

# Cauldron



Dr. EVERETT A. CHURCHILL



Northeastern University  
Library

The first part of the document discusses the importance of maintaining accurate records of all transactions. It emphasizes that every entry, no matter how small, should be recorded to ensure the integrity of the financial data. This includes not only sales and purchases but also expenses and income. The document provides a detailed list of items that should be tracked, such as inventory levels, accounts payable, and accounts receivable. It also outlines the procedures for recording these transactions, including the use of double-entry bookkeeping and the importance of regular reconciliations.

The second part of the document focuses on the analysis of the recorded data. It explains how to calculate key financial ratios and metrics, such as the gross profit margin, operating profit margin, and return on investment. These calculations are essential for understanding the company's financial performance and identifying areas for improvement. The document also discusses the importance of comparing the company's performance against industry benchmarks and historical data to provide context for the results.

The final part of the document addresses the reporting requirements for the financial data. It outlines the format and content of the financial statements, including the balance sheet, income statement, and cash flow statement. It also discusses the importance of providing clear and concise explanations for any significant fluctuations in the data. The document concludes by emphasizing the role of accurate financial reporting in decision-making and the overall success of the business.

cauldron  
Senur

NORTHEASTERN UNIVERSITY LIBRARIES DUPL



3 9358 01423830 4

# COLLEGIUM

VOLUME XXV



*Classes of '46 and '47*

NA371.807  
S46-47c  
cop 1

It is with great pleasure and with sincere gratitude that we, the Classes of 1946 and 1947, dedicate this twenty-fifth volume of the Cauldron to Professor John Butler Pugsley. He is a man with whom all members of our two classes have come in contact many times in their undergraduate years. He has always been a faithful friend and a valuable adviser, and he has made a contribution to the college life of each of us.

Professor Pugsley received his Bachelor of Arts degree from Colby College in 1905. After graduate work at Columbia University, he held positions as principal and superintendent of schools in towns in Vermont, New Hampshire, and Massachusetts. During the first World War he served as Athletic Officer of the 26th Division, a position in line with his skills as an athlete. Upon his discharge in 1918 he came to Northeastern University as Assistant Professor of Mathematics. A short time later, in September, 1919, he was appointed to the position of Registrar, the position which he has held since that time. It is interesting to note that Professor Pugsley has served as adviser to veterans of World War I and World War II.

*Dedication*



*John Butler Pugsley*

476

We, the Cauldron Board, present Volume  
Twenty-five of the Cauldron to classmates and  
to friends of the University.

Because of wartime conditions, it has been  
necessary to combine the Classes of 1946 and 1947  
under one cover. With the materials and the funds  
at hand, the combined staffs have labored  
to make this Cauldron a worthwhile remembrance  
of our college years.

Our best efforts are within these covers,  
and we sincerely hope that this book  
will always bring pleasant recollections  
of our undergraduate days.

FOR THE CLASS OF 1946

ROBERT C. TWOMBLY  
*Editor-in-Chief*

JAMES J. DONNELLAN  
*Business Manager*

RODERIC W. SOMMERS  
*Managing Editor*

FREDERIC D. McALLISTER  
*Photographic Editor*

ROBERT J. MARKELL  
*Informal Pictures Editor*

FOR THE CLASS OF 1947

JOHN H. COWLES  
*Editor-in-Chief*

RICHARD L. KENNEDY  
*Business Manager*

ROY L. WOOLDRIDGE  
*Managing Editor*

THOMAS L. McDONOUGH  
*Photographic Editor*

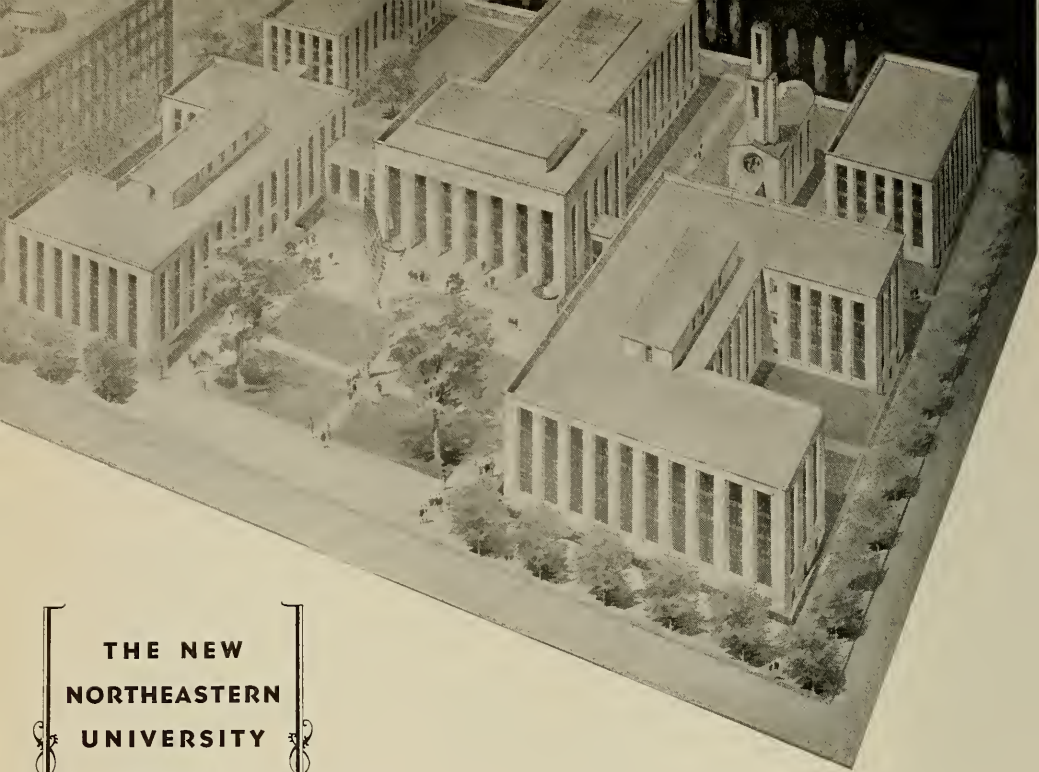
ARTHUR HEBERT  
*Informal Pictures Editor*



ADMINISTRATION



Faculty



THE NEW  
NORTHEASTERN  
UNIVERSITY  
PLANT

The Dream of Yesterday ~

The Work of Today ~

The Accomplishment of Tomorrow

*Carl S. Lee*

# The Northeastern University Corporation



ROBERT GRAY DODGE

*Chairman*

CARL STEPHENS ELL

*President of the University*

FRANK LINCOLN RICHARDSON

*Vice-Chairman*

HENRY NATHANIEL ANDREWS

*Treasurer*

EVERETT AVERY CHURCHILL

*Secretary*

Joseph F. Abbott  
Charles Francis Adams  
Wilman E. Adams  
Roger Amory  
Arthur A. Ballantine  
George L. Barnes  
Thomas P. Beal  
F. Gregg Bemis  
S. Bruce Black  
Henry G. Bradley  
George A. Burnham  
Godfrey L. Cabot  
Paul C. Cabot  
Walter Channing  
William C. Chick  
Paul F. Clark  
Sears B. Condit  
Albert M. Creighton  
Edward Dana  
Edward Dane  
James W. Daniels  
William J. Davidson  
Paul A. Draper  
David F. Edwards  
William P. Ellison  
Joseph B. Ely  
John Wells Farley  
Allan Forbes  
Ernest B. Freeman  
Franklin W. Ganse

Harvey D. Gibson  
Merrill Griswold  
Henry I. Harriman  
Carroll S. Harvey  
Chandler Hovey  
Weston Howland  
Howard M. Hubbard  
Maynard Hutchinson  
Arthur S. Johnson  
Charles B. Johnson  
Jacob J. Kaplan  
Harry H. Kerr  
Frank H. Lahey  
Halfdan Lee  
Galen D. Light  
Edward A. MacMaster  
John R. Macomber  
Albert E. Marshall  
Harold F. Mason  
J. Franklin McElwain  
Hugh D. McLellan  
Irwin L. Moore  
Fred L. Morgan  
Irving E. Moulthrop  
Clarence L. Newton  
Samuel Norwich  
Olaf Olsen  
Augustin H. Parker, Jr.  
George E. Pierce  
Roger Pierce

Matthew Porosky  
Frederick S. Pratt  
Roger S. Pratt  
Roger Preston  
H. Wendell Prout  
Sidney Rabinovitz  
Stuart C. Rand  
William M. Rand  
James L. Richards  
Harold B. Richmond  
John J. Robinson  
Charles M. Rogerson  
Robert B. Rugg  
Leverett Saltonstall  
Russell M. Sanders  
Andrew S. Seiler  
Frank P. Speare  
Russell H. Stafford  
F. R. Carnegie Steele  
Charles Stetson  
Earl P. Stevenson  
Robert T. P. Storer  
Frank H. Stuart  
Edward W. Supple  
Ralph E. Thompson  
James V. Toner  
Eliot Wadsworth  
Eustis Walcott  
Edwin S. Webster  
Sinclair Weeks



## Carl Stephens Ell

A.B., M.S., ED.M., SC.D.

*President of the University*



Everett Avery Churchill

A.B., ED.D.

*Vice-President of the University*

William Crombie White

S.B., ED.M.

*Director of the Day Colleges and Dean of the  
College of Engineering*



## Harold Wesley Melvin

A.B., M.A.

*Dean of Students*



## Robert Bruce

B.C.S., M.C.S.

*Acting Dean of the College of Business  
Administration*



Wilfred Stanley Lake

A.B., M.A., PH.D.

*Dean of the College of Liberal Arts*



Charles William Havice

A.B., M.A., S.T.B., PH.D.

*Dean of Chapel*



SCHLAGENHAUF



NIGHTINGALE



PARSONS



PUGSLEY



EVERETT

MILTON JOHN SCHLAGENHAUF, A.B., B.D., M.A.  
*Director of Admissions*

WINTHROP E. NIGHTINGALE, A.B., S.B., Ed.M.  
*Director of Cooperative Work*

EDWARD S. PARSONS, S.B., Ed.M.  
*Director of Student Activities*

JOHN B. PUGSLEY, A.B.  
*Registrar*

ALBERT E. EVERETT, S.B., M.B.A.  
*Director of E. S. M. W. T.*

DAISY MILNE EVERETT  
*Assistant Comptroller*

ALFRED W. FLETCHER, A.B.  
*Assistant Director of E. S. M. W. T.*

\*FREDERICK R. HENDERSON, S.B., M.S.  
*Assistant Dean of Engineering*

VERA L. JENKINSON, S.B.  
*Assistant Director of Admissions*

\*On leave of absence for the duration of the war



EVERETT



FLETCHER



HENDERSON



JENKINSON





OBERG



PURINTON



TOWLE

RUDOLF O. OBERG, S.B., Ed.M.  
*Director of Alumni Relations*

\*ELLIS M. PURINTON, B.B.A.  
*Instructor in Coordination*

GEORGE W. TOWLE, S.B.  
*Associate Professor of Coordination*

J. KENNETH STEVENSON, B.C.S.  
*Assistant to the Vice-President*

NATHAN LEVENSON, LL.B.  
*Director of the Press Bureau*

\*RUDOLPH M. MORRIS, S.B., Ed.M.  
*Secretary of the Faculty*

MARY B. FOOR  
*Manager of the Bookstore*

MYRA WHITE  
*Librarian*

\*On leave of absence for the duration of the war



STEVENSON



LEVENSON



MORRIS



FOOR



WHITE



SPEAR



HASKINS



COMBELLACK



DEAN

## Mathematics

JOSEPH SPEAR, A.B., M.A.

*Professor of Mathematics and Chairman of the Department*

ELMER E. HASKINS, S.B., M.A., Ph.D.

*Associate Professor of Mathematics*

WILFRED J. COMBELLACK, A.B., M.A., Ph.D.

*Assistant Professor of Mathematics*

\*EARL K. BOWEN, S.B., M.A.

*Instructor in Mathematics*

\*EDWARD M. COOK, A.B.

*Instructor in Mathematics*

WARREN C. DEAN, A.B., M.A.

*Instructor in Mathematics*

\*HARRY FERGUSON, S.B.

*Instructor in Mathematics*

SAMUEL A. STONE, S.B., M.S.

*Instructor in Mathematics,*

WILLIAM WALLACE, S.B.

*Instructor in Mathematics*



STONE

\*On leave of absence for the duration of the war



WALLACE



BOWEN



COOK



FERGUSON



ZELLER



FERRETTI



STEARNS



WHITTAKER

## Mechanical Engineering

JOSEPH W. ZELLER, S.B., M.E.  
*Professor of Mechanical Engineering and  
Chairman of the Department*

ALFRED J. FERRETTI, S.B., M.S.  
*Professor of Mechanical Engineering*

\*WILLIAM T. ALEXANDER, S.B., M.A.  
*Associate Professor of Industrial Engineering and  
Chairman of the Department*

FREDERICK A. STEARNS, S.B., M.S.  
*Associate Professor of Mechanical Engineering*

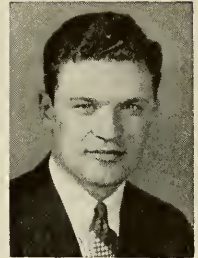
\*ALBERT E. WHITTAKER, S.B., Ed.M.  
*Associate Professor of Mechanical Engineering*

\*WAYLAND S. BAILEY, S.B., M.S.  
*Assistant Professor of Mechanical Engineering*

\*CHESTER H. WOLOWICZ, S.B., M.S.  
*Assistant Professor of Mechanical Engineering*

WARREN L. GANONG, S.B.  
*Instructor in Industrial Engineering*

\*DUNCAN W. SEAVEY, S.B., M.S.  
*Instructor in Mechanical Engineering*



WOLOWICZ

\*On leave of absence for the duration of the war



BAILEY



SEAVEY



ALEXANDER



GANONG



TOZER



MESERVE



DEVINE

## Drawing

ELIOT F. TOZER, S.B.

*Professor of Drawing and Chairman of the Department*

GEORGE H. MESERVE, JR., S.B., Ed.M.

*Associate Professor of Drawing*

\*OTIS F. CUSHMAN, S.B., M.S.

*Assistant Professor of Drawing*

J. JAMES DEVINE, S.B., Sc.M.

*Assistant Professor of Drawing*

CHARLES P. ENGELHARDT, S.B., M. ARCH.

*Instructor in Drawing*

\*EUGENE G. PARE, S.B., Ed.M.

*Instructor in Drawing*

\*GUSTAV ROOK, S.B.

*Instructor in Drawing*

\*On leave of absence for the duration of the war



ROOK



ENGELHARDT



CUSHMAN



PARE



GRAMSTORFF



BAIRD



SPENCER

## Civil Engineering

EMIL A. GRAMSTORFF, S.B., M.S.  
*Professor of Civil Engineering and  
Chairman of the Department*

CHARLES O. BAIRD, JR., S.B., M.S.  
*Associate Professor of Civil Engineering*

ERNEST L. SPENCER, S.B., M.S.  
*Assistant Professor of Civil Engineering*

GEORGE W. HANKINSON, S.B., A.B.  
*Instructor in Civil Engineering*

\*ALBERT E. SANDERSON, JR., S.B., M.S.  
*Instructor in Civil Engineering*



SANDERSON

## Chemical Engineering

CHESTER P. BAKER, S.B., M.A.  
*Professor of Chemical Engineering and  
Chairman of the Department*

JOHN C. MORGAN, S.B., M.B.A.  
*Assistant Professor of Chemical Engineering*

\*On leave of absence for the duration of the war



BAKER



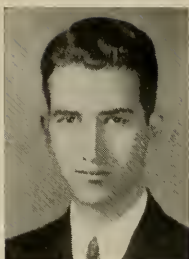
MORGAN



HANKINSON



VERNON



LUDER



ZUFFANTI

## Chemistry

ARTHUR A. VERNON, S.B., M.S., Ph.D.  
*Professor of Chemistry and Chairman of the Department;  
Director of Graduate Study*

W. FAY LUDER, A.B., Ph.D.  
*Associate Professor of Chemistry*

WALDEMAR S. MCGUIRE, S.B., M.A.  
*Associate Professor of Chemistry*

SAVERIO ZUFFANTI, S.B., M.A.  
*Associate Professor of Chemistry*

NORMAN A. DUBOIS, S.B., M.A., Ph.D.  
*Assistant Professor of Chemistry*

FLETCHER S. BOIG, B.S., M.S., Ed.M.  
*Instructor in Chemistry*



MCGUIRE



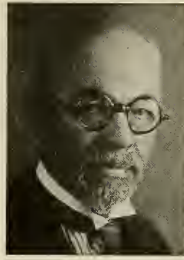
DUBOIS



BOIG



PORTER



SMITH



CLEVELAND

## Electrical Engineering

ROLAND G. PORTER, B.E.E., M.S.  
*Professor of Electrical Engineering and  
Chairman of the Department*

WILLIAM L. SMITH, S.B., ENG.D.  
*Professor of Electrical Engineering*

LAURENCE F. CLEVELAND, S.B., M.S.  
*Associate Professor of Electrical Engineering*

\*HENRY E. RICHARDS, S.B., M.S.  
*Associate Professor of Electrical Engineering*

GEORGE E. PIHL, S.B., M.S.  
*Assistant Professor of Electrical Engineering*

\*MARTIN W. ESSIGMANN, S.B.  
*Instructor in Electrical Engineering*

\*On leave of absence for the duration of the war



RICHARDS



PIHL



ESSIGMANN



ESTES



HAVICE



PINARD



POTTER



CUTTS

## Social Sciences

\*STANLEY G. ESTES, A.B., M.A., PH.D.  
*Professor of Psychology and Chairman of the Department*

CHARLES W. HAVICE, A.B., M.A., S.T.B., PH.D.  
*Professor of Sociology and Chairman of the Department;  
Dean of Chapel*

WILLIAM J. PINARD, A.B., M.A., Ed.M., PH.D.  
*Associate Professor of Sociology*

\*NORRIS W. POTTER, JR., A.B., M.A., PH.D.  
*Associate Professor of History and Government and  
Acting Chairman of the Department*

\*ELMER H. CUTTS, A.B., M.A., PH.D.  
*Assistant Professor of History and Government*

\*CHARLES M. RAMSEY, A.B., M.A.  
*Assistant Professor of Economics*

MARY C. WELBORN, A.B., A.M., PH.D.  
*Assistant Professor of History and Government*

GUSTAVE R. SERINO, A.B., Ed.M.  
*Instructor in History and Government*

\*On leave of absence for the duration of the war



RAMSEY



WELBORN



SERINO





MUCKENHOUP



COOLIDGE



JOHNSON

## Physics

CARL F. MUCKENHOUP, A.B., S.B., PH.D.  
*Professor of Physics and Chairman of the Department*

JOSEPH A. COOLIDGE, S.B., M.A.  
*Professor of Physics*

C. DAVID JOHNSON, A.B., M.A.  
*Associate Professor of Physics*

REGINALD G. LACOUNT, S.B., M.A., PH.D.  
*Associate Professor of Physics*

\*GEORGE B. WELCH, S.B., PH.D.  
*Assistant Professor of Physics*

ROBERT W. BORDEWIECK, S.B.  
*Instructor in Physics*

LOUISE G. MARSH, S.B.  
*Instructor in Physics*

\*THOMAS H. WALLACE, S.B., M.A., PH.D.  
*Assistant Professor of Physics*

\*On leave of absence for the duration of the war



LACOUNT



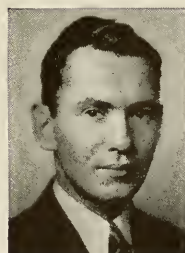
WELCH



BORDEWIECK



MARSH



WALLACE



HAMILTON



D'ALESSANDRO



FENNELL

## Business Administration

\*ALFRED D'ALESSANDRO, B.C.S., LL.B., C.P.A., M.B.A.  
*Professor of Accounting*

ROGER S. HAMILTON, A.B., M.A., Ph.D.  
*Professor of Economics and Chairman of the Department*

GEORGE R. FENNELL, S.B., M.B.A.  
*Assistant Professor of Marketing and  
Secretary of the Faculty*

GERALD R. TATTON, S.B., M.B.A.  
*Assistant Professor of Business Management and  
Head Coach of Track*

\*JOSEPH M. GOLEMME, S.B., M.A.  
*Instructor in Accounting*

\*LYMAN A. KEITH, S.B., M.A.  
*Instructor in Industrial Administration*



TATTON



GOLEMME

## Biology

STANLEY D. MIROYIANNIS, S.B., M.A., Ph.D.  
*Professor of Biology and Chairman of the Department*

PAULINE F. SULLIVAN, A.B., M.A.  
*Instructor in Biology*

\*On leave of absence for the duration of the war



KEITH



MIROYIANNIS



SULLIVAN



HOLMES



MARSTON



CLONEY

## English

FREDERICK W. HOLMES, A.B., M.A.  
*Professor of English and Chairman of the Department*

EVERETT C. MARSTON, A.B., M.A.  
*Associate Professor of English*

\*WILLIAM T. CLONEY, JR., A.B.  
*Assistant Professor of English and  
Director of the Publicity Bureau*

R. LAWRENCE CAPON, B.S., A.M.  
*Instructor in English*

\*FRANKLIN NORVISH, S.B., M.A.  
*Instructor in English*



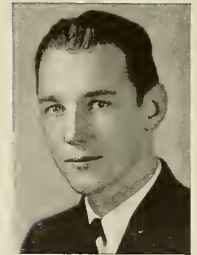
CAPON

## Modern Languages

CHARLES F. BARNASON, A.B., M.A., Ph.D.  
*Professor of Modern Languages and  
Chairman of the Department*

ANTONIO L. MEZZACAPPA, A.B., M.A., Ph.D.  
*Associate Professor of Modern Languages*

\*LOUIS COOPERSTEIN, A.B., M.A.  
*Instructor in Modern Languages*



NORVISH

\*On leave of absence for the duration of the war



BARNASON



MEZZACAPPA



COOPERSTEIN



MACKENZIE



KONTOFF



LANE

## Student Activities

DONALD H. MACKENZIE, S.B., Ed.M.

*Assistant Professor of Physical Education and Assistant to the Director of Student Activities*

\*HENRY A. KONTOFF, M.D.

*College Physician*

GEORGE M. LANE, M.D.

*College Physician*

\*JAMES W. DUNN, A.B.

*Instructor in Physical Education and Head Coach of Football and Basketball*

EMANUEL A. FLUMERE, A.B.

*Instructor in Physical Education and Head Coach of Football and Basketball*

WILLIAM C. HULTGREN

*Instructor in Physical Education*

\*WILLIAM F. LINSKEY

*Coach of Hockey*



DUNN

\*On leave of absence for the duration of the war



FLUMERE



HULTGREN



LINSKEY

DECEMBER  
GRADUATES  
1944



Seniors



## Norman A. Anderson

11 Linden Street, North Easton, Massachusetts

*Mechanical Engineering*

CAULDRON Junior Staff; Husky Plus Committee 5; Radio Club; American Society of Mechanical Engineers 3, 4, 5.

*Cooperative Work*

Ames Baldwin Wyoming Co., North Easton—Electrician's Helper, Apprentice Machinist.

## Joseph B. Arots

21 Willard Street, Waterbury, Connecticut

*Chemical Engineering*

PHI GAMMA PI

Freshman Honor List; Dean's List 4; Interfraternity Council Representative 3, Fraternity Treasurer 3, 4, 5, Assistant House Manager 2; Student Union Cabinet 3, 4; Newman Club 1, 2; American Institute of Chemical Engineers 2, 3, 4, 5, Social Chairman 5; American Chemical Society.

*Cooperative Work*

U. S. Rubber Co., Naugatuck, Conn.—Rubber Compounder in Laboratory.



## Victorino V. Banaag

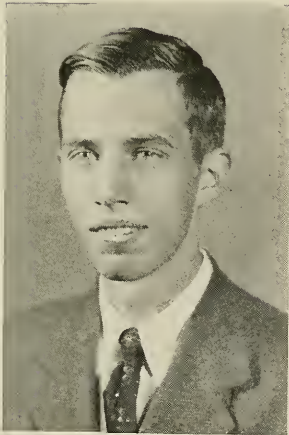
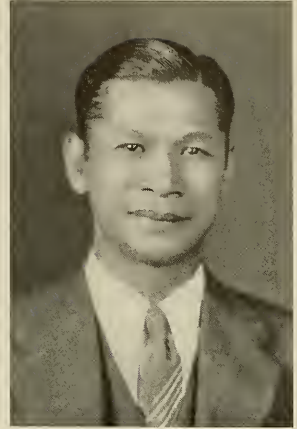
2621 Herran Street, Manila, Philippines

*Mechanical Engineering*

Activities at University of Santo Tomas, Manila: Basketball, Boxing, Tennis Teams; Student Council. Received degree of Bachelor of Science in Civil Engineering from Santo Tomas, 1934.

*Cooperative Work*

General Electric Co., Lynn—Test Engineer; Bethlehem Hingham Shipyard, Inc., Supervisor of Shipbuilding, U.S.N., Hingham—Associate Principal Machinery Inspector; Bethlehem Hingham Shipyard, Inc., Bureau of Yards and Docks, U.S.N., Hingham—Assistant Civil Engineer.



## Edward K. Blakeney

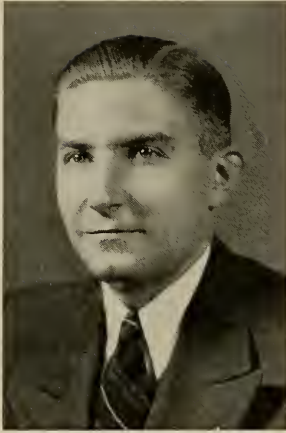
20 Laurel Street, Arlington, Massachusetts

*Liberal Arts (English)*

News 3, Makeup Editor 4; Astronomy Club 1; Literary Club 3, 4.

*Cooperative Work*

United Business Service, Boston—Clerk.



## Joseph J. Bulba

368 Franklin Avenue, Hartford, Connecticut

*Civil Engineering*

Freshman Honor List; Dean's List 5; Camera Club; Northeastern University Civil Engineering Society 2, 3, 4, President 5; American Society of Civil Engineers, and Boston Society of Civil Engineers; *Who's Who Among Students in American Universities and Colleges*.

*Cooperative Work*

N. Y., N. H. & H. R. R. Co., Hartford, Conn.—  
Chainman.

## Alfred D. DiNozzi

252 Broadway, Boston, Massachusetts

*Electrical Engineering*

Intramural Softball and Basketball 3, 4, 5; Senior Council; Chess Club 1, 2; American Institute of Electrical Engineers 2, 3, 4, 5.

*Cooperative Work*

Jackson & Morland, Boston—Assistant Engineer; Holtzer & Cabot Electric Co., Roxbury—In Charge of Print Developing.



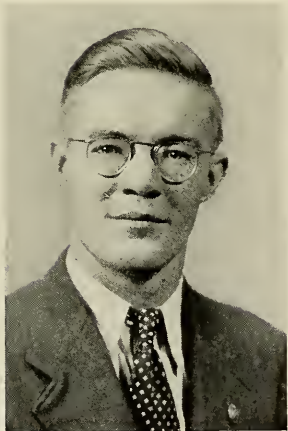
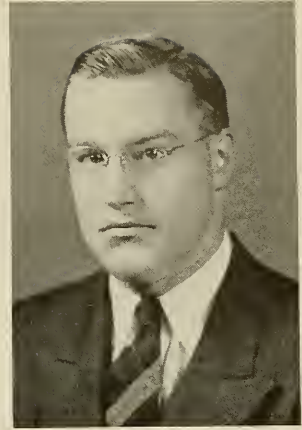


## James J. Donnellan

102 Gainsborough Street, Boston, Massachusetts  
*Business Administration (Accounting)*

Melvin Scholarship; Freshman Honor List; Dean's List 2, 3, 4, 5; CAULDRON Junior Staff 4, Business Manager 5; Student Union Cabinet Member 5; Senior Week Committee; Senior Council; Society for Advancement of Management 4, President 5; *Who's Who Among Students in American Universities and Colleges*.

*Cooperative Work*  
Pepperell Mfg. Co., Boston—Clerk.

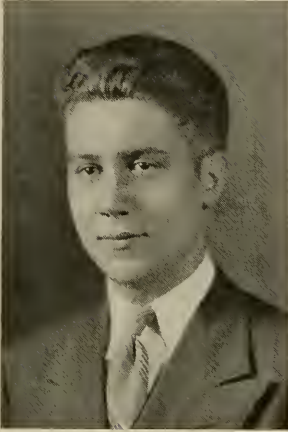


## Earle C. Farmer

431 West Fourth Street, South Boston, Massachusetts  
*Liberal Arts (Mathematics and Physics)*

Academy, Vice-President; Honor List; Dean's List 2, 3, 4, 5.

*Cooperative Work*  
Polaroid Corp., Cambridge—Laboratory Technician.



## Alfred J. Fleischmann

4 Lindner Court, Lawrence, Massachusetts

*Chemical Engineering*

SIGMA PHI ALPHA

Freshman Honor List; Dean's List 2; Senior Council;  
Yacht Club 3, Vice-Commodore 4, 5; Fraternity Treas-  
urer 3, President 4; American Institute of Chemical  
Engineers, Treasurer 5.

*Cooperative Work*

Tyer Rubber Co., Andover—Laboratory Assistant.

## Frank A. Folino

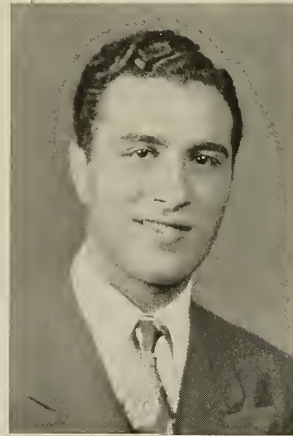
10 Fleet Street, Boston, Massachusetts

*Mechanical Engineering*

Intramural Baseball 3, 4, and Basketball 3, 4; Cosmo-  
politan Club 2, 3, Vice-President 4, 5; Rifle Club 3;  
American Society of Mechanical Engineers 3, 4, 5.

*Cooperative Work*

Reece Buttonhole Machine Co., Boston—Inspector.



## A. Harvey Gardner, Jr.

61 Porter Street, Melrose, Massachusetts

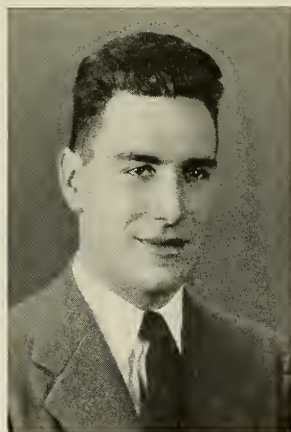
*Mechanical Engineering*

PHI BETA ALPHA

CAULDRON Junior Staff; Huskiers 1, 2; Intramural Baseball 4, 5, and Basketball 4; Student Council 3, 4, Treasurer 5, Chairman Activities Committee 5; Class Vice-President 1, 2; Class President 3, 4; American Society of Mechanical Engineers 3, 4, 5.

### *Cooperative Work*

Gould Aeronautical Division of Pratt Read & Co., Deep River, Conn.—Lead Inspector, Stress and Weights Analysis, Draftsman.



## John J. Goode

696 Huntington Avenue, Boston, Massachusetts

*Electrical Engineering*

Student Council 5; Rifle Club; Glider Club; Chess Club; Yacht Club; American Institute of Electrical Engineers, American Institute of Radio Engineers.

### *Cooperative Work*

Bethlehem Steel Co., Quincy—Installed, Tested, and Repaired Naval Electrical Equipment.



## Nathan I. Hentoff

1 Howland Street, Roxbury, Massachusetts

*Liberal Arts (English)*

Academy, Secretary 3, 4; Freshman Honor List; Dean's List 2, 3, 4, 5; Academy Freshman Scholarship; Dean's List Scholarship 2, 3, 4; *News* 1, Feature Editor 2, Editor-in-Chief 3; Student Council 4, Treasurer 2, Secretary 3; President of Senior Class; Debating Club 1; Semi-finals, Public Speaking Contest 1, 2; Literary Club 3, 4; Band 1; *Who's Who Among Students in American Universities and Colleges*.

## David E. Higginbotham

397 Washington Street, Taunton, Massachusetts

*Electrical Engineering*

Tau Beta Pi; Freshman Honor List; Dean's List 2, 3, 4; Secretary of Senior Class; Glee Club 1, 2; American Institute of Electrical Engineers 2, 3, 4, 5; *Who's Who Among Students in American Universities and Colleges*.

*Cooperative Work*

Mendell Elec. Mfg. Co., Inc., New Bedford—Switchboard Wiring.



## Herbert M. Johnson

13 Dwight Street, Ansonia, Connecticut

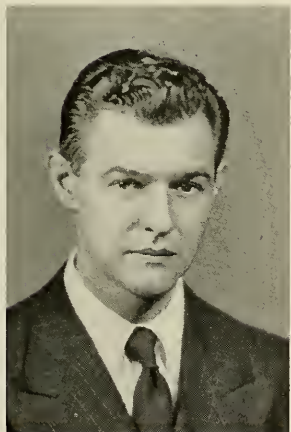
*Chemical Engineering*

GAMMA PHI KAPPA

Student Union 1, 2, Cabinet 3; Glee Club 1, 2; American Institute of Chemical Engineers 2, 3, 4, 5.

*Cooperative Work*

U. S. Rubber Co., Naugatuck, Conn.—Laboratory Assistant; Seamless Rubber Co., New Haven, Conn.—Laboratory Analyst; Farrel-Birmingham, Inc., Ansonia, Conn.—Assembler.



## John W. Kaczanowicz

317 Pleasant Street, Northampton, Massachusetts

*Mechanical Engineering*

(Receiving degree from Norwich University, Northfield, Vermont; completing credits at Northeastern under Veterans Administration.) Activities at Norwich: Phi Kappa Delta Fraternity; Treasurer, Mechanical Engineering Club; Secretary, Norwich Chapter, Society of American Military Engineers; Vice-President, Norwich Aero Club; Civilian Pilot Training Program; activities at Northeastern: Secretary, Northeastern University Veterans Association; Army service: Cavalry.



## Gerald H. Katz

31 Allen Street, Boston, Massachusetts

*Mechanical Engineering*

Freshman Honor List; Dean's List 2, 3; American Society of Mechanical Engineers 3, 4, 5.

*Cooperative Work*

Allen Plumbing & Heating Co., Boston—Steamfitter.

## Clayton W. Kennedy, Jr.

87 Pleasant Street, North Andover, Massachusetts

*Mechanical Engineering*

Intramural Softball 2, 3, 4, Basketball 3, 4; Senior Council; Husky Plus Committee 5; Senior Week Committee Class Treasurer 5; N. U. Veterans Association; American Society of Mechanical Engineers 3, 4, 5.

*Cooperative Work*

Davis & Furber Machine Co., North Andover—Machine Operator; General Electric, River Works, Lynn—Safety Engineering Dept.



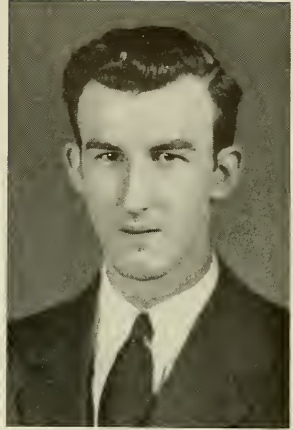
## Joseph R. Kiernan

22 Phillips Street, Lowell, Massachusetts  
*Chemical Engineering*

American Institute of Chemical Engineers 3, 4, 5.

### *Cooperative Work*

Wirthmore Research Laboratory, Malden—Laboratory  
Assistant; Tyler Rubber Co., Andover—Laboratory  
Assistant.



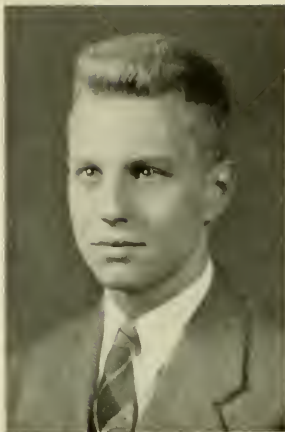
## Robert N. Kuehn

436 Mammoth Road, Manchester, New Hampshire  
*Civil Engineering*

Dean's List 2, 4; Intramural Softball 2, 3, 4; Chess Club  
1; Northeastern University Civil Engineering Society  
2, 3, 4, 5; American Society of Civil Engineers; Boston  
Society of Civil Engineers.

### *Cooperative Work*

Bethlehem Hingham Shipyard, Inc., Hingham—Rod-  
man, Transitman; Ritchie-Ellsworth, Camp Edwards—  
Rodman, Transitman, Inspector; Boston & Albany R. R.,  
Boston, Rodman.



## George W. Laakso, Jr.

5 Winthrop Street, Peabody, Massachusetts  
*Civil Engineering*

Dean's List 5; Student Union 4; Yacht Club 1; North-eastern University Civil Engineering Society 2, 3, 4, Vice-President 5; American Society of Civil Engineers; Boston Society of Civil Engineers.

### *Cooperative Work*

General Electric Co., Lynn—Rodman; N. Y., N. H. & H. R. R. Co., Hartford—Chainman.

## Melvin F. Levine

68 American Legion Highway, Dorchester, Massachusetts  
*Mechanical Engineering*

Freshman Honor List; Dean's List 2; *News* 2, 3, Feature Editor 4; Student Council 5; Student Union 4, 5; Glee Club 1, 2, 3; Literary Club 4; American Society of Mechanical Engineers 3, 4, 5.

### *Cooperative Work*

Sanborn Co., Boston—General; General Electric Co., Lynn—Expeditor, Tool Planning, Factory Layout.





## Stanley W. Lovejoy, Jr.

96 Appleton Street, Arlington, Massachusetts

*Mechanical Engineering*

NU EPSILON ZETA

Freshman Honor List; Dean's List 2; CAULDRON Junior Staff 4; Intramural Softball 4; Student Council 3, 4, 5, Vice-President 4, Secretary 5; Spring Festival Committee 4; Northeastern University Blood Drive; American Society of Mechanical Engineers 3, 4, 5.

*Cooperative Work*

Johns-Manville, Nashua, N. H.—Draftsman; Perfection Grate & Stoker Co., Boston—Draftsman.



## Robert J. Markell

92 Waumbuck Street, Roxbury, Massachusetts

*Civil Engineering*

KAPPA ZETA PHI

Freshman Honor List; Dean's List 4, 5; *News* 1, 2, 3, Art Editor 4; CAULDRON Junior Staff 4, Informal Pictures Editor 5; Senior Week Committee; Senior Council; Fraternity Secretary 2; Northeastern University Civil Engineering Society 2, 3, 4, Treasurer 5; American Society of Civil Engineers; Boston Society of Civil Engineers; *Who's Who Among Students in American Universities and Colleges*.

*Cooperative Work*

N. Y., N. H. & H. R. R. Co., Boston—Rail Inspector and Maintenance Helper; U. S. Coast and Geodetic Survey, New York—Rodman.



## Frederic D. McAllister

Van Brunt Street, Southampton, New York

*Mechanical Engineering*

NU EPSILON ZETA

CAULDRON Junior Staff 4, Photographic Editor 5; Football 1; Student Council 4, Vice-President 5; Class Secretary 4; Glee Club -4, 5; Intramural Baseball and Basketball 3, 4; American Society of Mechanical Engineers 3, -4, Program Chairman 5; Fraternity Grand Scribe 5.

*Cooperative Work*

Pratt & Whitney Aircraft, Hartford, Conn.—Assistant Production Engineer; Western Union Telephone Co., Waremills, N. Y.—Laboratory Assistant.

## Edward W. Murphy

647 East Third Street, South Boston, Massachusetts

*Civil Engineering*

Dean's List 4; Charles Hayden Scholar; Softball 2, 3, 4; Senior Council; Senior Week Committee; Northeastern University Civil Engineering Society 3, 4, 5; American Society of Civil Engineers; Boston Society of Civil Engineers.

*Cooperative Work*

Bethlehem Steel Co., Quincy—Test Engineer



## Kenneth E. Palmer

15½ Hodges Street, Attleboro, Massachusetts

*Civil Engineering*

Freshman Honor List; Dean's List 2, 3, 4; CAULDRON Junior Staff; Track 1, 2, 3, 4; Cross Country 1, 2, 3, 4; Student Council 4, 5; Senior Council; Class Vice-President 3, 4, 5; Northeastern University Civil Engineering Society 2, 3, 4, 5, Class Representative 2, 3; American Society of Civil Engineers; Boston Society of Civil Engineers.

*Cooperative Work*

United Construction Co., South Boston Navy Yard—Transitman; U. S. Coast and Geodetic Survey, Main—Photographic Observer; Northeastern University, Huntington Field—Maintenance.



## Samuel J. Pattison, Jr

122 East Side Parkway, Newton, Massachusetts

*Civil Engineering*

Dean's List; Charles Hayden Scholarship; *News* 1; Baseball 1, 4; Cross Country 1; Intramural Softball 3, 4; Class Council 1, 4; Senior Week Committee; Northeastern University Civil Engineering Society 2, 3, 4, 5, Secretary 4.

*Cooperative Work*

City of Newton, Newton—Rodman, Transitman; Bethlehem Steel Co., Quincy—Rodman; General Electric Co., West Lynn—Draftsman, Expeditor.



## George R. Peterson

122 Villa Street, Waltham, Massachusetts  
*Chemical Engineering*

Senior Council; American Institute of Chemical Engineers 3, 4, 5.

*Cooperative Work*  
Waltham Watch Co., Waltham—Laboratory Assistant.

## Arthur D. Porter

126 Villa Street, Waltham, Massachusetts  
*Electrical Engineering*

Freshman Honor List; Dean's List 2; Intramural Softball 3, 4; Intramural Basketball 3, 4; American Institute of Electrical Engineers 3, 4, 5.

*Cooperative Work*  
Boston Edison Co., Boston—Equipment Service, Division Maintenance Work.



## Leon Rabin

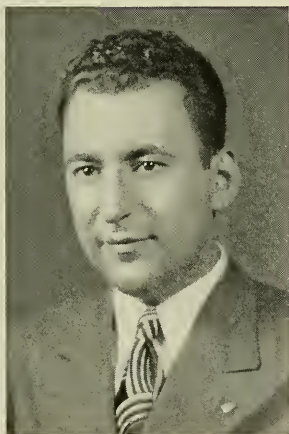
37 Falmouth Street, Boston, Massachusetts

*Chemical Engineering*

*News* 3, 4; Student Union 1, 2, Chairman Services Committee 3, Chairman War Services Committee 3, 4, Vice-President 4; Northeastern University Veterans Association 5; American Institute of Chemical Engineers 2, 3, 4, 5; American Chemical Society.

*Cooperative Work*

Northeastern University, Boston—Checkroom.



## William C. Raftell

2 Jackson Street, Charlestown, Massachusetts

*Chemical Engineering*

American Institute of Chemical Engineers 3, 4, 5.

*Cooperative Work*

Consolidated Rendering Co., Boston—Assistant Chemist; Barrett Div. Allied Chemical & Dye Corp., Malden—Assistant Chemist.



## Rodney W. Reder

322 Frost Road, Waterbury, Connecticut

*Mechanical Engineering*

PHI GAMMA PI

Freshman Honor List; Dean's List 2, 3; Fraternity Treasurer 3, House Manager -4, President 5; Interfraternity Softball; Interfraternity Council; American Society of Mechanical Engineers 3, -4, 5.

*Cooperative Work*

Waterbury Farrel Foundry & Machine Co., Waterbury, Conn.—Machine Assembly.

## Isadore Sheinefine

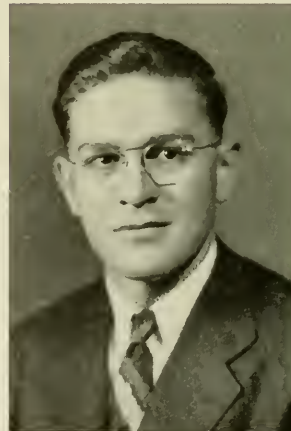
23 Magnolia Street, Roxbury, Massachusetts

*Chemical Engineering*

American Institute of Chemical Engineers 3, 4, 5.

*Cooperative Work*

Allied Container Corp., Boston—Assistant Shipper; Hy-Sil Mfgr., Revere—Assistant Shipper.



## John J. Smialek

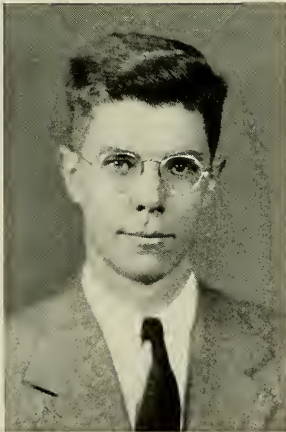
233 Lyman Street, Holyoke, Massachusetts

*Mechanical Engineering*

Varsity Basketball 3; Varsity Baseball 4; Student Council 5; American Society of Mechanical Engineers 3, Vice-Chairman 4, Chairman 5; Senior Week Committee.

*Cooperative Work*

Worthington Pump & Machinery Corp., Holyoke—Draftsman; General Electric Co., Lynn—Testor.



## Orin A. Smith

249 Melrose Street, Melrose, Massachusetts

*Mechanical Engineering*

Dean's List 4; American Society of Mechanical Engineers 3, 4, Treasurer 5.

*Cooperative Work*

Fay, Spofford & Thorndike, Boston—Electrical Drafting, Design and Layout on Newfoundland Base Project.



## Roderic W. Summers

38 Franklin Street, Medford, Massachusetts

*Civil Engineering*

Charles Hayden Scholar; Melvin Scholarship; Freshman Honor List; Dean's List 3, 5; CAULDRON Junior Staff 4, Managing Editor 5; Intramural Softball 3, 4; Student Council 5; Student Union 5; Glee Club 1, 2, 3, President 4, 5; University Song Leader 5; Northeastern University Civil Engineering Society 2, 3, 4, 5; American Society of Civil Engineers; Boston Society of Civil Engineers.

*Cooperative Work*

Stoneham Public Works Dept., Stoneham—Student Civil Engineer, Draftsman, Surveyor.

## William F. Sullivan

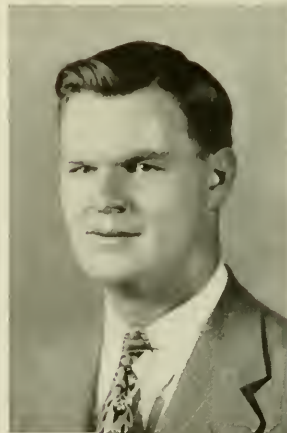
157 Baker Avenue, Revere, Massachusetts

*Mechanical Engineering*

Intramural Basketball 3, 4; Intramural Softball 3, 4, 5; Student Council 2, 3, Treasurer 4, President 5; Class Secretary 3; Class Treasurer 2, 4; Class Vice-President 5; Senior Week Committee; Husky Plus Committee 5; Senior Council; American Society of Mechanical Engineers 3, 4, 5; Society for the Advancement of Management 5; *Who's Who Among Students in American Universities and Colleges*.

*Cooperative Work*

P. S. Thorson Bros., Boston—Sheet Metal Worker; Hylite Corp., Boston—Sheet Metal Worker; Thomson Gibb Electric Welding Co., Lynn—Experimental Laboratory.





## John H. Taylor

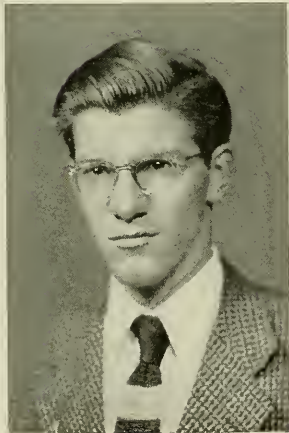
683 High Street, Westwood, Massachusetts

*Electrical Engineering*

Dean's List 2, 3; Intramural Softball and Basketball 3, 4, 5; Chess Club, Secretary and Treasurer 2; American Institute of Electrical Engineers, Chairman 5.

*Cooperative Work*

Allis Chalmers Mfg. Co., Hyde Park—Production Clerk,  
Order Chaser, Follow-up Man



## Thayer C. Taylor

22 Swan Place, Arlington, Massachusetts

*Liberal Arts (English)*

Dean's List 3, 4, 5; *News* 2, 3, Associate Managing Editor 4; CAULDRON Junior Staff 4; Student Union 2, 3, 4; Student Council 4, 5; Literary Club.

*Cooperative Work*

Boston Globe, Boston—Editorial Assistant; Boston Herald-Traveler, Boston—School Correspondent; F. S. Mosely & Co., Boston—Office Assistant.



## Robert C. Twumbly

16 Lawson Road, Winchester, Massachusetts

*Mechanical Engineering*

NU EPSILON ZETA

Dean's List 3; CAULDRON Junior Staff 4, Editor-in-Chief 5; Intramural Basketball 2, 3, 4; Intramural Softball 2, 3, 4; Husky Plus Committee 5; Nu Epsilon Zeta 2, 3, Vice-Grand Master 4, Grand Master 5; Interfraternity Council 3; Interfraternity Basketball 2, 3; American Society of Mechanical Engineers 3, 4, Social Chairman 5; Society for the Advancement of Management 5; Senior Week Committee; *Who's Who Among Students in American Universities and Colleges*.

*Cooperative Work*

Amory Foundry Co., Boston—Production Manager.

## Arnold P. Weiner

2 Pama Gardens, Brighton, Massachusetts

*Mechanical Engineering*

Glee Club 1; Northeastern University Veterans Association 5; Organizing Committee; American Society of Mechanical Engineers 2, 3, 4, 5; Army Service: Air Corps 1942-1943.

*Cooperative Work*

General Electric Co., Lynn—Supercharge Tester; Sanborn Co., Cambridge—Cardiette Inspector; Greenfield Tap & Die Corp., Greenfield—Gage Engineer.



## James K. Yee

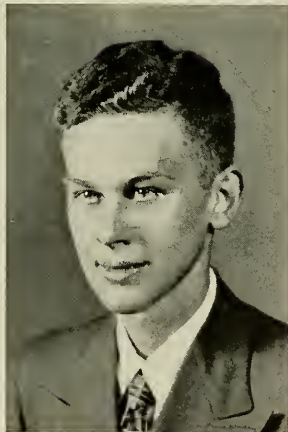
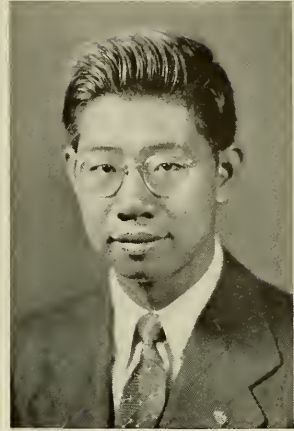
4 Hudson Street, Boston, Massachusetts

*Electrical Engineering*

Freshman Honor List; Intramural Softball; American  
Institute of Electrical Engineers 3, 4, 5.

*Cooperative Work*

Northeastern University, Boston—Physics Dept. Office,  
Physics Lab. Assistant.



## Ernest J. Zitke

65 Galen Street, Brockton, Massachusetts

*Mechanical Engineering*

News 1, 2; CAULDRON 1; American Society of Mechanical  
Engineers 3, 4, 5.

*Cooperative Work*

Ames Baldwin Wyoming Co., North Easton—Electrician.



## Serafin J. Krukonis

185 Silver Street, Boston, Massachusetts

*Mechanical Engineering*

Tau Beta Pi; Freshman Honor List; Dean's List 2, 3, 4;  
Football 1; Intramural Softball and Basketball 4; Rifle  
Club 1, 2, 3; Cosmopolitan Club 2, 3, 4; American So-  
ciety of Mechanical Engineers 3, Secretary 4, Chairman 5.

*Cooperative Work*

Hy-Lite Corp., Boston—Sheet Metal Worker.

### *Senior Dean's List*

JOSEPH J. BULBA

GERALD H. KATZ

JAMES J. DONNELLAN

GEORGE W. LAAKSO, JR.

NATHAN I. HENTOFF

ROBERT J. MARKELL

DAVID E. HIGGINBOTHAM

RODERICK W. SOMMERS

THAYER C. TAYLOR



### *Class Adviser*

Professor Ernest Lincoln Spencer was born May 17, 1913, in Norwood, Massachusetts. He now resides in Medfield with his wife and son. Professor Spencer attended Northeastern University and was graduated in 1936 with the degree of Bachelor of Science in Civil Engineering. He then did special work in structural design at the Franklin Institute during the years 1936 and 1937. In November, 1943, Professor Spencer received his Master of Science degree from Harvard University.

Professor Spencer came to Northeastern as Instructor in Civil Engineering in 1939. He was made Assistant Professor of Civil Engineering in September, 1944.

In addition to his work here at the University, Professor Spencer served as the chief of a surveying party with E. M. Brooks Company during 1936 and 1937. He was Junior Engineering Aide for one year for the Massachusetts Department of Public Works, Waterways Division. In 1938 he transferred to Jackson and Moreland, where he served as Assistant Engineer for two years on construction work. He is an active member of the American Society of Civil Engineers, and is also secretary of the Junior Association of the American Society of Civil Engineers, Northeastern Section.

It has been through the untiring efforts of Professor Spencer that we have been so successful as a class during this difficult war period. We take this opportunity to state our appreciation, and to thank Professor Spencer for his counsel, his assistance, and his friendship during our college career.



*First Row, left to right: Kennedy, Hentoff, Sullivan, Higginsbotham,  
Second Row, left to right: Donnellan, Murphy, Markell, Fleischmann, Prof. Spencer, Peterson, DiNozzi.*

## Class Council

## Senior Week Committee



*First Row, left to right: Kennedy, Sullivan, Markell, Gardner,  
Second Row, left to right: Murphy, Smialek, Pattison, Anderson, Twombly, Levine, Folino.*

# CLASS HISTORY

## FRESHMAN

We entered N. U. in September, 1941, the largest class ever to enter the University. Approximately 1000 entered in this division and 200 entered in Division B in November. Our class practically filled Jordan Hall, and it is interesting to note that all of the upper classes together held their meetings in this hall and didn't fill it as much as we did.

We fumbled through the first three days of orientation in the best manner that we could. Most of us wandered in a daze through a maze of examinations, both physical and mental, emptied our pens several times a day filling out cards and papers, and wondered if we ever would become accustomed to this new type of life that we were entering. As if the upperclassmen couldn't tell who were Freshmen and who were not, the University clinched the situation by placing on our heads a small object known as the "Freshman Hat."

The first semester saw us becoming oriented to college life. Near the end of our first semester, in December 1941 we followed the news very carefully and saw the

historic events of the sneak attack on Pearl Harbor and heard Congress declare war on Japan. These events were to change the lives and careers of many of us and would affect each and every one of us in many ways in the years ahead. Many left immediately for the Armed Services and amid the conflicting statements of "Serve your country" and "Stay in school and get your education first," we finished our first semester in hectic times.

Class elections were held the first week of our second semester and it was at this time that we started to function as a class. Our first dance was held on the Roof Garden of the Parker House. This dance was a huge social success and the hall was filled with couples who thoroughly enjoyed themselves. The second dance of this semester was a Semi-Formal held at the Hotel Continental in Cambridge and while it was not as successful as the first, it was enjoyed by all who attended.

Our Freshman year drew to a close with a substantial reduction in members and an air of uncertainty as to how many would be back for the Sophomore year.

### FRESHMAN OFFICERS

*Left to right: Gardner, Kemp, Carleton, Scott.*



## SOPHOMORE

Our Sophomore year started with our being separated into two divisions. Division A returned in the summer and to many who returned this was the first attempt at studying in the warm weather. Division B went on their first Co-op work period and as a result many friendships of our Freshman year were disrupted. We were all more or less fascinated by this new plan of education and, coupled with our relief of getting through the Freshman year, we were all content and overran any difficulties brought about by the Cooperative Plan.

So we went ahead, contributing some men to the Varsity squads, more and more men to the Armed Services, learning more every day, and continuing on the road to social success.

Due to the time we took becoming accustomed to the ten week periods, only one social affair was run this year. This was the All-University Round-up, which was run in conjunction with the Student Council. It was an all-out affair here at the University and on the program were such things as ex-

hibits in all the labs, baseball and basketball games, swimming, dancing, and movies. The dance was held in the large gymnasium of the Y. M. C. A. and the music was furnished by Andy Jacobson. The party lasted from noon until midnight and almost all who were students attended, together with a large group of faculty guests.

The weeks flew by and before we could plan anything else our year was over.

## MIDDLER

We now were in the year which caused so many explanations to other people. No one ever heard of a Middler year and it was almost impossible to keep telling everyone about it. Before we were very far along in this year we told people we were either Sophomores or Juniors, to save wear and tear on the vocal chords.

We entered this year with less than half of our original class enrollment. Despite our reduced numbers, we reorganized our class and made preparations for our third class dance. This dance was held at the



### SOPHOMORE OFFICERS

*First Row, left to right:*  
Prof. Spencer, Hughes,  
Kemp, Lovett. *Second*  
*Row, left to right:*  
Scott, Gorves, Sullivan,  
Tuomi.



Hotel Kenmore and once again we had a full house. To have such a good crowd was quite exceptional for at the time gas rationing was being strictly enforced and a few days before, pleasure driving had been banned. To top this all off there was a driving rain storm and most of us were thoroughly saturated, thanks to travel on the good old Boston El, before we reached the hall.

This year, due to the reduced membership of the classes and the possibility of losing even more to the draft, the Cooperative Plan was discontinued and we returned to a full-time basis. The discontinuing of Cooperative work meant no more school for a good many more of our classmates and our group was even further reduced in number.

We were, once again, all together in one division and this made the possibilities for future dances and parties look better than they ever had before.

## JUNIOR

The Junior year started only one week after the Middler year ended and we hardly

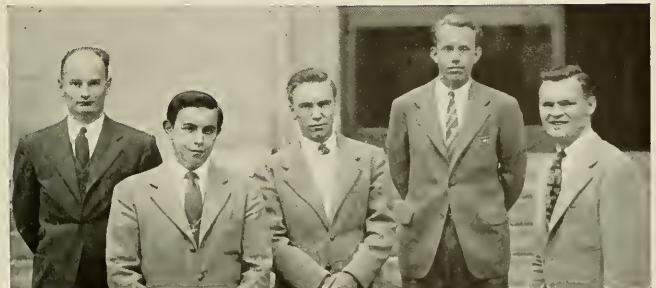
had time to realize that we had passed another milestone in our careers. We registered with a group of 80 out of our original class of 1200. Under the accelerated program the time seemed to pass very fast and it was in the second semester that preparations for a Junior dance were underway.

Because of the minute sum in our treasury, it was impossible to even consider a Junior Prom. With our treasury as a restraining influence we went ahead with the arrangements for the dance. The dance was held at the New England Mutual Charter Hall, and dancing to the music of Ruby Newman's Orchestra was very much enjoyed by all. Although this dance was the nearest we came to a financial flop it was another of our traditional social successes.

The Spring Festival was held this year and while it was not run by our class a good many of our members worked on the committee. This featured plays by the students in Bates Hall, softball games, dancing in the Commons, movies in 228-N, and an Open House.

### MIDDLER OFFICERS

*Left to right: Prof.  
Spencer, Kay, Gardner,  
Palmer, Sullivan.*



## SENIOR

We began our last undergraduate year at the University in June. Softball was our favorite noontime activity and we hardly had time to realize that we were almost through. Our activities didn't start until the second semester even though we had most of the responsibility of running the Fun Fest at Riverside Park. It was a very hot day, but a few courageous individuals played tennis and softball, while most of us were content to loll in the swimming pool. In the evening a dance was held and the day was completely successful.

In the second semester we ran the "Presentation Dance" primarily to make money for Senior Week. However, the dance turned out to be a huge social success as well as the greatest financial success of our career. The profits from this dance together with the class treasury were pooled and we went ahead with plans for Senior Week.

The Senior Week Committee was chosen and our plans were laid. The first activity of Senior Week was the Stag Smoker, which

was the Stag Banquet without the food. This ran along in more or less traditional fashion with a selected group of faculty present and the customary entertainment. Next we treated the faculty to a banquet, and everyone was very much pleased to be able to talk to them without fear of seeing them in class the next day. Friday we held the Senior Dinner Dance in the Hotel Gardner. This was formal and was perhaps the most successful dance (socially) that we have ever run. The Alumni Banquet was held Saturday and wound up our activities for Senior Week.

Graduation was held in Bates Hall on Sunday afternoon, December 3, and immediately after the exercises, a reception was held in the Commons.

And so we leave Northeastern University, a little the worse for wear and tear, but with an education to help us in the years to come. As we go our separate ways may we always look back with a pleasant recollection of our undergraduate days.

R. C. T.



### SENIOR OFFICERS

*Left to right: Kennedy, Hentoff, Prof. Spencer, Sullivan, Higinbotham.*

# Acknowledgments

To all who have contributed or helped us compile this yearbook, we of the CAULDRON Board express our sincere and heartfelt thanks.

To Mr. Waid, Miss Dempsey, and Mr. Yerkes for their prompt work and excellent cooperation.

To Mr. Russell Knight of the Stobbs Press, whose wealth of ability and experience so readily available, made this yearbook a pleasant success.

To the Activities Department and Miss Peppard, and other departments and secretaries, and to faculty members for their patience and assistance.

To William F. Sullivan for his help in compiling the Senior Section.

To Selma Kirschman and Louisa Ashton for their help in typing the copy.

To Edward Murphy and Joseph Bulba, though not regular members of the Board, for their cooperation on the Informal Pictures Section.



KING HUSKY II

**Societies**  
**Publications**  
**Fraternities**  
**Athletics**



# Activities

# Student Council



WILLIAM F. SULLIVAN, '46  
*President*

FREDERIC D. McALLISTER, '46  
*Vice-President*

PAUL V. SHAUGHNESSY, '48  
*Secretary*

A HARVEY GARDNER, '46  
*Treasurer*

DEAN HAROLD W. MELVIN  
*Faculty Adviser*

William J. Arvedon, '47  
Mary H. Bigelow, '48  
Lois A. Brady, '48  
David R. Cahill, '47  
Thomas Chin, '47  
Stephanie Chopek, '48

John H. Cowles, '47  
John J. Goode, '46  
Arthur Hebert, '47  
Nathan I. Hentoff, '46  
Melvin F. Levine, '46  
Arthur K. Littlefield, '47

Marjorie V. Lundfelt, '48  
John J. Smialek, '46  
Roderic W. Sommers, '46  
Thayer C. Taylor, '46  
Edward R. Willett, '47

## EX-OFFICIO MEMBERS

William Davidson, '48

Andrew J. McNeill, '49

## MEMBERS NOW IN THE ARMED SERVICES

Stanley W. Lovejoy, Jr., '46  
Kenneth E. Palmer, '46

Anthony J. R. Pandiscio, '47  
Donald C. Philbrick, '47



First Row, left to right: Hentoff, Chopek, Shaughnessy, Sullivan, Gardner, Brady, Dean Melvin.  
Second Row, left to right: Hebert, Willett, Levine, Cowles, Chin, Davidson.  
Third Row, left to right: Cahill, Sommers, Smialek, Goode.



First Row, left to right: Bury, Littlefield, Shaughnessy, Gold, Willett.  
 Second Row, left to right: Donnellan, Levine, Ashton, Flynn, Rothschild, Weinfeld.  
 Third Row, left to right: Peterson, Dacey, Sommers, Douville, Wallace, Morrice.

PAUL V. SHAUGHNESSY, '48  
*President*

I. LOUIS GOLD, '48  
*Vice-President*

SHELLEY A. PEARLMAN, '48  
*Secretary*

ROY A. PETERSON, '48  
*Treasurer*

DEAN CHARLES W. HAVICE  
*Faculty Adviser*

#### ADVISORY BOARD

Dean William C. White  
 Dean Harold W. Melvin

Dean Charles W. Havice  
 Professor Edward S. Parsons

#### COMMITTEE CHAIRMEN

Bramwell A. Bury, '48  
 James J. Douville, '47

Robert G. Harrison, '48  
 Arthur K. Littlefield, '47  
 John B. Morrice, '48

Murray A. Weinfeld, '47  
 Edward R. Willett, '47

#### COMMITTEE MEMBERS

Louisa J. Ashton, '48  
 Lois A. Brady, '48  
 Charles P. Changelian, '49  
 James J. Donnellan, '46

Calista M. Folsom, '48  
 Grace P. McKinlay, '48  
 John B. Morrice, '48  
 Barbara A. Parrish, '48  
 Nathan Rose, '47

Roderic W. Sommers, '46  
 Ben H. Tongue, '47  
 Robert D. Wolff, '48  
 Rita A. Young, '48



## Student Union Cabinet



Prof. Everett C. Marston  
*Faculty Adviser*

# THE CAULDRON BOARD

CLASS OF 1946

**James J. Donnellan**  
*Business Manager*

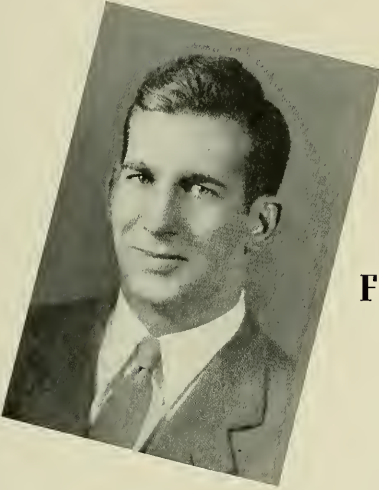
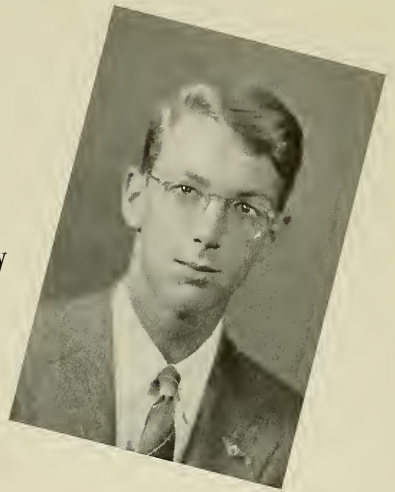


**Roderic W. Sommers**  
*Managing Editor*



**Robert C. Twombly**

*Editor-in-Chief*



**Frederic D. McAllister**

*Photographic Editor*

**Robert J. Markell**

*Informal Pictures Editor*



# The News

ARTHUR K. LITTLEFIELD, '47LA

*Editor-in-Chief*

EDWARD R. WILLETT, '47BA

*Managing Editor*

LEONARD WEISS, '49BA

*News Editor*

ALFRED J. PACELLI, '48E

*Acting Sports Editor*

GRANVILLE E. REED, '48LA

*Acting Feature Editor*

J. RICHARD BROWN, '48BA

*Make-up Editor*

MURRAY A. WEINFELD, '47LA

*Literary Editor*

HAROLD HUCKINS, JR., '47E

*Photographic Editor*

RICHARD L. KENNEDY, '47BA

*Business Manager*

ROBERT D. WOLFF, '48LA

*Office Manager*

LILLIAN KOLODIZ, '48E

*Circulation Manager*

JAMES TRAVERS, '49LA

*Advertising Manager*

PROFESSOR EVERETT C. MARSTON

*Faculty Adviser*

## NEWS STAFF

William R. White, '49E

William S. Filler, '49E

Phillip McGeoch, '49E

James H. Brown, '49E

Albert Adelman, '49E

## FEATURE STAFF

Louisa J. Ashton, '48LA

Walter Pollock, '48E

Paul V. Shaughnessy, '48LA

Vincent L. Ysebaert, '47LA

## SPORTS STAFF

William Buchanan, '49LA

E. Newell Austin, '48E

Louis Gold, '48E

Mel Silverman, '49E

Ernest E. Mills, '48E

Charles Block, '49E

Melvin R. Burstein, '48BA

## CIRCULATION STAFF

Samuel Simon, '49E

Leo Topol, '48LA

Alfred Winer, '48LA

Joseph Levine, '48E

Earl Yavner, '49E

John Morrice, '48LA

Ruth Reiner, '48LA

## ADVERTISING STAFF

Herbert A. Lerner, '49E

## PHOTOGRAPHIC STAFF

Allan Barnett, '49BA

Joseph Wolfson, '49E

Kurt Wessely, '48E

## MAKE-UP STAFF

Martin Levine, '49E

Jerry Konowitz, '49E

## ART STAFF

Dominic Berulli, '49E



First Row, left to right: Willett, Kennedy, Kolodiz, Littlefield, Reiner, Ashton, Professor Marston, Block. Second Row, left to right: Austin, Lerner, Wessely, Gold, Weinfeld, Rice, Adelman, Block. Third Row, left to right: Weiss, Pacelli, Simon, Shaughnessy, Huckins, Wolff, Wolfson, White, Reed, Yavner.



First Row, left to right: Gardner, Folino, Anderson, Twombly, Smith, Professor Stearns, Smialek, Cowles, Chase, Chin, M. Levine. Second Row, left to right: Austin, Lang, Banaag, McDonough, Harrison, Heffron, Preston, Briggs, Sandler, Cahn, Spitz, Goldman, Cook, Abbondante. Third Row, left to right: Nowell, Yurko, MacAnespie, Blanchard, Baker, Scurton, Gordon, Caplan, Taylor, Steiff, Corapi, Katz, Kaufman, Moscatelli. Fourth Row, left to right: Walden, B. Levine, Feinzig, Farley, Sullivan, Zitke, Tinglof, Weiner, Hopkins, Woodbury, Mills, Kennedy, Healy.

JOHN J. SMIALEK, '46

*President*

JOHN H. COWLES, '47

*Vice-President*

ARTHUR L. CHASE, '47

*Secretary*

ORIN A. SMITH, '46

*Treasurer*

PROFESSOR FREDERICK A. STEARNS

*Faculty Adviser*

MEMBERS FROM THE CLASS OF 1946

Norman A. Anderson  
Victorino V. Banaag  
Frank D. Folino  
A. Harvey Gardner, Jr.  
Gerald H. Katz

Clayton W. Kennedy  
Serafin J. Krukonis  
Melvin F. Levine  
Stanley W. Lovejoy, Jr.  
Fredric D. McAllister

Rodney W. Reder  
William F. Sullivan  
Robert C. Twombly  
Arnold P. Weiner  
Ernest J. Zitke

MEMBERS FROM THE CLASS OF 1947

Cosmo Abbondante  
Jason B. Baker  
Charles R. Blanchard  
Ralph G. Briggs, Jr.  
Thomas Chin  
Ernest M. Cook  
Vincent Corapi

Grant S. Healy  
Theodore K. Johnson  
Howard N. Kaufman  
Robert S. Lang  
Thomas G. MacAnespie  
Thomas L. McDonough  
David R. Nowell

John K. Taylor  
Carl Tinglof, Jr.  
Kenneth T. Walden  
Roderick V. Woodbury  
Malvin M. Yurko

MEMBERS FROM THE CLASS OF 1948

E. Newell Austin  
Irving Cahn  
Aaron Caplan  
Wilbur H. Farley  
Irving Feinzig  
Sherman H. Goldman  
Irving G. Gordon  
Robert G. Harrison

Paul Heffron  
Clifford Hopkins  
Charles Knowlton, Jr.  
Bernard G. Levine  
George Merker  
Ernest E. Mills  
Felix Moscatelli  
John L. Preston

Hyman Sandler  
George S. Scurton  
S. Leonard Spitz  
Leon H. Steiff  
Roger N. Tuttle  
Lester Wilker

# American Society of Mechanical Engineers

# American Institute of Electrical Engineers

JOHN H. TAYLOR, '46  
*Chairman*

ALFRED P. SIEKLUCKI, '47  
*Secretary-Treasurer*

JAMES E. MROSE, '47  
*Vice-Chairman*

PROFESSOR ROLAND G. PORTER  
*Faculty Adviser*

## MEMBERS FROM THE CLASS OF 1946

Alfred D. DiNozzi  
John J. Goode

David E. Higginbotham  
Arthur D. Porter

James K. Yee

## MEMBERS FROM THE CLASS OF 1947

Jerome H. Bloom  
Walter W. Bordewieck  
Walter Ciaschini

Nathan Freedman  
Lester B. Linsky  
Arthur A. Najarian

Ben H. Tongue  
George M. Zoza

## MEMBERS FROM THE CLASS OF 1948

Henry S. Hall

Robert N. G. Hom  
Sidney F. Quint

Bryan H. Saunders



*First Row, left to right: Porter, Sieklucki, Taylor, DiNozzi, Higginbotham, Professor Porter, Mrose. Second Row, left to right: Hom, Najarian, Freedman, Linsky, Riceman, Bordewieck, Saunders, Quint. Third Row, left to right: Bloom, Goode, Tongue, Zoza, Ciaschini, Hall.*



*First Row, left to right: Hebert, Laakso, Bulba, Markell, Murphy. Second Row, left to right: Wooldridge, Kuehn, Campbell, Pacelli, King. Third Row, left to right: Sikora, Pattison, Searles, Sommers.*

JOSEPH J. BULBA, '46  
*President*

GEORGE W. LAAKSO, JR., '46  
*Vice-President*

ARTHUR HEBERT, '47  
*Secretary*

ROBERT J. MARKELL, '46  
*Treasurer*

PROFESSOR CHARLES O. BAIRD, JR.  
*Faculty Adviser*

MEMBERS FROM THE CLASS OF 1946

Robert N. Kuehn  
Edward S. Murphy

Kenneth E. Palmer  
Samuel J. Pattison, Jr.

Roderic W. Sommers

MEMBERS FROM THE CLASS OF 1947

Gorden H. Searles

John Sikora

Roy L. Wooldridge

MEMBERS FROM THE CLASS OF 1948

Charles Axelrod

John M. Campbell  
Donald B. Carter, Jr.

Alfred J. Pacelli, Jr.

# Northeastern University

## Civil Engineering Society

# American Institute of Chemical Engineers

HYMAN RESNICK, '46  
*President*  
ALFRED J. FLEISCHMANN, '46  
*Treasurer*

LEWIS THFOHAROUS, '47  
*Secretary*

GEORGE P. CHANGELIAN, '46  
*Vice-President*

DAVID R. CAHILL, '47  
*Second Vice-President*

PROFESSOR CHESTER P. BAKER  
*Faculty Adviser*

## MEMBERS FROM THE CLASS OF 1946

Joseph B. Arots  
Herbert M. Johnson

Joseph R. Kiernan  
George R. Peterson  
Leon Rabin

William C. Raffell  
Isadore Scheinfine

## MEMBERS FROM THE CLASS OF 1947

John A. Burbidge  
Arnold Carlin  
Richard W. Greenwood

Harold Huckins  
George Koskoris  
Melvin J. Rosenfeld

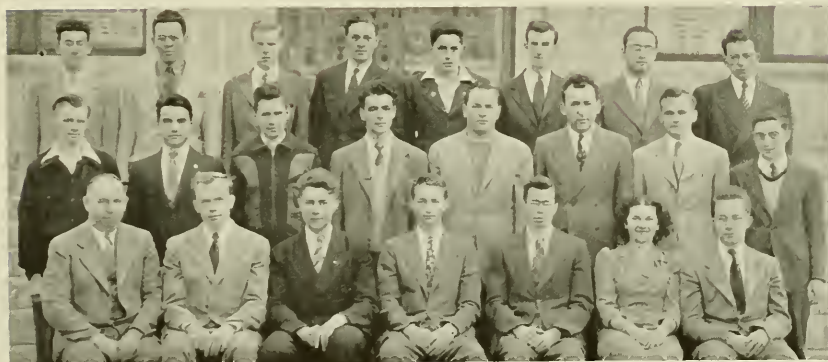
Alfred J. Scandura  
Anthony F. Tuccelli

## MEMBERS FROM THE CLASS OF 1948

Alfred H. Isenberg  
Lillian Kolodiz

Manuel G. Koutrakis  
Marjorie V. Lundfelt  
Charles T. Mitchell, Jr.

Francis J. Paris  
Norman Rubin



First Row, left to right: Professor Baker, Arots, Fleischmann, Cahill, Peterson, Kolodiz, Johnson. Second Row, left to right: Burbidge, Koskoris, Rabin, Koutrakis, Rosenfeld, Raffell, Greenwood, Paris. Third Row, left to right: Isenberg, Rabin, Huckins, Scheinfine, Carlin, Kiernan, Tuccelli, Scandura.



*First Row, left to right: Kaufman, Healy, Professor Ganong, Donnellan, Willett, Cowles. Second Row, left to right: Nowell, Kaizerman, Spampinato, Deery, McDonough, Kennedy. Third Row, left to right: Hunt, Woodbury, Twombly, Sweeney.*

JAMES J. DONNELLAN, '46  
*President*

GRANT S. HEALEY, '47  
*Secretary*

EDWARD R. WILLETT, '47  
*Publicity Director*

JOHN H. COWLES, '47  
*Vice-President*

HOWARD N. KAUFMAN, '47  
*Treasurer*

MR. WARREN L. GANONG  
*Faculty Adviser*

MEMBERS FROM THE CLASS OF 1946

Robert C. Twombly

MEMBERS FROM THE CLASS OF 1947

Joseph H. Deery  
Richard L. Kennedy

Thomas L. McDonough  
David R. Nowell  
George J. Selados

Alexander A. Sweeney, Jr.  
Roderick V. Woodbury

MEMBERS FROM THE CLASS OF 1948

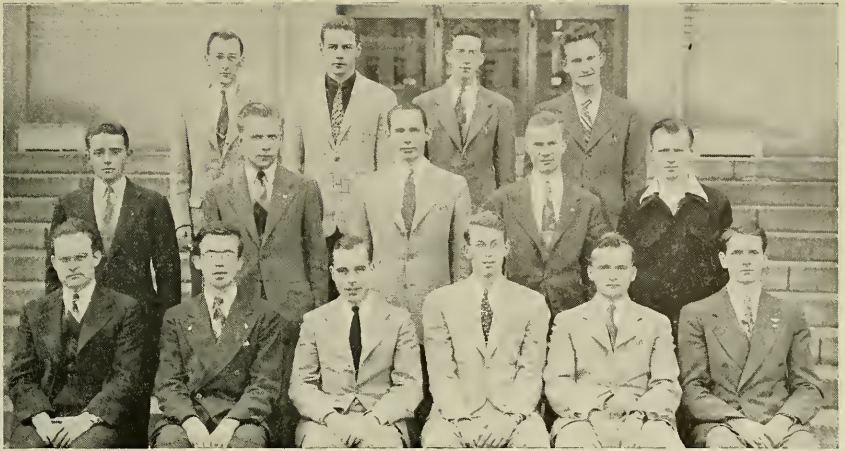
Lewis L. Kaizerman

Anthony L. Spampinato

# Society for the Advancement of Management







First Row, left to right: Professor Combella, Hall, Nowell, Twombly, Greenwood, Woodbury. Second Row, left to right: Carr, Mathes, Harrison, Littlefield, Burbidge. Third Row, left to right: Brown, Tuttle, Saunders, Cowles.

ROBERT C. TWOMBLY, '46

*Grand Master*

RICHARD W. GREENWOOD, '47

*Grand Scribe*

DAVID R. NOWELL, '47

*Vice-Grand Master*

HENRY S. HALL, '48

*Grand Chancellor*

PROFESSOR WILFRED J. COMBELLACK

*Faculty Adviser*



Stanley W. Lovejoy, Jr., '46  
 Roderick V. Woodbury, '47  
 Arthur K. Littlefield, '47  
 Brian H. Saunders, '48

J. Richard Brown, '49  
 Parker H. Carr, Jr., '49  
 John H. Cowles, '47  
 John A. Burbidge, '47

Roger N. Tuttle, '48  
 Robert G. Harrison, '48  
 Mark H. Mathes, '49  
 David L. Thurrell, '49

#### MEMBERS OF THE FACULTY

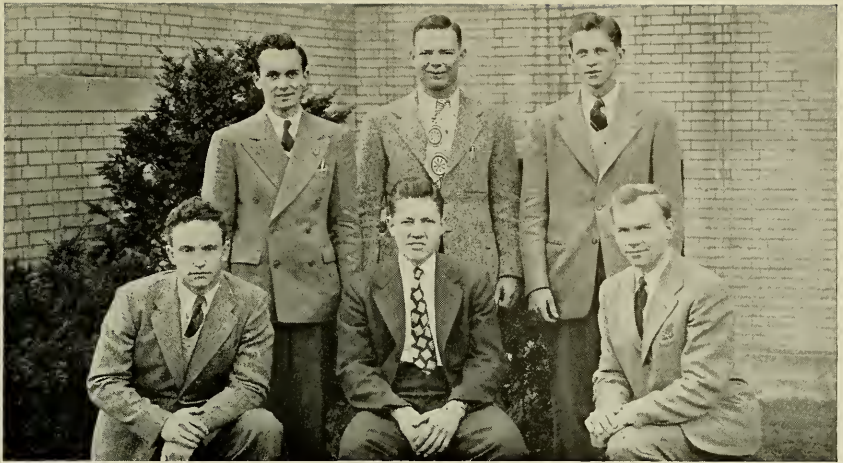
Prof. Wilfred J. Combella  
 Prof. J. James Devine  
 Dean Harold W. Melvin

Prof. George H. Meserve  
 Mr. Albert E. Sanderson

Prof. Ernest L. Spencer  
 Prof. George W. Towle  
 Dean William C. White

# Nu Epsilon Zeta Fraternity





*First Row, left to right: Waldens, Sikora, Arots.  
Second Row, left to right: Giroux, Doherty, Stankevich.*

JOHN SIKORA, '47

*President*

KENNETH T. WALDEN, '47

*Treasurer*

JOHN B. AROTS, '46

*Social Chairman*

GEORGE E. GIROUX, '49

*Vice-President and House Manager*

EDWARD A. STANKEVICH, '49

*Secretary*

MR. GEORGE W. HANKINSON

*Faculty Adviser*

*Pledgee: John F. Doherty, Jr., '48*



BROTHERS IN THE FACULTY

Prof. Henry E. Richards

Prof. Albert E. Whittaker

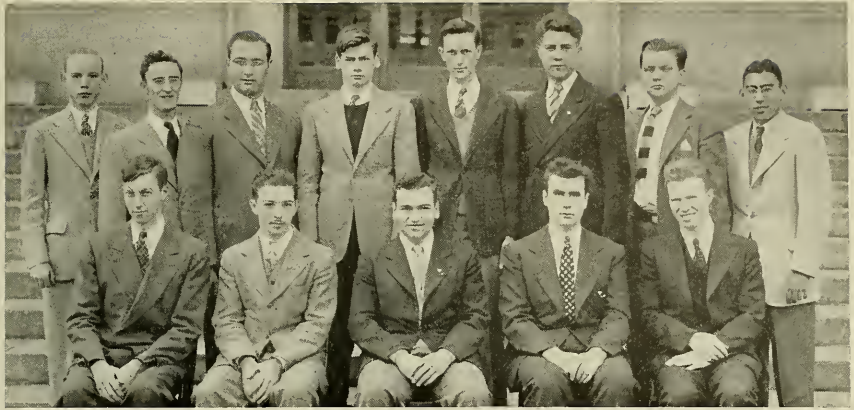
Prof. George E. Pihl

Prof. Milton J. Schlagenhauf

Dr. Elmer H. Cutts

# Phi Gamma Pi Fraternity





*First Row, left to right: Searles, Catatti, Najarian, Ciaschini, Mr. Bordewick.  
Second Row, left to right: Catterall, Bonasera, Tucelli, Mills, Hopkins, Fleischmann, Peterson, Pacelli.*

ARTHUR A. NAJARIAN, '47  
*President*

WALTER A. CIASCHINI, '47  
*Secretary*

EDWARD B. CATATTI, '47  
*Vice-President*

GORDON H. SEARLES, '47  
*Treasurer*

MR. ROBERT W. BORDEWICK  
*Faculty Adviser*



Salvatora J. Bonasera, '47  
George W. Catterall, '48  
John Christensen, '48  
F. Thomas Daly, '48

Alfred J. Fleishmann, '46  
Arthur J. Hilly, '48  
Clifford D. Hopkins, '48  
Ernest E. Mills, '48

Alfred J. Pacelli, '48  
Roy J. K. Peterson, '48  
Anthony F. Tuccelli, '47

BROTHERS IN THE FACULTY

Prof. Laurence F. Cleveland

Prof. Gerald R. Tatton

Dr. Reginald G. Lacount

Prof. Chester H. Wolowicz

# Sigma Phi Alpha Fraternity

# Yacht Club

W. MUNRO HALE, '48  
*Commodore*

MARTIN E. COHEN, '47  
*Secretary-Treasurer*

ALFRED J. FLEISCHMANN, '46  
*Vice-Commodore*

GRANT S. HEALY, '47  
*Fleet Captain*

PROFESSOR WALDEMAR S. MCGUIRE  
*Faculty Adviser*

## EXECUTIVE COMMITTEE

Henry Chin, '48

Stuart M. Cooney, '48  
Marjorie Lundfelt, '48

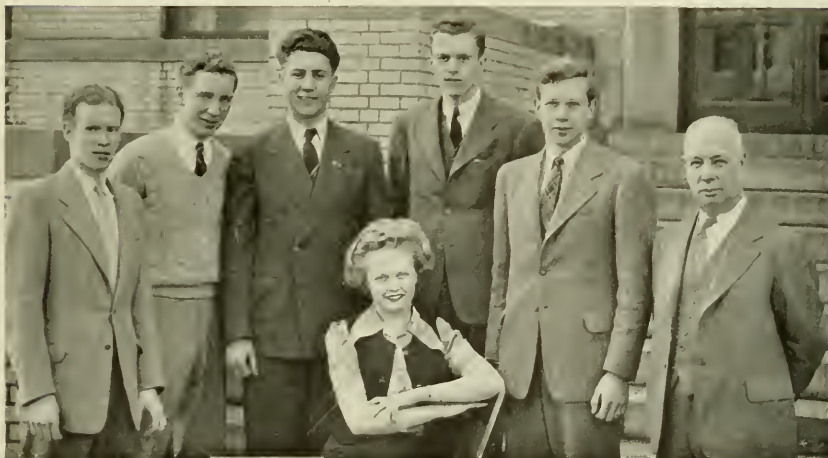
Robert S. Welsh, '48

The fall of 1938 found Northeastern without a nautical organization, but when the University was invited to take part in a regatta at M. I. T., as a non-member of the Intercollegiate Yacht Racing Association, two students—Ray Dion, '40 and Art Hartford, '40—represented Northeastern on their own. They won the regatta. And they won again when they unofficially represented N. U. the following spring at Brown, winning the I. C. Y. R. A. non-member championship plaque for the second year.

With two victories in a tough competitive field stowed away, the boys felt confident in going to Professor Parsons in the hope of organizing an official yacht club. They soon received his sanction, and Professor Rudolf O. Oberg was appointed adviser to the group.

After dominating the field of associate members for a year, N. U. joined the major league of yachting when the invitation to membership in the I. C. Y. R. A. was extended in May, 1940. The club now competes against some twenty-five colleges, in the East, and extending as far west as the University of Michigan.

During the winter, noon meetings were held with movies and talks. A Shore School was held in the spring for the benefit of novices. After successfully passing this requirement, actual instruction with boats using the facilities of the Community Sailing Association was given, thus making possible daily sailing and racing from May 1 to October 15.



*First Row:* Lundfelt.  
*Second Row, left to right:* Welsh, Cooney, Fleischmann, Healy, Hale, Professor McGuire



First Row, left to right: Bandurski, Flynn, Kirschman, Brady, Rosen, Reiner, Liker, McKinlay, Parrish. Second Row, left to right: Chopek, Rothschild, Leo, Lewis, Levin, Stiller, Kolp, Clark. Third Row, left to right: Osher, Yates, Ginsberg, Finneran, Leon, Freedman.

FRANCES ROSEN, '48  
*President*

CALISTA FOLSOM, '48  
*Vice-President*

LOIS BRADY, '48  
*Secretary*

RUTH REINER, '48  
*Treasurer*

MISS LOUISE G. MARSH  
*Faculty Adviser*

EXECUTIVE COMMITTEE

Selma Kirschman, '48, *Chairman* Florence Liker, '48 Grace P. McKinlay, '48

PUBLICITY COMMITTEE

Donna Riseman, '49, *Chairman* Frances Lezberg, '49 Ruth Freedman, '49

ALL-UNIVERSITY COMMITTEE

Barbara Parrish, '48, *Chairman* Barbara Clarke, '48 Rita Young, '48  
Shelley Pearlman, '48

SOCIAL COMMITTEE

Marjorie Lundfelt, '48, *Chairman* Charlotte Stiller, '48 Anastasia Bandurski, '48

MEMBERS FROM THE CLASS OF 1948

Phyllis Batchelder	Eleanor Goldman	Dorothy MacKnight
Mary Bigelow	Edythe Greenbaum	Pauline Novak
Ruth Blotcher	Evelyn Griffin	Harriet Phillips
Priscilla Carey	Lois Grossman	Sylvia Resnick
Stephanie Chopek	Virginia Hadley	Hannah Rothschild
Vivian Fain	Beverly C. Hirsh	Irma Rubin
Marjorie Faunce	Mona L. Kennedy	Harriet Schafer
Ruth M. Finneran	Lillian Kolodiz	Virginia Shattuck
Edythe Finkel	Dorothy Kolp	Ursula Ullrich
Mary J. Flynn	Norma Levine	Helen Yates
Mary Frenkel	Alice Lichwell	Chessie Zbikowska
	Jean E. MacKay	

MEMBERS FROM THE CLASS OF 1949

Louisa J. Ashton	Helen Kokoszka	Charlotte Osher
Claire Cohen	Evelyn L. Leone	Martha Salvi
Jeanne L. Hillman	Eleanor Levin	Laura Solomon

# Omega Sigma

# Veterans' Club

PAUL V. SHAUGHNESSY  
*President*

ARTHUR K. LITTLEFIELD  
*Vice-President*

PROFESSOR JOHN B. PUGSLEY  
*Veterans' Co-ordinator*

JOHN W. KACZANOWICZ  
*Secretary*

GEORGE E. GIROUX  
*Treasurer*

Bernard A. Barnes  
John W. Bonquet, Jr.  
Murray R. Braverman  
Alfred L. Brody  
James H. Brown  
John S. Brown  
Edward J. Burdeau  
Bramwell A. Bury  
Leon W. Bush  
Joseph H. Caputo  
Brian L. Casey  
Alan F. Cate  
Richard D. Clark  
Ernest M. Cook  
John J. Craven  
Edward F. Dacey  
Martin W. Donovan  
Ralph P. Dyer  
Seymour Feinberg  
Daniel M. Fox  
Albert Frager  
Richard W. Greenwood  
Henry S. Hall  
Burton C. Hoffman  
William Hoffman

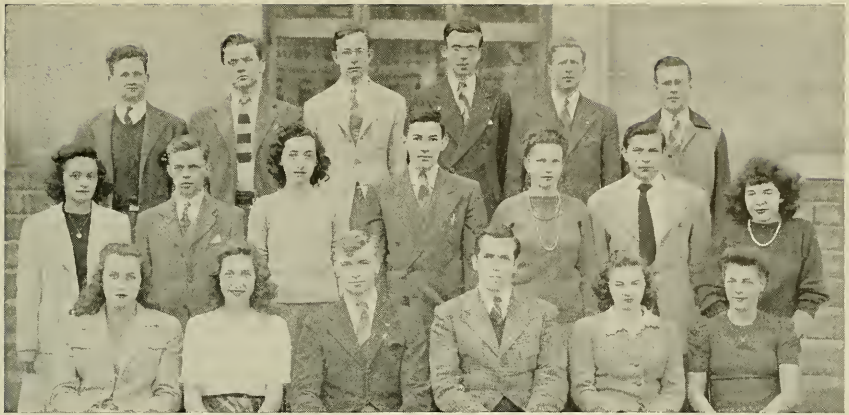
Clarence Husbands  
Roy W. Johnson  
Clayton W. Kennedy, Jr.  
George F. Kenney  
K. Charles Kopsiaftis  
Theodore W. Kudryk  
Frank Lambert  
Joseph E. Landry, Jr.  
Theung S. Lee  
Walter P. Lee  
Calvin T. Margolis  
Edward B. Mazzotta  
Andrew J. McNeill  
Anthony Miceli  
John J. Miner  
Leo J. Mishner  
Sidney T. Mitchell  
James A. Murray, Jr.  
Kenneth F. Olsen  
Francis P. Oresteen  
Vito Piccirillo  
Robert F. Pierce  
John Preston  
Thomas L. Preziosi  
James M. Qua

John F. Quigley  
Leon Rabin  
Herman E. Radke  
William C. Raftell  
Joseph F. Ricci  
Ralph T. Rotman  
William Ruminas, Jr.  
Fred Slater  
Roger O. Snowman  
Phillip Solomon  
L. Antonio Spampinato  
Edward A. Stankevich  
Bernard F. Stone  
Emanuel Sugarman  
John F. Sullivan, Jr.  
Norman R. Waddleton  
Ralph S. Wegman  
Murray H. Weinfeld  
Arnold P. Weiner  
Kurt Wessely  
Henry F. Whalen, Jr.  
Richard F. Whelpley  
Edward Willett  
Leonard Wolfson



First Row, left to right: Kudryk, Giroux, Littlefield, Shaughnessy, Kaczanowicz, Preziosi, Spampinato. Second Row, left to right: Bury, Cook, Wessely, Landry, Preston, Slater, Stone, Greenwood, Weinfeld, Willett. Third Row, left to right: Raftell, Johnson, Stankevich, Snowman, Quigley, Hall, Weiner, Rabin, Oresteen, Mitchell, Kennedy.





First Row, left to right: Flynn, Reiner, Stone, Sommers, Brady, Parrish. Second Row, left to right: Bandurski, Bury, Rosen, Cooperman, Freedman, Gold, Stiller. Third Row, left to right: Kennedy, Peterson, Barrett, Hall, Shaughnessy, Landry.

RODERIC W. SOMMERS, '46  
*President*

IRMA S. RUBIN, '48  
*Vice-President*

RUTH E. REINER, '48  
*Librarian*

PROFESSOR LAURENCE F. CLEVELAND  
*Faculty Adviser*

MEMBERS FROM THE CLASS OF 1946

David E. Higginbotham

MEMBERS FROM THE CLASS OF 1947

Ernest M. Cook

Richard L. Kennedy

MEMBERS FROM THE CLASS OF 1948

Anastasia S. Bandurski  
Jack S. Barritt  
John T. Bell  
Lois Ann Brady  
Bramwell A. Bury  
Isadore N. Cooperman

Vivian Fain  
Mary J. Flynn  
Isadore L. Gold  
Henry S. Hall  
Mona L. Kennedy  
Barbara A. Parrish

Roy J. K. Peterson  
Frances Rosen  
Paul V. Shaughnessy  
Charlotte Stiller  
Chessie Zbikowska

MEMBERS FROM THE CLASS OF 1949

Alfred H. Bloom  
Ruth L. Freedman  
Ruth H. Goldberg  
Alice Haggis  
Hazel R. Jack

Joseph E. Landry, Jr.  
Berjoubie Maranjian  
Nannette H. Marder  
Phyllis Milgroom  
Norman E. Ramsdell  
Donna S. Riseman

Isabelle J. Roebts  
Elinor A. Scholsberg  
Louise Silverman  
Bernard F. Stone  
Grace L. Ward

# Choral Society

# Husky Plus Club

## MEMBERS FROM THE CLASS OF 1946

Norman A. Anderson      Clayton W. Kennedy, Jr.      Robert C. Twombly  
William F. Sullivan

## MEMBERS FROM THE CLASS OF 1947

John H. Cowles

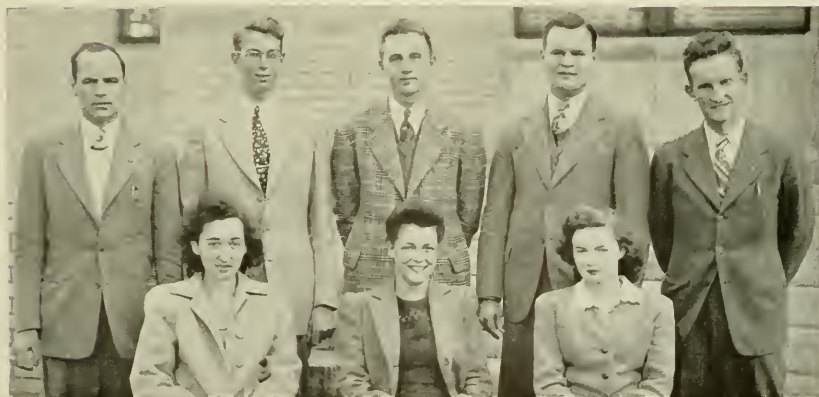
## MEMBERS FROM THE CLASS OF 1948

Lois Ann Brady      Grace P. McKinlay      Barbara A. Parrish  
Marjorie V. Lundfelt      Frances Rosen

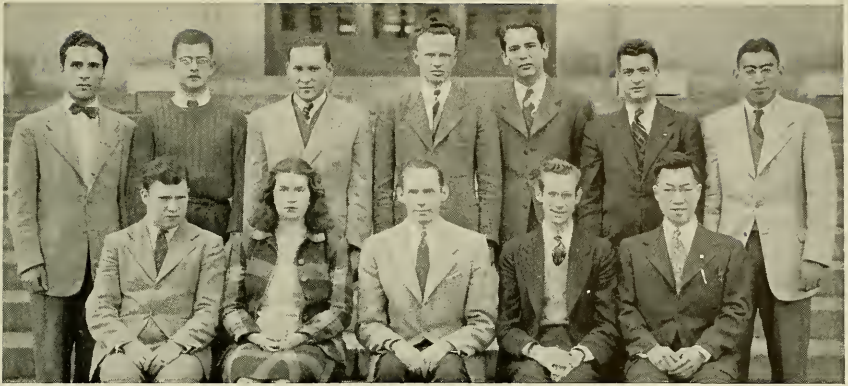
DEAN HAROLD W. MELVIN

*Faculty Adviser*

Husky Plus, organized August, 1944, is a volunteer service group of ten N. U. undergraduates whose primary purpose is to get out to Northeastern men in uniform service letters and copies of the *News*. The club meets only for work.



*First Row, left to right: Rosen, Parrish, Brady.  
Second Row, left to right: Kennedy, Twombly, Anderson, Sullivan, Cowles.*



First Row, left to right: Weinfeld, Ashton, Harrison, Morrice, Chin.  
 Second Row, left to right: Folino, Rottenberg, Zambrano, Simeone, Umana, Corapi, Pacelli.

ROBERT G. HARRISON, '48  
*President*

EARL M. YAVNER, '49  
*Secretary-Treasurer*

MURRAY A. WEINFELD, '47  
*Vice-President*

DEAN CHARLES W. HAVICE  
*Faculty Adviser*

MEMBERS FROM THE CLASS OF 1947

Thomas Chin                      Vincent Corapi                      Louis Simeone

MEMBERS FROM THE CLASS OF 1948

Charles Axelrod                      John B. Morrice                      Alfred Pacelli, Jr.

MEMBERS FROM THE CLASS OF 1949

Seymour Berman	George Lee	Jose P. Salas
Jose Biamon	Herbert A. Lerner	Tito P. Salas
Nicholas Cirillo, Jr.	Berjoubie Maranjian	Elinor Scholsberg
Tamara DeLuty	Albert Meltzer	Marion Taylor
Robert Evans	Frances M. Myers	Alvaro Umana
Charlotte Fertel	Jocol Rosewan	June Wiskind
James M. Gallagher	Martin Rottenberg	Rafael Zambrano

# Cosmopolitan Club

Commission of the Northeastern Student Union

# Baseball

RUSSELL A. STILES, '47 (N)  
*Captain*

MR. EMANUEL A. FLUMERE  
*Coach*

Mario Alves, '47

George A. Beckett, '45 (N)

A. Alfred diScipio, '49 (N)

Carl W. Eschelbach, '48

George E. Giroux, '49 (N)

Robert N. Huckins, '45

William A. Maida, '45

Eugene H. Messier, '48 (N)

Frank J. Rosato, '47 (N)

Kourken Samuelian, '47

Jerome P. Sawtelle, '48 (N)

Paul V. Shaughnessy, '48

John Sikora, '47

John J. Smialek, '46 (N)

Edward A. Stankevich, '49

John J. Stuart, '48

Alexander N. Tedesco, '49

Roger N. Tuttle, '48 (N)

Charles B. Wyman, '49

Stanislaus J. Zbozen, '49 (N)

	N. U.	Opp.		N. U.	Opp.
U. of Connecticut	5	5	Harvard	5	9
W. P. I.	1	2	U. of Maine	9	1
U. of New Hampshire	8	7	U. of New Hampshire	13	9
U. of Connecticut	3	6	Bates	6	7
Bates	8	7	U. of Maine	10	4



First Row, left to right: Zbozen, diScipio, Beckett, Samuelian, Stiles, Stuart, Giroux, Rosato. Second Row, left to right: Stankevich, Maida, Shaughnessy, Eschelbach, Huckins, Messier, Tuttle. Third Row, left to right: Coach Flumere, Sawtelle, Wyman, Smialek, Sikora, Tedesco.



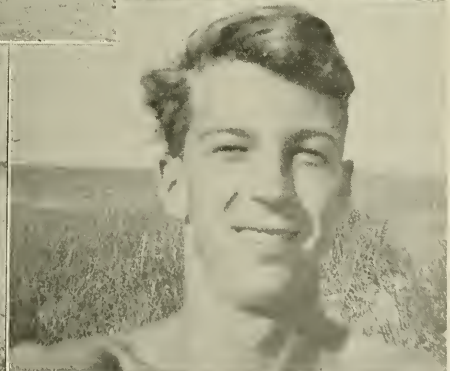
# Candidids







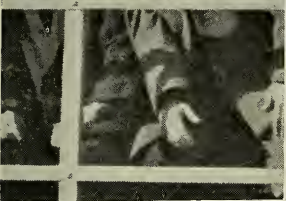
















# Seniors

The Class of '47

1945 JUNE GRADUATES

*The time lapse between the publication of the 1946 and 1947 sections of this CAULDRON has brought about a number of changes in the faculty. It has been found necessary in order to give a complete picture of the faculty to list these changes.*

On September 1, 1945, Professor Roger S. Hamilton was appointed to the post of Dean of the College of Business Administration replacing Robert Bruce who had served as Acting Dean of the College since the resignation of Dean Asa S. Knowles.

Mr. George W. Hankinson was appointed Assistant to the Director of Admissions in December 1944. Mr. Hankinson formerly served as Instructor in Civil Engineering.

Miss Louise C. Marsh, Instructor in Physics, has been appointed Adviser to Women Students.

Mr. Eugene G. Pare of the Department of Drawing, who was on loan to Tufts College for a year, returned to Northeastern in October 1944.

In September 1944, Mr. Saverio Cerullo was appointed Instructor in Economics and Accounting. He holds the B.S. and M.B.A. degrees from Boston University.

Dr. Blanche B. Daly rejoined the staff as a lecturer in the Department of Biology on a part-time basis in September 1944. Dr. Daly served in this Department in 1943. She received the A.B. from Hunter College, the M.Sc. from New York University, the M.A. from Radcliffe, and the Ph.D. from Boston University.

Mr. Edmund W. Fenn joined the staff as an Instructor in History and Government beginning with the spring term, 1945. Mr. Fenn is a graduate of Williams College and holds the degree of Master of Arts from Harvard University.

Mr. David E. Higginbotham was appointed Instructor in Physics. He received his S.B. degree in the field of electrical engineering from Northeastern December 1944, and is a member of the Epsilon Chapter of the Tau Beta Pi Association.

Dr. Herbert Moller came to Northeastern in September 1944 as Instructor in German. Dr. Moller has studied at the Universities of Heidelberg, Berlin, and Frankfort in Germany and received the Ph.D. from Boston University.

Mr. Horace Reynolds joined the Day College faculty as Instructor in English December 11, 1944. Mr. Reynolds holds degrees A.B. and A.M. from Harvard University where he majored in the field of English.

Mr. Robert W. Bordewick has accepted an appointment to the Department of Electrical Engineering at the Worcester Polytechnic Institute.

Mr. Emanuel A. Flumere has resigned his coaching duties here at Northeastern to give full time to coaching for the Malden High School. Mr. Samuel A. Stone has gone into war industry and is working for the Polaroid Company. Miss Pauline F. Sullivan of the Biology Department is now doing research work at Radcliffe.



Mr. Eugene George Pare was born December 20, 1915, in Lynn, Massachusetts. He now resides in Reading with his wife, two sons, and daughter. Mr. Pare attended Tufts College where he graduated in 1937 with a Bachelor of Science degree in Civil Engineering. A year later, he received his Master of Education degree at the same college. In addition to his teaching duties at N. U. he has worked as a surveyor for the Conti Construction Company; draftsman for the Mason-Neilan Regulator Company; teacher for three years at Wayland High School in English, Mathematics, and Science and coach of basketball, and assistant coach of baseball and football.



## EUGENE G. PARÉ

*. . . Our Class Adviser*

Mr. Paré came to Northeastern as instructor in both Engineering Drawing and Mathematics in 1941. He left on leave of absence to go to Tufts College in 1943 where he taught in the Engineering Drawing Department and was Assistant Coach of Cross Country on the Navy Program.

Mr. Paré returned to Northeastern in 1944, and resumed his duties in the Engineering Drawing Department. He became Class Adviser to the class of 1947, Head Coach of Baseball, and Adviser to the Intramural Basketball League.



## Cosmo Abbondante

31 Rose Street, Somerville  
Mechanical Engineering  
Cosmopolitan Club 1, 2, 3, 4, 5; Chess Club 4, 5; A. S.  
M. E. 3, 4, 5



## William J. Arvedon

25 Gibbs Street, Brookline.  
Liberal Arts English  
News 1, 2; Managing Editor 3; Student Union 1, 2; Stu-  
dent Council 2, 3, 4; Dramatic Club 1, 2, 3, 4; Literary  
Club 3

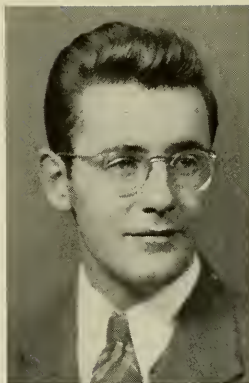


## Jason B. Baker

44 Supple Road Roxbury  
Mechanical Engineering  
Manager Football Squad 1; A. S. M. E. 3, 4, 5

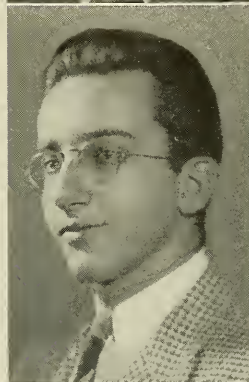
## Charles R. Blanchard

324 Main Street, Nashua, New Hampshire  
Mechanical Engineering  
A. S. M. E. 3, 4, 5



## Jerome H. Bloom

395 Harvard Street, Brookline  
Electrical Engineering  
Freshman Honor List; A. I. E. E. 2, 3, 4, 5  
CO-OPERATIVE WORK  
General Electric Co. . . . West Lynn . . . Plant Layout



## Salvatore J. Bonasera

217 Lexington Street, East Boston  
Business Administration  
Sigma Phi Alpha; Intramural Basketball 5





## Walter W. Bordewieck

274 Weston Road, Wellesley  
Electrical Engineering  
Freshman Honor List; Dean's List 2, 3; International Relations Club 4; A. I. E. E. 3, 4, 5  
CO-OPERATIVE WORK  
General Radio Co. . . . Cambridge . . . Inspector



## Ralph G. Briggs, Jr.

Main Street, Upton  
Mechanical Engineering  
Beta Gamma Epsilon; Interfraternity Softball; A. S. M. E. 3, 4, Vice-President 5  
CO-OPERATIVE WORK  
Bay State Abrasive Products Co. . . . Westboro . . . Laboratory Assistant



## John A. Burbidge

62 Chase Avenue, Lexington  
Chemical Engineering  
Nu Epsilon Zeta; Freshman Honor List; Dean's List 2; Class Basketball 5  
CO-OPERATIVE WORK  
Angier Products, Inc. . . . Cambridge . . . Foreman

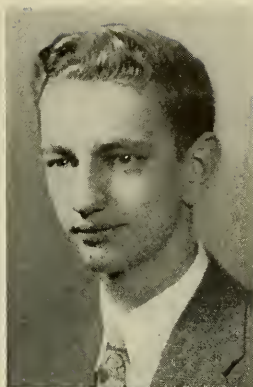
## David R. Cahill

12 Early Avenue, Medford  
Chemical Engineering

Beta Gamma Epsilon; Freshman Honor List; Dean's List 2, 3, 5; Interclass Basketball 3; Student Council 4, Vice-President 5; President Junior Class; Yacht Club; A. I. Ch. E. 2; Class Representative 3, Vice-President 4, 5; Who's Who Among Students in American Universities and Colleges; A. C. S. 2, 3, 4, 5

### CO-OPERATIVE WORK

First National Stores . . . Somerville . . . Laboratory Assistant



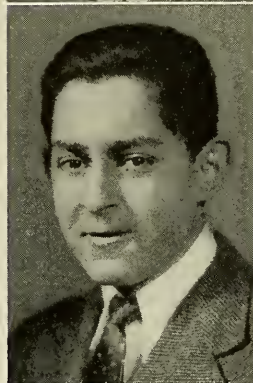
## Arnold D. Carlin

1161 Commonwealth Avenue, Allston  
Chemical Engineering

Freshman Honor List; Intramural Swimming 1; Basketball 4, 5; Softball 4, 5; Band; Chess Club; Representative Senior Week Committee; A. I. Ch. E. 2, 3, 4, 5; A. C. S. 2, 3, 4, 5

### CO-OPERATIVE WORK

Consolidated Bisquit . . . West Roxbury . . . Baker, Mixer



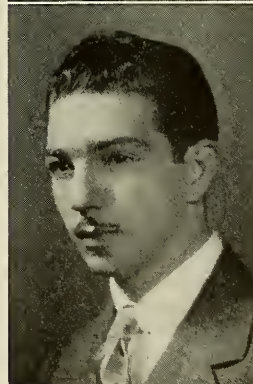
## Edward B. Catotti

9 Linden Street, Williamstown  
Liberal Arts—Chemistry

Sigma Phi Alpha; Fraternity Vice-President 4, Treasurer 5; A. I. Ch. E. 2; A. C. S. 3, 4, 5; Yacht Club 4, 5

### CO-OPERATIVE WORK

The Gaevert Company of America, Inc. . . Williamstown . . . Laboratory Assistant





## Arthur L. Chase

19 Kilton Street, Taunton  
Mechanical Engineering  
Beta Gamma Epsilon; Glee Club 1, 2; Yacht Club 4, 5;  
A. S. M. E. 3, Secretary 4, President 5

### CO-OPERATIVE WORK

General Electric—Plastics Division . . . Taunton . . .  
Tool Room Repair man



## Thomas W. F. Chin

475 Broadway, Chelsea  
Mechanical Engineering  
Freshman Honor List; Dean's List 2, 3, 4, 5; Student  
Council 4, 5, Treasurer 5; Class Secretary 3; Class Treas-  
urer 4, 5; Senior Week Committee 5; Cosmopolitan Club  
3, 4; A. S. M. E. 3, 4, 5, Publicity Chairman 4, 5

### CO-OPERATIVE WORK

The Reece Button-Hole Machine Co. . . . Boston . . .  
Milling Machine, Drill Press Operator



## Walter A. Ciaschini

19 Market Street, Northampton  
Electrical Engineering  
Sigma Phi Alpha; Yacht Club 4, 5; Rifle Club 1; A. I.  
E. E. 2, 3, 4, 5; Interfraternity Council 4, 5; Senior Week  
Committee; Class Secretary 4

## Ernest M. Cook

15 Albermarle Road, Waltham  
Mechanical Engineering

Beta Gamma Epsilon; Fraternity Vice-President 5; Student Council 5; Choral Society 1, 2, 3, President 5

CO-OPERATIVE WORK

Sanborn Co. . . . Cambridge . . . Assembly—G & N Eng. Co. . . . Boston . . . Shipper, Receiver, Stock Room



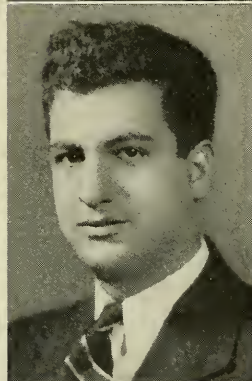
## Vincent Corapi

69 Forest Street, Watertown  
Mechanical Engineering

Student Union 2; Cosmopolitan Club 1, 4, 5, President 2, 3; A. S. M. E. Program Chairman 5; Rifle Club 3

CO-OPERATIVE WORK

Electro Products Co. . . . Waltham . . . Machinist—H. K. Carter Co. . . . Everett . . . Machinist—Boston & Maine R. R. . . . Boston . . . Machinist Helper



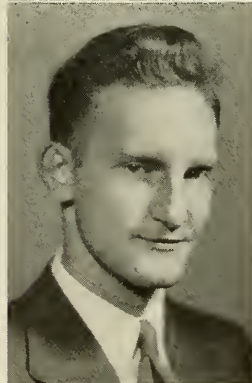
## John H. Cowles

68 Victoria Road, New Britain, Connecticut  
Mechanical Engineering

Nu Epsilon Zeta; Dean's List 3; Intramural Basketball 5; Student Council 4, President 5; CAULDRON Board 4, 5, Editor-in-Chief 5; Band 2; Class President 5; S. A. M. 5, Vice-President 4; A. S. M. E. 3, 5, Vice-Chairman 4, Chairman 4; Husky Plus Committee 4, 5; Who's Who Among Students in American Universities and Colleges

CO-OPERATIVE WORK

Fafair Bearing Co. . . . New Britain, Conn. . . . Inspector—Terry Steam Turbine . . . Hartford, Conn. . . . Turbine Tester





## Howard M. Curry

53 South Central Street, Bradford

*Liberal Arts—Chemistry*

*Dean's List 2, 3, 4, 5; A. C. S. 2, 3, 5, Vice-President 4*

CO-OPERATIVE WORK

*Tyer Rubber Co. . . . Andover . . . Laboratory Assistant*



## Joseph H. Deery

83 St. Rose Street, Boston

*Business Administration*

*Intramural Basketball 5; S. A. M. 2, 3, 4, 5; Law and Accounting Club 2, 3, 4, 5*

CO-OPERATIVE WORK

*Sears Roebuck Co. . . . Boston . . . Clerk—Murray Co.  
. . . South Boston . . . Laborer—Fore River Ship Yard  
. . . Quincy . . . Marker*



## James J. Douville

800 Worcester Street, Wellesley

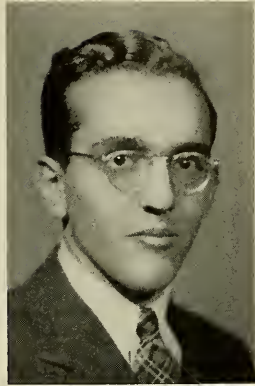
*Liberal Arts—Economics*

*Student Union 4, Pops Chairman 5; Band 1, 2*



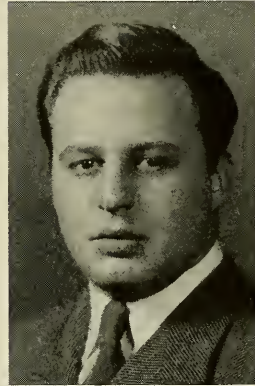
## Nathan Freedman

153 Howard Avenue, Roxbury  
Electrical Engineering  
*Freshman Honor List; Dean's List 2, 3, 4, 5; A. I. E. E.  
2, 3, 4, 5; Dean's List Scholarship 3, 4*  
CO-OPERATIVE WORK  
*National Co. . . . Malden . . . Assembly*



## Alex R. Giarrusso

6 Quincy Street, Methuen  
Business Administration  
*Intramural Basketball 5; Law and Accounting Club;  
S. A. M.; Member of Senior Committee*



## Herbert J. Goulston

6 Shailer Street, Brookline  
Liberal Arts—Pre-Medical  
*Band 1; Baseball 3; A. C. S. 3*





## George F. Gowen

677 Dudley Street, Dorchester

*Liberal Arts - English*

*Student Union Cabinet 4, 5; News 3, 4; Dramatics Club 4, 5; Literary Club 3, 4*

CO-OPERATIVE WORK

*Boston Globe . . . Boston . . . Head of Advertising Representatives*



## Lawrence P. Graves

52 Circuit Park, Melrose

*Industrial Engineering*

*Rifle Club 1; Yacht Club 2; A. S. M. E.; S. A. M.; E. R. C.*

CO-OPERATIVE WORK

*Tucker Concrete Form Co. . . . Malden . . . Draftsman - Service Caster and Truck Co. . . . Somerville . . . Machine Shop - General Electric Co. . . . Lynn . . . Student Engineer*



## Richard W. Greenwood

East Mill Street, Hopkinton

*Chemical Engineering*

*Nu Epsilon Zeta; Dean's List 3, 5; Interfraternity Softball and Bowling 3, 5; Student Union 1, 2, 3; A. I. Ch. E. 2, 3, 5; Treasurer 4; A. C. S. 4, 5; Fraternity Secretary 4, 5; Interfraternal Council Vice-President 4, 5; Senior Class Social Chairman; Husky Plus Club 5. In the class of '44: Chairman Freshman Cabinet; Vice-President in Sophomore Year; Middle Dance Committee; Junior CAULDRON Staff; Alumni President; Veterans' Association, 2nd Lieutenant in Reserves*

CO-OPERATIVE WORK

*Consolidated Biscuit Co. . . . West Roxbury . . . Production Worker - British Purchasing Comm. at National Fireworks, Inc. . . . West Hanover . . . Inspector - Commercial Filters, Inc. . . . South Boston . . . Laboratory Assistant*

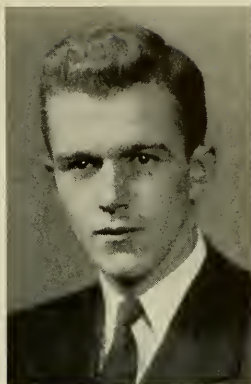
## Grant S. Healy

*Union Point, Webster  
Mechanical Engineering*

*Beta Gamma Epsilon; Fraternity Treasurer 3, President  
4, 5; Interclass Basketball 5; A. S. M. E. 4, 5; S. A. M.  
Secretary 4, 5; Yacht Club Executive Committee 3, Fleet  
Captain 4, Vice-Commodore 5; Husky Plus 4, 5; Interfrat-  
ernity Council 5*

### CO-OPERATIVE WORK

*General Electric Co., River Works . . . Lynn . . . Tool Job  
—Stevens Linen Works, Inc. . . . Webster . . . Maintenance*



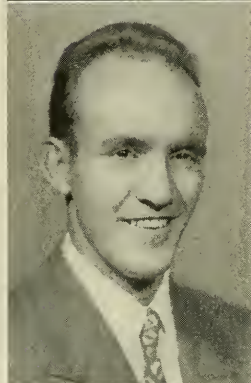
## Arthur Hebert

*Highland Road, Tiverton, Rhode Island  
Civil Engineering*

*Student Council 4, 5; Class Secretary 5; Senior Week  
Committee 5; CAULDRON Board 4, 5; N. U. C. E. S. 2,  
Treasurer 3, Secretary 4, President 5; Yacht Club 1, 2*

### CO-OPERATIVE WORK

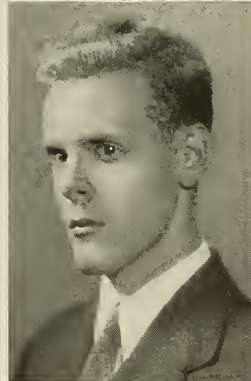
*U. S. Engineers Department . . . Bedford . . . Concrete  
and Asphalt Inspector*



## Harold A. Huckins, Jr.

*98 Lewis Road, Belmont  
Chemical Engineering*

*Dean's List 2; Track Team 2, 3; Intramural Basketball  
3, 5; Intramural Softball 1, 2; News, Photographic Staff 3,  
Photographic Editor 3, 4, 5; Chess Club 1, 5; A. C. S.  
4, 5; Yachting Club Skipper 3, 4, 5; Cosmopolitan Club  
5; A. I. Ch. E. 4, 5*





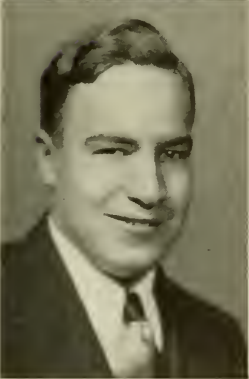
## Robert D. Hunt

5 Cottage Street, East Weymouth  
Business Administration  
Freshman Honor List; Donn's List 3, 4; Interfraternity  
Club 4, 5; S. A. M. 4, 5; Law and Accounting Club 2



## Leo C. Jerzyk

19 Hurdy Street, Salem  
Liberal Arts—Economics—Sociology  
International Relations Club 2, 3; German Club 2, Sec-  
retary 3; Dramatic Club 2, 3



## Richard E. Johnson

31 Congress Street, Walpole  
Mechanical Engineering  
Beta Gamma Epsilon; Fraternity Treasurer; Freshman  
Honor List; Dean's List 4; Intramural Basketball;  
A. S. M. E.

CO-OPERATIVE WORK  
Bird & Son . . . East Walpole . . . Helping Shipping Gang

## Howard N. Kaufman

42 Wainwright Street, Dorchester  
Mechanical Engineering

Freshman Honor List; Dean's List 2, 3, 4, 5; Treasurer  
S. A. M. 5; A. S. M. E. 3, 4, Social Chairman 5; Rifle  
Club 1



## Richard L. Kennedy

381 Lawrence Road, Medford  
Business Administration

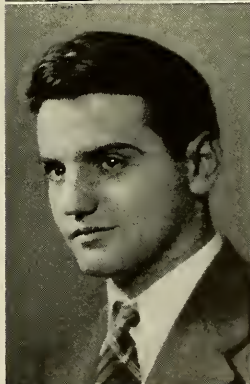
Freshman Honor List; Student Council 5; News 4,  
CAULDRON 4, 5, Business Manager of News, CAULDRON;  
N. U. Choral Society 1, 2, 3, 4, Secretary 5; S. A. M. 3, 4,  
Treasurer 5; Law and Accounting Club 2, 3



## George P. Koskoris

130 Bird Street, Dorchester  
Chemical Engineering

Science Club 1; Yacht Club 3, 4, 5; A. I. Ch. E. 4, 5;  
A. C. S. 2, 3, 4, 5





## Roy C. Laible

69 Albano Street, Roslindale

Liberal Arts—Chemistry

A. C. S. 3, 4, 5

CO-OPERATIVE WORK

Steadfast Rubber . . . Mattapan . . . Assistant Rubber  
Chemist



## Robert S. Lang

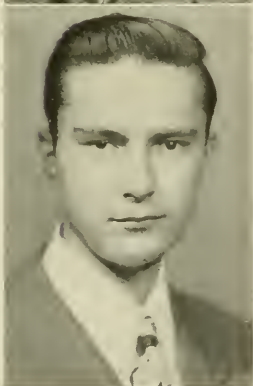
30 Howard Street, North Weymouth

Mechanical Engineering

Beta Gamma Epsilon; Fraternity Secretary; Intramural  
Softball 1, 3; Intramural Basketball 5; A. S. M. E.

CO-OPERATIVE WORK

Bethlehem Steel Corp. . . Quincy . . . Draftsman



## Max Leiter

Salem Street, Wilmington

Liberal Arts—Pre-Medical

Glee Club 1, 5

## Lester B. Linsky

244 Chestnut Street, Chelsea  
Electrical Engineering

Freshman Honor List; Dean's List 5; News 1; A. I. E. E.  
2, 3, 4, 5



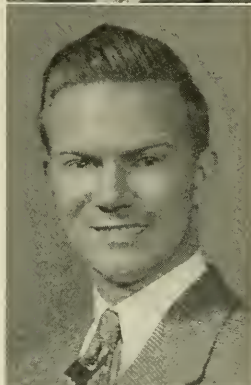
## Arthur K. Littlefield

29 Oxford Avenue, Bradford  
Liberal Arts—Psychology

Nu Epsilon Zeta; Freshman Honor List; Dean's List 2, 3,  
4, 5; Student Council 3, Publicity and Civic Affairs  
Chairman 4, 5; News, Editorial Board 3, Editor-in-Chief  
3, 4, 5; Dramatic Society Publicity Committee 4; Repre-  
sentative to Model Congress of Students 4, Provisional  
Chairman 4; Vice-President Veterans Association 4, 5;  
Senior Week Committee 5; Who's Who Among Students  
in American Universities and Colleges

CO-OPERATIVE WORK

F. S. Mosley Co. . . . Boston . . . Stock Messenger and  
Mail Clerk



## Thomas G. MacAespie

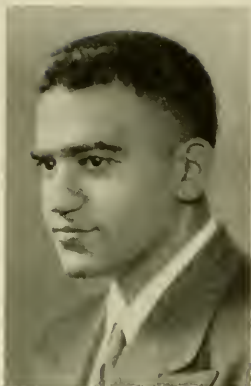
601 East Eighth Street, South Boston  
Mechanical Engineering

Freshman Honor List; A. S. M. E. 3, 4, 5; Chess Club 2, 3

CO-OPERATIVE WORK

Atlantic Research Associates . . . Newtonville . . . Drafts-  
man, Designer, Layout—NyLite Corp. . . . South Boston  
. . . Sheet Metal Worker—Stevens-Arnold, Inc. . . . South  
Boston . . . Assembly and Wiring of Control Panels for  
Machinery





## Azad Maranjian

384 North Bedford Street, East Bridgewater  
*Liberal Arts—Psychology, Sociology*  
Dean's List 3, 4; Student Union 1, 2, 3, 4, 5; Charter  
Member and Co-organizer of Literary Club; International  
Relations Club



## Thomas L. McDonough

604 Western Avenue, Lynn  
*Mechanical Engineering*  
Dean's List 4; Intramural Basketball 5, Captain 5; Intra-  
mural Softball 1, 3; News 1; CAULDRON Staff 4, Formal  
Pictures Editor 5; A. S. M. E. 3, 4, Secretary 5; S. A. M.  
4, Secretary 5; Alumni Treasurer  
CO-OPERATIVE WORK  
General Electric Co., River Works . . . Lynn . . . Elec-  
trical Engineering Department



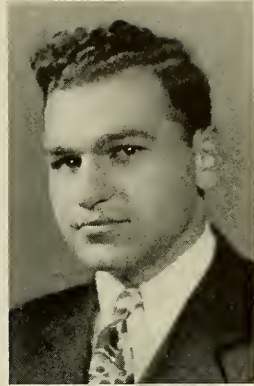
## James E. Mrose

42 Prosper Street, Malden  
*Electrical Engineering*  
Freshman Honor List; Dean's List 3, 5; A. I. E. E. Sec-  
retary-Treasurer 3, Vice-Chairman 4, Chairman 5; Alumni  
Vice-President  
CO-OPERATIVE WORK  
Boston Edison Co. . . Boston . . . Laboratory Test Work



## Arthur A. Najarian

180 High Street, Lawrence  
Electrical Engineering  
Sigma Phi Alpha; Interfraternity Softball 1; Fraternity  
House Manager 2, Secretary 3, President 4, Executive  
Council 5; A. I. E. E. Executive Committee 2, 3, 4, 5;  
Class Vice-President 4, 5; Interfraternity Council 5  
CO-OPERATIVE WORK  
General Electric Co., River Works . . . Lynn . . . Assistant  
Foundry Control Engineer



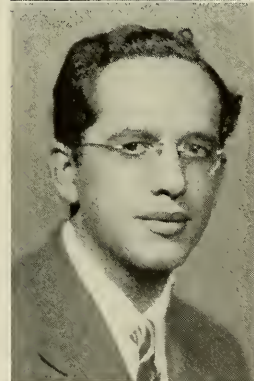
## David R. Nowell

90 Madison Street, Fall River  
Mechanical Engineering  
Nu Epsilon Zeta; Fraternity Secretary 3, Vice-President  
4; A. S. M. E. 3, 4, 5; S. A. M. 4, 5  
CO-OPERATIVE WORK  
Firestone Rubber & Latex Products Co. . . . Fall River  
. . . Student Engineer



## Nathan Rose

123 Lucerne Street, Dorchester  
Liberal Arts—Psychology  
Denn's List 2, 3, 4, 5; Student Union 2, 3, 4, 5





## Melvin J. Rosenfeld

83 Walnut Street, Chelsea

Chemical Engineering

Freshman Honor List; Intramural Basketball 4, 5; Softball 4, 5; Rifle Club; A. I. Ch. E. 3, 4, 5, Council 2; A. C. S. 3, 4, 5

CO-OPERATIVE WORK

American Finish & Chemical Co. . . . Chelsea . . . Laboratory Assistant



## Alfred J. Scandura

38 Sargent Street, Lawrence

Chemical Engineering

Intramural Basketball 3, 5; Softball 4, 5; Swimming 1; Band 1; A. C. S. 3, 4, 5; A. I. Ch. E. 2, 3, 4, 5, Vice-President



## Gordon H. Searles

16 Benefit Street, Worcester

Civil Engineering

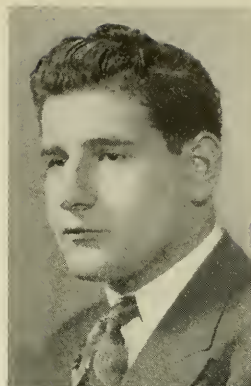
Sigma Phi Alpha; N. U. C. E. S. 2, 3, 4, Secretary 5; Fraternity Treasurer 4, Secretary 5

CO-OPERATIVE WORK

Boston & Albany R. R. . . . Boston . . . Chairman

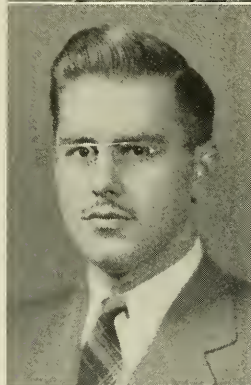
## George J. Selados

1740 Washington Street, Boston  
Business Administration  
Football 1; Basketball 5; Intramural Basketball 5;  
S. A. M.; Law and Accounting Club  
CO-OPERATIVE WORK  
Loomis Sayfest Co., Inc. . . . Boston . . . Stock Changes  
Recorder and General Office Work



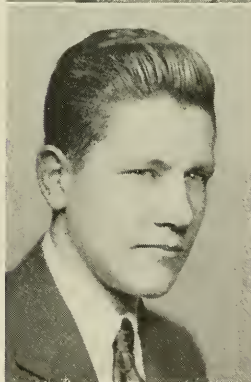
## Alfred P. Sieklucki

19 Plymouth Street, Hartford, Connecticut  
Electrical Engineering  
Track 1, 2, 3; Football 1, 2; A. I. E. E. Secretary-Treasurer 4, Vice-Chairman 5  
CO-OPERATIVE WORK  
Research Construction Co. . . . Cambridge . . . Radio Assembler—Submarine Signal Co. . . . Boston . . . File Clerk  
—Spencer Turbine Co. . . Hartford . . . Sheet Metal Worker



## John Sikora

12 Demond Street, Springfield  
Civil Engineering  
Phi Gamma Pi; Fraternity President 5; Baseball 3, 5;  
Intramural Basketball 5; N. U. C. E. S. 2, 3, 4, Treasurer 5  
CO-OPERATIVE WORK  
N. Y., N. H. & H. R. R. . . . Hartford . . . Railroad Inspector





## Reuben J. Silver

505 Main Street, West Medway  
*Liberal Arts—Psychology*  
*Freshman Honor List; Dean's List 2, 3, 4, 5; Sears B.*  
*Condit Award; Student Union 3, 4, 5*



## Louis S. J. Simeone

31 South Main Street, Cohasset  
*Liberal Arts—Mathematics*  
*Dean's List 4, 5; Track 3; Cosmopolitan Commission*  
*1, 2, 3, 4, 5*



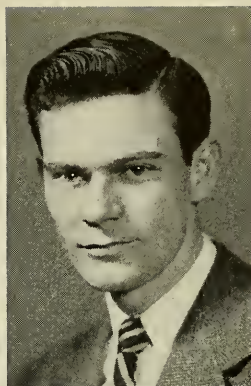
## Russell Stiles

34 Curtis Street, Weymouth  
*Liberal Arts—Economics—Sociology*  
*Baseball 1, 2, 4, 5, Captain 3*

## Alexander A. Sweeney, Jr.

*Labor-in-Vain Road, Ipswich*  
*Business Administration*  
*Freshman Honor List; Intramural Basketball 5; S. A. M.*  
*4, 5; Law and Accounting Club 2; Cosmopolitan Club 1;*  
*I. R. C. 2*

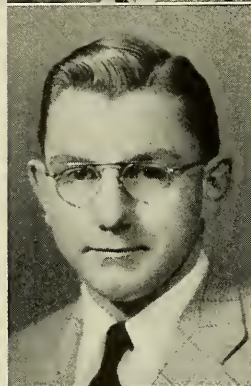
CO-OPERATIVE WORK  
*Sylvania Electric Products . . . Danvers . . . Cost Clerk—*  
*General Electric Co. . . Lynn . . . Cost Clerk*



## John K. Taylor

*Park Lane, Northboro*  
*Mechanical Engineering*  
*Interclass Basketball 5; A. S. M. E.*

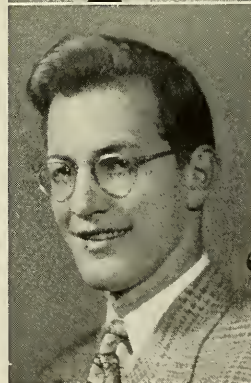
CO-OPERATIVE WORK  
*Bay State Abrasives . . . Westboro . . . Rate Setter—*  
*N. Y., N. H. & H. R. R. . . . Hartford . . . Draftsman—*  
*B. S. Ray & Sons . . . Worcester . . . Lathe Operator*



## Carl Tinglof, Jr.

*2227 Washington Street, Canton*  
*Mechanical Engineering*  
*Phi Gamma Pi; Intramural Baseball 3, 4; Intramural*  
*Basketball 5; A. S. M. E.*

CO-OPERATIVE WORK  
*Electro Products Co. . . Waltham . . . Machinist*





## Ben H. Tongue

12 Spencer Street, Springfield

Electrical Engineering

Freshman Honor List; Dean's List 2, 3, 4, 5; A. I. E. E. 2, 3; I. R. E. 5; Music Appreciation Hour 1

CO-OPERATIVE WORK

Westinghouse Electric & Manufacturing Co. . . . East Springfield . . . Laboratory Assistant in Engineering Department



## Anthony F. Tuccelli

13 Ten Hills Road, Somerville

Chemical Engineering

Sigma Phi Alpha; Intramural Basketball, Softball 4, 5; A. I. Ch. E. 2, 3, 4, Treasurer 5; A. C. S. 2, 3, 4, 5

CO-OPERATIVE WORK

Rust Proofing & Finishing Co. . . . Cambridge . . . Assistant Slipper



## Vahan C. Vorperian

21 Symphony Road, Boston

Business Administration

Sigma Society; Freshman Honor List; Dean's List 2, 3, 4, 5; Intramural Basketball 5; Sigma Society Award 2; Charles Hayden Scholarship 1

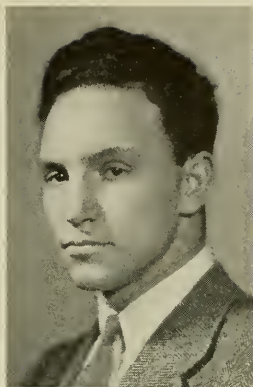
CO-OPERATIVE WORK

Sears Roebuck & Co. . . . Boston . . . Sales Clerk—Jackson & Moreland, Engineers . . . Boston . . . Cost Clerk

## Kenneth T. Walden

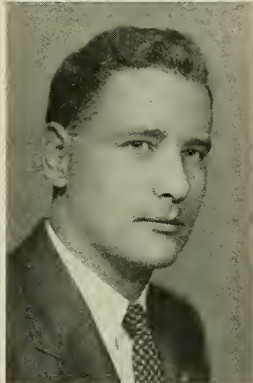
18 Franklin Street, Northampton  
Mechanical Engineering

*Phi Gamma Pi; Fraternity Treasurer 4, 5, Social Chairman 3; Varsity Football 1; A. S. M. E. 3, 4, 5; Senior Week Committee 5; Cosmopolitan Club 1, 2*



## Robert L. Watson

2321 Washington Street, Newton Lower Falls  
Liberal Arts—English



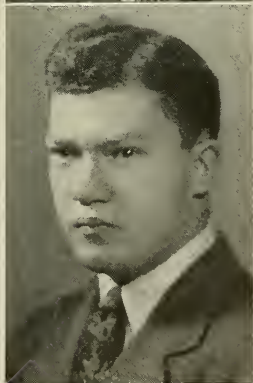
## Murray A. Weinfeld

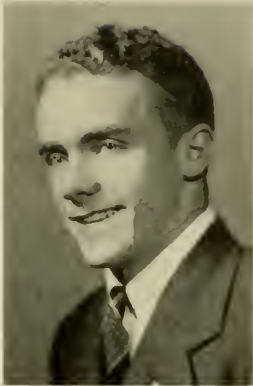
9 Verrill Street, Mattapan  
Liberal Arts—English

*Cosmopolitan Club 4, 5, Vice-President 3; Literary Club 3; News 3, 4, Literary Editor; N. U. Veterans' Association 3, 4, 5; Dramatic Society 4; Student Union 4, 5; Freshman Representative*

CO-OPERATIVE WORK

*Boston Globe . . . Boston . . . Business Office*





## Edward R. Willett

61 Palmer Street, Arlington

Business Administration

Freshman Honor List; Dean's List 2, 3, 4, 5; Intramural Basketball 4; Student Council 3, 4, 5; Student Union 3, 4, 5; News 3, 4, Managing Editor; Veterans' Association; S. A. M.; Charles Hayden Scholarship

CO-OPERATIVE WORK

National Casket Co. . . . Cambridge . . . Clerk



## Roderick V. Woodbury

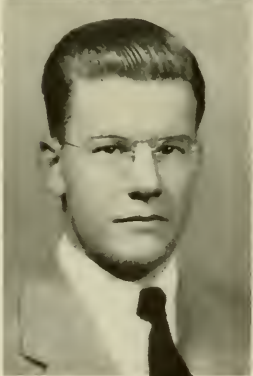
5 Washington Court, Boston

Mechanical Engineering

Nu Epsilon Zeta; Fraternity Pledge Chairman 5; A. S. M. E. 3, 4, 5; S. A. M. 4, 5, President; Chess Club 4, 5; Alumni Secretary

CO-OPERATIVE WORK

Commercial Filters . . . Boston . . . Laboratory Tester of Filters—Fore River Shipyard . . . Quincy . . . Pipe Fitter's Helper



## Roy L. Wooldridge

203 Fayette Street, Quincy

Civil Engineering

Freshman Honor List; Dean's List 2, 3, 4, 5; CAULDRON Board 4, Managing Editor 5; N. U. C. E. S. 2, 3, 4, Vice-President 5; Senior Week Committee; Sears B. Condit Award 4

CO-OPERATIVE WORK

W. S. Crocker, C. E. . . . Boston . . . Rodman



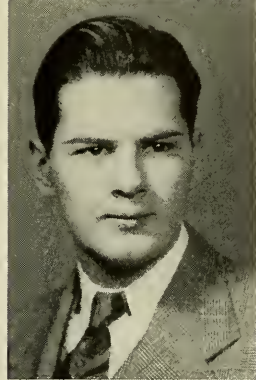
## Vincent L. Ysebaert

60 Wyman Street, Jamaica Plain  
Liberal Arts—Psychology  
News 3; Literary Club 3



## Malvin M. Yurko

14 Eldert Street, Brooklyn, New York  
Mechanical Engineering  
Freshman Honor List; A. S. M. E. 3, 4, 5  
CO-OPERATIVE WORK  
Sperry Gyroscope Co., Inc. . . . Brooklyn, N. Y. . . .  
Tester-Inspector



## George M. Zoza

198 M Street, South Boston  
Electrical Engineering  
Freshman Honor List; Dean's List 3; Chess Club 2, 3,  
4, 5; A. I. E. E. 2, 3, 4, 5  
CO-OPERATIVE WORK  
Boston Edison Co. . . . Boston . . . Laboratory Assistant



## Senior Class Officers



*First Row: left to right: Najarian, Cowles, Greenwood. Second Row: left to right: Hebert, Chin*

## Senior Week Committee



*First Row: left to right: Hebert, Najarian, Cowles, Greenwood, Chin  
Second Row: left to right: Walden, Ciaschini, Carlin, Woodbridge*

# R E T R O S P E C T I O N

The passing of the Class of 1947 into the portals beyond the gates of Northeastern University sees the passing of the first complete war-time class, the last but not least complete class of men students, the first class in which some were not able to participate in the cooperative plan, and a class that saw a decrease in campus life due to the war.

Yes, we were the first completely war-time class—we went through college under the strain of war—we saw the enrollment of the school go from 2500 students to about 900—it was a period when our professors were given leaves of absence to go with other colleges, universities, or government agencies to help out in the war effort while the remaining ones took over the duties of those who had left.

After our first year, co-eds began to appear on the campus. It didn't take long for them to become active in the school activities.

Due to the full-time plan which came about in 1943, our class missed out on the benefits of the cooperative plan.

As the war progressed, campus life decreased. Organizations of the school kept

losing so many of their key men that it was impossible to plan any campus affairs.

## *Freshman*

Our start at Northeastern University began in July of 1942, plus a few of us who entered ten weeks later—remember the morning of filling out cards and then taking examinations, the talks given us by the professors, and receptions? Looking back over it all now, those were the days when King Husky II met us in our first reception, when President Ell told us that we were doing as an important job coming to college as the servicemen are doing—when such activities as swim parties, professors and seniors softball games were being played—and an all-University roundup was being held. We were introduced to our Class Adviser, Professor Albert J. Lynd. This was the year we saw almost a normal activities year—there were football rallies on the steps of Richards Hall—football games where even our class had players on the varsity squad and we could see King Husky II at all the games—and when we watched a year of normal activities of basketball, track, and cross country. Throughout the year, more and more fellows joined the Reserves—calisthenics were held out in the parking lot—and students were being called up by the draft continually. Such were the activities and happenings around the campus during our freshman year.

While all these things were going on, our own class started to function. We held a dance in December at the Hotel Bradford.



This being our first dance we were very pleased with the success of the affair. It was a success both socially and financially. The fellows on the committee planned and executed the dance wonderfully and were given much credit after the dance. In February 1943, another dance was held at the Copley Plaza. The freshman class holding a function at the Copley Plaza was novel to the upper-classmen for it had been a long time since the freshmen had felt confident enough to plan, and make a success of, such an affair. But the dance went off with the satisfaction of all.

### *Sophomore Class*

The beginning of our sophomore year found Division A out on cooperative work while Division B still studied as freshmen. When we caught up to each other in studies, the cooperative plan on the ten-week basis was put in the files and the college continued on a full-time basis. This came about by the war, and also because the Army program began with our second term. Professor Lynd left school at this time, and Professor Antonio M. Mezzaappa took over as Class Adviser to our class.

In the class elections Frank Watts was elected President of the class; Anthony Pan-

diseio elected Vice-President; Mario Alves elected Secretary; Donald Philbrick elected Treasurer, and Walter Glazer elected Social Chairman. It was this year that our class held a joint dance with the frosh at the Copley Plaza—another successful affair.

During this year, the last group of Reserves left the college on their way to do their bit for the war effort.

### *Middler Year*

Class elections were held the first part of the semester in order to get busy on a class function. The officers elected were: President, Anthony Pandiseio; Vice-President, Mario Alves; Secretary, Thomas Chin; Treasurer, Donald Philbrick. After elections, a class smoker was planned. The success of the affair was placed in the hands of a committee of five. These fellows were: Tony Pandiseio, Marty Alves, Don Philbrick, Thomas Cain, and Cookie Samuelian. Credit was also given to Dave Cabill for his work.

At the smoker, the night was noted by its entertainment. The master of ceremonies of the affair was Tony Pandiseio. We had a speaker from the Boston Globe by the name of Jerry Nason who was sports editor at that time. Entertainment was supplied by Sunya



Slane Goldman, Margie Hart Gotthardt, Ann Corio Yamartino, and Gypsy Rose Lee Samuelian, who gave their imitation of languid and sultry dance routines. The smoker was a night of hilarious and exciting entertainment.

### *Junior Year*

Our junior year was a quiet one in the line of class activities. The quietness seen over the whole campus this year—there seemed to be a let-down because of the rapid pace that we were getting our schooling, the heat of the summer, and loss to the services of Anthony Pandiscio and Mario Alves. The officers elected were: David Cahill, President; Arthur Najarian, Vice-President; Walter Ciaschini, Secretary, and Thomas Chin, Treasurer. The semester was highlighted by Pops Night combined with the girls of Simmons. During this year we changed Class Adviser again. Mr. Eugene Pare took over Professor Antonio M. Mezzacappa's duties.

### *Senior Class*

The time certainly passed quickly, for before we knew it we were seniors. Going to school on the full-time basis was a fast and rapid pace. Class elections were held, and the officers elected were: President, John H. Cowles; Vice-President, Arthur Najarian; Secretary, Arthur Hebert; Treasurer, Thomas Chin; and Social Chairman, Richard Greenwood. The activity of the year was the Valentine Dance. The ball was held at the New England Mutual Hall with Ruby Neuman's orchestra with the delightful Billy Crosby



leading the band. The dance went along fine with refreshments served free to all, and the choosing of Miss Valentine. There were many beautiful girls to choose from, which made the competition keen. But the senior class still are the best pickers when it comes to taking the most beautiful girls out. Ken Walden brought the winner, a member of our class. The dance flourished very well. There wasn't the usual heat and crowding of dances, but it was a comfortable and enjoyable affair.

The rest of our senior year was spent mostly in the finding of our after-graduation employment. We all had a lot of interviews, and some had the opportunity to go on trips to the various companies. Along the way, we had to plan for our senior week. And, it didn't take long for that week to catch up to us. The week was highlighted by an alumni banquet, and the formal senior dinner dance. The alumni banquet was fine. We met men who had graduated from school in previous years and talked with them informally about their successes. The dinner dance went off fine with everyone enjoying the last affair together as a student class at Northeastern University. And so we passed on, giving way to another class.





# Activities



JOHN H. COWLES, '47  
*President*

THOMAS W. F. CHIN, '47  
*Treasurer*

DAVID R. CAHILL, '47  
*Vice-President*

STANLEY W. LOVEJOY, '47  
*Secretary*

DEAN HAROLD W. MELVIN  
*Faculty Adviser*

# Student Council

## CLASS OF 1947

William J. Arvedon  
Arthur K. Littlefield  
Edward R. Willet  
Arthur Hebert  
Ernest M. Cook  
Richard L. Kennedy

## CLASS OF 1948

Paul V. Shaughnessy  
Mary H. Bigelow  
Lois A. Brady  
Stephanie Chopek  
Grace P. McKinlay  
Edward C. Wallace  
Louis J. Gold

## CLASS OF 1949

Alfred diScipio

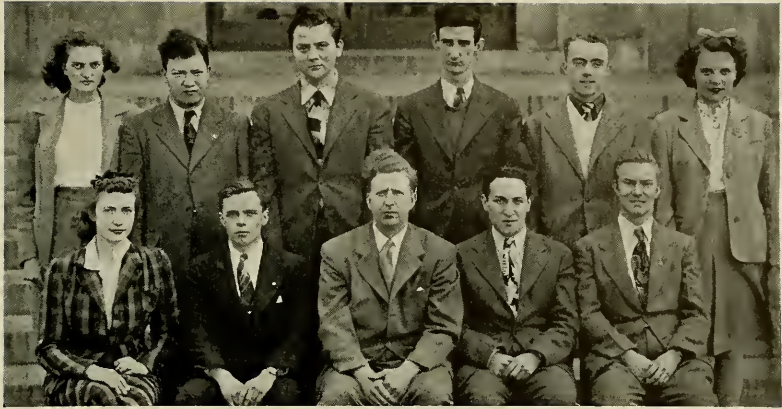
## EX-OFFICIO MEMBERS

Harold Dybvik, '49  
Jeanne L. Hillman, '49  
Elliot V. Rice, '48  
William Davidson, '48  
Arthur J. Cunningham, '49



First Row, left to right: Hillman, Willett, Chin, Cowles, Cahill, Lovejoy Bigelow. Second Row, left to right: Cook, Brady, McKinlay, Chopek, Davidson, Littlefield. Third Row, left to right: Dybvik, Hebert, Shaughnessy, Kennedy





*First Row, left to right: Leach, Bury, Shaughnessy, Davidson, Littlefield  
Second Row, left to right: Overton, Weinfeld, Peterson, Douville, Willett, Watts*

**PAUL V. SHAUGHNESSY, '48**  
*President*

**ROY J. K. PETERSON, '48**  
*Treasurer*

**LOUIS I. GOLD, '48**  
*Vice-President*

**SHELLY PEARLMAN, '48**  
*Secretary*

**DEAN CHARLES W. HAVICE**  
*Faculty Adviser*

#### ADVISORY BOARD

Dean William C. White  
Dean Harold W. Melvin  
Dean Charles W. Havice  
Professor Edward S. Parsons

#### COMMITTEE CHAIRMEN

Bramwell A. Bury, '48  
James J. Douville, '47  
Arthur K. Littlefield, '47  
John B. Morrice, '48  
Edward R. Willett, '47

#### COMMITTEE MEMBERS

Louisa J. Ashton, '49  
George F. Gowen, '47  
Eleanor F. Leach, '49  
Azad Maranjan, '47  
Hannah H. Rothschild, '48



**Student  
Union  
Cabinet**

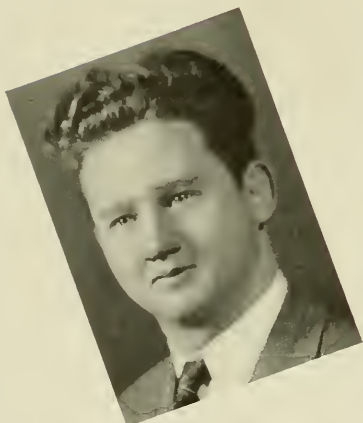


**Prof. Everett C. Marston**

FACULTY ADVISER

**Arthur Hebert**

INFORMAL PICTURES EDITOR



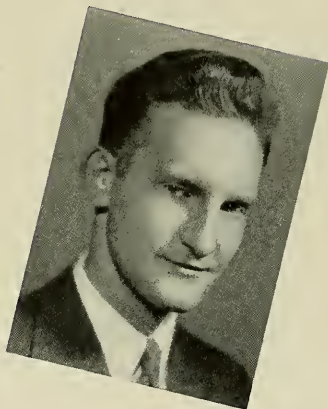
**Richard L. Kennedy**

BUSINESS MANAGER

# The '47 CAULDRON BOARD

**John H. Cowles**

EDITOR-IN-CHIEF

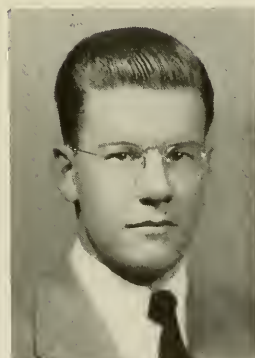


**Thomas L. McDonough**

PHOTOGRAPHIC EDITOR

**Roy L. Wooldridge**

MANAGING EDITOR



# NEWS

Elliot V. Rice, '48E  
*Editor-in-Chief*

J. Richard Brown, '48BA  
*Managing Editor*

James H. Brown, '49E  
*News Editor*

Alfred J. Pacelli, '48E  
*Sports Editor*

Arthur Cunningham, '49LA  
*Feature Editor*

Leo J. Mishner, '49BA  
*Make-Up Editor*

Kurt Wessely, '49E  
*Photographic Editor*

Mark H. Mathes, '49BA  
*Business Manager*

Robert D. Wolff, '48LA  
*Office Manager*

Lillian Kolodiz, '49E  
*Circulation Manager*

Hebert Lerner, '49E  
*Advertising Manager*

Professor Everett C. Marston  
*Faculty Adviser*

## NEWS STAFF

William S. Filler, '49E  
Shirley Hansen, '49LA  
Francis M. Myers, '49LA  
Harold Palefsky, '49E  
Eleanor K. Watts, '49BA  
William Yalden, '49LA

## FEATURE STAFF

Saul Brody, '49BA  
Joseph Crescimbeni, '49LA  
Granville E. Reed, '48LA  
Marvin Rogers, '48LA  
Jacob Roseman, '49LA  
Paul V. Shaughnessy, '48LA  
Lois Waldman, '49LA  
Leonard Weiss, '48BA

## SPORTS STAFF

E. Newell Austin, '48E  
Charles Block, '49E  
William Buchanan, '49LA  
Melvin R. Burstein, '49BA  
Martin Grossack, '50LA  
Ernest E. Mills, '48E  
Mel Silverman, '49E

## CIRCULATION STAFF

Esther Fafel, '49LA  
John Morrice, '48LA  
Ruth Reiner, '48LA  
Martin Rottenberg, '49E  
Alfon L. Rudsit, '49E  
Barbara Stone, '49LA  
Samual Simon, '49E  
Earl Yavner, '49E

## GENERAL STAFF

Phyllis Dennett, '49LA  
Cecily M. Epstein, '49LA

## ADVERTISING STAFF

Robert Weiner, '47E

## PHOTOGRAPHIC STAFF

Allan Barnett, '49BA  
Joseph Wolfson, '49E

## MAKE-UP STAFF

Edgar T. Navin, '49BA



First Row, left to right: Pacelli, J. Brown, R. Brown, Rice, Cunningham, Lerner, Professor Marston. Second Row, left to right: Hanson, Crescimbeni, Leach, Pepin, Watts, Barnett, Carlson. Third Row, left to right: Block, Amsic, Mills, Yalden, Shaughnessy, Wiener, Wessely



First Row, left to right: Rothschild, Kaufman, Briggs, Corapi, Professor Stearns, Chase, Harrison, Chin, McDonough. Second Row, left to right: Lang, Nowell, Knowlton, H. Taylor, Blanchard, MacAnespie, Baker, Sandler, Moscatelli, Wiener, Cook, Abbondante. Third Row, left to right: J. Taylor, Heffron, Yurko, Healy, Mills, Hoffman, Johnson, Walden, Scruton, Cowles. Fourth Row, left to right: Preston, Levine, Castelli, Lovejoy, Tinglof, Lambert, Woodbury, Tuttle, Caplan

#### CLASS OF 1947

Cosmo Abbondante  
 Jason B. Baker  
 C. Reed Blanchard  
 Thomas W. F. Chin  
 Ernest M. Cook  
 Vincent Corapi  
 John H. Cowles  
 Grant S. Healy  
 Richard E. Johnson  
 Howard N. Kaufman  
 Stanley W. Lovejoy, Jr.  
 Robert S. Lang  
 Thomas G. MacAnespie  
 David R. Nowell  
 John K. Taylor  
 Carl Tinglof, Jr.  
 Kenneth T. Walden  
 Roderick V. Woodbury  
 Malvin M. Yurko

#### CLASS OF 1948

Ernest N. Austin  
 Irving M. Cahn  
 Evo Castelli  
 David Feinzig  
 Carl E. Fuller  
 Edward Hoffman  
 Frank Lambert  
 Bernard C. Levine  
 Felix Moscatelli  
 Hannah H. Rothschild  
 Henry D. Trowsdale  
 Aaron M. Caplan  
 Wilbur H. Farley  
 Pauf Heffron  
 Charles W. Knowlton  
 Ernest E. Mills  
 John L. Preston  
 Hyman Sandler  
 George S. Scruton  
 Leonard Spitz  
 Leon H. Steiff  
 Harold E. Taylor  
 Roger N. Tuttle  
 Lester Wilber  
 Robert Weiner

ARTHUR L. CHASE, '47

*Chairman*

RALPH G. BRIGGS, '47

*Vice-Chairman*

THOMAS L. McDONOUGH, '47

*Secretary*

ROBERT G. HARRISON, '48

*Treasurer*

PROF. FREDERICK A. STEARNS

*Faculty Adviser*

# American Society of Mechanical Engineers

JAMES E. MROSE, '47  
*Chairman*

ALFRED P. SIEKLUCKI, '47  
*Vice-Chairman*

JASON KLAYMAN, '48  
*Secretary-Treasurer*

PROFESSOR ROLAND G. PORTER  
*Faculty Adviser*

CLASS OF 1947

Jerome H. Bloom  
Walter W. Bordewick  
Walter Ciaschini  
Nathan Freedman  
Lester B. Linsky  
Arthur A. Najarian  
George M. Zoza

CLASS OF 1948

Alfred L. Brody  
Theodor Brooker  
William Davidson  
Robert Costello  
Phillip Garnek  
Russell A. Johnson  
Ernest J. A. Landin  
John J. Leahy  
Raymond Oden  
Leroy J. Rackliffe  
Brian H. Saunders  
Edwin P. Uses

# American Institute of Electrical Engineers



*First Row, left to right: Ciaschini, Linsky, Bloom, Klayman, Mrose, Sieklucki, Najarian. Second Row, left to right: Leahy, Harris, Bordewick, Brody, Radcliffe, Freedman, Yee, Davidson. Third Row, left to right: Tonque, Garnick, Zoza, Uses, Terzis*



*First Row, left to right: Searles, Sikora, Hebert, Woolldridge, Pacelli. Second Row, left to right: Barnes, Mastropieri, Lowell, Professor Baird, Axelrod, Eschelbach, Radlo*

**CLASS OF 1948**

Charles Axelrod  
 Bernard A. Barnes  
 Donald B. Carter, Jr.  
 John M. Campbell  
 Carl W. Eschelbach  
 David I. Lowell  
 Alfred J. Pacelli  
 Francis J. Mastropieri

ARTHUR HEBERT, '47  
*President*

JOHN SIKORA, '47  
*Treasurer*

ROY L. WOOLDRIDGE, '47  
*Vice-President*

GORDON H. SEARLES, '47  
*Secretary*

PROFESSOR CHARLES O. BAIRD, JR.  
*Faculty Adviser*

**Northeastern University**  
**Civil Engineering Society**

ARNOLD D. CARLIN, '47  
*President*

ANTHONY F. TUCELLI, '47  
*Secretary*

ALFRED J. SCANDURA, '47  
*Vice-President*

MANUEL G. KOUTRAKIS, '48  
*Treasurer*

PROFESSOR CHESTER P. BAKER  
*Faculty Adviser*

CLASS OF 1947

John A. Burbidge  
David R. Cabill  
Richard W. Greenwood  
Harold A. Huckins  
George P. Koskoris  
Leon Rubin  
William Raffell  
Melvin J. Rosenfeld

CLASS OF 1948

Joseph Caputo  
Isadore Cooperman  
Alfred H. Isenberg  
Lillian Kolodiz  
Charles Mitchell  
Nicholas Pandiscio  
Norman Rubin  
Robert Walsh

CLASS OF 1949

Jeanne Hillman

# American Institute of Chemical Engineers



First Row, left to right: Greenwood, Scandura, Carlin, Tuccelli, Rosenfeld Second Row, left to right: Koskoris, Burbidge, Hillman, Cooperman, Catotti, Cabill. Third Row, left to right: Curry, Huckins, Laible



# AMERICAN CHEMICAL SOCIETY



First Row, left to right: Frenkel, Reiner, Greenwood, Salos, Curry, Rosen, Laible. Second Row, left to right: Koskoris, Rubin, Holstein, Cooperman, Koutrakis, Rosenfeld, Mitchell, Cohen, Carotti, Vozella. Third Row, left to right: Cahill, Fritz, Isenburg, Huckins, Fishman, Cotter, Tuccelli, Carlin, Wolfson

EMANUEL SALOS, '48

*Chairman*

ARTHUR A. VERNON

*Faculty Adviser*

## CLASS OF 1947

Arnold D. Carlin  
Harold A. Huckins, Jr.  
David R. Cahill  
Melvin J. Rosenfeld  
Roy Laible  
Richard W. Greenwood  
Anthony F. Tuccelli  
George P. Koskoris  
Howard M. Curry  
Herbert J. Goulston, Jr.

## CLASS OF 1948

Charles T. Mitchell  
Alfred H. Isenberg  
Norman Rubin  
Manuel G. Koutrakis

William A. McWilliams  
Bernard E. Lawson  
Isadore N. Cooperman  
Joseph A. Caputo  
Nicholas A. Pandiscio  
Lillian Kolodiz  
Frances Rosen  
Ruth E. Reiner  
Leo E. Topol  
Norma Levine  
Alfred Weiner  
Rita H. Ginsburg  
Leo D. Cohen  
Samuel Rosenfield  
Mona Kennedy  
Lois A. Brady  
Sarkis Vartanian  
Paul B. Lubell  
John T. Bell  
Francis Paris

## CLASS OF 1949

Walter Pollock  
Philip Perch  
Roger Gifford  
Edmund J. J. Podbielski  
Wladislaw Kaminsky  
Andrew J. McNeil  
Robert J. Leupold  
Edward A. Botan  
Richard Newmark  
Ira A. Wolfson  
Martin Rottenberg  
Earle Fritz  
Arthur C. Cotter  
Harry Fishman  
Jeanne L. Hillman  
Joseph F. Vozzella  
Bernard R. Stein  
Harris Holstein  
Samuel Spiegel

RODERICK V. WOODBURY, '47

*President*

THOMAS L. McDONOUGH, '47

*Secretary*

HOWARD N. KAUFMAN, '47

*Vice-President*

RICHARD L. KENNEDY, '47

*Treasurer*

MR. WARREN L. GANONG

*Faculty Adviser*

#### MEMBERS

Mark H. Mathes, '49

Harry H. Kitahata, '49

Robert H. Weiner, '48

David R. Nowell, '47

# Society for the Advancement of Management



*Seated: Woodbury. First Row, left to right: Kitahata, Kennedy, Nowell. Second Row, left to right: McDonough, Kaufman*



*First Row, left to right: Greenwood, Najarian, Cook, Pandiscio, Giroux.  
Second Row, left to right: Ciaschini, Lovejoy, Healy*

ARTHUR A. NAJARIAN, '47 S. P. A.  
*President*

RICHARD W. GREENWOOD, '47 N. E. Z.  
*Vice-President*

ERNEST M. COOK, '47 B. G. E.  
*Secretary-Treasurer*

PROFESSOR EDWARD S. PARSONS  
*Faculty Adviser*

Nicholas A. Pandiscio, '48, P. G. P.  
George E. Giroux, '49, P. G. P.  
Walter A. Ciaschini, '47, S. P. A.  
Stanley W. Lovejoy, Jr., '47, N. E. Z.  
Grant S. Healy '47, B. G. E.

# Inter Fraternity Council



STANLEY W. LOVEJOY, JR., '47  
*Grand Master*

JOHN H. COWLES, '47  
*Grand Chancellor*

ROGER N. TUTTLE, '48  
*Vice-Grand Master*

RICHARD W. GREENWOOD, '47  
*Grand Scribe*

PROF. WILFRED J. COMBELLACK  
*Faculty Adviser*

CLASS OF 1947  
Roderick V. Woodbury  
Arthur K. Littlefield  
David R. Nowell  
John A. Burbidge

CLASS OF 1948  
Henry S. Hall  
Brian H. Saunders  
J. Richard Brown  
Mark Mathes  
Frank Lambert, Jr.  
Bernard A. Barnes  
Granville E. Reed  
James A. Rawnsley  
Robert G. Harrison

CLASS OF 1949  
David L. Thurrell  
Earl A. Brown  
Kenneth F. Olsen  
Robert F. Pierce  
James P. Terry  
Bernard F. Stone

#### BROTHERS IN THE FACULTY

Prof. Wilfred J. Combellack  
Prof. J. James Devine  
Dean Harold W. Melvin  
Prof. George H. Meserve  
Mr. Albert E. Sanderson  
Prof. Ernest L. Spencer  
Prof. George W. Towle  
Dean William C. White

# Nu Epsilon Zeta



First Row, left to right: Nowell, Greenwood, Tuttle, Lovejoy, Cowles, Professor Combellack, Littlefield. Second Row, left to right: Barnes, Rawnsley, Lambert, Hall, Woodbury, Thurrell, Terry, Harrison. Third Row, left to right: J. Brown, Mathes, Stone, Olsen, E. Brown, Saunders, Reed, Pierce, Burbidge



First Row, left to right: Doherty, Stankevich, Mr. Hankinson, Giroux, Wayler. Second Row, left to right: Pandiscio, Sikora, Tinglof, Page, Zbozen, Walden, Calderero

**EDWARD A. STANKEVICH, '49**

*President*

**BENNETT WAYLER, '49**

*Treasurer*

**NICHOLAS PANDISCIO, '48**

*Social Chairman*

**GEORGE E. GIROUX, '49**

*Vice-President and House Manager*

**JOHN F. DOHERTY, JR., '48**

*Secretary*

**MR. GEORGE W. HANKINSON**

*Faculty Adviser*

**BROTHERS IN THE  
FACULTY**

Dr. Elmer H. Cutts  
Prof. George E. Pihl  
Prof. Henry E. Richards  
Prof. Milton J. Schlagenhauf  
Prof. Albert E. Whittaker

**MEMBERS**

Arthur Calderero, '49  
Ivan Page, '49  
John Sikora, '47  
Carl Tinglof, '47  
Kenneth T. Walden, '47  
Stanley Zbozen, '49



**Phi Gamma Pi**



WALTER A. CIASCHINI, '47  
*President*

EDWARD B. CATOTTI, '47  
*Treasurer*

GEORGE W. CATTERALL, '48  
*Vice-President*

GORDON H. SEARLES, '47  
*Secretary*

MR. WILLIAM WALLACE  
*Faculty Adviser*

# Sigma Phi Alpha

## MEMBERS

Salvatora J. Bonasera, '47  
Arthur J. Hilly, '48  
Ernest E. Mills, '48  
Alfred J. Pacelli, '48  
Arthur A. Najarian, '47  
Roy J. K. Peterson, '48  
Charles G. Smith, '49  
Anthony F. Tuccelli, '47

## BROTHERS IN THE FACULTY

Prof. Laurence F. Cleveland  
Dr. Reginald G. Laount  
Prof. Gerald R. Tatton  
Prof. Chester H. Wolowicz



First Row, left to right: Mr. Wallace, Searles, Ciaschini, Catotti, Najarian. Second Row, left to right: Bonasera, Smith, Hilly, Mills, Tuccelli, Pacelli



First Row, left to right: Cahill, Lang, Healy, Cook, Johnson.  
Second Row, left to right: Dybvik, Briggs, Chase, Root

GRANT S. HEALY, '47

*President*

RICHARD E. JOHNSON, '47

*Treasurer*

ERNEST M. COOK, '47

*Vice-President*

ROBERT S. LANG, '47

*Secretary*

DR. WILLIAM F. LUDER

*Faculty Adviser*



#### MEMBERS

David R. Cahill, '47  
Arthur L. Chase, '47

#### PLEDGES

Ralph Briggs, '47  
Harold Dybvik, '49  
Lawrence D. Root, '49

#### BROTHERS IN THE FACULTY

Prof. Emil A. Gramstorff  
Dr. William F. Luder

Beta  
Gamma  
Epsilon

MUNROE W. HALE, '49  
*Commodore*

BERNARD A. BARNES, '48  
*Secretary-Treasurer*

GRANT S. HEALY, '47  
*Vice-Commodore*

HENRY S. HALL, '48  
 ROBERT S. WELSH, '48  
*Committee*

PROFESSOR W. S. MCGUIRE  
*Adviser*

# Yacht Club

## CLASS OF 1947

David R. Cahill  
 A. L. Chase  
 Edward B. Catotti  
 Walter A. Ciaschini  
 Harold A. Huckins  
 George P. Koskoris  
 David R. Nowell  
 Alexander A. Sweeney

## CLASS OF 1948

John T. Bell  
 I. N. Cooperman  
 Alred H. Isenbug  
 Frank Lambert  
 Emanuel Salos  
 Irving M. Saslaw  
 Leonard Spitz  
 Leon H. Steiff

## CLASS OF 1949

Charles W. Ayer  
 Joseph A. Cicco  
 David J. Gibbons  
 Frederick W. Hanson  
 Jeanne L. Hillman  
 Edgar T. Navin  
 Dorothyann Shaw  
 James P. Terry, Jr.  
 Norman R. Waddleton

## CLASS OF 1959

Lawrence M. Fisher  
 Sidney Insoft  
 Christine L. Johnson



First Row, left to right: Professor McGuire, Healy, Hale, Barnes, Johnson, Second Row, left to right: Hillman, Cahill, Welsh, Chase, Catotti, Koskoris, Shaw, Third Row, left to right: Salos, Huckins, Ciaschini, Hanson, Lambert, Bell





*First Row, left to right: Wolfson, Barnett, Clark, Lovejoy, Vozella. Second Row, left to right: Oberg, Jack, Prifti, Professor Devine*

**CLASS OF 1949**

Allan A. Barnett  
 Leo J. Gold  
 Morton J. Greenburg  
 Hazel R. Jack  
 Jeryle L. Konowitz  
 Herbert A. Lemer  
 George W. Perkins  
 Melvyn G. Prifti  
 Samuel Waldstein

**RICHARD D. CLARK, '49**  
*President*

**PHILIP B. YOUNG, '47**  
*Ordnance Officer*

**STANLEY W. LOVEJOY, JR., '47**  
*Vice-President*

**IRA A. WOLFSON, '49**  
*Secretary-Treasurer*

**PROFESSOR J. JAMES DEVINE**  
*Adviser*

# Rifle Team



First Row, left to right: Huckins, Hanson, Professor Coolidge, Entin, Perch.  
 Second Row, left to right: Patriquin, Pepin, Kreesman, Lousarevian,  
 Carlson, Ritchie. Third Row, left to right: Woodbury, Reeves, Boruchoff, Bell

# Chess Club

LEONARD P. ENTIN, '49  
*President*  
 PHILIP S. PERCH, '49  
*Secretary*  
 SHIRLEY M. HANSON, '49  
*Treasurer*  
 PROFESSOR JOSEPH A. COOLIDGE  
*Faculty Adviser*

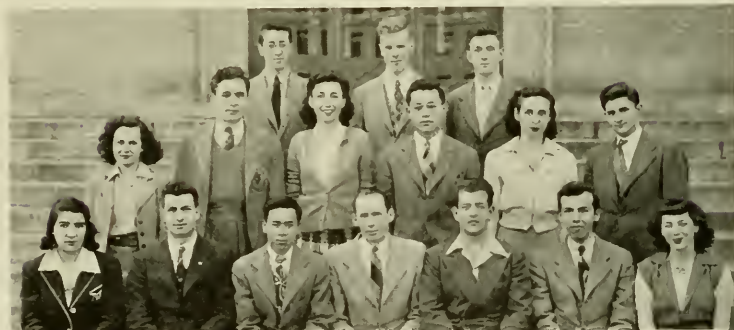
CLASS OF 1947  
 Roderick V. Woodbury

CLASS OF 1948  
 John T. Bell

CLASS OF 1949  
 Robert B. Angus, Jr. Alice Lousarevian  
 Irving Brudnick Lawrence W. Patriquin  
 Eleanor R. Carlson Phyllis M. Pepin  
 Lester Gilman Warren M. Reeves  
 Bernard A. Kriegsmann Kenneth J. Ritchie

# Cosmopolitan Club

[Commission of the Northeastern Student Union]



First Row, left to right: Aprizian, Corapi, Yee, Harrison, Rottenberg, Salos, Frenkel. Second Row, left to right: Schneider, Wolfson, Cohen, Kita-Hata, DeLuty, Lerner. Third Row, left to right: Waldstein, Huckins, Yalden

ROBERT G. HARRISON, '48  
*President*

MARTIN ROTTENBERG, '49  
*Secretary*

ALFRED MELTZER, '49  
*Treasurer*

GEORGE YEE, '49  
*Vice-President*

DEAN CHARLES W. HAVICE  
*Faculty Adviser*

CLASS OF 1947  
 Thomas Chin  
 Vincent Corapi  
 Harold A. Huckins, Jr.  
 CLASS OF 1948  
 Mary R. Frenkel  
 Emanuel Salos

CLASS OF 1949  
 Anna L. Aprizian  
 Simon Berman  
 Clair Cohen  
 Tamara E. DeLuty  
 Anne Etwanik  
 Esther Fafel  
 Herbert Lerner  
 Edward Levenson  
 Israel M. Livingston  
 Phyllis Milgrom  
 Walter Pollak

Jacob Roseman  
 Abbie H. Schneider  
 Elinor Schlossberg  
 Louise Silverman  
 Florence S. Stern  
 Barbara F. Stone  
 Marion D. Taylor  
 Norik N. Tatevossian  
 Sarnmel Waldstein  
 William Yalden  
 Earl M. Yavner

CLASS OF 1950  
 Herbert Prout  
 Bernard Reichart  
 Joseph Weiner  
 Berte Baroochian  
 Muriel M. Allen  
 Hersch Seigal  
 Simon K. Ludmer



*First Row, left to right: Hebert, Reiner, Rosenthal, Adelman, Goldstein, Cooperman  
Second Row, left to right: Professor Pinard, Gowen, Pearlson, Lindi, Ysebaert, Lituri, Gold*

**PROFESSOR WILLIAM J. PINARD**  
*Faculty Adviser*

**CLASS OF 1947**

William J. Arvedon  
George F. Gowen  
Vincent L. Ysebaert

**CLASS OF 1948**

Phyllis A. Batchelder  
Isadore N. Cooperman  
Mary J. Flynn  
Calista M. Folsom  
I. Louis Gold  
Selma Kirschman  
Lillian Kolodiz  
Pauline Novak

Barbara A. Parrish  
Ruth E. Reiner

**CLASS OF 1949**

Hilda L. Adelman  
Louisa J. Ashton  
Betty L. Goldstein  
Louis C. Lituri  
Leo Mishner  
Eleanor R. Levin  
Richard A. Lindi  
Phyllis Rosenthal

**CLASS OF 1950**

Jordan Pearlson

# Dramatic Club

STEPHANIE CHOPEK, '48  
*President*

JEANNE L. HILLMAN, '49  
*Vice-President*

PAULINE K. NOVAK, '48  
*Secretary*

FRANCES M. MYERS, '49  
*Treasurer*

MISS LOUISE G. MARSH  
*Faculty Adviser*

# Omega Sigma

## CLASS OF 1948

Mary H. Bigelow  
Lois A. Brady  
Vivian Fain  
Stephanie Chopek  
Calista M. Folsom  
Mary J. Flynn  
Mary R. Frenkel  
Rita H. Ginsberg  
Lillian Kolodiz  
Florence S. Liker  
Grace P. McKinlay  
Pauline K. Novak  
Barbara A. Parrish  
Ruth E. Reiner  
Sylvia S. Resnick  
Frances Rosen

## CLASS OF 1949

Phyllis A. Batcher  
Nancy Bandurski  
Ruth Blotcher  
Claire F. Cohen  
Esther Fafel  
Marjorie M. Faunce  
Jeanne L. Hillman  
Hazel R. Jack  
Evelyn Leone  
Eleanor Levin  
Frances M. Myers  
Dorothy C. Overton  
Mary L. Pottle  
Ann Rosenberg  
Martha E. Salvi  
Abbie H. Schneider  
Virginia M. Shattuck  
Louise Silverman  
Laura Solomon  
Ursula E. C. Ullrich  
Grace L. Ward  
Eleanor K. Watts  
Chessie Zbikowska  
Pearl Abelman  
Betty R. Hess  
Eleanor F. Leach

## CLASS OF 1950

Muriel M. Allen  
Bertha Barooshian  
Marjorie Black  
Sylvia Brenner  
Christine L. Johnson  
Grace M. Lane  
Gloria L. Weisbond



*First Row, left to right:* Somers, McKinlay, Folsom, Novak, Miss Marsh, Chopek, Hillman, Zbikowska, Roen, Brady, Overton. *Second Row, left to right:* Silverman, Bloom, Gneplert, Dennett, Komisar, Faunce, Goldberg, Rothschild, Schaeffer, Stone, Clarke, Etwanik. *Third Row, left to right:* Freedman, Cohen, Levin, Lindberg, Greene, Carlson, Pottle, Batcher, Frenkel, Hanson, Marder, Lane, Korsarter. *Fourth Row, left to right:* Jack, Black, Watts, Brenz, Fain, Connolly, Leach, Ginsberg, Louserevian, Pepin, Goldman, Shaw



First Row, left to right: Stankevich, Greenwood, Bury, Giroux, Shaughnessy, Littlefield, Waskow, Wessely, Kudryk.  
 Second Row, left to right: Bauman, Willett, Cook, McDermott, Stone, Adam, Spampinato, Weinfeld, Ludmer, Stuart.  
 Third Row, left to right: Brown, Watson, Ricci, Miller, Landa, Wood, Yantowski, Karp, Miner, Swickelberg, Preston.  
 Fourth Row, left to right: Misner, Luther, Marmer, Nagle, Johnson, Lovejoy, Lambert, McLoud, Barnes, Porter, McNeill

Arthur J. Adam  
 James Stuart Adams  
 Theodore S. Adameczyk  
 David M. Altman  
 Bernard A. Barnes  
 Harry Bauman  
 Charles A. Billies  
 David E. Boehnke  
 Irving Bosinoff  
 Murray R. Braverman  
 Alfred L. Brody  
 James H. Brown  
 John S. Brown  
 Edward Burdean  
 Bramwell A. Bury  
 Leon W. Bush  
 Francis J. Callahan  
 Irving Canner  
 Frank A. Capone  
 Joseph A. Caputo  
 Brian Casey  
 Alan Cate  
 Frank Cawley  
 Richard D. Clark  
 Ernest M. Cook  
 Richard F. Crooker  
 Theodore J. Daniels  
 George P. Davis  
 Francis E. Dixon  
 Martin W. Donovan  
 Ralph Dyer, Jr.  
 Seymour J. Feinberg  
 Daniel M. Fox  
 Hyman M. Fritz  
 George E. Giroux  
 Louis Peter Greenwood  
 Richard W. Greenwood  
 Irvin R. Hall  
 Francis R. Hankard  
 Richard J. Hebert  
 Burton C. Hoffman  
 George F. Horner  
 Dwight M. Howe

Vernon B. Howland  
 Clarence B. Husbands  
 Leo C. Jerzyk  
 Olof P. Johnson  
 Roy W. Johnson  
 Philip Karp  
 George F. Kenney  
 K. Charles Kopsioftis  
 Theodore W. Kudryk  
 Frank Lambert  
 Arthur S. Landa  
 James S. Langdon  
 Walter P. Lee  
 Leonard I. Lerner  
 Arthur K. Littlefield  
 Simon K. Ludmer  
 Edmund P. Luther  
 Max Maisner  
 Calvin T. Margolis  
 Elliot P. Markowsky  
 Irving C. Marmer  
 Clement McDermott  
 Leonard J. McLaskey  
 Thomas F. McLoud, Jr.  
 Andrew J. McNeill  
 Frances E. Melanson  
 Daniel B. Miller  
 Edmund O. Miner  
 Leo J. Mishner  
 Sidney Mitchell  
 James P. Murray, Jr.  
 William Richard Nagle  
 Kenneth F. Olsen  
 Francis P. Oresteen

GEORGE F. HORNER  
*President*

WILLIAM WASKOW  
*Vice-President*

LOUIS P. GREENBERG  
*Secretary*

DOUGLAS S. STUART  
*Treasurer*

PROFESSOR JOHN B. PUGSLEY  
*Faculty Adviser*

Richard B. Pelley  
 Robert F. Pierce  
 Ervin D. Porter  
 John L. Preston  
 Robert D. Prussman  
 James M. Qua  
 John F. Quigley  
 Leon Rabin  
 Herman E. Radke  
 William C. Raftick  
 Joseph F. Ricci  
 William Ruminas, Jr.  
 Dominic A. Sauni  
 Allan W. Sawyer  
 Evans O. Schwarz, Jr.  
 John A. Sharkey  
 Paul Shanghnessy  
 Edward E. Sinclair  
 Anthony L. Spampinato  
 Edward A. Stankevich  
 Bernard F. Stone  
 Douglas S. Stuart  
 Emanuel Sugerman  
 John F. Sullivan, Jr.  
 John Michael Sullivan

Paul Swickelberg  
 Israel Volinsky  
 Norman R. Waddleton  
 William Waskow  
 Robert L. Watson  
 Murray A. Weinfeld  
 Karl Wessely  
 Henry F. Whalen  
 Richard F. Whelpley  
 Edward R. Willett  
 William S. Wilson  
 Morris D. Winer  
 Leonard G. Wolfson  
 William T. Wood  
 Victor S. Yankowski

# Veterans Association

ERNEST M. COOK, '47

*President*

RICHARD L. KENNEDY, '47

*Secretary*

LOIS A. BRADY, '48

*Vice-President*

RUTH E. REINER, '48

*Treasurer*

PROF. LAURENCE F. CLEVELAND

*Faculty Adviser*

# Choral Society

## CLASS OF 1947

Arthur L. Chase

## CLASS OF 1948

Chessie Zbikowska

Stephanie Chopek

Frances Rosen

Alfred D. Winer

## CLASS OF 1949

Richard F. Whelpley

Ruth L. Freedman

Ruth H. Goldberg

Hazel R. Jack

Melvyn G. Prifti

Elizabeth A. Somers

Marjorie M. Faunce

Nannette H. Marder

Eleanor F. Leach

Martin Rottenburg

## CLASS OF 1950

Stanislaus J. Zbozen



First Row, left to right: Zbikowska, Whelpley, Brady, Cook, Kennedy, Freedman, Chase. Second Row, left to right: Chopek, Goldberg, Jack, Somers, Faunce, Rosen, Marder, Leach. Third Row, left to right: Prifti, Winer, Zbozen, Rottenburg



First Row, left to right: Leach, Rosen, Lambert, Brady, Faunce. Second Row, left to right: Shaw, Watts, Dybvik, Cowles, Greenwood, Zbikowska, McKinlay. Third Row, left to right: Healy, Lowell, Lovejoy, Barnes, Cahill

FRANK LAMBERT, JR., '48

*Chairman*

DEAN HAROLD W. MELVIN

*Faculty Adviser*

CLASS OF 1947

John H. Cowles  
Stanley W. Lovejoy, Jr.  
Richard W. Greenwood  
David R. Cahill  
Grant S. Healy

CLASS OF 1948

David I. Lowell  
Bernard A. Barnes  
Grace McKinley  
Stephanie Chopek  
Barbara A. Parrish  
Lois Ann Brady  
Chessie Zbikowska  
Frances Rosen

CLASS OF 1949

Harold Dybvik  
Marjorie M. Faunce  
Eleanor F. Leach  
Eleanor K. Watts  
Dorothean Shaw

# Husky Plus Club

# The Basketball Season

By MELVIN R. BURSTEIN

With just a basketball and a prayer, Coach "Foxy" Flumere carried an inexperienced but aggressive Husky quintet through the 1944-1945 basketball season with a total of 8 wins and 8 defeats.

The N. U. five opened the season against a more experienced U. S. S. Rizzi team and garnered their first win of the season, 57-48. Walsh and Henry proved the big guns in this game for N. U., scoring 27 and 19 points respectively. In the second game of the season, the Flumeremen showed an unexpected burst of power in beating the 3791 Quartermaster quintet 85-35. Again Henry and Walsh led the pack, scoring 35 and 25 points respectively. The basketball team lengthened their streak to three straight wins when they defeated Lowell Textile 61-37, January 6, at the Johnson Memorial Gym. The Huskies experienced their first loss of the season against a more experienced Rhode Island State team 110-55, but this loss was expected by all. The following Saturday found the Husky quintet trounc-

ing the University of Maine 50-33. Walsh and Henry continued their high scoring with 23 and 13 points respectively. On January 22, the Huskies captured their fifth win of the season against the Charlestown Marines 67-44.

But two losses were next on the menu against the University of New Hampshire, 68-57, and the Nutmeggers from Connecticut, 53-43. The losing streak was broken when the Huskies ran wild, 70-40, against A. I. C.

The Huskies ran their losses up to seven against the Providence Friars, 72-61; the Rhode Island Rams, 71-37; unexpectedly against the B. U. Terriers, 49-44, and Bowdoin, 61-50. But the Northeastern quintet went back to the win column against Maine, 63-54, and took their final game with Boston University, 52-45, without the services of Walsh.

The last game of the season was against the Nutmeggers of Connecticut, 72-54, to bring the season's total to 8 wins and 8 defeats.



Russell Stiles, '47 (N)  
*Manager*

Mr. Emanuel A. Flumere  
*Coach*

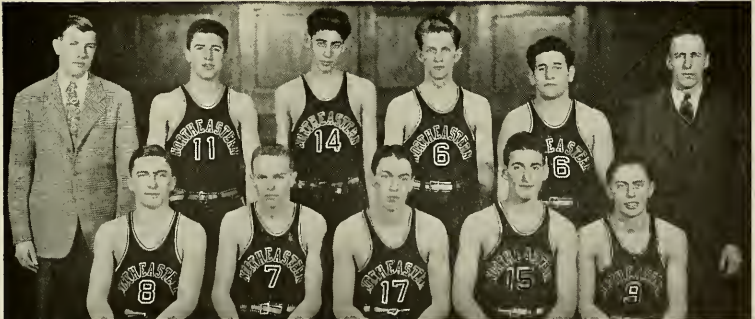
*Member from the Class of 1947*

George J. Selador

*Members from the Class of 1949*

Malcolm Henry (N)	Hebert Stackhouse
Walter M. Kozul (N)	Edward A. Stankevich (N)
Kay Krekorian (N)	Francis X. Walsh (N)
John B. Labbadia, Jr. (N)	Bennett J. Wayler (N)
Robert R. Schwarz (N)	

# B A S K E T B A L L



*First Row, left to right: Kozul, Walsh, Henry, Labbadia, Wayler. Second Row, left to right: Manager Malloy, Schwarz, Krekorian, Stankevich, Selados, Coach Flumere*

Prof. Gerald R. Tatton

*Coach*

Morton Lutch, '49

*Manager*

Harold B. Bemis, '49  
Arthur R. Calderaro, '49  
Richard L. Chapal, '49  
Seymour Goldberg, '48  
Herbert M. Kamol, '49  
Murray N. Markson, '49  
Ernest E. Mills, '48  
Norman Mills, '49  
Clifton A. Morre, '50  
Livingston S. Moyston, '49

Alfred J. Pacelli, '48  
Edwin H. Potish, '49  
Elliot J. Rice, '48  
Lawrence D. Root, '49  
Edward T. Spinnucci, '49  
Robert H. Springer, '49  
Marmold Tagriu, '49  
Alan O. Walker, '49  
Robert S. Welsh, '48

# T R A C K



*First Row, left to right: Spinnucci, Snyder. Second Row, left to right: Welsh, Bemis, Root, E. Mills, Potish, Calderaro. Third Row, left to right: Professor Tatton, Washington, Leafman, Pacelli, Moore, Lamouette, Moyston, Aimsie, Silverstein, Chaput, Manager Lutch. Fourth Row, left to right: Stone, Fraser, Rudsit, Karol, Kessel, M. Mills, Yorra, Learner, Tagriu*



First Row, left to right: Adelman, Buchanan, Mills, Kyes.  
 Second Row, left to right: Welsh, Goldberg, Professor Tatton, Austin, Rice

SEASON		N. U.	Opp.	
October 21	Univ. of Conn.	19	45	Albert Alderman, '49 E. Newell Austin, '49
October 28	Rhode Island	41	16	William J. Buchanan, '48 Seymour Goldberg, '48
November 4	Coast Guard	46	15	Frank Kyes, '49 Ernest E. Mills, '48
November 11	N. E. I. C. A. A. A.		5th place	Elliot J. Rice, '48 Robert S. Welsh, '48

# Cross Country *Fall '44*

## Acknowledgments

To all who have contributed or helped us compile this yearbook, we of the CAULDRON Board express our sincere and heartfelt thanks.

To Mr. Waid, Miss Dempsey, and Mr. Yerkes for their prompt work and excellent cooperation.

To Mr. Russell Knight of the Stobbs Press, whose wealth of ability and experience so readily available, made this yearbook a pleasant success.

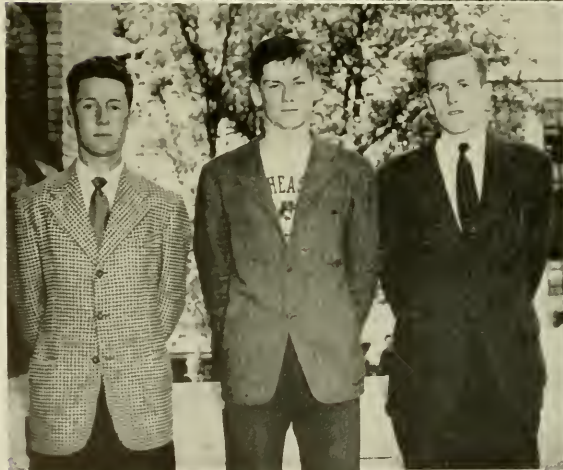
To the Activities Department and Miss Peppard, and other departments and secretaries, and to the faculty members for their patience and assistance.

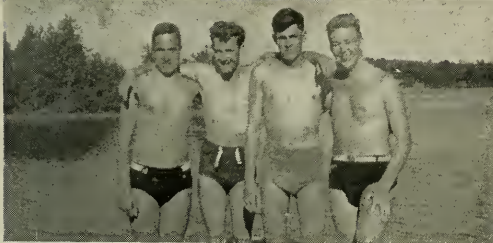
To those girls who helped type the copy.

To Shirley R. Swanson, who helped write the copy.



# Candid





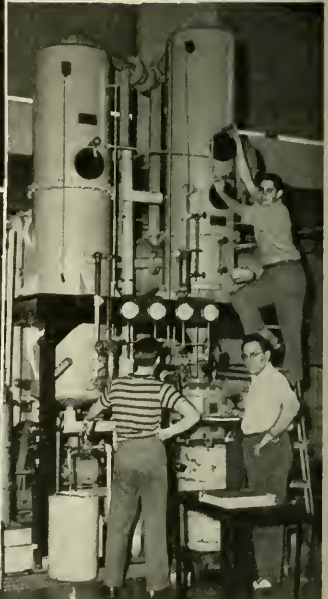


















# Advertising



The Officers and Faculty of North-eastern University wish to express to the members of the Class of 1946 and the Class of 1947 their very best wishes for success in everything which they may undertake or be called upon to perform



**NEW ENGLAND  
CONSERVATORY  
OF MUSIC**

AUDITORIUMS and HALLS  
for

Concerts, Lectures, Moving Pictures,  
Dramatics, Dance Recitals,  
Banquets, Dances

JORDAN HALL

GEORGE W. BROWN HALL

BANQUET HALL RECITAL HALL

**OLD ELM PHARMACY,  
Inc.**

M. EPSTEIN, Ph.G., Reg. Pharm.

58 Gainsboro St., cor. St. Stephen  
Boston, Mass.

Phone KEN 8948



# The HOTEL STATLER

..... Boston

Appreciates the Continued Patronage  
of Northeastern University Students  
and Alumni.

D. B. STANBRO, *Mgr.*

•

*Buy Bonds for Victory*

DRINK MILK FOR  
HEALTH

Be Sure It's

# HOOD'S

*Compliments of*

CLASS OF 1947

CLASS OF 1948

*Compliments*

*of*

Amory  
Foundry  
Company

Specializing

in

ALUMINUM CASTINGS

380 Amory Street

Jamaica Plain

HAROLD M. TWOMBLY

*Compliments of*

SIGMA PHI ALPHA  
NU EPSILON ZETA  
PHI GAMMA PI

**LEO HIRSH, INC.**

*Clothiers to University Men  
Army and Navy Outfitters*

250 Huntington Ave.

Boston, Mass.



**Gainsboro Pharmacy**

THE  
MODERN DRUG STORE

Corner  
Gainsboro and Huntington Ave.  
Nearest Northeastern

TRYOUT  
MANUFACTURING  
COMPANY

*"Always something different —  
with style and good taste"*



"For more than sixty years —  
Stobbs Press Craftsmen have produced fine printing."

**THE Stobbs PRESS**  
Worcester, Massachusetts

# WAID STUDIO

18 Newbury Street  
Boston, Massachusetts

•

## *School and College Photographers*

Completely equipped to render the highest quality craftsmanship and an expedited service on both personal portraiture and photography for college annuals.

•

## *Photographers to this Cauldron*

Patrons may obtain duplicates at any time

## *A Grand Place*

for a  
Banquet or Dance

*the*

# Hotel LENOX

*Monaco Room*

*Dome Room*

*Pine Room*

Come and see these charmingly modern function rooms. Ideal for Dances, Reunions, Receptions, and other functions. Other smaller rooms for limited numbers.

WALTER E. SEAVER,  
*Managing Director*

•

### ★ VISIT THE . . . . .

- "V . . . — Room"
- The Mexican Patio Coffee Shop  
Featuring Mexican Dishes
- The Washington Grill  
A Dining Room of Distinction

## S. BLOOMFIELD & SON

*Diamonds and Jewelry*

373 Washington Street Boston

Sid Bloomfield, '37

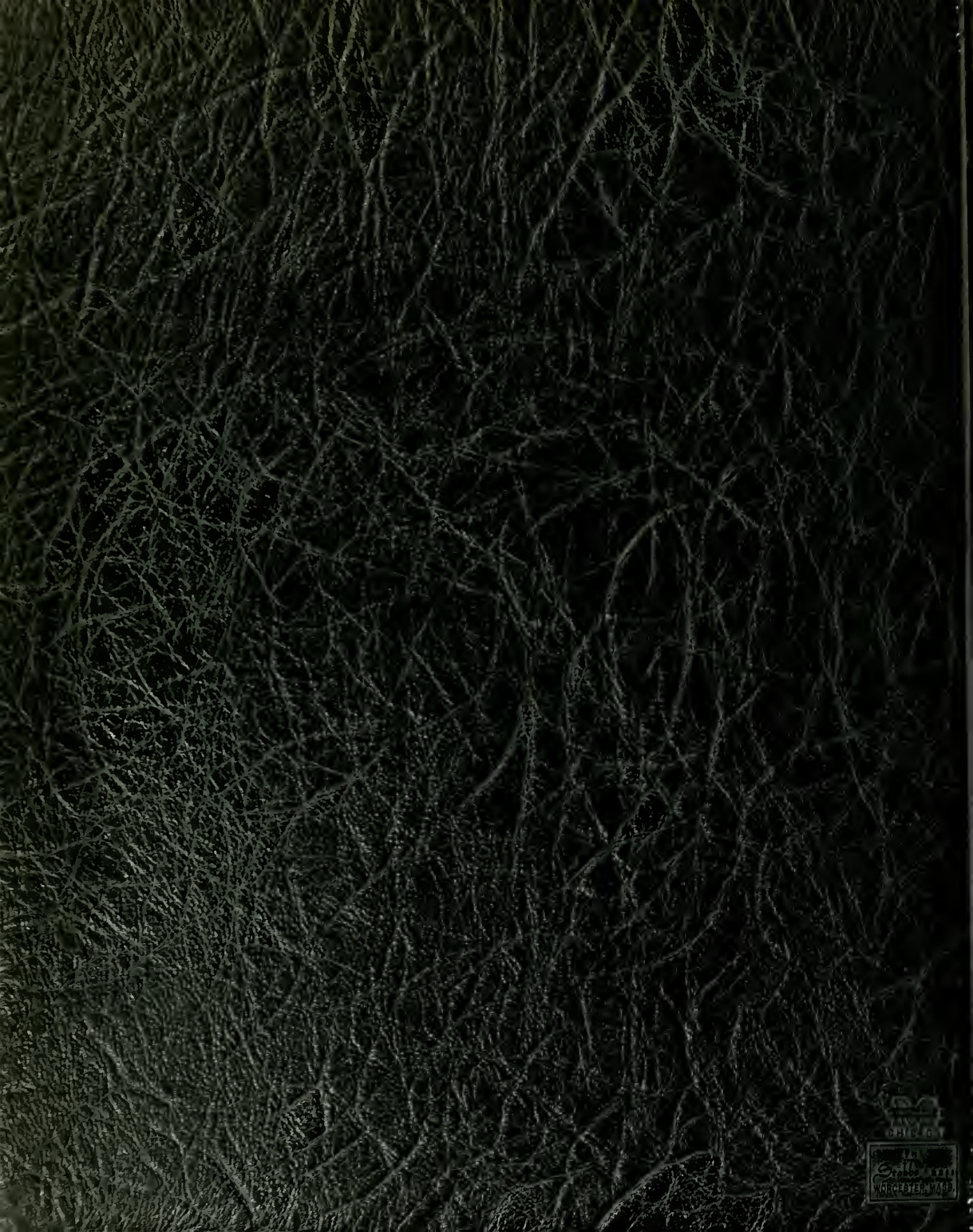
Lib. 5841

•









MADE IN  
ENGLAND  
THE  
SALISBURY  
BOOKBINDING CO. LTD.  
WIMBORNE, HANTS.