

Cauldron



DR. EVERETT A. CHURCHILL



Northeastern University
Library



NORTHEASTERN UNIVERSITY LIBRARIES DUPL



3 9358 01423830 4

COLLEGIUM
VOLUME XXV



Classes of '46 and '47

NA371.807
S46-47c
cop 1

It is with great pleasure and with sincere gratitude that we, the Classes of 1946 and 1947, dedicate this twenty-fifth volume of the Cauldron to Professor John Butler Pugsley. He is a man with whom all members of our two classes have come in contact many times in their undergraduate years. He has always been a faithful friend and a valuable adviser, and he has made a contribution to the college life of each of us.

Professor Pugsley received his Bachelor of Arts degree from Colby College in 1905. After graduate work at Columbia University, he held positions as principal and superintendent of schools in towns in Vermont, New Hampshire, and Massachusetts. During the first World War he served as Athletic Officer of the 26th Division, a position in line with his skills as an athlete. Upon his discharge in 1918 he came to Northeastern University as Assistant Professor of Mathematics. A short time later, in September, 1919, he was appointed to the position of Registrar, the position which he has held since that time. It is interesting to note that Professor Pugsley has served as adviser to veterans of World War I and World War II.

Dedication



John Butler Pugsley

476

We, the Cauldron Board, present Volume
Twenty-five of the Cauldron to classmates and
to friends of the University.

Because of wartime conditions, it has been
necessary to combine the Classes of 1946 and 1947
under one cover. With the materials and the funds
at hand, the combined staffs have labored
to make this Cauldron a worthwhile remembrance
of our college years.

Our best efforts are within these covers,
and we sincerely hope that this book
will always bring pleasant recollections
of our undergraduate days.

FOR THE CLASS OF 1946

ROBERT C. TWOMBLY
Editor-in-Chief

JAMES J. DONNELLAN
Business Manager

RODERIC W. SOMMERS
Managing Editor

FREDERIC D. McALLISTER
Photographic Editor

ROBERT J. MARKELL
Informal Pictures Editor

FOR THE CLASS OF 1947

JOHN H. COWLES
Editor-in-Chief

RICHARD L. KENNEDY
Business Manager

ROY L. WOOLDRIDGE
Managing Editor

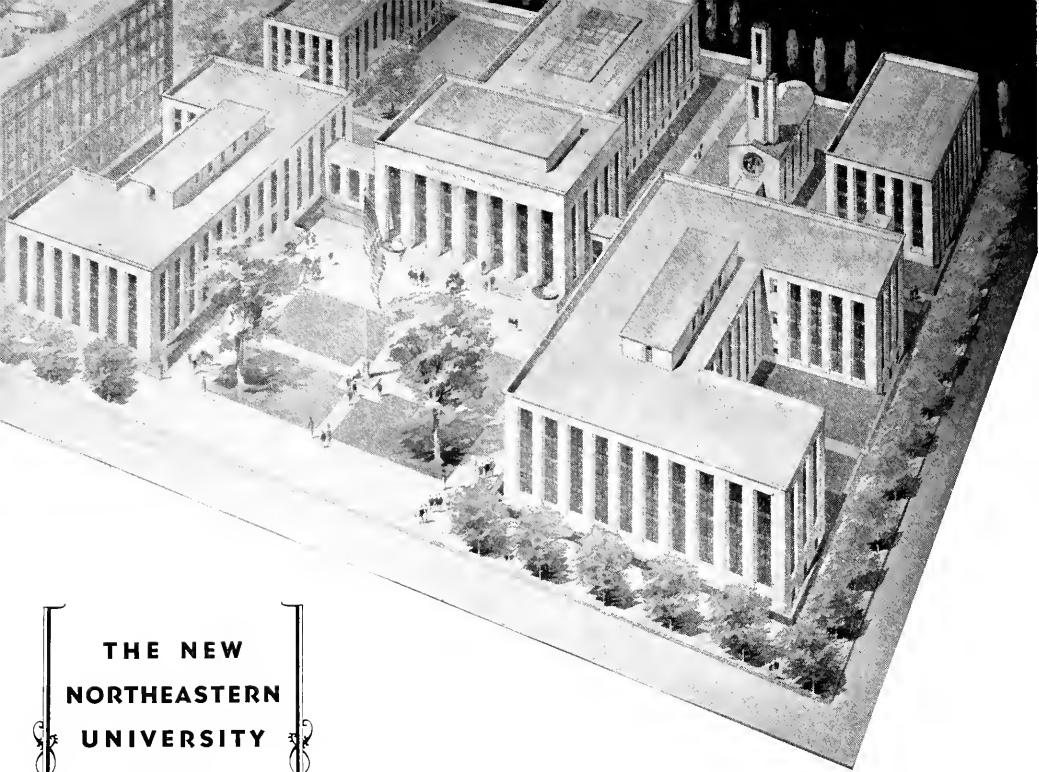
THOMAS L. McDONOUGH
Photographic Editor

ARTHUR HEBERT
Informal Pictures Editor

ADMINISTRATION



Faculty



THE NEW
NORTHEASTERN
UNIVERSITY
PLANT

The Dream of Yesterday ~

The Work of Today ~

The Accomplishment of Tomorrow

Carl S. Lee

The Northeastern University Corporation



ROBERT GRAY DODGE

Chairman

CARL STEPHENS ELL

President of the University

FRANK LINCOLN RICHARDSON

Vice-Chairman

HENRY NATHANIEL ANDREWS

Treasurer

EVERETT AVERY CHURCHILL

Secretary

Joseph F. Abbott
Charles Francis Adams
Wilman E. Adams
Roger Amory
Arthur A. Ballantine
George L. Barnes
Thomas P. Beal
F. Gregg Bemis
S. Bruce Black
Henry G. Bradley
George A. Burnham
Godfrey L. Cabot
Paul C. Cabot
Walter Channing
William C. Chick
Paul F. Clark
Sears B. Condit
Albert M. Creighton
Edward Dana
Edward Dane
James W. Daniels
William J. Davidson
Paul A. Draper
David F. Edwards
William P. Ellison
Joseph B. Ely
John Wells Farley
Allan Forbes
Ernest B. Freeman
Franklin W. Ganse

Harvey D. Gibson
Merrill Griswold
Henry I. Harriman
Carroll S. Harvey
Chandler Hovey
Weston Howland
Howard M. Hubbard
Maynard Hutchinson
Arthur S. Johnson
Charles B. Johnson
Jacob J. Kaplan
Harry H. Kerr
Frank H. Lahey
Halfdan Lee
Galen D. Light
Edward A. MacMaster
John R. Macomber
Albert E. Marshall
Harold F. Mason
J. Franklin McElwain
Hugh D. McLellan
Irwin L. Moore
Fred L. Morgan
Irving E. Moulthrop
Clarence L. Newton
Samuel Norwich
Olaf Olsen
Augustin H. Parker, Jr.
George E. Pierce
Roger Pierce

Matthew Porosky
Frederick S. Pratt
Roger S. Pratt
Roger Preston
H. Wendell Prout
Sidney Rabinovitz
Stuart C. Rand
William M. Rand
James L. Richards
Harold B. Richmond
John J. Robinson
Charles M. Rogerson
Robert B. Rugg
Leverett Saltonstall
Russell M. Sanders
Andrew S. Seiler
Frank P. Speare
Russell H. Stafford
F. R. Carnegie Steele
Charles Stetson
Earl P. Stevenson
Robert T. P. Storer
Frank H. Stuart
Edward W. Supple
Ralph E. Thompson
James V. Toner
Eliot Wadsworth
Eustis Walcott
Edwin S. Webster
Sinclair Weeks



Carl Stephens Ell

A.B., M.S., ED.M., SC.D.

President of the University



Everett Avery Churchill

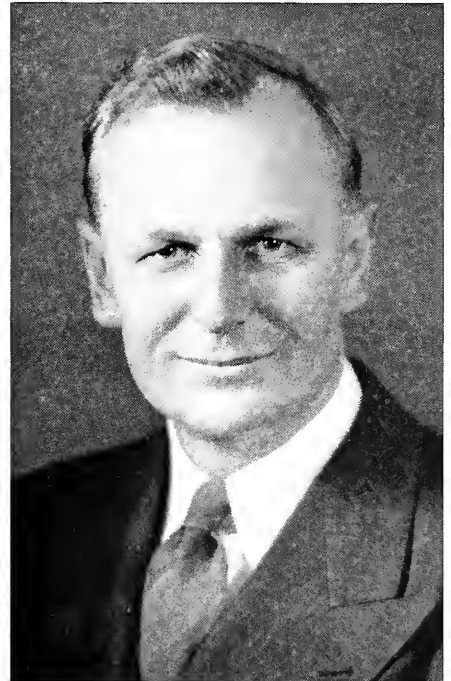
A.B., ED.D.

Vice-President of the University

William Crombie White

S.B., ED.M.

*Director of the Day Colleges and Dean of the
College of Engineering*



Harold Wesley Melvin

A.B., M.A.

Dean of Students



Robert Bruce

B.C.S., M.C.S.

*Acting Dean of the College of Business
Administration*

Wilfred Stanley Lake

A.B., M.A., PH.D.

Dean of the College of Liberal Arts



Charles William Havice

A.B., M.A., S.T.B., PH.D.

Dean of Chapel



SCHLAGENHAUF



NIGHTINGALE



PARSONS



PUGSLEY



EVERETT

MILTON JOHN SCHLAGENHAUF, A.B., B.D., M.A.
Director of Admissions

WINTHROP E. NIGHTINGALE, A.B., S.B., Ed.M.
Director of Cooperative Work

EDWARD S. PARSONS, S.B., Ed.M.
Director of Student Activities

JOHN B. PUGSLEY, A.B.
Registrar

ALBERT E. EVERETT, S.B., M.B.A.
Director of E. S. M. W. T.

DAISY MILNE EVERETT
Assistant Comptroller

ALFRED W. FLETCHER, A.B.
Assistant Director of E. S. M. W. T.

*FREDERICK R. HENDERSON, S.B., M.S.
Assistant Dean of Engineering

VERA L. JENKINSON, S.B.
Assistant Director of Admissions

*On leave of absence for the duration of the war



EVERETT



FLETCHER



HENDERSON



JENKINSON



OBERG



PURINTON



TOWLE

RUDOLF O. OBERG, S.B., Ed.M.
Director of Alumni Relations

*ELLIS M. PURINTON, B.B.A.
Instructor in Coordination

GEORGE W. TOWLE, S.B.
Associate Professor of Coordination

J. KENNETH STEVENSON, B.C.S.
Assistant to the Vice-President

NATHAN LEVENSON, LL.B.
Director of the Press Bureau

*RUDOLPH M. MORRIS, S.B., Ed.M.
Secretary of the Faculty

MARY B. FOOR
Manager of the Bookstore

MYRA WHITE
Librarian

*On leave of absence for the duration of the war



STEVENSON



LEVENSON



MORRIS



FOOR



WHITE



SPEAR



HASKINS



COMBELLACK



DEAN

Mathematics

JOSEPH SPEAR, A.B., M.A.

Professor of Mathematics and Chairman of the Department

ELMER E. HASKINS, S.B., M.A., Ph.D.

Associate Professor of Mathematics

WILFRED J. COMBELLACK, A.B., M.A., Ph.D.

Assistant Professor of Mathematics

*EARL K. BOWEN, S.B., M.A.

Instructor in Mathematics

*EDWARD M. COOK, A.B.

Instructor in Mathematics

WARREN C. DEAN, A.B., M.A.

Instructor in Mathematics

*HARRY FERGUSON, S.B.

Instructor in Mathematics

SAMUEL A. STONE, S.B., M.S.

Instructor in Mathematics,

WILLIAM WALLACE, S.B.

Instructor in Mathematics



STONE

*On leave of absence for the duration of the war



WALLACE



BOWEN



COOK



FERGUSON



ZELLER



FERRETTI



STEARNS



WHITTAKER

Mechanical Engineering

JOSEPH W. ZELLER, S.B., M.E.
*Professor of Mechanical Engineering and
Chairman of the Department*

ALFRED J. FERRETTI, S.B., M.S.
Professor of Mechanical Engineering

*WILLIAM T. ALEXANDER, S.B., M.A.
*Associate Professor of Industrial Engineering and
Chairman of the Department*

FREDERICK A. STEARNS, S.B., M.S.
Associate Professor of Mechanical Engineering

*ALBERT E. WHITTAKER, S.B., Ed.M.
Associate Professor of Mechanical Engineering

*WAYLAND S. BAILEY, S.B., M.S.
Assistant Professor of Mechanical Engineering

*CHESTER H. WOLOWICZ, S.B., M.S.
Assistant Professor of Mechanical Engineering

WARREN L. GANONG, S.B.
Instructor in Industrial Engineering

*DUNCAN W. SEAVEY, S.B., M.S.
Instructor in Mechanical Engineering



WOLOWICZ

*On leave of absence for the duration of the war



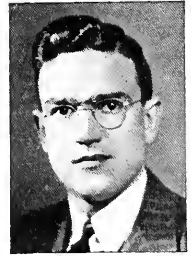
BAILEY



SEAVEY



ALEXANDER



GANONG



TOZER



MESERVE



DEVINE

Drawing

ELIOT F. TOZER, S.B.

Professor of Drawing and Chairman of the Department

GEORGE H. MESERVE, JR., S.B., Ed.M.

Associate Professor of Drawing

*OTIS F. CUSHMAN, S.B., M.S.

Assistant Professor of Drawing

J. JAMES DEVINE, S.B., Sc.M.

Assistant Professor of Drawing

CHARLES P. ENGELHARDT, S.B., M. ARCH.

Instructor in Drawing

*EUGENE G. PARE, S.B., Ed.M.

Instructor in Drawing

*GUSTAV ROOK, S.B.

Instructor in Drawing

*On leave of absence for the duration of the war



ROOK



ENGELHARDT



CUSHMAN



PARE



GRAMSTORFF



BAIRD



SPENCER

Civil Engineering

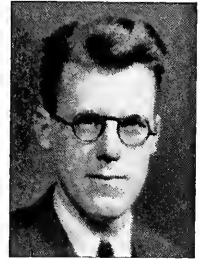
EMIL A. GRAMSTORFF, S.B., M.S.
*Professor of Civil Engineering and
Chairman of the Department*

CHARLES O. BAIRD, Jr., S.B., M.S.
Associate Professor of Civil Engineering

ERNEST L. SPENCER, S.B., M.S.
Assistant Professor of Civil Engineering

GEORGE W. HANKINSON, S.B., A.B.
Instructor in Civil Engineering

*ALBERT E. SANDERSON, Jr., S.B., M.S.
Instructor in Civil Engineering



SANDERSON

Chemical Engineering

CHESTER P. BAKER, S.B., M.A.
*Professor of Chemical Engineering and
Chairman of the Department*

JOHN C. MORGAN, S.B., M.B.A.
Assistant Professor of Chemical Engineering

*On leave of absence for the duration of the war



BAKER



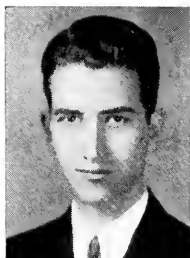
MORGAN



HANKINSON



VERNON



LUDER



ZUFFANTI

Chemistry

ARTHUR A. VERNON, S.B., M.S., Ph.D.
*Professor of Chemistry and Chairman of the Department;
Director of Graduate Study*

W. FAY LUDER, A.B., Ph.D.
Associate Professor of Chemistry

WALDEMAR S. MCGUIRE, S.B., M.A.
Associate Professor of Chemistry

SAVERIO ZUFFANTI, S.B., M.A.
Associate Professor of Chemistry

NORMAN A. DUBOIS, S.B., M.A., Ph.D.
Assistant Professor of Chemistry

FLETCHER S. BOIG, B.S., M.S., Ed.M.
Instructor in Chemistry



MCGUIRE



DUBOIS



BOIG



PORTER



SMITH



CLEVELAND

Electrical Engineering

ROLAND G. PORTER, B.E.E., M.S.
*Professor of Electrical Engineering and
Chairman of the Department*

WILLIAM L. SMITH, S.B., ENG.D.
Professor of Electrical Engineering

LAURENCE F. CLEVELAND, S.B., M.S.
Associate Professor of Electrical Engineering

*HENRY E. RICHARDS, S.B., M.S.
Associate Professor of Electrical Engineering

GEORGE E. PIHL, S.B., M.S.
Assistant Professor of Electrical Engineering

*MARTIN W. ESSIGMANN, S.B.
Instructor in Electrical Engineering

*On leave of absence for the duration of the war



RICHARDS



PIHL



ESSIGMANN



ESTES



HAVICE



PINARD



POTTER



CUTTS

Social Sciences

*STANLEY G. ESTES, A.B., M.A., Ph.D.
Professor of Psychology and Chairman of the Department

CHARLES W. HAVICE, A.B., M.A., S.T.B., Ph.D.
*Professor of Sociology and Chairman of the Department;
Dean of Chapel*

WILLIAM J. PINARD, A.B., M.A., Ed.M., Ph.D.
Associate Professor of Sociology

*NORRIS W. POTTER, JR., A.B., M.A., Ph.D.
*Associate Professor of History and Government and
Acting Chairman of the Department*

*ELMER H. CUTTS, A.B., M.A., Ph.D.
Assistant Professor of History and Government

*CHARLES M. RAMSEY, A.B., M.A.
Assistant Professor of Economics

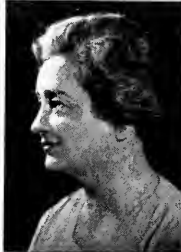
MARY C. WELBORN, A.B., A.M., Ph.D.
Assistant Professor of History and Government

GUSTAVE R. SERINO, A.B., Ed.M.
Instructor in History and Government

*On leave of absence for the duration of the war



RAMSEY



WELBORN



SERINO



MUCKENHOUP



COOLIDGE



JOHNSON

Physics

CARL F. MUCKENHOUP, A.B., S.B., PH.D.
Professor of Physics and Chairman of the Department

JOSEPH A. COOLIDGE, S.B., M.A.
Professor of Physics

C. DAVID JOHNSON, A.B., M.A.
Associate Professor of Physics

REGINALD G. LACOUNT, S.B., M.A., PH.D.
Associate Professor of Physics

*GEORGE B. WELCH, S.B., PH.D.
Assistant Professor of Physics

ROBERT W. BORDEWIECK, S.B.
Instructor in Physics

LOUISE G. MARSH, S.B.
Instructor in Physics

*THOMAS H. WALLACE, S.B., M.A., PH.D.
Assistant Professor of Physics

*On leave of absence for the duration of the war



LACOUNT



WELCH



BORDEWIECK



MARSH



WALLACE



HAMILTON



D'ALESSANDRO



FENNELL

Business Administration

*ALFRED D'ALESSANDRO, B.C.S., LL.B., C.P.A., M.B.A.
Professor of Accounting

ROGER S. HAMILTON, A.B., M.A., Ph.D.
Professor of Economics and Chairman of the Department

GEORGE R. FENNELL, S.B., M.B.A.
*Assistant Professor of Marketing and
Secretary of the Faculty*

GERALD R. TATTON, S.B., M.B.A.
*Assistant Professor of Business Management and
Head Coach of Track*

*JOSEPH M. GOLEMME, S.B., M.A.
Instructor in Accounting

*LYMAN A. KEITH, S.B., M.A.
Instructor in Industrial Administration



TATTON



GOLEMME

Biology

STANLEY D. MIROYIANNIS, S.B., M.A., Ph.D.
Professor of Biology and Chairman of the Department

PAULINE F. SULLIVAN, A.B., M.A.
Instructor in Biology

*On leave of absence for the duration of the war



KEITH



MIROYIANNIS



SULLIVAN



HOLMES



MARSTON



CLONEY

English

FREDERICK W. HOLMES, A.B., M.A.
Professor of English and Chairman of the Department

EVERETT C. MARSTON, A.B., M.A.
Associate Professor of English

*WILLIAM T. CLONEY, JR., A.B.
*Assistant Professor of English and
Director of the Publicity Bureau*

R. LAWRENCE CAPON, B.S., A.M.
Instructor in English

*FRANKLIN NORVISH, S.B., M.A.
Instructor in English



CAPON

Modern Languages

CHARLES F. BARNASON, A.B., M.A., Ph.D.
*Professor of Modern Languages and
Chairman of the Department*

ANTONIO L. MEZZACAPPA, A.B., M.A., Ph.D.
Associate Professor of Modern Languages

*LOUIS COOPERSTEIN, A.B., M.A.
Instructor in Modern Languages



NORVISH

*On leave of absence for the duration of the war



BARNASON



MEZZACAPPA



COOPERSTEIN



MACKENZIE



KONTOFF



LANE

Student Activities

DONALD H. MACKENZIE, S.B., Ed.M.

Assistant Professor of Physical Education and Assistant to the Director of Student Activities

*HENRY A. KONTOFF, M.D.

College Physician

GEORGE M. LANE, M.D.

College Physician

*JAMES W. DUNN, A.B.

Instructor in Physical Education and Head Coach of Football and Basketball

EMANUEL A. FLUMERE, A.B.

Instructor in Physical Education and Head Coach of Football and Basketball

WILLIAM C. HULTGREN

Instructor in Physical Education

*WILLIAM F. LINSKEY

Coach of Hockey



DUNN

*On leave of absence for the duration of the war



FLUMERE



HULTGREN

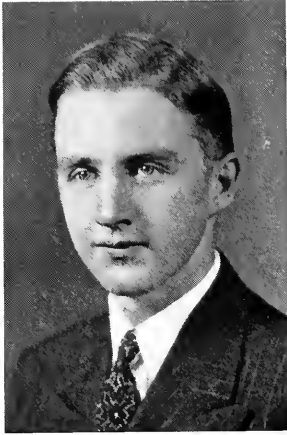


LINSKEY

DECEMBER
GRADUATES
1944



Seniors



Norman A. Anderson

11 Linden Street, North Easton, Massachusetts
Mechanical Engineering

CAULDRON Junior Staff; Husky Plus Committee 5; Radio Club; American Society of Mechanical Engineers 3, 4, 5.

Cooperative Work

Ames Baldwin Wyoming Co., North Easton—Electrician's Helper, Apprentice Machinist.

Joseph B. Arots

21 Willard Street, Waterbury, Connecticut
Chemical Engineering

PHI GAMMA PI

Freshman Honor List; Dean's List 4; Interfraternity Council Representative 3, Fraternity Treasurer 3, 4, 5, Assistant House Manager 2; Student Union Cabinet 3, 4; Newman Club 1, 2; American Institute of Chemical Engineers 2, 3, 4, 5, Social Chairman 5; American Chemical Society.

Cooperative Work

U. S. Rubber Co., Naugatuck, Conn.—Rubber Compounder in Laboratory.



Victorino V. Banaag

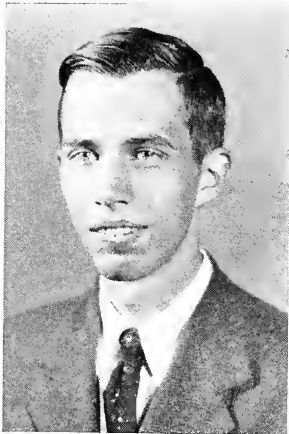
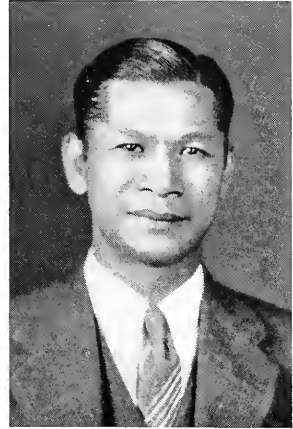
2621 Herran Street, Manila, Philippines

Mechanical Engineering

Activities at University of Santo Tomas, Manila: Basketball, Boxing, Tennis Teams; Student Council. Received degree of Bachelor of Science in Civil Engineering from Santo Tomas, 1934.

Cooperative Work

General Electric Co., Lynn—Test Engineer; Bethlehem Hingham Shipyard, Inc., Supervisor of Shipbuilding, U.S.N., Hingham—Associate Principal Machinery Inspector; Bethlehem Hingham Shipyard, Inc., Bureau of Yards and Docks, U.S.N., Hingham—Assistant Civil Engineer.



Edward K. Blakeney

20 Laurel Street, Arlington, Massachusetts

Liberal Arts (English)

News 3, Makeup Editor 4; Astronomy Club 1; Literary Club 3, 4.

Cooperative Work

United Business Service, Boston—Clerk.



Joseph J. Bulba

368 Franklin Avenue, Hartford, Connecticut
Civil Engineering

Freshman Honor List; Dean's List 5; Camera Club; Northeastern University Civil Engineering Society 2, 3, 4, President 5; American Society of Civil Engineers, and Boston Society of Civil Engineers; *Who's Who Among Students in American Universities and Colleges*.

Cooperative Work

N. Y., N. H. & H. R. R. Co., Hartford, Conn.—
Chainman.

Alfred D. DiNozzi

252 Broadway, Boston, Massachusetts
Electrical Engineering

Intramural Softball and Basketball 3, 4, 5; Senior Council; Chess Club 1, 2; American Institute of Electrical Engineers 2, 3, 4, 5.

Cooperative Work

Jackson & Morland, Boston—Assistant Engineer; Holtzer & Cabot Electric Co., Roxbury—In Charge of Print Developing.



James J. Donnellan

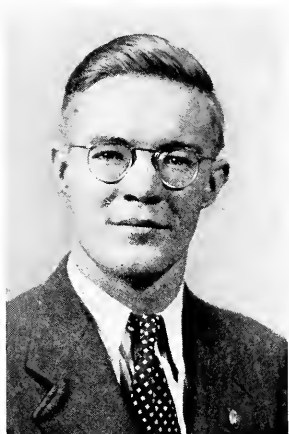
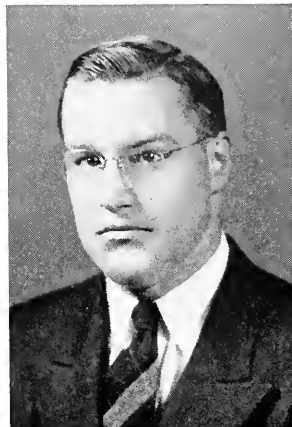
102 Gainsborough Street, Boston, Massachusetts

Business Administration (Accounting)

Melvin Scholarship; Freshman Honor List; Dean's List 2, 3, 4, 5; CAULDRON Junior Staff 4, Business Manager 5; Student Union Cabinet Member 5; Senior Week Committee; Senior Council; Society for Advancement of Management 4, President 5; *Who's Who Among Students in American Universities and Colleges*.

Cooperative Work

Pepperell Mfg. Co., Boston—Clerk.



Earle C. Farmer

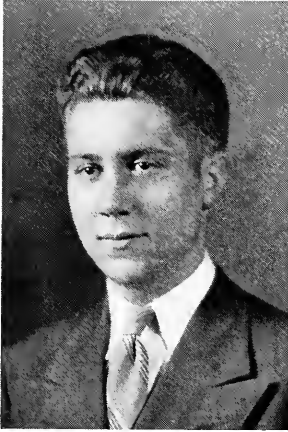
431 West Fourth Street, South Boston, Massachusetts

Liberal Arts (Mathematics and Physics)

Academy, Vice-President; Honor List; Dean's List 2, 3, 4, 5.

Cooperative Work

Polaroid Corp., Cambridge—Laboratory Technician.



Alfred J. Fleischmann

4 Lindner Court, Lawrence, Massachusetts

Chemical Engineering

SIGMA PHI ALPHA

Freshman Honor List; Dean's List 2; Senior Council;
Yacht Club 3, Vice-Commodore 4, 5; Fraternity Treas-
urer 3, President 4; American Institute of Chemical
Engineers, Treasurer 5.

Cooperative Work

Tyer Rubber Co., Andover—Laboratory Assistant.

Frank A. Folino

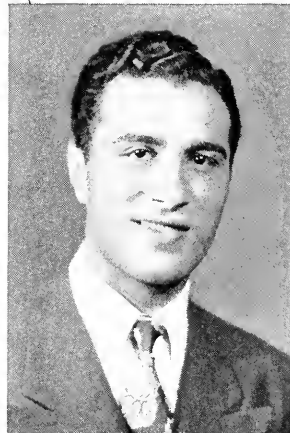
10 Fleet Street, Boston, Massachusetts

Mechanical Engineering

Intramural Baseball 3, 4, and Basketball 3, 4; Cosmo-
politan Club 2, 3, Vice-President 4, 5; Rifle Club 3;
American Society of Mechanical Engineers 3, 4, 5.

Cooperative Work

Reece Buttonhole Machine Co., Boston—Inspector.



A. Harvey Gardner, Jr.

61 Porter Street, Melrose, Massachusetts

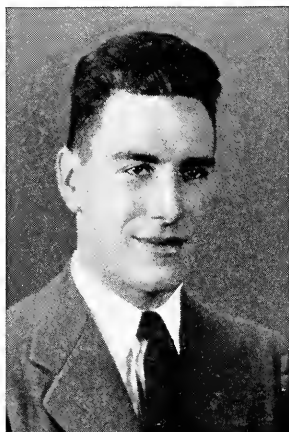
Mechanical Engineering

PHI BETA ALPHA

CAULDRON Junior Staff; Huskiers 1, 2; Intramural Baseball 4, 5, and Basketball 4; Student Council 3, 4, Treasurer 5, Chairman Activities Committee 5; Class Vice-President 1, 2; Class President 3, 4; American Society of Mechanical Engineers 3, 4, 5.

Cooperative Work

Gould Aeronautical Division of Pratt Read & Co., Deep River, Conn.—Lead Inspector, Stress and Weights Analysis, Draftsman.



John J. Goode

696 Huntington Avenue, Boston, Massachusetts

Electrical Engineering

Student Council 5; Rifle Club; Glider Club; Chess Club; Yacht Club; American Institute of Electrical Engineers, American Institute of Radio Engineers.

Cooperative Work

Bethlehem Steel Co., Quincy—Installed, Tested, and Repaired Naval Electrical Equipment.



Nathan I. Hentoff

1 Howland Street, Roxbury, Massachusetts

Liberal Arts (English)

Academy, Secretary 3, 4; Freshman Honor List; Dean's List 2, 3, 4, 5; Academy Freshman Scholarship; Dean's List Scholarship 2, 3, 4; *News* 1, Feature Editor 2, Editor-in-Chief 3; Student Council 4, Treasurer 2, Secretary 3; President of Senior Class; Debating Club 1; Semi-finals, Public Speaking Contest 1, 2; Literary Club 3, 4; Band 1; *Who's Who Among Students in American Universities and Colleges*.

David E. Higginbotham

397 Washington Street, Taunton, Massachusetts

Electrical Engineering

Tau Beta Pi; Freshman Honor List; Dean's List 2, 3, 4; Secretary of Senior Class; Glee Club 1, 2; American Institute of Electrical Engineers 2, 3, 4, 5; *Who's Who Among Students in American Universities and Colleges*.

Cooperative Work

Mendell Elec. Mfg. Co., Inc., New Bedford—Switchboard Wiring.



Herbert M. Johnson

13 Dwight Street, Ansonia, Connecticut

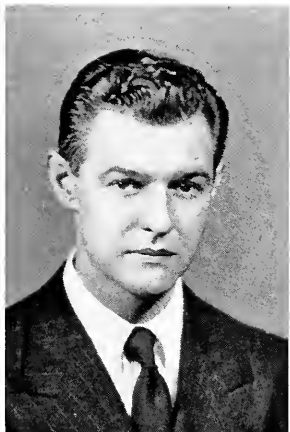
Chemical Engineering

GAMMA PHI KAPPA

Student Union 1, 2, Cabinet 3; Glee Club 1, 2; American Institute of Chemical Engineers 2, 3, 4, 5.

Cooperative Work

U. S. Rubber Co., Naugatuck, Conn.—Laboratory Assistant; Seamless Rubber Co., New Haven, Conn.—Laboratory Analyst; Farrel-Birmingham, Inc., Ansonia, Conn.—Assembler.



John W. Kaczanowicz

317 Pleasant Street, Northampton, Massachusetts

Mechanical Engineering

(Receiving degree from Norwich University, Northfield, Vermont; completing credits at Northeastern under Veterans Administration.) Activities at Norwich: Phi Kappa Delta Fraternity; Treasurer, Mechanical Engineering Club; Secretary, Norwich Chapter, Society of American Military Engineers; Vice-President, Norwich Aero Club; Civilian Pilot Training Program; activities at Northeastern: Secretary, Northeastern University Veterans Association; Army service: Cavalry.



Gerald H. Katz

31 Allen Street, Boston, Massachusetts

Mechanical Engineering

Freshman Honor List; Dean's List 2, 3; American Society of Mechanical Engineers 3, 4, 5.

Cooperative Work

Allen Plumbing & Heating Co., Boston—Steamfitter.

Clayton W. Kennedy, Jr.

87 Pleasant Street, North Andover, Massachusetts

Mechanical Engineering

Intramural Softball 2, 3, 4, Basketball 3, 4; Senior Council; Husky Plus Committee 5; Senior Week Committee Class Treasurer 5; N. U. Veterans Association; American Society of Mechanical Engineers 3, 4, 5.

Cooperative Work

Davis & Furber Machine Co., North Andover—Machine Operator; General Electric, River Works, Lynn—Safety Engineering Dept.



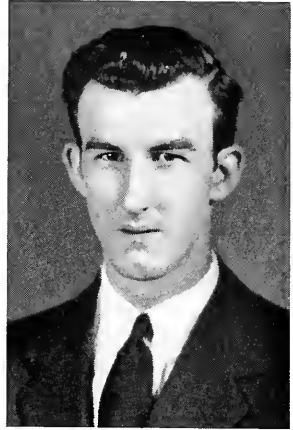
Joseph R. Kiernan

22 Phillips Street, Lowell, Massachusetts
Chemical Engineering

American Institute of Chemical Engineers 3, 4, 5.

Cooperative Work

Wirthmore Research Laboratory, Malden—Laboratory
Assistant; Tyler Rubber Co., Andover—Laboratory
Assistant.



Robert N. Kuehn

436 Mammoth Road, Manchester, New Hampshire
Civil Engineering

Dean's List 2, 4; Intramural Softball 2, 3, 4; Chess Club
1; Northeastern University Civil Engineering Society
2, 3, 4, 5; American Society of Civil Engineers; Boston
Society of Civil Engineers.

Cooperative Work

Bethlehem Hingham Shipyard, Inc., Hingham—Rod-
man, Transitman; Ritchie-Ellsworth, Camp Edwards—
Rodman, Transitman, Inspector; Boston & Albany R. R.,
Boston, Rodman.



George W. Laakso, Jr.

5 Winthrop Street, Peabody, Massachusetts
Civil Engineering

Dean's List 5; Student Union 4; Yacht Club 1; North-eastern University Civil Engineering Society 2, 3, 4, Vice-President 5; American Society of Civil Engineers; Boston Society of Civil Engineers.

Cooperative Work

General Electric Co., Lynn—Rodman; N. Y., N. H. & H. R. R. Co., Hartford—Chairman.

Melvin F. Levine

68 American Legion Highway, Dorchester, Massachusetts
Mechanical Engineering

Freshman Honor List; Dean's List 2; *News* 2, 3, Feature Editor 4; Student Council 5; Student Union 4, 5; Glee Club 1, 2, 3; Literary Club 4; American Society of Mechanical Engineers 3, 4, 5.

Cooperative Work

Sanborn Co., Boston—General; General Electric Co., Lynn—Expeditor, Tool Planning, Factory Layout.



Stanley W. Lovejoy, Jr.

96 Appleton Street, Arlington, Massachusetts

Mechanical Engineering

NU EPSILON ZETA

Freshman Honor List; Dean's List 2; CAULDRON Junior Staff 4; Intramural Softball 4; Student Council 3, 4, 5, Vice-President 4, Secretary 5; Spring Festival Committee 4; Northeastern University Blood Drive; American Society of Mechanical Engineers 3, 4, 5.

Cooperative Work

Johns-Manville, Nashua, N. H.—Draftsman; Perfection Grate & Stoker Co., Boston—Draftsman.



Robert J. Markell

92 Waumbuck Street, Roxbury, Massachusetts

Civil Engineering

KAPPA ZETA PHI

Freshman Honor List; Dean's List 4, 5; *News* 1, 2, 3, Art Editor 4; CAULDRON Junior Staff 4, Informal Pictures Editor 5; Senior Week Committee; Senior Council; Fraternity Secretary 2; Northeastern University Civil Engineering Society 2, 3, 4, Treasurer 5; American Society of Civil Engineers; Boston Society of Civil Engineers; *Who's Who Among Students in American Universities and Colleges*.

Cooperative Work

N. Y., N. H. & H. R. R. Co., Boston—Rail Inspector and Maintenance Helper; U. S. Coast and Geodetic Survey, New York—Rodman.



Frederic D. McAllister

Van Brunt Street, Southampton, New York

Mechanical Engineering

NU EPSILON ZETA

CAULDRON Junior Staff 4, Photographic Editor 5; Football 1; Student Council 4, Vice-President 5; Class Secretary 4; Glee Club 4, 5; Intramural Baseball and Basketball 3, 4; American Society of Mechanical Engineers 3, 4, Program Chairman 5; Fraternity Grand Scribe 5.

Cooperative Work

Pratt & Whitney Aircraft, Hartford, Conn.—Assistant Production Engineer; Western Union Telephone Co., Waremhill, N. Y.—Laboratory Assistant.

Edward W. Murphy

647 East Third Street, South Boston, Massachusetts

Civil Engineering

Dean's List 4; Charles Hayden Scholar; Softball 2, 3, 4; Senior Council; Senior Week Committee; Northeastern University Civil Engineering Society 3, 4, 5; American Society of Civil Engineers; Boston Society of Civil Engineers.

Cooperative Work

Bethlehem Steel Co., Quincy—Test Engineer



Kenneth E. Palmer

151½ Hodges Street, Attleboro, Massachusetts

Civil Engineering

Freshman Honor List; Dean's List 2, 3, 4; CAULDRON Junior Staff; Track 1, 2, 3, 4; Cross Country 1, 2, 3, 4; Student Council 4, 5; Senior Council; Class Vice-President 3, 4, 5; Northeastern University Civil Engineering Society 2, 3, 4, 5, Class Representative 2, 3; American Society of Civil Engineers; Boston Society of Civil Engineers.

Cooperative Work

United Construction Co., South Boston Navy Yard—Transitman; U. S. Coast and Geodetic Survey, Main—Photographic Observer; Northeastern University, Huntington Field—Maintenance.



Samuel J. Pattison, Jr

122 East Side Parkway, Newton, Massachusetts

Civil Engineering

Dean's List; Charles Hayden Scholarship; *News* 1; Baseball 1, 4; Cross Country 1; Intramural Softball 3, 4; Class Council 1, 4; Senior Week Committee; Northeastern University Civil Engineering Society 2, 3, 4, 5, Secretary 4.

Cooperative Work

City of Newton, Newton—Rodman, Transitman; Bethlehem Steel Co., Quincy—Rodman; General Electric Co., West Lynn—Draftsman, Expeditor.



George R. Peterson

122 Villa Street, Waltham, Massachusetts

Chemical Engineering

Senior Council; American Institute of Chemical Engineers 3, 4, 5.

Cooperative Work

Waltham Watch Co., Waltham—Laboratory Assistant.

Arthur D. Porter

126 Villa Street, Waltham, Massachusetts

Electrical Engineering

Freshman Honor List; Dean's List 2; Intramural Softball 3, 4; Intramural Basketball 3, 4; American Institute of Electrical Engineers 3, 4, 5.

Cooperative Work

Boston Edison Co., Boston—Equipment Service, Division Maintenance Work.



Leon Rabin

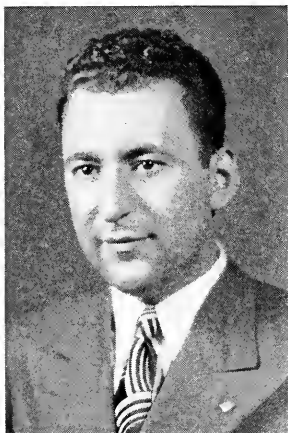
37 Falmouth Street, Boston, Massachusetts

Chemical Engineering

News 3, 4; Student Union 1, 2, Chairman Services Committee 3, Chairman War Services Committee 3, 4, Vice-President 4; Northeastern University Veterans Association 5; American Institute of Chemical Engineers 2, 3, 4, 5; American Chemical Society.

Cooperative Work

Northeastern University, Boston—Checkroom.



William C. Raftell

2 Jackson Street, Charlestown, Massachusetts

Chemical Engineering

American Institute of Chemical Engineers 3, 4, 5.

Cooperative Work

Consolidated Rendering Co., Boston—Assistant Chemist; Barrett Div. Allied Chemical & Dye Corp., Malden—Assistant Chemist.



Rodney W. Reder

322 Frost Road, Waterbury, Connecticut

Mechanical Engineering

PHI GAMMA PI

Freshman Honor List; Dean's List 2, 3; Fraternity Treasurer 3, House Manager -4, President 5; Interfraternity Softball; Interfraternity Council; American Society of Mechanical Engineers 3, -4, 5.

Cooperative Work

Waterbury Farrel Foundry & Machine Co., Waterbury, Conn.—Machine Assembly.

Isadore Sheinefine

23 Magnolia Street, Roxbury, Massachusetts

Chemical Engineering

American Institute of Chemical Engineers 3, 4, 5.

Cooperative Work

Allied Container Corp., Boston—Assistant Shipper; Hy-Sil Mfgr., Revere—Assistant Shipper.



John J. Smialek

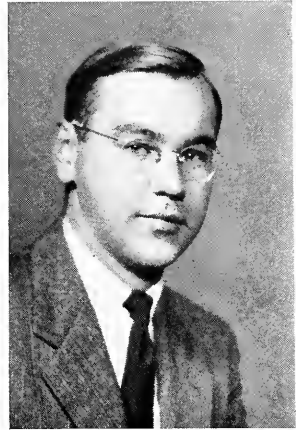
233 Lyman Street, Holyoke, Massachusetts

Mechanical Engineering

Varsity Basketball 3; Varsity Baseball 4; Student Council 5; American Society of Mechanical Engineers 3, Vice-Chairman 4, Chairman 5; Senior Week Committee.

Cooperative Work

Worthington Pump & Machinery Corp., Holyoke—Draftsman; General Electric Co., Lynn—Testor.



Orin A. Smith

249 Melrose Street, Melrose, Massachusetts

Mechanical Engineering

Dean's List 4; American Society of Mechanical Engineers 3, 4, Treasurer 5.

Cooperative Work

Fay, Spofford & Thorndike, Boston—Electrical Drafting, Design and Layout on Newfoundland Base Project.



Roderic W. Sommers

38 Franklin Street, Medford, Massachusetts

Civil Engineering

Charles Hayden Scholar; Melvin Scholarship; Freshman Honor List; Dean's List 3, 5; CAULDRON Junior Staff 4, Managing Editor 5; Intramural Softball 3, 4; Student Council 5; Student Union 5; Glee Club 1, 2, 3, President 4, 5; University Song Leader 5; Northeastern University Civil Engineering Society 2, 3, 4, 5; American Society of Civil Engineers; Boston Society of Civil Engineers.

Cooperative Work

Stoneham Public Works Dept., Stoneham—Student Civil Engineer, Draftsman, Surveyor.

William F. Sullivan

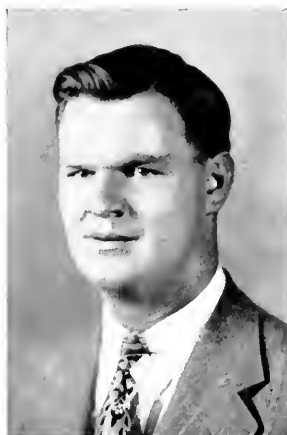
157 Baker Avenue, Revere, Massachusetts

Mechanical Engineering

Intramural Basketball 3, 4; Intramural Softball 3, 4, 5; Student Council 2, 3, Treasurer 4, President 5; Class Secretary 3; Class Treasurer 2, 4; Class Vice-President 5; Senior Week Committee; Husky Plus Committee 5; Senior Council; American Society of Mechanical Engineers 3, 4, 5; Society for the Advancement of Management 5; *Who's Who Among Students in American Universities and Colleges*.

Cooperative Work

P. S. Thorson Bros., Boston—Sheet Metal Worker; Hylite Corp., Boston—Sheet Metal Worker; Thomson Gibb Electric Welding Co., Lynn—Experimental Laboratory.



John H. Taylor

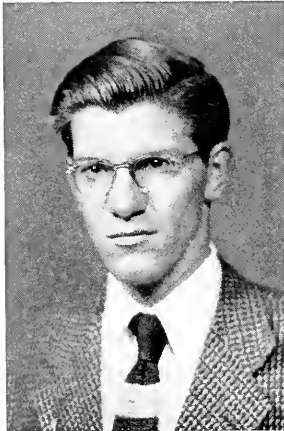
683 High Street, Westwood, Massachusetts

Electrical Engineering

Dean's List 2, 3; Intramural Softball and Basketball 3, 4, 5; Chess Club, Secretary and Treasurer 2; American Institute of Electrical Engineers, Chairman 5.

Cooperative Work

Allis Chalmers Mfg. Co., Hyde Park—Production Clerk,
Order Chaser, Follow-up Man



Thayer C. Taylor

22 Swan Place, Arlington, Massachusetts

Liberal Arts (English)

Dean's List 3, 4, 5; *News* 2, 3, Associate Managing Editor 4; CAULDRON Junior Staff 4; Student Union 2, 3, 4; Student Council 4, 5; Literary Club.

Cooperative Work

Boston Globe, Boston—Editorial Assistant; Boston Herald-Traveler, Boston—School Correspondent; F. S. Mosely & Co., Boston—Office Assistant.



Robert C. Twombly

16 Lawson Road, Winchester, Massachusetts

Mechanical Engineering

NU EPSILON ZETA

Dean's List 3; CAULDRON Junior Staff 4, Editor-in-Chief 5; Intramural Basketball 2, 3, 4; Intramural Softball 2, 3, 4; Husky Plus Committee 5; Nu Epsilon Zeta 2, 3, Vice-Grand Master 4, Grand Master 5; Interfraternity Council 3; Interfraternity Basketball 2, 3; American Society of Mechanical Engineers 3, 4, Social Chairman 5; Society for the Advancement of Management 5; Senior Week Committee; *Who's Who Among Students in American Universities and Colleges*.

Cooperative Work

Amory Foundry Co., Boston—Production Manager.

Arnold P. Weiner

2 Pama Gardens, Brighton, Massachusetts

Mechanical Engineering

Glee Club 1; Northeastern University Veterans Association 5; Organizing Committee; American Society of Mechanical Engineers 2, 3, 4, 5; Army Service: Air Corps 1942-1943.

Cooperative Work

General Electric Co., Lynn—Supercharge Tester; Sanborn Co., Cambridge—Cardiott Inspector; Greenfield Tap & Die Corp., Greenfield—Gage Engineer.



James K. Yee

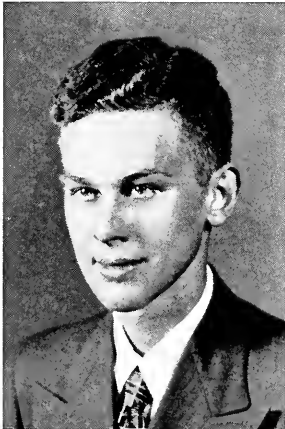
4 Hudson Street, Boston, Massachusetts

Electrical Engineering

Freshman Honor List; Intramural Softball; American
Institute of Electrical Engineers 3, 4, 5.

Cooperative Work

Northeastern University, Boston—Physics Dept. Office,
Physics Lab. Assistant.



Ernest J. Zitke

65 Galen Street, Brockton, Massachusetts

Mechanical Engineering

News 1, 2; CAULDRON 1; American Society of Mechanical
Engineers 3, 4, 5.

Cooperative Work

Ames Baldwin Wyoming Co., North Easton—Electrician.



Serafin J. Krukonis

185 Silver Street, Boston, Massachusetts

Mechanical Engineering

Tau Beta Pi; Freshman Honor List; Dean's List 2, 3, 4; Football 1; Intramural Softball and Basketball 4; Rifle Club 1, 2, 3; Cosmopolitan Club 2, 3, 4; American Society of Mechanical Engineers 3, Secretary 4, Chairman 5.

Cooperative Work

Hy-Lite Corp., Boston—Sheet Metal Worker.

Senior Dean's List

JOSEPH J. BULBA

GERALD H. KATZ

JAMES J. DONNELLAN

GEORGE W. LAAKSO, JR.

NATHAN I. HENTOFF

ROBERT J. MARKELL

DAVID E. HIGGINBOTHAM

RODERICK W. SOMMERS

THAYER C. TAYLOR



Class Adviser

Professor Ernest Lincoln Spencer was born May 17, 1913, in Norwood, Massachusetts. He now resides in Medfield with his wife and son. Professor Spencer attended Northeastern University and was graduated in 1936 with the degree of Bachelor of Science in Civil Engineering. He then did special work in structural design at the Franklin Institute during the years 1936 and 1937. In November, 1943, Professor Spencer received his Master of Science degree from Harvard University.

Professor Spencer came to Northeastern as Instructor in Civil Engineering in 1939. He was made Assistant Professor of Civil Engineering in September, 1944.

In addition to his work here at the University, Professor Spencer served as the chief of a surveying party with E. M. Brooks Company during 1936 and 1937. He was Junior Engineering Aide for one year for the Massachusetts Department of Public Works, Waterways Division. In 1938 he transferred to Jackson and Moreland, where he served as Assistant Engineer for two years on construction work. He is an active member of the American Society of Civil Engineers, and is also secretary of the Junior Association of the American Society of Civil Engineers, Northeastern Section.

It has been through the untiring efforts of Professor Spencer that we have been so successful as a class during this difficult war period. We take this opportunity to state our appreciation, and to thank Professor Spencer for his counsel, his assistance, and his friendship during our college career.



*First Row, left to right: Kennedy, Hentoff, Sullivan, Higginsbotham,
Second Row, left to right: Donnellan, Murphy, Markell, Fleischmann, Prof. Spencer, Peterson, DiNozzi.*

Class Council

Senior Week Committee



*First Row, left to right: Kennedy, Sullivan, Markell, Gardner
Second Row, left to right: Murphy, Smialek, Pattison, Anderson, Twombly, Levine, Folino.*

CLASS HISTORY

FRESHMAN

We entered N. U. in September, 1941, the largest class ever to enter the University. Approximately 1000 entered in this division and 200 entered in Division B in November. Our class practically filled Jordan Hall, and it is interesting to note that all of the upper classes together held their meetings in this hall and didn't fill it as much as we did.

We fumbled through the first three days of orientation in the best manner that we could. Most of us wandered in a daze through a maze of examinations, both physical and mental, emptied our pens several times a day filling out cards and papers, and wondered if we ever would become accustomed to this new type of life that we were entering. As if the upperclassmen couldn't tell who were Freshmen and who were not, the University clinched the situation by placing on our heads a small object known as the "Freshman Hat."

The first semester saw us becoming oriented to college life. Near the end of our first semester, in December 1941 we followed the news very carefully and saw the

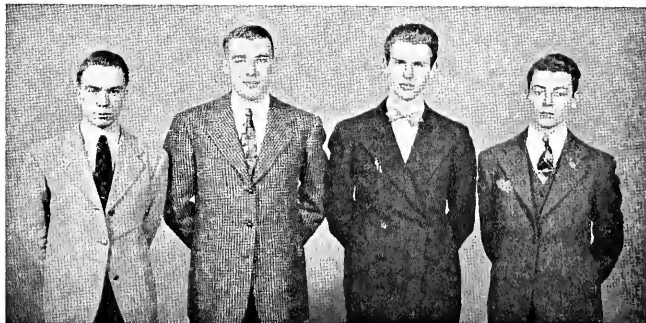
historic events of the sneak attack on Pearl Harbor and heard Congress declare war on Japan. These events were to change the lives and careers of many of us and would affect each and every one of us in many ways in the years ahead. Many left immediately for the Armed Services and amid the conflicting statements of "Serve your country" and "Stay in school and get your education first," we finished our first semester in hectic times.

Class elections were held the first week of our second semester and it was at this time that we started to function as a class. Our first dance was held on the Roof Garden of the Parker House. This dance was a huge social success and the hall was filled with couples who thoroughly enjoyed themselves. The second dance of this semester was a Semi-Formal held at the Hotel Continental in Cambridge and while it was not as successful as the first, it was enjoyed by all who attended.

Our Freshman year drew to a close with a substantial reduction in members and an air of uncertainty as to how many would be back for the Sophomore year.

FRESHMAN OFFICERS

Left to right: Gardner, Kemp, Carleton, Scott.



SOPHOMORE

Our Sophomore year started with our being separated into two divisions. Division A returned in the summer and to many who returned this was the first attempt at studying in the warm weather. Division B went on their first Co-op work period and as a result many friendships of our Freshman year were disrupted. We were all more or less fascinated by this new plan of education and, coupled with our relief of getting through the Freshman year, we were all content and overran any difficulties brought about by the Cooperative Plan.

So we went ahead, contributing some men to the Varsity squads, more and more men to the Armed Services, learning more every day, and continuing on the road to social success.

Due to the time we took becoming accustomed to the ten week periods, only one social affair was run this year. This was the All-University Round-up, which was run in conjunction with the Student Council. It was an all-out affair here at the University and on the program were such things as ex-

hibits in all the labs, baseball and basketball games, swimming, dancing, and movies. The dance was held in the large gymnasium of the Y. M. C. A. and the music was furnished by Andy Jacobson. The party lasted from noon until midnight and almost all who were students attended, together with a large group of faculty guests.

The weeks flew by and before we could plan anything else our year was over.

MIDDLER

We now were in the year which caused so many explanations to other people. No one ever heard of a Middler year and it was almost impossible to keep telling everyone about it. Before we were very far along in this year we told people we were either Sophomores or Juniors, to save wear and tear on the vocal chords.

We entered this year with less than half of our original class enrollment. Despite our reduced numbers, we reorganized our class and made preparations for our third class dance. This dance was held at the



SOPHOMORE OFFICERS

First Row, left to right:
Prof. Spencer, Hughes,
Kemp, Lovett. *Second*
Row, left to right:
Scott, Gorves, Sullivan,
Tuomi

Hotel Kenmore and once again we had a full house. To have such a good crowd was quite exceptional for at the time gas rationing was being strictly enforced and a few days before, pleasure driving had been banned. To top this all off there was a driving rain storm and most of us were thoroughly saturated, thanks to travel on the good old Boston El, before we reached the hall.

This year, due to the reduced membership of the classes and the possibility of losing even more to the draft, the Cooperative Plan was discontinued and we returned to a full-time basis. The discontinuing of Cooperative work meant no more school for a good many more of our classmates and our group was even further reduced in number.

We were, once again, all together in one division and this made the possibilities for future dances and parties look better than they ever had before.

JUNIOR

The Junior year started only one week after the Middler year ended and we hardly

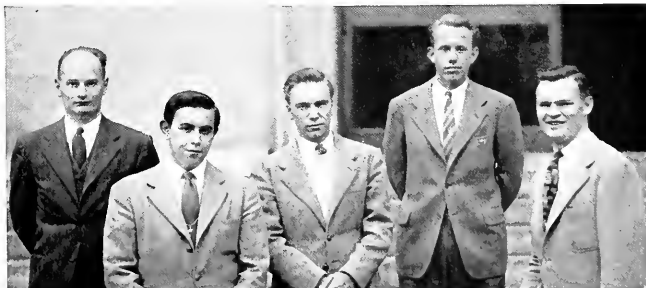
had time to realize that we had passed another milestone in our careers. We registered with a group of 80 out of our original class of 1200. Under the accelerated program the time seemed to pass very fast and it was in the second semester that preparations for a Junior dance were underway.

Because of the minute sum in our treasury, it was impossible to even consider a Junior Prom. With our treasury as a restraining influence we went ahead with the arrangements for the dance. The dance was held at the New England Mutual Charter Hall, and dancing to the music of Ruby Newman's Orchestra was very much enjoyed by all. Although this dance was the nearest we came to a financial flop it was another of our traditional social successes.

The Spring Festival was held this year and while it was not run by our class a good many of our members worked on the committee. This featured plays by the students in Bates Hall, softball games, dancing in the Commons, movies in 228-N, and an Open House.

MIDDLER OFFICERS

Left to right: Prof.
Spencer, Kay, Gardner,
Palmer, Sullivan.



SENIOR

We began our last undergraduate year at the University in June. Softball was our favorite noontime activity and we hardly had time to realize that we were almost through. Our activities didn't start until the second semester even though we had most of the responsibility of running the Fun Fest at Riverside Park. It was a very hot day, but a few courageous individuals played tennis and softball, while most of us were content to loll in the swimming pool. In the evening a dance was held and the day was completely successful.

In the second semester we ran the "Presentation Dance" primarily to make money for Senior Week. However, the dance turned out to be a huge social success as well as the greatest financial success of our career. The profits from this dance together with the class treasury were pooled and we went ahead with plans for Senior Week.

The Senior Week Committee was chosen and our plans were laid. The first activity of Senior Week was the Stag Smoker, which

was the Stag Banquet without the food. This ran along in more or less traditional fashion with a selected group of faculty present and the customary entertainment. Next we treated the faculty to a banquet, and everyone was very much pleased to be able to talk to them without fear of seeing them in class the next day. Friday we held the Senior Dinner Dance in the Hotel Gardner. This was formal and was perhaps the most successful dance (socially) that we have ever run. The Alumni Banquet was held Saturday and wound up our activities for Senior Week.

Graduation was held in Bates Hall on Sunday afternoon, December 3, and immediately after the exercises, a reception was held in the Commons.

And so we leave Northeastern University, a little the worse for wear and tear, but with an education to help us in the years to come. As we go our separate ways may we always look back with a pleasant recollection of our undergraduate days.

R. C. T.



SENIOR OFFICERS

Left to right: Kennedy, Hentoff, Prof. Spencer, Sullivan, Higginbotham.

Acknowledgments

To all who have contributed or helped us compile this yearbook, we of the CAULDRON Board express our sincere and heartfelt thanks.

To Mr. Waid, Miss Dempsey, and Mr. Yerkes for their prompt work and excellent cooperation.

To Mr. Russell Knight of the Stobbs Press, whose wealth of ability and experience so readily available, made this yearbook a pleasant success.

To the Activities Department and Miss Peppard, and other departments and secretaries, and to faculty members for their patience and assistance.

To William F. Sullivan for his help in compiling the Senior Section.

To Selma Kirschman and Louisa Ashton for their help in typing the copy.

To Edward Murphy and Joseph Bulba, though not regular members of the Board, for their cooperation on the Informal Pictures Section.



KING HUSKY II

Societies
Publications
Fraternities
Athletics



Activities

Student Council



WILLIAM F. SULLIVAN, '46
President

FREDERIC D. McALLISTER, '46
Vice-President

PAUL V. SHAUGHNESSY, '48
Secretary

A HARVEY GARDNER, '46
Treasurer

DEAN HAROLD W. MELVIN
Faculty Adviser

William J. Arvedon, '47
Mary H. Bigelow, '48
Lois A. Brady, '48
David R. Cahill, '47
Thomas Chin, '47
Stephanie Chopek, '48

John H. Cowles, '47
John J. Goode, '46
Arthur Hebert, '47
Nathan I. Hentoff, '46
Melvin F. Levine, '46
Arthur K. Littlefield, '47

Marjorie Y. Lundfelt, '48
John J. Smialek, '46
Roderic W. Sommers, '46
Thayer C. Taylor, '46
Edward R. Willett, '47

EX-OFFICIO MEMBERS

William Davidson, '48

Andrew J. McNeill, '49

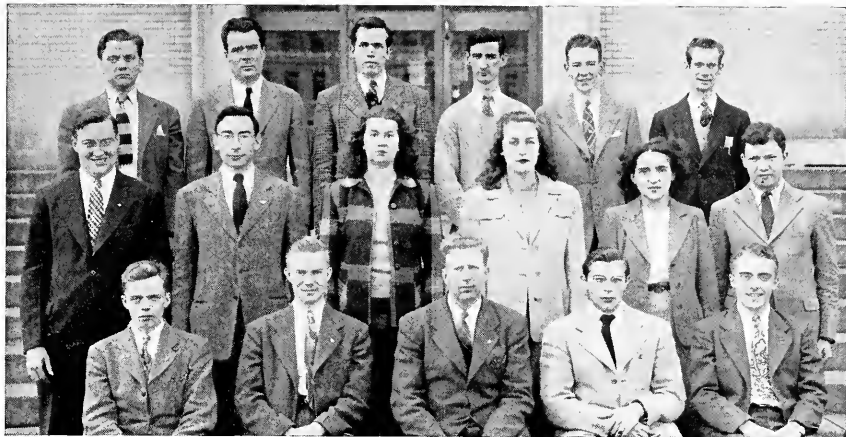
MEMBERS NOW IN THE ARMED SERVICES

Stanley W. Lovejoy, Jr., '46
Kenneth E. Palmer, '46

Anthony J. R. Pandiscio, '47
Donald C. Philbrick, '47



First Row, left to right: Hentoff, Chopek, Shaughnessy, Sullivan, Gardner, Brady, Dean Melvin.
Second Row, left to right: Hebert, Willett, Levine, Cowles, Chin, Davidson.
Third Row, left to right: Cahill, Sommers, Smialek, Goode.



First Row, left to right: Bury, Littlefield, Shaughnessy, Gold, Willett.
 Second Row, left to right: Donnellan, Levine, Ashton, Flynn, Rothschild, Weinfeld.
 Third Row, left to right: Peterson, Dacey, Sommers, Douville, Wallace, Morrice.

PAUL V. SHAUGHNESSY, '48
President

I. LOUIS GOLD, '48
Vice-President

SHELLEY A. PEARLMAN, '48
Secretary

ROY A. PETERSON, '48
Treasurer

DEAN CHARLES W. HAVICE
Faculty Adviser

ADVISORY BOARD

Dean William C. White
 Dean Harold W. Melvin

Dean Charles W. Havice
 Professor Edward S. Parsons

COMMITTEE CHAIRMEN

Bramwell A. Bury, '48
 James J. Douville, '47

Robert G. Harrison, '48
 Arthur K. Littlefield, '47
 John B. Morrice, '48

Murray A. Weinfeld, '47
 Edward R. Willett, '47

COMMITTEE MEMBERS

Louisa J. Ashton, '48
 Lois A. Brady, '48
 Charles P. Changelian, '49
 James J. Donnellan, '46

Calista M. Folsom, '48
 Grace P. McKinlay, '48
 John B. Morrice, '48
 Barbara A. Parrish, '48
 Nathan Rose, '47

Roderic W. Sommers, '46
 Ben H. Tongue, '47
 Robert D. Wolff, '48
 Rita A. Young, '48



Student Union Cabinet



Prof. Everett C. Marston
Faculty Adviser

THE CAULDRON BOARD

CLASS OF 1946

James J. Donnellan
Business Manager



Roderic W. Sommers
Managing Editor

Robert C. Twombly

Editor-in-Chief



Frederic D. McAllister

Photographic Editor

Robert J. Markell

Informal Pictures Editor



The News

ARTHUR K. LITTLEFIELD, '47LA

Editor-in-Chief

EDWARD R. WILLETT, '47BA

Managing Editor

LEONARD WEISS, '49BA

News Editor

ALFRED J. PACELLI, '48E

Acting Sports Editor

GRANVILLE E. REED, '48LA

Acting Feature Editor

J. RICHARD BROWN, '48BA

Make-up Editor

MURRAY A. WEINFELD, '47LA

Literary Editor

HAROLD HUCKINS, JR., '47E

Photographic Editor

RICHARD L. KENNEDY, '47BA

Business Manager

ROBERT D. WOLFF, '48LA

Office Manager

LILLIAN KOLODIZ, '48E

Circulation Manager

JAMES TRAVERS, '49LA

Advertising Manager

PROFESSOR EVERETT C. MARSTON

Faculty Adviser

NEWS STAFF

William R. White, '49E

William S. Filler, '49E

Phillip McGeoch, '49E

James H. Brown, '49E

Albert Adelman, '49E

FEATURE STAFF

Louisa J. Ashton, '48LA

Walter Pollock, '48E

Paul V. Shaughnessy, '48LA

Vincent L. Ysebaert, '47LA

SPORTS STAFF

William Buchanan, '49LA

E. Newell Austin, '48E

Louis Gold, '48E

Mel Silverman, '49E

Ernest E. Mills, '48E

Charles Block, '49E

Melvin R. Burstein, '48BA

CIRCULATION STAFF

Samuel Simon, '49E

Leo Topol, '48LA

Alfred Winer, '48LA

Joseph Levine, '48E

Earl Yavner, '49E

John Morrice, '48LA

Ruth Reiner, '48LA

ADVERTISING STAFF

Herbert A. Lerner, '49E

PHOTOGRAPHIC STAFF

Allan Barnett, '49BA

Joseph Wolfson, '49E

Kurt Wessely, '48E

MAKE-UP STAFF

Martin Levine, '49E

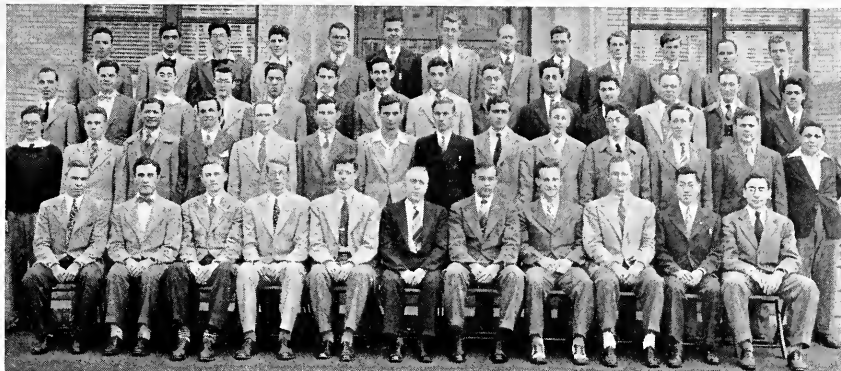
Jerry Konowitz, '49E

ART STAFF

Dominic Berulli, '49E



First Row, left to right: Willett, Kennedy, Kolodiz, Littlefield, Reiner, Ashton, Professor Marston. Second Row, left to right: Austin, Lerner, Wessely, Gold, Weinfeld, Rice, Adelman, Block. Third Row, left to right: Weiss, Pacelli, Simon, Shaughnessy, Huckins, Wolff, Wolfson, White, Reed, Yavner.



First Row, left to right: Gardner, Folino, Anderson, Twombly, Smith, Professor Stearns, Smialek, Cowles, Chase, Chin, M. Levine. Second Row, left to right: Austin, Lang, Banaag, McDonough, Harrison, Heffron, Preston, Briggs, Sandler, Cahn, Spitz, Goldman, Cook, Abbondante. Third Row, left to right: Nowell, Yurko, MacAnespie, Blanchard, Baker, Scurton, Gordon, Caplan, Taylor, Steiff, Corapi, Katz, Kaufman, Moscatelli. Fourth Row, left to right: Walden, B. Levine, Feinzig, Farley, Sullivan, Zitke, Tinglof, Weiner, Hopkins, Woodbury, Mills, Kennedy, Healy.

JOHN J. SMIALEK, '46
President

ARTHUR L. CHASE, '47
Secretary

JOHN H. COWLES, '47
Vice-President

ORIN A. SMITH, '46
Treasurer

PROFESSOR FREDERICK A. STEARNS
Faculty Adviser

MEMBERS FROM THE CLASS OF 1946

Norman A. Anderson
Victorino V. Banaag
Frank D. Folino
A. Harvey Gardner, Jr.
Gerald H. Katz

Clayton W. Kennedy
Serafin J. Krukonis
Melvin F. Levine
Stanley W. Lovejoy, Jr.
Fredric D. McAllister

Rodney W. Reder
William F. Sullivan
Robert C. Twombly
Arnold P. Weiner
Ernest J. Zitke

MEMBERS FROM THE CLASS OF 1947

Cosmo Abbondante
Jason B. Baker
Charles R. Blanchard
Ralph G. Briggs, Jr.
Thomas Chin
Ernest M. Cook
Vincent Corapi

Grant S. Healy
Theodore K. Johnson
Howard N. Kaufman
Robert S. Lang
Thomas G. MacAnespie
Thomas L. McDonough
David R. Nowell

John K. Taylor
Carl Tinglof, Jr.
Kenneth T. Walden
Roderick V. Woodbury
Malvin M. Yurko

MEMBERS FROM THE CLASS OF 1948

E. Newell Austin
Irving Cahn
Aaron Caplan
Wilbur H. Farley
Irving Feinzig
Sherman H. Goldman
Irving G. Gordon
Robert G. Harrison

Paul Heffron
Clifford Hopkins
Charles Knowlton, Jr.
Bernard G. Levine
George Merker
Ernest E. Mills
Felix Moscatelli
John L. Preston

Hyman Sandler
George S. Scurton
S. Leonard Spitz
Leon H. Steiff
Roger N. Tuttle
Lester Wilker

American Society of Mechanical Engineers

American Institute of Electrical Engineers

JOHN H. TAYLOR, '46
Chairman

ALFRED P. SIEKLUCKI, '47
Secretary-Treasurer

JAMES E. MROSE, '47
Vice-Chairman

PROFESSOR ROLAND G. PORTER
Faculty Adviser

MEMBERS FROM THE CLASS OF 1946

Alfred D. DiNozzi
John J. Goode

David E. Higginbotham
Arthur D. Porter

James K. Yee

MEMBERS FROM THE CLASS OF 1947

Jerome H. Bloom
Walter W. Bordewieck
Walter Ciaschini

Nathan Freedman
Lester B. Linsky
Arthur A. Najarian

Ben H. Tongue
George M. Zoza

MEMBERS FROM THE CLASS OF 1948

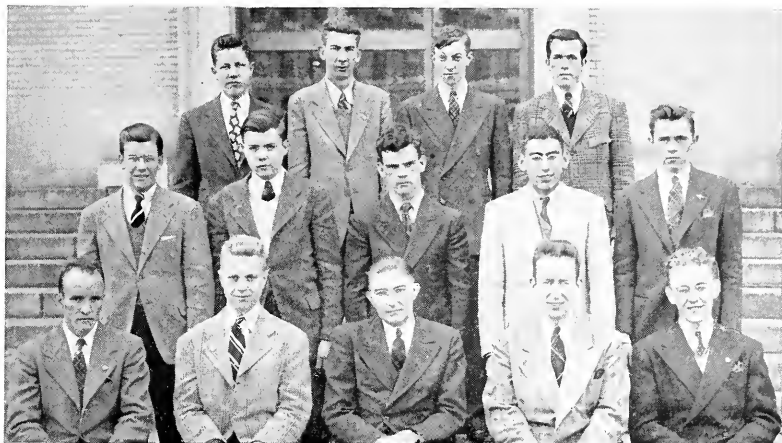
Henry S. Hall

Robert N. G. Hom
Sidney F. Quint

Bryan H. Saunders



First Row, left to right: Porter, Sieklucki, Taylor, DiNozzi, Higginbotham, Professor Porter, Mrose. Second Row, left to right: Hom, Najarian, Freedman, Linsky, Riceman, Bordewieck, Saunders, Quint. Third Row, left to right: Bloom, Goode, Tongue, Zoza, Ciaschini, Hall



First Row, left to right: Hebert, Laakso, Bulba, Markell, Murphy. Second Row, left to right: Wooldridge, Kuehn, Campbell, Pacelli, King. Third Row, left to right: Sikora, Pattison, Searles, Sommers.

JOSEPH J. BULBA, '46
President

GEORGE W. LAAKSO, JR., '46
Vice-President

ARTHUR HEBERT, '47
Secretary

ROBERT J. MARKELL, '46
Treasurer

PROFESSOR CHARLES O. BAIRD, JR.
Faculty Adviser

MEMBERS FROM THE CLASS OF 1946

Robert N. Kuehn
Edward S. Murphy

Kenneth E. Palmer
Samuel J. Pattison, Jr.

Roderic W. Sommers

MEMBERS FROM THE CLASS OF 1947

Gorden H. Searles

John Sikora

Roy L. Wooldridge

MEMBERS FROM THE CLASS OF 1948

Charles Axelrod

John M. Campbell
Donald B. Carter, Jr.

Alfred J. Pacelli, Jr.

Northeastern University

Civil Engineering Society

American Institute of Chemical Engineers

HYMAN RESNICK, '46
President
ALFRED J. FLEISCHMANN, '46
Treasurer

LEWIS THEOHAROUS, '47
Secretary

GEORGE P. CHANGELIAN, '46
Vice-President

DAVID R. CAHILL, '47
Second Vice-President

PROFESSOR CHESTER P. BAKER
Faculty Adviser

MEMBERS FROM THE CLASS OF 1946

Joseph B. Arots
Herbert M. Johnson

Joseph R. Kiernan
George R. Peterson
Leon Rabin

William C. Raffell
Isadore Sheinfine

MEMBERS FROM THE CLASS OF 1947

John A. Burbidge
Arnold Carlin
Richard W. Greenwood

Harold Huckins
George Koskoris
Melvin J. Rosenfeld

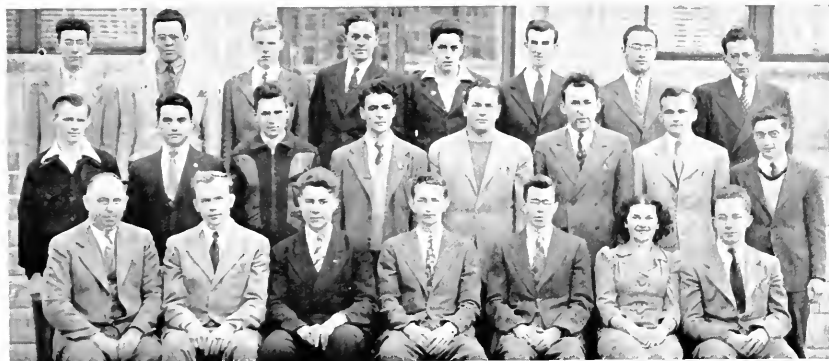
Alfred J. Scandura
Anthony F. Tuccelli

MEMBERS FROM THE CLASS OF 1948

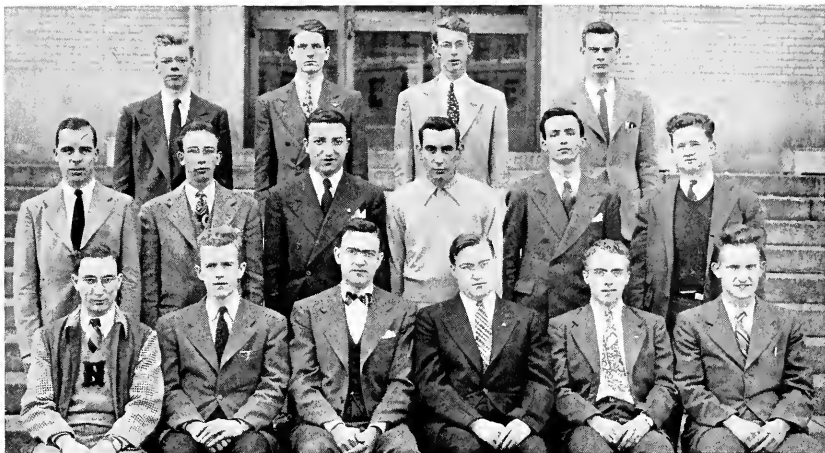
Alfred H. Isenberg
Lillian Kolodiz

Manuel G. Koutrakis
Marjorie V. Lundfelt
Charles T. Mitchell, Jr.

Francis J. Paris
Norman Rubin



First Row, left to right: Professor Baker, Arots, Fleischmann, Cahill, Peterson, Kolodiz, Johnson. Second Row, left to right: Burbidge, Koskoris, Rabin, Koutrakis, Rosenfeld, Raffell, Greenwood, Paris. Third Row, left to right: Isenberg, Rubin, Huckins, Sheinfine, Carlin, Kiernan, Tuccelli, Scandura.



First Row, left to right: Kaufman, Healy, Professor Ganong, Donnellan, Willett, Cowles. Second Row, left to right: Nowell, Kaizerman, Spampinato, Deery, McDonough, Kennedy. Third Row, left to right: Hunt, Woodbury, Twombly, Sweeney.

JAMES J. DONNELLAN, '46
President

GRANT S. HEALEY, '47
Secretary

EDWARD R. WILLETT, '47
Publicity Director

JOHN H. COWLES, '47
Vice-President

HOWARD N. KAUFMAN, '47
Treasurer

MR. WARREN L. GANONG
Faculty Adviser

MEMBERS FROM THE CLASS OF 1946

Robert C. Twombly

MEMBERS FROM THE CLASS OF 1947

Joseph H. Deery
Richard L. Kennedy

Thomas L. McDonough
David R. Nowell
George J. Selados

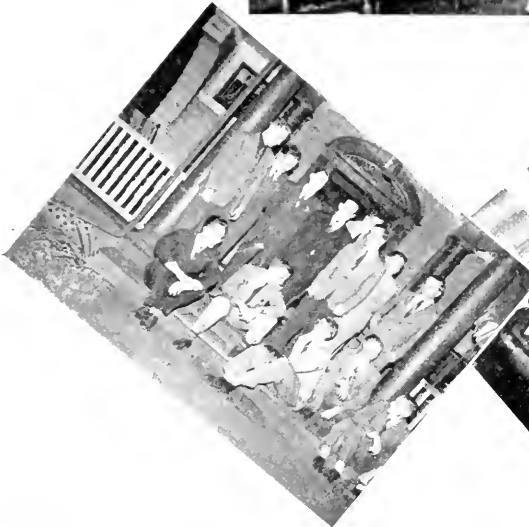
Alexander A. Sweeney, Jr.
Roderick V. Woodbury

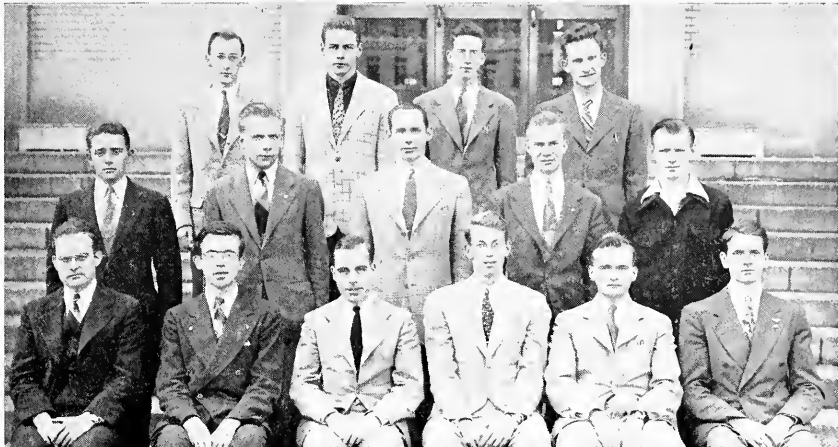
MEMBERS FROM THE CLASS OF 1948

Lewis L. Kaizerman

Anthony L. Spampinato

Society for the Advancement of Management





First Row, left to right: Professor Combellack, Hall, Nowell, Twombly, Greenwood, Woodbury. Second Row, left to right: Carr, Mathes, Harrison, Littlefield, Burbidge. Third Row, left to right: Brown, Tuttle, Saunders, Cowles.

ROBERT C. TWOMBLY, '46

Grand Master

RICHARD W. GREENWOOD, '47

Grand Scribe

DAVID R. NOWELL, '47

Vice-Grand Master

HENRY S. HALL, '48

Grand Chancellor

PROFESSOR WILFRED J. COMBELLACK

Faculty Adviser



Stanley W. Lovejoy, Jr., '46
Roderick V. Woodbury, '47
Arthur K. Littlefield, '47
Brian H. Saunders, '48

J. Richard Brown, '49
Parker H. Carr, Jr., '49
John H. Cowles, '47
John A. Burbidge, '47

Roger N. Tuttle, '48
Robert G. Harrison, '48
Mark H. Mathes, '49
David L. Thurrell, '49

MEMBERS OF THE FACULTY

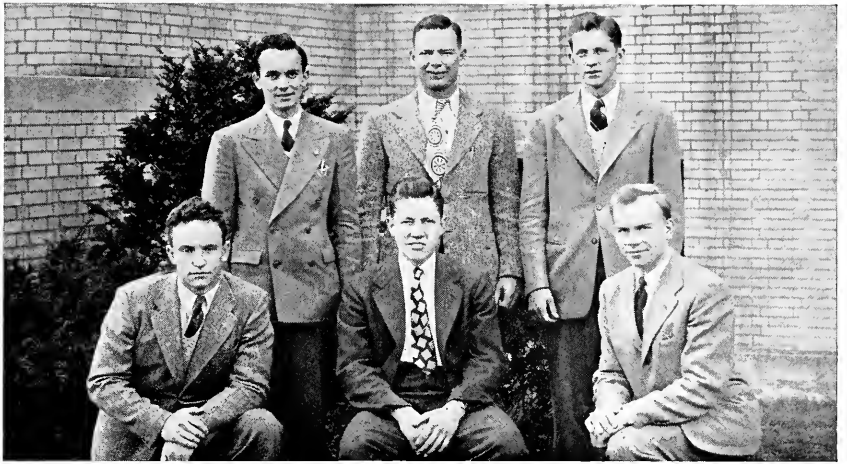
Prof. Wilfred J. Combellack
Prof. J. James Devine
Dean Harold W. Melvin

Prof. George H. Meserve
Mr. Albert E. Sanderson

Prof. Ernest L. Spencer
Prof. George W. Towle
Dean William C. White

Nu Epsilon Zeta Fraternity





*First Row, left to right: Waldens, Sikora, Arots.
Second Row, left to right: Giroux, Doherty, Stankevich.*

JOHN SIKORA, '47

President

KENNETH T. WALDEN, '47

Treasurer

JOHN B. AROTS, '46

Social Chairman

GEORGE E. GIROUX, '49

Vice-President and House Manager

EDWARD A. STANKEVICH, '49

Secretary

MR. GEORGE W. HANKINSON

Faculty Adviser

Pledgee: John F. Doherty, Jr., '48



BROTHERS IN THE FACULTY

Prof. Henry E. Richards

Prof. Albert E. Whittaker

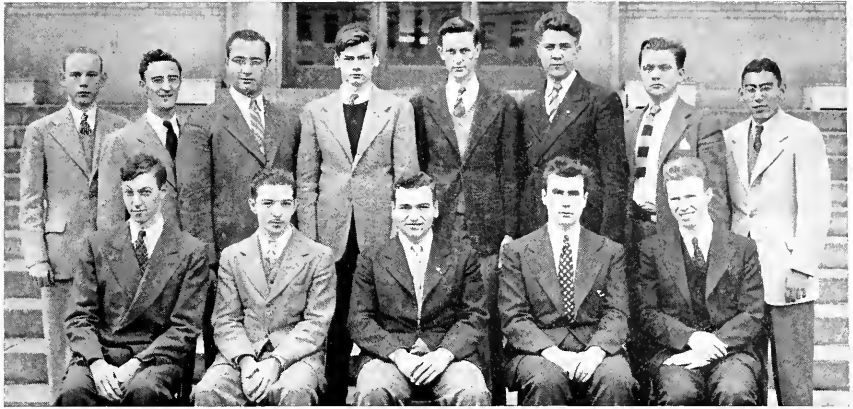
Prof. George E. Pihl

Prof. Milton J. Schlagenhauf

Dr. Elmer H. Cutts

Phi Gamma Pi Fraternity





*First Row, left to right: Searles, Catatti, Najarian, Ciaschini, Mr. Bordewick.
Second Row, left to right: Catterall, Bonasera, Tuccelli, Mills, Hopkins, Fleischmann, Peterson, Pacelli.*

ARTHUR A. NAJARIAN, '47
President

WALTER A. CIASCHINI, '47
Secretary

EDWARD B. CATATTI, '47
Vice-President

GORDON H. SEARLES, '47
Treasurer

MR. ROBERT W. BORDEWICK
Faculty Adviser



Salvatora J. Bonasera, '47
George W. Catterall, '48
John Christensen, '48
F. Thomas Daly, '48

Alfred J. Fleishmann, '46
Arthur J. Hilly, '48
Clifford D. Hopkins, '48
Ernest E. Mills, '48

Alfred J. Pacelli, '48
Roy J. K. Peterson, '48
Anthony F. Tuccelli, '47

BROTHERS IN THE FACULTY

Prof. Laurence F. Cleveland

Prof. Gerald R. Tatton

Dr. Reginald G. Lacount

Prof. Chester H. Wolowicz

Sigma Phi Alpha Fraternity

Yacht Club

W. MUNRO HALE, '48
Commodore

MARTIN E. COHEN, '47
Secretary-Treasurer

ALFRED J. FLEISCHMANN, '46
Vice-Commodore

GRANT S. HEALY, '47
Fleet Captain

PROFESSOR WALDEMAR S. MCGUIRE
Faculty Adviser

EXECUTIVE COMMITTEE

Henry Chin, '48

Stuart M. Cooney, '48
Marjorie Lundfelt, '48

Robert S. Welsh, '48

The fall of 1938 found Northeastern without a nautical organization, but when the University was invited to take part in a regatta at M. I. T., as a non-member of the Intercollegiate Yacht Racing Association, two students—Ray Dion, '40 and Art Hartford, '40—represented Northeastern on their own. They won the regatta. And they won again when they unofficially represented N. U. the following spring at Brown, winning the I. C. Y. R. A. non-member championship plaque for the second year.

With two victories in a tough competitive field stowed away, the boys felt confident in going to Professor Parsons in the hope of organizing an official yacht club. They soon received his sanction, and Professor Rudolf O. Oberg was appointed adviser to the group.

After dominating the field of associate members for a year, N. U. joined the major league of yachting when the invitation to membership in the I. C. Y. R. A. was extended in May, 1940. The club now competes against some twenty-five colleges, in the East, and extending as far west as the University of Michigan.

During the winter, noon meetings were held with movies and talks. A Shore School was held in the spring for the benefit of novices. After successfully passing this requirement, actual instruction with boats using the facilities of the Community Sailing Association was given, thus making possible daily sailing and racing from May 1 to October 15.



First Row: Lundfelt.
Second Row, left to right: Welsh, Cooney, Fleischmann, Healy, Hale, Professor McGuire



First Row, left to right: Bandurski, Flynn, Kirschman, Brady, Rosen, Reiner, Liker, McKinlay, Parrish. Second Row, left to right: Chopek, Rothschild, Leo, Lewis, Levin, Stiller, Kolp, Clark. Third Row, left to right: Osher, Yates, Ginsberg, Finneran, Leon, Freedman.

FRANCES ROSEN, '48
President

LOIS BRADY, '48
Secretary

CALISTA FOLSOM, '48
Vice-President

RUTH REINER, '48
Treasurer

MISS LOUISE G. MARSH
Faculty Adviser

EXECUTIVE COMMITTEE

Selma Kirschman, '48, *Chairman* Florence Liker, '48 Grace P. McKinlay, '48

PUBLICITY COMMITTEE

Donna Riseman, '49, *Chairman* Frances Lezberg, '49 Ruth Freedman, '49

ALL-UNIVERSITY COMMITTEE

Barbara Parrish, '48, *Chairman* Barbara Clarke, '48 Rita Young, '48
Shelley Pearlman, '48

SOCIAL COMMITTEE

Marjorie Lundfelt, '48, *Chairman* Charlotte Stiller, '48 Anastasia Bandurski, '48

MEMBERS FROM THE CLASS OF 1948

Phyllis Batchelder
Mary Bigelow
Ruth Blotcher
Priscilla Carey
Stephanie Chopek
Vivian Fain
Marjorie Faunce
Ruth M. Finneran
Edythe Finkel
Mary J. Flynn
Mary Frenkel

Eleanor Goldman
Edythe Greenbaum
Evelyn Griffin
Lois Grossman
Virginia Hadley
Beverly C. Hirsh
Mona L. Kennedy
Lillian Kolodiz
Dorothy Kolp
Norma Levine
Alice Lichwell
Jean E. MacKay

Dorothy MacKnight
Pauline Novak
Harriet Phillips
Sylvia Resnick
Hannah Rothschild
Irma Rubin
Harriet Schafer
Virginia Shattuck
Ursula Ullrich
Helen Yates
Chessie Zbikowska

MEMBERS FROM THE CLASS OF 1949

Louisa J. Ashton
Claire Cohen
Jeanne L. Hillman

Helen Kokoszka
Evelyn L. Leone
Eleanor Levin

Charlotte Osher
Martha Salvi
Laura Solomon

Omega Sigma

Veterans' Club

PAUL V. SHAUGHNESSY
President

ARTHUR K. LITTLEFIELD
Vice-President

GEORGE E. GIROUX
Treasurer

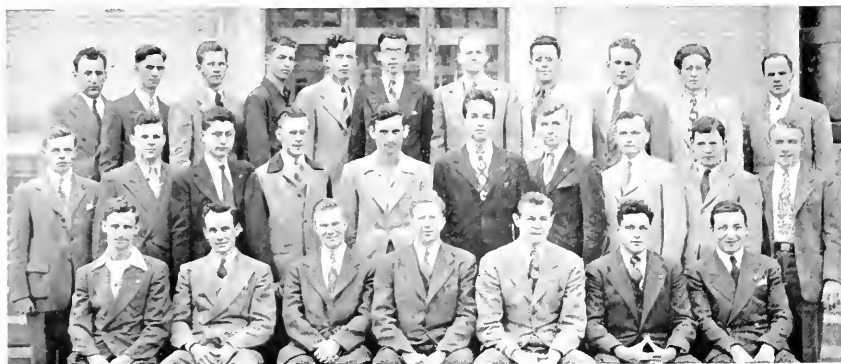
PROFESSOR JOHN B. PUGSLEY
Veterans' Co-ordinator

JOHN W. KACZANOWICZ
Secretary

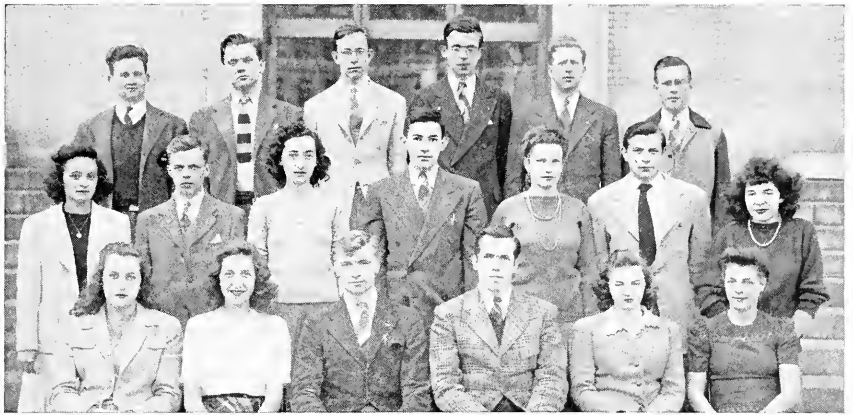
Bernard A. Barnes
John W. Bonquet, Jr.
Murray R. Braverman
Alfred L. Brody
James H. Brown
John S. Brown
Edward J. Burdeau
Bramwell A. Bury
Leon W. Bush
Joseph H. Caputo
Brian L. Casey
Alan F. Cate
Richard D. Clark
Ernest M. Cook
John J. Craven
Edward F. Dacey
Martin W. Donovan
Ralph P. Dyer
Seymour Feinberg
Daniel M. Fox
Albert Frager
Richard W. Greenwood
Henry S. Hall
Burton C. Hoffman
William Hoffman

Clarence Husbands
Roy W. Johnson
Clayton W. Kennedy, Jr.
George F. Kenney
K. Charles Kopsiaftis
Theodore W. Kudryk
Frank Lambert
Joseph E. Landry, Jr.
Theung S. Lee
Walter P. Lee
Calvin T. Margolis
Edward B. Mazzotta
Andrew J. McNeill
Anthony Miceli
Edmund O. Miner
Leo J. Mishner
Sidney T. Mitchell
James A. Murray, Jr.
Kenneth F. Olsen
Francis P. Oresteen
Vito Piccirillo
Robert F. Pierce
John Preston
Thomas L. Preziosi
James M. Qua

John F. Quigley
Leon Rabin
Herman E. Radke
William C. Raftell
Joseph F. Ricci
Ralph T. Rotman
William Ruminas, Jr.
Fred Slater
Roger O. Snowman
Phillip Solomon
L. Antonio Spampinato
Edward A. Stankevich
Bernard F. Stone
Emanuel Sugarman
John F. Sullivan, Jr.
Norman R. Waddleton
Ralph S. Wegman
Murray H. Weinfeld
Arnold P. Weiner
Kurt Wessely
Henry F. Whalen, Jr.
Richard F. Whelpley
Edward Willett
Leonard Wolfson



First Row, left to right: Kudryk, Giroux, Littlefield, Shaughnessy, Kaczanowicz, Preziosi, Spampinato. Second Row, left to right: Bury, Cook, Wessely, Landry, Preston, Slater, Stone, Greenwood, Weinfeld, Willett. Third Row, left to right: Raftell, Johnson, Stankevich, Snowman, Quigley, Hall, Weiner, Rabin, Oresteen, Mitchell, Kennedy.



First Row, left to right: Flynn, Reiner, Stone, Sommers, Brady, Parrish. Second Row, left to right: Bandurski, Bury, Rosen, Cooperman, Freedman, Gold, Stiller. Third Row, left to right: Kennedy, Peterson, Barrett, Hall, Shaughnessy, Landry.

RODERIC W. SOMMERS, '46
President

IRMA S. RUBIN, '48
Vice-President

RUTH E. REINER, '48
Librarian

PROFESSOR LAURENCE F. CLEVELAND
Faculty Adviser

MEMBERS FROM THE CLASS OF 1946

David E. Higginbotham

MEMBERS FROM THE CLASS OF 1947

Ernest M. Cook

Richard L. Kennedy

MEMBERS FROM THE CLASS OF 1948

Anastasia S. Bandurski
Jack S. Barritt
John T. Bell
Lois Ann Brady
Bramwell A. Bury
Isadore N. Cooperman

Vivian Fain
Mary J. Flynn
Isadore L. Gold
Henry S. Hall
Mona L. Kennedy
Barbara A. Parrish

Roy J. K. Peterson
Frances Rosen
Paul V. Shaughnessy
Charlotte Stiller
Chessie Zbikowska

MEMBERS FROM THE CLASS OF 1949

Alfred H. Bloom
Ruth L. Freedman
Ruth H. Goldberg
Alice Haggis
Hazel R. Jack

Joseph E. Landry, Jr.
Berjoughie Maranjian
Nannette H. Marder
Phyllis Milgroom
Norman E. Ramsdell
Donna S. Riseman

Isabelle J. Roebts
Elinor A. Scholsberg
Louise Silverman
Bernard F. Stone
Grace L. Ward

Choral Society

Husky Plus Club

MEMBERS FROM THE CLASS OF 1946

Norman A. Anderson Clayton W. Kennedy, Jr. Robert C. Twombly
William F. Sullivan

MEMBERS FROM THE CLASS OF 1947

John H. Cowles

MEMBERS FROM THE CLASS OF 1948

Lois Ann Brady Grace P. McKinlay Barbara A. Parrish
Marjorie V. Lundfelt Frances Rosen

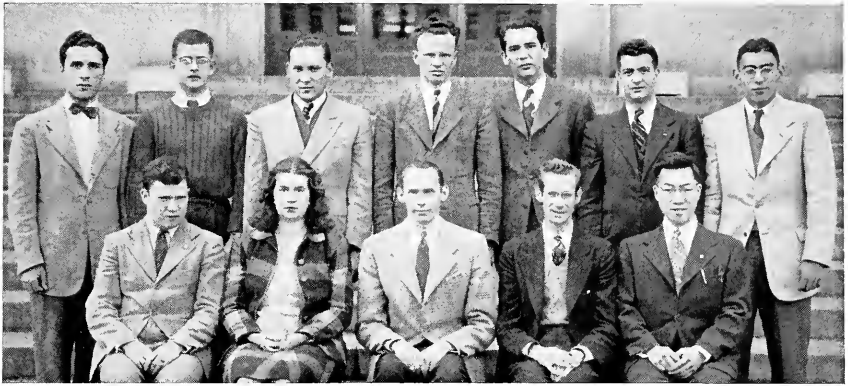
DEAN HAROLD W. MELVIN

Faculty Adviser

Husky Plus, organized August, 1944, is a volunteer service group of ten N. U. undergraduates whose primary purpose is to get out to Northeastern men in uniform service letters and copies of the *News*. The club meets only for work.



*First Row, left to right: Rosen, Parrish, Brady.
Second Row, left to right: Kennedy, Twombly, Anderson, Sullivan, Cowles.*



First Row, left to right: Weinfeld, Ashton, Harrison, Morrice, Chin.
 Second Row, left to right: Folino, Rottenberg, Zambrano, Simeone, Umana, Corapi, Pacelli.

ROBERT G. HARRISON, '48
President

MURRAY A. WEINFELD, '47
Vice-President

EARL M. YAVNER, '49
Secretary-Treasurer

DEAN CHARLES W. HAVICE
Faculty Adviser

MEMBERS FROM THE CLASS OF 1947

- | | | |
|-------------|----------------|---------------|
| Thomas Chin | Vincent Corapi | Louis Simeone |
|-------------|----------------|---------------|

MEMBERS FROM THE CLASS OF 1948

- | | | |
|-----------------|-----------------|---------------------|
| Charles Axelrod | John B. Morrice | Alfred Pacelli, Jr. |
|-----------------|-----------------|---------------------|

MEMBERS FROM THE CLASS OF 1949

- | | | |
|-----------------------|---------------------|-------------------|
| Seymour Berman | George Lee | Jose P. Salas |
| Jose Biamon | Herbert A. Lerner | Tito P. Salas |
| Nicholas Cirillo, Jr. | Berjoubie Maranjian | Elinor Scholsberg |
| Tamara DeLuty | Albert Meltzer | Marion Taylor |
| Robert Evans | Frances M. Myers | Alvaro Umana |
| Charlotte Fertel | Jocol Rosewan | June Wiskind |
| James M. Gallagher | Martin Rottenberg | Rafael Zambrano |

Cosmopolitan Club

Commission of the Northeastern Student Union

Baseball

RUSSELL A. STILES, '47 (N)
Captain

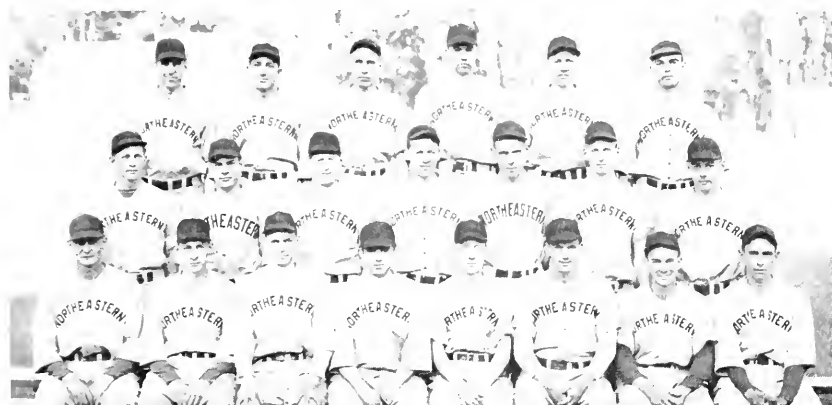
MR. EMANUEL A. FLUMFRE
Coach

Mario Alves, '47
George A. Beckett, '45 (N)
A. Alfred diScipio, '49 (N)
Carl W. Eschelbach, '48
George E. Giroux, '49 (N)
Robert N. Huckins, '45
William A. Maida, '45

Eugene H. Messier, '48 (N)
Frank J. Rosato, '47 (N)
Kourken Samuelian, '47
Jerome P. Sawtelle, '48 (N)
Paul V. Shaughnessy, '48
John Sikora, '47

John J. Smialek, '46 (N)
Edward A. Stankevich, '49
John J. Stuart, '48
Alexander N. Tedesco, '49
Roger N. Tuttle, '48 (N)
Charles B. Wyman, '49
Stanislaus J. Zbozen, '49 (N)

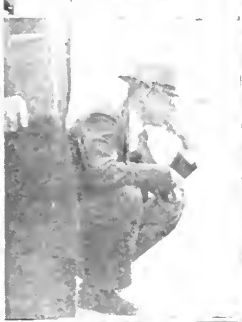
	N. U.	Opp.		N. U.	Opp.
U. of Connecticut	5	5	Harvard	5	9
W. P. I.	1	2	U. of Maine	9	1
U. of New Hampshire	8	7	U. of New Hampshire	13	9
U. of Connecticut	3	6	Bates	6	7
Bates	8	7	U. of Maine	10	4



First Row, left to right: Zbozen, diScipio, Beckett, Samuelian, Stiles, Stuart, Giroux, Rosato. Second Row, left to right: Stankevich, Maida, Shaughnessy, Eschelbach, Huckins, Messier, Tuttle. Third Row, left to right: Coach Flumfre, Sawtelle, Wyman, Smialek, Sikora, Tedesco.

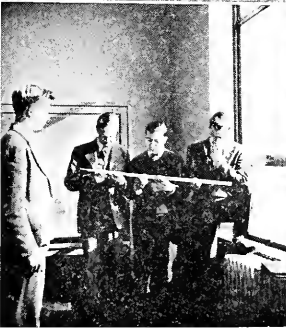
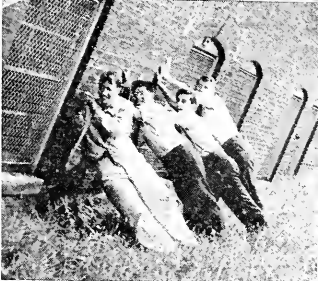


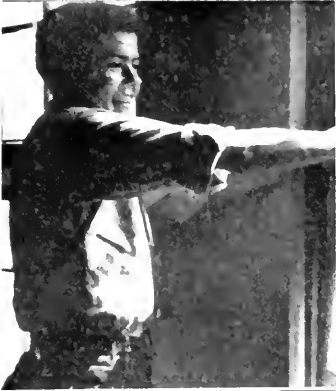
Candidids

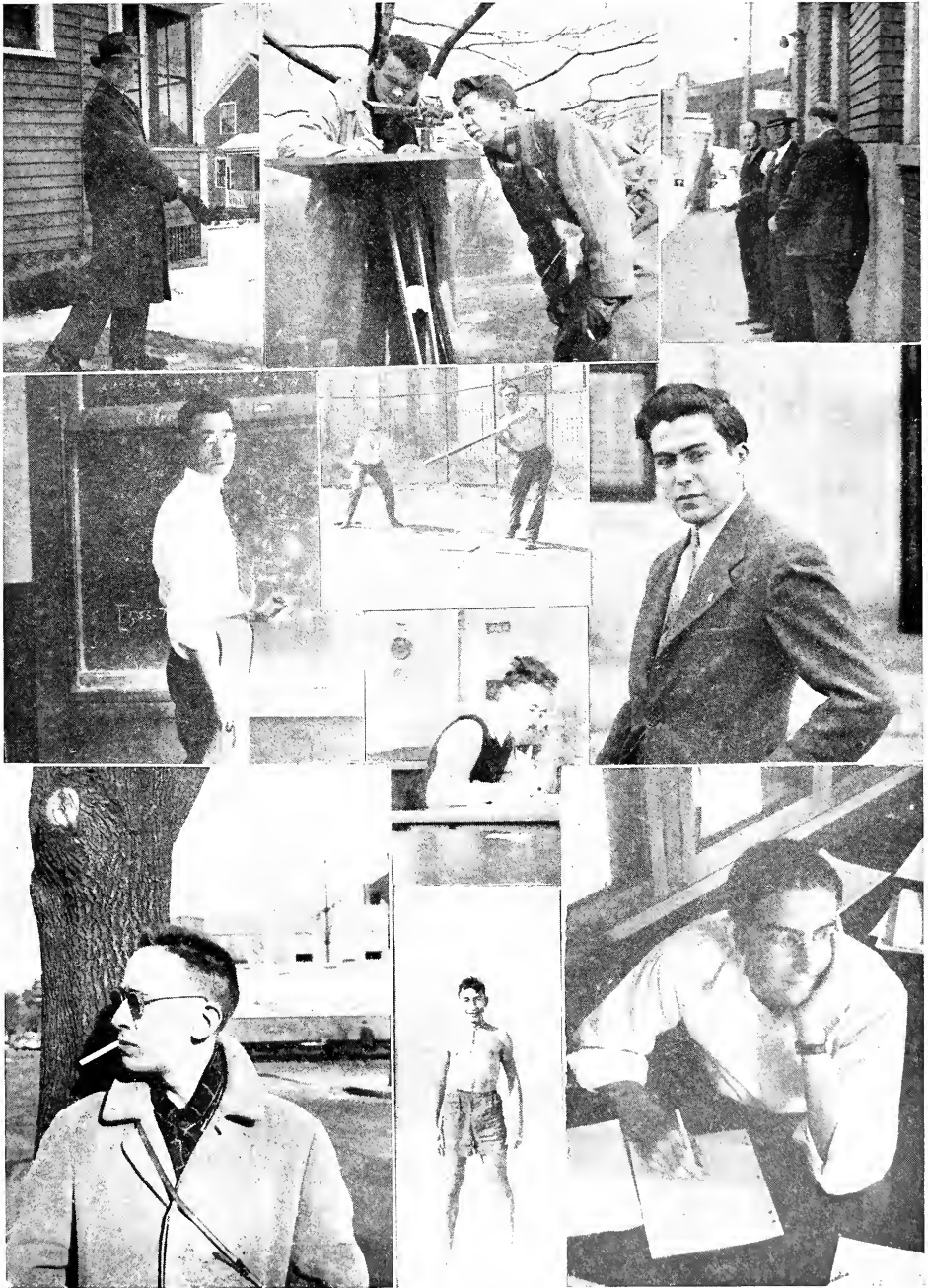




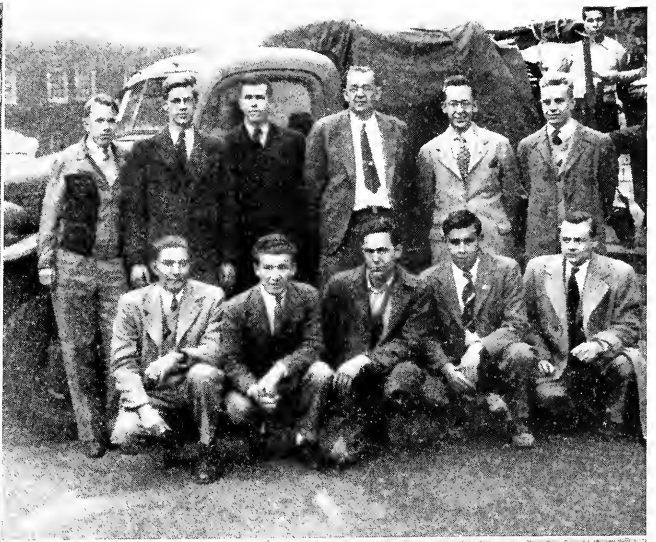
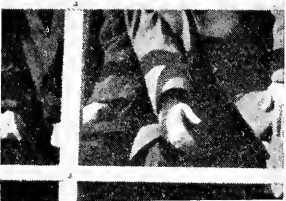
















Seniors

The Class of '47

1945 JUNE GRADUATES

The time lapse between the publication of the 1946 and 1947 sections of this CAULDRON has brought about a number of changes in the faculty. It has been found necessary in order to give a complete picture of the faculty to list these changes.

On September 1, 1945, Professor Roger S. Hamilton was appointed to the post of Dean of the College of Business Administration replacing Robert Bruce who had served as Acting Dean of the College since the resignation of Dean Asa S. Knowles.

Mr. George W. Hankinson was appointed Assistant to the Director of Admissions in December 1944. Mr. Hankinson formerly served as Instructor in Civil Engineering.

Miss Louise G. Marsh, Instructor in Physics, has been appointed Adviser to Women Students.

Mr. Eugene G. Pare of the Department of Drawing, who was on loan to Tufts College for a year, returned to Northeastern in October 1944.

In September 1944, Mr. Saverio Cernullo was appointed Instructor in Economics and Accounting. He holds the B.S. and M.B.A. degrees from Boston University.

Dr. Blanche B. Daly rejoined the staff as a lecturer in the Department of Biology on a part-time basis in September 1944. Dr. Daly served in this Department in 1943. She received the A.B. from Hunter College, the M.Sc. from New York University, the M.A. from Radcliffe, and the Ph.D. from Boston University.

Mr. Edmund W. Fenn joined the staff as an Instructor in History and Government beginning with the spring term, 1945. Mr. Fenn is a graduate of Williams College and holds the degree of Master of Arts from Harvard University.

Mr. David E. Higginbotham was appointed Instructor in Physics. He received his S.B. degree in the field of electrical engineering from Northeastern December 1944, and is a member of the Epsilon Chapter of the Tau Beta Pi Association.

Dr. Herbert Moller came to Northeastern in September 1944 as Instructor in German. Dr. Moller has studied at the Universities of Heidelberg, Berlin, and Frankfurt in Germany and received the Ph.D. from Boston University.

Mr. Horace Reynolds joined the Day College faculty as Instructor in English December 11, 1944. Mr. Reynolds holds degrees A.B. and A.M. from Harvard University where he majored in the field of English.

Mr. Robert W. Bordewick has accepted an appointment to the Department of Electrical Engineering at the Worcester Polytechnic Institute.

Mr. Emanuel A. Flumere has resigned his coaching duties here at Northeastern to give full time to coaching for the Malden High School. Mr. Samuel A. Stone has gone into war industry and is working for the Polaroid Company. Miss Pauline F. Sullivan of the Biology Department is now doing research work at Radcliffe.

Mr. Eugene George Pare was born December 20, 1915, in Lynn, Massachusetts. He now resides in Reading with his wife, two sons, and daughter. Mr. Pare attended Tufts College where he graduated in 1937 with a Bachelor of Science degree in Civil Engineering. A year later, he received his Master of Education degree at the same college. In addition to his teaching duties at N. U. he has worked as a surveyor for the Conti Construction Company; draftsman for the Mason-Neilan Regulator Company; teacher for three years at Wayland High School in English, Mathematics, and Science and coach of basketball, and assistant coach of baseball and football.



EUGENE G. PARÉ

. . . *Our Class Adviser*

Mr. Pare came to Northeastern as instructor in both Engineering Drawing and Mathematics in 1941. He left on leave of absence to go to Tufts College in 1943 where he taught in the Engineering Drawing Department and was Assistant Coach of Cross Country on the Navy Program.

Mr. Pare returned to Northeastern in 1944, and resumed his duties in the Engineering Drawing Department. He became Class Adviser to the class of 1947, Head Coach of Baseball, and Adviser to the Intramural Basketball League.



Cosmo Abbondante

31 Rose Street, Somerville
Mechanical Engineering
Cosmopolitan Club 1, 2, 3, 4, 5; *Chess Club* 4, 5; *A. S. M. E.* 3, 4, 5



William J. Arvedon

25 Gibbs Street, Brookline.
Liberal Arts - English
News 1, 2; *Managing Editor* 3; *Student Union* 1, 2; *Student Council* 2, 3, 4; *Dramatic Club* 1, 2, 3, 4; *Literary Club* 3



Jason B. Baker

44 Supple Road, Roxbury
Mechanical Engineering
Manager Football Squad 1; *A. S. M. E.* 3, 4, 5

Charles R. Blanchard

324 Main Street, Nashua, New Hampshire
Mechanical Engineering
A. S. M. E. 3, 4, 5



Jerome H. Bloom

395 Harvard Street, Brookline
Electrical Engineering
Freshman Honor List; A. I. E. E. 2, 3, 4, 5
CO-OPERATIVE WORK
General Electric Co. . . . West Lynn . . . Plant Layout



Salvatore J. Bonasera

217 Lexington Street, East Boston
Business Administration
Sigma Phi Alpha; Intramural Basketball 5





Walter W. Bordewieck

273 Weston Road, Wellesley
Electrical Engineering
Freshman Honor List; Dean's List 2, 3; International Re-
lations Club 4; A. I. E. E. 3, 4, 5
CO-OPERATIVE WORK
General Radio Co. . . . Cambridge . . . Inspector



Ralph G. Briggs, Jr.

Main Street, Upton
Mechanical Engineering
Beta Gamma Epsilon; Interfraternity Softball; A. S. M. E.
3, 4, Vice-President 5
CO-OPERATIVE WORK
Bay State Abrasive Products Co. . . . Westboro . . . Lab-
oratory Assistant



John A. Burbidge

62 Chase Avenue, Lexington
Chemical Engineering
Nu Epsilon Zeta; Freshman Honor List; Dean's List 2;
Class Basketball 5
CO-OPERATIVE WORK
Angier Products, Inc. . . . Cambridge . . . Foreman

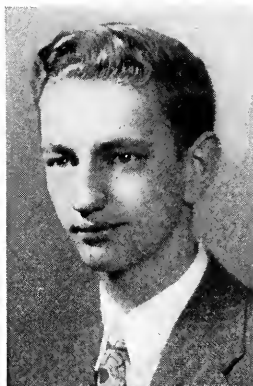
David R. Cahill

12 Early Avenue, Medford
Chemical Engineering

Beta Gamma Epsilon; Freshman Honor List; Dean's List 2, 3, 5; Interclass Basketball 3; Student Council 4, Vice-President 5; President Junior Class; Yacht Club; A. I. Ch. E. 2; Class Representative 3, Vice-President 4, 5; Who's Who Among Students in American Universities and Colleges; A. C. S. 2, 3, 4, 5

CO-OPERATIVE WORK

First National Stores . . . Somerville . . . Laboratory Assistant



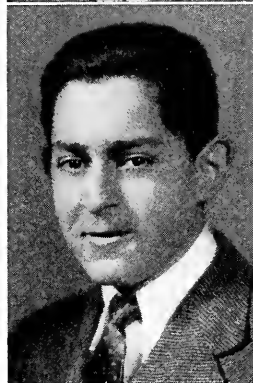
Arnold D. Carlin

1161 Commonwealth Avenue, Allston
Chemical Engineering

Freshman Honor List; Intramural Swimming 1; Basketball 4, 5; Softball 4, 5; Band; Chess Club; Representative Senior Week Committee; A. I. Ch. E. 2, 3, 4, 5; A. C. S. 2, 3, 4, 5

CO-OPERATIVE WORK

Consolidated Bisquit . . . West Roxbury . . . Baker, Mixer



Edward B. Catotti

9 Linden Street, Williamstown
Liberal Arts—Chemistry

Sigma Phi Alpha; Fraternity Vice-President 4, Treasurer 5; A. I. Ch. E. 2; A. C. S. 3, 4, 5; Yacht Club 4, 5

CO-OPERATIVE WORK

The Gaevert Company of America, Inc. . . Williamstown . . . Laboratory Assistant





Arthur L. Chase

19 Kilton Street, Taunton
Mechanical Engineering
Beta Gamma Epsilon; Glee Club 1, 2; Yacht Club 4, 5;
A. S. M. E. 3, Secretary 4, President 5

CO-OPERATIVE WORK

General Electric Plastics Division . . . Taunton . . .
Tool Room Repair man



Thomas W. F. Chin

475 Broadway, Chelsea
Mechanical Engineering
Freshman Honor List; Dean's List 2, 3, 4, 5; Student
Council 4, 5, Treasurer 5; Class Secretary 3; Class Treas-
urer 4, 5; Senior Week Committee 5; Cosmopolitan Club
3, 4; A. S. M. E. 3, 4, 5, Publicity Chairman 4, 5

CO-OPERATIVE WORK

The Reece Button-Hole Machine Co. . . . Boston . . .
Milling Machine, Drill Press Operator



Walter A. Ciaschini

19 Market Street, Northampton
Electrical Engineering
Sigma Phi Alpha; Yacht Club 4, 5; Rifle Club 1; A. I.
E. E. 2, 3, 4, 5; Interfraternity Council 4, 5; Senior Week
Committee; Class Secretary 4

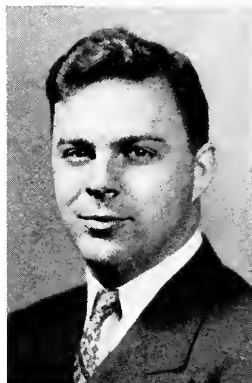
Ernest M. Cook

15 Albermarle Road, Waltham
Mechanical Engineering

Beta Gamma Epsilon; Fraternity Vice-President 5; Student Council 5; Choral Society 1, 2, 3, President 5

CO-OPERATIVE WORK

Sanborn Co. . . . Cambridge . . . Assembly—G & N Eng. Co. . . . Boston . . . Shipper, Receiver, Stock Room



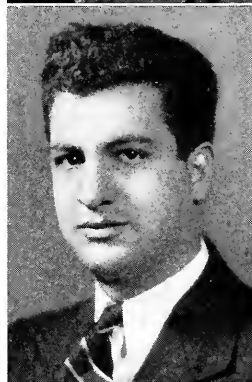
Vincent Corapi

69 Forest Street, Watertown
Mechanical Engineering

Student Union 2; Cosmopolitan Club 1, 4, 5, President 2, 3; A. S. M. E. Program Chairman 5; Rifle Club 3

CO-OPERATIVE WORK

Electro Products Co. . . . Waltham . . . Machinist—H. K. Carter Co. . . . Everett . . . Machinist—Boston & Maine R. R. . . . Boston . . . Machinist Helper



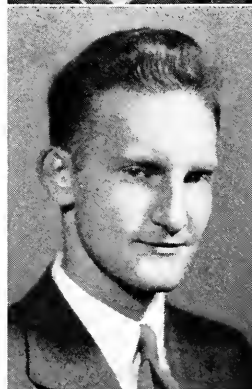
John H. Cowles

68 Victoria Road, New Britain, Connecticut
Mechanical Engineering

Nu Epsilon Zeta; Dean's List 3; Intramural Basketball 5; Student Council 4, President 5; CAULDRON Board 4, 5, Editor-in-Chief 5; Band 2; Class President 5; S. A. M. 5, Vice-President 4; A. S. M. E. 3, 5, Vice-Chairman 4, Chairman 4; Husky Plus Committee 4, 5; Who's Who Among Students in American Universities and Colleges

CO-OPERATIVE WORK

Fafnir Bearing Co. . . . New Britain, Conn. . . . Inspector—Terry Steam Turbine . . . Hartford, Conn. . . . Turbine Tester





Howard M. Curry

53 South Central Street, Bradford

Liberal Arts—Chemistry

Dean's List 2, 3, 4, 5; A. C. S. 2, 3, 5, Vice-President 4

CO-OPERATIVE WORK

Tyer Rubber Co. . . . Andover . . . Laboratory Assistant



Joseph H. Deery

83 St. Rose Street, Boston

Business Administration

Intramural Basketball 5; S. A. M. 2, 3, 4, 5; Law and Accounting Club 2, 3, 4, 5

CO-OPERATIVE WORK

*Sears Roebuck Co. . . . Boston . . . Clerk—Murray Co.
. . . South Boston . . . Laborer—Fore River Ship Yard
. . . Quincy . . . Marker*



James J. Douville

800 Worcester Street, Wellesley

Liberal Arts—Economics

Student Union 4, Pops Chairman 5; Band 1, 2

Nathan Freedman

153 Howard Avenue, Roxbury
Electrical Engineering
Freshman Honor List; Dean's List 2, 3, 4, 5; A. I. E. E.
2, 3, 4, 5; Dean's List Scholarship 3, 4
CO-OPERATIVE WORK
National Co. . . . Malden . . . Assembly



Alex R. Giarrusso

6 Quincy Street, Methuen
Business Administration
Intramural Basketball 5; Law and Accounting Club;
S. A. M.; Member of Senior Committee



Herbert J. Goulston

6 Shailer Street, Brookline
Liberal Arts—Pre-Medical
Band 1; Baseball 3; A. C. S. 3





George F. Gowen

677 Dudley Street, Dorchester
Liberal Arts English
Student Union Cabinet 4, 5; *News* 3, 4; *Dramatics Club*
4, 5; *Literary Club* 3, 4

CO-OPERATIVE WORK

Boston Globe . . . *Boston* . . . *Head of Advertising Rep-*
resentatives



Lawrence P. Graves

52 Circuit Park, Melrose
Industrial Engineering
Rifle Club 1; *Yacht Club* 2; *A. S. M. E.*; *S. A. M.*;
E. R. C.

CO-OPERATIVE WORK

Tucker Concrete Form Co. . . . *Malden* . . . *Draftsman—*
Service Caster and Truck Co. . . . *Somerville* . . . *Machine*
Shop—General Electric Co. . . . *Lynn* . . . *Student*
Engineer



Richard W. Greenwood

East Mill Street, Hopkinton
Chemical Engineering
Nu Epsilon Zeta; *Dean's List* 3, 5; *Interfraternity Soft-*
ball and Bowling 3, 5; *Student Union* 1, 2, 3; *A. I. Ch. E.*
2, 3, 5; *Treasurer* 4; *A. C. S.* 4, 5; *Fraternity Secretary*
4, 5; *Interfraternal Council Vice-President* 4, 5; *Senior*
Class Social Chairman; *Husky Plus Club* 5. *In the class*
of '34: Chairman Freshman Cabinet; Vice-President in
Sophomore Year; Middler Dance Committee; Junior
CAULDRON Staff; Alumni President; Veterans' Association,
2nd Lieutenant in Reserves

CO-OPERATIVE WORK

Consolidated Biscuit Co. . . . *West Roxbury* . . . *Production*
Worker—British Purchasing Comm. at National Fire-
works, Inc. . . . *West Hanover* . . . *Inspector Commercial*
Filters, Inc. . . . *South Boston* . . . *Laboratory Assistant*

Grant S. Healy

*Union Point, Webster
Mechanical Engineering*

*Beta Gamma Epsilon; Fraternity Treasurer 3, President
4, 5; Interclass Basketball 5; A. S. M. E. 4, 5; S. A. M.
Secretary 4, 5; Yacht Club Executive Committee 3, Fleet
Captain 4, Vice-Commodore 5; Husky Plus 4, 5; Interfrat-
ernity Council 5*

CO-OPERATIVE WORK

*General Electric Co., River Works . . . Lynn . . . Tool Job
—Stevens Linen Works, Inc. . . . Webster . . . Maintenance*



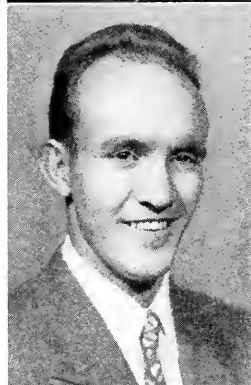
Arthur Hebert

*Highland Road, Tiverton, Rhode Island
Civil Engineering*

*Student Council 4, 5; Class Secretary 5; Senior Week
Committee 5; CAULDRON Board 4, 5; N. U. C. E. S. 2,
Treasurer 3, Secretary 4, President 5; Yacht Club 1, 2*

CO-OPERATIVE WORK

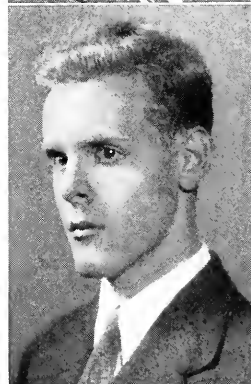
*U. S. Engineers Department . . . Bedford . . . Concrete
and Asphalt Inspector*



Harold A. Huckins, Jr.

*98 Lewis Road, Belmont
Chemical Engineering*

*Dean's List 2; Track Team 2, 3; Intramural Basketball
3, 5; Intramural Softball 1, 2; News, Photographic Staff 3,
Photographic Editor 3, 4, 5; Chess Club 1, 5; A. C. S.
4, 5; Yachting Club Skipper 3, 4, 5; Cosmopolitan Club
5; A. I. Ch. E. 4, 5*





Robert D. Hunt

5 Cottage Street, East Weymouth
Business Administration
Freshman Honor List; Dean's List 3, 4; Interfraternity
Club 4, 5; S. A. M. 4, 5; Law and Accounting Club 2



Leo C. Jerzyk

19 Hardy Street, Salem
Liberal Arts—Economics—Sociology
International Relations Club 2, 3; German Club 2, Sec-
retary 3; Dramatic Club 2, 3



Richard E. Johnson

31 Congress Street, Walpole
Mechanical Engineering
Beta Gamma Epsilon; Fraternity Treasurer; Freshman
Honor List; Dean's List 4; Intramural Basketball;
A. S. M. E.

CO-OPERATIVE WORK
Bird & Son . . . East Walpole . . . Helping Shipping Gang

Howard N. Kaufman

42 Wainwright Street, Dorchester
Mechanical Engineering

Freshman Honor List; Dean's List 2, 3, 4, 5; Treasurer
S. A. M. 5; A. S. M. E. 3, 4, Social Chairman 5; Rifle
Club 1



Richard L. Kennedy

381 Lawrence Road, Medford
Business Administration

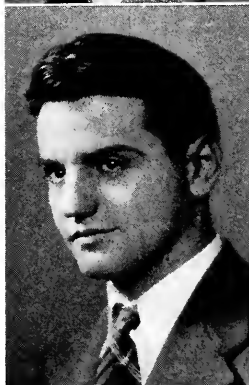
Freshman Honor List; Student Council 5; News 4,
CAULDRON 4, 5, Business Manager of News, CAULDRON;
N. U. Choral Society 1, 2, 3, 4, Secretary 5; S. A. M. 3, 4,
Treasurer 5; Law and Accounting Club 2, 3



George P. Koskoris

130 Bird Street, Dorchester
Chemical Engineering

Science Club 1; Yacht Club 3, 4, 5; A. I. Ch. E. 4, 5;
A. C. S. 2, 3, 4, 5





Roy C. Laible

69 Albano Street, Roslindale

Liberal Arts—Chemistry

A. C. S., 3, 4, 5

CO-OPERATIVE WORK

Steadfast Rubber . . . Mattapan . . . Assistant Rubber
Chemist



Robert S. Lang

30 Howard Street, North Weymouth

Mechanical Engineering

Beta Gamma Epsilon; Fraternity Secretary; Intramural

Softball 1, 3; Intramural Basketball 5; A. S. M. E.

CO-OPERATIVE WORK

Bethlehem Steel Corp. . . Quincy . . . Draftsman



Max Leiter

Salem Street, Wilmington

Liberal Arts—Pre-Medical

Glee Club 1, 5

Lester B. Linsky

244 Chestnut Street, Chelsea
Electrical Engineering

Freshman Honor List; Dean's List 5; News 1; A. I. E. E.
2, 3, 4, 5



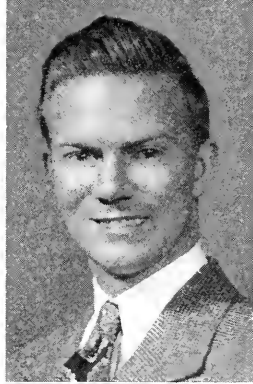
Arthur K. Littlefield

29 Oxford Avenue, Bradford
Liberal Arts—Psychology

Nu Epsilon Zeta; Freshman Honor List; Dean's List 2, 3,
4, 5; Student Council 3, Publicity and Civic Affairs
Chairman 4, 5; News, Editorial Board 3, Editor-in-Chief
3, 4, 5; Dramatic Society Publicity Committee 4; Repre-
sentative to Model Congress of Students 4, Provisional
Chairman 4; Vice-President Veterans Association 4, 5;
Senior Week Committee 5; Who's Who Among Students
in American Universities and Colleges

CO-OPERATIVE WORK

F. S. Mosley Co. . . . Boston . . . Stock Messenger and
Mail Clerk



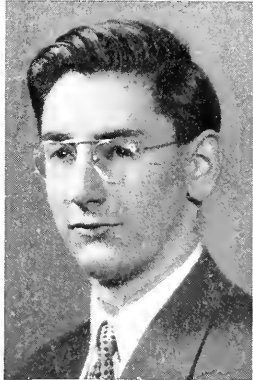
Thomas G. MacAnespie

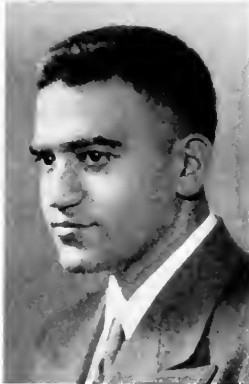
601 East Eighth Street, South Boston
Mechanical Engineering

Freshman Honor List; A. S. M. E. 3, 4, 5; Chess Club 2, 3

CO-OPERATIVE WORK

Atlantic Research Associates . . . Newtonville . . . Drafts-
man, Designer, Layout—NyLite Corp. . . . South Boston
. . . Sheet Metal Worker—Stevens-Arnold, Inc. . . . South
Boston . . . Assembly and Wiring of Control Panels for
Machinery





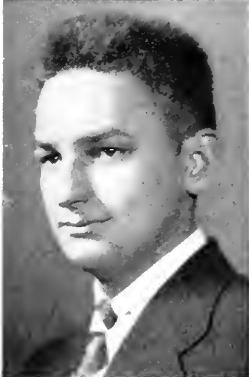
Azad Maranjian

384 North Bedford Street, East Bridgewater
Liberal Arts—Psychology, Sociology
Dean's List 3, 4; Student Union 1, 2, 3, 4, 5; Charter
Member and Co-organizer of Literary Club; International
Relations Club



Thomas L. McDonough

604 Western Avenue, Lynn
Mechanical Engineering
Dean's List 4; Intramural Basketball 5, Captain 5; Intra-
mural Softball 1, 3; News 1; CAULDRON Staff 4, Formal
Pictures Editor 5; A. S. M. E. 3, 4, Secretary 5; S. A. M.
4, Secretary 5; Alumni Treasurer
CO-OPERATIVE WORK
General Electric Co., River Works . . . Lynn . . . Elec-
trical Engineering Department

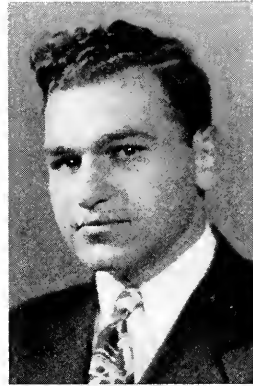


James E. Mrose

42 Prosper Street, Malden
Electrical Engineering
Freshman Honor List; Dean's List 3, 5; A. I. E. E. Sec-
retary-Treasurer 3, Vice-Chairman 4, Chairman 5; Alumni
Vice-President
CO-OPERATIVE WORK
Boston Edison Co. . . Boston . . . Laboratory Test Work

Arthur A. Najarian

180 High Street, Lawrence
Electrical Engineering
*Sigma Phi Alpha; Interfraternity Softball 1; Fraternity
House Manager 2, Secretary 3, President 4, Executive
Council 5; A. I. E. E. Executive Committee 2, 3, 4, 5;
Class Vice-President 4, 5; Interfraternity Council 5*
CO-OPERATIVE WORK
*General Electric Co., River Works . . . Lynn . . . Assistant
Foundry Control Engineer*



David R. Nowell

90 Madison Street, Fall River
Mechanical Engineering
*Nu Epsilon Zeta; Fraternity Secretary 3, Vice-President
4; A. S. M. E. 3, 4, 5; S. A. M. 4, 5*
CO-OPERATIVE WORK
*Firestone Rubber & Latex Products Co. . . . Fall River
. . . Student Engineer*



Nathan Rose

123 Lucerne Street, Dorchester
Liberal Arts—Psychology
Dean's List 2, 3, 4, 5; Student Union 2, 3, 4, 5





Melvin J. Rosenfeld

83 Walnut Street, Chelsea

Chemical Engineering

Freshman Honor List; Intramural Basketball 4, 5; Softball 4, 5; Rifle Club; A. I. Ch. E. 3, 4, 5, Council 2; A. C. S. 3, 4, 5

CO-OPERATIVE WORK

American Finish & Chemical Co. . . . Chelsea . . . Laboratory Assistant



Alfred J. Scandura

38 Sargeant Street, Lawrence

Chemical Engineering

Intramural Basketball 3, 5; Softball 4, 5; Swimming 1; Band 1; A. C. S. 3, 4, 5; A. I. Ch. E. 2, 3, 4, 5, Vice-President



Gordon H. Searles

16 Benefit Street, Worcester

Civil Engineering

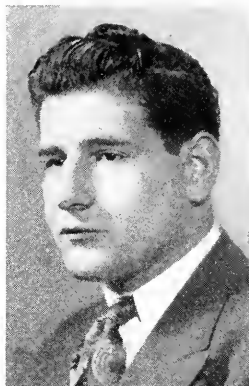
Sigma Phi Alpha; N. U. C. E. S. 2, 3, 4, Secretary 5; Fraternity Treasurer 4, Secretary 5

CO-OPERATIVE WORK

Boston & Albany R. R. . . . Boston . . . Chairman

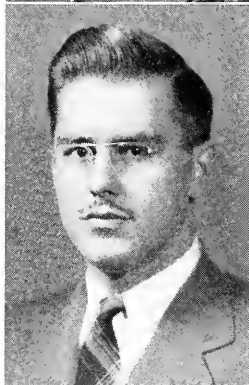
George J. Selados

1740 Washington Street, Boston
Business Administration
Football 1; Basketball 5; Intramural Basketball 5;
S. A. M.; Law and Accounting Club
CO-OPERATIVE WORK
Loomis Sayfest Co., Inc. . . . Boston . . . Stock Changes
Recorder and General Office Work



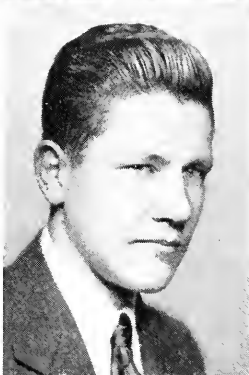
Alfred P. Sieklucki

19 Plymouth Street, Hartford, Connecticut
Electrical Engineering
Track 1, 2, 3; Football 1, 2; A. I. E. E. Secretary-Treasurer 4, Vice-Chairman 5
CO-OPERATIVE WORK
Research Construction Co. . . . Cambridge . . . Radio Assembler—Submarine Signal Co. . . . Boston . . . File Clerk
—Spencer Turbine Co. . . Hartford . . . Sheet Metal Worker



John Sikora

12 Demond Street, Springfield
Civil Engineering
Phi Gamma Pi; Fraternity President 5; Baseball 3, 5;
Intramural Basketball 5; N. U. C. E. S. 2, 3, 4, Treasurer 5
CO-OPERATIVE WORK
N. Y., N. H. & H. R. R. . . . Hartford . . . Railroad Inspector





Reuben J. Silver

505 Main Street, West Medway
Liberal Arts—Psychology
Freshman Honor List; Dean's List 2, 3, 4, 5; Sears B.
Condit Award; Student Union 3, 4, 5



Louis S. J. Simeone

31 South Main Street, Cohasset
Liberal Arts—Mathematics
Dean's List 4, 5; Track 3; Cosmopolitan Commission
1, 2, 3, 4, 5



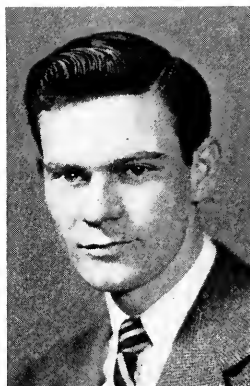
Russell Stiles

31 Curtis Street, Weymouth
Liberal Arts—Economics—Sociology
Baseball 1, 2, 4, 5, Captain 3

Alexander A. Sweeney, Jr.

Labor-in-Vain Road, Ipswich
Business Administration
Freshman Honor List; Intramural Basketball 5; S. A. M.
4, 5; Law and Accounting Club 2; Cosmopolitan Club 1;
I. R. C. 2

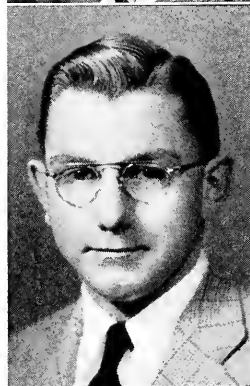
CO-OPERATIVE WORK
Sylvania Electric Products . . . Danvers . . . Cost Clerk—
General Electric Co. . . . Lynn . . . Cost Clerk



John K. Taylor

Park Lane, Northboro
Mechanical Engineering
Interclass Basketball 5; A. S. M. E.

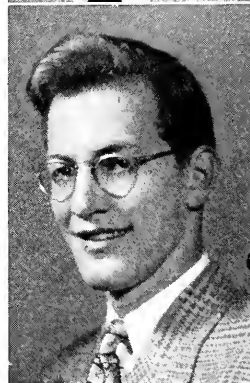
CO-OPERATIVE WORK
Bay State Abrasives . . . Westboro . . . Rate Setter—
N. Y., N. H. & H. R. R. . . . Hartford . . . Draftsman—
B. S. Roy & Sons . . . Worcester . . . Lathe Operator



Carl Tinglof, Jr.

2227 Washington Street, Canton
Mechanical Engineering
Phi Gamma Pi; Intramural Baseball 3, 4; Intramural
Basketball 5; A. S. M. E.

CO-OPERATIVE WORK
Electro Products Co. . . . Waltham . . . Machinist





Ben H. Tongue

12 Spencer Street, Springfield
Electrical Engineering
Freshman Honor List; Dean's List 2, 3, 4, 5; A. I. E. E.
2, 3; I. R. E. 5; Music Appreciation Hour 4
CO-OPERATIVE WORK
Westinghouse Electric & Manufacturing Co. . . . East
Springfield . . . Laboratory Assistant in Engineering
Department



Anthony F. Tuccelli

11 Ten Hills Road, Somerville
Chemical Engineering
Sigma Phi Alpha; Intramural Basketball, Softball 4, 5;
I. I. Ch. E. 2, 3, 4, Treasurer 5; A. C. S. 2, 3, 4, 5
CO-OPERATIVE WORK
Rust Proofing & Finishing Co. . . . Cambridge . . .
Assistant Shipper



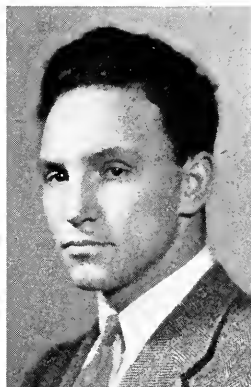
Vahan C. Vorperian

21 Symphony Road, Boston
Business Administration
Sigma Society; Freshman Honor List; Dean's List 2, 3, 4,
5; Intramural Basketball 5; Sigma Society Award 2;
Charles Hayden Scholarship 1
CO-OPERATIVE WORK
Sears Roebuck & Co. . . . Boston . . . Sales Clerk—Jack-
son & Moreland, Engineers . . . Boston . . . Cost Clerk

Kenneth T. Walden

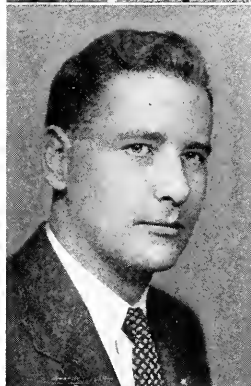
18 Franklin Street, Northampton
Mechanical Engineering

Phi Gamma Pi; Fraternity Treasurer 4, 5, Social Chairman 3; Varsity Football 1; A. S. M. E. 3, 4, 5; Senior Week Committee 5; Cosmopolitan Club 1, 2



Robert L. Watson

2321 Washington Street, Newton Lower Falls
Liberal Arts—English



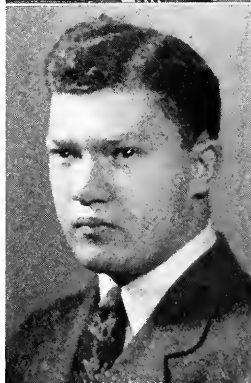
Murray A. Weinfeld

9 Ferrill Street, Mattapan
Liberal Arts—English

Cosmopolitan Club 4, 5, Vice-President 3; Literary Club 3; News 3, 4, Literary Editor; N. U. Veterans' Association 3, 4, 5; Dramatic Society 4; Student Union 4, 5; Freshman Representative

CO-OPERATIVE WORK

Boston Globe . . . Boston . . . Business Office





Edward R. Willett

61 Palmer Street, Arlington

Business Administration

Freshman Honor List; Dean's List 2, 3, 4, 5; Intramural Basketball 4; Student Council 3, 4, 5; Student Union 3, 4, 5; News 3, 4, Managing Editor; Veterans' Association; S. A. M.; Charles Hayden Scholarship

CO-OPERATIVE WORK

National Casket Co. . . . Cambridge . . . Clerk



Roderick V. Woodbury

5 Washington Court, Boston

Mechanical Engineering

Nu Epsilon Zeta; Fraternity Pledge Chairman 5; A. S. M. E. 3, 4, 5; S. A. M. 4, 5, President; Chess Club 4, 5; Alumni Secretary

CO-OPERATIVE WORK

Commercial Filters . . . Boston . . . Laboratory Tester of Filters—Fore River Shipyard . . . Quincy . . . Pipe Fitter's Helper



Roy L. Wooldridge

203 Fayette Street, Quincy

Civil Engineering

Freshman Honor List; Dean's List 2, 3, 4, 5; CAULDRON Board 4, Managing Editor 5; N. U. C. E. S. 2, 3, 4, Vice-President 5; Senior Week Committee; Sears B. Condit Award 4

CO-OPERATIVE WORK

W. S. Crocker, C. E. . . . Boston . . . Rodman

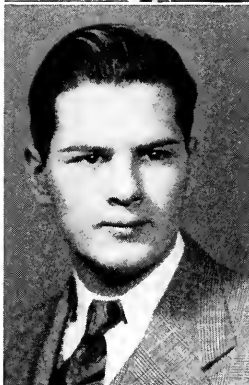
Vincent L. Ysebaert

60 *Wyman Street, Jamaica Plain*
Liberal Arts—Psychology
News 3; Literary Club 3



Malvin M. Yurko

14 *Eldert Street, Brooklyn, New York*
Mechanical Engineering
Freshman Honor List; A. S. M. E. 3, 4, 5
CO-OPERATIVE WORK
Sperry Gyroscope Co., Inc. . . . Brooklyn, N. Y. . . .
Tester-Inspector



George M. Zoza

198 *M Street, South Boston*
Electrical Engineering
Freshman Honor List; Dean's List 3; Chess Club 2, 3,
4, 5; A. I. E. E. 2, 3, 4, 5
CO-OPERATIVE WORK
Boston Edison Co. . . . Boston . . . Laboratory Assistant



Senior Class Officers



First Row (left to right): Hebert Najarian, Walden Ciachini, G. Carlbin, Woodbridge Greenwood, Hebert Chin

Senior Week Committee



*First Row (left to right): Hebert Najarian, Walden Ciachini, G. Carlbin, Woodbridge Greenwood, Hebert Chin
Second Row (left to right): Walden Ciachini, Carlbin, Woodbridge Greenwood*

R E T R O S P E C T I O N

The passing of the Class of 1947 into the portals beyond the gates of Northeastern University sees the passing of the first complete war-time class, the last but not least complete class of men students, the first class in which some were not able to participate in the cooperative plan, and a class that saw a decrease in campus life due to the war.

Yes, we were the first completely war-time class—we went through college under the strain of war—we saw the enrollment of the school go from 2500 students to about 900—it was a period when our professors were given leaves of absence to go with other colleges, universities, or government agencies to help out in the war effort while the remaining ones took over the duties of those who had left.

After our first year, co-eds began to appear on the campus. It didn't take long for them to become active in the school activities.

Due to the full-time plan which came about in 1943, our class missed out on the benefits of the cooperative plan.

As the war progressed, campus life decreased. Organizations of the school kept

losing so many of their key men that it was impossible to plan any campus affairs.

Freshman

Our start at Northeastern University began in July of 1942, plus a few of us who entered ten weeks later—remember the morning of filling out cards and then taking examinations, the talks given us by the professors, and receptions? Looking back over it all now, those were the days when King Husky II met us in our first reception, when President Ell told us that we were doing as an important job coming to college as the servicemen are doing—when such activities as swim parties, professors and seniors softball games were being played—and an all-University roundup was being held. We were introduced to our Class Adviser, Professor Albert J. Lynd. This was the year we saw almost a normal activities year—there were football rallies on the steps of Richards Hall—football games where even our class had players on the varsity squad and we could see King Husky II at all the games—and when we watched a year of normal activities of basketball, track, and cross country. Throughout the year, more and more fellows joined the Reserves—calisthenics were held out in the parking lot—and students were being called up by the draft continually. Such were the activities and happenings around the campus during our freshman year.

While all these things were going on, our own class started to function. We held a dance in December at the Hotel Bradford.



This being our first dance we were very pleased with the success of the affair. It was a success both socially and financially. The fellows on the committee planned and executed the dance wonderfully and were given much credit after the dance. In February 1943, another dance was held at the Copley Plaza. The freshman class holding a function at the Copley Plaza was novel to the upper-classmen for it had been a long time since the freshmen had felt confident enough to plan, and make a success of, such an affair. But the dance went off with the satisfaction of all.

Sophomore Class

The beginning of our sophomore year found Division A out on cooperative work while Division B still studied as freshmen. When we caught up to each other in studies, the cooperative plan on the ten-week basis was put in the files and the college continued on a full-time basis. This came about by the war, and also because the Army program began with our second term. Professor Lynd left school at this time, and Professor Antonio M. Mezzacappa took over as Class Adviser to our class.

In the class elections Frank Watts was elected President of the class; Anthony Pan-

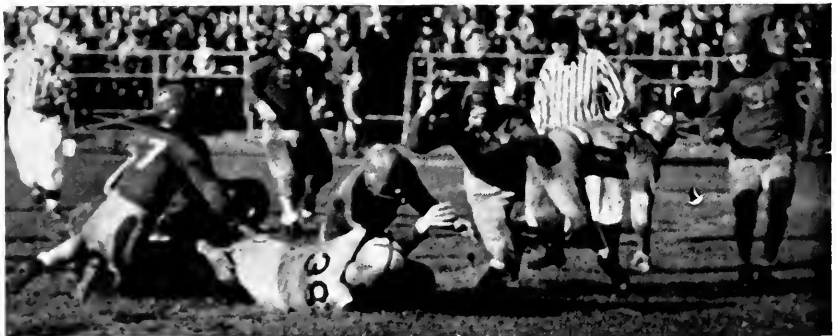
diseio elected Vice-President; Mario Alves elected Secretary; Donald Philbrick elected Treasurer, and Walter Glazer elected Social Chairman. It was this year that our class held a joint dance with the frosh at the Copley Plaza—another successful affair.

During this year, the last group of Reserves left the college on their way to do their bit for the war effort.

Middler Year

Class elections were held the first part of the semester in order to get busy on a class function. The officers elected were: President, Anthony Pandiseio; Vice-President, Mario Alves; Secretary, Thomas Chin; Treasurer, Donald Philbrick. After elections, a class smoker was planned. The success of the affair was placed in the hands of a committee of five. These fellows were: Tony Pandiseio, Marty Alves, Don Philbrick, Thomas Cain, and Cookie Samuelian. Credit was also given to Dave Cabill for his work.

At the smoker, the night was noted by its entertainment. The master of ceremonies of the affair was Tony Pandiseio. We had a speaker from the Boston Globe by the name of Jerry Nason who was sports editor at that time. Entertainment was supplied by Sunya



Slane Goldman, Margie Hart Gotthardt, Ann Corio Yamartino, and Gypsy Rose Lee Samuelian, who gave their imitation of languid and sultry dance routines. The smoker was a night of hilarious and exciting entertainment.

Junior Year

Our junior year was a quiet one in the line of class activities. The quietness seen over the whole campus this year—there seemed to be a let-down because of the rapid pace that we were getting our schooling, the heat of the summer, and loss to the services of Anthony Pandiscio and Mario Alves. The officers elected were: David Cahill, President; Arthur Najarian, Vice-President; Walter Ciaschini, Secretary, and Thomas Chin, Treasurer. The semester was highlighted by Pops Night combined with the girls of Simmons. During this year we changed Class Adviser again. Mr. Eugene Pare took over Professor Antonio M. Mezzacappa's duties.

Senior Class

The time certainly passed quickly, for before we knew it we were seniors. Going to school on the full-time basis was a fast and rapid pace. Class elections were held, and the officers elected were: President, John H. Cowles; Vice-President, Arthur Najarian; Secretary, Arthur Hebert; Treasurer, Thomas Chin; and Social Chairman, Richard Greenwood. The activity of the year was the Valentine Dance. The ball was held at the New England Mutual Hall with Ruby Neuman's orchestra with the delightful Billy Crosby



leading the band. The dance went along fine with refreshments served free to all, and the choosing of Miss Valentine. There were many beautiful girls to choose from, which made the competition keen. But the senior class still are the best pickers when it comes to taking the most beautiful girls out. Ken Walden brought the winner, a member of our class. The dance flourished very well. There wasn't the usual heat and crowding of dances, but it was a comfortable and enjoyable affair.

The rest of our senior year was spent mostly in the finding of our after-graduation employment. We all had a lot of interviews, and some had the opportunity to go on trips to the various companies. Along the way, we had to plan for our senior week. And, it didn't take long for that week to catch up to us. The week was highlighted by an alumni banquet, and the formal senior dinner dance. The alumni banquet was fine. We met men who had graduated from school in previous years and talked with them informally about their successes. The dinner dance went off fine with everyone enjoying the last affair together as a student class at Northeastern University. And so we passed on, giving way to another class.





Activities



JOHN H. COWLES, '47
President

THOMAS W. F. CHIN, '47
Treasurer

DAVID R. CAHILL, '47
Vice-President

STANLEY W. LOVEJOY, '47
Secretary

DEAN HAROLD W. MELVIN
Faculty Adviser

Student Council

CLASS OF 1947

William J. Arvedon
Arthur K. Littlefield
Edward R. Willet
Arthur Hebert
Ernest M. Cook
Richard L. Kennedy

CLASS OF 1948

Paul V. Shaughnessy
Mary H. Bigelow
Lois A. Brady
Stephanie Chopek
Grace P. McKinlay
Edward C. Wallace
Louis J. Gold

CLASS OF 1949

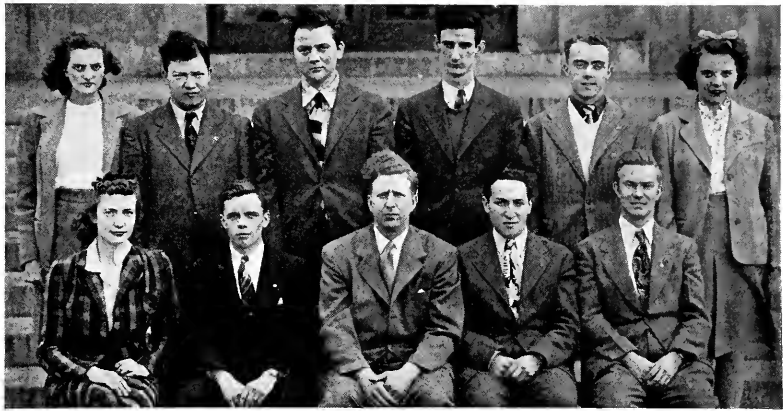
Alfred diScipio

EX-OFFICIO MEMBERS

Harold Dybvik, '49
Jeanne L. Hillman, '49
Elliot V. Rice, '48
William Davidson, '48
Arthur J. Cunningham, '49



First Row, left to right: Hillman, Willett, Chin, Cowles, Cahill, Lovejoy, Bigelow. Second Row, left to right: Cook, Brady, McKinlay, Chopek, Davidson, Littlefield. Third Row, left to right: Dybvik, Hebert, Shaughnessy, Kennedy



*First Row, left to right: Leach, Bury, Shaughnessy, Davidson, Littlefield
Second Row, left to right: Overton, Weinfeld, Peterson, Douville, Willett, Watts*

PAUL V. SHAUGHNESSY, '48
President

ROY J. K. PETERSON, '48
Treasurer

LOUIS I. GOLD, '48
Vice-President

SHELLY PEARLMAN, '48
Secretary

DEAN CHARLES W. HAVICE
Faculty Adviser

ADVISORY BOARD

Dean William C. White
Dean Harold W. Melvin
Dean Charles W. Havice
Professor Edward S. Parsons

COMMITTEE CHAIRMEN

Bramwell A. Bury, '48
James J. Douville, '47
Arthur K. Littlefield, '47
John B. Morrice, '48
Edward R. Willett, '47

COMMITTEE MEMBERS

Louisa J. Ashton, '49
George F. Gowen, '47
Eleanor F. Leach, '49
Azad Maranjan, '47
Hannah H. Rothschild, '48



**Student
Union
Cabinet**



Prof. Everett C. Marston

FACULTY ADVISER

Arthur Hebert

INFORMAL PICTURES EDITOR



Richard L. Kennedy

BUSINESS MANAGER

The '47 CAULDRON BOARD

John H. Cowles

EDITOR-IN-CHIEF



Thomas L. McDonough

PHOTOGRAPHIC EDITOR

Roy L. Wooldridge

MANAGING EDITOR



NEWS

Elliot V. Rice, '48E
Editor-in-Chief

J. Richard Brown, '48BA
Managing Editor

James H. Brown, '49E
News Editor

Alfred J. Pacelli, '48E
Sports Editor

Arthur Cunningham, '49LA
Feature Editor

Leo J. Mishner, '49BA
Make-Up Editor

Kurt Wessely, '49E
Photographic Editor

Mark H. Mathes, '49BA
Business Manager

Robert D. Wolff, '48LA
Office Manager

Lillian Kolodiz, '49E
Circulation Manager

Hebert Lerner, '49E
Advertising Manager

Professor Everett C. Marston
Faculty Adviser

NEWS STAFF

William S. Filler, '49E
Shirley Hansen, '49LA
Francis M. Myers, '49LA
Harold Palefsky, '49E
Eleanor K. Watts, '49BA
William Yalden, '49LA

FEATURE STAFF

Saul Brody, '49BA
Joseph Crescimbeni, '49LA
Granville E. Reed, '48LA
Marvin Rogers, '48LA
Jacob Roseman, '49LA
Paul V. Shaughnessy, '48LA
Lois Waldman, '49LA
Leonard Weiss, '48BA

SPORTS STAFF

E. Newell Austin, '48E
Charles Block, '49E
William Buchanan, '49LA
Melvin R. Burstein, '49BA
Martin Grossack, '50LA
Ernest E. Mills, '48E
Mel Silverman, '49E

CIRCULATION STAFF

Esther Fafel, '49LA
John Morrice, '48LA
Ruth Reiner, '48LA
Martin Rottenberg, '49E
Alfon L. Rudsit, '49E
Barbara Stone, '49LA
Samual Simon, '49E
Earl Yavner, '49E

GENERAL STAFF

Phyllis Dennett, '49LA
Cecily M. Epstein, '49LA

ADVERTISING STAFF

Robert Weiner, '47E

PHOTOGRAPHIC STAFF

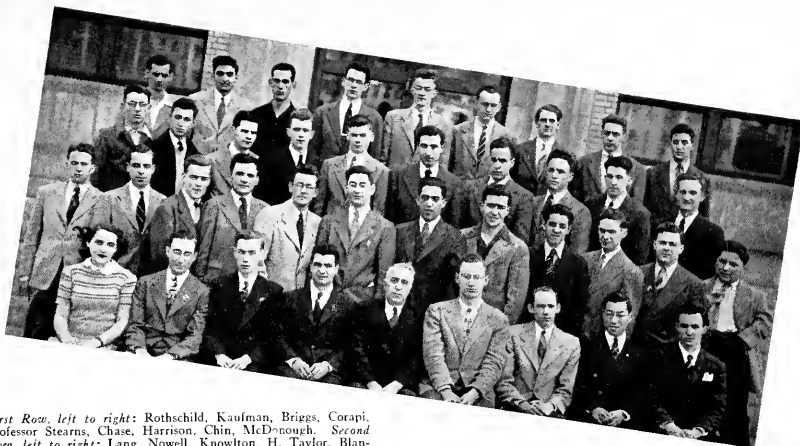
Allan Barnett, '49BA
Joseph Wolfson, '49E

MAKE-UP STAFF

Edgar T. Navin, '49BA



First Row, left to right: Pacelli, J. Brown, R. Brown, Rice, Cunningham, Lerner, Professor Marston. Second Row, left to right: Hanson, Crescimbeni, Leach, Pepin, Watts, Barnett, Carlson. Third Row, left to right: Block, Amsie, Mills, Yalden, Shaughnessy, Wiener, Wessely



First Row, left to right: Rothschild, Kaufman, Briggs, Corapi, Professor Stearns, Chase, Harrison, Chin, McDonough. Second Row, left to right: Lang, Nowell, Knowlton, H. Taylor, Blanchard, MacAnespie, Baker, Sandler, Moscatelli, Wiener, Cook, Abbondante. Third Row, left to right: J. Taylor, Heffron, Yurko, Healy, Mills, Hoffman, Johnson, Walden, Scruton, Cowles. Fourth Row, left to right: Preston, Levine, Castelli, Lovejoy, Tinglof, Lambert, Woodbury, Tuttle, Caplan

CLASS OF 1947

Cosmo Abbondante
 Jason B. Baker
 C. Reed Blanchard
 Thomas W. F. Chin
 Ernest M. Cook
 Vincent Corapi
 John H. Cowles
 Grant S. Healy
 Richard E. Johnson
 Howard N. Kaufman
 Stanley W. Lovejoy, Jr.
 Robert S. Lang
 Thomas G. MacAnespie
 David R. Nowell
 John K. Taylor
 Carl Tinglof, Jr.
 Kenneth T. Walden
 Roderick V. Woodbury
 Malvin M. Yurko

CLASS OF 1948

Ernest N. Austin
 Irving M. Cahn
 Evo Castelli
 David Feinzig
 Carl E. Fuller
 Edward Hoffman
 Frank Lambert
 Bernard C. Levine
 Felix Moscatelli
 Hannah H. Rothschild
 Henry D. Trowsdale
 Aaron M. Caplan
 Wilbur H. Farley
 Pauf Heffron
 Charles W. Knowlton
 Ernest E. Mills
 John L. Preston
 Hyman Sandler
 George S. Scruton
 Leonard Spitz
 Leon H. Steiff
 Harold E. Taylor
 Roger N. Tuttle
 Lester Wilber
 Robert Weiner

ARTHUR L. CHASE, '47

Chairman

RALPH G. BRIGGS, '47

Vice-Chairman

THOMAS L. McDONOUGH, '47

Secretary

ROBERT G. HARRISON, '48

Treasurer

PROF. FREDERICK A. STEARNS

Faculty Adviser

American Society of Mechanical Engineers

JAMES E. MROSE, '47
Chairman

ALFRED P. SIEKLUCKI, '47
Vice-Chairman

JASON KLAYMAN, '48
Secretary-Treasurer

PROFESSOR ROLAND G. PORTER
Faculty Adviser

CLASS OF 1947

Jerome H. Bloom
 Walter W. Bordewick
 Walter Ciaschini
 Nathan Freedman
 Lester B. Linsky
 Arthur A. Najarian
 George M. Zoza

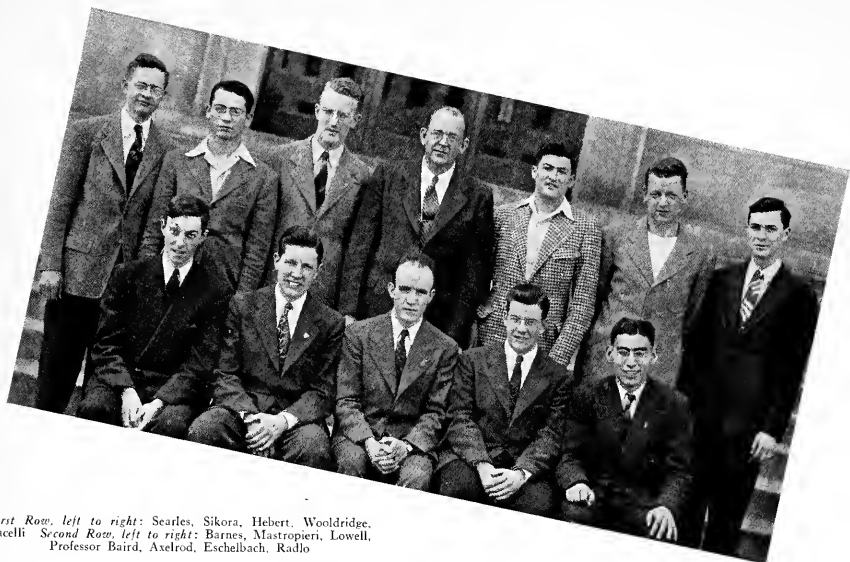
CLASS OF 1948

Alfred L. Brody
 Theodor Brooker
 William Davidson
 Robert Costello
 Phillip Garnek
 Russell A. Johnson
 Ernest J. A. Landin
 John J. Leahy
 Raymond Oden
 Leroy J. Rackliffe
 Brian H. Saunders
 Edwin P. Uses

American Institute of Electrical Engineers



First Row, left to right: Ciaschini, Linsky, Bloom, Klayman, Mrose, Sieklucki, Najarian. Second Row, left to right: Leahy, Harris, Bordewick, Brody, Radcliffe, Freedman, Yee, Davidson. Third Row, left to right: Tonque, Garnick, Zoza, Uses, Torres.



First Row, left to right: Searles, Sikora, Hebert, Woolldridge, Pacelli. Second Row, left to right: Barnes, Mastropieri, Lowell, Professor Baird, Axelrod, Eschelbach, Radlo

CLASS OF 1948

Charles Axelrod
 Bernard A. Barnes
 Donald B. Carter, Jr.
 John M. Campbell
 Carl W. Eschelbach
 David I. Lowell
 Alfred J. Pacelli
 Francis J. Mastropieri

ARTHUR HEBERT, '47
President

JOHN SIKORA, '47
Treasurer

ROY L. WOOLDRIDGE, '47
Vice-President

GORDON H. SEARLES, '47
Secretary

PROFESSOR CHARLES O. BAIRD, JR.
Faculty Adviser

Northeastern University

Civil Engineering Society

ARNOLD D. CARLIN, '47
President

ANTHONY F. TUCCELLI, '47
Secretary

ALFRED J. SCANDURA, '47
Vice-President

MANUEL G. KOUTRAKIS, '48
Treasurer

PROFESSOR CHESTER P. BAKER
Faculty Adviser

CLASS OF 1947

John A. Burbidge
David R. Cahill
Richard W. Greenwood
Harold A. Huckins
George P. Koskoris
Leon Rubin
William Raffell
Melvin J. Rosenfeld

CLASS OF 1948

Joseph Caputo
Isadore Cooperman
Alfred H. Isenberg
Lillian Kolodiz
Charles Mitchell
Nicholas Pandiscio
Norman Rubin
Robert Walsh

CLASS OF 1949

Jeanne Hillman

American Institute of Chemical Engineers



First Row, left to right: Greenwood, Scandura, Carlin, Tuccelli, Rosenfeld. Second Row, left to right: Koskoris, Burbidge, Hillman, Cooperman, Catotti, Cahill. Third Row, left to right: Curry, Huckins, Laible

AMERICAN CHEMICAL SOCIETY



First Row, left to right: Frenkel, Reiner, Greenwood, Salos, Curry, Rosen, Laible. Second Row, left to right: Koskoris, Rubin, Holstein, Cooperman, Koutrakis, Rosenfeld, Mitchell, Cohen, Carotti, Vozella. Third Row, left to right: Cahill, Fritz, Isenburg, Huckins, Fishman, Cotter, Tuccelli, Carlin, Wolfson

EMANUEL SALOS, '48

Chairman

ARTHUR A. VERNON

Faculty Adviser

CLASS OF 1947

Arnold D. Carlin
Harold A. Huckins, Jr.
David R. Cahill
Melvin J. Rosenfeld
Roy Laible
Richard W. Greenwood
Anthony F. Tuccelli
George P. Koskoris
Howard M. Curry
Herbert J. Goulston, Jr.

CLASS OF 1948

Charles T. Mitchell
Alfred H. Isenberg
Norman Rubin
Manuel G. Koutrakis

William A. McWilliams
Bernard E. Lawson
Isadore N. Cooperman
Joseph A. Caputo
Nicholas A. Pandiscio
Lillian Kolodiz
Frances Rosen
Ruth E. Reiner
Leo E. Topol
Norma Levine
Alfred Weiner
Rita H. Ginsburg
Leo D. Cohen
Samuel Rosenfield
Mona Kennedy
Lois A. Brady
Sarkis Vartanian
Paul B. Lubell
John T. Bell
Francis Paris

CLASS OF 1949

Walter Pollock
Philip Perch
Roger Gifford
Edmund J. J. Podbielski
Wladislaw Kaminsky
Andrew J. McNeil
Robert J. Leupold
Edward A. Botan
Richard Newmark
Ira A. Wolfson
Martin Rottenberg
Earle Fritz
Arthur C. Cotter
Harry Fishman
Jeanne L. Hillman
Joseph F. Vozzella
Bernard R. Stein
Harris Holstein
Samuel Spiegel

RODERICK V. WOODBURY, '47

President

THOMAS L. McDONOUGH, '47

Secretary

HOWARD N. KAUFMAN, '47

Vice-President

RICHARD L. KENNEDY, '47

Treasurer

MR. WARREN L. GANONG

Faculty Adviser

MEMBERS

Mark H. Mathes, '49

Harry H. Kitahata, '49

Robert H. Weiner, '48

David R. Nowell, '47

Society for the Advancement of Management



Seated: Woodbury. First Row, left to right: Kitahata, Kennedy, Nowell. Second Row, left to right: McDonough, Kaufman



*First Row, left to right: Greenwood, Najarian, Cook, Pandiscio, Giroux.
Second Row, left to right: Ciaschini, Lovejoy, Healy*

ARTHUR A. NAJARIAN, '47 S. P. A.
President

RICHARD W. GREENWOOD, '47 N. E. Z.
Vice-President

ERNEST M. COOK, '47 B. G. E.
Secretary-Treasurer

PROFESSOR EDWARD S. PARSONS
Faculty Adviser

Nicholas A. Pandiscio, '48, P. G. P.
George E. Giroux, '49, P. G. P.
Walter A. Ciaschini, '47, S. P. A.
Stanley W. Lovejoy, Jr., '47, N. E. Z.
Grant S. Healy '47, B. G. E.

Inter Fraternity Council



STANLEY W. LOVEJOY, JR., '47
Grand Master

JOHN H. COWLES, '47
Grand Chancellor

ROGER N. TUTTLE, '48
Vice-Grand Master

RICHARD W. GREENWOOD, '47
Grand Scribe

PROF. WILFRED J. COMBELLACK
Faculty Adviser

CLASS OF 1947
Roderick V. Woodbury
Arthur K. Littlefield
David R. Nowell
John A. Burbidge

CLASS OF 1948
Henry S. Hall
Brian H. Saunders
J. Richard Brown
Mark Mathes
Frank Lambert, Jr.
Bernard A. Barnes
Granville E. Reed
James A. Rawnsley
Robert G. Harrison

CLASS OF 1949
David L. Thurrell
Earl A. Brown
Kenneth F. Olsen
Robert F. Pierce
James P. Terry
Bernard F. Stone

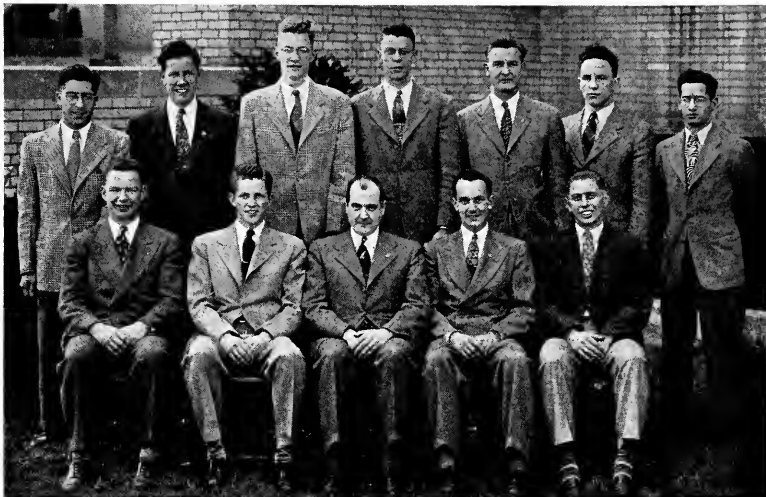
BROTHERS IN THE FACULTY

Prof. Wilfred J. Combellaek
Prof. J. James Devine
Dean Harold W. Melvin
Prof. George H. Meserve
Mr. Albert E. Sanderson
Prof. Ernest L. Spencer
Prof. George W. Towle
Dean William C. White

Nu Epsilon Zeta



First Row, left to right: Nowell, Greenwood, Tuttle, Lovejoy, Cowles, Professor Combellaek, Littlefield. Second Row, left to right: Barnes, Rawnsley, Lambert, Hall, Woodbury, Thurrell, Terry, Harrison. Third Row, left to right: J. Brown, Mathes, Stone, Olsen, E. Brown, Saunders, Reed, Pierce, Burbidge



First Row, left to right: Doherty, Stankevich, Mr. Hankinson, Giroux, Wayler. Second Row, left to right: Pandiscio, Sikora, Tinglof, Page, Zbozen, Walden, Calderaro

EDWARD A. STANKEVICH, '49

President

BENNETT WAYLER, '49

Treasurer

NICHOLAS PANDISCIO, '48

Social Chairman

GEORGE E. GIROUX, '49

Vice-President and House Manager

JOHN F. DOHERTY, JR., '48

Secretary

MR. GEORGE W. HANKINSON

Faculty Adviser

**BROTHERS IN THE
FACULTY**

Dr. Elmer H. Cutts
Prof. George E. Pihl
Prof. Henry E. Richards
Prof. Milton J. Schlagenhauf
Prof. Albert E. Whittaker

MEMBERS

Arthur Calderoro, '49
Ivan Page, '49
John Sikora, '47
Carl Tinglof, '47
Kenneth T. Walden, '47
Stanley Zbozen, '49



Phi Gamma Pi



WALTER A. CIASCHINI, '47
President

EDWARD B. CATOTTI, '47
Treasurer

GEORGE W. CATTERALL, '48
Vice-President

GORDON H. SEARLES, '47
Secretary

MR. WILLIAM WALLACE
Faculty Adviser

Sigma Phi Alpha

MEMBERS

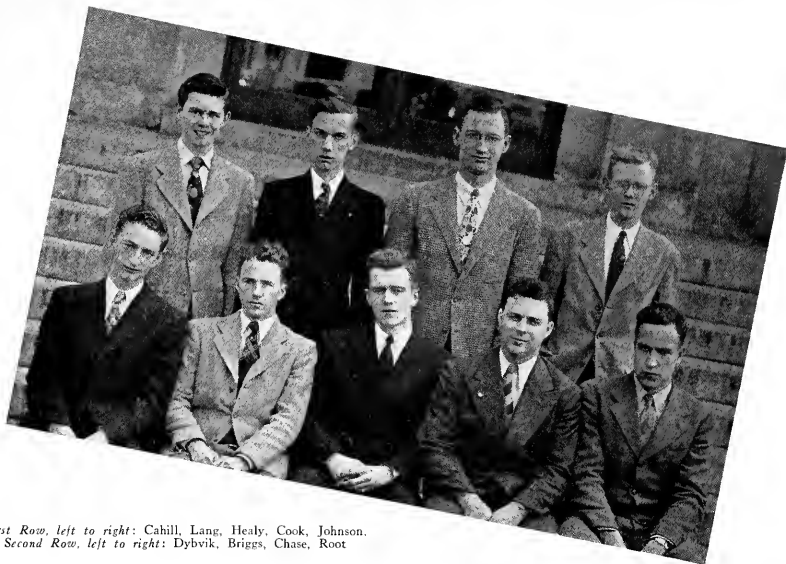
Salvatora J. Bonasera, '47
Arthur J. Hilly, '48
Ernest E. Mills, '48
Alfred J. Pacelli, '48
Arthur A. Najarian, '47
Roy J. K. Peterson, '48
Charles G. Smith, '49
Anthony F. Tuccelli, '47

BROTHERS IN THE FACULTY

Prof. Laurence F. Cleveland
Dr. Reginald G. Lacount
Prof. Gerald R. Tatton
Prof. Chester H. Wolowicz



First Row, left to right: Mr. Wallace, Searles, Ciaschini, Catotti, Najarian. Second Row, left to right: Bonasera, Smith, Hilly, Mills, Tuccelli, Pacelli



*First Row, left to right: Cahill, Lang, Healy, Cook, Johnson.
Second Row, left to right: Dybvik, Briggs, Chase, Root*

GRANT S. HEALY, '47

President

RICHARD E. JOHNSON, '47

Treasurer

ERNEST M. COOK, '47

Vice-President

ROBERT S. LANG, '47

Secretary

DR. WILLIAM F. LUDER

Faculty Adviser



MEMBERS

David R. Cahill, '47
Arthur L. Chase, '47

PLEDGES

Ralph Briggs, '47
Harold Dybvik, '49
Lawrence D. Root, '49

**BROTHERS IN THE
FACULTY**

Prof. Emil A. Gramstorff
Dr. William F. Luder

Beta
Gamma
Epsilon

MUNROE W. HALE, '49
Commodore

BERNARD A. BARNES, '48
Secretary-Treasurer

GRANT S. HEALY, '47
Vice-Commodore

HENRY S. HALL, '48
 ROBERT S. WELSH, '48
Committee

PROFESSOR W. S. MCGUIRE
Adviser

Yacht Club

CLASS OF 1947

David R. Cahill
 A. L. Chase
 Edward B. Catotti
 Walter A. Ciacchini
 Harold A. Huckins
 George P. Koskoris
 David R. Nowell
 Alexander A. Sweeney

CLASS OF 1948

John T. Bell
 I. N. Cooperman
 Alred H. Isenbug
 Frank Lambert
 Emanuel Salos
 Irving M. Saslaw
 Leonard Spitz
 Leon H. Steiff

CLASS OF 1949

Charles W. Ayer
 Joseph A. Cicco
 David J. Gilboms
 Frederick W. Hanson
 Jeanne L. Hillman
 Edgar T. Navin
 Dorothyann Shaw
 James P. Terry, Jr.
 Norman R. Waddleton

CLASS OF 1959

Lawrence M. Fisher
 Sidney Insoft
 Christine L. Johnson



First Row, left to right: Professor McGuire, Healy, Hale, Barnes, Johnson.
 Second Row, left to right: Hillman, Cahill, Welsh, Chase, Catotti, Koskoris,
 Shaw. Third Row, left to right: Salos, Huckins, Ciacchini, Hanson, Lambert,
 Bell



First Row, left to right: Wolfson, Barnett, Clark, Lovejoy, Vozella. Second Row, left to right: Oberg, Jack, Prifti, Professor Devine

CLASS OF 1949

Allan A. Barnett
 Leo J. Gold
 Morton J. Greenburg
 Hazel R. Jack
 Jeryle L. Konowitz
 Herbert A. Lemer
 George W. Perkins
 Melvyn G. Prifti
 Samuel Waldstein

RICHARD D. CLARK, '49
President

PHILIP B. YOUNG, '47
Ordnance Officer

STANLEY W. LOVEJOY, JR., '47
Vice-President

IRA A. WOLFSON, '49
Secretary-Treasurer

PROFESSOR J. JAMES DEVINE
Adviser

Rifle Team



First Row, left to right: Huckins, Hanson, Protes or Coolidge, Entin, Perch.
 Second Row, left to right: Pattisquam, Pepin, Kriesman, Lousarevian,
 Carlson, Ritchie. Third Row, left to right: Woodbury, Reeves, Bouchell, Bell

Chess Club

LEONARD P. ENTIN, '49

President

PHILIP S. PERCH, '49

Secretary

SHIRLEY M. HANSON, '49

Treasurer

PROFESSOR JOSEPH A. COOLIDGE

Faculty Adviser

CLASS OF 1947

Roderick V. Woodbury

CLASS OF 1948

John T. Bell

CLASS OF 1949

Robert B. Angus, Jr.	Alicie Lousarevian
Irving Brudnick	Lawrence W. Patriquin
Eleanor R. Carlson	Phyllis M. Pepin
Lester Gilman	Warren M. Reeves
Bernard A. Kriegsmann	Kenneth J. Ritchie

Cosmopolitan Club

[Commission of the Northeastern Student Union]



First Row, left to right: Aprizian, Corapi, Yee, Harrison, Rottenberg, Salo, Frenkel. Second Row, left to right: Schneider, Wolfson, Cohen, Kita-Hata, DeLuty, Lerner. Third Row, left to right: Waldstein, Huckins, Yalden

ROBERT G. HARRISON, '48

President

MARTIN ROTTENBERG, '49

Secretary

ALFRED MELTZER, '49

Treasurer

GEORGE YEE, '49

Vice-President

DEAN CHARLES W. HAVICE

Faculty Adviser

CLASS OF 1947

Thomas Chin

Vincent Corapi

Harold A. Huckins, Jr.

CLASS OF 1948

Mary R. Frenkel

Emanuel Salo

CLASS OF 1949

Anna L. Aprizian

Simon Berman

Clair Cohen

Tamara E. DeLuty

Anne Etwanik

Esther Fafel

Herbert Lerner

Edward Levenson

Israel M. Livingston

Phyllis Milgrom

Walter Pollak

Jacob Roseman

Abbie H. Schneider

Elinor Schlossberg

Louise Silverman

Florence S. Stern

Barbara F. Stone

Marion D. Taylor

Norik N. Tatevossian

Samuel Waldstein

William Yalden

Ead M. Yavner

CLASS OF 1950

Herbert Praut

Bernard Reichart

Joseph Weiner

Berte Baroochian

Muriel M. Allen

Hersch Seigal

Simon K. Ludmer



*First Row, left to right: Hebert, Reiner, Rosenthal, Adelman, Goldstein, Cooperman
Second Row, left to right: Professor Pinard, Gowen, Pearlson, Lindi, Ysebaert, Lituri, Gold*

PROFESSOR WILLIAM J. PINARD
Faculty Adviser

CLASS OF 1947

William J. Arvedon
George F. Gowen
Vincent L. Ysebaert

CLASS OF 1948

Phyllis A. Batchelder
Isadore N. Cooperman
Mary J. Flynn
Calista M. Folsom
I. Louis Gold
Selma Kirschman
Lillian Kolodiz
Pauline Novak

Barbara A. Parrish
Ruth E. Reiner

CLASS OF 1949

Hilda L. Adelman
Louisa J. Ashton
Betty L. Goldstein
Louis C. Lituri
Leo Mishner
Eleanor R. Levin
Richard A. Lindi
Phyllis Rosenthal

CLASS OF 1950

Jordan Pearlson

Dramatic Club

STEPHANIE CHOPEK, '48
President

JEANNE L. HILLMAN, '49
Vice-President

PAULINE K. NOVAK, '48
Secretary

FRANCES M. MYERS, '49
Treasurer

MISS LOUISE G. MARSH
Faculty Adviser

Omega Sigma

CLASS OF 1948

Mary H. Bigelow
Lois A. Brady
Vivian Fain
Stephanie Chopek
Calista M. Folsom
Mary J. Flynn
Mary R. Frenkel
Rita H. Ginsberg
Lillian Kolodiz
Florence S. Liker
Grace P. McKinlay
Pauline K. Novak
Barbara A. Parrish
Ruth E. Reiner
Sylvia S. Resnick
Frances Rosen

CLASS OF 1949

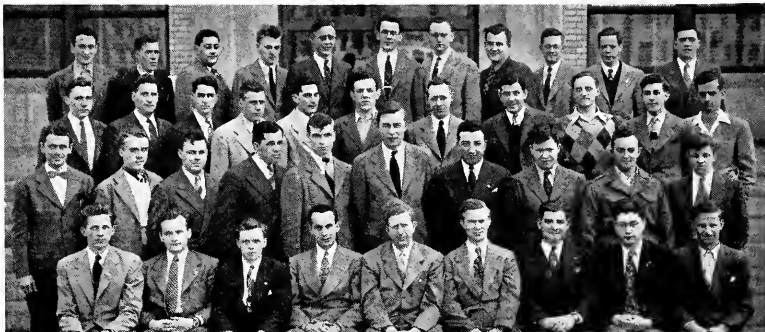
Phyllis A. Batchelder
Nancy Bandurski
Ruth Blotcher
Claire F. Cohen
Esther Fafel
Marjorie M. Faunce
Jeanne L. Hillman
Hazel R. Jack
Evelyn Leone
Eleanor Levin
Frances M. Myers
Dorothy C. Overton
Mary L. Pottle
Ann Rosenberg
Martha E. Salvi
Abbie H. Schneider
Virginia M. Shattuck
Louise Silverman
Laura Solomon
Ursula E. C. Ullrich
Grace L. Ward
Eleanor K. Watts
Chessie Zbikowska
Pearl Abelman
Betty R. Hess
Eleanor F. Leach

CLASS OF 1950

Muriel M. Allen
Bertha Barooshian
Marjorie Black
Sylvia Brenner
Christine L. Johnson
Grace M. Lane
Gloria L. Weisbond



First Row, left to right: Somers, McKinlay, Folsom, Novak, Miss Marsh, Chopek, Hillman, Zbikowska, Ro-en, Brady, Overton. Second Row, left to right: Silverman, Bloom, Gaeplert, Dennett, Komisar, Faunce, Goldberg, Rothschild, Schaeffer Stone, Clarke, Ewank. Third Row, left to right: Freedman, Cohen, Levin, Ludwig, Greene, Carlson, Pottle, Batchelder, Frenkel, Hanson, Marler, Lane, Kozart. Fourth Row, left to right: Jack, Black, Watts, Brenz, Fain, Connolly, Leach, Ginsberg, Louserevian, Pepin, Goldman, Shaw



First Row, left to right: Stankevich, Greenwood, Bury, Giroux, Shaughnessy, Littlefield, Waskow, Wessely, Kudryk.
 Second Row, left to right: Bauman, Willett, Cook, McDermott, Stone, Adam, Spampinato, Weinfeld, Ludmer, Stuart.
 Third Row, left to right: Brown, Watson, Ricci, Miller, Landa, Wood, Yantowski, Karp, Miner, Swickelberg, Preston.
 Fourth Row, left to right: Misner, Luther, Marmer, Nagle, Johnson, Lovejoy, Lambert, McLoud, Barnes, Porter, McNeill

Arthur J. Adam
 James Stuart Adams
 Theodore S. Adamczyk
 David M. Altman
 Bernard A. Barnes
 Harry Bauman
 Charles A. Billies
 David E. Boehnke
 Irving Bosinoff
 Murray R. Braverman
 Alfred L. Brody
 James H. Brown
 John S. Brown
 Edward Burdeau
 Bramwell A. Bury
 Leon W. Bush
 Francis J. Callahan
 Irving Canner
 Frank A. Capone
 Joseph A. Caputo
 Brian Casey
 Alan Cate
 Frank Cawley
 Richard D. Clark
 Ernest M. Cook
 Richard F. Crooker
 Theodore J. Daniels
 George P. Davis
 Francis E. Dixon
 Martin W. Donovan
 Ralph Dyer, Jr.
 Seymour J. Feinberg
 Daniel M. Fox
 Hyman M. Fritz
 George E. Giroux
 Louis Peter Greenberg
 Richard W. Greenwood
 Irvin R. Hall
 Francis R. Hankard
 Richard J. Hebert
 Burton C. Hoffman
 George F. Horner
 Dwight M. Howe

Vernon B. Howland
 Clarence B. Husbands
 Leo C. Jerzyk
 Olof P. Johnson
 Roy W. Johnson
 Philip Karp
 George F. Kenney
 K. Charles Kopsioftis
 Theodore W. Kudryk
 Frank Lambert
 Arthur S. Landa
 James S. Langdon
 Walter P. Lee
 Leonard I. Lerner
 Arthur K. Littlefield
 Simon K. Ludmer
 Edmund P. Luther
 Max Maisner
 Calvin T. Margolis
 Elliot P. Markowsky
 Irving C. Marmer
 Clement McDermott
 Leonard J. McLaskey
 Thomas F. McLoud, Jr.
 Andrew J. McNeill
 Frances E. Melanson
 Daniel B. Miller
 Edmund O. Miner
 Leo J. Mishner
 Sidney Mitchell
 James P. Murray, Jr.
 William Richard Nagle
 Kenneth F. Olsen
 Francis P. Oresteen

GEORGE F. HORNER
President

WILLIAM WASKOW
Vice-President

LOUIS P. GREENBERG
Secretary

DOUGLAS S. STUART
Treasurer

PROFESSOR JOHN B. PUGSLEY
Faculty Adviser

Richard B. Pelley
 Robert F. Pierce
 Ervin D. Porter
 John L. Preston
 Robert D. Prussman
 James M. Qua
 John F. Quigley
 Leon Rabin
 Herman E. Radke
 William C. Raftell
 Joseph F. Ricci
 William Ruminas, Jr.
 Dominic A. Sanni
 Allan W. Sawyer
 Evans O. Schwarz, Jr.
 John A. Sharkey
 Paul Shaughnessy
 Edward E. Sinclair
 Anthony L. Spampinato
 Edward A. Stankevich
 Bernard F. Stone
 Douglas S. Stuart
 Emanuel Sugerman
 John F. Sullivan, Jr.
 John Michael Sullivan

Paul Swickelberg
 Israel Volinsky
 Norman R. Waddleton
 William Waskow
 Robert L. Watson
 Murray A. Weinfeld
 Kurt Wessely
 Henry F. Whalen
 Richard F. Whelpley
 Edward R. Willett
 William S. Wilson
 Morris D. Winer
 Leonard C. Wolfson
 William T. Wood
 Victor S. Yankowski

Veterans Association

ERNEST M. COOK, '47

President

RICHARD L. KENNEDY, '47

Secretary

LOIS A. BRADY, '48

Vice-President

RUTH E. REINER, '48

Treasurer

PROF. LAURENCE F. CLEVELAND

Faculty Adviser

Choral Society

CLASS OF 1947

Arthur L. Chase

CLASS OF 1948

Chessie Zlikowska

Stephanie Chopek

Frances Rosen

Alfred D. Winer

CLASS OF 1949

Richard F. Whelpley

Ruth L. Freedman

Ruth H. Goldberg

Hazel R. Jack

Melvyn G. Prifti

Elizabeth A. Somers

Marjorie M. Fauce

Nannette H. Marder

Eleanor F. Leach

Martin Rottenburg

CLASS OF 1950

Stanislaus J. Zbozen



First Row, left to right: Zlikowska, Whelpley, Brady, Cook, Kennedy, Freedman, Chase. Second Row, left to right: Chopek, Goldberg, Jack, Somers, Fauce, Rosen, Marder, Leach. Third Row, left to right: Prifti, Winer, Zbozen, Rottenburg



First Row, left to right: Leach, Rosen, Lambert, Brady, Faunce. Second Row, left to right: Shaw, Watts, Dybvik, Cowles, Greenwood, Zbikowska, McKinley. Third Row, left to right: Healy, Lowell, Lovejoy, Barnes, Cahill

FRANK LAMBERT, JR., '48
Chairman

DEAN HAROLD W. MELVIN
Faculty Adviser

CLASS OF 1947

John H. Cowles
Stanley W. Lovejoy, Jr.
Richard W. Greenwood
David R. Cahill
Grant S. Healy

CLASS OF 1948

David I. Lowell
Bernard A. Barnes
Grace McKinley
Stephanie Chopek
Barbara A. Parrish
Lois Ann Brady
Chessie Zbikowska
Frances Rosen

CLASS OF 1949

Harold Dybvik
Marjorie M. Faunce
Eleanor F. Leach
Eleanor K. Watts
Dorothy Shaw

Husky Plus Club

The Basketball Season

By MELVIN R. BURSTEIN

With just a basketball and a prayer, Coach "Foxy" Flumere carried an inexperienced but aggressive Husky quintet through the 1944-1945 basketball season with a total of 8 wins and 8 defeats.

The N. U. five opened the season against a more experienced U. S. S. Rizzi team and garnered their first win of the season, 57-48. Walsh and Henry proved the big guns in this game for N. U., scoring 27 and 19 points respectively. In the second game of the season, the Flumeremen showed an unexpected burst of power in beating the 3791 Quartermaster quintet 85-35. Again Henry and Walsh led the pack, scoring 35 and 25 points respectively. The basketball team lengthened their streak to three straight wins when they defeated Lowell Textile 61-37, January 6, at the Johnson Memorial Gym. The Huskies experienced their first loss of the season against a more experienced Rhode Island State team 110-55, but this loss was expected by all. The following Saturday found the Husky quintet trounce-

ing the University of Maine 50-33. Walsh and Henry continued their high scoring with 23 and 13 points respectively. On January 22, the Huskies captured their fifth win of the season against the Charlestown Marines 67-44.

But two losses were next on the menu against the University of New Hampshire, 68-57, and the Nutmeggers from Connecticut, 53-43. The losing streak was broken when the Huskies ran wild, 70-40, against A. I. C.

The Huskies ran their losses up to seven against the Providence Friars, 72-61; the Rhode Island Rams, 71-37; unexpectedly against the B. U. Terriers, 49-44, and Bowdoin, 61-50. But the Northeastern quintet went back to the win column against Maine, 63-54, and took their final game with Boston University, 52-45, without the services of Walsh.

The last game of the season was against the Nutmeggers of Connecticut, 72-54, to bring the season's total to 8 wins and 8 defeats.

Russell Stiles, '47 (N)
Manager

Mr. Emanuel A. Flumere
Coach

Member from the Class of 1947

George J. Selador

Members from the Class of 1949

Malcolm Henry (N)	Hebert Stackhouse
Walter M. Kozul (N)	Edward A. Stankevich (N)
Kay Krekorian (N)	Francis X. Walsh (N)
John B. Labbadia, Jr. (N)	Bennett J. Waylor (N)
Robert R. Schwarz (N)	

B A S K E T B A L L



First Row, left to right: Kozul, Walsh, Henry, Labbadia, Waylor. Second Row, left to right: Manager Malloy, Schwarz, Krekorian, Stankevich, Selador, Coach Flumere

Prof. Gerald R. Tatton
Coach
 Morton Lutch, '49
Manager

Harold B. Bemis, '49
 Arthur R. Calderaro, '49
 Richard L. Chapal, '49
 Seymour Goldberg, '48
 Herbert M. Kamol, '49
 Murray N. Markson, '49
 Ernest E. Mills, '48
 Norman Mills, '49
 Clifton A. Morre, '50
 Livingston S. Moyston, '49

Alfred J. Pacelli, '48
 Edwin H. Potish, '49
 Elliot J. Rice, '48
 Lawrence D. Root, '49
 Edward T. Spinneci, '49
 Robert H. Springer, '49
 Marmold Tagrin, '49
 Alan O. Walker, '49
 Robert S. Welsh, '48

T R A C K



First Row, left to right: Spinneci, Snyder. Second Row, left to right: Welsh, Bemis, Root, E. Mills, Potish, Calderaro. Third Row, left to right: Professor Tatton, Washington, Leafman, Pacelli, Moore, Lamouette, Moyston, Ainsie, Silverstein, Chaput, Manager Lutch. Fourth Row, left to right: Stone, Fraser, Rudsit, Karol, Kessel, M. Mills, Yorra, Learner, Tazrin



*First Row, left to right: Adelman, Buchanan, Mills, Kyes.
Second Row, left to right: Welsh, Goldberg, Professor Tatton, Austin, Rice*

SEASON		N. U.	Opp.	
October 21	Univ. of Conn.	19	45	Albert Alderman, '49
October 28	Rhode Island	41	16	E. Newell Austin, '49
November 4	Coast Guard	46	15	William J. Buchanan, '48
November 11	N. E. I. C. A. A. A.		5th place	Seymour Goldberg, '48
				Frank Kyes, '49
				Ernest E. Mills, '48
				Elliot J. Rice, '48
				Robert S. Welsh, '48

Cross Country *Fall '44*

Acknowledgments

To all who have contributed or helped us compile this yearbook, we of the CATALPA Board express our sincere and heartfelt thanks.

To Mr. Waid, Miss Dempsey, and Mr. Yerkes for their prompt work and excellent cooperation.

To Mr. Russell Knight of the Stobbs Press, whose wealth of ability and experience so readily available, made this yearbook a pleasant success.

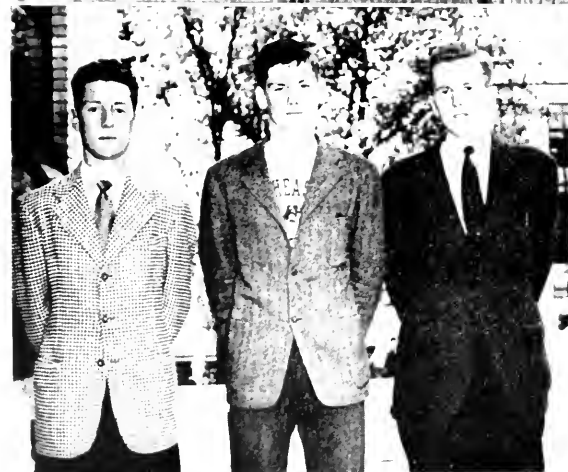
To the Activities Department and Miss Peppard, and other departments and secretaries, and to the faculty members for their patience and assistance.

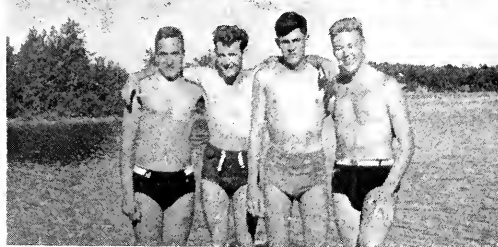
To those girls who helped type the copy.

To Shirley R. Swanson, who helped write the copy.

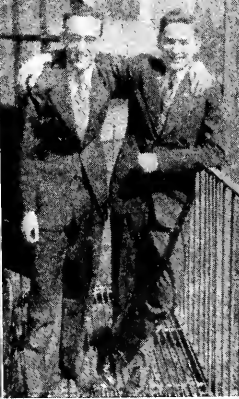


Candid



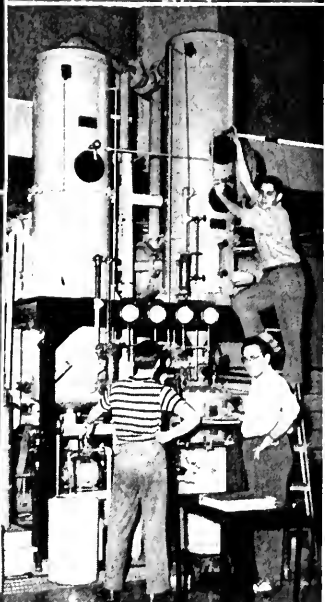














Advertising



The Officers and Faculty of North-eastern University wish to express to the members of the Class of 1946 and the Class of 1947 their very best wishes for success in everything which they may undertake or be called upon to perform



**NEW ENGLAND
CONSERVATORY
OF MUSIC**

AUDITORIUMS and HALLS
for

Concerts, Lectures, Moving Pictures,
Dramatics, Dance Recitals,
Banquets, Dances

JORDAN HALL

GEORGE W. BROWN HALL

BANQUET HALL RECITAL HALL

**OLD ELM PHARMACY,
Inc.**

M. EPSTEIN, Ph.G., Reg. Pharm.

58 Gainsboro St., cor. St. Stephen
Boston, Mass.

Phone KEN 8948

The HOTEL STATLER

. Boston

Appreciates the Continued Patronage
of Northeastern University Students
and Alumni.

D. B. STANBRO, *Mgr.*

•

Buy Bonds for Victory

DRINK MILK FOR
HEALTH

Be Sure It's

HOOD'S

Compliments of

CLASS OF 1947

CLASS OF 1948

Compliments

of

**Amory
Foundry
Company**

Specializing

in

ALUMINUM CASTINGS

380 Amory Street

Jamaica Plain

HAROLD M. TWOMBLY

Compliments of

SIGMA PHI ALPHA
NU EPSILON ZETA
PHI GAMMA PI

LEO HIRSH, INC.

*Clothiers to University Men
Army and Navy Outfitters*

250 Huntington Ave.

Boston, Mass.



Gainsboro Pharmacy

THE
MODERN DRUG STORE

Corner
Gainsboro and Huntington Ave.
Nearest Northeastern

TRYOUT
MANUFACTURING
COMPANY

*"Always something different —
with style and good taste"*



"For more than sixty years —
Stobbs Press Craftsmen have produced fine printing."

THE *Stobbs* **PRESS**
Worcester, Massachusetts

WAID STUDIO

18 Newbury Street
Boston, Massachusetts

•

School and College Photographers

Completely equipped to render the highest quality craftsmanship and an expedited service on both personal portraiture and photography for college annuals.

•

Photographers to this Cauldron

Patrons may obtain duplicates at any time

A Grand Place

for a
Banquet or Dance

the

Hotel LENOX

Monaco Room

Dome Room

Pine Room

Come and see these charmingly modern function rooms. Ideal for Dances, Reunions, Receptions, and other functions. Other smaller rooms for limited numbers.

WALTER E. SEAVER,
Managing Director

•

★ VISIT THE

- "V . . . — Room"
- The Mexican Patio Coffee Shop
Featuring Mexican Dishes
- The Washington Grill
A Dining Room of Distinction

S. BLOOMFIELD & SON

Diamonds and Jewelry

373 Washington Street Boston

Sid Bloomfield, '37

Lib. 5841

•





MA
BY THE
PUBLISHER
OF
THE
MAGAZINE
OF
THE
MAGAZINE
OF
THE
MAGAZINE