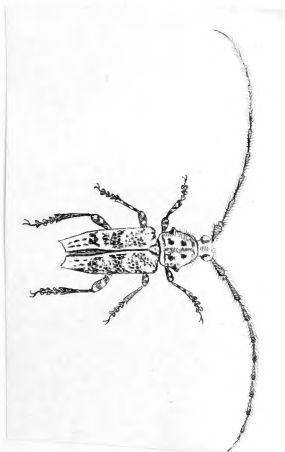
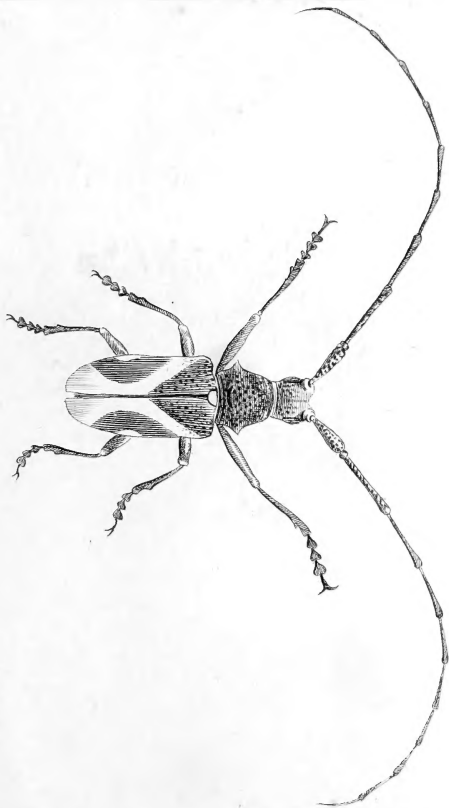
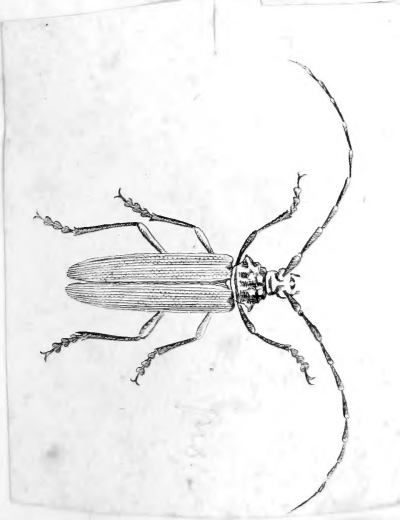
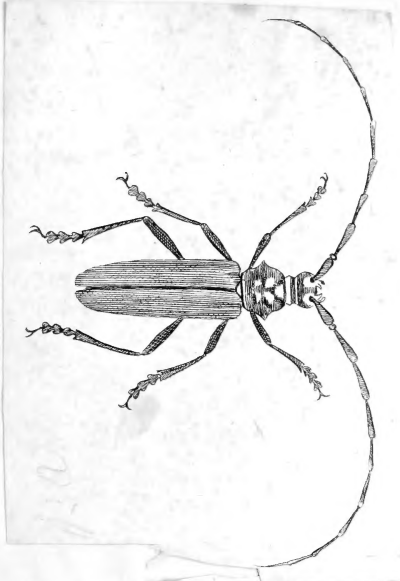
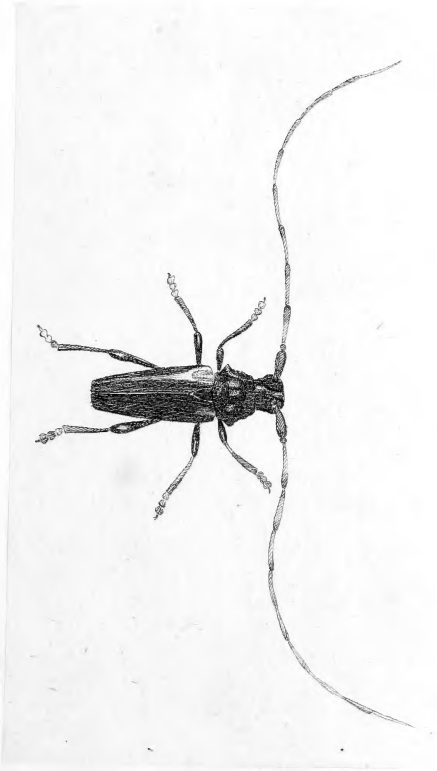


QL
596
C4
C42
1800
Box 1
RB
Ent.







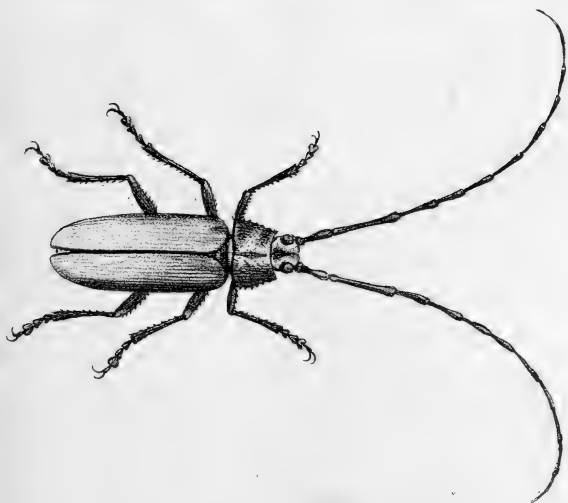


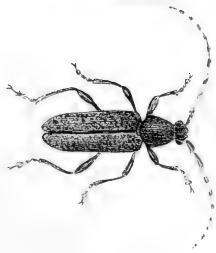
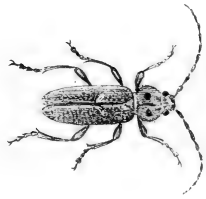


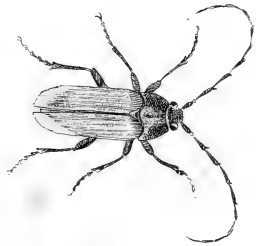




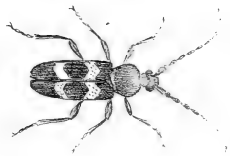


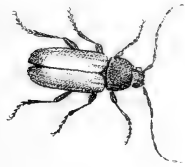










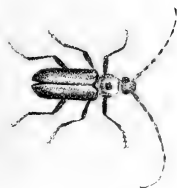








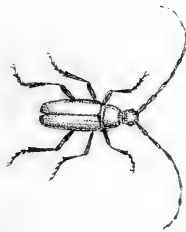




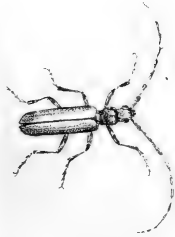




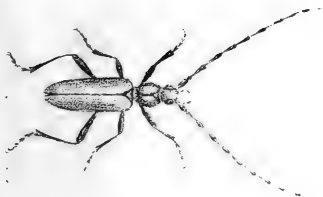






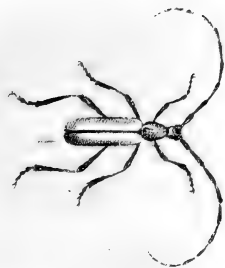


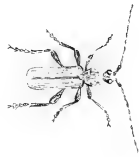










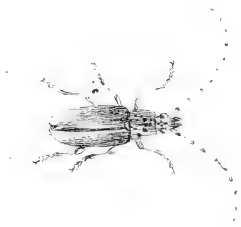








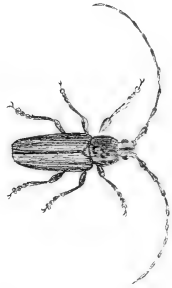






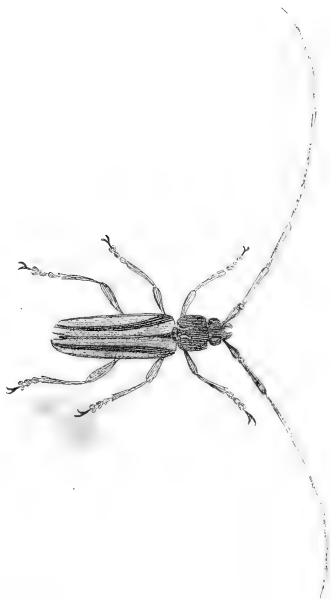




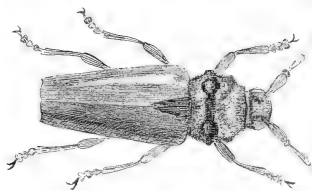


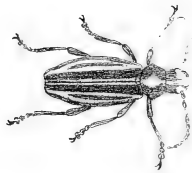


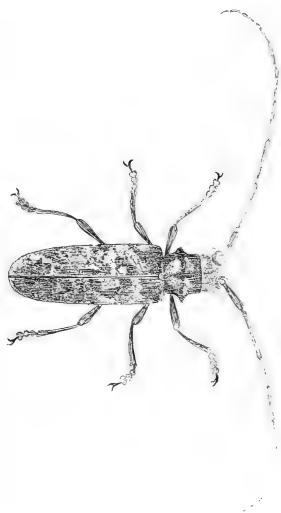


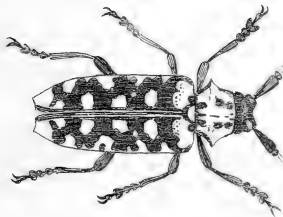


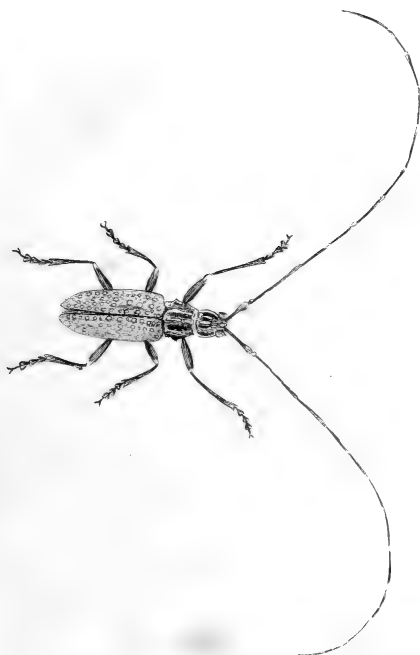


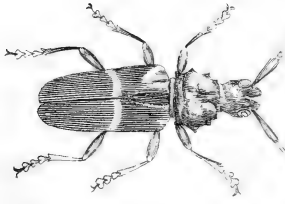


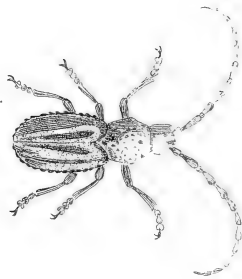


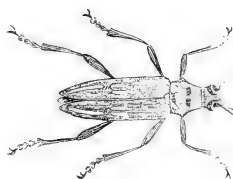


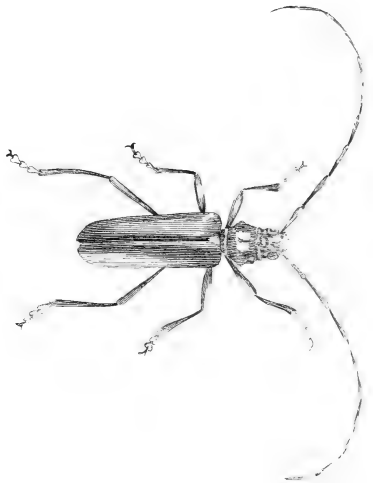


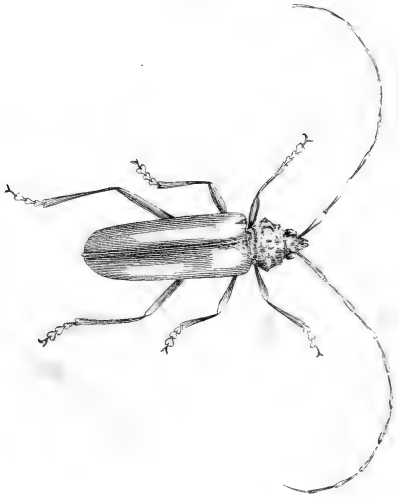










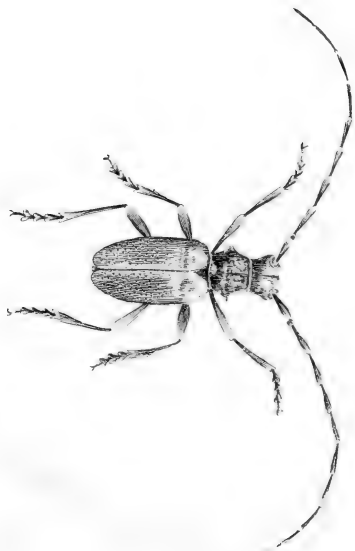


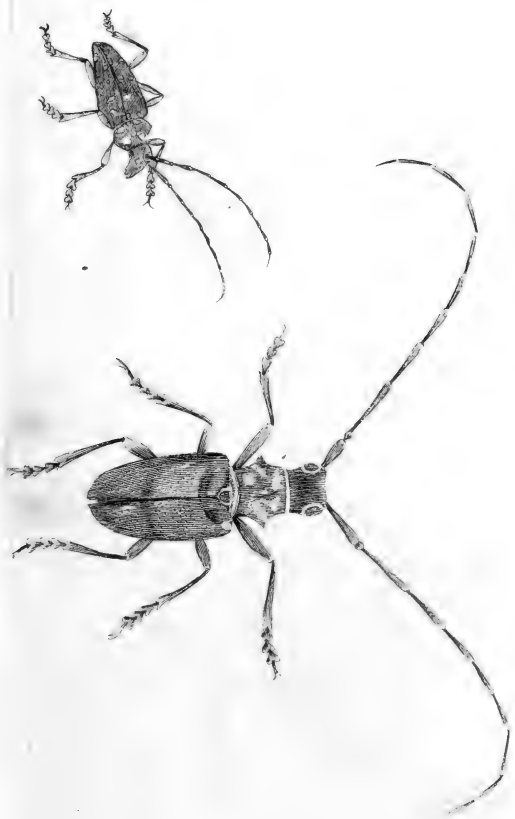


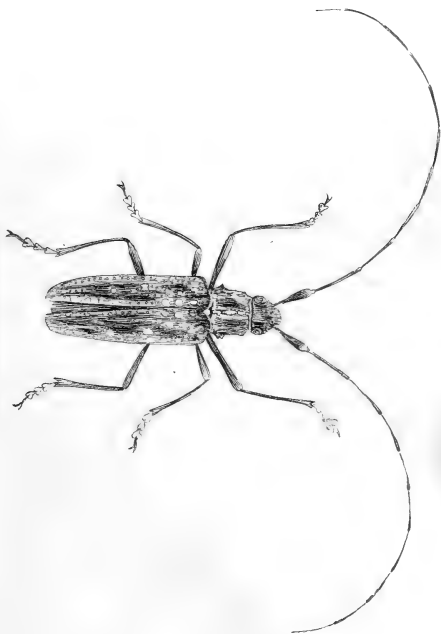




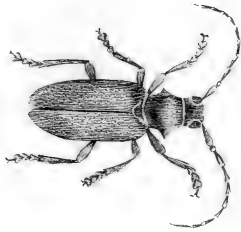


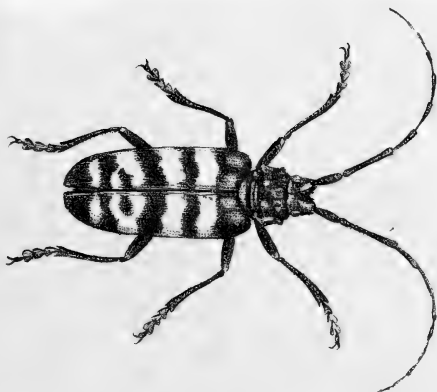


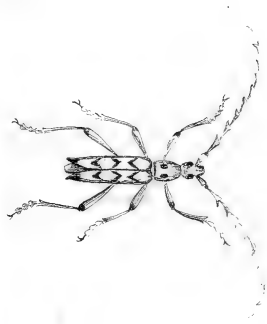




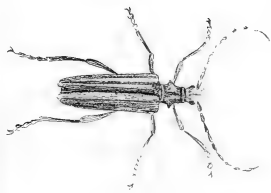




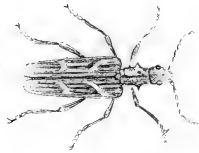








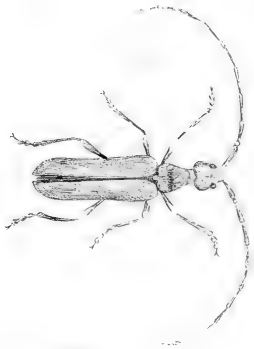




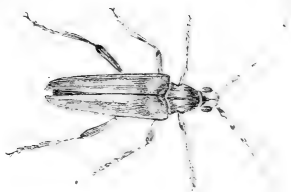


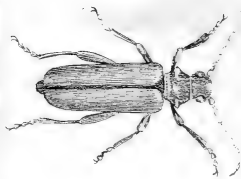






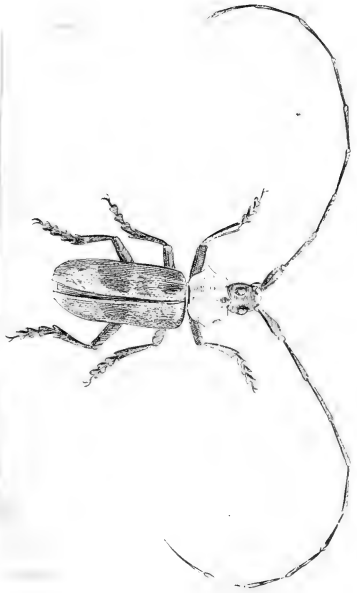






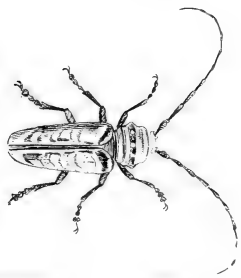


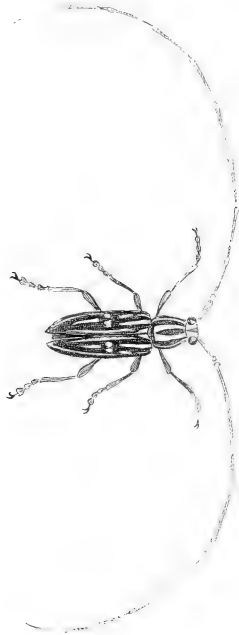




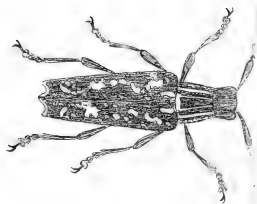


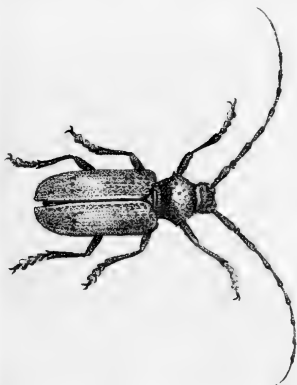




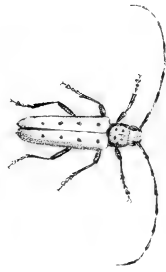


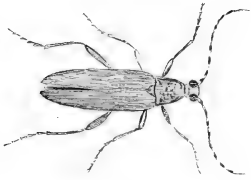
















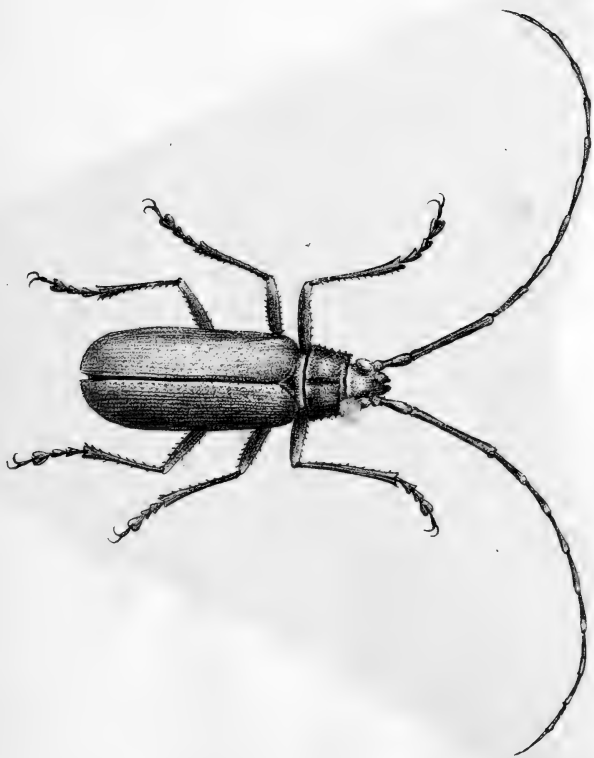
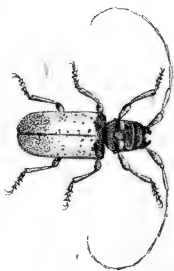
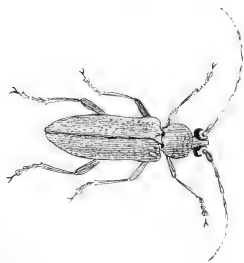


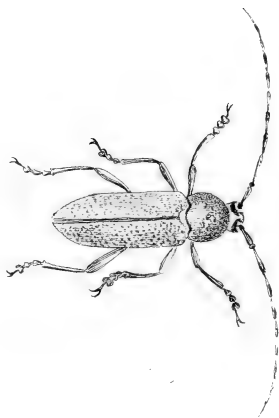
Fig. 2.









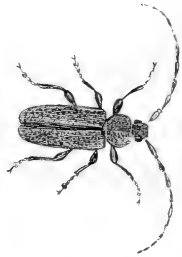






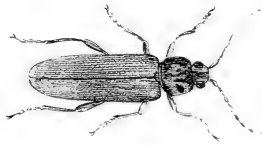






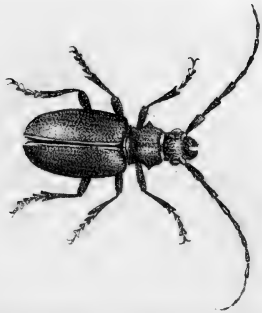




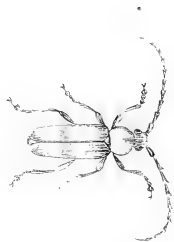


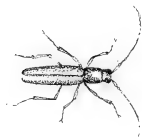


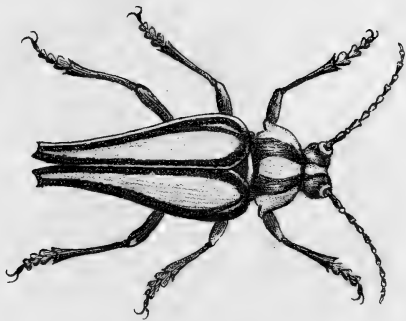








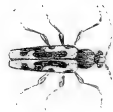


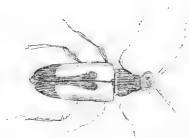






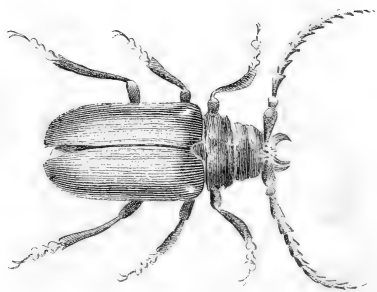














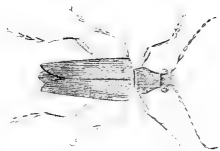


1875

1875



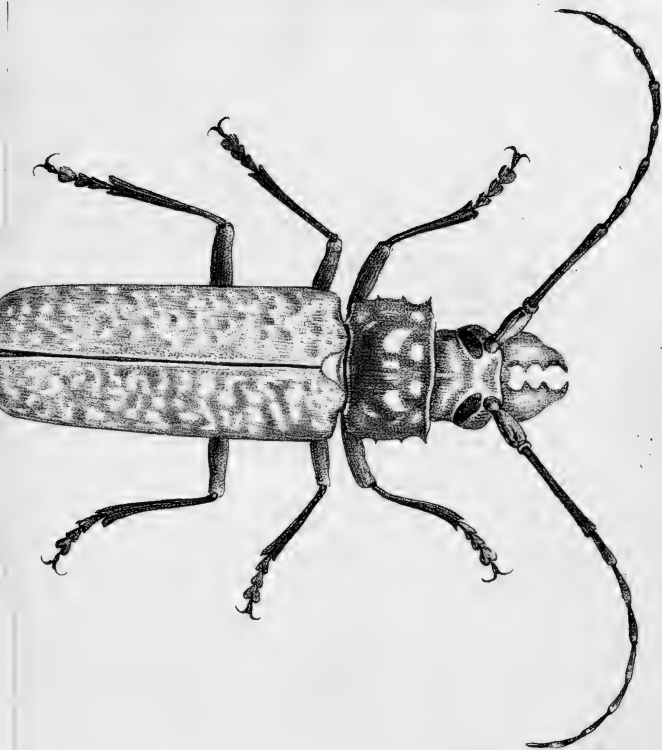








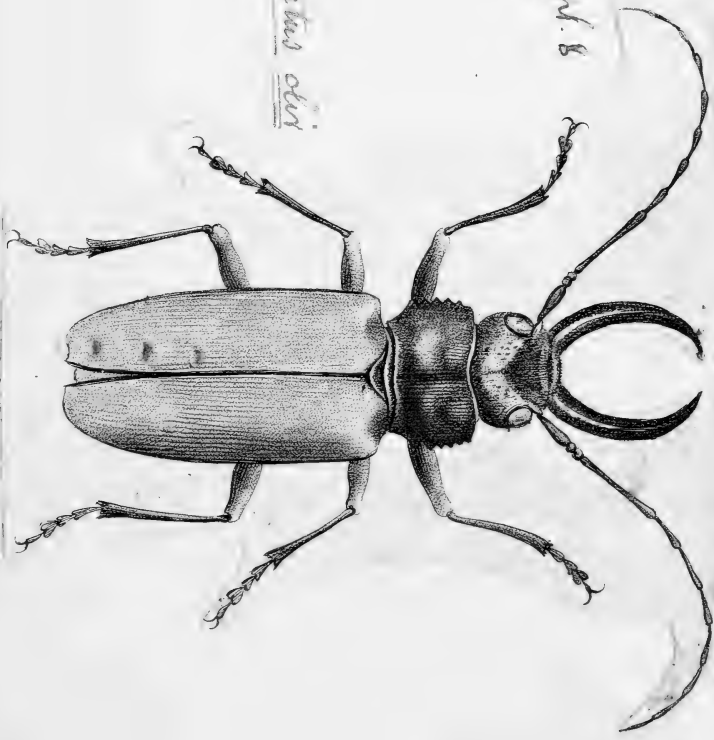




Pl. Ent. 91: 66. Pl. 8

fig. 31.

Dionus. Exsectus otini





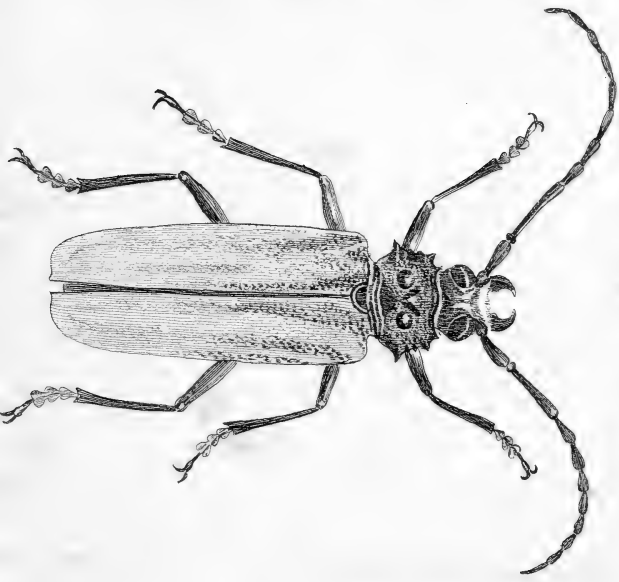
Arcyus leucomis

3

Trans. N. Y. S.

Chis. Ent. 910. 66. Pl. 9. fig. 22

Pionus
Corticivorus striatus

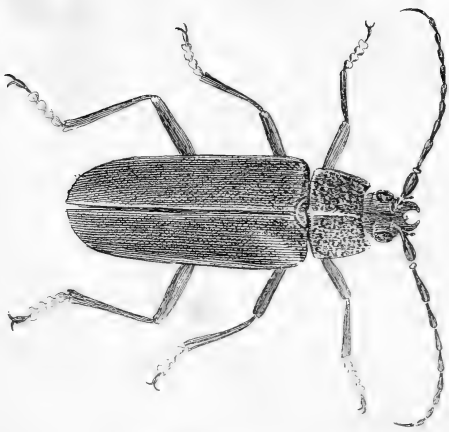




Atlas. Ent. n° 66. pl. 9. fig. 23.

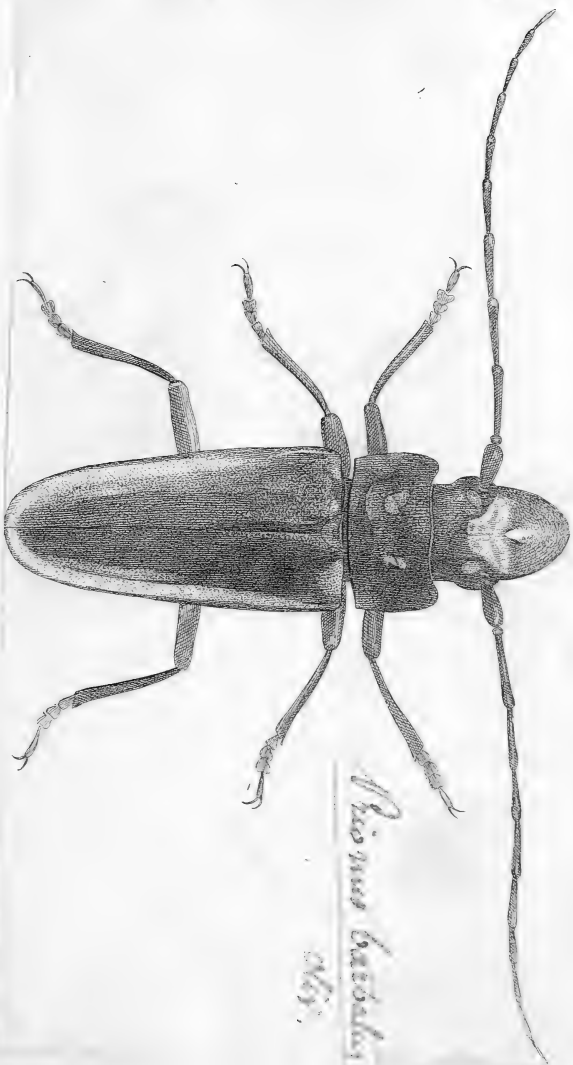
Pionus serraticornis. Oliv.

Winn. Ent. 112:66. Pl. 9. Fig. 68.



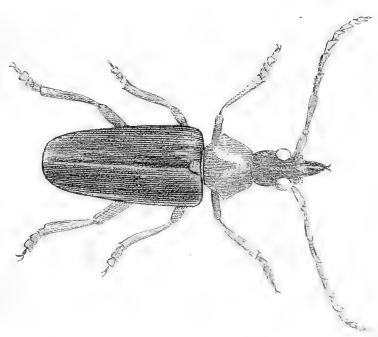
Winn. Ent. 112:66. Pl. 9. Fig. 68.

Col. Ent. 11: 66. pl. 10 fig. 40.



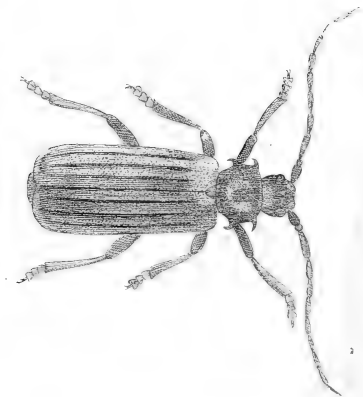
Pisimus barbatus
Muls.

Off. int. 1790 66. p. 10. fig. 27.



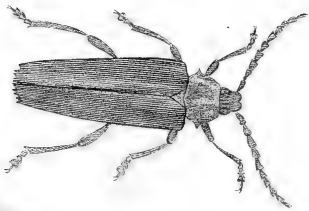
Pionus cartellus

Atlix. Int. no. 66. pl. 10 fig. 28

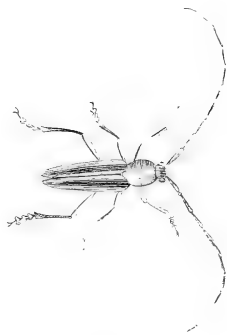


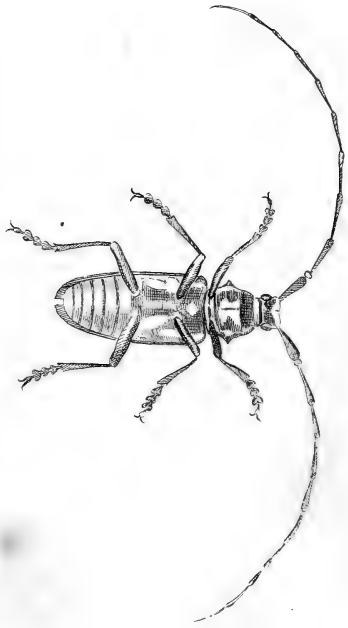
Pseudom. arcuata
Atlix.

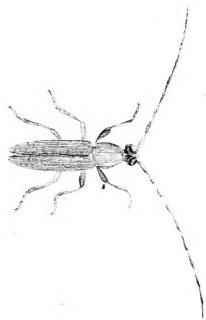
Stir. Ent. 1866. Pl. 10 fig 39

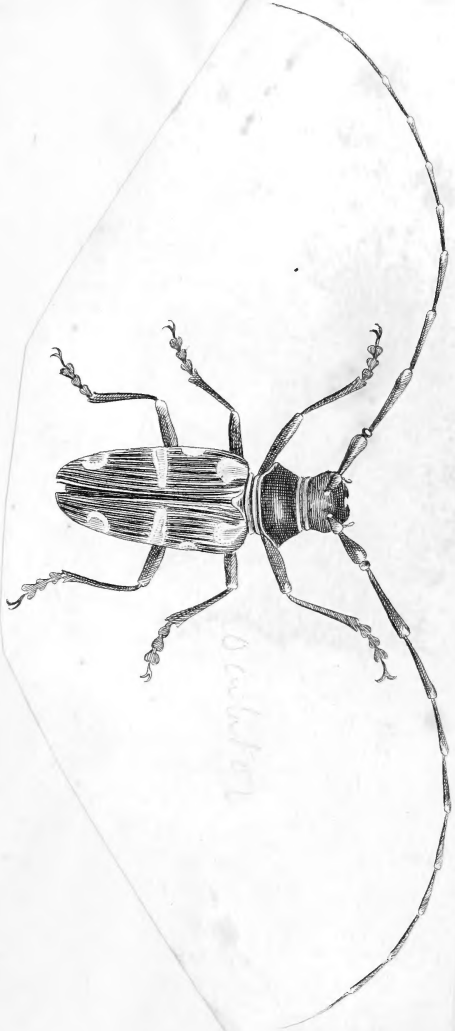


Stenomus fuliginosus









C. cubitor

