

Digitized by the Internet Archive
in 2008 with funding from
Microsoft Corporation

<http://www.archive.org/details/chairsbyjacobbro00dumorich>

Chairs by the Jacob Brothers

Directory and Consulate Periods

TOUS DROITS RÉSERVÉS

COPYRIGHT BY A. MORANCÉ, 1921.

DOCUMENTS D'ART

French Garde Meuble

Chairs
by the Jacob Brothers

by

Ernest DUMONTHIER

Director of the French Garde Meuble

Directory and Consulate Periods



1780

ALBERT MORANCÉ

Publisher
PARIS

BRENTANO'S

Booksellers
NEW-YORK

N^o 2550
J55D82

Chairs by the Jacob Brothers

Directory and Consulate Periods

From the French of Mr. E. DUMONTHIER



GEORGES Jacob, well known as a chair and cabinet-maker (1), was amongst those imprisoned in the early days of the French Revolution. On his release in 1794 he once more resumed his craft. Subsequently he retired, and his two sons, who had previously aided him, were left to carry on their father's work under the name of Jacob Frères. Their success was so great that a division of labour was determined upon; and the elder Georges

took over the entire management, while the younger François-Honoré specialized in the technical side of the firm's work.

The main achievement of the two brothers consisted in reproducing the furniture executed by their father during the last years of the reign of Louis XVI, and during the early Revolutionary period. Properly speaking a Directory style has not existed, for the one so-called is either an imitation of former models or a transition towards that of the Empire period. On the other hand, since the work of such as Dugoure, David, Percier and Fontaine dates back previous to the Empire, one may justly refer to a Consulate style.

Perhaps the chief characteristic of the Directory and Consulate styles is the curved or crosier back of the chairs. During the Consulate, the arms of the chairs generally terminated in the heads of lions or leopards, but after the Egyptian Campaign, these were replaced by heads of Egyptian women, sphinxes or winged chimeras. Occasionally the arms of the chairs terminated in balls, a favourite decoration during the Empire period. The legs of the chairs were variously shaped, some were ringed or made to resemble the

(1) See: E. Dumonthier, *Chairs by Georges Jacob*. Louis XVI Period. — 1 vol.

foot of an animal, while what are termed Etruscan legs constituted a very strong support indeed. When the Consulate was near its close, square massive legs became much in vogue.

The frame-work of these chairs is always simple. During the Directory and the early Consulate ornaments are lacking, but little by little G. and F.-H. Jacob used small palm-leaves carved in wood to adorn the chair at the springing of the arms or at the upper part of the back. Heads of Egyptian women or sphinxes are likewise used as ornaments, but richer decorations representing roses, leaves of ivy, oak and lotos are only found from the year 1802 onward.

As the plates given in this work illustrate the shape of the chairs, it may be of interest to mention that the principal woods used by the Jacobs in making them were mahogany, elm and beech. In the case of their other furniture they used mahogany, oak, walnut, maple, beech, lin:e-wood, elm, ebony and box-wood. The mahogany chairs were polished, the beech chairs were either in the colour of wood, or painted in grey or green. During the second part of the Consulate period, these latter were very often gilt.

G. and F.-H. Jacob equipped their workshop with the best plant procurable at the time, and secured the aid of the most famous artists for completing and adorning their furniture. For example, the bronze ornamentation was entrusted to Cahier, Chéret, Damerat, de la Fontaine and others, while the chiselled work was executed by Ravrio or Pierre-Philippe Thomire. The porcelain plaques were made by such as Olivier.

On the 30 th Vendémiaire An XII (October 21 st. 1803), the elder brother Georges Jacob died, and the younger François-Honoré became the sole manager of the firm which was then to be known as Jacob-Desmaller et C^{ie}, 77, Rue Meslée (1). The brilliant tradition in chair and cabinet making which distinguished the Jacob family was fully maintained by François-Honoré and his son Georges-Alphonse, till what time the firm finally passed under the control of J. Jeanselme.

(1) See: E. Dumonthier, *Chairs by Jacob-Desmaller*. Consulate and Empire Periods. — 2 vols.



Genealogical Table of the Jacob Family

FROM THE REGISTER OF BIRTHS AND DEATHS	FIRM	PERIOD OF WORK	MARKED SIGNATURE ON WORK
<p>I. JACOB (GEORGES), born in the first half of the eighteenth century.</p>	<p>G. JACOB 78, rue Meslée</p>	<p>From 1765 to 1797</p>	<p>G ♦ JACOB</p>
<p>II. <i>Mis Sonr</i> :</p> <p>1. JACOB (GEORGES), (1768-1803).</p> <p>2. JACOB (FRANÇOIS-HONORE), (1770-1841).</p>	<p>JACOB FRÈRES 78, rue Meslée</p>	<p>From 1797 to October 1803</p>	<p>JACOB-FRÈRES RUE MESLÉE</p>
<p>JACOB (FRANÇOIS-HONORÉ) (the above-mentioned), called :</p> <p>JACOB-DESMALTER</p>	<p>JACOB-DESMALTER & C^{ie} 77, rue Meslée</p>	<p>From 1803 to 1825</p>	<p>JACOB-D. R-MESLÉE</p>
<p>III. <i>The latter's Son</i> :</p> <p>JACOB-DESMALTER (GEORGES-ALPHONSE), (1798-1870).</p>	<p>JACOB (A.) fils & C^{ie}, 30, rue de Bondy 44, rue de Bondy</p> <p>JACOB-DESMALTER (A.), 23, rue des Vinaigriers</p> <p>The firm was subsequently taken over by J. Jeanselme.</p>	<p>From 1825 to 1855</p> <p>From 1855 to 1847</p>	<p>A. JACOB F^s & C^{IE}</p> <p>♦ JACOB</p>

LIST OF ILLUSTRATIONS (1)

The measurements are given in feet and inches : h. = height. — l. = length. — b. = breadth.

Plates.

1. — Mahogany CHAIR. With upholstery in tapestry of Beauvais. — h. 3' 1" ; l. 1' 5" ;
b. 1' 6".
Palace of Fontainebleau.
— Arm-chairs similar to this Chair have been manufactured by Georges Jacob during the French Revolution.
 2. — Mahogany ARM-CHAIR. With crosier back and upholstery of the time of Louis XVI.
— h. 2' 11" ; l. 1' 11" ; b. 1' 8".
Palace of Compiègne.
 3. — EASY-CHAIR. To match the preceding Arm-chair. — h. 3' ; l. 2' 1" ; b. 1' 9".
Palace of Compiègne.
 4. — Mahogany CHAIR. With leather seat. — h. 2' 9" ; l. 1' 5" ; b. 1' 4".
Château de Malmaison.
 5. — ARM-CHAIR. To match the preceding Chair. — h. 3' ; l. 1' 11" ; b. 1' 7".
French Garde Meuble.
 6. — Mahogany CHAIR. With ancient Indian silk cover. — h. 2' 11" ; l. 1' 4" ; b. 1' 6".
Palace of Fontainebleau.
 7. — HIGH-BACK CHAIR. To match the preceding Chair. The frame-work is attributed to G. and F.-H. Jacob. — h. 3' ; l. 1' 7" ; b. 1' 6".
Palace of Fontainebleau.
 8. — Mahogany ARM-CHAIR. With crosier back and green leather cover. — h. 2' 11" ;
l. 1' 10" ; b. 1' 8".
French Garde Meuble.
 9. — Mahogany CHAIR. With gilt decoration, crosier back and modern silk upholstery.
— h. 3' ; l. 1' 5" ; b. 1' 3".
Château de Malmaison.
 10. — Mahogany ARM-CHAIR. With crosier back, arms terminating in lions' heads, carved legs and modern silk cover. — h. 3' 1" ; l. 1' 10" ; b. 1' 5".
Formerly in the Trianon, now in the French Garde Meuble.
-

(1) All pieces of furniture illustrated in this work are by G. and F.-H. Jacob, but whenever the stamped signature is lacking thereon, indication will be given as follows : — Attributed to G. and F.-H. Jacob.

11. — Mahogany CHAIR. With crosier back. — h. 2' 11" ; l. 1' 4" ; b. 1' 4".
French Garde Meuble.
12. — Mahogany CHAIR. With crosier back and hair cover. — h. 2' 10" ; l. 1' 6" ; b. 1' 4".
Château de Malmaison.
13. — Mahogany ARM-CHAIR. With crosier back, arms terminating in lions' heads and upholstery of the time of Louis XVI. — h. 3' 1" ; l. 1' 9" ; b. 1' 5".
French Garde Meuble.
14. — Mahogany ARM-CHAIR. With crosier back, arms terminating in lions' heads, and modern velvet cover. — h. 3' 1" ; l. 1' 9" ; b. 1' 5".
French Garde Meuble.
15. — Mahogany CHAIR. With ancient upholstery. — h. 3' ; l. 1' 6" ; b. 1' 5".
Palace of Fontainebleau.
16. — FRAME-WORK of SOFA. With crosier back and arms supported by winged Chimeras. — h. 3' ; l. 4' 6" ; b. 1' 10".
Attributed to *G. and F.-H. Jacob.*
17. — Mahogany ARM-CHAIR. With crosier back, arms terminating in balls, Etruscan legs, and green velvet cover. — h. 3' 1" ; l. 2' ; b. 1' 8".
Palace of Compiègne.
18. — Mahogany CHAIR. With crosier back and hair cover. — h. 2' 11" ; l. 1' 6" ; b. 1' 4".
Palace of Fontainebleau.
19. — Mahogany CHAIR. With crosier back and Indian silk upholstery. — h. 2' 11" ; l. 1' 5" ; b. 1' 4".
Palace of Fontainebleau.
20. — Mahogany CHAIR. With crosier back and ancient seat cover. — h. 3' 1" ; l. 1' 5" ; b. 1' 4".
French Garde Meuble.
21. — ARM-CHAIR. Of carved wood painted in grey. Tapestry cover of Beauvais entitled : Sciences and Arts, after Lagrenée. — h. 3' 3" ; l. 2' 2" ; b. 1' 11".
Palace of Fontainebleau.
22. — SOFA. To match the preceding Arm-chair. — h. 3' 4" ; l. 6' 3" ; b. 2' 4".
Palace of Fontainebleau.
23. — FRAME-WORK of Mahogany ARM-CHAIR. With crosier back and arms with the heads of women as supports. — h. 3' 2" ; l. 1' 11" ; b. 1' 7".
French Garde Meuble.
24. — Gilt CHAIR. With crosier back and modern upholstery. — h. 3' ; l. 1' 6" ; b. 1' 4".
Château de Malmaison.
25. — Mahogany CHAIR. With crosier back and ancient upholstery. — h. 3' ; l. 1' 7" ; b. 1' 4".
Château de Malmaison.

26. — Mahogany ARM-CHAIR. With crosier back, arms supported by gilt heads of women and modern silk cover. — h. 3' 1"; l. 2' 1"; b. 1' 8".
Château de Malmaison.
27. — Mahogany ARM-CHAIR. With crosier back, carved legs and arms supported by Egyptian heads. — h. 3' 1"; l. 1' 6"; b. 1' 5".
French Garde Meuble.
28. — Gilt wooden BEDSTEAD, with Etruscan legs and crosier backs terminating in heads of lions. — h. 3' 2"; l. 6' 5"; b. 2' 8".
French Garde Meuble.
29. — Gilt ARM-CHAIR. With crosier back, arms supported by Egyptian heads, carved legs and velvet upholstery. — h. 3'; l. 2'; b. 1' 4".
Château de Malmaison.
30. — Gilt ARM-CHAIR. With crosier back, carved legs, modern cover, and arms supported by the heads of Egyptian women. — h. 3' 2"; l. 2' 2"; b. 1' 11".
Château de Malmaison.
31. — Gilt FRAME-WORK of an ARM-CHAIR. With crosier back and arms supported by winged Chimeras. — h. 3' 5"; l. 2' 5"; b. 1' 11".
French Garde Meuble.
32. — Gilt ARM-CHAIR. With crosier back and silk upholstery of the Empire Period. — h. 3' 1"; l. 1' 11"; b. 1' 8".
Palace of Fontainebleau.
33. — Gilt wooden STOOL. With carved legs and silk cover of the Restauration Period. h. 1' 8"; l. 2'; b. 1' 9".
Formerly in the Palace of Saint Cloud, now in the French Garde Meuble.
34. — Carved and gilt ARM-CHAIR. With crosier back, arms supported by heads of women and ancient upholstery. — h. 3' 1"; l. 1' 6"; b. 1' 8".
Formerly in the Tuileries, now in the French Garde Meuble.
35. — EASY-CHAIR. To match the preceding Arm-chair. — h. 3' 1"; l. 2' 7"; b. 2'.
Formerly in the Tuileries, now in the French Garde Meuble.
36. — SOFA. To match the preceding Arm-chair and Easy-chair. The frame-work attributed to *G. and F.-H. Jacob*. — h. 3' 3"; l. 1' 9"; b. 2' 9".
Formerly in the Tuileries, now in the French Garde Meuble.
37. — Carved and gilt ARM-CHAIR. With ancient upholstery and arms supported by leopards. — h. 3' 2"; l. 2' 4"; b. 2'.
French Garde Meuble.
38. — EASY-CHAIR. To match the preceding Arm-chair. — h. 3' 2"; l. 2'; b. 1' 11".
French Garde Meuble.
39. — Gilt ARM-CHAIR. With crosier back and silk cover of the Restauration Period. — h. 3' 2"; l. 2' 2"; b. 1' 9".
French Garde Meuble.

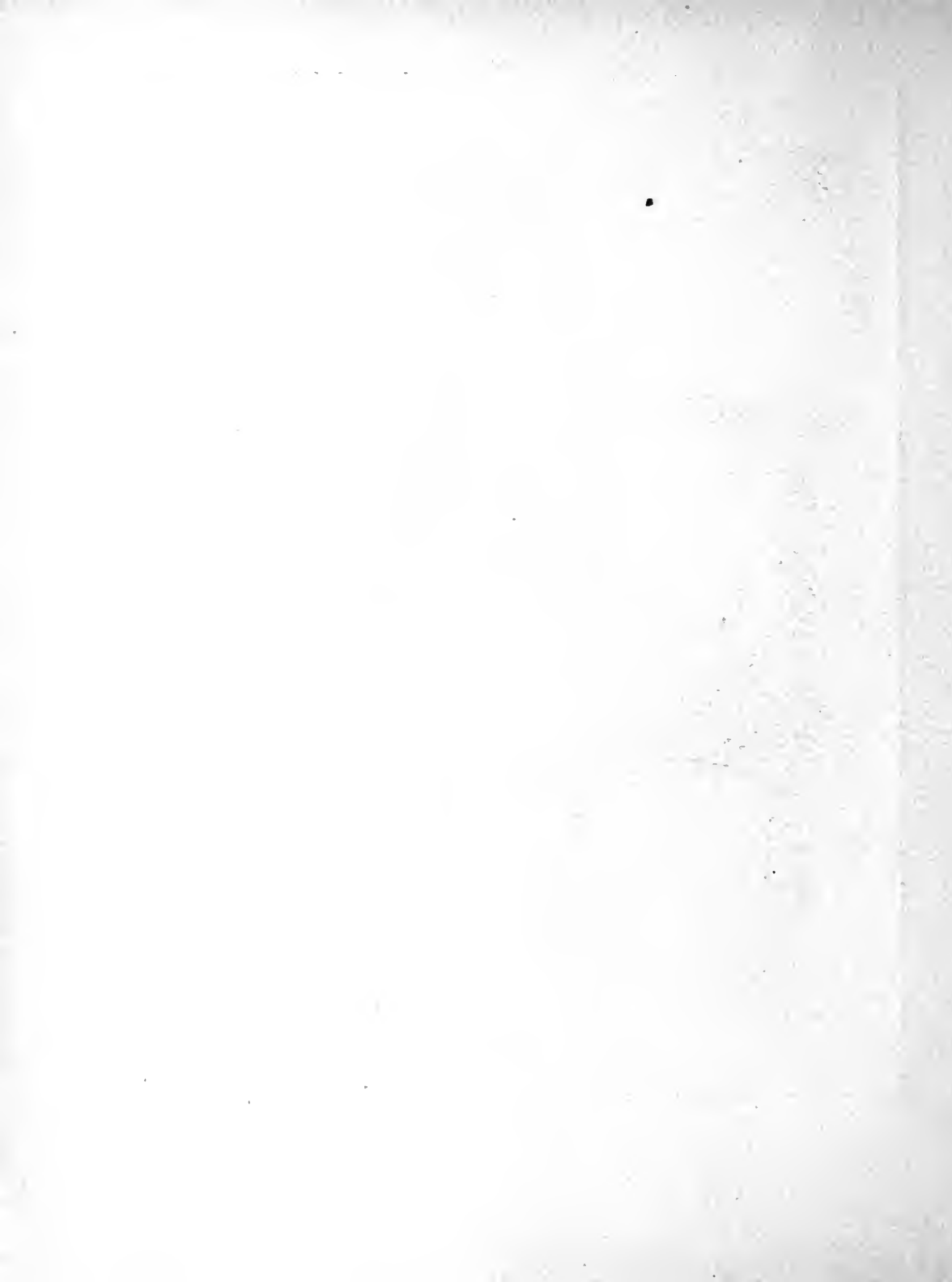
40. — Gilt ARM-CHAIR. With crosier back, square legs and upholstery dating back to the Empire Period. — h. 3' 1"; l. 2'; b. 1' 9".
Palace of Fontainebleau.
41. — Carved and gilt ARM-CHAIR. With arms supported by Egyptian heads, and upholstery of Tours of the Empire Period. The frame-work attributed to *G. and F.-H. Jacob*. — h. 3' 1"; l. 2'; b. 1' 7".
French Garde Meuble.
42. — SOFA. To match the preceding Arm-chair. The frame-work attributed to *G. and F.-H. Jacob*. — h. 3' 2"; l. 5' 4"; b. 2'.
French Garde Meuble.
- Similar Chairs may be seen at the Château de Malmaison.

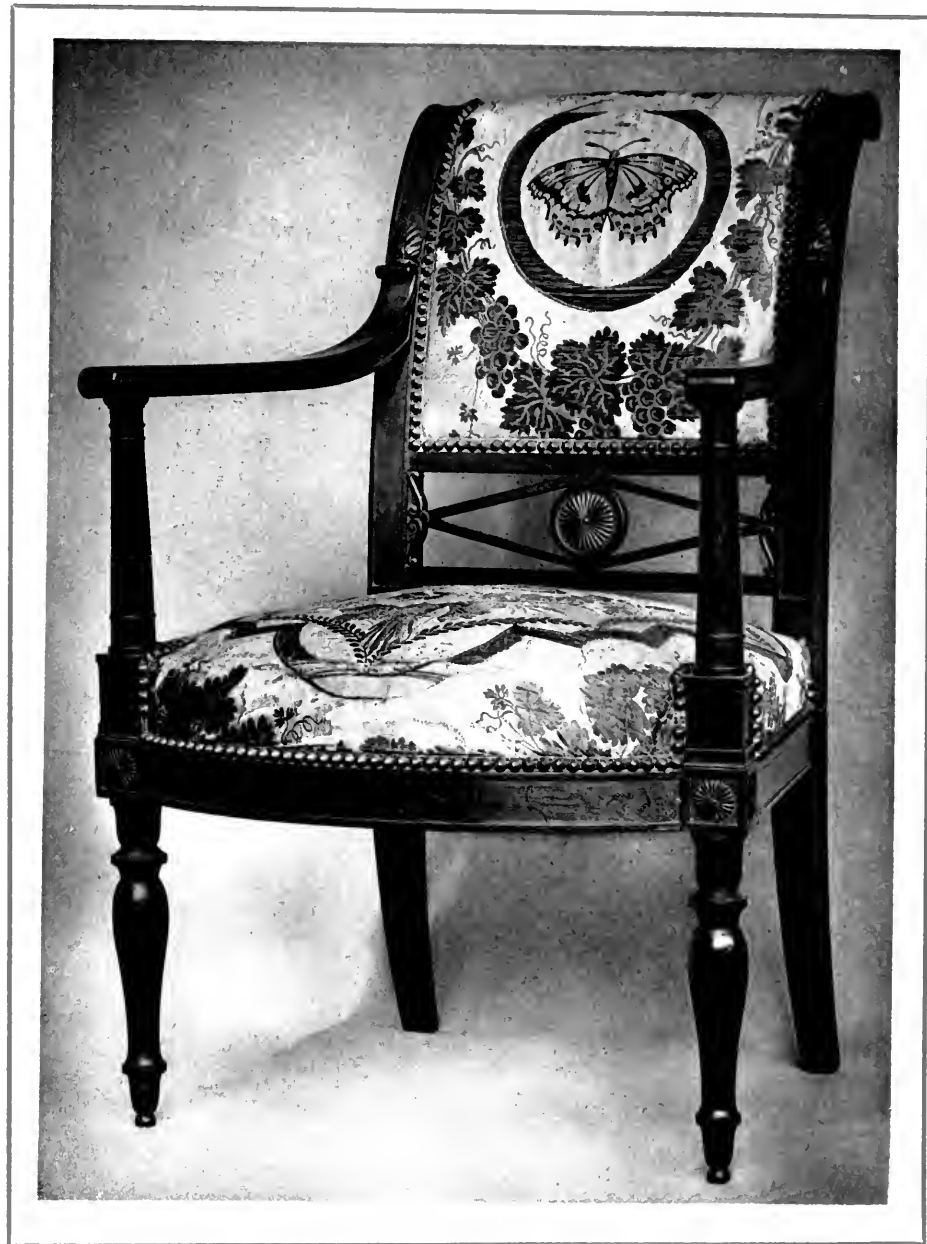






Mahogany CHAIR.
With upholstery in tapestry of Beauvais.
Palace of Fontainebleau.



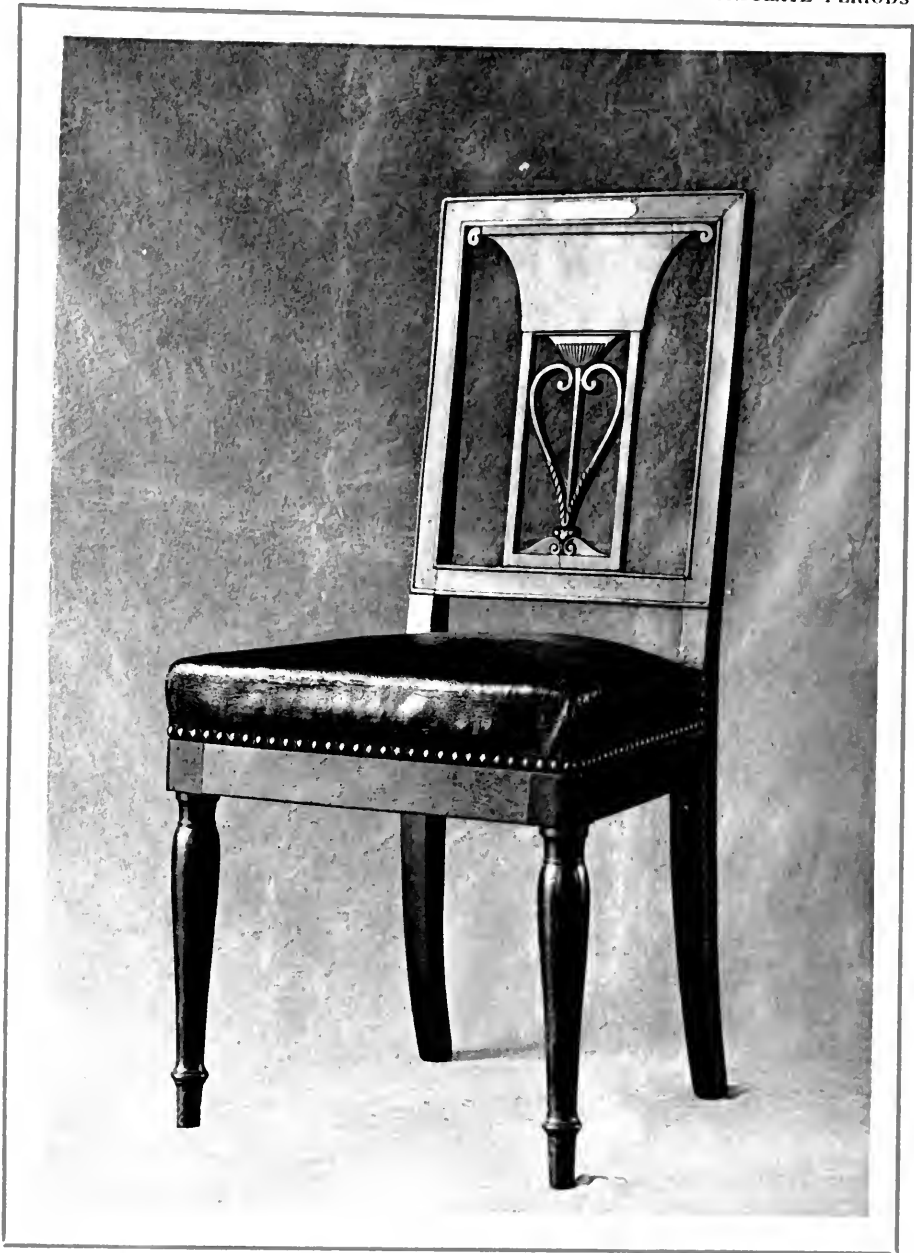


Mahogany ARM-CHAIR.
With crosier back and upholstery of the time of Louis XVI.
Palace of Compiègne.

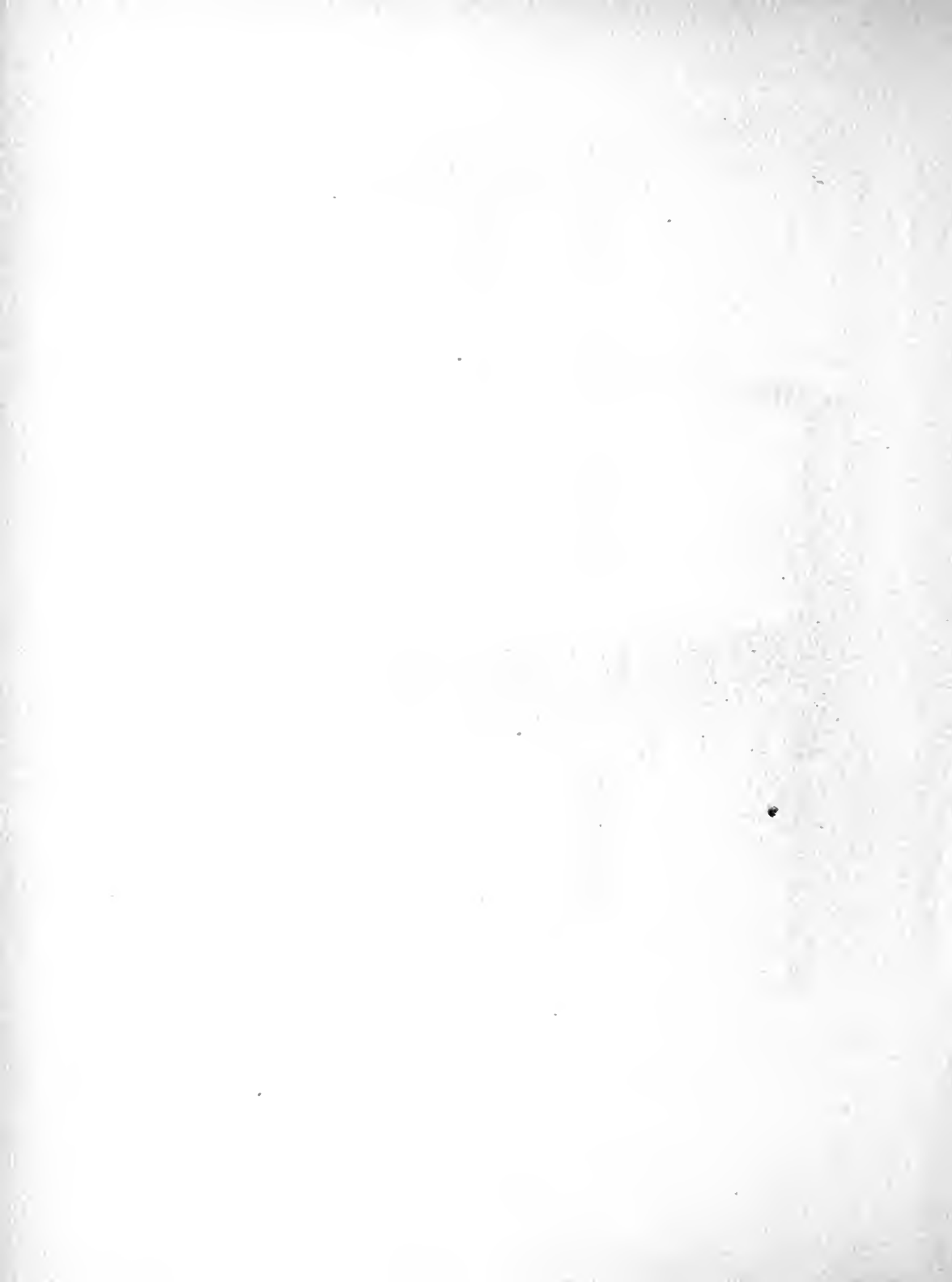




Mahogany EASY-CHAIR.
With crosier back and ancient silk cover.
French Garde Meuble.



Mahogany Chair, with leather seat.
Château de Malmaison.





Mahogany ARM-CHAIR.
With modern velvet cover.
French Garde Meuble.



Mahogany Chair.
With ancient Indian silk cover.
Palace of Fontainebleau.

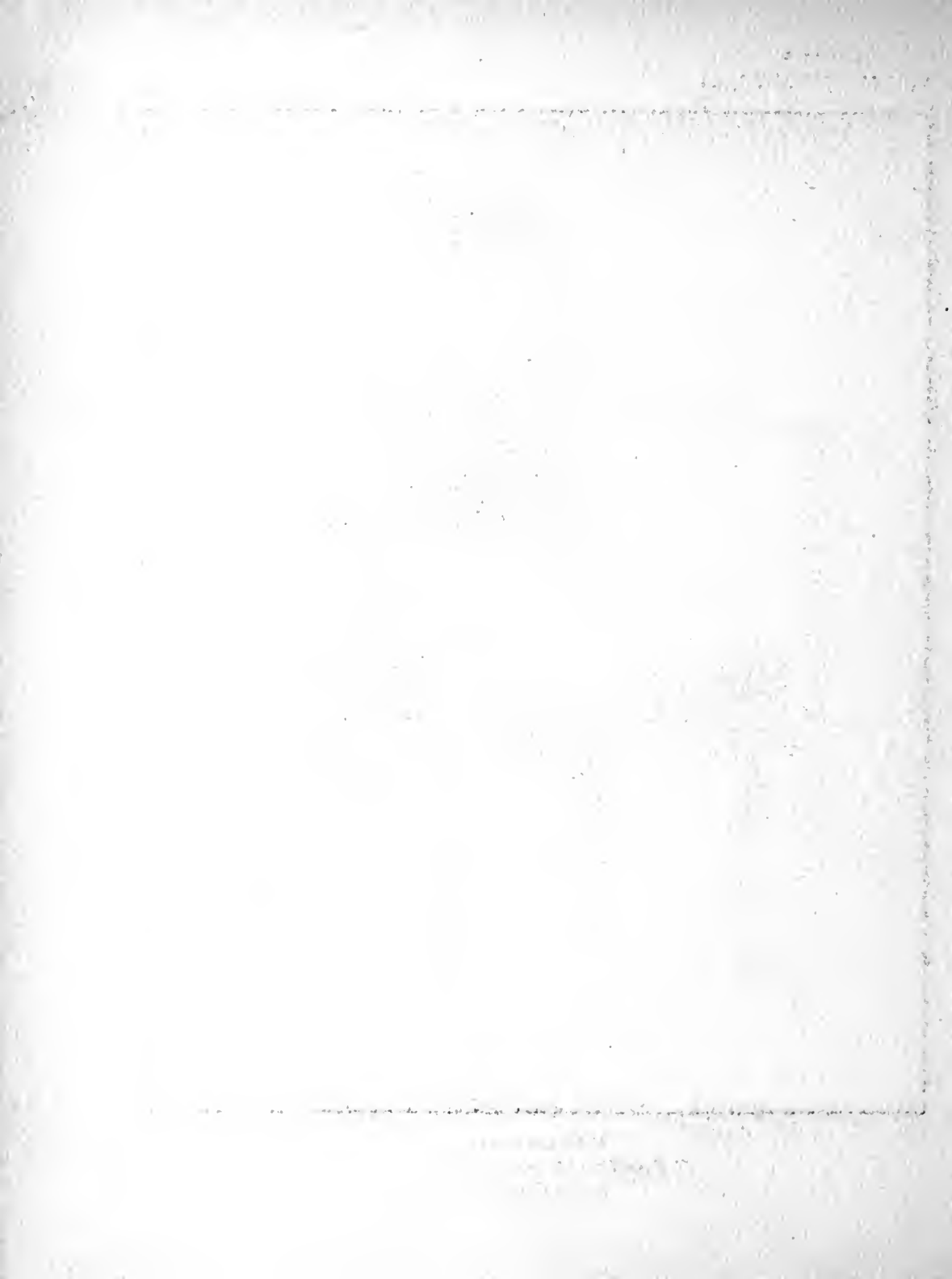


HIGH-BACK CHAIR.

Of Mahogany, with crosier back and ancient Indian silk upholstery.
The frame-work is attributed to G. and F.-H. Jacob.
Palace of Fontainebleau.

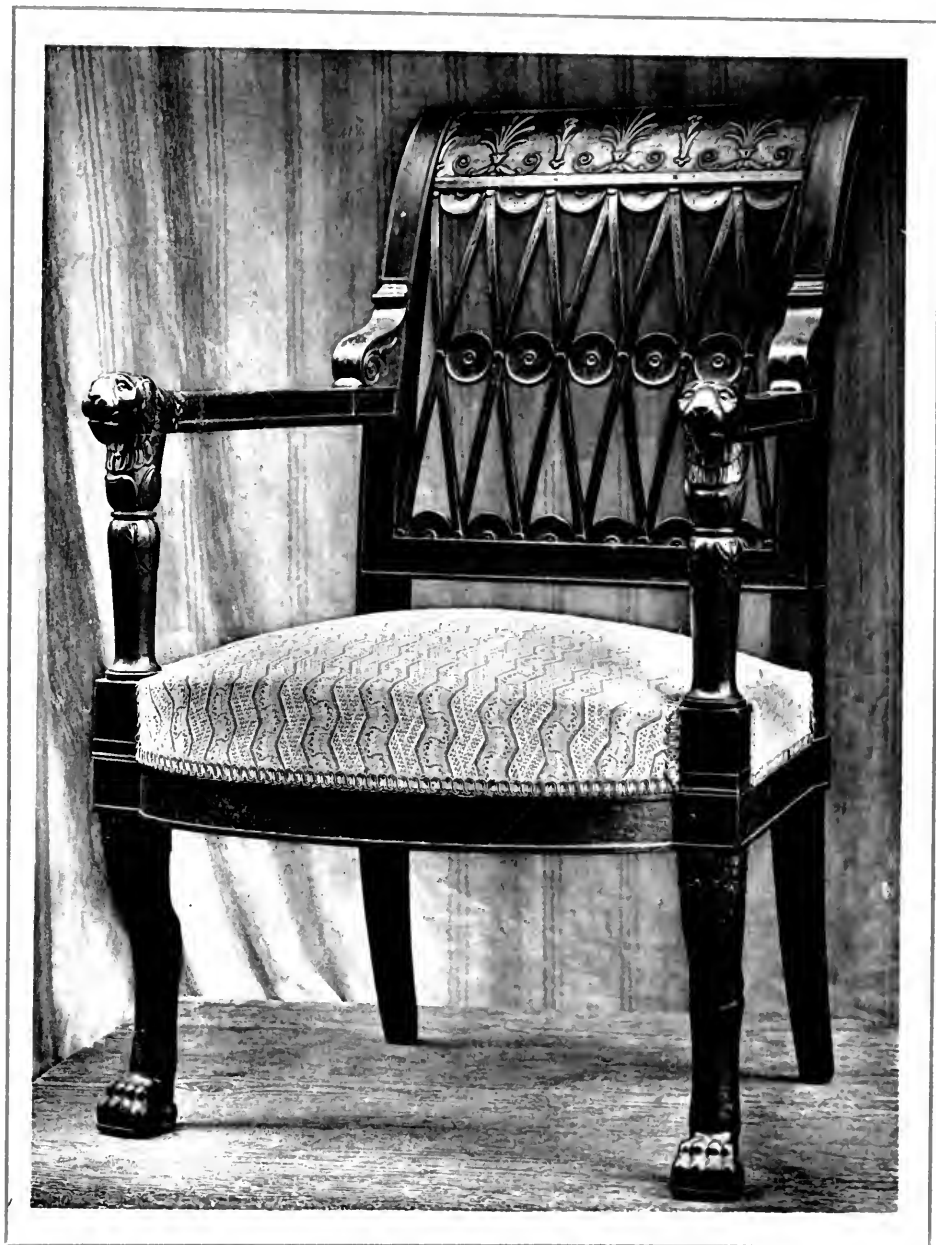


Mahogany ARM-CHAIR.
With crozier back and green leather cover.
French Garde Meuble.

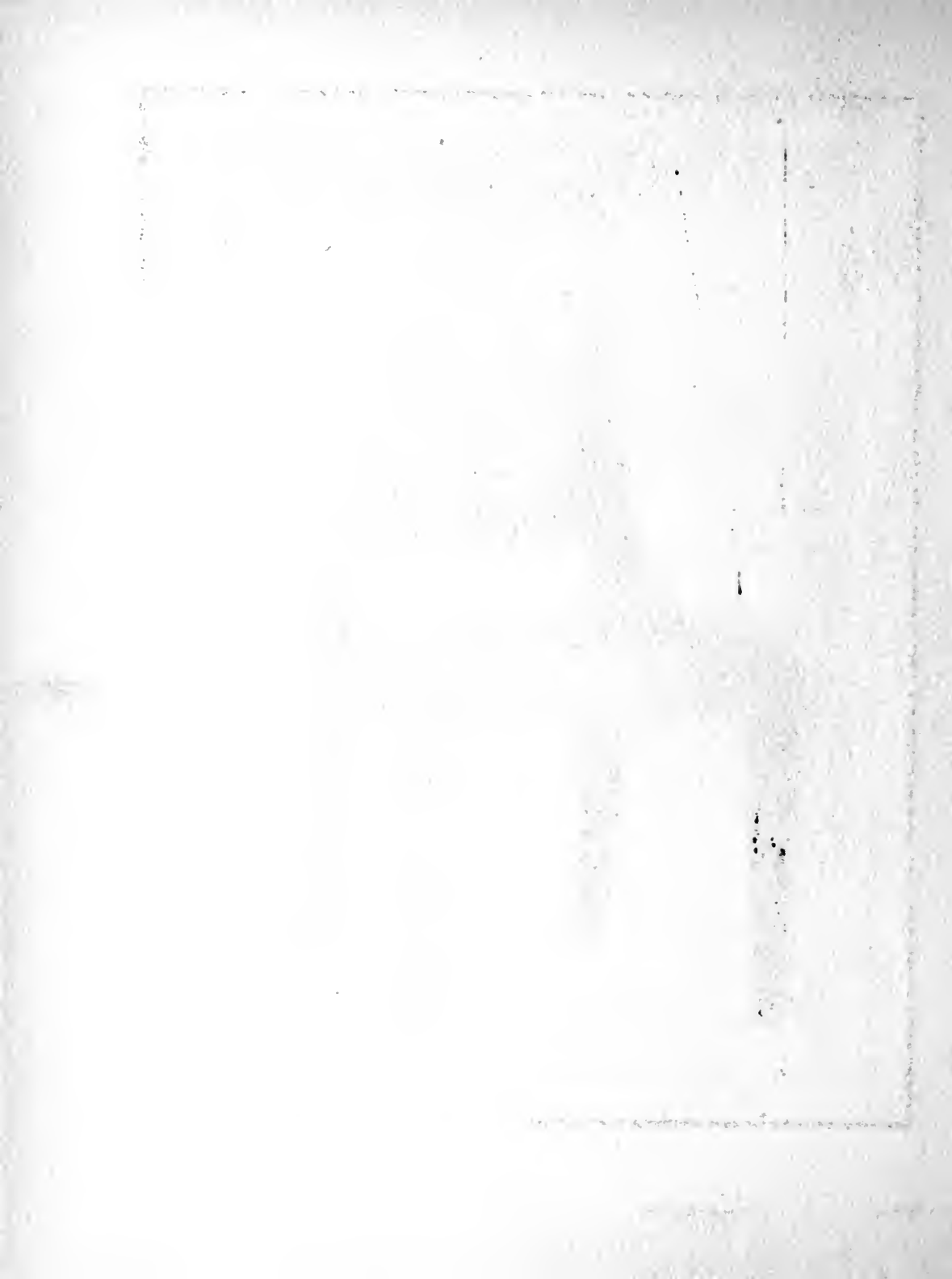


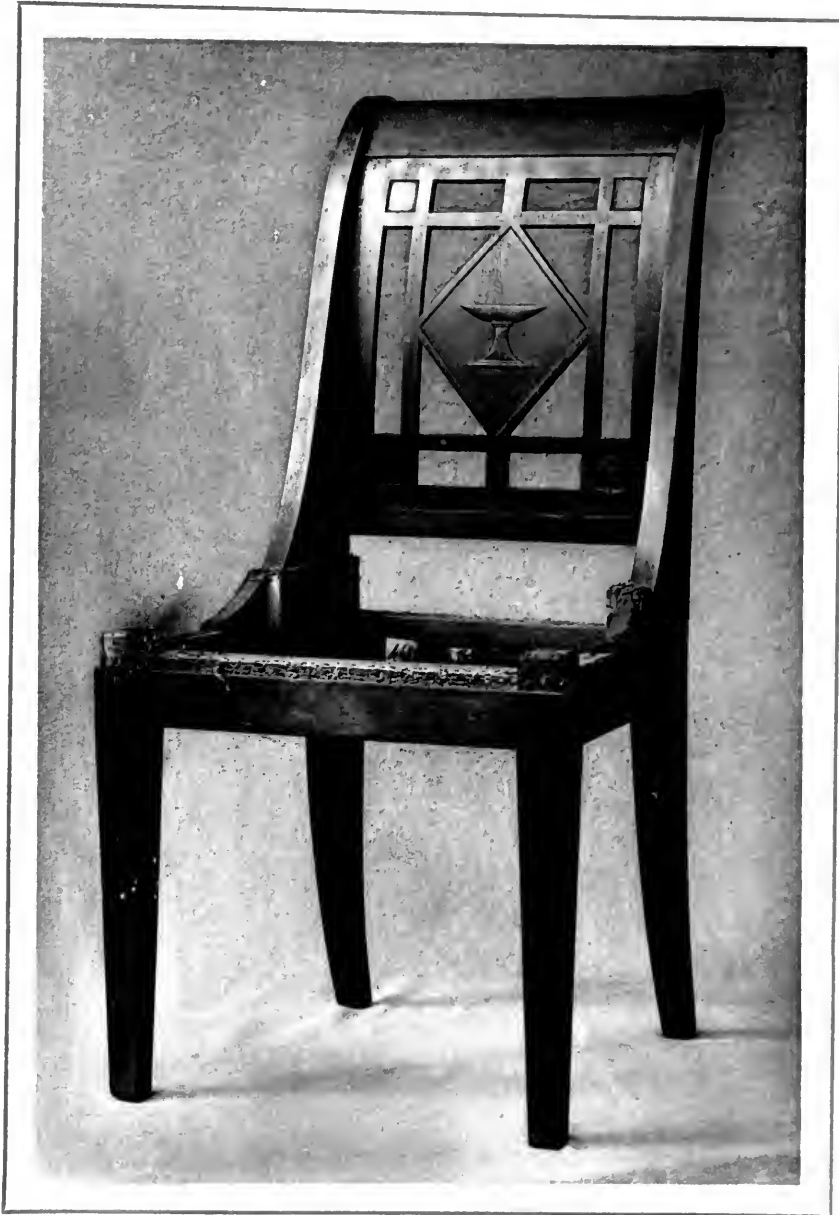


Mahogany CHAIR.
With gilt decoration, crosier back, and modern silk upholstery.
Château de Malmaison.



Mahogany ARM-CHAIR.
With crozier back, arms terminating in lions' heads,
carved legs and modern silk cover.
Formerly in Trianon, now in the French Garde Meuble.

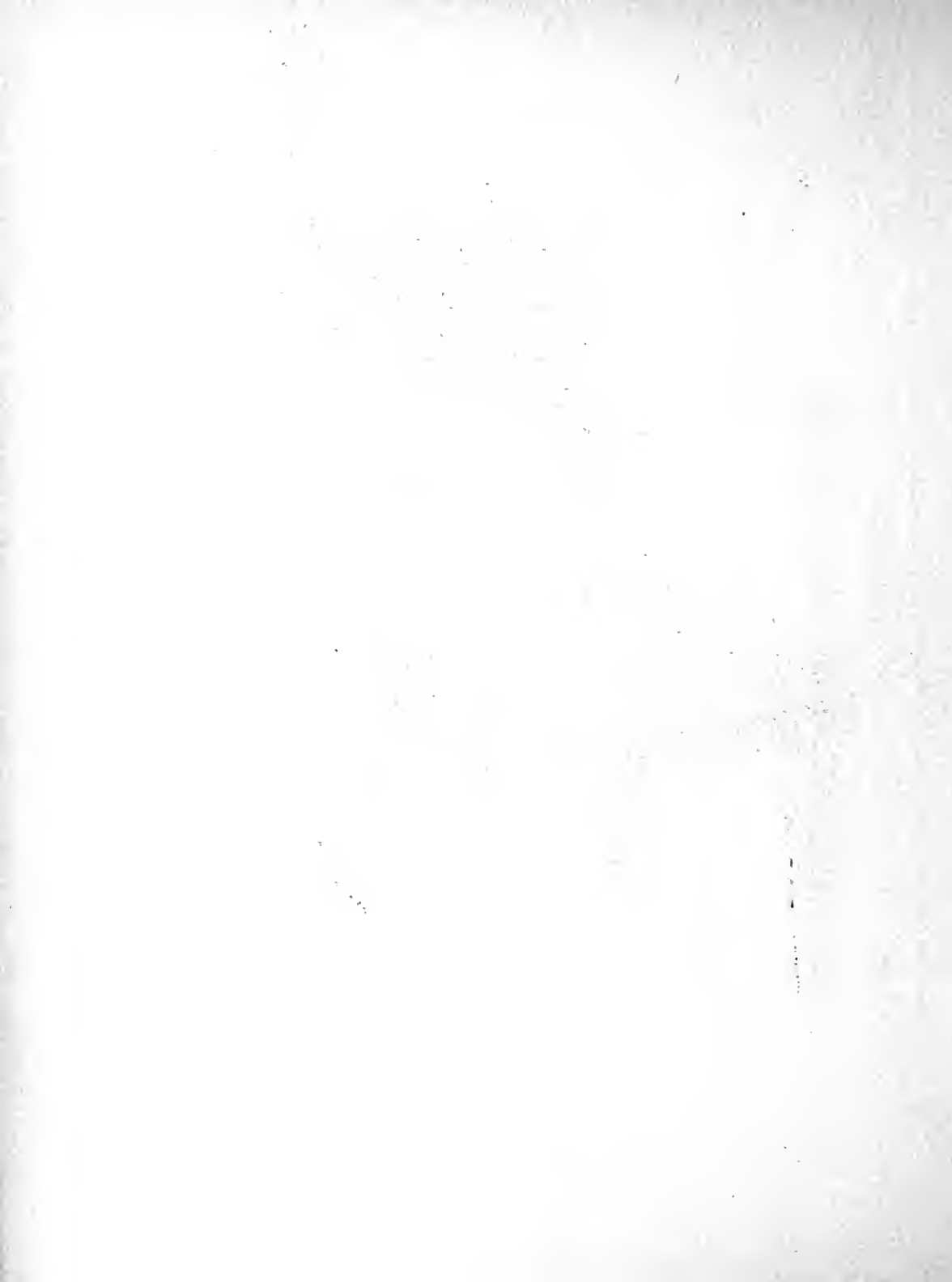




Mahogany CHAIR, with crosier back.
French Garde Meuble.



Mahogany CHAIR.
With crosier back and hair cover.
Château de Malmaison.





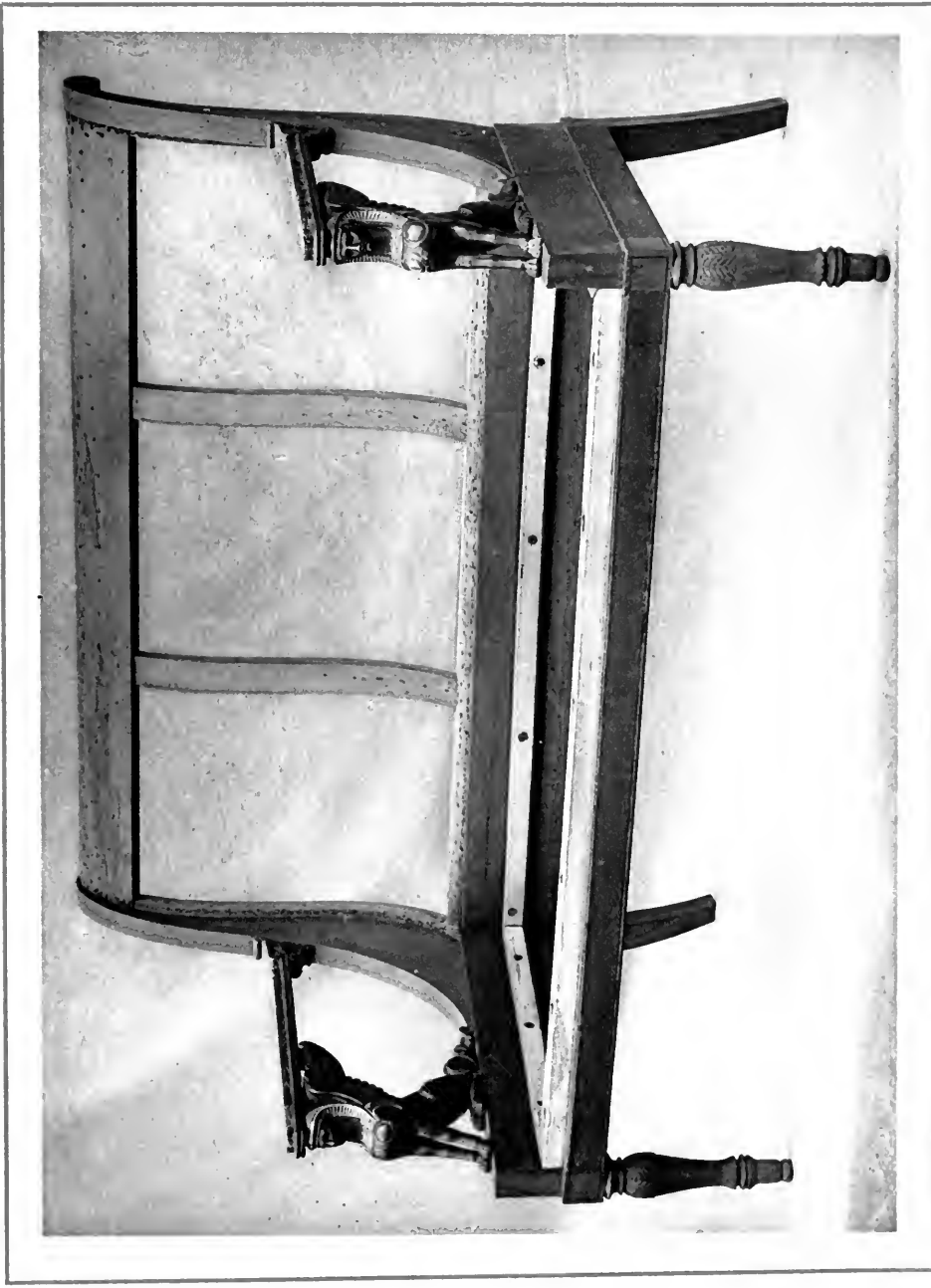
Mahogany ARM-CHAIR.
With crosier back, arms terminating in lions' heads, and upholstery
of the time of Louis XVI.
French Garde Meuble.



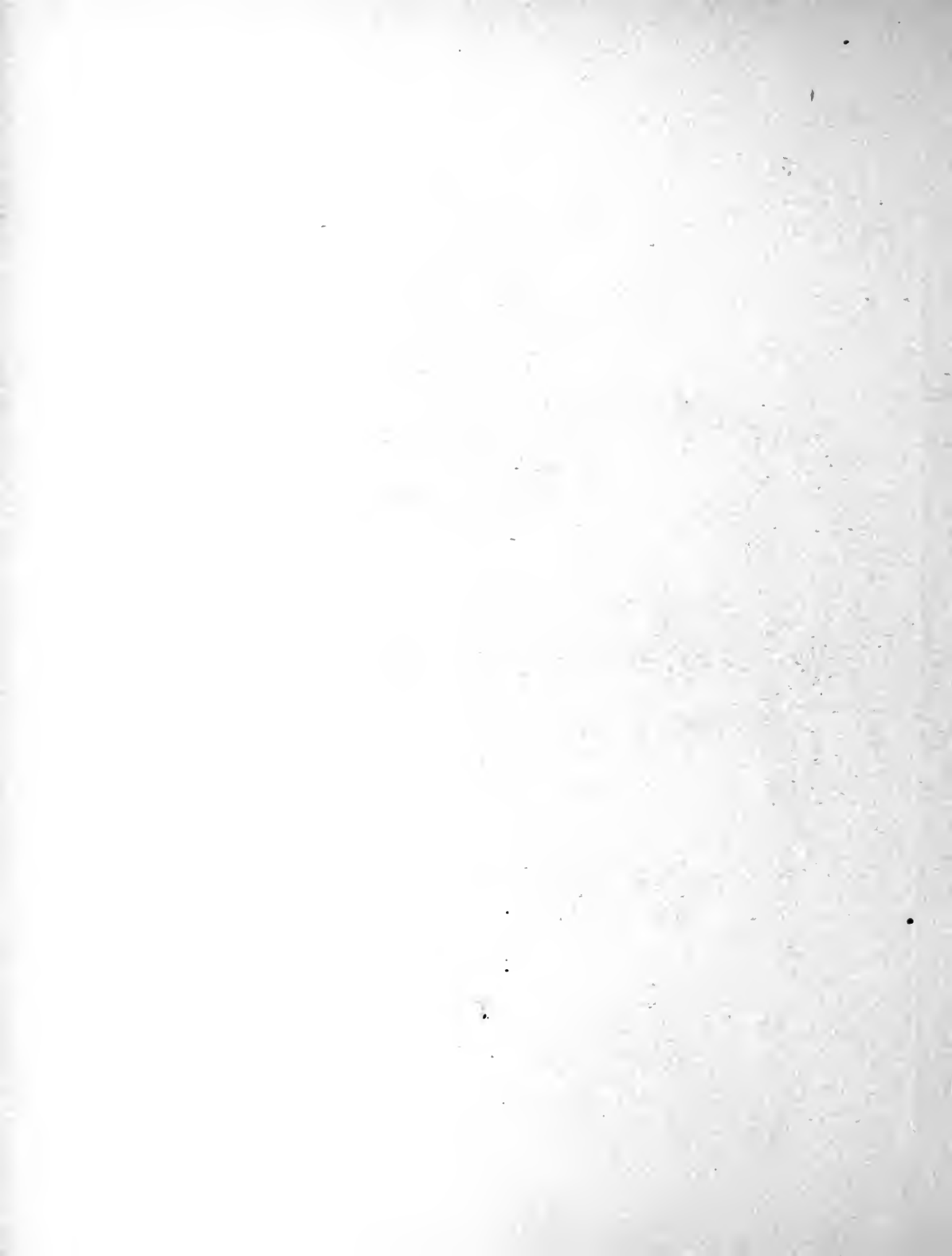
Mahogany ARM-CHAIR.
Wit crosier back, arms terminating in lions' heads.
and modern velvet cover.
French Garde Meuble.



Mahogany CHAIR.
With ancient upholstery.
Palace of Fontainebleau.



FRAME-WORK OF SOFA.
With crosier back and arms supported by winged Chimeras.
Attributed to G. and F.-H. Jacob.

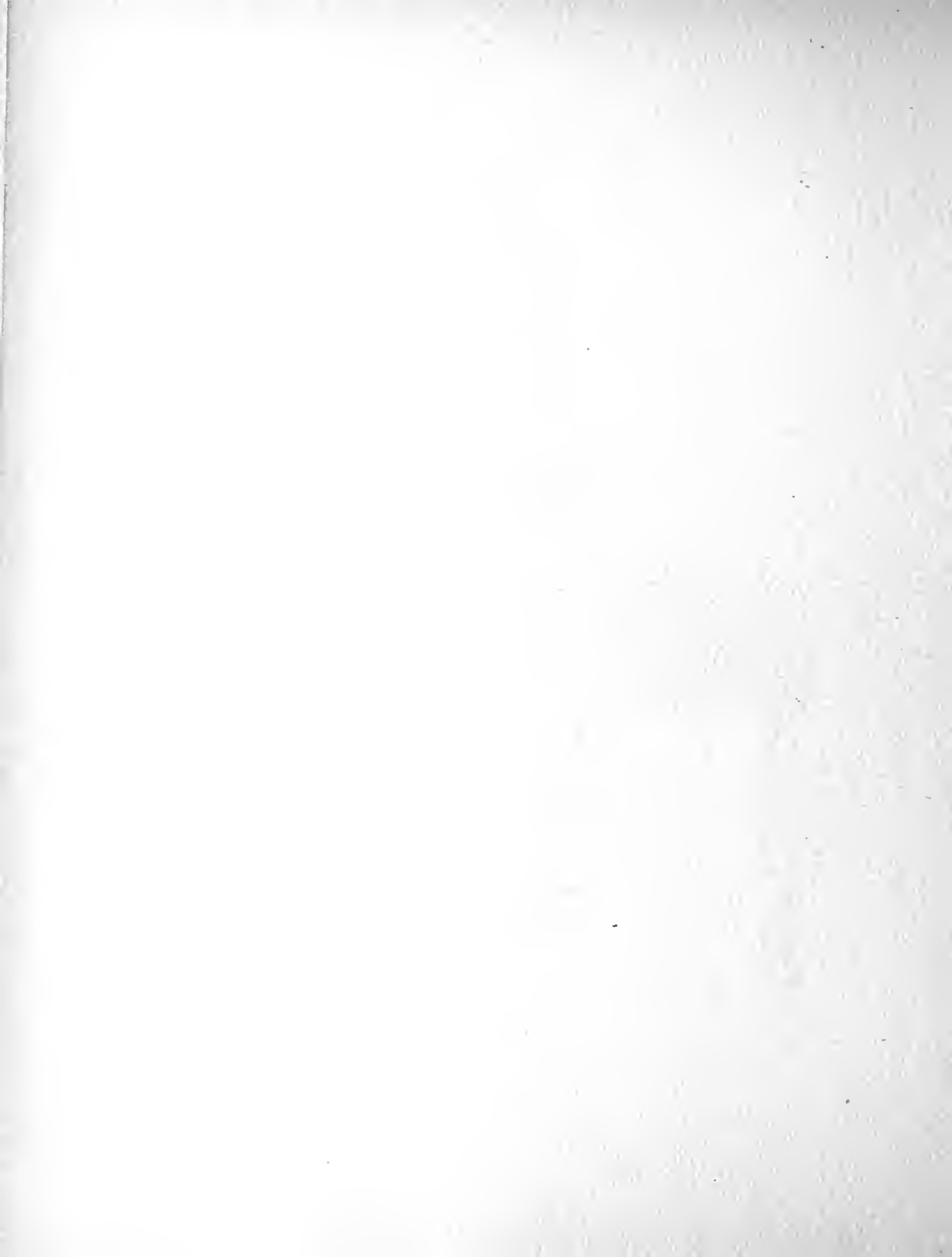




Mahogany ARM-CHAIR.
With crosier back, arms terminating in balls, Etruscan legs,
and green velvet cover.
Palace of Compiègne.

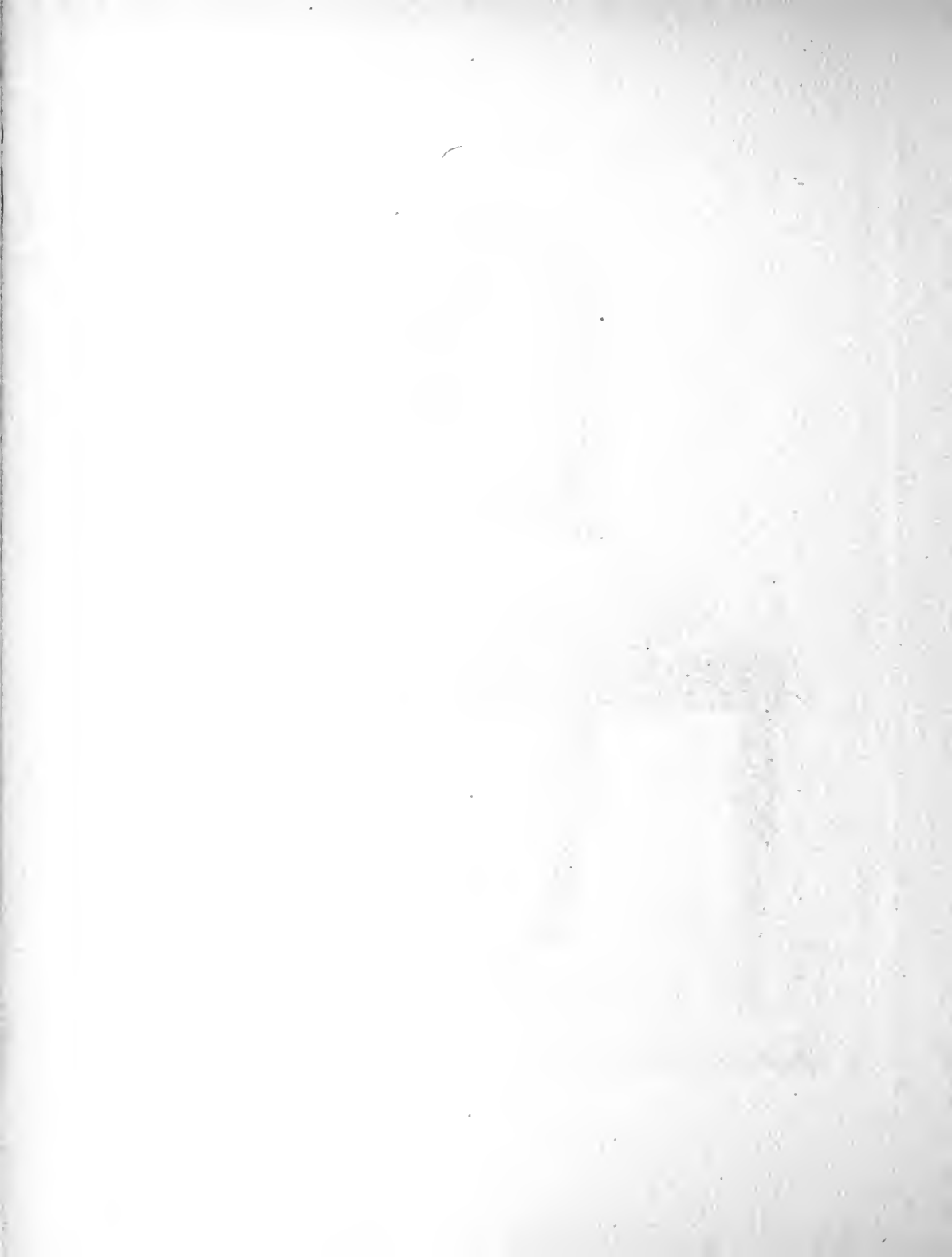


Mahogany CHAIR.
With crosier back and hair cover.
Palace of Fontainebleau.



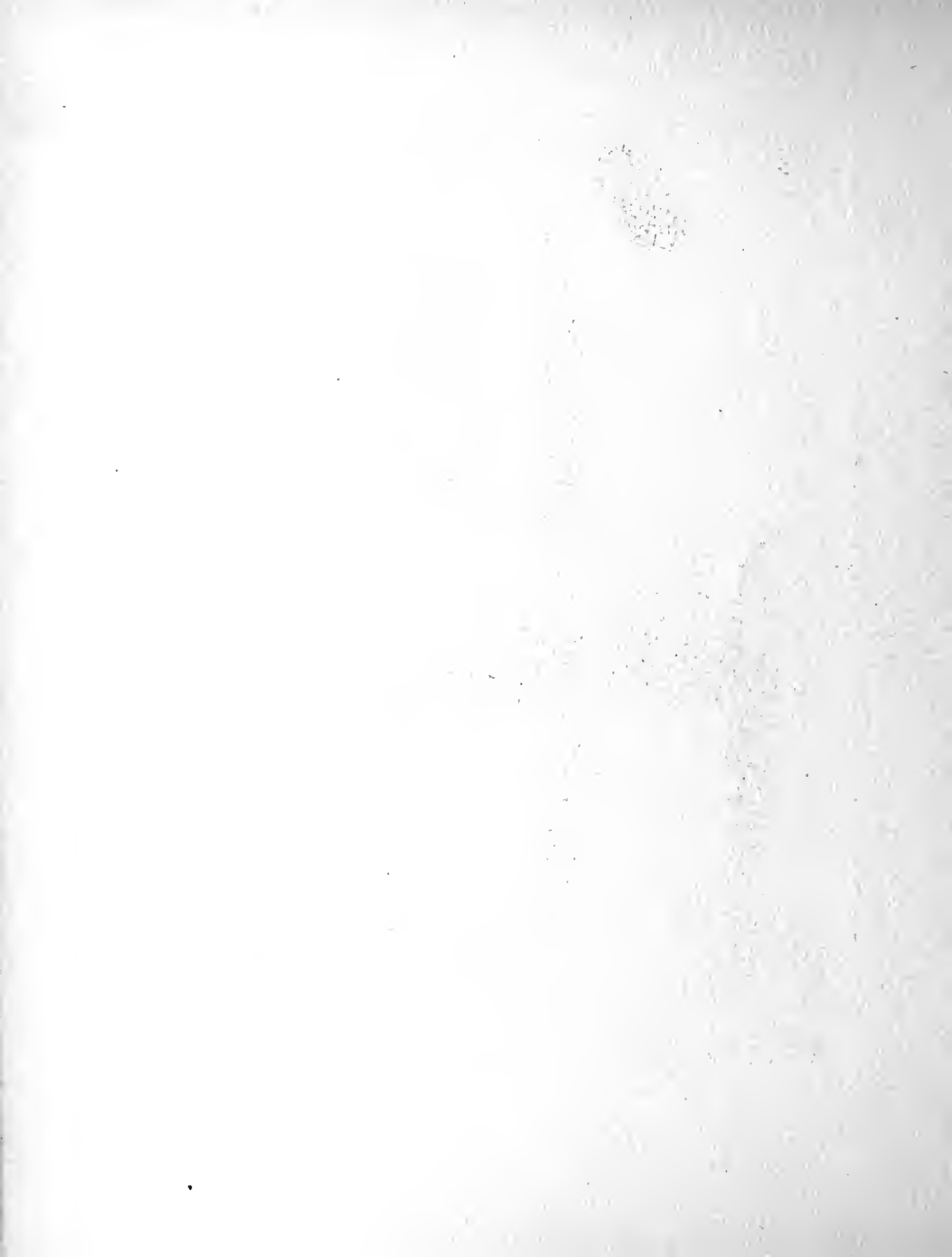


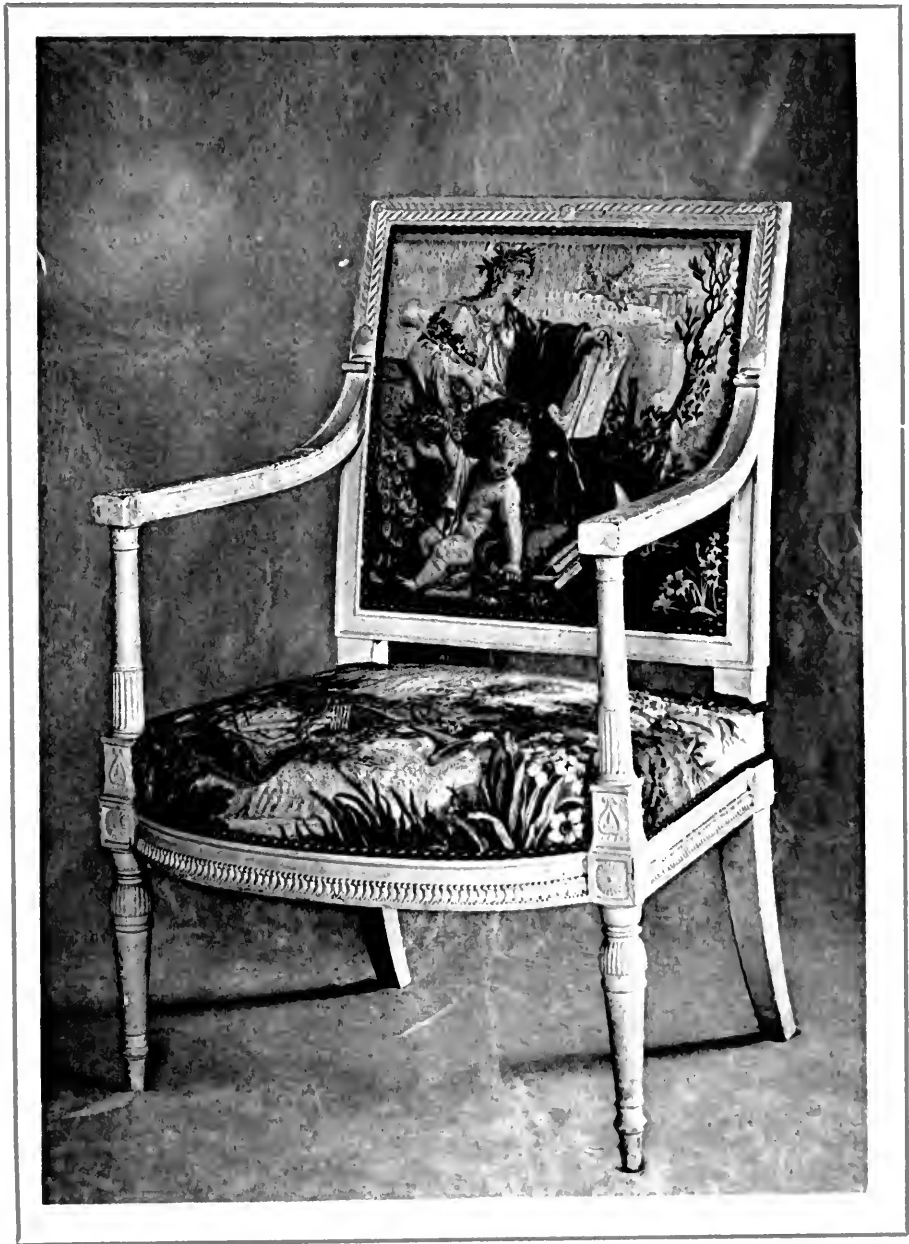
Mahogany CHAIR.
With crozier back, and Indian silk upholstery.
Palace of Fontainebleau.





Mahogany CHAIR.
With crozier back and ancient seat cover.
French Garde Meuble.

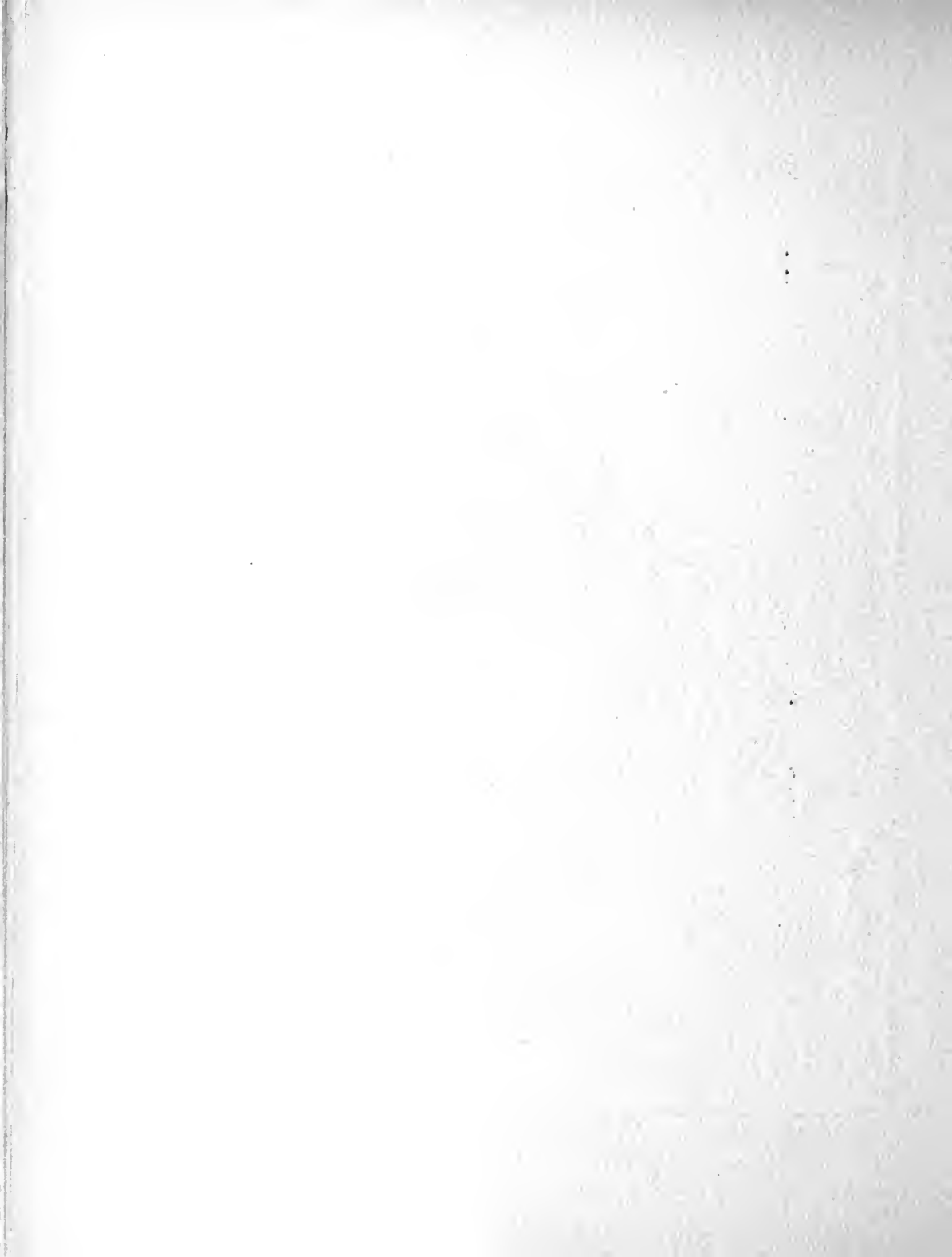


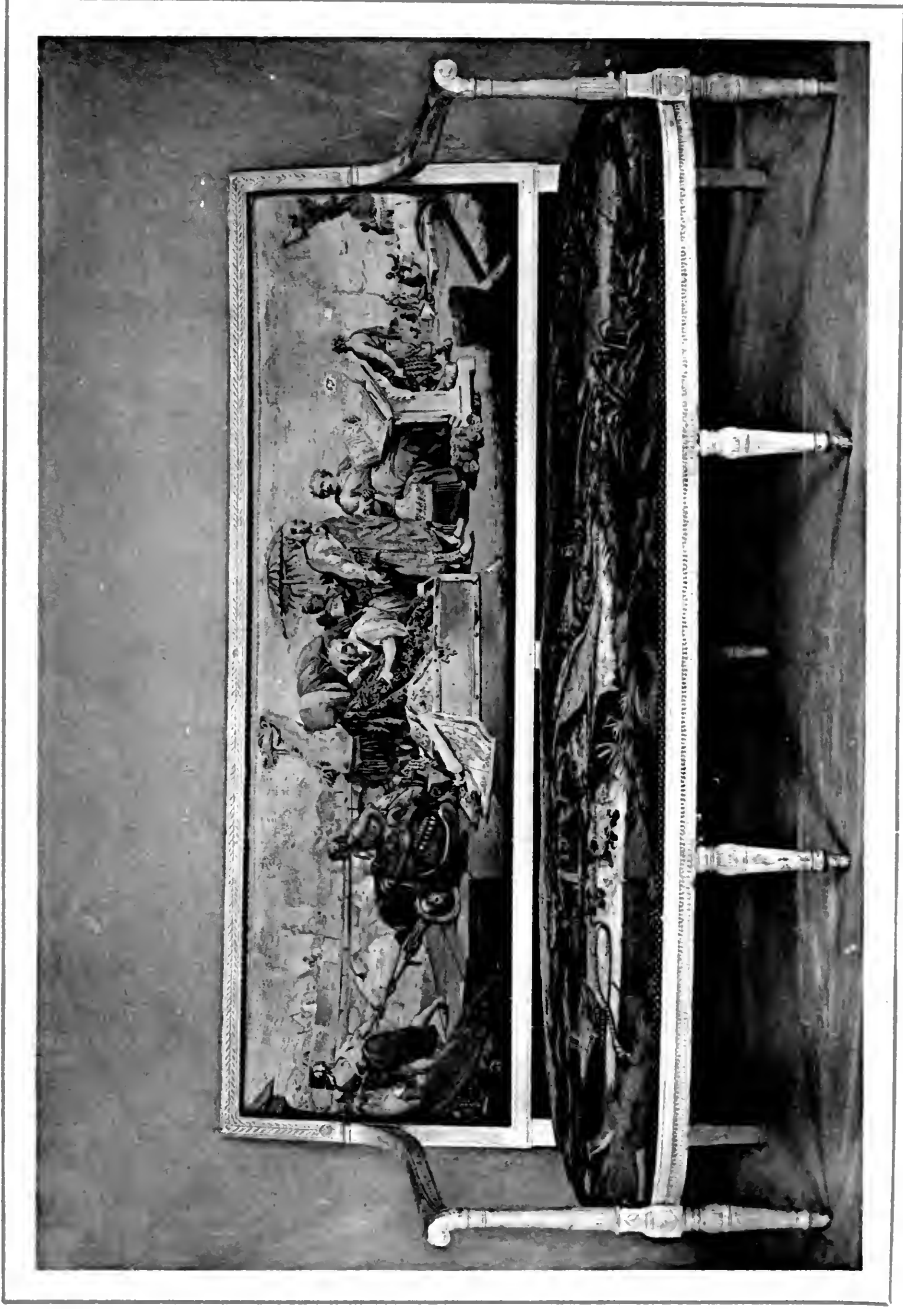


ARM-CHAIR.

Of carved wood painted in grey.

Tapestry cover of Beauvais entitled : *Sciences and Arts*, after *Lagrenée*.
Palace of Fontainebleau.





SOFA.

Of carved wood painted in grey.

Tapestry cover of Beauvais entitled : *Sciences and Arts*, after *Lagrenée*.
Palace of Fontainebleau.



Frame-work of Mahogany ARM-CHAIR.
With crosier back, and arms with the heads of women as supports.
French Garde Meuble.



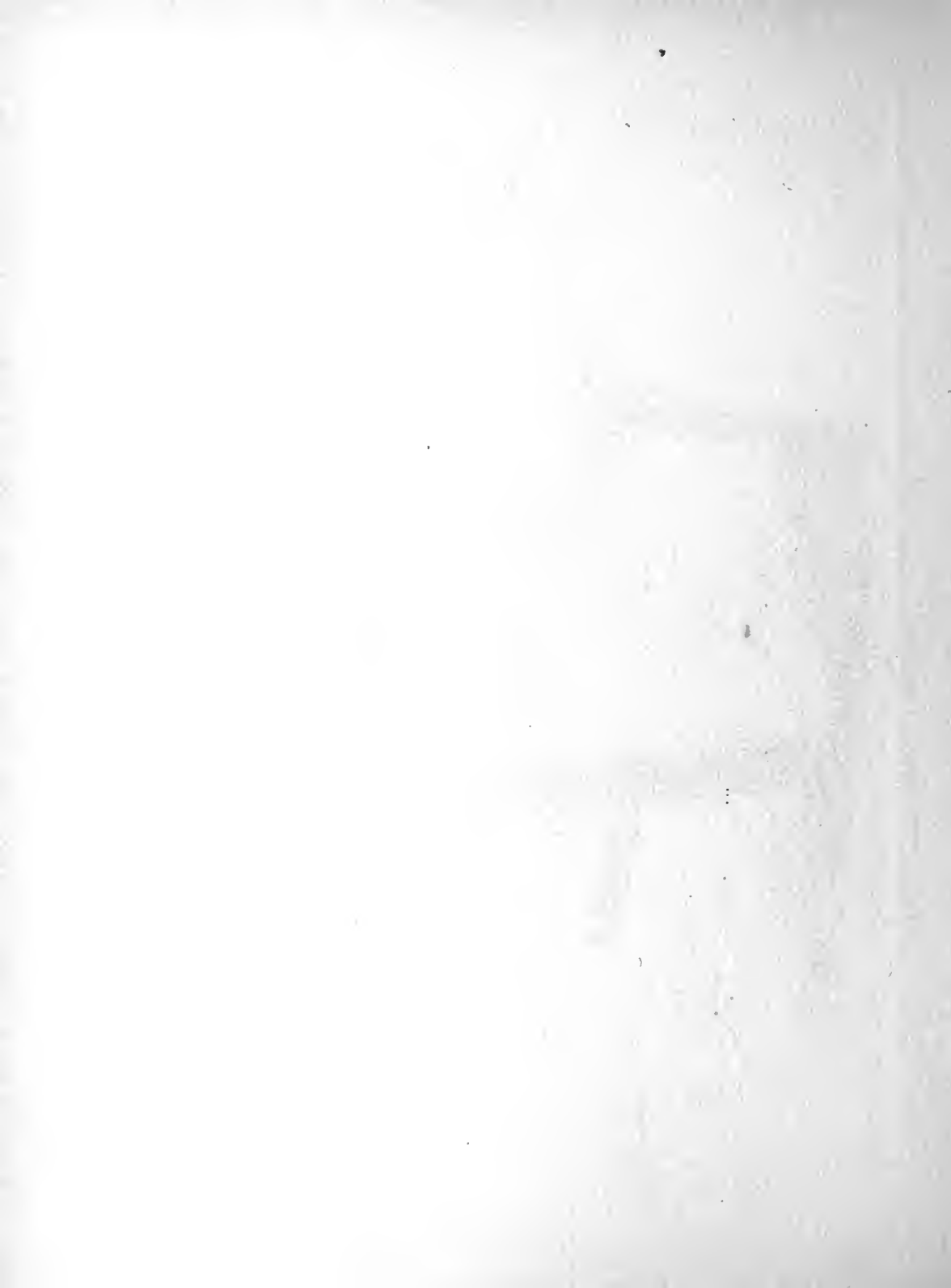
Gilt Chair.
With crosier back and modern upholstery.
Château de Malmaison.



Mahogany CHAIR.
With crosier back and ancient upholstery.
Château de Malmaison.

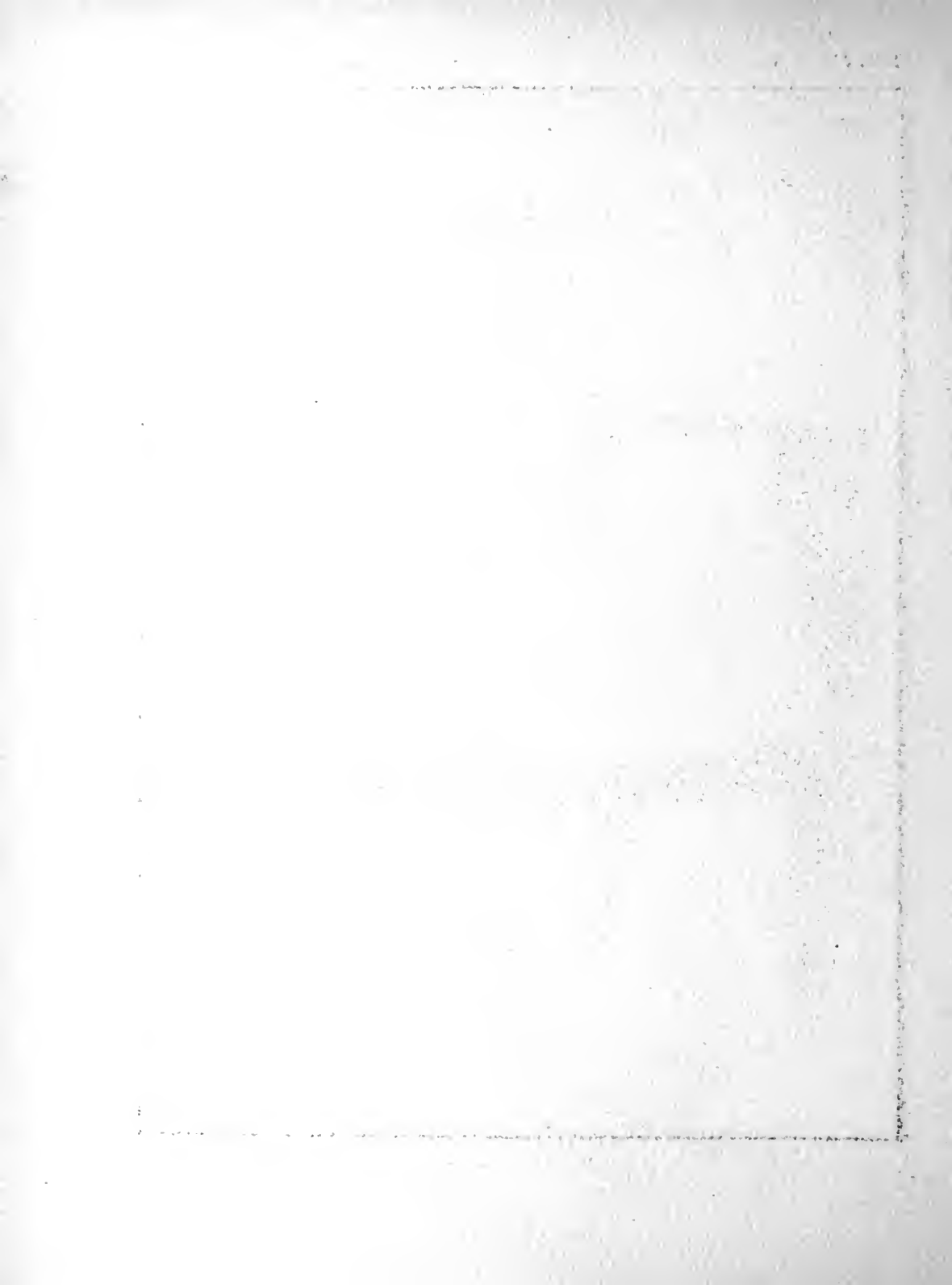


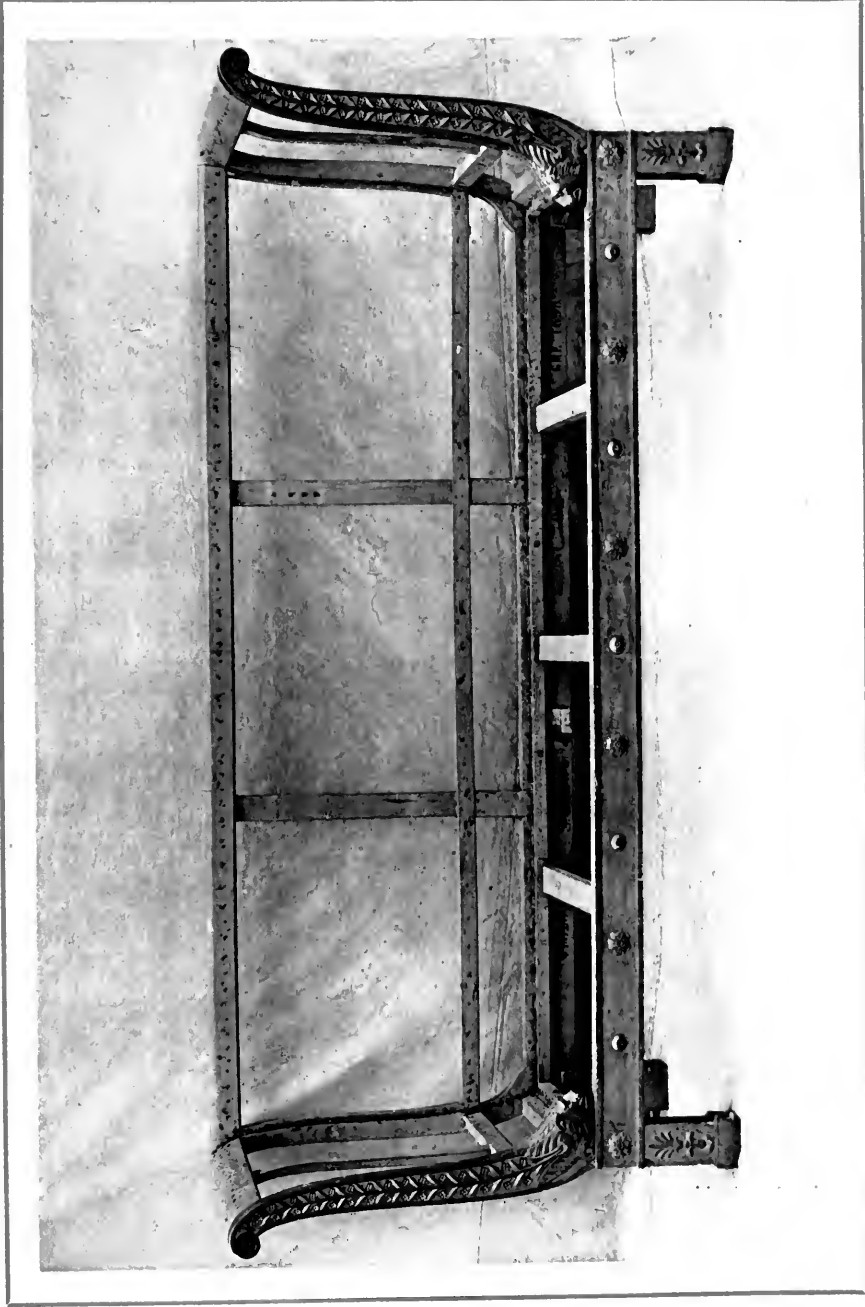
Mahogany ARM-CHAIR.
With crosier back, arms supported by gilt heads of women,
and modern silk cover.
Château de Malmaison.





Mahogany ARM-CHAIR.
With crosier back, carved legs and arms supported
by Egyptian heads.
French Garde Meuble.





GILT WOODEN BEDSTEAD.
With Etruscan legs and crosier backs terminating in heads of lions.
French Garde Meuble.





Gilt ARM-CHAIR.

With crosier back, arms supported by Egyptian
heads, carved legs, and velvet upholstery.
Château de Malmaison.

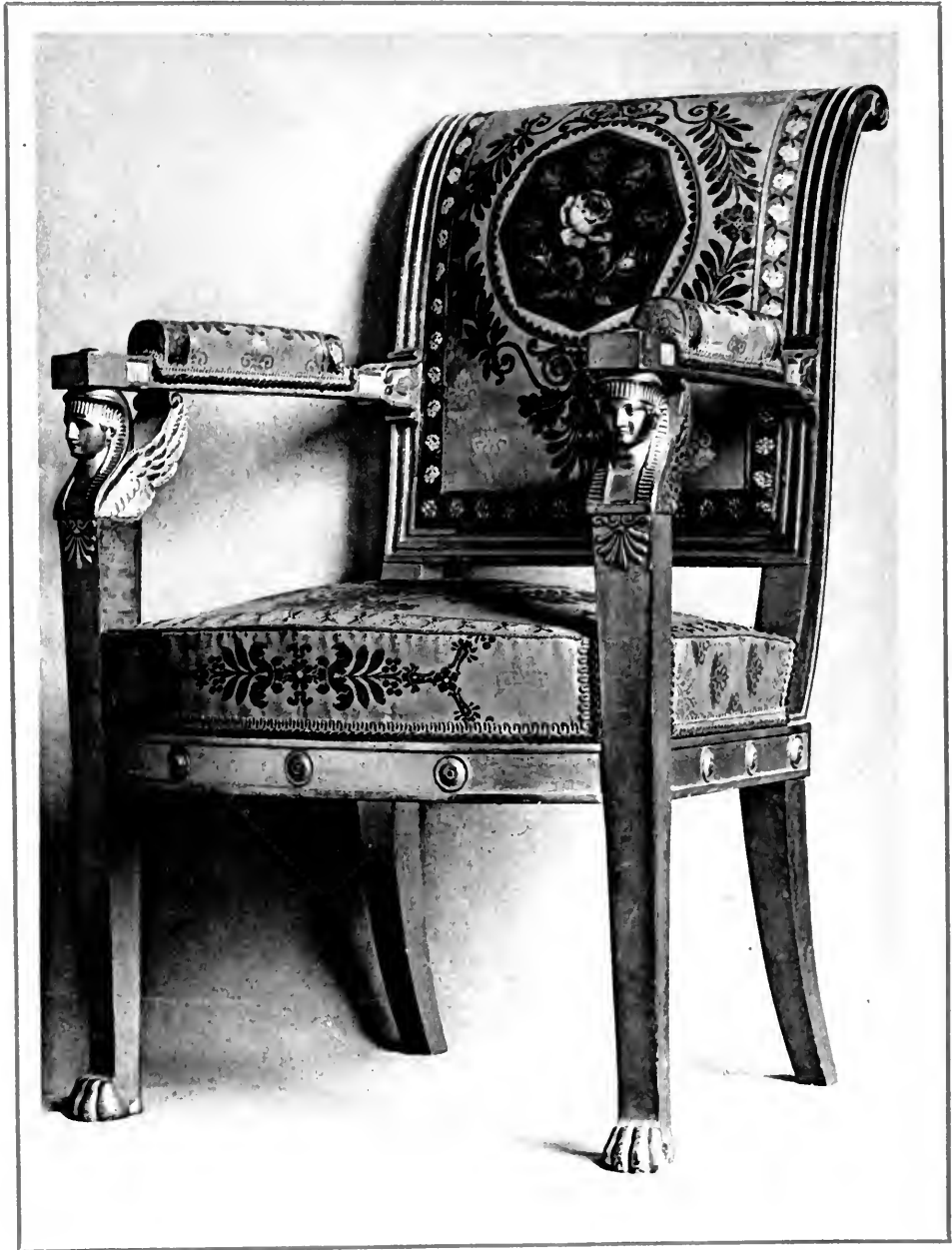


Gilt ARM-CHAIR.

With crosier back, carved legs, modern cover,
and arms supported by the heads of Egyptian women.
Château de Malmaison.



Gilt Frame-work of an ARM-CHAIR.
With crosier back and arms supported by winged Chimeras.
French Garde Meuble.



Gilt ARM-CHAIR.
With crosier back, square legs, and upholstery
dating back to the Empire Period.
Palace of Fontainebleau.



Gilt wooden stool.
With carved legs and silk cover of the Restoration period.
Formerly in the Palace of Saint-Cloud,
now in the French Garde Meuble.

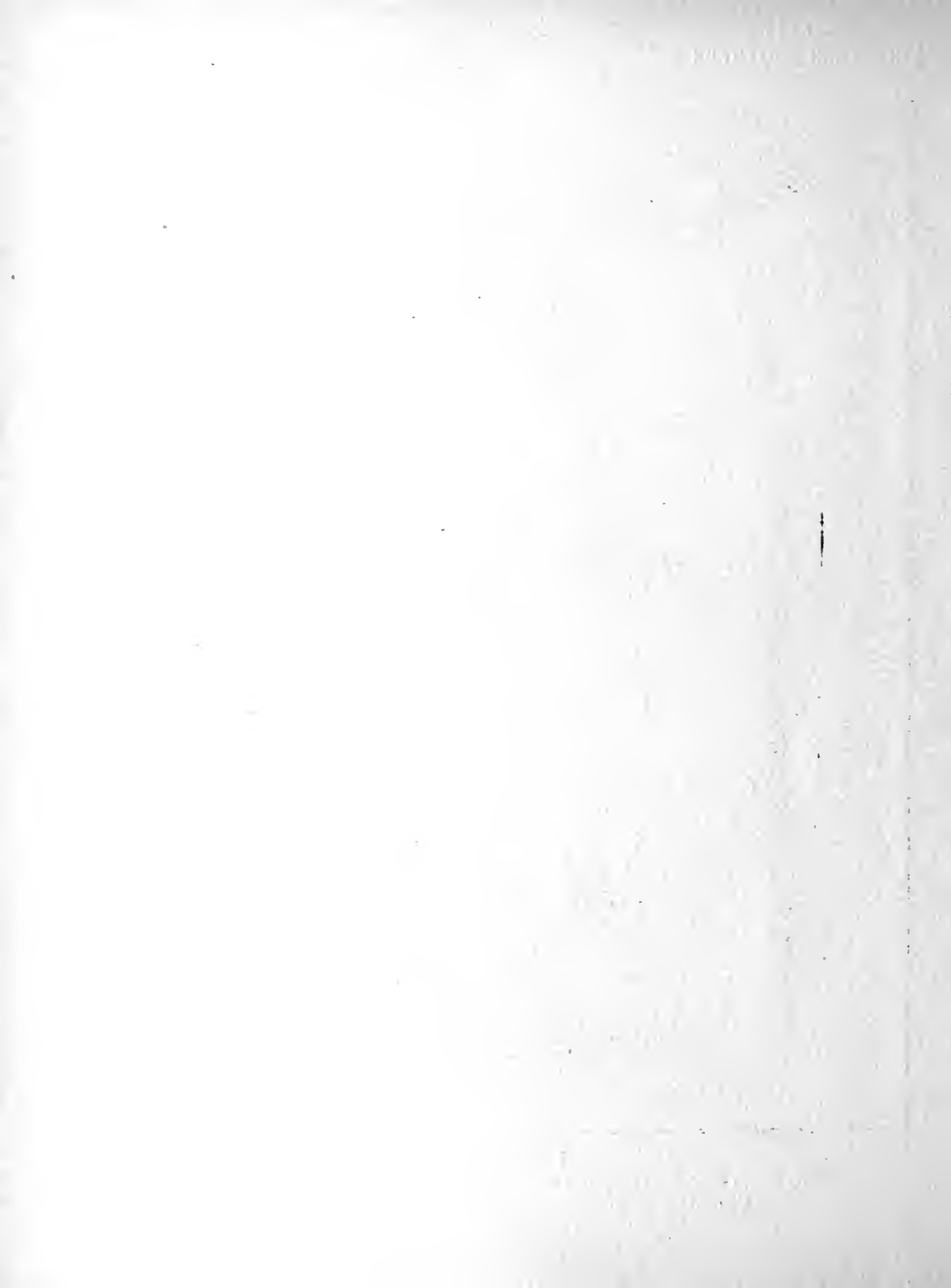


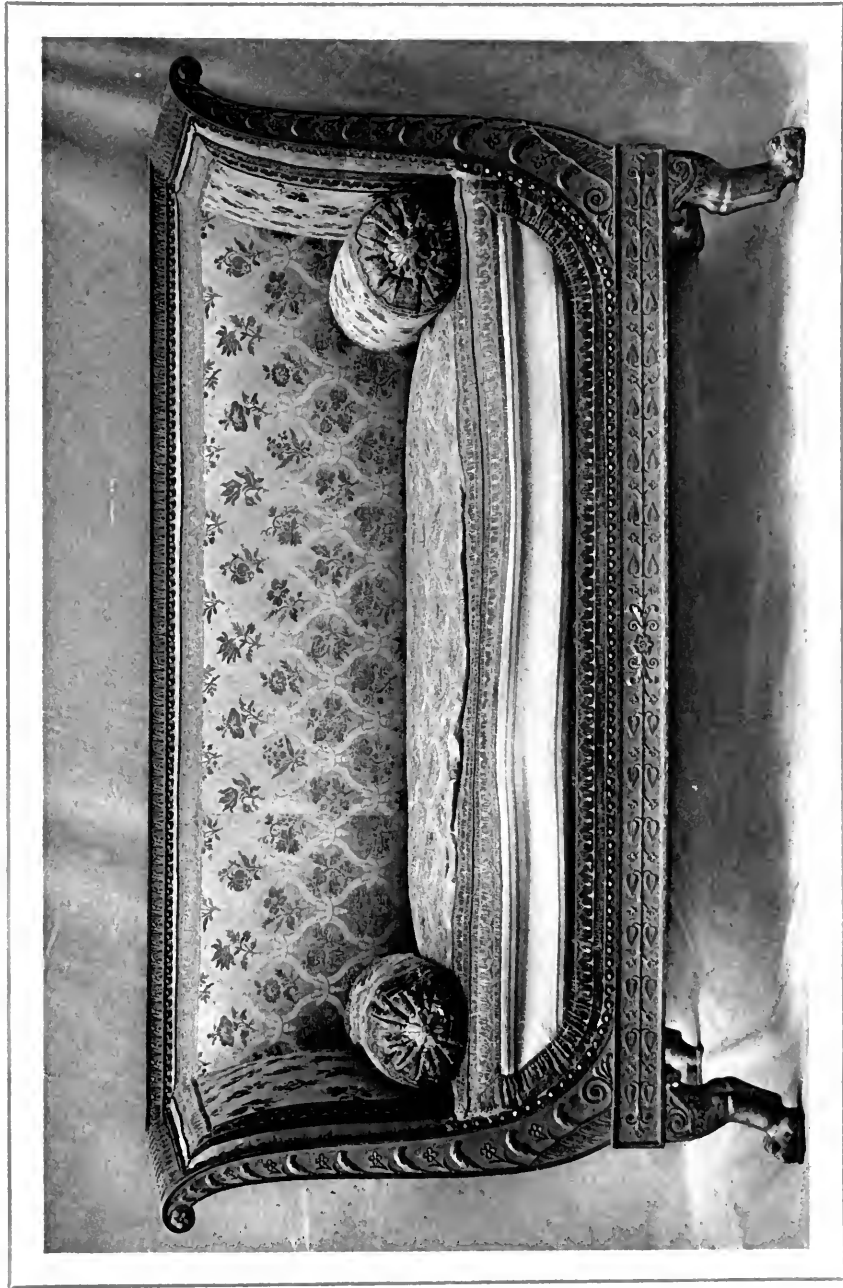
Carved and gilt ARM-CHAIR.
With crosier back, arms supported by heads of women,
and ancient upholstery.
Formerly in the Tuileries, now in the French Garde Meuble.



EASY-CHAIR.

With crosier back, arms supported by heads of women, and ancient upholstery.
Formerly in the Tuileries, now in the French Garde Meuble.

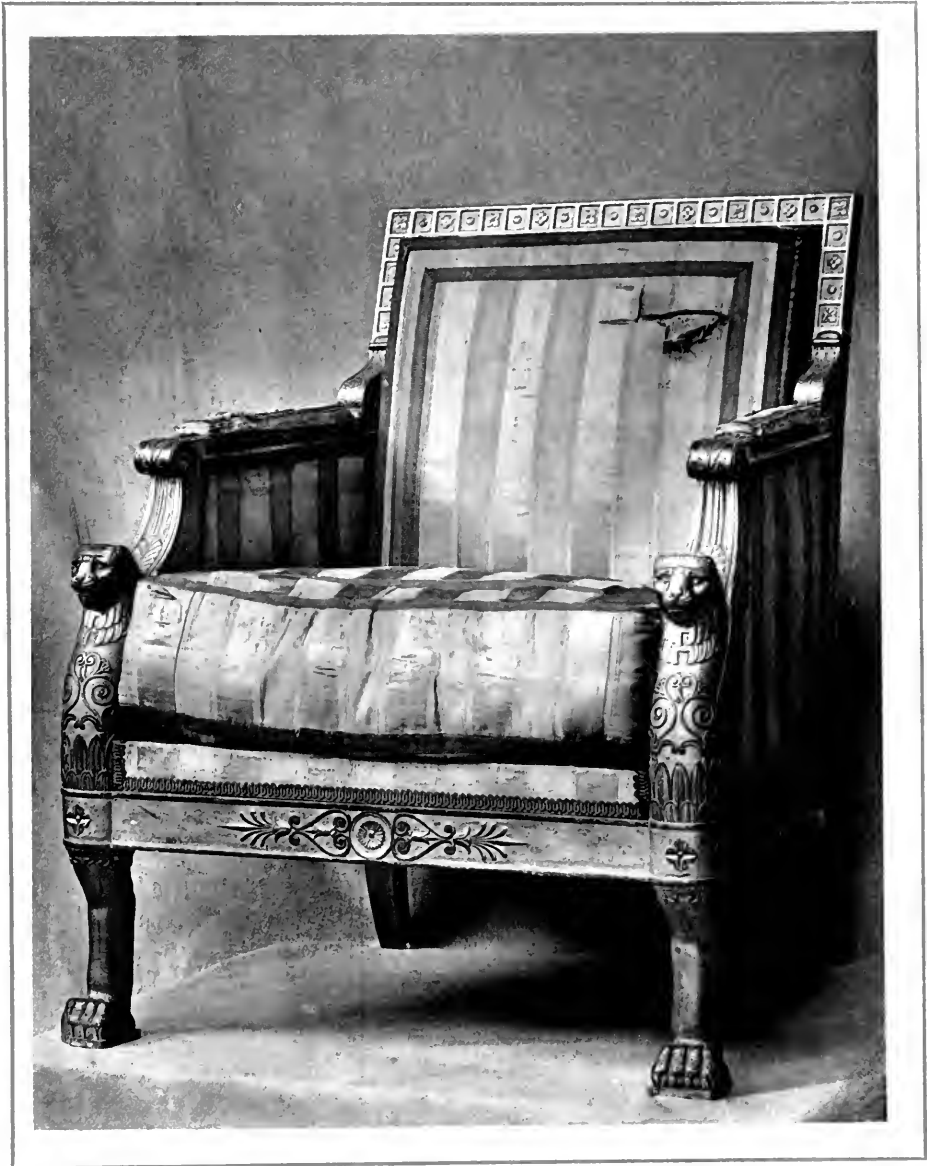




Carved and gilt sofa.
With ancient silk upholstery.
French Garde-Meuble.



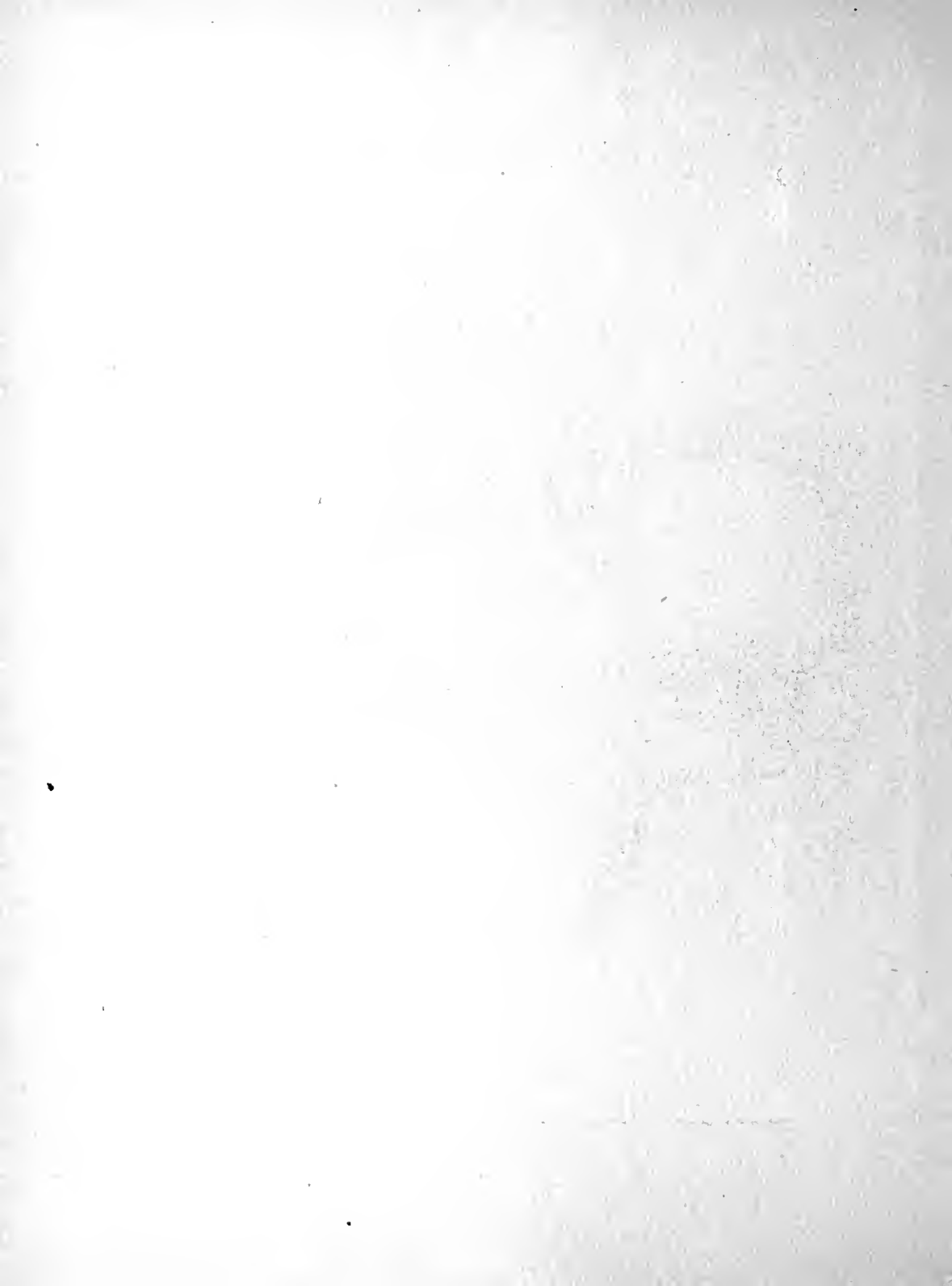
Carved and gilt ARM-CHAIR.
With ancient upholstery and arms supported by leopards.
French Garde Meuble.



Carved and gilt EASY-CHAIR.
With ancient silk upholstery and arms supported by leopards.
French Garde Meuble.

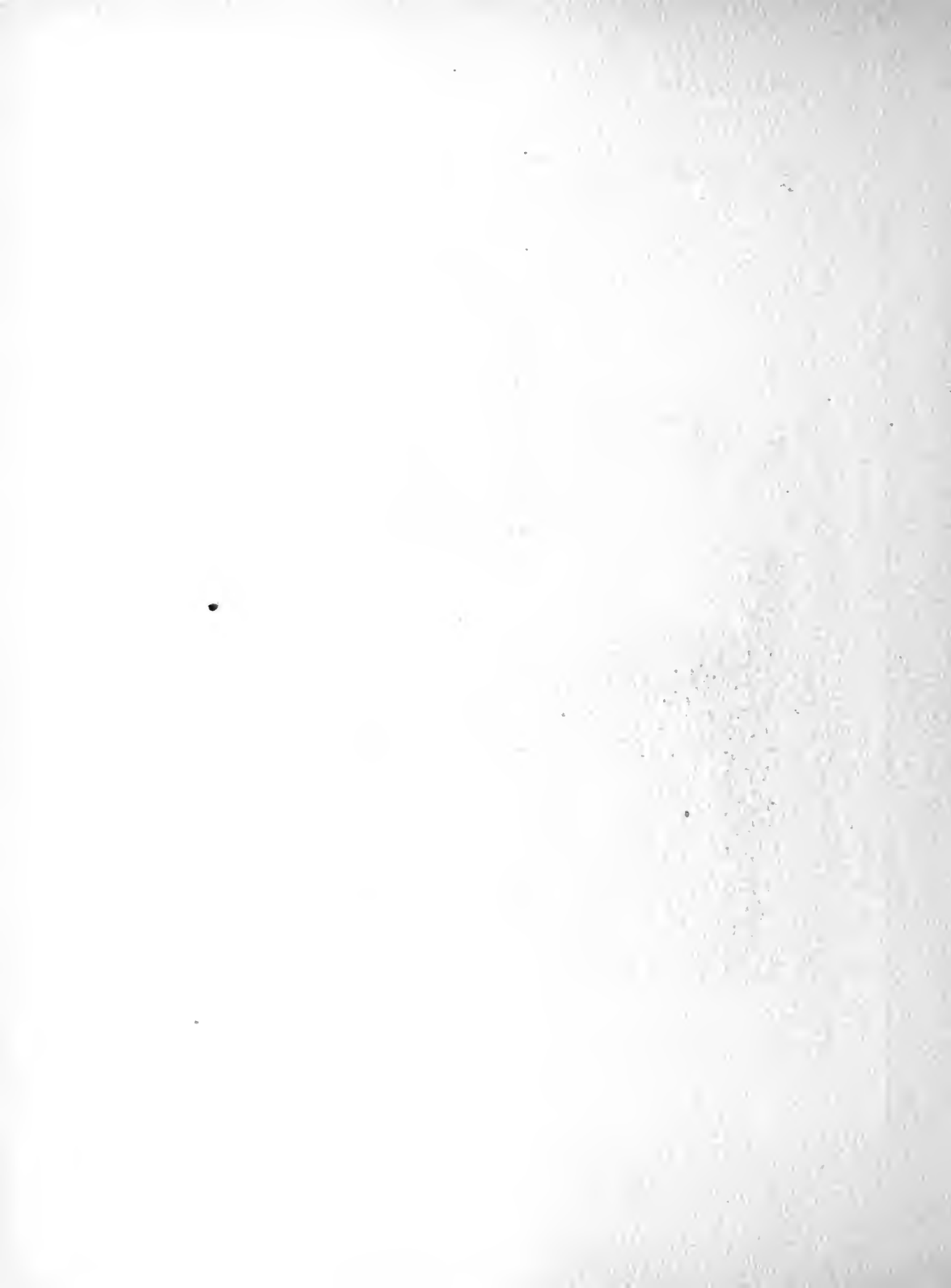


Gilt ARM-CHAIR.
With erasier back and silk cover of the Restauration period.
French Garde Meuble.



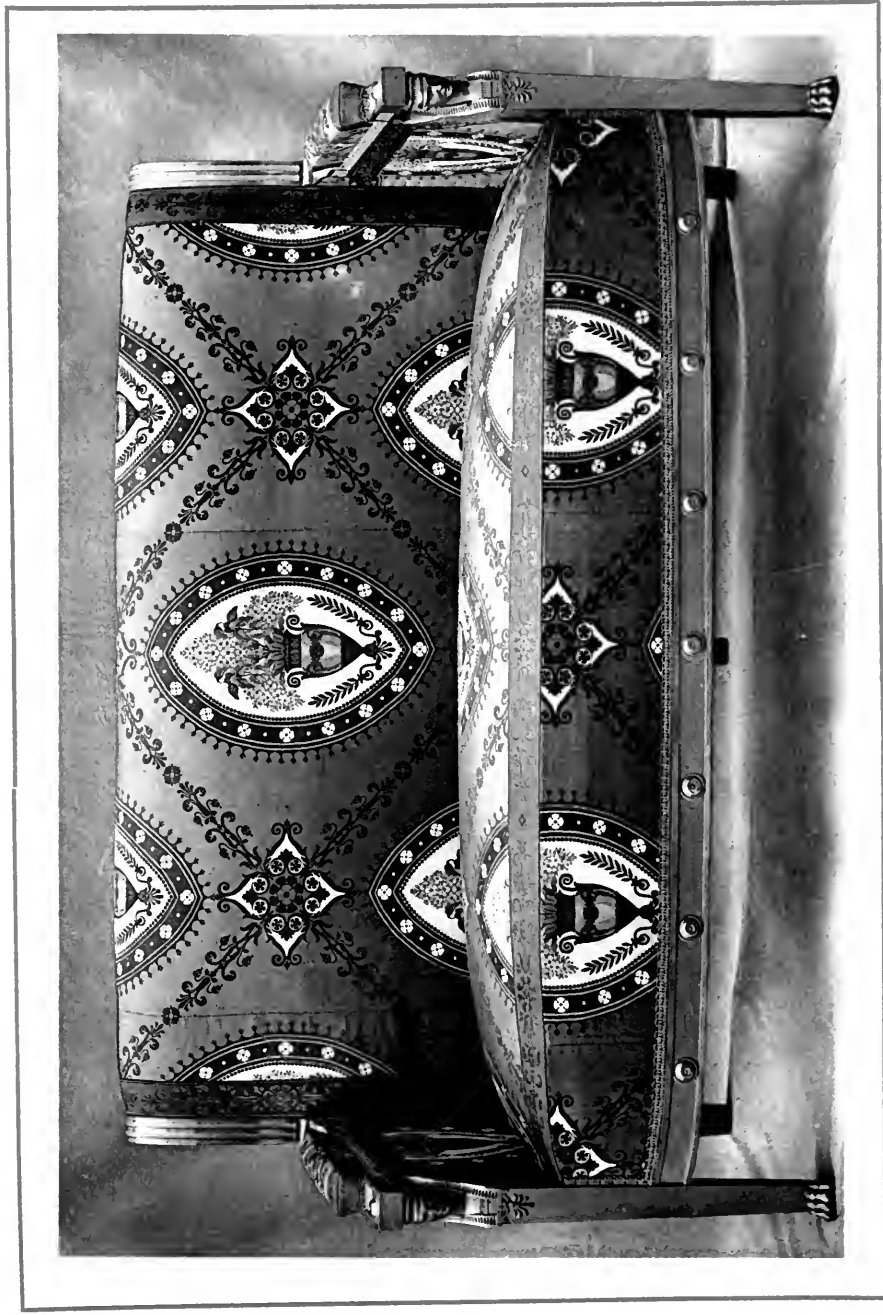


Gilt ARM-CHAIR.
With crosier back and silk upholstery
of the Empire Period.
Palace of Fontainebleau.





Carved and gilt ARM-CHAIR.
With arms supported by Egyptian heads and upholstery of Tours of the
Empire period.
The frame-work attributed to G. and F. H. Jacob.



Carved and gilt Sora.
With crozier back, arms supported by Egyptian heads,
upholstery of Tours of the Empire Period.
The frame-work attributed to G. and F.-H. Jacob.
French Garde Meuble.



AU DIRECTOIRE

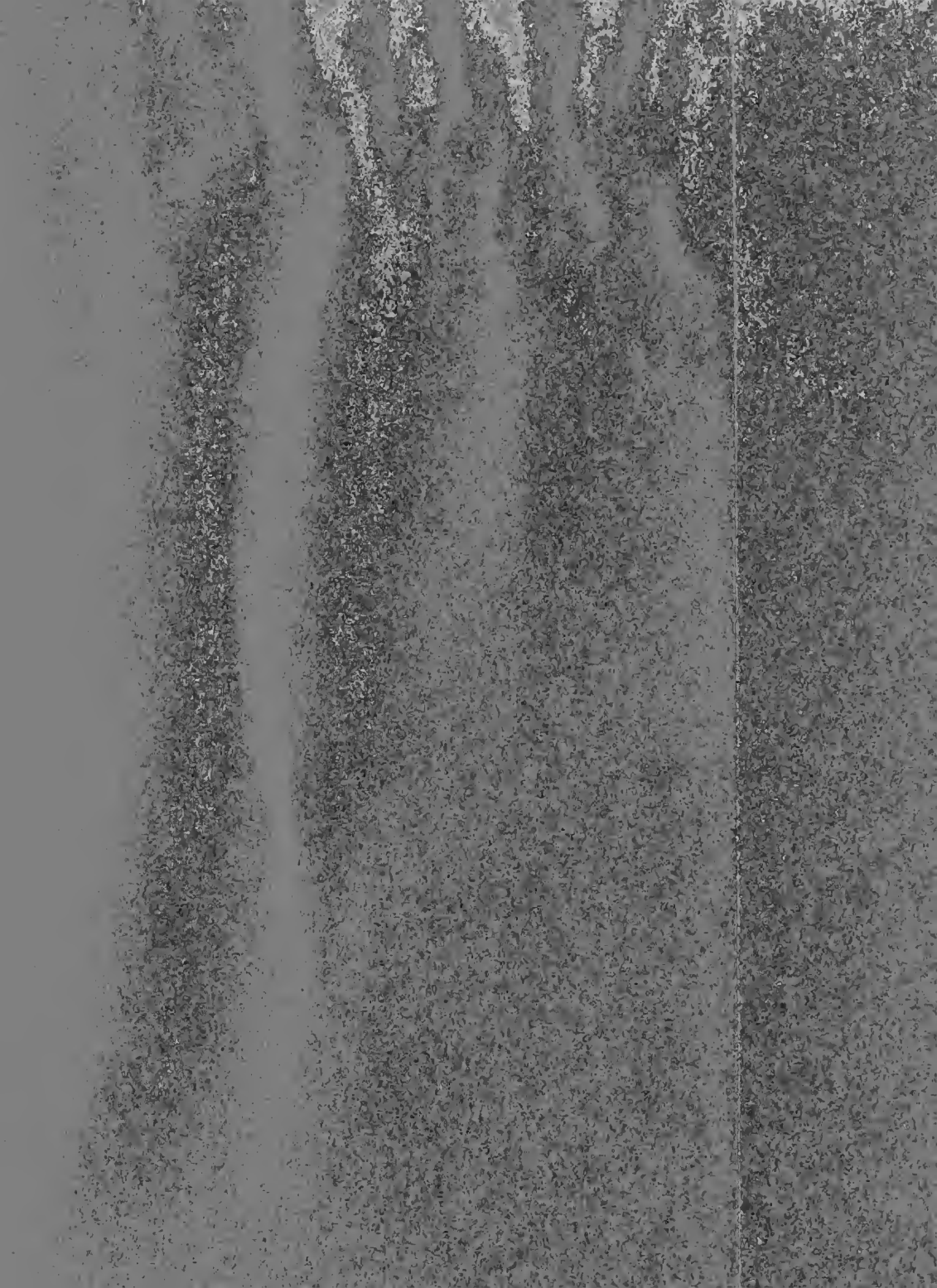
46, Rue du Bac, PARIS —

FLEURUS 00-76

On regroupe des Ensembles
de Salons, Salles à manger, Bureaux, Chambres

DIRECTOIRE
et EMPIRE

EXCLUSIVEMENT ANCIEN



CONFIDENTIAL
CONFIDENTIAL
CONFIDENTIAL



