

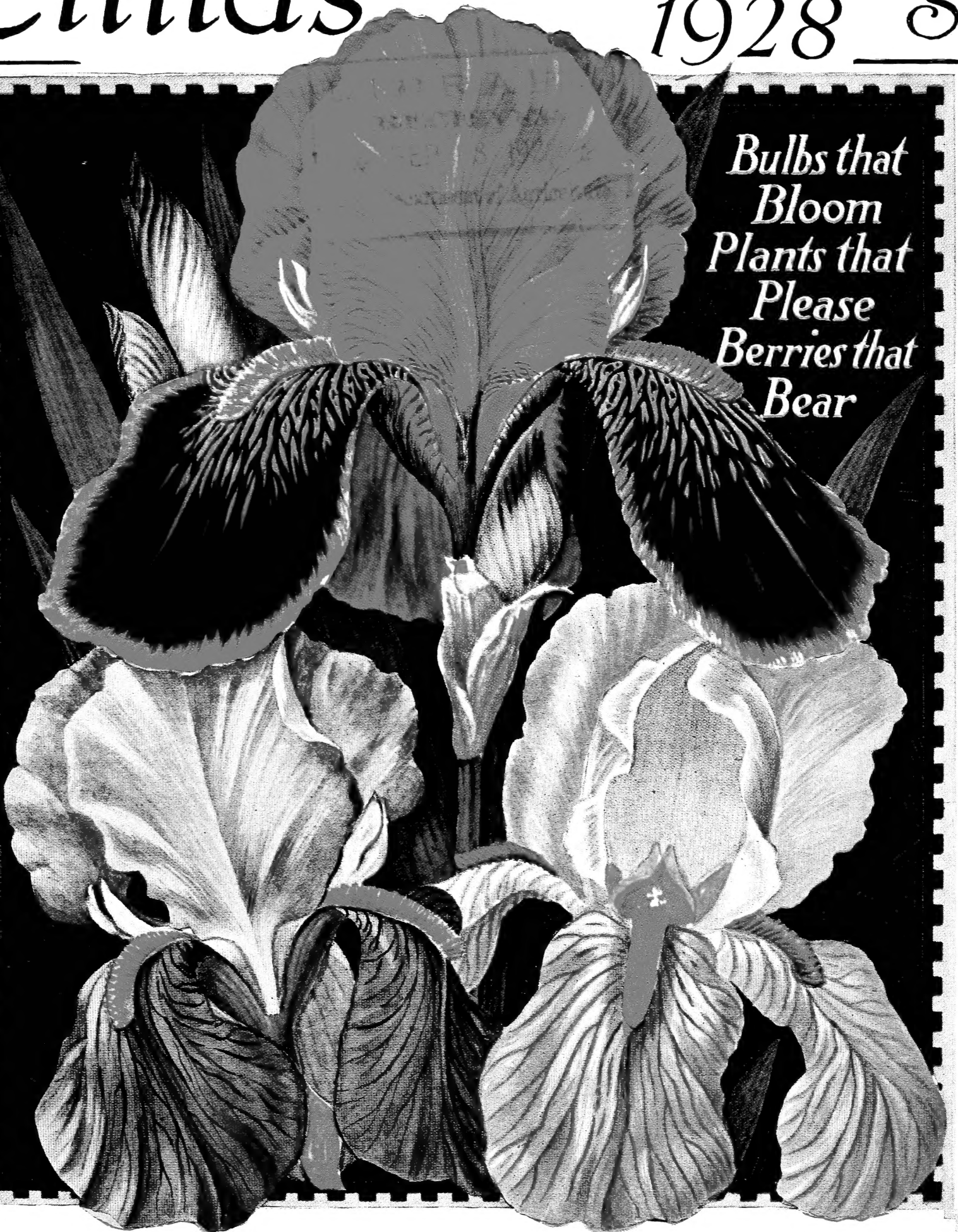
Historic, archived document

Do not assume content reflects current scientific knowledge, policies, or practices.



Childs' Fall Catalog 1928

*Bulbs that
Bloom
Plants that
Please
Berries that
Bear*



The Three Most Beautiful Iris

7210. LORELY, Yellow. 7220. ALBERT VICTOR, Blue. 7230. QUEEN OF MAY, Pink.
Each 35c; Doz. \$3.50 Postpaid. See page 24 for description and prices.

JOHN LEWIS CHILDS SEED CO.
FLORAL PARK-NEW YORK
INC.
NO SALE COMPLETE UNTIL OUR CUSTOMER IS SATISFIED

Childs' Own-Root Roses for Fall Planting

Bloom All Summer—Sold on a Money Back Guarantee

Last spring we were unable to offer one-year roses. This fall we again offer them. Roses that are field-grown and have big strong roots. Guaranteed to bloom profusely next year from early spring to freeze-up. Guaranteed to bloom many, many times more profusely than any pot-grown or bench-grown roses. Guaranteed to be as large or larger roots than two-year-old purchased anywhere. They are best for the amateur. They are fool-proof. Once planted, always there. Guaranteed as hardy as an oak.

The varieties offered we have selected for their peculiar adaptability for fall planting.

Fall planting will give you full six weeks' more bloom the following summer.

To the best of our knowledge we are the only seedsmen growing own-root roses.

Safe Varieties for Fall Planting

THE 14 VARIETIES IN COLOR

13053 (No. 1) **Harry Kirk**. Deep sulphur-yellow, with edges of petals lighter; well-formed, full, free. Vigorous.

13022 (No. 2) **Edel**. White flowers that open ivory-white. Strong grower and free flowering.

13060 (No. 3) **Jonkheer J. L. Mock**. Pink. Flowers of large size and perfect formation. Deep pink with rose-white on the outside of the petals.

13001 (No. 4) **Countess of Gosford**. Clear salmon-pink, base of petals suffused yellow; large, well-formed flowers.

13071 (No. 5) **Lady Ashtown**. Carmine-pink, shading to golden yellow at base of petals. Blooms are large, globular.

12999 (No. 6) **Candeur Lyonnaise**. Long, oval bud, usually borne single on a long stem; flowers very large, pure white.

13088 (No. 7) **Miss Lolita Armour**. In 1921 this Rose won the Bagatelle (Paris) prize. Chrome-yellow at the base, shading to orange and copper hues on reverse of petals.

13012 (No. 8) **Duchess De Brabant**. Light rose, shaded salmon. Very free, early and late.

13024 (No. 9) **Francis Scott Key**. Large crimson buds and blooms of good form, very double; fragrant, good foliage.

13152 (No. 10) **Rose Marie**. This is a grand Rose of the very highest merit. Bright watermelon red.

13052 (No. 11) **Hoosier Beauty**. Color glowing, deep crimson with darker shading. Upright, strong, free, good form.

13026 (No. 12) **Frank W. Dunlop**. At the International Flower Show at New York City it won the silver medal for the best new pink Rose in the exhibition.

13077 (No. 13) **Marjorie Bulkeley**. Buds long, opening buff, heavily flushed with rose, finishing silvery-pink.

13006 (No. 14) **Crusader**. The growth is heavy and the flower stems strong; free flowering. Blooms double, a rich, velvety crimson.

Strong 1-year-old Field-Grown Roots: Each 50c; 3 for \$1.40; 6 for \$2.65; doz. \$5.00; 14 for \$5.75. Postpaid.

Strong 2-year-old Field-Grown Roots: Each 75c; 3 for \$2.15; 6 for \$4.10; doz. \$8.00; 14 for \$9.00. Postpaid.



TO OUR PATRONS—

Although it is not our custom to recommend any special publication, we sincerely believe that every customer of ours should be a subscriber to **YOUR HOME**. For this most essential home magazine is helping thousands of people with their home and garden activities.

JOHN LEWIS CHILDS SEED CO.

Special Low Subscription Rates

\$1.00 for 5 Months—\$2.50 for 1 Year—\$4.00 for 2 Years

Your Home, Dept. C, 1926 Broadway, New York, N. Y.

Enclosed find \$..... for a..... subscription for Your Home.

Name..... Address.....

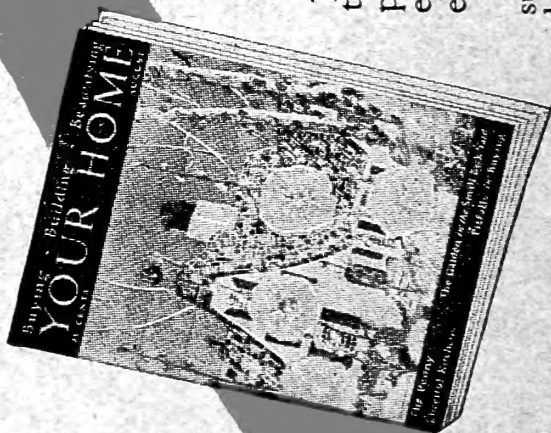
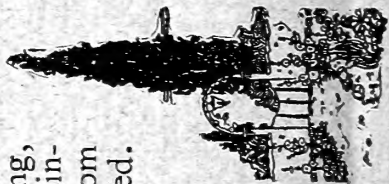
\$1

Your Home Magazine

*The essential magazine for flowers and garden growers
Take advantage of this offer: a 5 months subscription for*

Your Home Magazine tells you how to make your garden more productive. Your landscape more striking—your hedges and lawns more beautiful. The technicalities of planting, fertilizing, spraying and pruning are all made clear to you by our highly paid horticulturists. The selecting, planting and caring for your flower garden are all explained from a practical standpoint. Gardens that bloom from early Spring to late in the Fall are especially featured.

Every issue of this magazine contains practical helps and suggestions for home folks. The articles, plans and household helps are within your reach. Nationally known authorities discuss problems of vital importance to you every month. The advice in a single article may be worth more to you than the price paid for your whole subscription. It is truly America's greatest home-lovers' magazine.



*Use Order Form
On Reverse Side*

Your Flower Garden AND Your Home

Better Homes and Gardens specializes on these two important and interesting things.

In every issue you will find seasonable information on the growth and care of flowers, shrubs, trees, the lawn, fruits and vegetables. Still greater success and more beauty in the garden may be yours thru these helpful suggestions

Better Homes and Gardens also contains new ideas on home building and home improvement; practical ideas that you can put into actual use. Beautifully illustrated thruout.

FREE TO SUBSCRIBERS

Our Subscribers' Information Bureau is at your service without cost to you. Landscape, floral, building and home decoration experts are anxious to help you with your problems.

Often the Bureau is able to make suggestions which will save you many dollars, or give helpful advice on the many phases of gardening and home improvement. Let Better Homes and Gardens serve you.

ORDER BLANK ON OTHER SIDE



To the Patrons of the John Lewis Childs' Seed Company—

We are pleased to say again that while we do not generally recommend publications, we honestly believe that every customer of ours should be a subscriber to Better Homes and Gardens to help them in their home and garden activities.
John Lewis Childs Seed Company.

Special Low Subscription Rates

\$1.00 for 2 Years **60c for 1 year** **\$1.50 for 3 Years**

Mail This Coupon Today

Better Homes and Gardens
Des Moines, Iowa

Enclosed find \$_____ for a _____ years subscription to Better Homes and Gardens. This is a New Renewal Extension Subscription.

Name _____ St. & No. _____

P O _____ State _____

Childs' Famous "Own Root" Roses

Roses From Early Summer Until Freeze-up

Childs' "Own-Root" Field-Grown Roses should not be confused or compared for value with the Roses so generally offered at low enticing prices.

Such roses are either Bench-grown, Pot-grown, Grafted or Budded. Bench-grown roses are the run-out bushes that have been forced for cut-flower purposes, and having ceased to bloom are of no further forcing value, hence are discarded.

Pot-grown roses are grown in small pots, are small, tiny, weak, fragile puny plants, compared with field-grown. Budded and Grafted roses are rose cuttings grafted on Manettie Vines, or wild rose roots, from which suckers shoot up and produce wild roses, predominating the bush entirely.

Childs' Own-Root Roses are cuttings rooted on their own roots then grown in the open fields which develop big heavy root systems. They bloom true to type forever. No worry. No care. No suckers. Blooms from early spring until freeze-up. Our one- and two-year bushes start blooming next Spring.

The Finest of the Hardy Monthly Roses (Hybrid Teas) Varieties We Especially Recommend for Safe Fall Planting

The number immediately before the names of the roses refer to the numbers on the color page opposite so you may get an approximate idea of the color only. Each rose is a distinct type, shape, form and shade of its own.

- 12987 (No. 14) Admiral Ward.** Full, globular flowers of crimson-red, shaded fiery-red and velvety crimson.
- 12983 (No. 8) Alida Lovett.** Large buds. Bright shell-pink with rich sulphur at the base. Long lasting blooms. Stiff long stems. Disease resistant.
- 12992 (No. 12) America.** Large, rose-pink, fine shaped flowers, sweetly scented, carried on long stems.
- 12990 (No. 9) American Beauty.** This red rose of national reputation now equals in hardiness any other rose.
- 12985 (No. 2) Angelus.** Flower large, white, cream tint at center; very fragrant. Upright and vigorous. Free bloomer.
- 12989 (No. 13) Antoine Rivoire.** Pale flesh on yellow ground. Large. Full. Free bloomer. Continuous bloomer.
- 12984 (No. 10) Arthur R. Goodwin.** Copper color mixed with orange-red which later turns to soft salmon-pink.
- 12995 (No. 8) Annie Laurie.** Bud large, long pointed; flower very double, flesh-pink, edges deeper, golden yellow base.
- 12997 (No. 6) Bessie Brown.** Large ivory-white blooms of good substance and richly perfumed. Free bloomer.
- 12996 (No. 2) British Queen.** Pure white, slightly flushed later with rose. Very large flowers. Profuse bloomer.
- 13004 (No. 8) Clara Watson.** Flesh color, center tinted peach. Very fragrant. Wonderful bloomer.
- 13000 (No. 12) Columbia.** Pink. A very beautiful rose-pink, and exceedingly fragrant. A very profuse bloomer.
- 13003 (No. 11) Chas. K. Douglas.** Flaming scarlet, flushed velvety crimson, sweetly scented. Vigorous, upright grower that blooms in profusion.
- 13010 (No. 7) Duchess of Wellington.** Long, pointed buds; blooms intense saffron-yellow, flushed crimson, changing to lighter yellow.
- 13019 (No. 5) Edith Part.** Rosy-red with suffusion of deep salmon and coppery yellow at the base. Free flowering. Very fragrant.
- 13125 (No. 14) Etoile de France.** Rich velvety crimson. Center ruby-red. Very large and double.
- 13050 (No. 14) Gruss An Teplitz.** Scarlet. It is of the most exquisite scarlet, shading to a velvety crimson.
- 13070 (No. 6) Kaiserin Augusta Victoria.** White. A strong, free bloomer. A soft, pearly white, tinted lemon at center.
- 13133 (No. 3) Killarney.** Bright shell-pink; long pointed buds with large flowers. Perpetual flowering.
- 13014 (No. 2) Killarney Double White.** This Rose is not excelled by any other white.
- 13074 (No. 13) Lady Hillingdon.** Deep orange-yellow. Large size. Long stems. Long and pointed shape. Fine for cutting.
- 13137 (No. 12) La France.** Bright satin-pink. Silver reflex. One of the finest and best garden varieties.
- 13073 (No. 4) Lady Ursula.** Large, well formed blooms with thick petals of light flesh-pink.
- 13138 (No. 5) Los Angeles.** The color is a beautiful pink running to coral.
- 13080 (No. 8) Mme. Butterfly.** Salmon-pink. Similar in every way to the beautiful Ophelia. Shadings are deeper.
- 13085 (No. 3) Mme. Caroline Testout.** Clear Bright satiny pink. One of the most popular roses in the world.
- 13090 (No. 13) Mme. Edward Herriot.** Yellow. The buds are of coral red color, shaded with yellow at base.
- 13100 (No. 1) Mrs. Aaron Ward.** Yellow. A distinct yellow, shading lighter outward. One of the freest bloomers. Compact and beautiful at all stages.
- 13105 (No. 7) Mrs. Charles Lamplough.** Large lemon-yellow. Fine bloomer. Very beautiful.
- 13096 (No. 2) Mrs. H. R. Darlington.** A gold medal variety. Color creamy-yellow. Very fragrant. Free and continuous bloomer.
- 13097 (No. 5) Mrs. Henry Morse.** A lively pink, shaded salmon, deeper at base, with distinct tea scent.
- 13145 (No. 13) Old Gold.** Vivid reddish-orange, with coppery red and apricot shadings. Medium size, semi-double.
- 13110 (No. 4) Ophelia.** Salmon-pink. Delicate salmon tint, shaded with rose. An exceptionally fine bloomer.
- 13146 (No. 3) Premier.** Dark pink flowers of full size, fine form, and pleasing fragrance, borne singly on stiff, thornless stems from a vigorous and robust plant.
- 13148 (No. 11) Prince Englebert Charles d'Arenberg.** Brilliant scarlet with darker shadings. Large. Full. Upright. Free bloomer.
- 13155 (No. 12) Radiance.** Brilliant rosy opaline-pink. Large. Free. Sweet fragrance. None better than this one.
- 13157 (No. 10) Red Radiance.** Cheerful full red.
- 13164 (No. 10) Sensation.** Deep glowing crimson with dark shadings. Fine for cutting. Free bloomer.
- 13165 (No. 7) Sunburst.** Intense golden orange.
- 13170 (No. 8) William F. Dreer.** Delicate silver-pink with a golden suffusion that covers the entire flower. A beautiful yellow.
- 13172 (No. 13) Winnie Davis.** Brilliant apricot-pink, tinted lighter, semi-double. Buds long. Great bloomer.

Prices: Strong One-Year-Old Field-Grown Roots 50c; 3 for \$1.40; 6 for \$2.65; doz. \$5.00. Any 14 for \$5.75. Postpaid.
Prices: Strong Two-Year-Old Field-Grown Roots 75c; 3 for \$2.15; 6 for \$4.10; doz. \$8.00. Any 14 for \$9.00. Postpaid.

Climbers
offer in Spring only

Perpetuals
offer in Spring only

\$1.25 OUR GREAT SURPRISE COLLECTION \$1.25

SEVERAL DOLLARS' WORTH OF FINE PLANTS, BULBS AND SEEDS FOR \$1.25, POSTPAID

We are obliged to grow and import enormous stocks of all kinds of Plants and Bulbs, generally more than are necessary, to make sure of having enough. It is our custom, after the heavy Fall business is over, in November, to take this surplus stock of good things, make it into "Surprise" Collections, and offer them to our customers, giving them two to four times the Catalog value. The "surprise" is the great variety of fine things. These collections cannot be sent out until some time in November, and will be entirely of our own selection, from kinds of which we have a surplus. No collection will be made up for less than one dollar and twenty-five cents (\$1.25) and from that up to any amount the purchaser may desire in multiples of \$1.25, which will be sent Prepaid.

Real Worth While Novelties

For 53 years we have specialized in plant life. Many of the plants so common to you now were originally introduced by us. This fall we offer an unusual and extraordinary house plant—*Rivinia Humilis*.

Our selection of bulbs comprise the newest and all the most popular. Our prices we believe will be found consistently lower than can be purchased from reliable sources elsewhere. It will pay you to compare them.

Our quality is guaranteed to be the best. We undertake to satisfy you in every possible way or refund your money.

Rivinia Humilis

A Rare Combination of Beauty

16855—This plant, which we offer this fall for the first time, has received more unsolicited praise from recent Garden Publications than any other plant in recent years.

Mr. E. C. Vick, international authority on Horticulture and Garden, Editor of the Peoples Home Journal, has this to say: "No house plant for summer or winter can excel the new *Rivinia Humilis* (offered by Childs' of Floral Park) for dependability and productiveness. No plant to my knowledge is more fitted for a table decoration, or a dining room plant. No plant more ornamental. No other plant can be put to such an appropriate use for decorating Christmas packages, or the house, than this marvelous blood-berry.

Never have I seen a plant more exquisite in baskets or more generally useful as a house plant. I wish I could make a personal visit to every home in America and extol its virtues, so every one would have and enjoy it."

From the axil of every leaf is produced a raceme of small attractive white flowers, followed quickly by dazzling currant sized brilliant scarlet berries of glossy hue thickly strung along the branches. It retains flowering and fruiting habit for unusually long periods, literally covered with flowers and fruit at the same time. If you love the unusual, the striking, the beautiful, then get acquainted with this. What you usually pay for holly for a few days' use at Christmas time will purchase a number of these plants for continuous use in the home. Grown with ease in the house.

16855. Each, 35c; 3 for \$1.00, postpaid.



Everblooming Amaryllis

5020. This introduction of our own is a plant and flower of incomparable magnificence. The most extravagant praises would not do it justice. It was the wonder and the awe of all who saw the International Flower Show display. As a pot plant for the house it is unexcelled.

The flower stalks are about two feet high and bear from three to five exquisitely beautiful blooms of the brightest and most striking orange-salmon color ever seen in any flower. Always plant in the smallest pot the bulbs will go in.

5020. BULBS. \$1.00 each; 3 for \$2.75, postpaid.

50150. SEED. Pkt. 25c, postpaid.



Azalea Amoena Superba

The Most Beautiful Hardy Shrub in the World

14010. (See illustration.) Bushes become literally covered with rose shaped flowers, so thick in fact you can hardly see the leaves on the bushes. It is a wonderfully prolific shrub. They start to bloom their heads off the first year and each year as they increase in size the profusion of blooms increases. Always when in bloom it is a fascinating, dazzling display of colors and flowers. It is of intense, deep, rich pink (almost red). Protect the first few winters by covering. Should be two or more in every front yard.

Each 50c; 3 for \$1.35; doz., \$5.00, postpaid.

Azalea Amoena

14000. A lovely hardy evergreen Azalea with beautiful foliage and compact, bushy growth. Plants are densely covered with rich violet-red showy blossoms. Same as the Superba except the color.

14000. Amoena. Each 50c; 3 for \$1.35; doz. \$5.00, postpaid.

Childs' Exclusive Novelties

Streptosolen Amabilis Magnifica

Covered With Bloom the Year Round

16910. A marvelous flower. Literally covered with bloom all the year. A magnificent pot plant for the winter. No other flower in cultivation blooms more freely. No other plant gives more joyous pleasure to the owner.

A mass of beautiful violet-like blue flowers all the time. It's a mystery how it can support such a wealth of flowers month in, month out. No other flower is more easy to cultivate in the house. It is about the only all-winter blooming, blue flowering plant.

16910. PLANTS. Each 25c; 5 for \$1.00, postpaid.

I received my Streptosolen Everblooming, and it really is just fine. Always in bloom, and the dearest little blue flowers all the time in fine shape. Just started growing immediately.—Mrs. A. G. Wilson, 1245 Connecticut Street, Lawrence, Kansas.



Streptosolen Amabilis Magnifica



Rose, Winter Gem in Full Bloom

ful stems are of large size and a lovely crimson pink color. The buds are perfect in form and the open flower full and double. One plant of it will produce more good Roses in the year than any other Tea Rose grown.

13260. Each 40c; 3 for \$1.10; doz. \$4.00, postpaid.

Double Syringa

Sweet Scented Gardenia-Like Flowers

14170. In our opinion this is the uncrowned Queen of all the shrubs. If we could have but one shrub in our garden, it would be this one. It is unquestionably the greatest of all garden treats.

It will give you more satisfaction than any other ten shrubs you can grow. It's our own introduction; we alone offer it. A full grown bush will scent the surroundings for a block away. A branch in a vase will make your house as fragrant as a breath from heaven. It is truly a Master-Creation. Imagine if you can a bush with flowers literally covering all the branches fully two feet (see illustration). The flowers resemble small white roses or gardenias—except they are all of true double formation. Please try and understand we are doing our best to persuade you to find a place in your garden, no matter how small, for the greatest shrub in the world. You just can't afford to be without it. We feel positive once you become acquainted with it you will find room for many of them. It is one of the few shrubs that make ideal house flowers when cut. As it grows and flourishes you can keep all your friends in beautiful, fragrant flowers.

Perfectly hardy anywhere. Once well rooted it grows extremely fast.

14170. Each \$1.50; 3 for \$4.25, postpaid.

Winter Gem Rose

Blooms All Winter Long

13260. Enthusiastic letters of genuine satisfaction rain upon us showers of praise of this marvelous rose for indoor use. Blooms twelve months of the year indoors or outdoors in summer.

It blooms in profusion on well formed, treelike bushes. Although a very old variety, it still maintains its record for one of our best selling novelties.

It is a Tea Rose of remarkably strong and vigorous growth. It flowers all the time and nothing but killing it outright will check it. The blossoms borne on long, grace-



One branch of our Double Syringa

Priced Very Low **Darwin Tulips** Priced Very Low

Big Long-Stemmed Types—Every Bulb a Top Size

Nothing surpasses the Darwin tulip in its dazzling bloom. No class or groups of flowers compare with them in grandeur, richness, and variety of color or can be purchased for so little financial outlay.

Darwins burst forth in early spring, bring joy, cheer, and happiness after the long, dreary months of winter. Plant them in front of your shrubbery or evergreens in borders, or in beds in the lawn.

We guarantee our bulbs to be selected strains of the highest type, to bloom with uniformity as to period of bloom and height. We guarantee our bulbs to be of large blooming size. (Top size.)

**USE VARIETY NUMBER
WHEN ORDERING**



Giant, Long-stemmed Darwin Tulips

Culture. Plant before the ground freezes, five or six inches deep and five inches apart and cover with stable manure or leaves after the ground freezes, but not before. For forcing inside, bulbs should be planted early in deep pots and put in a dark place for six weeks in a cool temperature. Keep watered and bring them in the light slowly.

Five Darwin Beauties on Back Cover

This collection of five harmonizing colors of gigantic size present a magnificent sight. A dazzling array that is almost a fairy land in any garden. The immense flowers are so wax-like in appearance as to be deceptive to the eye at closest range, so much so that it is necessary to touch them to be sure they are real honest-to-goodness tulips. Are extremely hardy. Stems fully 24 inches long. Big strong stems that will stand severe wind storms.

3885. YELLOW BEAUTY. (See rear cover illustration No. 1.) Not a true Darwin. Conforms to all the Darwin requisites such as form, height, maturity and substance. It is a marvelously striking bright yellow color.

3888. PINK BEAUTY. (See rear cover illustration No. 2.) A delightful refreshing pink of monster size. Almost too beautiful to believe natural. Color more defined than any other pink we know of. Height 24 inches.

3891. SCARLET BEAUTY. (See rear cover illustration No. 3.) The newest of all the Darwins. A marvel for richness of its color. The largest and brightest red of any Darwin or any other Tulip. Height 28 inches.

3894. ORANGE BEAUTY. (See rear cover illustration No. 4.) Not much use trying to write how beautiful the color or substance. It is the most exquisite shade of orange we ever laid eyes on. Height 26 inches.

3897. LAVENDER BEAUTY. (See rear cover illustration No. 5.) No color in a tulip can look richer, more exquisite, more pleasing than this delightful dainty lavender-hued Darwin. Wax-like type. Height 26 inches.

Price on above five Tulips: **Doz. 75c; 100 for \$5.00, postpaid.**

Prices Postpaid	PINK	50 Bulbs at the 100 Rate	RED	Prices Postpaid
3900.	BARONNE DE LA TONNAYE. Bright rose shaded geranium pink. Height 26 inches. Doz. 50c; 100 for \$3.50.		3950. EUROPE. Glowing salmon scarlet, shaded rose, white base, medium sized flower, strong stem. Fine border sort. Height 22 inches. Doz. 50c; 100 for \$3.50.	
3923.	CENTENAIRE. Lilac pink with blue center; large, 24 inches. Doz. 55c; 100 for \$3.75, postpaid.		3970. GLOW. Dazzling vermilion-red, white base with blue markings; handsome and distinct. Height 23 inches. Doz. 75c; 100 for \$5.50, postpaid.	
3968.	FARNCOMBE SANDERS. One of the finest pinks, 25 inches. Doz. 50c; 100 for \$3.50.		3902. BARTIGON. Dazzling scarlet. Large, strong. One of the best forcers, 24 inches. Doz. 50c; 100 for \$3.50.	
3978.	GRETCHEN. Delicate pink, 24 inches. Doz. 50c; 100 for \$3.50, postpaid.		3981. KING HAROLD. Carmine red, large, 24 inches. Doz. 50c; 100 for \$3.50, postpaid.	
3930.	CLARA BUTT. Clear pink, flushed salmon rose, lovely and distinct in color and shape, one of the best. Height 21 inches. Doz. 45c; 100 for \$3.25, postpaid.		4052. WM. PITT. Glowing red. Extra choice, 24 inches. Doz. 85c; 100 for \$6.00, postpaid.	
4017.	MADAME KRELAGE. A beautiful clear pink with light edge. Inside soft rose-pink. Very large flower. Height 28 inches. Doz. 50c; 100 for \$3.50.		VIOLET	
4030.	PRIDE OF HAARLEM. Brilliant rosy carmine with blue base, very large flower. Glorious color and habit. Height 25 inches. Doz. 55c; 100 for \$3.75, postpaid.		4053. WILLIAM COPELAND. Lilac. Very large, strong, 24 inches. Doz. 55c; 100 for \$3.75, postpaid.	
	BLACK		3952. EUTERPE. Very bright lilac. Very fine, 24 inches. Doz. 60c; 100 for \$4.00, postpaid.	
4055.	ZULU. Blackish violet. Exquisite, 24 inches. Doz. 60c; 100 for \$4.00, postpaid.		3960. ERGUSTE. Pale violet, flushed silvery white, inside deeper with white base; good for forcing or for borders. Height 26 inches. Doz. 55c; 100 for \$3.75, postpaid.	
3980.	LA TULIPE NOIRE. (The Black Tulip.) Very dark maroon-black, the blackest of all, having a velvety sheen in the sunlight. Large flower. Height 25 inches. Doz. 75c; 100 for \$5.50, postpaid.		4040. REV. EW BANK. An exquisite shade of soft lavender-violet, shaded silvery gray. Height 22 inches. Doz. 55c; 100 for \$3.75.	
	YELLOW		WHITE	
3885.	YELLOW BEAUTY. Really a Cottage Tulip, but is the best yellow to put with your Darwins. Very large yellow flowers. Height 25 inches. Doz. 75c; 100 for \$5.00.		4050. WHITE QUEEN. A lovely soft white when fully open, though tinged blush at first. Height, 24 inches. Doz. 60c; 100 for \$4.00.	

Childs' Gold Medal Mixture

3860. This wonderful mixture of Darwins contains all the varieties listed above. Splendid effects are obtained by planting this mixture. **Doz. 45c; 50 bulbs \$1.85; 100 bulbs \$3.50.**

Childs' General Mixture

3865. A nicely balanced mixture of 12 to 15 colors made up from our surplus stocks. **Doz. 40c; 25 for 70c; 50 for \$1.15; 100 for \$2.25, postpaid.**

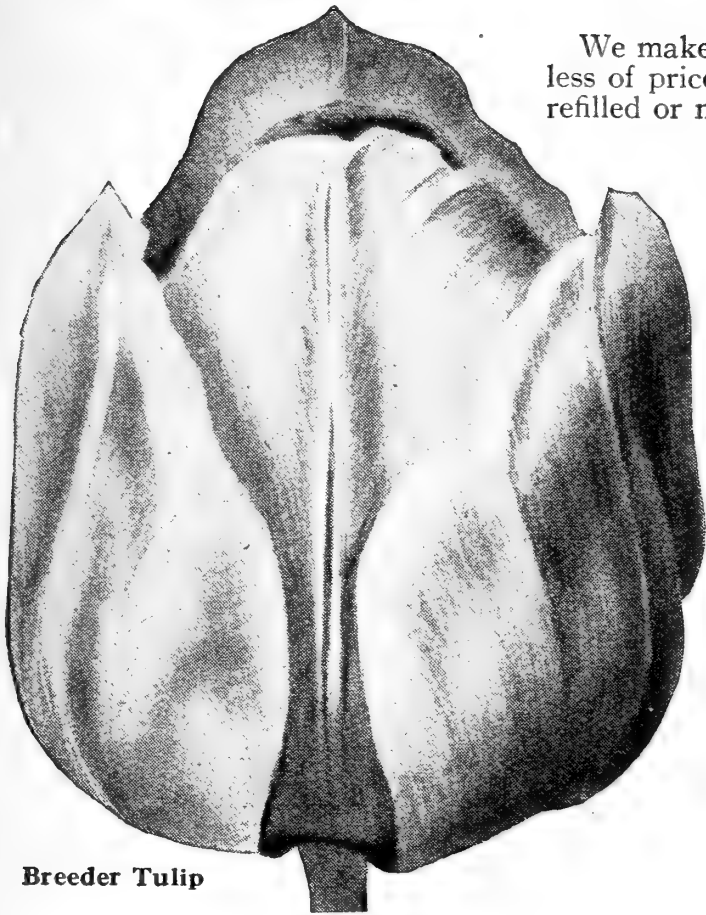
Childs' Straight Colors

3855. (Specify the color or colors wanted.) Scarlet, Crimson, Red, Light Pink, Pink, Salmon, Violet, Lilac, Mahogany, Purple, Yellow. **Doz. 45c; 25 for 75c; 50 for \$1.30; 100 for \$2.50, postpaid.**

Prices Are Postpaid

Breeder Tulips

We make bold to claim you can not buy any better bulbs anywhere regardless of price. Each bulb is of Top Size. Guaranteed to be so or your order refilled or money refunded. The Breeders are similar to the Darwins except the colors range darker. Culture the same as the Darwins.



Breeder Tulip

- Violet** 4677 **GODET PARFAIT.** Dark violet, white base, large flower. 25 inches. Doz. 85c; 100 for \$6.25.
 4700 **LOUIS XIV.** The most beautiful of all Breeder or Darwin Tulips. Purple with broad golden brown edge. 24 inches. Doz. 80c; 100 for \$5.75, postpaid.
 4745 **TURENNE.** Purple-violet with broad yellow edge. 24 inches. Doz. \$1.00; 100 for \$6.50.
 4679 **JAUNE D'OEUF.** Heliotrope changing to yellow. Good forcer. Doz. 90c; 100 for \$6.75.
- Red** 4665 **FEU ARDENT.** A fiery red, dark towards the bottom. Fine forcer. Doz. 95c; 100 for \$6.50.
 4720 **PANORAMA.** Mahogany red. Fine forcer and bedder. 26 inches. Doz. 60c; 100 for \$4.50.
- Brown** 4610 **BRONZE QUEEN.** Soft buff. Inside tinged golden bronze with yellow base. Doz. 55c; 100 for \$4.00.
- Wine** 4620 **CARDINAL MANNING.** Dull wine color with rosy bronze flush changing to rosy-violet. 25 inches. Doz. 75c; 100 for \$5.50, postpaid.
- Pink** 4718 **MEDIA.** Carmine pink, salmon shaded. 25 inches. Doz. 70c; 100 for \$5.00, postpaid.

Byblooms and Bizarre Tulips

4210. The striped and Bizarre effects of these beautiful Tulips are both fascinating and striking. Every color harmonizes. The Byblooms are marked with rose or violet on white. The Bizarre are brown on yellow. Mixed colors. Doz. for 65c; 25 for \$1.25; 50 for \$2.35; 100 for \$4.50.

Special Breeder Tulip Mixture

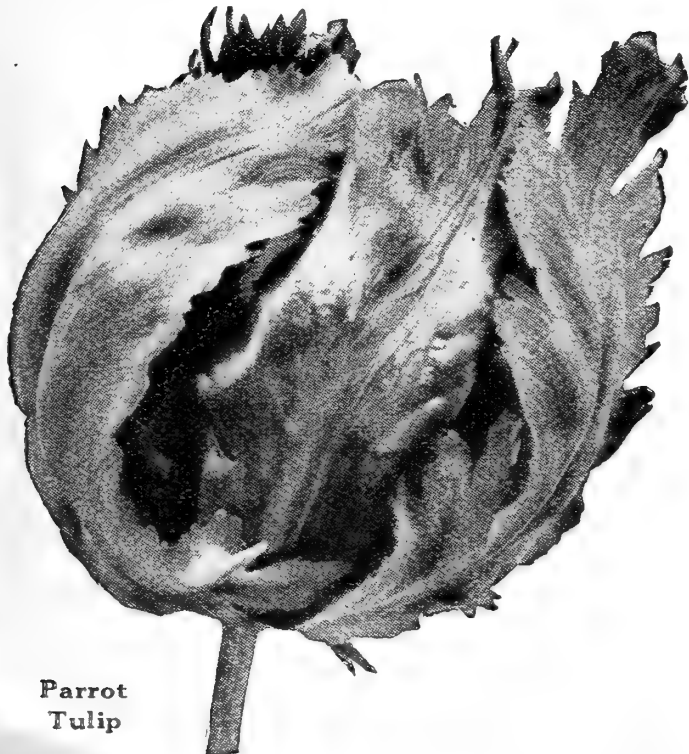
4757. Dozen 50c; 25 for \$1.00; 50 for \$1.90; 100 for \$3.75, postpaid.

Parrot Tulips

4220. These May-flowering tulips are yet another class of the most radiant hues, they are queerly slashed and scalloped on the edges. (Also equally well known as Dragon Tulips.) 15 inches high. Mixed colors. Doz. for 50c; 25 for \$1.00; 50 for \$1.90; 100 for \$3.75, postpaid.



Bybloom and Bizarre Tulips



Parrot Tulip

Duc Van Thol Tulips

4580. The first to bloom in the spring, fully two weeks earlier. The best for house culture. Colors are unexcelled by any tulips. Mixed, White, Scarlet, Vermillion, Pink, etc. Doz. for 60c; 25 for \$1.20; 50 for \$2.25; 100 for \$4.35, postpaid.

Rembrandt Tulips

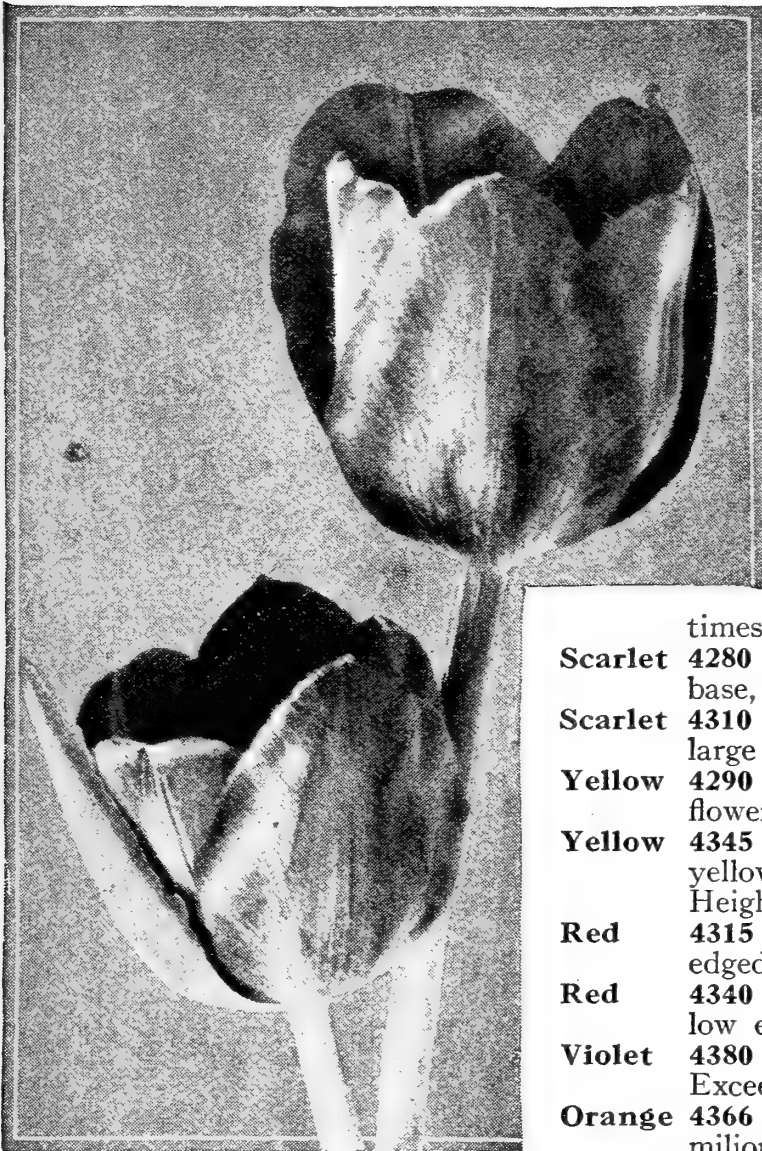
4230. In our opinion nothing excels them for stateliness, colors, and variegations. Surely none surpass them for bedding. Grow 18 to 24 inches high. Mixed colors. Doz. for 60c; 25 for \$1.20; 50 for \$2.30; 100 for \$4.50, postpaid.

Single Early Tulips

Nothing in the world surpasses the brilliancy of single Early Tulips in color. Nothing from the earth comes at a time that cheers and beautifies as Early Tulips. Nothing brings so much joy to the heart and solace to the soul as the Tulips that immediately follow the cold, dreary, snowy winters.

USE VARIETY NUMBER WHEN ORDERING

			Doz. bulbs	100 bulbs
Pink	4300	COTTAGE MAID. Broad margin of rose pink over cream, fine for bedding. Height 12 inches.....	\$0.80	\$5.75
Pink	4368	ROSE LUISANTE. Deep pink of a beautiful shade. Fine for bedding	.65	4.75
White	4370	WHITE HAWK. Beautiful pure white, large globular flower, superb for bedding or late forcing. Height 13 inches	.80	5.75
	4352	LA REINE. Pure white, sometimes turns to a delicate pink.....	.65	4.50
Scarlet	4280	BELLE ALLIANCE. Brilliant scarlet, yellow base, large flower. Height 13 inches.....	.60	4.50
Scarlet	4310	CRAMOISIE BRILLIANT. Brilliant red, large flowers. Long stems. Fine for bedding.....	.70	4.75
Yellow	4290	CHRYSOLORA. Clear golden yellow, large flower. Height 12 inches.....	.60	4.50
Yellow	4345	KING OF THE YELLOWS. Deep golden yellow, retains its color. For bedding or forcing. Height 12 inches. A marvelous tulip.....	.85	6.50
Red	4315	DUC DE BERLIN. Bright crimson-scarlet, edged yellow, fine large flower. Height 16 inches....	.65	5.00
Red	4340	KEIZERKROON. Bright red with broad yellow edge, large flower. Fine forcer and bedder....	.80	5.75
Violet	4380	WOUWERMAN. A lovely purple violet. Exceedingly large. Amazingly beautiful.....	.85	6.50
Orange	4366	PRINCE OF AUSTRIA. Bright orange vermilion. Very large flower. Sweet scented. Fine forcer	.85	6.50



Cramoisie Brilliant

Special Mixture of Early Single Tulips

4260. This special mixture consists of the above varieties and many more beautiful colors, blended so as to give a wonderful assortment. Will delight you.

Dozen 45c 25 bulbs 90c 50 bulbs \$1.75 100 bulbs \$3.25

Crocus—The First to Bloom in Spring

These fascinating bright little flowers are the earliest of all, they pop up their lovely heads at the first warm Spring sunbeams. They grow almost anywhere in beds, under shrubbery, scattered broadcast in the lawn under trees or in pots in the home. There is one thing to be remembered, and that is not to cut them down until the foliage has matured and died down or they will not come up another year.

- Purple Blue 3030 BARON BRUNOW.
- Yellow 3040 YELLOW MAMMOTH.
- Striped 3070 SIR WALTER SCOTT.
- White 3050 MONT BLANC.

Doz. 30c; 50 for \$1.00; 100 for \$1.90, postpaid.

40 Flowered Crocus or Giant Yellow

3080. (See illustration opposite.) It is astonishing the number of blooms a single bulb of this Crocus will furnish. The flowers are very large and brilliant, and a row of them is a wave of gold. The most satisfactory Crocus grown, owing to its enormous size, bright color and abundant bloom. This variety is extra fine for growing in pots or pans in the house.

Doz. 35c; 50 bulbs \$1.25; 100 for \$2.35, postpaid.

Special Mixed Crocus

3100. We are offering here all colors mixed, Blue White, Yellow and Striped.

Doz. 25c; 50 bulbs 90c; 100 bulbs \$1.65, postpaid.



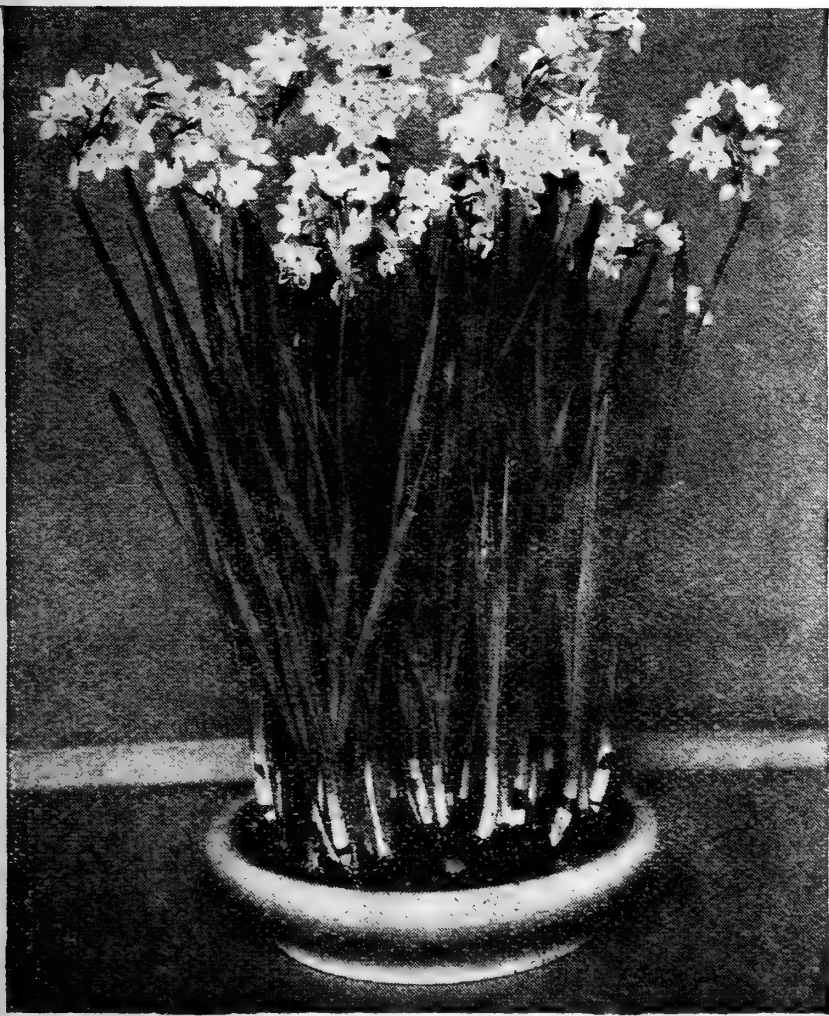
Double Early Tulips

The great consideration in Double Tulips is their long period of bloom. Many of our customers feel that the prolonged blooming season makes them an indispensable early spring flower. For the same reason they are given a stated preference for pot culture for interior use. Plant the same as other Tulips.

			Doz.	100	
			bulbs	bulbs	
			50	at 100 rate	
Yellow	4510	TEA ROSE. Soft pale yellow, a distinct color in double Tulips. Fine for bedding or forcing. Height 11 inches...	\$0.60	\$4.25	
Yellow	4440	COURONNE d'OR. Large, deep yellow, flushed orange-red or copper. One of the best. Height 11 inches.....	\$0.95	\$6.25	
Yellow	4455	GOLDEN KING. Purest golden yellow.....	\$1.00	\$8.00	
Red	4490	RUBRA MAXIMA. Dark scarlet; an exceptionally good bedding variety. A good forcer	\$0.65	\$4.75	
Red	4460	LE MATADOR. A beautiful bright scarlet. One of the best for forcing and none better for bedding	\$1.00	\$8.00	
Red	4430	COCHENILLE. Carmine. An extra good forcing variety. Fine for cutting.....	.85	6.00	
White	4420	BOULE DE NEIGE. Pure white, large, full flower, resembling a white Peony. Splendid for bedding or forcing. Height 10 inches. A very beautiful tulip	\$0.90	\$7.00	
Violet	4410	BLUE CELESTE. Soft violet-purple. Large flowers of very pleasing color. A beautiful Tulip for cutting or late forcing. Height 16 inches. Exceedingly rich.....	.90	7.00	
Rose	4480	MURILLO. Delicate rose-pink, flushed white. Fine for bedding and forces easily. Height 11 inches. Considered the best double pink for forcing.....	.50	3.75	
Orange	4515	TOURNESOLL. Bright red with margin of yellow. Height 12 inches. Striking....	.90	6.50	
Pink	4470	LUCRETIA. Bright rose-pink. Very large, broad flowers of fine color. Fine forcer....	.75	5.50	



Rubra Maxima



Paper-White Narcissi

Childs' Special Mixture of Double Tulips

4400. We are offering you this splendid mixture of the above varieties, with many wonderful colors added to this list, and we know you will enjoy these Tulips very much.

Doz. bulbs	50c	25 bulbs	\$1.00
50 bulbs	\$1.85	100 bulbs	\$3.50

Giant Paper-White Narcissus

Used for Planting in Pebbles

3800. This is the variety so generally grown in water with gravel and stones in a saucer, bowl, or pot, blooming at Xmas time and throughout the late winter months. This is the large flowering variety that has made Childs' strain so popular all over the country. It's a secret how we do it, but we certainly do supply a superior bulb. Bulbs that are sure to bloom in profusion. Each 10c; doz. \$1.15; 100 for \$7.75, postpaid.

Culture. Bulbs may be planted in pots and put away in a dark place at a temperature of 55 to 60 degrees, in order to start the roots growing first, then brought to the light. A very popular way is the Chinese Method: set the bulb or bulbs in a glass or bowl filled with pebbles, and keep roots covered with water.



Long Trumpet Narcissus

Single Jonquils

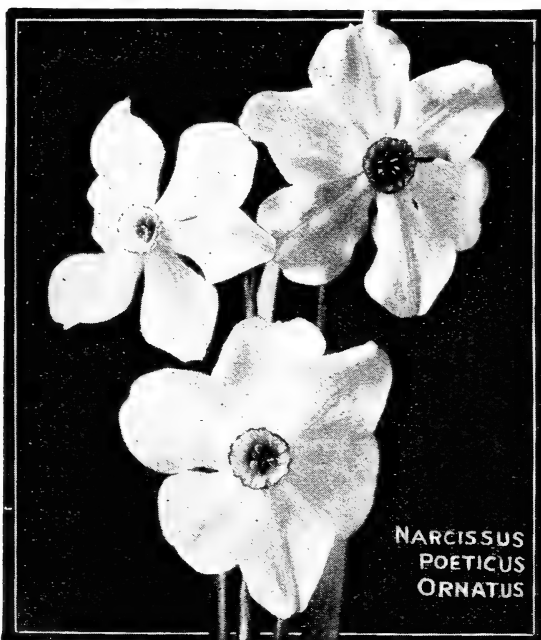
3730. These ever favorite dainty flowers are a gleam of gold when in bloom. Splendid to grow in pots.

A free bloomer, and excellent for forcing. A lovely pure gold color and exquisite fragrance. The best single. Doz. \$1.00; 100 bulbs \$7.50, postpaid.

Daffodils Double

The double-flowering Daffodils we offer may be planted outdoors, or they may be forced in flats (or boxes) for cutting and are excellent for pots.

3660. VAN SION. Star-like petals; long double trumpet with beautiful crimped petals. Golden yellow. Fine for cutting or forcing. Large bulbs. 15c each; doz. \$1.45; 100 for \$9.50, postpaid.



NARCISSUS
POETICUS
ORNATUS

Narcissus

After many years' experimenting we find that the varieties mentioned below cover a range that will practically fill all requirements for the garden, indoor and Florists' use and are the American grown varieties that are most dependable. You will be immensely pleased with these sturdy, vigorous, rapid growing bulbs.

Long Trumpet Varieties

3540. EMPEROR. Yellow Trumpet. Perianth deep primrose-yellow, large flower of remarkable substance; fine for borders or forcing. Very popular.

3570. GOLDEN SPUR. Rich yellow trumpet, broad and open. Perianth large and spreading. Forcer.

3580. VICTORIA. Trumpet a deep yellow, large and frilled. Perianth broad creamy white. Beautiful.

Prices on above Narcissus: Each 20c; doz. \$1.75; 100 for \$12.00. Postpaid.

Medium Trumpet

3590. BARRI CONSPICUOUS. Large perianth, soft yellow. Short cup, edged orange scarlet. Extra fine. Each 10c; doz. \$1.15; 100 for \$8.25, postpaid.

3610. SIR WATKIN. Large yellow cup tinged a deeper shade. Perianth primrose-yellow. A giant in size. Beautiful. Each 15c; doz. \$1.75; 100 for \$12.00.



Double Daffodils

Narcissus Poeticus

This is the short-nose Narcissus. Very hardy and excellent for naturalizing in the garden. They are highly prized for their form and delightful fragrance, and are splendid for growing indoors in pots or flats.

3760. POETICUS ORNATUS. Perianth pure white, yellow cup edged deep red. Large and beautiful. Each 15c; Doz. \$1.15; 100 for \$8.25, postpaid.

Narcissus Poetaz

Has a delightful perfume. Splendid for winter-blooming in pots. Very hardy and excellent for planting in the garden.

3710. LAURENS KOSTER. Pure white. Prices: Each, 20c.; doz., \$2.00; 100 for \$12.50.



GRAPE
HYACINTHS.

Scilla Siberica The Beautiful Russian Violet

The flowers are star or violet shape, held on spikes — bell fashion. Comes in deepest violet, also white. A great flower for shady spots, for deep recesses, corners, under trees, under bushes, lawns, beds, borders. Once planted, always there.

3820. VIOLET. Doz. 60c; 25 for \$1.10; 50 for \$2.15; 100 for \$4.00, postpaid.

3830. WHITE. Doz. 60c; 25 for \$1.10; 50 for \$2.15; 100 for \$4.00, postpaid.



SCILLA

Fritillaria (Meleagris)

3150. This new variety is the most desirable of fall bulbs for early spring blooming in the garden. They always attract great attention, bearing clusters of large bell-shaped flowers in various colors, perfectly hardy and may be left in the ground for years.

Doz. \$.65; 50 for \$2.50; 100 for \$4.90, postpaid.



FRI
TILLARIA
MELEAGRIS

Eranthis Hyemalis (Winter Aconite)

3110. These lovely golden blossoms are charming with Snowdrops, Scillas and Chionodoxas. Does well under trees. Four to eight inches high. Hardy.
Doz. 45c; 50 bulbs \$1.50; 100 for \$2.90, postpaid.

Ixias

3340. These beautiful Winter flowering bulbs have rich varied colors. The center always differing in color opening in the rays of the sun they offer a display of gorgeous beauty. Borne on long, graceful spikes. Hardy.
Doz. 40c; 50 bulbs \$1.45; 100 bulbs \$2.90, postpaid.



GIANT SNOWDROPS.

Snowdrops

These lovely little flowers are the earliest in the Spring, and are so hardy that they mind neither sleet nor snow. Snowdrops are graceful and pretty white flowers, touched with green. They bloom with the Crocus. Hardy.

3840. SINGLE SNOWDROPS (Special Bulbs). Doz. 45c; 50 for \$1.75; 100 for \$3.35.

3850. DOUBLE SNOWDROPS. Doz. 75c; 50 for \$3.00; 100 for \$5.00.

Winter Blooming Lilies

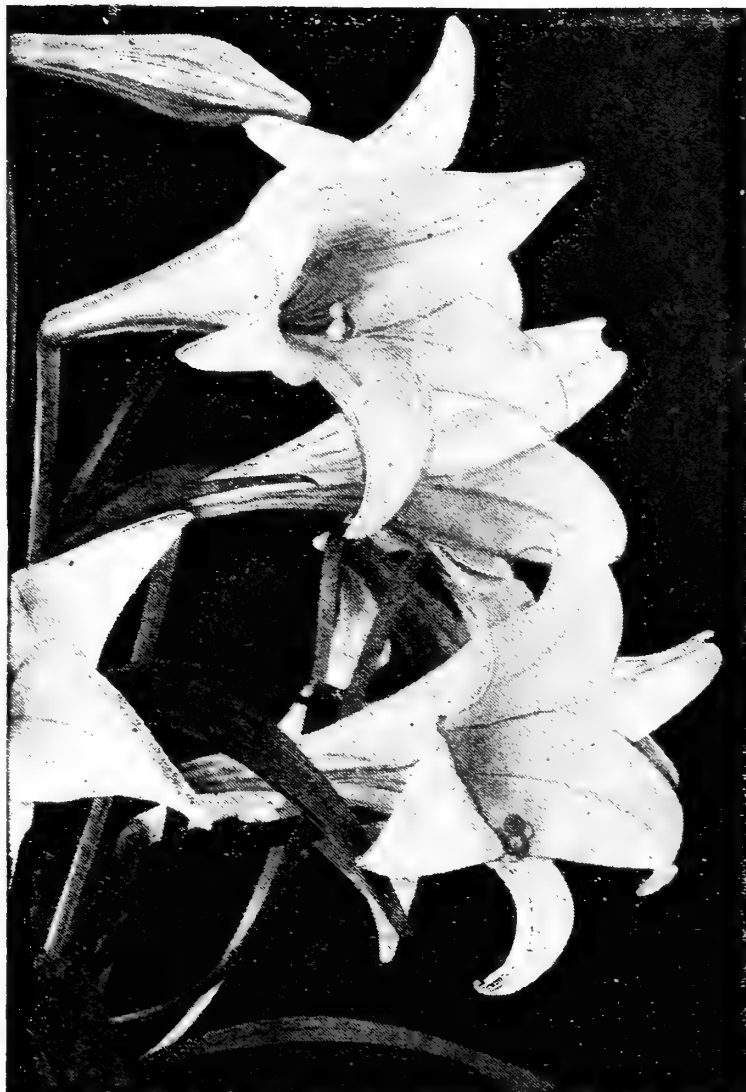
These are the Lilies for indoor growing. Bulbs should be set with the top just below the surface in 5-inch pots, and if possible placed in the earth out-of-doors, cover the pot lightly with straw until the roots have a chance to start, then take indoors and keep in a cool room while growing.

Easter Lily (*Longiflorium Giganteum*)

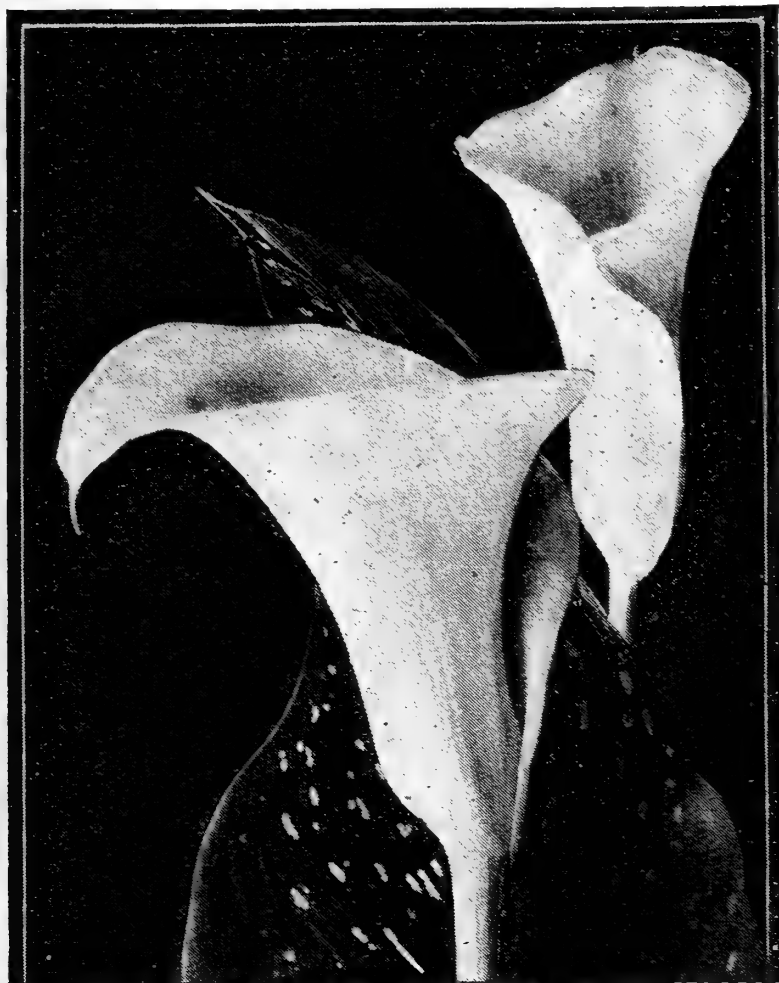
6460. Hardy with protection. No Lily excels this as a winter bloomer. The flowers are very long and trumpet shaped; pure white and deliciously fragrant. Three to twelve magnificent blossoms on a stem. Blooms splendidly in pots. This is the genuine Easter Lily which is so well known and popular. Grown by all florists and sold at a high price at Easter time. Grow your own this year. **Strong bulbs, 50c each; 3 for \$1.35, postpaid.**

Bermuda Lily (*Lilium Harrisii*)

5165. Hardy with protection. Another very fine white Lily of great beauty and an early bloomer. It grows to the height of four feet with a great cluster of pure, waxy white, fragrant flowers with bright yellow anthers. Much used for Easter decorations on account of its great height and many flowers. Very simply and easy to grow. Large bulbs 9 to 11. Do not buy any of a smaller size. **60c each; doz. \$5.00, postpaid.**



The Stately Easter Lily



Calla, *Elliottiana*

Calla, *Elliottiana*

Giant Yellow or Golden Calla

5170. Not hardy. This is a yellow Calla of marvelous beauty. Flowers very large and of the brightest golden-yellow. Leaves beautifully spotted with white. Its great size of bloom, brilliant yellow color, and large, strikingly marked leaves make this a plant of unusual beauty and novelty. Fine for winter-flowering, planted in December or January. Strong flowering bulbs. **40c each; doz. \$4.00.**

5175. Extra large, 50c each; doz. \$5.00, postpaid.

Calla, Godfrey (Everblooming)

One of the Best Window Plants Grown.

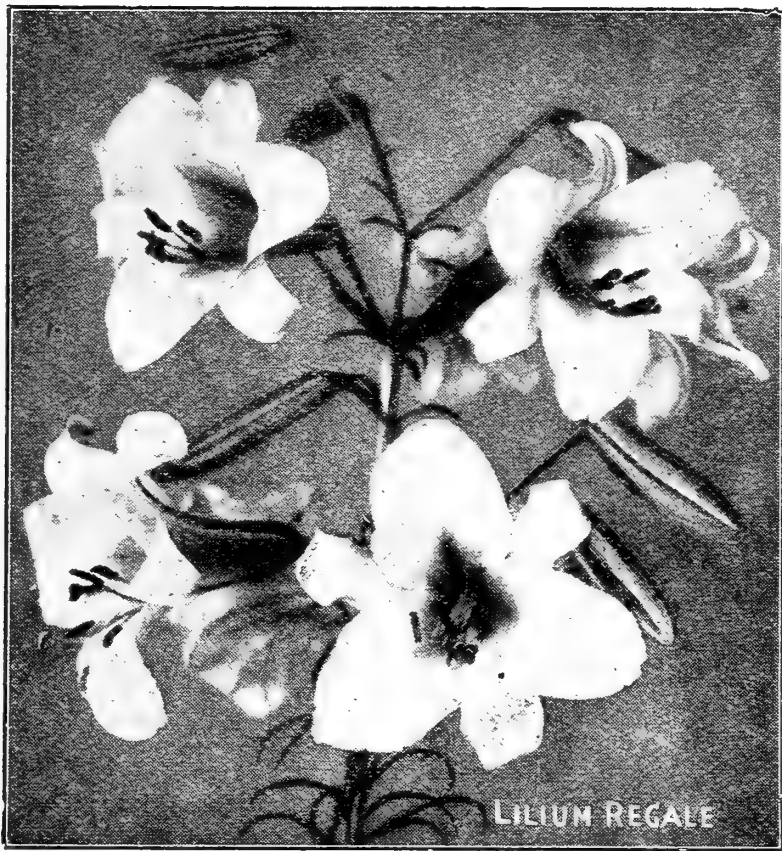
5180. Not hardy. This Calla has the habit of the very dwarf sorts by blooming when very small, growing on through the various stages of dwarf, half dwarf, and large sorts up to *Giantissima*. Its immense, rich green leaves and pure white flowers of graceful shape make a splendid plant for any window. To all these may be added the novel quality of summer-blooming in the garden. Fine for banking background. **Plants, 35c each; 3 for \$1.00, postpaid.**

Madonna Lily

A Favorite Lily for the Hardy Garden

6405. This hardy lily for in or out door planting closely resembles the Easter Lily. Planted late in the fall comes into bloom shortly after the tulips. Makes a striking appearance in the garden with its cluster of large, magnificent, stately, white flowers. The petals are broad, glistening and contrasty. Very fragrant. One of the most popular outdoors lilies in America and highly recommended for planting for contrast in the perennial bed. **Each 35c; 3 for \$1.00; doz. \$3.50, postpaid.**





Liliums

Earliest of all Lilies and good for pots and for forcing. Very hardy, healthy and free blooming.

6265. ATROSANGUINEUM. (See illustration opposite.) Deep ruby-red, very rich. Each 50c; doz. \$5.00.

6440. HANSONI. (Golden Turk's Cap Lily.) A rare and fine Lily. Blooms in June and early July. Color rich yellow with deep brown dots. Anthers reddish orange. Each 75c; doz. \$7.50. Postpaid.

6360. LEONARD JOERG. (See illustration opposite.) Light orange-yellow, spotted black, medium height. Elegant type. Each 50c; doz. \$5.00; Postpaid.

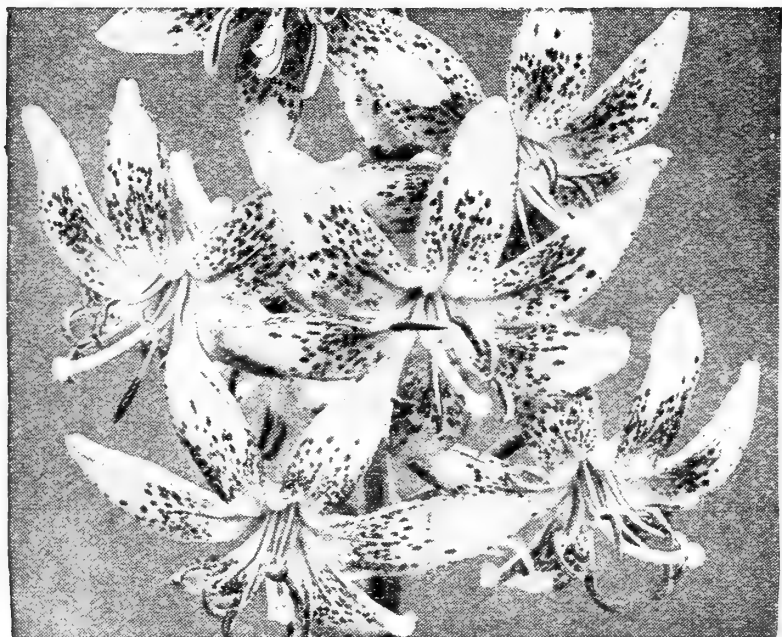
6405. MADONNA LILY. See page 13 for description. Each 35c; 3 for 85c; doz. \$3.50. Postpaid.

6365. ROBUSTA. (See illustration opposite.) Flowers very large, wide open; light orange-salmon, richly spotted chocolate. Each 45c; doz. \$4.50. Postpaid.

6450. SUPERBUM. Very beautiful orange-red. Each 45c; doz. \$4.50. Postpaid.

6295. TIGRINUM, DOUBLE. (Tiger Lily.) An August blooming orange lily spotted black. Each 30c; doz. \$3.00. Postpaid.

6300. TIGRINUM SPLENDENS. An improved single tiger lily. Very large orange flowers spotted black. Each 25c; doz. \$2.50.



Lilium Hansonii

Hardy Lilies

LONG ISLAND GROWN

We take infinite pride in being able to offer all these beautiful Lilies in strains that are perfectly hardy and can be planted anywhere with success and grown with ease and bloom in profusion.

Plant this spring, 6 to 8 inches deep. Cover with leaves.

New Royal Lily Regale

6340. One of the most beautiful Lilies of unusual colorings, clusters of blooms measuring from four to six inches in length and have a sweet fragrance. The colorings are most beautiful; ivory-white, shaded pink tinged with bright canary yellow at the base. Blooms during July and August. This Lily is perfectly hardy. Each 75c; 6 for \$4.00; doz. \$7.50. Postpaid.



Grand Speciosum Lilies

The Speciosum Lilies have a rich blending of colors and delicate fragrance not found in any other type.

6410. MAGNIFICUM. A greatly improved Speciosum of wonderful color. White, suffused rose-pink and spotted red. The base of each petal is striped with green and the anthers are red. Exceedingly popular.

6390. MELPOMENE. Words cannot describe the beauty of this variety. Frosted white, spotted, clouded and bearded with pinkish crimson. Petals deeply recurved and widely bordered red. A superior type.

6400. RUBRUM. Deep rose, spotted crimson and mottled white. Flowers four to six inches across.

Any of the above three select bulbs, each 45c; one each of the three for \$1.25; doz. \$4.50. Postpaid.

6495 Hardy Lily Collection. One of each Beautiful Lily listed on this page (12 in all) for \$5.00. Postpaid.

House Plants

Do you realize we are one of the few who have been growing, producing, developing and selling House Plants for over a Half Century?

Surely this long experience should be an assurance of Quality. We are about the only Growers who sell on an Absolute Guarantee. "Satisfaction Guaranteed or Purchase Price Refunded" is our motto.

Abutilon

15085. NEW TRAILING. A novelty of great beauty. This wonderful Abutilon has rich, deep green leaves, spotted rich yellow. Flowers long and somewhat trumpet-shaped of the richest blood-scarlet color, while the slender branches will grow several feet in length, trailing gracefully from a suspended pot or basket, or may be trained as a climber. A plant of striking beauty. **35c each; 3 for \$1.00; postpaid.**

15060. INFANTA EULALIA. This is very fine. Plants dwarf and short jointed, producing exquisite, large cupped blossoms by the score from the time the plant is four inches high. Blooms all the time. Color a dainty, soft satin pink. **Each 25c; postpaid.**

15070. GIANT - FLOWERED YELLOW. Immense wide spreading blossoms of a fine, clear lemon-yellow. **25c each, postpaid.**

15080. GIANT-FLOWERED PINK. A rich, dark pink of great size. **Each 25c; postpaid.**



New Trailing Abutilon

Asparagus

15090. PLUMOSUS NANUS-DOWNY PLUME. A delicate and graceful plant with wide-spreading foliage which is very fine, soft and feathery. Nothing better than this to make up with cut flowers. **30c each; 3 for 75c.**

50910. ASPARAGUS PLUMOSA SEED. Pkt. **25c; 2 for 35c, postpaid.**

15100. SPRENGERI. A variety of the finest ornamental qualities. For hanging pots, or bracket pots where the mass of rich foliage can droop in its natural grace, it is one of the loveliest objects. **25c each; 3 for 70c, postpaid.**

50920. ASPARAGUS SPRENGERI SEED. Pkt. **15c; 2 for 25c, postpaid.**

Asclepias (Curassivica)

15050. A plant of unusual merit, as it is a perpetual bloomer, producing at all times large clusters of orange-scarlet blossoms that resemble in color combination the Lantana. It, however, blooms most freely from December to Easter. One of the finest pot plants we have ever grown. **30c each; 3 for 85c.**



Asclepias Curassivica

Acalypha

15000. (See illustration.) A straight, stout, branching plant clothed with large green leaves of good substance, and out of the axil of every leaf grows a spike of blossoms, glowing crimson in color. Ten to twenty inches long, as large around as one's finger and looks like a long piece of rich, red chenille cord. They last for months before fading, and before they fall off several other spikes have started out in the same leaf axil. **15000. Sanderi.** **Each 40c; 3 for \$1.10.**

Anemones (Wild Flower)

Very beautiful and brilliant hardy spring-flowering bulbs. They possess a beautiful range of exquisite colors. This hardy perennial positively should be in every garden. Very beautiful. Profuse bloomer.

3000. FRENCH. Single, mixed, all colors. **6 bulbs 75c; doz. \$1.25; 100 for \$8.00, postpaid.**

3010. ST. BRIGID. Semi-double blossoms of showy colors. **6 bulbs 75c; doz. \$1.25; 100 for \$8.00, postpaid.**



ACALYPHA SANDERI.



ST. BRIGID ANEMONE.

Rex Begonias

We know of no other plant that gives more universal pleasure or can be grown with more ease of culture than the Rex Begonia. With ordinary care they will thrive for years and years, grow to immense size and get more beautiful, more fascinating as they age.

We have a national reputation for our beautiful Begonias. Our Long Island Begonias are of a superior constitutional vigor.

15110. ALFONSO. Silvery green with a dark border filled with conspicuous silver spots. Exceedingly novel and fine. Try it.

15120. CRIMSON GLOW. Very light green leaves overlaid with a flush of fine crimson. Very striking and fascinating.

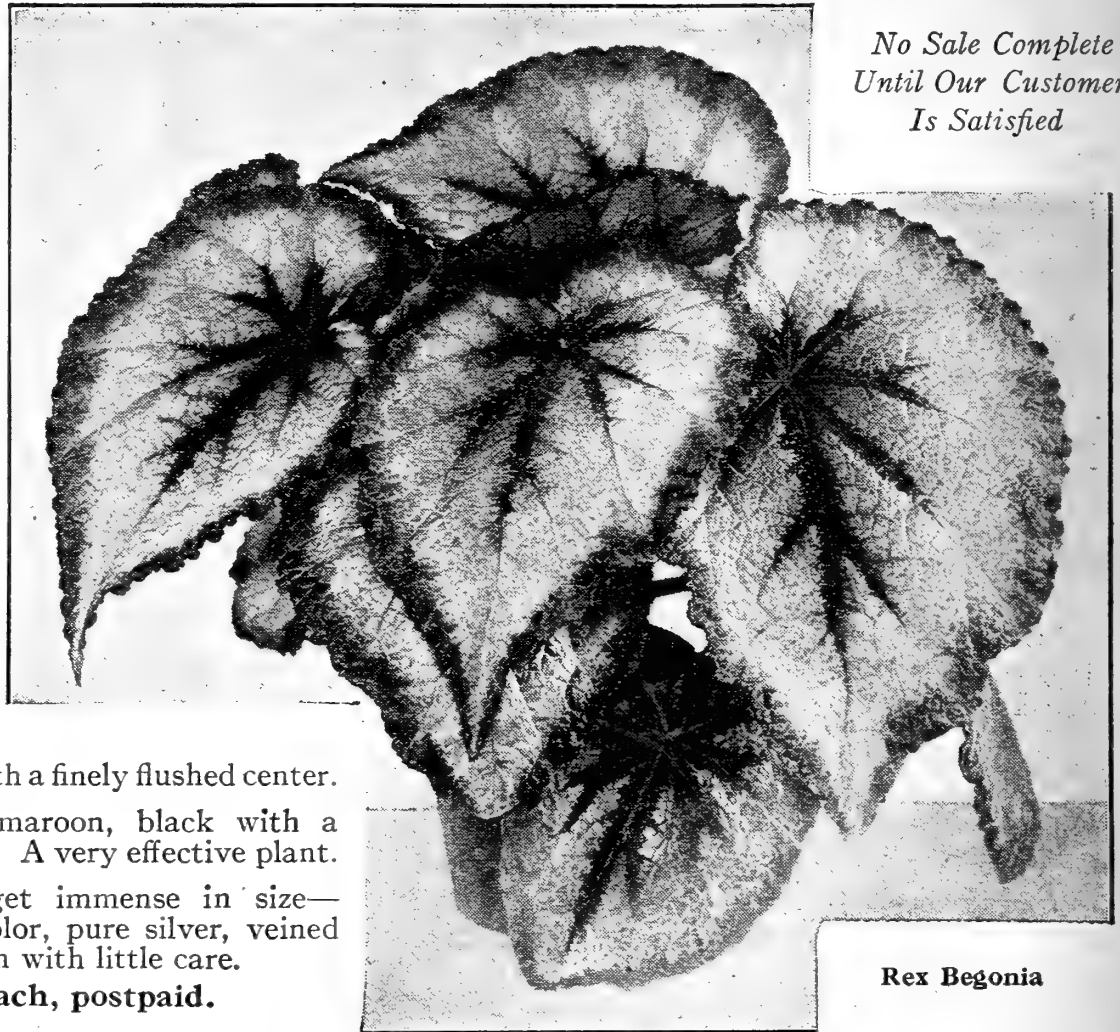
15130. CZAR NICHOLAS. A beautiful stipple of green and silver with a finely flushed center.

15140. EDWARD IV. Deep maroon, black with a striking zone of pink and silver spots. A very effective plant.

15155. MONSTER. Leaves get immense in size—reaching two and one-half feet. Color, pure silver, veined with dark green. Grows to perfection with little care.

Prices on the above, 50c each, postpaid.

15170. One of each (5 in all) for \$2.25, postpaid.



*No Sale Complete
Until Our Customer
Is Satisfied*

Rex Begonia

All Prices Postpaid



BEGONIA
IMMENSE

Three New Begonias

15234. ALBERT MARTIN. This is one of our newest begonias and one of the finest. A bronze-leaved variety of unusual merit, about ten inches high. Each 40c; 3 for \$1.10.

15236. FIRE SEA. A recent introduction. Captured an award of merit. Exceedingly free blooming. Dark fiery red. Reddish green leaves suitable for all purposes. Good bedder. Each 40c; 3 for \$1.10, postpaid.

15238. CHATELAINE HYBRID. Another new one of merit. Flowers are a brilliant rose and very large, over twice the size of the older sorts. Each 40c; 3 for \$1.10.

Tree Begonias

15260. HAAGEANA (Pink). Flowers rose-pink in great clusters nearly a foot in diameter. Plant grows very tall and is covered with reddish, fuzzy hair. Most beautiful. One of the most popular. Each 75c; 3 for \$2.00, postpaid.

15270. IMMENSE (Crimson). The clusters of crimson-pink blossoms are very large. Plant grows two to three feet tall, with handsome spotted foliage. Blooms all year, in fact always in bloom. Each 50c; 3 for \$1.35, postpaid.

15290. PRESIDENT CARNOT (Red). Brilliant red flowers in immense clusters. Each 40c; 3 for \$1.10.

15280. METALICA (Light pink). Large, heavy leaves. Metallic luster. Each 30c; 3 for 85c, postpaid.

Crimson Dwarf Double Begonia

15240. For outdoor summer use or indoor winter use we commend this as a Begonia that will produce a profusion of double flowers. Especially recommended for indoor use. The foliage is beautiful and the flowers are bright crimson color. It is decidedly an all-year-round flower. This has been a novelty for years.

15240—Each 50c; 3 for \$1.35, postpaid.

Begonias

Begonias grow and thrive with comparative ease of culture. For indoor use in winter they add a cheer and joy hard to realize until tried. In the spring if set outdoors they will continue to bloom and thrive. No flower for almost continuous bloom can excel the flowering begonia.

Begonia Mignon Hybrids

These beautiful quick-flowering Hybrids of Begonia Gracilis are among the best and easiest grown plants either for pots or bedding. Plants bloom very quickly. Always in bloom. The bloom literally covers the entire plant.

15180. NEW LUMINARIS. Foliage a rich bronzy crimson, flowers scarlet. A most showy plant.

15190. PEARL WHITE. Large, snow-white.

15200. NEW BONFIRE. Bright rosy scarlet.

15210. PRIMADONNA. New exquisite large pink.

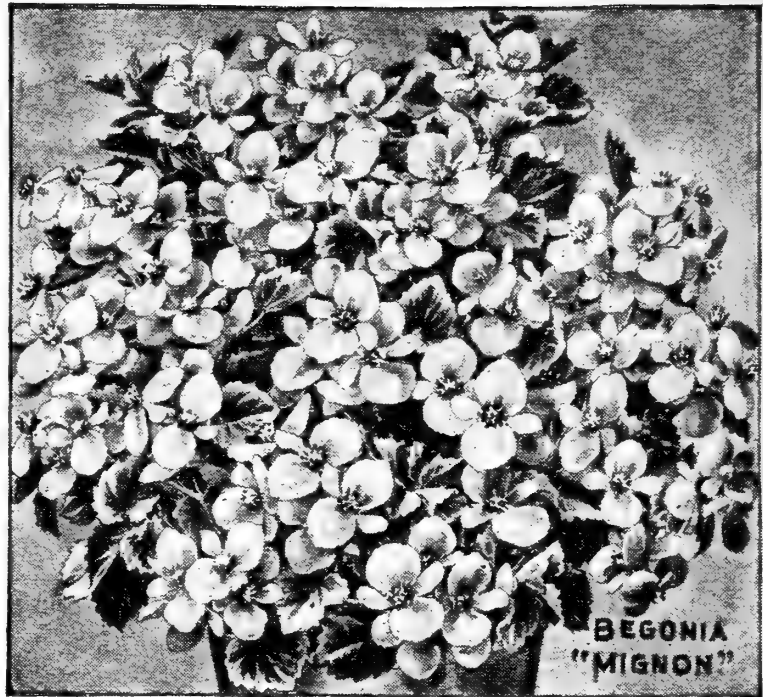
15220. PINK PROFUSION. Distinguished for its fine deep color and unusual quantity of blossoms. 25c each; the 5 for \$1.10; \$2.50 doz., postpaid.

Begonia Seed

51080. SEED (Vernon Hybrids) Mixed. Pkt. 25c.

51060. TUBEROUS ROOTED SEED. Pkt. 25c.

51070. GRACILIS HYBRIDS SEED. Pkt. 25c.



Cyclamen (Grandiflorum)

15865. Few pot plants are so desirable for winter blooming as the Cyclamens. They are in continuous bloom for several months. The foliage is very attractive, being variegated with several shades of green. The flowers rise above the foliage on long stems and are odd and interesting in form. They are of the clearest, most intense colors, ranging from pure white, pink and deep red. **Strong plants, mixed colors, 75c each; 3 for \$2.00, postpaid.**

52080. CYCLAMEN GIGANTEUM SEED (Mixed.) Pkt. 35c; 3 for \$1.00, postpaid.

Cape Jasmine or Gardenia

15880. EVERBLOOMING. (See illustration.) One of the most admired flowers in the world. It is mentioned in books of fiction more today than any other flower. Thousands of persons wear their Gardenias in their coat lapels day in and day out. The flowers of this are very large and perfect, with pure white, wax-like petals and glorious fragrance. Large, double and surpassingly lovely. A good plant will show flowers every day in the year, growing well as a window plant. **65c each; 3 for \$1.75.**

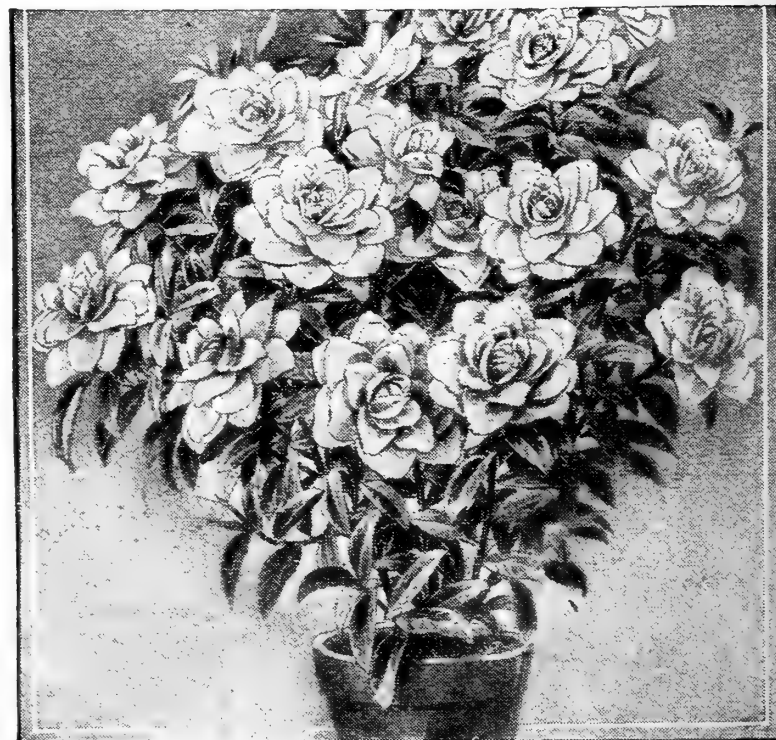
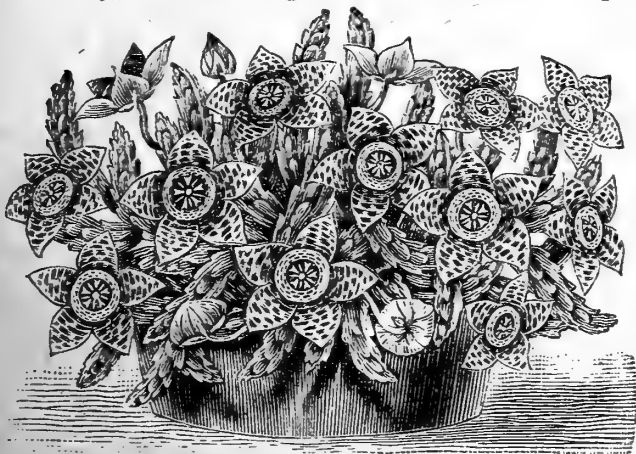


Cacti-Stapelia

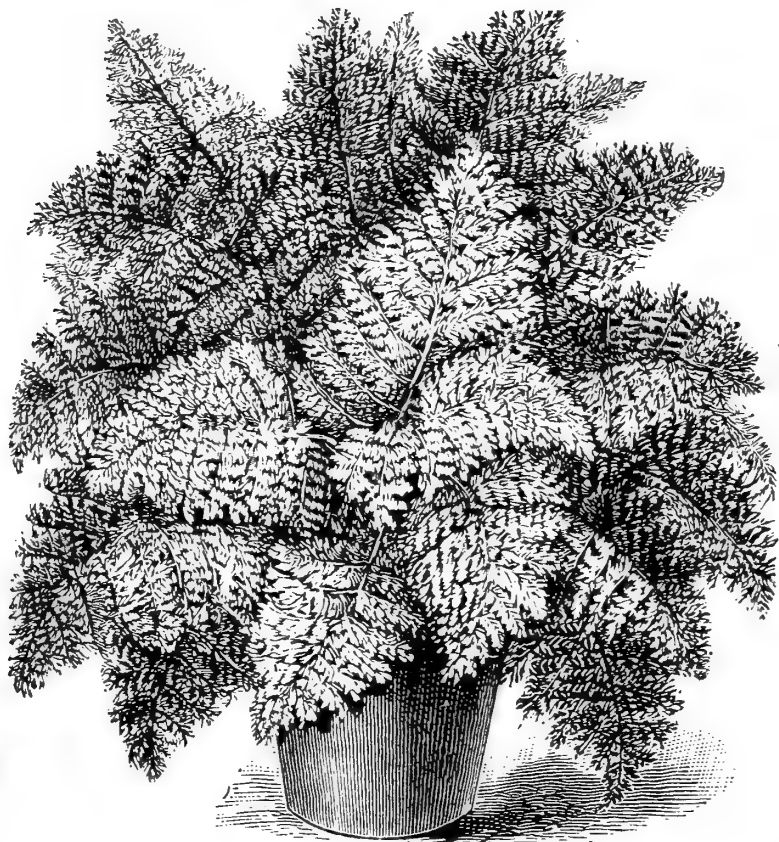
15680. VARIEGATA. The most popular of all the Cactus. Has thick stems and star-shaped maroon, brown and yellow spotted blossoms. The flowers are thick and leathery, resembling the skin of a reptile. If you

admire Cactus you will appreciate this variety. **Each 50c; 3 for \$1.35, postpaid.**

51170. CACTI SEED, MIXED. Pkt. 20c; 2 for 35c, postpaid.



Nothing excels the fragrant Cape Jasmine as a house plant



Whitmanii

Ferns

Ferns are perhaps the most attractive and useful plants we have for the house. The smaller growing varieties are unexcelled as dainty permanent table decorations and the large sorts make elegant specimen plants. We make a specialty of Ferns. Long Island is the natural home of the Fern. It is here they grow at their best. It is here where the heavy fogs and mists, cold nights instil a vigor and robustness in fern life that make Childs' Ferns the quickest growing, most beautiful and most popular Ferns in the country.

16050. BOSTONIENSIS. The true Boston Fern. Of all decorative plants for house culture, this is perhaps the most imposing and satisfactory. It is so robust that it will stand and thrive in most any situation in a room even if out of the sun's rays. Plants form an immense number of graceful drooping fronds, varying in length from two to five feet. **35c each; 3 for \$1.00, postpaid.**

16110. TEDDY, JR. A superb dwarf form of the splendid Mrs. Roosevelt Fern. One of the newer Ferns that is now very popular. **35c each; 3 for \$1.00, postpaid.**

16150. WHITMANII COMPACTA. This is a condensed form with the pinnae, subdividing, making miniature fronds which are superimposed on the main fronds as if two or more were condensed in one. **40c each; 3 for \$1.10.**

16075. ROOSEVELT. A great improvement on the old Boston Fern. It is more upright in growth, grows faster and makes about four fronds to the old varieties' one. It is also a deeper and richer color. **35c each.**

16070. LACE OR BABY (Goodi). This has the finest foliage of all Ferns. It is so delicate that it gives the impression of the finest lacework. No fern in existence can compare with it in fluffiness. **40c each; 3 for \$1.10, postpaid.**

16060. CHILDSI. This remarkable sort originated in our greenhouse. The fronds are short, narrow and rigid, held mostly erect in dense masses. **40c each; 3 for \$1.10, postpaid.**

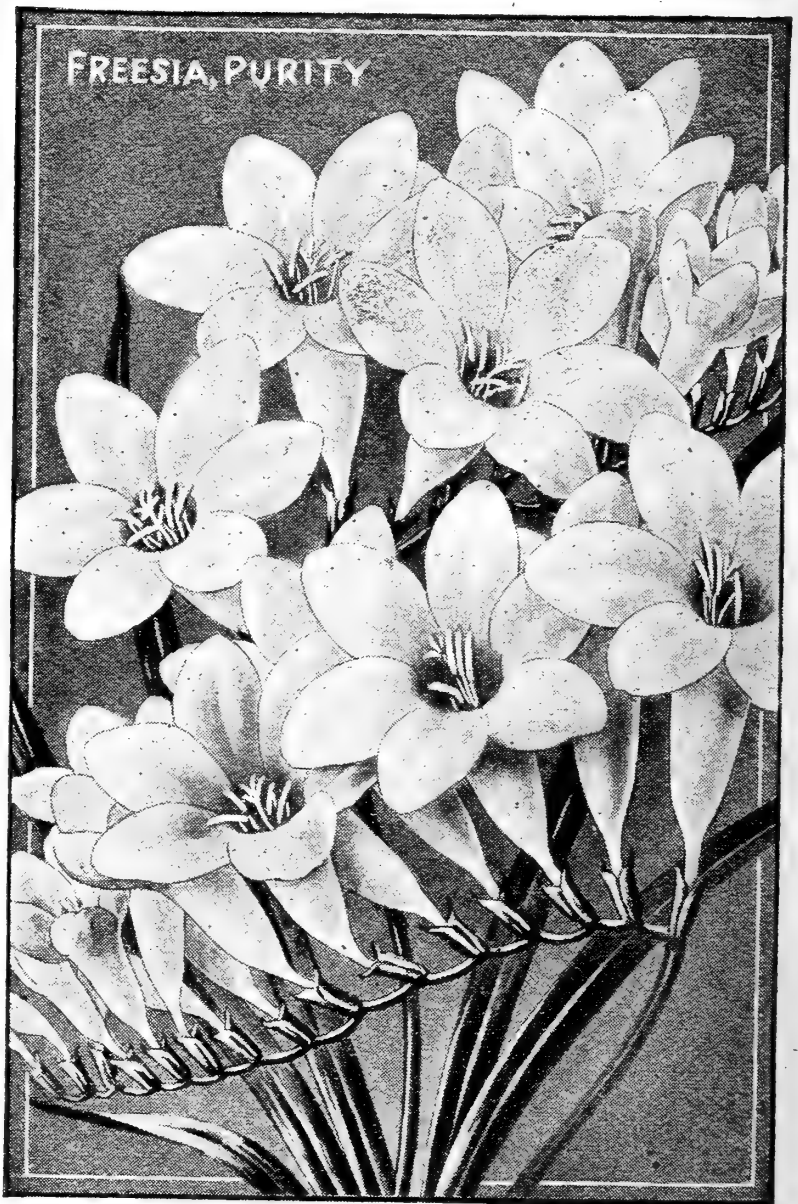
16160. COLLECTION. One of each of above 6 for **\$2.00.**

Childs' Purity Freesia

Clusters of pure white flowers of enormous size, save for one tiny yellow spot in the throat. Beautifully shaped petals, large, well rounded and opened. Very fragrant. Not hardy.

3120. Large Bulbs, doz. 35c; 100 for \$2.00, postpaid.

3130. Selected Mammoth Bulbs, doz. 50c; 100 for \$5.00, postpaid.



New Giant Colored Freesias

This is a new class of strong growing, large flowering Freesia of distinct coloring. The richness of color, size and beauty of these Freesias are wonderful. Freesias are not hardy.

3140. NEW GIANT COLORED FREESIA, Mixed. All colors, yellow, blue, pink, lavender, violet, white, etc. **6 for 45c; doz. 75c; 100 for \$5.50, postpaid.**

\$1.25 OUR GREAT SURPRISE COLLECTION \$1.25

SEVERAL DOLLARS' WORTH OF FINE PLANTS, BULBS AND SEEDS FOR \$1.25 POSTPAID

We are obliged to grow and import enormous stocks of all kinds of Plants and Bulbs, generally more than are necessary, to make sure of having enough. After the fall business is over, in November, this surplus stock is made up into "Surprise" Collections of our own selections, two to four times the Catalog value. No collection will be made up for less than one dollar and twenty-five cents (\$1.25) and from that up to any amount the purchaser may desire in multiples of \$1.25, which will be sent Prepaid.

Fuchsias

The best known of the old-fashioned window plants. Have rich green foliage and graceful, pendent flowers of brilliant color.

15940. TROPHY. One of the most striking and dazzling plants for the house in winter or the garden in summer. This Fuchsia does exceedingly well and is a very satisfying variety for the small house. It is a continuous surprise day in day out. Large double purple with scarlet sepals. 25c each; 3 for 70c, postpaid.

15950. TRAILING QUEEN. A lovely drooping habit displaying a mass of beautiful foliage and large flowers of rosy scarlet and violet-purple color. Flowers borne in clusters, buds long and graceful. Great sort for wall pocket and hanging basket. 25c each; 3 for 70c, postpaid.

15930. SOUV. DE H. HENKEL. A strong, bushy grower with rich bronzy green leaves, veined red. The tubular flowers are a brilliant scarlet in color and two to three inches long. 25c each; 3 for 70c, postpaid.



New Double Hibiscus

Double Chinese Hibiscus

(See illustration.) Has glossy leaves and huge flaming flowers of satinlike texture. Summer or winter, it is always blooming. Pots of Hibiscus are extra fine for piazza or balcony, and for bedding out in summer. Try a few in the house.

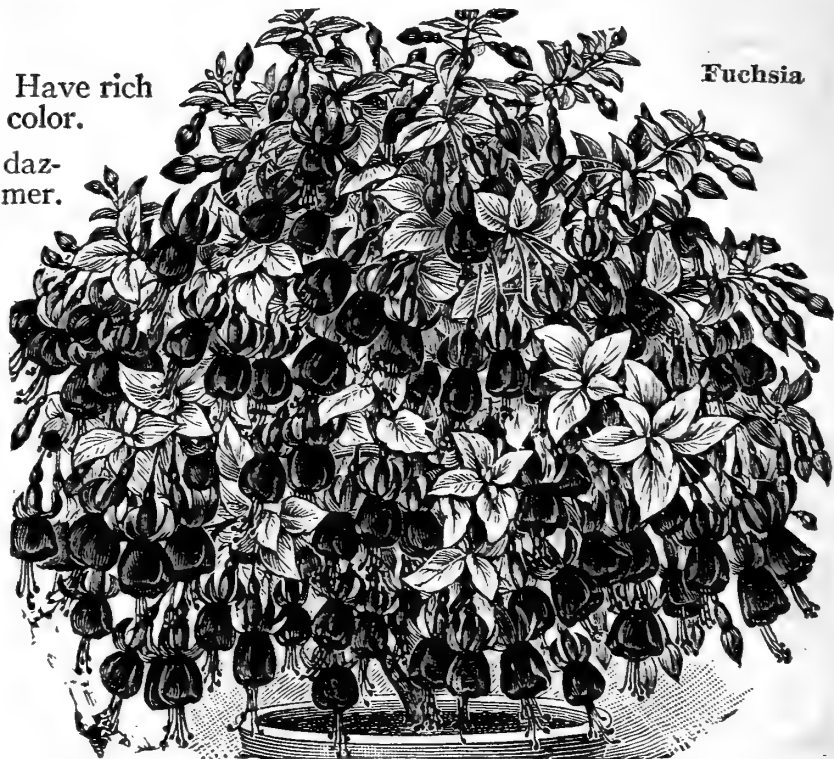
16430. PEACHBLOW. This is one of the finest plant novelties offered in recent years. The flowers are double, and from four to five inches in diameter; of a charming rich pink color, with deep crimson center. Good sort for the window-sill.

16410. COOPERI. Most exquisite foliage, being variegated green, white, pink and red. Although this has a pinkish flower, it is extremely popular as an ornamental plant, few plants exceeding it in attractiveness.

Price on above: Each 35c; 3 for \$1.00.

JUSTICIA. (See illustration.) This begins to bloom when the plant has only three or four leaves, and is never out of flower afterward. If pinched back occasionally, it makes a stocky plant, frequently covered with up to thirty pink flower heads, lasting a long time. The foliage is also highly ornamental.

16540. NEW DWARF. Each 30c; doz. \$3.00, postpaid.



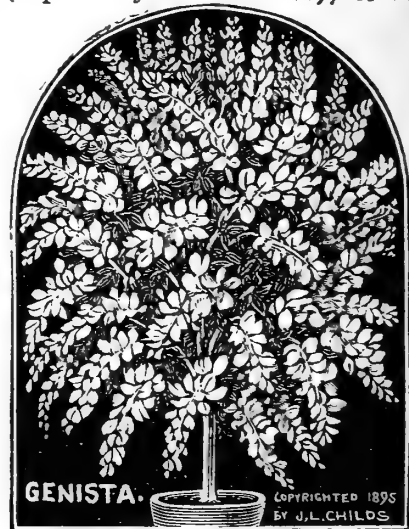
Fuchsia

Trophy

Genista Shower of Gold

15970. (See illustration.) As a plant for late winter and early spring-blooming (especially for Easter), it is almost without an equal. Flowers, golden-yellow, very fragrant, and borne in large, drooping racemes and in such quantity as to almost hide leaf and branch — most truly a "Shower of Gold." Sure to bloom. 35c each; 3 for \$1.00, postpaid.

USE
ORDER
NUMBER
WHEN
ORDERING



GENISTA.

COPYRIGHTED 1895 BY J.L. CHILDS



New Dwarf Justicia

Lantanas—New Dwarf

(See illustration.) These dwarf Lantanas are fine, free blooming plants for pots. They are not particular as to soil, but love a sunny place. Dwarf and bushy in growth, with numerous flower spikes.

16550. AURIEL. Brilliant orange-scarlet with central florets of a bright yellow. Put in the garden in the spring they are marvelous.

16560. PINK. Clear, bright pink with primrose center.

16570. WHITE PERFECTION. Pure white. Florets have yellow eyes. Very striking in mass beds with above varieties.

Each 25c; doz. \$2.50, postpaid.

Oleander

This well-known plant is very attractive and can be grown in almost any soil or situation. Its dark green, willow-like foliage is most beautiful with its many large satin-like flowers.

16660. PINK. Beautiful large blossoms of rosy pink, double.

16670. WHITE. Magnificent large snow-white, double. Rapid grower.

16680. YELLOW. Large and very beautiful. Fine for the house.

Price, 40c each; 3 for \$1.10, postpaid.

Otaheite Orange

16710. An extra fine pot plant, with glossy leaves, the true fragrant Orange blooms and abundant little bright Oranges that will hang on the bush like balls of gold for several months after they are ripe. It will bloom and fruit in a two-inch pot, and we have seen a plant in a window that was but fifteen inches high and had twenty-five Oranges on it. With good sunlight they are never out of fruit. Very fascinating. 45c each; 3 for \$1.20, postpaid.

Otaheite Lemon

16690. A superb novelty in the form of a very dwarf Lemon for pot culture, similar to the Otaheite Orange. Blooms freely even when only six inches high and bears an abundance of beautiful little Lemons. Very amusing to your friends. 60c each; 3 for \$1.65, postpaid.

Wonder Lemon

16700. A Lemon that can be easily grown in pots. Fruit is borne on plants one to two feet high, growing in five or six-inch pots. It is overbearing. It makes a beautiful specimen plant for the house. Not hardy and must be taken in during winter. Strong plants. A very desirable house plant. 45c each; 3 for \$1.20, postpaid.



Primula (Obconica)

Monarch Primrose

16835. These are new large-flowering Obconica-Sinensis Hybrids of various colors, as large and fine as Primula Sinensis. Colors, pink, violet, blush, rose, lilac, white, etc. Very charming flowers, being borne in large trusses and at all times of the year in great profusion. They bloom very quickly from seed, and the large, showy blossoms are borne constantly for a year. Plants very vigorous and easily grown. **Plants, mixed.** Fine stock ready to bloom. 25c each; 3 for 70c, postpaid.

55360. PRIMULA OBCONICA SEED. Pkt. 25c; 2 for 40c, postpaid.



Palms for House Use

Kentia Belmoreana Palm

16731. It is claimed that this palm for house use is one of the most vigorous and robust in cultivation. They withstand abuse and neglect to considerable extent. The leaves are wide and dark green. **Each \$1.00; 3 for \$2.75, postpaid.**



PHOENIX ROEBELINI.

Phoenix Robelini Palm

16732. (See illustration.) A palm for house use that will stand considerable abuse and still grow rapidly and large. It is beyond a doubt one of the finest palms possible to grow. Nothing can surpass it as a decorative plant. It will succeed in any window. If moved outdoors in summer, does equally well. The foliage is graceful, striking and beautiful. We offer it because we have been studying the best palms for growing in the home and find that this and our Filifera and the Kentia Palms are unquestionably the best for average home conditions. **Each 75c; 3 for \$2.00, postpaid.**



PALM

Filifera

16730. (See illustration.) One of the best window palms for the house or conservatory. Stands dust and dry air, and lack of sunshine and is very ornamental with its elegantly fan-shaped leaves of a rich, dark, feathery green. The plant is a compact grower well adapted to pot culture. Perhaps the most generally satisfactory palm ever offered, as shown by our enormous yearly distribution of it. **35c each; 3 for \$1.00, postpaid.**

New Poinsettia (Santa)

16825. (See illustration.) Our own creation. A wonderful double flaring crimson Poinsettia that is in bloom at Christmas time and continues to bloom until the middle of March (other sorts bloom only for about one week at Christmas-time). Does well in the home. **Each 50c; 3 for \$1.35, postpaid.**



POINSETTIA.

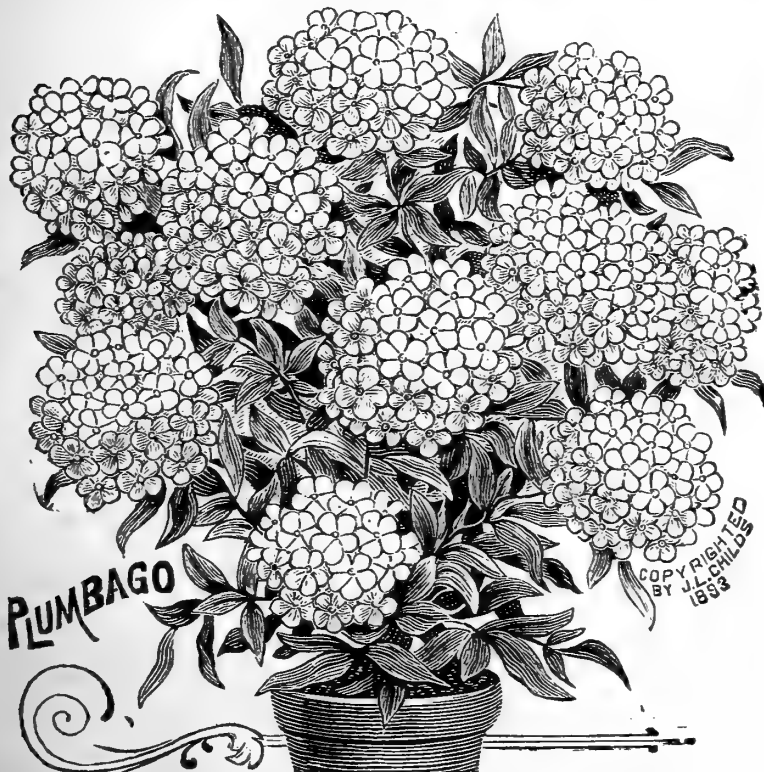
OUR GUARANTEE

Satisfaction guaranteed or your order refilled or money refunded

Plumbago

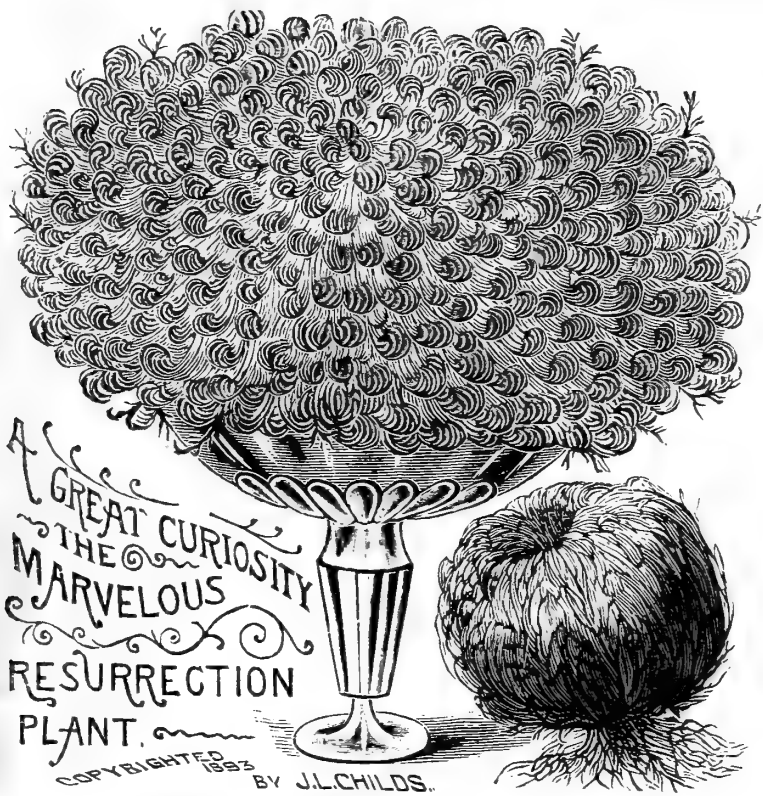
16820. CAPENSIS BLUE. (See illustration.) Scarcely another flower has its color; a clear, soft, baby-blue, or palest azure. An attractive pot plant, and the clustered blossoms are fine for cutting. **50c each; 3 for \$1.35, postpaid.**

16810. CAPENSIS ALBA. Like the above, but white. **35c each; 3 for \$1.00, postpaid.**



PLUMBAGO

COPYRIGHTED BY J.L. CHILDS 1898



Pelargoniums

These new Pelargoniums (Geraniums) are considered by many to be the finest pot plants in cultivation. Habit, strong, compact and bushy, with the strongest constitution and great wealth of beautiful foliage.

16740. CLORINDA. This Pelargonium is rare and unknown, although exceedingly fine. Foliage rich, deep, healthy green and very fragrant. Flowers large, bright, rosy cerise. Each 30c; 3 for 85c, postpaid.

16800. PANSY CLUSTER. A very profuse bloomer in spring and summer. The flowers are like good sized Pansies in large clusters, being tinted white with large, dark, velvety blotches. Each 30c; 3 for 85c.

Resurrection Plant

6515. We sell more Resurrection Plants than we do of any other plant. It is most fascinating. See illustration. A ball of tightly folded leaflets, dry and dead. Drop it in a bowl of water and in a short time there is a great, loose, expanded rosette. 10c each; 3 for 25c, postpaid.

Streptosolen

16910. (See page 3 for description and prices.) Each 25c; 5 for \$1.00.



Rose—Winter Gem

13260. The great indoor pot-rose for winter use. See page 3 for illustrations and descriptions. Each 40c; 3 for \$1.10, postpaid.



Sanseveria Zealanica

16890. There is scarcely a decorative plant used that is more striking in foliage and habit than this. It will grow in a dark hall, cool bedroom, or stand on a mantel in a heated room. It will stand gas and dust, and will go for months without a drop of water, yet remain as thrifty as ever. Erect, rigid, sword-like leaves, thick and fleshy, dark green with clouded bars of white. In May or June it sends up long, plummy spikes of soft, feathery whiteness. 50c each; 3 for \$1.35, postpaid.

Swainsonia

16920. (Large White). (See illustration.) Few plants equal this in beauty and general good qualities. It has a most beautiful fern-like foliage and blooms perpetually every day in the year, its blossoms being the shape and nearly the size of Sweet Peas, and borne in great clusters of twenty to forty. These clusters appear at the axils of the leaves, and a single branch shows many clusters in bloom at all times. Each 30c; 3 for 85c, postpaid.

Grapes

12120. BRIGHTON. A large red grape of excellent flavor. A well-known and popular variety.

12130. CONCORD. The fine old reliable purple.

12138. DELAWARE. Small, red, sweet, juicy.

12160. NIAGARA. This is the finest white grape grown. Berry and bunches large and sweet. Each 40c; 3 for \$1.10; doz., \$4.00., postpaid.

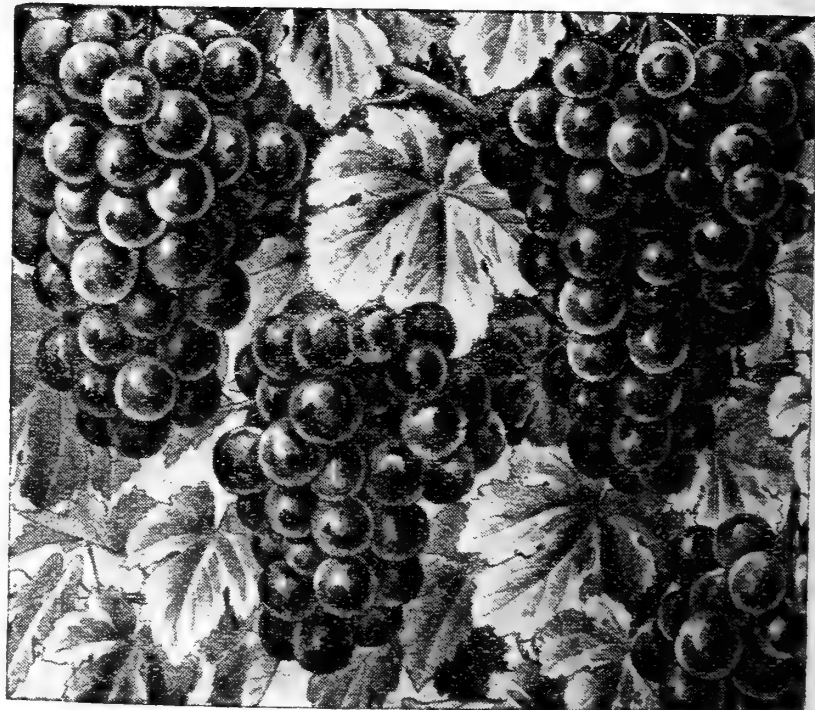
Raspberries

12030. HONEYSWEET. Fruit shiny black. No gray bloom. Very hardy and vigorous. Exceptionally sweet, fine shipper, canner. 25c each; 3 for 70c.

12050. ST. REGIS. One of the earliest of the Reds. Wonderfully productive. Bears all season. Ever-bearing. Bright crimson color. Sweet, luscious, hardy and vigorous. Each 15c; doz., \$1.50, postpaid.

Blackberries

12020. BLOWER'S GIANT. There is no bush Blackberry that can equal this in productiveness, quality of fruit, hardiness and vigor of growth. We highly recommend it in every respect. Extra strong plants. 3 for 60c; 1oz., \$2.00, postpaid.



Brighton Grape

STRAWBERRIES

See Spring Catalog — Shipped in Spring Only

Hardy Climbing Vines

Ampelopsis Veitchi The best wall climber. Clings tightly by suckers thrown out along the stems to brick, stone, etc., and is a wall of living green the summer through, turning in autumn to a flaming crimson. It stands the dust and dry air of cities. 14300. 35c each; 3 for \$1.00, postpaid.

Bignolia, or Trumpet Creeper A robust, tall-growing vine. Flowers large and trumpet shaped. A brilliant reddish orange. 14315. 60c each; 3 for \$1.65.

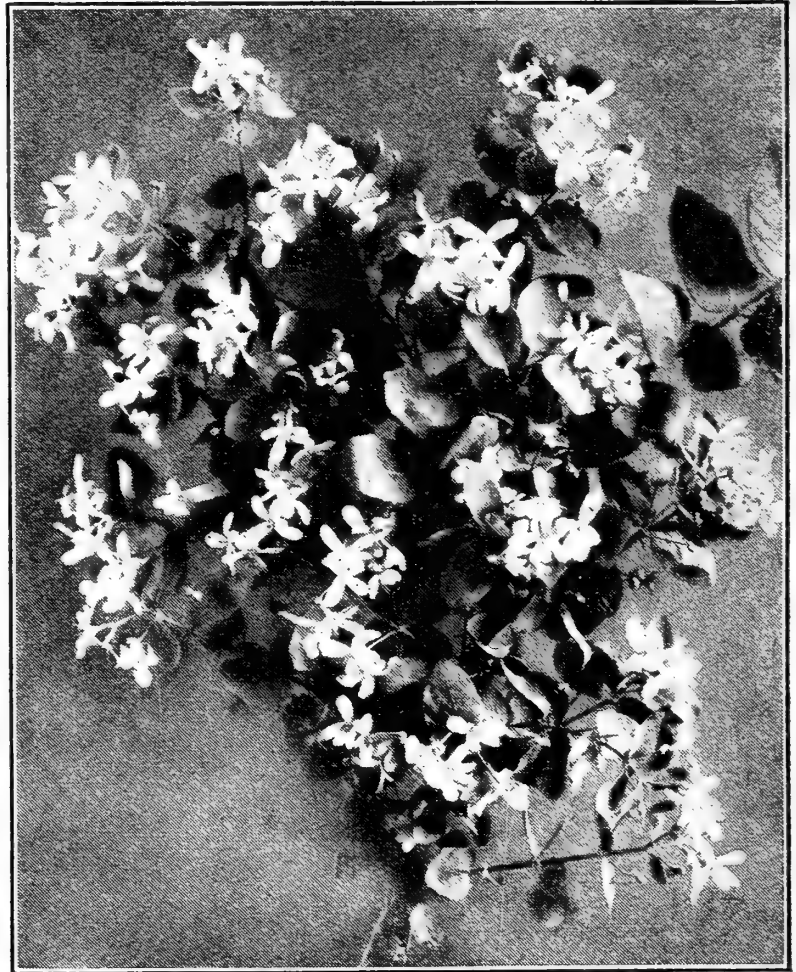
Clematis Ina Has heavy, dark green foliage. Flowers are about two inches in diameter. Color white shaded to lilac-blue on edges of petals. Begins blooming in August. 14330. 60c each; 3 for \$1.65.

Clematis, Crispa Bell-flowered. Grows from ten to twenty feet in one season. Fine blue color with white border. 14340. 30c each; 3 for \$1.00, postpaid.

Clematis, Coccinea Similar to Crispa, except that the flowers are a fine, rosy scarlet color. A grand climber. 14350. 30c each; 3 for \$1.00, postpaid.

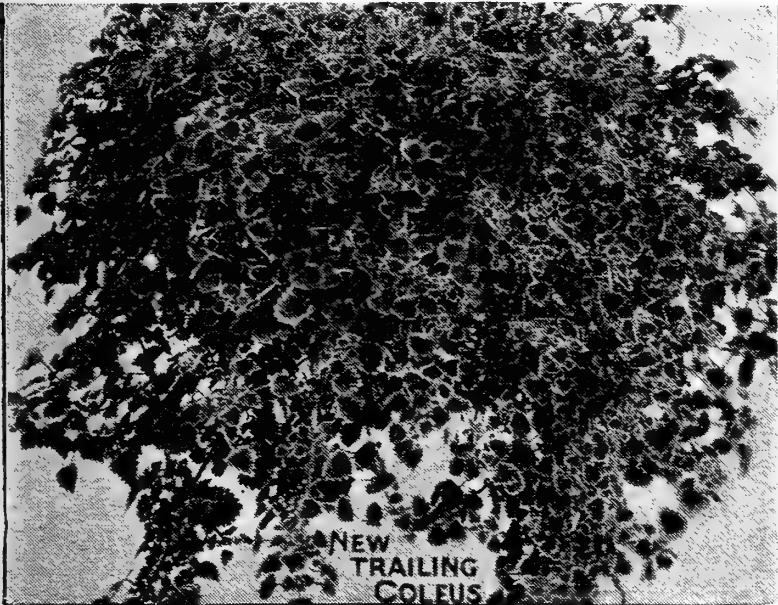
Honeysuckle, Golden Leaved Innumerable sprays of the most perfect little leaves that are covered with a network of gold and green, often marked with pink also. Blossoms pure white. 14360. 25c each; 3 for 70c, postpaid.

Honeysuckle, Halliana (See illustration opposite.) Dark green foliage, which keeps green nearly all winter, with beautiful clusters of sweet-scented flowers that open a snow-white and turn a pale yellow. 14370. 25c each; 3 for 70c, postpaid.



Honeysuckle, Halliana

Trailing Plants for House Use



NEW TRAILING COLEUS

Coleus (See illustration opposite.) Leaves green with bright red center shading to yellow at base. 15860. Trailing Queen. Each 20c; doz., \$2.00.

Crimson Creeper (See illustration.) Highly ornamental. Red stemmed, dark, rich green foliage. Blossoms crimson. 15895. Each 20c; doz., \$2.00, postpaid.

Mexican Primrose It is a perpetual bloomer. Bright, deep pink. 16840. Each 20c; doz., \$2.00.

Nepeta (Glechoma) It is hardy, fragrant and pretty, its small, round leaves finely marked with white. 16600. Each 20c; doz., \$2.00, postpaid.

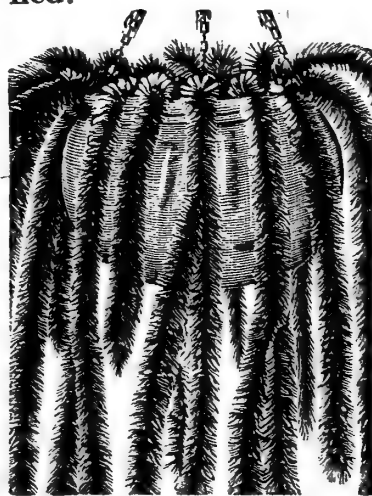
Parrot Feather (See illustration opposite.) Long, trailing stems covered with plummy foliage. Ornamental. 16735. Each 20c; doz., \$2.00, postpaid.

Vinca An attractive trailing vine with green and white variegated leaves, sky blue blossoms borne profusely. For a pot or basket plant it is excellent. Not hardy.

16935. Variegata. Each 20c; doz., \$2.00.
16937. Aurea Variegata. Each 20c; doz., \$2.00



Vinca



Parrot Feather



CRIMSON

CREEPER

No Sale complete until our customer is satisfied.



IRIS SIBIRICA
ORIENTALIS

Childs' Iris German or Garden Iris

You only need make one purchase of Iris from Childs' to realize how superior our Long Island Grown Iris are. It is self-evident in the appearance alone. We recommend planting of both German and Japanese. The Jap varieties do not bloom until after the German types are all through blooming. The Japs have nearly twice the blooming period of the garden or German Iris.

Lavender

- | | Each | Doz. |
|--|--------|--------|
| 7340 Pallida Dalmatica. Queen among Irises; grand and stately. S. lavender; F. clear lavender. Flowers large and fine.... | \$0.35 | \$3.50 |
| 7370 Princess Beatrice S. and F. Clear lavender, shading to silvery blue at base. An exquisite flower..... | .35 | 3.50 |
| 7310 Lohengrin. One of the most popular and beautiful. S. and F. uniform shade of cattleya-rose. Very large..... | .35 | 3.50 |

Blue

- | | | |
|---|-----|------|
| 7410 Sibirica Orientalis Blue. (See illustration opposite.) A beautiful large flower of a clear exquisite blue with horizontal falls. Very scarce..... | .25 | 2.50 |
| 7220 Albert Victor. (See front cover.) Conceded the most beautiful and most exquisite of the blues. S. soft blue. F. beautiful lavender..... | .35 | 3.50 |
| 7360 Perfection. S. delightful blue. F. dark velvety violet-black, with orange beard. A handsome flower..... | .30 | 3.00 |

White

- | | | |
|--|-----|------|
| 7400 Snow Queen Sibirica. A beautiful and exquisite ivory-white Iris of exceptionally large size..... | .25 | 2.50 |
| 7390 Rhein Nixie. S. pure white. F. deep violet blue, with a white edge..... | .35 | 3.50 |
| 7256 Fairy S. and F. White. Delicately bordered and suffused soft blue.. | .35 | 3.50 |

Red and Bronze

- | | | |
|---|-----|------|
| 7295 Jacquesiana. S. bright coppery-crimson; F. rich maroon. One of the best.. | .35 | 3.50 |
|---|-----|------|

Yellow

Each Doz.

- | | | |
|--|--------|--------|
| 7210 Loreley. (See front cover.) S. light yellow with occasional blue markings. F. ultra-marine blue, bordered cream... | \$0.35 | \$3.50 |
| 7280 Iris King. S. clear lemon-yellow. F. rich maroon, bordered yellow..... | .35 | 3.50 |
| 7252 Flavescens. A delicate shade of soft yellow. Large sweet scented flowers. | .30 | 3.00 |

Pink

- | | | |
|---|-----|------|
| 7230 Queen of May. (See front cover.) It is beautiful beyond description. S. and F. lovely rose-lilac..... | .35 | 3.50 |
| 7270 Her Majesty. Many consider this the most beautiful pink, resembles Queen of May. S. lovely rose-pink. F. same color veined..... | .35 | 3.50 |

New Japanese Iris

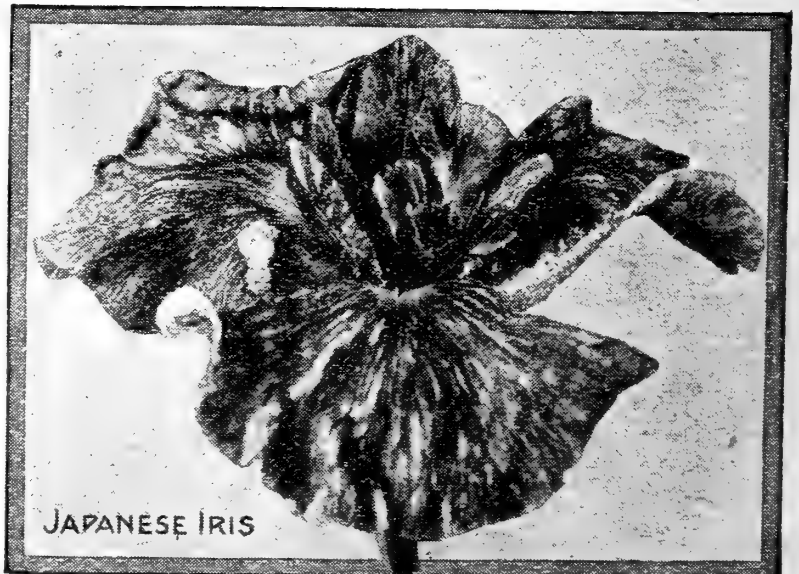
It's a real pleasure to offer you twelve fine new Japanese Iris creations. Surpass all other Iris in size of bloom.

- | | |
|--|--|
| 7450 AGNES REED. Single. Falls mulberry purple with halo of royal purple. Standard hematoxin violet, lighter at base. | |
| 7460 CATHERINE PARRY. Double. Blue overlaid rosy-red, high tufts in center almost triple. | |
| 7465 DAISY HERRINGTON. Single. Pinkish-blue, veined purple. | |
| 7470 DORIS CHILDS. Double. Pearl white deeply veined rosy plum. Center petals deep plum edged white. | |
| 7475 ELEANOR PARRY. Double. Claret red, flamed white and blue. Medium size flower. | |
| 7480 FASCINATION. Double. Blue lightly veined white, pink tinge. | |
| 7485 JEANNETTE PARRY. Single. White suffused with violet, petaloid stigmas amethyst. | |
| 7490 MARJORIE PARRY. Double. Delicate light mauve, tufted center. Extra fine. | |
| 7455 BEAUTY. Single. Silvery white distinctly veined and suffused indigo blue. Inner petals plum edged white. | |
| 7495 PAINTED LADY. Single. White, center blotched, light phlox purple, tufts white. | |
| 7500 PYRAMID. Double. Violet purple, veined white in center of each petal. | |
| 7505 RED RIDING HOOD. Single. Fine amaranth veined and suffused white. | |
| 7520 COLLECTION. One each of above 12 for \$4.00. | |
| 7525 MIXED. Doz. \$2.50; 50 for \$10.00; 100 for \$18.00. | |

Mixed Iris

7205. This mixture comprises many, many beautiful named varieties and is carefully blended for colors, formations and harmony.

Doz. \$1.50; 100 for \$10.00. Postpaid.



JAPANESE IRIS

Prices on Above Japanese Iris; Each 35c; Doz. \$8.50; 100 for \$27.50, postpaid



Festiva Maxima

8005 ALBATRE 8.7. Large, compact globular rose type. Milk-white shaded ivory, wide center petals tinged lilac, edged with minute line of carmine. Each \$1.00; 3 for \$2.75.

8020 ALEXANDER DUMAS 7.1. Medium size, light violet-rose, creamy white collar of narrower petals, mingled with wide center petals. Each 75c; 3 for \$2.00.

8015 ASA GRAY 8.1. Large semi-rose, pale lilac, sprinkled with dots of deeper lilac. Fragrant. Each \$1.50; 3 for \$4.25.

8040 BARONESS SCHROEDER 9.0. Flesh white fading to milk white, globular rose type, very large. Each \$1.25; 3 for \$3.50.

8055 COURONNE d'OR 8.1. Large, flat (semi-rose) type. Pure white with ring of yellow stamens around tuft of center petals tipped carmine. Each \$1.00; 3 for \$2.75.

8060 DUCHESS DE NEMOURS 8.1. Pure white crown, sulphur white collar, no crimson flecks. Each 75c; 3 for \$2.00.

8085 EDULIS SUPERBA 7.6. Large loose flat crown, bright mauve-pink, early. Each 50c; 3 for \$1.35.

8090 EUGENIE VERDIER 8.06. Large med. compact flat semi-rose, pale hydrangea-pink, collar lighter, flecked crimson. Each \$1.25; 3 for \$3.50.

8100 FELIX CROUSSE 8.4. Large globular typical bomb, brilliant red. Each \$1.00; 3 for \$2.75.

8110 FESTIVA MAXIMA 9.3. This is by far the biggest selling Peony grown. Very large globular rose type, pure white center prominently flecked crimson, outer petals sometimes faint lilac. Each 75c; 3 for \$2.00.

8105 FLORAL TREASURE 7.9. Rose type; early midseason. Very large, full flowers of clear even pink, shading lighter at center; very delicate color. Each 75c.

8125 GOLDEN HARVEST 7.3. Medium; loose bomb, guards pale lilac-rose, center creamy white, developing many wide petals of peach-blossom pink. Each \$1.00; 3 for \$2.75.

8149 LADY BRAMWELL 6.0. Soft silvery pink. Each \$1.00; 3 for \$2.75.

Long Island Peonies

We fully appreciate that many new novelties are offered from time to time at fabulous prices, but we have discontinued offering novelties without special merit. We offer only such varieties, new or old, as we know are best suited for and do best in the average garden. Varieties that are worth while sorts.

8240 MARGUERITE GERARD 8.4. Large compact semi-rose developing into crown with stamens, very pale hydrangea-pink, fading to nearly white, central petals flecked dark carmine. Each \$1.00; 3 for \$2.75.

8150 MME. BOLLET 7.4. Very compact globular rose type, pale lilac-pink, silvery reflex. Each 75c; 3 for \$2.00.

8160 MME. CALOT 8.1. Large rose type, pale hydrangea-pink center shading darker, collar tinged silver. Each \$1.00; 3 for \$2.75.

8170 MME. CHAUMY. Large, very full, compact flower, beautifully formed. Silky petals, soft pink shaded with bright rose. Each \$1.50; 3 for \$4.25.

8210 MME. DE VERNEVILLE 7.9. Large very full bomb, pure white, center blush when first open fading to pure white carmine specks. Each 75c; 3 for \$2.00.

8270 MONS JULES ELIE 9.2. Pale lilac-rose, collar lighter shaded amber yellow at base, very large medium compact high crown. Each \$1.25; 3 for \$3.50.

8275 MONS KRELAGE 7.7. Large compact semi-rose type, dark solferino-red, with silvery tips. Each \$1.25; 3 for \$3.50.

8220 MME. EMILE GAILE 7.7. Large, double, cup-shaped, imbricated flowers. Color delicate seashell pink, with touches of heliotrope and lavender. \$1.50.

8280 OCTAVE DEMAY 8.5. Very large, flat crown. Guards and center pale hydrangea-pink, collar almost white. Fragrant. Very dwarf habit, free bloomer. Each \$2.00.

8295 PHILOMELE 7.7. Medium, low flat crown, guards bright violet-rose, center of narrow amber-yellow petals changing to cream, as flower develops a crown appears, bright rose. Each \$1.25; 3 for \$3.50.

8300 QUEEN VICTORIA 6. 8. Large globular medium loose, low crown, milk-white guards, tinted flesh, center cream white with crimson spots. Each \$1.00; 3 for \$2.75.

8305 TRIOMPHE DU NORD 6.0. Very large medium compact bomb, light solferino-red with silvery reflex. Each \$1.00; 3 for \$2.75.

8320 ALL COLORS. Mixed. 6 for \$3.00; doz. \$5.50. Postpaid.



Hardy Flowering Shrubs

Long Island runs out into the ocean one hundred miles like a needle. The winds, fogs and mists produce a salt sediment that hardens and produces an extremely robust growing, vigorous, hardy, productive, prolific shrub. We list only the shrubs we consider best for general purposes.

14000. Azaleas. See page 2 for illustration and descriptions.

14020. Berberis (Thunbergii, Japanese Barberry). A most beautiful and valuable shrub at all seasons. Small foliage which changes color in the fall and bright-red berries that remain all winter. 30c each; doz. \$3.00, postpaid.

14070. Hydrangea Paniculata. A most valuable ornamental shrub. Bushy and robust, every branch tipped with an immense close panicle of flat snow-white flowers. The trusses of bloom are ten to twelve inches long and nearly as thick. Blooms the first summer. 75c each; 3 for \$2.00, postpaid.

14045. Deutzia (Crenata Magnifica). A shrub of phenomenal beauty. Stems large bronze-green, middlesize leaves, pointed and finely toothed. Numberless flowers in the form of crowded panicles, round, opening large, full and double. 65c each; doz. \$6.50.

14050. Forsythia (or Golden Bell). Very early in the spring, while yet leafless, the Golden Bell hangs out its rows of drooping yellow bells. The leaves that come later are of a dark, almost myrtle green, turning to a rich bronze-purple. A showy shrub. 65c each; doz. 6.50, postpaid.



California Privet

14060. Hydrangea Snowball. This Hydrangea begins blooming in May or June and continues in profusion until frost. The flowers are pure white, the clusters as round as a ball and of great size. 75c each; 3 for \$2.00.

14105. Privet, Lodense. American Boxwood. This is a new, dwarf and distinct form of Privet of extremely compact and low growing habit. The foliage is rich dark green and of extreme hardiness. It is particularly useful for low hedges and borders as it stands shearing very well and can be kept low and compact. 15c each; doz. \$1.50, postpaid.

14095. Privet California. Nothing makes so fine a hedge as Childs' Long Island Grown California Privet, which is perfectly hardy and is almost an evergreen, as its beautiful, shining, dark green leaves do not drop until nearly spring. Set plants six to twelve inches apart and trim to any height desired.

Doz. \$1.00, postpaid; 100 for \$5.00; 500 for \$22.50, express charges collect.

14100. Golden Privet. Same as above except the leaves are bright golden in color. 15c each; doz. \$1.25; 100 for \$10.00, postpaid.

14130. Robinia Hispida (Sweet Pea Shrub). This bears dainty sprays of lovely rose-pink blooms and graceful pinnate foliage. Very hardy and grows to the height of three or four feet. Its flowers are borne in clusters and are the size and shape of lovely Sweet Peas. 65c each; doz. \$6.50, postpaid.

14170. New Double Syringa (Philadelphus or Mock Orange). See page 3 for description. \$1.50 each; 3 for \$4.25.

14150. Symphoricarpos (Coral Berry). Of dwarf, low-branching habit, forming a dense globular bush with fine foliage and pink blossoms. Its special beauty, however, is in its great crop of beautiful crimson berries which appear in compact clusters closely set along the branches. The berries remain nearly all winter. 65c each; doz. \$6.50, postpaid.

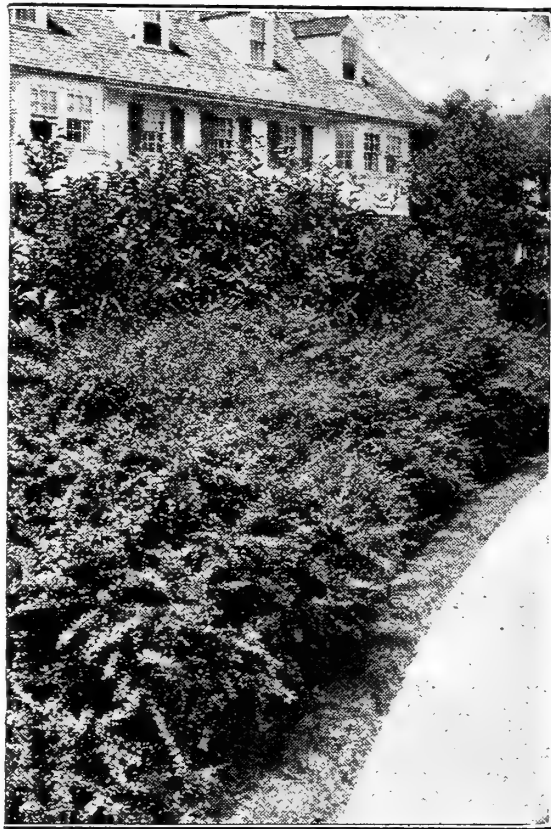
14185. Weigela Rosea Gigantea. A large, gracefully spreading bush with immense rose-pink flowers. Blooms in May and makes a splendid shrub. 65c each; doz. \$6.50, postpaid.

14180. Weigela Rosea Variegata. Leaves light green heavily variegated with a creamy-yellow, making a charming effect, but when its myriads of long, tubular, rose-colored blossoms are out, bending every branch to the ground, we see one of the most magnificent flowering shrubs. 75c each; doz. \$7.50.

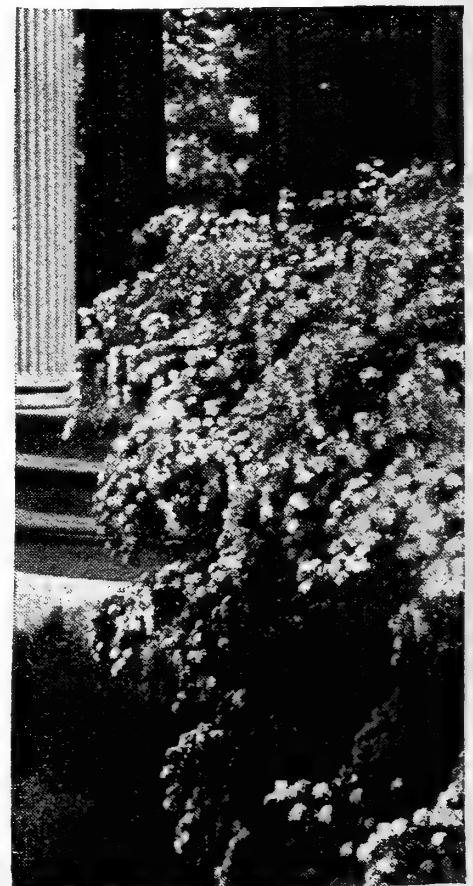
14187. Weigela Eva Rathke. A rare Everblooming Weigela, producing great quantities of blooms in magnificent clusters on the terminal branches. Color, deep, rich blood-red, the finest color yet seen among Weigelas. One of the most brilliant flowering shrubs in cultivation. 75c each; doz. \$7.50.

14120. Spirea (True Bridal Wreath). This is the best known. It forms a great arching shrub, which in May and June is a mass of snow-white flowers. Van Houttei. 50c each; doz. \$5.00, postpaid.

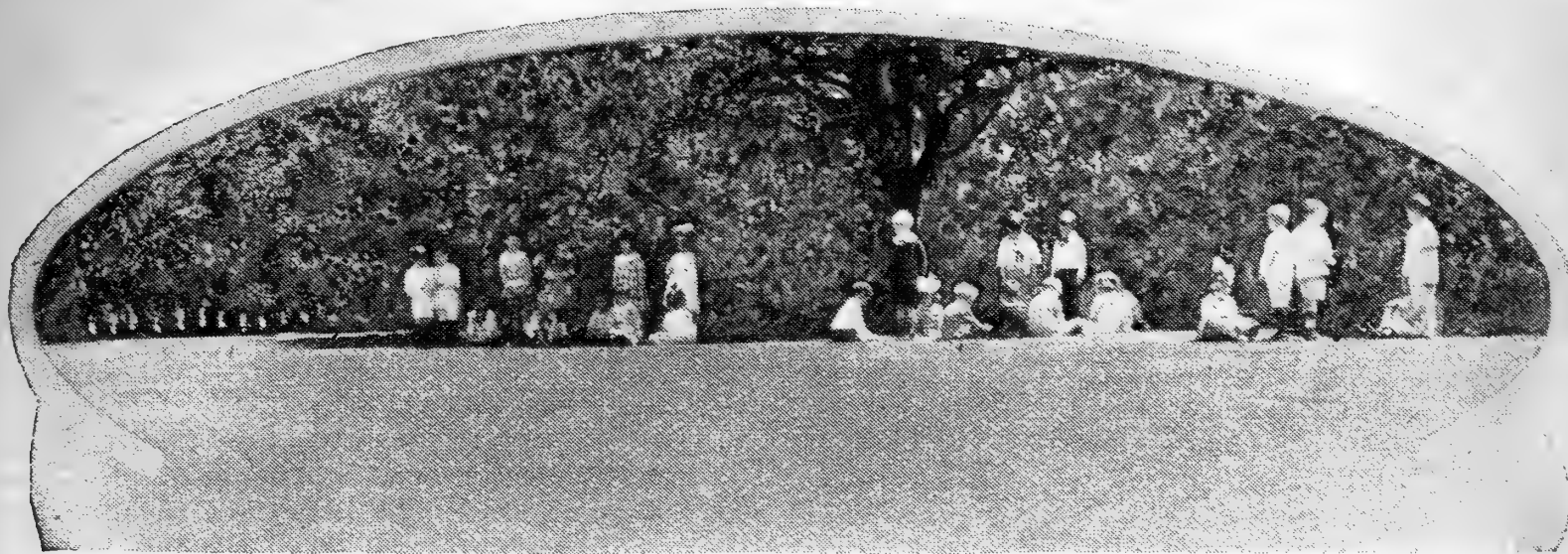
14190. Willow. Quick growing, can be trained to either tree or bush formation. Salix-Pussy Willow. 65c each; doz. \$6.50.



Berberis, Thunbergii



Spirea Van Houttei



Our Office Lawn from Childs' Floral Park Lawn Seed

Lawn Grass Seed for Every Soil

If you are making a New Lawn or renovating the old, by all means buy seed suitable to the character of your soil. For 53 years Lawns have been a study with us; we know from soil conditions the Grasses required for best results. We are the only seed house offering "Prescription Lawn Seed."

If you are unable to decide the type of seed required from the mixtures listed below, write us a full description, send your remittance and we will be glad to forward a specially prepared mixture to suit your needs.

DIRECTIONS FOR MAKING A LAWN SENT WITH EVERY ORDER

Floral Park Lawn Seed Mixtures

A careful, scientific blending of grasses that long years of study and experiments demonstrate will flourish under varied soil conditions, in adverse weather, and give—from earliest spring until latest fall—a luxuriant, rich green velvety mat. We offer a "Special Prescription" for each lawn.

- | | |
|--|--|
| 2200 Floral Park Regular Mixture | 2204 Floral Park Medium Light Soil Mixture |
| 2201 Floral Park Black Heavy Soil Mixture | 2205 Floral Park Light Soil Mixture |
| 2202 Floral Park Medium Heavy Soil Mixture | 2206 Floral Park Sandy Soil Mixture |
| 2203 Floral Park Clay Soil Mixture | 2207 Floral Park Gravelly Soil Mixture |
| 2208 Floral Park with White Dutch Clover | |

Prices on above Mixtures: Qt. 35c; 4 qts. \$1.25; peck (5 lbs.) \$2.35; bushel \$9.00, postpaid.

2220 Shady Nook Mixture. We recommend this mixture where shade prevails the greater part of the day, around house foundations and where trees are dense. Does well in moist spots. Qt. 50c; 4 qts. \$1.75; peck (5 lbs.) \$3.25; bushel (20 lbs.) \$12.50, postpaid.

2380 Clover, White Dutch. For lawns. Personally we consider a lawn better without White Dutch Clover. Oz. 10c; ¼ lb. 25c; ½ lb. 40c; 1 lb. 75c; 5 lbs. \$3.50; 10 lbs. \$6.75, postpaid.

Humus for Lawns

Positively the finest Humus in America, bar none. Clean, odorless and free from weed seeds. Nothing equals Humus as a top dressing for lawns or to improve the soil where grass does not grow well. It is splendid to sweeten the soil in shady places and under shubbery. Scatter it thickly over the lawn in fall or spring. In places where grass does not do well and on bare spots in the lawn, loosen the top soil and work in plenty of Humus before sowing the grass seed. Mixed with the soil for house plants, will increase the growth of the plant and the size of the blossoms. Nothing better for holding moisture and fertilizer in the lawn. Humus is clean decayed vegetable matter ripened and cured by the elements (odorless). Prices F. O. B. Floral Park: 100 lb. bag \$1.75; 500 lbs. in 100 lb. sacks \$8.25; 1,000 lbs. in 100 lb. sacks \$15.00; 2,000 lbs. in 100 lb. sacks \$27.50; 2,000 lbs. (not bagged) \$25.00. Prices by mail prepaid: 3 lb. pkg. (for testing) 75c; 7 lb. pkg. \$1.40.

Insecticides and Sundries

Oyama Plant Food

Oyama will keep house plants in bloom all winter and as green and luxuriant as if grown outdoors in the summer. It makes no difference how healthy or delicate your plants may be, Oyama will bring out new flowers and foliage. Oyama is fine for all kinds of plants, ferns, roses, bulbs, shrubs, fruits, flowers and vegetables.

Price: House plant size, makes 6 gallons; 1 pkg., 40c; 3 for \$1.10, postpaid.

Gardener size, makes 32 gallons; 1 pkg., \$1.10; 3 for \$3.15, postpaid. Full directions in package.

Aphine

A concentrated liquid readily soluble in water, and will destroy green, black, white fly, thrips, mealy bug, red spider and soft scales. It can be applied to tender foliage. It can be used as a spray, dip or washing solution in the house.

½ pint, 60c; quart, \$1.50, postpaid.

Vermine

A germicide for all soil vermin. It can be used on house plant and in the garden by thoroughly soaking the ground. It will protect your plant against the ravages under the soil. Mix one part Vermine with four hundred parts water.

½ pint, 60c; quart, \$1.60, postpaid.

STIM-U-PLANT

This is a modern, scientific and convenient method of obtaining quick results by supplying to the plant, in concentrated form, quickly available food. The plant food is put up in tablet form, the tablets being placed under the surface of the soil where they dissolve and feed the roots. It may also be used as a liquid fertilizer by dissolving the tablets in water.

Small size, 25c; medium size, 75c, postpaid.

Watch-Em-Grow

A highly concentrated odorless plant food that we can recommend as living up to its name. Nothing better for House Plants, Ferns, Bulbs, etc.; one teaspoon makes ½ gallon solution. Trial package, 10c; 8-oz. size, 60c, postpaid.

Red Wing Powder

A nationally known insecticide for the destruction of Flies, Lice, Vermin, Bed-bugs, Moths, Mosquitos, Ants, Red Ants, Fleas, Chicken Lice, Bird Lice, and other insects too numerous to mention.

Price, 10c each, postpaid.

Sulphur Tobacco

A tobacco soap to use for spraying. 3-oz. cake 15c; 8-oz. cake 25c. Postpaid.

Childs' Perennial Flower Seeds

Refer to Page 33 for Color Illustrations

Nature's way of reproducing itself is through seed. This is the time of year to plant perennial flower seeds. Seeds are far the most economical.

Nothing easier or more simple, the one and only outstanding rule is "Don't sow your seed deep." Nature's way is best; simply cover the seed enough to keep from blowing away. Try growing from seed this year.

- 50010. ACHILLEA (The Pearl).** (Ptarmica variety.) (See color illustration page 33.) Perennial with branching clusters of fully double pure white flowers. Pkt., Select Strain, 25c; 1/8 oz., \$2.00, postpaid.
- 50011. ACHILLEA (Roseum Millefolium).** Dense heads of pink flowers. Pkt., 25c; 1/8 oz., \$3.00.
- 50100. ALYSSUM (Basket of Gold).** (A saxatile Var. Compactum.) A dwarf perennial form. Golden yellow blossoms. Useful in rockwork. Makes a thick spreading mat. Pkt., 10c; 1/4 oz., 40c, postpaid.
- 50880. ASTER (Alpinus).** The flowers are as large as in the other types. Bright, pleasing color of blue-petalled, yellow centered blooms. Useful in borders and rockeries, and for cutting. Pkt., 15c; 1/4 oz., 50c.
- 50890. ARABIS (Alpina).** Hardy. Low-growing perennial. Spikes of white flowers. A splendid rock plant. Pkt., 10c; 1/4 oz., 25c, postpaid.
- 50120. ADLUMIA (Cirrhosa).** Flesh color, bleeding-heart shaped flowers. Pkt. 15c; 1/4 oz., \$1.00.
- 50170. ANCHUSA (Ialica).** (Drop-more variety.) Hardy perennial. Blue. Grows 3 feet. Large leaves. Pkt., 15c; 1/4 oz., 35c, postpaid.
- 50180. ANEMONE (Coronaria).** (Poppy Anemone.) Mixed colors. Large flowered. Pkt., 10c; 1/4 oz., 50c.
- 50190. ANEMONE (St. Brigid).** (See illustration page 15.) An improved hardy double and single flower. Mixed colors. Pkt., 15c; 1/4 oz., 50c, postpaid.
- 50210. AQUILEGIA (New Long-Spurred Hybrids).** (See color illustration page 33.) Perennial. The finest selection of Aquilegia in the world today, from white and pale yellow to deep blue and maroon. Pkt., 50c; 1/8 oz., \$1.00.
- 50215. AQUILEGIA (Prize Mixture).** (See illustration page 33.) An unusually high type of Aquilegia. Pkt., 15c; 1/8 oz., \$1.00, postpaid.
- 50220. AQUILEGIA (California Hybrids).** Extra large. Scarlet and yellow. Pkt., 15c; 1/8 oz., 50c.
- 51100. BOCCONIA (Cordata).** Plume poppy. Creamy pink. Pkt., 10c; 1/4 oz., 25c, postpaid.
- 51130. BOLTONIA (Latisquama).** (See illustration page 33.) Perennial. Velvety blue flowers, even more showy. Pkt., 10c; 1/8 oz., 50c, postpaid.
- 51150. BELLIS (Longfellow or Double Rose).** The best of all the pinks. Charming plant for edges and borders. Pkt., 15c; 1/8 oz., 50c, postpaid.
- 51160. BELLIS (Giant White).** Flowers are pure white and very double and firm. Pkt., 15c; 1/8 oz., 50c.
- 51165. BELLIS (Mixed).** Pkt., 15c; 1/8 oz., 50c.
- 51340. COREOPSIS (Lanceolata Grandiflora).** (See illustration page 33.) Fringed petals of clear yellow. Pkt., 10c; 1/4 oz., 25c.
- 51350. CAMPANULA (Carpatica).** Perennial. Bell-shaped flowers, dark blue to white. This should be in every garden. Pkt., 10c; 1/4 oz., 50c, postpaid.
- 51360. CAMPANULA (Persicifolia Grandiflora).** Soft blue flowers. Grows 2 to 3 feet. Very fine for cutting. Pkt., 15c; 1/4 oz., \$1.00, postpaid.
- 51370. CAMPANULA (Pyramidalis).** Rich blue flowers. Flowers set closely on the spikes. Very attractive in vases. Pkt., 10c; 1/4 oz., 50c, postpaid.
- 51380. CAMPANULA (Calycanthemum).** (See illustration page 33.) Striking clear blue. Cup and saucer type. Pkt., 15c; 1/4 oz., 75c.
- 51390. CANTERBURY BELLS (Finest Single Mixed).** Pkt., 10c; 1/4 oz., 75c, postpaid.
- 51400. CANTERBURY BELLS (Finest Double Mixed).** Pkt., 10c; 1/4 oz., 50c, postpaid.
- 51510. CANDYTUFT (Sempervirens).** White blooming, hardy perennial. Pkt., 15c; 1/4 oz., \$1.00.
- 51720. CENTAURIA (Montana).** Lovely blue. Very free bloomer. Pkt., 10c; 1/4 oz., 40c, postpaid.
- 52000. CHRYSANTHEMUM (Shasta Daisy).** White flowers, yellow centers. Pkt., 15c; 1/4 oz., 50c.
- 52180. DELPHINIUM (Childs' Private Estate Hybrids, Special Strain).** (See illustration on inside rear cover.) Carefully crossed and hybridized for immensity of size, for peculiarity in formation and beauty of colorings. Pkt., 25c; 1/4 oz., \$1.25, postpaid.
- 52185. DELPHINIUM (Royal Hybrids, Mixed).** An exceptionally select strain. Pkt., 25c; 1/4 oz., 75c.
- 52190. DELPHINIUM (Belladonna).** Of the loveliest soft pale blue. Pkt., 25c; 1/4 oz., 75c.
- 52200. DELPHINIUM (Chinense Blue).** A splendid deep blue. Pkt., 10c; 1/4 oz., 40c, postpaid.
- 52210. DELPHINIUM (Chinense White).** Very stocky plants. Pkt., 10c; 1/4 oz., 40c, postpaid.
- 52220. DELPHINIUM (Bellamosum).** Deep blue. Pkt., 20c; 1/4 oz., 75c, postpaid.
- 52400. DIANTHUS (Allwoodii Mixed).** A new type. A special strain. Pkt., 35c, postpaid.
- 52410. DIANTHUS (Plumarius Semperflorens, Mixed Colors).** Single, semi-double and double. Pkt., 15c; 1/4 oz., 60c, postpaid.
- 52420. DIANTHUS (Scotch Mixed).** We claim we have the finest in America. Pkt., 15c; 1/4 oz., 40c.
- 52460. DIGITALIS (Mixed).** All colors, of a superb quality. Pkt., 10c; 1/4 oz., 30c, postpaid.
- 52470. DIGITALIS (Monstrosa).** Odd, long spikes surmounted by one large flower, all colors mixed. Pkt., 10c; 1/4 oz., 40c, postpaid.
- 52730. GEUM (Atrosanguineum).** Showy, double dark crimson flowers. Pkt., 10c; 1/4 oz., 50c, postpaid.
- 52740. GEUM (Mrs. Bradshaw).** Rich orange-scarlet. About 2 inches across. Pkt., 15c; 1/4 oz., \$1.00.
- 52840. GAILLARDIA (Perennial Kermesina Splendens).** Crimson centers. Canary yellow borders. Pkt., 15c; 1/4 oz., 40c, postpaid.
- 52850. GAILLARDIA (Perennial Grandiflora Compacta).** (See illustration page 33.) Rich and varied colors. Pkt., 15c; 1/4 oz., 40c, postpaid.
- 52870. GAILLARDIA (Perennial Mixed).** Make a stunning sight. Pkt., 10c; 1/4 oz., 40c, postpaid.
- 52960. GOLDEN ROD (Solidago Canadensis).** The well-known. Pkt., 10c; 1/4 oz., 75c, postpaid.
- 52990. GYPSOPHILA (Paniculata Grandiflora).** (See illustration page 33.) Clear white double. Pkt., 25c; 1/8 oz., 50c.
- 53260. HELLIANTHUS (Autumn Glory).** (See illustration page 33.) (Hardy perennial.) Rich brown; flecked with gold. Pkt., 15c; 1/4 oz., \$1.00, postpaid.

Childs' Perennial Flower Seeds

Refer to Our Large Catalog for Illustrations

- 53270. HIBISCUS** (Mixed Hybrids). White, rose and crimson flowers. Pkt., 15c; 1/4 oz., 35c.
- 53300. HEUCHERA** (Sanguinea). White, pink rose, etc. Pkt., 25c; 1/8 oz., \$2.50, postpaid.
- 53320. HOLLYHOCK** (See illustration page 33.) (Double Variety, Newport Pink). Pure pink. Pkt., 10c; 1/4 oz., 50c.
- 53330. HOLLYHOCK** (Double Variety, Maroon). Beautiful maroon. Pkt., 10c; 1/4 oz., 50c.
- 53340. HOLLYHOCK** (Double Variety, Bright Rose). Delightful rose-pink. Pkt., 10c; 1/4 oz., 50c.
- 53350. HOLLYHOCK** (Double Variety, White). One of the best. Pkt., 10c; 1/4 oz., 50c, postpaid.
- 53360. HOLLYHOCK** (Double Variety, Bright Red). The most popular. Pkt., 10c; 1/4 oz., 50c.
- 53370. HOLLYHOCK** (Double Variety, Yellow). Very striking yellow. Pkt., 10c; 1/4 oz., 50c.
- 53390. HOLLYHOCK** (Double Variety, Mixed). Fine color array. Pkt., 10c; 1/4 oz., 50c, postpaid.
- 53170. HONEYSUCKLE**. Mixed white, yellow and pink. Pkt., 20c, postpaid.
- 53430. IRIS** (Kaempferi). Mixed colors and many varieties. Pkt., 10c; 1/4 oz., 30c, postpaid.
- 53580. LAVENDER**. Blue and violet flowers. Used for scenting. Pkt., 10c; 1/4 oz., 25c, postpaid.
- 53600. LIATRIS**. Tall, wand-like spikes of rosy purple flowers. Pkt., 10c, postpaid.
- 53630. LATHYRUS** (Mixed). Resemble Sweet Peas. Pkt., 10c; 1/4 oz., 25c, postpaid.
- 53740. LUPINES** (Polyphyllus Mixed). Pea-like flowers. Pkt., 10c; oz., 30c, postpaid.
- 53750. LYCHNIS** (Chalceodonica). Round heads of red to scarlet flowers. Pkt., 10c; 1/4 oz., 35c.
- 53760. LYTHRUM** (Salicaria Roseum Superbum). (See illustration inside rear cover.) Perennial. Rose colored flowers. Pkt., 10c; 1/4 oz., 35c, postpaid.
- 53940. MYOSOTIS** (Alpestris Royal Blue). Compact, rich dark blue. Pkt., 10c; 1/4 oz., 40c.
- 53950. MYOSOTIS** (Victoria) Azure blue. Forget-me-nots. Pkt., 15c; 1/4 oz., 50c, postpaid.
- 54810. PENTSTEMON** (Gloxinoides "Sensation"). Known as Beard Tongue. Rose, pink, black to purple Gloxinia-like flowers. Pkt., 15c; 1/4 oz., 75c.
- 54830. PLATYCODON** (Grandiflorum). Large, bell-shaped flowers of clear steel blue. Beautiful. Of finest texture. Pkt., 10c; 1/4 oz., 40c, postpaid.
- 54850. PLATYCODON** (Japonicus Fl. Pl.). Double; large deep blue flowers of exceptional beauty. Pkt., 15c; 1/4 oz., 75c, postpaid.
- 54860. POLEMONIUM** (Coeruleum). Bell-shaped purple flowers. Should be in every garden. Pkt., 10c; 1/4 oz., 75c, postpaid.
- 55020. PHLOX** (Cuspidata). (See illustration page 33.) Star-shaped blossoms in all imaginable colors. Pkt., 20c, postpaid.
- 55130. POPPY** (Iceland Sunbeam). (See illustration page 33.) Some of the flowers prettily tinged with rose. Pkt., 25c, postpaid.
- 55140. POPPY** (Iceland New Hybrids, Mixed). A real fairy garden. Pkt., 15c; 1/4 oz., 50c, postpaid.
- 55230. POPPY** (Orientale). Rich crimson color, each petal with a black blotch. Pkt., 15c; 1/8 oz., 50c.
- 55240. POPPY** (Princess Victoria Louise). Salmon-pink. Unusually striking. Pkt., 15c, postpaid.
- 55250. POPPY** (Rembrandt). Orange-scarlet. A gorgeous color. Pkt., 15c; 1/8 oz., 50c, postpaid.
- 55280. POPPY** (Oriental Hybrids, Mixed). (Perennial). Pkt., 15c; 1/8 oz., 50c, postpaid.
- 55540. PYRETHRUM** (Hybridum). (See illustration page 33.) Tansy-like foliage and large daisy-like flowers; white to red, yellow centers. Unexcelled for cutting. Pkt. 10c; 1/4 oz., 75c.
- 55380. POLYANTHUS** (Primrose, Invincible Giant). Huge flowers in all shades, white to crimson. A great garden display. Pkt., 15c, postpaid.
- 54410. PANSY** (Mastodon). A splendid combination of colors in this large-flowering type of Pansy. Special strain, mixed. Pkt., 25c; 1/8 oz., \$1.50.
- 55785. SCABIOSA** (Caucasia). Lavender-blue flowers. Pkt. 25c; 1/8 oz., \$1.00, postpaid.
- 56430. STATICE** (Mixed). (Sea lavender.) Makes nice winter bouquets when dried. Plant generous quantities. Pkt., 15c; 1/4 oz., 50c, postpaid.
- 56460. STOKESIA** (Mixed). Cornflower Aster. Colors blue and white. Pkt., 15c; 1/4 oz., 50c.
- 56470. SWEET ROCKET** (Mixed). Hardy perennial. White or lilac flowers. An old, old reliable sort. Pkt., 10c; 1/4 oz., 20c, postpaid.
- 56555. SWEET WILLIAM** (Child's Everblooming). (See illustration page 33.) Blooms first year from seed. Pkt. 25c; 1/4 oz., 75c, postpaid.
- 56490. SWEET WILLIAM** (Newport Pink). Soft watermelon pink. Borne in massive clusters. Once planted, always there. Pkt., 15c; 1/4 oz., 75c, postpaid.
- 56500. SWEET WILLIAM** (Scarlet Beauty). Very beautiful. Pkt., 15c; 1/4 oz., 50c, postpaid.
- 56510. SWEET WILLIAM** (Diadem). Deep rich crimson. Very free bloomer. Pkt., 15c; 1/4 oz., 50c.
- 56520. SWEET WILLIAM** (White). Glistening white. Pkt., 15c; 1/4 oz., 50c, postpaid.
- 56530. SWEET WILLIAM** (Mixed, Single). Many colors. Pkt., 10c; 1/4 oz., 50c, postpaid.
- 56540. SWEET WILLIAM** (Mixed, Large Double). Many colors. Pkt., 15c; 1/4 oz., 50c, postpaid.
- 56610. VIOLET** (Odorata). Exceptionally hardy. Very fragrant. Purple mixed. Pkt., 15c; 1/4 oz., \$1.00.
- 56660. WALL FLOWER** (Perennial Mixed). All colors mixed. Pkt., 10c; 1/4 oz. 75c, postpaid.
- 56697. WILD FLOWER GARDEN**. Perennials mixed. Pkt., 15c, postpaid.
- 56795. YUCCA** (Filamentosa). Bell-shaped. Creamy colored flowers. Pkt., 15c; 1/4 oz., 35c, postpaid.

17000. ASPARAGUS (New Washington). Introduced by the U. S. Department of Agriculture, and is far superior to any other Asparagus. Is rust-resisting. 2-year-old plants. 25 for 75c; 100 for \$1.75, postpaid.

17095. RHUBARB. Start your Rhubarb garden this fall. The earliest and finest of all Rhubarb and fit for use not only in the spring, but all through the summer and fall. 15c each; 3 for 40c; doz. \$1.50; 100 for \$12.00, postpaid.



Dianthus Latifolius

10040. - **ACHILLEA**. See pages 32 and 33.

10170. **AJUGA (Reptens)**. A plant of low-creeping habit, with a profusion of handsome dark leaves and spikes of blue flowers. It will thrive in sun or shade. 20c each; doz., \$2.00, postpaid.

10035. **AQUILEGIA**. See pages 32 and 33.

10200. **BOLTONIA**. See pages 32 and 33.

10890. **BLEEDING HEART (Dicentra spectabilis)**. Handsome border plant, so well known. Will grow in any climate. 75 each; doz., \$7.50, postpaid.

10285. **CAMPANULA (Bellflower)**. The favorite old-fashioned Bellflower plant, should be in every garden, mixed colors. 25c each; doz., \$2.50, postpaid.

10300. **CANTERBURY BELLS**. See page 32.

10230. **COREOPSIS**. See pages 32 and 33.

11120. **CANDYTUFT (Iberis)**. A plant of low-spreading growth, completely hidden with dense heads of white flowers, when potted in the fall. Blooms well indoors. 25c each; doz., \$2.50, postpaid.

10760 **SHASTA DAISY**. See pages 32 and 33.

Delphiniums (Hardy Larkspur)

See pages 32 and 33.

Wonderful blue spikes, most attractive as a cut flower.

10840. **BELLADONNA**. A free and continuous bloomer with beautiful light blue flowers in long, loose spikes. An old favorite. 25c each; doz., \$2.50, postpaid.

10850. **BELLAMOSAM**. The color is a fine deep blue, the center of each blossom touched with lighter color. 25c each; doz., \$2.50, postpaid.

10880. **PRIVATE ESTATE GIANT HYBRIDS (Genuine Childs' Strain)**. A wonderful new strain with giant flowers on very tall stems. Fine blue shades. 30c each; doz., \$3.00.

10860. **CHINENSE (Blue)**. Large spikes of medium height and brilliant, deep blue flowers. Quite distinct from others. Blooms throughout the summer. 25c each; doz., \$2.50, postpaid.

52200. **SEED**. Pkt. 10c; 1/4 oz. 40c, postpaid.

10870. **CHINENSE (Alba)**. Very much like the blue sort described above, but with pure white blossoms. 25c each; doz. \$2.50, postpaid.

52210. **SEED**. Pkt. 10c; 1/4 oz. 40c, postpaid.

Hardy Perennials

Long Island, and Childs' particularly, are noted for their robustness, hardiness, and prolificness of their Perennials. Located between the oceans, the salt mists, salt air and winds deposit a salt sediment that produces a plant or root that excels in constitutional vigor, a root that no matter how small, thrives and grows from the day it is planted.

Now that most perennials are in bloom, look around and make your choice. Perennials are by far the most satisfactory to grow. Once planted they are always there. Each year the plants enlarge. Each year the bloom increases in profusion. Fall is nature's own time for transplanting perennials. Order yours today, give them as much fall root growth as possible.

Dianthus (Hardy Pinks)

Bright colors. Best varieties for bedding and cutting.

10790. **ROBERT**. Flowers two inches across; deep rose-pink with darker center. A genuine treat.

10800. **MARY**. Double rose-pink flowers with distinct bright carmine centers. Very fragrant.

10810. **PHILIP**. Deep pink with yellow and brownish markings at center. Finely cut edges. Very beautiful.

10820. **HAROLD**. Large, double white with deep pink and soft yellow centers. Every one loves this. 25c each; doz., \$2.50, postpaid.

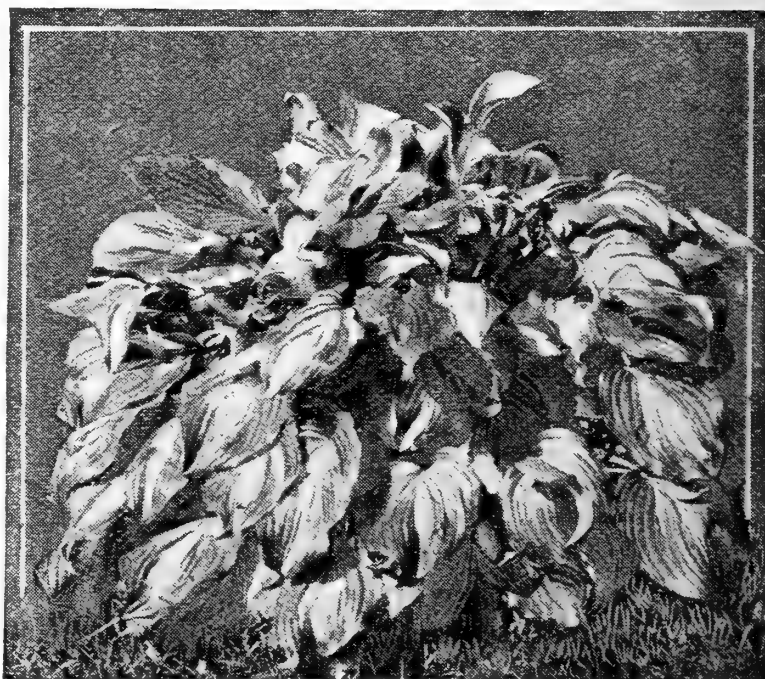
10970. **FUNKIA (Day Lily; Aurea Variegata)**. Splendid foliage plant, grows well with little care and is perfectly hardy. Fine for shady or damp places in clumps or borders. Produces tall clusters of fragrant lily-like flowers, green and yellow leaves with light blue flowers. 35c each; doz., \$3.50, postpaid.

10950. **FUNKIA (Large White)**. Broad green leaves and white flowers. Blooms from August to frost. 35c each; \$3.50 per doz., postpaid.

10960. **FUNKIA (Variegated Leaved)**. A rosette-cluster of almost white leaves, lightly striped with green and yellow. Flowers lilac-blue on tall spikes. One of the finest hardy plants. Fine also for pots. 35c each; \$3.50 per doz., postpaid.

10980. **GYPSOPHILA**. See pages 32 and 33.

11170. **LILY OF THE VALLEY**. A charming flower with dainty white bells and delicate fragrance. Once planted, it will grow and spread and bloom freely with no care at all. The flowers are excellent for cutting. Grows well in shade under trees or shrubbery. Fine roots. Doz., 75c; 100 for \$6.00, postpaid.



Funkia (Aurea Variegata)

Hardy Perennial Phlox

See pages 32 and 33

True Long Island grown Phlox, of a constitutional vigor that only Long Island stocks can have. They are thrifty, robust and rapid growers. Ready to start the formation of their bloom when most strains are beginning their growth.

The varieties listed here are newest and the "Cream" of their class. The range of colors are wonderful, delicate, blazing and striking. Can be grown in any soil, and if spikes of flowers are removed they rebloom.

11321. INDEPENDENCE. A wonderful semi-dwarf white sort of immense blooming heads.

11323. LA SOLIEL. Light rose shading to lighter center. A delicate and beautiful color.

11326. L'ESPERANCE. Lovely light lavender-pink with white center.

11330. MRS. JENKINS. (See illustration opposite.) Pure white with immense panicles.

11360. PEACH BLOSSOM. Peach blossom color.

11365. PRESIDENT TAFT. An exceedingly beautiful light pink with a lighter center. Very distinct.

11375. RALPH SLOCOMBE. Clear cherry-red, suffused with salmon, deep red eye and fine trusses.

11385. THE QUEEN. Pure white and large.

11390. W. C. EAGAN. A rich delicate lilac.

11388. WHITE LADY. A clear, glistening white of large form and free blooming habit.

11389. WHITE BRANCHING. An exceptionally fine pure white that branches out. Blooms very large.

Prices on above: 25c each; \$2.50 doz., postpaid.

11392. MIXED COLORS. Price 20c; doz., \$2.00.

55020. SEED. Mixed. Pkt. 20c; 2 pkts., 35c.

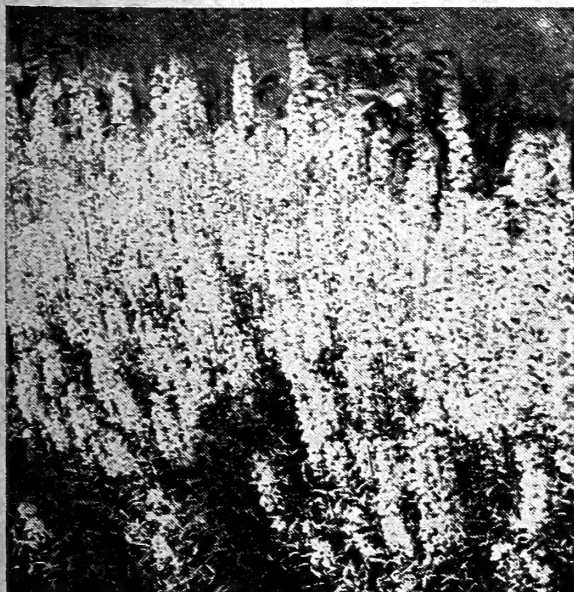
Phlox Subulata These are the lovely Moss Pinks, so welcome in early spring.

11270. SUBULATA PINK. One of the finest low, turfy growing plants, fine for use under trees, around rockwork, edging beds, etc. Very showy blossoms. Each 25c; doz., \$2.50.

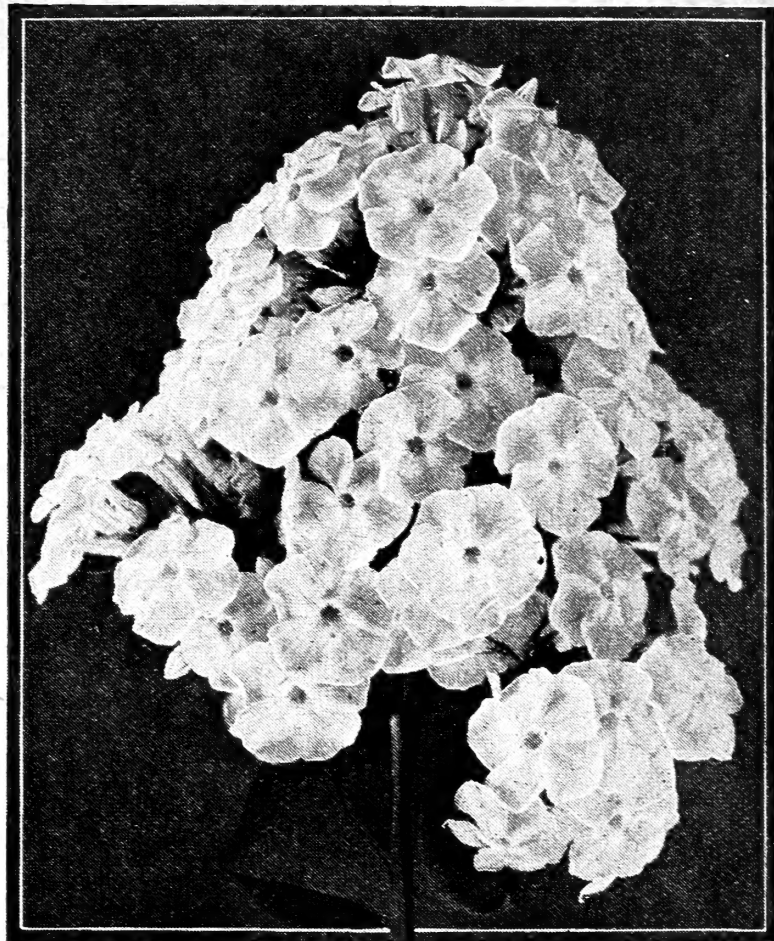
11220. LYTHRUM VIRGATUM (Rose Queen). One of the very hardy perennials we have grown. In early summer plants send up a dozen or more wiry stems from each crown to the height of four feet. Color rosy pink, very showy and brilliant. 25c each; doz., \$2.50.

11230. Two-year-old plants, 35c each; doz., \$3.50.

11240. MONARDA. (See pages 32 and 33).



Lythrum Virgatum



Phlox. Mrs. Jenkins

Hemerocallis Robust, strong growing plants with masses of large blossoms like the most beautiful Lilies.

11030. FLAVA (Lemon Lily.) Deep lemon-yellow. Very fragrant. Two and one-half feet tall.

11035. LUTEOLA. Golden yellow, 6 inches across on stout branches. Up to 4 feet tall.

Strong Roots, 25c each; doz., \$2.50, postpaid.

10830. DIGITALIS. See pages 32 and 33.

10990. GAILLARDIA. See pages 32 and 33.

11080. HELIANTHUS. See pages 32 and 33.

11040. HOLLYHOCK. See pages 32 and 33.

11160. LAVENDER (New Early Dwarf). A new Lavender of dwarf habit, adapted to pot or garden culture, perfectly hardy. Dark blue flowers in graceful spikes and of unexcelled fragrance that lasts for months. Dried sprays of flowers laid among clothes imparts a delicate fragrance to them. 50c each; doz., \$5.00, postpaid.

11140. LYCHNIS (Chalcedonica). One of the most brilliant hardy scarlet flowers we have. The formation of the flower petals suggests its common name. Maltese Cross. 25c each; doz., \$2.50.

11470. PHALARIS ARUNDINACEA (Ornamental Grass). Also called Variegated Ribbon Grass or Gardener's Garters. It is an ornamental grass which grows from one to two feet tall, with beautifully variegated foliage. Each 25c; doz., \$2.50, postpaid.

11460. PYRETHRUM. See pages 32 and 33.

11420. POPPY. See pages 32 and 33.


11490. RUDBECKIA (Golden Glow.) This plant we introduced many years ago is still one of the most effective and desirable hardy perennials for all summer and fall blooming. Our strain has been improved from year to year until it now grows to the height of ten feet, branching freely, and bearing by the hundreds on long, graceful stems, double blossoms of the brightest golden color and as large as Pompon Dahlias. 20c each; doz., \$2.00, postpaid.

11550. STOKESIA (Cyanea.) The charming Cornflower Aster which grows one or two feet tall and bears its lovely blue blossoms from July to October. One of the most useful flowers. Each 25c; doz., \$2.50.

11600. VERONICA (Subsessilis.) See pages 32 and 33.

11605. VERONICA (Spicata.) A dwarf sort growing one to two feet on long spikes with bright blue blossoms. Each 25c; doz., \$2.50.

Childs' Famous Long Island Perennials

See Opposite Page for Color Illustration 

\$28.80 Value Perennials for \$18.00, Postpaid

A Great Opportunity to Fill Your Garden with Flowers

Once in Always There—No More Replanting

Prices, one Plant of each (value \$4.80) for \$4.50; 3 of each (value \$14.40) for \$10.50; 6 of each (value \$28.80) for \$18.00; one doz. of each \$34.50. Postpaid.

(1) **Hollyhock** (See illustration opposite.) This old favorite should be in every garden. It is unexcelled as a background with its tall, stately stems and lovely double blossoms like great rosettes of crinkled silk. They grow from 4 to 8 feet tall, blooming in profusion. **11040 Newport Pink. 11050 Red. 11060 White. 11070 Yellow.** Prices on above: 30c each; \$3.00 doz. **53390 Seed. Mixed. Pkt. 10c; 1/4 oz. 50c.**

(2) **Helianthus (Hardy Sunflower)**. (See illustration opposite.) It blooms long after frost has killed everything else. It stands 5 to 7 feet high, the great massing branches a sheet of solid bloom of the clearest and richest golden yellow. Blossoms are like great daisies flecked with gold.

11080 Angustifolius (Autumn Glory). 30c each; \$3.00 doz. 53260 Seed. Pkt. 15c; 1/4 oz. \$1.00.

(3) **Daisy** (See illustration opposite.) Bloom all summer. The largest of all white daisies. Flowers 5 inches across on long stems.

10760 Shasta Daisy. 25c each; \$2.50 doz. 52000 Seed. Pkt. 15c; 1/4 oz. 50c.

(4) **Delphinium** (See illustration opposite.) This stately plant is almost indispensable in the hardy flower garden or border. The color ranges through many tones of blue to intense deep royal purple.

10880 Private Estate Giant Hybrid. (See illustration opposite.) 30c each; \$3.00 doz. **52180 Seed. Pkt. 25c; 1/4 oz. \$1.25.**

(5) **Achillea (Milfoil or Yarrow)**. (See illustration opposite.) Beautiful and hardy. Does well in dry, sunny places. Splendid for rockeries. Color white.

10040 Ptarmica. (The Pearl.) 20c each; doz. \$2.00. 50010 Seed. Pkt. 25c; 1/8 oz. \$2.00. Postpaid.

(6) **Pyrethrum** (See illustration opposite.) They bloom profusely from May onward. Blossoms are single and double like hardy colored daisies, mixed white, pink and red.

11460 25c each; \$2.50 doz. 55540 Seed. Pkt. 10c; 1/4 oz. 75c.

(7) **Phlox** (See illustration opposite.) True Long Island grown Phlox that are as hardy as oaks. See page 31 for named varieties.

11392 Mixed Colors. Price 20c; doz. \$2.00. 55020 Seed. Mixed. Pkt. 20c; 2 pkts. 35c.

(8) **Gypsophila (Baby's Breath)**. (See illustration opposite.) Grows to a height of 2 or 3 feet. In June and July it is a cloud of misty white bloom.

10980 Paniculata. 25c each; \$2.50 doz. 52990 Seed. Pkt. 25c; 1/8 oz. 50c.

(9) **Aquilegia (Columbine)**. (See illustration opposite.) Each plant bears many delicate flowers on long stems above the foliage.

10920 Childs' Long Spurred Hybrids. Hybrid. 30c each; doz. \$3.00. 50210 Seed. Pkt. 50c; 1/8 oz. \$1.00.

(10) **Oriental Poppy (Papaver Orientalis)**. (See illustration opposite.) They make splendid permanent clumps for the hardy border with their flaming orange-scarlet color, fine foliage and compact growth.

11420 Orientalis. 35c each; \$3.50 doz. 55230 Seed. Pkt. 15c; 1/8 oz. 50c.

(11) **Veronica (Speedwell)**. (See illustration opposite.) Each clump sends up a dozen or more flowering spikes to the height of two or three feet. The flowers are of a deep lustrous blue color.

11600 Longiflora, Subsessilis. 30c each; \$3.00 doz.

(12) **Canterbury Bells (Campanula Calycanthemata)**. (See illustration opposite.) Cup and Saucer Varieties. They are very hardy, profuse bloomers, and resemble miniature cups and saucers. Grow about 3 feet tall.

10290 Calycanthemata, Blue. 10300 Pink. 10310 White. Price on above, 25c each; \$2.50 doz.

(13) **Gaillardia (Blanket Flower)**. (See illustration opposite.) Large flowers of brilliant tones of red, brown, orange and yellow, mixed. Always in bloom.

10990 Grandiflora. 25c each; \$2.50 doz. 52870 Seed. Pkt. 10c; 1/4 oz. 40c.

(14) **Coreopsis (Calliopsis)**. (See illustration opposite.) Bears bright yellow blossoms from June till fall. Grows 3 to 4 feet tall with very long stemmed blossoms.

10230 Lanceolata, Grandiflora. 25c each; \$2.50 doz. 51340 Seed. Pkt. 10c; 1/4 oz. 25c.

(15) **Digitalis (Foxglove)**. (See illustration opposite.) Tall spikes with fine foliage and a mass of large balls.

10830 Mixed. 25c each; \$2.50 doz. Postpaid. 52460 Seed. Pkt. 10c; 1/4 oz. 30c.

(16) **Sweet William**. **10764 Everblooming. Mixed colors. 25c each; \$2.50 doz. 56555 Seed. Pkt. 25c; 1/4 oz. 75c.**

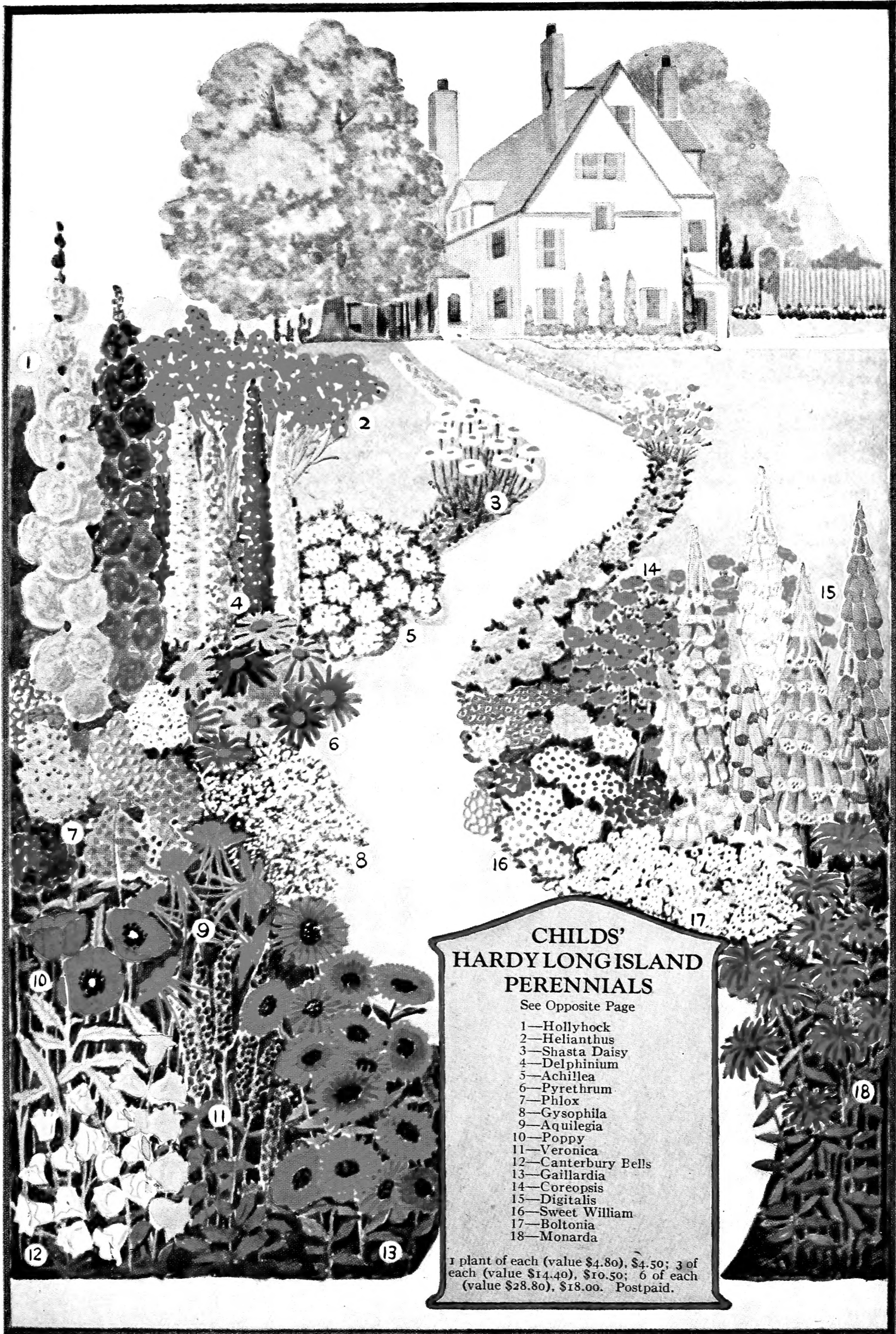
(17) **Boltonia** (See illustration opposite.) **10200 Asteroides.** Innumerable daisy-like white blossoms. **Plants: 25c each; \$2.50 doz.**

(18) **Monarda (Bergamot or Oswego Tea)**. (See illustration.) Produces a profusion of bright deep scarlet blossoms. Flowers and foliage fragrant.

11240 30c each; \$3.00 doz. Postpaid.

Where to Find What You Want

Abutilon.....15	Easter Lily.....13	Ixias.....12	Plants, Trailing.....23	Sundries.....27
Acalypha.....15	Ferns.....18	Justicia.....19	Plumbago.....21	Surprise Collection...1-18
Amaryllis.....2	Flower Seeds.....28-29	Lantana.....20	Poinsettia.....27	Swainsonia.....22
Anemones.....15	Freeseias.....18	Lawn Grass.....27	Primula.....20	Syringa.....3
Asclepias.....15	Fritillaria.....12	Lemon.....20	Privet.....26	Tulips.....4-5-6-7-8-9
Asparagus.....15	Fuchsia.....19	Lilies, Easter.....13	Resurrection Plant...22	Bybloom-Bizarre.....6
Asparagus Roots...29	Genista.....19	Lilies, Hardy.....14	Rhubarb.....29	Cottage.....7
Azalea.....2-26	Grape Hyacinth.....12	Madonna Lily.....13	Rivinia.....2	Darwin & Breeder 4-5-6
Begonias.....16-17	Grapes.....22	Mertensia.....12	Roses.....1-3-22	Double Early.....9
Berries.....22	Hardy Shrubs.....2-3-26	Narcissus.....9-10	Sanseveria.....22	Duc Van Thol.....6
Cactus.....17	Hardy Vines.....23	Oleander.....20	Scilla.....12	Lily.....7
Calla.....13	Hibiscus.....19	Orange.....20	Seed.....28-29	Parrot.....6
Cape Jessamine.....17	Humus.....27	Palm.....21	Shrubs, Hardy.....3-26	Rembrandt.....6
Chionodoxa.....12	Hyacinths.....11	Pelargonium.....22	Snowdrops.....12	Single Early.....8
Crocus.....8	Insecticides.....27	Peonies.....25	Streptosolen.....3	Vines.....23
Cyclamen.....17	Iris.....24	Perennials.....30-31-32		Winter Aconite.....12
Daffodils.....10				



**CHILDS'
HARDY LONG ISLAND
PERENNIALS**

See Opposite Page

- 1—Hollyhock
- 2—Helianthus
- 3—Shasta Daisy
- 4—Delphinium
- 5—Achillea
- 6—Pyrethrum
- 7—Phlox
- 8—Gysophila
- 9—Aquilegia
- 10—Poppy
- 11—Veronica
- 12—Canterbury Bells
- 13—Gaillardia
- 14—Coreopsis
- 15—Digitalis
- 16—Sweet William
- 17—Boltonia
- 18—Monarda

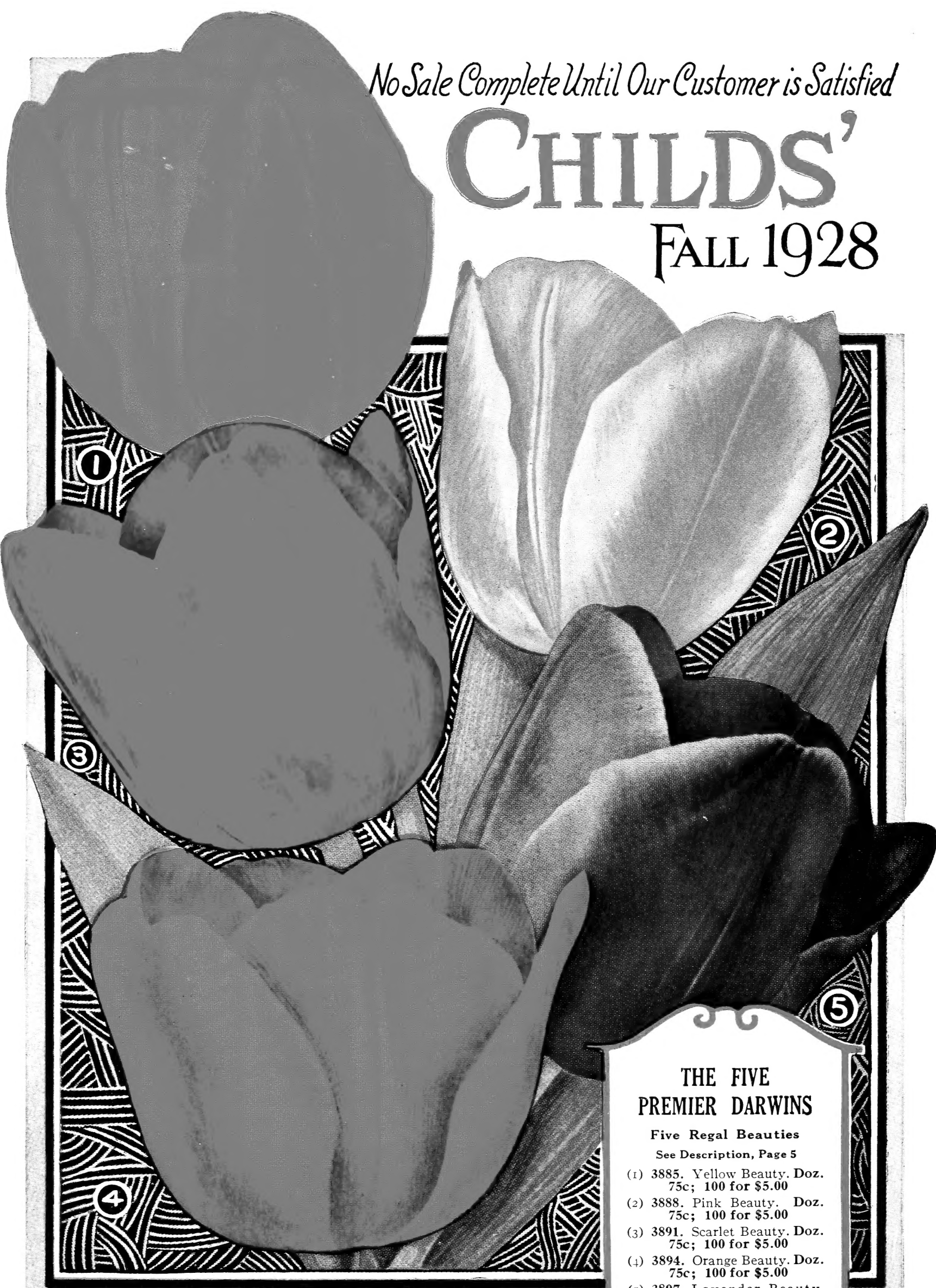
1 plant of each (value \$4.80), \$4.50; 3 of each (value \$14.40), \$10.50; 6 of each (value \$28.80), \$18.00. Postpaid.

See opposite page for description and prices.

No Sale Complete Until Our Customer is Satisfied

CHILDS'

FALL 1928



THE FIVE PREMIER DARWINS

Five Regal Beauties

See Description, Page 5

- (1) 3885. Yellow Beauty. Doz. 75c; 100 for \$5.00
- (2) 3888. Pink Beauty. Doz. 75c; 100 for \$5.00
- (3) 3891. Scarlet Beauty. Doz. 75c; 100 for \$5.00
- (4) 3894. Orange Beauty. Doz. 75c; 100 for \$5.00
- (5) 3897. Lavender Beauty. Doz. 75c; 100 for \$5.00

JOHN LEWIS CHILDS SEED CO.
FLORAL PARK · N · Y ·