


Chilhowee

1915





Digitized by the Internet Archive
in 2010 with funding from
Lyrasis Members and Sloan Foundation





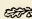
BENSON
PRINTING
COMPANY

NASHVILLE

Chilhowean

Nineteen Hundred Fifteen Volume X



Published Annually by
The Senior Class of
Maryville College
Maryville,  Tennessee

CONTENTS

Book The First
The Faculty

Book The Second
College Department

Book The Third
Preparatory Department

Book The Fourth
Other Departments

Book The Fifth
Organizations

Book The Sixth
Athletics

Book The Seventh
Miscellaneous

FOREWORD

IT has been our intention, in publishing this volume of The Chilhowean, to present

College life in Maryville, not as picturesque and exalted, but simply to portray it as it is. A college Annual should chronicle only what is characteristic and representative, that, in years to come, the memories of our Alma Mater may be the fresher and sweeter

We had hoped for a Chilhowean superlative, a zenith in its sphere. To say that our hopes have partially failed is but to record our human weakness, not to impair our fondest dreams





DEDICATION

TO
REV. CLINTON HAN-
COCK GILLINGHAM
Master of Arts

IN APPRECIATION OF HIS
EFFICIENT & CONSCIENTIOUS
INSTRUCTION IN
THE CLASS-ROOM, HIS
KIND PERSONAL INTEREST
IN THE WELFARE OF EVERY
STUDENT, AND HIS UN-
TIRING EFFORTS FOR THE
ADVANCEMENT OF MARYVILLE COLLEGE, WE
RESPECTFULLY DEDICATE
THIS VOLUME OF
THE CHILHOWEAN

Rev. Clinton Hancock Gillingham, M.A.



LINTON HANCOCK GILLINGHAM was born September 29, 1877, in Philadelphia, Pa., and received his early education in the primary schools of that city. From 1889 to 1901 he did not attend school, but held clerical positions in Philadelphia, with the Central Y. M. C. A. and with the Pennsylvania Railway Company. During that time he prepared for college under private tutors, and in 1901 entered Maryville College, from which institution he received his B.A. degree in 1905, and his M.A. degree in 1907. He attended Princeton Theological Seminary and the Theological Seminary of Kentucky, receiving his B.D. degree from the latter in 1908.

He was ordained to the ministry by the Presbytery of Union in 1907, and in the same year was called to a professorship in Maryville College, which he has held since that time. He is now Professor of English Bible, Head of the Bible Training Department and Registrar of the College. In addition to his other work, he acted, on one occasion, as Principal of the Preparatory Department.

His various duties have brought Professor Gillingham into personal contact with a large per cent of the students. Those who have learned to know him have found in him an interested friend, ever ready to give advice and help.

History of Maryville College



MARYVILLE COLLEGE is an old, time honored institution. Its history is divided into three distinct epochs: the institution as a seminary, as an ante-bellum college and as a post-bellum college. The seminary was founded in 1819, with Rev. Isaac Anderson, D.D., as its first president, by the Synod of Tennessee. In 1821 a literary and college department was added. Through years of privation and poverty, perseverance and prayer, the institution fulfilled the purposes of its founders. By 1842, in which year the seminary was chartered as Maryville College, nearly one hundred men had been sent out into the gospel ministry, and there were several hundred alumni. The institution had just begun a steady and propitious advance, when it was closed by the convulsions of the Civil War.

When the ravages of war were done, the college was re-opened, and, during the reconstruction period, grew steadily. A new campus of 235 acres was secured, and in 1869-1871 three much needed buildings were erected. Philanthropists and donors enabled the fast-growing college to add to its equipment and to maintain a sufficient endowment. In 1880-1884 \$100,000 was secured, while in 1891 a legacy of \$216,572 made possible the erection of several memorial buildings, and imparted to the college new life. Following the donation of \$100,000 in 1905 and the completion of the Forward Fund three years later, other new halls were built.

By 1900 Maryville College had already assumed the station of a modern institution. Yet in the last decade and a half, the growth has been noticeably greater than in any other period of its history. Modern equipment has been installed, new departments added and capable instructors secured. Total property valuation in 1913-1914 was \$800,000, and in that year there were 769 students and 40 instructors. Maryville College is now one of the strongest institutions of Tennessee and adjoining states. With little cost, it offers the most favorable opportunities for an education. It surrounds the student with the best environment, physical, mental and moral. It is located at Maryville, one of the most healthful and moral towns of East Tennessee, and attracts students from every part of the country. It is an institution with a record full of divine providence, human faithfulness and college usefulness; boasting noble achievements in the past, boundless opportunities in the present, high purpose and hope for the future.



VOORHEES CHAPEL



PEARSONS HALL

(10)

CHILHOWEAN



A PART OF THE CAMPUS



CARNEGIE HALL

(11)

CHILHOWEAN



FAYERWEATHER SCIENCE HALL



ANDERSON HALL

(12)



PRESIDENT'S RESIDENCE



Board of Directors

CLASS OF 1915

HON. WILLIAM LEONIDAS BROWN	Philadelphia
REV. NEWTON WAGSWORTH CADWELL, D.D.	Atlantic City, N. J.
JAMES MOSES CRAWFORD, ESQ.	Fountain City, R. D. 1.
REV. JOHN BAXTER CRESWELL, B.A.	Bearden
REV. WILLIAM ROBERT DAWSON, D.D.	South Knoxville
REV. CALVIN ALEXANDER DUNCAN, D.D.	Harriman
REV. JOHN SAMUEL EAKIN, B.A.	Greenville
REV. WOODWARD EDMUND FINLEY, D.D.	Marshall, N. C.
SAMUEL O'GRADY HOUSTON, B.A.	Knoxville
HUMPHREY GRAY HUTCHISON, M.D.	Vonore
JOHN RILEY LOWRY, B.S.	Knoxville
COLONEL JOHN BEAMAN MINNIS	Knoxville

CLASS OF 1916

REV. JOHN MCKNITT ALEXANDER, B.A.	Maryville
JAMES ADDISON ANDERSON, ESQ.	Fountain City, R. D. 1
HON. THOMAS NELSON BROWN, M.A.	Maryville
HON. JOHN CALVIN CRAWFORD, B.A., LL.B.	Maryville
JUDGE JESSE SEYMOUR L'AMOREAUX	New York, N. Y.
REV. THOMAS JUDSON MILES, M.A.	Knoxville, R. D. 10.
FRED LOWRY PROFFITT, B.A.	Maryville
REV. JOHN C. RITTER, B.A.	Washington College
GOVERNOR JOHN POWEL SMITH	National Soldiers' Home
REV. J. ROSS STEVENSON, D.D., LL.D.	Princeton, N. J.
JAMES MARTIN TRIMBLE, ESQ.	Chattanooga
REV. DAVID GOURLEY WYLIE, D.D., LL.D.	New York, N. Y.

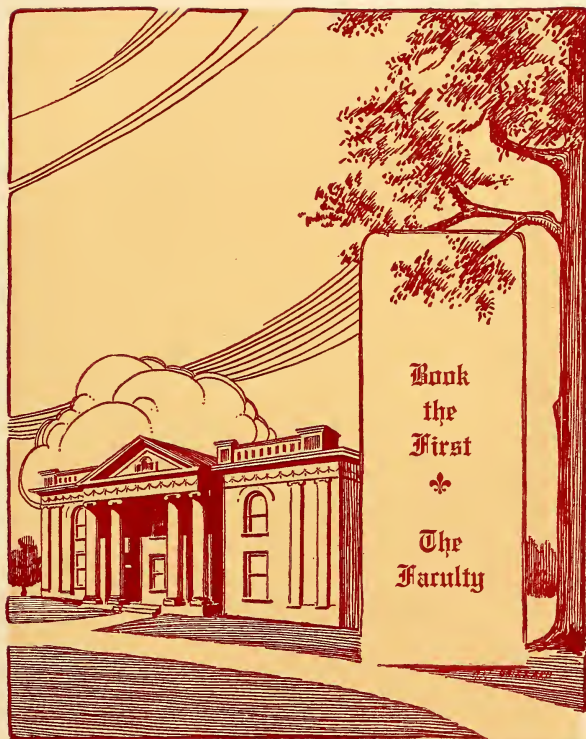
CLASS OF 1917

*REV. NATHAN BACHMAN, D.D.	Sweetwater
REV. ROBERT LUCKY BACHMAN, D.D.	Rockwood
REV. HENRY SEYMOUR BUTLER, D.D.	Huntsville
REV. EDGAR ALONZO ELMORE, D.D.	Chattanooga
HON. MOSES HOUSTON GAMBLE, M.A.	Maryville
REV. ROBERT ISAACS GAMON, D.D.	Knoxville
**REV. THOMAS LAWRENCE, D.D.	Asheville, N. C.
ALEXANDER RUSSELL MCBATH, ESQ.	Knoxville, R. D. 3
HON. WILLIAM ANDERSON MCTEER	Maryville
WILLIAM EDWIN MINNIS, ESQ.	New Market
JOSEPH AUGUSTUS MUECKEY, ESQ.	Kingston
REV. SAMUEL TYNDALE WILSON, D.D.	Maryville

*Died December 3, 1914.

**Died January 6, 1915.





Book
the
First



The
Faculty



Rev. Samuel Tyndale Wilson, D.D.

President, and Professor of the English Language and Literature, and of the Spanish Language

B.A. and M.A., Maryville College, and Theological Course in Lane Seminary. Missionary in Mexico and Instructor in the Theological Seminary, Mexico City, 1882-84. Returned home on account of ill health. Called to Chair of English Literature, Maryville College, 1884, and became President in 1901. Has spent a year in Europe; is a member of the Presbyterian Historical Society; publisher of several historical articles, and author of "Southern Mountaineers." Has been Stated Clerk of Synod of Tennessee since 1891.

CHILHOWEAN

HEADS OF DEPARTMENTS



JASPER CONVERSE BARNES, Ph.D.

Dean, and Professor of Psychology and Political Science

B.A. and M.A., Marietta College; Ph.D., University of Chicago; Graduate work, Universities of Chicago, Wooster and Cornell. In 1892 became Principal of the Preparatory Department, and Professor of the Science and Art of Teaching, Maryville College. Later was made Professor of Psychology and Political Science, and in 1914 became Dean. Member: Phi Beta Kappa; The National Educational Association; The American Association for the Advancement of Science; The American Psychological Association; Rhodes Scholarship Committee for Tennessee. President: The Southern Society for Philosophy and Psychology.

HENRY JEWELL BASSETT, M.A.

Professor of Latin, and Secretary of the Faculty

B.A. and M.A., Maryville College; Graduated from Princeton University; Graduate Student at Universities of Chicago, Michigan and Columbia. European tour, 1912. Professor of Latin at Maryville since 1905.

REV. CLINTON HANCOCK GILLINGHAM, M.A.

Registrar, Professor of the English Bible, and Head of the Bible Training Department

B.A. and M.A., Maryville College; Theological Course in Princeton and Kentucky Seminaries; Ordained to the Ministry, 1907; Professor in Maryville College since 1907.

FRANCIS MITCHELL McCLENAHAN, M.A.

Professor of Chemistry and Geology

Graduated at Tarkio College, Mo.; B.A. and M.A., Yale; Graduate Student at Yale and University of Chicago. Graduate Assistant in Kent and Sheffield laboratories, Yale, and in chemical laboratories, University of Chicago. Instructor in Chemistry in Pittsburg, Pa., High School, and Kansas State Agricultural College; Professor of Chemistry and Physics, Tarkio College; Maryville since 1906, except for one year. Is member of American Chemical Society, and The American Association for the Advancement of Science.

CHILHOWEAN

HEADS OF DEPARTMENTS

ARTHUR WALLACE CALHOUN, M.A.

Professor of Social Science and Greek

B.A., University of Pittsburg; M.A., University of Wisconsin. Has been professor at New Windsor College, Florida State College for Women, Lenox College, Ia. Maryville College since 1913.

GEORGE ALAN KNAPP, M.A.

Professor of Mathematics and Physics

B.A. and M.A., Hamilton. Principal of Bridgewater Academy and Union Free School, Bridgewater, N. Y., 1884-85; Superintendent of Franklin Academy and Collegiate Institute, Prattsburg, N. Y., 1885-88; Professor of Mathematics, Park College, Mo., 1888-90; Professor of Mathematics and Physics, Olivet College, Mich., 1890-98; Professor of Mathematics and Astronomy, Olivet College, 1898-1914; Professor, Maryville College, 1914.

MRS. JANE BANCROFT SMITH ALEXANDER, M.A.

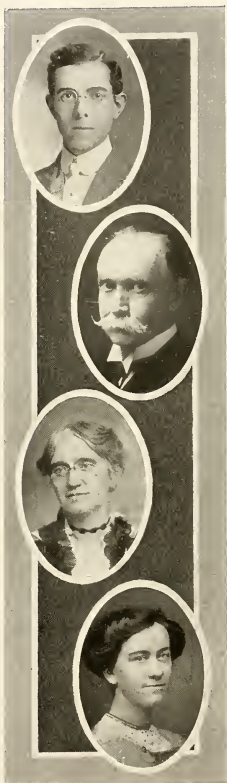
Professor of the English Language and Literature

Graduated from the Young Ladies' Seminary of Williamstown, Mass.; Special Student, Wellesley College; M.A., Maryville College; Graduate Student, University of Vermont, Harvard and Columbia. Two European tours and a year of study in France and Italy, including courses in History and Literature at Sorbonne University of Paris. Has held positions at Lindenwood College, Mo., Halsted School, N. Y., and Maryville College. Present position since 1905.

SUSAN ALLEN GREEN, M.A.

Professor of Biology

B.A., Smith College; M.A., University of Chicago; Student at Woods Hole Marine Biological Laboratory. Tour of Europe. Maryville College since 1906.



CHILHOWEAN

HEADS OF DEPARTMENTS

JOHN WESLEY PERKINS, M.A.

Professor of German and French

B.A., Earlham College; M.A., Northwestern University; European tour. Has taught in University School, Duluth, Minn., Rising Sun, Ind., High School, Jamestown College. Maryville College, 1914.

HORACE LEE ELLIS, M.A.

Principal of Preparatory Department, and Professor of Education

B.A. and M.A., Maryville College. Has taught in Preparatory Department of Maryville College, Tennessee Military Institute, Carnegie High School; Principal Roane County High School; Professor of Latin, Carson-Newman College, 1907-14; Dean of Carson-Newman College, 1911-14. Present position since 1914.

MARY ELLEN CALDWELL, B.A.

Dean of Women, and Matron of Pearsons Hall

B.A., Maryville College. Has been instructor in Maryville College; Principal of Maryville Public Schools; Principal of Huntsville, Tenn., Presbyterian Academy, seven years; Matron of Baldwin Hall on two occasions, totaling fifteen years; Dean of Women, 1913; Matron of Pearsons Hall, 1914.

HELENA MABEL RYLAND, B.A., B.S.

Head of the Home Economics Department

B.A., Tusculum College; B.S., Columbia University; Domestic Science Diplomas, Tusculum College and Teachers' College of Columbia University; Special Student, Summer School of the South, and University of New York. Taught: S. P. Lees Collegiate Institute, Ky., two years; Stanley McCormick School, N. C., three years; Southern Female College, Va. Maryville College since 1913.



CHILHOWEAN

HEADS OF DEPARTMENTS

LAURA BELLE HALE

Piano and Harmony, and Head of the Music Department

Graduate, Cincinnati Conservatory of Music; Graduate Student, Cincinnati Conservatory of Music. Teacher, Cincinnati Conservatory of Music. Maryville College since 1913.

ZANNA STAATER

Voice

Graduate of Artist Department, Cincinnati Conservatory of Music. Teacher of Music, Bluffton, O., one year. Maryville College, 1914.

MRS. NITA ECKLES WEST, B.A., B.O.

Expression

Graduate of Murphy College and Grant University. Taught in Murphy College, one year, and at Maryville College, eleven years.

ANNA BELLE SMITH

Painting and Drawing

Pupil: In Painting and Drawing, of Messrs. Courtois and Girardot, Paris, and Messrs. Chase and Wier, New York; in Illustration, of Messrs. Mora and Wiles; in Sculpture, of Mr. MacNeal; in Pottery, of Mr. Volkmer. Student in Art Students' League, New York, and in Academies Colarossi and Julien, Paris. Maryville College, 1914.



CHILHOWEAN

PREPARATORY DEPARTMENT

MARGARET ELIZA HENRY, B.A.

English

B.A., Maryville College. Taught in Maryville College, 1890-1903. Field Secretary and Chairman of the Scholarship Committee, Maryville College, since 1903.

EDGAR ROY WALKER, B.A.

Mathematics

B.A., Maryville College; Graduate Student, University of Chicago. Maryville College since 1910.

EVA ALEXANDER, B.A.

English and Bible

B.A., Maryville College; Graduate Student, University of Tennessee; Correspondence work with University of Chicago. Taught in Grants Pass, Oregon; Principal of Maryville Public Schools, three years. Came to Maryville College in 1914 to teach in place of Miss Mary Alexander, who is on leave of absence.

ALICE ISABELLA CLEMONS, B.A.

English

B.A., Maryville College, 1908. Physical Director of Girls, Maryville College, 1907-08. Present position since 1909.

CHILHOWEAN

PREPARATORY DEPARTMENT

NELLIE PEARL McCAMPBELL, B.A.

Latin

B.A., Maryville College; Special Student, Summer School of the South. Maryville College since 1911.

DAVID JOSEPH BRITTAIN, B.A.

History

B.A., Maryville College; Principal and Physical Director, Harlem High School, Harlem, Ga.; Principal of Porter Academy, Bank, Tenn. Present position since 1912.

ALMIRA ELIZABETH JEWELL, B.A.

Latin

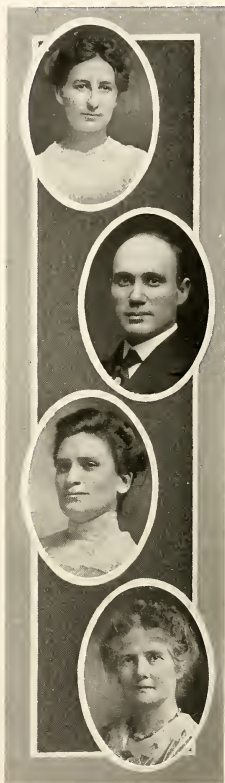
B.A., Maryville College; Special Student at Summer School of the South, two years. Has taught in Harlan, Ky., two years, and Hot Springs, N. C., one year. Present position since 1912.

MME. ADELE MARIE DENNÉE

Brevet Supérieur

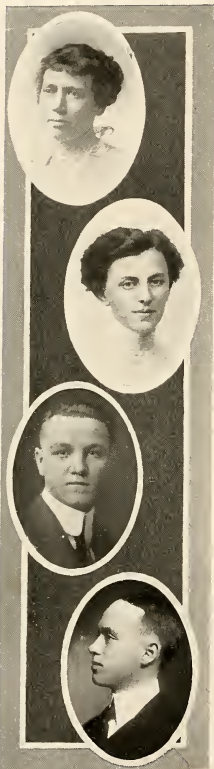
German and French

Born and educated in France. Attended Lycee and Sorbonne, Paris; Brevet Supérieur, The Sorbonne. Spent three years in Germany learning the language. Has taught in Germany, Russia and the United States. In the latter country her work has been in Indianapolis, Ind., Boston, Mass., and the College for Women, Columbia, S. C. Came to Maryville in 1914.



CHILHOWEAN

PREPARATORY DEPARTMENT



MABEL BROADY, B.A.

English

B.A., Maryville College. Has taught in Elk City, Okla., High School, and State University School, Claremore, Okla. Maryville College, 1913.

ANNA ETHEL FANSON, B.A.

English and Latin

B.A., Maryville College. Teaching in Maryville College since 1913.

Z. JAY STANLEY, B.A.

History

B.A., Earlham College. Maryville College, 1914.

THOMAS HARVEL MITCHELL

Bookkeeping

Graduate of Missouri State Normal School, Cape Girardeau. Teaching in Maryville College since 1913.

CHILHOWEAN

INSTRUCTORS IN OTHER DEPARTMENTS

LESTER EVERETT BOND

Physical Director

Courses in Physical Education at Battle Creek, Mich., and at Silver Bay, N. Y. Coach of Track, Portland, Me., High School; Assistant Physical Director, Portland, Me., Y. M. C. A. Maryville College since 1911.

MARY BARNETT BOGGS

Piano

Graduate of Music Department, Maryville College.

MARY KATE RANKIN, B.A.

Piano

Graduate of Music Department, Maryville College.
Special Student at Cincinnati Conservatory of Music.

EDNA ELIZABETH DAWSON

Piano

Graduate of Music Department, Maryville College.
Special Student at Cincinnati Conservatory of Music.



CHILHOWEAN



(24)



Faculty Assistants

MAYME REBECCA MAXEY, B.A.

MARIE ELISE KARNES

Assistants in Biology Laboratories

HORACE WALTON THRELKELD

Assistant in Psychology Laboratory

MARK HOPKINS BARNES

CHAUNCEY ELBERT CONRAD

FRANK MOORE CROSS

WILLIAM HENRY PLEASANTS

Assistants in Chemistry Laboratories

JOSEPH CHARLES WALKER

WILLIAM ARMSTRONG POWEL

Assistants in Preparatory Science Laboratories

JESSIE B. FRANKS

Assistant in Algebra

LILY ELMA MITCHELL

JOHN VANT STEPHENS, JR.

MARGARET CECELIA PEELER, Ph.B.

Assistants in History

BERTHA MAE CAMPBELL

MAE DARTHULA SMITH

Assistants in Home Economics

NELLIE WILSON

Girls' Physical Director





Other Officers

FRED LOWRY PROFFITT

Treasurer

OLGA ALEXANDER MARSHALL

Assistant Registrar

HENRY JEWELL BASSETT

Manager of the Loan Library

SARAH JANE GAMBLE

Matron of Baldwin Hall

MRS. LIDA PRYOR SNODGRASS

Librarian

REV. ARNO MOORE

Proctor of the Grounds

EDGAR ROY WALKER

Proctor of Carnegie and Memorial Halls

ALICE ARMITAGE GILLINGHAM

Secretary to the Scholarship Committee

SARAH FRANCES COULTER

Manager of the Co-operative Boarding Club

LULA GRAHAM DARBY

Assistant Manager of the Co-operative Boarding Club

LAURA JANE LYLE

Assistant Manager of the Co-operative Boarding Club

FRANK KEITH POSTLETHWAITE

Assistant Librarian

GILBERT OSCAR ROBINSON

Assistant in the Loan Library

ALBERT ALEXANDER BREWER

Janitor

(26)



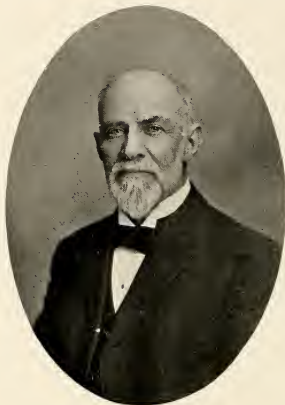


Rev. Nathan Bachman, D.D.

In the death of Rev. Nathan Bachman, D.D., Maryville College has lost one of its greatest benefactors. To give an endowment of religious faith is the greatest service that could be rendered an institution. Such a service Dr. Bachman rendered Maryville College. On seven different occasions, at intervals of four or more years each, he conducted the February meetings at the College. He held the first one conducted on College Hill, and that meeting has been the model and norm of all that have followed. The sanity, quietness, and earnestness of his methods commended themselves to the authorities of the College, and these methods have been so faithfully followed that no other college has had so remarkable a series of successful evangelistic campaigns.

Dr. Bachman loved the College, and served as Director most of the time from 1865 to the date of his death. He established, out of his modest savings, The Self-Help Loan Fund of two thousand dollars, and was very happy as he heard of the service rendered by the fund.

Dr. Bachman died at Sweetwater, Tennessee, on December 3, 1914, aged almost eighty-two years. Dr. Elmore, President of the Board of Directors, and Dr. Wilson, President of the College, conducted the funeral service.



Phoebus Wood Lyon, Ph.D.

Phoebus Wood Lyon was born in Tarrytown, N. Y., on September 2, 1844. He received his education in private schools, Irving Institute, and Columbia College, now, Columbia University. He served in the Civil War as a Sergeant and a Lieutenant, and was captured by the enemy in 1863. Mustered out of service, he finished his education and learned the stationery business, which he entered as his father's partner. After a number of years he gave up this business and began his teaching career. Professor Lyon was in turn principal of the schools in Belleville, N. J., and Summit, N. J., registrar and business manager of Elmira College, N. Y., and principal of West Jersey Academy of Bridgeton, N. J., which last position he held for fifteen years.

In 1905 Dr. Lyon came to Maryville College, and was a member of its faculty from that time until 1914. Unable to resume his duties in the Fall of 1914, he gradually failed in health until, on November 13th of that year, he passed away.

The work of Dr. Lyon was principally in the line of the English Language and Literature, and of History; but his lively interest in everything and everybody broadened his real field of service until it was limited only by the limitations of his ability to help; for he was willing and eager to lend a helping hand wherever a helping hand was needed. He possessed not only an acute and active mind but also a noble and tender heart.

In Memoriam

REV. THOMAS CAMPBELL, M.A.

1835-1914

Instructor in Painting and Drawing

ROBERT McCORKLE MAGILL

1842-1914

Bookkeeper of the Co-operative Boarding Club

REV. THOMAS LAWRENCE, D.D.

Died 1915

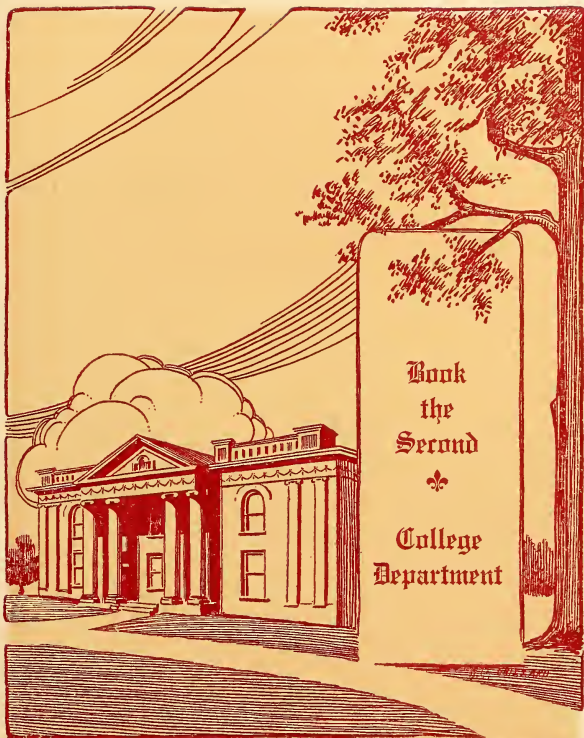
Director of the College

CHILHOWEAN

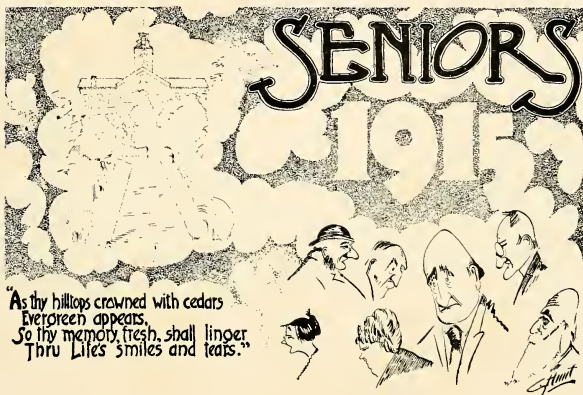


A GROUP OF COLLEGE BUILDINGS

(30)



CHILHOWEAN



"As thy hilltops crowned with cedars
Evergreen appears,
So thy memory fresh, shall linger
Thru Life's smiles and tears."



Senior Class

Colors: Garnet and White.

Flower: Carnation.

Motto: Ad extremum durabimus.

OFFICERS

THOS. W. GODDARD *President*

RUTH R. CARSON *Vice-President*

HARRY O. BUSH *Secretary and Treasurer*

JOHN V. STEPHENS, JR. *Editor*

YELL

Kiki, koax, koax, koax!
Sidi, didax, didax, didax!
Eureka, Eureka! Sis, boom, bah!
Senior, Senior! Rah, rah, rah!



CHILHOWEAN



THOMAS WARNER GODDARD, *President*
Maryville, Tenn.

A Σ

General; President Athletic Association, '14-'15; Varsity Football, '11-'13-'14; Captain Football, '13-'14; President Senior Class.



"TOM"

CHILHOWEAN



ANISE ELIAS ATIYEH

Homs, Syria

Athenian

General; Delegate to International Convention of the Student Volunteer Movement for Foreign Missions, at Kansas City, '14.



"PRINCE"

HIRAM SMITH BALCH

Newport, Tenn.

Athenian



"HIRAM"

Mathematics; Vice-President Athenian, '13, Winter Term; Treasurer Athenian, '13-'14; Recording Secretary Athenian, '14, Fall Term.



CHILHOWEAN

MARK HOPKINS BARNES

Maryville, Tenn.

Athenian



"JASPER"

Science; Winner Doubles in Tennis Tournament, and Member College Tennis Team, '11-'12-'13-'14; Class Basketball, Baseball and Tennis; Assistant in Chemistry, '14-'15; Youngest Member of Class.



ALFRED DEBARD BIGGS

Greenup, Ky.

Athenian

Classical; Prize Winner Prohibition Oratorical Contest, '12; Secretary Intercollegiate Prohibition Association, '14-'15; Assistant Business Manager *Chilhowean*, '15.



"CONSTABLE"

CHILHOWEAN



MARY BARNETT BOGGS

Kingston, O.

Θ E

General; President Theta Epsilon, '13, Spring Term; Treasurer Theta Epsilon, '14, Spring Term; Basketball Reserves, '12-'13; Varsity Basketball, '13-'14-'15; Captain Basketball, '14-'15; Graduate in Music, '13; Assistant in Music, '13-'14-'15.



"MARY"

LESTER EVERETT BOND

South Portland, Me.

Α Σ



"PEANUT"

General; President Alpha Sigma '14, Fall Term; Vice-President Alpha Sigma, '12; President Y. M. C. A., '14; Cabinet Y. M. C. A., '12-'13; President Adelpic Union, '13-'14; President Volunteer Band, '14-'15; President Class, '13; Class Football, Basketball and Baseball; Chairman Swimming Pool Committee, '14; Varsity Football, '11-'12-'13-'14; Coach Track, '12-'13-'14-'15; Coach Basketball, '11-'12; Coach Girls' Basketball, '11-'12-'13-'14-'15; Physical Director, '11-'12-'13-'14-'15.



(36)

CHILHOWEAN

HARRY OSWALD BUSH
Philadelphia, Pa.

A Σ



"ozz"

Classical; President Alpha Sigma, '14, Fall Term; Secretary-Treasurer Class, '14-'15; Class Baseball and Track; Class Quartette, '13-'14-'15; President Ministerial Association, '14-'15; Vice-President and Editor Ministerial Association, '13-'14; Glee Club, '11-'12-'13-'14-'15; President Glee Club, '13-'14; First Tenor College Quartette, '11-'12-'13-'14; Chapel Organist, '13-'14-'15; Cabinet Y. M. C. A., '12-'13-'14; Varsity Track, '12-'13-'14-'15; Captain Track, '12; Manager Track, '15.



RUTH VIRGINIA BUTLER
Manila, P. I.

Bainonian

Modern Languages; President Bainonian, '14, Fall Term; Vice-President Bainonian, '14, Winter Term.



"RUTH"



RUTH RANKIN CARSON

Maryville, Tenn.

Bainonian

*Classical; Vice-President
Senior Class.*



"RUTH"

ANNE MCPHEETERS CRANE

New Decatur, Ala.

Θ E



"ANN"

*Modern Languages; President
Theta Epsilon, '14, Winter Term;
Secretary Theta Epsilon, '12,
Spring Term; President Adelpic
Union, '14-'15; President Class,
'13-'14; Class Editor, '12-'13;
Class Quartette, '13-'14-'15; Sec-
retary Y. W. C. A., '13-'14; As-
sociate Editor *Chilhowean*, '15.*



CHILHOWEAN

CHARLES EDWARD DAWSON

South Knoxville, Tenn.

A Σ



"HOOK"

Classical; President Alpha Sigma, '13, Fall Term; Interclass Debator, '12, '13; Class Football, Basketball and Baseball; Member Intercollegiate Debating Committee, '14-'15; Editor-in-Chief *College Monthly*, '13-'14; Athletic Editor on *College Monthly*, '12-'13; Alpha Sigma Editor on *College Monthly*, '13-'14; President Law Club, '13-'14; Treasurer Law Club, '14-'15; Varsity Baseball, '12-'13-'14-'15; Captain Baseball, '14; Assistant Manager Baseball, '13; President Athletic Association, '12-'13; Student Representative on Board of Athletic Control, '13-'14; Associate Editor *Chilhowean*, '15.



JOHN EVANS ENSIGN

Rossville, Ga.

A Σ

Classical; Cross Country Team, '11-'12; Joint Winner Cross Country Cup, '11-'12; Class Track; Poet on *Chilhowean*, '15.



"ENSIGN"

CHILHOWEAN



MARIE ELISE KARNES
Gallipolis, O.

Θ E

Classical; Varsity Basketball, '11-'12; Basketball Squad, '13-'14; Assistant in Biology laboratories, '14, '15.



"ELISE"

EMMETT KILPATRICK
Camden, Ala.
Athenian



"KIL"

General; Program Secretary Athenian, '14, Fall Term; Vice-President Alabama Club, '14-'15; Vice-President Lawyers' Club, '14-'15.



(40)

CHILHOWEAN

RALPH WALDO LLOYD

Fort Duchesne, Utah

A Σ



"RABBI"

General; President Alpha Sigma, '14, Fall Term; Vice-President Alpha Sigma, '12, '13; Secretary Alpha Sigma, '12; President Class, '11-'12; Secretary-Treasurer Class, '13-'14; Interclass Debater, '12, '13; Class Football, Basketball, Baseball and Tennis; Treasurer Y. M. C. A., '13-'14; Advisory Board Y. M. C. A., '14-'15; Y. M. C. A. Editor on *College Monthly*, '13-'14; Swimming Pool Committee, '14; Manager Lyceum Course, '14-'15; Varsity Football, '13, '14; Varsity Basketball, '11-'12-'13-'14; Captain Basketball, '14-'15; Manager Basketball, '13-'14; Baseball Reserves, '13; Winner Doubles and Singles in Tennis Tournament, and Member College Tennis Team, '12-'13-'14; Assistant in Physics, '11-'12; Assistant in Physiology, '12-'13-'14; Business Manager *Chilhowean*, '15.



SAROSA ROSAMOND MELICK

Annandale, N. J.

Bainonian

General; President Bainonian, '14, Spring Term; Cabinet Y. W. C. A., '13-'14; Class Orator Commencement, '15.



"SAROSA"

CHILHOWEAN



THOMAS HARVEL MITCHELL

Ironton, Mo.

A Σ

Classical; President Alpha Sigma, '15, Winter Term; Vice-President Adelpic Union, '14-'15; President Chess Club, '13-'14; Vice-President Prohibition Association, '13-'14; Secretary Y. M. C. A., '14-'15; Class Quartette, '13-'14-'15; Instructor in Book-keeping, '13-'14-'15.



"MITCH"

FRANK MACQUARIE MOXON

Lowell, Mass.

A Σ



"MOX"

General; Recording Secretary Alpha Sigma, '13, Fall Term; Corresponding Secretary Alpha Sigma, '14, Spring Term; Vice-President Alpha Sigma, '15, Winter Term; Alpha Sigma Editor on College Monthly, '14-'15.



CHILHOWEAN

ALBERT FRANCIS MURRAY

New Decatur, Ala.

A Σ



"AL"

Mathematics; Secretary-Treasurer Class, '12-'13; Interclass Debater, '13; Class Football, Basketball and Baseball; Founder, '12, and Chief Operator, '12-'13-'14-'15, Maryville College Wireless Station; Assistant Business Manager Chilhowean, '15



WINIFRED LEE PAINTER

Maryville, Tenn.

Bainonian



General; Vice-President Bainonian, '14, Fall Term; Secretary Bainonian, '13, Fall Term; Class Editor, '14.



"WINIFRED"

CHILHOWEAN



SAMUEL FRANKLIN POWEL, JR.
Rogersville, Tenn.

Athenian

*Classical; President Athenian,
'15, Winter Term; Class Ora-
tor Commencement, '15.*



"TEAM"

MADGE TIPTON REAGAN

Maryville, Tenn.

Θ E



"MADGE"

*General; President Theta Ep-
silon, '13, Fall Term; Secre-
tary Theta Epsilon, '12, Spring
Term; Treasurer Theta Ep-
silon, '12, Fall Term; Vice-
President Class, '13; Class
Quartette, '13-'14-'15; Stu-
dent Representative on Board
of Athletic Control, '13-'14;
Editor-in-Chief Chilhowean,
'15.*



CHILHOWEAN

JOHN VANT STEPHENS, JR.

Cincinnati, Ohio

A Σ



"STEVE"

General; President Alpha Sigma, '14, Spring Term; Vice-President Alpha Sigma, '14, Winter Term; Secretary Alpha Sigma, '13; Vice-President Class, '13-'14; Class Basketball and Baseball; Secretary Y. M. C. A., '13-'14; Advisory Board Y. M. C. A., '14; Cabinet Y. M. C. A., '13; Swimming Pool Committee, '14; Baseball Reserves, '13, '14; Manager Baseball, '15; Editor *College Handbook*, '14-'15; Assistant in History, '15.

CORINNE FLEMING TÊTEDOUX

Norwood, Ohio

Bainonian



General; Secretary-Treasurer Class, '11-'12; Private Secretary to the President, '11-'12-'13-'14.



"CORINNE"

CHILHOWEAN



GEORGE LYNN TONEY

Erwin, Tenn.

$\Lambda \Sigma$

General; Class Baseball; Captain Baseball Reserves, '12, '14.



"LYNN"

HOWARD HANNINGTON WILSON

Maryville, Tenn.

Athenian



"HIJO"

General; President Class, '12-'13; Captain Class Football Team, '11; Member Committee on Cross Country Races, '12-'13.



Our Final Word



E, the Class of Nineteen Hundred and Fifteen, have long looked forward to that time when we would be Seniors. We have been forging forward slowly, yet steadily, towards that goal which has been so highly placed by our ambitions. Until the last few months this goal has seemed somewhat mystic, lacking in definite shape. But now it begins to loom up before us with all of its realities.

We have likewise eagerly anticipated that day when, having completed our preparation for life and its problems, we would stand on the threshold of that great door which opens only once, ushering us into a new and broader life.

Yet, there is a feeling of deepest regret, tinged with sorrow, that we find ourselves on the verge of leaving our old school, which, during our college days, has come to mean so much to us. The memories of these days, days which are ending all too soon, long will linger with us. Memories of those principles of our Alma Mater, which, through College have been molding our characters, will go with us through life, serving as monitors to keep us from stepping aside into the green and pleasant pastures along life's highway.

We now begin to comprehend the stern problems of life's practicalities which stand before us; between us and success. But before these seemingly insurmountable difficulties that block our path, we do not waver. We stand ready and eager to prove to our Alma Mater, as well as to the world, that we can acquit ourselves like men and women. We believe that the hours spent in these old walls on College Hill have not been spent in vain, and we go out with the intention and determination of bringing naught but honor upon our Alma Mater.

Our class will soon be divided. Some will proceed immediately to the front, where they will take their stand to prove themselves worthy. Others will still further pursue their preparation for life's work, in order that they may make their lives count most for that which is worth while, leaving behind them a name, ineffacable forever, in the hearts of mankind. Although divided in numbers, in purpose we shall stand united, with the determination to succeed in whatever walk of life we may pursue; determined that the world shall be better because we have lived.

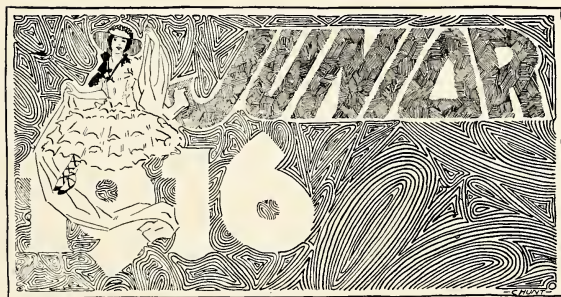
To those who have the interest of Maryville College at heart; to those who have gone out before us and now face life's problems; to those who will follow in our footsteps, Greeting.

This volume is our farewell message to Maryville College, a final word to our Alma Mater. It is a monument to College Life, which, in after years, will serve as a gentle reminder to bring before us the sweet memories of college days of long ago.

Resolution (A Retrospect)

O Classmates, when in life's mad tempest wild
Our timid barques meet shock on shock, and we
To grovelling fear have almost yielded; free,
But by a faith in something not defiled
By contest with dark storms, wave on wave piled,
'Tis but to try our faith that we may see
What virtue lies in hope, what men we be,
And by these hopeful thoughts have our fears stilled.
For these great tests of virtue were prefaced
By many aids to faith on yesterday,
When on our class first shone the sun and braced
With his warm beams our cold hearts. Fearfully
Have we been led, but surely we've been placed
Where we, bound by old ties, serve manfully.

CHILDHOOD



(49)



(50)

CHILHOWEAN



L. GRAY WEBB	President
GEORGE M. ADAMS	Vice-President
LULA B. CRESWELL	Secretary
CHAUNCEY E. CONRAD	Treasurer
FRED R. WHALIN	Editor

Junior Class

Colors: Gold and White.

Motto: B².

Flower: Daisy.

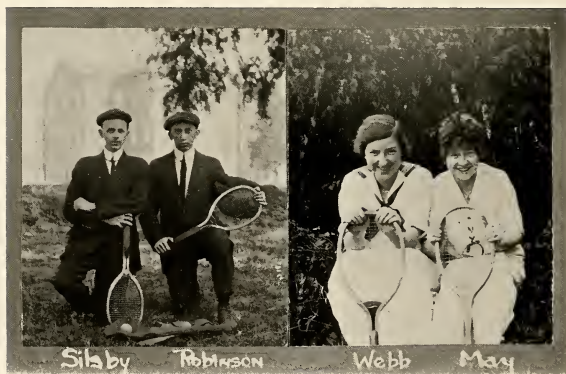
MEMBERS

ALMA ADAMS	ABIGAIL FITCH	ETHEL McKELVEY	JESSE ROSS
GEORGE M. ADAMS	EDNA FOSTER	ALETHA MAY	HELEN M. SCHAUL
RUTH ALTER	MARGARET GEDRGE	LILY MITCHELL	CHARLES E. SILSBY
A. B. CALDWELL	CORA J. HENRY	HARWELL PARK	RAYMOND SMITH
R. W. CARVER	ZELMA KENNEDY	WILLIAM PLEASANTS	KATHERINE SUGG
CHAUNCEY E. CONRAD	J. EDWARD KIDDER	KEITH POSTLETHWAITE	MURIEL TAYLOR
LULA B. CRESWELL	TRACY F. KNAPP	WILLIAM A. POWEL	H. W. THREKELD
FRANK M. CROSS	GEORGE T. LIDDELL	D. W. PROFFITT	S. E. WALLIN
EDNA DAWSON	BERNICE LOWRY	ROLFE M. RANKIN	L. GRAY WEBB
ARTHUR FERGUSON	COY MCCURRY	OSCAR ROBINSON	FRED R. WHALIN
LOIS WILSON			

(51)



CHILHOWEAN



JUNIOR CLASS TEAMS

(52)

Junior



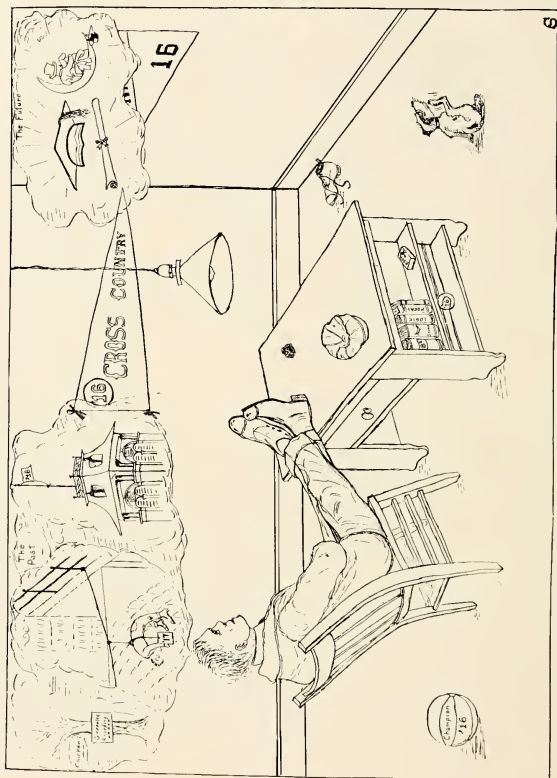
N pleasant retrospection we recall the pleasures that have come into the making of our history. It is not a history premeditated or laid out in an orderly or systematic way, but only a spontaneous reaction to stimuli, and an adjustment to environment. The assiduity of the past obviates any anxiety for the future, and our proclamation to the world asserts our fighting spirit.

We continue to play leading parts in every phase of college life. In athletics we hold the class championship in basketball, baseball, and girls' tennis, and we have nine men on Varsity teams. We are represented six strong in the Ministerial Association, and we are all active in literary society work. But our greatest and most enviable accomplishment is successful "moonshining." Where is there a class that has so many patient, diligent, and aggressive moonshiners as does the Class of Sixteen? We set a precedent for all that come after, and such a precedent establishes prestige that leads to achievement.

We still retain the loyalty and unity that have characterized us since the valorous Freshman days. Often have we incurred the enmity of upper-classmen, and bravely have we borne the odium of under-classmen, but always winning the friendship of neutral-classmen, and never wavering in the performance of our duty. We expect every man to do his duty now and throughout life. We shall always remember kindly those who have instructed us; who have enlarged our opportunities and have elevated our ideals. Their reward must be in our boundless gratitude.

YELL

Strychnine, quinine, powder and dust,
Where we are there is fuss,
Skull and cross-bones, we're a fright,
Brain and brawn for Gold and White!



JUNIOR MEMORIES AND VISIONS

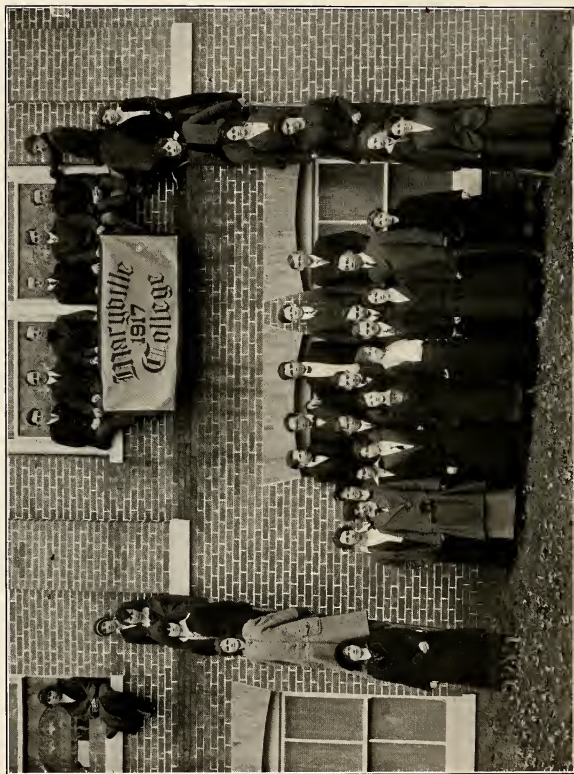
CHILHOWEAN

1917



Sophomore

(55)



(56)

Sophomore Class

Colors: Purple and Old Gold.

Flower: Yellow Rose.

Motto: Impossible is Un-American.

Yell: Gold and Purple; Purple and Gold;
 Sophomore, Sophomore; all's been told.
 Are we in it? I should smile!
 We've been in it all the while!
 Well! Well!! Well!!!

1917

OFFICERS

J. C. WALKER *President*

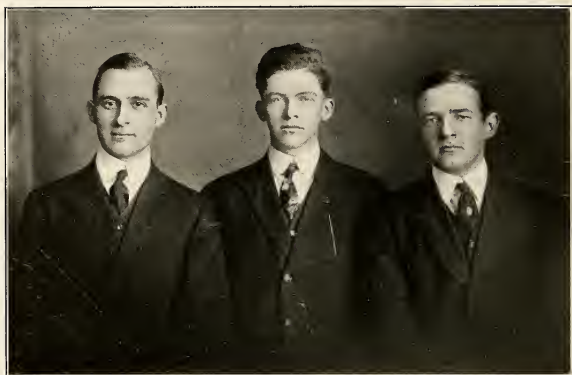
LORINE SCHEER *Vice-President*

R. C. GAMON *Secretary and Treasurer*

MARY MATHEWS *Editor*

(57)

CHILHOWEAN



SOPHOMORE DEBATERS



Sophomore



OPHOMORE AGE is a Freshman's ambition, a Junior's relinquished joy, and a Senior's happy memory. It is the time when it becomes an assured fact that nothing can stop the progress along the thistle grown path which leads at last to a cap and gown. It is the time when one realizes that knowledge is the only power that can move effectively the machines of the twentieth century.

We are proud of our class. We have passed the careless, easy-going days of the Freshman, and entered into the thoughtful and ambitious life of the Sophomore. It is in the Sophomore Age that scholarship begins to make its appearance, and the Class of Seventeen is well represented in the ranks where scholarship is the important factor.

In athletics we find many of our members taking an active part, and among them are to be found the Varsity baseball and football captains.

We have always taken an active part in the religious work of the College, and during this year we have had unusual opportunity for showing our strength in this important phase of school life.

Things are valued largely by the amount of "spirit" they contain. A college class without enthusiasm is much like a race horse without "life"; for the members of the class are in the race for higher and better things, and it takes spirit to win. The Class of Seventeen has always possessed the get-up that is required to attain things. However, early in our Sophomore year the spirit of our class was *crushed* by those "higher up"—for political reasons it is supposed. This *crush* has been greatly deplored by the "fair ones" in our class, and it will always remain a sad, dark blot on our history.

The only interclass challenge that we have received came from the Freshmen, and we took great pleasure in accepting their invitation to a debate. We hope that they will be able to interest our three representatives.

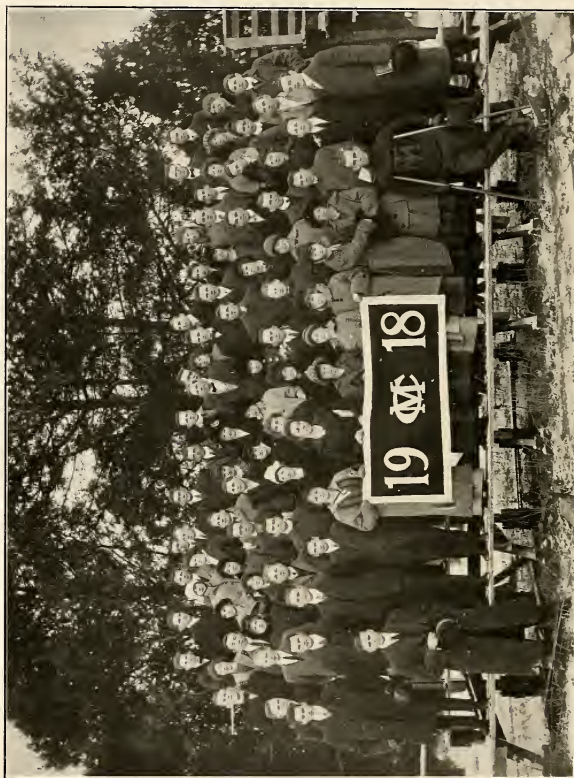
As this is the final lap for our friends and advisors, the Class of 1915, we take this opportunity to wish them much pleasure and much success in their future work. Their friendship has been a source of joy to us, and we shall always cherish in our memories the Class of 1915.

The Departure of Class Spirit

When I consider how the year is spent,
E'er half my days in these old walls are o'er,
And ne'er again that spirit as before,
Which even is torn and from the classes rent,
And leaving us in sorrow to relent
The joys which fondly were our happy store.
"Is there," I ask, "yet nothing to be sent
From her who granted spirit yet before?"
Answer soon replies, "Dean M doth not need
Either students' will or their good advice.
Who best bear her mild yoke and stand her creed
Will from crime and demerits all be freed;
They serve her all, who do for her their best,
Just so they let all class-like spirit rest."



(61)



(62)

CHILHOWEAN

Freshman Class

Colors: Orange and Black.

Flower: Tiger Lily.

Motto: Finimus Coepturi.

YELL

Sika-ta-boom, rah! rah!
Sika-ta-boom, rah! rah!
Hoorah! hoorah!
Freshman, rah! rah!

OFFICERS

AUBREY W. WILLIAMS	President
ANNA CRESWELL	Vice-President
CECIL CROSS	Secretary and Treasurer
ANDREW RICHARDS	Editor



ACH successive year brings to Maryville College a larger Freshman Class than that of the previous year. And in keeping with this numerical growth comes an increased amount of talent, ability, and versatility into the activities of student life. Then it is the natural order of things, supplemented by a favoring good fortune, to which we attribute the presence of so gifted a class as ours.

Our sketch cannot be particularly a historical one, for, while our history is interesting, it is as yet not lengthy enough to be an all absorbing topic. But the best idea of the history we are to make can be presented by taking stock of our membership.

We enumerate 80. The numerous deeds and qualifications of each member of the class render futile an attempt to recount, with any degree of fullness, individual histories or descriptions. Suffice it to say, that there is no department of activities, open to students of our college, in which Freshmen are not taking part. The effectiveness of their action is evidenced by the leading positions which they have won in the various organizations and athletic teams.

But, just as we are aggressive and unflinching toward outsiders who would oppose us, we are loyal and a compact unit within. Friendliness, sympathy, and co-operation characterize our every relationship one with another. Our feasts, our jaunts, and our social gatherings, all have abounded with abundant expression of that class spirit which is the keynote to our organization and its expectations for the future.

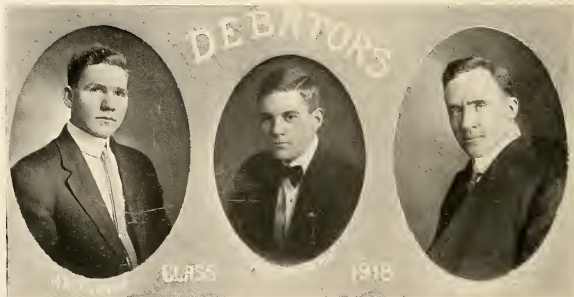
A college course is, to the life of the individual, a gift from ages of development and accumulation of knowledge. As we enter upon ours with that realization, we are aware that so singular a gift can be given but once. Thus, it is and shall ever be our purpose to entertain the complete spirit of college life, utilizing its benefits, seizing its opportunities and enjoying its pleasures.

(63)

194

418

CHILHOWEAN



(66)

CHILHOWEAN



(67)



Pearsons Eating House

MENU

AQUA SOUP

A FRESH CRACKER

HASH AU YESTERDAY

BEANS A LA EVERY DAY

SQUEEZED POTATOES

DISAPPOINTED ROLLS

BATTER (ED) CAKES

OLD LADY (SEQUESTERED)

CATCH UP (NEXT SUNDAY)

COW MILK

PUMP WATER

RAW APPLES (PIE ON TUESDAY)

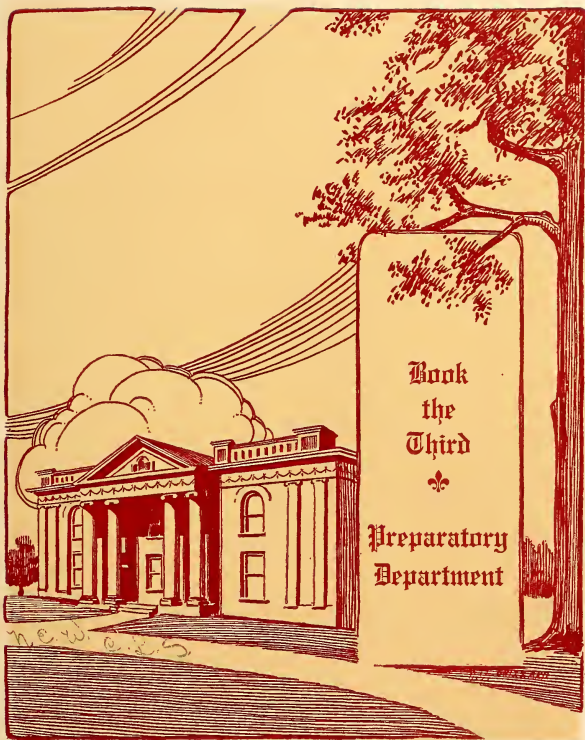
SALT (SOME CLASS)

BELL

PASSED BY POOR FOOD COMMISSION

(68)





Preparatory Department



THE Preparatory Department, contributing both in numbers and influence, forms no small part of Maryville College. Athletic, literary, social, and religious activities all find among their supporters a large proportion of Preps., and no representation of the school can be correct unless it gives this department a prominent place.

The Preparatory School is on the basis of the Carnegie Foundation requirements, and its standard is as high as that of the foremost secondary schools. All the privileges and advantages of the institution are available to students in this department. It offers two courses of study: the Classical and the General. Its popularity is evidenced by the fact that almost half the States of the Union and several foreign countries are represented in its membership.

Maryville was fortunate in securing, at the beginning of this year, Professor Ellis, formerly Dean of Carson and Newman College, to take the principalship of the Preparatory Department, and under his leadership this branch of the College undoubtedly will grow yet more in strength and influence.



(70)



Fourth Year Preparatory

Colors: Purple and Gold.

Flower: Violet.

MOTTO

Make no enemies, but have many friends.
Borrow all you can, but make no lends.

YELL

Fourth Prep., Fourth Prep. of old M. C.!
Nineteen-nineteen we're glad to be!
See us, watch us ever fly!
Our lowest ideal is in the sky!

OFFICERS

JOHN K. WITHERSPOON	President
KATE HILL	Vice-President
LUTHER MCCURRY	Secretary-Treasurer

Starting four years ago along the road of prepdom, we have now arrived at the end of the way. It has not been altogether a smooth and easy path, for there have been rough places where some have fallen. Thus only a part of those who began the journey will finish the final lap. That number, however, is larger than the accompanying picture would indicate.

Now that we are in sight of our last mile post, we find that it is not the end, but only the beginning of the larger and broader preparation of a college course. And we trust that next year will find every member of our class entered for the start in this further preparation for life's usefulness.



CHILHOWEAN



(72)





Third Year Preparatory

Colors: Garnet and Gray.

Motto: No surrender.

Flower: Sweet Pea.

YELL

Hip-Hip-Hooray!
Third Prep Hooray!
On through Prepdom!
The Garnet and Gray!

OFFICERS

EDWARD S. CAMPBELL	<i>President</i>
ERNEST K. JAMES	<i>Vice-President</i>
KATHLEEN PORTER	<i>Secretary and Treasurer</i>

(73)



CHILHOWEAN



(74)



Second Year Preparatory

Colors: Gold and White.

Flower: Daisy.

Motto: Impossible is not in our dictionary.

YELL

Boom-tra-la! Boom-tra-la!

V-I-C-T-O-R-Y!

Are we in it? Yes, I guess!

Second Preps! Second Preps!

Yes, Yes, Yes.

OFFICERS

MARGARET L. BROWN	<i>President</i>
H. G. WEISBECKER	<i>Vice-President</i>
LILY PROFFITT	<i>Secretary-Treasurer</i>
JESSIE THISTLE	<i>Business Manager</i>
FRED KING	<i>Business Manager</i>



CHILHOWEAN



(76)



First Year Preparatory

Colors: Green and White.

Flower: White Lily.

Motto: Ad astra per aspera.

YELL

Hobble, gobble! Razzle, dazzle! Sis-boom-ah!

First Prep., First Prep!

Rah! Rah! Rah!

OFFICERS

DANIEL H. THOMAS *President*

HELEN GODDARD *Vice-President*

LUTHER F. SHARP *Secretary-Treasurer*

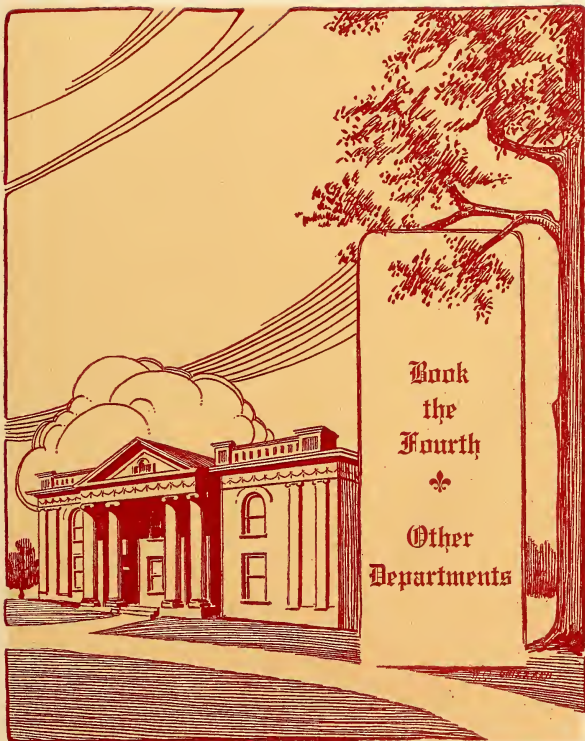
ALLEN F. GROENEVELD *Editor*



CHILHOWEAN



(78)



Other Departments



GLANCE at the history of Maryville College reveals a steady growth and expansion. Aside from an increase in the efficiency and capacity of the original departments, more have been added until at present there are four departments which are distinctly separate from the College proper.

These Other Departments are Music, Expression, Art, and Home Economics. The first three have been parts of the College for a number of years, but the last is only in its second year. The recent demands made by students for courses in these branches have necessitated an extension and a remodeling. While students taking regular college work are admitted for courses in these Departments, yet those who wish to specialize only are permitted to do so.

Since these schools, with increased attendance and growing interest, are upon better foundations than ever before, and since they are in charge of efficient directors, we may safely predict further extension and a wider influence in the future. And we hope that before many years Maryville College will add to these an Agricultural Department.



"We may live without poetry, music and art;
We may live without conscience and live without heart;
We may live without friends, we may live without books,
But civilized man cannot live without cooks."

—Merideth.

THE third floor of Science Hall has been the scene of many and varied activities during the past school year. Come to the sunny, well-equipped sewing room on any school day and see in what a hive of industry you will find yourself. If it is a class of beginners, you will see college girls taking slow, painstaking stitches in their first hand-made garment. Or if it is an advanced class, some will be at the sewing machines, others drafting or modeling.

Come into the spacious kitchen and watch the Maryville College cooks prepare fruit after the most approved modern methods, bake a loaf of bread such as mother used to make, or serve an emergency luncheon to favored members of the faculty.

An attractive feature of the work was added this spring when Mr. Lewis, of Knoxville, consented to give a course in tailoring. About twelve of the most competent pupils are taking this course, which we hope will become a permanent feature of the Department.

We appreciate the co-operation of the Faculty, especially Dean Barnes, who has proposed establishing a matrimonial bureau to be carried on in connection with the Home Economics Department. The only fear is that even our spacious rooms would not accommodate the large classes that would enroll in this course.

Miss Smith and Miss Huff have the honor of being the first graduates. The fact that we have a graduating class when the Department is barely two years old is remarkable, and gives evidence of a spirit of interest which has already made this one of the most desirable courses offered by the College.

CHILHOWEAN



CLASSES IN HOME ECONOMICS

CHILHOWEAN



CLASSES IN HOME ECONOMICS

CHILHOWEAN



Expression Department

1914-15

TUNNELL BOGLE
J. REA BUTLER
JOHNNIE CATLETT
ALICE CLEMONS
ETHEL FANSON
G. A. FOGLEMAN
EDITH FOX
ANNIE LEE FRAZIER
MAUD GAYLOR
GENEVIEVE GIBSON
GRACE GOODPASTURE

NELLIE GOODPASTURE
LILLIE HENRY
LOIS HENRY
MIRIAM HUTSELL
JANET JACKSON
SOPHIE KARTE
J. H. KIGER
MURIEL MITCHELL
FRANK M. MOXON
MARGARET PEELER
KATIE LEE POWELL

KATHERINE SUGG
RUTH QUINN
PAT QUINN
GEORGE SIMPSON
ELSIE TIPTON
MARTHA VANCE
ELSIE WALKER
ECKLES WEST
F. R. WHALIN
MARION WILBANKS
NELLIE WILSON

(83)



The Department of Music

THE Department of Music of Maryville College has recently been reorganized and placed under the leadership of a responsible head.

Miss Hale, who has been appointed head of the Music Department and Teacher of Piano, is a graduate of the Cincinnati Conservatory of Music, and previous to taking charge of the teaching of piano in Maryville College, two years ago, was employed as teacher of piano and harmony in that Conservatory. Since she has directed her efforts toward enlarging the Music Department of Maryville College, that department has grown so rapidly that new rooms in the large chapel building have been opened for use as studios and practice rooms, new pianos have been purchased, and three assistant teachers procured.

The assistants are graduates of the department who have been further trained for their work by a special course in piano at the Cincinnati Conservatory of Music, where they have also made a study of the most advanced methods of teaching.

The College considers itself very fortunate in having been able to secure Miss Zanna Staater as Teacher of Voice. Miss Staater is a graduate of the Cincinnati Conservatory of Music, where she attained distinction as a singer. She came highly recommended by her Alma Mater, and has shown herself to be well equipped for the development of the work which she has in charge.

CHILHOWEAN



PIANO DEPARTMENT



VOICE DEPARTMENT

(85)



ANNA BELLE SMITH

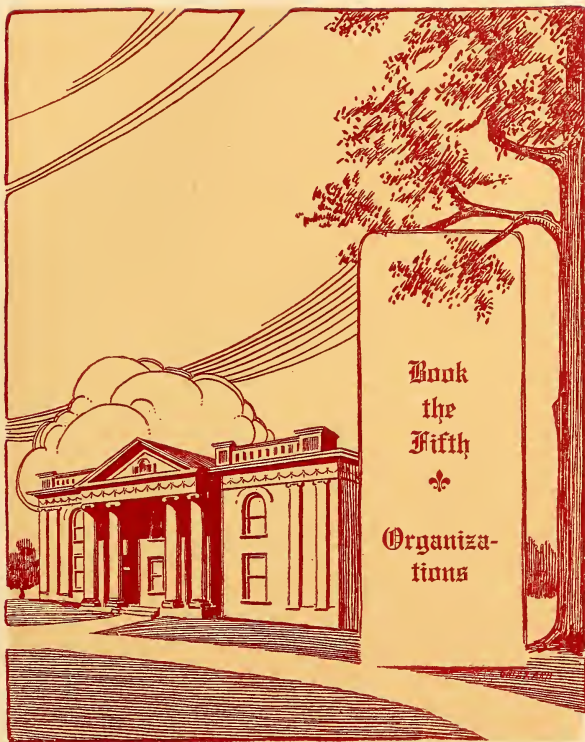
Department of Art

ANNA BELLE SMITH, *Head*

The work of the Art Department is to cultivate the æsthetic sense, and to train the eye and hand, thus adding to the student's ability along many lines of work.

The courses include:

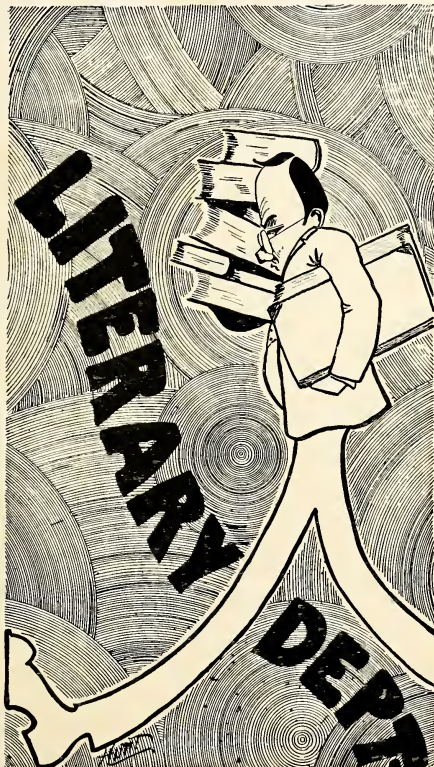
1. Study of Form and Color in objects and in landscape from nature.
2. Figure drawing from living models.
3. Theory of Perspective and Color.
4. Elements of Applied Design.
5. Modeling and Pottery Making.



Book
the
Fifth



Organiza-
tions



(87)



(83)

Alpha Sigma

SENIOR SECTION

L. E. BOND	C. J. GIBSON	T. H. MITCHELL	G. N. STEELMAN
H. O. BUSH	G. HODGES	F. M. MOXON	R. L. TAYLOR
H. L. CATON	J. A. HOLLOWAY	W. B. PARKS	WM. SHERRILL
BLAINE CRUM	C. S. LARUE	W. S. PEREA	H. TURNER
C. E. DAWSON	J. E. KIDDER	W. H. PLEASANTS	HARRY VINYARD
HORACE DAWSON	TRACY F. KNAPP	D. W. PROFFITT	J. C. WALKER
FORD DAY	C. S. LLOYD	PAT QUINN	S. E. WALLIN
J. V. DEALEY	G. A. LLOYD	HUNTER RODGERS	B. E. WATKINS
J. E. ENSIGN	R. W. LLOYD	AUGUSTUS SISK	B. G. WEAVER
H. H. FERNTHEIL	G. T. LIDDELL	CHAS. STANSBURY	DECK WILLIAMS
P. G. FULTON	CARL LYLE	J. V. STEPHENS, JR.	Z. J. STANLEY
R. S. GAMON	A. F. MURRAY	A. RICHARDS	T. W. GODDARD
W. R. GARRISON	R. MAPES	JOE ROSE	LYNN TONEY
	C. E. MCCURRY	MAX LESTER	

JUNIOR SECTION

DAVID BRIGGS	LAMAR WILSON	TILLMAN HENRY	FREDRICK ALLEN
O. H. LOGAN	BRUCE BUTLER	ALLEN TURNER	CEDRIC MILLER
LUTHER MCCURRY	MAX COOK	JOHN TURNER	C. W. SIMMONS
RALPH MOORE	HERBERT ENLOE	RALPH YOUNG	JOEL GEORGES
J. B. TWEED	PEDRO HERNANDEZ	EARNEST JAMES	THOS. SMITH
EDW. CAMPBELL	ISAAC HUSKEY	L. M. CROSS	R. R. ROYAL
SAMUEL MCCLARY	MELVIN LAWSON	J. MURRAY MACKAY	DON LUTHER
W. W. MOORE	H. L. SENTELLE	J. A. DENNIS	W. G. GOREHAM
FRED PETERSON	HOBART FORD	J. A. HUFFAKER	S. M. ARMSTRONG

PATRICK SLATERY

CHILHOWEAN



PARTICIPANTS IN ALPHA SIGMA MIDWINTER

Left to Right: Queen Elizabeth, RALPH W. LLOYD; Count Bellievre, F. M. MOXON; Pages, MARGARET and LOUISE McCLENAHAN (Sitting); Fool, O. H. LOGAN (Sitting); Earl of Leicester, PAT QUINN; Lord Burleigh, C. E. DAWSON; Scotch Quartet, A. SISK, W. B. PARKS, J. C. WALKER, J. H. TURNER; Sir Walter Raleigh, H. O. BUSH; Sir William Shakespeare, B. G. WEAVER; Doorkeeper, CEDRIC MILLER; Messenger, MAX G. COOK.

The Midwinter

IT has long been the custom for each literary society to give annually a public entertainment commonly called a "midwinter." The purpose of these midwinters is to show to the student body and to the people of Maryville something of the efficient work which the societies are doing; to give to the society members an opportunity for practice in public speaking; and incidentally to aid in keeping the society treasuries filled.

There is always much local interest in these entertainments, and careful plans and preparation are made for them. No dramatic productions, except light original sketches, are given.

In December the Alpha Sigma Society gave its midwinter for this year. The subject was "Courtship"; the scene was laid at Queen Elizabeth's court in 1587; the characters included Elizabeth, Sir Walter Raleigh, William Shakespeare, and other well-known figures of that day; the plot was woven around the trial and execution of Mary, Queen of Scots.

Alpha Sigma



THE Alpha Sigma Literary Society was founded in the year 1882, and for over thirty years has continued its triumphant march of progress. Organized by a little band of men, it has grown and prospered with each succeeding year until over one hundred persons answer to their names at its roll call. Its past history is one of progress and achievement. Since its inception it has given to the world one hundred and fifty graduates, who have taken their places in almost every honorable and useful walk of life.

But brilliant as has been the past record of the Society, it today approaches the zenith of its history. Never before have so many rallied to its banner, and never before has the work accomplished been so willingly and efficiently done. During the past year the Society grew by leaps and bounds, both in literary attainment and in membership. Working harmoniously together, the two Sections, the Junior and the Senior, have added new thought and purpose to the Society's life. A remodeled constitution, adjusted to the growing needs, has resulted in definite progress. Not only has the literary life been strengthened, but the social life has been broadened. While offering to the ambitious and strong work to do, it also invites them to a close friendship and a warm fellowship. Yes, this year is one that will forever live in the memories of the ten graduates who leave it, and one that will linger long in the memories of those who remain. The Alpha Sigma Society rejoices with its friends for the noble record of the past, for the great attainments of the present and for the brightest future of its history.

CHILHOWEAN



(92)



ATHENIAN MIDWINTER PARTICIPANTS

Athenian

TO the Athenian belongs the distinction of being the oldest student organization on the "Hill." Organized in 1868, soon after the College was reopened at the close of the Civil War, the Society has grown in numbers and prosperity along with the College.

The year which is just past has been a successful one in many respects for the old Athenian. Many new members have been added to our roll—nearly thirty in the Preparatory Section alone. A view of our elegant quarters on the third floor of Anderson Hall can be seen in the picture above.

The Athenian has counted among its membership many of the most talented men that the College has produced.

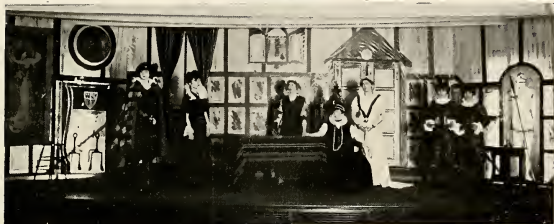
The Society has a tradition of earnest endeavor and a high standard of excellence in literary work, and of loyalty to our Alma Mater. Each year sees this tradition translated into an ideal to spur its members on to greater achievement. We predict for the Athenian a future as bright as its past.

(93)

CHILHOWEAN



(94)



SCENE FROM "THE ABBOTT," BAINONIAN MIDWINTER, 1915

Bainonian



HAT Bainonian stands for faithful, efficient work, is shown by the fact that out of the nine Senior girls of this year, Bainonian claims five. As usual our society has increased, and the new members enter heartily into the work that "makes the society go." After welcoming the new girls and receiving a number of them into her ranks, Bainonian entertained one evening. An interesting feature of this meeting was an account from each member of how she had spent the vacation.

Bainonian gives to the Preparatory girls as well as to the College girls an opportunity to display their merits; in fact, they are cordially welcomed. Our meetings are well attended and our programs, which consist of music, debates, readings, and evenings with authors, are much enjoyed. The girls have always entered heartily into the spirit of the occasion, for they realize that these programs tend to broaden their viewpoint. Recently an evening was spent in reviewing the history of the society, and several charter members took part. We listened to papers which told about some of our members who had graduated and made a success of life. Why! Bainonian boasts of lawyers, physicians, writers, and missionaries! The girls were so enthused over this historical evening that our President was overwhelmed with requests for a repetition in the near future. Bainonian started the Winter Term with a full house and open mouths. Each girl brought her glass and spoon, and ate and drank of the dainty refreshments provided.

With the steady growth of our Society, both in numbers and intellectual development, due to our instructive programs, Maryville College is proud of one society. Which society? BAINONIAN!



(96)

Theta Epsilon

Lost In the Snow

(A true story of a Theta's grandfather.)



THE shortest day of the year was wearing to its close, ushered out by such a storm as only the dwellers in the region around Lake Erie know anything about. Blinding snow was driven before a fierce, howling wind which one moment swept it into huge, trembling drifts and the next left an expanse of bare, frozen ground. Sleet and particles of ice cut the face like needles, and, to add to the white desolation, the cold was of that peculiar crushing character so intense as to be hardly endurable.

Two weary travelers, plowing through the drifts, one moment forced before the wind, the next hurled back by a sudden gust, followed their worn-out horses through the trackless forest, that, in the early days of the colonies, covered the great region of the north. They were the circuit rider and his little son, who had left the settlement several days before, hoping to reach their home on the lake shore before Christmas.

Autumn had been unusually late that year. Only a few days before and the forest was a waving cloud of color. A flock of screaming crows mocked the coming winter; here and there a bird called through the stillness; squirrels danced from tree to tree in search of nuts, as if, with greater insight than man, they could foresee the future and took this last opportunity to add to their winter store. Is it any wonder that the travelers, assured by these signs of continued mildness, should have neglected to prepare for a storm? The road through the forest was only a hunters' trail, over which, in good weather, the backwoodsman could, with difficulty, carry the barest necessities to his family. Instead of articles for their own comfort while on the way, they would take a few Christmas things for the mother and younger children at home. When night came on they would stop at the cabin of some settler and find a place on the hearth before a blazing log fire, for the kindly minister and his little son were welcome visitors to the simple backwoodsmen.

The first day passed uneventfully. At night, failing to reach a house, they made a fire of resinous pine, roasted a rabbit for their supper, and, wrapping themselves in their blankets, lay down to sleep. But what a change the morning brought! They were awakened by the cold and thus kept from freezing, only to find themselves buried in the snow. Their clothes were frozen, their packs lost and their horses stamping about

CHILHOWEAN

in a useless attempt to keep warm. Although the situation was bad enough, yet such discomforts were not unusual in the life of the pioneer, and it was not long until wood had been found and a good breakfast was cooking over the fire. The man and boy dried their clothes, fed their horses, dug their packs from a nearby snowdrift, and were soon ready to start. The snow was steadily falling. To wade it was impossible; but for the horses to carry their packs and riders was also out of the question. Besides, walking was the only way to keep from freezing; so it was decided to leave the packs behind, and to drive the horses ahead, while they themselves would follow in the path thus made. At first the father was sure of the way; but it was not long until he realized that the trail was entirely covered. If they were ever to reach the little cabin on the border of the Lake, nothing but their hunter's instinct would guide them. So they struggled on until afternoon, sometimes riding, sometimes walking, but every hour growing more and more weary. Through all the long tramp they saw not one sign of life. No smoke arose from settlers' huts, inviting them to warmth and comfort within; no bells sounded across the snow. Even the rabbits had hidden in their burrows, where they would starve unless the snow should form a crust, over which they could run to find food. The snow fell so fast that it almost blinded them and, with the thick foliage of the pines, made noon seem twilight.

At last the child's strength was so far gone that he could no longer follow his father. A great pine tree, whose branches drooped almost to the ground, offered the best shelter the forest could give. They had long ago given up all hope of reaching home, and so, making a path around the tree, they prepared, as a last resort, to walk around and around until help or unconsciousness should relieve them. When the little boy fainted, the father wrapped him in his own great coat, and, laying him in the snow, took up the weary march alone, stopping from time to time to be sure that the child was as comfortable as he could be made. At last he was himself overcome and fell in the snow at the boy's side. There a search party found them in the morning. The man was dead, but his son, protected by the coat, was soon revived, and lived to tell the story of their terrible experience.

The child is an old man now, and the country through which they passed has many prosperous farms and thriving cities; the old forest has long ago disappeared, and a railroad takes the place of the Indian trail; but to him it is always a lonely, frozen wilderness, with wolves howling and snow falling, himself a frightened little boy, wrapped in the coat of the great hearted father to whom he owes his life.

THETA.



CHILHOWEAN





Intercollegiate Debate, Nineteen Fourteen

IN 1909 a Triangular Debating and Oratorical League, composed of Maryville, Carson-Newman, and Tusculum, was formed. A silver cup, offered to the college winning the largest number of points for three consecutive years, was awarded to Maryville. In 1914 there was a meet with Carson-Newman only, but the League has now been renewed for the years 1914-16.

Last year the question debated was: "Resolved, That Congress should pass a minimum wage law, to be applied to all industries engaged in interstate commerce, the constitutionality of such action being conceded." Maryville's affirmative team, composed of R. A. Ramsey and Chauncey E. Conrad, debated at home, while E. R. Hunter and A. S. Moore defended the negative at Jefferson City. After stirring contests, in which all these men made strong pleas and acquitted themselves in a most credible manner, both decisions went to Carson-Newman. However, the defeat brought no dishonor upon our representatives, and attention was turned at once to the task of bringing the decision to Maryville in 1915.



Law Club

MOTTO: "People cannot live without us, and certainly cannot die without us."

OFFICERS

PAT QUINN	President
EMMETT KILPATRICK	Vice-President
CARL S. LLOYD	Secretary
CHAS. E. DAWSON	Treasurer

ALTHOUGH the Law Club of Maryville College is only a child in years, yet it has already taken its place among the best organizations on the Hill. Last year when a small group of prospective lawyers organized the club they formed the nucleus of a growing organization. Many of their anticipations have already become realizations. We opened this year with a large attendance, consisting of old members and others who have since joined our ranks. As formerly, we hold regular biweekly meetings. Our programs consist of orations, essays, mock-trials, and the like, all of which are interesting as well as instructive. If you want to know "Who is who and why" at Maryville, visit one of our meetings; we will convince you; that is our business.

(101)

CHILHOWEAN

Swimming Pool



Seniors breaking dirt



"Henry"
Basket Ball Team



"Harwell"



Rx-15



After the Game



(102)

CHILHOWEAN

COLLEGE



Publications

(103)



CHILHOWEAN





Chilhowean Staff

MADGE T. REAGAN . . . *Editor-in-Chief*

RALPH W. LLOYD . . . *Business Manager*

CHARLES E. DAWSON . . . *Associate Editor*

ANNE CRANE . . . *Associate Editor*

ALBERT F. MURRAY . . . *Assistant Business Manager*

ALFRED D. BIGGS . . . *Assistant Business Manager*

J. EVANS ENSIGN . . . *Poet*







Maryville College Monthly Staff

H. W. THRELKELD, '16	<i>Editor-in-Chief</i>
GEORGE M. ADAMS, '16	<i>Business Manager</i>
H. W. THRELKELD, '16	<i>Athenian</i>
EDITH HUFF, '17	<i>Bainonian</i>
FRANK M. MOXON, '15	<i>Alpha Sigma</i>
ERMA RUSSELL, '17	<i>Theta Epsilon</i>
J. EDWARD KIDDER, '16	<i>Y. M. C. A.</i>
ANNA JONES, '17	<i>Y. W. C. A.</i>
R. W. CARVER, '16	<i>Athletics</i>
ISABEL PORTER, '17	<i>Student Volunteer Band</i>
S. E. WALLIN, '16	<i>Exchange</i>
PROF. H. J. BASSETT, '04	<i>Alumni</i>





JOHN V. STEPHENS, JR.

Maryville College Handbook

Published annually by the Y. M. C. A.

JOHN V. STEPHENS, JR.

Editor and Manager, '14-'15

B. G. WEAVER

Assistant

The Bulletin

Official Publication of the College, the First
Number of Which is the College
Catalogue.

(108)

CHILHOWEAN



CHILHOWEAN



(110)

19

M

15



Maryville College Orchestra

J. W. PERKINS, *Violin*

C. E. DAWSON, *Cornet*

TRACY F. KNAPP, *Violin*

H. H. HUDDLESTON, *Trombone*

MISS EUNICE MAY, *Piano*

Like many other institutions, the Maryville College Orchestra was organized to meet a long felt need. At first the plans went no further than to play for one entertainment, but the result was so satisfactory that there were soon invitations for further engagements. The organization became permanent, and was designated as the Maryville College Orchestra.

Though only two years old, it has grown to be one of the principal assets of the College, and would fill an honorable place among the best amateur organizations. The members deserve so much the more credit because they have had no special instructor, and generally have received no compensation for their services.





SISK

PARKS

WALKER

TURNER

Red-Headed Quartet

AUGUSTUS SISK	<i>First Tenor</i>
W. B. PARKS	<i>Second Tenor</i>
J. C. WALKER	<i>First Bass</i>
J. H. TURNER	<i>Second Bass</i>

THE "RED-HEADED QUARTET" has red hair; so far as we know, every member has had red hair all his life. Also they can sing, and we have no proof to deny that they have sung all the days of their lives. Though their musical ability is undeniably a concomitant of their golden hair, yet we will not venture the assertion that it is a result of said golden locks. Be this as it may, the fact remains that they form one of the best musical organizations in the College. Of this their deeds testify stronger than our words.

The "Red-Headed Quartet" made its début in the Alpha Sigma Hall, where the first offerings of their voices were enthusiastically received. From that occasion they have been in constant demand. Their appearance in the Alpha Sigma Midwinter this year, when they assumed the role of Scotch Highlanders, was distinct and unique. Their work has not been confined to society and college functions, but they have rendered valuable service in Y. M. C. A. and other Christian endeavor. Probably the most noteworthy accomplishment of this quartet was during the recent gubernatorial campaign in Tennessee, when they spent six weeks in the fight. They did honor to themselves, to their College, and to their State. We predict for them still further achievement and success in years to come.

(112)



BUSH

ARMSTRONG

CAHOON

RANKIN

College Quartet

THE Maryville College Quartet has continued this year the good work always done by that organization. It is by no means an easy task to uphold to an equal degree the tradition established in former years. Yet we can, with no feeling of hesitancy, ascribe to the present representation praise and merit. In view of the fact that the Glee Club was not organized this year, the College Quartet has been called upon to perform extra duties. To these demands they have cheerfully responded. The high grade and quality of the selections rendered have met with hearty approval. The College unites as a whole in expressing its appreciation for the work so sacrificingly and so willingly done.

The personnel of the quartet is as follows: Harry O. Bush, First Tenor; S. M. Armstrong, Second Tenor; Rolfe M. Rankin, First Bass; D. B. Cahoon, Second Bass.



BUSH

CRANE

REAGAN

MITCHELL

Senior Quartet

OFTEN the Senior Quarter is but a nominal organization; this year it is a reality. It has brought the sweet solace of music to many a tired heart; it has sung itself into the good will and respect of many a happy banqueter; and it has helped to establish the dignity of the Senior Class.

Miss Crane sings soprano, Miss Reagan contralto, Mr. Bush tenor, and Mr. Mitchell wrestles with the notes of the lower regions. May these people sing their way through the world as successfully as they have done through college.



(115)

CHILHOWEAN



Y. M. C. A. CABINET



(116)

Y. M. C. A.



O other college activity, religious or otherwise, is more efficient in the development of Christian character in the students of Maryville College than the Y. M. C. A. Since the purpose of the College is to give a Christian education, the value of this organization can hardly be overestimated. The very fact that it stands for the development of the mind, the body, and the spirit, places it at the head of the list of student organizations.

The Association building, which was constructed exclusively by the students, is an exception among the schools of the South. The auditorium is large and provided with comfortable seats. There are basketball courts for both boys and girls. The reading room, where books, magazines, and newspapers can always be found, furnishes an inviting place to the boys on the Hill.

A campaign by the students, which resulted in raising \$1,500, and a gift of something over \$5,000 by the College, have made possible the building of a swimming pool modernly equipped in every respect. The students are greatly indebted to Dr. Wilson, Treasurer Proffitt, and others for their gracious assistance in the building of this pool.

Another phase of the Y. M. C. A. work deserves special mention. This is the Lyceum Course. Annually, under the management of the Y. M. C. A., about five of the best musical companies and lecturers on the lyceum platform come to Maryville.

The regular devotional meetings are held every Sunday afternoon. In addition to these, there are Bible and mission study classes. They offer instructive courses, and every student is given an opportunity to join a class. The Association publishes annually a handbook containing information that is very helpful to both old and new students.

The Y. M. C. A. building is a home for the students; Christ is the cornerstone, and with this foundation it is an organization of love and service.

CHILHOWEAN



(118)

CHILHOWEAN

Y. W. C. A.

Motto: "Not by might nor by power, but by my Spirit, saith the Lord of Hosts."—Zech. iv:6.

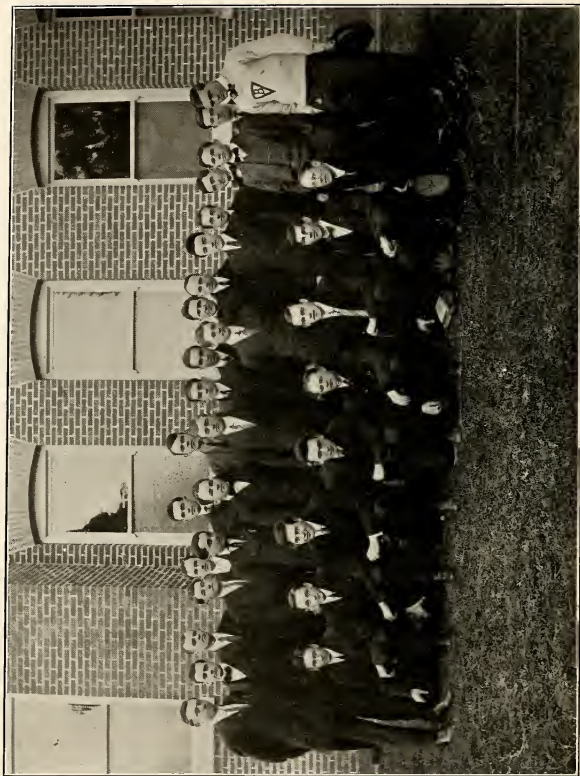


THE Young Women's Christian Association of Maryville College is yearly becoming stronger and more potent in the lives of the College girls. They realize more and more the need of such an organization; one which lays aside all denominational feeling and binds them together in "true-hearted, whole-hearted" fellowship with Jesus Christ. We aim to have every girl in school join the Association and enter into its active work, as it is only through the latter that she derives the best from the Association.

We are welcoming you into an Association that spells OPPORTUNITY, and, to be grasped, this means DEVOTION to an aim. Our Y. W. C. A. stands not for any mere sentiment, but for a devotion to and a striving for the best things physically, mentally, and spiritually. The Association is for you and is to be used by you, and without you and your help it will not be a success. If you do not like everything about it, do not stay away, but come in and help to make it better.

Many a young woman asks this practical question: "I cannot take a leading part, but I want to help; how can I be of service to the Y. W. C. A.?" Here are some of the best ways:

1. Do not criticize the Association, but if you see any faults, tell them to the President or any member of the Cabinet. Any suggestions will be gladly received.
2. Attend the prayer meetings regularly.
3. Join a Bible Class.
4. Join a Mission Study Class.
5. Be willing to do anything which the Association may ask you to do.
6. Pray for our work; you may be withholding a blessing by not praying.



(120)



Ministerial Association

"God had only one Son and He made Him a Minister."

OFFICERS

HARRY O. BUSH	<i>President</i>
AUBREY WILLIAMS	<i>Vice-President</i>
S. CECIL CROSS	<i>Secretary-Treasurer</i>
ANDREW RICHARDS	<i>Program Secretary and Editor</i>
CHESTER F. LEONARD	<i>Superintendent of Mission Work</i>

MEMBERS

FRED ALLEN	MANUEL HERNANDEZ	F. C. PETERSON
S. M. ARMSTRONG	F. HUBER	F. K. T. POSTLETHWAITE
L. E. BOND	ROY JENKINS	C. F. RAMSAY
H. O. BUSH	H. J. JORDAN	ANDREW RICHARDS
M. G. COOK	V. C. LANCING	R. R. ROYAL
F. M. CROSS	C. F. LEONARD	C. E. SILSBY
S. C. CROSS	G. T. LIDDELL	J. V. STEPHENS, JR.
H. H. FERNTHEIL	O. H. LDGAN	E. C. THURMAND
C. B. FISHER	W. H. MCCORD	L. S. WAGNER
J. S. GEORGES	C. V. MILLER	S. E. WALLIN
W. J. GOREHAM	T. H. MITCHELL	AUBREY WILLIAMS
A. E. GROENEVELD	H. B. PARK	R. A. YOUNG
	W. S. PEREA	

The Ministerial Association of Maryville College is an organization composed of all students who are preparing for the Christian ministry. During the past year we have been very fortunate in our work. Our semi-monthly meetings have been sources of information and inspiration; and the mission work accomplished under our supervision has brought forth a great harvest. All denominations are represented in the Association, and the opportunities offered for practical work render it imperative that every candidate for the Christian ministry become identified with those who are putting first things first in their lives.



Student Volunteer Band

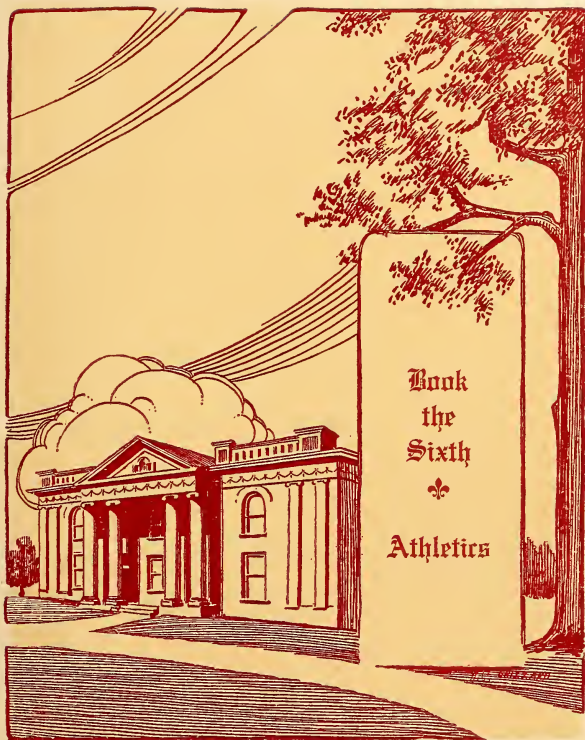
LESTER E. BOND	<i>President</i>
A. E. GROENEVELD	<i>Vice-President</i>
MARY MILES	<i>Secretary-Treasurer</i>
ISABEL PORTER	<i>Editor</i>

The Student Volunteer Band of Maryville College was organized October 19, 1894, by Mr. H. Luce, a traveling secretary of the movement. At that time the Band consisted of seven members. Since then many volunteers have come and gone, but the membership has been steadily increasing. From the total number who have been enrolled as members of the Volunteer Band, twenty-five are now working in foreign fields. Others are engaged in further preparation, while still others have been called to home fields.

At the beginning of the year the Band seemed small, for a number of our members did not return. However, recruits have been added until we number seventeen. The Thursday morning prayer meetings have been characterized by a spirit of earnestness, while the regular biweekly meetings are very interesting and instructive.

We have been most fortunate in receiving a visit from Mr. Poteat, a traveling secretary of the Student Volunteer Movement, whose addresses were thoroughly appreciated. We have also enjoyed having with us for a short time Mr. Fred Hope, a former Maryville Volunteer, who is now engaged in work in Africa.

With a knowledge of what Mr. Hope and others have been able to accomplish, and a realization of the work still to be done, we are the more eager to complete our preparation, that we may assist in garnering the "fields white unto the harvest."



Athletic Association



ALL athletics are conducted under the auspices of the Maryville College Athletic Association, with a supervision by the Board of Athletic Control, composed of representatives from the student body, the Faculty, and the town of Maryville. All students of the College are members of the Athletic Association without fee, and are entitled to a vote in all its meetings. Members of the Varsity Football, Basketball, and Baseball Teams and winners of points in intercollegiate track meets are entitled to wear the Varsity "M."

BOARD OF ATHLETIC CONTROL

1914-1915

THOS. W. GODDARD	President
C. F. KELLY	Secretary
F. L. PROFFITT	Treasurer and Official Buyer
PRESIDENT S. T. WILSON	Faculty Representative
E. R. WALKER	Faculty Representative
D. J. BRITTAIN	Faculty Representative
HARWELL B. PARK	Student Representative
REID GARRISON	Student Representative
ALICE WRIGHT	Student Representative
CHAS. D. CHANDLER	Town Representative
DR. J. A. MCCULLOCH	Town Representative



Coaches

Z. JAY STANLEY, *Football and Basketball Coach*, graduated last year from Earlham College, Ind., where he was a member of the football, basketball and baseball teams. This is his first year at Maryville. He developed a strong football team, which, in the face of numerous injuries, finished the season with a good record. His work with the basketball squad was of the highest order, and he had a team hard to beat. His exhortations of "More cork" and "Dat' a game" have been familiar expressions on the athletic fields this year.

LESTER E. BOND, *Track, Girls' Basketball and Gymnasium*. "Peanut" has been with us for some time. He received his training in the high schools and the Y. M. C. A. of Portland, Me., at Battle Creek, Mich., and at Silver Bay, N. Y. Before coming to Maryville in 1911, he coached the track team at Portland High School, and was assistant physical director in the Y. M. C. A. of that city. Since he has been at Maryville he has done a great deal in building up track and gymnasium work. He has successfully coached the girls' basketball team for four years, and one year he had charge of the boys' team.

WILLIAM T. EVERETT, who is our *Baseball Coach*, began his baseball career at Maryville College, where he played on the Varsity from 1900 to 1902. Since then he has played with Dubuque in the Three I League; Ottumwa in the Central Association; Oskaloosa, Ia., and Wausau, Wis., in the Minnesota League; Rockford and Aurora, W. I. League; and with Vincennes and Cairo in the Kitty League. He coached the baseball team at Davidson College, N. C., 1906-07-09, came to Maryville in 1914, and turned out one of the best teams in the history of the institution. He has accepted an invitation to return in 1915. Coach Everett knows baseball, knows how to tell it, and knows how to handle men. He is one of the best and one of the most popular coaches that Maryville has ever had.

(124)

CHILHOWEAN



FOOTBALL



CHILHOWEAN



(126)



Football Team

GODDARD, (Capt.)	Center
GREER	Guard
DAY	Guard
BRIGGS	Guard
HENRY	Tackle
VANDEGRIFT	Tackle
SAMSEL	Tackle
BOND	End
BRYSON	End
McCALL	End
CALLOWAY, (Mgr.)	Halfback and Quarterback
LLOYD	Quarterback
THRELKELD	Quarterback
BUTLER	Halfback
LIDDELL	Halfback
FINFROCK	Halfback
CLEMONS	Fullback
SMITH	Fullback

FOOTBALL RECORD

Maryville	77	Central High	7
Maryville	0	University of Kentucky	80
Maryville	0	Transylvania University	66
Maryville	7	University of Chattanooga	35
Maryville	97	Athens	0
Maryville	13	King College	0
Maryville	67	Mars Hill	0
Maryville	7	Tusculum	6
Maryville	0	Carson-Newman	3
Maryville	26	Furman University	19



The Football Season



THE football season of nineteen fourteen was a pronounced success. It was the first truly successful season which Maryville has had in several years, and all the sweeter were our victories because of the many obstacles it was necessary to overcome. Although at the beginning there was a wealth of material, seemingly enough first string men for two varsities, yet, even at the preliminary work-outs, a succession of misfortunes began that followed us throughout the entire season. Almost every day added to the hospital list, and scarcely a game was played that did not take its toll, and leave some hole to be filled. But always were we able to present a battle front to our adversaries; always did we possess a line of good weight and power, behind which a set of speedy backs operated with telling effect.

The first game of the season was a romp, Central High furnishing the incentive, the score being 77-7. This game cost us a promising halfback. Our next games were with Kentucky State and Transylvania, in Lexington. Both of these resulted disastrously for us, from the standpoint of scores and from the loss of an end and two tackles, one of which did not return to the game this fall. The following week we met the University of Chattanooga on their home grounds, and in our battered condition lost 35-7. Here again we were crippled, losing a quarterback for the remainder of the season.

After a short rest at home we met Athens and won handily by a 97-0 score. Next came King College, who gave us a stiff game, which resulted in a 13-0 victory for us. Mars Hill furnished our next opposition, and we easily defeated them 67-0, but it cost us another quarterback. Then traveling to Greenville, we won from Tusculum in a close and exciting contest 7-6.

The best game of the season came when we met Carson-Newman on a field of snow and mud. We lost through a wonderful drop kick, whose equal is not witnessed in one out of a hundred games. This battle was one for history to record. On Thanksgiving Day, another well played game, with Furman University at Greenville, S. C., resulting in a score of 26-19 in our favor, closed the season.

For this record of six victories and four defeats we are very grateful to our team and to our coach. We feel that never have we been represented by a harder playing, cleaner squad than the one of nineteen fourteen, and we know that their work will long be remembered by friend and foe alike.

CHILHOWEAN



BASKETBALL



CHICHEWEAN



GARRISON, *Forward*, has played a strong game all season, often causing the scorer to get an adding machine to count his points. Reid has now played three years on the team.

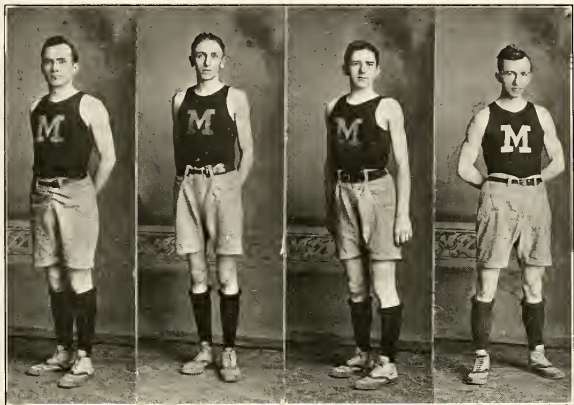
ROBINSON, *Forward*, is a scrapper from start to finish. Though light, you can depend on him to get the ball or to spill a man. He plays for team work and is an excellent passer. Can play guard if necessary.

CRUM, *Cent.r.* "Lefty" has jumped well at center and has also contracted the habit of shooting baskets from angles that sometimes astound his opponents.

CLARK, *Guard, and Captain-elect for 1916*. "Fatty" has excellent form, is fast on his feet, a swift passer, and makes a pastime of winning games with long goals.

(130)

CHILHOWEAN



PROFFITT, *Guard and Manager*, is aggressive before everything else, and he does not give his forward a moment's rest. He is effective both on the defense and the offense. These are the requirements of a good player. "Dave" has now been on the team for three years.

HODGES, *Center and Forward*. "Snake" goes like a cyclone, and toward the close of the season made all the fans sit up and take notice. Strong on defense, a hearty eater, and believes in filling the basket full.

SMITH, *Forward*, is an accurate shot and a sure foul tosser. Team work is his middle name. Although his first year on the team, he has made several star guards blush to speak his name.

LLOYD, *Forward and Captain*. Misfortune looked down upon our captain, and football claimed him as a victim. To say that we missed him is stating so great a truth in such simple language as to cause words to lose their significance.

The Basketball Season



T the beginning of the season our prospects for a winning team did not look very bright. Captain Lloyd was out of the game with a broken leg, and Liddell and Brittain had both gone from school. But with the old men on hand and with several of last year's scrubs, Coach Stanley began work to turn out a machine that would shoot more baskets than its opponents. As a result the end of the season found that Maryville had scored 415 points as against 293 by her opponents, and the Coach's efforts had been successful.

The team was one of the best in several years. Not only did the members show excellent individual form, but the team work, as a result of many "curtain lectures," was very good. If you are a lover of good sport, just ask some one about that game with the "Wild Cats."

Our boys developed one quality this year that they have not had before, that of coming back strong in the second half. Each player seemed to realize fully that the responsibility of winning the game rested upon his putting everything that he had into it. And often seeming defeat has been turned into victory by their stubborn determination to win.

Although averaging only 150 lbs. in weight, the team won eight of the twelve games played. What they lacked in weight they made up in speed and "pep." The team has played all year under a tentative captain, Lloyd having sacrificed his crowning year to a football injury. And so we attribute the success of the year to the faithful work of the men and the excellent coaching of Mr. Stanley.



Basketball Team

MEMBERS

LLOYD, <i>Captain</i>	Forward
ROBINSON	Forward
GARRISON	Forward
SMITH	Forward
CRUM	Center
HODGES	Center
CLARK	Guard
PROFFITT, <i>Manager</i>	Guard

BASKETBALL RECORD

Maryville	74	Central High School	8
Maryville	45	Johnson Bible College	18
Maryville	57	Knoxville Business College	28
Maryville	17	University of Kentucky	37
Maryville	22	University of Kentucky	23
Maryville	27	Tusculum (49 min.)	27
Maryville	37	Tusculum	13
Maryville	28	Asheville	21
Maryville	11	Asheville Y. M. C. A.	28
Maryville	21	King	42
Maryville	44	Knoxville Ramblers	20
Maryville	32	Cumberland	28



CHILHOWEAN



Girls' Basketball

TEAM

Miss LOIS WILSON.....	<i>Forward</i>	Miss MILDRED STINNETT.....	<i>Center</i>
Miss DIXIE WEBB.....	<i>Forward</i>	Miss CATHERINE SUGG.....	<i>Guard</i>
Miss SARAH STINNETT.....	<i>Forward</i>	Miss EDNA FOSTER.....	<i>Guard</i>
Miss MARY BOGGS, <i>Captain</i>	<i>Center</i>	Miss ETHEL BIRCHFIELD.....	<i>Guard</i>
Miss MAYME MAXEY.....		<i>Manager</i>	

RECORD

Maryville.....	36	Central High School.....	24
Maryville.....	25	Park City High School.....	13
Maryville.....	24	Murphy College.....	21
Maryville.....	12	Murphy College.....	35
Maryville.....	—	Athens	—
Maryville.....	—	Knoxville Y. W. C. A.....	—

(134)

CHILHOWEAN



BASEBALL



CHILHOWEAN



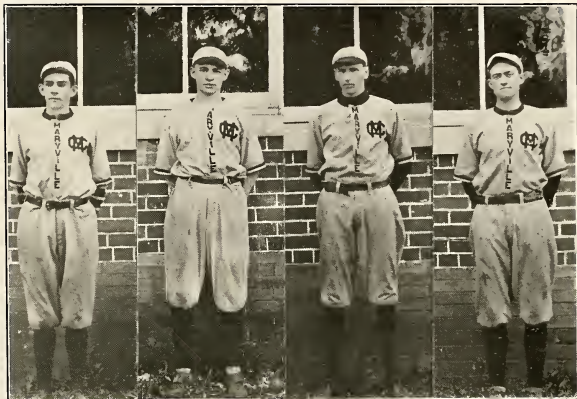
CHARLES E. DAWSON, *Pitcher and Captain*. For three years "Hook" has been Maryville's steadiest pitcher, and supported by a good team he has lost very few of his games. On two occasions he has made a good showing against National League teams. He is right handed and a very effective user of the "spitball," but, like most pitchers, a very gentle batter.

R. W. CARVER, *Catcher and Manager*. "Rack" has been backstop and captain or manager of our team since most of us can remember. Few better college catchers have been seen in Maryville during his four years on the Varsity. Experienced and steady, he is good at everything that is required in his position. He does not lead the team in base running.

J. M. NICELY, *Pitcher*. "Lefty" has the distinction of being about the smallest man on the team—physically. But he throws a big curve, is a fast and sure fielder, and he wins his games. He is a good hitter, leading the team in batting during one of his two Varsity years.

C. F. KELLY, *Third Baseman and Captain-elect for 1915*. Our third baseman is a ball player with a reputation, not only in Maryville, but also in baseball circles elsewhere. "Buncome" is large, hits hard and often, is a sure fielder and has a swift, accurate peg. With a cool head and an abundance of good humor, he keeps his corner of the diamond awake all of the time. He rivals Carver in stealing bases.

CHILHOWEAN



HARWELL B. PARK, *First Baseman*. Playing his first year on the team, "Preacher" showed himself to be a natural ball player. He is fast and sure, and is the hardest slugger on the team. By some he has been called the best first baseman that Maryville has ever had.

LINDSAY M. JOHNSTON, *Second Baseman*. "Lindsay" is fast, handles the ball with skill, is an exceptionally good batter, and is one of the best base runners on the squad.

G. W. HODGES, *Short Stop*. A natural ball player, easy and graceful in fielding his position, and the possessor of a magnificent "whip," "Slim" makes very few bobbles. He is not a strong batter, but yet a valuable one, and he uses his head. It is his first year on the team.

E. M. REEVES, *Left Fielder*. "Tightwad" has now played his full four years. He is one of the best outfielders that Maryville has ever had. He is a deadly fielder, a good thrower, and the team leader in batting and base running. Last year he won fame by getting two hits off "Jeff" Tesreau.

CHILHOWEAN



NEWTON S. MCCALL, *Center Fielder*. A sure fielder, a strong hitter, scientific and loquacious; that is "Newt." There is no fear about the center garden when "Newt" is there. He has now played on the Varsity two years.

HENRY A. CALLOWAY, *Right Fielder*. "Hen" is fast and a good fielder. He don't like an out curve, but hits an "in" full on the face. He does not say much, but is always working. First year on the team.

JOHN O. ADAMS, *Catcher and Utility Fielder*. When called upon to play, "Adams" performed like a veteran. Behind the bat he has a snap throw hard to equal, and with some more experience will make a first-class backstop.

WILLIAM T. EVERETT, *Coach*, is discussed elsewhere in these pages.



Baseball

BASEBALL RECORD 1914

M. C.	20	Johnson Bible College.....	0
M. C.	7	Johnson Bible College.....	1
M. C.	0	Brooklyn Nationals.....	11
M. C.	11	Knoxville High School.....	0
M. C.	0	Tusculum	5
M. C.	4	Tusculum	2
M. C.	6	Tusculum	4
M. C.	0	Tusculum	0
M. C.	4	Knoxville (Appalachian League).....	2
M. C.	6	Knoxville (Appalachian League).....	3
M. C.	5	Knoxville Y. M. C. A.....	3
M. C.	8	Cumberland College.....	1
M. C.	4	Cumberland College.....	0
M. C.	6	Cumberland College.....	8
M. C.	9	Cumberland College.....	0
M. C.	3	Emory and Henry.....	2
M. C.	4	Emory and Henry.....	3
M. C.	6	Emory and Henry.....	7
M. C.	1	Emory and Henry.....	2
M. C.	1	Lincoln Memorial University.....	2
M. C.	10	Lincoln Memorial University.....	0

Won 14, Lost 6, Tied 1.

BASEBALL TEAM 1914

CARVER, <i>Manager</i>	<i>Catcher</i>
ADAMS	<i>Catcher</i>
DAWSON, <i>Captain</i>	<i>Pitcher</i>
NICELY	<i>Pitcher</i>
PARK	<i>First Base</i>
JOHNSTON	<i>Second Base</i>
KELLY	<i>Third Base</i>
HODGES	<i>Short Stop</i>
REEVES	<i>Left Field</i>
McCALL	<i>Center Field</i>
CALLOWAY	<i>Right Field</i>



Baseball, Nineteen and Fourteen



WITH great interest and expectation, the opening of the baseball season of 1914 was awaited, for baseball in Maryville has always been ushered in amid a grand display of enthusiasm. The gates were opened in the second week of March and a horde of candidates took the field. In addition to the new applicants, all the Varsity veterans of the year before reported for a berth on the team. Much credit must be given Coach Everett for the patience and skill which he exhibited in selecting the squad. From the first the team went onto the diamond with a confidence and zeal that is unknown to most college nines, and the result of its work is its own praise.

The most noteworthy game of the season was the contest with the Brooklyn "Dodgers." Had it not been for the unlucky seventh inning, Maryville would have granted the game to Brooklyn 1-0, but that seventh inning must be counted and the big leaguers won 11-0. However, the game did credit to the team which Manager Robinson spoke of as "a college team hard to equal."

Out of a hard schedule of 21 games, Maryville won 14, tied 1 and lost 6, only 1 being lost on the home diamond. A team that knew baseball, that played baseball, full of its own hope and ambition, but working for the Alma Mater, was the team of 1914.

CHILHOWEAN



TRACK



CHILHOWEAN



CATON, One Mile, Two Miles.

PARKS, Half Mile, One Mile.

THRELKELD, (No picture), *Manager*, 440 Yards, 220 Yards, High Jump, Relay.

BOND, *Coach*.

(142)

CHILHOWEAN



BUTLER, *Captain*, Pole Vault, Hurdles, High Jump, Relay.

GREER, Shot Put, Hammer Throw, Discus.

BUSH, 100 Yard Dash, 220 Yard Dash, Broad Jump, Relay.

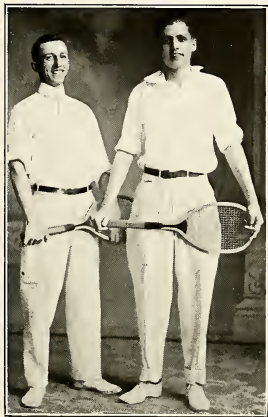
RANKIN, Discus, Hurdles, Broad Jump, Relay.

Track



RACK work continues to live more in the future than in the past. Progress has been made in this branch of sport, but owing to the lack of competition in this part of the South and consequently the difficulty of arranging satisfactory meets, Maryville has not had a very great number of inter-collegiate matches. In those that she has entered she has made a good showing and has brought home a number of trophies.

During the season of 1915 the following track activities are anticipated: Participation by the Preparatory Department in the Annual State Preparatory Meet; two dual meets with Tusculum, and one with Tennessee; meet of East Tennessee and Virginia Schools at Bristol; annual Field Day; two cross country races.



LLOYD-BARNES

Tennis



ENNIS, like track, has never held a very important part in Maryville athletics. There are eight good courts on the campus and these are full to overflowing on every favorable day. But interest in the game as an intercollegiate sport has never been very pronounced among colleges of this section, and therefore, Maryville has not had many important matches. However, there are held each year class and all-comers' tournaments, which usually attract considerable interest and furnish some good tennis.

Last year the only intercollegiate match scheduled was unavoidably canceled and only the college tournaments were played. In the class matches the Junior team, composed of Mark H. Barnes and Ralph W. Lloyd, won among the boys, while Miss Aletha May and Miss Gray Webb, representing the Sophomores, won the girls' affair.

In the college championship tournament Mark H. Barnes and Ralph W. Lloyd successfully defended their title of doubles champions and Ralph W. Lloyd won in the singles.

(145)



(146)



The Maryville College "M" Club

THE existence of this club is to the end that the athletics of Maryville College may be brought to a higher plane; by increasing the efficiency of the teams, encouraging true sportsmanship, and enlisting the active support of the student body and the College.

It shall be a purpose of the club to discountenance the unlawful wearing of the "M" by any person, whether he be a student or not; to enforce and impress the honor and distinction accruing to a wearer of the "M"; and to accord to all visiting teams the most courteous treatment possible.

Only those who have been awarded at least two "M's" are eligible to active membership.

OFFICERS 1915

R. W. CARVER	<i>President</i>
R. U. VANDEGRIFT	<i>Vice-President</i>
H. W. THRELKELD	<i>Secretary</i>
C. F. KELLY	<i>Assistant Secretary</i>
H. A. CALLOWAY	<i>Treasurer</i>
G. O. ROBINSON	<i>Editor</i>

MEMBERS 1915

L. E. BOND	H. H. GREER
D. H. BRIGGS	L. M. JOHNSTON
A. D. BRYSON	C. F. KELLY
H. O. BUSH	R. W. LLOYD
J. R. BUTLER	N. S. McCALL
H. A. CALLOWAY	J. M. NICELY
R. W. CARVER	D. W. PROFFITT
H. L. CATON	R. M. RANKIN
A. L. CLARK	G. O. ROBINSON
M. B. CRUM	H. W. SAMSEL
C. E. DAWSON	C. L. SMITH
J. E. ENSIGN	H. W. THRELKELD
T. W. GODDARD	R. U. VANDEGRIFT

Honorary Member

DEAN J. C. BARNES



The Swimming Pool



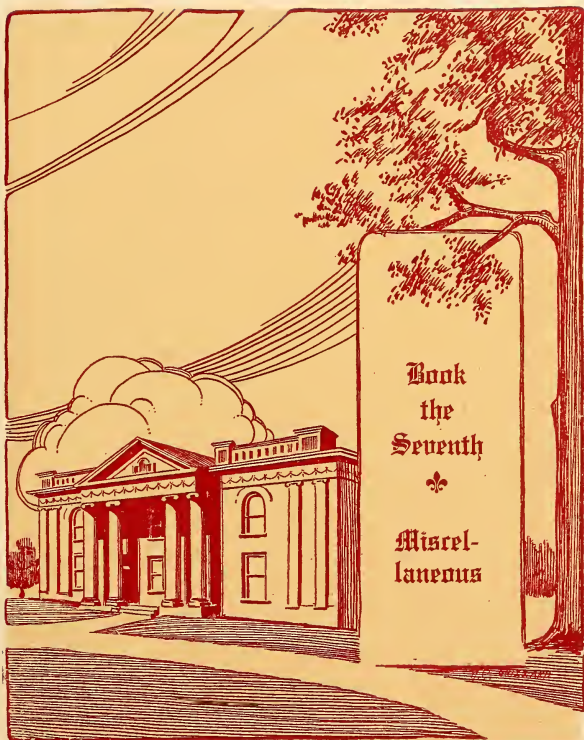
ARYVILLE has the reputation of having one of the best student Y. M. C. A. buildings in the South. It was built through the efforts of the students themselves, but because of a lack of funds the completion of part of the original plans was left for some future time. One of these uncompleted plans was the building of the swimming pool.

The erectors of Bartlett Hall left an excavation for the pool beneath the gymnasium. However, nothing further was ever done until, in January, 1914, the Y. M. C. A. cabinet took up the matter, and, upon promise of aid from the College, launched a campaign to secure money for the purpose of installing a first-class pool.

At first the plans were modest enough, but upon consideration and an increase of enthusiasm, they grew until they called for an outlay of \$5,000. If the students could raise \$1,500, the College promised to furnish the remainder. The student committee, having the matter in charge, designated the first week in November as the time to accomplish the formidable task of raising \$800, which amount they needed at this time to fulfill their part of the agreement. At the end of the week the whole sum had been secured, and a swimming pool was promised for the near future. Because of unfavorable weather and other unavoidable hindrances, construction has not progressed as rapidly as might be desired, but some day, ere long, will see the consummation of this work.

The plans call for a brick building with glass roof, situated on the southeast side of Bartlett Hall. There will be a pool 25x75 feet, shower baths, dressing rooms, steel lockers, and a modern filtering system.

Thus the latest addition to the college equipment is largely a product of student effort, and will stand with Bartlett Hall as an expression of good will and a gift of real value to the students of the future.



Book
the
Seventh



Miscel-
laneous

CLUBS



(149)



Chess Club

OFFICERS

G. O. ROBINSON	President
J. E. ENSIGN	Vice-President
PEDRO HERNANDEZ	Secretary
CHARLES SILSBY	Treasurer

MEMBERS

H. E. BLAUVELD	R. S. GAMON	R. A. RAMSEY
L. E. BOND	C. J. GIBSON	G. O. ROBINSON
A. B. CALDWELL	PEDRO HERNANDEZ	C. E. SILSBY
J. E. ENSIGN	T. H. MITCHELL	P. H. SLATERY
	A. F. MURRAY	

(150)



The Boxing Club

Our Aim: To develop muscle and manliness.

ALBERT F. MURRAY *President*
 ROBERT M. ANDERSON *Vice-President*
 PEDRO HERNANDEZ *Secretary and Treasurer*

IN every normal American youth there is an instinctive leaning toward the science that teaches the use of the fists. A young man will take unceasing pride in the development that is sure to follow a few lessons in this "manly art of self-defense." And, after all, what is more pleasing to the eye or more gratifying to the possessor than a well trained, well-kept, well-controlled, well-formed human body?

This group of amateurs who form The Boxing Club have banded together to further their common purpose, viz: the development of scientific boxing and the development of the body.

The interest displayed during the first year of organization warrants the prediction, for next year, of an increased membership, a larger amount of apparatus, and more spacious quarters.



The Tatling Tatters

Motto: "Gobble-gobble-gobble-git."

Colors: O. N. T. White and D. M. C. Blue.

NEXT TO TATTING, WOULD RATHER

"BIRD" CAMPBELL.....Cook
JESSIE THISTLE.....Moonshine
FAITH ROBINETTE.....Sleep
ANNE CRANE.....Study Theism
MAUD CAYLOR...Give the news from Princeton
LULA CRESWELL.....Tease "Gummy"

"SUDE" MILLER....Have her hands "fussed at"
CENEVIEVE GIBSON.....Tat some more
"BABE" CAMPBELL.....Talk
MURIEL MITCHELL.....Sing in "Psych."
MARY HICKEY.....Go to the movies
"JANE" OGILVIE.....Boat around the "Bush"

(152)

CHILHOWEAN



The Pythagorean Club

Motto: Meet upon the level, and part upon the square.

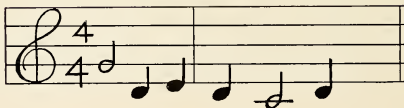
Home Address: All points of the compass

Colors: Blue and White.

(152)



CHILHOWEAN



Motto: Guess ? ? ? ? ? ? ? ?

Flower: Heleminocladia cae

Song: "No One Knows"

Mascot: JESSE ELISHA

JOSEPHINE FRANCIS....."Joe"
ROBERTA FRANCIS....."Bob"
CATHERINE SUGG....."Kate"
MARGARET SUGG....."Peg"
MARY CAMP....."Idie"

SARAH GOODWIN....."Sack"
LORINE SCHEER....."Lorena"
EDNA DAWSON....."Ednie"
CORA BURNES....."Burnie"

(154)

CHILHOWEAN



The Missouri Show-Me's

Motto: "No mule, no ride."

Colors: Sable and Gold.

Song: Hound Dog Song.

OFFICERS

T. H. MITCHELL	<i>President</i>
SOPHIE KARTE	<i>Vice-President</i>
*MARY MATHEWS	<i>Secretary-Treasurer</i>

MEMBERS

CHAUNCEY E. CONRAD	SOPHIE KARTE	T. H. MITCHELL
DAN CONRAD	GUIDO KAYES	G. O. ROBINSON
JOSEPHINE FRANCIS	RAYMOND MCGINLEY	MARIE TURNER
GENEVIEVE GIBSON	MARY MATHEWS	HARRY VINYARD
	LILY E. MITCHELL	

FRATER IN FACULTATE

PROF. "MAC"

*Deceased. (Gone to rest in Cape Girardeau, Mo.)

(155)

CHILHOWEAN



Alabama Club

OFFICERS

LORINE SCHEER	<i>President</i>
EMMETT KILPATRICK	<i>Vice-President</i>
CECIL CROSS	<i>Secretary and Treasurer</i>

MEMBERS

US

Here is the band who came away from home
 To get all there is in the hills about;
 To seek our fortunes and without a doubt
 To meet our fates with whom we'll ever roam,
 Tho' doomed are some to wait and some to moan.
 But we are with hearts, tho' gay and stout,
 Always glad to work and never will give out

'Till we can say with some who truly own,
 We have it all from dear old Maryville.
 So we will make our Maryville a name,
 And back in Alabama we will fill
 The minds of youths, aspiring high to fame,
 With songs of thee our Alma Mater dear,
 And praise for thee thru every coming year.

—K.

CHILHOWEAN



Kentucky Club

Motto: United we stand; divided we fall.

Flower: Goldenrod.

Ambition: To promote the fame of the Bluegrass State.

OFFICERS

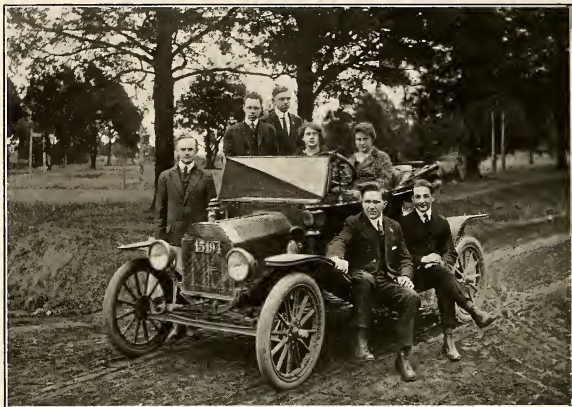
A. D. BIGGS	President
C. L. SMITH	Editor
F. D. McCLELLAN	Secretary

MEMBERS

S. H. BIGGS	C. A. MORGAN
A. M. PRICE	N. H. STEPHENS
G. A. FOGLEMAN	A. D. BIGGS F. D. McCLELLAN
L. A. THRELKELD	C. W. BOWLES
C. L. SMITH	D. CARPENTER
R. E. SMITH	J. A. SEWARDS

(157)

CHILHOWEAN



Michigan Club

DRAMATIS PERSONAE

	A. E. GROENEVELD	<i>President</i>
	NELLIE WILSON	<i>Vice-President</i>
	V. C. LANSING	<i>Corresponding Secretary</i>
JOSEPHINE KNAPP		<i>Recording Secretary</i>
	T. A. SMITH	<i>Treasurer</i>
	TRACY KNAPP	<i>Time Keeper</i>
	S. M. ARMSTRONG	<i>Sergeant-at-Arms</i>

CHANT

We want to go back to Michigan,
 The dear old Wolverine State,
 Back there where there's ice and snow,
 Back there with the Eskimo;
 There's where joy is forever our fate,
 Back in dear old Michigan,
 Our old home State.
 We want to go back where we were born.

That dear old State of wheat and corn.
 Back where automobiles are made;
 Back where higher wages are paid.
 We want to go back to Michigan,
 That dear old northern State.
 Oh, we want to go back,
 We've got to go back.
 To Michigan.

(158)

CHILHOWEAN



North Carolina Club

From Left to Right: Bottom Row: S. ELDRIDGE WALLIN, Big Laurel; SALLIE K. PROFFITT, Bald Creek; DURWARD N. TOWE, Chapanoke; LILLIE MARIE PROFFITT, Bald Creek; THOMAS D. LUTHER, Chandler; IVA McMAHAM, Crestmont; EDGAR H. SAWYER, Swannanoa.

Second Row: NANCY L. BOST, Clearmont; WILLIAM H. PLEASANTS, Roxboro; ANNIE L. PLEASANTS, Roxboro; MOFFITT BEARD, Charlotte; BERTIE FORD, Crestmont; DAVID H. BRIGGS, Marshall; RUTH M. GREENLEE, Old Fort; JENNETTE JACKSON, Tyton; FRED C. PETERSON, Asheville.

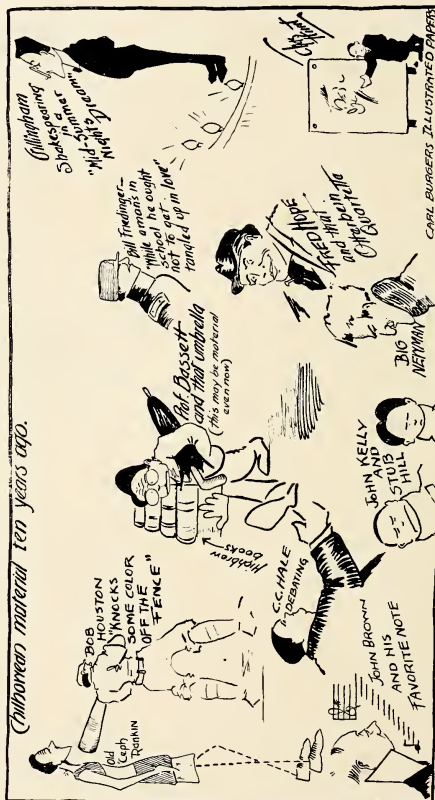
Third Row: GORDON McKOY, Old Fort; STELLA CARVER, Lee; CHARLOTTE McKOY, Old Fort; HUBERT E. ENLOE, Judson; ANNIE C. COCHRANE, Charlotte; BOYD A. RAMSEY, Revere; RUBBY COGGINS, Crestmont; JOHN B. TWEED, Marshall.

Top Row: THOMAS J. GREENLEE, Old Fort; JAMES M. MACKEY, Old Fort; EUGENE JACKSON, Asheville.

OFFICERS

S. ELDRIDGE WALLIN	President
STELLA CARVER	Vice-President
AUGUSTUS SISK	Secretary and Treasurer
DURWARD N. TOWE	Editor

(159)



(160)



(161)

CHILHOWEAN

ABBREVIATED ANECDOTES

Oct. 23rd—Biggs snores in Dr. Barnes' class.

Nov. 10th—Dirt breaking for swimming pool. Bond announces that he is glad to be present.

Nov. 17th—Senior Class pins arrive C.O.D. Campaign to raise money.

Nov. 23rd—Stephens becomes interested in affection (Psych). Ruth refuses to show interest.

Dec. 16th—Kilpatrick tells Jim Adams "good-by."

Jan. 28th—Dawson moonshines.

Mar. 12th—Dean Barnes announces meeting of "The Pressing Club."

* * * *

"HIJO" WILSON: "My girl from Alabama talks through her nose."

LYNN TONEY: "What's the matter, is her mouth worn out?"

* * * *

CAN YOU?

Can you make the eye of a needle cry?

Can you deafen an ear of corn?

Can you manicure the hands of a clock?

Or even the finger of scorn?

Can you pull the leg of a yachting course?

Can you break an arm of the sea?

Can you hear the hounds of a wagon bark?

Or even the bark of a tree?

Can you skim the whey from the milky way?

Can you tell where the moonbeams light?

Can you guess where the Class of Fifteen will land

When there are no bills to pay?

* * *

A TRUE STORY

DEAN BARNES (in Psychology): "I say that we cannot attend to affection."

ATIYEH: "Then, who attends to it?"

* * * *

CHAUNCEY: "Did you tell Weaver I was a fool?"

RAMSEY: "No; Weaver isn't a fool—"

CHAUNCEY: "I say, did you tell Weaver I was a fool?"

RAMSEY: "And I say no; Weaver isn't a fool, and it is unnecessary to tell him."

(162)

CHILHOWEAN

WHAT THEY NEED MOST

ATIYEH	A dictionary
"TOM" MITCHELL	Hair
CORA BURNS.....	Two bottles of anti-fat
ALBERT MURRAY	Gasoline
GRACE GOODPASTURE.....	Plenty of room
ENSIGN.....	A girl
KILPATRICK	Dignity
GEORGE ADAMS.....	A horse and buggy
HARWELL PARK.....	To comb his hair "a la pompadour"
BERNICE LOWRY.....	A talking machine
"TOM" GODDARD	More sweethearts
FRANK CROSS	Brother
BILL PLEASANTS	A speedometer
PILE.....	Muscle
AUBREY WILLIAMS.....	A bigger hat
MARY BOGGS	A voice
"JIM ADAMS.....	Bangs
MISS MOLLIE.....	A detective
CAHOON.....	A chance to vent his knowledge

* * * *

WHAT THE CLASS OF FIFTEEN HAS DONE FOR THE COLLEGE

Attended classes for four years.	Elevated the ideals of the student body.
Furnished her an Ensign.	Decorated and beautified the campus.
Advised the Faculty.	

* * * *

NEEDED—BY MARYVILLE COLLEGE

A patrol wagon.	Self-opening doors.
A kindergarten department.	Capital punishment.

* * * *

FAVORITE SONGS

"I Think It Must Be Love".....	Jordan
"Feed Me and the World Is Mine".....	Bond
"Sing Me to Sleep".....	Biggs

(163)



CHILHOWEAN

SOME DEFINITIONS

(Discovered through diligent research by the CHILLOWEAN Staff.)

ANGER: 1. A violent blushing and scampering up and down of the blood upon hearing the truth about ourselves. 2. A sudden tumescence of the ego and a furious exaltation of verbal powers upon losing a collar button.

CLOCKS A tell-tale; a gossip; a blab.

DIGNITY: A state of spiritual, mental or emotional starchiness that precedes a bluff.

EPITAPH: Postponed compliments.

FAILURE: The man who can tell others what to do, but never does it himself.

HAS-BEEN: Any man who thinks he has arrived.

HUMAN DYNAMO: Any man who gets everything charged.

KNOWLEDGE: Knowledge is what I know; wisdom is what I see; theology is what I guess.

NEIGHBOR: The man who knows more about you than you know about yourself.

ORATORY: Chin music with Prince Albert accompaniment.

SECRET: 1. A thing we give to others to keep for us. 2. Something known only to a few.

TALK: To open and close the mouth rapidly while the bellows in the throat pump out the gas in the brain.

UTOPIAN: A person who demands that you shall live up to his ideals.

ZEPHYR: A ladylike blizzard.

* * * *

A JOKE

"Don't you think you could do something with that orchestra to improve my song?" asked the lady soloist.

"What's the matter with it?" replied "Slick" Huddleston.

"Why, they could hardly hear me for that trombone."

"Well, we might put in a couple more trombones."

* * * *

PEACE

"Every man has some arguments with his wife, I suppose," said Dean Barnes.

"My wife and I never argue," replied Prof. Walker, complacently. "Once in a while I make a remark and my wife shows me exactly where I am wrong. But we never argue."

* * * *

POETIC GEM.

It's sweet to love;

But, O how bitter

To love a girl,

And then can't git 'er!

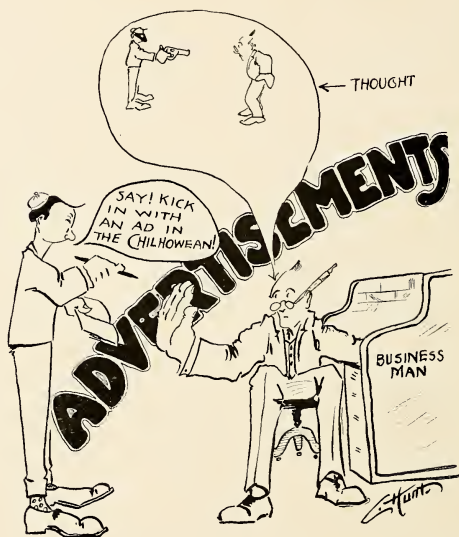
—Tracy Knapp.

(164)

THE FOLLOWING HAVE
CONTRIBUTED
TO
"THE CHILHOWEAN"

WOODS-TAYLOR
CLOTHING STORE
KNOXVILLE, TENN.

DR. S. R. MILLER
KNOXVILLE, TENN.



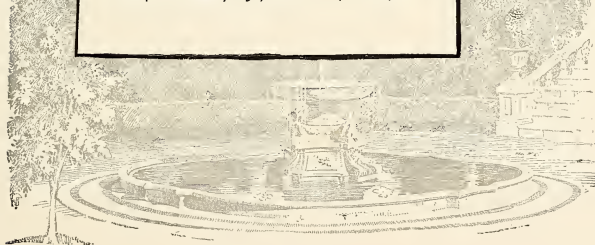
Masters
in the
Delectable
Art of
Printing

BENSON
PRINTING CO.
NASHVILLE,
TENN.

Makers of
Printing
That
Makes
Good

This Book Is a Sample of Our Work

WE make a specialty of high-grade School and College Printing, such as Catalogs, Annuals, Booklets, Programs, etc. Our printing plant is one of the best equipped and most modern in the entire South. We printed this year over fifteen Annuals for such institutions as Vanderbilt University, Tulane University, University of Alabama, Cumberland University, Sewanee, Trinity College, Maryville College, Winthrop Normal and Industrial College, North Carolina State Normal and Industrial College, Sullins College, Logan Female College, and many others. Samples and prices cheerfully furnished upon request.



LET THE TIMES PRESS

PRINT YOUR

COLLEGE CARDS, BOOKS,
AND PAMPHLETS

READ THE TIMES

For County, Town, and College
News

CLYDE B. EMERT, Editor and Owner

South Side Store

Call on us for Fancy Groceries,
Choice Candies, High Grade Sta-
tionery, Dry Goods, Notions, Etc.

When preparing a feast, come
around and let us fill your orders.

F. R. Babcock & Company

319 STANLEY STREET

Two Blocks South of College

HOWARD WATCHES

HEADQUARTERS FOR

The E. Howard Watches, \$40 to \$155
and The Edward Howard, \$350

HEINS, JEWELER

317 Gay Street

KNOXVILLE, TENNESSEE

COME IN
AND LOOK OVER OUR
PICTURES

EVERY TIME YOU ARE
IN KNOXVILLE

McCoy Studio

313 Gay Street

→ → → GO TO ← ← ←

Ellis-Chandler Co.

For Everything Ready-to-Wear

Athletic Goods Pennants Banners Etc.

Made-to-Measure Clothing a Specialty

JAS. M. STAIR & SON

BUILDING CONSTRUCTION

ESTIMATES
CHEERFULLY GIVEN

Henson Building
KNOXVILLE, TENNESSEE

STUDENTS

will find a complete line of
FANCY GROCERIES, CON-
FECTIONS AND ALL
KINDS OF FRUIT
AT TOOLE'S
Opposite New Providence Church

WILL A. McTEER R. R. KRAMER

ATTORNEYS AND
COUNSELORS

Maryville, Tenn.

DO YOUR BANKING WITH THE OLD RELIABLE

BANK OF MARYVILLE
CAPITAL - - - \$50,000.00

THIRTY YEARS OF
SUCCESSFUL BANKING

MARYVILLE
TENNESSEE

THE D. L. AULD COMPANY

COLUMBUS, OHIO

CLASS RINGS	ENGRAVED INVITATIONS
CLASS PINS	STATIONERY

WRITE FOR CATALOGUE

Knoxville & Augusta Railroad

"The College Route"

Excellent Train Service Between Maryville and Knoxville, Making Close
Connection at Knoxville with Through and Local Trains to All
Points North, East, South, and West

FOLLOWING IS CONDENSED SCHEDULE:

No. 6 Leaves Maryville.....	6:00 A.M.	Arrives Knoxville.....	6:40 A.M.
No. 2 Leaves Maryville.....	9:35 A.M.	Arrives Knoxville.....	10:15 A.M.
No. 4 Leaves Maryville.....	5:05 P.M.	Arrives Knoxville.....	5:45 P.M.
No. 1 Leaves Knoxville.....	7:30 A.M.	Arrives Maryville.....	8:10 A.M.
No. 3 Leaves Knoxville.....	3:00 P.M.	Arrives Maryville.....	3:40 P.M.
No. 7 Leaves Knoxville.....	6:00 P.M.	Arrives Maryville.....	6:45 P.M.

W. P. HOOD, SUPERINTENDENT

Lane
Theological
Seminary
Cincinnati, Ohio

Eighty-Second Year

Address
WILLIAM McKIBBIN
President

Maryville
Electric and
Plumbing Co.

If you need anything in
our line we can
satisfy you

Electric Apparatus a
Specialty

Peoples Telephone No. 273

STUDENTS!

FOR THE BEST
ICE CREAM AND CHOICE
CONFECTIONS

SEE

UNCLE JOE

DROP IN AND
MAKE YOURSELF
AT HOME

CLASS CATERING
MY SPECIALTY

Joe F. Reagan

MAIN STREET

Two Doors Above Postoffice

Cotrell & Leonard

ALBANY, NEW YORK

Makers of

Caps, Gowns, Hoods



*To the American Col-
leges and Universities
from the Atlantic to
the Pacific*

Class Contracts a
Specialty

Correct Hoods for
All Degrees

Rich Robes for
Pulpit and Bench

Bulletin, Samples, Etc.
On Request

Jas. A. & D. R. Goddard

REAL ESTATE AND INSURANCE

MARYVILLE, - TENNESSEE

BUY YOUR

Candies, Fruits and Lunches

AT

WEBB & GIBSON'S

(Old College Students)

Nearest Grocery to Campus

Opposite K. & A. Depot

Dreamland Theater

MARYVILLE, TENNESSEE

Most Modernly Equipped Picture
House in East Tennessee

Serials, Educational Comedies, and
Western Features a Specialty.

Your Patronage Solicited

PATRONIZE

Seilaz Cafe

Service :: Quality

515 Gay Street

KNOXVILLE, TENNESSEE

TRAVEL VIA



SHORT LINE TO

LOUISVILLE, ATLANTA, CINCINNATI, ST. LOUIS,
JACKSONVILLE AND OTHER POINTS

QUICK TIME AND EXCELLENT SERVICE

For Complete Information about Rates, Routes and Schedules

Call on or Address

C. N. HORNER, AGENT
MARYVILLE, TENN.

D. S. CHANDLER, D.P.A.
KNOXVILLE, TENN.

We Make a Specialty of Engraving and Stationery
for Colleges. We Made the Invitations
for the Class of 1915

E. A. Wright Bank Note Co.

1108 Chestnut Street

PHILADELPHIA

W. M. THOMAS W. H. THOMAS

Thomas & Son

Contractors

Steam and Hot Water Heating
Sanitary Plumbing

New Phone 145-3 Rings Office Phone 211

Shop and Office: Main Street
MARYVILLE, TENNESSEE

EYE, EAR, NOSE AND
THROAT

DR. F. L. YOUNG

SPECIALIST

Young Building

KNOXVILLE, TENNESSEE

PEOPLES PHONE No. 96

DRS. CALDWELL & BYRNE

DENTISTS

The Bank of Maryville Building

Quick Service Popular Prices
Open All Night

Busy Bee Restaurant

V. APOSTOLIS, Proprietor

WE CATER TO COLLEGE
PATRONAGE

367 West Gay St. Opp. Atkin Hotel

YOU WILL BE SATISFIED
WITH PRINTING FROM THE

Enterprise Print Shop

JAS. B. HEDGE, JR., Owner

Student and College Work Solicited
on the Basis of Satisfaction Assured

BOTH PHONES No. 75

R. F. GRAF J. R. GRAF H. R. GRAF

R. F. Graf & Sons

ARCHITECTS
AND STRUCTURAL
ENGINEERS

KNOXVILLE, TENNESSEE

THE BANK OF BLOUNT COUNTY

W. L. RUSSELL, *President*
JOHN M. CLARK, *Cashier*

M. H. GAMBLE, *V.-President*
J. E. ROWAN, *Asst. Cashier*

CAPITAL, - \$50,000.00
UNDIVIDED, \$22,000.00

SAFETY DEPOSIT BOXES
FOR RENT

CORRESPONDENCE WITH A VIEW TO ESTABLISHING
BUSINESS RELATIONS SOLICITED

MARYVILLE
TENNESSEE

JIM ANDERSON CO.
"OLDEST, LARGEST, AND STRONGEST
GROCERY STORE IN THE STATE"

Established in 1880. No change
in location, name or bank since that
time. Our guarantee is as good as
a Government Bond, and has been
for 34 years.

KNOXVILLE TENNESSEE

KODAKS

AND

KODAK SUPPLIES

Walker's Drug Store

Between the Two Banks—Main Street

Starr Pianos

Famous for Quality

HAVE BEEN ON MARKET
FOR 48 YEARS

BEFORE BUYING A PIANO
OR A PLAYER-PIANO
INVESTIGATE THE
STARR
IT WILL PAY YOU

Starr Piano Co.

517 Market Street
KNOXVILLE, TENNESSEE

Write for Catalogue

Quick Service Popular Prices
Open as long as anything in sight.

East Side Cafe

W. V. ANDERSON, Proprietor

We Cater to College Patronage

Nearest Cafe to the College
Opposite K. & A. Depot

Both Phones

Orders Delivered Any Time

Dr. E.G.E. Anderson

DENTIST

402 Arnstein Building
KNOXVILLE, TENNESSEE
Old Phone 404

Eugene L. Webb

The Students' Photographer

Up-to-Date Photos of All Styles
High-Grade Kodak Finishing a Specialty

230 Main Street
MARYVILLE, TENNESSEE

MADE MAJORITY OF PHOTOS FOR "THE CHILHOWEAN"

T. E. BURNS COMPANY

The Finest Grocery Store in the Entire South

VISITORS ALWAYS WELCOME

311-313 Wall Street

KNOXVILLE, TENNESSEE

DR. V. C. DAIL

EAR, EYE, NOSE

AND

THROAT SPECIALIST

Fourth Floor, Arnstein Building

KNOXVILLE, TENNESSEE

NEW MANAGEMENT

Sam Houston Inn

SPECIAL SUNDAY DINNERS 25c

BANQUETS AND THEATRE
PARTIES A SPECIALTY

E. C. GILMORE, Proprietor

MARYVILLE, TENNESSEE

THE GEM THEATER

MAGNIFICENTLY
EQUIPPED

Special Features of a High Class
Will Furnish Attraction at This
Theater at All Times

YOUR PATRONAGE SOLICITED

John A. Goddard

DENTIST

Students cordially invited to call when
in need of dental work

FREE EXAMINATIONS

Office Up Stairway Next to J. N.
Badgett's Store

PEOPLES PHONE 241

We Hope the Students' Will Patronize the
Advertisers in Our College Annual

The Branson Studio

711 SOUTH GAY STREET, KNOXVILLE, TENN.

PHOTOGRAPHS OF QUALITY



Special Attention Given to MARYVILLE COLLEGE Work

GOOD'S CAFE

For Ladies and Gentlemen

Sea Foods and Good Meats
a Specialty

C. EARL GOOD, Prop. 521 S. Gay Street
KNOXVILLE, - TENNESSEE

Dr. C. F. Crowder

PHYSICIAN

Office in Lawrence Bldg.

MARYVILLE, - TENNESSEE

J. N. Badgett Company

WHOLESALE and RETAIL Department Store

MARYVILLE, :: :: :: :: TENNESSEE

EXCEPTIONALLY QUICK SERVICE

Via

HARRIMAN AND
TENNESSEE CENTRAL

Shortest Line and Quickest Time
Between

KNOXVILLE
====AND====
NASHVILLE

THROUGH COACHES ON DAY TRAINS
THROUGH ELECTRIC LIGHTED PULLMAN SLEEPERS
ON NIGHT TRAINS
BETWEEN KNOXVILLE AND NASHVILLE
INDIVIDUAL LIGHTS ON EACH BERTH

=====
For further information, call on or write
J. E. SHIPLEY, ASST. GEN. PASSENGER AGENT
Nashville, Tennessee

OR

GUY H. MAY, TRAVELING PASSENGER AGENT
Knoxville, Tennessee

SPECIAL ATTENTION GIVEN TO
DISEASES OF THE GUMS

Dr. C. H. Alexander

DENTIST

Room 603, Arnstein Building

KNOXVILLE, TENNESSEE

GO TO CITY BAKERY

THE HOME OF

"Good Eats"

FOR

CANDIES, CREAMS, PIES
AND CAKES

G. A. BENEDICK, Proprietor



The American Teachers' Agency

19 Deaderick Bldg. KNOXVILLE, TENNESSEE

We can help students into good positions who have
qualified themselves to teach.

Vacancies are being reported to us daily.

Write us for further information.

S. O. HOUSTON

Manager

KNAFFL & BRAKEBILL

**Modern Photographic
Portraiture**

=====

Special Prices to Colleges

=====

622 GAY STREET, :: :: KNOXVILLE

Peoples Phone
251

Bell Phone
158

The Sanitary Grocery
NEATEST STORE IN TOWN
EVERYTHING FRESH
PROMPT DELIVERY

WALKER JOHNSON and ROBT. COSTNER
Proprietors

B. C. Young's New Place

FORMERLY
THE STAR RESTAURANT

Where all college students eat. Everything new
and sanitary. I sell meal tickets to students.
Come and see me and bring your friends.

REGULAR MEALS 25c,
AND SHORT ORDERS

B. C. YOUNG, Prop.

**"Here is Your Answer; in
WEBSTER'S
NEW INTERNATIONAL
- THE MERRIAM WEBSTER**

Even as you read this publication you likely
question the meaning of some *new* word. A
friend asks: "What makes mortar harden?"
You seek the location of *Lach Katrine* or the
pronunciation of *jujutsu*. What is *white coat*?
This **NEW CREATION** answers all kinds of
questions in Language, History, Biography, Fic-
tion, Foreign Words, Trades, Arts and Sciences,
with final authority.

400,000 Words and Phrases Defined.
2700 Pages. 6000 Illustrations.
Cost \$400,000.

The only dictionary with
the *new divided page*.—
characterized as "A Stroke
of Genius."

Write for speci-
men pages, illus-
trations, etc.

Mention this pub-
lication and
receive FREE a
set of pocket
maps.

**G. & C.
MERRIAM
CO.,
Springfield,
Mass.**



"CHILHOWEAN
1915"

MARYVILLE COLLEGE ANNUAL

Maryville, Tenn.

Asst. Business Mgrs
A. F. Murray
Alfred O. Biggs

Associate Editors
Chas. E. Dawson
Anne Crane
Frost
J. Evans Ensign

April 14, 1915.

Mr. L.A. Williams, President,
Knoxville Engraving Co.,
Knoxville, Tenn.

My dear Mr. Williams:

Your last shipment of
proofs have been received, and we are exceed-
ingly well pleased with them. The Printing
Company advises us that the plates have
arrived, and check up correctly.

We desire to thank you
for the efficient service which you have
rendered, and for the personal and helpful
interest which you have shown. We shall take
great pleasure in recommending you to next
year's staff.

Very truly yours,

Ralph W. Lloyd
Bus. Mgr. CHILHOWEAN 1915

QUALITY--SERVICE--PERSONAL ATTENTION
Three Essentials—Our Motto

Knoxville Engraving Co.
Knoxville, Tenn.



