



EX LIBRIS



COPYRIGHTED
BY
MARGARET L. MELODY
Editor
ANDREW E. NEWCOMER
Business Manager
1932



The Chilhowean

PUBLISHED BY

THE JUNIOR CLASS

OF

MARYVILLE COLLEGE

MARYVILLE

TENNESSEE

VOLUME XXVI, 1932





DEDICATION

With the keenest appreciation for the magnificent future of splendid achievement which he has envisaged for our Alma Mater, and which we know he will labor to make possible, we dedicate this volume of the Chilhowean to

RALPH WALDO LLOYD

a man possessing that rare development of mind that grasps a problem in its entirety and its relativity; that rich quality of heart that sees and sympathizes and understands; that wide compass of soul that recognizes ideals and looks beyond and realizes in attainment.





CONTENTS

BOOK I
CAMPUS

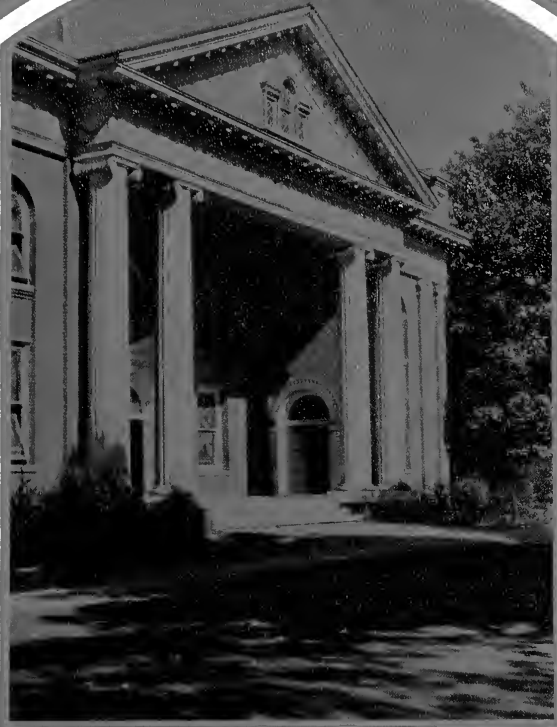
BOOK II
ADMINISTRATION

BOOK III
CLASSES

BOOK IV
ATHLETICS

BOOK V
ORGANIZATIONS

BOOK VI
FEATURES



FOREWORD

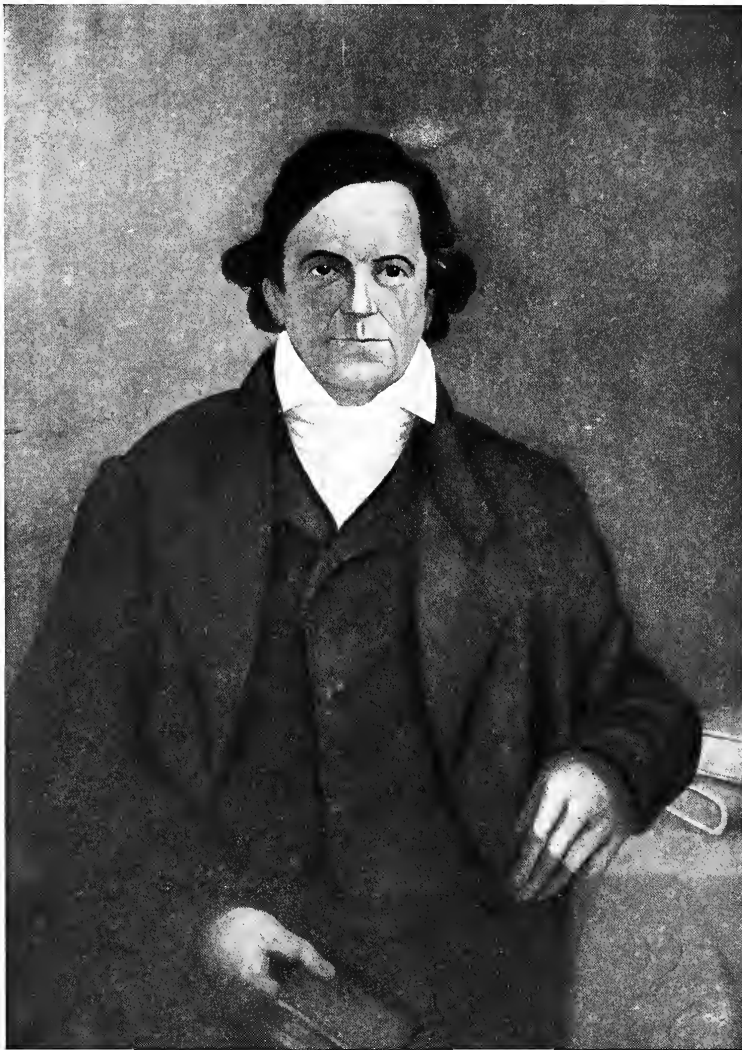
AS WE realize, in this year of inauguration, that two epochs in the history of Maryville College are being welded together, and as we see, in the fusion of past and present, a greater college emerging, we who love Maryville look with pride at our growing Alma Mater, and, with thoughts on the gripping record of five heroic administrations, we turn toward the future of larger scope and brighter destiny which is rising from the foundations of a century. : : : : :

IN MEMORIAM



JASPER CONVERSE BARNES

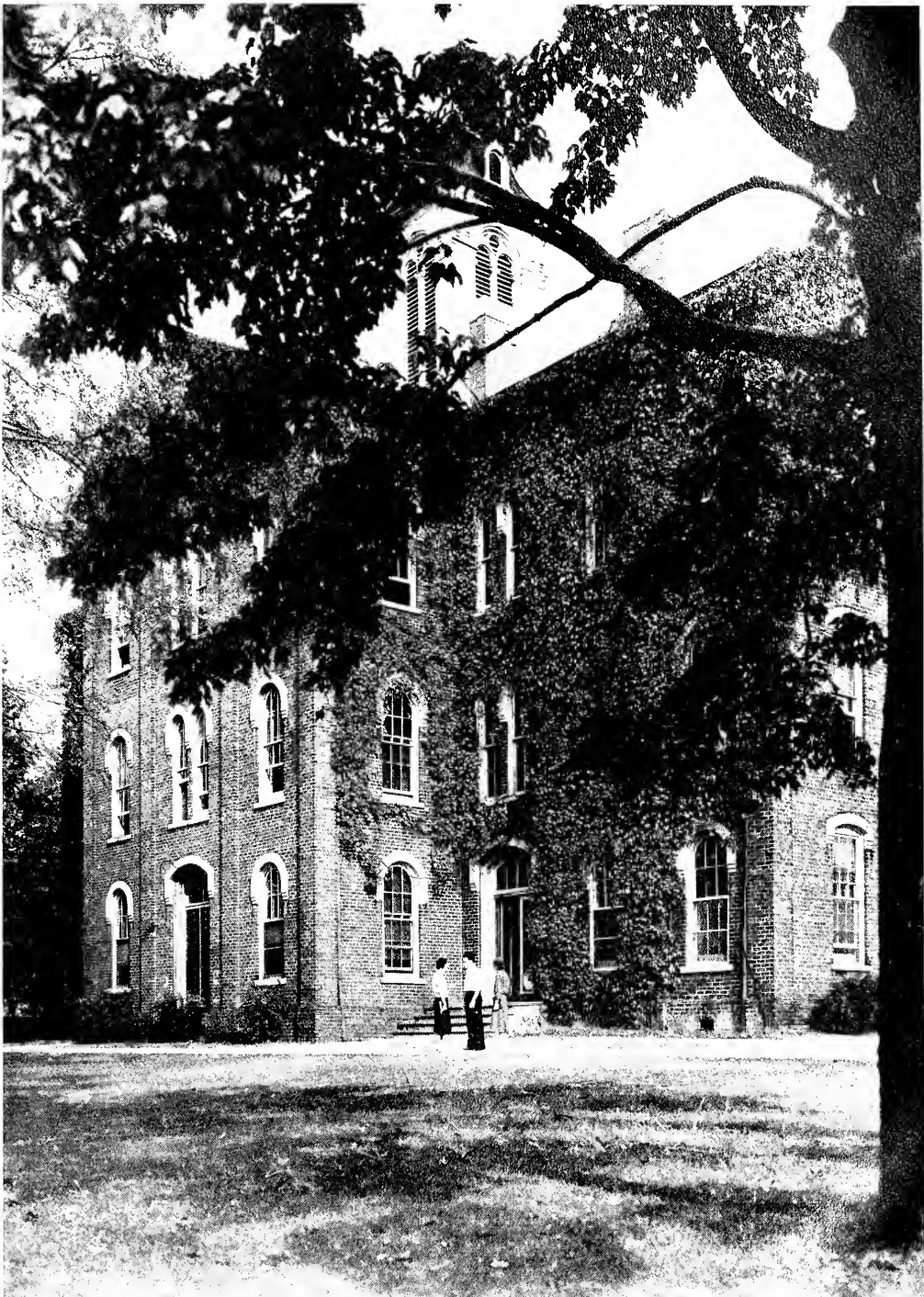
On the road from the Unknown to the Unknown we met a journeyman who had been long travelling. He had come from far and had done many deeds, and his eye was still clear and his hand still strong. And as we began to know him, the road sloped away into the shadows, and Life slipped from him as a garment outworn.



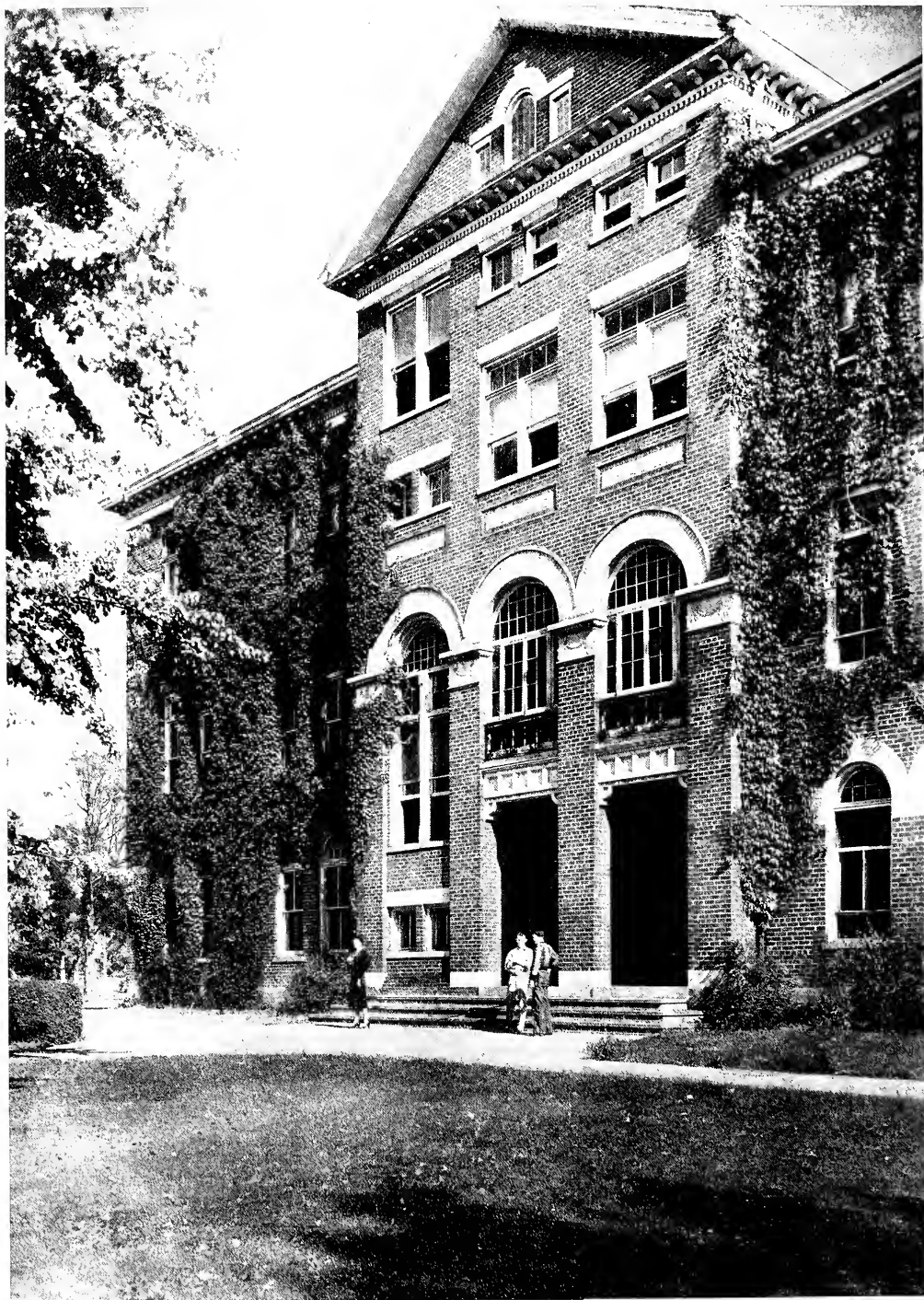
ISAAC ANDERSON

Genesis. A prophet with whom the vision splendid
chose to lodge; through whom the incarnation
came to pass; from whom the purpose caught its
eloquence of might rushing winds. And his morn-
ing of dream and his evening of deed
were the first day.

Book I
Campus



ANDERSON HALL



FAYERWEATHER SCIENCE HALL



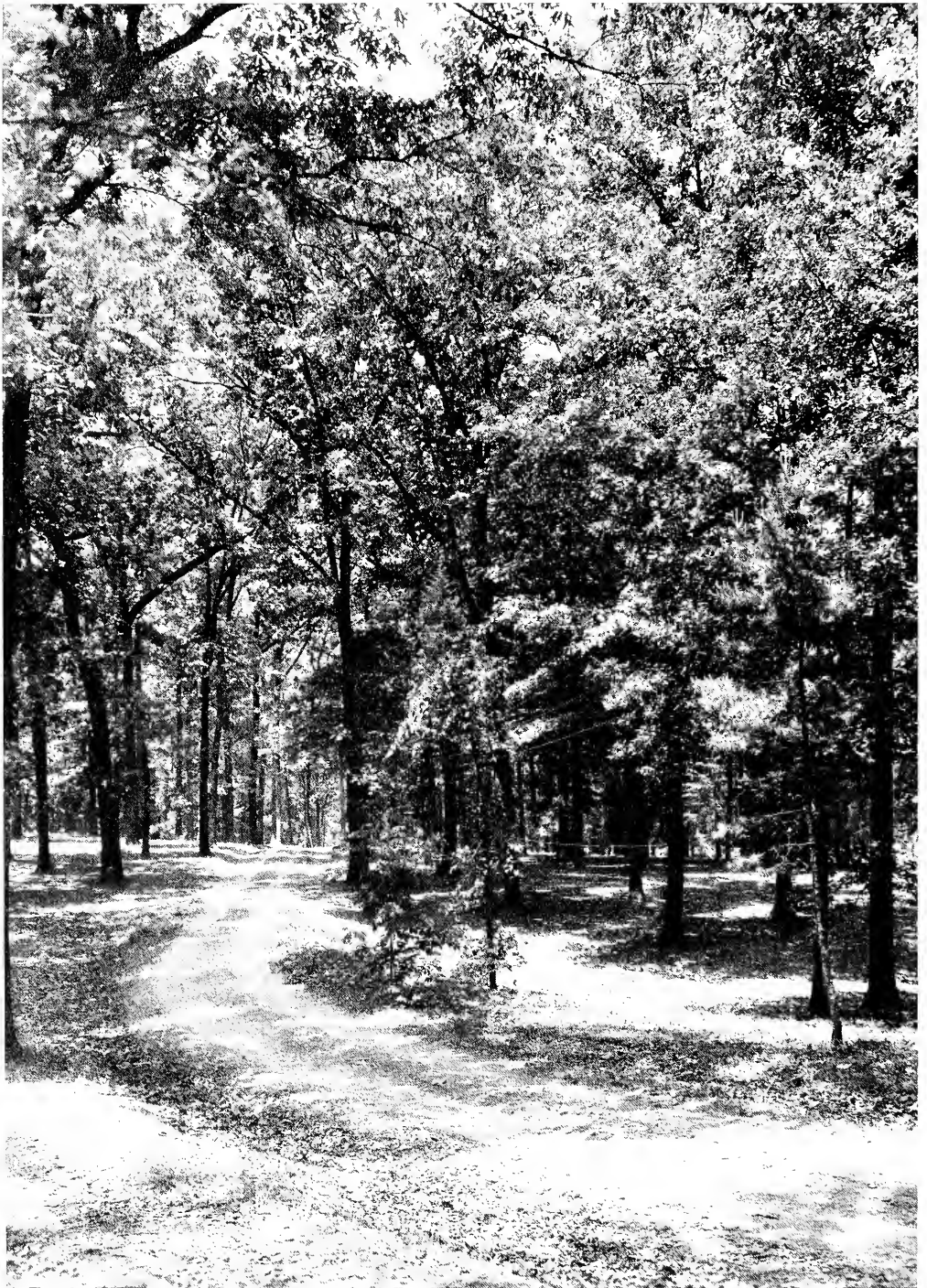
THAW HALL



PEARSONS HALL



PRESIDENT'S HOME



COLLEGE WOODS



JOHN J. ROBINSON

Foundations. A successor who wore the mantle well. A follower who animated brick and mortar with the flame. A disciple who caught the torch and held it high through all the trying crises until the cataclysm which swept it out.

Book II

Administration



EDWIN RAY HUNTER

M.A., PH.D.

Dean of the College

Dr. Hunter was graduated from Maryville College in 1914. He returned to his Alma Mater in 1919 to teach in the department of English language and literature, of which department he later became the head. In 1931 he was appointed dean of the college, in which capacity his educational understanding and his human insight enable him to serve with honor to the college and success to himself.

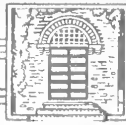


MARY ELLEN CALDWELL

B.A.

Dean of Women

Miss Caldwell was graduated from Maryville College in 1891 and remained here for the following six years to teach in the departments of Latin and Mathematics. In 1905 she returned in the capacity of matron. In 1913 she was appointed dean of women, which position she has retained by virtue of her natural ability to manage dormitory situations and her growing experience with young people of college age.



MRS. JANE BANCROFT SMITH ALEXANDER, M.A.
Associate Professor of English

MISS ALMIRA CAROLINE BASSETT, M.A.
Associate Professor of Latin

MISS CLARA JANE BROWN, M.A.
Professor of Home Economics

MISS ALICE ISABELLA CLEMENS, B.A.
Associate Professor of English

MISS MILDRED McCHEYNE CRAWFORD, B.A.
Associate Professor of English

CHARLES C. CURTIS, B.S.
Associate Professor of Education

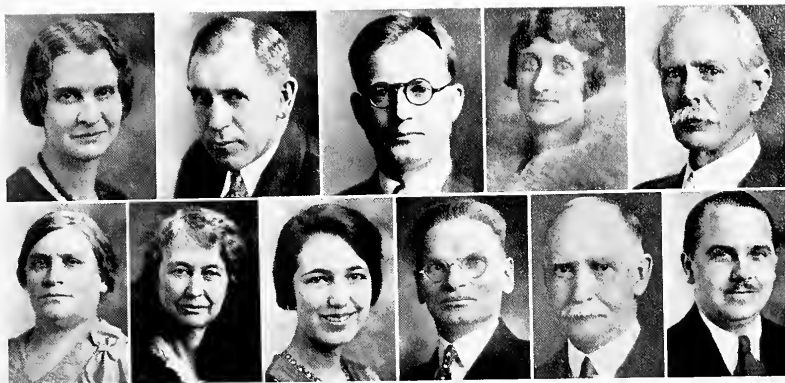
EDMUND WAYNE DAVIS, M.A.
Professor of Latin and Greek

HORACE LEE ELLIS, M.A.
Librarian

MISS HELEN REBECCA GAMBLE, M.A.
Associate Professor of Psychology and Education

MISS SUSAN ALLEN GREEN, M.A., L.H.D.
Professor of Biology

FRED ALBERT GRIFFITTS, M.A.
Associate Professor of Chemistry



MISS JESSIE SLOANE HERON, M.A.

Associate Professor of English

LOMBE SCOTT HONAKER, B.A.

Professor of Physical Training and Director of Athletics

GEORGE DEWEY HOWELL, M.S.

Professor of Chemistry

MISS BONNIE LUCILLE HUDSON, M.A.

Associate Professor of Biology

GEORGE BENJAMIN HUSSEY, M.A., Ph.D.

Professor of Modern Languages

MISS ALMIRA ELIZABETH JEWELL, M.A.

Associate Professor of History

MISS MARY MOORE KELLER, M.A.

Associate Professor of Psychology

MISS CLARA VIRGINIA KENNEDY, B.A., B.S.

Assistant Librarian

JOHN HERBERT KIGER, M.A.

Associate Professor of the English Bible

GEORGE ALAN KNAPP, M.A., Litt.D.

Professor of Mathematics

KENNETH RAYMOND LAGERSTEDT, M.A.

Associate Professor of French and German



JAMES HENRY McMURRAY, M.A., Ph.D., L.H.D.
Professor of Political and Social Science and History

MISS GERTRUDE ELIZABETH MEISELWITZ, B.S.
Associate Professor of Home Economics

MRS. ELIZABETH GRIFFES NEWBERRY, B.A.
Instructor in French

MRS. BESSIE HENRY OLIN, M.A.
Associate Professor of Biology

HORACE EUGENE ORR, M.A., D.D.
Professor of the English Bible and Religious Education

VERTON MADISON QUEENER, M.A.
Associate Professor of History and Debate

MRS. EVELYN NORTON QUEENER
Instructor in Physical Training for Women

MORTON McCASLIN RODGERS, M.E., S.T.M., Ph.D., D.D.
Professor of the English Bible

ROBERT LEWIS SMITH, B.A.
Instructor in Spanish

ROBERT CAPERUS THROWER, B.A.
*Instructor in Spanish, and Assistant Director of Physical Training
and Athletics*

EDGAR ROY WALKER, M.A.
Acting Professor of Physics

MISS MARGARET CATHERINE WILKINSON, M.A.
Associate Professor of French



OTHER OFFICERS OF ADMINISTRATION

- FRED LOWRY PROFFITT, B.A., *Treasurer*
 MISS ANNA JOSEPHINE JONES, B.A., *Administrative Secretary*
 MISS CLEMMIE HENRY, *Student-Help Secretary*
 MRS. CELIA ROUGH WRINKLE, *Assistant to the Treasurer*
 MISS RUTH WEESE, B.A., *Assistant to the Administrative Secretary*

TEACHERS OF SPECIAL INSTRUCTION

- MISS LAURA BELLE HALE, B.Pd., *Head of the Department of Music*
 MRS. NITA ECKLES WEST, B.A., B.O., *Head of the Department of Expression*
 MISS WILHELMINA HOLLAND, B.A., B.O., *Expression*
 NAN BIRD, *Art*

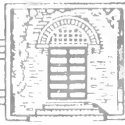
OTHER OFFICERS

- WILLIAM PATTON STEVENSON, D.D., LL.D., *College Pastor*
 MRS. LIDA PRYOR SNODGRASS, *Matron of Baldwin Hall*
 MRS. EMMA LEE WORLEY, *Matron of Memorial Hall*
 MISS JESSIE ELEANOR McCORKLE, *Assistant Matron of Baldwin Hall*
 MRS. ADDIE KIDD PROFFITT, *Assistant Matron of Baldwin Hall*
 MRS. PEARL WELLS BUTCHER, *Assistant Matron of Pearsons Hall*
 MRS. ELIZABETH HALL, *Matron of Ralph Max Lamar Memorial Hospital*
 EULIE ERSKINE McCURRY, *Proctor of Carnegie Hall*
 GEORGE ALAN KNAPP, M.A., Litt.D., *Manager of the Book Store*
 MRS. KATHRYN ROMIG McMURRAY, B.S., *Manager of the College-Maid Shop*
 MISS SARAH FRANCES COULTER, *Manager of the Boarding Club*
 MISS LULA GRAHAM DARBY, *Dining Room Matron*
 ERNEST CHALMERS BROWN, *Engineer*
 RALPH IRWIN, *Night Watchman*

STUDENT ASSISTANTS

BIOLOGY

- | | |
|----------------|-------------------------------------|
| LOUISE CLINE | FRANCES MASSEY |
| ERCELLE HUNTER | ANDREW NEWCOMER |
| HARVEY LOWRY | WILLIAM LATHAN, <i>Bacteriology</i> |
| BARBARA LYLE | BEULAH DUGGAN, <i>Botany</i> |
| HOMER McCANN | JESSIE MAE RAMSEY, <i>Zoology</i> |



STUDENT ASSISTANTS

(Continued)

CHEMISTRY

GEORGA BURK
 COOLEY COMBS
 WILMA DICK
 JOHN EYSTER
 WINFIELD GLASS
 DANA HANBY

SHERRILL HATCHER
 PAUL HUNTER
 HENRY LOWRY
 MARGARET MOZINGO
 DOLLIE PUTNAM
 ROSS RANKIN

JOHN SMERZNAK

HOME ECONOMICS

HELEN BURDETTE
 VIRGINIA CRIDER
 MABEL HEMBREE

THEONA PRUETT
 HELEN STEWART
 DOROTHY WEATHERLY

PHYSICS

FRANK GARMAN

ROBERT McREYNOLDS

PAUL SHELTON

ASSISTANT LIBRARIANS

BENJAMIN GROVES
 HOWARD KIPP
 FRED KIRCHNER

MARGARET MELODY
 MARY JOHN METCALFE
 RICHARD ORR

GEORGE OSBORN

LOAN LIBRARY

ELIZABETH GILLIS
 WILLIAM MARSTON

DAN McCONNELL
 TOM WEESE

ELIZABETH WILBAR

GYMNASIUM

HARDEE GILLESPIE
 JOHN KINSEY

VENNOR LOWRY
 JOHN TOPE

MILDRED PURVIANCE



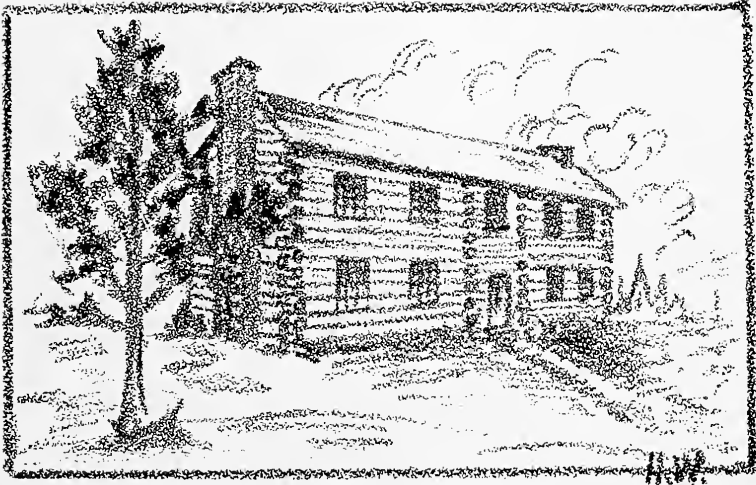
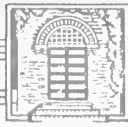
PETER MASON BARTLETT

Re-creation. A builder among ruins. Father of a site, an endowment, an erection. Patron of a memory, a hope, a salvage. Toiler in an early dawn, which he found shadowed by a long night, and left colored by a coming sun.

Book III

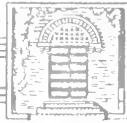
Classes





"The Log College"
1802.

SENIORS



Senior Class Officers

- GEORGE OSBORN - - - - - *President*
- VIRGINIA CRIDER - - - - - *Vice-President*
- RENO SMITH - - - - - *Treasurer*
- IVA BABCOCK - - - - - *Secretary*



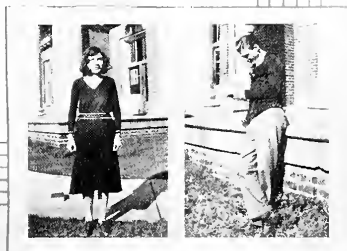
RUTH LLOYD, CLASS MASCOT

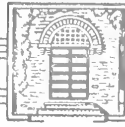


ZELMA MAE ACTON
 ALCOA, TENNESSEE
 Major: French
 Minors: English, Spanish
 THETA EPSILON

JUNIUS LANDRUM ALLISON
 ASHEVILLE, NORTH CAROLINA
 Major: English
 Minors: History, Political and Social Science
 ATHENIAN

Transferred from Biltmore Junior College; President Alethian Literary Society 2; Bluets Editor 2; Highlander Business Manager 2; Y.M.C.A. Cabinet 4; Writers' Work Shop 3, 4; Athenian Critic 4; Law Club President 4; Athenian Midwinter 4.





ELLEN LOUISE AVERY

ST. PETERSBURG, FLORIDA

Major: Religious Education
 Minors: Education, English

BAINONIAN

Student Council 1; Bainonian Program Secretary 2; Florida Club Vice-President 2, 3; Florida Club Secretary 4; Graduate of Expression 3; College Players 3; Nu Gamma Leader 2; Y.W.C.A. Cabinet 4; Athenian Midwinter 2; Bainonian Midwinter 3, 4; College Players' Play 3.

IVA ELIZABETH BABCOCK

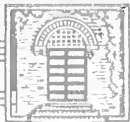
SUNBRIGHT, TENNESSEE

Major: English
 Minors: Spanish, Education

THETA EPSILON

"M" Club President 4; Class Secretary 4; Theta Epsilon Secretary 4; Theta Epsilon Sergeant-at-Arms 4; Student Council 4; Athletic Board of Control 3, 4; Y.W.C.A. Athletic Director 3, 4; Tennis Team 3; Pep Committee 4.





WALLACE WOOLSEY BARR

TARRYTOWN, NEW YORK

Major: Biology

Minors: Political Science, History

ATHENIAN

EVELYN MERLE BEEBE

MISSOULA, MONTANA

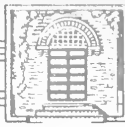
Major: Religious Education

Minors: English, Education

BAINONIAN

Oberlin College 1; Freshman Girls' Glee Club 1; Nu Gamma Leader 3; Program Secretary Y.W.C.A. 3; President Y.W.C.A. 4; Bainonian Program Secretary 2; Bainonian Treasurer 3; Bainonian Mid-winter Business Manager 3; Triangle Club Program Secretary 2; Girls' Glee Club 2; Vesper Choir 2, 3, 4; Writers' Work Shop 3; Student Council 3; Student Volunteer 2; Chilhowean Staff 3; Daisy Chain 3; B. G. 3, 4.





LOUIS BLISS BLAIR
CINCINNATI, OHIO

Major: Economics
Minors: Psychology, History
ATHENIAN

CHILTON WEBSTER BOWLES
BELLBROOK, OHIO

Major: Political and Social Science
Minors: Bible, German
ALPHA SIGMA

Glee Club 1, 2, 3, 4; College Quartet 1, 2, 3, 4; Vesper Choir 1, 2, 3, 4; Alpha Sigma Midwinter 3, 4; College Players 3, 4; Theta Alpha Phi 3, 4; Theta Alpha Phi Play 3.





CLARENCE AMIEL BRATSCHIE
NEWCASTLE, PENNSYLVANIA

Major: Religious Education
Minors: French, History

ATHENIAN

MARGARET BRIGMAN
PANAMA CITY, FLORIDA

Major: Spanish
Minors: Psychology, Political Science

BAINONIAN

Student Council 3; Student Faculty Committee 3; Athenian Vice-President 4; Varsity Track 1, 2, 3, 4; Bainonian Midwinter 2; Freshman Debate; Y.M.C.A. Cabinet 3, 4.





HELEN JEANNETTE BURDETTE

SPENCER, NORTH CAROLINA

Major: Home Economics
Minors: Bible, Education

THETA EPSILON

Catawba College 1; House Chairman 3;
Theta Epsilon President 4; Program Sec-
retary Home Ec Club 3; Treasurer French
Club 3; Home Economics Assistant 4.

GEORGA FERN BURK

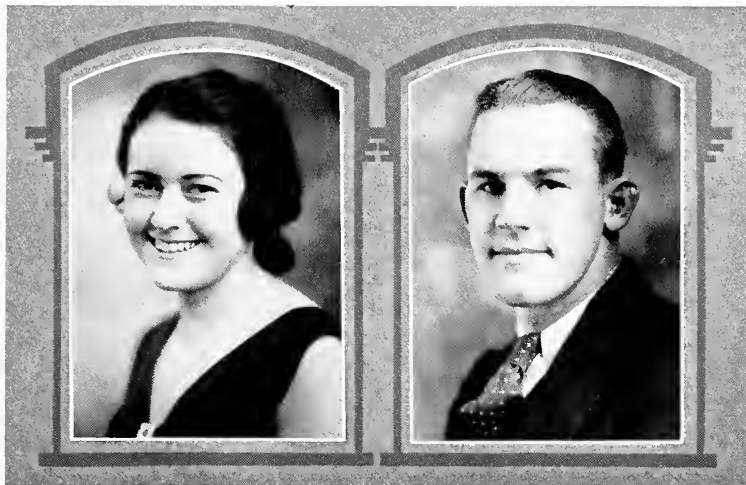
RUDOLPH, OHIO

Major: Home Economics
Minors: Education, Foods

BAINONIAN

Class Secretary 3; Student Council 2;
Bainonian Sergeant-at-Arms 2; Bainonian
Secretary 3; Bainonian Program Secretary
4; Chemistry Club Editor 4; Home Ec
Club Editor 4; Athletic Monograms 2,
3; Y.W.C.A Store Assistant Manager 2;
Y.W.C.A. Store Manager 3, 4; Nu Gam-
ma Leader 2; Orchestra 1, 2, 3, 4; As-
sistantships 2, 3, 4.





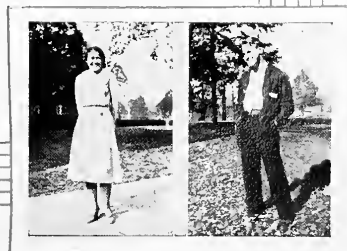
LENA MAYE BUSH
DANDRIDGE, TENNESSEE

Major: History
Minors: Spanish, Psychology
THETA EPSILON

ROBERT HOMER BYERLY
MARYVILLE, TENNESSEE

Major: History
Minors: Political and Social Science, Psychology
ALPHA SIGMA

Student Council 1; Alpha Sigma Mid-
winter 4; Track 3; Football 2.





LEA CALLAWAY

MARYVILLE, TENNESSEE

Major: Biology

Minors: Chemistry, Education

ALPHA SIGMA

Freshman Debate; Class President 2; Class Editor 3; Chilhowean Staff 3; Student Council Vice-President 4; Athletic Board of Control 3, 4; President of Athletic Board of Control 4; Pi Upsilon 1, 2, 3, 4; Varsity Football 1, 2, 3, 4; Football Captain 4; Varsity Basketball 1, 2; Varsity Track 2, 3, 4; Alpha Sigma Midwinter 4.

FRANCIS EDGAR COLLINS

SPRING CITY, TENNESSEE

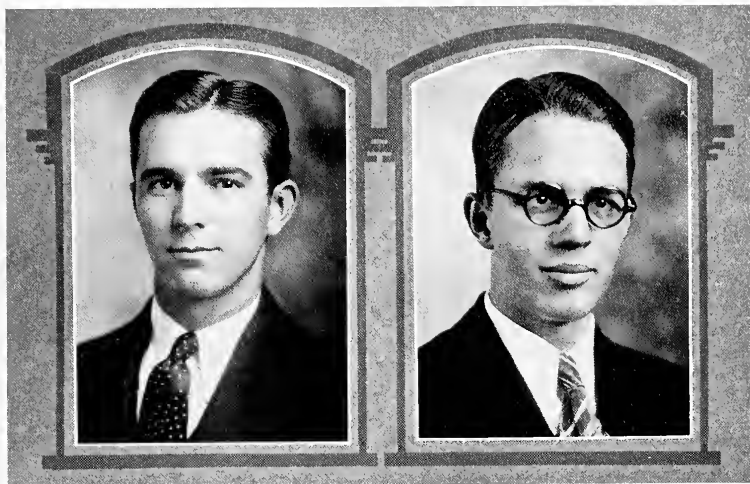
Major: History

Minors: Political and Social Science, Education

ATHENIAN

East Tennessee Club Treasurer 2; Student Council 4; Student-Faculty Committee 4.





COOLEY LEDFORD COMBS

JEFF, KENTUCKY

Major: Chemistry
Minors: Biology, Physics

ATHENIAN

Chemistry Assistant 2, 3, 4; Kentucky Club Editor 2; Kentucky Club President 3; Pre-Medical Club President 3; Student Council 4; Student Council Secretary-Treasurer 4; College Players 4; Athenian Editor 3; Athenian Recording Secretary 3; Class Treasurer 3; Athenian President 4.

EDWARD BEEKMAN COOPER

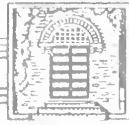
BRIDGETON, NEW JERSEY

Major: Greek
Minors: History, Bible

ATHENIAN

Vesper Choir 1, 2, 3, 4; Ministerial Association Editor 4; Athenian Program Secretary 4; Tennis Squad 3, 4.





THOMAS MOORE COOPER
BRIDGETON, NEW JERSEY

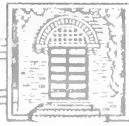
Major: Greek
Minors: Bible, History
ATHENIAN

Athenian Sergeant-at-Arms 2, 4; Football Squad 2, 3, 4; Track Squad 2.

MARGARET FRANCES CRAGAN
MARYVILLE, TENNESSEE

Major: Home Economics
Minors: Education, History
BAINONIAN





MARTHA VIRGINIA CRIDER

MARION, KENTUCKY

Major: Home Economics

Minors: History, Bible

THETA EPSILON

Class Vice-President 4; Student Council 4; Nu Gamma Leader 2; Kentucky Club Vice-President 2; Y.W.C.A. Cabinet 4; Home Economics Assistant 3, 4.

HELEN ARNOLD CROWDER

MARYVILLE, TENNESSEE

Major: Home Economics

Minor: Home Economics

THETA EPSILON

Theta Epsilon President 4; Theta Epsilon Program Secretary 3; Theta Epsilon Publicity Chairman 2; Athletic Board of Control 3; "M" Club 3, 4; Athletic Awards 2, 3; Orchestra 1, 2, 3, 4; Ensemble 3, 4; Editor Handbook 3; Blue Ridge Delegate 3; Y.W.C.A. 3, 4; Nu Gamma Leader 3, 4.





AMANDA RUTH DAVIS
CHATTANOOGA, TENNESSEE

Major: History
Minors: Education, Bible
BAINONIAN

WILMA LEONE DICK
HILLSBORO, OHIO

Major: Latin
Minors: History, Education
BAINONIAN

Bainonian Critic 3; Chemistry Assistant
2, 3, 4.



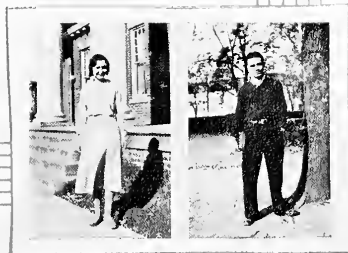


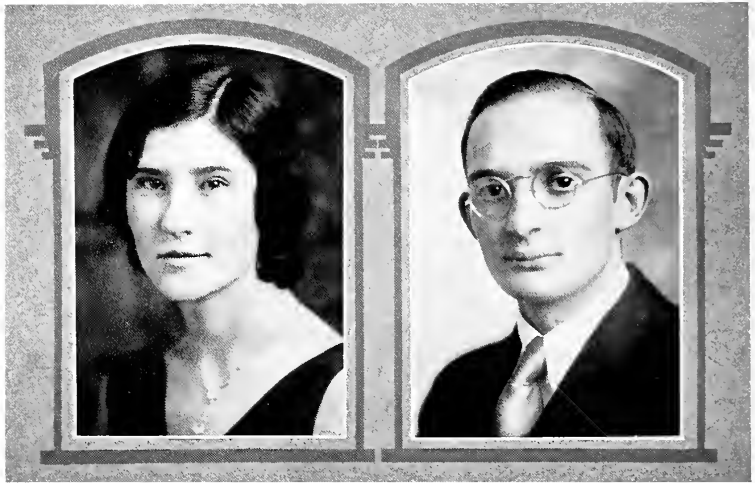
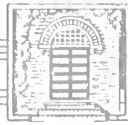
ADDIE MAE DOBSON
GREENEVILLE, TENNESSEE

Major: Biology
Minors: History, Education
THETA EPSILON

FREDERICK JACK DOLINSEK
LINCOLN, ILLINOIS

Major: Mathematics
Minors: Physics, Education
ATHENIAN





BEULAH ALICE DUGGAN
KNOXVILLE, TENNESSEE

Major: Biology
Minors: Latin, English
BAINONIAN

Orchestra 2, 3, 4; Secretary Art Club 3;
Bible Assistant 2, 3; Botany Assistant 4.

HUBERT LEO DUNCAN
FLATROCK, ILLINOIS

Major: Political Science
Minors: History, Education
ATHENIAN

Vesper Choir 1, 2, 3, 4; Glee Club 2, 3;
Three "I" Club President 3; Student
Council Secretary 4; Student-Faculty
Contact Committee 4; Program Secretary
Athenian 4; Athenian Critic 3.





JANE GLASCOCK EDRIS

MARYVILLE, TENNESSEE

Major: Home Economics

Minors: Home Economics, Religious Education

BAINONIAN

Bainonian Program Secretary 2; Home Ec Club Program Secretary 2; Home Ec Club President 3.

PAUL MILBURN EDRIS

MARYVILLE, TENNESSEE

Major: Religious Education

Minors: Psychology, English

ATHENIAN

Fellowship Club President 1; Ministerial Association Secretary 2; Ministerial Association Vice-President 3; Ministerial Association President 3; Athenian Program Secretary 3; Athenian Midwinter 1; Bainonian Midwinter 2, 3; Swimming Team 2; Cheer Leader 2, 3, 4; Head Cheer Leader 4; Freshman Debate; Florida Club Secretary 2.





FRANCES JEANNETTE ESHELMAN

CRESTON, OHIO

Major: History

Minors: English, Education

THETA EPSILON

Wooster College 1, 2; Wooster Paper Staff 2; Writers' Work Shop 4; Y.W. C.A. Cabinet 4; Student Honor Rank Committee 4.

EMIL WESLEY FARR

RAMSEY, WEST VIRGINIA

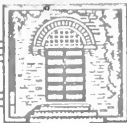
Major: History

Minors: French, Education

ALPHA SIGMA

Alpha Sigma Midwinter 2; Football Manager 4; "M" Club 4; May King 4.





BLUNDON GLENN FERGUSON
ANESTEAD, WEST VIRGINIA

Major: History

Minors: Political and Social Science, Education

ALPHA SIGMA

Varsity Football 2, 3, 4; Basketball Manager 4; Basketball Squad 2; Baseball Squad 1, 3, 4; Athletic Board of Control Secretary 3, 4; "M" Club 2, 3, 4; "M" Club President 4; Class Athletic Director 3.

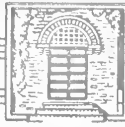
NELLE SARAH GARLAND
HAMSTEAD, MARYLAND

Major: Home Economics

Minors: Psychology, Education

THETA EPSILON





ELOISE ROSE GARRETT

MIAMI, FLORIDA

Major: Biology

Minors: Spanish, Education

BAINONIAN

Florida Club Vice-President 1; Florida Club Editor 2; Glee Club 2, 3, 4; Vesper Choir 2, 3, 4; Y.W.C.A. Cabinet 2; Spanish Assistant 3, 4; Student Council 4.

SAMUEL WILSON GILLINGHAM

GLENSIDE, PENNSYLVANIA

Major: History

Minors: Political Science, Physics

ALPHA SIGMA

Alpha Sigma Program Secretary 3; Alpha Sigma Secretary 4; Track Squad 2, 3; Alpha Sigma Midwinter 3; Senior Class Play 4; Physics Assistant 2, 3; R.C.A. Institute.





MARJORIE ESTABROOK GOULD
ST. PETERSBURG, FLORIDA

Major: Education
Minor: Spanish
BAINONIAN

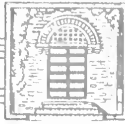
St. Petersburg Junior College 1, 2; Spanish Club Program Secretary 4; Bainonian Program Secretary 4; Daisy Chain 3.

MARGARET RUTH GUTHRIE
WALNUT, NORTH CAROLINA

Major: Education
Minors: History, Bible
THETA EPSILON

Theta Epsilon House Chairman 4; Nu Gamma Leader 3; Y.W.C.A. Cabinet 4.





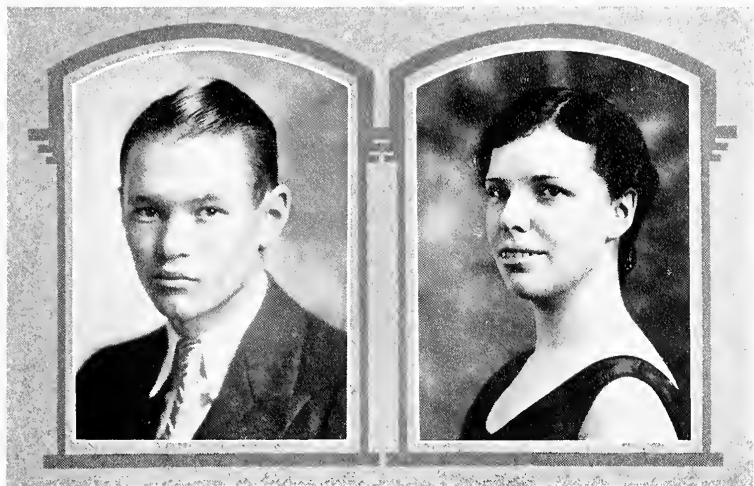
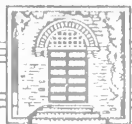
JOSEPH BLAKEMAN HACKER
MANCHESTER, KENTUCKY
Major: Religious Education
Minors: Political and Social Science, French
ATHENIAN

Student Volunteer Program Secretary 3;
Inter-Racial Commission President 4.

MARION RUTH HANNAH
MARYVILLE, TENNESSEE
Major: Home Economics
Minors: Psychology, History
THETA EPSILON

Alpha Sigma Midwinter 3; Daisy Chain
3.





SHERRILL THEODORE HATCHER
SEVIERVILLE, TENNESSEE

Major: Chemistry
Minors: Physics, Spanish

Chemistry Assistant 3, 4; Chemistry Club Treasurer 3; Chemistry Club President 4.

MABEL EDITH HEMBREE
OLIVER SPRINGS, TENNESSEE

Major: Home Economics
Minors: French, Education

BAINONIAN

Home Ec Club Treasurer 4; Home Ec Assistant 4.





ELEANOR PATRICIA HENRY

FORT McDOWELL, CALIFORNIA

Major: English

Minors: History, Religious Education

BAINONIAN

Oberlin College 1; Oberlin Freshman Girls' Glee Club 1; Oberlin House Representative 1; Bainonian Poster Chairman 2; Student Volunteer Program Secretary 3; Pre-Medical Club Program Secretary 3; Orchestra 3, 4; Ensemble 3, 4; Y.W.C.A. Cabinet 3; Y.W.C.A. Vice-President 4; Writers' Work Shop 4; Tumbling Team 2, 3, 4; Tumbling Team Captain 4; B. G. 3, 4; Vesper Choir 2, 3, 4; Ethics Assistant 4.

JOSEPH WELDON HINA

MARION, KENTUCKY.

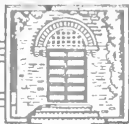
Major: Chemistry

Minors: Physics, Mathematics

ALPHA SIGMA

Writers' Work Shop 3, 4; Chemistry Club 2, 3; Chemistry Club President 3; Class President 3; Highland Echo Staff 3; Highland Echo Editor-in-Chief 4; Pi Upsilon 3, 4.





ELGIE KATHRYN HODGES
HUNTSVILLE, ALABAMA

Major: French
Minors: Latin, Education

BAINONIAN

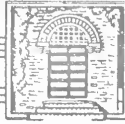
RUBY ALENE HITCH
MARYVILLE, TENNESSEE

Major: Home Economics
Minors: Bible, Education

THETA EPSILON

Highland Echo Staff 1, 2; Nu Gamma Leader 2; Class Secretary 2; Y.W.C.A. Treasurer 3; Tennis Team 2; Tennis Champion 4; French Club President 3; Bainonian Program Secretary 3, Bainonian Secretary 4, Bainonian President 4; Writers' Work Shop 3, 4; Alabama Club Secretary 2; Alabama Club President 3; Chilhowean Staff 3.





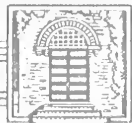
WILLIAM MALCOLM HOUTS
MARYVILLE, TENNESSEE

Major: Chemistry
Minors: Physics, Bible

MESSINA LEE HOWARD
MARYVILLE, TENNESSEE

Major: History
Minor: Political and Social Science
THETA EPSILON





MARY ELIZABETH HUNT

INDIANAPOLIS, INDIANA

Major: History

Minors: Education, Mathematics

THETA EPSILON

Indiana Central College 1, 2; Glee Club 1, 2; Basketball 1, 2; Theta Epsilon Program Secretary 4; Theta Epsilon Vice-President 4; Theta Midwinter 4; Tumbling Team 3; Vesper Choir 3, 4; Glee Club 3, 4.

LINCOLN WALKER HURST

FAIRFAX, OHIO

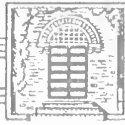
Major: Biology

Minor: Chemistry

ALPHA SIGMA

Alpha Sigma President 4; Ohio Club President 4; Varsity Baseball 1, 2, 3, 4.





LYNETTE NEWELL JOHNSON

PONTOTOC, MISSISSIPPI

Major: English

Minors: French, Education

THETA EPSILON

Chickasaw College 1, 2; Mississippi Club
Secretary 4; Writers' Work Shop 4.

ALEXANDER MAGILL JONES

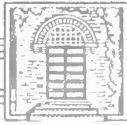
MARYVILLE, TENNESSEE

Major: History

Minors: Political and Social Science, Education

Highland Echo Assistant Business Man-
ager 3; Highland Echo Business Manager
4; Track 2; Vesper Choir 3, 4; Athenian
Midwinter 2; Bainonian Midwinter 3.





SAMUEL BUFORD KING

SEVIERVILLE, TENNESSEE

Major: History

Minors: Chemistry, Economics

ATHENIAN

University of Tennessee 3.

KATHRYN LOUISE KIZER

MARYVILLE, TENNESSEE

Major: History

Minors: Bible, Education

THETA EPSILON

Theta Epsilon Midwinter 2; Alpha Sigma
Midwinter 3, 4; College Players 3; Grad-
uate in Expression 3; May Day Attendant
3.





EDITH ELIZABETH KITTS
CORRYTON, TENNESSEE

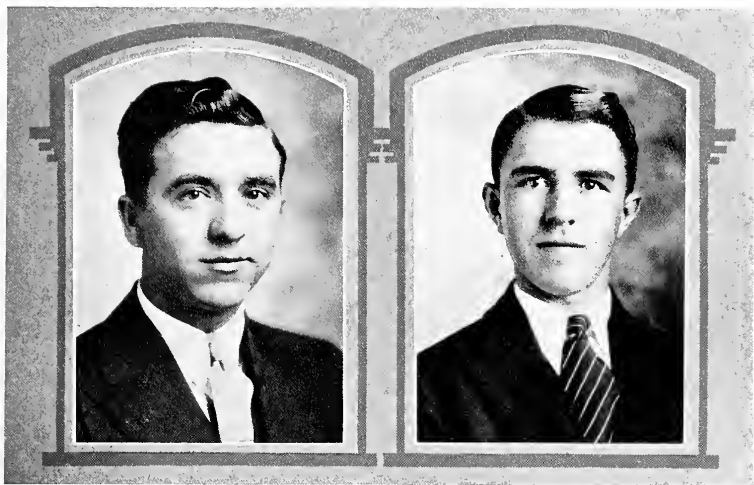
Major: History
Minors: Spanish, French
THETA EPSILON

Spanish Club Vice-President 4; Theta Epsilon Vice-President 4; Athletic Awards 2, 3; "M" Club 4; History Assistant 4.

LINTON LOY LANE
BINFIELD, TENNESSEE

Major: Biology
Minors: Political Science, Education
ATHENIAN





ROBERT PHILIP LEACH
CHATTANOOGA, TENNESSEE

Major: Bible
Minors: Psychology, German
ATHENIAN

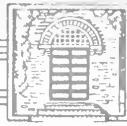
Track 1; Glee Club 3, 4; Vesper Choir
4; Athenian Midwinter 3, 4.

HOLLIS GLENDON LOGAN
MULBERRY, TENNESSEE

Major: History
Minors: English, Education
ATHENIAN

Bryson College 1; David Lipscomb Col-
lege 2.





MARY EMILY LOVETTE
GREENEVILLE, TENNESSEE

Major: English

Minors: History, Education

THETA EPSILON

Varsity Debate 2; Pi Kappa Delta 2, 3, 4; Pi Kappa Delta Vice-President 4; Alpha Sigma Midwinter 2, 3; College Players 3; Graduate of Expression 3; Theta Epsilon Midwinter 4; Tumbling Team 4; Theta Alpha Phi 4.

VENNOR MILLARD LOWRY
MARYVILLE, TENNESSEE.

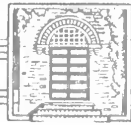
Major: French

Minors: Greek, History

ALPHA SIGMA

Physical Education Assistant 4.





BARBARA BEAGLE LYLE

WASHINGTON COLLEGE, TENNESSEE

Major: Biology

Minors: Education, Bible

BAINONIAN

Orchestra 1, 2, 3, 4; Ensemble 3, 4; Biology Assistant 2, 3, 4; Bainonian Program Secretary 3; Bainonian Secretary 4; Y.W.C.A. Secretary 4; Student Honor Rank Committee 4; Bainonian Midwinter 4.

GORDON ROBINSON LYLE

WASHINGTON COLLEGE, TENNESSEE

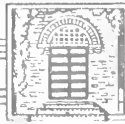
Major: Education

Minors: Bible, History

ALPHA SIGMA

East Tennessee Teachers' College 2.





RUTH ELIZABETH McCAMPBELL
MARYVILLE, TENNESSEE

Major: English
Minors: Education, French
BAINONIAN

Daisy Chain 3.

HOMER ELDON McCANN
WASHINGTON, D. C.

Major: Political and Social Science
Minor: History, Education
ATHENIAN

Chilhowean Editor 3; Handbook Editor 2; Handbook Business Manager 1; Class Treasurer 1; Class Editor 2; Y.M.C.A. Cabinet 1, 2, 3; Y.M.C.A. Advisory Board 2, 3, 4; Athenian Secretary 2; Athenian Midwinter 2, 3; Bainonian Midwinter 1, 4.





JESSIE EDITH McDUFFIE
DILLON, SOUTH CAROLINA

Major: History
Minors: English, Education
THETA EPSILON

Montreat Junior College 1, 2; Tritonian
President 2; Class Vice-President 2; Eng-
lish Assistant 3, 4; Varsity Debate 4;
Pi Kappa Delta 4.

FRED WILLIAM MCGHEE
MARYVILLE, TENNESSEE

Major: History
Minors: Physics, Education





MARY MILDRED MACKENZIE
CHATTANOOGA, TENNESSEE

Major: English

Minors: Psychology, Education

THETA EPSILON

Student Council 3, 4; Student Council President 4; Theta Epsilon Treasurer 3; Theta Epsilon Program Secretary 2; Y.W. C.A. Cabinet 4; Nu Gamma Leader 2; Graduate of Music 3; Graduate of Expression 3; Writers' Work Shop 3, 4; Theta Epsilon Midwinter 1, 2, 4; Alpha Sigma Midwinter 3; College Players' Play 3; English Assistant 2, 3, 4; Varsity Debate 4; Pi Kappa Delta 4.

CECIL VERNON MARLEY
CONCORD, TENNESSEE

Major: English

Minors: Political Science, History

ALPHA SIGMA

Alpha Sigma President 4; Alpha Sigma Midwinter 4.





ELLEN EMMA METZ
GRAYSVILLE, TENNESSEE

Major: Mathematics
Minors: Physics, French

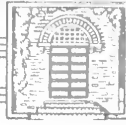
BAINONIAN

NINA LOU MILLER
SPARTA, TENNESSEE

Major: Home Economics
Minors: Education, French

BAINONIAN





RUBY IRENE MILLER
KNOXVILLE, TENNESSEE
Major: Mathematics
Minors: Spanish, French
THETA EPSILON

WILLAMARA MINTON
MARYVILLE, TENNESSEE
Major: Biology
Minors: History, Chemistry
THETA EPSILON

Graduate of Art 2; Chilhowean Staff 3.





BLANCHE ELLEN MOODY
ROBBINSVILLE, NORTH CAROLINA

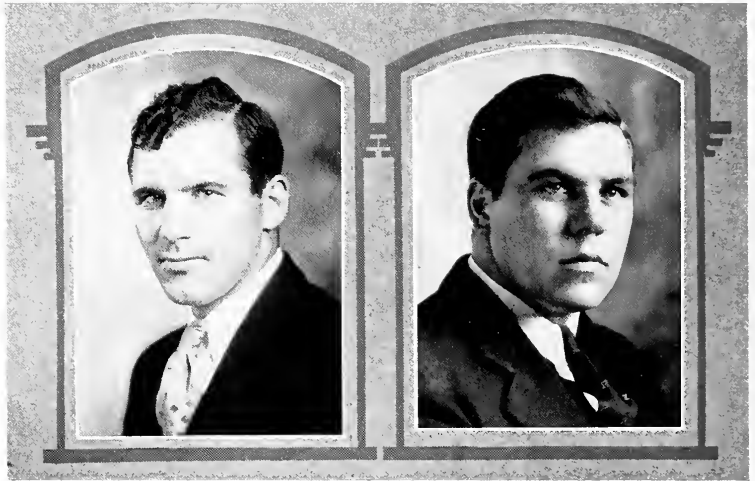
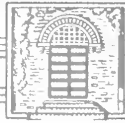
Major: History
Minors: Political Science, Education
BAINONIAN

MARY JACULYN O'DELL
HOT SPRINGS, NORTH CAROLINA

Major: English
Minors: History, Psychology
THETA EPSILON

Girls' Glee Club 3; Theta Program Secretary 3; Theta Vice-President 4; English Assistant 4; Writers' Work Shop 3, 4.





GEORGE HENRY OSBORN, JR.
LIVINGSTON, NEW JERSEY

Major: History
Minors: Political Science, Education
ATHENIAN

Class President 4; Student Council 3, 4;
Athenian President 4; Athenian Secretary
3; Athenian Critic 3; Triangle Club
Vice-President 3; Theta Alpha Phi 3, 4;
Bainonian Midwinter 2, 4; College Play-
ers' Play 1; Theta Alpha Phi Play 3.

CLIFFORD BROWN OVERLY
GREENSBURG, PENNSYLVANIA

Major: History
Minors: Psychology, Education
ALPHA SIGMA

Athletic Board of Control 4; Varsity
Football 1, 2, 3, 4; All-Conference Tackle
2, 3, 4; Baseball Manager 3; Varsity
Wrestling 2, 3, 4; Class Athletic Director
1; "M" Club 1, 2, 3, 4; Theta Epsilon
Midwinter 2; Alpha Sigma Midwinter 1.





THEONA JUANITA PRUETT

ELIZABETHTON, TENNESSEE

Major: Psychology

Minors: Home Economics, English

THETA EPSILON

GEORGIA IVALEE QUEEN

TELLICO PLAINS, TENNESSEE

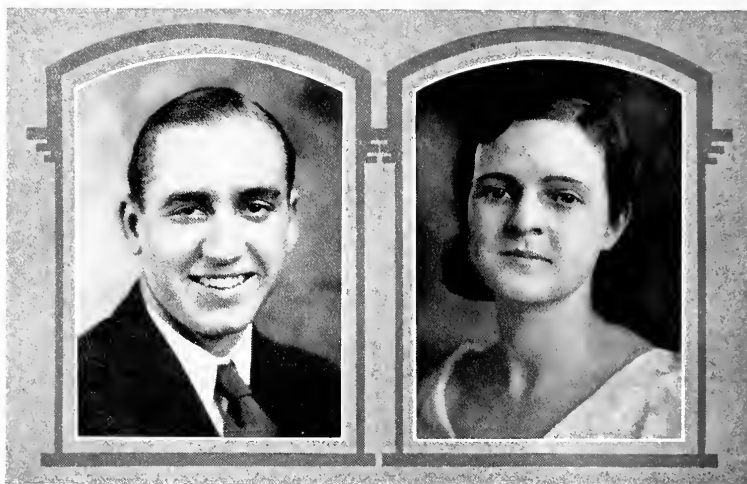
Major: Education, Psychology

Minors: Bible, English

THETA EPSILON

Montreat Junior College 1, 2; Class Play 2.





COILE A. QUINN
LANCING, TENNESSEE

Major: History
Minors: Political and Social Science, Biology
ALPHA SIGMA

Band 1; Alpha Sigma Midwinter 2, 3;
Theta Epsilon Midwinter 4.

MYRTLE LOU REPASS
WASHINGTON COLLEGE, TENNESSEE

Major: Education
Minors: English, History
BAINONIAN

Bainonian Midwinter 3; Bainonian Critic
3; College Players 3, 4; English Assistant
3, 4; Athenian Midwinter 4; Bainonian
Vice-President 4; Graduate of Expression
4; Theta Alpha Phi 4.





EVELYN JO ROBERTS
ASHEVILLE, NORTH CAROLINA

Major: Education
Minors: English, Bible

THETA EPSILON

Montreat Junior College 1, 2; Student
Body Treasurer 2; Class Play 1, 2.

PAUL SHELTON
WHITE ROCK, NORTH CAROLINA

Major: Mathematics
Minors: Physics, Education

ATHENIAN





ANNE ROBB SMARTT
SMARTT, TENNESSEE

Major: Latin
Minors: English, Education
THETA EPSILON

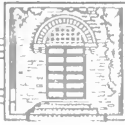
Class Vice-President 1; Student Council 2; Theta Epsilon Secretary 3; Thera Epsilon Program Secretary 2, 4; Middle Tennessee Club Vice-President 4; Y.W.C.A. Cabinet 2, 3; Writers' Work Shop 3, 4; Glee Club 1, 2, 3, 4; Glee Club President 4; Vesper Choir 1, 2, 3, 4; Theta Epsilon Midwinter 3, 4; Student Honor Rank Committee 4; May Queen 4.

RENO SAARINEN SMITH
AMHERST, MASSACHUSETTS

Major: English
Minors: French, History
ALPHA SIGMA

Class Treasurer 4; Alpha Sigma Program Secretary 4; Alpha Sigma President 4; Massachusetts Club President 4; Orchestra 1, 2, 3; Band 1, 2, 3, 4; Graduate of Expression 4; Alpha Sigma Midwinter 3, 4; College Players' Play 3, 4; Theta Alpha Phi 4.





RUTH MYRTLE SMITH
MORRISTOWN, TENNESSEE

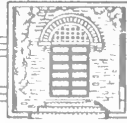
Major: History
Minors: Bible, Education
BAINONIAN

LAURENCE MARMADUKE SOMERS
GLASSBORO, NEW JERSEY

Major: Psychology
Minors: Political and Social Science, Physics
ALPHA SIGMA

Alpha Sigma Program Secretary 2; Alpha Sigma Vice-President 4; Orchestra 1, 2, 3, 4; Band 1, 2, 3, 4; Drum Major 3, 4; Theta Epsilon Midwinter 2, 4; Alpha Sigma Midwinter 3, 4; Triangle Club Vice-President 3; Y.M.C.A. Cabinet 2, 3, 4; Theta Alpha Phi 4.





JANET LOUISE STANLEY

CRYSTAL RIVER, FLORIDA

Major: Education
 Minors: Bible, History
 BAINONIAN

Bainonian Program Secretary 3; Bainonian Vice-President 3; Tumbling Team 2, 3, 4.

RALPH BENFORD TEFFETELLER

MARYVILLE, TENNESSEE

Major: Religious Education
 Minors: Psychology, Spanish
 ATHENIAN

Class President 1; Y.M.C.A. Cabinet 1, 3; Y.M.C.A. President 4; East Tennessee Club President 3; "M" Club Treasurer 3; French Club Secretary 3; Athenian Recording Secretary 4; Pi Upsilon 3, 4; East Tennessee Y.M.C.A. Conference Vice-President 3, 4; Varsity Football 3, 4; Varsity Wrestling 3, 4; Varsity Baseball 1, 2, 3, 4.





JULIA FRANCES TERRY

DAYTON, OHIO

Major: English

Minors: History, Education

BAINONIAN

Class Secretary 1; Class Vice-President 2; Student Council 3; Highland Echo Staff 1, 2, 3, 4; Highland Echo Staff Editor 3, 4; Bainonian Program Secretary 1, 3; Bainonian President 4; "M" Club 4; Associate Editor Maryville Handbook 2; Y.W.C.A. Secretary 2; Y.W.C.A. Vice-President 3; Freshman Debate; Writers' Work Shop 3, 4; Student-Faculty Committee 3; Student-Faculty Honor Rank Committee 4; English Assistant 2, 3, 4; B. G. 3, 4; Athletic Award 1; Vice-President Ohio Club 2.

JOSIE MARIE TIPTON

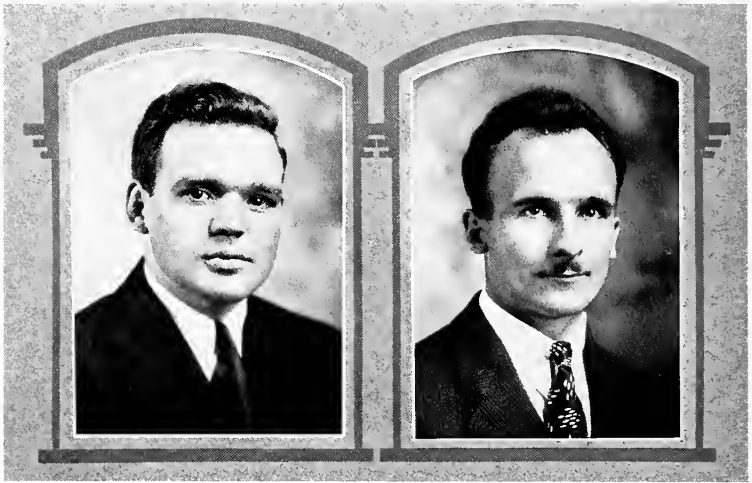
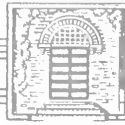
CHILHOWEE, TENNESSEE

Major: History

Minors: Spanish, Education

BAINONIAN





MILLARD TOLLIVER
DEMOCRAT, KENTUCKY

Major: History

Minors: Education, Political and Social Science

ATHENIAN

Football 1, 2, 3, 4.

FREDERICK BENNETT URCH
PHILADELPHIA, PENNSYLVANIA

Major: Greek

Minors: Latin, Education





JOHN JAMES URCH
PHILADELPHIA, PENNSYLVANIA

Major: Chemistry
Minors: Physics, Mathematics

LUCY ANNE VOORHEES
BRIDGEPORT, CONNECTICUT

Major: French
Minors: English, Latin

BAINONIAN

Highland Echo Staff 1, 2, 3; Nu Gamma Leader 2, 3; Bainonian Program Secretary 1; Bainonian Midwinter 3; Athenian Midwinter 4; College Players' Play 4; French Club President 3; Freshman Debate; French Assistant 4.





ROBERT HAYES WALLACE
 LOCKHART, SOUTH CAROLINA

Major: French
 Minors: Spanish, Education
 ATHENIAN

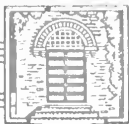
Glee Club 1, 2, 3, 4; Vesper Choir 2, 3;
 Track 3, 4; Athenian Vice-President 3;
 Athenian Recording Secretary 4; Athenian
 President 4; Ministerial Association
 Treasurer 2; Student Council 2; Bainonian
 Midwinter 4.

DOROTHY SILER WEATHERLY
 ASHEVILLE, NORTH CAROLINA

Major: Home Economics
 Minors: History, Education
 THETA EPSILON

Home Economics Assistant 4.





WILLIAM HADLEY WEBB

MARYVILLE, TENNESSEE

Major: History

Minors: Biology, Bible

ATHENIAN

Bainonian Midwinter 2, 4; Pi Upsilon 2, 3, 4; Pi Upsilon Vice-President 4; Track Squad 2; Athenian Midwinter 3; Athenian Editor 3; Chilhowean Business Manager 3; Band 2.

CHARLES CARROLL WEST

WINSTON-SALEM, NORTH CAROLINA

Major: English

Minors: French, Bible

ALPHA SIGMA

Band 2, 3, 4; Alpha Sigma Critic 2; Alpha Sigma Secretary 3; Alpha Sigma Midwinter 1, 2, 3; Student Council 1.





LENORE IRENE WEST
MARYVILLE, TENNESSEE

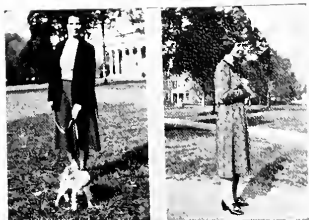
Major: French
Minors: History, Spanish
THETA EPSILON

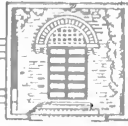
Theta Epsilon Program Secretary 1; Theta Epsilon Midwinter 2; College Players' Play 3, 4; Alpha Sigma Midwinter 3; Nu Gamma Leader 3.

HELEN ELIZABETH WILBAR
SALERNO, FLORIDA

Major: English
Minors: Social Science, History
BAINONIAN

Graduate of Expression 3; College Players' Play 3, 4; Athenian Midwinter 2; Bainonian Midwinter 3, 4; Y.W.C.A. Cabinet 3; Y.W.C.A. Treasurer 4; Highland Echo Staff 1, 2; Spanish Club Secretary 1; Spanish Club President 2; Spanish Club Program Secretary 2; Florida Club President 3; Bookroom Assistant 2, 3, 4; Bainonian Vice-President 4; Theta Alpha Phi 4.





EMMA ALICE WILLIAMS

ROGERSVILLE, TENNESSEE

Major: Home Economics

Minors: History, Education

BAINONIAN

ESTALENA SARAH WILLIAMS

NEWPORT, TENNESSEE

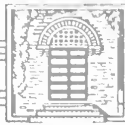
Major: Home Economics

Minors: History, Education

BAINONIAN

Home Ec Club Vice-President 3; Home Ec Club Treasurer 4.





NAOMI PHYLLIS WILLINGHAM
CLINTON, SOUTH CAROLINA

Major: History
Minors: English, Education
THETA EPSILON

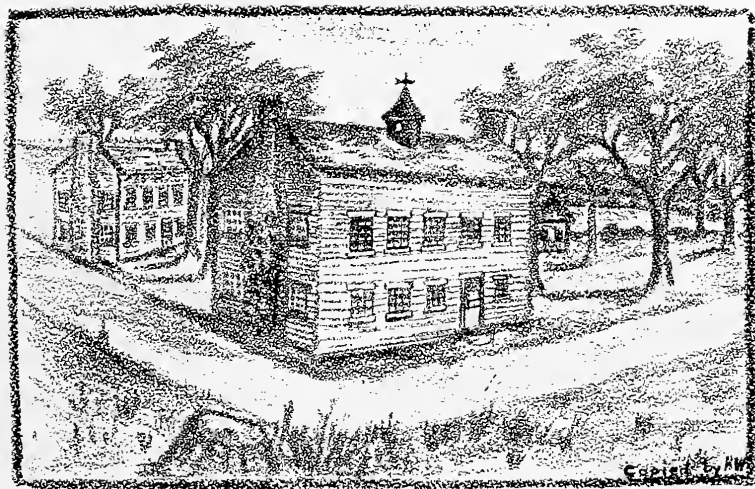
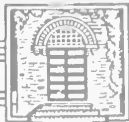
Class Vice-President 3; Student Council 4; Vesper Choir 2, 3, 4; Glee Club 2, 3, 4; Glee Club Vice-President 4; Theta Epsilon Program Secretary 3; Theta Epsilon President 4; Alpha Midwinter 3, 4; Y.W.C.A. Secretary 3; Y.W.C.A. Cabinet 4; Student-Faculty Committee 4.

Laura JEAN WORKIZER
ST. PETERSBURG, FLORIDA

Major: Education
Minors: History, Literature
BAINONIAN

St. Petersburg Junior College 1, 2; Bainonian Program Secretary 4; Florida Club President 4; Art Club Editor 3; Y.W.C.A. Cabinet 3; Daisy Chain 3.





"The Frame College"

JUNIORS



Junior Class Officers

ALLEN AMESBURY

President

INEZ HAMRICK

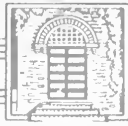
Vice-President

MARIAN MORROW

Secretary

ROBERT STEVENSON

Treasurer



ALLEN HARRY AMESBURY
MARYVILLE, TENNESSEE

Major: Mathematics
Minor: Physics

LOIS RUSSELL BLESSING
WYTHEVILLE, VIRGINIA

Major: English
Minor: Education

MARY ELLEN ANDERSON
ETOWAH, TENNESSEE

Major: Mathematics
Minor: Education

RUTH MARY BOYD
ROLLA, MISSOURI

Major: English
Minor: Education

EUNICE MAY BALDWIN
ALCOA, TENNESSEE

Major: French
Minor: Spanish

STEVE THEODORE BORETSKY
SCOTTDALE, PENNSYLVANIA

Major: History
Minor: Social Science



AUBREY SWIFT BRADSHAW
FLEMINGSBURG, KENTUCKY

Major: Biology
Minor: Chemistry

LEON WEST BROWN
SWEETWATER, TENNESSEE

Major: Mathematics
Minor: Physics

DONALD WARREN BRIGGS
TARRYTOWN, NEW YORK

Major: Mathematics
Minor: Physics

LUCILLE FERNE CALLAHAN
HARTFORD, TENNESSEE

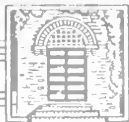
Major: French
Minor: German

RUTH ELIZABETH BROCIOS
PLAINS, PENNSYLVANIA

Major: English
Minor: History

JEAN ELIZABETH CAMPBELL
FAIRFIELD, IOWA

Major: French
Minor: English



HAROLD ELMER CARSON
ONEIDA, TENNESSEE

Major: Mathematics
Minor: Chemistry

MARY MYRTLE CORNWALL
HARTSVILLE, TENNESSEE

Major: Home Economics
Minor: Education

ELLA LOUISE CLINE
MIAMI, FLORIDA

Major: Biology
Minor: Home Economics

DOROTHY DOUGLAS CRUZE
MARYVILLE, TENNESSEE

Major: History
Minor: Education

NINA BELLE COULTER
MARYVILLE, TENNESSEE

Major: Biology
Minor: History

WESLEY YOUNGS CULVER
LONG ISLAND, NEW YORK

Major: Biology
Minor: Chemistry



AMELIA ALICE DICKENS
ASHEVILLE, NORTH CAROLINA

Major: English
Minor: Psychology

ALEXANDER PERU DUFF
BOAT, KENTUCKY

Major: Greek
Minor: English

WILLIAM JOHN DOBBIE
CRESSON, PENNSYLVANIA

Major: Spanish
Minor: History

LAURA ELIZABETH DUNCAN
MONTREAT, NORTH CAROLINA

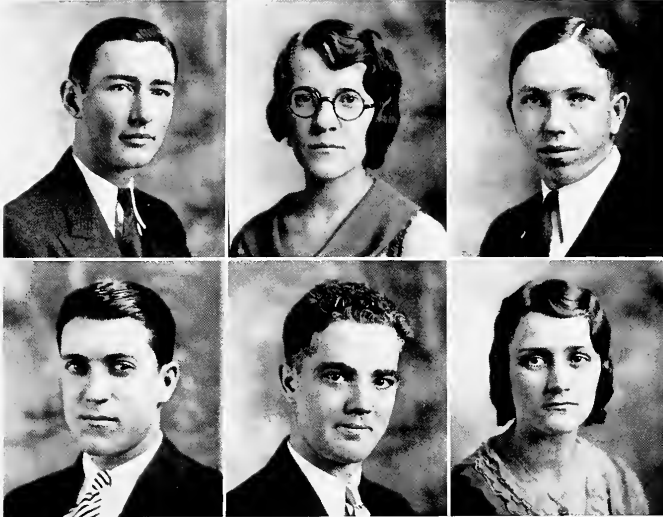
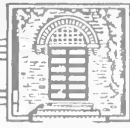
Major: English
Minor: History

DOROTHY EFFIE DRAKE
MIDDLESBORO, KENTUCKY

Major: Spanish
Minor: History

FRANCES ANNE DUPRE
MARYVILLE, TENNESSEE

Major: Mathematics
Minor: Education



FRANK DERRELL EAGLETON
MARYVILLE, TENNESSEE

Major: Social Science
Minor: History

GEORGE FRANKLIN FISHBACH
MARYVILLE, TENNESSEE

Major: German
Minor: Education

HELENE MAE ENLOE
FRANKLIN, NORTH CAROLINA

Major: Home Economics
Minor: French

WINFIELD ALLEN GLASS
MOUNT ROYAL, NEW JERSEY

Major: Chemistry
Minor: Biology

OPAL CORRINE EVANS
CEDAR SPRINGS, VIRGINIA

Major: Mathematics
Minor: English

LOUIE CHARLES GODDARD
MARYVILLE, TENNESSEE

Major: History
Minor: Education



EUNICE GRANT
ST. PETERSBURG, FLORIDA

Major: Education
Minor: Biology

MARTHA ADELAIDE GUSHERT
CHATTANOOGA, TENNESSEE

Major: Home Economics
Minor: Education

EDWIN HAMILTON GREENE
BLUE ASHE, OHIO

Major: Mathematics
Minor: Physics

HAZEL KATHERINE HALE
MORRISTOWN, TENNESSEE

Major: French
Minor: Education

BENJAMIN PETER GROVES
TROY, OHIO

Major: Social Science
Minor: English

INEZ ALBERTA HAMRICK
HICKORY, NORTH CAROLINA

Major: English
Minor: French



WILLIAM HANNAH
TRENTON, NEW JERSEY

Major: Biology
Minor: French

STELLA VENTRICE JAMES
FRIENDSVILLE, TENNESSEE

Major: French
Minor: English

GEORGE BOWMAN HOWELL
CEDARVILLE, NEW JERSEY

Major: English
Minor: Psychology

WILBUR STILES JOHNSON
MARYVILLE, TENNESSEE

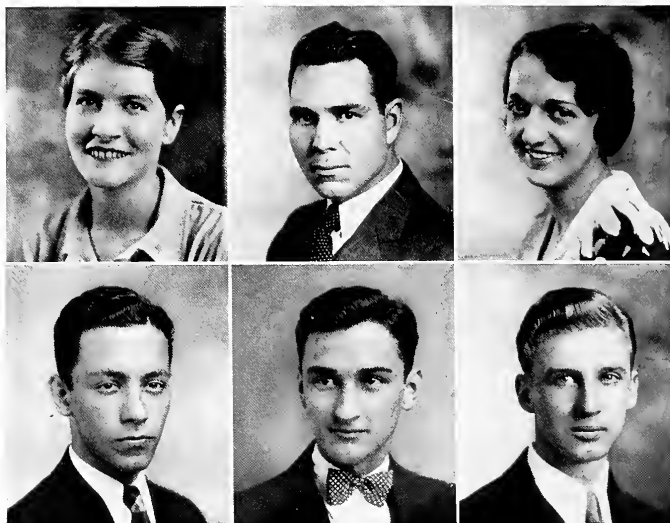
Major: Psychology
Minor: Social Science

PEARLE MILDRED HUNTER
DAYBROOK, NORTH CAROLINA

Major: Education
Minor: Bible

MARJORIE LOUISE JONES
RAHWAY, NEW JERSEY

Major: Home Economics
Minor: Psychology



JANETTE KINKADE
ST. PETERSBURG, FLORIDA

Major: Chemistry
Minor: Education

J. ARTHUR LAZELL
RIDGEWOOD, NEW YORK

Major: English
Minor: History

JOHN BURLIN KINSEY
DAYTON, OHIO

Major: Biology
Minor: Chemistry

JAMES WILLIAM LEWIS
SPRINGFIELD, TENNESSEE

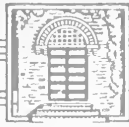
Major: Social Science
Minor: History

DOROTHY KRUPITZER
CLEVELAND, OHIO

Major: English
Minor: German

HARVEY McLENDON LOWRY
CORBIN, KENTUCKY

Major: Biology
Minor: Chemistry



JAMES HENRY LOWRY
MARYVILLE, TENNESSEE

Major: Chemistry
Minor: Biology

ROBERT McREYNOLDS
FRIENDSVILLE, TENNESSEE

Major: Mathematics
Minor: Physics

ANNETTE JANSEN LUETJE
ATLANTA, GEORGIA

Major: Latin
Minor: Education

ELLEN WHITLOCK MACRAE
HOPKINSVILLE, KENTUCKY

Major: Education
Minor: Psychology

JOHN HURLEY McFERRIN
FAYETTEVILLE, TENNESSEE

Major: Mathematics
Minor: Education

BOYCE HERBERT MAHAN
ALCOA, TENNESSEE

Major: Mathematics
Minor: Education



VERA ANTOINETTE MAKOVSKY
PRINCE GEORGE, VIRGINIA

Major: Latin
Minor: History

MARGARET LILLIAN MELODY
FLINT, MICHIGAN

Major: English
Minor: French

EMMA LINE MARSHALL
VONORE, TENNESSEE

Major: Biology
Minor: English

MARY JOHN METCALFE
AUGUSTA, GEORGIA

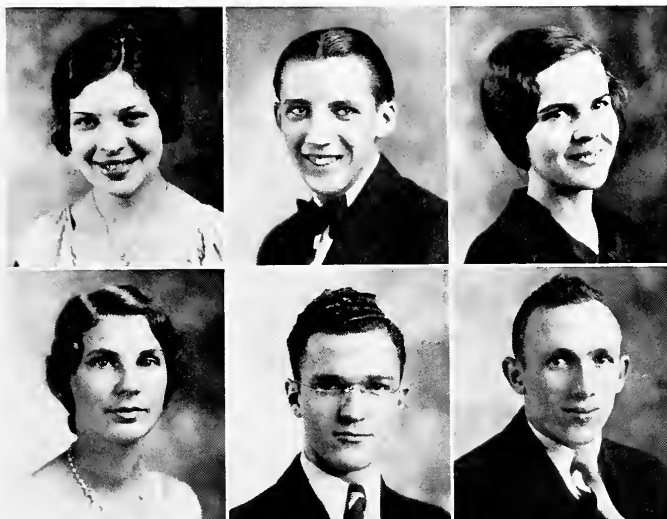
Major: Home Economics
Minor: French

WILLIAM JAMES MARSTON
LOVELAND, OHIO

Major: Physics
Minor: Chemistry

FRANCES HENDRICKS MINGEA
BESSEMER, ALABAMA

Major: Home Economics
Minor: Education



MARY KATHERINE MIZE
LOUDON, TENNESSEE

Major: Psychology
Minor: English

MARGARET MAY MOZINGO
SELMA, NORTH CAROLINA

Major: Chemistry
Minor: Biology

CLIFTON EARLE MOORE
STEWARTSTOWN, PENNSYLVANIA

Major: English
Minor: Bible

CHARLES WHITNEY MUIR
ATTICA, INDIANA

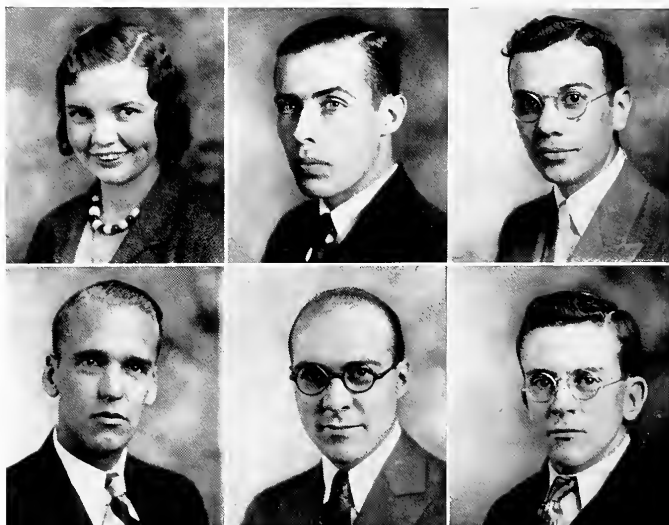
Major: Social Science
Minor: Psychology

MARIAN LEE MORROW
WALNUT, NORTH CAROLINA

Major: Home Economics
Minor: Education

JOSEPH HAROLD MYERS
MARYVILLE, TENNESSEE

Major: History
Minor: Education



RUTH PEGGY MYERS
MARYVILLE, TENNESSEE

Major: Mathematics
Minor: Education

HENRY MUHLENBURGH OTTO
WAVERLY, NEW YORK

Major: Social Science
Minor: Education

FRANK ROBINSON NEFF, JR.
PHILADELPHIA, PENNSYLVANIA

Major: History
Minor: Bible

LLOYD ROBERT OVERLY
GREENSBURG, PENNSYLVANIA

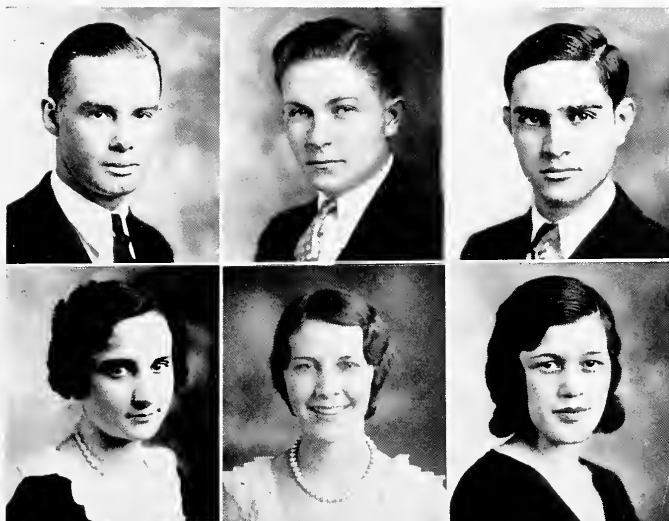
Major: Spanish
Minor: Education

ANDREW EARL NEWCOMER
READING, PENNSYLVANIA

Major: English
Minor: History

ROBERT FINLEY PAXTON
PENNY FARMS, FLORIDA

Major: English
Minor: Bible



JAMES OTIS PAUL
KNOXVILLE, TENNESSEE

Major: Biology
Minor: History

RUTH ANNA PEERY
WALLAND, TENNESSEE

Major: History
Minor: Education

ALFRED SYLVESTER PAYNE
MARYVILLE, TENNESSEE

Major: History
Minor: Physics

MARGARET AUGUSTA PENLAND
UNION, MISSISSIPPI

Major: History
Minor: English

JOSEPH ANDREW PEERY
WALLAND, TENNESSEE

Major: Mathematics
Minor: Chemistry

CLARA PETERSON
DAY BROOK, NORTH CAROLINA

Major: Psychology
Minor: Biology



GARNETT PRICE
DANVILLE, WEST VIRGINIA

Major: History
Minor: Social Science

RALPH CONRAD QUENELLE
LENOIR CITY, TENNESSEE

Major: English
Minor: History

MILDRED FRANCES PURVIANCE
DAYTON, OHIO

Major: Biology
Minor: Education

JESSIE MAE RAMSEY
MARSHALL, NORTH CAROLINA

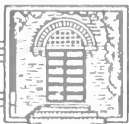
Major: Biology
Minor: Education

DOLLIE TEE PUTNAM
GREENVILLE, SOUTH CAROLINA

Major: Home Economics
Minor: Education

WILLIMAE RENEGAR
BUECHEL, KENTUCKY

Major: French
Minor: Spanish



CHARLES F. RICHARDSON
TAZEWELL, TENNESSEE

Major: Mathematics
Minor: Physics

ROBERT EDWIN RUMMEL
PORT CARBON, PENNSYLVANIA

Major: Chemistry
Minor: Physics

ROBERTA LOUISE ROBISON
BIRMINGHAM, ALABAMA

Major: English
Minor: Social Science

MARJORIE SALMONS
TRENTON, NEW JERSEY

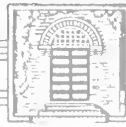
Major: English
Minor: Education

VIRGINIA IRENE ROSS
HOUSTON, TEXAS

Major: French
Minor: Spanish

ROSEMARY SHOOPMAN
SOMERSET, KENTUCKY

Major: English
Minor: Education



KATHERINE MARY SMITH
UNION, MISSOURI

Major: Spanish
Minor: History

WILLIAM ROBERT STEVENSON
PITTSBURGH, PENNSYLVANIA

Major: Greek
Minor: History

MARY ELLA SPENCER
PONTOTOC, MISSISSIPPI

Major: English
Minor: Psychology

HELEN RANKIN STEWART
SNEEDVILLE, TENNESSEE

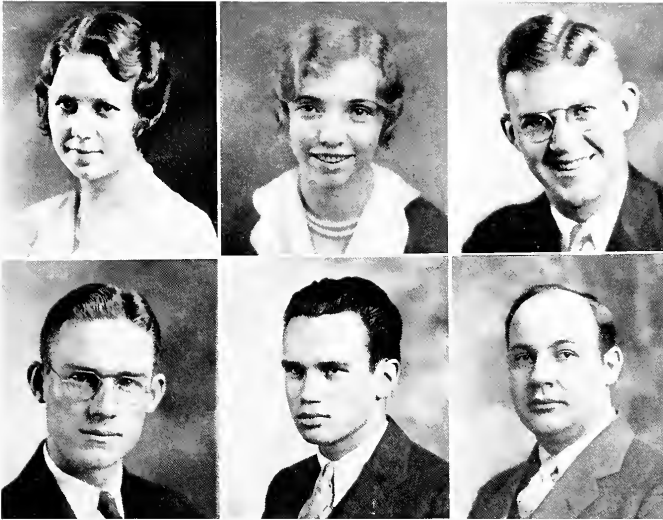
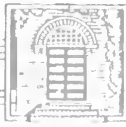
Major: Home Economics
Minor: Education

NORMA JEAN SPILATORE
RAHWAY, NEW JERSEY

Major: French
Minor: English

JOSEPH WILSON TAYLOR
MARYVILLE, TENNESSEE

Major: History
Minor: Social Science



DOROTHEA EBBA THOMSEN
MADISONVILLE, OHIO

Major: Home Economics
Minor: Chemistry

LINDSAY TOPE
MOULTRIE, OHIO

Major: Biology
Minor: Chemistry

HELEN THOMPSON
CHICAGO, ILLINOIS

Major: History
Minor: Psychology

RALPH SPENCER WALKER
TOWNSEND, TENNESSEE

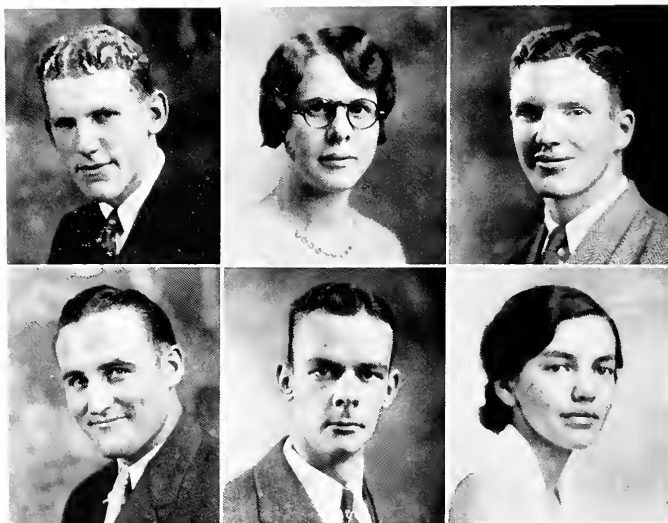
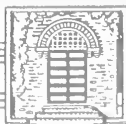
Major: English
Minor: History

JOHN KENNETH TOPE
MOULTRIE, OHIO

Major: Social Science
Minor: Psychology

FLOYD RONALD WATERS
SCRANTON, PENNSYLVANIA

Major: Biology
Minor: Physics



EUGENE LESLIE WEBB
MARYVILLE, TENNESSEE

Major: English
Minor: Education

ADA WILLIAMS
NEWPORT, TENNESSEE

Major: Mathematics
Minor: Physics

HARRY WOOD
TRENTON, NEW JERSEY

Major: Bible
Minor: Greek

JESSE JOE WOODARD
LYNCHBURG, TENNESSEE

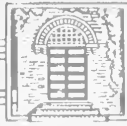
Major: History
Minor: Physics

LAMAR WOODWARD
MONTREAT, NORTH CAROLINA

Major: English
Minor: Education

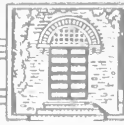
MABEL NATHALIA WRIGHT
MARYVILLE, TENNESSEE

Major: English
Minor: Latin



"The Brick College"

SCHOLARS



Sophomore Class Officers

DAVID McARTHUR

President

ALMA ALLIS

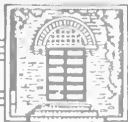
Vice-President

DONALD FORTUNE

Secretary

ANDREW ALEXANDER

Treasurer



ANDREW ALEXANDER
MARYVILLE, TENN.

CHARLES BEALE
CAIRO, GA.

ALMA ALLIS
BLOOMFIELD, N. J.

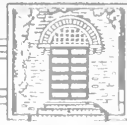
FAYE BLACKBURN
LENOIR CITY, TENN.

CHARLOTTE AUGUSTINUS
CHICAGO, ILL.

ELSA BOWDEN
CROSSVILLE, TENN.

ELIZABETH BACON
LENOIR CITY, TENN.

FRANCES BUNTIN
MERIDIAN, MISS.



MADISON BYAR
LOCKLAND, OHIO

DOROTHY CASSERES
CARTAGO, COSTA RICA

ROBERT BEYER
NORRISTOWN, PA.

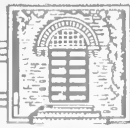
MARY ELLEN CRAMER
DAYTON, OHIO

LELA BURDETTE
GEORGETOWN, TENN.

MARGARET EDITH COOLEY
KNOXVILLE, TENN.

MARY HOLLIS CARTER
LAFAYETTE, TENN.

BEN DeLOZIER
MARYVILLE, TENN.



SARA DICK
HILLSBORO, OHIO

RUTH FARLEE
PRINCETON, N. J.

WILMA DORSEY
HARRIMAN, TENN.

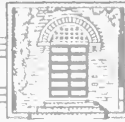
CHARLOTTE FERRIS
BLUE ASH, OHIO

THOMAS DUNCAN
KINGSPORT, TENN.

DONALD FORTUNE
SALEM, MO.

WILLIAM DUNNING
OWENSBORO, KY.

FRANCES GARNER
KNOXVILLE, TENN.



HAZEL GARNER
KNOXVILLE, TENN.

MARY E. HARRISON
KNOXVILLE, TENN.

REGINALD GARRETT
RICE, VA.

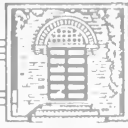
HELEN HART
CHICAGO, ILL.

ELIZABETH GILLIS
GANADO, ARIZ.

DOROTHY HASSALL
TRENTON, N. J.

GORDON GROOMS
SEAMAN, OHIO

BETTY HAYES
ANCHORAGE, KY.



RUTH HENRY
TOWNSEND, TENN.

ARTA GRACE HOPE
FLAT ROCK, ILL.

DANIEL HICKS
NEWARK, N. J.

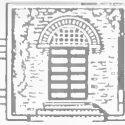
RUTH HONEYCUTT
BURNSVILLE, N. C.

MARY ELEANOR HIMMELRIGHT
PIQUA, OHIO

ERCELLE HUNTER
JONESBORO, TENN.

ELOISE HITT
TULLAHOMA, TENN.

MAE HUNTER
DAYBROOK, N. C.



THELMA ILES
CHATTANOOGA, TENN.

LUCY DELL KIDWELL
GREENEVILLE, TENN.

CATHERINE KEELER
PHILADELPHIA, PA.

ELLA KILGORE
GLASGOW, KY.

VIVIAN KELLY
ECORSE, MICH.

HOWARD KIPP
CINCINNATI, OHIO

KENNETH KIDD
GREENBACK, TENN.

FRED KIRCHNER
NEWARK, N. J.



HELEN KIZER
MARYVILLE, TENN.

ELIZABETH LANTERMAN
EVANSTON, ILL.

NELL JO KNIGHT
SAN ANTONIO, TEXAS

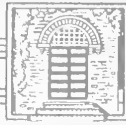
CLARK LATHAN
DANDRIDGE, TENN.

HEYDEN LAMPE
SYEN CHUN, KOREA

JUANITA LAW
MARYVILLE, TENN.

HENRY LAMPE
SYEN CHUN, KOREA

VIOLA LIGHTFOOT
CHATTANOOGA, TENN.



MOLLIE LITTLE
SPARTA, TENN.

JOHN McQUEEN
HATTIESBURG, MISS.

DAVID McARTHUR
MERIDIAN, MISS.

HELEN MAHAN
ALCOA, TENN.

ALBERT McCULLOCH
MARYVILLE, TENN.

JEANNE MARTIN
ALBUQUERQUE, N. M.

BERNICE McNUTT
VERNON, TEXAS

FRANCES MASSEY
JACKSONVILLE, ALA.



HARRY MATHIAS
SCRANTON, PA.

ALBERTA MESSAMORE
FOUNTAIN CITY, TENN.

CHARLOTTE MATHIS
MEMPHIS, TENN.

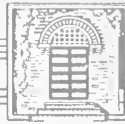
JANE MITCHELL
SPARTA, TENN.

FRANK MEASE
NEWARK, N. J.

JAMA NORTON
MARYVILLE, TENN.

LEE MERRICK
TRENTON, N. J.

JASMINE ORR
CHATTANOOGA, TENN.



RICHARD ORR
CANTON, ILL.

ALFRED PRICE
RICE, VA.

MARGARET PARNELL
BAKERSVILLE, N. C.

WILHELMINA QUANDT
DECHERD, TENN.

JOHN PHAY
KISSIMMEE, FLA.

HILDA RANKINS
REPTON, KY.

WALTER PIPPERT
MAPLEWOOD, N. J.

ROSS RANKIN
WHITE PINE, TENN.



JULIA RINK
LAFAYETTE, GA.

ERNESTINE SMITH
CANTON, N. C.

MARY RINK
LAFAYETTE, GA.

GERALDINE SMITH
PHILADELPHIA, PA.

CECIL SKIDMORE
ELIZABETHTOWN, KY.

MARGARET SMITH
CONCORD, TENN.

MERRITT SLAWSON
ORLANDO, FLA.

JOHN SPRINGER
MIDDLETOWN, PA.



KATHERINE STANTON
KNOXVILLE, TENN.

MAISIE THOMAS
ALCOA, TENN.

VETA MAE STEPHENS
TELLICO PLAINS, TENN.

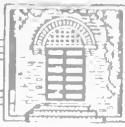
PAULINE THRONE
YORK, PA.

LUCILLE SWAFFORD
RICEVILLE, TENN.

ROBERT TRIPP
CARROLLTON, OHIO

MICHAEL TESTA
SCRANTON, PA.

FRANKIE TROTTER
DAYTON, OHIO



CARRIE LOU TWEED
GREENEVILLE, TENN.

WARREN WARMAN
TRENTON, N. J.

PHOEBE UNDERWOOD
MORRISTOWN, TENN.

JANET WARREN
MIYAZAKI, JAPAN

ANNA UNGER
OAKDALE, TENN.

MARTHA WATKINS
HENDERSON, TEXAS

KATHERINE WARD
WEAVERVILLE, N. C.

KATHERINE WAYLAND
KNOXVILLE, TENN.



MARY SLOANE WELSH
CULLEOKA, TENN.

JESSE WILLIS
MOREHEAD CITY, N. C.

BLANCHE WILSON
KNOXVILLE, TENN.

OTIS WILSON
BANKHEAD, ALA.

DOROTHY WOODWARD
CEDAR GROVE, N. J.

JOSEPHINE WOODWARD
MONTREAT, N. C.

NAOMI WOODS
GREENBACK, TENN.

LORRAINE YENNIE
ECORSE, MICH.



"The Growing College"

FRESHMEN



Freshman Class Officers

EARL CRAWFORD

President

RUTH HERSHEY

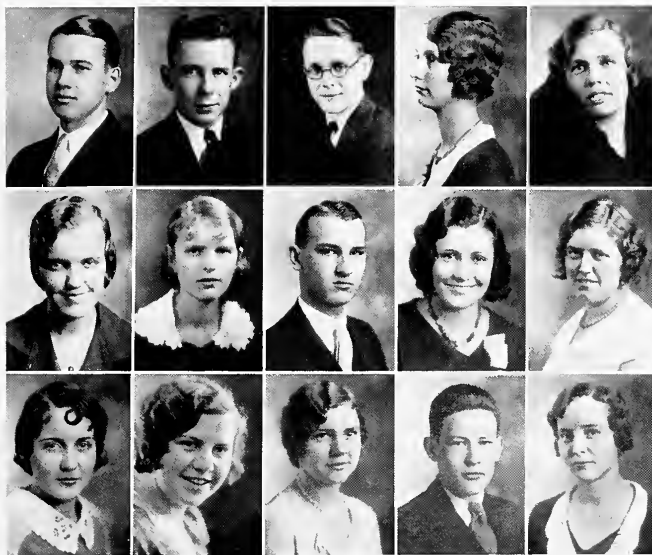
Vice-President

RUBY SMITH

Secretary

ROBERT BIERI

Treasurer



LAWRENCE NELSON AGNEW

THERON RALPH ALEXANDER

EDGAR REUBEN ALFORD

MATTIE VICTORIA ANDERS

LILLIAN BELLE ARMSTRONG

MARY ROSE ATCHLEY

MARIE BAILEY

WALTER FLOWERS BOEHME

BEATRICE BRACKETT

SARA MALINDA BRAKEBILL

MARY BRADSHAW

BETTY JEAN BREWER

SARA ELIZABETH BROWN

ROBERT LOWRY BROWN

DOLORES THERESA BURCHETTE



HELMA CALVIN
 DOUGLAS MACKAY CARHART
 JESSE LEE CARTER
 SARITA PEARL CASSERES
 DOROTHY ELIZABETH COATES

KARA LEE COLDIRON
 MALVERN CLOPTON, Soph.
 LUCILE COLTHARP
 CECELIA CONOVER
 MARY REBECCA COOPER

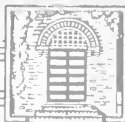
MARJORIE BELLE CORRELL
 EARLE WHITE CRAWFORD
 MARY ELIZABETH CROMER
 HAZEL DEATON
 GEORGE FRANKLIN DEEBEL



RUTH EMMA DENNING
 MARY RUTH DETHERO
 PHYLLIS FAIRFIELD DEXTER
 RUFUS DUKE DODSON
 HARVEY DOUBLEDE

KERN VIRGINIA DUCKETTE
 LORENA MAY DUNLAP
 KATHERINE LOUISE EARNEST
 HENRY STUART FISHER
 SARAH WALTINE FORTUNE

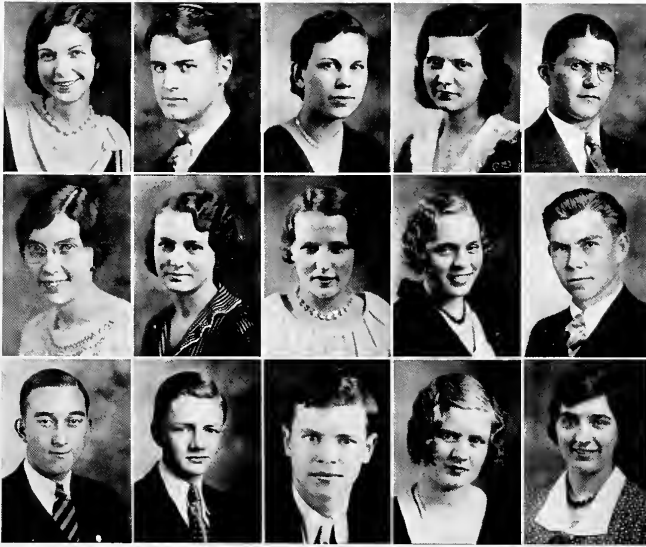
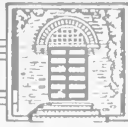
MARY EMILY FRANKLIN
 THERESA FREY
 NINA GAMBLE
 ANNA WHITE GETTYS
 FRANCES VIRGINIA GODDARD



FLORENCE MAY GRABIEL
 EDNA HILDA HAAS
 MILDRED MEEK HARRIS
 GRACE HAST
 CORA EMMALYN HATFIELD

AGNES FARIS HILL
 GEORGE HOGLAN
 WILLIE LEE HOUSTON
 JAMES B. HOWELL
 MARY FLORENCE HYDE

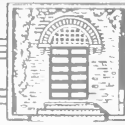
RUTH FRANCES IRWIN
 ELEANOR JOHNSON
 MARGARET ELOISE JOHNSON
 BENJAMIN HARRISON JONES
 ROBERTA LOUISE JONES



RENA FOREST JOYNER
 EDWARD M. KEELER
 MARGARET LOUISE KELBAUGH
 MARGARET ANNE KELLY
 THOMAS VANSICLE KIDD

FLORENCE C. KENDALL
 HAZEL KINNAMON
 ALLINE KOONS
 MARY ANNIS LAMBIN
 CHARLES EDWARD LEWIS

EDWARD VERNON LODWICK
 ROBERT EARL LONG
 ERNEST BROYLES LOWE
 ANNE GLENN LOWRY
 MARGARET LOUISE McCAMPBELL



PAUL McCANDLESS
 MARGARET ELLEN McMURRAY
 MATTIE LOU McNABB
 IDA WEE MABRY
 HERMAN MAGEE

CHLOE MIGNONNEE MALPHUS
 ROSALIND MEADE
 MARY EVELYN MEEK
 FERN BONITA METZGER
 MARY BARNETT MITCHELL

EVELYN HOPE MISER
 REBA CATHERINE MORROW
 ELIZABETH MOTLEY
 DOROTHY MILDRED NARVAN
 NELLY BARTOLA NILSON



JACK LELAND OVERLY
 DOROTHY LYNN PARR
 ELIZABETH PETERSON
 GRACE GRAHAM PROFFITT
 RUTH GERTRUDE RAINEY

LOUISE EMILY REICHELDERFER
 ELVIRA LOUISE RESSLER
 ROBERTA GRAYSON REVELEY
 ELIZABETH TOMPKINS RODERICK
 MARCUS DOOLEY ROADMAN

Laura Jane Ross
 Maurine Lois Rowe
 Iris Miona Russell
 Alys Elizabeth Scroggy
 Margaret Louise Shanks



MELKIJAH SHARP
 MARY ETTA SHARP
 JAMES PATERSON SHAW
 GRACE MARGARET SIMBRO
 HELEN GOULD SLOAN

MAXIE LOUISE SMITH
 RUBY WILSON SMITH
 KATIE RUTH SOLMON
 GERTRUDE SELMA SOUDERS
 MRS. CLAIRE M. STANDRIDGE

GEORGE VINCENT STANLEY
 INA MAE STEFFY
 EDGAR LOVE STOREY
 BEATRICE AMELIA THORSON
 ALICE MARIE TIMBLIN



JOSEPH DAVIS TRUXTON, JR.

IRMA KATE VANCE

SAMUEL THOMAS WAID

MARTHA DORIS WALDREP

LANA LEE WALKER

MARY EARL WALKER

DORA IMOGENE WEBB

VIOLET WEBB

MARY FRANCES WELLS

HAZEL ANNE WHITE

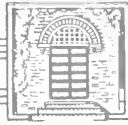
BARBARA ALICE WHITMORE

CARONA WHITTED

GLADYS ELOISE WOOD

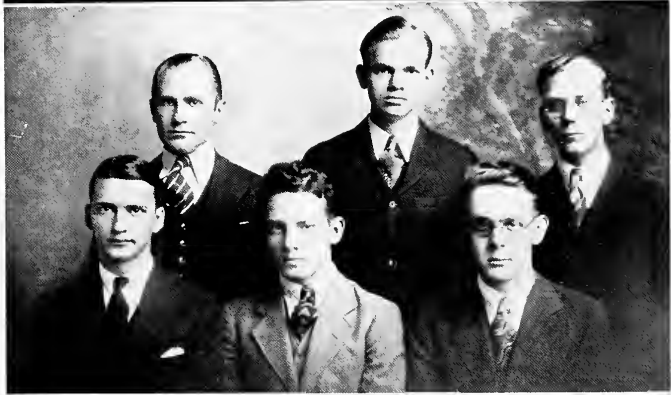
BETTY EMILY WOODWELL

MARIA WYNN



Freshman Debaters

BETTY BREWER, RUTH RAINEY, MAE MARTIN
GRACE PROFFITT, FLORENCE HYDE, MARIA WYNN



JAMES SMITH, GEORGE HOGLAN, DOUGLAS CARHART
EARLE CRAWFORD, NEWMAN SMITH, RUEBEN ALFORD



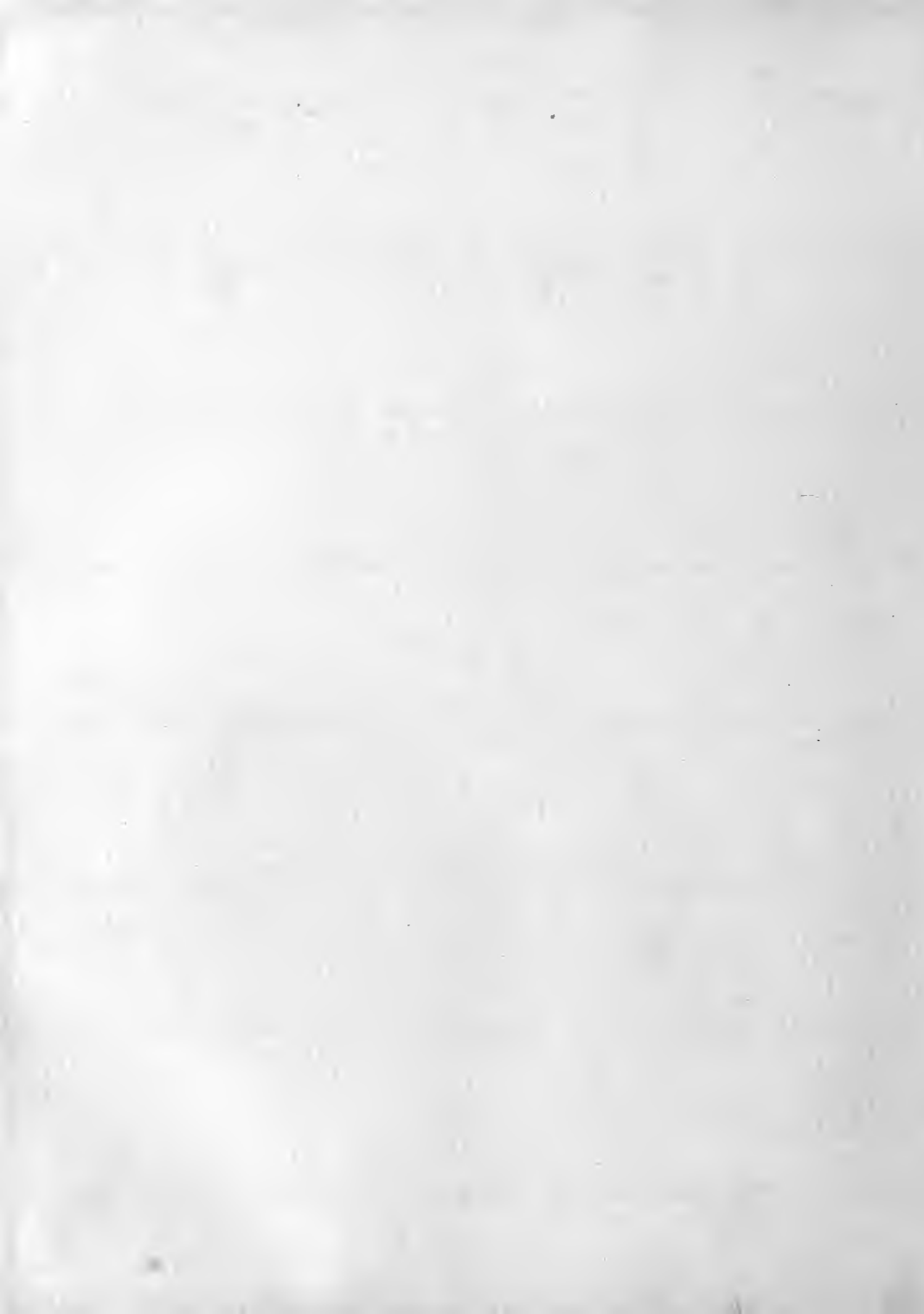
SAMUEL WARD BOARDMAN

Evolution. A wise director of change and growth in a day of struggling action. A safe guide along routes of construction to a synthetic attainment.

Shaper of a solid destiny, and pointer toward a larger end.

Book IV

Athletics





CHEER LEADERS

PAUL EDRIS

JACK NEE

ANGELO NARCISO

FLOYD WATERS

General Athletics

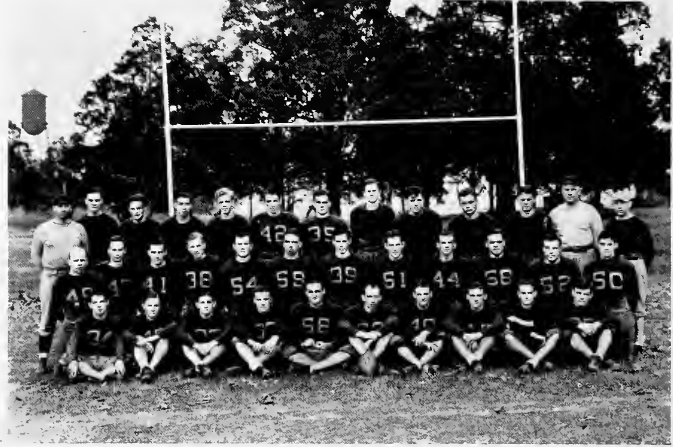
Athletics play a major part in the wholesome, all-round development of the students at Maryville College. The athletic program is under the able direction of Coach Lombe S. Honaker. He is assisted by Coach Robert Thrower. From the time of the first football practice period in the fall to the time when the last track and baseball suit is turned in in the spring, these men give their skill and ability in developing winning teams for Maryville.

Three years ago Maryville College introduced night football games to the sport-supporting public of this section. The innovation is acclaimed as successful, since it enables more people to attend the games than could attend the afternoon games. Basketball, baseball, track, wrestling, and tennis are other forms of athletics which are played at Maryville. The basketball team and the wrestling team had very successful seasons. The wrestlers and basketeers won most of their games.

The athletic program is very important in every college, and Maryville is one of the leading colleges of this section in that respect.



Football Squad

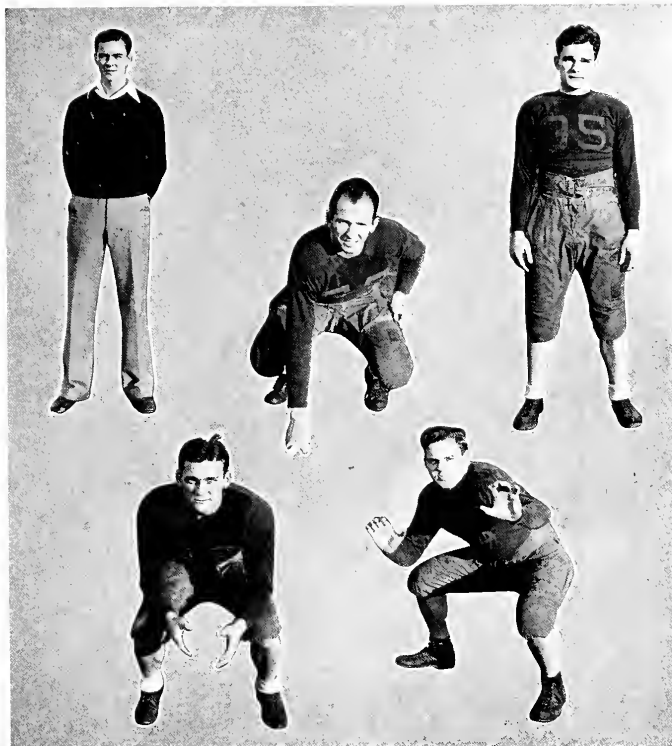


Back row—Gann, Farr, Dunning, Slawson, Lampe, Peters, Kiser, Cooper, Simms, Renfro, Willocks; Thrower and Honaker, coaches.

Middle row—Teffeteller, Gwinn, Kalman, Russell, Holloway, Carper, Ferguson, Burns, White, Tolliver, Overly, Richardson.

Front row—Gillespie, Payne, Wilson, Overly, Woodard, Callaway, West, Boretzky, Graham, Peacock.

Maryville	-	-	-	-	-	25	L. M. U.	-	-	-	-	-	-	0
Maryville	-	-	-	-	-	0	University of Tennessee	-	-	-	-	-	-	33
Maryville	-	-	-	-	-	0	University of Kentucky	-	-	-	-	-	-	19
Maryville	-	-	-	-	-	51	Union	-	-	-	-	-	-	0
Maryville	-	-	-	-	-	26	Tennessee Wesleyan	-	-	-	-	-	-	7
Maryville	-	-	-	-	-	6	Howard	-	-	-	-	-	-	6
Maryville	-	-	-	-	-	0	Milligan	-	-	-	-	-	-	0
Maryville	-	-	-	-	-	14	Lenoir-Rhyne	-	-	-	-	-	-	6
Maryville	-	-	-	-	-	7	Carson-Newman	-	-	-	-	-	-	0



FARR, Manager

BORETSKY

CALLAWAY, Captain

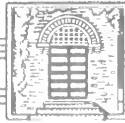
TOLLIVER

KISER

The Maryville College football team finished the 1931 season as champions of the Smoky Mountain Conference. Out of a ten-game schedule, the only defeats received were from the universities of Tennessee and Kentucky. Both of these teams were strong and the 33-0 defeat by Tennessee and the 19-0 defeat by Kentucky were good signs of the ability of the Highlander team.

Each game played was marked by the fight and spirit Captain Lea Callaway gave to his teammates. The all-conference team had Callaway in the backfield by virtue of a unanimous vote. This automatically gave him the captaincy. Tolliver, Overly, Ferguson, White, Woodard, Teffeteller, Carper, and Gillespie were all placed high in the selection for individual conference honors.

When the season closed, Coaches L. S. Honaker and Robert Thrower realized that they would have a hard job trying to replace the seven men who would be graduated in June. These seven lettermen are Tolliver, Callaway, Overly, White, Ferguson, Teffeteller, and Carper. Each one had a large share in the success of the team.



RUSSELL

WILSON

WOODARD

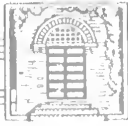
TEFFETELLER

A review of the games of the year will give an idea of the ability of the team, and, at the same time, the way in which the team progressed.

L. M. U., the first opponent, was easily put out of the running by an early season punch, 25-0. The Rail-Splitters have never beaten Maryville, nor by their showing is there any likelihood of such a thing ever happening.

The Highlanders next met U. T. The game resulted in what might be called a "moral victory." Carper and Ferguson blocked a punt; Coach Bob Neyland of U. T. said that Callaway could make any backfield in the Southern Conference; and the line held Tennessee for three consecutive downs inside its own three yard line.

The Kentucky Wild Cats were the second and last men to take the measure of the Scots. Later in the season these same Kentucky players fought the Vols out of an opportunity to go to the Rose Bowl Tournament. Yet they were only able to beat the Highlanders 19-0. Callaway and White clicked with a forward passing attack that annoyed their opponents throughout the game. The team put more into these two games than in the rest of the schedule put together.



CARPER

RICHARDSON

WHITE

WEST

Then, down from Barboursville, Ky., came little Union College to take its worst beating in years, 51-0. It was the largest score of the year for Maryville, and every man on the Scot team ran rampant. Tennessee Wesleyan next tried to stop Maryville, but before it had started the score was 26-7 in favor of the Hill men. It was a case of a good little team against a much better and larger team.

Howard College, of Birmingham, Alabama, gave the Highlanders a scare the following week. Five minutes of play had elapsed when the score was 6-0 in favor of the Alabamians. But Callaway, White, and Boretsky combined some good passing, excellent receiving, and a bit of uncertain strategy that succeeded in tying the score. The try for the extra point failed.

The less said about the Milligan game, the next on the schedule, the better. Maryville expected to win, believing that her conference championship depended on the victory. The game ended in a 0-0 tie.

The Appalachian Teachers brought a heavy line, but it was too slow. However, Maryville could do no better than a 6-6 tie. Overly, in the line, was the best man on the field.



OVERLY

FERGUSON

M. GILLESPIE, Capt.-Elect

PAYNE

Another Carolina team gave the Scots something to worry about when Lenoir-Rhyne started the second half of its game with a 6-0 lead. The Highlanders came out of their lethargy in the last half and between Gillespie, Callaway, Boretzky, and White, they ran up a 14-6 score to take the game. Maryville's punting averaged 38 yards in this game.

The last game of the season was with Carson-Newman. The Eagles went down under a barrage of passes, pile-driving smashes at the line, and an inspired Callaway, Tolliver, Overly, Ferguson, Carper, Teffeteller, and White, each playing his last game for Maryville.

Maryville made 211 yards from scrimmage against 8 yards from scrimmage for Carson-Newman. The 7-0 score is not at all indicative of the hard fighting that marked the game. The victory settled for another year the Highlander supremacy over conference football opponents.

The 1932 team will have to draw its material from a fighting second team. Martin Gillespie was elected captain of the new team; and Woodard, Boretzky, Jack Overly, Kiser, Russell, Payne, West Richardson, Kalman, and all the other substitutes and new men must help Gillespie to carry on the Maryville Orange and Garnet to better and brighter heights.



Men's Basketball Squad



Nee, Woodard, White, Mann, Cherry, Lewis, Kiser, Overly, Stone, Holloway,
Jarnagin, Allen, Ferguson, Honaker, coach.

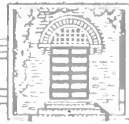
One of the toughest schedules a Scot team has ever been called upon to play was the line-up of opponents given to Maryville's basketball team of 1931-1932. It finished the 21-game schedule with two defeats, but those two losses cost Maryville the Smoky Mountain Conference Championship. In games won and lost, Maryville ranked third in conference standing at the end of the season.

The outstanding feature of the year for the team was a five-game trip that included Milligan, East Tennessee, King, V. P. I., and Roanoke. Not one of these games was lost.

In fact it was not until February 15, that a Carson-Newman team, fighting to avenge a football defeat, handed the Scots their first conference setback.

With the championship in sight, Maryville then lost its hardest game of the season to Milligan, 43-41. This game was the fastest and cleanest seen here for some time.

The team loses White and Mann through graduation, but will have Lewis, captain-elect; Nee, Woodard, Overly, Kiser, Cherry, and Allen back again.



Basketball Men



JAMES LEWIS

JOHN WHITE, *Capt.*

JOE WOODARD

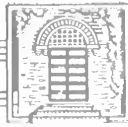
JACK NEE

JACK OVERLY

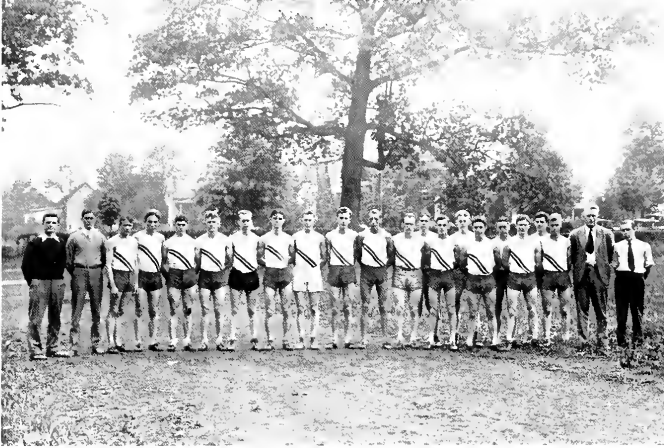
ERNEST MANN

BLUNDON FERGUSON, *Mgr.*

JOHN KISER



Track Squad



Smerznak, Lippard, Taylor, Truesdale, Richardson, Byerly, Stevenson, Felknor, Burns, Hitch, Moore, Callaway, Young, Bratschie, L. Webb, Byar, Kipp, Wood, Mattingly, Paul, Thrower, coach; Neff.

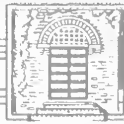
Coach Robert Thrower's track team finished up the 1931 season with a .500 percentage. It was defeated by L. M. U. and the University of Tennessee, but broke the tape ahead of T. P. I. and the University of Chattanooga.

The javelin throw record for Wilson Field was broken twice by Maryville men, the first time by Woodard and the second time by Russell, who had only practiced twice previously. The record is now 171 feet, 5 inches.

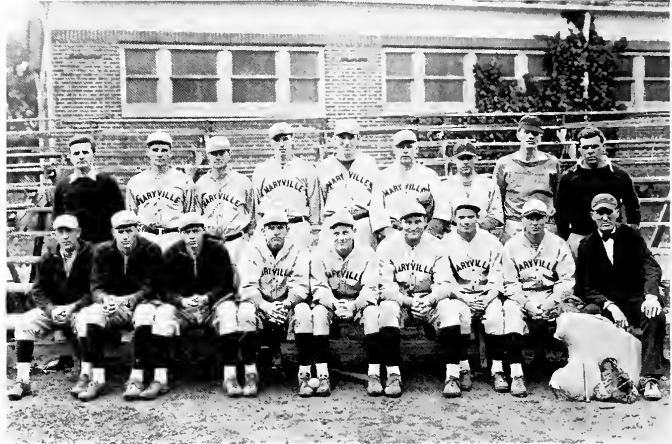
One of the most thrilling finishes was turned in by "Speck" Moore, in the mile against U. T. He won the race.

Roy Taylor, as captain of the team, started the season off with a stellar performance in the cross-country. Throughout the remainder of the season he led his teammates on with good leadership and plenty of courage in the face of defeat.

The men back for 1932 were: Felknor, captain; Wood, Bratschie, Woodard, Russell, Byar, Paul, Hitch, Mann, Moore, Richardson, and Callaway.



Baseball Squad



Smerznak, Kiser, Benn, Nee, Hurst, Teffeteller, Graf, Duff, Overly.
Honaker, coach; Chandler, Stidham, White, West, Woodard, Watkins, Smith.

The 1931 baseball machine put out by Coach L. S. Honaker had a season which showed up more of the individual characteristics of the players than usual. Woodard, White, Teffeteller, West, and Hurst were the only veterans left of the team, but they formed a nucleus from which high things were expected.

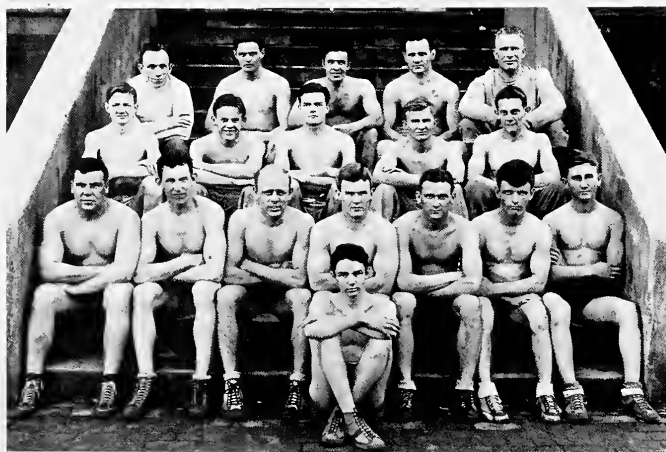
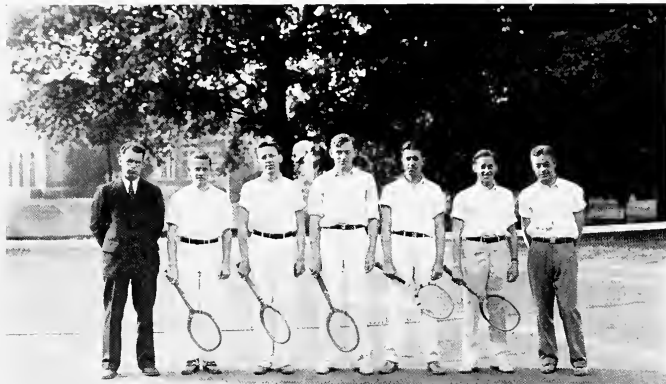
The men who showed up well during the season, besides those just mentioned, were Kiser, Nee, Graf, Benn, and Chandler. The latter was forced to leave school because of family illness, and then received a try-out with the American League, Philadelphia Athletics.

Out of a total of fifteen games played during the entire season only two games were lost. The pitching mainstays of the team were lost through graduation, but it is expected that Hurst, Kiser, Holloway, a freshman, Duff, and Pippert will rise to the needs of the occasion and will win ball games.

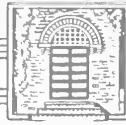
White, the super-active first baseman and batter, was elected captain for 1932.



MEN'S TENNIS TEAM
 SMITH, D. BUCHANAN, STRAIN, TALMADGE, FISCHBACH,
 E. BUCHANAN, LANDRUM

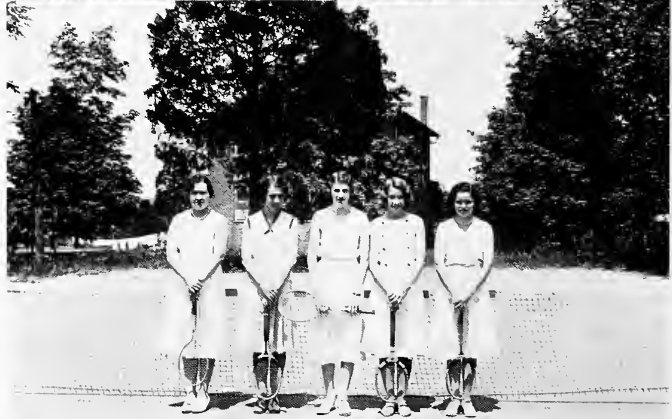


WRESTLING TEAM
 MYERS, DUNNING, SILVER, PENN, THROWER, coach
 LONG, BALLARD, DAVIS, KRAINOCK, BETTIS
 OVERLY, BURNS, TEFFETELLER, TOPE, BORETSKY, PEACOCK, CROSS
 CAMPBELL



GIRLS' SOCCER CHAMPIONS

WINN, BARR, SCHOELLER, DICK, FRONEBERGER, WOODS,
FARLEE, YENNIE, WAYLAND, captain, HASSALL



GIRLS' TENNIS TEAM

SWAFFORD, CUSHMAN, COOLEY, HAMRICK, CARSWELL



WOMEN'S BASEBALL CHAMPIONS

Back row—FARLEE, BARR, HEIDEL, COOLEY, LITTLE, MULLINS, THOMPSON
ANDREWS, WINN

Front row—CARVER, WILSON, captain, WAYLAND, WOODWARD



WOMEN'S BASKETBALL CHAMPIONS

Back row—BURCHETTE, WINN, GILLINGHAM, NEWMAN, JOYNER, PROFFITT, DUCKETT
COATES, JOHNSON, captain, COOPER, GAMBLE

Not in picture—IMOGENE WEBB



GIRLS' TUMBLING TEAM

STANLEY, KELLAR, MITCHELL, BRATSCHE, coach; HENRY, HARRIS, LOVETTE



GIRLS' VOLLEY BALL CHAMPIONS

WINN, CARTER, WILSON, TROTTER, HASSALL, DICK, LITTLE, BARR
 FARLEE, WAYLAND, YENNIE, SCHOELLER, captain.



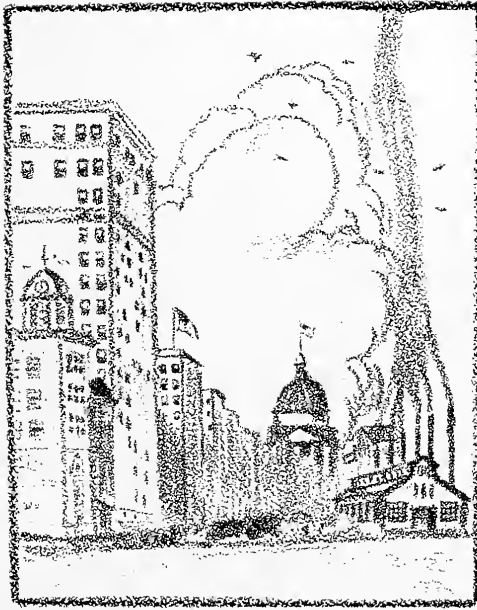
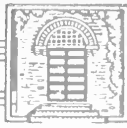
SAMUEL TYNDALE WILSON

Expansion. A dreamer who recaptured the first small radiance and fused it with the growing ideal. An iron fighter who dared rejoice in the strait place. A visionary who led from summit to summit and from strength to strength.

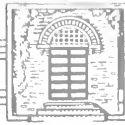
Book V

Organizations

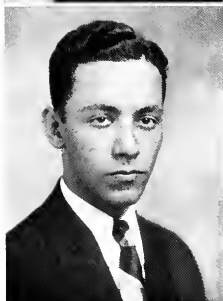
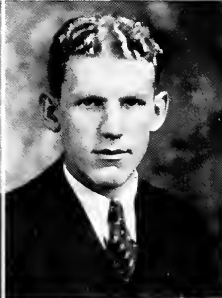




ORGANIZATIONS



Chilhowean Staff



MARGARET MELODY
Editor

NATHALIA WRIGHT
Associate Editor

ANDREW NEWCOMER
Business Manager

CONRAD QUENELLE
Activities

LESLIE WEBB
Photography

HARRY WOOD
Art

ARTHUR LAZELL
Athletics

MARGARET MOZINGO
Typist

ROBERT McREYNOLDS
Asst. Bus. Mgr.



Highland Echo Staff



DR. HUNTER, Faculty Advisor; WELDON HINA, Editor-in-Chief; ALEXANDER JONES, Business Manager; JULIA TERRY
 NATHALIA WRIGHT, ROBERT STEVENSON, ROBERTA ROBISON, CONRAD QUENELLE
 ARTHUR LAZELL, GERALDINE SMITH, RICHARD ORR, CHARLES BEALE
 DOROTHY CASSERES, ROBERT RULE, MARGARET PARNELL,
 BENJAMIN GROVES, Assistant Business Manager.



Bainonian Officers



JULIA TERRY, KATHERINE HODGES, JANET STANLEY, ELEANOR HENRY, LOU REPASS.
 BARBARA LYLE, LAURA JEAN WORKIZER, MARJORIE GOULD, GEORGA BURK,
 BETTY WILBAR.

JOSIE TIPTON, ELLEN METZ, MABEL HAMBREE, EUNICE GRANT, RUTH FARLEE.
 MAXIE SMITH, VIOLET WEBB, LILA BARR, THERESA FREY, ELIZABETH PETERSON.



Bainonian Literary Society



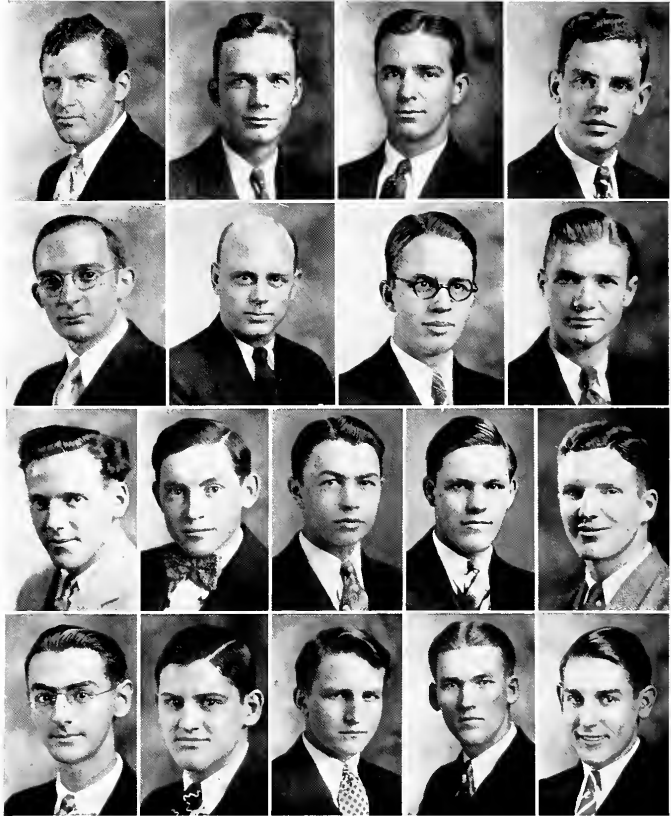
Bainonian means traveler, and for fifty-seven years Bainonian Literary Society has been traveling in the front ranks of campus activities. Throughout the school year, from "rush week" in the fall, to the commencement program in the spring, the members of Bainonian take an important part in all forms of curricular and extra-curricular life.

Bainonian's range of activity is as wide as college life itself. The current year has been no exception in this respect. Members of Bainonian hold important offices in Y.W.C.A., on the *Ecbo* staff, on the *Chilhowean* staff, and have taken a leading part in dramatics and forensics.

But Bainonian's influence does not end on the campus. The Bainonians in the past established high standards of living and high ideals of friendship. The Bainonians of the present strive to attain to these high standards and ideals, and to raise them even higher than they have been.

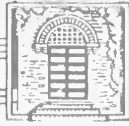


Athenian Officers



GEORGE OSBORN, ROBERT WALLACE, COOLEY COMBS, CLARENCE BRATSCHE
 HUBERT DUNCAN, RALPH TEFFETELLER, EDWARD COOPER, JUNIUS ALLISON
 WILLIAM HANNAH, BENJAMIN GROVES, WESLEY CULVER, AUBREY BRADSHAW,
 HARRY WOOD.

FRED KIRCHNER, GORDON GROOMS, RICHARD ORR, ROSS RANKIN, WALTER PIPPERT.



Athenian Literary Society

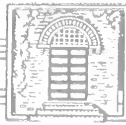


Athenian is the oldest literary society on the Hill, and as such, has a long record of achievements and successes. Service, loyalty, and co-operation are cardinal guiding factors in the life of Athenian as a society, and in the lives of Athenians as individuals.

One of the greatest services rendered by Athenian is the assistance in welcoming and orientating the freshmen. Athenians have shown their loyalty to the school and to the society, and their co-operation with society officers and with the college authorities.

Some of the most prominent men on the hill this year are Athenians. The majority of the Varsity debaters, the president of the senior class, the president of the Y.M.C.A., and many of the Y.M.C.A. Cabinet members are members of Athenian society.

Athenian may well be proud of both its collective achievements and those of the individual members.



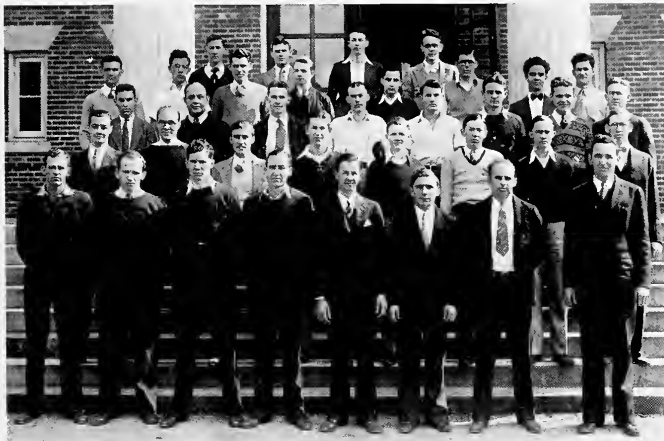
Alpha Sigma Officers



LINCOLN HURST, RENO SMITH, CECIL MARLEY, LAURENCE SOMERS,
 CHARLES WEST, WILSON GILLINGHAM, DONALD BRIGGS, ROBERT OVERLY,
 STEVE BORETSKY, JOHN TOPE, MICHAEL TESTA, JACK NEE,
 ROBERT BEYER, JESSE WILLIS, DAN HICKS, JOHN MCQUEEN.



Alpha Sigma Literary Society



Alpha Sigma, though one of the younger literary societies, is among the foremost from the standpoint of the ideals and abilities of its members. It is these individual characteristics which, carried together, have created the society.

Alpha Sigmas are always welcome members of any group, and their affability and congeniality are particularly extended to the freshmen in the fall in an effort to acquaint them with the college.

Some of the most important positions on the hill are filled by Alpha Sigmas. The editor of the *Higbland Ecbo*, the captain of the football squad, and members of the glee club, the expression department, the student council, and the Y.M.C.A. cabinet are worthy representatives of the society. The Theta Alpha Phi cup for the best midwinter was awarded Alpha Sigma this year.

Alpha Sigma is still growing, as evidenced by its steady progress each year, and the college may expect in the future society an even more satisfactory medium for the expression of student activity.



Theta Epsilon Officers



NAOMI WILLINGHAM, HELEN BURDETTE, HELEN CROWDER, ANNE SMARTT,
 JACULYN O'DELL
 ELIZABETH HUNT, IVA BABCOCK, EDITH KITTS, FRANCES MINGEA, RUTH GUTHRIE
 ELIZABETH DUNCAN, WILLAMARA MINTON, RUTH SWISHER, MARGARET PENLAND,
 NELL JO KNIGHT
 DOROTHEA THOMSEN, LOUISE REICHELDERFER, MARY ELIZABETH DYER,
 MARY KATHERINE MIZE, BETTY HAYES.



Theta Epsilon Literary Society



The "Happy Sisters" of Theta Epsilon have been associated for thirty-eight years as a congenial band of friends striving together for education and recreation. In every phase of college life a Theta may be distinguished by her talent and ingenuity along special lines.

Thetas take great pleasure in welcoming the new girls in the fall "rush week", and throughout the year their interest in every member continues in active support of any Theta project.

Some of Theta's most illustrious daughters on the hill include the presidents of the Y.W.C.A., the Student Body, and Pi Kappa Delta. Other members hold equally responsible positions and are equally prominent in moulding student opinion.

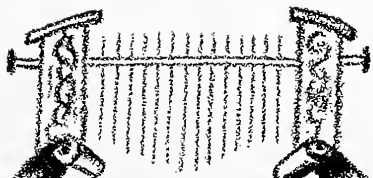
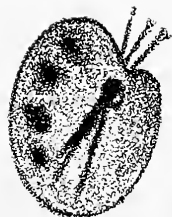
Theta is justly proud of the ideals she has set and followed in the past, of the happy sisters which she has sent out to figure largely in the fields of music, drama, and education, and she may with just enthusiasm look forward to her days of coming achievement.



Student Council



MILDRED MacKENZIE, president, LEA CALLAWAY, COOLEY COMBS, IVA BABCOCK,
FRANCIS COLLINS, ELOISE GARRETT.
NAOMI WILLINGHAM, HUBERT DUNCAN, GEORGE OSBORN, VIRGINIA CRIDER,
BENJAMIN GROVES, FRANCES MINGEA.
WILBUR JOHNSON, NORMA SPILATORE, ELIZABETH DUNCAN, HARRY WOOD,
RICHARD ORR.
GERALDINE SMITH, CARRIE LOU TWEED, LORENA DUNLAP, WALTER PIPPERT,
LILLIAN ARMSTRONG.





Music Department



MISS LAURA B. HALE
Head of Department

MISS FRANCES HENRY
Voice

The Music Department of Maryville College is under the leadership of Miss Laura B. Hale, who offers advanced instruction in piano and harmony. She is assisted in the department of piano by Miss Susan Howard, who teaches piano and history of music; in the department of voice by Miss Frances Henry, who directs the Vesper Choir and the Glee Clubs; in the department of violin by Miss Mildred Butcher, who directs the Band, the Orchestra, and the String Ensemble.



MISS SUSAN HOWARD
Piano

MISS RUTH HENRY
Graduate in Piano

MISS MILDRED BUTCHER
Violin



Vesper Choir



MARY FRANCES HENRY - - - - - *Director*

SUSAN LOGAN HOWARD - - - - - *Accompanist*

Sopranos:

- ELOISE GARRETT
- ELEANOR HENRY
- ELOISE HITT
- ELIZABETH HUNT
- MARY JOHN METCALFE
- ANNE SMARTT
- NORMA SPILATORE
- MARY SLOAN WELCH
- BLANCHE WILSON

Contraltos:

- MERLE BEEBE
- MARY ELIZABETH CROMER
- DOROTHY NARVAN
- MILDRED PURVIANCE
- VIRGINIA ROSS
- MARJORIE SALMONS
- LUCILLE SWAFFORD
- PAULINE THRONE
- KATHERINE WAYLAND
- NAOMI WILLINGHAM

Tenors:

- EDWARD COOPER
- EDWIN GREENE
- GORDON GROOMS
- BENJAMIN GROVES
- WILLIAM HANNAH
- ROBERT LEACH
- HARRY MATHIAS
- ROBERT OVERLY
- JESSE WILLIS

Basses:

- DONALD BRIGGS
- JESSE LEE CARTER
- GORDON COURTNEY
- JAMES CROTHERS
- HEYDON LAMPE
- WILLIAM MARSTON
- RENO SMITH
- JAMES STEVENSON
- HARRY WOOD



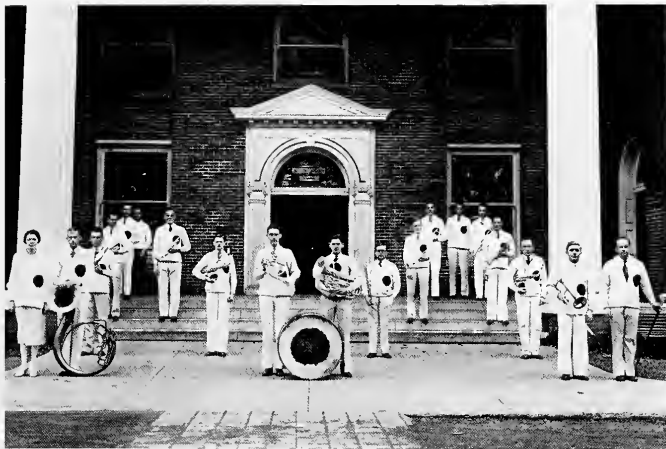
STRING ENSEMBLE



COLLEGE ORCHESTRA



College Band



MILDRED BUTCHER - - - - - *Director*
 LAURENCE SOMERS - - - - - *Drum Major*

Trumpet:

ALEX BROWN
 JAMES STEVENSON
 JOHN PHAY
 HUGH CRAWFORD
 CHESTER BRADBURY
 CHARLES STANBERRY
 C. B. STANBERRY
 JAMES LAING
 LELAND WAGGONER

Trombone:

RENO SMITH
 LEE MERRICK

Alto Horn:

ARNOLD BURGIN

Bass:

LEON BROWN

Clarinet:

EDGAR STOREY
 THOMAS VANNATTA
 FRANK MEASE
 FRED KNISELY

Saxophone:

JACK DAMRON
 ROBERT ROSS
 ROBERT LONG
 WILLIAM NELSON
 JOE MEYERS

Baritone:

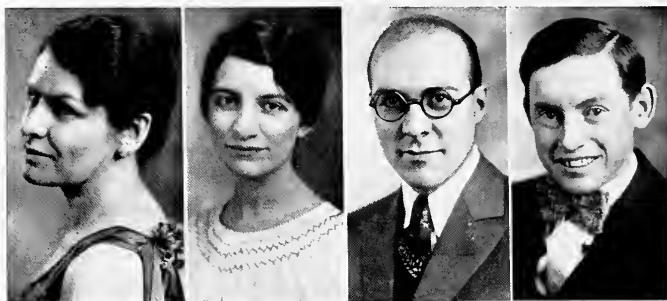
GORDON GROOMS

Drum:

JAMES KERR
 ROY LUCAS
 FRITZ CROMER
 PAUL THOMAS
 LUCIAN BROWN
 CHARLES WEST



Glee Singers



MARY FRANCES HENRY
Director

BENJAMIN GROVES
Business Manager

SUSAN LOGAN HOWARD
Accompanist

ROBERT OVERLY
President





Girls' Glee Club



MARY FRANCES HENRY
Director

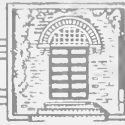
SUSAN LOGAN HOWARD
Accompanist

RUTH HENRY
Accompanist

Expression Graduates



RENO SMITH, LUCY ANN VOORHEES, LOU REPASS



Theta Alpha Phi



DONALD BRIGGS
President

CHILTON BOWLES
GEORGE OSBORN
LOU REPASS
ELIZABETH WILBAR
MARY LOVETTE

WESLEY CULVER
Secretary-Treasurer

RENO SMITH
LAURENCE SOMERS
MRS. NITA ECKLES WEST, honorary
DR. E. R. HUNTER, honorary



College Players



"PEG O' MY HEART"
Coached by Miss Wilhemina Holland



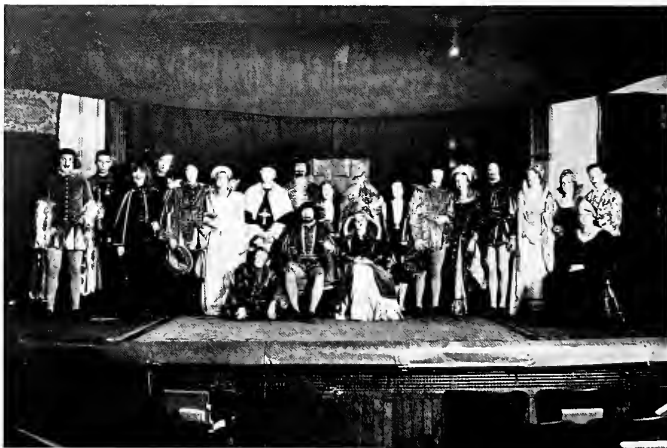
"THE MELTING POT"
Coached by Miss Wilhemina Holland



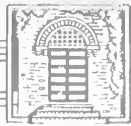
Mid-Winters



"SHE STOOPS TO CONQUER"
Presented by Athenian Literary Society



"WHEN KNIGHTHOOD WAS IN FLOWER"
Presented by Bainonian Literary Society



Mid-Winters



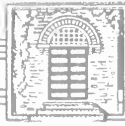
"DAVID HARUM"

Presented by Alpha Sigma Literary Society
Theta Alpha Phi Winner



"ALISON'S HOUSE"

Presented by Theta Epsilon Literary Society



Pi Kappa Delta





Pi Kappa Delta

PROF. VERTON QUEENER

Coach

Order: Instruction

Degree: Special Distinction

MILDRED CRAWFORD

Order: Debate

Degree: Proficiency

ELIZABETH DUNCAN

President

Order: Debate and Oratory

Degree: Honor and Fraternity

DR. E. R. HUNTER

Order: Instruction

Degree: Special Distinction

MARY LOVETTE

Vice-President

Order: Debate

Degree: Fraternity

BENJAMIN GROVES

Secretary-Treasurer

Order: Debate and Oratory

Degree: Honor and Fraternity

MARY JOHN METCALFE

Editor

Order: Debate

Degree: Fraternity

ROBERT STEVENSON

Order: Debate and Oratory

Degree: Proficiency and Fraternity

MILDRED MacKENZIE

Order: Debate and Oratory

Degree: Special Distinction and Proficiency

EDITH McDUFFIE

Order: Debate

Degree: Fraternity

FRED KIRCHNER

Order: Debate

Degree: Fraternity

JAMES LEWIS

Varsity Squad

ROBERT TRIPP

Order: Debate

Degree: Fraternity

LUCILLE SWAFFORD

Order: Debate

Degree: Fraternity

CHARLES BEALE

Order: Debate

Degree: Fraternity

CARRIE LOU TWEED

Order: Debate

Degree: Fraternity

ANDREW NEWCOMER

Order: Debate

Degree: Fraternity

ERCELLE HUNTER

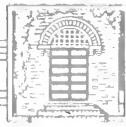
Order: Debate

Degree: Fraternity

ARTHUR LAZELL

Order: Debate and Oratory

Degree: Proficiency and Fraternity



HI-TRAIL



LES WEBB



BOB STEVENSON



LEA CALLAWAY
BLACKMOUNT



SPIDER WEBB
WILKESBORO



STEVE BORETSKY



BEEP MYERS
BELL'S CROSS



DAVE McARTHUR

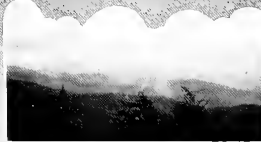


DIGGER HINA



TUFFY TEETZEL

JOHNNY TOPE





"M" CLUB

IVA BABCOCK
President

JULIA TERRY
Secretary-Treasurer

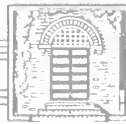
MILDRED PURVIANCE
Program Secretary



HOME ECONOMICS CLUB

RUBY HITCH, *President*
THEONA PRUETT, *Vice-President*

LILA BARR, *Secretary*
ESTALENA WILLIAMS, *Treasurer*



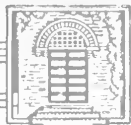
Triangle Club



DONALD BRIGGS - - - - - *President*
 RUTH FARLEE - - - - - *Vice-President*
 RUTH BROCIOS - - - - - *Secretary*
 FRED KIRCHNER - - - - - *Treasurer*

MEMBERS

ALMA ALLIS	MARJORIE SALMONS
CECELIA CONOVER	MILDRED SCHOELLER
DANIEL HICKS	NORMA SPILATORE
GEORGE HOWELL	ROBERT STEVENSON
JAMES HOWELL	BURTON TOMS
MARJORIE JONES	ROBERT TOMS
CATHERINE KEELER	MICHAEL TESTA
ARTHUR LAZELL	JOSEPH TRUXTON
FRANK NEFF	WARREN WARMAN
ANDREW NEWCOMER	DOROTHY WOODWARD
WALTER PIPPERT	



KENTUCKY CLUB

ALEXANDER DUFF
President

WILLIMAE RENEGAR
Vice-President

HILDA RANKIN
Treasurer

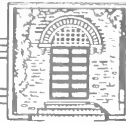


FLORIDA CLUB

LAURA JEAN WORKIZER
President

LOUISE AVERY
Secretary-Treasurer

JESSE LEE CARTER
Editor



MISSISSIPPI CLUB

JOHN McQUEEN, *President*
DOROTHY PARR, *Vice-President*

EMMA BUNTIN, *Treasurer*
IRMA KATE VANCE, *Program Secretary*



OHIO CLUB

LINCOLN HURST, *President*
JOHN KINSEY, *Vice-President*

FRANCES J. ESHELMAN, *Sec'y-Treas.*
MAE MARTIN, *Program Secretary*



THREE "I" CLUB

RICHARD ORR
President

HELEN THOMPSON
Vice-President

JEAN CAMPBELL
Treasurer

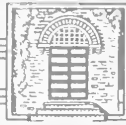


CAROLINAS CLUB

INEZ HAMRICK
President

AMELIA DICKENS
Secretary

JOSEPHINE WOODWARD
MARY MILLER KNOX
Program Secretaries



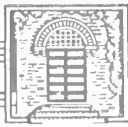
Pre-Medical Club



WINFIELD GLASS - - - - - *President*
 WESLEY CULVER - - - - - *Vice-President*
 COOLEY COMBS - - - - - *Secretary-Treasurer*
 ALEXANDER DUFF - - - - - *Program Secretary*

MEMBERS

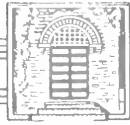
LEA CALLAWAY	HARVEY LOWRY
CARL CASSADA	MARGARET MOZINGO
TOM DAVIS	ROSS RANKIN
BEULAH DUGGAN	LINDSAY TOPE
SAM WAID	



Art Club
Instructor - Miss Nan Bird
Editor - Frances Garner

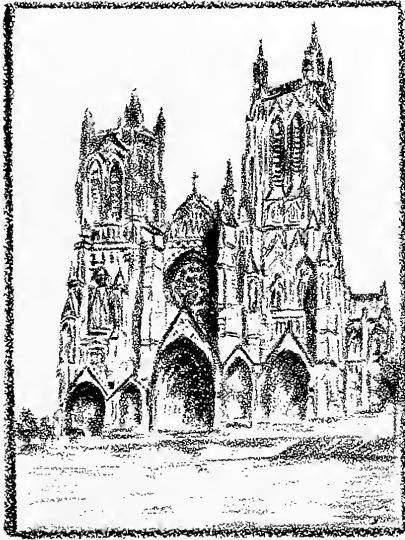
Frances
Garner

THE 1932



CHILHOWEAN

AUTOGRAPHS



RELIGION



Y. M. C. A. Cabinet



LEA CALLAWAY	CLARENCE BRATSCHE	JUNIUS ALLISON	
LAURENCE SOMERS	DONALD BRIGGS	FLOYD WATERS	ANDREW NEWCOMER
HARRY WOOD	AUBREY BRADSHAW	WILLIAM HANNAH	DAVID MCARTHUR



Y. M. C. A. Officers



RALPH TEFFETELLER
President

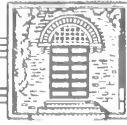
ROBERT OVERLY
Secretary

ALEXANDER DUFF
Vice-President

The Y. M. C. A. has rendered much valuable service on the Hill this year. The word "Service" has been a keyword in the organization's activities. Plans for an active year were made during the annual fall retreat at Tallassee. The Y.M.C.A.'s service, however, had begun even before that, for during the summer months the "M" Handbook had been printed and distributed to incoming freshmen. This little book was a great help in getting the new students orientated and acquainted with Maryville ideas and ideals.

The Fellowship Club, organized under the supervision of the Y. M. C. A. was also a great help to the freshmen. It enabled them to become acquainted with one another and with the old students.

Besides these particular services to the freshmen and new students, the "Y" has been a real factor in stimulating the student body in general to a higher type of college life, and to a thoughtful interest in current problems. The weekly meetings have brought good programs and popular speakers to those who have attended them.



Y. W. C. A. Cabinet



ANNE SMARTT, NAOMI WILLINGHAM, NATHALIA WRIGHT, ELLEN MACRAE
 WILLIMAE RENEGAR, RUTH BROCIUS, MILDRED PURVIANCE, VIRGINIA CRIDER
 MARY ELLA SPENCER, RUTH GUTHRIE, MILDRED MACKENZIE, LAURA J. WORKIZER
 IVA BABCOCK, DOROTHEA THOMSEN, LOUISE AVERY, MARY SWACICK



Y. W. C. A. Officers



MERLE BEEBE - - - - - *President*
 ELEANOR HENRY - - - - - *Vice-President*
 BARBARA LYLE - - - - - *Secretary*
 ELIZABETH WILBAR - - - - - *Treasurer*

The Y. W. C. A. is a very important factor in the life on the Hill. Its members co-operate with the Y. M. C. A. in the production of the "M" book, and its Nu Gamma groups take the place of the Fellowship Club among the men. The "Big Sister" movement is very helpful to the freshman girls.

At the weekly meetings of the Y. W. C. A., studies of life problems are made which are beneficial to all those who attend. These programs deal with questions of vital importance to college students and tend to keep them in touch with the great national and international policies.

The Y. W. C. A. is an organization of world-wide influence. The Maryville unit of this great system aims to give the highest ideals of Christian and Christian service to the college.



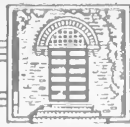
Nu Gamma Sigma Leaders



INEZ HAMRICK, leader, MARGARET SMITH, DOROTHY HASSALL, DOROTHY CASSERES
 MARIE SCHROELUKE, RUTH FARLEE, MILDRED PURVIANCE, JEANNE MARTIN,
 VIRGINIA ROSS

ELIZABETH GILLIS, GERALDINE SMITH, ELIZABETH AYERS, ALMA ALLIS,
 BERNICE McNUTT

BLANCHE WILSON, LILA BARR, ELINOR WINN, FRANCES MASSEY, MARGARET PARNELL



Student Volunteer Association



OFFICERS

ELIZABETH GILLIS	- - - - -	<i>President</i>
MICHAEL TESTA	- - - - -	<i>Secretary-Treasurer</i>
JANET WARREN, ROBERTA ROBISON	- - - - -	<i>Editors</i>
DOROTHY CASSERES, KATHERINE SMITH	- - - - -	<i>Program Secretaries</i>
FRANK NEFF	- - - - -	<i>Editor of News Bulletin</i>
ANNETTE LUETJE	- - - - -	<i>Devotional Chairman</i>
MR. BLACK	- - - - -	<i>Faculty Advisor</i>

The purpose of the Student Volunteer Movement is to inform people who plan to enter the foreign mission field of the needs of that field, to enlist recruits for the service, and to create an intelligent interest in missions among the laity who do not enter active service.

The Maryville College group is the largest and strongest in the state. The delegation attending the Quadrennial Convention of the Movement in Buffalo, New York, during the Christmas vacation was one-fifth of the total attendance from the South Atlantic Region. A representative delegation was also sent to the spring conference at Bethel College, McKenzie, in March.

One of the most valuable services rendered during the year was the publication of the Student Volunteer World News Bulletin in the library. The most significant happenings in the economic, social, political, and religious life of the world were concisely reported, and were interpreted or commented upon in the editorial columns of the bulletin.

Speakers from outside the group were engaged from time to time and spoke on Sunday evenings to meetings which exceeded in attendance and interest those of any previous year.



Ministerial Association



ROBERT STEVENSON
President

WARREN WARMAN
Vice-President, Program Secretary

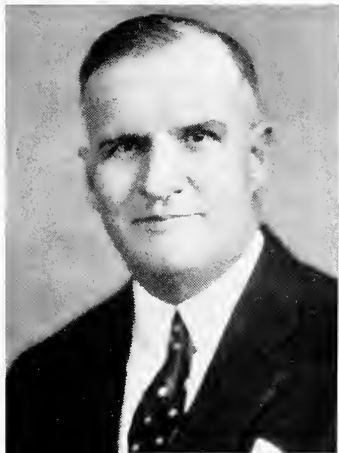
HARRY C. WOOD
Secretary-Treasurer

EDWARD B. COOPER
Editor

The Ministerial Association of Maryville College has rendered much important service to the college and to the community during the past year. Its members have held services at some of the country churches, at the almshouse, at the county prison, and at the Magee Street Mission. The weekly meetings of the Association have been very helpful to the members of the organization, as well as to visitors and friends.

The members of the Ministerial Association are chosen from three classes of students: (1) those who have pledged themselves to full time Christian service, (2) those who are still open to conviction concerning such a pledge, and (3) those whose general standing and whose interest in the Association have led to their being voted into membership.

The Ministerial Association is growing rapidly and its members look forward with eagerness to another year of service at Maryville.



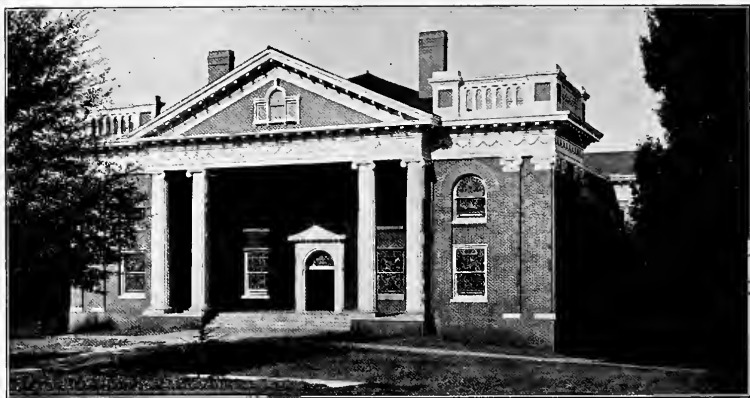
DR. WILLIAM H. FOULKES



REV. SIDNEY STRINGHAM

The February Meetings

With Dr. William H. Foulkes as speaker, and Rev. Sidney E. Stringham as song conductor, the fifty-sixth series of February Meetings were directed along vital lines of inspiration and guidance. Dr. Foulkes, who is pastor of the Old First Church in Newark, New Jersey, devoted his time and ability exclusively to the needs of the students, and acted not only as a minister of the gospel, but as an adviser of youth. Rev. Stringham, who returned for the eleventh consecutive year to lead the song services, once more advanced the message of the meetings through his medium of music.



Dr. Stevenson and his Wednesday morning chapel sermons are as much a Maryville tradition as the February Meetings and moonshining. Since 1919, when they first came to Maryville College, the college pastor and his wife, through their courtesy and hospitality, have so grown into the life of the college that they have become one with the students and the faculty in the growth of a greater Maryville.

Dr. Stevenson was drawn to Maryville from his first absorbed reading of Dr. Wilson's *A Century of Maryville College*, and since coming here he has directed his life and influence in the greatest harmony with that "story of altruism."



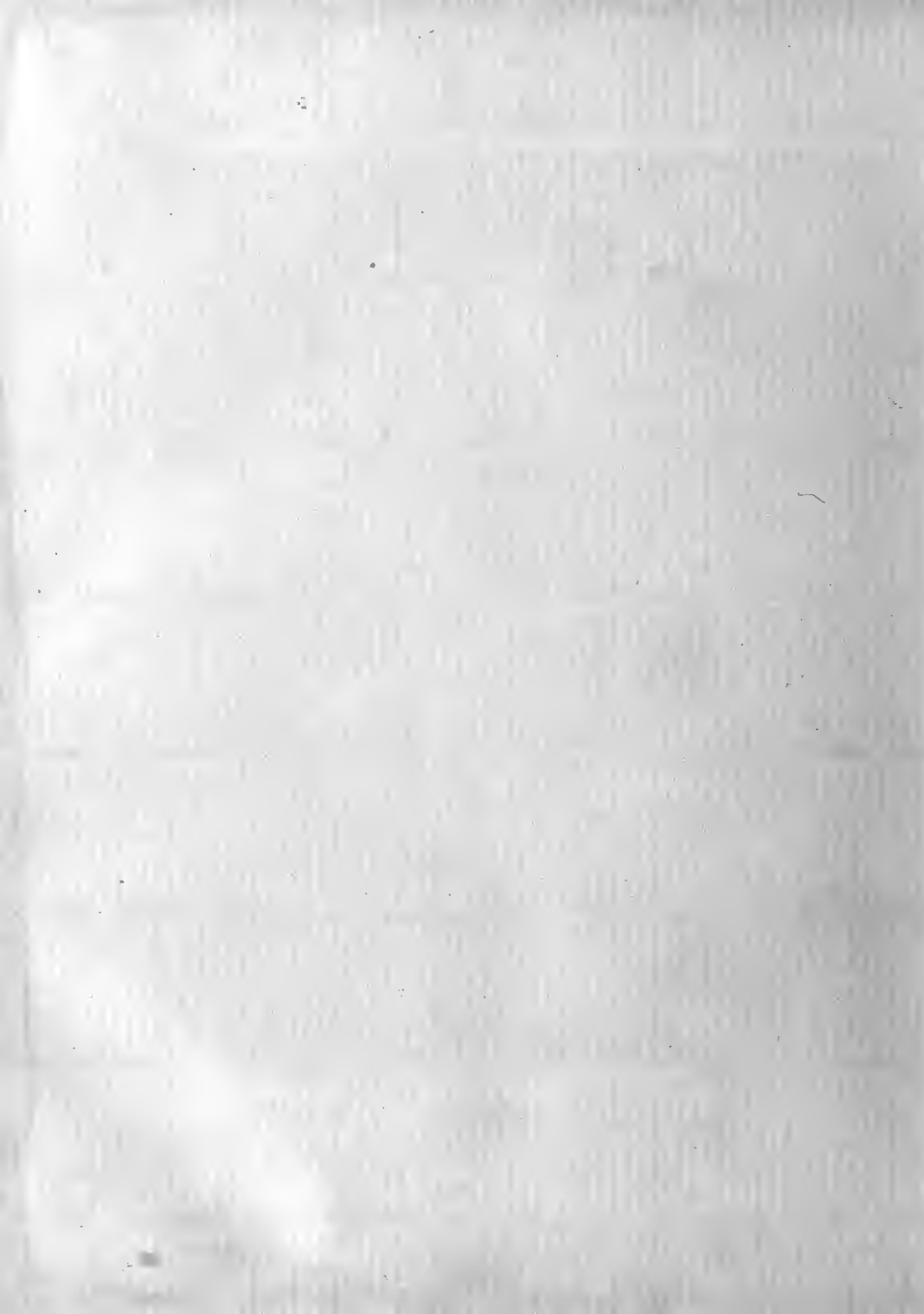


RALPH WALDO LLOYD

An open door. An explorer who, in the threshold pause, received the heritage of a gripping past, heard the challenge of an untried present, saw the ideal of a fascinating future. And he entered in, thrice armed.

Book VI

Features





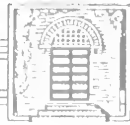
MISS MILDRED HARRIS
REPRESENTATIVE OF THE ADMINISTRATION OF
DR. ISAAC ANDERSON
1819—1857



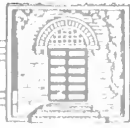
MISS MARGARET SMITH
REPRESENTATIVE OF THE ADMINISTRATION OF
DR. JOHN J. ROBINSON
1857—1861



MISS INEZ HAMRICK
REPRESENTATIVE OF THE ADMINISTRATION OF
DR. PETER MASON BARTLETT
1869—1887



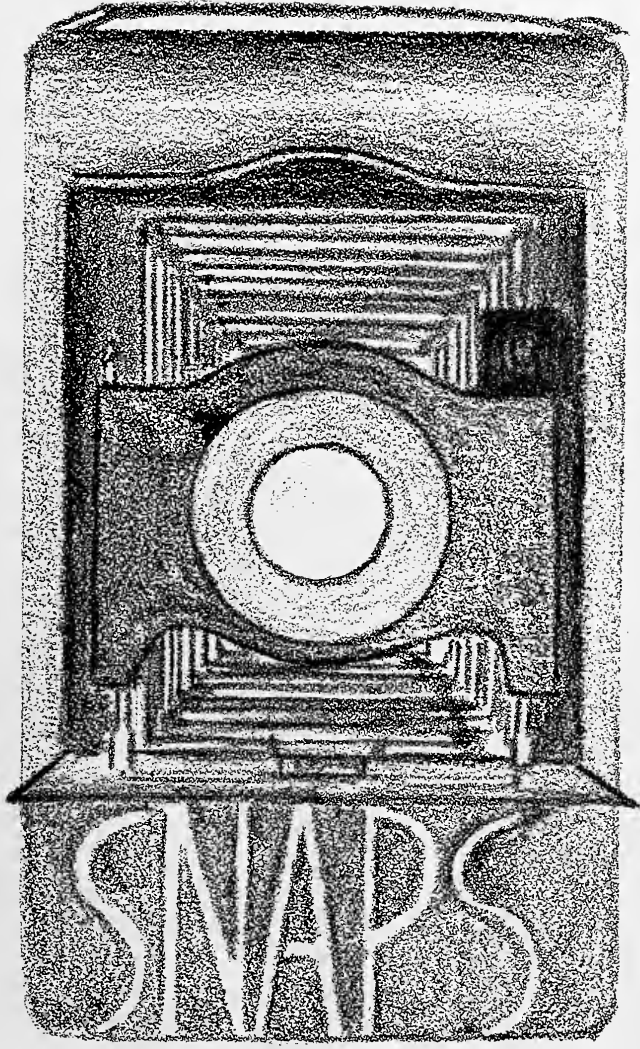
MISS DOROTHEA THOMSEN
REPRESENTATIVE OF THE ADMINISTRATION OF
DR. SAMUEL WARD BOARDMAN
1889—1901



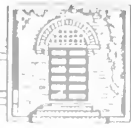
MISS VIRGINIA CRIDER
REPRESENTATIVE OF THE ADMINISTRATION OF
DR. SAMUEL TYNDALE WILSON
1901—1930

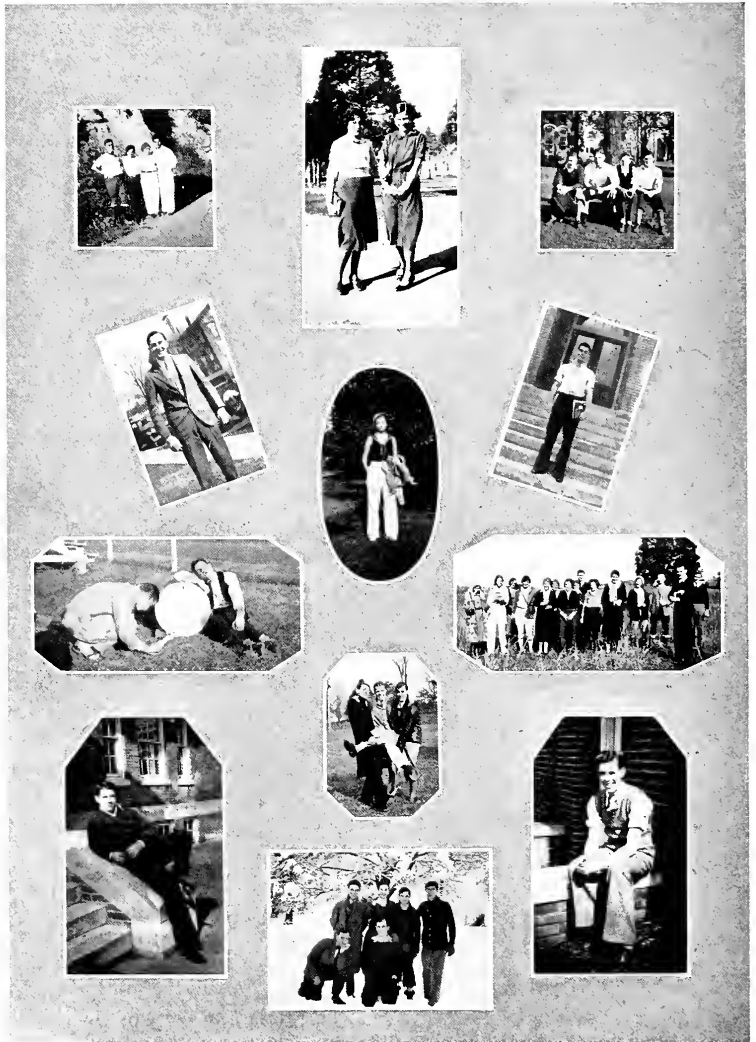
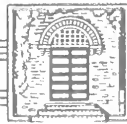


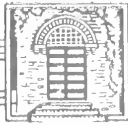
MISS RUTH HANNAH
REPRESENTATIVE OF THE ADMINISTRATION OF
DR. RALPH WALDO LLOYD
1930







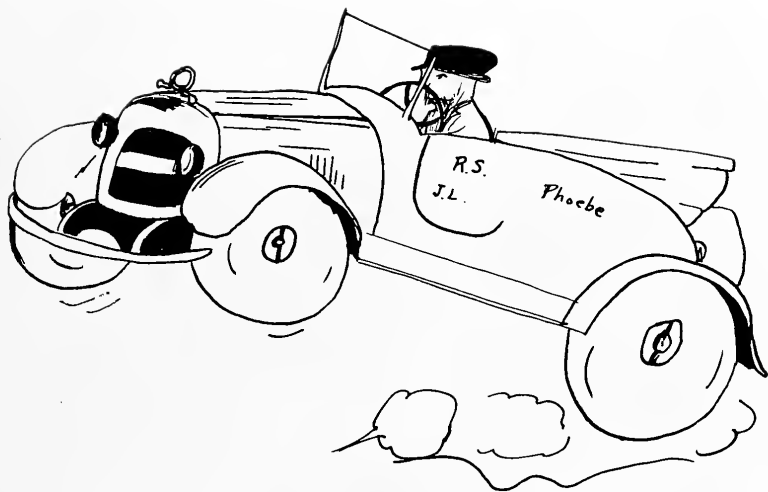






Inauguration

The inauguration of Dr. Ralph Waldo Lloyd as the sixth president of Maryville College was celebrated in a two-day program of extensive address on the twenty-second and twenty-third of October, 1931. The double theme for the occasion was "The Story of World Progress During the Lifetime of Maryville College", and "The College of Liberal Arts in Present Day Thought and Life." A number of the most prominent Americans in the varied fields of religion, education, law, science, and journalism were speakers. Among them were: Dr. W. J. Hutchins, president of Berea College; Dr. C. A. Ellwood, professor of sociology at Duke University; Dr. J. H. Finley, associate editor of the *New York Times*; and Dr. H. T. Kerr, president of the board of Christian education of the Presbyterian Church. The culminating and final exercise of the entire program was the induction of Dr. Lloyd by Dr. W. R. Dawson, chairman of the board of directors. At the roll call of the great aggregation of special visitors and witnesses to this ceremony answers were made by representatives of ninety-six colleges and universities, sixteen of whom were themselves college presidents.



ADVERTISEMENTS



LUXURY... at
THE PARK'S GATEWAY

After a day's motoring, know the luxury of The Andrew Johnson. Rooms are large and airy. . . . all with tub and shower. Meals are more than satisfying . . . and at prices that travelers like to pay.

Single Room \$2.50 to \$5.00

Double Room \$4.50 to \$8.00

HOTEL ANDREW JOHNSON

UNDER KNOTT MANAGEMENT

KNOXVILLE

TENNESSEE

CHANDLER-SINGLETON CO.

Department Store

Friendly Five Shoes for Men

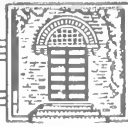
Wayne Knit Hosiery

NORTON HARDWARE COMPANY

"Always at Your Service"

MARYVILLE

TENNESSEE



We wish to thank the students for their courteous
patronage and wish each one good luck and a very
pleasant vacation



THE WEBB STUDIO

Photos of Permanency and Character

COLLEGE STREET

MARYVILLE

SATISFACTION IN FLOWERS

On the Hill, Back Home, or Any
Place You May Have Occasion
to Use Them

BAUM'S
Home of Flowers

HUGH M. CLARK
Manager

PROFFITT'S

"The Students' Store"



EFFICIENT SERVICE
HIGHEST QUALITY
LOWEST PRICES
MAKE
PROFFITT'S
THE BEST PLACE
TO TRADE



CONVENIENT!

-and a Saving
of Dollars on
each Ticket



- ◆ MORE DEPARTURES
- ◆ MORE CITIES SERVED
- ◆ TERMINALS RIGHT
DOWNTOWN

Maryville College students know Southeastern Greyhound Lines service . . . the way most of them travel because of the unusual comfort and convenience, plus the many dollars saved.

You'll find Greyhound the Collegiate Way to travel . . . you can keep the gang together and have a rip-roaring time. Or you can charter a whole bus . . . just for the frat house gang . . . by the mile, day or hour for the next intercollegiate event, splitting the cost between the passengers.

SOUTHEASTERN

GREYHOUND
Lines



WHITE STAR LINE

INC.

*Our Best Wishes
to
Graduates of Maryville
College*

COME BACK TO SEE US
WHEN POSSIBLE

WALKER'S
Drug Store and
Tea Room



EAST TENNESSEE PACKING CO.

BYRNE DRUG CO.

The Rexall Store



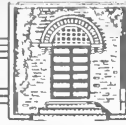
“On the Convenient
Corner”



WE DELIVER

Phones

3 - and - 4



**PALACE
THEATRE**

~
**Select
Photoplays**

~
MARYVILLE
TENN.

It Costs Less at
**STERCHI BROS.
STORES, INC.**

▼
PHONE 666
222-224-230 Main St.
MARYVILLE - TENNESSEE

**WRIGHT'S
5 and 10c
STORE**

~
*"Where a Little Money
Goes a Long
Way"*

**McCammon-
Ammons
Funeral Home**

**AMBULANCE
SERVICE**
MARYVILLE - TENNESSEE

**BRANSON
SISTERS**

Photographers
713½ GAY ST.

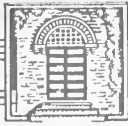
SPECIAL RATES TO
MARYVILLE
STUDENTS

~
KNOXVILLE - TENNESSEE

**HOPE
BROTHERS**

JEWELERS
Since 1868

KNOXVILLE - TENNESSEE



**KNOXVILLE
LITHOGRAPHING
COMPANY**

DESIGNERS AND PRINTERS
OF
FINE COLLEGE ANNUALS

KNOXVILLE, TENN.
U. S. A.

*Personal co-operation with
the staff in the planning
and designing of the -
annual is a definite -
part of our service.*



Q U A L I T Y



FINE Annuals are brought about by skillful and trained effort, only. . .

Copper supremacy is the result of many years of successful experience in Annual designing and engraving. This experience, together with the South's best artists, designers and engravers, is a guarantee for the finest Annuals.

CAPPER - ENGRAVING - COMPANY.
INCORPORATED
KNOXVILLE, TENNESSEE
ARTISTS - DESIGNERS - ENGRAVERS.









