



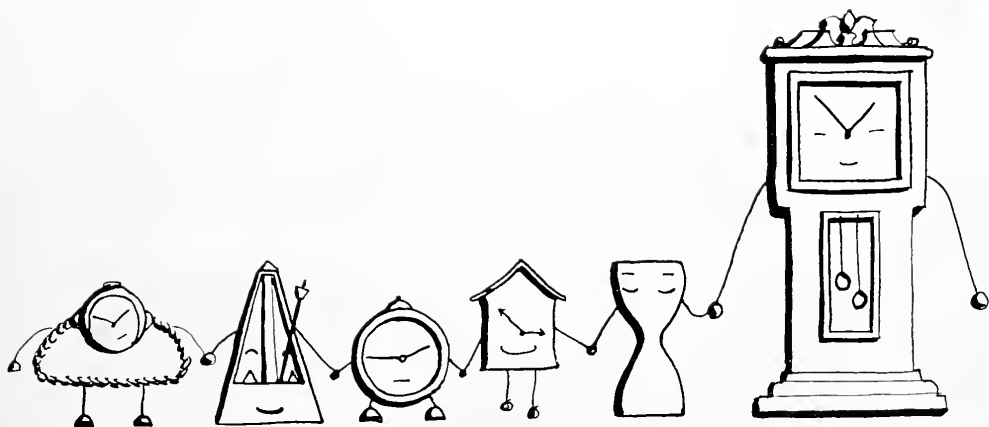
1952

The
MILITARY



Digitized by the Internet Archive
in 2010 with funding from
Lyrasis Members and Sloan Foundation

<http://www.archive.org/details/chilhowean195246mary>



Chilhowean TELLS . . .

... OF *Time* AT



Maryville College





OF *Time*





WE CHOOSE







OF *Time* WE USE





OF *Time*
WE LOOSE







C O N T E N T S

- ADMINISTRATION
- STUDENT BODY
- ACTIVITIES
- ORGANIZATIONS
- FINE ARTS
- ATHLETICS

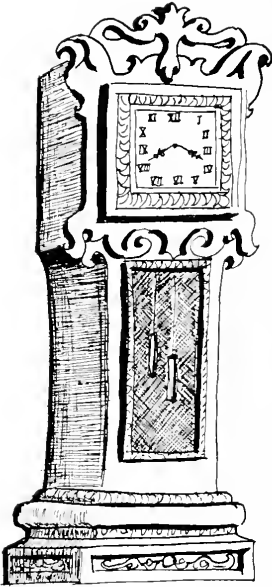
1952 CHILHOWEAN

VOLUME 46

PUBLISHED ANNUALLY BY THE JUNIOR CLASS OF
MARYVILLE COLLEGE, MARYVILLE, TENNESSEE

SARAH BROWN Editor-in-Chief

TASKER ROBINETTE Business Manager



ADMINISTRATION



Directors, Administrative Officers, and Teachers, not textbooks inspire students to higher ideals. From their own achievements these persons offer to the students the wisdom which they have gained and encourage them to utilize their knowledge to build a new and better future. The friendly attitude displayed and the willing help given make Maryville teachers highly esteemed by their pupils. Their confidence in us makes us confident in ourselves.



RALPH WALDO LLOYD

B.A., B.D., D.D., LL.D.

O U R P R E S I D E N T

The admiration and respect of the entire student body are freely given to our president, Dr. Ralph Waldo Lloyd. Aside from his many activities for the College, which in themselves would constitute a full-time job for most people, Dr. Lloyd is active in educational organizations and in church organizations both national and international.

Inaugurating his twenty-first year as president of Maryville College, Dr. Lloyd made a European trip in the summer, bringing back many fascinating stories to share with both students and faculty.

Not only does our president hold a high place in our esteem for his work, but also in our hearts for his wonderful sense of humor, even-tempered disposition, friendly manner, and exemplary Christian character.

DR. FRANK DeLOSS McCLELLAND
Dean of Students



DR. EDWIN RAY HUNTER
Dean of Curriculum, Chairman of the Division of Language and
Literature and Professor of English.



ADMINISTRATION OFFICERS



MR. LOUIS A. BLACK
Director of Maintenance



MISS CLEMMIE J. HENRY
Special Assistant to the President



MR. PAUL W. HENRY
Treasurer



LINCOLN BARKER
B.A., M.A., Ph.D.
Professor of Psychology and Education



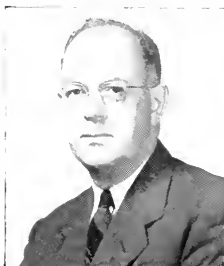
CAROLYN LOUISE BLAIR
B.A., M.A.
Assistant Professor of English



DAVID H. BRIGGS
B.A., M.A., Ph.D.
Professor of Psychology and Education



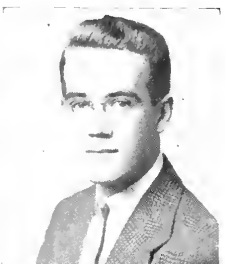
BONNIE HUDSON BROWN
B.A., M.A.
Assistant Professor of Biology



RALPH THOMAS CASE
B.A., B.D., Ph.D.
Professor of Sociology



AFTON K. CHAMBERLAIN
Assistant in the Student-Help Office



PAUL JOEL COOPER
B.A., M.A.
Assistant Professor of French



KATHLEEN CRAVEN
B.A., M.A.
Assistant Professor of Drama and Speech

THE FACULTY AND STAFF

KATHARINE CURRIE DAVIES
B.A., B.Mus., Mus.M.
Professor of Music and Chairman of the Division of Fine Arts

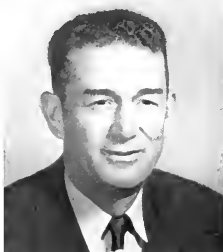
JOHN ARTHUR DAVIS
B.A., M.A.
Associate Professor of Physical Education

JOSEPHINE DUNLAP
B.A., B.S.L.S.
Assistant in the Library

ALICE ARCHIBALD EADDY
B.Mus.
Instructor in Music



FRED ALBERT GRIFFITHS
B.A., M.S., Ph.D.
Professor of Chemistry and Chairman of the Division of Science



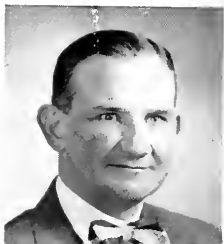
EVELYN GRACE GUSS
B.A., M.A.
Instructor in Greek and Latin



ELIZABETH BENEDICT HALL
Matron of Ralph Max Lamar Memorial Hospital



THELMA HALL
R.N.
Nurse at Ralph Max Lamar Memorial Hospital





ERNEST CHALMERS BROWN
Engineer



ALITA M. BRYANT
B.A.
Assistant in the Personnel Office



JOHN DALES BUCHANAN
B.A., M.A., Th.B., D.D.
Associate Professor of Bible and
Religious Education



ARTHUR STORY BUSHING
B.A., M.A.
Assistant Professor of English



EMMA CATHERINE CREWS
B.A., M.A.
Instructor in Music



MARGARET M. CUMMINGS
B.A., M.R.E.
Assistant Professor of Bible and
Religious Education



ANNA ORR CURRIE
Head of Baldwin Hall



MALCOLM J. DASHIELL
B.F.A.
Instructor in Art

THE FACULTY AND STAFF

DAVID LeROY ENGELHARDT
B.A., B.D., Ed.M.
Assistant Professor of Bible and
Religious Education

COMMODORE BASCOM FISHER
B.A., M.A.
Associate Professor of History

WILLIAM HALCOT FORD
B.A., M.A.
Associate Professor of Economics

MARTHA RUTH GRIERSON
B.A., B.A.L.S., M.S.
Librarian



HARRY H. HARTER
B.A., Mus.M.
Assistant Professor of Music



JESSIE SLOANE HERON
Ph.B., M.A.
Associate Professor of English



LOMBE SCOTT HONAKER
B.A.
Professor of Physical Education,
Chairman of the Division of Physical
Education and Health, and Direc-
tor of Athletics



DOROTHY DUERSON HORNE
B.Mus., M.Mus.
Associate Professor of Music





GEORGE DEWEY HOWELL
B.A., M.S.
Professor of Chemistry and Secretary of the Faculty



WILLIAM CURTIS HUGHES
B.M.Ed.
Instructor in Music



NANCY BOULDEN HUNTER
B.A.
Secretary to the President



ELIZABETH HOPE JACKSON
B.A., M.A.
Assistant Professor of English



JOHN HERBERT KIGER
B.A., M.A.
Assistant Professor of History



KATHRYN C. KOLTER
Housemother of Carnegie Hall



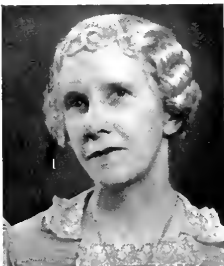
PAUL COOK KOLTER
B.A., M.S.
Instructor in Biology



THELMA HALL KRAMER
B.S., M.S.
Assistant Professor of Education

THE FACULTY AND STAFF

JESSIE ELEANOR McCORKLE
Assistant in the Treasurer's Office



MAURINE LONES OWEN
B.A.
Editorial Supervisor of Special Studies



CALLIE COX McCURRY
Assistant in the Treasurer's Office



KENNETH LEE PAXTON
B.S.
Instructor in Science and Mathematics



EULIE ERSKINE McCURRY
B.A., M.A.
Supervisor of Men's Residence and Proctor of Carnegie Hall



ARCHIBALD FRANKLIN PIEPER
B.A., LL.B.
Associate Professor of Political Science



KATHRYN WORLEY MARTIN
B.A., M.A.
Assistant Professor of Spanish and French



MARY GLADYS PIEPER
B.A.
Instructor in Sociology





CHARLOTTE BUEL JOHNSON
B.A., M.A.
Assistant Professor of Art



DORIS BAUMANN JOHNSON
B.Mus.
Supervisor of Printing Department



JESSIE KATHERINE JOHNSON
B.A., M.A.
Assistant Professor of English



KENNETH PETRIE JOHNSON
B.S., Ed.M.
Assistant Professor of Physical Education



EDITH DeLANEY LARGEN
B.S., M.S.
Instructor in Physical Education



MARGARET JONES LeMASTER
Head of Pearsons Hall



VIOLA MAE LIGHTFOOT
B.A.
Assistant to the Dean of Students



LOUISE MARGARET LLOYD
B.A.
Instructor in Music

THE FACULTY AND STAFF

FRANCES MASSEY
B.A.
Dean of Women



GERTRUDE E. MEISELWITZ
B.S., M.S.
Professor of Home Economics



MARY MILES
B.A.
Assistant in the Library



HORACE EUGENE ORR
B.A., M.A., D.D.
Professor of Religion and Philosophy and Chairman of the Division of Bible, Philosophy and Education



EVELYN NORTON QUEENER
Assistant Professor of Physical Education



VERTON MADISON QUEENER
B.A., M.A., Ph.D.
Professor of History and Chairman of the Division of Social Science



HARVEY SAMUEL REBER
B.A.
Assistant Professor of German



ROWENA D. ROBINSON
Assistant to the Head of Baldwin





INGEBORG M. RODEMANN
B.S., M.S.
Instructor in German and Education



JAMES HOWARD SCHWAM
B.S., M.A.
Assistant Professor of Spanish



HELEN WHITESIDE SHEPARD
Head of McLain Memorial Hall



FRED ERNEST SHORT
B.A., B.S.
Instructor in Drama and Speech



AUGUSTUS SISK
B.A., M.A., Ph.D.
Professor of Mathematics and Physics



LUCILE GILLESPIE STEPP
B.S.
Instructor in Home Economics



ELIZABETH TAYLOR STEWART
Assistant to the Head of Pearson's Hall



NELL GARDINER STRICK
Director of the Student Center

THE FACULTY AND STAFF

DOROTHY HELEN YAWTER
B.A.
Instructor in Music

ARDA SUSAN WALKER
B.A., M.A.
Assistant Professor of Economics

EDGAR ROY WALKER
B.A., M.A.
Associate Professor of Mathematics and Physics

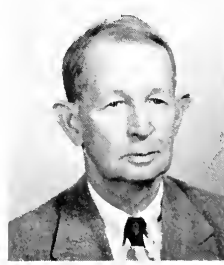
MARGARET SUZANNA WARE
Dietician and Manager of the Dining Hall



M. CATHARINE WILKINSON
B.A., M.A.
Associate Professor of French



LYLE LYNDON WILLIAMS
B.S., M.A., Ph.D.
Professor of Biology



THELMA PFAFF WILLIAMS
Manager of the College Maid Shop



CELIA ROUGH WRINKLE
Assistant to the Treasurer







S T U D E N T B O D Y



As difficult as it is for large groups of people to get along well together, the student body at Maryville manages with a surprising degree of success to give the appearance of being one big happy family. The friendly spirit with which all new students are greeted and the wholesome attitude which prevades the campus lingers in the memory of most visitors to the College. As each student is distinguished by his deeds, so is each school recognized by the caliber of its students.

Seniors

OFFICERS

RALPH THIESSE President

VILLIAM ROBINSON Vice-President

LOIS LAYTON Secretary

ROBERT LYNN Treasurer

Thiesse, Layton, Robinson, Lynn



First row:

- CHARLES EDWARD ALLEN, Louisville, Kentucky; Major, Physical Education; Basketball, 1, 2, 3, 4; Football, 2, 3, Captain, 4; Track, 1; Student Council 1, 2, 4; Athletic Board of Control, 2, 3, President, 4; Who's Who in American Colleges and Universities, 4.
- JAMES RALPH ALLISON, Salineville, Ohio; Major, Political Science; Honor Roll, 1, 2, 3; Men's Glee Club, 3, Secretary-Treasurer, 4; CHILHOWEAN Editorial Staff, 3; Student Council, 4; Student Faculty Senate, 4; Athenian.
- CORA FEILD ANTHONY, Ripley, Tennessee; Major, Mathematics; Honor Roll, 1, 2, 3; M Club, 2; Nu Gamma Leader, 2; Y.W.C.A. Cabinet, 3, Treasurer, 4; Bainonian, Secretary, 2.
- CAROL HELEN BARNETT, Carlinville, Illinois; Major, Piano; All Girl Choir, 2; Theta Epsilon.
- IDA KATHERINE BLACKBURN, Knoxville, Tennessee; Major, Biology; Honor Roll, 1, 2, 3; College Playhouse Player, 4; Nu Gamma Leader, 2; Y.W.C.A. Cabinet, 3, 4; Bainonian, Treasurer, 2.



Second row:

- MARY BRYAN BLACKSHEAR, Loudon, Tennessee; Major, Elementary Education; Honor Roll, 3; All Girl Choir, 3; Bainonian.
- ROBERT EDGAR BLEILER, Mount Holly, New Jersey; Major, Economics; Honor Roll, 2; Men's Glee Club, 1, 2, 3; Alpha Sigma.
- BARBARA BLUM, Fountain City, Tennessee; Major, English; Honor Roll, 1, 2, 3; M. Club, 1, 2; Spanish Club, President, 2; Sigma Delta Pi, 2, 3, 4; Writers' Workshop, 3, 4; CHILHOWEAN Editorial Staff, 3; Nu Gamma Leader, 2; Y.W.C.A. Cabinet, 3, 4; Calendar Girl, 2; Bainonian.
- WILMA BORTER, Springfield, New Jersey; Major, Home Economics; Honor Roll, 2, 3; All Girl Choir, 1; Daisy Chain, 3; Theta Epsilon, Treasurer, 4.
- BRANIN ALEXANDER BOYD, Philadelphia, Pennsylvania; Major, Physics; Intramural Medal, 3; Honor Roll, 1, 3; Men's Glee Club, 1, 2, 3, 4; Pep Committee Chairman, 4; Athenian.

Seniors

First row:

- HARRIET HAZEL BROWN, Maryville, Tennessee; Major, Spanish; Honor Roll, 2, 3; Sigma Delta Pi, 2.
- MARY ANNE BROWNE, Raleigh, North Carolina; Major, Chemistry; Band, 2, 3, 4; Orchestra, 2, 3, 4; Pre-Med Club, Secretary-Treasurer, 4; Bainonian.
- BETTY BRUNSKILL, Jacksonville, Florida; Major, Bible; Bainonian.
- ALLAN BLAIR CALDWELL, Cedar Rapids, Iowa; Major, Psychology; Honor Roll, 2, 3; French Club, Vice-President, 4; College Playhouse Players, 2, 3, President, 4; Theta Alpha Phi, Vice-president, 4; "Highland Echo," Assistant Business Manager, 2, 3; M.S.O. Representative, 3; Inter-Club Council, 4; Drama Board of Control, Chairman, 4; Athenian.
- ETHEL HAGAN CALDWELL, Lawrenceburg, Tennessee; Major, Biology; Theta Epsilon, Vice-president, 3.



Second row:

- JAMES MILLER CALLAWAY, Maryville, Tennessee; Major, Chemistry; Football, 3, Co-Captain, 4; Wrestling, 3, 4; Honor Roll, 1, 2; M Club, President, 4; Student Council, 2, 3; Athletic Board of Control, President, 3.
- RUTH ALICE CLIVER, Burlington, New Jersey; Major, Mathematics; Honor Roll, 1, 3; M Club, 3, 4; Theta Epsilon.
- NORRIS LEE COOK, Kenmore, New York; Major, Sociology; M.S.O. Coordinating Council, 4; Alpha Sigma.
- WALLACE REED CORNETT, Alcoa, Tennessee; Major, Chemistry; Honor Roll, 1; Athenian.
- CLAUDE ALEXANDER COWAN, Birmingham, Alabama; Major, Philosophy; Honor Roll, 1; Band, 2, 3; Alpha Sigma.

First row:

- THOMAS WALTER CRAMER, Maryville, Tennessee; Major, Economics; Honor Roll, 2, 3; Business Club, Treasurer, 4.
- MARY ELIZABETH CRAWFORD, Monticello, New York; Major, English; Theta Epsilon.
- ROBERT THOMAS CUTHILL, Buffalo, New York; Major, History; Debate, 1, 2, 3, 4; Pi Kappa Delta, 2, 4, Reporter, 3; Class President, 3; Student Council, 3, 4; Student Faculty Senate, Vice-Chairman, 4; Social Board, 4; Student Body President, 4; Who's Who in American Colleges and Universities, 4; Alpha Sigma, Secretary, 2.
- SARA JEAN DAVIS, Seymour, Tennessee; Major, Physical Education; Band Majorette, 3, 4; M Club, 2, 3, President, 4; "B.G." Club, 2, 3, Secretary-Treasurer, 4; Athletic Board of Control, 3, Secretary, 4; Inter-Club Council, 4; Class Secretary, 2, Daisy Chain, 3; Theta Epsilon, Vice-President, 2.
- GEORGE WILLIAM DAY, Philadelphia, Pennsylvania; Major, Biology; Track, 1, 3; Cross Country, 2, 4; Intramural Medal, 2; M Club, 3, 4; Men's Glee Club, 4; Athenian, Vice-President, 4; President, 4.



Second row:

- WILLIAM HOWARD DEIHL, Asheville, North Carolina; Major, Music; Vesper Choir, 2, 3, 4; Madrigal Singers, 2, 3, 4; Orchestra, 1, 2, 3, 4; Athenian.
- ELIZABETH McLEYNE DINKLE, Baltimore, Maryland; Major, Mathematics; Bainonian.
- JESSIE DYE, Dayton, New Jersey; Major, Elementary Education; Honor Roll, 3; All Girl Choir, 1, 2, 3, 4; Student Council, 4; Student Faculty Senate, 4; W.S.G.A., President, 4; Y.W.C.A., Cabinet, 4; May Day Attendant, 2; Theta Epsilon, Treasurer, 3.
- MARILYN DRUMMER EDGE, Dover, New Jersey; Major, Sociology; Honor Roll, 3; Pearsons Vice-House Chairman, 3; Theta Epsilon.
- WALTER EVANS ENGLISH, JR., Philadelphia, Pennsylvania; Major, Biology; Track, 2, 3; Intramural Medal, 3; Honor Roll, 1; Vesper Choir, 1, 2, 3, 4; M Club, 2, 3, 4; Athletic Board of Control, 3, 4; M.S.O. Representative, 4; Y.M.C.A. Cabinet, 3; Athenian, Secretary, 2, President, 4.

Seniors

First row:

- NANNETTE ENLOE, Atlanta, Georgia; Major, Sociology; M Club, 2, 3, 4; "B.G." Club, 3, 4; Student Council, 4; Nu Gamma Leader, 2; Y.W.C.A. Cabinet, 3; Vice-President, 4; Daisy Chain, 3; Bainonian, President, 4.
- JAMES BEATTY FARRIS, JR., Eatonton, Georgia; Major, Business Administration; Business Club, Secretary, 4; Athenian, Secretary, 4.
- WILLIAM O. FAULKNER, JR., Memphis, Tennessee; Major, Economics; Cheerleader, 4; Honor Roll, 1, 2; Men's Glee Club, 1, 2, Treasurer, 3, President, 4; Spanish Club, Vice-president, 4; Sigma Delta Pi, 2; Y.M.C.A. Cabinet, 4; May Day Attendant, 3; Athenian, Treasurer, 3.
- RONALD VERNON FLEMING, Dravosburg, Pennsylvania; Major, English; Honor Roll, 3; Band, 1; Orchestra, 1; Vesper Choir, 2, 3, 4; German Club, Vice-president, 1.
- MARY CLAIRE FOX, Sevierville, Tennessee; Major, Elementary Education; Theta Epsilon, Vice-president, 4.



Second row:

- ROBERT STEVENS FULLER, Harrisburg, Pennsylvania; Major, Physics; Honor Roll, 1, 3; Alpha Sigma.
- NINA RUTH GILLETTE, Vineland, New Jersey; Major, Elementary Education; Honor Roll, 2, 3; Messiah Soloist, 4; Vesper Choir, 1, 2, 3, 4; Bainonian.
- WILLIAM THADDEUS GODWIN, JR., St. Petersburg, Florida; Major, Sociology; Swimming, 1; Class Treasurer, 2; Y.M.C.A. Cabinet, 3; Alpha Sigma.
- BOBBIE JUNE GRAVES, Maryville, Tennessee; Major, Biology.
- DONALD LESTER GRAY, Edwardsville, Illinois; Major, Sociology; I.R.C., Vice-president, 4; Athenian.

First row:

- RALPH WILLIAM GREASER, Maryville, Tennessee; Major, Physical Education; Football, 1, 2, 3.
- BILLY MARSHALL GRINSTEAD, Sevierville, Tennessee; Major, Business Administration.
- ANGIE JOY HAYES, Atlanta, Georgia; Major, Elementary Education; Honor Roll, 2, 3; All Girl Choir, 1, 2; Orchestra, 1, 2, 3; F.T.A., Vice-president, 4; Memorial Vice-House Chairman, 2; W.S.G.A., Secretary, 3; Daisy Chain, 3; Bainonian, Secretary, 3.
- JOHN ISAAC HENDRICKS, JR., Sodus, New York; Major, Sociology; Honor Roll, 3; Camera Club, President, 4; Pre-Ministerial Cabinet, 3; Athenian.
- MARGARET JOY HICKMAN, Waynesburg, Pennsylvania; Major, Sociology; Honor Roll, 1, 3; All Girl Choir, 1; Orchestra, 1; Vesper Choir, 2, 3, 4; Bainonian.



Second row:

- ELIZABETH JUNE HOOD, Knoxville, Tennessee; Major, Piano and Music Theory; Honor Roll, 1, 2, 3; Vesper Choir, 2, 3, 4; Tau Kappa Chi, 2; Secretary, 3; Vice-president, 4; Bainonian.
- HERBERT F. HOOVER, New York, New York; Major, Music Theory; Honor Roll, 1, 3; Men's Glee Club, 2; Disc Club, Chairman, 4; Y.M.C.A. Cabinet, 4.
- GEORGE DEWEY HOWELL, JR., Maryville, Tennessee; Major, Chemistry; Honor Roll, 1, 2, 3; Band, 1; Madrigal Singers, 2; Messiah Soloist, 3, 4; Vesper Choir, 1, 2, 3, 4; Athenian.
- BEVERLY JEAN JACOBI, Point Pleasant, New Jersey; Major, Elementary Education; Cheerleader, 1, 2; Honor Roll, 2, 3; Class Vice-president, 3; Y.W.C.A. Cabinet, 3, 4; Daisy Chain, 3; Calendar Girl, 3; Bainonian.
- DOROTHY LOUISE JOHNSTON, Montgomery, Alabama; Major, Home Economics; Honor Roll, 3; Theta Epsilon.

Seniors

First row:

- THOMAS LAIRD JONES, St. Petersburg, Florida; Major, Sociology; Baseball, 1, 3, 4; Football, 4; Intramural Award, 3; Honor Roll, 1, 2, 3; "Highland Echo," 1; M.S.O. Coordinating Council, 4; Student Body Vice-president, 4; May Day Attendant, 2; Alpha Sigma.
- RUTH LUCILLE KEEFER, Rahway, New Jersey; Major, Biology; Honor Roll, 2, 3; Bainonian.
- ROBERT WILLIAM KEES, Philadelphia, Pennsylvania; Major, Business Administration; Cheerleader, 3, Captain, 4; Honor Roll, 3; Y.M.C.A. Cabinet, 4; Athenian, Vice-president, 3.
- THOMAS PETER KELLY, Morris Plains, New Jersey; Major, Political Science; Cross Country, 2, 3; Captain, 4; Track, 2, 3, 4; Honor Roll, 3; Debate, 1, 2, 3, 4; Pi Kappa Delta, 2, 3, 4; "Highland Echo," 1, 2; Alpha Sigma.
- MARY HUME KELTON, Port Tampa City, Florida; Major, Elementary Education; Honor Roll, 3; All Girl Choir, 3, 4; French Club, President, 4; Inter-Club Council, 4; Barnwarming Sponsor, 3; Theta Epsilon, Secretary, 3.



Second row:

- MARGARET ANN KETTLES, Pittsburgh, Pennsylvania; Major, English; Band Majorette, 1, 2, 3, 4; Honor Roll, 1, 2, 3; All Girl Choir, 1, 2, 3, 4; Writers' Workshop, 3, 4; Y.W.C.A. Cabinet, 3; Theta Epsilon, President, 4.
- JANET EDMAN KIHLGREN, Berkeley Heights, New Jersey; Major, Elementary Education; All Girl Choir, 1, 2, 3, 4; Y.W.C.A. Cabinet, 4; Student Volunteers Cabinet, 3; Daisy Chain, 3; Bainonian.
- IN SUN KIM, Wilmington, Delaware; Major, English; Yesper Choir, 4.
- JAMES LOUIS KREN, Pitcairn, Pennsylvania; Major, Physical Education; Men's Glee Club Vice-president 3; M Club, Treasurer, 4; Class President, 2; Student Council, Vice-president, 3; Y.M.C.A., Treasurer, 3, President, 4; Who's Who in American Colleges and Universities, 4; Alpha Sigma.
- RUTH HARRIET KUCKHERMAN, Dayton, Ohio; Major, Sociology; Honor Roll, 3; Theta Epsilon, Secretary, 4.

First row:

- MARY EDITH LANCASTER, Hendersonville, North Carolina; Major, Elementary Education; All Girl Choir, 1, 2, 3, Vice-president, 4; "B.G." Club, 2, 3, President, 4; Class Secretary, 3; Inter-Club Council, 4; Nu Gamma Leader, 2; Y.W.C.A., Secretary, 3, Cabinet, 4; Calendar Girl, 3; Daisy Chain, 3; Bainonian, Vice-president, 4.
- WALTER JOHN LANGE, St. Petersburg, Florida; Major, Biology.
- RUBY NELL LASTER, Birmingham, Alabama; Major, Biology; All Girl Choir, 1, 2, 3; Bainonian.
- LOIS MARIE LAYTON, Pine Island, New York; Major, English; All Girl Choir, 1, 2, 3, 4; Class Secretary, 4; Bainonian.
- ANN STEWART LEEDER, Jullundur City, India; Major, Home Economics; M Club, 2; Y.W.C.A. Cabinet, 3, 4; Daisy Chain, 3; Bainonian, Vice-president, 3.



Second row:

- ROBERT DANIEL LEHR, Altoona, Pennsylvania; Major, Education; Vesper Choir, 2, 3, 4; F.T.A., Treasurer, 3; Alpha Sigma.
- JOYCE ELLA LENDERMAN, Birmingham, Alabama; Major, Elementary Education; Honor Roll, 3; Memorial House Committee, 2; Daisy Chain, 3; Barnwarming Sponsor, 4; Theta Epsilon.
- MARY ELIZABETH LESTER, Atlanta, Georgia; Major, Elementary Education; F.T.A., President, 4; Inter-Club Council, 4; Barnwarming Sponsor, 1; Band Sponsor, 4; Theta Epsilon.
- ANNABELLE JOYCE LIBBY, Lisbon, Ohio; Major, English; All Girl Choir, 2, 3, 4; Theta Epsilon.
- ROBERT ATHAN LYNN, Elmhurst, Illinois; Major, Business Administration; Honor Roll, 1, 2, 3; Men's Glee Club, 1, 2; Spanish Club, President, 3; Business Club, Vice-president, 4; Debate, 1; CHILHOWEAN Business Manager, 3; Class Treasurer, 4; Barnwarming King, 4; Athenian.

Seniors

First row:

- MARGARET SHIELDS McClURE, Maryville, Tennessee; Major, Art; Honor Roll, 3; Band, 1; Pi Gamma, President, 3; Y.W.C.A. Cabinet, 3; Daisy Chain, 3.
- MARY LOIS McCONNELL, Maryville, Tennessee; Major, Sociology; Band, 1, 2, 3, 4; "Highland Echo" Editorial Staff, 1, 2, 3; "M" Book Staff, 4; Y.W.C.A. Cabinet, 4; Theta Epsilon.
- LENA BELLE McGAHA, Newport, Tennessee; Major, Biology; Honor Roll, 2, 3; Tau Kappa Chi, Treasurer, 4; Boinonian.
- EMILY MAHALA McLAIN, Lakeland, Florida; Major, Elementary Education; Honor Roll, 2, 3; M Club, 3, 4; Theta Epsilon.
- BERT EARNEST SAMUEL McMAHON, Ashtabula, Ohio; Major, Physical Education; Basketball, 1, 2, 3, 4; Football, 1, 2, 3, 4; Track, 2, 3, 4.



Second row:

- JANICE HELEN MARION, Mercerville, New Jersey; Major, Elementary Education; All Girl Choir, 1, 2, 3, 4; Pearsons House Chairman, 4; Student Volunteers Cabinet, 3; Boinonian.
- NANCY CAROLYN MARSHALL, Etowah, Tennessee; Major, Music; Tau Kappa Chi, 2, Vice-president, 3, President, 4; Theta Epsilon.
- HELEN SUE MARTIN, Bloomington, Illinois; Major, Elementary Education; Honor Roll, 3; Band, 3; All Girl Choir, 1, 2; Vesper Choir, 3, 4; Student Council, 1, 2, 4; W.S.G.A., Treasurer, 2; Social Board, 4; Nu Gamma Leader, 2; Y.W.C.A., Treasurer, 3, President, 4; Who's Who in American Colleges and Universities, 4; Boinonian.
- CLAIRE LOUISE MASTERS, Roseville, Michigan; Major, English; Honor Roll, 2; All Girl Choir, 2, 4, President, 3; College Playhouse Players, Treasurer, 4; Theta Alpha Phi, 4; Boinonian.
- WESLEY PARKER MILES, Huntington, New York; Major, English; Tennis, 1, 2, 3, 4; M Club, Secretary, 4; Y.M.C.A. Cabinet, 3, Vice-president, 4; Athenian.

First row:

- CAROLYN EILEEN MILLER, Monmouth, Illinois; Major, Sociology; Honor Roll, 1, 2, 3; Debate, 2, 3, 4; Pi Kappa Delta, 2, 3, Vice-president, 4; CHILHOWEAN Editor, 3; Writers' Workshop, 3; Student Council, 3, Secretary, 4; Y.W.C.A. Cabinet, 4; Daisy Chain, 3; Barnwarming Queen, 4; Who's Who in American Colleges and Universities, 4; Bainonian.
- DAVID MASON MILLER, Maryville, Tennessee; Major, Political Science; "Highland Echo" Business Staff, 3, Business Manager, 4; Alpha Sigma.
- DOROTHY LEE MILLER, Gallinburg, Tennessee; Major, English; Theta Epsilon.
- ELIZABETH MOORE, Decatur, Georgia; Major, English; Honor Roll, 1, 2, 3; Theta Epsilon.
- ROSALIE ANNE MUNSON, Rochester, New York; Major, Voice; Honor Roll, 3; Madrigal Singers, 3, 4; Messiah Soloist, 2, 3, 4; Vesper Choir, 2, 3, 4; Theta Epsilon.



Second row:

- ROBERT ALEXANDER NEILL, Donora, Pennsylvania; Major, History; Alpha Sigma.
- RICHARD ALAN NEWMAN, Kingston, New York; Major, Sociology; I.R.C., President, 3; "Highland Echo" Editorial Staff, 1, 2, 3, Editor, 4; Writers' Workshop, 3, 4; Student Council, 4.
- DAVID T. NOLEN, Panama City, Florida; Major, Economics; French Club, Vice-president, 3, Treasurer, 4; Alpha Sigma.
- ROBERT HARMON OSBORN, Morristown, New Jersey; Major, Political Science; Men's Glee Club, 2, 3, 4; Alpha Sigma, Secretary, 3.
- RUSSELL CARL OWENS, Olyphant, Pennsylvania; Major, Philosophy; Honor Roll, 1, 2, 3; Athenian.

Seniors

First row:

- LOUISE ELIZABETH PACKARD, Hammonton, New Jersey; Major, French; Honor Roll, 1, 2, 3; Vesper Choir, 1, 2, 3, 4; College Playhouse Players, 3, 4; Messiah Soloist, 4; Bainonian.
- C. EUGENE PARKS, JR., Feura Bush, New York; Major, Biology; Baseball, 3, 4; Men's Glee Club, 2, 3, 4; Athenian.
- NEALE JOHN PEARSON, Lakeland, Florida; Major, History; Cross Country, 1, 2, 3, 4; Track, 2, 3, 4; Pep Committee, 3, 4; Intramural Assistant Manager, 2, 3, Senior Manager, 4; Honor Roll, 2, 3; Spanish Club, Vice-president, 3; Sigma Delta Pi, 2, 3, 4; I.R.C., Treasurer, 3, 4; M Club, 2, 4; Secretary, 3; Writers' Workshop, 3, 4; "Highland Echo" Editorial Staff, 2, Sports Editor, 3, 4; Inter-Club Council, 4; Y.M.C.A. Cabinet, 4; Alpha Sigma, Vice-president, 3, Secretary, 3, President, 4.
- JOAN ALLISON PLATT, Trenton, New Jersey; Major, Education; Band, 4; Theta Epsilon.
- MARY JO PRIBBLE, Macfarlan, West Virginia; Major, Chemistry; Honor Roll, 1, 2, 3; Theta Epsilon.



Second row:

- LAURA ANN PRITCHETT, Spring Place, Georgia; Major, Elementary Education; All Girl Choir, 1, 2, 3, 4; F.T.A., Treasurer, 4; Daisy Chain, 3; Bainonian.
- CLARENCE LeROY REASER, Jersey Shore, Pennsylvania; Major, English; Track, 1, 2; Wrestling, 1; Honor Roll, 1, 2, 3; Band; Orchestra, 1, 3, 4; Men's Glee Club, 1; Vesper Choir, 2, 3, 4; "Highland Echo" Business Staff, 1, 2; Pre-Ministerial Cabinet, 3; Student Volunteers Cabinet, 2; Athenian.
- DAVID DICKSON REED, Hamden, New York; Major, Philosophy; Vesper Choir, 3, 4; College Playhouse Players, 2, 3, 4; Theta Alpha Phi, 3, President, 4; Writers' Workshop, 3, 4; Student Council, Treasurer, 4; Student Faculty Senate, 4; Inter-Club Council, 4; Y.M.C.A. Cabinet, 3; Secretary, 4, Advisory Board, 2, 3, 4; Who's Who in American Colleges and Universities, 4; Athenian.
- MARY JO RICHARDSON, Clinton, Tennessee; Major, Music Theory; Theta Epsilon.
- E. ELIZABETH ROACH, Columbus, Ohio; Major, Sociology; Honor Roll, 1, 3; All Girl Choir, 2, 3, President, 4; Writers' Workshop, 3, 4; Y.W.C.A. Cabinet, 4; Bainonian, Vice-president, 4.

First row:

- WILLIAM NATHANIEL ROBINSON, Maryville, Tennessee; Major, Music Theory; Honor Roll, 1, 2, 3; Messiah Soloist, 3, 4; Opera Workshop, 2, 3; Vesper Choir, 3, 4; "M" Book Staff, 4; Class Vice-president, 4; Y.M.C.A. Cabinet, 4.
- WILLIAM FRED ROGERS, Maryville, Tennessee; Major, History.
- BARBARA ANNE ROSENSTEEL, Mount Union, Pennsylvania; Major, Psychology; Band, 1, 2, 3, 4; Orchestra, 1, 2, 3, 4; Social Board, 4; Theta Epsilon.
- SHIRLEY ANN SCHUE, South Bend, Indiana; Major, Elementary Education; Honor Roll, 2, 3; F.T.A., Secretary, 4; Theta Epsilon.
- CHARLIE WILLIE SCHWENKE, JR., Houston, Texas; Major, Philosophy; Athenian.



Second row:

- BARBARA STIDHAM SCHWOBEL, Coffeeville, Mississippi; Major, Music Theory; All Girl Choir, 1; Theta Epsilon.
- GRACIE H. SCRUGGS, Clinton, Tennessee; Major, Physical Education; Cheerleader, 1, 2; Honor Roll, 2; All Girl Choir, 2, 4; President, 3; M. Club, Secretary, 3, 4; Athletic Board of Control, Secretary, 3; Inter-Club Council, 4; Theta Epsilon, President, 4.
- RICHARD CARSON SEELEY, Hammonton, New Jersey; Major, Physics; Honor Roll, 1, 2, 3; German Club, Vice-president, 3; President, 4; I.R.C., President, 4; "Highland Echo" Editorial Staff, 1, 2, 3; Managing Editor, 4; CHILHOWEAN Business Staff, 3; Writers' Workshop, 4; M.S.O. Representative, 4; Athenian.
- MILTON EARL SHELLKOPF, Baltimore, Maryland; Major, German; Honor Roll, 2, 3; German Club, President, 3; Writers' Workshop, 3, 4; Alpha Sigma.
- HELEN JOAN SIMS, Riverside, California; Major, Dietetics; Honor Roll, 2, 3; Bainonian.

Seniors

First row:

- HENRY DAVIS SMITH, Trenton, New Jersey; Major, Biology; Athenian.
- JAMES WILLIAM SMITH, Maryville, Tennessee; Major, Business Administration.
- MARY LEE SNODDERLY, Maryville, Tennessee; Major, Piano; Band, 1, 2; Y.W.C.A. Cabinet, 4; Pi Gamma, Secretary-Treasurer, 2, President, 4; Boinonian.
- DORIS MARIE SOMERVILLE, Erie, Pennsylvania; Major, English; Honor Roll, 1, 2, 3, 4; Orchestra, 1, 2, 3, 4; College String Ensemble, 1, 2, 3, 4; Writers' Workshop, 3, 4; Student Council, 4; Inter-Club Council, 4; Student Volunteers Cabinet, 3, President, 4; Who's Who in American Colleges and Universities, 4; Boinonian.
- BERYL CONSTANCE STEWART, Haworth, New Jersey; Major, Elementary Education; Honor Roll, 3; All Girl Choir, 2, 3, 4; May Day Attendant, 3; Calendar Girls, 2; Homecoming Queen, 4; Boinonian.



Second row:

- DONALD CLIFFORD STILWELL, Peekskill, New York; Major, Sociology; Athenian.
- ELLA LOUISE SWIFT, White Hall, Maryland; Major, Elementary Education; Honor Roll, 3; Memorial Vice-House Chairman, 2; Student Council, Secretary, 3; Inter-Club Council, Vice-President, 4; Nu Gamma Leader, 2; Y.W.C.A. Cabinet, 3, 4; Boinonian, Treasurer, 3, President, 4.
- RALPH G. THIESSE, Cleveland, Ohio; Major, Sociology; Intramural Sportsmanship Award, 3; Honor Roll, 1, 2, 3; Vesper Choir, 4; M.S.O. Representative, 2, President, 3; Class Treasurer, 1; Class President, 4; Student Council, 3, 4; Student Faculty Senate, 3, 4; Y.M.C.A. Cabinet, 3, 4; Who's Who in American Colleges and Universities, 4; Athenian.
- BETTY LOU THOMAS, New Smyrna Beach, Florida; Major, Physics; M Club, 4.
- MARY CHARLES THOMAS, Maryville, Tennessee; Major, English; Honor Roll, 2, 3.

First row:

- JOHN LAURENCE THOMPSON, Maryville, Tennessee; Major, Public School Music; Men's Glee Club, 1, 2, President, 3; Camera Club, Vice-president, 2, President, 3.
- DOROTHY JOAN TITLEY, Corinth, Mississippi; Major, English; Honor Roll, 2; College Playhouse Players, 2, 3; Theta Alpha Phi, Historian, 3; Writers' Workshop, 3; Theta Epsilon.
- CAROLYN JOYCE TOOMEY, Knoxville, Tennessee; Major, Biology; Honor Roll, 3; Theta Epsilon.
- WILLIAM KENNEDY UPHAM, St. Petersburg Beach, Florida; Major, Sociology; Honor, 2, 3; I.R.C., Secretary, 4; M.S.O. Coordinating Council, 4; Athenian, Vice-president, 4.
- W. AUSTIN VAN PELT, Denver, Colorado; Major, Sociology; Honor Roll, 3; College Playhouse Players, Vice-president, 4; Theta Alpha Phi, 4, CHILHOWEAN Editorial Staff, 3; Y.M.C.A. Cabinet, 4; Alpha Sigma.



Second row:

- RICHARD JOHN WAKA, New York, New York; Major, Greek; Honor Roll, 1, 2, 3; Class Vice-president, 2; Y.M.C.A. Cabinet, 3.
- BUSTER LAWRENCE WALLACE, Corinth, Mississippi; Major, Music.
- MARGARET ANNE WARREN, Selma, Alabama; Major, Sociology; Madrigal Singers, 1, 2, 3, 4; Messiah Soloist, 3, 4; Vesper Choir, 1, 2, 3, 4; Y.W.C.A. Cabinet, 4; Theta Epsilon.
- MINNA SUE WATSON, Knoxville, Tennessee; Major, English; Honor Roll, 1, 2, 3; M Club, 2, Treasurer, 3; CHILHOWEAN Editorial Staff, 3; Writers' Workshop, 3, 4; Baldwin House Committee, 2; Theta Epsilon.
- GLENN FERRELL WATTS, Granville, Tennessee; Major, Biology; Pre-Med Club, President, 4.

Seniors

First row:

- GERALD RICHARD WHEAT, Hamden, New York; Major, Sociology; Athenian.
- ONEDA WHITEHEAD WHITE, Maryville, Tennessee; Major, Elementary Education.
- JANET ELIZABETH WHITING, Chatham, New Jersey; Major, Elementary Education; Honor Roll, 2, 3; Vesper Choir, 2, 3, 4; Bainonian.
- GERALD EUGENE WILLIAMS, Alcoa, Tennessee; Major, Mathematics; Honor Roll, 3; Madrigal Singers, 3; Vesper Choir, 3, 4; Athenian.



Second row:

- EDWARD NEWELL WITHERSPOON, Chattanooga, Tennessee; Major, Economics; Honor Roll, 1, 2, 3; Business Club, President, 4; Debate, 1, 2, 3, 4; Pi Kappa Delta, 2, Treasurer, 3, President, 4; CHILHOWEAN Business Staff, 3; Writers' Workshop, 3; Student Council, 4; Inter-Club Council, Chairman, 4; Social Board, 4; Athenian.
- HAZEL DEANE WOOD, Abingdon, Virginia; Major, Physical Education; French Club, Treasurer, 3; M Club, 3, 4; Athletic Board of Control, 4; May Day Attendant, 3; Theta Epsilon, Treasurer, 3.
- MORNA RUTH WRIGHT, Columbus, Ohio; Major, Elementary Education; Honor Roll, 2, 3; Y.W.C.A. Cabinet, 4; Student Volunteers Cabinet, 2; Daisy Chain, 3; Bainonian.
- PHILIP WARE ZEBLEY, Elkton, Maryland; Major, History; Band, 3, 4; Athenian.

-
- WILLIAM ARTHUR ESPENSHADE, Berwyn, Pennsylvania; Major, Biology.
 - CHARLES WILLIAM HOLSINGER, Latrobe, Pennsylvania; Major, Biology.
 - EVA MAY MALTESE, Arlington, Virginia; Major, Art.
 - ROBERT WILSON MOSER, Pine Plains, New York; Major, Sociology.
 - HARRY EVERETT NEWBERRY, Lenoir City, Tennessee; Major, Physical Education.
 - GENE PAYNE, Maryville, Tennessee; Major, Business Administration.
 - RICHARD ALLEN ROGERS, Miami, Florida; Major, Psychology.
 - JOHN ELMER SHIELDS, Maryville, Tennessee; Major, Physical Education.
 - WILLIAM ALVIN SPRINGFIELD, Ardmore, Pennsylvania; Major, Biology.

SENIORS NOT PICTURED

J U N I O R S

OFFICERS

PAUL MERWIN President

ISABEL LEITCH Vice-President

MARY EDITH McMILLAN Secretary

LACY WOODY Treasurer

Woody, McMillan, Leitch, Merwin





First row:

- WILLIAM COOMBE ADDY New Jersey
Art
- JEAN ALVA ANDERSON New York
Biology

- SHIRLEY JANE ATWELL New York
Education



Second row:

- LaDONNA LOU BAYLOR Michigan
Education

- BENITA BISWAS Pakistan
Physical Education

- RUTH ELLEN BLACKBURN Tennessee
Biology

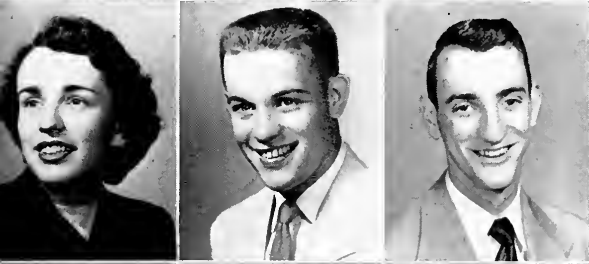


Third row:

- VERNON CLEMENT BOWMAN North Dakota
Bible

- ROY DON BRAKEBILL Tennessee
Music

- SARAH HERON BROWN Maryland
History



Fourth row:

- RUTH ESTHER BURGOS New York
Sociology

- JAMES COLEMAN CAMPBELL Pennsylvania
Physical Education

- GEORGE COOPER CARPENTER Mississippi
English



Fifth row:

- FLORENCE IRENE CLARK West Virginia
Art

- MARTHA LOU COILE Tennessee
History

- ROBERT ALAN COLES Pennsylvania
English

J U N I O R S

J U N I O R S

First row:

DOROTHY ANN COOLEY Pennsylvania
Home Economics

MILDRED COOPER New York
Education

ROBBIE CAROLYN COOPER Tennessee
Education



Second row:

VIRGINIA ELINOR COOPER Maryland
Education

RUTH CARROLL CROSS Tennessee
Bible and Religion

JAMES PATTISON DARROCH Pennsylvania
History



Third row:

RICHARD ORAL DART Indiana
Psychology

SARA EVELYN DRUM Pennsylvania
Education

JOAN RUTH DUERIG Ohio
French



Fourth row:

BEVERLY RUTH EDWARDS Tennessee
Art

DOROTHY JEAN ELLIS New Jersey
Sociology

NANCY ADELLE FERGUSON Pennsylvania
English



Fifth row:

EVELYN D. FIELDS North Carolina
History

EMERSON COOK FLURKEY West Virginia
Pre-Medical

EMMETT DAVID FOSKEY Georgia
Political Science





First row:

RICHARD THOMAS GARDNER Pennsylvania
Pre-Medical

WILLIAM HOMER GARREN Tennessee
Business Administration

GLENN ADEN GENTRY Tennessee
Biology



Second row:

GRACE ANNE GREENAWALT Pennsylvania
Spanish

WILLIAM WESLEY GREENE New York
Pre-Medical

HOWARD DEWEY GRESS Florida
Political Science



Third row:

JOHNIE B. GRIFFITTS Tennessee
Education

MARY JANE HAHN Ohio
Bible and Religion

BETTY ANN HAMMERS Pennsylvania
Sociology



Fourth row:

KENNETH CLARENCE HAMMOND New Jersey
History

MARY ANN HARRIS Tennessee
Philosophy

DAVID FRANKLIN HELWIG New York
Political Science



Fifth row:

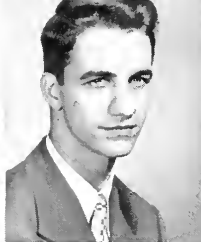
MARY ANN HICKS Ohio
Bible and Religion

GLORIA ANN HINEMAN Tennessee
English

CLAIRE SIDNEY HOFFMAN Delaware
French

J U N I O R S

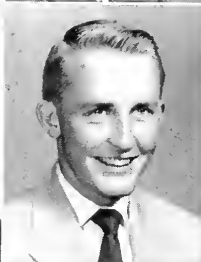
JUNIORS



First row:

EDWIN VAN HOLLAND Maryland
English

DORIS LEE HOLT Pennsylvania
Music



Second row:

DOROTHY ANN HOOVER Pennsylvania
Music

RICHARD STICKLEY HYATT Virginia
Pre-Medical

ROBERTA HALL JAMES New York
Psychology

Third row:

JUDY BERNICE JOHNSON Tennessee
History

JOYCE KAEBNICK Pennsylvania
Sociology

KAROLE LOU KAPP Pennsylvania
English



Fourth row:

JOYCE ELAINE KEPPEL New Jersey
Home Economics

RICHARD YERKES KERR New York
Spanish

PEGGY-ANN KESSLER New Jersey
Biology

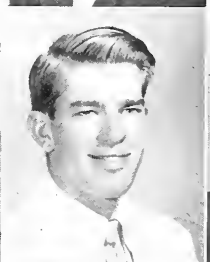


Fifth row:

DAVID GEORGE KIPP North Carolina
Pre-Medical

ANN COWLES KIRKPATRICK Georgia
Education

SALLY ANN KOTZ Tennessee
English



Sixth row:

CHARLES FRANKLIN LARUE Texas
History

RICHARD JAMES LEBOLD Ohio
Political Science

ISABELLA LEITCH New York
Education



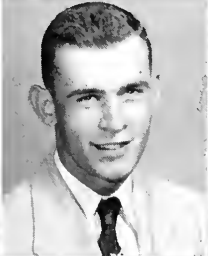


First row:

RANDAL ARLEN LeQUIRE Tennessee
Public School Music

PATRICIA JANE LEWIS Mississippi
English

MARY EDITH McMILLAN Georgia
Sociology

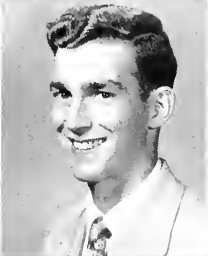


Second row:

LESTA CAROL MERRICK New Jersey
Music

PAUL LaSALLE MERWIN New Jersey
Sociology

BARBARA ANN MILLER Pennsylvania
Education

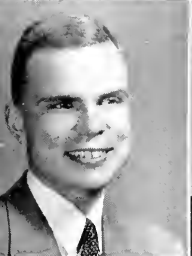


Third row:

BRUCE RODERIC MILLER New Jersey
History

ROBERT ALLAN MIZELLE New Jersey
Sociology

WILLIAM SLADE MORSE Tennessee
Sociology



Fourth row:

HERSCHEL L. MOSIER New York
History

MARY SUE MUNSON Virginia
Biology

BARBARA ANNE MURPHY New Jersey
Home Economics



Fifth row:

GRACE EDITH MYERS Pennsylvania
Bible and Religion

RICHARD EDWARD NYSTROM Connecticut
Psychology

GRACE WILDER OSBORN New Jersey
Education



Sixth row:

RICHARD EDWARD PATTON Pennsylvania
Business Administration

HELEN LOUISE PETTS Indiana
History

JUNIORS

JUNIORS

First row:

SHIRLEY REBECCA POSTLETHWAITE . . . Maryland
Bible and Religion

MARY GRACE PRITCHARD Georgia
Sociology

Second row:

ROBERTA ELIZABETH RANKIN Tennessee
Bible and Religion

CHARLES EDWARD REID Pennsylvania
English

MARIE LOCKHART RICHARDS New Jersey
Biology

Third row:

TASKER KAY ROBINETTE Ohio
Business Administration

BARBARA EMELINE ROGERS Pennsylvania
Physical Education

NANCY JOSEPHINE ROGERS Tennessee
English

Fourth row:

SHIRLAND ETTA ROUSSEY Pennsylvania
Education

VIRGINIA HELEN SANDERSON New Jersey
Physical Education

BARBARA ANNE SCOTT North Carolina
Music

Fifth row:

GEORGE EDWARD SCOTT North Carolina
Pre-Medical

KENNETH EDWARD SHAFER Pennsylvania
Bible and Religion

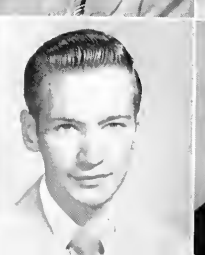
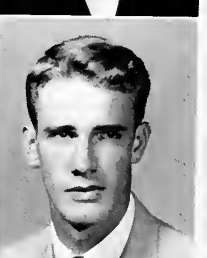
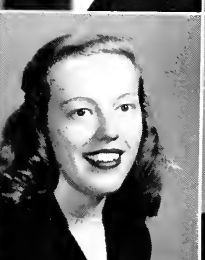
WILLIAM BUFORD SHORT West Virginia
Pre-Medical

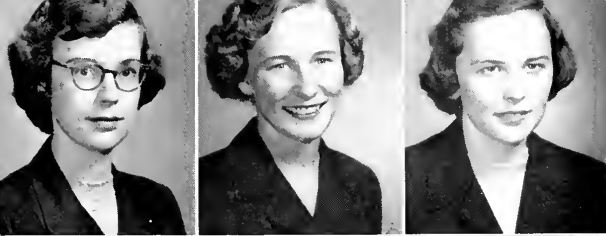
Sixth row:

GERTRUDE ELIZABETH SINGLETON Ohio
Education

WEBSTER ZEELAND SMITH Illinois
Biology

CATHERINE RUTHERFORD SNEDEKER Virginia
Home Economics





First row:

- MARY JANE SPENCER Tennessee
Sociology
- ELIZABETH ELLEN STILES Florida
Bible and Religion
- SUE CARSON SUMMERS North Carolina
Sociology



Second row:

- CAROLYN VAN DYKE SYMMES New Jersey
English
- ARTHUR JAMES VAN ALSTYNE Pennsylvania
English
- GERALD WALKER Tennessee
Political Science



Third row:

- HUGH HENDERSON WALKER Tennessee
Mathematics
- FANNIE BROWN WEBER Ohio
English
- PHYLLIS JEAN WEST North Carolina
Home Economics



Fourth row:

- MARY JEANETTE WHITAKER Tennessee
Biology
- MARY ANN WHITE North Carolina
Music
- SUE ELLEN WHITE Ohio
Sociology



Fifth row:

- CURTIS BRYAN WILBANKS New Jersey
Psychology
- SIDNEY JEANETTE WILEY Tennessee
English
- JANET AMELIA WOODS Pennsylvania
Education



Sixth row:

- LACY DONALD WOODY Tennessee
Education
- GALEN RODGER WORK Pennsylvania
Philosophy

J U N I O R S



Hunt, Gates, Sangster, Halstead

OFFICERS

JAMES HUNT President

DAVID GATES Vice-President

PATRICIA HALSTEAD Secretary

ROBERT SANGSTER Treasurer

S O P H O M O R E S

S O P H O M O R E S



First row:

HAZEL KATHERINE ALEXANDER
North Carolina
DON CUERDUNE ALFORD
Tennessee
GARETH DEAN BAKER
Pennsylvania
WILLIAM ORVILLE BALDWIN
Nebraska

Second row:

JOANN ELLEN BASH
Florida
CAROLYN ANN BEATTY
Ohio
HORACE PALMER BECKWITH
New Jersey
CHARLOTTE ESTELLE BEECH
Tennessee

Third row:

MARY JAMES BEVAN
Tennessee
HAROLD ROBERT BLACK
Pennsylvania
CHARLES ROY BLACKBURN
Tennessee
JAMES HOLMES BANG
New York

Fourth row:

EVELYN ALICE BOUGHTON
Pennsylvania
MOODY CARLTON BRYLES
Arkansas
LETITIA ANN BUCHANAN
Pennsylvania
ROBERT DALES BUCHANAN
Tennessee

Fifth row:

NAOMI BURGOS
New York
BARBARA RUTH BUTTRILL
Georgia
GEORGE SKEER CALDWELL
Ohio
ELIZA JANE CHILD
West Virginia

Sixth row:

CAROL PHYLLIS CORNELL
Florida
NINA CAROLYN CORRY
Georgia
DONALD WINCHESTER CRAIG
Pennsylvania
DOROTHY MILDRED CRAWFORD
New York

First row:

SAMUEL ROBERT CROTHERS
Pennsylvania

EDNA SUE CULBERTSON
Tennessee

SYLVIA CAROL CUMMINGS
Tennessee

ANNIE LAURIE CURETON
New Jersey



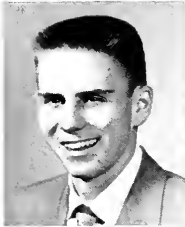
Second row:

WILLIAM HOWARD DARTNELL
New Jersey

VIRGINIA AGNES DAVENPORT
Tennessee

CAROL JEAN DEMLER
Pennsylvania

MARGARET HELEN DRINNEN
Tennessee



Third row:

JANICE ELIZABETH EAKIN
Pennsylvania

JOANNE CATHERINE EDWARDS
New Jersey

WALTER MARTIN ELWOOD
New Jersey

MARGARET MARY EVANS
New Jersey



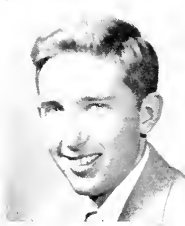
Fourth row:

JOHN SAMUEL FAULKNER
Tennessee

SAMUEL WAYNE FEEHRER
Pennsylvania

FENTON FARRELL FERGUSON
Tennessee

MARY VIRGINIA FERGUSON
Tennessee



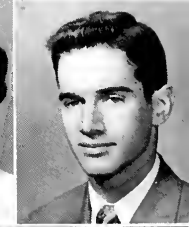
Fifth row:

JEANNINE FIORI
New York

CAROL JEAN FRASER
Oklahoma

JOAN HARRIET FREI
Philippines

DAVID FRANKLIN GATES
Missouri



Sixth row:

DAROTHY ELMAS GREENHAGEN
New York

JANIE MARIE GRIFFITTS
Tennessee

JON OLIVER HALE
Tennessee

PATRICIA BARRETT HALSTEAD
New Jersey



S O P H O M O R E S

S O P H O M O R E S



First row:

MARION SUSAN HERON
Illinois

MARTHA ANNE HORTON
Tennessee

CONNIE JEANNE HOWELL
Tennessee

RICHARD CHARLES HUGHES
Pennsylvania

Second row:

JAMES ARTHUR HUNT
Pennsylvania

JAMES THOMAS JACKSON
Georgia

ALICE GRANT KELLY
Tennessee

LOUISE JACQUELENE KENDALL
Indiana

Third row:

EVELYN CORNEIL KILGO
Tennessee

DOLA ANN KINARD
Tennessee

EDNA RUTH KING
Georgia

MARGARET JOSEPHINE KING
Tennessee

Fourth row:

LORA PRISCILLA KINSINGER
North Carolina

ANN ELIZABETH KOSTENBADER
Pennsylvania

ADOLPH WILLIAM KUNEN
New Jersey

AGNES PATRICIA LAING
New York

Fifth row:

ANTON KILGORE LeQUIRE
Tennessee

SARAH JOYCE LINGINFELTER
Tennessee

BARBARA JEAN LINK
Tennessee

ALBERT A. LOTITO
New York

Sixth row:

PATRICIA ANN LOVETTE
Tennessee

JESSIE GOODBAR LYONS
Tennessee

ALBERT CARROLL McCULLOUGH
South Carolina

VIVIAN LEA McDONALD
Tennessee

SOPHOMORES



First row:

SANDRA DONNAN McDUGAL
Pennsylvania
ALVERTA McGARITY
Pennsylvania



Second row:

JOE DRINNEN McMURRAY
Tennessee
ANNE BERYL McNEELEY
Tennessee
NANCY LEE MARKOE
Maryland
MARTHA JEAN MAXWELL
South Carolina



Third row:

HELEN BERNICE MILLER
Florida
JOHN JAY MOED
New York
MARY ANN MOODY
Kentucky
CAROL DEANE MOORE
Kentucky



Fourth row:

BARBARA JANE MORRELL
Tennessee
MILDRED ELIZABETH MOWERY
Pennsylvania
MARYALICE MOYER
Pennsylvania
ROBERT NORMAN NAVRATIL
Florida



Fifth row:

NANCY JANE NAYLOR
Tennessee
HERSHEL HARRY NELSON
Florida
BARBARA WINIFRED NEWMAN
Pennsylvania
BENT OLESÉN
New York



Sixth row:

JOHN CLARK PEPPERS
Pennsylvania
ELVIRA ANN PIERCE
Connecticut
MARGARET TURLEY POINTS
Kentucky
MARGARET RAY QUINN
Tennessee



Seventh row:

MARGARET ALISON REED
New York
MARIAN KATHRYN RICE
Georgia
HOMER TYNDALE RICKABAUGH
Pennsylvania
DAVID CARL RITZMAN
Pennsylvania



First row:

RUTH ANNE ROACH
Ohio

ANNE ELIZABETH ROBISON
Georgia

HAZEL DIANE ROSS
North Carolina

HELEN ELEONORE SEAY
New Jersey



Second row:

ETHEL MILDRED SHOCKLEY
Delaware

CAROLYN EFFIE SLOAN
Tennessee

EMILY VIRGINIA SMITH
Virginia

VIRGINIA ANN SMITH
Maryland



Third row:

GUY WILSON SNEED
Tennessee

ROBERT MAX SOCKWELL
North Carolina

JAMES TERRELL SQUIRES
Tennessee

ANN THWEATT TAYLOR
Tennessee



Fourth row:

LOYD EUGENE TAYLOR
Tennessee

HAZEL IRENE TIMBLIN
Pennsylvania

WILMA RUTH TRUMBULL
Pennsylvania

KENNETH DOUGLAS TUCK
Virginia



Fifth row:

ELLEN LOUISE TURNER
Delaware

MARY CATHARINE VAN FOSSEN
District of Columbia

HENRY JOHN VAN HASSEL
New Jersey

CATHERINE JANE VOILS
North Carolina



Sixth row:

DOROTHY ANN WELLS
Tennessee

JAMES OVID WILEY
Tennessee

MILDRED KATHERYNE WILLIAMS
Tennessee

BETTY JO WOODY
Tennessee



Seventh row:

ANNA MARGARET YOAKUM
Tennessee

ROBERT MERRIMAN YOUNG
Georgia

S O P H O M O R E S



MacCall, Florence, Shelton, Breen

OFFICERS

HARRY MacCALL President

WILLIAM BREEN Vice-President

NANCY FLORENCE Secretary

ROBERT SHELTON Treasurer

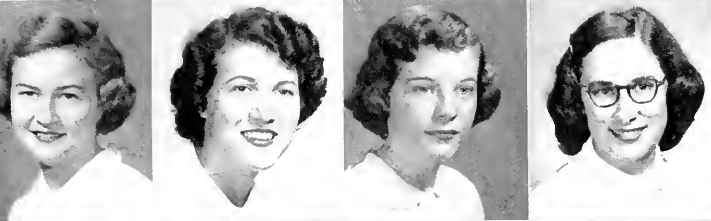
F R E S H M E N

F R E S H M E N



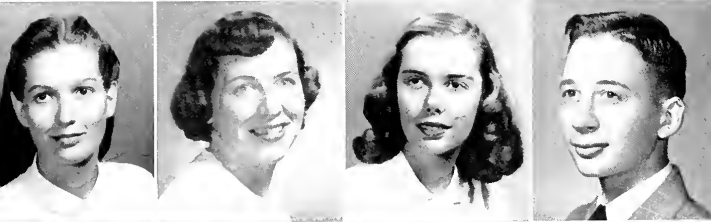
First row:

MARGUERITE ANN AITKEN
 CAROLYN ANITA ALDERMAN
 THOMAS BYRD ALLEN
 CLARA FRANCES AREHART



Second row:

PATTIE JANE ARTERBURN
 SHIRLEY ANNE AXLEY
 RUTH ELAINE BARKER
 ROSA EMMA BAUERLE



Third row:

GRACE PRISCILLA BENHAM
 ELIZABETH BALDWIN BIRCH
 JANNA LOUISE BOGGS
 HUGH DONALD BOWERS



Fourth row:

WILLIAM FRANKLIN BREEN
 BARBARA LYNN BROWN
 ALICE MARIE BUCHANAN
 ANNE WICKLIFFE BUCKLEY



Fifth row:

SALLY ANN BUTTS
 ANNIE SUE CARTER
 KATHERINE ALPHONSINE CHASE
 JANICE GAY CLEMENS



Sixth row:

RALPH DIXON CONNATSER
 BARBARA ELLEN COX
 ELIZABETH ANNE COX
 ABIGAIL MARY CROSBY

First row:

EDITH BELLE CUNNINGHAM
EMMA MARGUERITE CURTIS
WILLIAM FLOYD DAVIS
JAMES DEMER



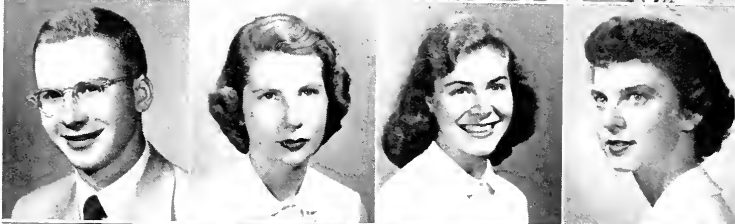
Second row:

ANNA LEE DISHNER
CAROL ANN DOLL
NANCY PHYLLIS DUNN
CHARLES JACOB FARRIS



Third row:

JAMES CALVIN FISHER
MARGARET LOUISE FISHER
NANCY KATHERINE FLORENCE
MARTHA CLAIRE FREENY



Fourth row:

DONNA PAULINE FRENCH
MURCHIE ELOISE GAZAWAY
LUCY JANE GEER
RHODA ANNE GILLESPIE



Fifth row:

JOE TERRY GILLILAND
JOHN TURNER GLANVILLE
NANCY ROSS GOLDSMITH
NILLAH MEEK GRINSTEAD



Sixth row:

ROBERTA JENELLE HADLEY
MARY ELIZABETH HAM
DORIS GWEN HANCOX
JOAN SIMS HERSCHELMAN



F R E S H M E N

F R E S H M E N



First row:

BRUCE CURTISS HEUSER
WALTER FREDERICK HILLER
LEE HODGSON
BETTY SUE HUTSON



Second row:

BONNIE LOU HUTSON
BARBARA JANE INNES
BETTY JEAN JAMES
RONALD CLAIR JENNINGS



Third row:

MARILYN CATHERINE
JOHNSTON
BILLIE LEE JONES
JOELENE PATRICIA JONES
PATRICIA CLAIRE JONES



Fourth row:

LUCY LEYBURN JUNKIN
EDITH CATHERINE KEENAN
MARY ALICE KEMP
JAMES WALTER KESLER



Fifth row:

NANCY AGNES KIDD
MARILYN VAUGHN KIEFER
HENRIETTA LAING
VIRGINIA HOPE LANE



Sixth row:

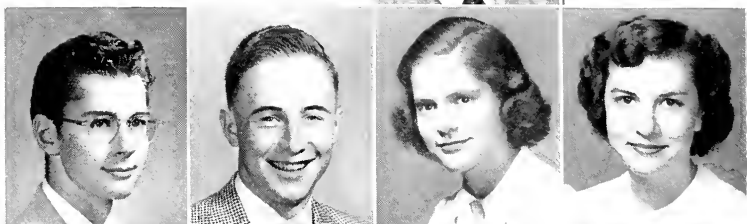
BILLIE MARIE LESTER
MARY CAROLYN LEICHTY
JESSIE CAROLYN LIME
HOWARD ROBERTS LORENZ

FRESHMEN



First row:

RONALD LEWIS LYNN
MABEL MARCIA MCKINNEY



Second row:

ARTHUR CLARENCE
McWILLIAMS
HARRY FRANKLIN MacCALL
NANCY FULLER MANDEVILLE
MARTHA EILEEN MARION



Third row:

JAMES ARLEN MAYS
DOROTHY MAY MILLER
BOBBY LEE MIZE
DWIGHT MILLINGTON
MOODY



Fourth row:

CAROL FRANCES MOORE
GERALDINE MOORE
JEAN ESTHER MORGAN
FRANCES ELYNOR MORRIS



Fifth row:

KATHLEEN RAE MORRISON
ELIZABETH DEE MURPHEY
MARGARET LOUISE MYERS
RUTH FRANCES ORR



Sixth row:

ELIZABETH ANN PARRISH
GAYLIA MAE PARRISH
SYLVIA JEAN PERESENYI
SARAH ANNE PLEDGER



Seventh row:

NATALIE KAY PRINZING
DAVID ALVIN RAMSEY
CAROLYN MARIE RICE
HARRY RIGHTER ROBINSON



First row:

HAZEL ANN ROBINSON
JUDITH SCHWARZ
JIMMIE ANN SCRUGGS
REBECCA RUTH SEXTON



Second row:

MARIE ANN SHARP
SHIRLEY SMITH
SHEILA BLAKE SUTTON
MARGARET ANNE THOMAS



Third row:

FERN MARGARET THOMPSON
MARY ANN THOMPSON
MARIAN JEANNETTE TIRRELL
ALTHA JANE TURNER



Fourth row:

OLIVIA CARLYLE VAWTER
JENNIE LEE WAGNER
PATSY CAROLE WAGNER
WANDA MAE WALKER



Fifth row:

NANCY ELIZABETH WATSON
JOSEPHINE LOUISE WEAVER
MARY FRANCES WEBB
KENNETH JOHN WILKINSON



Sixth row:

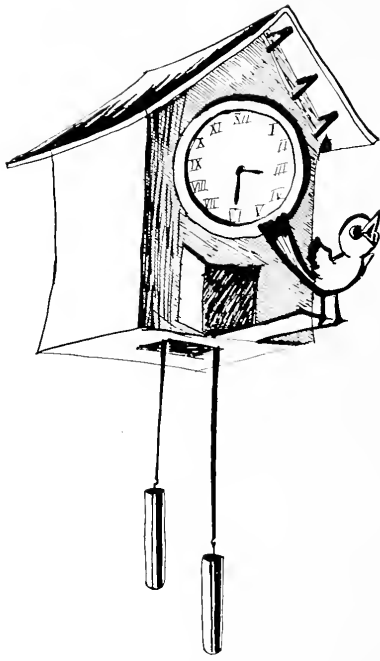
PEGGY ANN WILLIAMS
WILMA JEAN WILLIAMS
DOROTHY LEE WILSON
DOROTHY ANNE YATER



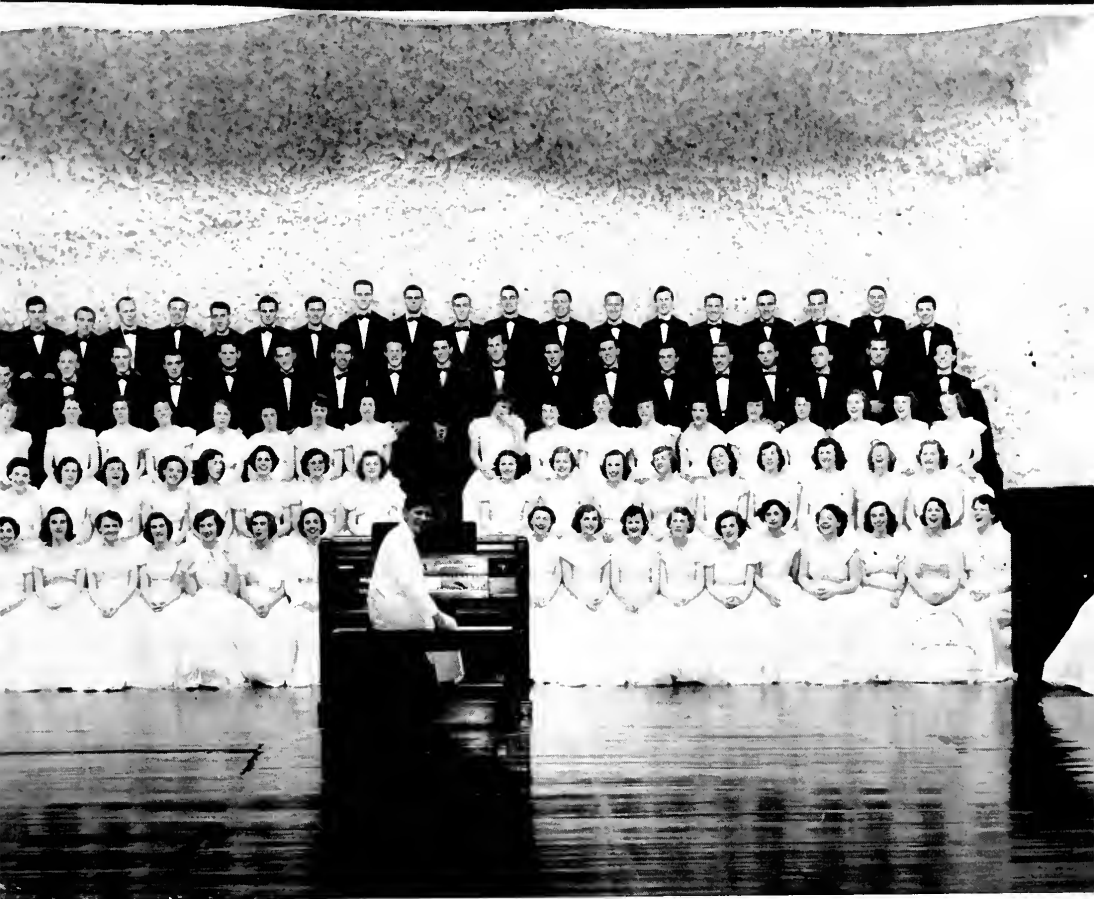
Seventh row:

PHILIP McCOWAN YOUNG
NANCY MARIE ZERFING

FRESHMEN



A C T I V I T I E S



Aside from the regular routine of studies most students find time to participate in several extra-curricular activities. Whether it is musical, dramatic, or artistic talent you have, you are in great demand. Homecoming, Barnwarming, and May Day offer an unlimited possibility for ambitious students and present an opportunity for those who just like to watch to enjoy themselves to the fullest.



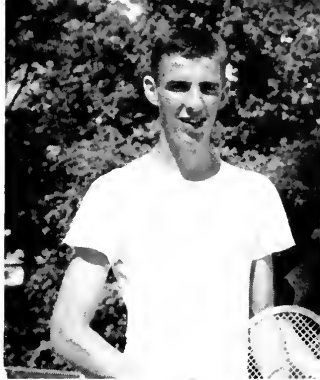
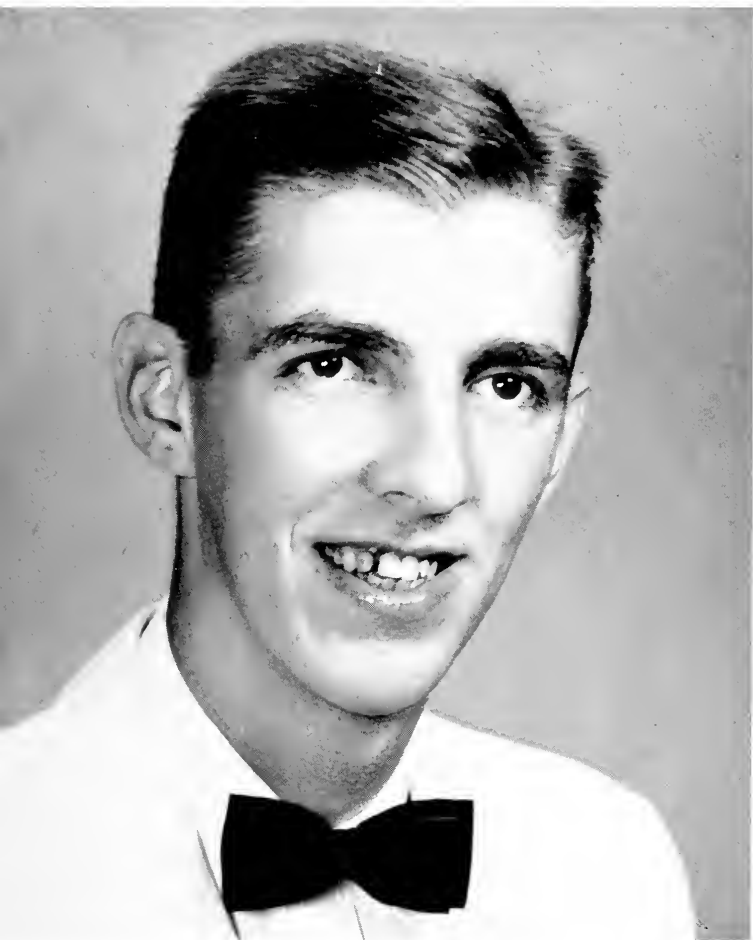
BEVERLY JEAN JACOBI
POINT PLEASANT, NEW JERSEY

GIRL OF THE YEAR



While learning the three "R's," our Girl of the Year has excelled in the three "P's"—pep, personality, and poise. Professors find her a conscientious student, YW members find her an earnest and sincere worker, and all Maryville students find her a gay and charming classmate. Whether she is

making a poster, rehearsing a dance routine, working at the Negro mission, or aiding "back stage" on a big production, her pleasant smile and willing attitude make her an asset to our campus. CHILHOWEAN presents proudly its Girl of the Year—Beverly Jacobi.



WESLEY PARKER MILES
HUNTINGTON, L.I., NEW YORK

BOY OF THE YEAR

Personality, friendliness, sportsmanship, and sincerity are outstanding characteristics that describe our Boy of the Year. His ready wit, boundless energy, and willingness to do what needs doing make him a valuable member of our student body.

His sense of fair play has gained for him many friends and in turn has made his friendship esteemed by others. Socially, scholastically, and spiritually he is our choice—Wes Miles, CHILHOWEAN Boy of the Year.



B A N D S P O N S O R

MISS BETTY LESTER
ATLANTA, GEORGIA



MISS BERYL STEWART
HAWORTH, NEW JERSEY

HOMECOMING QUEEN



King Bob, Queen Lynn, and the Court



Students and townfolks, young and old, relived their childhood memories at YW's annual Barnwarming production "Main Street Fantasy." The Alumni Gym became a storybook-land with the addition of gaily decorated booths, and with the performance of a toy shop romance between a Swiss Doll and the Captain of the Wooden Soldiers, aided and abetted by Raggedy Ann and Andy and Popo the Puppet, but complicated by the French Doll.

Queen Lynn and King Bob reigned over the festivities, the proceeds of which went to Tuba Indian Mission in Arizona.

B A R N W A R M I N G

1 9 5 1



MISS CAROLYN MILLER
MONMOUTH, ILLINOIS

BARNWARMING QUEEN



SENIOR SPONSOR

MISS JOYCE LENDERMAN
BIRMINGHAM, ALABAMA



MISS JEANETTE WILEY
HEISKELL, TENNESSEE

JUNIOR SPONSOR



SOPHOMORE SPONSOR

MISS RUTH ANNE ROACH
COLUMBUS, OHIO



MISS PRISCILLA INGLES
PHILADELPHIA, PENNSYLVANIA

FRESHMAN SPONSOR

A



MISS DIXIE CONNER

B



MISS NANCY FLORENCE



MISS EVELYN FIELDS

A L E N D A R



MISS FRANKIE McEACHERN



MISS SHIRLEY POSTLETHWAITE



MISS BETTY HAMMERS



**SWEETHEARTS
OF**

1951

MISS MARY EDITH McMILLAN
MARIETTA GEORGIA



ALPHA SIGMA

1952

MISS PEGGY POINTS
DRY RIDGE, KENTUCKY

Autumn



HOMECOMING ROYALTY



MC'ERS IN DOGPATCH

Time



JUST BEFORE THE PARADE

Winter



MADRIGAL SINGERS



PARADE OF THE WOODEN SOLDIERS

Time



RAGGEDY ANN AND ANDY



"DANCE OF THE GODS" ON MT. OLYMPUS



DAISY CHAIN LOVELIES

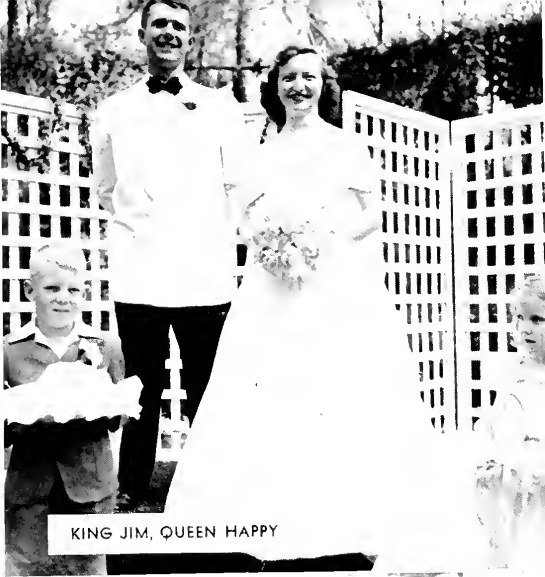


COMMENCEMENT, 1951

Spring



TOURING CHOIR VISITS WASHINGTON, D. C.



KING JIM, QUEEN HAPPY



MAYPOLE DANCERS

Time



MAY COURT, 1951



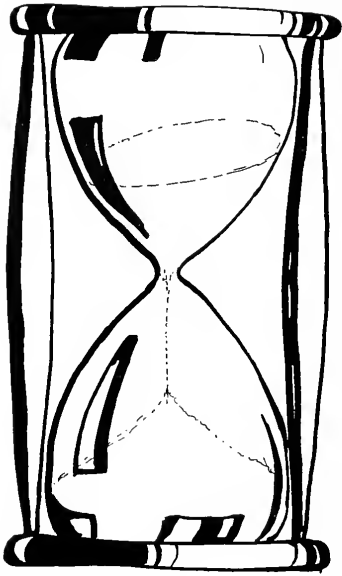
Time





Out



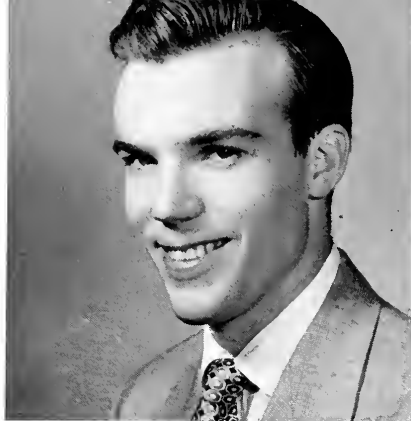


ORGANIZATIONS



No matter where your interest lies, you can probably find an organization on campus designed to fit your needs. There are those which provide spiritual guidance, opportunity for learning more about student government, general interest clubs, and, of course, the four societies just for fun. Taking an active interest in one or more of these organizations contributes to a well-rounded college education.

S T U D E N T C O U N C I L



BOB CUTHILL
Student Body President

This year the theme of the Student Council has been CO-OPERATION. By living up to this theme, the student leaders on the Council have been able to attain much success. Accepting the responsibility placed upon it by all of the students, the

Council has done its utmost to deal effectively with the problems arising out of student life. The establishment of a Student Office has been the most significant advance of the year. An accurate and consistent record of student organizations will be kept in this office.

A Wednesday night Council session





OFFICERS

BOB CUTHILL President LYNN MILLER Secretary
 TOM JONES Vice-President DAVE REED Treasurer

MEMBERS

Row One

Charlie Allen
 Jim Allison
 Jessie Dye
 Nannette Enloe

Row Two

Tom Jones
 Jim Kren
 Susie Martin
 Lynn Miller
 Dick Newman
 Dave Reed

Row Three

Doris Somerville
 Ralph Thiesse
 Newell Witherspoon
 Sarah Brown
 Beverly Edwards
 Betty Hammers

Row Four

Paul Merwin
 Bill Morse
 Marie Richards
 Edward Scott
 Walt Elwood
 Jim Hunt

Row Five

Ruth Roach
 Hank Van Hassel
 Harry MacCall
 Judy Schwarz

Members not pictured: Arnold Munn, Ralph Force.

W. S. G. A.



JESSIE DYE
WSGA President

◆
OFFICERS

JESSIE DYE President

DORIS HOLT Secretary-Treasurer

The six girls who make up the co-ordinating committee of Women's Student Government Association are a representative group from the four classes who co-ordinate government in the women's dormitories with the campus Student Government plan. WSGA was organized in order that the women students on campus might assume a larger degree of responsibility in government on the hill.

JANICE MARION

DORIS HOLT

PEGGY EVANS

ETHEL SHOCKLEY

ELIZABETH MURPHEY



M . S . O .



OFFICERS

WILLIAM MORSE Chairman

EUGENE PARKS Vice-Chairman

JAMES DARROCH Secretary-Treasurer



WILLIAM MORSE
MSO Chairman



First Row: Pearson, Callaway, Lange, Wilbanks, Seeley, Morse, Davis, Ma'er. Second Row: Jones, Lehr, Parks, Black, Munn, Upham, Darroch.

Men's Student Organization, which was organized just a few years ago, gives all men of Maryville College a democratic voice in student government on the campus and sponsors projects of benefit to male students. Last year major steps

were taken to strengthen the organization and as a result a new constitution was adopted this year. Pictured above is the co-ordinating council, whose membership was increased under the new constitution.



S O C I A L B O A R D

Because all work and no play makes a dull coed, the Social Board works from the first "Community Sing" in the fall to the last "after-dinner-dance" in the spring to give Maryville students a varied and entertaining social program.

Faculty and student representatives work with Chairman Marie Richards in supervising Saturday night programs, dancing activities, and Student Center facilities.

I N T E R - C L U B C O U N C I L

Those organizations having no individual representative on Student Council take part in Student Government through representation on an Inter-Club Council. The president of Inter-Club Council, Newell Witherspoon, is a voting member Student Council where he acts on behalf of the clubs affiliated with this group.



WHO'S WHO

IN AMERICAN COLLEGES AND UNIVERSITIES

CHARLES ALLEN . . . Student Council Member
. . . Football Captain . . . Basketball Player . . .
Athletic Board President.

ROBERT CUTHILL . . . Student Body President . . .
Debator . . . Junior Class President . . . Student-
Faculty Senate Member.

CAROLYN MILLER . . . CHILHOWEAN Editor
. . . Debator . . . Student Council Member . . .
YWCA Cabinet Member.

DAVID REED . . . Student Council Member . . .
Theta Alpha Phi President . . . Vesper Choir Mem-
ber . . . YMCA Cabinet Member.



JAMES KREN . . . YMCA President . . . Student
Council Vice-President . . . Sophomore Class Presi-
dent . . . Baseball Player.

SUSIE MARTIN . . . YWCA President . . . Student
Council Member . . . Vesper Choir Member . . .
Nu Gamma Leader.

DORIS SOMERVILLE . . . Student Vols President
. . . Student Council Member . . . Orchestra Mem-
ber . . . Writers' Workshop Member.

RALPH THIESSE . . . MSO Chairman . . . Student
Council Member . . . Senior Class President . . .
Student-Faculty Senate Member.



SUSIE MARTIN
President of YWCA

YOUNG WOMEN'S CHRISTIAN ASSOCIATION

The Maryville College YWCA greatly enriches the college life through its many activities during the year. Primary among its purposes is to give each girl an opportunity to develop a full and creative life. Through the Big-Little Sister program, the YWCA aids in the "getting acquainted"

period.

In seeking to accomplish the goals, various committees were organized. The heads of these committees formed the cabinet which worked with adult sponsors. An attempt was made through personal contact to discover the interests of each girl and

First row: Singleton, Roach, Anthony, Enloe, Martin, Hammers, McMillan, Wright, Jacobi, Cooper. Second row: Warren, Rogers, Burgo, Myers, Dye, Blackburn, Blum, Blackburn, Kihlgren, Lancaster. Third row: Leitch, Miller, Leeder, Swift, Spencer.



OFFICERS

- SUSIE MARTIN President
- NANNETTE ENLOE Vice-President
- BETTY HAMMERS Secretary
- CORA ANTHONY Treasurer
- MARY EDITH McMILLAN Nu Gamma Chairman

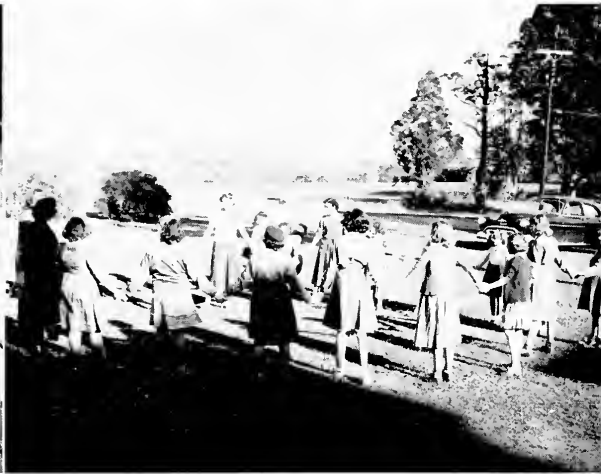


McMillan, Hammers, Enloe, Anthony

Santa visits the Negro Mission



Y-Sponsored Scout Recreation



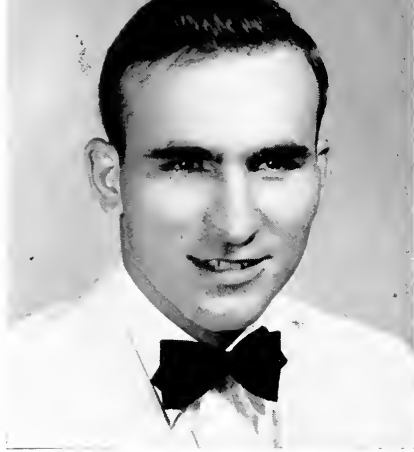
place her accordingly on a committee.

Barnwarming, mission work, and community service are some of the projects which not only take advantage of the various abilities of the girls, but also contribute to the service of others. The YM and YW also co-operated in giving the students the facilities of the "Y" Store, the "M" Book, Artist Series, devotions, and the weekly Wednesday night radio program, "Fron-

tiers of Faith."

The Sunday programs try to meet the various needs of the young women by utilizing music, plays, speakers, and worship services.

Using the theme "Commissioned, Consecrated, and Controlled," the two Y's have undoubtedly been of great service to each individual, to the college, and to the community.



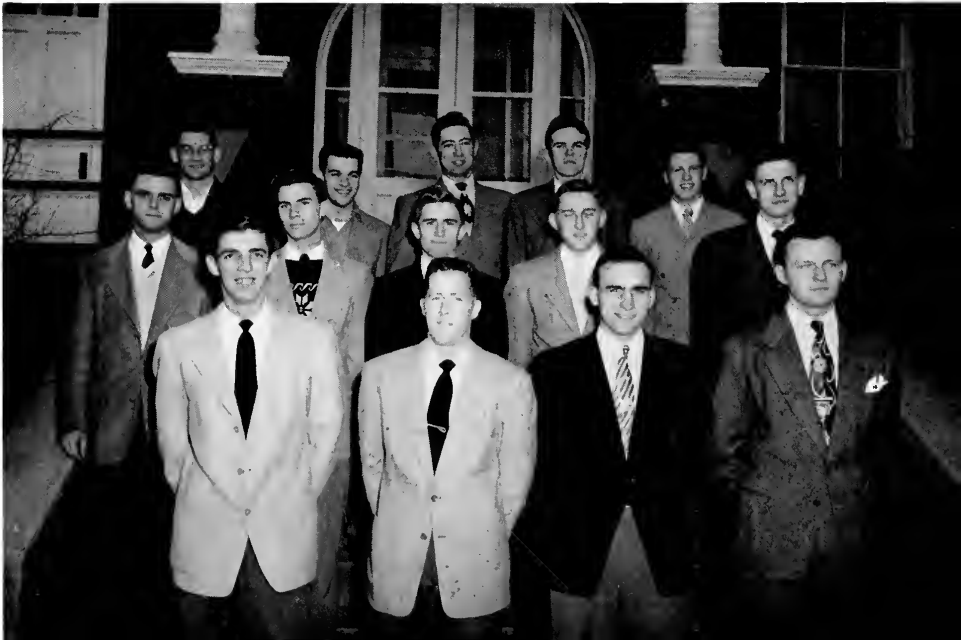
JAMES KREN
YMCA President

YOUNG MEN'S CHRISTIAN ASSOCIATION

Working with the theme "Committed, Consecrated, and Controlled," YM is well on its way through another successful year. The organization provides a well rounded program of spiritual, social, and physical activities for men students.

Sunday afternoon worship services, joint meetings with YW, and active participation in mid-week prayer meetings and in the February Meetings aid spiritual growth. A memorable event this year was the annual Bible Baseball game, which saw

First row: Miles, Reed, Kren, Springfield. Second row: Darroch, Knecht, Rickabaugh, Faulkner, Thiesse. Third row: Callaway, Campbell, Robinson, Brakehill, Pearson.



OFFICERS

- JAMES KREN President
 WESLEY MILES Vice-President
 DAVID REED Secretary
 ALVIN SPRINGFIELD Treasurer



Kren, Miles, Reed, Springfield

Where the elite meet—the Y Store.



YM encourages intramural athletics.



YW go down in defeat to a proud, but chivalrous YM team. Through community service projects, the men gain invaluable experience while serving others.

The YM's co-sponsorship of the Y Store and of Artist Series adds much to the campus social life. Also on the lighter side were the Y Hike to the Chimneys; a YM "Brawl," a square dance, and participa-

tion in receptions for visiting speakers.

The interest displayed by YM has been valuable to the program of Intramural athletics. For the second year, YM will present an Intramural Sportsmanship Award to some deserving athlete.

Finding a place in Y will help young men to find their place in the community and in life.



Leaders—First row: Joann Bash, Barbara Buttrill, Carol Cornell, Carol Demler, Helen Drinnen, Janice Eakin. Second row: Peggy Evans, Pat Halstead, Connie Howell, Ann Kirkpatrick, Jean Maxwell, Mildred Mowery. Third row: Peggy Points, Marion Rice, Ruth Roach, Jane Voils.

N U G A M M A

MARY EDITH McMILLAN
Nu Gamma Chairman



A friendly introduction to Maryville College is afforded new women students through the YW-sponsored Nu Gamma Program. Sixteen sophomore girls, chosen as Nu Gamma leaders by the YWCA cabinet, correspond with new girls in the summer, are on hand to greet them upon their arrival on campus, and counsel and entertain them during the first six weeks. This year a high spot in Nu Gamma activity was Sunday night supper at "Morningside" for each Nu Gamma group.

The purpose of the Student Volunteers group on Maryville College campus is two-fold. Sincere, earnest Christians are encouraged to respond to Christ's imperative "Go ye into all the world," by offering their talents and their lives to the world mission of His Church. On the other hand, those who have not felt themselves chosen for a missionary vocation are confronted with the equal necessity of faithful prayers and generous financial support which enables the organization to send packages to foreign and national missions.

Jesus' words, "As the Father hath sent me, SO SEND I YOU," are this year's theme. Through Sunday night programs, informal fellowship groups, special projects, attendance at the SVM Quadrennial Conference, members seek a clearer understanding of God's will for their lives in the plan of His Kingdom on earth.



DORIS SOMERVILLE
President of Student Volunteers

STUDENT VOLUNTEERS





PI GAMMA

In an effort to make the town girls feel a closer relationship with the school and with the girls rooming on campus, YWCA sponsors the Pi Gamma organization. Through informal social gatherings with both town girls and dorm girls a closer acquaintance is formed.

THE "M" BOOK

One of the many undertakings to which YMCA and YWCA lend their talents is the publication each year of an "M" Book, which contains rules, regulations, and an explanation of activities on Maryville campus. It is of unquestionable value to both old and new students. On this year's staff were editors Mary Lois McConnell and Bill Robinson, and business managers Ruth Blackburn and Don Brakebill.





Carolyn Symmes Elizabeth H Jackson

Edwin R. Hunter G. Edward Scott

David Reed

Pat Lewis

Daine Hoffman

Peggy Kettles

Joan Titley

Arthur Van Alstyne

Bob Coles

Betty Roach

Baron Seely

Carl Shellkopf Jack Durant

E. Van Halland Lois Somerville

Dick Newman

Karole Kapp

Neale Pearson

Jessie Heron

Gene Watson

Sarah Brown

Carolyn Blair

Barbara Blum

WRITERS' WORKSHOP

GOVERNING BOARD

EDWARD SCOTT	Chairman
JOAN TITLEY	Secretary
KAROLE KAPP	EDWIN R. HUNTER

Writers' Workshop was organized in 1927 to promote creative writing among students and faculty and to provide a medium for criticism of their writings.

Membership is limited to twenty-five and is elected on basis of literary interest and achievement. Each member writes and presents to the group two papers each year for criticism and in turn serves as literary critic at weekly meetings. "Chips," an annual publication, contains the most outstanding literary efforts of the preceding year.



EDITORIAL STAFF

Edward Alan Newman	Editor
Don Seeley	Managing Editor
Dele Pearson	Sports Editor
Ter Elwood	Associate Editor
A. Frei	Associate Editor
A. Kinsinger	Associate Editor
Lovette	Associate Editor

Staff Reporters

Brown, Kathy Chase, Bob Coles, Abby Crosby, Jane Geer, Dorothy Greenhagen, Roberta Key, Betty Ham, Bruce Heuser, Van Holland, Ingles, James Mays, Carol F. Moore, Phyllis Schamehorn, Emily Smith.

Business Staff

Mid Miller	Business Manager
Buchanan	Assistant
D. A. Griffiths	Faculty Adviser
Maryville Enterprise	Printer

Represented for national advertising by National Advertising Service

Scots & Soda

Voices, 7



By Kathy C...
OLE CLA...
to the Cap...
Friday, and...
10, 11, is th...
Many a...
picolor show...
folksy perio...
nally adapted...
on's "Penrod"...
pocent, bright...
uring World...
is summer r...
enjoyed in an

ington's beloved...
no longer ca...
a back seat in...
en-age sister (D...
y in the process...
at romance can't...
han baseball. De...
by a dull respectable...
Smith), who has l...
father's approval, (C...
University senior (C...
Rae), bursting with c...
icalism, who thinks th...
ought to be blown up...
Further complicatio...
by the pesky kid b...
Gray) who still gets o...
by getting his family...
e. g. he wins the sym...
angry teacher by co...
ally a secre...
mi...
enef...
pret...
its...
make...
; Gra...
Tarki...
t quit...
ess ket...
MacR...

we hear that one of Miss Wilkinson's...
is reading a rather "racy" story. When they...
o any part which was particularly risque...
ggested conjugating verbs. It couldn't be...
could it?

* * * * *

ve heard of hiding many various and sun...
gs in one's bed, but never a window screen...
a, what else can one do with such an item...
e can't get it back on the window? Note...
nless window on 2nd floor Carnegie.



ave just...
most po...
week an...
that is t...

e inte...
sugg...
ation...

ou...
ad...
o...

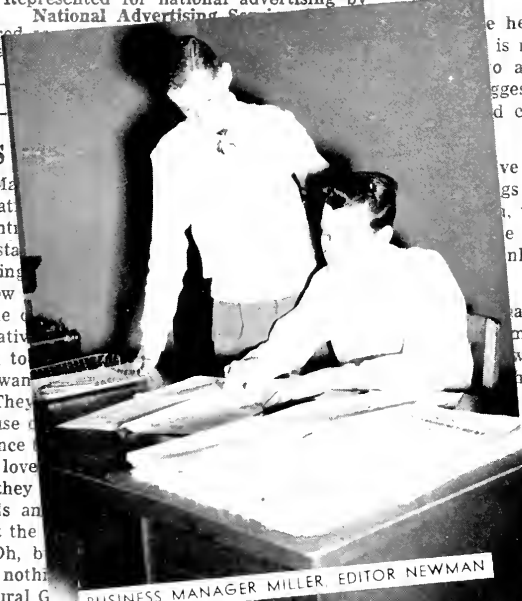
exams begin.

What's...
negie? See...
(Second f...
floor place.

Mem...
shiny she...
One poo...
you can bec...
you must be a man, approach...
and shyly asked for a shoe shine. Do ye...
someone should tell her why she was flatly refused?

* * * * *

new tu...
to a v...
and T...
h, "Acro...
raring Cl...
trapping...
ues, as th...
n whom h...
ease his v...
n area of...
ackfoot chi...
Jack Holt...
marriage fina...
ove just bef...
Gable's br...
in the grandv...
of t...
outdoors, superbly...
in techniq...
the



BUSINESS MANAGER MILLER EDITOR NEWMAN

and enter our...
It makes us very happy to know that the...
of Maryville possess this enjoyment for the...
r things of life, but we wish they'd cultivate their...
rests elsewhere—perhaps at concerts and recitals...
Ah, yes—we Maryville women certainly are glad...
our men so appreciate music—but we wish that...
ween 6:30 and 7:15 they'd appreciate us more.

AC

So Easy To Publish
Newspaper

It's so easy to publish a newspaper. . . You...
get tired. You never need a vacation. Your...
l is always clear. You're always bright as a sil...

THE 1952 CHILHOWEAN



SARAH BROWN



TASKER ROBINETTE

EDITORIAL STAFF

SARAH BROWN Editor KAROLE KAPP Copy Editor
 FLORENCE CLARK Art Editor SONNY SHORT Sports Editor
 CAROLYN SYMMES Class Editor

BUSINESS STAFF

TASKER ROBINETTE Business Manager BARBARA ROGERS Assistant Business Manager
 JEAN ELLIS Assistant Business Manager CURT WILBANKS Assistant Business Manager
 DR. F. A. GRIFFITS Faculty Advisor

The 1952 CHILHOWEAN is the result of many months of hard work by the staffs and the faculty advisor and of sincere cooperation by the student

body. It is an earnest attempt at being a true record of a college year—we hope you like it.



OFFICERS

NEWELL WITHERSPOON President

THOMAS KELLY Treasurer

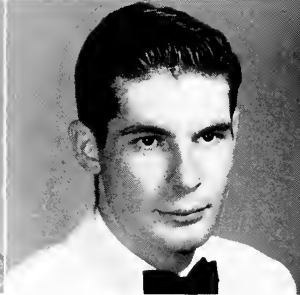
CAROLYN MILLER Vice-President

CHARLES LaRUE Historian

ROBERT CUTHILL

THOMAS KELLY

CHARLES LaRUE



CAROLYN MILLER

ΠΚΔ

NEWELL WITHERSPOON

Pi Kappa Delta competes with colleges and universities all over the country for forensic honors. Maryville is justly proud of her debators who inevitably make a good showing. One of the highlights of

last year's program was the trip to Oklahoma for the annual National Pi Kappa Delta tournament which the group made in the spring accompanied by Miss Arda Walker.

P I K A P P A D E L T A

THETA ALPHA PHI



DAVID REED
President

OFFICERS

DAVID REED President ALLAN CALDWELL Secretary-Treasurer
JOAN TITLEY Historian

By participating in any one of the many activities which go into the production of a play, amateur Thespians at Maryville College may accumu-

late points. When a worker has earned a sufficient number, he is eligible for membership in Theta Alpha Phi, the national dramatic fraternity.

ALLAN CALDWELL
GRACE MYERS

KATHLEEN CRAVEN
JOAN TITLEY

LOUISE MASTERS
AUSTIN VAN PELT





A L P H A S I G M A

OFFICERS

First Semester

NEALE PEARSON President
 ED SCOTT Vice-President
 CURT WILBANKS Secretary
 JOE BENDER Treasurer
 BOB NAVRATIL Program Chairman

Second Semester

TASKER ROBINETTE President
 JOE STATER Vice-President
 ED SCOTT Secretary
 JOE BENDER Treasurer
 CURT WILBANKS Program Chairman

NEALE PEARSON

TASKER ROBINETTE



Boys from Alpha Sigma, acting with their Theta sisters, brought back the Gay Nineties to the Maryville campus during the fall rush week and again joined this society in planning an enjoyable Spring Formal. The presentation of the 1952 Sweetheart of Alpha Sigma in February climaxed several weeks of feverish activity for the Sigs and exciting suspense for the student body.



A T H E N I A N

OFFICERS

First Semester

WALTER ENGLISH President
 KEN UPHAM Vice-President
 JIM FARRIS Secretary
 BOB JOHNSTON Treasurer
 GEORGE DAY Program Chairman

Second Semester

GEORGE DAY President
 ALLAN CALDWELL Vice-President
 KEN UPHAM Secretary
 DICK DART Treasurer
 JACK MAXWELL Program Chairman

In addition to lending their support to all the functions of rush week, the Athenians helped Bainonian produce a very successful fall dance. The dreariness of December was brightened by the royal introduction of six lovely girls at the AB Calendar Program.

WALTER ENGLISH

GEORGE DAY





B A I N O N I A N

The clever slogan "It's the Life for Me" started Bainonian on a merry Rush Week as well as an active year. Colorful gypsy costumes flourished on campus while gypsy troubadours serenaded at dinner.

Caravanning through the college woods with the Athenians and learning the techniques of being a good gypsy at the formal were the main introductions to the society year.

ELLA SWIFT

NANNETTE ENLOE



Second Semester

OFFICERS

- NANNETTE ENLOE President
- BETTY ROACH Vice-President
- JANICE EAKIN Secretary
- ANN KIRKPATRICK Treasurer
- CORA ANTHONY Program Chairman
- RUTH CROSS Program Chairman

First Semester

OFFICERS

ELLA SWIFT President

ANN LEEDER Vice-President

JEAN ELLIS Secretary

MARY JANE SPENCER Treasurer

SHIRLEY ATWELL Program Chairman

LOIS LAYTON Program Chairman

Bainonian's fine spirit and co-operation didn't prevent her from entering into a little friendly rivalry with the other societies at the All-Society Volley Ball Game and at Skit Night. Other activities for the year included the annual banquet, the Athenian-Bainonian Moonlight Hike, and the ABC program. This year the fall dance



'Twas the night before the formal.

was under the sponsorship of Athenian and Bainonian who showed the campus what it would be like to attend a "Dance of the God's" on Mount Olympus.

Not to be forgotten are the weekly programs put on by the various chapters in the society, all of which help to add to the spirit of Bainonian.

Bainonian cheers through the years.

Bainonian gypsies visit the fortuneteller.





THETA EPSILON

Theta Epsilon began the year with an elaborate rush week program which carried new students back sixty years to the carefree days just before the turn of the

century. The Gay Nineties Review included a traditional splash party featuring an aquacade and a bathing beauty contest, and was climaxed by the Saturday night

GRACIE SCRUGGS



PEGGY KETTLES



OFFICERS

Second Semester

- PEGGY KETTLES President
- HAZEL WOOD Vice-President
- CAROLYN SLOAN Secretary
- LETITIA BUCHANAN Treasurer
- ELIZABETH MURPHEY Program Chairman
- JANNA BOGGS Program Chairman

OFFICERS

First Semester

- GRACIE SCRUGGS President
- MARY CLAIRE FOX Vice-President
- WILMA BORTER Secretary
- RUTH KUCKHERMAN Treasurer
- EDITH McMILLAN Program Chairman
- CONNIE HOWELL Program Chairman



"On a bicycle built for two."

formal "Up In Central Park." The latter, a musical show, was presented by a cast of Theta and Alpha Sig talent.

Other memorable events of the year include a moonlight hike and combined programs with Alpha Sigma during the fall; the Theta-Bainonian basketball game which saw Theta go down in defeat for the

first time in several years, and the presentation of the Alpha Sigma Sweetheart and Cupids selected from Theta members during the winter; and a springtime banquet and the Spring Formal planned for May Day and sponsored this year by Theta and Alpha Sigma.

Cast of "Up In Central Park"



Theta brews up a Victory



F R E N C H C L U B



OFFICERS

First Semester

MARY KELTON President
 ALLAN CALDWELL Vice President
 JOAN DUERIG Secretary
 DAVID NOLAN Treasurer
 LOUISE PACKARD Program Chairman
 CLAIRE HOFFMAN Program Chairman

Second Semester

LOUISE PACKARD President
 DAVID GATES Vice-President
 MARION SUE HERON Secretary
 MARY SUE MUNSON Treasurer
 HANK VAN HASSEL Program Chairman
 PAT WALTHALL Program Chairman



OFFICERS

First Semester

RUTH BURGOS President
 WILLIAM FAULKNER Vice-President
 JOANN BASH Secretary
 NAOMI BURGOS Treasurer
 GRACE GREENAWALT Program Chairman

Second Semester

RICHARD KERR President
 DAVID HELWIG Vice-President
 HARRIET BROWN Secretary
 JACK MAXWELL Treasurer
 CAROL CORNELL Program Chairman

S P A N I S H C L U B

G E R M A N C L U B

OFFICERS

First Semester

CARSON SEELEY President
BILL SITLER Vice-President
JAMES JACKSON Secretary
FANNY WEBER Treasurer

Second Semester

FANNY WEBER President
JAMES JACKSON Vice-President
BILL SITLER Secretary
CARSON SEELEY Secretary



MEMBERS

JEAN DAVIS
NANNETTE ENLOE
EDITH LANCASTER
SHIRLEY ATWELL
JUDY JOHNSON
BARBARA MILLER
PEGGY POINTS
CAROLYN SLOAN



B . G . C L U B

INTERNATIONAL RELATIONS



OFFICERS

CARSON SEELEY
President

DONALD GRAY
Vice-President

VIRGINIA COOPER
Secretary

NEALE PEARSON
Treasurer



OFFICERS

BETTY LESTER
President

JOY HAYES
Vice-President

SHIRLEY SCHUE
Secretary

LAURA PRITCHETT
Treasurer

FUTURE TEACHERS

PRE-MINISTERIAL ASSOCIATION

OFFICERS

CHARLES REID
President

GALEN WORK
Vice-President

KEN RUTHERFORD
Vice-President

BRUCE MILLER
Secretary-Treasurer



OFFICERS

TASKER ROBINETTE
President

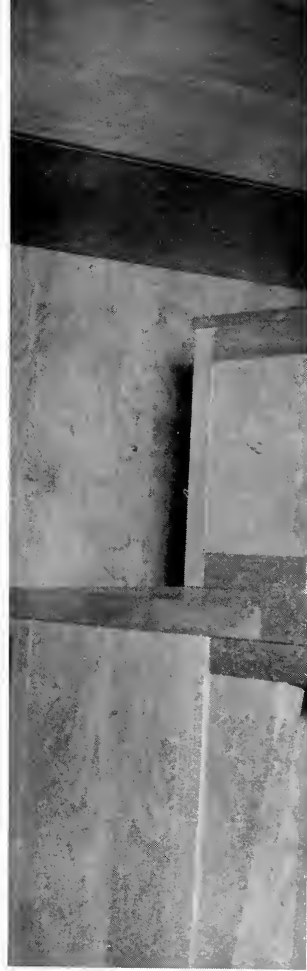
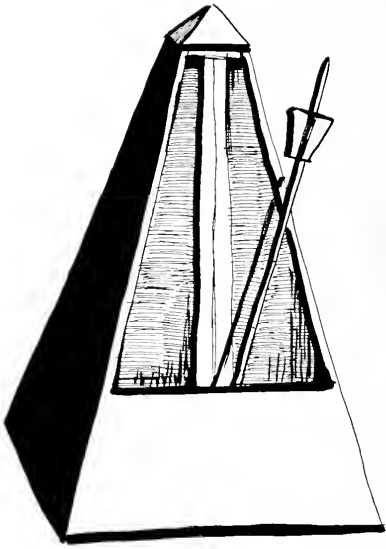
THOMAS CRAMER
Vice-President

PAT LAING
Secretary

DAVE NOLEN
Treasurer



B U S I N E S S C L U B



F I N E A R T S



Maryville takes great pride in her fine art's division, and rightly so. The College's new Fine Arts Center and the Vesper Choir's tour of the country have publicized Maryville far and wide. Aside from participation in the dramatic, musical, and artistic organizations, students have the opportunity of hearing and seeing persons famous in various fields through the Artist Series and the February Meetings.



V E S P E R C H O I R

Throughout the year the Maryville College Vesper Choir does much to add to the joys of college life. Under the direction of Mr. Harry Harter, the sixty voices are chosen in the fall, molded, and trained in such a way as to provide inspiration as well as entertainment. The weekly Vesper service, occasional chapel performances, and numerous concert appearances provide opportunities for the choir to share with others the messages of choral music. Several extended tours have been taken,

the most notable and recent one in the 1951 Season being a northern trip including such cities as Washington, D. C., Baltimore, Philadelphia, Pittsburgh, and Cincinnati.

The Vesper Choir is a well-known and loved part of the college and has made a real name among many musical circles.

Much pleasure is gained, not only for the listeners, but also for the singers who find a real feeling of unity and fellowship through the many activities in which they participate.

BAND AND ORCHESTRA

Whether it's on the football field at half time or in the Santa Claus parade, Maryville's marching band with its rapid cadence and high-stepping majorettes makes a good appearance. The college orchestra, also under the direction of Mr. Curtis Hughes, with Miss Catherine Crews as

Concert Mistress, provides music on the more classical side. The regular program for the year consisted of accompanying the Messiah in December and of presenting fall and spring concerts. Augmenting this year's agenda was the presentation of an original musical score "Highlanday" written by Bill Deihl.



A L L G I R L C H O I R



The All Girl Choir makes its appearance on campus once each month at the Sunday Vesper Services, and takes part in the special Christmas Vesper program. The social event sponsored by the Choir is the annual "Sadie Hawkins Day" program and square dance which provide fun and laughter for the entire campus.



In place of the annual "Springtime Serenade," the Glee Club and the All Girl Choir combined forces this year to produce the merry and delightful Gilbert and Sullivan operetta, "The Pirates of Penzance." In a more serious vein, they participated in a program of sacred music at a joint meeting of YM and YW.

M E N ' S G L E E C L U B

T A U K A P P A C H I

Tau Kappa Chi is composed of women music students who are desirous of promoting interest in music and whose goal is a higher achievement in that field. Members are June Hood, Doris Holt, Joyce Lingenfelter, Lena McGaha, Carolyn Marshall, and Barbara Sandos.



A sincere interest in music appreciation is the qualification for membership in the Disc Club. Members Annabelle Libby, Dorothy Vawter, Nina Ruth Gillette, George Caldwell, Don Brakebill, Larry Wallace, and Herbert Hoover this year have specialized in presenting various forms such as the sonata, concerto, and aria.



D I S C C L U B



1951 Messiah Chorus and Orchestra

T H E M E S S I A H

Messiah Soloists



The largest group in the history of Maryville College gave a stirring performance this year at the nineteenth annual presentation of Handel's Messiah. The chorus was composed of Vesper Choir, Girl Choir, and Men's Glee Club members, interested students, faculty, and townspeople.

Musical accompaniment was provided for both the chorus and the thirteen soloists by the College Symphony Orchestra, Miss Katharine Davies at the organ and Miss Garnet Manges at the piano. The entire production was under the direction of Mr. Harry Harter.

Nelson and Neal, duo-pianists, were the first presentation of the 1951-52 Artist Series. The young couple, who gave their concert in October, were an immediate success, winning the hearts of the students by their marvelous talent and by their delightful informality. A unique variation of "Yankee Doodle" was a popular selection even here in the heart of Dixie.



NELSON and NEAL

A R T I S T S E R I E S

WILLIAM WARFIELD



January brought the second guest artist, the well-known baritone William Warfield of "Showboat" fame. A program of classics, foreign-language songs, folk-songs, and spirituals thrilled the audience. Warfield's magnificent voice and charming personality brought him back for five encores—one of which was Kern's immortal "Ole Man River."



ALLAN CALDWELL
Playhouse President

Comedy and Drama were both well represented in the two major productions selected by Playhouse this year. The first semester "Two Blind Mice," a political

MARYVILLE PLAYHOUSE

satire by Samuel Spewack, amused the campus, and later in the year Shakespearean drama complete with witches and ghosts made its appearance with the performance of "Macbeth."

Below: Cast of "Two Blind Mice" makes a curtain call
Bottom: Confusion in the Office of Medicinal Herbs



For the Experimental Theater plays, director Kathleen Craven selected first two slightly unusual treatments of the eternal love theme: Theresa Helburn's "Enter the Hero" and Anton Chekov's "The Marriage Proposal." A Christmas play "Star Song" ended the first semester for the thespians. Starting the new year off right actors, actresses, stage hands, propmen, and costumers combined efforts to present Edna St. Vincent Millay's "The King and the Slaterns" and the play "Overtones."



Duncan and the Macbeths rehearse



"Star Song," the Christmas Play

OFFICERS

- | | |
|---------------------------|----------------|
| ALLAN CALDWELL | President |
| AUSTIN VAN PELT | Vice-President |
| GRACE MYERS | Secretary |
| LOUISE MASTERS | Treasurer |





First hand experience in oil painting

A R T A C T I V I T I E S

The art gallery in the Fine Arts Center has been the scene of several exhibitions this year. The first semester brought an exhibition of nineteenth century French prints followed by an exhibit of the work of Maryville College students. Later showings were the works of the John Herron

Art School, a display of plans and drawings made by architects Schweiker and Elting, and a display of American Folk Art.

Many new additions were made to the Art Department this year, including twelve new easels and a kiln which is now in operation. The main project for the year was the tool board for sculpturing.

Future teachers learn crafts



FAC gallery display



This year the seventy-sixth in the Maryville College series of February Meetings was led by Dr. George E. Sweazy, the Director of the New Life Movement and Secretary of the Division of Evangelism for the Presbyterian Church, U.S.A. Our song leader for the series was Mr. John Magill, of Abington, Pennsylvania, a graduate of Maryville College.

In his first message Dr. Sweazy told us, "It's the set of the soul that decides the goal, and not the storm or the strife."

FEBRUARY

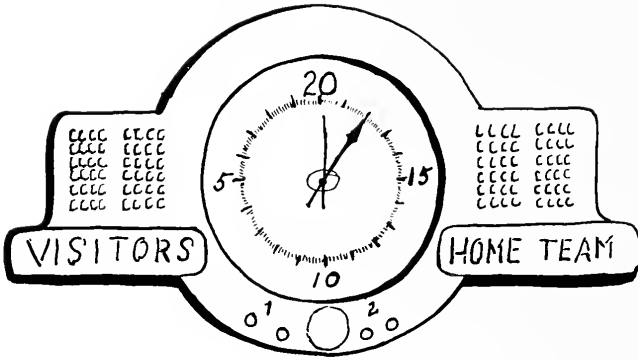
MR. JOHN MAGILL
Songleader



DR. GEORGE E. SWEAZY
Leader of the 1952 February Meetings

MEETINGS

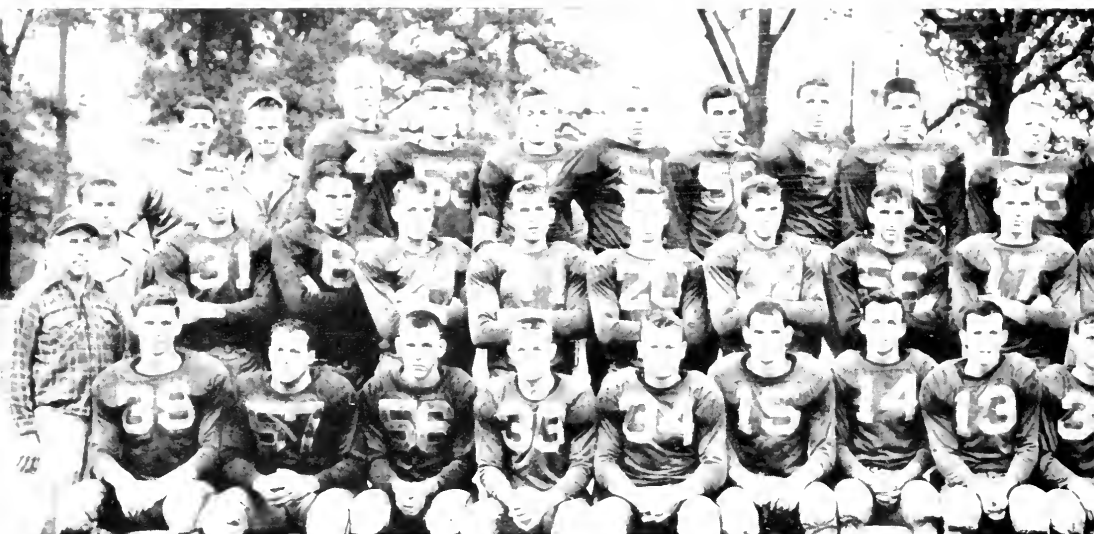
Upon this line from a well-known poem Dr. Sweazy built a series of enlightening sermons, designed to answer such important questions as "Who am I?" and "Who is Jesus Christ?" Fun and fellowship at the YM-YW party, the opportunity of getting acquainted presented at the receptions, and serious discussions at campus bull sessions and at informal interviews helped everyone to feel the true spirit and meaning behind the February Meetings, and to realize the vital part they play in the life at Maryville College.



A T H L E T I C S



Maryville College takes pride in her athletic department which emphasizes the building of strong bodies and the development of high character, rather than the mass production of winning teams. An invitation to participation is extended to all—men or women, varsity potentials or average players—through various media, and the honor of the amateur athlete is jealously guarded.



First row: L. Honaker, Kinser, Madry, King, Campbell, Squires, Callaway, C. Allen, T. Allen, Reynolds, Peppers, Breen, Russell, McCampbell. Second row: J. Davis, R. Davis, Moore, F. Garren, Merwin, Moody, Alford, Berrong, Glanville, McMahon, Greaser, Mills, Upton. Third row: Mize, Major, Putton, H. Garren, Jones, Glad, Sharp, Bender, McBrayer, Morton, Gardner, Bell, Newberry, S. Honaker.



Highlanders at practice

FOOTBALL

With thirteen lettermen, fifteen veterans, and nine freshmen Maryville College turned to its ever harder task of competing with football-subsidizing colleges in the specialized art of the gridiron.

Opening game saw MC's fifty-fifty chance with Hiwassee go down the drain by virtue of a missed point and a Tiger

DON ALFORD

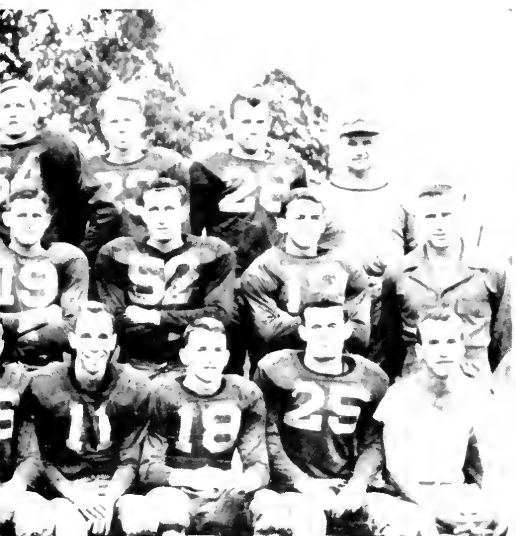
JOE BENDER

BOB BERRONG

JIM CAMPBELL

DICK GARDNER





Coaches Scott Honaker, J. A. Davis, and L. S. Honaker

S E A S O N

reverse which went for 91 yards and a 7-6 score.

Opposition was next furnished by the Gamecocks of Jacksonville State Teachers College and the Scots went under to the tune of 26-0. As in last year's game Maryville fought a valiant first half, trailing only 7-0 at the half, but later succumbed to a



Captain Charlie Allen



Alternate Captain Jim Calvay

FRANK GARREN

HOMER GARREN

HAROLD GLAD

RALPH GREASER

JERRY KING





WES KINSER

BERT McMAHON

BOB MADRY

PAUL MERWIN

MALCOLM MOORE

team with greater depth, manpower, and experience.

The Centre Colonels loomed third on the horizon, and despite the fact that the highlanders consistently outplayed a 200-pound line, the Praying Colonels took to the air and racked up two "quickies," finishing with a 13-7 score.

October 13 and East Tennessee State were remembered with regret as the Scots, with an injury-hampered line-up, sought to avenge last year's game. But fortune wasn't with MC as the ETS Bucs passed for two TD's in the first half and ran over two more in the second to sew up the game 27-0.

The Scotties then played Emory & Henry and went under 38-12, though Allen, Campbell, and Sharp clicked for two nice ones.

Rain played the villian when Carson-Newman came to town on Homecoming date. Punting was the deciding factor, with the Eagles getting the edge and eeking out a slip-slide 12-0 victory.

It was a cold, damp day for the Georgetown bout, which featured good passing and a little rough stuff both ways. As usual, however, breaks were the whole game and a fighting, courageous Scottie eleven went down 21-0.

In a brisk finale with Carson-Newman, the Highlanders were out-run, out-passed, but not out-scraped as things got rough and six men went out via the thumb route. Final score—27-6.

A football story is not all told in the scores, and the will to win will surely bring success in the future.

JOHN MORTON

HARRY NEWBERRY

DICK PATTON

GENE RUSSELL

GRANT SHARP





First row: Morse, MacCall, Faulkner, Ritzman, Erickson, Maxwell, McCullough, Helwig. Second row: Wilbanks, Merwin, Catlin, Buchanan, Benton, Squires, Callaway, Davis.

W R E S T L I N G

Having only two lettermen, Morse (captain) and Callaway, the wrestling team under the direction of Coach "J. D." Davis dug into a hard schedule.

A fast opener saw the Scottie matmen down Knoxville Y in a close 16-13 match. Three losses followed—Chattanooga 21-11, ever-strong Vanderbilt 21-10, and Middle Tennessee State 17-12. Maryville then proceeded to avenge a previous loss to the Chattanooga Mocs by coming out on the long end of a 20-13 score on the home mats.

MTS and Vandy return matches at home and Emory, Auburn, and Knoxville Y bouts

on the road were yet to meet as this book went to press. The MC wrestlers will finish the season in the SEAAU Tourney in which they placed second last year.





First row: Campbell, Allen, McWilliams, McMahon, Kinser, Shields, Wiley. Second row: Honaker, Abbott, Johnston, Hopkins, Greene, Lebold, Davis, Johnson. Third row: Walker, Sexton, Van Benthuyse, Hale, England, Jennings, Buser, Young.

BASKETBALL SEASON



Scottie Hoopsters in action against Milligan



DICK ABBOTT



CHARLIE ALLEN



JIM CAMPBELL



JOE HOPKINS



BOB JOHNSTON

With four of last year's lettermen remaining and much untested talent, Coaches Honaker and Johnson continued their rebuilding of the basketball squad. With a hard schedule and few breaks, MC's cage-men got off to a flying start with a 58-42 win over Carbon-Carbide of Oak Ridge. The Scots then dropped two "heartbreakers"—one to Hiwassee 83-82, and another to Tusculum 82-78. Back in stride again the hoopsters racked up three straight victories—Lincoln Memorial University 92-80, Carbon-Carbide 87-47, and

Milligan 67-62. Tennessee Wesleyan then proceeded to hand MC its worst defeat of the season to date by an 82-47 score. Hiwassee came to the fore next and went under 70-67, to soften the following three losses to Emory & Henry 69-68, King 48-47, and Carson-Newman 56-49. The Scots topped North Georgia in a thrilling 88-82 contest, with seven games yet to play as this book went to press. The Scot scoring punch was usually centered in Captain "Meano" Shields, Charlie Allen, and Dick Abbott with inspired play and cooperation from every man on the squad.

WES KINSER

BERT McMAHON

A. C. McWILLIAMS

JOHN SHIELDS

JIM WILEY





First row: L Campbell, Alford, J. Campbell, Reynolds, Yunker, Jones, Wiley. Second row: Cusick, Van Benthuyzen, Parks, Newberry, Short, Kren, Kinser, Williams, Honaker, Russell.

MC's baseball team, under the leadership of Coach Lombe (Gray Fox) Honaker, enjoyed a victorious season last spring ending up with a 10-2 record. Starting with the wrong foot, the Scots lost the season's opener against Hiwassee 4-0, but had sweet revenge in a second game which saw a Maryville favored 21-0 score. Gaining momentum with warmer weather, the Lombe-men then dropped Emory & Henry at home 3-2, with King and Milligan going under 7-8 and 8-0 on

the road. Lincoln Memorial University handed the Scots their second and last defeat 9-4. Successive wins followed—over East Tennessee State 2-1, King 6-2, and Carson-Newman 11-5. Milligan and Carson-Newman then came to town to take the short end of identical 6-4 scores. When LMU furnished the opposition for the last game, the Highlanders rambled to an 8-6 score, avenging an earlier defeat and making the season complete.

B A S E B A L L , 1 9 5 1



Intramural Board: Navratil, Sockwell, Johnson, Pearson

The Intramural system of Maryville College is set up so as to furnish some sport for any man not participating in varsity athletics. The wide and variable selections include touch football, soccer, basketball, softball, golf, tennis, ping-pong, and badminton.

Winners of the various leagues receive

a cup and ribbons as did the YMCA in football and the Question Marks in basketball.

Much thanks is due Coach Johnson and his staff of managers as well as the referees for providing such a fine means of recreation in both team and individual competition.

I N T R A M U R A L S

T R A C K , 1 9 5 1

First row: Sprague, McCullough, Kerr, McMahon, Sangster, Helwig, Maxwell, Second row: Davis, Blackburn, Nairn, Kelly, Hopkins, Taylor, Thurston, Menges.



The Scottie tracksters entered in competition with East Tennessee State and placed in the Milligan Relays. Much individual work has been done on the track and field equipment, as the men work with an eye to the future.



First row: Kerr, Rogers, Day, Pearson, Brooks, Helwig. Second row: Kelly, McMillan, Taylor.

Maryville's Cross Country Team showed fair success, ending the season with a 3 won, 3 lost, and 1 tied record. Opening meet showed the Scots succumbing to Tennessee 48-15. The Highlanders went on to split a twin bill with William Jennings Bryan, defeat Sewanee, and finish first in an open triangular meet with Louisville and Sewanee. The season closed with a tie with Georgia Tech and another loss to Tennessee.

C R O S S C O U N T R Y

T E N N I S , 1 9 5 1

First row: Anderson, McCampbell, Gage, Buser. Second row: Miles, England, Anderson, Johnson.

The Highlander tennis troupe under the coaching of Kenneth Johnson enjoyed a very successful year. The team won 7 and lost 1, and was scored upon on just three occasions. After romping over such teams as LMU, Milligan, Carson-Newman, and Tusculum, the Scots tied for second place in the State Intercollegiate Meet at Sewanee to close a victorious season.



Much credit is due our cheerleaders whose vim, vigor, and vitality kept our spirits high in times of woe. Always at the head of every game, pep rally, and snake dance were these peppy guys and gals headed by Bob Kees. Under the commendable leadership of Pep Committee Chairman Branin Boyd, the cheerleaders have been active in all seasons of sports.



First row: Conner, Lovette, McEachern, Morrison. Second row: Faulkner, Sloan, Kees, Bang.

C H E E R L E A D E R S



The Howies



W O M E N ' S

Our women athletes also show their talents by active participation in various sports including basketball, swimming, stunts, softball, soccer, tennis, aerial darts, badminton, and track and field events.

Spirited color and rivalry are seen in the practices and games which culminate in the tournaments between the two divisions —the Chillies and the Howies.

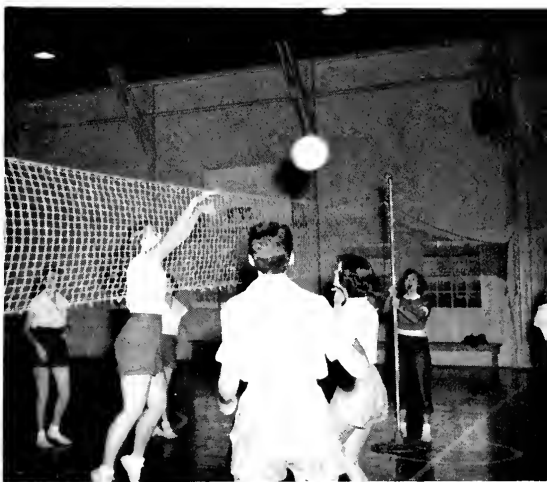


The Chillies

V A R S I T Y

The much coveted letter and sweater along with membership in the Women's "M" Club, earned through a point system, are goals tending to accentuate active athletic engagement.

The development of strong bodies and minds coupled with the excitement of competition makes Women's Varsity one of the most popular activities on campus.





W O M E N ' S " M " C L U B

OFFICERS

JEAN DAVIS President
 BARBARA ROGERS Vice-President
 NANCY FERGUSON Program Chairman
 RUTH ROACH Publicity Chairman

GRACIE SCRUGGS Secretary
 JUDY JOHNSON Treasurer
 JACKIE KENDALL Program Chairman
 EMILY McLAIN Publicity Chairman

Membership in the Women's "M" Club is the coveted reward for accumulating four hundred or more points through participation in the Women's Varsity program. The promotion of athletic interest and good sportsmanship among girls is the goal of the organization.

A fall camping trip to Laurel Lake, a party with Men's "M" Club, and a trip to the Carson-Newman football game were social highlights of the year. A late spring overnight hike is being planned by members to close initiation week for neophytes.



M E N ' S ' ' M ' ' C L U B

OFFICERS

JIM CALLAWAY President
 HOMER GARREN Vice-President

WES MILES Secretary
 JIM CAMPBELL Treasurer

Only three years organized, the Men's "M" Club is now one of the most active groups on campus. It was formed with the stress on being a "brotherhood" of lettermen and a credit to the school. Membership is available to all men who receive a letter in an intercollegiate sport. "Little

Dogs," or neophytes, spotlight initiation week which is held in the fall and highlighted in a Saturday night shin-dig.

Service projects of the club include ushering and selling of concessions at the District Basketball Tournament held in the Alumni Gym and the purchase of new skirts for this year's cheerleaders.

THE MARYVILLE COLLEGE MAID SHOP



Maryville College is proud to have its name carried to many parts of the world under the label of the College Maid Shop. In war and peace, College Maid has served well the many individuals and agencies that look to her for nurses' uniforms.

The Maid Shop is a vital part of the Student Help program, but making money is not the only service to the college girls. Thru the use of shop equipment College Maids are able to make many of their own clothes and the clothes for others. The shop is proud of the expert seamstresses it has produced and many comments from satisfied customers attest to the value and efficiency of this training.

COMPLIMENTS
OF THE
**COLLEGE HILL FOOD
MARKET**

Corner of Cate & Stanley
Phone 804

COMPLIMENTS

OF

gladys caldwell

GIFTS

Just off the Campus

COMPLIMENTS
OF THE
**WESTERN AUTO ASSOCIATE
STORE**

**CRAIG TEDFORD
REFRIGERATION & MFG. CO.**

Condry Building

P. O. Box 627

Phone 1016

**QUALITY MERCHANDISE
MARYVILLE HARDWARE CO.**

101 East Church St.

Phone 2753

MARYVILLE, TENNESSEE

Dependable Service Reasonable Prices

COMPLIMENTS
OF
**SPEARS AND WILLIAMS
FURNITURE CO.**

"The same furniture for less money"

GOOD LUCK
AND
BEST WISHES
TO
GRADUATES
**WHITE STAR BUS LINES
INC.**

COMPLIMENTS
OF THE
PARK THEATRE

COMPLIMENTS
OF
LYNCH BAKERY

Telephone 1303

Party Orders

Birthday Cakes

**NORTON
HARDWARE CO.**

Phone 18

WE DELIVER



**COLLEGE
HILL GRILL**

200 yards from the South
Gate—Enjoy home cooked
meals at your most conven-
ient Restaurant.



COMPLIMENTS

OF

**PROFFITT'S
DEPARTMENT STORE**

"Since 1919, the Best Place
to Trade"



GLAMOR SHOP

New styles come into our store daily from
America's most important markets.
Come in to see us often.

**GO GLAMOR—DRESS WELL—SAVE
MONEY**

CITY DRUG STORE

**MARYVILLE'S LEADING
PRESCRIPTION STORE**



Phone 66

Maryville, Tenn.

MCCAMMON-AMMONS

FUNERAL HOME

Ambulance Service

Phone 345

THE **J & K** SUPER STORES

"More Groceries
For Less"

MARYVILLE — ALCOA

McKULLOCK'S

"Silver House"

Serving Maryville Over Half a Century

GIFTS WRAPPED FREE

112 E. Broadway

Phone 1133

SHOEMAKER'S
SHOE STORE

MARYVILLE

Phone 418

COMPLIMENTS

OF

CAPITOL THEATRE

BYRNE DRUG COMPANY

PRESCRIPTIONS

Telephone 3 and 4

Maryville, Tennessee

TENNESSEE GAS COMPANY

NATURAL GAS FOR ALL USES

Cooking, refrigeration, water heating, and house heating

Phone 1080

211 Broadway

Maryville, Tenn.

FOR
MUSIC — SPORTS — NEWS
STAY TUNED TO

WGAP

"1400 On Your Dial"

The Voice of
Maryville—Alcoa and Blount Area

COMPLIMENTS

OF

McARTHUR'S DEPARTMENT STORE

MARYVILLE, TENNESSEE

"The House of Service"

ROGERS CLEANERS

"QUALITY CLEANING"

Maryville

Phone 1060

See Us—Try Us—Use Us

SPEAR'S STUDIO

Enlargements
and Developing
Portraits—Finishing

COMPLIMENTS

OF THE

J. C. PENNEY CO.

MARYVILLE AND ALCOA NEW AUTOMOBILE AND TRUCK DEALERS ASSOCIATION

AMOS AND ANDY BUICK CO.

COSTNER-EAGLETON MOTORS

DAVIS MOTOR CO.

HITCH RADIO SERVICE

McCAMMON MOTOR AND EQUIPMENT CO.

McNUTT MOTOR CO.

MYERS MOTORS

PAINE MOTOR CO.

STANLEY BIRD MOTOR CO.

WEST MOTOR SALES

W. L. KIDD MOTOR CO.

INTEGRITY—PUBLIC SERVICE—EFFECTIVE
COOPERATION—MUTUAL WELFARE

"The South's Largest Home Furnishers"

STERCHI BROS.

133-137 Broadway Maryville, Tenn.

CLARK'S FLOWERS

333 E. Broadway

"THEY SAY A LOT"

Phone 313

HEADQUARTERS FOR
SPORTS WEAR SPORTING GOODS



"Everything for the College Set"

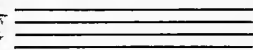
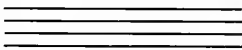
Maryville
123 Broadway

Knoxville
317 Wall Ave.

MARYVILLE GROCERY CO., INC.

508 E. High Street

Phone 51



Walgreen Agency drug stores are noted the nation over for their quality and variety of food served at their fountains. Our store is no exception.

Telephone 44

We can be relied upon to serve only the very best in sandwiches, salads, drinks and ice cream confections.

Maryville, Tenn.

MEMOIRS OF GOOD TIMES AT M. C.

WILL INCLUDE

THE "Y" STORE

operated by the Y.M.C.A. — Y.W.C.A.

COMPLIMENTS

OF

M. M. ELDER

CASH-CARRY STORE

WHITE OFFICE MACHINE

121 W. Church

Exclusive Royal Typewriter Distributor

Electric — Standard — Portable

"Won't Write? Call White"

Phone 3755

ROYAL JEWELERS

"It's Easy to Pay the
Royal Way"

Gamble Building

Maryville

COMPLIMENTS

OF

**BLOUNT GROCERY
COMPANY**



Phone 222

306 Washington St.

MARYVILLE, TENNESSEE

COMPLIMENTS

OF

BADGETT STORE CO.

109 W. BROADWAY

WHEN YOU THINK OF

Portraits

THINK OF

TALLENSTUDIO

Phone 3-5800

611 S. Gay

KNOXVILLE, TENNESSEE



YOUR OFFICIAL CHILHOWEAN
PHOTOGRAPHERS

COMPLIMENTS
OF
UNITED JEWELERS

Jewelry on easy terms

Broadway

Maryville

COMPLIMENTS
OF
PARKS-BELK COMPANY

"Home of Better Values"

Telephones: 2363, 2364

Coulter Florists

"Maryville's Oldest Florists"

WE WIRE FLOWERS ANYWHERE

Sevierville Road

Maryville, Tenn.



COMPLIMENTS

OF THE

NEW

**CHARLES
THEATRE**



FIVE POINTS

MARYVILLE

"Costs so little to look your best"

**HOPKINS
CLEANERS AND
LAUNDERERS**

Phone 1615

COMPLIMENTS

OF

**FARMER AND STAPP
BARBER SHOP**

❖ **JFG SPECIAL**
COFFEE ❖
"The Best Part Of The Meal"

ASPHALT & RUBBER TILE
PLASTIC WALL TILE
LINOLEUMS PAINTS
"We Serve To Serve Again"
MARYVILLE
LINOLEUM & PAINT CO.
Court St. Phone 2795

COMPLIMENTS
OF
THE EAGLE STORES CO.
5c to \$1.00

Southern Dairies
Sealtest
DAIRY PRODUCTS

KNOXVILLE, TENNESSEE

Phone 2-5171

Congratulations

TO ALL OF YOU, ON THE COMPLETION
OF ANOTHER YEAR,
AND THE BEST OF LUCK TO
YOU GRADUATES

FROM THE

JOHNSON & WILLARD CO.

corner of Front and Walnut Streets

KNOXVILLE, TENNESSEE

THE

GENERAL CONTRACTORS

WHO BUILT YOUR NEW FINE ARTS CENTER

Ask Your Dealer for

LAY'S CLOVER LEAF
BRAND

HAM — BACON — SAUSAGE

LAY PACKING
COMPANY

KNOXVILLE, TENNESSEE

LAW'S FURNITURE CO.

Complete Home Furnishers

Philco Appliances

Floor Coverings

409 Washington Ave.

Maryville

CHANDLER'S

LADIES READY-TO-WEAR

Blount National Bank Building

MARYVILLE, TENNESSEE

Phone 2272



MARYVILLE

TENNESSEE

COMPLIMENTS
OF THE
HARRISON CONSTRUCTION CO.



Your Neighbors and Friends on
Springbrook Lane

Call 2106

Alcoa, Tennessee

COMPLIMENTS
OF
ROBINETTE, THE PAINTER

The finest quality brush and spray work,
on Pearl Road, at the North end of Strongsville

Phone BE 4-5065

Strongsville, Ohio

**THE
TRAVELERS HOTEL COURT**

We are always happy to serve the Alumni
and relatives of students of
Maryville College

South City Limits

Phone 1477

COMPLIMENTS
OF
GILBERT'S COFFEE HOUSE

"We Never Close"

Delicious Coffee, Hamburgers, Sandwiches,
Breakfast, and Fountain Specialties

THIS BOOK WAS DESIGNED AND PRINTED

BY

BENSON PRINTING CO.

NASHVILLE, TENNESSEE

ENGRAVINGS IN THIS BOOK WERE MADE

BY

CAPITOL ENGRAVING CO.

807 Clark Place

NASHVILLE, TENNESSEE



