

1966 CHILHOWEAN





Digitized by the Internet Archive
in 2010 with funding from
Lyrasis Members and Sloan Foundation

<http://www.archive.org/details/chilhowean196660mary>



MARYVILLE



1966





Brikht an' shinin', th' facultie begin a busie day durin' thir retreat.



Confusion characterizes Freshmen arriva'—Ba'dwin Ha'.

"Mirror, mirror on th' wa', wha's the fairest o' them a'? Snow White!?"



Reception for parents o' incomin' Freshmen.

To plan year's work, facultie hauld traditiona' retreat at Tapoco Lodge i' Great Smokie Mountains . . . i' a settin' o' rest an' tranquilitie, great minds grapple wif monstrous problems . . . back on th' campus, ither problems arise—er, arrive—Freshmen . . . greeted by Nu Gammas an' Key Men . . . directed to barren 8x10 cubicles (or at least tha's hoo they seemed at first) . . . new faces, strange names . . . UCCF weilcam freshmen wif picnic on Pearson's lawn . . . Bill Erwin 'n' companie entertain wif the production "Snow White an' th' Five Dwarfs" . . .





Dinin' ha' . . . hoot! . . . I meen dinin' ROOM!

. . . Student Council Mixer on the tennis courts . . . "Isna thir onie ither way to get Freshmen acquainted? Aye, but 'tis again' th' rools!" . . .

. . . auld students return . . . traditional A' Sing (held indoors beca's o' rain) gies 'em chance to look o'er new students . . . "I hoop a' these kids are as dumb as they look!" . . . changes aroun' campus catch attention o' veterans . . . auld paths noo paved . . . new offices i' Anderson . . . renovated eatin' quart'rs (chandeliers an' draperies made ye wand'r if ye were i' the rikht place!) . . . wi' new schedule is it possible to eet six meels a day? . . . "Wha'! Eight hoors between breakfast an' lunch?" . . . high intensitie likhts i' chapel . . . na new dairms, thoo . . . "I dinna ken th' new dairms were underground!" . . . tired feet an' shairt tempers frae lang lines at librarie, personnel office, treasurer's office, an' bookstair . . . then—classes! . . .



"Och, come along, Dean. Ye meen I HAE to tak Bible?"



Dean Rusk rece'in' honorarie degree frae President Copeland.

Sigs 'n' Thetas entertain at a "fierie" pep rallie.

. . . Big send-off for footba' team as they leave for Southwestern at Memphis . . . first plane trip . . . facultie's turn for tired feet (an' han's) at reception o' students . . . Maryville hosts eminent United States government official at Convocation an' Foond'r's Day, th' Honorable Secretarie o' State Dean Rusk . . . inside view o' oor commitment i' Viet Nam . . .



A moament o' high spirit—Honaker Field.



Oor footba' team on one o' its less strenuous occasions.



Highland lad 'n' lassie perform to th' delikht o' th' spectators.



The Womenfolk—Joyce, Judy, Leni, Barbara, an' Jean.

. . . Rush Week . . . western Sigs 'n Thetas vie wi' Scottish Chi Betas 'n' Phis for pledges . . . various organizations hauld initiations—required attendance at breakfast—och!! . . . Allen Drury leads off Lecture Series wi' informative ta'k about his personal experiences wi' prominent political figures . . . Student Council sponsors anither campus first—th' Womenfolk . . . colorfu' foaksingers leev Student Council i' th' red . . . tenor Walter Carringer returns hame to op'n Artist Series . . . Presbyterie Day brings Moderator o' General Assemblie, William Phelps Thompson, to campus . . . discussion groops participated i' by students an' members o' th' communitie . . .

Moderator Thompson greets Dean McClelland after Vespers on Presbyterie Day.





Look closer. Glasgow or Maryville?

"Bushing, I canna get my shov'l oot o' th' ground." "Mebbe ye shad tak ye're foot off it."

Wi' th' addition o' heavie machinerie, the hoal deep'ns. 'ns



"If we donna hurrie up, it wi' be 'Orange, Garnet, FLOP Fore'er.'"



Bird's-eye view o' th' Hamecomin' Dance.



The President an' Mrs. Copeland entertain Freshmen at the White Hoos—er—Mornin'side.



. . . Hamecomin' weilcams Alumni . . . traditional barbecue supper for auld grads . . . traditional sack suppers for students . . . lang awaited ground-breakin' for new dairms held at last . . . Scots host Quakers frae Guilford on gridiron . . . Sigs 'n' Thetas carrie off top prize wi' float "Happiness is Top Dog" . . . even concluded wi' dance i' Alumni Gym . . . op'nin' o' Lantern . . . weil, 'tis quite an improvement o'er the Sa't Cellar . . . "Th' sa't o' th' earth has becam the likht o' th' wairld" . . . first annual Facultie-Varsitie basketba' game results i' last minute defeat o' facultie, 82-23 . . .

The Woodwind Quintet i' th' midst o' thir performance.





Orin's homecomin' i' **MOURNING BECOMES ELEKTRA.**



Mister an' Mistress Roberts are honored at halftime o' Carson-Newman game.

. . . campus livened by soonds o' noo combo, "The Great Mice" (?)—"barefoot freshmen wi' cheeks o' tan . . . hickory, dickory, dock!" . . . for thoas wi' different taste th' Artist Series presents the New York Woodwind Quintet . . .

. . . Vietnam Week sponsored by **Highland Echo** . . . message to th' President an' th' forces i' Vietnam, paperback book drive, an' Student-Facultie Forum a' gie students chance to express thir opinions . . . lang-awaited construction on dairms begins . . . Playhoos presents **Mourning Becomes Elektra** . . . ootstandin' production o' Eugene O'Neill's masterpiece . . .

. . . afternoon footba' game wi' arch-rival Carson-Newman . . . Dr. Copeland an' his ta'kin' tie start day off wi' optimistic tone . . . Mister 'n' Mistress Roberts are honored at halftime . . . distribution o' mid-semester grades provides traditional shock for noo students . . . "007—tha's my average, nae my code number!" . . . Lecture Series presents distinguisht speaker, Ferenc Nagy, former prime minister o' Hungary . . . students receeve authoritative views o' present Cauld War situation wi' particular emphasis on Eastern Europe . . .

Please, Mister Swenson, I'd rather do it myself.





P.D.A.?

"Poor Joe is deid!" But we do na suspect ye, "Wild Bill" McClelland.



Thank ye, ma'm, but I really do na deserve it.



. . . Sophomore class brings th' musical **Oklahoma** to campus . . . by popular demand, movie next year wi' be "on New Jersey" . . . first annual Honaker Bowl held on Thanks-givin' Day . . . Scots play host to Earlham College Quakers . . . tha' nikht Alumni Gym becomes scene o' customarie Barnwarmin' . . . organization-sponsored booths gie students chance to test thir skills . . . talent show hikhlikhted by facultie skit set to familiar toons frae **Oklahoma!** . . . "schoolgirl" quintet singin' "I Canna Say No" . . . Dr. Cope-land as feature attraction i' "Poor Joe Is Deid" . . . i' spite o' stalwart competition, Lynn Duke wins talent show . . . Dr. Harter's movie rounds oot evenin' hilariouslie . . . festivities reigned o'er by Barnwarmin' Queen Mary Simpson an' King John Mulholland . . . proceeds to go to Crossroads-Feroze-pore Project . . .

... Fine Arts Department presents Mistress Schoen i' first facultie recital o' th' year ... Fa' Formal sponsored by Kappa Phi an' Chi Beta ... "Winter on th' Hill" i' snowcapped Pearson's Hall Dinin' Room ... men's intramural flagba' season hikhlighted by annual Stinkin' Shoo game ... Kappa Phi defeets Alpha Sig, 35-28 ... basketba' an' wrestlin' get into fu' swing ... wrestlers manage to become first victorious varsitie athletes o' th' year ... Wee Chapel gien noo coat o' paint—orange—to enhance meditation ... Women's an' Men's Choirs present Fa' Concert ...



Makin' guid use o' th' new Warburg Apparatus.



Sculptors get "potted" i' FAC basement.



Lantern reflects spirit o' Christmas readin's.



Madrigal Singers on special Christmas television program.



Dean Massey blazes trail throo disaster area.



Home o' th' Scots covered by one o' deepest snows on record.

'Twas th' nikht before Christmas, an' a' throo Lloyd ha', Th' lassies i' thir nikhtgoons were having' a ba'.



. . . Christmas Vespers held i' chapel—service consistin' o' music by choirs an' reedin's by representatives o' various areas o' campus life . . . Junior 'n' Senior classes sponsor Christmas partie . . . Thirtie-third annual presentation o' **Messiah** sung by 250-voice chorus . . . holiday spirit intensified wi' Christmas reedin's i' Lantern, fallowt by campus-wide carolin' . . . decorations appeer i' various places—dairms, Anderson Ha' offices librarie, an' even chapel courtyard . . . Student Council decorates **dogwood** tree wi' Christmas likhts . . . finallie, lang-awaited Christmas vacation—two weeks o' freedom an' rest, or Independent Studies, as th' case may be . . .



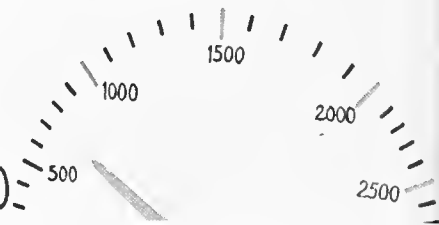
Whan th' Scots are awa, th' Porkies wi' play.

Crossroads-Ferozepore

FRED HOPE CAMPAIGN

1966

Project Goal \$3000



\$700 doon; \$2,300 to gae!

"Double, double, toil an' trouble"
comes to a fierie end.



. . . a' too soon, classes resoom . . . Junior Class presents double feature, **The Mouse That Roared** an' **Zotz** . . . societies hold elections an' installations o' second semester officers . . . fatal week o' semester finals subjects students to limits o' thir endurance . . . "I stayed up a' nikht studyin', then slept throo my exam!" . . . Student Council charts buses to concert gien by Peter, Paul 'n' Mary at Knoxville Coliseum . . . first semester ends an' weil-deserved break begins . . .

. . . second semester begins wi' appearence o' some noo faces an' absence o' monie auld faces . . . Dr. Bloy presents facultie recital wi' music o' Bach . . . Lecture Series hosts distinguisht Maryville alumnus, John R. Stockton . . . "Th' American Economie i' th' Mid-Sixties" . . . winter band concert competes wi' wrestlin' match, as usual . . .

. . . Fred Hope Fund initiates "Crossroads-Ferozepore Project" an' aims hikh . . . subzero weather an' heavie snow invade campus . . . conditions worsen an' students wha do na slip on ice, slide on gravel . . .



Februarie Meetin's leaders create informal atmosphere at niktlye discussions.

Taen advantage o' "Little" advice.



. . . Dr. Ganse Little leeds ninetieth annual Februarie Meetin's . . . "as Archimedes, or Carlyle—or somebody once said . . ." . . . background o' abstract art lends appropriate atmosphere to messages o' "A Faith For A' Seesons" . . . **reconciliation** becomes a key word . . . "to quote a nurserie rhyme . . . to use a 75¢ word . . . parentheticallie speakin' " . . . an', o' course, "Lady, do ye na know whan to stop?" . . . panel discussions leed to searchin' questions aboot th' church an' th' college, amang ither things . . . effective communion service concludes niktlye meetin's . . .

. . . Salzburg Marionette Theatre delikhts yang at heart wi' matinee o' Dean McClelland's "Nut-quacker Suite" an' evenin' performance o' Mozart's "Th' Magic Flute" . . . Nu Gamma leeders weilcome new coeds wi' annual fashion show . . . western fans weilcome Senior class movie **High Noon** . . . lassies treet lads at Jean's Drag . . .



Salzburg Marionettes i' midst o' Mozart's "The Magic Flute."



"Hoo do ye solve a problem like Maria?"

. . . weeks o' combined efforts o' Playhoos, orchestra, an' communitie culminate i' massive production o' **Th' Sound o' Music** . . . numerous sets, colorful authentic costumes, popular melodies, Presbyterian nuns(?) . . . o'erwhelmin' demand ca's for repeet performances . . .

. . . violinist Mister McKaskell strings along wi' tradition as he gies his first facultie recital . . . Spring Vacation: students forced frae campus . . .

. . . Facultie recital series combines presentation o' music 'n' art by Mister Bonham an' Miss Mueller . . . audience impressed by performance o' yang Japanese cellist, Tsuyoshi Tsutsumi i' final proogram o' Artist Series . . . traditional Easter Sunrise Service heilt i' amphitheater . . . Freshman class brings suspense thriller **Charade** to campus . . . varietie marks Glee Club spring concert . . . "Weil, wha di' ye expect?" . . .

. . . UCCF goes on coeducational o'ernikht hike . . . classes hauld picnics . . . marked increase i' sunburns . . . campus i'vaded by hundreds o' hikh school groops congregatin' for East Tennessee Choral Festival . . . seniors subjected to inevitable comps . . . "My whale college career was shattered i' one afternoon!" . . . College-Communitie Orchestra entertains wi' annual concert . . . plans are made for upcomin' year on UCCF retreat . . .

. . . Sigs 'n' Thetas create exotic atmosphere wi' Spring Formal, "Paradise Isle" . . . election time brings transformation o' campus . . . buttons, banners, posters, speeches, absurd promises, factions . . . Playhoos concludes seeson wi' comedie, **Androcles an' th' Lion** . . . Mister Roberts directs band i' spring concert . . . as students' thoughts turn toward summer excitement, finals forme reca' o' winter facts . . .



At Maryville College "proagress is oor most important product."

. . . Alumni Day: past acquaintances renewed, college escapades retould as graduates return for traditional gatherin' . . . four years' efforts culminate as seniors tak part i' Baccalaureate an' Commencement exercises . . . gowns, diplomas, Daisie Chain, proud parents, cameras, an' mixed emotions mark realization o' some goals an' expectation o' ithers.



Line forms at th' rear, Mister Horst.



A chain o' lassies an' daisies.



Harry's Harem.





Dr. Edwin R. Hunter



DEDICATION

As we enter the centennial year of the publication of *Hamlet's Problem* in 1918, I am fortunate to have had the opportunity to dedicate this new edition to my dear friend and colleague, the late

Harold G. Mitchell, who has traveled with me across the globe in the last few years of our lives together.

The fact of personality, an ancient
and a modern, but history, is not

here or there, but a man, the same, the same,

To, out of a hundred, the same, the same,
Geoffrey, and Wol, and the rest, the same,

But, however, in the roughness, the roughness, the path,

Yet in the, the, a year,
Fut, and with the, and the,
We, in the, in the,

But, in the, in the, in the, in the,

Harold G. Mitchell, the same, the same,
Thy, the, the,

The, in the, in the, in the, in the,
Of, in the, in the, in the, in the,
The, in the, in the, in the, in the,
and, in the, in the, in the, in the,
pure and Common Sense: in the, in the,
the, in the, in the, in the, in the,

© 1918, 1998
This Man, Art, and Spirit
The, in the, in the, in the, in the,

147th YEAR

1966 CHILHOWEAN

*Wherever I wander, wherever I rove
The hills of the Highlands for ever I love
Robert Burns*

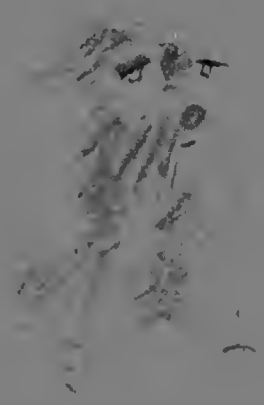


TABLE O' CONTENTS



oor chiefs 22

the clans 38



accolades 66

scottish rivalry 80



lads an' lassies 98





OUR CHIEFS



The President

Joseph J. Copeland . . . oor chieftain . . . apart frae th' student body i' position, yet an integral part o' them, too . . . a'ways gie'in' encouragement to th' aspirin' athlete or scholar . . . a promoter o' student-facultie rapport . . . his orange 'n' garnet tie this year reveelt th' wonder o' wonders—it talks . . . Wi' he attempt anither hop via pogo stick across th' fish pond this spring? . . . Barnwarmin' brikht'ned by "Poor Joe is Dead" (a candle likhts his head) . . . an' "Noo abideth Drury, Johnson, God, Freshmen an' Th' Womenfoak: but th' funniest o' these are th' Women, foak."

Guidman an' guidwife o' Morningside.



Dean o' th' College

Frank Deloss McClelland

A man o' manie talents . . . active i' Red Cross, teacher o' adults at Home Avenue, former leed'r o' th' Boy Scouts, active on th' Blount County Recreation Council, an active Kiwanian, Secretarie-Treasurer o' th' Tennessee College Association . . . Dean o' th' College . . . a strong concern for th' students' academic, religious, social an' physica' development . . . known to goa swimmin' at six o'clock o' th' morn . . . a luvlie wee granddaukhter—wha's proud? . . . "Th' leed'r o' oor chapel service the morn is" . . . "after th' last supp'r" . . . "dinin' room, no' dinin' ha'."



Pamela Karin: "Isn't Granddaddy fun?"



Dean o' Women

Edith Frances Massey

A waitin' room an' a secretarie . . . "d' ye hae chaperones?" . . . flies an' drives to far-off places to recroot students . . . answers th' telephone constantlie . . . helps mak plans for th' new dorms . . . assigns freshmen roommates . . . luvs yellow . . . I'm just a lass wha canna say nae" . . . entertains guests galore . . . likes to reed . . . sends postcards frae Scandinavian countries . . . hoosmithier o' Willard Hoos . . . circle meetin's . . . activities calendar . . . counsels whan th' goin gets rough . . . settles disputes . . . answers questions . . . a'ways thir whan we need her.



Dean o' Students

Tom Fuhr

Makin' debut as Maryville's Dean o' Students . . . fresh frae same post at Westminster College, Salt Lake City, Utah . . . pictured here i' front o' his favorite paintin'—characteristic abstract?—excellent conversation piece whan entertainin' students—just try to title it! . . . "an incurable schizophrenic" . . . a clergyman-magician . . . quite an adept amateur photographer . . . th' unforgettable musica' chapel program . . . "An' noo, Dr. Bloy wi' illustrate the flute-like tone o' oor versatile organ" . . . a dedicated advisor an' co-ordinator o' student affairs.





Chaplain

Edward Fay Campbell

Tha' hat! . . . private office . . . private secretarie . . . substitute chapel annooncer . . . teeches Sunday School at New Providence . . . wee Hoos i' th' Woods . . . "'Twad seem to me" . . . frequent trips to Cades Cove . . . uncatalogued librarie . . . "thees annoouncements are na' i' ony special order" . . . takes earlie mornin' wa'ks . . . organizes February meetin's . . . chapel proograms . . . vespers . . . listens . . . understands . . . helps . . . a part o' Maryville tha' we luv.

Man o' multiple responsibilities . . . member o' the Board for twenty-six year . . . chairman o' the Board for twal year . . . also Chairman o' Board o' Directors at Bank o' Maryville an' Blount Memorial Hospital . . . practices law i' "spare time" . . . lang-time persona' interest i' Maryville College . . . graduate o' Class o' 1926 . . . captain o' the footba' team . . . Man o' the Year as a senior . . . special interest i' farmin' . . . raisin' black angus cattle an' red-headed son . . . "May I borrow the car to-nikht, Doug?" . . . donator o' cabin on Loudon Loch for Student Council retreat.

Chairman o' the Board

Joe Caldwell Gamble





Viola Lightfoot, Registrar; Daniel Frank Layman, Treasurer; Mary Miles, Director o' Student-Help.

Administrators

Seated: Imogene Atkins, Administrative Assistant to th' Director o' Admissions. **Standing:** Raymond Irving Brahams, Jr., Director o' Development; Duncan Campbell Bennett, Director o' Information Services; William Harold Laster, Admissions Counselor; William F. Taylor, Jr., Director o' Admissions.





Mr. Arthur S. Bushing, Mrs. Nancy N. Navratil, Editorial Supervisor o' Independent Study; Mrs. Ruth F. Webb, Dr. Carolyn L. Blair, Dr. Elizabeth H. Jackson, Chairman, Department o' English; Dr. Edwin R. Hunter, Mrs. Herma R. Cate, Miss Jessie K. Johnson, Mr. David G. Hoch.

English an' Foreign Languages

Changes take place—offices added . . . new face on staff, Mrs. J. H. Cate frae Maryville High . . . experimental creative writin' groops assisted by Dr. Blair . . . addition o' ae literarie magazine to th' campus? . . . Dr. Jackson's beads break i' 17th Centurie Literature class—"If ye sit on them they mikht hatch!" . . . "a rikht taut domestic situation" . . . seminar on Hawthorne 'n' Melville incorporated into Independent Studies' Proogram . . . freshmen learnin' hoo to write . . . sophomores learnin' hoo to reed . . . upper classmen learnin' th' impairtance o' reedin' 'n' writin'!

"Bonjour, classe!" . . . "En bien, au revoir!" . . . an eilevation takes place i' language lab—second floor Anderson to third floor . . . Mister Dees, new German teecher, fi's gap left by Miss Birkelbach's move to Germany . . . French major Ruth Bates spends junior year i' Switzerland . . . Lois Huffines, junior German major studies i' Germany . . . "Continenta' Nikht": proogram on European customs gien i' Lantern . . . various classes sing Christmas carols i' French, German 'n' Spanish . . . "We maun speed ahead!" . . . "Tha' canna be oor beil!" . . . use o' records i' class . . . French foreign pen pals . . . Greek footba' cheers . . . "We want a Tau Delta!"



Seated: Miss Kathryn W. Martin, French and Spanish; Miss M. Catharine Wilkinson, Chairman, Department of Foreign Languages, French; Richard V. Fridenbergs, French, German, Russian. **Standing:** Roy E. Lindahl, Classical Languages; James H. Schwam, Spanish; Arthur F. Dees, German; Austin P. Cooley, French.



Dr. Rollin McKeehan, Chairman, Department o' Education; Mrs. Thelma H. Kramer.



Miss Mary L. Borkhuis, Dr. Jerry E. Waters, Chairman, Department o' Psychologie.

Psychologie an' Education

A separate department . . . new chairman: Dr. McKeehan frae Knoxville . . . relocated office on second floor Thaw . . . new equipment—overhead projector, typewriter . . . observers i' local schools . . . teachers' aids or substitutes? . . . brainstormin' . . . gradin' papers . . . actuallie tryin' to teach . . . study ha's . . . workshop wi' local secondary teachers the summer . . . "th' objectives o' this course are . . ." . . . creativitie . . . round table discussions.

New face: Miss Borkhuis frae South Dakota . . . new equipment . . . runnin' professors . . . bi-weeklie seminars . . . research on fish . . . memorizin' nonsense syllables . . . nae mair 201 lab repairs! . . . experimentallie-oriented Inde-

pendent Studies . . . "the ca'culator's wrang!" . . . "for example, the social behavior o' a Rhesus monkey" . . . ego-deflatin' personalitie tests.

Increasin' number o' female P. E. majors . . . a hot swimmin' pool . . . improved course: kinesiology . . . a' I had were red knee socks . . . work i' area schools . . . "My wrasslers are goin' to win th' SEC tournament this year an' I'm goin' to retire" . . . Hoot! today's bloo, na broon . . . black e'e frae tumblin' . . . bloo jumpers . . . class tournaments . . . "May I mak an appintment wi' ye?" . . . a paper on defensive footba'?

Health an' Physical Education



Mrs. Edith M. Lorgen, Mr. Lauren F. Kardatzke, Mr. John A. Davis, Mr. Howard J. Tomlinson, Mr. Boydson H. Baird, Chairman, Department of Physical Education; Mrs. Carmian F. Davis.



Seated: Mr. Robert J. Bonham, Music; Mrs. Sallie W. Schoen, Music; Dr. Harry H. Harter, Chairman, Department o' Fine Arts; Miss Barbara A. Mueller, Art; Dr. James A. Bloy, Music. **Standing:** Mr. Robert W. McKaskell, Music; Mr. John A. Roberts, Music; Mr. Thomas E. Jones, Theater an' Speech; Mr. William H. Swenson, Art; Mr. Lou S. Mize, Music; Mr. Victor R. Schoen, Music.



Mr. Jones directin' a rehearsal o' "Mourning Becomes Elektra."

Fine Arts

New faces: Mister Bonham, pianist frae India, an' Mister McKaskell, concert-master frae Montreal, Canada . . . annual play series—a drama, a musical, a comedie . . . "hae ye been atop o' th' theatre?" . . . thirty-third presentation o' *Messiah* . . . Christmas Vespers . . . concerts gien by Men's Choir an' Women's Choir . . . facultie an' student recitals . . . "this piano is oot o' toon" . . . "I played a rikht noat!" . . . National Association o' Schools o' Music since 1942 . . . lang hoors o' practice . . . "just one mair time" . . . collages made frae leaves an' dirt . . . artistic chess sets . . . openin' nikhts . . . art shawin's . . . th' practice rooms are foo" . . . "me—conduct the band?" . . . "Promptness is a virtue—an' a must!" . . . "Let us commence to begin" . . . repertoire again—"Och, ye dinna teil me I hae to sing **twa** numbers" . . . "I sing it vera weil; an' my accompanist plays it vera weil—but we canna do it thegither!"



Mr. A. Thomas Horst, Chairman, Department o' Bible, Philosophie, an' Religion; Mrs. Grace P. McArthur, Christian Education; Mrs. Margaret M. Cummings, Bible an' Christian Education; Dr. James P. Griffin, Philosophie an' Religion; Dr. Esther C. Swenson, Philosophie an' Christian Education.

Bible, Philosophie, an' Religion

"Paul is na tha' funnie, is he?"



Sevra' rooms are moved . . . a' classes conducted on third floor o' Anderson . . . addition o' Philosophie o' Education course —i' connection wi' curriculum change i' Education Department . . . "Weil, 'tis as this: Einstein was wrang!" . . . Dr. Griffin gies doctorate . . . next? . . . "Let us pray" . . . East Tennessee Biblica' Colloquim Programs: Liturgical music lecture durin' winter an' religious play i' spring . . . either Plato or Dr. Griffin ance said . . . Mrs. Cummings helps J. D. Davis on recrootin' campaign for wrestlers . . . "Let us pause for a moment an' reflect on this."



Mr. Robert C. Ramger, Dr. Arthur R. Shields, Chairman, Department o' Biology; Dr. James B. Lytle.



Mr. George D. Howell, Dr. David P. Young, Dr. Fred A. Griffiths, Chairman, Department o' Chemistry.

Seated: Mr. Marion B. Tolar, Chairman, Department o' Mathematics. **Standing:** Mr. William H. Dent, Mr. Thomas I. Hicks, Dr. Stanmore B. Townes.



Biologie, Chemistrie, Mathematics, an' Physics

Cuttin' up live frogs—och! . . . if ye sleep thro' the mass lectures, ye can hear it again by tape recairdin' . . . a large, comfie executive chair . . . research . . . botanists' delight—the Warburg Apparatus purchast by a National Science Foundation Grant . . . "snakes eat rats?" . . . weeklie seminars wi' refreshments . . . "maun biologists take chemistrie?" . . . student-presented papers . . . mushroom slides . . . muddie field trips an' pockets stuffed wi' specimens . . . a joke a lecture . . . a planaria wi' four heads . . . "hae onything for th' autoclave?" . . . honor organization—Beta Beta Beta . . . a basement foo' o' mice . . . a loaded bulletin board . . . "Why doesna grass grow und'r tha' tree?"

Brand-new chemistrie readin' cairner . . . a student chemistrie chapter kin to th' American Chemical Society . . . smell o' rotten eggs . . . continuin' since 1963, organaphorous research . . . student participation durin' summer . . . visitin' lecturers . . . student prepared proograms . . . graduate-work recrooters . . . standard taper equipment \$1200! . . . Are ye sure ye used the rikht chemicals? . . . fire extinquisher's on th' wa' . . . impossible un-knoans . . . state meetins' i' th' ootside world . . . infrared spectrometer . . . periodic chart o' elephants? . . . experimental course i' spectroscopy . . . we need a dishwasher . . . white lab coats an' plastic aprons.

Three pages for one problem? . . . Mister Tolar's revisin' high school curriculum for East Tennessee . . . teacher-student research on lasers . . . twa future doctorates . . . new face: Dr. Townes, visitin' lecturer frae Universitie o' Hawaii . . . perfect lab reports? . . . computer courses at U.T. . . . anither quiz? . . . a trip frae here to Knoxville wi' a coffee break . . . high school math contest here . . . frictionless toys . . . area math meetins' complete wi' dinner . . . twa new math offices i' the auld hame economics department . . . lots an' lots o' problems . . . guid pencil sharpeners . . . "Wha' was your percentage error?"

Required: 101 'n' 102 Historie . . . "Och, wha' meen ye—G hoor?" . . . Woodrow Wilson Foundation Fellowship for three year . . . "by th' by" . . . journa' articles due Friday . . . Couldna we passible affard new maps? . . . visitin' lecturer Hoffman, retired chairman o' department o' historie frae U.T. . . . "1000 pages? are ye foolin'?" . . . Aye—an' 1200 for English Historie" . . . "ye're text authors say" . . . Walker 'n' Lightfoot float doon th' Nile—summer—1965 . . . an' then thir are thoas book reports . . . "add this to your bibliographie" . . . Walker uses free time to teech anither class—Historie o' Education . . . "Mebbe ye werna high enow to see th' comet."



Seated: Mrs. Sarah E. McNiell, Dr. Arda S. Walker, Chairman, Department o' Historie.
Standing: Mr. Russell D. Parker, Mr. Wallace L. Lewis, Dr. J. Wesley Hoffman.

Historie, Economics, Bus. Administration, Political Science, an' Sociologie

Nagy speaks to Polie Sci class . . . Ainsworth—doctorate i' th' air . . . "so be it" . . . Hileman an' Ainsworth—Traffic cops i' th' chapel balconie . . .
. . . "As Samuelson says" . . . nikht classes i' business law . . . "wha's kid is tha' i' th' ha'?" . . . "Hoo monie lasses i' tha' Economics class?" . . . new student seminars . . . "Wad samebodie PLEASE answer tha' phone?" . . .
. . . mair Sociologie majors than e'er gang into social work . . . guess social problems are on the rise . . . "Wha'? A campus-wide survey on sex?" . . . "I'm a kook" . . . "Sorrie, Schuler for 1960 is checkt oot" . . . Sociologie Three-O-Sex—th' most popular course on campus . . . "fore'er an' e'er, wairl' wi' oot end—Amen."

Seated: Dr. Esther C. Swenson, Sociology. **Standing:** Mr. Arthur D. Ainsworth, Chairman, Department o' Political Science; Mr. Audley E. Hileman, Chairman, Department o' Economics an' Business Administration; Dr. Ralph T. Case, Chairman, Department o' Sociology.
Not Pictured: Dr. Robert N. Navratil, Business Administration.





First Row: MRS. PATIENCE WYMAN, Secretarie, Fine Arts Center; MISS MARY WELSH, Assistant i' th' Student-Help Office. **Second Row:** MRS. MARGARET MILLER, Assistant i' th' Registrar's Office; MRS. MARCIA ELLIS, Secretarie to th' Chaplain.

MISS JANE HUDDLESTON, Secretarie to th' Dean o' th' College; MISS VICTORIA SAMBURG, Assistant to th' Dean o' Students an' Women; MRS. LYNNE McNAIR, Assistant i' th' Public Relations Of- fice; MRS. MARY FUGATE, Receptionist i' th' Central Office; MISS ELIZABETH WELSH, Assistant i' th' Alumni Office; MRS. JANICE ROBERTS, Secretarie to th' Director o' Development; MRS. LOWREY WATSON, Secretarie to th' President.

Staff



MR. FRED BLEVINS; MR. HUGH CRAWFORD, Assistant Business Manager, Assistant i' th' Treasurer's Office; MISS PATRICIA HILL; MRS. BETTY EGGERS. **Seated:** MRS. EVA VINE- YARD.

MRS. JANETTE GAMBLE, Housekeeper; MR. THOMAS HUTSELL, Engineer. **Seated:** MRS. ANN KENNEDY.





Housemothers: MRS. BEATRICE SPEARS, Head o' Baldwin Hall; MRS. PEARL CATHEY, Head o' Pearsons Hall; MRS. ROWENA ROBINSON, Head o' Margaret Bell Lloyd Residence; MRS. JANICE ROBERTS, Housemother o' Crawford House; MRS. LUCY WITHERSPOON, Housemother o' Taylor House; MRS. LOU ELLA EPTING, Assistant i' Baldwin Hall.



MRS. ALYNE HARRISON, Housemother o' Memorial Hall; MRS. JULIA JONES, Housemother o' Carnegie Hall; MR. LEE CRIPPEN, Supervisor o' Men's Residences.



MISS THELMA HALL, Nurse; MRS. MARGARET HEN-NEMUTH, Manager o' College Stores; MRS. MARY BUCHANAN, Head o' th' Student Center; MRS. FLORENCE HARTER, Hostess i' th' Dining Room; MISS MARGARET WARE, Manager o' th' Dining Room.

Librarians, Seated: MISS JOSEPHINE DUNLAP; MRS. IRMA MIZER, Assistant Librarian; MISS VIRGINIA TURRENTINE, Head Librarian. **Standing:** MRS. LYNN ANN BEST, MRS. ALICE CRIPPEN, MISS SANDRA STEVENS, Secretarie to th' Head Librarian; MRS. DOROTHY CRAWFORD.







THE CLANS



First Row: J. Mulholland, A. Little, T. Amon, C. Rigell, D. Harris. Second Row: M. McConeghy, L. Crawford, K. Hitchens, M. Ayers, O. Williams, J. Blanchard, A. Crooper, H. Seitz, B. Brown, H. McCampbell, J. Jett, H. Porter. Third Row: N. Ryan, D. Alexander, R. Reed, S. Messenger, T. Ellis, R. Ries, D. Gamble, R. Tarwater, D. Hutchison, F. Eggers.

Student Council

Fresh ideas . . . Th' Womenfolk . . . new academic committee headed by John Mulholland . . . emphasis on academics an' constructive projects . . . Viet Nam forum . . . a retreat wi' better participation . . . th' inevitable red tape . . . Wha' about fire alarm systems for Carnegie 'n Pearsons?" . . . "Is th' town student delegation present?" . . . "Whare di' th' munie for th' dining ROOM come frae?" . . . "Wha's wrang wi' dancin' on Sunday night 'til one A.M.?" . . . "Wha' about mair shows?" . . . "Piano preludes to th' meetins' are nice, but Eggers says it's time to gie started" . . . "D' ye think we'll e'er gie oot o' debt?" . . . "Och, they be aworkin' on th' dairms!" . . . an' fait'fu' John Mulholland moved for adjournment . . . "Huther says a' i' favor say aye an' thoas as are oppoased can stay" . . . preparin' th' way for next year's council.

Hugh McCampbell, President; Betty Brown, Secretary; Hank Seitz, Vice-President.





PROGRAMS COMMITTEE: R. Ries, D. Gamble, co-chairmen.



PUBLICITY COMMITTEE: J. Siver, R. Roark, D. Price, K. Hitchens, chairman.



ELECTIONS COMMITTEE. Seated: P. Neilson, C. Rigell, B. Lender. Standing: D. Alexander, H. Seitz, chairman; N. Hooven, D. Nelson, S. Messenger.



PEP COMMITTEE: R. Reed, co-chairman; M. Malone, D. Kline, J. Beall, D. Nelson, M. Chomyk, J. Wolfe, S. Sober, D. Harris, co-chairman; F. Lantz, H. Porter, L. Grinstead.



ACADEMIC COMMITTEE. Seated: J. Blanchard, M. McGoneghy, B. Brown, A. Little, J. Mulholland, chairman. Standing: T. Ellis, F. Eggers, D. Gamble, R. Ries, S. Messenger.



SOCIAL COMMITTEE: R. Tarwater, B. Brown, N. Ryan, J. Jett, chairman.



PROJECTS COMMITTEE: B. Childs, J. Moore, H. Porter, co-chairman; O. Williams, co-chairman.



Seated: T. Lundstedt, Secretary; L. Crawford, President; L. Grinstead, Vice-President. Standing: J. Krause, B. Minear, D. Barnett, P. Neilson, S. Humphries, M. Miller, J. Hobson.

Women's Student Government Association

"One for you, an' one for you . . ."



Grawin' influence . . . discussion on th' role o' women today . . . "sack supper" replacement dinner . . . hoos councils handlin' dairm matters capable . . . Coordinatin' Council providin' communication wi' th' administration . . . membership i' national organization—Intercollegiate Association for Women Students . . . Cooperation wi' M.S.C. i' sponsorin' social activities.

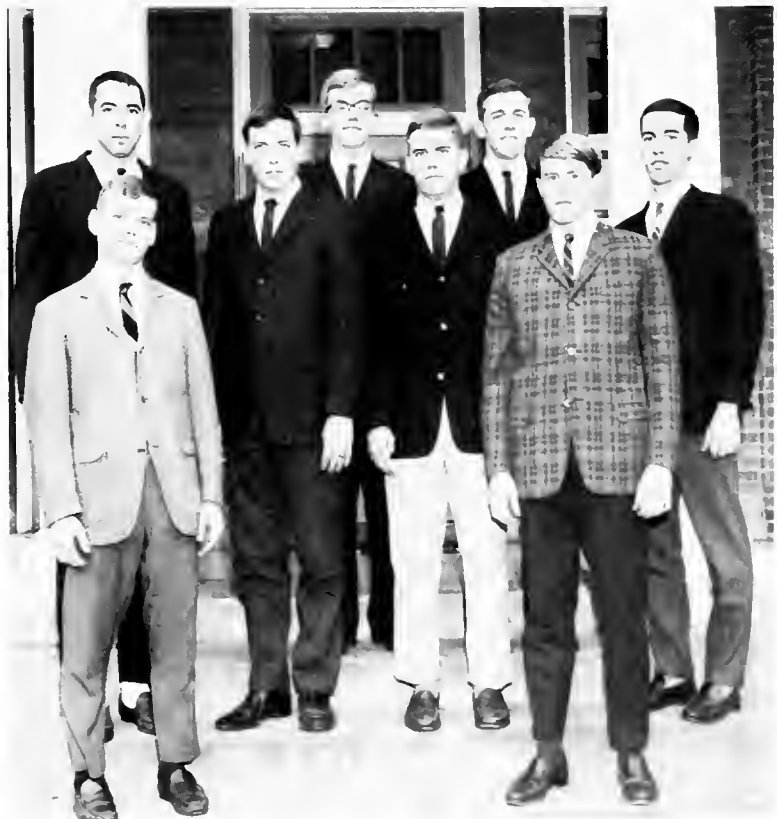


First Row: O. Rupe, R. Nicolas, W. South, Secretary-Treasurer; T. Dorsett. **Second Row:** S. Faris, P. DerPilbosian, F. Van Hartesveldt, G. Higgins.

First Row: K. Verheek, G. Schnitzer. **Second Row:** D. Alexander, D. Nelson, J. Moore, T. Amon, President. **Third Row:** D. Welch, J. Dowling.

Men's Student Cooperative

Promotin' unities among men . . . order in th' dormitories . . . communication with th' administration . . . social activities such as open-hoos, Artist Series receptions, dances . . . decoratin' th' goal posts.



United Campus Christian Fellowship



D. Ellison, Vice-President; M. Burkhart, Vice-President; B. Erwin, President.

Camp-out i' Dr. Campbell's livin' room . . . setting up Big-Little Brother an' Big-Little Sister program . . . Mister "Snow White" Erwin . . . nineteen picnickers i' an M.G. . . . sack suppers by bus likht . . . rum coffee at th' Lantern? . . . cheese fondue wi' Mister Ainsworth . . . Madrigals i' th' balconie . . . Crossroads . . . fun an' relaxa-

tion at Laurel Loch . . . Homecamin' float—"Orange, Garnet float forever" . . . sponsorin' Barnwarmin' . . . overnikht hikes . . . community service projects at Home Avenue, Children's Home, Sunnybrook, Asbury Acres, Montvale . . . Assist wi' scoot troops . . . Heather's posters.

Seated: C. Pusey, Recording Secretary; L. Grinstead, Worship Chairman; S. Parker, "The Lantern"; J. Jenkins, Service Chairman. **Sitting:** Z. Jones, Treasurer; H. Van Dyke, Publicity Secretary; R. Ries, Service Chairman; M. Burkhart, Vice-President. **Standing:** D. Schellenger, Corresponding Secretary; B. Young, Worship Chairman; W. Frey, "Feedback" Editor; D. Ellison, Vice-President; W. Evasul, Education Chairman; B. Erwin, President.





D. McGruther, G. Meyer, T. Ellis, K. Jones, D. Gamble, D. Nelson, H. Seitz, D. Ellison, Chairman.
 Not Pictured: B. Stinnett, J. Graham, P. Park, W. South, J. Haynie.

Key Men

an'

Nu Gammas

Letters home . . . suitcases an' trunks up steps . . . "goodies" i' front o' doors at holiday time . . . oor first float . . . Alumni Gym to Alumni barn . . . mistletoe i' th' Lantern . . . latest spring fashions . . . co-ed (?) o'ernikht hike . . . unexpected dips i' the loch.



First Row: W. Hannah, M. Burkhart, Chairman; P. Mackintosh, B. Woodworth. **Second Row:** E. Cubbin, N. Ryan, G. Walker, L. McNair, C. Sherrod, K. Bishop. **Third Row:** B. Minear, M. Robinson, B. McMillan, T. Cochran, L. Waller, J. Jett, T. Josey, P. Feller. **Not Pictured:** J. Bettis.



Officers, Seated: S. Wood, J. Morris, S. Talmage, N. Bennett, M. Miller, S. Doerschuk. Standing: S. Foreman, M. Simpson, R. Roark, J. Templeton, B. Koza, B. Woodworth, C. Haley.

Chi Beta

FIRST SEMESTER OFFICERS

President	SARAH DOERSCHUK
Vice-President	MARY SIMPSON
Secretary	REVA ROARK
Treasurer	JUDY TEMPLETON
Program Chairman	CHERYL HALEY
Program Chairman	SUE TALMAGE
Program Chairman	BARBARA WOODWORTH
Rush Week Chairman	MARTY MILLER
Barmaid	BECKY KOZA

SECOND SEMESTER OFFICERS

President	MARTY MILLER
Vice-President	SUE FOREMAN
Secretary	NAN BENNETT
Treasurer	SUE TALMAGE
Program Chairman	JUDY MORRIS
Program Chairman	SHERRY WOOD
Barmaid	SARAH DOERSCHUK





FIRST SEMESTER OFFICERS

President	LYNN HOWARD
Vice-President	RAY EATON
Secretary	KEN HITCHENS
Treasurer	JERRY HUGHES
Program Chairman	ANDY RUHLIN
Athletic Chairman	ROY RIES
Rush Week Chairman	DAVE HUTCHISON
Bartender	RICHARD REED

SECOND SEMESTER OFFICERS

President	JOHN KERR
Vice-President	DAN MITCHELL
Secretary	ORUS RUPE
Treasurer	GARY MEYER
Program Chairman	JOHN BRAYMER
Athletic Chairman	COLE PIPER
Bartender	ANDY RUHLIN

Kappa Phi



Officers, Seated: L. Howard, R. Eaton, K. Hitchens, J. Hughes, R. Reed. Standing: J. Kerr, D. Mitchell, O. Rupe, G. Meyer, J. Braymer, C. Piper, A. Ruhlin.



Officers, Seated: B. Hall, G. Proffitt, J. Rose, G. Wells, D. Heismeyer, L. McNair. Standing: M. Anderson, T. Cochran, L. Miller, J. Yarrington, A. Chubb, B. Vincent, J. Ferguson, B. Turpin, M. Pierce, L. Waller, K. Trowbridge, K. Bishop.

Theta Epsilon

FIRST SEMESTER OFFICERS

President	GINNY WELLS
Vice-President	DOT HEISMEYER
Secretary	LINDA McNAIR
Treasurer	JAN ROSE
Chaplain	KATHY TROWBRIDGE
Rush Week Chairmen	GINGER PROFFITT, MEREDITH PIERCE
Program Chairmen	PATTI FELLER, LAURIE WALLER
Athletic Chairmen	KATHY BISHOP, BARBARA TURPIN

SECOND SEMESTER OFFICERS

President	JAN ROSE
Vice-President	GINGER PROFFITT
Secretary	BETTY HALL
Treasurer	MARTHA ANDERSON
Chaplain	TRUDY COCHRAN
Skit Night	GINNY WELLS, JEANNE YARRINGTON
Program Chairmen	ARDIS CHUBB, LAURIE MILLER
Athletic Chairmen	JEAN FERGUSON, BETTY VINCENT





FIRST SEMESTER OFFICERS

President	GEORGE DERBYSHIRE
Vice-President	STEVE WORRELL
Secretary	BUCKY HARTENSTINE
Treasurer	BOB LEACH
Chaplain	PAUL MILLIN
Program Chairman	STEVE DORNER
Program Chairman	ED GREENAWALD
Athletic Chairman	SONNY HUGHES

SECOND SEMESTER OFFICERS

President	HUGH McCAMPBELL
Vice-President	RALPH McCAMPBELL
Secretary	GEORGE DERBYSHIRE
Treasurer	BOB LEACH
Chaplain	JOHN FORGETY
Program Chairman	JOHN McLAUGHLIN
Program Chairman	GERRY STEIGELMAN
Athletic Chairman	AL MORRIS

Alpha Sigma



Officers, Seated: J. McLaughlin, J. Forgety, H. McCampbell, R. McCampbell, A. Morris. Standing: B. Leach, P. Millin, S. Dorner, G. Derbyshire, B. Hartenstine, S. Worrell, S. Hughes.



Kappa Phi's Leedin' Ladies an' Chi Beta's Favorite Phis—Seated: Judy Jenkins, Mary Simpson, Sarah Doerschuk, Betty Brown, Marty Miller. Standing: Jerry Hughes, Rich Reed, Lynn Howard, Rich Marshall, Lupton Wood.



Batman an' Robin cower durin' Sgt. Porter's moment o' glorie.



Changin' o' th' guard durin' Rush Week.

XB—KΦ . . . Rush: "Ae Highland Fling" compleat wi' authentic Scottish refreshments! . . . changin' o' th' guard at th' KΦ-XB guardhoos . . . a command performance, "Luv Ne'er Faileth" . . . yangest escape artist . . . Homecomin': "Hats Off to th' Scots"—third place float . . . KΦ Knights win Stinkin' Shoo footba' game 35-28 i' freezin' cauld . . . XB banquet for th' Knights . . . bonnie winter formal i' Pearsons, "Winter on th' Hill" . . . XB a' stars win volleyba' championship . . . KΦ wins volleyba' intramurals . . . dances at Phi hoos wi' Great Mice . . . ski trip to Gatlinburg . . . anither wild initiation . . . Batman an' Robin . . . Deveney's Raiders, Gready's Grenadiers, and Porter's Polaks leed pledges throo eventful evenin' . . . Favorite Phis, Leedin' Ladies . . . intramural basketba' . . . skit nikht . . . skatin' trips an' picnic . . . softba' intramurals . . . increest interest, noo plans, developments.

President an' Mistress Copeland share spotlikht at "Winter on th' Hi'."



Tam o' Shanter reminds Maryville o' Scottish tradition.



Air raid forces Cupids under shelter.



Mistress "B" becomes lifetime Sig sweetheart.



"Top Dog" is top dog.

Kathy Hinger, Ginny Wells, Barbara Fitch, Sweetheart; Jan Rose, Peggy Malone— $\Lambda\Sigma$ Cupids.



$\Theta E-\Lambda\Sigma$. . . a reliable, devoted core o' veterans "Roond Up Some Freshmen" durin' Rush Week . . . big beef barbecue, a rodeo, an' a fashion shoa . . . first place homecomin' float—"Happiness is Bein' Top Dog" . . . Pearsons decorated wi' cedar at Yuletide . . . a Yuletide partie i' th' Lantern . . . th' entertainment o' th' Bloo Shades thro' th' year . . . th' annual Theta banquet at th' Pioneer Hoos i' Janu-arie—foak music, onyane? . . . spirited pledges endure th' rigors o' initiation wi' "Valentine's Day" theme . . . a Sweetheart an' Cupids honored by th' men o' Sig at annual dance . . . the namin' o' "Sig Man o' th' Year"—Hugh McCampbell . . . overnikht trip to Gatlinburg . . . intramurals frae fa' throo spring . . . skit nikht . . . a memorable spring formal wi' a Polynesian theme, "Paradise Isle."

Sigs' an' Thetas' answer to th' Christy Minstrels.





First Row: F. Corbett, P. Williams, M. Burlingham, S. Wyman, N. Gillingham. Second Row: M. Rankin, I. Shelley, J. Bryan, J. Paul, M. Caldwell, M. Robinson, N. Ryan, J. Graham, P. Brown, J. Kerr, C. Reynolds, W. Eवाल, J. Hinkle, K. Schussler, C. Sherrrod, M. Peterson. Not Pictured: J. Beall, R. Bright, J. Hannah, Z. Jones, L. Palmer, G. Paxton, M. Pierce, D. Sansbury, S. Sullivan.

Florence Corbett, Editor; Marilyn Rankin, Business Manager

Chilhowean 1966

A book presentin' the toatal life o' Maryville College for 1965-1966 i' 136 pages . . . a junior project for th' seniors—an' ithers . . . "Does onyane ken when th' Scottish tradition originated at Maryville an' why —mebbe then we could write the foreword" . . . hoo wi' thirty staff members e'er fit into th' new office i' Thaw? . . . it doesna really matter —anything's better than haen to keep ev'riething i' th' dairm . . . coordinatin' copie, pictures, an' layoot . . . "We should hae started writin' this earlier" . . . "Keep tellin' me tha' it wi' a' be worth it i' May!" . . . frustrations an' anxieties . . . yet pride i' th' end.

STAFF OFFICERS

Editor	FLORENCE CORBETT
Business Manager	MARILYN RANKIN
Literary Editors	JOHN KERR, SUZI WYMAN
Faculty Editor	KITTY SCHUSSLER
Classes Editors	JOHANN BEALL, JUDY HANNAH, NANCY RYAN
Honors Editor	JOAN PAUL
Organizations Editor	MIRIAM PETERSON
Sports Editors	BILL EVAUL, PEGGY WILLIAMS
Art Editor	NANCY GILLINGHAM
Typing Editor	JOYCE BRYAN



THE HIGHLAND ECHO EDITORIAL STAFF, First Row: B. Bullard, A. LeFurgey, J. Siver, S. Chittick. **Second Row:** R. McCampbell, S. Humphries, S. Mason, A. Leeth, J. Krause, M. Malone.



Carole Brownlee, Editor; Paul Millin, Business Manager.

Labors to foofi' obligations to the whole campus . . . **The Highland Echo** reports news to a' phases o' Maryville College population . . . bi-weeklie . . . reviews o' plays, books, concerts, lectures . . . creative an' original poems, cartoons, shairt stories . . . led campus attention i' national an' international concerns . . . Viet Nam Week . . . hundreds o' paperback books collected an' sent to forces . . . petition to President o' th' United States . . . forum to express views on war i' Southeast Asia.

THE HIGHLAND ECHO CONTRIBUTORS, First Row: E. Lankenau, M. Miller, J. Hutcheson, M. L. Zorb. **Second Row:** S. Foreman, G. Wells. **Third Row:** J. Kerr, J. Rose, J. Brenckman, M. Bishop, J. Mulholland. **Fourth Row:** L. St. Clair, J. Weeks, J. Gifford.



Highland Echo

STAFF EDITORS

Editor CAROLE BROWNLEE
 Business Manager PAUL MILLIN
 News Editor BARBARA BULLARD
 Feature Editor SANDY CHITTICK
 Sports Editor RALPH McCAMPBELL
 Art Editor VAN PALLIS



Vesper Choir

Cled i' bloo 'n' wheit for an eventfu' year . . . Bach Cantata . . . Christmas Vespers . . . tour thro' th' Sooth . . . Beethoven's Ninth wi' th' Knoxville Symphony Orchestra . . . Vesper services . . . under th' direction o' Dr. Harter . . . sixty-five carefullie selected voices . . . fa' auditions . . . runnin' across campus t' check th' Fine Arts Center bulletin board every five minutes . . . members representin' a' areas o' academic interest an' musical experience.

Messiah

Thirty-third annual presentation . . . a two-hundred an' seventy-one voice chorus an' twal' soloists . . . College-Community orchestra o' thirty-four . . . under th' direction o' Dr. Harry H. Harter . . . hundurs o' East Tennesseans pourin' into th' chapel . . . participants frae student bodie, facultie, an' townsfoak . . . assisted by Dr. Bloy at th' organ, Mrs. Shoen at th' harpsichord, Mr. Bonham at th' piano . . . impressive an' alive . . . rekindlin' o' th' heart's rejoicin'.



SOLOISTS, First Row: P. Clendenen, L. Duke, M. Miller, M. Rucker, I. Jack. Second Row: F. Doscher, T. Llewellyn, S. Boatman, J. Henry, S. Tompkins, J. Breckenridge, L. Sikes, Dr. Harter, Director. Not Pictured: J. Gresham, trumpettist.





Women's Choir 'N' Men's Glee Club

Sti' grawin', 54 members . . . under the direction o' Mr. Lou Mize an' accompanist Carol Pusey . . . Winter Concert: Bruckner's "Te Deum," Bartok's "Folk Songs," Bernstein's "West Side Story" . . . Jean's Drag—drag wha? . . . "Keep your chests up" . . . "I canna teil whir your chest ends an' your stomach begins" . . . "Som'ane i' the soprano section is stickin' oot" . . . A Wolf Whistle!!! . . . Christmas vespers . . . Sunday vespers . . .

. . . Spring Concert: Vaughn Williams . . . Sound o' Music . . . guid blend, a guid sound, a guid year . . . lookin' forward to next year.

Concert Band

Highlander Band moves i'doors for winter concert . . . uniform changes to formal concert dress . . . Guards hat on stage sti' reminder o' footba' half-time . . . solo piper . . . ever tie four musicians (?) . . . Winter Concert honors birthday o' Civil War president wi' "Lincoln Portrait" . . . ootstandin' percussion section . . . "less brass—mair bassoon!" . . . music o' composers—Handel, Wagner, an' Mancini . . . "Th' Sinfonians" to celebrate i'stallation o' music fraternitie . . . Spring Concert fa's on Armed Forces Day . . . stirrin' marches . . . ensemble groops—dance band, woodwind quintet, brass quartet, Dixieland combo . . . members o' conductin' class gain experience by choosin' selections an' directin' them . . . cloases year wi' outdoor "pops" concert for alumni.





The Maryville College

E'er readie to march an' more readie to play . . . themes frae weil-known musicals . . . catchie cadence . . . twirlin' duets . . . precision drill an' pageantrie . . . hame games, one awa' game, an' th' Honaker Bowl . . . a show honorin' th' Roberts . . . pep rallies an' parades . . .

Officers: R. M. . . . Vice-President: T. Dickson. President: Z. Jones. Secretary: B. Lucas. Treasurer:





Highlander Marchin' Band

a Scottie mascot—Little Bit . . . Scottish plaid kilts 'n' Royal guard reds . . . oor own Highland lassie 'n' a troo Scottish peiper . . . "We are th' Scotties" . . . a' eightie o' this bonnie group . . . "niver lose oor pepability."

R. Brown, Peiper; B. Laip, Highland Lassie; Jenn A. Roberts, Directors; J. Campbell, Drum Major





A. Jablonski, K. Miller, M. Shaver, T. Marston, P. Armstrong, A. Friedrich, T. Dickson, B. Smith.

Porky an' Th' Simple Seven

"Wha' mean ye we canna go thro' th' Dinin' Room?" . . .
 "Di' ye see thos legs?!" . . . "Wha's th' Porky Playmate
 this month?" . . . "Wha's an honorarie pig?" . . . "Whan
 ye're up, ye're up—I canna believe they did tha'" . . .
 "Whan ye need someone t' gie th' spirit up . . . at pep
 rallies, i' th' dinin' "room", after chapel, at basketball
 games . . . whare'er ye leest expect t' find them."



Cheerleaders

Howie, Howie, Chilhowie . . .
 at pep rallies, footba' games, bas-
 ketba' games . . . betimes e'en i'
 chapel . . . eight enthoosiasts
 leed vital student body support
 for Scots' athletic teems . . . a'-
 ternates added to squad this year
 . . . special acrobatics add tha'
 extra "Umph!" . . . Rock tha'
 orange an' garnet, yama, yama!

First Row: C. Riqell, D. Harris, B. Baird,
 A. Ruhlin. Second Row: L. McClain, B.
 Smith, D. Nettle. Top: Fran Lantz, Cap-
 tain.



AΣ

Blue Shades

Added sounds—Darrell Stoker . . . plus Bo, Ken, Russ, 'n' Huther . . . th' cool rock . . . how monie students can ye pack into a Sig Hoos? . . . AΣ Rush Show . . . Frosh Mixers, footba' dances, AΣ Sweetheart Dance . . . off-campus engagements . . . a guid year, a guid sound, a guid fellowship.

H. McCampbell, K. Arentson, R. Bright, D. Stoker, R. Hedges.

Student Affiliate Chapter O' American Chemical Societie

Pre - professional group composed o' chemistrie majors . . . chartered i' January o' 1965 . . . sponsored by Dr. F. A. Griffiths (member o' th' American Chemical Societie . . . practical experience for future careers.



First Row: F. Eggers, Vice-President; S. Briggs, Secretary; T. Putnam, President; E. Smith, board member; Z. Jones. Second Row: K. Yoder, K. Keen, R. Tarwater, M. Beard, C. Lim, Mr. Howell. Third Row: R. Bodnar, J. Fan, J. Mulholland, Dr. Young, J. MacDaid, Dr. Griffiths, D. Terrill.



First Row: D. Heismeyer, Vice-President; N. Muller, Secretary; H. Griffin, President; J. Brenckman, M. Frazier, M. Walden, M. Hay, M. Miller, T. Lundstedt, B. Fitch, J. Rose, J. Stapp, J. Jenkins, E. Beatty, B. Brown, Vice-President; P. Evaul, Treasurer. **Second Row:** E. Wagner, S. Foreman, J. Bryan, C. Turner, M. Wismer. **Third Row:** J. Graham, K. Schussler, M. Bishop, J. Ibsen. **Fourth Row:** A. Chubb, B. Lender, P. Johnson. **Fifth Row:** J. Donohue, J. Tate. **Sixth Row:** M. Peterson, J. Templeton, A. Fleming, H. DeWeese.

Student National Education Association

Monthlie meetin's . . . panels an' guest speakers wi' discussions o' subjects relative t' teachin' . . . participation i' local, state, an' national activities o' th' National Educational Association . . . strivin' to become guid teachers.

First Row: R. Sultzbach, M. Lafferty, E. Mantz, M. Shaver, Vice-President; M. Rucker, Secretary; I. Jack, President; E. Trent, Treasurer. **Second Row:** S. Babelay, R. Wood, A. Hongspan.

Music Educators' National Conference

Open to a' music majors . . . th' past, th' present, an' th' future o' music education . . . monthlie meetin's wi' guest speakers, films, an' demonstrations . . . sponsored by Mister John Roberts.





First Row: V. Tiffany, L. Paulson, G. Proffitt, C. Horton, S. Gamsby, K. Mattson, S. Anthony. **Second Row:** C. Tiffany, Vice-President: M. Moffett, N. Vann, M. Miller, N. Arn, M. Anderson, C. Vandegriff. **Third Row:** P. Moffett, D. Moss, Secretary-Treasurer; K. Jones, P. DerPilbosian, R. Mahler, S. Wintermuts, Mr. Jones, B. Bates, D. Caylor, J. Gidley, President.

Hard work, guid times, an' tradition . . . unforgettable productions . . . an' orange floor . . . a Christmas tree . . . openin' nikht thrill . . . tears an' laughter . . . role involvement . . . twa films . . . electrifyin' drama—"Mourning Becomes Elektra" . . . The Hill alive wi' "The Sound of Music" . . . Commencement production—"Androcles and the Lion."

Playhouse

Seated: B. Talmage, President. **Standing:** E. Hall, B. Smith, R. Lucas, A. Cropper, S. Simons, H. Newman.



Campus Mike

Eech Sunday nikht th' air's astir . . . music, interviews, discussions, sports, an' gossip . . . th' voice o' Maryville College . . . 1400 on ye're radio dial . . . WGAP . . . "Wee Willie an' th' Big Big Coo."



First Row: C. Scott, J. Paul, P. Eby. Second Row: S. Doerschuk, Dr. Waters, M. Malone, D. Alexander, D. Armentrout, J. Bernard, President; C. Petze, M. Borkhuis, C. Reynolds.

Psi Sigma Mu

T' braudin' oor knowledge o' psychologie . . . individual participation . . . student-conducted seminars . . . visitin' speakers . . . trips t' hear speakers, see pints o' interest.

Debate

Th' tongue o' triumph . . . Women's State Championship . . . twa trophies (includin' sweepstakes) i' th' South Atlantic Tournament . . . sweepstakes i' a lasses' tournament at Bristol, Virginia . . . second place i' th' four-man Novice Tournament at Carson-Newman . . . numerous first an' second places i' events sich as oratorie, extempore, an' impromptu speekin'.



First Row: P. Proffitt, F. Abramoff, S. Proffitt, P. Millin, W. Hannah, D. Harris, L. Sikes. Second Row: M. McMaster, A. Barton, B. Cox, P. Steele, M. Gillespie.

B. G.'s

Purpose???—fellowship, 'tis said . . . three seniors, three juniors, an' twa sophomores . . . th' danglin' o' th' green dice . . . ah, 'tis a mysterie unso'ved.

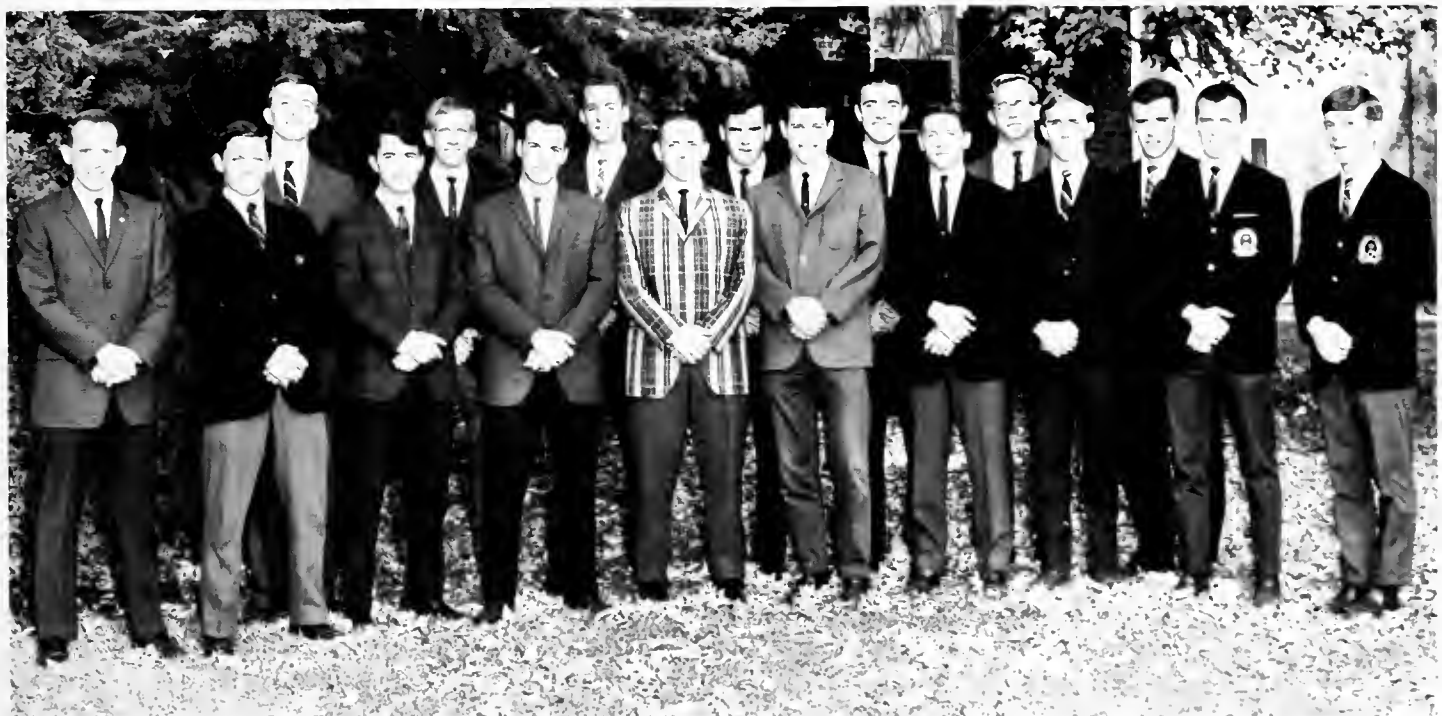


First Row: B. Goode, P. Feller, S. Briggs. Second Row: J. Beall, S. Proffitt, President. Third Row: I. Hellmer, L. Waller, J. Reynolds, Business Manager.

Circle K

Sponsored by th' Maryville an' Alcoa Kiwanis Clubs . . . members selected on twa merits—high scholastic standin' an' a realization o' service obligations to th' college . . . varsitie-facultie basketba' game . . . ushers for Sunday Vespers an' **Messiah** . . . a swimmin' program for th' Blount County Boys' Club . . . a petition supportin' oor countrie's involvement i' Viet Nam . . . limit o' twenty-five members . . . heartie lads wi' braud smiles.

First Row: F. Gready, Vice-President; R. Ries, Treasurer; D. Parrish, O. Williams, G. Meyer, J. Kerr, J. Henderson, D. Harris, H. McCampbell, J. Mullolland. Second Row: D. Terrill, Secretary; D. McGruther, R. Reed, E. Harmon, T. Ellis, G. Hallen, J. Graham. Not Pictured: R. Marshall, President.







ACCOLADES



Man o' The Year

Mr. William Shafer Erwin, Jr.



Woman o' The Year

Miss Elizabeth Rebecca Brown



Miss Lois Margaret Grinstead

Band Sponsor

Who's Who

Among Students i'

American Universities

an' Colleges

Seventeen seniors mak' Who's Who . . . national publication . . . nominated by senior class an' facultie . . . representatives o' a' phases o' Maryville College life . . . exceptional i' scholarship, leadership, citizenship . . . active i' campus organizations . . . promise to go far.



Seated: Louise Crawford, Betty Brown. Standing: Keith Renne, Lewright Sikes, William Erwin.

Seated: Marianne Jefferson, Sara Parker. Standing: Oliver Williams, Reed Tarwater, Richard Reed.



First Row: Sandra Chittick, Carole Brownlee, Hugh McCampbell. Second Row: David Ellison, Sandra Briggs, Michael Dalton. Not Pictured: Dale Schellenger.





Miss Sara Jane Parker

Homecomin' Queen



Miss Christine Lim

Miss Betty Brown

Miss Faith Scotchmer

Miss Louise Crawford

Homecomin' Court



Mr. John Mulholland

Miss Mary Simpson

Barnwarmin' King an' Queen



Miss Reva Roark, Junior Class Miss Sandra Johnson, Freshman Class
Miss Jean Bettis, Sophomore Class Miss Janis Rose, Senior Class

Class Sponsors

Alpha Gamma Sigma

Alpha Gamma Sigma — Maryville's scholastic honorarie societie . . . purpose: to encourage troo scholarship an' to stimulate interest i' cul- tural pursoots among th' stu- dents o' th' college . . . reedin' discussion proogram centered on Thomas à Becket, as por- trayed i' plays by Eliot, Frye, Anouilh, an' Tennyson . . . membership requirement—at least ae 3.33 scholastic aver- age . . . i'clouds onie o' th' facultie an' staff wha are members o' Phi Beta Kappa or wha hae fulfilled th' re- quirements for membership i' Alpha Gamma Sigma . . . charter members sti' connect- ed wi' Maryville College: Dr. Hunter, Miss Viola Lightfoot, Miss Frances Massey, an' Miss Mary Sloane Welsh.



Seated: Mrs. Crawford, L. Crawford, President; Mrs. McNeill, Vice-President. Standing: Mr. Horst, Mr. Bennett, Secretary; K. Renne, Dr. Copeland. Not Pictured: Miss Massey, Miss Lightfoot, Miss Welsh, Dr. Hunter, Dr. Walker, Dr. Swenson, Mr. Hoch.

Eta Phi Chapter . . . chartert i' 1963 . . . ae national bio- logical honorarie societie . . . membership bast on scholar- ship an' interest i' biologie . . . seminars an' hikes . . . moni- tored reedin' room i' Fayerweather . . . noosletter publisht an' sent to a' alumni wha were biologie majors.

Beta Beta Beta

B. Currie, Dr. Shields, Treasurer and Counselor; K. Denow, Secretary; H. McCampbell, Vice-President; Mr. Ramger, G. Hallen, President; B. Prather, M. Jefferson, Historian; R. Cruz-Alvarez, Dr. Lytle.



Pi Delta Phi

Pi Delta Phi—national French honor societie . . . dedicated to th' expansion an' expression o' French civilization . . . fosters th' understandin' an' enjoyment o' French literature, art, philosophie, historie, an' especiallie th' French language . . . Maryville chapter—Delta Gamma . . . correspondence wi' students i' France . . . tootrin' students i' French . . . one member, Ruth Bates, spendin' junior year abraud, studyin' i' Switzerland.



First Row: S. Haggart, A. Brownlee, W. Goodwyne, President; R. Bates, C. Bridges, Miss Wilkinson. Sponsor. Second Row: Miss Martin, Mr. Fridenbergs, J. Thomas, Secretary-Treasurer; Mr. Cooley, S. Chittick, Vice-President.

Th' Epsilon o' Tennessee Chapter o' th' National Social Science Honor Societie . . . chartert i' 1957 . . . purpose: to encourage interest i' scholarlie attainment i' th' field o' th' social sciences by periodic meetin's wi' papers presented by students, facultie members, an' visitin' speakers . . . requirement o' membership—guid moral character, 20 hours i' th' social sciences with ae B average, an' standin' i' th' upper 35% o' thir junior or senior class.

Pi Gamma Mu



Mr. Ainsworth, F. Corbett, S. Haldeman, A. Layman, S. Haggart, B. Erwin, L. Sikes, Dr. Case, Secretary-Treasurer; J. Hughes, Vice-President; P. Millin, President; Mr. Lewis, Counselor.



Pi Kappa Delta

To preserve forensic activities . . . eligibility—sophomore having won majority of debates . . . three officers and three members . . . chance to travel . . . tournament competition.

Seated: S. Proffitt, Vice-President.
Standing: D. Harris, Secretary-Treasurer;
L. Sikes, President.

Theta Alpha Phi

Oldest of national honorary fraternities of theater arts . . . purpose to increase interest—stimulate creativeness—foster artistic achievement in all crafts of theater . . . open to all students earning a minimum number of points by working in every area of theater.



First Row: M. Shaklee, V. Wells, Secretary; H. Myers, Historian; J. Gidley.
Second Row: Mr. Jones, K. Jones, M. Miller, President; G. Proffitt, Vice-President; T. Llewellyn, Treasurer.



Seated: C. Pusey, E. Mantz, A. Junkin. **Standing:** Dr. Harter, M. Shaver, T. Allen, J. Breckenridge, C. Meeker, W. Rumsey, S. Tompkins, L. Sikes, C. Doscher, Dr. Bloy, M. Gross, J. Henry, M. Rucker, Secretary-Treasurer; T. Llewellyn, President.

Tau Kappa Chi

Honorary societie for thoas i' studie o' music . . . purpose —to promote student an' communitie interest an' participation i' music department . . . aim to raise academic standard o' music department . . . to provide goal for lads an' lassies interested i' music . . . to promote trained musicianship an' further understandin' o' styles o' music . . . special attention this year to seminars by music facultie on twentieth centurie music.

First Row: T. Dickson, Treasurer; H. McCampbell, H. Livingston, President; V. Schoen, R. Bonham.
Second Row: R. McKaskell, J. Meyers, C. Meeker, Secretary; R. Bright, C. Doscher, D. Seeley, E. Best.
Third Row: J. Bloy, L. Mize, T. Allen, M. Shaver, Warden; W. Rumsey, Historian; J. Breckenridge, Vice-President; J. Roberts, J. Henry, H. Harter, Advisor.



Phi Mu Alpha Sinfonia

Honorary music fraternitie for lads . . . professional musicians . . . chartered i' November . . . aim to advance ca'se o' music i' America . . . to foster mutual weilfar an' brotherhood o' students o' music . . . to develop truest fraternal spirit among members . . . to encourage loyaltie to Maryville College.





SCOTTISH RIVALRY

Varsitie Football

1965—year o' disappointments . . . 0-9-1 record . . . team was progressively stronger . . . monie hopes for th' late seeson were shattered wi' injuries to Dalton, Dutton, an' Story.
 1965—year o' seniors . . . Ramsey, a guid quarterback an' aen excellent safetie . . . Pryor, Dalton, Dutton, Bailey, 'n' Anderson standoots frae th' class o' '65.
 1965—year o' new players . . . Crabtree develops as a fine quarterback . . . Ronco, Bosco, Carkhuff, an' Cropper readie to tak' o'er th' vacancies.
 1965—year o' lettermen . . . 33 lads letter . . . Story, Webb, Greeno, Rogers, an' Berry form experient foondation for next year.



Kneeling: Co-Captains Jim Pryor, Mike Dalton. **Standing:** Lauren Kardatzke, Backfield Coach; Howard Tomlinson, Head Coach; Wilbur Ramsey, End Coach.

First Row: R. Fagan, Asst. Mgr.; G. Phillips, R. Lockard, K. Bailey, D. Rogers, H. Ramsey, A. Anderson, S. Harris, A. Cropper, C. Slaybaugh, E. Greeno, R. Bosco, J. Maietta. **Second Row:** C. Berry, D. Harris, M. Dalton, J. Cloninger, J. Forgety, C. Gehman, P. O'Bryan, B. Carkhuff, R. McCampbell, J. Mullendore, S. Dockery, D. Berry, J. Dawson, C. Ridings, Equipment Mgr. **Third Row:** Coach Kardatzke, S. Worrell, D.

Story, S. Hutsell, L. Cerovac, J. Fort, W. South, G. Higgins, T. Bradam, D. McDade, A. Robins, G. Dutton, F. Eggers, Coach Tomlinson. **Fourth Row:** J. Mullins, Student Asst. Coach; Coach Ramsey, S. Webb, G. Derbyshire, D. Ronco, H. Crabtree, J. Heck, J. Pryor, D. Taylor, C. Piper, D. Belcher, J. McLaughlin, J. Llewellyn, Team Mgr.; N. Hughes, Trainer.



FINAL SCORES

Maryville 0	Southwestern 14
Maryville 8	Centre 14
Maryville 0	Georgetown 23
Maryville 12	Emory & Henry 13
Maryville 0	Livingston State 30
Maryville 6	Guilford 39
Maryville 13	Millsaps 28
Maryville 6	Mars Hill 6
Maryville 7	Carson-Newman 37

Honaker Bowl:

Maryville 17	Earlham 26
--------------	------------

Honaker Bowl . . . an innovation i' the Scot athletic proagram . . . sponsored by the Honaker Club i' order to raise munie for athletic scholarships . . . th' Bowl is named i' honor o' one o' th' greatest coaches Maryville has had, the late Lombe Scott Honaker . . . November 25, Thanksgivin': an excitin' day startin' a tradition o' postseeson footba' . . . foes this year were th' Earlham College Quakers o' Richmond, Indiana . . . th' Scots looked like th' teems o' yore i' th' first half—takin' a 17-14 leed into the dressin' room . . . Earlham cam back inspired i' th' second half an' won by a score o' 26-17 . . . Herman Ramsey was chosen best Scot o' th' afternoon.



'Tis thumbs up as th' Scots fly for the first time to a footba' game—at Memphis agin' Southwestern. Later they flew to Millsaps i' Mississippi.



Th' Scottie runner is dropt shairt o' th' first doon i' the Honaker Bowl as Webb (84) an' ithers look on.

Winner o' th' Amos Alonzo Stagg Century o' Physical Fitness Award: Charles Berry, Robert Bosco, Mike Dalton, Gary Dutton, Earnie Greeno, Jim Pryor (twice winner), Herman Ramsey, Don Story.





A Centre Colonel gaes naewhir as Danny Rogers an' Herman Ramsey move i' . . .



Sonny Webb fikhts for a pass i' th' end zone whilst Ronco looks on . . .

Alan Cropper starts to turn th' cairner ag'in Guilford . . .





Touchdown!—A bowl score for th' Scots . . .

Go, Scotties, Go

Disappointin' year i' footba' . . . team improves thro' oot year, but loss o' key play'rs hurts . . .

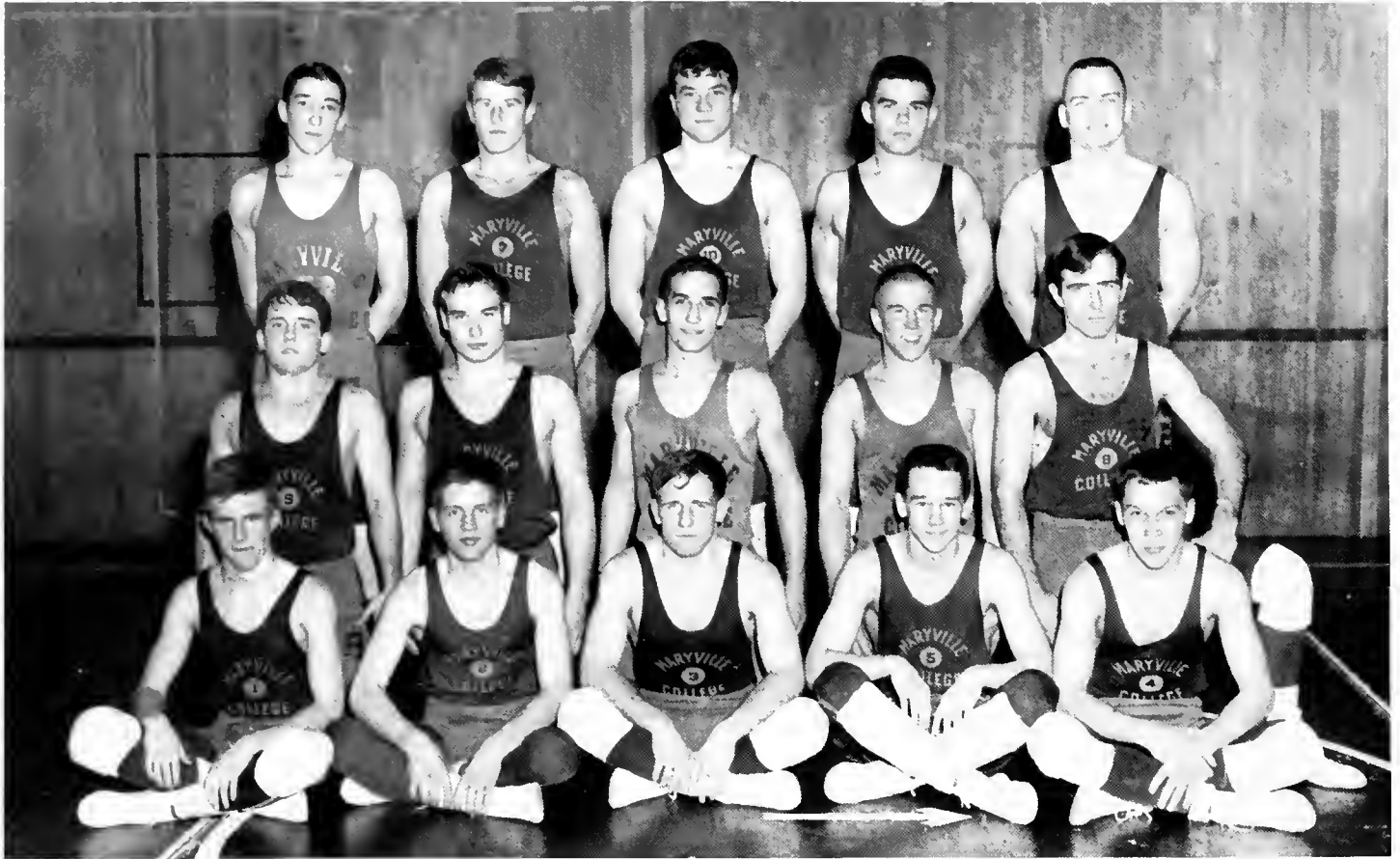
Highlanders' spirits soar as they fly to Memphis for first game—Scots outplay Southwestern, but trail i' scorin' column 14-0 . . . losses to Centre, 14-8, an' to Georgetown, 23-0, fallaw . . . Maryville aboot beats Emory 'n' Henry Wasps, but disputed clippin' ca'l stings Scots—final score is 13-12, e'en thoa Scot's leed Wasps i' statistics . . .

Loss to Livingston State precedes Hamecomin' forfeit to Guilford Quakers, wha pacify oor spirited laddies wi' 39-6 defeat —i' this game, Dutton an' Story, defensive sta'warts, are injured an' lost for rest o' th' seeson—injuries tha' ki'l Maryville's chances ag'in Millsaps Majors, wha win 28-13.

Hoaps are high for Mars Hill game, which turns oot to be probablie best game o' th' year for Scots—final score stands at 6-6—injury to co-chief Mike Dalton sidelines him for Carson-Newman battle . . . rival Eagles outplay an' outscore Highlanders, winnin' by score o' 37-7.

Danny Rogers reaches for the ba' frae quarterback Ramsey, an' heads for th' Carson-Newman line . . .





First Row: A. Ruhlin, J. Henderson, R. Pritts, T. Wylie, R. Johnson.
 Second Row: R. Kolb, G. Patton, F. Tidikis, S. Hodgson, B. Nicholas.

Third Row: L. St. Clair, G. Schnitzer, D. Gilmore, S. Wood, P. O'Bryan.

Wrestlin'

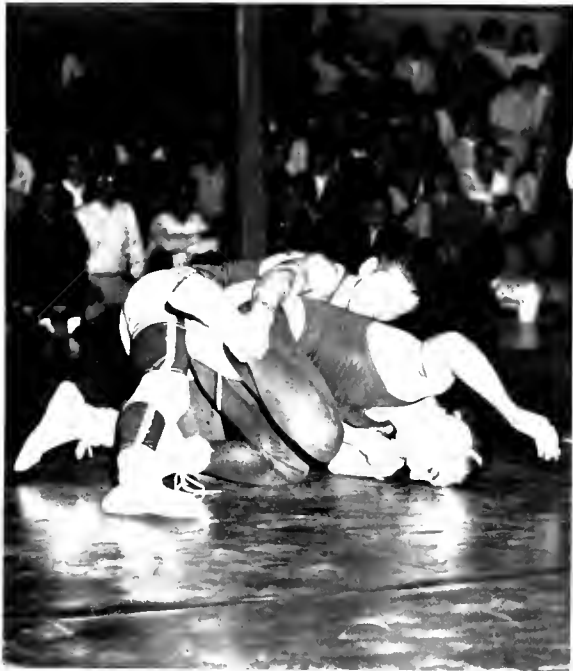
Maryville finishes season wi' a 5-6 record, wi' wins against Carson-Newman, Knoxville "Y," an' Emory . . . Carson-Newman drops wrestlin' frae thir athletic program three hoors before thir second Maryville match? . . . Ance again strang i' th' likhtweikht divisions, an' gettin' stranger i' th' heavyweikht divisions . . . Ron Pritts goes undefeated (10-0) for th' season, scorin' 38 points . . . Captain Ralph Johnson, oor 1965 SEC champ, registers an 8-2 season, wi' 32 points . . . John Henderson ends wi' a 9-3 season an' 39 points . . . Scots place fourth i' th' Chattanooga Wrestlin' Tournament . . . Johnson takes a first place; Henderson, Ruhlin, an' Wiley take seconds; O'Bryan 'n' Nicholas place third . . . Henderson, th' "Little General," registers his first collegiate pin against Milligan . . . Results o' th' 1966 SEC Tournament—Ron Pritts first at 130 lbs., John Henderson second at 123 lbs., an' Tom Wylie fourth at 137 lbs. . . . Ootlook for next year verra guid—na seniors on this year's team!

Coach Davis points oot strategie to Captain Ralph Johnson.





Thumbs up for O'Bryan.



This is na time to hold hands, lads.



Pritts pins doon anither five for th' Scots.

Schnitzer works th' "Big Stretch" against Auburn.





Coach Boydson Baird an' Captain Denny McGowan.

Basketba' team suffers throo a 3-17 season . . . First half o' season sees a dismal 0-10 record . . . Loss o' Denny McGowan to knee injurie for 4 games hurts team i' efforts against Bryan an' West Georgia . . . Dave Alexander, leedin' scorer wi' an 11.6 point average, an' Darrell Maietta, wi' a 7.6 point average, leeve at semester break . . . Hopes i'crease wi' addition o' Bill Padgett, Jon Hancher, 'n' Darrell Stoker to th' team . . . i' ten games, Padgett leads a' scorers wi' 267 points for a 26.7 average . . . Comes close to th' school scorin' record wi' a 45-point effort i' th' second Bryan game . . . Jon Hancher, th' "seventh man" on th' team, finds th' rikht spot to lead i' reboonds wi' an average o' 8 reboonds per game . . . Senior captain Denny McGowan, playin' his last year, improves sharplic after recoverie . . . Next year's team wi' be a guid one—a yang one, losin' onlie McGowan to graduation . . .

Basketball

Kneeling: D. McGowan, Coach B. Baird. Standing: G. Meyer, D. Maxwell, P. Whitson, D. Payne, J. Hancher, C. Rumford, L. Dunson, D. Stoker, D. Clark, J. Llewellyn, B. Padgett, J. Hogue, L. Raby.





Padgett lays it up for two mair against Mars Hill.

Johnson Bible College backs awa' frae two points by Hancher.



Captain Denny McGowan points th' way to th' basket.

Final Scores

	MC		W
Bryan	45-43	M. J. H.	45-74
LMU	67-90	Emory, W. Va.	63-61
Berry	49-68	Johnson Bible	75-42
LMU	36-72	Centre	57-55
West Georgia	57-41	Bryan	92-44
Miligan	53-67	Miligan	74-66
Shorter	53-48	Cumberland	42-44
Berry	42-96	Asheville-Biltmore	53-44
Cumberland	55-20	Marietta	93-24
Asheville-Biltmore	74-67	Emory, W. Va.	74-72



Hancher shies awa' frae a left to th' jaw as Rumford scores.



Daniel i' th' "Lions" den?



It says here, "I'flate 7 to 9 lbs."

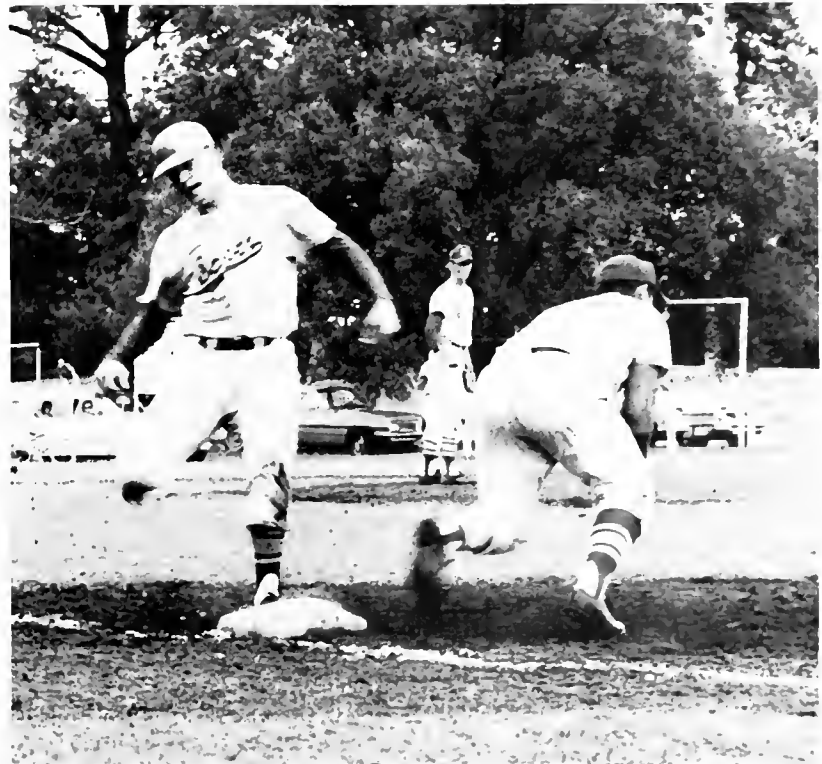


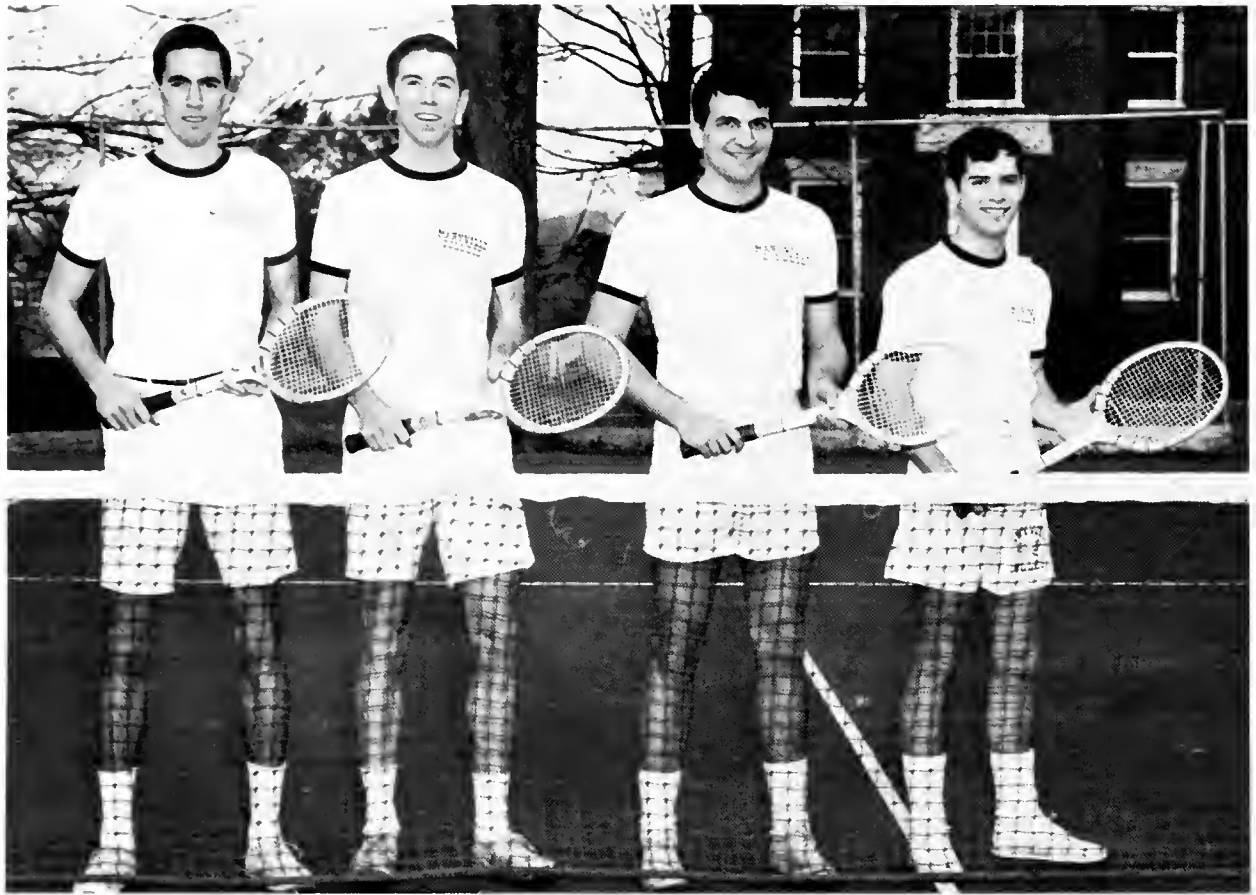
RETURNING LETTERMEN. First Row: J. Agnew, J. Llewellyn, D. Payne. Second Row: W. Webb, B. Nicholas, F. Gready, J. Fort, N. Hughes.

Baseball

Baseball team looks forward to a long season—30 games . . . Squad strengthened with a full crop of freshmen, including one "A"-Stater . . . Strangest position behind the plate with Captain Sonny Hughes and Frank Gready . . . Last year's winningest pitcher Bob Nicholas and Jack "Crook" Llewellyn helped by Bachus, Crabtree, Hancher, and Moore . . . infielders Payne and Agnew backed up by Stiano, Dockery, Maietta, and Hancher . . . Sonny Webb lends experience to the youthful outfield . . . Captain Hughes, last year's leading hitter, counts on freshmen to add needed power in the batter's box . . . A rough season—including games with last year's National Small College Champs, Carson-Newman, and UT—but good pitching can produce a winning season for the Scots . . .

Safe!



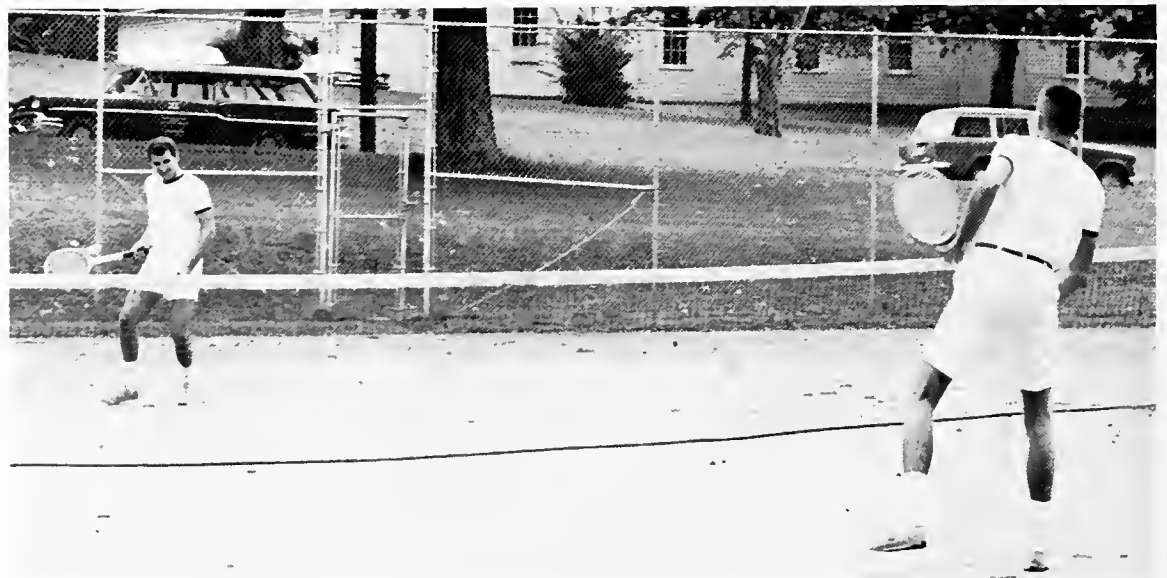


RETURNING LETTERMEN: L. Howard, W. Gass, R. Marshall, P. Park.

Tennis

Th' most unpublicized an' ignored o' th' spring sports promises some fast action this year . . . Four returnin' lettermen—Captain Rich "Turkey" Marshall, Lynn Howard, Pete Park, an' Bill Gass—provide th' experience for Coach Kardatzke's hikhlie talented team . . . Al Marshall—"Turkey's" brither—Richard "Cotton" Lambert, an' David Crawford are among th' freshmen tha' provide stiff competition

against th' veterans i' th' fikht for teem positions . . . "Did ye say thir was a lass on th' teem, too?" . . . Th' Scots face 16 matches an' a trip to th' TIAC State Tennis Tournament against consistintlie strang opposition . . . Th' teem should present some excitin' court play i' th' Spring Sports Arena . . .



I can beet ye standin' on one foot.

Track

Th' track team emerges as th' team most likeliest to hae a winnin' season . . . Havin' lost onlie two lettermen to graduation an' Dave Alexander to UT, th' team's deficit is mair than made up by th' freshman squad . . . In th' lang distances, Hugh McCampbell is backed up by Bob Cooper an' Brian Childs . . . Rich Reed an' McCampbell leed a pack o' middle distance runners tha' includes George Brown 'n' Walt Grady . . . i' th' shairt distances Dick Craig, Bob Leach an' Mike Dalton are joined by Al Cropper . . . Leach, Terry Amon an' Dan Mitchell wi' ance again share honors i' th' Hurdle division . . . Th' field events, traditionallie th' weakest spot on th' Scot team, is th' most strengthened position . . . Greg Hallen, Dan Styles, an' Cole Piper are joined by returnees Joe Malloy an' Mitchell, along wi' Monroe Brown 'n' Les Dunson frae th' freshmen . . . Th' team wi' run 11 meets plus th' TIAC meet, wi' an improved team frae th' one tha' produced last year's 4-3 record . . .



Reed 'n' McCampbell head for a 1-2 finish i' th' 880 at Emory!

Kneeling: D. Styles, J. Malloy, H. McCampbell, B. Childs. **Standing:** D. Mitchell, T. Amon, R. Reed, D. Craig, G. Brown, M. Dalton, M. Brown, B. Leach, K. Jones.





Marshall scores 6 points wi' his "juglin' act."

Men's Intramurals

Flagba'—Sig's Sledgehammers win th' championship, losin' onlie one an' tyin' one . . . Phi Knights place second, losin' twa, tyin' one . . . Stinkin' Shoo game played under th' likhts again . . . i' one o' th' most excitin' footba' games o' th' year, Phi comes back to win 35-28 . . .

Volleyba'—once again dominated by th' Phi Titans wha completed thir fourth straikht undefeated season . . . Facultie an' th' Sig Sledges fallaw closelie i' th' standin's . . .

Basketba'—Th' Sig Sledges 'n' th' Phi Knights are th' teems to beet . . . i' th' "B" League, Facultie teem gang for its third straikht championship . . . Societie second teems provide delikhtfu' comedie o' errors i' thir games . . . First teem struggles ta'en mair seriouslie than some varsitie games . . .

Spring—on tap are wrestlin' an' softba' . . . Th' UCCF Martyrs are regroupin' for anither year on th' diamond—franticallie searchin' for a female pitcher . . . Promise o' an excitin' season as th' Phi Superheroes an' th' Sig Sledgehammers seek to fill thir rosters . . . Sig oot to defend hard-earned title at season's end wi' anither "World Series o' Softba'," th' Stinkin' Shoo games—feeturin' Sig power versus Phi speed . . .

Th' name o' th' game is Flagba', na Tackle.





Craig scampers around end i' th' Stinkin' Shoo game.



Th' Butchers i' action against th' Sledgehammers.



Captain Millin o' th' Butchers aims for th' basket.

I do na think ye can
stare him doon, Ray!





Women's Intramurals

W.A.A. . . . Women's Athletic Association . . . varied intramural program . . . fifteen sports . . . for a' women on campus . . . A' Star Volleyba' game . . . wan by Chi Beta . . . most popular sport—volleyba'.



W.A.A. Council

Council . . . coordinatin' bodie between "M" Club an' Women's Athletic Association . . . sets up rools for intramural proogram . . . vice-president o' "M" Club i' charge o' Council . . . plus president o' "M" Club, athletic chairmen o' societies, events manager, an' facultie member.



Seated: E. Lankenau, Mrs. Davis, Advisor.
Standing: B. Turpin, J. Ferguson, K. Bishop.



"M" Club

Membership requires 400 pints i' one year . . . achieved thro' participation i' women's intramurals . . . sets up an' directs th' intramural proogram . . . spring retreat . . . fa' retreat . . . sponsorship o' Hamecomin' Dance.

First Row: Mrs. Davis, Advisor; K. Bishop, Secretary; E. Lankenau, President; L. Gresham, Treasurer; P. Williams, Proogram Chairman. Second Row: J. Ferguson, Vice-President; S. Rowley, D. Meury, Proogram Chairman; M. Stewart.





LADS AN' LASSIES



Reed Tarwater, President; Janice Best, Secretary-Treasurer; Eric Bergman, Vice-President.

Senior Class Officers

September 17: rain, hot dogs, an' marshmallows . . . forma' pep rallie . . . "Spirits o' Hamecomin'" . . . float queen high on her float wi' nae wa' to gie doon . . . "High Noon" . . . originator o' Blue Shades . . . Twa-Year Clods . . . Independent Studies—THROUGH! . . . completelie washt oot wi' comps—'til forwar' to th' future for the Class o' 1966.



TERRY L. AMON
Clark, New Jersey
Economics an' Business Administration



EDNA M. BEATTY
Covington, Ohio
Elementarie Education



ERIC L. BERGMAN
Champaign, Illinois
Historie



JAMES E. BERNARD
Batavia, New York
Psychologie



JANICE K. BEST
Friendsville, Tennessee
Mathematics



MARCIA J. BISHOP
Stuttgart, Germany
Elementarie Education



SUE ANNE BLAIR
Oak Ridge, Tennessee
English



JANE L. BRECKMAN
Roselle, New Jersey
English



SANDRA E. BRIGGS
Washington, Pennsylvania
Chemistrie



ELIZABETH R. BROWN
Harriman, Tennessee
Elementarie Education

STEPHEN M. BROWN
Knoxville, Tennessee
Organ



CAROLE G. BROWNLEE
Argyle, New York
English



BARBARA J. BULLARD
Kansas City, Missouri
Sociologie



PATSY R. BURCH
Maryville, Tennessee
Economics an' Business Administration





RONALD B. CHEEK
Richmond, Indiana
Economics an' Business Administration



SANDRA R. CHITTICK
Buffalo, New York
Historie



KENNETH L. CHRISTY, JR.
Lutz, Florida
Historie



ARDIS L. CHUBB
Atlantic City, New Jersey
Elementarie Education



RICHARD C. CLEASBY
Miami Springs, Florida
Bible an' Christian Education



WILLIAM O. COVERT
Macomb, Illinois
Mathematics



BRENDA C. COX
Louisville, Tennessee
Elementarie Education



LOUISE A. CRAWFORD
Maryville, Tennessee
English



R. MICHAEL DALTON
Walland, Tennessee
Mathematics



H. KATHERINE DENOW
Trenton, New Jersey
Biologie

GEORGE H. DERBYSHIRE, III
Colora, Maryland
Economics an' Business Administration



ADAM C. DEVENEY
Lansdowne, Pennsylvania
Mathematics



HAZEL LEE DEWEESE
Montgomery, West Virginia
Elementarie Education



EUGENE B. DIXON
Maryville, Tennessee
Health an' Physical Education





SARAH A. DOERSCHUK
Galesburg, Illinois
Psychologie



JEAN A. DONOHUE
Wellfleet, Massachusetts
Elementarie Education



ROBERT B. DUNSMORE
Sarasota, Florida
Sociologie



GARY J. DUTTON
Loudon, Tennessee
Historie



I always said Sunday suppers were for the "dogs."



DAVID R. DYE
Cranbury, New Jersey
German



DAVID J. ELLISON
Philadelphia, Pennsylvania
Historie

WILLIAM S. ERWIN, JR.
Du Quoin, Illinois
Historie

PHYLLIS A. EVAUL
Banner Elk, North Carolina
Elementarie Education

ALLAN R. FIELDS
Presque Isle, Maine
French

BARBARA L. FITCH
Plainfield, New Jersey
Elementarie Education

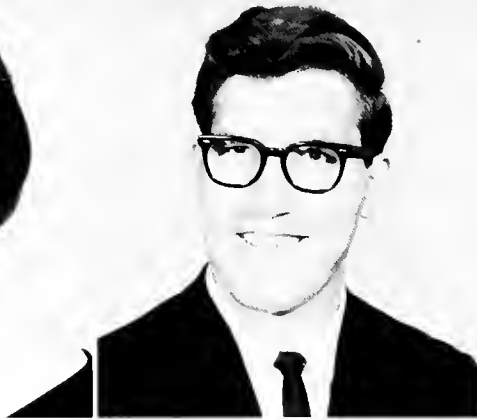




F. ANN FLEMING
Canton, North Carolina
Elementarie Education



SUSAN K. FOREMAN
Tokyo, Japan
English



R. WAYNE FREY
Tarrant City, Alabama
Philosophie an' Religion



WILLIAM H. GASS
Maryville, Tennessee
Mathematics



JAMES M. GIFFORD
Shelbyville, Tennessee
Historie



LINDA D. GRESHAM
Maryville, Tennessee
Health an' Physical Education



HELEN D. GRIFFIN
Ocean Grove, New Jersey
Elementarie Education



LOIS M. GRINSTEAD
Columbus, Ohio
Bible an' Christian Education



MARGARET B. GROSS
Charleston, West Virginia
Organ



MARGARET A. HAGGART
Inwood, New York
Political Science

S. SUE HALDEMAN
Upper Marlboro, Maryland
Historie

GREGORY S. HALLEN
Philadelphia, Pennsylvania
Biologie

MARGARET L. HAY
Dunellen, New Jersey
Elementarie Education

DOROTHY A. HEISMEYER
Elizabeth, New Jersey
Elementarie Education





NANCY R. HOOVEN
Lambertville, New Jersey
Elementarie Education



LINDA L. HORNE
North Decatur, Georgia
Philosophie an' Religion



BARBARA J. HORTMAN
Hunfingdon Valley, Pennsylvania
Sociologie



RUTH L. HOUSER
Lockland, Ohio
Sociologie



I'd like to tak' advantage o' my position at th' microphone. . . .



W. LYNN HOWARD
Maryville, Tennessee
Mathematics



GERALD A. HUGHES
Trenton, New Jersey
Economics an' Business Administration



NORMAN L. HUGHES, JR.
Moore Haven, Florida
Health an' Physical Education

RUTH A. HULTS
Roselle, New Jersey
English

JOY E. HUTCHESON
Dunwoody, Georgia
English

A. JOHANNE IBSEN
Ft. Lauderdale, Florida
Elementarie Education

MARIANNE L. JEFFERSON
Wheeling, West Virginia
Biologie





JOAN F. JENKINS
St. Joseph, Michigan
Home Economics



JUDITH A. JENKINS
Maryville, Tennessee
Elementarie Education



KAREN E. KEEN
Chattanooga, Tennessee
Chemistrie



LINDA J. KEYEES
Maryville, Tennessee
Sociologie



DIANE M. KLINE
Pittsburgh, Pennsylvania
Elementarie Education



REBECCA B. KOZA
Dothan, Alabama
German, French



ELLEN L. LANKENAU
Dumont, New Jersey
Health an' Physical Education



G. STEPHEN LAVERE
Union, New Jersey
Historie



J. ANN LAYMAN
Milwaukee, Wisconsin
Sociologie



SUSAN J. LAYMASTER
Waverly, Ohio
Art Education

ELIZABETH P. LENDER
Bloomfield, New Jersey
Elementarie Education

CHRISTINE LIM
Bangkok, Thailand
Chemistrie

THOMAS M. LLEWELLYN
St. Petersburg, Florida
Organ

STANFORD W. LONG
Alcoa, Tennessee
Political Science





HUGH S. McCAMPBELL
Knoxville, Tennessee
Biology



MICHAELA D. McCROSKEY
Walland, Tennessee
Foreign Languages



DENNIS C. MCGOWAN
Pataskala, Ohio
Health an' Physical Education



JEPPY A. McNABB
Loudon, Tennessee
Physics



ELIZABETH A. MAHLER
Nashville, Tennessee
Music



RICHARD J. MARSHALL
Wilmington, Delaware
Economics an' Business Administration



Keep smilin', Louise! There are onlie eight mair blocks.

SARA A. MASON
Lewisburg, Tennessee
English

CHARLES W. MEEKER, JR.
Roselle, New Jersey
Piano

MARTHA E. MILLER
Columbus, Ohio
Elementarie Education

PAUL H. MILL N
East Hickory, Pennsylvania
Political Science





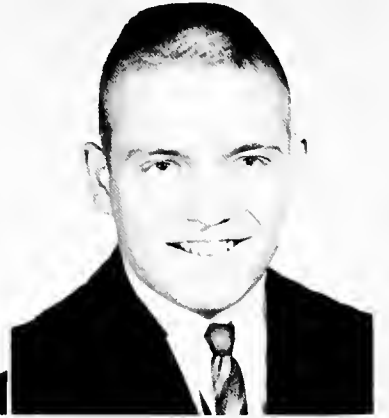
ANNABELLE MINEAR
Coral Gables, Fla.
Elementarie Education



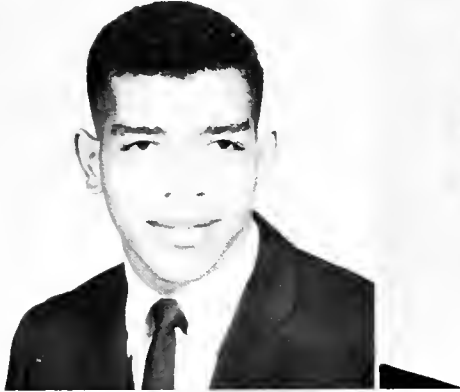
JOHN C. MULHOLLAND
Youngstown, Ohio
Chemistrie



NANCY JAYNE MULLER
Clifton, New Jersey
Elementarie Education



JACK A. MULLINS
Harriman, Tennessee
Health an' Physical Education



JOHN O. NOEL, III
Bronx, New York
Historie



ROSALIE L. ORCUTT
Phoenixville, Pennsylvania
Elementarie Education



SARA J. PARKER
Erie, Pennsylvania
Art



AUDREY D. POORE
Maryville, Tennessee
Sociologie



DAVID R. POWELL
Folsom, Pennsylvania
English



DORIS J. PRICE
Knoxville, Tennessee
Art

J. SHEPRY PROFFITT
Maryville Tennessee
English

JAMES W. PRYOR
Knoxville, Tennessee
Health an' Physical Education

THEODORE D. PUTNAM
Hazelwood, North Carolina
Chemistrie

RICHARD B. REED
Trenton, New Jersey
Health an' Physical Education





KEITH M. RENNE
Bala-Cynwyd, Pennsylvania
English



E. JEAN REYNOLDS
Canonsburg, Pennsylvania
Art



MARY F. RICKLOFF
Hamburg, New York
Bible an' Christian Education



ROY L. RIES
Levittown, Pennsylvania
Bible an' Christian Education



Uh, Oh! John, I ken I'm gang to laugh.



ELIZABETH L. ROBINSON
Loveland, Ohio
Sociologie



FLORENCE M. ROLLWAGEN
Ridgewood, New Jersey
Biologie

JANIS M. ROSE
Milton, Massachusetts
Sociologie



HELEN E. RYAN
Louisville, Kentucky
Political Science



J. DALE SCHELLENGER JR.
Gurnee, Illinois
Historie



ROBERT E. SCHULTZ
Maryville, Tennessee
Mathematics





FAITH A. SCOTCHMER
St. Louis, Missouri
English



CHRISTINE E. SCOTT
Philadelphia, Pennsylvania
Psychologie



HENRY W. SEITZ
Johnstown, Pennsylvania
Political Science



MARGARET E. SHAKLEE
South Norwalk, Connecticut
English



MICHAEL A. SHAVER
Blountville, Tennessee
Music Education



J. THOMAS SHOWALTER
Maryville, Tennessee
Historie



SANDRA S. SHOWALTER
Maryville, Tennessee
Elementarie Education



LEWRIGHT B. SIKES
Murfreesboro, Tennessee
Historie



MARY M. SIMPSON
Smithfield, Kentucky
Psychologie



JUDITH C. SIVER
Hackensack, New Jersey
Art Education

SUSAN E. SOBER
Louisville, Kentucky
Psychologie

BETTY LOU SOCHOCKY
Atlantic City, New Jersey
Political Science

JANE F. STAPP
Maryville, Tennessee
Elementarie Education

O. REED TARWATER
Maryville, Tennessee
Chemistrie





CELIA C. TIFFANY
Muncie, Indiana
Mathematics



SARAH E. TOMPKINS
Lexington, Kentucky
Music



CAROLYN R. TURNER
Newport, Tennessee
Elementarie Education



CORLISS D. VOGEL
Cranford New Jersey
Elementarie Education



EILEENE P. WAGNER
Springfield, New Jersey
Elementarie Education



OLIVER K. WILLIAMS, III
Berea, Ohio
Biologie



MARY ANN WILSON
Bloomington, Illinois
Bible an' Christian Education



Aye, Mither, I ken you tauld me nae to gie grass stains on my dress.

MARJORIE C. WISMER
Port Huron, Michigan
Home Economics

W. LUPTON WOOD, JR.
Yadkinville, North Carolina
Historie

DANA S. WYMAN
Maryville, Tennessee
Art

MARY LEE ZORB
Butler, Pennsylvania
Bible an' Christian Education





Dave Alexander, President; Don Story, Vice-President; Patsy Eby, Secretary-Treasurer.

Junior Class Officers

Challenge 'n' responsibility—nae rest for the wearie . . . Homecomin's "Stock 'em Scots" . . . Soph-Junior-Senior dance . . . Men's resident assistants (?) . . . "The Mouse That Roared" . . . Independent Studies begun—th' year o' th' 3x5 index card . . . millions o' daisies (a' i' a chain) . . . th' yearbook o' memories—activities for a busie, ambitious Class o' 1967.



First Row:

FRED ABRAMOFF Philadelphia, Pennsylvania
 J. DAVID ALEXANDER Knoxville, Tennessee
 NANCY L. ALLEN Corryton, Tennessee
 THOMAS N. ALLEN Closter, New Jersey
 KENNETH E. ARENTSON Houston, Texas

Second Row:

DAVID P. ARMENTROUT Knoxville, Tennessee
 NANCY L. ARN Johnson City, Tennessee
 JOHN S. ATCHLEY Ft. Lauderdale, Florida
 ELEANOR BABINGTON-JOHNSON, Knoxville, Tennessee
 JOHANN C. BEALL Severna Park, Maryland

Juniors

Third Row:

MARVIN R. BEARD Millington, Tennessee
 DAVID R. BERRY Maryville, Tennessee
 JANET L. BOGLE Oak Ridge, Tennessee
 MALCOLM V. BRANNER Maryville, Tennessee
 JAMES M. BRECKENRIDGE Decatur, Alabama

Fourth Row:

KATHERINE A. BROWN McLean, Virginia
 PATRICIA A. BROWN Winter Park, Florida
 JOYCE L. BRYAN Washington, New Jersey
 MARSHA A. BURKHART Memphis, Tennessee
 MARILYN L. CALDWELL Decatur, Georgia





First Row:

DONNA R. CIEPLY Utica, New York
 JOSE A. COBAS, III Rio Piedras, Puerto Rico
 FLORENCE D. CORBETT St. Petersburg, Florida
 REBECA E. CRUZ-ALVAREZ Miami, Florida
 M. ELIZABETH CURRIE . . . Greensboro, North Carolina

Second Row:

THOMAS S. DICKSON St. Petersburg, Florida
 SUE F. DONALDSON Miraj, India
 ELIZABETH A. DORAN Cookeville, Tennessee
 F. CHARLES DOSCHER Merrick, New York
 H. RAYMOND EATON Wyalusing, Pennsylvania

Juniors

Third Row:

PATSY L. EBY Ocean City, Maryland
 FRANK M. EGGERS, II Maryville, Tennessee
 WILLIAM K. EVAUL Banner Elk, North Carolina
 K. JEAN FERGUSON Bryson City, North Carolina
 MARTHA I. FRAZIER Knoxville, Tennessee

Fourth Row:

PAMELA C. FREDRICKSON . . . Dravosburg, Pennsylvania
 SABRA L. GALBRAITH Concord, Tennessee
 SUZANNE C. GAMSBY Hammondsport, New York
 SUE C. GASTON Lake Wales, Florida
 NANCY G. GILLINGHAM Short Hills, New Jersey





First Row:

CHARLES C. GILMORE Maryville, Tennessee
 BARBARA A. GOODE Indianapolis, Indiana
 JEANNE R. GRAHAM Youngstown, Ohio
 JOHN A. GRAHAM Youngstown, Ohio
 FRANK N. GREADY South Lyon, Michigan

Second Row:

ELLEN C. HAMLETT Nashville, Tennessee
 JUDY A. HANNAH Horsham, Pennsylvania
 DAVID C. HARRIS Amarillo, Texas
 ROBERT L. HART Enid, Oklahoma
 INGRID B. HELLMER Lynnfield, Massachusetts

Juniors

Third Row:

KATHARINE L. HINGER Alexandria, Virginia
 JEFFREY N. HINKLE Pluckemin, New Jersey
 KENNETH R. HITCHENS Warminster, Pennsylvania
 STEPHEN R. HODGSON Oxon Hill, Maryland
 SARA V. HUMPHRIES Birmingham, Alabama

Fourth Row:

DAVID P. HUTCHISON Scranton, Pennsylvania
 GAIL L. IGO Allison Park, Pennsylvania
 IBBIE A. JACK Knoxville, Tennessee
 I. PATRICIA JOHNSON Jacksonville, Florida
 KEITH E. JONES Pottstown, Pennsylvania





First Row:

ZETA E. JONES Bristol, Tennessee
 VIMOL JOTIKASTHIRA Bangkok, Bangkok, Thailand
 CAROL L. KAUFMANN North Hills, Pennsylvania
 JOHN A. KERR, JR. Maryville, Tennessee
 MARTHA A. LAFFERTY Claymont, Delaware

Second Row:

FRANCES J. LANTZ Powell, Tennessee
 FRANKLIN LATHAM Louisville, Mississippi
 ALICE B. LEETH Lebanon, Tennessee
 SALLY S. LINCK Richmond, Virginia
 DAVID E. LINEBAUGH Struthers, Ohio

Juniors

Third Row:

OSWALDO A. LOPEZ Pittsburgh, Pennsylvania
 CHRISTINE L. LUNDSTEDT Pocomoke City, Maryland
 MARY JO McCONEGHY Bethesda, Maryland
 SANDRA L. McMAHAN Maryville, Tennessee
 MARGARETTE V. MAHON Knoxville, Tennessee

Fourth Row:

JOSEPH J. MALLOY, JR. Loudon, Tennessee
 MARGARET J. MALONE Fernandina Beach, Florida
 EDNA J. MANTZ Clinton, Tennessee
 ROBERT E. MARINO Colonia, New Jersey
 CAROL R. MATHIAS Long Island, New York





First Row:

KRISTIN V. MATTSON . . . Falls Church, Virginia
 KARL W. MILLER . . . Dover, New Jersey
 MARGARET LEE MOFFETT . . . Oyster Bay, New York
 VALINDA J. MONDUL . . . Miami, Florida
 HAZEL C. MYERS . . . Columbus, Ohio

Second Row:

BARBARA A. NEAD . . . Richmond, Indiana
 PAULA E. NELSON . . . Miami Springs, Florida
 ALFRED F. NELSON, JR. . . Ft. Lauderdale, Florida
 DAVID L. OAKES . . . Syracuse, New York
 PATRICK C. O'BRYAN . . . Norfolk, Virginia

Juniors

Third Row:

CAROLINE OSIKOWICZ . . . Mount Clemens, Michigan
 LINDA A. PALMER . . . Stamford, Connecticut
 JOAN L. PAUL . . . Lexington, Kentucky
 MIRIAM L. PETERSON . . . Hampton, Virginia
 CHARLES L. PETZE, III . . . New Castle, Delaware

Fourth Row:

MEREDITH A. PIERCE . . . Rehoboth Beach, Delaware
 JOYCE A. PIGGE . . . Mt. Vernon, Illinois
 W. HAROLD PORTER . . . Columbus, Mississippi
 RONALD L. PRITTS . . . Canonsburg, Pennsylvania
 GINGER L. PROFFITT . . . Alcoa, Tennessee





First Row:

CAROL E. PUSEY Allison Park, Pennsylvania
 DAVID P. RAMSEY Beaver Falls, Pennsylvania
 MARILYN K. RANKIN Nashville, Tennessee
 CORNELIA M. REYNOLDS North East, Maryland
 CHARLES D. RIDINGS Walland, Tennessee

Second Row:

REVA J. ROARK Alexandria, Virginia
 RICHARD L. ROWETT Newton, New Jersey
 WILLIAM J. RUMSEY Dover, New Jersey
 DOROTHY L. SANBURY Springfield, Virginia
 KATHERINE L. SCHUSSLER Houston, Pennsylvania

Juniors

Third Row:

DAVID L. SEELEY Thompsonville, Connecticut
 EDWARD D. SMITH Alcoa, Tennessee
 JAYNE C. SMITH Bel Air, Maryland
 REBECCA SMITH Ft. Leonard Wood, Missouri
 DAVID SMOOK El Dorado Springs, Missouri

Fourth Row:

E. WAYNE SOUTH Phillipsburg, New Jersey
 DAVID L. SPENCER Cleveland, Tennessee
 JAMES E. STOCKBURGER Oak Ridge, Tennessee
 DONALD W. STORY Maryville, Tennessee
 J. SHELBY SULLIVAN Owensboro, Kentucky





First Row:

TERRY D. SYBRANT Newark, California
 WILLIAM E. TALMAGE San Francisco, California
 JUDY K. TEMPLETON Kingsport, Tennessee
 DAVID G. TERRILL Bethesda, Maryland
 ELAINE A. THOMAS Annemanie, Alabama

Second Row:

JOSEPH E. THOMAS Birmingham, Alabama
 BARBARA J. TURPIN Evansville, Indiana
 HEATHER J. VANDYKE Niles, Michigan
 FRED R. VANHARTESVELDT Lakeland, Florida
 W. JERRY WEEKS Knoxville, Tennessee

Juniors

Third Row:

VIRGINIA M. WELLS Silver Spring, Maryland
 MARGARET A. WILLIAMS Middletown, Pennsylvania
 CATHERINE L. WISSLER Suffern, New York
 JOHN G. WOLFE, III Baldwinsville, New York
 RACHEL A. WOOD Hammonton, New Jersey

Fourth Row:

MAREN J. WRIGHT Gurnee, Illinois
 SUZANNE A. WYMAN Maryville, Tennessee
 ROBERT A. YOUNG, JR. St. Petersburg, Florida





Cole Piper, Vice-President; Barbara Roberts, Secretary-Treasurer; Scrib Messenger, President.

Sophomore Class Officers

Back for another guid year . . . Is tha' a genie wi' a crista' ba'? (Wha' a pep rallie!) . . . freshman-sophomore picnic . . . Hamecomin' Parade—"Guillotine Guilford" . . . student mixer after the Mars Hill game . . . "Oklahoma"—a huge success . . . sophomore 'cheerin' competition . . . a year o' memorable activities for th' Class o' 1968.



First Row:

JOHN R. AGNEW Wayne, Pennsylvania
 DAMRONGBHORN AMATAYAKUL Bangkok, Thailand
 MARTHA E. ANDERSON McDonald, Pennsylvania
 SUSAN E. ANDERSON Oak Ridge, New Jersey
 SARAH V. BABELAY Knoxville, Tennessee
 HELEN G. BEATTY Covington, Ohio
 NANCY R. BENNETT Miami, Florida

Fourth Row:

SUSAN J. CARR Medford, Massachusetts
 JANCHAI CHANGTRAKUL Bangkok, Thailand
 ROBERTA M. CHESNEY Charleston, West Virginia
 DEAN E. CLARK Glen Ellyn, Illinois
 PATRICIA A. CLENDENEN Knoxville, Tennessee
 TRUDY K. COCHRAN Maryville, Tennessee
 CAROL B. COCKE Memphis, Tennessee

Second Row:

EDWIN J. BEST, JR. Maryville, Tennessee
 WILLIAM C. BIRCH Cincinnati, Ohio
 KATHLEEN M. BISHOP Stuttgart, Germany
 RUTH A. BLACK Chattanooga, Tennessee
 WILLIAM H. BLACKWOOD Manchester, New Hampshire
 SANDRA K. BOATMAN Knoxville, Tennessee
 CAROLYN E. BOAZ Newton, New Jersey

Sophomores

Third Row:

ROBERT J. BODNAR Hamburg, New Jersey
 DONALD L. BRACKBILL Jamesburg, New Jersey
 JOHN W. BRAYMER Pittsburgh, Pennsylvania
 RUSSELL J. BRIGHT Madison, Wisconsin
 J. VICTOR BROWN, JR. Maryville, Tennessee
 MERRY L. BURLINGHAM Deerfield Beach, Florida
 JOHN T. CAMPBELL Turtle Creek, Pennsylvania

Fifth Row:

AUDREY J. COUSART Lansdowne, Pennsylvania
 CYNTHIA A. COWGILL McLean, Virginia
 HARVEY C. CRABTREE Loudon, Tennessee
 ETHEL C. CUBBIN Rydal, Pennsylvania
 MARGARET S. DAVIS St. Augustine, Florida
 MARILYN DAVIS Brooklyn, New York
 KATHY H. DOANE West Yarmouth, Massachusetts





First Row:

DANIEL E. EIDSON Maryville, Tennessee
 THOMAS L. ELLIS Maryville, Tennessee
 ANITA I. EMERICK Greenfield, Ohio
 RONALD A. FAGAN Tullahoma, Tennessee
 JAMES M. FAN San Jui, Castle Peak, Hong Kong
 PATRICIA E. FELLER Denville, New Jersey
 MARY JANE FINKE Murphysboro, Illinois

Third Row:

I. EARNEST GREENO Sarasota, Florida
 CHERYL S. HALEY Dickinson, Texas
 DIANE K. HALL Richmond, Indiana
 ELIZABETH A. HALL Silver Spring, Maryland
 ROBERT J. HANNA Somerville, New Jersey
 WANDA G. HANNAH Maryville, Tennessee
 WILLIAM E. HARMON Maryville, Tennessee

Sophomores

Fourth Row:

DAVID HARRIS, II Trenton, New Jersey
 PATRICIA H. HARVEY Florence, Alabama
 JAMES B. HECK Baltimore, Maryland
 ROBERT W. HEDGES Madison, New Jersey
 H. CRAIG HELLER Stroudsburg, Pennsylvania
 JOHN R. HENDERSON, JR. Glenshaw, Pennsylvania
 JOSEPH W. HENRY Alcoa, Tennessee

Second Row:

JAMES E. FORT Plainfield, New Jersey
 DOUGLAS A. GAMBLE Maryville, Tennessee
 CARL W. GEHMAN, JR. Quakertown, Pennsylvania
 LINDA A. GIESSELMANN Oakland, New Jersey
 MARYBETH GILLANDER Greeneville, Tennessee
 H. GAIL GOVE Vineland, New Jersey
 MARGARET E. GREEN Teaneck, New Jersey

Fifth Row:

JIM L. HOGUE Denver, Colorado
 CAROLYN A. HORTON Clinton, Tennessee
 JENNY L. JETT Maryville, Tennessee
 JUDY L. JOHNS Atlanta, Georgia
 MARIE E. JOHNSON Jacksonville, Florida
 A. TERESA JOSEY Smyrna, Georgia
 ALICE W. JUNKIN Taichung, Taiwan





First Row:

W. EUGENE KEELER Houston, Pennsylvania
 JANET L. KRAUSE Landenberg, Pennsylvania
 BETTY JO LEARY Orlando, Florida
 E. ANN LeFURGEY Elkin, North Carolina
 BARBARA J. LEWIS Owensboro, Kentucky
 LINDA V. LEWIS Westfield, New Jersey
 RONALD R. LUCAS Pittsburgh, Pennsylvania

Fourth Row:

SCRIBNER A. MESSENGER Bartlesville, Oklahoma
 DENISE MEURY West Trenton, New Jersey
 GARY R. MEYER Cincinnati, Ohio
 BETTY L. MILAM Orlando, Florida
 LAURIE J. MILLER Ft. McClellan, Alabama
 MARGARET A. MILLER Powell, Tennessee
 M. DAVIS MILLER, II Lexington, Kentucky

Second Row:

RALPH L. McCAMPBELL Knoxville, Tennessee
 LINDA J. McCLAIN Knoxville, Tennessee
 DOUGLAS B. McGRUTHER Wayne, New Jersey
 REBECCA A. McMILLAN Maryville, Tennessee
 LINDA C. McNAIR Birmingham, Alabama
 CHRISTINE C. MacCORMACK Jackson, Tennessee
 PATRICIA A. MacHARG St. Clair Shores, Michigan

Sophomores

Third Row:

PHYLLIS H. MacKINTOSH Baden, Pennsylvania
 H. RICHARD MAHLER, III Nashville, Tennessee
 MARGARET C. MANN Union, West Virginia
 KENNETH B. MARINE, JR. Maryville, Tennessee
 DANIELLE D. MARKLEY Cincinnati, Ohio
 DONNA C. MEADOWS Bradenton, Florida
 JERRY D. MELTON, JR. Maryville, Tennessee

Fifth Row:

BEVERLY N. MINEAR Coral Gables, Florida
 MARION E. MOFFETT Lexington, Indiana
 RICHARD W. MORDE Falls Church, Virginia
 MUFFET MOREHEAD Kingsport, Tennessee
 DEBORAH MOSES Tampa, Florida
 DONNA L. MOSS Garfield, Heights, Ohio
 JOHN A. MYERS Chattanooga, Tennessee





First Row:

J. PETER NEALE Memphis, Tennessee
 RICHARD E. NELSON Snow Hill, Maryland
 HOWARD A. NEWMAN Roslyn, Pennsylvania
 LOUIS R. NEWMAN Roselle Park, New Jersey
 ROBERT B. NICHOLAS Union, New Jersey
 PETER J. PARK Maryville, Tennessee
 B. ELANE PARKER Atlanta, Georgia

Third Row:

W. DOUGLAS PRICE Ashtabula, Ohio
 DAN R. QUARLES Canton, Georgia
 LYNN L. RAMSEY Maryville, Tennessee
 SANDRA L. RAPP Henderson, Kentucky
 BARBARA L. ROBERTS Maryville, Tennessee
 EDWARD B. ROBERTS, JR. Maryville, Tennessee
 META Y. ROBINSON Olive Branch, Mississippi

Sophomores

Fourth Row:

NANCY L. ROMINGER Lakewood, Ohio
 VIRGINIA C. ROSEBOROUGH Jacksonville, Florida
 SHIELDA Y. ROSS Knoxville, Tennessee
 H. LEE ROWLAND Strafford-Wayne, Pennsylvania
 SUSAN G. ROWLEY Orlando, Florida
 ANDREW D. RUHLIN Trenton, New Jersey
 NANCY P. RYAN Louisville, Kentucky

Second Row:

BETTY M. PATTERSON Alexandria, Virginia
 LINDA A. PAULSON Drexel Hill, Pennsylvania
 GEORGE G. PAXTON II Washington, Pennsylvania
 DON PAYNE, JR. Greeneville, Tennessee
 GARY L. PHILLIPS Decatur, Georgia
 A. COLEMAN PIPER Morrisville, Pennsylvania
 DAVID A. POLEY Philadelphia, Pennsylvania

Fifth Row:

REBECCA J. SANKNER St. Petersburg, Florida
 CHARLEEN J. SCHMIDT Livingston, New Jersey
 SUSAN C. SCOTT Philadelphia, Pennsylvania
 ISABEL L. SHELLEY Knoxville, Tennessee
 CHARLOTTE SHERROD Knoxville, Tennessee
 JEFFREY R. M. SKRINAR Lincroft, New Jersey
 BRUCE SMITH Collingswood, New Jersey





First Row:

DEE ANN SMITH Emerson, New Jersey
 MARTHA D. SMITH Wilmington, Delaware
 RICHARD R. STEVENSON Mercer, Pennsylvania
 DENNIS K. STEWARD Port Royal, Pennsylvania
 MARJORIE STEWART Salem, New Jersey
 DARRELL J. STOKER Columbia, South Carolina
 DANIEL F. STYLES Arlington, Virginia

Fourth Row:

SHERRY F. WOOD Cleveland, Tennessee
 DOROTHEA J. WOODALL Kingston, Tennessee
 BARBARA L. WOODWORTH Coral Gables, Florida
 RONALD A. WORSTELL Canonsburg, Pennsylvania
 THOMAS S. WYLIE Washington, Pennsylvania
 JEANNE A. YARRINGTON Glenside, Pennsylvania
 RICHARD G. YATES, JR. Oxford, Pennsylvania

Second Row:

RICHARD A. SULTZBACH Morrisville, Pennsylvania
 SUSAN E. TALMAGE Westmont, New Jersey
 JULIA A. TATE Bellbrook, Ohio
 ELIZABETH C. TRENT Hatboro, Pennsylvania
 KATHLEEN TROWBRIDGE Pittsburgh, Pennsylvania
 CAROL A. VANDEGRIFF Atlanta, Georgia
 LISBETH J. VINCENT Paulsboro, New Jersey

Sophomores

Third Row:

E. GAYLE WALKER Lebanon, Tennessee
 LAURIE A. WALLER Neenah, Wisconsin
 A. REBECCA WATSON Harlingen, Texas
 JANET L. WELLS Nashville, Tennessee
 J. STEPHEN WINTERMUTE Kansas City, Kansas
 PHYLLIS A. WOHLERS Livingston, New Jersey
 GEORGE V. WOOD Hammonon, New Jersey

Fifth Row:

KATHERINE YODER East Palestine, Ohio





Craig Rigell, President; Sandra Johnson, Secretary-Treasurer; David Welch, Vice-President.

Freshman Class Officers

Fu' o' spirit, pep, an' workers . . . th' "meetin'est" class on campus . . . experimental orientation an' P.D.A.!! . . . Rush Week, Facultie Reception, President's Reception, a plastered smile . . . second place Homecomin' float "Friendlie Persuasion" . . . Freshman Honaker Bowl pep rallie an' Barnwarmin' Booth . . . a band **par excellence** —The Great Mice . . . countin' days an' e'en hoors til holidays an' HOME . . . this, th' 150th class, hae foond an' come to luv its new home at Maryville College.



First Row:

KENNETH W. AINSLIE Memphis, Tennessee
 THOMAS V. ALDERSON Wilmington, Delaware
 KYLE C. ANDERSON Loudon, Tennessee
 LYNN V. ANTHONY Murray Hill, New Jersey
 SUE E. ANTHONY Maryville, Tennessee
 PETER C. ARMSTRONG Lake Wales, Florida
 CHARLES H. ASCHOFF Belvidere, New Jersey
 MARGARET E. AYRES St. Louis, Missouri
 WILLIAM E. BAIRD, JR. Claremont, California

Freshmen

Second Row:

DIANA L. BARNETT Spokane, Washington
 HELEN F. BARR Kingsport, Tennessee
 G. ALICE BARTON Maryville, Tennessee
 WILLIAM A. BATES Portland, Connecticut
 G. JEFFREY BEANE Paradise, Pennsylvania
 J. MACK BETTIS Memphis, Tennessee
 H. JANE BLANCHARD Chattanooga, Tennessee
 NANCY C. BOODY Norris, Tennessee
 PEGGY L. BORING Maryville, Tennessee

Fourth Row:

DAVID S. CHAMBLISS Chattanooga, Tennessee
 BRIAN H. CHILDS USNA Annapolis, Maryland
 BRUCE A. CHITTICK Buffalo, New York
 MICHAEL CHOMYK Wilmington, Delaware
 MARY C. CHRISTOFFERSON Maryville, Tennessee
 MARTHA A. CLABO Friendship, Tennessee
 CINDY L. CLYMANS Newville, Pennsylvania
 JACKIE M. COLYER Maryville, Tennessee
 WILLIAM W. COX Youngstown, Ohio

Third Row:

ROBERT B. BOSCO Belvidere, New Jersey
 NOREEN T. BOVIS North Springfield, Virginia
 KATHRYN A. BRIDGES Corinth, Mississippi
 WILLIAM E. BRISCOE Clinton, Tennessee
 GEORGE W. BROWN Harriman, Tennessee
 M. ALEXANDER BROWN Summit, New Jersey
 JANET S. BUNCH Morristown, Tennessee
 WILLIAM A. CAMPTON Glenside, Pennsylvania
 JANE C. CARD Hermitage, Tennessee

Fifth Row:

DAVID N. CRAWFORD Maryville, Tennessee
 DAVID G. CROFT Erie, Pennsylvania
 LEAH E. CROMER Winona Lake, Indiana
 ALAN G. CROPPER Wilmington, Delaware
 DAVID L. CURETON Washington, New Jersey
 CATHERINE M. CURRIE Decatur, Georgia
 TRAVIS M. CUTRIGHT Canonsburg, Pennsylvania
 DANA E. DASHER Miami, Florida
 NANCY J. DAVIDSON Huntsville, Alabama





Freshmen

Third Row:

WILLIAM H. EGGERS, JR. Maryville, Tennessee
 JOY A. EICHHORN Cincinnati, Ohio
 JANET S. ELLIS Chattanooga, Tennessee
 LAUREL M. ERSKINE Manchester, New Hampshire
 SAMMY W. FARIS Abilene, Texas
 SUSAN J. FERSHEE Carlisle, Ohio
 ROSLEEN FOSTER Plainfield, New Jersey
 SAMUEL B. GARNER Venore, Tennessee
 R. WHITIS GARRETT Bartow, Florida

First Row:

CHARLES M. DAVIES Waukesha, Wisconsin
 JOE M. DAWSON Maryville, Tennessee
 LEWIS A. DeLANO Snow Hill, Maryland
 STEPHEN DeLAPP Knoxville, Tennessee
 ERNEST A. DELLARIPA Philadelphia, Pennsylvania
 JAMES M. DeMONTIGNEY Mt. Holly, New Jersey
 SARAH L. DENNEY Watertown, New Jersey
 PHILIP DerPILBOSIAN Philadelphia, Pennsylvania
 JAMES K. DiCARLO San Francisco, California

Fourth Row:

MARK J. GILLESPIE Venetia, Pennsylvania
 ELLEN M. GOULD Biblia, Lolodorf, Cameroun, West Africa
 WALTER P. GRADY New York, New York
 SALLY P. GREEN Windsor Locks, Connecticut
 DOUGLAS M. GREENE Cincinnati, Ohio
 LINDA L. GREGG Scenery Hill, Pennsylvania
 E. MARGARET HAILSTONE Camp Lejeune, North Carolina
 M. CATHERINE HALLMAN Fort Valley, Georgia
 JUDY A. HANNAH Maryville, Tennessee

Second Row:

TERRY E. DORSETT Ashland, Kentucky
 JOHN C. DOWLING East Brunswick, New Jersey
 DIANA L. DRAKE Buffalo, New York
 L. LYNN DUKE Bartow, Florida
 LESLIE V. DUNSON Dayton, Ohio
 THOMAS W. DUXBURY West Orange, New Jersey
 NANCY S. EAKER Decatur, Alabama
 MAPTHA S. EDINGTON Knoxville, Tennessee
 C. SUE EDWARDS Cincinnati, Ohio

Fifth Row:

DAVID R. HARDY Long Valley, New Jersey
 STEVE B. HARDY Cincinnati, Ohio
 ROBERT L. HARNER, III Midwest City, Oklahoma
 CHARLES G. HILL BelAir, Maryland
 JEAN H. HOBSON Staunton, Virginia
 MARY E. HODGES Greenback, Tennessee
 AREERAT HONGSPAN Maryville, Tennessee
 LORRAINE HOTALEN Newton, New Jersey
 C. DIANE HOUSEHOLDER Knoxville, Tennessee





First Row:

GERUY C. HOWARD Maryville, Tennessee
 JUANITA G. HOWELL Maryville, Tennessee
 HENRY YUEH-FOO HSU Sao Paulo, Brazil
 SUSAN L. HULIT Billings, Montana
 GWEN K. HUMPHREYS Ewa Beach, Hawaii
 SANDRA S. HUNTER Burgettstown, Pennsylvania
 PAMELA D. HUSKEY Gatlinburg, Tennessee
 STEVE L. HUTSELL Maryville, Tennessee
 NANCY E. HYDE Maryville, Tennessee

Freshmen

Second Row:

ALFRED E. JABLONSKI Washington College, Tennessee
 CAROL L. JAMES Kettering, Ohio
 SANDRA L. JAMISON New Wilmington, Pennsylvania
 SANDRA L. JOHNSON Johnson City, Tennessee
 LINDA D. KEEBLE Alcoa, Tennessee
 SUSAN K. KETCHUM Dodgeville, Wisconsin
 FRANK L. KILGARD, JR. Coral Gables, Florida
 WALTER S. KINSELL Absecon, New Jersey
 KRISTINE KITTEL Tucker, Georgia

Fourth Row:

ELLEN A. LEIBROCK Newport, Tennessee
 JOYCE E. LEIBUNDGUTH Evansville, Indiana
 ANN S. LITTLE Jackson, Mississippi
 MARY LEE LORING Smithville, Tennessee
 ALIDA S. McARTHUR Maryville, Tennessee
 JUDITH K. McARTHUR Maryville, Tennessee
 KAREN J. McGILL Knoxville, Tennessee
 JOHN R. McLAUGHLIN Lutherville, Maryland
 MARK W. McMASTER Hellam, Pennsylvania

Third Row:

KAY E. KLIMSTRA Carbondale, Illinois
 FRANCIE L. KLINDT Knoxville, Tennessee
 ELLEN C. KNAPP Hatboro, Pennsylvania
 ROBERT J. KUSEK Homestead, Pennsylvania
 REBECCA A. LAGLE Bradenton, Florida
 BRENDA K. LAIPPLY Mansfield, Ohio
 GORDON A. LAKE McGuire A.F.B., New Jersey
 RICHARD L. LAMBERT Maryville, Tennessee
 KENNETH S. LANDRETH Marion, Virginia

Fifth Row:

SUSAN M. MacKENZIE Wynnewood, Pennsylvania
 LESLIE E. MAHAFFEY Memphis, Tennessee
 JOHN J. MAIETTA, JR. Morristown, New Jersey
 M. CARROLL MANLEY Maryville, Tennessee
 MERRILY MANN Atlanta, Georgia
 MIKE J. MARLOWE Chattanooga, Tennessee
 ALAN T. MARSHALL Wilmington, Delaware
 THOMAS G. MARSTON Wyncote, Pennsylvania
 ARTHUR S. MASKER Pleasantville, New Jersey





Freshmen

Third Row:

JEFFREY L. PENNY Mansfield, Ohio
 MICHAEL R. PEPPER Harrison, Ohio
 RUTH A. PETERSON Hampton, Virginia
 ROBERT B. PHILLIPS Levittown, Pennsylvania
 G. KERN PISER Smyrna, Delaware
 CELIA D. POTH Perrysville, Ohio
 SUSAN K. POWERS Vineland, New Jersey
 PRAON PRADIPASEN Maryville, Tennessee
 LILLIAN L. PROFFITT Maryville, Tennessee

First Row:

WILLIAM G. MATHIESON St. Louis, Missouri
 DAVID B. MAXWELL Delaware, Ohio
 DONNA J. MAYNARD Maryville, Tennessee
 PETER A. MOFFETT Lexington, Indiana
 MARTHALYNN MONROE Roseland, New Jersey
 JAMES C. MOORE, JR. Philadelphia, Pennsylvania
 JIM R. MULLENDORE Paris, Missouri
 KATHLEEN L. MUSGRAVE Stillwater, Oklahoma
 AMBER L. MYERS Townsend, Tennessee

Fourth Row:

SHARON A. PUSEY Allison Park, Pennsylvania
 DIANE E. REED Oak Park, Illinois
 LINDA J. REIFENKUGEL Brooklyn, New York
 JOYCE B. REIMERS Philadelphia, Pennsylvania
 PAUL T. REITER Miami, Florida
 WILLIAM F. REMENSCHNEIDER Rochelle Park, New Jersey
 ANN E. REYNOLDS Clearwater, Florida
 JAMES T. REYNOLDS Wallingford, Pennsylvania
 CRAIG D. RIGELL Baltimore, Maryland

Second Row:

CHARLES H. MYERS Hammonton, New Jersey
 LINDA L. NEEL Alliance, Ohio
 KATHLEEN R. NELSON Seattle, Washington
 MARCIA A. NEWLIN Charlotte, North Carolina
 STEPHANIE J. NOWAKOWSKI Knoxville, Tennessee
 ALICE M. ORMAN Knoxville, Tennessee
 SHARON L. OWINGS Plainfield, New Jersey
 MARY E. PADDISON Memphis, Tennessee
 SUSAN D. PAPPER Wheeler, A.F.B., Hawaii

Fifth Row:

DAVID H. RONCO Springfield, New Jersey
 MARY LEE ROSEBOROUGH Jacksonville, Florida
 JUNE M. ROSTAN Valdese, North Carolina
 ROBERT D. ROTHROCK Bergenfield, New Jersey
 CHARLES L. RUMFORD Colwyn, Pennsylvania
 LINDEN H. ST. CLAIR Gladwyne, Pennsylvania
 ROBERT L. SAMMONS Dayton, Ohio
 GEORGE C. SCHNITZER Clark, New Jersey
 SARA J. SCHUG Covington, Louisiana





First Row:

MARY JANE SCHUSSLER Houston, Pennsylvania
 KAREN L. SCHWARZWALDER New Providence, New Jersey
 SCOTT C. SEELEY Hobart, Indiana
 LINDA S. SHANLEY Elsmore, California
 HOPE SHIELDS Maryville, Tennessee
 SUSAN A. SIMONS Rabun Gap, Georgia
 CHARLES H. SLAYBAUGH Rising Sun, Maryland
 BRENDA J. SLOAN Walland, Tennessee

Freshmen

Second Row:

KATHLEEN S. SMITH Burgettstown, Pennsylvania
 NANCY L. SMITH South Hadley Falls, Massachusetts
 RICHARD T. SMITH Cleveland, Ohio
 STUART H. SMITH Miami, Florida
 J. DELZIA SNYDER Knoxville, Tennessee
 JAMES A. STAIANO Califon, New Jersey
 BARBARA A. STEPHENSON Kettering, Ohio
 JOSEPH D. STEVENS Beaver Falls, New York
 N. SUZANNE STONE Shelbyville, Tennessee

Fourth Row:

NANCY S. VANN Miami, Florida
 HENRY B. VAN SANT Hulmeville, Pennsylvania
 KENNETH S. VERHEECK Hackensack, New Jersey
 D. SUE VEST Knoxville, Tennessee
 CHERYL F. VINCELL Lawrenceburg, Kentucky
 CAROL A. VOLK Alcoa, Tennessee
 JERRY L. VORNBERGER Columbus, Ohio
 ALICE E. WEAVER Loudon, Tennessee
 MARJORIE J. WEBB Maryville, Tennessee

Third Row:

SUE A. SULLIVAN Clearwater, Florida
 LINDA S. TAYLOR Maryville, Tennessee
 STEPHEN W. TAYLOR St. Petersburg, Florida
 W. DAVID THRALL Indianapolis, Indiana
 MELODY J. THURMAN Cincinnati, Ohio
 FRANK TIDIKIS Bridgeport, Pennsylvania
 VIRGINIA C. TIFFANY Muncie, Indiana
 KENNETH A. TRINTER Bernardsville, New Jersey
 JACQUE R. TUCKER Memphis, Tennessee

Fifth Row:

DAVID L. WELCH Cincinnati, Ohio
 L. ANN WHITE Huntsville, Alabama
 PATRICIA D. WILKE Columbus, Ohio
 TIMOTHY B. WILSON Eighty Four, Pennsylvania
 W. FRANKLIN WILSON Collingswood, New Jersey
 JANICE E. WINKLER Fort Thomas, Kentucky
 M. DIANE WOOD Yadkinville, North Carolina
 W. SCOTT WOOD, III APO San Francisco, California
 JOHN KEE-CHUN YUEN Sao Paulo, Brazil



Senior Directorie

- CUNTON ODIS ABBOTT JR., Morganton Rd., Friendsville, Tenn. Major: Health an' Physical Education. Football (Letterman, Co-captain), Wrestling (Letterman).
- ARCHIE HOUSTON ANDEPSON, Morganton Rd., Maryville, Tenn. Major: Health an' Physical Education. Football (Letterman).
- TERRY LEROY AMON, 11 Bartell Place, Clark, N. J. Major: Economics an' Business Administration. Kappa Phi (Secretary), MSC Council (Secretary-Treasurer, President), YMCA, **Echo**, Social Committee, Student Faculty Senate, Student Council, Barnwarmin', Track (Letterman).
- EDWARD KEITH BAILEY, Rt. No. 2, Maryville, Tenn. Major: Health an' Physical Education. Football (Letterman).
- EENA MAE BEATTY, 105 E. Wright St., Covington, Ohio. Major: Elementary Education. SNEA, YWCA, UCCF (Campus Life Comm.), Band, Orchestra, Messiah, Sophomore Aide, Intramurals.
- ERIC LLEWELLYN BERGMAN, 221 Arcadia Dr., Champaign Ill. Major: Historie, Alpha Sigma, UCCF, **Chilhowean** (Faculty Editor), Wrestling, Intramurals, Senior Class Vice-President.
- JAMES EDWARD BERNARD, 18 Madison Av., Batavia, N.Y. Major: Psychology. Alpha Sigma, Psi Sigma Mu, Choir, Messiah, Intramurals.
- JANICE KAY BEST, Rt. No. 1, Friendsville, Tenn. Major: Mathematics. Chi Beta, YWCA, UCCF, Sophomore Aide, Messiah, Senior Class Secretary-Treasurer.
- MAPCIA JEANNE BISHOP, Bldg. 6-A-8 Kelley Barracks, Moringen, Stuttgart, Germany. Major: Elementary Education. Theta Epsilon (Athletic Co-chairman), WAA (Council, Publicitie Comm.), SNEA.
- SUE ANNE BLAIR, 126 Nevada Cr., Oak Ridge, Tenn. Major: English. **Echo**, Messiah.
- JANE LOUISE BRENCKMAN, 271 E. 5th Ave., Roselle, N. J. Major: English. Chi Beta, SNEA, Vesper Choir (Tour), Messiah, Playhouse, **Chilhowean**, **Echo**, Secretary—Lloyd Hall.
- SANDRA ELIZABETH BRIGGS, R. D. No. 1, 259B, Washington, Penn. Major: Chemistry. Theta Epsilon, American Chemical Societie (Secretary), B. G. (Initiation Chairman), YWCA, Nu Gamma, UCCF, WSGA, Band, Messiah, **Echo**, **Chilhowean** (Senior Editor), Intramurals, Pearsons' House Chairman, Elizabeth Hillman Chemistry Award, Petroleum Research Grant in Organic Chemistry, **Who's Who**.
- ELIZABETH REBECCA BROWN, Box 372, Harriman, Tenn. Major: Elementary Education. Chi Beta (Program Chairman, Treasurer), YWCA, UCCF, SNEA (Vice-President), Student Council (Social Comm., Chairman, Secretary-Treasurer, Pep Comm., Publicitie Comm., Academic Comm.), Loyd Residence Vice-House Chairman (Social Comm.), **Echo** (Asst. Business Manager), **Chilhowean**, Barnwarmin' Sponsor, Homecomin' Court, Playhouse, Messiah, **Who's Who**.
- STEPHEN MASON BROWN, 2807 Pruden Dr., Knoxville, Tenn. Major: Organ. Campus Life.
- CAROLE GRACE BROWNLEE, Box 66, Argyle, N. Y. Major: English. Chi Beta (Athletic Chairman, Chapter Chairman), YWCA, WAA, WSGA (Town Night Comm.), UCCF, Orchestra, Pearsons' Secretary, **Echo** (Feature Editor, Exchange Editor, News Editor, Editor-in-Chief), **Who's Who**.
- BARBARA JEAN BULLARD, 3935 Terrace, Kansas City, Mo. Major: Sociology. Chi Beta, YWCA (Program Comm.), UCCF, WSGA, Messiah, Nu Gamma, **Echo** (Feature Editor, News Editor), Intramurals.
- CATY RUTH BURCH, Rt. 8, Maryville, Tenn. Major: Economics. YWCA, Band, Playhouse, Human Relations Comm.
- RONALD BRIAN CHEEK, 805 S. 10th St., Richmond, Ind. Major: Economics an' Business Administration. Kappa Phi, Circle K, YMCA, **Chilhowean**, Intramurals, Resident Assistant.
- SANDRA RAYE CHITTICK, 5 Belmont Dr., Buffalo, N. Y. Major: Historie. Theta Epsilon, Pi Delta Phi (President, Vice-President), International Relations, UCCF, American Chemical Societie, Nu Gamma, **Echo** (Feature Editor), **Chilhowean**, Human Relations Comm., Intramurals, **Who's Who**.
- KENNETH LESTER CHRISTY, Rt. 3, Box 30, Lutz, Fla. Major: Historie. MSC, Playhouse, Football (Letterman).
- ARDIS LOUISE CHUBB, 3809 Ventnor Ave., Apt. No. 5, Atlantic City, N. J. Major: Elementary Education. Theta Epsilon, SNEA, Student Council (Projects Comm.), Women's Choir, Vesper Choir, Messiah, Playhouse, Talent Show, Intramurals.
- RICHARD CHARLES CLEASBY, 500 Westward Dr., Miami Springs, Fla. Major: Bible an' Christian Education. Alpha Sigma, UCCF (Social Comm., Special Education Teacher).
- WILLIAM O. COVERT, 1309 Parkview Dr., Macomb, Ill. Major: Mathematics. Alpha Sigma (Treasurer), Intramurals.
- BRENDA CHERYL COX, Rt. 1, Louisville, Tenn. Major: Elementary Education, SNEA.
- LOUISE ADELINE CRAWFORD, 720 Washington, Maryville, Tenn. Major: English. Chi Beta (Rush Week), Alpha Gamma Sigma (President), WSGA (Coordinatin' Council, Secretary-Treasurer, President), YWCA, Student Council, Band (Treasurer), Theater, Baldwin Secretary, Baldwin House Chairman, **Echo**, Sophomore Aide, Nu Gamma, Daisie Chain, Student-Facultie Senate, Homecomin' Court, Alpha Gamma Sigma Award, **Who's Who**.
- MICHAEL ROY DALTON, Walland, Tenn. Major: Mathematics. Football (Co-captain, Letterman), Basketball (Letterman), Track (Letterman), **Who's Who**.
- H. KATHERINE DENOW, 1627 Eighth St., Trenton, N. J. Major: Biologie. Theta Epsilon, BSU, UCCF, Beta Beta Beta (Secretary), Christian Vocation Comm., International Relations Comm., Messiah, Biologie Seminar.
- GEORGE HENRY DERBYSHIRE, III, West Nottingham, Colora, Md. Major: Economics an' Business Administration. Alpha Sigma (President), Circle K, Football (Letterman).
- ADAM CALHOUN DEVENEY, 140 Essex Ave., Lansdowne, Pa. Major: Mathematics. Kappa Phi (Treasurer), Messiah, Sophomore Class Vice-President, Float Comm., Chairman, Soccer (Co-captain), Wrestling (Letterman, 4th place SEC 1963), Asst. Proctor East Tenn. Math. Contest, 2nd Lt., USMC.
- HAZEL LEE DEWEESE, 138 Fifth Ave., Montomery, W. Va. Major: Elementary Education. Chi Beta, UCCF, SNEA, Band, February Meetings Comm., Five Heps, House Council, Nu Gamma, Women's Choir, Messiah.
- EUGENE BOONE DIXON, Rt. 8, Edgewood Acres, Maryville, Tenn. Major: Health an' Physical Education. Alpha Sigma, Intramurals, Student Intramural Athletic Director, Football, Wrestling (Letterman, Captain).
- SARAH ANNE DOERSCHUK, 928 Hawkinson, Galesburg, Ill. Major: Psychology. Chi Beta (Initiation Chairman, Program Chairman, President), Psi Sigma Mu (Psychologie Seminar), Women's Choir.
- JEAN ALICE DONOHUE, Box 562, Wellfleet, Mass. Major: Elementary Education. SNEA.
- ROBERT BLAIR DUNSMORE, 804 S. Tuttle Ave., Sarasota, Fla. Major: Sociologie. Alpha Sigma, Soccer.
- GARY JAMES DUTTON, Rt. 2, Loudon, Tenn. Major: Historie. Football (Letterman), Baseball (Letterman).

DAVID RICHARD DYE, R. D. No. 2, Cranbury, N. J. Major: German, Kappa Phi, Soccer, Intramurals.

DAVID JERALD ELLISON, 1820 Barbeck St., Philadelphia, Pa. Major: Historie, Kappa Phi, UCCF (Vice-President), Key Men, Inter Societie Council, Artist Series Comm., Intramurals, **Who's Who**.

WILLIAM SHAFER ERWIN, JR., 322 N. Washington, Du Quoin, Ill. Major: Historie, Kappa Phi (Program Chairman), Circle K, Pi Gamma Mu, Student Council (Elections Comm.), UCCF (Vice President, President), YMCA, **Echo** (Business Manager), Key Men, Freshman Class President, Intramurals, Sophomore Honors Program, Frederick Queener Historie Award **Who's Who**.

PHYLLIS ANNE EVAUL, Box 335, Banner Elk, N. C. Major: Elementary Education, Chi Beta (Rush Week), SNEA (Treasurer), YWCA, Nu Gamma Sophomore Aide, Orchestra, Playhouse, Messiah, Women's Choir, Barnwarmin', Intramurals, Daisie Chain, Baldwin House Council, Baldwin Floor Chairman, Lloyd Residence House Council, Lloyd Residence Floor Chairman.

ALLAN R. FIELDS, 33 Academy St., Presque Isle, Maine. Major: French, MSC, Vesper Choir, Men's Glee Club, Messiah, Playhouse, Intramurals.

BARBARA LOU FITCH, 33 Leland Ave., Plainfield, N. J. Major: Elementary Education, Chi Beta (Chapter Chairman), Theta Epsilon, SNEA, Inter Societie Council, Lloyd Residence House Council, Intramurals, Alpha Sigma Cupid.

FRANCES ANN FLEMING, Box 480, Rt. 2, Canton, N. C. Major: Elementary Education, Chi Beta, SNEA, WSGA, YWCA, UCCF, Women's Choir, Vesper Choir, Nu Gamma, Intramurals, Sophomore Aide, Messiah, Lloyd Residence House Council.

SUSAN KATHRYN FOREMAN, c/o Lt. Col. C. A. Foreman, Det. 1, 6499th Spt. Gp., APO San Francisco, Calif. Major: English, Chi Beta, SNEA, YWCA, **Echo**, Nu Gamma, Daisie Chain, Messiah.

ROY WAYNE FREY, 1016 Waverly St., Tarrant City, Ala. Major: Philosophie an' Religion, Kappa Phi, MSC, YMCA (Publicitie Chairman), UCCF (**Feedback** Co-editor), Circle K, Campus Mike, Vesper Choir, Key Men, Debate, Wrestling.

WILLIAM HOWARD GASS, 1025 Sterling Ave., Maryville, Tenn. Major: Mathematics, Kappa Phi, Town-Student Comm., Student Council (Elections Comm., Pep Comm.), Intramurals, Tennis (Letterman), Student-Facultie Student Center Planning Comm.

JAMES MAURICE GIFFORD, 324 Colonial Ave., Shelbyville, Tenn. Major: Historie, Kappa Phi (Rush Show), Intramurals, **Echo**, Elections Comm., 4 Year Scholarship.

LINDA DAVIS GRESHAM, 441 Glyndon St., Vienna, Va. Major: Health an' Physical Education, Chi Beta, WAA, M Club (Treasurer), **Chilhowean**, Cheerleader, Intramurals.

HELEN DOROTHEA GRIFFIN, 120 Inskip Ave., Ocean Grove, N. J. Major: Elementary Education, Chi Beta, SNEA (Vice-President, President), **Chilhowean**, Theater, Barnwarmin', Messiah, Women's Choir, Daisie Chain.

LOIS MARGARET GRINSTEAD, 1864 Berkshire Rd., Columbus, Ohio. Major: Bible an' Christian Education, Theta Epsilon, Chi Beta, WSGA (Vice-President), UCCF (Worship Comm., Chairman, Cabinet), Band, Vesper Choir, Theater, Student Council (Social Comm., Homecoming Comm., Pep Comm.), Nu Gamma, Sophomore Aide, Messiah, Senior Counselor, Band Sponsor.

MARGARET BLAINE GROSS, 610 43rd St., S. E., Charleston, W. Va. Major: Organ, Chi Beta, Tau Kappa Chi, YWCA, UCCF, Orchestra, Messiah, Vesper Choir.

MARGARET ALEXANDRA HAGGART, 320 Morris Ave., Inwood, N. J. Major: Political Science, Beta Beta Beta, Pi Delta Phi (Vice-President), **Echo**, International Relations Club, Human Relations Comm.

SYLVIA SUE HALDEMAN, 14063 Dumbarton Dr., Upper Marlboro, Md. Major: Historie, Chi Beta (Rush Tea Chairman), Pi Gamma Mu, YWCA (Program Comm.), UCCF (Communitie Service Comm.), Student Council (Projects Comm.), Women's Choir (Secretary-Treasurer), Messiah, Intramurals, Barnwarmin', Junior Class Secretary-Treasurer, Daisie Chain, **Echo**, **Chilhowean**.

GREGORY STEVEN HALLEN, 8713 Lakes Lane, Philadelphia, Pa. Major: Biologie, Kappa Phi (Treasurer, Pledge Chairman), Beta Beta Beta (President), Circle K, Student Council (Pep Comm., Homecoming Co-chairman), Intramurals, Track (Letterman).

MARGAPET LOUISE HAY, 703 Dunellen Ave., Dunellen, N. J. Major: Elementary Education, YWCA, UCCF, SNEA, Theater, Messiah.

DOROTHY ANNE HEISMEYER, 331 Elmore Ave., Elizabeth, N. J. Major: Elementary Education, Theta Epsilon (Program Chairman, Vice-President), SNEA, (Vice-President), Nu Gamma, **Chilhowean**, Messiah, Pep Comm., Daisie Chain.

JAMES HARVEY HENDEPSON, 308 Shoppe St., Maryville, Tenn. Major: Health an' Physical Education, Basketball (Letterman).

NANCY ROMINE HOOVEN, Dilts Corner Pk., Lambertville, N. J. Major: Elementary Education, Chi Beta, YWCA, UCCF, SNEA, International Relations Club (President), Messiah, Women's Choir, **Echo** (Asst. Business Manager), Student Council (Elections Comm.).

LINDA LECLAIR HORNE, P. O. Box 1113, North Decatur, Ga. Major: Philosophie an' Religion, YWCA (Christian Vocations Comm., Communitie Service Comm.), UCCF (Communitie Service Comm.), Lecture Series Comm.

BARBARA JOAN HORTMAN, 1985 County Club Dr., Huntingdon Valley, Pa. Major: Sociologie, Chi Beta, WAA, Intramurals, **Chilhowean**.

RUTH LOUISE HOUSER, 311 Palmer St., Lockland, Ohio. Major: Sociologie, Chi Beta, Band, Orchestra, Theater, Messiah, Intramurals.

WILLIS LYNN HOWARD, Linda Lane, Maryville, Tenn. Major: Mathematics, Kappa Phi (Treasurer, President), Intramurals, Tennis (Letterman).

GERALD ARTHUR HUGHES, 2 Heather Dr., Trenton, N. J. Major: Economics an' Business Administration, Kappa Phi (Treasurer, Pledge Advisor, Dance Chairman), Pi Gamma Mu (Vice-President), Pep Comm., Homecoming Parade Chairman, MSC, Intramurals, Padgett Scholarship.

NORMAN LESTER HUGHES, JR., Rt. 2, Box 37B, Moore Haven, Fla. Major: Health an' Physical Education, Alpha Sigma (Athletic Chairman, President), Intramurals, Inter-societie Council, Soccer, Baseball (Letterman).

RUTH ANN HULTS, 47 E. 6th Ave., Roselle, N. J. Major: English, Chi Beta, UCCF (Home Avenue), SNEA (Publicitie Co-chairman), WSGA, Nu Gamma, Messiah, Theater, Intramurals, Women's Choir, Pearsons' House Council (Treasurer), Lloyd Residence House Chairman.

JOY ELAINE HUTCHESON, Box 35, Dunwoody, Ga. Major: English, Chi Beta (Secretary), Women's Choir (Secretary, President), **Echo**, Theater, Messiah, Barnwarmin', Lecture Series Comm., Pearsons' House Council Secretary, Daisie Chain.

ASTA JOHANNE IBSEN, 3560 Jackson Blvd., Melrose Park, Fort Lauderdale, Fla. Major: Elementary Education, Chi Beta, SNEA, Spanish Club.

MARIANNE LOUISE JEFFERSON, 7 Willow Lane, Wheeling, W. Va. Major: Biologie, Chi Beta, Beta Beta Beta (Historian), Asst. Floor Chairman, Floor Chairman, Barnwarmin', Sponsor, Messiah, Daisie Chain **Who's Who**.

JOAN FRANCES JENKINS, 307 Prospect, St. Joseph, Mich. Major: Home Economics, Chi Beta, SNEA, UCCF (Time-Off Chairman), Women's Choir, Intramurals, Barnwarmin', Messiah.

JUDITH ANITA JENKINS, 1609 Cherry Dr., Maryville, Tenn. Major: Elementary Education, Chi Beta, SNEA (Publicitie Chairman), UCCF (Communitie Service Comm., Co-chairman), Intramurals, Football.

KAREN ELIZABETH KEEN, 2725 First Dr., Chattanooga, Tenn. Major: Chemistry, Theta Epsilon, American Chemical Society, Intramurals, Playhouse, **Echo**, **Chilhowean** (Honors Editor), National Presbyterian College Scholarship.

LINDA JEAN KEYES, Pt. 4, Maryville, Tenn. Major: Sociologie, SNEA.

- DANE M. KLINE, 274 Beverly Rd., Pittsburgh, Pa. Major: Elementary Education. Theta Epsilon, SNEA, Women's Choir (Soloist), Theater, Messiah, Intramurals, Junior Class Barnwarmin' Booth Chairman, Elections Comm., Discipline Comm., Pep Comm. (All Scots Day Chairman), Daisie Chain.
- REBECCA BOGGS KOZA, 505 Roosevelt Dr., Dothan, Ala. Major: Foreign Language. Theta Epsilon, Chi Beta (Dance Chairman, Bar Maid), YWCA, Playhouse **Chilhowean** (Organizations Editor), Daisie Chain.
- ELLEN LOUISE LANKENAU, 134 Roosevelt Ave., Dumont, N.J. Major: Health and Physical Education. Chi Beta (Secretarie), M Club (Vice-President, President) **Chilhowean**, Women's Choir, Messiah, Baldwin Fire Captain, Intramurals, Sophomore Aide, Nu Gamma, Baldwin House Council, Lloyd Residence House Council.
- GRANT STEPHEN LAVERE, 732 Fairway Dr., Union, N. J. Major: History, Wrestlin', Intramurals.
- JUDITH ANN LAYMAN, 121 W. Saveland Ave., Milwaukee, Wisconsin. Major: Sociologie. Chi Beta, YWCA, UCCF (Communitie Service Comm. Chairman), Pi Gamma Mu, Band.
- SUSAN JANE LAYMASTER, 543 Second St., Waverly, Ohio. Major: Art Education, Band, Messiah.
- ELIZABETH RUTH LENDER, 38 Oakridge Rd., Bloomfield, N. J. Major: Elementary Education. Theta Epsilon (Treasurer), SNEA, Floor Chairman, Daisie Chain.
- CHRISTINE LIM, Bangkok, Thailand. Major: Chemistry. Theater, Homecomin' Court.
- THOMAS MCCOY LLEWELLYN, 6260 29th Ave., North, St. Petersburg, Fla. Major: Organ. Theta Alpha Phi (Treasurer), Tau Kappa Chi (Secretarie-Treasurer, President), Messiah, Playhouse, Vesper Choir, Madrigals, Opera Workshop.
- STANFORD WHITE LONG, 1109 Grant St., Alcoa, Tenn. Major: Political Science. Alpha Sigma, Track, Intramurals, BSU (Vice-President).
- HUGH SHANNON McCAMPBELL, Rt. No. 12 McCampbell Rd., Knoxville, Tenn. Major: Biologie. Alpha Sigma (Program Chairman, Secretarie, Blue Shades), Football, Track (Letterman), Wrestlin' (Letterman), Intramurals, Orchestra, Messiah, Student Council (Elections Comm., President), Junior Class President, Circle K, Beta Beta Beta (Vice-President), Phi Mu Alpha Sinfonia, Barnwarmin' M. C., **Who's Who**.
- MICHAELA DEXTER McCROSKY, Rt. 1, Walland, Tenn. Major: Foreign Language.
- DENNIS CHARLES McGOWAN, Box 357, Pataskala, Ohio. Major: Health and Physical Education. Alpha Sigma, Basketball (Letterman, Captain), Track (Letterman).
- JERRY ALEXANDER McNABB, 1125 Huffland Dr., Loudon, Tenn. Major: Physics. Kappa Phi, Band, Orchestra.
- JAMES J. MacDAID, 123 Ardsley Ave., Trenton, N. J. Major: Chemistry. Alpha Sigma, American Chemical Societie, Vesper Choir, Men's Glee Club.
- ELIZABETH ANN MAHLEP, 1516 Shelton Ave., Nashville, Tenn. Major: Music. Chi Beta, YWCA, UCCF, Women's Choir, Vesper Choir, Messiah.
- RICHARD JOHN MARSHALL, 1510 Clayton St., Wilmington, Del. Major: Economic and Business Administration. Kappa Phi (Athletic Chairman, Bartender), Circle K (President), Vesper Choir, Messiah, Intramurals, Tennis (Letterman).
- SARA ANN MASON, Pametto Farm, Lewisburg, Tenn. Major: English. **Echo**, **Chilhowean** (Business Manager), Lloyd Resident Treasurer, Daisie Chain.
- CHARLES WILLIAM MEEYER, JR., 365 Birch Dr., Roselle, N. J. Major: Piano. Kappa Phi, Tau Kappa Chi, Charter Member Phi Mu Alpha Sinfonia, Vesper Choir, Senior Recital, 1st place—Freshman Piano Scholarship Competition, Playhouse (Asst. Director, Stage Crew, Make-up Director), Messiah, Men's Glee Club (Accompanist), Campus Mike USSF (Sunnybrook Program Comm.).
- HOWARD NELSON MILLER, 410 Westwood Dr., McMinnville, Tenn. Major: English. Kappa Phi, **Echo**, Soccer.
- MARTHA ELLEN MILLER, 1277 Morning Ave., Columbus, Ohio. Major: Elementary Education. Chi Beta (Skit Night Chairman, Rush Week Chairman), Theta Alpha Phi (President), YWCA, SNEA, Nu Gamma, Sophomore Aide, Playhouse (Program Chairman, Vice-President), Barnwarmin', Vesper Choir, Messiah, Theater (Crew, Cast, Asst. Director, Stage Manager, Best Supportin' Actress—**Harvey**), Malcolm Miller award for the Best Actress.
- PAUL H. MILLIN, East Hickory, Pa. Major: Political Science. Alpha Sigma (President), Pi Gamma Mu (President), Intramurals, **Echo** (Business Manager), Debate.
- ANNABELLE MINEAR, 1414 Venetia Ave., Coral Gables, Fla. Major: Elementary Education. Chi Beta (Secretary), SNEA (Treasurer), UCCF (Recordin' Secretarie, Cabinet), Sophomore Aide, Nu Gamma, Senior Counselor.
- JOHN CLARK MULHOLLAND, 1938 Selma Ave., Youngstown, Ohio. Major: Chemistry. Alpha Sigma (Pledge President, Secretarie), Circle K (Vice-President), American Chemical Societie, Student Facultie Senate, Messiah, Intramurals, Resident Asst., Barnwarmin' King, Student Council (Pep Comm. Chairman, Program Comm. Chairman, Fred Hope Coordinatin' Comm., Publicitie Comm. Chairman).
- NANCY JAYNE MULLER, 47 Linwood Terrace, Clifton, N. J. Major: Elementary Education. Chi Beta, YWCA, UCCF, SNEA (Secretarie), House Council (Secretarie).
- JACK ANCIL MULLINS, Rt. 3, Box 167, Harriman, Tenn. Major: Health and Physical Education. Student Asst. Football Coach, Football (Letterman).
- JOHN NOEL, III, 1339 Prospect Ave., Bronx, N. Y. Major: Historie. Alpha Sigma, **Echo**, International Relations Comm., UCCF (Education Comm. Co-chairman).
- ROSALIE LOUISE ORCUTT, 1235 Tyler Ave., Phoenixville, Pa. Major: Elementary Education. Chi Beta, SNEA, **Echo** (Asst. Business Manager), **Chilhowean**, Messiah, Daisie Chain.
- SARA JANE PARKER, 2516 Peninsula Dr., Erie, Pa. Major: Art. YWCA, UCCF (Publicitie Chairman, **Lantern** Coffeehouse Chairman), Vesper Choir (Tour), Messiah, Sophomore Aide, Nu Gamma, Vice-House Chairman, Floor Chairman, **Chilhowean** (Editor), Homecomin' Queen, Senior Art Show, **Who's Who**.
- AUDREY DEWITT POORE, 304 Hudson Dr., Maryville, Tenn. Major: Sociologie. Theta Epsilon, Messiah.
- DAVID REED POWELL, 1032 8th Ave., Folsom, Pa. Major: English. Beta Beta Beta, Sophomore Class President, Theater, Orchestra, Messiah, **Kilt** (Co-Editor), **Pepper Shakers**.
- DORIS JANE PRICE, 3121 E. 5th Ave., Knoxville, Tenn. Major: Art. Chi Beta, Sophomore Aide.
- JEANNE SHERER PROFFITT, 231 Hudson Dr., Maryville, Tenn. Major: English. Pi Kappa Delta (Secretarie, Vice-President), B.G. (President), YWCA (Children's Home), UCCF (Discussion Group Chairman), Playhouse, **Echo**, **Chilhowean**, Barnwarmin' Sponsor, Sophomore Aide, Debate.
- JAMES WAYNE PRYOR, Rutledge Pike, Knoxville, Tenn. Major: Health and Physical Education. Alpha Sigma, Football (Letterman, Co-Captain), Wrestlin' (Letterman).
- THEODORE DELANO PUTNAM, Box 73, Hazelwood, N. C. Major: Chemistry. Kappa Phi, American Chemical Societie (President), Intramurals.
- HERMAN L. RAMSEY, Rt. 1, Rockford, Tenn. Major: Health and Physical Education. Football (Letterman).
- RICHARD BERNARD REED, 10 Farm Rd., Trenton, N. J. Major: Health and Physical Education. Kappa Phi (Program Chairman, Bartender, President), Circle K (Secretarie, Board of Directors), Student Council (Social Comm., Homecomin' Parade Chairman, Pep Co-Chairman), Student Facultie Senate, Intersocietie Council, Key Men, UCCF (Social Comm.), Intramurals, Resident Asst., Orchestra, Messiah, Tennis, Track (Letterman), **Who's Who**.

KEITH MUNRO RENNE, 126 Cynwyd Rd., Bala-Cynwyd, Pa. Major: English. Alpha Gamma Sigma, Lecture Series Comm., E. E. McCurry Scholarship Prize, Intramurals, **Who's Who**.

EMILIE JEAN REYNOLDS, Box 169 R, D. No. 1, Canonsburg, Pa. Major: Art, B.G. (Business Manager), **Chilhowean** (Art Editor), Women's Chorus, Daisie Chain.

MARY FERN RICKLOFF, 2979 Cloverbank Rd., Hamburg, N. Y. Major: Bible an' Christian Education, Intramurals, Women's Choir (Social Chairman), Messiah.

ROY LOUIS RIES, 17 Highland Park Pl., Levittown, Pa. Major: Bible an' Christian Education, Kappa Phi (Athletic Chairman, Rush Week Chairman, Skit Night Chairman, Homecomin' Float Chairman), Circle K (Treasurer, Cabinet), YWCA, UCCF (Cabinet, Social Comm., Service Comm. Chairman, Communitie Service, Homecomin' Float), **Barnwarmin'**, Intramurals, Key Men, Men's Glee Club, Messiah, **Wrestlin'** (Letterman, 4th place SEC Tournament 1964), Student Council (Programs Comm., Co-chairman, Curriculum Comm.), Fred Hope Comm., February Meetings Comm.

ELIZABETH LAVILLA ROBINSON, R.R. No. 1, Box 218-A, Loveland, Ohio. Major: Sociologie, UCCF, Messiah, Women's Choir.

FLORENCE MARIE ROLLWAGEN, 114 Circle Ave., Ridgewood, N. J. Major: Biologie, Theta Epsilon, Church Vocations Comm., UCCF, International Relations Comm., Messiah, Biologie Seminar.

JANIS MARGARET ROSE, 848 Brush Hill Rd., Milton, Mass. Major: Sociologie, Theta Epsilon (Treasurer), YWCA, UCCF (Children's Home), Town Night Comm., Human Relations Council, **Chilhowean**, SNEA, Freshman Talent Show, Messiah, Senior Counselor, Senior Class Sponsor, Daisie Chain.

HELEN ELIZABETH RYAN, 2510 Hawthorne Ave., Louisville, Ky. Major: Political Science, Theta Epsilon, **Echo**, **Chilhowean** (Sports Editor), Intramurals, Student Council Elections Comm., Daisie Chain.

JOHN DALE SCHELLENGER, JR., 4158 Meyer Rd., Gurnee, Ill. Major: Historie, Kappa Phi, YMCA, UCCF (Feedback Editor, Corresponding Secretarie, **Lantern** Comm.), **Chilhowean**, Men's Glee Club, Messiah Debate, Playhouse, Intramurals, Soccer, Track Best Actor Award, **Who's Who**.

ROBERT EDWARD SCHULTZ, 126 Miller Ave., Maryville, Tenn. Major: Mathematics, Playhouse, Current Events Seminar, Student Council.

FAITH ADA SCOTCHMER, 7032 Kingsbury Blvd., St. Louis, Mo. Major: English, Chi Beta, UCCF, **Lantern** Comm., Women's Choir, Salt Cellar Comm., Messiah, Senior Counselor, Homecomin' Court.

CHRISTINE ELIZABETH SCOTT, 3909 Fairdate Rd., Philadelphia, Pa. Major: Psychologie, Theta Epsilon Choir, Messiah, Psi Sigma Mu.

HENRY WILLIAM SEITZ, JR., 2517 Sunshine Ave., Johnstown, Pa. Major: Political Science, Alpha Sigma, UCCF, Key Men, Student Council (Vice-President), Intramurals, Pep Comm. Chairman, Elections Comm. Chairman.

MARGARET E. SHAKLEE, 132 Flashhill Rd., South Norwalk, Conn. Major: English, Chi Beta, YWCA, Women's Choir, Vesper Choir (Tour), Intramurals, Theater, Messiah.

MICHAEL AUSTIN SHAVER, Rt. 2, Blountville, Tenn. Major: Music Education, Tau Kappa Chi, MENC (Vice-President), Messiah, Band, Glee Club, Orchestra, Dance Band, Dan Rineer Quintet, Porkies.

JAY THOMAS SHOWALTER, 514 Clark St., Maryville, Tenn. Major: Historie, MSC.

SANDRA S. SHOWALTER, 514 Clark St., Maryville, Tenn. Major: Elementarie Education, SNEA.

LEWRIGHT BROWNING SIKES, Box 998, Murfreesboro, Tenn. Major: Historie, Pi Kappa Delta (President), Tau Kappa Chi, Debate, Messiah (Soloist), Orchestra, Discipline Comm., **Who's Who**.

MARY MACDONALD SIMPSON, Rt. N., Smithfield, Ky. Major: Psychologie, Chi Beta (Program Chairman, Initiation Chairman, Rush Publicitie Chairman, Vice-President), Psi Sigma Mu, Band, Orchestra, Messiah, Intramurals, Senior Counselor, **Barnwarmin'**, and Honaker Bowl Queen.

JUDITH CLAPE SIVER, 324 Summit Ave., Hackensack, N. J. Major: Art Education, Theta Epsilon, **Chilhowean**, **Echo** (Circulation Manager, News Editor, Asst. Editor), Publicitie Comm., Daisie Chain.

SUSAN ELIZABETH SOBER, 6339 Limewood Circle, Louisville, Ky. Major: Psychologie, Chi Beta, Psi Sigma Mu, Pearson Dorm Council, Pep Comm. (Chairman o' Judges o' Floats, Chairman o' All Scots Day).

BETTY LOU SOCHOCKY, 1428 Madison Ave., Atlantic City, N. J. Major: Political Science, Chi Beta (Push Week Chairman, Athletic Chairman), Daisie Chain.

JANE FAIRMAN STAPP, 1009 Ray Ave., Maryville, Tenn. Major: Elementarie Education, Theta Epsilon, Messiah, Playhouse, Intramurals, SNEA.

BUDDY LYNN STINNETT, 521 Mountain View Ave., Maryville, Tenn. Major: Historie, Key Men, Student Council.

OLIVER REED TARWATER, Rt. No. 5, Pleasant Hill Rd., Maryville, Tenn. Major: Chemie, Alpha Sigma, Circle K (Treasurer), American Chemical Societie (Vice-Chairman), MSC, Junior Class Vice-President, Senior Class President, Student Council, Elections Comm., Social Comm., **Who's Who**.

CELIA CATHERINE TIFFANY, Lone Beech Dr., Rt. 6, Muncie, Ind. Major: Mathematics, Chi Beta, YWCA, **Echo**, Playhouse (Vice-President), Messiah Sophomore Honors, Physics Lab Asst., Math Asst. Scholarship.

SARAH ELIZABETH TOMPKINS, 107 Tahoma Rd., Lexington, Ky. Major: Music, Theta Epsilon, Tau Kappa Chi, Vesper Choir, Skit Night, Playhouse, Messiah (Soloist), Fine Arts Competition, Opera Workshop, Artist Series Comm., **Echo**, Madrigals, Senior Recital, Lloyd Residence House Council (Fire Captain).

CAROLYN RAE TURNER, Rockhill Rd., Newport, Tenn. Major: Elementarie Education, SNEA, Messiah, Vesper Choir.

CORLISS DIANE VOGEL, 602 Orchard St., Cranford, N. J. Major: Elementarie Education, Theta Epsilon, SNEA, Messiah, Vesper Choir, Playhouse.

EILEENE PATRICIA WAGNER, 46 S. Springfield Ave., Springfield, N. J. Major: Elementarie Education, Chi Beta, Theta Epsilon (Officer), SNEA, YWCA, UCCF, **Echo**, **Chilhowean**, Playhouse, Intramurals, Women's Choir, Vesper Choir (Tour), Messiah.

OLIVER KENNETH WILLIAMS, III, 740 Fair St., Berea, Ohio. Major: Biologie, Alpha Sigma (Program Chairman, Rush Show), Circle K (President, Board of Directors, Program Chairman), YMCA, Student Council (Projects Comm., Co-chairman, Programs Comm.), Student Facultie Senate, Intramurals, Campus M'ke (Co-chairman), Biologie Lab Asst., Biologie Seminar, **Who's Who**.

MARY ANN WILSON, 114 Greenwood Ave., Bloomington, Ill. Major: Bible an' Christian Education, Chi Beta, YWCA, UCCF, **Barnwarmin'**, Band (Kiltie Sergeant), Messiah.

MARJORIE CLAIRE WISMER, 1414 Union St., Port Huron, Mich. Major: Home Economics, Chi Beta, Vesper Choir, Messiah, Band, Orchestra.

WILLIAM LUPTON WOOD, JR., Box 367, Yadonville, N. C. Major: Historie, Kappa Phi (Program Chairman), YMCA, UCCF (Asbury, Acres Comm., Religious Life an' Activities Comm.), Circle K, **Chilhowean**, BSU, Student Council, Key Men, Pep Comm. Co-chairman, Football Statistician, Track.

DANA STRONG WYMAN, 131 Magnolia St., Maryville, Tenn. Major: Art, Town Comm.

MARY LEE ZORB, 620 Center Ave., Butler, Pa. Major: Christian Education, Chi Beta, **Chilhowean**, **Echo**, Messiah, Sophomore Aide, Senior Counselor.

ALMA MATER

Where Chilhowee's lofty mountains
Pierce the southern blue
Proudly stands our Alma Mater,
Noble, grand, and true.

Chorus

Orange, Garnet, float forever,
Ensign of our hill!
Hail to thee, our Alma Mater,
Hail to Maryville!

As thy hilltop crowned with cedars
Ever green appears,
So thy memory fresh shall linger
Through life's smiles and tears.

Lift the chorus, wake the echoes,
Make the welkin ring!
Hail the queen of all the highlands,
Loud her praises sing!



Q. How many days in a week
do you go to school?
A. I go to school 5 days a
week.

Q. How many days in a week
do you go to school?
A. I go to school 5 days a
week.





