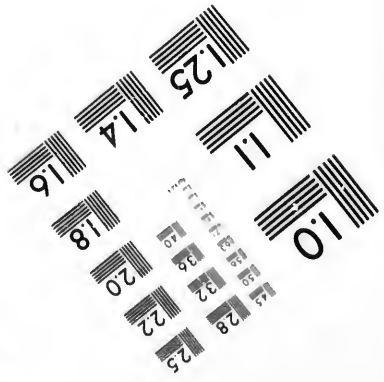
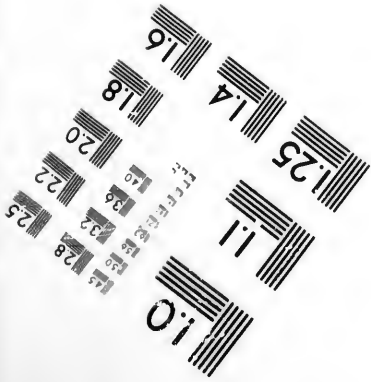
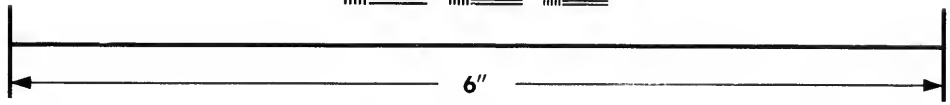
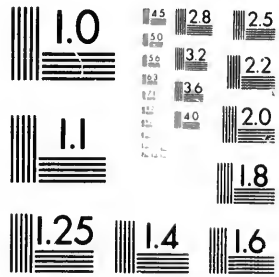


**IMAGE EVALUATION  
TEST TARGET (MT-3)**



**Photographic  
Sciences  
Corporation**

23 WEST MAIN STREET  
WEBSTER, N.Y. 14580  
(716) 672-4503

**CIHM/ICMH  
Microfiche  
Series.**

**CIHM/ICMH  
Collection de  
microfiches.**



Canadian Institute for Historical Microreproductions

Institut canadien de microreproductions historiques

**1980**

Technical and Bibliographic Notes/Notes techniques et bibliographiques

The Institute has attempted to obtain the best original copy available for filming. Features of this copy which may be bibliographically unique, which may alter any of the images in the reproduction, or which may significantly change the usual method of filming, are checked below.

L'Institut a microfilmé le meilleur exemplaire qu'il lui a été possible de se procurer. Les détails de cet exemplaire qui sont peut-être uniques du point de vue bibliographique, qui peuvent modifier une image reproduite, ou qui peuvent exiger une modification dans la méthode normale de filmage sont indiqués ci-dessous.

- Coloured covers/  
Couverture de couleur
- Covers damaged/  
Couverture endommagée
- Covers restored and/or laminated/  
Couverture restaurée et/ou pelliculée
- Cover title missing/  
Le titre de couverture manque
- Coloured maps/  
Cartes géographiques en couleur
- Coloured ink (i.e. other than blue or black)/  
Encre de couleur (i.e. autre que bleue ou noire)
- Coloured plates and/or illustrations/  
Planches et/ou illustrations en couleur
- Bound with other material/  
Relié avec d'autres documents
- Tight binding may cause shadows or distortion  
along interior margin/  
La reliure serrée peut causer de l'ombre ou de la  
distortion le long de la marge intérieure
- Blank leaves added during restoration may  
appear within the text. Whenever possible, these  
have been omitted from filming/  
Il se peut que certaines pages blanches ajoutées  
lors d'une restauration apparaissent dans le texte,  
mais, lorsque cela était possible, ces pages n'ont  
pas été filmées.
- Additional comments:/  
Commentaires supplémentaires:

- Coloured pages/  
Pages de couleur
- Pages damaged/  
Pages endommagées
- Pages restored and/or laminated/  
Pages restaurées et/ou pelliculées
- Pages discoloured, stained or foxed/  
Pages décolorées, tachetées ou piquées
- Pages detached/  
Pages détachées
- Showthrough/  
Transparence
- Quality of print varies/  
Qualité inégale de l'impression
- Includes supplementary material/  
Comprend du matériel supplémentaire
- Only edition available/  
Seule édition disponible
- Pages wholly or partially obscured by errata  
slips, tissues, etc., have been refilmed to  
ensure the best possible image/  
Les pages totalement ou partiellement  
obscurcies par un feuillet d'errata, une pelure,  
etc., ont été filmées à nouveau de façon à  
obtenir la meilleure image possible.

This item is filmed at the reduction ratio checked below/  
Ce document est filmé au taux de réduction indiqué ci-dessous.

10X	12X	14X	16X	18X	20X	22X	24X	26X	28X	30X	32X
						✓					

The copy filmed here has been reproduced thanks to the generosity of:

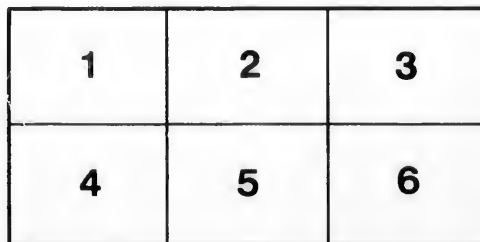
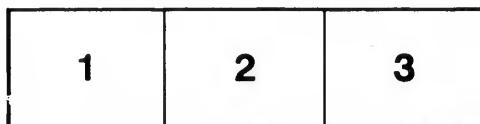
Library of the Public  
Archives of Canada

The images appearing here are the best quality possible considering the condition and legibility of the original copy and in keeping with the filming contract specifications.

Original copies in printed paper covers are filmed beginning with the front cover and ending on the last page with a printed or illustrated impression, or the back cover when appropriate. All other original copies are filmed beginning on the first page with a printed or illustrated impression, and ending on the last page with a printed or illustrated impression.

The last recorded frame on each microfiche shall contain the symbol  $\rightarrow$  (meaning "CONTINUED"), or the symbol  $\nabla$  (meaning "END"), whichever applies.

Maps, plates, charts, etc., may be filmed at different reduction ratios. Those too large to be entirely included in one exposure are filmed beginning in the upper left hand corner, left to right and top to bottom, as many frames as required. The following diagrams illustrate the method:



L'exemplaire filmé fut reproduit grâce à la générosité de:

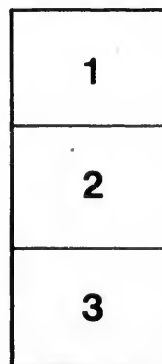
La bibliothèque des Archives  
publiques du Canada

Les images suivantes ont été reproduites avec le plus grand soin, compte tenu de la condition et de la netteté de l'exemplaire filmé, et en conformité avec les conditions du contrat de filmage.

Les exemplaires originaux dont la couverture en papier est imprimée sont filmés en commençant par le premier plat et en terminant soit par la dernière page qui comporte une empreinte d'impression ou d'illustration, soit par le second plat, selon le cas. Tous les autres exemplaires originaux sont filmés en commençant par la première page qui comporte une empreinte d'impression ou d'illustration et en terminant par la dernière page qui comporte une telle empreinte.

Un des symboles suivants apparaîtra sur la dernière image de chaque microfiche, selon le cas: le symbole  $\rightarrow$  signifie "A SUIVRE", le symbole  $\nabla$  signifie "FIN".

Les cartes, planches, tableaux, etc., peuvent être filmés à des taux de réduction différents. Lorsque le document est trop grand pour être reproduit en un seul cliché, il est filmé à partir de l'angle supérieur gauche, de gauche à droite, et de haut en bas, en prenant le nombre d'images nécessaire. Les diagrammes suivants illustrent la méthode.





Sawyer  
1892

## THE HAZEN FAMILY.

FOUR AMERICAN GENERATIONS.

By HENRY ALLEN HAZEN, A.M., New Haven, Conn.

**T**HE origin of this family beyond the sea has not been traced. Recent information locates a family bearing the name in Newcastle-on-Tyne, in the last century, and possibly the fact may afford a clue to the English home of the Puritan Edward.

(11) 1. EDWARD<sup>1</sup> HAZEN was the immigrant ancestor. The first mention of the name, which has been found, occurs in the records of Rowley. "Elizabeth, wife of Edward Hassen, was buried 1649 Sept. 18." He was a man of substance and influence in the town; was overseer or Selectman in 1650, 1651, 1654, 1660, 1661, 1665 and 1668, and judge of delinquents 1666. In the records of surveys, Feb. 4, 1661, he appears entitled to "seven gates." These related to cattle rights on the town commons; the average number being three, and no one had more than seven. The inventory of his estate amounted to £404 : 7 : 8.

Of his first wife, Elizabeth, nothing is known; or where or how long they had been married.

He married (2) in March, 1650, Hannah, dau. of Thomas and Hannah-Grant. He was buried in Rowley, July 22, 1683. His widow m. (2) March 17, 1683-4, George Browne of Haverhill, who Sept. 9, 1693, adopted her youngest son Richard as the sole heir to his large estate. Lieut. Browne d. Oct. 31, 1699, aged 76; his wife d. Feb. 1715-16. The children of Edward and Hannah (Grant) Hazen, all born in Rowley, were:

- i. ELIZABETH, b. March 8, 1650-1; m. April 1, 1670, Nathaniel, son of John and Bridget-Harris of Rowley.
- ii. HANNAH, b. Sept. 1653; m. William Gibson, and d. before 1683, leaving three children.
- iii. JOHN, b. Sept. 22, 1655. He is not mentioned in the distribution of his father's estate; while the children of Hannah, deceased, do receive their portion; and Thomas receives two of the eleven shares, or the double portion of the oldest son. John must therefore have died without issue.
2. iv. THOMAS, b. Feb. 29, 1657-8; d. in Norwich, Ct., April 12, 1735.
3. v. EDWARD, b. Sept. 10, 1660; d. 1748.
- vi. ISABELL; b. July 21, 1662; m. Jan. 16, 1680, John, son of Thomas and Ann-Wood of Boxford.
- vii. PRICELLA, b. Nov. 25, 1664; m. July 21, 1681, Jeremiah, son of John and Dorcas Pearson, of Rowley.

- viii. EDNEY, b. June 20, 1667; m. Aug. 2, 1686, Timothy, son of Rev. William and Elizabeth (Wooton) Perkins, of Topsfield.  
 4. ix. RICHARD, b. Aug. 6, 1669; d. in Haverhill, Mass., Sept. 25, 1733.  
 x. HEPHIZIBETH, b. Dec. 22, 1671; m. 1689; d. in Rowley, Nov. 29, 1689.  
 xi. SARAH, b. Aug. 23, 1673; m. June 27, 1690, Daniel Wicomb, Jr., of Rowley.

2. THOMAS<sup>2</sup> (*Edward*<sup>1</sup>), owned a farm in Rowley at his father's death. He removed to Boxford before March 22, 1689-90, where he was made freeman. He was dismissed from the church in Topsfield to become one of the constituent members of the church in Boxford, in 1702; and in 1711 again removed to Norwich, Conn., where he died April 12, 1735, aged 77 years. He lived in the part of Norwich called West Farms, and, with three sons, was one of the petitioners for its incorporation as a parish in 1716. It is now Franklin. He married Jan. 1, 1682-3, Mary, dau. of Thomas Howlet, whose father was the Sergeaut Thomas Howlet, one of the ten first settlers in Agawam (Ipswich) 1632-3, deputy from Ipswich 1635, and Topsfield 1665, and often employed in running lines and locating towns and farms. She died Oct. 24, 1727. Their children were:

5. i. JOHN, b. 1683; m. Mercy Bradstreet.  
 ii. HANNAH, b. Oct. 10, 1684, in Rowley; m. July 13, 1727, Joshua, son of Benjamin Morse of Newbury, Mass.  
 iii. ALICE, b. in Boxford, June 16, 1686.  
 iv. EDNAH, b. (when?); m. Oct. 21, 1724, Joshua Smith of Norwich, Conn.  
 6. v. THOMAS, bapt. Topsfield, Mass., May 4, 1690; d. in Norwich, Conn., 1776 or 1777.  
 7. vi. JACOB, bapt. Topsfield, April 24, 1692; d. in Norwich, Conn., Dec. 22, 1755.  
 vii. MARY, } bapt. Topsfield, Sept. 9, 1694. Lydia m. March 17, 1713-14,  
 viii. LYDIA, } Benjamin, son of Caleb and Margaret (Post) Abell of Norwich, Conn.  
 ix. HEPHIZIBAH, bapt. Topsfield, May 16, 1697; m. Oct. 1, 1716, David Ladd of Norwich, Conn.; d. March 13, 1728.  
 x. RUTH, b. (when?); d. in Norwich, Feb. 18, 1739-40.  
 xi. JEREMIAH, bapt. Topsfield, May 3, 1702.

3. EDWARD<sup>2</sup> (*Edward*<sup>1</sup>), b. Sept. 10, 1660; m. Nov. 6, 1684, Jane, dau. of John and Jane (Crosby) Pickard, who survived him. His will was probated Dec. 26, 1748, bearing date May 27, 1738. Children, b. in Rowley:  
 i. JANE, b. Oct. 11, 1685; m. Jan. 1, 1707, Joseph Jewett of Rowley.  
 ii. EDWARD, b. July 17, 1688; d. in Newbury, without issue, April 19, 1723. He m. Sarah, dau. of John Perley. She m. (2) Dec. 30, 1723, Samuel Hale of Bradford; d. 1758 or 1759.  
 8. iii. JOHN, b. 1691; d. in Rowley, Nov. 19, 1756, aged 65.  
 9. iv. } BENJAMIN, b. Feb. 19, 1694-5; d. Sept. 18, 1755, in Groton.  
 v. } HEPHIZIBAH, twin, m. Nathaniel Perkins.  
 10. vi. SAMUEL, b. July 20, 1698; d. Sept. 20, 1790, in Shirley.  
 11. vii. ISRAEL, b. July 20, 1701; d. Jan. 2, 1784, in Rowley.  
 viii. HANNAH, m. ——— Greenleaf.

4. RICHARD<sup>2</sup> (*Edward*<sup>1</sup>), b. Aug. 6, 1669. He inherited the large estate of his step-father, George Browne of Haverhill, and was a Lieutenant in the Militia. He m. (1) Dec. 5, 1694, Mary, dau. of Capt. John and Hannah (Andrews) Peabody. "Hannah Andrews was the dau. of Robert, the emigrant ancestor of the late Gov. John A. Andrew, LL.D. Capt. John Peabody was the son of Lieut. Francis, from whom descended the great London banker, George Peabody." His wife Mary d. Dec. 13, 1731, and he m. (2) Mrs. Grace Kimball, April 3, 1733. He d. Sept. 25, 1733. His children, all by his first wife, were:

- i. RICHARD, b. July 28, 1695; d. Aug. 6, 1695.
  - 12. ii. RICHARD, b. July 20, 1696; d. Oct. 18, 1754.
  - iii. PRISCILLA, b. Nov. 25, 1698; m. Feb. 17, 1719-20, Benjamin Kimball of Bradford, Mass.
  - 13. iv. MOSES, b. May 17, 1701; m. March 5, 1727-8, Abigail White.
  - v. GEORGE, b. Aug. 2, 1703; d. Dec. 6, 1704.
  - vi. MARY, b. Aug. 23, 1705; m. an English sea-captain.
  - vii. SARAH, b. Dec. 24, 1707; m. Nathan Symonds of Haverhill.
  - viii. HANNAH, b. Feb. 5, 1709-10; m. James Osgood.
  - ix. ELIZABETH, b. Sept. 10, 1712; d. July 8, 1713.
  - x. JOHN, b. Jan. 24, 1714; d. July 12, 1714.
  - xi. ANN, b. May 4, 1717; m. Samuel, son of James Ayer of Haverhill.
5. JOHN<sup>3</sup> (*Thomas*,<sup>2</sup> *Edward*<sup>1</sup>), b. March 23, 1683; m. Mercy, dau. of John and Sarah (Perkins) Bradstreet, and gr.-dau. of Gov. Simon Bradstreet and of Rev. William Perkins. She d. Nov. 22, 1725, in Norwich, Conn., and he m. there (2) May 31, 1726, Elizabeth, prob. dau. of Daniel and Elizabeth (Douglass) Dart. Children by first wife:
- i. JOHN, b. Feb. 21, 1711-2; m. March 10, 1734, Deborah Peek of Lyme, Conn., where he lived and had children: *Mary*,<sup>5</sup> *John*,<sup>5</sup> *Mary*,<sup>5</sup> *Deborah*,<sup>5</sup> *Nathaniel*,<sup>5</sup> *Eunice*,<sup>5</sup> *Joseph*,<sup>5</sup> *Lydia*<sup>5</sup> and *Samuel*.<sup>5</sup>
  - ii. SAMUEL, b. May 1, 1713.
  - iii. SIMON, b. June 4, 1715.
  - iv. MARGARET, b. July 16, 1716; prob. m. Aug. 18, 1743, Zebulon Wildes, Topsfield, Ms.
  - v. CALEB, b. April 4, 1720; m. Sarah Hamlin of Norwich, and removed, with his father-in-law, to Carmel, N. Y. A numerous family comes from him, of whom is the Rev. Hervey Crosby Hazen, lately a missionary in India, and now minister in Spencer, N. Y.
  - vi. SARAH, b. July 6, 1722.
  - vii. DANIEL, b. June 1, 1724.
  - viii. ELIZABETH, b. Sept. 15, 1727.
  - ix. MARY, b. May 18, 1729.
  - x. HANNAH, b. June 28, 1731.
  - xi. THOMAS, b. Feb. 12, 1732-3.
  - xii. HANNAH, b. May 18, 1735.

To the line of this JOHN it is probable that the extensive families in New Jersey belong, from which offshoots are found in Pennsylvania, and in Walsingham, Ontario, Canada. Among its present representatives are Abraham Hazen, Esq., a successful merchant on Broadway, New York, and the Hon. Abraham D. Hazen of Pennsylvania, now Third Assistant Post Master General.

The last two children, *Thomas* and *Hannah*, are set here, as probably their true place in the line. The record of their birth is found at Lyme, Conn., where the birth of Thomas is entered 1722-3; probably an error for 1732-3. If the record is correct, the "*John and John, Jr.*," of Lyme, at same date, are not father and son, and no place can be found for the father of this Thomas in the line; while if we assume this easy slip of the clerk's pen,—and clerks do make mistakes,—the difficulty disappears, and these children fall into a sequence so natural as to constitute a strong proof of its correctness.

6. THOMAS<sup>3</sup> (*Thomas*,<sup>2</sup> *Edward*<sup>1</sup>), m. Sept. 30, 1714, Sarah Ayer of Norwich. She d. Sept. 16, 1753, and he m. (2) Mrs. Elizabeth Bacon. Children, all b. in Norwich:

- i. SARAH, b. Sept. 12, 1715.
- ii. JOSEPH, b. June 30, 1717; m. Dec. 8, 1740, Elizabeth Durkee of Norwich. He removed, about 1780, with his sons, to Grand Isle, Vermont, where they were among the pioneer settlers, and where the family has been numerous and honored.



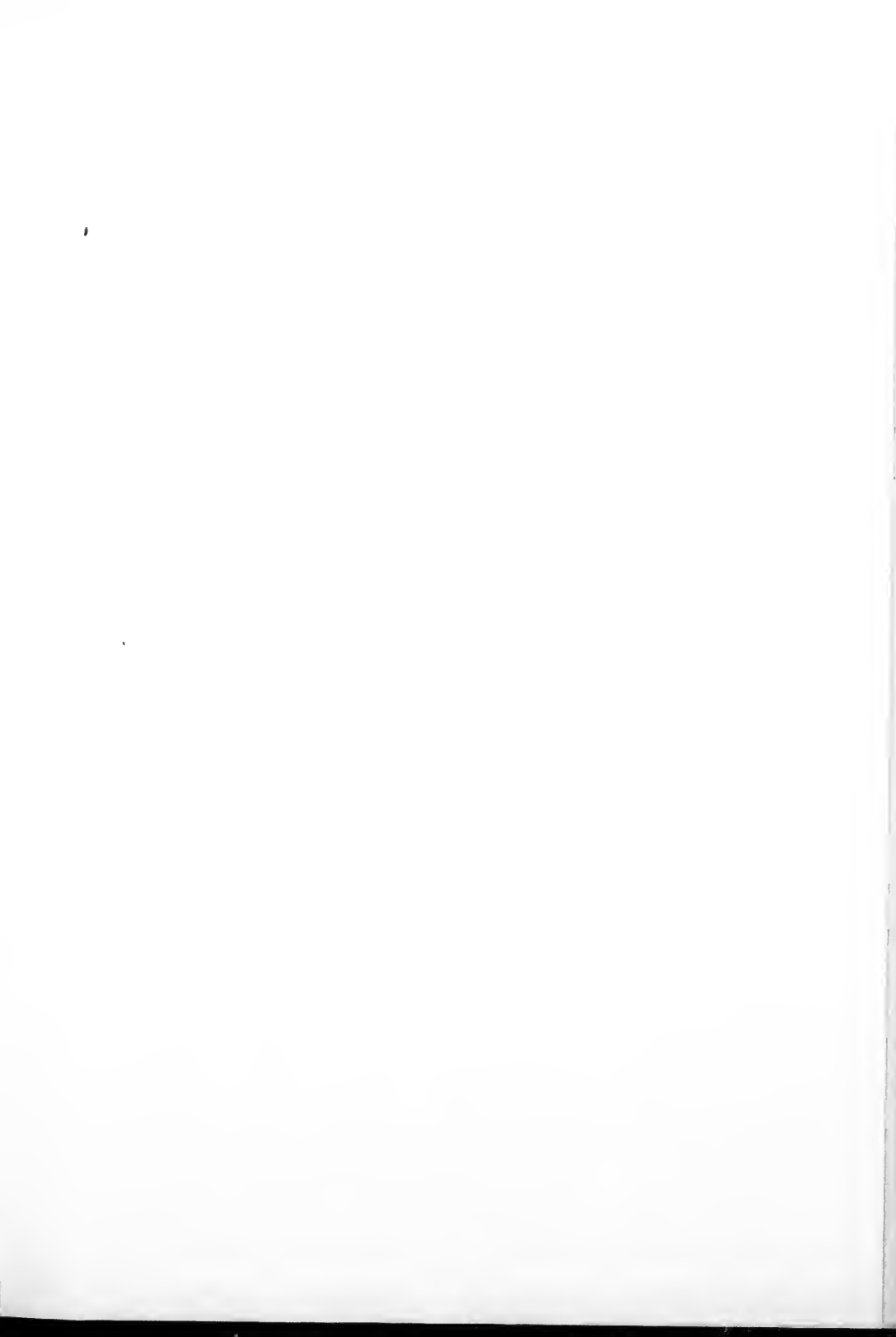
- iii. THOMAS, b. Sept. 30, 1719; m. Mareh 7, 1742-3, Ann Tenney of Norwich. He lived in Woodbury, Conn., where he was a large proprietor in the part of the town which is now Washington. In 1774, he removed to Hartford, Vermont, where most of his sixteen children married and settled. His land, or that of the family, extended across the town along its north bound six miles, and included 1000 acres around the present village of West Hartford. He built in 1775 the first two-story house in the town, in the north-east corner on the Connecticut river road. It is still occupied, as it always has been, by his descendants, *Asa*,<sup>5</sup> *Allen*,<sup>6</sup> and *Charles Dana*,<sup>7</sup> who is its present owner. He died Aug. 19, 1782. His posterity has been numerous, among whom have been the Rev. *Austin*,<sup>6</sup> pastor in Hartford and Berlin, Vt., father of the Rev. Allen, many years missionary in India; of Mrs. Stoddard, some time missionary in Persia, with her cousin, Austin Hazen Wright; and of three other sons who are clergymen in Vermont and Connecticut; the Rev. *Jasper*,<sup>6</sup> one of the oldest and most honored ministers and editors of the Christian denomination; also Gen. *William B.*,<sup>7</sup> of the U. S. Army, who distinguished himself under Sherman in the War of the Rebellion, and particularly by his brilliant capture of Fort McAllister, near Savannah, on the "March to the Sea." The pastor of the Congregational Church, Billerica, Mass., and his namesake, the compiler of this article, are sons of the two Allens above.
- iv. ALICE, b. April 30, 1722.
- v. MARTHA, b. July 3, 1725; m. Dec. 4, 1751, Peter Ayer of Norwich, Conn.
- vi. HANNAH, b. April 20, 1729; m. July 5, 1753, Jacob, son of Jacob and Hannah (Kingsbury) Hyde, of Haverhill, Mass.
- vii. MOSES, b. Dec. 1, 1731; d. July 11, 1812; m. Nov. 13, 1755, Elizabeth Merrill of Norwich. She d. Jan. 4, 1776, and he m. (2) Jan. 9, 1783, Joanna Sampson of Norwich, who d. May 29, 1813. Many of his descendants still live in Norwich and adjacent towns.

7. JACON<sup>2</sup> (*Thomas*,<sup>2</sup> *Edward*<sup>1</sup>), m. Oct. 27, 1719, Abigail ———. Children, all b. in Norwich, Ct.:

- i. HOWLET, b. Sept. 13, 1720; d. Feb. 12, 1721-2.
- ii. ABIGAIL, b. July 27, 1723; m. March 12, 1740-1, Nathan Stedman.
- iii. HOWLET, b. March 19, 1723-4; m. Sept. 8, 1748, Zeruiah Lord of Norwich. He emigrated to Wyoming, Pa., and bought 1100 acres of land where Wilkesbarre now stands. He died in a year or two, about three months before the great Indian battle at Wyoming. Two of his sons went out with the five hundred to the battle, and returned with the fifty that escaped. They went back to Connecticut.
- iv. TEMPERANCE, b. Aug. 20, 1727; m. Jedediah, son of Jabez and Rebecca (Leonard) Perkins.
- v. JACOB, b. Nov. 30, 1729; m. Feb. 12, 1752, Mary Brett of Bridgewater, Mass., and had ten children, of whom *Frederick*,<sup>5</sup> b. Sept. 25, 1763, m. Sarah Stedman, lived in Tunbridge and Norwich, Vt., and West Springfield, Mass., and had thirteen children. Two of these were the Revs. Reuben S. and James A., graduates of Yale College, and ministers in Massachusetts and Connecticut. The Rev. Reuben S. had seven children, of whom are the Rev. Timothy Allyn of Goshen, Conn., and the Rev. James King, Secretary of the Board of Publication of the Presbyterian Church (South), at Richmond, Va.

8. JOHN<sup>2</sup> (*Edward*,<sup>2</sup> *Edward*<sup>1</sup>). His age at death, Nov. 19, 1756, would place his birth in 1791. He m. May 19, 1715, Sarah Nelson; lived in Rowley. Children:

- i. JEREMIAH, b. Feb. 29, 1715-6; m. Oct. 13, 1737, Sarah Adams. He d. of small pox, in Rowley, Jan. 5, 1779. Had children:—*Sarah*,<sup>5</sup> b. July 23, 1738, who m. Nov. 28, 1760, Jeremiah Chaplin; and *Moses*,<sup>5</sup> b. Dec. 9, 1743, who m. Rebecca, and from whom came several families in New Hampshire, Andover, Wilmot, Sutton, Hillsboro' and Weare.





- ii. SARAH, b. March 17, 1718-9; d. Feb. 9, 1773.
- iii. JANE, b. June 17, 1723.

9. BENJAMIN<sup>2</sup> (*Edward*,<sup>2</sup> *Edward*<sup>1</sup>), m. (1) in Groton, Mass., July 25, 1717-18, Elizabeth, dau. of James and Anne Blanchard; m. (2) April 2, 1740, Betty, dau. of Daniel and Hannah Nutting. Children, all born in Groton, Mass.:

- i. ELIZABETH, b. Feb. 5, 1719; d. young.
- ii. TIMOTHY, b. Sept. 11, 1720; d. young.
- iii. EUNICE, b. Oct. 20, 1722; d. Nov. 14, 1728.
- iv. HEZZIAH, b. Feb. 19, 1724-5.
- v. BETTY, b. Nov. 30, 1740; m. Jonathan Foster, March 30, 1758; she d. Sept. 25, 1758.
- vi. MARY, b. April 28, 1743; m. Jan. 9, 1772, Jacob, son of Ebenezer and Sarah Patch. She had 8 children, and d. Aug. 28, 1828.
- vii. BENJAMIN, b. Dec. 7, 1745; m. Nov. 20, 1770, Lydia, dau. of Amos and Hannah (Nutting) Woods; d. 1820.
- viii. JOHN, b. May 31, 1749.
- ix. DAVID, b. Oct. 20, 1751; m. Hannah.
- x. EUNICE, b. April 30, 1754; m. (1) Nathaniel, son of William and Experience (Spanlding) Shattuck, who d. April 15, 1813, and she m. (2) Jan. 19, 1815, Thomas Bennett. She d. July 9, 1844.

10. SAMUEL<sup>2</sup> (*Edward*,<sup>2</sup> *Edward*<sup>1</sup>). Note by Rev. Seth Chandler, of Shirley, Mass. "In 1749, Samuel Hazen purchased a farm in what was then called Stow-leg, a small strip of land soon after annexed to Shirley, forming its entire southern boundary. This estate, after many changes and improvements, remains in possession of the family of the fourth and fifth generations. He was chosen selectman at organization of the town in 1753, and held the same office in after years. Few families pass through four generations like the Hazens of Shirley, maintaining such general good character and sustaining such unvariable thrift. A patient, faithful and honest industry, and a consistent economy, are usually at the foundation of such success." Samuel m. Oct. 1, 1723, Sarah Harriman. She d. Aug. 1, 1794, æ. 96. Their children were:

- i. EDWARD, b. May 26, 1724; d. in Rowley, Jan. 10, 1736-7.
- ii. SAMUEL, b. Jan. 31, 1726-7; d. " Nov. 25, 1736.
- iii. MARGARET, b. Jan. 23, 1729-30; d. " Dec. 24, 1736.
- iv. SARAH, b. April 9, 1731; d. " Dec. 20, 1736.
- v. BENJAMIN, b. April 23, 1734; d. " Jan. 6, 1736-7.

These children died of an epidemic.

- vi. EDWARD, b. Groton, Mass., May 2, 1738; moved to Little Falls, N. Y., in 1794; m. (1) Jan. 10, 1758, Sarah Willard of Lancaster, Mass.; m. (2) Mrs. (Dodge) Bathrick, Lunenburg, Mass.; d. 1796. A family in Swansey, N. H., comes of him.
- vii. SAMUEL, b. Shirley, Mass., May 24, 1740; m. Elizabeth Little of Lunenburg, Mass. He d. May 16, 1815. She d. Sept. 11, 1814, æ. 74. His son Thomas was father of Joseph, now of Shirley, whose son Thomas Joseph, a merchant in Boston, was preparing a Hazen Genealogy when he d. April 27, 1865. To his labors we are indebted for valuable aid.
- viii. EUNICE, m. (1) Joseph Farwell, and (2) Nathaniel Willard.

11. ISRAEL<sup>2</sup> (*Edward*,<sup>2</sup> *Edward*<sup>1</sup>), m. May 24, 1724, Hannah Chaplin of Rowley. She d. June 10, 1760, aged 55. He m. (2) June 18, 1761, Mrs. Jane Harriman of Rowley. It seems probable that the following are the children by the first marriage.

- i. JACOB, m. Abigail, dau. of Amos and Margaret (Cogswell) Perley, and widow of William Spofford.
- ii. ISRAEL, d. Rowley, 1749.
- iii. AMOS, d. " 1749.

To this line belong Hon. Nathan W. of Andover, Mass., and Marshman W. D. C. 1866, of Boston.

12. RICHARD<sup>9</sup> (*Richard<sup>3</sup> Edward<sup>1</sup>*), b. July 20, 1696; graduated H. C. 1717; lived in Haverhill, Mass., and Hampstead, N. H.—one of the pioneers of the latter town; an eminent surveyor. With his brother Moses, he was one of the first proprietors of Pennycook, now Concord, N. H., and active in its settlement, he making most of the early surveys. In 1741, he first surveyed the boundary between Massachusetts and New Hampshire. His journal, while making this survey, will appear in the July number of the REGISTER. He was one of the Prince Subscribers; was Representative from Haverhill in 1742. Died suddenly Oct. 18, 1754, on the road from Hampstead to Haverhill. He m. Oct. 22, 1719, Sarah, dau. of Fawn Clement of Newbury, Mass. Their children, all b. in Haverhill:

- i. RICHARD, b. June 19, 1722; m. Oct. 23, 1744, Miriam, dau. of Robert and Mary (Courier) Hoyt, and had children: *Richard<sup>5</sup> Nathaniel<sup>5</sup> John<sup>5</sup> and Mary<sup>5</sup>*.
- ii. SARAH, b. Feb. 12, 1723-4; d. July 29, 1740.
- iii. MARY, b. March 10, 1725-6; d. Nov. 30, 1737.
- iv. HANNAH, b. Sept. 17, 1729; m. John Moore.
- v. NATHANIEL, b. July 23, 1732; d. Nov. 19, 1737.
- vi. ELIZABETH, b. Sept. 22, 1734; m. Joseph Little of Newburyport.
- vii. NATHANIEL, b. Dec. 9, 1737; d. Dec. 10, 1745.
- viii. MARY, b. Feb. 2, 1739-40; d. Sept. 10, 1823; m. (1) Benjamin, son of Moses and Sarah (Jacques) Little of Hampstead, N. H., and had six children, of whom *Mary<sup>6</sup>* m. William Culef of Hampstead, and *Richard Hazen<sup>6</sup>* went to Chelsea, Vt. Mr. Little d. April 18, 1777, and she m. (2) Major Edward Moors of Haverhill.

13. MOSES<sup>9</sup> (*Richard<sup>3</sup> Edward<sup>1</sup>*), b. May 17, 1701; m. March 5, 1727-8, Abigail, dau. of John and Lydia (Gilman) White. The Worshipful William White, of Haverhill, was grandfather of John White. Their children, born in Haverhill, were:

- i. ABIGAIL, b. Jan. 7, 1728-9; m. Nov. 16, 1749, Moses Moors. Gen. Benjamin Moors, of Plattsburg, N. Y., was their son.
- ii. JOHN, b. Aug. 11, 1731; d. probably in Haverhill, N. H., before the Revolution. He was active in the settlement of Hampstead, N. H., and when the French and Indian war broke out, he distinguished himself by good service. In the Crown Point expedition, 1757, he was Lieutenant in Capt. Jacob Bayley's company, Col. Meserve's regiment from New Hampshire. In 1758, he was a Captain in Col. Hart's regiment; and in 1760, held the same rank in Col. Goffo's regiment sent out for the invasion of Canada. After the war, he and his friend, Col. Bayley, joined in the enterprise which had long attracted the attention of the province, of settling the rich Coss country, and became, in 1761, the first settler of Grafton County, N. H., at Haverhill. Bayley occupied Newbury, on the opposite side of the Connecticut, the next spring; each naming his new town from his early home. He m. Nov. 30, 1752, Ann Swett, of Haverhill, who d. in Sept. 29, 1765. They had *Sarah<sup>5</sup> John<sup>5</sup>* and two children who d. in 1759. *John<sup>5</sup>* b. Nov. 29, 1755, went with his uncle William to New Brunswick; lived in Burton; m. Sept. 2, 1787, Priscilla, dau. of Dr. William and Priscilla (Leonard) McKinstry, and had twelve children.
- iii. MOSES, b. June 1, 1733; d. Feb. 4, 1803, in Troy, N. Y. Like his brother, he was in the French war, and distinguished himself under Wolfe on the Plains of Abraham, where he was severely wounded. After the war he retired on half pay for life in the British Army, and settled at St. Johns, Canada, where he m. a French lady, Charlotte La Saussee, but had no children. When the Revolution came he joined the

x on the river Soell or Richelieu.

- patriot cause, sacrificing a large estate and his half pay for life, raised a regiment of Canadians, which was recruited from all quarters as the war proceeded, and known variously as "Congress's Own" and "Hazen's Own." The traitor Arnold honored him by baseless charges of insubordination, but the record proves his good conduct, and he was Brigadier-General at the close of the war. He cut a military road through northern Vermont, from Peacham to Hazen's Notch, in Montgomery, which still bears his name.
- iv. ANNA, b. July 30, 1735; m. Robert, son of Amos Peasley, of Dover, N. H., one of the first settlers of Gilmanton. Charles Hazen Peasley, a distinguished citizen of New Hampshire, and Member of Congress, 1847-'53, was her grandson.
- v. WILLIAM, b. July 17, 1738; d. March 23, 1814. Before the Revolution he removed to New Brunswick, and from the establishment of the Province was a member of the Governor's Council until his death. He was a large landholder. He m. July 14, 1764, Sarah, dau. of Dr. Joseph and Sarah (Leonard) LeBaron, of Plymouth, Mass. They had sixteen children, of whom *Elizabeth* m. the Hon. Ward Chipman, H. C. 1770, Judge of the Supreme Court and Acting Governor of New Brunswick at his death, in 1824; his son, the Hon. Ward Chipman, LL.D., H. C. 1805, was the late Chief-Justice of the Province. *William* was father of Hon. Robert L. Hazen, Esq., Recorder of St. John, and a Senator of Canada. *Charles* resided in Boston, and was father of Mary Anne, wife of the Rev. Edmund F. Shafter (to whose admirable Shafter Memorial we are indebted for particulars of this line). *Robert* was an officer in the English army, and father of Robert F. Hazen, Esq., of St. Johns. *Sarah Lovell* m. (1) Thomas Murray, and (2) William Botsford, late Judge of the Supreme Court of New Brunswick, father of the Hon. Amos E., a Senator of Canada; the Hon. George, of Fredericton, and Dr. LeBaron, of St. Johns. *Charlotte* m. Gen. Sir John Foster Fitz Gerald, a member of the British Parliament, whose dau. Charlotte m. Otto Leopold, Baron Von Ende, Chamberlain to the King of Saxony; and Anne m. Sir Robert-Keith Arbuthnot, Baronet of Scotland. *Frances Amelia* m. Col. Charles Drury, of the English Army, having sons Gen. Charles and Ward Chipman Drury, of St. Johns.
- vi. SARAH, b. Nov. 1, 17—; m. Major Nathaniel Merrill, of Haverhill, N. H.