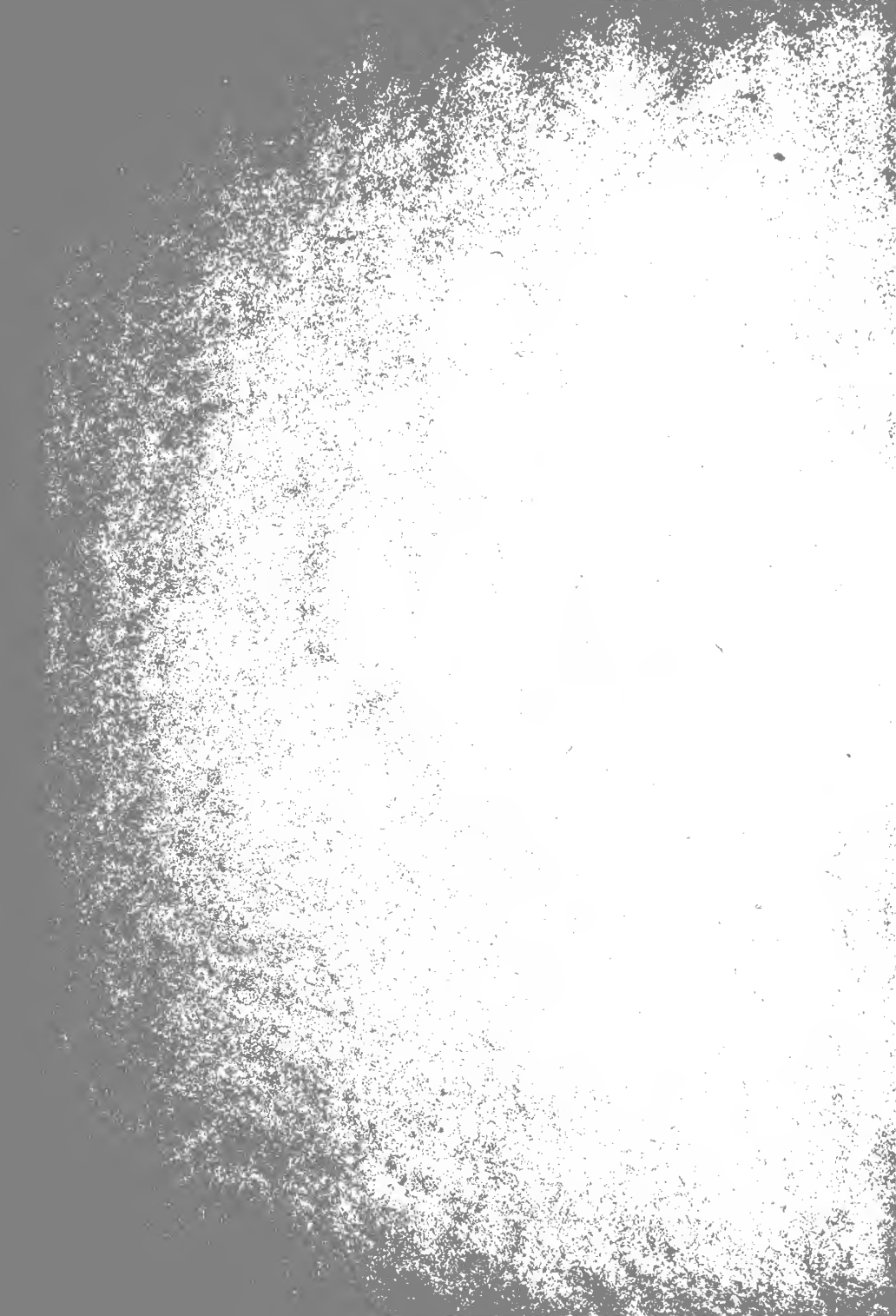


# CHYMES

1929



Hutchins Librar  
of  
Berea College  
Berea, Kentucky







**Ex Libris**

## *F*oreword--

The chymes that tolled the hours and called us to our daily tasks throughout our college days will soon be but a memory.

With the hope that in later years this book may cause to re-echo pleasant memories of Berea, the Senior Class of 1929 presents this volume of the CHYMES.

T H E

# CHYMES

Published by the Class of

1929

BEREA COLLEGE

BEREA, KENTUCKY



HOWARD EMERSON TAYLOR  
Business Manager, Berea College



College 378.7691 B487c 1929

s

Berea College Collegiate dept. Senior  
class  
Chimes.

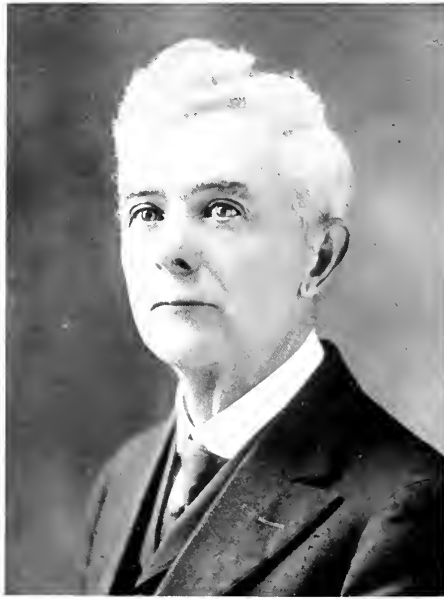
The Class of 1929  
Dedicates this Volume of

THE CHYMES

To An Optimist—  
Howard Emerson Taylor



## IN MEMORIAM



THOMAS A. MARTIN, A.M.

Professor of Mathematics, College, 1921-1928

A scholar, a gentleman, and a Christian.

Died September 11, 1928

# IN MEMORIAM



NORMA DISHMAN CHAMBERLAIN

Graduate Nurse

Died February 10, 1929

ARLIE WALTER LEFTWICH

Freshman, College

Died February 10, 1929



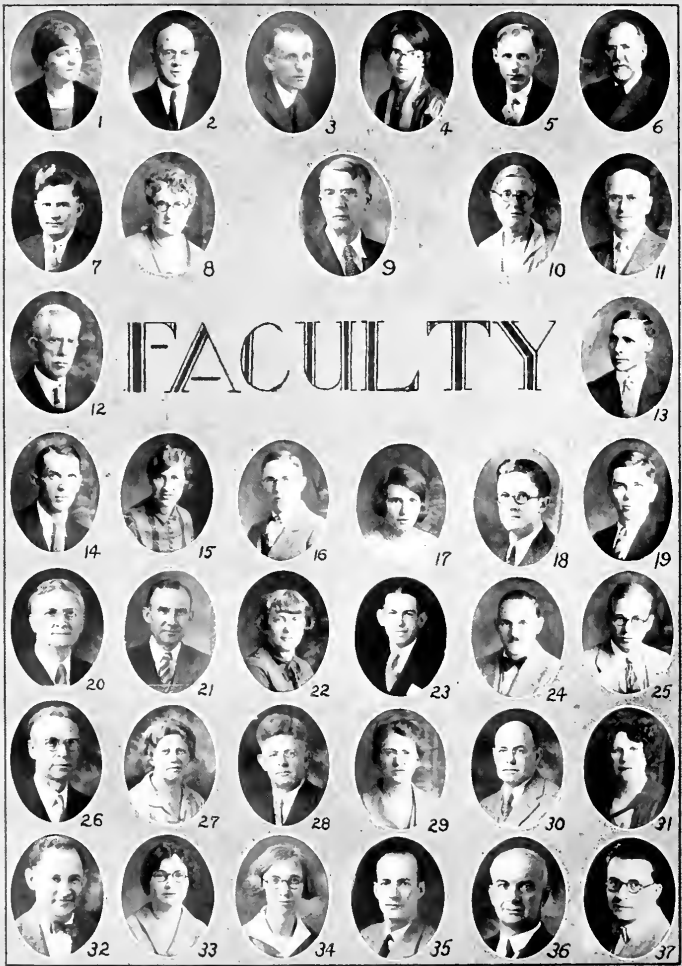




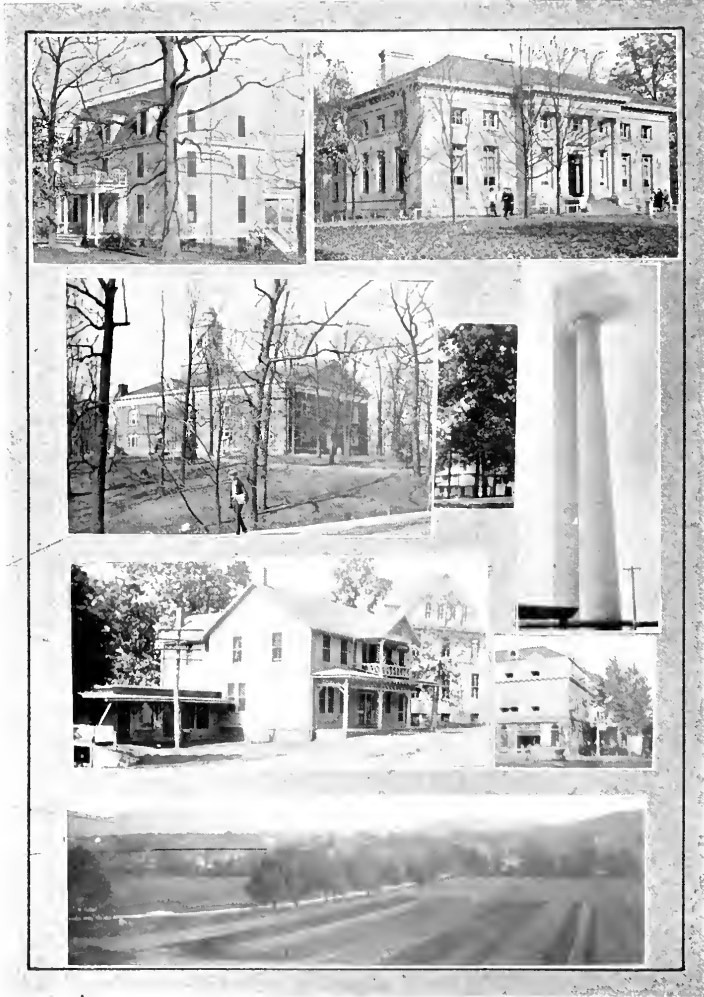
PRESIDENT WILLIAM J. HUTCHINS

# THE COLLEGE FACULTY

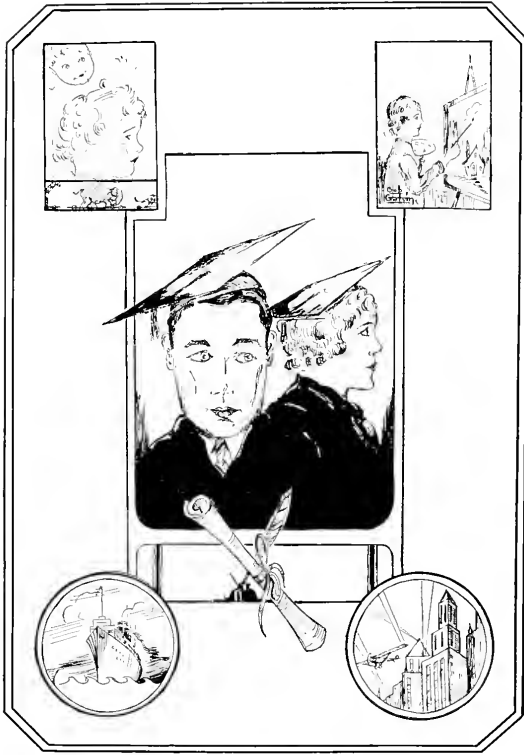
Thomas A. Hendricks, M.A. 9 Dean	Celia Kysela, B.Mus. 34 Music
Mary E. Welsh B. A. 10 Dean of Women	Edna Mae Long Home Nursing
Mrs. Lillie B. Reynolds 8 Secretary to Dean	Charlotte Ludlum, A.M. 15 Associate Professor of Latin
Wm. Jesse Baird, M.S. 7 Professor of Agriculture	Cloyd N. McAllister, Ph.D. 11 Professor of Normal Instruction
John S. Bangson, A.M. 28 Professor of Biology	Waldemar Noll, A.M. 14 Professor of Physics; Basketball and Foot- ball Coach
Eloise Blakeslee Physical Education	Charles S. Price, M.S. 32 Associate Professor of Agriculture
Wilbur G. Burroughs, A.M., F.R.G.S. 3 Professor of Geology	Donald W. Pugsley, M.S. 16 Associate Professor of Mathematics
Julian H. Capps, A.M. 25 Professor of Chemistry	R. C. Quimby, B.P.E. 24 Physical Education
Margaret Chapin, B.A. 4 Associate Professor of French	James W. Raine, A.M., D.D. 26 Professor of English
Albert J. Chidester, A.M. 36 Professor of Education	Elizabeth Richardson, A.M. 22 Associate Professor of French
Frances L. Cocks, A.M. 17 Associate Professor of English	James R. Robertson, Ph.D. Litt.D. 6 Professor of History and Political Science
Henrietta Cole, A.M. 31 Associate Professor of English	Elizabeth Jane Slaughter 27 Music
William H. Combs, A.M. 5 Associate Professor of History and Political Science	Eunice M. True, A.M. 29 Professor of Home Economics
Marion Cox Physical Education	J. W. C. Van Cleve, A.M. 23 Associate Professor of Agriculture
Helen H. Dingman Social Service	William H. Walker, Ph.D., D.D. 12 Professor of Religious Education and Philosophy
Myrtle Elliott, M.S. 33 Associate Professor of Home Economics	Ernest J. Weekes, A.M. 30 Associate Professor of English
William P. Fenn, A.M. 18 Associate Professor English; Track Coach	Albert G. Weidler, Ph.D. 20 Professor of Economics
Kingsley W. Given, A.M. 35 Associate Professor of English	Mary Cocks (Mrs. Ben T.) Welsh Home Economics
J. Wesley Hatcher, A.M. 2 Professor of Sociology	R. Tyson Wckoff, Ph.D. 37 Professor of German
William R. Hutcherson, A.M. 19 Associate Professor of Mathematics	Earl F. Zeigler, B.D., M.A., 21 Religious Education
Gladys V. Jameson, B.Mus. 1 Music	



# FACULTY







*SENIORS*

MOSES G. ALLEY, JR.  
"JUNE BUG"

B.A. HISTORY AND POLITICAL  
SCIENCE

Matewan, West Virginia.

THESIS: *"The History and De-  
velopment of the Eighteenth  
Amendment."*

Kappa Sigma; Harmonia 2, 3, 4; Glee  
Club 3, 4.

ROSCOE "BIG" BAKER

Clay City, Kentucky.

B.A. HISTORY AND POLITICAL  
SCIENCE

THESIS: *"Woodrow Wilson's  
Mexican Policy."*

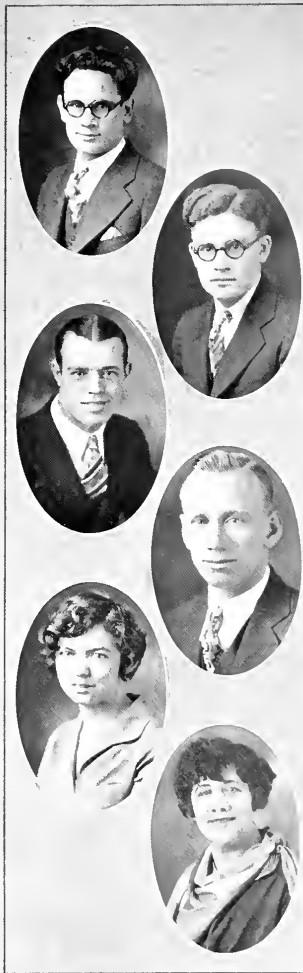
Basketball 1, 2, 3, 4; B Club 2, 3, 4,  
Pres. 4; Baseball 1, 2, 3, 4, Capt. 4;  
Football 1, 2; Pearsons Hall Council  
3; French Club 1, 2; Glee Club 4.

MARIE BARGER

Liberty, Kentucky

B.A. HOME ECONOMICS

Pi Epsilon Pi; Y.W.C.A.; W.A.A. 3, 4.



LAWRENCE M. BAKER  
"RED"

Manchester, Kentucky.

B.A. ENGLISH

THESIS: Original Play—*"The  
Mortgage."*

Kappa Sigma; Y.M.C.A.; Basketball  
2, 3, 4; B Club 2, 3, 4; Dramatic Club;  
Pres. Pearsons Hall Council 3.

PARIS BALLOU

Flat Rock, Kentucky.

B.A. HISTORY AND POLITICAL  
SCIENCE

Kappa Sigma, Pres. 4; T. K. A.  
1, 2, 3, 4, Pres. 3; Y.M.C.A.; Debate  
1, 2, 3, 4; Oxford Debate 3.

ISABEL AGATHA BELL

New York, New York.

B.A. HISTORY AND POLITICAL  
SCIENCE

THESIS: *"The First American  
Medical Missionaries."*

Kappa Gamma; Y.W.C.A.; Christian  
Endeavor; Dramatic Club 4; French  
Club 4; German Club 4.

PAUL BLACKBURN

Sherman, New York.

B.A. ENGLISH

Kappa Sigma; Glee Club 4.

RUTH BRADLEY

Atlanta, Georgia.

B.A. SOCIOLOGY AND SOCIAL SERVICE

THESIS: "Schools of Philosophy Among the Negroes."

Utile Dulce, Pres. 4; Dramatic Club 3, 4; French Club 3, 4; Classical Club 4.

RUBY PAULINE BROWN  
"BUGYE"

Mountain City, Tennessee.

B.A. ENGLISH

Utile Dulce; Y.W.C.A.; W.A.A. 1, 2, 3, 4; Ladies Hall Council 4; Harmonia 1, 2; Dramatic Club 3, 4; French Club 3; CHYMES Staff 4.



MARY ALMA BOTTS

Denniston, Kentucky.

B.A. MATHEMATICS

Utile Dulce; Y.W.C.A.; Classical Club 4.

J. CLINTON BROSHEER  
"LIT"

Middlesboro, Kentucky.

B.A. CHEMISTRY

Alpha Zeta; Basketball Manager 3; CHYMES, Editor-in-Chief 4.

RAYMOND MILLARD CABLE

Campton, Kentucky.

B.A. BIOLOGY

Phi Delta, Pres. 4; Class Pres. 4; Dramatic Club 2, 4; Inter-Society Debate 3; Glee Club 1, 3, 4; German Club 3, 4.

SUSIE LEE CARDWELL

Frankfort, Kentucky.

B.A. ENGLISH

Pi Epsilon Pi; Christian Endeavor; Harmonia 1, 2, 3, 4.



ETTA LEWIS COLLINS  
"DOODLE"

Berea, Kentucky.

B.A. FRENCH

Pi Epsilon Pi; Glee Club 1, 2, 3, 4; Harmonia 3, 4; French Club 3, 4.

KERMIT "O. K." COMBS

State Road, N. C.

B.A. BIOLOGY

Kappa Sigma; Dramatic Club, Track 3, 4; Cross Country 4.



EULAS E. DAVIS

Fingerville, N. C.

B.A. CHEMISTRY AND PHYSICS

Kappa Sigma; Inter-Society Debate 3; Football 2, 3.

ALEXANDER FRANKLIN DIX

Decatur, Alabama.

B.A. SOCIOLOGY

THESIS: "The Adolescent Boy in Berea."

Kappa Sigma; Y.M.C.A., Pres. 4; Dramatic Club 2, 3; French Club 1, 2; German Club 3; Cross Country 3; Track 4; B Club 3, 4.



JASPER E. DIXON

Hiltons, Virginia.

B.A. ENGLISH

THESIS: Original Play—"Twilight Law."

Alpha Zeta, Pres. 4; Y.M.C.A.; Inter-Society Debate 2, 3; Triangular Oratorical Contest 4; T.K.A. 4; Football 2, 3; Track 2, 3, 4; Pres. Pearsons Hall Council 4; Dramatic Club 4.

**CALLIE EVERHART**

Nashville, Tennessee.

B.S. HOME ECONOMICS

Kappa Gamma; Y.W.C.A.; Basketball 3, 4; W.A.A. 1, 2, 3, 4; Baseball 1; Fieldball 1, 2, 3; Classical Club 4; Agriculture-Home Ec. Club 4.



**LESLIE MOYERS GARRETT**

Booneville, Kentucky.

B.A. CHEMISTRY

Alpha Zeta; Football 1, 3; Track 1, 2; German Club 4.



**DOROTHY GLENN**

Live Oak, Florida.

B.A. ENGLISH

Utile Dulce; Dramatic Club, Pres. 4; Collegiate Union 4; CHYMES Staff 4.



**EDNA PEARL FOLKLAND**

Jennings, Louisiana.

B.A. HOME ECONOMICS

Pi Epsilon Pi; Y.W.C.A.; Dramatic Club 4; Agriculture-Home Ec. Club 4; French Club 2, 3, 4.



**HAZEL F. GIRVIN**

Newport, Kentucky.

B.A. ANCIENT LANGUAGES

Pi Epsilon Pi; Y.W.C.A.



**HOWARD R. GOODNIGHT**

Boone, North Carolina.

B.A. CHEMISTRY AND PHYSICS

Alpha Zeta.



MARY KATHERINE HAFER

Ludlow, Kentucky.

B.A. ENGLISH

THESIS: Original Play—"Out of the Mist."

Pi Epsilon Pi; Y.W.C.A.; Glee Club 3, 4; Orchestra 1, 2, 3, 4; Dramatic Club 1, 2, 3, 4.

ELIZABETH HELTON

Kirksville, Kentucky.

B.S. HOME ECONOMICS

Pi Epsilon Pi, Pres. 4; Y.W.C.A.; Harmonia 2, 3, 4; Debate 4; T.K.A. 4; Classical Club 4; Agriculture-Home Ec. Club 4.

ZELLA MAE HERNDON

Corbin, Kentucky.

B.A. EDUCATION

THESIS: "The Development and Evaluation of Mental Tests."

Utile-Dulce; Harmonia 1, 3, 4.



RECTOR "REX" HARDIN

Spindale, North Carolina.

B.A. ECONOMICS

Alpha Zeta, Pres. 4; Y.M.C.A.; Debate 1; T.K.A. 4; Pi Gamma Mu 4; Pres. Collegiate Union 4; CHYMES Staff 4.

MARTHA HENSON

South Lebanon, Ohio.

B.A. ECONOMICS

THESIS: "Consumer's Control in Industry."

Utile Dulce; Y.W.C.A.; Basketball 3; Track 1, 2, 3.

MAUDIE D. HILL

Waco, Kentucky.

B.A. EDUCATION

THESIS: "Methods of Elementary School Music."

Utile Dulce; Y.W.C.A.; Dramatic Club 4.

REUBEN C. HINSDALE  
 Polk Co., North Carolina.  
 B.A. CHEMISTRY

Kappa Sigma; Class Pres. 3; Dramatic Club, Pres. 3; Track 3; B Club 3, 4; Baseball 2, 3; Football 2; Y.M.C.A.



ALICE C. INGRAHAM  
 Kingsport, Tennessee.  
 B.S. HOME ECONOMICS  
 Kappa Gamma; Harmonia 1, 3.



WILFRED P. JOHNSTON  
 Chardon, Ohio.  
 B.A. MODERN LANGUAGES

Alpha Zeta; Y.M.C.A.; Inter-Society Debate 3; German Club 3, 4, Pres. 4; French Club 3, 4, Pres. 4; CHYMES Staff 4; Pi Gamma Mu 4.



ARTHUR C. HOUNSHELL  
 Jackson, Kentucky.  
 B.A. EDUCATION AND PSYCHOLOGY

THESIS: "Developments in Moral Education."

Phi Delta, Pres. 4; Y.M.C.A.; Inter-Society Debate 2; Debate 2; Home Oratorical Contest 3, 4; Triangular Contest 3; T.K.A. 3, 4, Pres. 4.

AUDREY MARIE ISHMAEL  
 Raceland, Kentucky.  
 B.A. HISTORY AND POLITICAL SCIENCE

THESIS: "The Relation of the United States to Nicaragua."

Pi Epsilon Pi; Y.W.C.A.; Dramatic Club; Classical Club 4.



WILLIAM M. JUSTICE  
 Pikeville, Kentucky.  
 B.A. ENGLISH  
 Kappa Sigma.



**SAMUEL E KENDRICK**

Frenchburg, Kentucky.

B.A. ECONOMICS

THESIS: "*The Present Status of Co-operative Agriculture Banking, and Insurance in Kentucky.*"

Phi Delta: Harmonia 1, 2, 3, 4; Track 1; Tennis 2, 3; Capt. 3; B. Club 2, 3; Sec. Bd. of Directors, Credit Union 1, 2, 3.

**HOMER KIDD**

Endee, Kentucky.

B.A. HISTORY AND POLITICAL SCIENCE

THESIS: "*The History of Taxation in Kentucky.*"

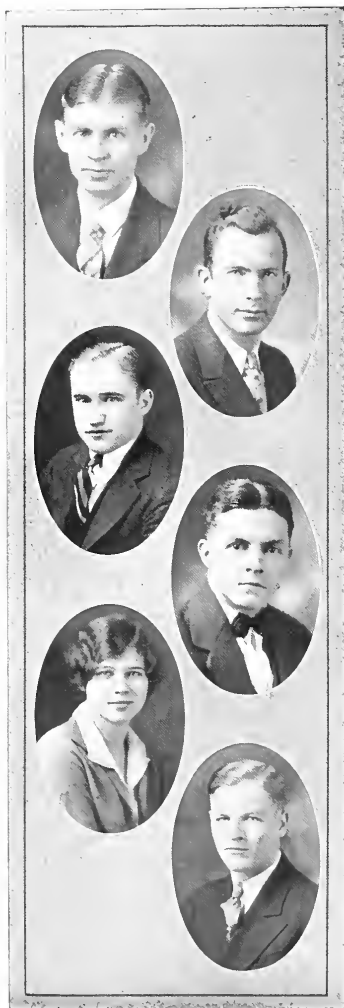
Phi Delta: Baseball 3, 4.

**ANNA KRAATZ**

Jackson, Ohio.

B.A. FRENCH

Kappa Gamma: Dramatic Club; French Club; W.A.A.: President Ladies Hall Council 4.



**AUSBIE L. KENNEDY**

Niota, Tennessee.

B.S. AGRICULTURE

Kappa Sigma: Y.M.C.A.: Harmonia 1, 2, 3, 4; Glee Club 2, 3, 4.

**GREER JACKSON KIMERY**

Shelbyville, Tennessee.

B.A. EDUCATION

THESIS: "*Gifted Children and Genius.*"

Phi Delta: Y.M.C.A.

**WILLIAM A. LAFFERTY, JR.**

Canmer, Kentucky.

B.A. CHEMISTRY

Alpha Zeta: Y.M.C.A.: Football 4; Dramatic Club 1, 2, 3, 4; Inter-Society Debate 1, 2, 3.



E. E. LAMBERT

Price, West Virginia.

B.S. AGRICULTURE

Kappa Sigma, Pres. 4; Christian Endeavor, Pres. 3; Glee Club; Debate 4.



ALICE L. LEWIS

Berea, Kentucky.

B.A. ENGLISH

THESIS: Original Play—"The Other Side of the Fence."

Pi Epsilon Pi; German Club 3, 4; Classical Club, Pres. 4.



MARY EDNA MAY

Salysville, Kentucky.

B.A. MATHEMATICS

Utile Dulce; Christian Endeavor.



BESS ORIENE LEDFORD

Berea, Kentucky.

B.A. ENGLISH

Kappa Gamma; French Club 2, 3.



MAY MAHAFFEY

Richmond, Kentucky.

B.A. ENGLISH

Kappa Gamma; Y.W.C.A.; Classical Club 4; French Club 2, 3, 4.



LYNN B. MAYFIELD

Summer Shade, Kentucky.

B.A. CHEMISTRY AND PHYSICS

Basketball 1, 2, 4; Track 1, 2, 4; B Club 4; Pearsons Hall Council 2; Dramatic Club 2, 4; French Club 2.

**JEAN MERSHON**

Springboro, Pennsylvania.

B.A. ENGLISH

Utile Dulce, Pres. 4; Y.W.C.A.; French Club 2, 3, 4; CHYMES Staff 4.



**RUBY FAE NICKELL**

Hardburly, Kentucky.

B.A. MATHEMATICS

Pi Epsilon Pi, Pres. 4; Glee Club, Pres. 4; Dramatic Club 2, 3; Collegiate Union, Chorister 3; French Club 1, 2.

**ELEANOR MARIA PAYNE**

Winchester, Kentucky.

B.A. ENGLISH

Kappa Gamma, Pres. 4; Y.W.C.A.; Dramatic Club 2, 3; Classical Club 4; Basketball 3, 4.



**ANITA EVELYN PHILLIPSON**

Ashland, Kentucky.

B.A. SOCIOLOGY

Kappa Gamma, Pres. 4; Y.W.C.A.; Glee Club 1, 2, 3, 4; Band 1, 2; Orchestra 1, 2, 3, 4; Harmonia 1, 2, 3, 4; Basketball 1, 2, 3, 4; W.A.A. 1, 2, 3, 4; Collegiate Union 4.

**JULIA ANNABEL PORTER**

Berea, Kentucky.

B.A. ENGLISH

Pi Epsilon Pi; Glee Club 3, 4; Orchestra 3; Band 3; Dramatic Club 4.



**VANDILLA PRICE**

Russellville, Tenn.

B.A. HOME ECONOMICS

Pi Epsilon Pi; Y.W.C.A.; Dramatic Club 4; Agriculture-Home Ec. Club 4.

**PAULINE RHODES**

Bloomfield, Iowa.

B.A. HOME ECONOMICS

Kappa Gamma; Y.W.C.A.; Agriculture-Home Ec. Club 4.



**LEONARD H. ROBINSON**

Junction City, Kentucky.

B.S. AGRICULTURE

Kappa Sigma; Debate 4; Winner State Constitutional Oratorical Contest 3.



**ANNA L. STAMPER**

Campton, Kentucky.

B.A. ENGLISH

Kappa Gamma; Y.W.C.A.; Dramatic Club 1, 3, 4; Basketball 1, 4; French Club 3, 4.



**KITTY RITCHIE**

Viper, Kentucky.

B.A. EDUCATION

THESIS: "A Survey of the Kindergarten Movement in America."

Pi Epsilon Pi; Y.W.C.A.; W.A.A., Pres. 4; Basketball, Capt. 3.



**EDGAR C. SELL**

Albany, Kentucky.

B.A. CHEMISTRY

Kappa Sigma; Basketball 1, 2, 3, 4; Baseball 2, 3; Football 4.



**GRADY E. TESTER**

Valle Crucis, N. C.

B.A. ENGLISH

Alpha Zeta

DILLARD D. TURNER

Yeaddiss, Kentucky.

B.A. BIOLOGY

Kappa Sigma; Football 2; Track 3; French Club 3, 4; CHYMES, Business Manager 4.



CHRISTINE VEST

Yosemite, Kentucky.

B.A. EDUCATION

THESIS: "Mental Hygiene."

Pi Epsilon Pi; Y.W.C.A.; French Club 3, 4; Credit Union Loan Com. 4; Dramatic Club 3, 4.

EULA IRENE VIRGIN

Concord, Kentucky.

B.A. ENGLISH

Utile Dulce; Y.W.C.A.; Dramatic Club 2, 3; W.A.A. 1, 2, 3, 4; Pres. 3; French Club 3; PINNACLE Staff 3; Basketball 2, 3, 4.



RALPH WALKER

Sugar Grove, N. C.

B.S. AGRICULTURE

Alpha Zeta; Baseball 1, 2, 3; Manager Football 4.

WILLIAM HOWARD WALKER

Sugar Grove, N. C.

B.S. AGRICULTURE

Alpha Zeta, Pearsons Hall Council 4; Football 2, 3, 4, Capt. 3; Basketball 1, 2, 3; Manager 4; Baseball 1, 2, 3, Capt. 3; Ag.-Ec. Club 4.



MARY HEATH WELLS

Corydon, Kentucky.

B.A. ENGLISH

Kappa Gamma; Y.W.C.A.; Glee Club 1, 2, 3, 4, Pres. 1; Harmonia 1, 2, 3, 4; French Club 3, 4; Collegiate Union 2, 3.

S. EDWARD WHEELER

Rock, West Virginia.

B.S. AGRICULTURE

Phi Delta, Pres. 4; Inter-Society Debate 3; CHYMES, Circulation Manager 4.



GRAY H. WILLIAMS

Spindale, North Carolina.

B.S. AGRICULTURE

Kappa Sigma.



MOLLYE E. WILCOX

Elk Park, North Carolina.

B.A. HISTORY AND SOCIOLOGY

THESIS: "*The History of England's Relation to Ireland.*"

Pi Epsilon Pi; Y.W.C.A.; Glee Club 2, 3, 4; Ballad Contest 1; Dramatic Club 2; German Club 1.



BONNIE THELMA WILLIS

Wing, North Carolina.

B.A. ENGLISH

Kappa Gamma; Y.W.C.A.; PINNACLE Staff 2, 3; Dramatic Club, Pres. 4; German Club 3.

UNDERGRADUTE WORK  
COMPLETED AUGUST 1928

TILFORD JOHN CORNN

London, Kentucky.

B.A. EDUCATION

THESIS: *Curricular and Extra-Curricular High School Music.*"

Kappa Sigma; Glee Club 3, 4.

FLOSSIE MAE HOWARD

Bradley, Kentucky.

B.A. MODERN LANGUAGES

THESIS: *"The Influence of Romanticism on the Lyric Poetry and Prose Writings of Nineteenth Century France."*

Utile Dulce.

RESPERS RAYMOND ROYALL

Traphill, North Carolina.

B.A. ENGLISH

Kappa Sigma; Glee Club 4; Dramatic Club 4; Constitutional Oratorical Contest 4; Intersociety Debate 4.



JAMES M. HOLT

Gray, Kentucky.

B.A. EDUCATION

THESIS: *"Equal Educational Opportunities for Every Child in Kentucky."*

MARY JANE HOWARD

Bradley, Kentucky.

B.A. MODERN LANGUAGES

THESIS: *"The Influence of Romanticism on the Lyric Poetry and Prose Writings of Nineteenth Century France."*

Utile Dulce.

Officially Classed With the Class  
of 1929

UNDERGRADUATE WORK  
COMPLETED AUGUST 1929

MAURICE W. BLAKEY

Canmer, Kentucky.

B.A. EDUCATION

THESIS: "*Primary Methods in  
Language Arts.*"

Kappa Sigma; Y.M.C.A.; Glee Club  
1, 4.



JESS JOHNSON

Rockhold, Kentucky.

B.A. CHEMISTRY AND PHYSICS

Phi Delta; Football 1, 2, 3, 4; Basket-  
ball 1, 2, 3; Track 3, 4; B Club 3, 4.



TISHA BRASSFIELD

Carpenter, Kentucky.

B.A. MATHEMATICS

Pi Epsilon Pi; Y.W.C.A.; Harmonia 4.



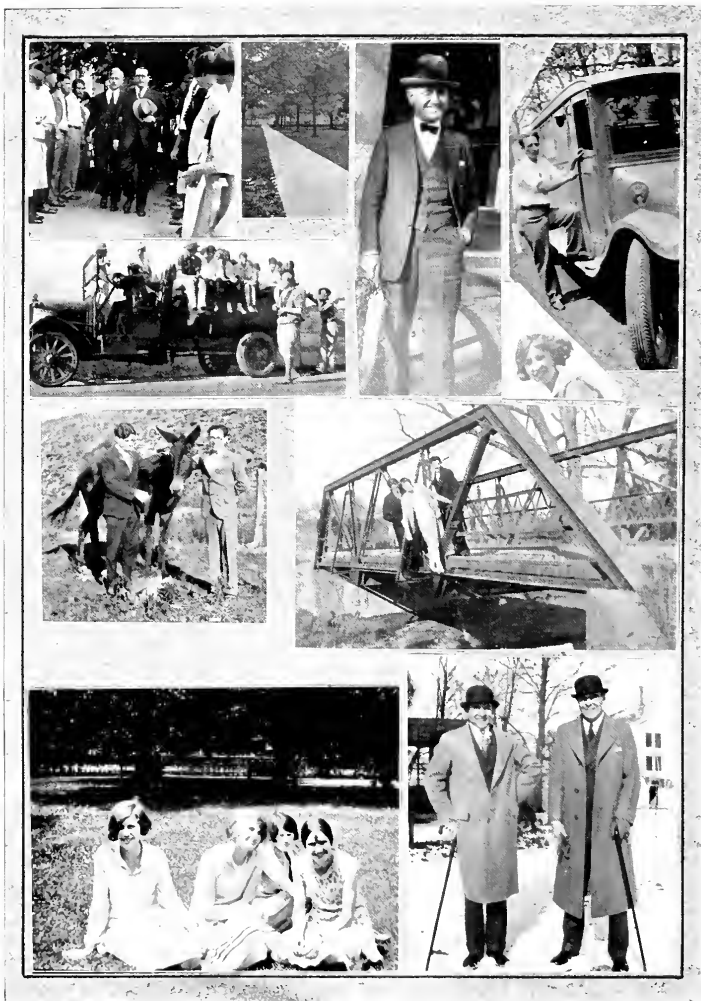
CATHERINE LOUISE LONG

Greencastle, Indiana.

B.A. HOME ECONOMICS

Kappa Gamma; Agriculture-Home Ec  
Club 4.

Officially Classed With the Class  
of 1930







*UNDERGRADUATES*

# JUNIORS

## CLASS OF 1930

*President*

*Vice President*

*Secretary*

*Treasurer*

William Edwards

Gilbert Roberts

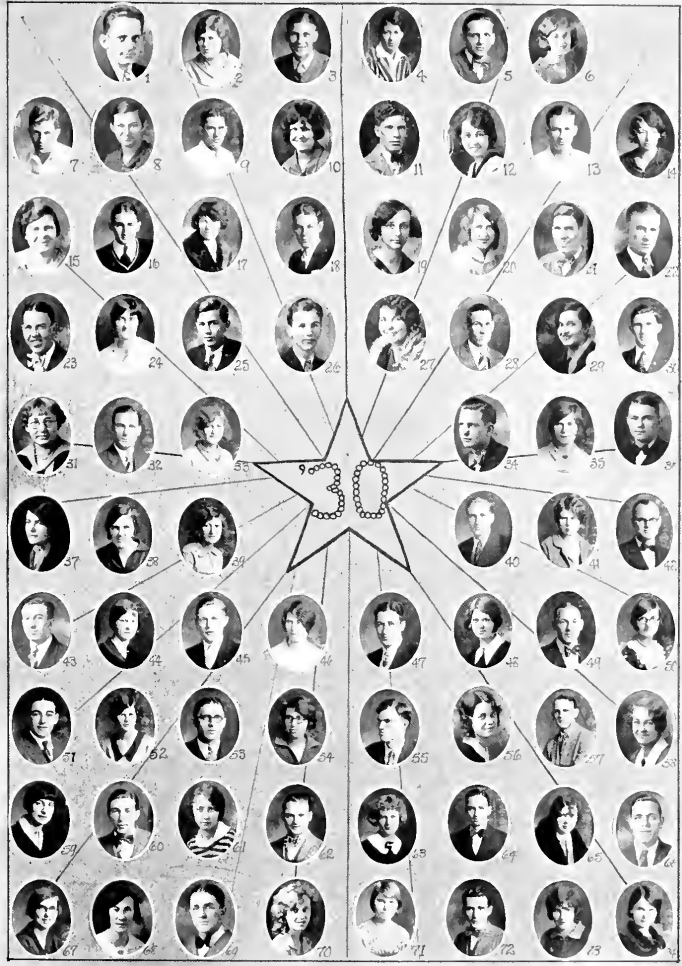
Willie Fay Allen

Sam McCluer

## ROLL

Willie Fay Allen 48  
Franklin Alley 28  
H. Stuart Auvil 25  
Ruth Barbe 59  
Elbert Baxter 49  
Ellen Best 56  
Clarence Burton 5  
Mildred Burton 19  
Nina Bryan 44  
Frances Chaney 68  
Robert Collins 64  
Ed Cooper 40  
Nellie Cox 63  
Theodore Craig 32  
Fred Creech 22  
Oma Creech 8  
William Davidson 51  
Hugh Davis 7  
A. W. Dodd 34  
William Edwards 26  
Wilson Evans 3  
Mabel Fibiger 17  
Thurman Folger 13  
Helen Freas 67  
Virginia Friend 20  
Earl Gambill 43  
Gladys Hammett 73  
James Hamner 9  
Robert Harlowe 21  
Eugene Hilliard 16  
Blanche Hinds 52  
Howard Hopkins 11  
Ruth Hopkins 71  
Maude Howell 15  
Esther Johnson 10  
Hazel Johnson 14  
Lardmon Johnson 30

Maybelle Johnson 37  
Bobbie Ketner 29  
Quay Ketner 1  
Ed Lafferty 23  
Roxie Ledbetter 54  
Helen Leslie 4  
Albert Link 57  
E. G. Maples 42  
Sam McCluer 55  
Gladys McClure 2  
Neal McWhorter 72  
Jessie Measel 46  
Mary Moore 50  
Gaither Norman 66  
Irene Parker 24  
Ralph Phillips 47  
Virgil Phillips 60  
Elma Phillipson 58  
Göebel Pruitt 45  
Eleanor Reed 70  
Sylve Reynolds 69  
Gilbert Roberts 36  
Elizabeth Shea 38  
Mrs. Shouse 31  
Alma Shrader 6  
Beatrice Sisk 39  
Cato Smith 53  
Martha Standing 74  
Eula Stanley 41  
Julia Stenken 35  
Lucy Sweeney 12  
Tommye Terrill 61  
Edward Thompson 62  
Howard Tilson 18  
Ruth Wamsley 65  
Thelma Warren 33  
Nettie West 27



# SOPHOMORES

CLASS OF 1931

*President*

Earl Turner

*Vice President*

Miriam McVey

*Secretary*

Beulah Wolfe

*Treasurer*

Lynn Gabbard

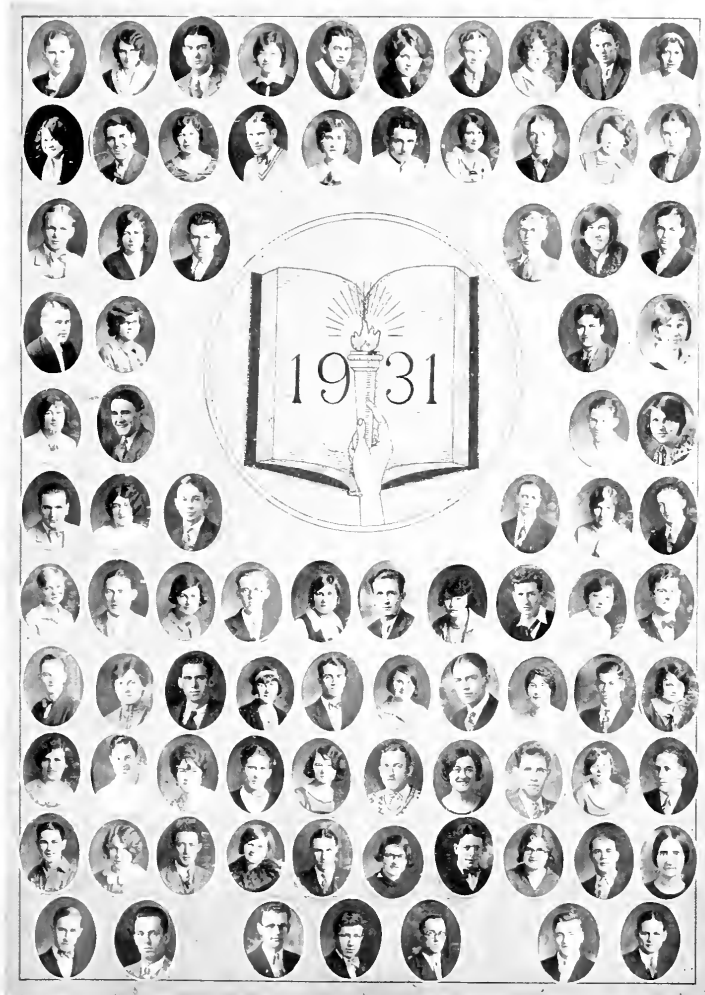
*Sergeant-at-Arms*

Paul Neal

## ROLL

James Adams  
Clyde Allen  
Virginia Auvil  
Alma Booth  
Hetty Bourne  
James Bowman  
Garland Brook  
Ivy Lois Brooks  
Elizabeth Brosheer  
Ellison Brown  
Millard Caudill  
Joe Caylor  
Ruth Chidester  
Richard Chrisman  
Nina Cox  
William Coyn  
Garland Creech  
William Davis  
Mary Drake  
Nancy Eversole  
Clyde Fitzpatrick  
Ophelia Frances  
Earl Frazier  
Lynn Gabbard  
Clarence Gilbert  
Bevvie Gilreath  
Otis Goble  
Brydon Grainger  
William Gray  
Virgil Hall  
Jack Hays  
Anna Mae Helton  
Sam Hendricks  
Nora Howard  
Dorothy Ingraham  
Reba Johnson  
Fern Kidd  
Jack Kidd  
Tracy Knight  
Margaret Kraatz  
Lucille Kuykendall  
Forest Lacy  
Zelma Langworthy  
Bernard Lowry

Millard Magill  
Hubbard Martin  
Aileen Maupin  
George Mayo  
Miriam McVey  
Paul Neal  
Thomas Nesbitt  
Frances Odom  
Jennie Pace  
Alba Padgett  
Bevvie Perkins  
Fletcher Phillips  
Ila Mae Propps  
Rodney Quillen  
Kelly Ray  
Ruth Raymond  
Raymond Redmond  
Arlo Riddle  
Charles Rosenberry  
John Shouse  
Edith Slone  
Annis Smith  
Mary Ina Smith  
Ivan Steele  
Kenneth Swope  
Minnie Tevis  
Glen Toms  
Earl Turner  
Virgil Turner  
Clyde Venable  
Ethel Waldroop  
Lillian Wilson  
Gladys Williams  
O. J. Williams  
Harry Williams  
Ray Wine  
Phina Winegar  
Beulah Wolfe  
Muriel Wolfe  
Julia Woodfin  
Joe Woods  
Forest Wyatt  
Earl Wynn



# FRESHMEN

## CLASS OF 1932

*President*

*Vice President*

*Secretary*

*Treasurer*

*Sergeant-at-Arms*

Earl G. Robbins

Dorothy Lloyd

Oranell Sullivan

Earnest McCracken

Joseph Ayers

## ROLL

Clyde Allen 74  
Ora Lee Allen 48  
Nell Anderson 78  
Walter Arrants 28  
J. Yates Bailey 94  
Hilda Booth 103  
Byron Brian 18  
Gladys Brown 75  
Forest Cable 7  
Rex Center 104  
Alice Chatfield 14  
Alma Chidester 61  
Ellen Clarkston 32  
Margaret Cocks 52  
Dewey Collett 70  
Dewey Combs 39  
Ruth Congleton 3  
Frances Cooper 71  
Wilburn Corell 31  
Glenmore Cotton 80  
Alma Crouse 110  
Charles Culbertson 45  
Ethel Cunningham 96  
William Dameron 100  
James Davis 108  
Ruth Davis 84  
John Dean 89  
Virginia Dean 20  
Lum Duke 38  
Jefferson Earp 83  
George Eaves 68  
Lloyd Elliott 33  
Paul Elliott 26  
Nannie Estridge 60  
Daniel Eutsler 107  
Nell Faust 19  
Delna Fielder 49

Sherill Flannery 62  
Audrey Frances 59  
Ruby Frazier 13  
Ethel Gambill 6  
Madge Gambill 97  
Kermit Gardner 56  
Ruth Gardner 34  
Ruth Goodman 73  
Agnes Haldane 35  
James Hale 101  
William Haley 44  
Leroy Hall 106  
Raleigh Hall 63  
Richard Hamlin 65  
Arthur Hammons 95  
Kennie Hatfield 81  
Myrtle Hicks 92  
Joanna Huff 51  
Betty Jacobs 40  
Mary Jeffries 69  
Geneva Johnson 42  
Elizabeth Jones 82  
Harold Jones 1  
Roy Justice 109  
William Kelley 5  
Ross Kelly 15  
Reba Kennedy 21  
Lester Kirk 64  
Paul Kirkpatrick 37  
Golda Knowles 67  
Minnie Ledford 30  
Arlie Leftwich 55  
Dorothy Lloyd 8  
Ruth Marcum 53  
Maude McAllister 90  
Earnest McCracken 22  
Helen McWhorter 43

Estle Meadows 2  
Robert Meriwether 91  
Hoke Miller 93  
Edward Montgomery 23  
Russell Moore 50  
Robert Nance 87  
Leroy Northington 99  
Walter Parker 76  
Gladys Parsons 66  
Philip Partridge 11  
Harold Puckett 98  
Pearl Rader 47  
Eva Rainer 17  
Kelly Ray 46  
Earl Robbins 4  
Beth Roberts 10  
Charles Rosenberry 29  
Griffith Royall 85  
Evelyn Sammons 24  
Margaret Sanders 12  
Alva Sharpe 25  
Jack Sherman 57  
Irene Simpson 86  
Virgil Smith 105  
Olive Sturgill 36  
Oranell Sullivan 9  
Lucille Swaringen 58  
Rembrandt Swaringen 77  
Franklin Thurman 54  
Nazario Vargas 72  
Decatur Wade 79  
Irene Wallace 27  
J. L. Walters 102  
Raymond Willis 16  
Edrye Wilson 41









*SECONDARY SCHOOLS*

# ACADEMY GRADUATES

CLASS OF 1929

<i>President</i>	Litton Singleton
<i>Vice President</i>	Boyd Hickam
<i>Secretary</i>	Annabel Pow
<i>Treasurer</i>	T. J. Brandenburg
<i>Sergeant-at-Arms</i>	Bill Murphy

## ROLL

Lutie Adams	Lola Fowler 83	James Pointer
Evelyn Aikman	Eugene Frazier	Annabel Pow 68
Vergie Alexander 4	Thosé Frazier	Katherine Proctor 81
Kermit Allen 44	Robert Galvin 13	James Reynolds
Louise Amos 74	Leila Garrett	Lockie Rice 48
Ellis Bailey	Amos Gastineau 3	Miriam Rigby
George Baird 84	Nathan Gortney 21	Kelse Risnef
Tom Ball 80	Chandler Hale 58	Edda Rodda 18
George Ballou 28	Ernest Hammons	Anna Roberts 42
Stella Kate Bellamy 62	Aubrey Henderson 57	Milburn Roberts 34
Mabel Best 19	Boyd Hickam 75	John Rupe
Elsie Blankenship	Gladys Hubbard 66	Harland Sanders 20
Tomas Boneta	Nannie Hudson	Earnest Scott 38
Harold Bracley 32	Earl Hyden 45	Ruby Scrivener 50
T. J. Brandenburg 60	Arnold Ison 35	John Searcy 55
Frank H. Brown	Dove Jessee 59	Sophia Shea 2
Jean Cocks 8	Ida Kale 56	Irby Shelton 47
Sam Colwell 73	Martha Kendrick 29	Elizabeth Shrader 64
Corbin Combs	Gillis Lambdin	Litton Singleton 1
Ivan Combs 5	Leonard Lewis	Butler Skinner 22
Sam Combs 67	Bernice Lively	William Stafford 63
Orpha Cornett 27	Henry Lutes 86	Nell Stark 11
Chester Craft 40	Samuel Lynn 65	Clara Strong 10
James Davenport	Alta May	Ruth Swinney 79
Doris Davis 46	Victor McConkey 82	Sue Terrill 16
Minnie Blanch Davis	Horace McNeil 7	Hazel Turner 36
Charlie Devinye 52	Katherine Miller 72	Sam Tuttle 23
Arthur Dick 87	Howard Moore 31	Kelly Wagers 71
Norman Dodson 9	Carl Morris 37	Thelma Waldron 14
Gladys Duff 76	Sue Helen Morris	Wardell Walter 53
Elsie Gladys DuQuette	Bruce Muncy 69	Carl Werthenberger
Ellis Edwards	William Murphy 78	Charles White 25
Elva Edwards 6	Laura Nelson 39	John White 30
Edith Elswick 12	Orris Ony	Winston Williams
Dona England 26	Oscar Owens 15	Lee Ella Witt 54
Elmo Farley	Alice Pace 51	Roy Witt 77
Fannie Farley 33	Delphia Payne 43	Sherman Young 49
Bonnie Fleenor	Iva Pearson 61	Mary Margaret Zeigler 17



# NORMAL GRADUATES

CLASS OF 1929

*President*

*Vice President*

*Secretary*

*Treasurer*

*Sergeant-at-Arms*

Jason B. Wilson

Bernice Howard

Medella Stacy

Clarence Stephens

Luther C. Jones

## ROLL

Miss Chapman, Sponsor 25	Dorcie Fowler 8	Robert Oliver 26
Callie Angel 27	Collette Garrett 43	Will K. Peace 1
Delca Asbury 12	Evelyn Goodbey 21	Lona Porter 29
Estill Back 6	Ferrell Gravett 7	Luther Rice 11
Willie Browning 46	Ethel Green 10	Jack Rouse 35
Katherine Bush 45	Lillian Greer 47	Jessie Sawyer 16
Brown Campbell 14	Eva Hensley 30	Victor Shoemaker 22
Theodore Carter 20	Ather Hicks 34	Clara Siler 28
Elizabeth Caudill 32	Ocie Hoskins 42	Elizabeth Slusher 23
Marie Combs 38	Bernice Howard 44	Medella Stacy 2
Genoa Conley 15	Lillian Isaacs 48	Clarence Stevens 18
Mrs. Bertha Crase 36	Pearl Johnson 3	Miranda Story 39
Daisy Crawford 17	Luther Jones 4	Edward Turner 37
Eddie Daniels 40	Clyde Linnville 5	John W. L. Turner 33
Shafter Davidson 31	Bessie Maggard 13	Clarice Wampler 19
Lillian Deaton 41	Marvin Nay 9	Jason Wilson 24



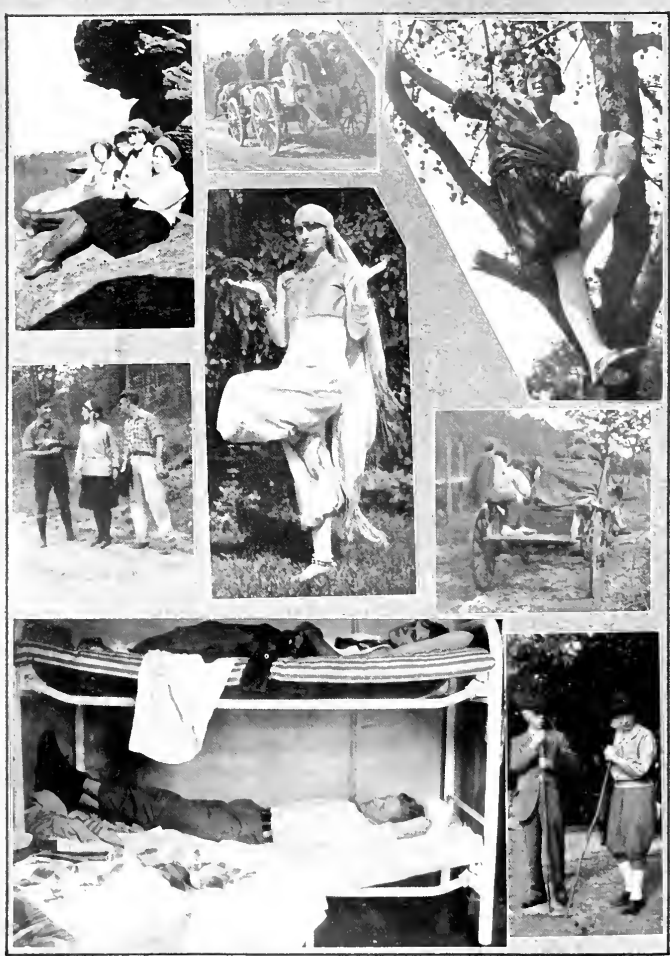
## NURSES

Miss Harmon, Miss Todd, Miss Mullins



# NORMAL 29







*ORGANIZATIONS*

# KAPPA SIGMA LITERARY SOCIETY

Founded 1920

*Motto: By Skill We Conquer*

*Colors: Red, Green and Gold*

*President*

Reuben Hinsdale

*Vice President*

Lawrence Baker

*Corresponding Secretary*

Goebel Pruitt

*Recording Secretary*

Clarence Gilbert

*Treasurer*

Franklin Alley

*Sergeant-at-Arms*

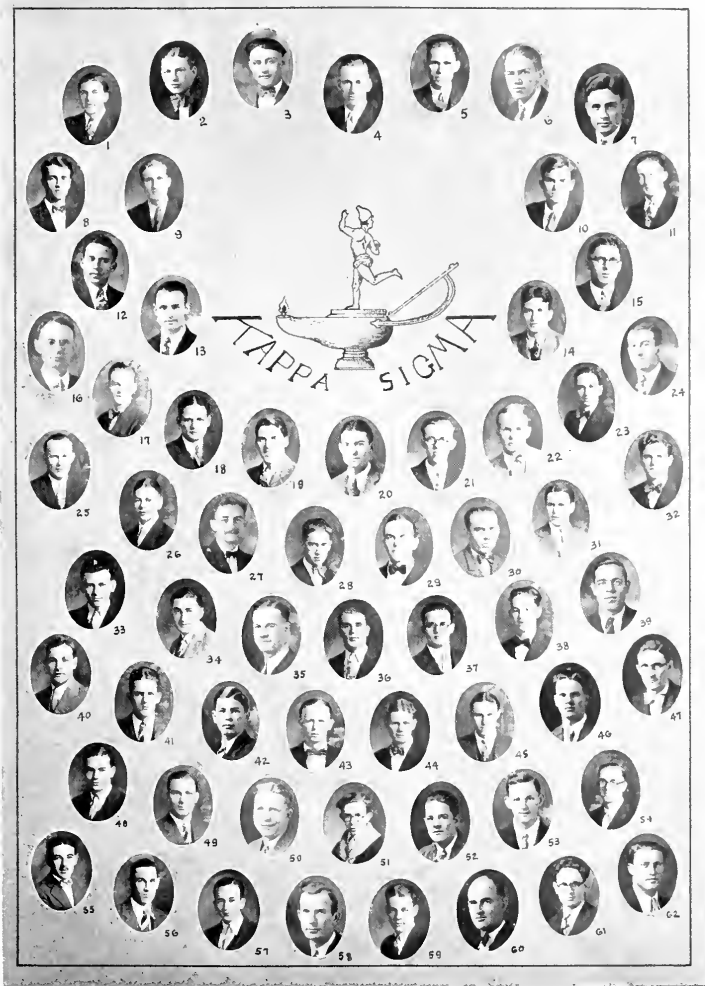
Kermit Combs

## ROLL

Clyde Allen 43  
Franklyn Alley 56  
Moses Alley 61  
Lawrence Baker 7  
Paris Ballou 4  
Paul Blackburn 27  
Maurice Blakey 60  
James Boyce 31  
Byron Brian 57  
Richard Chrisman 33  
Robert Collins 23  
Dewey Combs 52  
Kermit Combs 47  
Ed Cooper 9  
Glenmore Cotton 51  
Theodore Craig 49  
Thomas Crow 38  
William Damron 37  
William Davidson 55  
Eulas Davis 32  
Frank Dix 1  
Lum Duke 29  
Jefferson Earp 53  
George Eaves 41  
Daniel Eutsler 46  
Earl Fraser 20  
Earl Gambill 24  
Clarence Gilbert 8  
Brydon Grainger 14  
James Hale 50  
Leroy Hall 35

Virgil Hall 11  
Wm. M. Justice 16  
William Kelley 26  
Ausbie Kennedy 58  
E. E. Lambert 5  
Bernard Lowry 18  
Sam McCluer 10  
Earnest McCracken 42  
Robert Meriwether 28  
Paul Neal 19  
Thomas Nesbitt 22  
Gaither Norman 39  
Leroy Northington 3  
Cullen Owens 2  
Earl Robbins 40  
Leonard Robinson 40  
Griffith Royall 44  
Edgar Sell 62  
John Shouse 6  
Cato Smith 15  
Ivan Steele 36  
Edward Thompson 13  
Howard Tilson 59  
Glen Toms 54  
Dillard Turner 12  
Virgil Turner 45  
Clyde Venable 21  
Gray Williams 25  
J. L. Walters 34  
Ray Wine 48  
Earl Wynn 17





# PHI DELTA LITERARY SOCIETY

Founded 1859

*Motto: We Love Debate*

*Colors: Gold and Black*

<i>President</i>	A. C. Hounshell
<i>Vice President</i>	Gilbert Shely
<i>Recording Secretary</i>	Arch Bowman
<i>Corresponding Secretary</i>	O. J. Williams
<i>Treasurer</i>	William Wright
<i>Sergeant-at-Arms</i>	Raymond Cable

## ROLL

James Adams 14	Horace Lyttle
H. Stuart Auvil 4	Ernest Maples 2
Elbert Baxter 24	Hoke Miller
Arch Bowman 6	Escum Moore
James Bowman 1	William Ogg
Garland Brock 22	Philip Partridge 27
Forest Cable 11	Charles Phillips 26
Raymond Cable 18	Ralph Phillips 16
Rex Center	Virgil Phillips 5
Dewey Collett	Stephen Polly
Fred Creech 19	Rodney Quillen 9
John Dean 3	Raymond Redmond 15
Kermit Gardner 28	Gilbert Shely 17
Raleigh Hall 21	Jack Sherman 8
Arthur Hammons	Virgil Smith 10
Harold Hebb	Samuel Taylor
A. Curtis Hounshell	Earl Turner 7
Jesse Johnson 12	Eward Updyke
Landmon Johnson	Nazario Vargas 25
Homer Kidd	Edward Wheeler 13
Greer Kimery 29	William Wright
Forest Lacy 23	O. J. Williams 20



# ALPHA ZETA LITERARY SOCIETY

Founded 1894

*Motto: We Seek the Truth*

*Colors: Crimson and Gold*

<i>President</i>	Rector Hardin
<i>Vice President</i>	Wilfred Johnston
<i>Corresponding Secretary</i>	Howard Goodnight
<i>Recording Secretary</i>	Joe Morgan
<i>Treasurer</i>	Kenneth Swope
<i>Sergeant-at-Arms</i>	Jasper Dixon

## ROLL

Walter Arrants 33	Grover Harris 37
Yates Bailey 41	Jack Hays 25
Clinton Brosheer 7	Eugene Hilliard 6
Clarence Burton 35	Curtis Johnson 31
Millard Caudill 10	Wilfred Johnston 2
Wilburn Corell 29	Quay Ketner 44
William Coyne 18	Tracy Knight 15
Hugh Davis 40	Ed Lafferty 11
Jasper Dixon 27	William Lafferty 13
William Edwards 22	Albert Link 16
Paul Elliott 38	Millard Magill 30
Wilson Evans 9	Estle Madows 34
Clyde Fitzpatrick 28	Joe Morgan 14
Thurman Folger 46	Kelly Ray 23
Bevvis Gilreath 8	Gilbert Roberts 24
Otis Goble 32	Alva Sharpe 45
Howard Goodnight 19	Kenneth Swope 12
William Gray 17	Grady Tester 4
William Haley 39	Howard Walker 21
James Hamner 43	Ralph Walker 1
R. A. Hanlin 26	Harry Williams 36
Rector Hardin 20	Raymond Willis 5
Robert Harlowe 42	Joe Woods 3



# UTILE DULCE LITERARY SOCIETY

Founded 1899

*Motto: Omne tulit punctum qui miscuit Utile Dulce*

*Colors: Purple and Gold*

<i>President</i>	Ruth Bradley
<i>Vice President</i>	Helen Crossen
<i>Recording Secretary</i>	Maudie Hill
<i>Corresponding Secretary</i>	Maude Howell
<i>Treasurer</i>	Irene Parker
<i>Sergeant-at-Arms</i>	Jean Mershon

## ROLL

Nell Anderson 18	Jessie Measel 11
Alma Botts 34	Jean Mershon 1
Ruth Bradley 2	Myrtle Metcalf 38
Ruby Brown 24	Mary Moore 10
Frances Chaney 27	Della Napier 29
Frances Cooper 35	Irene Parker 21
Helen Crossen 8	Grace Poynter 13
Alma Crouse 28	Alpha Rader 9
Lydia Deyton 41	Irene Simpson 40
Nannie Estridge 33	Beatrice Sisk 31
Nancy Ann Eversole 37	Nannie Belle Sizemore 22
Mabel Fibiger 26	Mrs. John A. Smart
Dorothy Glenn 4	Mary Ina Smith 42
Martha Henson 6	Martha Standing 19
Zella Herndon 3	Eula Virgin 5
Maudie Hill 12	Ethel Waldroop 36
Blanche Hinds 16	Ruth Wamsley 7
Maude Howell 25	Thelma Warren 14
Zelma Langworthy 17	Nettie West 20
Roxie Ledbetter 23	Sarah Jane Williams
Aileen Maupin 32	Lillian Wilson 15
Edna May 39	Phina Winegar 30



# PI EPSILON PI LITERARY SOCIETY

Founded 1904

*Motto: She Soars On Her Own Wings*

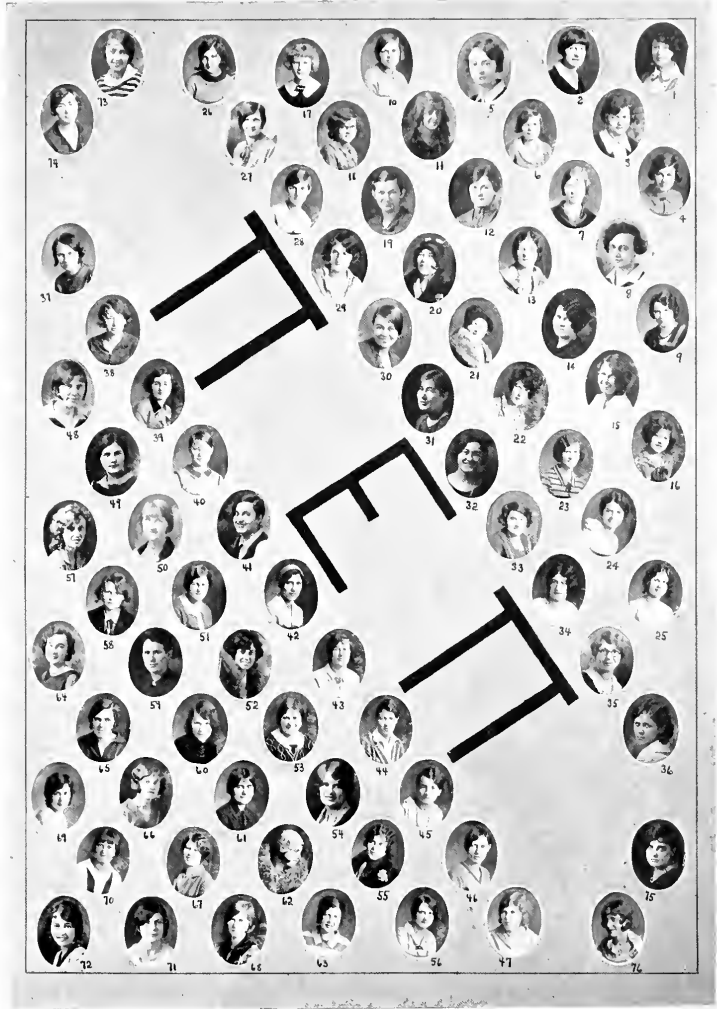
*Colors: Green and White*

<i>President</i>	Elizabeth Helton
<i>Vice President</i>	Christine Vest
<i>Recording Secretary</i>	Marie Barger
<i>Corresponding Secretary</i>	Eleanor Reed
<i>Treasurer</i>	Elizabeth Brosheer
<i>Sergeant-at-Arms</i>	Ruby Nickell

## ROLL

Harriet Allen 1	Ethel Gambill 26	Jean Pow
Georgia Baird	Ruth Gardner 27	Vandilla Price
Sytha Ballou	Hazel Girvin 28	Ila Mae Propps 53
Ruth Barbe 2	Mary Katherine Hafer 29	Mary Qualls
Ellen Best	Agnes Haldane	Pearl Rader 54
Marie Barger 3	Lona Hale	Eva Rainer 55
Hetty Bourne 4	Grace Hall 30	Ruth Raymond 56
Tisha Brassfield 5	Gladys Hammett	Eleanor Reed 57
Elizabeth Brosheer 6	Nellie Hays 31	Arlo Riddle 58
Nina Bryan 7	Anna Mae Helton 32	Kittie Ritchie 59
Mildred Burton 8	Elizabeth Helton 33	Anna Roberts
Myrna Canfield	Nora Howard 34	Beth Roberts 60
Susie Lee Cardwell 9	Joanna Huff	Bernice Rumley 61
Alice Chatfield 10	Audrey Ishmael 35	Evelyn Sammons 62
Alma Chidester 11	Betty Jacobs 36	Margaret Sanders 63
Ruth Chidester 12	Mary Jeffers 37	Rosa Lee Seale 64
Ellen Clarkson 13	Hazel Johnson 38	Elizabeth Shea 65
Margaret Cocks	Thelma Johnson	Alma Shrader 66
Etta Lewis Collins 14	Elizabeth Jones 39	Dessie Smith
Ruth Congleton 15	R. ba Kennedy 40	Eula Stanley 67
Virginia Copeland 16	Bobbie Ketner 41	Julia Stenken 68
Nellie Cox 17	Margaret Kraatz 42	Olive Sturgill 69
Nina Cox 18	Lucille Kuykendall 43	Oranell Sullivan 70
Oma Creech 19	Helen Leslie 44	Lucille Swaringen 71
Ruth Davis 20	Alice Lewis 45	Lucy Sweeney 72
Clara Estes	Dorothy Lloyd 46	Tommye Terrill 73
Nell Faust 21	Gladys McClure 47	Gladys Turner
Delna Fielder 22	Miriam McVey 48	Katherine Venable
Edna Folkland 23	Olive Montgomery 49	Christine Vest 74
Audrey Francis 24	Louise Morgan	Babe Wallace 75
Ophelia Francis	Ruby Nickell 50	Mollye Wilcox
Ruby Frazier 25	Gladys Parsons 51	Edrye Wilson 76
Virginia Friend	Annabel Porter 52	





# KAPPA GAMMA LITERARY SOCIETY

Founded 1922

*Motto: Noblesse Oblige*

*Colors: Rose and Gray*

<i>President</i>	Anita Phillipson
<i>Vice President</i>	Alma Booth
<i>Secretary</i>	Bess Leford
<i>Treasurer</i>	Callie Everhart
<i>Critique</i>	Helen Freas

## ROLL

Ora Lee Allen 46	Minnie Leford 40
Willie Fay Allen 8	Catherine Long 10
Virginia Auvil 26	May Mahaffey 19
Alma Booth 27	Ruth Marcum 45
Hilda Booth 35	Maude McAllister 48
Iva Lois Brooks 24	Helen McWhorter 36
Mary Drake 21	Frances Odom 41
Ethel Cunningham 47	Jennie Pace 28
Callie Everhart 2	Alba Padgett 30
Helen Freas 14	Eleanor Payne 9
Madge Gambill 34	Anita Phillipson 4
Ruth Goodman 42	Elma Phillipson 17
Rowena Hammond 43	Mary Ann Rogers 39
Myrtle Hicks 44	Edith Stone 32
Ruth Hopkins 5	Annis Smith 29
Alice Ingraham 6	Anna Stamper 16
Dorothy Ingraham 33	Minnie Tevis 31
Esther Johnson 11	Jean Trent 12
Geneva Johnson 37	Mary Wells 1
Maybelle Johnson 7	Gladys Williams 20
Reba Johnson 18	Bonnie Willis 15
Fern Kidd 38	Beulah Wolfe 25
Anna Kraatz 13	Muriel Wolfe 23
Bess Leford 3	Julia Woodfin 22



## ACADEMY LITERARY SOCIETIES



### LENORIAN

Front row: Alka Michael, Ethel Woods, Stella Bellamy, Martha Kendrick. Second row: Edna Sproles, Rose Minnucci, Anna Roberts, Ethel Meadows, Jean Coeks, Miss Emily Welch, Mary Margaret Zeigler, Dove Jesse, Doris Harrison, Ruth Zeigler, Miriam Ripby. Third row: Clydia Holcomb, Nuala Frost, Bonnie Fleenor, Eva Isaacs, Alice Pace, Carrie Madon, Margaret Ann Livegood, Rachael Marshal, Lorraine Redwine, Patsy McVey. Back row: Gladys Mays, Eva Whitacar, Ercel Vanover, Dixie Jones, Maude Holcomb, Orpha Cornett, Eula Fee, Delila Compton, Floy Young, Sarah Hammack, Delta Combs, Reba Eads.



### PI SIGMA

Front row: Arthur Woodruff, George Baird, Hubert Robinson, William J. B. Smith. Back row: Andrew Fekette, Paul Simek, Harry Ramey, Ottis Lambdon, Ralph Johnson.



#### SIGMA TAU

Front row: Isaac Hays, Dana England, Sherman Copley, Ivan Combs, Booker Shert, Chandler Hale, Oscar Owens. Second row: William Murphy, Lacy Wipperman, James Littlefield, Edmond Pike, Percy Hancock, Edward Slade, Virgil Childers, Amos Gastineau. Back row: George Ballou, Earnest Scott, James Meadows, Earnest Hammons, Horace McNeil, Virgil Marcum, Lawton Allen.



#### BETA ALPHA

Front row: Howard Bradley, Bruce Muncy, Victor McConkey, Aubrey Henderson, Posey Petrey. Second row: Earl Hyden, Smith Jones, Charles MacDonald, William Gortney, Alfred Lay, Ralph Cook, Leslie Dietz. Back row: Bwman Shrader, Gaine Stidam, Sherman Young, William Baird, Henry Forsman.



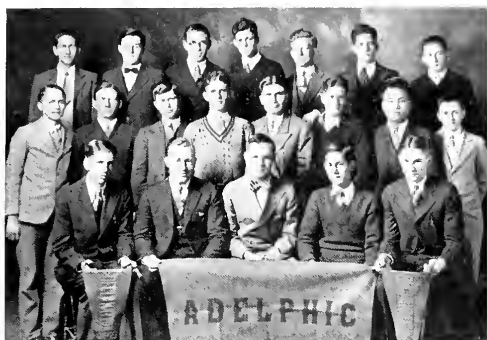
#### AELIOIAN

Front row: Zelma Wagers, Virginia Heath, Clara Strong, Miss Stowe, Lola Fowler, Ruby Scrivener, Lena Robbins. Second row: Edna Newman, Anne Gabbard, Lutie Adams, Flossie Willis, Elizabeth Shrader, Aileen Greathouse. Back row: Halley Shrader, Berta Staggs, Dorothy Perry, Virginia Stevens, Verlin Watson.



#### SORORIAN

Front row: Nell Newsome, Ollie Kelly, Margaret Miller, Miss Williamson, Beatrice Kelly, Gladys Duff, Roba Miller. Second row: Evelyn Auxier, Jamae Stargill, Ruby Raleigh, Christine Rhoton, Faye Cody, Tommie Stebbins. Back row: Ruth Mobley, Katherine Proctor, Annabel Pow, Louise Amos.



#### ADELPHIC

Front row: Litton Singleton, Tom Ball, Howard Moore, Sam Combs, T. J. Brandenburg. Second row: Percival Combs, Smith, Milburn Roberts, Henry Skinner, I. L. Shelton, Luther Baker, Tenk Whan Lee, Paul Gambill. Back row: Eckle Rowlin, Norman Wheeler, Albert Rhoton, Chalmer Frazier, Sam Lynn, Jhn Farmer, Edgar Blankenship.



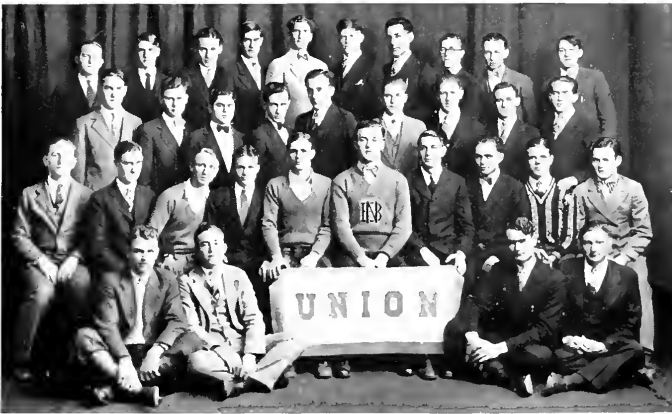
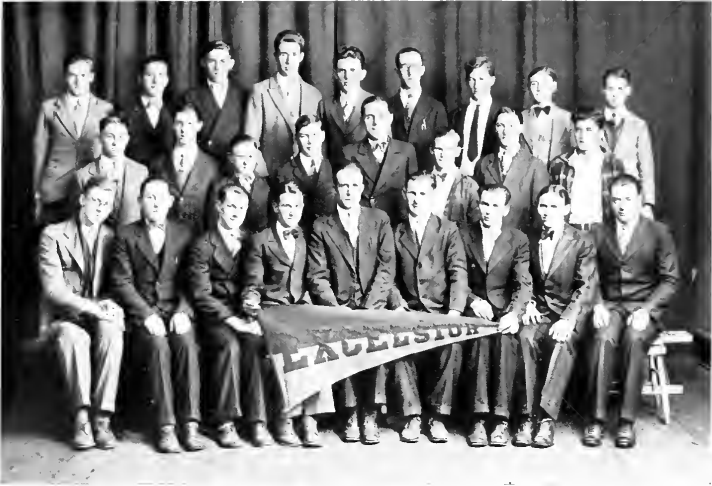
#### VICTORIA

Front row: Alma Kibler, Helen Marcus, Flora Mae Jones, Miss Roettger, Kenneth Northcut, Caserith Franklin, June Kibler. Second row: Blanche Davis, Vergie Alexander, Edith MacDonald, Alta May, Lucille Hughes, Pearl Kirby. Back row: Nettie Green, Lillian Sullivan, Katherine Edwards, Ruth Swinney, Iva Pearson, Gladys Hubbard, Fannie Farley.

NORMAL LITERARY SOCIETIES







# TAU KAP PA ALPHA



A. C. HOUNSHELL '29—Pres.

JULIA STENKEN '30—V. Pres.

A. G. WEIDLER—Sec. Treas.

PARIS BALLOU '29—Cor. Sec.

The Berea chapter of Tau Kappa Alpha, a national honorary forensics society, was founded in 1924. Its purpose is to promote oratory and debate, both intercollegiate and intramural. Its success may be gauged by the records Berea teams have made in this field. In eight years of intercollegiate debate, Berea teams have won 47 out of 68 decisions. In oratory during the same period Berea has won 19 first places, 10 seconds, and 3 thirds, thus placing in 32 of the 44 contests entered.

This season thirteen men and eight women have participated in intercollegiate forensics. Paris Ballou was awarded the high point medal this year with 16 points, the largest total ever amassed by any member of the Berea chapter.

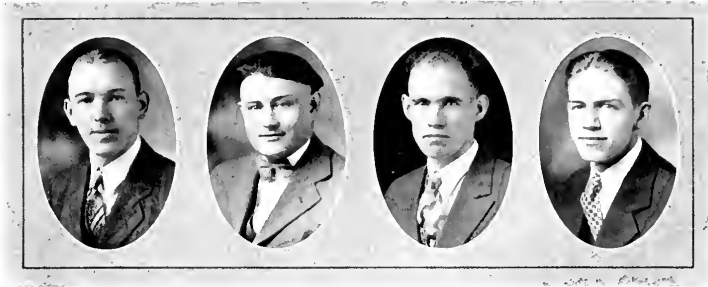


A. G. WEIDLER



A. C. HOUNSHELL

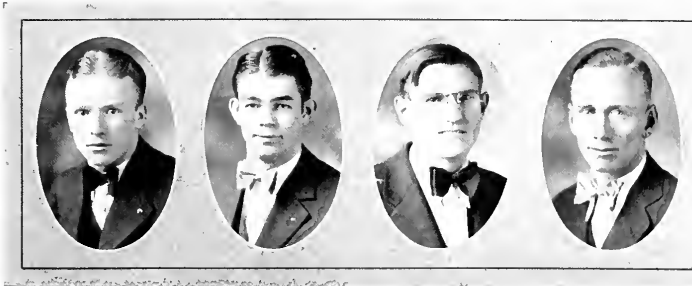
## MEN DEBATERS



### AFFIRMATIVE TEAM

ELBERT BAXTER, LEONARD ROBINSON, E. E. LAMBERT, JOHN SHOUSE

Debates: March 1, Centre at Berea; March 15, Wesleyan at Winchester; April 2, University of Kentucky at Lancaster; April 3, University of Kentucky at Stanford; April 5, Waynesburg at Berea; April 10, Georgetown at Georgetown; May 3, University of Louisville at Louisville—radio debate.

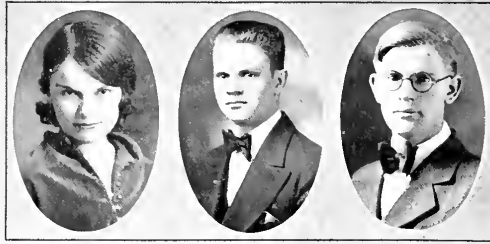


### NEGATIVE TEAM

EARL TURNER, ESCUM MOORE, RECTOR HARDIN, PARIS BALLOU

Debates: March 1, University of Kentucky at Lexington; March 15, Wesleyan at Berea; March 22, University of Kentucky at Richmond; March 23, University of Kentucky at Berea; March 24, University of Kentucky at Mt. Vernon; April 10, Georgetown at Berea.

## ORATORS



MARTHA STANDING: State Oratorical Contest, first place,  
April 26.

DANIEL EUTSLER: Home Oratorical Contest, first place,  
February 11; State Oratorical Contest, first place, March 2.

FOREST LACY: Constitutional Oratorical Contest, second  
place, April 26.



O. J. WILLIAMS: Alternate on Negative Debating Team.

JASPER E. DIXON: Home Oratorical Contest, second place,  
February 11; Triangular Contest at Richmond.

ETHEL GAMBILL: Triangular Oratorical Contest at Richmond.

19

WOMEN DEBATERS



AFFIRMATIVE TEAM  
MIRIAM McVEY, RUTH BARBE, JULIA STENKEN



NEGATIVE TEAM  
BEATRICE SISK, ELIZABETH HELTON, MAYBELLE JOHNSON



1 Ruth Bradley, 2 Dean McAllister, 3 Rector Hardin (Pres.), Wilfred Johnston, 5 Dean Baird, 6 Dr. Robertson, 7 Mrs. Weidler, 8 Dean Weidler (Sec.-Treas.), 9 Anita Phillipson, 10 Mollye Wilcox (V. Pres.), 11 Sam Kendrick, 12 Audrey Ishmael, 13 Miss Nicola.

### PI GAMMA MU

Pi Gamma Mu is a national social science honor society which was organized in 1924 for the purpose of promoting the scientific study of social problems. Its scope is broad; it includes all sciences that contribute directly to the solution of social prob-

lems; it includes all sciences that contribute directly to the solution of social problems. The Berea chapter, which was the fourth charter chapter of Pi Gamma Mu established, places emphasis upon History, Political Science, Economics and Sociology. There are no honorary members. To be eligible, one must complete a specified number of hours in the social sciences, and must show a high degree of efficiency in them. In the Berea chapter only instructors, alumni, and seniors of outstanding scholarship and intense interest in social sciences are eligible for membership.

The motto of this organization is: "Ye shall know the truth and the truth shall make you free."

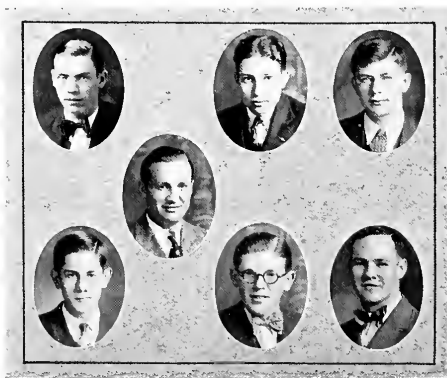


A. O. FRENCH  
ASSOCIATE SECRETARY, Y.M.C.A.



### THE CREDIT UNION

Top row: Christine Vest, Mauce Howell, Loan Committee; Roy Walters, Pres; A. G. Weidler, Supervisor; A. J. Chidester, Chairman Loan Committee. Second row: Miss E. K. Corwin, Supervisor; Ben Welsh, Treas.; Bottom row: Sam McCluer, Gaiter Norman, Harold Jones, Earl Robbins, Gilbert Roberts, Directors; C. N. Shutt, Supervisor.



### ACADEMY DEBATERS

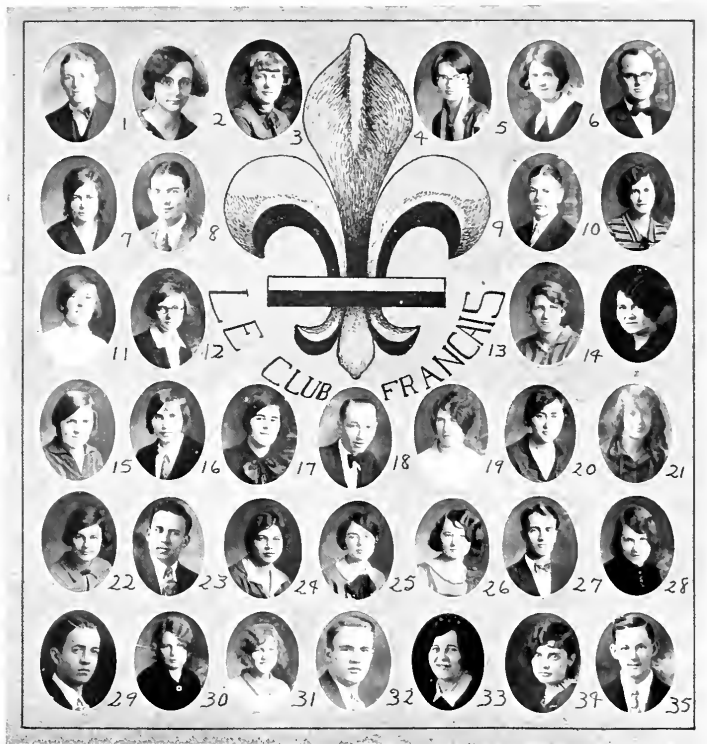
#### AFFIRMATIVE TEAM

Leonard Stephens, Amos Gastineau, Milburn Roberts.

Prof. C. N. Graham, Coach

#### NEGATIVE TEAM

Sam Combs, Oscar Owens, Howard Moore.



## THE FRENCH CLUB

Willie Fay Allen 5  
 Hetty Bourne 22  
 Milcred Burton 2  
 Ruth Bradley 12  
 (Sec.)

Miss Chapin 4  
 Alma Chidester 21  
 Etta Lewis Collins 14  
 Ruth Congleton 30  
 Frances Cooper 13  
 Helen Crossen 25  
 Ethel Cunningham 16

Ruth Davis 11  
 Jefferson Earp 35  
 Edna Folkland 10  
 Earl Fraser 8  
 (Pres.)

Clarence Gilbert 27  
 Wilfred Johnston 18  
 William Kelley 9  
 Anna Kraatz 24  
 Earnest Maples 6  
 Jessie Measel 19  
 Alba Padgett 7  
 Miss Richardson 3

Beth Roberts 28  
 Elizabeth Shea 15  
 Jack Sherman 32  
 Anna Stamper 33  
 Dillard Turner 23  
 Earl Turner 1  
 Christine Vest 20  
 Irene Wallace 34  
 Thelma Warren 31  
 Sara Jane Williams 17  
 Raymond Willis 29  
 Julia Woodfin 26





## THE GERMAN CLUB

H. Stuart Auvil 6  
 (V. Pres.)  
 Isabel Bell 24  
 Mildred Burton 17  
 Forest Cable 31  
 Raymond Cable 1  
 Dewey Collett 26  
 William Coyne 23  
 A. W. Dodd 8  
 Leslie Garrett 22  
 Ruth Goodman 34  
 Raleigh Hall 30  
 Jack Hays 16  
 Myrtle Hicks 18

Howard Hopkins 12  
 Ruth Hopkins 10  
 Dorothy Ingraham 36  
 Sandmon Johnson 2  
 Wilfred Johnston 4  
 (Pres.)  
 Roy Justice 25  
 Jack Kidd 15  
 Forest Lacy 37  
 Alice Lewis 32  
 Edward Montgomery 29  
 Charles Phillips 33  
 Ralph Phillips 21

Rosa Lee Seale 9  
 Gilbert Shely 14  
 John Shouse 13  
 Eula Stanley 2  
 Ivan Steele 28  
 Lucy Sweeney 7  
 Edward Thompson 11  
 (Sec.)  
 Virgil Turner 19  
 O. J. Williams 27  
 Joe Woods, 3  
 (Treas.)  
 Dr. Wyckoff 5



## THE CLASSICAL CLUB

Miriam Adams 6  
 Lawrence Baker 31  
 Alma Botts 35  
 Ruth Bradley 24  
 Garland Brock 4  
 Mildred Burton 13  
 Margaret Cocks 1  
 (Sec.)  
 Frances Cooper 27  
 Nina Cox 15  
 Daniel Eutsler 12  
 Callie Everhart 8  
 Nancy Eversole 26

Hazel Girvin 3  
 (V. Pres.)  
 Gladys Hammett 20  
 Rowena Hammond 22  
 Anna Mae Helton 9  
 Elizabeth Helton 29  
 Blanche Hinds 10  
 Maude Howell 25  
 Audrey Ishmael 11  
 Maybelle Johnson 30  
 Zelma Langworthy 17  
 Alice Lewis 2  
 (Pres.)

May Mahaffey 14  
 Jessie Measel 33  
 Robert Nance 23  
 Eleanor Payne 34  
 Ruth Raymond 32  
 Mrs. Shouse 5  
 Faith Mae Sloan 16  
 Mary Ina Smith 7  
 Miss Welsh 19  
 Raymond Willis 28  
 Phina Winegar 21  
 Muriel Wolfe 18



**Y. W. C. A. CABINET**

Ruth Barbe 14; Oma Creech, Treas. 3; Helen Crossen, Pres. 1; Helen Frens 10; Hazel Girvin 5; Elizabeth Helton 12; Audrey Ishmael 13; Ruby Kirk, Academy 17; Anna Kraatz 4; Lucille Kuykendall 8; Irene Parker, Sec. 2; Anita Phillipson 16; Pauline Rhodes 15; Kitty Ritchie 7; Nannie Bell Sizemore 9; Christine Vest, V. Pres; 6; Muriel Wolfe 11.



**LADIES HALL COUNCIL**

Ruby Brown, Senior Councilor 2; Miss Cocks, Advisor 5; Anna Kraatz, President 1; Jessie Measel, Junior Councilor 3; Miss Welsh, Advisor 6; Phina Winegar, Sophomore Councilor 4.



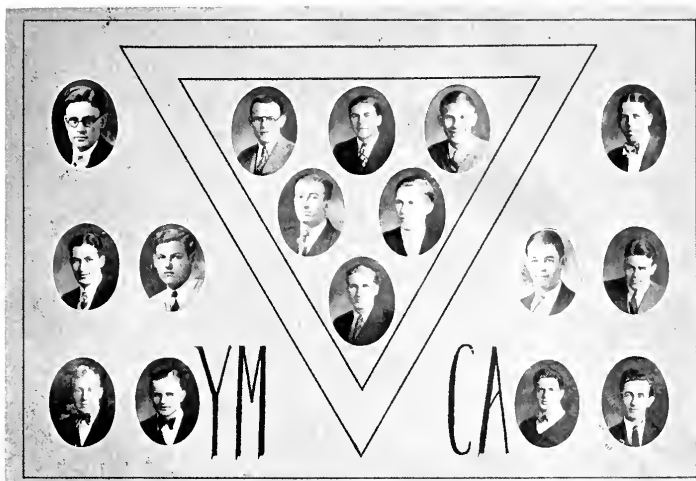
**CHRISTIAN ENDEAVOR CABINET**

Susie Lee Cardwell, V. Pres. 1; Mr. Christopher 12; Raleigh Hall, Pres. 6; Gladys Hubbard, Missions 9; E. E. Lambert, Treas. 2; William Murphy, Pianist 5; Marvin Nay, Pastor's Aid 10; Earl Robbins, Programs 3; Louise Scott, Sec. 8; Eula Stanley, Social 4; Edward Thompson, Membership 11; Rev. Zeigler 7.



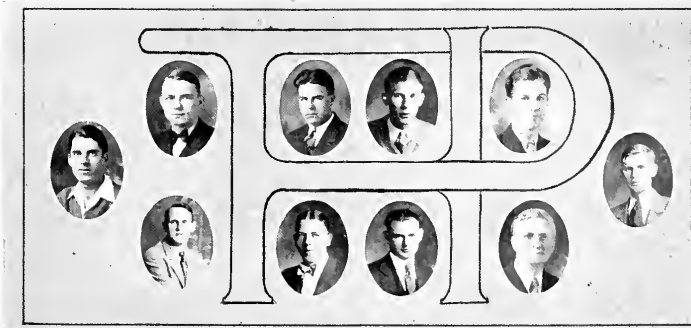
**COLLEGIATE UNION OFFICERS**

TOP ROW: James Hamner, Treas.; Anita Phillipson, Pianist; Rector Hardin, Pres.; Nettie West, Sec.; Ed Lafferty, Cheer Leader; BOTTOM ROW: Ruby Nickell, Chorister; Dorothy Glenn, Social.



### Y. M. C. A. CABINET

TOP ROW: Lawrence Baker; Earl Carroll, Associate Sec.; Frank Div., Pres.; Wilson Evans, V. Pres.; Ed Lafferty. SECOND ROW: Earl Gambill, Treas.; Geibel Pruitt. THIRD ROW: Ralph Phillips; William Stafford; Ed Cooper, Gen. Sec.; Escum Moore; Jasper Dixon. BOTTOM ROW: Tom Lall; Ted Carier; Sam Tuttle; Herbert Lewis.



### PEARSONS HALL COUNCIL

TOP ROW: Gilbert Roberts; Jasper Dixon, Pres.; Wilson Evans, V. Pres.; Bill Edwards. SECOND ROW: Paul Neal; Forest Lacy. THIRD ROW: Albert Link; Ed Lafferty; Howard Walker, Treas.; Dean Weidler.

# AGRICULTURE-HOME ECONOMICS CLUB

FOUNDED 1929

<i>President</i>	John A. Smart
<i>Vice President</i>	Willie Fay Allen
<i>Secretary</i>	Callie Everhart
<i>Treasurer</i>	Ralph Phillips
<i>Sergeant-at-Arms</i>	Howard Walker

## ROLL

Miriam Adams 17	Jerry Montgomery 27
Willie Fay Allen 35	Irene Parker 30
Dean Baird 3	Ralph Phillips 36
Marie Barger 33	Virgil Phillips 34
Nina Bryan 15	Prof. Price, Agriculture 1
Hugh Davis 39	Vandilla Price 12
Miss Elliott, Clothing 4	Goebel Pruitt 32
Callie Everhart 40	Sylve Reynolds 19
Mr. Fielder, Garden 7	Pauline Rhodes 13
Thurman Folger 43	Leonard Robinson 20
Edna Folkland 42	Alma Shrader 28
Elizabeth Helton 26	Nann'e Belle Sizemore 23
Eugene Hilliard 31	Mr. Spence, County Agent 5
Blanche Hinds 21	Julia Stenken 38
Alice Ingraham 9	Howard Tilson 41
Lanmon Johnson 29	Miss Eunice True, Home Ec. 2
Ausbe Kennedy 14	Prof. VanCleve, Agriculture 8
Quay Ketner 16	Howard Walker 10
Miss Ledbetter, Co. Dem. Agent 6	Ralph Walker 37
Catherine Long 11	Edward Wheeler 22
Neal McWhorter 24	Gray Williams 25
Mr. Monier, Dairy 18	





RALPH RIGBY  
HEAD OF DEPARTMENT OF MUSIC



MEN'S GLEE CLUB

Junior Alley, Paul Blackburn, Alva Sharpe, Albert Link, Raymond Cable, Sylve Reynolds, Theodore Wright, Lloyd Elliott, Joe Woods, Howard Tilson, Earl Fraser, Maurice Blakey, Ausbie Kennedy, Frank Alley, William Haley, Clarence Gilbert.





### GIRLS' GLEE CLUB

Alba Padgett, Etta Lewis Collins, Nellie Hays, Ethel Gambill, Annabel Porter, Anna K. Roberts, Mollye Wilcox, Mary Wells, Anita Phillipson (pianist), Margaret Sanders, Mary Katherine Hafer, Nellie Cox, Elma Phillipson, Peulah Wolfe, Tommye Terrill. (Not in picture: Bess Gilbert, Beth Roberts.)

MISS GLADYS V. JAMESON  
DIRECTOR MEN'S AND GIRLS' GLEE CLUBS





## THE ORCHESTRA

Front row: Miss Cheney, pianist; Mrs. R. G. Hutchins, Margaret Kraatz, Mary Katherine Hafer, Elma Phillipson, Daniel Eutsler, first violins; Miriam Rigby, clarinet; Rosa Lee Seale, Anna Roberts, cellos; Mrs. J. N. Peck, Mr. Speers, violas; William Kelley, Helen Crossen, Ruth Raymond, Mrs. John F. Smith, second violins. Second row: Gilbert Roberts, French horn; Harold Rigby, flute; William Murphy, trombone; Virgil Minnich, Sousaphone; Mr. Huffman, director; E. G. Maples, Milburn Roberts, Major Gardner, cornets.



## THE BAND

Front row: Miriam Rigby, Anna Roberts, Mabel Best, clarinets; Michael Hoffmann, flute; Henry Gardner, French horn; Walter Engle, alto; Mr. Huffman, director; Mary Lee Hackett, Major Gardner, Milburn Roberts, Henry Lutes, Scott T. McGuire, Jr., Edgar Brown, cornets. Second row: John Bardette, William Hazelwood, clarinets; Harold Rigby, piccolo; Lloyd Roberts, clarinet; Bernard Davidson, Harold Davidson, Ulysses Wilder, saxophones; Virgil Minnich, Sousaphone; William Haley, bass drum; Kelley Wagers, snare drum; John Moore, Emerson Hatcher, baritone; Raleigh Hall, William Murphy, Gaine Stidam, trombones.

# DRAMATIC CLUB

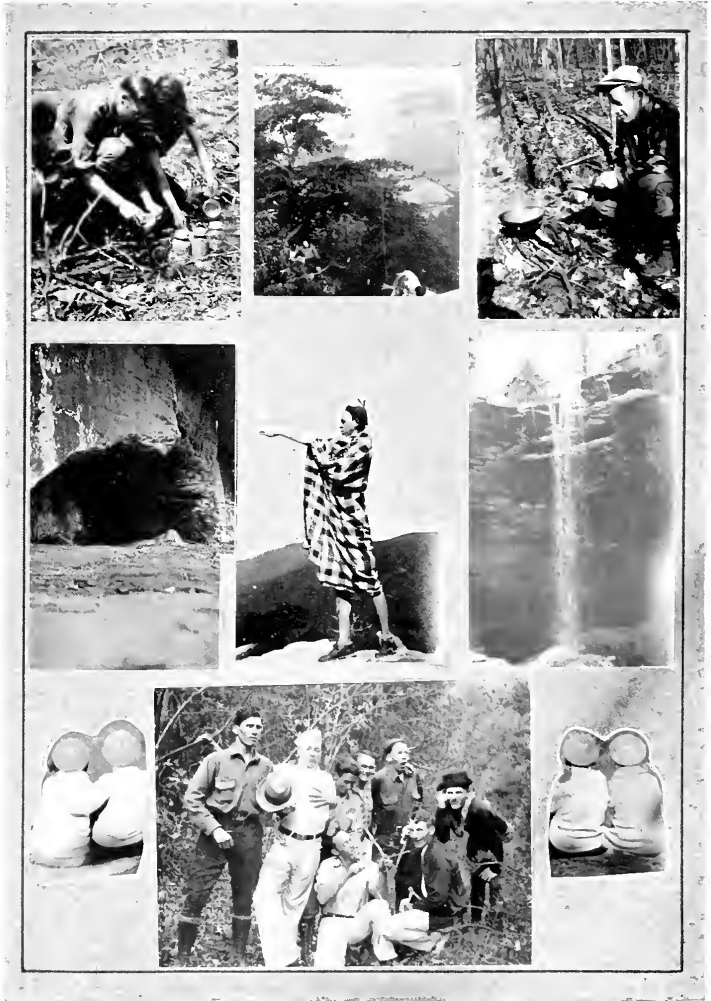
Founded 1920

DOROTHY GLENN—*President*

## ROLL

Willie Fay Allen 5	Mary Jeffries 30
Lawrence Baker 42	Esther Johnson 60
Isabel Bell 52	Maybelle Johnson 20
Alma Booth 36	Reba Kennedy 23
Hilda Booth 29	Bobbie Ketner 12
Ruth Bradley 38	Anna Kraatz 27
Byron Brian 53	Margaret Kraatz 32
Gerland Brock 58	Albert Link 25
Ruby Brown 7	Lynn Mayfield 40
Raymond Cable 9	Neal McWhorter 55
Ruth Congleton 61	Estle Meadows 8
Francis Cooper 54	Paul Neal 33
Wilburn Corell 6	Ruby Nickell 51
William Coyne 19	Cullen Owens 11
Helen Crossen 34	Eleanor Payne 63
William Davidson 35	Ralph Phillips 4
Jasper Dixon 13	Virgil Phillips 62
Clyde Fitzpatrick 2	Elma Phillipson 3
Edna Folkland 59	Pauline Rhodes 49
Earl Farser 31	Arlo Riddle 10
Virginia Friend 1	Margaret Sanders 48
Clarence Gilbert 15	Edgar Sell 56
Prof. Given 24	Alva Sharpe 21
Dorothy Glenn 41	Jack Sherman 39
Mary Katherine Hafer 14	Anna Stamper 16
Agnes Haldane 26	Minnie Tevis 43
Raleigh Hall 37	Christine Vest 22
Maudie Hill 45	Prof. Weir 17
Dorothy Ingraham 44	Nettie West 46
Audrey Ishmael 57	Phina Winegar 18
Betty Jacobs 47	Julia Woodfin 50







# ATHLETICS



Eula Virgin, Oma Creech, Martha Henson, Callie Everhart, Anita Phillipson, Anna Kraatz, Kitty Ritchie.

### WOMEN'S ATHLETIC ASSOCIATION

The Women's Athletic Association was established in 1924 in order to encourage the girls along athletic lines. This encouragement takes official form in the various insignia which are awarded for the fulfillment of certain requirements rather than for success in competitive sports.

Each school has its own organization to handle its own athletics. The awards are peculiar to each school, but similar in all in design and value.

These awards are won on the point system. Points may be earned in hiking, soccer, swimming, basketball, archery, tennis, baseball and track. Of these sports, soccer, swimming and archery were initiated this year.

In the College Department, a set of class numerals and eligibility to membership are acquired along with 100 points. The block BC signifies that its wearer has amassed 600 points, a block B stands 1200, and an Old English BC represents 1800.

Points are earned thusly: Member of first team—100 points; member of second team—50; substitute—25; adherence to training rules for one month—25; hiking 100 miles—75.





## THE "B" CLUB

Front row: Burton, basketball; Red Baker, basketball 3 years, honorary captain; Hinsdale, track; Big Baker, basketball 3 years; Noll, coach; Mayfield, track; Harlowe, basketball 2 years, tennis; Jess Johnson, basketball; Wyatt, basketball. Back row: Dix, track; Cooper, track; Evans, basketball 2 years, tennis; James Bowman, basketball; Caylor, basketball 2 years; Big Phillips, track; Wright, basketball; Reynolds, track; Hopkins, track. Seated: Brosheer, manager basketball '28; Howard Walker, manager basketball '29. Not in picture: Curt Johnson, basketball 3 years, captain; R. C. Quimby, honorary; Gilbert Shely, track.

The B Club was organized in 1925. The official letter at that time was a ten inch full black B. It was at first blue, to be worn on a white sweater, but was soon changed to a white letter on a blue sweater. Later, the size was also revised, so that the official letter is now a six inch full block B seven inches wide. Service stripes are worn in the top bar of the B. A captain's letter has a star, an honorary or coach's an H, and a manager's an M, all placed in the bottom bar of the B.

The B is awarded only in basketball, tennis, and track; these are the intercollegiate sport in which Berea is represented.

## THE MOUNTAINEERS

Kentucky basketball was of much better grade than usual this season. Practically all the teams in the State were leftovers from last year, and all of them were improvements. But, notwithstanding the fact that Berea had the lightest and the youngest college team in Kentucky, she showed up exceptionally well against this stiffer competition. With six letter men back, and three first rate Sophomores fighting for berths, prospects looked good at the first of the season. On top of the material at hand, the new Seabury Gym was quite an improvement over the Tabernacle as a stamping ground for future champions.

When this new gym was dedicated on the 16th of November, the old Berea team that won the State championship in 1926 returned to the scenes of their former glory to test the mettle of their successors. The present varsity lost to the heroes of days gone by, all right, but they did hold the Old Mountaineers to a four point victory.

After this game the Mountaineers gradually developed into a rather erratic team which could, however, handle the ball better than any quintet Berea has fostered in many seasons. It was curious how the boys could not all get hot in the same game. One time Jeff would run wild, and his teammates would be powerless to assist him. At the first Georgetown game it was Curt's time; Evans had his day now and then—and so it went.

The second Centre game, played in Berea, was the only time the boys happened to work together. It will be quite a while before Berea fans

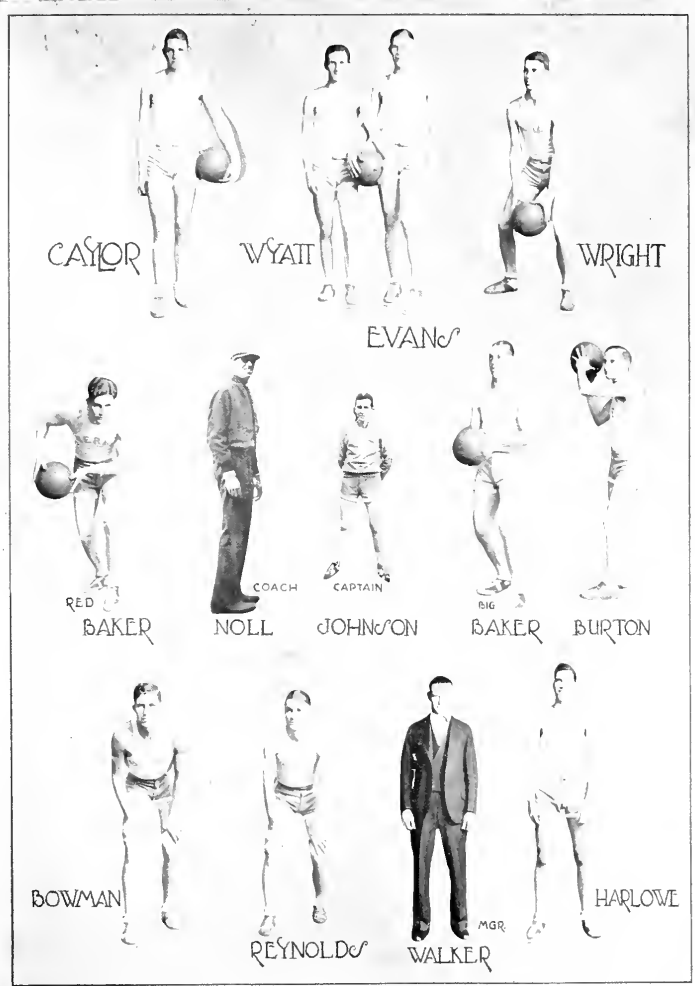
(Continued on Page Ninety-one)



1926 KENTUCKY CHAMPIONSHIP TEAM

Front row: Bill Collawn, French Maggard, G. Henley Wright, Julian Harlowe.

Back row: Yankee Lewis, John Henry Lafferty, Clay Watson, Clayton Sherman.



CAYLOR

WYATT

WRIGHT

EVANS



RED  
BAKER



COACH  
NOLL



CAPTAIN  
JOHNSON



BIG  
BAKER



BURTON



BOWMAN



REYNOLDS



MGR.  
WALKER



HARLOWE



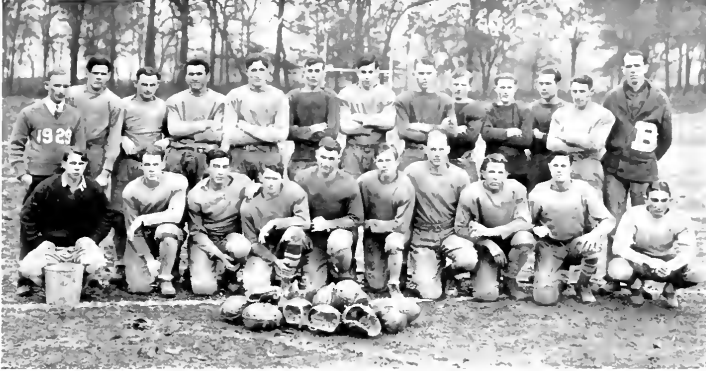
### FRESHMAN BASKETBALL TEAM

Front row: Sharpe, Dean, Hale, Montgomery, Hammons. Back row: Gardner, Davis, Partridge, Arrants, Puckett, Quimby (coach).

### INTERMURAL BASKETBALL

Berea's 1928-29 intermural basketball season was close enough from the championship side of the question to be interesting, although the playing of each individual team was considerably below par. In fact, there were no really outstanding players on any of the four teams which compose the Berea International Basket Ball Conference.

The race for the championship was not a walkaway until the final game, when the prep school made one of Academy's fourth quarter rallies and completely smothered the Freshmen who were already trailing in scoring. Along towards the last of the season, Shutt's peppers, Quimby's rats, and Rash's schoolmams were about neck, neck, and neck, but the season wound up with Academy on top by virtue of 5 wins out of 7 games. The Freshmen were second with 4 games won to three lost; then came Normal with 3 and 3, and the Junior High team trailed with a record of one game won out of six played. Their one win, however, was the biggest upset of the season, for they trimmed the hitherto undefeated Freshmen decisively, and repeated the stunt shortly afterwards in an extra-schedule game.



## COLLEGE FOOTBALL TEAM

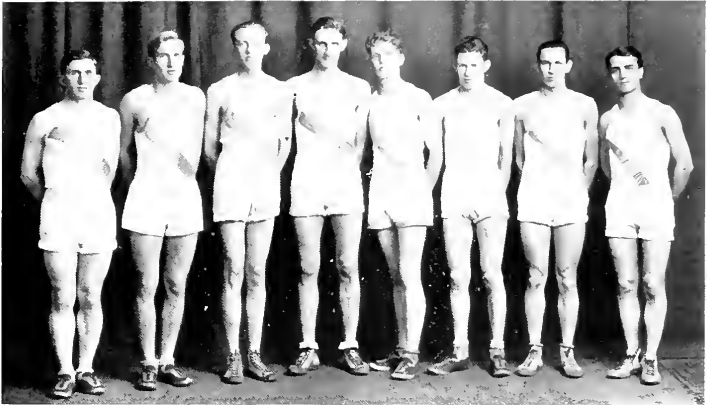
Front row: Brosheer (water boy), Tilson, V. Phillips, Johnson, Parker, Pruitt (Capt.), Bowman, Hamner (Capt.-elect), Hays, Hilliard.  
 Back row: R. Walker (Manager), Miller, H. Walker, Puckett, R. Phillips, Auvil (Manager-elect), Woods, Partridge, Lafferty, Sell, Neal, Sharpe, Noll (Coach)

## FOOTBALL

The 1928 football season was remarkably like its predecessor in that the various teams almost automatically fell into the places one would ordinarily expect them to. The College team was never scored on, and it ran up a total of 190 points to its opponents' collective goose egg. Academy was next in line, then Normal and Junior High.

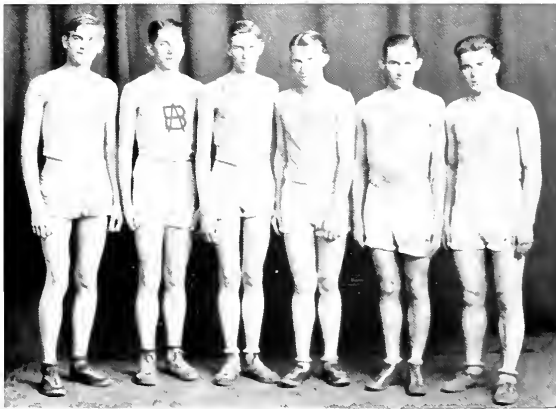
As the total of scores would indicate, the College aggregation was clean out of the class of the rest of the teams. The Crimson line was the heaviest from tackle to tackle, and the fastest from end to end, that ever assembled on the Main Athletic Field. In fact, it is regrettable in the instance of this season that Berea does not participate in intercollegiate football.

With a line composed of Virge Phillips, Ah Eey Bowman, Touchdown Parker, Martha Johnson, and Jim Hamner, flanked by Hilliard and Hays, backed by Peanut Pruitt, Mike Massey, Howard Walker and Big Phillips, and re-enforced by Tilson's consistent punts and a lot of up-and-coming subs, Berea should be able to provide any team in the state with some stiff competition.



### VARSITY CROSS COUNTRY TEAM

Johnson, Cooper (Capt), Venable, Combs, Hopkins, Caudill, Alley, Gilbert.



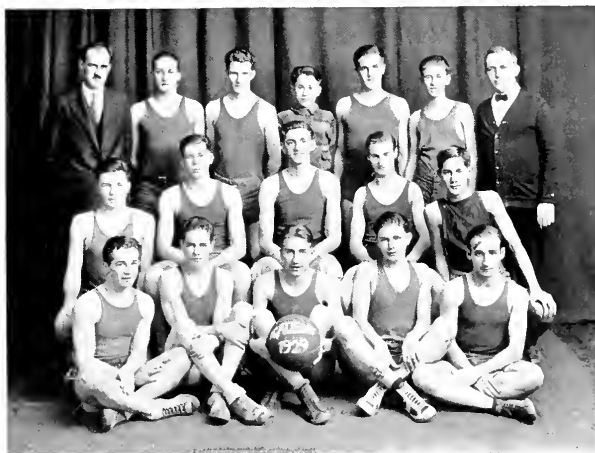
### ACADEMY CROSS COUNTRY TEAM

Raymond Isaacs, Litton Singleton, Dona England, Nathan Gortney,  
Virgil Childers, Edmund Pike

THE MOUNTAINEERS—Continued from Page Eighty-six

will forget how Jeff Wyatt made four points off the first two tip-offs in the first twenty seconds of play and how he finished the game with sixteen more to his credit. Evans made 11 points that day, and Harlowe and Red Eaker played exceptionally good guard ball. This game was the best exhibition of basketball that has been displayed in Berea for quite a while.

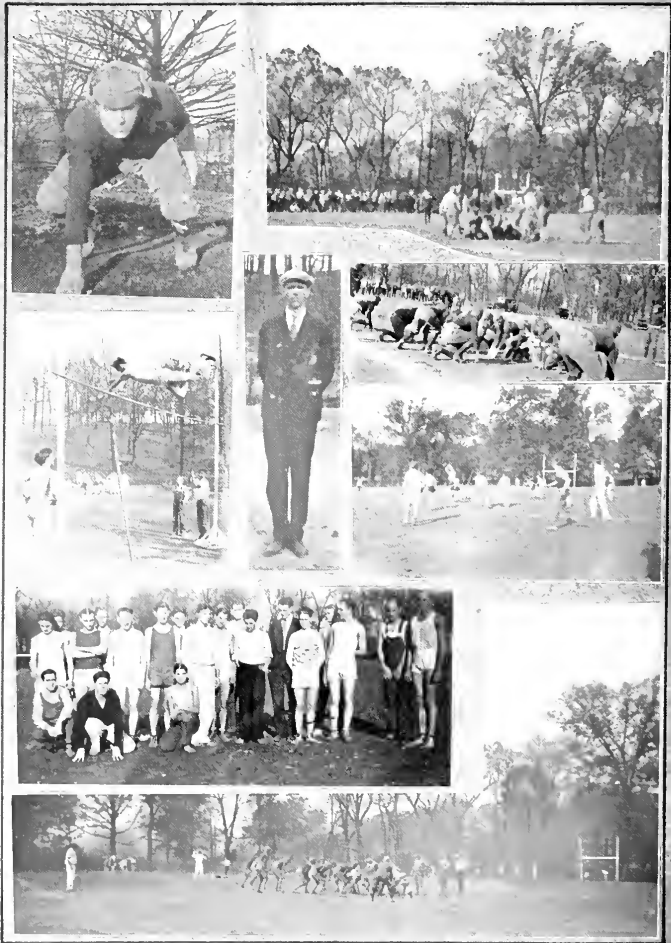
The season in brief: Berea defeated Cumberland at Williamsburg 45-17 before the holidays; lost to Georgetown there 27-36 January 2nd; won over Eastern 36-16 in the opening game in Berea's new gym January 7th; lost to Centre there 25-35 the 12th; to Louisville there 31-36 the 18th; trimmed Transylvania 40-13 at Berea January 21st; lost to Georgetown at Berea 28-20 the 29th; defeated Eastern there 37-25 February 1st; lost to Wesleyan at Berea 18-30 February 4th; won over Transy there 25-15 the 9th; defeated Centre at Berea 36-25 February 11th; lost to Wesleyan there 21-34 the 14th. In the first game of the tournament, the Mountaineers lost a heartbreaker to Centre 30-31.



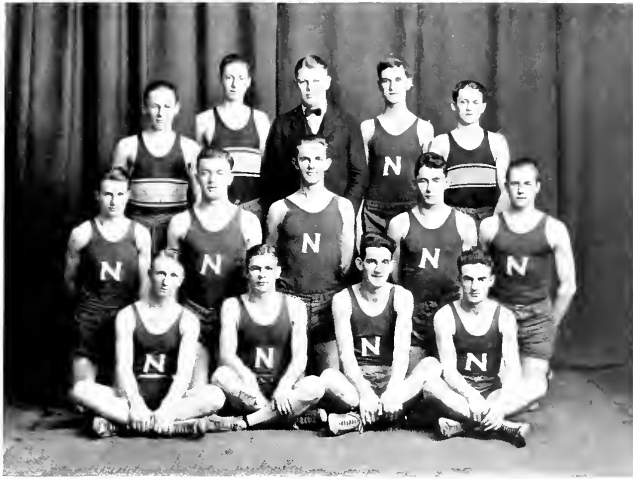
ACADEMY BASKETBALL TEAM

1928-29 Intermural Champions

Front row: Wyatt, Frazier, Hickam, Bailey Dietz. Second row: Robinson, Denton, McConkey, Runyon, S. Combs. Back row: Smart (Asst. Coach), Petrey, Copley, W. Combs (Manager), Hammond, Evans, Shutt (Coach)







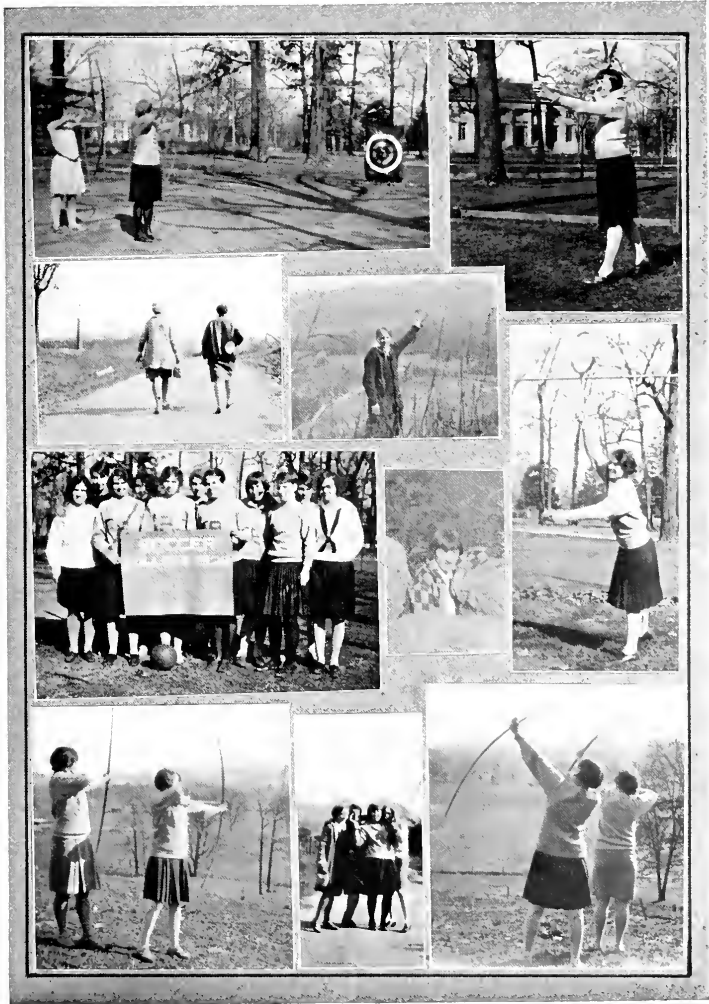
### NORMAL BASKETBALL TEAM

Front row: Mann, Buster, J. L. Turner, Osborne. Second row: Shoemaker, Newby, Sloan, Price, Roe. Back row: Woods, Whitaker, Rash (Coach), J. H. Turner, Roberts.

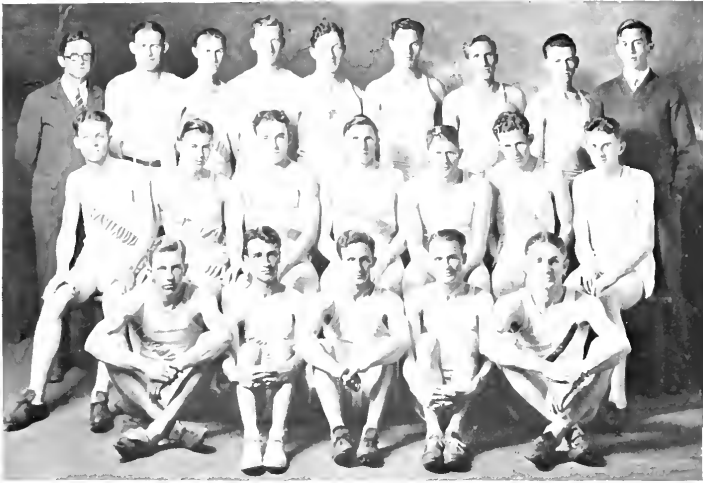
### JUNIOR HIGH BASKETBALL TEAM

Front row: Saylor, Combs, Sparks, Helton. Second row: Ritchie, Shockey, Roberts, Caudill. Back row: Barrett, Payton, Speers (Coach), Leady, Eversole.





# TRACK



Front row: Davis, Gilbert, Wyatt, Thompson, Reynolds. Second row: Tilson, Adams, Davidson, L. Johnson, J. Johnson, Caudill, Montgomery. Back row: Fenn (Coach), Martin, Turner, Mayfield, Phillips, Hays, Cooper (Capt.), Christian, Auvil (Manager).

This year's track team is the result of an exceptionally good collection of green material. It is coached by Prof. Fenn, who was once a timber topper of the first water, and captained by Ed Cooper, a high jumper of no mean ability and a distance man to be watched with both eyes. The experienced men who served as a nucleus for this aggregation of track and field men are Eig Phillips, Lynn Mayfield, Jess Johnson and Jeff Wyatt.

The first meet of the season, with Georgetown College, proved rather disastrous. When the smoke had cleared away and the scores were counted, the Tigers were found to have amassed 74 points to the Mountaineers' 43. Berea men who took first places were Gilbert in the distance runs, Davis in the 440, and Cooper in the high jump. Gilbert, a Sophomore, handily won the mile and two mile runs, indicating that the long distance departments of other colleges in Kentucky should look to their training procedure before the State Meet. The most sensational event of the day was the mile relay. The Berea team, Hays, Montgomery,

Reynolds, and Davis, made excellent time, and Davis, running anchor, ran a beautiful last lap, overcoming a heavy lead and leaving his man far behind.

The team was greatly handicapped at the first of the season by the epidemic of scarlet fever, but it is steadily improving as strength and ambition return to the limbs and hearts of the victims of the fell malady. A certain amount of work is bound to make a winning team out of the squad.

The Freshman team, without an experienced man on the squad, gave the Georgetown rats a stiff race, but lost 55-62. Duke, Sharpe, Bailey, Phillips, and Ayers showed up well, and, with experience, should develop into real collegiate threats.

#### COLLEGE BASEBALL TEAM



Front row: Hamlin p; Jack Kidd rf; Briscoe ss; Steele c. Second row: Homer Kidd cf; James Bowman p; Caylor 1b; Eaves 3b; Wade lf. Third row: Hilliard 3b; Big Baker 2b, Captain.



Bill Bowman, Wilson Evans, Todd Allen, Bob Harlowe (Capt.) C. Owens.

## TENNIS

As this goes to press, Berea's tennis season is still in process. The Mountaineers have scheduled two matches with Centre, two with Kentucky State, and one with the University of Louisville.

The members of the team are ranked as follows: Captain Harlowe, Wilson Evans, Todd Allen, Cullen Owens, and Bill Bowman. The team is somewhat handicapped by the absence of Sam Kendrick, the diminutive ace, who was such a mighty bulwark of strength last year.

It is hoped and expected that Berea will acquit herself as well this year as she did last spring. In the 1928 season, her tennis team defeated State and Centre twice each, and split two games with Georgetown. On this performance, Berea laid claim to the State tennis championship. Since there was no officially recognized championship team, Berea's claim was as good as anybody's, and still stands approved as read.

## THE ALUMNI ASSOCIATION OF BEREA COLLEGE

### OFFICERS

LOUIS J. KARNOSH '13  
President  
W. O. RAMEY '21  
1st Vice-President  
F. E. MATHENY '98  
2nd Vice-President  
CHARLES T. MORGAN '23  
Secretary

### EXECUTIVE COMMITTEE

WM. JESSE BAIRD '19  
BLANCHE NICOLA '14  
A. J. RUSSELL '26  
LORENA HAFER '17  
BENTON FIELDER, Vocational Rep.  
ROBERT F. SPENCE, Normal Rep.  
LUTHER AMBROSE '20, Academy Rep.



CHARLES T. MORGAN  
Alumni Secretary

The Alumni Association of Berea College with its executive office on the campus has as its purpose the promotion of the welfare of Berea College, and the maintenance of a mutually beneficial relationship between the institution and its graduates and former students.

Membership in the Alumni Association represents a continued interest in the friends of college days and a new realization of the part former students may have in the development of the College and its Allied Schools. Recipients of all degrees granted by the College are admitted to active membership of the Association. Also former students of the College may become members after the graduation of the last class with which they were connected. Graduates of the Secondary Schools are admitted to associate membership.

## 1929                      PRESIDENTS                      1930

### CLASSES

Summer School '29 ---- Maurice Blakey	Junior ----- Clarence Gilbert
Senior ----- Gilbert Roberts	Sophomore ----- Lum Duke

### ORGANIZATIONS

Alpha Zeta ----- William Edwards	Kappa Gamma ----- Jean Trent
Kappa Sigma ----- Edward Thompson	Y. M. C. A. ----- Wilson Evans
Phi Delta ----- Ralph Phillips	Y. W. C. A. ----- Irene Parker
Pi Epsilon Pi ----- Julia Stenken	Christian Endeavor ---- Delbert Eagle
Utile Dulce ----- Helen Crossen	

## SUMMARY

### 1925-26—

- September 8: Enter Class of 1929.
- October 5: First intermural speedball game, College 11, Academy 2.
- November 2: Senior Class presents "The Irresistible Marmaduke."
- February 22-24: Berea Mountaineers win first K. I. B. T. and State Basketball Championship.
- November 4: Student government adopted in dining rooms.
- April 3: English Faculty presents "The Servant in the House."
- May 19: Dramatic Club presents "Taming of the Shrew."
- May 28: Harmonia presents "Mikado."

### 1926-27—

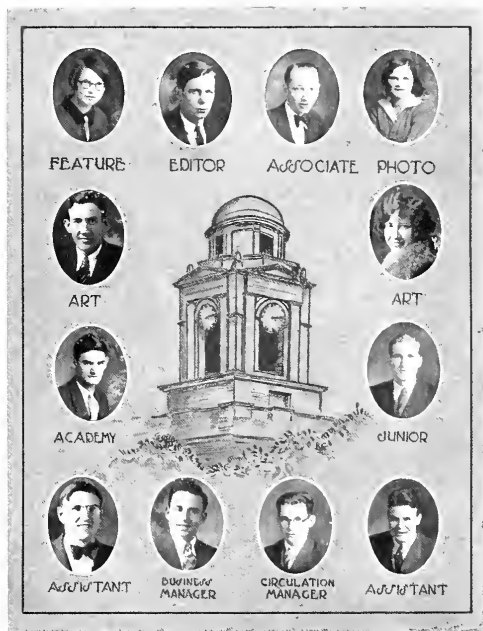
- October 23: Woods Penniman Building Dedicated.
- December 3: Berea admitted to Southern Association of Colleges.
- December 6: Oxford-Berea debate.
- April 5: EXTRA published.
- May 28: Dramatic Club presents "Dear Brutus."

### 1927-28—

- March 28: Science Building dedicated.
- May 22: Dramatic Club presents "A Message from Mars."
- May 14: Mock Presidential Convention.
- May 29: Water tower painted and cleaned.
- June 2: Harmonia presents "Pinafore."

### 1928-29

- October 18: Vincent Goldthwait Memorial Building dedicated.
- November 12: Dramatic Club presents "The Enemy."
- November 16: Charles Ward Seabury Gymnasium dedicated.
- November 17: Berea approved by Association of American Universities.
- March 11: Scarlet fever epidemic and quarantine begins.
- March 18: Silver Creek officially closed to Seniors.
- April 17: Dramatic Club presents "Ice Bound."
- May 22: Harmonia presents "The Creation."
- June 3: Exit Class of 1929.



### THE CHYMES STAFF

Editor-in-Chief .....	J. Clinton Brosheer
Associate Editor .....	Wilfred Johnston
Feature Editor .....	Jean Mershon
Photo Editor .....	Dorothy Glenn
Art Editor .....	Grady Tester
Art Editor .....	Ruby Brown
Junior Representative .....	Ed Cooper
Academy Representative .....	Robert Galvin
Business Manager .....	Dillard Turner
Assistant .....	Rector Hardin
Circulation Manager .....	S. Edward Wheeler
Assistant .....	Jasper Dixon



# Advertising



It pays  
to patronize  
our  
advertisers

ROMINGER & HARRISON

Undertakers

Berea

Kentucky

Phones 48 and 197

Mrs. John F. Lovett

For Service and Satisfaction in  
DRESSMAKING

J. C. GABBARD

DENTIST  
MAIN STREET

R. R. COYLE & SON

Ready to Serve You

WE CALL WE DELIVER

NU-WAY CLEANERS

12 Center Street

DOCTORS

J. M. & C. M. LOGSDON

Dentists

Main Street

Berea, Kentucky



# Boone Tavern

A PRIVATE HOTEL WITH ALL MODERN CONVENIENCES  
A PLACE THAT IS JUST LIKE HOME

Managed and Controlled by Berea College

---

---

## BOONE TAVERN GIFT SHOP

Products of Student Industries

Located on the Corner of Main Street, Opposite Union Church

Under Berea College Management

Berea, Kentucky

# BEREA COLLEGE STUDENT INDUSTRIES

## “Berea College-Made Products”

### BAKERY

Bread, Rolls, Pies, Cakes, Cookies and Special Orders. 24-hour service on Mail Orders

### BROOM INDUSTRY

Household and Fancy Hearth Brooms. Price List on request.

### FIRESIDE INDUSTRIES

Coverlets, Quilts, Scarfs, Bags, Pillow-Covers, Hook and Rag Rugs, Runners, and other woven articles. Ask for circular.

### CLOTHING DEPARTMENT

Aprons, Pillows, Bonnets, Smocks, Romper Suits, Bibs, and Laundry Bags.

### MOUNTAIN WEAVER BOYS

All-wool Home-spuns for Men's Summer and Winter Suitings.

### WOODWORK

Walnut and Cherry Furniture for the home. Cedar Chests. Novelties in Wood-carving.

---

In Berea all students perform some labor, thus making themselves self-supporting.

In purchasing from the Student Industries, you are assured of supervised, accurate workmanship in addition to supporting this great Berea project.

SEND INQUIRIES TO

BEREA COLLEGE, Berea, Kentucky



150-J

# HANDCRAFT POTTERY.

Original Models

Strictly Hand-made



150-V

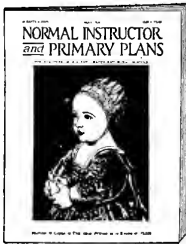


# WACO POTTERIES

---

WACO · KENTUCKY

# NORMAL INSTRUCTOR and PRIMARY PLANS



The Largest and Most Helpful Magazine for Teachers of All the Grades and Rural Schools Published monthly during the school year from September to June inclusive—ten large, handsome numbers filled with the best and most usable teaching material obtainable.

Subscription Price \$2.00 Per Year  
Send now for FREE SAMPLE COPY of June issue containing the new Rotogravure Picture Section.  
F. A. OWEN PUBLISHING COMPANY  
DANSVILLE, N. Y.

Also Publishers of a large line of helpful books for teaching, supplementary readers, etc. Send for Catalogue.

## MILLINERY

MODERATELY PRICED

*Many Interesting and Unusual Values  
are Offered at*

\$1.98-\$2.50, \$5.00 to \$7.50

Mrs. Jennie B. Fish

Masonic Temple Bldg., Berea, Ky.

## BEREA

## NATIONAL BANK

Your Business Solicited

Capital, Surplus and Undivided  
Profits, \$100,000

Member Federal Reserve

Berea

Kentucky

# SHERWIN-WILLIAMS

PAINTS-VARNISHES-LACQUERS-ENAMELS



## ASK YOUR DEALER

Ask your dealer for them, and request your painter to use Sherwin-Williams Paints and Varnishes because they look better, cover more, and last longer.

***THE SHERWIN-WILLIAMS Co.***

*"There's a Dealer in Your Town."*



## "PAINT HEADQUARTERS"

With heartiest good wishes for the  
future success of the

Class of 1929

A Friend

<p>HONEST—          QNALITY          EFFICIENCY          and SERVICE</p> <p>Guaranteed In Shoe Repair</p> <p><b>E. L. THOMA</b>          Short Street</p>	<p><i>"Say It With Flowers"</i></p> <p><b>RICHMOND GREENHOUSE</b></p> <p>Richmond, Ky.                      Phone 188</p> <p>Bus service to Berea and surrounding          towns. Order your Spring Plants now.</p>
<p><b>W. G. BEST</b>          Dentist</p> <p>College Office—Campus          Town Office—Main Street</p>	<p>THERE IS A DIFFERENCE          Clothes Custom Made to Order          Last Longer                      Look Well          Fit Perfectly                      Cost No More</p> <p><b>JACK CHASTAIN</b>          Tailor</p>
<p>We're in business for your looks.          Follow the crowd to Boone Tavern          Barber Shop.</p> <p>Our Motto is Service          Our Reward is Satisfaction          Our Place is Boone Tavern</p> <p><b>Boone Tavern Barber Shop</b></p>	<p><b>Odessa Beauty Shoppe</b>          West Chestnut Street</p> <p>Specialists in the Art of Permanent          Waving, Marceling and Bobbing</p> <p>Phone 199</p> <p>Odessa Jennings                      Marie Soper</p>



## DOROTHY VAN BOCKERN VANDILLA PRICE

Two of our new Gladiolus originations, to be introduced in the near future.  
*"They Were Bred In Old Kentucky"*

If interested in CHOICE GLADIOLUS, get your name on our mailing list.

BEREA GLAD GARDENS

D. J. Lewis, Proprietor

61 Center Street, Berea, Kentucky

Sales Office: Short Street

## LIFE INSURANCE PAYS

It Helps Protect your Future

SOMEONE HAS GUARANTEED YOUR EDUCATION. YOU  
MUST GUARANTEE YOUR FUTURE FINANCIAL  
INDEPENDENCE

Invest in a small policy while you are young; while your occupation is that of  
student; while the rate as such is low.

*Advance in age means higher rate and less likelihood of insurability*

THE PENN MUTUAL is one of the oldest and strongest, therefore reliable  
Let us explain the policy—

M. G. Alley, Jr., Rector Hardin, Special Student Representatives.

A. F. SCRUGGS, General Insurance

Short Street

Berea, Kentucky

STRICTLY A NEWSPAPER

For Thoughtful, Intelligent People

**The Lexington Leader**

The Lexington Leader advertising columns are informative, clean and trustworthy.

The Lexington Leader—It's a liberal education. Read it.

The Lexington Leader is edited to meet requirements for a good home newspaper.

\$5 a Year, Daily and Sunday, by Mail in Kentucky. Order To-day.

**BRYAN-HUNT CO.**

WHOLESALE GROCERS

Lexington, Kentucky

*Distributors of Sun Kist Brand California Canned Fruits*

A trial through your grocers will convince you of the merit of this brand.

**Scott T. McGuire**

*The Student's Friend*

Drugs and Jewelry

Berea, Kentucky

We are Headquarters for Gifts

**THE 'CO-OP' STORE**

features CHESTEFIELD Shirts and underwear (Shorts and Union-suits)—because it maintains high quality merchandise at minimum and popular prices. All the latest novelty and staple patterns available now. Once a Chesterfield user, always a booster!

**Chesterfield Shirts**

*"Your Bosom Friend"*

Louisville, Kentucky

---

---

## WHEN SCHOOL IS OUT Pens and Pencils Are In

When you take that summer position first of all equip yourself with a good pen and pencil set, one that will serve you unflinchingly.

Whatever your preference may be there is a Conklin to meet it. Step into the nearest store and look at the Conklins, or maybe, if the family was reminded, you might easily receive a gift set.

The Conklin Enduras on the right are unconditionally and perpetually guaranteed and sensibly priced. The pens \$5 and \$7. Pencils \$3.50 and \$4. All colors.

On the left is a splendid outfit for those desiring still lower prices. The pens \$3.50. The pencils \$2.50. All in rich, attractive colors.

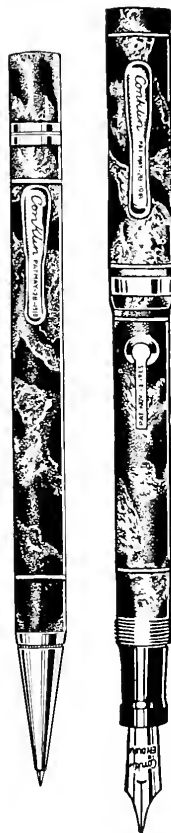
THE CONKLIN PEN COMPANY

Toledo, Ohio

New York

Chicago

San Francisco



---

---

# Conklin

---

---

"GOLD BOND CLOTHES"

We are proud of the suits we send to  
the COOPERATIVE STORE

For the Men of

BEREA COLLEGE

Milton Ochs Company

Cincinnati, Ohio

The Oskamp Nolting Co.

Diamonds, Watches, Jewelry

Leather Goods, Luggage, Silverware

Trophies, Medals, Cups

Fraternity Jewelry

26-28-30 West Seventh Street

Cincinnati, Ohio

Compliments of

BESSIRE & COMPANY

Incorporated

Louisville, Ky.

**K** Umbrellas, Parasols and Canes  
*"Never Mind the Weather"*

The Anderson Breiting Co.

Manufacturers

225 W Fourth St. Cincinnati, Ohio

*"Always Better by Comparison"*

Phone, Main 135

# The Louisville HERALD-POST



Kentucky's Most Newsy Morning Newspaper



Keep abreast of the current events by having the Herald Post come to your door early every morning



Unsurpassed Circulation and Unequaled Service



LOUISVILLE

KENTUCKY

## AT YOUR SERVICE

When you had your photo made at our Studio, the negative was carefully filed for *your* future use, and is now

*"AT YOUR SERVICE"*

Mail us your Kodak work. Same clean, prompt service at the same price.

## THE LEWIS STUDIO

Short Street

Berea, Kentucky

A NATION-WIDE INSTITUTION

Every  
Store A  
Local  
Enterprise

# J.C. PENNEY Co.

No "Sales"  
Lowest  
Prices  
Every Day

*"WHERE SAVINGS ARE GREATEST"*

FOR MEN—

Modish Hats  
Stylish Hats and Caps  
Quality Shoes  
Charming Coats and Dresses

Suits at a Savings  
Furnishings  
Feautre Shirts

FOR WOMEN—

Fine Millinery  
Dressy Shoes  
Serviceable Hosiery  
Exquisite Lingerie

THE STORE WHERE MADISON COUNTY SHOPS

15

WE HAVE HELPED TO KEEP YOU WARM, AND—  
WE HAVE HELPED TO LIGHT YOUR WAY THROUGH  
YOUR SCHOOL LIFE WITH ONE OF OUR  
GOOD COALS

This was a *Real Pleasure* to us, and it can only be exceeded by *your* continued patronage on our coals in your business and home lives, which we hope will be *Prosperous* and *Happy*.

## THE SOUTHERN COAL & COKE CO.

719-727 Dixie Terminal

Cincinnati, Ohio

*Producers of*

DIXIE GEM

HI-LO

SOUTHERN STAR

GOLDEN GLOW

KENTUCKY ACE

ARCHER

SUN-RA

EMERALD GEM

REGAL



“Photographs Live Forever”  
THE OGG STUDIO

Portraits, Commercial Photography, Kodak Finishing  
We pay special attention to mail order Kodak Finishing

SAVE YOUR VACATION  
WITH A KODAK

Spend your vacation and save it too—  
that's what you do with a Kodak  
along.

Stop at our Kodak counter before you  
leave on your trip. We'll show you  
how easily the Kodaks work and help  
you to pick out the right one.

Autographic Kodaks \$5 up

Porter-Moore Drug Co.  
Incorporated

Baker's News & Music  
Shop

T. P. Baker, Prop.

News—Music—Confections

Phone 291  
Berea, Kentucky



150 Pounds Pressure



CRANE VALVES



2500 Pounds Pressure

*Wishing you happiness...  
and health and comfort*

Crane Co. congratulates the class of 1929 and expresses its sincere good wishes for the future success and happiness of every member.

Since comfort and health are a part of happiness, it takes this occasion to remind you that its plumbing and heating materials are dedicated to serve your well-being.

And to remind you also, that, when you build your home, a warm welcome awaits you at any Crane branch, or exhibit room.

**CRANE**

**PLUMBING AND HEATING MATERIALS**

CRANE CO., 824 BROADWAY, CINCINNATI, OHIO

*Branches and Sales Offices in 180 Cities*



## Congratulations to the Class of 1929

---

When you leave Berea, remember The Churchill Weavers make lovely hand-woven articles—scarfs, shawls, baby blankets, couch throws, and sports dress materials, the latter sold by the piece or made up ready-to-wear. We gladly answer mail inquiries and put you in touch with our nearest representative.

THE CHURCHILL WEAVERS

(At the North End of Town)

Berea, Kentucky

**E. F. COYLE**

Main Street  
Berea's Leading  
Dry Goods Store

Shafer-Allen Motor Co.

Berea, Kentucky



The Outstanding Chevrolet of  
Chevrolet History

*A Six in the Price Range of the Four*

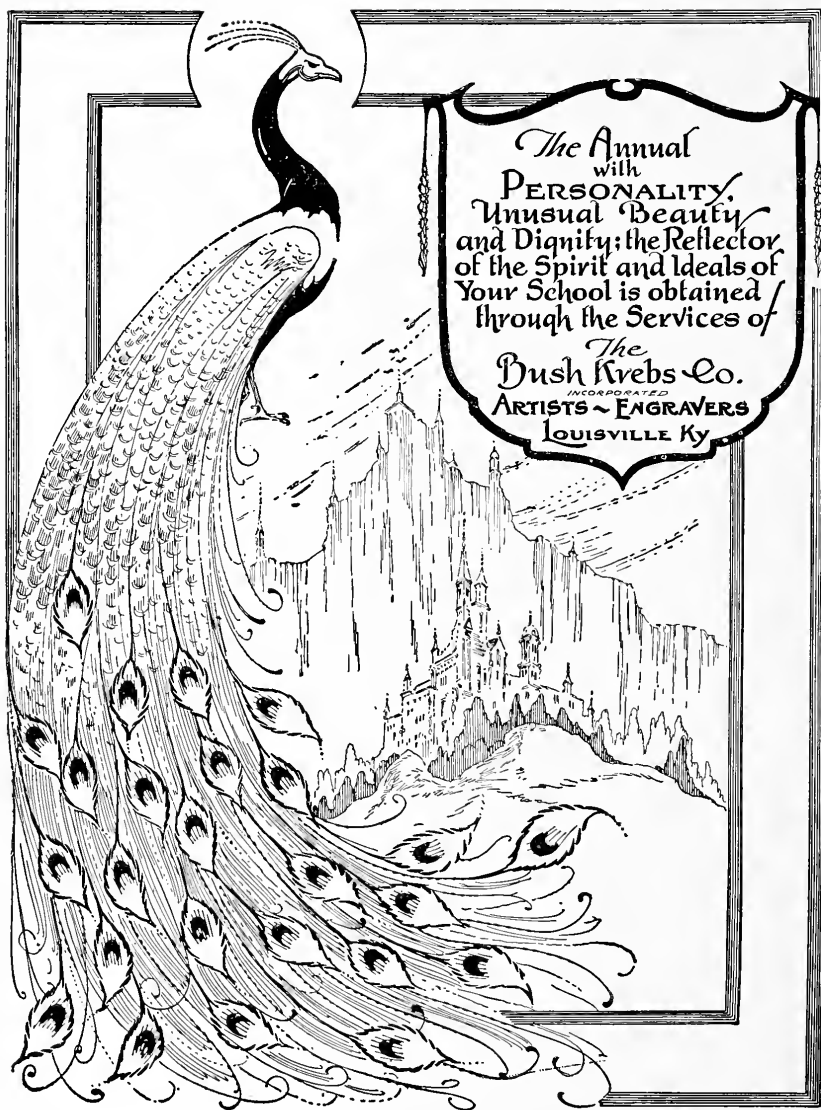
# Greetings

As Berea marches forward in the development of American youth The Courier-Journal sets forth day by day in its thorough-going way to give its readers the very best newspaper value that money and initiative can produce.

Both Berea College and The Courier-Journal have momentous tasks before them and it is with no small pride that The Courier-Journal recognizes its close association with Kentucky's educational institutions. May Berea continue to progress in the educational promotion of ambitious young men and women.

## The Courier-Journal

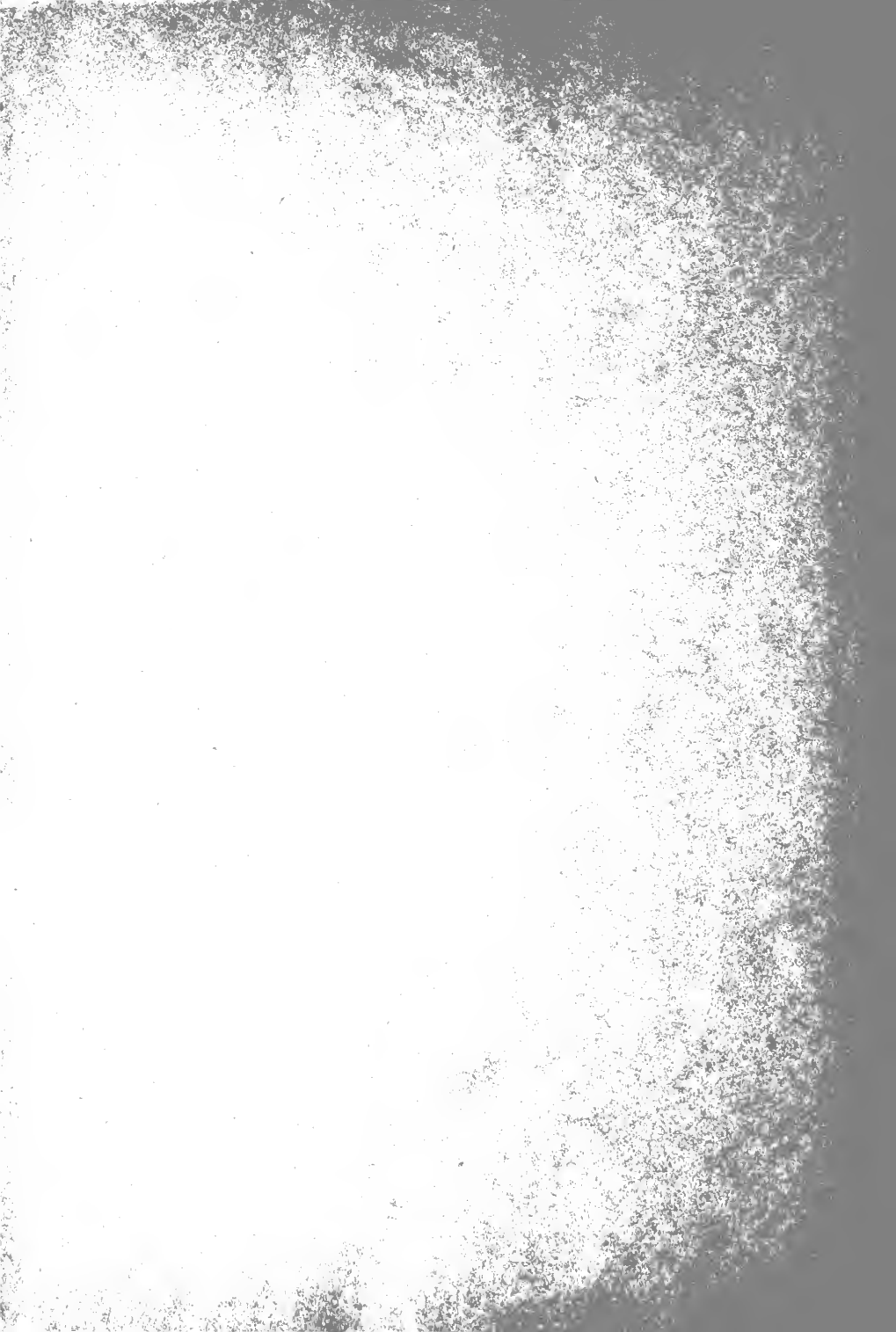
*Largest Circulation of Any Kentucky Newspaper*



*The Annual*  
with  
**PERSONALITY.**  
*Unusual Beauty*  
and Dignity; the Reflector  
of the Spirit and Ideals of  
Your School is obtained  
through the Services of

*The*  
**Dush Krebs Co.**  
INCORPORATED  
**ARTISTS - ENGRAVERS**  
**LOUISVILLE KY**

9638



Printed By  
BEREA COLLEGE PRESS  
Berea, Ky.

BEREA COLLEGE



3 3217 00350 7168