

11/10/25  
10/3/15

**Hutchins Library**  
**of**  
**Berea College**  
**Berea, Kentucky**





EX LIBRIS



Digitized by the Internet Archive  
in 2011 with funding from  
Lyrasis Members and Sloan Foundation

<http://www.archive.org/details/chimes193000bere>

HYMES

OF BEREA COLLEGE



PUBLISHED BY

THE CLASS OF

1 9 3 0

PRINTED BY THE

Berea College Press

# *F*OREWORD--

*This book is presented as a volume of happy memories, to bring back in revery the hours spent in Berea. If, as you turn the pages, you can again hear the chimes pealing from the Chapel tower, and see the campus in all its beauty, the purpose of our labors will be realized.*



College 378.7691 B487c 1930

5

Berea College Collegiate dept. Senior  
class  
Chimes.

# DEDICATION

*To those young faculty members who, through their enthusiasm for education and their closeness to our own generation, have helped us to catch the vision of a larger life and a greater Berea, the Class of 1930 dedicates this volume of the Chymes.*

## CHYMES

*Your notes caress the air  
With tears and laughter  
Beauty lingers there  
Forever after.*

*Sometimes you bring to me  
Remembered sorrow  
You always bring to me  
A new tomorrow.*

*If I should go away  
To a far strange place  
I'd miss you through the day  
As a beloved face.*

MARTHA STANDING



PRESIDENT WILLIAM J. HUTCHINS



# *IN MEMORIAM*

RUBY FAE NICKELL

Class 1929

JOHN HENRY BARBE

Class 1927

JAMES WOODROW WILLIAMS

Academy Class 1932

ISAAC HARDIN LONG

Instructor in Bookkeeping and Mathematics, Academy

THOMAS A. EDWARDS

Dean Foundation-Junior High School, 1904-1926











# THE COLLEGE FACULTY

1. Wm. H. Walker, Ph.D.  
Professor of Religious Education  
and Philosophy
2. J. Wesley Hatcher, A.M.  
Professor of Sociology
3. Helen H. Dingman  
Social Service
4. Albert J. Chidester, A.M.  
Professor of Education
5. Cloyd N. McAllister, Ph.D.  
Professor of Normal Instruction
6. Thomas A. Hendricks, A.M.  
Professor of Psychology; Dean
7. Margaret G. Chapin, B.A.  
Associate Professor of French
8. Henrietta Cole, A.M.  
Associate Professor of English
9. Mrs. Wm. P. Fenn, A.M.  
Associate Professor of English
10. James Watt Raine, D.D.  
Professor of English
11. May B. Smith, A.M.  
Associate Professor of English
12. Wm. P. Fenn, A.M.  
Associate Professor of English
13. Elizabeth Richardson, A.M.  
Associate Professor of French
14. Chas. Pauck, A.M.  
Associate Professor of German
15. James R. Robertson, Ph.D.  
Professor of History and Political  
Science
16. Harold W. Stoke, Ph. D.  
Associate Professor of History and  
Political Science
17. Wm. H. Combs, A.M.  
Associate Professor of History and  
Political Science
18. Wilford Fritz, B.P.E.  
Associate Professor of Physical  
Education
19. Rexford C. Quimby, M.P.E.  
Professor of Physical Education
20. Jack C. Miller, M.S.  
Associate Professor of Agriculture
21. Benton Fielder  
Superintendent Grounds and Garden
22. William Jesse Baird, M. S.  
Professor of Agriculture
23. Charles S. Price, M.S.  
Associate Professor of Agriculture
24. Howard S. Monier, B.S.  
Superintendent Dairy
25. Eunice M. True, A.M.  
Professor of Home Economics
26. Myrtle Elliott, M.S.  
Associate Professor of Home  
Economics
27. John S. Bangson, A.M.  
Professor of Biology
28. Julian H. Capps, A.M.  
Professor of Chemistry
29. Wilbur G. Burroughs, A.M.  
Professor of Geology
30. Waldemar Noll, M.S.  
Professor of Physics
31. Donald W. Pugsley, M.S.  
Associate Professor of Mathematics
32. Wm. R. Hutcherson, A.M.  
Professor of Mathematics
33. Cornelia A. Nettinga, B.Mus.  
Music
34. Irene A. Ziegler, B.Mus.  
Music
35. Elizabeth J. Slaughter  
Music
36. Gertrude E. Cheney, B.A.  
Music
37. Celia H. Kysela, B. Mus.  
Music
38. Mary E. Welsh, B.A.  
Professor of Greek; Dean of Women
39. Charlotte P. Ludlum, A.M.  
Associate Professor of Latin





CHYMES



SENIORS



MIRIAM ADAMS  
Big Creek, Ky.

Ag.-Home. Ec. Club; Classical Club; Y.W.C.A.

WILLIE FAY ALLEN  
Georges Creek, Ky.

Ag. Home Ec. Club; Choir; K. G.; Dramatic Club; French Club; Y.W.C.A.; Harmonia.



FRANKLIN ALLEY (*Frank*)  
Matewan, W. Va.

K.S.; Glee Club; German Club; Cross Country; Track; Business Manager CHYMES.

GERTRUDE BAILEY  
Ocala, Ky.

U.D.; Harmonia; Choir; Dramatic Club.



RUTH BARBE  
Welch, W. Va.

P.E.P.; Y.W.C.A.; V.-P.; T.K.A.; Debate; Associate Editor CHYMES

ELBERT BAXTER  
Bloomfield, Ky.

P.D.; T.K.A.; Debate Y.M.C.A.; Treas.; Choir, Harmonia.



LUCY BELCHER  
Bowling Green, Ky.

P.E.P.

ELLEN BEST  
Berea, Ky.

P.E.P.; Ag. Home Ec. Club; French Club; Echo Club, Pres.

F. HARLAN BOOHER  
Albany, Ky.

K. S.: Dramatic Club; Y.M.C.A.; Harmonia;  
French Club; T.K.A.; Debate.

ALMA LEE BOOTH  
Carlisle, Ky.

K.G., Treas., Vice-Pres.; Dramatic Club,  
"Icebound"; Y.W.C.A.

NINA MARIE BRYAN  
Traphill, N. C.

P.E.P.; Y.W.C.A., Cabinet; Agr. Home Ec. Club;  
French Club

CLARENCE BURTON  
La Fargeville, N. Y.

A.Z., Sec.; Inter-Soc. Debate; Delta Phi  
Alpha; Basketball; Baseball; "B" Club;  
Y.M.C.A., Vice-Pres.

MILDRED BURTON  
La Fargeville, N. Y.

P.E.P.; French Club, Sec.; German Club; Delta  
Phi Alpha; Collegiate Union, Sec.

MARY FRANCIS CHANEY  
Lynchburg, Ohio.

U.D., Sec.; Harmonia; Choir; French  
Club; Classical Club; Education Club Sec.;  
Y.W.C.A.

ROBERT COLLINS  
Livia, Ky.

K.S., Pres.; Winner Henry George Essay Contest  
1929; Basketball.

EDWARD COOPER (Ed)  
Maywood, Ill.

K.S., Track, Capt; Cross Country, Capt.;  
Delta Phi Delta; Bus. Mgr. Finance;  
Editor Chymes; Y.M.C.A., Gen. Sec.





**GENEVA COX**  
Mt. Vernon, Ky.

P.E.P.: Harmonia; Y.W.C.A.; Choir; Dramatic Club; Glee Club.

**NELLIE L. COX**  
Mt. Vernon, Ky.

Glee Club, Pres.; P.E.P., Pres.; Y.W.C.A. Cabinet; Harmonia.

**THEODORE CRAIG**  
Mt. Jackson, Va.

K.S., Sec.

**FRED CREECH**  
Shonn, Ky.

P.D.; French Club; Pearson Hall Council; Y.M.C.A.

**OMA CREECH**  
Pine Mountain, Ky.

P.E.P.; Y.W.C.A. Cabinet; Dramatic Club; W.A.A.; French Club; Basket Ball.

**HELEN CROSSEN**  
Montrose, Pa.

Y.W.C.A., Pres.; U.D.; French Club; Harmonia; Orchestra.

**WILLIAM K. DAVIDSON**  
Fort Blackmore, Va.

K.S.; Dramatic Club; Track; Swimming; Football, Capt.; Y.M.C.A. Cabinet.

**HUGH DAVIS**  
Maggie, N. C.

A.Z.; "B" Club; Baseball, Basketball; Track; Ag. Home Ec. Club, Pres.



A. W. DODD  
Adairsville, Ga.

French Club; German Club.

WILLIAM C. EDWARDS  
Santa Barbara, Cal.

A.Z., Pres; Class Pres. 1929; Dramatic Club; Basketball; Y.M.C.A., Treas; Pearsons Hall Council; Chymes Staff; Dining Room Committee, Chairman.

WILSON A. EVANS  
St. Charles, Va.

A.Z.; Basketball, Capt.; "B" Club; Tennis, Capt.; French Club; Y.M.C.A., Pres.; German Club; Pearsons Hall Council.

MABEL E. FIBIGER  
Louisville, Ky.

U.D., Sec.; French Club; Y.W.C.A.; German Club.

THURMAN FOLGER (*Tavi*)  
Dobson, N. C.

A.Z.; Ag. Home Ec. Club; Dramatic Club.

HELEN FREAS (*Spike*)  
Murphy, N. C.

French Club; K.G., Pres.

VIRGINIA FRIEND (*Ginny*)  
Richwood, W. Va.

P.E.P., Sec.; Dramatic Club; Y.W.C.A.; French Club.

EARL GAMBILL  
Blaine, Ky.

K.S.; Orchestra; Dramatic Club; Y.M.C.A. Cabinet; German Club.





ELIZABETH GILBERT (*Bess*)  
Berea, Ky.

K.G.; Glee Club; Echo Club; Harmonia; Ag.  
Home Ec. Club.



FLORENCE GOSNEY  
Avant, Okla.

Y.W.C.A.; Harmonia.



GLADYS HAMMET (*Tot*)  
Gaffney, S. C.

P.E.P.; French Club; Harmonia; Y.W.C.A.;  
Classical Club.



E. KYLE HAMMOND  
Gate City, Va.

K.S., Pres.; French Club; Pearsons Hall  
Council; Y.M.C.A.; Debate; T.K.A.



JAMES HAMNER (*Bozo*)  
Arley, Ala.

A.Z.; Cheer Leader; Football; Collegiate Union,  
President.



GROVER HARRIS  
Tallapoosa, Ga.

Education Club; French Club; German  
Club; A. Z.



NELLIE HAYS  
Berea, Ky.

P.E.P.; French Club; Echo Club; Ag. Home Ec.  
Club; Collegiate Union.



EUGENE HILLIARD  
Newbern, Tenn.

A.Z.; Basketball; Football; Baseball;  
Y.M.C.A.; Ag. Home Ec. Club.

BLANCHE HINDS  
Livingston, Tenn.

U.D.; Y.W.C.A.; L.H. Council, Pres.; Ag. Home  
Ec. Club; Classical Club; Harmonia.

HOWARD HOPKINS (*Hoppy*)  
Berea, Ky.

P.D.; Track Team; Cross Country; "B"  
Club; Delta Phi Alpha; German Club.



RUTH HOPKINS  
Berea, Ky.

K.G.; Vice-Pres.; French Club; German Club,  
Pres.; Delta Phi Alpha; Chymes Staff.

MAUDE HOWELL  
Berea, Ky.

U.D., Treas.; Classical Club; Y.W.C.A.,  
Cabinet; Harmonia; Student Volunteers.



BARBARA ESTHER JOHNSON  
Graysville, Tenn.

K.G.; Y.W.C.A.; French Club; Dramatic Club;  
Glee Club; Chymes Staff.

HAZEL FLORENCE JOHNSON  
Buckhorn, Ky.

P.E.P.; Y.W.C.A.; Dramatic Club.



CURTIS JOHNSON (*Cart*)  
Graysville, Tenn.

A.Z.; "B" Club; Basketball, Capt.

MAYBELLE JOHNSON  
Scottsville, Ky.

K.G.; Student Council; Dramatic Club;  
Debate.





**QUAY KETNER**  
Maggie, N. C.

A.Z.: Ag. Home Ec. Club.

**ROXIE A. LEDBETTER**  
Livingston, Tenn.

U.D.: C.E.: Ag. Home Ec. Club.

**HELEN AUDREY LESLIE**  
East Bank, W. Va.

P.E.P.: Sec.: Basketball: Baseball: French Club:  
Y.W.C.A.: Sec.

**ALBERT BLEW LINK**  
Charles Town, W. Va.

Glee Club: A.Z.: Dramatic Club: Pinnacle  
Staff: Football: Track: Pearsons Hall  
Council: Y.M.C.A.: French Club.

**BERNARD W. LOWRY** (*Bill*)  
Raynham, N. C.

K.S.: Treas.: Y.M.C.A.: Cabinet: Student Volun-  
teers: Pres.: Inter Society Debate.

**J. KYLE McCLAUGHERTY**  
Leeds, Ala.

K.S.: C.E.: Debate.

**SAM McCLUER**  
Berea, Ky.

Kappa Sigma

**ERNEST MAPLES**  
Owens Crossroads, Ala.

P.D.: Orchestra.

**JESSIE MEASEL**  
Clarence, Ky.

U.D.; Harmonia; French Club; Classical Club;  
Student Council; Pi Gamma Mu, Pres.

**W. C. MONTGOMERY (Jerry)**  
Bourne, Ky.

Cross Country; Baseball; Track; Ag.  
Home Ec. Club.

**ESCU MOORE (Persia)**  
Ashland, Ky.

P.D., Pres.; Y.M.C.A., Vice Pres.; T.K.A., Vice  
Pres., High Point Medal; Speedball

**MARY A. MOORE**  
Berea, Ky.

U.D., Vice Pres.; Y.W.C.A.; Harmonia;  
Debate.

**JOE T. MORGAN**  
Gainsboro, Tenn.

A.Z., Treas.; Y.M.C.A.

**IRENE PARKER**  
Hillsboro, Ala.

U.D.; Y.W.C.A., Pres.; Harmonia, Ag.  
Home Ec. Club.

**MRS. F. L. PHILLIPS**  
Berea, Ky.

Pi Gamma Mu; K. G.

**RALPH W. PHILLIPS**  
Parsons, W. Va.

Track, Capt.; P.D., Pres.; Ag. Home Ec.  
Club, Pres.; Dining Hall Government,  
Chm.; Football; Dramatic Club; "B"  
Club; Y.M.C.A.; Cabinet; Band.





**VIRGIL W. PHILLIPS**  
Parsons, W. Va.

P.D.; Ag. Home Ec. Club; Dramatic Club; Football; Pearsons Hall Council Pres.; Track Mgr.

**ELMA PHILLIPSON**  
Ashland, Ky.

K.G.; Pi Gamma Mu; Orchestra; Y.W.C.A.; Harmonia; Dramatic Club; W.A.A.; Glee Club; Band.



**GOEBEL B. FRUIT (*Pnut*)**  
Paint Lick, Ky.

Football, Capt.; Baseball, Capt.; Basketball, Mgr.; Academy Coach; Y.M.C.A.; K.S.; Student Council; Agr. Home Ec. Club; "B" Club.

**MARTHA HELEN REDMOND**  
Nancy, Ky.

Y.W.C.A.; No-Tobacco League; U.D.; Dramatic Club; French Club; Classical Club.



**ELEANOR REED (*Pad*)**  
Welch, W. Va.

Dramatic Club, Pres.; P.E.P.; Oratory; Debate; T.K.A.; Y.W.C.A.; German Club, Vice Pres.; French Club, Pres.

**ROBERT SYLVE REYNOLDS**  
Tyner, Ky.

A.Z.; Basketball; Track; Glee Club; "B" Club; Y.M.C.A.; Ag. Home Ec. Club.



**HAROLD RIGBY (*Little Fan*)**  
Eerea, Ky.

A.Z.; Orchestra; Assistant Conductor of Band; Chorister.

**GILBERT ROBERTS (*Gib*)**  
Berea, Ky.

Y.M.C.A.; Orchestra; Pand; Glee Club; A.Z., Pres.; A.Z. Orchestra, Director; Berea Credit Union; President Senior Class; Delta Phi Alpha.

ELIZABETH SHEA  
Carlisle, Ky.

P.E.P.; Y.W.C.A.; French Club; German Club;  
Pi Gamma Mu.

MRS. EDITH JULIA SHOUSE  
Eubank, Ky.

Classical Club.

ALMA SHRADER  
Wannville, Ala.

Y.W.C.A.; C.E.; Ag. Home Ec. Club; P.E.P.

TULEN BEATRICE SISK  
Rosman, N. C.

Weaver Junior College; Medal in Debate;  
U.D.; T.K.A.

NANNIE BELLE SIZEMORE  
Buckhorn, Ky.

U.D.; Y.W.C.A.; Basketball; Ag Home Ec. Club.

CLAUDIUS CATO SMITH  
Berea, Ky.

Football; K.S.; Debate; Dramatic Club.

MARTHA STANDING (*Colleen*)  
West Branch, Iowa.

U.D., Pres.; T.K.A., Pres.; State Oratorical Con-  
test; Triangular Oratorical Contest.

EULA PEARLE STANLEY  
Warrensville, N. C.

P.E.P., Vice Pres.; C.E. Cabinet; German  
Club; Delta Phi Alpha, Sec.; Education  
Club.





**JULIA H. STENKEN** (*Judy*)  
Covington, Ky.

P.E.P., Pres.; T.K.A., Pres.; Y.W.C.A., Treas.;  
Dramatic Club; Ag Home Ec. Club, Vice Pres.;  
Delta Phi Alpha.

**LUCY SWEENEY** (*Woosie*)  
Liberty, Ky.

P.E.P., Vice Pres.; German Club; Y.W.  
C.A., Delta Phi Alpha; Dramatic Club.

**TOMMIE TERRILL**  
Kingston, Ky.

P.E.P.; Glee Club; Harmonia.

**EDWARD THOMPSON**  
Elgin, Ky.

Football; Track; K.S., Pres.; German  
Club; Delta Phi Alpha; Collegiate Union;  
Secretary Senior Class.

**HOWARD G. TILSON**  
Adamsville, Ala.

K.S.; Football; Choir; Harmonia; Glee Club,  
Pres.; Ag. Home Ec. Club; Track.

**JEAN TRENT**  
Cleveland, Tenn.

K.G., Pres.; Student Council; French  
Club; Glee Club; Choir; Harmonia.

**RUTH HELEN WAMSLEY**  
Hutlonsville, W. Va.

U.D., Sec.; German Club; Y.W.C.A.; Educational  
Club.

**THELMA LOU WARREN**  
Eubank, Ky.

U.D.; French Club; German Club; Delta  
Phi Alpha; Harmonia; Y.W.C.A.



NETTIE JANE WEST  
Meadows of Dan, Va.

U.D.: Collegiate Union, Sec.: Cheer Leader:  
Dramatic Club.



DIXIE BAILEY  
Hindman, Ky.

P.E.P.: Y.W.C.A.: W.A.A.: French Club: Har-  
monia: Classical Club: Basketball.

ELSIE CREECH  
Pine Mountain, Ky.

K.G.: Y.W.C.A.: W.A.A., Pres.: Basket-  
ball: Archery.



NELLIE GRIFFITH  
Bastian, Va.  
U.D.: Harmonia.

SADIE HART  
Longview, Ill.

P.E.P.: Basketball: Track: Hockey:





**SAMUEL HENDRICKS (Sam)**  
Berea, Ky.

A.Z.: Glee Club.

**LIZZIE MAE JARVIS**  
Mars Hill, N. C.

U.D.: W.A.A.; Y.W.C.A.; Dramatic Club; Classical Club



**BOBBIE KETNER**  
Maggie, N. C.

P.E.P., Sec.: Education Club; Y.W.C.A.; French Club

**EDWARD LAFFERTY (Stoke)**  
Canmer, Ky.

A.Z., Treas.; Y.M.C.A., Cabinet; Glee Club; Cheer Leader; Dramatic Club; Pearsons Hall Union; Chymes, Photo Editor.



**ZELMA LANGWORTHY**  
Frenchburg, Ky.

U.D.; Dramatic Club; Classical Club, Sec.; Berea Credit Union.

**HORACE LYTTLE**  
Wallins Creek, Ky.

Education Club; P.D.



**J. CAMPBELL McNIEL**  
Rose Hill, Va.

K.S.; "R.U.R.": Education Club.

**RUBY E. SMITH**  
Jonesville, Va.

U.D.; Y.W.C.A.; French Club





CHYMES



LOWER CLASSES

# JUNIOR

CLASS OF 1931

*President*

Clarence Gilbert

*Vice President*

Lucille Kuykendall

*Secretary*

William Coyne

*Treasurer*

Elizabeth Brosheer

*Sergeant at Arms*

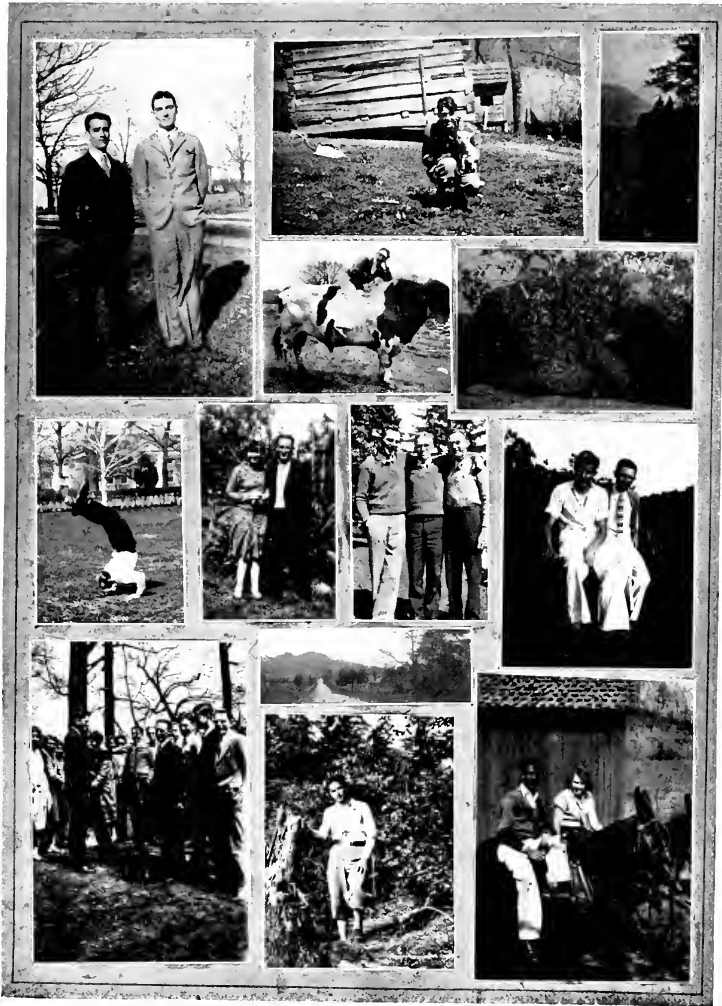
Earl Turner

- |    |                     |    |                      |
|----|---------------------|----|----------------------|
| 1  | James Adams         | 36 | Richard Chrisman     |
| 2  | Mary Drake          | 37 | Muriel Wolfe         |
| 3  | John Shouse         | 38 | Guy Walton           |
| 4  | Virginia Auvil      | 39 | James Bowman         |
| 5  | Beulah Wolfe        | 40 | Nina Bryan           |
| 6  | Jack Kidd           | 41 | James D. Davis       |
| 7  | Golda Maggard       | 42 | Millard Magill       |
| 8  | Virgil Turner       | 43 | Minnie Tevis         |
| 9  | Elizabeth Clark     | 44 | Ethel Waldroop       |
| 10 | Ray Wine            | 45 | Earl Fraser          |
| 11 | Phina Winegar       | 46 | Marion Gardner       |
| 12 | Elizabeth Brosheer  | 47 | Garland Creech       |
| 13 | William Wright      | 48 | Sylvia Graham        |
| 13 | Forest Lacy         | 49 | Clara Strong         |
| 15 | Virgil Hall         | 50 | Joe Wood             |
| 16 | Sarah Jane Williams | 51 | Willard Manning      |
| 17 | Sytha Ballou        | 52 | Stella Jean Denny    |
| 18 | Earl Jones          | 53 | Miriam McVey         |
| 19 | Hilda Booth         | 54 | Brydon Grainger      |
| 20 | Todd Allen          | 55 | George Mayo          |
| 21 | Thomas Nesbitt      | 56 | Calla Turner         |
| 22 | Dorothy Ingraham    | 57 | Fletcher Phillips    |
| 23 | Mabel Nesbitt       | 58 | Julia Woodfin        |
| 24 | Earl Wynn           | 59 | Ollie James Williams |
| 25 | William Coyne       | 60 | Theodore Wright      |
| 26 | Nettie Grissom      | 61 | Glenn Toms           |
| 27 | Opal Veith          | 62 | Lucille Kuykendall   |
| 28 | Clyde Fitzpatrick   | 63 | Clarence Gilbert     |
| 29 | Clyde Venable       | 64 | Evelyn Turner        |
| 30 | Nora Howard         | 65 | Lawrence Henson      |
| 31 | Ailene Maupin       | 66 | Anna Mae Helton      |
| 32 | Earl Turner         | 67 | Hettie Bourne        |
| 33 | Arlo Riddle         | 68 | Reba Johnson         |
| 34 | Paul Neal           | 69 | Cullen Owens         |
| 35 | Katherine Venable   |    |                      |









# SOPHOMORE

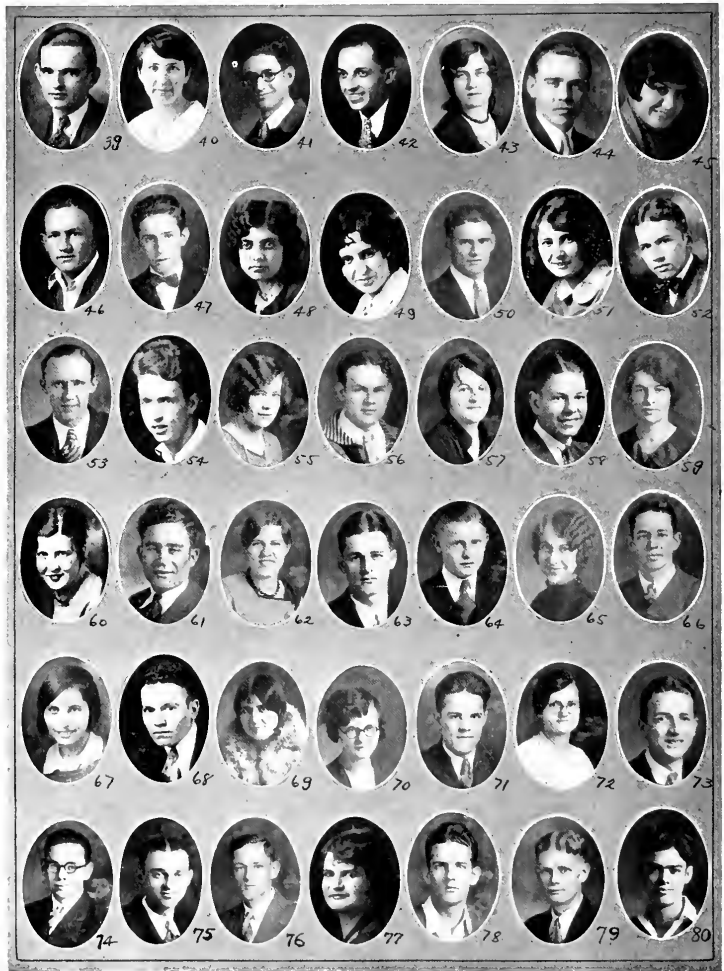
CLASS OF 1932

*President*  
*Vice President*  
*Secretary*  
*Treasurer*  
*Sergeant at Arms*

Dewey Combs  
Helen McWhorter  
Alma Chidester  
Reba Kennedy  
Earl Robbins

- |    |                   |    |                        |
|----|-------------------|----|------------------------|
| 1  | Raleigh Hall      | 41 | George Farthing        |
| 2  | Arthur Hamon      | 42 | Chester H. Roberts     |
| 3  | Geneva Johnson    | 43 | Madge Gambill          |
| 4  | Carl Sheriff      | 44 | Leroy Northington      |
| 5  | Ruth Congleton    | 45 | Anna Virginia Copeland |
| 6  | Yates Bailey      | 46 | Franklin Thurman       |
| 7  | Dewey Collett     | 47 | Kennie Hatfield        |
| 8  | Earl Robbins      | 48 | Irene Wallace          |
| 9  | Ruby Frazier      | 49 | Dorothy Lloyd          |
| 10 | Sherrill Flannery | 50 | Decatur Wade           |
| 11 | Edward Updyke     | 51 | Joanna Huff            |
| 12 | Reba Kennedy      | 52 | Edward Montgomery      |
| 13 | Kermit Gardner    | 53 | Estill Meadows         |
| 14 | William Barker    | 54 | Obie Johnson           |
| 15 | Forest Cable      | 55 | Irene Simpson          |
| 16 | Ellen Clarkson    | 56 | James Greene           |
| 17 | Clayton Stanley   | 57 | Maude McAllister       |
| 18 | Harold Puckett    | 58 | William Kelley         |
| 19 | Ruth Davis        | 59 | Alma Chidester         |
| 20 | Robert Meriwether | 60 | Margaret Sanders       |
| 21 | Clyde Allen       | 61 | Joe Ayres              |
| 22 | Elizabeth Jones   | 62 | Myrtle Metcalf         |
| 23 | Helen McWhorter   | 63 | Melvin Payne           |
| 24 | Charles Phillips  | 64 | Walter Bowling         |
| 25 | Olive Montgomery  | 65 | Ruth Goodman           |
| 26 | Lydia Deyton      | 66 | Thomas Crow            |
| 27 | James Davis       | 67 | Ethel Cunningham       |
| 28 | Mary Turner       | 68 | Lloyd Armour           |
| 29 | Ruth Gardner      | 69 | Bernice Rumley         |
| 30 | Lloyd Elliott     | 70 | Margaret Shutt         |
| 31 | Pearl Rader       | 71 | Dewey Combs            |
| 32 | Beth Roberts      | 72 | Gladys Brown           |
| 33 | E. L. Mann        | 73 | Raymond Willis         |
| 34 | Myrna Canfield    | 74 | Robert Nance           |
| 35 | Robert Nance      | 75 | Wilbert Correll        |
| 36 | Mary Qualls       | 76 | Jefferson Earp         |
| 37 | Frances Cooper    | 77 | Mary Ann Rogers        |
| 38 | Alice Chatfield   | 78 | George Eaves           |
| 39 | John Dean         | 79 | Griffis Royal          |
| 40 | Myrtle Hicks      | 80 | Walter Arrants         |







# FRESHMEN

## CLASS OF 1933

<i>President</i>	Lawton Allen
<i>Vice President</i>	William Stafford
<i>Secretary</i>	Hannah Trigg
<i>Treasurer</i>	Oscar Owens
<i>Sergeant at Arms</i>	Tony Kauth

1 Ruth Peter	38 Jane Odell	75 Andrew Wooten
2 Herbert Hare	39 Sam Lipari	76 Daisy Miller
3 Edna Deitz	40 Roberta Shawver	77 Martha Garrett
4 Kenneth Meade	41 Milburn Roberts	78 Fred Russell
5 Roberta Armbruster	42 Harry Sturms	79 Martha Friend
6 Howard McKinney	43 Horace McNeil	80 Venson Combs
7 Jean Denley	44 Grace Cockerham	81 Anna Roberts
8 Eric Lawson	45 Ray Kelly	82 William Stafford
9 Jean Cocks	46 Arta Hinds	83 Elizabeth Kraatz
10 Virginia Casey	47 Clarence Wyatt	84 Herbert Dewes
11 Joe Hughes	48 Bernice Jones	85 Ann Pritchard
12 Sue Christian	49 Philip Lawson	86 Samuel Combs
13 John Seruggs	50 Miriam Rigby	87 Lucille Robertson
14 Dixie Christian	51 Pat Dyar	88 Dorman Strunk
15 Helen Mitchell	52 Mildred Cunningham	89 Ruth Shaffer
16 Luther Rice	53 Sherman Copley	90 Paul Kalavski
17 Florence Hall	54 Eddie Daniels	91 Jack Rouse
18 Allen Ledford	55 Earnil Kirk	92 Harriet Gates
19 Grace Bingham	56 Robert Mullins	93 Chewning Campbell
20 Jason Wilson	57 Ethel Ledbetter	94 Mary Keaton
21 Reba Johnston	58 Delmas Hinds	95 Roscoe Buckland
22 Hannah Trigg	59 Mary Avery	96 Eulela Lyons
23 Jason Smith	60 William Sewell	97 Mary Moore
24 William Hall	61 Ruth Tomlison	98 Kermit Allen
25 Melva Jones	62 Stuart Daugherty	09 Lola Fowler
26 Robert Dunnigan	63 Clarence Peters	100 Lawton Allen
27 Delpha Payne	64 Edna Price	101 Ruth Rutter
28 Norman Dodson	65 Paul Booher	102 Edda Rodda
29 Aline Howard	66 Mary Alice Howard	103 Sophia Shea
30 Mark Keith	67 Hubert Dunnigan	104 Floyd Freeman
31 Sherman Trail	68 Mina Avery	105 Byron Bennett
32 Frances Sutphin	69 Robert Fitzpatrick	106 Marjorie Boggs
33 Litton Singleton	70 Orbie Baker	107 Hayward Hunt
34 Ruby Scrivner	71 Helen Basham	108 Norma Setzer
35 Tony Kauth	72 Oscar Owens	109 Donald Young
36 William Jackson	73 Stella Kate Bellamy	110 Roxie Beare
37 Sue Terrill	74 Hortense Colawn	111 Nancy Carter











ALUMNI

# THE ALUMNI ASSOCIATION

## The Organization and its Purpose

THE Alumni Association of Berea College is an organization of the graduates and former students of the College and graduates of the Allied Schools. In general the purpose of the organization is the promotion of the welfare of Berea, and the establishment of a mutually beneficial relationship between the College and Allied Schools, and their graduates and former students.

## Membership

FIRST. The recipients of all degrees heretofore or hereafter granted by Berea College are eligible for membership. 2. Former students of the College may become members of the Association after the graduation of the class with which they were last connected. 3. Graduates of the secondary schools allied to Berea College may become associate members of the Association, an affiliation which entitles them to the regular membership in their own particular school association.

## Dues

MOST organizations raise funds through dues for their members. In accordance with this plan those who are eligible may become members by the payment of such dues as are provided by the constitution. Dues may be paid outright or they may be paid through the Berea Bonds of Loyalty. These are attractive bonds in the denomination of fifty dollars, stipulating that the holder shall pay ten dollars a year for a period of five years. A part of this money goes as dues while the remainder goes as a gift to the institution. Two paid up bonds entitle one to life membership. While signing these bonds is a popular method of joining the Association, yet no person should stay out because he does not wish to bind himself in this way. All are welcome, regardless of the amount they may choose to pay.

## Clubs

THERE are a number of Berea Clubs scattered throughout the country in which graduates and former students are keeping alive the friendships formed on the campus, or, making new ones upon the basis that one Berean has so many things in common with every other Berean. Each of these clubs welcomes into its membership those who reside in its respective territories. Newcomers into the cities where these clubs are located will be welcomed at club meetings with a hearty handshake in which the beat of a Berea Heart is always felt. Alumni moving into Harlan, Louisville, Cleveland, Chicago, Detroit, Cincinnati, Asheville or vicinities will find Berea clubs. The Alumni Office will gladly form contact for any who may have trouble in spotting the officers.

## In the Service of Alma Mater and its Alumni

WHILE built upon a deep underlying college sentiment, the Alumni Association aims to be of distinct service to its members as well as to the College. To this end an office is maintained where valuable address lists are kept; historical and statistical material is continually being gathered about the alumni; news of interest to the alumni is gathered and distributed to members of the association through the medium of THE CITIZEN, a weekly owned and published by the College; an appointment bureau is maintained for the service of the outgoing seniors of each year's class, as well as for recent graduates who wish to avail themselves of its service. The Alumni Office has fast become a clearing house for all sorts of alumni relations; and every year new ways are found where the relationship of the alumni to each other and to the College is improved.

*The Alumni Office is the one place that should  
always have your correct address.*



C B Y M E S



ORGANIZATIONS

# ALPHA ZETA

FOUNDED 1894

Motto: *We Seek The Truth*

1	Horace McNeil	25	Milburn Roberts
2	Boles McMillan	26	Theodore Wright
3	William Jackson	27	Clarence Burton
4	Floyd Freeman	28	Eugene Hilliard
5	Dorman Strunk	29	Estill Meadows
6	Forest Wyatt	30	Wilburn Correll
7	Thurman Folger	31	Sam Hendricks
8	Hugh Davis	32	George Farthing
9	Clyde Fitzpatrick	33	Joe Wood
10	Grover Harris	34	Fred Russell
11	Raymond Willis	35	Walter Arrants
12	Edward Montgomery	36	Edd Rodda
13	Albert Link	37	Eric Lawson
14	William Coyne	38	Quay Ketner
15	Robert Mullins	39	John D. Seruggs
16	Sylve Reynolds	40	Lloyd Elliott
17	William Edwards	41	Ed Lafferty
18	Gilbert Roberts	42	Jack Kidd
19	Joe Hughes	43	James Hamner
20	Anthony Kauth	44	Millard Magill
21	Wilson Evans	45	Herbert Hare
22	Yates Bailey	46	Frank Clark
23	Joe Morgan	47	Ernil Kirk
24	Otis Goebel		







# PHI DELTA

FOUNDED 1859

Motto: *We Love Debate*

1	James Adams	26	Howard McKinney
2	Jason Wilson	27	Escum Moore
3	Jack Rouse	28	Sherman Trail
4	Kennie Hatfield	29	Luther Rice
5	Elbert Baxter	30	Ollie Williams
6	William Wright	31	Forest Cable
7	Forrest Sheley	32	Raleigh Hall
8	Lee Mann	32	Eddie Daniels
9	Virgil Smith	34	Willard Manning
10	Litten Singleton	35	Virgil Phillips
11	Sherman Copley	36	Herbert Dewes
12	Herbert Dunham	37	Phillip Lawson
13	Charles Phillips	38	Edward Updyke
14	Ralph Phillips	39	Fred Creech
15	Kermit Gardner	40	Pat Dyer
16	Dewey Collett	41	Harry Sturms
17	Earl Turner	42	Howard Hopkins
18	Chewing Campbell	43	Jason Smith
19	Byron Bennett	44	Charles Bertram
20	Arthur Hamon	45	Samuel Corbs
21	John Dean	49	Robert Meade
22	Hayward Hunt	46	Delmas Hinds
23	Allen Ledford	47	Jerome Helton
24	Guy Walton	48	Forest Lacy
25	Carl Sheriff		





# KAPPA SIGMA

FOUNDED 1920

Motto: *By Skill We Conquer*

1	William Davidson	25	Jefferson Earp
2	Kyle Hammond	26	Ed Thompson
3	Earl Winn	27	Oscar Owens
2	Earl Wynn	28	Paul Neal
5	Thomas Crowe	29	Paul Booher
6	Goebel Pruit	30	Ray Wine
7	Franklin Alley	31	Bernard Lowry
8	LeRoy Hall	32	Clarence Gilbert
9	Joseph Ayres	33	William Kelley
10	Ira Cotton	34	Howard Tilson
11	Norman Dodson	35	Robert Collins
12	Virgil Turner	36	Clarence Peters
13	Dewey Combs	37	Donell Gould
14	Kyle McLaugherty	38	Harlan Booher
15	Robert Meriweather	39	William Murphy
16	Earl Gambill	40	Cato Smith
17	George Mayo	41	Stewart Daugherty
18	LeRoy Northington	42	Daniel Eutsler
19	Thomas Nesbitt	43	Earl Fraser
20	Earl Jones	44	Richard Chrisman
21	William Hall	45	Gaither Norman
22	George Eaves	46	Doc Damron
23	Glenn Toms	47	Theodore Craig
24	Virgil Hall	48	Ed Cooper





# PI EPSILON PI

FOUNDED 1904

Motto: *She Soars On Her Own Wings*

1	Margaret Cocks	27	Joanna Huff	53	Rosa Lee Seale	78	Myrna Carfield
2	Jean Cocks	28	Mary Peter	54	Beth Roberts	79	Golda Maggard
3	Thelma Johnson	29	Mary Turner	55	Edna Price	80	Evelyn Turner
4	Elizabeth Shea	30	Stella Jean Denny	56	Melva Jones	81	Grace Bingham
5	Jean Denley	31	Elizabeth Brosheer	57	Dixie Bailey		
6	Nellie Cox	32	Irene Wallace	58	Lucille Kuykendall		Members not in
7	Elizabeth Kraatz	33	Ellen Best	59	Daisy Miller		picture:
8	Lucy Sweeney	34	Vera Russell	60	Nina Bryan	1	Ila Mae Propps
9	Bernice Rumley	35	Ellen Clarkson	61	Alma Shrader	2	Lucy Belcher
10	Ruth Gardner	36	Geneva Cox	62	Bobbie Ketner	3	Mildred Burton
11	Dorothy Lloyd	37	Fanny Farley	63	Frances Lafferty,	4	Oma Creech
12	Miriam McVey	38	Glady's Hammett		Pianist	5	Eva Evans
13	Arlo Riddle	39	Miriam Rigby	64	Mary Robertson	6	Audrey Francis
14	Bernice Jones	40	Pearl Rader	65	Ruby Frazier	7	Ethel Gambill
15	Eula Stanley	41	Virginia Friend	66	Tommie Terrill	8	Agnes Haldane
16	Hazel Johnson	42	Reba Kennedy	67	Florence Gosney	9	Florence Hall
17	Nora Howard	43	Margaret Sanders	68	Vera Bryan	10	Martha Kendrick
18	Ruth Peter	44	Sadie Hart	69	Ruth Barbe	11	Margaret Kraatz
19	Alma Chidester	45	Nellie Hays	70	Ruby Scrivner	12	Glady's McClure
20	Martha Friend	46	Alice Chatfield	71	Anna Mae Helton	13	Anna Roberts
21	Opal Veith	47	Virginia Copeland	72	Sytha Ballou	14	Roberta Shawver
22	Stella Kate Bellamy,	48	Lola Fowler	73	Ruth Schaffer	15	Clara Strong
23	Margaret Lyman,	49	Ruth Davis	74	Grace Cockerhar,	16	Sophia Shea
24	Hetty Bourne	50	Julia Stenken	75	Ruth Congleton		
25	Eleanore Reed	51	Katherine Venable	76	Helen Leslie		
26	Olive Montgomery	52	Mary Qualls	77	Elizabeth Jones		





# UTILE DULCE

FOUNDED 1899

Motto: *Omne tulit punctum qui miscuit Utile Dulce*

1	Nannie B. Sizemore	23	Roxie Ledbetter
2	Virginia Casey	24	Phina Winegar
3	Thelma Warren	25	Mabel Nesbitt
4	Lydia Deaton	26	Grace Robbins
5	Sarah Jane Williams	27	Irene Simpson
6	Beatrice Sisk	28	Gladys Brown
7	Martha Standing	29	Mary A. Moore
8	Zelma Langworthy	30	Jessie Hamm
9	Hannah Trigg	31	Frances Cooper
10	Irene Parker	32	Martha Redmond
11	Helen Mitchell	33	Blanche Hinds
12	Roxie Beare	34	Mabel Fibiger
13	Gertrude Bailey	35	Frances Chaney
14	Arta Hinds	36	Nellie Griffith
15	Bernice Howard	37	Allene Howard
16	Virgie Smart	38	Jessie Measel
17	Maudé Howel	39	Mary Howard
18	Aileen Maupin	40	Blanche Davis
19	Ruth Wamsley	41	Mina Avery
20	Ruby Smith	42	Mary Avery
21	Lizzie Jarvis	43	Ethel Ledbetter
22	Nettie Grissom	44	Ollie McKinney







# KAPPA GAMMA

FOUNDED 1922

Motto: *Noblesse Oblige*

1	Helen Freas	27	Fern Kidd
2	Bess Gilbert	28	Muriel Wolfe
3	Vassar Graham	29	Marjorie Boggs
4	Edna Deitz	30	Jean Trent
5	Mary Keaton	31	Geneva Johnson
6	Jessie Liles	32	Hilda Booth
7	Mrs. Brooks Phillips	33	Ruth Goodran
8	Mary Drake	34	Beulah Wolfe
9	Reba Johnson	35	Norma Setzer
10	Ann Pritchard	36	Julia Woodfin
11	Virginia Auvil	37	Loraine Booth
12	Nancy Carter	38	Esther Johnson
13	Susan Christian	39	Hortense Collawn
14	Dixie Christian	40	Elma Phillipson
15	Maude McAllister	41	Harriet Gates
16	Helen Basham	42	Roberta Armbrister
17	Mildred Cunningham	43	Willie Fae Allen
18	Ethel Cunningham	44	Elsie Creech
19	Frances Sutphin	45	Calla Turner
20	Helen McWhorter	46	Elizabeth Clark
21	Jane Odell	47	Reba Johnson
22	Alma Booth	48	Maybelle Johnson
23	Minnie Tevis	49	Mary Moore
24	Ruth Hopkins	50	Ma'ge Gambill
25	Gladys Wagers	51	Margaret Shutt
26	Myrtle Hicks	52	Dorothy Ingraham







## GERMAN CLUB

- |                          |                       |
|--------------------------|-----------------------|
| 1 Daisy Miller           | 12 Ruth Goodman       |
| 2 Sophia Shea            | 13 John Shouse        |
| 3 Ruth Hopkins, Pres.    | 14 Dewey Collett      |
| 4 Prof. Pauck            | 15 Eula Stanley, Sec. |
| 5 Eleanor Reed, V. Pres. | 16 Sue Terrill        |
| 6 Mildred Burton         | 17 Dorothy Ingraham   |
| 7 Helen Basham           | 18 Raleigh Hall       |
| 8 Alma Chidester         | 19 Lucy Sweeney       |
| 9 Howard Hopkins         | 21 Harriet Gates      |
| 10 Elizabeth Shea        | 22 Golda Maggard      |
| 11 Mabel Fibiger         |                       |



## FRENCH CLUB

- |    |                    |    |                 |    |                 |
|----|--------------------|----|-----------------|----|-----------------|
| 1  | William Kelley     | 15 | Melvin Payne    | 29 | Luther Kelley   |
| 2  | Mildred Burton     | 16 | Maud McAllister | 30 | Miss Chapin     |
| 1  | Anne Pritchard     | 17 | Alma Chidester  | 31 | Mabel Fibiger   |
| 4  | Earl Fraser, Pres. | 18 | Norman Dodson   | 32 | Elizabeth Shea  |
| 5  | Olive Montgomery   | 19 | Ruth Hopkins    | 33 | Eleanor Reed    |
| 6  | Gilbert Shely      | 20 | Howard Roberts  | 34 | Gertrude Bailey |
| 7  | Sytha Ballou       | 21 | Ruby Smith      | 35 | Ira Cotton      |
| 8  | Elizabeth Jones    | 22 | Anna Roberts    | 36 | Frances Chaney  |
| 9  | Thomas Crowe       | 23 | Dewey Collett   | 37 | Ruth Davis      |
| 10 | Thelma Warren      | 24 | Marjorie Boggs  | 38 | Anna Mae Helton |
| 11 | Harlan Booher      | 25 | Earl Wynn       | 39 | Ethel Ledbetter |
| 12 | Virginia Auvil     | 26 | Gladys Hammett  | 40 | Miss Richardson |
| 13 | Madge Gambill      | 27 | Mabel Nesbitt   | 41 | Hilda Booth     |
| 14 | Dewey Combs        | 28 | Martha Redmond  | 42 | Robert Nance    |



## CLASSICAL CLUB

- |    |                  |    |                  |
|----|------------------|----|------------------|
| 1  | Miriam Adams     | 14 | Blanche Hinds    |
| 2  | Anna Mae Helton  | 15 | Lizzie Jarvis    |
| 3  | Zelma Langworthy | 16 | Nellie Cox       |
| 4  | Margaret Cocks   | 17 | Gilbert Shely    |
| 5  | Phina Winegar    | 18 | Jean Cocks       |
| 6  | Alma Chidester   | 19 | Earl Wynn        |
| 7  | Margaret Lyman   | 20 | Virgie Smart     |
| 8  | Gladys Hammett   | 21 | Martha Redmond   |
| 9  | Daniel Eutsler   | 22 | Miss Ludlum      |
| 10 | Evelyn Turner    | 23 | Miss Welsh       |
| 11 | Grace Cockerham  | 24 | Maybelle Johnson |
| 12 | Dixie Bailey     | 25 | Frances Cooper   |
| 13 | Myrtle Metcalf   | 26 | Maud Howell      |



## PI GAMMA MU

Dean Wm. J. Baird  
 Elra Phillipson  
 Dean Cloyd N. McAllister  
 Prof. J. Wesley Hatcher  
 Elizabeth Shea

Prof. Wm. H. Walker  
 Jessie Measel, Pres.  
 Mrs. Brooks Phillips  
 Mrs. Avo W. Weir,  
 Sec.-Treas.

Prof. James R. Robertson  
 Clyde Venable, V. Pres.  
 Mabel Fibiger



## PHI DELTA ALPHA

Howard Hopkins  
 Virgil Hall  
 Ruth Hopkins  
 Eula Stanley

Dewey Collett  
 Julia Stenken  
 Prof. Pauck  
 Forrest Cable

Olive Montgomery  
 Edward Thompson  
 Earl Gambill  
 Clarence Burton

Gilbert Roberts  
 Lucy Sweeney  
 John Shouse  
 Ed Cooper  
 Jack Kidd

## AGRICULTURE-HOME ECONOMICS CLUB

President	<i>Hugh Davis</i>
Vice President	<i>Julia Stenken</i>
Secretary	<i>Blanche Hinds</i>
Treasurer	<i>Lawrence Henson</i>

- |                       |                      |
|-----------------------|----------------------|
| 1 Prof. Miller        | 22 Rosa Lee Seale    |
| 2 Prof. Price         | 23 Clyde Fitzpatrick |
| 3 Miss E. True        | 24 Eugene Hilliard   |
| 4 Miss M. Elliott     | 25 Irene Parker      |
| 5 Mr. H. Monier       | 26 Julia Stenken     |
| 7 George Mayo         | 27 W. C. Montgomery  |
| 6 Bess Gilbert        | 28 Nina Bryan        |
| 8 Roxie Ledbetter     | 29 Quay Ketner       |
| 9 Goebel Pruitt       | 30 Nora Howard       |
| 10 Alma Shrader       | 31 Katherine Venable |
| 11 O. J. Williams     | 32 Ellen Best        |
| 12 Sylve Reynolds     | 33 Hugh Davis        |
| 13 Blanche Hinds      | 34 Nellie Hays       |
| 14 W. T. Wright       | 35 Lawrence Henson   |
| 15 Lucille Kuykendall | 36 Miriam McVey      |
| 16 Howard Tilson      | 37 Miriam Adams      |
| 17 Vera Bryan         | 38 Virgil Phillips   |
| 18 Jean Trent         | 39 Thurman Folger    |
| 19 James Adams        | 40 Gladys Wagers     |
| 20 Willie Fay Allen   | 41 Jack Kidd         |
| 21 Ralph Phillips     |                      |







## TAU KAPPA ALPHA

### MEMBERS OF TAU KAPPA ALPHA

Martha Standing, Pres.  
 Forest Lacy  
 Elbert Baxter  
 Ruth Barbe  
 John Shouse

C. N. Shutt, Sec.-Treas.  
 O. J. Williams  
 Julia Stenken, Cor. Sec.  
 Eleanore Reed  
 Kyle Hammond

Miriam McVey  
 F. Harlan Booher  
 Escum Moore, V. Pres.  
 Beatrice Sisk  
 Earl Turner  
 Daniel Eutsler

### THE FORENSIC PROGRAM FOR 1930

The forensic work began this year with a number of debates between the University of Kentucky and Berea. These debates occurred during the fall before high school audiences in this section of Kentucky. The decisions were always made by the audiences, Berea receiving approximately half the decisions. The first semester work was concluded January 6, by a debate between Berea and Albion, Michigan, in which Berea was the victor. Those representing Berea in the fall were Kyle Hammond, Daniel Eutsler, Raleigh Hall, Virgil Turner, Willard Manning, and Virgil Smith.

The spring debating work began in March with a debate between Berea and Wittenberg on "Chain Stores." Other teams met by Berea this spring were Centre,



ASSOCIATE MEMBERS OF TAU KAPPA ALPHA

Mary Moore  
Clarence Gilbert  
Ruth Goodman

Virgil Turner  
Raleigh Hall  
Martha Friend

Lee Mann  
Harriet Gates  
Willard Manning

Georgetown, University of Kentucky, University of Florida, Asbury, Transylvania, Lincoln Memorial, Maryville, Colorado College, and Northwestern University.

Two subjects were debated, that of Chain Stores, and that of Disarmament. This is the first year that the men have used two subjects and interest in both propositions was maintained throughout the year. Those representing Berea were Lee Mann, Delbert Eagle, Esecum Moore, John Shouse, O. J. Williams, Clarence Gilbert, Harlan Booher, and Kyle McClaugherty.

Men's oratory always arouses great interest and competition. This year the Home Oratorical was won by Mr. Earl Turner, second place being taken by Forest Lacy. In the Constitutional Contest, William Wright was victor, while Forest Lacy won second place again. In the State Contest Earl Turner took second honors. William Wright has not yet represented Berea in the State Constitutional Contest.

The girls chose the Disarmament question as the subject of this season's debate. Since this topic is one of timely interest much enthusiasm was shown among the participants. The first debate was with Kentucky Wesleyan at Berea. Duel debates were held with Maryville College, Tennessee, and with the University of Cincinnati.

Those debating were Ruth Barbe, Harriet Gates and Mary Moore on the affirmative team and Martha Friend, Ruth Goodman and Beatrice Sisk, on the negative.

The program in women's oratory has not yet been completed. In the Home Oratorical Contest Eleanore Reed placed first, Hilda Booth second and Ethel Gambill third.



### BEREA CREDIT UNION

A. J. Chidester  
Olevia Harlow  
Gaither Norman  
Prof. J. N. Peck

Marguerite Sloan  
Virgil O. Turner  
Lewis Hart  
Benj. T. Welch

Harold Jones  
Roy N. Walters  
Gilbert Roberts  
Isabelle Perry

Zelma R. Langworthy  
Dean C. N. Shutt



### COLLEGIATE UNION OFFICERS

Joseph Wood, Yell Leader      Harold Ribgy, Chorister      Mildred Burton, Secretary  
Nellie Hays, Ch. Social Com.      Anna Mae Helton, Pianist      J. O. Hamner, President  
Edward Thompson, Treasurer



### VARSITY "B" CLUB

(Left to right):

Front row—Clarence Burton, Kermit Gardner, Wilson Evans, Edward Cooper, Ralph Phillips, Curtis Johnson, Clarence Gilbert, R. S. Reynolds.

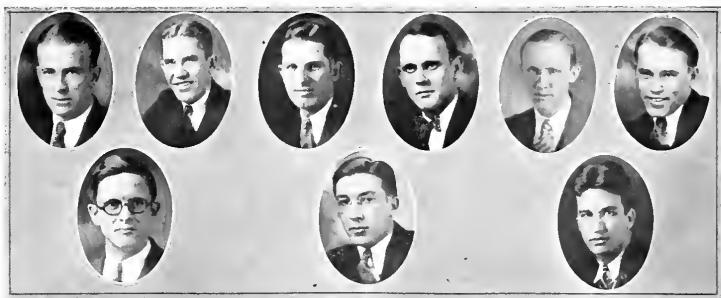
Back row—Forest Wyatt, Hugh Davis, Virgil Turner, Everett Allen, James Bowman, Theodore Wright (Pres.), Richard Chrisman.

Honorary and other members—Waldemar Noll, William P. Fenn, R. C. Quimby, Wilford Fritz, Cullen Owens, Bill Bowman, Goebel Pruit, Stuart Auvil, Charles Culbertson, Wilbert Montgomery, Frank Clark, Howard Tilson, Joe Ayres, Yates Bailey, Virgil Phillips.



### LADIES HALL COUNCIL

- |  |                                       |
|--|---------------------------------------|
| 1. Madge Gambill, Soph. Representative | 4 Beulah Wolfe, Junior Representative |
| 2. Blanche Hinds, President            | 5 Jean Trent, Senior Representative   |
| 3. Miss Welsh, Dean of College Women   |                                       |



### PEARSONS HALL COUNCIL

Fred Creech  
James Hamner  
William Coyne

Albert Link  
Estill Meadows  
Jack Kidd

William P. Fenn  
Virgil Phillips  
Brydon Grainger



### CHYMES STAFF

Ed Cooper, Ruth Barbe, Frank Alley, Esther Johnson, James Hamner, Ed Lafferty, William Edwards, Ruth Hopkins, Goebel Pruitt. Not in picture: Mr. Stoke, faculty advisor; Martha Standing, features; Mary Cooper, Class 27, art work.



### CHRISTIAN ENDEAVOR

H. J. Christopher, Norma Setzer, Earl Robbins, Helen Runnion, Rev. G. N. Luccock,  
Louise Scott, Delbert Eagle, Eula Stanley, William Murphy, Mary Robertson,  
Raleigh Hall, Obie Johnson.



### STUDENT VOLUNTEERS

Sam McCleur, Nancy Eversole, Clyde Venable, Eleanor Steenrod, Bernard Lowry,  
Grace Robbins, Goldie Combs, Blanche Davis, Ollie Williams, Willard Man-  
ning, Glenn Toms, Gaither Norman, Miss Stowe, Safronia Rasnick.

## Young Men's Christian Association



### Y.M.C.A. CABINET

Wilson Evans  
Earl Gambill  
Escum Moore  
Paul Neal

Earl Fraser  
Wm. Stafford  
Wm. Edwards  
Ed Lafferty

Wm. Davidson  
Bernard Lowry  
Ed Cooper  
Clyde Venable

Litten Singleton  
Verbon Gay  
Clarence Burton  
Earl Turner

The purpose of the Y.M.C.A. is:

1. To provide opportunity for individual expression in the Christian life, and to lead others to the Christian way of living and thinking.
2. To create a friendlier attitude among young men locally and universally.
3. To provide an opportunity for fellowship among Christian young men.
4. To provide preparation and encouragement toward church membership.

If being in Berea for Freshmen Days, welcoming the new students and helping them to adapt themselves to the campus; if providing an impressive installation for new men, the sending out of Sunday School teachers, Armistice Day programs, Young Peoples Society leaders, athletic club leaders, rendering the "Color Line"; the carrying on of the splendid work in the colored school of Middletown, keeping three recreation rooms open all year, the initiation of visits to the firesides of the faculty members, the discussion groups of the Fall and Spring, the weekly devotional meetings, are any indication of the working out of this purpose, the Y.M.C.A. is a vital factor in Berea life.



## Young Women's Christian Association



### Y.W.C.A. CABINET

Irene Parker  
Nellie Cox  
Nina Bryan  
Alma Chidester

Miriam McVey  
Ruth Barbe  
Frances Cooper  
Blanche Hinds

Oma Creech  
Madge Gambill  
Julia Stenken  
Lucille Kuykendall

Helen Freas  
Miss E. True  
Maude Howell  
Muriel Wolfe

What did we do? We were the oil that lessened the friction of Freshmen Days. We poured oil on troubled waters by meeting mid-night trains and conducting dazed Freshmen to the hospital—truly a hospitable reception. Of course, we observed all the time-honored customs, as holding our Apple-Cookie Social and spending a week-end at the Bungalow. Why they even caught us in the Jam Social.

Quite important in our work was our Social Service. We have real satisfaction in knowing that a little cabin up in the hills is made more comfortable and its blind housekeeper happier because of the bit we could do. We helped some industrial women help themselves by finding a market for the little things they might sell to pay for their much-needed glasses.

As usual, we sent \$25.00 to Miss Dizney in China, and a box to the Buckhorn Orphanage.

Last, but not least, we had our usual weekly meetings, and in addition this year sponsored a Week of Prayer.

# THE DRAMATIC CLUB

President

*Eleanore E. Reed*

Secretary

*Prof. H. L. Weir*

Cabinet

*Cullen Owens, Ethel Gambill, Paul Neal,  
Esther Johnson, Zelma Langworthy*

1	Reba Kennedy	24	Irene Wallace
2	Earl Fraser	25	Estill Meadows
3	Pearl Rader	26	Phina Winegar
4	Oscar Owens	27	Edward Lafferty
5	Ruth Goodman	28	S. Byron Bryan
6	L. Guy Walton	29	Hilda Booth
7	Ruth Congleton	30	Ruth Shaffer
8	Zelma Langworthy	31	Horace P. Neal
9	Sylvia Graham	32	Jean Denley
10	James T. Adams	33	Eleanore Reed
11	Margaret Sanders	34	Mildred Burton
12	Clyde Fitzpatrick	35	Earl Jones
13	Vera Russell	36	Madge Gambill
14	Lizzie Jarvis	37	Cullen B. Owens
15	Nettie Grissom	38	Arlo Lee Riddle
16	Albert B. Link	39	William Coyne
17	Julia Stenzen	40	Gladys Wagers
18	Arthur Woodruff	41	Gertrude Bailey
19	Hazel Johnson	42	Alma Booth
20	Earl Winn	43	William Davidson
21	Esther Johnson	44	Alma Chidester
22	C. Cato Smith	45	Prof. H. L. Weir
23	Martha Richmond	46	Bobbie Ketner





### NATIONAL HONOR SOCIETY

Wilson Evans, Milburn Roberts, Alma Chicester, Sam Combs, Frances Cooper, Norman Dodson, Cullen Owens, Goebel Pruitt, Sam McCluer, Nettie West, Earl Gambill, George Farthing, Wm. Murphy, Gilbert Roberts, Zelma Langworthy, Estil Meadows, Margaret Cocks, Reba Johnston, Myrtle Hicks, Amos Gastineau, Earl Turner, Dewey Collett, Ruth Congleton.



### ALPHA ZETA ORCHESTRA

Gilbert Roberts—Director

From left to right: Virgil Minnich, Sousaphone; William Murphy, Trombone; Bernard Davidson, Saxophone; Ulysses Wilder, Saxophone; John D. Scruggs, Piano; Harold Rigby, Flute; Milburn Roberts, Trumpet; Gilbert Roberts, Trumpet; George Farthing, Tenor Banjo; Ed T. Rodda, Drums and Traps.



## BAND

Top row left to right: Harold Rigby, Michael Hoffman, Richard McKee, William Hazle-  
 Virgil Minnich, Sam Wise, William Murphy, Gaine Stidham, Emerson Hatcher,  
 John Moore, Mr. Dick.

Second row left to right: Alma Chidester, Miriam Rigby, Arlo Lee Riddle, Bernice  
 Howard, Anna M. Roberts, Henry Gardner, Buster Cornett, Frances Shouse,  
 Wm. Johnson, Robert Wallace, Edgar Brown, Major Gardner, Scott T. McGuire.



### MEMBERS OF COLLEGE ORCHESTRA

Back row, left to right: Harold Rieby, Ellison Brown, Kathryn Dick, Virgil Minnich, William Murphy, Ralph Rieby, Director, Milburn Roberts, Scott T. McGuire, Jr., Gilbert Roberts, Miriam Rieby, Daniel Eustler, Margaret Holderman, George Dick.

Front row, left to right: Mrs. Mary P. Hutchins, Margaret Kraatz, Elma Phillipson, Rosa Lee Seale, Jane Stafford, Anna K. Roberts, Beth Roberts, Nellie Hays, Margaret Cocks, Alma Childester.



### MEN'S GLEE CLUB

Back row: Gilbert Roberts, Otis McKinney, Ed Rodda, Albert Link, Sam Hendricks, Frank Alley, Clarence Gilbert, Edward Updyke.

Front row: Ed Lafferty, Sylve Reynolds, Sherman Copley, Earl Fraser, Joseph Wood, Howard Tilson, Theodore Wright, Horace McNeil.

Through the spirit which Miss Jameson, the director, has imparted, the club has been able to do some nice work. The beginning of the year found the club in a rather crude state. During many long hours of secluded slaving and practice, much refinement has been accomplished.

Quite a few chapel services as well as some of the meetings of the campus organizations have been brightened by this group. A group of songs by the club made the annual performance of the orchestra more delightful.

The students and the general public enthusiastically received the Sunday afternoon recital of the club. A quartet from the group and a solo by Mr. Tilson added to the enjoyment of the performance. As a climax to the year's work, the club broadcasted from WHAS, Louisville.

Graduation takes its toll from the club by taking away several good voices which will be hard to replace. However the club cheerfully accepts their loss and will be ready to work harder in the future.



## GIRLS' GLEE CLUB

Left to right:

1	Blanch Davis	6	Muriel Wolfe	12	Anna Roberts, Sec.-Treas.
2	Esther Johnson	7	Margaret Lyman	13	Elma Phillipson
3	Nellie Hays	8	Miriam McVey	14	Ethel Gambill
4	Bess Gilbert	9	Ruth Rutter	15	Beulah Wolfe
5	Beth Roberts	10	Geneva Cox	16	Tommie Terrill
		11	Nellie Cox, Pres.		

This has been a very delightful year for the College Girls' Glee Club. A more congenial and happy group could not be found. Work in such an organization as this is a real pleasure.

Not all of the plans made for the club this year have been realized; but the girls have had some very interesting experiences. During Christmas vacation eight of the girls, with Miss Jameson and Mr. Taylor, were guests of WLS in Chicago for six days. Here they broadcasted programs, chiefly of mountain ballads and old hymns, and were royally entertained by friends of Berea in Chicago.

The chief event of the year in which all the girls participated was the concert given on March the twenty-third.

The Girls' Glee Club is always ready and willing to serve Berea as best it can.







CHYMES



SECONDARY  
SCHOOLS

# ACADEMY GRADUATES

## CLASS OF 1930

President

*Hubert Robinson*

Vice President

*Gaine Stidham*

Secretary

*Kathryn Proctor*

Treasurer

*Scott T. McGuire*

Sergeant at Arms

*Leonard Stephens*

1 Bertie Staggs	41 Smith Jones	80 June Kibler
2 Elizabeth Rayborn	42 Verda Miller	81 Dove Jessee
3 Katherine Edwards	43 Chalmer Frazier	82 Gillis Lambdin
4 Leonard Stephens	44 John Estes	83 Walter Combs
5 Frances Moore	45 Edna Newman	84 Rose Minucci
6 Logan Taylor	45 Margaret A. Livengood	85 Lucille Stephens
7 Edna Sproles	47 Henry Fortner	86 Percy Hancock
8 J. Clayton Farmer	48 Anna Lee Fortner	87 David Lewis
9 Naomi McBride	49 Ellison Cosby	88 Walter Casey
10 Ulysses Wilder	50 Henry Goddard	89 John Carlisle
11 Kathryn Proctor	(Class '31)	90 Bowen Shrader
12 Phillip Brashear	51 Dorothy Gay	91 Bertha Huff
13 James Moore	52 Robert Baxter	92 Ruby Carrier
14 Lena Rollins	53 Helen Thompson	93 Virginia Stiles
15 Albert Rhoton	54 Martha Pace	94 Theodore Robbins
16 Nellie Lake	55 Mary Taylor	95 Bruner Dixon
17 Evelyn Auxier	56 Scott T. McGuire, Jr.	96 Hobert Smith
18 Sterling Price	57 Alma Wolfam	97 Excel Vanover
19 Alfred Perry	58 Benjamin F. Tackett	98 Raymond J. Isaacs
20 Anna Gabbard	59 Eva Isaacs	99 Truman Cole
21 Francis Shouse	60 Roscoe Manning	100 James Meadows
22 Faye Cody	61 Dallas Pearson	101 Norma McCollum
23 Minerva Gay	62 Gaine Stidham	102 Ammon Rhinehart
24 Posey Pettry	63 Bethel Langworthy	103 Amos Gastineau
25 Ruby Kirk	64 Evelyn Morgan	104 Dixie Jones
26 Mary Gay	65 Elizabeth Davis	105 Flossie Willis
27 Ethyl Hurley	66 Hazel Troutman	106 Virgil Childers
28 Edmund Pike	67 William J. Baird, Jr.	107 Halley Shrader
29 Allene Greathouse	68 William Howard	108 Wallace Wolfe
30 Lee Ella Witt	69 Madge Maxwell	109 Miss Emil Welch
31 Thomas Cocks	70 Donald Cole	(Sponsor)
32 Alma Kibler	71 Dicy Callahan	110 Dean C. N. Shutt
33 Emerson Hatcher	72 Virginia Heath	111 Paul Robinson
34 Isaac Hayes	73 Hise Tudor	112 Hubert Robinson
35 Carrie Madon	74 William Johnson	113 Nancy Eversole
36 Glenn Harris	75 Leonard Martin	114 Marjorie Clark
37 Decatur Johnson	76 Virginia Stephens	Not in picture:
38 Chester McIntyre	77 Edna Pigman	Briscoe Evans
39 John Moore	78 Flora Mae Jones	Samuel Colwell
40 Donald Pendergrass	79 Edith Beatty	Willie Firestone



# NORMAL GRADUATES

## CLASS OF 1930

Herbert Lewis  
Vice President  
Secretary

*President*  
*Louise Carpenter*  
*Richard Morris*

- |    |                    |    |                     |
|----|--------------------|----|---------------------|
| 1  | Elsie Evans        | 32 | Jerome Helton       |
| 2  | Jennings Acton     | 33 | Thelma Walls        |
| 3  | Bertha Hendricks   | 34 | Jessie Johnson      |
| 4  | Helen Holsapple    | 35 | George Guffey       |
| 5  | J. Keo Rash        | 36 | Louise Carpenter    |
|    | (Class Advisor)    | 37 | Floy Young          |
| 6  | Edith Morris       | 38 | James Watts         |
| 7  | Ruby Shoemaker     | 39 | Ruby Bullock        |
| 8  | James Price        | 40 | Gladys Rucker       |
| 9  | Sylvia Graham      | 41 | Mae Kelley          |
| 10 | Herbert Lewis      | 42 | Nervie Partin       |
| 11 | Mary Shadoin       | 42 | Flora Vanderpool    |
| 12 | Clarence Spicer    | 43 | Gertrude Higgins    |
| 13 | Maxie Cornett      | 44 | Carl Hamilton       |
| 14 | Goldie Combs       | 45 | Ruby Skinner        |
| 15 | Oscar Morgan       | 46 | Carrie Wilson       |
| 16 | Mrs. Carrie Morgan | 47 | Roscoe Playforth    |
| 17 | Ruby Mercer        | 48 | Minta Miller        |
| 18 | James Vanderpool   | 49 | Lena Howard         |
| 19 | Virgie Dixon       | 50 | Millie Peck         |
| 20 | Charles Bertram    | 51 | Mae Hamilton        |
| 21 | Della Cornett      | 52 | Cora Combs          |
| 22 | Lewis Craft        | 53 | Bernice Williams    |
| 23 | Lena Elkin         | 54 | Aliene Conlee       |
| 24 | Samantha Raleigh   | 55 | Kenneth Arnett      |
| 25 | Mary Booher        | 57 | Florence Hibbard    |
| 26 | Mona Pennington    | 58 | Mrs. Minerva Saylor |
| 27 | Richard Morris     | 59 | Lyda Walton         |
| 28 | Ruth McBee         | 60 | Safronia Rasnick    |
| 29 | Mary McBee         | 61 | Rose Howard         |
| 30 | Grace Griffith     | 62 | Elvin Buster        |
| 31 | Henry Newby        |    |                     |



## BEREA COLLEGE SCHOOL OF NURSING



Top row: Edna Brooking, Helen Settles, Irene Rogers, Verda Brassfield. Bottom row: Rosa Carico, Pauline Rogers, Bertha Pigg.

### CLASS OF 1930

The 1930 class of the School of Nursing is the largest that has graduated since the school was reorganized in 1921, to conform with the revised nursing law of the state. Since 1921 the classes have had from one to six members. We are proud of our nine members this year. Our department varies from the others in that we spend three full years in training, with eight weeks vacation allowed during the three years. We affiliate with the Cincinnati General Hospital, Cincinnati, Ohio, for certain services in which our hospital cannot give us sufficient work. In our course of study we have to meet the minimum requirements for School of Nursing as adopted by the State Board of Nurse Examiners of Kentucky, but our school has increased the numbers of hours to conform as nearly as possible to that recommended by the National League of Nursing Education. The practical work on the wards counts as laboratory work. The standards of our School of Nursing and the hospital have both been greatly improved in the past few years, and in the near future we hope to have a large and better equipped nursing school.



## FOUNDATION-JUNIOR HIGH SCHOOL.



THE Foundation-Junior High School provides an educational opportunity for students from the mountain counties of Appalachian America who are sixteen years of age and over and who do not live within reasonable reach of adequate public schools and who have not completed the first nine grades. There are several divisions in each grade grouped according to their achievements. No matter how neglected a student's education may have been he can find classes in the Foundation-Junior High School adapted to his age and needs. Many of the young people who enter this school have been out of school for several years. Students are promoted from one grade to another as rapidly and at any time their progress justifies promotion.

New classes are started at the beginning of the second semester to accommodate those who enter for the first semester.

There is a large staff of trained teachers who are sympathetic and experienced in adapting their work to the needs of young men and women who are not so far advanced as they should be because of the lack of educational opportunities.



AELIOIAN. 1st row: Moore, Gay, Stowe, Eversole, Huff; 2nd row: Gay, Gay, McBrayer, Newman, Willis, Rollins, Langworthy; 3rd row: Heath, Shrader, Greathouse, Allen, Stephens.



LENORIAN. 1st row: Livengood, Holcomb, Rayborn, Welch, Jesse, Harrison; 2nd row: Woods, Bates, Vanover, Meadows, Hurley, Mayes, Jones; 3rd row: Vanover, Michael, Johnston, Fitzpatrick, Maden.



SORORIAN. 1st row: Duff, Runion, Troutman, Newsome, Auxier; 2nd row: Bishop, Cartee, Owens, Proctor, Williamson, Owens, Eubanks, Noel; 3rd row: Rhoton, Raleigh, Tanner, Deel, Smith, Smalley, Turner, Morgan.



VICTORIA. 1st row: Johnson, Worrell, Cardwell, Franklin, Kibler, Ison; 2nd row: Morris, Keen, Evans, Baker, Arnett. 3rd row: Denning, Hale, Dickenson, Jones, Wilson, Castle.



SIGMA TAU. 1st row: Cocks, Hayes, Childers, Manning, Meadows, Slade; 2nd row: Ammon, Brown, Scrivner, Stephens, Leady, Paul; 3rd row: Tuttle, Folkland, Nichols, McKeehan, Childers.



BETA ALPHA. 1st row: Hopkins, Lay, White, Shouse, Baird, Howard, Langdon; 2nd row: bard, McIntyre, ise, Stidham; 3rd row: Dixon, Shively, Jones, Pettrey, Johnson, Burkhard, Ellis, Shrader; 3rd row: Johnson, Hibbard, McIntyre, Wise, Stidham, McIntyre.



PI SIGMA. 1st row: Smith, Speares, Carey, Brewer; 2nd row: Mengel, McGuire, Tackett, Ramey, Robinson; 3rd row: Combs, Cosby, Harris.



ADELPHIC. 1st row: Gambill, Brown, Hatchett, Rhoton, Sheaffer, Wheeler; 2nd row: Herold, McKee, Ritchie, Walker, Meadows, Herrin; 3rd row: Tipton, Combs, Taylor, Wilson, Stephens, Twiner, Cole.



PHILOMATHEA. 1st row: Whitehouse, McDaniel, Skinner, Pace, Mills, Hacker, Howard, Howard; 2nd row: Combs, Dixon, Baker, Kelley, Bowman, Morris, Cornett; 3rd row: Cline, Walton, Combs, Mays, Morris, Thorpe, Strong, Shoemaker; 4th row: Holsappel, Lovins, Lockard, Joseph, Turner, Joseph, Young, Martin, Fuson.



APPALACHIA. 1st row: Hughes, Huddleston, Booher, Higgins, Evans, Shadin, Graham, Wilson; 2nd row: Turner, Raleigh, Southerland, Appelby, Headly, Conlee, Hatfield, Walls, Walls, Spencer, McBee; 3rd row: Billings, Pittman, Barnes, Bronwing, Wilson, McKnight, Gray, Johnson, Spencer; 4th row: Booher, Bullock, Crawford, Graham, Combs, Fuson, Gregory, Miller.



EXCELSIOR. 1st row: Combs, Craft, Coubs, Perkins, Hamilton, Oliver, Nickel, Wireman, Watts; 2nd row: Jones, Helton, Hamilton, Jones, Gabbard, Boker, Caldwell, Vanderpool, Picklesimer, Sergeant, Howard, Playforth; 3rd row: Applegate, Bowling, Butler, Spicer, Johnson, Phipps, Deaton, Sharpe, Miniard, Combs

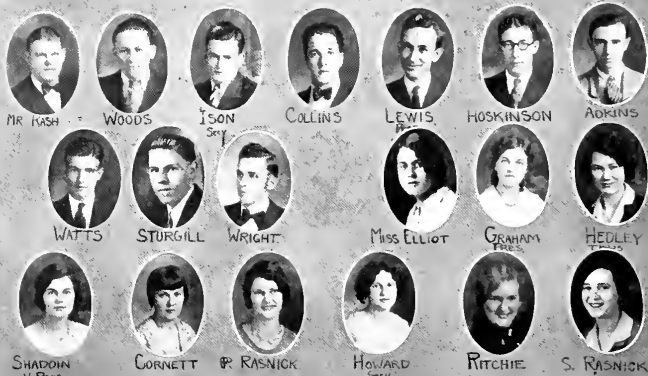


UNION. 1st row: Dillingham, Ison, Roberts, Adkins, Lewis; 2nd row: Lyons, Taylor, Avery, McCray, Jennings, Acton, Stidam Woods; 3rd row: Baldwin Warrel, Roy, Barnett, Litton; 3rd row: Lykins, Wright, Ray, Arnett, Dyre, Kegley; 4th row: Baker, Richardson, Leedy, Cundiff, Bullock, Wagers, Dawn; Hale; 5th row: Sams, Morris, Hoskinson, Jones, Baker, Ramsey.

ACADEMY YM-YW CABINETS



NORMAL YM-YW CABINETS



MI-Y



GIRL RESERVES







ACADEMY DEBATING TEAM

James Hatchett

Frances Shouse

Walter Brown

W. A. Hackett

.



CHYMES



WATH  
LETICS

1918

1918



CHARLES WARD SEEVERY  
GIVES HIMSELF FOR MEN

A GIFT OF SACRIFICIAL LOVE DEDICATED TO THE YOUNG MEN OF SERA. IN MORE THAN THAT THEY MAY REPENT IN THEIR BODIES TO BE SAVED AND ENDURING SERVANTS OF THE GOOD WILL. THAT THEY MAY HERE LEARN TO PLAY IN DEPENDENT RHYTHM AND COOPERATION TO THE FINEST ORDER WITH COURAGE, DETERMINATION, DISMAY, AND WITHOUT CONSENT.

THEY ARE THE DALLANT HEROES OF THE ENGINEERS WHO WERE ENRAGED IN THIS WILDEST AND MOST THE PATRIOTS WHO BUILT THE COLLEGE THEY MAY TAKE HONORABLE PART IN THE GLORIOUS DEPTHS OF THE PERIL AND THE BLOOD OF THE

Inter-collegiate

Sports

Basketball

Track

Tennis

Cross Country

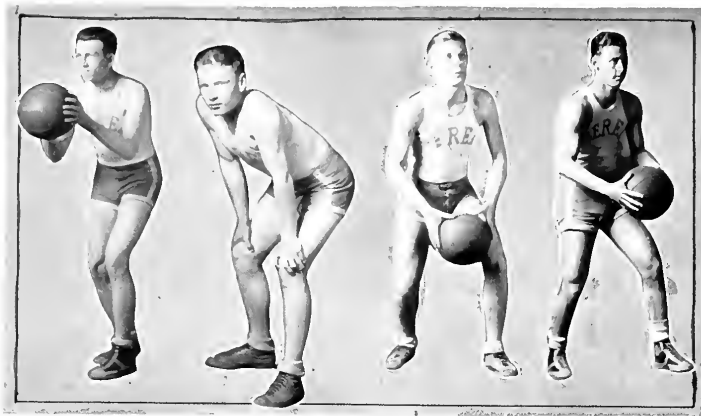
## PHYSICAL EDUCATION AND ATHLETICS

The foundation of the present department of Physical Education and Athletics was laid by Mr. John C. Miller, who served as Director of Physical Education for several years prior to 1924. His interests lay largely in the field of intra-mural athletics, which he developed quite extensively, but he also coached a basketball team that started a reputation for Berea, for it did not lose a game to a Kentucky college.



The Director in 1924-25, Johannes Hendrickson, handled the gymnasium work and Professor Waldemar Noll, then new to Berea, coached football, baseball and track. Mr. Noll was very successful, especially in basketball for his team lost no Kentucky games in 1925 and challenged the University of Kentucky, to decide the State Championship, and in 1926, won the first tournament held at Winchester. He continued coaching basketball through the 1929 season. The track teams were under his tutelage until Professor Fenn took them over last year. Many Berea graduates who are now coaching football owe their abilities in this line to Mr. Noll, for he coached football for six years. Much credit is due Mr. Noll for carrying on the work started by Mr. Miller, for maintaining the interest in intra-mural sports by not laying too much stress on intercollegiate athletics, and for looking after our affiliations with the S.I.A.A.

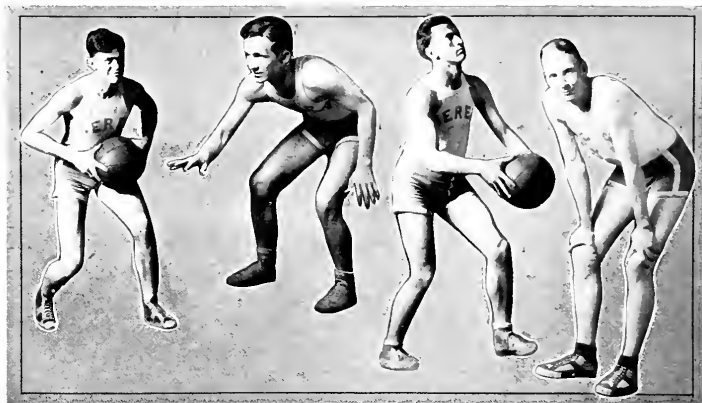
With the coming of Mr. Quimby in 1925 intra-mural athletics really got started, and this year saw interschool baseball, football, basketball, tennis, volley ball and swimming, an intersociety basketball tournament and a handball tournament open to all the schools.



Berea faced the basketball season of 1929-30 with practically all green material and poor prospects for a winning team. With only Captain Evans, Ted Wright and a few reserves from last year to build around, the situation was anything but pleasant for a new coach. Some of the wise birds said if Berea won a game they would be lucky.

However from this bunch of green material a team was moulded that put a real battle in every game played and won half of their S.I.A.A. games. After a couple of practice games before Christmas the regular season opened December 31 with a game against the University of Kentucky. This game was supposed to be a set-up for Kentucky. But those who went to see the massacre had the surprise of their lives when the Mountaineers started off playing cool, heads-up basketball and matching goal for goal with the mighty Wildcats. Berea led most of the way and it was only a couple of long shots in the closing minutes that sent them to defeat 29-26. Evans scored eleven points and stood out as the individual star of the game.

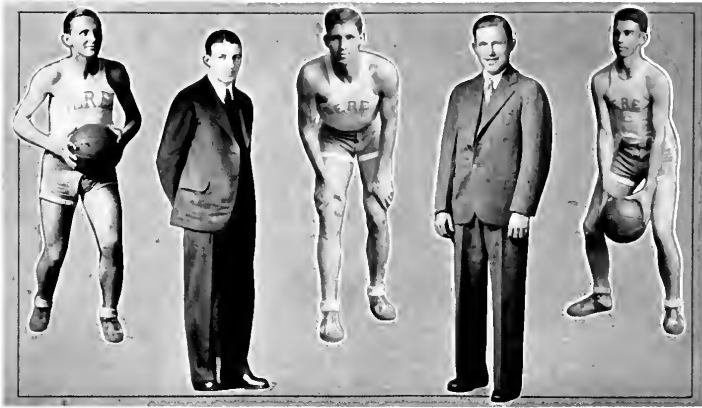
After the Kentucky game the regular S.I.A.A. schedule began. Space does not permit a detailed account of the season. The next game was at 31-25



Arrants, Wyatt, Puckett, Updyke

defeat by Louisville in what resembled football more than a basketball game. After adapting themselves to the football tactics they came very near to overcoming the big early lead by a desperate rally in the last half. Following the Louisville game we were defeated 32-29 at home by Eastern's Carr Creek stars and lost to center 31-28 at home. The first win of the season was a 31-28 victory over Georgetown, followed by a 42-20 victory over Western Normal. The only one-sided games of the season were 38-20 defeat by Wesleyan followed by a 39-22 victory over Transylvania. The classic of the season was a one point victory over Eastern. This game was played before a capacity crowd in Madison High School Gym. Both teams were at their best and a nip and tuck battle resulted. The lead changed hands several times. The crowd was left almost in hysterics by the spectacular long shooting of Jimmy Bowman and Zelda Hale and nobody had much idea as to who would win until the timekeeper's gun ended the game giving Berea a 32-31 victory. A 32-24 defeat by Wesleyan and a 35-29 defeat over Georgetown ended the regular season.





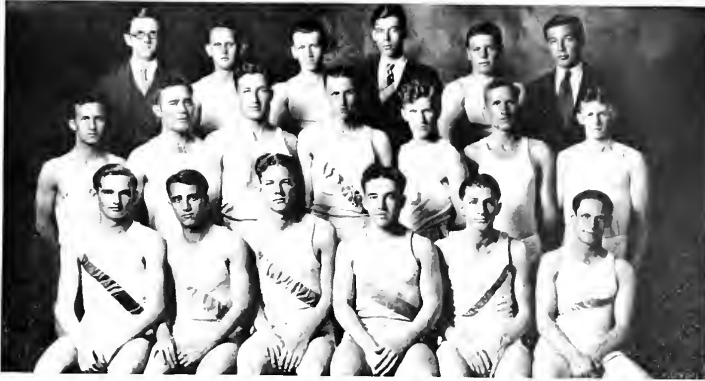
Burton, Coach Fritz, Bowman, Pruitt, Wright.

The showing in the tournament was somewhat of a disappointment. For the only time in the season we were favorites to win the first game over Western. However the boys got a bad start and couldn't get going until it was too late. They finally struck their stride and by scoring twelve points in the last four minutes came within one point of tying the score but lost 39-38.

## TRACK

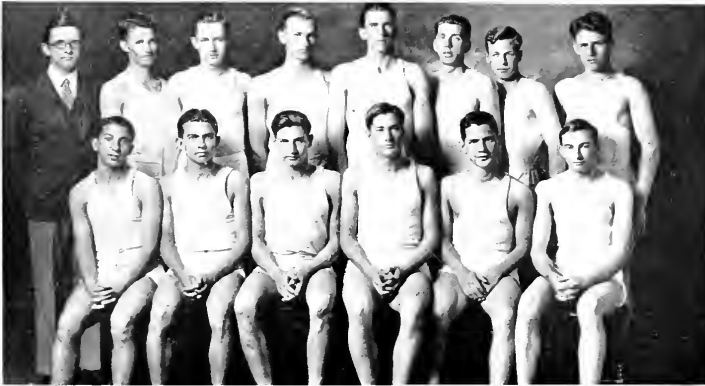
The track team of 1930 is very strong in the distance events and in the high hurdles having taken first place in the half mile, mile, two mile, and high hurdles in every meet in which they have competed up to date of going to press. Chrisman always takes the half mile in good time. Bailey has yet to be pressed in the mile, Gilbert usually runs the two miles in near record time, while Tilson and Turner take turns about beating each other in the high hurdles. As is usual with Berea teams, we are weak in the dashes and the field events, and hence our meets have consisted largely of "swapping points." Berea's prospects in the State meet received a severe jolt when "Jerry" Montgomery, a good four-forty man and one of the mainstays of the relay team, was ruled ineligible because of having been registered as a Senior last year. Clark was been running well in the dashes although he has not quite reached the form expected of him. Culbertson throws the javelin around 160 feet. Cooper and Phillips are doing fairly well in the high jump, while Phillips usually places in the shot and discus. Ayres is running so well that in the two miles that if it were not for Gilbert he would win every meet. Although Silve Reynolds has not been out very long, he is doing fairly well in the 4-40 and in the relay. He is also broad jumping. Wyatt is under orders to avoid strenuous work and is only pole vaulting, and has not reached his best form. Davidson has shown the greatest improvement recorded this year, although it is not much more remarkable than that shown by Howard Tilson who ran the high hurdles in 16 seconds at Centre. Berea defeated Centre  $79\frac{1}{2}$  to  $47\frac{1}{2}$  at Danville, and was defeated by Georgetown at Berea 67 to 52, and by Louisville at Louisville 80 to 49.

The Freshman track team has had a good season, defeating the Centre freshmen 90-25, and led the Georgetown freshmen all the way to win easily by 67 to 47. Numerals have been made by the following: Young (dashes); Wyatt (hurdles and high jump); Dyer (pole vault) Singleton and Lawson (distance) Strums (dashes); Allen (javelin and discus); Bennett (vault).



### VARSIITY TRACK TEAM

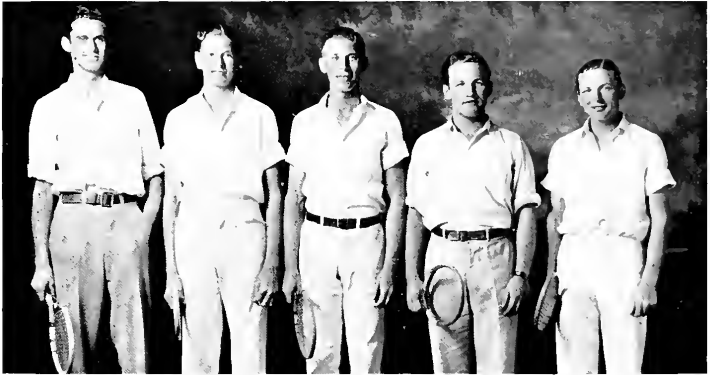
Front row: Dean, Gilbert, Tilson, Davidson, Reynolds, Clark; Second row: Wyatt, Ayers, Phillips, Turner, Hopkins, Cooper, Bailey; Third row: W. P. Fenn, Link, Chrisman, Wood, Culbertson, Phillips.



### FRESHMAN TRACK TEAM

Front row: Lipari, Young, Wyatt, Hughes, Wooten, Sturms; Back row: W. P. Fenn, Copley, Dyar, Bennett, Hinds, Singleton, Allen, Lawson.

## TENNIS



Allen, Kelley, Evans, Bowman, Owens

The tennis team has given a good account of itself up to date although the record of wins is not impressive. The boys were greatly handicapped in the early part of the season by the fact that the tennis courts were not useable, and they played their first match with hardly any practice, losing to Georgetown 4-3. A few days later they were swamped by the University of Kentucky, 7-0. The team has shown a constant improvement and expect to defeat Georgetown and make it more interesting for Kentucky in return engagements. The first match with Center ended 3-3, and was called on account of darkness. In the second match Berea won, 6-1.

The team has excellent prospects for next year, as Captain Wilson Evans is the only Senior on the team, the others being Juniors and Sophomores.

## CROSS COUNTRY



CROSS COUNTRY TEAM: Coach Fenn, Ritchie, Young, Singleton, Isaacs, Cooper, Bailey, Gilbert, Capt.

A large squad of both Freshman and Varsity men reported in the fall and worked out regularly in the expectation of some inter-collegiate competition. Since no other school in the state boasted a Cross Country team, however, no meets could be scheduled and the men had to be content with some intramural practice meets.

A team consisting of the outstanding men from the entire school competed in the Annual Thanksgiving Day race in Cherokee Park, Louisville, in which were entered the University of Indiana and Butler College Varsity and freshmen, and teams from the YMCA and YMHA in Louisville. Berea took third place in the race, nosing out the Butler College freshmen.

Nearly all the members of the squad are distance runners on the track team and thus get advantage of Fall practice.

The team was coached by Professor Wm. P. Fenn, and captained by Clarence Gilbert.



Intra-mural

Sports

Track

Tennis

Swimming

Volleyball

Handball

Football

Basketball

## FOOTBALL

The outstanding feature of the 1929 intra-mural season was that the struggle for first place was between Academy and Normal, while the College and Junior High fought it out for third and fourth place.

Academy began the season with practically all green material, but after being held to a scoreless tie by Normal in the first game, proceeded to smash their way through all opposition to win the championship and end the regular season with the following record: Academy 0, Normal 0; Academy 20, Jr.-High 6; Academy 14, Normal 7; Academy 22, Jr.-High 0; Academy 25, College 12. They then climaxed the season in the Thanksgiving Day game with a hard fought victory over Normal in the most spectacular game ever played in Berea. This game was played in freezing weather, on a windswept field covered with two inches of snow. In the first half, Academy scored, and completely outplayed Normal. The teachers opened the second half with a line drive that Pruitt's men could not stop, and scored in the first minute of the fourth quarter, thereby tying the score, and then were stopped only by a desperate rally on the twenty yard line. With only one minute to go and with all Academy supporters praying for the game to end quickly in a tie, "Happy" Perry faked a punt to draw Normal men through, then dashed around right end for sixty five yards. A five yard pass Perry to Wilder, who carried the ball over, won the game for Academy in the last thirty seconds. "Jin" Minnich then plunged through the line for the extra point, making the score 13-6.

Normal started the season with several experienced men, and probably put out the best team ever supported by the Normal School, landing second place with a record of three victories, two losses and one tie. The high spot of their season was when, with four minutes to play they scored two touchdowns, to break a scoreless tie with College, and to win 13-0.

College had to content herself with third place, due to the fact that since few of the experienced men reported, the team was undeniably green.

Although the Jr.-High School failed to win a game, they played good football and scored in all except three games.





ACADEMY FOOTBALL—1st row: Farmer, Harris, Wilder, Perry, Burgeen, Cox, Engle. 2nd row: Minnich, Riddle, Carter, Baxter, McGuire, Martin, Carey, Higgins, Combs, Nichol; 3rd row: Forbes, Hancock, Leedy, Mays, Smith, Pendergrass, Palmer, Colwell, Anderson, Pruitt, Hager, Scrivner, Coach Pruitt.



NORMAL FOOTBALL—1st row: Shearer, Ison, Newby, Wright, Price, Sams; 2nd row: McKinster, Stidham, Raleigh, Woods, Browning, Roberts; 3rd row: Coach Rash, Rose, Baker, Henderson, Hampton, Buster, Salyer.



COLLEGE FOOTBALL—1st row: Combs, Roberts, Jackson, Lawson, C. Fitzpatrick, Russell. 2nd row: Baker, Smith, Woods, Taylor, McMillan, Dyer. 3rd row: Kauth, Davidson, Robbins, Noll, G. Fitzpatrick, Wyatt, Buckland.



JUNIOR HIGH FOOTBALL—Front row: Shockley, P. Jones, H. Jones, Hibbitts, Ferguson, Truitt, Henderson. Back row: right, Hyatt, Kegley, Howard.



ALL BEREА—Left to right: Perry, Wilder, Hyatt. Back row. Mays, Pendergrass, Anderson, Hibbets, Lindon, Ison, Baker.

## BASKETBALL

The winter of 1929-30 saw in action some of the best intra-mural basketball teams of recent years. Again precedent was ignored and the "dope" upset, when, for the first time in Berea's intra-mural history, the Junior-High School walked through all opposition to win the championship with the loss of only one game. "Jerry" Hughes built a highly effective machine from a squad of good material, and amazed everybody by nearly doubling the score on the Academy in their opening game. Before the season was over, however, people ceased to be surprised at anything that the team did, and the 56-20 victory over the Normal School, was accepted quite calmly. The champion's record for the season follows. Victories: Acad. 34-18; Normal 56-20; Acad. 33-27; Normal 36-23; Frosh 23-22; Frosh 53-28. Loss: Acad. 33-27. Saylor and Eversole stood out in all the games.

Although the Academy got away to a poor start, losing to Jr. High 34-18 and to the Frosh 34-32, they developed ideas of their own after the second game, and with a team built around their only letter man of the year before, Paul Robinson, they won all the rest of their games to land in second place. with four wins and two losses. Had they not lost to the Frosh, they would have tied with Jr.- High as they broke even with them in two games. The 33-27 defeat of Jr.-High and 33-17 defeat of the Transy Freshmen, who had trimmed them earlier in the season were the greatest achievements of "P'nut" Pruit's and Dean Shutt's boys.

The Freshmen, with a husky bunch of candidates among whom were several high school stars, were the early favorites to win the championship, but for some reason they never were able to play the quality of basketball of which they were capable, and they finished the season in third place with a record of three wins and three losses. The loss of Wyatt through illness handicapped the Freshmen in several games.

Although the Normal School possessed a better than average team, they did not succeed in winning a game against the stiff opposition offered by the other schools.



JUNIOR-HIGH BASKETBALL—Front row: Wood, Saylor, Brosheer. Back row: Coach Hughes, Hyatt, Eversole, Taylor, Dean Baird.



ACADEMY BASKETBALL—Front row: Taylor, Perry, Robinson, Pruitt, Dean Shutt, White, Smith. Back row: Hatcher, Turner, Petrey, Peyton, Combs, Evans, Stevens, Frasier, Nechodoma.



FRESHMAN BASKETBALL—Front row: Young, Wyatt, Bennett, Dyer, Fitzpatrick, McMillan, Combs. Back row: Quimby, Sewell, Hughes, Smith, Mullins, Trail, Owens.



NORMAL BASKETBALL—1st row: Browning, Buster, R. Baker, Newby, Price, Roberts. 2nd row: Combs, Barrett, Rouse, Coach Rash, Taylor, Raleigh.

## INTER-SOCIETY BASKETBALL



UNION INTERSOCIETY CHAMPIONS. 1st row: Ison, Wagers, Woods. 2nd row: Leedy, Jones, Whittaker, Hoskinson.

As a part of Professor Quimby's program of "Athletics for Everybody" a basketball tournament in which teams representing the various men's literary societies in the College, Academy and Normal School competed, was held during the winter. A regular schedule of games and practice periods was worked out for all teams. The team winning the championship was to be honored by placing its name on one of the plaques in the New Seabury Gymnasium. Considerable enthusiasm was aroused and many men appeared in uniforms, who formerly had been content to engage in athletics from the side lines.

As there were nine teams competing, a large number of games were played, many of them very interesting. During the last part of the season, the race developed into a three cornered struggle between Alpha Zeta and Phi Delta, of College, and Union, of Normal, each team finally establishing a record of six wins and two losses. In the play-off Phi Delta defeated Alpha Zeta 23-11, and then forfeited the final game to Union, which thus became Inter Society Champion.

## BASEBALL

With the possible exception of College, the department baseball teams appear to be somewhat weaker than common this year, yet the baseball season has been very successful. There have been some interesting and well played games.

Following the custom of giving more space and the first writeup to the championship team, we are forced to place College in the position. There are two more games on the regular schedule, and Normal still has a chance to either tie or win the championship. Realizing the danger of counting chickens before they hatch, we offer apologies now in case the unexpected should happen and Normal win the championship. But the placing must be done now because those games will not be played until after this goes to press.

Many of the players on last year's College team failed to go out this year. Nevertheless College has put a good team in the field and apparently is not missing the so-called last year's stars. They have won every game played to date. Only one has been even a close score. This was a very hard fought game with Normal, which College won breaking a 4-4 tie with a two run rally in the ninth inning. If anyone doubted the superiority of the College team, they must have been convinced Field Day when they walloped a picked team from all the other schools by the score of 16-10. The pitching of "Captain Jimmie" Bowman has been the feature of all games played.

On the same basis that College was selected for first place, Normal seems to have second place sewed up. They have lost only one game, a 6-4 decision to College. The Normal team has played steady and consistent baseball. The steady work of Baker, their one-armed pitcher has been their strongest asset. Buster is a brilliant fielder and a dangerous slugger.

Academy had practically no experienced men from which to build a team. And though the writer hates to admit it, they seem to have a much weaker team than usual. Their hitting has been weak and the fielding while good at times has often failed in the pinches. Payton is pitching good ball but cannot win without better backing. They have won only one game defeating Junior-High 12-6.

Junior-High has a team of young and inexperienced boys. They are handicapped by lack of an experienced pitcher. At present they have not won a game and seem destined for last place.

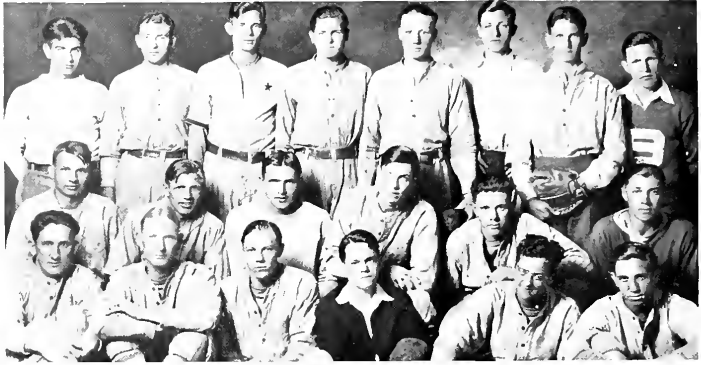




COLLEGE BASEBALL—1st row: Gardner, Bowman, Eaves, Parker, Minford, Dun-  
nelgon, 2nd row: Baker, Klauski, Smith, Flannery, Suel, Allen, 3rd row: Walton,  
Keith, Montgomery, Johnson, Center, Strunk.



NORMAL BASEBALL—1st row: R. Baker, A. Baker, Spicer, Raleigh, Guffey, 2nd row:  
Perkins, Deaton, Playforth, Rose, Combs, Woods, Bishop, 3rd row: Rash, Lin'cen, Little,  
Jones, Hampton, Wright, Miniard.



ACADEMY BASEBALL—1st row: Fraley, Dixon, Johnson, Brewer, Cox, Rose. 2nd row: G. Brewer, Perry, Parker, Stephens, Meece, M. Johnson. 3rd row: Jones, Smith, Peyton, Leedy, Hughes, Logsdon, Engle, Coach Pruitt.



JUNIOR HIGH BASEBALL—1st row: Ruley, Combs, Shockley, Carter, Wright, Smith, Vance. 2nd row: Marks, Hyatt, Durossett, Corley, Gilbert, Fannin, Bollinger, Hughes.

## MINOR ATHLETIC ACTIVITIES

The College Sophomores won the Speedball Championship by defeating the Juniors in the final game. Six teams competed, one from each College class and from the Academy and Junior High School.

By defeating "Bud" Davidson in the finals of the handball tournament, "Bill" Bowman became champion.

As this goes to press four swimming teams are competing for the swimming championship of the school. Academy, coached by Brydon Grainger holds the edge at present, having defeated the College swimmers coached by Ed Cooper by a good margin. Sam Hendricks is the Normal mentor, and Bill Stafford is teaching the Junior High swimmers the rudiments.

The volleyball tournament was won by the Sophomores, who were later defeated 3-2 by the Physical Education Instructors.

There are seven teams competing in the tennis tournament, and up to the present Academy has defeated Normal, Sophs the Frosh, Juniors the Seniors, Academy the Frosh, Juniors the Normal, Seniors the Normal, Academy the Sophs.

The Annual Yankee-Rebel basketball game was won by the rebels, who were captained by Wilson Evans.

Field Day Championship was won by the Varsity and Harry Noble was high point man with 15 points; Virgil Turner was second with 13, and Ralph Phillips was third with 11. The Freshmen took second place, and the Academy was third.

Thirteen boys won their Senior Life Saving Emblems, and three their Junior Emblems. Four girls received emblems.

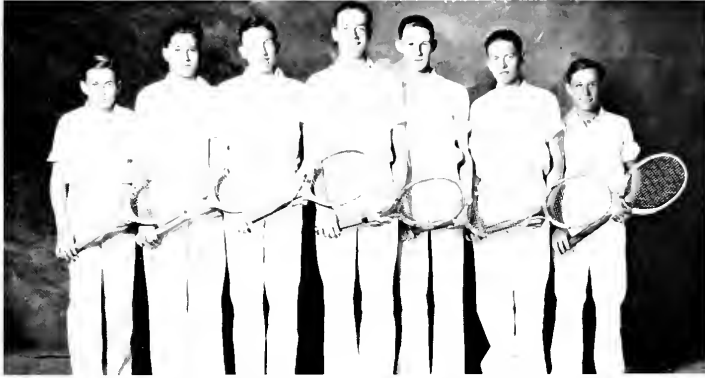
## INTERSCHOLASTIC SPORTS

The only scholastic sports permitted in Berea are two basketball games each by the Academy and Normal schools, and the Academy track team goes to the Danville and Georgetown high school meets.

The Academy basketball team broke even in two games played with the Transy freshmen. In the first game played at Lexington, the Academy boys were all dolled up in new suits, and while they were admiring their own "pretty" suits the freshmen ran away with the basketball game. The second game at home was a different story, the Academy boys started with fast well executed offense that completely baffled their opponents and piled up eleven points before Transy scored a single point. They won this game in a walkaway running up a score of 36-16 with the second team playing the last half.

The Normal boys lost both of their games to the Wesleyan freshmen. The first game played at Winchester, was easy for the Freshmen who played their second team most of the game and then won 38-17. The second game played on the home floor was a real battle. Normal played excellent basketball and led most of the way only losing in the last few minutes by 23-17.

The Academy track team has made an enviable record this season. In the Danville Meet with eleven schools participating they scored 26 points to finish in third place, being beaten only by Male and Manual of Louisville. In the Georgetown relays they did considerably better scoring 42 points to nose out Male High School and take second place. There are several good men on the team, but the bulk of the scoring has been done by Isaacs and Noble, two of the most brilliant high school stars in the state. Isaacs cut eleven seconds off the mile record at Danville, then with less than half an hour rest cut five seconds off the half mile record. Noble placed first in both shot and javelin, and second with the discus at Danville. He lacked an inch breaking the shot put record at Georgetown and the only reason he didn't break his own javelin record is because he set it so high last year that he doesn't need to even approach it again to win over all competition. In the medley relay at Georgetown, Isaacs running as anchor man gave the spectators a real thrill when he overcame a 35 yard handicap, passed up four men and finished 35 yards ahead of the field and set another half-mile record at 2:01.3, eleven seconds faster than any other high school man in the state has done it. Jeff Wyatt seems to have done a good job of coaching the team.



ACADEMY TENNIS TEAM—Nechodoma, Amon, Hatcher, Cosby, Hoffman, White, Wilder.



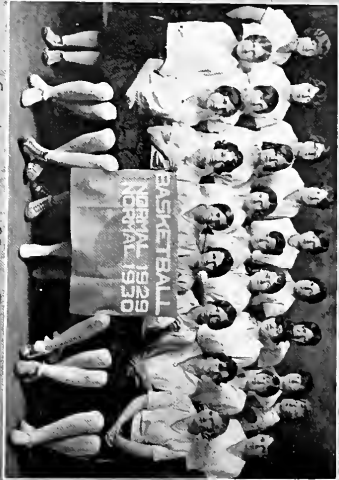
ACADEMY TRACK TEAM—Frasizer, Hayes, Isaacs, Wilder, Noble, Wheeler, Farmer, Hatcher, Cole, Taylor, 2nd row: Coach Wyatt, Hawks, Jacobs, Minniard, Cosby, Hoffman, White, Howard, Ritchie, Cocks, Mgr.



WOMEN'S  
ATHLETICS



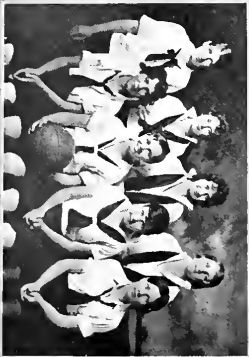
COLLEGE SOCCER TEAM



CHAMPIONS 1930 BASKETBALL



ACADEMY BASKETBALL



JUNIOR HIGH BASKETBALL





Miss Ludlum    Elsie Creech    Frances Cooper    Reba Kennedy    Minnie Tevis

The W. A. A. started several years ago in a reclaimed barn. The maiden activities were baseball, basketball and hiking. Today the Association sponsors soccer, basketball, baseball, tennis, archery, swimming and hiking.

We have joined the U. S. Field Hockey Association and anticipate a fine hockey season for next year.

Another stride forward was to become a member of the Women's Division National Amateur Athletic Federation. "The Women's Division of the National Federation of America believes in the spirit of play for its own sake, and works for the promotion of physical activity for the largest possible proportion of persons in any given group, in forms suitable to individual needs and capacities, under leadership and environmental conditions that foster health, physical efficiency and the development of good citizenship."

These are the ideals for which we are striving in the W.A.A. of Berea College.



## REMEMBER—

Ruth and the bull? When the Phillips brothers moved to Gilbert Cottage? When James O. Hamner acquired a dog? When Craig wore spats? How Baby Face and Plato looked in Derby Hats? When Wilson Evans tried to grow a mustache? When Miss Benniman's cat accomplished its demise? When the girls went coasting with the boys? When Persia made whoopee in the chemistry lab and you could smell it at West End? The yo-yo craze? When Prof. Spadino threw the cat over the transom? When the Senior girls dressed a la 1898? When Ruth and Bob got poison ivy? When the girl in the insane asylum fell in love with Frank Dix? How Ginny played sweet nothings in Senior parlor? The Robots? How Mr. Jay led the pep meeting? When everybody had scarlet fever? How the milk bottles disappeared from Miss Welch's office? Hollowe'en? Where Dean Hendricks was at 11:10 when he wasn't in chapel? How P'nut defended his honor in the dining room? Senior tea? When Ed Cooper cleaned his room? When the boys came and went at will through East Gate? Uncle Ab and his hamburgers? The fellows who called your number in Christian Evidences? Boarding Hall hash? When Sloke Lafferty got caught in Fat-Man's Misery? When Sylve Reynolds flunked the Greek examination? Why they put a light over the bridge? The first Junior-Senior prom? How you drove that cow to the Berea College school house? How Taxi enjoyed saying grace? When Sloke was caught "playing hands" with Helen Leslie in Ladies Hall lobby? When Esther Johnson eloped on the milk wagon? The A. Z. orchestra? How Normal boys go round the mulberry bush? The kings of Israel? When Dean Baird sold blueing and bought a watch? Ever seeing Link without Lafferty? Those numerous carloads of oranges.

Did you ever see a Kangeroo court?

## FAMILIAR SAYINGS—

Perhaps I am beginning two minutes early—. Are there any announcements? If not, I have three. I'm gonna marry an A.Z. woman one of these days—Hallelujah. Will the following girls please meet in West Parlor? Class, fall in! With exception of those working at the Tavern no one will be excused. Well, I guess I'd better shave. O. K., M. E. Welsh. Class dismissed! The chaplain will now lead us in prayer. Are you ready Mr. Ogg? Just one moment please. Now hold right still—all right. Before he speaks let us rise, please, and sing number 214. Social privileges, tickets 15c at the Coop. All out, please, except College Juniors and Seniors. I'll match you for a set-up. O.K., Katherine S. Bowersox, Alliance Dean of Women. Who's your friend? Got your Evidences paper written yet? Pure blooded Anglo Saxon. Wonderful—marvelous—. Count off by twos from left to right—count! I was a poor boy myself, raised on a farm—. Ask Sam McCluer. Did you get fined too? Great day in the morning! Boy's you must not stand on the porch. Hey, come back with that towel! Read the sign, please, "Silence is requested." All students are warned of the ten dollar fine. Play something, Ginny. Yeah, you cut class today. C, double minus. Soups on. Chapel will meet at nine twenty-five. And what did she say then? Say. If you only knew what I know on you! I'm sorry that I have to mention this again. The team will leave from the Tavern at seven, sharp. Everybody out of the pool, there's a class coming in. You have eight absences to make up. Got a job for next year yet? What will we do Senior week? When will the Chymes be out?

Taxi: Heads, the drug store, tails the Coop, and if it stands on edge, I'll study.

Dean Shutt: Whenever I look at Dean Baird I see red.

Phina: I caught Gaither flirting last night.

Alma: That's the way I caught Buddie, too, darling.

# ADVERTISING

BEST WISHES TO THE

CLASS OF 1930

FROM

CHURCHILL



WEAVERS

## LIFE INSURANCE PAYS

*It helps protect your future*

SOME ONE HAS GUARANTEED YOUR EDUCATION. YOU  
MUST GUARANTEE YOUR FUTURE FINANCIAL  
INDEPENDENCE

Invest in a small policy while you are young; while your occupation is that of a student; while the rate as such is low.

Advance in age means higher rate and less likelihood of insurability.

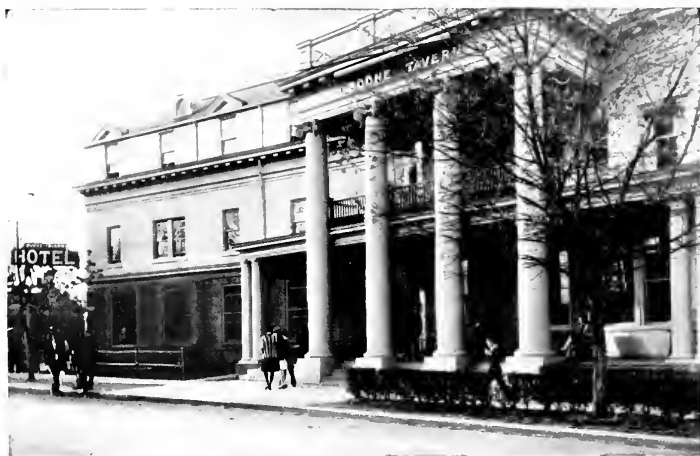
THE PENN MUTUAL is one of the oldest and strongest, and therefore reliable. Let us explain the policy.

A. F. SCRUGGS, District Agent

THE PENN MUTUAL LIFE INSURANCE CO.

Short Street

Berea, Ky.



# Boone Tavern

*A PRIVATE HOTEL WITH ALL MODERN CONVENIENCES  
A PLACE THAT IS JUST LIKE HOME*

*Managed and Controlled by Berea College*

---

---

## BOONE TAVERN GIFT SHOP

*Products of Student Industries*

Located on the Corner of Main St., Opposite Union Church

Under Berea College Management

Berea, Ky.

# BEREA COLLEGE STUDENT INDUSTRIES

## “Berea College-Made Products”

### BAKERY

Bread, Rolls, Pies, Cakes, Cookies and Special Orders. 24-hour service on Mail Orders

### BROOM INDUSTRY

Household and Fancy Hearth Brooms. Price List on request.

### FIRESIDE INDUSTRIES

Coverlets, Quilts, Scarfs, Bags, Pillow-Covers, Hook and Rag Rugs, Runners, and other woven articles. Ask for circular.

### CLOTHING DEPARTMENT

Aprons, Pillows, Bonnets, Smocks, Romper Suits, Bibs, and Laundry Bags.

### MOUNTAIN WEAVER BOYS

All-wool Home-spuns for Men's Summer and Winter Suitings.

### WOODWORK

Walnut and Cherry furniture for the home. Cedar Chests. Novelties in Wood-carving.

---

In Berea all students perform some labor, thus making themselves self-supporting. In purchasing from the Student Industries, you are assured of supervised, accurate workmanship in addition to supporting this great Berea project.

SEND INQUIRIES TO  
BEREA COLLEGE, Berea, Kentucky



A NATION-WIDE INSTITUTION

Every  
Store a  
Local  
Enterprise

**J. C. PENNY Co.**

No "Sales"  
Lowest  
Prices  
Every Day

*"WHERE SAVINGS ARE GREATEST"*

FOR MEN—

Stylish Hats and Caps  
Quality Shoes  
Suits at a Saving  
Feature Shirts

FOR WOMEN—

Fine Millinery  
Dress Shoes  
Serviceable Hosiery  
Coats and Dresses

THE STORE WHERE MADISON COUNTY SHOPS

## AT YOUR SERVICE

When you had your photo made at our studio, the negative was carefully filed for your future use, and is now

*"AT YOUR SERVICE"*

Mail us your Kodak work. Same clean, prompt service at the same price.

The Lewis Studio

Short Street

Berea, Kentucky



“Photographs Live Forever”

## THE OGG STUDIO

Portraits, Commercial Photography, Kodak Finishing

We pay special attention to mail order Kodak Finishing

Click-Allen Motor Co.

Berea, Kentucky



The Outstanding Chevrolet of  
Chevrolet History

*A Six in the Price Range of the Four*

SUITS MADE TO MEASURE

PRESSING

DRY CLEANING

REPAIRING

Nu-Way Cleaners

J. CHESTER PARKS

12 Center Street

Phone 125

WITH HEARTIEST GOOD WISHES FOR THE  
FUTURE SUCCESS OF THE  
CLASS OF 1930

THE BLACK DIAMOND  
PAINT & VARNISH WORKS, Inc.

Paints and Varnishes of all Kinds

1209-1217 BANK STREET  
CINCINNATI, OHIO

**E. F. COYLE**

**Main Street**

**Berea's Leading  
Dry Goods Store**

**Berea National Bank**

Your business solicited

Capital, Surplus and Undivided

Profits \$120,000.00

Member Federal Reserve

GO TO

**Boone Tavern Barber Shop**

FOR

QUALITY AND SERVICE

**Odessa Beauty Shoppe**

West Chestnut Street

Specialists in the Art of Permanent  
Waving, Marceling and Bobbing

Phone 199

Odessa Jennings

Marie Soper

**ROMINGER & HARRISON**

FUNERAL DIRECTORS

BEREA

KENTUCKY

PHONES 48 AND 197

YOUR CLASSMATES  
WILL TELL YOU—

"Be sure you get

GENUINE  
*Trussell*

For use in classes"



*They won't wear out!*

Trussell memo and classbooks are used  
by students everywhere.

They will serve you long and faithfully



*The featherweight—another Trussell  
creation*

JUST SAY—

GENUINE  
*Trussell*

The clerk will know

---

**H. W. PETERS Co.**

*Boston's Largest Manufacturing Jewelers*  
**BOSTON, MASS.**



**BEREA ALUMNI RING**



---

Orders for the New Alumni Rings  
may be placed at any time at the

BEREA COLLEGE  
COOPERATIVE STORE  
Berea, Kentucky

THERE IS A DIFFERENCE  
Clothes Custom Made to Order, Last  
Longer, Look Well, Fit Perfectly,  
Cost no more.

Jack Chastain  
TAILOR

HONEST  
QUALITY  
EFFICIENCY  
AND SERVICE

Guaranteed in Shoe Repair

E. L. Thoma  
Short Street :

DOCTORS

J. M. & C. M. Logsdon

DENTISTS

Main Street                      Berea, Ky.

R. R. Coyle & Son

CLOTHING—SHOES

GENTS FURNISHINGS

Main Street                      Berea, Ky.

Baker's  
News & Music Shop

T. P. Baker, Prop.

NEWS                      MUSIC  
CONFECTIONS

Phone 291                      Berea, Ky.

John F. Dean                      E. L. Roberts

Insurance of All Kinds

Representing the Mutual Benefit Life  
Insurance Co., of Newark, N. J.

Office, Berea Bank & Trust Co.

DOROTHY VAN BOCKERN

VANDILLA PRICE

WILLIE FAY ALLEN

Three of our new Gladiolus originations, to be introduced in the near future

*"They Were Bred In Old Kentucky"*

*If interested in CHOICE GLADIOLUS get your name on our mailing list*

## BEREA GLAD GARDENS

D. J. LEWIS, Proprietor

61 Center Street, Berea, Kentucky

Sales Office, Short Street

## NOTHING MORE COLLEGIATE

### STYLISH BASS MOCCASINS

Smart—Comfortable—Durable

Endorsed By

Paris, London And New York



### Popular On Every Campus



On the campus, at the games, on the street, in fact Bass Moccasins are the correct footwear for all sports occasions. The moccasin has been endorsed by fashion leaders everywhere. They are smart comfortable and long wearing. Get your Bass Moccasins now.

*Made In Styles For Men and Women*

*Write For New Free Catalog*

G. H. BASS & CO.

WILTON, MAINE

**Bryan Hunt Co., Inc.**

Lexington

Kentucky

Distributors for Sunkist Brand  
California Fruits

Ask your dealer for this brand. They  
will please you.

Remember the Name

**Marinette**

Stands for style and quality in sweaters  
They are sold exclusively by

THE COOPERATIVE STORE

With

Compliments

**Porter Moore Drug Co.**  
Inc.

**Scott T. McGuire**

*The Students Friend*

DRUGS AND JEWELRY

Berea

Kentucky

We are headquarters for gifts.



CANDY IS A FOOD

INCLUDE IT IN YOUR DIET



*Makes a* LOVELY DESSERT

Manufactured by

LITTLEFIELD & STREERE CO.

Knoxville, Tennessee

HOLMES-DARST COAL COMPANY

JOHNSTON'S "SURETY BOND" PAINT  
SAVES ONE-THIRD THE COST

THE R. F. JOHNSTON PAINT COMPANY

Lexington

Kentucky

COMPLIMENTARY

SCATTER SUNSHINE WITH  
GREETING CARDS

*A Greeting Card For Every Occasion*

THE GIBSON ART COMPANY

Cincinnati, Ohio

NUNN-BUSH

Ankle-Fashioned Oxfords for Men

Know the luxury of wearing quality  
shoes with the ankle fashioned feature

NUNN, BUSH & WELDON SHOE CO.

Milwaukee, Wis.

Many of Men's Furnishing  
Items purchased by the

COOPERATIVE STORE

Came from us.  
That's why you can  
depend on them.

Simon Ades Sons & Co.

Louisville, Kentucky

### Imported English Fillets

Now on the Market

They are wrapped in cellophane, the newest and best.

Enables your customers to see the fish plain as if unwrapped.

Cut from fish caught in deeper and colder water.

Absolutely boneless and skinless.

Not put through any salt solution whatsoever.

Easily prepared in many more different ways.

Better flavored.

Distributed by

The New Fisheries Company

324 W. Sixth Street Cincinnati, Ohio.

Take a tip from Bob—

If the Cooperative Store knew where  
to buy better suits for the money, they  
wouldn't be showing you our line.

M. Born & Co.

Chicago, Illinois

Compliments of

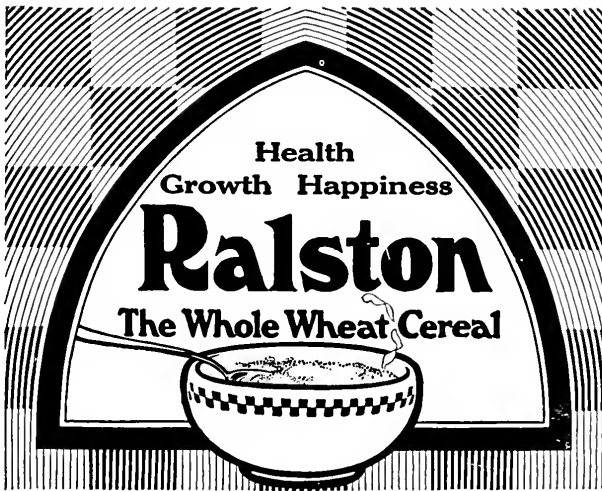
Bessire & Company

Inc.

Louisville, Kentucky

A newspaper should be judged almost solely on its news—the completeness, the accuracy, the enterprise, the decency, the constructive quality of the information to which it devotes its space

READ  
THE LEXINGTON LEADER  
CENTRAL KENTUCKY'S HOME NEWSPAPER





*The Largest and Most Helpful Magazine for  
Teachers of All the Grades and Rural Schools*

## **NORMAL INSTRUCTOR** *and* **PRIMARY PLANS**

Published monthly during the school year from September to June inclusive—ten large handsome numbers filled with the best and most usable teaching material obtainable. Eight-page Rotogravure Section in each issue.

Subscription Price \$2.00 Per Year  
Sample Copy on Request

F. A. OWEN PUBLISHING CO., DANSVILLE, N. Y.  
Also publishers of a large line of helpful books for teachers, entertainment books, supplementary readers, pictures, etc. Send for catalogue.

### The Oskamp Nolting Co.

Diamonds, Watches, Jewelry,

Leather Goods, Luggage, Silverware,  
Trophies, Medals, Cups,  
Fraternity Jewelry

26-28-30 West Seventh Street  
Cincinnati, Ohio

### **K** UMBRELLAS, PARASOLS AND CANES

*"Never mind the weather"*

### The Anderson Breiting Co. MANUFACTURERS

225 W. Fourth St., Cincinnati, Ohio.

*"Always Better by Comparison"*

Phone, Main 135



## What Are Your Newspaper Ideals?

NEWSPAPERS furnish most of the information which our brains digest to provide the life-blood of public opinion.

You select food for yourself with considerable care. Wisdom dictates that you select your food for thought with equal care.

Throughout the State of Kentucky and twenty-four Southern Indiana counties, more than two hundred and five thousand families are doing this through the pages of *The Courier-Journal* and *The Louisville Times*.

These newspapers offer daily mental diet so sanely balanced as to stimulate development of that citizenship which is the nation's greatest asset and future hope.

Liberal on every economic question, fearlessly independent of every political issue, tolerant in the broadest sense of the word on every social problem, these newspapers have been able to serve the public for over a century with a singleness of purpose that has merited and won widespread recognition.

## The Courier-Journal—The Louisville Times



Don't Say "Ice Cream" Say

**NATIONAL  
ICE CREAM**

It means so much more

**MADE WITH REAL CREAM**

**DR. J. F. WHITE**

CHIROPRACTOR  
Phone 318

Berea

Kentucky

**Davis Tailor Made Clothes**

Best *Made-to-Order Clothing Value*  
in America

Let me show you my new line and  
prove it

**COLLEGE PRESSING SHOP**

Salesman, O. J. Williams

**DEMPSIE R. HART**

CAMPUS SIGN ARTIST

*"the boy that swings a wicked brush"*

**SIGNS OF ALL KINDS**

Berea

Kentucky



EGALITE-WILSON FRUIT COMPANY

THE BEST IN FRUITS AND VEGETABLES

WHOLESALE ONLY

LEXINGTON, KENTUCKY

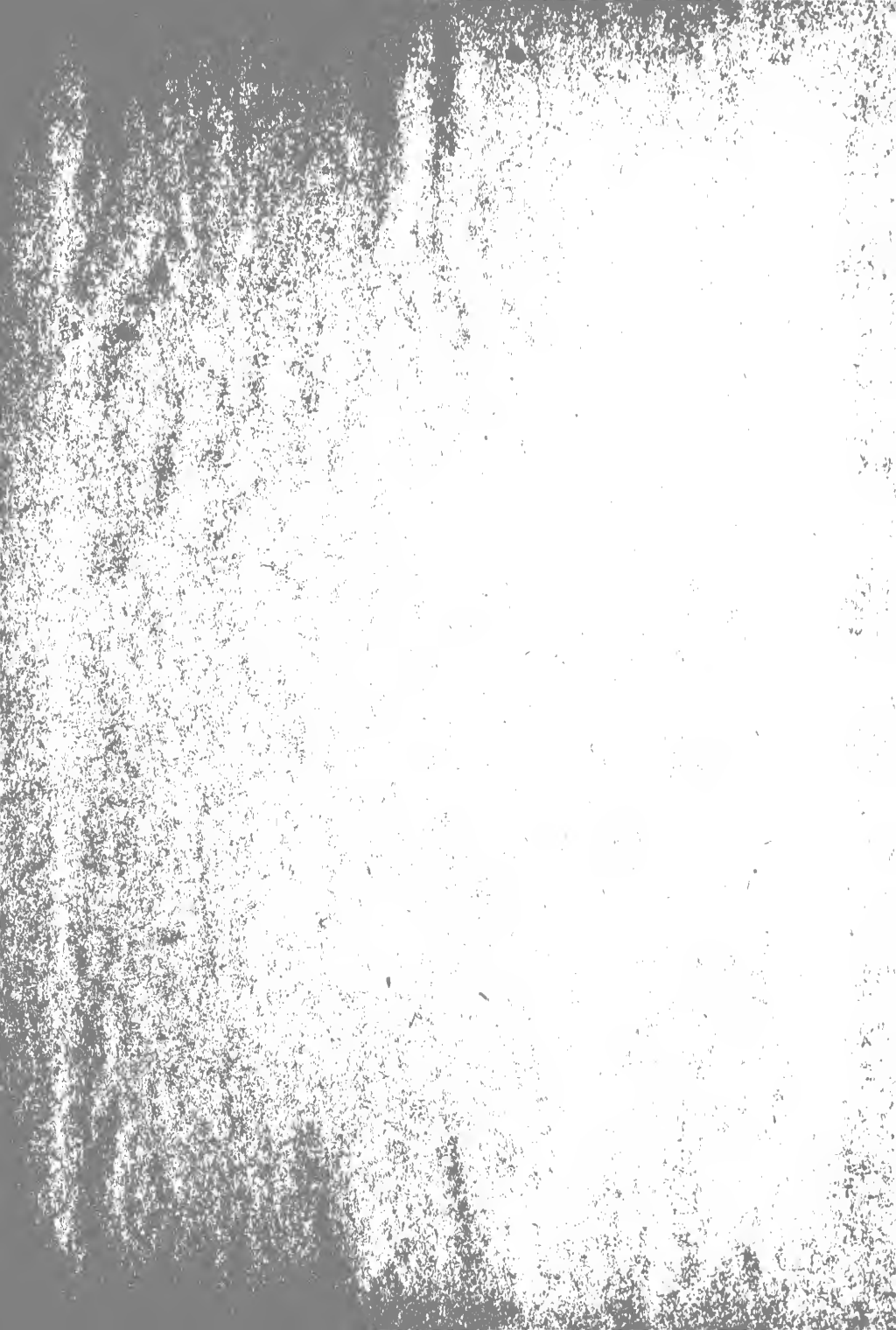
BEST WISHES FOR CLASS OF 1930

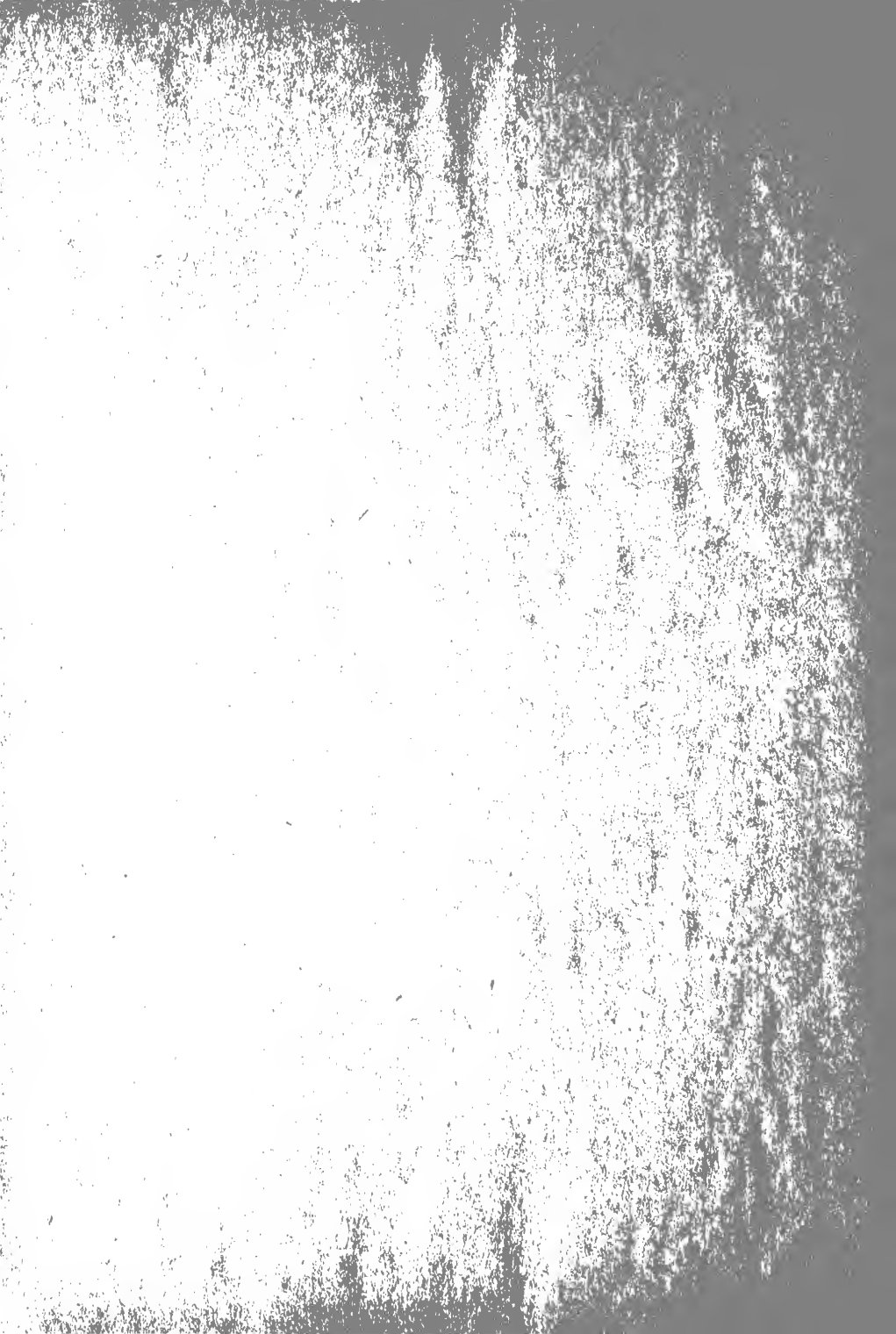
DAVIDSON BROS. & COMPANY

BEREA

KENTUCKY









BEREA COLLEGE



3 3217 00350 7184