

# CHIMES 1951

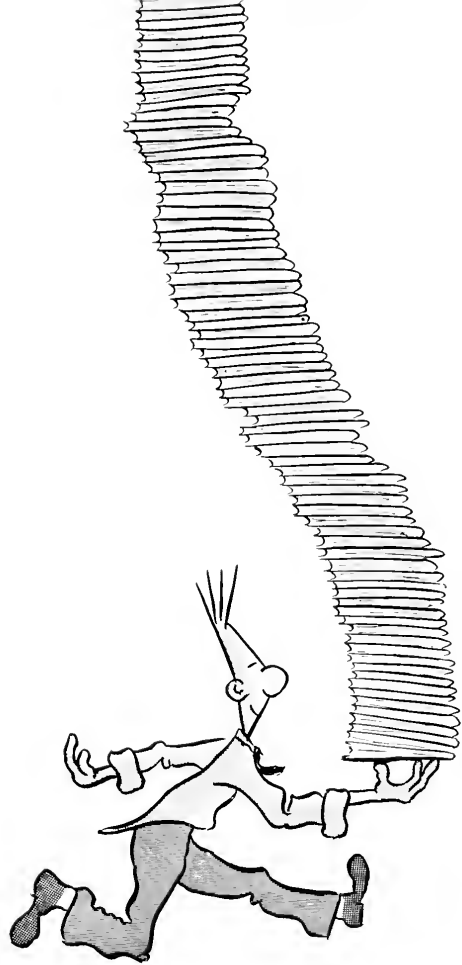
College  
378 7691  
B487c  
1951

Digitized by the Internet Archive  
in 2011 with funding from  
Lyrasis Members and Sloan Foundation

<http://www.archive.org/details/chimes195100bere>

John Smith





Here It Is!



*Draper Building . . . . November*



*First Period Class . . . . . Science Hall*

# 1951 Chimes

Published by the  
SENIOR CLASS OF BEREA COLLEGE  
Berea, Kentucky

RAYMOND COLLEY, Editor

CHARLES HONEYCUTT, Business Manager

Printed by the  
THOROUGHbred PRESS, Lexington, Ky.

Engravings by  
ART-CRAFTS ENGRAVING Co., Cincinnati, Ohio

# The 1951 Chimes Is

## *A Word From The Editor*

As I considered the questions of who should print the Chimes, or do the engraving, representatives from various firms offered attractive proposals to sway the decision of a yearbook editor their way. "We'll do the complete layout for you," one artist said.

I was tempted to go along with some of these offers, but one thing caused me to change my mind. I believed that the CHIMES could best represent Berea by having all the planning and work done by students. No other person can best put into words, or pictures, the true Berea story.

I'm glad to say that I was not disappointed in the results. I feel that with the budget and materials that the staff had at hand, a creditable job has been done.

When the seniors selected me to edit the CHIMES, I knew that it would be a big job. It was! The book, however, could not have been published without the help of several people, especially, Charles Honeycutt, who worked diligently as business manager; Margie Sue Sweet, who handled subscriptions and circulation; Bernard May, who did all the photography except class panels; John Rummel, who offered welcome advice; and Charles Carrington, who filled the role of faculty adviser. My thanks go to these people, and every other person who assisted in any manner.

The CHIMES was aided immensely, too, by my wife. She willingly saw our prefab turned into an office—littered often by pictures, papers, and other items. To her, I also say thanks.

Now that the last book has been delivered, my only wish is that it meets the expectations of each reader.



# A Book About Berea

Berea College Collegiate dept. Senior  
class  
Chimes.



*Mid-Term Graduation Exercises*

On The Following Pages

You Will —



Remember  
Berea Faces



Relive

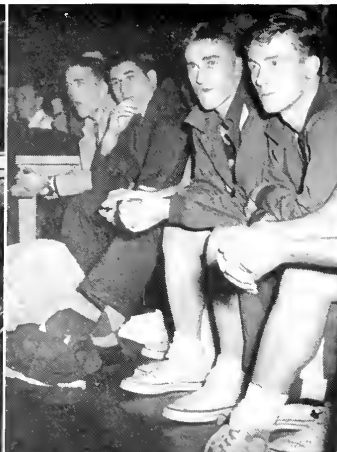
Berea

Days



*Top picture is of Williams Building welcome at Homecoming, 1950. Center photo was taken at Mid-term Graduation services, while the bottom picture shows a scene at the dedication of Anna L. Smith dormitory.*

## Recapture the Berea Spirit



*Kentucky Hall*



**But First  
A Few  
Berea Scenes**



*Middle Above—  
Howard Hall*

*At right—  
Emory Building*





*At left—  
Water Tower after a new paint job by night  
climbers.*

*Below, left—  
Hunting Hall after the evacuation to Anna  
L. Smith.*

*Below, right—  
Draper Tower from near Pearson Hall.*



# Administration and Faculty





DR. ELIZABETH S. PECK





## Dedication

Learning is a painless process in Dr. Peck's classes. She makes history live as she shows the true meaning of the events and dates lined up in chronological order in our textbooks. If we close our eyes, we can hear the king's messenger knocking on Parliament's locked door back in the seventeenth century, or baby Louis XIV's thin wail as he is taken from the royal palace down the back steps.

Dr. Peck says she has no desire to live in a large city. She loves the feeling of belonging to a community—being part of its "spiritual cement." Dr. Peck has been offered positions at other universities, but she has stayed at Berea to help us, to teach us, to love us. She once said that personal publicity was distasteful to her, but we of the class of '51 must acknowledge her tireless efforts to guide us into good citizenship.

The 1951 CHIMES is dedicated to Dr. Peck. She will live in our memories as the person who represents the inspiring qualities of our teachers at Berea College.

*Below, Dean Shutt, Mr. Gonkler, Dr. Peck, Mr. Wyatt, Walter Mulbry, Secretary of Baseball.*

*English History*





DR. FRANCIS S. HUTCHINS

## **A Message From the President**

Each student of Berea will cherish this copy of the CHIMES, for through the years it will serve as a reminder of friends and activities which become a part of life itself. Each semester in Berea will have its particular memories.

Berea is your College. It belongs in some measure to each of the forty-four thousand students who have enrolled since its founding.

Berea College belongs to the future too. Through your lifetime the College will grow, and I believe that it will gather increasing strength. It is my hope that the College will continue to stand for the finest in education, for a clear sighted and courageous Christian conviction. It is my belief that each student may view his Alma Mater with affection, gratitude, and with pride. I know that Berea College follows each student with interest and pleasure, for in his accomplishments and achievements the College and its staff find their own greatest satisfaction.

*Francis S. Hutchins*

# The Administration

*Top row—*

GEORGE KAVANAUGH, Business Manager; L. D. BIBBEE, Treasurer.

*Middle row—*

C. N. SHUTT, Director of Guidance and Testing; WILSON EVANS, Dean of Labor, LEWIS SMITH, Dean of the College.

*Bottom row—*

LESTER OTT, Director of Admissions; ADELAIDE GUNDLACH, Registrar; CHARLES CARRINGTON, Alumni Secretary.





*Kenneth H. Thompson  
Dean of Men*



*Julia Allen  
Dean of Women*



*Lillie Margaret Pressley  
Asst. Dean of Women*

## LOOK RIGHT!!!

The Berea workers pictured on the next page are people with whom we have had close association as students at Berea. It is only right that they be recognized as Berea friends.

*Top picture . . . . .* PAUL NESTOR, Assistant Business Manager, and MAUDE LEDFORD, Secretary.

*Second row . . . . .* MABLE SANGREN, Secretary, Treasurer's Office; DELPHA DAVIS, Secretary, Admissions Office; MRS. ELEANOR CLARK, Secretary, Dean of Men's Office.

*Third row . . . . .* CHARLOTTE STEWART, Secretary to the President; MRS. BENNY BARNES and MAUDE KILBOURNE, Secretaries to Dean of College; HILDA WIERINGA and BEN WELSH, Assistants to Dean of Labor.

*Bottom row . . . . .* MARGARET SLOAN, Secretary, Office of Guidance; LELIA FLANNERY, Secretary, Alumni Office; REBEKAH MILLER and PHYLLIS SHUMACHER, Assistants in Registrar's Office, and VIRGINIA AUVIL, Assistant Registrar.

# Administrative Assistants



# Faculty

First picture, top: PHILOSOPHY AND RELIGION—G. Noss, I. Martin, D. Robertson, G. Ross, J. Feaver.

Second picture, top: ENGLISH—J. Weekes, E. Smith, J. Hughes, M. Faulkner, E. Brooks, E. Weekes.

First picture, bottom: HISTORY AND POLITICAL SCIENCE—E. Peck, J. VanHook, W. Hopkins, R. Jans.

Second picture, bottom: ART—S. Wilkerson, D. Tredennick, R. Bigelow, L. Pross, C. Miller, C. Harding.



## Look Right !!!

First picture, top: AGRICULTURE—F. Wolford, C. Spillman, S. Whipple, R. Orr, H. Monier, W. May.

Second picture, Top: MATH—T. Wright, J. Wyre, D. Pugsley, G. Roberts.

First picture, middle: BUSINESS AND ECONOMICS—R. Menefee, W. Evans, W. Newbolt, A. Wiedler, H. Lincoln.

Second picture, middle: PSYCHOLOGY—J. Russell, I. Dungan, G. Ekas.

Bottom pictures: PHYSICS, GEOLOGY, CHEMISTRY—M. Burrough, W. Burroughs, G. Levey, D. Worth, W. Noll, J. Capps.





HOME ECONOMICS—R. Woods, M. Hart, A. Dinsmore, M. Carpenter, G. Morris, A. Aspnes, F. Harrison.

First picture: MUSIC—C. Keysela, M. Franke, J. Chrisman, R. Hovey, G. Jameson, M. Belt, H. May, A. Lisko

Second picture: FOREIGN LANGUAGES—C. Pauck, C. Ludlum, R. Urhan, E. Richardson, G. Daniel, M. Ledford.





Top picture—EDUCATION—C. Graham, P. Wear.

First picture, bottom—SOCIOLOGY—R. Giffin, H. Dingman, F. Smith.

Second picture, bottom—BIOLOGY—H. Hull, S. Gilkerson, R. Grodner, F. Gailey.





# Senior Class - - 1951

## SENIOR OFFICERS

Logan, Soc. Chm.,  
Kelly, Treas., Barrier,  
S.C. Rep., May, Pres.  
McKiddy, S.C. Rep.,  
Hodges, Sec., Allgood,  
V.P., Ellison, Soc. Chm.,  
Winebarger, S.C. Rep.

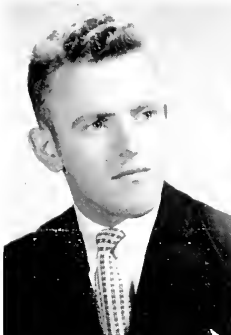


HUGH A. POSTON  
 B.S. Agriculture  
 Canton, North Carolina  
 Ag.-Home Ec. Club 3, 4; Ag.  
 Union 1, 2, 3, 4; Berea Play-  
 ers 3, 4.

MARGARET ELIZABETH  
 TEMPLIN  
 A.B. Elem. Education  
 White Pine, Tennessee  
 F.T.A. 3, 4, V. Pres. 4; Berea  
 Players 1; Y.W.C.A. 2; Har-  
 monia 4.

ARTHUR D. WILLIS  
 A.B. French  
 Spruce Pine, N. C.  
 French Club 2, 3, 4, Pres. 2,  
 3, 4; P.A.L. 2, 3, Secretary  
 3; Band 1; Orchestra 1; Y.  
 M.C.A. 2, 3; Berea Players  
 2, 3; Spanish Club 4; Canter-  
 bury Fellowship 1, 2, 3, 4.

MARY LOU ALLGOOD  
 A.B. English  
 Kingsport, Tennessee  
 Wallpaper 3, 4, Ed. 3, Ed.  
 Board 4; Class V. Pres. 4;  
 S.D.A. 3, 4; M.S.F.P. 3; P.  
 A.F. 3; F.O.R. 3, 4; N.S.A.  
 4, Regional Director of Pub-  
 lic Relations 4.



GLENN A. SAWYER  
 A.B. English  
 Woodbine, Ky.  
 Berea Players 1, 3, 4; Coun-  
 try Dancers 3, 4; Harmonia  
 1, 2; Y.W.C.A. 1, 2, 3; B.T.U.  
 1, 2, 3, Secretary 2, 3.

EDWIN C. COPELAND  
 A.B. English  
 Landrum, S. C.  
 Wallpaper 1, 2; Berea Play-  
 ers 2, 4; F.T.A. 3, 4; Delta  
 Phi Alpha 3, 4, Pres. 3;  
 Y.M.C.A. 3; Men's Council 4.

VIRGINIA ALICE KNOWLES  
 A.B. Psychology  
 Merchantville, N. J.  
 Studio Ensemble 3; Psychol-  
 ogy Club 3, 4, Secretary 4;  
 Berea Players 3.

ODELL CARLTON MILLER  
 B.S. Agriculture  
 Conieville, Virginia  
 Ag. Union 1, 2, 3, 4; Ag.-  
 Home Ec. Club 3, 4, Prog.  
 Chm. 4; Track Team 1, 2;  
 Cross Country Team 2, 3,  
 4, Mgr. 1; B Club 1, 2, 3, 4.

LOIS ANN ABELS

A.B. Philosophy  
Parkersburg, W. Va.

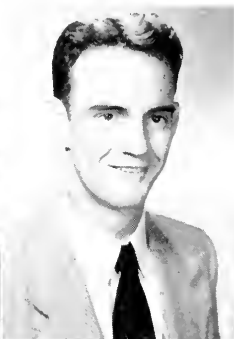
Women's Association 1, 2,  
Sec.-Treas. 2; Student Council  
1, Secretary 4; Berea  
Players 1, 2; Harmonia 4;  
Berea Christian Youth Council  
2, 4; Pres. 4; Y.W.C.A.  
3; Meth. Student Fellowship  
1, 2, 4; Inst. Comm. on Religious  
Life 1.



EDSEL GODBEY

A.B. Physical Education  
Bethelridge, Ky.

Wallpaper 1, 2, 3; Student  
Council 2, 3; Men's Assoc. 1,  
Pres. 1; Berea Players 1, 2,  
3; Chimes 4, Sports Ed. 1.



EDITH JOAN RAMEY

B.S. Home Economics  
Gesling, Kentucky

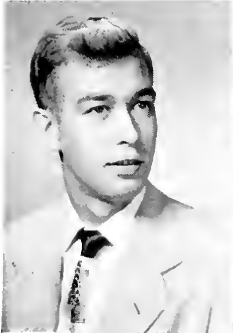
Berea Players 1, 2, 3, 4; Pres.  
1; Tau Delta Tau 3, 4; Y.W.  
C.A. 1, 2, 3, 4; Cabinet 2, 3,  
4; V. Pres. 4; Women's Council  
3; Interdorm Council 1, 2,  
3; Home Economics Club 4;  
Berea Christian Youth Council  
1; W.A.A. 2.



CYRUS CRUM

B.S. Agriculture  
Inez, Kentucky

Ag. Union 1, 2, 3, 4; Ag.  
Home Ec. Club 1; Country  
Dancers 1, 2, 3, 4.



WILLIAM EVERETT

ARROWOOD

A.B. Geology  
Spruce Pine, N. C.

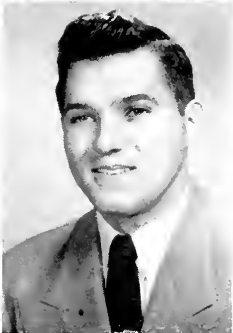
Pi Alpha 4; Varsity Swimming  
Team 1, 4; B Club 4.



LUCY PENNINGTON

A.B. Elem. Education  
Gray Hawk, Kentucky

Berea Players 1, 2, 3; Har-  
monia 2, 4; Y.W.C.A. 2, 3, 4.  
Cabinet 4; E.T.A. 3, 4.



PETER T. MCNEILL

B.S. Agriculture  
West Jefferson, N. C.



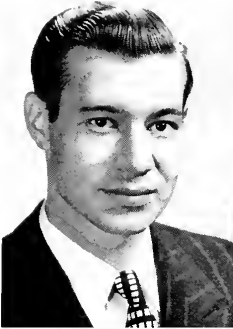
EULA JEAN LINDON

B.S. Home Economics  
Hazel Green, Kentucky

Country Dancers 1, 2, 3, 4;  
Harmonia 1, 2.

WILLIAM F. EICKER  
A.B. Psychology  
Baltimore, Maryland

Wallpaper 1, 2; Ed. Board 1, 2; Cosmopolitan Club 1, 2; Sec.-Treas. 1; Hiking Club 1; Pres. 1; Psychology Club 1; Berea Players 1, 2, 3, 4; Men's Council 1; Twenty Writers 1; Harmonia 1.



MARTHA VIRGINIA DAVIS  
A.B. Psychology  
Black Mountain, N. C.

Berea Players 1, 2; Y.W.C.A. 1, 2; Psychology Club 3, 4; Secretary 3; V. Pres. 4.



BERT H. LEMING  
B.A. Biology  
Greenville, Tenn.



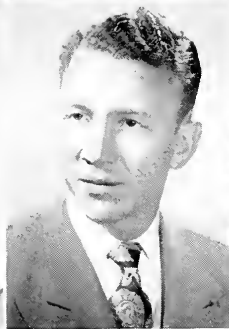
ELENITA R. ELLISON  
A.B. Sociology  
Beckley, W. Va.

Y.W.C.A. 1, 2; Music Chm. 2; Berea Players 1, 3; Student Association Social Chm. 2, 3; Class Social Chm. 2, 4; Sociology Club 3, 4.



REBECCA O'DANIEL CAUBLE  
A.B. Elem. Education  
Belmont, N. C.

Berea Players 1, 2; Studio Ensemble 3; Harmonia 3; College Choir 4; Women's Clothing Committee 3, 4; Chm. 4; Chimes 4.



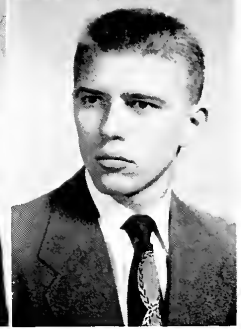
TED SMITH  
A.B. Phil. and Rel.  
Asheville, N. C.

Track 1, 2, 3, 4, Capt. 2; Y. M.C.A. 1, 2, 3, 4; V. Pres. 2; Harmonia 2, 3; Berea Players 2, 4; Life Service 2, 3; Prayer Group 1, 2, 3, 4; Chm. 3; Gymnastics Team 2, 3, 4.



ANNA RAE ELLIOTT HILL  
B.S. Home Economics  
Middleburg, Kentucky

Band 1; Berea Players 1, 2; Harmonia 3; Ag. Home Ec. Club 3.



ROBERT V. HILL  
A.B. History and Pol. Sci.  
Petersburg, W. Va.

History and Political Science Club 4.

GEORGE MILTON DAVIS  
A.B. English  
Fountain Inn, S. C.

Berea Players 3, 4, Secretary  
3; Y.M.C.A. 3, 4.

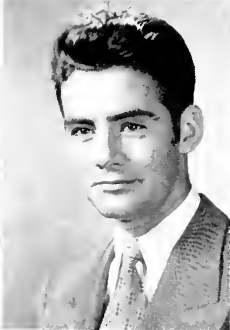
RUBY SALYER BUTCHER  
A.B. Home Economics  
Fuget, Ky.

RUSH BUTCHER  
B.S. Agriculture  
Flatwoods, W. Va.

Country Dancers 2; Ag.  
Union 4; Berea Players 3.

DOROTHY TALBOTT  
B.S. Home Economics  
Belington, W. Va.

Berea Players 1, 2; Y.W.C.A.  
1, 2, 3; W.A.A. 3, 2; Home  
Ec. Club 3, 4, Pres. 4; Ag.  
Home Ec. Club 3, 4, Social  
Chm. 4; Wallpaper 2, 3.



EDITH DERTING

A.B. Music-Piano  
Greenville, Tennessee

Keyboard Club 1, 2, 3, 4;  
Harmonia 1, 2.

JOHN F. DERTING

B.S. Agriculture  
Hiltons, Virginia

Ag. Union 1, 2, 3, 4; Base-  
ball 1, 2; Gymnastics Team  
3; Berea Players 1, 2.

ANNA LOUISE ARCHER

A.B. Sociology  
Jonesboro, Tennessee

Wallpaper 1, 2; Berea Play-  
ers 1, 2; Y.W.C.A. 1, 2, 3;  
Women's Council 3, 4; Socio-  
logy Club 2, 3, 4; Social and  
Prog. Chm. 3; Harmonia 3,  
4; Union Church Choir 3, 4;  
Inter-Dorm. Council 1, 3, 4;  
Speech Choir 2, 4; Class Sec-  
retary 3; Chimes 4; Psychol-  
ogy Club 4; Women's Assoc.  
Chapel Committee 4, Chm. 4;  
Student Labor Committee 4,  
Chm. 4; Berea Representa-  
tive-Youth Council of Mid-  
Century White House Con-  
ference 4.

ROBERT L. DAVIS

B.S. Agriculture  
Sneedville, Tennessee

Ag. Union 1, 2, 3, 4; Ag.  
Home Ec. Club 3; Y.M.C.A.  
3.

**IRENE LOUISE McDONALD**  
 B.S. Business Adm.  
 Fayetteville, N. C.

Wallpaper 1, 2, 3; Bus. Mgr. 3; Chimes 3, 4; Berea Players 1, 2, 3, 4; Tau Delta Tau 3, 4; Pres. 4; Alpha Psi Omega 3, 4; Bus.-Econ. Club 3, 4; Sec. 4; Y.W.C.A. 1; P.A.L. 1; Speech Choir 2, 4.



**PHILLIP CAMERON**  
 A.B. Philosophy  
 Marion, Virginia

Medical Science Club 1; Berea Players 1, 4; S.D.A. 3.



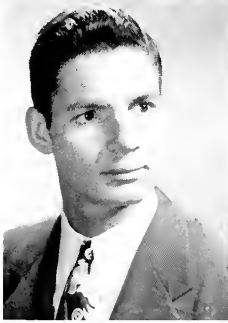
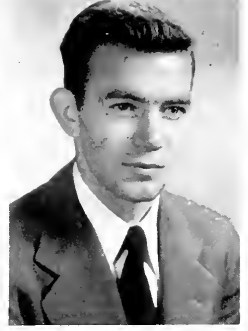
**OPAL LEMMON**  
 A.B. Elem. Education  
 Pelleyton, Ky.

F.T.A. 4; Outlying Work 3, 4.



**JAMES FRANKLIN MILLER**  
 A.B. Biology  
 Easley, South Carolina

Twenty Writers 2, 3, V; Pres. 2; Pres. 3; Wallpaper 3, 4.



**WILLIAM L. HUNTSMAN JR.**  
 A.B. Physical Education  
 Glasgow, Kentucky

B; Club 1, 2, 3, 4; Basketball 1, 2, 3, 4; Baseball 1, 2, 3, 4.



**LILAS REBECCA NEAL**  
 A.B. Elem. Education  
 Old Fort, N. C.

Y.W.C.A. 1, 2; Life Service 1; Berea Players 2, 3; Cosmopolitan Club 3; F.T.A. 3; S. F.A. 3; Outlying Work 3; B. T.A. 1, 2; Union Church Youth Fellowship 3, 4.



**GEORGE A. ARMSTRONG**  
 B.S. Agriculture  
 Sassafras, Kentucky

Basketball 1, 2; Baseball 3; Ag. Union 1, 2, 3, 4; B Club 2, 3, 4.



**JANE ANN SHERROW**  
 B.S. Business Adm.  
 Beattyville, Kentucky

Harmonia 1, 2; Glee Club 4; Bus. and Econ. Club 3, 4; F.T.A. 4; Berea Players 4.



**ELIZABETH RUTH HUTCHINSON**  
 A.B. History and Pol. Sci.  
 Ashville, N. C.  
 Berea Players 1, 2, 3; P.A.L. 1, 2; P.A.F. 3, 4.

**WILLIAM CAREY MASSEY**  
 A.B. Psychology  
 Newport, Kentucky  
 Psychology Club 3, 4; V. Pres. 3, Pres. 1; Y.M.C.A. 3, 4; Secretary 1; Honor Committee 1.

**BESSIE VIRGINIA LOONEY**  
 A.B. Elem. Education  
 Grapefield, Virginia  
 Y.W.C.A. 1, 2; F.T.A. 1, 2, 3, 4; Pres. 3; Harmonis 3; Outlying Work 2, 3; B.S.U. 1, 2, 3, 4; Prayer Group 2, 3, 4.

**TRUMAN DENHAM**  
 A.B. Biology  
 Tompkinsville, Ky.  
 Medical Science Club 1, Chem. 1.



**ROBERT WILTON DAVIS**  
 A.B. English  
 Fountain Inn, S. C.  
 Berea Players 3, 4; Y.M.C.A. 3, 4.

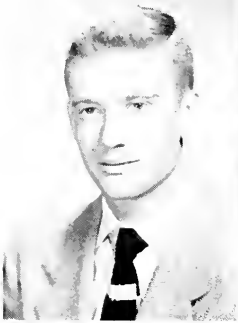
**MARJORIE SUE SWEET**  
 A.B. English  
 Louisville, Kentucky  
 Wallpaper 3, 4; Berea Players 1, 2, 3, 4; Twenty Writers 3; Chimes 3, 4; Sales and Circulation Mgr. 4.

**KENNETH COFFEY**  
 A.B. Physical Education  
 Berea, Kentucky  
 Crosscountry Team 1, 2, 3, 4; Club 1, 2, 3, 4; Sec.-Treas. 4; Track 2, 3, 4.

**FERN SEXTON NORSWORTHY**  
 A.B. English  
 Grayson, Kentucky  
 F.T.A. 3; V. Pres. 3; Y.W.C.A. 1, 2, 3, 4; Cabinet 3, 4; P.A.L. 3; Berea Players 2, 3, 4; Executive Council 3; Wallpaper 3.

**EARL STANLEY SHRADER**  
B.S. Business Adm.  
Rainelle, W. Va.

B. Club 2, 3, 4, V. Pres. 1; Swimming Team 2, 3, 4; Capt. 3; Track 3, 4; Baseball 3, 4; Bus. and Econ. Club 2, 3, 4; Y.M.C.A. 1, 2, 3, 4; Intergural Sports 1, 2, 3, 4.



**PATRICIA SMITH**  
B.S. Business Adm.  
Pageton, W. Va.

Bus. and Econ. Club 3, 4; W.A.A. 1, 2, 3; Y.W.C.A. 1, 2.

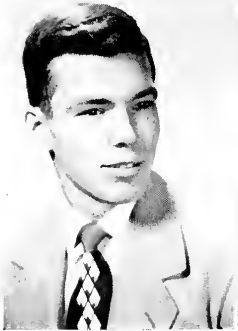


**HUGO E. MILLER**  
A.B. Geology  
Drift, Kentucky



**MARJORIE B. HODGES**  
B.S. Business Adm.  
Lewisburg, W. Va.

Bus. and Econ. Club 2, 3, 4; Union Church Choir 1, 2; French Players 3, 4; Y.W.C.A. 1; Class Secretary 1.



**DANIEL W. CAPPS**  
B.S. Business Adm.  
Berea, Kentucky

Men's Glee Club 2; Union Church Choir 1, 2; Harmonia 3, 4; Berea Players 1, 2; Bus. and Econ. Club 4; B. Club 1, 2, 3, 4; Pres. 1; Basketball 1, 2, 3, 4; Capt. 4; Swimming 2, 3, 4; Track 1, 2, 3, 4.



**HENRY BRUCE KELLY**  
B.S. Business Adm.  
Pennington Gap, Va.

B. Club 1, 2, 3, 4; Bus. and Econ. Club 1, 2, 3, 4, V. Pres. 4; Class Treasurer 4.



**SHELIA STRUNK**  
A.B. English  
Berea, Kentucky

Berea Players 1, 2, 4; Chimes 1; French Club 4.



**JERRY S. FISH**  
A.B. History and Pol. Sci.  
Berea, Kentucky

Hist. and Pol. Sci. Club 3, 4; Bus. and Econ. Club 4; Basketball 1, 2; Chimes 1; Adv. Mgr. 4; B. Club 2, 3, 4; P.A.F. 3, 4.

**J. CHARLES HONEYCUTT**  
B.S. Business Adm.  
Knoxville, Tennessee

Bus. and Econ. Club 1, 2, 3, 4; V. Pres. 3; Pres. 4; Tau Kappa Alpha 3, 4; Pi Gamma Mu 3, 4; Berea Players 1, 2, 3; P.A.B. 2, 3, 4; V. Pres. 4; Chimes 3, 4; Bus. Mgr. 4; Cheerleader 3; Capt. 3; Baseball 2, 3; Mgr. 2, 3; B. Club 3, 4; Speech Choir 3, 4; Y. M.C.A. 1, 2, 3, 4; Cosmopolitans 2, 3; Intramural Sports 1, 2, 3, 4; Ecumenical Comm. 2, 3.

**CHARLES W. WARNOCK**  
A.B. History and Pol. Sci.  
Dayton, Ohio

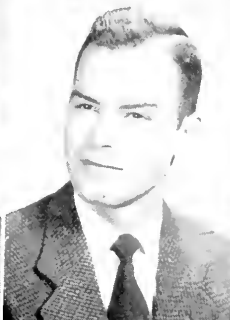
Camera Club 1; Men's Glee Club 2; Studio Ensemble 3; Harmonia 3, 4; Chimes 3; Bus. Mgr. 3; Union Church Choir 1, 2, 3; Student Council 2.

**BETTY GLYNN HAMMOND**  
A.B. Sociology  
Middletown, Ohio

Sociology 3, 4; Sec. 3; Country Dancers 1, 2, 3, 4; Sec. Treas. 3; Publicity Mgr. 3; W.A.A. 3, 4; Berea Players 1, 2; Chimes 4.

**WILLIAM McCLURE WALLER**  
A.B. Mathematics  
Verona, Kentucky

Math. Club 3, 4; B. Club 2, 3, 4; Track 2, 3, 4; Baseball 3, 4; Berea Players 1, 2, 4; Harmonia 3; Pi Alpha 4; Country Dancers 3, 4; Y.M.C.A. 1, 2, 3, 4.



**CARLOS P. LOPEZ**  
B.S. Business Adm.  
Havana, Cuba

Country Dancers 1, 2, 3; Cosmopolitan Club 1, 2, 3, 4; Pres. 3; Berea Players 1, 2, 3; Y.M.C.A. 1, 2, 3; Chimes 1; B. Club 2, 3, 4.

**KATHRYN MCKIDDY**  
A.B. Home Economics  
Corbin, Kentucky

Harmonia 1; Berea Players 3; Student Council 1, 2, 3, 4; V. Pres. 4; Y.W.C.A. 1, 4.

**EDDIE KAY WILSON**  
B.S. Agriculture  
Columbus, N. C.

Ag. Union 1, 2, 3, 4.

**CLARA C. EPPARD**  
A.B. English  
Elkton, Virginia

Harmonia 1; Wallpaper 1, 2, 3; Berea Players 3; Twenty Writers 3, 4; Y.W.C.A. 1, 2, 4; Cabinet 2, 4; Women's Council 3; Prose Writing Booklet 3; Ed. Board 3; Speech Choir 4.

**THOMAS PHILIP WALKER**  
A.B. Economics  
Bostic, N. C.

Band 1, 3; Berea Players 1, 3; Pi Gamma Mu 1; Bus. and Econ. Club 3, 4; Men's Council 3; Class V. Pres. 1; Y.M.C.A. 1, 2, 3, 4.



**BEVERLEY H. FLEMING**  
A.B. History and Pol. Sci.  
Mt. Jackson, Virginia

Berea Players 1; Y.M.C.A. 1, 3, 4; P.A.F. 2, 3, 4; Harmonia 3, 4; Hist. and Pol. Sci. Club 3, Pres. 1; Delta Phi Alpha 3, 4.

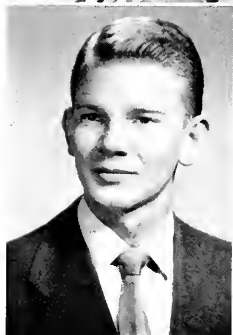


**O. GLENN HALL**  
B.S. Agriculture  
Leeco, Ky.



**CHERRY JOAN COOK**  
A.B. Biology  
Waco, Texas

W.A.A. 1, 2; Berea Players 1, 2; Y.W.C.A. 1, 2; American Chemical Society 3; Medical Soc. Club 1, 2, 3, 4; Pi Alpha 4; Life Saving 3.

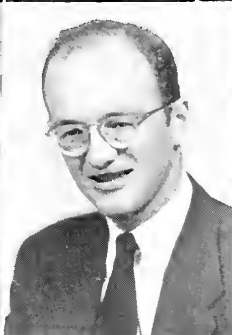


**RALPH EUGENE BOWLING**  
A.B. Chemistry  
Oneida, Kentucky  
Pi Alpha 3, 4.



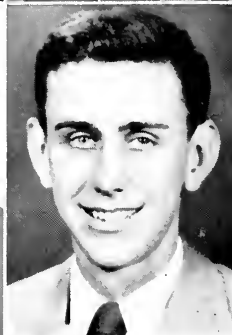
**HILDA ALTHEA SEAY**  
A.B. English  
Asheville, N. C.

Berea Players 1, 2, 3; Harmonia 4; Twenty Writers 3, 4; Chapel Choir 1.



**RICHARD P. DOUTHITT**  
A.B. English  
Pfafftown, N. C.

Berea Players 1, 2; Harmonia 3, 4; Y.M.C.A. 1, 2, 3, 4; Wallpaper 2, 3; Honor Committee 2, 3, 4; Chm. 3, 4.



**DOUGLAS C. KELLEY**  
A.B. Hist. and Pol. Sci.  
Lansing, Michigan

Wallpaper 3, Ed. 3; S.D.A. 3, 4; National Chm. 4; Union Church Choir 3; Harmonia 4; Berea Players 3; Outing Club 3; F.O.R. 4; Pi Gamma Mu 4.

**ROBERT REED ROGERS**  
A.B. Chemistry  
Oak Park, Illinois

Math. Club 1, 2, 3, 4; Y.M.C.  
A. 1, 2, 3, 4; P.A.F. 1, 2;  
Wallpaper 3, 4; Adv. Mar. 3  
1; Pi Alpha 2, 3, 4; V. Pres.  
3; Class Treas. 3; American  
Chem. Soc. 3, 4; Sec. 3, 4.

**DOROTHY WARHOLM**  
A.B. English  
Grundy, Virginia

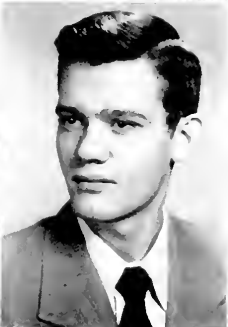
Harmonia 1; Berea Players 1,  
2; Y.W.C.A. 1, 2.

**ARTHUR L. HAYNES**  
B.S. Business Adm.  
Greenwood, Kentucky

Bus. and Econ. Club 3, 4; Y.M.C.A. 2; Berea Players 2.

**LENA MARIE WHITIS**  
A.B. Elem. Education  
Eubank, Kentucky

P.T.A. 1, 2, 3, 4; Prog. Chm.  
3; Pub. Chm. 4; Berea Play-  
ers 1, 2, 3, 4; Exec. Council 4.



**NATALIE BROWN**  
A.B. Biology  
Fountain City, Tenn.

Ensemble 2, 3; Harmonia 1.

**DAVID BERNARD MAY**  
B.S. Agriculture  
Danville, Kentucky

Ag. Union 1, 2, 3, 4; Men's  
Glee Club 1; Men's Associa-  
tion 3; Pres. 3; Men's Coun-  
cil 3; Student Council 3, 4;  
Y.M.C.A. 3; V. Pres. 3;  
Chimes 3, 4; Who's Who in  
American Colleges and Uni-  
versities.

**CLELA BENTLEY**  
B.S. Business Adm.  
Berea, Kentucky

Bus. and Econ. Club 1, 2, 3,  
4; Harmonia 2, 3; Spanish  
Club 4; Pub. Chm. 4; Berea  
Players 3; Y.W.C.A. 1, 2, 3;  
Chimes 4.

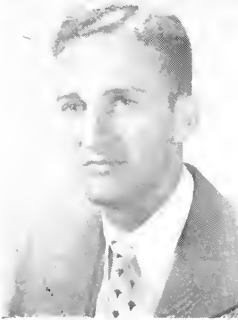
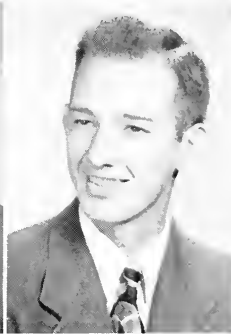
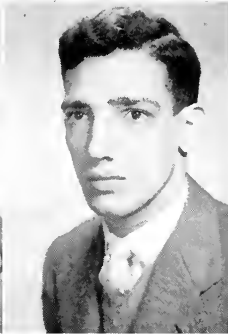
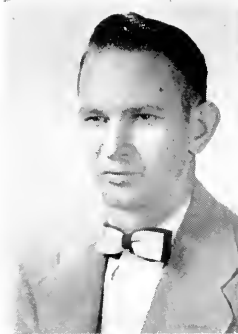
**STEPHEN BURKHART**  
A.B. Biology  
Wallins Creek, Ky.

VADIS GOBBEY  
A.B. Biology  
Bethelridge, Ky.

ROBERT M. CORNETT  
B.S. Business Adm.  
Hazard, Kentucky  
Basketball 1, 2, 3, 4; B Club  
1, 2, 3, 4; Bus. and Econ.  
Club 2, 3, 4; Pi Gamma Mu 3,  
4.

EUGENE WESLEY  
A.B. Mathematics  
Lynch, Kentucky

FRANCIS HAMMOND  
B. S. Business Adm.  
Berea, Kentucky  
Business Club 1, 2, 3, 4.



OLIVER WAYNE RICE JR.  
B.S. Agriculture  
Ocoee, Tennessee

Berea Players 1, 2, 3; Ag.  
Union 1, 2, 3, 4; Country  
Dancers 3, 4; Y.M.C.A. 2, 3,  
4; Ag.-Home Ec. Club 3;  
Harmonia 3, 4.

ALFRED C. DOWDY  
A.B. Biology  
Union, W. Va.

Y.M.C.A. 1, 2, 3; Prayer  
Group 1, 2; Cross Country 1,  
2, 3, 4; Capt. 2, 3, 4; Track 1,  
2, 3, 4; Co-Capt. 3; Pi Alpha  
4; B Club 1, 2, 3, 4.

INGVIL P. GRETAR  
B.S. Business Adm.  
Reykjavik, Iceland

Delta Phi Alpha 3, 4; Cosmo-  
politan Club 1, 2, 3, 4; Bus.  
and Econ. Club 3, 4; Union  
Church Choir 1, 2; Harmonia  
1, 2; P.A.F. 3, 4; Y.M.C.A.  
1, 2, 3, 4.

BETTY HOLBERT GRETAR  
A.B. English  
Johnson City, Tennessee

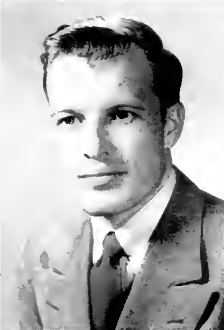
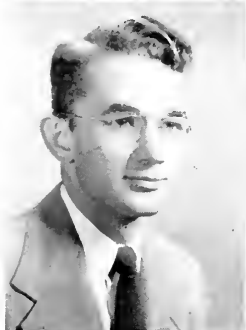
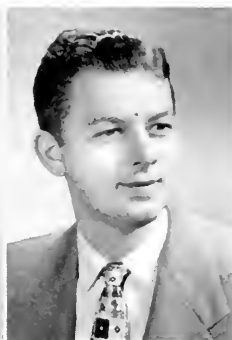
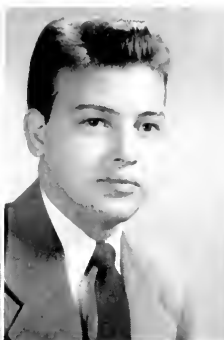
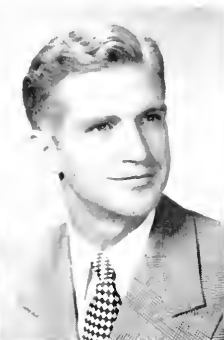
French Club 1, 2; Harmonia  
1, 2, 3; Union Church Choir  
3; P.A.F. 2, 3; Berea Players  
1, 2; Y.W.C.A. 1, 2, 3.

JACK R. HUTCHINS  
A.B. Geology  
Hazel Green, Kentucky

GEORGE WILMER  
BUCHANAN  
B.S. Agriculture  
Hazel Green, Kentucky  
Berea Players 1; Ag. Home  
Ec. Club 1, 2; Ag. Union 1,  
2, 3, 4; Country Dancers 1,  
2, 3, 4; Pres. 1; Y.M.C.A. 4.

ROBERT M. ARRINGTON  
A.B. Mathematics  
Tenso, Virginia  
Math. Club 2, 3, 4, Pres. 1;  
B. Club 2, 3, 4.

WILLIAM THOMAS COOLEY  
A.B. Biology  
Prestonburg, Kentucky



THOMAS WHITESELL  
B.S. Agriculture  
Staunton, Virginia  
Ag. Union 1, 2, 3, 4, Secretary 4; B. Club 2, 3, 4.

STOKES PEARSON  
B.S. Agriculture  
Wilkesboro, N. C.

FRED E. WINEBARGER  
B.S. Agriculture  
Zionville, N. C.  
Y.M.C.A. 2, 3, 4, Cabinet 3,  
4; Berea Players 1; Explorer  
Scouts 1, 2, 3, 4, Leader 3,  
4; Ag. Union 1, 2, 3, 4.

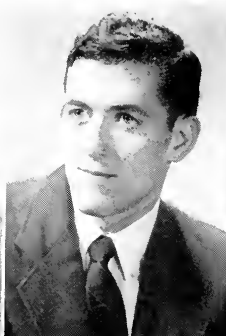
GRACE TURNER  
WINEBARGER  
B.S. Business Adm.  
Rupert, W. Va.  
Class Secretary 1; Bus. and  
Econ. Club 1, 2, 3, 4; Y.W.  
C.A. 1, 2, 3; Student Council  
1; Berea Players 1.

**JAMES STEWART**  
A.B. Biology  
Barbourville, Ky.



**CLAUDE RAYMOND BEVERLY**  
A.B. Physics  
Clintwood, Virginia

Math. Club 1; Berea Players 2, 3; Pi Alpha 3, 4; Sigma Pi Sigma 3, 4, Pres. 3, 4; Outing Club 4, Pres. 4; American Inst. of Physics 4, V. Pres. 4; Y.M.C.A. 3; Student Council 3.



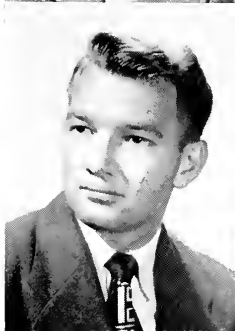
**EVELYN HAMMONS**  
A.B. English  
Barbourville, Ky.

Berea Players 1; Y.W.C.A. 1.

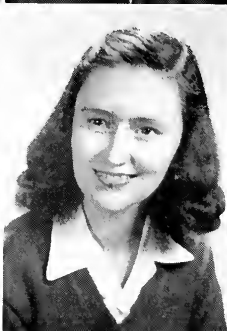


**MAURICE WESLEY**  
A.B. Social Science  
Somerset, Kentucky

F.T.A. 2, 3; Country Dancers 3, 4; Berea Players 1, 2, 4; Y.M.C.A. 1, 2, 3; S.D.A. 2, 3; P.A.F. 1, 2, 3.

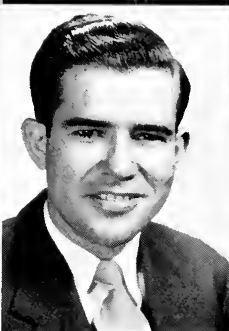


**JIMMY EDWIN CAMPER**  
A.B. Biology  
Buchanan, Virginia  
B Club 4; Baseball 3.



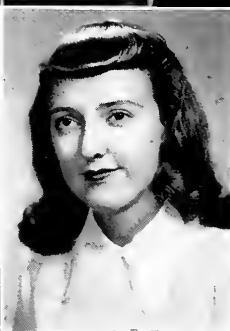
**HELEN HARTMAN DINGUS**  
A.B. Music-Piano  
Greenville, Tennessee

Women's Council 1; Berea Players 1; Y.W.C.A. 1; Country Dancers 1, 3; Studio Ensemble 1, 2; Band 2, 4; Harmonia 2; Class Social Co-Chm. 3; Royal Collegians 2, 3, 4.



**ALA F. TUCK**  
B.S. Agriculture  
Emporia, Virginia

Cross Country 2; Ag. Union 1, 2, 3, 4; Ag.-Home Ec. Club 3, 4, Sat. at Arms 4; Prayer Group 1, 2, 3, 4, V. Pres. 4; Y.M.C.A. 1, 2; B.S.U. 1, 2, 3, 4; Missions' Chm. 3; Track 1, 2, 3; Life Service 4; Bapt. Church Choir 3; Harmonia 4; P.A.F. 3; Inter-Dorm Council 4; Wallpaper 2.



**BETTY ABERNETHY TUCK**  
A.B. Elem. Education  
Drexel, N. C.

Berea Players 1, 2, 3; Y.W.C.A. 1, 2, 3; F.T.A. 2, 3, 4; B.S.U. 1, 2, 3, 4, V. Pres. 3; Christian Youth Council 4, Sec. 4; Harmonia 4.



**GEORGE W. AKENS**  
 B.S. Business Adm.  
 Big Stone Gap, Va.

Bus. and Econ. Club 2, 3, 4.

**LOLA SHOLAR**  
 A.B. Home Economics  
 Hopkinsville, Ky.

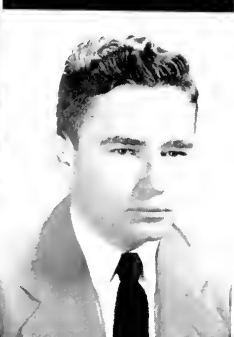
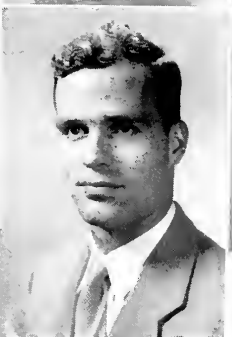
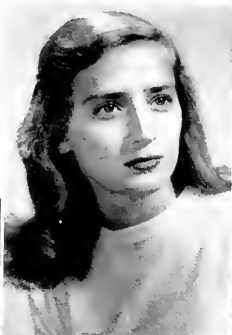
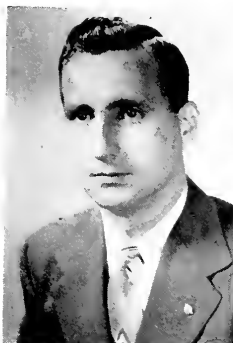
Berea Players 1; Vanguards  
 1; Prayer Group 1, 2; Har-  
 monia 2, 3; Union Church  
 Choir 3, 4; P.A.F. 3; Home  
 Ec. Club 3, 4; Bus. and Econ.  
 Club 1, 2, 3; Y.W.C.A. 1, 2, 3.

**JAMES PURMAN**  
 A.B. History  
 Bardstown, Ky.

Student Council 2, 3, 4. V.  
 Pres. 2, Student Chm. Chapel  
 Comm. 3, 4; Y.M.C.A. 1, 2, 3.  
 4, Treas. 2; Canterbury Fel-  
 lowship 1, 2, 3, 4; Harmonia  
 1, 2, 3; S.D.A. 3, V. Pres. 3.

**MARY LOU STAPLETON**  
 B.S. Home Economics  
 Paintsville, Kentucky

Union Church Choir 3, 4;  
 Home Ec. Club 2, 3, 4, Treas.  
 4; Ag. Home Ec. Club 3; W.  
 A.A. 1, 2, 3, 4; Berea Players  
 2, 3.



**CLEO M. WILSON**  
 B.S. Business Adm.  
 Berea, Kentucky

Glee Club 3, 4, Sec.-Treas. 4;  
 Bus. and Econ. Club 2, 3;  
 Berea Players 1.

**ANDRE RIEBEN**  
 A.B. Physics  
 Tolochnaz, Switzerland

French Club 1, 2, Pres. 1, 2;  
 Cosmopolitan Club 1, 2, 3, 4.

**BETTY M. WILLIAMS**  
 B.S. Business Adm.  
 Berea, Kentucky

Bus. and Econ. Club 4; Crea-  
 tive Dancing 4.

**RICHARD LOY GETZ**  
 A.B. History and Pol. Sci.  
 Petersburg, W. Va.

Hist. and Pol. Sci. Club 3, 4;  
 Pi Gamma Mu 4.

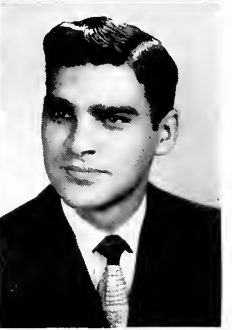
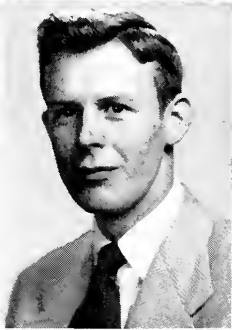
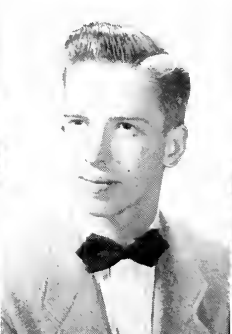
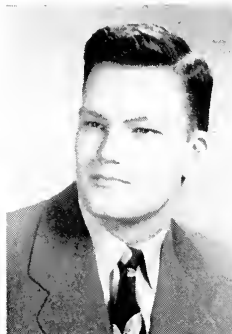
ANDREW HOWARD  
NICHOLAUS  
A.B. Mathematics  
Winchester, Kentucky  
Math. Club 3, 4.

HAZEL VEATRESS WATSON  
A.B. Social Science  
Gatlinburg, Tennessee  
F.T.A. 2, 4; Berea Players 1,  
4; W.A.A. 2; Country Dan-  
cers 3, 4.

HARRY PHILLIPS  
A.B. Music-Piano  
Washington College, Tenn.

NELL JEAN LUSK  
MCDARRIS  
B.S. Home Economics  
Rosman, N. C.

Y.W.C.A. 1, 2, 3, 4; Berea  
Players 1, 2, 3, 4; Home Ec.  
Club 2, 3, 4; Ag. Home Ec.  
Club 3, 4; Harmonia 3; W.A.  
A. 1, 2; B.S.U. 1, 2.



MAUDE E. BREWER  
A.B. Sociology  
Minneapolis, Minn.

Berea Players 1, 2, 3; S.D.A.  
3, 4, Exec. Board 3, 4; Socio-  
logy Club 3, 4; Y.W.C.A. 3,  
4, Cabinet 4.

DONALD L. BROWN  
B.S. Agriculture  
Berea, Kentucky

Ag. Union 2, 3, 4; B Club 2,  
3, 4; Varsity Basketball 2.

TED K. HESSE  
A.B. Home Economics  
Berea, Kentucky

ROBERT WESTFALL  
B.S. Agriculture  
Flatwoods, W. Va.

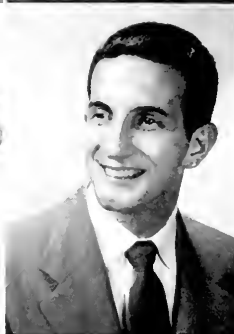
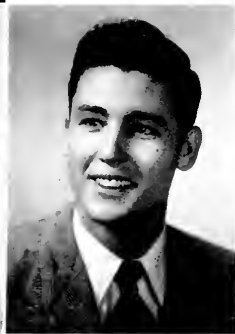
Ag. Union 3; Ag. Home Ec.  
Club 2; Country Dancers 1;  
Berea Players 1.

LESLIE McCURRY  
B.S. Agriculture  
Bee Log, N. C.  
Ag. Union 3, 4.

LUCILLE BEATRICE  
SPURLIN  
A.B. English  
Albertville, Alabama  
F.T.A. 3.

HARLAN CLAY BANKS  
B.S. Agriculture  
Whitesburg, Ky.

MARY FRANCES HART  
A.B. Elem. Education  
Charlotte, N. C.  
F.T.A. 3, 4; Berea Players 4.



ANNABEL HUSKEY  
A.B. Elem. Education  
Sevierville, Tennessee  
Harmonia 2; Berea Players  
2, 4; F.T.A. 3, 4; Country  
Dancers 2, 3, 4.

ARNOLD B. GODSEY  
B.S. Business Adm.  
Stearns, Kentucky  
Bus. and Econ. Club 3, 4.

EULA MARIE HAYNES  
B.S. Home Economics  
Mars Hill, N. C.  
Berea Players 1, 2, 3; Har-  
monia 4; Ag. Home Ec. Club  
3, 4; Home Ec. Club 1, 2, 3, 4.  
4; W.A.A. 1, 2; Tau Delta  
Tau 3, 4, Sec. 4.

PAUL W. LEACH  
A.B. Mathematics  
Petersburg, W. Va.  
Pi Alpha 4; Student Section  
American Institute of Physics

MARY OGLE  
A.B. English  
Basham, Virginia

Twenty Writers 3, 4; Harmonia 3, 4; Berea Players 2, 3; Y.W.C.A. 2.



GALEN AFTON MARTIN  
B.A. Economics  
East Rainelle, W. Va.

Wallpaper 1; S.D.A. 2, 3, 4; P.A.F. 1, 2, 3; Y.M.C.A. 1, 2, 4; Student Council 1; Berea Players 1, 2; Business-Econ. Club 3, 4; Regional Chairman N.S.A. 4; N.S.A. Coordinator 2, 3, 4.



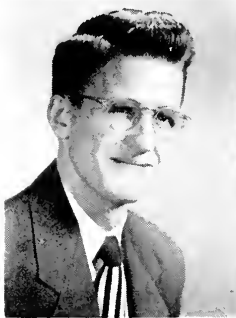
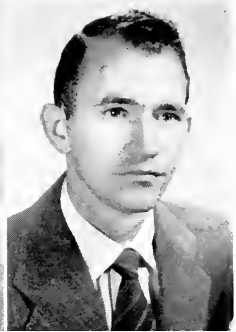
ARTIE EVELINE COMBS  
A.B. Psychology  
Woodlawn, Va.

Outing Club 3; Berea Players 1, 3, 4; P.A.F. 1; Y.W.C.A. 4.



ARNOLD EDWARDS  
B.S. Agriculture  
Blaine, Kentucky

Ag. Union 1, 2, 3, 4; Ag. Home Ec. Club 4; Berea Players 1, 4.



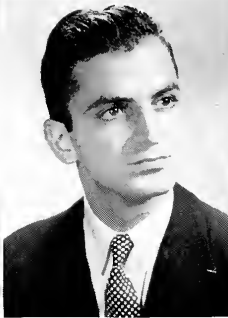
GENE E. LOGAN  
B.S. Business Adm.  
Rutherfordton, N. C.

Eus. and Econ. Club 2, 3, 4; Spanish Club 2, 3; Berea Players 2; Class Social Chm. 4.



PAULINE LEDBETTER  
BRASWELL  
B.S. Home Economics  
Black Mountain, N. C.

Y.W.C.A. 4; Berea Players 3; Home Ec. Club 3, 4; AG. Home Ec. Club 3, 4.



MAURICE SHAMMA  
A.B. Chemistry  
Cairo, Egypt

Cosmopolitan Club 3, V. Pres. 3; Pi Alpha 4, V. Pres. 4; Sigma Pi Sigma 3, 4, Treas. 3, 4; American Chemical Society 3, 4, Chm. 3, 4.



BARBARA WILLIAMS  
RICHARDSON  
A.B. Sociology  
Berea, Kentucky

Wallpaper 1; Harmonia 2, 3; Sociology Club 3.

LLOYD COLLIER  
A.B. Mathematics  
Wise, Va.

Country Dancers 1, 2, 3, 4; Berea Players 2; Y.M.C.A. 2, 3.

JOAN KAY YOUNG  
B.S. Home Economics  
Richwood, W. Va.

Women's Glee Club 1; College Quartet 4; College Chapel Choir 4.

WILLIAM E. FERGUSON  
B.A. Psychology  
Roanoke, Va.

Psychology Club 3, 4.

MARGARET JONES  
A.B. Biology  
East Lynn, W. Va.



GERTRUDE BREMER  
A.B. Biology  
Ankara, Turkey

LAURA WILLOREE YOUNG  
A.B. English  
Burnsville, N. C.

JOHN A. AUXIER  
A.B. Physics  
Paintsville, Ky.

Sigma Pi Sigma 3, 4; V. Pres. 3, Sec. 4; Pi Alpha 3, 4; Pres. 4; American Inst. of Physics 4, Pres. 4; Radio Club 4.

ELLEN MURRAY  
A.B. Sociology  
Mount Carmel, Conn.

Y.W.C.A. 1, 2, 3, 4; Berea Players 1, 2, 3; S.D.A. 3, 4; Sociology Club 2, 3, 4; Chimes 3; Wallpaper 4.

**JAMES GRIZZLE**  
B.S. Agriculture  
Herald, Va.

Ag. Union 1, 2, 3, 4; Har-  
monia 3; Outing Club 4.

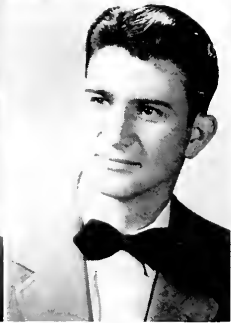
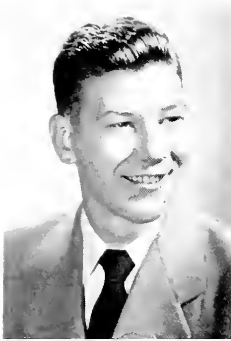
**FRANCES ANNE KIELY**  
A.B. Sociology  
Marshalltown, Iowa

S.D.A. 3, 4; Exec. Board 3,  
Chm. 4; Y.W.C.A. 3, 4; Cab-  
inet 3, 4; Outing Work 3;  
Union Church Choir 3; Wall-  
paper 3; F.O.R. 3; Sociology  
Club 3, 4; Inter Dorm Coun-  
cil 3; Outing Club 4; Berea  
Players 3; Women's Council  
3; Life Service 3; Cosmopol-  
itan Club 3.

**SHERMAN ISSAC ROBBINS**  
A.B. Biology  
Hazard, Kentucky

**CARLEY IRENE TURNER**  
B.S. Home Economics  
Talbert, Kentucky

Home Ec. Club 3, 4; Ag-  
Home Ec. Club 3, 4; Berea  
Players 1, 2, 3; Country  
Dancers 3; Y.W.C.A. 1, 2.



**EMOGENE GILPIN**  
A.B. History and Pol. Sci.  
Gilpin, Ky.

Berea Players 1, 2; French  
Club 3, 4; W.A.A. 3, 4.

**TED N. CARPENTER**  
B.S. Agriculture  
Three Mile, N. C.

Ag. Union 1, 2, 3, 4; Ag-  
Home Ec. Club 3, 4; V. Pres.  
4; Y.M.C.A. 3, 4; Berea Play-  
ers 4.

**ALMA JEAN SAWYER**  
A.B. Elem. Education  
Democrat, N. C.

Y.W.C.A. 1, 2; P.T.A. 1, 2,  
3, 4; Berea Players 1, 2, 3;  
W.A.A. 1, 2.

**BENJAMIN BARNES**  
A.B. History  
Berea, Kentucky

Hist. and Pol. Sci. Club 3, 4.

GEORGE E. BARRIER  
B.S. Agriculture  
Jonas Ridge, N. C.

Ag. Union 2, 3, 4; Pres. 4;  
Ag.-Home Ec. Club 3, 4; B  
Club 4; Y.M.C.A. 2, 3, 4;  
Berea Players 3, 4; Student  
Council 4.

ANNA VIOLET YABLONSKI  
A.B. Elem. Education  
Scarboro, W. Va.

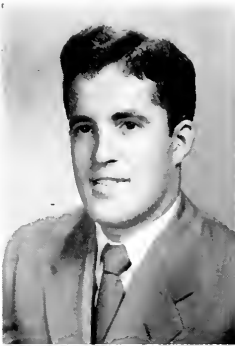
Y.W.C.A. 1, 2, 3, 4; Cabinet  
1; Harmonia 2, 3, 4; Life  
Service 2; W.A.A. 1, 2, 3; 3;  
P.T.A. 4.

THOMAS MAY  
A.B. Art  
Langley, Ky.

Berea Players 1, 2, 3, 4;  
Harmonia 1, 2, 3; Y.M.C.A.  
Club 4.

HERMAN DELLINGER  
B.S. Agriculture  
Crossnore, N. C.

Ag. Union 2; Ag.-Home Ec.  
Club 4.



EVERETT S. COLEMAN  
A.B. Chemistry  
McAndrews, Ky.

Men's Glee Club 1; Band 1, 2,  
3; Orchestra 4; Royal Col-  
legians 4; Phi Alpha 4; Out-  
ing Club 3; B.S.U. 3; Music  
Dir.; Country Dancers 3, 4;  
Berea Players 2; Medical  
Science Club 3.

J. WARD DUCKWALL  
B.S. Agriculture  
Middletown, Va.

B. Club 3, 4; Ag. Union 1, 2,  
3, 4.

WADE SELF  
A.B. Biology  
Forest City, N. C.

SAKIKO MIYASHIRO  
A.B. Hist. and Pol. Sci.  
Kapaa, Kauai, Hawaii

Y.W.C.A. 3, 4; Pi Gamma Mu  
4.

RUTH MONETTE GORMAN  
A.B. Sociology  
Louisville, Ky.

Sociology Club 3, 4; Pres. 4;  
Y.W.C.A. 1, 2, 3, 4; Cabinet  
1, 2, 3, 4; S.D.A. 3, 4; V.  
Chm. 4; Harmonia 3, 4; Berea  
Players 1, 2; Pi Gamma Mu  
4; Wallpaper 4.

FLOYD WILLIAM FINCH JR.  
A.B. Phil. and Rel.  
Arden, N. C.

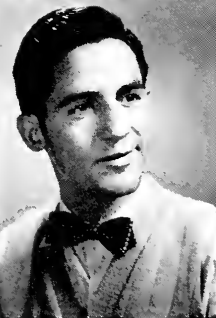
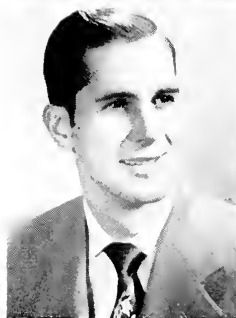
Canterbury Fellowship 1, 2, 3,  
4; Life Service 1, 2, 3; Pres.  
3; Y.M.C.A. 1, 2, 3, 4; Pres.  
4; Cabinet 3; Men's Council  
1; Inter Dorm Council 1, 3;  
U.Y.F. 1, 2, 3; Pres. 3; Out-  
lying Work 2, 3; Judiciary  
Comm. Chm. 3, 4; Student  
Council 3, 4; Berea Christian  
Youth Council 1, 2, 3, 4, V.  
Pres. 3; Danforth Chapel  
Choir 3, 4; Institutional Com.  
on Rel. Life 4; Wallpaper 3;  
Sociology Club 1, 2, 3; Berea  
Players 2, 3, 4; Harmonia 3,  
4; W.S.S.F. Co-Chm. 3;  
Cross-Country Track Team 3.

M. JEANETTE CARR  
B.S. Business Adm.  
Ezel, Ky.

Bus. Ec. Club 2, 3, 4; Berea  
Players 2, 4; Y.W.C.A. 1.

WALTER H. HUNT  
A.B. Philosophy  
Shreveport, La.

Berea Players 1, 2; Photo  
Club 1; Physics Club 2;  
Psych. Club 3, 4; P.A.F. 2, 3,  
Treas.



THOMAS BRUCE PITTMAN  
B.S. Agriculture  
Frank, N. C.

Intramural Sports 2, 3, 4;  
Ag. Union 1, 2, 3, 4.

JEAN ROBINSON  
A.B. Elem. Education  
Ashland, Ky.

E.T.A. 3, 4; Soc. Chm. 3;  
Prog. Chm. 4; Y.W.C.A. 4;  
S.D.A. 3; Wallpaper 3; Cos-  
mopolitan Club 1, 2; Outly-  
ing Work 1; Union Church  
Choir 3.

CHARLES LEMASTER  
B.S. Business Adm.  
Barnetts Creek, Ky.

B. Club 2, 3, 4; Berea Play-  
ers 1, 2, 3, 4; Econ. and Bus.  
Club 1, 2, 3, 4.

VINCENTE LUIS RODRIGUEZ  
A.B. English  
Marianao, Cuba

Wallpaper 3; Country Dan-  
cers 3, 4; Harmonia 3, 4;  
Studio Ensemble 3; College  
Chapel Choir 4; Y.M.C.A. 3,  
4.



**FONTAINE BANKS, JR.**  
A.B. Hist. and Pol. Sci.  
Hardy, Kentucky

Student Assoc. Pres. 3, 4; E.T.A. 2, 3, Pres. 2, 3; Class V. Pres. 2; Men's Council 2; Comm. on Improved Teaching. Chm. 1, 2; P.A.F. 1, 2; Wallpaper 3; Berea Players 2, 3; Y.M.C.A. 1, 2, 3, 4.



**MARGIE LEWIS**  
B.S. Business Adm.  
Lewisburg, W. Va.

Bus. and Econ. Club 1, 2, 3, 4; E.T.A. 3, 4; Berea Players 3; B.S.U. 1, 2, 3, 4; Missions Chm. 1.



**PAUL J. BRINGHAM**  
A.B. Philosophy  
Cleveland, Ohio

Y.M.C.A. 1, 2, 3; Cabinet 1, 2, 3; Harmonia 2, 3, 4; Life Service 1, 2, 3; Berea Players 1; Psych. Club 2, 3; Cosmopolitan Club 2, 3; Prog. Chm. 3; Wallpaper 3.



**REBA FRANCES KINSLAND**  
B.S. Home Economics  
Clyde, N. C.

Home. Ec. Club 2, 3, 4; Pub. Chm. 1; Berea Players 1; Y. W.C.A. 1.



**CHRISTINE PHIPPS**  
B.S. Business Adm.  
New Castle, Ind.

W.A.A. 1, 2; French Club 3; Bus. and Econ. Club 4.



**RUBEN DARIO RECIO**  
B.S. Business Adm.  
Antilla, Cuba

Bus. and Econ. Club 3, 4; Cosmopolitan Club 1, 2, 3, 4; P.A.L. 3, 4.



**DOROTHY SUE JENKINS**  
B.S. Business Adm.  
Whitesburg, Ky.

Harmonia 1, 2; Bus. and Ec. Club 1, 2, 3, 4; Berea Players 1, 2; Chimes 1; Y.W.C.A. 1.



**DON HOPPER HALL**  
A.B. Chemistry  
Forest City, N. C.

Am. Chem. Society 3, 4; Treas. 3, 4; Pi Alpha 3, 4; Sigma Pi Sigma 4, V. Pres. 4; Am. Inst. of Physics 4; Y. M.C.A. 1, 2, 3, 4; Berea Players 1, 2.

**JACK EDWARD REESE**  
A.B. English  
Hendersonville, N. C.

Studio Ensemble 1, 2, 3; Pres.  
3; Harmonia Society 4;  
Chapel Choir 1; Wallpaper 1,  
2; Associate Editor 2; Class  
President 2; Twenty Writers  
2; Student Council 2; Parli-  
mentarian 3; Danforth Choir  
4.

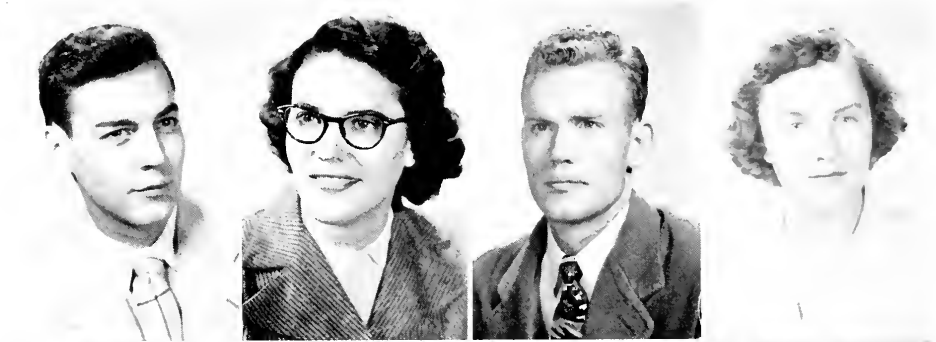
**BETTY JEWELL PINGLEY**  
B.S. Home Economics  
Elkins, W. Va.

W.A.A. 1, 2, 3, 4; Home Ec.  
Club 3, 4; Ag. Home Ec. Club  
3, 4, Sect. 4; Outing Club 3,  
4, Sect. Treas. 3; Berea Play-  
ers 1; Y.W.C.A. 1, 2; Wall-  
paper 1, 2.

**WILLIAM C. ENGLE**  
B.S. Agriculture  
Hindman, Ky.

**ELIZABETH MARGARET  
HAYES**  
A.B. Geology  
St. Paul, Va.

Berea Players 1; Pi Alpha 1.



**ERNEST G. STRAUSS**  
A.B. Chemistry  
Amsterdam, Holland

Harmonia 3, 4; Med. Sci.  
Club 3, 4; Life Service 3, 4;  
Cosmopolitan Club 2, 3, 4;  
Chemistry Society 3, 4; F.O.  
R. 2, 3, 4.

**GENE RICE**  
A.B. Hist. and Pol. Sci.  
Middlesboro, Ky.

P.A.F. 1, 2; Pol. Sci. Club 4.

**GENA ELLIS**  
A.B. Elem. Education  
Greer, S. C.

Harmonia 3, 4; Berea Play-  
ers 3; P.T.A. 2, 3; Danforth  
Choir 3; Union Youth Fellow-  
ship 1, 2, 3, 4; Outlying Work  
1, 2, 3.

**RANDALL WILLIAMS**  
A.B. Geology  
Berea, Kentucky

Band 4; Y.M.C.A. 2, 3; Berea  
Players 1; Ag. Union 4; B.  
S.U. 1, 2, 3, 4; Outing Club 4.

**RAYMOND COLLEY**  
A.B. Hist. and Pol. Sci.  
Grundy, Virginia

Berea Players 1, 2; Wallpaper 1, 2, 3, 4; Ed. 2; Makeup Ed. 4; Sports Ed. 1, 2, 3, 4; Times 1, 2, 3, 4; Sports Ed. 2, 3; Ed. 4; Who's Who in American Colleges 1; Class Pres. 3.

**SARAH F. SMITH**  
A.B. Sociology  
Beattyville, Ky.

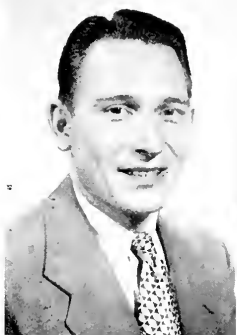
Harmonia 1; Berea Players 3; Inter-Dorm Council 3; Sociology Club 3, 4.

**WOODROW W. McINTOSH**  
B.S. Agriculture  
Berea, Kentucky

Ag. Union 2, 3, 4; Treas. 2; V. Pres. 3; Ag. Home Ec. Club 2, 3, 4; Pres. 4.

**MARGARET LOUISE PEAK**  
A.B. Public School Music  
Gilbert, W. Va.

Harmonia 1; Union Church Youth Fellowship 1, 2, 3, 4; V. Pres. 3; Pres. 1; Union Church Choir 1, 4.



**FANNIE LAURA GARRISON**  
B.S. Home Economics  
Democrat, N. C.

Y.W.C.A. 1, 2, 3, 4; Berea Players 1, 2, 3, 4; W.A.A. 1, 2; B.S.U. 1, 2; Home Ec. Club 2, 3; Ag. Home Ec. Club 3, 4; Harmonia 3; Country Dancers 3.

**JOHN ROBERT WHITAKER**  
A.B. Biology  
Grant, Alabama

Y.M.C.A. 1, 2, 3, 4; Pub. Chm. 2; F.T.A. 2, 3; Pub. Chm. 3; B Club 2, 3, 4; Cross Country Team 2, 3; Chemistry Club 3, 4; Pi Alpha 4.

**WYLDINE WILLIAMS**  
A.B. Psychology  
Berea, Kentucky

Band 1, 2, 3, 4; Orchestra 1; Berea Players 1, 3, 4; B.S.U. 1, 2, 3, 4; Exec. Council 1, 2; Psychology Club 3, 4; W. A.A. 4.

**RALPH H. LONG**  
A.B. Sociology  
Winston-Salem, N. C.

Y.M.C.A. 1, 2, 3, 4; Pres. 3; Cabinet 2, 3, 4; Sociology Club 2, 3, 4; Treas. 2; Berea Players 1, 3; Pi Gamma Mu 3, 4; Berea Christian Youth Council 2, 3; F.T. A. 1.

ERNEST WENDE  
A.B. Agriculture  
Cochbamba, Bolivia



RUBY SCOTT  
A.B. Art  
Rose Hill, Va.

French Club 1, 2, 3, 4, Sec.  
3, 4.



THEONA MCQUEEN  
A.B. Hist. and Pol. Sci.  
Shady Valley, Tennessee

Berea Players 2, 3; Y.W.C.A.  
3; P.P.A. 3; P.A.F. 4, Treas.  
4; Class Secretary 3; Chimes  
1; Pi Gamma Mu 4.



HAZEL RUTH MCCURRY  
B.S. Home Economics  
Marion, N. C.

Berea Players 1, 2, 3; Home  
Ec. Club 2, 3, 4; Ag. Home  
Club 3.



HELENA JACOBS  
B.S. Business Adm.  
Louisville, Ky.

Harmonia 1, 2, 3, 4; Berea  
Players 1, 3; P.A.L. 1, 2, 3;  
Cosmopolitan Club 3, 4, Sec.  
Treas. 4; Life Service 1, 2;  
Spanish Club 4; Y. Pres. 4;  
Bus. and Econ. Club 1, 2, 3,  
4; Pub. Chm. 4; Chimes 4;  
Bapt. Student Council 1, 4.



MARY LOUISE CORSI  
A.B. Hist. and Pol. Sci.  
Bethel, Ohio

Orchestra 2, 3, 4; Royal Col-  
legians 3; Student Council 3,  
4; Women's Association Pres.  
4; Pi Gamma Mu 4.



RHODA ALLEN  
A.B. Hist. and Pol. Sci.  
Langley, Kentucky

Berea Players 1, 2, 3, 4;  
Alpha Psi Omega 3, 4, Sec.  
4; Hist. and Pol. Sci. Club 3,  
4, Sec. 4.



MARY ALICE SEALS ARNETT  
B.S. Home Economics  
Morganton, N. C.

Y.W.C.A. 1, 2, 4, Treas. 4;  
Berea Players 3; W.A.A. 1, 2,  
3; Life Service 1, 2; Berea  
Christian Youth Council 3, 4;  
M.S.E. 1, 2, 3, 4, Sec. 2, Pres.  
3; Home Ec. Club 2, 3, 4; Ag.  
Home Ec. Club 3, 4; Wom-  
en's Council 3.

### *Class Officers*

Gouge, Soc. Chm., Maxey, S. C. Rep., Wade, Sec., Eskew, S. C. Rep., Brown, Pres. Mull, Soc. Chm., Carter, S. C. Rep., Breazeale, Treas., Sevy, V. P., Kim, S. C. Rep.



## Juniors

*Library*



*Union Church*





James A. Fish  
 Beatrice Fush  
 David Auxler  
 Marolyn Olson  
 Kenneth Moore  
 Hazel Childress



Lois Pierce  
 Elwood Moore  
 Doris Hieb  
 Mack Brazzale  
 Vivian Cope  
 William Bishoff



Harvey Southerly  
 Nellie Sherrill  
 Betty Sue Sheehy  
 James Cheney  
 Harriet Cline  
 Wilma Atkins



Ada Rose Richards  
 William Rose  
 Carol Henderson  
 Jimmy Hall  
 Anita Purkey  
 Roscoe Lemons



Francis Bonny  
 Betty Stallard  
 Nadene Wade  
 Bill Marion  
 Nelvia Lowe  
 Mattie Lusk



Unabelle Boggs  
 Jerry Harris  
 Nell Halsey  
 Oral Rudd  
 Martha Dendy  
 Joanne Dingus

Leah Ann Alley  
 Walter Jacobs  
 Frances Dillingham  
 Joyce Croucher  
 Vinson Watts  
 Mary E. Eubanks



Wheeler Bell  
 Pauline Girdler  
 Gaylyn Price  
 Henry Brown  
 James Gillespie  
 Margaret Floyd



Dorothy Alexander  
 Robert B. Byrd  
 Ann Webb  
 Doris Cash  
 Varon Campbell  
 Dillard Feltner



James Masterson  
 Barbara Huntsman  
 James Leatherwood  
 Christine Kinniard  
 Tommy Camper  
 Eloise McCurry



Mae Crosswhite  
 Charles Edwards  
 Barbara Childers  
 Donald Wagoner  
 Esther Allen  
 John Thompson

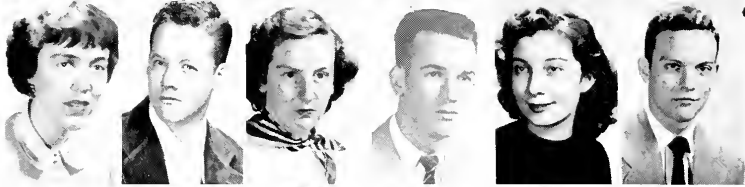


Francis Montgomery  
 Billie Fay Wyatt  
 Robert Sevy  
 Dorothy Ball  
 Woodrow Jones  
 Josephine Wittig

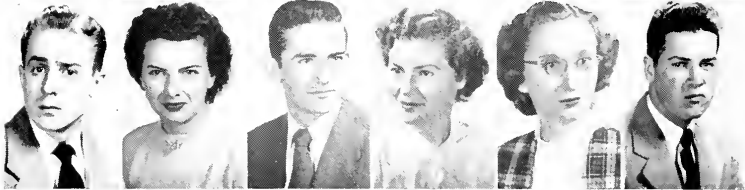




Carl Meeks  
 Minerva Gabbard  
 Imogene Huddleston  
 Fred Nickell  
 Anna Lou McNeil  
 Harold Dollar



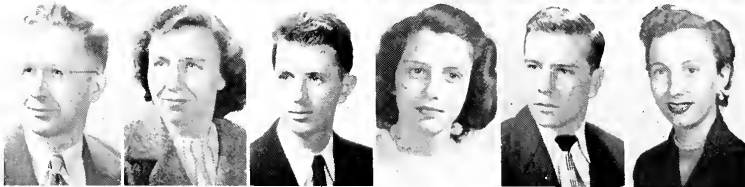
Avonelle VanHorne  
 James E. Brewer  
 Hazel Gossage  
 Byrne Tinney  
 Rosalba Moore  
 Harold Castle



Ludd Farr  
 Bonnie Landrum  
 Randal Mull  
 Maxine Burr  
 Lois Jolley  
 Kessler Abley



Gladys Osborne  
 Wylie Tallman  
 Maudine Bastin  
 Doug Thomas  
 Betty Austin  
 Corban Goble



Jessie Hoffman  
 Edith Hoffman  
 Gene Burton  
 Mabel Meeks  
 John C. Rogers  
 Leona Sutherland



Mildred Cornett  
 Charles Smith  
 Virginia A. Snedeger  
 John McDonald  
 Mary Louise King  
 Edward Harrill



Alfred G. Fuller  
 Ruth Brantley  
 Leon Branum  
 Rena J. Mullins  
 Carlos Tackett  
 Wilda Gay Eskew



Carolyn Atkins  
 Garland Godsey  
 Lorene Parker  
 Donald Matthias  
 Mary E. Thomas  
 Frank Deadrick



Leon Branum  
 Zena Lois Turner  
 Charles Blankenship  
 Lois Gilbert  
 Robert Elswick  
 Elizabeth McConnell



Louise Huddleston  
 David Bunbury  
 Julia Faye Ramey  
 Herbert Pilson  
 Nancy Renkenberger  
 William Carter



Robert Baird  
 Patty Frasier  
 Samuel Jennings  
 Laura Burke  
 Claude Tisinger  
 Priscilla Davidson



Eleanor Clem  
 Don Hillman  
 Carolyn Breedlove  
 William Ramsay  
 Susan Wiseman  
 William Loyd





Sol Valentine  
Margaret Smith  
Bill Friar  
Doswell Gentry  
James Hale  
Rosey Maxey



Nell Jennings  
Wilfred Clute  
Tommy Vickers  
Joanne Barrier  
Urban Peters  
Nannie Harris



Bill Brys n  
Pauline Muse  
Herbert Fields  
Doris Plymale  
Glenn Parker  
Jean Coghill



Peggy Brown  
Donald Dixon  
H. A. Porter  
Reynard Shrewsbetry  
James Chalmers



### ***Class Officers***

Leatherwood, S. C. Rep.,  
Banks, S. C. Rep., Taylor,  
Sec. Wilde, Tres., McClure,  
Soc. Chm., Hulburt, V. P.,  
Edwards, Pres., Gray, S. C.  
Rep.



## **Sophomores**

*Presser Music Hall*



*Rogers Art Building*





Virginia Dorton  
Buster Wright  
Mary J. Leatherwood  
Coy McCall  
Lenore Harris



James Harper  
Sue Carroll  
Billy Crosswhite  
Mary Ann Mullins  
Allan Vinton



Ruth Ketchersid  
Edsel Parker  
Ruth Dodd  
Paul Nolan  
Dolores Bell



Ed Dowdy  
Phyllis Foley  
Herbert Gray  
Jean Dedman  
Sherrill Bastin



Louise Austin  
Gene Lominac  
Letty Hunt  
Gerald Edmundson  
Jane Aulick



Phil Horne  
Helen Lear  
James Flowers  
Nancy Akers  
Bobby Hayes



Betty Ledford  
David Johnson  
Jeanne Lear  
Bob Glynn  
Bobbie Moyers



James Almond  
June Hassler  
Charles Stallard  
Elizabeth Worthen  
Bill Napier

Jack Edwards  
 Jane Hill  
 Russ Moneyham  
 Gay Sprinkle  
 Curtis Caudill



Roxie Jones  
 Bill Stidham  
 Mabel Stout  
 Ray Rose  
 Lovie Lovett



Harold Justice  
 Helen Hill  
 Sydney Garrett  
 Lillie Bess Parsons  
 Vance Smith



Carolyn Thurmond  
 Vernon Williams  
 Maxine Taylor  
 Lowell Garrett  
 Jean Horsey



Kenneth Hubbard  
 Blanche Allison  
 Charles Baber  
 Nellie Leatherwood  
 Powell Johnson



Bertba Biddy  
 Jack Cole  
 Stella Ramsay  
 Hoy Lewis  
 Donna Moore



James Kirby  
 Louiza Aaron  
 Carol Horton  
 Mary Ingram  
 Ronald Walthall



Kitty Pickens  
 Ignacio Cruz  
 Faye Huskey  
 Bravel Abbott  
 Eleanor Morris





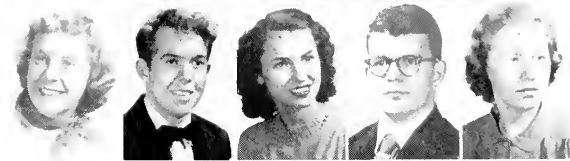
Hubert Callahan  
Phyllis Hart  
Victor Gilkerson  
Betty Fisher  
Wesley Lambert



Exle Wilde  
Carl Cross  
Hilda Davenport  
Harold Minns  
Janet Cochran



Albert Harris  
Clair Hamrick  
Bernard Furry  
Laura Walker  
George Linkous



Sue York  
Jackie Keeter  
Edna Nickell  
Elvis Thompson  
Marjorie Martin



Wiley DuVall  
Carroll Wilde  
Jack Harrison  
Pat Bowen  
Luls Jokay



Bessie Hagy  
Fred Cornwall  
Fay Edmiston  
Raymond Tackett  
Joanne Ezzard



Bob Miller  
Shirley Wheeler  
Hunter Elrod  
Dolores Branun  
Paul Clevenger



Nora Hefner  
David Kite  
Eleanor Brooks  
Donald Hawthorne  
Betty Smith

Carl Graham  
Allene Wade  
Willie Brown  
Betty McGlone  
Leland Martin



Freda Wright  
Inez Moss  
Roy Page  
Anna Lee Messer  
Audrey Colvard



Jeanne Riddle  
Suzie Shriver  
Julia Tipton  
Lowell Eden  
Janath Casto



Florence Pittman  
Mary Hulbert  
Hugh Browning  
Peggy Smith  
Lanjul Chairatana



Lewis Bell  
Barbara Coyle  
Betty Banks  
Richard Tisinger  
Helen Calico



Shirley Wilson  
Duel Mobley  
Edith Deal  
Lula Bruce  
Stephen Bow



Kenneth Valentine  
Lottie Corbin  
Mary Hughes  
Margaret Withrow  
Norman Mirbach



Evelyn Hall  
Otis Buff  
Jayne Hall  
Wilma Powell  
Pete Ryan





Doris Moores  
Forrest McGlone  
Clara Disco  
David Adams  
Mary Leming



Willie Cross  
Sue Lilly  
Bishop Spangler  
June Fain  
Nickie Sizemore



John Wong  
Faye Todd  
Robert Walters  
Gladys Christian  
Lois Templin



Marjorie McDonald  
Wayne Morris  
Lola Aaron  
Don Wells  
Mildred Mattingly



Jerry Coleman  
Colista Spradlin  
Lydia Gallher  
Betty Saylor  
Martha Large



Gwen Rapier  
Earlene Fuson  
Louise Bryson  
James Rouse  
Mrs. Arthur Haynes



Dorothy Schmidt  
Bruce Thacker  
Sarah Boyd



### *Class Officers*

Rogers, Treas., Williams, S. C. Rep., Friar, V. P., Hamilton, S. C. Rep. Fowler, Soc. Chm., Johnson, Pres., Mc-Sween, S. C. Rep.



## Freshmen

*James Hall*



*Fairchild Hall*





Mildred Brantley, Gerald Leslie, Azalee Wilson, Tinsley Crowder, Orpha Copley, James Conley, Jolene Hager, Ross Bailey.

Joe Mitchell, Arlene Tonne, Gene Watson, Mary Cavalier, Forrest Godbey, Alice Webb, Guy Ledbetter, Nancy Biddix.

Billie Rimmer, Glen Cottongim, Palis Dean Caudill, Edward Minns, Patricia Barnmon, Samuel Colville, Betty Parker, Bobby Moores.

Herman Smith, Imogene Sutton, Dempsey Bailey, Lois Pelfrey, Phil McCarty, Mary Ann Bell, Harold Gibbs, Mildred Underwood.

Margaret Planck, Robert Pruitt, Myrla Russell, Pridu Kiive, Nelma Eller, Ted Rogers, Eloise Armstrong, Marvin Carroll.

Gerald Skinner, Mary Atwood, Douglas Powell, Joan Drake, Bradley Brown, Betty Winston, Billy Hasty, Mary O'Daniel.



Jack Friar, Fannie Hardwick, Harold Barnhill, Wilma Howell, Jimmy Owens, Mary Emma Childers, Jack Campbell, Mary Catherine Bramlett.

Marva Ann Rusell, Simon Steely, Jewell Baldock, Richard Duncan, Frances Pennington, Kenneth Johnson, Betty Grooms, Loyal Jones.

Chester Miracle, Gwendolyn Lanier, Ernest Dutton, Barbara Caylor, John Marsh, Maizie Faulkner, Raymond Holt, Erma Taylor.

Mary Bostic, Lynn Shipe, Geraldine Williams, Howard Gallimore, Eunice Dare Bumgarner, Ronald Dingess, Guy Marie Tuggle, Patrick Williams.

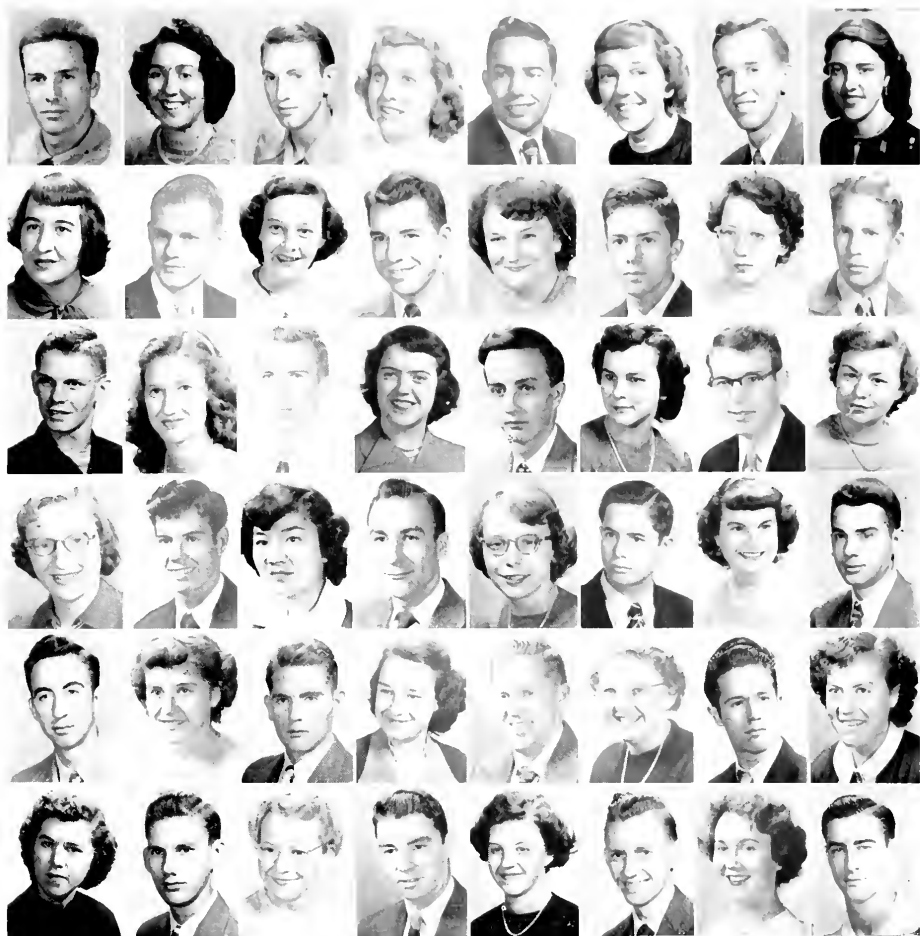
Troy Greenhill, Janet Allbright, William Ballew, Louise Rhudy, Jack Wingo, Evelyn Callihan, John Via, Ann Cameron.

Ruth Sutton, Kenneth Gwinn, Masiel Deweese, Eugene McLemore, Edith Campbell, William Wilson, Joanne Carr, Allan Lewis.



Glenna Wilson, Frank Sueyoshi, Sue Vaught, Wallace Holcomb, Delmas Dugger, Jean Austin.  
Gladwin Solomon, Gene Flynn, Evelyn Boise, Bill Stout, Roy Crosi, Leslie Ray.





Thor Caudill, Mary Alice Leslie, Wayne Grogan, Reva Jo Fowler, Leonard Packett, Mina Janc Derickson, Neil Rogers, Frances Botkin.

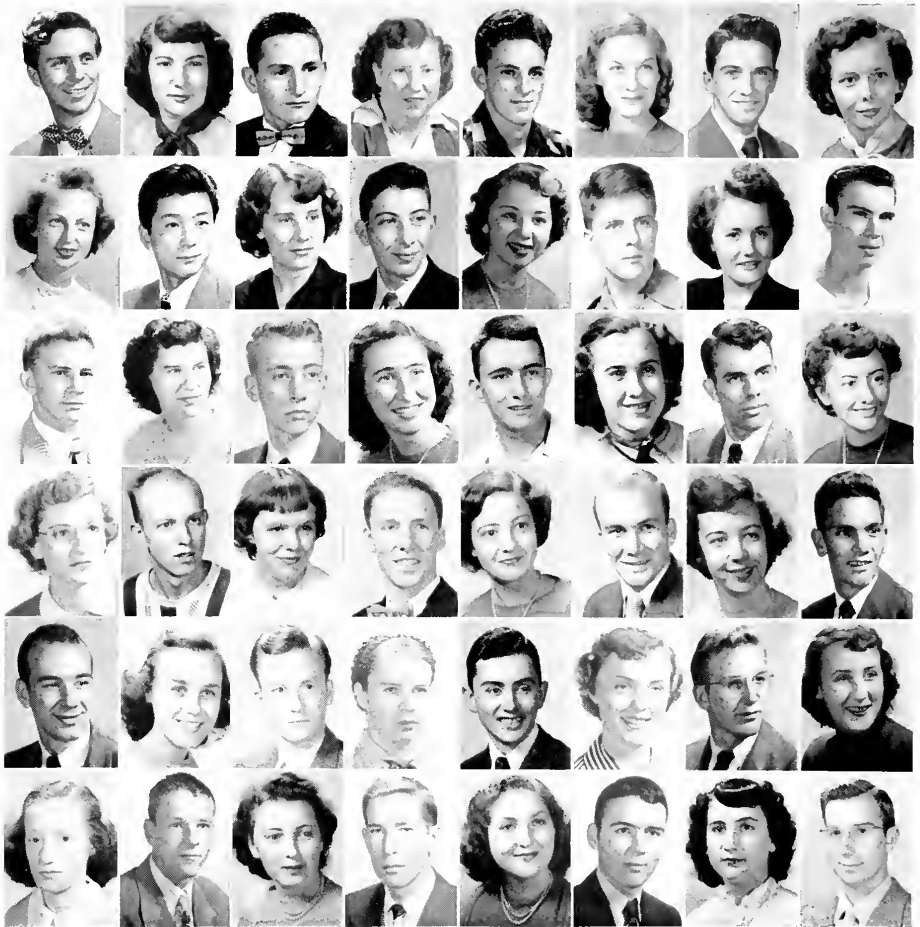
Cora Lee Howard, Gene Hoskins, Evelyn Glass, Milton Jones, Joan Cunningham, Melvin Bess, Marion McClung, Sonny Pitts.

Stanley Abner, Doris Helmboldt, Harold Jarrell, Martha Jones, Donald Powers, Audrey Godbey, Lewis Miles, Frances McLaughlin.

Romelle Stivers, Doug Massey, Michiko Miyashiro, Grant Mason, Bethena Shaw, Jack Brummit, Alice Sadler, Joe Morgan.

Jack Gabbard, Norma Black, Donald Atkins, Jackie Webb, Cecil Barrier, Betty Green, Dexter Byrd, Minnie Beard.

Doris Ann Hinkle, Harvey Lane, Ellen Reedy, Milton Young, Ruth Meeks, Bill Atkins, Joyce Loy, Forrest Johnson.



Bill Johnson, Christine Gross, Don Moxley, Edna Cornelius, Robert Douglas, Norma Rigsby, Lee Ricketts, Frances Foster.

Kathleen Preston, John Hirata, Betty Cogburn, Bill McKnight, Norma Parsons, Wayne Mattox, Clara Halterman, Buford Abner.

Richard Dawson, Norma Wallen, Gordon Hamilton, Elaine Risk, Paul Moser, Imogene Lewis, Sam Turner, Marilyn Weaver.

Mary Ann Campbell, Vernie Burleson, Mary Elizabeth Osborne, Tully Larew, Dolores Ball, John Van Horn, Eleanor Case, James Sells.

Graham Rosenberger, Jeanne Kiser, Denver Gay, Rosemary Brockman, Hollis Hall, Eileen Gunter, Ed Bringman, Ann Taylor.

June Warholm, Ronald Lester, Louise Ogle, Bob Moore, Frieda Meade, Ronald Gibson, Jo Ann Leo, Don Wheeler.



Clyde Hall, Sara Wright, Conner Chaney, Billie Hurt, Roger Buchanan, Joyce Shepherd, Marcus Halcomb, Dorothy Ledford.

Ruth Hall, Lloyd Austin, Maxine Kincaid, Bob Knight, Joan Varney, R. C. Day, Mary House, Ed Hinderlite.

Kinzel Peace, Grace Rogers, Tom McCloud, Mary Ballard, Paul Garrison, Ruth Anna Whittenback, Corinne Alley, Gene Flynn.

Glenna Taulbee, Dave Henderson, Lillie Bryan, Bill Laswell, Eva Franklin, Robert Taylor, Jean Case, Neil Anderson.

Fred Hartman, Alice Manicur, Joan O'Dell, Yvonne Ward, Vance Cox, Edith Seale, Betty McSween, Samuel Hung.

John Merritt, Frances Van Sant, Patricia Ascough, Pansy Sherrill, Fairy Powers, Derl Stallard, Betty Sayre, Betty Nestor.

Berea Faces



The School  
of Nursing

*Capping Exercises*







MISS FLORENCE GIBSON  
*Superintendent of Nurses*



MISS RUTH STEGEMAN  
*Supervisor*



MRS. ELIZABETH BURKE  
*Instructor*

*Berca College Hospital*



# Seniors



BETTY LOU ROBINETTE  
Benham, Ky.

MARTHA M. SALTER  
Milton, Fla.

PATRICIA JUNE MACE  
Webster Springs, W. Va.



RUBY ALLENE HURT  
Grider, Ky.

BETTY LOU GILES  
Oak Ridge, Tenn.

MARY ANNA LEDBETTER  
Johnson City, Tenn.



JANET ELIZABETH WEBB  
Garrett, Ky.

BETTY REDMOND JOHNS  
Stuart, Fla.

VIRGINIA PEARL BULLENS  
Wildie, Ky.



MARJORIE ALICE WOODY  
Arlington, Va.

EDITH ROSE MORGAN  
Berea, Ky.

MARY EDNA JONES  
Friendsville, Tenn.



*Cincinnati General Hospital*



*Veterans Hospital, Lexington*

Commencement services mean the final day of graduation is not too far in the future . . . three years have past . . . we came to Berea . . . as freshmen . . . probies, that is . . . then came the capping services, which meant that we had officially passed our probation period . . . the black stockings were discarded . . . we worked . . . night duty . . . A. D. duty . . . then we went to Cincinnati General Hospital . . . more work and study . . . it seemed like a huge place after the Berea Hospital . . . and we were glad to get back . . . then we went to Veterans' in Lexington for more training . . . and back to Berea again for the final months . . . and commencement . . . finally, we'll take the State Boards—final exams—and wait for a notice from the examining committee which says that we are now . . . R.N.'s.

*Capping Services*



*A. D. Duty*





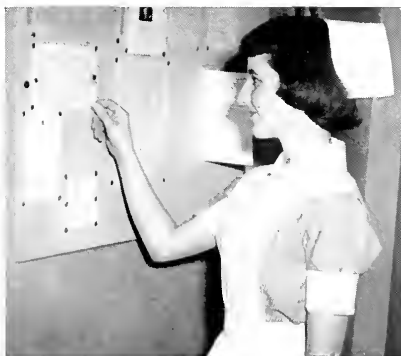
## Juniors



*Top picture*—Betty White, Bonnie Reynolds, Paula Chambers, Annabelle Phipps.

*Bottom pictures*—Ida Dean Wright, Polly Broughton, Zola Hatmaker, Rosemary Robertson, Edith Bradley, Rosa Pennington, Donna White, Mary Jane Hudson.

### *Ciney Notices*



### *Favorite Dorm*





*Front row*—Iva Sublett, Georgia Ivey, Jean Hurt, Patricia Johnson, Jeanette Robinson, Joyce Gilliam, Margaret Bishop, Olga Moles, Colleen Tester, Edna Edmondson.

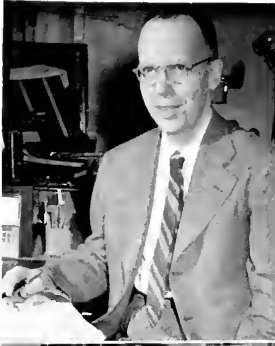
*Back row*—Lois Evans, Uhrike Gabler, Wilda Wilson, Mary Edens, Ruth Anna Blackburn, Geraldine Harrison, Norma Hurley, Rosa Ferguson, Carolyn Benson, Pauline Pennington, Dolores Witt.

## Freshmen

*Miss Chase*

*Classroom Duty*





DR. JOHN ARMSTRONG



DR. BATES HENDERSON



DR. PAUL HARRISON



DR. CLEMENT HAHN  
*Dentist*

# Student Health Service



# Organizations and Activities



Berea Days



# Wallpaper Staff

## Elected The Wallpaper

ial F  
nas Play  
ented  
on Chur  
ent." a har

WA  
CRH

ip and mail  
ox 1008—C  
ip for a sen  
aper!

.....

MAILED  
..... 90c



ssocia  
Num  
Me  
cie  
C. 2  
Rise  
ter,  
.....  
er

MONEY SEND  
ENCLOSED BILL

ation Of The Berea College Student Associa

T  
on Of T  
Day!!  
its S  
Heels  
lass Na  
IMES B  
o-chair



Nur  
po  
ip  
nt As  
W!  
n to the

## UMT Today

Address .....

Check One:                      Check One:

Top picture—Vickers, Ramsay, Buchanan, Crowder, Editor Goble, Rogers, Purkey.  
Bottom picture—Colley, Miles, Hall, Milier, Fain, Rogers, Albright, Smathers.



### **Business and Economics**

Hubbard, Wade, Jacobs, Kelly, McDonald, Honeycutt, Pres., Wade, Hodges, Logan.

Carr, Eubanks, Williams, Porter, Atwood, Boyd, Masterson, Caudill, Fish.

Mull, Walker, Honeycutt, Wittig, Winebarger, Sherrow, Watts, Newbolt, Akens, Carter.

Horton, Castle, Gray, Ball, Greter, Spangler, Wiseman, Ross, Parker, Chin.

LeMaster, Ledford, Montgomery, Bell, Jones, Haynes, Godsey, Williams, Mrs. Weidler.

Tackett, Recio, Hammonds, Louis, Rouse, Miss Lincoln.



### **F. T. A.**

Baldock, Ellis, Yablonski, Bastin, Alexander, Neal, Robinson, Ketchersid.

Webb, Leslie, Halsey, Atkins, Wilson, Manicur, Templin, Pennington, Harrill.

Whitis, Girdler, Holt, Bailey, Jennings, Gilkeson, Campbell, Gibson, Childress, Fuson, Sawyer, Mr. Wear.



### **Agriculture-Home Economics**

Hesse, Pingley, McCurry, Talbot, King, Grider.

Edwards, Winebarger, Claypool, Marion, McIntosh, Southerly, Wag-  
ner.

## Pi Alpha



Medley, Burke, Boggs, Shamma, Auxier, Rudd, Rogers, Johnston, Crosswhite, Breedlove, Bunbury, Hayes, Cook, Hall, Waller.

Dr. Worth, Howard, Shrewsberry, Alley, Beverly, Horsch, Sherill, Arrowood, Reneau, Hoffman, Mr. Roberts, Leach, Breazeale, Slocum, Bowling, Coleman.

## Sigma Pi Sigma



Hoffman, Hall, Beverly, Leach, Hamilton, Auxier, Horsch, Breazeale, Slocum, Mr. Roberts, Dr. Wright.

Kiive, Dr. Worth, Dr. Noll, Vest, Nickola-kis, Deadrick.

## Pi Gamma Mu



Cline, Gorman, Gilpin, McQueen, Getz, Kelly, Corsi, Smith, Weidler, Honeycutt, Weidler, Walker, Cornett Bell.

## Tau Kappa Alpha



Kelly, Weidler, Martin, Kim, Gretar, Honeycutt, Watts.



### **Royal Collegians**

Fields, Mrs. Dingus, Ballew, Hubbard, Coleman, Dingus, Hughes, Johnson, Hartman, Bringman, Mull.



### **Chapel Choir**

Chairatana, Rodriquez, Southerlin, Watson, Childers, Reese, Rogers, Cassell, Guinn, Marsch, Moser, Phillips, Kirby, Mr. Hovey.

Fowler, Harrell, Shaw, Helmboldt, Hassler, O'Dell, Jones, Disco, Lanier, Bryan.

Case, Wright, Marshall, Burchell, Cauble, Botkin, Hefner, Seay.



### **Band**

R. Williams, Mr. Lisko, M. Williams, Meeks, Coleman, Howard, W. Williams, Bringman, Mull, Byrd, Hager, Hartman, Vinton, Morris.

*Harmonia Society*



*Varsity Women's  
Glee Club*

Riddle, Glass, Risk, Ezzard,  
Jacobs, Hamrick, Thurmond,  
Eskew, Ingram, Kysela.

Sherrow, Stivers, Edmiston,  
Click, Wilson, Corban, Coch-  
ran, House, Forsyth.

*Keyboard Club*

Bonny, Keeter, Marsh, Phillips, Foley, Thurmond,  
Lisi, Eskew, Derting, Griffith, Peak, Ellison, Moores,  
Franke.

*Mr. Hovey Conducts Orchestra and Harmonia*





### **Speech Choir**

Pittman, Davis, Eppard, Douthit, Foley, John, McDonald, Burns, Branham.

### **Twenty Writers**

Norsworthy, Eppard, Brannum, Smith, Ogle, Dedman, Johnson.



### **Danforth Choir**

Case, Belt, Finch, Riddle, Ross, Clem, Tackett, Cash, Tsang.

## Berea Players



*"The Tab"*



### *Alpha Psi Omega*

Sawyer, Smith, Seay, John, Moore,  
McDonald, Haynes, Ramey.

### *Tau Delta Tau*

Vickers, Smith, Moore, Seay, Mc-  
Donald, Gouge.





*Scenes from Players' Shows*





### **Cosmopolitan Club**

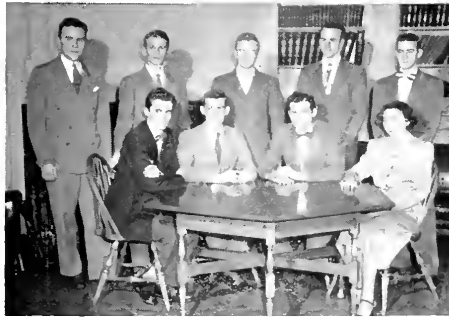
Kanai, Posch, Solomon, Recio, Sueyoshi, Thompson, Hung, Flores, Schmidt, Miyashiro, Green, Wheeler, Jacobs Cheney, Cruz, Recio, Wende.



### **Math Club**

Dingus, Cruz, Hillman, Breazeale, Waller, Arrington, Pugsley, Leslie, Stout, Mrs. Arrington.

### **Pre-Med Students**



Norsworthy, Bowling, Leming, Burke, Miller, Coleman, Burkhart, Garrett, Johnson.

### **Students for Democratic Action**



Lee, Atwood, Kiely, Robinson, Schmidt, Harrell, Murray, Allgood, Martin, Wende, Posch.



### Home Ec. Club

Stapleton, Talbott, King, Parker.  
 Mrs. Morris, Miss Harrison, Miss  
 Aspnes, Miss Dinsmore, Miss  
 Woods, Turner, Jennings. McCon-  
 nell, Frazier, Price, Fletcher,  
 Pingley, Wright. Hesse, Childers,  
 York, Banks, Morris, Click, Leath-  
 erwood,, E. McCurry, Arnett, Gos-  
 sage, Saylor, H. McCurry, McDar-  
 ris, Huddleston, Aaron, Braswell,  
 Haynes.

### Medical Science



Mrs. Burke, Gilpin, Cook, Barrier, Glenn, Burke, Miller,  
 Johnson, Page, Henderson, Strauss.

### American Chem. Society



Howard, Capps, Shrewsberry, Bowling,  
 Whitaker, Bunbury, Strauss, Hansen,  
 Levy, Rogers, Shamma.

### *Life Service*

Wyre, H. Webb, Boggs,  
Cash, Cruz, Evans, Stauss,  
Dungan, Keener, Buckner,  
Webb, Strait, Green, Israel,  
Reece, Campbell, Walthall.



### *Y. M. C. A. Cabinet*

Lee, Ballew, Massey, Wine-  
barger, Finch, Crosswhite,  
Tackett, Walthall, Ross.

### *Y. W. C. A. Cabinet*

Henderson, Hansen, Cline,  
Pennington, Bastin, Yablon-  
ski, Ramey, Eppard, Murray,  
Arnett, Kiely, Gorman.



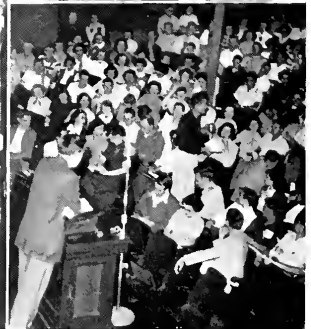


### Student Council

Walters, May, Godbey, John, Carter, Gray, Eskew, Pressley, Kim, B. Banks, F. Banks, Allen, Hamilton, McSween, Corsi, McKiddy, Winebarger, Ball, Leatherwood, Abels.

## Student Association

Mary Corsi, Women's Association President, Fontaine Banks, Student Association President, Ann Abels, Student Council Secretary, and Edsel Godbey, Men's Association President, discuss campus problem. Other scenes are of Association people, meetings, and office.



## Country Dancers

Crum, Gabler, Kyser, R. Ramsay, Sawyer, Rice, Huskey, Wesley, Wallen, Nickel, Lindon, Rodriguez, E. Nickell, Collier, Ward, Watson, J. Ramsay, Hammons, B. Ramsay, A. Burton, G. Burton, Cornett, Mr. Smith.



## Ag. Union

Cottongim, Hall, Shores, Duckwall, May, Hubbard, Jokay, Derting, Winebarger, Rice, Parker, Robbins, Barrier, Dixon, Chalmers, Bryson, Wagoner, Valentine, Lambert, Wade, Vinton, Dill, Few, Claypoll, Parsons, Southerly, Pittman, Geyer, Davis, Adams, W. Cross, C. Cross, Fry, Tuck, Miller, Minns, Williams, Dowdy, Miller, Rogers, Tisinger, Pitts.

## Fire Department



LeMaster, Horton, Thompson, Noland, Honeycutt, Harper, Shrader, Kelly.

## Outing Club



Lewis, Wills, Brummitt, Reedy, Beverly, Phipps, Austin, Griffith, Copley, Jones, Cash, Bailey, Stidham, Larew.



## Chimes Staff

RAYMOND COLLEY  
Editor

BERNARD MAY  
Photography

MARGIE SUE SWEET  
Circulation Manager

CHARLES HOBECUTT  
Business Manager

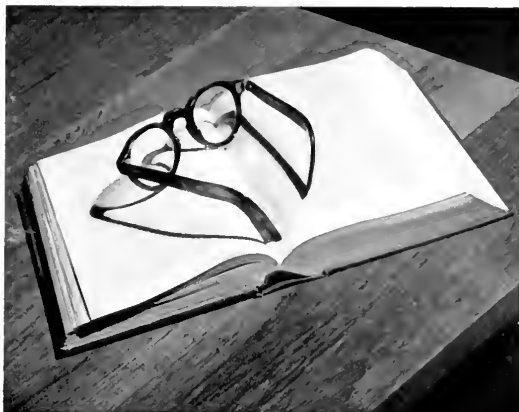
JERRY FISH  
Advertising Manager

### Chimes Staff

Pictured below are Helena Jacobs, Louise Archer, James Masterson, Shelia Strunk, Carlos Lopez, and Edsel Godbey. Not pictured on this page are Theona McQueen, Becke Cauble, Irene McDonald, Betty Hammons, Mary Hulburt, Lynn Dunn, Dorothy Jenkins, Anita Purkey, Wilma Adkins, Ruben Recio, Lou Myers, Allene Wade, Nannie Harris, Nadene Wade, Alice Sadler, John Rummel, Martha Davis, and Charles Carrington.



# The Senior Story



*Top—Lincoln Hall and Elizabeth Rogers Hall  
Bottom—Phelps-Stokes Chapel and Pearson Hall*



## THE SENIOR STORY

We are graduating! Remember us? We are that guinea pig class that flocked to the Berea College campus in September, 1947. Some of us were weather-beaten war veterans; some of us were married and had children; some of us were green just-out-of-high-school kids—just a little worn by the war years. But all of us were entering a new phase in our lives. Maybe we did come to college for different individual reasons: "to get a better job," "Mamma said I had to, but I wanted to work in Detroit," "I got to learn; there are things I got to know," "I've come to study what is beautiful—to understand the things that make life worth living." And we, the people who knew where we were going and we who didn't know why we were here, started our college careers.

Some of us heard about a new system which was being attempted: the General Education program. This was a four-year college course preceded by a basic year for those who needed certain courses necessary to make up for schooling missed in high school. In our Freshman year we were required to take Physical Science, a combination of Mathematics, Chemistry, Physics, Geology, and Astronomy. There were other requirements—Bible, Biology, Psychology, Composition. We complained, perhaps we found something that encouraged us to major in one of these fields and dedicate our learning to one of these subjects. The Sophomore year found us in the guinea pig role once more. We were the first class to become preoccupied with that year-long, eight-hour blending of Art, Literature, and Music—Humanities. We heard new words like "sentient," "intensity," "contemplative," "negative space," "classical," "dissonance" and many others. And after a few months of bewilderment and confusion, some of us began to touch upon the new worlds mentioned so often by the professors. We learned we might live a thousand lifetimes by reading that many books. We began to understand good music and to appreciate "modern" art. We began to understand the importance of man's expression of himself.

When we became Juniors, we had to select a major to concentrate upon. We had classes with Seniors who made things harder for us. We met exciting new teachers. We had another requirement: Ethics. And some of us felt we had come closer to the meaning of life when we read some of the ideas of Aristotle, Plato, Spinoza, Russell.

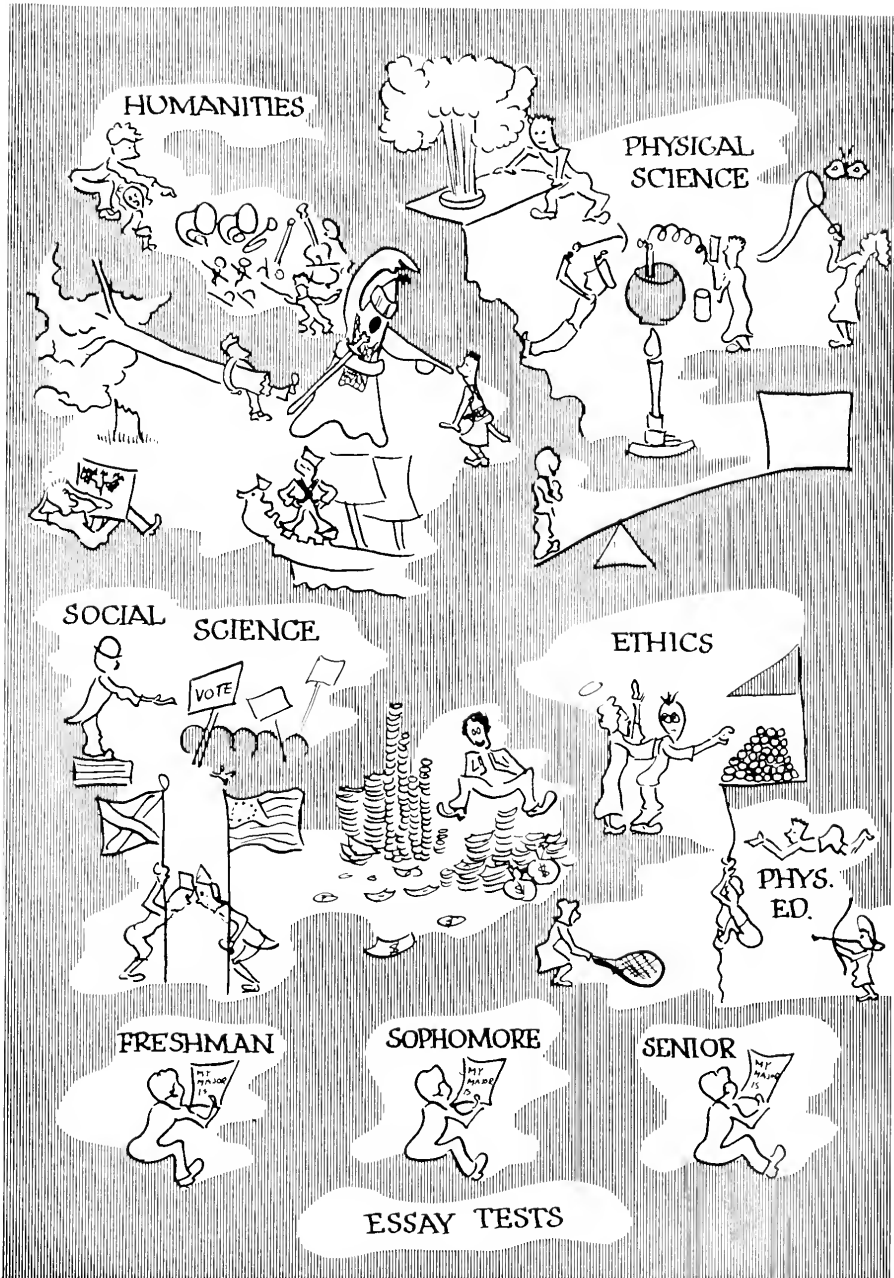
So we became Seniors. Sure, we backslid sometimes. There were things to take care of such as Proficiency Tests in Foreign Language (another experiment to be tried on us), qualifying examinations, summer schools, teacher's certificates. We became Seniors. That meant *The Chimes* would be *our* book this year. That meant important meetings for class officers, elections of award winners, selecting the May Court, ordering announcements, suggesting Commencement speakers. We began to worry about next year; about finding a job, or finding the money to go to graduate school.

Looking back now, we remember some wonderful times. We are surprised when we realize that these new ideas and ideals of ours must have sneaked into our brains during some teacher's lecture or while we were reading a text book. We almost hate to leave Berea; we don't think about that. We don't want to admit that it hurts after we have complained so much. But that griping was fun too. Remember that silly story in Comp class? How about our first paintings of "Twin Mountain"? Will we ever forget those thrilling basketball tournaments—we always got to the fina's, but then—oh then. It was tough to realize that Joe, the fire-house mascot, had been laid to rest. How happy the girls were when they moved into Anna Smith Hall! And those ruged arguments about pacificism and patriotism—

And that very special boy or girl we met—some of us popped the question right on the campus.

Most of us have one special event or day that we consider worth our entire four years here. We hope that Berea College will remember its guinea pigs, class of '51, and we also hope that we will march out of the Chapel on Commencement Day, June 4, as beautiful and strong and intelligent men and women.





*Mountain Day, Chapels, Parties*



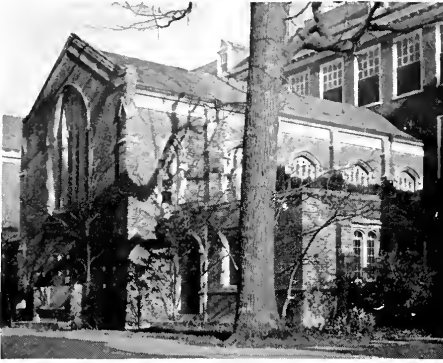


*Anna L. Smith Dorm*



*The Big Move*

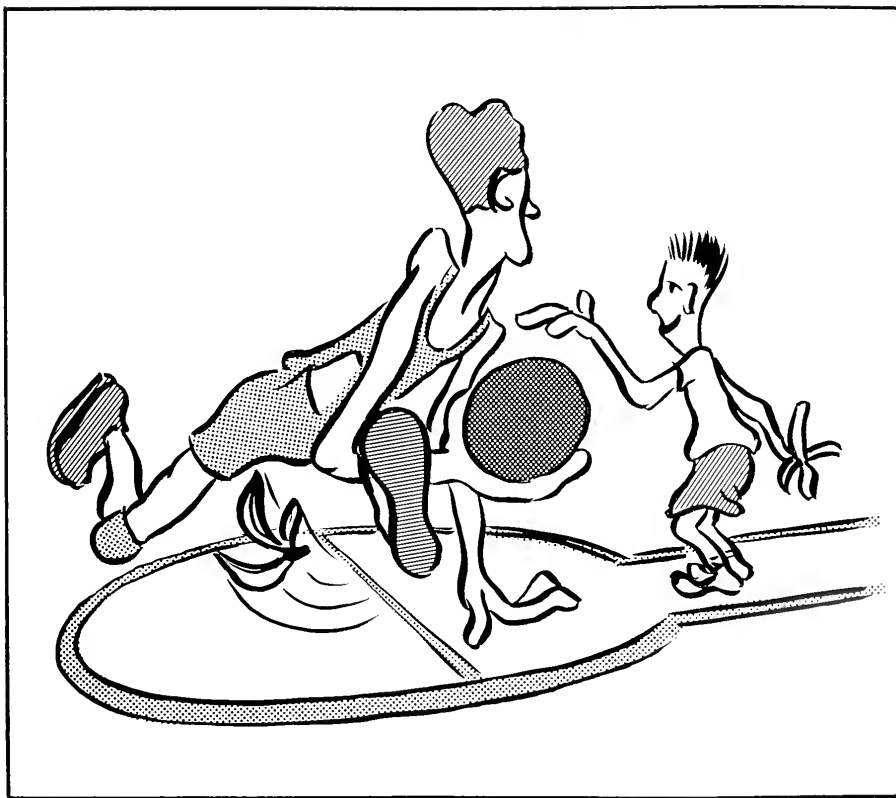




## Danforth Chapel



# Berea Sports





### Cheer Leaders

Rose, Kirby, Auxier. Hardwick,  
Maxey, Fowler.



### Swimming

Moore, Mgr., Waller, Posch, Allen,  
Coach Gunkler. Brown, Graham,  
Shrader, Walters, Mosser, Arro-  
wood. Breazeale, Auxier, Lisenbee.



### Cross Country

Mgr. Miller, Dowdy, New-  
some. Fisher, Callahan,  
Johnson, Colvard, Felt-  
ner, Wade.



## Baseball

Williams, Kelly, Via, Waller, Johnson, Brooks, Huntsman, Godsey, Wright, Carter, Coach Wyatt, Martin, Massey, Trimble, Morris, Shrader, Stidham, Harper.

## K. I. A. C. Track Champs, 1951



Coach Poulson, McCall, Baker, Dowdy, Waller, Capps, Feltner, Dutton, Smith, Newsome, Burke, Coffey, Rogers, Cole, Cottingin, Williams, Massey, McDaniel, Hubbard, Abbott, Colvard, Ryan, Clevenger, Wade, Miller, Johnson, Callahan, Shrader.

## Track



### *Fire Department*

Football Champs—Noland, LeMaster, Horton, Capps, Shrader, Kelly, Honeycutt.



### *Pearson Second*

Basketball Runner-Up — Tackett, Leatherwood, Thompson, DuVall, Rudd, McCall, Godsey, Feltner, Hale.



### *Pearson Third*

Basketball Champs—Miller, Massey, Vinton, Weddington, Boyd, Mobley, Abbott, Walters, Napier, Masterson.

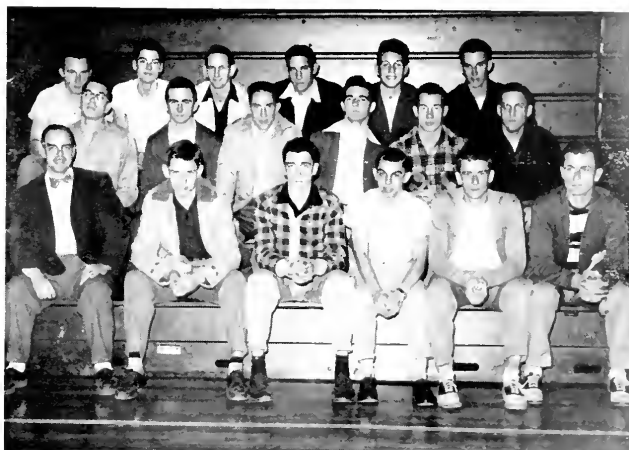




LELAND MARTIN  
Student Director



## *Intramurals*



### *Intramural Council*

Israel, Feltner, Godbey, Wagoner, Stidham, Rogers, Holder, Gillispie, Williams, Camper, Walters, Barnes, Gunkler, Abner, Leslie, Abbott, Shrader, Martin.

O. H. GUNKLER  
Athletic Director



### Tennis

Pittman, Coach Evans, LeMaster, Jacobs, Arrowood, Grubbs, Graham. Auxier, Byrd, Hale.

### B Club

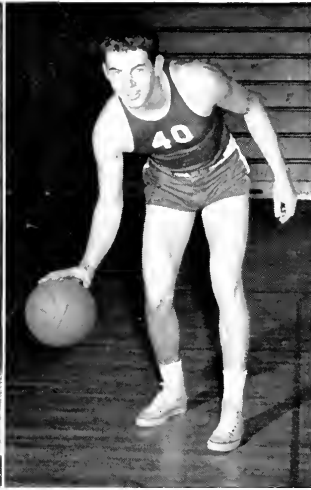
Williams, Martin, Barrier, Arrowood, Brown, Baker, Huntsman, Feltner, Capps, Jacobs, Wade, Auxier, Shrader, Carter, Honeycutt, Ryan, Godsey, Callahan, Waller, Graham, LeMaster, Kelly, Fish, Noland, Harper, Ison, Brooks, Valentine, Hale, Colvard.







BOB CORNETT



CHARLES BAKER



RAY HALBERT

## *Basketball*

Mgrs. McCall and McGlone



Combs in the "Tote Box"





Coaches POULSON  
and WYATT

*Season Record*

<i>We</i>	<i>Opponent</i>	<i>They</i>
77	Alumni	47
101	Miligan	67
60	E. Tenn. State	68
72	Transylvania	46
56	Union	66
53	Dayton	74
65	Hiram	47
67	Georgetown	59
59	Wilmington	66
67	Union	57
59	Wesleyan	76
53	Villa Madonna	57
63	Centre	56
70	Morehead	86
73	Wilmington	64
78	Wesleyan	104
39	Georgetown	78
66	Centre	65
82	Transylvania	42
K.I.A.C. Tournament		
56	Georgetown	45
56	Centre	71



DON BROOKS



RALPH WADE



BILL HUNTSMAN



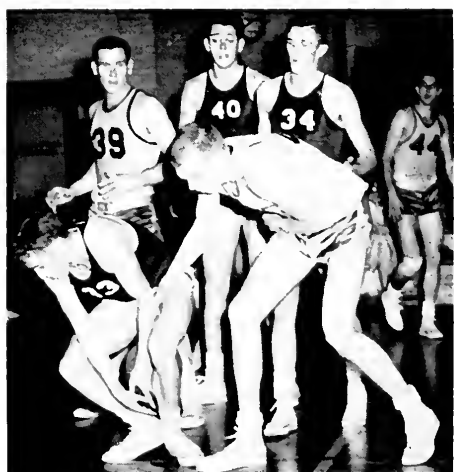
ERNEST DUTTON

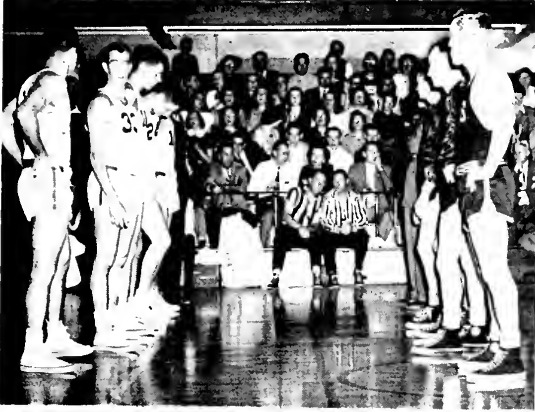
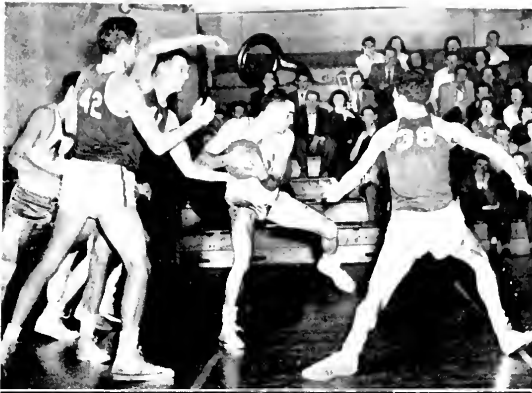


DOUG MASSEY



GERALD SKINNER





PAUL NOLAND

GLEN ISON

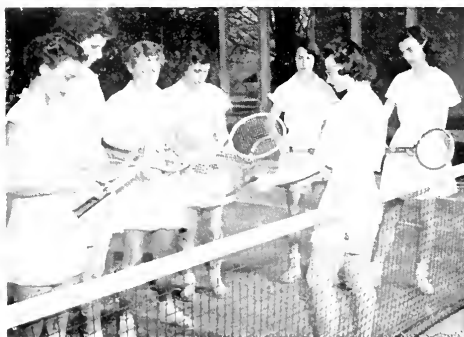
CAPTAIN DAN CAPPS



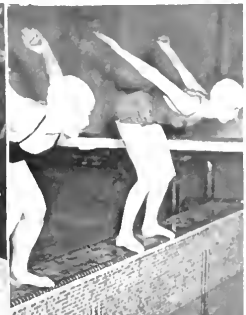
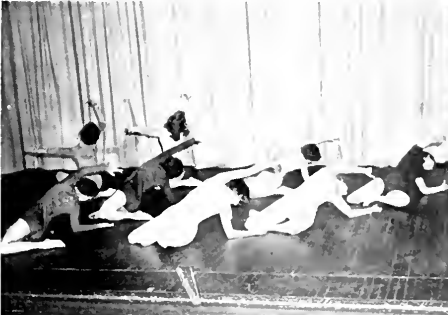
# Women's Sports

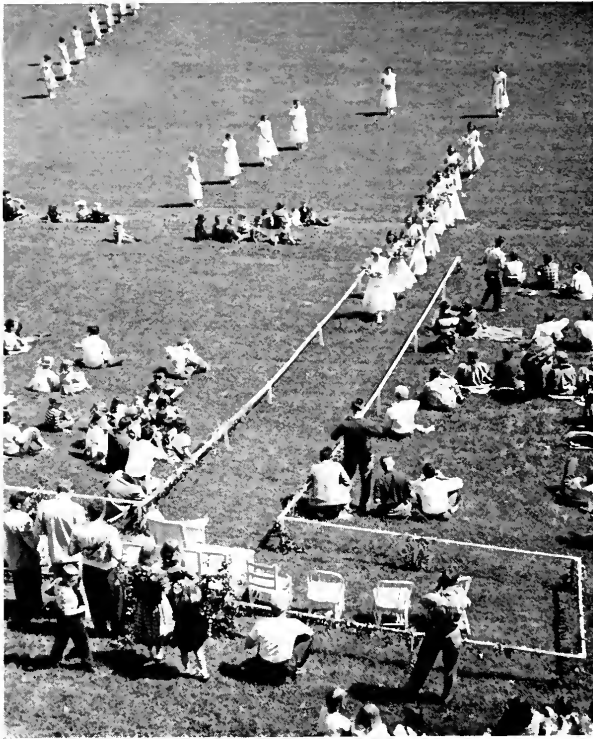
## W. A. A.

Gouge, Leatherwood, Ghalligher, Lisi, Wittenbach, Hulburt, Moore, Sutherland, Smathers, Ezzard, Reedy, Durden, Nickell, Thomas, Frasher.









*Procession to May Queen's Throne*

*May Day Dances*



Miss Louise Archer

*May Queen*

## May Day

1951

### May Court

Nita Ellison, Betty Pingley, Kathryn McKiddy, Nell Jean McDarris, Queen Louise Archer, Ann Abels, Becke Cauble, Irene McDonald, and Betty Williams.



# The Foundation School





ROY N. WALTERS  
*Dean of Foundation School*



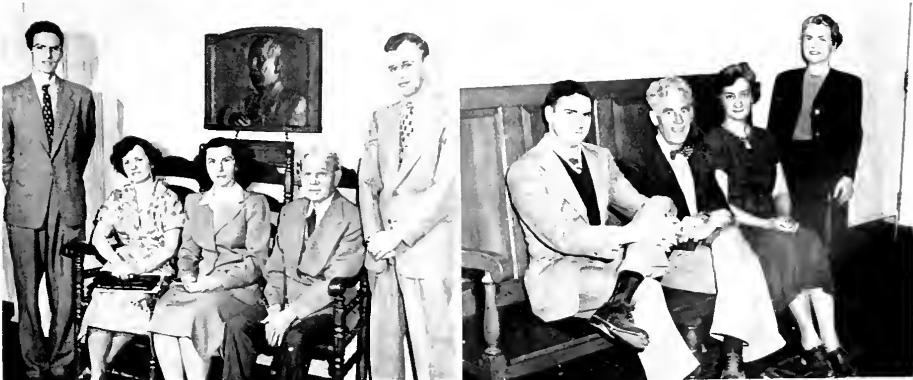
LILLIAN MCGUIRE  
*Secretary*



DELIA EMERSON  
*Dean of Women*

## Foundation Faculty

J. Grossman, G. Morris, M. Carpentar, H. Schultz, O. Boes, J. York, P. Ayre, L. Fenn,  
F. Brooks.





### *Class Officers*

Roundtree, Rubarts. Brooks,  
Ambrose, Wade, Pres. Van  
Winkle.

## Seniors

### *Disney In Action*



Edwin Patton  
Betty Perkins  
Janis Morris



Barbara Combs  
John C. Buckhold  
Ivadean Rubarts



Dulcenia Brashear  
Bonnie Auxier  
Joe Morris



Mary Hammersly  
Paul Scott  
Alifair Barton



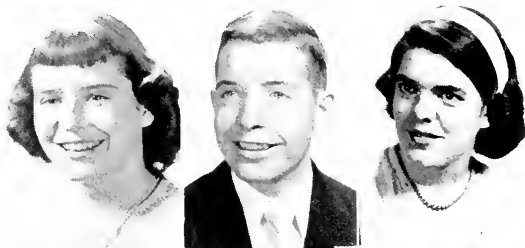
Hector McNeil  
Helen Baker  
Irene Wells



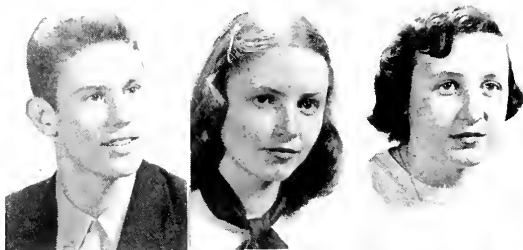
Patricia Hebb  
Sue Ann Hodges  
Julian H. Capps



Axie Howard  
Russell Cohurn  
Dorothy Kavanaugh



Billy Richardson  
Winifred Hughes  
Mary Ann Lear



Geneva Rice  
James Pullins  
Betty Broome

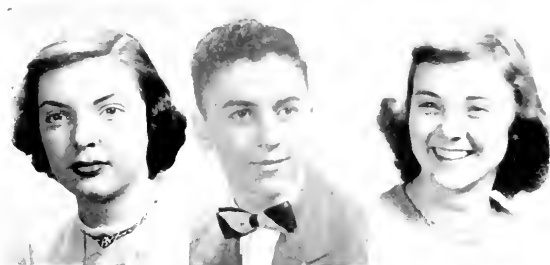


Ruth Wilder  
Martha Noss  
Larry Curry





Bobby Brooks  
Ralph Coleman  
Fern Wade



Joyce Graham  
Lesona Garland  
Ottis Turner



Martha Williams  
Aaron Wilson  
Ethel Dayton



Martin Ambrose  
Martha Roark  
Alta Smart



Don Hall  
Chloe Slusher



# Juniors



Fern Clark  
Dirrell Cress  
Alice Sprinkle  
Patricia Cook



Bobby Tate  
Alice Ashby  
Reva Felty  
Jack Morris



Doris Wells  
George Baker  
Sandy Reynolds  
Mima Rice



Barbara McAfee  
Jerry Harrison  
Charlene Rudder  
Larry Wilson

Robert Hatmaker  
Geraldine Neal  
David Zook  
Billie Barnette



Phyllis Scrivner  
Barlow Newbolt  
Madge Campbell  
Gladys Parker



Joseph Ray  
Patricia Garner  
Clyde Morgan  
Sarah Smith



Barbara Arnett  
Claude Sturgill  
Shirley Mealey



## Freshmen

Urjanis, Stone, Hull, Lewis, Stafford, Oakley, Allen, Miller, Coffey, McGuire, Dunaway, Collins, Hamblin, Bates, Anderkin, Humfleet, Williams, Baker, Carico, Frye, Sturgill, Cass, Newman, Embree, Skinner, Kavanaugh, Scott, Gambrel, Boleyn, Kilmourne, Davis, Cook, Melton, Caudill, Hubbard, Stacy, Creech, Halstead, Morris, Powell, Ford.



## Sophomores

Cox, Carter, Pauck, Wade, Pennington, Couch, Miller, Blanton, Mullis, McWilliams, Smith, Mills, Barger, McCollum, Owens, Chisholm, Garrett, Smith, Anderkin, Brown, Raine, Childers, French, Phillips, McCoy, Blair, Jones, Felty, Spillman, Gunkler, Carico, Perkins, Calhoun, Adams, Davis, Jackson, Hinn, Hoskins, Ambrose, Abrams, White, Atkins.



# Organizations

## *Chimes Staff*

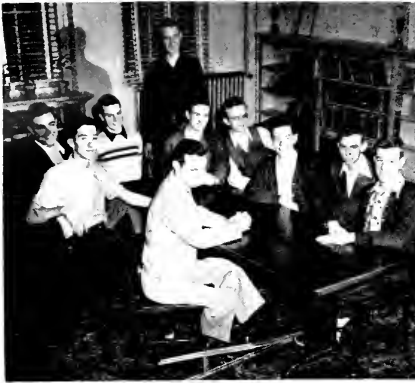
Editor Brooks, Broome, Rubarts, Kavanaugh, Taylor, Wade.



## *Lion Staff*

Parrish, Roark, Neal, Goodrich, Drake. Brown, Rice, Auxier, Lear, Reynolds, Blanton, Richardson. Hammersley, Editor Baker.





Curry, Whitis, Mr. Drake, Stone, Stubblefield, Lord, Blair.



Lewis, J. Kavanaugh, N. Wade, Pauck, McWilliams. D. Kavanaugh, F. Wade, Slusher, Skinner, Howard, Carter, Noss, Miss Thorpe, McCoy.

Foundation Chorus



Stafford, Davis, J. Kavanaugh, Radford, Miss Belt, Coffey, Evans, Seay, Mealey, F. Taylor, Collins, Miller.

Miss Peak, D. Kavanaugh, Cress, Urjanis, Hatmaker, Newbolt, Zook, Woodfin, Begley, F. Taylor, Humfleet, Scott.

Cheer Leaders



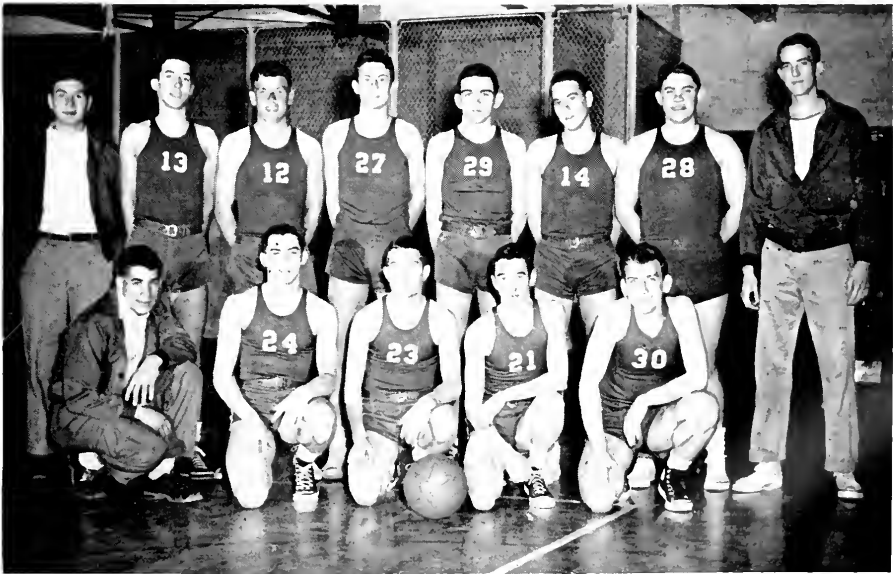
Broome, Morris, Cook.

## Swimming

Troutman, Chambers, VanWinkle, Price, Capps, Gunkler, McNeil, Hoskins, Hinn, Davis, Dugan, Coach Shrader, Abrams.



## Basketball



Mgr. Roark, Wilson, Coburn, Tate, Pullins. Mgr. Wilson, Whitis, Summer, Richardson, Perry, Dyer, Harrison, Coach Poulson.

# INDEX

## COLLEGE FACULTY AND ADMINISTRATION

Allen, Julia	16-88	Pugsley, Lester	18	Davis, Martha	26
Aspnes, Agnes	20-86	Pugsley, Donald	19	Davis, Robert	27
Auvil, Virginia	17	Richardson, Elizabeth	20	Davis, Wilton	29-82
Armstrong, John	74	Roberts, Gilbert	19-79	Dellinger, Herman	43
Barnes, Mrs. Benjamin	17	Robertson, D. E.	18	Denham, Truman	29
Belt, Mary	20-22-82-122	Ross, Gordon	18-22-82-87	Derting, Edith	27-81
Bibbee, L. D.	15	Russell, James	19	Derting, John	27-89
Bigelow, R.	18	Sanaren, Mabel	17	Diagus, Helen	36-80
Birkles, Eleanor	18	Shurt, Charles	13-15	Douthit, Richard	32-82
Burroughs, Mavis	19	Shumacher, Phyllis	17	Dowdy, Alfred	34
Burroughs, Wilbur	19	Sloan, Margaret	17	Duckwall, James	43-89
Burke, Elizabeth	69	Smith, Emily Ann	18	Edwards, Arnold	40
Capps, Julian	19-86	Smith, Frank	21-89	Eieker, William	26-84
Carpenter, Mildred	20	Spillman, Claude	19	Ellis, Gena	46-78
Carrington, Charles	15	Stegeman, Ruth	69	Elshon, Elenita	23-26-111
Chin, Rockwood	78	Stewart, Charlotte	17	Engle, William	46
Christian, John	20	Thompson, Kenneth H.	16	Eppard, Clara	31-82-87
Clark, Eleanor	17	Tredennick, Dorothy	18	Ferguson, William E.	41
Courrier, Dorothy	22-108	Urban, Ruth	20	Finch, Floyd	44-82-86
Daniel, George	20	Van Hook, J.	18	Fish, Jerry	30-78-90-102
Davis, Delpha	20	Wear, P.	21-78	Fleming, Beverly	32
Dingman, Helen	21	Weatherford, W. D.	7	Garrison, Fannie	47
Dinsmore, Agnes	20-86	Weekes, J.	18	Getz, Richard	37-79
Duncan, Irvine	19-87	Weekes, E. J.	18	Gilpin, Emogene	42-79
Ekas, Gertrude	19	Welsh, Den	17	Godhey, Edsel	25-90
Evans, Wilson	15-19-102	Whipple, Sherman	19	Godhey, Vadis	34-88
Faulkner, Maureen	18	Wiedler, A. G.	19-78-79	Godsey, Arnold	39-78
Feaver, J. Clayton	18-22	Wieringa, Hilda	17	Gorman, Ruth	44-79-87
Flannery, Lelia	17	Wilkinson, Sally	18	Gretar, Betty	34
Foley, Win. J.	82	Wolford, Feaster	19-22	Gretar, Inavi	34-78-79
Franke, Margaret	20-81	Woods, Ruth	20-86	Grizzle, James	42
Galley, Frank	21	Worth, D.	19-79	Hall, Don	45-79
Gibson, Florence	69	Wright, Theodore	19-79	Hall, O. Glenn	32
Giffin, Roscoe	21	Wyatt, Clarence	13-99-105	Hammond, Francis	34
Gilkerson, Seth	21-22	Wyre, Jean	19-87	Hammons, Betty	31-89
Graham, Charles	21			Hammons, Evelyn	36
Grodner, R.	21			Hart, Mary	39
Gundlach, Adelaide	15			Hayes, Elizabeth	46
Gunkler, O. H.	98-101-102			Haynes, Arthur	33-78
Hahn, Clement	74-75			Haynes, Marie	39
Harding, Christine	18			Hesse, Ted	38-86
Harrison, Florence	20			Hill, Anna Rae	26
Harrison, Paul	74			Hill, Robert	26
Hart, Marie	20			Hodges, Marjorie	29-30-78
Henderson, Bates	74			Honeycutt,	
Hopkins, Waring	18			Charles.	31-75-79-89-90-100-102
Hovey, Rolf	20-80-81			Hunt, Walter	44
Hughes, Jerome	18			Huntsman, William	28-98-102-105
Hull, H.	21			Huskey, Annabel	39-86
Hutchins, Francis S.	14			Hutchins, Jack R.	35
Jameson, Gladys	20			Jacobs, Helena	48-81-85-90
Jans, Ralph	18-22			Jenkins, Dorothy	45
Kavanaugh, George	15			John, James	82-83-88
Kilbourne, Maude	17			Jones, Margaret	41
Kysela, C.	20-81			Kelley, Douglas	32-79
Ledford, Maude	17			Kelly, Bruce	23-30-78-89-99-100-102
Ledford, Maudie	20			Kiely, Frances	42-85
Levey, Gerritt	19-86			Kinsland, Reba	45
Lincoln, Hazel	19			Knowles, Virginia	24
Lisko, Andrew	20-80			Le Master, Charles	44-78-89-100-102
Ludlum, Charlotte	20			Leach, Paul W.	39-79
Martin, Ira J.	18			Leming, Bert H.	26-75-85
May, Helen	20			Lemmon, Opal	28
May, William	19			Lewis, Margie	45
Menefee, Robert	19			Lindon, Eula Jean	25-89
Miller, Christine	18			Logan, Gene	23-40-78
Miller, Rebekah	17			Long, Ralph	47
Monier, H.	19			Looney, Bessie	29
Morris, G.	20-86			Lopez, Carlos	31-90
Nester, Paul	17			McCurry Hazel	48-86
Newbolt, William	19			McCurry, Leslie	39
Noll, W.	19-79			McDarris, Nell Jean	35-111
Noss, George	18			McDonald, Irene	28-82-83-111
Orr, Ray	19			McIntosh, Woodrow	47-78
Ott, Lester	15			McKiddy, Kathryn	29-31-88-111
Pauck, Charles	20			McNeill, Peter	25
Peck, Elisabeth	12-13-18			McQueen, Theona	48-79
Poulson, Jerry	99-105			Massey, William	29-86-100
Pressley, Lillie Margaret	16-88			Martin, Galen	40-79-85-88
				May, Bernard	23-33-88-89-90
				May, Thomas	43
				Miller, Hugo	30

## SENIOR CLASS

Abels, Lois Ann	25-88-111
Akens, George	37-78
Allen, Rhoda	48-84
Algood, Mary Lou	23-24-85-102
Archer, Louise	7-27-90-111
Armstrong, George	28
Arnett, Mary Alice	48-87
Arrington, Robert	35-85
Arrowood, William	25-79-98-102
Auxler, John	41-79
Banks, Fontaine	45-88
Banks, Harlan Clay	39
Barnes, Benjamin	42
Barrier, George	23-43-89-102
Bentley, Clea	33
Beverly, Claude	36-79
Bowling, Eugene	32-85-86
Braswell, Pauline	40-86
Bremer, Gertrude	41
Brewer, Maude	38
Bringman, Paul	45-80
Brown, Donald L.	38
Brown, Natalie	33
Buchanan, George	35
Burkhart, Stephen	33-85
Butcher, Ruby	27
Butcher, Ruth	27
Cameron, Phillip	28-84
Camper, Jimmy	36
Capps, Dan	30-99-100-102-107
Carpenter, Ted	42
Carr, Jeanette	44-78
Caulbe, Rebecca	26-75-80-111
Coyle, Kenneth	29
Coleman, Everett	43-80-85
Colley, Raymond	47-77-90
Collier, Lloyd	41-89
Combs, Artie Eveline	40
Cook, Cherry	32-86
Cooley, William	35
Copeland, Edward	24
Cornett, Robert	34-79-104
Corsi, Mary	7-48-79-88
Crum, Cyrus	25-89
Davis, Milton	27



Miller, James Frank	28-77-85
Miller, Odell	24-98-102
Miyashiro, Sakiko	42
Murray, Ellen	41-85-87
Noad, Lilas	28
Niekolous, Andrew	37
Norsworthy, Fern	29
Ogle, Mary	40-82
Peak, Margaret	47-81
Pearson, Stokes	35
Phillips, Harry	38-80-81
Phipps, Christine	45
Pennington, Lucy	25-78-87
Pingley, Betty	46-78-86-111
Pittman, Bruce	42
Poston, Hugh	24
Ramey, Joan	25-83-87
Recio, Ruben	45-78-85
Resse, Jack	46-80
Rice, Gene	46
Rice, Oliver	34-89
Rieben, Andre	37
Richardson, Barbara	40
Robbins, Sherman	42
Robinson, Jean	42-85
Rodriguez, Vincente	42-80-89
Rogers, Robert	33-77-79-86
Sawyer, Alma Jean	42
Sawyer, Glema	24-83-89
Scott, Ruby	48
Seay, Hilda	32-80-83-84
Self, Wade	43
Shamma, Maurice	40-79-86
Sherrow, Jane Ann	28-78-81
Sholar, Lola	37
Shrader, Stanley	39-89-98-99-100-101-102
Smith, Patricia	30
Smith, Sarah	47
Smith, Ted	25
Spurlin, Lucille	39
Stapleton, Mary Lou	37
Stewart, James	36
Strauss, Ernest	46
Strunk, Sheila	30-80
Swanson, Alfred	7
Sweet, Marjorie	29-90
Talbott, Dorothy	25-86
Templin, Margaret	24-78
Tuck, Ala	36-89
Tuck, Betty	36
Tuck, Herbert	7
Turner, Irene	42
Walker, Philip	32-78-79
Waller, William	31-79-85-90-102
Warholm, Dorothy	33
Warnock, Charles	31
Watson, Hazel	38-89
Wende, Ernest	48-85
Wesley, Maurice	36-89
Wesley, Eugene	34
Westfall, Robert	38
Whitaker, John R.	47-86
Whitesell, Thomas	35
Whitis, Marie	33
Williams, Betty	37-111
Williams, Randall	46-78
Williams, Wylaine	47
Willis, Arthur	24
Wilson, Cleo	37-81
Wilson, Eddie Kay	31
Winebarger, Fred	35-78-86-89
Winebarger, Grace	23-35-78-88
Yablonski, Anna	43-78-86
Young, Joan	41
Young, Willorve	43

## JUNIORS

Adkins, Wilma Rogenea	50-78
Alexander, Dorothy	51-78
Allen, Esther	51
Alley, Leah Anne	52-79
Alley, Kessler, Jr.	51-79
Atkins, Carolyn	53

Austin, Betty	52-89
Auxier, David	50-98-102
Baird, Robert	53
Ball, Dorothy Sage	51
Barrier, Joanne	51-86
Bastin, Maudine	52-78-87
Bell, Wheeler	51-78-79
Bishop, William	50
Blankenship, Charles	53
Boggs, Mary Lou	87
Boggs, Chabelle	50-79
Bonney, Francis E.	50-81
Branthley, Ruth	53
Branum, Leon	53-82
Brenzenbe, Mack	49-50-79-85-98
Breedlove, Carolyn	53-79
Brewer, James	52
Brown, Henry	49-51-88-98-102
Brown, Peggy	54
Brummitt, Curtis	89
Bryson, William	54
Bunbury, David	53-79-86
Burke, Erwin	79-99
Burke, Laura	53
Burr, Maxine	52
Burton, Gene	52-89
Bush, Beatrice	50
Byrd, Robert	51-80-102
Campbell, Vernon	51-78
Camper, Tommy	51
Carter, William	49-53-78-88-98-102
Cash, Doris	51-82-87-89
Castle, Harold	52-78-80
Chalmers, James	54-89
Cheney, James Frank	50-85
Childers, Barbara	51-86
Childress, Hazel Elizabeth	50-78
Claypool, Donald	89
Clem, Eleanor	53-82
Click, Peggy Jean	86
Cline, Harriet	50-87
Cline, Wilford	54-78
Coghill, Jean	54
Cope, Vivian	50
Cornett, Mildred	52-89
Crosswhite, Mae	51-79
Croucher, Joyce	51
Davidson, Priscilla	53
Deadrack, Frank	53-79
Dendy, Martha	50
Dillingham, Frances	51
Dingus, Doyle	80-85
Dingus, Joanne	50
Dixon, Donald	54-89
Dollar, Harold	52
Edward, Charles	51
Edswick, Robert	53
Eskew, Wilda	53-49-81-88
Eubanks, Mary	51-78
Farr, Ludd Jr.	52
Feltner, Dillard	51-98-100-101-102
Fields, Herbert	51-80
Fish, James	50
Floyd, Margaret	51
Fraisher, Patty Lou	53-86-108
Friar, Billy Wade	54
Fuller, Alfred	53
Gabhard, Minerva	52
Gentry, Doswell	54
Gilbert, Lois	53
Gillespie, James	52
Girdler, Pauline	51-78
Goble, Corban	52-77
Godsey, Garland	53-78-99-100-102
Gossage, Hazel	52-86
Gouge, Joyce	49-53-108
Hale, James	54-100-102
Hall, Jimmy	50
Halsey, Nell	50-78
Hansen, Maye	86-87
Harrill, Edward	52-78-85
Harris, Jerry Luther	50
Harris, Nannie	54
Henderson, Carol	50-87

Hieb, Doris	50
Hillman, Don	53-85
Hoffman, Edith	52
Hoffman, Jessie Edward	52-79
Hubard, James	89
Hubbard, Marilyn Louise	78
Huddleston, Louise	53-86
Huddleston, Inogene	52
Huntsman, Barbara	51
Jacobs, Walter	51-102
Jennings, Nell	51-86
Jennings, Samuel	53-78
Jolley, Lois	52
Jones, Woodrow	51-78
Kim, Thomas	49-79-88
King, Mary Louise	52-78-86
Kinnaird, Christine	51
Landrum, Bonnie	52
Leatherwood, James	51-100
Lennox, Roscoe	50
Lloyd, William	53
Lowe, Sylvia	50
Lusk, Mattie	50
McConnell, Elizabeth	53-86
McCurry, Eloise	51-78-86
McDonald, John	52
McNeil, Anna Lou	52
Marion, William	50-78
Masterson, James	51-78-100
Matthias, Donald	53
Maxey, Rosemary	49-54
Medley, James	79
Meeks, Carl	52
Meeks, Mabel	52-80
Miller, Gerald	86
Moore, Kenneth	50
Moore, Elva Rosalita	52-83
Montgomery, Francis	51-78
Mull, Randall	49-52-78-80
Mullins, Rena J.	53
Muse, Pauline	52-81
Nickell, Fred	52-89
Niekolakis, Nicholas F.	79
Olsen, Marolyne Alice	50
Osborne, Gladys	52
Parker, Glenn	54
Parker, Lorene	53-86
Peters, Urban	54
Pierce, Loise Joe	50
Pilson, Herbert	53
Plymale, Doris	54
Porter, H. A.	51-78
Price, Gaylyn	51-86
Purkey, Anita	50-77
Ramey, Julia Faye	53
Ramsay, William	53-77-89
Renkenberger, Nancy	53
Richards, Ada Rose	50
Rogers, John	52
Rose, William Ralph	50
Ross, Betty	78
Rudd, Oral	50-79-100
Saevy, Robert	49-51
Shelby, Betty	50
Sherrill, Nellie	50-79
Shrewsbury, Reynard	51-79-86
Slocum, Robert	79
Smith, Charles	52-82
Smith, Margaret	51-83
Snedegar, Virginia Ann	52
Southerly, Harvey	50-78-89
Stallard, Betty	50
Strauss, Ernest	86-87
Sutherland, Leona	52
Tackett, Carlos	53-78-87
Tallman, Wiley	52
Thomas, Doug	52
Thomas, Mary	53-108
Thompson, John	51-89-100
Tinney, Byrne	52
Tisinger, Claude	53
Turner, Lois	53
Valentine, Sol	54
VanHorne, Avonelle	52

Vickers, Tommie	54-77-83
Wade, Nadene	49-50-78
Wagoner, Donald	51-78-89-101
Ward, Flonnie	89
Watts, Vinson	50-78-79
Webb, Ann	51-78-87
Weddington, Herbert	100-102
Wiseman, Susan	53-78
Wittig, Josephine	51-78
Wyatt, Billie Faye	51

## SOPHOMORES

Aaron, Loly	60-87
Aaron, Louiza	57
Abbott, Bravel	57-99-100-101
Adams, David	60
Akers, Nancy	56
Allen, William Kenneth	98
Allison, Blanche	57
Almond, James	56
Aulick, Jane	56
Austin, Louise	56
Baber, Charles	57
Baker, Charles	99-102-104
Banks, Betty	59-55-88
Bastin, Sherrill	56
Bell, Delores	56
Bell, Lewis	59
Biddy, Bertha	57
Bow, Stephen	59
Bowen, Patsy	58
Boyd, Gene	100
Boyd, Sara	60-78
Branham, Delores	58-82
Brooks, Donald	99-105
Brooks, Eleanor	58
Brown, Wilda	59
Browning, Hugh	59
Bruce, Lulu	59
Bryson, Louise	60
Buckner, Louise	87
Buff, Otis	59
Calico, Helen	59
Callahan, Hubert	58-98-99-102
Carroll, Lois Sue	56
Casto, Januth	59
Caudill, Curtis	57-78
Chairatana, Loujil	59-80
Christman, Gladys	60
Chevenger, Paul	58-99
Click, Betty Jo	81
Cochran, Janet	58-81
Cole, Jack	57
Colvard, Audrey	59
Corbin, Lattie	59-81
Corwall, Fred	58
Coyle, Barbara	59
Cross, Carl	58-89
Cross, Willie	60-89
Crosswhite, Billie	56-87
Cruz, Ignacio	57-85-87
Davenport, Hilda	58
Deal, Edith	59
Dezman, Jean	56-82
Djsero, Clara	60-80
Dodd, Ruth	56
Dorton, Virginia	56
Dowdy, Edward	56-98-99
DuVall, Wiley	58-100
Eben, Lowell	59
Edmiston, Fay	58
Edmundson, Gerald	56
Edwards, Jack	55-57
Eldred, Hunter	58
Ezzard, Joanne	58-81
Fain, June	60-77
Fisher, Betty	58
Flowers, James	56
Foley, Phyllis	56-81
Futry, Bernard	58
Fuson, Earlene	60-78
Gallher, Lydia	60
Garrett, Lowell	57
Garrett, Sydney	57

Geyer, George Shisler	89
Gilkinson, Victor	58
Gilpin, Ella Daniel	86
Glenn, Robert	6-56-86
Graham, Carl	59-98-102
Gray, Herbert	55-56-78-88
Hagy, Bessie	58
Hall, Evelyn	59
Hall, Jayne	59
Hamrick, Clair	58-81
Harper, James	56-99-102
Harris, Albert	58
Harris, Lenore	56
Harrison, Jack	58
Hart, Phyllis	58
Hassler, June	56-80
Hawthorne, Donald	58
Hayes, Bobby	56
Haynes, Mrs. Arthur	60
Hefner, Nora	58-80
Hill, Helen	57
Hill, Jane	57
Honeycutt, Wanda	78
Horne, Phillip	56
Horsch, Jean	6-57-79
Horton, Carol	57-78-89-100
Hulbard, Kenneth	57
Hukhes, Mary	59
Hulburt, Mary	55-59-108
Hunt, Letty	56
Huskey, Faye	57
Imgrain, Mary	57
Isen, Glennon	102-107
Johnson, Davie	56
Johnson, Powell	57-98-99
Jokay, Luis	58-89
Jones, Roxie	57
Justice, Harold	57
Keeter, Jackie Crawford	58-81
Ketehersid, Ruth	56
Kirby, James	57
Kite, David	58
Lambert, Wesley	58
Largo, Martha	60
Lear, Helen	56
Lear, Jennie	56
Leatherwood, Mary Jane	56-87
Leatherwood, Nellie	55-57-88-108
Ledford, Betty	58
Leming, Mary	60
Lewis, Hoy	57
Libby, Sue	60
Linkous, George	58
Lisenbee, Benny Ray	98
Lisi, Phyllis Katherine	81
Lominac, Gene	56
Lovette, Lovie	57
McCall, Coy	99-100-104
McClure, Hilda	55
McDonald, Marjorie (Mrs.)	60
McGlone, Betty	39
McGlone, Forrest	60-104
Martin, Leland	59-99-101-102
Martin, Marjorie	58
Mattingly, Mildred	60
Messer, Anna Lee	59
Miller, Robert	58-99
Mims, Harold	58-89
Mirbach, Norman	59
Mobley, Duad	59-100
Moneyhan, Russ	57
Moore, Donna	57
Moore, Doris	60-81
Morris, Eleanor	57
Morris, Wayne	60
Moss, Inez	59
Moyers, Bobbie	56
Mullins, Mary Anne	56
Napier, William	56-100
Nickell, Edna	58-89
Noland, Paul	56-89-99-102-107
Page, Roy	59-86
Parker, Edsel	56
Parsons, Lillie Bess	57

Pickens, Catherine	57
Pitman, Florence	59-82
Powell, Wilma	59
Ramsay, Stella	57
Riddle, Jeanne	59-82
Rose, Ray	57
Rouse, James	60-78
Ryan, Peter	59-99-102
Schmidt, Dorothy	60-85
Shriver, Suzanne	59
Sizemore, Nicky	60
Smith, Betty	58
Smith, Vance	57
Smith, Peggy	59
Spangler, Bishop	60-78
Sprinkle, Gay	57
Spradlin, Colista	60
Stallard, Charles	56
Stidham, William	57-89-99-101
Stout, Mable	57
Strait, Emma Jo	87
Tackett, Raymond	58-100
Taylor, Maxine	55-57
Templin, Lois	60
Thompson, Elyis	58
Thurmond, Carolyn	57-81
Tipton, Julia	59
Tinsinger, Richard	59
Todd, Fays	60
Valentine, Kenneth	59-89-102
Vinton, Allan	56-80-100
Wade, Allene	59-78-89
Wade, Ralph	98-99-102-105
Walker, Laura	58
Walters, Robert	60-100-102
Walters, Roy	88-98
Walshall, Ronald	57-87
Wells, Donald	60
Wheeler, Shirley	58-85
Wilde, Carroll	58
Wilde, Exkie	55-58
Williams, Vernon	57
Wilson, Shirley	59-78
Withrow, Margaret Anne	59
Wong, John	60
Worthing, Elizabeth	56
Wright, Buster	56-99
Wright, Freda	59
York, Delores Valerie	59
York, Sue	58-86

## FRESHMEN

Abner, Buford	66
Abner, Stanley	65
Albright, Janet	63
Alley, Esther Corine	67
Anderson, Nell	67
Armstrong, Eloise	62
Ascough, Patricia	67
Atkins, Bill	65
Atkins, Donald	65
Atwood, Mary	62-85
Austin, Lloyd	67
Austin, Jean	64
Bailey, Ross	62-89
Bailey, Dempsey	62-78
Baldock, Jewell	63
Ball, Delores	88
Ballard, Mary	67
Ballow, William	63-80-87
Barnhill, Harold	63
Barrier, Cecil	65
Beard, Minnie	65
Bell, Delores	66
Bess, Melvin	65
Biddix, Nancy	62
Black, Norma	65
Boise, Evelyn	64
Bootic, Mary	63
Botkin, Frances	65-80
Bramlett, Mary Catherine	63
Brannon, Patricia Ruth	62
Brantley, Mildred	62
Bringman, Ed.	66-80
Brockman, Rose Mary	66

Brown, Bradley	62
Brummitt, Jack	65
Bryan, Lillie	67-80
Buchanan, Roger	67-77
Bumgarner, Eunice Dale	63
Burchell, Eleanor	80
Burleson, Vernie	66
Byrd, Dexter	65
Callihan, Evelyn	63
Cameron, Ann	63
Campbell, Edith	63
Campbell, Jack	63
Campbell, Mary Ann	66
Carr, Joanne	63
Carroll, Marvin	62
Case, Jean	67
Case, Eleanor	66-80
Caudill, Polis Dean	62
Caudill, Thor	65
Cavalier, Mary	62
Caylor, Barbara	63
Chaney, Conner	67
Childers, Mary Emma	63
Cogburn, Betty	66
Colvard, James	98-99-102
Colville, Samuel	62
Conley, James Franklin	62
Copley, Orpha	62
Cornelius, Edna	66
Cottonizing, Glenn	62-99
Cox, Vance	67
Cross, Roy	64
Crowder, Tinsley	62-77
Cunningham, Joan	65
Dawson, Richard	66
Day, R. C.	67
Derickson, Mina Jane	65
Deweese, Massie	63
Dingess, Ronald	63
Douglas, Robert	66
Drake, Joan	62
Dunger, Delmas	64
Duncan, Richard	63
Durden, Mabry Jean	108
Dutton, Ernest	63-99-106
Eller, Nelma	62
Falkner, Maizie	63
Flores, Carlos	85
Flynn, Eugene	64
Foster, Frances	66
Fowler, Reva Jo	61-65-80-98
Franklin, Eva	67
Friar, Jack	61-63
Gabbard, Jack	65
Gallimore, Howard	63
Garrison, Paul	67
Gay, Denver	66
Gibbs, Harold	62
Gibson, Ronald	66
Glass, Evelyn	65
Godhey, Audrey	65
Godby, Forrest	62
Green, Betty	65-85-87
Greenhill, Troy	63
Grogan, Wayne	63
Grooms, Betty	63
Gross, Christine	66
Gunter, Eileen	66
Gwinn, Kenneth	63-80
Hager, Jolene	62
Halbert, Ray	104
Halcomb, Marcus	66
Halcomb, Wallace	66
Hall, Hollis	66
Hall, Clyde	67
Hall, Ruth	67
Halterman, Clara	66
Hamilton, Gordon	61-66-88
Hardwick, Fannie	63-98
Harrell, Wilma Ruth	80
Hartman, Fred	67-80
Hasty, Billy	62
Helmboldt, Doris	65-80
Henderlite, Edward	67
Henderson, David	67
Hinkle, Doris Ann	65
Hirata, John	66
Holder, Edwin	101
Holt, Raymond	63-78
Hoskins, Eugene	65
House, Mary	67-81
Howard, Cora Lee	65
Howell, Wilma	63
Hung, Samuel	67-85
Hurt, Billie	67
Jarrell, Harold	65
Johnson, Forest	65
Johnson, Kenneth	61-63-99
Johnson, William	66-80
Jones, Milton	63
Jones, Loyal	63
Jones, Martha	65-80
Kilvi, Pridu	62
Kineaid, Maxine	67
Kiser, Jeanne	66
Knight, Bob	67
Lane, Harvey	65
Lanier, Gwendolyn	63-80
Larew, Tully	66-89
Laswell, Billy	67
Ledbetter, Guy	62
Ledford, Dorothy	67
Lee, William	87
Leo, Jo Ann	66
Leslie, Gerald	62-101
Leslie, Mary Alice	65
Lester, Ronald	66
Lewis, Alon	63
Lewis, Imogene	66
Loy, Joyce	65
McCarty, Phil	62
McCloud, Thomas	67
McClung, Marian	65
McDaniel, Bill	89
McKnight, Bill	66
McLaughlin, Frances	65
McLenore, Eugene	63
McSween, Betty	61-67-88
Maddox, Wayne	66
Manicur, Alice	67-78
Marsh, John Seawell	63-80-81
Mason, Grant	65
Massey, Douglas	65-99-106
Meade, Frieda	66
Meeks, Ruth	65
Merritt, John	67
Miles, Louis	65-77
Minnis, Edward	62
Miracle, Chester	63
Mitchell, Joe	62
Miyashiro, Michiko	65-85
Moore, Bobby	62
Moore, Bob	66
Morgan, Joe	65
Moser, Paul	66-80
Moxley, Donald	66
Nester, Betty	67
O'Daniel, Mary Frances	62
O'Dell, Joan	67-80
Ogle, Louise	66
Osborne, Mary Elizabeth	66
Owens, James	63
Packett, Leonard	65
Parker, Betty	62
Parsons, Norma	66
Peace, Kinzel	67
Pelfrey, Lois	62
Pennington, Frances	63
Pitts, Soney	65
Planck, Margaret	62
Powell, Douglas	62
Powers, Donald	65
Powers, Fairy	67
Preston, Kathleen	66
Fruit, Robert	62
Ray, Leslie	64
Reedy, Ellen	65-108
Rhudy, Louise	63
Ricketts, Lee	66
Rigsby, Norma	66
Rimmer, Billie	62
Risk, Elaine	66
Rogers, Grace	67-77
Rogers, Neil	61-65-80
Rogers, Theodore	62
Rosenberger, Graham	66
Russell, Lola Myrla	62
Russell, Marva Ann	63
Sadler, Alice	65
Sagre, Betty	67
Saude, Edith	67
Sells, James	66
Shaw, Bethona	65-80
Shepherd, Joyce	67
Sherrill, Patsy	67
Shipe, Arthur Lynn	63
Skinner, Gerald	62-106
Smathers, Patricia	77-108
Smith, Herman	62
Solmon, Gladwin	64-85
Stallard, Orl	67
Steele, Simon	63
Stivers, Romelle	65
Stout, Billy	61
Sueyoshi, Frank	66-85
Sutton, Imogene	63
Sutton, Ruth	62
Taulbee, Glenna	67
Taylor, Anne	66
Taylor, Robert	67
Taylor, Ermalene	63
Tonne, Arlene	62
Trimble, Edwin	39
Tuggle, Guy Marie	63
Turner, Sam	66
Underwood, Mildred	62
Van Horn, John	66
Van Sant, Frances	67
Varney, John	67
Vaught, Sue	66
Via, John	63-99
Wallen, Norma	66
Ward, Yvonne	67
Warholm, June	66
Watson, Gene	62-80
Waver, Marilyn	66
Webb, Alice	62-85
Webb, Jackie	65
Wheeler, Donald	66
Williams, Geraldine	63
Williams, Patrick	61-63
Wilson, Azalee	62
Wilson, Glenna	66
Wilson, William	63
Wingo, Jack	63
Winston, Betty	62
Witt-nback, Ruth Anna	67-108
Wright, Sara	67-80
Young, Milton	65

Senior Nurses	70
Junior Nurses	72
Freshmen Nurses	73

### FOUNDATION SCHOOL FACULTY

Ayre, Pearly	113
Boes, O.	113
Brooks, Florence	113
Carpenter, Mildred	113
Dizney, C.	119
Drake, Charles	121
Emerson, Della	113
Fenn, Lois	113
Grossman, J.	113
McGuire, Lillian	113
Morris, G.	113
Parrish, Gladys	121
Schultz, H.	113
<b>Foundation</b>	
Seniors	115-116-117
Foundation Juniors	118-119
Foundation Sophomores	120
Foundation Juniors	120

Our thanks go to The Chimes'

# Advertisers

Without their splendid cooperation, this  
book could not have been published.



Suppliers of hardware for the  
ANNA L. SMITH DORMITORY

**J. B. Schroder Company**  
Cincinnati 10, Ohio



*Anna L. Smith Hall*

# Hargett Construction Company

Incorporated

GENERAL CONTRACTORS

113 Walton Avenue

Lexington 37, Ky.

*Contractors For Berea College's Newest Building—*

*The Anna L. Smith Hall for Women.*

*Central Kentucky's Leading  
Jewelers and Silversmiths  
for Sixty-Seven Years*

**Victor Bogaert Co.**

"Jewelers and Diamond Importers"

Established Since 1883

Brussels, Belgium; Lexington, Ky.

Compliments of

**The Wm. Glenny Glass  
Company**

10-16 W. Commerce Street

CINCINNATI, OHIO

Manufacturer of the Calgonite Control . . . . an aid to Efficient,  
Economical Machine Washing.

**CALGON, INC.**

"CALGONITE FOR HYGENIC DISH-CONDITIONING"

P. O. Box 1346

Pittsburgh 30, Pa.

**CROSSE &  
BLACKWELL**

BALTIMORE · 24, MD.

*Fine Foods  
Since 1706*



Compliments

Of

A

Friend



Fine Meats Since 1845!

And still, in 1951, this trademark is your guarantee of  
highest quality in meats.

WHEN YOU BUY KINGAN'S . . . YOU BUY THE BEST!

**Kingan & Co.**

General Offices

Indianapolis, Ind.

Congratulations

Shearard's Studio

Expert Photo Finishing  
and Portrature

Photographic Supplies

SHORT STREET

BEREA

Quality Furniture

LEET BROTHERS

Since 1913

Main and Broadway

Lexington

Compliments of

ADES-LEXINGTON DRY GOODS CO.

Lexington, Ky.

DAVID ADES

LOUIS R. ADES

DOT  
FRUITS AND VEGETABLES  
HOTELS AND INSTITUTIONS

## THE JANSZEN COMPANY

Cincinnati, Ohio

MA 0932

HUGH CAMPBELL, Representative

1419 Richmond Road

Lexington, Kentucky

Phone Lex. 3-4085

The Only Place In Berea  
Especially For Berea Students!

## THE HANGOUT

"We'll be here when you re-  
turn. Drop in and see us . . .  
anytime."

## Hughes Fawcett, Incorporated

115 Franklin St.

New York 13, N. Y.

LOOMS AND ACCESSORIES



IRISH LINEN!

IT'S LOVELY

IT LASTS!



May We Extend Our  
CONGRATULATIONS  
MARTIN A. CEDER

Louisville, Ky.

Elevators

Clay 0633

Compliments Of  
CRANE CO.

Compliments Of  
Blanke-Baer Extract & Preserving Co.

St. Louis, Missouri

*Manufacturers of*

FINE JELLIES, JAMS, PRESERVES, PIE FILLING,  
PEANUT BUTTER, SALAD DRESSING

*and*

FINE INDUSTRIAL FRUITS AND FLAVORS

# TRANE

Manufacturing Engineers of heating, ventilating, and air conditioning equipment for domestic, commercial, industrial and process applications. The new, beautifully illustrated booklet "Choose Your Weather" tells the story of Trane equipment and how it is being used to fill the need of good heating, ventilating and air conditioning throughout the world. Your free copy can be secured from either La Crosse or Louisville.

The Trane Company - - - La Crosse, Wisconsin

LOUISVILLE SALES OFFICE

326 Fincastle Bldg.

Phone: Amhurst 2511

Congratulations to the  
Seniors of 1951.

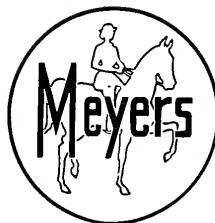
**E. E. GABBARD**

and

**K-TAXI**

Phones 202 and 602

Berea



Riding Apparel  
and Sportswear

LEXINGTON, KY.

Compliments of

**Cutter Electric Co.**

Lexington, Ky.

**ELECTRICAL CONTRACTORS**

940 East Third Street

Phone 2-2565

**BRAKMEIER BROS.**

Bronze Memorials

Rubber  
Brass  
Steel

**STAMPS**

LOUISVILLE, KY.



BAKERY AND CANDY KITCHEN

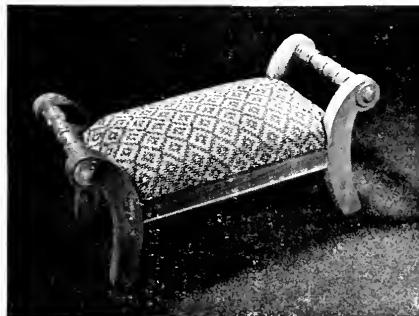


NEEDLECRAFT



BROOMCRAFT

WOODCRAFT



FIRESIDE INDUSTRIES

MOUNTAIN WEAVERS



BEREA COLLEGE  
*Student Industries*  
BEREA, KENTUCKY

"It is only by labour that  
thought can be made healthy,  
and only by thought that  
labour can be made happy;  
and the two cannot be  
separated with impunity."

Ruskin

# *Sleepy-Head House*

*The South's Most Complete Factory-To-You Furniture Store*

Retail Division of

Southern Bedding Company, Inc.

Main at Broadway

Lexington, Kentucky

*"WE WORK THAT YOU MAY SLEEP"*

Compliments of

**THE ALLEN COMPANY, INC.**

Winchester, Kentucky

Contractors

*Also*

Producers Of Crushed Limestone

and

Agriculture Lime

Best  
Wishes  
To  
The  
Class  
Of  
1951



PORTER-MOORE DRUG COMPANY, Berea, Ky.

Supplies

Machinery

Equipment

Manufacturers

Distributors

Importers

**HUTER-QUEST & COMPANY**

Incorporated

833 W. Main Street

LOUISVILLE 2

KENTUCKY

**CHARLES F. SHIELS & CO.**

White Pine and Domestic Hardwoods

CINCINNATI 3, OHIO

# NU-MAID

## "TABLE GRADE" MARGRINE

Produced from the finest  
Ingredients from American farms  
In one of the most modern  
Plants in the country.



**THE MIAMI MARGARINE COMPANY**

CINCINNATI 2, OHIO

Compliments Of

**PURKEY and DAVIS**

Berea, Kentucky

Remember that EPLEE'S COURT  
Offers The Most Modern  
Accommodations In Berea.

• ◆ •

**EPLLEE'S COURT**

Berea

Kentucky

Congratulations  
Seniors!!

**BEREA NATIONAL  
BANK**

Berea, Kentucky

**Fine Paper Specialties**

BETTY BRITE—

White or Tinted Doilies,  
Place Mats, Shelf Covers,  
Baking Cups

AMERICAN—

Drinking Cups, Porcell  
Cups, Candy Box Findings,  
Tray Covers

**American Lace Paper Co.**

Milwaukee, Wisconsin



**BOONE TAVERN OF BEREA COLLEGE**

*"Our Student Staff Prides Itself In The Best And Most  
Efficient Service Available"*



*"Food Products Of Quality"*

Pickles  
Preserves  
Jams and Jellies  
Fruit Butters

## Lutz & Schramm Inc.

1412-1464 River Avenue  
Pittsburgh 12, Pa.  
Phone CEdar 1-1620

## To the Class of 1951

We Offer Our  
Congratulations

And

Best Wishes For The Future

## JIM'S PLACE

Short Street

Berea

*"Remember To Drop In And  
See Us When You Return to  
Berea."*

## ROMINGER FUNERAL HOME

Berea, Ky.

Our Ambulance Stands Ready  
Night and Day To Serve Berea  
And the Surrounding Commu-  
nities.

*"Congrats To The Grads"*



## Swinford Chevrolet Co.

Chevrolet-Oldsmobile

Berea, Ky.

We Offer Expert Repair Service  
For Your Chevy.

Wholesale Dealers

## Fulton Fish Market

121-123 West Jefferson Street  
Louisville 1, Kentucky



FISH  
OYSTERS  
CONDIMENTS

Dry Cleaning and Tailoring Well Done

*Modern Equipment*

## NU-WAY CLEANERS

SATISFACTION GUARANTEED

Main Street

Phone 61

BEREA

### Lacquer Specialties, Inc.

Allegheny Ave. and Ave. P.

Mail Zone No. 5

Newark, N. J.

WOrth 2-7765

Compliments of  
**GRAINGER  
ANTIQUÉ SHOP**  
and  
**BEREA THEATRE**

*Reliable* - - - - -

SWIFTER THAN FREIGHT  
CHEAPER THAN EXPRESS

### Meeks Motor Freight

1311 W. Market Street

Louisville 3, Ky.

In Berea It's  
**STANDARD  
OIL COMPANY**

R. F. POWELL  
Manager

**BEST WISHES**

**for the**

**CLASS OF 1951**



**DAVIDSON BROS.  
AND COMPANY**

Berea, Kentucky

Compliments of

**American Cotton  
Products Company**

2512 South Damen Avenue  
Chicago, Illinois

Compliments Of

**Finnell and Hymer  
Furniture Store**

Kelvinator Appliances  
Phone 292 Masonic Bldg.  
BEREA

Congratulations and

Best Wishes to

The 1951 Seniors  
of Berea College

**Dixie Wax Paper Co.**

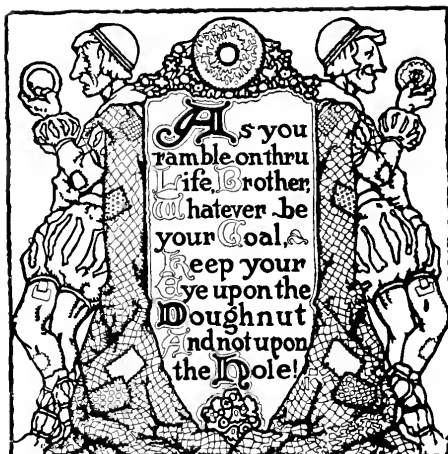
P. O. Box 2607  
Memphis, Tennessee

**CALUMET**

**Tea & Coffee Co.**

500-508 West 31st Street  
Chicago 16, Illinois

*"Beverages That Satisfy  
The Discriminating"*



Doughnut Corporation  
of America

393 Seventh Avenue

New York 1, N. Y.

Compliments Of

Elder Federated Store

Richmond, Kentucky

Berea Dry Cleaners

Short Street

Cleaning

Pressing

Altering

Compliments of

a Friend

ZARING'S MILL

MADISON MAID FLOUR

For Delicious Rolls and Cakes

ZARING'S MEAL

For Delicious Corn Cakes  
and Muffins

Richmond, Kentucky



“Where  
We  
All  
Get  
Together.”

**THE CARLTON,** Main Street

Berea, Ky.

“Your  
Friendly  
Bus  
Company”

Compliments Of

**BLACK BROTHERS BUS LINES**

Phone 210

RICHMOND, KENTUCKY

“Charter  
Service  
Anywhere”

Compliments Of

**YOUNG'S STORE**

Main Street

Berea, Kentucky

Congratulations and Best Wishes to the Graduates of '51

**QUALITY A TRADITION**

**W. F. HIGGINS COMPANY**

*Complete Home Furnishings*

Phone 62

Richmond, Kentucky

Phone 62

**BEREA  
COLLEGE  
STORE**

“At The Service of  
The Students  
And Workers  
Of Berea College”

*Designed For You  
Maintained For You*

“Where Berea Co-eds  
Shop For Style  
And Quality.”



**THE  
ELSIE  
SHOPPE**

Main Street  
Berea, Kentucky

Compliments Of  
**BAKER'S NEWS AND SUNDRY STORE**

“T. P.'s”  
Berea, Kentucky

Our Congratulations Go to the Seniors of 1951

**BEREA BANK AND TRUST CO.**

Berea, Kentucky

*“Growing In Strength Through Service”*

**Remember:**

*It's The DIXIE KITCHEN For*

**STEAKS  
CHOPS  
DINNERS  
SANDWICHES  
DRINKS**

**DIXIE KITCHEN**

West End

Berea, Ky.

GILMER WILSON, Proprietor

High Grade, Band Sawed Indiana Hardwoods

**T. A. FOLEY LUMBER CO., INC.**

Manufacturers

Established 1887

Phone 618

PARIS, ILLINOIS

We Wish to Congratulate the Seniors of 1951

**BEREA MOTOR COMPANY**

Chestnut Street

Berea, Kentucky

*YOUR DODGE-PLYMOUTH DEALER*



**Seniors:**

"We Have Appreciated Your Business While You  
Were At Berea."

**ALLEN'S FLOWERS**  
Berea, Kentucky

Compliments Of

**PARSONS' ELECTRIC CO.**

Chestnut Street

Berea, Kentucky

Compliments Of

**ALLEN FOODS, INC.**

St. Louis, Missouri

Institutional Food Specialists

for Schools, Colleges, and Restaurants

WHOLESALEERS, DISTRIBUTORS AND MANUFACTURERS

To the Class of '51—

Congratulations!!

**BEREA BARGAIN STORE**

Berea, Kentucky

**BROCK-McVEY CO., INC.**

Plumbing And Heating Supplies

LEXINGTON, KENTUCKY



**“Wholesale  
Fruits and  
Vegetables”**



**PETE MARINO**

Irvine Street

Richmond, Kentucky

To a

**Swell Class and a Great School**

***Congratulations***

**PAPER PACKAGE COMPANY  
INDIANAPOLIS, INDIANA**

**PROTECT YOUR HEALTH**

Use: Lee Clay Well Lining  
Lee Clay Septic Tanks  
Lee Clay Grease Traps  
Lee Clay Sewer Pipe and Drain Tile

*“See Your Local Building Material Dealer”*

**LEE CLAY PRODUCTS CO., INC.**  
CLEARFIELD, Rowan County, KENTUCKY

We invite our friends in  
the Berea area to visit  
our new quarters at

321 SYCAMORE ST.  
CINCINNATI 2,  
OHIO

THE  
JOHNSON  
ELECTRIC  
SUPPLY  
COMPANY

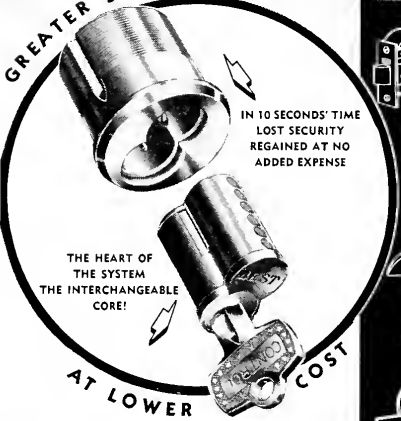
Electrical Supplies

Television and Appliances

Lighting Equipment

**BEST** features  
THE EXCLUSIVE  
**INTERCHANGEABLE**  
*Core*

**GREATER SECURITY**



IN 10 SECONDS' TIME  
LOST SECURITY  
REGAINED AT NO  
ADDED EXPENSE

THE HEART OF  
THE SYSTEM  
THE INTERCHANGEABLE  
CORE!

**AT LOWER COST**

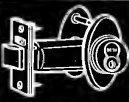
*Best*

**BRINGS NEW LOCK PROTECTION  
AND NEW LOCK SECURITY**


Hotels, Hospitals, Schools, Office Buildings,  
and Y. M. C. A. and Y. W. C. A.  
Buildings.

Institutions and Industrial plants of any  
size may have a Master Key for all Best  
Locks. Groups of locks may be Sub-  
Mastered Keyed in groups of Individual  
Keyed locks. This gives YOU the protection  
of "renewable security" by the use of the  
INTERCHANGEABLE CORE when  
keys are misplaced or stolen, or when  
there is a change of personnel.


Best Mortise Cylinders are interchangeable  
with most cylinders of other make  
mortise locks.




Tubular Mortise Night  
Latch operated by key  
outside and thumb turn  
inside or key both sides.




Tubular Mortise  
Knob Latches




Sliding Gate  
Locks



Best Rim  
Night Latches  
and Cylinders




Cabinet-Desk-  
Drawer-Locker  
and Switch Box  
Locks



Best Solid Jacketed  
Padlocks supplied in  
1½", 1¾" and 2"  
sizes. Chains and  
dust caps if desired.

WRITE TODAY FOR A COPY OF OUR "PREVIEW"  
AND COMPLETE INFORMATION ON BEST LOCKS.



**BEST**

**BEST UNIVERSAL LOCK CO., Inc.**  
10 N. SENATE AVE. • INDIANAPOLIS 4, INDIANA

**MAKE EVERY MEAL  
A PARTY MEAL**

*. . . Always Use*



**MONARCH  
FOODS**

*Definitely FINER*

**MONARCH** . . . the foods Arthur Godfrey  
tells you are best.

**Seniors:**

Little Mama extends best wishes  
for the future.

**LITTLE MAMA'S**

Short Street

Berea

*"The Favored Spot For Bereans  
To Meet, To Eat, To Chat."*

**FOLEY MOTOR COMPANY**

Ford Sales and Service  
Wrecker Service

Phone 308

Berea, Kentucky

**BOONE TAVERN**

**GIFT SHOP**

Berea, Ky.

*Always The First Stop*

For Products of **BEREA COLLEGE STUDENTS**  
And Handicrafts of the Southern Highlands



*The* **ART-CRAFTS**  
**ENGRAVING CO.**

• Superior Printing Plates •  
Perfection of Depth and Color  
PArkway 0268-9      705-11 Sycamore St.  
CINCINNATI

ENGRAVERS FOR THE CHIMES







BEREA COLLEGE  
3 3217 00320 3081

