



NEW YORK PUBLIC LIBRARY
ASTOR LENOX TILDEN FOUNDATION
455 FIFTH AVENUE
NEW YORK 17, N. Y.

NY PUBLIC LIBRARY THE BRANCH LIBRARIES



3 3333 08119 4496

95-1011940

~~89.6 Tomlins~~

5810

Christmas carols

THE CENTRAL CHILDREN'S ROOM
BONNELL LIBRARY CENTER
40 WEST 53 STREET
NEW YORK, N.Y. 10019

Digitized by the Internet Archive
in 2007 with funding from
Microsoft Corporation



CHRISTMAS CAROLS

ANCIENT AND MODERN

EDITED BY

WILLIAM L. TOMLINS



AMERICAN BOOK COMPANY

NEW YORK

CINCINNATI

CHICAGO

5810

CAROL OF THE FLOWERS.

GASCON.

slow.

Come with us, sweet flow'rs, and wor-ship Christ the

2d time rit. FINE.

Lord, let your per-fumes hov-er round the Babe a-dored.

Sop. & Alto.

1. Mod - est Vio - let, hid - ing in the grass - y
2. Lil - y fair, low bend - ing in the smn's warm
3. As thou, Pan - sy, shin - est forth in bright ar -
4. As thou, Rose, wide - op'n - ing dost thy scent im -

shade, Thou canst say how hum-ble He for us is made light, Thou dost tell that He is pure as thou art white. ray, So doth He His maj-es-ty to man dis-play. part, So His love ex-pand-ing, draws each sin-ful heart.

Much faster.

In-fant so gen-tle, so pure and so sweet, Love, from Thy tiny eyes, sinners doth greet.

p *cres.* *pp* *rall.* *D. C.*

Tend'rest words fail all thy beau-ty to shew; We must a-dore Thee, if Thee we would know.

THE MANGER THRONE.

mf

1 Like sil - ver lamps in a dis - tant shrine, The
 4. The stars of heav'n still shine as at first They
 5. Faith sees no lon - ger the sta - ble floor, The

mf

stars are spark - ling bright; The bells of the cit - y of
 gleamed on this wonderful night, The bells of the cit - y of
 pavement of sapphire is there, The clear light of heav'n streams

God ring out, For the Son of Ma - ry was born to - night; The
 God peal out, And the An - gels' song still rings in the height; And
 out to the world; And Angels of God are crowd - ing the air; And

gloom is past, and the morn at last Is coming with o - rient light.
 love still turns where the God-head burns, Hid in Flesh from flesh - ly sight.
 heav'n and earth, thro' the spot - less Birth, Are at peace on this night so fair.

THE MANGER THRONE. Concluded.

2. Nev-er fell mel-o-dies half so sweet As those which are fill-ing the skies;
 3. Now a new Pow'r has come on the earth, A match for the ar-mies of hell;

And nev-er a pal-ace shown half so fair As the man-ger bed where our Sav-ior
 A Child is born who shall con-quer the foe, And all the spir-its of wick-ed-ness

lies; No night in the year is half so dear As this which has ended our sighs.
 quell; For Ma-ry's Son is the Might-y One Whom the prophets of God fore - tell.

CAROL FOR CHRISTMAS DAY.

Moderato.

1. All this night bright angels sing, Nev - er was such car - rol-ling: Hark! a voice which
 2. Wake, O earth, wake ev - 'ry thing, Wake and hear the joy I bring: Wake and joy; for
mf

CAROL FOR CHRISTMAS DAY. Concluded.

cres. *f* *p*

loud - ly cries, "Mor - tals, mor - tals, wake and rise. Lo! to glad - ness Turns your
all this night. Heav'n and ev - 'ry twink - ling light, All a - maz - ing, Still stand

cres. *f*

sad - ness; From the earth is ris'n a Sun, Shines all night, tho' day , be done."
gaz - ing; An - gels, Pow'rs and all that be, Wake, and joy this Sun to see!

3D VERSE. *mf*

3. Hail! O Sun, O bless - ed Light, Sent in - to this world by night; Let Thy Rays and

dim. *pp* *cres.*

heav'nly Pow'rs Shine in these dark souls of ours. For, most du - ly, Thou art

f *ff* *rall.*

tru - ly God and man, we do con - fess: Hail, O Sun of Right - eous - ness!

HYMN FOR CHRISTMAS DAY.

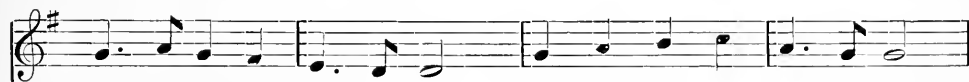
SOLO. Treble or Tenor, or alternately.

J. GOSS.



1. See a - mid the win - ter's snow, Born for us on earth be - low,
 2. Lo, with - in a man - ger lies, He, who built the star - ry skies;
 3. Say, ye ho - ly Shep - herds, say, What your joy - ful news to - day;
 4. "As we watched at dead of night, Lo, we saw a won - drous light;

Moderato.



See the ten - der Lamb ap - pears, Prom - ised from e - ter - nal years.
 He, who throned in height sub - lime, Sits a - mid the Cher - u - bim.
 Where - fore have ye left your sheep, On the lone - ly mount - ain steep?
 An - gels sing - ing peace on earth, Told us of the Sav - ior's birth."



CHORUS.



Hail! Thou ev - er bless - ed morn! Hail, Re - demp - tion's hap - py dawn!



Sing thro' all Je - ru - sa - lem, Christ is born in Beth - le - hem.



5 Sacred Infant, all Divine,
 What a tender love was Thine;
 Thus to come from highest bliss
 Down to such a world as this!
 Hail, thou ever blessed, ect.

6 Teach, O teach us, Holy Child,
 By Thy face so meek and mild,
 Teach us to resemble Thee,
 In Thy sweet humility!
 Hail, thou ever blessed, etc

CAROL FOR CHRISTMAS-EVE.

mf

1. Lis - ten, lord - ings, un - to me, a tale I will you tell; Which, as on this
 2. Shepherds lay a - field that night, to keep the sill - y sheep, Hosts of An - gels
 3. On - ward then the An - gels sped, the shepherds onward went, God was in His

mf

night of glee, in Da - vid's town be - fel. Jo - seph came from Na - za - reth, with
 in their sight came down from heav'n's high steep. Ti - dings! ti - dings! un - to you: to
 man - ger bed, in wor - ship low they bent. In the morn - ing, see ye mind, my

Ma - ry, that sweet maid: Wea - ry were they, nigh to death; and for a lod - ging
 you a Child is born, Pur - er than the drops of dew, and bright - er than the
 mas - ters one and all, At the Al - tar Him to find who lay with - in the

CHORUS.

ff

pray'd. Sing high, sing low, sing high, sing low, sing to and fro, Go tell it out with
 morn.
 stall. Sing high, sing low,

ff

CAROL FOR CHRISTMAS-EVE. Concluded.

speed, Cry out and shout all round a - bout, That Christ is born in - deed.

SLEEP, HOLY BABE.

pp *cres.* *mf*

1. Sleep, Ho - ly Babe! up - on Thy moth - er's breast; Great
2. Sleep, Ho - ly Babe! Thine An - gels watch a - round, All
3. Sleep, Ho - ly Babe! while I with Ma - ry gaze In
4. Sleep, Ho - ly Babe! ah! take Thy brief re - pose; Too

pp *mf*

Lord of earth, and sea, and sky, How sweet it is to see Thee lie In
 bend - ing low with fold - ed wings, Be - fore th' In - car - nate King of kings, In
 joy up - on that Face a - while, Up - on the lov - ing in - fant smile Which
 quick - ly will Thy slum - bers break, And Thou to length - ened pains a - wake, That

dim. *pp*

such a place of rest. In such a place of rest.
 rev - erent awe pro - found; In rev - erent awe pro - found.
 there di - vine - ly plays; Which there di - vine - ly plays.
 death a - lone shall close; That death a - lone shall close.

pp

O BIENHEUREUSE NUIT.

SOPRANO SOLO.

pp

NORMANDIE.

O night, peace - ful and blest! For

now Je - sus doth rest, Near His fond watch - ful moth - er! Soft

light o'er Him doth shine, A - round, bright an - gels

hov - er, He is the Child Di - vine.

O BIENHEUREUSE NUIT. Concluded.

CHORUS.

pp

O night peace-ful and blest! For now Je - sus doth rest, Near His

cres.

fond watch - ful moth - er; Soft light o'er Him doth shine, A -

mf

round, bright an-gels hov - er, He is the Child Di - vine. . .

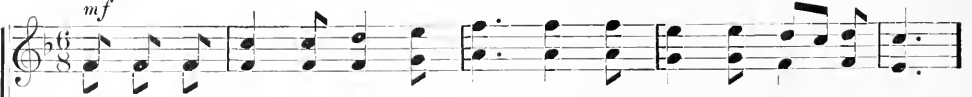
cres. *mf* *rall.* *dim.*

CHANTANS! BARGIES, NOUE, NOUE.

Vivace.

Besancon Carol.

mf



1. Shepherds! shake off your drow - sy sleep, Rise and leave your sil - ly sheep;
2. Hark! ev - en now the bells ring round, List - en to their mer - ry sound;
3. See how the flowers all burst a - new, Think - ing snow is sum - mer dew;



An - gels from heav'n a - round loud sing - ing, Tid - ings of great joy are bringing.
Hark! how the birds new songs are mak - ing, As if win - ter's chains were breaking.
See how the stars a - fresh are glow - ing, All their brightest beams be - stow - ing.



CHORUS.

poco rit.



Shepherds! the cho - rus come and swell! Sing No - él, O sing No - él.



A TYROLESE CAROL.

SOLO. A SHEPHERD. *Moderato.*



1. Come, shepherds, come! shake off your sleep, And open your weary eyes; 'Tis time to leave your
2. Around the hut where-in I slept A glow of light was seen, And golden strings of
3. We, too, this welcome news did hear From angels in the air, They bade us cast a-



A TYROLESE CAROL. Concluded.

fold-ed sheep, Come, shepherds, come, a - rise, Hark! an-gels clad in bright ar-ray, Burst
harp were swept By an-gels clad in sheen. What sounds of joy the air then stirr'd, What
way all fear, And to the town re - pair. We hastened to the humble stall, The

forth in heav'nly song; See! night grows brighter than the day, Lit by their glist'ning throng.
hymns of ho - ly rest! *In ter-ra pax* a - bove I heard, And *Christus na-tus est*.
Ho - ly Child we sought; On bended knee each one did fall, And humble offerings brought.

CAROL OF THE BIRDS.

Not slow.

Bas Quercy.

1. Whence comes this rush of wings a - far? Fol-low-ing straight the No - el star?
2. "Tell us, ye birds, why come ye here, In - to this sta - ble poor and drear?"
3. An - gels, and shepherds, birds of the sky, Come where the Son of God doth lie;

Birds from the woods in wondrous flight, Beth - le-hem seek this Ho - ly night.
"Hast'ning we seek the new-born King, And all our sweet-est mu - sic bring."
Christ on the earth with man doth dwell, Join in the shout, No - el, No - el.

BETHLEHEM.

THE SHEPHERD'S NATIVITY HYMN.

CHRISTMAS ANTHEM.

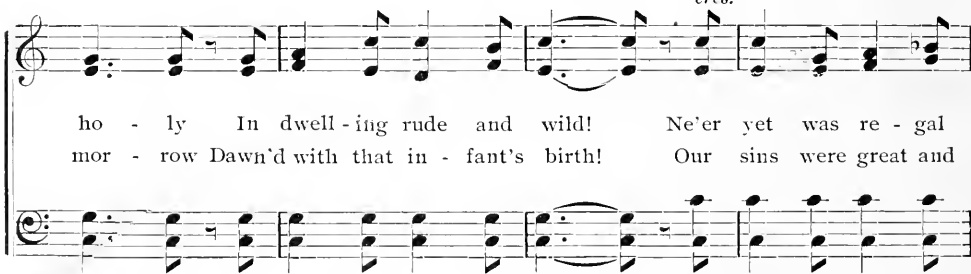
CHARLES GOUNOD.



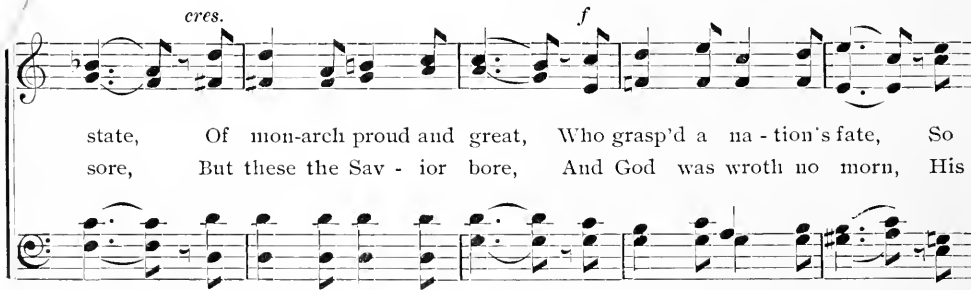
1. Cra - dled all low - ly, Be - hold the Sav - ior child, A Be - ing
2. No long - er sor - row, As with - out hope, oh, earth! A bright - er



ho - ly In dwell - ing rude and wild! Ne'er yet was re - gal
mor - row Dawn'd with that in - fant's birth! Our sins were great and



state, Of mon - arch proud and great, Who grasp'd a na - tion's fate, So
sore, But these the Sav - ior bore, And God was wroth no morn, His



glo - rious as the man - ger bed of Beth - le - hem!
own Son was the child that lay in Beth - le - hem!



BETHLEHEM. Concluded.

le'm, O star of Beth - - le - - hem! Hal - le - lu - jah!

le'm, O star of Beth - - le - - hem! Hal - le - lu - jah!

ff *A* *ff* *ff*

A

This system contains the first two vocal staves and the piano accompaniment. The vocal parts enter with the lyrics 'le'm, O star of Beth - - le - - hem! Hal - le - lu - jah!'. The piano accompaniment features a melodic line in the right hand and a harmonic accompaniment in the left hand. Dynamics include *ff* and *A* (accents).

Hal - le - lu - jah! A - - - men!

- - - - - men! A - - - - - men!

Hal - le - lu - jah! A - - - - - men!

- - - - - men!

Ped. *

This system continues the vocal and piano parts. The vocal parts sing 'Hal - le - lu - jah! A - - - men!'. The piano accompaniment provides harmonic support. The system concludes with a *Ped.* (pedal) marking and a double asterisk symbol.

NOWEL! NOWEL!

"To Bethlem did they go, the shepherds three;
To Bethlem did they go, to see whe'r it were so or no,
Whether Christ were Born or no,
To set men free."

SOLO. *Andante.*

1. Mas - ters in this hall, Hear ye news to - day
Shep - herds many and one Sat a - mong the sheep

Brought from o - ver sea, And ev - er I you pray; }
No man spake more word Than they had been a - sleep. }

QUARTET, 2d time CHORUS.

{ Now - el! Now - el! Now - el! Now - el sing we clear! Holp - en
{ Now - el! Now - el! Now - el! Now - el sing we loud! God to -

are all folk on earth, Born is God's Son so dear: }
day hath poor folk rais'd, And cast a - down the proud. }

2 Quoth I, "Fellows mine,
Why this guise sit ye?
Making but dull cheer,
Shepherds though ye be?"
Quoth these fellows then,
"To Bethlem Town we go,
To see a Mighty Lord
Lie in manger low."
Quartet. Nowel, &c.

3 Ox and ass Him know,
Kneeling on their knee,
Wondrous joy had I
This little babe to see;
This is Christ the Lord,
Masters be ye glad!
Christmas is come in,
And no folk should be sad.
Quartet. Nowel, &c.

JAN 10 1941

