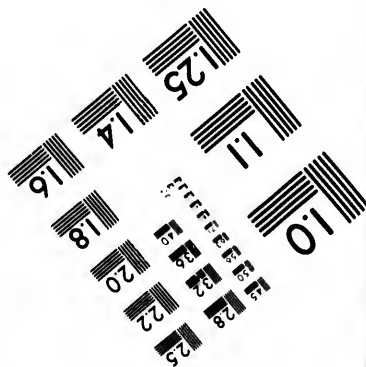
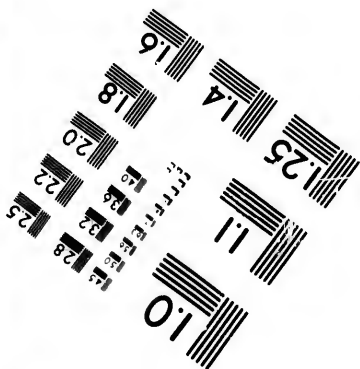
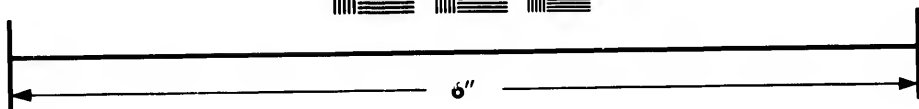
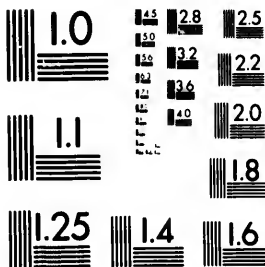


**IMAGE EVALUATION  
TEST TARGET (MT-3)**



**Photographic  
Sciences  
Corporation**

23 WEST MAIN STREET  
WEBSTER, N.Y. 14580  
(716) 872-4503

15  
16  
18  
20  
22  
25

**CIHM/ICMH  
Microfiche  
Series.**

**CIHM/ICMH  
Collection de  
microfiches.**



Canadian Institute for Historical Microreproductions / Institut canadien de microreproductions historiques

15  
16  
18  
20  
22  
25

**© 1981**

Technical and Bibliographic Notes/Notes techniques et bibliographiques

The Institute has attempted to obtain the best original copy available for filming. Features of this copy which may be bibliographically unique, which may alter any of the images in the reproduction, or which may significantly change the usual method of filming, are checked below.

L'Institut a microfilmé le meilleur exemplaire qu'il lui a été possible de se procurer. Les détails de cet exemplaire qui sont peut-être uniques du point de vue bibliographique, qui peuvent modifier une image reproduite, ou qui peuvent exiger une modification dans la méthode normale de filmage sont indiqués ci-dessous.

- Coloured covers/  
Couverture de couleur
- Covers damaged/  
Couverture endommagée
- Covers restored and/or laminated/  
Couverture restaurée et/ou pelliculée
- Cover title missing/  
Le titre de couverture manque
- Coloured maps/  
Cartes géographiques en couleur
- Coloured ink (i.e. other than blue or black)/  
Encre de couleur (i.e. autre que bleue ou noire)
- Coloured plates and/or illustrations/  
Planches et/ou illustrations en couleur
- Bound with other material/  
Relié avec d'autres documents
- Tight binding may cause shadows or distortion  
along interior margin/  
La reliure serrée peut causer de l'ombre ou de la  
distortion le long de la marge intérieure
- Blank leaves added during restoration may  
appear within the text. Whenever possible, these  
have been omitted from filming/  
Il se peut que certaines pages blanches ajoutées  
lors d'une restauration apparaissent dans le texte,  
mais, lorsque cela était possible, ces pages n'ont  
pas été filmées.
- Additional comments:/  
Commentaires supplémentaires:

- Coloured pages/  
Pages de couleur
- Pages damaged/  
Pages endommagées
- Pages restored and/or laminated/  
Pages restaurées et/ou pelliculées
- Pages discoloured, stained or foxed/  
Pages décolorées, tachetées ou piquées
- Pages detached/  
Pages détachées
- Showthrough/  
Transparence
- Quality of print varies/  
Qualité inégale de l'impression
- Includes supplementary material/  
Comprend du matériel supplémentaire
- Only edition available/  
Seule édition disponible
- Pages wholly or partially obscured by errata  
slips, tissues, etc., have been refilmed to  
ensure the best possible image/  
Les pages totalement ou partiellement  
obscurcies par un feuillet d'errata, une pelure,  
etc., ont été filmées à nouveau de façon à  
obtenir la meilleure image possible.

This item is filmed at the reduction ratio checked below/  
Ce document est filmé au taux de réduction indiqué ci-dessous.

10X	14X	18X	22X	26X	30X
<input type="checkbox"/>	<input type="checkbox"/>	<input type="checkbox"/>	<input checked="" type="checkbox"/>	<input type="checkbox"/>	<input type="checkbox"/>
12X	16X	20X	24X	28X	32X

The copy filmed here has been reproduced thanks to the generosity of:

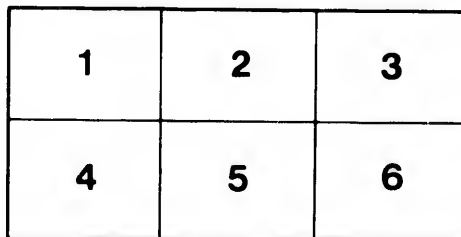
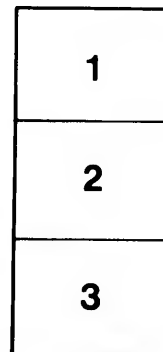
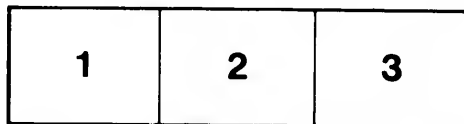
Library Division  
Provincial Archives of British Columbia

The images appearing here are the best quality possible considering the condition and legibility of the original copy and in keeping with the filming contract specifications.

Original copies in printed paper covers are filmed beginning with the front cover and ending on the last page with a printed or illustrated impression, or the back cover when appropriate. All other original copies are filmed beginning on the first page with a printed or illustrated impression, and ending on the last page with a printed or illustrated impression.

The last recorded frame on each microfiche shall contain the symbol → (meaning "CONTINUED"), or the symbol ▼ (meaning "END"), whichever applies.

Maps, plates, charts, etc., may be filmed at different reduction ratios. Those too large to be entirely included in one exposure are filmed beginning in the upper left hand corner, left to right and top to bottom, as many frames as required. The following diagrams illustrate the method:



L'exemplaire filmé fut reproduit grâce à la générosité de:

Library Division  
Provincial Archives of British Columbia

Les images suivantes ont été reproduites avec le plus grand soin, compte tenu de la condition et de la netteté de l'exemplaire filmé, et en conformité avec les conditions du contrat de filmage.

Les exemplaires originaux dont la couverture en papier est imprimée sont filmés en commençant par le premier plat et en terminant soit par la dernière page qui comporte une empreinte d'impression ou d'illustration, soit par le second plat, selon le cas. Tous les autres exemplaires originaux sont filmés en commençant par la première page qui comporte une empreinte d'impression ou d'illustration et en terminant par la dernière page qui comporte une telle empreinte.

Un des symboles suivants apparaîtra sur la dernière image de chaque microfiche, selon le cas: le symbole → signifie "A SUIVRE", le symbole ▼ signifie "FIN".

Les cartes, planches, tableaux, etc., peuvent être filmés à des taux de réduction différents. Lorsque le document est trop grand pour être reproduit en un seul cliché, il est filmé à partir de l'angle supérieur gauche, de gauche à droite, et de haut en bas, en prenant le nombre d'images nécessaire. Les diagrammes suivants illustrent la méthode.

rrata  
to

pelure,  
n à

32X

2.

C.P.R.  
NW  
9718  
G21204



FREE

FACTS



ADVISE NEAREST AGENT EARLY HOW MANY ADULTS AND CHILDREN, AND HOW MANY CARS OF SETTLERS' EFFECTS, SO ACCOMMODATION WILL BE PROVIDED FOR YOU.

SPECIAL TRAINING FOR SETTLERS' EFFECTS WITH COLONIST SLEEPER ATTACHED, WILL LEAVE CARLETON JUNO. ABOUT 9 P.M. ON EVERY TUESDAY IN MARCH AND APRIL PROVIDED SUFFICIENT BUSINESS OFFERS.

FARMS &

SLEEPERS

RATES  
AND  
CONDITIONS  
OF  
SHIPPING  
FOR  
COLONISTS  
AND  
THEIR  
EFFECTS

# OUR AGENTS . . .

Agents must advise General Passenger Agent, on booking any Passengers, as Accommodation is limited.

Acton .....	Que.....	A. St. Amour
Almonte .....	Ont.....	D. H. Davis
Alexandria .....	" .....	S. MacDonell
Arnprior .....	" .....	Jno. A. MacDonald
Aultsville .....	" .....	C. S. Ault
Brockville .....	" .....	Geo. E. McGlade
Batiscan .....	Que.....	G. Marquis
Bedford .....	" .....	Jno. Douglas
Berthierville .....	" .....	A. L. Caisse
Carleton Place.....	Ont.....	W. W. Kibbee
Caughnawaga .....	Que.....	N. A. Giasson
Champlain.....	" .....	L. Bailly
Chesterville .....	Ont.....	C. Casselman
Coaticooke .....	Que.....	A. B. Ode!
Cornwall .....	Ont.....	G. W. Gibbons
Cowansville .....	Que.....	B. Heritage
Danville .....	" .....	J. C. Stockwell
Gananoque .....	Ont.....	G. A. Asseltine
Hawkesbury .....	" .....	Jno. Morrow
Howick .....	Que.....	D. R. Hay
Huntingdon .....	" .....	A. McNaughton
Iberville .....	" .....	C. A. Laberge
Iroquois .....	Ont.....	Jas. Powell
Joliette.....	Que.....	Prevost & Piche
Kemptville .....	Ont.....	W. H. Bottum
Knowlton.....	Que.....	E. E. Mills
Louiseville .....	" .....	T. Mineau
Lacolle .....	" .....	W. B. Vanvliet
La Patrie.....	" .....	A. Bourret
Montreal, 129 St. James St.	" .....	Wm. F. Egg
Marieville .....	" .....	J. A. Fournier
Maskinonge .....	" .....	J. Marchand
Maxville.....	Ont.....	Smillie Bros.
Morrisburg .....	" .....	A. Brown

For continuation of Agents see inside back cover.

01001

# RAILWAY AND FREE GRANT ... LANDS ...

**T**HE CANADIAN PACIFIC RAILWAY COMPANY own nearly 25,000,000 acres of land in the Canadian North-West, lying chiefly along its Main Line and Branches. The lands have been carefully selected by competent surveyors, enabling the Company to offer those of the highest grade to intending purchasers at prices ranging from \$2.50 per acre upwards, and purchaser may go into immediate possession on payment of one-tenth of the purchase money, and the balance in nine annual instalments.

All surveyed even numbered sections, excepting 8 and 26, are held exclusively for free homesteads, and entry therefor for the amount of a quarter section (160 acres) can be obtained on payment of a fee of ten dollars.

The railway traverses four of the most important Provinces and Districts of the North-West, viz.: Manitoba, Assiniboia, Alberta and Saskatchewan. The last named has been recently opened up by the railway, and contains some of the best lands, while its soil is unsurpassed on the continent.

**Reduced Prices.** The Canadian Pacific Railway have made a general reduction in the price of all lands listed at \$4 per acre and upwards, excepting only such as are particularly valuable owing to proximity to stations or to other special causes. This reduction will, in most cases, range from 25 to 33 per cent. The lands in the Edmonton District, unsurpassed in the Dominion, are sold at a uniform price of \$3.

**Manitoba** is already well settled, but homesteads can still be secured in this highly favored Province. The natural resources of the country are as great as those of any other

199399

part of the North American Continent. The soil is a rich black loam of great strength and depth, that of the Red River Valley being particularly well adapted for the growth of wheat. The Province is well supplied by nature with wood, hay and water. To all these advantages may be added the fact that the hardships of pioneering are scarcely felt. Railways, schools, churches and thriving towns are now scattered all over the country. The population is made up of Canadians, Americans and people from every state in Europe, so that the intending settler, no matter what his nationality, can settle amongst his own countrymen.

**Assiniboia,** the central District of the North-West, contains the largest unbroken tract of wheat-growing land to be found on the American Continent, viz. : the rich plain lying south of the Qu'Appelle River, with Regina as its centre. A plough furrow could be run for 100 miles in a straight line keeping in the same uniformly rich clay loam. The Western part of the District is particularly well adapted to Stock Raising, having a climate that permits of Cattle Grazing throughout the whole of the winter; natural shelter given by the Cypress Hills; the nutritious buffalo grasses of the plains, and watered by the South Saskatchewan, Red Deer, Swift Current and the innumerable spring-fed streams flowing from the Cypress Hills.

**Alberta** is situated immediately east of the Rocky Mountains and north of the International Boundary, covering an area of about 120,000 miles. It is celebrated for its mild climate in winter and cool breezes in summer. Situated as it is it has the benefit in winter of the "Chinook Winds," which follow a North-easterly direction from the current in the Southern Pacific Ocean, whence they receive their warmth. The snow in winter rarely lies longer than four or five days, when it is melted by this wind.



thus making the winters mild and filling the creeks and ponds with water for the stock on the ranches. In the summer these creeks are constantly supplied with water from the melting snow in the mountains, so that during summer and winter there is always to be found throughout the District **an abundance of water for grazing and all other purposes.**

The wild grasses of the District are most nutritious, as has been demonstrated by the thousands of cattle sold from the different ranches all in first-class condition for the market, and it is a fact that, even in the spring, cattle which have not received any feed except what they got by grazing are brought in from the ranches **as fat as stall-fed cattle in the Eastern Provinces.**

The cool temperature in summer with the grasses and pure cool mountain streams mentioned, make Alberta one of the best countries to be found for **Cheese and Butter making**, and before long it will be as noted for such industries as for its ranches.

This District is being opened up rapidly by the C.P. Ry.—the branches from Calgary to Edmonton and to Macleod being in full operation.

**Saskatchewan.** The valley of the Saskatchewan, which extends from the Rocky Mountains to Manitoba, contains some of the most fertile soil in the world. The territorial division of Saskatchewan comprises that portion of the great valley and surrounding country lying next north of Assiniboia. Prince Albert, near the forks of the North and South branches of the Saskatchewan, reached by the Canadian Pacific, is the principal centre, and in a short time will be served by the M. & N. W. Ry. as well as by the Canadian Pacific. Battleford, a thriving settlement, situated in the delta formed by the confluence of the Battle River and the North Saskatchewan, is surrounded by excellent farming country

on which are established a number of prospering settlers.

**Land Explorers** are offered reduced return rates, first-class, to Winnipeg from points in Canada east of Sudbury, and can, on presentation of the return half of same to the undersigned, purchase return tickets from Winnipeg to points west in the Province of Manitoba, and Districts of Assiniboia or Alberta, the value of which will be refunded to the original holder should he purchase within 30 days one quarter section (160 acres) of Canadian Pacific farm lands. A similar rebate will be made to actual settlers on Canadian Government lands west of Winnipeg and east of Calgary, on production of proof of purchase or entry of same within the 30 days.

Westbound trains stop for sufficient time at Winnipeg Station to enable passengers to visit the Land Offices of the Company, where maps and pamphlets, descriptive of the Free Grant and Railway Lands, through which the Railway passes, can be obtained. **Stop-over** privileges between Winnipeg and Calgary will be granted (on application to the conductor) on Through Second Class or Colonist Tickets to British Columbia or Puget Sound, thus enabling passengers to make personal inspection of the lands.

For detailed prices, maps and full particulars, apply to

**L. A. HAMILTON,**

C.P.R. Land Commissioner,  
WINNIPEG,

Or any Agent of the Canadian Pacific Ry.  
Company.

## GOVERNMENT LANDS

### Free Homestead Regulations.

All even-numbered sections of Dominion Lands in Manitoba or the North-West Territories, excepting 8 and 26, which have not been homesteaded, reserved to provide wood lots for settlers, or other purposes, may be homesteaded by any person who is the sole head of a family, or any male over eighteen years of age, to the extent of one quarter-section of 160 acres, more or less.

**Entry.** Entry may be made personally at the local land office in which the land to be taken is situate, or if the homsteader desires he may, on application to the Minister of the Interior, Ottawa, or the Commissioner of Dominion Lands, Winnipeg, receive authority for some one to make the entry for him. A fee of \$10 is charged for an ordinary homestead entry; but for lands which have been occupied an additional fee of \$10 is chargeable to meet inspection and cancellation expenses.

The entry must be perfected within six months of its date by the settler beginning to reside upon and cultivate the land, unless entry is obtained after the first of September, in which case it need not be perfected before the 1st day of June following.

### Homestead Duties.

After perfecting his Homestead Entry as described, the settler must continue to reside upon and cultivate the land for which he holds entry for three years from the date thereof, during which period he may not be absent from the land for more than six months in any one year without forfeiting the entry.

Upon furnishing proof, which must be satisfactory to the Commissioner of Dominion Lands, that he has fulfilled the conditions as to residence and cultivation before specified, the settler shall be entitled to a

patent from the Crown for his homestead, provided he is a British subject by birth or naturalization.

If the homesteader desires to obtain his patent within a shorter period than three years he will be permitted to purchase his homestead at the Government price ruling at the time, upon proof that he has resided thereon for twelve months from the date of perfecting entry, and that he has brought at least thirty acres under cultivation.

**Application for Patent** may be made before the local agent, or any homestead inspector. Before making application for patent the settler must give six months' notice in writing to the Commissioner of Dominion Lands of his intention to do so. When, for convenience of the settler, application for patent is made before a homestead inspector, a fee of \$5 is chargeable. Application for patent must be made within five years from the date of the homestead entry, otherwise the right thereto is liable to forfeiture.

**Dominion Lands Offices** are located at Winnipeg, Brandon, Minnedosa, Lake Dauphin, Estevan, Regina, Yorkton, Lethbridge, Calgary, Red Deer, Wetaskiwin, Edmonton, Battleford and Prince Albert

**Timber.** A liberal supply of timber for house-building purposes and fuel is granted free to settlers on payment of a small office fee for the permit to cut.

For full information as to conditions of tender, and sale of timber, coal or other mineral lands, apply to the Secretary of the Department of the Interior, Ottawa, Ontario; the Commissioner of Dominion Lands, Winnipeg, Manitoba; or to any other of the Dominion Lands Agents for Manitoba or the North-West Territories.

# LIST OF PUBLICATIONS

## FREE TO ALL

Who will write asking for them. These are interesting, neatly printed and accurately illustrated descriptive pamphlets and folders relative to Western Canada. Published by the Canadian Pacific Railway Company.

### Farming and Ranching in Western Canada

A most interesting and well-written pamphlet descriptive of the advantages and capabilities of the Provinces of Manitoba, Alberta, Assiniboia and the fertile valley of the Saskatchewan, with detailed information as to cattle and horse and sheep ranching, dairying, mixed farming and mining. Carefully illustrated with views produced from photographs; with land and railway maps. Free on application.

Free on application.

### Free Farms Folder.

A carefully prepared mass of information concerning Manitoba, Assiniboia, Northern and Southern Alberta with the newly opened districts of Edmonton, Battleford and Prince Albert; printed on the reverse side of a Transcontinental Map of the Canadian Pacific Railway, and a map of that Company's land grant, together with the Government lands open to free homesteading. Free on application.

Free on application.

Any or all of these publications will be sent free to any address upon application to any agent of the Canadian Pacific Railway Company. They give information so valuable to every Canadian as to the glorious heritage his country has in the magnificent territories and provinces of the North-West, that they should be read by everyone who desires to be well posted.

This pamphlet is also published in the German and French languages.

**Northern Alberta.** A publication giving detailed information concerning the country between Calgary and Edmonton, on the Edmonton & Calgary Branch Line, and on the district around Edmonton.

**British Columbia.** The best compilation of trustworthy information yet issued regarding our Pacific Coast Province, carefully revised and brought up to date. Handsomely illustrated, with maps of the Province and railway map. Should be in the hands of everyone who feels the slightest interest in British Columbia.

Apply for free copies of any of the Publications mentioned, or this Pamphlet, to

---

or any Agent of the Company

---

**C. E. E. USSHER,**  
Asst. Gen'l Passenger Agent.

**D. McNICOLL,**  
Gen'l Passenger Agent.

**W. BRETT,**  
Travelling Passenger Agent.

**A. E. LALONDE,**  
Travelling Passenger Agent.

**HEAD OFFICES: MONTREAL.**

## FACTS

**Construction** This thoroughly built and splendidly equipped line has earned a reputation for comfort and regular time that few lines in America have ever reached, and none until after many years of operation. In the construction of this line the utmost care was taken with every detail, and nothing was left undone to make it what it was intended by its projectors to be, **the very best new line ever constructed on the American Continent.**

**Equipment.** This line is equipped with the finest Passenger Coaches and Colonist Sleeping Cars in the world. The wheels used under all the passenger rolling stock are of Krupp steel, 40 inches in diameter, not one of which has ever failed; the axles are of steel, and of the full size of the iron axles used on other lines. The car bodies are strongly framed to meet any contingency, and are wider and higher than those of any other railway. They are double-windowed and are designed to secure uniform warmth, combined with perfect ventilation, in winter, and an abundance of cool air, with freedom from dust, in summer; the cars of no other line can compare with them in these respects, nor in strength, elegance and comfort.

**Track and Bridges.** The cuttings are unusually wide and thoroughly drained; the embankments are very wide and solid; the bridges, resting on first-class masonry, are of steel, and of twice the ordinary strength; the rails are of the best steel, manufactured under the most rigid inspection, and are laid with angle splices of double strength; the ties are large and closely laid, and the track is ballasted with the best materials.

## Second Class, or Colonist, Sleeping Cars

Are run on this line instead of the ordinary second class cars. They are handsomely finished in light woods, on the general plan of ordinary sleeping cars. They are bright and pleasant, and so comfortable that they are largely used by first-class passengers in making short trips. **No extra charge is made in these cars.** Colonists can procure mattresses, curtains and blankets suitable for the cars from the Company at following prices, viz. :—  
Mattresses, 75 cents each ; Blankets, 80 cents each ; Pillows, 20 cents each ; Curtains, 75 cents per pair, at MONTREAL, ST. MARTIN JUNCTION, OTTAWA, NORTH BAY and FORT WILLIAM.

## The Civility and Attention

Of the employees of the Company are spoken of by every traveller on the line. The cleanliness of cars and stations is also noticed. These two points are, next to safety, most carefully watched by the management.

## Safety,

Every appliance of proven value, calculated to secure SAFETY, has been adopted on this line. They are too numerous to mention, but they include an elaborate guard system at all bridges, Cooke's patent SAFETY switch at all turn-outs from the main track—the only SAFETY switch in use in Canada, and the only one that will with certainty prevent derailment from a misplaced switch. Especial care has been taken to make the heating apparatus on trains entirely SAFE, and the oil used in lighting the cars is manufactured expressly for the Company, and is SAFER even than candles, while it affords a most brilliant light.



# COLONIST RATES OF FARE . . .

—FROM—

## MONTREAL

TO	2nd Class
Alameda, Assa.	\$27 05
Alexander, Man.	24 75
Austin, Man.	23 70
Aylesbury, Assa.	30 20
Bagot, Man.	23 50
Balgovie, Assa.	28 60
Bassano, Alba.	37 40
Beresford, Man.	24 75
Bergen "	22 55
Binscarth "	26 35
Birtle "	26 05
Boharm, Assa.	29 90
Boissevain, Man.	25 60
Bowden, Alba.	40 80
Brandon, Man.	24 40
Broadview, Assa.	27 05
Brunton, Alba.	38 60
Burnside, Man.	23 35
Calgary, Alba.	39 45
Canmore "	41 15
Carberry, Man.	24 00
Carievale, Assa.	26 35
Carman, Man.	23 55
Carmichael, Assa.	32 85
Carnduff "	26 55
Caron "	30 05
Cartwright, Man.	25 35
Cassils, Alba.	36 80
Cayley "	40 45
Chaplin, Assa.	30 80
Chater, Man.	24 35
Cheadle, Alba.	38 70
Cherry Coulee, Aba.	35 95
Churchbridge, Assa.	27 05
Claireholm, Alba.	41 50
Clearwater, Man.	25 05
Cochrane, Alba.	40 05
Coutts "	39 20
Crowfoot "	37 65
Crystal City, Man.	24 95
Déleau "	25 20
Deloraine "	25 60
De Winton, Alba.	39 85
Didsbury "	40 45
Disley, Assa.	29 50
Dominion City, Man.	23 55
Douglas "	24 20
Duck Lake, Sask.	33 15
Dundurn, Assa.	31 65
Dunmore "	34 80
Edmonton, Alba.	43 30
Elkhorn, Man.	25 70
Emerson "	23 70
Ernfold, Assa.	31 00
Estevan, Assa.	27 75
Findlater "	29 85
Findlay, Man.	25 40
Finsbury, Assa.	30 70
Fleming "	26 00
Forest.	Ticket to Chater

## COLONIST RATES OF FARE—Continued

TO	Forres, Assa	\$34 10
	Foxwarren, Man	26 15
	Frobyshtre, Assa	27 20
	Gainsboro' "	26 20
	Gladstone, Man	23 95
	Gleichen, Alba	38 10
	Glenboro', Man	24 50
	Grand Coulee, Assa	29 10
	Grassy Lake, Alba	36 20
	Grenfell, Assa	27 35
	Gretna, Man	23 75
	Griswold "	24 95
	Gull Lake, Assa	32 70
	Hague, Sask	32 70
	Hamiota	Ticket to Chater
	Hanley, Assa	31 40
	Hartney, Man	25 25
	Herbert, Assa	31 35
	High Pluff, Man	23 15
	High River, Alba	40 25
	Hirsch, Assa	27 35
	Holland, Man	24 10
	Holmfield "	25 50
	Indian Head, Assa	28 60
	Innisfail, Alba	41 00
	Keith "	39 70
	Kemnay, Man	24 60
	Killarney "	25 60
	Kininzie, Alba	36 10
	Lacombe "	41 75
	Langdon "	38 95
	Langenburg, Assa	26 85
	Langevin, Alba	35 85
	Leavings "	41 35
	Lethbridge "	37 55
	Lumsden, Assa	29 30
	Manitou, Man	24 40
	Maple Creek, Assa	33 70
	McGregor, Man	23 60
	Macleod, Alba	41 55
	Medicine Hat, Assa	35 00
	Medora, Man	25 60
	Melita "	25 75
	Menteith "	25 10
	Methven "	24 90
	Midnapore, Alba	39 65
	Milk River "	39 70
	Minnedosa, Man	24 85
	Mitford, Alba	40 10
	Moosejaw, Assa	29 75
	Moosomin "	26 15
	Morden, Man	24 00
	Morley, Alba	40 50
	Morris, Man	23 20
	Morse, Assa	31 10
	Namaka, Alba	38 35
	Nanton "	40 60
	Napinka, Man	25 60
	Neepawa "	24 50
	Nesbitt "	24 90
	Newdale "	25 20
	Ninga "	25 60
	Niverville "	22 90
	Oak Lake, Man	25 10
	Oak River "	Ticket to Chater
	Oakshela, Assa	27 20
	Okotoks, Alba	40 00
	Otoskwan "	43 15
	Oxbow, Assa	26 90

## COLONIST RATES OF FARE—Continued

\$34 10	TO Pasqua, Assa.....	\$29 55
26 15	Penhold, Alba.....	41 15
27 20	Pense, Assa.....	29 25
26 20	Pierson, Man.....	26 05
23 95	Pilot Mound, Man.....	24 35
38 10	Pipestone ".....	25 55
24 50	Ponoka, Alba.....	42 05
29 10	Poplar Point, Man.....	23 00
36 20	Portage La Prairie, Man.....	23 25
27 35	Prince Albert, Sask.....	33 85
23 75	Qu' Appelle, Assa.....	28 25
24 95	Radnor, Alba.....	40 50
32 70	Rapid City, Man.....	25 15
32 70	Rat Portage, Ont.....	22 40
Chater	Reaburn, Man.....	22 95
31 40	Red Deer, Alba.....	41 35
25 25	Red Jacket, Assa.....	26 30
31 35	Regina ".....	28 90
23 15	Reston, Man.....	25 70
40 25	Riverdale ".....	25 00
27 35	Rokeby, Assa.....	27 55
21 10	Rosser, Man.....	22 65
25 50	Rosthern, Sask.....	32 90
28 00	Rush Lake, Assa.....	31 55
41 00	Russell, Man.....	26 60
39 70	Saltcoats, Assa.....	27 40
24 60	Saskatoon, Sask.....	32 10
25 60	Secretan, Assa.....	30 60
36 10	Selkirk East, Man.....	22 40
41 75	Sewell ".....	24 15
38 95	Shepard, Alba.....	39 25
26 85	Shoal Lake, Man.....	25 55
35 85	Sidney ".....	23 80
41 35	Sidewood, Assa.....	33 10
37 55	Sintaluta ".....	27 80
29 30	Solsgirth, Man.....	25 85
24 40	Souris ".....	24 90
33 70	Stair, Assa.....	35 20
23 60	Stavely, Alba.....	40 90
41 55	Sterling, ".....	38 05
35 00	Stockton, Man.....	24 65
25 60	Stonewall ".....	22 80
25 75	Stony Mountain, Man.....	22 70
25 10	Strathmore, Alba.....	38 50
24 90	Summit, Ont.....	22 40
39 65	Swift Current, Assa.....	32 00
24 85	Tilley, Alba.....	36 30
40 10	Treesbank, Man.....	24 80
29 75	Treherne ".....	23 95
26 15	Varcoe.....	Ticket to Chater
24 00	Virden, Man.....	25 35
40 50	Walsh, Assa.....	34 35
23 20	Wapella ".....	26 45
31 10	Wataskiwin, Alba.....	42 50
38 35	Westbourne, Man.....	23 60
40 60	West Selkirk ".....	22 85
25 60	Whitewater ".....	25 60
24 50	Whitewood, Assa.....	26 75
24 90	Winifred, ".....	35 60
25 20	Winkler, Man.....	23 90
25 60	Winnipeg ".....	22 40
22 90	Woodside ".....	23 80
25 10	Yorkton, Assa.....	27 75

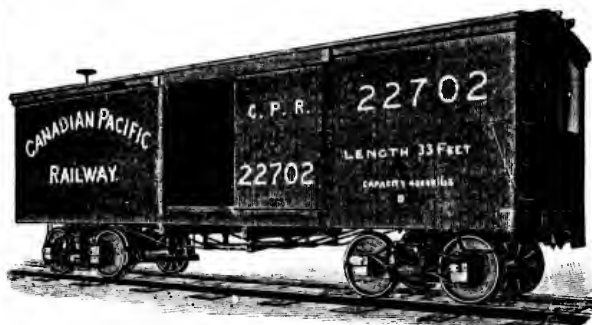
**BAGGAGE.**—For Colonists 300 lbs. of personal baggage will be checked on each full ticket, and 150 lbs. on each half ticket. The Rate on **Excess** baggage is 12 per cent. of the above rates.

Rates, Rules, Conditions and Explanations  
FOR THE TRANSPORTATION OF  
**SETTLERS' EFFECTS**

From all Canadian Pacific Railway Stations and from all  
Grand Trunk Railway Stations to principal points in

**MANITOBA and the CANADIAN NORTH-WEST**

**A.— A Carload** of Settlers' Effects, within the meaning of this tariff, may be made up of the following described property for the benefit of actual settlers, viz.: **LIVE STOCK**, any number up to but not exceeding **TEN (10)** head, all told, viz.: Horses, mules, cattle, calves, sheep or hogs;



HOUSEHOLD GOODS and personal property (second hand); **WAGONS**, or other vehicles for personal use (second hand); **FARM MACHINERY, IMPLEMENTS and TOOLS** (all second hand); **LUMBER and SHINGLES**, which must not exceed 2,500 feet in all, or the equivalent thereof, or in lieu of, not in addition to, the lumber and shingles, a **PORTABLE HOUSE** may be shipped; **SEED GRAIN**; small quantity of **TREES or SHRUBBERY**; small lot **LIVE POULTRY** or pet animals; and sufficient feed for the live stock while on the journey.

Settlers' Effects  
Conditions of  
Carriage  
Continued

**B.—Less than Carloads** will be understood to mean only HOUSEHOLD GOODS (second hand); WAGONS, or other vehicles for personal use (second hand), and second hand FARM MACHINERY, IMPLEMENTS and TOOLS. Less than carload lots must be plainly addressed.

**C.—Merchandise**, such as groceries, provisions, hardware, etc., also implements, machinery, vehicles, etc., if new, will not be regarded as Settlers' Effects, and if shipped, will be charged the regular classified tariff rates. Forwarding and Receiving Agents are required to watch the loading and unloading of cars, and to see that this rule is strictly complied with.

**D.—**Should the allotted number of Live Stock be exceeded, the additional animals will be taken at the ordinary classified tariff rates, over and above the carload rates for the Settlers' Effects, but the total charge for any one such car will not exceed the regular rate for a straight carload of live stock. (These ordinary tariff rates will be furnished by Station Agents on application.)

**E.—Passes.**—One man will be passed free in charge of live stock when forming part of carloads to feed, water and care for them in transit. Agents will use the usual form of Live Stock Contract.

**F.—Top Loads.**—Agents must not permit, under any circumstances, any article to be loaded on the top of box or stock cars; such manner of loading is dangerous, and is ABSOLUTELY FORBIDDEN.

**G.—**Carloads will not be stopped at any point short of destination for the purpose of unloading part. The entire carload must go through to the station to which originally consigned.

**J.—Carload Rates.**—The rates shown in the column headed "Carloads" apply on any shipment occupying a car, and weighing 20,000 lbs. (10 tons) or less. If the carload weighs over 20,000 lbs., the additional weight will be charged for at rates shown.

## SPECIAL FREIGHT RATES ON COLONIST EFFECTS

TO	Carloads 20,000 lbs.	Less than Carloads per 100 lbs.
*Airdrie .....	\$179	\$1 79
Alameda .....	133	1 33
Alexander .....	124	1 24
Arden .....	120	1 20
Austin .....	117	1 17
*Aylesbury .....	148	1 48
Bagot .....	115	1 15
*Balgonie .....	140	1 40
*Bassano .....	172	1 72
Berestford .....	122	1 22
*Bergen .....	110	1 10
Binscarth .....	129	1 29
Birtle .....	127	1 27
*Boharm .....	146	1 46
Boissevain .....	127	1 27
*Bowden .....	182	1 82
Brandon .....	122	1 22
Broadview .....	133	1 33
*Brunton .....	186	2 05
Burnside .....	115	1 15
Calgary .....	177	1 77
Canmore .....	181	1 81
Carberry .....	120	1 20
*Carievale .....	131	1 31
Carman .....	114	1 14
*Carmichael .....	157	1 57
Carnduff .....	131	1 31
*Caron .....	146	1 46
*Carroll .....	122	1 22
Cartwright .....	122	1 22
*Cassils .....	170	1 70
*Cayley .....	181	1 81
*Chaplin .....	150	1 50
Chater .....	122	1 22
*Cheadle .....	175	1 75
*Cherry Coulee .....	176	1 90
*Churchbridge .....	132	1 32
*Claireholm .....	181	1 81
Clearwater .....	122	1 22
Cochrane .....	178	1 78
Coutts .....	187	2 07
*Crowfoot .....	172	1 72
Crystal City .....	122	1 22
Cypress River .....	120	1 20
*Deleau .....	124	1 24
Deloraine .....	129	1 29
*De Winton .....	179	1 79
*Didsbury .....	181	1 81
*Disley .....	144	1 44
Dominion City .....	110	1 10
Douglas .....	120	1 20
*Drinkwater .....	143	1 55
Duck Lake .....	157	1 57
*Dundurn .....	154	1 54
Dunmore .....	164	1 64
Edmonton .....	192	1 92
Elkhorn .....	127	1 27
Emerson .....	110	1 10

## SPECIAL FREIGHT RATES—Continued

	TO	Carloads 20,000 lbs.	Less than Carloads per 100 lbs.
	*Ernfold.....	\$150	\$1 50
	Estevan.....	135	1 44
	*Findlater.....	116	1 46
	*Findlay.....	127	1 27
	*Finsbury.....	148	1 48
	Fleming.....	129	1 29
	*Forest.....	122	1 22
	*Forres.....	161	1 61
	*Foxwarren.....	129	1 29
	*Frobysire.....	133	1 33
	Gainsboro'.....	129	1 29
	Gladstone.....	117	1 17
	Gleichen.....	173	1 73
	Glenboro'.....	120	1 20
	*Grand Coulee.....	142	1 42
	*Grassy Lake.....	179	1 92
	Grenfell.....	136	1 36
	Gretna.....	110	1 10
	Griswold.....	121	1 21
	Gull Lake.....	156	1 56
	*Hague.....	157	1 57
	*Halbrite.....	138	1 49
	Hamiota.....	127	1 27
	*Hanley.....	152	1 52
	Hartney.....	124	1 24
	*Herbert.....	152	1 52
	High Bluff.....	113	1 13
	High River.....	180	1 80
	*Hirsch.....	133	1 33
	Holland.....	117	1 17
	*Holmfild.....	124	1 24
	Indian Head.....	138	1 38
	Innisfail.....	182	1 82
	*Keith.....	178	1 78
	Kemnay.....	122	1 22
	Killarney.....	124	1 24
	*Kininvie.....	168	1 68
	*Lacombe.....	187	1 87
	*Langdon.....	175	1 75
	Langenburg.....	131	1 31
	*Langevin.....	166	1 66
	Lauder.....	127	1 27
	*Leavings.....	181	1 81
	Lethbridge.....	183	2 00
	Lumsden.....	144	1 44
	Macleod.....	181	1 81
	Macoun.....	137	1 47
	*Manitou.....	120	1 20
	Maple Creek.....	159	1 59
	McGregor.....	117	1 17
	Medicine Hat.....	164	1 64
	*Medora.....	129	1 29
	*Melita.....	129	1 29
	Menteith.....	121	1 24
	*Methven.....	122	1 22
	Midnapore.....	179	1 79
	*Milestone.....	141	1 53
	Milk River.....	186	2 06
	*Minnedosa.....	122	1 22
	Mitford.....	180	1 80
	*Moosejaw.....	146	1 46
	Moosomin.....	129	1 29
	Morden.....	117	1 17

Less than  
Carloads per  
100 lbs.

\$1 79

1 33

1 24

1 20

1 17

1 48

1 15

1 40

1 72

1 22

1 10

1 29

1 27

1 46

1 27

1 82

1 22

1 33

2 05

1 15

1 77

1 81

1 20

1 31

1 11

1 57

1 31

1 46

1 22

1 22

1 70

1 81

1 50

1 22

1 75

1 90

1 32

1 81

1 22

1 78

2 07

1 72

1 22

1 20

1 24

1 29

1 79

1 81

1 44

1 10

1 20

1 55

1 57

1 54

1 64

1 92

1 27

1 10

## SPECIAL FREIGHT RATES—Continued

TO	Carloads 20,000 lbs.	Less than Carloads per 100 lbs.
Morley.....	\$180	\$1 80
*Morris.....	110	1 10
Morse.....	150	1 50
Nanton.....	181	1 81
*Namaka.....	173	1 73
Napinka.....	127	1 27
Neepawa.....	120	1 20
Nesbitt.....	122	1 22
Newdale.....	124	1 24
Ninga.....	127	1 27
Niverville.....	110	1 10
North Portal.....	137	1 47
Oak Lake.....	124	1 24
Oak River.....	124	1 24
*Oakshela.....	133	1 33
*Okotoks.....	179	1 79
*Otoskwan.....	192	1 92
Oxbow.....	133	1 33
Parkbeg.....	118	1 48
Pasqua.....	144	1 44
*Penhold.....	183	1 83
Pense.....	144	1 44
*Pierson.....	129	1 29
Pilot Mound.....	122	1 22
Pipestone.....	127	1 27
*Ponoka.....	187	1 87
Poplar Point.....	112	1 12
Portage La Prairie.....	114	1 14
Prince Albert.....	161	1 61
Qu'Appelle.....	140	1 40
Radnor.....	180	1 80
Rapid City.....	124	1 24
Rat Portage.....	102	1 03
Reaburn.....	112	1 12
Red Deer.....	184	1 84
Red Jacket.....	131	1 31
Regina.....	142	1 42
Reston.....	127	1 27
*Riverdale.....	122	1 22
*Roche Percee.....	137	1 47
Rokeby.....	135	1 35
Rosser.....	110	1 10
*Rosthern.....	157	1 57
Roulean.....	143	1 55
Rush Lake.....	152	1 52
Russell.....	131	1 31
Saltecoats.....	133	1 33
Saskatoon.....	154	1 54
Secretan.....	148	1 48
Selkirk East.....	110	1 10
Selkirk West.....	111	1 11
Sewell.....	120	1 20
Shepard.....	177	1 77
Shoal Lake.....	124	1 24
Sidewood.....	157	1 57
Sintaluta.....	138	1 38
*Solsgirth.....	127	1 27
Souris.....	122	1 22
*Stair.....	164	1 64
*Stavely.....	181	1 81
*Sterling.....	186	2 01
Stockton.....	120	1 20
Stonewall.....	110	1 10

SPECI

TH  
Montre  
branch  
sive ra  
than c  
Bircht  
\$12.00  
pound  
\*  
C  
Flag S  
F



## SPECIAL FREIGHT RATES—Continued

Less than Carloads per 100 lbs.	TO	Carloads 20,000 lbs.	Less than Carloads per 100 lbs.
\$1 80	Stony Mountain.....	\$110	\$1 10
1 10	*Strathmore.....	175	1 75
1 50	Summit.....	99	1 00
1 81	Swift Current.....	154	1 54
1 73	Sidney.....	117	1 17
1 27	*Tilley.....	168	1 68
1 20	*Treesbank.....	122	1 22
1 22	Treherne.....	117	1 17
1 24	*Varcoe.....	121	1 24
1 27	Virden.....	127	1 27
1 10	*Walsh.....	163	1 63
1 47	Wapella.....	131	1 31
1 24	Westbourne.....	117	1 17
1 24	Wetaskiwin.....	189	1 89
1 24	Weyburn.....	138	1 49
1 33	*Whitewater.....	127	1 27
1 79	Whitewood.....	133	1 33
1 92	*Winifred.....	174	1 88
1 33	Winkler.....	117	1 17
1 48	Winnipeg.....	110	1 10
1 44	Wolsley.....	136	1 36
1 83	*Woodside.....	117	1 17
1 44	*Yellow Grass.....	140	1 51
1 29	Yorkton.....	135	1 35

The above rates apply from stations Sudbury and east to Montreal, and Sharbot Lake and east to Lennoxville, including branches. From stations St. Vincent de Paul to Quebec inclusive rates will be \$10.00 per car and 10 cents per 100 lbs, in less than carload lots, more, than rates shown above. From stations Birchtown to Lake Megantic inclusive the rates will be from \$12.00 to \$26.00 per car, and from 12 cents to 36 cents per 100 pounds in less than carload lots, more, than the above.

\* Flag Stations. All charges must be prepaid.

Charges for less than carloads, whether shipments be to Flag Stations or otherwise, must be prepaid.

For any other information relative to freight matters, write

**W. B. BULLING, Jr.,**

General Freight Agent,

MONTREAL.

### OUR PUBLICATIONS



FREE FARMS  
NORTHERN ALBERTA  
MANITOBA  
WESTERN CANADA

Can be obtained free from any agent  
of the Company.

## INSTRUCTIONS

### FOR INTENDING PASSENGERS

---

---

**Before Starting** advise the nearest agent how many adults and how many children. (With the children count noses, remembering that the little ones require room even if under five years of age and travel free.) You should advise the agent at least the Saturday before you intend to start, in order that sufficient accommodation be supplied to make every one feel comfortable.

**Tell Agent** if you are going by settlers' train, by which live stock and effects go (Colonist Sleeper attached), or by express train. Your ticket is good by either.

**Settlers' Trains** leave Carleton Junction at 9 p.m., February 27th, and each Tuesday in March and April, provided sufficient business offers, and colonists and their effects should be forwarded to this point so as to reach there prior to that hour.

**Fast Express** leaves Montreal at 4.45 p.m. every day except Sunday, and has Colonist Sleeper attached.

## INSTRUCTIONS

OR INTENDING PASSENGERS—Continued

**Bring Along Your Own Bedding**

The mattresses should not exceed 6 feet in length by 3 feet 6 inches in width; the curtains, 7 feet long by 3 feet in width, two of which will be required for a section; or fittings can be obtained at Montreal, St. Martin Junction, Ottawa, North Bay, or Fort William at cost prices, already given on p. 12.

**Lunch Baskets** should not be over 6 inches high and 2 feet 9 inches long and 18 inches wide.

**OUR PUBLICATIONS**

FREE FARMS  
NORTHERN ALBERTA  
MANITOBA  
WESTERN CANADA

Can be obtained free from any agent  
of the Company.

# TIME CARD

## VIA REGULAR TRAINS

### FOR COLONISTS WITHOUT EFFECTS

Leaving Montreal Daily, Except Sunday, and connecting  
through, unless otherwise stated.

#### MAIN LINE

Lv. <b>Montreal</b> .....	†4.45pm
Ottawa .....	9.55 "
Carleton Junction .....	11.10 pm
Renfrew .....	12.46 am
North Bay .....	7.45 am
Port Arthur .....	1st day 1.08 pm
Fort William .....	2nd day 1.30 pm
Rat Portage .....	3rd day 2.30 am
Ar. <b>Winnipeg</b> .....	8.00
High Bluff .....	" 12.47
Portage la Prairie .....	" 13.05
McGregor .....	" 14.08
Carberry .....	" 15.20
Sewell .....	" 15.37
Chater .....	" 16.05
Brandon .....	" 16.15
Griswold .....	" 16.38
Oak Lake .....	" 16.57
Yrden .....	" 17.35
Elkhorn .....	" 18.30
Fleming .....	" 19.24
Moosomin .....	" 19.50
Whitewood .....	" 21.08
Broadview .....	" 21.45
Grenfell .....	" 22.37
Indian Head .....	4th day 24.05
Qu'Appelle .....	" 24.33
Regina .....	" 2.05
Pense .....	" 2.32
Moosejaw .....	" 4.30
Chaplin .....	" 6.52
Rush Lake .....	" 8.30
Swift Current .....	" 9.45
Maple Creek .....	" 13.12
Dunmore .....	" 15.37
Medicine Hat .....	" 16.30
Lethbridge .....	" 22.00
Crowfoot .....	" 21.10
Ar. Strathmore .....	" 22.55
Ar. Calgary .....	5th day 1.05

† Daily except Sunday

**DELORAINE BRANCH**

Lv. Winnipeg	J 8.40	R 8.15
Ar. Plum Coulee	11.10	14.25
Morden	11.45	16.30
Thornhill	12.05	17.20
Manitou	12.55	19.00
Pilot Mound	14.30	J 10.55
Killarney	16.10	14.25
Boissevain	16.55	15.55
Deloraine	17.40	17.30
Napinka	18.30	19.30

J Tuesday, Thursday and Saturday.

R Monday, Wednesday and Friday.

**SOUTHWESTERN BRANCH**

Lv. Winnipeg	J 9.00
Ar. Carman	11.25
Treherne	13.45
Holland	14.30
Glenboro	15.17
Methven	16.10
Nesbitt	16.25
Souris	17.10

J Tuesday, Thursday and Saturday.

**SOURIS BRANCH**

Lv. Brandon	J 12.35
Ar. Souris	14.45
Hartu	17.00
Napinka	17.55
Melita	R 8.05
Oxbow	11.25
Estevan	15.15

J Tuesday, Thursday and Saturday.

R Monday, Wednesday and Friday.

**PRINCE ALBERT BRANCH**

Lv. Regina	L 7.00
Ar. Lumsden	8.12
Finsbury	11.43
Dundurn	14.05
Saskatoon	16.15
Duck Lake	19.00
Prince Albert	21.00

L Tuesday and Saturday.

**MANITOBA & NORTH-WESTERN RY.**

Lv. Winnipeg	J 8.25
Ar. Portage la Prairie	10.45
Gladstone	12.10
Neepawa	13.35
Minnedosa	J 14.23
Rapid City	J 15.45
Minnedosa	J 14.50
Solsgrith	18.25
Birtle	18.55
Binscarth	J 20.55
Russell	P 22.10
Langenburg	I 22.55
Salcoats	24.50
Rokeby	1.35
Yorkton	I 2.00

P Wednesday only. I Saturday only. J Tuesday, Thursday and Saturday.

**CALGARY AND MACLEOD**

Lv. Calgary	h	7.30
Ar. De Winton	f	8.28
High River		9.35
Nanton	f	10.30
Claresholm		11.35
Macleod	h	12.30

h Wednesday and Saturday.

f Flag Stations.

**CALGARY AND EDMONTON**

Lv. Calgary	c	8.00
Ar. Calgary June	f	8.08
Beddington	f	8.34
Airdrie		9.05
Crossfield	f	9.35
Carstairs		10.07
Olds		11.00
Innisfail		12.05
Red Deer		13.30
Lacombe		14.30
Ponoka		15.23
Wetaskiwin		16.35
Leduc		17.53
Otoskwan		18.30
Edmonton	c	19.00

c Monday and Thursday.

f Flag Stations.

**DUNMOR. AND LETHBRIDGE**

Lv. Dunmore	*	16.00
Ar. Whittle	f	17.27
Winnifred	f	17.47
Grassy Lake		19.05
Purple Springs	f	19.32
Woodpecker	f	20.28
Lethbridge	*	22.00

\* Daily. f Flag Stations.

**OUR PUBLICATIONS**

FREE FARMS  
NORTHERN ALBERTA  
MANITOBA  
WESTERN CANADA

Can be obtained free from any agent  
of the Company.

# OUR AGENTS . . . .

CONTINUED FROM SECOND PAGE OF COVER

Agents must advise General Passenger Agent, on booking any Passengers, as accommodation is Limited.

7.30  
8.28  
9.35  
10.30  
11.35  
12.30

8.00  
8.08  
8.34  
9.05  
9.35  
0.07  
1.00  
2.05  
3.30  
4.30  
5.23  
6.35  
7.53  
8.30  
9.00

6 00  
7 27  
7 47  
9 05  
9 32  
0 28  
2 00

Ormistown . . . . .	Que . . . . .	W. Bryson
Ottawa, 42 Sparks Street . . . . .		J. E. Parker
Pembroke . . . . .	Ont . . . . .	Jas. N. Blackmer
Portneuf . . . . .	Que . . . . .	M. S. Delisle
Prescott . . . . .	Ont . . . . .	H. H. Wells
Quebec . . . . .	Que . . . . .	Geo. Duncan
Renfrew . . . . .	Ont . . . . .	Jas. Clark
Richelieu . . . . .	Que . . . . .	Z. E. Bessette
Richmond . . . . .	" . . . . .	J. A. Dalton
Sherbrooke, 6 Commercial . . . . .	" . . . . .	E. H. Crean
Smith's Falls . . . . .	Ont . . . . .	B. Caswell
Sorel . . . . .	Que . . . . .	J. A. Proulx
St. Anne de la Perade . . . . .	" . . . . .	F. Lafleche
St. Barthelemi . . . . .	" . . . . .	J. A. Laferriere
St. Casimir . . . . .	" . . . . .	N. E. Lacourciere
St. Cutlibert . . . . .	" . . . . .	C. N. Paquin
St. Felix de Valois . . . . .	" . . . . .	G. Read
St. Henry . . . . .	" . . . . .	J. T. Bedford
St. Hyacinthe . . . . .	" . . . . .	E. Mathieu
St. John's, 74 Richelieu . . . . .	" . . . . .	L. N. Hebert
St. Martine . . . . .	" . . . . .	E. McGowan
St. Raymond . . . . .	" . . . . .	H. Pelletier
Ste. Scholastique . . . . .	" . . . . .	Jos. Langlois
St. Tite . . . . .	" . . . . .	A. Lacourciere
The Brook . . . . .	" . . . . .	Jos. Menard
Three Rivers . . . . .	" . . . . .	Miss M. C. Methot
Thurso . . . . .	" . . . . .	G. Edwards
Victoriaville (Arthabaska) . . . . .	" . . . . .	D. C. Bourbeau
Waterloo . . . . .	" . . . . .	P. Murphy
Winchester . . . . .	" . . . . .	G. R. Bow
Yamachiche . . . . .	" . . . . .	A. Jacerte
Yamaska . . . . .	" . . . . .	L. Parenteau

And all C. P. R. Station Agents.



**FREE**

**FACTS**



ADVISE NEAREST AGENT EARLY HOW MANY ADULTS AND CHILDREN, AND HOW MANY CARS OF SETTLERS' EFFECTS, SO ACCOMMODATION WILL BE PROVIDED FOR YOU.

SPECIAL TRAINS FOR SETTLERS' EFFECTS WITH COLONIST SLEEPER ATTACHED, WILL LEAVE CARLETON JUNO. ABOUT 9 P.M. ON EVERY TUESDAY IN MARCH AND APRIL PROVIDED SUFFICIENT BUSINESS OFFERS.

**FARMS &**

**RATES  
AND  
CONDITIONS  
OF  
SHIPPING  
FOR  
COLONISTS  
AND  
THEIR  
EFFECTS**

**SLEEPERS**



