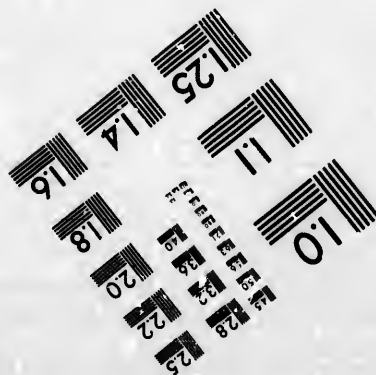
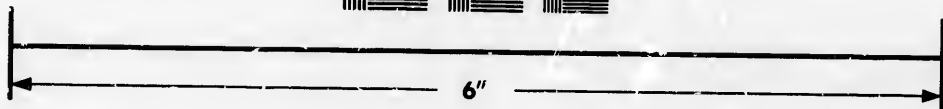
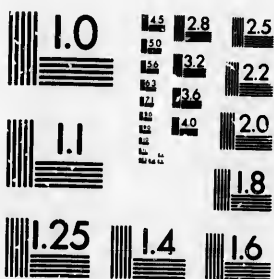


**IMAGE EVALUATION  
TEST TARGET (MT-3)**



**Photographic  
Sciences  
Corporation**

23 WEST MAIN STREET  
WEBSTER, N.Y. 14580  
(716) 872-4103

28  
32  
25  
22  
20  
18

**CIHM/ICMH  
Microfiche  
Series.**

**CIHM/ICMH  
Collection de  
microfiches.**



**Canadian Institute for Historical Microreproductions / Institut canadien de microreproductions historiques**

10

**© 1981**

Technical and Bibliographic Notes/Notes techniques et bibliographiques

The Institute has attempted to obtain the best original copy available for filming. Features of this copy which may be bibliographically unique, which may alter any of the images in the reproduction, or which may significantly change the usual method of filming, are checked below.

L'Institut a microfilmé le meilleur exemplaire qu'il lui a été possible de se procurer. Les détails de cet exemplaire qui sont peut-être uniques du point de vue bibliographique, qui peuvent modifier une image reproduite, ou qui peuvent exiger une modification dans la méthode normale de filmage sont indiqués ci-dessous.

- Coloured covers/  
Couverture de couleur
- Covers damaged/  
Couverture endommagée
- Covers restored and/or laminated/  
Couverture restaurée et/ou pelliculée
- Cover title missing/  
Le titre de couverture manque
- Coloured maps/  
Cartes géographiques en couleur
- Coloured ink (i.e. other than blue or black)/  
Encre de couleur (i.e. autre que bleue ou noire)
- Coloured plates and/or illustrations/  
Planches et/ou illustrations en couleur
- Bound with other material/  
Relié avec d'autres documents
- Tight binding may cause shadows or distortion  
along interior margin/  
La reliure serrée peut causer de l'ombre ou de la  
distortion le long de la marge intérieure
- Blank leaves added during restoration may  
appear within the text. Whenever possible, these  
have been omitted from filming/  
Il se peut que certaines pages blanches ajoutées  
lors d'une restauration apparaissent dans le texte,  
mais, lorsque cela était possible, ces pages n'ont  
pas été filmées.
- Additional comments:/  
Commentaires supplémentaires:

- Coloured pages/  
Pages de couleur
- Pages damaged/  
Pages endommagées
- Pages restored and/or laminated/  
Pages restaurées et/ou pelliculées
- Pages discoloured, stained or foxed/  
Pages décolorées, tachetées ou piquées
- Pages detached/  
Pages détachées
- Showthrough/  
Transparence
- Quality of print varies/  
Qualité inégale de l'impression
- Includes supplementary material/  
Comprend du matériel supplémentaire
- Only edition available/  
Seule édition disponible
- Pages wholly or partially obscured by errata  
slips, tissues, etc., have been refilmed to  
ensure the best possible image/  
Les pages totalement ou partiellement  
obscurcies par un feuillet d'errata, une pelure,  
etc., ont été filmées à nouveau de façon à  
obtenir la meilleure image possible.

This item is filmed at the reduction ratio checked below/  
Ce document est filmé au taux de réduction indiqué ci-dessous.

10X	14X	18X	22X	26X	30X
<input type="checkbox"/>	<input type="checkbox"/>	<input type="checkbox"/>	<input checked="" type="checkbox"/>	<input type="checkbox"/>	<input type="checkbox"/>
12X	16X	20X	24X	28X	32X

The copy filmed here has been reproduced thanks to the generosity of:

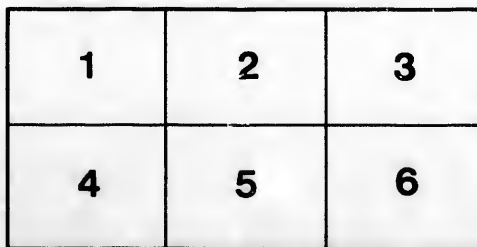
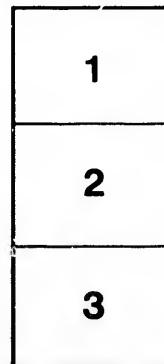
National Library of Canada

The images appearing here are the best quality possible considering the condition and legibility of the original copy and in keeping with the filming contract specifications.

Original copies in printed paper covers are filmed beginning with the front cover and ending on the last page with a printed or illustrated impression, or the back cover when appropriate. All other original copies are filmed beginning on the first page with a printed or illustrated impression, and ending on the last page with a printed or illustrated impression.

The last recorded frame on each microfiche shall contain the symbol  $\rightarrow$  (meaning "CONTINUED"), or the symbol  $\nabla$  (meaning "END"), whichever applies.

Maps, plates, charts, etc., may be filmed at different reduction ratios. Those too large to be entirely included in one exposure are filmed beginning in the upper left hand corner, left to right and top to bottom, as many frames as required. The following diagrams illustrate the method:



L'exemplaire filmé fut reproduit grâce à la générosité de:

Bibliothèque nationale du Canada

Les images suivantes ont été reproduites avec le plus grand soin, compte tenu de la condition et de la netteté de l'exemplaire filmé, et en conformité avec les conditions du contrat de filmage.

Les exemplaires originaux dont la couverture en papier est imprimée sont filmés en commençant par le premier plat et en terminant soit par la dernière page qui comporte une empreinte d'impression ou d'illustration, soit par le second plat, selon le cas. Tous les autres exemplaires originaux sont filmés en commençant par la première page qui comporte une empreinte d'impression ou d'illustration et en terminant par la dernière page qui comporte une telle empreinte.

Un des symboles suivants apparaîtra sur la dernière image de chaque microfiche, selon le cas: le symbole  $\rightarrow$  signifie "A SUIVRE", le symbole  $\nabla$  signifie "FIN".

Les cartes, planches, tableaux, etc., peuvent être filmés à des taux de réduction différents. Lorsque le document est trop grand pour être reproduit en un seul cliché, il est filmé à partir de l'angle supérieur gauche, de gauche à droite, et de haut en bas, en prenant le nombre d'images nécessaire. Les diagrammes suivants illustrent la méthode.



7

INDEX  
TO  
THE RAILWAY ACT  
OF CANADA,

51 VICT., CHAP. 29,  
AS AMENDED BY 53 VICT., CHAP. 28; 54-55 VICT., CHAP. 51,  
55-56 VICT., CHAPS. 27, 29; 56 VICT., CHAP. 27;  
57-58 VICT., CHAP. 53; 59 VICT., CHAP. 9.

BY  
WALTER VAUGHAN,  
LATE OF THE LAW DEPARTMENT OF THE CANADIAN PACIFIC  
RAILWAY COMPANY.

TORONTO :  
CANADA LAW JOURNAL COMPANY,  
TORONTO, CANADA.  
1898.



---

Entered according to Act of the Parliament of Canada, in the year one thousand eight hundred and ninety-eight, by R. R. Cromarty, at the Department of Agriculture.

---

PRINTED BY  
ROBT. G. McLEAN,  
TORONTO.



## DIRECTIONS AND ABBREVIATIONS.

---

The references are to the sections and sub-sections of the Act ; thus " 246 (3) " = sub-section 3 of section 246.

Where the Act has been amended, the amending Act is cited thus: 155 (2) 54-55 V., c. 51, s. 1 ; the reference being to sub-section 2 of section 155 as amended by the Act 54-55 Victoria, chapter 51, section 1.

The following abbreviations have been used :—

" Book of ref. " = Book of reference.

" Co. " = the Company.

" Department, " = Department of Railways.

" Gov.-in-Col. " = Governor-in-Council.

" Ry. Comm. " = the Railway Committee.

" R. S. C. " = Revised Statutes of Canada, 1886.

---

## COMPILER'S NOTE.

---

The Railway Act occupies more than eighty pages of the statute-book, and, up to this date, it has been amended by no less than seven statutes. To this complicated legislation a large number of persons, especially those engaged in the construction or operation of railways and lawyers engaged in the practice of Railway Law, are obliged, by the nature of their work, to make constant reference ; and the need of a full and accurate Index has been long felt and frequently expressed. It is to supply that want that this Index is published. The compiler has endeavored, as a lawyer, to serve the profession by making it perfectly accurate and trustworthy ; as a servant for several years of a great railway company, to make it so complete in index-words, and its contents so clear, as to meet the needs of all who are concerned in the construction or operation of a railway.

**A****Abandonment**

Of expropriation proceedings and new notice, 158.

**Accidents**

Notice to be given by Co.; penalty for omission, 267.  
 Appointment of Commissioner to enquire into, 268.  
 Powers of Commissioner, 13, 15.  
 Report of Commissioner, 269.  
 Payment of Commissioner and witnesses, 16, 270.  
 Returns; penalty for not making, 302-304.

**Accommodation**

For transportation of passengers and goods, 246 (1, 2).

**Action**

Right of action against Co. for negligence, etc., 246 (3).  
 Co. not relieved by notice or condition, 246 (3).  
 Co. not relieved by Government inspection or by anything in or done under Act, 288.  
 Limitation of time for commencement of, 287.  
 What may be pleaded; the general issue; 287.

**Agreement**

For sale of land to Co., who may make, 136.  
 When agreement may be made, 144, 141.  
 Order of Judge required in certain cases, 137.  
 Power of sale limited in certain cases, 138.  
 Validity of, under Railway Act, 139.  
 Effect of, when made before deposit of plan, etc., 141.  
 For interchange of traffic, 238, 239.

**Aliens, 87.****Allotment of Shares, 34.****Alterations in line of Railway**

Jurisdiction of Railway Committee, 11 (b).  
 What deviation from located line allowed, 90 (d), 117.  
 Plan and profile, 130, 131.  
 Change of constructed line, 120.

**Animals**

Penalty for suffering animals to go on railway, 199, 272.  
 Not to be at large on highway within  $\frac{1}{2}$  mile of crossing, except in charge, 271 (1).  
 if so at large, may be impounded, 271 (2).  
 No right of action if killed, 271 (3).  
 Liability for animals killed on tracks, 194 (3) 53 V., c. 28, s. 2.  
 When Co. not liable, 196, 198, 199.

**Annual Statement, 62.****Appliances**

Co. must use best, for stopping trains, etc., 243.  
 Ry. Comm. may order Co. to alter, 243.  
 Penalty for not using best, or for noncompliance with Ry. Comm.'s orders, 243.

**Application of Act**

In general, 3.  
 Certain provisions apply to all persons, companies and railways whether within legislative authority of the Dominion Parliament or not, 4.

**Application of Act—Continued.**

- Exception of provisions from Special Act, 6.
- Sections 32-89, application of, 5 (1).
- To form part of Special Act, 5 (2).
- Exception of, from Special Act, 5 (3).
- How made applicable to companies not subject to them, 7.
- Provincial railway crossing or joining Dominion railway subject as to such crossing and junction to provisions of Act, 177.

**Approaches**

- Inclination of approaches by which highway is carried over, under or across railway, 186.
- Fences to, 186.
- Cost of fencing when railway constructed or under construction on 19th April, 1884, 186.
- Jurisdiction of Ry. Comm., 11 (i).

**Arbitration**

- When parties shall arbitrate, 144.
- Arbitrators.
  - Disqualification, 159, 160.
  - Appointment of Company's Arb., 146 (c).
    - of arb. for opposite party, 151.
    - of third arbitrator, 151.
  - When judge may appoint sole arb., 150.
  - Vacancy in office, 157.
  - Oath; duties; 152.
  - Meetings and procedure, 152.
    - Examination of witnesses, 155 (1).
    - Evidence to be taken in writing or by stenographer, 155 (2) 54-55 V., c. 51, s. 1.
  - Transmission of papers to clerk of court, 155 (2) 54-55 V. c. 51, s. 1.

**Award**

- Time within which award is to be made, 156.
- Who may make, when, and where, 152.
- Arbitrators in making, must consider and set off increased value of remaining lands, 153.
- Damages to date from deposit of plan and book of ref. 145.
- What must be stated by, 161 (1).
- Not invalidated by want of form or technical objection, 161 (1).
- To be final and conclusive, 152.
  - Exception, 161 (2-4).
- Appeal from, 161 (2-4).
- Copy of, to be filed in court and deemed title of Co. if conveyance refused, 167, 170.

**Compensation**

- to date from deposit of plan and book of ref. 145.
- Payment or legal tender of, 162.
- Payment into court in certain cases, 163.
- Procedure on payment into court, 168, 169, 172.
  - In like case in P. of Quebec, 170-172.
- To stand in place of the lands, 166.
- Possession under award, 162.
  - Warrant of possession, when issued, 162.
  - Warrant of possession before award, 163-165.

**Arrest of Offenders, 283.****Award, See ARBITRATION.**

**B****Badges**

To be worn by certain of the Company's servants, 247.

**Baggage**

Checks to be affixed to, 250.

Penalty for refusing to check, 251.

Passenger producing check may be witness in action brought by him to prove contents and value of, 252.

**Baggage Cars**

Position of, on trains, 245.

Penalty for placing, in rear of passenger cars, 291.

**Beach**

Power of Co. to take for railway purposes, 99, 105.

No work to be constructed on until plan and site approved by Ry. Comm., 181.

**Bell**

Locomotive-engine to be furnished with, 244.

To be rung at Highway crossings; penalty for neglect, 256.

**Bills of Exchange, 98.****Board of Directors, See DIRECTORS.****Bonds, Debentures, Etc.**

Authority to issue, 93 (1).

Limit of issue, 93 (4), 55-56 V., c. 27, s. 4.

Issue of new, to replace bonds, etc., withdrawn or paid off, 93 (4), 55-56 V., c. 27, s. 4.

No bond, etc., to be for less than \$100, 93 (3).

When, where, and how payable, 93 (1).

Rate of interest, 93 (1).

Disposal of, 93 (2).

Registration of, 96 (2).

To be the first preferential claim, 95 (1).

Holder of, to be a mortgagee, 95 (2).

Mortgage to secure, 94 (1).

Powers, rights, and remedies granted or restricted by, 94 (2).

Validity of, 94 (2).

Deposit of; notice, 94 (3).

No proceeding to enforce payment of, may be taken except through trustee under Mortgage deed, 95 (2).

Powers and rights of holders in case of nonpayment, 96 (1-3).

Sale of railway to purchaser not having corporate powers, 278-280.

Transfer of, 97.

Purchase of another company's bonds, etc. forbidden; exceptions, 276, 277.

**Bonus**

Power of Company to take, 90 (b).

**Book of Reference**

What it must contain, 123.

Omission of, or error in, name of landowner, 118.

Errors of, 128, 129.

May be made of sections of railway, 124.

Deposit in Department, 124.

Examination and certificate by Minister or Deputy, 125.

**Book of Reference—Continued.**

- Deposit in Department of duplicate examined and certified, 125.
- Deposit of copies with registrars of deeds, 125.
- Custody of copies by registrars, 132.
- Access of public to, 126, 132.
- Notice of deposit with registrars, 144.
- Deposit, and newspaper notice, to be general notice, 145.
- Works cannot proceed until deposit, 131.
- Certified copies to be evidence, 127, 133.

**Borrowing Powers, See BONDS.****Branch Lines**

- Jurisdiction of Railway Committee, 11 (c), 121.
- Power to build, 90 (n), 121.
- Procedure where branch more than a quarter of a mile in length, 121.
- Limit of time for construction, 121.
- Powers of Company with respect to, 122.
- Co. shall not extend line beyond termini mentioned in Special Act, 120.

**Bridges.**

- Power to build, 90 (g).
- No trains to run on, unless constructed and maintained with safeguards approved by Minister, 193.
- Headway above cars, 192 (1-6).
- AT HIGHWAY CROSSINGS
- Dimensions, 185.
- Inclination of highway, 185, 186.
- of approaches to, 186.
- Fences, 186.
- Cost of fencing when railway constructed or under construction on 19th April, 1884, 11 (i), 186.

**OVER NAVIGABLE WATERS**

- Height, 179.
- Openings, 179.
- Flooring, 180.
- Plan and site to be approved, 181.
- Gov.-in-Col. may direct construction of draw or swing bridge, and regulate opening of same, 179.
- Gov.-in-Col. may order new bridge to be substituted for existing; penalty for noncompliance, 182.
- Co. must not substitute movable for existing fixed bridge without consent of Ry. Comm, 182.
- Trains to stop before passing any draw or swing; exception; penalty, 255 (1, 2) 55-56 V., c. 27, s. 7.
- Foot passengers must use foot-bridge; exceptions, penalty, 274 (1, 2.)

**By-Laws, Rules, and Regulations**

- Directors may make by-laws or pass resolutions for certain purposes, 58 (59 V., c. 9, s. 1.)
- Resolutions passed by directors instead of by-laws prior to 23rd April, 1896, validated by 59 V., c. 9, s. 2.
- Company may make, for certain purposes, 214.
- Form and execution of, 216.
- Approval by Gov.-in-Col., 217.
- Publication of, affecting public, 218.

**By-Laws, Rules and Regulations—Continued.**

- affecting shareholders or employees, 219.
- Who are bound by, 220.
- Fixing tolls, etc., 223-228, 232.
- Certified copies to be evidence, 222.
- Violation of, Co. may prescribe penalty for, 215.
- Penalty under Act for, 296.
- When followed by greater risk, 294.
- When summary interference by Co. justified, 221.
- Returns to Minister, 302-305.

**C**

**Calls**

- How made; notice of, 63.
- Publication of notice of, 64.
- Payment of, 65.
- Interest on paid up, 71.
- On overdue, 66.
- Recovery of unpaid calls, 67, 68.
- No interest on share when calls in arrear, 72.
- Shares liable to forfeiture for refusal to pay, 80.

**Capital Stock**

- Amount of, to be stated in Special Act, 35.
- Division into shares of \$100 each, 35.
- Subscription books to be opened, 33.
- Subscription, 33.
- By municipal corporations, 38.
- Deposit in bank, 33, 36.
- Allotment, 34.
- Application of, 35.
- Is personal property, 75.
- Directors may issue paid up, in certain cases, 39.

**Cars**

- Inspection by Government Engineer, before opening of railway, 202.
- When out of repair, 205, 210.
- Position of cars on trains, 245.
- Penalty for placing baggage in rear of passenger cars, 291.
- For carriage of dangerous goods, 254.
- Not to stand on railway crossing longer than 5 minutes; penalty, 261 (1, 2).
- Brakes and disconnecting appliances, and seats, 243.

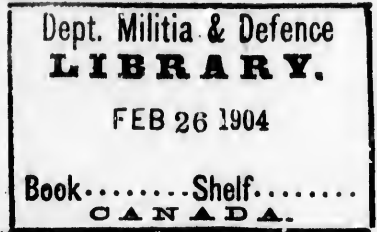
**Canal,** See NAVIGABLE WATERS.

**Cattle**

- Penalty for suffering cattle to go on railway, 199, 272.
- Not to be at large on highway within 1/2 mile of crossing except in charge, 271 (1).
- If so at large, may be impounded, 271 (2).
- No right of action if killed, 271 (3).
- Liability for cattle killed on tracks, 194 (3) 53 V., c. 28, s. 2.
- When Co. not liable, 196, 198, 199.

**Cattle-Guards.**

- Erection of, at highway crossings, 194 (1).
- When land occupied at time of construction of railway, 195.



**Cattle Guards—Continued.**

- Fences to be turned into, 197 (55-56 V., c. 27, s. 6.)
- When Co. liable for damages to animals through omission to erect or maintain, 194 (3) 53 V., c. 28, s. 2.
- When Co. freed from liability, 196.

**Certificate of Shares, See SHARES.****Charges, See TOLLS.****Classification of Freight. 226.****“Clerk of the Peace”**

- Meaning of expression when lands not situate wholly in one district, 2 (y.)

**Commissioner**

- Appointment of, for enquiry into accident, 12.
- Powers of, 13, 15.
- Payment of witnesses before, 16.

**Company**

- Meaning of expression “Company” in Act, 2 (a).
- Powers under Act of Incorporation, 31.
  - In general under Railway Act, 90 (a-s) 53 V., c. 28; 55-56 V., c. 27.
  - To borrow money, see Bonds, Debentures, etc.
  - To take lands, see Lands; Expropriation.
  - To construe branch lines, see Branch Lines.
  - To enter upon lands to make surveys, 123.
  - To sell surplus lands, see Sale.
  - To make by-laws, etc., see By-laws.
  - To collect tolls, see Tolls.
  - To make traffic agreements, etc., see Traffic Arrangements.

**Compensation**

- In respect of works ordered by Ry. Comm., Jurisdiction of Ry. Comm., 11 (j).
- For damage sustained through exercise of Co.'s powers, 92.
- For lands vested in Crown for special or trust purposes, 99.
- For Indian lands, 101.
- For lands purchased or expropriated to stand in place of lands, 166.
  - Arbitrators to set off increased value against damages, 153.
  - Lien for payment of, 143.
  - To date from deposit of plan, etc. in expropriation, 145.
  - When award not made in due time, 156.
  - When Co. not responsible for disposition of, 140.
- Payment or legal tender of, 163.
  - Possession upon, 162.
  - Into court, 167-169, 172.
    - In Province of Quebec, 167, 170-172.
  - In respect of railway crossing, etc., 176.
- For damages to goods and injuries to persons, see Damages; Injuries.

**Conductor**

- Intoxication of, 292.

**Confirmation of Title**

- In Province of Quebec, 170, 171.

**Constables (Railway)**

- Appointment, 281, 285.
- Oath, 281, 282.
- Powers, 282, 283.
- Arrest of offenders, 283.
- Dismissal, 284, 285.
- Punishment for neglect, 286.

**Construction of Railway**

- Time limited for, 89.
- General powers of Co. during, 90 (a-s) 53 V., c. 28, and 55-56., c. 27.
- Power to take lands for, 112.
- To take materials for, 113.

**Contract**

- for sale of lands to Co., who may make, 136.
- Judge's order required in certain cases, 137.
- Vendor's powers limited in certain cases to land actually required for use of railway, 138.
- Validity of, 139.
- Effect of, when made before plan, etc., deposited, 141.
- Co. not responsible for disposition of purchase money, 140.
- for interchange of traffic, 238, 239.

**Conveyance**

- of lands to Co., who may make, 136.
- Judge's order required in certain cases, 137.
- Limited in certain cases to lands actually required for railway, 138.
- Validity, 139.
- Co. not responsible for disposition of purchase money, 140.

"County," Meaning of expression, in Act, 2 (b).

"Court," Meaning of expression in Act, 2 (c).

**Crossings**, See FARM CROSSINGS ; HIGHWAY CROSSINGS ; RAILWAY CROSSINGS ; STREET RAILWAY CROSSINGS.

**Crown Lands**

- Power of Co. to take, 99.
- when reserved for military or naval purposes, 100.
- Indian reserves, 101.
- public beach, or land covered with water, 99, 105.

**D****Damages**

- Co. to do as little damage as possible in exercise of powers, and to make full compensation, 92.
- to lands and for expropriation of lands to be settled by arbitration in case of disagreement, 144.
- to date from deposit of plan and book of ref. 145.
- Arbitrators to consider increased value of lands by reason of the construction of the railway, 153.
- Right of action for negligence ; Co. not relieved by any notice, condition or declaration, 246 (3).
- Co. liable for injuries sustained through insufficiency of appliances on trains, etc., notwithstanding agreement to contrary, 243.
- When Co. liable for injuries to persons standing on car platform or on baggage, wood or freight car, 249.



**Damages—Continued.**

- Liability of Co., director, or officer for damages caused by contravention of Act, special Act, orders of Ry. Comm., etc., 289 (1, 2).
- Limitation of action for damages sustained by reason of the railway; what may be pleaded, 287.
- Co. not relieved by inspection under, or provisions contained in Act, 288.

**Dangerous Goods**

- Carriage of, 253, 254.

**Debentures, See BONDS.****“Department”**

- Meaning of expression, in Act, 2 (d).

**“Deputy”**

- Meaning of expression, in Act, 2 (e).

**Desistment**

- of expropriation proceedings and new notice, 158.

**Deviation**

- Jurisdiction of Railway Committee, 11 (b).
- What deviation from located line allowed, 90 (d), 117.
- Plan and profile, 130, 131.
- Change of constructed line, 120.

**Directors**

- Qualification, 49.
- Disqualification, 57.
- Election at first meeting of shareholders, 36
- At annual or special meeting of shareholders, 46, 47.
- Representation of municipalities on board, 38.
- Term of office, 50.
- Vacancies, how filled, 48, 51.
- Quorum, 46, 53.
- Acts of majority of quorum to be binding, 54.
- Votes; casting vote of chairman, 55.
- Election of President and Vice-President, 52.
- Who shall be chairman of meetings, 52.
- When certified copies of minutes of meetings evidence, 212.
- Power to make by-laws, etc., 58 (59 V., c. 9, ss. 1, 2).
- To appoint officers, 59.
- Subject to control of shareholders, by-laws, etc., 56.
- Liability for damages for contravention of Act, orders of Gov.-in-Col., Ry. Comm., etc., etc.; and penalty, 289 (1, 2).

**Directors (Provisional).**

- Who shall be, 33.
- Quorum, 33.
- Term of office, 33.
- Powers, 33.
- Allocation of stock by, 34.

**Discrimination**

- Jurisdiction of Ry. Comm., 11 (k, l, p).
- Forbidden, 224, 240.
- Equal tolls to be charged to all persons under the same circumstances and for the same services, 224.
- Between localities forbidden; exception, 232.
- Special rates, when Co. may give, 225.
- Secret special rates, rebates, etc., forbidden, 233.
- Damages for exacting extortionate toll, 290.

**Ditches**, See DRAINS.

**Diversion**

- Of rivers, streams, watercourses, 90 (h), 91.
- Of waterpipes, gaspipes, sewers, drains, 90 (j), 91.
- Of telephone, telegraph, and electric light wires, 90 (j), 91.
- Of highway, 90 (h), 91.
- For level crossing, 187.

**Dividends**

- Declaration of, 69.
- Rate to be determined by annual meeting, 70.
- Not to impair capital, 71.
- Not to be paid on shares when calls in arrear, 71.
- Not to be paid to purchaser of shares until transfer entered, 73.

**Drains**, Etc.

- Jurisdiction of Ry. Comm., 11 (q), 14.
- Construction of, through Co.'s lands in interest of municipality, 14.
- Power of Co. to construct, 90 (g, i).
- To divert, 90 (j), 91.

**Drunkenness**

- Of engine-driver or conductor, 292.
- Sale of liquor to employees while on duty, 293.

**E**

**Electricity**

- Line may be worked by, 90 (k).

**Electric Light Wires**

- Diversion of, 90 (j), 91.

**Electric Railway**

- Shelter for motormen and car operators, 10 (c), 57-58 V., c. 53, s. 1.
- Crossings of Dominion Railway,—
  - Must be approved by Ry. Comm., 173 (56 V., c. 27, s. 1).
  - Notice of application to railway Co. 173 (56 V., c. 27, s. 1).
  - Powers by Ry. Comm. in respect of, 173 (56 V., c. 27, s. 1), 174, 175.
  - Ry. Comm. to apportion cost, failing agreement, 176.
  - Conductor of electric car to go forward and see track clear before crossing electric railway, 257 (1) 56 V., c. 27, s. 2.

**Eminent Domain**, See EXPROPRIATION.

**Employees**

- Ry. Comm. may make regulations for safety of, 10 (c) 57-58 V., c. 53, s. 1.
- Are incapable of being chosen directors, 57.
- Directors may make by-laws or pass resolutions for appointment and superannuation of, and prescribing duties of, 58 (59 V., c. 9, ss. 1, 2).
- Directors to appoint officers and take security, 59.
- Co. may make by-laws and regulations for conduct of, 214 (g), 220.
- Violation of by-laws, rules, etc.; penalty, 295.
- When attended by greater risk, 294.
- Co. may pay penalty imposed under sec. 294 and deduct from wages, 295.

**Employees—Continued.**

- Penalty for contravention by officers of Act, orders of Ry. Comm., etc., etc., 289 (1, 2).
- Badges to be worn by certain, 247.
- Sale of liquor to, while on duty, 293.
- Intoxication of engine-driver or conductor, 292.
- Superannuation allowances to, 58 (59 V., c. 9, ss. 1, 2).

**Engine**

- Brakes and appliances, for stopping trains and communicating with conductor, 243.
- Bell and whistle, 244, 256.
- Oilcups and oiling appliances, 262 (5).
- Inspection of, before opening of railway, 202.
  - When out of repair, 205, 210.
- Protection when engine and tender in rear of train, 260 (55-56 V., c. 27, s. 9).
- Intoxication of driver, 292.

**Engine Driver**

- Intoxication of, 292.
- Penalty for neglect to sound bell and whistle at highway level crossing, 256.

**Engineer, See INSPECTING ENGINEER.****Expenditure (Working).**

- Meaning of expression "Working Expenditure" in Act, 2 (x).
- To be first charge on undertaking, 94.

**Explosives**

- No passenger shall carry, 253.
- To be distinctly marked by shipper; penalty, 253.
- Carriage of, 254.
- Company may refuse to take, 254.

**Express Companies**

- Facilities to be granted to, 242.

**Expropriation**

- Of lands vested in Her Majesty, 99.
- Of public beach and lands covered with water, 99, 105.
- Of lands reserved for military and naval purposes, 100.
- Of Indian reserves, 101.
- Of lands of other companies, 102.
- Of lands (or occupation) for construction or repair of railway or for carrying out requirements of Ry. Comm., 112.
- Of lands on which are situate materials required for construction or maintenance or of right to take such materials, 113.
- Of lands or right of way for sidings, waterpipes, or tracks, to reach materials, 114.
- Extent of lands that may be compulsorily taken, 103, 115.
  - For cuttings, offsets, stations, etc., etc., 103, 104.
  - Where more ample space required for accommodation of public or traffic, or protection against snow drifts, 103.
  - Proceedings for obtaining more ample space, 106-108 (59 V., c. 9., s. 3) 109-111.
- Purchase with consent of owner of larger quantity than could be compulsorily taken; sale of surplus, 115.
- Location of railway.
  - Surveys and levels to be made, 123.
  - Plan, profile, and book of reference to be made, 123.
  - Scale and paper of plan and profile, 135.
  - Contents of book of reference, 123.

**Expropriation—Continued.**

- May be made in sections, 134.
- To be deposited in department, 124.
- To be examined and certified by Minister or Deputy, 125.
- Duplicate so examined and certified to be deposited in department and with registrars of deeds, 125.
- Must be deposited before construction, 131.
- Custody of copies by registrars and access of public to, 126, 132.
- Certified copies of, when evidence, 127, 133.
- Of alterations, 130.
- Correction of errors in 128, 129.
- Notice to treat—what it must contain, 146.
- Service of, 144.
  - By advertisement when owner absent, 148, 149.
  - To be accompanied by surveyor's certificate, 147.
  - Contents of surveyor's certificate, 147.
- Abandonment and new notice; costs, 158.
- Arbitration.
  - When parties shall arbitrate, 144.
- Arbitrators.
  - Disqualification, 159, 160.
  - Appointment of Co.'s arbitrator, 146 (c).
    - Of arbitrator for opposite party, 151.
    - Of third arbitrator, 151.
    - When judge may appoint sole arbitrator, 150.
  - Vacancy in office, 157.
  - Oath, duties, 152.
  - Meetings and procedure, 152.
  - Examination of witnesses, 155 (1).
  - Evidence to be taken in writing or by stenographer, 155 (2), 54-55 V., c. 51, s. 1.
  - Transmission of papers to clerk of court, 155 (2), 54-55 V., c. 51, s. 1.
- Award.
  - Who may make, when and where, 152.
  - Time within which award is to be made, 156.
  - Damages to date from deposit of plan and book of ref., 145.
  - Arbitrators in making, must consider and set off increased value of remaining lands, 153.
  - What must be stated by, 161 (1).
  - Not invalidated by want of form or technical objection, 161 (1).
  - To be final and conclusive, 152.
    - Exception, 161 (2-4).
  - Appeal from, 161 (2-4).
  - Copy to be filed in court and deemed title of Co., if conveyance refused, 167, 170.
- Compensation.
  - To date from deposit of plan and book of ref. 145.
  - Payment or legal tender of, 162.
  - Payment into court in certain cases. 163.
    - Procedure on, 168, 169, 172.
    - In like cases in Prov. of Quebec, 170, 172.
  - To stand in place of lands, 166.
  - When Co. not responsible for disposition of purchase money, 140.
- Possession under award, 162.
- Warrant of possession, when issued, 162.
  - before award, 163-165.

- Extensions**, See BRANCH LINES.  
Co. shall not extend line beyond termini mentioned in special Act, 120.
- Extortion**, See DISCRIMINATION:  
Damages for exacting extortionate toll, 290.
- Extra Lands**  
May be expropriated for certain purposes with authority of Minister, 103.  
Proceedings for obtaining, 106-108 (59 V., c. 9, s. 3), 109-111.

## F

- Facilities**  
To other companies and connecting lines, 240, 241.  
To express companies, 242.
- Fares**  
In general, see TOLLS.  
Expulsion of passenger for refusal to pay, 248.  
Repayment of cost of unused ticket or part of ticket, see R. S. C., c. 110, s. 9.
- Farm Crossings**  
Duty of Co. to make, 191.  
Gates and fastenings at, 194 (1, 2), 195.  
Gates to be kept closed, 198.  
Penalty for leaving gates open, and liability to Co., 199.  
When Co. exempted from liability in respect of, 196, 198, 199.
- Fastenings at Hurdle Gates**, 194 (1, 2).
- Fences**  
To be erected and maintained on each side of railway; where and when necessary, 194 (1), 195.  
when land occupied at time of construction, 195.  
Description of, 194 (1).  
To be turned into cattle-guards at public crossings, 197 (55-56 V., c. 27, s. 6).  
When Co. liable for damages to animals for omission to erect or maintain, 194 (3), 53 V., c. 28, s. 2.  
When Co. is exempted from liability in respect of, 196, 199.  
Liability to Co. and penalty for taking down fence, 199.  
To bridges and approaches at highway crossings, 186.  
Cost to be apportioned by Ry. Comm. when railway constructed or under construction on 19th April, 1884, 11 (i), 186.
- Fences (Snow)**.  
Erection and removal of, 116.
- First Meeting of Shareholders**, 36.
- Foot Bridge at Highway Level Crossings**  
Foot passengers must use; exception; penalty, 274 (1, 2).
- Forfeiture of Shares**, See SHARES.
- Freight Charges**, See TOLLS.
- Freight Classification**, 226.
- Frogs**  
Packing of, 262 (1-4).

## G

**Gas Pipes**

- Diversion of, by Co. during construction, 90 (j), 91.
- Through Company's lands, 14.
- jurisdiction of Ry. Comm., 11 (q), 14.

**Gates at Farm Crossings**

- When Company must erect, 194 (1), 195.
- Fastenings, 194 (1, 2).
- Must be kept closed, 198.
- penalty for leaving open, 199.
- When Co. freed from liability for animals killed, 196, 198, 199.

**General Advantage of Canada, Works for the**

- Certain railways declared to be, 306.
- Such railways subject to legislative authority of Dominion Parliament, 307.
- Confirmation of provincial legislation affecting, 308.

**Goods**

- Meaning of expression "Goods" in Act, 2 (f).
- Transportation of, 246 (1, 2).
- Right of action for company's negligence, 246 (3).
- Penalty for refusal to receive, convey or deliver, 241.
- Carriage of dangerous goods, 253, 254.
- Seizure and detention of, for unpaid tolls, 234.
- Sale of goods in default of payment of tolls, 235.
- Sale of unclaimed goods, 236, 237.

**Government Railways**

- Excepted from application of Act, 3.

**Grants**

- Power of Company to take grants in aid of railway, 90 (b).

**Gravel**

- Expropriation of land for, or of right to take, 113, 115.
- Expropriation of right-of-way, and construction of sidings, etc., to reach gravel at a distance, 114.

## H

**Head Office, 32.****Highway**

- Meaning of expression "Highway," 2 (g).
- Diversion of, 90 (h), 91.
- For level crossing, 187.
- Bridges over, height and breadth of, 185.
- Inclination of highway and approaches to, 185, 186.
- Fences to highway and approaches, 186.
- Cost of, to be apportioned by Ry. Comm. when railway constructed or under construction on 19th April, 1884, 11 (i), 186.
- When railway may be carried along, 183.
- Construction of, through, across or under Co.'s lands or works, 14.
- Jurisdiction of Ry. Comm., 11 (q), 14.
- Manner and terms of, 14.
- Who may construct, 14.
- Cost of construction and maintenance, 14.

**Highway Crossings**

- Construction of highway across railway, 14.
- Jurisdiction of Ry. Comm., 11 (q), 14.
- Manner and terms of, 14.
- Who may construct, 14.
- Cost of construction and maintenance, 14.
- Construction of railway across highway :—
- Jurisdiction of Ry. Comm., 11 (h).
- Powers of Co. as to land required, 187.
- Diversion of highway, 187.
- Plan and profile to be submitted to Ry. Comm., 187.
- Powers of Ry. Comm. as to works and protection, 187, 188.
- Apportionment of cost of works and protection, 188.
- Extension of time for completion of work, 189.
- Penalty for noncompliance with Ry. Comm.'s orders, 188.
- Rails must not sink below or rise above level of highway at level crossings more than one inch, 184.
- Inclination of highway and approaches at, 186.
- Fences to approaches, 186.
- Cost of, to be apportioned by Ry. Comm., when railway constructed or under construction on 19th April, 1884, 11 (i), 186.
- Proceedings by local authority when railway out of repair at, 206-208.
- Signboards to be erected at level crossings; penalty, 190.
- Bell to be rung and whistle sounded at level crossings; penalty, 256.
- Cars not to stand on level crossings longer than five minutes; penalty, 261 (1, 2).
- Pedestrians to use footbridge provided at level crossings; penalty, 274 (1, 2).

**Hurdle Gates**, See GATES AT FARM CROSSINGS.

**I****Inclination**

- Of descent of highway under railway bridge, 185.
- Of approaches by which roadway is carried over or under railway or across it at rail level, 186.

**Incorporation**

- Powers of Co. under special Act, 31.
- Of Secs. 32-89 with special Act, 5 (2); exception, 5 (3), 6.
- Of purchaser of railway not having corporate powers, 280.

**Indian Lands**. 101.

**Injuries**

- The Co. to do as little damage as possible in the exercise of their powers and to compensate for all damage sustained by reason thereof, 92.
- Co. liable for injuries sustained through inefficiency of appliances on trains, etc., notwithstanding any agreement to contrary, 243.
- Co. liable for negligence; not relieved by notice or condition, 246 (3).
- When Co. not liable for injuries sustained by person standing on car platform or on baggage, wood, or freight car, 249.

**Injuries—Continued.**

- Limitations of action for damages or injury sustained by reason of the railway, 287.
- Co. not relieved from liability by inspection under, or provisions contained in Act, 288.
- Liability of Co., director, or officer, contravening provisions of Act, orders of Ry. Comm., etc., etc., 289.

**Inspecting Engineer**

- Meaning of expression "Inspecting Engineer" in Act, 2 (h).
- Powers, 13, 15.
  - May travel and use telegraph free of charge, 27, 28.
  - May regulate running of trains while railway out of repair; penalty for noncompliance by Co., 209.
  - May prohibit running of trains in case of danger; penalty for noncompliance by Co.; 210, 211.
- Proof of authority of, 29.
- Co. must afford information to, 26.
- Telegraph operators must obey orders of; penalty, 28.
- Order of, promulgation of, 24.
  - Publication by Co. of, 25.
- Penalty for obstructing, 30.
  - For violation of order of, when attended by greater risk, 294.

**Inspection of Railway, Rolling Stock, Etc.**

- Before opening of railway,—
  - Notices to Minister, 200.
    - Penalty for opening without notice, 201.
  - Inspection and report by engineer, 202, 204.
  - Postponement of opening and further inspection, 202.
    - Penalty for opening contrary to direction of Minister, 203.
  - Order of Minister not binding unless accompanied by copy of Inspecting Engineer's report, 204.
- Out of repair, 205.
  - Minister or Engineer may regulate trains; penalty, 209.
  - Engineer may prohibit trains in case of danger; penalty, 210, 211.
    - Proceedings on such prohibition, 211.
- Out of repair at highway level crossings, proceedings by local authority, inspection, etc, 206-208.
  - Regulation or prohibition of trains, 209-211.
- Co. not relieved from liability by inspection under Act, 288.

**Interchange of Traffic**

- Jurisdiction of Ry. Comm., 11 (f, l, m, n, o).
- Facilities to other companies and connecting lines, 240, 241.
  - Unreasonable preference to particular company forbidden; penalty, 240, 241.
- Agreement with another company, consent of shareholders and approval of Gov.-in-Col., 238.
  - Notice of application for approval, 239.

**Interest**

- on calls paid up, 71.
- on sums paid in advance on shares, 85.
- not to be paid on shares when calls in arrear, 72.
- not to be paid to purchaser of shares until transfer entered, 73.

**International Boundary**

- Exercise by Co. of powers beyond, 90 (r), 53 V., c. 28, s. 1.



**Interpretation**

of words and expressions in Act, 2.

**Intoxication**

of engine-driver or conductor, 292.

penalty for selling liquor to employees while on duty, 293.

**J****Joint Freight Classification, 226.****"Judge"**

Meaning of expression, in Act, 2 (i).

**Junction, See RAILWAY CROSSINGS.****Jurisdiction**

Of Dominion Parliament, see Application of Act.

Of Ry. Comm., in general, 10 (1, 2), 11.

Of magistrates to try offenders, 283.

**"Justice"**

Meaning of expression in Act, 2 (j).

when lands not situate wholly in one district, 2 (y).

**"Justices, Two"**

Meaning of expression in Act, 2 (j).

**L****Lands**

Meaning of expression "Lands" in Act, 2 (k).

Entry for surveys, 90 (a).

Co.'s power to purchase, 90 (c), 115.

Co. may make railway across, 90 (d).

Co.'s powers in respect of lands—

granted in aid of the railway, 90 (b).

vested in Her Majesty, 99.

reserved for naval and military purposes, 100.

Indian Reserves, 101.

public beach and land covered with water, 99, 105.

of other companies, 102.

for construction and repair of railway or for carrying out requirements of Ry. Comm., 112.

whereon are situate materials required for construction or maintenance, 113.

for sidings, water-pipes, or tracks to reach materials, 114.

at highway crossings, 187.

Extent of lands that may be compulsorily taken, 103, 115.

For cuttings, offsets, stations, etc., 103, 104.

Where more ample space required for accommodation of public or traffic, or protection against snow drifts, 103.

Proceedings for obtaining more ample space, 106-108 (59 V., c. 9, s. 3), 109-111.

Location of railway, see Location of line.

Map or plan, profile, and book of reference, see Location of line.

Expropriation proceedings, see Expropriation.

Damages to date from deposit of plan, etc., 145.

Increased value of remaining lands to be considered, 153.

Compensation to stand in place of lands, 166.

Payment or legal tender of, 162.

**Lands—Continued.**

- Payment into court in certain cases, 163.
  - Procedure on, 168, 169, 172.
  - In like cases in Prov. of Quebec, 170-172.
- Possession and warrant of possession, 162-165.
- Sale to company, 144.
  - Effect of contracts made before deposit of plan, etc., 141.
  - Validity of, 139.
- When owners cannot alienate, annual rent may be fixed, 142.
- Lien for purchase money or rent, 143.
- When Co. not responsible for disposition of purchase money, 140.
- Conveyance, who may make, 136.
  - Order of judge required in certain cases, 137.
  - Limited to lands actually required in certain cases, 138.
  - Validity of, 139.
- Sale by Co. of lands not necessary for railway, 90 (c), 115.
  - Of lands obtained by Crown by way of subsidy or otherwise, 90 (s) 55-56 V., c. 27, s. 3.

**Lease**

- Meaning of expression "Lease" in Act, 2 (l).
- Of lands which owner cannot alienate, 142.

**Level Crossings (Highway).**

- Jurisdiction of Ry. Comm., 11 (h).
- Powers of Co. as to land required for, 187.
- Diversion of highway, 187, 112.
- Plan and profile to be submitted to Ry. Comm., 187.
- Powers of Ry. Comm. as to works and protection, 187, 188.
  - Apportionment of cost of works and protection, 188.
  - Extension of time for completion of work, 189.
  - Penalty for non-compliance with Ry. Comm.'s orders, 188.
- Construction, 183.
  - Rails not to rise above or sink below surface of highway more than one inch, 184.
  - When rails not deemed an obstruction, 183.
- Inclination of highway approaches, 186.
  - Fences to approaches, 186.
  - Cost of to be apportioned by Ry. Comm. when railway constructed or under construction on 19th April, 1884, 11 (i), 186.
- Proceedings by local authority when railway out of repair at, 206-208.
- Signboards to be erected at ; penalty, 190.
- Bell to be rung and whistle sounded at ; penalty, 256.
- Cars not to stand longer than five minutes on ; penalty, 261 (1, 2).
- Pedestrians to use footbridge provided at ; penalty, 274 (1, 2).

**Limitation**

- Of time commencing and finishing railway, 89.
- Of actions for damages, 287.

**Location of Line**

- Entry upon lands to make surveys, 90 (a).
- Surveys and levels to be taken, 123.
- Plan, profile and book of reference to be made, 123.
  - Scale and paper of plan and profile, 135.

**Location of Lines—Continued.**

- Contents of book of reference, 123.
- may be made in sections, 124.
- To be deposited in Department, 124.
- To be examined and certified by Minister or Deputy, 125.
- Duplicate so examined and certified to be deposited in Department and with registrar of deeds, 125.
- Must be deposited before construction, 131.
- Custody of copies by registrars and access of public to, 126, 132.
- Certified copies, when evidence, 127, 133.
- Correction of errors in, 128, 129.
- Of alterations, 130, 131.
- Of completed railway to be filed in Department and with registrars of deeds, 134.
- Deviations—what deviation from local line allowed, 90 (d), 117.
- Jurisdiction of Ry. Comm., 11 (b).
- Alterations, 130, 131.
- Change of, with consent of Ry. Comm., 120.
- Must not interfere with working of, or access to mines, 119.

**Locomotives**

- Government Inspection before opening of railway, 202.
- When out of repair, 205, 210.
- Appliances—brakes, communication with conductor, 243.
- Bell and whistle, 244.
- Oil-cups and oiling appliances, 262 (5).
- Protection when locomotive and tender in rear of train, 260 (55-56 V., c. 27, s. 9).

**Luggage, See BAGGAGE.****M****Magistrates**

- Jurisdiction to try offenders, 283.

**Mails**

- Carriage of, 264.

**Map, See PLAN.****Map or Plan, See PLAN.**

- Meaning of expression, "Map or Plan," 2 (m).

**Materials**

- Expropriation of lands for, or of right to take, 113, 115.
- Of right of way and construction of sidings, etc., to take materials at a distance, 114.
- Abandonment of expropriation proceedings and new notice, 158.

**Meetings**

- Of shareholders,—
  - First meeting, 36.
  - Annual and special, 40 (1).
  - Where held, 40 (2).
  - Notice ; evidence of notice, 41.
  - What business may be transacted at, 42.
  - Voting, 43.
  - By proxy, 44, 45.
  - When certified copies of minutes evidence, 212.
- Of directors,—
  - Who shall preside at, 32.
  - Voting, 55.
  - When certified copies of minutes evidence, 212.

**Military Forces**

Carriage of, 264.

**Mines**

Railway must not obstruct access to, or working of, 119.

**Minister**

Meaning of expression "Minister", 2 (n).

Powers—in general, 12, 13, 15.

Promulgation of order of, 24.

Publication by Co. of order of, 25.

Documents signed by, to be evidence without proof of signature, 23.

**Minutes of Meetings**

When certified copies evidence, 212.

**Mortgage**

Co. may secure bonds, etc., by, 94 (1).

Powers, rights, and remedies granted or registered by; 94 (2).

Validity of, 94 (2).

Deposit; notice, 94 (3).

No proceedings may be taken by holders of bonds, etc., to enforce payment except through trustees under, 95 (2).

Sale of railway to person not having corporate powers under, 278-280.

**Municipalities**

may subscribe for stock in Co., 38.

Representation on board of directors, 38.

**N****Naval Forces**

Carriage of, 264.

**Navigable Waters**

Expropriation of land covered with water with consent of Gov.-in-Col., 99, 105.

Construction of works in, jurisdiction of Ry. Comm. 11 (g).

Plan and site must be approved, 181.

Co. must not cause obstruction or impede navigation, 178.

Bridges—height; openings, 179.

Flooring, 180.

Approval of plan and site, 181.

Gov.-in-Col. may direct construction of draw or swing, and regulate its opening, 179.

Gov.-in-Col. may order new bridge to be substituted for existing; penalty for non-compliance, 182.

Co. must not substitute movable for existing fixed bridge without consent of Ry. Comm., 182.

Trains to stop before passing any draw or swing; exception, penalty, 255 (1, 2) 55-56 V., c. 27, s. 7.

**"Near"**

Meaning of expression, in Act, 2 (o).

**Negligence**

Right of action against Company for, 246 (3).

Co. not relieved by any notice, condition, etc., 246 (3).

nor by inspection, or anything in or done under authority of Act, 288.

**Notices**

- of first meeting of shareholders, 36.
- of annual and special meetings, 41.
- of calls, 63, 64.
- to treat for sale of land in expropriation proceedings, 146-149.
  - abandonment, and new notice, 158.
- to landowner where materials required for construction or maintenance, 113.
- of deposit of deed of mortgage, 94 (3).
- of deposit of plan and book of ref. with registrars, 144.
- of application to Ry. Comm. for railway crossing, 173.
  - for authority to construct street over drainage, etc., through Co.'s lands, 14.
- of application to Gov.-in-Col. to approve traffic agreement, 239.
- to Minister that railway ready for inspection, 200.
- of by-laws, rules and regulations affecting public, 218.
  - affecting shareholders or employees, 219.
- of expected arrival of overdue trains, 263 (1-3).
- of Secretary given by order of directors deemed notices by the directors and the Company, 213.

**Nuisance**

- Co. may make by-laws, etc., respecting any, 214 (e).

**O****Offences**

- Provisions of Railway Act relating to, apply to all persons, companies and railways whether within legislative authority of Dominion Parliament or not, 4.
- Contravention of Railway Act, special Act, orders of Ry. Comm., etc., 289 (1, 2).
- Of Ry. Comm.'s regulations respecting speed of trains and use of whistles in cities, etc., and safety of employees in passing from one car to another, 10.
- Violations of by-laws, rules, etc., 296.
  - when attended by greater risk, 294.
  - of orders by the Ry. Comm. when attended by greater risk, 294.
- Trespassing on track, 273 (1, 3).
- Wrongfully entering train, 273 (2, 3).
- Selling liquor to employees while on duty, 293.
- Intoxication of engine-driver or conductor, 292.
- Arrest of offenders; jurisdiction of justices, 283.

**Officers of the Company**

- are incapable of being chosen directors, 57.
- Appointment of, 58 (59 V., c. 9, ss. 1, 2), 59.
- Security to be taken from, 59.
- By-laws, rules, etc., concerning, 58 (59 V., c. 9, ss. 1, 2), 214 (g), 219, 220.
- Penalty for contravention of Act, orders of Ry. Comm., etc., etc., 289 (1, 2).
- for violation of by-laws, etc., orders of Ry. Comm., etc., when attended by greater risk, 294.
- Payment of penalty by Co. and deduction thereof from wages, 295.

**Offices, 32.**

**Oil-Cups and Oiling Appliances**, 262 (5).

**Owner**

Meaning of expression "Owner" in Act, 2 (p).

**P**

**Packing**

of frogs, wing and guard rails, 262 (1-4).

**Passengers**

Duty of Co. to transport, 246 (2).

Accommodation for, 264 (1).

Penalty for refusal to receive or convey, 241.

Injury to, while standing on platform of car or on baggage, wood or freight car, 249.

Right of action for Co.'s negligence, 246 (3.)

Right of action for injuries sustained through insufficiency of appliances on trains, 243.

Expulsion of, refusing to pay fare, 248.

Privilege of stop-over, see R. S. C., c. 110, s. 10.

**Passenger Tickets**, See TICKETS.

**Passenger Cars**

Position of, on trains, 245, 291.

Seats, brakes, and other appliances, 243.

Government Inspection before opening of railway, 202.  
when out of repair, 205, 310.

**Penalties**

in general—

Provisions of Railway Act relating to, apply to all persons, companies and railways whether within legislative authority of Dominion Parliament or not, 4.

to be a first charge on revenues of the Co., 94.

for contravention of the Railway Act, special Act, orders of Ry. Comm., etc., 289 (1, 2).

for contravention of Ry. Comm.'s regulations respecting speed of trains, use of whistles in cities, etc., and safety of employees in passing from one car to another, 10.

for violation of Co.'s by-laws, rules, etc., 296.

Ry. Comm., Minister, etc., when attended by greater risk, 294.

Company may pay penalty imposed under section 294 and deduct same from offender's salary or pay, 295.

Company may prescribe, for violation of by-laws, etc., 215.

**Pipes**

through Co.'s lands—Jurisdiction of Ry. Comm., 11 (q), 14.

Construction of, in interest of municipality, 14.

Power of Co. to construct, 90 (g, i).

to divert, 90 (j), 91.

to construct and lay down, to reach materials, 114.

**Plan and Profile**

of proposed railway to be made, 123.

may be made in sections, 124.

to be deposited in Department, 124.

to be examined and certified by Minister or Deputy, 125.

Duplicate so examined and certified to be deposited in Department, and with registrar of deeds, 125.

**Plan and Profile—Continued.**

- to be deposited before commencement of construction, 131.
- Custody of copies by registrars and access of public to, 126, 132.
- Scale and paper of, 135.
- to be certified by President or Engineer, 135.
- Errors, how remedied, 128, 129.
- of branch lines for approval of Ry. Comm., 121.
- of alterations, 130.
- of completed railway to be filed; penalty, 134.
- when copies of, evidence, 127, 133.

**Possession**

- under award in expropriation proceedings, 162.
- Warrant of, when issued, 162.
- before award, 163-165.

**Prescription**

- Limitation of time for commencement of actions for damages or injury sustained by reason of the railway, 287.

**President**

- Election of; term of office, 52.
- to be chairman of directors' meetings, 52.
- Absence or illness of, Vice-President to act, 60.
- may be entered in minutes, 61.
- certificate of, 61.

**Profile, See PLAN, etc.****Promissory Notes, 98.****Provincial Legislation**

- affecting works for the general advantage of Canada, confirmation of, 308.

**Provincial Railways**

- Application of certain provisions of Act to, 4.
- crossing or joining Dominion railways, 177.

**Provisional Directors**

- Who shall be; quorum; duration of office; powers, 33.
- Allotment of stock by, 34.

**Proxy**

- Shareholders may vote by, 44.
- Form of, 44.
- Validity of votes by, 45.

**R****Rails**

- Packing of frogs, wing and guard rails, etc., 262 (1-4).

**Railway**

- Meaning of expression "Railway" in Act, 2 (q), 55-56 V., c. 27, s. 1.
- Time limited for construction of, 89.
- Sale of railway to purchaser not having corporate powers, 278-280.

**Railway Committee**

- Meaning of expression "Railway Committee" in Act, 2 (r).
- Constitution, 8.
- Secretary of, 9.

**Railway Committee—Continued.**

Powers in general—

- to regulate speed of trains and use of whistle in cities, etc., 10 (a, b).
- to make regulations for safety of employees, 10 (c) 57-58 V., c. 53, s. 1.
- to impose penalties for breach of such regulations, 10 (d), 10 (2).
- to hear and determine applications, complaints, etc., 11.
- to order enquiry and report, 12.
- to compel attendance of witnesses and production of books, etc., 13 (c, d), 15.
- to review, vary, or rescind previous decision, 18.
- to state a case to Supreme Court on question of law, 19, 20.
- to enter into and inspect Co.'s property, 13 (a).
- to inspect works and rolling stock, 13 (b).
- to administer oaths, affirmations or declarations, 13 (e).
- in respect of the construction of drains and streets through the Co.'s lands, 14.
- to authorize expropriation of another company's lands, 102.
- to authorize location of line so as to obstruct working of or access to mines, 119.
- to authorize change of location for benefit of railway, 120.
- to authorize construction of branch lines and expropriation of lands therefor, 121.
- in respect of railway crossings and junctions, 173 (56 V., c. 27, s. 1), 177.
- in respect of highway crossings, 183-189.
- to order new, or alteration of, apparatus and arrangements for stopping trains, disconnecting cars, etc., 243.
- Decision of, may be made a rule of court, 17.
- to be final, subject to appeal to Gov.-in-Col. 21.
- Costs of proceedings before, 22.
- Payment of witnesses, 16.
- Promulgation of order of, 24.
- Publication by Co. of order of, 25.
- Violation of regulations of, respecting speed of trains and use of whistle in cities, etc., and safety of employees; penalty, 10 (d), 10 (2).
- of orders or directions of, by Co., director, or officer; penalty, 289 (1, 2).
- when attended by greater risk, 294.
- Documents signed by Chairman or Secretary to be evidence without proof of signature, 23.

**Railway Constables**

- Appointment, 281, 285.
- Oath, 281, 282.
- Powers, 282, 283.
- Arrest of offenders, 283.
- Dismissal, 284, 285.
- Punishment for neglect, 286.

**Railway Crossings, Junctions**

- Provisions of Railway Act relating to, apply to all companies and railways whether within legislative authority of Dominion or not, 4.
- Provincial Railway crossing Dominion railway, 177.



**Railway Crossings, Junctions—Continued.**

- Jurisdiction of Ry. Comm. 11 (d).
- Power of Co. to cross another railway. 90 (f).
- Approval of Ry. Comm. necessary, 173 (56 V., c. 27, s. 1).
- Application for, and notice, 173 (56 V., c. 27, s. 1).
- Ry. Comm. may direct works to be executed, and measures to be taken for the public safety, 174.
- may direct use of interlocking switch, signal system, etc., 175.
- to apportion expenses between companies in case of disagreement, 176.
- Officer to be stationed at, and no train to pass till conductor signalled, 257 (1, 2) 56 V., c. 27, s. 2.
- Train to be stopped for one minute before crossing; exception, 258, (56 V., c. 27, s. 2.)

**Rates,** See TOLLS.

**Rebate,** See DISCRIMINATION.

**Record of Shareholders,** 88.

**Refund,** See DISCRIMINATION; TICKETS.

**Register of Shareholders,** 88.

**Regulations,** See BY-LAWS, etc.

**Repairs**

- Government inspection when railway or rolling stock out of repair, and proceedings thereon, 205.
- Minister or Inspecting Engineer may regulate running of trains while railway out of repair; penalty, 209.
- Inspecting Engineer may prohibit running of trains in case of danger; penalty, 210.
- Report of such prohibition and proceedings thereon, 211.
- Proceedings by local authority when railway out of repair at highway level crossings, 206-208.

**Repeal**

- of Revised Statutes of Canada 1886, chap. 109, and of 50-51 Vic. chap. 19, 309.

**Resolutions**

- Directors may pass resolutions for certain purposes, 58 (59 V., c. 9, s. 1.)
- passed instead of by-laws for purposes mentioned in Sec. 58 prior to 23 April, 1896, confirmed, 59 V., c. 9, s. 2.

**Returns**

- What companies must render returns, 4, 298.
- Annual returns; attestation; penalty, 299 (1-6.)
- to be laid before Parliament, 299 (6.)
- Weekly returns, to be posted; penalty, 300 (1, 2).
- Penalty for signing false returns, 301.
- Half-yearly returns of accidents, 302.
- Half-yearly returns of by-laws, etc., 302.
- Minister may prescribe forms of, 303.
- may order additional, 303.
- Penalty for not transmitting returns of accidents, by-laws, etc., and additional returns ordered by Minister, 304.
- to be privileged communications and not evidence in courts, 305.

**Right of Way**

- Over or through lands owned by the Co., Jurisdiction of Ry. Comm. 11 (a).

**River**, See NAVIGABLE WATERS.  
 Diversion of, 90 (h), 91.

**Road Crossings**, See HIGHWAY CROSSINGS.

**Rolling Stock**

Inspection before opening of railway, 202.

When railway out of repair, 205, 210.

Apparatus and arrangements for communication between conductor and engine-driver, brakes, etc., 243.

**Rules**, See BY-LAWS.

**Running at Large**, See CATTLE.

**Running Powers**

Jurisdiction of Ry. Comm., 11 (f.m.)

**S**

**Safety of Employees**

Ry. Comm. may make regulations for, passing from one car to another, 10 c), 57-58 V., c. 53, s. 1.

**Sale**

of lands to Company, see Lands.

By Co. of lands not necessary for railway, 90 (c), 115.

of lands obtained from Crown by way of subsidy or otherwise, 90 (s), 55-56 V., c. 27, s. 3.

of railway to purchaser not having corporate powers, 278-280.

of goods in default of payment of tolls, 235.

of unclaimed goods, 236, 237.

of liquor to employees on duty; penalty, 293.

of tickets—employees in stations or on trains selling tickets to wear badges, 247.

Appointment of agents in cities, towns, etc., R.S.C., c. 110, ss. 2, 3.

of foreign railway companies R.S.C., c. 110, s. 3.

Name and date to be stamped on ticket sold by agent R.S.C., c. 110, s. 4.

Penalty for selling ticket without authority, R.S.C., c. 110, s. 8.

Sale of unused portion of ticket prohibited, R.S.C., c. 110, s. 9(4).

**Scalpers, (Ticket)**

Sale of tickets without authority prohibited; penalty, R.S.C., c. 110, s. 8.

**Securities**, See BONDS.

Co. may not purchase another company's; exceptions, 276.  
 Penalty, 277.

**Servants**, See EMPLOYEES.

**Sewers**, See DRAINS.

**Shares**

are personal property, 75.

to be \$100 each, 35.

Stock-books to be opened, 33.

Subscription, 33.

by municipal corporations, 38.

Allotment, 34.

Paid-up shares may be issued and allotted for certain purposes,

39.

**Shares—Continued.**

- Calls ; how made ; notice, 63.
- Publication of notice, 64.
- Payment of, 65.
- Interest on overdue, 66.
  - may be recovered by suit, 67.
  - Allegations in suit, 68.
- Interest on paid-up, 71.
  - on calls paid in advance, 85.
  - not to be paid on calls in arrear, 72.
- Forfeiture of shares for non-payment of, 80-84.
- No transfer of shares valid when calls in arrear, 75.
- Certificate of shares to be prima facie evidence of title, 78.
- Dividends, declaration of, 69.
  - Rate of, 70.
  - Not to impair capital, 71.
  - Not to be paid when calls in arrear, 71.
  - Not to be paid to purchaser of shares until transfer entered, 73.
- Forfeiture of, for refusal to pay calls, 80-84.
- Interest on sums paid in advance on shares, 85.
  - on calls, 71.
  - not to be paid on shares when calls in arrear, 72.
  - not to be paid to purchaser of shares until transfer entered, 73.
- Title to, certificate to be prima facie evidence of, 78.
  - The want of certificate not to prevent holder disposing of share, 79.
  - Co. may treat registered holder as absolute owner, 77 (55-56 V., c. 27, s. 2).
- Transfer of, how made ; Transfer book, 73.
  - Form of transfer of fully paid up shares, 74 (2).
  - of shares not fully paid up, 74 (1).
  - Want of certificate not to prevent holder disposing of share, 79.
  - cannot be made when calls in arrear, 75.
  - of less than a whole share invalid, 75.
- Transmission of, otherwise than by transfer, 76.
- Trusts in respect of, Co. not bound to see to execution of, 77 (55-56 V., c. 27, s. 2).
- Co. must not purchase shares in another company ; exceptions, 276.
  - Penalty, 277.

**Shareholders**

- Aliens to have equal rights as, 87.
- Liability to Co.'s creditors, 86.
- Record of, to be kept, open to inspection of shareholders, 88.
- First meeting of, 36.
- Annual and special general meetings, 40 (1).
  - Notice, and evidence of notice, 41.
  - to be held at head office, 40 (2).
  - What business may be transacted at, 42.
  - When certified copies of minutes evidence in court, 212.
  - Acts and decision of majority binding, 45.
- Votes to be in proportion to shares, 43.
  - by proxy ; form of proxy, 44, 45.

**“ Sheriff ”**

- Meaning of expression in Act, 2 (s).
- when lands not wholly situate in one district, 2 (y).

**Short Title,** 1.

**Sidings**

Power to make sidings to obtain materials, 114.

**Signboards at Highway Crossings,** 190.

**Snow**

Extent of land which may be expropriated for protection against,

103.

Proceedings for obtaining extra lands for protection against, 106-108 (59 V., c. 9, s. 3) 109-111.

**Snow Fences**

Erection and removal of, 116.

**"Special Act"**

Meaning of expression in Act, 2 (t).

**Speed of Trains.**

Co. may regulate, by by-laws, rules and regulations, 214 (a).

Rate of, passing through thickly peopled portion of city, town or village, when track not fenced as prescribed, 259 (55-56 V., c. 27, s. 28).

Power of Ry. Comm. to regulate, 10 (a).

**Statement (Annual),** 62.

**Stations**

Extent of land which may be expropriated for, 103.

Use of by another Co., Jurisdiction of Ry. Comm., 11 (f).

Facilities to be afforded other railways at, 240.

Badges to be worn by certain employees in, 247.

**Statistics,** See RETURNS.

**Steam Whistle,** See WHISTLE.

**Stenographer**

Appointment of, in arbitration, 155 (2) 54-55 V., c. 53, s. 1.

**Stock,** See CAPITAL STOCK ; SHARES ; CALLS ; TRANSFER.

**Stream**

in general, See NAVIGABLE WATERS.

Diversion of, 90 (h), 91.

**Streets,** See HIGHWAYS.

**Street Crossings,** See HIGHWAY CROSSINGS.

**Street Railways**

Shelter for motormen and operators of electric cars, 10 (c), 57-58 V., c. 53, s. 1.

Crossings of Dominion Railway—

must be approved by Ry. Comm., 173 (56 V., c. 27, s. 1).

Notice of application to railway Co., 173 (56 V., c. 27, s. 1).

Powers of Ry. Comm. in respect of, 173 (56 V., c. 27, s. 1),

174, 175.

Ry. Comm. to apportion cost, failing agreement, 176.

Conductor of electric car to go forward and see track clear before crossing electric street railway, 257 (1) 56 V., c. 27, s. 2.

**Subsidies**

Power of Co. to take, 90 (b).

**Subsidy Lands**

Sale of, 90 (s) 55-56 V., c. 27, s. 3.

**Superannuation**

of officers and employees, 58 (59 V., c. 9, ss. 1, 2).

**Surveys**

and levels to be made of lands through which railway is to pass,  
123.

Power of Co. to enter upon lands to make, 90 (a).

**T****Telegraph and Telephone Lines**

Diversion of, during construction, 90 (j), 91.

Power of Co. to construct or acquire, 90 (m).

Government may have exclusive use of, 265.

Government may construct, along line of railway, 266.

Operators to obey orders of Inspecting Engineer; penalty for neglect or refusal, 28.

**Terminus**

Company cannot extend line beyond termini mentioned in special Act, 120.

**"The Undertaking"**

Meaning of expression in Act, 2 (w).

**Tickets**

Employees in stations or trains selling, to wear badges, 247.

Appointment of agents in cities, towns, etc., R.S.C., c. 110,  
ss. 2, 3.

of foreign railway companies, R.S.C., c. 110, s. 3.

Name and date to be stamped on ticket sold by agent, R.S.C.,  
c. 110, s. 4.

Penalty for sale without authority, R.S.C., c. 110, s. 4.

Redemption of unused portion, R.S.C., c. 110, s. 9.

Sale of unused portion prohibited, R.S.C., c. 110, s. 8.

Stop-over privilege, R.S.C., c. 110, s. 10.

**Ticket Agents, See TICKETS.****Time**

Limitation of, for construction of railway, 89.

for commencement of action for damages, 287.

**Tolls**

Meaning of expression "Toll" in Act, 2 (u).

Jurisdiction of Ry. Comm., 11 (k, l, p).

Power of Co. to take and regulate, 90 (a), 223, 227.

How fixed, 223, 224.

Publication and approval of by-law fixing, 227.

Revision by Gov.-in-Col. of by-law fixing, 228.

Classification of freight, 226.

Fractions of distance and of weight, 229.

Tariff to be posted up, 230.

Payment of; to whom, where and how payable, 231.

how enforced, 234.

sale of goods in default of, 235.

sale of unclaimed goods and application of proceeds, 236, 237.

expulsion of passenger for refusal to pay, 248.

Extortion—damages for exacting extortionate toll, 290.

Discrimination forbidden, 224, 240.

Equal tolls to be charged to all persons under the same cir-  
cumstances and for the same services, 224.

between localities forbidden; exception, 232.

Special rates, when Company may give, 225.

secret special rates, rebates, etc., forbidden, 233.

**Tracks.** See LOCATION; ALTERATIONS; REPAIRS; FENCES; PACKING; RAILWAY CROSSINGS; TRAFFIC ARRANGEMENTS; ANIMALS; TRESPASSING.

Location, alignment, etc., Jurisdiction of Ry. Comm., 11

Use of, by another company, 102.

jurisdiction of Ry. Comm., 11 (f, m, n).

**Traffic.** See TRAFFIC ARRANGEMENTS.

Meaning of expression "Traffic" in Act, 2 (v).

Accommodation to be furnished for, 246 (1).

Facilities to other companies, 240, 241.

### Traffic Arrangements

Meaning of expression "Traffic" in Act, 2 (v).

Jurisdiction of Ry. Comm., 11 (f, l, m, n, o).

Agreement with another company, 238, 239.

Facilities to be granted to other companies and connecting lines, 240, 241.

Use of tracks, stations, etc., of another company, 102.

### Trains

Best appliances to be used for communication between conductor and driver, and for stopping, etc., 243.

Accommodation to be furnished by Company, 246 (1).

Badges to be worn by Company's servants on passenger trains, 247.

Position of cars on passenger trains, 245, 291.

Running of trains—trains must be run at regular hours, fixed by public notice, 246 (1).

when railway out of repair, 209.

may be prohibited in case of danger, 210, 211.

Company may by by-law, rule or regulation, fix hours of arrival and departure, 214 (a).

Notice in stations when trains overdue, 263 (1-3).

Speed, Co. may regulate, 214 (a).

in cities, towns, etc., 259 (55-56 V., c. 27, s. 8.)

Power of Ry. Comm. to regulate, 10 (a).

Moving reversely in cities, etc., 260 (55-56 V., c. 27, s. 9).

Bell and whistle at highway level crossings; penalty, 256.

Cars not to stand on highway level crossing longer than five minutes at a time; penalty, 261 (1, 2).

Officer to be stationed at railway level crossing, and no train to pass until conductor signalled, 257 (1, 2) 56 V., c. 27, s.

Trains to stop before passing railway level crossing, exception, 258 (56 V., c. 27, s. 2).

Trains to stop before passing draw or swing bridge; exception; 255 (1, 2) 55-56 V., c. 27, s. 7.

Wrongfully entering train; conviction and penalty, 273 (2, 3).

### Transfer of Shares

How made; Transfer Book, 73.

Form of transfer of shares fully paid up, 74 (2).

of shares not fully paid up, 74 (1).

No transfer can be made of shares when calls in arrear, 75.

No transfer of less than a whole share valid, 75.

### Trees

Power of Co. to fell trees along its line, 90 (e).

**Trespassing on Railway,** 273 (1, 3).

**Trusts**

Company not bound to see execution of, 77 (55-56 V., c. 27, s. 2).

**Tunnels**, 192 (1-6).**"Two Justices"**

Meaning of expression, in Act, 2 (j).

**U****Unclaimed Goods**

Sale of, 236, 237.

**"Undertaking, The"**

Meaning of Expression in Act, 2 (w).

**Uniform**

Certain employees of Co. to wear badges, 247.

**United States**

Power of Co. to exercise its powers in, 90 (r) 53 V., c. 28, s. 1.

**Unjust Preference**, See **DISCRIMINATION**.

**V****Vice-President**

Election, 52.

to act as chairman of directors in President's absence, 52

Powers of, during President's absence or illness, 60.

**Votes**

of shareholders to be in proportion to shares, 43.

by proxy, 44, 45.

of majority to be binding, 45.

of directors at directors' meetings, 55.

**W**

**Warrant of Possession**, 162-165.

**Watercourses**

in general, See **NAVIGABLE WATERS**.

Diversion of, 90 (h), 91.

**Water Pipes**

Power of Company to lay during construction, 114.

Diversion of, during construction, 90 (j), 91.

through Company's lands, 14.

Jurisdiction of Ry. Comm., 11 (q), 14.

**Weeds**

Company to cut down on railway, 275 (1, 2).

**Wharf**

Power of company to erect, 90 (l).

Plan of work and site to be approved by Ry. Comm., 181.

**Whistle**

Locomotive-engine to be furnished with, 244.

to be sounded at highway crossings; penal<sup>v</sup> for neglect, 256.

Ry. Comm. may regulate use of whistle in cities, etc., 10 (a).

**Witnesses**

Attendance of, may be enforced by Ry. Comm., Minister, etc, 15.

Payment of, 16.

attending accident enquiry, 270.

**Words**

Interpretation of expressions in Act, 2.

**Working Expenditure**

Meaning of expression " Working Expenditure " in Act, 2 (x).  
to be a first charge in railway, 94.

**Works for the General Advantage of Canada**

What railways are, 306.  
subject to legislative authority of Dominion Parliament, 307.  
Confirmation of provincial legislation affecting, 308.



