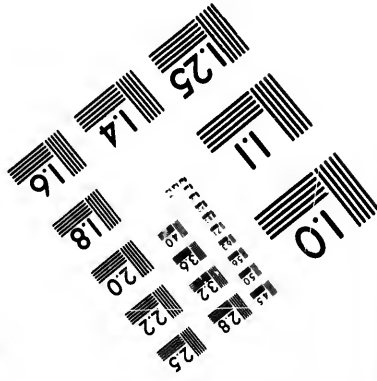
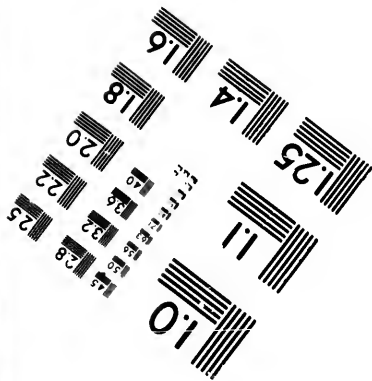
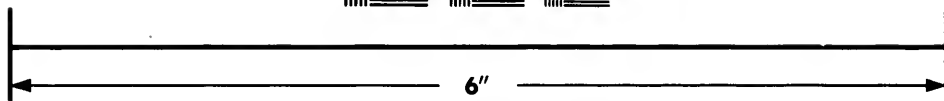
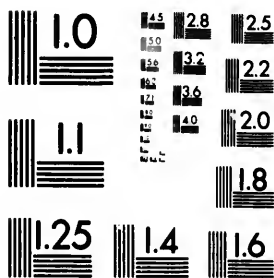


**IMAGE EVALUATION  
TEST TARGET (MT-3)**



**Photographic  
Sciences  
Corporation**

23 WEST MAIN STREET  
WEBSTER, N.Y. 14580  
(716) 872-4503

**CIHM/ICMH  
Microfiche  
Series.**

**CIHM/ICMH  
Collection de  
microfiches.**



**Canadian Institute for Historical Microreproductions / Institut canadien de microreproductions historiques**

**© 1986**

Technical and Bibliographic Notes/Notes techniques et bibliographiques

The Institute has attempted to obtain the best original copy available for filming. Features of this copy which may be bibliographically unique, which may alter any of the images in the reproduction, or which may significantly change the usual method of filming, are checked below.

L'Institut a microfilmé le meilleur exemplaire qu'il lui a été possible de se procurer. Les détails de cet exemplaire qui sont peut-être uniques du point de vue bibliographique, qui peuvent modifier une image reproduite, ou qui peuvent exiger une modification dans la méthode normale de filmage sont indiqués ci-dessous.

- Coloured covers/  
Couverture de couleur
- Covers damaged/  
Couverture endommagée
- Covers restored and/or laminated/  
Couverture restaurée et/ou pelliculée
- Cover title missing/  
Le titre de couverture manque
- Coloured maps/  
Cartes géographiques en couleur
- Coloured ink (i.e. other than blue or black)/  
Encre de couleur (i.e. autre que bleue ou noire)
- Coloured plates and/or illustrations/  
Planches et/ou illustrations en couleur
- Bound with other material/  
Relié avec d'autres documents
- Tight binding may cause shadows or distortion along interior margin/  
La reliure serrée peut causer de l'ombre ou de la distorsion le long de la marge intérieure
- Blank leaves added during restoration may appear within the text. Whenever possible, these have been omitted from filming/  
Il se peut que certaines pages blanches ajoutées lors d'une restauration apparaissent dans le texte, mais, lorsque cela était possible, ces pages n'ont pas été filmées.
- Additional comments:/  
Commentaires supplémentaires:

- Coloured pages/  
Pages de couleur
- Pages damaged/  
Pages endommagées
- Pages restored and/or laminated/  
Pages restaurées et/ou pelliculées
- Pages discoloured, stained or foxed/  
Pages décolorées, tachetées ou piquées
- Pages detached/  
Pages détachées
- Showthrough/  
Transparence
- Quality of print varies/  
Qualité inégale de l'impression
- Includes supplementary material/  
Comprend du matériel supplémentaire
- Only edition available/  
Seule édition disponible
- Pages wholly or partially obscured by errata slips, tissues, etc., have been refilmed to ensure the best possible image/  
Les pages totalement ou partiellement obscurcies par un feuillet d'errata, une pelure, etc., ont été filmées à nouveau de façon à obtenir la meilleure image possible.

This item is filmed at the reduction ratio checked below/  
Ce document est filmé au taux de réduction indiqué ci-dessous.

10X	14X	18X	22X	26X	30X
<input type="checkbox"/>	<input type="checkbox"/>	<input type="checkbox"/>	<input type="checkbox"/>	<input checked="" type="checkbox"/>	<input type="checkbox"/>
12X	16X	20X	24X	28X	32X

The copy filmed here has been reproduced thanks to the generosity of:

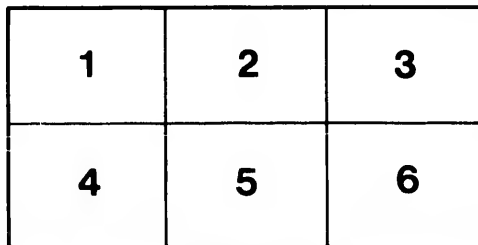
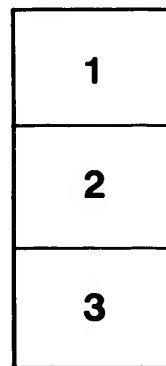
National Library of Canada

The images appearing here are the best quality possible considering the condition and legibility of the original copy and in keeping with the filming contract specifications.

Original copies in printed paper covers are filmed beginning with the front cover and ending on the last page with a printed or illustrated impression, or the back cover when appropriate. All other original copies are filmed beginning on the first page with a printed or illustrated impression, and ending on the last page with a printed or illustrated impression.

The last recorded frame on each microfiche shall contain the symbol  $\rightarrow$  (meaning "CONTINUED"), or the symbol  $\nabla$  (meaning "END"), whichever applies.

Maps, plates, charts, etc., may be filmed at different reduction ratios. Those too large to be entirely included in one exposure are filmed beginning in the upper left hand corner, left to right and top to bottom, as many frames as required. The following diagrams illustrate the method:



L'exemplaire filmé fut reproduit grâce à la générosité de:

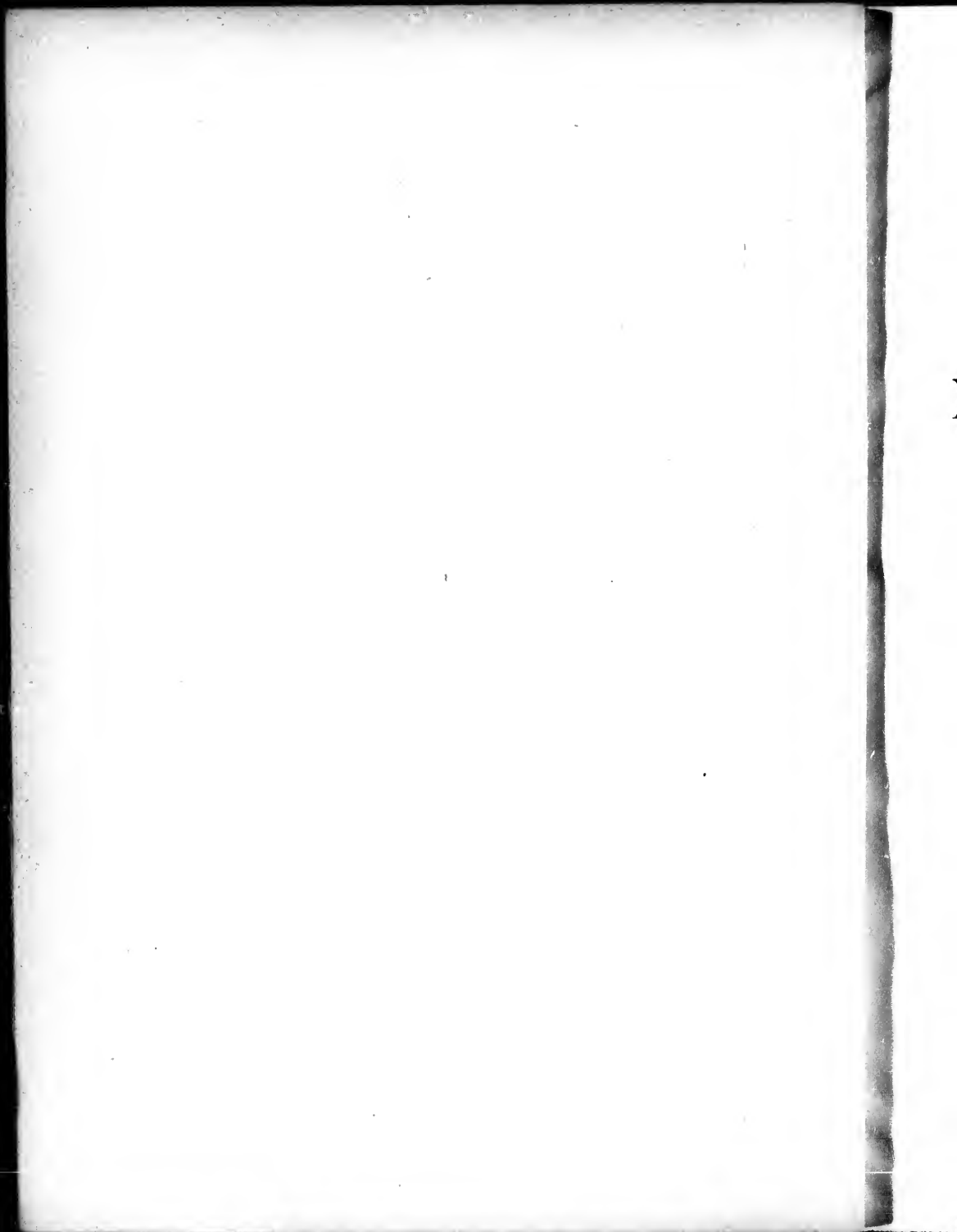
Bibliothèque nationale du Canada

Les images suivantes ont été reproduites avec le plus grand soin, compte tenu de la condition et de la netteté de l'exemplaire filmé, et en conformité avec les conditions du contrat de filmage.

Les exemplaires originaux dont la couverture en papier est imprimée sont filmés en commençant par le premier plat et en terminant soit par la dernière page qui comporte une empreinte d'impression ou d'illustration, soit par le second plat, selon le cas. Tous les autres exemplaires originaux sont filmés en commençant par la première page qui comporte une empreinte d'impression ou d'illustration et en terminant par la dernière page qui comporte une telle empreinte.

Un des symboles suivants apparaîtra sur la dernière image de chaque microfiche, selon le cas: le symbole  $\rightarrow$  signifie "A SUIVRE", le symbole  $\nabla$  signifie "FIN".

Les cartes, planches, tableaux, etc., peuvent être filmés à des taux de réduction différents. Lorsque le document est trop grand pour être reproduit en un seul cliché, il est filmé à partir de l'angle supérieur gauche, de gauche à droite, et de haut en bas, en prenant le nombre d'images nécessaire. Les diagrammes suivants illustrent la méthode.



vol 98 1116

No. 30.

BUREAU OF NAVIGATION—HYDROGRAPHIC OFFICE.

No. 1.

LIST OF LIGHTS

OF

NORTH AND SOUTH AMERICA  
(EAST AND WEST COASTS),

INCLUDING

*BRITISH NORTH AMERICA; THE WEST INDIA ISLANDS, AND THE  
ADJACENT COASTS; THE COAST OF BRAZIL, ETC., TO CAPE  
HORN; THE PACIFIC COAST OF AMERICA,  
AND THE PACIFIC ISLANDS.*

(The Lights of the Coast, &c., of the United States will be found in the Lists published  
by the U. S. Light-house Board.)

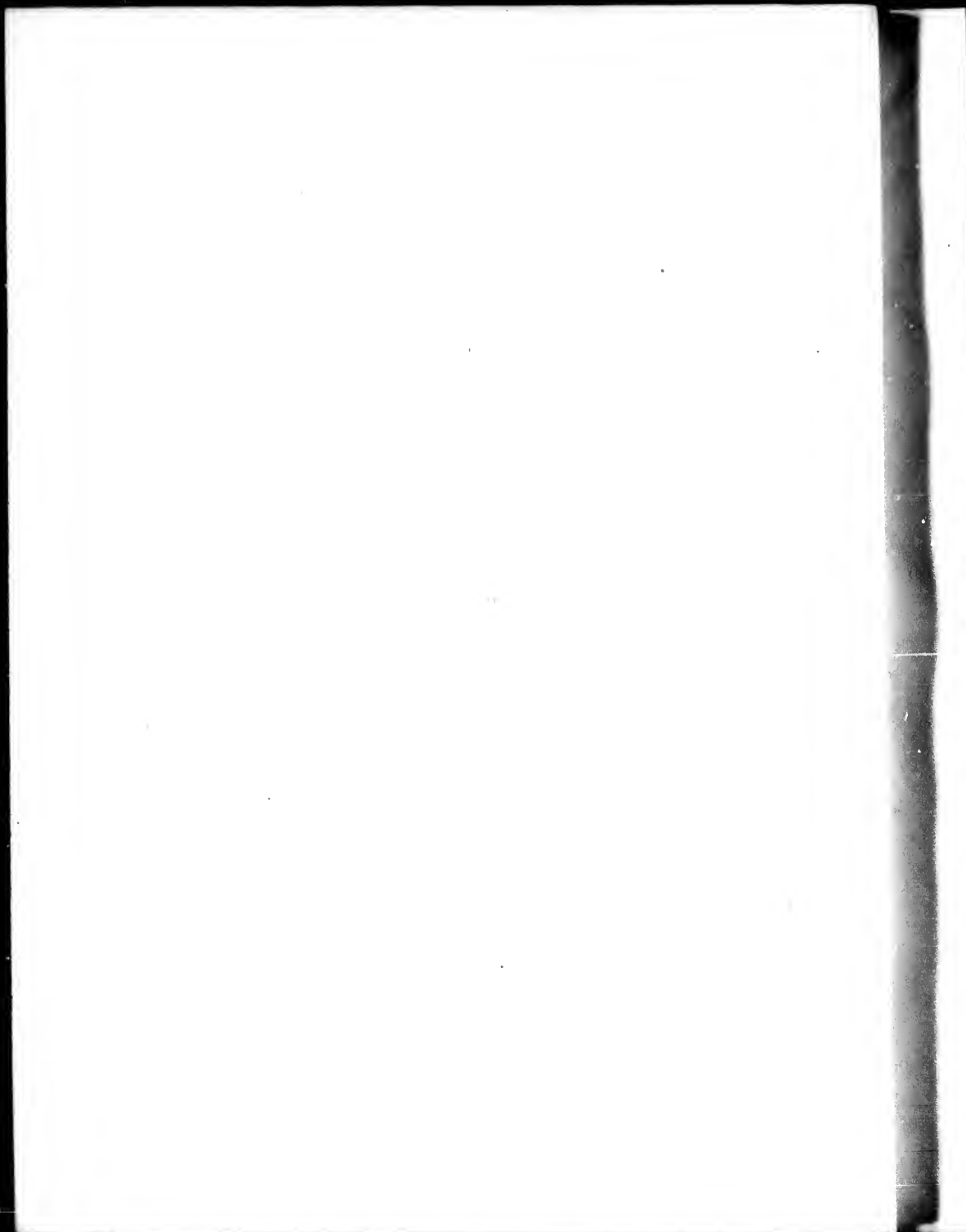
Corrected to January, 1873.

BY LIEUT. COMMANDER FELIX MCCURLEY, U. S. N.

(Navigators are requested to inform the U. S. Hydrographic Office, Washington, D. C., of any  
omissions or errors they may discover in this List.)

Price, 30 Cents.

WASHINGTON:  
GOVERNMENT PRINTING OFFICE,  
1873.



## ABBREVIATIONS AND EXPLANATIONS.

### LIGHTS.

F. Fixed or steady.

FL. Flashing. Showing five or more flashes and eclipses, alternately, in a minute.

F. & FL. Fixed light, with a white or red flash, in addition (preceded and followed by a short eclipse), at intervals.

REV. Revolving. Lights gradually increasing to full effect, and gradually decreasing to eclipse, at equal intervals.

INT. Intermittent. Suddenly appearing in view, remaining visible for a certain time, and then as suddenly eclipsed for a shorter time.

ALT. Alternating. Red and bright light, alternately, at equal intervals, without any intervening eclipse.

### ILLUMINATING APPARATUS.

C. Catoptric, or by metallic reflectors.

D. Dioptric, or by refracting lenses.

ORD. Order or class of apparatus, numbered from the first to the sixth order.

N. North.		E. East.		S. South.		W. West.
B. Brazil.		Dn. Danish.		M. Mexico.		Spa. Spain.
B.A. Buenos Ayres.		Dn. Dutch.		N.G. Nueva Grenada.		U.S. United States.
B.O. Banda Oriental.		E. England.		P. Peru.		V. Venezuela.
C. Chilé.		F. France.		R. Russia.		

The bearings are magnetic, and are given *from* the ship, *not from* the light.

Measurements are in English feet, yards, and nautical miles.

The distance the lights are visible is calculated from a height of fifteen feet above the level of the sea at high water.



TABLE I.

TABLE OF DISTANCES at which objects can be seen at sea, according to their respective elevations and the elevation of the eye of the observer.

Heights, in feet.	Distances, in statute or English miles.	Distances, in geographic or nautical miles.	Heights, in feet.	Distances, in statute or English miles.	Distances, in geographic or nautical miles.	Heights, in feet.	Distances, in statute or English miles.	Distances, in geographic or nautical miles.
5	2.958	2.565	70	11.067	9.598	250	20.916	18.14
10	4.184	3.628	75	11.456	9.935	300	22.912	19.87
15	5.123	4.443	80	11.892	10.26	350	24.748	21.46
20	5.916	5.130	85	12.196	10.57	400	26.457	22.94
25	6.614	5.736	90	12.549	10.88	450	28.062	24.33
30	7.245	6.283	95	12.893	11.18	500	29.580	25.65
35	7.826	6.787	100	13.228	11.47	550	31.024	26.90
40	8.366	7.255	110	13.874	12.03	600	32.403	28.10
45	8.874	7.696	120	14.490	12.56	650	33.726	29.25
50	9.351	8.112	130	15.083	13.08	700	35.000	30.28
55	9.811	8.509	140	15.652	13.57	800	37.416	32.45
60	10.246	8.886	150	17.201	14.91	900	39.833	34.54
65	10.665	9.249	200	18.708	16.22	1,000	41.833	36.28

EXAMPLE: A tower 120 feet high will be visible to an observer whose eye is elevated 15 feet above the water, 17 nautical miles; thus, from the table:

15 feet elevation; distance visible, 4.443 nautical miles.
120        "        "        "        "        "        "
<u>12.56</u>
<u>17.003</u>

TABLE II.

Table for finding the distance of an object by two bearings, and the distance run between them.

Points.	Difference between the course and the FIRST bearing—points.																			
	2	2½	3	3½	4	4½	5	5½	6	6½	7	7½	8	8½	9	9½	10	10½		
Difference between the course and the SECOND bearing.	4	1.00																		
	4½	0.81	1.23																	
	5	0.69	1.00	1.45																
	5½	0.60	0.85	1.17	1.66															
	6	0.54	0.74	1.00	1.35	1.85														
	6½	0.49	0.67	0.88	1.14	1.50	2.02													
	7	0.46	0.61	0.79	1.00	1.27	1.64	2.17												
	7½	0.43	0.57	0.72	0.90	1.11	1.39	1.77	2.30											
	8	0.41	0.53	0.67	0.82	1.00	1.22	1.50	1.87	2.31										
	8½	0.40	0.51	0.63	0.76	0.92	1.09	1.31	1.58	1.96	2.50									
	9	0.39	0.49	0.60	0.72	0.85	1.00	1.18	1.39	1.66	2.03	2.56								
	9½	0.38	0.48	0.58	0.69	0.80	0.93	1.08	1.25	1.46	1.72	2.08	2.60							
	10	0.38	0.47	0.57	0.66	0.76	0.88	1.00	1.14	1.31	1.51	1.76	2.11	2.61						
10½	0.38	0.47	0.56	0.65	0.74	0.84	0.94	1.06	1.19	1.35	1.55	1.79	2.12	2.60						
11	0.39	0.47	0.56	0.64	0.72	0.81	0.90	1.00	1.11	1.24	1.39	1.57	1.80	2.11	2.56					
11½	0.40	0.48	0.56	0.63	0.71	0.79	0.87	0.95	1.05	1.15	1.27	1.41	1.58	1.79	2.08	2.50				
12	0.41	0.49	0.57	0.64	0.71	0.78	0.85	0.92	1.00	1.08	1.18	1.29	1.41	1.57	1.76	2.03	2.41			
12½	0.43	0.51	0.58	0.65	0.71	0.77	0.83	0.90	0.97	1.03	1.11	1.20	1.29	1.41	1.55	1.72	1.96	2.30		

RULE.—Multiply the distance run in the interval between the two bearings by the number found in the table under the difference between the course and first bearing, and opposite the difference between the course and second bearing. The product is the distance at the time the second bearing was taken.

EXAMPLE.—A light-house, when first seen, bore W. N.W.; after running W, by 8, 16 miles, it bore N. ½ W. Required, its distance when the second bearing was taken.

Difference between course and first bearing = 3 points.  
 Difference between course and second bearing = 5½ points.  
 Corresponding tabular number . . . . . 0.51  
 And 16 miles . . 0.61 = 10.08 miles, the distance required.

stances, geographic nautical miles.  
 18.14  
 19.87  
 21.46  
 22.94  
 24.33  
 25.65  
 26.90  
 28.10  
 29.25  
 30.28  
 32.45  
 34.54  
 36.28

water, 17



# LIGHTS.

## LABRADOR.

Number.	Height of light above sea level.	Distance visible in nautical miles.	Character of light-house or vessel.	Height, in feet, of building from base to vane.	Character and order of illuminating apparatus.	Year lighted.	Remarks.
1	470	24	Circular tower; clap-boarded, and white.	62	D., 1st ord.	1858	Lighted from April 1 to Dec. 15. Visible from about N.W. by N. round by S. to E. A gun is fired every hour during fog and snow-storms. Depot of provisions here for shipwrecked mariners. Var'n in 1870, 32° 10' W.
2	138	20	Hexagonal white building, 100 feet from keeper's dwelling.	40	C. ....	1871	
3	153	18	Circular tower; clap-boarded, and white.	100	D., 2d ord.	1858	Lighted from April 1 to Dec. 15. A gun fired here every hour during fog and snow-storms.

## NEWFOUNDLAND.

4	130	18	Hexagonal white tower, 100 feet from keeper's dwelling.	40	C. ....	1871	
5	100	12	Circular brick tower.	20	D. ....	1858	Var'n in 1870, 34° W.
6							
7	150	16	Square tower, with vertical stripes red and white.	36	D., 1st ord.	1843	RED and WHITE, alternately, in every direction seaward. Visible for a quarter of a minute, and half a minute dark. Kept open at Spillers Point clears the Flowers Rocks. Var'n in 1870, 32° 45' W.
8							
9	92	15	Wood; white; roof red.		C., 4th ord.	1857	Visible seaward between the bearings of W. S.W. and N.E.
10							
11	380	24	Circular; brick.	31	C., 1st ord.	1858	When the S. part of the island bears N. N.E. $\frac{1}{2}$ E. within the distance of 8 miles, the light is not visible, being obscured by the high land. The keeper's dwelling is white and roof red.
12							
13	151	18	Square wooden house; roof white and red stripes.	35	.....	1869	On keeper's dwelling. Two bright and one red flash. Visible between the bearings of N. N.E. to S. S.W. Var'n in 1870, 31° W.
14							
15	{ 40 17 }	3 & 11	Wood; white.	38	Gas. ....	1853	West leads in to clear the spit of 8 feet. Appears as a double light for 3 miles only. Obscured by the Salvage on the bearings of W. $\frac{1}{2}$ S.
16							



## NEWFOUNDLAND—Continued.

Number.	Height of light above sea level.	Distance visible, in nautical miles.	Character of light-house or tower.	Height, in feet, of building from base to vane.	Character and order of illuminating apparatus.	Year lighted.	Remarks.
17	114	10	Stone; square	30	C, 4th ord.	1834	On keeper's dwelling. Visible seaward between the bearings of W. 8 W. and S. S. E. When Cape Spear or St. John's Harbor is enveloped in fog, a gun is fired every hour during day light. St. John's Chain Rock Battery in lon. 52° 49' 47" W.
18							
19	225					1863	
20							These two lights in one lens through the Narrows, S. W. 1 W. Var'n in 1850, 31° 10' W.
21	50					1863	
22							
23	264	22	Wood; square tower red and white horizontal.	38		1835	Visible seaward.
24							
25	200	16	Red brick tower.			1871	Keeper's dwelling painted white, with red roof.
26							
27	180	19	Circular; S. E. face of light-house striped red and white, vertical.	40	C, 1st ord.	1856	A conical beacon stands 50 yards S. from light-house, and telegraph station N. 340 yards from light-house. Visible between the bearings E. N. E. and W. S. W.
28							
29	314	24	Circular; red and white bands.	56		1851	Visible in all directions seaward between the bearings of W by S, and S. E. Var'n in 1870, 50° 30' W.
30							
31	330	26	Circular; brick.	40	D., 1st ord.	1860	RED and WHITE, alternately.
32							
33	430	27	Circular	25	D., 1st ord.	1858	On keeper's dwelling.
34							



## NEWFOUNDLAND—Continued.

Number.	Height of light above sea level.	Distance visible, in nautical miles.	Character of light-house or vessel.	Height, in feet, of building from base to vane.	Character and order of illuminating apparatus.	Year lighted.	Remarks.
35	210	20	Nearly square; white ...	36	D., 5d. ord.	1862	RED flash, succeeded by two BRIGHT ones. Two guns are fired, at 3 minutes' interval, every 2 hours during fog, from 6 a. m. to 6 p. m. Obscured on the N. by the bluffs of St. Pierre, Var'n in 1870, 28° 5' W.
36							
37	36	6	Square; white.....		C., 4th ord.		These two lights kept in one N.W. lead mid-channel through S. entrance, and indicate the best water between the Herbrand Rocks and Dog Island.
38							
39	64	3	Square; white .....		C., 4th ord.	1862	RED light, kept in sight to the left of Cape Eagle, working into the S.E. passage, clears to S. of Cape Rouge Shoals. Var'n in 1870, 28° 10' W.
40							
41	408	25	White; a square house; roof red; tower rising from the center.	30	D., 3d ord.	1865	Visible in all directions, except when obscured by the land between E. S.E. and S.
42							
43	41	20	Wooden hexagonal tower; white.		C.....	1871	The powerful flashing white light make a complete revolution in 24 minutes. At a long distance it appears as a steady light.
44							

## ST. LAWRENCE GULF AND RIVER.

45	140	20	Octagonal; wood; white.	40	D., 3d ord.	1839	Obscured between N. by E. & E. N.E. Extinguished when the gulf is obstructed by ice. Var'n in 1870, 27° 10' W.
46							
47	140	20	Octagonal; wood; white.	40	D., 3d ord.	1831	Steam fog-whistle sounded during a fog, and a gun fired every 4 hours, commencing at 4 a. m. Visible on all bearings, except between S. S.E. and W. Extinguished when the gulf is obstructed with ice.
48							
49	.....	20	Hexagonal wooden tower; white.		C.....	1871	Shows red 30 seconds, white 30 seconds.
50							





## ST. LAWRENCE GULF AND RIVER—Continued.

Number	Height of light above sea level.	Distance visible, in nautical miles.	Character of light-house or vessel.	Height, in feet, of building from base to vane.	Character and order of illuminating apparatus.	Year lighted.	Remarks.
51	140	21	White frame building....	50	D., 2d ord.	1870	White dwelling 200 feet distant. Var'n in 1870, 27° 30' W.
52							
53	136	16	Circular tower; faced, clapboarded, and white.	112	D., 1st ord.	1858	A gun is fired every hour during fog and snow-storms. Var'n in 1869, 26° 16' W.
54							
55	49	11				1867	Var'n in 1870, 26° 26' W.
56							
57	20	7					RED light only when mail steamers are expected.
58							
59	{ 25 } { 29 }	7	Red light-ship .....			{ 1871 } { 1872 }	{ For guiding vessels into the harbor.
60							
61	110	15	Circular tower; faced, clapboarded, and white.	80		1835	The light-house must always be kept open southward of Cormorant Point. Visible between the bearings of N. N.W. to N.E. by N. Depot of provisions here for shipwrecked mariners. Lighted from April 1, to December 15.
62							
63	75	14	White hexagonal wooden building.	54	C.....	1871	Keeper's dwelling, also of wood, painted white, and stands about 150 feet E. from the tower.
64							
65	100	15	Circular tower; gray stones.	75		1831	Visible between the bearings of N. N.W. and S.E. by E. round by N.
66							
67	112	15	Circular tower; clapboarded, and white.	109	D., 2d ord.	1858	A gun is fired every hour during fog and snow-storms. Depot of provisions for shipwrecked mariners.
68							
69	147	R. 15 D. 20	Hexagonal white wooden building.	54	C.....	1871	Shows RED and BRIGHT every 4 minutes, there being an interval of 2 minutes between each flash.
70							



## ST. LAWRENCE GULF AND RIVER—Continued.

Number.	Height of light above sea level.	Distance visible, in nautical miles.	Character of light-house or vessel.	Height, in feet, of building from base to vane.	Character and order of illuminating apparatus.	Year lighted.	Remarks.
71	110	18	Low square tower, with dwelling-house combined, all white.	37	C.....	1871	Is visible from all points seaward, except east, in which direction it is obscured by Chate Point and Cape Anne.
72							
73	195	20	Square white tower, over house.	35	C.....	1871	Destroyed by fire. Discontinued for the present.
74	70	15	Octagonal tower, on keeper's dwelling.	35	C.....	1871	
75	100	15	Circular tower; chip-boarded, and white.	75	.....	1830	Depot of provisions for shipwrecked mariners. A gun will be fired every hour during fogs or snow-storms from April 1 to Dec. 15. Var'n in 1870, 259 W.
76	{ 34 37 }	12	Black light-vessel, with "Manicougan, Quebec," on her stern.	.....	D.....	1872	The vessel is moored in 25 fathoms, and lies 4 miles from land. East Peninsula bears N.E., West Peninsula W. N.W. During thick and foggy weather and during snow-storms a steam fog-whistle will be sounded as follows: A blast of 8 seconds, an interval of 8 seconds, then another blast of 8 seconds, after which an interval of 2 minutes and 20 seconds. It will probably be heard at the following distances: In calm weather or with the wind, from 10 to 20 miles; in stormy weather or against the wind, from 3 to 8 miles.
77	43	10	Octagonal; white	.....	.....	1830	Pilots stationed here. Lighted from April 10 to Dec. 10.
78							
79	112	17	Circular; gray stones	65	.....	1844	A gun fired every half hour during fog and snow-storms from April 10 to Dec. 15. Lighted from April 10 to Dec. 15.
80							
81	34	12	Red light-vessel, with "Red Island Light" on her sides.	.....	C.....	1871	The vessel is moored during season of navigation in 10 fathoms, in a northeasterly direction from Red Islet, with the latter a little open of Hare Island, and with the RED BUOY about 1/2 mile distant in a W. S.W. direction. During thick or foggy weather or snow-storms a steam fog-whistle will be sounded from the light-vessel 10 seconds in every minute. The whistle will probably be heard at the following distances: In calm weather ..... 15 miles. With the wind ..... 20 miles. Stormy weather ..... 5 to 8 miles. Against the wind ..... 3 to 5 miles.
82	35	10	Square; wood, painted white.	29	C.....	1872	
83	75	12	Circular; gray stones	51	.....	1848	Lighted from April 10 to Dec. 10.
84							
85	60	13	Octagonal; chip-boarded, and white.	40	.....	1809	Lighted from April 10 to Dec. 10. A gun fired every half hour during fog and snow-storms.
86							
87	78	10	Brick; drab color	39	D., 4th ord.	1862	Lighted from April 10 to Dec. 10.
88							



## ST. LAWRENCE GULF AND RIVER—Continued.

Number.	Height of light above sea level.	Distance visible, in nautical miles.	Character of light-house or vessel.	Height, in feet, of building from base to vane.	Character and order of illuminating apparatus.	Year lighted.	Remarks.
89	180	12	Brick; drab color .....	39	D., 4th ord.	1862	Lighted from April 10 to Dec. 10.
90							
91	166	18	Wood.....	30	C.....	1862	Var'n in 1870, 19° 20' W.
92	{ <sup>24</sup> 16}		Light-vessel; two masts.....			1871	In thick or foggy weather or snow-storms a bell will be tolled. If, from any accident, the light-vessel should be out of position, the light on the foremast only will be exhibited, and during the day the ball at the foremast-head will be taken down.
93		9	Two masts .....			1836	The ship's bell is kept tolling during fogs and snow-storms.
94							
95	68	13	Stone; conical; white ...	38		1843	Lighted from April 10 to Dec. 10.
96							

## ST. LAWRENCE RIVER.

97	175	10	Square white wooden building.	24	C.....	1871	
98							
99	44	10	Wood.....	37	C.....	1862	Var'n in 1870, 17° 50' W.
100							
101	70	13	Wood.....	30	C.....	1862	
102	38	8	White.....		C.....	1869	
103	96	10	Wood; white .....			1858	Var'n in 1870, 15° 53' W.
104							
105	30	6	Wood; white.....	30		1842	A small light, to assist in keeping in channel for some distance up and down the river.
106							



## ST. LAWRENCE RIVER—Continued.

Number.	Height of light above sea level.	Distance visible, in nautical miles.	Character of light-house or vessel.	Height, in feet, of building from base to vane.	Character and order of illuminating apparatus.	Year lighted.	Remarks.
107	{ 200 130 }	5	Both stone, and white; the lower lantern is on roof of house.			1842	These lights in one lead up Richelieu Channel to the light on Richelieu Island.
108							
109	{ 152 130 }	12	Wood; octagonal; white	{ 24 7 }		{ 1846 1824 }	These lights lead up the Richelieu. Var'o in 1876, 15° 30' W.
110							
111	57	6	Octagonal; stone			1843	This light and the lights on Platon Point are very nearly in the same line of bearing, namely, N. 73° E.
112							
113	35	5	Wood	8		1844	To show off Battures des Grondines, and to avoid Battures Cordin, and as a steering point for Richelieu.
114							
115	110	4	Wood	20		1856	Lead to and from Cap à la Roche and Cape Charles, and to answer as a steering point through Richelieu.
116							
117	{ 50 25 }	5 each.	Octagonal; wood; white.	30		1857	To lead off Cap à la Roche to Levrard.
118							
119	85	5	Wood; octagonal; white.	12		1844	To indicate the widest berth off Cap à la Roche. Var'n in 1873, 14° 10' W.
120							
121	{ 39 20 }	3	Wood; octagonal; white.	{ 21 11 }		1844	To lead through Levrard, and clear Batture S. Ann on S. and Poullier on N.
122							
123	30	4	Wood; octagonal; white.	10		1844	Steering point for lower part of Bay of Champlain.
124							





## ST. LAWRENCE RIVER—Continued.

Number.	Height of light above sea level.	Distance visible, in nautical miles.	Character of light-house or vessel.	Height, in feet, of building from base to vane.	Character and order of illuminating apparatus.	Year lighted.	Remarks.
125	{ 53 } { 33 }	4	Wood; octagonal; white.	{ 13 } { 10 }		1843	To clear Batture Bigot. Var'n in 1870, 14° 29' W.
126							
127	{ 55 } { 35 }	6	Wood; octagonal; white.	{ 30 } { 10 }		1843	To clear Pouillier Provenché.
128							
129	{ 31 } { 12 }	3 each.		{ 21 } { 4 }		1839	These lights, in one with the eastern light-vessel on lake, lead up through the dredged channel. S. 70° W. High light removed in winter.
130							
131	71	12		24		1843	Shows the turn of channel at Point du Lac.
132							
133	15	6	Red.	8			Removed at the approach of winter on account of ice. On south side of Petite Traverse, off Rivière du Loup.
134							
135	15	6	Red.	8		1816	Removed at the approach of winter on account of ice. To indicate the turn of the channel, and leads to No. 2.
136							
137	15	6	Red.	8		1828	In connection with Isle à la Pierre, and bearing in line with No. 1, and to avoid Battures St Francis and à la Carpe. Var'n in 1870, 12° 55' W.
138							
139	30	6	Red.	20		1843	To lead from the entrance of the Batture of Lake St Peter to No. 1 light-vessel, up and down.
140							
141			Red.			1863	
142							
143	30	6	Red.				Indicates entrance to channel, and leads to No. 1.
144							



## ST. LAWRENCE RIVER—Continued.

Number.	Height of light above sea level.	Distance visible, in nautical miles.	Character of light-house or vessel.	Height, in feet, of building from base to vane.	Character and order of illuminating apparatus.	Year lighted.	Remarks.
145	{ 21 } { 13 }	7	Red .....	{ 17 } { 9 }		1851	Leads to channel called Flat Island.
146							
147			Wood; white; square .....			1858	To lead into La Valtrie Channel and Isle Bouchard, and indicates the new channel to be kept in line till La Valtrie lights are brought to bear.
148							
149			Octagonal; wood; white .....			1866	To clear the island.
150							
151	{ 20 } { 14 }	4	Wood; white .....	{ 20 } { 14 }		1843	To lead through Isle d'In Bogue Channel, and to avoid Pouliller on the N. and shoal on S.
152							
153	21	4	Wood; white; octagonal .....			1831	To indicate the island, being extremely low land. Removed in winter on account of ice.
154							
155		4	Wood; white, square .....				Leads to entrance through Vercheres Channel, up and down the river. Var'n in 1870, 121° W.
156							
157	{ 53 } { 25 }	{ 6 } { 4 }	High and low; octagonal; wood; white .....			1846	To lead through the channel between Point aux Trembles and Varennes up to Longue Point.
158							
159	{ 28 } { 29 } each.	4	{ Wood; octagonal .....	{ 31 } { 21 }		1830	Indicates the deepest channel to and from the harbor. Var'n 1870, 11° 45' W.
160							
161	27	6	Square; wood; white .....	17		1849	Var'n in 1870, 11° 25' W.
162							



## ST. LAWRENCE RIVER—Continued.

Interval of revolution or flash.	Number.	Height of light above sea level.	Distance visible, in nautical miles.	Character of light-house or vessel.	Height, in feet, of building from base to vane.	Character and order of illuminating apparatus.	Year lighted.	Remarks.
	163	20	6	Circular; iron; red			1849	
	164							
	165	30	6	Red				
	166							
	167	35	8	Wooden tower; hexagonal; two sides next to river white, the others brown.	25	C	1870	Can be seen on approaching it in both directions.
	168							
	169	21	6	Iron	17			
	170							
	171	29	7	Wood	25			
	172							
	173	36	9	Wood	17			
	174	45	6	Hexagonal white tower	30	C	1871	
	174½	35	6	Hexagonal white tower, on a pier.	30	C	1871	
	175	20	6	Red			1849	
	176							
	177		10	Wood; square frames			1850	In one lead to Chateaugay Light. Var'n in 1870, 11° W.
	178							
	179	20	8	Square; wood	20		{ 1845 1850 }	To be kept in one, when leaving the canal, till the upper lights come in one.
	180							

## ST. LAWRENCE RIVER—Continued.

Number.	Name.	Location.	Latitude.		Longitude.	Number of lights and relative positions.	Character of light.	Interval of revolution or flash.	
			° ' "	° ' "					
181	OFF GROSSE POINT.....	On piers in river.....	° ' "	° ' "		2.....	F.		
182									
183	ST. FRANCIS LAKE.	Coteau du lac..... N. shore, at head of rapids, in village.	45 16 30	74 11 45	1.....	F.			
184									
185			McGee's Point.....	N. shore.....	45 12 25	74 19 10	1.....	F.	
186									
187			Cherry Island.....	S. side of N. channel.....	45 9 —	74 22 —	1.....	F.	
188									
189			Cherry.....	Light-vessel above island.....	45 8 20	74 25 40	1.....	F.	
190									
191	Crib.....	N. side of channel, on a pier, 4 miles S. W. from Lancaster village.	45 7 —	74 30 —	1.....	F.			
192									
193	Cornwal Canal.....		45 1 15	74 55 25	1.....	F.			
194									
195	COLE'S SHOAL.....	On pier, 5 miles W. of Brockville, $\frac{1}{4}$ of a mile from N. shore.			1.....	F.			
196									
197	GRENADIER ISLAND.....	S.W. point of island, N. side of channel, 2 miles below Rockport.			1.....	F.			
198									
199	LYNDOCK ISLAND.....	S.W. point of island, S. side of channel, 5 miles W. of Rockport.			1.....	F.			
200									

## ST. LAWRENCE RIVER—Continued.

Number.	Height of light above sea level.	Distance visible, in nautical miles.	Character of light-house or vessel.	Height, in feet, of building from base to vane.	Character and order of illuminating apparatus.	Year lighted.	Remarks.
181		3	Square; wood; red.....			1850	
182							
183	50	6	On top of a house.....	11		1818	Not lighted since 1863. Var'n in 1870, 10° 20' W.
184							
185	30	10	Square; wood.....	21			Midway between Coteau and Cherry Island.
186							
187	40	10	Square; wood.....	50		1847	
188							
189						1849	Opposite the light there is a beacon, N. of the channel.
190							
191	20	8	Square; wood.....	20		1844	
192							
193						1865	Var'n in 1870, 9° 40' W.
194							
195	33	6	White; square; wood....	31	C.....	1856	
196							
197	55	10	White; square; wood....	37	C.....	1856	
198							These small lights are for the purpose of marking out the channel through the "Thor" and Islands, between Brockville and Kingston. Var'n in 1870, 7° 15' W.
199	40	7	White; square; wood....	26	C.....	1856	
200							



## ST. LAWRENCE RIVER—Continued.

Number.	Name.	Location.	Latitude.		Longitude.		Number of lights and relative positions.	Character of light.	Interval of revolution or flash.
			N. ° ' "	W. ° ' "	W. ° ' "	° ' "			
201	GANNIQUE NARROWS.	N.E. end of Little Slave Island, S. side of channel, 5 miles below Gannique.					1	F.	
202									
203	JACK-DRAW SHOAL.	On a pier, N. side of channel, 5 miles below Gannique.					1	F.	
204									
205	SPECTACLE SHOAL.	On a pier, N. side of channel, 2 miles W. of Gannique.	41 16 0	76 22 30			1	F.	
206									
207	RED HORSE ROCK.	On a pier, S.E. side of channel, $\frac{1}{4}$ a mile W. of No. 203.					1	F.	
208									
209	BURNT ISLAND.	S.E. point of island, N. side of channel, $\frac{1}{2}$ of a mile from No. 203.					1	F.	
210									
211	WOLFE ISLAND.	N.E. entrance point of island, 18 miles S.E. of Kingston.	41 14 0	76 10 —			1	F.	
212									

## LAKE ONTARIO.

213	KINGSTON.	S.E. part of town.	41 13 30	76 29 0			1	F.	
214									
215	SNAKE ISLAND.	On pier on bar, N. side of channel, 5 miles W. of Kingston.	41 11 30	76 32 —			1	F. red.	
216									
217	GAGE or SIMCOE.	S.W. point of island, Yeo Point, 9 miles W. of Kingston.	41 9 0	76 33 0			1	F.	
218	PIGEON ISLAND.	Near the center of the island.	41 4 5	76 22 30			1	Rev.	Every minute and 10 seconds.

## ST. LAWRENCE RIVER—Continued.

Interval of revolution or flash.	Number.	Height of light above sea level.	Distance visible, in nautical miles.	Character of light-house or vessel.	Height, in feet, of building from base to vane.	Character and order of illuminating apparatus.	Year lighted.	Remarks.
	501	44	7	White; square; wood ...	37	C.....	1856	
	502							
	503	31	6	White; square; wood ...	29	C.....	1856	
	504							
	205	28	9	White; square; wood ...	26	C.....	1856	
	206							
	207	28	8	White; square; wood ...	26	C.....	1856	These small lights are for the purpose of marking out the channel through the Thousand Islands, between Brockville and Kingston. Var'n in 1870, 7° 15' W.
	208							
	209	64	10	White; square; wood ...	25	C.....	1856	
	210							
	211			White; square; wood ...		C.....	1856	
	212							

## LAKE ONTARIO.

	213		4	Square; wood; white.....			1844	<i>Not lighted.</i> Latitude of court-house at Kingston, 44° 14' N.; long, 76° 28' 38" W. Var'o in 1870, 7° W.
	214							
	215	35	6	Stone; square.....	35		1858	
	216							
	217	45	15	Round; stone.....	40		1830	
	218	46	12	Tower on keeper's dwelling; white.	41	C.....	1871	



## LAKE ONTARIO—Continued.

Number.	Height of light above sea level.	Distance visible, in nautical miles.	Character of light-house or vessel.	Height, in feet, of building from base to vane.	Character and order of illuminating apparatus.	Year lighted.	Remarks.
219	68	22	Round; stone.....	62		1828	
220							
221	....	10	.....				
222	46	12	.....	41	C.....	1870	Seen when approaching it from the E. or W.
223	62	21	Round; stone.....	60		1833	Var'n in 1870, 60° W.
224	40	10	Square white tower, on keeper's dwelling.		C.....	1871	Visible from all points of approach.
225	51	12	Stone.....	54	C.....	1856	
226							
227	67	18	Octagonal; stone.....	63		1840	
228							
229		3	.....			1851	
230							
231	46	12	Square wooden tower, painted brown.	39	C.....	1870	Can be seen on approaching it from the N.E., E., and S.W.
232							
233	50	8	Square; wood; white....	16		1844	
234							
235	45	10	Octagon; stone.....	48		1840	Two miles off shore.
236							
237		4	.....				{ RED, facing S. BRIGHT, facing E. and W.
238							
239		4	On a stone house.....				Var'n in 1870, 30° W.
240							

Interval of revolution or flash.

one minute and 10 seconds.

## LAKE ONTARIO—Continued.

Number.	Name.	Location.	Latitude.		Longitude.	Number of lights and relative positions.	Character of light.	Interval of revolution or flash.
			N. ° ' "	W. ° ' "				
241 242	OSHAWA POINT .....	Pier head .....	43 53 0	78 47 0	1		F.	
243 44	WHITBY HARBOR .....	W. pier .....	43 51 0	78 56 —	1		F.	
245 246	PICKERING, or LIVER- POOL .....	E. pier head .....	43 48 45	79 2 0	1		F.	
247 248	TORONTO .....	Gibraltar Point, S.W. side of point, 1½ miles S. of Toronto.	43 37 0	79 23 30	1		F.	
249 250		Queen's Wharf, western part; the other on arm of pier.	43 38 10	79 23 45	2		F.	
251 252	CREDIT PORT .....	On pier .....	43 33 30	79 35 0	1		F.	
253 254	OAKVILLE .....	Pier head .....	43 26 45	79 40 30	1		F.	
255 256	BURLINGTON BAY .....	S. pier of entrance .....	43 18 0	79 48 50	2			
257 258	DALHOUSIE HARBOR .....	E. pier head .....	43 13 30	79 15 30	1		Rev.	

## LAKE ERIE.

259 260	COLDBORNE PORT and RANGE LIGHT.	W. pier head .....	43 53 30	79 17 0	2			
------------	------------------------------------	--------------------	----------	---------	---	--	--	--

## LAKE ONTARIO—Continued.

Number.	Height of light above sea level.	Distance visible, in nautical miles.	Character of light-house or vessel.	Height, in feet, of building from base to vane.	Character and order of illuminating apparatus.	Year lighted.	Remarks.
241						1863	
242							
243	12	5	Square; wood	8		1844	
244							
245						1863	
246							
247	66	18	Hexagonal; stone	62		1820	
248							
249	22	6	Wood; square; red	16		1838	RED light is on the arm of the pier. To be passed closely on port hand. Var'n in 1870, 3° W.
250							
251						1863	
252							
253	42	12	Wood; octagon	36		1836	
254							
255	{ 60 18	{ 15 4	{ One white; one red; square; octagon.	{ 54 14	{ ..... {	{ 1838 1845	{ High light, RED.
256							
257	53	10	Wood	44		1852	Entrance to Welland Canal.
258							

## LAKE ERIE.

259	{ 58 14	{ 12 8	{ Wood	{ 54 10	{ ..... {	{ 1852	{ Entrance to Welland Canal.
260							



## LAKE ERIE—Continued.

Number.	Height of light above sea level.	Distance visible, in nautical miles.	Character of light, house or vessel.	Height, in feet, of building from base to vane.	Character and order of illuminating apparatus.	Year lighted.	Remarks.
261	64	10	Round; stone.....	60		1848	Var'n in 1870, 22° 40' W.
262							
263		10	Square; wood; white.....			1848	Grand River entrance.
264							
265	20	8	Square; wood; white....	20		1846	
266							
267	65	25	Octagon; wood.....	60		1843	Var'n in 1870, 12° 40' W.
268							
269	96	12	Octagon; wood.....	46		1840	
270							
271							
272							
273	20	4	Lantern.....	20		1841	
274							
275	45	9	Round; stone.....	40		1833	W. by N. clears Pelee Shoal. Var'n in 1870, 02° 45' E.
276							
277	76			61		1861	
278							

## DETROIT RIVER.

279	56	18	Round; stone.....	40		1837	
280							

Interval of revolution or flash.

Every 3 minutes.





## LAKE ST. CLAIR.

Number.	Height of light above sea level.	Distance visible, in nautical miles.	Character of light-house or vessel.	Height, in feet, of building from base to vane.	Character and order of illuminating apparatus.	Year lighted.	Remarks.
251	34 15	12 6	Square; wood ..... Stone; round tower.....	30 15	.....	1837 1815	The two lights in one lens over the bar.
252							

## LAKE HURON.

253	150	25	Square tower .....	20	.....	1847	Var'n in 1870, 0° 50' W.
254							
255	87	15	.....	87	D., 3d ord.	1850	
256							
257	86	15	.....	86	D., 3d ord.	1850	
258							
259	90	15	.....	85	D., 3d ord.	1850	Var'n in 1870, 0° 50' W.
260							
261	130	12	.....	85	D., 3d ord.	1850	
262							
263	86	10	.....	85	D., 3d ord.	1850	
264							
265	21	6	.....			1858	Var'n in 1870, 0° 30' W.
266							
267	61	8	.....	60	D., 4th or .	1850	
268							

Interval of revolution  
or flash.

Every 4 minutes.

Every 24 minutes.



## LAKE HURON—Continued.

Number.	Height of light above sea level.	Distance visible in nautical miles.	Character of light-house or vessel.	Height in feet of building from base to vane.	Character and order of illuminating apparatus.	Year lighted.	Remarks.
299	56	16	Square wooden tower, painted white; on keeper's dwelling-house.	40	C.....	1870	Visible from all points of approach.
300							
301	195	20	Square tower, on white dwelling.	42	C.....	1870	
302							
303	60	10	.....	20	C, 3d ord.	1866	At N. side of channel leading into Killarney Harbor.
304							
305	30	5	.....	20	C, 3d ord.	1866	
306							
307	24 } 22 }	6	.....		C, 3d ord.	1866	
308							
309	35	8	.....		C, 3d ord.	1866	
310							
311							
312							

## LAKE SUPERIOR.

313		8	.....		C, 3d ord.	1866	
314							

## NEW BRUNSWICK.

315	79	12	Wood; white; octagon...	74	.....	1856	
316							



## NEW BRUNSWICK—Continued.

Number.	Height of light above sea level.	Distance visible, in nautical miles.	Character of light-house or vessel.	Height, in feet, of building from base to vane.	Character and order of illuminating apparatus.	Year lighted.	Remarks.
317	52	14	White; wood.....	4*	C.....	1870	Attached in keeper's dwelling.
318							
319	{ 27 31½ }	10	Buildings hexagonal and white.			1871	These beacons, kept in range, lead into the harbor. The outer exhibits a bright, the inner a red light.
320	32	12	Square wooden tower, painted white.	28	C.....	1872	
321	49	13	Square wooden tower, painted white.	33	C.....	1870	Seen from all points of approach.
322							
323	55	13	Square; white; wood....	40	C.....	1870	
324							
325							<i>Building.</i>
326							
327							<i>Building.</i>
328							
329	70	14	Wood; white.....	58		1841	Var'n in 1870, 23° 10' W.
330						1871	
331							<i>Building.</i>
332							
333	70	14	White; wood; square tower.	50	D., 4th ord.	1864	
334	40	14	Wood; square; white ...	27	C.....	1872	To guide vessels into Shediac Harbor.
335	15	6	Lantern on a pole .....			1860	Lighted during the summer season.
336							
337	72	14	Octagonal; white.....	40		1870	White dwelling 50 feet westward of light-house.
338							

Interval of revolution or flash.

Rev. every 2 minutes, showing light every alternate half-min.

## PRINCE EDWARD ISLAND.

Number.	Name.	Location.	Latitude.		Longitude.	Number of lights and relative positions.	Character of light.	Interval of revolution or flash.
			° N. "	' " W. "				
339 340	NORTH POINT.....	On point.....	47	3 46	63 59 19	1	F.	
341 342	CASCUMPEQUE, N. side ..	Sandy Island .....	46	48 22	64 2 15	1	F.	
343 344	RICHMOND HARBOR.....	Bill Hook, or Fishery Island, N. side entrance.	46	34 44	63 42 29	1	F.	
345 346	EAST POINT.....	200 yards in shore from S. part of point.	46	27 9	61 58 15	1	F.	
347 348	CARDIGAN BAY .....	Panmure Head, Georgetown Harbor, S. entrance.	46	8 47	62 27 40	1	F.	
349 350	GEORGETOWN .....	St. Andrew Point .....	46	9 57	62 30 15	1	F.	
351 352	HILLSBOROUGH BAY ....	Prim Point, 100 yards from the point, S.E. part of bay.	46	3 10	63 3 40	1	F.	
353 354	CHARLOTTE TOWN HAR- BOR.	Blockhouse Point, W. side of entrance.	46	13 55	63 7 28	1	F.	
355 356 357 358	BEDEQUE BAY.....	Salutation, or Seseow Head. . .	46	19 0	63 48 30	1	F.	
		Green's Wharf .....	46	23 32	63 47 5	1	F.	
359 360	PUGWASH HARBOR.....	Seaman's Point, E. side of entrance.	45	52 30	63 40 30	1	F.	

## PRINCE EDWARD ISLAND.

Number.	Height of light above sea level.	Distance visible, in nautical miles.	Character of light-house or vessel.	Height, in feet, of building from base to vane.	Character and color of illuminating apparatus.	Year lighted.	Remarks.
330 340	80	14	.....	.....	.....	1856	
341 342	82	8	Octagon tower; wood; white.	.....	C.....	1856	Lighted during 8 months of the year. Var'n in 1870, 33° 40' W.
343 344	20	8	Tower.....	.....	.....	1856	Lighted during 8 months of the year.
345 346	130	18	Wood; octagon; white....	63	.....	1867	
347 348	89	14	Wood; octagon; white....	49	C.....	1853	Lighted during 8 months of the year. The light should be kept open of Terns Point to clear reef off Bear Cape. In 1867 partially hidden by fir trees.
349 350	36	8	Red and white, striped vertical.	20	Lantern with coal-oil.	1868	
351 352	68	13	Brick; white; circular...	50	C.....	1845	Lighted during 8 months of the year. Several buoys mark the dangers in the bay.
353 354	35	16	On roof of block-house; white.	.....	.....	1856	Var'n in 1870, 22° 44' W.
355 356	80	14	.....	.....	.....	1864	
357 358	15	7	Lantern on a pole.....	.....	.....	1856	
359 360	48	8	Square; wood; white....	44	C.....	1871	Showing RED seaward, and BRIGHT toward the harbor.



## NOVA SCOTIA.

Number.	Name.	Location.	Latitude.		Longitude.		Number of lights and relative positions.	Character of light.	Interval of revolution or flash.
			N. ° ' "	W. ° ' "					
361 362	AMET ISLAND .....	Center of island, Northumberland Strait.	45 50 15	63 10 0	1		F.		
363 364	CARBOU ISLAND.....	N.E. part.....	45 46 —	62 40 —	1		Rev.	Every minute....	
365 366	PICTOU HARBOR.....	S. point of entrance.....	45 41 25	62 39 26	2	Vertical: upper white, lower red.	F.		
367 368	PICTOU ISLAND.....	S.E. point .....	45 49 10	62 30 29	1		F.		
369 370	CAPE ST. GEORGE.....	N. side of cape .....	45 32 35	61 55 —	1		Rev.	Every $\frac{1}{2}$ minute..	
371 372	POMQUET, ST. GEORGE BAY.	N.E. end of island .....	45 39 —	61 44 —	1		F. red.		
373 374	N. ENTRANCE CANSO GUT	W. side, 120 yards in shore...	45 41 42	61 38 58	1		F.		
375 376	SHIP HARBOR, CANSO GUT.	Point Tupper.....	45 36 —	61 22 —	1		F. red.		
377 378	Port Hood .....	S. entrance of harbor .....	46 0 0	61 31 40	1		F.		
379	Sea Wolf or Margaree Island.	Summit or middle of island ..	46 21 20	61 15 33	1		F.		
380	Cheticamp Island...	S.W. end of island .....	46 36 32	61 3 0	1		Rev.	Revolves once in 14 minutes, and shows a flash every 45 sec'da.	
381 382	CAPE BRETON ISLAND. Ingonish Island .....		46 41 20	60 20 0	1		F.		

## NOVA SCOTIA.

Interval of revolution or flash.	Number.	Height of light above sea level.	Distance visible, in nautical miles.	Character of light-house or vessel.	Height in feet of building from base to vane.	Character and order of illuminating apparatus.	Year lighted.	Remarks.
	361	44	12	Square; wood; white ...	32	C.....	1866	Visible round horizon.
	362							
every minute...	363	35	12	White; square .....	26	.....	1878	
	364							
	365	65	11	Octagon; wood; striped red and white vertically.	55	.....	1834	Lighted when the navigation is free from ice. A small RED light is seen below lantern, kept W. S.W. clears the E. reefs off Pictou Island. Var'n in 1870, 22° 40' W.
	366							
	367	52	12	Square; white .....			1853	
	368							
every 1/4 minute...	369	350	25	Square; white .....	39	D., 2d ord.	1861	
	370							
	371	50	10	White; square .....	23	.....	1868	Visible between the bearings of W. (round by N.) and S. Var'n in 1870, 23° 40' W.
	372							
	373	110	18	Wood; square; white ...	35	.....	1842	There is good anchorage under the light with the wind off shore.
	374							
	375	44	.....	Square; white tower.....	24	.....	1870	117 feet from extremity of point. Visible from N. entrance of Gut of Canso, and from south about 3 miles.
	376							
	377	54	10	Square; white tower .....			1854	RED light on N. side. BRIGHT light on S. side.
	378							
	379	218	21	Square; white tower.....			1854	To vessels in dangerous proximity to the island the light may become obscured by the abrupt cliffs on the sides of the island.
Flashes once in 1/2 minutes, and shows a flash every 45 sec's.	380	149	20	Wood; square; painted white, with black ball on seaward side.	24	C.....	1872	
	381	257	15	Square; white wooden tower.	40	D., 5th ord.	1871	
	382							

## NOVA SCOTIA—Continued.

Number.	Name.	Location.	Latitude.		Longitude.		Number of lights, and relative positions.	Character of light.	Interval of revolution or flash.		
			N.	W.	°	'				°	'
283	Bird Island .....	Clioux Island $\frac{1}{4}$ of a mile from N. end.	46	21	60	22	30	1	Rev.	Every minute.	
284											
285	Black Rock Point ..	S. side of entrance to Big Bras d'Or.	46	18	60	24	0	1	F.	.....	
286											
287	Point of beach.....	N. side.....	46	17	60	32	15	1	F.	.....	
288	Sydney.....	W. end of South Bar .....	46	12	60	12	40	1	F. red.	.....	
289	Sydney.....	Flat Point, E. side of Spanish Bay.	46	16	60	7	22	1	F.	.....	
290											
291	Flat Island .....	On island .....	46	11	59	45	50	1	Rev.	Every 15 seconds	
292											
293	Scatarl Island.....	N.E. point, on Trap Rock ....	46	2	59	40	18	1	Rev.	Visible a minute, eclipsed half a minute.	
294											
295	Scatarl Island.....	W. end .....	46	0	59	47	20	1	F. red.	.....	
296											
297	Louisburg Harbor ..	N. side of entrance, 60 fathoms in shore of point.	45	54	59	57	15	1	F.	.....	
298											
299	S. ENTRANCE CANOE GUT	Eddy or Sand Point.....	45	31	61	14	42	2	Horizontal, 8 yards apart.	F.	.....
400											
401	GUYSBOROUGH HARBOR	W. side of entrance, near Pearl Point, Chebucto Bay.	45	22	61	29	11	1	F.	.....	
402											

CAPE BRETON ISLAND—Continued.





## NOVA SCOTIA—Continued.

Interval of revolution or flash.	Number.	Height of light above sea level.	Distance visible, in nautical miles.	Character of light-house or vessel.	Height, in feet, of building from base to vane.	Character and order of illuminating apparatus.	Year lighted.	Remarks.
	403	70	14	Wood; square; white....	31		1865	Center of keeper's dwelling. Visible round horizon.
	404	39	11	Wood; square; painted white.	28	C.....	1872	
	405	31	8	Wood; square; white....			1851	
	406	42	12	Wood; square; painted white.	28	C.....	1872	
	407	75 & 40	15 & 9 &	Wood; octagon; striped red and white horizontally.	60		1815	A steam fog-whistle is situated 100 yards S. of light-house. Each blast will be 8 seconds' duration, with intervals of 51 seconds. Varn in 1870, 23° 30' W.
	408							
Every 20 seconds	409	55	11	White; pyramidal; octagonal lantern.	35		1851	Light not totally obscured during the eclipses. 10 seconds' duration flash and 10 seconds' eclipse.
Showing alternate flashes of red and white every 2 minutes.	410	61	15	Wood; square; painted white; roof of dwelling red.	28	C.....	1872	
Every 2 minutes	411	70	12	White, with two black bulls seaward, S, S.W.	35		1846	On house.
	412							
Every minute....	413	85	14	Wood; octagonal; black and white vertical stripes on seaward side.	53		1865	Alternately BR. HT and RED faces. Visible round horizon.
	414							
	415	45	8	Octagonal; dull red, with white belt.			1852	BR. HT RED to seaward. Pilots are stationed here.
	416							
	417	58	12	White; circular; roof red.	48		1815	When Sambro Light bears W, S.W., this light should not be brought to the westward of S., which clears the Thru Cup Shoal. Varn in 1870, 26° 25' W.
	418	132	18	Wood; square; painted white.	23	C.....	1872	
Revolves once in 2 minutes, and shows a flash every minute.	419	115	20	Octagon; white	60		1758	If a vessel fires a gun during a fog it will be answered by two from the island, and the same reply will be made to the sound of a steamer's whistle. Pilots resort here.
	420							

## NOVA SCOTIA—Continued.

Number.	Name.	Location.	Latitude.		Longitude.	Number of lights and relative positions.	Character of light.	Interval of revolution or flash.
			N. ° ' "	W. ° ' "				
421	PEGGY'S POINT	E. side of entrance to St. Margare's Bay.	41 26 30	63 54 —	1		F. red.	
422								
423	CHESTER or MADONE B. I.	East Ironbound Island, S.E. part, 200 feet from the shore.	44 26 22	64 4 50	1		F.	
424	MADONE BAY	On Hudson's Nose	44 24 56	64 13 46	1		F. red.	
425	MALAGASH or L'AN-ENBURG BAY.	Cross Island, E. point	44 18 43	64 9 57	2	Vertical, 11 yards apart.	Upper Fl. Lower F.	Bright 45 seconds, eclipsed 15 seconds.
426		Battery Point	44 21 41	64 17 36	1		F.	
427								
428								
429	MOSHER	On island, S.E. part, W. side of entrance to Le Have River.	44 11 —	64 19 —	1		F. red.	
430								
431	WEST IRONBOUND ISLAND, S. side.	Mouth of Le Have River	44 13 43	64 16 19	1		Rev.	Every 30 seconds
432								
433	METWAY FORT	Metway Head, W. side of entrance.	44 6 10	64 32 14	1		F.	
434								
435	LIVERPOOL BAY	Coffin Island, S. point	44 1 58	64 37 34	1		Rev.	Bright 40 seconds, eclipsed 80 seconds.
436		Fort Point, S. entrance	44 3 —	64 42 —	1		F. red.	
437								
438								
439	LITTLE HOPE	Nearly on center of islet	43 48 31	64 47 15	1		Rev. red.	
440	PORT EBERT HARBOR	On Shingle Beach, E. side of harbor.	43 48 10	64 55 24	1		F. red.	

## NOVA SCOTIA Continued.

Interval of revolution or flash.	Number.	Height of light above sea level.	Distance visible, in nau- tical miles.	Character of light-house or vessel.	Height, in feet, of build- ing from base to vane.	Character and order of illuminating apparatus.	Year lighted.	Remarks.
	421	65	14	White; square .....	26		1868	
	422							
	423	150	16	White; wood .....	46	C. ....	1866	Visible from all points of approach. Rebuilt.
	424	68	11	Square; wood; painted white.	23	C. ....	1872	
Bright 45 seconds, eclipsed 15 sec- onds.	425	{ 100 65	{ 14 8	Red; octagonal base.....	23		1832	Pilots resort here; and vessels might take refuge in case of necessity. Var'n in 1870, 19° 55' W.
	426							
	427		12	Square; white.....		C. ....	1864	On top of dwelling-house, which is white.
	428							
	429	55	12	Square; white .....	26		1868	
	430							
Every 30 seconds	431	72	13	Square tower; white.....	29		1855	Near the edge of a cliff 40 feet high.
	432							
	433	41	10	Square; white; with black square seaward.			1851	Like a dwelling-house.
	434							
Bright 40 seconds, eclipsed 80 sec- onds.	435	72	16	Octagon base; horizontal stripes, red and white, eight in number.	66		1812	Var'n in 1870, 18° 55' W.
	436							
	437	30	5	Square; white.....	17		1855	Left on port side when entering harbor.
	438							
	439	40	12	Square; white.....	31		1865	Center of keep'r's dwelling; visible round horizon.
	440	33	10	Square; wood; painted white.	29	C. ....	1872	





## NOVA SCOTIA—Continued.

Interval of revolution or flash.	Number.	Height of light above sea level.	Distance visible, in nautical miles.	Character of light-house or vessel.	Height, in feet of building from base to vane.	Character and order of illuminating apparatus.	Year lighted.	Remarks.
.....	441	44	10	Square; white .....	39 .....	.....	1853	
.....	442	66	11	Square; wood; painted white.	29 C.....	.....	1872	
.....	443	{ 130 65	{ 18 10 }	Octagonal; vertical stripes, black and white.	77 .....	.....	1788 Repaired 1858	Var'n in 1870, 18° 5' W.
Alternate red and white flashes every minute.	444	48	12	Square; wood; painted white.	29 C.....	.....	1872	
.....	445	49	12	Square; white, with black ball seaward.	35 .....	.....	1850	
.....	446							
Bright 15 seconds, eclipsed 35 seconds.	447	53	12	White; conical .....	50 D.....	.....	1861	Var'n in 1870, 17° 25' W.
.....	448							
.....	449		12	Wood; white .....	C.....	.....	1864	Visible seaward. Each end of a dwelling-house white.
.....	450							
.....	451	28	8	Square; white .....	27 .....	.....	1854	Open westward of St. John's Island; bearing N.E. by N. clears the ledge. Making harbor from any other direction, the light must be brought to the northward of E. N.E. before it can be steered for, to avoid shoal spot off C. St. Ann Point.
.....	452							
.....	453	58	18	Octagon; white .....	79 .....	.....	1830	The Blonde Rock lies 8 by W. 3½ miles from light-house. A steam-whistle is sounded, during fogs and snow-storms, in blasts of 5 seconds' duration, with intervals of 5 seconds and 45 seconds, alternately. May be heard from 5 to 25 miles, according to weather. Var'n in 1870, 16° 40' W.
.....	454							
Every minute and 45 seconds, dark 30 seconds.	455	117	20	Octagon; vertical stripes, red and white.	59 .....	.....	1839	Fog-whistle on W. side sounded in fogs or snow-storms 10 seconds in every minute, with an interval of 50 seconds. May be heard from 5 to 7 miles, according to wind and weather. Cannot be at all times relied on.
.....	456							
Every 30 seconds.	457	100	13	Octagonal; white .....	46 .....	.....	1868	RED and BRIGHT.
.....	458							

## NOVA SCOTIA—Continued.

Number.	Name.	Location.	Latitude.		Longitude.		Number of lights and relative positions.	Character of light.	Interval of revolution or flash.			
			N. o r "	W. o r "	o r "	o r "						
459	Bryer Island .....	N.W. point .....	44	14	57	66	23	33	1	.....	F.	.....
460			.....	.....	.....	.....	.....	.....	.....	.....	.....	.....
461	Peter Island .....	S. entrance to Grand Passage.	44	15	30	66	20	20	2	Horizontal...	F.	.....
462	.....	.....	.....	.....	.....	.....	.....	.....	.....	.....	.....	
463	Petit Passage, N. entrance.	Bonr's Head, 50 feet from edge of cliff.	44	24	16	66	13	0	1	.....	Rev.	Alternate red and white flashes every minute.
464			.....	.....	.....	.....	.....	.....	.....	.....	.....	
465	Sissiboo River.....	Near Weymouth.....	44	26	30	66	1	15	1	.....	F.	.....
466	.....	.....	.....	.....	.....	.....	.....	.....	.....	.....	.....	
467	Digby, or Annapolis	Prim Point, S. point of entrance	44	41	34	65	47	8	1	.....	F.	.....
468	Southwestern Wolf Island.	Southeastern point of island ..	44	56	50	66	41	10	1	.....	Rev.	An interval of 1½ minutes between each flash.
469			.....	.....	.....	.....	.....	.....	.....	.....	.....	
470	Marshall Cove, or Port Williams.	.....	44	56	52	65	16	1	2	.....	F.	.....
471	Bliss Island .....	W. point of island .....	45	1	15	66	51	0	1	.....	F. red.	.....
472	Margaretville .....	.....	45	2	57	65	4	0	2	.....	F.	.....
473	Black Rock Point.	S. shore .....	45	10	10	64	46	0	1	.....	F.	.....
474	.....	.....	.....	.....	.....	.....	.....	.....	.....	.....	.....	
475	Horton.....	On bluff .....	45	6	15	64	13	10	1	.....	F.	.....
476	.....	.....	.....	.....	.....	.....	.....	.....	.....	.....	.....	
477	Burn Coat Head ...	Basin of mines .....	45	18	17	63	48	30	1	.....	F.	.....
478	.....	.....	.....	.....	.....	.....	.....	.....	.....	.....	.....	

BAY OF FUND.—Continued.

## NOVA SCOTIA—Continued.

Number.	Height of light above sea level.	Distance visible, in nautical miles.	Character of light-house or vessel.	Height, in feet, of building from base to vane.	Character and order of illuminating apparatus.	Year lighted.	Remarks.
459	72	13	Octagonal; white	55		1809	Var'n in 1870, 172° 45' W.
460							
461	40 each.	10	Square; white			1850	Visible from the northward between the bearings of S. by W. and S. S.W., and from the southward between the bearings of N.E. by E. and N. N.W. $\frac{1}{4}$ W.
462							
463						1864	On the top of a dwelling-house, which is white. Visible from E. by S. to S.W. by W.
464							
465	20	8	Square, pyramidal; painted white.	33	C.	1870	Visible from all points of approach.
466							
467	76	13	Square; vertical stripes	22		1817	Var'n in 1870, 180° 45' W. During thick weather, fog, and snow-storms, a steam fog-whistle will be sounded 8 seconds in each minute, thus making an interval of 52 seconds between each blast. The whistle has been heard at the following distances: In calm weather, over 15 miles; with the wind, about 20 miles; stormy weather and against the wind, 6 miles.
468	111	17 to 20	Square wooden building, painted white	55	C.	1871	Visible from all points of approach.
469	{ 60 } { 57 }	5	Square; white	22		1859	Visible between the bearings of W. S.W. and E. N.E. (round by N.) At the distance of about 5 miles it will show a BRIGHT light, and on a nearer approach GREEN.
470	45	12	Square wooden tower, painted white.	50	C.	1871	Visible from all points of approach seaward.
471	{ 30 } { 27 }	5	Square; white	22		1859	Visible between the bearings of W. S.W. and E. N.E. (round by N.) At the distance of about 5 miles it will show a BRIGHT light, and on a nearer approach RED.
472							
473	45	12	Square; white	35		1848	
474							
475	92	20	Square; white	20		1851	Var'n in 1870, 200° 40' W.
476							
477	75	13	Square; white	50		1859	On keeper's dwelling. Visible from all points of approach.
478							

Interval of revolution or flash.

Alternate red and white flashes every minute.

Interval of 1 1/2 minutes between each flash.

## NOVA SCOTIA—Continued.

Number.	Name.	Location.	Latitude.	Longitude.	Number of lights and relative positions.	Character of light.	Interval of revolution or flash.
479	BAY OF FUNDY.—Continued.	Cobequid Bay.....	Speneer Point, N. shore.....	N. "	W. "	1	F.
480							
481		Partridge Island or Parsborough.	W. side of river .....	45 23 —	64 19 0	1	F.
482							
483		Apple River, Chignecto Bay.	Cape Curstan or Hetty Point, N. entrance.	45 28 —	64 51 30	1	F.
484							

## NEW BRUNSWICK.

485	BAY OF FUNDY.	Grindstone .....	W. part of island .....	45 43 13	64 37 25	1	F.		
486									
487		Enragé.....	Pitch of cape.....	45 35 31	61 46 55	1	F.		
488									
489		Quaco.....	Small rock off head.....	45 19 20	65 31 55	1	Rev.	Every 50 seconds.	
490									
491		St. John's Harbor.	Partridge Island.....		45 14 —	66 3 5	1	F.	
492									
493									
494									
495	Lepreau.....	On point.....	45 3 31	66 27 39	2	Vertical, 9 yards apart.	F.		
496									

## NOVA SCOTIA—Continued.

Interval of revolution or flash.	Number.	Height of light above sea level.	Distance visible, in nautical miles.	Character of light-house or vessel.	Height, in feet, of building from base to vane.	Character and order of illuminating apparatus.	Year lighted.	Remarks.
	450			Window in a building.....			1863	
	481	37	9	Octagon; white.....	32		1852	
	482							
	483		12	Tower; white.....	24			
	484							

## NEW BRUNSWICK.

	485	60	12	Wood; octagonal; white.....			1859	Visible from N.E. by E. (round by N.) to E. by S., or 315° Cape Enragé Light-house S.W. by W. $\frac{1}{4}$ W. about 10 miles. Var'n in 1870, 21° 10' W.
	486							
	487	120	15	Square; white.....	33		1840	Visible between the bearings of N.W. and N.E. (round by S.)
	488							
Every 20 seconds.	489	38	15	Octagon; horizontal bands, red and white.	46		1835	
	490							
	491	119	20	Octagon; vertical stripes, red and white.	40		1791	In foggy weather a steam-whistle is sounded every minute for 10 seconds. A bell buoy is established near the E. side of Partridge Reef.
	492							
	493	35	12	Octagon; vertical stripes, red and white.	15	D.....	1828 relighted 1898	Leading light for the spit. Var'n in 1870, 19° 25' W.
	494							
	495	{ 81 53 }	15	Octagon; striped horizontally, red and white.	31		1831	Visible from southward between the bearings of W. N.W. and E. by N. A steam-whistle is sounded, during fogs and snow-storms, in blasts of 5 seconds' duration, with intervals of 5 seconds and 45 seconds, alternately. May be heard from 3 to 20 miles, according to the weather. Var'n in 1869, 18° 10' W.
	496							



## NEW BRUNSWICK—Continued.

Interval of revolution or flash.	Number.	Height of light above sea level.	Distance visible, in nautical miles.	Character of light-house or vessel.	Height, in feet, of building from base to vane.	Character and order of illuminating apparatus.	Year lighted.	Remarks.
	497	64	15	Octagon; white, with red cross.	34		1829	Var'n in 1870, 18° W.
	498							
	499	42	10	Octagon; white.....	22		1831	Visible between the bearings of N.W. by N. and S.E. by S.
	500							
	501	118	17	Octagon; wood; white .	50	C.....	1860	Visible between the bearings of S.W. and N.W. (round by S.) Var'n in 1870, 17° 30' W.
	502							
	503	E. 58 (W. 54)	15	{ White; octagon ..... { White.....	58 36	D., 3d ord. {	1870 1832	{ A gun is fired every four hours during a fog. Vessels standing to the northward should haul off the moment the lights are in one to avoid the Murr Ledges.
	504							
Every minute....	505	66	12	Octagon; striped vertically, black and white alternately.	41	D., 4th ord.	1831	A gun is fired to answer signals during a fog. Dangerous rocks extend 4 miles eastward of the light-house. Fixed light..... 45 seconds. Eclipse..... 54 " Flash..... 44 " Eclipse..... 54 " <u>60</u>
	506							

## BERYUDA ISLANDS.

Every 51 seconds.	507	362	24	Circular; iron; white ...	106		1846	Visible from all directions except between the bearings of S. 48° W. and S. 52° W., also S. 53° W. to S. 62° W., being interrupted by high land. Var'n in 1870, 7° 16' W.
	508							

## BAHAMIA ISLANDS.

Every minute and a half.	509	80	12	Conical tower; upper part red, lower white; lantern white.	70	C., 2d ord.	1836	Seen except when it bears between S. by W. 4 W. and S. 4 E., being intercepted by the Demini Isles when 8 miles distant. Var'n in 1870, 4° 10' E. An indifferent light.
	510							





## BAHAMAS ISLANDS—Continued.

Interval of revolution or flash.	Number.	Height of light above sea level.	Distance visible inautical miles.	Character of light-house or vessel.	Height, in feet, of building from base to vane.	Character and order of illuminating apparatus.	Year lighted.	Remarks.
Every $\frac{1}{2}$ minute.	511	158	16	Iron, with broad red bands, 8 in number; and white, 7 in number, horizontal bands; lantern white.	145	C, 1st ord.	1859	Shows a fixed light, for a distance of 6 miles, between the flashes.
	512							
	513	81	12	Circular; 5 bands, red and white alternately.	46	D, 3d ord.	1863	Visible between the bearings of N.W. by N. and N.E., or 58°.
	514							
	515	68	10	Conical stone tower; white.	58	C, 1st ord.	1816	Visible between the bearings of N.E. and N.W. through N. Var'n in 1870, 32° 30' E. The regulation is still in force which requires the exhibition at night of a red light at Hog Island Light-house whenever the state of the bar at the entrance to Nassau is such as to be considered impassible or dangerous to vessels entering the harbor.
	516							
	517	50	9	On cupola of house.				Visible only between N. N.W. $\frac{1}{2}$ W. and W. $\frac{1}{2}$ N.
	518							
Every minute.	519	160	16	Conical stone tower; white lower part and red upper part; lantern white.	85	C, 1st ord.	1836	Visible between the bearings of S.W. and E. S.E. through E.
	520							
	521	123	14	Circular; stone	77	D, 1st ord.	1863	Illuminates 22° of the horizon.
	522							
	523							<i>Proposed.</i>
	524							
	525	133	17	Conical; 3 bands of red brick.	114	D, 2d ord.	1868	Illuminates 33°.
	526							
Every minute	527	120	17	Conical, stone tower; whitish.	114	D, 2d ord.	.....	Visible about 1 mile southward of Mathew Town over the land. Var'n in 1870, 3° E.
	528							



## BAHAMA ISLANDS—Continued.

Interval of revolution or flash.	Number.	Height of light above sea level.	Distance visible, in nautical miles.	Character of night-house or vessel.	Height, in feet, of building from base to vane.	Character and order of illuminating apparatus.	Year lighted.	Remarks.
A flash every half minute.	529	108	15	White; iron; circular....	60	C.....	1845	Var'n in 1870, 2° 25' E.
	530							
	531	146	16	Circular, iron; broad red bands, 7 in number, and white, 6 in number; lantern white.	150	D., 1st ord.	1860	Visible round horizon.
	532							
	533		8			D., 1th ord.		<i>Proposed.</i>
	534							
	535	96	8	Stone, conical tower; white and red upper part.	58		1830	Visible round horizon, except when it bears S.W. & W., being intercepted by water cays when 3 leagues distant. Var'n in 1870, 4° 25' E.
	536							
<b>GREAT ANTILLES.</b>								
Half a minute	537	117	20		167	D., 2d ord.	1863	"Roncall" thereon. Var'n in 1870, 6° E.
	538							
	539					D., 2d ord.		<i>Proposed.</i>
	540							
	541	110	15			D., 3d ord.		<i>Proposed.</i> Var'n in 1870, 5° 38' E.
	542							
A flash every half minute.	543	170	21	Stone cubic.....	73	D., 1st ord.	1845	"O'Donnell" thereon. The light is extinguished for ten minutes after midnight to clean and trim the lamps. Var'n in 1870, 5° 30' E.
	544							
	545							
	546							
Every minute	547	93				D., 3d ord.		<i>Proposed.</i>
	548							

## GREAT ANTILLES—Continued.

Number	Name.	Location.	Latitude.		Longitude.	Number of lights and relative positions.	Character of light.	Interval of revolution or flash.
			N. ° ' "	W. ° ' "				
549	Cardenas Bay (Spa.)	Piedras Cay, Los Pinzones.....	23 14 24	81 6 32	1	F. & Fl.	A red flash every half minute.	
550		Cay Diana.....	23 9 56	81 6 10	1	F.		
551								
552								
553	Cayo Cruz del Padre (Spa.)	On reef, $\frac{1}{2}$ of a mile N.E. of cay.	23 17 —	80 53 29	1	F.		
554								
555	Bahia de Urdiz (Spa.)	N.E. part of cay.....	23 12 34	80 58 35	1	F. & Fl.	Every minute....	
556	Sagua la Grande....	Rancheria Point.....	23 5 2	80 4 0	1	F.		
557	Parson Cay Grande (Spa.)	N. part of cay.....	22 29 3	78 9 10	1	F. & Fl.	A flash every minute.	
558								
559	Nuevitas Harbor (Spa.)	Empovento or Pilots' Point, E. entrance.	21 37 30	77 4 33	1	F.		
560		Maternillos Point.....	21 40 6	77 8 14	1	Rev.	Every minute....	
561								
562								
563	Lucrecia (Spa.)....	On point.....	21 4 38	75 37 11	1	Rev. red.	Every minute....	
564								
565	Barnes (Spa.)....	Entrance of port.....	20 21 40	74 29 37	1	F.		
566								
567	Cape Maysi (Spa.)...	On cape, E. point of island....	20 15 10	74 9 41	1	F.		
568								

CUBA, North Coast—Continued.

## GREAT ANTILLES—Continued.

Interval of revolution of flash.	Number.	Height of light above sea level, in feet.	Distance visible, in nautical miles.	Character of light-house or vessel.	Height, in feet, building from base to vane.	Character and order of illuminating apparatus.	Year lighted.	Remarks.
A red flash every half minute.	549	74	15	Tower on house; white.	67	D., 4th ord.	1857	
	550							
	551	41	7	Iron column			1862	Var'n in 1870, 43 5/8' E.
	552							
	553	49	10	Conical; white.	46	D., 4th ord.	1862	
	554							
Every minute.	555	175	24	Iron; white.	159	D., 1st ord.	1862	
	556	57	8 1/2	Red pole	46	D.	1872	The pole is in the center of the keeper's dwelling, which is of brick. Visible between S.W. 1/4 W., round by N., to S.E. 1/4 E.
	557	150 {	Fl. 20 P. 14	Iron; brown; base stone.	127	D., 1st ord.	1859	Var'n in 1870, 49 10' E.
A flash every minute.	558							
	559	49	9	On white mast from center of building.	44	D., 6th ord.	1864	Keeper's dwelling is quadrangular, yellow.
	560							
Every minute.	561	173	23	White	170	D., 1st ord.	1866	Color thereon. Duration of eclipse, 16 seconds.
	562							
	563	130	17	Stone; white		D., 2d ord.	1868	Var'n in 1870, 39 40' E.
Every minute.	564							
	565	48	12	Iron column		D., 4th ord.	1870	To facilitate entrance by night. Column attached to keeper's dwelling.
	566							
	567	128	17	Tower circular; base octagonal.		D., 2d ord.	1862	
	568							

## GREAT ANTILLES—Continued.

Number.	Name.	Location.	Latitude.		Longitude.		Number of lights and relative positions.	Character of light.	Interval of revolution or flash.		
			N.	W.	°	'				°	'
569	St. Jago de Cuba (Spa.)	100 yards E. of the Morro Castle.	19	57	42	75	53	35	1	Rev.	Every 2 minutes
570											
571	Cruz (Spa.)	On cape.	19	48	21	77	44	40	1	F.	A red flash every 3 minutes.
572											
573	Jagua, Xagua, or Clemfuegos Harbor (Spa.)	Colorada Point, E. point of entrance.	22	1	0	80	30	30	1	F. & Fl.	
574											
575	Cochinos Bay (Spa.)	Cay Piedras, N. part.	21	58	0	81	4	47	1	F.	
576											
577	Batabano (Spa.)		22	41	25	82	18	21	1	F.	
578											
579	Pepe, Isle of Pines (Spa.)	On cape	21	26	—	83	6	—	1	Rev.	
580											
581		Morant Point	17	56	0	76	11	40	1	Rev.	Every minute
582											
583	JAMAICA ISLAND (E.).	Blum Point, 66 yards northward of point.	17	55	45	76	47	0	1	F.	
584											
585		Fort Augusta	17	58	—	76	51	0	1	F.	
586											

CUBA, South Coast.

## GREAT ANTILLES—Continued.

Interval of revolution or flash.	Number.	Height of light above sea level.	Distance visible, in nau- tical miles.	Character of light, house or vessel.	Height, in feet, of build- ing from base to vane.	Character and order of illuminating apparatus.	Year lighted.	Remarks.
2 minutes	569	223	15	White; iron.....	30	D, 3d ord.	1861	Var'n in 1870, 1° 6' E.
	570							
flash every minutes.	571	115	18	Stone tower on focal plane.		C, 2d ord.	1871	Vessels passing the light from E. to W. or from W to E. should keep well off until passed, to avoid the reef.
	572							
	573	81	14	.....	45	D, 2d ord.	1851	"Villa Nueva" thereon. Var'n in 1850, 5° 18' E.
	574							
	575	30	7	Brown.....	26	D, 1th ord.	1863	Over keeper's dwelling.
	576							
	577	31	3	Lantern on mast.....			1854	
	578							
	579		16	.....		D, 2d ord.		Proposed. Var'n in 1870, 5° 40' E.
	580							
minute...	581	115	15	White iron tower.....	96		1842	Var'n in 1870, 4° 50' E.
	582							
	583	68	12	White.....			1854	RED when seen between the bearings of N.W. by W, $\frac{1}{2}$ W, and N. $\frac{1}{2}$ E. BRIGHT from N. $\frac{1}{2}$ E. to S.E. (round by E.)
	584							
	585	40		Single lamp suspended from the beacon.				BRIGHT and RED light. The BRIGHT light visible to the S. and W., and the RED to the eastward. Bearing N. by E. leads through the S. channel. Var'n in 1870, 4° 50' E.
	586							





## GREAT ANTILLES—Continued.

Number.	Height of light above sea level.	Distance visible in actual miles.	Character of light-house or vessel.	Height, in feet, of building from base to vane.	Character and order of illuminating apparatus.	Year lighted.	Remarks.
587	234	6	On a mast	16		1861	<i>Discontinued.</i> Var'n in 1870, 22° 25' E.
588							
589	113	9	Cupola, white	100		1853	
590							
591		12				1866	Indicates the position of the bay at night.
592							
593		12				1866	Intended to indicate the position of the bay at night.
594							
595	80	9				1864	<i>Discontinued.</i>
596							
597		10				1866	
598							
599	171	15		D, 30 ord.		1846	Only 5 seconds bright; eclipse 112 seconds. Var'n in 1870, 17° 40' E.
600							

## VIRGIN AND CARIBBEE ISLANDS.

601	115	12	White			1872	Visible from E. by S. through S. to W.
602							
603		4				1857	Var'n in 1870, 17° 30' E.
604							
605						1855	
606							



## VIRGIN AND CARIBBEE ISLANDS—Continued.

Number.	Height of light above sea level.	Distance visible, in nautical miles.	Character of light, lens or glass.	Height, in feet, of building from base to vane.	Character and order of illuminating apparatus.	Year lighted.	Remarks.
607	150	20	Red, of en iron frame-work	132	D., 2d ord.	1868	Var'n in 1870, 0° 40' E.
608							
609	37	12	Wooden frame	33		1846	N. by W, $\frac{1}{2}$ W, leads to the anchorage.
610							
611							For mail steamer, when expected. Var'n in 1870, 1° E.
612							
613	62	8		42		1843	<i>Temporary.</i> For mail steamer, when expected. The upper light 614. Var'n in 1870, 0° 30' E.
614							
615	108	15		75	D., 3d ord.		The Balchae Rock lies S, 12° W, $\frac{1}{2}$ a mile. Var'n in 1870, 1° E.
616							
617		7					
618							
619			Lantern				
620							
621			Lantern				
622							
623		7				1858	
624							
625		2				1865	Light at end of wharf also 10 ft. but is elevation.
626							
627		9				1867	
628							



## VIRGIN AND CARIBBEE ISLANDS—Continued.

Number.	Height of light above sea level.	Distance visible, in nautical miles.	Character of light-house or vessel.	Height, in feet, of building from base to vane.	Character and order of illuminating apparatus.	Year lighted.	Remarks.
629			On flag-staff			1867	When mail steamer is expected.
630							
631	62	11	Red mast	15		1855	
632							
633	131	6					RED light from W. N.W. to W. S.W. BRIGHT in other directions.
634							
635		5				1860	
636							
637		5				1860	ORANGE to the N., BLUE to the W., and GREEN to the S. The BRIGHT and BLUE lights in line lead to the anchorage.
638							
639		2				1860	Lighted on the day the mail is expected, and for three nights after, if not arrived.
640							
641	410	24	White tower		D, 1st ord.	1862	Var'n in 1:50, 1° 15' E.
642							
643	80	3				1843	For mail steamer, when expected. Var'n in 1870, 1° 30' E.
644							
645			Red perch			1868	When mail steamers are expected.
646							
647			Perch			1868	Shown from the day the mail is due until it arrives.
648							



## VIRGIN AND CARIBBEE ISLANDS—Continued.

Number.	Height of light above sea level.	Distance visible, in nautical miles.	Character of light-house or vessel.	Height, in feet, of building from base to vane.	Character and order of illuminating apparatus.	Year lighted.	Remarks.
649	640	6				1858	For mail steamer, when expected.
650							
651					D, 1st ord.		<i>Proposed.</i>
652							
653	145	18	Alternate red and white bands.	90		1852	Does not show until it bears to the westward of S.W. by W., and to be kept well open in order to clear the Cobbler Reef, Var'n in 1870, 12° 57' E.
654							
655	34	Br <sup>t</sup> , 8 Red, 3				1850	RED to N. of E., and BRIGHT to S. of E.
656							

## MEXICO AND CENTRAL AMERICA.

657	15					New 1865	
658							
659	80	15	White	60			Var'n in 1870, 82° 20' E.
660	102	15	Tower, pointed blue, with white stripes at the upper part.		4th ord.	1872	
661	126	12				1860 Imp'd 1869	Var'n in 1870, 69° 49' E.
662							
663	100	14	Circular; white lantern; red and white upper part.		D, 2d ord.	1856	
664							
665	95	14				1861	
666							
667	60	10		50		1852	Var'n in 1870, 72° 35' E.
668							





## MEXICO AND CENTRAL AMERICA—Continued.

Interval of revolution or dash.	Number.	Height of light above sea level.	Distance visible, in nautical miles.	Character of light-house or vessel.	Height, in feet, of building from base to vane.	Character and order of illuminating apparatus.	Year lighted.	Remarks.
	649	31 49	13	Skeleton; iron; upper third black; remainder white.	57	D., 4th ord.	1840 New 1868	The bank extends 14 miles to the N.E. of the light-house. The lights can be seen above the trees from all points of the compass, but the light-house is seen from seaward only from N.E. to S.W. by W.
	650							
	671	95 75	3			D., 6th ord.	1846	Var'n in 1870, 7° E.
	672							
	673					D., 6th ord.	1863	Holsted on flag-staff.
	674							
	675	53	6	Flag-staff, with a yard, on which the lights are displayed.	75	D. ....	1868	One major, the other red.
	676							
	677	88	18	Iron tower; white. ....	About 100	C., 3d ord.	1821	Visible round horizon.
	678							
	679	30	11					Seventy yards from the shore. Var'n in 1850, 24° E.

## NEW GRENADA, VENEZUELA, AND GUYANA.

	681	60	10	Wood; open white building	60	D., 5th ord.	1852	Var'n in 1870, 0° 45' E.
	682							
	683	328	24				1870	
	684	58	10	White tower			1872	Temporary guide to the anchorage. Var'n in 1872, 4° 50' E.
	685	60	6				1857	
	686							
	687	30	6	Stone tower				Building.
	688							

## NEW GRENADA, ETC.—Continued.

Number.	Name.	Location.	Latitude.		Longitude.	Number of lights and relative positions.	Character of light.	Interval of revolution or flash.	
			N. 0° 0' 0"	W. 0° 0' 0"					
689 690	GRAN CURAÇAO ISLAND (Du.)	St. Ann Harbor, Rif Fort	12	6 10	68 53 10	1	F.		
691 692	LITTLE CURAÇAO (Du.)	On E. side of island	11	58 0	68 38 0	1	F.		
693 694	BUEN AYRE (Du.)	Laete (S. point)	12	2 12	68 17 0	1	F.		
695 696 697 698	PUERTO CABELLO	Brava Point	10	30 0	68 0 0	1	Rev.	Red and bright flashes every 40 seconds.	
699 700 701 702	TRINIDAD (E.)	Port Espana, on jetty	10	38 40	61 31 0	1	F.		
		Leicos Point	10	3 30	61 55 40	1	F.		
703 704 705 706		TORLINO (E.)	Scarborough, or Bucclet Point.	11	10 0	60 42 —	1	F.	
707 708 709 710		DEMERARA (E.)	On E. side of entrance	6	49 30	58 11 30	1	Rev.	Every minute.
	Light-vessel, in 3 fathoms, N.E. ½ N., about 10 miles from entrance of river.		6	57 15	58 6 50	1	F.		

## NEW GRENADA, ETC.—Continued.

Number.	Height of light above sea level.	Distance visible, in nautical miles.	Character of light-house or vessel.	Height, in feet, of building from base to vane.	Character and order of illuminating apparatus.	Year lighted.	Remarks.
689						1850	
690							
691	40	10			C, 2d ord.	1850	
692							
693	85	12	White, with vertical red stripes.	75	C, 2d ord.	.....	
694							
695	70	11	Quadrangular			1861	Var'n in 1870, 3° 40' E.
696							
697							
698							
699	50	15	Hexagonal tower	43	D, 4th ord.	1841	Visible between the bearings of N. E. by N. and E. E. round by W. Var'n in 1870, 2° E.
700							
701	29	5					Lantern hoisted on a white spar. Va
702							
703	115	12	Pentagon tower; red and white.	46	.....	1842	Visible between the bearings of E. N. by S. Var'n in 1870, 2° 18' E.
704							
705							
706							
707	103	16	Octagonal tower; red and white vertical.	100	D, 4th ord.	1829	Var'n in 1870, 2° E.
708							
709	30	10	Red, with one mast about 60 feet high, and a blue flag by day.			1844	Pilot for Demerara and Essequibo Rivers are on board. "DEMERARA" on her sides.
710							

Interval of revolution  
or flash.RED and WHITE  
flashes every 40  
seconds.

every minute....



## NEW GRENADA, ETC.—Continued.

Interval of revolution or flash.	Number.	Height of light above sea level.	Distance visible, in nautical miles.	Character of light-house or vessel.	Height, in feet, of building from base to vane.	Character and order of illuminating apparatus.	Year lighted.	Remarks.
	711	10		A ball on the Foremast; roofed over, with a jigger-mast aft.			1850	The light bearing S. S. W., in 4 fathoms, is the fairway into the harbor. A ship pilot boat cruises outside the bar constantly, carrying a white flag with PILOT inscribed thereon.
	712							
	713	30	7	Red ball at mast-head.			1858	"SURINAM" on the vessel's sides. Var'n in 1870, 17 3/4 E.
	714	75	12	Wooden tower.	70	D.	1871	To enter the Maroni River by day, keep the outer buoy and the Dutch light-house on the W. side of entrance in a line, and, on reaching the inner buoy, steer for Point Panato. The Dutch light shows only over a sector of 90°; that is, 45° each side of S. 38° W.
	714 1/2	75	13	White wooden tower.		D.	1871	
	715	200	18			C.	1864	A rock of 12 feet lies 2,078 yards N. by W. 1/4 W. from light-house.
	716							
	717	61	9	Iron piles; quadrangular.		C.	1864	Var'n in 1870, 6° 20' W.
	718							
	719	69	8			C.	1850	GREEN light. These two lights in one lead over the <i>Atollé Rock</i> , which is avoided by passing W. of this line.
	720							
	721	130	10	Wooden frame.	40	C.	1862	
	722							
	723	39				C.	1862	
	724							

## BRAZIL.

Every 5 minutes; eclipsed every 5 seconds.	725	30		Iron; one mast.		C.	1868	Ships coming from the eastward should, as soon as the light-vessel bears W., steer for her, and, passing N., steer S. W., as soon as they have rounded her.
	726							
Every 2 minutes	727	17					1852	Var'n in 1870 37° W.
	728							



## BRAZIL.—Continued.

Interval of revolution or flash.	Number.	Height of light above sea level.	Distance visible in nautical miles.	Character of light-house or vessel.	Height in feet of lighting from base to vane.	Character and order of illuminating apparatus.	Year lighted.	Remarks.
Every 14 minutes for 48 seconds.	729	147	15	Square.....	75		Re-established 1868	BRIGHT and RED, alternately. Var'n in 1870, 4° 40' W.
	730							
	731						1860	A guide to the anchorage before Alcantara.
	732							
Every 32 seconds	733		11			D., 1st ord.	1829	
	734							
	735	70	14	Square; white.....	80		1861	
	736							
	737	85	12		50	, 4th ord.	1872	
	738							
	739	30					1868	
	740							
	741	43	12	Round tower.....		C., 3d ord.	1860	
	742							
Every minute.	743		15				1824	Twice BRIGHT and once a RED light in succession showing a light every minute. Var'n in 1870, 10° W.
	744							
A flash every 2 minutes.	745	308	22				1856	Fixed light 70 seconds, eclipse 16 seconds, flash 12 seconds, eclipse 32 seconds.
	746							
	747	69	11				1867	Var'n in 1870, 8° 45' W
	748							





## BRAZIL.—Continued.

Interval of revolution or flash.	Number.	Height of light above sea level.	Distance visible, in navi- gational miles.	Character of light-house or vessel.	Height, in feet, of build- ing from base to vane.	Character and order of illuminating apparatus.	Year lighted.	Remarks.
	719	115	6 to 9				1862	BRIGHT to S. E., RED eastward, GREEN southward. Vessels should anchor with RED light in sight in 4 fathoms; with BRIGHT or GREEN light in sight, do not go into less than 5 fathoms.
	720							
Every 80 seconds.	721	140	18				1823	Twice BRIGHT and once a RED light succeed each other, showing a light every 80 seconds.
	722							
	723						1864	
	724							
Every minute	725	256	20	White	80		1854	Eclipse not total within 8 miles.
	726							
Every minute	727	189	17	Iron; circular	51	D., 1st ord.	1861	Var'n in 1870, 59° 35' W.
	728	66	12	Tower		D., 4th ord.	1871	
Every minute and a half.	729	522	25	Circular; light stone color	53	C., 1st ord.	1861	Visible between S. W. and E., or 925°. Duration of the total eclipse is 45 seconds.
	730							
Every 2½ minutes	731	315	10 to 14	White; square	50		1828	BRIGHT and RED alternately.
	732							
	733		6				1830	Position of Fort Villegagnon, lat. 22° 54' 42" S., long. 43° 5' 0" W. of Greenwich. Var'n in 1870, 23° 24' W.
	734							
	735			Lantern on a pole			1856	RED light exhibited occasionally when steamers are plying.
	736							
	737	384	21	White	40	D., 1st ord.	1831	
	738							
	739	262	20	Iron tower	72		1872	
	740							



## BRAZIL.—Continued.

Interval of revolution or flash.	Number.	Height of light above sea level.	Distance visible, in nauti- cal miles.	Character of light-house or vessel.	Height in feet of build- ing from base to vane.	Character and order of illuminating apparatus.	Year lighted.	Remarks.
Every minute.....	771	149	18	Circular.....		C, 5d ord.	1861	
	772							
Every 2 minutes	773	96	11	.....		C, 2d ord.	1833	Bright 70 seconds, eclipsed 50 seconds. Var'n in 1870, 6° 30' E.
	774							
	775						1860	
	776							
	777						1860	
	778							
	779						1860	
	780							
	781						1860	
	782							
	783						1860	
	784							
	785						1860	
	786							

## BUENOS AYRES, ETC.

Every minute.....	786	130	16	Octagonal tower.....		, 1st ord.	1872	Proposed.
	787	152	20	.....	90	D.....	1860	To be removed to its former position on Lobos Island. Var'n in 1870, 4° 10' E.
	788							
Every 3 minutes	789	104	12	White.....	65	.....	1833	Not to be depended on.
	790							

## BUENOS AYRES, ETC.—Continued.

Number.	Name.	Location.	Latitude.		Longitude.		Number of lights and relative positions.	Character of light.	Interval of revolution or dash.
			° S.	' "	° W.	' "			
791	English Bank (B.O.)	Light-vessel, in 7 fathoms; on tail, N. part of bank.	35	6 0	55	52 —	1	F.	
792									
793	Pañeha Shoal	Light vessel a cable's length N. N.W. $\frac{1}{4}$ W. of shoal.	34	51 0	56	25 0	1	F.	
794									
795		W. side of harbor, on mount..	34	53 3	56	15 13	1	F. & Fl.	A flash every 3 minutes for 15 seconds.
796									
797	Monte Video (B.O.)	End of breakwater, on San José Point.					1	F. red.	
798									
799		Cathedral, S. tower	34	54 20	56	12 58	1	F.	
800									
801	Point Indio Light-ship.	Light-vessel, in 3 $\frac{1}{2}$ fathoms, N.E. $\frac{1}{4}$ N., 8 miles from Indio Point.	35	11 —	57	3 —	1	F.	
802									
803	Chico Bank (B.O.)	Light-vessel, in 4 $\frac{1}{2}$ fathoms, N.E. $\frac{1}{4}$ N., from Point Aulaya 11 $\frac{1}{2}$ miles.	34	46 45	57	28 —	1	F.	
804									
805	Colonia (B.O.)	S.W. angle of plaza	34	28 20	57	52 —	1	Rev.	Every 2 minutes.
806									
807		In 2 $\frac{1}{2}$ fathoms, guard-ship outer roads.	34	34 30	58	18 —	1	F.	
808	Buenos Ayres (B. A.)								
809		Custom-house tower					1	F.	
810	MARTIN GARCIA		34	11 10	58	13 30		F. white.	

## BUENOS AYRES, ETC.—Continued.

Number.	Height of light above sea level.	Distance visible, in nautical miles.	Character of light, sound or vessel.	Height, in feet, of building from base to vane.	Character and order of illuminating apparatus.	Year estab.	Remarks.
791	8		Red, with 3 masts			1857	Position not <i>always</i> to be depended on.
792							
793	17	5				1866	
794							
795	48	25	Brown	25	C, 1st ord.	1852	The flash of 15 seconds is preceded and followed by a short eclipse. Dial-plate of clock in the S. tower of cathedral lighted by gas, which enables vessels to anchor by cross-bearings by night
796							
797	16					1850	
798							
799	147					1862	
800							
801	About 30	10	Two masts; a black ball at the foremast head.			1849	When pilots are on board, a RED and WHITE diagonal flag is hoisted. The vessel is frequently passed without being seen.
802							
803	About 20	10	Two masts			1857	After bad weather the position of this light is not to be depended on.
804							
805	110	10	Dull brick			1846	
806							
807	About 20	7	Three masts			1857	Var'n in 1870, 10° 20' E.
808							
809							
810							

## BUENOS AYRES, ETC.—Continued.

Number.	Name.	Location.	Latitude.		Longitude.		Number of lights and relative positions.	Character of light.	Interval of revolution of flash.
			S.	N.	W.	E.			
811	FALKLAND ISLANDS (E.).	Pembroke Cape.....	51	40 40	57	41 48	1	F.	
812									
813	MAGELLAN STRAIT.....	Sandy Point, blockhouse $\frac{1}{2}$ mile from entrance to the river.	53	9 30	50	13 10	2	F.	
814									

## WEST COAST OF SOUTH AMERICA.

815	CHILOE ISLAND (C).....	N. part, San Carlos de Ancud, Huapihuay, or Punta Corona.	41	46 45	73	53 —	1	F. & Fl.	A flash every 2 minutes.
816									
817	VALDIVIA (C).....	Noble Fort Point.....	39	52 10	73	24 50	1	F.	
818									
819	COQUIMBO BAY, S. part (C.)	Tortuga Point.....	29	56 53	71	21 10	1	Fl.	Every 15 seconds
820									
821	QUIBUQUINA ISLAND, N. point.	Concepcion Bay, Talcahuano.	36	36 18	73	4 —	1	Rev.	Every $\frac{1}{2}$ minute.
822									
823	VALPARAISO (C).....	Angeles or Flynn Ancha Point.	33	1 10	71	39 —	1	F. & Fl.	A flash every minute.
824									
825	HUASCA (C).....		28	28 0	71	19 0	1		
826									
827	CALDERA PORT (C).....	On point.....	27	3 0	70	53 30	1	F. & Fl.	A flash every minute and a half.
828	MOHENDO HARBOR.....	On promontory.....	17	1 —	72	0 —	1	F.	

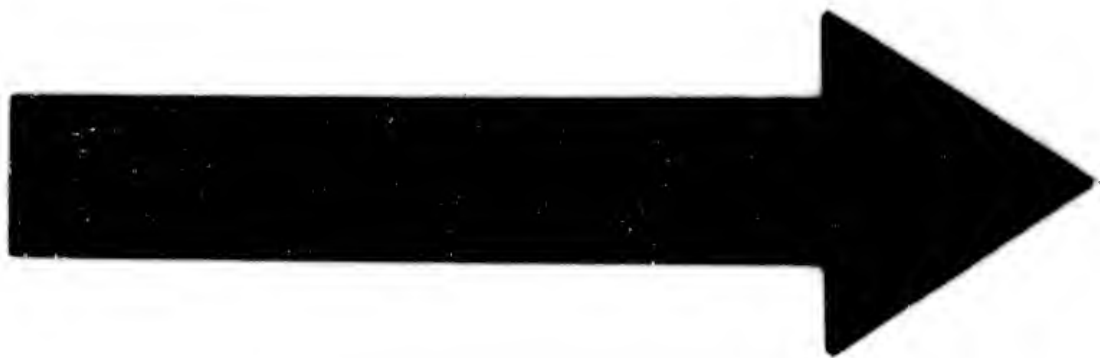
## BUENOS AYRES, ETC.—Continued.

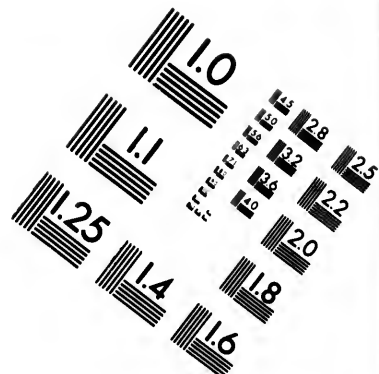
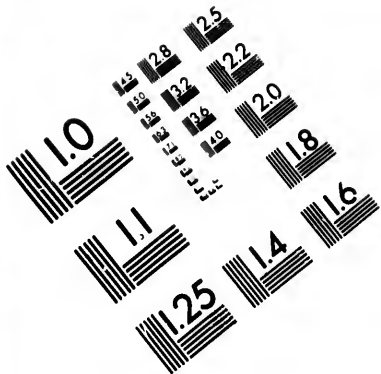
Interval of revolution or flash.	Number.	Height of light above sea level.	Distance visible, in nautical miles.	Character of light-house or vessel.	Height, in feet, of building from base to vase.	Number and order of illuminating apparatus.	Year lighted.	Remarks.
	811	110	14	Circular; iron; white and red bands.	60	1		Seen from seaward in every direction, and dark only between N.W. $\frac{1}{2}$ N. and S.W. $\frac{1}{2}$ W. Dark toward Porto William and Stanley (which are free ports). Var'n in 1870, 14° 55' E.
	812							
	813	19						Var'n in 1870, 21° 50' E.
	814							

## WEST COAST OF SOUTH AMERICA.

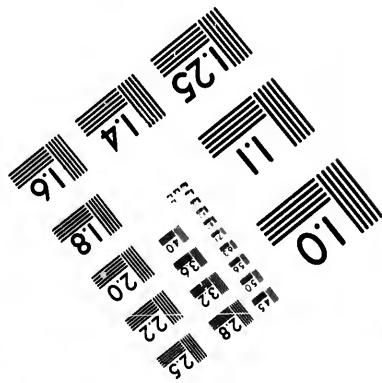
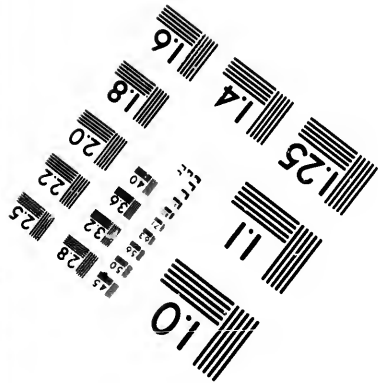
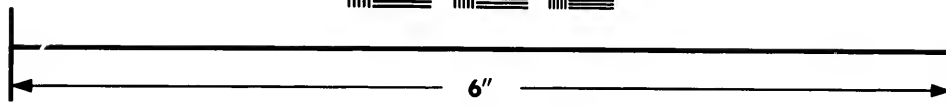
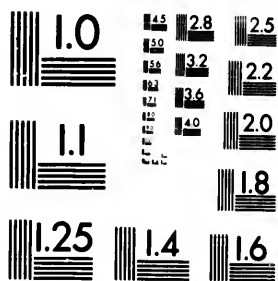
A flash every 2 minutes.	815	197	12	Circular; white; lantern green.	32	D., 4th ord.	1859	When the light bears S.E. by E., you may haul to southward.
	816							
	817	121	8	Square; wood; white....	24	D., 4th ord.	1866	
	818							
Every 15 seconds	819	106	12	Square; white; cupola green.	25	D., 4th ord.	1868	To mark Punta Arenas anchorage, in 8 fathoms.
	820							
Every $\frac{1}{4}$ minute.	821	213	15	Circular; white; lantern and dome green.	36	D., 4th ord.	1869	Bright 9 seconds and eclipsed 21 seconds
	822							
flash every minute.	823	197	20	Circular; white.....	61	D., 4th ord.	1838	The flash is preceded and followed by a short eclipse. In coming from the southward the light does not open off Curaumilla Point until it bears to eastward of N. N.E. $\frac{1}{2}$ E. Longitude of Port Antonio, 71° 38' W. Var'n in 1870, 16° 20' E.
	824							
	825							Proposed.
	826							
flash every minute and a half.	827	123	15	Square; wood; white; rail black; lantern green.	42	D., 4th ord.	1868	
	828	147	3	On flag-staff, 65 feet high.				







**IMAGE EVALUATION  
TEST TARGET (MT-3)**



**Photographic  
Sciences  
Corporation**

23 WEST MAIN STREET  
WEBSTER, N.Y. 14580  
(716) 872-4503

10  
16  
18  
20  
22  
25  
28  
32  
36

10  
16  
18  
20  
22  
25  
28  
32  
36



## WEST COAST OF SOUTH AMERICA—Continued.

Number.	Height of light above sea level.	Distance visible, in nautical miles.	Character of light-house or vessel.	Height, in feet, of building, from base to vane.	Character and order of illuminating apparatus.	Year lighted.	Remarks.
829	880	12	Wood; octagonal form	60		1857	Not visible from N.W. $\frac{1}{2}$ N. to W. by N. $\frac{1}{2}$ N.; just open on latter bearing will lead through Boqueron Channel in $4\frac{1}{2}$ fathoms. Var'n in 1870, $11^{\circ}$ E.
830							
831						1872	Var'n in 1870, $9^{\circ} 45'$ E.
832							
833						1870	
834							

## CENTRAL AMERICA AND MEXICO, S.W. COAST.

835	65	9	White		D., 3d ord.	1856	
835 $\frac{1}{2}$		7 to 8				1872	
836		6 to 7				1872	
837	855	4 or 5				1858	For mail steamers only, when expected. Var'n in 1870, $8^{\circ} 25'$ E.
838							

## BRITISH COLUMBIA.

839	118	18	Tower stone; with 5 alternate horizontal bands, black and white.		D., 2d ord.	1861	A fog bell has been established at Race Island Light-house, Juan de Fuca Strait, which will be used as occasion may require. S.E. by E., 3 or 4 cables' length, is a reef, having 5 feet thereon.
840							
841	70	10	White; iron; lantern red	57	D., 4th ord.	1860	BRIGHT when bearing from N. $\frac{1}{2}$ W. to N.W. by W. $\frac{1}{2}$ W. RED from N.W. by W. $\frac{1}{2}$ W. to S. $\frac{1}{2}$ E., and eclipsed from S.E. $\frac{1}{2}$ E. landward to the BRIGHT limit. Var'n in 1870, $21^{\circ} 30'$ E.
842							
843	About 54	11	Red, with 2 masts; on the mainmast is a ball.		C., 6th ord.	1866	White name on her sides. Bell sounded in foggy weather. Var'n in 1870, $23^{\circ}$ E.
844							

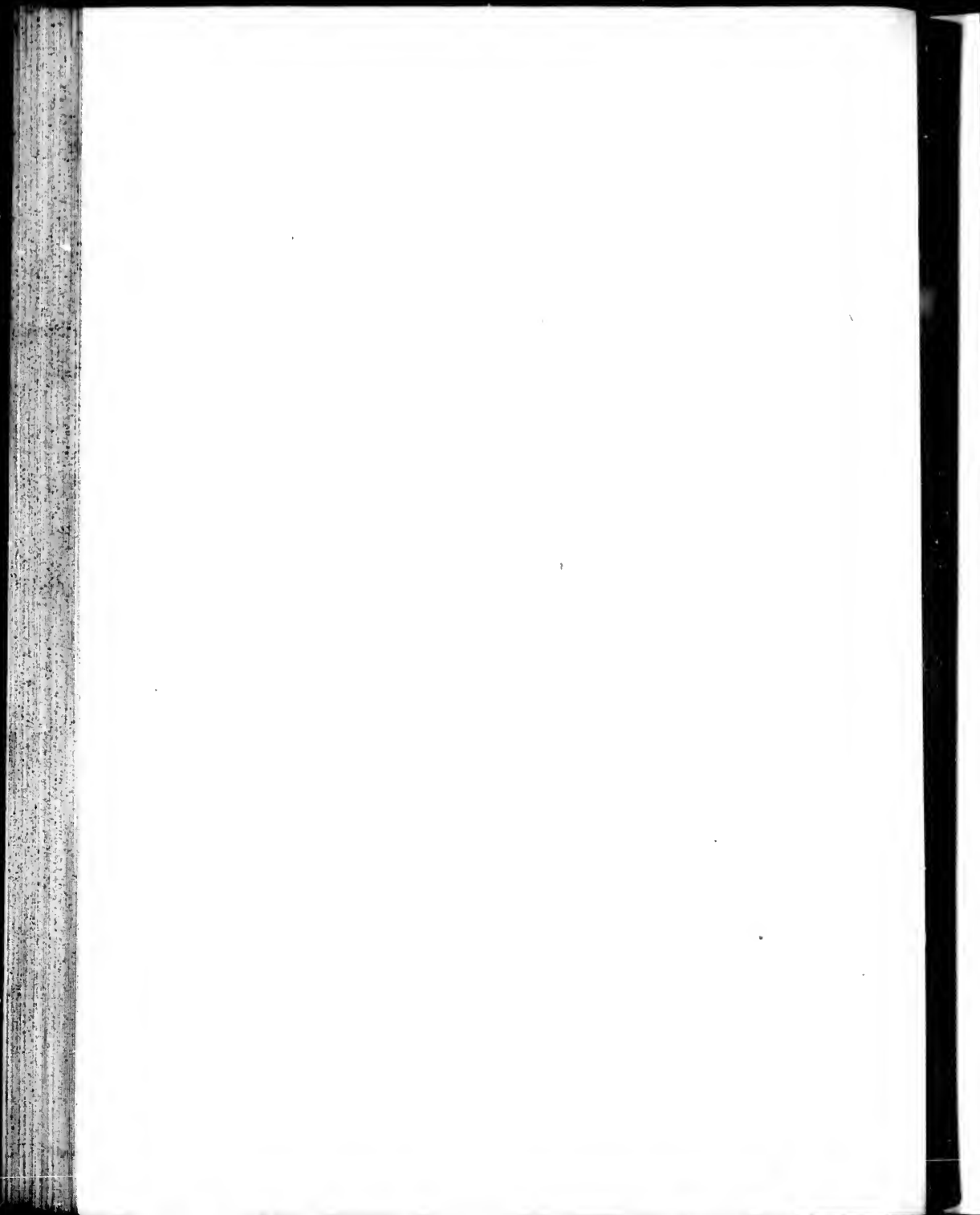


## HAWAIIAN ISLANDS (or Sandwich Islands).

Number.	Height of light above sea level.	Distance visible, in nautical miles.	Character of light-house or vessel.	Height, in feet, of building from base to vane.	Character and order of illuminating apparatus.	Year lighted.	Remarks.
815	50	10				1869	
846							
847	50	10				1869	With the light bearing E. N.E. is good anchorage about $\frac{1}{4}$ of a mile off shore.
848							
849		6				1868	Var'n in 1870, 9° 10' E.
850							
851	} 26 } 28	9			D., 4th ord.	1869	Visible between the bearings of E. and N.W. by W. round by N. GREEN light. To enter the harbor, bring the two lights in one.
852		5					

## SOCIETY ISLANDS.

853	350	15	Square tower; white.....	72	D., 3d ord.	1868	Visible between the bearings of E. by S. and S.W. by W. $\frac{1}{4}$ W. round by N. Var'n in 1870, 7° 51' E.
854							
855						1869	On beacons, which serve as a leading mark through the channel, one of which is on the corner of the Battery de l'Embassade, and the other on the side of the hill beyond. Lights not to be depended on.
856							To the right of the lights which serve as a leading mark, about $\frac{1}{4}$ of a mile W. N.W. from the first light.
857		5	White beacons with red diamonds.			1871	The inner light is placed on a hill behind the town; the other a little to the S. of the Wesleyan Mission-house. The lights by night or beacons by day, kept in line, lead through the middle of S. entrance passage.
858							





# INDEX.

A.	No.
Abaco	521
Abrolhos Islands	757
Acajuba, San José de	835½
Acapulco	837
Acanara	731
Adnet Island	361
Amherst, Fort	17
Amherst Islands	49
Amherstburgh	279
Amour Point	3
Angeles Point	823
Anguilla Cay	533
Annapolis, or Digby	467
Anticosti and Islands	63 to 67
Antigua Islands	613
Antilles, Great	537 to 600
Antonio, Fort San	751
Apple River	483
Arichat Harbor	405
Arichat Harbor, West	404
Arsineau Point	321
Aspinwall	681
Atalia Point	727
Athol Island	517

B.	No.
Bacallen Island	11
Bacorro Point	445
Bacolet Point	703
Bacots Bluff	63
Bahama Islands	509 to 536
Bahia de Cadiz	535
Bahia, or San Salvador	751 to 753
Balsandry Head	587
Barceon	565
Barbados Island	651 to 655
Barba Negra	785
Barbura Island, Santa	757
Barclay Point	613
Barlovento Point	539
Basse Terre	625
Batabono	577
Bathurst Harbor	319
Batiscan	121
Bay of Quinto	221, 222
Beach Point	451
Beach, point of	387
Beauharnois	177
Beaver Islands	411
Bedeque Bay	355 to 357
Belize	671 to 673
Belle Chasse	101
Belle Isle	1
Berbee	711
Bermuda Island	507, 508
Bisquette Island	79
Big Bras d'Or	385
Big Fish Island	449
Big Outer Creek	269
Bill Hook Island	343

C.	No.
Bireh Point	315
Bird Island	383
Bird Island	523
Black Rock Point	385
Bliss Island	470
Blockhouse Point	353
Boar's Head	463
Bois Blanc Island	279
Bojurn	779
Bokel Cay	675
Bonami Point	321
Bonnyvata	7
Braganza Shoal	725
Brams Point	713
Brandy Pots	87
Brava Point	695
Brazil	725 to 785
British Columbia	829 to 841
Bruce Port	271
B'inet Island	41
Bryer Island	459
Buenos Ayres (City)	807 to 809
Buenos Ayres	787 to 813
Burin Island	31
Burlington Bay	255
Burnt Island	209
Burwell Port	269

C.	No.
Cabello, Puerto	695
Cadiz, Bahia de	555
Caldera Port	827
Caliboucou Point	765
Callao	829
Campeche	685
Campobello Island	497
Canon Point	37
Canso Cape	407
Canso Gut (N. entrance)	373
Canso Gut (ship harbor)	376
Canso Gut (S. entrance)	399
Canso Harbor	406
Cape Breton Island	377 to 388
Cape Capstan	483
Cape Chatte	71
Cape Frio	759
Cape Madelleno	125 to 127
Cape Magdalen	69
Cape May	567
Cape Norman	2
Cape Pine	29
Cape Race	27
Cape Ray	43
Cape Roseway	443
Cape Rouge	97
Cape Sable	53
Cape Santa Maria	447
Cape Santa Maria	786½
Cape St. Mary	31
Cape St. Mary	457

C.	No.
Carnool Mountain	641
Caraquet Island	317
Cardenas Bay	549
Carligan Bay	347
Caribbean Islands	601 to 656
Caribou Island	263
Carleton Point	319
Carlisle Bay	655
Carousal Island	73
Carron Point	319
Carter's Island	442
Casoumpeque	341
Cassels Point	354
Castillo Point	679
Castle Island	925
Castles Harbor	643
Catalina Harbor	9
Catfish Creek	271
Catherina, Santa	771
Cay Diana	551
Cayeeno	715 to 724
Cayes Bay	593
Cayo Cruz	553
Cay Piedras	575
Ceara	737
Central America and Mexico	835 to 838
Ceperon Bay	721
Chaleur Bay	320 to 323
Champlain	123
Chantry Islands	287
Charles Cape	115
Charlotte Fort	649
Charlotte Town Harbor	353
Chateauguny	175
Chebueto Head	418
Chesabucto Bay	401
Cherry	169
Cherry Island	187
Chester Bay	423
Chetcamp Island	380
Chico Bank	803
Chignecto Bay	483
Chiloe Island	815
Christian Island	297
Christianstadt Fort	605
Christovno	783
Ciboux Island	383
Cienfuegos Harbor	573
Claire Point	171
Clapperton Island	309
Clark Point	285
Cobequid Bay	479
Coburg	233
Cochinos Bay	575
Cocoonut Shoal	647
Coffin Island	435
Colborne Port	259
Coles Shoal	195
Colonia	805
Colorado Point	573

	No.		No.		No.
Conception Bay	821	Flat Point	389	Gull Island	235
Conchas, Moro das	769	Flint Island	391	Gull Rock	441
Convent of San Francisco	609	Flores Island	789	Gun Cay	509
Coquilmo Bay	819	Foelinho do Cobo Point	759	Guyana, New Grenada, and Vene-	
Corwall Cannl	193	Foreland or Long Point, N.	267	zuela	681 to 724
Coteau du Lac	183	Fortean Bay	3	Guysborough Harbor	401
Cotladiba Bar	749	Fort Point	437		
Cranberry Island	407	Fort St. Louis	633		
Cranberry Point	410	Fortune Bay	41	<b>II.</b>	
Credit Port	351	Fourchu, Cape	455	Hacha, Rio de In	685
Crib	191	Fox Island	331	Haiti, Port au Princes	595 to 597
Croix, St.	603 to 605	Fox Island	231	Half-moon Cay	677
Crooked Island Passage	523 to 525	Française Point	714½	Halifax	415 to 417
Cross Island	425	Francis Port, St.	129	Halifax Harbor, entrance to	418
Cruz, Cape	571	Francisco, San	747	Hara Point, O'	57
Cruz, Santa	603 to 605	Francisco, Convent of San	650	Harbor Grace	13 to 15
Cruz, Vera	659, 660	Fraser River	843	Hart's Island	406
Cuba	537 to 580	Frederichstadt Port	603	Havana	543
Curaçoa Island, Great	689	Frio, Cape	753	Hawaii Island	845 to 847
Curaçoa Island, Little	691	Fundy, Bay of	451 to 506	Hawillan Islands	845 to 852
				Head Harbor	497
				Heath Point	61
<b>D.</b>		<b>G.</b>		Hetty Point	483
Dalhousie Harbor	257	Ginge or Simcoe	217	Hillsborough Bay	351
Darlington	239	Gananoque Narrows	201	Hilo Harbor	845
De La Plata, Rio	787 to 809	Gannet Rock	505	Hobson's Nose	424
Demerara	707 to 709	Garola, Martin	810	Hog Island	515
Devil Island	415	Gaspe Bay	55 to 57	Hole in Wall	519
Diana Cay	351	Gaspe Harbor	59	Honduras, Cape	674
Digby or Annapolis	467	George Bay, St.	371	Honolulu	851
Dodding Head	33	George, Capo St.	949	Hood, Port	377
Domlago, Santa	589	Georgetown	349	Hope Islet, Little	439
Dominica Island	629	Georgian Bay	289 to 309	Hope, Port	237
Duver, Port	365	Georgia, Gulf of	843	Horton	475
Ducks, False	219	Gibb's Hill (Bermuda)	507	Huaplayac	815
		Gibraltar Point	247	Husen	825
<b>E.</b>		Goatzacalcos River	661	Huckleberry	330
East Beaver Island	411	Gobernadora	541	Huron, Lake	293 to 312
East Ironbound Island	423	Goderich	283		
East Point	345	Gonzalo River	739	<b>I.</b>	
Ebert Harbor, Port	440	Gozier Islet	617	Icaosa Point	701
Eddy or Sand Point	399	Grace, Harbor	13 to 15	Icnaea Island, St.	313
Edward Island, Prince	339 to 369	Grande Do Norte, Rio	741	Iguazu Island, Great	527
Egg Island	74, 413	Grande Do Sul, Rio	773	India Point, Light-slip	801
Egg Island or Scotch Bonnet	225	Grande Ido Kannoutaska	91	Ingonish Island	381
Elbow Cay	521	Grand Manan Island	501	Ironbound Island, E.	423
Enfant Perdu	717	Great Antilles	537 to 600	Ironbound Island, W.	431
English Bank	791	Great Curaçoa Island	689	Isaac Island, Great	511
English Cay	671	Great Inagua Island	527	Isle à la Baguie	153
English Harbor, Fort Berkeley	613	Great Isaac	511	Isle à la Pierre	143
Enragé Cape	487	Great Stirrup Cay	513	Isle aux Prunes	149
Erle Lake	259 to 278	Green Island	85	Isle aux Raisins	139 to 141
Escumance Point	329	Green Island	403	Isle of Coves	289
Espana Port	639	Green Shoal	173	Isle of Pines	579
Espirito Santo Bay	758	Griffith Island	291	Incolomi	729
Esquimaux	841	Grifo Island	837		
Estreito	777	Grindstone	485	<b>J.</b>	
		Groneline	117	Jack-straw Shoal	263
<b>F.</b>		Grosse Point	179	Jacmel	591
Falkland Islands	811	Grosse Point, Off	181	Jago de Cuba, St.	569
False Ducks	219	Gundaloupe Island	615 to 625	Jagua Harbor	573
Father Point	77	Guana Cay, Little	521	Jamaica Island	581 to 585
Ferryland Head	25	Guanoes	547	Junero, Rio de	763 to 765
Fisgard Island	841	Gunnyquil	831	Jerseyman's Island	404
Fishery Island	343	Gulf of St. Lawrence	45 to 96	John's Harbor, St.	17 to 21
Fish Island, Big	449			José Fort, San	589

INDEX.

III

No.		No.
235	José Point, San	797
441	Jourimain Island	337
509	Juan de Ulloa, San	659
and Vene-	Juan, Fort San	599
681 to 724	Jutias Cay	539
401		
	<b>K.</b>	
683	Kamouraska, Grand Isle	91
595 to 597	Kingston	213
677		
415 to 417	<b>L.</b>	
418	Labriador	1 to 4
57	Laehue	161
13 to 15	Lacoe, S. point	693
406	La Grande, Sagua	556
543	Laguna de Terminos	663
843 to 847	La Hacha, Rio de	685
845 to 852	Lahaina	849
497	Lahaina Port	849
61	Lake Erie	259 to 278
493	Lake Huron	293 to 312
351	Lake Ontario	213 to 258
845	Lake St. Clair	291 to 292
424	Lake St. Francis	183 to 193
515	Lake St. Louis	161 to 165
519	Lake Superior	133 to 141
673	La Libertad	313 to 314
851	Langhaia Point	836
377	La Plata, Rio de	113
439	Lark Islet	787 to 809
475	Lator Port	82
815	La Valtrie	445
825	Lawrence Gulf and River, St.	145
339	Lawrence River, St.	45 to 96
293 to 312	Leprau	37 to 212
701	Levuka Harbor	495
313	Libertad, La	857
527	Liecomb Island	836
801	Little Curagon	410
391	Little Current	691
423	Little Gimna Cay	397
431	Little Hope Islet	521
511	Liverpool Bay	439
553	Liverpool or Pickering	433 to 437
143	Lobos Cay	245
149	Lonely Island	531
139 to 141	Lonely Island	301
289	Long Pilgrims	89
579	Long Point	297
729	Lorenzo Island	829
	Louisburg Harbor	397
	Lucia Island, St.	643 to 647
	Lucrecia	563
	Luz, Maranhann San	733
	Luzia, Santa	758
	Lyndock Island	199
	<b>M.</b>	
	Macao	745
	Machias	503
	Macarpe Point	737
	Madame Island	405
	Madeleise, Cape	125 to 127
	Magenta, Cape	69
	Magenta Islands	51

	Mageilan Strait	813
	Mahone Bay	424
	Maitland Port	263
	Malaguash Bay	425 to 427
	Maleolm Point	330
	Maldonado	787
	Manleongan Shoals	76
	Manan Islands, Grand	501
	Manzanillo Island	691
	Maracaibo	687
	Maroche Point	405
	Maranhann	733
	Mares	781
	Mareello, Fort San	733
	Mareos, Fort San	733
	Margaree Island	379
	Margreenville	471
	Marlegante Island	627
	Maroon River	714, 714 1/2
	Marshall Cove	469
	Martin, Santa	683
	Marthe Point, St.	635
	Martin Garcia	810
	Martinique	631 to 641
	Marycubo	687
	Mary, Cape St.	31
	Mary, Cape St.	437
	Materillos Point	591
	Mauger Beach	417
	Mauger Cay	689
	Muni Island	849
	Mays, Cape	567
	McGue's Point	185
	McTavish Point	174 1/2
	Mel, Island do	769
	Metway Head	433
	Metway Port	433
	Mexico and Central America	657 to 680
	Mexico and Central America, S.W. Coast.	835 to 837
	Miak Island	299
	Miamichl Bay	329, 330
	Miscou Island	315
	Moela Island	767
	Molauk Island	261
	Molendo Harbor	828
	Mohlenfels Point	601
	Moon Cay, Half	677
	Monte Video	795 to 799
	Montserrat Island	611
	Mont, Point de	75
	Morant Point	581
	Morro Castle	543
	Morro de San Paolo	755
	Morro Island	663
	Mosher	429
	Moule de Port	623
	Mouron Islet	621
	<b>N.</b>	
	Nassau Harbor	515
	Nantagados, Ponta dos	771
	Needham Point	655

	Negra, Barba	765
	Negros, Pointe des	631
	Negro Harbor	444
	Negro Island	444
	New Brunswick	315 to 328 and 485 to 506
	Newfoundland	5 to 44
	New Grenada, Venezuela, and Guy-	
	ann.	681 to 794
	Neuf, Port.	107
	Nicoya Gulf	835
	Niebla Fort Point	817
	Norman, Cape	2
	North Foreland	267
	North Point	339
	Northumberland Strait	334
	Norio, Rio Grande do	741
	Nottawasaga Island	293
	Nova Scotia	361 to 484
	Nuevitas	559 to 561
	<b>O.</b>	
	Oahu Island	851
	Oak Point	330
	Oakville	253
	Off Croase Point	181
	O'Hara Point	57
	Ontario, Lake	213 to 258
	Orignid, Point l'	174
	Orleans Island	192
	Ottawa River	189 to 174 1/2
	Otter Creek, Big	269
	Ovalou Island	857
	<b>P.</b>	
	Padre, Cayo Cruz del	533
	Panela Shoal	793
	Panama	833
	Paolo, Morro de San	755
	Papilote, Port.	855, 856
	Para	725 to 727
	Parana, S. E. y	769
	Paradon Cay Grande	557
	Parry Sound Harbor	289
	Parborough	481
	Partridge Island (Bay of Fundy)	481
	Partridge Island (Georgian Bay)	305
	Partridge Island (St. John's Harbor)	491
	Patos Lake	775 to 789
	Paul Island, St.	45 to 47
	Peart Point	401
	Peggy's Point	421
	Pelee Island	275
	Pelee Spit	277
	Pembroke Cape	811
	Pepe	579
	Perdu, Enfant	717
	Pernambuco	743
	Peter Island	461
	Peter Point	223
	Peter Rock	235
	Petite Terre	615
	Petit Passage	463
	Peyrera, Christovao	783
	Pickering or Liverpool	245

	No.		No.		No.
Pietou Harbor	365	Punta Corona	815	San José de Acuña	835
Pietou Island	367	Punta dos Naufragados	771	San Juan de Ulloa	659
Piedras Cay	549			San Luiz (Maranhão)	733
Piedras Cay, N. part	575	<b>Q.</b>		San Marcello, Fort.	753
Pierro Bay, St.	639	Queen's Wharf (Toronto)	249	San Marcos, Fort.	733
Pierre des Boquets, St.	119	Quilate, Bay of	221, 222	San Paolo, Morro de	755
Pierre, Isle à la	143	Quitridina Island	821	San Salvador, Bahia, or	751
Pierre Island, St.	35 to 39			Santa Anna	735
Pigeon Island	218	<b>R.</b>		Santa Barbara Island	757
Pilgrims, Long	89	Raca, Cape	97	Santa Catharina Island	771
Pillar, Stone	95	Race Island	839	Santa Clara Island	831
Pilots' Point	559	Ragged Point	651	Santa Cruz	545
Pine, Cape	29	Raisins, Isle Aux	139	Santa Cruz Port	761
Pines, Isle of	579	Rancheria Point	556	Santa Cruz Island	603 to 605
Piozones, Los	549	Range Light	307	Santa Lusia	758
Planquata Cay	535	Ray, Cape	43	Santa Maria, Cape	764
Plata, Rio de la	787 to 809	Raza Island	761	Santa Marta	683
Platon Point	169	Red Island Bank	81	Santo Domingo	587 to 597
Playa Ancha Point	823	Red Islet	83	Santo Domingo	589
Plain Point	583	Red Rock	303	Santos	767
Point Amour	3	Repentigny	151	Savanna Port	684
Pointe à Pitre	619	Richelieu	111	Searborough Point	763
Pointe des Negres	631	Richibucto	333	Scutari Island, N.E. point	393
Point aux Trembles	157	Richmond Harbor	243	Scutari Island, W. end	395
Point of Beach	387	Rich Point	4	Scotch Bonnet Island	225
Point Claire	169 to 171	Rico Island, Puerto	599	Scoutia, Nova	361 to 484
Point du Lac	131	Rif Fort	689	Senosow Head	355
Point de Monte	75	Rimonaky	77	Sent Island	453
Point, Father	77	Rio de Janeiro	763 to 765	Sennan's Point	359
Point Indio (light-ship)	801	Rio de la Hache	685	Sea Wolf Island	579
Point Langlais	113	Rio de la Plata	787 to 809	S. entrance, Canso Gut	399
Point l'Original	174	Rio Grande do Norte	741	Shafsbury	307
Point Pleasant	221	Rio Grande do Sul	773	Shediac	335
Point St. Pierre	119	Rivière du Loup (light-ship)	135	Shelburne Harbor	443
Point Rich	4	River St. Lawrence	97 to 212	Shingle Beach	449
Point Tupper	375	River St. Lawrence	212	Ship harbor, Canso Gut	375
Pouquet, St. George Bay	371	Roqueta Island	837	Sincoe	217
Portage Beach	327	Roseat Bay	829	Sisal	627
Portage Island	325	Roseway, Cape	443	Sisiboo River	405
Port au Prince (Half)	595 to 597	Rouge, Cape	97	Snake Island	215
Port Ebert Harbor	440	Royale Island	715	Society Islands	153 to 858
Port Espana	699	Rozier Cape	53	Sombro Island	607
Port Hood	377	Rugged Island Harbor	441, 442	South Cape	49
Port Lahaion (Lahinaluon)	849			Southwestern Wolf Island	468
Port Latour	445	<b>S.</b>		Spears, Cape	23
Port Neuf	107	Sable, Cape	447	Spectacle Shoal	205
Port Papete	855, 856	Sagua la Grande	556	Spencer Point	479
Port Santa Cruz	545	Saguenay River	82	Spit, Pelce	277
Port Savanilla	684	Sal Cay	533 to 535	Stanley Port	273
Port Stanley	273	Salmon Point	224	Stirrup Cay, Great	513
Port St. Andrew	459	Salutation Head	355	Stone Island	143
Port St. Francis	129	Salut Islets	715	Stone Pillar	95
Port Williams	469	Samana Bay	587	Straw Shoal, Jack	293
Pots, Broody	87	Sambro	419	St. Andrew, Port	499
Presque Isle	529	Sand Point	399	St. Antoine	181
Prim Point	467	Sandy Head Point	59	St. Christopher Island	669
Prince Edward Island	329 to 360	Sandy Island	341	St. Clair, Lake	281 to 282
Princes, Isle Aux	149	Sandy Point	813	St. Croix	165
Punkaa Point	845	Sandwich Islands	845 to 852	St. Croix Island	603 to 605
Pubnico Harbor	451	San Antonio	537	St. Francis Lake	193 to 199
Puerto Cabello	685	San Antonio, Port	751	St. Francis Port	129
Puerto Rico Island	599	San Carlos de Aneud	815	St. George Cape	369
Pugwash Harbor	359	San Francisco	747	St. Ignace	313
Punta Arenas	835	San Francisco, Convent of	661	St. John's Harbor (Newfoundland)	17 to 21

INDEX.

V

No.  
 ..... 8354  
 ..... 659  
 ..... 733  
 ..... 753  
 ..... 733  
 ..... 755  
 ..... 751  
 ..... 735  
 ..... 757  
 ..... 771  
 ..... 831  
 ..... 645  
 ..... 703  
 ..... 603 to 605  
 ..... 758  
 ..... 7864  
 ..... 683  
 ..... 587 to 597  
 ..... 589  
 ..... 707  
 ..... 681  
 ..... 703  
 ..... 393  
 ..... 395  
 ..... 395  
 ..... 361 to 484  
 ..... 355  
 ..... 433  
 ..... 359  
 ..... 379  
 ..... 399  
 ..... 307  
 ..... 335  
 ..... 443  
 ..... 440  
 ..... 375  
 ..... 217  
 ..... 607  
 ..... 465  
 ..... 215  
 ..... 853 to 858  
 ..... 607  
 ..... 49  
 ..... 468  
 ..... 23  
 ..... 205  
 ..... 479  
 ..... 277  
 ..... 271  
 ..... 513  
 ..... 143  
 ..... 95  
 ..... 203  
 ..... 498  
 ..... 103  
 ..... 608  
 ..... 281 to 282  
 ..... 105  
 ..... 603 to 605  
 ..... 183 to 193  
 ..... 129  
 ..... 368  
 ..... 313  
 (land) 17 to 21

No.	No.
St. John's Harbor (N. Brunswick) 491 to 493	493
St. Lawrence Point ..... 102	102
St. Lawrence Gulf and River ..... 45 to 96	96
St. Lawrence River ..... 97 to 212	212
St. Louis, Fort ..... 633	633
St. Louis Lake ..... 163 to 165	165
St. Lucia Island ..... 643 to 648	648
St. Margaret's Bay ..... 421	421
St. Mary, Cape ..... 31	31
St. Mary, Cape (Bay of Fundy) ..... 457	457
St. Paul Island ..... 45 to 47	47
St. Peter's Lake ..... 133 to 139	139
St. Pierre des Becquets ..... 119	119
St. Pierre Island ..... 35 to 39	39
St. Roque Shoals ..... 92, 93	93
St. Therese ..... 155	155
St. Thomas ..... 601	601
St. Vincent Island ..... 649	649
S. Traverse (light-ship) ..... 93	93
Sulphur Island ..... 311	311
Superior, Lake ..... 313	313
Suregonoa ..... 775	775
Surinam ..... 713	713
Swallow's Tail ..... 501	501
Sydney ..... 388, 389	389
<b>T.</b>	
Tahiti ..... 853	853
Talcahuano ..... 821	821
Taupico ..... 657	657

No.	No.
Tapiou Battery ..... 643	643
Telegraph Island ..... 222	222
Thames River ..... 281	281
Therese, St. .... 155	155
Thomas, St. .... 601	601
Toronto ..... 247 to 249	249
Tortuga Point ..... 819	819
Tower, Old Lookout ..... 661	661
Traverse ..... 147	147
Traverse, South ..... 93	93
Trembles, Point aux ..... 157	157
Trinidad ..... 699 to 701	701
Truxillo ..... 679	679
Turks Island ..... 529	529
Turneff Cayn ..... 660	660
Tusket River ..... 449	449
<b>U.</b>	
Uilon, Fort San Juan de ..... 659	659
<b>V.</b>	
Vache Isle ..... 503	503
Vaidivin ..... 817	817
Valparaiso ..... 823	823
Valtrie, La ..... 145	145
Vancouver Island ..... 839 to 841	841
Venus Point ..... 853	853
Venezuela and Guyana, New Gren- ada ..... 681 to 724	724
Vera Cruz ..... 659, 660	660
Video, Monte ..... 795 to 799	799

No.	No.
Vieille Ville Shoal ..... 645	645
Vineent Island, St. .... 649	649
Virgin and Caribbee Islands ..... 601 to 656	656
<b>W.</b>	
Wade Shoal ..... 167	167
Wadhams, Offer ..... 5	5
West Arlehat Harbor ..... 404	404
West Coast of South America ..... 815 to 834	834
Western Light (St. Peter's Lake) ..... 137	137
West Inbound Island ..... 431	431
Weymouth ..... 465	465
Whitby Harbor ..... 243	243
White Cliff ..... 391	391
White Head Island ..... 409	409
Wicked Point ..... 324	324
William Island ..... 411	411
Williams, Port ..... 469	469
Wolfe Island ..... 211	211
Wolfe Island, Southwestern ..... 468	468
<b>X.</b>	
Xagua Harbor ..... 573	573
Xicalango Island ..... 663	663
<b>Y.</b>	
Yarmouth ..... 455	455
Yeo Point ..... 217	217
<b>Z.</b>	
Zaparo Island ..... 687	687

0

