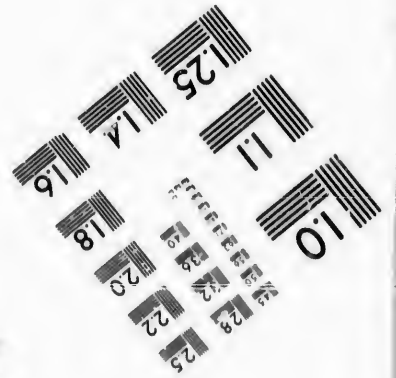
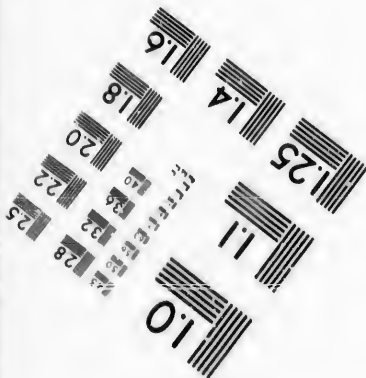
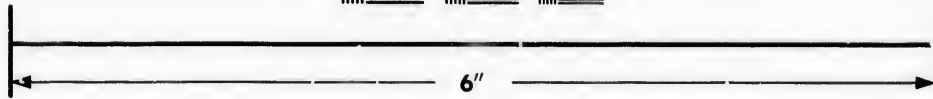
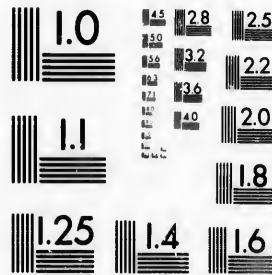


**IMAGE EVALUATION
TEST TARGET (MT-3)**



**Photographic
Sciences
Corporation**

23 WEST MAIN STREET
WEBSTER, N.Y. 14580
(716) 872-4500



**CIHM/ICMH
Microfiche
Series.**

**CIHM/ICMH
Collection de
microfiches.**



Canadian Institute for Historical Microreproductions / Institut canadien de microreproductions historiques



© 1987

Technical and Bibliographic Notes/Notes techniques et bibliographiques

The Institute has attempted to obtain the best original copy available for filming. Features of this copy which may be bibliographically unique, which may alter any of the images in the reproduction, or which may significantly change the usual method of filming, are checked below.

L'Institut a microfilmé le meilleur exemplaire qu'il lui a été possible de se procurer. Les détails de cet exemplaire qui sont peut-être uniques du point de vue bibliographique, qui peuvent modifier une image reproduite, ou qui peuvent exiger une modification dans la méthode normale de filmage sont indiqués ci-dessous.

Coloured covers/
Couverture de couleur

Covers damaged/
Couverture endommagée

Covers restored and/or laminated/
Couverture restaurée et/ou pelliculée

Cover title missing/
Le titre de couverture manque

Coloured maps/
Cartes géographiques en couleur

Coloured ink (i.e. other than blue or black)/
Encre de couleur (i.e. autre que bleue ou noire)

Coloured plates and/or illustrations/
Planches et/ou illustrations en couleur

Bound with other material/
Relié avec d'autres documents

Tight binding may cause shadows or distortion along interior margin/
La reliure serrée peut causer de l'ombre ou de la distorsion le long de la marge intérieure

Blank leaves added during restoration may appear within the text. Whenever possible, these have been omitted from filming/
Il se peut que certaines pages blanches ajoutées lors d'une restauration apparaissent dans le texte, mais, lorsque cela était possible, ces pages n'ont pas été filmées.

Additional comments:
Commentaires supplémentaires:

Coloured pages/
Pages de couleur

Pages damaged/
Pages endommagées

Pages restored and/or laminated/
Pages restaurées et/ou pelliculées

Pages discoloured, stained or foxed/
Pages décolorées, tachetées ou piquées

Pages detached/
Pages détachées

Showthrough/
Transparence

Quality of print varies/
Qualité inégale de l'impression

Includes supplementary material/
Comprend du matériel supplémentaire

Only edition available/
Seule édition disponible

Pages wholly or partially obscured by errata slips, tissues, etc., have been refilmed to ensure the best possible image/
Les pages totalement ou partiellement obscurcies par un feuillet d'errata, une pelure, etc., ont été filmées à nouveau de façon à obtenir la meilleure image possible.

This item is filmed at the reduction ratio checked below/
Ce document est filmé au taux de réduction indiqué ci-dessous.

10X	14X	18X	22X	26X	30X
<input type="checkbox"/>	<input type="checkbox"/>	<input type="checkbox"/>	<input checked="" type="checkbox"/>	<input type="checkbox"/>	<input type="checkbox"/>
12X	16X	20X	24X	28X	32X

The copy filmed here has been reproduced thanks to the generosity of:

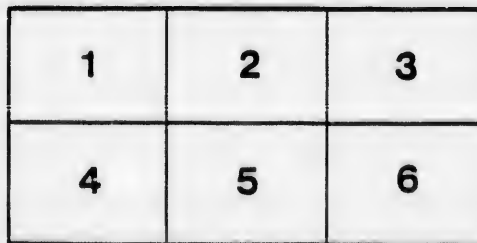
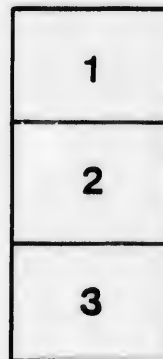
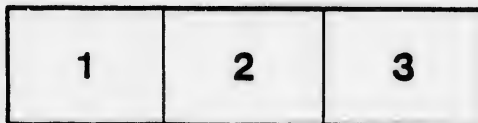
D. B. Weldon Library
University of Western Ontario
(Regional History Room)

The images appearing here are the best quality possible considering the condition and legibility of the original copy and in keeping with the filming contract specifications.

Original copies in printed paper covers are filmed beginning with the front cover and ending on the last page with a printed or illustrated impression, or the back cover when appropriate. All other original copies are filmed beginning on the first page with a printed or illustrated impression, and ending on the last page with a printed or illustrated impression.

The last recorded frame on each microfiche shall contain the symbol \rightarrow (meaning "CONTINUED"), or the symbol ∇ (meaning "END"), whichever applies.

Maps, plates, charts, etc., may be filmed at different reduction ratios. Those too large to be entirely included in one exposure are filmed beginning in the upper left hand corner, left to right and top to bottom, as many frames as required. The following diagrams illustrate the method:



L'exemplaire filmé fut reproduit grâce à la générosité de:

D. B. Weldon Library
University of Western Ontario
(Regional History Room)

Les images suivantes ont été reproduites avec le plus grand soin, compte tenu de la condition et de la netteté de l'exemplaire filmé, et en conformité avec les conditions du contrat de filmage.

Les exemplaires originaux dont la couverture en papier est imprimée sont filmés en commençant par le premier plat et en terminant soit par la dernière page qui comporte une empreinte d'impression ou d'illustration, soit par le second plat, selon le cas. Tous les autres exemplaires originaux sont filmés en commençant par la première page qui comporte une empreinte d'impression ou d'illustration et en terminant par la dernière page qui comporte une telle empreinte.

Un des symboles suivants apparaîtra sur la dernière image de chaque microfiche, selon le cas: le symbole \rightarrow signifie "A SUIVRE", le symbole ∇ signifie "FIN".

Les cartes, planches, tableaux, etc., peuvent être filmés à des taux de réduction différents. Lorsque le document est trop grand pour être reproduit en un seul cliché, il est filmé à partir de l'angle supérieur gauche, de gauche à droite, et de haut en bas, en prenant le nombre d'images nécessaire. Les diagrammes suivants illustrent la méthode.

errata
to

pelure,
on à

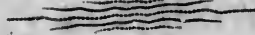
1891

1892.

SUPPLEMENTARY



Stove + Catalogue



the

McCLARY MFG. CO.

LONDON, TORONTO, MONTREAL

AND WINNIPEG.

Gift of John Brustwick, Brook N. H., N. H.
21 Dec 1952

The World's Argand

With Ventilated Steel Plate Oven.

WE confidently call the attention of the trade to these stoves as the **greatest production in the Range Line of the age**, embodying as they do every improvement that science can suggest, and years of experience experiment, and test confirm.

One of the chief features is the self equalizing ventilated **Steel Oven**—the system of circulation being simple, thorough and always active—while the construction being of sheet metal insures quick, even and perfect operation, with a great saving in fuel. Its originality and adaptability were at once recognized by the trade in the United States as the farthest advance that science and thought have yet reached toward the ideal stove. The immediate and large demand for them has fully proved this superiority.

The Fire Box is proportioned to secure the most perfect combustion of fuel, whether hard or soft coal or wood. Linings for coal or wood are interchangeable without disturbing bed plate.

The Grates.—The Bi-Plex grate for coal is in two sections, which are operated by being geared together. By removing two bolts, which are always operative, the grates are released, and are interchangeable without disturbing fire box linings or bed plate. Gear wheels are protected from the fire, and can never get out of working order.

Water Front and Water Back.—The former for coal is of cast iron, and has large capacity. The latter for wood consists of heavy wrought pipes in an open back guard. The most perfect water heating device ever used where wood is the fuel. Grates or brick lining can be removed and replaced without disturbing either water front or back.

The Reservoir receives heat upon all sides, and baking can be carried on whether reservoir damper is open or closed. Change from reservoir to square, or vice versa, can be quickly made by changing one plate.

The Hearth.—Bottom has removable sides, which can be easily replaced. Hearth slide is arranged with drop hinge

Broiler Opening is of sufficient size to admit of large broiler, which, with the broad fire surface, makes a very superior arrangement for this kind of cooking. Top of range is large, and has broad burnished edges $1\frac{1}{4}$ inches deep. Top guard with damper box—an excellent device—is handsomely ornamented and furnished with two nickel plated swing shelves, and arranged for attachment of pipe shelf or high closet.

The Range as a whole is full size, handsomely ornamented, and easily kept clean. **It has no equal for utility, appearance, economy or durability**, and the dealer that secures the sale of it for his locality will certainly control the trade.

World's Argand.

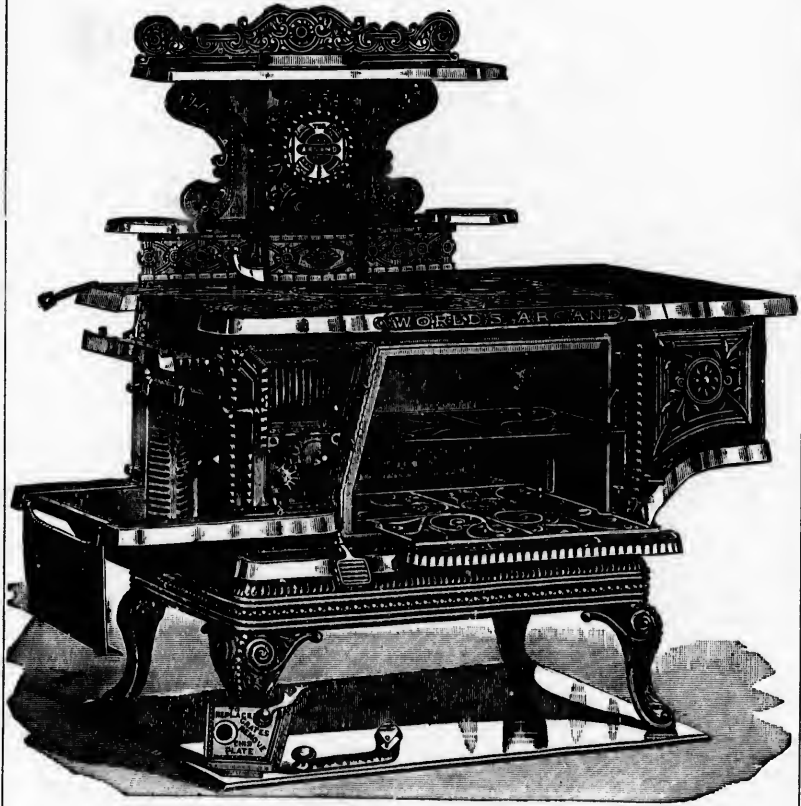


SEE PAGE 1 FOR DESCRIPTION.

No. 8-18, square.....	\$43 00
" 8-18, with reservoir.....	53.00. 51 00
" 9-20, square.....	51.00. 53 00
" 9-20, with reservoir.....	60 00

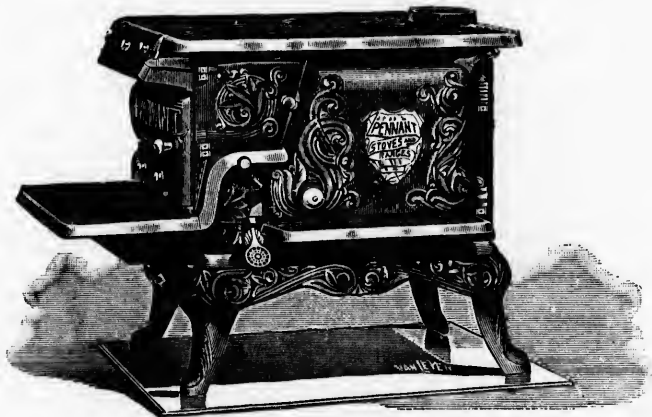
See next page for dissected cut.

World's Argand.



No. 8-18, square.....	\$43 00
" 8-18, with reservoir.....	530.0. 51-00
" 9-20, square.....	51.00. 53-00
" 9-20, with reservoir.....	60 00
High shelf.	

Loyal Pennant.



For Coal or Wood.

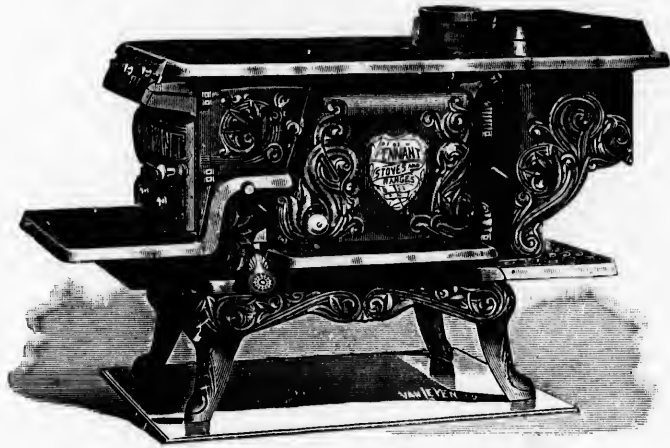
No. 8-1/2 square.....	\$32 80
" 9 19, "	37 60

An entirely new stove from the ground up. The design is such as to command admiration at a glance, and it is provided with all the new improvements known to the trade.

Owing to having very large flues it will burn hard or soft coal or wood equally well ; and we have no hesitation in warranting every stove to give perfect satisfaction.

We look with pardonable pride to our full line of cook stoves and ranges, and, without doubt, this particular stove is better value for the money than any made.

Loyal Pennant.



For Coal or Wood.

No. 8-16 with reservoir	\$42 30
“ 9-19, “ “	47 70

For description see opposite page.

Mechanic.



Coal and Wood Cook.

No. 8, square	\$22 00
“ 9, “	24 00

Just as named, suitable for mechanics : has all the good points, and no bad ones ; is somewhat larger than the Sergeant, and has every modern convenience. As with all McClary's Famous Stoves, it is fully warranted.

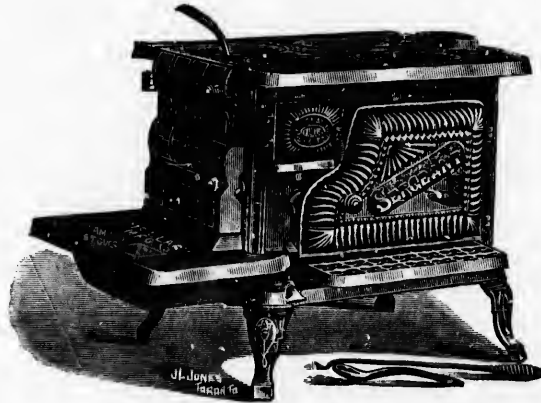
Mechanic.



Coal and Wood Cook.

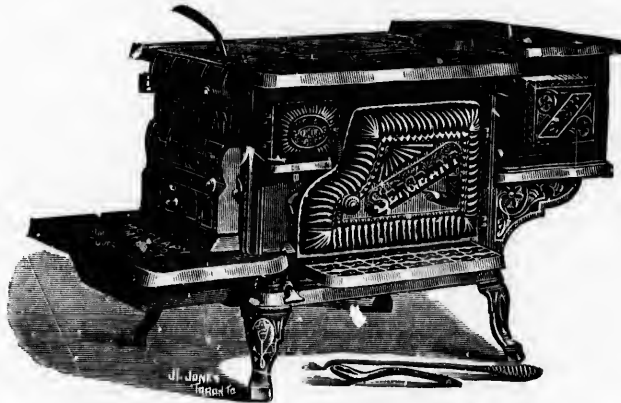
No. 8, with reservoir.....	\$30 00
“ 9, “ “	32 00

Sergeant.



For Coal or Wood.

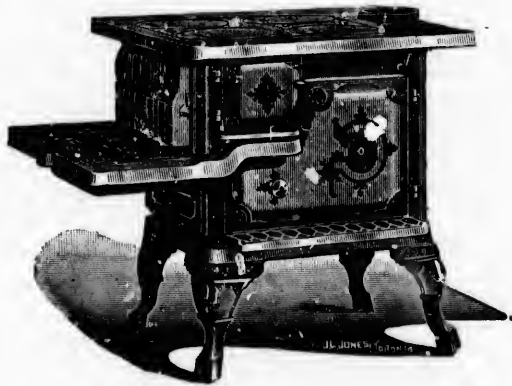
- | | |
|-------------|---------|
| No. 8 | \$20 00 |
| No. 9 | 22 00 |



- | | |
|-----------------------------|---------|
| No. 8, with reservoir | \$28 00 |
| No. 9, " " | 30 00 |

This is our old friend in a brand new uniform, making it the handsomest cheap stove in the market. It has been time tried and fire tested, and commands the fullest approval of all those who have handled it.

Victoria.

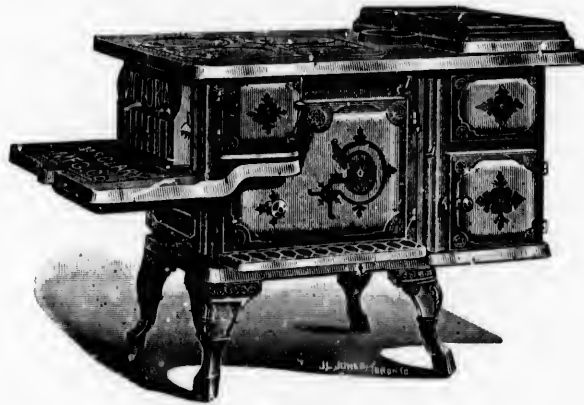


For Wood Only.

No. 8, square	\$19 00
“ 9, “	20 00

The above is a new pattern of a cheap wood cook, which is of a very handsome design, and has a very commodious fire box. It will prove a good seller, and we warrant satisfaction with every stove.

Victoria.

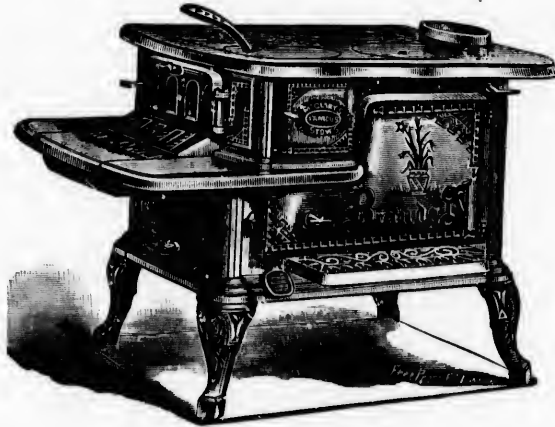


For Wood Only.

No. 8, with reservoir	\$28 00
“ 9, “ “	29 00

For description see opposite page.

Brandon.



For Wood Only.

No. 8-18, square.....	\$18 00
“ 9-20, “	20 00

This, for its weight, size and finish, is the cheapest stove in Canada.



And to still further give our customers the control of the trade with a good cheap stove we quote furniture for it.

No. 8, I. C., Tin Furniture and Hollow Ware.....	\$6 40
“ 9, “ “ “ “ “ “	7 00
“ 8, I. X., “ “ “ “ “ “	7 00
“ 9, “ “ “ “ “ “	7 40

The Famous Base Burner.

THIS stove in its line as a base burner stands on a par with the World's Argand Range as the most complete conception of a heating stove that the stove founders' art has yet produced, and has reached the point where it seems impossible to suggest any further improvement.

It is constructed in the most modern style, and of a character to render it powerful in operation.

Special attention is called to the flue arrangement. Instead of the products of combustion being taken down one flue they are divided, and pass down two flues, one being at each corner of the back of the stove, thus distributing the heat to the extreme rear corners. Each of the descending flues are large, giving greatly increased flue capacity. After the heat passes down the two rear flues it is made to travel along both sides of the bottom to the front, being equally distributed to the outer surfaces; the heat then moves back through the centre flue, and makes its exit through the large ascending flue in the rear, thus rendering the entire lower portion of the stove direct radiating surfaces, giving it more heating capacity for its size than any ever before devised. Between the descending and ascending flues are large circulating flues, which are highly heated by direct radiation from them. Air is taken from floor through opening in bottom of stove, passing through these flues and discharged at top of stove fully heated. Double heater attachment provided, by which this heat may be carried to upper rooms. Fresh air pipe can be connected when desired. Stove is provided with patent telescope magazine, lower part of which can be pushed within upper half, allowing fire pot to be lifted out through front. The trade will appreciate this feature at once. Stove is fitted with either duplex or flat shaking centre draw grates as may be desired. Ash pit and pan will catch all ashes. Guaranteed to be the cleanest stove built. Ornamental black section between large nickel jacket and swinging top provides rest for coal hod when filling stove, and prevents injury to nickeling.

The original patterns of this stove cost \$8000.

IT IS A TRIUMPH OF ART AND UTILITY.

Famous Base Burner.

No. 1, parlor\$51 00

Size of Fire Pot, 13½ inches.

No. 2, parlor\$54 00

Size of Fire Pot, 15 inches.

Both have double heater attachments.



The oven is constructed with three flues, the same as a cooking stove. The cooking holes are close to the fire pot, and boil quickly.

{ \$56 00 }

No. 1, with oven.....\$56 00
Size of Fire Pot, 13½ inches.

Famous Base

Burner.



Famous Base Burner.

This cut illustrates the flue construction and double heater arrangement.

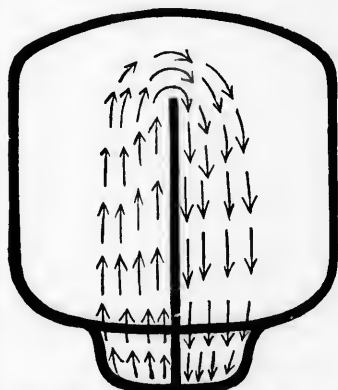


(14)

Famous Base Burner.



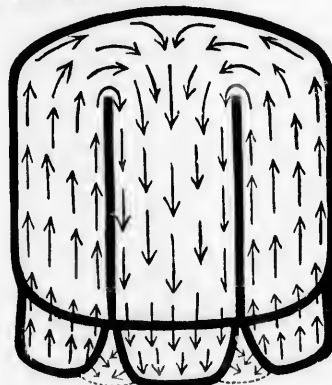
In above Flue Construction there are **Four** Surfaces Radiating Heat.



Above cut illustrates the arrangement of Bottom Flues in nearly all base burners, showing the Heat is not Equally Distributed.



In above Flue Construction there are **NINE** Surfaces Radiating Heat, Increasing the Heating Capacity with the same amount of fuel.



The above Bottom Flue Construction causes the Heat to go to the Outer Surfaces, Largely increasing the Heating Capacity and Economizing in Fuel.

The Famous Base Burner has more heating capacity, and is the most economical stove ever made. Why? Because it has about 1-3 more radiating surface as compared with same sizes of other Base Burners, and is mounted and fitted perfectly.

Derby.

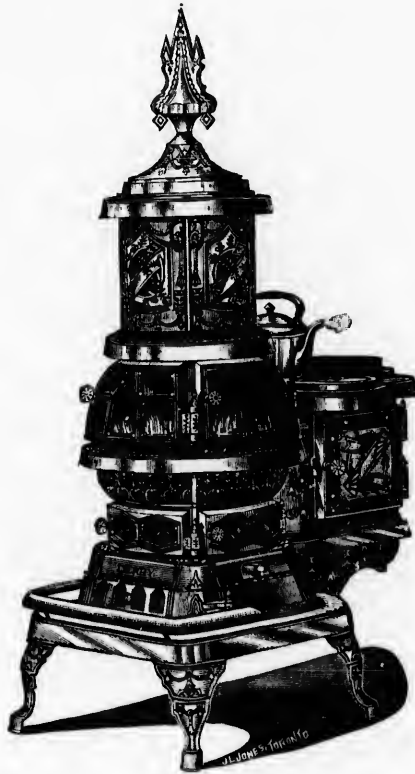


No. 13, parlor.....	\$22 00
“ 12 “	26 00

A popular cheap base burner, formerly made by Harte, Smith & Co., of Belleville, who made a great number of them while in business.

We can add nothing more than that owing to the large demand it previously had there is still a good demand for it, and dealers will find it necessary to keep them in stock.

Derby.



No. 24, with oven \$30 00

Famous Franklin.



No. 12.....	\$24 50
“ 14.....	29 00

Franklin stoves are now the ruling passion, and we are proud to say we have a line of them that will please the most fastidious, the Famous Franklin being the “newest thing out” in this particular line.

This stove is made with round fire pot, front sliding doors, beautifully ornamented with nickel and tile. This stove must be seen to be appreciated, and will make an ornament to any home beside being a perfect ventilator and good heater. Fire can be kept in over night, and will look particularly luminous owing to the large mica front.

Famous Franklin.

Showing Open Grate.



See opposite page for price.

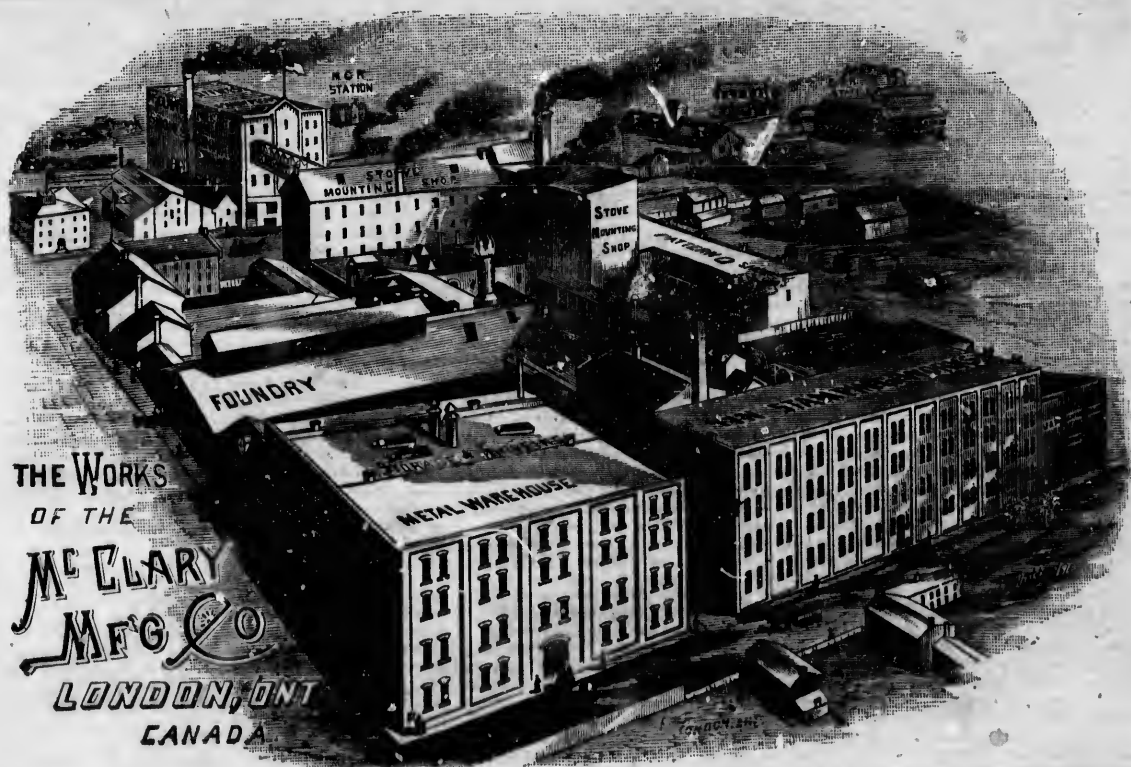
Empire Franklin.



No. 2	\$11 00
No. 3	13 00

Already well and favorably known on the market. We got out this line to complete our Franklin series. Being very cheap it will fill a want for a cheap open stove to use spring and fall, before the furnaces are started.





THE WORKS
OF THE
McCLARY
MFG CO
LONDON, ONT
CANADA

