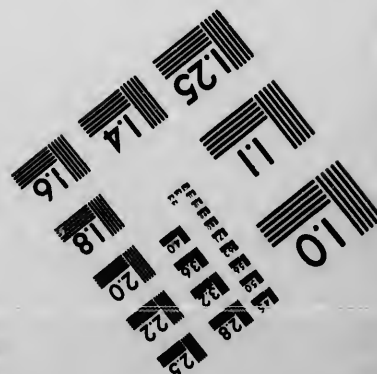
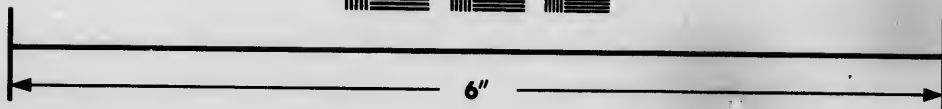
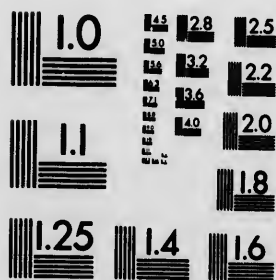


**IMAGE EVALUATION
TEST TARGET (MT-3)**



**Photographic
Sciences
Corporation**

23 WEST MAIN STREET
WEBSTER, N. Y. 14580
(716) 872-4503

**CIHM
Microfiche
Series
(Monographs)**

**ICMH
Collection de
microfiches
(monographies)**



Canadian Institute for Historical Microreproductions / Institut canadien de microreproductions historiques

© 1993

Technical and Bibliographic Notes / Notes techniques et bibliographiques

The Institute has attempted to obtain the best original copy available for filming. Features of this copy which may be bibliographically unique, which may alter any of the images in the reproduction, or which may significantly change the usual method of filming, are checked below.

L'Institut a microfilmé le meilleur exemplaire qu'il lui a été possible de se procurer. Les détails de cet exemplaire qui sont peut-être uniques du point de vue bibliographique, qui peuvent modifier une image reproduite, ou qui peuvent exiger une modification dans la méthode normale de filmage sont indiqués ci-dessous.

- Coloured covers/
Couverture de couleur
- Covers damaged/
Couverture endommagée
- Covers restored and/or laminated/
Couverture restaurée et/ou pelliculée
- Cover title missing/
Le titre de couverture manque
- Coloured maps/
Cartes géographiques en couleur
- Coloured ink (i.e. other than blue or black)/
Encre de couleur (i.e. autre que bleue ou noire)
- Coloured plates and/or illustrations/
Planches et/ou illustrations en couleur
- Bound with other material/
Relié avec d'autres documents
- Tight binding may cause shadows or distortion along interior margin/
La reliure serrée peut causer de l'ombre ou de la distorsion le long de la marge intérieure
- Blank leaves added during restoration may appear within the text. Whenever possible, these have been omitted from filming/
Il se peut que certaines pages blanches ajoutées lors d'une restauration apparaissent dans le texte, mais, lorsque cela était possible, ces pages n'ont pas été filmées.

- Coloured pages/
Pages de couleur
- Pages damaged/
Pages endommagées
- Pages restored and/or laminated/
Pages restaurées et/ou pelliculées
- Pages discoloured, stained or foxed/
Pages décolorées, tachetées ou piquées
- Pages detached/
Pages détachées
- Showthrough/
Transparence
- Quality of print varies/
Qualité inégale de l'impression
- Continuous pagination/
Pagination continue
- Includes index(es)/
Comprend un (des) index

Title on header taken from:/
Le titre de l'en-tête provient:

- Title page of issue/
Page de titre de la livraison
- Caption of issue/
Titre de départ de la livraison
- Masthead/
Générique (périodiques) de la livraison

Additional comments:/
Commentaires supplémentaires:

This item is filmed at the reduction ratio checked below/
Ce document est filmé au taux de réduction indiqué ci-dessous.

10X	12X	14X	16X	18X	20X	22X	24X	26X	28X	30X	32X
						/					

The copy filmed here has been reproduced thanks to the generosity of:

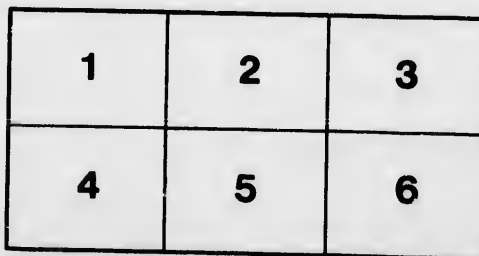
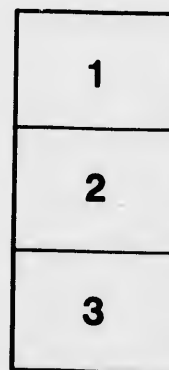
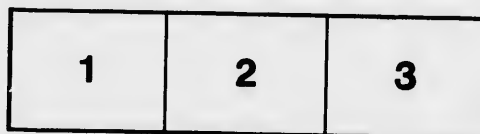
Douglas Library
Queen's University

The images appearing here are the best quality possible considering the condition and legibility of the original copy and in keeping with the filming contract specifications.

Original copies in printed paper covers are filmed beginning with the front cover and ending on the last page with a printed or illustrated impression, or the back cover when appropriate. All other original copies are filmed beginning on the first page with a printed or illustrated impression, and ending on the last page with a printed or illustrated impression.

The last recorded frame on each microfiche shall contain the symbol \rightarrow (meaning "CONTINUED"), or the symbol ∇ (meaning "END"), whichever applies.

Maps, plates, charts, etc., may be filmed at different reduction ratios. Those too large to be entirely included in one exposure are filmed beginning in the upper left hand corner, left to right and top to bottom, as many frames as required. The following diagrams illustrate the method:



L'exemplaire filmé fut reproduit grâce à la générosité de:

Douglas Library
Queen's University

Les images suivantes ont été reproduites avec le plus grand soin, compte tenu de la condition et de la netteté de l'exemplaire filmé, et en conformité avec les conditions du contrat de filmage.

Les exemplaires originaux dont la couverture en papier est imprimée sont filmés en commençant par le premier plat et en terminant soit par la dernière page qui comporte une empreinte d'impression ou d'illustration, soit par le second plat, selon le cas. Tous les autres exemplaires originaux sont filmés en commençant par la première page qui comporte une empreinte d'impression ou d'illustration et en terminant par la dernière page qui comporte une telle empreinte.

Un des symboles suivants apparaîtra sur la dernière image de chaque microfiche, selon le cas: le symbole \rightarrow signifie "A SUIVRE", le symbole ∇ signifie "FIN".

Les cartes, planches, tableaux, etc., peuvent être filmés à des taux de réduction différents. Lorsque le document est trop grand pour être reproduit en un seul cliché, il est filmé à partir de l'angle supérieur gauche, de gauche à droite, et de haut en bas, en prenant le nombre d'images nécessaire. Les diagrammes suivants illustrent la méthode.

LP
F
18
C

LAN

Incorp

1st. CROW
rate Far
scattered
Province

These lo
the Old sep
lished Road

2nd. Bloc
acres eac
Province

A town c
position, on
the Gore D
expense of

This sett
improved w
of the Colon
houses have

LP
F 5012
1830
C3

LANDS IN UPPER CANADA,

TO BE DISPOSED OF

BY THE

CANADA COMPANY,

Incorporated by Royal Charter, and Act of Parliament.

1st. **CROWN RESERVES.**—Being detached lots or separate Farms, containing generally 200 acres each, scattered through the different Townships in the Province.

These lots are in many instances interspersed through the Old settlements; and have the advantages of established Roads in their immediate vicinity.

2nd. **BLOCKS OF LAND** containing from 1,000 to 25,000 acres each, situated in the Western Districts of the Province.

A town called Guelph, has been established in a central position, on the most considerable tract of land in the Gore District, and Roads have been opened at the expense of the Company to the various parts of the settlement, and the land is rapidly improved with a rapidity unprecedented in any part of the Colony; a saw-mill and several other buildings have been built, besides a number of houses.

17033

descriptions of tradesmen are numbered amongst the inhabitants.

As the erection of a church is commencing, it is hoped that ere long there will be also a resident clergyman. The building of a good grist-mill and oatmeal-mill is also in progress, which will probably be in operation by the end of this year.

Settlers with capital, who prefer establishing themselves on land on which partial clearings have been made, and houses erected, may find lots with such improvements for sale, and will be at no loss for comfortable accommodations at the taverns in the town, and board and lodging at a moderate rate till they are able to establish themselves.

They will find no difficulty in procuring laborers and servants, or in contracting for buildings, or the first operations of clearing the land of timber, making fences, &c.

The distance from Guelph to York, the seat of government in Upper Canada, is not more than eighty miles, and will be reduced to sixty miles, when an intended improvement in the road is completed.

Two large Blocks in the township of Wilmot, have also been surveyed and laid out into farms, a road has been cut through one of them from Guelph leading to the Great Huron Tract, and again through that to Goddard, on Lake Huron.

THE HURON TERRITORY.—A tract of 1,100,000 acres in the shape of a triangle, its base being about sixty miles in length, resting on Lake Huron, and having a direct navigable communication through Lakes Erie and Ontario, to the Atlantic.

The Company have laid out a town in this district, at

the confu
which pr
one of th
the Provi

Severa
vantages,
intention
grist-mill,
erected.)
on the C
ing vesse
establishe
inhabitan
Countries
tlements

The so
more like
abundanc
rection,
building,
descriptio

Roads
St. Thom
are roads
Erie. C
dance by
nication
settlemer

A road
from God
Lake On
and main
them, in
oldest se

d amongst the
cing, it is hop-
ent clergyman.
eal-mill is also
eration by the

blishing them-
gs have been
with such im-
ss for comfort-
he town, and
they are able

g laborers and
the first ope-
making fences,
e seat of go-
e than eighty
when an in-
eted.

Wilmot, have
s, a road has
ph leading to
h that to Go-

of 1,100,000
se being about
uron, and hav-
hrough Lakes

his district, at

the confluence of the River Maitland with Lake Huron, which promises, from its local advantages, to become one of the most important and flourishing Settlements in the Province.

Several enterprizing colonists, attracted by these advantages, have gone to settle at Goderich, and with the intention of erecting a brewery, distillery, brick-kilns, grist-mill, &c. (a tavern and saw-mill have already been erected.) The harbour, the only one within 150 miles, on the Canadian side of the Lake, is capable of containing vessels of the burthen of 200 tons, and it has been established as a Port of Entry, which will ensure the inhabitants a great share of the trade with the Upper Countries, and their opposite neighbours in the new settlements in the United States.

The scenery in the River Maitland is beautiful, and more like English than any other in Canada. There is abundance of brick-earth and potters-clay in every direction, with abundance of lime-stone fit for burning or building, and the river abounds with fish of the finest description.

Roads are in progress from Goderich to the town of St. Thomas, in the London District, from whence there are roads to Kettle-Creek and Port-Talbot, on Lake Erie. Cattle and provisions can be obtained in abundance by this route or the still more easy water communication between Goderich and the old, well-cultivated settlements of Sandwich, Amherstburgh, and Detroit.

A road has also been completed, as before mentioned, from Goderich, by Wilmot and Guelph, to the Head of Lake Ontario, and York; and it is intended to improve and maintain all these communications, so as to make them, in every respect, equal to the best roads in the oldest settlements in the Province.

For this purpose, and towards the improvement of water communications, the building of churches, school-houses, bridges, wharfs, and other works for the benefit and accommodation of the public, the Company have engaged to expend a sum of £48,000.

With respect to the important consideration of climate and soil, in the Huron Tract, the former is as good, and the latter equal, if not superior, to any other in Upper or Lower Canada.

The company have hitherto preferred making sales of lots of about from 80 to 200 acres to individual settlers, but the commissioners in Upper Canada have directions to treat with associations of settlers for larger quantities, or even whole blocks of land, if they should prefer this course (which was adopted by many of the first settlers in the western, and now the most flourishing districts of the State of New-York;) and there will be every disposition to encourage small capitalists and enterprising and industrious emigrants by the most extended credit, on such conditions as may be only consistent with the final security of the Company.

EASTE

Con.	To
2	North
3	North
9	No. 1
"	No. 3
	Tow
9	No. 1
	11
	18.
"	No. 1
	Tow
1	No. 4
2	" 5
3	" 4
4	" 5
5	" 4
6	" 5
7	" 4
8	" 5
9.	" 4
10.	" 5
11	" 4
12	" 5
	T
1.	North
2	"
3	"
"	No. 4
4	" 5
"	North
5	North
"	No. 4
6	North
"	No. 5
7	" 4
8	North
"	No. 5
9.	" 4
10	" 5
"	" 2
11	" 4
"	No. 1
12	North

EASTERN DISTRICT. OTTAWA DISTRICT.

Improvement of
churches, school-
houses for the benefit
company have en-

ation of climate
is as good, and
other in Upper

making sales of
individual settlers,
have directions
larger quantities,
ould prefer this
the first settlers
ing districts of
be every dis-
d enterprising
ended credit,
sistent with the

Township Lochiel.			Mountain.		
Con.	LOTS.	Acres	Con.	LOTS.	Acres
2	North 1/2 of 1 2 5.	100	1	No. 11 21 23.	200
3	North 1/2 of 1 9 11.	100	2	" 20.	200
9	No. 1.	200	3	" 21 23.	200
"	No. 38.	140	4	" 5 20.	200
	<i>Township Roxburgh.</i>		5	" 4 11 21 23.	200
9	No. 1 2 3 4 5 6 7 8 9 10		6	" 5 15 20.	200
	11 12 13 14 15 16 17		7	" 11 21 23.	200
	18.	200	8	" 5 15 20.	200
"	No. 19.	150	9	" 11' 21 23.	200
	<i>Township Winchester.</i>		9	" 4 N. 1/2.	100
1	No. 4 11 21 23.	200	10	" 15 20.	200
2	" 5 15.	200	11	" 4 11 21 23.	200
3	" 4 11 21 23.	200	12	" 15 20.	200
4	" 5 20.	200	12	" 5.	180
5	" 4 11 21 23.	200		<i>Williamsburgh.</i>	
6	" 5 15 20.	200	8	No. 1 2 3 4 5 6.	200
7	" 4 11 21 23.	200		<i>OTTAWA DISTRICT.</i>	
8	" 5 15 20.	200		<i>Hawkesbury East.</i>	
9	" 4 11 21 23.	200	3	South 1/2 of 2 6 11.	100
10	" 5 15 20.	200	3	No. 17.	200
11	" 4 11 21 23.	200	4	" 6 13 20 27 34.	200
12	" 5 15 20.	200	5	" 3 17 24.	200
	<i>Township Finch.</i>		5	" 31.	195
1	North 1/2 of 4 11.	100	6	" 6 13 20.	200
2	" 1/2 of 5.	100	6	" 27.	110
3	" 1/2 of 11.	100	7	No. 3	200
"	No. 4 21.	200	7	North 1/2 of 17.	100
4	" 5.	200	8	No. 3 5 7 11.	200
"	North 1/2 of 20.	100		<i>Hawkesbury Gore.</i>	
5	North 1/2 of 11 21 23.	100	5	1.	200
"	No. 4.	200	6	2.	200
6	North 1/2 of 20.	100	8	2.	200
"	No. 5.	200		<i>Hawkesbury West.</i>	
7	" 4 11 21 23.	200	3	South 1/2 of 1 15.	100
8	North 1/2 of 20.	100	6	" 1/2 of 14.	100
"	No. 5 15.	200	9	No. 17.	190
9	" 4 11 21 23.	200		<i>Caledonia.</i>	
10	" 5 15.	200	1	No. 18 21 23 24.	200
"	" 20.	159	2	" 15 18 20.	200
11	" 4.	200	3	" 11 18 21 23.	200
"	No. 11.	72	4	" 14 15 20.	200
12	North 1/2 of 5.	100	5	" 11 21 23.	200
			6	" 5 15 20.	200

OTTAWA DISTRICT.

OTTAWA

Caledonia Continued.			Alfred Continued.			Cumberland		
Con.	LOTS.	Acres	Con.	LOTS.	Acres.	Con.		
7	No. 4 11 21 23.	200	3	N. ½ of 28.	100	3	No. 11	
8	" 5 15 20.	200	4	No. 15.	200	4	" 39	
9	" 21 23.	200	4	S. ½ of 5.	100	5	" 51	
9	F. ½ of 11.	100	5	No. 4 11 16.	200	6	" 39	
9	" 4.	60	5	N. ¼ of 13.	100	7	" 51	
10	" 15 20.	200	6	" 5 13 15.	200	8	" 39	
11	" 21.	84	7	" 4 7 11.	"	9	" 51	
	<i>Plantagenet Front.</i>			" 16.	122	10	" 39	
	No. 1 broken front.	44	8	" 5 13.	200	11	" 5.	
	" 3 " "	28	"	" 15.	40	"	" 11.	
1	" 1.	152	9	" 4.	130	"	" 21.	
"	" 37.	200	"	" 7 11.	200	"	" 28.	
2	" 5 15 22 29 34 36.	200	10	" 5.	"		Lot B. in	
3	" 4 14 21 23.	200	11	" 4 7.	"		11th	
4	" 5.	133	12	" 5.	"		Lots on	
"	" 15 20.	200	13	" 4.	190			
5	" 4 11 21 23.	200		<i>Cambridge.</i>			No. 1.	
6	" 15 20.	200	1	No. 4 11 18 26.	200		" 23	
7	" 4 11 21 23.	200	2	" 2 8 15 23 30.	"		G	
8	" 5 15 20.	200	3	" 4 11 18 26.	"	1	No. 7.	
9	" 4 11 21 23.	200	4	" 2 8 15 23 30.	"	"	" 13.	
10	" 5 15 20.	200	5	" 4 18 26.	"	"	" 19 2	
11	" 4 21 23.	200	6	" 2 8 23 30.	"	2	" 14 2	
12	" 15 20.	200	7	" 4 11 18 26.	"	3	" 3 13	
13	" 4 11 21 23.	200	8	" 2 8 15 23 30.	"	4	" 13	
	<i>Plantagenet Rear.</i>		9	" 4 11 18 26.	"	5	" 3 13	
14	No. 4 14 19.	200	10	" 2 8 15 23 30.	"	6	" 2 8 1	
15	" 3 10 20 22.	200		<i>Russell.</i>			" 27 B	
16	" 4 14 19.	200	1	No. 1 8 13 15.	200		Ride	
17	" 3.	75	2	" 7 16 21.	"		On the	
"	" 10 20 22.	200	3	" 1 8 13 15.	"	2	No. 4 14	
18	" 14 19.	200	4	" 7 16 21.	"	3	" 13 23	
19	" 10 20 22.	200	5	" 1 8 13 15.	"	4	" 4 9 1	
20	" 14 19.	180	6	" 7 16 21.	"	5	" 3 13.	
	<i>Alfred.</i>		7	" 1 8 13 15.	"	6	" 4 12	
1	Lot A.	70	8	" 7 16 21.	"		" 3 9 1	
"	" B.	90	9	" 1 8 13 15.	"		" 7 13	
2	No. 3.	60	10	" 7 16.	"		" 2 8 1	
"	Lot A. B.	100		" 21.	36		Cl	
3	No. 2.	148		<i>Cumberland.</i>			No. 5.	
"	" 3.	180	1	No. 5 21 28.	200		" 6.	
"	Lot A. B.	100	2	" 9 16 24.	"		" 11.	
"	No. 22 33.	200	3	No. 5.	160		" 21.	

JOHNSTOWN DISTRICT—continued.

Edwardsburgh Cont'd.			Marlborough Continued.		
Con.	Lots.	Acres	Con.	Lots.	Acres
10	No. 33.	100	7	East $\frac{1}{2}$ of 4.	100
"	" 34.	101	8	" 3 8 23 28.	200
"	" 35.	102	9	" 14 28 30.	"
"	" 36.	103	10	" 8 15 23 27.	80
"	" 37.	104		Broken Front No. 2.	"
	South Gower.			" " " 4.	"
1	No. 4.	200		" " " 30.	300
6	" 14.	100		Wolford.	
7	" 11.	200	2	No. 3 8.	200
8	West $\frac{1}{2}$ of 5.	100	3	" 9 27	200
	North Gower.			South $\frac{1}{2}$ of 2 and 17.	100
1	No. 7 13 19	200	4	No. 3.	170
2	" 4 12 23 38.	"	"	" 16.	200
3	" 8 28 38.	"	5	" 17.	200
4	" 4 9 14 24 29 34 39.	"	"	South $\frac{1}{2}$ of 9 and 27.	100
A.	" 7 13.	"	6	No. 3 8.	200
"	" 19.	190	"	South $\frac{1}{2}$ of 23.	100
	Front on the Rideau,		"	East $\frac{1}{2}$ of 28.	"
	No. 13.	70	7	No. 27.	200
	Oxford.		"	South half of 9.	100
1	No. 30.	250	8	No. 3 8 16 23 28.	80
2	" 29.	200		Montague.	
3	East $\frac{1}{2}$ of 2.	100	2	West $\frac{1}{2}$ of 8.	100
4	South $\frac{1}{2}$ of 10 and 12.	"	"	No. 16.	200
5	No. 1 5.	200	3	East $\frac{1}{2}$ of 4 and 14.	100
6	South $\frac{1}{2}$ of 1 and 19.	100	4	No. 3.	200
7	No. 4 14.	200	"	East $\frac{1}{2}$ of 8 and 23.	100
8	" 1.	"	"	South $\frac{1}{2}$ of 16.	"
9	South $\frac{1}{2}$ of 12 and 18.	100	5	No. 4 14 22.	200
10	No. 19.	200	5	Front $\frac{1}{2}$ 29.	100
"	" 7 13.	"	6	No. 2 6 23.	200
"	South west $\frac{1}{2}$ of 22.	100	"	Rear $\frac{1}{2}$ 29.	100
	Marlborough.		"	East $\frac{1}{2}$ of 16.	100
1	No. 2 4.	200	7	No. 22.	200
2	" 3 27 29.	"	"	East $\frac{1}{2}$ of 14.	100
"	East $\frac{1}{2}$ of 1.	100	8	No. 3.	200
"	South $\frac{1}{2}$ of 12.	"	"	East $\frac{1}{2}$ of 16.	100
3	No. 11 28 30.	200	9	No. 14.	200
4	" 13 16 23 28.	"	"	East half of 22 and 29.	100
4	East $\frac{1}{2}$ of 6.	100	10	No. 3 8 16.	200
5	" 14 22 29.	200	"	East half of 23 and 28.	100
6	" 3 8 16 23 26.	"		Elizabeth Town.	
7	No. 14 22 29.	"	11	No. 4 7 9 10 11 17 18.	110

JC

No. 17
" 22
South
Yonge
No. 5,
" 10
" 20
" 4
" 17
" 11
" 17
" 17
" 20
West $\frac{1}{2}$
East $\frac{1}{2}$
Lot A.
No. 3
" 10
" 17
" 4
West $\frac{1}{2}$
No. 10
" 17
" 11
" 10
" 20
" 11
South $\frac{1}{2}$
South $\frac{1}{2}$
No. 10
East $\frac{1}{2}$ of
" $\frac{1}{2}$ of
No. 22
" 21
East $\frac{1}{2}$ of
No. 9
" 10
No. 16
South $\frac{1}{2}$
North $\frac{1}{2}$

continued.

JOHNSTOWN DISTRICT—continued.

Lots.		Yonge.		Kitley continued.	
Acres.	Con.	Acres.	Con.	Acres.	Con.
10					
23 28.	2	No. 17.	200	No. 16 23	200
8 30.	5	" 22.	"	West 1/2 of 8	100
23 27.	6	South half of 13.	100	South 1/2 of 28	"
Front No. 2.	"	Yonge, formerly Escott.		" 1/2 of 16	"
" " 4.	"	No. 5, Broken Front.	279	" 1/2 of 4	"
" " 30.	3	" 10	239	No. 14	200
Volford.		" 20	77	South 1/2 of 8	100
27	1	" 4	170	No. 8.	200
of 2 and 17.	3	" 17	200	Bastard.	
	4	" 11	190	No. 4	65
	"	" 17	200	" 14 29	117
	6	" 17	150	" 3 8	200
of 9 and 27.	8	" 20 21	200	" 16	156
		Lansdown.		South 1/2 of 23	100
of 23.	2	West 1/2 of A.	100	" 1/2 of 4 14	"
28.	4	East 1/2 of 8	"	No. 16	200
	5	Lot A.	200	South 1/2 of 8	100
lf of 9.	6	No. 3	111	" 1/2 of 4	133
16 23 28.	"	" 10	200	" 1/2 of 8	64
ontague.	8	" 17	140	" 1/2 of 28	43
of 8.	7	" 4	50	No. 28	6
4 and 14.	8	West 1/2 of 11	100	North Crosby.	
8 and 23.	"	No. 10	200	No. 11 21 23	200
of 16.	"	" 17 22	100	" 5	80
22.	9	" 11	160	" 15 20 26	200
23.	"	" 10 15	200	" 11 21	"
9.	10	" 20	30	" 23	150
23.	11	" 11 South	50	" 15 20	200
9.	12	South 1/2 of 3	40	" 4 11 21 23	"
16.	3	Leads.		" 5 15 20 25	"
14.	4	South 1/2 of 9	100	" 4 21 23	"
16.	"	No. 10 22	200	" 5 20 25	"
of 22 and 29.	"	East 1/2 of 3 17	100	" 4 11 21 23	"
6.	5	" 1/2 of 4 14 21	"	" 5 15 20	100
of 23 and 28.	6	No. 22	120	South Crosby.	
eth Town.	7	" 21	200	No. 4.	60
10 11 17 18.	9	East 1/2 of 11	100	" 5	200
	10	No. 9	10	" 4	"
	11	" 10	36	" 23	185
	2	Kitley.		South half of 5	100
	"	No. 16	200	No. 15	200
	3	South 1/2 of 23	100	" 4	"
		North 1/2 of 29	"	" 21	170

JOHNSTOWN DIST.—BATHURST DIST.

South Crosby continued.			BATHURST DISTRICT.		
Con.	LOTS.	Acres.	Township of Nepean, on the Ottawa.		Acres.
6	No. 5 26.	204			
	South half of 15	100	Con.		
	No. 27	56	A.	North ½ of 3	100
7	" 4	200	1	No. 3	200
	" 21	100		<i>On the Rideau.</i>	
	" 23	190	2	No. 4	164
8	" 5	170	"	" 18 24	200
	" 15	56	"	East ¾ of 32	150
9	" 4	90	3	" 3 13 33	200
	" 21	170	"	East ½ of 23	100
	" 11 23	200	4	No. 4 9 14	200
10	" 15	25	"	East ½ of 19	100
	" 20 25	96	5	No. 3	200
	<i>Burgess.</i>		6	" 4	"
1	No 14	60	"	South ½ of 18	100
	" 27	32		<i>Goulburn.</i>	
2	" 3	200	1	No. 14	200
	" 8	170	2	West half of 3	100
	" 23	40	3	East ½ of 14	"
3	" 4	200	4	" half of 8	"
	" 14	120	5	No. 22	200
	" 27	32	"	Part of 27	150
4	" 3	176	6	No. 23	200
	" 8	130	7	" 14 27	"
	" 16 23	200	8	East ½ of 23	100
5	" 4	100	9	No. 14	200
	" 14 22	200	10	" 8 16	"
	" 27	32	11	" 4 14	"
7	" 4	40	12	" 8	166
	" 22	200	"	" 16	155
	" 16	"		<i>March.</i>	
10	" 23	"	1	No. 14 19 22 23 25	200
	<i>Emsley.</i>		2	West half of 4	100
1	No. 29	13	"	" 16 23 25	200
4	" 8	200	"	East half of 3	100
5	West ½ of 4.	100	"	No. 4 22	200
6	No. 3 8	200	"	" 16 23	"
	" 16	42	"	" 14	"
8	" 3 8 23	200	"	" 27	100
	" 23	40	2	West half of 4 27	100
9	" 4	200	3	No. 27	"
10	" 3	"	4	" 27	"
		100	"	" 27	"
			"	" 3	68

Con.	No.
1	No.
"	"
2	"
"	W
3	No
"	Ea
"	No
4	"
5	"
"	W
6	No
7	"
"	"
8	"
9	"
"	"
10	"
11	"
12	"
"	"
"	"
1	No
2	"
3	"
4	"
5	"
6	"
7	"
8	"
1	N
2	"
3	"
4	"
5	V
6	M
7	"
8	E
9	M

BATHURST DISTRICT.

ACT.		Huntly.		Fitzroy continued,		Acre	
n, on		Lots.		Lots.			
Acre.		Con.	Acre.	Con.	Acre.	Con.	Acre.
		1	No. 4 14 22	200	9	No. 4 14	200
		"	" 27	110	10	" 3 8	200
		2	" 3 8 23	200	11	" 4 14 16	200
100		"	West half of 16	100	12	" 3 8 16	165
200		3	No. 22	200	<i>Pakenham.</i>		
	164	"	East 1/2 of 14	100	1	No. 4 14 22	200
	200	"	No. 27	116	2	" 3 8 16 19 23	200
	150	4	" 3 8 23	200	3	" 4 14 22 25	200
	200	5	" 4 14	"	4	" 3 8 23 16	200
	100	"	West half of 22	100	5	" 4 14 22	200
	200	6	No. 3 8 16 23	200	6	" 3 8 16 2	200
	100	7	" 4 14 22	"	7	" 14 19 22	200
	200	"	" 27	128	8	" 8 16 23	200
	"	8	" 3 8 16 23	200	"	West 1/2 of 3	100
	100	9	" 4 14 22	"	9	No. 4 14 22	200
		"	" 27	133	10	" 3 8 16 19 23	200
	200	10	" 3 8 16 23	200	11	" 4 14 22	200
	100	"	" 4 14 22	"	12	" 3 8	162
	"	11	" 3 8	165	<i>Beckwith.</i>		
	"	"	" 16	170	1	No. 22	200
	200	"	" 23	180	2	East 1/2 of 23	100
	150	<i>Torbolton.</i>			5	No. 14 26	200
	200	1	No. 4 11 14 22	200	6	" 16	"
	"	2	" 3 8 16 23	"	7	West 1/2 of 22	100
	100	3	" 4 14 22	"	"	No. 27	125
	200	4	" 3 8	"	9	" 22	200
	"	"	" 23	45	10	West 1/2 of 16	100
	"	5	" 4	200	<i>Drummond.</i>		
	166	"	" 14	63	2	East half of 28	100
	155	6	" 3 8	200	3	No. 4 22	200
		7	" 4	"	"	" 27	"
	200	8	" 3	54	4	East 1/2 of 3	100
	100	<i>Fitzroy.</i>			5	No. 4	200
	200	1	No. 4 22	200	9	East 1/2 of 14	100
	100	2	" 3 8 16 23	"	10	No. 16	170
	200	3	" 4 14 22	"	<i>Bathurst.</i>		
	"	4	" 3 8 16	"	8	No. 3	167
	"	5	" 4 22	"	9	" 4	80
	100	"	West 1/2 of 14	100	10	West 1/2 of 3	100
	100	6	No. 3 8 16 23	200	"	No. 8	66
	"	7	" 14 22	"	11	East 1/2 of 14	165
	"	"	East 1/2 of 4	100	12	No. 8	100
	"	8	No. 3 8 16 23	200			

BATHURST DISTRICT—continued.

North Sherbrooke.			Ramsay continued.		
Con.	Lots.	Acres.	Con.	Lots.	Acres
1	No. 4 14 22	200	8	Front $\frac{1}{2}$ of 3	100
"	" 27	118	9	No. 4 22	200
2	" 3 8 16	200	"	" 27	92
"	" 23	150	10	" 8 23	200
3	" 4 14	200	11	" 14 22	"
4	" 3 8	"	"	" 27	92
5	" 4	162	12	" 3 8 23	200
South Sherbrooke.			East half of 15		
1	No. 4 21	200	Lanark.		
"	East half of 11	100	1	No. 4 14 22	200
2	No. 5	"	"	" 27	100
3	" 21	200	2	" 23	200
4	" 5	"	3	" 14	"
"	" 15	"	"	" 27	100
"	West half of 20	100	"	East half of 22	"
5	No. 4	156	4	No. 8 16 23	200
"	" 11 21	200	"	" 2	170
6	" 10 15	"	"	" 27	100
7	" 11	"	6	" 2	194
8	" 15	"	"	" 3 8 23	200
"	" 20	144	7	" 1	188
9	" 11	200	"	" 3 4 14	200
10	" 10 15	"	"	" 22	142
11	" 11	"	"	" 27	100
"	East half of 21	100	8	" 3	200
12	No. 15 20	200	"	" 8	195
Ramsay.			"	" 16	155
1	" 4 22	200	"	" 23	190
"	" 27	92	9	" 14 22	200
"	East half of 14	100	"	" 27	100
"	West $\frac{1}{2}$ of 3 & East of 8	"	10	" 3 16 23	200
"	No. 23	200	11	" 4 22	"
3	" 4 14 22	"	"	West half of 14	100
"	" 27	92	"	No. 27	"
4	" 8 23	200	12	" 23	165
"	East half of 15	100	"	Rear part of 8	65
"	West half of 3	"	Dalhousie.		
5	No. 4 14 22	200	1	No. 4 14 22	200
"	" 27	92	"	" 27	100
6	" 3 8 15	200	2	" 3 8 16 23	200
7	" 4	"	3	" 4 14 22	"
"	West half of 14	100	"	" 27	92
"	No. 27	92	4	" 3 8 16 23	200

BATHURST DISTRICT—MIDLAND DISTRICT.

continued.
 Acres
 100
 200
 92
 200
 92
 200
 100
 200
 100
 200
 100
 200
 100
 200
 170
 100
 194
 200
 188
 200
 142
 100
 200
 195
 155
 190
 200
 100
 200
 100
 200
 165
 65
 200
 100
 200
 95
 200

Dalhousie continued.			Lavant continued.		
Con.	LOTS.	Acres	Con.	LOTS.	Acres
5	No. 2 14 22	200	6	No. 3 8 12 16 23	200
"	" 27	80	7	" 4 14 22	200
6	" 8 16 23	200	8	" 3 8 16	200
"	South West half of 9	100	"	" 23	180
7	No. 4 14 22	200	9	" 4 14	200
"	" 27	70	"	" 22	196
8	" 3 16 23	200	10	" 25	96
9	" 4 14 22	100	11	" 3 8 12 16	200
"	" 27	200	12	West 1/2 of 14	96
10	" 3 16 23	60	12	No. 3	200
"	North 1/2 of 8	100	13	" 8	114
11	No. 4 14 22	200	13	" 3	96
"	" 27	50			
12	" 3 8 16 23	165			
	Darling.			MIDLAND DISTRICT.	
1	No. 4 14 19 22	200	4	Township of Pittsbrgh	
2	" 3 8 16 23	"	5	No. 13 21 23 29	200
3	" 4 19 22	"	"	" 23 25 27 29 31 33	200
"	" 14	185	6	35	
4	" 3 16 23	200	6	" 2 5 26 30 34 38	200
"	" 8	160	7	" 5 10 11 29 37	200
5	" 4 14 19 22	200	8	" 1 2 11 12 15 16 17	200
6	" 3 8 16 23	"	"	" 23	144
7	" 4 22	"	"	North 1/2 of 4	100
"	" 14	195	"	South 1/2 of 6	100
8	" 3 8 16 19	200	9	No. 4 30 31 32 33 34 36	200
"	" 23	117	"	" 18	124
9	" 4	185	10	" 27	164
"	" 14	200	"	" 15	200
"	" 22	100	"	" 22	147
10	" 3 8 16	200	"	" 24	162
"	" 23	80	"	" 27	153
11	" 4	200	"	" 29	148
12	" 3 8 16 23,	162	11	" 5 21 28 34	200
"	" 19,	157	"	" 11	109
	Lavant.		12	" 3 9	200
1	No. 4 14 22	200	"	" 16	140
2	" 3 8 16	"	"	" 24	154
"	" 23	172	"	" 30	93
3	" 4 14 22	200	13	" 5 11 21 28	200
4	" 3 8 16	"	14	" 3 9	200
"	" 23	170	"	" 16	125
5	" 4 14 22	200	15	" 5	47
			"	" 11 21	100

MIDLAND DISTRICT.

Loughborough.			Palmerston continued.		
Con.	LOTS.	Acres	Con.	LOTS.	Acres
1	No. 23	200	5	No. 4 11 21 28	200
3	" 23	135	6	" 3 9 16 24 30	"
4	" 15	200	7	" 4 11 21 28	"
5	" 2	"	8	" 3 16 24	"
"	" 21	160	"	" 9	170
6	" 15 24	200	"	" 30	200
7	" 11 21 23	"	9	" 4 11 21 28	"
8	" 5 24	200	10	" 3 16 24 30	"
"	South $\frac{1}{2}$ of 15	100	"	" 9	180
9	No. 4 11 21 23	200	11	No. 4 11 21 28	105
10	" 5 15 24	"	Camden East.		
11	" 4 11 21 23	"	2	East $\frac{1}{2}$ of 4	100
12	" 5 15 24	"	"	No. 30 37 46	200
13	" 4 11 21 23	"	"	" 33 35	150
14	" 5 15 24	"	3	" 7 27 50	200
Portland.			4	East half of 33	100
2	No. 6	200	5	No. 2 8 25 31 37	200
"	" 15	117	"	" 1 6 10 14 19 21 26	"
"	" 4	200	"	27	200
4	" 6	"	"	" 32	40
"	" 17	120	"	34	130
5	" 18	135	"	" 1 2 8 9 13 15 20 45	"
6	" 6 11 17	200	"	51	200
7	" 19	"	7	" 1 6 7 14 19 21 26	"
8	" 6 11	"	"	32 47	200
"	" 17	164	8	" 2 5 9 11 13 21 23	"
9	" 7	140	"	27 29 33 35 38 45 51	200
"	" 19	200	9	" 2 3 5 7 9 11 13 15	"
10	" 6 11 17	"	"	21 23 25 27 29 31 33	"
"	" 24	13	"	35 37 41 47	200
11	" 7 19	200	Richmond.		
12	" 6 11 17 24	"	5	No. 1 3 8 10	200
13	" 7	95	6	" 3 15	"
"	" 19 25	200	7	" 2 8 14 23	"
14	" 6 11 17 24	"	"	" 24	190
Palmerston.			8	" 4 5 8 10 11 14 16	200
1	No. 4	160	9	" 3	100
"	" 11 28	200	"	" 5 7 9 11 14 15 16	"
2	" 3 9 16 24	"	10	" 17 20	200
"	" 30	150	"	" 1	150
3	" 4 21 28	200	"	" 8 13 17	200
"	" 11	190	11	" 3 9	"
4	" 3 9 16 24 30	200			

MIDLAND DISTRICT.

continued.

	Acres
28	200
4 30	"
28	"
	170
	200
28	"
30	"
	180
28	105
<i>East.</i>	
	100
	200
	150
	200
3	100
37	200
19 21 26	
	200
	40
	130
15 20 45	
	200
19 21 26	
	200
13 21 23	
38 45 51	200
1 13 15	
29 31 33	
	200
<i>d.</i>	
	200
	"
	190
14 16	200
	100
15 16	
	200
	150
	200
	"

Sheffield.		Tyendinga continued.	
Con.	LOTS.	Acres	Con.
1	No. 5 11 21 28	200	4
2	" 3 9 16 24 30	"	"
3	No. 5	"	"
"	" 11 21 28	"	"
4	" 3 16	"	4
"	" 24	"	5
"	" 30	130	8
5	No. 5 21 28	200	9
"	" 11	110	"
6	" 3 16 24	200	6
7	" 5 21 28	"	7
"	" 11	184	"
8	" 3 16 24	200	"
9	" 5 11 21	"	8
"	" 28	30	"
10	" 3 16 24	200	9
11	" 5 11 21	"	"
12	" 3 16 24	"	1
13	" 5 11	"	175
"	" 21	209	2
14	" 3 16 24	"	3
15	" 5 11 (21 supposed a Clergy.)	"	4
16	" 16	50	5
"	" 24	55	6
	<i>Kaladar.</i>		7
1	No. 5 11 21 28	200	"
2	" 3 9 16 24 30	"	"
3	" 5 11 21 28	"	8
4	" 3 9 16 24 30	"	"
5	" 5 11 21 28	"	9
6	" 3 9 16 24 30	"	"
7	" 5 11 28	"	10
"	" 21	180	"
8	" 3 9 16 24 30	200	11
9	" 5 11 21 28	"	12
10	" 3 9 16 24 30	"	13
11	" 5 11 18 21 28	142	"
	<i>Tyendinga.</i>		14
1	No. 35	200	"
2	" 5 15 20 29	"	"
"	North $\frac{1}{2}$ of 39	100	"
3	No. 4 11 21 23 28 35	200	"

Acres
100
100
100
200
"
"
200
"
200
200
200
200
200
200
114
200
"
"
"
"
"
200
67
200
180
200
180
200
180
200
188
200
"
"
31
191
185
176
180
171

MIDLAND DISTRICT.

Huntingdon.			Marmora continued.		
Con	LOTS.	Acres.	Con.	LOTS.	Acres
1	No. 16	200	6	" 3 16 24 30	200
2	" 15	200	7	" 5 11 19 21 28	200
3	" 20	100	8	" 3 16 24 30	200
4	South 1/2 of 5 & E 1/2 15	100	9	" 5 11 19 21 28	200
5	No. 4 11 19	200	10	" 3 16 24 30	200
6	" 3 10 17	200	11	" 5 11 13 19 21 28	135
7	" 2 9 16	200	<i>Madoc</i>		
8	" 5 15	200	1	No. 5 11 28	200
9	" 20	100	2	" 3 9 16 24 30,	200
10	" 4 11 19	200	3	" 5 11 21 28	200
11	" 3 10 17	200	4	West 1/2 of 4	100
12	" 2 9 16	200	5	West 1/2 of 3	100
13	" 5 15	200	6	No. 9 16 24 30	200
14	" 20	200	7	" 5 11 21 28	200
15	" 4 11 19	200	8	" 3 9 24 30	200
16	" 3 10 17	200	9	" 16	158
17	" 2 9 16	200	10	" 5 11 21 28	200
18	" 5 15	200	11	" 3 9 16 24 30	200
19	" 20	80	12	" 5 11 21 28	200
<i>Rawdon.</i>			13	" 3 9 16 24 30	200
1	No. 4	200	14	" 5 11 21 28	135
2	" 5 20	200	<i>Elzevir.</i>		
3	" 4 11	200	1	No. 5 11 21 28	200
4	" 5 15 20	200	2	" 3 9 16 24 30	200
5	" 4 11 21	200	3	" 5 11 21 28	200
6	" 5 8 15 20	200	4	" 3 9 16 24 30	200
7	" 2 11 21 23	200	5	" 5 11 21 28	200
8	" 5 15 20	200	6	" 3 9 16 24 30	200
9	" 4 11 21 23	200	7	" 5 11 21 28	200
10	" 5 15 20	200	8	" 3 9 16 24 30	200
11	" 4 11 21 23	200	9	" 5 11 18 21 28	200
12	" 5 15 20	200	10	" 3 9 16 24 30	200
13	" 4 11 21 23	200	11	" 5 11 21 23 26 28	124
14	" 5 15 20	200	<i>Lake.</i>		
<i>Marmora.</i>			1	No. 5 11 19 28	200
1	No. 5 19 21 28	200	2	" 21	160
2	" 11	140	3	" 3 16 24 30	200
3	" 3 16 24 30	200	4	" 5 11 28	200
4	" 11	160	5	" 19	80
5	" 19 21 28	200	6	" 21	175
6	" 16 24	200	7	" 3 16 24 30	200
7	" 30	130	8	" 5 11 19 21 28	200
8	" 19 21 28	200	9	" 3 24 30	200

NEWCASTLE DISTRICT.

continued.	
30	200
21 28	200
30	200
21 28	200
30	200
19 21 28	135
oc	
	200
4 30,	200
28	200
	100
	100
30	200
28	200
	200
	158
8	200
30	200
3	200
30	200
3	135
r.	
8	200
30	200
	200
30	200
0.	200
28	200
0	200
26 28	124
	200
	160
	200
	200
	200
	80
	175
	200
8	200
	200

Lots continued.		Cramahé continued.		
Con.	Lots.	Acres	Con.	
6	" 16	192	3	
7	" 5 11 19 21	200	" North 1/2 of 5	
8	" 28	80	" East half of 11	
8	" 3 16	200	4 No. 16 30	
"	" 24	170	5 " 21 28	
"	" 30	110	" East half of 11	
9	" 5 11 19 21	200	6 No. 3 24 30	
"	" 28	100	7 " 21 28	
10	" 3 16 24	200	" North 1/2 of 34	
"	" 30	50	8 " 16 24 30	
11	" 5 11 19 21	135	9 " 5 21 28 34	
"	" 28	100	10 " 3 9 16 24 30	
Hallowell				
5	No. 5	100	3 No. 5	
"	" 7 8	140	4 " 3 16	
"	" 9	145	5 " 5 11 21 34	
"	" 10	150	6 " 3 9 16 24 30	
"	" 11 14	170	7 " 5 11 21 28 34	
"	" 12 13	180	8 " 3 9 16 24 30	
"	" 15 16	160	9 " 5 11 21 38 34	
"	" 17	100	10 " 3 16 24 30	
"	" 18	10	Hamilton.	
NEWCASTLE DISTRICT				
Murray.				
2	No. 24 30	200	4 No. 9	
3	" 20 21	"	5 " 5 11 21 28	
4	" 24 30	"	6 " 3 9 24 30	
5	" 5	"	" North 1/2 of 16	
6	" 24	"	7 " 5 11 21	
7	West 1/2 of 3	100	8 " 3 9	
8	" 5 21 28	200	9 " 34	
9	South 1/2 of 3	100	10 " 30	
10	No. 24 30	200	Seymour.	
11	South 1/2 of 5	100	1 No. 4 11 23	
12	East 1/2 of 11	100	" " 21	
13	No. 21 28 34	200	2 " 15 20	
14	" 9 16 24 30	100	3 " 4 11 21 23	
15	" 32	90	4 " 5 15 20	
16	" 35	55	5 " 4 11 21 23	
17	" 36	30	6 " 5 15 20	
Cramahé.				
18	North 1/2 of 16	100	7 " 4 21 23	
			8 " 5 20	
			9 " 15	
			10 " 4 11 21 23	
			11 " 5 20	
			12 " 15	

D

NEWCASTLE DISTRICT—Continued.

Seymour Continued			Otanabee continued.			Acres
Con.	LOTS.	Acres.	Con.	LOTS.	Acres	Acres
11	No. 4 11 23	200	7	No. 21 28	200	200
"	" 21	180	"	" 11	95	95
12	" 5 20	200	8	" 9 24 30	200	200
13	" 4 21 23	200	"	West $\frac{1}{2}$ of 16	100	100
"	" 11	120	9	No. 21 28	200	200
14	" 5	186	"	East $\frac{1}{2}$ of 11	100	100
"	" 15 20	200	10	No. 9 24 30	200	200
15	" 4	30	"	West $\frac{1}{2}$ of 16	100	100
"	" 11 21 23	38	11	West half of 28	100	100
	<i>Percy.</i>		12	No. 9	57	57
1	No. 4 11 23	200	"	" 16 24	200	200
2	" 5	200	13	" 21	200	200
3	" 4 11	200	14	" 16	200	200
4	" 5	200	15	" 21	200	200
5	" 4 11 21 23	200	16	" 16	200	200
6	" 5 15	200	17	" 11	186	186
7	" 4 11 23	200		<i>Monaghan.</i>		
8	" 5 15 20	200		No. 15	200	200
9	" 4 11 23	200	3	" 14	200	200
10	" 5 15 20	200	5	" 14	40	40
11	" 4	163	6	" 4	200	200
"	" 11	193	7	" 5	192	192
"	" 21 23	200	8	" 4	200	200
12	" 15	128	9	" 5	200	200
"	" 20	200	13	" 5	200	200
13	" 21 23	200		<i>Asphodel.</i>		
	<i>Athwick.</i>		1	No. 5 19	200	200
1	No. 4 11 21 23	200	2	" 3 16	200	200
2	" 15 20	200	3	" 5 11 19	200	200
"	" 5	117	4	" 16	200	200
3	" 11 21 23	200	5	" 5 11 19	200	200
4	" 15 20	200	6	" 9 16	200	200
5	" 21 23	200	7	" 5 11 19	200	200
6	" 15	60	8	" 9 16	200	200
"	" 20	200	9	" 5	30	30
7	" 21	36	10	" 11	200	200
	<i>Otanabee.</i>		10	" 9 16 19	200	200
1	No. 21 28	200	11	" 11	200	200
2	" 16 24 30	200	12	" 9	20	20
3	" 28	200	"	" 16	160	160
4	" 16 24 30	200		<i>Belmont.</i>		
5	" 21 28	200	1	No. 3 16 24	200	200
6	" 9 24 30	200	"	" 30	190	190

NEWCASTLE DISTRICT.—continued.

d.
ed.

Acre
200
95
200
100
200
100
200
100
100
100
57
200
200
200
200
200
200
186

200
200
40
200
192
200
200
200
200
30
200
200
20
160

200
190

Belmont continued.

Con.	LGTS.	Aeres.
2	No. 5 11 19 21	200
"	" 28	30
3	" 3 30	200
"	" 16	33
"	" 24	142
4	" 5 11	200
"	" 19	80
"	" 21	98
"	" 28	186
5	" 3 24 30	200
"	" 16	20
6	" 5 19 22 28	290
"	" 11	189
7	" 3 24 30	200
"	" 16	124
8	" 5 11 21 28	200
"	" 19	175
9	" 3 16 24 30	200
10	" 5 11 19 21 28	200
11	" 3 16 24 30	200
12	" 5 11 19 21 28	60

Dummer.

1	No. 5 11 21	200
"	" 28	196
2	" 3 9 16 24	200
3	" 5 11 21 28	200
4	" 3 9 16 24	200
"	" 30	109
5	" 5 11 21 28	200
6	" 3 9 16 30	200
"	" 24	180
"	" 32	135
7	" 5 11 21 28	200
8	" 3 9 16 24 30	200
9	" 5 21 28	200
"	" 11	160
10	" 3 9 16 24 30	200
11	" 5 11 21 28	200
12	" 3 9 16	165
"	" 24	158
"	" 30	161

Douro.

1	No. 5 11 21	200
---	-------------	-----

Douro continued.

Con.	LGTS.	Aeres.
1	No. 28	66
2	" 3 9 16 24	200
3	" 5 11 21	"
4	" 3 9 16 24	"
5	" 5 11 21	"
6	" 3 9 16	"
7	" 5 11	"
"	" 21	90
8	" 3 9	200
"	" 16	60
9	" 5	200
"	" 10	135
"	" 11	22
10	" 13	200
"	" 9	42

Smith.

1	No. 4	200
2	" 5	"
3	" 4	"
"	" 21	66
4	" 5 15	200
6	North 1/2 of 30	100
"	No. 15 20	200
"	" 27	194
7	" 21	200
8	" 20 27	"
9	" 21 24	173
"	" 28	200
10	" 20 27	"
11	" 21 28	57
12	" 27 34	200
"	" 20	"
13	" 28 38	198
14	" 27	200
"	" 34	126
"	No. 44	40
15	" 20	142
"	" 21	200
"	" 28 38	25
16	" 22	200
"	" 27	39
"	" 34	180
"	" 44	"

NEWCASTLE DISTRICT.—continued.

Smith continued.		Methuen continued.		Acres
Con.	LOTS.	Con.	LOTS.	
17	No. 24	62	" 16	200
"	" 28	200	" 24	40
"	" 38	30	" 30	190
18	" 27	60	12 " 5 11 19 21	64
	<i>Emily Gore.</i>		" 28	48
1	No. 4	175		
2	" 5	164	1 No. 5	190
3	" 4	200	" " 11 21	200
"	" 9	120	" " 28	120
4	" 5	200	2 " 3 9 16 24 30	200
5	" 4	200	3 " 5 21	"
"	North $\frac{1}{2}$ of 11	100	" " 11	17
6	No. 5	200	" " 28	195
"	" 15	65	4 " 3 9 16 24 30	200
7	" 4 11	200	5 " 5 21 28	"
8	" 5	200	" " 11	196
"	" 15	133	6 " 3 9 16 24 30	200
"	" 10	195	7 " 5 11 21 28	"
9	" 4	200	8 " 3	38
10	" 5	200	" 9 16 30	200
	<i>Methuen.</i>		" 24	189
1	No. 3 16 24 30	200	9 " 5 11 21 28	200
2	" 5 11 19 21 28	200	10 " 3	"
3	" 3 16 30	200	" 9 16 24 30	"
"	" 24	178	11 " 5 11 21 28	"
4	" 5 19 21 28	200	12 " 3 9 30	166
"	" 11	20	" 16	160
5	" 3 24 30	200	" 24	153
"	" 16	140		
6	" 5	59	1 No. 9 16 24	200
"	" 11 19 21 28	200	" 30	189
7	" 3	100	2 " 11 21 28	200
"	" 16	190	3 " 9 16	"
"	" 24 30	200	" 24	180
8	" 11	198	" 30	192
"	" 5 19 21	200	4 " 11 21 28	200
"	" 28	91	5 " 9	155
9	" 3	150	" 16 24 30	200
"	" 16	200	6 " 11 21 28	"
"	" 24	7	7 " 9	50
"	" 30	102	" 16 24 30	200
10	" 5 11 19 21 28	200	8 " 11 21 28	"
11	" 3	160	9 No. 9 16 24 30	"

Con.	Acres
10	
"	
11	
"	
12	
"	
13	
"	
14	
"	
15	
16	
"	
17	
"	
18	
"	
19	
"	
5 No.	
6	
7	
8	
9	
10	
1 No.	
2	
" Sou.	
3 No.	
4	
" Sou.	
6 Nor.	
7 No.	
" Nor.	
8	
9 No.	
" Nor.	
10 Sou.	
12 Wes.	
" Nor.	
13 No.	
14	

NEWCASTLE DISTRICT.—continued.

ed.

Acres
200
40
190
64
48
190
200
120
200
"
17
195
200
"
196
200
"
"
38
200
189
200
"
"
"
186
180
153
200
189
200
"
180
192
200
155
200
"
50
200
"
27

Harvey continued.			Cavan Continued.		
Con.	LOTS.	Acres.	Con.	LOTS.	Acres.
10	" 11 21 28	200	14	East ½ 15	100
"	" 5	25		Clarke.	
11	" 3	125	3	No. 5 21	200
"	" 9 16 24 30	200	4	" 16 30	200
12	" 5 21 28	105	5	" 5 11 21 28 34	200
"	" 11	200	6	" 9 16 24 30	200
13	" 3 9 24 30	200	7	" 3 5 11 21 28 34	200
"	" 16	185	8	" 3 9 16 24 30	200
14	" 5 11 21 28	200	9	" 5 11 21 28	200
15	" 3 9 24 30	"	10	" 9 16 24 30	100
16	" 5 21 28	175		Manvers.	
"	" 11	200	1	No. 4 11 21 23	200
17	" 3 24 30 32	65	2	" 5 15 20	200
"	" 9	200	3	" 4 11 21 23	200
18	" 21 28	200	4	" 5 15 20	200
19	" 3	63	5	" 4 11 21 23	200
"	" 9	130	6	" 5 15 20 25	200
"	" 16 24 30	156	7	" 4 11 21 23	200
	Hope.		8	" 5 15 20	200
5	No. 21 34	200	9	" 4 11 21 23	200
6	" 3 24 80	"	10	" 5 15 20	200
7	" 28 34	"	11	" 4 11 21 23	208
8	" 3 9 16 24 30	"	12	" 5 15 20	200
9	" 5 11 21 28 34	"	13	" 4 11 21 23	200
10	" 3 9 16 24 30	100	14	" 5 15 20	200
	Cavan.			Emily.	
1	No. 4 11	200	1	No. 4 11 21	200
2	" 4 5	"	2	" 5 20	200
"	" South ½ of 15	100	"	North ½ of 15	100
3	No. 4	200	3	No. 4 11	200
4	" 5	"	"	North ½ of 21	100
"	" South ½ of 11	100	4	No. 15 20 22	200
6	North ½ of 5	"	"	North ½ of 5	100
7	No. 4 21	200	5	No. 4 21	200
"	North ½ of 11	100	"	North ½ of 11	100
8	" ½ of 15	"	6	No. 5 15 20 22	200
9	No. 11 19 21	200	7	" 4 11 21	"
"	North ½ of 4	100	8	" 5 15 20	"
10	South ½ of 5	"	9	" 4 11 21	"
12	West ½ of 5	"	10	" 15 20	"
"	North ½ of 15	"	"	North ½ of 5	100
13	No. 4 21	200	11	No. 4 11 21	200
14	" 5 20	200	12	" 5 15 20	200

NEWCASTLE DIST.—HOME DISTRICT.

<i>Emily continued.</i>			<i>Darlington.</i>		
Con.	LOTS.	Acres.	Con.	LOTS.	Acres.
13	" 4 11 21	200	2	North $\frac{1}{2}$ of 24	100
14	" 5 15 20	200	3	No. 5 21 28 34	200
<i>Mariposa.</i>			4	" 3 9 16 24	200
1	No. 4 11 21 23	200	5	" 5 11 21 28	200
2	" 5 15 20	200	"	East $\frac{1}{2}$ of 34	200
3	" 4 11 21 23	200	6	" 3 9 16 24 30	200
4	" 5 15 20	200	7	" 5 11 21 28 34	200
5	" 4 11 21 23	200	8	" 3 9 16 24 30	200
6	" 5 15 20	200	9	" 5 11 21 28 34	200
7	" 4 11 21 23	200	10	" 3 9 16 24 30	100
8	" 5 15 20	200	HOME DISTRICT.		
9	" 4 11 21 23	200	<i>Whitby.</i>		
10	" 5 15 20	200	3	No. 34	200
11	" 4 11 21 23	200	4	" 9 16 30	200
12	" 5 15 20	200	"	North $\frac{1}{2}$ of 3	100
13	" 4 11 21 23	200	5	" 5 11 21 28 34	200
14	" 5 15 20	200	6	" 3 9 16 24 30	200
15	" 4 11 21 23	200	7	" 5 11 21 28 34	200
<i>Cartwright.</i>			8	" 3 9 16 24 30	200
1	No. 4 11 21 23	200	9	" 5 11 21 28 34	200
2	" 5 15 20	200	<i>Reach.</i>		
3	" 4 11 21 23	200	1	No. 4 11 21 23	200
4	" 5 15 20	200	2	" 5 15 20	200
5	" 4 11 21 23	200	3	" 4 11 21 23	200
6	" 5 15 20	200	4	" 5 15 20	200
7	" 4 11 21 23	200	5	" 4 11 21 23	200
8	" 5	195	6	" 5 15 20	200
"	" 15 20	200	7	" 4 11 21 23	200
9	" 4 21 23	200	8	" 5 15 20	200
10	" 5	200	9	" 4 11 21 23	200
"	" 20	145	10	" 5 15 20	200
11	" 4	192	11	" 4 11 21 23	200
"	" 21	80	12	" 5 15 20	200
"	" 23	200	13	" 4 11 21 23	200
12	" 5	120	14	" 5 15 20	200
"	" 15	130	<i>Brock.</i>		
"	" 20	110	1	No. 4 11 21 23	200
"	" 21	190	2	" 5 15 20	200
"	" 23	200	3	" 11 21 23	200
"	" 5	150	4	" 5 15 20	200
"	" 15	170	5	" 4 11 21 23	200
"	" 20	200	6	" 5 15 20	200

DISTRICT.

Acres.	LOTS.
100	of 24
200	28 34
200	6 24
200	21 28
200	34
200	6 24 30
200	21 28 34
200	6 24 30
200	21 28 34
100	6 24 30

Acres.	LOTS.
200	
200	
100	
200	1 28 34
200	24 30
200	1 28 34
200	24 30
200	1 28 34
200	each.
200	21 23
200	0
200	1 23
200	0
200	1 23
200	0
200	1 23
200	0
200	23
200	0
200	23
200	0
200	ock.
200	1 23
200	0
200	3
200	0
200	23
200	0

HOME DISTRICT.—continued.

Brook, continued.		Whitchurch continued	
Con.	LOTS.	Con.	LOTS.
7	No. 4 21 23	9	" 11
8	" 5 20	"	" 28
9	" 4 11 21 23	"	" 34
10	" 5 15 20	Pickering.	
11	" 4 11 21 23		
12	" 5 15 20		
13	" 4 11 21 28	1	" 34
14	" 5 15 20	2	" 30
Georgina.		3	" 21 28 34
		4	North 1/2 of 5
1	" 4 11 21 23	4	South 1/2 of 30
2	" 5 15 20	5	North 1/2 of 9
3	" 4 11 21 23	6	No. 11 34
4	" 5 15 20	7	South 1/2 of 5
5	" 4 11 21	8	" 3 9 30
6	" 15 19	9	No. 5 11 21 28
7	" 4 21 23	10	" 3 9 16 24 30
8	" 15	11	" 5 11 28
Scott.		Scarborough.	
		2	No. 9
		3	" 5
1	No. 5 11 21 28 34	4	South 1/2 of 21
2	" 3 9 16 24 30	5	" 3 9
3	" 5 11 21 28 34	6	North 1/2 of 30
4	" 3 9 16 24 30	7	" 34
5	" 5 11 21 28 34	Markham.	
6	" 3 9 16 24 30	11	" 11
7	" 21 28 34	Gwillimbury East.	
8	" 3 9 16 24 30	2	No. 27 33
Uxbridge.		3	" 34
		4	" 33
		5	" 5 19 21 28 35
1	No. 9 16 24 30 36	6	" 6 12 14 18 20 27 33
2	" 11 21 28 34	7	" 5 11 21 28 34
3	" 3 9 16 24 36	8	" 6 12 20 27 33
4	" 5 11 21 28 34	9	" 5
5	" 3 9 16 24 36	Gwillimbury North.	
6	" 5 11 21 28	2	No. 5
7	" 3 9 16 24 30 36	3	" 11
8	" 5 11 21 28 34	4	" 6 20
Whitchurch.		5	" 5 21
		6	No. 6 12 20
4	No. 12	7	" 5 11 21
5	" 15	8	" 6
6	" 6 12 20 27 33	9	" 12
7	" 16 17 18 19 20		
	21 28 34		
8	" 12 20 27 33		

HOME DISTRICT.—continued.

Guilimbury North cont.			Chinguacousy, East of Hurontario Street.		
Co.	LOTS	Acres.	Co.	LOTS	Acres.
	No. 5 Lake Con.	210	1	No. 22 28 32	200
	" 11	256	"	West 1/2 of 18	100
	" 19	230	2	West 1/2 of 26	100
	King.		3	No. 20	200
2	No. 12	200	4	West 1/2 of 6	100
3	" 2 15 31	200	"	No. 22 28	200
"	Vest 1/2 of 25	100	4	" 15 26 34	200
4	" 6 12 20	200	5	" 22 28 32	200
5	" 15	"	6	West 1/2 of 20	100
6	" 12 20 27 33	"	"	West 1/2 of 26	"
7	" 2 8 15 16 17 18 19 20 31	200	1	West of Hurontario St.	
8	" 12 20	"	"	No. 20 26 34	200
9	" 2 8 15 25	"	"	West 1/2 of 15	100
10	" 6 12 20	"	2	No. 22 28	200
"	West 1/2 of 27	100	3	" 20 26	"
11	" 8 15 18 25 31	200	4	" 6 13 22 28	"
"	" 2	148	"	S. W. 1/2 of 32	100
12	" 33	200	5	" 15 20 26 34	200
"	" 12	40	6	" 22 28	"
"	" 20	116	Caledon, E. Hurontario Street.		
"	" 27	184	1	No. 5 28	200
13	" 31	24	"	East half of 11	100
	Vaughan.		"	East half of 21	100
2	No. 33	200	2	No. 3 24	200
3	" 25 31	200	"	East half of 16	100
4	East half of 33	100	"	No. 30	6
5	East 1/2 of 25	100	3	" 5	200
6	No. 27	200	"	" 11 21	"
8	" 20 27 33	200	"	" 28	50
9	" 25 31	200	4	" 3 16 24	200
"	West half of 15	100	"	North 1/2 of 9	100
10	" 12	30	5	No. 5 11 21	200
"	" 20	80	6	" 3 16	200
"	" 27 33	150	"	" 24	50
11	" 31	200	West of Hurontario St.		
	Toronto, East of Centre Road.	52	1	No. 5 11 28	200
2	No. 6		"	West 1/2 of 21	100
	Etobicoke,	200	2	No. 9 24 30	200
A	No. 13	100	3	" 11 28 21	200
			"	West 1/2 of 21	100
			4	No. 3 9 16 30	200

Con. 4
5
6
1
2
3
4
5
6
7
8
9
10
1
2
3
4
5
6
7
8
9
10
11
1 No
2
3
4
5
6
7
8
9
10
11

HOME DISTRICT.—continued.

Con.	Acres.
2	200
3	100
4	100
5	200
6	100
7	200
8	200
9	100
10	200
11	200
12	100
13	200
14	100
15	200
16	100
17	200
18	100
19	200
20	100
21	200
22	100
23	200
24	100
25	200
26	100
27	200
28	100
29	200
30	100
31	200
32	100
33	200
34	100
35	200
36	100
37	200
38	100
39	200
40	100
41	200
42	100
43	200
44	100
45	200
46	100
47	200
48	100
49	200
50	100
51	200
52	100
53	200
54	100
55	200
56	100
57	200
58	100
59	200
60	100
61	200
62	100
63	200
64	100
65	200
66	100
67	200
68	100
69	200
70	100
71	200
72	100
73	200
74	100
75	200
76	100
77	200
78	100
79	200
80	100
81	200
82	100
83	200
84	100
85	200
86	100
87	200
88	100
89	200
90	100
91	200
92	100
93	200
94	100
95	200
96	100
97	200
98	100
99	200
100	100

West of Hurontario St. continued.		Mara continued.		
Con.	Acres.	Con.	Acres.	
LOTS.				
4	s. W. half of 24	6	No. 9 16	200
5	No. 11 21 28	7	" 5 11 18 21	200
6	West half of 5	8	" 3 24	185
7	No. 7 16 24 30	9	" 9 16 24	200
	Albion.	10	" 5 11 21	"
1	No. 5 28 34	11	" 28	24
2	" 3 9 16 30 36	12	" 3 9 16 24	200
3	" 5 21 28 34	13	" 5 11 21 28	"
4	" 3 16 30	"	" 3 9 16 24	"
5	East half of 9	"	" 5 11 21	"
6	No. 11 21 28	14	" 28	153
7	" 34	15	" 11	180
8	" 3 9 24 30	16	" 3	196
9	" 5	17	" 9	92
10	" 21 28			
11	" 9	Orillia.		
12	" 30	Northern Division.		
13	" 14 24	1	" 5 11 21	200
14	" 21	2	" 3 9 16	"
15	" 28	3	" 24	80
16	" 24	4	" 5 11 21	200
17		5	" 3 9 16	"
18		6	" 24	80
19		7	" 5 11 21	200
20		8	" 3 9 16 22	"
	Thorah.	9	" 24	80
1	No. 4 11 16	10	" 5 11 21	200
2	" 15	11	" 3 9 16	"
3	" 20	12	" 24	80
4	" 4 11 16 17	13	" 5 11 21	200
5	" 18	14	" 3 9 16 22	"
6	" 5 15	15	" 24	80
7	" 4	16	" 5 11 21	200
8	" 5	17	" 9 16 22	"
9	" 4 11	18	" 24	50
10	" 5	19	" 11 21	200
11	" 4	20	" 5	20
	Mara.	21	" 9 16	200
1	No. 5 11	22	" 24	80
2	" 3 9	23	" 11	200
3	" 5 11	24	" 21	90
4	" 3 9	25	" 9	125
5	" 5 11	26	" 24	60
6	" 3 16 30	27	" 11	200
	17	28	" 9	190
		29	" 11	195

147
124

HOME DISTRICT.—*continued.*

<i>Orillia, S. Division.</i>			<i>Medonte continued.</i>		
<i>Con.</i>	<i>LOTS.</i>	<i>Aeres.</i>	<i>Con.</i>	<i>LOTS.</i>	<i>Aeres.</i>
1	No. 5	170	13	No. 4 11 21 23	209
"	" 11	200	14	" 5 15 20	200
"	" 21	90		<i>Oro.</i>	
2	" 3 9 16	20	2	No. 16 25 33 39 A.	100
3	" 5 11	200	"	" 27	200
4	" 3 9	200	3	" 4 11 21 23	200
5	" 5 11	200	4	" 5 15 20 27	200
6	" 3	190	5	" 4 11 21 23	200
7	" 11	80	6	" 5 15 20	200
	<i>Tay.</i>		7	" 4 11 13 21 23	200
2	No. 82 89 94 103	100	8	" 5 8 11 12 13 15 20	200
"	" 112	54	9	" 27	100
3	" 5 11 28	200	"	" 4 11 12 21 23	200
"	" 19	87	10	" 5 15 20	200
"	" 21	42	11	" 4 11 21 23	200
4	" 3 79 16	200	12	" 5 15 20	200
5	" 5 11	200	13	" 23	32
6	" 3 7 9	200	"	" 11 21	200
"	" 16	12	"	" 4	108
7	" 5 11	200	14	" 5 15 20	200
8	" 3 7	200		<i>Tiny.</i>	
"	" 9	185	1	No. 11	200
9	" 5	200	"	" 21	122
10	" 3 7 9	200	"	" 28	97
11	" 5	200	2	" 9 16 24	200
"	" 11	60	3	" 11 21	200
12	" 3	192	"	" 28	11
"	" 16	141	4	" 9 16	200
13	" 7	195	"	" 24	159
"	" 11 13	200	5	" 11	200
14	" 3 9 16	200	"	" 21	185
	<i>Medonte.</i>		6	" 9 15 15 17 18	200
3	No. 4 11 21 23	200	7	" 11	200
4	" 5 15 20	200	8	" 9 16	200
5	" 4 11 21 23	200	9	" 11	200
6	" 5 15 20	200	10	" 9	165
7	" 4 11 21 23	200	"	" 16	200
8	" 5 13 15 20	200	11	" 11	200
9	" 4 11 12 13 14 21 23	200	12	" 9 16	200
10	" 5 13 15 20	200	13	" 11	200
11	" 4 11 21 23	200	"	" 21	29
12	" 5 15 20	200	14	" 9 16	200
			15	" 5	195

HOME DISTRICT.—continued.

e continued.		Tiny continued.		Vespra continued.	
LOTS.	Acres.	Con.	LOTS.	Acres.	Con.
21 23	200	15	No. 11 21	200	4
20	200	16	" D	87	5
Oro.			" 9 16	200	6
5 33 39 A.	100		" 3	190	7
	200		" 24	150	8
21 23	200	17	" E 5 11 21	200	9
20 27	200	18	" A D 9 16 24	"	10
1 23	200		" 3	175	11
20	200	19	" E.	114	"
3 21 23	200		" 5 11 21	200	12
12 13 15 20	200	20	" A.	111	13
	100		" D.	96	"
2 21 23	200		" 3	192	14
20	200		" 9	144	
1 23	200		" 16	200	
20	200	21	" 21	48	1
	32		" 5	18	2
	200		<i>Flos.</i>		3
	108	1	No. 5 11 19 21	200	
	200		" 27	135	1
		2	" 3 9 16 24	200	2
	200	3	" 5 11 17 18 21	"	3
	122		" 27	135	4
	97	4	" 3 9 16 17 18 19 24	200	5
4	200	5	" 5 11 21	"	6
	200		" 27	135	7
	11	6	" 3 9 16 24	200	8
	200	7	" 5 11 21	"	
	159		" 27	135	1
	200	8	" 3 9 16	200	2
	185		" 24	141	3
3 17 18	200	9	" 5 11 21	200	4
	200		" 27	60	5
	200	10	" 3 9 16	200	6
	200		" 24	30	7
	165	11	" 5 11	90	
	200		" 21	62	1
	200		<i>Vespra,</i>		
	200	2	No. 15 21 31 38	100	2
	200		" 20	37	3
	29		" 21	22	4
	200	3	" 4 21	200	5
	195		" 23	99	6
					7

Vespra continued.

LOTS.

No. 5 17 20	200
" 4 21 23	"
" 5 15 17 20	"
" 4 21 23	"
" 5 13 15 17 20	"
" 4 12 13 14 21 23	"
" 5 13 15 17 20	"
" 4 21	"
" 23	72
" 5 15 17 20	200
" 4	"
" 21	196
" 5 15 17 20	200

Mulmur.

West of Hurontario St

No. 5 11 21 28 31	200
" 3 9 16 24	"
" 5 11 21 28 31	"

East of Hurontario St.

No. 3 9 16 24	200
" 5 11 21 28 31	"
" 3 9 16 24	"
" 5 11 21 28 31	"
" 3 9 16 24	"
" 5 11 21 28 31	"
" 3 9 16 24	"
" 5 11 21 28 31	"

Tosorontio.

No. 5 11 21 28 31	200
" 3 9 16 24	"
" 5 11 21 28 31	"
" 3 9 16 24	"
" 5 11 21 28 31	"
" 3 9 16 24	"
" 5 11 21 28 31	"

Essa.

No. 5 11 21 28	200
" 3 9 16 24 30	"
" 5 11 21 28	"
" 3 9 16 24 30	"
" 5 11 18 21 28	"
" 3 9 16 24 30	"
" 5 11 21 28	"

HOME DISTRICT.—continued.

<i>Essa continued.</i>			<i>Tecumseth.</i>		
Con.	LOTS.	Acres	Con.	LOTS.	Acres
8	No. 3 9 16 24 30	200	1	No. 4 11	200
9	" 5 11 21 28	"	2	" 5	200
10	" 3 9 16 24 30	"	3	" 11	200
11	" 5 21 28	136	4	" 15	200
	<i>Innisfil.</i>			North $\frac{1}{2}$ of 5	100
1	No. 4 21 23	200	5	" 4 11	200
"	" 11	50	6	" 5 20	200
2	" 5 15 20	200	7	North $\frac{1}{2}$ of 4	100
3	" 4 21	"	"	No. 11 4	200
"	" 23	160	8	" 5 20	200
4	" 5 15 20	200	"	North $\frac{1}{2}$ of 15	100
5	" 4 11 21 23	"	9	" 4 11	200
6	" 5 15 20	"	"	North $\frac{1}{2}$ of 21	100
7	" 4 11 21 23	"	10	" 5 15 20	200
8	" 5 15 20 "	"	11	" 4 11 21 23	200
9	" 4 11 21 23	"	12	" 5 15 20	200
10	" 5 15 20	"	13	" 4 11 21 23	200
"	" 27	160	14	" 5 15 20	200
11	" 4 11 21 23	200	15	" 4 11 21 23	50
12	" 5 15 20 27	"		<i>Adjala.</i>	
13	" 4 11	"	1	No. 11 21 28	200
"	" 21	150	2	" 3 16 24 30	200
"	" 23	190	"	West $\frac{1}{2}$ of 9	100
14	" 5	200	3	" 5 11 21 28	200
	<i>Gwillimbury West.</i>		4	" 3 9 16 24 30	200
	<i>Old Survey.</i>		5	" 5 11 21 28	200
2	No. 10 11 12	200	6	" 3 9 24 30	200
"	" 20	100	7	" 5 11 21 28	200
3	" 5	200	8	" 3 9 16 24 30	50
"	" 11	100		<i>Mono.</i>	
	<i>New Survey.</i>			<i>West of Hurontario St.</i>	
1	No. 11	64	1	No. 5 11 21 28	200
2	" 5	100	2	" 3 9 16 24 30	200
3	" 5 17	200	3	" 5 11 21 28	200
10	" 5 17	"		<i>East of Hurontario St.</i>	
11	" 11	"	1	" 5 11 21 28	200
12	" 5 15 17	"	2	" 3 9 16 24 30	200
"	" 20	190	3	" 5 11 18 21 28	200
13	" 4 11	200	4	" 3 9 16 24 30	200
"	" 21	150	5	" 5 11 21 28	200
14	" 5 15 17 20	200	"	" 3 9 16 24 30	200
15	" 4 11 21	40	"	" 5 21 28	200
			"	East half of 11	100

GORE DISTRICT.—LONDON DISTRICT.

<i>Garrofraxa continued.</i>			<i>Beverly, continued.</i>		
Con.	LOTS.	Acres.	Con.	LOTS.	Acres.
A	No. 3	200	3	North half of 1 16	190
B	" 5	200	"	No. 23	200
C	" 3	200	4	" 5 13 20 28	100
	<i>Eramosa.</i>		5	" 16 23	200
1	No. 26	200	6	" 13 20 28	"
"	" 28	150	7	" 6 16 23 25	"
2	" 9 30	200	8	" 5 11 13 15 20 22 26 28	"
3	" 6 21 28	200	9	" 1 10 16 23 36	"
4	" 29 15 24 30	200	"	South half of 8	100
5	" 6 13 19 21 23	200	10	No. 5 13 20 28	"
6	" 29 15 24 30	200		<i>Glanford.</i>	
7	" 13 21 28	200	3	No. 13	200
	<i>Nassagaweya.</i>		5	" 13	"
1	No. 6 13 21 28	200	7	" 13	"
2	" 13 9 15 24 30	200	9	" 13	40
3	" 6 13	200		<i>Binbrook.</i>	
4	" 9 21 30	200	7	No. 25 29	200
5	" 3 6 13 28	200	8	" 17 21	"
6	" 9 15 24 30	200	9	" 29	"
7	" 3 13 21 23	200	"	" 25	170
	<i>Nelson.</i>			NIAGARA DISTRICT.	
	<i>North Dundas Street.</i>			<i>Township of Caistor.</i>	
2	North half of 23	100	1	No. 3	200
	<i>New Surrey.</i>		3	" 2 8 16	"
1	No. 5	200	4	" 7 13	"
2	" 9	200	5	" 2 8 16	"
4	" 3	200	"	South half of 21	100
5	" 11	200	6	No. 7 13 19	200
7	" 5 11	200	7	" 16.	246
	<i>Flamborough East.</i>			LONDON DISTRICT.	
6	No. 13	200		<i>Township of Windham.</i>	
7	" 3 9	200	1	No. 21 23	200
8	" 13	200	2	" 5 20	"
9	" 3	200	3	" 4 11 21 23	"
10	" 13	200	4	" 5 15 20	"
"	Rear half of 3	100	5	" 4 11 21 23	"
11	No. 2 3 9	200	6	" 15 20	"
12	" 5	200	7	" 4 11 21 23	"
13	" 3 9	200	8	" 15 20	"
14	" 5	45	9	" 11 21 23	"
	<i>Flamborough West.</i>		10	" 15 20	"
4	No. 4 12	200	11	" 11 21	"
"	" 21	110	12	" 15 20	"
5	" 5 13	200	13	" 11 21 23	"
"	" 18	106		<i>Rainham.</i>	
"	" 4 12	200	2	No. 5 15	200
7	" 5	200	3	" 4 11	"
8	" 2 5	200	4	" 5 6 7 12	"
"	" 8	166	"	" 15	135
9	" 5	171	"	" 16	64
10	" 4	42	5	" 4 5 6	200
	<i>Beverly.</i>		"	" 11	199
2	North half of 23	100			
"	No. 23	200			

DISTRICT.

Acres.
100
200
100
200
"
"
25
15 20 22 26 28
23 56
100
78
23
anford.
200
"
"
40
brook.
200
"
"
170
DISTRICT.
of Caistor.
200
"
"
"
100
200
145
DISTRICT.
of Windham.
200
"
"
"
"
"
"
"
"
"
"
ham.
200
"
"
135
64
200
199

LONDON DISTRICT.—continued.

Rainham continued.				Charlottesville continued.		
Con.	LOTS.	Acres.	Con.	LOTS.	Acres.	
6	" 5		4	No. 5	200	
7	" 4	200	5	" 4	200	
8	" 5	200	6	" 4 5	200	
		36	7	" 4 11	200	
	Walpole.		8	" 5 15 20	200	
3	No. 4 11 21 23	200	9	" 4 11	200	
4	" 5 15 20	200	10	" 15	200	
5	" 4 11 21 23	200	11	" 4	200	
6	" 5 15 20	200	12	" 5	105	
7	" 4 11 21 23	200		Walsingham.		
8	" 5 15 20	200	A	North half of 11	100	
9	" 4 11 21 23	200	1	No. 4	200	
10	" 5 7 14	200	"	North half of 11	100	
11	" 4 6 11	200	2	No. 5 12	200	
12	" 5 9 14 16	200	3	" 4 11 21	200	
13	" 4 8 13	200	4	" 5 12 15 20	200	
14	" 5	200	5	" 4 21 23	200	
16	" 4	200	6	" 5 15 20	200	
	Woodhouse.		7	" 4 11 21	200	
2	No. 20	200	8	" 5 15 20	200	
3	" 21	200	9	" 4 11 21 23	200	
4	" 20	200	10	" 5 15 20	200	
5	" 11 21 23	200	11	" 4 11 21 23	200	
6	" 20	200	12	" 5 15 20	200	
	South half of 15	100	13	" 4 11 21 23	200	
	Townsend		14	" 5 15 20	200	
1	No. 4	200		Middleton,		
2	" 5 22	200		South of Talbot Road.		
3	" 4 21	200	2	No. 5	90	
	" 23	198	"	" 8	150	
4	" 5 20	200	"	" 12 15 18 19 22 26	200	
5	" 4 21 23	200	"	" 29 34 36 40 43	194	
6	" 15	200	3	" 18	160	
7	" 21 23	200	"	" 32	76	
8	" 15 20	200	"	" 39 45	21	
9	" 23	200	"	" 46	200	
10	" 15 20	200	"	" 19 21 25 28	90	
11	" 17 21	200	4	" 22		
12	" 15 20	200		South of Talbot Road.		
13	" 21 23	200	2	No. 4 11 13 18	200	
14	" 15 20	200	"	" 19	195	
	Charlottesville.		"	" 21	118	
1	No. 4	200	"	" 25	32	
3	" 4	200				

LONDON DISTRICT.—*continued.*

<i>Middleton continued.</i>				<i>Zorra continued.</i>			
Con.	LOTS.	Acres.	Con.	LOTS.	Acres.	Con.	Acres.
2	No. 32	80	12	No. 3 9 16 30	200		
"	" 35	108	"	" 24	150		
"	" 39 42 46	110	13	" 5 11 21 28 34	200		
3	" 1 5 8 12	200	14	" 3 16 24 30	114		
"	" 15	144		<i>Zorra.</i>			
4	" 4	200	1	East half of 11	100		
"	" 8	197	"	No. 21 25 34	200		
"	" 11	92	2	" 3 9 16 24 30	200		
5	" 1	200	3	" 5 11 21 28 34	200		
"	" 5	114	4	East half of 3	100		
	<i>Houghton.</i>		"	" 24 30	200		
	<i>West of North Road.</i>		5	" 21 28 34	200		
	No. 4 11 14	200	6	East half of 3	100		
	<i>East of North Road.</i>		"	West half of 9	100		
	No. 1 5 7 15	200	"	No. 16 24 30	200		
	" 20	155	"	" 36	40		
	No. 21		7	" 5 21 28 34	200		
	<i>South of Talbot Road.</i>	100	8	" 3 16 24 30	200		
1	" 4 11 13 17 19	200	"	West ½ of 9	100		
2	" 5 7 15 17	"	9	No. 21 28 34	200		
3	" 4 7 11	"	"	East half of 5	100		
4	" 1 5	"	"	West half of 11	100		
"	" 13	185	10	No. 3 9 16 24 30	200		
"	" 15	12	"	" 36	40		
5	" 4	200	11	" 11 21 28 34	200		
"	" 11	185	12	" 9 16 24 30	200		
6	" 13 5 8	200	13	" 11 21 28 34	200		
"	" 10	100	14	" 9 16 24 30	200		
	<i>Nissouri.</i>		15	" 11 21 28 34	200		
1	No. 21 28 34	200	16	" 9 24 30	200		
2	" 3 16 24 30	"	"	" 16	140		
3	" 5 11 21 28 34	"	17	" 11 28 34	200		
4	" 3 9 16 24 30	"	18	" 30	120		
5	" 5 21 28 34	"	19	" 34	60		
6	" 3 9 16 24 30	"		<i>Blenheim.</i>			
"	" 36	96	1	No. 21 23	200		
7	" 11 21 28 34 5	200	3	" 11 21 23	200		
8	" 3 9 16 24 30	"	4	" 15 20	200		
9	" 5 11 21 28 34	"	5	" 11 21 23	200		
10	" 3 9 16 24 30	"	6	" 5 20	200		
"	" 36	96	"	" 15	130		
11	" 21 28 34	200	7	" 4 11 21 23	200		
"	East half of 5	100	8	" 5 15 20	200		

LONDON DISTRICT.—continued.

		Blenheim continued.		Burford continued.			
		Con.	LOTS.	Acres.	Con.	LOTS.	Acres.
Continued.		9	No. 4 11 21 23	200	12	" 15 20	200
rs.	Acres.	10	" 5 15 20	"	13	" 11 21 23	"
30	200	11	" 4 11 21 23	"	14	" 20	"
150		12	" 5 15 20	"	<i>Dereham.</i>		
200		13	" 11 21 23	"	1	No. 3 24	200
30	114	14	" 11 15 20 21 23	"	2	" 6 13 20 27	"
			<i>Oxford North.</i>		3	" 3 10 17 24	"
		1	No. 17	200	4	" 6 13 20 27	"
	100	2	" 4 11	"	5	" 3 10 17 24	"
	200	3	" 8	"	6	" 6 13 20 27	"
28 34	200		North $\frac{1}{2}$ of 12	100	7	" 3 10 17 24	"
30	100	4	No. 4	200	8	" 6 13 20 27	"
	200		<i>Oxford West.</i>		9	" 3 10 17 24	"
	200	4	No. 5	200	10	" 6 13 20 27	"
	100		" 15	180	11	" 3 10 17 24	"
	100	5	" 4	87	12	" 6 13 20 27	"
	200		" 11	192	<i>Norwich.</i>		
	40	6	" 5	32	1	No. 3 24	200
	200		<i>Oxford East.</i>		2	" 27	"
	200	1	No. 4.	200	3	" 24	"
	100		South half of 11	100	4	" 27	"
	200	2	No. 5 15	200	5	South half of 17	100
	100	3	" 4 11	"	6	South half of 24	"
	100	4	South half of 15	100	7	No. 17	200
	200	5	No. 11	200	8	" 6	"
	40	6	South half of 21	100	"	North half of 27	100
	200		No. 5 15 20	200	9	No. 3	200
	200	7	" 4 11 21	"	"	South half of 24	100
	200	8	" 5 15 20	"	10	No. 6 20 27	200
	200		<i>Burford.</i>		11	" 3 10 17 24	"
	200	1	No. 12 21 23	200	12	" 6 13 27	"
	200	2	" 5 20	"	"	" 20	184
	140	3	" 4 11 21 23	"	<i>Gore of B.</i>		
	200	4	" 5 15 20	"	<i>Bayham.</i>		
	120	5	" 6 23	"	2	No. 27	200
	60	6	" 15 20	"	3	" 24	"
		7	" 21 23	"	"	South half of 22	100
	200	8	" 15 20	"	"	South half of 7	"
	200	9	" 4 23	"	4	No. 13 20	200
	200		North half of 21	100	"	North $\frac{1}{2}$ of 27	100
	200	10	No. 5 15	200	"	North $\frac{1}{2}$ of 6	"
	200		South half of 20	100	5	No. 3 17 22 24	200
	130	11	No. 4 11 21 23	200	5	" 10	50
	200		H				
	200						

LONDON DISTRICT.—continued.

Con.	Bayham continued LOTS.	Acres.	N. of Edgeware Road. First Range.	Acres.	Con.
6	" 27	220	LOTS.		5
8	" 10 20 22 24	200	No. 4 6 11 13	100	6
"	North $\frac{1}{2}$ of 6	100	" 20 ditto.	65	
9	No. 3 7 10 21	200	Second Range.		A
"	" 27	60	" 4 6 11 13	100	"
10	" 6	150	No. 1 3 10	200	"
"	" 24	50	North $\frac{1}{2}$ of 17	100	"
"	" 13 20	200	" 1 4 6 11 13	200	B
11	" 17	100	Vort $\frac{1}{2}$ of 18	100	
	<i>Malahide.</i>		No. 3 10	200	1
2	No. 14	200	" 1	180	2
"	North $\frac{1}{2}$ of 22 24 30	100	" 6	140	3
3	No. 5 11 17 21 25 34	200	" 13	200	4
4	" 9 22 24 30 35	200	" 18	48	5
5	" 6 11	200	<i>Southwold.</i>		6
"	" 28	180	No. 4.	120	7
"	" 34	260	" 11	99	
	<i>North of 5th Concession.</i>		" 15	200	8
Gore	No. 5 11	40	" 4 11	"	9
	<i>South of 8th Concession</i>		" 5 15	"	10
	No. 21	102	" 7, East river road.	100	11
	" 23	100	" 7, N. side Union do.	75	Gore
	" 28	90	" 5, South side ditto.	84	
Con.	" 16 17 24 28 30	200	" 6, ditto ditto.	100	B F
"	" 9	212	<i>North side of Lake R'd.</i>		
<i>South</i>	North half of 3	100	No. 2	20	Con.
9	" 11	50	" 3	80	1
"	" 21	120	" 4	180	2
"	" 23	132	" 5 8	140	3
"	" 28	162	" 6 9	110	4
"	" 29	169	" 7	75	A
"	" 30	178	" 11	54	B
"	" 34	205	<i>Dunwich.</i>		
	<i>Yarmouth.</i>		No. 4 11 21 23	200	1
1	North $\frac{1}{2}$ of 17	100	" 5 15 20	200	2
2	No. 27	200	" B.	60	3
"	Vorth $\frac{1}{2}$ of 13	100	" 4 11 21 23	200	4
4	" 27	200	" 5 15 20	200	C
6	" 13 27	200	" 5 15 20 C. next ri-		D
7	" 10 17	200	ver Thames.	200	
			" 4 5 13 15 20 B.	200	3
			" 4 6 7 8 11 13 14 17		4
			18, next L. Eric.	200	6

LONDON DISTRICT.—continued

		<i>Dunwich continued.</i>		<i>Westminster continued.</i>	
		LOTS.		LOTS.	
Con.	Acres.	Con.	Acres.	Con.	Acres.
		5	" 19 21 23, A. ditto	6	" 5 8 11 14 15 18 20
	100	6	" 5 15 20, B.		" 21
	65		<i>North 1st Concession.</i>	7	" 4 5 8 11 14 21
		A	" 4		" 23
	100	"	" 11	8	" 5
	200	"	" 21	"	" 8
	100	"	" 23	"	" 9
	200	B	" 11	"	" 11
	100		<i>Aldborough.</i>	"	" 14 15 18 20 21
	200	1	" 4 11	9	" 21
	180	2	" 5 12	Gore	" 4
	140	3	" D. 9	"	" 11 21 23
	200	4	" 3 13		<i>Dorchester.</i>
	48	5	" D. 7 14	1	<i>Northern Division.</i>
		6	" 5 8 13	2	No. 5 15 20
	120	7	" C. 3 6 8 13 18 23	3	" 4 11 16 21
	99		24	4	" 8 12 15 20
	200	8	" D. 19	"	" 21
	"	9	" C. 3 13 18 23	"	" 11
	"	10	" II 19		<i>Southern Division.</i>
	100	11	" C 3 13 18 23	1	No. 11
	75		<i>Between 6th & 7th Con.</i>	2	" 5 15 20
	84	Gore	No. D. 5 10	3	" 4 11 21 23
	100	B F	" 11	4	" 5 15 20
			<i>In the north east Division, or Gore.</i>	5	" 4 11 21 23
	20	Con.	No. 21	6	" 5 15 20
	80	1	" 24	7	" 4 11 21 23
	180	2	" 21 23	8	" 5 15 20
	140	3	" 20 24	9	" 4 11 21 23
	110	4	" 21 23	10	" 5 15 20
	75	A	" 21	11	" 4 11 21 23
	54	B	" 21	12	" 5 15 20
			<i>Delaware.</i>	B	No. 5
	200	1	No. 21 23	"	" 6
	200	2	" 5 20	"	" 7
	60	3	" 4 11 21 23		<i>London.</i>
	200	4	" 5 15 20	1	No. 21
	200	C	" 21 23	2	" 2 3 24
		D	" 11	3	" 5 11
	200		<i>Westminster.</i>	4	" 23
	200	3	No. 4 5 8 11 14 21	5	" 24
	13 14 17	4	" 5 8 11 15 18 20 21	6	" 11 28
	L. Erie. 200	5	" 4 5 8 11 14 21 23	6	" 3 9 24 30

LONDON DISTRICT.—continued.

London continued.			Caradoc continued.		
Con.	LOTS.	Acres.	Con.	LOTS.	Acres.
7	" 28	200	8	" 5 15 20	200
"	North $\frac{1}{2}$ of 11 21	100	9	" 1 4 11 21 23	"
8	No. 3 9 24 30	200	10	" 5 15 20	"
9	" 5 21 28	200		<i>S. of Longwood Road.</i>	
10	" 3 9 24 30	200		No. 3 5 15 20 2d range.	200
11	" 5 11 21	200		" 4 11 3d ditto.	"
"	South half of 28	100		" 5 20 4th ditto.	"
12	No. 3 9 24 30	200		" 15 do. ditto.	195
"	South half of 16	100		" 4 5th ditto.	200
13	No. 5 11 28	200		" 11 do. ditto.	195
"	South half of 21	100		<i>Ekfrid.</i>	
14	No. 3 9 16 24 30	200	1	No. 5 6 15 20	200
15	" 5 11 21 28	200	2	" 4 7 11 13 15 20	"
16	" 3	129		" 21 23	200
"	" 9	138	3	" 3 5 15 20	"
"	" 24	165	4	" 4 11 21 23	"
"	" 30	180	5	" 5 15 20 23	"
C	" 3	200	6	" 4 11 21 23	"
	<i>Lobo.</i>		7	" 5 15 20	"
1	No. 12	136	8	" 4 11 21 23	"
3	" 4 11	200		<i>North of Talbot Road.</i>	
4	" 15	195		No. 4 2d range.	216
5	" 4 11	200		" 11 ditto.	228
6	" 5 15	200		" 21 23 ditto.	200
7	" 11	200		<i>South of Talbot Road.</i>	
8	" 5 15	200		No. 5 15 20 2d range.	200
"	" 20	55		" 4 11 21 23 3d do.	"
9	" 4 11	200		" 5 4th do.	"
"	" 21	55		" 20 ditto.	36
10	" 5 15 20	200		<i>Mosc.</i>	
11	" 4 11 21	200	1	No. 4 14 19 22 24 25	200
"	" 23	55	2	" 1 3 8 14 16	"
12	" 5 15 20	200	"	" 23	195
13	" 4 11 21 23	200	3	" 2 6 12 14	200
	<i>Caradoc.</i>		"	" 22	100
1	" 4 11 21	200	4	" 3 8 16	200
2	" 1 5 15 20	200	5	" 4 14	"
3	" 4 11 21 23	200	6	" 3 8	"
4	" 2 4 5 15 20	200	"	" 16	30
5	" 4 11 21	200	7	" 4	200
"	North half of 23	100	8	" 3 8	"
6	No. 5 15 20	200	9	" 4	"
7	" 4 11 21	200	10	" 3	"

d.

inued.	Acres.
23	200
"	"
d Road.	
d range.	200
3d ditto.	"
th ditto.	"
o. ditto.	195
th ditto.	200
o. ditto.	195
	200
5 20	200
"	"
"	"
"	"
"	"
"	"
Road.	
ange.	216
to.	228
to.	200
Road.	
range.	200
3d do.	"
4th do.	"
ditto.	36
24 25	200
"	"
"	195
"	200
"	100
"	200
"	"
"	30
"	200
"	"
"	"

WESTERN DISTRICT.

11	"	10	"	18 15 19	
		"	"	" 21	
		11	"	" 2	
		"	"	" 11	20
		12	"	" 13 15	200
		"	"	" 18	10
		13	"	" 11	200
		"	"	" 6	20
		"	"	" 13	
		15	"	" 2	
		"	"	" 11	
		1		Tilbury West.	
		2		No. 5 11	
		3		" 3 9 16	
		4		" 5 21	
		5		" 3 9 16	200
		6		" 5	200
		7		" 3	200
		8		" 11	190
		9		" 21	200
		10		" 9 16	200
		11		" 5 11	200
		12		" 21	130
		13		" 3 9 16	200
		14		" 5 11	200
		15		No. 5 Broken front.	183
		16		" 11 ditto.	61
		17		Romney.	
		18		No. 4 broken front.	40
		19		" 4	150
		20		" 15 21	200
		21		" 20	150
		22		" 21 25 26	200
		23		" 13 15 20	200
		24		" 29	165
		25		" 21	200
		26		" 23	120
		27		" 15	138
		28		" 20	185
		29		" 23	393
		30		Division of Dues.	
		31		East. Division.	
		32		No. 12 14 15 16 17 18	
		33		" 19	200

North side of Longwood
Road—2d range.
No. 23 14 16 200
" 23 190
" 25 90

WESTERN DISTRICT
Township of Howard
North East of 21 22
Between this Town-
ship and Harwich.
Block A. 7234

Chatham.
No. 13 14 15 17 200
" 13 14 15 16 17 200
" 13 14 15 16 17 200
" 13 14 15 16 17 200
" 13 14 15 16 17 200
" 13 14 15 16 17 200
" 13 14 15 16 17 200
" 13 14 15 16 17 200
" 13 14 15 16 17 200
" 13 14 15 16 17 200
" 13 14 15 16 17 200
" 16 150
" 17 82

Raleigh.
No. 24, Broken Front,
on the Thames.
Block A. 5500

Tilbury East.
No. 11 200
" 6 13 15 200
" 18 40
" 2 11 200
" 6 200
" 13 16
" 18 60
" 21 130
" 22 200
" 24 140
" 6 13 21 25 200
" 15 180
" 3 200

Tilbury East continued

No. 18 15 19
" 21
" 2
" 11
" 13 15
" 18
" 11
" 6
" 13
" 2
" 11
Tilbury West.
No. 5 11
" 3 9 16
" 5 21
" 3 9 16
" 5
" 3
" 11
" 21
" 9 16
" 5 11
" 21
" 3 9 16
" 5 11
No. 5 Broken front.
" 11 ditto.
Romney.
No. 4 broken front.
" 4
" 15 21
" 20
" 21 25 26
" 13 15 20
" 29
" 21
" 23
" 15
" 20
Division of Dues.
East. Division.
No. 12 14 15 16 17 18
" 19

WESTERN DISTRICT--continued.

Dues continued		Dues continued.	
Loas.	Acres. Con.	Loas.	Acres.
13 14 15 16 17 18		5 7 13 21 28	200
19	200	8 9 16 24 30	200
7 13 14 15 16 17 18		5 11 21 28	200
19	200	3 9 16 24 30 35	200
8 13 14 15 16 17 18		5 11 21 28	200
19	200	3 9 16 24 30	200
9 13 14 15 16 17 18		5 11 21 28	200
19	200	3 9 16 24 30 33	200
10 13 14 15 16 17 18		5 11 21 28	200
19	200	3 9 16 24 30	200
11 13 14 15 16 17 18		5 11 21 28	200
19	200	3 9 16 24 30 33	200
Cander		Nempe.	
2 No. 7 8 9 10	200	1 No. 6 16 23 25	200
" 11		" 1 7 22 25	200
" 12		" 6 16 23 25	200
" 13		" 4 5 16 23 28	200
3 East 1/2 of 6	100	" 6 16 23 29	200
" No. 7 8	200	D.	156
" 9		6 " 1 7 15 22 25	200
" 10		7 " 6 16 23 29 A. D.	200
" 11		6 " 1 7 15 22 28	200
4 East half of 6	100	9 " 6 16 23 29	200
" No. 7		10 " 7 15 22 28	200
" 8		11 " 6 16 23 29	200
" 9		12 " 7 15 22 28	200
Zone.		13 " 6 16 23 29 A.	200
1 No. 21	114	14 " 7 15 22 28	200
" 22	84	15 " 6 16 23 29	200
" 34	54	Malden.	
2 16 24 30	200	No. 64 65 66 67 68 69	
3 " 21 28 34	200	70 71 82 83 84 85	
4 " 16 24 30	200	86 87 88 89	200
5 " 21 28 34	200	Sandwich.	
6 " 16 24 30	200	1 2 3 4 5 6	200
7 " 21 28 34	200	7	
8 " 16 24 30	200	8	
9 " 21 28 34	200	1 2 3 4 5 6	200
10 " 16 24 30	200	7	
11 " 21 28 34	135	1 2 3 4 5	200
Dues.		" 6	
1 No. 6 11 21 28	200	" 7	
2 " 3 9 16 24 30 33	200	8 " 1 2 3 4 5	200

Doc. 8
9
10
11
12
13
14
15
16
17
18
19
20
21
22
23
24
25
26
27
28
29
30
31
32
33
34
35
36
37
38
39
40
41
42
43
44
45
46
47
48
49
50
51
52
53
54
55
56
57
58
59
60
61
62
63
64
65
66
67
68
69
70
71
72
73
74
75
76
77
78
79
80
81
82
83
84
85
86
87
88
89
90
91
92
93
94
95
96
97
98
99
100

OF APPLICATION.

Year, 18

18

To the *Land Company.*

I wish to purchase *12* in the

Concession of *100* and *100*

(for the same at the rate of *100* per acre,

in the following manner

Cash down,

Instalments, payable yearly, with Interest at 6 per cent.

And I will conform to all the terms and conditions which the Company may establish for regulating the settlement of their Lands.

Address,

Post Office,

10 C

ATION.

1893

in the
and
per cent.

at 6 per cent.
conditions which
the settlement



