

**COLUMBIA COUNTY**  
**PENNSYLVANIA**

**Community Facilities**

**COUNTY BUILDINGS, SCHOOLS and RECREATION**

**1968**

**a background study of the  
comprehensive county plan**

**COLUMBIA COUNTY PLANNING COMMISSION**  
**COURT HOUSE, BLOOMSBURG, PENNSYLVANIA**

COLUMBIA COUNTY  
HISTORICAL SOCIETY

# **COLUMBIA COUNTY PENNSYLVANIA**

## **Community Facilities** **COUNTY BUILDINGS, SCHOOLS and RECREATION**

The preparation of this report was financed in part through an urban planning grant from the Department of Housing and Urban Development, under the provisions of Section 701 of the Housing Act of 1954, as amended, administered by the Bureau of Community Development, Pennsylvania Department of Community Affairs.

**1968**

**a background study of the  
comprehensive county plan**

782

**COLUMBIA COUNTY PLANNING COMMISSION**  
**COURT HOUSE, BLOOMSBURG, PENNSYLVANIA**

COLUMBIA COUNTY COMMISSIONERS

Richard K. Walton, President

Carl S. Canouse, Vice President      John C. Creasy, Secretary

Marvin T. Bower, Chief Clerk

Gailey C. Keller, Solicitor

301.34

C726

u 3

COLUMBIA COUNTY PLANNING AND ZONING COMMISSION

MEMBERS

Maynard R. Johnson, Chairman

Horace D. Bennett, Jr.

Joseph C. Conner, Vice Chairman

Robert T. Burge

Carl A. Wittig, Treasurer

Vaughn W. Carson

Frank Beishline

Fred W. Kistler

Joseph G. Tuza

STAFF

George A. McKelvy, Planning Director

Jay W. Myers, Solicitor

Annette Chebatoris

SPECIAL PROJECT CONSULTANT

Clifton E. Rodgers and Associates  
901 North Cameron Street  
Harrisburg, Pennsylvania

## CONTENTS

### COMMUNITY FACILITIES STUDY COLUMBIA COUNTY, PENNSYLVANIA

	<u>PAGE</u>
<u>PART ONE - COUNTY BUILDINGS</u>	
A. Court House	1
B. County Jail	5
C. Storage Buildings	5
D. County Home	6
<u>PART TWO - EDUCATIONAL FACILITIES</u>	
Introduction	7
A. BENTON AREA SCHOOL DISTRICT	
1. Benton Area Junior-Senior High 7-12	10
2. L. Ray Appleman Elementary 1-6	10
B. BERWICK AREA SCHOOL DISTRICT	
3. Berwick Area Senior High 10-12	11
4. Third Street Junior High 7-9	11
5. Orange Street Junior High 7-9	12
6. Nescopeck Junior High 7-9	12
7. Chestnut Street Elementary K-8	12
8. Fairview Avenue Elementary K-4	12
9. Ferris Heights Elementary K-4	12
10. Fourteenth Street Elementary K-6	12
11. Market Street Elementary K-6	12
12. Orchard Street Elementary 4-6	12
13. Salem Township Elementary 1-6	12
13A Christian Church K-1	12
14. Nescopeck Third Street Elementary K-4	12
15. Nescopeck Fourth Street Elementary 3-5	12
C. BLOOMSBURG SCHOOL DISTRICT	
16. Bloomsburg Area Senior High 10-12	13
17. Bloomsburg Area Junior High 7-9	14
18. Bloomsburg Memorial Elementary K-6	15
19. W. W. Evans Memorial Elementary K-6	16
20. Beaver Township Elementary K-6	16
21. Main Township Elementary 1-6	17
D. CENTRAL COLUMBIA SCHOOL DISTRICT	
22. Central Columbia Junior-Senior High 7-12	18
23. Scott Township Elementary K-6	18
24. Mifflin Township Elementary K-6	18
25. Lime Ridge Elementary K-3	18
26. North Centre Township Elementary 4-6	19

CONTENTS (Continued)

	<u>PAGE</u>
27. Mount Pleasant Township Elementary 4-6	19
28. Orangeville Elementary 1-3	19
E. MILLVILLE AREA SCHOOL DISTRICT	
29. Millville Junior-Senior High 7-12	20
30. Madison Township Elementary 1-6	20
31. Pine Township Elementary 1-6	20
32. Greenwood Township Elementary 1-6	21
F. SOUTHERN COLUMBIA AREA SCHOOL DISTRICT	
33. Southern Columbia Area Junior-Senior High 7-12	21
34. Catawissa Elementary K-6	22
35. Elysburg Elementary K-6	22
36. Roaring Creek Valley Elementary K-6	22
G. CENTRALIA BOROUGH 1-12	
Attend Mt. Carmel Area School District in Northumberland County	23
H. CONYNGHAM TOWNSHIP 1-12	
Attend North Schuylkill School District in Schuylkill County	23
I. PAROCHIAL SCHOOLS	
Emmaculet Conception	23
St. Columba	23
St. Cyril & Methodius	23
St. Ignatius	23
St. Joseph	23
J. COLUMBIA-MOUNTOUR VOCATIONAL-TECHNICAL SCHOOL 10-12	
	23
K. COMMUNITY COLLEGE	
	24
L. BLOOMSBURG STATE COLLEGE	
	24
<u>PART THREE--RECREATION FACILITIES</u>	
A. Standards for Recreation and Park Areas	30
B. State Parks and Forests	31
C. Major Natural Features	31
D. Bloomsburg Fairgrounds	32
E. Amusement Parks	32
F. Historical Museums	32
G. Municipal Parks and Recreation Areas	33
H. County Recreation Facilities	37

# PART ONE

## COUNTY BUILDINGS



COLUMBIA COUNTY COURT HOUSE





## PART ONE

### COUNTY BUILDINGS

#### 1. COLUMBIA COUNTY COURT HOUSE

The Court House is located in the center of the Business District of Bloomsburg, the County Seat.

The front part of the building is a three and one-half story brick structure with a six story belfry tower which houses a bell and clock. The rear portion of the building is a two story brick structure.

Construction of the Court House took place in three stages: (1) The center section, constructed before the Civil War, was of fine colonial architecture with large columns in front. The entire second floor of this section is the Court Room. (2) The front section addition in 1890 removed the columns and created the three and one-half story Richardson Brick Structure, and (3) The rear section in 1939, was designed by Architect Schell of Bloomsburg. The latter section has a full finished basement.

The following is an evaluation of the adequacy of the condition, size and location of the site and building.

#### SITE:

The site comprises 19,780 square feet in form of a rectangle 215 x 92 feet on the north side of West Main Street in Bloomsburg. The building is setback approximately 30 feet from the curb on Main Street and about 15 feet from the alley on the west side, and extends to the alley line at the rear property line.

Space is provided for nine cars to park along the alley on the west side of the building plus two on the front plaza and an additional six along the alley on the east side. The total number of available parking spaces is inadequate.

While the site is conveniently located to the business, financial and professional offices in Bloomsburg, its size does not permit horizontal expansion of the building. To expand the site it would be necessary to span the alley in the rear and acquire the municipal parking lot.

#### BUILDING:

The following inspection report of the Court House covers observations of the general condition and adequacy of space for each of the special functions.

## GENERAL CONDITION AND DESIGN:

The building is structurally sound and maintained as well as is reasonably feasible for an aging structure of this type. The design, layout and arrangement of space is generally inadequate and inefficient for present and future operations.

### A. FIRST FLOOR

1. Commissioners Suite
  - a. Meeting Room and General Office space is inadequate in respect to circulation, equipment operation, visitor waiting and meetings with the Commissioners.
  - b. Vault: Size satisfactory, equipment old.
2. Tax Assessor and Voter Registration (combined office)
  - a. Space utilization at maximum.
  - b. Storage insufficient.
  - c. Noise of equipment conflicts with other activities.
3. Registrar and Recorder
  - a. Office space adequate.
  - b. Storage of records inadequate.

Revisions now in planning

- a. Expand vault.
  - b. Take over additional area (former FHA office).
  - c. Close off part of the corridor for additional space.
4. Janitor's Area
    - a. Too small when used as combined janitor area and storage room.
  5. Toilets
    - a. Fair condition - clean but fixtures old.
  6. Treasurer
    - a. Area satisfactory except equipment and furnishings old.
  7. Prothonotary
    - a. Office area satisfactory except for equipment and furnishings being old.
    - b. Basement storage of old records inadequate.

### B. SECOND FLOOR

8. Court Room and Adjacent Areas
  - a. Old but in fair to good condition.
  - b. Law library too small.
  - c. Jury rooms adequate.
  - d. Need visiting judge area.

9. Planning Commission
  - a. Office Area inadequate space.
  - b. Need (1) conference room, (2) director's office.
  - c. Equipment good.
10. Child Welfare
  - a. Inadequate space.
  - b. Lack interview room and waiting room.
  - c. Storage too small.
11. District Attorney and Probation
  - a. Space inadequate - Location poor for review and work with judges.
  - b. Space needs re-arrangement - Conflict with families coming in for interviews.
  - c. Equipment old.
12. Veterans Affairs
  - a. Space adequate.
  - b. Furnishings old.
13. Institution District (Adult Welfare)
  - a. Space satisfactory.
  - b. Furnishings and equipment old.

C. THIRD FLOOR

14. County Superintendent of Schools and Vocational Agriculture (4 rooms)
  - a. Need for this space questionable - if to continue, space adequate.
  - b. Most furnishings old.
15. Agriculture Extension (4 rooms)
  - a. Insufficient office and storage space.
  - b. Arrangement of available space poor.
  - c. Equipment and furnishings old and questionable.
  - d. Third floor location difficult for older visitors.

D. BASEMENT FLOOR

16. Civil Defense
  - a. Not good - combined with storage of county records.
  - b. Lack storage space.
  - c. Need emergency administration and communications facility.
17. Army Recruiting
  - a. Space satisfactory. Equipment good.
18. Basement, Generally
  - a. Not good for offices.
  - b. Poor ventilation and dampness.
  - c. Circulation between spaces poor.
  - d. Low ceilings.
  - e. Inadequate exits.

## RECOMMENDATION:

It is recommended that the Board of County Commissioners engage an architectural firm to undertake a space study of the Court House to determine the feasibility of remodeling the existing structure at the present location.

It is recommended that the Space Study be undertaken before major remodeling improvements are made in view of the foregoing findings.

A Space Study, when properly conceived, can be used as a long range guide for staging remodeling projects and thereby enables the Commissioners to undertake several improvement projects at different times with the assurance that the expenditures will be in accordance with a sound plan.

The Space Study should cover the followings subjects:

- a. An analysis of the present activities and uses housed in the Court House.
- b. A study of the site and the potential for its expansion. In this case it may be necessary to bridge over and/or tunnel underneath the alley to the north if the study indicates that horizontal expansion is advisable. The study may reflect vertical expansion and an elevator to be the most advantageous and thus the limits of the present site would not have to be expanded.
- c. External space arrangement and traffic circulation. This study would also give consideration to the external appearance of the building as well as requirements for off-street parking, loading and unloading zones with respect to the existing and future traffic pattern of the Downtown Area.
- d. Internal space and circulation studies. These studies would be related to the requirements as may be dictated by future population growth and the present and new types of activities that the County will be required to consider. In addition, it would give consideration to the internal circulation of visitors, employees, and respective business operations and storage facilities.
- e. Methods of financing construction work. This study would give consideration to the present income and expenditures and consider other sources of income as may be available from outside sources to finance an improvement program.

## 2. COLUMBIA COUNTY JAIL

The Jail is a rugged stone structure erected in 1877. It is located on a large site at the corner of Seventh and Iron Streets in Bloomsburg.

### SITE:

The site comprises approximately 60,000 square feet of level land in the form of rectangle about 200 x 300 feet. The site is located in a residential district and is more than adequate in size for present and future needs of the jail as well as the county warehouse and storage buildings that are located to the rear.

### BUILDING:

The building has the capacity of handling 20 prisoners including an old fashioned exercise yard enclosed by a high stone wall. In addition, plans are underway to remodel the second floor of the front part of the building into two sections for adult and teenage women. A section on the first floor is being remodeled for teenage boys. The first floor has office space for the warden and the kitchen in addition to the men's cell block.

The building is structurally sound but very old fashioned. The present usage of the jail reflects that the capacity is more than twice that required for prisoners during recent years.

### RECOMMENDATION:

It is recommended that use of the present jail be continued until a multi-county program is arranged whereby a facility of efficient size can be provided. If the jail is relocated in the future, the site can be used for other uses.

## 3. STORAGE BUILDINGS

As previously mentioned, the county has a warehouse to store surplus food and miscellaneous supplies and equipment. This is a cement block building built in 1956 on Seventh Street to the rear of the jail. This building is adequate in size and condition for present and future use. At the same site there is a wood frame building judged to be over 75 years old. This building is old but in satisfactory condition for its present limited use which is storage of equipment.

### RECOMMENDATION:

The storage buildings are adequate in size and condition for present and future use. Should the jail be relocated

from this site in the future it would be advisable to provide for needed storage elsewhere.

#### 4. COUNTY HOME

The County Home, historically referred to as "The County Poor Farm", is located off Fishing Creek Road on Township Road 500 in Mount Pleasant Township north of Bloomsburg. There are 135 acres in the property, 95 which are farmed.

The buildings consist of the following:

Men's Building	Brick
Women's Building	Frame
Superintendent's Residence	Frame
Barn and other Farm Buildings	Frame

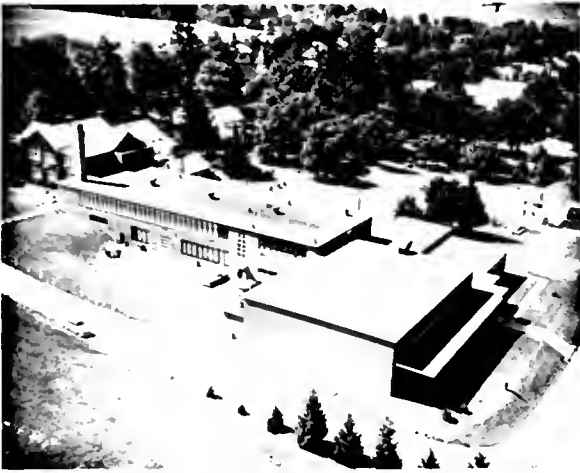
The State classifies the County Home as having facilities adequate for 15 patients. The concept of the County Home as a farm originated in the early days of county institutions. With the decline in the farm population and increase in urban and suburban population, influenced by the Industrial Revolution and continuing in recent years, the background of the persons requiring care at the County Home has changed from rural to predominantly urban. This change in background plus the increase in the life span of elderly persons places a high demand on the County Institution District to provide a modern nursing home.

The modern concept of such a facility is to have an adequately sized center with complete medical and therapeutic services in addition to the housing of patients. To accomplish this, it may be advisable for Columbia County to join with Montour and/or other adjoining counties to create proper facilities on an economically feasible basis.

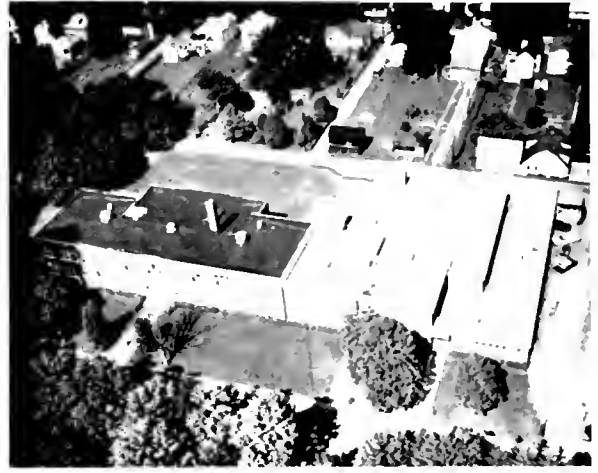
#### RECOMMENDATION:

Have architect planners conduct a site location study and feasibility study for a new County Home at the appropriate location.

Millville Jr.-Sr. High School



Benton Jr.-Sr. High School



## PART TWO

## EDUCATIONAL FACILITIES



Bloomsburg Senior High School



Berwick Senior High School



Southern Jr.-Sr. High School



Central Jr.-Sr. High School





PART TWO  
EDUCATIONAL FACILITIES

Columbia County has a County School Board of eight members and a staff of twelve. The County Superintendent is the executive officer.

The County is delineated into six districts, each administering a full scale educational program in the elementary and secondary grades. In addition, the newly formed Columbia-Montour Area Vocational-Technical School will initiate operations in a new building in September 1969. Including the new Vocation-Technical School, there will be 37 public schools and 5 parochial schools serving Columbia County. Considerable progress has been made in the modernization and expansion of the public school system in the twenty year period from 1948 to 1968. A survey made in 1948 reported 47 schools outside Berwick where there were 9 at that time. Of a total of 56 schools, 20 had one room and another 14 were reported to be substandard in 1948.

A survey and inspection has been conducted of the entire public school system in the Spring of 1968 and an evaluation made as to the adequacy of size and location with relation to the present and potential population. The accompanying map shows the location of each school. The number on the map is keyed to the Summary Table and the following narrative descriptions of each school and site.

Also included is a sample of the questionnaire used to secure information from each school district. The questionnaires were mailed to the Superintendent of each School District through the Columbia County Planning Commission in cooperation with the office of the County Superintendent of Schools. The study consultant then discussed the questionnaire with each District Superintendent and inspected each of the 37 schools.

The information contained in the questionnaires was then analyzed in relation to present and future population in each of six school districts.

From this analysis, a rating score was assigned to each school on the basis of the building, the site, and or the location.

Excellent - Few or no improvements needed.

Good ----- Certain desirable facilities are lacking or inadequate but could be made adequate.

Fair -----Deficiencies are numerous but correction can be made with relative economy.

Poor -----Inadequate because of a combination of two or more of the following: Absence of facilities, inadequate capacity, poor structural condition, inadequate site, poor location, or poor access.

Unsatisfactory - The building and/or site should be abandoned at the earliest possible time.

The purpose of this survey is to inventory the public school needs and to have this background information available for the consideration of each school district in formulating their comprehensive development plans.

The following summarizes the principle physical characteristics and needs for each school district:

#### A. BENTON AREA SCHOOL DISTRICT

The Secondary and Elementary Schools are located at the Benton Park in a manner so that the buildings and site can be expanded. The location is central and accessible from all parts of the district. While certain desirable facilities are lacking or inadequate, the present buildings can be made adequate.

#### B. BERWICK AREA SCHOOL DISTRICT

Berwick is a built-up industrial center. The Senior High School is an excellent building well located to serve the District and on a site that can be expanded. Of the three (3) buildings used as Junior High Schools and nine (9) elementary buildings only one (Salem) is less than 36 years old and only three are less than fifty years in age. While the District is to be complimented on their excellent maintenance program, a gradual replacement program shall be necessary. Most schools are well located to serve neighborhoods in which the children reside, however, with few exceptions, there is insufficient land at these sites for expansion or for essential outdoor playgrounds.

#### C. BLOOMSBURG AREA SCHOOL DISTRICT

This District has an excellent Senior High School on a large site which will permit expansion when necessary. The Junior High School is located in a congested section of Bloomsburg on a small site. The Memorial Elementary site is adequate and the Evans Elementary site is large enough to allow for expansion.

In general, the elementary buildings are in good condition but the distribution of room space creates serious overcrowding within Bloomsburg and too much space in Beaver and Main Townships where population decline has occurred.

#### D. CENTRAL COLUMBIA SCHOOL DISTRICT

This District has an excellent Junior-Senior High School on a site that can be expanded. Of the six (6) elementary schools, three (3) are to be closed. One because of structural conditions and two because of the location with respect to the distribution of the pupils.

#### E. MILLVILLE AREA SCHOOL DISTRICT

This District just completed a modernization and expansion program of the Junior-Senior High School. Two of the three (3) elementary buildings can be expanded on the present sites, while the third (Madison) shall have to relocate to a new site when expansion is undertaken.

#### F. SOUTHERN COLUMBIA AREA SCHOOL DISTRICT

The Junior-Senior High School is an excellent building on a large site. Two of the three (3) existing elementary schools, Catawissa and Elysburg are satisfactory for present usage but should not be expanded. Meanwhile, the Roaring Creek Elementary School could be expanded at the present site.

---

o

A detailed inventory and analysis based on field surveys and data provided by the school districts for each primary and secondary public school building follows in addition to descriptive summaries for all other educational facilities in Columbia County.

BUILDING INSPECTION REPORT  
FOR EACH SCHOOL DISTRICT

A. BENTON AREA SCHOOL DISTRICT

This District covers the northeast corner of Columbia County and is comprised of the Boroughs of Benton and Stillwater and the Townships of Benton, Fishing Creek, Sugarloaf and Jackson.

The public schools are located in Benton Borough on Fishing Creek. Pennsylvania Highway Route 487 runs north and south along Fishing Creek Valley where a major portion of the population is located.

While the total population is not expected to expand significantly in this area, a movement of population is reflected by the new subdivisions (eg. Green Acres) to the north of Benton in the Township.

There are two (2) public schools in this district:

1. The Benton Area Junior-Senior High School - 7-12

The Junior-Senior High School was built in 1927 with an addition in 1957. It is a two-story brick structure. There are 18 classrooms with a rated capacity of 480 students. The school serves grades 7 to 12. Present enrollment is 411 and the projected enrollment by 1978 is 484. There are special indoor facilities such as a gymnasium, auditorium, cafeteria, music room, vocational arts, shops and library.

Outdoor facilities include a soccer and baseball field in the Benton Park. While the school site is only 3 acres, the Benton Park of 19 acres is directly across the street.

A planned expansion includes a library and six classrooms. It is feasible to expand the building at the present site.

2. The L. Fay Appleman Elementary - K-6

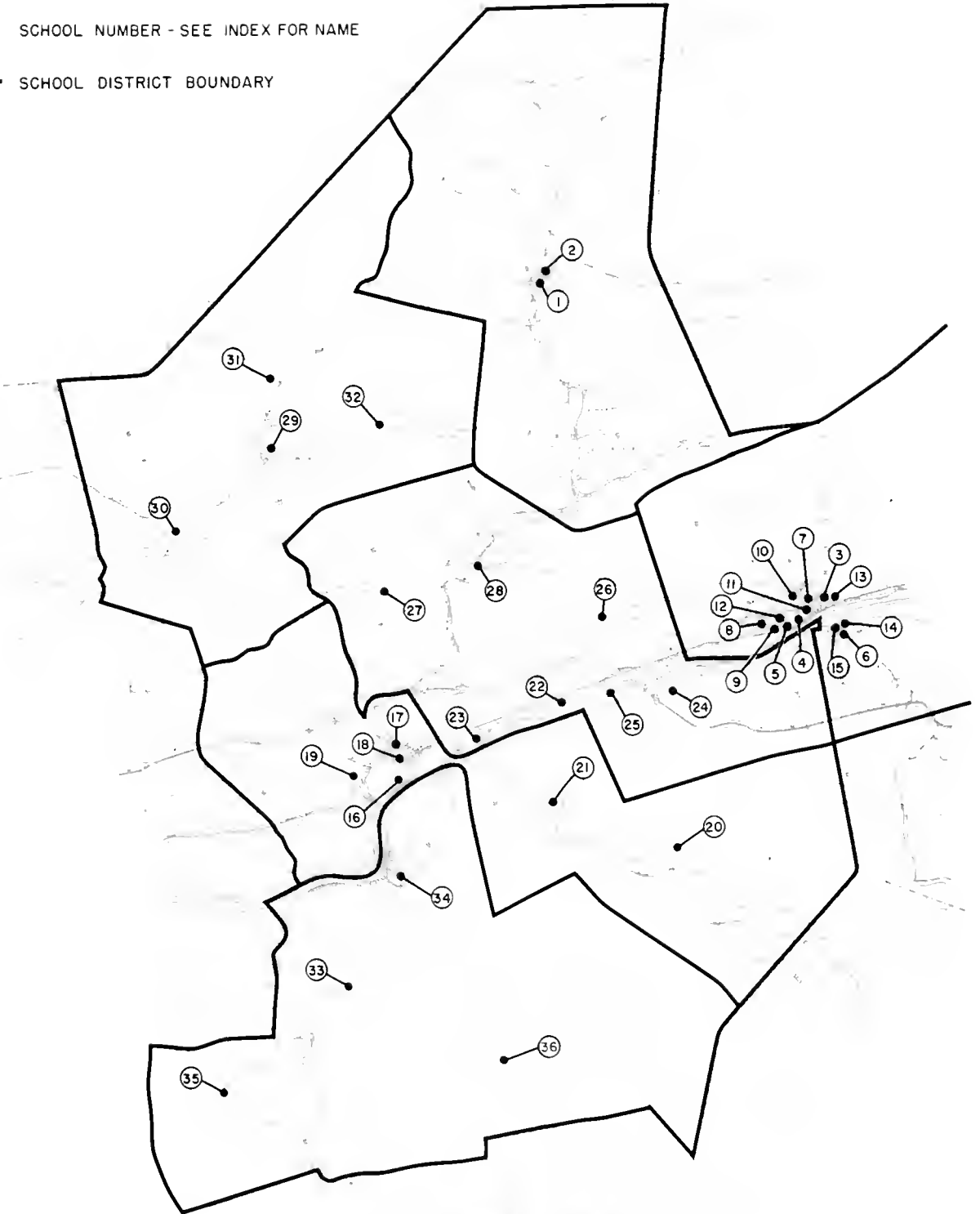
This school is a brick structure built in 1954 and expanded in 1967. It has 20 classrooms with a rated capacity of 600. The kindergarten through sixth grade is served. Total enrollment is 554 and the projected enrollment is 611.

# COLUMBIA COUNTY PENNSYLVANIA

● SCHOOL

⑬ SCHOOL NUMBER - SEE INDEX FOR NAME

— SCHOOL DISTRICT BOUNDARY



COLUMBIA COUNTY  
PLANNING COMMISSION



**SCHOOLS AND SCHOOL DISTRICTS**



The site is adjacent to the High School and the 19 acre Benton Park. There is a library and an all purpose area that serves as the auditorium-cafeteria. In addition, there is a large playground available.

There are no planned expansions; however, the building could be expanded on the present site.

Central water and a on-site septic tank are used. A central sewerage system has been discussed.

## B. BERWICK AREA SCHOOL DISTRICT

This District comprises the boroughs of Berwick and Briar Creek and Briar Creek Township in Columbia County as well as Salem, Nescopeck and Hollenback townships and Nescopeck Borough in Luzerne County.

### 3. Berwick Area Senior High School - 10-12

This building is located in Salem Township to the east of Berwick in a developing neighborhood. The school was built in 1958 and is a fine brick structure.

There are 42 classrooms with a rated capacity of 825. Present enrollment is 998 and the projected enrollment is 1,131. Grades 10-12 are served.

The building is complete with special facilities such as a gym, auditorium, cafeteria, music room and shops. It is expected that approximately 150 students will attend the Area Vocational Technical School in 1969 and that this number will increase by 1978. Thus, the overcrowding at this school will be temporarily relieved when the Vocational Technical School opens.

The site of 26.7 acres provides space for football, soccer, baseball and track.

A central water and sewer system provides service.

The Building can be expanded on this site.

### 4. Third Street Jr.High School - 7-9

Located in central Berwick in a congested area. This is an old structure with the original section built in 1887 and additions in 1901, 1921, and 1926.

Serving grades 7-9, there are 28 classrooms rated for 600 students. The present enrollment is 687 and the projection to 1978 is 685. This building is overcrowded for present and future enrollment.

Special facilities include an all purpose area for gym, and cafeteria. There are also an auditorium, vocational arts and shop areas.

Central water and sewer facilities are available.

A small site of two acres limits expansion of this building in this location.

#### 5. Orange Street Junior High School - 7-9

Located in West Berwick in a built-up section of town. Built in 1929, this school has 15 classrooms with a rated capacity of 330. Present enrollment is 332 and the projection for 1978 is 344.

A gym and cafeteria are available. A central water and sewer system provides service.

The site contains two acres which limits future expansion of the building.

#### 6. Nescopeck Junior High School - 7-9

Located in Nescopeck on a site of one acre in a built-up section. The school was built in 1932 and expanded in 1953.

There are 13 classrooms rated to serve 200. Present enrollment is 196 which is projected to go to 225 by 1978.

There is a cafeteria, music room and vocational arts room. An all-purpose area serves as the gym and auditorium. There is a central water and sewer system.

It is not feasible to expand the site or the building unless the adjoining elementary buildings are removed.

### ELEMENTARY SCHOOLS

There are nine elementary schools in the Berwick District - one in Salem Township, two in Nescopeck and six in Berwick (see summary tables). (Kindergarten and First Grade classes are temporarily being held in the Christian Church until the Salem school is enlarged.) The Salem Elementary School is the only modern building of the group. Only one of the balance are less than forty years old and the others are all over fifty years of age.



These old buildings are all neighborhood schools originally located for convenience of pedestrian students.

The summary tables list the capacity and evaluates the structures, location and site as to suitability for present and future use.

With exception of the new Salem School, these elementary buildings are on sites of 1 and 2 acres, a factor not favoring expansion of the buildings. The Salem building has a large site and an all-purpose room for gym, auditorium and cafeteria.

### C. BLOOMSBURG AREA SCHOOL DISTRICT

This District covers the Town of Bloomsburg and the townships of Beaver, Main, Hemlock and Montour. The Town of Bloomsburg is the urbanized economic and cultural center of the district while a suburban pattern is forming in Hemlock and Montour Townships. Main and Beaver Townships are rural areas to the south of the Susquehanna River with small settlements in Mainville, Slabtown and Shumans. To the east beyond the Bloomsburg District boundary, some of the over spill or suburban growth from Bloomsburg is in Scott Township.

Three of the six public schools are located in Bloomsburg where a large majority of the population reside. The school enrollment reflects a steady growth from 2,331 in 1956-1957 when the jointure was established to 2,749 in 1967.

The major problem confronting this district is the overcrowding of the Bloomsburg Memorial School and the congested location of the Junior High School. Growth trends in the Fernville and Sunken Heights section of Hemlock and Montour Township reflect the need for expansion of the W. W. Evans School in the near future.

#### 16. Bloomsburg Area Senior High School - 10-12

Located at 12th & Railroad Streets in Bloomsburg. Constructed on a 32 acre site, brick construction in the year 1963.

Student capacity - 709, Present enrollment - 637, Projected enrollment - 709. Teaching Staff - 30 full time and 2 on 1/2 day basis.

Contains 24 classrooms - 15 carpeted.

Gymnasium seats 600 - (boys and girls shower and locker facilities adjoining).

Auditorium seats 750 (stage area, public address facilities, electric organ, aisle carpeted).

Home Economics Department  
Health Classrooms  
Vocational Agricultural Department  
Automotive Shop  
Mechanical Drawing Room  
Music and Band Room

Cafeteria  
Library (contains one room for professional use)  
Art Department  
Chemistry and Physics Laboratories  
Special Education Room (Secondary level)  
Biology Department and Laboratory  
Business Education Room  
Visual Aid Room  
Faculty Work Rooms  
T.V. Antenna and co-axial cable system  
Outdoor facilities for use of physical education classes  
Asphalt student and faculty parking facilities  
Baseball field  
Plans for football stadium (not yet completed)  
Boys and girls lavatory facilities  
Intercommunication and paging system with clocks  
Water supply and sanitary disposal system connected to municipal system  
Oil fired heat  
District Administrative offices  
Senior High School Principal's office  
Senior High School Guidance office  
Health Suite - nurses room

This building has adequate capacity and located on a large site accessible to all parts of the district.

17. Bloomsburg Area Junior High School - 7-9

Located at First and Center Streets in Bloomsburg. Student capacity - 750, Present enrollment - 666, Projected enrollment - 736. Teaching Staff - 31 full time and 3 on 1/2 day basis.

Main Building constructed on approximately 1 acre, brick construction in the year 1927.

Contains 36 classrooms.

Gymnasium seats, 600 (boys and girls locker and shower facilities adjoining).

Auditorium seats 1,000 (stage, public address facilities, electric organ).

Home Economics Department  
Art Department  
Health Rooms  
Science Laboratory  
Music Room  
Guidance Office  
2 rooms - Susquehanna Valley Regional Film Library  
Library  
Audio-Visual Room  
Boys and girls lavatory facilities  
Water supply and sanitary disposal systems connected to municipal system

Vocational Building constructed in 1948 of brick. Separated from main building by a public alleyway.

1 General Classroom  
Industrial Arts Shop and Classroom  
Special Education Room (Secondary Level)  
Band Room  
Cafeteria (new - 1967)  
Heated from Main Building

These buildings are located in a congested section of Bloomsburg and the site is too small to provide adequate play areas and parking.

18. Bloomsburg Memorial Elementary School - K-6

Located at Fifth and Market Streets in Bloomsburg. Constructed on approximately 2 acres, brick veneer cement block construction in the year 1952.

Student capacity - 825, Present enrollment - 916, Projected enrollment - 1,096. Teaching Staff - 32 full time and 2 on 1/2 day basis.

25 Classrooms plus 2 Kindergarten Classrooms  
Asphalt playground facilities  
2 Remedial Reading Rooms  
Health Room  
Library  
Art Room  
Boys and girls lavatory facilities - 3 showers  
Water supply and sanitary disposal systems connected to municipal system  
Elementary principal's office  
Hand fired coal heat - Converting to oil/gas combination.

This building is overcrowded. The site is not large enough to expand at this location. The need will likely continue for an additional elementary school in Bloomsburg.

19. W. W. Evans Memorial School - K-6

Located in Hemlock Township near Sunken Heights. Constructed on 13.6 acre site, brick veneer cement block construction in the year 1955 - contains 8 classrooms.

Original building - Student capacity - 240, 6 room addition constructed in 1962 - capacity - 180.

Total rated capacity 420, Present enrollment - 395, Projected enrollment - 660. Teaching staff - 19 full time.

All purpose room utilized for cafetorium  
Asphalt parking facilities  
Kindergarten Room  
Health Room  
Materials Learning Center  
Remedial Reading Center  
Elementary principal's office  
Septic system (sanitary disposal)  
Municipal Water  
Oil heat  
Special Education room (Elementary level)  
Boys and girls lavatory facilities

This building is adequate for present enrollment and can be expanded on the site as need develops.

20. Beaver Township School - K-6

Stone construction in the year 1936.

Student capacity - 270, present enrollment - 101, Projected enrollment - 111. Teaching staff - 4 full time.

12 classrooms  
Cafeteria and kitchen  
Auditorium (stage, dressing rooms)  
Locker rooms with showers for boys and girls  
Industrial arts (moved to Junior High School 1963)  
Home Economics (moved to Junior High School 1963)  
Principal's office  
Visual Aid Room  
Music Room  
Art Room  
Boys and girls lavatory facilities  
Septic tank - separate water system  
Municipal light plant

Stand-by electric generator  
Hand-fired coal  
Maintenance Shop for custodians

This building serves the rural community of Beaver Township and has adequate capacity for future growth.

21. Main Township School - 1-6

Located in the Village of Mainville. Frame construction in 1921 - renovations made in 1960. Site 3.5 acres.

Student capacity - 150, Present enrollment - 97, Projected enrollment - 106. Teaching Staff - 3 full time teachers.

6 classrooms  
Multi-purpose room (cafeteria and auditorium)  
Kitchen  
Audio-Visual Room  
Music Room  
Hand-fired coal (steam heat)  
Municipal light plants - stand-by units  
Boys and girls lavatory facilities  
Septic tanks - separate water system  
Principal's office

This building is adequate for the present and projected population in this area.

D. CENTRAL COLUMBIA SCHOOL DISTRICT

This District covers the faster growing section of Columbia County between Berwick and Bloomsburg. This includes Scott, North Centre, South Centre, Mifflin, Mount Pleasant and Orange townships and the Borough of Orangeville. The new Keystone Shortway has three traffic interchanges in this district, one with Route 487 - Light Street Road, one at U. S. Route 11 and one at Route 330.

A major portion of the population resides in the urbanizing strip on the north banks of the Susquehanna between Bloomsburg and Berwick in Scott and South Centre townships. There are settlements at Orangeville and Light Street on Fishing Creek, in Orange and Scott townships respectively. Mifflinville and much smaller Hellerville are settlements to the south of the Susquehanna River in Mifflin Township. There is also a growing settlement in the northwest corner of this district in Mount Pleasant Township near the elementary school.

There are eight public schools, in the Central Columbia School District. A Junior-Senior High School and seven elementary buildings.

22. Central Columbia Junior-School High School - 7-12

Located on Old Berwick Road in Scott Township this brick school was constructed in 1962. It serves grades 7-12. With 41 classrooms it has a rated capacity of 1,165. Present enrollment is 1,040.

Indoor facilities include a gym, auditorium, cafeteria, music room, arts, and shops. The 66 acre site provides space for football, soccer, baseball, track and tennis. The site and the building are adequate and the building can be expanded. Central water is available and an on-site treatment plant is used for disposal of waste.

23. Scott Township Elementary - K-6

This brick school, located in Espy, was built in 1931 with additions in 1950. There are 20 classrooms with a rated capacity of 600. Grades kindergarten through sixth are served. Present enrollment is 513.

There is a playground and baseball field on the 11 acre site. An indoor all-purpose area provides space for gym and auditorium. There is a cafeteria.

The site and building are adequate and the building can be expanded on the site.

A central water supply and on-site septic tank is used.

24. Mifflin Township Elementary - K-6

This school is located in Mifflinville on a site of 11 acres. Built in 1938 it is brick and in good condition.

With 14 classrooms it has a rated capacity of 420. Present enrollment is 342.

An indoor all-purpose area provides gymnasium and auditorium space. There is a cafeteria and music room. Out-of-doors there is a playground and baseball field.

A central water system is proposed and a central sanitary sewer system is needed.

The site is adequate and the building could be expanded on this site of 11.0 acres.

25. Lime Ridge Elementary - K-3

This is a frame structure built in 1925 and in good condition. With four classrooms it has a rated capacity

of 120. The total enrollment is 109. The site has 1.5 acres where there is a playground. There are no special facilities and none are planned.

It is not feasible to expand this building. While the site is easily accessible the building is located too close to the Old Berwick Road for safety reasons. An on-site well and septic tank are used.

26. North Centre Township Elementary - 4-6

This is a white frame building with six classrooms built in 1929. The building has a rated capacity of 180 and the present enrollment is 190 pupils.

The site of eleven acres is located in a rural section of North Centre Township which is not yet experiencing growth and development.

The school district plans to close this building.

27. Mount Pleasant Township Elementary - 4-6

This is an attractive small school built in 1943. Brick and frame, the structure is in good condition.

With three classrooms, the rated capacity is 90 which is the present enrollment. There are no special facilities other than a playground and a site of 7.0 acres.

An on-site well and septic system are used. This site is not easily accessible nor is it feasible to expand the building. The School District plans to close this building.

28. Orangeville Elementary - 1-3

This is an old frame structure built in 1859. With 3 classrooms the rated capacity is 90. Present enrollment is 80. There are no indoor special facilities. There is a playground on the site of 2.0 acres.

A central water supply is available and an on-site septic system is used for sanitary purposes.

The site is not easily accessible nor is it feasible to expand the building. The School District plans to close this building.

E. MILLVILLE AREA SCHOOL DISTRICT

The Millville District includes Greenwood, Madison and Pine townships plus Millville Borough. It is located to

the northwest of Bloomsburg. Millville is the major population and economic center. Small settlements include Jerseytown, Iola, Eyers-Grove, and Rohrsburg.

29. Millville Junior-Senior High School - 7-12

This school is located on Route 254 east of the business district in Millville. A brick structure with sections built in 1902, 1952, and 1968.

There are 27 classrooms with a rated capacity of 584 students. The present enrollment is 458 and a straight line projection places this at 665 by 1978.

Indoor facilities include a gym, cafeteria, music room, vocational arts and shops. A site of 20 acres provide space for a soccer field and baseball field. A track is proposed.

A central water and sewer system is available.

This school is centrally located on a site that can be expanded. Facilities needed are administrative offices, teacher-student conference room, health suite, auditorium and larger library.

30. Madison Township Elementary - 1-6

This school is located on Route 254 in the Village of Jerseytown in Madison Township. A frame structure built in 1932 and in good condition.

There are six regular classrooms plus an improvised room arranged by using the stage in the auditorium to eliminate overcrowding and the bussing of pupils to another school. The rated capacity of the school is 180 and the present enrollment is 199 with the 1978 projected enrollment at 205.

There is an all-purpose room used for auditorium and cafeteria. The site of four acres provides space for a playground and baseball field. On-site well and septic system provide water and sewer service. It may be necessary to replace this building within five to ten years in view of the projected population growth in this area.

31. Pine Township Elementary - 1-6

This school is located at Iola on Route 42 north of Millville in Pine Township.

A brick structure built in 1960 with six class-



rooms. The building has a capacity of 180 pupils and an enrollment of 181. Projected enrollment is 205.

An all-purpose room serves as the auditorium and cafeteria. The site of 5 acres has a playground and baseball field. An on-site well and septic system are used. This building can be expanded on this site.

32. Greenwood Township Elementary - 1-c

This school is located on Route 25+ east of Millville in Greenwood Township. Built in 1944 this brick structure is in good condition on a well located site of 5 acres.

There are six classrooms and no special purpose rooms. There is a baseball field and playground. An on-site well and septic system are used to supply water and handle sewerage.

The rated capacity is 180 and total enrollment is 172. The projected enrollment is 205. The site and building can be expanded at this location.

There is a need for an all-purpose room for a cafeteria - auditorium, library, offices, music rooms, teachers room, nurses room and other special facilities.

4. SOUTHERN COLUMBIA AREA SCHOOL DISTRICT

This District comprises the large rural farm area in the southwest corner of the County. The district comprises Catawissa, Hoaring Creek, Locust, Cleveland and Franklin townships and Catawissa Borough in Columbia County and Ralpho Township in Northumberland County. Catawissa Borough is the major urban center where industrial and commercial activities are located. Small settlements of population include, Nunkata, Queen City, Slabtown, Newlin and Mill Grove in Columbia County and Elysburg in Northumberland County.

33. Southern Columbia Area Jr.-Sr. High School - 7-12

This school is located on Route 487 in Franklin Township. It is a brick school built in 1901. There are 27 classrooms with a rated capacity of 357. No new classrooms are proposed. The present enrollment is 8-c.

The building has indoor facilities such as a gym, auditorium, cafeteria, music room, vocational arts, and shops. The site of 56 acres provides ample space for football, baseball and track.

An on-site well and sewage treatment plant are used.

The site and building could be expanded. This site is attractive and well located, although sight distance of approaching traffic is less than desirable. Access would be greatly enhanced if portions of Route 487 were widened and realigned from Catawissa to Elysburg.

34. Catawissa Elementary - K-6

This building is located in the built-up area of Catawissa Borough. This is an old 2-story brick structure built in 1882 with additions in 1905 and 1936.

The rated capacity of the 13 classrooms is 365. One new classroom is proposed. Present enrollment is 362 and the projection is 400.

An all-purpose area serves as a gym, auditorium and cafeteria. There is a soccer field and baseball field on the site of six acres. A central water and sewer system are available.

This site cannot be expanded and the access is congested. The building should not be expanded beyond present plans.

35. Elysburg Elementary - K-6

This school is located at Elysburg in Ralpho Township, Northumberland County. A brick structure with the original part built in 1922 and additions in 1935 and 1955.

The school serves grades kindergarten to sixth. There are ten classrooms with a rated capacity of 300. One new classroom is proposed. The total enrollment is 260.

An all-purpose area provides indoor space for gym, auditorium and cafeteria. The site of six acres allows ample space for a baseball field. There is a central water supply and an on-site septic system.

It appears that this building and site can accommodate the future needs unless unexpected growth takes place.

36. Roaring Creek Valley Elementary - K-6

This school is located in Locust Township to the south of Numidia on Route 42. A one-story brick structure built in 1953. There are nine classrooms rated to house 270 students. No additions are planned. Present and long range enrollment is 286.

An all-purpose room serves as cafeteria and auditorium. The site of 11 acres has a baseball field. An



Health Suite  
Cafeteria and Kitchens  
Administrative Suite  
Conference Areas  
Student Activities

The site of 48 acres is located north of the Berwick Highway in South Centre Township. There is adequate outdoor space for the athletic facilities and for future expansion.

The curriculum to be available at this Vocational Technical School is as follows:

Auto Body  
Auto Mechanic  
Carpentry and Construction  
General Electricity  
Horticultural and Floriculture  
Distributive Education  
Machine Shop  
Printing  
Sheet Metal and Fabrication  
Data Processing  
Drafting and Design  
Electronics  
Cosmetology  
Health Assistance  
Food Preparation

K. COMMUNITY COLLEGE

Columbia County has no Community College at present. Persons desiring this level of educational services travel to the community college centers at Williamsport and Wilkes-Barre.

The travel distance ranges from 25 to 40 miles for persons from Columbia County. Recognizing that the economy of the community college is achieved through the students being able to stay at home and commuting to classes daily, the question of a community college for Columbia-Moutour Counties remains open for further study and consideration.

L. BLOOMSBURG STATE COLLEGE

A liberal arts college equipped to provide undergraduate and graduate training. The 1966-67 enrollment of 3,250 students is projected to 6,525 by 1976-77. The main campus of 60 acres was started over a hundred years ago by the Bloomsburg Literary Institute. The institution advanced from a Normal School to a Teachers College and now a Liberal Arts College.



TABLE 2-1

## SUMMARY OF EXISTING PUBLIC SCHOOLS - 1968

## COLUMBIA COUNTY, PENNSYLVANIA

SCHOOL DISTRICT	GRADES	YEAR BUILT	CLASSROOMS	RATED CAPACITY	PRESENT ENROLLMENT	PROJECTED ENROLLMENT
<b>A. BENTON AREA SCHOOL DISTRICT</b>						
1. Junior-Senior High School	7-12	1927	18	480	411	486
2. L. Ray Appleman Elementary	K-6	1954	20	600	554	611
<b>B. BERWICK AREA SCHOOL DISTRICT</b>						
3. Senior High School	10-12	1958	42	825	998	1,131
4. Junior High (Third Street)	7-9	1887	28	600	687	685
5. Junior High (Orange Street)	7-9	1929	15	330	332	344
6. Junior High (Nescopeck)	7-9	1932	13	200	196	225
<u>Elementary Schools</u>						
7. Chestnut Street	K-8	1911	8	240	222	224
8. Fairview Avenue	K-4	1904	8	240	210	226
9. Ferris Heights	K-4	1906	14	372	327	347
10. Fourteenth Street	K-6		13	390	447	346
11. Market Street	K-6	1870	7	210	220	230
12. Orchard Street	4-6	1914	11	330	230	250
13. Salem Township	K-6	1954-1969	12-14	360	451	760
14. Third Street (Nescopeck)	K-4	1911	10	280	282	277
15. Fourth Street (Nescopeck)	3-5	1897	5	140	129	155
<b>C. BLOOMSBURG AREA SCHOOL DISTRICT</b>						
16. Senior High School	10-12	1963	24	709	637	709
17. Junior High School	7-9	1927-1948	36-40	750	644	736
<u>Elementary Schools</u>						
18. Bloomsburg Memorial	K-6	1952	27	825	916	1,096
19. W. W. Evans Memorial	K-6	1955-1962	8	420	395	660
20. Beaver Township	K-6	1936	12	270	101	111
21. Main Township	1-6	1921	6	150	97	106

(table continued)

TABLE 2-1 (Continued) 1968

SUMMARY OF EXISTING PUBLIC SCHOOLS

COLUMBIA COUNTY, PENNSYLVANIA

SCHOOL DISTRICT	GRADES	YEAR BUILT	CLASSROOMS	RATED CAPACITY	PRESENT ENROLLMENT	PROJECTED ENROLLMENT
<b>D. CENTRAL COLUMBIA SCHOOL DISTRICT</b>						
22. Junior-Senior High School	7-12	1962	41	1,165	1,040	1,240
<u>Elementary Schools</u>						
23. Scott Township	K-6	1931	20	600	213	200
24. Milligan Township	K-6	1938	14	420	342	220
25. Green Ridge	K-6	1925	3	120	107	120
26. Mount Centre Township	4-6	1929	6	180	190	See Closed
27. Mount Pleasant Township	4-6	1953	3	90	90	See Closed
28. Orangeville	1-3	1959	3	90	80	See Closed
<b>E. MILLVILLE AREA SCHOOL DISTRICT</b>						
29. Junior-Senior High School	7-12	1909, 1959, 1963	27	1,384	1,100	1,100
<u>Elementary Schools</u>						
30. Millville Township	1-6	1959	1	150	150	150
31. Millville Township	1-6	1959	1	150	150	150
32. Millville Township	1-6	1944	1	150	150	150
<b>F. WESTERN COLUMBIA AREA SCHOOL DISTRICT</b>						
33. Junior-Senior High School	7-12	1941	1	100	100	100
<u>Elementary Schools</u>						
34. Elvinstown	K-6	1922, 1930, 1955	10	300	270	270
35. Elvinstown	K-6	1973	1	270	250	250

EVALUATION OF BUILDING, LOCATION and SITE - 1968

## COLUMBIA COUNTY, PENNSYLVANIA

S C H O O L D I S T R I C T	BUILDING	LOCATION	SITE	R E M A R K S
<b>A. BENTON AREA SCHOOL DISTRICT</b>				
1. Junior-Senior High School	Good	Excellent	Good	Building & Site can expand
2. L. Ray Appleman Elementary	Good	Excellent	Good	Building & Site can expand
<b>B. BERWICK AREA SCHOOL DISTRICT</b>				
3. Senior High School	Excellent	Excellent	Good	Expand Building - 1972
4. Junior High (Third Street)	Poor	Good	Poor	Not Sufficient Land
5. Junior High (Orange Street)	Poor	Good	Poor	Not Sufficient Land
6. Junior High (Nescopeck)	Poor	Good	Poor	Not Sufficient Land
<u>Elementary Schools</u>				
7. Chestnut Street	Fair	Good	Poor	Not Sufficient Land
8. Fairview Avenue	Fair	Good	Poor	Not Sufficient Land
9. Ferris Heights	Fair	Good	Poor	Not Sufficient Land
10. Fourteenth Street	Poor	Good	Poor	Not Sufficient Land
11. Market Street	Unsatisfact.	Good	Poor	Abandon-1973 Not Sufficient Land
12. Orchard Street	Fair	Poor	Poor	Not Sufficient Land
13. Salem Township	Excellent	Excellent	Excellent	Expanded - 1969
14. Third Street (Nescopeck)	Fair	Fair	Poor	Not Sufficient Land
15. 14th Street (Nescopeck)	Unsatisfact.	Unsatisfact.	Unsatisfact.	Abandon - 1968
<b>C. BLOOMSBURG AREA SCHOOL DISTRICT</b>				
16. Senior High School	Excellent	Excellent	Excellent	Building & Site can expand
17. Junior High School	Fair	Unsatisfact.	Unsatisfact.	Future utilization Questionable
<u>Elementary Schools</u>				
18. Bloomsburg Memorial	Excellent	Good	Poor	Not Sufficient Land for expansion
19. W. W. Evans Memorial	Good	Good	Good	Building & Site can expand
20. Beaver Township	Fair	Good	Good	Limited Demand
21. Main Township	Fair	Good	Fair	Limited Demand



## EVALUATION OF BUILDING, LOCATION and SITE - 1968

## COLUMBIA COUNTY, PENNSYLVANIA

S C H O O L D I S T R I C T	BUILDING	LOCATION	SITE	R E M A R K S
D. CENTRAL COLUMBIA SCHOOL DISTRICT				
22. Junior-Senior High School	Excellent	Good	Excellent	Building & Site can expand
<u>Elementary Schools</u>				
23. Scott Township	Good	Good	Good	Building can be expanded
24. Mifflin Township	Good	Good	Good	Building can be expanded
25. Lime Ridge	Good	Poor	Poor	Retain as Neighborhood School
26. North Centre Township	Good	Unsatisfact.	Poor	To be Closed
27. Mount Pleasant Township	Good	Unsatisfact.	Fair	To be Closed
28. Orangeville	Unsatisfact.	Unsatisfact.	Unsatisfact.	To be Closed
E. MILLVILLE AREA SCHOOL DISTRICT				
29. Junior-Senior High School	Good	Good	Good	Building & Site can expand
<u>Elementary Schools</u>				
30. Madison Township	Poor	Fair	Poor	Continue for limited period (5-10 years)
31. Pine Township	Good	Good	Good	Building can be expanded
32. Greenwood Township	Good	Good	Good	Building can be expanded
F. SOUTHERN COLUMBIA AREA SCHOOL DISTRICT				
33. Junior-Senior High School	Excellent	Excellent	Excellent	Building & Site can expand
34. Catawissa	Poor	Poor	Poor	Expansion not Recommended
35. Elysburg	Good	Good	Good	Expansion not Recommended
36. Roaring Creek Valley	Good	Good	Good	Building & Site can expand

QUESTIONNAIRE  
 PUBLIC SCHOOL SURVEY  
 COLUMBIA COUNTY, PENNSYLVANIA  
 March 1968

KINDLY RETURN TO:  
 George A. McKelvy, Director  
 Columbia Co. Planning Commission  
 Court House  
 Bloomsburg, Pennsylvania 17815

1. Name of District: \_\_\_\_\_
2. Name of School Building: \_\_\_\_\_ Year Built: \_\_\_\_\_  
 (Est. if unknown)  
 Dates of any additions: \_\_\_\_\_
3. Grades Served: \_\_\_\_\_
4. Number of Class Rooms: \_\_\_\_\_ Rated Capacity \_\_\_\_\_  
 Number and Capacity of any Proposed Class Rooms: \_\_\_\_\_
5. Total Enrollment - 1968 \_\_\_\_\_ (Attach Breakdown by Grades)
6. Projected Enrollment - 1978 \_\_\_\_\_ (Attach Breakdown by Grades)
7. Area of Site (Acres) \_\_\_\_\_
8. Check if Special Indoor Facilities are Available:
 

	<u>Separate</u>	<u>Included in All Purpose Area</u>	<u>Proposed</u>
Gymnasium	_____	_____	_____
Auditorium	_____	_____	_____
Cafeteria	_____	_____	_____
Music	_____	_____	_____
Vocational Arts	_____	_____	_____
Shops	_____	_____	_____
Swimming Pool	_____	_____	_____
9. Check if Special Outdoor Facilities are Available:
 

		<u>Proposed</u>
Football Field	_____	_____
Soccer Field	_____	_____
Baseball Field	_____	_____
Track Field	_____	_____
Swimming Pool	_____	_____
10. Public Services: (check appropriate blanks)
 

Central Water Supply \_\_\_\_\_ Supply from Wells on Site \_\_\_\_\_

Central Sanitary Sewer Facilities \_\_\_\_\_

Treatment Plant on Site \_\_\_\_\_ Septic Tank on Site \_\_\_\_\_

Other (specify) \_\_\_\_\_

11. Condition of Building and Site for Current and Potential Enrollment:

The present building is adequate with respect to the following (YES or NO) :

	<u>CURRENT ENROLLMENT</u>	<u>POTENTIAL ENROLLMENT</u>
a. Construction	_____	_____
b. Safety	_____	_____
c. Sanitation	_____	_____
d. Location	_____	_____
e. Special Facilities	_____	_____
f. Other	_____	_____

If any are answered (NO) attach comment sheet. Identify comment with item letter (a,b,c, etc.)

12. Is it Feasible to Improve Present Building? (YES or NO) \_\_\_\_\_

Remarks:

13. Is it Feasible to Expand Present Building on the Site? (YES or NO) \_\_\_\_\_

Remarks:

14. Is the Building Accessible from all Parts of the Attendance Area? (YES or NO) \_\_\_\_\_

Remarks:

15. Check Appropriate Statement for the Status of the Long Range Developmental Plan for the District:

Report Completed \_\_\_\_\_ Expect to Complete Report by \_\_\_\_\_

Copy Available to Commission: (for files \_\_\_\_\_) (for loan \_\_\_\_\_)

16. Your comments pertaining to the adequacy of school-related supporting community facilities such as roads, sewerage, etc. or any other school-related community development problem are welcome and would be most helpful. If any, please attach.

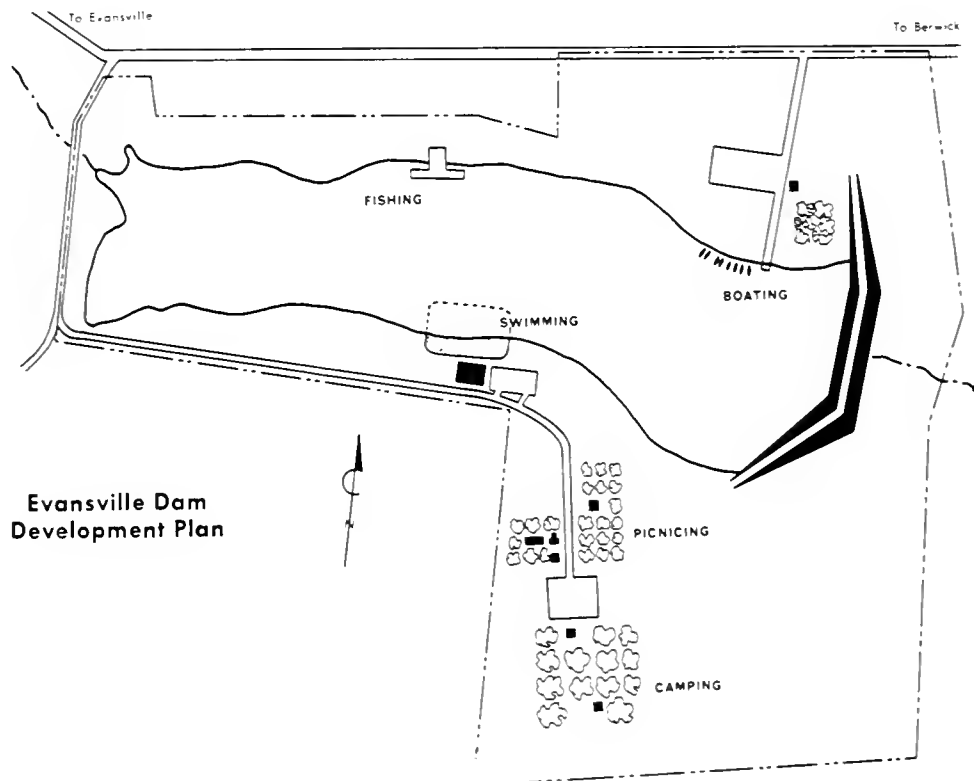
Col. Co. P.C.

Completed \_\_\_\_\_ by \_\_\_\_\_  
date initials



# PART THREE

## RECREATION FACILITIES





## PART THREE

### RECREATION FACILITIES

#### STANDARDS FOR RECREATION AND PARK AREAS

Recreation areas are of many types and functions. The size, type, economic feasibility and justification for recreation areas is generally based on the size of the community, the intensity of urban development, social conditions and available natural amenities.

Basic standards for recreation areas are defined herein to guide in the establishment of the responsibility and to determine where the deficiencies, if any, are in Columbia County.

1. NEIGHBORHOOD PLAYGROUND. This is the chief outdoor play center where people of the neighborhood can gather. It is a play area where the pre-school child can play in a protected area under the eye of its mother, where young people and adults can enjoy games, where the entire neighborhood can gather for festivals, play nights and other activities. It becomes a neighborhood center where the whole family can find limited types of recreation and relaxation. In size it may vary from 3-1/2 acres for a population of 2,000 to 6 or 7 acres for a population of 5,000 and its location should be within 1/4 of a mile of every home, if possible. Features of the neighborhood playground usually are a play apparatus area, open space for informal playfields, courts for games, shaded areas for quiet activity, a swimming pool and a shelter house. The Neighborhood Playground is usually a municipal function.
2. PLAYFIELD. A playfield provides facilities for diversified recreational activities for young people and adults, although a section is commonly developed as a playground. A part of the playfield is often set aside for athletics or highly specialized sports. The size may range from 12 to 30 acres, as may be determined desirable in relation to the proposed uses. A common design criteria for the playfield is one acre for each 800 people to be served, and its location should be within one mile of every home. Some of the features of the playfield may be the playlot and playground, areas for field games such as mushball, baseball and other sports, badminton, tennis courts, lawn games, a swimming pool, outdoor theater, picnic center, an indoor recreation facility and ample parking area for cars. The playfield is usually a municipal function.
3. THE LARGE PARK. The large park is intended to give the urban dweller an opportunity to get away from the noise, rush of traffic and enjoy contact with nature. It should provide a pleasant environment in which to engage in recreation activities. An area of 100 to 400 acres or more is desirable,

although smaller property of unusual scenic interest may serve the purpose. Every major urban center should have one of these properties and it is suggested that an area of 400 to 500 acres be provided for every 50,000 population. It is seldom possible to standardize on the layout for a large park. Its value lies in the efficient utilization of its natural features. For instance, a large part of the area should be woodland, open lawn, meadow and glen. Naturally, water areas contribute greatly to its value. Roads should be kept to a minimum and provide access only to centers of great use. These may include a swimming pool, picnic areas, boating, field sports, day camps, a zoological garden, a botanical garden, comfort stations and shelters. The large Parks generally the function of the County Commissioners in a county like Columbia, with its many scattered urban centers

### STATE PARKS AND FORESTS

Ricketts Glen State Park. A 13,000 acre state park located on the north border of Columbia County in Luzerne and Sullivan Counties. A profusion of magnificent waterfalls may be viewed from trails along Kitchen's Creek. Camping, fishing and swimming are available at Lake Jean at the summit which is accessible by way of Route 487.

State Game Lands. There are three major State Game Land areas in Columbia County providing outstanding large and small game hunting. Game Lands # 8, consisting of 12,300 acres is located in the southern portion of the County. Game Lands #226, more than 4,200 acres in area, is located north-west of Millville. Game Lands #75, consisting of nearly 2,000 acres is located along the top of Huntington and Lee mountains north of Berwick.

### MAJOR NATURAL FEATURES

Susquehanna River. The North Branch of the Susquehanna River bisects the County from east to west adding much to the area's beauty and providing opportunities for boating and fishing. Boat clubs are located at Berwick and Catawissa.

Fishing Creek Valley. Fishing Creek Valley extends northward from the Susquehanna River at Bloomsburg into Rickett's Glen State Park. This area provides many fine camping, swimming and fishing spots. In Benton, there is a large park with swimming available at the adjacent Benton Dam. The Boy Scouts of America maintain an outstanding outdoor facility at Camp Lavigne north of Benton.

Catawissa Creek. Along with the Susquehanna River at Catawissa, the Catawissa Creek Valley is another natural scenic area worthy of preservation. Camp Catawissa is a privately owned year-round youth camp providing swimming, horseback riding, skiing, tobogganing, fishing, nature craft and general outdoor recreation.



The Catawissa Dam was recently reconditioned by local citizens to provide an attractive swimming area. The Catawissa Boat Club is located across the river from Catawissa on the Susquehanna.

### BLOOMSBURG FAIR GROUNDS

The Columbia County Agricultural, Horticultural and Mechanical Association has operated the Bloomsburg Fair for more than one hundred years. The grounds are well developed and maintained and include exposition buildings, race track and grandstand. The annual Fair Week in September, attracts more than a quarter of a million people to exhibits of agriculture, industry, school, home arts, crafts, harness and midget auto racing.

### AMUSEMENT PARKS

There are several private amusement park areas. Knoebel's Grove is outstanding in this category. Amusements include rides, playland, roller skating, dancing, entertainment, refreshments, picnicking and large swimming pool. Located on the countyline, 3 miles east of Elysburg on Route 487. Open May 30th thru Labor Day - also Sundays during May and September. There are also a number of summer cottages at this park.

Along Old Berwick Road is the Bloomsburg Midget Raceway and on the New Berwick Highway is the Carroll Park and Western Railroad. An authentic western village is being developed at Carroll Park in conjunction with the operating antique steam railroad.

Ideal Park on Route 42 south of Catawissa has a swimming pool, games, playfields and picnic facilities.

### HISTORICAL MUSEUMS

In addition to the numerous landmarks in the way of historic and scenic sites and buildings throughout the County, there are several museums of note.

Berwick Historical Society Museum. 535 East Second Street. There are over 500 volumes of historical books here, including several sets of Pennsylvania Archives. On file are many newspaper clippings, cemetery records, articles and genealogies of Berwick, Salem Township and vicinity.

Columbia County Historical Society Museum. 353 East Main Street, Bloomsburg. A multitude of Indian artifacts, records and other momentos of the area's history are preserved and displayed here. A basic historical and genealogical library is also maintained here by the Society. Larger quarters are needed.

Magee Historical Museum. A privately owned free museum of thousands of historical household items, firearms and items representing the development of the carpet industry. Open Wednesdays, Saturdays and Sundays year-round. Located at 698 West Main Street, Bloomsburg.

Magee Museum Village. Located along Millville Road, Bloomsburg. An exhibit of 35 antique cars and 60 carriages and sleighs, old time general store and operating antique electric trolley line with 8 reconstructed horse drawn and motorized cars.

### Frontier Forts

There were three frontier forts in Columbia County. Fort Jenkins across the river from the Village of Mifflinville, Fort McClure on the Susquehanna River at Fishing Creek in Bloomsburg and Fort Wheeler on Fishing Creek at Light Street. With the exception of Fort McClure, only markers remain at these sites.

### Covered Bridges

There are over 27 wooden covered bridges in Columbia County nearly all of which are still in use. The few "retired" structures are maintained by the County for their historical value. Thousands visit these structures annually.

### Pennsylvania Canal

The North Branch Division of the Pennsylvania Canal was opened in 1831 from Northumberland to Pittston and extended to Elmira in 1856. The line was abandoned in 1901. Evidence of the canal bed and locks is still visible along much of the line through the county. To date, no portions have been reconstructed for historical or recreational purposes and annually more of the line is being permanently obliterated by urban development.

### MUNICIPAL PARKS AND RECREATION AREAS

BERWICK BOROUGH. The Berwick Recreation Board administers a recreation program in the Borough. The Recreation Board has submitted a statement of interest to the Pennsylvania Department of Community Affairs for a grant under the \$500 Million Bond Issue for a municipal swimming pool. The Board contemplates the continuing development of the following recreation areas:

Ber-Vaughn Park: Ber-Vaughn, the site of the proposed swimming pools, is located in Briar Creek Borough which adjoins the Borough of Berwick on its western boundary. It comprises approximately 25 acres of land, about one-third of which is wooded, improved with a Little League Baseball diamond, one softball field, several tennis courts, a midget race track, a dance pavilion and band stand, fireplaces, picnic tables, shelters and children's playground equipment. Most of the improvements are concentrated in the wooded area, leaving considerable room for the swimming pools, accessory buildings and parking accommodations. A swimming pool has been planned for almost a decade but a lack of funds in the Borough treasury has prevented the construction of such a needed item. The Recreation Board has plans for the replacement of many of the ancient trees which are gradually dying off and for the construction of a band shell and dressing rooms for summer concerts and similar entertainment.

Sponsler Park: Sponsler Park, like Ber-Vaughn Park, is Borough owned property and covers an entire block on Monroe Street. This park has been developed as a neighborhood playground by the installation of playground equipment, two pavilions, a paved basketball court, a basketball bank board and park benches. The pavilions and benches, strategically placed under the many trees, provide an area of relaxation for numerous retirees living in the vicinity. Future development of this facility calls for the replacement of the ancient maple trees with young hardwoods and addition of two additional paved basketball courts.

Fowler Field: Fowler Field is leased from the Berwick Athletic Association under a long term lease at a nominal fee. This facility is used almost exclusively for softball games by the Church leagues and industrial leagues and for midget football practice, although children of the immediate vicinity use it for various types of amusement at other times. Improvements of this facility call for the installation of a lighting system for night use and for the construction of blacktopped tennis courts which can be converted into an ice rink in the winter time for winter sports.

American Legion Playground: The American Legion Playground is also a neighborhood playground on land under a long term lease at a nominal cost from the local unit of the American Legion. This playground is equipped with various playground equipment and a paved basketball court for the accommodation of the children of the immediate vicinity in the northern part of the borough. Future plans provide for the addition of a pavilion, benches and fireplaces so that adults, as well as children, may use the facility.

Market Street School Playground: This playground is located on a portion of school property which is used by the school children during school hours and by other children at other times. Fenced with a chain link fence donated by the local Kiwanis Club and equipped with the usual items of playground equipment, a paved basketball bank board and a paved hop-scotch court, this playground offers a safe haven for children living in the heart of the borough. Being fairly well equipped, no improvements are contemplated for this facility at the present time.

Vine Street Playground: This playground was leased recently from a local industry which has no immediate use for it, under a long term lease at a nominal charge. Present plans for this facility call for the installation of the usual items of playground equipment, which is already on order, and the construction of a blacktopped basketball court. Future development of this facility requires planning guidance.

Walnut Street Playground: This area is a future playground awaiting the completion of a fill project on an old excavation.

site owned by the borough. Completion of the fill is anticipated in approximately three years, at which time it is contemplated that a fence will be constructed and the usual items of playground equipment will be installed for the accommodation of the children in the eastern part of the borough.

Although the area of available recreation land is below present-day standards and some important facilities are lacking, Berwick's recreational needs are unusually well served by its many neighborhood facilities.

TOWN OF BLOOMSBURG. Bloomsburg has made considerable progress in acquiring and developing additional recreation space since the Planning Survey of 1947. At that time, the land area developed for parks and playgrounds was 5.3 acres and consisted of the High School Athletic Field on Seventh Street (three acres), a small park along West Main Street (1.8 acres), and the play area adjacent to the old High School (0.5 acres). The recent land use survey indicates that the Town has approximately 45 acres in recreational use, in addition to the Fairgrounds and school playground facilities.

The most outstanding development in recent years has been the creation of the attractive Community Park along the river at the foot of Market Street between Railroad Avenue and Catherine Streets. This extensive park area contains 40 acres and provides space for Little League and Midget League Baseball fields, tennis courts, playground equipment, and picnic facilities. The Municipal Pool, built by public subscription and supported by the community, is located adjacent to the park. The park is attractively landscaped and well maintained. Although located in a flood plain, the only significant disadvantage of the park is its location on the edge of the town, beyond the walking distance of a considerable portion of the population.

Both the park areas along West Main Street and at the Junior High School are too small and poorly located for extensive use. The old High School Athletic Field provides a measure of open space in a congested section of the town but is used almost exclusively as a football field.

The construction of the new High School in 1963 created a new playfield for the community. Provision is made for major outdoor activities such as football, baseball, and track; and a stadium is currently in the planning stage. A small asphalt playground with some equipment is provided at the centrally located Memorial Elementary School. This facility, in addition to the school's all-purpose room, is used extensively in a summer recreation program conducted there.

An appraisal of Bloomsburg's recreational facilities reveals that they are still below the desirable minimum standard for a small community. The total of 45 acres of recreational space is considerably below the desirable minimum of 100 acres recommended by the National Recreation Association. A well-balanced

recreational system requires a variety of facilities as well as adequate land area in locations convenient to the residents. Facilities such as playfields, neighborhood playgrounds, small play lots, decorative parks, and community centers should be the major components of a town-wide recreation program.

Most of the land currently in recreational use is concentrated in the large riverfront park that is located at a considerable distance from the population. The greatest deficiency appears to be in small playground or playlots in the older and more crowded sections of the community. The lack of vacant land in these sections makes the acquisition of needed land more difficult as well as more expensive. The large concentration of young school children in these sections increases the need for play space close to home. There is also a need for more decorative park areas throughout the Town, particularly in the Business District, at the various entrances to the Town, and along the Susquehanna River and Fishing Creek.

The Town is spending an increasing amount of money for recreation in recognition of the growing need for additional facilities and play space and the increasing amount of leisure time. Recreation expenditures increased substantially in 1955 with the opening of the Municipal Pool. Since then they have varied between \$7,000 and \$10,000 annually, or \$.65 to \$.95 per capita.

BENTON BOROUGH: The Borough of Benton maintains a 19 acre community park adjacent to a former grist mill dam on Fishing Creek within the borough. The dam provides an ample swimming facility for residents of the area. Within the park studded by many shade trees have been developed extensive picnicing facilities as well as several active play areas including a soccer and baseball field. The facility is also utilized by the adjacent Benton Schools in their athletic program.

MILLVILLE BOROUGH: The Borough of Millville, through a Park Commission, is developing a 7-1 + acre site within the Borough as a regional community park. Existing facilities in the Millville Community Park consist of two paved tennis courts, a little league baseball field, three pieces of playground apparatus and a few picnic facilities. Plans call for the provision of a swimming pool, bathhouse, softball diamond, basketball and volleyball courts, additional playground and picnic facilities, parking and improved sanitary facilities. The borough has recently submitted an application for a state grant toward the construction of the proposed swimming pool.

VILLAGE OF MIFFLINVILLE: In the Village of Mifflinville, Mifflin Township, there are several acres of land owned by the township along the river which have been developed for public recreational use. Approximately four acres have been developed and maintained

by the local Lions Club as a community park with picnic, playground and sanitary facilities available as well as an area for informal softball games. Additional acreage to the east is utilized by the Mifflin Township Fire Company as a carnival grounds. The school grounds located more in the center of the village are utilized for organized ball games and as a general play area.

CATAWISSA BOROUGH: The only outdoor recreation facilities located in the Borough of Catawissa are the dam on Catawissa Creek which is utilized intensively for swimming and a Little League ballfield being developed. Playgrounds and playfields are needed to serve the area's population.

CENTRALIA BOROUGH: The Borough of Centralia, located at the southern extreme of the county, has recently acquired a 10 acre site within the Borough for recreational purposes. Development plans for the site, to be known as the Borough Line Park and Playfield include facilities for all age groups and all levels of activity. The first phase of development will consist of a combination basketball and ice skating facility for which the borough has submitted applications for state and federal recreational development grants.

#### COUNTY RECREATION FACILITIES

Until recently, the county had not found it necessary to participate extensively in the provision of recreational facilities. At present, the only county facility is Twin Bridges Park located near Forks between Orangeville and Benton. After several years of planning, the county is now participating in the development of a multi-purpose reservoir along the Evansville/Berwick Road in cooperation with the Pennsylvania Fish Commission and the U.S. Soil Conservation Service.

**Twin Bridges Park:** Twin Bridges Park is an approximately one-quarter acre leased site along Huntington Creek, adjacent to twin covered bridges which have been restored by the county. Picnic and sanitary facilities are available as well as wading and swings for the youngsters. The attractive site is very popular with the demand often exceeding the capacity, particularly on weekends.

**Evansville Dam:** The Evansville Dam is being developed primarily for flood control purposes, however, considerable recreational uses will also be available. There will be a 50 acre permanent pool which will provide swimming, fishing and boating. Development of the total site, consisting of 173 acres, will be carried out by the county over an extended period of time. Present plans call for a boat launching ramp with mooring facilities for 40 boats, and a beach area bathhouse, several picnicing units, a camping area, water and sanitary facilities and parking for one to two hundred cars.

# COLUMBIA COUNTY PENNSYLVANIA

RICKETTS GLEN STATE PARK

## ● PUBLIC RECREATION FACILITIES

STATE GAME LANDS NO. 13

BENTON PARK

STATE GAME  
LANDS NO. 226

MILLVILLE PARK

STATE GAME LANDS NO. 55

BER VAUGHN PARK

MIFFLINVILLE PARK

BLOOMSBURG PARK

STATE GAME LANDS NO. 58

GATAWISSA DAM

BOROUGH LINE PARK

COLUMBIA COUNTY  
PLANNING COMMISSION



# COUNTY FACILITIES





## CONCLUSIONS

Columbia County is fortunate to have its limited supply of public recreation facilities supplemented by a diversity of private parks, golf courses plus many State Parks and Forests. The natural environment of the county provides many opportunities for passive and active recreation activities in the attractive mountainous area, the Susquehanna River, scenic rolling farmland and historic landmarks.

Deficiencies are reflected in county facilities when the foregoing is evaluated with the recommended standards. A site location study and a general development plan for one or more County Parks will be undertaken by the county planning commission to aid in meeting the growing need for public recreation area.





974 838  
~~301~~ 34  
0726  
v.3