

Nineteen Eighty One



CONESTOGAN



REFERENCE
MATERIAL

FOR
LIBRARY
USE ONLY



BH
378.413
= 243.2
178

ZUG MEMORIAL LIBRARY
FINZEE COLLEGE
ELIZABETHTOWN, VA. 17022

CONESTOGAN 1981

*ELIZABETHTOWN
COLLEGE*

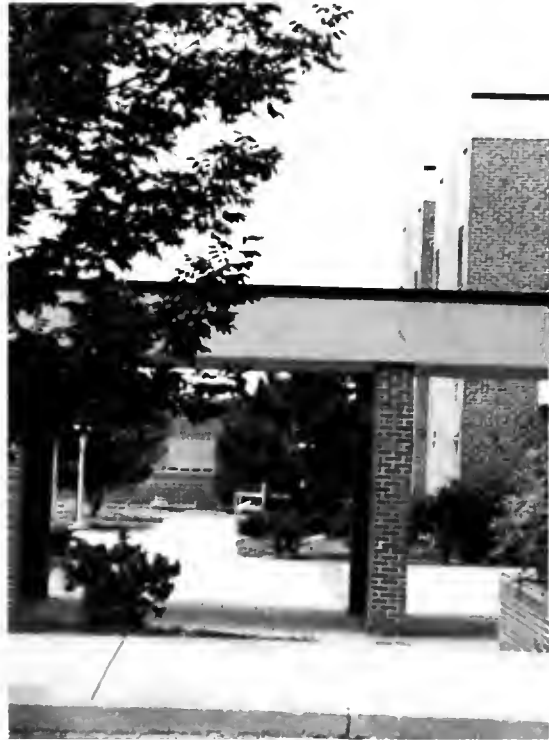
*ELIZABETHTOWN,
PENNSYLVANIA*

17022

For Reference
FOR INFORMATION ONLY



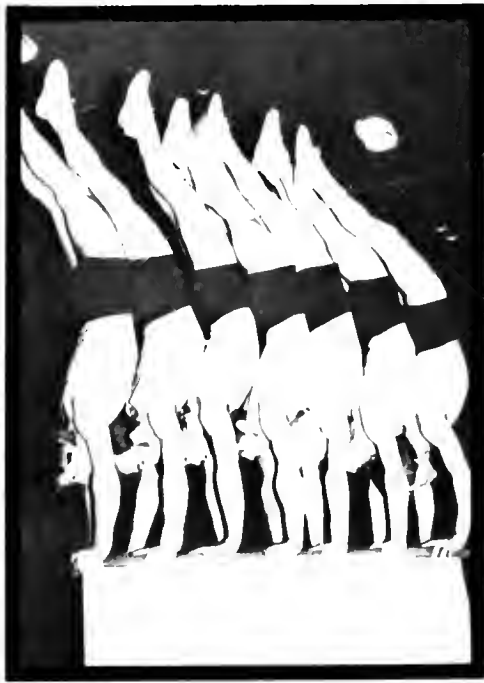




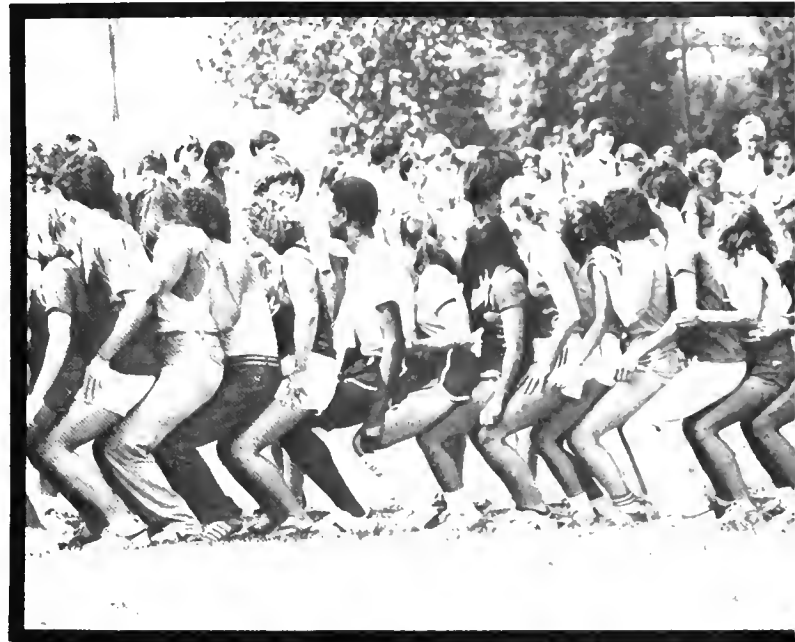








BOSTON '80





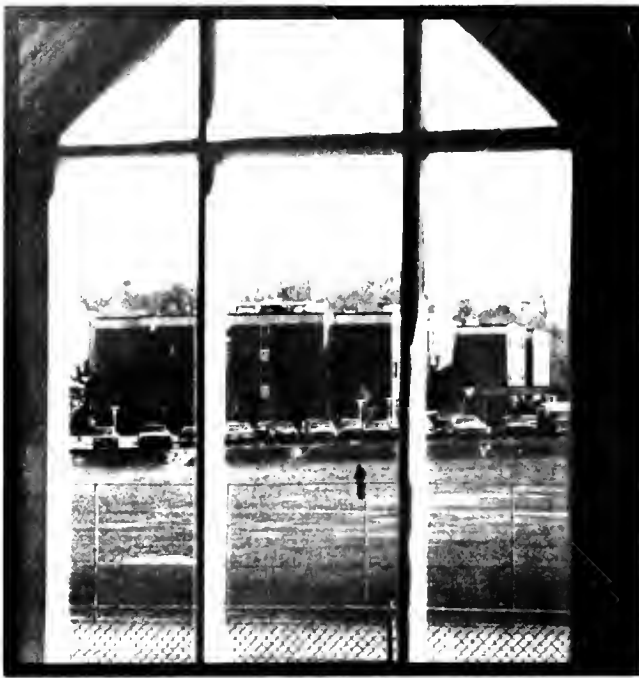




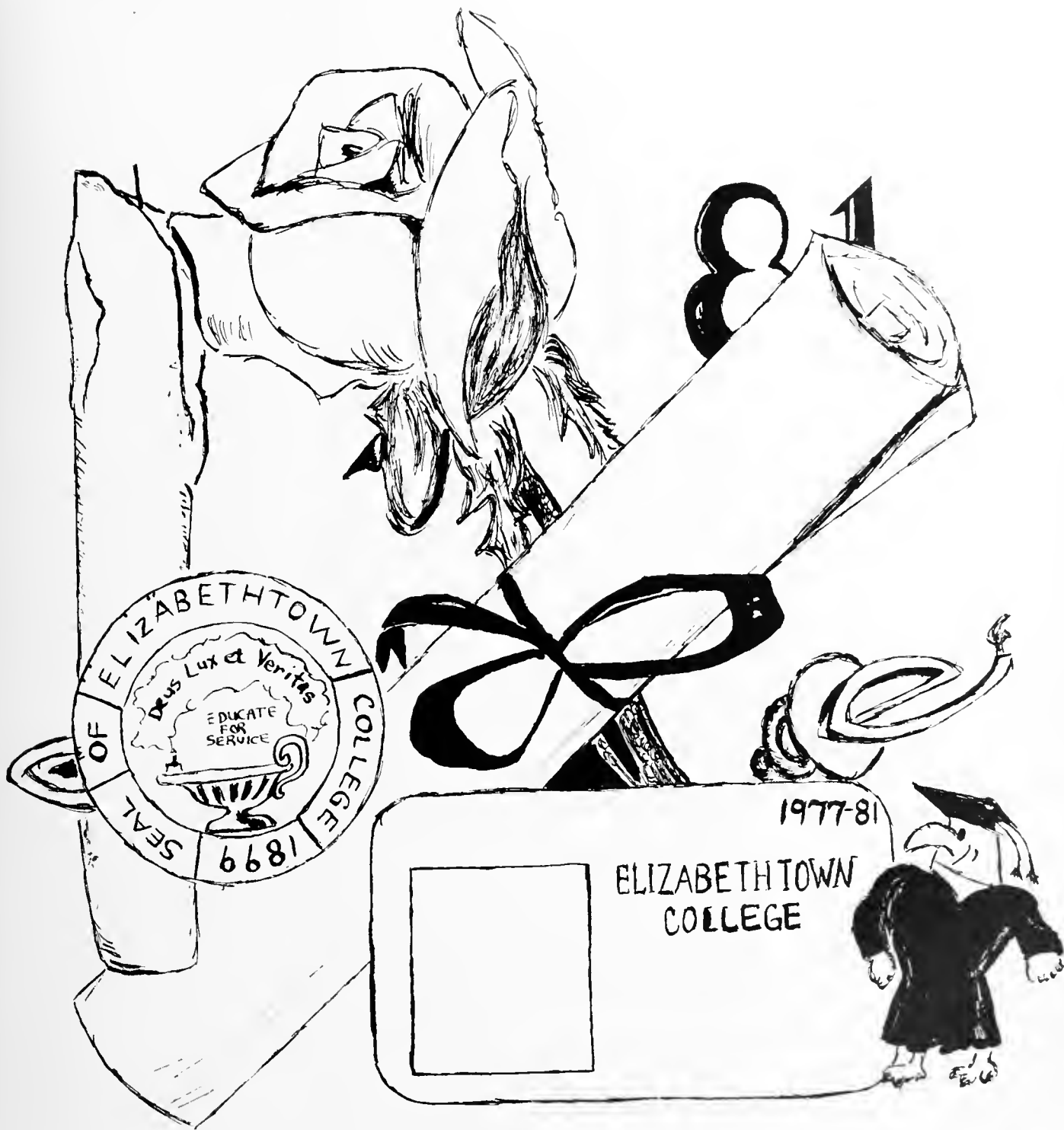








SENIORS





*Michael S. Adamko
Freehold, NJ
Business Administration*



*Claudia Albanese
Gillette, NJ
Accounting*



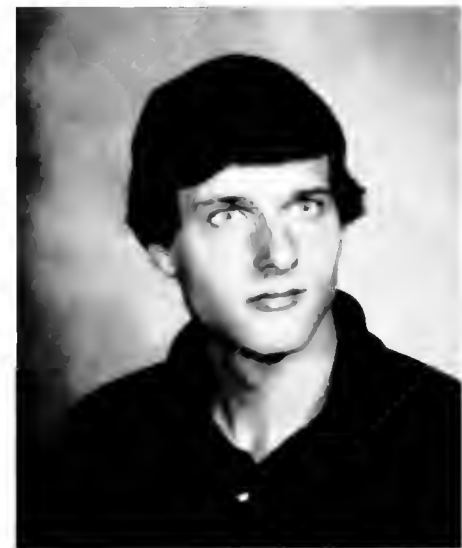
*Karen J. Allen
Langhorne, PA
Elementary Education*



*Susan Alburger
Palmyra, NJ
Psychology*



*Todd A. Albaugh
Elizabethtown, PA
Accounting*



*William C. Allen, III
Elizabethtown, PA
Mathematics*



*Michael W. Anderson
Wyomissing, PA
Bus. Admin.-Mktg./Mgmt.*



*Rochelle A. Angstadt
Lancaster, PA
Communication Arts*



*Ellen K. Anthony
St. Georges, DE
English*



*Diane L. Artz
Derwood, MD
Music Therapy*



*F. Allen Artz, III
Llewellyn, PA
Music Education*



*Linda J. Auch
Middletown, PA
Occupational Therapy*



*Richard E. Autrey
Gladstone, N.J.
Accounting*



*Janette Azelvandre
Miami Shores, FL
Bus. Admin.-Acctg.*



*Donna L. Ault
Lancaster, PA
Early Childhood Education*



*Elizabeth A. Baker
Doylestown, PA
Music Therapy*



*Gary B. Baker
Newark, DE
Communication Arts*



*Constance M. Bahn
York, PA
Elementary Education*



*Karl L. Baker
Baltimore, MD
Business Administration*



*Luanne Barnes
Conway, SC
Political Science*



*Hollis D. Baker
Marietta, PA
Music Education*



*Randi K. Bartells
Libertyville, IL
Business Administration*



*Richard E. Basom, Jr.
Elizabethtown, PA
Social Work*



*Joyce L. Barnett
Phoenixville, PA
Biology*



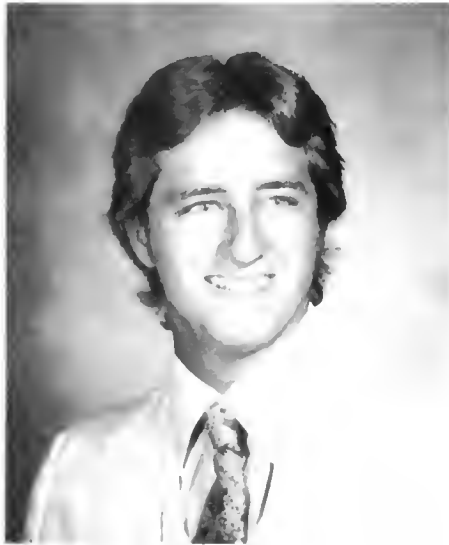
*Elaine M. Bauer
Langhorne, PA
Elementary Education*



*Dallas S. Beck
Elizabethtown, PA
Economics*



*Denise N. Beck
Lancaster, PA
Medical Secretarial Science*



*David G. Behrs
Binghamton, NY
Political Science/History*



*Barbara E. Bentz
York, PA
Early Childhood Education*



*Dianne L. Bessette
Coventry, RI
Biology*



*Robert D. Beyer
Bloomsburg, PA
Accounting*



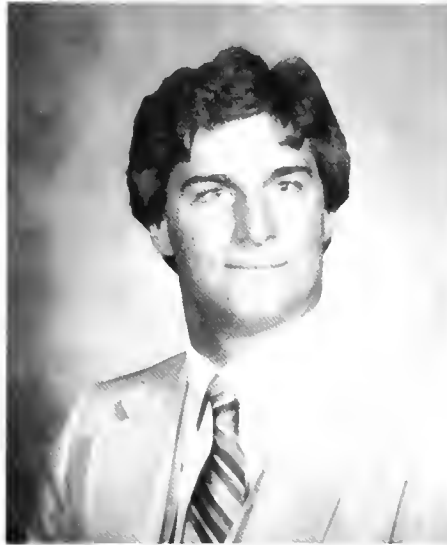
*Javed A. Bhatti
Harrisburg, PA
Chemistry/Pre-Dentistry*



*Kurt C. Biedlingmaier
Ambler, PA
Psychology*



*Lynne A. Bisbing
Pennsauken, NJ
Music Therapy*



*John R. Bittner
Everett, PA
Business Administration*



*Becky L. Blair
Camp Hill, PA
Social Work*



*Donald E. Boehm
Blairstown, NJ
Business Administration*



*Susan C. Borowski
Frederick, MD
Social Work*



*Kathy S. Bohn
Waynesboro, PA
Early Childhood Education*



*David A. Bostwick
Berkeley Heights, NJ
Business Administration*



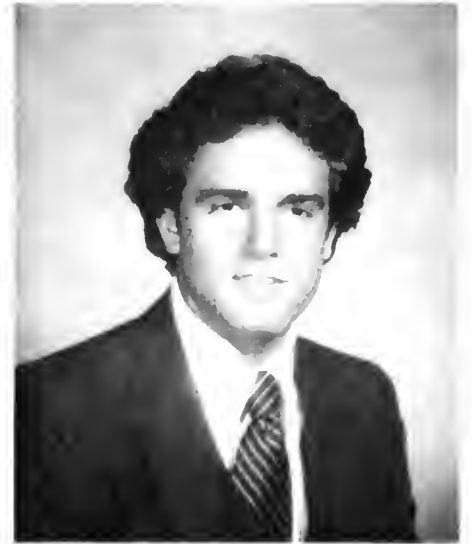
*Lynda A. Bloomer
Sparrowbush, NY
Sociology/Anthropology*



*Lori R. Bonner
Union, NJ
Bus. Admin.-Mktg./Mgmt.*



*Katherine M. Boyle
Millville, NJ
History*



*Timothy L. Breneman
Millersville, PA
Bus. Admin.-Marketing*



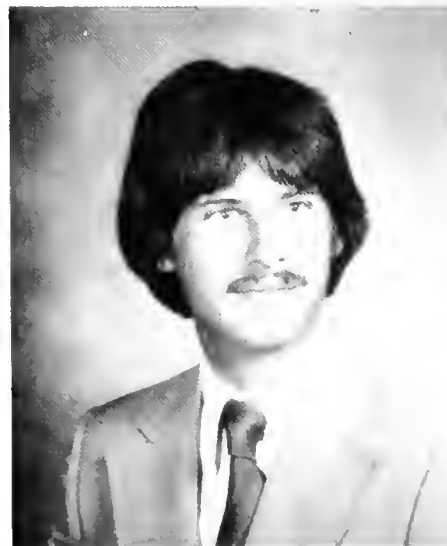
*Geraldine F. Bradley
Haddonfield, NJ
Communication Arts*



*Karol L. Briggs
Oxford, MA
Spanish*



*Bradley C. Brooks
Bainbridge, PA
Communication Arts*



*Richard L. Brinser
Newport, PA
Computer Science*



*Clifford L. Brown
Elizabethtown, PA
Communication Arts*



*Lisa A. Brown
Newark, DE
Early Childhood Education*



*Nancy A. Brugger
Elizabethtown, PA
Bus. Admin.-Marketing*



*Donna L. Burkhart
Elizabethtown, PA
Social Work*



*Dana M. Buterbaugh
Waynesboro, PA
English*



*Tamara R. Burk
Chalfont, PA
Elementary Education*



*D. Blair Bux
Doylestown, PA
Psychology*



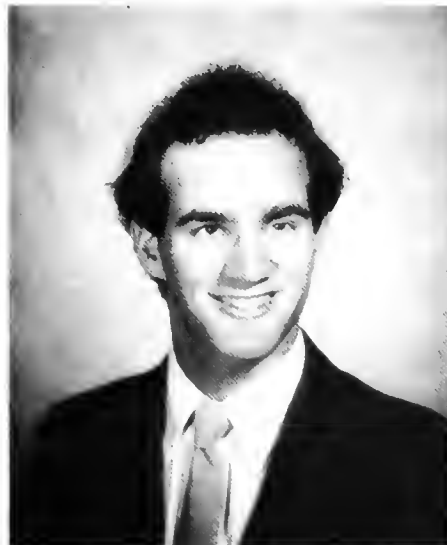
*Phyllis A. Byers
Mount Joy, PA
Bus. Admin.-Management*



*J. Reid Carleton
Ambler, PA
Bus. Admin.-Marketing*



*Allison L. Cassidy
Washington D.C.
Medical Secretarial Science*



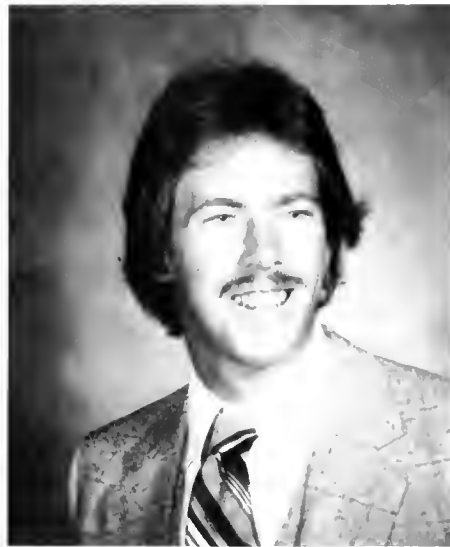
*Brian S. Carroll
Lancaster, PA
Communication Arts*



*Holly A. Carmint
Lafayette Hill, PA
Occupational Therapy*



*Nicole J. Castello
Shillington, PA
Medical Secretarial Science*



*Mark A. Chadwick
Neptune, NJ
Social Work*



*Wendy K. Chin
Potomac, MD
Bus. Admin.-Mktg./Mgmt.*



*Mary A. Chowansky
Basking Ridge, NJ
Bus. Admin.-Management*



*Connie L. Chronister
York, PA
Biology*



*Lisa A. Cipollone
Havertown, PA
History*



*James M. Clemente
Kingston, PA
Accounting*



*Anne P. Coles
Mount Holly, NJ
Medical Secretarial Science*



*Susan M. Coney
Pennsville, NJ
Early Childhood Education*



*Dorothy A. Connelly
Stratford, NJ
Bus. Admin.-Management*



*Cindy S. Cooley
Gardners, PA
Chemistry/Med. Tech.*



*Joann T. Coruzzi
Haddonfield, NJ
Social Work*



*Anne E. Coyne
Quarryville, PA
Communication Arts*



*James B. Davis
Factoryville, PA
Economics*



*Lynne A. Cowers
Flemington, NJ
Psychology*



*Merrilea Davis
York, PA
Medical Secretarial Science*



*Sue E. Countryman
East Petersburg, PA
Biology*



*Ann T. Cybulski
York, PA
Accounting*



*Ricky J. Dillon
Lancaster, PA
Social Sciences*



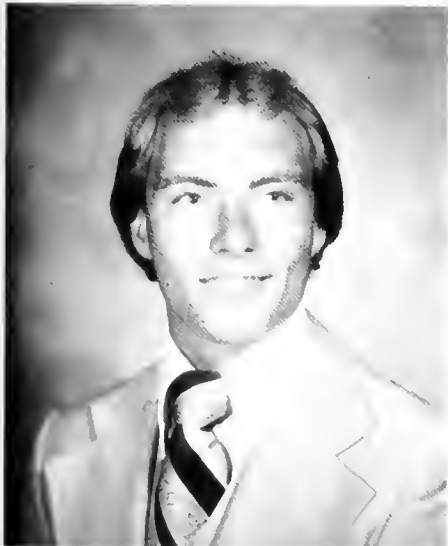
*Margaret S. Disch
Westfield, NJ
Social Work*



*Yvonne I. Dockey
Pillow, PA
Music Education*



*Richard J. Dolan
Claymont, DE
Business Administration*



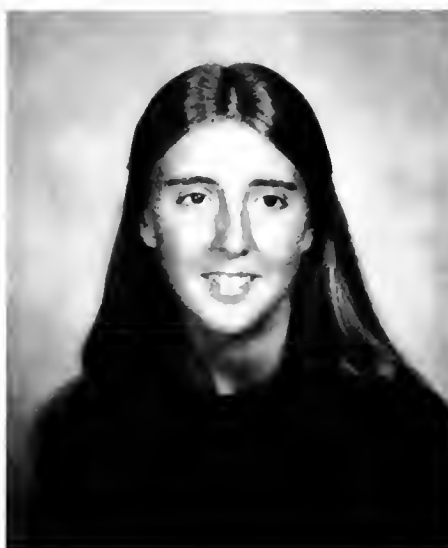
*Michael G. Doerr
Lancaster, PA
Bus. Admin.-Acctg./Mgmt.*



*Dorothy A. Donovan
Bethlehem, PA
Early Childhood/Elementary Ed.*



*Anne E. Douglas
Elizabethtown, PA
Sociology*



*Robin A. Eckert
Schuylkill Haven, PA
Early Childhood/Elementary Ed.*



*Karen M. Elisee
New Castle, DE
Occupational Therapy*



*Dawn M. Elser
Lititz, PA
Medical Secretarial Science*



*Michael L. Endy
Pennsburg, PA
Chemistry/Management*



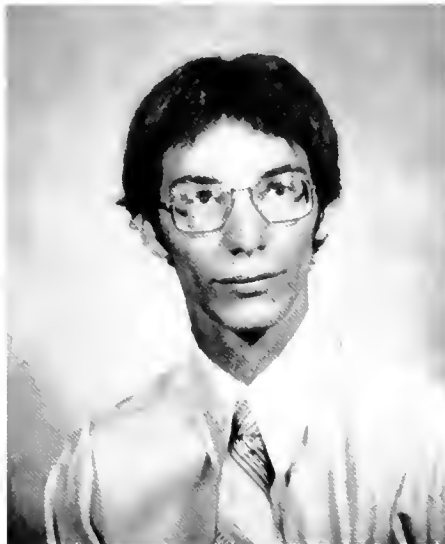
*Debra J. Erb
Lititz, PA
Medical Secretarial Science*



*Pauline M. Felice
Elizabethtown, PA
Political Science/Psychology*



*Debra C. Fenninger
Lancaster, PA
Elementary Education*



*James A. Fitting
Bethlehem, PA
Accounting*



*Margaret A. Foley
Swarthmore, PA
English*



*Jean L. Evans
Coatesville, PA
Occupational Therapy*



*Thomas E. Ferron
Kennett Square, PA
Elementary Education*



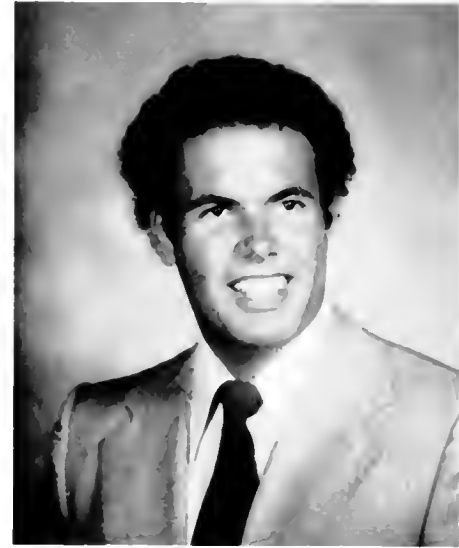
*Christine A. Foor
Selinsgrove, PA
English*



*Diane M. Forster
Westmont, NJ
Elementary Education*



*Annette M. Fox
York, PA
Social Work*



*George G. Forbes
Camp Hill, PA
Business Administration*



*M. Margaret Fox
Chagrin Falls, OH
Forestry/Biology/Mgmt.*



*Maryanne C. Foy
Blue Ball, PA
Psychology*



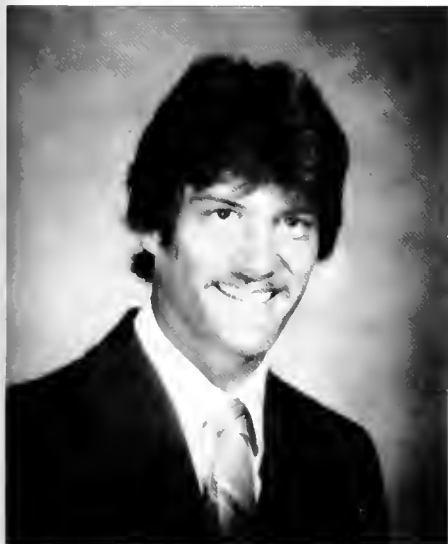
*Marie L. Francks
Churchville, PA
Bus. Admin.-Marketing*



*Judith A. Fuller
Timonium, MD
Accounting*



*Karen M. Gallagher
Lansdale, PA
Bus. Admin.-Management*



*Jerry A. Futer
Elizabethtown, PA
Social Work*



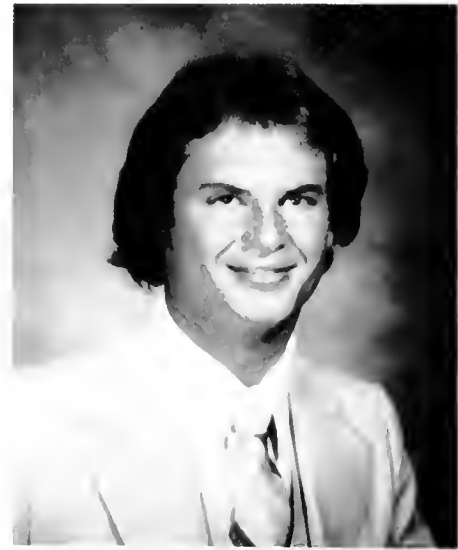
*Constance R. Gallow
Phoenix, MD
Early Childhood Education*



*Terry A. Garrett
Elizabethtown, PA
Business Administration*



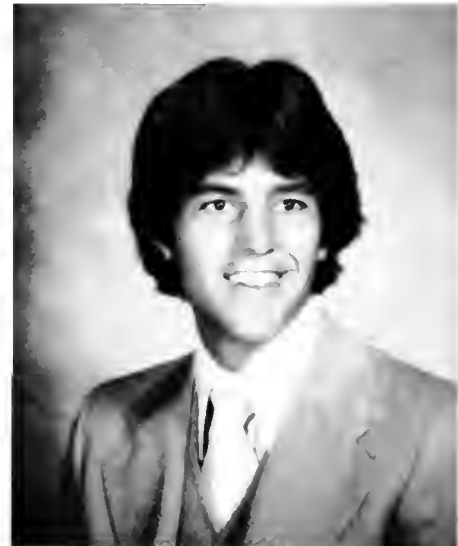
*Ray R. Geary
Boiling Springs, PA
English*



*Paul E. Gerding
Totowa, NJ
Bus. Admin.-Marketing*



*Timothy R. Glatfelter
Lancaster, PA
Bus. Admin.-Mgmt./Mktg.*



*Dean M. Glick
Bird-In-Hand, PA
Business Administration*



*Nancy E. Glattfelder
York, PA
Communication Arts/Business*



*Kathy E. Goodman
Harrisburg, PA
Elementary Education*



*Gay A. Graham
Mountville, PA
Bus. Admin.-Management*



*Jeffrey L. Gosnell
York, PA
Bus. Admin.-Marketing*



*Carolyn Gray
West Deptford, NJ
Accounting*



*Catherine E. Gottschalk
Morris Plains, NJ
Social Work*



*Lisa D. Groff
Westminster, MD
Medical Secretarial Science*



*Frances M. Gross
Lititz, PA
Accounting*



*Carol J. Hackenbrack
Harrisburg, PA
Elementary Education*



*Nancy E. Hahn
Wilmington, DE
Business Administration*



*Shelley J. Gross
Berwick, PA
Bus. Admin.-Management*



*Jenny E. Haisley
Westminster, MD
Business Administration*



*Jeffrey C. Hampton
Eldora, NJ
Accounting*



*Jennifer L. Hart
Forksville, PA
Occupational Therapy*



*Susan L. Hand
Haddon Heights, NJ
Business Administration*



*Mary L. Heckel
Lititz, PA
Bus. Admin./Management*



*Kathleen J. Hawrylo
Trenton, NJ
Biology*



*L. Denise Hazelwood
Northfield, NJ
English/Secondary Ed.*



*Kim A. Heffleger
Reading, PA
Bus. Admin./Marketing*



*Lori J. Henninger
Kempton, PA
Occupational Therapy*



*Rhonda M. Heindel
Red Lion, PA
Biology*



*Barry E. Herman
York, PA
Biology*



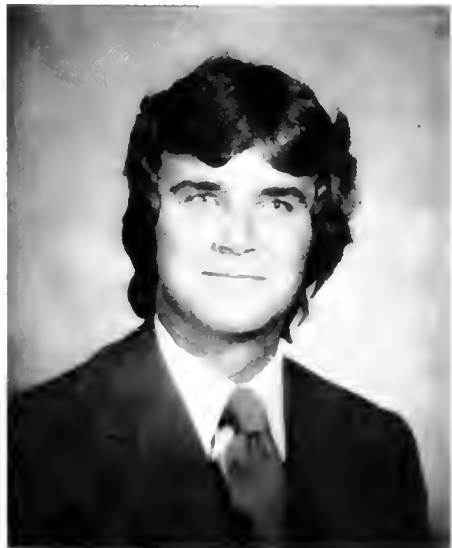
*Melanie L. Heinz
North Wales, PA
Early Childhood/Elementary Ed.*



*Nancy L. Hertel
Fort Washington, PA
Bus. Admin./Management*



*William J. Hestwood
Hummelstown, PA
History*



*John P. Hilla
Westwood, NJ
Business Administration*



*Donna L. Hill
Newtown, PA
Communication Arts*



*Deborah A. Hoffer
Manheim, PA
Mathematics/Secondary Ed.*



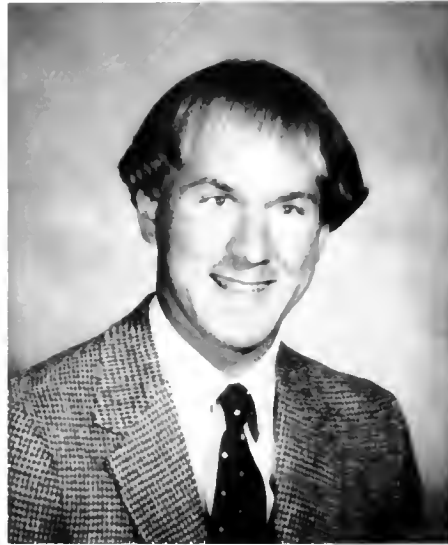
*Janice E. Hill
Silver Spring, MD
Mgmt./Mktg./International Bus.*



*Albert T. Holcombe
Maple Glen, PA
Bus. Admin./Management*



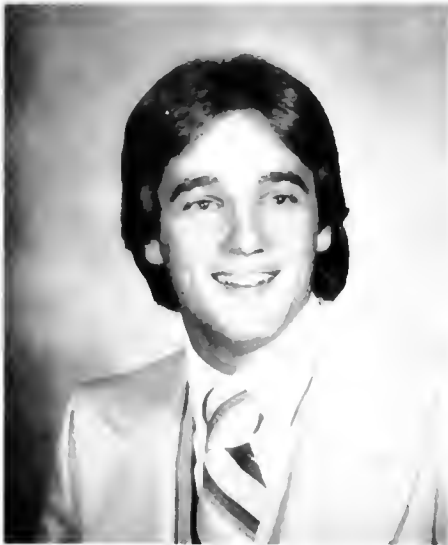
*Catharine M. Horn
Quarryville, PA
Bus. Admin./Management*



*Mark R. Hornberger
Christiana, PA
Communication Arts*



*Judith E. Hostetler
Elizabethtown, PA
Chemistry/Medical Technology*



*Wayne E. Huyard
Lancaster, PA
Bus. Admin.-Mgmt./Mktg.*



*Laurie A. Jacobsen
Fort Washington, PA
Bus. Admin.-Mgmt./Mktg.*



*Donald F. Johnson, Jr.
Willow Street, PA
Accounting*



*Karenlee Jones
Morton, PA
Medical Secretarial Science*



*Lee D. Joseph
Collegeville, PA
Political Science*



*Belinda S. Kaercher
Souderton, PA
Social Work*



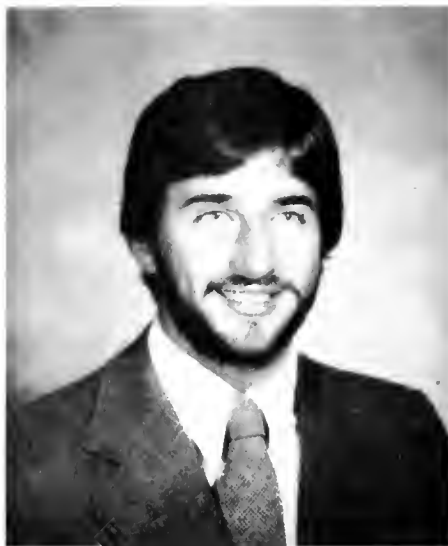
*Donna K. Kafka
Clarksboro, NJ
Social Work*



*Timothy J. Keech
Coatesville, PA
Accounting*



*Jane M. Keeney
Harrisburg, PA
Chemistry/Med. Tech.*



*Timothy A. Kemmler
Fort Washington, PA
Management/Bus. Communications*



*Joanne L. Kennedy
Birdsboro, PA
Social Work*



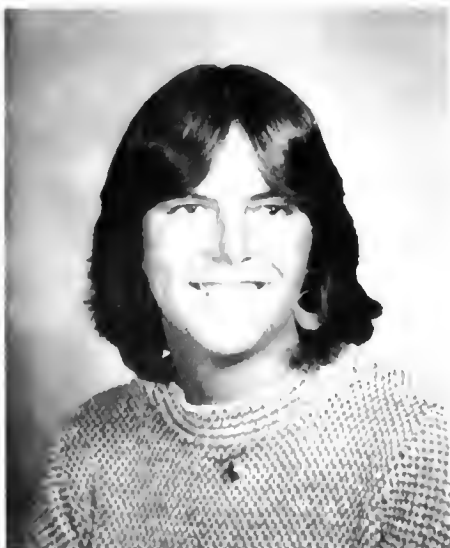
*Katherine M. Keller
Williamsport, PA
Spanish/Mathematics/Sec. Ed.*



*Joseph F. Kibala
Perth Amboy, NJ
Chemistry/Med. Tech.*



*David P. King
Severna Park, MD
Social Work*



*Marcia J. Kessler
Meadowbrook, PA
Political Science*



*Eugene L. Kirchner, Jr.
Lancaster, PA
Bus. Admin./Business Ed.*



*Elizabeth A. Kirk
Oxford, PA
Social Work*



*Cathy L. Kipp
Downingtown, PA
Occupational Therapy*



*Geoffrey W. Kitsock
Ashland, PA
Comm. Arts/Political Science*



*Donald J. Kleiss
Wilmington, DE
Bus. Admin.-Marketing*



*Jennifer L. Kissel
Huntingdon Valley, PA
Psychology*



*Gayle L. Kline
Mountville, PA
Accounting*



*Robert A. Kline
Palmyra, PA
Business Administration*



*Tamra L. Knackstedt
Harrisburg, PA
Mathematics/Secondary Ed.*



*Colette C. Koch
Bridgewater, NJ
Business Administration*



*Stacia E. Koval
Wilmington, DE
Medical Secretarial Science*



*Judith M. Kowalok
Pittsburgh, PA
Psychology*



*Susan Kozak
Trenton, NJ
Biology*



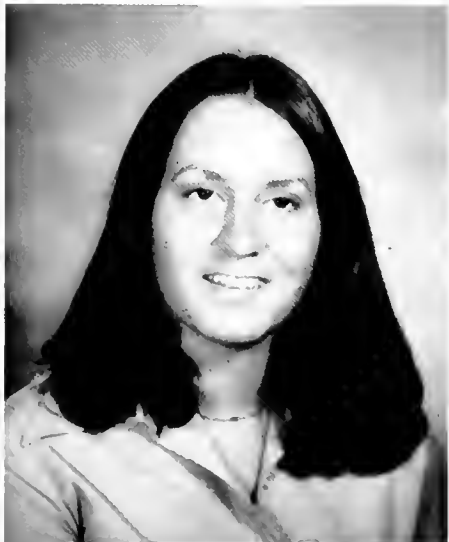
*Brenda K. Kreider
Elizabethtown, PA
Social Studies/History*



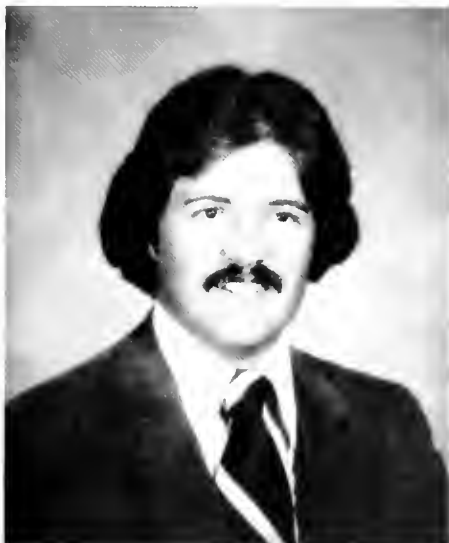
*Sharon M. Kurowski
Belle Mead, NJ
Biology*



*Carolyn E. Lee
Claymont, DE
Medical Secretarial Science*



*Donna M. Kusnierczyk
Modena, PA
Psychology*



*Donald C. Lawler
Waynesboro, PA
Business Administration*



*Diane K. Lenhart
Schuylkill Haven, PA
Social Work*



*W. Vernon Lee
Philadelphia, PA
Psychology*



*Kathleen M. Liberatori
Stowe, PA
Bus. Admin.-Marketing*



*Cynthia A. Lenker
Cherry Hill, NJ
Occupational Therapy*



*Donna M. Lenker
Cherry Hill, NJ
Medical Secretarial Science*



*Joy E. Little
Newton, NJ
Music Education*



*Jeanne D. Loeffler
Warminster, PA
Occupational Therapy*



*Lisa M. Loercher
Lititz, PA
Medical Secretarial Science*



*LuAnn L. Long
Mount Joy, PA
Bus. Admin.-Management*



*Sharon R. Lynch
Chester Springs, PA
Elementary Education*



*John M. Llewellyn
West Reading, PA
Political Science*



*Mary Jo M. Loftus
Mays Landing, NJ
Occupational Therapy*



*Maureen A. Maggese
Manhasset, NY
Early Childhood Education*



*Sheryl D. Martin
Ephrata, PA
Early Childhood Education*



*Julie E. Mahan
Harrisburg, PA
Bus. Admin.-Management*



*Cynthia A. Marx
Cheshire, CT
Occupational Therapy*



*Nancy J. Mayer
Pennsauken, NJ
Chemistry/Med. Tech.*



*Julie E. May
York, PA
Elementary Education*



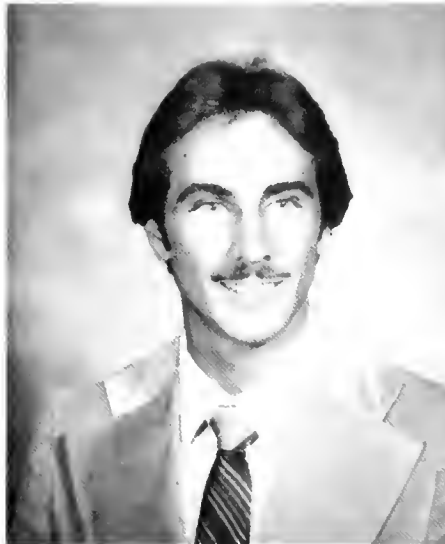
*Joan A. McCandless
Broomall, PA
Occupational Therapy*



*Robert N. McClure
Downingtown, PA
Accounting*



*Barbara J. McCoy
Camp Hill, PA
Elementary Education*



*Jeffrey J. McCloy
Haddonfield, NJ
Social Science*



*Lynda L. McCutcheon
Morrisville, PA
Elementary Education*



*Linda L. McCullough
Haddonfield, NJ
Chemistry/Med. Tech.*



*Emily J. Meibohm
Drexel Hill, PA
Occupational Therapy*



*Julie L. Metcalf
Orono, ME
Occupational Therapy*



*Mary Ann Merel
Northfield, NJ
Mathematics/Sec. Ed.*



*Julie E. Milanick
Harmony, PA
Occupational Therapy*



*Anne L. Messina
Lancaster, PA
Bus. Admin.-Mktg./Mgmt.*



*Michael R. Miley
Lancaster, PA
Bus. Admin.-Management*



*Lorraine M. Miller
Coaldale, PA
Early Childhood Education*



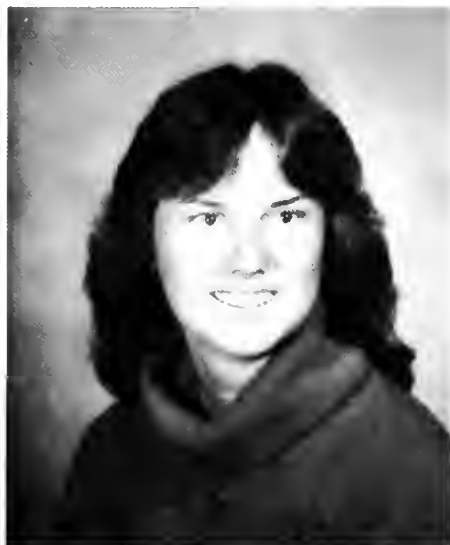
*Ralph L. Miller
Lititz, PA
Bus. Admin.-Managment*



*Karen K. Mitchell
Middletown, PA
Social Work*



*Susan L. Morgenson
Audubon, PA
Psychology*



*Sherry A. Morgan
North Branford, CT
Bus. Admin.-Computer Sci./Mgmt.*



*Abdul R. Moosa
Harrisburg, PA
Biology/Pre-Med.*



*Deborah C. Morris
Elizabethtown, PA
Music Therapy*



*Elizabeth D. Morris
Media, PA
Psychology*



*Karen J. Mummiert
East Berlin, PA
Business Administration*



*Diane J. Nelson
Croton Falls, NY
Mathematics*



*Kathryn S. Nicodemus
Walkersville, MD
Medical Secretarial Science*



*Daniel S. Noyes
Allentown, PA
Biology*



*Maureen P. O'Brien
Westfield, NJ
Occupational Therapy/Psych.*



*Bettina F. Oellig
Hummelstown, PA
Medical Secretarial Science*



*Polly V. Oldis
Pennington, NJ
Music Therapy*



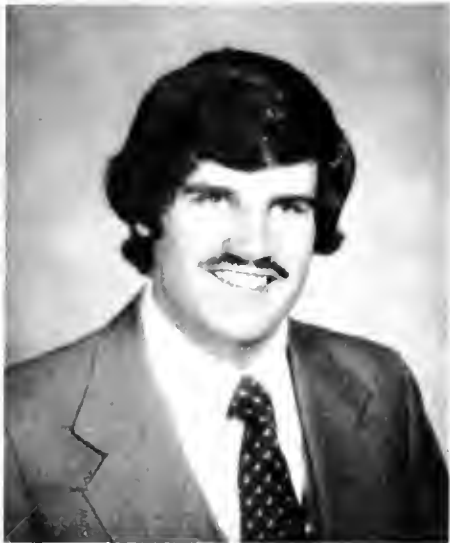
*Jill S. Page
Willow Grove, PA
Music Therapy*



*Page S. Palmer
Chambersburg, PA
Social Work*



*Michael J. Paolini
Wyomissing, PA
Bus. Admin.-Mktg./Mgmt.*



*John W. Parker, Jr.
Cherry Hill, NJ
Accounting*



*Dawn R. Paul
Herndon, PA
Business Administration*



*Beth A. Peiffer
Lebanon, PA
Accounting*



*Robyn A. Pollina
Spring Lake Heights, NJ
Business Education*



*Kathy L. Peraino
Villanova, PA
Early Childhood Education*



*Paul G. Pontius
Lancaster, PA
Bus. Admin.-Management*



*Loretta J. Price
Mount Airy, MD
Music Therapy*



*Judith A. Priggins
Lansford, PA
Bus. Admin.-Economics*



*Karen M. Princiotta
Pompton Plains, NJ
Social Science/Pol. Sci.*



*Mark S. Randolph
Hatboro, PA
Bus. Admin.-Mktg./Communications*



*Julie A. Rankin
Frederick, MD
Occupational Therapy*



*Lily Rastegar
Shiraz, Iran
Business Administration*



*Cindi L. Reed
Harrisburg, PA
Accounting*



*Jean D. Reed
Media, PA
Occupational Therapy*



*Marcia K. Rebman
Rehlersburg, PA
Social Work*



*Mary Lou Regan
Tobyhanna, PA
Business Administration*



*Ellen M. Reilly
Drexel Hill, PA
Occupational Therapy*



*C. Dana Reese
Hockessin, DE
Bus. Admin.-Mktg./Communications*



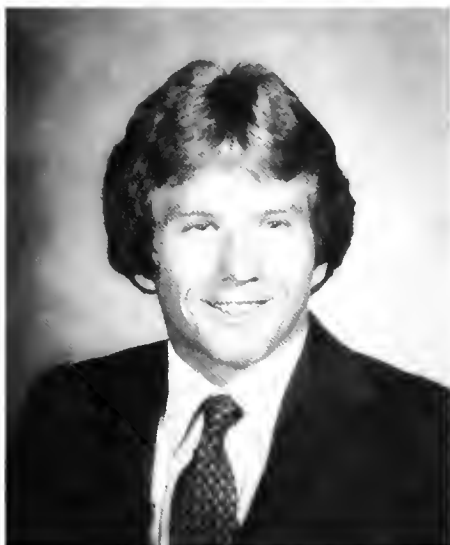
*Patricia A. Reiner
East Petersburg, PA
Occupational Therapy*



*Ralph C. S. Richard
Oley, PA
Pol. Science/Bus. Admin.*



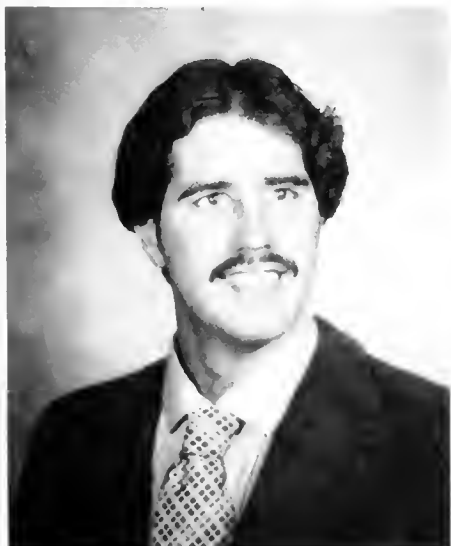
*Lizbeth M. Reilly
Wyomissing, PA
Communication Arts*



*Bruce T. Rowe
Lancaster, PA
Business Administration*



*Teresa M. Rowe
Halifax, PA
Chemistry*



*Peter J. Roland
Emmaus, PA
Bus. Admin.-Mktg./Acctg.*



*Arlissa R. Salamone
Newton, NJ
Business Administration*



*Diane K. Schaeffer
Lebanon, PA
Business Administration*



*Suzanne K. Schreiber
Quarryville, PA
Bus. Admin.-Mgmt./Communications*



*Laurette A. Schuler
Randallstown, MD
Medical Technology*



*Timothy M. Seager
Myerstown, PA
Bus. Admin.-Management*



*Judy R. Seldomridge
Lancaster, PA
Business Administration*



*David A. Sempeles
Camp Hill, PA
Bus. Admin.-Accounting*



*Twila L. Shaeffer
Lancaster, PA
Medical Secretarial Science*



*Sandra Y. Shambaugh
Mechanicsburg, PA
Occupational Therapy*



*Janet T. Shapiro
Harrisburg, PA
Bus. Admin.-Management*



*Donna L. Shiveler
Swedesboro, NJ
Business Administration*



*Anne W. Shillingford
Wayne, PA
Elementary Education*



*Thomas M. Showers
Manheim, PA
Business Administration*



*Jennifer R. Shultz
York, PA
Music Therapy*



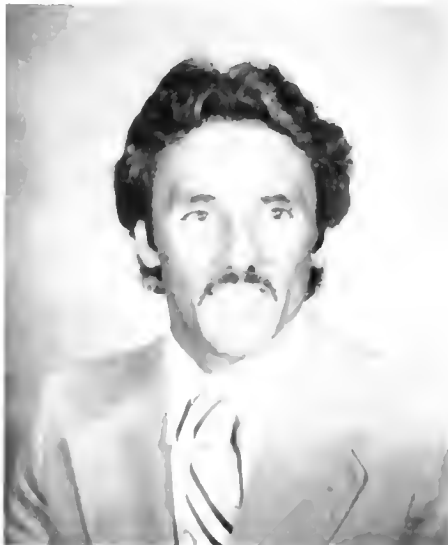
*Anne E. Siefert
Glenside, PA
Bus. Admin.-Marketing*



*Andrew D. Silverman
Philadelphia, PA
Bus. Admin.-Marketing*



*Margaret E. Smeltzer
Everett, PA
Medical Secretarial Science*



*Frank C. Sluzis
Mahanoy City, PA
Political Science*



*Frederick Z. Smith
Washington D.C.
Political Science*



*Douglas R. Snavely
Manheim, PA
Business Administration*



*Debra J. Snavely
Elizabethtown, PA
Social Work*



*Audrey L. Snyder
Emmaus, PA
Business Administration*



*Andrew N. Sole, III
Wenonah, NJ
Elementary Education*



*Kathryn J. Snyder
Carlisle, PA
Business Education*



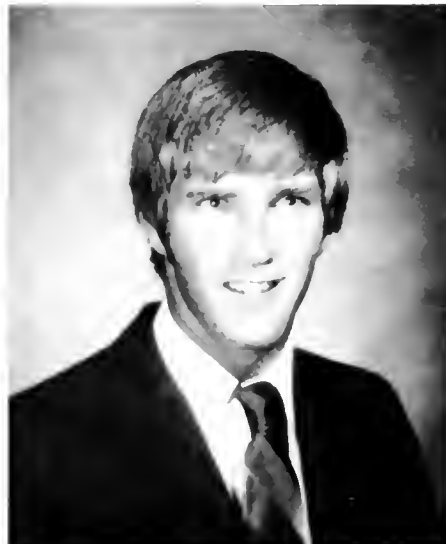
*Beverly K. Sollenberger
Curryville, PA
Medical Secretarial Science*



*Katherine G. Stahl
Wilmington, DE
Psychology*



*Michael C. Spangler
York, PA
Business Administration*



*Joseph E. Stanger, Jr.
Bridgeton, NJ
Bus. Admin.-Management*



*Carol B. Spence
Boyertown, PA
Elementary Education*



*Deanne E. Starr
New Cumberland, PA
Biology*



*Hugh R. Stewart
Huntingdon Valley, PA
Bus. Admin.-Mktg./Econ.*



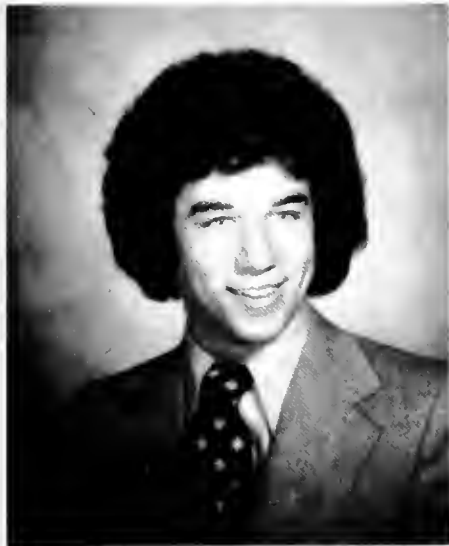
*Charles K. Stephens
Elizabethtown, PA
Sociology*



*MaryJo E. Szada
Steelton, PA
Biology*



*Theresa D. Sweigart
Lebanon, PA
Bus. Admin.-Mktg./Mgmt.*



*Thomas R. Stepanchak
Columbia, PA
Bus. Admin.-Mgmt./Communications*



*William A. Sturtevant
Centreville, DE
Bus. Admin.-Marketing*



*Jeffrey P. Tamburro
West Chester, PA
Political Science*



*Richard F. Terry
Huntingdon Valley, PA
Business Administration*



*Suzanne J. Tessier
Pennsauken, NJ
Music Education*



*Marianne Tezak
New Cumberland, PA
Chemistry*



*Jane L. Thomas
York, PA
Social Work*



*Raymond E. Tierney
Tobyhanna, PA
Social Work*



*Linda Torgersen
Manasquan, NJ
Pre-Forestry*



*John N. Touloumes, Jr.
Elizabethtown, PA
Business Administration*



*Timothy H. Trayer
Camp Hill, PA
Bus. Admin.-Marketing*



*Mark W. Trimmer
York, PA
Bus. Admin.-Marketing*



*Thomas V. Viscome
Elizabethtown, PA
Business Administration*



*Serena F. Von der Heiden
Millington, NJ
History*



*Sandra J. Wagner
Reading, PA
Social Work*



*Donald E. Warner
Biglerville, PA
Business Administration*



*Suzanne M. Whitley
Harrisburg, PA
Elementary Education*



*Hilary F. Welsh
Palmyra, NJ
Sociology*



*Stephen E. Wenzel
Manheim, PA
Business Administration*



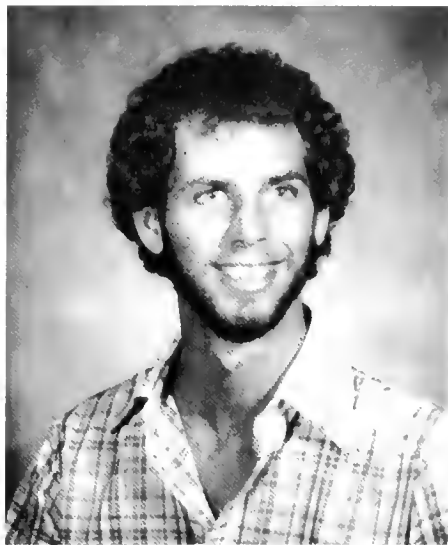
*Barbara J. Wightman
Camp Hill, PA
Bus Admin.-Mktg./International Bus.*



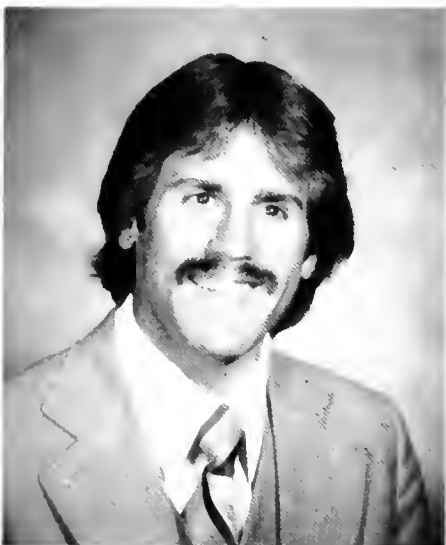
*Elaine S. Wise
Columbia, PA
Music Therapy*



*Christine L. Wolf
Hanover, PA
Occupational Therapy*



*Paul E. Witkovsky
Kensington, MD
Psychology*



*Philip A. Wolgemuth
Lancaster, PA
Bus. Admin.-Management*



*William K. Wood, Jr.
Harrisburg, PA
Bus. Admin.-Marketing*



*Robert G. Wolpert, Jr.
Elizabethtown, PA
Accounting*



*J. Thomas Woodson, III
Lancaster, PA
Bus. Admin.-Marketing*



*Gary W. Wylde
Montvale, NJ
Sociology*



*Thomas E. Woolley
Annville, PA
Pre-Engineering*



*Herbert B. Yost
Parker Ford, PA
Bus. Admin.-Mgmt./Econ.*



*Deborah A. Wright
Bendersville, PA
Psychology*



*Barbara R. Young
Intercourse, PA
Medical Secretarial Science*



*Steven M. F. Young
Elizabethtown, PA
Biology*



*Caryl A. Zimmerman
West Lawn, PA
Chemistry/Med. Tech.*



*Robert M. Zaccano
Harrisburg, PA
Biology*



*Richard D. Zmuda
Hershey, PA
Sociology/Anthropology*



SPORTS



VARSITY SOCCER



Varsity: Row 1 Dean Glick, Andy Silverman, Chuck Hart, Jerry Futer, Paul Sergi, Kevin Vrabel Row 2 Fred Potts, Rob Gosman, Bubba Toure, Sok Young Kim Row 3 Tim Moyer, Orlando Rodriguez, Barry Dohner, Leigh Hannum, Mike Boess Row 4 Coach Owen Wright, Stan Shilling, John Mumford, Randy Lowe, Jeff Kerstetter Row 5 Asst. Coach Joe Whitmore, Mark Willoughby, Mike Federici, Tom Defino, Mark Ford

VARSITY	EC	OPP
Alumni	4	1
Blue Jay Classic		
Bloomsburg	2	1
Messiah	2	3
Delaware	4	1
Juniata	12	0
Gettysburg	6	0
Phila. Textile	0	5
FDU — Madison	1	1
Trenton State	1	0
Scranton	1	3
Wilkes	2	0
Lynchburg	0	2
Susquehanna	3	2
Lock Haven	3	5
Albright	5	0
Lycoming	9	0
Scranton*	0	3
Haverford#	3	4
Bucknell	2	1
Franklin & Marshall	2	3
West Chester	0	2
*MAC Playoff #NCAA first round		



The Jays opened the season with the first Blue Jay Classic, playing host to Bloomsburg, Messiah, and St. Lawrence. Plagued by injuries the Jays lost the championship round to Messiah. The Jays bounced back, however, to defeat powerful Delaware and Gettysburg, presenting Coach Owen Wright with his 200th victory. Scranton, as always, proved the season's big nemesis, beating the Jays in regular season and repeating the victory for the MAC Northern Division title. The Jays hosted the first round of the NCAA championship playoff, but lost to Haverford in overtime. The Blue Jays finished the season with a 11-9-1 record.





JV SOCCER



JV: Row 1 Dave Beatty, Dave Hahn, Nick Broujos, Rudi Fischer, Jim Cavanaugh, Norm Goss Row 2 John Perkins, Craig Pursel, Jeff Burns, Dave Kennedy, Greg Schoelkopf, Brad Baylor, Jack Mentzer Row 3 Coach Steve Beck, Mike Meiskey, Tom Taglang, Devin Sawdev, Wayne Humphreys, Rob Gratantoni, Dave Dunlap Row 4 Craig Fenstermacher, Dave Metzler, Dane McAlpine, Bill Young.



JV SOCCER	EC	OPP
Alumni	3	0
Delaware	0	3
Gettysburg	0	2
MCCC	0	1
Dickinson	1	0
Messiah	2	0
Millersville	3	1
Bucknell	3	1
Franklin & Marshall	2	1
Susquehanna	1	0
Scranton	3	2
Record	7-3	

FIELD HOCKEY

The Jaygals finished the season ranked as the number 4 Division III team in the nation, finishing fourth in the AIAW national championship tournament at Hollins College. Elizabethtown advanced to the Hollins tournament by virtue of a second place finish in the Eastern AIAW regional tournament held at Gettysburg College. Connie Chronister finished the season as leading scorer with 12 goals. Beth Shenenberger scored eight and Dawn Eveler and Nancy Hahn each had six. Coach Yvonne Kauffman's team finished with a season record of 12-6-2.



Varsity: Row 1 Alyson McGwire, Maureen Connelly, Nancy Hahn, Connie Chronister, Tammy Irvin, Beth Shenenberger Row 2 Coach Yvonne Kauffman, Diann Steinmeier, Lori Hartman, Barb Stewart, Cindy Minor, Dawn Eveler, Linda Wagner, Edith Thompson, Michelle Frizol.

VARSITY	EC	OPP
Wilkes	2	2
Messiah	4	3
East Stroudsburg	3	2
Widener	0	3
Millersville	0	3
Albright	4	2
Lebanon Valley	2	0
Dickinson	5	1
Franklin & Marshall	1	4
York	4	1
Gettysburg	2	1
Bucknell	1	1
Shippensburg	1	0
Western Maryland	Rain	
E AIAW Playoff		
Salisbury State	2	0
Franklin & Marshall	4	2
Gettysburg	0	2
AIAW National Championship		
Wisconsin-Stevens Point	4	2
Mary Washington	2	0
Hartwick	2	3
Chico State	0	2



JV Field Hockey	EC	OPP
East Stroudsburg	0	3
Widener	2	1
Millersville	0	4
Dickinson	1	2
Franklin & Marshall	0	3
York	2	1
Gettysburg	1	3
Bucknell	0	4
Shippensburg	0	1



JV: Row 1 Denese Freed, Shelby Raudensky, Anne Shillingford, Sharon Eby, Sylvia Gove Row 2 Phyllis Holton, Carla Mylin, Julie Dum, Jeanmarie Dennen, Kim Rebeck, Tam Wolf, Peggy Ford, Coach Linda Raber

VOLLEYBALL



Varsity: Row 1 Mary Simansky, Peggy Futer Row 2 Tracy Lloyd, Sue Herrick, Betsy Wetzel, Rhonda Heindel, Mary Lou Regan, Kelly Ludwig Row 3 Manager Melissa Northrop, Laura Anthony, Joy Asplundh, Cathy Ford, Karen Lutz, Lynn Jump, Coach Jack Snader.

VARSITY	EC	OPP
Wilkes	3	0
Franklin & Marshall	1	3
Albright	1	3
York	0	3
York-PSU	3	1
Dickinson	0	3
Susquehanna	0	3
Bucknell	0	3
Western Maryland	0	3
Gettysburg	0	3
Moravian	1	3
Messiah	2	3
Juniata	0	3

Record 2-11

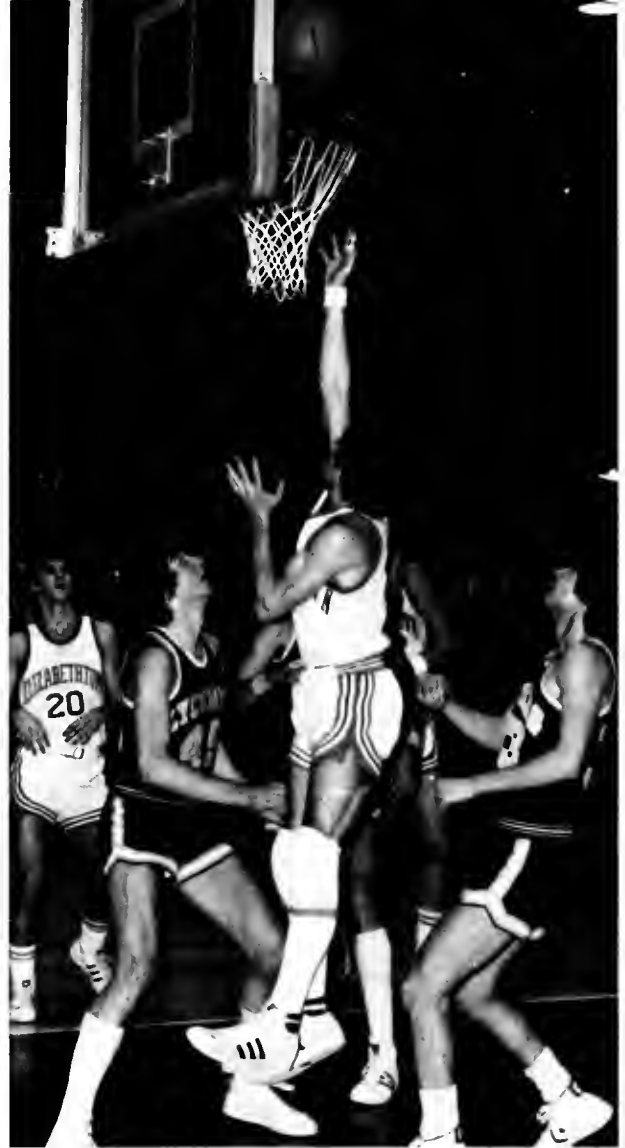


JV Volleyball	EC	OPP
Franklin & Marshall	0	2
York	0	2
Susquehanna	0	2
Western Maryland	0	2
Gettysburg	1	2
Messiah	0	2
Juniata	2	0

Record 1-6

MEN'S BASKETBALL

	EC	OPP
Haverford	52	48
York	70	64
<i>Sponaugle Tournament</i>		
Millersville	57	67
Allentown	73	62
Juniata	49	53
Delaware Valley	71	63
Albright	55	52
Susquehanna	41	57
Millersville	60	70
Franklin & Marshall	38	60
Gettysburg	51	59
Lycoming	50	47
Widener	39	69
Wilkes	54	49
Albright	40	46
Susquehanna	50	62
Juniata	69	59
FDU — Madison	45	43
Lebanon Valley	53	47
Phila. Textile	44	51
Scranton	54	62
King's	46	48
Lycoming	67	55



The loss of the leading scorer and rebounder from last year's basketball team, combined with injuries this season, resulted in the Jays posting their first losing season in seven seasons. The Jays finished their season with a 67-55 win over Lycoming to bring their record to 11-12 for the year. Freshman Neil Mansur brought the promise of new offensive power, unfortunately, he was injured in the season and never got back on the court. Sophomore Roy Bickel was also sidelined with injuries. Future promise is also shown by Brian Crouse. From this year's team Coach Don Smith will lose four talented seniors, Mark Chadwick, Dave Thompson, Jack Llewellyn, and Joe Harriger.



Row 1 Tri-captains Mark Chadwick, Joe Harriger, and Jack Llewellyn. Row 2: Coach Don Smith, Tom Hand, Steve Souder, Gary Chesnev, Neil Mansur, Dave Thompson, Roy Bickel, Art George, Mark Hershberger, Rob Marshall, Brian Crouse, Asst. Coach Dan Reitmeyer.

WOMEN'S BASKETBALL



Varsity: Row 1 Peggy Longo, Nora Barlow, Co-captains Donna Mulder and Bev Hall, Coach Yvonne Kauffman Row 2 Geri Bradley and Sandy Stewart Row 3 Page Lutz and Pam Palmieri Row 4 Beckie Donecker and Sherri Kinsey.

The Jaygals closed the season with a record of 27-3, best ever for an Elizabethtown team. They were the MAC Northern Division Champions, which took them to the EIAIW playoffs and the AIAW National Playoffs. During the regular season Geri Bradley became the first women's basketball player in E — town history to score 1000 points. Bev Hall, Sherri Kinsey, and Donna Mulder were also given EIAIW All — region honors. Mulder made the AWSF All — American second team while Kinsey was given honorable mention.



	EC	OPP
Immaculata	73	65
Messiah Tourney		
Rundolph — Macon	66	32
Messiah	68	51
Shippensburg	59	61
Eastern Mennonite	76	43
Bridgewater	84	48
Lock Haven	92	54
Gettysburg	88	50
Albright	72	54
Juniata	79	60
Millersville	71	51
Wilkes	83	40
Widener	68	58
Dickinson	98	31
Susquehanna	89	50
Messiah	64	55
Bucknell	72	57
Phila Textile	62	48
York	74	55
Scranton	66	59
Western Maryland	114	44
Franklin & Marshall	78	36
Lycoming	94	40

MAC Playoffs Northern Division

Kings	91	45
Scranton	68	53

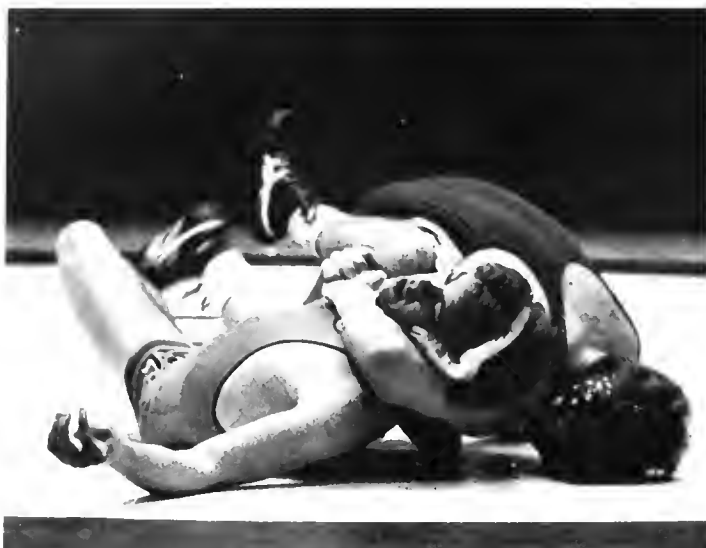
EIAIW Playoffs

Grove City	65	48
Trenton State	77	62
Pitt — Johnstown	63	66
AIAW National Playoffs		
Columbia College — S.C.	71	56
Worcester	59	67



JV: Row 1 Coach Lee Ann Chelak, Michele Ryan, Lauren Winner, Theresa Yesalavage, Pam Craig Row 2 Connie Chronister, Mary Simansky, Mary Ellen Zizos, Diane Dondero, Karen Clark.

WRESTLING



Coach Ken Ober's team finished the season with an 11-7 record, but finished sixth in the MAC competition. Bright spots in the year were the performances of Kurt Anderson, who went undefeated in 14 matches in dual competition and freshmen Lew Copenhaver and Brian Meiser. All three are expected back for next season.

VARSIITY	EC	OPP
LVC Invitational	9th	place
Moravian	36	12
York College	25	21
Loyola	39	18
Howard	42	6
Gettysburg	34	9
Scranton	21	28
Ursinus	24	21
Towson	canceled	
Albright	49	6
Widener	37	15
Millersville	19	22
Susquehanna	24	18
Lycoming	12	30
Messiah	34	15
Lebanon Valley	43	12
Delaware Valley	13	30
Juniata	12	37
Pitt-Johnstown	6	40
Swarthmore	20	28



Row 1 Fred Engle, Ron Royer, Lew Copenhaver, Keith Grant, Larry Leshner, Mike Doerr Row 2 Dave Chute, Bob Speers, Dave Lehman, Don Chapman, Kurt Anderson, Brian Meiser.

SWIMMING



Row 1 Doreen Dempsey, Jennifer Kissel, Karen Brune, Deb Craig, Jayne Shea Row 2 Colleen Coolican, Bob Utzinger, Becky Dinulos, Randall Malick, Tess Tulley, Sue Schneider Row 3 Coach Walter Shaw, tri-captains Judy Seldomridge, Tim Breneman, Suzette Desjardin, and Nick Broujos.

VARSITY	EC	OPP
Lycoming	25	75
Western Maryland Men	28	62
Women	34	65
West Chester	45	48
Millersville	44	49
York	43	53
Susquehanna Men	10	84
Women	33	67
King's	15	82
Kutztown	66	24
Dickinson	35	54
Ursinus Men	33	48
Women	42	50
Swarthmore Men	20	79
Women	39	61



After 23 winless attempts over three seasons, Elizabethtown swimmers finally put an end to that trend with a 66-24 victory over Kutztown. The ecstatic Jays dunked Coach Shaw not once, but three times in the Kutztown pool. The team showed signs throughout the season of breaking out of the slump as it swam several close meets before Kutztown. With captains Judy Seldomridge and Tim Breneman and diver Jenny Kissel being lost to graduation, Captain Suzette Desjardin will be returning next year to lead the team on to more victories.



BASEBALL

	EC	OPP
Ursinus	2	3
Juniata	5	8
York	3	4
Scranton	1	8
EC	9	4
Phila. Textile	3	2
Franklin & Marshall	5	6
Widener	7	10
Albright	7	18
Millersville	14	8
Maryland — Baltimore	3	2
Fredonia State	2	4
West Chester	6	7
Penn State — Capitol	1	11
Susquehanna	7	8
Lebanon Valley	3	7
Dickinson	3	4
Messiah	16	10
	0	8
	6	5
	4	6
	6	5
	18	4
	7	8
	16	1
	10	0

Despite the return of last season's pitching staff and a wealth of outfield talent, the baseball Jays couldn't quite get their act together and finished with an 8-16 record.

Stan Daubert, Roy Bickel, and Tim Moyer turned in the best pitching records, while Don Lawler and Charlie Artz led in the batting. Lawler batted .370 and Artz .313. Daubert posted a 2-1 pitching record. Bickel was 2-1 and Moyer finished even at 1-1.



Row 1 Andy Melhalko, co-captains Don Lawler and Gary Wylde, Stan Daubert, Kevin Jacoby, Charlie Artz, Matt Richards Row 2 Don Warner, Andy Pagenkopf, Rick Dolan, Tim Kemmler, Mike Keller, Jack Mentzer, Scott Vaz, Todd Heisev Row 3 Roy Bickel, Lew Hannon, Allan Rossi, Tim Moyer, Mike Tinucci, Perry Owen, Bill DeMora Row 4 Asst. Coach Wayne McCullough, Coach Owen Wright, Statistician Becki Buss

WOMEN'S TENNIS



EASTERN AC
IAAW
CHAMPIONSHIP



	EC	OPP
York	8	1
Bloomsburg	Rain	
Franklin & Marshall	5	4
Millersville	7	2
Western Maryland	Rain	
Shippensburg	5	4
Juniata	9	0
Dickinson	Rain	
Albright	7	2
Susquehanna	5	4
Gettysburg	3	6
Bucknell	5	4
MAC Playoffs		
Ursinus	3	6
EAIAW Regional		
Wm. Paterson	7	2
Gettysburg	5	1

The women's tennis team had another outstanding season. The Jaygals finished their regular season with an 8-2 record and that earned them a spot in the eastern regional competition. E — town College won the team title and Blue Jay partners Beckie Donecker & Jenny Haifley teamed up to win the doubles crown in the Regional EAIAW Tennis Tournament. Donecker & Haifley were named to the All Eastern Team and they also advanced to the national tournament at Trenton State where they won national doubles championship.

During the regular season the team's muscle was in its four top players. All-American Beckie Donecker, the team's No. 1 player, and Kathy Goodman, the team's No. 4 player, lost only two matches during the season. In the No. 2 slot, senior Jenny Haifley was 7-3. Senior Kathy Keller, the team's No. 3 player, went undefeated this season. In doubles competition, the No. 1 doubles team of Donecker & Haifley compiled an 8-2 record while the No. 2 team of Keller & Goodman finished the season with a 6-4 record.



Row 1: Beckie Donecker, co-captains Kathy Keller and Kathy Goodman, Jenny Haifley Row 2: Coach Yvonne Kauffman, Ann Mumford, Stacey Estock, Sylvia Gove, Linda Torgerson.

MEN'S TENNIS

The Elizabethtown Men's Tennis team this season successfully defended its Middle Atlantic Conference Northwest Section title by winning every match against five conference foes. The attempt to annex the Northern Division title, however, went a-glimmering as the Jays lost the playoff 0-9 to defending champion Upsala. Jeff Kitsock, Dave Kelley, Mike Endy, and Joe Stanger will all be graduating. The team posted a 10-3 season.



	EC	OPP
Gettysburg	5	4
Ursinus	6	3
Scranton	2	7
Lycoming	9	0
York	7	2
Wilkes	7	2
Juniata	8	1
Albright	8	1
Susquehanna	6	3
Phila. Textile	9	0
Millersville	2	7
Dickinson	5	4
Upsala	0	9

Row 1 Mike Heisler, Jeff Kitsock, Dave Kelley, Joe Kramer Row 2 Piyush Chowhan, Capt Mike Endy, Joe Stanger, Coach Bob Garrett.

SOFTBALL



After two break-even seasons in its first two years, the women's softball team came up with its first losing season in the third year for the sport at Elizabethtown. Under new coach Diane Hiestand, the women finished with a 5-13 record.



Row 1 Diann Steinmeier, Karenlee Jones, Karen Gallagher Row 2 Lori Hartman, Beth Hilbert, Sue Grigson, Lauren Winner, Sharon Eby, Melanie Miles Row 3 Michelle Frizol, Karen Clark, Kim Elwell, Janet Villano, Melody Libhart, Coach Diane Hiestand.

	EC	OPP
Juniata	9	10
York	16	4
	10	11
Seranton	1	6
	5	7
Franklin & Marshall	0	3
	14	4
Shippensburg	5	18
	2	17
Susquehanna	7	6
	4	5
Millersville	5	10
	6	5
Albright	2	9
Wilkes	2	12
	5	11
Gettysburg	3	5

TRACK & FIELD



Row 1 Deb Craig, June Denlinger, Co-captains Suzette Desjardin and Dan Noyes, Michelle Casario, Kathy Lambert Row 2 Kirk Doran, Tom Gamon, Ed Ebling, Kyle Ward, David Dunlap, Lee Davis, Roy Meyer, John Mulkerin, Tim Holder, Coach John Schwanger.

	EC	OPP
Ursinus	6	83
F&M	6	92
Susquehanna	19	126
Dickinson	16	65
Messiah	16	99
Delaware Valley	14	71
York	28	114
Lebanon Valley	14	71
Baptist Bible	14	31
Messiah	14	69
<i>Women's Meets</i>		
Delaware Valley	45	61
F&M	65	101
Swarthmore	65	17

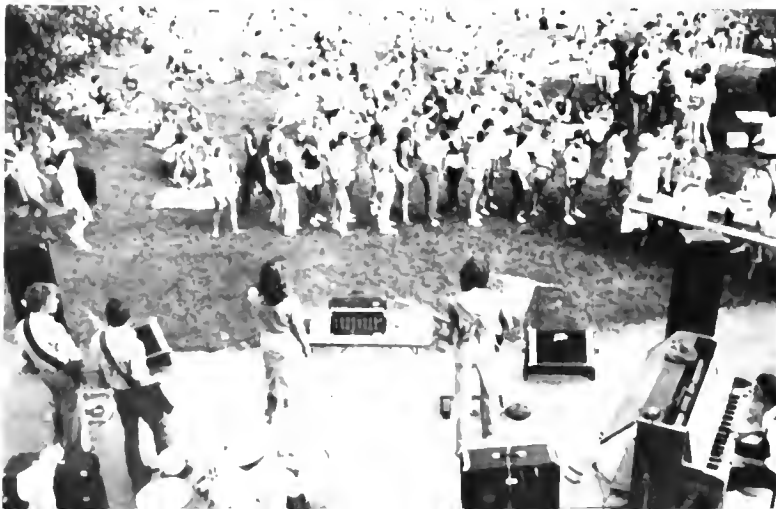


Elizabethtown's track team under new coach John Schwanger had a disappointing season. In competition against 10 opponents the Jays did not win any. The women's team, in three meets was successful in one. Bright spot of the year was the performance of freshman Roy Meyer in the shot and discus. Meyer set new school records of 44-1 3/4 in the shot and 130-1 in the discus.

ACTIVITIES



FRESHMAN ORIENTATION





CONVOCATION



Once again, September brought a crowd of new faces to campus — the freshman class. This year's freshman orientation contained some old and some new traditions. The ever-popular Progressive Hike, the second annual Frosh Zaney Picture, New Games, and a bonfire-pep rally were enjoyed by frosh and upperclassmen alike. On a more serious note, the Freshman Induction and Candlelight Ceremony officially made the class a part of E-town College. The hilarious comedy group, Chicago City Limits, entertained the entire campus community.

Another ceremony marking the beginning of the new academic year was Convocation. Attended by administration, faculty, students, and friends, this year's speaker was Dr. J. R. Coleman, president of Haverford College.

SOCK 'N' BUSKIN WEEKEND



The popular Theme Weekends were once again offered by various clubs and organizations. The first one of the fall semester entitled "That's Entertainment" was sponsored by Sock and Buskin. The weekend started off with a Gong Show in the caf. The highlight of the weekend was surrey rides around campus on a beautiful Sunday afternoon.

ROYER COUNTRY WEEKEND



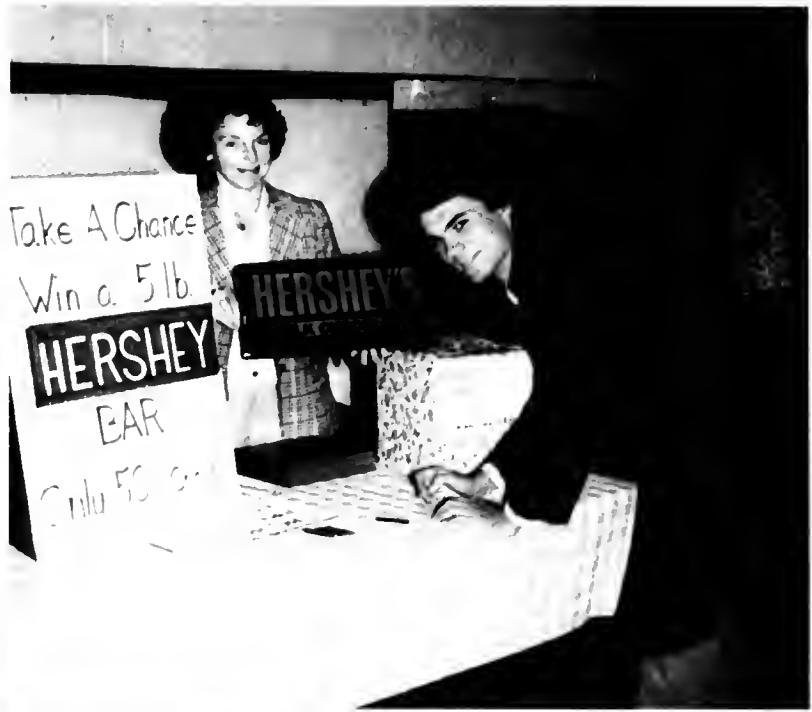
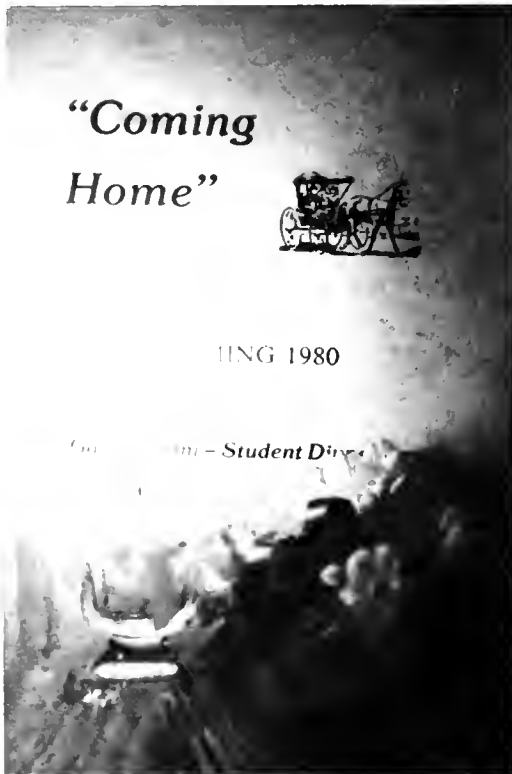
For the second year, Royer Dorm Council provided the campus with a down-home, country theme weekend. Although the weather did not cooperate, hayrides and a bonfire were still offered on Friday. The weather improved just in time for everyone to enjoy the Susquehanna River Band on Sunday.

TALENT SHOW



The first annual Sock and Buskin Talent Show was held on Saturday, October 4. As the highlight of Parents' Weekend, the Show benefited the American Heart Association. Over sixteen acts performed to a packed audience. Three of these acts appeared on the children's television show, "The Incredible Dr. Dudd" as a part of the group's publicity campaign.

HOMEcoming 1980



An array of activities keep students and alumni busy during Homecoming 1980. The Danish Gymnastic Show amazed everyone on Friday evening. The wet weather did not stop the scheduled events for Saturday as the Carnival Midway was moved into the gym along with the annual Ladies' Auxiliary Fair. In sometimes heavy downpour, the varsity soccer team battled against Lock Haven State in a tough game. Due to the weather, the presentation of the Homecoming Court and the crowning of the queen usually held at halftime was held that evening at the Student-Alumni Homecoming Dinner Dance at the Penn Harris Motor Inn. Senior Marianne Tezak was crowned by President Mark C. Ebersole who also introduced the Homecoming Court





*The 1980 Homecoming Court:
 Row 1: Marianne Tezak and Dave Hahn, Susan Borowski and Pat Fricchione, Polly Oldis and Kevin Markey Row 2: John Arndt and Julie English, Tim Kemmler and Linda Layer, Bob Cahill and Maryrose Frey, Becky Dinulos and John Perkins, Gail Reid and Al Granger, Ann Mumford and Wayne Humphreys.*

THE MAN WHO CAME TO DINNER



On October 29, 30, 31, and November 1, the Elizabethtown College Campus Theatre staged the 1939 Broadway hit, "The Man Who Came to Dinner." This comical play is about a well-known radio personality, Sheridan Whiteside (portrayed by Clifford Brown) who, while on a lecture tour in Ohio, breaks a long-standing personal rule and accepts an invitation to dinner at the home of the Stanleys, a prominent local family. Fate steps in when Whiteside is injured in a fall on the ice outside the Stanley home and is forced to stay with them throughout the holiday season. The plot centered around his ensuing relationships with the family, members of his staff, and his friends. Other lead roles were held by Donna Hill as Maggie Cutler, Whiteside's secretary, Roberta Luxton as actress Lorraine Sheldon, and Holly Hardaway and John Louloumes as Mrs. and Mr. Stanley

BOSTON



"A City and Its People" was the title of this year's Emphasis Week held November 3-9. During the week, the Cultural Events Committee sponsored various guest speakers and a walking tour of the City of Lancaster. The highlight of the week was the weekend trip to Boston. Over 120 faculty members, staff, and students visited the Freedom Trail, Harvard, and other various sites. For those who opted to stay on campus, the Slim Pickers of Boston were imported for their coffeehouse entertainment.

MS. MALE E-TOWN



Craziness continued to prevail on campus as the Ms. Male E-town pageant was held for the third consecutive year. A panel of distinguished judges watched as each contestant took part in all three phases of competition — evening gown, swimsuit, and talent. Last year's queen, Ms. Stan Tyson, was on hand to crown the new queen, Ms. Tim Seager.



HALLOWEEN





THANKSGIVING



CHRISTMAS DINNER



BRINSER WINTER CARNIVAL





Starting off the second semester of theme weekends was Brinser Dorm Council's Winter Carnival. Back by popular demand, this weekend featured both indoor and outdoor activities. The highlight of the weekend was the indoor carnival held on Saturday evening. Casino games and concession stands filled the A.A. as students gambled and spent their play money. Those with big earnings had a chance to spend them at Sunday's auction. Following the carnival activities, People's Choice hosted the dance.

BEATLEMANIA®



One of the highlights of the 1980-1981 school year was APB's successful presentation of the Broadway show, "Beatlemania", on January 30 in Thompson Gym, over 3,000 people were mesmerized as the evolution of the Beatles' music was recreated. Cited as the "most ambitious theatrical audio-visual production to date", the show captured the excitement, beauty, and hysteria of the 1960s in the slides, film clips and music. Four accomplished musicians effectively performed the music of Paul McCartney, George Harrison, Ringo Starr, and the late John Lennon



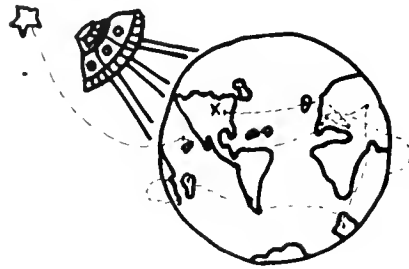
NEW YORK

NEW YORK



The tradition of student-produced musical reviews was continued this year by a newly organized club, S.T.E.P. The Student Team of Entertainers and Performers presented their show on February 7, 8, and 9. The show, entitled "New York, New York" was directed by senior Maureen O'Brien along with her committee of choreographers. Over 50 students were involved in this production which benefited the Elizabethtown Community Center. Numbers ranging from "New York, New York" to "Big Spender" to "On Broadway" keep standing-room-only audiences entertained.

♪ "All over the World"



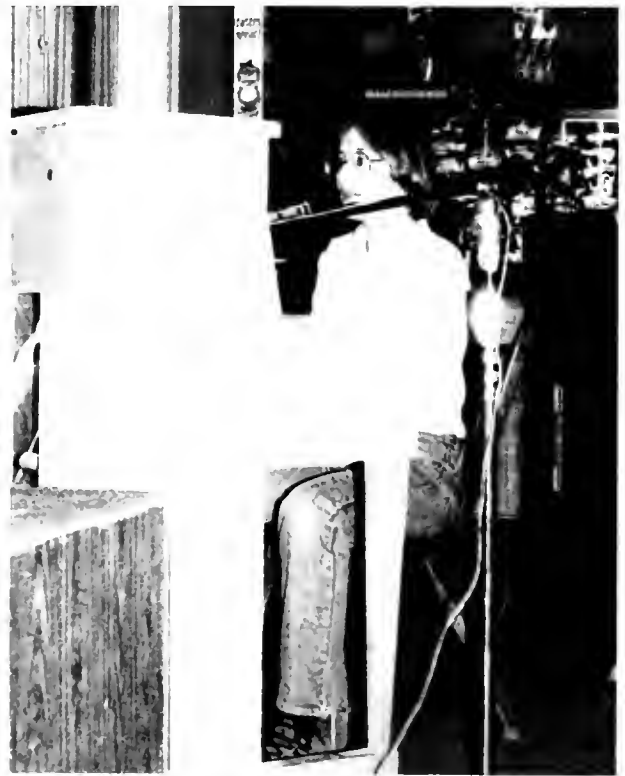
The Synchronized Swim Club once again presented its successful swim show to benefit the Elizabethtown Hospital for Children and Youth. The Synchro Show combined 11 aquatic routines with a land show that tied the pool numbers together. This year's show entitled "All Over the World," featured numbers from countries around the world. The land show, written and performed by members of Alpha Psi Omega, featured the adventures of the crew of an alien spaceship as they search the Earth for a desperately needed part. The show played to sold-out crowds February 25 through 28.

INTERNATIONAL WEEKEND



On February 27 and 28, the International Club sponsored its original theme weekend. A hall decorating contest got floors involved in competing for the best representation of a country. The Music Man, Tom Stepanchak, spun tunes as students competed in an international dance contest. During the dance, an international costume contest was also held.

AND NOW FOR SOMETHING COMPLETELY DIFFERENT . . .



The mid — semester slump was avoided this year by an action — packed, crazy weekend planned by the Student Senate. A terrific student coffeehouse kicked off the weekend's activities on Thursday night. Crazy games and contests made for Friday night fun in "Almost Anything Goes." Saturday night, the campus punked out to the sounds of THE SHARKS. Dressed in everything from neckties to leopard everyone whipped up a great time.



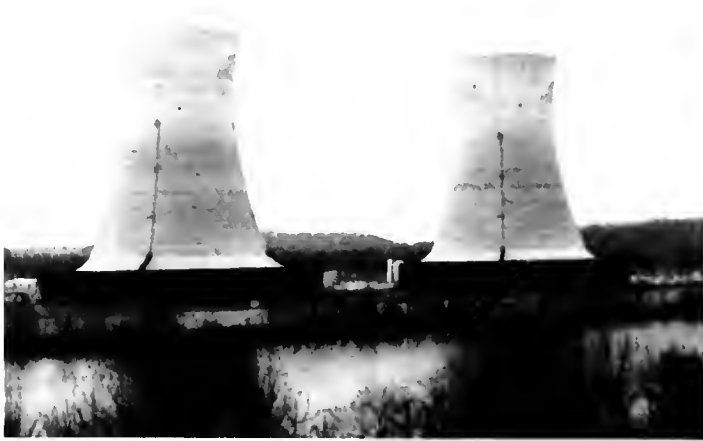
1981 DANCE — A — THON



The fifth annual Dance-a-thon was held March 20-21 to benefit the Leukemia Society of America. Fifty couples danced 24 hours to raise \$7800 to fight leukemia. A variety of dancing and scheduled meals and breaks keep the dancers going. Dancing in the square in downtown E -- town highlighted Saturday dancing. The couples also "danced the night away" with local D.J.s, square dancing, costume dancing, and new wave sounds.

TMI FALLOUT WEEKEND

The Sophomore Class and APB put their heads together to sponsor this 2 — year anniversary of TMI. In addition to a professional coffeehouse, a marathon run, and a meltdown dinner, the highlight was actual tours of TMI.



BIG BROTHER — BIG SISTER DAY



Over fifty children from the city of Harrisburg once again invaded the E — town campus for a day of fun and activities. Co — sponsored by the Delphi Society and the Religious Life Council, approximately sixty students volunteered their time to be a big brother or sister. Games, bowling, swimming, dancing, and movies were among some of the activities enjoyed by the children and their big brothers and sisters.



AN APRIL EVENING IN PARADISE

JUNIOR — SENIOR DINNER DANCE



"An April Evening in Paradise" was the theme of the 1981 Junior — Senior Dinner Dance held on April 4 at the Treadway Resort Inn. The Junior Class planned an evening of beauty and enjoyment. After a reception at the poolside, a delicious meal was served. "Section Eight," from Washington, D.C., provided music as couples filled the dancing floor. Good food, good music, and the company of good friends made for a memorable evening.

BRIGADOON



On April 22, 23, 24, and 25, Campus Theatre presented the romantic musical, "Brigadoon." A combined effort of the Communication Arts and Music departments, this production involved over eighty students. The story revolved around Tommy Albright (Played by Jeff Spade) and Jeff Douglas (C. John Palmer) who stumble into the magical town of Brigadoon which appears only once every hundred years. While there, Tommy falls in love with Fiona (Donna Hill and Holly Hardaway in this shared role). Strong singing and beautifully choreographed dance numbers highlighted this successful production.



FACULTY/ADMINISTRATION VARIETY SHOW

For the first time ever, a faculty/administration variety show was held on April 12. Talents such as Dave Iacono — Harris and Sherrie Raffield, Don Muston, Jim Hilton, and the Bookstore girls entertained the college community.



SAILING . . . T.G.I.S. 1981



Sailing was the theme of this year's Thank God It's Spring weekend held April 24-26. Despite inclement weather, there were activities galore to keep everyone entertained. On Thursday night, the music of John Franklin kicked off the spring celebration. Jane Thomas and friends kept the music going during Friday's dinner. Later that night at the "Thompsoncabana" Night Club, Gil Eagles hypnotized and mesmerized the college campus. Nick Stamos and his crew once again outdid themselves at the special T.G.I.S. "Sailing" dinner on Saturday. Afterwards, the band, "Central Heat," provided dancing sounds. The weather cleared up just in time for a fabulous outdoor concert on Sunday with Jonathan Edwards.



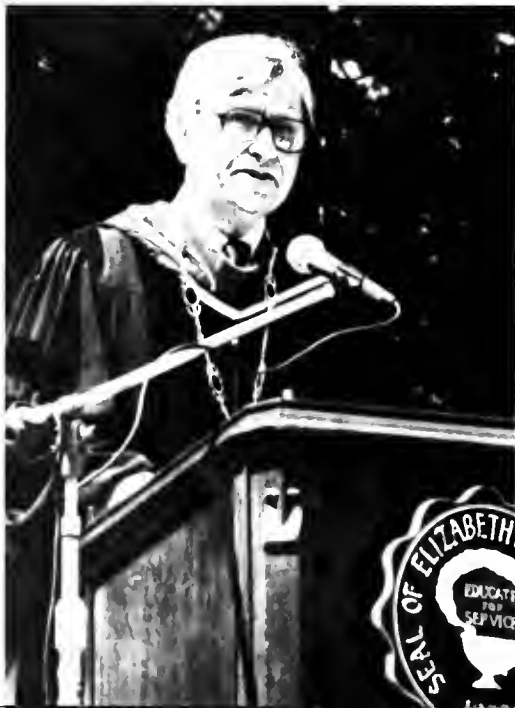


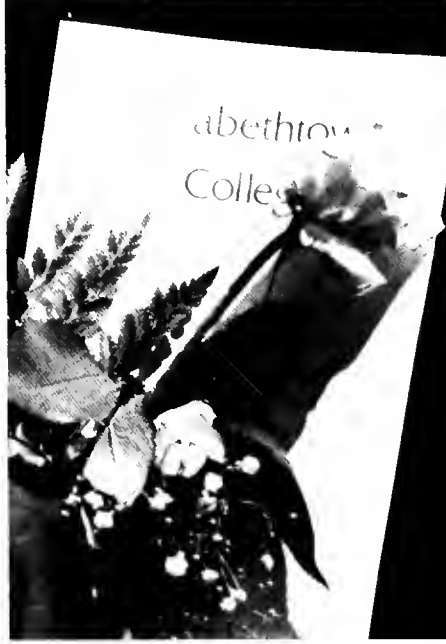
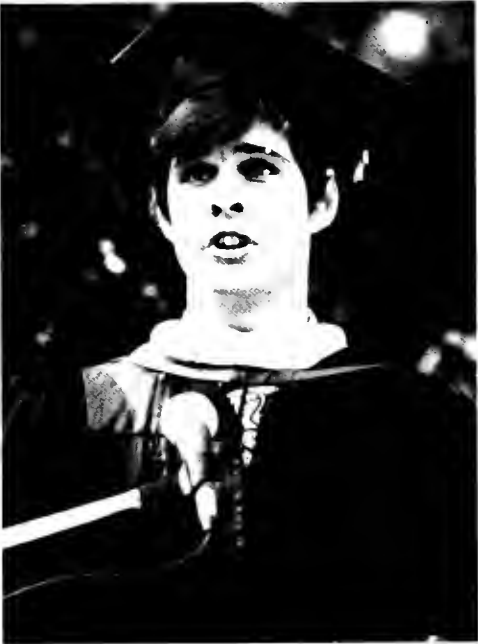
STUDENT AWARDS CEREMONY

For the third year, Elizabethtown College held its annual Student Awards Ceremony. Twelve students (pictured at left) received this year's distinguished student awards. Marianne Tezak was this year's recipient of the Alumni Outstanding Senior Award and Barbara Wightman was awarded the Raffensperger Journalism Prize for her work on the college yearbook. Outstanding resident assistants honored by the Housing Office were Lynda Davis, Kevin Jacoby, Maureen O'Brien, and Julie Rankin. The Department of Athletics honored its outstanding players and athletes. The 46 students nominated for Who's Who Among Students in American Colleges and Universities were also recognized at the ceremony.

1st row: Jeff Spade (Freshman), David Presti (Junior), John Touloumes (Senior), David Kelley (Senior). 2nd row: Robyn Pollina (Senior), Susan Borowski (Senior), Kathy Keller (Senior), Diane Schaeffer (Senior), Holly Hardaway (Freshman), Tammy Irvin (Sophomore), Maryrose Frey (Junior). Absent Janet Villano (Sophomore).

GRADUATION MAY 9, 1981





For the first time in the history of the college, commencement exercises for the class of '81 were held outside in the Dell, Saturday May 9th. It was a most festive day as parents, relatives and friends gathered to see over 300 graduates receive their degrees. Commencement guest speaker, Ginny Thornburgh delivered an address on the various aspects of caring and Senior Class President Jack Llewellyn reflected on his four years at Elizabethtown College. Dave Iacono — Harris, Social Work Assistant Professor and the Music Department were this year's recipients of the Steinman Awards. A reception was held in Myer Circle following the exercises.

CLUBS

Accounting Club
 Alpha Lambda Delta
 Alpha Mu
 Alpha Psi Omega
 American Chemical Society
 Activities Planning Board
 Awareness Coalition
 Biology Club
 Black Student Union
 Brass Ensemble
 Campus Gold
 Cheerleaders
 C.H.E.W.
 Clarinet Quartet
 Commuter Council
 Chorale
 Choral Union
 Community Orchestra
 Concert Band

Concert Choir
 Conestogan
 Computer Science Club
 Delphi Society
 E.C.F.
 Etownian
 Fencing Club
 F.C.A.
 History Club
 International Club
 Jazz Band
 Marketing Club
 Med — Tech Club
 M.E.N.C.
 Math Club
 Occupational Therapy Club
 Outdoor Club
 Phi Beta Lambda
 Photography Club

Political Science Club
 P.S.E.A.
 Pre — Health Professions Club
 Psi Chi
 Psychology Club
 SAM Club
 Sociology Club
 Society of Physics Students
 Social Work Club
 Speech Club
 Student Senate
 Sock & Buskin
 S.T.E.P.
 Supreme Fiction Club
 Synchro Swim Club
 T.R.E.E.
 Woodwind Quartet
 EC 64

THE CONESTOGAN STAFF

<i>Editor-in-Chief</i>	<i>Barbara Wightman</i>
<i>Assistant Editor</i>	<i>Louise Heist</i>
<i>Photo Editors</i>	<i>Molly Keith</i>
	<i>Leo Lucchesi</i>
<i>Senior Section Editors</i>	<i>Suzanne Schreiber</i>
	<i>Lynda McCutcheon</i>
<i>Sports Section Editors</i>	<i>Ginger Geissler</i>
	<i>Beth Matthews</i>
<i>Activities Section Editors</i>	<i>Sue Borowski</i>
	<i>Terri O'Neill</i>
<i>Clubs Section Editors</i>	<i>Sharon Kurowski</i>
	<i>Barry Herman</i>
<i>Underclass Section Editor</i>	<i>Janet Shapiro</i>
<i>Faculty & Admin. Editor</i>	<i>Tom Stepanchak</i>
<i>Advertisements Editor</i>	<i>J. Reid Carleton</i>
<i>Copy Editor</i>	<i>Rochelle Angstadt</i>
<i>Artists</i>	<i>Kris Manwiller</i>
	<i>Andre Cooper</i>

Photographers: Tom Stepanchak, Peggy Fox, Ginger Geissler, Elizabeth Cushing, Karen McCall, Deb Wood, Beth Matthews, Sue Herrick, Sue Reed, Kay Carpenter.

Volunteers: Beth Reilly, Emily Meibohm, Jean Evans, Cindy Reese, Tim Kemmler, Arleen Moran.

President: Mark C. Ebersole

Advisor: Ken Baylor

Dean of Students: Walter B. Shaw

Publisher: Herff Jones Yearbooks

— Mike Gilroy — Representative

Photographic Services: Davor Photo, Inc.

CLASS OFFICERS

SENIOR CLASS:

PRES: Jack Llewellyn
VP: Gene Kirchner
SEC: Robyn Pollina
TREAS: Luanne Barnes

JUNIOR CLASS:

PRES: Holly Cooke
VP: Maryrose Frey
SEC: Mari Pugliese
TREAS: Jay Eichelberger

SOPHOMORE CLASS:

PRES: Al Granger
VP: Lynne Anderson
SEC: Jane Daveler
TREAS: Gail Reid

FRESHMAN CLASS:

PRES: Dave Doebler
VP: Julie English
SEC: Naomi Torchiana
TREAS: Beth Hilbert

UNDERCLASSMEN



SCHLOSSER





Schlosser RA's: Row 1 Lynda Davis, Maggie Beck(AC), Leslie Powell Row 2 Mary Jo Loftus, Jennifer Hampshire, Kathy Schwarzmann.



Schlosser Dorm Council: Row 1 Dana Aberle, Debbie Hawtof(VP), Liz Diacont, Allison Gorman, Kathy Jo McPike (Pres.) Row 2 Amy Ziegler, Maggie Beck(Advisor), Mary Maucher, Nancy Gonzalez, Becky Dinulos(Treas.) Row 3 Joan Rohrbaugh(Social Rep.), Linda Needham(Sec.), Deb Novobilski, Karen Gutshall.



I-East: Row 1 Dianne Snyder, Nancy Baionno, Valerie Hoover, Joan Rohrbaugh, Allison Gorman, Lynda Davis(RA), Mary Simansky Row 2 Sally Kammerer, Connie Vathis, Lisa Myers, Karen Nelson, Monica Benner, Beverly Sollenberger, Alison Cumens, Barb Baeckert, Kathy Lau, Kim Milligan Row 3 Amy Ziegler, Pam Krieder Row 4 Joy Asplundh, Corny VonLersner, Tricia Landis, Diane Greenhalgh, Kathy-Jo McPike, Karen Dorsey, Sue Kurtz, Vicki Freund, Pam Hunsberger, Thu Dang, Brunilda Fuentes Absent: Sherrie Peck, Kathy Schmidt, Connie Chronister, Carla Mylin, Deanna Dibert, Kim Girvin, Carol Spence, Dawn Eveler, Lola Gallant, Naomi Torchiana, Phyllis Dayton, Lisa Confer.





2 — East: Row 1 Dawn Ciancia, Teresa Macrina, Jane Daveler, Lori Snyder, Chris Geig
 Row 2 Donna Hummel, Cindy Minor, Pam Grove, Carolyn Lee, Sam Hess, Dana Aberle, Huong
 Nguyen, Kim Wanke Row 3 Terri Linton, Joanne Andresky, Becky Evans, Andrea
 Klingenberg, Joan McNerney, Virginia Ray, Kim Rebeck, Julie Dum Row 4 Lori Bonner, Linda
 Seiple, Sue Stevens, Louise Heist, Mary Jo Loftus(RA) Absent: Gay Graham, Holly Nolt,
 Jaymie Billbrough, Kelly Aucker, Pat Allen, Kim Whalen, Joanne Ware, Noni Lowndes, Kathy
 Hassinger, Lisa Groff.



2 — West Row 1 Val Schmidt, Lorin Schatch, Lea Davis, Jennifer Hampshire(RA), Mary
 Walters, Lori Donofrio, Judy Koury Row 2 Page Lutz, Renee Horst, Linda Needham,
 Deb Novobilski, Lam Johnson, Cheryl Strashaugh, Katy Dempsey, Kim Nett, Karen
 Gutshall, Beth Brodhag, Kitty Nicodemus Row 3 Diane Nelson, Lorraine Miller, Cindy
 Steller, Diane Schaeffer, Dawn Paul, Laurie Leayman, Robin Leshner, Angie Nelson, Suzanne
 Tessier Row 4 Nancy Gonzalez, Doreen Dempsey, Mindy Holl, Sue Grigson, Susan
 Mehl Absent Jane Thomas, Sue Kozak, Laurette Schuler, Sylvia Gove, Barb Stewart, Deb
 Wright, Jane Slotterback, Jeanne McCarty, Linda Warnunski





3 — East: Row 1 Beth Perkins, Debbie Hawtof, Chris Hinkle, Deb Snavely, Robin Eckert
 Row 2 Deb Nicholas, Mary Arnick, Leslie Powell(RA), Nancy Keffer, Jeanine Pantano, Cindy Lenker, Diane Forester Row 3 Laurie Jacobsen, Sharon Kurowski, Janice Hill, Bindy Kaercher, Jeanne Loeffler Row 4 Esther Coppock, Joyce Barnett, Connie Gallow, Sue Whitley, Joanne Coruzzi, Lori Zeigler, Connie Bahn, Kim Paskill, Karen Caprara. Row 5 Becky Dinulos, Julie Mahan, Lynn Sachs, Stacia Koval, Liz Diacont, Jean Evans, Beckie Donecker, Kathy Goodman, Barb McCoy, Gail Schmerfeld
 Absent: Robyn Pollina, Chris Jamieson, Arlissa Salamone, Terri Yesalavage.



3 — West: Row 1 Anne Siefert, Yvonne Herder Row 2 Audrey Snyder, Laurie Stetler, Janette Azelvandre, Cindy Reese Row 3 Cindy Nichols, Sherry Mason, Clarice Grant, Mary Beth Rdesinski, Donna Hull, Julie English, Cathy Conner, Karen Brune Row 4 Lori Gallego, Karen Eastridge, Peggy Sauer, Donna Fraunfelter, Mary Maucher Row 5 Mary Ann Sorrentino, Sue Ehlinger, Christine Walker, Kathy Schwarzmann(RA), Michelle Olein, Nancy Gonzalez Absent: Lita Foor, Beth Hilbert, Kathy Kirk, Becky Blair, Lien Dang, Carol Hopcke, Denise Hazelwood, Caryl Zimmerman, Lorraine Miller, Sue Schneider.

BRINSER



Brinsler RA's Row 1 Kevin Jacoby, Bob Cahill, Mark Trimmer Row 2 Jimmy Cavanaugh, Rick Autrey



Brinser Dorm Council: Row 1 Mark Hornberger Row 2 Herb Yost (Pres.), Bill Ketrick (Sec.), Tom Stepanchak Row 3 John Bittner, Kevin Jacoby, Wayne McCullough (AC), Tim Keech, Bob Cahill Row 4 Roy Meyer, Mark Beiler, Mark Trimmer, Rick Galley (VP) Absent: Bill DeMora (Treas.).



1 — NS: Row 1 Nick Rogers, Chris Dowdell, Steve Augst, John Boehm, Rick Autrey (RA) Row 2 Tom Showers, Tim & Anne, Load Yeager, Mike Wagner, Javed Bhatti, Bob Keen Row 3 Woody Rothenberger, Dave Hickernell, Dave Wenger Row 4 Bill Ketrick, Rick Galley, Kirk Dawson Row 5 Randall Malick, Joe Schultz, Brian Carroll, John Bittner, Tom Stepanchak, Tom Hart, Joe Kibala, Bob Slamp, Steve Simmers Absent: Walt Schlett, Dave Sempeles, Bob Zaccano, Kirk Billet, Roy Martin.





2 — North: Row 1 Chris Cavanaugh, Dave Doebler, Mike Keller, Scott Lied Row 2 Kurt Fisher, Scott Miner, Mike Kanyak, Jon Singer, Mike Shupp Row 3 Jimmy Cavanaugh (RA), Ron Faus, Mike Miley Row 4 Don Umberger, Laine Heltebridle, Dan Noyes Row 5 Dave Beall, Rick Brinser, Doug Glass, Jim Jameson Row 6 Nick Broujos, Keith Kurtz, Jerry Gladfelter Absent: Allen Artz, Shibs, Tom Bailey.



2 — South: Row 1 Mark "Burger" Hornberger, Scott Miller, Jim "Slick" Fitting Row 2 Herb "Herbal" Yost, Bob Wolpert, Barry Dohner Row 3 Kevin "Jaco" Jacoby (RA), Mark "Sparky" Sohns, Ed Ebling, Joe Stanger Row 4 Roy Meyer, John Brewer, Kyle Ward, Todd Heisey, Bill Young Row 5 Mark Zurko, Mark Beiler, Jeff Rill, Ken "Commuter" Greider, Mark Irish Row 6 Fodd Nave, Curt Heisey, Darrvl "D-Boone" Brown Absent: Tim Keech, Andy Mehalko, Tim Bledsoe, Tim Moyer, Matt Richards



3 — North: Row 1 Jim Boris, Bob Cahill (RA) Row 2 Ed Koehler, Bill DeMora, Mike Anderson, Todd Armstrong Row 3 Bruce Rowe, Mike Arevalo, Jim Testerman Row 4 Rick Zmuda, Steve Pease, Jeff McCloy, Chau Bui Row 5 Al Mede, Bill Shebey, Mike Tinucci, Scot Custer Row 6 David Githens, Vince Simansky, Eric Daiga Absent: Buster Williamson, Mike Mitchell, John "Heatwave" Perkins, Chuck Hart.



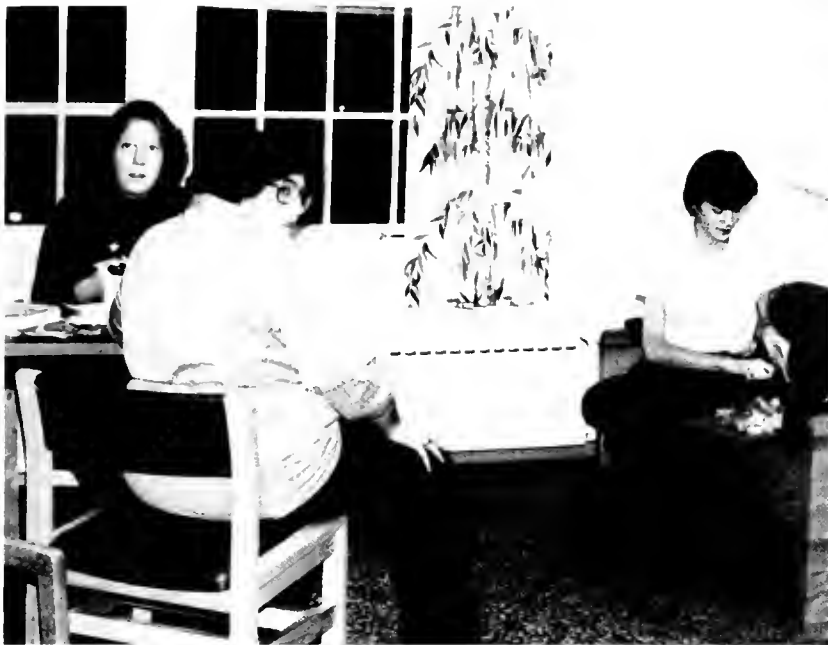
3 — South: Row 1 Beth, Andy "Little Wrestler" Maurer, Doug "Wank" Wanke, Doug "Us" Abel, Alvin "Onionhead" Walton, Jeff "Bleech" Bleacher, Scott "Moto" Stauffer, Eric "Bagger" Luckenbaugh Row 2 Karl "Rock" Baker, Kevin "Spud" Plesnik, Stephen "Animal" Chester, Andy "Bugs" Silverman Row 3 Craig "Cactus" Kovach, Don "Dan" Kleiss, Rex "Alligator" Lofland, Tim Kershner, Ray "Basket" Hershey, Rich Jacobson Absent: Mark "Dad" Trimmer (RA), Dave Kettering, Keith Buehl, Jeff Kerstetter, Clark McSparren, John Shumate, Dave Burkholder.



MYER



Myer RA's Row 1 Nancy Hertel, Julie Rankin,
Sandra Postupack Row 2 Mary Anne Geiger, Colette
Koch, Mac McCullough (AC).



*Myer Dorm Council: Row 1 Mari Pugliese (VP), Dotty Donovan
Row 2 Martha Groff, Vicki MacWright, Mary Muhich Row
3 Fran Gross (Treas.), Wayne McCullough (AC), Cindy Cooley
(Sec.) Absent: Judy Seldomridge (Pres.), Faith Bernard.*



1 -- East: Emily Martens, Gretchen Nettling, Cindy Marx, Mary Ann Merel, Sandra Postupack Absent: Maureen Glose, Vicki MacWright, Maureen Rittner, Nora Barlow, Katrina Myers, Judy Wilder.





2 — East: Row 1 Barb Martin, Nancy Hertel(RA), Nancy McCullom, Cheryl Petti, Mary Everline Row 2 Mari Pugliese, Mary Rose Frey, Sue Arter, Maria Long, Beth Eberhart, Jodi Wise, Lisa Schoener, Lisa Kirkland Row 3 Kay Keller, Amy Zacharias, Kathie Boyle, Nancy Pederson, Martha Falkenstein, Beth Grumbine, Chris Hershey, Sue Lynam, Faith Bernard Absent: Tammy Burk, Marueen Roberts, Jenny Spencer, Dana Buterbaugh, Alecia Masood, Karen Allen, Annette Fox, Jonna Long, Bernie Wilk, Dorinda Christ.



2 — West: Row 1 Wendy Barrett, Sue Wallie, Robin Lilarose, Dotty Donovan, Julie Rankin(RA), Melinda Crabbs, Linda Torgerson, Beth LeConey Row 2 Donna Lenker, Jenny Haifley, Donna Hill, Dolly Locke, Nancy McCollum, Kathy Detrick, Linda Sites, Jeanne McClure Row 3 Diane Lenhart, Michele Ryan, Kathy Bohn, Lisa Brown Row 4 Niki Costello, Lynn Barbour, Anne Shillingford, Katy Boyle, Sue Rogers Absent: Joelle Riley, Alicia Huertes, Arlene Green



3 — East: Row 1 Jackie Frear, Holly Cooke Row 2 Lori Herr, Sandy Kreider, Lynne Anderson, Diane Ford, Betsy Musselman, Tina Garrison Row 3 Gayle Kline, Kathy Ross, Becki Buss, Linda McCullough, Mabel Sweitzer, Cindy Cooley, Loretta Price, Annette Murray Row 4 Carenda Baker, Joanne Larson, Fran Gross, Becky Love, Mary Muhich Row 5 Cindy Neil, Mary Anne Geiger(RA), Judy Seldomridge, Lynne Bisbing, Polly Oldis Absent: Joy Little, Jenny Shultz, Karin Fink, Barb Young, Julie Hilliard, Gwen Kenyon, Sherry Rarick, Eileen Floriani, Nancy Scott.



3 — West: Row 1 Melanie Miles, Beth Bosilovich Row 2 Lauren Winner, Gaye Smith, Mary Yingling, Sue Reed, Diane Bisher Row 3 Jenni Zimmerman, Lisa Lang, Judy Priggins, Karen Lutz, Colette Koch(RA), Phyllis Holton Row 4 Emily Meibohm, Wendi Walker, Jacqui Harmer, Terry Dess, Ellen Cooper, Marion Ward, Holly Hardaway, Lisa Kauffman, Julie Metcalf, Martha Groff Absent: Pam Miller, Shawn Lowe, Sue Blomster, Anne Reifsnnyder, Marcia Rebman.



OBER



Ober RA's: Row 1 Pat Fricchione, Bruce Ulrich, Scott Pifer, Mac McCullough (AC), Jack Llewellyn Row 2 Barry Herman, Tom Woolley, Bob Utzinger Absent: Rich Terry.





Ober Dorm Council: Row 1 Gary Wylde (Sec.), Glenn Scheyhing (Treas.), Tim Kemmler (Pres.), Joe Orlando, Rich Terry Row 2 Kurt Biedlingmaier, Greg Seifter, Herk Rintz, Mac McCullough (AC), Doug Weisbach Absent: Fran DeSalvo, Bob Mertz (VP), Bruce Merritt.



A — 1: Row 1 Dave Hahn, Brian Snyder, Skip Baylor, Chuck Link, Bob Morton Row 2 Wayne Erdman, Tim Collins, Bob Jordan, Pat Fricchione, Jay Eichelberger, Jeff Wynn, Orlando Rodriguez, Dave Presti Row 3 Kurt Biedlingmaier, Charlie Artz, Tom Morral, Blair Bux, Glenn Rigg, Kevin Markey, Tim Kemmler, Tom Gammon, Steve Shubert, Bob Mertz, Don Bufalo, Nick Sirianni Absent: Dale Sheaffer, Dennis Boyle, John Schmitz, Gary Chesney, Bob Trimble, Pat McPaul, Craig Bright, Ernie Holmes, Kent Whiting, Doug Ward.



A — 2: Row 1 Ken Jones, Jack Llewellyn(RA) Row 2 Jack Mentzer, Eric Kilhefner, Lou Hannon, "Stud" Defino, Wayne Humphreys, John Hilla, Scot Hess Row 3 Frank Lamberta, Mark "Chad" Chadwick, D.T., Unknown, "Percy", Ron, Pat, Mike, Jerry Row 4 Tom Holcombe, "Captain" Dave Shaw, Andre Cooper, Joe Barrett, Albert Granger, Paul Charles Radding, John Arndt, George Neidig & Kermit Absent: Bill Clifford, John Curtin.



A — 3 Row 1 Bob Speers, Mark Hershberger Row 2 Doug Weisbach, Nikita Green, Stu Hubbard, Mark Jordan, Al Rossi, Dennis Brennan Row 3 Tim McClure, Glen Maltias, Scott Stauffer, Mike Hiesler, Hiroshi Ishikawa, Chris Rhinesmith, Tom Smith, Johnny Mumford Row 4 Jim Watson, Dave Satterthwaite, Nick Haitos, Art George Row 5 Dan Hammond, Jack O'Reilly, Jay Bvers Absent: Bob Utzinger(RA), Jeff Steffy, Rick Kidron, Dennis Boyle, Erik Randolph, Brian Meiser, Charles Hayes, Andy Rich, Glenn Arizini, Brad Willhard, Ron Royer, Lew Copenhaver, Will Montalvo, Sam Kline, Rich Ash, Gary Coleman



*B — B: Row 1 Chris Andrews, Scott Frick, Dave Thatcher, Bruce "Dutch" Ulrich(RA)
Row 2 Drew Devitt, C.J. Palmer, Jud Gemmill, Bill Ewer, Mike Leid, Kevin Breighner, Jay Greer Absent: Craig Beittel, Andy Wasilisin, Don Warner, Scott Pryor.*



B — 1: Row 1 Guy Creep, Kurt Anderson Row 2 Roy Bickel, Joe Orlando, Jeff Schaum, Tim Hand, John Way, Darryl Swartz, Tom Smith, Dan Nixon Row 3 Dave Metzler, Mike Harleman, John Bowman, Ted O'Donnell, Bob Deimler, Matt Douglas, Bill Davidson, Eric Love, Bob Buell Row 4 Glenn Sternitzke, Brian Hartman, Scott Vaz, Rich Wagner, Andy Pagenkopf, Scott Pifer(RA), Keith Dunlop Absent: Steve Souder, Mike Ochman, Robert Marshall, Neil Mansur, Vernon Lee, Brian Crouse, Norman Weise, Tom Becker, Fran DeSalvo, George Pappas, Barry Gay, Bill Gentry.



B — 2 Row 1 Tom Woolley(RA 1st semester), Tony Rolsal, Kevin Warner, Herc Rintz, Gary Stepanchick Row 2 Greg Weaver, Frank Souder, Mike Hudome, Norman Goss, Rick Beittel Row 3 Rich Carter, Tom Iredale, Pete Spragg, Larry Leshar, Lee Davis, Dave Kennedy Row 4 Jim LaPorta, Rudy Fisher, Brett Tennis, George Gerdis, Don Chapman, Tom Neiss, Craig Pursel Row 5 Gary Wylde, Rich Terry(RA 2nd semester), Mike Brennan, Al Geckle, Dan Schmidt, Dave Beatty, Fred Potts, John Winand, Pat Hawkins Absent: Wes Terry, Nick Broujos.



B — 3 Row 1 Glenn Scheyhing, Tony Knight Row 2 Greg Siefert, Perry Owen, John Joyce, Dave Stepanchak, Dave Chute, Rob Fratantoni, Mark Ford Row 3 Tim Zimmerman, Tim Hihm, Paul Sergi, Brian Kaercher, Neil Shanahan Row 4 Barry Herman(RA), Joe Boyle, Dwight Davis, Greg Gloffre, Craig Tosh, Dana Reese, Tom Lancaster Row 5 Dave Bradley, Dave Allman, Dane McAlpine Absent: George Forbes, Bruce Merritt, Mike Federici, Kevin Vrabel, Sok Young Kim, Joe Kramer, Gene Kirschner, Leigh Hannum, Steve Rathsam, Keith Grant, Joel Elder, Larry Singer, Bill Shank, Tom Jaglang, Tod Shedlosky



ROYER



Royer Dorm Council: Row 1 Gay Detweiler(Sec.), Amy Porter Row 2 Joyce Lehman, Sue Kirby(Treas.), Beth Metzger, Mary Ellen Zizos Row 3 Carolyn Weaver, Gretchen Franz(VP), Lisa Hamilton, Deb Graves Row 4 Nancy Neimeyer, Carol Richman, Terri Sweigart(Pres.).



Royer RA's: Wayne McCullough(AC), Melanie Metzger Maggie Disch, Beth Reilly, Lynn Crowers, Cathy Kipp, Yvonne Dockey.





1 — North: Row 1 Janet Graham, Beth Metzger, Laura Bauer, Beth Reilly(RA) Row 2 Amy Porter, Tammie Dimm, Gretchen Franz Row 3 Linda Layer
Absent: Terri Sweigart, Lee Ford.



1 — South: Row 1 Doris Wegner, Lori Zagorskie, Robyn Wramage, Holly Engle, Melanie Metzger(RA), Barb Stone, Sue Herrick Row 2 Carolyn Weaver, Karen Jeteles, Allison Cassidy, Gail Reid, Chris Wolfe, Alane Seiler, Debbie Gable & Toby Absent
Karen Barker, Beth Bowser, Bettina Oellig, Holly Rossi.



2 — North: Row 1 Michelle Gaiotti, Dianne Swatski, B. Mary Royer, Maria Long, Deb Graves Row 2 Lisa Hamilton, Becky Zimmerman, Diane Kee, Kathy Snyder, Leonora Lucchesi, Ellen Martin, Carolyn Gray Row 3 Chris Agnew, Yvonne Dockey(RA), Michele Marsh, Carla Hofmann, Jill Page, Kathy McCambridge Absent: Roberta Luxton, Cheri Paul, Nancy Yarnall, Jeanmarie Dennen.



2 — South: Row 1 Sue Coney Row 2 Sherry Russin, Nancy Niemeyer, Wanda Buzzard, Paula Ferguson, Sandy Hensel Row 3 B.B. Vanelli, Carol Caricofe, Dorinda Christ, Karen Lease, Val Williams, Carol Richman, Jeanna Clark, Corinne "Killer Bee" Foor Row 4 Linda Wagner, Beth Geidel, Kyle Arizini, Betsy Wetzel, Laurie Hosman Row 5 Nancy Carlson, Sue Hivner, Laura Beal, Tami Weaver, Sandi Longsderff, Kim Mohl Absent: Cathy Kipp(RA), Christy Butler.





3 — North. Row 1 Jane Brennan, Cathy Starr, Brenda Misheck Row 2 Sue Wiatroski, Donna Way, Ann Mumford Row 3 Laura Goldy, Molly Hanson, Joanne Soyka, Janice Thirlwall Row 4 Kathy Merel, Patty Kogut, Ellen Watts, Pam Lorincz Row 5 Eileen Crim, Mary Ellen Zizos Row 6 Maggie Disch (RA), Lori Henninger, Laura Lowenbach, Sharon Warner Absent: Chris Witbak, Diane Dondero.



3 — South Row 1 Debbie McGarry, Gay Detwiler, Joyce Lehman Row 2 Lisa Clevinger, Lisa Groff, Carol Rogers, Debbie Trainer Row 3 Joyce Clevinger, Carol Brenna, Betsy Huber Row 4 Sue Butterworth, Cindy Law, Roslyn Lewis, Diann Steinmeier, Marianne Noll, Sue Kirby Row 5 Lynn Crowers (RA), Jodi Clark, Sarah Muvskens Absent: Iwila Shaeffer, Vickie Overly, Chris Foor



FOUNDERS



Founders RA's: Row 1 Robin Bower, Maggie Beck (AC), Abdul Moosa, Julie Murphy, Sue Borowski, Marianne Tezak Row 2 Barbara Wightman, Suzanne Schreiber, Diane Artz, Tracy Binkley, Donna Wilson, Kathy Keller, Jeff Gosnell Absent: Bill Griffith (AC), Becki Buss.



Founders Dorm Council: Row 1 Ann Cybulski, Kris Manwiller (Treas.), Deb Stefani Row 2 Kathyann Hutchinson, Janet Villano, Karen Skovira (Activities), Allyson Rider, Lisa Loercher (Sec.), Liz Weitzmann, Kim Beattie Row 3 Dot Rogers, Bill Jordan, Bernie Bambrick (Pres.), Gary Beck Absent: Sandy Wagner (VP).



A-1: Row 1 Lori Hartman, Deb Bucker, Sue Borowski (RA) Row 2 Alyson McGwire, Karen Nitterhouse, Sandy Wagner, Sharon Eby, Peggy Fox, Jean Garman, Diane Cortellessa, Kay Gordon, Ginger Geissler Row 3 Jenny Kissel, Kris Manwiller, Tess Tulley, Lee Ann Chelak, Beth Matthews Absent: Beth Shenenberger, Shelby Raudensky, Wendy Flanders, Cathy Anderson, Suzette Desjardin, Kathy Heindel.



A-2: Row 1 Julie Murphy (RA), Lori Bannon, Cherie Ankeny, Dottie Jacoby, Melody Libhart, Sue Souder, Colleen McAuey, Cheryl Krukowski Row 2 Nancy Dublin, Regina Schneider, Cathy Ebersole, Deb Wood, Kathy Doolittle, JoAnne Roberts, Nikita Green, Lynda Bloomer Row 3 Anne Dixon, Anne Coles, Randi Montgomery, Carol Smith, Patti Moyer, Irene Donohue Absent: Colleen Cooligan, Brenda Mizdail, Karen Keiter, Joyce Anderson, Roxanne Zsiray, Melinda Rosen, Susie Wright, Kathy Cherego, Cindy Bakalian, Sue Shearer.



A-3: Row 1 June Denlinger row 2 Carol Kasel, Erin Garrity, Barb Glackin, Jane Heim, Audrey Johnson, Elfie Paquette, Shawna Riggs Row 3 Kelly Book, Sharon Lynch, Gail Galbraith, Michele Erbe, Tina Wilson, Patti Suarez Row 4 Holly Carmint, Kathy Stahl, Diane Artz (RA), Jamie Hurley, Cheryl Terbot, Karen Clark, Nancy Hahn, Linda Ott, Berni Bambrick Row 5: Lisa Ciotti, Kim Lishon Absent: Colleen Coolican, Lisa Rogers, Shelley Gross, Ann Hilla, Lynn Jump, Amy Gohn, Jenny Swisher.



B-1: Row 1 Emily Duzey, Ivelisse Acosta, Joni Humpert, Robin Bower (RA), Esther Vorhauer Row 2 Terri Rehn, Tam Wolf, Beverly Boyer, Allyson Rider, Diane White, Rosie Pugliese Absent: Toni Jennings.



B-2: Row 1 Betsey Kirk, Geri Bradley, Jane Hawley, Diane Walker, Phuong Vo Row 2 Edith Nelson, Kathy Hetrich, Linda Worst, Arleen Moran, Stephanie Hall, Elyse Fratantoni Row 3 Sue Hand, Karen Mummeri, Andra Smith, Lynn Collingwood, Barbara Wightman (RA), Kathyann Hutchinson, Carol Weber Row 4 Lisa Naugle, Elizabeth Cushing, Marlene Gruber, Wanda Hertzog, Teresa Rowe, Deb Blaschak Absent: Michelle Waldron, Carol Fees, Nancy McCollum, Ann Cybulski, Melissa Mullin, Teresa Puhalla.



B-3 Row 1 Pam Craig, Leanna Muntzenberger, Maureen Coyne, Alexa Hardysh, Sandy Mack, Deb Craig Row 2 Peg Longo, Tammy Irvin, Deb Balthaser, Peggy Ford, Karen McCall, Amy Grimm, Lorie Gage, Marianne Tezak (RA) Row 3 Pam Palmieri, Kris Hoffman, Janet Villano, Terri O'Neill, Laura Colonna, Sue Seifrit, Deb Schillinger, Barb Lockard Row 4 Deb Lebo, Lisa Laudenslager, Beth Peiffer, Molly Keith, Claire Porter Absent: Carol Roland, Sandy Farmer, Karen Kottmeyer, Melissa Weaver, Deb Simon.





C-1: Row 1 Tracy Binkley (R.A), Debbie Erikson Row 2 Kathy Lambert, Rochelle Angstadt, Rhonda Heindel, Marie Francks, Mary Lou Regan, Lorie Hart Row 3 Carolyn Fleming, Nanci Jo Grimm, Karen "Hopper" Struve.



C-2: Row 1 Sandy Austin, Karen Skovira, Kim Glass, Kay Carpenter, Lisa Loercher, Beth Maloney, Nancy Plante, Laura Macaluso Row 2 Elaine Wise, Maureen Maggese, Teri Godfrey, Elaine Weller Row 3 Marty Brose, Kathy Knight, Patty Hoferer, Pam Saltzer, Anne Weigand Row 4 Sandy Stewart, Kathy Keller (R.A), Janet Shapiro, Dianne Jones, Jacki Hagmayer Absent: Nancy Simon, Sherry Mason, Luanne Barnes, JoAnne Glah, Kelly Ludwig, Melissa Stufft, Edie Thompson, Beth Whitacre.



C-3: Row 1 Lynda McCutcheon, Suzanne Schreiber (RA), Bernie Bambrick, Judy Fuller, Ginny Howard, MaryAnn Calderone, Shelly Roger Row 2 Beth Spangler, Robin Ford, Kris Reese, Jane Binnersley, Liz O'Donnell, Michelle Frizol, Heather Heissenbuttel, Susanna Beron Row 3 Tracy Martin, Bill Gentry, Cathy Kwader, Cheri Woods, Deb Stefani, Dot Rogers, Kathy Carey, Carolyn Behr, Tom Woodson, Mary Barr, Joanne Sims Absent: Sue Carbone, Rose Junkin, Cathy Staub, Cheri Fogelsanger, Laurie Kirchner, Marissa Koziar, Kim Menges.



D-1: Row 1 Alan Hair, Tim Keebaugh, Abdul Moosa (RA), Tom Hohenwarter Row 2 Don Boehm, Gary Beck, Bill Jordan, Piyush Chowhan, Mike Silvernagle, Frank "Fudjo" Sluzis Row 3 Scott Klein, Rick Wagner, Pat Killian, Mark England, Dave "Woody" Woodington, Chris Smith, Steve McKee Absent: Greg Schoelkopf, Mike Kondash, Tim Ruhl, Bill Gentry, George Pappas.





D-2: Row 1 Gia Altomari, Mary Ann Kenney, Cheryl McCabe, Lisa Bollard, Patti Sanderson Row 2 Yukiko Hosokawa, Liz Weitzmann, Carroll Boylan, Sharon Kauffman, Michelle Casario, Kathy Lambert, Katrina Ost, Maryrose Check Row 3 Barbara Snyder, Cindy Auerbach, Jayne Shea, Linda Gigantino Row 4 Sharon Corretore, Maura Herlihy, Jackson Browne, Donna Wilson (RA), Sloane Roia, Kim Beattie, Bruce, Diane Ames, Lorri Mitchell Absent: Stacia Ogburn, Pam Brown, Cherie Zieber, Michelle Zimmerman, Michele Arnold, Ellen Whitacre, Linda Smith, Diane Woodend, Becki Buss (RA 2nd semester).



D-3: Row 1 Tim Trayer, Scoob Coleman, Chris Forsythe, Don Winger, Scott Weidner Row 2 Tim Holder, Tom Woodson, Mike Doerr Row 3 Jeff Gosnell (RA), Drew Sole, Ray Tierney, Chris Knauer, George Binner, Chris Lenhart, Nick Messica Row 4 Gary Baker, Dave Sohn, Mark Smith, Jeff Kitsock, Mike Spangler, Ralph Richard Row 5 Mike Boess, Stan Shilling, Dave Behrs Absent: Paul Gerding, Mike Adamko, Mike Meiskey, Steve Ford, John Mulkerin, Jim Davis, Paul Pontius.



CO-OPS



CO-OP RA's: Ann Foley, Mary Kohut, Julie May, Maggie Beck (AC), Jim Clemente, Maureen O'Brien, Joanne Kennedy Absent: Dave Kelley, Donna Wilson, Anne Marie McCafferty.



Sigma Row 1 Chris Wolf, Lee Meriwether, Sandy Bock, Sybil Raunch Row 2 Marcia Kessler, Karen Gallagher, Anne Marie McCafferty, Pat Kogut, Georgeanna Splevin Absent: Mary Kohut (R 4)



*Rose Garden: Row 1 Betsy Isaacs, Trina Schwing, Gretchen Nettling
Row 2 Anne Messina, Ann Foley (RA), Serena Von der Heiden Absent:
Heidi Stahl, Hilary Welsh.*



*Maple: Ignatz, Jim Clemente (RA 1st semester), Dave Lehman, Devin
Sawdey, Gary Procek Row 2 Pete Roland, Bill McKara, Brad
Rhoads, Jeff Tamburro, Randy Lowe, Mike Paolini, Scott Kocovic
Absent: Dave Kelley (RA 2nd semester).*



*Holly House: Row 1 Mary Anne Doll, Maureen O'Brien (RA), Nancy
Coyne, Page Palmer Row 2 Almut Hessler, Betsy Morris, Diane
March, Wendy Chin Absent: Karen Hamann.*



Orchard: Row 1 Donna Shiveler, Karen Mitchell, Joanne Kennedy (RA) Row 2 Susan Morgenson, Sue Hand, Claudia Albanese Row 3 Dianne Bessette, Donna Kusnierczyk.



Green Gables Missi Northrop, Jenny Hart, Mary Ellen Marshall, Julie May (RA), Liz Baker, Aud "Iggv" Fetter, Marvayne Foy, Dot Connelly, Joan McCandless, Maryjo Szada Absent Maureen Connelly, Julie Milanick



FACULTY & ADMINISTRATION



BUSINESS

BIOLOGY)
ADMINISTRATION)

OCCUPATIONAL THERAPY

Foreign Language

COMPUTERS

SOCIOLOGY

Teaching History With Interest

The HOW to BOOK of HEALTH

HOW TO TEACH ECONOMICS

PLATO WHO? How to introduce philosophy

PSYCHOLOGY

ART



Mr. Henry Libhart (Department Chairman), Mr. Jeff White, Ms. Karen Wenger.

BIOLOGY



Mrs. Agnes Tavani, Dr. Rollin Pepper, Dr. Frank Polanowski, Mr. Ronald Laughlin (Department Chairman), Dr. Robert Heckman, Dr. Frederic Hoffman, Dr. James Dively.

BUSINESS



First row Ms. Donna Mottilla, Mrs. Carroll Kreider, Mrs. Alice Knouse (Department Secretary), Ms. J. Sue Dolan. Second row Mr. David Griswald, Mr. Donald Muston, Mr. Sam Weaver, Mr. Marshall Pomroy, Mr. George Ghptis. Third row Mr. Stanley Neyer, Mr. Hugh Evans, Mr. Maurice Hoppie, Dr. Jay Buffenmver (Department Chairman). Absent Mr. Edgar Bitting, Miss Martha Eppley, Mr. Randy Trostle





CHEMISTRY



Seated: Dr. Charles Schaeffer Standing: Mr. Jack Hedrick (Department Chairman), Ms. Lidia Hernandez, Miss Zoe Proctor, Dr. Raymond Reeder, Mrs. Elizabeth Neyer, Dr. John Ranck.

ARTS

COMMUNICATION



First row: Mr. Gerry Wolff, Dr. Jack Sederholm Second row: Mr. Donald E. Smith (Department Chairman), Dr. Jobie Riley.

SCIENCE

COMPUTER



Ms. Barbara Tulley (Department Chairman), Mr. Thomas Leap

EDUCATION



Seated: Dr. Boyd Fox, Dr. Hooshang Bagheri, Dr. Carl Callenbach, Dr. Donna Gaver Standing: Mr. Stanley Bowers, Dr. Paul Rice (Department Chairman).

ENGLISH



Seated: Mrs. Noel Kupras-Bauer, Ms. Elizabeth Russell (Department Chairman), Dr. Thomas Dwyer, Mrs. Louise Black Standing: Mrs. Linda Campbell, Dr. John Campbell, Ms. Suzanne Miller Magda, Mrs. Shirley Deichert, Mr. Gerry Wolff.

HISTORY



Seated: Dr. J. Kenneth Kreider (Department Chairman) Standing: Dr. Richard Mumford, Dr. Bela Vassady, Dr. Thomas Winpenny, Mr. H. Herbert Poole



MATHEMATICS



First row: Mr. I.L. Bossler, Mr. Robert Morse Second row: Dr. Donald Koontz, Dr. Ernest Blaisdell Third row: Mr. Robert Dolan, Mr. John Koontz, Dr. Ronald Shubert (Department Chairman).

LANGUAGES

MODERN



Seated: Mr. Uldis Daiga (Department Chairman), Mrs. Suzanne Goodling Standing: Ms. Diane Griffiths, Ms. Susan Terrio.

THERAPY

OCCUPATIONAL



Seated Ms. Reba Sebelist (Department Chairman), Mrs. Laura Fuller Standing: Miss Sherry Gibson, Mrs. Gail Richert.

MUSIC



First row: Dr. Carl Shull, Dr. John Harrison, Mr. David Barger Second row: Mr. Otis Kitchen, Mr. John Stites, Mr. Harry Simmers (Department Chairman), Dr. Darrell Douglas.

EDUCATION

PHYSICAL



Ms. Yvonne Kauffman, Mr. Joseph Whitmore, Mr. Donald P. Smith, Mr. D. Kenneth Ober (Department Chairman), Dr. Owen Wright, Mr. Robert Garrett.

EARTH SCIENCE

PHYSICS



Dr. Richard Bowman, Mr. Hubert Custer (Department Chairman), Mr. Glenn Thompson.

SCIENCE

POLITICAL



Dr. Wayne Selcher (Department Chairman), Mr. W. Wesley McDonald, Dr. Robert Lamontagne.



PSYCHOLOGY



Dr. Andrew Sagar, Dr. Judith McLaughlin, Dr. Delbert Ellsworth (Department Chairman), Dr. Robert Cheung, Dr. Paul Dennis.

PHILOSOPHY

RELIGION



Dr. Eugene Clemens (Department Chairman), Dr. Austin Ritterspach, Dr. Stanley Sutphin, Mr. Armon Snowden, Dr. William Puffenberger.

SOCIAL WORK

SOCIOLOGY



Dr. Donald Kraybill (Department Chairman), Mrs. Sharon Rafffield, Mr. Bruce Lehr, Mr. David Iacono-Harris. Absent: Mr. Russell Eisenbise, Ms. Vivian Bergel.



PRESIDENT



Mark C. Ebersole

DEAN OF FACULTY

OFFICE OF



First row: Michael Andrews, Bruce Wilson, Guy Cooper, Henry Long Second row: E. Margaret Gabel, Martha Eppley, Sandra Zerby, Gail Derck, Ann Carper.



STUDENT AFFAIRS

OFFICE OF



First row: Jo Ann Ramsey, Pat March, Maggie Beck, Beverly Piscitelli Second row: Bill Griffin, Dr. Walter Shaw, Gordon Bateman, Wayne McCullough, James Hilton, D. Kenneth Ober, Royol Snaveley.

ADVERTISEMENTS



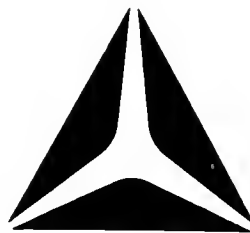
GOOD COURSE:

Banking I Student loans, checking accounts, money orders, savings, all banking services, offered by one of Pennsylvania's largest banks. Hours convenient. Prerequisites for admission none. Happy to help you bank your way through college.

COMPLIMENTS
OF

Commonwealth National Bank

Elizabethtown Office
10-12 South Market Street
367-1116



E-town East Office
Rt 230 & Schwanger Rd
367-1041

"happy to help you Bank"
Member FDIC

David Martin

STORES

YOUR BRAND NAME
STORE
FOR MEN AND BOYS
SINCE
1895

*Hart Schaffner & Marx
*Phoenix Clothes
*Hagger
*Farah
*Arrow
*Lee

*Van Heusen
*Jantzen
*Gleneagles
*London Fog
*Woolrich
*Wrangler

1 Center Square
Elizabethtown

20 S. Union St.
Middletown

Harrisburg East Mall
Harrisburg Pa.

Stehman's IGA

626 S. Market Street
Elizabethtown, Pa.
367-1943

CARPENTER'S INN

Dining Room

Lounge

Coffee Shop

26-32 S. Market St.

Elizabethtown, Pa. 17022
Phone: 367-2432

*Hunting and
Fishing Supplies*

367-5585



TROP GUN SHOP

R.D. #3 - (RHEEMS EXIT OFF 283)
ELIZABETHTOWN, 17022

EVERY WEEKDAY 9 to 9
CLOSED WEDNESDAY
SATURDAY 9 to 5

ED LANDIS

BEST WISHES CLASS OF '81

B & G LUMBER COMPANY

Phone: 367-1690

212 W. High St. E-town

GINDER CLEANERS, INC.

SUMMER & WINTER STORAGE - FUR GLAZING
LAUNDRY - DRY CLEANING - REPAIRS

50 N. SPRUCE ST.

ELIZABETHTOWN, PA. 17022

PHONE 367-1270



Garden Spot Feeds
Master Mix Feeds
Heating Oil

GRUBB SUPPLY COMPANY

419 West High Street
Elizabethtown, Pa.



- Home Dressed Meats
- Retail-Wholesale
- Home Smoked Hams and Bacon
- Meat for your freezer
- Custom Slaughtering
- Home made mince meat

*Homemade Bologna
Sweet and Lebanon*

13 N. Market St.
Elizabethtown, Pa. 17022

Bus 367 1246

STA-TRIM Styling
Salon

welcome College Students

**COME TO US
WITH YOUR
HAIR**

**WE'LL
SHOW
YOU
THAT
WE CARE**



Open Tue. to Fri. 7-7 Sat. 7-1.

Route 743, South Maytown Avenue
PHONE 367-6502 FOR YOUR APPOINTMENT

Tropical Treat Restaurant

*"A Treat That Can't Be Beat!"
2 miles east of Elizabethtown*

Phone 367-3491

Open 6 am-10 pm

Roth's

FURNITURE STORES

BankAmericard · Mastercharge
Honored

206 S. MARKET ST.
ELIZABETHTOWN, PA.
Open Thurs. and Fri. till 9 p.m.

*The Full Service Store You Can Build Your
Home Around*



ED'S EXXON

PHONE 367-0818

ROUTES 743 & 285
ELIZABETHTOWN, PA 17022



BOX 642
R. D. 3, Elizabethtown, Pa. 17022
PHONE: 367-5468

STORE HOURS:
MON. TUES. THUR. FRI.
8:00 A.M. - 9:00 P.M.
WED.
8:00 - 12:30
SAT.
8:00 - 5:00

"Our Location Saves You Dollars"



RD #2, Box 712
Elizabethtown, PA. 17022
(717) 367-1394

ENGLISH BROTHERS INC.

"Beverage Distributors
Since 1947"

*Famous for a complete line
of Domestic & Imported brands
of Beer plus soft drinks & mixers*

Market Basket

59 College Avenue
Elizabethtown, Pa.
367-7000

Tues. Wed. 9-5
Thur. 9-9
Fri. 9-10
Sat. 9-6
Closed Sun. Mon.



*FOOTBALL*SOCCER*
 *WRESTLING*TRACK*HOCKEY
 *TENNIS*SOFTBALL*
 JOGGING*GOLF* BASKETBALL

ELIZABETHTOWN SPORTING GOODS

27 Center Sq., Elizabethtown

Quality Sports Equipment
At Reasonable Prices

•Wilson•Adidas•Converse
 •Rawlings•Spalding•Brooks
 •and many others

Team, School and Club Discounts
367-6633



Big A Auto Parts

865 North Hanover
 Elizabethtown, Pa. 17022
 Mon.-Fri. 8-5
 Sat. 8-3
 Phone: 367-5537

MUELLER'S FLOWER SHOP

55 N. Market St.
 Elizabethtown, Pa. 17022
 Phone: 367-1581



FLOWERS WITH QUALITY,
BEAUTY AND ARRANGEMENT

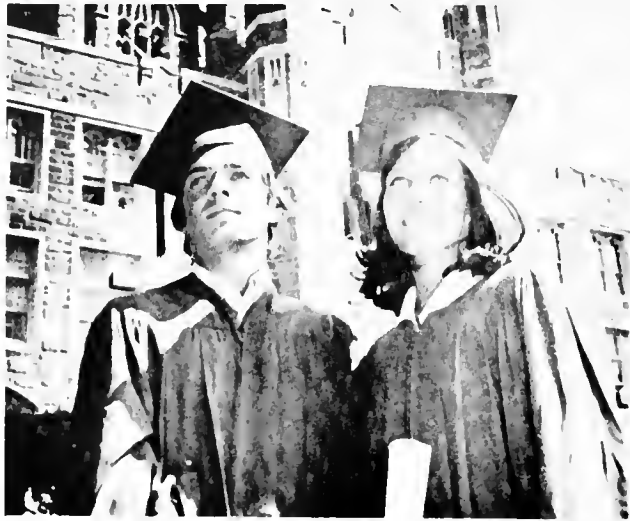
BOB'S FLOWERS

39 S. Market St.
 Elizabethtown, Pa. 17022
 Phone: 367-2211

GROSH FURNITURE

117 South Market St.
 Elizabethtown, Pa.
 Open Thur. & Fri. till 9
 INTERIOR DECORATING

Free Delivery



We're the only bank you'll ever need.

In your lifetime you'll make some big loans, and some small loans. Your savings account will go up and down like a yo-yo as you struggle to get ahead and you'll write thousands upon thousands of checks.

You'll have enough things going against you — we think you should have a good bank on your side . . . ours.

Elizabethtown Trust Company

P. O. BOX 227 • ELIZABETHTOWN, PENNSYLVANIA 17022 • 717-367-1156



Special Day Bridal Boutique

3105 SYCAMORE ST.

HARRISBURG, PA. 17111

717-564-7055

*Featuring Uniquely Beautiful
Gowns For The Entire
Wedding Party*

APPOINTMENTS PREFERRED
Daily 11:00 A.M.—8:00 P.M.
Sat. 10:00 A.M.—4:00 P.M.



Hoffer's Arco

Perk's Car Service

State Inspection — Towing —
Tires — Batteries & Accessories
135 N. Market St. Elizabethtown, Pa.
367-7513

900 S. Market St.
367-6346

PATRONS

Economy Shoe Store
15-17 West High Street
Elizabethtown 367-7532

Zarfoss Hardware
Market Center Square
Elizabethtown 367-1261

Jane's Showcase of Gifts
33 South Market Street
Elizabethtown 367-0611

Binkley's Sewing Machines
111 North Market Street
Elizabethtown 367-1450

Bishops Studio & Camera Shop
44 North Market Street
Elizabethtown 367-1322

Moose's 5 & 10
Market Center Square
Elizabethtown 367-4707

Christian Light Bookstore
48 South Market Street
Elizabethtown 367-1360

J.B. Hostetter & Sons, Inc.
45 South Market Street
Elizabethtown 367-1929

Messick Farm Equipment, Inc.

Rheems Exit Rt. 283
Elizabethtown
367-1319

I would like to express my appreciation to the 1981 Conestogan staff for the effort and time they have put into making this book possible. Special thanks to Mr. Baylor — advisor and Mr. Mike Gilroy — yearbook representative for all their help. Special thanks also to Elizabeth, Arleen and Terri.

*Barbara J. Wightman
Editor*

1980

h prof



The Etownian

sole discusses cost hike

wimmers nab first win C.H.E.W. 'town's "Social" Life
the last three years "General Hospital" provides

ew of JDN "love in the afternoon"

e next Friday : BEATLEMANIA

rsdays were made for "The Carp's"

eral manager **BEAT LOCK HAVEN!**

ormers Influenza infects campus **Welcome Parents**

AL-TV Remember Maple? **CROP Volleyball Marathon**
ents deserve a chance raises funds for hungry

an leads in campus political survey

mpage Complaint investigated *Sleep-in tonight*

at is an RA? Policy creates many problems

rleading squad **Decision '80: Boston**

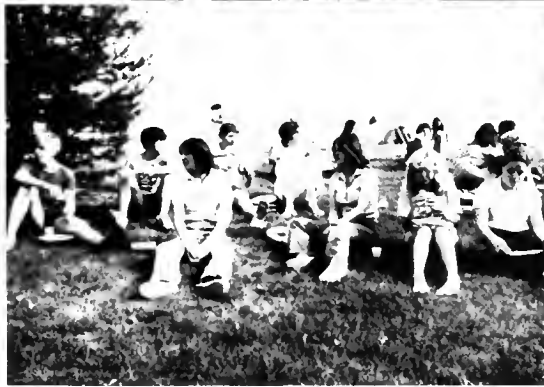
eam hopes **Administration So long Jimmy**

erence title violates contracts **Surrogate**





BLUE JAYS



*The end of
one chapter . . .*



*. . . the start
of another.*







