

County Platt Book  
1876 to ~~1877~~



*County Plat 1876-*

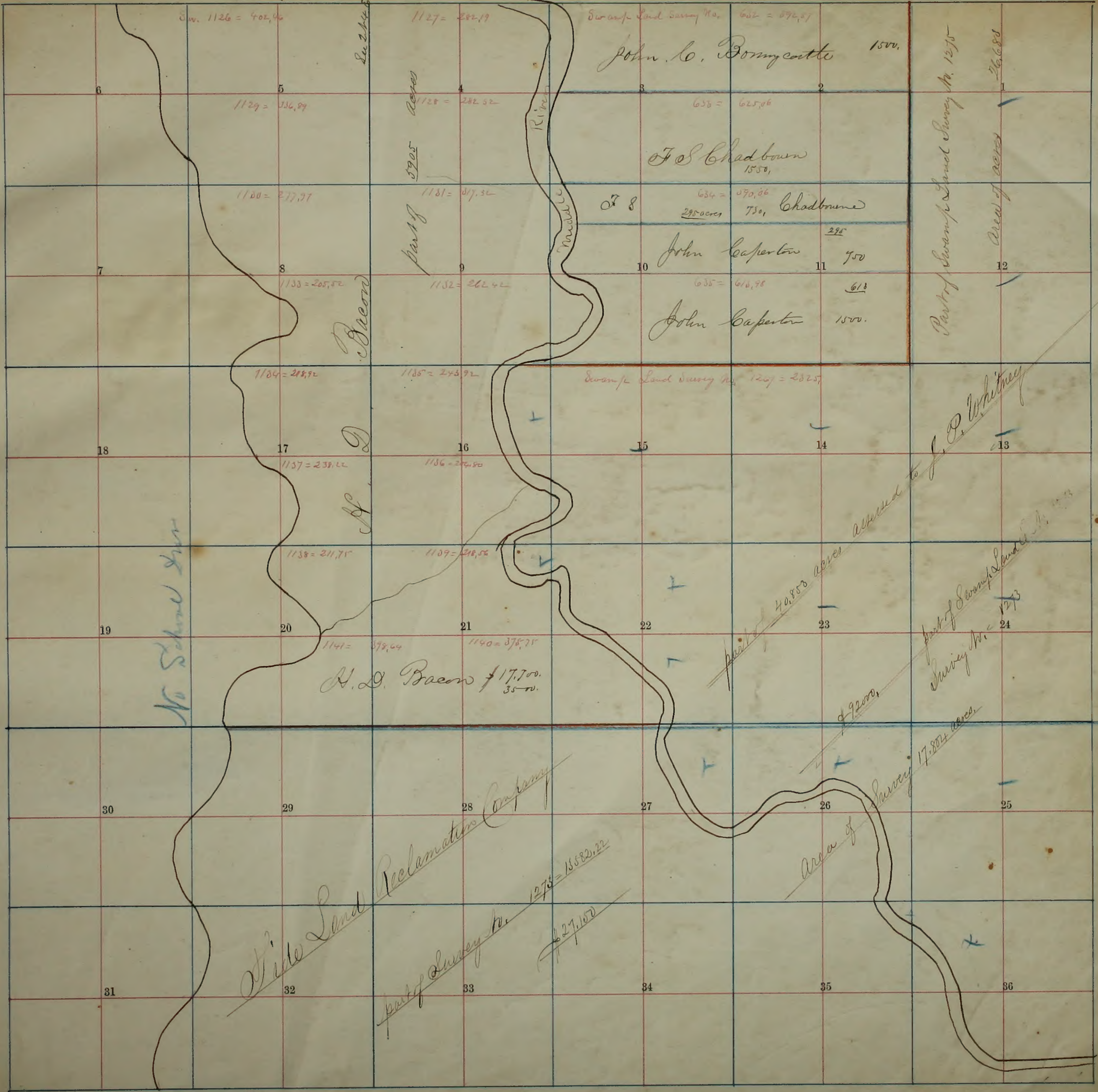
*The following provisions of the Codes  
make it the duty of Assessors to collect the  
taxes on all movable personal property,  
when such taxes are not a lien upon real  
estate.*

SECTION 3820. The Assessor must collect the taxes  
on movable personal property when  
such taxes are not a lien upon real  
property.

SECTION 3821. In the case provided for in the pre-  
ceding section at the time of making  
the assessment, or at any time before  
the first Monday of July, the Assessor  
may collect the taxes by seizure and  
sale of any personal property owned  
by the person against whom the tax  
is assessed.



Township No. 1 North Range No. 4 East Mount Diablo Base and Meridian.



John C. Bonycastle 1500.

F. S. Chadbourne 1550.

J. S. Chadbourne 750.

John Caperton 750.

John Caperton 1500.

Swamp Land Survey No. 1207 = 282.57

H. D. Bacon 17,700. 35-r.

part of Survey No. 1273 = 15582.22 27.152

part of 40,800 acres assessed to J. P. Whitney

Area of Survey 17,807.4 acres

part of Swamp Land Survey No. 1273

Meal Tulare

Part of Swamp Land Survey No. 1275 Area of acres 26,688

No School Dist

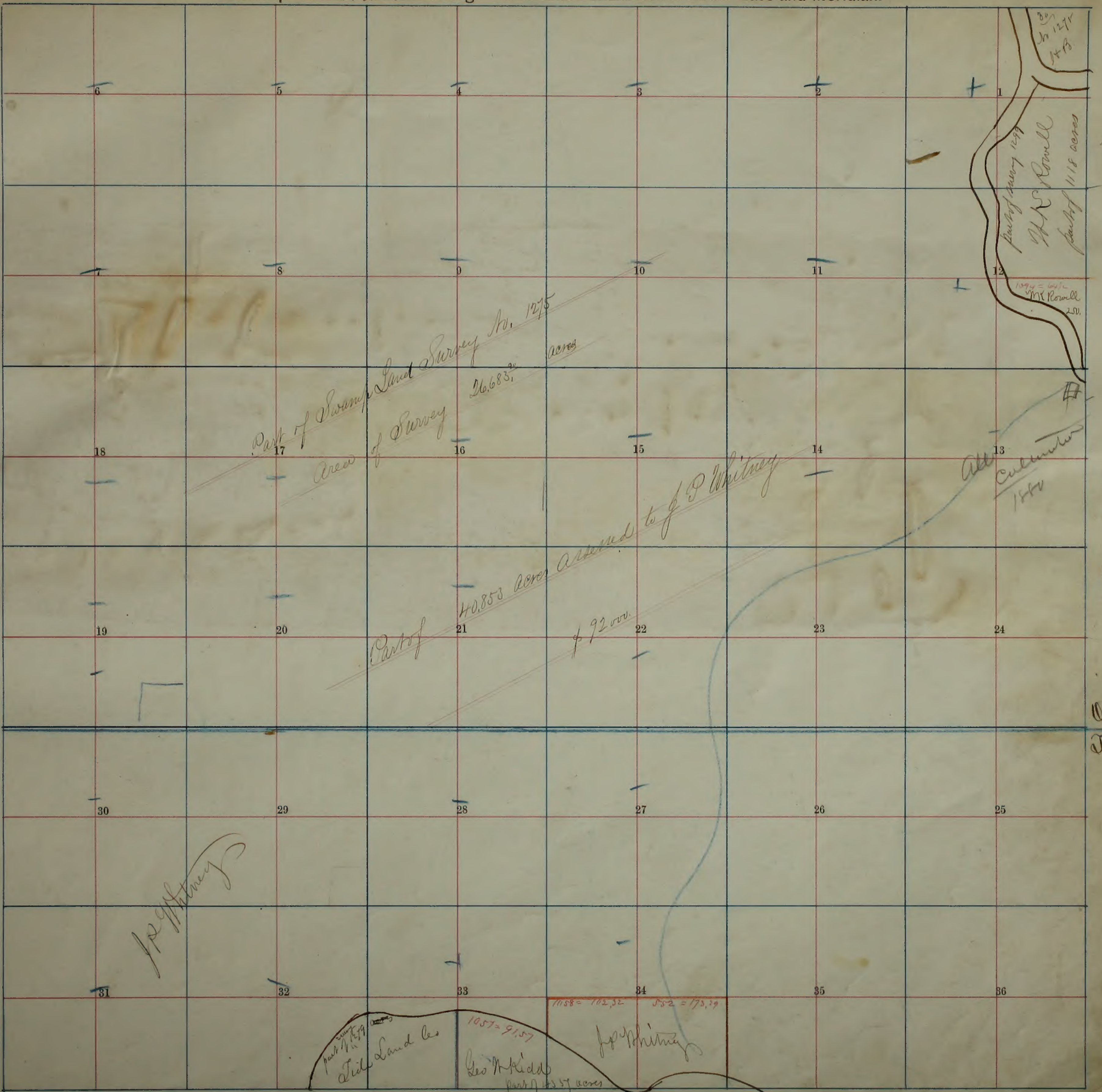
Bacon

part of 5705 Acres

Middle River

Su. 244





all in Kingdon

J. Whitney

Meal Tulare

part of 1879  
Tide Land Co  
Geo. M. Kidd  
part of 91.57 acres

1058 = 102.52 582 = 175.29

J. Whitney

part of survey 1299  
A. H. Rowell  
part of 1118 acres

All Cultivated  
1870

Part of Swamp Land Survey No. 1275  
Area of Survey 26,683.20 acres

Part of 40,853 acres returned to J. Whitney  
492.000

part of 1275  
1478











Collegendo  
on 18/14 825 1.11.76









Township No. 1 North Range No. 8 East Mount Diablo Base and Meridian.

39.91	Virginia Tappan 6380. 300.	Mar. F. Brown 3200. 500.	Joseph Manning 1600. 1000.	Sylvanus Waell 4800 100	E. D. Morrison 3460. 500.	part of 1923 part of 1923	Sam. S. S. S.	Samuel Austin 6000 700.	S. B. Dunham 20000. 900.	36
39.40	John Dennis 3000 200	Samuel Kitchen 5500 600.	W. R. Sedbetter 512 8240 1000.	100	Abey Munter 3100 50	John G. Brown of 1923 acres	40000 1000	R. W. Allen 2900. 100.	S. B. Dunham	35
38.90	R. R. Chalmers 3200 450	Carl Thomas 3400 900.	Mo S. Minnahon 14926 14926	900 acres	W. S. Moss. 17000 1000	John G. Brown of 1923 acres	40000 1000	John G. Brown of 1923 acres	John DeChapin 5500 400	34
38.40	James M. Lawrence 3400 200.	Thomas Minnahon 3650 acres 7700 1400	Thomas Minnahon 3500	7400 1400	W. G. Robinson 6800 2000	John G. Brown of 1923 acres	14000 7000	John G. Brown of 1923 acres	Samuel Hewitt 6000 2500	33
37.90	Med McCants 17000 1000.	John L. Summing	W. O. Robinson 14000. 8000.	W. G. Robinson 6800 2000	W. G. Robinson 6800 2000	John G. Brown of 1923 acres	10000. 900.	S. B. Dunham	Samuel Hewitt 6000 2500	32
37.40	776	John L. Summing	W. O. Robinson 14000. 8000.	W. G. Robinson 6800 2000	W. G. Robinson 6800 2000	John G. Brown of 1923 acres	10000. 900.	S. B. Dunham	Samuel Hewitt 6000 2500	31
36.90	John Beach 3000. 100.	13800. 700.	John Griffin 15000. 2400.	John C. Houtt 9800 1500.	John C. Houtt 9800 1500.	John G. Brown of 1923 acres	12000. 400.	David Young	John P. Hunk 8000 4000	30
36.40	John Beach 3000. 100.	13800. 700.	John Griffin 15000. 2400.	John C. Houtt 9800 1500.	John C. Houtt 9800 1500.	John G. Brown of 1923 acres	12000. 400.	David Young	John P. Hunk 8000 4000	29
35.90	John Beach 3000. 100.	13800. 700.	John Griffin 15000. 2400.	John C. Houtt 9800 1500.	John C. Houtt 9800 1500.	John G. Brown of 1923 acres	12000. 400.	David Young	John P. Hunk 8000 4000	28
35.40	John Beach 3000. 100.	13800. 700.	John Griffin 15000. 2400.	John C. Houtt 9800 1500.	John C. Houtt 9800 1500.	John G. Brown of 1923 acres	12000. 400.	David Young	John P. Hunk 8000 4000	27
34.90	John Beach 3000. 100.	13800. 700.	John Griffin 15000. 2400.	John C. Houtt 9800 1500.	John C. Houtt 9800 1500.	John G. Brown of 1923 acres	12000. 400.	David Young	John P. Hunk 8000 4000	26
34.40	John Beach 3000. 100.	13800. 700.	John Griffin 15000. 2400.	John C. Houtt 9800 1500.	John C. Houtt 9800 1500.	John G. Brown of 1923 acres	12000. 400.	David Young	John P. Hunk 8000 4000	25
33.90	John Beach 3000. 100.	13800. 700.	John Griffin 15000. 2400.	John C. Houtt 9800 1500.	John C. Houtt 9800 1500.	John G. Brown of 1923 acres	12000. 400.	David Young	John P. Hunk 8000 4000	24
33.40	John Beach 3000. 100.	13800. 700.	John Griffin 15000. 2400.	John C. Houtt 9800 1500.	John C. Houtt 9800 1500.	John G. Brown of 1923 acres	12000. 400.	David Young	John P. Hunk 8000 4000	23
32.90	John Beach 3000. 100.	13800. 700.	John Griffin 15000. 2400.	John C. Houtt 9800 1500.	John C. Houtt 9800 1500.	John G. Brown of 1923 acres	12000. 400.	David Young	John P. Hunk 8000 4000	22
32.40	John Beach 3000. 100.	13800. 700.	John Griffin 15000. 2400.	John C. Houtt 9800 1500.	John C. Houtt 9800 1500.	John G. Brown of 1923 acres	12000. 400.	David Young	John P. Hunk 8000 4000	21
31.90	John Beach 3000. 100.	13800. 700.	John Griffin 15000. 2400.	John C. Houtt 9800 1500.	John C. Houtt 9800 1500.	John G. Brown of 1923 acres	12000. 400.	David Young	John P. Hunk 8000 4000	20
31.40	John Beach 3000. 100.	13800. 700.	John Griffin 15000. 2400.	John C. Houtt 9800 1500.	John C. Houtt 9800 1500.	John G. Brown of 1923 acres	12000. 400.	David Young	John P. Hunk 8000 4000	19
30.90	John Beach 3000. 100.	13800. 700.	John Griffin 15000. 2400.	John C. Houtt 9800 1500.	John C. Houtt 9800 1500.	John G. Brown of 1923 acres	12000. 400.	David Young	John P. Hunk 8000 4000	18
30.40	John Beach 3000. 100.	13800. 700.	John Griffin 15000. 2400.	John C. Houtt 9800 1500.	John C. Houtt 9800 1500.	John G. Brown of 1923 acres	12000. 400.	David Young	John P. Hunk 8000 4000	17
29.90	John Beach 3000. 100.	13800. 700.	John Griffin 15000. 2400.	John C. Houtt 9800 1500.	John C. Houtt 9800 1500.	John G. Brown of 1923 acres	12000. 400.	David Young	John P. Hunk 8000 4000	16
29.40	John Beach 3000. 100.	13800. 700.	John Griffin 15000. 2400.	John C. Houtt 9800 1500.	John C. Houtt 9800 1500.	John G. Brown of 1923 acres	12000. 400.	David Young	John P. Hunk 8000 4000	15
28.90	John Beach 3000. 100.	13800. 700.	John Griffin 15000. 2400.	John C. Houtt 9800 1500.	John C. Houtt 9800 1500.	John G. Brown of 1923 acres	12000. 400.	David Young	John P. Hunk 8000 4000	14
28.40	John Beach 3000. 100.	13800. 700.	John Griffin 15000. 2400.	John C. Houtt 9800 1500.	John C. Houtt 9800 1500.	John G. Brown of 1923 acres	12000. 400.	David Young	John P. Hunk 8000 4000	13
27.90	John Beach 3000. 100.	13800. 700.	John Griffin 15000. 2400.	John C. Houtt 9800 1500.	John C. Houtt 9800 1500.	John G. Brown of 1923 acres	12000. 400.	David Young	John P. Hunk 8000 4000	12
27.40	John Beach 3000. 100.	13800. 700.	John Griffin 15000. 2400.	John C. Houtt 9800 1500.	John C. Houtt 9800 1500.	John G. Brown of 1923 acres	12000. 400.	David Young	John P. Hunk 8000 4000	11
26.90	John Beach 3000. 100.	13800. 700.	John Griffin 15000. 2400.	John C. Houtt 9800 1500.	John C. Houtt 9800 1500.	John G. Brown of 1923 acres	12000. 400.	David Young	John P. Hunk 8000 4000	10
26.40	John Beach 3000. 100.	13800. 700.	John Griffin 15000. 2400.	John C. Houtt 9800 1500.	John C. Houtt 9800 1500.	John G. Brown of 1923 acres	12000. 400.	David Young	John P. Hunk 8000 4000	9
25.90	John Beach 3000. 100.	13800. 700.	John Griffin 15000. 2400.	John C. Houtt 9800 1500.	John C. Houtt 9800 1500.	John G. Brown of 1923 acres	12000. 400.	David Young	John P. Hunk 8000 4000	8
25.40	John Beach 3000. 100.	13800. 700.	John Griffin 15000. 2400.	John C. Houtt 9800 1500.	John C. Houtt 9800 1500.	John G. Brown of 1923 acres	12000. 400.	David Young	John P. Hunk 8000 4000	7
24.90	John Beach 3000. 100.	13800. 700.	John Griffin 15000. 2400.	John C. Houtt 9800 1500.	John C. Houtt 9800 1500.	John G. Brown of 1923 acres	12000. 400.	David Young	John P. Hunk 8000 4000	6
24.40	John Beach 3000. 100.	13800. 700.	John Griffin 15000. 2400.	John C. Houtt 9800 1500.	John C. Houtt 9800 1500.	John G. Brown of 1923 acres	12000. 400.	David Young	John P. Hunk 8000 4000	5
23.90	John Beach 3000. 100.	13800. 700.	John Griffin 15000. 2400.	John C. Houtt 9800 1500.	John C. Houtt 9800 1500.	John G. Brown of 1923 acres	12000. 400.	David Young	John P. Hunk 8000 4000	4
23.40	John Beach 3000. 100.	13800. 700.	John Griffin 15000. 2400.	John C. Houtt 9800 1500.	John C. Houtt 9800 1500.	John G. Brown of 1923 acres	12000. 400.	David Young	John P. Hunk 8000 4000	3
22.90	John Beach 3000. 100.	13800. 700.	John Griffin 15000. 2400.	John C. Houtt 9800 1500.	John C. Houtt 9800 1500.	John G. Brown of 1923 acres	12000. 400.	David Young	John P. Hunk 8000 4000	2
22.40	John Beach 3000. 100.	13800. 700.	John Griffin 15000. 2400.	John C. Houtt 9800 1500.	John C. Houtt 9800 1500.	John G. Brown of 1923 acres	12000. 400.	David Young	John P. Hunk 8000 4000	1

Douglas Dent

Douglas Dent







Neal



W.D. Byrnes & Son  
 1044 acres - Survey  
 674, 677, 676,  
 672, 602 & 649

W.D. Byrnes & Son  
 2003 acres  
 6000  
 entered in Survey  
 596, 600, 601, 650, 647, 608, 671,  
 673, 675, & 676 1/2 of Sec 8 - front of it

W.D. Byrnes & Son  
 813 acres

W.D. Byrnes & Son  
 1000

W.D. Byrnes & Son  
 600 550

W.D. Byrnes & Son  
 550 200  
 W.D. Byrnes & Son  
 475  
 W.D. Byrnes & Son  
 320

W.D. Byrnes & Son  
 2003

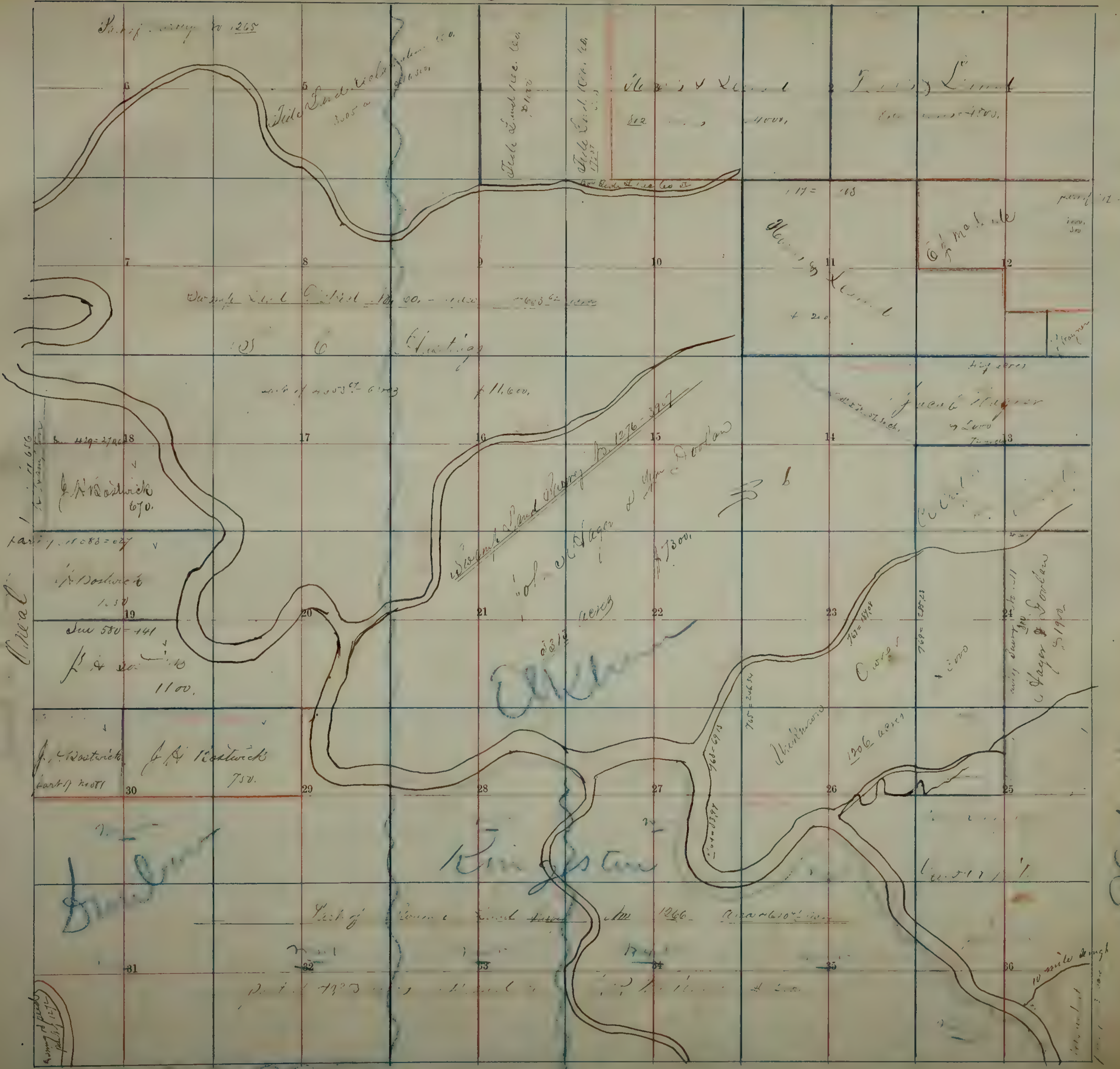
W.D. Byrnes & Son  
 600

W.D. Byrnes & Son  
 1550

W.D. Byrnes & Son  
 900

W.D. Byrnes & Son  
 1550





Part of survey to 1265

Side of road to 1265  
3005 a

Side of road to 1265  
31100

Side of road to 1265  
17207

Side of road to 1265  
4000

Side of road to 1265  
4000

117 = 118

Hunting  
+ 200

Side of road to 1265  
1000

Side of road to 1265  
1000

Hunting

Side of road to 1265  
11000

11000

Side of road to 1265  
1276-3907

17300

Side of road to 1265  
419-2700

J.A. Westwick  
670

Side of road to 1265  
1000

J.A. Westwick  
1000

Side of road to 1265  
580-141

J.A. Westwick  
1100

Bridgman

Hunterwood

Side of road to 1265  
1000

Side of road to 1265  
1000

Hager & Goodlaw  
1900

J.A. Westwick  
750

J.A. Westwick  
750

Bridgman

Bridgman

Part of survey to 1266

Side of road to 1265  
1000

Side of road to 1265  
1000

Side of road to 1265  
1000

Side of road to 1265  
1000

Side of road to 1265  
1000

Side of road to 1265  
1000

10 miles long

Side of road to 1265  
1000

Bridgman





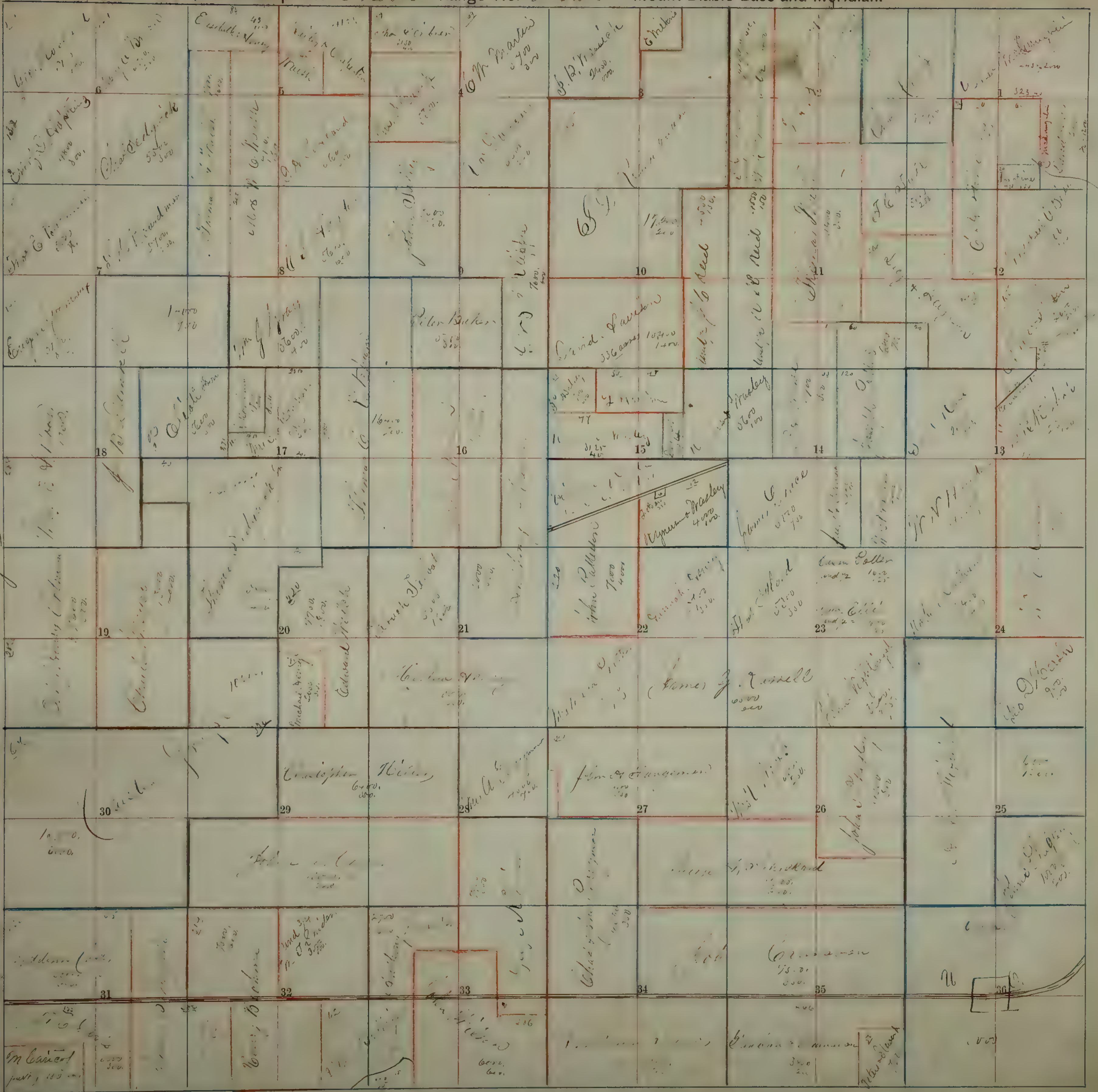






40  
85  
123

Douglas



...

















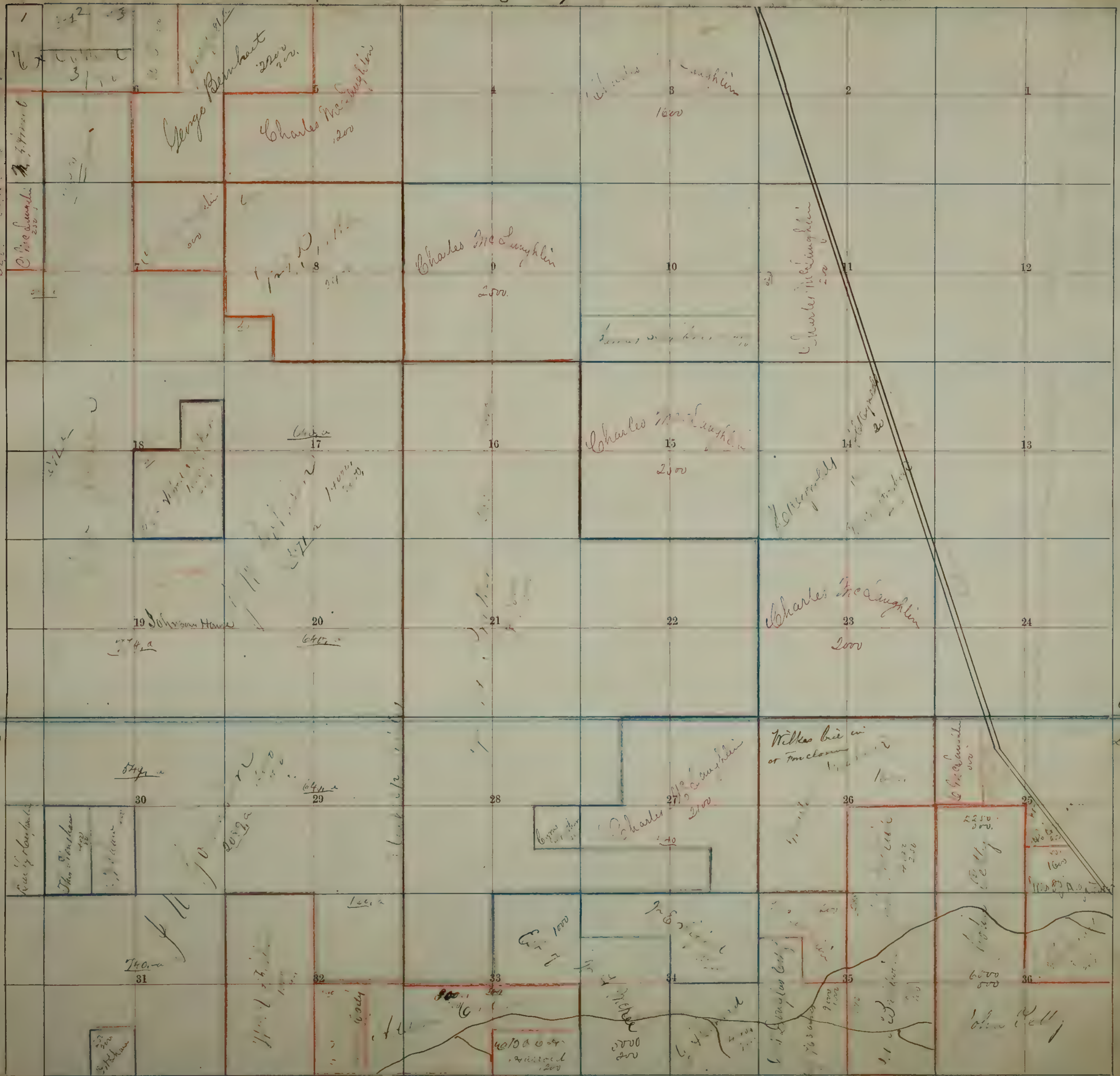












Elliott  
Douglas

Elliott  
Douglas

1  
2  
3

4  
5  
6

7  
8  
9

10  
11  
12

13  
14  
15

16  
17  
18

19  
20  
21

22  
23  
24

25  
26  
27

28  
29  
30

31  
32  
33

34  
35  
36

George Benbow  
2200

Charles McLoughlin  
1200

Charles McLoughlin  
2500

William  
1600

Charles McLoughlin  
2500

Charles McLoughlin  
2000

Charles McLoughlin  
2100

William Bell  
or Trueman  
1000

William Bell  
2250

William Bell  
2500

William Bell  
2500

Johnson House

5400

7400

William Bell  
2500

William Bell  
2500

William Bell  
2500

William Bell  
2500

William Bell  
2500

William Bell  
2500





Handwritten notes in the top right corner, including the number '11' and '450'.

Handwritten notes including 'Point of Chamberlain' and '400'.

Handwritten notes including 'July 1850'.

Handwritten notes including 'August 12 1850'.

Handwritten notes including 'July 1850'.

Handwritten notes along the river line including 'July 1850'.

Handwritten notes along the river line including 'July 1850'.

Handwritten notes along the river line including 'July 1850'.

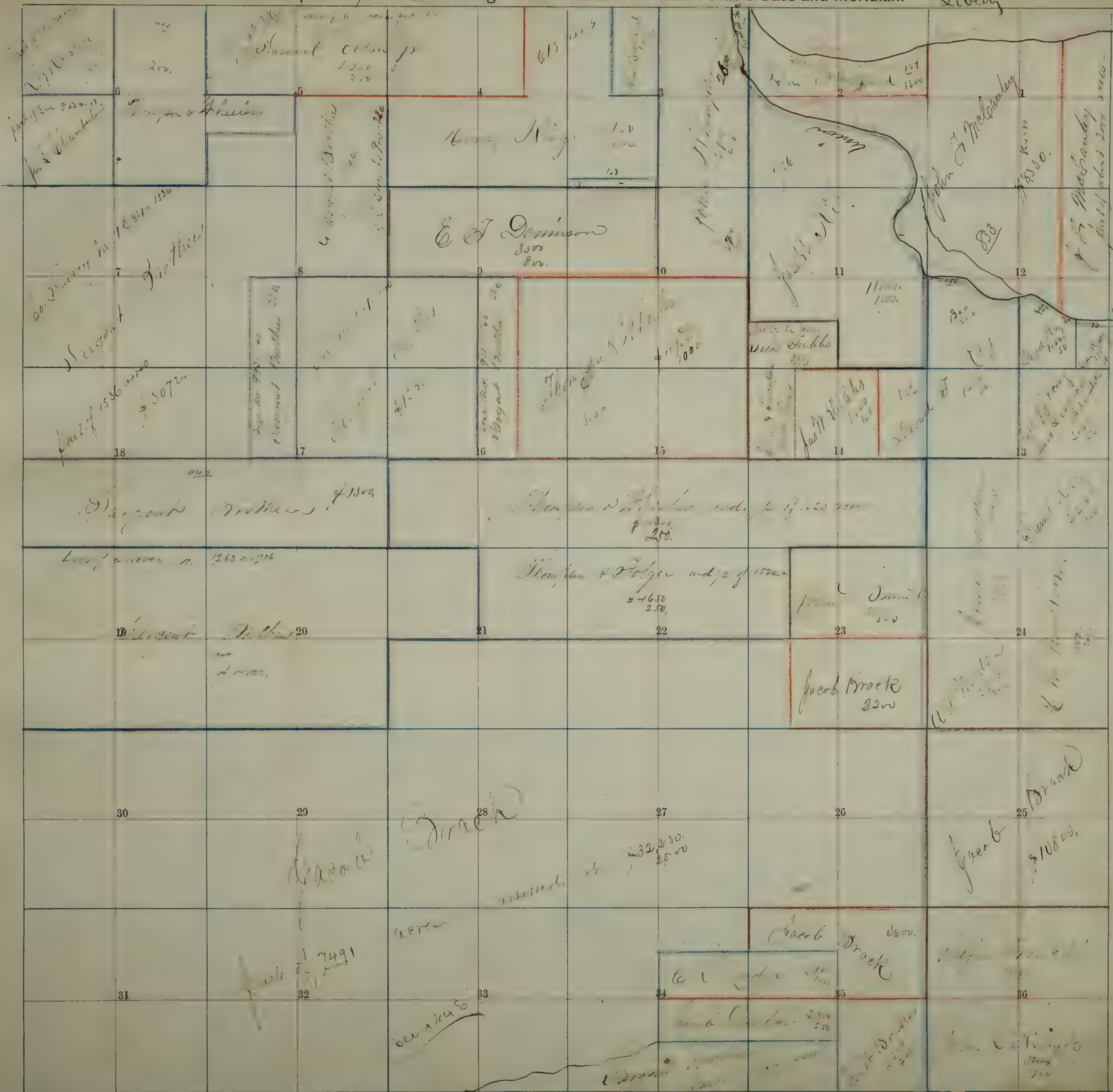
Handwritten notes along the river line including 'July 1850'.

Handwritten notes along the river line including 'July 1850'.

Handwritten notes including '401 acres' and 'July 1850'.

Vertical handwritten text on the right edge of the grid, possibly 'Union'.





Liberty  
Elkhorn

Union  
Elkhorn



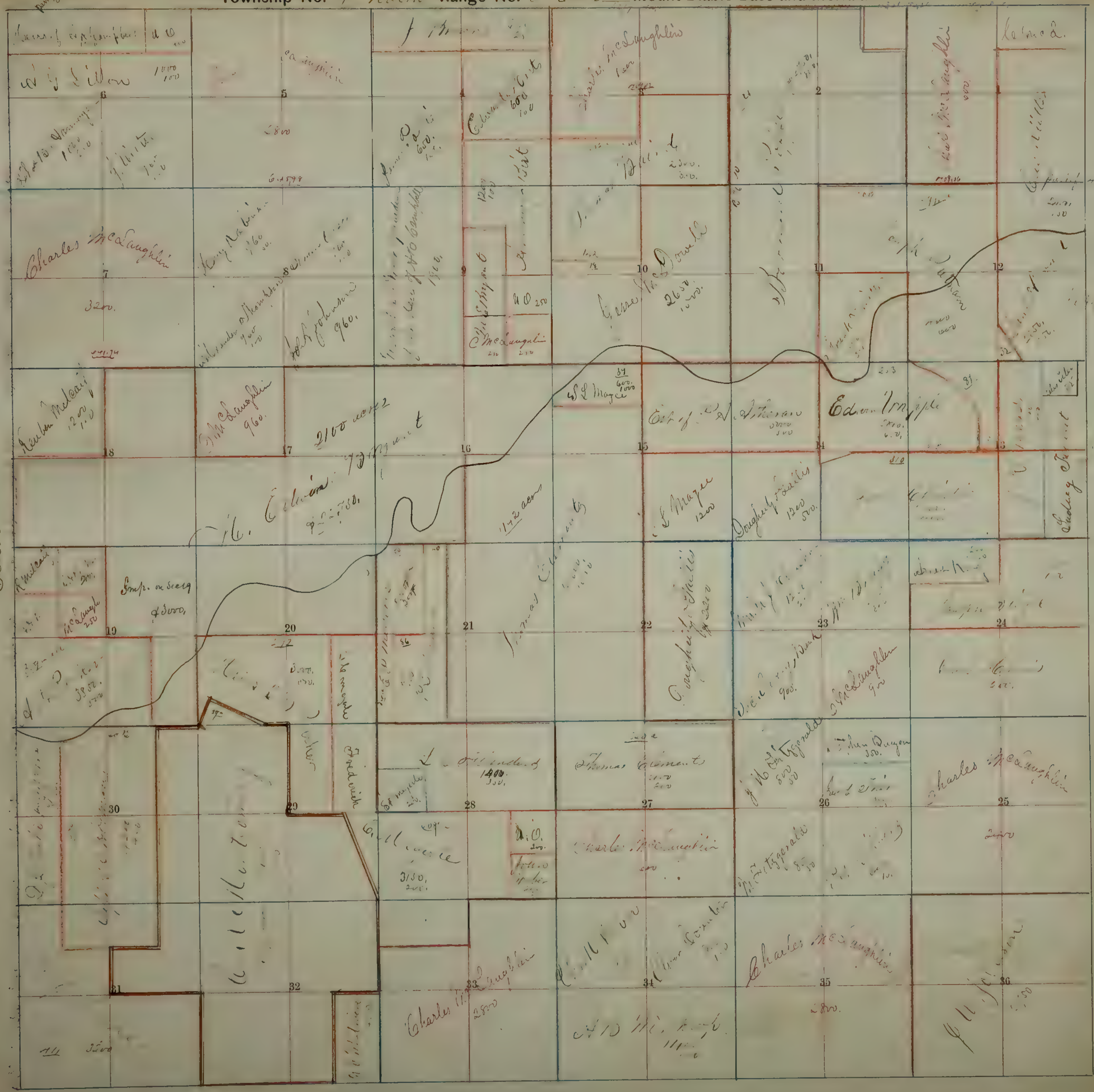








Elliott



James J. Simpson  
 1000  
 1000  
 1000  
 1000

Charles McLaughlin  
 3200

John McLaughlin  
 1200  
 1000

John McLaughlin  
 2500

John McLaughlin  
 3800  
 500

John McLaughlin  
 3000

John McLaughlin  
 5800

John McLaughlin  
 1600  
 1000  
 1000  
 1000

John McLaughlin  
 960

John McLaughlin  
 4000

John McLaughlin  
 1400  
 300

John McLaughlin  
 2800

John McLaughlin  
 6000  
 1000

John McLaughlin  
 1200  
 1000

John McLaughlin  
 2100  
 2000

John McLaughlin  
 1400  
 300

John McLaughlin  
 3150  
 200

John McLaughlin  
 2800

John McLaughlin  
 1000

John McLaughlin  
 2000  
 1000

John McLaughlin  
 1200

John McLaughlin  
 1400  
 300

John McLaughlin  
 1000

John McLaughlin  
 1100

John McLaughlin  
 1000

John McLaughlin  
 2000  
 1000

John McLaughlin  
 1200

John McLaughlin  
 1400  
 300

John McLaughlin  
 1000

John McLaughlin  
 1000

John McLaughlin  
 1000

John McLaughlin  
 2000  
 1000

John McLaughlin  
 1200

John McLaughlin  
 1400  
 300

John McLaughlin  
 1000

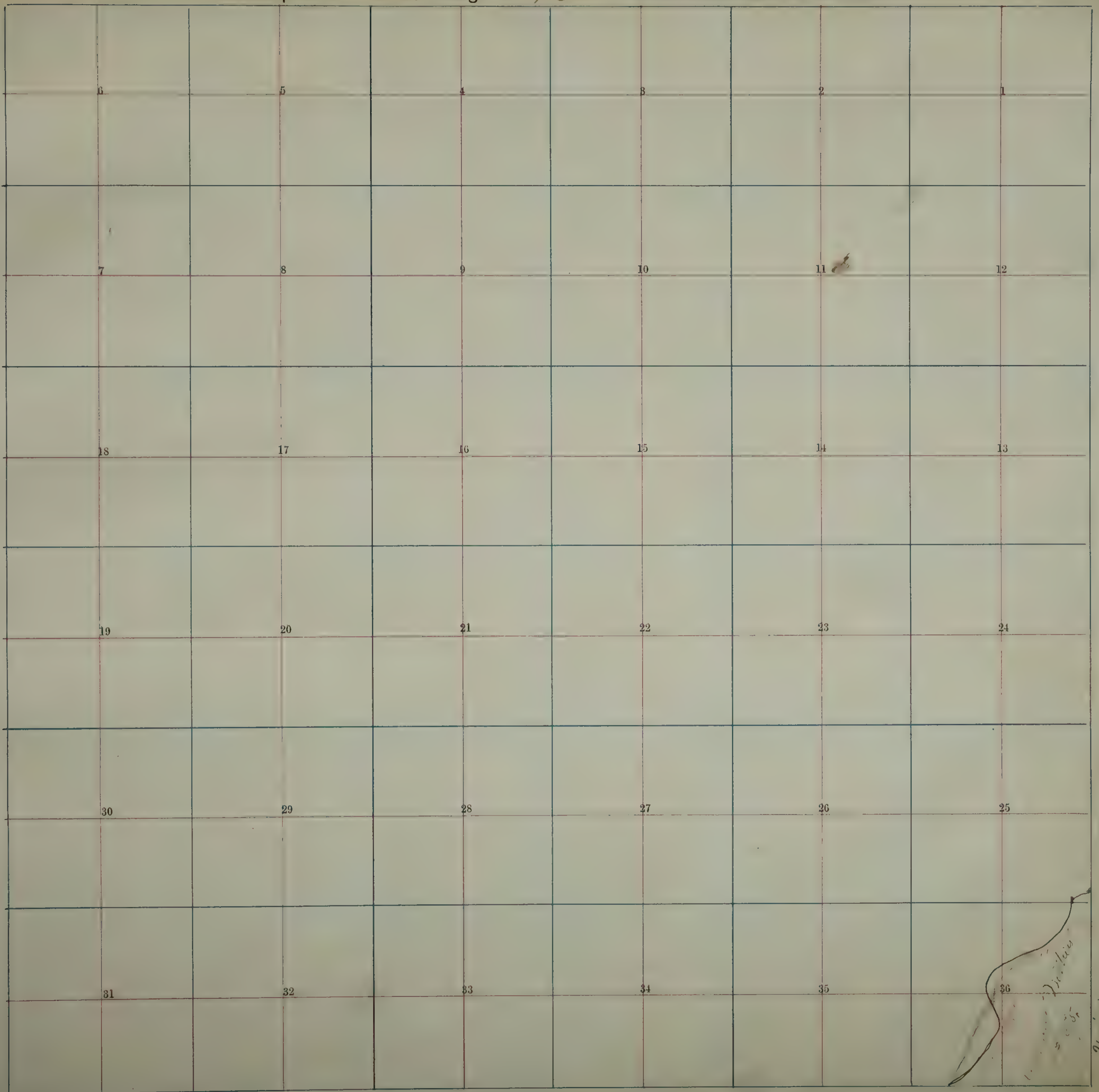
John McLaughlin  
 1000



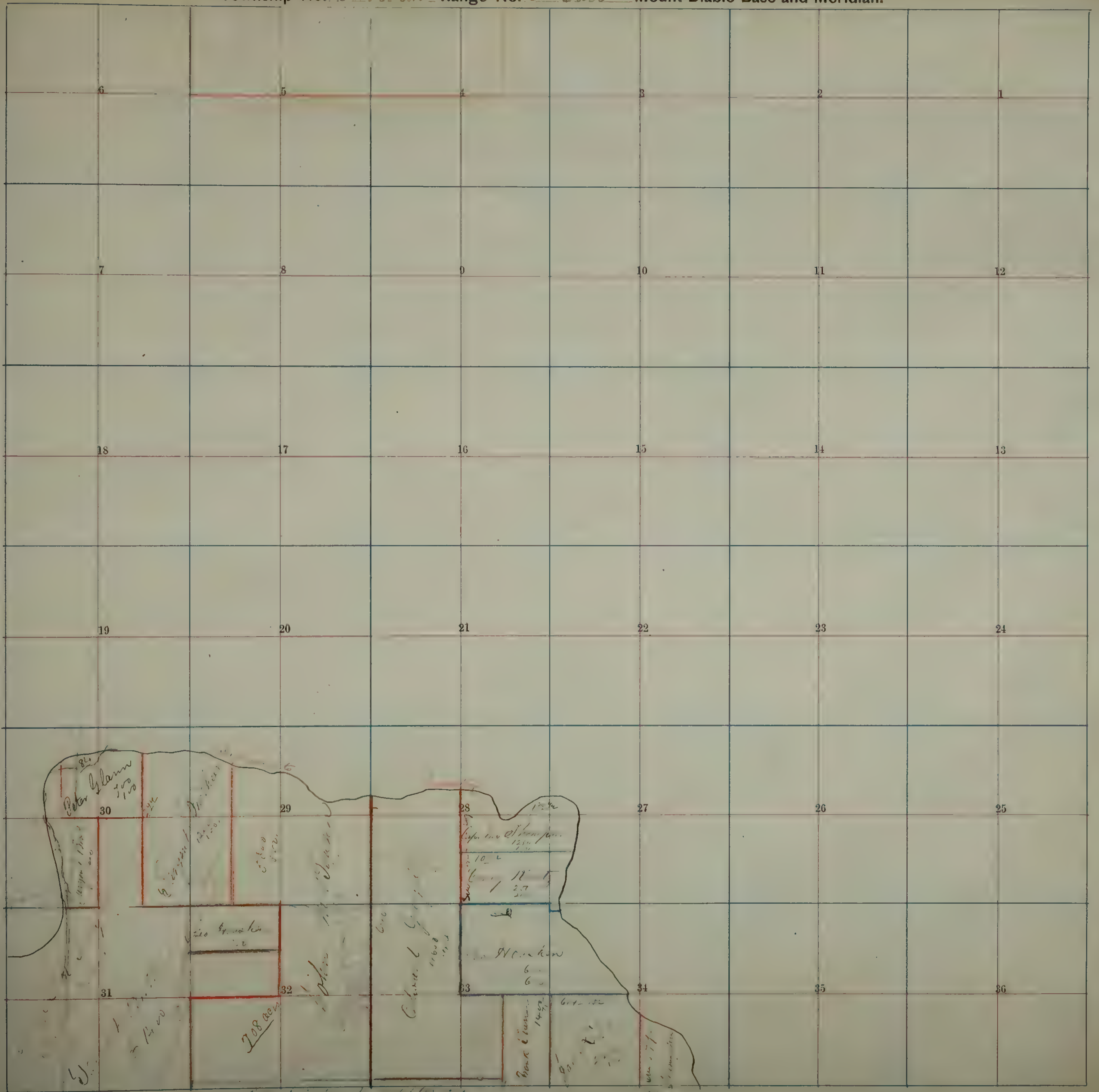
Elliot









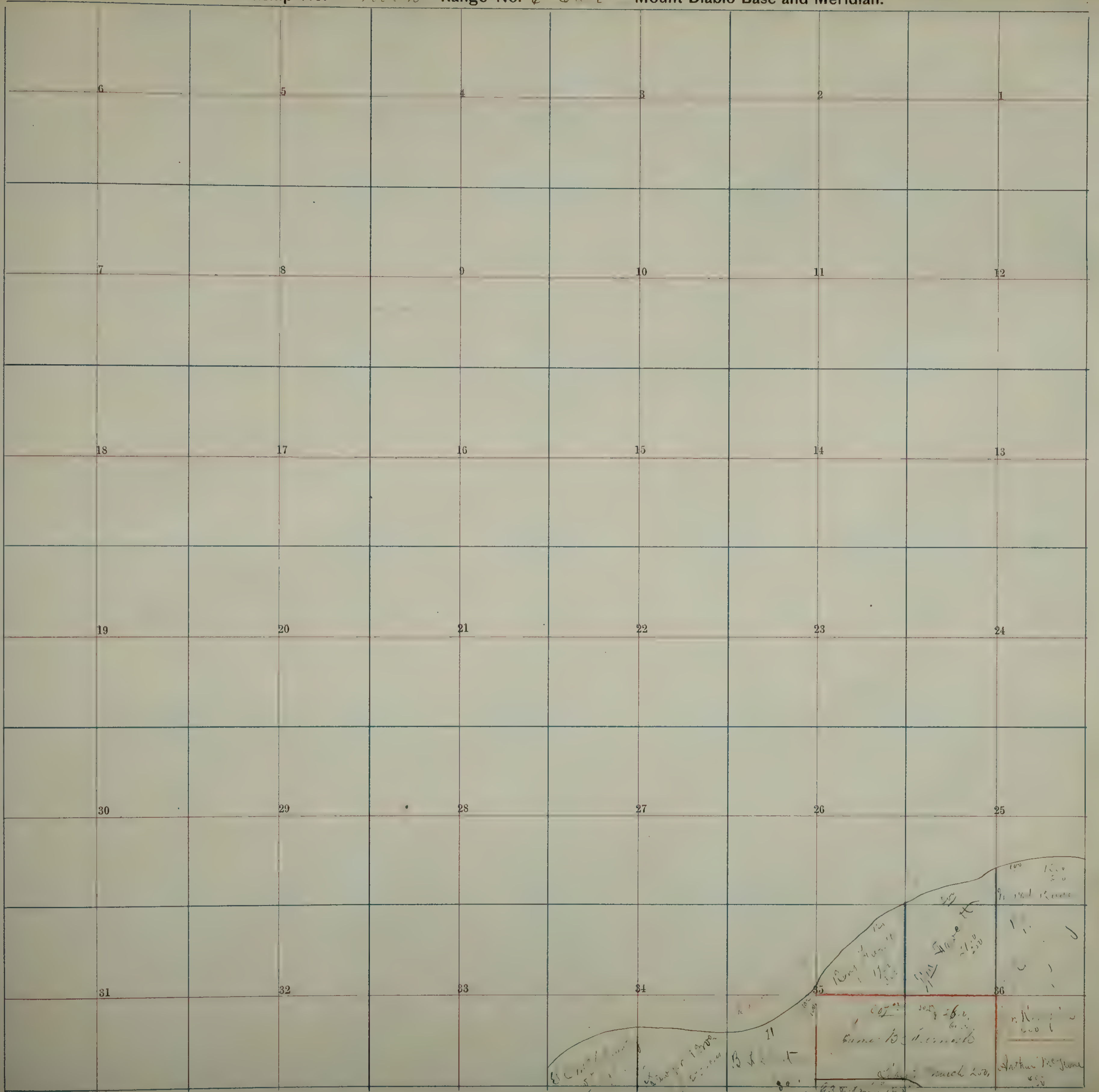


Section 30: Peter Glenn 1/20 1/20  
Section 29: 5000 5000  
Section 28: 1000 1200  
Section 31: 1400  
Section 32: 208 ac  
Section 33: 1400  
Section 34: 1400

Union

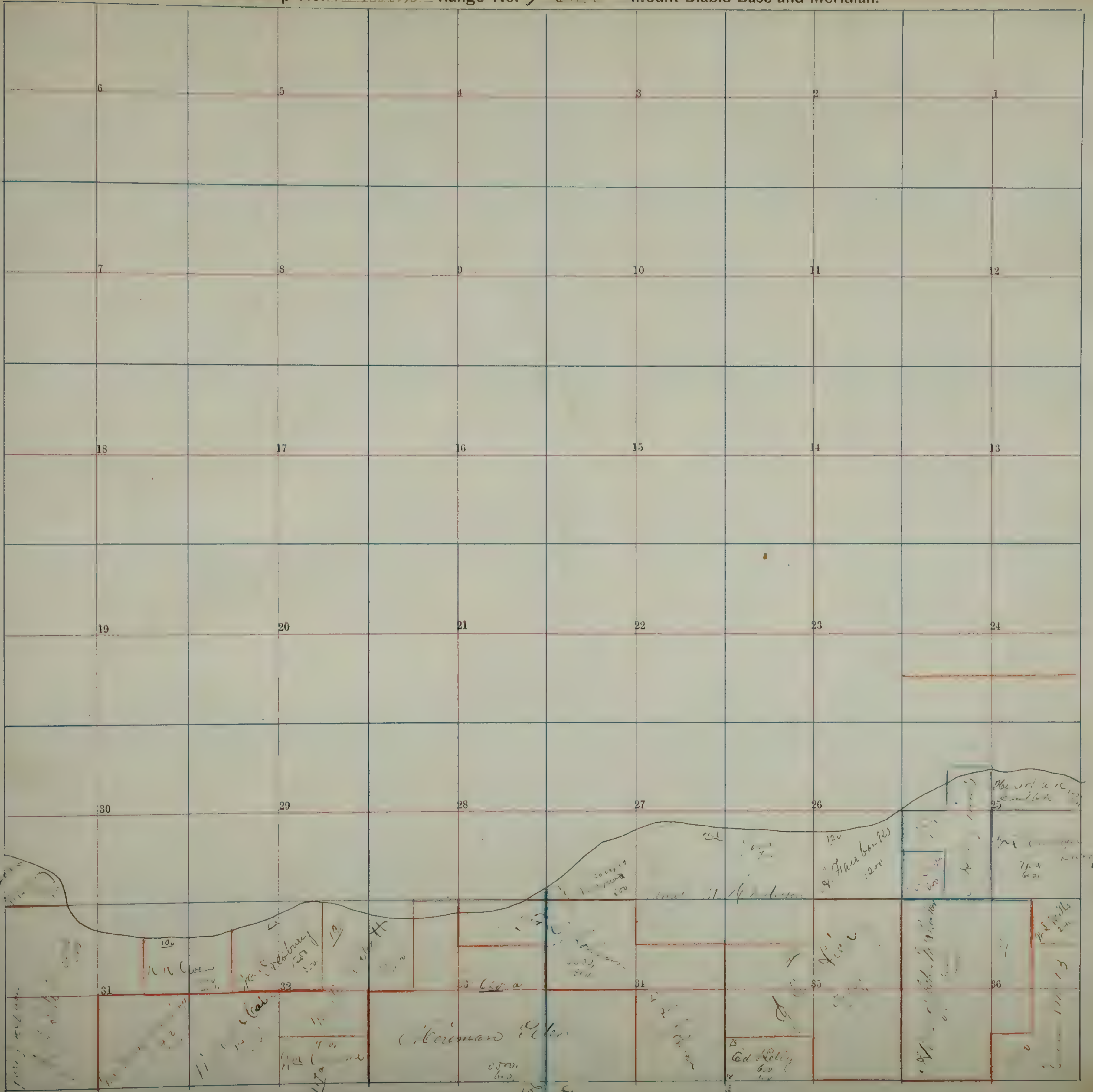


Township No. 5 North Range No. 6 West Mount Diablo Base and Meridian.



Handwritten notes and signatures in the bottom right corner of the grid, including:  
- "Liberty"  
- "Arthur McJone"  
- "B. H. T."  
- "1870"  
- "1871"  
- "1872"  
- "1873"  
- "1874"  
- "1875"  
- "1876"  
- "1877"  
- "1878"  
- "1879"  
- "1880"  
- "1881"  
- "1882"  
- "1883"  
- "1884"  
- "1885"  
- "1886"  
- "1887"  
- "1888"  
- "1889"  
- "1890"  
- "1891"  
- "1892"  
- "1893"  
- "1894"  
- "1895"  
- "1896"  
- "1897"  
- "1898"  
- "1899"  
- "1900"





6 5 4 3 2 1

7 8 9 10 11 12

18 17 16 15 14 13

19 20 21 22 23 24

30 29 28 27 26 25

31 32 33 34 35 36

*N. N. C. Wren*  
*Liberty*  
*Ed. Kelly*  
*C. W. Kelly*  
*1200*  
*1000*  
*1100*  
*1200*  
*1300*  
*1400*  
*1500*  
*1600*  
*1700*  
*1800*  
*1900*  
*2000*  
*2100*  
*2200*  
*2300*  
*2400*  
*2500*  
*2600*  
*2700*  
*2800*  
*2900*  
*3000*  
*3100*  
*3200*  
*3300*  
*3400*  
*3500*  
*3600*

Liberty  
Collins

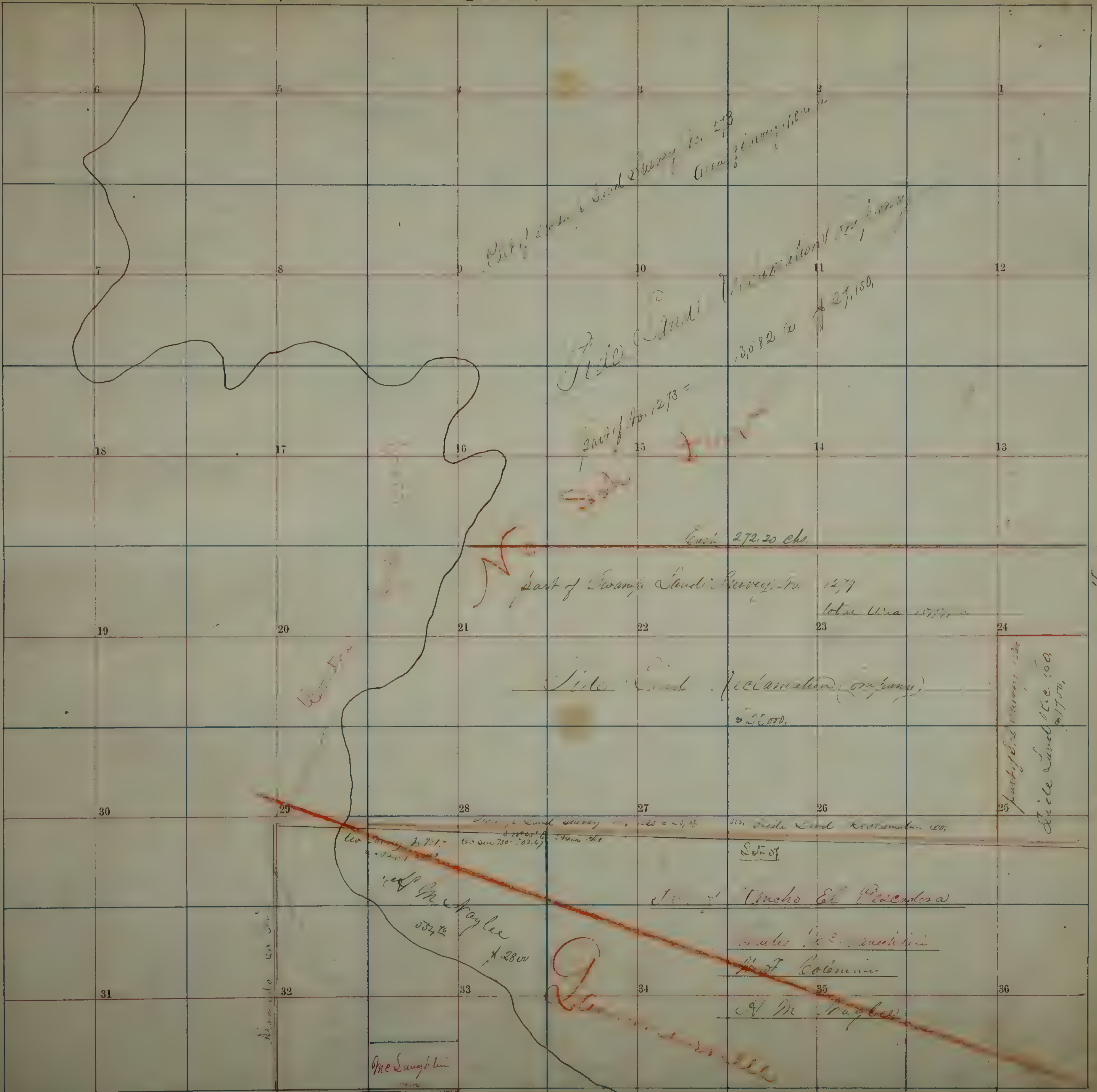












Scale

part of land survey to 518  
Area 11,000,000

Tide Land Reclamation Co.  
27,150

part of No. 1273 =

Gain 272.20 chs.

part of Swamp Land Survey No. 1279  
total area 15,771

Tide Land Reclamation Co.  
28,000

part of survey No. 130  
Tide Land Co. 150  
1,170

1000

part of land survey to 518  
Area 11,000,000

part of land survey to 518  
Area 11,000,000

Soil of

part of Tincho El Encuentro

part of Tincho El Encuentro

part of Tincho El Encuentro

McNaylee  
2800

McLaughlin

part of land survey to 518  
Area 11,000,000

part of land survey to 518  
Area 11,000,000

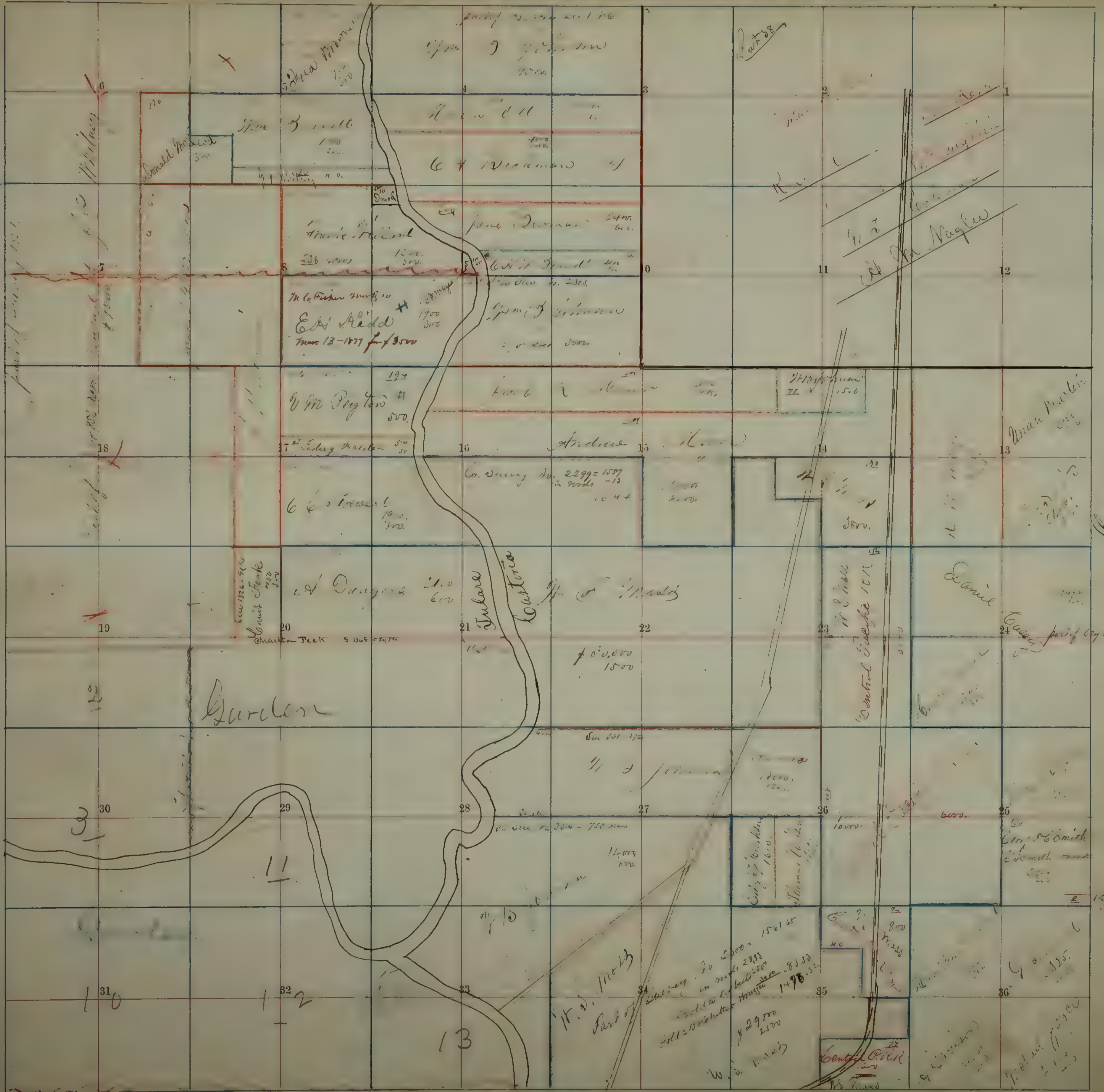


Tulare



Island Garden





In care

Quartoria

Gardens

In care  
Quartoria

Central Electric 1011

H. W. Moxley

1561 65  
2893  
85.55  
1498.52  
29.00  
25.00

Central Electric

11.25

6

120

Spec 3 mill

Howell

C. F. Newman

Frank P. ...

John ...

Ed. Redd  
Mar 13-1877 for 3500

John ...

Wm. Poyton

John ...

Edgar ...

Andrew

6 1/2 ...

Co. survey No. 2299 = 1557  
in ...

A. ...

In care  
Quartoria

H. W. Moxley

Chas. Peck

100,000  
1500

2

3

30

29

28

27

26

25

10

32

33

35

36

13







1	2	3	4	5	6	7	8	9	10	11	12
13	14	15	16	17	18	19	20	21	22	23	24
25	26	27	28	29	30	31	32	33	34	35	36

Dent

Handwritten entries in the grid cells include names and values:

- Row 1: Daniel Mitchell, 2000; 4800; 12000; 2000; 2000; 2000; 2000; 2000; 2000; 2000; 2000; 2000
- Row 2: 2000; 2000; 2000; 2000; 2000; 2000; 2000; 2000; 2000; 2000; 2000; 2000
- Row 3: 2000; 2000; 2000; 2000; 2000; 2000; 2000; 2000; 2000; 2000; 2000; 2000
- Row 4: 2000; 2000; 2000; 2000; 2000; 2000; 2000; 2000; 2000; 2000; 2000; 2000
- Row 5: 2000; 2000; 2000; 2000; 2000; 2000; 2000; 2000; 2000; 2000; 2000; 2000
- Row 6: 2000; 2000; 2000; 2000; 2000; 2000; 2000; 2000; 2000; 2000; 2000; 2000
- Row 7: 2000; 2000; 2000; 2000; 2000; 2000; 2000; 2000; 2000; 2000; 2000; 2000
- Row 8: 2000; 2000; 2000; 2000; 2000; 2000; 2000; 2000; 2000; 2000; 2000; 2000
- Row 9: 2000; 2000; 2000; 2000; 2000; 2000; 2000; 2000; 2000; 2000; 2000; 2000



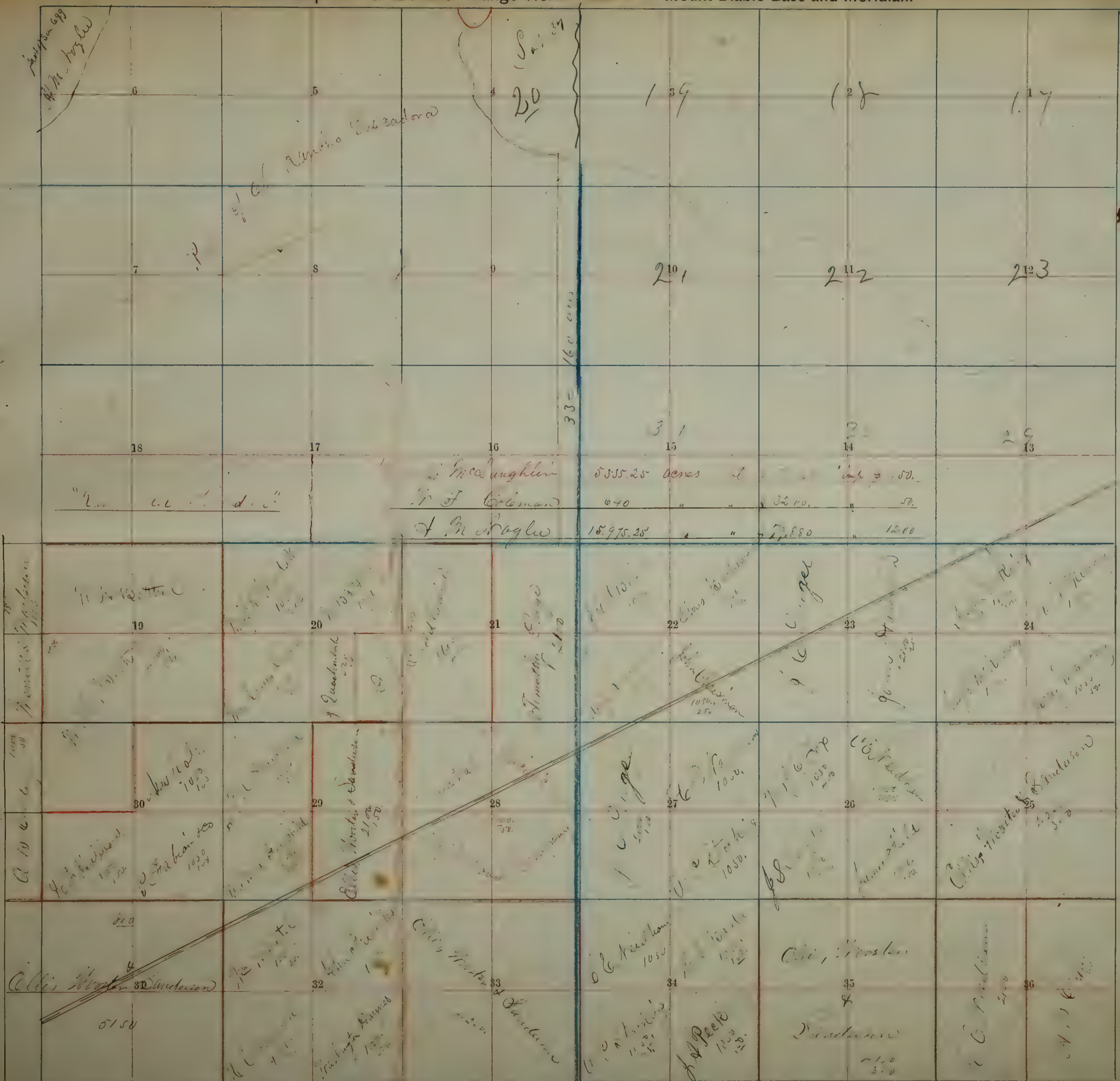
Dent

4 1000 1000 1000 1000	5 1000 1000 1000 1000	6 1000 1000 1000 1000	7 1000 1000 1000 1000	8 1000 1000 1000 1000	9 1000 1000 1000 1000	10 1000 1000 1000 1000	11 1000 1000 1000 1000	12 1000 1000 1000 1000
13 1000 1000 1000 1000	14 1000 1000 1000 1000	15 1000 1000 1000 1000	16 1000 1000 1000 1000	17 1000 1000 1000 1000	18 1000 1000 1000 1000	19 1000 1000 1000 1000	20 1000 1000 1000 1000	21 1000 1000 1000 1000
22 1000 1000 1000 1000	23 1000 1000 1000 1000	24 1000 1000 1000 1000	25 1000 1000 1000 1000	26 1000 1000 1000 1000	27 1000 1000 1000 1000	28 1000 1000 1000 1000	29 1000 1000 1000 1000	30 1000 1000 1000 1000
31 1000 1000 1000 1000	32 1000 1000 1000 1000	33 1000 1000 1000 1000	34 1000 1000 1000 1000	35 1000 1000 1000 1000	36 1000 1000 1000 1000	37 1000 1000 1000 1000	38 1000 1000 1000 1000	39 1000 1000 1000 1000









Wilson

Jularc

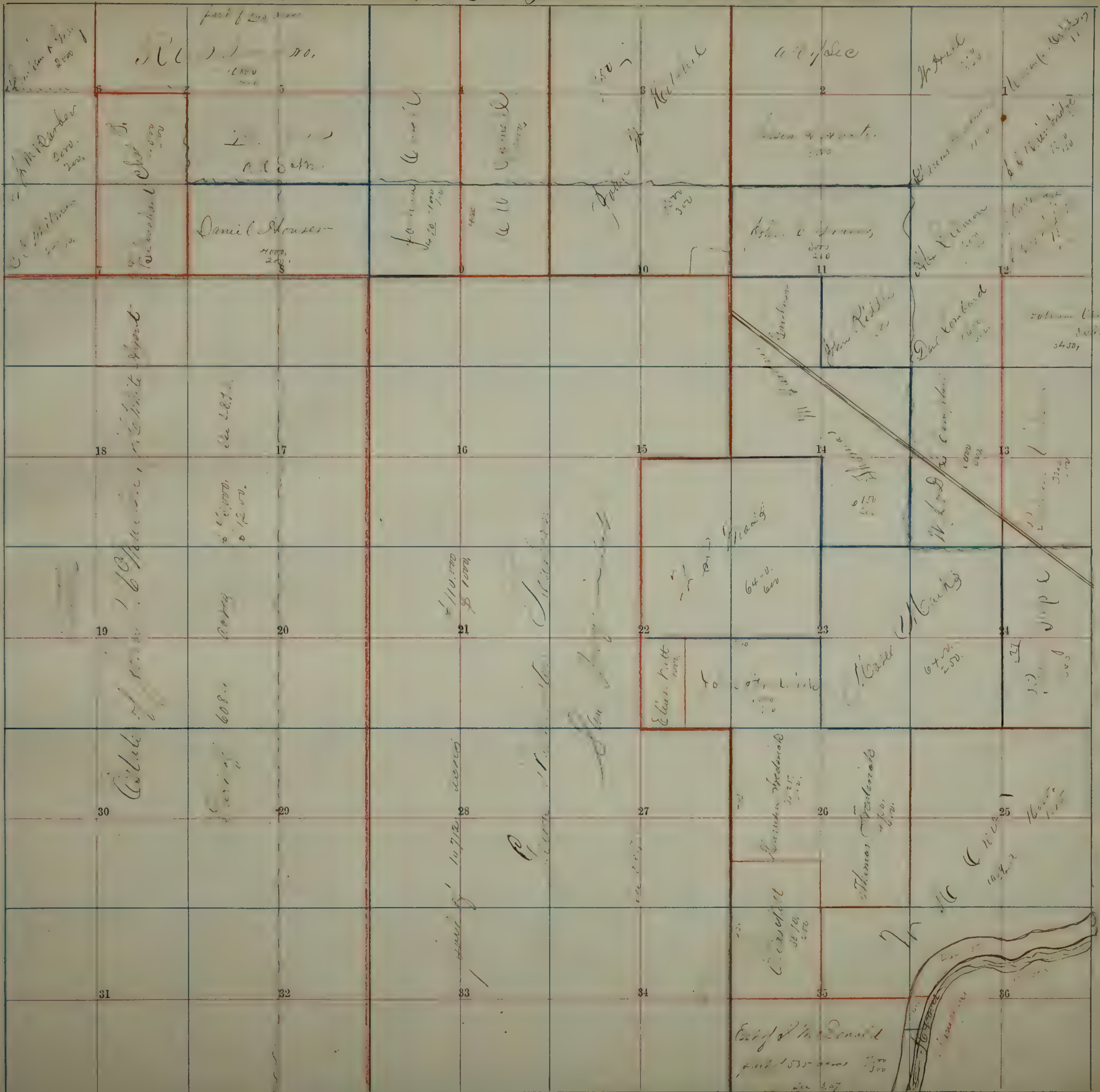
Valley







Castro













6	5		4	3	2	1
7	8		9	10	11	12
18	17		16	15	14	13
19	20		21	22	23	24
30	29		28	27	26	25
31	32		33	34	35	36

Stulard

Handwritten notes and signatures within the grid cells, including names like Charles McLaughlin, J. J. Crisman, and various dates and measurements.















6	5							
7	8							
18	17							
19	20							
30	29							
31	32							

Handwritten notes in the top-left section of the grid.

Handwritten notes in the top-middle section of the grid.

Handwritten notes in the top-right section of the grid.

Handwritten notes in the top-far-right section of the grid.

Charles no Laughlin

Charles A. Laughlin

Handwritten notes in the middle-right section, including '11nd 72 (City of K 125)' and '600'.

Handwritten notes in the middle-left section of the grid.

Edward ... 16"

Julius

Handwritten notes in the bottom-left section of the grid.

Handwritten notes in the bottom-middle section of the grid.

Handwritten notes in the bottom-right section of the grid.

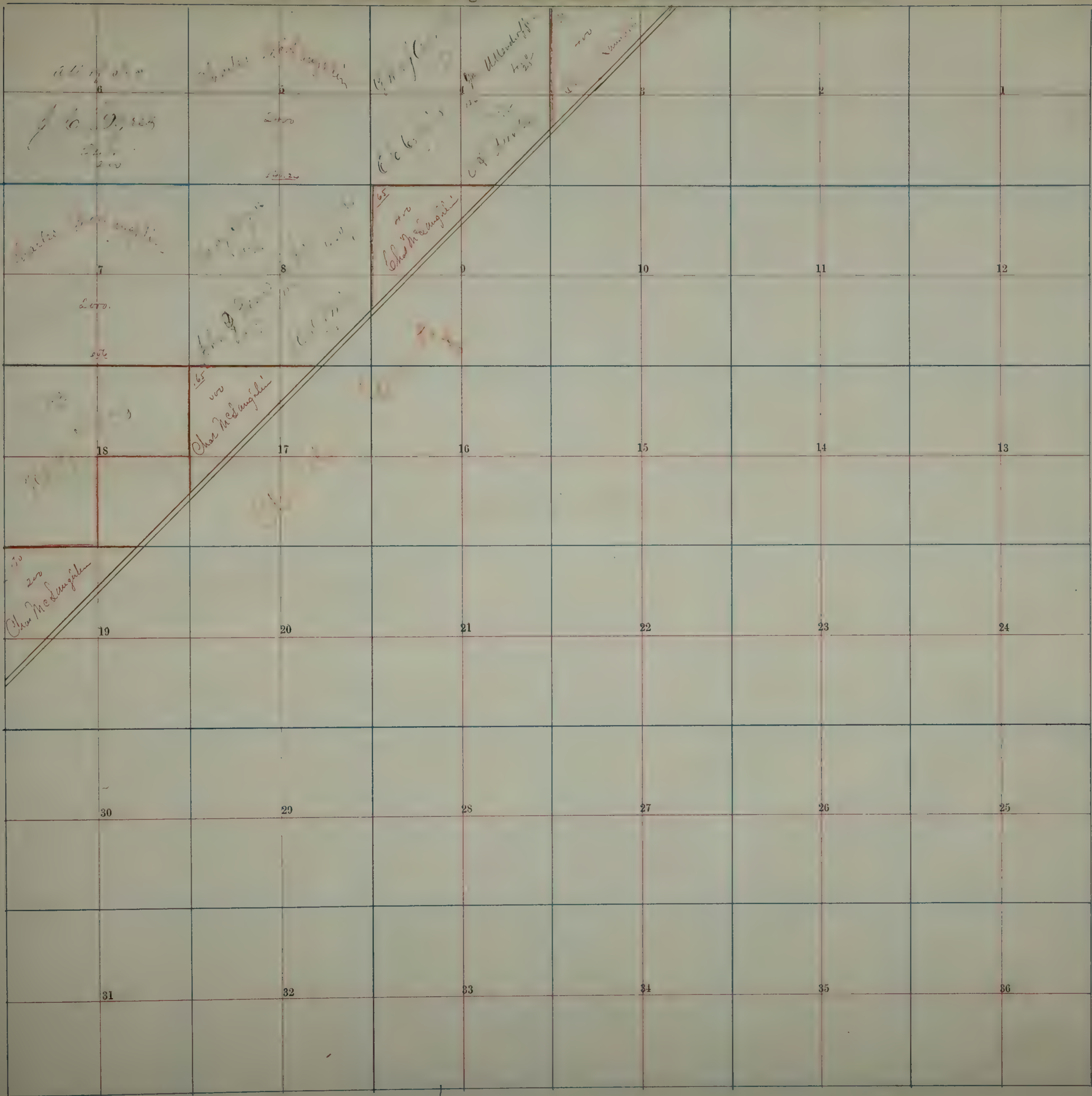
Handwritten notes in the bottom-far-right section of the grid.



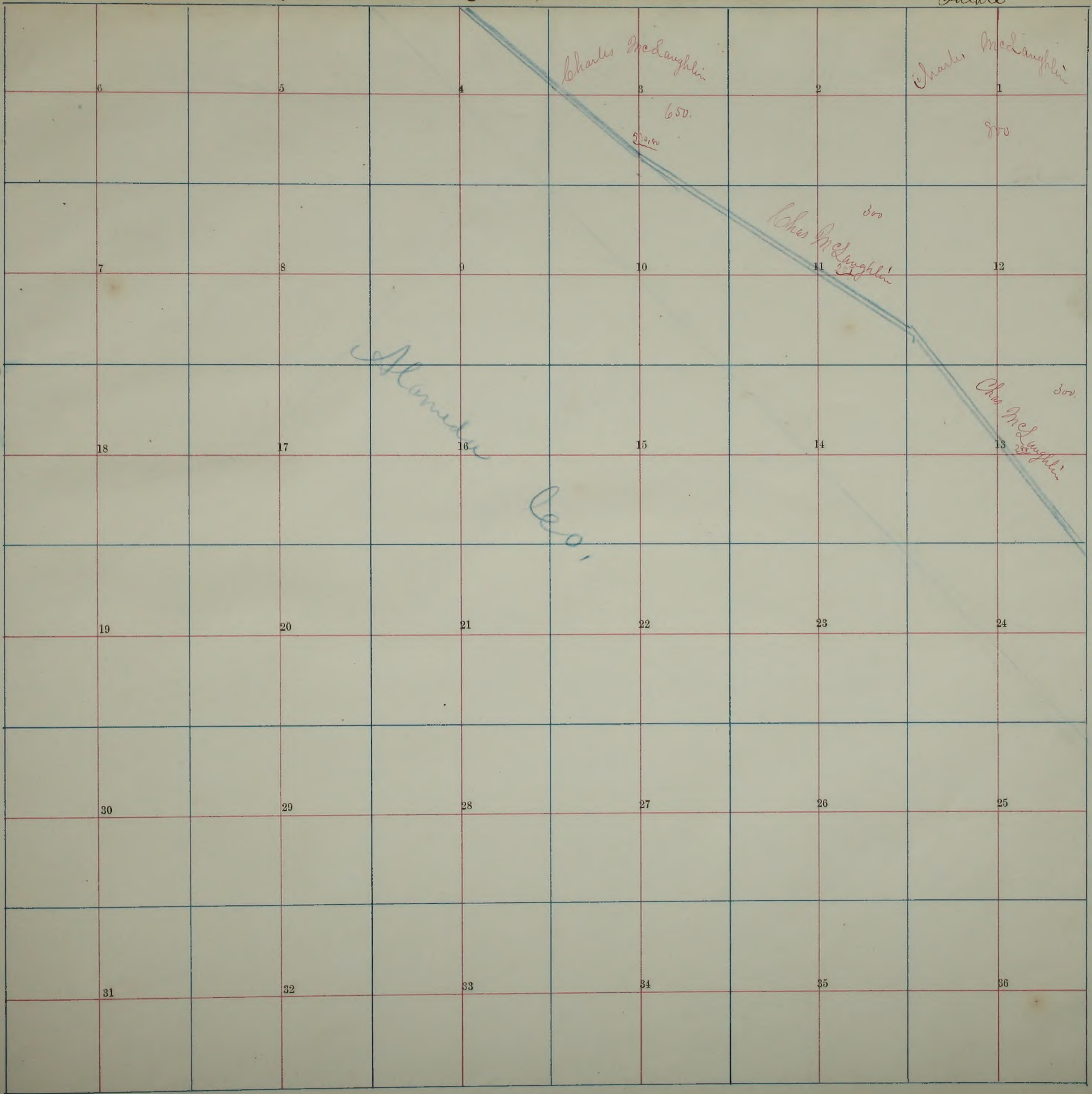




In Care







Tulare

Mansden

Geo.

Charles McLaughlin

Charles McLaughlin

Charles McLaughlin

Charles McLaughlin

650

500

300

300

6

5

4

3

2

1

7

8

9

10

11

12

18

17

16

15

14

13

19

20

21

22

23

24

30

29

28

27

26

25

31

32

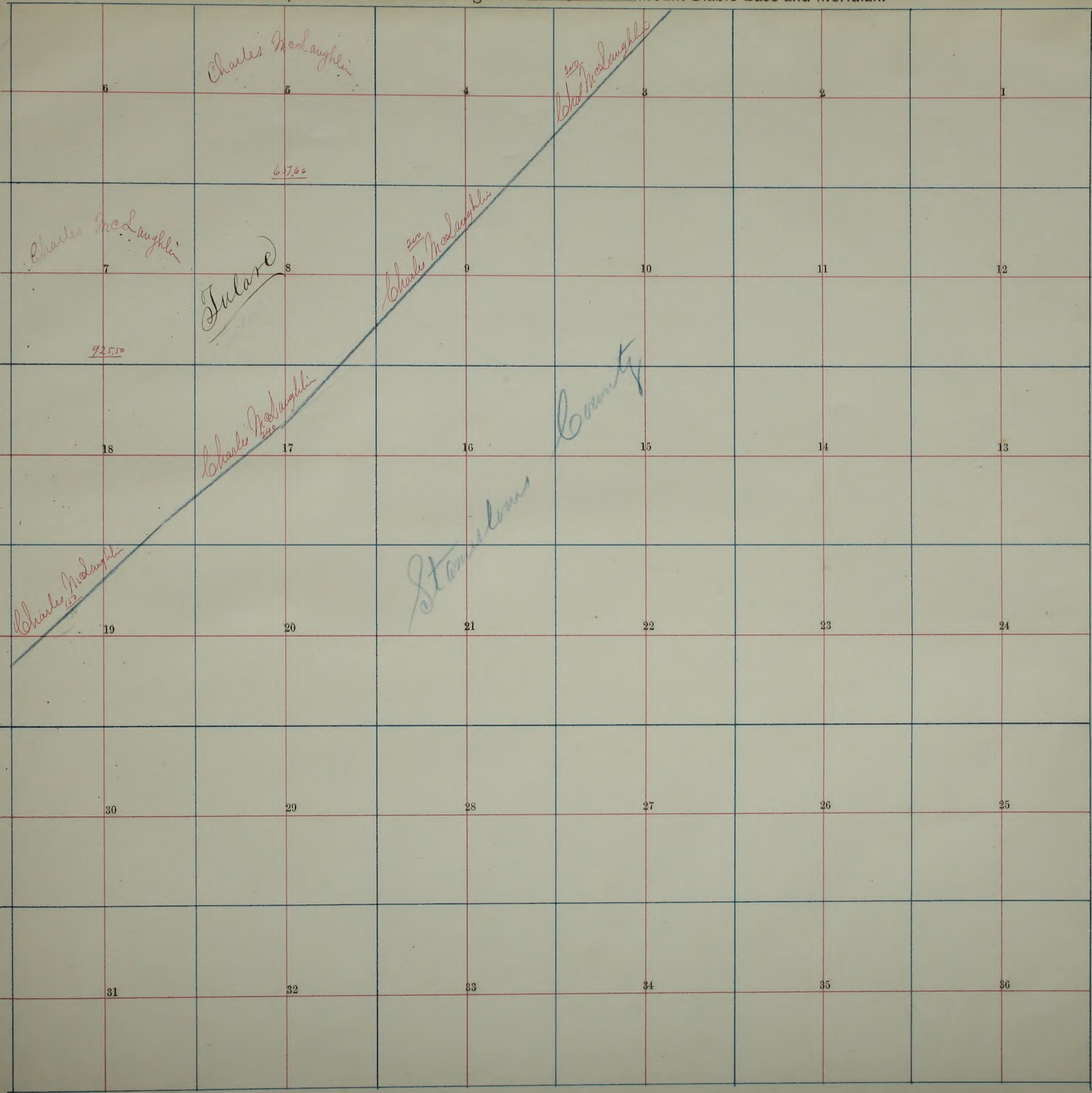
33

34

35

36





Charles McLaughlin

see Charles McLaughlin

67.60

Charles McLaughlin

Julare

see Charles McLaughlin

925.50

see Charles McLaughlin

County

see Charles McLaughlin

Stammons

6

5

4

3

2

1

7

8

9

10

11

12

18

17

16

15

14

13

19

20

21

22

23

24

30

29

28

27

26

25

31

32

33

34

35

36







