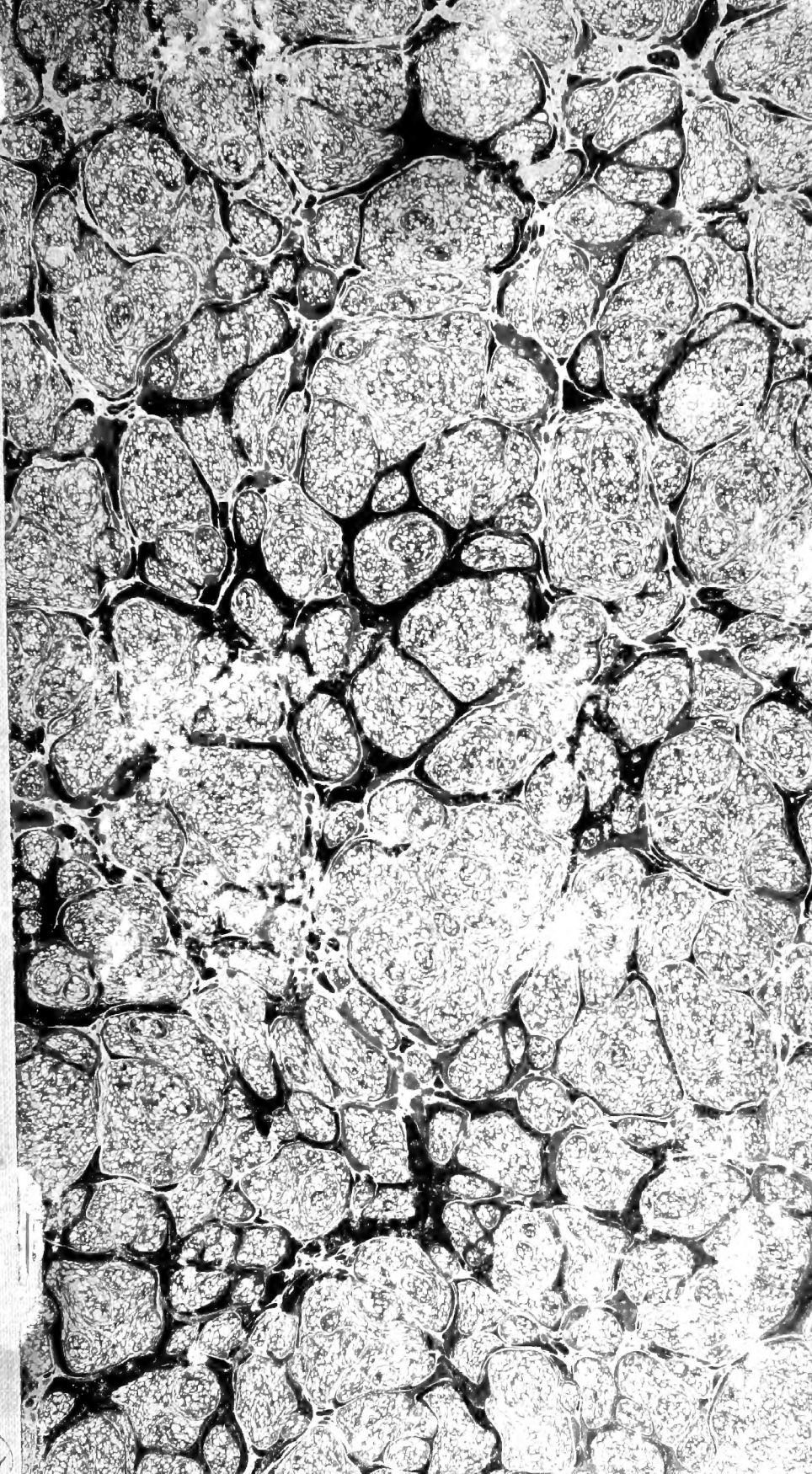


8997
374
899



Z
5997
B74
1899

Cornell University Library	
THE GIFT OF	
College of Architecture Library Cornell University	
A.2103 21	572107

7673-1

THE CODMAN COLLECTION

OF BOOKS



ON LANDSCAPE GARDENING.

ALSO

Cornell University Library
Z 5997.B74 1899

The Codman collection of books on landsc

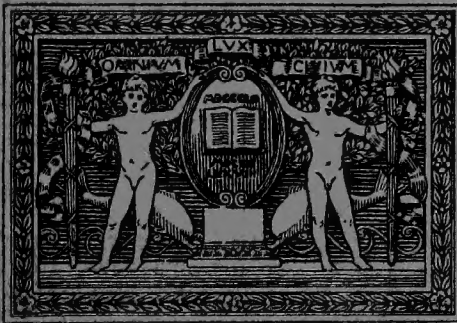


3 1924 021 023 191

A LIST OF BOOKS

ON TREES AND FORESTRY.

Reprinted from the Monthly Bulletins.



BOSTON.
PUBLISHED BY THE TRUSTEES.
1899.

TRUSTEES OF THE PUBLIC LIBRARY.

FREDERICK O. PRINCE, President.

SOLOMON LINCOLN, Vice-President.

JOSIAH H. BENTON, JR. HENRY P. BOWDITCH.

JAMES DeNORMANDIE.

LIBRARIAN.

HERBERT PUTNAM.

Central Library, Copley Square.

Branch Libraries.

Brighton Branch, Holton Library Building, Rockland St.	Roxbury Branch, 46 Millmont St.
Charlestown Branch, City Square.	South Boston Branch, 372 Broadway.
Dorchester Branch, Arcadia, cor. Adams St.	South End Branch, English High School Building, Montgomery St.
East Boston Branch, 37 Meridian St.	West End Branch, Cambridge, cor. Lynde St.
Jamaica Plain Branch, Curtis Hall, Centre St.	West Roxbury Branch, Centre, near Mt. Vernon St.

Delivery Stations.

Station A. Lower Mills Reading Room, Washington, near River St.	Station L. North Brighton Reading Room, 56 Market St.
Station B. Roslindale Delivery Station, 25 Poplar St.	Station M. Crescent Avenue Delivery Station, 940 Dorchester Ave.
Station D. Mattapan Reading Room, River, cor. Oakland St.	Station N. Blue Hill Avenue Delivery Station, 200 Blue Hill Ave.
Station E. Neponset Delivery Station, 49 Walnut St.	Station P. Broadway Extension Delivery Station, 13 Broadway Extension.
Station F. Mount Bowdoin Reading Room, Washington, cor. Eldon St.	Station Q. Upham's Corner Delivery Station, 756 Dudley St.
Station G. Allston Delivery Station, 14 Franklin St.	Station R. Warren Street Delivery Station, 329 Warren St.
Station H. Ashmont Delivery Station, 4 Talbot Ave.	Station S. Roxbury Crossing Delivery Station, 1173 Tremont St.
Station J. Dorchester Station Delivery Station, 1 Milton Ave.	Station T. Boylston Delivery Station, Lamartine, cor. Paul Gore St.
Station K. Bird Street Delivery Station, 6 Wayland St.	Station U. 62 Union Park St.

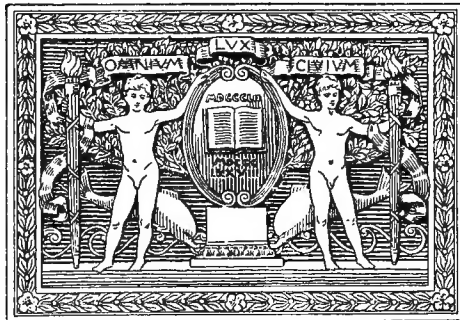
LANDSCAPE GARDENING.
TREES AND FORESTRY.

.

9285B4

THE CODMAN COLLECTION
OF BOOKS
ON LANDSCAPE GARDENING.
ALSO
A LIST OF BOOKS
ON TREES AND FORESTRY.

Reprinted from the Monthly Bulletins.



BOSTON.
PUBLISHED BY THE TRUSTEES.

1899.

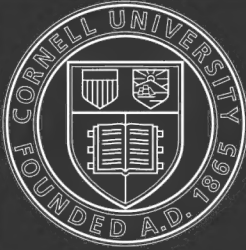
D

9285B4

A. 210321

PREFACE.

The list of works on landscape gardening, which form the Codman collection, is reprinted from the Monthly Bulletin of November, 1898. The Card Catalogue should be consulted for works on this and kindred topics, in the General Library, but not here included. The list of books on trees and forestry is reprinted from the Monthly Bulletin of October, 1898.



Cornell University Library

The original of this book is in
the Cornell University Library.

There are no known copyright restrictions in
the United States on the use of the text.

THE CODMAN COLLECTION

OF BOOKS

ON LANDSCAPE GARDENING.

These books were given to the Library by Mr. and Mrs. James M. Codman in memory of their sons Henry Sargent and Philip Codman, landscape architects. The main part of the collection relates to landscape gardening and topics allied to it; but a few of the titles, which have no direct connection with this subject, are here introduced as forming part of the original gift.

- Abbott, Charles Conrad.
Upland and meadow. A Poaetquissings chronicle. N. Y., 1886. 12°. *L.15.5
- Abel, Lothar.
Die Baumpflanzungen in der Stadt und auf dem Lande. Wien, 1882. Illus. Pl. 8°. *L.22.17
- Garten-Architektur. Mit 198 Illustrationen, nach Handzeichnungen des Verfassers. Wien, 1876. F°. *L.50.26
- Ablett, William H.
English trees and tree-planting. London, 1880. Pls. 8°. *L.22.15
- Ackermann, Rudolph, publisher.
A picturesque tour of the English lakes. With 48 coloured views drawn by T. H. Fielding and J. Walton. London, 1821. 4°. *L.51.7
- Aikin, John.
The woodland companion: or a brief description of British trees. London, 1802. Pls. Sm. 8°. *L.22.33
- Alison, Archibald.
Essays on the nature and principles of taste. [2d edition.] Edinburgh, 1811. 2 v. 8°. *L.62.5
- Alphand, Jean Charles Adolphe.
Les promenades de Paris. 487 gravures sur bois, 80 sur acier, 23 chromolithographies. Paris, 1867-73. 2 v. L. f°. *L.70.15
Contents. — 1. Text with woodcuts. 2. Plates.
- Amherst, Hon. Alicia Margaret.
A history of gardening in England. London, 1895. Illus. 8°. *L.32.24
Bibliography of works on English gardening, pp. 323-379.
- Anderson, James. 1739-1808.
An essay on quick-lime as a cement and manure. Boston, 1799. Sm. 8°. No. 2 in *L.24.5.2
- Anderson, James, of the Royal horticultural society.
The new practical gardener, and modern horticulturist. London. [1872-74.] 2 v. Illus. Pls., mostly colored. 8°. *L.32.22
- André, Édouard.
L'art des jardins. Paris, 1879. Illus. Pls. L. 8°. *L.31.14
- Un mois en Russie. Notes . . . d'un membre du jury à l'Exposition internationale d'horticulture de Saint-Pétersbourg. Paris, 1870. 16°. *L.12.22
- Angus, William.
The seats of the nobility and gentry, in Great Britain and Wales. With descriptions. Islington, 1787. 63 pls. 8°, obl. *L.52.1
- Antiquarian and picturesque tour round the southern coast of England, illustrated with 84 plates, from drawings by J. M. Turner, W. Collins, W. Westall, . . . and others. Engraved by G. Cooke, . . . [Anon.] London, 1849. 4°. *L.51.2
- "Arcadia," pseud.
Report, accompanying design, for laying out "Central Park." N. Y., 1858. 8°. *L.53.28
- Arcadie hollandaise, ou, collection choisie de six-cent vues pittoresques d'antiquités, ruines, châteaux, terres seigneuriales, &c. de Hollande. Amsterdam, 1807. L. f°. *L.20.2
- Art-studies from nature, as applied to design: for the use of architects, designers, and manufacturers. London, 1872. Illus. Sm. 4°. *L.54.8
Contents. — The adaptability of our native plants to the purposes of ornamental art, by F. E. Hulme. — Sea-weeds as objects of design, by S. J. Mackie. — The crystals of snow as applied to the purposes of design, by James Glaisher. — The symmetrical and ornamental forms of organic remains, by Robert Hunt.
- Auswahl von Park- und Gartenverzierungen. Entworfen und ausgeführt von Schinkel, Persius . . . Zusammengestellt aus dem Architektonischen Skizzenbuch. Berlin, 1891. 32 pls. L. f°. *L.20.8
- Bacon, Francis, Lord.
Essays. With annotations by Richard Whately. New edition. London, 1882. *L.62.10

- Bailey, Liberty Hyde, jr.
A list of ornamental plants which are hardy in Michigan. Lansing, 1887. 8°. *L.23.11
- Baker, John Wynn.
Appendix [to The gardener's new companion] containing the advantages of the drilling and horse-shoeing tillage, above the broad-cast tillage . . . [London, 1767.] Sm. 8°. No. 4 in *L.26.3
- Balch, Elizabeth.
Glimpses of old English homes. London, 1890. Illus. Portrs. 8°. *L.42.1
- Baring-Gould, Sabine.
Old country life. London, 1890. Illus. Pls. 8°. *L.62.12
- Bartlett, William Henry.
American scenery; or, land, lake, and river. From drawings by W. H. Bartlett engraved by R. Wallis, J. Cousen . . . The literary department by N. P. Willis. London, 1840. 2 v. 4°. *L.51.10
- Batty, Elizabeth Francis.
Italian scenery. London, 1820. 8°. *L.51.6
- Batty, Robert.
Select views of some of the principal cities of Europe. London, 1832. F°. *L.51.5
Ninety plates with explanatory text in English and French. There are two impressions of each view, the first in outline, the second the finished proof.
- Baxter, Sylvester.
Greater Boston. A study for a federalized metropolis. Boston, 1891. 8°. *L.53.73
- Beattie, William.
Switzerland. A series of views. London, 1836. 2 v. 4°. *L.51.8
- Benque, W., and Charles Rawolle.
Notices of sketches for laying out the Central Park. N. Y., 1858. 12°. *L.53.25
- Bickham, George, the younger.
Stow: the gardens of . . . Lord viscount Cobham. [Anon.] London. [1750.] Pls. Sm. 8°. *L.42.21
The plates were drawn and engraved by B. Seeley.
- Bigelow, Jacob.
Florula Bostoniensis. A collection of plants of Boston and its environs. Boston, 1814. 8°. *L.23.1
Same. 2d edition, enlarged. Added, a glossary of botanical terms. Boston, 1824. 8°. *L.23.2
- Billing, Robert.
An account of the culture of carrots. Dublin, 1767. Sm. 8°. No. 3 in *L.26.3
- Blomfield, Reginald.
The formal garden in England. By Reginald Blomfield and F. Inigo Thomas. London, 1892. Illus. Pls. Sm. 8°. *L.34.17
The illustrations are by Thomas.
- Boitard, Pierre.
Manuel de l'architecture des jardins. Nouvelle édition. Atlas. Paris. [1853.] 140 pls. [Encyclopédie Roret.] 24^{1/2}, obl. *L.56.7
- Bona, T.
Tracé et ornementation des jardins d'agrément. Genève, 1859. Illus. 12°. *L.34.14
- Boreau, Alexandre.
Notice historique sur le Jardin des plantes d'Angers, et sur les progrès de la botanique en Anjou. [Angers, 184-?] 8°. *L.53.87
- Boston.
Joint committee on public lands.
Report in relation to the Public garden, July, 1850. Boston, 1850. Folded plan. 8°. *L.53.60
- Park commissioners.
Notes on the plan of Franklin park and related matters. [Boston.] 1886. Folded map and plan. 8°. *L.53.70
- Bouchard-Huzard, Louis.
Traité des constructions rurales, et leur disposition. 2e édition, augmentée. 1e partie, 2e partie. Paris. [1869.] 3 v. Illus. Pls. Plans. 8°. *L.41.4
- Boyceau, Jacques, seigneur de La Barauidière.
Traité du jardinage . . . Paris, 1688. 16°. *L.24.9
- Bradley, Richard.
The gentleman and gardener's kalendar. London, 1718. Pls. Sm. 8°. No. 2 in *L.35.1
- New improvements of planting and gardening. London, 1717. 2 parts in 1 v. Pls. Sm. 8°. *L.35.1
- Brayley, Edward Wedlake, and John Britton.
The beauties of England and Wales. London, 1801-1816. 18 v. in 25. 8°. *L.44.1
Contents. — Introduction by J. N. Brewer. 1-6. Bedfordshire; Berkshire; Buckinghamshire; Cambridgeshire; Cheshire; Cornwall; Cumberland; Isle of Man; Derbyshire; Devonshire; Dorsetshire; Durham; Gloucestershire; Hampshire; Isle of Wight; Herefordshire; by Brayley and Britton. 7. 8. Hertfordshire; Huntingdonshire; Kent; by Brayley. 9. Lancashire; Leicestershire; Lincolnshire; by Britton. 10. London and Middlesex; by Brayley, J. Nightingale, and Brewer. 11. Monmouthshire; Norfolk; Northamptonshire; by J. Evans and Britton. 12. Northumberland; Nottinghamshire; Oxfordshire; Rutlandshire; by J. Hodgson, F. C. Laird, and Brewer. 13. Shropshire; Somersetshire; by Nightingale. 14. Suffolk; Surrey; Sussex; by F. Shoberl. 15. Warwickshire; Worcestershire; Wiltshire; Westmorland; by Britton, Brewer, Hodgson and Laird. 16. Yorkshire; by J. Bigland. 17. North Wales; by Evans. 18. South Wales; by T. Rees.
- Bremer, Fredrika.
The homes of the New World; impressions of America [1849-51]. Translated by Mary Howitt. London, 1853. 3 v. Sm. 8°. *L.52.18
- Bright, Henry Arthur.
The English flower garden, with notes. London, 1881. Sm. 8°. *L.34.9
- Brockedon, William.
Illustrations of the passes of the Alps. London, 1828, 29. 2 v. Maps. Pls. 4°. *L.51.18
A large paper copy.
- Road-book from London to Naples. Illustrated with 5 views, from drawings by Stanfield, Prout, and Brockedon, engraved by W. and E. Finden. London, 1835. 4°. *L.51.19
- Brooklyn. Park commissioners.
Annual report, 1st-13th. 1861-73. Brooklyn, 1861-73. Pls. 8°. *L.53.50
- Brown, James.
The forester; a practical treatise on the planting, rearing, and general management of forest trees. 3d edition, enlarged. Edinburgh, 1861. L. 8°. *L.22.8
- Brussels.
Plan du Bois de la Cambre. Bruxelles. [1888.] Size, 13 x 7 inches. Scale, 15mm. =100m. *L. 57.12

- Buffalo, N. Y. Park commission.
The projected park and parkways on the south side of Buffalo. Two reports by the landscape architects [F. L. and J. C. Olmsted]. [Buffalo.] 1888. Illus. Map. 8°. *L.53.12
- Burroughs, John.
Fresh fields. Boston, 1885. 16°. *L.15.9
Contents.—Nature in England.—English woods: a contrast.—In Carlyle's country.—A hunt for the nightingale.—English and American song-birds.—Impressions of some English birds.—In Wordsworth's country.—A glance at British wild flowers.—British fertility.—A Sunday in Cheyne Row.—At sea.
- Camponon, François Nicolas Vincent.
La maison des champs, poème. 2e édition, augmentée de quelques poésies. Paris, 1810. 24°. *L.65.15
- Central park, The, under ring-leader rule. N. Y., 1871. 8°. *L.53.37
- Céris, A. de.
Parcs et jardins. Paris. [1865.] Illus. 12°. *L.53.104
- Chambers, Sir William.
Designs of Chinese buildings, furniture, dresses, machines, and utensils. Annexed, a description of their temples, houses, gardens, &c. London, 1757. 21 pls. L. f°. *L.50.1
A dissertation on oriental gardening. London, 1772. *L.31.24
Same. 2d edition, with additions. London, 1773. 4°, large paper. *L.31.25
Chinese pavilions, gardens, etc. 36 views. 4°, obl. *L.61.24
- Clarke, Eliot Channing.
Maine drainage works of the city of Boston. 3d edition. Boston, 1888. Illus. Pls. 8°. *L.12.9
- Cleveland, Horace William Shaler.
The aesthetic development of the united cities of St. Paul and Minneapolis. [Minneapolis, 1888.] Map. 12°. *L.53.102
The culture and management of our native forests for development as timber or ornamental wood. Springfield, 1882. 8°. *L.22.13
A few words on the arrangement of rural cemeteries. Chicago, 1881. 8°. *L.53.119
Landscape architecture as applied to the wants of the West; with an essay on forest planting on the great plains. Chicago, 1873. 16°. *L.22.40
- Cobbett, William.
The woodlands; or, a treatise on . . . the planting . . . cultivating . . . pruning; and . . . cutting down of forest trees and underwoods. London, 1825. Pl. 8°. *L.22.11
- Codman, Henry Sargent.
A list of works on the art of landscape gardening. (Cut from Garden and forest. Vol. 3, pp. 131-135. N. Y., 1890.) *L.10.1
- Colinet, C.
Indicateur de Fontainebleau. Palais, forêt, environs. 22e édition des Guides Dene-court-Colinet. Fontainebleau. [1888?] Illus. Plan. 16°. *L.57.1
- Colman, Henry.
European agricultural and rural economy. Boston, 1846-49. 10 parts in 2 v. Pls. 8°. *L.12.8
- Columbia university.
Report of W. R. Ware and F. L. Olmsted on the occupation of the new site. [N. Y., 1893.] 8°. *L.52.11
- Conder, Josiah.
The art of landscape gardening in Japan. (Asiatic society of Japan. Transactions. Vol. 14, pp. 119-175. Yokohama, 1886.) *L.53.90
The flowers of Japan and the art of floral arrangement. With illustrations by Japanese artists. Tokio, 1891. Illus. Pls. L. f°. *L.20.15
Landscape gardening in Japan. [With] Supplement. With collotypes by K. Ogasawa. Tokio, 1893. 2 v. Illus. Pls. F°. *L.20.14
- Cook, Clarence Chatham.
A description of the New York Central park. [Anon.] N. Y., 1869. Illus. Portrs. Plan. 8°. *L.53.34
- Cooke, George.
Views in London and its vicinity. 48 pls., engraved on copper by George Cooke, from drawings by Calcott, Stanfield, Prout, . . . &c., after the original sketches by Edward W. Cooke. London. [1834.] F°. *L.50.22
- Copeland, Robert Morris.
Country life: a handbook of agriculture, horticulture, and landscape gardening. Boston, 1859. Illus. Pls. Plans. 8°. *L.34.25
- Copeland & Cleveland.
A few words on the Central Park. Boston, 1856. 8°. *L.53.20
- Cradock, Joseph.
Literary and miscellaneous memoirs. In 4 v. Vol. 1, 2. London, 1826. 8°. *L.62.7
- Crane, Walter.
The claims of decorative art. London, 1892. No. 72 of an edition of 110 copies. *L.54.3
- Crocker, Uriel Haskell.
Map and description of proposed metropolitan park for Boston. [Anon.] [Map drawn by Col. Francis G. Lee.] Boston, 1870. 8°. *L.53.62
- Crommelin, May, compiler.
Poets in the garden. London, 1886. Col. pls. Sm. 4°. *L.64.8
- Cruikshank, Thomas.
The practical planter: containing directions for the planting of waste land, and management of wood, with a new method of rearing the oak. Edinburgh, 1830. Illus. 8°. *L.22.12
- Curten, —.
Essai sur les jardins. Lyon, 1807. 8°. *L.34.24
- Czullik, August.
Wiener Gärten im Jahre 1890. Wien, 1891. 24 pls. F°. *L.50.10
Wiener Gärten im vorigen Jahrhundert. Wien, 1891. 30 pls. L. f°. *L.50.11
- Dame, Lorin Low.
Typical elms and other trees of Massachusetts. Introductory chapter by Oliver Wendell Holmes. Plates by Henry Brooks, reproduced by the photogelatine process. Boston, 1890. 57 pls. F°. *L.20.13

- Dana, James Dwight.
Manual of geology . . . with special refer-
ence to American geological history. 3d
edition. N. Y. [1880.] Illus. 12 pls.
8°. *L.13.2
- Darcel, Jean.
Étude sur l'architecture des jardins. Paris,
1875. Pls. 8°, large paper. *L.31.26
- Darwin, Erasmus.
The botanic garden; a poem, in two parts.
With philosophical notes. Part 1. Lon-
don, 1790. Pls. 4°. *L.51.9
Contents. — Part 1. The economy of vegetation.
- Decaisne, Joseph, and Charles Victor Naudin.
Manuel de l'amateur des jardins. Traité
général d'horticulture . . . Paris. [1862-
72.] 5 v. Illus. 12°. *L.34.21
- Delamer, Eugene Sebastian.
The flower-garden. New edition. London.
N. d. Pl. 16°. *L.24.6
- Deland, Margaret.
The old garden and other verses. Deco-
rated by Walter Crane. Boston, 1894. 12°.
*L.64.6
- Delille, Jacques.
L'homme des champs, ou, les Géorgiques
françoises. Strasbourg, 1800. Pl. 16°.
*L.65.13
Les jardins, ou, l'art d'embellir les paysages.
Poème. 2e édition. Paris, 1782. Pl. 8°.
*L.65.8
Same. Nouvelle édition, augmentée. Paris,
1803. 24°. *L.65.9
- Dennis, Jonas.
The landscape gardener. London, 1835.
Pls. 8°. *L.33.24
- Depelchin, Fernand.
Les forêts de la France. Tours, 1886. Illus.
Pls. L. 8°. *L.22.2
- Des Cars, Amédée Joseph, comte.
A treatise on pruning forest and ornamental
trees. Translated from the 7th French
edition by Charles S. Sargent. Boston,
1881. Illus. Pl. 12°. *L.22.32
- Description of a plan for the improvement of
Central Park. [By] "Greensward."
N. Y., 1858. 8°. *L.53.29
- Description of the design for laying out the
Central Park, bearing the motto "Ars
longa, vita brevis est." N. Y., 1858. 8°.
*L.53.26
- Desjardins, Gustave.
Le Petit-Trianon. Versailles, 1885. Illus.
Pls. Plans. L. 8°. *L.51.13
- Dezallier d'Argenville, Antoine Joseph.
La théorie et la pratique du jardinage. Ou
l'on traite à fond des beaux jardins apellés
communément les jardins de propreté,
comme sont les parterres, . . . [Anon.]
Paris. [1709?] Pls. 4°. *L.31.1
Same. Par L. S. A. I. D. A. Nouvelle édi-
tion. 1713. Pls. *L.31.2
- The theory and practice of gardening:
wherein is fully handled all that relates to
fine gardens, commonly called pleasure-
gardens. Done from the French original,
by John James of Greenwich. London,
1712. Pls. 4° *L.31.3
Wrongly attributed to Le Blond, who merely il-
lustrated some of the editions of this work.
- Dezallier d'Argenville, Antoine Nicolas.
Dictionnaire du jardinage . . . Par M.
D * * *. Paris, 1777. Pls. Sm. 8°.
*L.24.8
- Voyage pittoresque de Paris; ou, indication
de tout ce qu'il y a de plus beau dans
cette grande ville en peinture, sculpture,
& architecture. Par M. D * * *. 2e
édition, augmentée des cabinets de ta-
bleaux des particuliers . . . Paris, 1752.
Pls. 12. *L.57.3
- Diesel, Matthias.
Erlustierende Augenweide in Vorstellung
Herrlicher Garten und Luftsgebäude,
theils inventiert und angelegt theils nach
dermahligen Sito gezeichnet. Aug. Vind.
[1730?] 52 pls. 8°, obl. *L.61.21
- Downing, Andrew Jackson.
Cottage residences; designs for rural cot-
tages and cottage-villas, and their gardens
and grounds. Adapted to North America.
2d edition. N. Y., 1844. Illus. Pls. 8°.
*L.41.1
Same. 4th edition. N. Y., 1856. 8°. *L.41.2
Same. New edition. Containing revised lists
of trees [etc.], by H. W. Sargent and C.
Downing. Edited by G. E. Harney.
N. Y., 1873. Illus. Pls. *L.41.3
Rural essays. Edited by George William
Curtis. N. Y., 1853. Illus. Pls. Portr.
8°. *L.32.10
- Duchesne, Antoine Nicolas.
Sur la formation des jardins; par l'auteur
des Considérations sur le jardinage. Paris,
1775. 8°. No. 3 in *L.33.15
- Dupuis, Aristide.
Conifères de pleine terre. 2e édition. Paris.
[1881.] Illus. Pls. 12°. *L.35.5
- Duvillers, François Joseph.
Les parcs et jardins. Paris, 1871, 78. 2 v.
80 pls. L. 1°. *L.50.7
- Dyer, Thomas Henry.
On imitative art, its principles and pro-
gress. London, 1882. 8°. *L.54.10
- Eckman, William H.
Public parks. Facts and statistics . . . rela-
tive to the benefits and profits derived
therefrom in large communities. Cleve-
land, 1888. 8°. *L.53.84
- Eddy, John William.
Boydell's picturesque scenery of Norway.
. . . Revised by William Tooke. Lon-
don, 1820. 80 col. pls. F°. *L.50.12
- Eggleston, Nathaniel Hillyer.
Hand-book of tree-planting. N. Y., 1888.
Table. 12°. *L.22.34
- Eichler, G.
Handbuch des gärtnerischen Pflanzeich-
nens. Berlin, 1880. Illus. 18 col. pls. 4°.
*L.31.19
Same. 1891. Text, 8°; Atlas, L. 8° *L.31.20
- Eidlitz, Leopold.
The nature and function of art, more es-
pecially of architecture. N. Y., 1881. 8°.
*L.54.7
- Ekart, Tobias Philipp.
Betrachtungen über bildende Landschafts-
Gartenkunst in einer erläuternden Be-
schreibung des Fürstlichen Parks zu Son-
dershausen. Potsdam, 1840. Plan. F°.
*L.31.29

- Eliot, Charles.
A report upon the opportunities for public open spaces in the Metropolitan district of Boston, made to the Metropolitan park commission, 1892. Boston, 1893. Maps. Pls. 8°. *L.53.64
- Elliott, Franklin Reuben.
Handbook of practical landscape gardening. 2d edition, enlarged. Rochester, 1885. Illus. Pls. 8°. *L.32.17
- Ellwanger, George H.
The garden's story; or, pleasures and trials of an amateur gardener. 2d edition. N. Y. 1889. 16°. *L.24.4
The story of my house. N. Y., 1891. Pl. 16°. *L.64.1
A large paper copy.
- Emerson, George Barrell.
A report on the trees and shrubs growing naturally in the forests of Massachusetts. 3d edition. Boston, 1878. 2 v. Pls. 8°. *L.22.5
- Engelhardt, H. A.
The beauties of nature combined with art. Montreal, 1872. 16°. *L.22.41
- England. Views.
Fifty-seven photographs of places in England. In two cases. *L.60.1
- Ernouf, Alfred Auguste, baron.
L'art des jardins. Paris, 1868. 2 v. Illus. Plans. 16°. *L.35.6
Same. 3e édition, entièrement refondue, avec le concours de A. Alphand. Ouvrage orné de 510 illustrations. Paris. [1885.] 4°. *L.31.21
- Falke, Jakob von.
Der Garten. Seine Kunst und Kunstgeschichte. Berlin. [1884.] Illus. Pls. 4°. *L.31.18
- Famous parks, The, and gardens of the world. London, 1880. Illus. Pls. L. 8°. *L.51.17
- Felton, Samuel.
Gleanings on gardens, chiefly respecting those of the ancient style in England. London, 1829. Pl. 8°. *L.33.10
On the portraits of English authors on gardening. London, 1828. 8°. *L.33.10
Same. 2d edition, with additions. London, 1830. Portr. 8°. *L.63.5
- Fergusson, James.
History of the modern styles of architecture. 3d edition. By Robert Kerr. N. Y., 1891. 2 v. Illus. Pls. 8°. *L.54.14
- Fernow, B. E.
Forestry for farmers. Washington, 1895. Illus. [U. S. Dept. of agriculture.] 8°. *L.22.25
- Finden, William, and Edward Francis Finden.
Views of ports and harbours, watering places, fishing villages, and other picturesque objects on the English coast. Engraved from paintings by J. D. Harding, G. Balmer, . . . and other artists. London. [1836.] 50 pls. 4°. *L.51.4
- Flint, Charles Louis.
A practical treatise on grasses and forage plants. Revised edition. Boston, 1888. Illus. 8°. *L.12.21
- Follen, Charles Christopher.
Suggestions on landscape gardening. Thorough drainage; by J. Herbert Shedd. Boston, 1859. 8°. *L.33.30
- Forbes, Alexander.
Short hints on ornamental gardening. Kendal, 1829. Illus. Pls. Plans. Sm. 8°. *L.34.7
- France. Views.
Twenty-seven photographs of places in France. In two cases. *L.60.2
- Gaertnerische Plankammer. Hrsg. von M. Bertram, Fr. Bouché, Carl Hampel. Heft 1-3. Berlin, 1892-94. 3 v. Plans. L. f°. *L.20.9
- Garden and forest. A journal of horticulture, landscape art and forestry. Conducted by Charles S. Sargent. Vol. 1-7. N. Y., 1888-97. F°. *L.11.1
- Garden annual, The, almanack, and address book for 1892. Prepared under the direction of William Robinson. London. [1892.] 12°. *L.24.13
- Geitner, H.
Der Thiergarten bei Berlin. Chromolithographischer Plan. Nebst Text. Berlin, 1880. 16°. *L.53.86
- Gelée, Claude, called Claude Lorrain.
Liber veritatis; or, a collection of prints . . . in the collection of the Duke of Devonshire. Executed by Richard Earlom. [Engraved by John Boydell.] London, 1777-1819. 3 v. 3 portrs. 300 mezzotints. L. f°. *L.50.19
- Geschwind, Rudolf.
Beiträge zur Landschaftsgärtnerei. Die Felsen in Gärten und Parkanlagen. Stuttgart, 1880. 8°. *L.33.11
- Gilpin, William.
An essay on prints. 5th edition. London, 1802. Pls. 8°. No. 1 in *L.42.15
Forest scenery. Edited by Francis George Heath. London, 1887. Pls. 8°. *L.22.19
The last work published of the Rev. William Gilpin, representing the effect of a morning, a noon tide, and an evening sun. London, 1810. 30 pls. F°. *L.51.21
With the half-title Gilpin's day.
- Observations made in 1772, on several parts of England; particularly the mountains and lakes of Cumberland and Westmoreland. 2d edition. London, 1788. Pls. 8°. *L.42.10
Same. 3d edition. 1792. *L.42.8
Observations made in 1776, on several parts of Great Britain; particularly the Highlands of Scotland. 2d edition. London, 1792. 2 v. *L.42.9
Observations on several parts of Great Britain, particularly the Highlands of Scotland, relative chiefly to picturesque beauty, made in the year 1776. 3d edition. London, 1808. 2 v. Pls. 8°. *L.42.11
Observations on several parts of the counties of Cambridge, Norfolk, Suffolk, and Essex. Also on several parts of North Wales; made in 1769 [and]. 1773. London, 1809. 20 col. pls. 8°. *L.42.16
Observations on the coasts of Hampshire, Sussex, and Kent. London, 1804. Pls. 8°. *L.42.17=No. 2 in *L.42.14
Observations on the river Wye, and several parts of South Wales, &c., made in the summer of 1770. London, 1782. Pls. 8°. No. 1 in *L.42.14
Same. 2d edition. 1789. *L.42.19

- Observations on the western parts of England; added, a few remarks on the picturesque beauties of the Isle of Wight. 2d edition. London, 1808. Pls. 8°. *L.42.7= *L.42.13
- Remarks on forest scenery, and other woodland views, illustrated by the scenes of New-Forest in Hampshire. London, 1791. 2 v. Pls. 8°. *L.42.12
- Same. 2d edition. 1794. *L.22.18
- Three essays: on picturesque beauty; on picturesque travel; and on sketching landscape: added, a poem, on landscape painting. London, 1792. Pls. *L.42.18; No. 2 in *L.42.15
- Gilpin, William Sawrey.
Practical hints upon landscape gardening: with some remarks on domestic architecture, as connected with scenery. 2d edition. London, 1835. Pls. 8°. *L.32.16
- Glenny, George.
Hand-book of practical gardening. London. N. d. Sm. 8°. *L.34.4
- Godefroy, A.
Plaintes d'un horticulteur sur la triste situation de la section de culture au Muséum d'histoire naturelle. Saint Germain en Laye, 1880. 8°. *L.24.1
- Goodyear, William Henry.
A history of art. 2d edition. N. Y. [1889?] Pls. 8°. *L.54.1
- Graef, H. A.
Explanatory remarks to a sectional plan of Prospect park. Brooklyn, 1865. 8°. *L.53.53
- Gray, Asa.
Lessons in botany. Revised edition. The elements of botany. N. Y. [1887.] Illus. 8°. *L.23.3
- Gressent, Vincent Alfred.
Parcs et jardins. Paris, 1877. Illus. 18°. *L.53.107
- Same. 1891. Pls. Plans. 12°. *L.53.108
- Grindlay, Robert Melville.
Scenery, costumes, and architecture chiefly on the western side of India. London, 1830. 36 col. pls. F°. *L.50.21
- Gross, Wilhelm.
Ansichten über bildende Gartenkunst. I. Theil. Berlin 1868. 16°. *L.34.15
- Guiol, —.
Essai sur la composition et l'ornement des jardins. [Anon.] Paris, 1823. 107 pls. 16°, obl. *L.26.4
- Gustin, Samuel I.
Plan for Central Park. [N. Y.] N. d. 8°. *L.53.22
- Haenel, C. Moritz.
Sächsische Herrnsitze und Schlösser. Hrsg. von Haenel u. Adam und Cornelius Gurlitt. Dresden. [1885?] Illus. 72 pls. F°. *L.50.15
- Hall, William Hamilton.
Alessandro irrigation district, California. Its physical, engineering and business problems and conditions, W. H. Hall. Its legal status, Wilson & Wilson. San Francisco, 1891. Maps. 8°. *L.12.14
- Central irrigation district, California. Its physical, engineering and business problems and conditions, W. H. Hall. Its legal status, Wilson & Wilson. San Francisco, 1891. Pl. Map. 8°. *L.12.13
- Perris irrigation district, California. Its physical, engineering and business problems and conditions, W. H. Hall. Its legal status, Wilson & Wilson. San Francisco, 1891. Pls. Maps. 8°. *L.12.12
- Hallier, Ernst.
Grundzüge der landschaftlichen Gartenkunst, eine Aesthetik der Landschaftsgärtnerei . . . Neue Ausgabe. Leipzig, 1896. Illus. Portr. 8°. *L.32.11
- Hamerton, Philip Gilbert.
The graphic arts. London, 1882. Portrs. Pls. F°, large paper. *L.60.15
- Imagination in landscape painting. Boston, 1895. Pls. *L.55.6
- Landscape. With original etchings and illustrations from pictures and drawings. London, 1885. F°, large paper. *L.60.14
- Handtke, F.
General-Karte des Schwarzen Meeres mit den Karten des Bosporus und der Dardanellenstrasse. Glogau, 1877. Size, 25½ x 19¼ inches. *L.61.2
- Harding James Duffield.
Seventy-five views of Italy and France, adapted to illustrate Byron, Rogers, Eustace, and all works on Italy and France. Engraved by Allen, Brandard . . . etc. London, 1834. F°. *L.50.24
- Harris, Joseph.
Food for plants. Edited by S. M. Harris. [Chicago? 1893.] 12°. *L.23.13
- Harvard college.
Report of the Committee on fine arts. May, 1892. Signed by Robert S. Peabody and Arthur Rotch. [Cambridge, 1892.] 8°. *L.54.6
- Haupt, Lewis Muhlenberg, editor.
A move for better roads. Essays on road-making and maintenance and road laws, for which prizes or honorable mention were awarded through the University of Pennsylvania . . . Phila., 1891. 8°. *L.53.88
- Hayes, Samuel.
A practical treatise on planting; and the management of woods and coppices. 3d edition. Dublin, 1822. Vignettes. Pls. 8°. *L.22.22
- Hazlitt, William Carew.
Gleanings in old garden literature. N. Y., 1887. 16°. *L.66.5
- Heath, Francis George.
Autumnal leaves. With colored plates, and wood illustrations of New Forest scenery, engraved by James D. Cooper, . . . 3d edition. London, 1885. Sm. 8°. *L.15.3
- Burnham beeches. Holiday edition. (6th.) London, 1885. Pls. Fac-simile. Sm. 8°. *L.22.36
- Sylvan winter. London, 1886. Illus. Pls. Sm. 8°. *L.15.4
- Heely, Joseph.
Letters on the beauties of Hagley, Envil, and the Leasowes. London, 1777. 16°. *L.57.6
- Hibberd, Shirley.
Rustic adornments for homes of taste. 2d edition. London, 1857. Illus. Pls. Sm. 4°. *L.56.5

- Hibbert, E. R., and Robert Buist.
The American flower garden directory.
With lists of shrubs, [etc.]. New edition,
with additions. Phila., 1841. 8°. *L.25.3
- Higginson, Thomas Wentworth.
Out-door papers. Boston, 1871. 16°. *L.15.7
- Hirschfeld, Christian Cayus Lorenz.
Théorie de l'art des jardins. Trad. de l'al-
lemand. Leipzig, 1779-83. 4 v. in 2.
Illus. Pls. 4°. *L.21.2
Theorie der Gartenkunst. Leipzig, 1775.
Pl. 16°. *L.34.1
Same. 1779-85. 5 v. in 2. Illus. Pls.
*L.32.21
- Historical sketch, An, of Los Angeles county,
California. Los Angeles, 1876. 8°. *L.12.11
- Hofland, Barbara Wreaks.
A descriptive account of the mansion and
gardens of White-Knights, a seat of the
Duke of Marlborough. Illustrated with
23 engravings, from pictures by T. C.
Hofland. London. [1810.] F° *L.20.3
- Hofland, Thomas Christopher.
Specimens of garden decorations and orna-
mental scenery, selected from White-
Knights. Engraved from drawings by T.
C. Hofland. London, 1846. Pls. 4°. *L.20.4
- Hole, Samuel Reynolds.
A book about the garden and the gardener.
2d edition. London, 1893. Sm. 8°. *L.24.3
- Home, Henry, lord Kames.
Elements of criticism. 5th edition. Edin-
burgh, 1774. 2 v. 8° *L.62.14
- Horticulturist, The, and journal of rural art
and rural taste. Albany, 1846-66. 21 v.
4° & 8°. *L.11.5
- Hovey, Charles Mason.
The fruits of America. Boston, 1852, 56. 2
v. Portrs. Col. pls. L. 8°. *L.22.4
- Howitt, William.
The rural life of England. London, 1841.
Pl. 8°. *L.15.1
- Hughes, John Arthur.
Garden architecture and landscape garden-
ing. London, 1866. Illus. Pls. Plans.
8°. *L.42.5
- Ideenmagazin für Liebhaber von Gärten,
englischen Anlagen und für Besitzer von
Landgütern . . . Hrsg. von Grohmann
und Baumgärtner. 3te Auflage. Leip-
zig. [1799-180-?] 3 v. Pls. Plans. 4°. *L.20.16
Continued under the title, Neues Ideen-Magazin
für Liebhaber von Gärten . . . [*L.20.17].
- Imai, K.
A guide to chrysanthemum cultivation.
Tokio, 1892. Illus. 8°. *L.25.1
- Italy. Views.
Twenty-three photographs of places in
Italy. In a case. *L.60.3
- Jaeger, Hermann.
Gartenkunst und Gärten sonst und jetzt.
Berlin, 1888. Illus. L. 8° *L.32.25
Lehrbuch der Gartenkunst. Berlin. 1877.
8°. *L. 33.9
Same. Leipzig. [1877?] *L.34.26
- James, Joseph Francis.
On the geographical distribution of the in-
digenous plants of Europe and the north-
east United States. Cincinnati. [1881.]
8°. *L.23.10
- Japan. Views.
Large view with smaller views in margin.
*L.53.96
- Jaubert, Hippolyte François, comte.
La botanique à l'Exposition universelle de
1855. Paris, 1855. 8°. *L.23.16
- Jefferies, John Richard.
Amaryllis at the fair. A novel. London,
1887. 8°. *L.64.4
- Jessen, Peter.
Gartenanlagen und Gartendecorationen
nach alten Vorbildern. Berlin, 1802. 34
pls. L. f°. *L.50.9
- Jewitt, Llewellynn, and Samuel Carter Hall.
The stately homes of England. London.
1874, 77. 2 v. Illus. Pls. 8°. *L.42.4
- Johnson, George William.
The gardener's dictionary. With a revised
supplement including all the new plants
and varieties to the end of 1880. By N. E.
Brown. London, 1882. 8°. *L.34.23
A history of English gardening. London,
1820. *L.33.26
- Johnson, Joseph Forsyth.
The natural principles of landscape garden-
ing. Belfast. [1874.] Pls. L. 8°. *L.31.9
- Jones' views of the seats, mansions, castles,
etc. of noblemen and gentlemen in Eng-
land, Wales, Scotland and Ireland. Series
4. Scottish seats. London, 1829. 4°. *L.41.11
- Kemp, Edward.
How to lay out a garden. From the 2d
London edition. N. Y., 1858. Illus. Pls.
12°. *L.34.10
Same. 3d edition, enlarged. London, 1864.
8°. *L.34.11
Same. From the 2d London edition, en-
larged. 2d edition. N. Y., 1880. 12°. *L.34.12
- Kennedy, John.
A treatise upon planting, gardening, and the
management of the hothouse. Dublin,
1784. 8°. *L.24.2
- Kern, G. M.
Practical landscape gardening, with refer-
ence to the improvement of rural resi-
dences. 3d edition. Cincinnati, 1855.
Illus. Pls. 12°. *L.34.16
- Knight, Richard Payne.
The landscape, a didactic poem. 2d edition.
London, 1795. Pls. 4°. *L.51.14
- Krafft, Jean Charles.
Maisons de campagne, plans et décorations
de parcs et jardins français, anglais et
allemands. Paris, 1876. 219 pls. F°. *L.50.3
- Plans des plus beaux jardins pittoresques
de France, d'Angleterre et d'Allemagne.
Paris, 1809, 10. 2 v. Pls. 8°, obl. *L.61.22
- Recueil d'architecture civile, contenant les
plans, coupes et élévations des châteaux,
maisons de campagne et habitations ru-
rales . . . situés aux environs de Paris et
dans les départemens voisins . . . [Paris,
1806, 07.] 120 pls. L. f° *L.50.4

- La Borde, Alexandre Louis Joseph, comte de. Description des nouveaux jardins de la France, et de ses anciens châteaux. Paris, 1808. 130 pls. Map. L. f°. *L.50.6
Another copy, without the text, and containing only 45 plates, of which 2 are inserted, is on *L.50.16.
- Lalos, J.
De la composition des parcs et jardins pittoresques. 2e édition, augmentée. Paris, 1824. Ps. Plans. 8°. *L.53.98
- Lanciani, Rodolfo Amedeo.
Ancient Rome in the light of recent discoveries. Boston, 1892. Illus. Pls. 8°. *L.52.3
- Langley, Batty.
New principles of gardening: or, the laying out and planting parterres, groves . . . avenues, parks, &c. London, 1728. 28 pls. 4°. *L.21.1
- Langier, Marc Antoine.
Essai sur l'architecture. [Anon.] Paris, 1753. 16°. *L.55.18
- Le Berryais, René.
Traité des jardins, ou le nouveau de la Quintinye. Par M. L. B * * *. Paris, 1775. 2 v. 8°. *L.26.2
Contents. — 1. Jardin fruitier. 2. Jardin potager.
- Lecoq, —, architecte de parcs et jardins.
Le paysagiste. Nouveau traité d'architecture de parcs et jardins (école moderne). Paris, 1860. Pls. L. f° *L.50.29
- Lefèvre, André.
Les parcs et les jardins. 2e édition. Paris, 1871. Illus. Pls. *L.53.106
- Leland Stanford Junior university.
[Senator Stanford's plan for its organization. The grant, founding and endowing the university. Description of the property.] San Francisco, 1888. Portrs. 8°. *L.52.13
- Le Lorrain de Vallemont, Pierre.
Curiositez de la nature et de l'art sur la végétation: ou, l'agriculture, et le jardinage dans leur perfection . . . Nouvelle édition, augmentée. Pte I. Paris, 1734. Pls. 12°. *L.26.1
- Lemonnier de la Croix, G. E., and Louis Marie Normand.
Paris moderne; ou, choix de maisons de campagne et constructions rurales des environs de Paris. 3e partie. Liège. [185-?] Pls. Plans. F°. *L.61.1
- Le Rouge, Georges Louis.
Détail des nouveaux jardins à la mode. Cahier 1-12. Paris. [1755-1785.] 291 pls. 4°, obl. *L.61.30
- Letarouilly, Paul Marie.
Édifices de Rome moderne. Paris, 1868-74. Text, 3 v. in 1. Illus. Pls. Plans. 4°; Atlas, 3 v. Pls. Map. L. f°. *L.70.17
- Le Tourneur, Pierre Prime Félicien.
Le jardin anglais. Londres, 1788. 2 v. Portr. 8°. *L.65.1
- Lewis, Frederick Christian
Scenery of the rivers of England and Wales, illustrated by painter's etchings. From pictures in the collection of the Duke of Bedford, Lord Northwick, . . . Painted and engraved by F. C. Lewis. London. [1845-48.] 68 pls. F°. *L.50.23
- Lézay-Marnésia, Claude François Adrien, marquis de.
Les paysages, ou, essais sur la nature champêtre; poème. Nouvelle édition, augmentée. Suivi . . . de plusieurs pièces fugitives . . . Paris, 1800. 8°. *L.62.8
- Liger, Louis.
Le jardinier fleuriste. Nouvelle édition. Paris, 1764. Pls. 8°. *L.24.11
- Ligne, Charles Joseph, prince de.
Coup d'œil sur Belœil. Belœil, 1781. 8°. *L.52.15
- Œuvres choisies, pub. par M. de Propiac, faisant suite aux Lettres et pensées du mêmes auteur, pub. par Madame la baronne de Staël-Holstein. Paris, 1809. 8°. *L.62.18
- Little, William.
Letter to the president and council of the Montreal Board of trade objecting "To get rid of the lumber." Montreal, 1890. 8°. *L.22.9
- Loudon, Jane.
The amateur gardener's calendar. A monthly guide. London, 1867. Illus. Sm. 8°. *L.33.4
- Gardening for ladies; and companion to the flower-garden. 2d American from the 3d London edition. N. Y., 1860. Illus. 12°. *L.33.3
- Loudon, John Claudius.
An encyclopædia of cottage, farm and villa architecture and furniture . . . London, 1833. Illus. Pls. Plans. 8°. *L.42.6
- An encyclopædia of gardening; comprising horticulture, floriculture, arboriculture, and landscape-gardening. London, 1822. Illus. 8°. *L.32.7
- Hints on the formation of gardens and pleasure grounds. [Anon.] London, 1812. Pls. 4° *L.31.27
- Observations on the formation and management of useful and ornamental plantations; on the theory and practice of landscape gardening and on gaining and embanking land from rivers or the sea. Edinburgh, 1804. Pls. 8°. *L.32.8
- The suburban gardener, and villa companion. London, 1838. Illus. Pls. 8°. *L.32.6
- A treatise on forming, improving, and managing country residences. London, 1806. 2 v. 4°. *L.41.5
- Trees and shrubs; an abridgment of the Arboretum et fruticetum Britannicum. London, 1883. Illus. Pls. 8°. *L.22.6
- The villa gardener . . . 2d edition. Edited by Mrs. Loudon. London, 1850. Illus. Pls. 8°. *L.32.9
- Lubbock, Sir John, baronet.
The beauties of nature and the wonders of the world we live in. London, 1893. Illus. Pls. 8°. *L.15.6
- Lyell, Sir Charles.
Principles of geology. 11th edition. N. Y., 1887. 2 v. Illus. Pls. Maps. 8° *L.13.1
- Lyon, P.
A treatise on the physiology and pathology of trees . . . Edinburgh, 1816. Pl. 8°. *L.22.28

- McDonald, Alexander.
A complete dictionary of practical gardening. With engravings . . . from original drawings by Sydenham Edwards. London, 1807. 2 v. Col. pls. 4°. *L.21.3
- McDonald, Edward.
Old Copp's hill and burial ground. With historical sketches. 13th edition. Boston, 1891. Portr. Pls. Fac-similes. 8°. *L.53.75
- McMillan, William.
Landscape gardening in high-colored foliage. [Buffalo, 1889.] 8°. *L.31.13
- Major, Joshua.
The theory and practice of landscape gardening. London, 1852. Illus. Portr. Pls. 4°. *L.31.12
- Mangin, Arthur.
Les jardins. Histoire et description. Tours, 1867. Illus. Pls. F°. *L.20.12
- Manning, Warren H.
Landscape gardening. Boston, 1893. 8°. *L.32.14
- Marshall, Charles.
An introduction to the knowledge and practice of gardening. 1st American from 2d London edition. Added an essay on quick-lime as a cement and as a manure, by James Anderson. Boston, 1799. 2 v. Sm. 8°. *L.24.5
- Marshall, William.
On planting and rural ornament. 3d edition. London, 1803. 2 v. Sm. 8°. *L.33.23
Planting and ornamental gardening. [Anon.] London, 1785. 8°. *L.33.21
- Planting and rural ornament. Being a 2d edition, with large additions, of Planting and ornamental gardening. [Anon.] London, 1796. 2 v. 8°. *L.33.22
- Mason, George.
An essay on design in gardening . . . Now greatly augmented . . . London, 1795. 8°. *L.33.2
- Mason, William.
The English garden: a poem. New edition. Added a commentary and notes by W. Burgh. York, 1783. 8°. *L.66.3
- Mason, William, and Horace Walpole, 4th earl of Orford.
An heroic epistle to Sir William Chambers, knight, comptroller general of His Majesty's works, and author of a late dissertation on oriental gardening. With explanatory notes. [Anon.] London, 1773. 4°. No. 1 in *L.31.25
Same. 11th edition. No. 2 in *L.31.25
- Massachusetts.
Joint board upon the improvement of Charles river.
Report upon the improvement of Charles river from the Waltham line to the Charles River bridge. Boston, 1894. Pls. Maps. 8°. *L.53.68
- Metropolitan park commissioners.
Report [preliminary]. [Boston.] 1893. Illus. Pls. Maps. Plans. 8°. *L.53.65
- Mavor, William Fordyce.
A new description of Blenheim, the seat of the Duke of Marlborough. With a preliminary essay on landscape gardening. [Anon.] 8th edition, enlarged. Oxford, 1811. Pls. Plan. *L.57.2
- Mawe, Thomas, and John Abercrombie.
Every man his own gardener. 24th edition, with improvements, by James Main. London, 1839. Pls. Sm. 8°. *L.24.14
- Mayhew, Henry.
The Rhine and its picturesque scenery. Rotterdam to Mayence. London, 1856. Pls. 8°. *L.52.2
- Meador, James.
The planter's guide: or, pleasure gardener's companion. London, 1779. Pls. 8°, obl. *L.22.35
- Meason, Gilbert Laing.
On the landscape architecture of the great painters of Italy. [London.] 1828. 55 pls. 4°. *L.41.12
- Medikus, Friedrich Kasimir.
Beiträge zur schönen Gartenkunst. Mannheim, 1782. Sm. 8°. *L.35.4
- Meyer, G.
Lehrbuch der schönen Gartenkunst. Mit besonderer Rücksicht auf die Parkanlagen. 2te vermehrte Auflage. Berlin, 1873. Illus. 25 plans. L. f°. *L.20.10
- Miller, Philip.
Dictionnaire des jardiniers . . . Ouvrage trad. de l'anglois, sur la huitième édition, par une société de gens de lettres [Laurent de Chazelles]. Paris, 1785. 8 v. Portr. Pls. Plans. 4°. *L.21.5
- Millin de Grandmaison, Aubin Louis.
Dictionnaire des beaux-arts. Paris, 1806. 3 v. 12°. *L.54.18
- Milner, George.
Country pleasures, the chronicle of a year chiefly in a garden. Boston, 1881. 16°. *L.15.8
- Milner, Henry Ernest.
The art and practice of landscape gardening. London, 1890. Pls. 4°. *L.31.22
- Monthorin, France.
Note sur l'exploitation agricole du domaine de Monthorin, arrondissement de Fougères. Fougères, 1891. 8°. *L.12.20
- Morel, Jean Marie.
Théorie des jardins. [Anon.] Paris, 1776. 16°. *L.32.4
- Morren, Charles Jacques Édouard.
Correspondance botanique. Liste des jardins, des chaires, des musées, des revues et des sociétés de botanique du monde. 8e édition. Liège, 1880. 8°. *L.23.15
- Morris, Francis Orpen.
A series of picturesque views of seats of the noblemen and gentlemen of Great Britain and Ireland. London. [1866-80.] 6 v. Colored pls. 4°. *L.41.8
- Morris, Richard.
Essays on landscape gardening, and on uniting picturesque effect with rural scenery. London, 1825. Pls. 4°. *L.31.23
- Morris, William.
Hopes and fears for art. Five lectures delivered in Birmingham, London, and Nottingham, 1878-1881. London, 1882. Sm. 8°. *L.55.8
- Murray, Andrew.
The pines and firs of Japan. London, 1863. Illus. 8°. *L.22.29

- Nash, Joseph.
The mansions of England in the olden time.
Re-edited by J. Corbet Anderson. With
the original illustrations reduced and executed
in lithography by Samuel Stanesby.
London, 1869-72. 4 v. Pls. F°. *L.60.10
- Neale, John Preston.
Views of the seats of noblemen and gentlemen
in England, Wales, Scotland, and Ireland.
[1st series.] London, 1818. Pls.
4°. *L.41.9
- Neide, Eduard.
Ausgeführte Gartenanlagen. Hrsg. von H.
Geitner. Berlin, 1884. Plans. F°
*L.20.11
- Neubert, Wilhelm.
Schlüssel zur bildenden Gartenkunst . . .
Stuttgart, 1853. Col. pls. 8°. *L.33.1
- Neues Ideen-Magazin für Liebhaber von
Gärten, englischen Anlagen und für
Besitzer von Landgütern . . . Hrsg. von
Baumgärtner. [Heft 1-12.] Leipzig,
1806. Pls. Plans. 4°. *L.20.17
This continues the Ideenmagazin für Liebhaber
von Gärten . . . [*L.20.16].
- New York, city.
Board of commissioners of the Central park.
Annual report, 1st, 3d, 13th. N. Y., 1857,
1860, 1870. 3 v. Pls. Maps. Plans. 8°
*L.53.18
- Municipal government. Special committee
on parks.
Report, relative to laying out a new park
in the upper part of the city. N. Y., 1852.
Map. 8°. *L.53.15
- New York, state. Board of commissioners of
the state survey.
Special report on the preservation of the
scenery of Niagara Falls, and 4th annual
report on the triangulation of the state,
for 1879. James T. Gardner, director.
Albany, 1880. Maps. Pls. 8° *L.53.8
- Newhall, Charles S.
The trees of northeastern America. With an
introductory note by N. L. Britton.
N. Y., 1890. Pls. 8°. *L.22.7
- Newton, Joseph.
The landscape gardener. London, 1876. 24
pls. Sm. f°. *L.31.28
- Nicholson, George, editor.
The illustrated dictionary of gardening, a
practical and scientific encyclopædia of
horticulture for gardeners and botanists.
Edited by George Nicholson, assisted by
J. W. H. Traill and J. Garrett. London,
1885-88. 4 v. Illus. L. 8° *L.21.4
- Ogawa, K.
Matsushima, (one of the three most famous
views of Japan). Tokyo. N. d. 6 pls.
F°. *L.50.27
- Scenes in Nikko and vicinity. Tokyo. N. d.
12 pls. F°. *L.50.28
- Olmsted, Frederick Law.
A consideration of the justifying value of a
public park. Boston, 1881. L. 8°. *L.53.4
- Mount Royall, Montreal. N. Y., 1881. Plan.
12°. *L.53.97
- The spoils of the park. With a few leaves
from the deep-laden note-books of "a
wholly unpractical man." [N. Y.] 1882.
8°. *L.53.43
Relates to Central park, New York.
- Olmsted, Frederick Law, and Jonathan Baxter
Harrison.
Observations on the treatment of public
plantations, more especially relating to the
use of the axe. Boston, 1889. 8°
*L.22.10
- Olmsted, Frederick Law, and John C. Olm-
sted.
Plan of public recreation grounds for the
city of Pawtucket. Report. Boston, 1888.
Map. Sm. 4°. 4431.100=*L.53.6
- Olmsted, Frederick Law, and Calvert Vaux.
General plan for the improvement of the
Niagara reservation. N. Y., 1887. Plan.
L. 8°. *L.53.9
- Olmsted, Vaux & co.
Observations on the progress of improve-
ments in street plans. With special refer-
ence to the park-way proposed to be laid
out in Brooklyn. Brooklyn, 1868. 8°
*L.53.56
- Preliminary report to the commissioners
for laying out a park in Brooklyn, N. Y.
Brooklyn, 1866. Plan. 8°. *L.53.54
- Ompeda, Ludwig Friedrich Christian Carl,
Freiherr von.
Rheinische Gärten von der Mosel bis zum
Bodensee. Bilder aus alter und neuer
Gärtnererei. Berlin, 1886. Illus. Pls. Plans.
4°. *L.31.15
- Palladio, Andrea.
The second [and third] book of Palladio's
Architecture. Translated from the
Italian, and the designs carefully copied
by B. Cole, engraver. London, 1733. Pls.
Plans. F°. *L.41.14
- Papworth, John Buonarotti.
Hints on ornamental gardening: consisting
of a series of designs for garden buildings,
gates, fences, railings, &c. London, 1823.
29 colored pls. L. 8°. *L.41.6
- Rural residences. With some observations
on landscape gardening. London, 1818.
Col. pls. L. 8°. *L.41.7
- Park Jurjavés [nächst Agram in Kroatien].
Wien. [1853.] 11 pls. F°, obl. *L.50.14
- Parsons, Samuel, jr.
Landscape gardening. N. Y., 1891. Illus.
Pls. 8°. *L.32.23
- Péan, Armand.
L'architecte paysagiste. Paris. [1886.]
Illus. Pls. Plans. 8° *L.31.11
- Percier, Charles, and Pierre François Léonard
Fontaine.
Choix des plus célèbres maisons de plaisance
de Rome et de ses environs. 2e édition.
Paris, 1824. 75 pls. L. f° *L.70.6
- Plans de plusieurs châteaux, palais et rési-
dences de souverains de France, d'Italie,
d'Espagne et de Russie. [Anon.] Paris.
[1833.] 38 pls. F°. *L.70.7
- Perelle, Adam.
Receuil des plus belles veües des maisons
royale de France. Paris. [1685?] 106 pls.
L. f°. *L.50.25
- Perkins, George Henry.
Catalogue of the flora of Vermont, includ-
ing phænogamous and vascular crypto-
gamous plants growing without cultiva-
tion. Burlington, 1888. L. 8°. *L.23.14

- Petzold, E.
Beiträge zur Landschafts-Gärtneri. Weimar, 1849. Illus. Map. 8°. *L.31.5
- Fürst Hermann v. Pückler-Muskau in seinem Wirken in Muskau und Branitz, sowie in seiner Bedeutung für die bildende Gartenkunst Deutschlands. Leipzig, 1874. Portr. 8°. *L.53.92
- Die Landschafts-Gärtneri. Mit erläuterten Figuren, nach Originalaufnahmen von Friedrich Preller. 2te vermehrte Auflage. Leipzig, 1862. L. 8°. *L.31.6
- Same. 1888. 8°. *L.31.7
- Same. 1896. *L.31.8
- Der Park von Muskau. Hoyerswerda. [1856.] Plan. 16°. *L.53.94
- Philadelphia. Commissioners of Fairmount park.
Annual report. [10th.] Phila., 1878. Portr. Pls. Maps. 8°. *L.53.83
- Phillips, Henry.
Sylva florifera: the shrubby historically and botanically treated. London, 1823. 2 v. 8°. *L.22.23
- Photographs. Collections.
Fourteen miscellaneous photographs, including five of Berlin. In a case. *L.60.7
- Nine photographs, including five of Antwerp and four of Brussels. In a case. *L.60.5
- Picturesque sketches of rustic scenery including cottages & farmhouses. By Prout, Varley, etc. [London?] 1860. 54 pls. F°. *L.60.12
- Pinchot, Gifford.
Biltmore forest. Chicago, 1893. Pls. 12°, obl. *L.53.110
- Pindemonte, Ippolito.
Su i giardini inglesi e sul merito in cio dell'Italia; e Sopra l'Indole dei giardini moderni: saggio di Luigi Mabil, con altre operette sullo stesso argomento. Verona, 1817. Pl. 8°. *L.33.25
- Piringer, —.
Garten-Verschönerungen oder Entwürfe zu geschmackvollen Gartengebäuden und Zierden. Wien. [1823.] 14 pls. F°, obl. *L.61.23
- Wurzbach identifies the author with Benedict Piringer, the engraver.
- Platt, Charles Adams.
Italian gardens. N. Y., 1894. Pls. L. 8°. *L.31.10
- Pontey, William.
The profitable planter. A treatise on the theory and practice of planting forest trees. 3d edition, enlarged. London, 1809. Pl. 8°. *L.22.27
- Practical observations on the culture of lucerne, turnips, . . . &c. Communicated by letters to Dr. Templeman. Added, a comparative view of the broad cast and drill husbandry . . . Dublin, 1767. Sm. 8°. No. 2 in *L.26.3
- Price, Sir Uvedale, baronet.
An essay on the picturesque, as compared with the sublime and the beautiful; and on the use of studying pictures, for the purpose of improving real landscape. London, 1794. 8°. *L.32.1
- Same. New edition, with additions. 1796, 98. 2 v. *L.32.2
- The picturesque: with an essay on the origin of taste, and much original matter, by Sir Thomas Dick Lauder, bart., and 60 illustrations on wood by Montagu Stanley. Edinburgh, 1842. 8°. *L.32.3
- Pueckler-Muskau, Hermann Ludwig Heinrich, Fürst von.
Aendeutungen über Landschaftsgärtneri, verbunden mit der Beschreibung ihrer praktischen Anwendung in Muskau Stuttgart, 1834. Text, 16°; Atlas, 44 col. pls. 2 folded maps. 2 folded plans. F°. *L.70.19
- Aperçu sur la plantation des parcs en général, joint à une description détaillée du parc de Muskau. Traduit de l'allemand. Stuttgart, 1847. 8°. *L.53.93
- Pyne, James Baker.
The English lake district. Manchester, 1853. Illus. Pls. L. f°. *L.70.10
- Quincy, Mass. Board of park commissioners. Annual report, 1892. Quincy, 1893. Map. 8°. *L.53.77
- Rand, Edward Sprague, jr.
The rhododendron and "American plants." Boston, 1871. 12°. *L.25.2
- Rapin, René.
Les jardins, poème en quatre chants: trad. nouvelle. avec le texte. Par MM. V * * * [Voyron] et G * * * [Gabiot]. Amsterdam, 1782. 8°. *L.34.20
- Of gardens. A Latin poem. English'd by Mr. Gardiner. London. [1706.] Pls. Sm. 8°. *L.34.18
- Same. 2d edition. [1716?] *L.34.19
- Rauch, John Henry.
Public parks: their effects upon the moral, physical and sanitary condition of the inhabitants of large cities; with special reference to the city of Chicago. Chicago, 1860. 8°. *L.53.80
- Reber, Franz von.
History of mediæval art. Translated by Joseph Thacher Clarke. N. Y., 1887. Illus. Plans. 8°. *L.54.12
- Reform association, New York city.
Andrew H. Green and Thomas C. Fields. Secret management of the Central park commission. N. Y., 1874. 8°. *L.53.40
- Repton, Humphry.
Designs for the Pavillon at Brighton. With the assistance of John Adey Repton and G. S. Repton. London. [1808.] Vignettes. Col. pls. Plan. L. f°. *L.50.5
- An enquiry into the changes of taste in landscape gardening. London, 1806. 8°. *L.33.28
- The landscape gardening and landscape architecture of the late Humphry Repton, being his entire works on these subjects. New edition. By J. C. Loudon. London, 1840. Illus. Portr. Pls. 8°. *L.33.27
- Observations on the theory and practice of landscape gardening. Including remarks on Grecian and Gothic architecture. London, 1803. Illus. Portr. Pls. 4°. *L.31.32
- Same. 1805. *L.31.33

- Sketches and hints on landscape gardening. Collected from designs and observations now in the possession of the different noblemen and gentlemen, for whose use they were originally made. London. [1794.] Pls. F^o, obl. *L.31.31
- Repton, Humphrey, and John Adey Repton. Fragments on the theory and practice of landscape gardening. Including some remarks on Grecian and Gothic architecture. London, 1816. Illus. Col. pls. 4^o. *L.31.34
- Richou ———.
Art de composer, de distribuer et de décorer, à peu de frais, toute espèce de jardins . . . Paris, 1828, 29. Text; Atlas, 24 pls. 12^o. *L.34.8
- Rieth, Otto.
Architektur-Skizzen. 120 Handzeichnungen in Autotypie. Berlin, 1891. F^o *L.41.15
- Riviera of Italy. Views.
Twenty-three photographs, which include thirteen of Monte Carlo, eleven of Cannes, one of Avanches. In a case. *L.60.4
- Robbins, Mary Caroline.
The rescue of an old place. Boston, 1892. 16^o. *L.65.2
- Robinson, John.
Ornamental trees for Massachusetts plantations. Boston, 1881. 8^o *L.22.31
- Robinson, William.
The English flower garden: style, position, and arrangement; followed by a description of all the plants best suited for its embellishment. 2d edition. London, 1889. Illus. 8^o. *L.32.19
- Garden design and architects' gardens. Two reviews. London, 1892. Illus. Pls. 8^o. *L.32.18
- Gleanings from French gardens: an account of such features of French horticulture as are most worthy of adoption in British gardens. London, 1868. Illus. Pls. Sm. 8^o. *L.34.13
- The parks and gardens of Paris, considered in relation to the wants of other cities and of public and private gardens. 2d edition. London, 1878. *L.53.1
- Same. 3d edition. 1883. Illus. Pls. *L.53.2
- The subtropical garden. 2d edition. London, 1879. Illus. Pls. Sm. 8^o. *L.34.5
- Rochester, N. Y. Board of park commissioners.
By-laws. Rochester, 1889. 12^o. *L.53.11
- Royal botanic gardens, Kew.
The gallery of Marianne North's paintings of plants and their homes, Royal gardens, Kew. Descriptive catalogue. 4th edition. enlarged. London, 1886. Maps. Sm. 8^o. *L.24.12
- Official guide to the museums of economic botany. No. 3. Timbers. London, 1886. Sm. 8^o. *L.23.5
- Route map and index to the Royal botanic garden and arboretum. [London.] 1885. Broadside. *L.51.12
- Ruskin, John.
Lectures on architecture and painting, delivered at Edinburgh, November, 1853. N. Y., 1890. 12^o *L.55.10
- The poetry of architecture: cottage, villa, etc. N. Y., 1890. 12^o *L.55.11
- The seven lamps of architecture. 2d edition. N. Y., 1890. 16^o. *L.55.12
- St. Louis. Forest park.
Report of the commissioners. 1875. St. Louis, 1876. Pls. Plans. 8^o. *L.53.82
- Samuels, Edward Augustus.
Among the birds: a series of sketches for young folks. Boston, 1868. Illus. Pls. 16^o. *L.15.10
- Ornithology and oölogy of New England. Boston, 1867. Illus. Pls. 8^o. *L.13.20
- Santos, Francisco de los.
The Escurial; or, a description of that wonder of the world for architecture and magnificence of structure. Translated into English by a servant of the Earl of Sandwich. London, 1671. Sm. 4^o. *L.52.20
- Sargent, Charles Sprague.
Asa Gray. Boston, 1886. 8^o. *L.23.4
- Report on the forests of North America (exclusive of Mexico). Washington, 1884. Maps. 4^o. *L.22.1
- The woods of the United States. With an account of their structure, qualities, and uses. N. Y., 1885. 8^o. *L.22.24
- Sargent, Henry Winthrop.
Skeleton tours through England, Scotland, Ireland, Wales, Denmark, Norway, Sweden, Russia; Poland, and Spain. N. Y., 1870. 16^o. *L.57.10
- Sauvan, Jean Baptiste Balthazard.
Picturesque tour of the Seine, from Paris to the sea. Illustrated with 24 coloured engravings, from drawings by A. Pugin and J. Gendall. London, 1821. Map. L. 4^o. *L.51.20
- Schabol, Jean Roger.
La théorie du jardinage. Ouvrage rédigé après sa mort sur ses Mémoires, par M. D * * * [Antoine Nicolas Dezallier d'Argenville]. Nouvelle édition, augmentée. Paris, 1774. Portr. Pls. Sm. 12^o. *L.24.7
- Schleiden, Matthias Jakob.
The plant; a biography. Translated by Arthur Henfrey. 2d edition. London, 1853. Illus. Pls. 8^o. *L.23.6
- Schmidlin, Eduard.
Die bürgerliche Gartenkunst, oder, praktische Anleitung zur zweckmässigsten Anlage, Eintheilung und Bestellung der Haus- und Wirthschafts-Gärten . . . 2. Auflage. Stuttgart, 1852. Pls. Plans. 8^o. *L.34.22
- Schmidt, Otto.
Bürgen und Schlösser in Oesterreich. 50 Heliogravuren, mit Text von Julius Meurer. Wien, 1894. L. f^o. *L.50.17
- Schneider, Carl Ernst.
Die Aesthetik der Gartenkunst. Leipzig, 1890. 8^o. *L.34.27
- Die schöne Gartenkunst, in ihren Grundzügen gemeinfasslich dargestellt. Stuttgart, 1882. 16^o. *L.34.3
- Sckell, Friedrich Ludwig von.
Beitraege zur bildenden Gartenkunst. München, 1819. Pls. Plans. 16^o. *L.33.7
- Same. 2. Ausgabe. [1825.] Portr. Pls. 8^o. *L.33.8

- Scott, Frank Jesup.
The art of beautifying suburban home grounds of small extent. N. Y., 1881. Illus. Pls. 8°. *L.33.29
- Scoville, Joseph A.
Plan for Central park. [N. Y., 1858.] 8°. *L.53.27
- Sedding, John D.
Garden-craft old and new. London, 1891. Illus. 8°. *L.32.12
Same. 2d edition. 1892. *L.32.13
- Seeley, J.
Stowe. A description of the house and gardens of . . . George-Grenville-Nugent-Temple, marquis of Buckingham. Buckingham, 1797. Pls. Plans. 8°. *L.42.20
The plates were drawn and engraved by T. Medland.
Same. 8°, large paper. *L.41.10
- Select collection, A, of views and ruins in Rome, and its vicinity. London. [1798?] 62 col. pls. F°. *L.50.8
- Shenstone, William.
Works, in verse and prose. 3d edition. London, 1768, 69. 3 v. Illus. Portr. Pls. Sm. 8°. *L.66.8
- Siebeck, Rudolph.
Die bildende Gartenkunst in ihren modernen Formen. Leipzig, 1853. 16 col. pls. F°, obl. *L.70.12
Plates 17-20 are lacking.
Same. 2. Ausgabe. 1856. Text, 8°; Atlas, 20 col. pls. L. f°. *L.70.13
- Guide pratique du jardinier-paysagiste à l'usage des propriétaires, amateurs, architectes, ingénieurs, jardiniers, etc. Traduction par J. Rothschild. 3e édition. Paris, 1870. Atlas only. F°. *L.20.1
- Silva, Ercole, conte.
Dell' arte dei giardini inglesi. [Anon] Milano. Anno IX [1800]. Illus. Pls. 4°. *L.20.20
- Simond, Louis.
Voyage d'un Français en Angleterre pendant les années 1810 et 1811. Paris, 1816. 2 v. Pls. Sm. 8°. *L.52.16
- Sinclair, James.
The beauties of nature: and how far they transcend those of art, in landscape gardening. A poem. London, 1852. Pl. Sm. 8°. *L.65.4
- Sinclair, Sir John, bart.
The code of agriculture; including observations on gardens, orchards, woods, and plantations. 1st American edition, with notes. Hartford, 1818. Pls. 8°. *L.12.7
- Sloan, Samuel.
Homestead architecture, containing 40 designs for villas, cottages, and farm houses, with essays on style, construction, landscape gardening, furniture, etc. 3d edition. Phila., 1870. 8°. *L.42.3
- Smith, Charles H. J.
Parks and pleasure grounds; or, practical notes on country residences, villas, public parks, and gardens. London, 1852. Sm. 8°. *L.53.100
- Smith, Francis Hopkinson.
American illustrators. Part 1-5. N. Y., 1892. Illus. Portrs. 15 pls. F°. *L.50.20
- Smith, John, publisher.
Select views in Italy. London, 1792, 96. 2 v. 72 pls. Map. 4°, obl. *L.61.20
- Smith, John Thomas.
Remarks on rural scenery, with 20 etchings of cottages, from nature . . . London, 1797. 4°. *L.51.11
- Smyth, Thomas.
Who own the Province lands, the commonwealth or its tenants? [Boston, 1890.] 8°. *L.53.78
Refers to the shore front lands in Provincetown.
- Snelling, George Henry.
[Memorial to the Legislature of Massachusetts, with remarks and letters in favor of a modification of the Back Bay plan.] [Boston, 1859.] Pl. Plan. 8°. *L.53.61
- Society instituted at London for the encouragement of arts, manufactures and commerce.
The gardener's new companion: added, an appendix, containing the manner of keeping bees . . . By a lover of improvement. Also, a collection of letters on agriculture. Dublin, 1766, 67. Pl. Sm. 8°. *L.26.3
- Some artists at the Fair. N. Y., 1893. Illus. Pls. 8°. *L.54.2
Contents. — The decoration of the Exposition, by F. D. Millet. — Types and people at the Fair, by J. A. Mitchell. — The art of the White city, by W. H. Low. — Foreground and vista at the Fair, by W. H. Gibson. — The picturesque side, by F. H. Smith.
- Spain. Views.
Fifteen photographs of places in Spain. In a case. *L.60.6
- Spectator, The. New edition, with prefaces by Alexander Chalmers. London, 1817. 10 v. Sm. 8°. *L.66.1
- Speechly, William.
A treatise on the culture of the vine. York, 1790. Pls. L. 8°. No. 1 in *L.24.10
- Starke, Julius.
California woods. San Francisco, 1889. 8°. *L.22.16
- Steele, Richard, of Sion Hill, near Thirsk.
An essay on gardening, containing a catalogue of exotic plants for . . . greenhouses. York, 1793. Pls. L. 8°. No. 2 in *L.24.10
- Steuart, Sir Henry, baronet.
The planter's guide: or, a practical essay on the best method of giving immediate effect to wood, by the removal of large trees and underwood. Chiefly intended for the climate of Scotland. 2d edition, enlarged. London, 1828. 8°. *L.22.20
Same. 1st American, from the 2d London edition. N. Y., 1832. 8°. *L.22.21
- Stieglitz, Christian Ludwig.
Descriptions pittoresques de jardins du goût le plus moderne. Leipzig, 1802. Pls. 8°. *L.33.13
Gemälde von Gärten im neuern Geschmack. Leipzig, 1798. Pls. Sm. 4°. *L.33.12
- Strutt, Jacob George.
Silva Britannica [et Scotica]; or, portraits of forest trees, distinguished for their antiquity, magnitude or beauty. London. [1830.] 50 pls. F°. *L.22.3
- Sulzer, Johann Georg.
Allgemeine Theorie der schönen Künste in einzeln, nach alphabetischer Ordnung der Kunstwörter auf einander folgenden Artikeln abgehandelt. Neue verm. 2te Auflage. Theil 1-4. Leipzig, 1792-94. Pls. 8°. *L.63.1

- Switzer, Stephen.
Ichnographia rustica: or, the nobleman, gentleman, and gardener's recreation. Containing directions for the surveying and distributing of a country-seat into rural and extensive gardens . . . 2d edition, with additions. London, 1742. 3 v. Pls. Plans. Sm. 8°. *L.35.3
- Taylor, Isidore Justin Séverin, baron, and others.
Voyages pittoresques et romantiques dans l'ancienne France. Par J. Taylor, Ch. Nodier et Alph. de Cailleux. Paris, 1820-77. 17 v. Pls. Plans. L. f°. *L.40.1-8
The vol. for Bourgogne is lacking, also vol. 3 of Champagne and vol. 3 of Normandie.
- Temple, Sir William.
Works. Prefixed, the life of the author. Edinburgh, 1754. 4 v. 8°. *L.62.20
- Thaxter, Celia.
An island garden. [Appledore, Isles of Shoals.] With pictures and illuminations by Childe Hassam. Boston, 1894. 8°. *L.15.2
- Thomson, James.
The seasons. Prefixed, the life of the author by P. Murdoch. N. Y., 1820. 24°. *L.64.10
- Same. With engraved illustrations, from designs drawn on wood by John Bell, C. W. Cope . . . Edited by Bolton Corney. London, 1842. Illus. 8°. *L.64.11
The illustrations, 77 in number, are from designs furnished by members of the Etching club.
- Thouin, Gabriel.
Plans raisonnés de toutes les espèces de jardins. 3e édition. Paris, 1828. 58 col. pls. L. f°. *L.50.18
- Tipton, Ed. A.
Trotting and thoroughbred stock, the property of Leland Stanford, Palo Alto, Cal. San Francisco, 1888. 8°. *L.12.10
- Tokio Daigaku, Tokio, Japan.
Catalogue of plants in the herbarium of the College of science, Imperial university. Tōkyō, 1886. 8°. *L.23.8
- Trianon, palaces, Versailles.
Guide illustré des palais et jardins de Trianon. Versailles, 1887. Illus. Pls. Plans. 16°. *L.57.8
- Tuckermann, W. P.
Die Gartenkunst der italienischen Renaissance-Zeit. Berlin, 1884. Illus. Pls. Plans. 8°. *L.31.4
- Turner, Joseph Mallord William.
Picturesque views of England and Wales. With descriptive and historic illustrations by H. E. Lloyd. London, 1838. 2 v. L. 4°. *L.51.1
The rivers of France. London, 1837. 61 pls. 4°. *L.51.3
- [Twenty essays on literary and philosophical subjects.] [Dublin, 1791.] *L.65.11
- Useful and ornamental planting. London, 1832. Illus. 8°. *L.32.15
- Useful plants of Japan described and illustrated. Contents of and indices to Yuyo shokubutsu zusetzu mokuroku oyobi sakuin. Tokyo, 1891. 8°. *L.23.9
- Vallès, F. de P. F. X. H.
De l'aliénation des forêts aux points de vue gouvernemental, financier, climatologique et hydrologique. Paris, 1865. 8°. *L.22.37
- Van Rensselaer, Mariana Griswold.
Art out of doors. Hints on good taste in gardening. N. Y., 1893. 12°. *L.34.6
Client and architect. Chicago, 1891. 8°. *L.52.9
- Vasey, George.
Exotic trees in Washington. [Washington, 1875.] 8°. *L.22.14
- Vaux, Calvert.
Villas and cottages. A series of designs for execution in the United States. N. Y., 1857. Illus. Plans. 8°. *L.42.2
- Veitch, James Herbert.
A traveller's notes . . . of a tour through India, Malaysia, Japan, Corea, the Australian colonies and New Zealand, 1891-1893. Chelsea, 1896. Illus. Pls. Map. L. 4°. *L.51.16
- Vergnaud, N.
L'art de créer les jardins. Nouvelle édition. Paris, 1839. 24 colored pls. and plans. F°. *L.50.13
- Viart, —, vicomte de.
Le jardiniste moderne . . . 2e édition. Paris, 1827. Pl. 12°. *L.34.2
- Victoria illustrated. Containing a description of the province of British Columbia, and a review of the resources [etc.] of Victoria. Victoria, 1891. Illus. Portrs. 4°. *L.51.15
- Vierling, Frank C.
Arbori-culture. Proceedings before the Committee on judiciary. Ordinance introduced Nov. 11, 1889. Chicago, 1890. 12°. *L.22.26
- Walpole, Horace, 4th earl of Orford.
Anecdotes of painting in England. Also, a catalogue of engravers who have been born or resided in England. Collected by George Vertue. With additions by James Dallaway. New edition, by Ralph N. Wornum. London, 1849. 3 v. Illus. Portrs. 8°. *L.54.16
- The correspondence of Horace Walpole, earl of Orford and the Rev. William Mason. Edited by J. Mitford. London, 1851. 2 v. 8°. *L.62.1
- Essay on modern gardening. [Essai sur l'art des jardins modernes. Traduit en français par M. le duc de Nivernois en 1784.] Imprimé à Strawberry-Hill. 1785. Sm. 4°. *L.32.20
In French and English.
- Ward, Lester Frank.
Directions for collecting and preserving plants. Washington, 1882. 8°. *L.23.12
- Warder, John Aston.
Hedges and evergreens. A manual for the cultivation, pruning, and management of all plants suitable for American hedging; especially the Maclura, or Osage orange. N. Y., 1858. Illus. Pls. *L.23.7
- Warton, Joseph.
An essay on the genius and writings of Pope. [Anon.] 2d edition. London, 1762-82. 2 v. 8°. *L.62.16
- Watelet, Claude Henri.
Essai sur les jardins. Paris, 1774. 8°. No. 2 in *L.33.15=*L.33.6

- Weale, John, editor.
 Designs of ornamental gates, lodges, palisading, and iron work of the royal parks. London, 1841. Illus. 50 pls. F°. *L.60.20
- Weichardt, Carl.
 Motive zu Garten-Architekturen . . . Weimar, 1879. 25 pls. 3 sheets of details. F°. *L.20.7
- Weidenmann, J.
 Beautifying country homes. A handbook of landscape gardening. N. Y. [1870.] Illus. 24 col. pls. 4°. *L.31.30
- Wesmael, Alfred.
 Catalogue raisonné des arbres forestiers & d'ornement de pleine terre en Belgique. Gand, 1864. 8°. *L.22.30
- Whately, Thomas.
 L'art de former les jardins modernes. [Anon.] Trad. de l'anglois [par François de Paule Latapie]. Paris, 1771. 8°. *L.33.14
- Same. Paris, 1771. No. 1 in *L.33.15
- Observations on modern gardening. [Anon.] Dublin, 1770. Sm. 8°. *L.33.16
- Same. 2d edition. London, 1770. 8°. *L.33.17
- Same. 3d edition. 1771. *L.33.18
- Observations on modern gardening, and laying out pleasure-grounds, parks, farms, ridings, &c. New edition: with notes by Horace (late) earl of Orford. London, 1801. Colored pls. 4°. *L.33.20
- Wilkins, Gouverneur Morris.
 In the matter of the extension of Central Park. [N. Y., 1861?] 8°. *L.53.32
- Wilkinson, Sir John Gardner.
 On colour, and on the necessity for a general diffusion of taste among all classes, with remarks on laying out dressed or geometrical gardens. London, 1858. Illus. Pls. 8°. *L.62.3
 Many of the plates are colored.
- Wint, Paul de.
 Essais historiques sur les jardins. Paris, 1855. 8°. *L.33.5
- Wood, John George.
 Insects at home. A popular account of insects, their structure, habits, and transformations. N. Y., 1872. Illus. Pls. 8°. *L.13.10
- Woodward, George Evertson.
 Architecture and rural art. No. 1. 1867. N. Y. [1867.] Illus. Pls. 12°. *L.56.3
- Suburban and country houses. N. Y. [1873.] Illus. Pls. 12°. *L.56.2
- Woodward, George Evertson, and Francis William Woodward.
 Country homes. 5th edition. N. Y., 1866. Plans. 12°. *L.56.1
- Woolnoth, William.
 The ancient castles of England and Wales. With historical descriptions by E. W. Brayley. London, 1825. 2 v. Pls. 4°. *L.41.13
- World's Columbian exposition.
 Classification adopted by the World's Columbian commission. Chicago, 1891. Pls. 8°. *L.52.7
- Report of the director of works [D. H. Burnham]. Chicago, 1892. 8°. *L.52.6
- Young, Arthur.
 General view of the agriculture of Oxfordshire. Drawn up for the consideration of the board of agriculture and internal improvement. London, 1813. Pls. Maps. 8°. *L.12.6
- General view of the agriculture of the county of Essex. London, 1807. 2 v. 8°. *L.12.4
- General view of the agriculture of the county of Lincoln. London, 1799. Pls. Maps. 8°. *L.12.1
- General view of the agriculture of the county of Norfolk. London, 1804. Pls. Map. 8°. *L.12.2
- General view of the agriculture of the county of Suffolk. 3d edition. London, 1804. Pls. Map. 8°. *L.12.3
- General view of the agriculture of the county of Sussex. London, 1813. Pls. Maps. 8°. *L.12.5
- Zeyher, Carl, and J. G. Rieger.
 Schwezingen und seine Garten-Anlagen. Mannheim. [1826.] Pls. Plans. 8°. *L.35.2

LIST OF BOOKS

ON

TREES AND FORESTRY.

This list is based on the one published in the Bulletin for July, 1878, and reprinted in the Bulletin for January, 1879, with the addition of the titles of such books as have since then been received at the library.

- Abel, L.
Die Baumpflanzungen in der Stadt und auf dem Lande. Wien, 1882. 8°. *L.22.17
- Ablett, W. H.
English trees and tree planting. London, 1880. 8°. *L.22.15; 3844.54
- Adams, J. F. A.
Sanitary forest-culture. (In Massachusetts medical society. Medical communications. Vol. 13, pp. 289-301. Boston, 1886.) *7737.7.13
- Aikin, J.
The woodland companion: or a brief description of British trees. London, 1802. *L.22.33
- Akerly, S.
On the cultivation of forest trees. [N. Y., 1823.] 8°. No. 1 in *5845.22
Remarks on the cultivation of the locust tree. [1817.] 8°. No. 2 in *5845.22
- Aldrovandi, U.
Dendrologiæ libri duo. Bononiæ, 1668. F°. 3870.10
- Allan, J. T.
Prize essay on forest-growing. Nebraska horticultural society. Brownville, 1873. 8°. No. 4 in *4263.58.2
- Alphand, J. C. A.
Arboretum et fleuriste de la ville de Paris. Paris, 1875. F°. *5840.57
- American forestry association.
The forest reservation policy. [Washington, 1896?] 8°. 3852.85
Proceedings, 1882, 83, 85-88, 90-97. Washington, 1883-97. 8°. *3852.61
- Anders, J. M.
Sanitary influences of forest growth. Phila., 1885. 8°. No. 1 in 5844.21
- Andersson, N. J.
Salices Boreali-Americanæ, a synopsis of North American willows. Boston, 1860. (In Proc. Am. Acad. of arts and sc., vol. 4, pp. 50-78.) *3370.6.4
- Andrews, C. C.
Report on the forests and forest culture of Sweden. Washington, 1872. 8°. No. 1 in 5845.28
- Annales forestières. Paris, 1842-65. 24 v. 3850a.50
- Annuaire des eaux et forêts. 1862-89, 94-97. Paris, 1862-97. 12°. 5849a.50
- Apgar, A. C.
Trees of the northern United States. N. Y., 1892. 12°. 5849.65
- Bagneris, G.
Elements of silviculture. London, 1882. 8°. 3859.61
Manuel de silviculture. Paris, 1878. 8°. 3847.39
- Bailey, L. N.
A list of ornamental plants which are hardy in Michigan. Lansing, 1887. 8°. *L.23.11
- Barck, Harald.
On the foliation of trees. Upsal, 1753. (In Stillingleet. Literary life, etc. Vol. 2, pp. 361-404. London, 1811.) 6571.24.2
- Barney, E. E.
Facts and information in relation to the catalpa tree. Dayton, 1878. 8°. No. 15 in *5845.22
Additional facts and information. Dayton, 1879. 8°. No. 22 in *5845.22
- Baudrillart J. J.
Traité général des eaux et forêts, chasses et pêches. Paris, 1813. 5 v. 4°. **G.150.11
- Becquerel, A. C.
Des climats et de l'influence qu'exercent les sols boisés, et non boisés. Paris, 1853. 8°. 3966.65
- Belgrand, —
De l'influence des forêts sur l'écoulement des eaux pluviales. (In Annales des ponts et chaussées. 1854.) 8°. *4010a.225.3e sér., v. 7
- Bell, R.
The geographical distribution of the forest trees of Canada. Montreal, 1882. 8°. 5844.29
- Berenger, A. di.
Dell' antica storia e giurisprudenza forestale in Italia. Venezia, 1860. 8°. 3664.14
Saggio storico della legislazione veneta forestale dal secolo VII al XIX. Venezia, 1863. 8°. 3844.52

- Berg, C. H. E. von.
Geschichte der deutschen Wälder. Dresden,
1871. 8°. 3846.64
- Blanquart de Septfontaines, L. M.
Forêts et bois; leur semis et plantations.
Paris, 1791, 95. 2 parts in 1 v. 4°. *7405.25
- Bosc, L. A. G., and J. J. Baudrillart.
Dictionnaire de la culture des arbres, &c.
Paris, 1821. [Encyclop. méth. Agriculture.
Vol. 7.] *7405.1.7
- Boussingault, J. B.
Agronomie, chimie agricole et physiologie.
2e édition. Paris, 1860-64. 3 v. 8°. 5974.12
- Boutcher, W.
Treatise on forest tree culture. Edinburgh,
1785. 4°.
- Bowers, E. A.
The present condition of the forests on the
public lands. (In American economic as-
sociation. Publications. Vol. 6, no. 3, pp.
55-74. Baltimore, 1891.) No. 3 in *5360a.10.6
- Bradley, C. B.
A new study of some problems relating to
the giant trees. San Francisco, 1886. 8°. 5843.41
- Bradley, R.
New improvements of planting. London,
1717. 8°. *L.35.1
Same. 3d edition. Part I. 1719. 5999.67
- Brewer, W. H.
Woodlands and forest systems of the United
States. (In Walker, F. A. Statistical
atlas. Washington, 1874.) *Cab.23.12.2
- Brisbin, J. S.
Trees and tree-planting. N. Y., 1888. 12°. 3856.57
- Brown, J.
The forester. 2d edition. Edinburgh, 1851.
8°. 4903.5
Same. 3d edition. 1861. *L.22.8
Same. 5th edition. 1882. 3852.55
- Brown, J. C.
Finland: its forests and forest management.
Edinburgh, 1883. 8°. 3859.72
Forestry in Norway. Edinburgh, 1884. 8°. 3859.78
Forestry in the mining districts of the Ural
mountains in eastern Russia. Edinburgh,
1884. 8°. 3859.80
Forests and forestry of northern Russia.
Edinburgh, 1884. 8°. 3859.79
Forests and moisture. Edinburgh, 1877. 8°. 3963.51
The forests of England . . . in bye-gone
times. Edinburgh, 1883. 8°. 3859.64
Introduction to the study of modern forest
economy. Edinburgh, 1884. 8°. 3859.76
Management of crown forests at the Cape of
Good Hope. Edinburgh, 1887. 8°. 3856.52
Pine plantations on the sand wastes of
France. Edinburgh, 1878. 8°. 3846.68
Reboisement in France. London, 1876. 8°. 3845.60
School of forest engineers in Spain. Edin-
burgh, 1886. 8°. 3857.73
Schools of forestry in Germany. Edinburgh,
1887. 8°. 3857.77
- Browne, D. J.
Silva Americana. Boston, 1832. 8°. 3845.14
Trees of America. N. Y., 1851. 8°. 165.2; B. H. Ref. 451.5
- Bryant, A.
Forest trees. N. Y., 1871. 12°. 3848.50
- Buehler, A.
Der Wald in der Culturgeschichte. Basel,
1885. 8°. No. 10 in *2900a.50.8
- Buesgen, M.
Bau und Leben unserer Waldbäume. Jena,
1897. 8°. 3842.68
- Bulletin administratif et judiciaire des Annales
forestières. Sér. I-3. 1827-64. Paris,
1844-65. II v. 8°. *3840a.51
Succeeded by Répertoire de législation et de ju-
risprudence forestières [*3854.50].
- Burns, W. W.
Preservation of moisture for seasonable
rainfall. Washington, 1883. F°. No. 293 of *3950.25
- Caimi, P.
Cenni sulla importanza e coltura dei boschi.
Milano, 1857. 8°. 3843.51
- Canada. Secretary of state.
Reports on the forests of Canada. London,
1885. F°. 5840.69
- Cannon, D.
Le propriétaire-planteur. Traité . . . du
reboisement et des plantations des parcs
et jardins. Paris, 1894. 8°. 3844.80
- Carpenter, W. L.
Destruction of pine-timber in the Rocky
mountains. (In U. S. Geol. surv. of the
terr. 7th ann. rept., pp. 538-539. Wash-
ington, 1874.) *7863.1.1873
- Castellani, —.
Dell' immediata influenza delle selve sul
corso delle acque. Torino, 1818. 3841.73
- Cerini, G.
Dell' impianto e conservazione dei boschi.
Milano, 1844. 8°. 5845.6
- Chevandier, E.
Recherches sur l'emploi de divers amende-
ments dans la culture des forêts. (In
Comptes rendus des séances de l'Acad. des
sci., Dec. 8, 1851.) 3223.1.33
- Clavé, J.
Étude sur l'économie forestière. Paris, 1862.
12°. 3847.60
Various important articles in the Revue des
deux mondes. See the Table générale.
1831-93. *3315.2
- Cleveland, H. W. S.
The culture and management of our native
forests for development as timber or or-
namental wood. Springfield, 1882. 8°. 5844.46=No. 2 in 5844.21=L.22.13
Landscape architecture as applied to the
wants of the West; with an essay on forest
planting on the great plains. Chicago,
1873. 16°. 3999.136=L.22.40
- Cobbett, W.
The woodlands. London, 1825. 8°. *L.22.11
- Cooper, J. G.
On the distribution of the forests and trees
of North America. [Washington, 1858.]
No. 4 in *5845.22
- Coultas, H.
What may be learned from a tree. N. Y.,
1860. 8°. 3845.16

- Courval, E. A. de.
Taille et conduite des arbres, etc. Paris, 1861. 3843.55
- Coutance, A.
Histoire de la chêne. Paris, 1873. 8°. 3849.61
- L'olivier. Paris, 1877. 8°. 3991.52
- Cruickshank, T.
The practical planter. Edinburgh, 1830. 8°. *L.22.12
- Curtis, C. E.
The manifestation of disease in forest trees. London, 1892. 8°. 5849.64
Practical forestry. London, 1898. 8°. 3849.71
- Dame, L. L.
Typical elms and other trees of Massachusetts. Boston, 1890. F°. *3840.66=*L.20.13
- Demontzey, P.
Traité pratique der reboisement. 2e édition. Paris, 1882. 8°. 3845.66
- Depelchin, Fernand.
Les forêts de la France. Tours, 1886. 8°. *L.22.2
- Des Cars, A. J.
L'élagage des arbres. Paris, 1870. 8°. 5849a.54
A treatise on pruning forest and ornamental trees. Boston, 1881. 12°. 5849.53=*L.22.32
- Dexter, T. E.
A description and history of vegetable substances, used in the arts, and in domestic economy. London, 1829. 8°. 5849.56
Same. Boston, 1830. 16°. 5849.28
- Drorrien, S. v.
Forests and forestry. N. Y., 1879. 8°. No. 3 in *5844.21
- Du Breuil, A.
Culture des arbres et arbrisseaux d'ornement. Paris, 1878. 12°. 3847.61
- Du Hamel du Monceau, H. L.
De l'exploitation des bois. Paris, 1764. 2 v. 4°. 4013.15
La physique des arbres. Paris, 1788. 2 v. 4°. 3842.9
- Des semis et plantations des arbres. Paris, 1760. 4°. 3860.1
Traité des arbres et arbustes. 2e édition. Paris, 1804-1815. 7 v. F°. 3860.1
- Dunnell, M. H.
American forestry. Washington, 1882. 8°. No. 1 in *4325.108
- Dupont, A. E., and B. de La Grye.
Les bois. Paris, 1875. 8°. 3849.65
- Dupuis, A.
Conifères de pleine terre. 2e édition. Paris, 1872. 12°. *L.35.5
- Ebermayer, E.
Die physikalischen Einwirkungen des Waldes auf Luft und Boden. Aschaffenburg, 1873. 8°. 3849.62=Atlas, 3840.50
- Ebermayer, T.
Die Lehren der Forstwissenschaft. München, 1872. 8°. No. 2 in *5845.28
- Egleston, N. H.
Hand-book of tree-planting. N. Y., 1884. 12°. 3859.75
Same. 1888. *L.22.34
- Emerson, G. B.
Forest trees. [1859.] 8°. 3846.81
- Report on the trees and shrubs growing naturally in Massachusetts. Boston, 1846. 8°. 3845.8
Same. 2d [enlarged] edition. Boston, 1875. 2 v. 8°. 3845.59
- English forests and forest trees. Historical, legendary, and descriptive. London, 1853. 8°. **K.54.9
- Evelyn, J.
Sylva; or, a discourse of forest trees. With notes by A. Hunter. York, 1776. 4°. *5851.8
- Féraud-Giraud, L. J. D.
Police des bois, défrichements et reboisements. Paris, 1861. 8°. 3846.60
- Fernow, B. E.
Address on forestry . . . Trenton. Princeton, 1897. 8°. 5841.37
Forestry for farmers. Washington, 1895. 8°. *L.22.25=3844.83
- L'industrie forestière aux États-Unis. Paris, 1889. 8°. No. 12 in *5992.70
- Practicability of an American forest administration. (In American economic association. Publications. Vol. 6, no. 3, pp. 75-92. Baltimore., 1891.) No. 3 in *5560a.10.6
- The relation of forest to farms. Washington, 1896. 8°. No. 1 in 3844.84
- Fischbach, H.
Katechismus der Forstbotanik. 5. Aufl. Leipzig, 1894. 16°. 5849.80
- Fischbach, J., and H. Masius.
Deutscher Wald und Hain. München. [1872.] 8°, obl. 3849.51
- Fisher, W. R.
Forest protection. London, 1895. 8°. 5846.12.4
- Forest utilization. London, 1896. 8°. 5846.125
- Flagg, W.
Trees in assemblages. (From Atlantic monthly, Aug., 1861, pp. 129-141.) No. 6 in *5845.22
- Woods and by-ways of New England. Boston, 1872. 8°. 3849.52
- Forest protection and the tariff on lumber. Spirit of the press. N. Y., 1883. 8°. 5844.45=No. 1 in *5844.20
- Numerous selections from speeches and newspapers.
- Forester, The. [Monthly.] Vol. 4, 1898. Washington, 1898. 8°. *3840a.58
- Forsyth, W.
Culture of fruit trees, etc. London, 1824. 8°. 4003.3
- Fox, W. F.
The Adirondack black spruce. Albany, 1895. 8°. 3846.77
- Fraas, Carl Nicolaus.
Geschichte der Landbau- und Forstwissenschaft. München, 1865. 8°. 3915.54.3
- Fraser, H.
Handy book of ornamental conifers and rhododendrons, etc. Edinburgh, 1875. 8°. 3858.54
- French forest ordinance of 1669. Edinburgh, 1883. 8°. 3847.78
- Fries, E.
Novitiarum floræ Suevicæ mantissa prima. Accedit commentatio de salicibus. Lundæ, 1832. Sm. 8°. 5849a.30

- Fuerst, H.
 Illustriertes Forst- und Jagd-Lexikon. Berlin, 1888. 8°. 3834.54
 The protection of woodlands. N. Y., 1883. 8°. 3844.81
 Same. Edinburgh, 1893. 8°. 5845.61
- Fuller, A. S.
 The forest tree culturist. N. Y., 1870. 12°. 5998.7
 Practical forestry. N. Y., 1884. 12°. 3859.77
- Garden and forest. [Weekly.] Vol. 1-10. N. Y., 1888-97. F°. *8000a.50
 No more was published.
 Same. Vol. 1-7. 1888-94. *L.11.10
- Gerlach, M.
 Baumstudien. Wien, 1895. 4°. *4070.96
- Geyer, P.
 Der Wald im nationalen Wirthschaftsleben. Leipzig, 1879. 8°. 3858.72
- Gilpin, W.
 Gilpin's forest scenery. London, 1879. 8°. 4078.7
 Same. 1887. *L.22.19
 Remarks on forest scenery. London, 1791. 2 v. 8°. *L.42.12
 Same. 2d edition. 1794. *4062.11=*L.22.18
 Same. 3d edition. 1808. **4066.7=*G.155.9
- Gilson, F. H.
 Trees of Reading, Mass. Reading, 1888. 8°. 5841.40
- Goeppert, H. R.
 Über die Reisen des Pflanzenreichs. Berlin, 1869. 8°. No. 66 in *5914.50.3
- Gordon, G.
 The pinetum. London, 1858. 8°. 3845.7
 Same. London, 1875. 8°. 3845.56
- Gray, A.
 Forest geography and archæology. Boston, 1878. 8°. No. 14 in *5845.22
 Notes on tree growth. (In Estes. Half-hour recreations in popular science. 2d series. Boston, 1879.) 3918.54.2
 Sequoia and its history. Salem, 1872. 8°. No. 4 in *5845.28
- Grigor, J.
 Arboriculture. Edinburgh, 1868. 8°. 3846.51
- Grindon, L. H.
 Trees of old England. Boston, 1868. 8°. 5859.3
- Grisebach, A.
 Die Vegetation der Erde nach ihre klimatische Anordnung. Leipzig, 1872. 2 v. 8°. 3845.62
 The most important modern work on the distribution of forests and plants in general.
- Haldeman, R. J.
 Preservation of forests and encouragement of tree-planting. Washington, 1872. 8°. No. 5 in 5845.28
- Hale, P. M.
 The woods and timbers of North Carolina. Raleigh, 1883. 16°. 5849.57
- Hartig, R.
 Text-book of the diseases of trees. London, 1894. 8°. 3843.75
 Traité des maladies des arbres. Paris, 1891. 8°. 5841.32
- Hayes, S.
 A practical treatise on planting; and the management of woods and coppices. 3d edition. Dublin, 1822. 8°. *L.22.22
- Heath, F. G.
 Autumnal leaves. London, 1881. 8°. 3858.71
 Same. 3d edition. 1885. *L.15.3
 Sylvan winter. London, 1886. 8°. *L.15.4
 Tree gossip. London, 1885. 8°. 3857.61
 Trees and ferns. London, 1879. 8°. 3841.71
- Our woodland trees. London, 1878. 8°. 3847.68
- Hemsley, W. B.
 Handbook of hardy trees, shrubs, and herbaceous plants. London, 1873. 8°. 3845.51
 Same. Boston, 1873. 8°. 3845.52
- Hennig, C.
 Beiträge zur Begründung des Einflusses der Wälder auf das Wohl der Bevölkerung zusammengestellt. Leipzig, 1871. 8°. 5845.5
- Hersey, E.
 Facts . . . relating to the white pine. Cambridge? 8°. 5844.37
- Hess, R.
 Die forstliche Unterrichtsfrage. Berlin, 1874. 8°. No. 11 in 5216.50.3
 Über Waldschutz und Schutzwald. Hamburg, 1888. No. 6 in *5216.50.N.F.3
- Heyer, G.
 Das Verhalten der Waldbäume gegen Licht und Schatten. Erlangen, 1852. 8°. 3852.50
- Hillhouse, A. L.
 Description of the European olive tree. Paris, 1818. 8°. **5844.1
 An essay on the history and cultivation of the European olive-tree. Paris, 1820. 8°. 5847.4
- Hodges, L. B.
 The forest tree planters' manual. St. Paul, 1879. 8°. *5845.23
 Practical suggestions on forest tree planting in Minnesota. St. Paul, 1874. 8°. No. 6 in *5845.28=No. 9 in *5845.22
- Hoeffler, J. C. F.
 Le monde des bois. Paris, 1868. 8°. 5844.8
- Hoffmann, C.
 Paper on the eucalypts of Australia. Montreal, 1873. 8°. 3849.59
- Hohenstein, A.
 Der Wald sammt dessen wichtigem Einfluss auf das Klima der Länder. Wien, 1860. 8°. 3846.50
- Hough, F. B.
 The elements of forestry. Cincinnati, 1882. 12°. 3844.64
 A familiar talk about trees. Concord, N. H., 1883. 8°. No. 2 in *5844.20
 Memorial . . . upon the cultivation and care of forests. 1873. 4°. No. 4 in *5845.27
 On the duty of governments in the preservation of forests. Salem, 1873. 8°. No. 7 in *5845.28
- Public health interests concerned in the preservation of certain primeval forests and in the cultivation of groves and trees. 1875. 8°. No. 11 in *5845.22=No. 8 in *5845.28

- Report of the committee [A. A. A. S.] on the preservation of forests. [1874?] 8°. No. 5 in *5845.27
See also United States. Department of agriculture.
- Hough, R. B.
The American woods. Lowville, N. Y., 1888. 8°. *5843.20
- Houston, E. J.
Outlines of forestry. Phila., 1893. 12°. 3848.76
- Howitz, D.
Forest protection and tree culture on water frontage. (In International fisheries exhibition. Fisheries exhibition literature. Vol. 7, pp. 263-278. London, 1884.) *3906.58.7
- India. Forest department.
Review of the forest administration in British India, 1882-83, by W. Schlich. Simla, 1884. F°. *5850.11
- Inquiry, An, into the uses and abuses of the practice of scraping and washing trees. By a committee of the Mass. horticultural society. Boston, 1854. 8°. No. 7 in *5992.22
- Jacquot, Charles.
Les codes de la législation forestière. 4e édition. Paris, 1866. 8°. 5669a.8
- Jarchow, H. N.
Forest planting. N. Y., 1893. 12°. 5845.62
- Johns, C. A.
Forest trees of Great Britain. London, 1869. 12°. 3847.55
- Journal of forestry. Vol. 2, nos. 13-15. London, 1878. 8°. *7841.2
- Kahl, A.
Forstgeschichtliche Skizzen. Strassburg, 1894. 8°. *2904.53, Heft 19
- Kansas state horticultural society.
Report on Kansas forestry. 4th-6th. 1883-85. Topeka, 1884-86. 3 v. 8°. *5843.8
- Kasthofer, K.
Der Lehrer im Walde. Bern, 1828. 8°. 3859.51
- Keffer, C. A.
Tree planting in the western plains. Washington, 1896. 8°. No. 2 in 3844.84
- Kingzett, C. T.
Nature's hygiene: with special reference to the chemistry and hygiene of the eucalyptus and the pine. London, 1880. 8°. 3768.25
- Kinney, A.
Eucalyptus. Los Angeles, 1895. 8°. 5843.56
- Kirby, M. and E.
Chapters on trees. London. [1873.] 8°. 1175.10
- Kirwan, C. de.
Flore forestière illustrée. Paris, 1872. F°. *Cab.58.19.4
- Klase, L. M.
Dissertatio botanica de Betula nana. Stockholm, 1743. 4°. No. 11 in *5855.17
- Knobel, E.
A guide to find the names of all wild-growing trees and shrubs of New England by their leaves. [Endicott, Mass., 1894.] 24°. 3849.68
- Koch, K.
Dendrologie. Erlangen, 1872. 2 v. in 3. 8°. 3843.58
Vorlesungen über Dendrologie. Stuttgart, 1875. 8°. 3846.65
- Kurz, S.
Forest flora of British Burmah. Calcutta, 1877. 2 v. 8°. 3840a.55
- Lambert, A. B.
Description of the genus pinus. London, 1832. 2 v. L. 8°. *3841.68
- Landolt, E.
Die forstliche Betriebslehre. Zürich, 1892. 8°. 5844.49
Der Wald. Zürich, 1872. 8°. 3847.55
- Lanessan, J. M. A. de.
Introduction à la botanique. Le sapin. 2e édition. Paris, 1890. 8°. 3855.100
- Lauterburg, R.
Ueber die Einfluss der Wälder auf die Quellen und Stromverhältnisse der Schweiz. Bern, 1877. 7843.2
- Lavalle, A.
Arboretum Segrezianum. Paris, 1877. 8°. 3847.58
- Lefevre, G. J. S.
English commons and forests. London, 1894. 8°. 3843.73
- Lewis, P.
Historical inquiries concerning forests and forest laws. London, 1871. 4°. 4520.24
- Little, J.
The timber supply question of the Dominion of Canada and the United States of America. 2d edition. Montreal, 1876. 8°. No. 3 in *5844.20
- Little, W.
Letter to the . . . Montreal Board of trade objecting "To get rid of the timber." Montreal, 1890. 8°. *L.22.9
- Loeffelholz-Colberg, F. von.
Die Bedeutung und Wichtigkeit des Waldes, etc. Leipzig, 1872. 3847.64
- Lorentz, B.
Cours élémentaire de culture des bois, etc. 5e édition. Paris, 1867. 8°. 3847.51
- Lorenz von Libernau, J. R., Ritter.
Wald, Klima und Wasser. München, 1878. 16°. 3917.50.29
- Louden, J. C.
Arboretum et fruticetum Britannicum. London, 1844. 8 v. 8°. 3845.4; **G.155.2
The Derby arboretum. London, 1840. 8°. 3830.10
- An encyclopædia of gardening, etc. London, 1822. 8°. *L.32.7
Same. 1830. 3834.52
Encyclopædia of trees and shrubs. London, 1842. 8°. 3834.8
Hortus lignosus Londinensis. London, 1838. 8°. 3830.9
- Trees and shrubs; an abridgment of the Arboretum et fruticetum. London, 1883. 8°. *L.22.6
- Lowe, J.
The yew-trees of Great Britain and Ireland. London, 1897. 8°. 3843.79
- Lyon, P.
A treatise on the physiology and pathology of trees. Edinburgh, 1816. 8°. *L.22.28

- Macgregor, J. L. L.
The organization and valuation of forests.
London, 1883. 8°. 3844.68
- Manning, J. W.
Forest and ornamental tree planting. [Reading? 187-?] 8°. No. 24 in *5845.22
Trees, fruit and ornamental. [Groton? 1880.] 8°. No. 4 in *5844.21
- Manteuffel, H. E. de.
L'art de planter, etc. Trad. par S. P. Stumper. 2e édition. Paris, 1874. 16°. 5849a.51
- Marchand, A.
Ueber die Entwaldung der Gebirge. Bern, 1849. 12°. 3847.65
- Maron, E. W.
Forst-Statistik der sämmtlichen Wälder Deutschlands. Berlin, 1862. 8°. 3845.68
- Marsh, G. P.
The earth, as modified by human action. N. Y., 1874. 8°. 5822.16
Man and nature. N. Y., 1864. 8°. 3824.55
- Marshall, H.
Arbustum Americanum. Phila., 1875. 8°. 3859.20
- Marshall, W.
Planting and ornamental gardening. London, 1875. 8°. *L.33.21
- Massachusetts society for promoting agriculture.
Circular in regard to timber trees and the tax thereon. Boston, 1879. 4°. No. 23 in *5845.22
Prizes for arboriculture. Boston, 1876. 8°. No. 9 in *5845.27=No. 12 in *5845.22
- Mathews, F. S.
Familiar trees and their leaves. N. Y., 1896. 12°. 5846.20
Same. 1897. 5846.22
- Mathew, P.
On naval timber and arboriculture. London, 1831. 8°. 5849.22
- Mauzy, L. F. A.
Histoire des grandes forêts de la Gaule, etc. Paris, 1867. 8°. 3846.59
- Mayr, H.
Die Waldungen von Nordamerika. München, 1890. 8°. 5844.28
- Meguschner, F.
Memorie sulla migliore maniera per rimettere i boschi della Lombardia. Milano, 1859. 3846.69
- Menzies, W.
Forest trees and woodland scenery. London, 1875. F°. 3840.55
- Meyer, G.
Forstwirtschaft. Berlin, 1895. 16°. 5849.74
- Michaux, A.
Histoire des chênes de l'Amérique. Paris, 1801, 1802. 4°. *3860.11
- Michaux, F. A.
Histoire des arbres forestiers de l'Amérique septentrionale. Paris, 1810-1813. 3 v. *5841.22
Histoire des chênes de l'Amérique septentrionale. Paris, 1811. 8°. 5844.7
North American sylvia. Paris, 1819. 3 v. 8°. **G.151.3
- Michie, C. Y.
The larch: . . . culture and general management. Edinburgh, 1882. 8°. 3858.74
- The practice of forestry. Edinburgh, 1888. 8°. 3856.65
- Moloney, C. A.
Sketch of the forestry of West Africa. London, 1887. 8°. 3857.81
- Mongrédien, A.
Trees and shrubs, for English plantations. London, 1870. 8°. 7841.1
- Montluisant, —.
Note sur les dessèchements les endiguements et les irrigations. (In Annales des ponts et chaussées, 1833, 2e semestre, pp. 281-294.) 3316.1.9
- Mouillefert, P.
Traité des arbres et arbrisseaux . . . cultivés . . . en Europe. Paris, 1891. 8°. *3854.69
- Müller, E.
La forêt. Paris, 1878. 8°. 3841.56
- Murray, A.
The pines and firs of Japan. London, 1863. 12°. *L.22.29
- Nanquette, H.
Cours d'aménagement des forêts, etc. Nancy, 1860. 8°. 3847.50
- National academy of sciences.
Report of the committee . . . upon the inauguration of a forest policy. Washington, 1897. 8°. 5844.65
- New Hampshire. Forestry commission.
Report. June session, 1885. Concord, 1885. 8°. *5846.5
- New York, state. Senate.
Report of the committee on agriculture relating to the subject of the forests. March 20, 1885. [Albany, 1885.] 8°. No. 5 in *5844.21
- Forest commission.
Annual report. 1-3, 5, 9. Albany, 1886-95. 5 v. 8°. *5843.12
- Newhall, C. S.
The trees of northeastern America. N. Y., 1890. 8°. 3841.63=*L.22.7
- Ney, C. E.
Über den Einfluss des Waldes auf das Klima. Berlin, 1886. 8°. No. 5 in *5216.50.N.F.1
- Nisbet, J.
British forest trees and their silvicultural characteristics. London, 1893. 8°. 5844.58
Studies in forestry. Oxford, 1894. 8°. 3848.79
- Northern transcontinental survey.
Forest department. Map bulletin 1. N. Y., 1883. L. F°. *Map 47.4
- Northrop, B. G.
Economic tree-planting. N. Y., 1878. 8°. 3846.67
Reprinted from the report of the Connecticut State board of agriculture.
- The schools of forestry and industrial schools of Europe. N. Y., 1878. 8°. 5844.41=No. 10 in *5845.28
- Tree planting, forestry in Europe, and other papers. New Haven, 1880. 8°. No. 6 in *5844.21=5844.19
- Nuttall, T.
The North American sylvia. Phila., 1842-49. 3 v. ***3842.3=**G.151.2
- Ohio. State forestry bureau.
Annual report. 1-5, 1885-89. Columbus, 1886-90. 8°. *5843.15

- Ohio state forestry association.
 Proceedings at its meeting . . . March 28th,
 1884. Columbus, 1884. 8°. *5843.6
- Olmsted, F. L., and J. B. Harrison.
 Observations on the treatment of public
 plantations. Boston, 1889. 8°. 5843.19=*L.22.10
- Orlandini, O.
 Trattato di boschicoltura o elementi d'arte
 forestale. Firenze, 1883. 16°. 3859.70
- Paris. Exposition universelle de 1878.
 Catalogue raisonné des collections exposées
 par l'administration des forêts. Paris,
 1878. Sm. 8°. 4026.53
 Notice sur le débit et les emplois du safin,
 de l'épicéa et du mélèze, par M. Gallot.
 Paris, 1878. 4°. 3843.56
- Parks, C. W.
 Forestry education. (In United States.
 Bureau of education. Report for 1893/94.
 Vol. 1, pp. 809-818. Washington, 1896.)
 *7595.1.1893/94, vol. 1
- Parsons, C. W.
 Forests: their influence on climate and soil.
 Providence, 1878. 8°. No. 11 in *5845.28=No. 16 in *5848.22
- Peaslee, J. B.
 Trees and tree-planting. Cincinnati, 1884.
 8°. No. 4 in *5844.20
 Same. (In United States. Bureau of educa-
 tion. Planting trees in school grounds.
 Washington, 1885.) No. 11 in *5844.20=5844.55
 Same. (In Ohio. State forestry bureau.
 3d annual report. Columbus, 1888.)
 *5843.15.1887
- Peck, C. H.
 The black spruce. [Albany, 1875?] 8°. No. 10 in *4472.52
- Perry, G. B.
 An essay on the cultivation of the oak, and
 other forest trees. (In Essex agricultural
 society. Agricultural essays. Pp. 11-19.
 Danvers, 1847.) 5992.68
- Pfeil, W.
 Ueber Befreiung der Wälder. Züllichau,
 1821. 8°. 3667.30
- Phillips, H.
 Sylva florifera. London, 1823. 2 v. 8°. *L.22.23
- Pinchot, G.
 Biltmore forest. Chicago, 1893. 12°. 5849a.72=*L.53.110
 Government forestry abroad. (In American
 economic association. Publications. Vol.
 6, no. 3, pp. 5-54. Baltimore, 1891.)
 No. 3 in **5560a.10.6
- Pinchot, G., and H. S. Graves.
 The white pine. N. Y., 1896. 16°. 3858.21
- Piper, R. U.
 The trees of America. No. 1-4. Boston,
 1858. 4°. 5840.11
- Planchon, J. É.
 The Eucalyptus globulus, from a botanic,
 economic, and medical point of view.
 Washington, 1875. 8°. No. 12 in *5845.28
- Pontey, W.
 The profitable tree planter. 3d edition.
 London, 1809. 8°. *L.22.27
- Porcher, F. P.
 Resources of the southern fields and forests.
 Charleston, 1863. 8°. 4475.10
 Same. New edition. 1869. 8°. 4475.11
- Powell, Baden Henry Baden-.
 Forest law. London, 1893. 8°. 3844.82
- Pueschel, Alfred.
 Kurzgefasste Forst-Encyclopædie. Leipzig,
 1860. 16°. 3848.80
- Puton, A.
 L'aménagement des forêts. 2e édition.
 Paris, 1874. 16°. 5849a.52
 Manuel de législation forestière. Paris,
 1876. 16°. 3999.67
- Rattray, J., and H. R. Mill, editors.
 Forestry and forest products: prize essays
 . . . Edinburgh . . . 1884. Edinburgh,
 1885. 8°. 3843.70
- Ratzeburg, J. T. C.
 Die Waldverderber und ihre Feinde. Ber-
 lin, 1869. 8°. 5894.2
 Die Waldverderbniss. Berlin, 1866. 4°. 5890.3
- Ravenscroft, E.
 Pinetum Britannicum. Edinburgh, 1884.
 3 v. F°. **Cab.58.13.1=**Cab.58.12.1
- Read, M. C.
 Forest culture in Ohio. (In Ohio. Secre-
 tary of state. Annual report for 1878. Pp.
 541-549. Columbus, 1879.) *6394.9.1878
- Rentzsch, H.
 Der Wald im Haushalt der Natur und der
 Volkswirtschaft. 2te Aufl. Leipzig, 1862.
 3847.70
- Répertoire de législation et de jurisprudence
 forestières. Paris, 1863-1896. 22 v. 8°. 3854.50
 The successor of Bulletin administratif et judi-
 ciaire des Annales forestières [3840.51].
- Revue des eaux et forêts. T. 1-36. Paris,
 1862-97. 8°. 3853.50
- Ribbe, C. de.
 La Provence au point de vue des bois, des
 torrents et des inondations. Paris, 1857.
 8°. 3843.50
- Roberts, M.
 Voices from the woodlands. London, 1850.
 168.12
- Robinson, J.
 Ornamental trees for Massachusetts planta-
 tions. Boston, 1881. 8°. No. 8 in *5844.21=*L.22.31
 Our trees. . . Salem, and . . . Essex
 county. Salem, 1891. 8°. 5844.52
 Our trees in winter. Salem, 1882. 8°. No. 5 in *5844.15
 Same. (In Essex institute. Bulletin. Vol.
 13, pp. 38-51. Salem, 1882.) *4451.1.13
 The pine: its life and importance in Essex
 county. Salem, 1878. 8°. No. 21 in *5845.22
 Report of the committee on forest trees.
 [Essex agricultural society.] Salem, 1884.
 8°. No. 5 in *5844.20=5844.35
- Robinson, W.
 Parks, promenades and gardens of Paris.
 London, 1869. 8°. 4635.1
- Roe, E. P.
 The home acre. N. Y., 1889. 12°. 3992.70

- Roland, A.
Farming for pleasure and profit. 3d section. Tree-planting. London, 1879. 8°. 3997-73.3
- Rossmassler, E. A.
Der Wald. Leipzig, 1863. 8°. 5842.1
- Roth, C.
Geschichte des Forst- und Jagdwesens in Deutschland. Berlin, 1879. 8°. 3843.65
- Rousset, A.
Les études de maître Pierre sur l'agriculture et les forêts. Paris, 1864. 12°. 5849a.53
- Ruiz Amado, H.
Estudios forestales. Tarragona, 1870. 2 v. 8°. 3845.69
- Russell, J., duke of Bedford.
Pinetum Woburnense. London, 1839. 8°. ***3851.103
- Saint-Morys, É. B. V., comte de.
Observations sur les plantations en général et particulièrement sur celles des arbres résineux. [?] 8°. No. 2 in *6675.83
- Salisch, H. von.
Forstästhetik. Berlin, 1885. 16°. 3857.70
- Sargent, C. S.
A few suggestions on tree-planting. Boston, 1876. 8°. No. 13 in *5845.22
Forest flora of Japan. Boston, 1894. 4°. *5840.67
Notes on trees and tree-planting. Boston, 1878. 8°.
No. 17 in *5845.22=No. 12 in *5845.28
The above are reprinted from the 23d and 25th reports of the Mass. State board of agriculture.
- Report on the forests of North America. Washington, 1884. [10th census. Vol. 9.] 4°. *L.22.1=C.280.1.9
- The silva of North America. Boston, 1891-97. 11 v. F°. ***3840.65
- The woods of the United States. N. Y., 1885. 8°. 3845.67=*L.22.24
- Schacht, H.
Les arbres. Bruxelles, 1864. 8°. 3844.51
Der Baum. Berlin, 1860. 8°. 3845.20
- Schleiden, M. J.
Für Baum und Wald. Leipzig, 1870. 8°. 3846.63
- Schlich, W.
A manual of forestry. London, 1889-96. 5 v. 8°. 5846.12
- Schurz, C.
The need of a rational forest policy in the United States. Phila., 1889. 8°. 3852.79
- Schwappach, A.
Forstpolitik, Jagd- und Fischereipolitik. Leipzig, 1894. 8°. 3561.138
- Schwendener, S.
Aus der Geschichte der Culturpflanzen. Basel, 1872. 8°. No. 10 in *2900a.50.1
- Sears, J. H.
Notes on the forest trees of Essex, Clinton and Franklin counties, New York. Salem, 1881. 8°. No. 6 in *5844.15
Same. (In Essex institute. Bulletin. Vol. 13, pp. 174-188. Salem, 1882.) *4451.1.13
- Seckendorff-Gudent, A., Freiherr von.
Beiträge zur Kenntniss der Schwarzföhre. Wien, 1881. 8°. 5841.14
Das forstliche Versuchswesen. Wien, 1881. 8°. 3844.63
- Die forstlichen Verhältnisse Frankreichs. Leipzig, 1879. 8°. 3844.58
- Verbauung der Wildbäche, Aufforstung und Berasung der Gebirgsgründe. Wien, 1884. 2 v. 3942.55; Atlas, *3940a.26
- Selby, P. J.
History of British forest-trees. London, 1842. 8°. 3845.6
- Semler, H.
Tropische und nordamerikanische Waldwirtschaft und Holzkunde. Berlin, 1888. 8°. 3851.56
- Siemoni, G. C.
Manuale teorico-pratico d'arte forestale. 2a ed. Firenze, 1872. 8°. 5859.50
Relazione sui boschi ed i loro prodotti . . . Esposizione di Vienna . . . 1873. [Firenze? 1873.] 8°. No. 3 in *5845.27
- Small, H. B.
Canadian forests. Montreal, 1884. 8°. 5845.40
- Smith, Capt. John.
England's improvement revived. London, 1670. 4°. **H.92.55
- Smucker, I.
Prairie forestry. (Cut from Newark American, May 25, 1883.) No. 10 in *5844.21
- Springer, J. S.
Forest-life and forest-trees. N. Y., 1851. 12°. *4504.114
- Starke, J.
California woods. San Francisco, 1889. 8°. *L.22.16
- Stearns, R. E. C.
Forest tree culture in California. 1872-82. [1882.] 8°. 5844.34
- Stewart, H.
The planter's guide. Edinburgh, 1828. 8°. 4003.6
Same. 2d edition. 1828. *L.22.20
Same. 1st American edition. N. Y., 1832. *L.22.21
- Same. 3d edition. 1848. 4003.7=3982.5
- Strutt, J. G.
Silva Britannica. London, 1826. F°. ***Cab.58.13.2=**G.20.4
Same. 1830. *L.22.3
- Surell, A.
Étude sur les torrents des Hautes-Alpes. Paris, 1870-72. 2 v. 8°. 3043.52
- Thiéry, E.
Restauration des montagnes, correction des torrents, boisement. Paris, 1891. 8°. 3941.64
- Townsend, E. C.
Cypress (*Cupressus-disticha*). A brief history of the most noted and wonderful wood in the world. N. Y., 1890. 8°. 5849a.78
- Trees and how to grow them. London. [1881?] 8°. 3859.59
- United States.
Cultivation of timber and the preservation of forests. Report from the committee on public lands. Washington, 1874. 8°.
No. 8 in *5845.27=No. 6 in *5844.20
- Letters, reports, etc., on the subject of the establishment of a school of forestry. Washington, 1880. 8°. No. 7 in *5844.20

- Message from the president communicating information in relation to the cultivation of timber and the preservation of forests. Washington, 1874. 8°. No. 7 in *5845.27
Census bureau. 10th census. Forestry bulletin. No. 1-25. Washington, 1881-83. 4°. *5850.5
Consuls.
Forestry in Europe. Reports from the consuls of the United States. Washington, 1887. 8°. *5843.7
Department of agriculture.
Forestry in the United States. Address of George B. Loring. Washington, 1883. 8°. No. 8 in *5844.20
Preliminary report on the forestry of the Mississippi valley. Washington, 1883. 8°. No. 9 in *5844.20
The proper value and management of government timber lands and the distribution of North American forest trees. Washington, 1884. 8°. *5991.71.5
Report upon forestry. Prepared by F. B. Hough. Washington, 1878-82. 3 v. 8°. *3845.61
Forestry division. Bulletin. No. 1-14. Washington, 1887-96. 5 v. 8°. *5843.25
Untersuchungen aus dem forstbotanischen Institut zu München. B. 1-3. Berlin, 1880-83. 3 v. 8°. 5843.27
No more was published.
Useful and ornamental planting. London, 1832. 8°. 5997.63=*L.32.15
Vallès, F. de P. F. X. H.
De l'aliénation des forêts aux points de vue gouvernemental, financier, climatologique et hydrologique. Paris, 1865. 8°. 3846.61=*L.22.37
Vasey, G.
Exotic trees in Washington. Washington, 1875. 8°. *L.22.14
Vaupell, C.
Bøgens Indvandring i de danske Skove. Kjøbenhavn, 1857. 8°. 3846.62
Vierling, F. C.
Arboriculture. Chicago, 1890. 12°. *L.22.26
Villa, A. G. B.
I boschi nella Lombardia, etc. 3a ed. Milano, 1873. 8°. 5996.4
Walker, Campbell.
Reports on forest management in Germany, Austria, and Great Britain. London, 1873. 8°. 3843.76
State forestry: its aim and object. 1876. 8°. No. 14 in *5844.21
State forestry; its climatic and financial aspect. [Wellington, 1887.] 8°. No. 15 in *5844.21
Walker, J. B.
An address upon the forests of New Hampshire. Manchester, N. H., 1872. 8°. No. 2 in *4393.43
The forests of New Hampshire. Concord, N. H., 1883. 8°. No. 6 in *4393.43
Our New Hampshire forests. Concord, N. H., 1891. 8°. No. 9 in *4393.43
The preservation and control of our forests. Concord, N. H., 1894. 8°. No. 11 in *4393.43
Ward H. M.
The oak. London, 1892. 8°. 3848.73
Warder, J. A.
An address on forestry. [Nebraska City, 1878?] 16°. No. 20 in *5845.22
An essay on timber planting in Ohio. Columbus, 1880. 8°. No. 12 in *5844.21
Forestry and its needs. Washington, 1878. 8°. No. 19 in *5845.22
Hedges and evergreens. N. Y., 1858. 12°. 5999.13=*L.23.7
Report on forests and forestry. Washington, 1875. [Vienna exhibition, 1873.] 8°. No. 11 in *5844.21
The western catalpa. Washington, 1881. 8°. No. 13 in *5844.21
Wesmael, A. C.
Catalogue raisonné des arbres forestiers & d'ornement. en Belgique. Gand, 1864. 8°. *L.22.30
Wessely, J.
Die oesterreichischen Alpenländer und ihre Forste. Wien, 1853. 2 v. 8°. 3843.57
Williams, J. O.
Mammoth trees of California. Boston, 1871. 8°. 5847.6
Wisconsin.
Report on the disastrous effects of the destruction of forest trees. Madison, 1867. 8°. 5996.2
Wood, S.
The tree planter and plant propagator. London, 1880. 12°. 3847.76
The tree pruner. London, 1880. 12°. No. 2 in 3847.76
Wood industries, The, of Canada. London, 1897. F°. *8010.64
Wood industries, The, of Sweden. London, 1896. F°. 8010.155
Wright, E.
The voice of a tree from the Middlesex Fells. By Pinus Strobus. Boston, 1883. 32°. No. 10 in *4490b.84

BIBLIOGRAPHY.

- Baldamus, A. C. E.
Die deutsche Literatur der Forst- und Jagdwissenschaft. 1881-1885. Leipzig, 1886. 8°. *2176.82
Bjerregaard, A. P.
Bibliography of forestry and kindred topics. (Cut from New York, state. Forest commission. Annual report, 1887-88. Troy, 1889. 2176.105
Jordana y Morera, J.
Apuntes bibliográfico-forestales. Madrid, 1873. 8°. *2172.56
Switzerland. Département fédéral de l'industrie, etc.
Forêts, chasse et pêche. Forêts. Berne, 1894. [Bibliographie nationale suisse. Fasc. V9c.] 8°. *2152.58.V9c.

UNITED STATES GOVERNMENT PUBLICATIONS.

In addition to such separate government publications as are referred to in the foregoing list, the following articles will be found in the United States documents:

Forest cultivation on the Plains, by L. Blodget (Report of the Department of agriculture for 1872). — Forest culture (Report for 1870. — American forests, their destruction and preservation, by F. Starr, jr. (Report for 1865). — Culture and management of forests (38th congress, 2d session, exec. doc. 68). — Preservation of forests, and mem., from the American association for the advancement of science, on the cultivation of timber and the preservation of forests (43d congress, 1st session, House doc. 259). — Preservation of forests (43d congress, 1st session, Senate doc. 28). — Forests and their climatic influence, by A. C. Becquerel (Smithsonian report for 1869, 41st congress, 3d session, exec. doc. 153). — Distribution of forest trees in Montana, Idaho, and Washington territory, by W. W. Johnson (Smithsonian report for 1870, 42d congress, 1st session, exec. doc. 20). — Distribution of forests and trees of North America, with notes on its physical geography, by J. G. Cooper (Smithsonian report for 1858, 35th congress, 2d session, Misc. doc. 49). — Forests and forestry, by J. A. Warder (44th congress, 1st session, exec. doc. 196). — The forests and trees of Northern America (Report of the Commissioner of patents, 1860). — Message relating to forestry. President R. B. Hayes, 1870 (45th congress, 3d session, House exec. doc. 29). — Report on forestry, by F. B. Hough, 1880 (46th congress, 2d session, House exec. doc. 37). — Message on forestry. President R. B. Hayes, 1880 (46th congress, 2d session, House exec. doc. 37). — Letters, reports, etc., on the establishment of a school of forestry (46th congress, 2d session, Senate misc. doc. 91). — Report of the forestry division, Department of agriculture, 1883 (47th congress, 2d session, exec. doc. 109). — Annual report, chief of forestry bureau, 1884 (48th congress, 1st session exec. doc. 178). — Forest culture and forest preservation in New South Wales, by G. W. Griffin (Consular report 81, 1887). — Annual report, forestry division (Department of agriculture, 1887). — Memorial of the American association for the advancement of science in behalf of a proper forest policy, 1890 (51st congress, 1st session, Senate exec. doc. 36). — Memorial of A. Bocherd in relation to the destruction of forests in the United States, 1890 (51st congress, 1st session, Senate misc. doc. 51). — Forests of Hanover, by A. M. Simon (Consular report 115, 1890). — Forests of Germany, by J. H. Smith (Consular report 113). — Influence of forests on water supplies by B. E. Fernow (Annual report, Department of agriculture for 1889). — 5th annual report of the division of forestry (Annual report, Department of agriculture, for 1890). — Annual report of the division of forestry, 1891 (Annual report, Department of agriculture, for 1891). — Plates prepared . . . to accompany a report on the forest trees of America, by A. Gray (Smithsonian publication 800). — Report from the committee on agriculture and forestry favoring bill to provide for . . . public forest reservations (52d congress, 1st session, Senate report 1002). — Trees in French cities by H. G. Knowles (Consular report 147). — Forestry in the United States, by B. E. Fernow (Paris exposition, 1889; reports of the U. S. commissioners, vol. 5). — Report from the committee on public lands favoring bill to protect forest reservations (52d congress, 2d session, House report 2437). — Report of the division of forestry for 1892 (Department of agriculture, 52d congress, 2d session, House exec. doc. 1, part 6). — Forests in Belgium, by G. W. Roosevelt (Consular report 154). — Additions to the forest flora of North America, by G. B. Sudworth (Annual report, Department of agriculture, for 1892). — Report from the committee on public lands favoring bill to protect forest reservations (53d congress, 1st session, House exec. doc. 78). — Report from the committee on public lands favoring bill to protect public reservations, May 14, 1894 (53d congress, 2d session, House report 897).

PARLIAMENTARY PAPERS OF GREAT BRITAIN.

In the Sessional Papers issued by the British government are annual reports on forests, etc., relating especially to Great Britain. These can be consulted on the Special Libraries floor.

MASSACHUSETTS BOARD OF AGRICULTURE.

The annual reports of the Secretary of this Board [6445.4] contain many valuable articles on this subject. The importance of tree-culture is treated of in the reports for 1853, 54, 57, 59, 61, 65, 71, 72, 75, 76. — Desirability of extending the growth of forests, 1853, 54, 56, 57, 59, 61, 62, 65, 69, 71, 72, 75; Destruction of forests increasing the liability to drought, 1854, 56, 59, 61, 69, 75. — Temperature of soil in forests, 1854, 56, 59, 65. — Extent of the destruction of forests, 1854, 65, 72, 75. — Profit of growing forests, 1856, 57, 65, 75. — Influence of forests, 1854, 56, 59, 61, 69, 71, 72, 75. — Number of valuable species of forest trees in this country, 1854, 57, 66, 69, 72. — Methods and times of planting and transplanting forest trees, 1856, 60, 62, 65, 66, 75, 76. — Rotation in forest trees, 1860, 69 (for another article on this subject, see H. D. Thoreau's "Excursions," 4506.14) — Time of felling forest trees, 1856. — Char-

acteristics of different trees, 1866. — Change of the foliage in autumn, 1875. — Forest schools in Europe, 1875. — Characteristics of the foliage of northern compared with that of southern trees, 1865. — Action of frost on trees, 1874. — Effect of girdling, 1873, 74. — Value of farms increased by trees, 1875. — Purification of the atmosphere, 1875. — Nearness to dwelling-houses, 1875. — Notes on trees and tree-planting, by C. S. Sargent, 1875, 77. — Forest fires, by C. S. Sargent, 1882. — Forest tree planting, by A. P. Slade. — Discussion on forestry. — Report of the committee on forest trees, by John Robinson, 1883. — Forestry and arboriculture in Massachusetts, by John Robinson, 1887. — Report on forestry, 1890. — Act . . . for the preservation and reproduction of forests, 1893.

See also the Transactions of the Massachusetts horticultural society, and of the American association for the advancement of science, *passim*.

The Central Library.

- Annual List of new books, 1896-97. .05; by mail, .15
 Annual reports. Free; by mail, .07
 Handbook for Readers, 1890. .10; by mail, .17
 Monthly Bulletin.
 Free upon application; by mail, .03
 Quarterly Bulletins. 5 cts. a number; by mail, .10. Nos. 1-3, 10, 12-28, 35, 36, 46, 47, 52, 54-56, 62, 64, 71, 72, 74, 101-102, out of print.
 English Prose Fiction. 8th edition, 1893. .10; by mail, .18
 — Supplement. 1893-1897. .05; by mail, .08
 Periodicals, Newspapers, Transactions, and other Serial Publications currently received in the Principal Libraries of Boston and Vicinity. Publ. 1897. .25; by mail, .33
 Selected List for Younger Readers. 3d ed. 1898. .01; by mail, .03
 Chronological Index to Historical Fiction. 3d ed. In Bulletin from Jan., 1892 to Jan., 1896. (When finished to be issued as a separate work.)
 Bates Hall Index. Supplement of 1866 (including Parker Collection). Unbound. \$1.00
 Books in raised type for the Blind. List. .50
 French Fiction. .10; by mail, .13
 History, Biography, and Travel. 3d ed., 1892. .25; by mail, .42
 Russian works in the Library. .05
 A List of Books on Social Reform. .05; by mail, .09

- Electric Telegraph and Telephone. In Bulletin no. 92.
 Electricity and Magnetism. In Bulletin no. 88.
 Memoranda of Lieut. Col. Eld, 1779 and 1780. Original Letters of Earl Percy, 1774-1778. In Bulletin no. 87.
 Memorandums made in a tour to the Eastern States, 1797, by Robert Gilmore. In Bulletin no. 88.
 Notes on some writing which may be by Shakespeare in the Library. In Bulletin no. 79.
 Spanish and Portuguese Books not restricted to "Hall use." In Bulletin no. 84.

Facsimiles.

- Chart of Boston Harbor, in color, made by order of Andros. In Bulletin no. 92.
 First Draft of the Freeman's oath. In Bulletin no. 97.
 Five Broad-sides of the Boston Committee of Correspondence, 1773, 74. In Bulletin no. 93.
 Five Revolutionary Broad-sides. In Bulletin no. 90.
 Four Broad-sides relating to the American Colonies, 1696, 1697, 1774, 1775. In Bulletin no. 94.
 Latin Version of 1493 of the First Letter of Columbus on the Discovery of America, with a new Translation.
 List of Passengers in the Speedwell, 1656. In Bulletin no. 96.
 Petition of the Handycraftsmen of Boston, 1677, against the Intrusion of Strangers. In Bulletin no. 95.

Plan of Boston, drawn by Chevalier Daux in 1692. In Bulletin no. 95.

Catalogues of Special Collections.

- Barton Library. Catalogue (complete). \$5.00
 Part 1. Shakespeare Collection. 3.00
 Part 2. Miscellaneous. 3.00
 Chamberlain Collection of Autographs. Brief description, with portrait.
 Make application; by mail, .03
 Franklin Library. List of portraits. In Bulletin no. 84.
 John A. Lewis Library of Early New England Books. Catalogue. In Bulletin no. 89.
 Prince Library. Catalogue. \$1.00
 Thayer Library. Catalogue. In Bulletin no. 100.
 Galatea Collection. Catalogue. .15; by mail, .18

Subject Catalogues.

- Reprinted from the Public Card Catalogue.
 No. 1. Annuals. In Bulletin no. 94.
 No. 2. Egypt. In Bulletin no. 94.
 No. 3. Alps. In Bulletin no. 95.
 No. 4. Steam Engines. In Bulletin no. 95.
 No. 5. Works relating to the Blind. In Bulletin no. 95.
 No. 6. Africa. In Bulletin no. 95.
 No. 7. Arctic Regions. In Bulletin no. 96.
 No. 8. Health and Hygiene. In Bulletin no. 97.
 No. 9. Tracts of the Time of Charles I., and English Commonwealth. In Bulletin no. 98.
 No. 10. Architecture, Construction, Decoration. .25; by mail, .33
 No. 11. Roads. In Bulletin no. 99.
 No. 12. Corea, Japan, China. In Bulletin no. 99.
 No. 13. Goethe. In Bulletin no. 100.

Special Bibliographies.

- No. 1. Franklin Bibliography.
 No. 2. List of Spanish Grammars.
 No. 4. Maps in the Publications of the Geological Society.
 No. 5. Bibliography of Special Subjects. Also in Bulletin no. 80, and in Handbook, 9th ed.
 No. 6. Bibliography of the Official Publications of the Continental Congress, 1774-89.
 No. 7. Catalogue of Family Histories.
 No. 8. Higher Education of Women. .15; by mail, .18
 A List of Books on Social Reform. .05; by mail, .08

Other Publications.

- Genealogies and Estates of Charlestown, 1629-1818. By T. B. Wyman. 2 v. \$8.00
 Journal of the Quebec Expedition, 1775; Journals, 1776 to 1783. By Henry Dearborn. each, .75
 Map of Old Boston, compiled from the Book of Possessions. By George Lamb.

Branches.

- Finding lists. Free upon application.
 West End Finding List (and Supplement). .10

