

Cornell University Library

BOUGHT WITH THE INCOME
FROM THE
SAGE ENDOWMENT FUND
THE GIFT OF
Henry W. Sage
1891

A 226.960

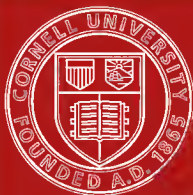
5/10/08

Cornell University Library
arV18564

Lecture-notes on the theory of electrical



3 1924 031 216 272
olin,anx



Cornell University Library

The original of this book is in
the Cornell University Library.

There are no known copyright restrictions in
the United States on the use of the text.

LECTURE-NOTES
ON THE
THEORY OF ELECTRICAL
MEASUREMENTS.

*PREPARED FOR THE THIRD-YEAR
CLASSES OF THE COOPER UNION
NIGHT-SCHOOL OF SCIENCE.*

BY
WILLIAM A. ANTHONY,
Late Professor of Physics, Cooper Union.

THIRD EDITION, REVISED

BY
ALBERT BALL,
Assistant Professor of Physics and Applied Electricity, Cooper Union.

NEW YORK:
JOHN WILEY & SONS.
LONDON: CHAPMAN & HALL, LIMITED.
1908.

Copyright, 1898,
BY
WILLIAM A. ANTHONY.

Copyright, 1908,
BY
ALBERT BALL.

The Scientific Press
Robert Drummond and Company
New York

REVISER'S PREFACE.

By the courtesy of the publishers and under the advice of the author, the revision of these Notes was undertaken in order that the book might more fully meet the needs of the Cooper Union students. To this end numerous problems have been added. These have been selected with great care in order that their proper solution may indicate the application of the principles discussed in the text. A few of the principles have been more fully elaborated. Paragraphs upon capacity and its measurement have been incorporated. Among other minor changes the symbol for current has been changed to I , reserving the symbol C for capacity.

Much credit is due to Professor F. M. Hartmann for valuable suggestions.

ALBERT BALL.

COOPER UNION, N. Y.

1908.

PREFACE.

IT is the purpose of these Notes to furnish the student the topics treated in the lectures; to give in full such facts, data, and courses of reasoning as are not readily mastered by the student in the course of the lecture; in short, to aid the student in those matters which he is likely to find most difficult, or which he may fail at the moment to fully grasp. It is not, however, intended to relieve the student of the necessity of taking his own notes of the lectures as they are delivered, and every student is expected to take such notes, especially as to the experiments and the lessons which they teach. Unless the student writes short-hand, the notes he can take during a lecture must necessarily be brief, and he should aim to record suggestive phrases to be afterward more fully elaborated.

The student is advised of the great importance, as soon as possible after the lecture, of going over the ground and filling in his notes, thereby clearing up

subjects that may have appeared obscure, and fixing his knowledge of the topics treated. On no account should the student fail to make this review before the time for the next lecture.

It is the purpose of this course of lectures to teach the fundamental principles of all electrical measurements, rather than to describe in detail methods employed in particular cases. To this end the definitions and relations of electrical quantities have been discussed at considerable length, and the derivation of the electrical units has been fully treated. It is believed that, with this thorough foundation in the theory of electrical measurements, and a knowledge of typical methods such as are treated in these lectures, the student will be better equipped for practical work than he could possibly be by the most extended instruction in special empirical methods without such foundation.

W. A. ANTHONY.

CONTENTS.

THE C. G. S. SYSTEM OF UNITS	Page 1
Arbitrary and Derived Units; Basis of C. G. S. System; Fundamental Units; Characteristics of Matter; Motion; Units of Velocity and of Acceleration; Force; Work and Energy; Practical Units; Gravitation Units; Heat Units; Relations between the Various Units.	
THE MAGNETIC FIELD	Page 12
General Character of Magnets; Lines of Magnetic Force; Strength of Magnetic Poles; Unit Magnetic Pole; Intensity of Magnetic Fields; Graphical Representation of Magnetic Fields; The Earth's Magnetic Field; Measurement of Field Intensity.	
THE ELECTRIC CURRENT	Page 22
Origin and Effect of Currents; Magnetic Field due to Currents; The Tangent Galvanometer; Current-measuring Instruments Employing Artificial Fields; Electrical Dynamometers and Electric Balances.	
POTENTIAL AND ELECTROMOTIVE FORCE	Page 32
Potential and Difference of Potential in General; Electrical Difference of Potential; Measurement of Difference of Potential; Unit Difference of Potential; Electromotive Force; Examples of Electromotive Force; Capacity.	
RESISTANCE AND OHM'S LAW	Page 42
Specific Resistance; Unit Resistance; Conductivity; Resistance and Temperature; Power Consumed by Resistance; Divided Circuits.	

PRACTICAL MEASUREMENTS OF ELECTRICAL QUANTITIES	Page 50
The International Units; Definitions of the International Units by the International Congress.	
MEASUREMENT OF RESISTANCE	Page 52
Instruments; Methods of Measurement; Measurement of Insulation Resistance; Measurement of very Small Resistances; Measurement of Resistance of Electrolytes; Resistance of Batteries.	
MEASUREMENT OF CURRENT	Page 62
Measurement by the Tangent Galvanometer; By Direct-reading Instruments; By Fall of Potential.	
MEASUREMENT OF POTENTIAL	Page 64
By Electrostatic Forces; By Comparison with a Known Potential Difference; By the Current Produced in a Circuit of Known Resistance; By the Ballistic Galvanometer.	
TESTING AND CALIBRATING INSTRUMENTS	Page 67
Tests of Resistance Sets; The Divided-meter Bridge; Calibration of the Bridge Wire; Tests of Current Instruments; Tests of Instruments for Measuring Potential.	
MEASUREMENT OF CAPACITY	Page 71
HEATING EFFECTS OF THE CURRENT	Page 81
Temperature of a Conductor Carrying Current.	
INCANDESCENT LIGHTING	Page 83
The Incandescent Lamp; High Temperature Required for Economy; Incandescent Lamps of Different Candle-power.	
ARC LIGHTING	Page 85
Source of the Light; Power Consumed.	
CHEMICAL EFFECTS OF THE CURRENT	Page 89
Decomposition of Salts; Definitions of Terms; Faraday's Laws; Applications of Electrolysis; Energy Required.	

ELECTROMAGNETIC INDUCTION	Page 95
Direction of Current; Law of Lenz; Electromotive Force Developed.	
ELECTROMAGNETISM	Page 98
The Magnetic Circuit; Magnetic Reluctance and Permeability; The Electromagnet; Measurements of Permeability.	

NOTES

UPON

ELECTRICAL MEASUREMENTS.

THE C.G.S. SYSTEM OF UNITS.

To measure any quantity is to compare it with another quantity of the *same kind* that has been chosen as a unit.

It was the practice originally to choose units arbitrarily, without regard to the relation they might bear to other units already chosen. Thus the gallon, a unit of capacity, is 231 cubic inches. It would have been far more convenient if it had been 100 or 1000 cubic inches.

When electrical science had reached the stage where units of measurement were necessary, units were at first arbitrarily chosen, but it was very early recognized that such a course would lead to a multitude of troublesome factors for reducing to other

units already fixed, and, fortunately, the matter was taken up and a consistent system of units devised before the arbitrary units had acquired a strong foothold.

The system so devised is known as the centimetre-gramme-second, or the c.g.s., system of units. In order that it may be fully understood, it will be necessary to consider briefly the basis upon which the system rests.

It has been said that all physical phenomena are the result of matter and motion. Any physical measurement may, therefore, be effected by measuring the mass of matter, and the motion involved. But motion implies two elements—space or length, and time. The measurement of any physical phenomenon, therefore, involves the measurement of three independent quantities, and for the measurement of these quantities three independent units must be arbitrarily chosen. These are called fundamental units, and from them all other units may be derived.

Fundamental Units.—The fundamental units of the c.g.s. system are: for the unit of length, the centimetre, which is the one-hundredth part of the length of a certain platinum bar deposited in the archives of France and declared by government enactment to be a metre; for the unit of mass the gramme, which is the one-thousandth part of a cube of platinum

deposited in the archives of France and declared by government enactment to be a kilogramme; for the unit of time, the second, which is the 86400th part of the mean solar day.

Characteristics of Matter.—The distinctive characteristic of matter is its persistence in whatever state of rest or motion it may happen to have, and the *resistance* which it offers to any attempt to change that state. This property is called *inertia*.

The resistance which a body offers to change of state of rest or motion is, other things being equal, proportional to its *mass*.

Anything that changes the state of a body with respect to rest or motion is called *force*.

Motion.—Motion may be *uniform* or *varied*. Rate of motion is called velocity. In a uniform motion, velocity is measured by the space passed over in unit time. In varied motion, the velocity at any instant of time is measured by the space which the body would pass over in the next second if, from that instant, the velocity were uniform.

The unit velocity is the velocity of a body which, moving with a uniform motion in a straight line, describes unit space in unit time.

Rate of change of velocity is called *acceleration*. Acceleration may be constant or varied.

When constant, it is measured by the change in velocity which occurs in unit time. When varied, its value at any instant is measured by the change in

velocity that would occur in unit time if, from that instant, the acceleration were constant.

Unit acceleration is the acceleration of a body whose velocity, changing at a constant rate, changes by the amount of one unit velocity in the unit time.

A constant velocity is expressed by the ratio space to time:

$$v = \frac{s}{t} (1)$$

This expression is also true for the instantaneous velocity at a given instant of time in varied motion, if s represent a space described at that instant in a time t so short that during that time the velocity may be considered constant.

In the same way, a constant acceleration is expressed by the ratio velocity to time:

$$a = \frac{v}{t} (2)$$

v representing the change of velocity in the time t . If v and t be taken small enough, formula (2) gives the instantaneous acceleration when acceleration is variable, just as (1) gives the instantaneous velocity in varied motion.

Uniformly Varied Motion, or Motion in which Acceleration is Constant.—Let v_1 represent the initial velocity. Then velocity at end of time t is

$$v = v_1 + at (3)$$

Since the velocities in this case form a series in arithmetical progression, the mean velocity is the half-sum of the initial and final velocities, or

$$\frac{v_1 + v}{2} = \frac{v_1 + v_1 + at}{2} = v_1 + \frac{at}{2},$$

and the space described in time t is

$$s = \frac{v_1 + v}{2}t, \dots \dots \dots (4)$$

or

$$s = v_1t + \frac{1}{2}at^2. \dots \dots \dots (5)$$

Substitute in (4) the value of t from (3):

$$s = \frac{v^2 - v_1^2}{2a}. \dots \dots \dots (6)$$

If the motion start from rest, $v_1 = 0$, and the above formulæ become

$$v = at; \dots \dots \dots (7)$$

$$s = \frac{1}{2}vt; \dots \dots \dots (8)$$

$$s = \frac{1}{2}at^2; \dots \dots \dots (9)$$

$$s = \frac{v^2}{2a}. \dots \dots \dots (10)$$

Force.—Since force is the assumed cause of change of motion, it is proper to take the change produced

in unit mass in unit time, that is, the *rate* of change of motion, or acceleration, as a measure of the force producing it. But the force required to produce a given change is proportional to the *mass*. Hence the force required to produce a given acceleration in any mass is proportional to the product of the mass by acceleration.

Since we are free to choose a unit of force, we may make the force

$$F = ma, \quad (11)$$

m being any mass, and a the acceleration produced in that mass by the force F . We may now define the c.g.s. unit force as that force which may produce in a mass of one gramme the c.g.s. unit acceleration. It is called a *dyne*.

Work and Energy.—The physical idea of work is resistance *overcome* through space. Assuming a force to produce motion in its own direction, work is measured by the product of that force by the space through which it acts. Hence the following equation:

$$W = Fs. \quad (12)$$

The c.g.s. unit work is the work performed by a force of one dyne acting through a space of one centimetre in the direction of the force. It is called an *erg*.

When the resistance overcome is inertia, the force

overcoming it equals ma ; see (11). If the force continue to act until the velocity suffers a change equal to v , then the space through which it acts is (10), $s = \frac{v^2}{2a}$. Substituting these values of F and s in (12),

$$W = \frac{1}{2}mv^2. \quad . \quad . \quad . \quad . \quad (13)$$

That is, the work which must be done to impart to the mass m the velocity v equals half the product of the mass by the square of its velocity. Conversely, if a mass m , moving with a velocity v , be brought to rest, it will *do* work represented by the same product.

Energy is capacity for doing work. Thus the mass of the last paragraph has a capacity for doing work equal to $\frac{1}{2}mv^2$. This is the energy it possesses because of its motion.

A body may also possess energy because of its *position of advantage* with respect to some force. The energy which a body possesses because of its motion is called *kinetic* energy. That which it possesses because of its position is called *potential* energy.

Energy is measured in the same units as work. In describing the measurement of work it was assumed that the displacement of the body was in the line of direction of the force, but this may not be the case. The body may be constrained to move in a path whose direction makes an angle with the line of direction of the force. In this case, to obtain the *effective*

force along the path, the force must be resolved into two components, one in, and the other at right angles to, the path. Evidently the component lying in the path is the only component having any effect to produce motion along the path, and the work done is measured by the product of this component into the space through which the point of application of force moves. The component along the path is the *projection* of the force upon the path. If α be the angle between the path and the line of direction of the force, the effective component along the path is $F \cos \alpha$.

Practical Units.—The erg is a very small amount of work. For practical purposes a larger unit, equal to ten million (10^7) ergs, is employed, and is called a *joule*.

The *watt* is a unit *rate* of working. It is work performed at the rate of one joule per second.

Gravitation Units.—Before the adoption of the simply related units of the c.g.s. system certain arbitrary units of force and work were in use, and are still largely used in engineering practice. Those most in use are: a force equal to the weight of a pound of matter, called also a pound, and a force equal to the weight of a kilogramme at Paris, called also a kilogramme. It is unfortunate that the name pound should have been used for two such totally distinct quantities.

From these units of force are derived the units of

work, the *foot-pound*, being the work done by a force of one pound acting through a space of one foot, and the *kilogramme-metre*, being the work done by a force of one kilogramme acting through a space of one metre; also the units rate of working, the *horse-power*, being work performed at the rate of 550 foot-pounds per second, and the *cheval-vapeur*, work performed at the rate of 75 kilogramme-metres per second.

Heat Units.—Since heat is a form of energy, it is important to define here the heat units and their relation to the other units of work and energy.

The *British thermal unit* is the heat required to raise the temperature of one pound of water from 32° to 33° Fahrenheit.

The *pound-degree centigrade* is the heat required to raise the temperature of one pound of water from zero to 1° centigrade.

The *calorie* is the heat required to raise the temperature of one kilogramme of water from zero to 1° centigrade.

The *gramme calorie* is the heat required to raise the temperature of one gramme of water from zero to 1° centigrade.

Below are given the relations between these various units.

UNITS OF FORCE.

Kilogramme = 981000 dynes.

Pound = 444972 “

UNITS OF WORK OR ENERGY.

Kilogramme-metre	= 9.81×10^7 ergs.
“	= 9.81 joules.
Foot-pound	= 1.356×10^7 ergs.
“	= 1.356 joules.

UNITS RATE OF WORKING.

Cheval-vapeur	= 736 watts.
Horse-power	= 746 “

UNITS OF HEAT.

Calorie	= 426 kgm.-metres.
“	= 4160 joules.
British thermal unit	= 778 foot-pounds.
“ “ “	= 1055 joules.
Pound-degree centigrade	= 1400 foot-pounds.
“ “	= 1898 joules.
Joule	= .00024 calorie
	= .000948 B. T. U.
	= .000527 pound-deg. C.

PROBLEMS.

(1) A body is projected upward with a velocity of 5000 cm. How high will it rise ?

(2) A rifle-barrel is 75 cm. long. A rifle-ball of 15 grms. leaves the rifle with a velocity of 60000 cm. per second. Assuming a uniform acceleration, for how

long a time was the bullet in the rifle? What was the force of the powder in dynes? in pounds?

(3) If the bullet of the last example were stopped in a space of 10 cm. by a uniform resistance, what is that resistance?

(4) What energy—ergs, joules, foot-pounds—did the bullet possess on leaving the rifle?

(5) How much heat—calories, B.T.U.—can be generated in one hour by one horse-power?

(6) A 100-ton locomotive running at 60 miles per hour is stopped in 10 minutes. Required: Average acceleration in ft. per sec. per second? Retarding force in pounds (assuming it uniform)? Energy expended in foot-pounds? Heat generated in B.T.U.?

(7) Express all of the quantities referred to in problem (6) in c.g.s. units.

(8) A locomotive exerting a pull of 1000 pounds maintains a speed of 50 miles per hour. What H.P. is expended? How many watts?

(9) A constant force acting upon a mass of 3 kg. for 20 seconds causes it to move from rest a distance of 15 meters. Required: The force in grams? The velocity at the end of 20 seconds? The distance traversed during the 15th second?

THE MAGNETIC FIELD.

Definition of a magnet.

Natural and artificial magnets.

Bar magnets, horseshoe magnets.

Distribution of magnetic force.

Ends where force is manifested called *poles*.

The two poles are not alike.

Any magnet suspended so as to be free to swing in a horizontal plane settles with one pole toward the north and the other toward the south. One pole cannot exist without the other.

Pole pointing north is in English writings called the *north pole*.

Mutual action of poles.

Force extends all around the magnet and to a great distance.

Space around a magnet where its forces are manifested is called the *magnetic field*.

Direction and intensity of forces in different parts of the field vary greatly.

A curved line so drawn in the field that at each

point of this line the line of direction of the magnetic force at that point is tangent to it, is called a *line of force*.

The direction of the force along the line is assumed to be the direction in which a free *north* pole would move in obedience to that force.

Lines of force indicated by iron-filings and by a small needle.

Lines of force can never cross each other, for, if they did, that would mean two directions of the magnetic force at the point of crossing. This is impossible.

Strength of Magnetic Poles.—Forces exerted by different poles vary greatly.

Force exerted by the *same* pole at different distances varies greatly.

Theory indicates and careful measurements demonstrate that the magnetic force exerted by one magnetic pole upon another varies inversely as the square of the distance.

The strength of a magnetic pole is assumed, other things being equal, to be proportional to the force exerted by it.

Unit Magnetic Pole.—Since the action between two magnetic poles is mutual, the force exerted by one pole upon another must be proportional to the product of the two pole strengths. Hence, as we are

free to choose the unit strength of pole, we may put

$$F = \frac{pp}{d^2}, \quad (14)$$

The c.g.s. unit strength of pole is, then, a pole of such strength that it actuates another equal pole at a distance of one centimetre with a force of one dyne.

Intensity of Magnetic Field.—It is often convenient to express magnetic forces in terms of the intensity of the magnetic field. The intensity of the magnetic field at any point is assumed to be proportional to the force exerted upon a pole of given strength placed at that point. Hence we may put

$$F = Hp, \quad (15)$$

where H is the intensity of the field.

The c.g.s. unit intensity of field is now a field of such intensity that in it unit pole is actuated by a force of one dyne.

Since unit pole is also actuated by a force of one dyne at a distance of one centimetre from another unit pole, it follows that unit intensity of field is found at a distance of one centimetre from the unit pole.

These definitions have been given as though one pole alone could act to produce a magnetic field, but this is a condition that cannot be realized in practice.

It has already been stated that one pole could not exist alone. It is also true that each pole affects to a greater or less extent the intensity and direction of the lines of force in the magnetic field.

Graphical Representation of Magnetic Field.—Lines of force may not only be used to indicate the direction of the forces in the magnetic field, but they may be so drawn as to indicate the intensity also. For this purpose they are so drawn that the number of lines passing through a square centimetre at any point is equal to the number of units expressing the field intensity at that point, the surface upon which the square centimeter is measured being perpendicular to the lines of force. It follows that from the unit pole as defined there must emanate 4π lines of force.

The Earth's Magnetic Field.—The lines of force of the earth's field in this region lie in a vertical plane about 7° west of the geographical meridian, and are inclined at an angle of some 75° with the horizon.

The deviation from the true north is called the *declination* of the magnetic needle, and the deviation from the horizontal is called the *inclination* or *dip*. Since magnetic needles are usually free to swing only in a horizontal plane, they are affected only by the *horizontal component* of the earth's magnetic intensity. This is called the horizontal intensity of the earth's

magnetic field, and is represented by the symbol H . If α be the angle of dip, then

$$H = \text{total intensity} \times \cos \alpha.$$

Measurement of Field Intensity.—Suppose it is required to determine the horizontal intensity of the earth's magnetic field. A magnetic needle is suspended by a fibre of silk so as to be free to swing in a horizontal plane. If it be deviated slightly from the magnetic meridian and then left to itself, it will vibrate back and forth in a time which will be less the greater the force, and greater the greater the resistance offered by its inertia.

The resistance offered by the inertia of a body to a force producing rotary motion depends not only upon the mass of the body, but also upon the distribution of that mass with respect to the axis of rotation; that is, upon a factor of the body which is called the *moment of inertia*. This is a factor that may be determined by computation for some bodies of regular form, but for irregular bodies it must be determined by experiment. We will represent it by the symbol K .

Let NS in the figure represent the magnetic meridian, and A a magnetic needle deflected from the meridian plane. A force at each end of the needle, equal to $H\sin\alpha$, constitutes a *couple* which causes the needle to vibrate. The effect of this couple to pro-

duce rotation is measured by the product of one of the forces by the distance between them, which, when the needle is at right angles to the meridian, is the length of the needle, hence by $H\rho l$, where l is the length of the needle. ρl , represented by the symbol

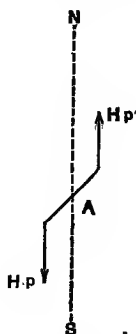


FIG. I.

M , is called the *magnetic moment* of the needle. Then it can be shown that the time of a single vibration or oscillation is

$$t = \pi \sqrt{\frac{K}{HM}} \dots \dots (16)$$

[See Appendix.]

If t and K are determined, HM may be found from formula (16).

But the quantity sought is H , and the above experiment gives the product HM .

To find H it is necessary to make another measurement to determine the ratio of H to M .

Let the magnet A of Fig. 1 be placed as in Fig. 2, at some distance to the east or west of a small needle

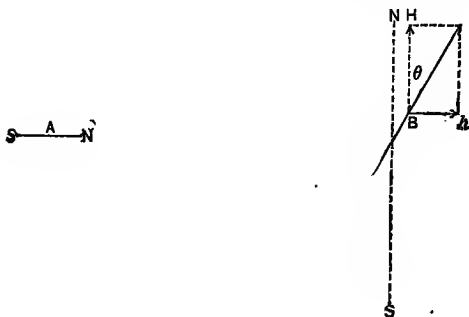


FIG. 2.

B whose deflection can be accurately measured. A is so placed that its axis prolonged passes through the centre of B . Then if r be the distance between the centres, and θ the deflection of B produced by A , it can be shown that

$$\frac{M}{H} = \frac{1}{2} r^3 \tan \theta. \quad \dots \quad (17)$$

[See App.]

From (16) and (17) both H and M may be found.

The method here described for determining H is similar to that employed for determining the intensity of gravity by means of the pendulum.

Horizontal intensity of the earth's field in New York is about .17 c.g.s. units.

It has been suggested to adopt as a practical unit of field intensity the intensity of a uniform field in which there are 10^9 c.g.s. lines per cm.². This unit has been called a *gauss*. A field of 10000 c.g.s. units would be $\frac{1}{10}$ milligauss.

PROBLEMS.

(10) A magnetic needle vibrates 15 times per minute in the earth's magnetic field in New York. The same needle vibrates 16 times per minute in another location. What is the value of H in the second location?

(11) Two needles identical in dimensions and mass make, at the same place, one 50, the other 30 vibrations per minute. How do their strengths compare?

(12) If two needles known to be of the same strength make, at the same place, one 50, the other 30 vibrations, how is this accounted for? Explain the relation between the two.

(13) The needle A of Fig. 2 causes B to be deflected 15° . Another needle substituted for A causes a deflection of 20° . Required the relative strengths of the two needles.

(14) If in Fig. 2 the distance AB is 50 cm. and the needle B is deflected 15° , what is the relation between the magnetic moment of A and the field in which B is placed?

(15) Two poles of equal strength are 20 cm. apart and the force of mutual attraction between them is 2.25 dynes. Find the strength of the poles.

(16) What is the force with which a pole of strength 10 c.g.s. units is actuated when placed in a magnetic field that would be represented by 5 lines per sq. cm.?

(17) What is the total intensity of the earth's magnetic field at a point where the angle of dip is 75° and the horizontal intensity is .17 c.g.s. units?

(18) If a bar magnet whose magnetic moment is 1000 c.g.s. units be suspended in a magnetic field whose intensity is .2 c.g.s. units, what work in ergs must be done in turning the magnet from its equilibrium position through an angle of 30° ? 45° ? 90° ?

(19) What will be the moment of the couple which would hold the magnet in problem (18) in each of the deflected positions?

(20) What will be the intensity of a magnetic field in which a couple whose moment is 5 gram-centimeters acting upon the magnet of problem (18) maintains a deflection of 45° ?

(21) If the moment of inertia of a bar magnet be 5000 gram-cm.² and its magnetic moment 2000 c.g.s. units, what will be its time of vibration if suspended in a horizontal position by a torsionless fiber in a field whose horizontal intensity is .17 c.g.s.? (See equation 16.)

(22) If the poles of the magnet in problem (21) are 20 cm. apart, what is its pole strength?

(23) What strength of field will be produced by the magnet of problem (22) at a point 20 cm. from either pole? At a point 20 cm. from one pole on a line perpendicular to the magnet?

THE ELECTRIC CURRENT.

When the two terminals of an electric generator are joined by a conductor, something takes place which is called an electric flow.

The conductor is said to carry an *electric current*. This current is known only by its effects.

It heats the conductor.

It affects a magnetic needle near which the conductor may be placed. This shows that the current develops a magnetic field.

Field due to Current.—*Direction.*—Studying the effect of the current upon a needle, it is seen that the lines of force are concentric circles of which the wire is the axis.

Can be shown by means of iron-filings sprinkled on a glass plate.

The direction of the force in these lines may be determined from the following rule: *Suppose the current flowing from you. The lines then have the direction of the movement of the hands of a watch whose dial faces you.*

Intensity.—Let *AB*, Fig. 3, represent the direction of the horizontal component of the earth's magnetism.

Let a conductor carrying a current be placed parallel to AB and over or under the magnetic needle NS .

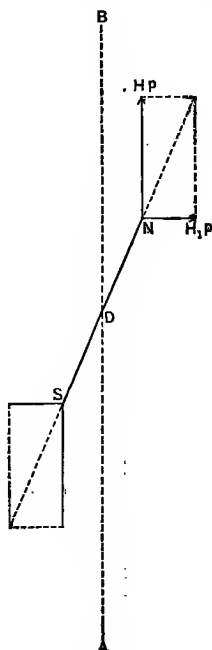


FIG. 3.

The lines of force due to the current are at right angles to AB , and forces in opposite directions, constituting a couple, will act upon the opposite poles of the needle.

These will cause a deflection which is opposed by the force of the earth's magnetism, and it is evident that the needle will be in equilibrium when its direction is that of the resultants of the two pairs of forces,

as represented in the figure. The force due to the earth's magnetism acting upon each pole of the needle is $H\rho$. That due to the current is $H_1\rho$ at right angles to $H\rho$. If α be the angle of deflection, it is plain from the figure that

$$H_1\rho = H\rho \tan \alpha,$$

or

$$H_1 = H \tan \alpha. \quad . \quad . \quad . \quad . \quad (18)$$

If the conductor, instead of remaining in the magnetic meridian, is turned with the needle and kept parallel to it, the deflecting force will always be at

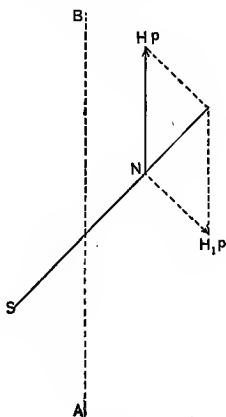


FIG. 4.

right angles to the needle as in Fig. 4, where only one force of each pair is shown. Here we have

$$H_1\rho = H\rho \sin \alpha,$$

or $H_1 = H \sin \alpha$ (19)

It may be assumed as self-evident that if all parts of a conductor were at equal distances from a needle, the force exerted would be proportional to the length of the conductor.

It is shown experimentally that, other things being equal, the force exerted by a current upon a needle is proportional to the inverse square of the distance.*

It is assumed that, other things being equal, *strength of current* is proportional to the force it exerts upon a magnetic pole. Hence we may put

$$F = \frac{IL\phi}{d^2}, \quad (20)$$

where I is the strength of current, L its length, d its distance from the pole whose strength is ϕ .

We may now define the c.g.s. unit current as a current of such strength that, flowing in a conductor 1 cm. long, bent into an arc of a circle of 1 cm. radius, it will exert upon the c.g.s. unit magnetic pole at the centre of the circle a force of one dyne.

The c.g.s. unit current has no name. The unit used in practice is one tenth of the c.g.s. unit, and is called the *ampere*.

It is impossible practically to realize the conditions stated in the definition of the unit current, because

* All parts of the conductor being at the same distance from the needle.

the conductors by which the current is brought to and carried away from the arc of unit length would themselves have some influence upon the needle. But if the conductor be bent into a complete circle of unit radius, the conductors leading to and from the circle may then be twisted together so that the currents flowing in them in opposite directions neutralize each other, and the effect produced is that of the circle alone. The length of such a circle being 2π , the field produced at the centre by unit current flowing in the conductor will be 2π .

A conductor forming a circle of radius r will, therefore, produce at its centre a magnetic field:

$$H_1 = \frac{I2\pi r}{r^2} = \frac{2\pi}{r}I.$$

Tangent Galvanometer.—If the plane of such a circle coincide with the plane of the earth's magnetic meridian, and a short magnetic needle free to swing in a horizontal plane be placed at its centre, it will be in equilibrium (see (18)), when

$$\frac{2\pi}{r}I = H \tan \alpha. \quad . \quad . \quad . \quad (21)$$

Hence
$$I = \frac{Hr}{2\pi} \tan \alpha. \quad . \quad . \quad . \quad (22)$$

If the conductor make n turns,

$$I = \frac{Hr}{2\pi n} \tan \alpha. \quad . \quad . \quad . \quad (23)$$

Note that the result is independent of the strength of the needle.

An instrument constructed to realize these conditions is called a tangent galvanometer because the current is proportional to the tangent of the angle of deflection.

The quantity $\frac{Hr}{2\pi n}$ is the *constant* of the galvanometer.

Helmholtz's Form of Tangent Galvanometer.—In this instrument there are two equal coils placed at a distance apart equal to their radius, and the needle is on the common axis midway between them.

The constant of this instrument is

$$.222 \frac{Hr}{n} \dots \dots \dots (24)$$

[See Appendix.] All the above expressions give I in c.g.s. units. To give I in amperes multiply by 10.

Current-measuring Instruments employing Artificial Fields.—The tangent galvanometer, depending for its indications upon the intensity of the earth's magnetic field, can only be used where this intensity is constant, or at least free from local disturbances. Furthermore, large currents cannot be accurately measured by this instrument because the fields produced by such currents are very large in comparison with the field of the earth. Instruments are therefore

constructed in which a strong artificial field produced by a permanent magnet is employed to direct the needle. Such instruments must be *calibrated* by direct comparison with some standard instrument.

Other Current-measuring Instruments.—Instead of employing a magnetic field as the directive force to oppose the force of the current, a spring may be employed.

Instead of making the magnetic needle movable, this may be fixed and the coil made the movable element, e.g., D'Arsonval galvanometers. Current-measuring instruments may be so graduated as to indicate the current directly in amperes. They are then called *ammeters*.

Force upon Conductors Carrying Currents in a Magnetic Field.—From the rule given on page 21 it is plain that if *A* (Fig. 5*a*) represents the cross-section

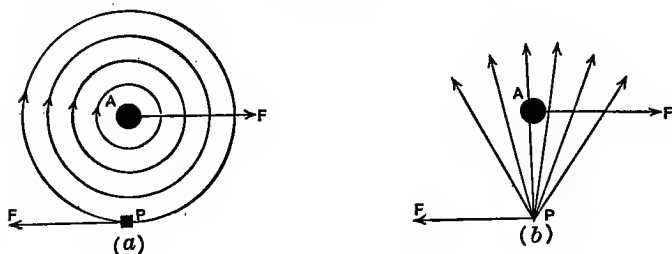


FIG. 5.

of a conductor carrying a current away from the observer a positive pole placed at *P* will be urged toward

the left. Since for every such action there is always an equal and opposite reaction the conductor will be urged to the right with an equal force. This mutual action is of course due to the reaction of the two magnetic fields, each of which tends to distort the other.

If we consider the relative directions of the current, the field in which the conductor is placed, and the force acting upon the conductor (see Fig. 5*b*), we may arrive at the following rule: Place the thumb and the first two fingers of the *left* hand mutually at right angles. Point with the *index* finger in the direction of the field, with the *second* finger in the direction of the current, the *thumb* will then point in the direction of the force *acting upon the conductor*.

The above rule applies whatever be the source of the field. It follows that there must be a mutual action between any two currents placed near each other. The following rules applying to this mutual action are special cases of forces upon conductors carrying current, in a magnetic field.

Parallel currents flowing in the same direction attract, flowing in opposite directions they repel.

Currents making an angle tend to become parallel and to flow in the same direction.

Currents may be measured by means of their mutual action. For this purpose two coils are so connected that the same current traverses both and

the force due to their mutual action is measured. Evidently this force is proportional to the square of the current.

Electrodynamometers.

Electric balances.

Electrical Quantity.—It is sometimes necessary to consider the total quantity of electricity employed during a period of time. It is assumed that the unit current conveys the unit quantity per second. Hence the quantity conveyed in t seconds is

$$Q = It. \quad . \quad . \quad . \quad . \quad . \quad (25)$$

The practical unit quantity is the *coulomb*, which is the quantity conveyed by the ampere in one second.

PROBLEMS.

(24) Where $H = .17$, what is the constant of a tangent galvanometer having a coil of fifty turns 50 cm. diameter?

(25) If the needle of such an instrument is deflected 30° , what is the current in amperes? What quantity of electricity per hour is conveyed by such a current?

(26) If it be required to measure a current approximating 100 amperes, how large a coil of one turn would be required, the allowable deflection being 60° ?

(27) What field intensity exists at the centre of a

circular coil of one turn one metre in diameter, carrying 1000 amperes?

(28) A tangent galvanometer has two coils, one 80 cm. diameter, ten turns, the other 100 cm. diameter, eight turns. Currents measured by the two coils respectively produce the same deflection. What is the relation between those currents?

(29) What must be the diameter of the coil of a tangent galvanometer of five turns so that a current of 2 amperes shall produce a deflection of 45° at a place where H is .2 c.g.s. units? What is the value of the constant of the above galvanometer?

(30) If the galvanometer of problem (24) is so constructed that the coil may be rotated about a vertical axis so that the needle shall always lie in the plane of the coil, with what current in the coil will it be necessary to rotate it through 30° from the meridian? What is the value of the constant of the galvanometer when so used? What is the maximum current that can be measured with it in this way?

POTENTIAL

AND

ELECTROMOTIVE FORCE.

Potential is a concept that was introduced into mechanics for the purpose of simplifying the study of the effects produced in a field of force. The characteristics of a field are known when we know the direction and intensity of the forces exerted at various points in it.

It must be remembered that no *force* exists in a field except when there is present in it some body or agent peculiar to that field. For example, in a gravitation field no force exists except where *matter* is present. In a magnetic field no force exists except where a *magnetic pole* is present. The *intensity* of a field at any point is measured by the force which would act upon a *test unit* of the kind to which the force is due, if such a unit were present. The actual force exerted is the product of the field intensity by the number of such units present.

Now in studying the effects of such forces where their directions and intensities vary from point to

point within the field, the problem becomes very complicated if we attempt to solve it by taking into account the forces themselves.

But every movement in a field, of a body acted upon by the forces, involves *work*, and problems relating to the effects of such movements are much simplified if we express the characteristics of the field in terms of the work done in moving a body from one point to another in it, instead of in terms of the direction and intensity of the forces.

Difference of Potential.—We define the *difference of potential* between two points in a field of force to be a difference of condition between the two points which is measured by the work which would be done by the forces in the field in moving a test unit from one point to the other. The work done in this case is independent of the *path* over which the body is moved. For it is self-evident that if work is done *by* the forces in moving a body from the point *A* to the point *B* in a field of force, exactly the same work must be done *against* the forces in moving the body back by the *same path* from *B* to *A*. Now if more work can be done by the forces of the field by moving the body over one path than by moving it over another, the body might be made to move *from A* to *B* by the path giving the greater work, and *back* to *A* by the path requiring the lesser work, and so work could be continually done by simply allowing a body

to go from one point to another by one path, and back to the first point by another. But this is inconsistent with the principle of the conservation of energy.

If V and V_1 represent the potentials at the points A and B respectively, and s the distance between them, it is plain that the average force that is exerted upon a test unit as it moves from one point to the other is $F = \frac{V - V_1}{s}$, and if the points are taken very near together F will be the force at the middle point between them. But $\frac{V - V_1}{s}$ is the *rate of change of potential with respect to space*. Hence the intensity of the field at any point is the *rate of fall of potential at that point*.

Electrical Difference of Potential.—Electricity, which, flowing in a conductor, constitutes an electric current, may be collected in small amounts upon insulated bodies. When so collected it constitutes an electric charge, and a body receiving it is said to be positively charged. In order that a charge may be put upon one body the same amount of charge must be taken from some other body, which is in consequence said to be negatively charged or to possess a negative charge. (This assumes both bodies originally in a state of electrical equilibrium.) A rapidly moving body possessing

a positive charge produces magnetic effects precisely similar to those of an electric current in the same direction. If the moving body possess a negative charge, the effects are the same as of a current in the opposite direction.

Whenever a difference of condition exists between two points, such that a positive charge tends of itself, without the aid of any other agency, to pass from one point to the other, a difference of electrical potential is said to exist between these points, and the former is said to have a higher potential than the latter. If an electric charge passes from one point to another of lower potential, work is done *by* it, just as work is done by the weight of a clock in running down. If the charge be carried by some outside agency from a point of lower to one of higher potential, work must be done *upon* it, just as work must be done upon the clock weight in winding it up. The forces which cause the charge to move in the former case and against which it is moved in the latter case are called electrostatic forces, and the space in which such forces are manifest is called an electrostatic field.

Measurement of Potential Difference.—The amount of work necessary to carry a *unit quantity* of electricity from one point to another is a measure of their potential difference. It follows that the amount of work done in carrying any quantity of electricity from one point to another is proportional to the quantity carried and to the potential difference between the points.

If two points having a difference of potential be connected by a conductor, electricity will flow from the point of higher to that of lower potential. This flow, constituting an electric current, tends to restore the electric equilibrium and continues only until the two points are brought to the same potential. If a difference of potential between the two points be maintained by an electric generator, a continuous current flows through the conductor and the work done is proportional to the quantity of electricity transferred and to the difference of potential between the two points. Since we are free to choose a unit of potential difference, we may write

$$W = EQ, \quad (26)$$

where W is the work done, E the potential difference, and Q the quantity.

The c.g.s. unit potential difference may now be defined as that potential difference which, in transferring the c.g.s. unit quantity of electricity, performs work equal to one erg. The *practical* unit potential difference is the *volt* = 10^8 c.g.s. *units*.

The rate of working or *power* expended is

$$P = \frac{W}{t} = \frac{EQ}{t};$$

or, since $\frac{Q}{t} = I$,

$$P = EI (27)$$

Since the volt is 10^8 c.g.s. units and the ampere is 10^{-1} c.g.s. units, one ampere flowing with a fall of potential of one volt gives 10^7 ergs per second, or one watt.

The test of electrical difference of potential is the current produced when the bodies are connected by a conductor, the force exerted upon charged bodies between them, or the fact that the two bodies are themselves urged together by the electrostatic forces.

Gold-leaf electrometer.

Quadrant electrometer.

Electromotive Force may be defined as anything that produces or tends to produce an electrical flow. Under this definition, potential difference is an electromotive force, but electromotive force, E.M.F., is a much broader term than difference of potential. It includes all agencies that tend to produce an electric flow. The term electromotive force is usually applied to such agencies as tend to disturb the electrical equilibrium and bring about difference of potential. When a glass rod is rubbed with silk an electromotive force is developed which transfers electricity from the silk to the rod and develops a difference of potential.

Difference of potential is *always* due to a disturbance of electrical equilibrium by an electromotive force.

Electricity, like water, seeks its own level, and left to itself, difference of potential would sooner or later disappear.

E.M.F. is measured by the difference of potential it can produce.

Examples of E.M.F.—When copper and zinc plates are immersed in dilute sulphuric acid the copper becomes positive in relation to the zinc. An E.M.F. exists, tending to carry electricity from the metal to the liquid, but this is greater for zinc than for copper. This E.M.F. is independent of the size of the plates.

When the junction of two metals is heated, an E.M.F. is in general developed which carries electricity from one metal to the other, producing a difference of potential between them.

When a conductor is moved across a magnetic field, an E.M.F. in general exists, causing a transfer of electricity from one end toward the other, so developing a difference of potential between the two ends. When the difference of potential so developed is equal to the E.M.F. producing it, there will be no further transfer of electricity except to make up for any leakage to surrounding bodies.

Capacity.—The amount of electricity that must be stored upon a conductor to change its potential by any given amount is found to depend upon the size and shape of the conductor, its proximity to other conductors, and upon the nature of the surrounding dielectric. Other things remaining the same, the ratio of the quantity of

electricity put upon a conductor to the change of potential produced is found to be a constant. This ratio is therefore a measure of the capacity of the conductor. And since we are free to choose a unit of capacity we may write

$$C = Q/E. \quad (28)$$

Hence a conductor has c.g.s. unit capacity if its potential is changed by one c.g.s. unit when charged with one c.g.s. unit quantity of electricity. It has a practical unit capacity, called a farad, if its potential is changed by one volt when charged with one coulomb.

$$1 \text{ farad} = \frac{1 \text{ coulomb}}{1 \text{ volt}} = \frac{10^{-1}}{10^8} = 10^{-9} \text{ c.g.s. units.}$$

The combination of two conductors close together but insulated from each other is called a condenser. As ordinarily used the two conductors are connected respectively to the two terminals of a battery or other generator. When so used the capacity of the condenser is equal to the ratio of the charge upon one of its plates to the difference of potential between them.

If, after being charged to any difference of potential E , the terminals of a condenser be disconnected from the charging source and joined by a conductor, the total quantity of electricity that will pass through the conductor during the discharge is

$$Q = EC,$$

where C is the capacity of the condenser.

If two condensers whose capacities are C_1 and C_2 respectively be connected in multiple (Fig. 6*a*) to a charging source, their plates have the same difference of

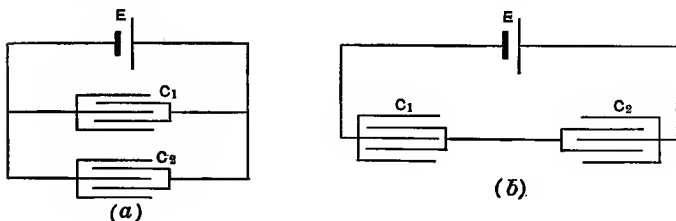


FIG. 6.

potential E and the two charges are respectively C_1E and C_2E and the total charge is $(C_1+C_2)E$. If C be the capacity of the two combined and Q the combined charge, then,

$$C = \frac{Q}{E} = \frac{(C_1+C_2)E}{E} = C_1 + C_2. \quad \dots (29)$$

Hence the capacity of two condensers in multiple is the sum of their separate capacities.

If the two condensers be connected in series (Fig. 6*b*) and then disconnected and discharged separately, it will be found that the same quantity will be discharged by each, and the same also as would be discharged by the two if discharged in series. It can also be seen that the difference of potential E between the extreme plates is the sum of the potential differences E_1 and E_2 of the individual condensers. If C represent the capacity and Q the charge for the series combination,

$$\begin{aligned}
 Q &= Q_1 = Q_2 \quad \text{and} \quad E = E_1 + E_2; \\
 \therefore C &= \frac{Q}{E}; \quad \therefore E = \frac{Q}{C}; \quad E_1 = \frac{Q_1}{C_1}; \quad E_2 = \frac{Q_2}{C_2}. \\
 \therefore \frac{Q}{C} &= \frac{Q_1}{C_1} + \frac{Q_2}{C_2}. \quad \text{Hence} \quad \frac{1}{C} = \frac{1}{C_1} + \frac{1}{C_2}. \quad (30)
 \end{aligned}$$

Equations (29) and (30) can be easily extended to the combination of three or more condensers.

The capacities of ordinary conductors being only a very small part of a farad are usually expressed in microfarads (millionths of a farad). The capacity of a Leyden jar is a small fraction of a microfarad.

PROBLEMS.

(31) A potential difference of 200 volts exists between two bodies 10 cm. apart. What is the mean force acting upon a small body charged with one coulomb to carry it across from one body to the other?

(32) A 16-candle incandescent lamp consumes about .5 ampere at 110 volts. How many watts? How many horse-power to operate 500 such lamps?

(33) How much heat per hour may be developed by a current of 6 amperes at 240 volts?

(34) What quantity of electricity is conveyed in one hour by a current of 10 amperes?

(35) A body charged with 50 coulombs is discharged in 10 seconds. What is the mean current?

RESISTANCE AND OHM'S LAW.

There is no such thing as a *perfect* conductor of electricity.

That the best conductors offer *resistance* to the flow of electricity in them is shown by the fact that whenever a current flows there is always a fall of potential along the conductor.

Resistance is proportional to the *length* of the conductor and inversely proportional to its *cross-section*.

Specific Resistance.—Different materials forming conductors of same length and cross-section vary greatly in resistance. The specific resistance of a substance may be defined as the ratio of the resistance of a conductor of that substance to the resistance of a conductor of same length and cross-section of some other substance, taken as a standard.

Or, the *absolute* specific resistance of a substance is the resistance of a centimetre cube of that substance taken between opposite faces.

Hence the resistance R of any conductor is equal to its absolute specific resistance multiplied by its length

L in centimeters and divided by its cross-sectional area A in square centimeters or

$$R = kL/A,$$

where k is the absolute specific resistance of the material.

In order to facilitate the computation of resistances of cylindrical wires whose dimensions are measured in English units, tables have been prepared which give for various materials the resistance of a cylindrical wire one foot long and one mil ($=.001$ inch) in diameter. This is called the resistance per mil-foot. Since the sectional areas of cylindrical wires are proportional to the squares of their diameters, we have

$$R = k'L/D^2,$$

where k' is the resistance per mil-foot, L the length in feet, and D the diameter in mils.

Copper and silver have the least specific resistance. Other metals have varying specific resistances. Iron has about six times and mercury about sixty times the specific resistance of silver.

Liquids have much higher resistances. The resistance of the liquids used in galvanic batteries is from one to ten million times that of copper.

Ohm's Law states that the current flowing in a conductor is directly proportional to the potential difference, and inversely proportional to the resist-

ance, or, since we have yet to choose a unit of resistance, we may put

$$I = \frac{E}{R} \dots \dots \dots (31)$$

Unit Resistance.—The c.g.s. unit resistance may now be defined as that resistance through which the c.g.s. difference of potential will carry the c.g.s. unit current.

The practical unit resistance is the *ohm* = 10^9 c.g.s. units.

$$\text{Hence amperes} = \frac{\text{volts}}{\text{ohms}}.$$

The megohm = a million ohms, and the microhm = one millionth ohm, are units often used.

Conductivity measures the capacity of a conductor to carry current. It is the reciprocal of *resistance*.

Insulation Resistance.—No substance is a *perfect* insulator. Gutta percha, one of the best insulators, has a resistance 85×10^{19} times the resistance of copper.

The insulation of telegraph lines and cables, and of insulated wires generally, is given in megohms per mile.

Resistance and Temperature.—The resistance of most materials is altered by a change in temperature. The ratio of the change in resistance per degree (Centigrade) change in temperature, to the resistance at 0° C.

is called the temperature coefficient of resistance. In pure metals the resistance increases when the temperature rises, the temperature coefficient being about .4 per cent. The temperature coefficient of alloys varies greatly with the composition and with the temperature. For carbon and electrolytes and for some alloys the temperature coefficient is negative.

Power Consumed by Resistance.—Combining equations (27) and (31), we have

$$P = I^2 R; \quad \dots \dots \dots (32)$$

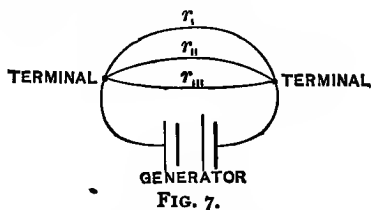
$$P = \frac{E^2}{R} \cdot \dots \dots \dots (33)$$

This means that in a given conductor the electrical power consumed is proportional to the square of the current, or to the square of the fall of potential along that conductor. Since the electrical energy expended in a conductor develops heat, the heating effect of a current in a given conductor is proportional to the square of the current.

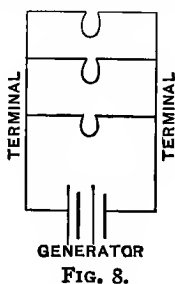
Divided Circuits.—When the terminals of an electric generator or any two bodies between which a difference of potential is maintained are joined by two or more conductors, current flows through each of them in accordance with Ohm's law.

Conductors so connected are said to be joined in

multiple or in parallel. Figs. 7 and 8 are typical representations of such an arrangement.



If E be the difference of potential between the two bodies to which the conductors are joined, and $r_I, r_{II},$



$r_{III},$ etc., are the resistances, respectively, of the several conductors, the currents flowing will be

$$I_I = \frac{E}{r_I};$$

$$I_{II} = \frac{E}{r_{II}};$$

$$I_{III} = \frac{E}{r_{III}};$$

etc. etc.

Evidently the total current is

$$I = \frac{E}{r_1} + \frac{E}{r_{II}} + \frac{E}{r_{III}} + \text{etc.} = \frac{E}{R}, \quad \dots \quad (34)$$

where R is the *equivalent* resistance of the several conductors. From (34) R can be calculated when $r_1, r_{II},$ etc., are known. For example, (34) gives for three conductors

$$\frac{I}{r_1} + \frac{I}{r_{II}} + \frac{I}{r_{III}} = \frac{I}{R},$$

whence

$$(r_1 r_{II} + r_1 r_{III} + r_{II} r_{III})R = r_1 r_{II} r_{III};$$

$$R = \frac{r_1 r_{II} r_{III}}{r_1 r_{II} + r_1 r_{III} + r_{II} r_{III}}. \quad \dots \quad (35)$$

When two conductors are connected in multiple, the fall of potential is the same along both. Evidently for every point on one there must be a point on the other having the same potential. If two such points be connected by a wire, no current will flow through that wire.

In Fig. 9 let $ABD, ACD,$ be two conductors joining the terminals of the generator S . The point C on ACD , which has the same potential as B on ABD , may be found by connecting B to one terminal of a delicate current-indicator G , to the other terminal of which a wire is connected which may be slid along ACD . When G indicates no current, the point C is found.

Let r, r_1, r_{II}, r_{III} , be the resistances of the several sections of the conductors as marked on the figure.

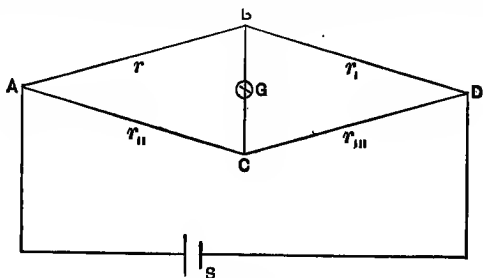


FIG. 9.

Let e be the fall of potential from A to B and from A to C . Let e_1 be the fall of potential from B to D and from C to D . Then, since the same current flows through AB and BD ,

$$\frac{e}{r} = \frac{e_1}{r_1} \dots \dots \dots (36)$$

For a similar reason

$$\frac{e}{r_{II}} = \frac{e_1}{r_{III}} \dots \dots \dots (37)$$

Dividing (37) by (36),

$$\frac{r}{r_{II}} = \frac{r_1}{r_{III}}, \dots \dots \dots (38)$$

which shows the relation between the four resistances.

PROBLEMS.

(36) Two conductors in multiple arc have resistances of 24 and 30 ohms respectively. What is the

equivalent resistance? A current of 8 amperes flows in the circuit. What is the potential difference between the ends of the conductors? What current flows through each?

(37) Four conductors, of 1, 2, 3, 4 ohms respectively, are in multiple. What is the equivalent resistance?

(38) A galvanometer has a resistance of 4500 ohms; it is desired to place in parallel with it a resistance that shall shunt away from it $\frac{9}{10}$ the current. What must be that resistance?

(39) What is the equivalent resistance of 500 incandescent lamps in parallel, each lamp having a resistance of 200 ohms?

(40) What current will the lamps of the last problem consume at a potential difference of 110 volts? Suppose the leads from the generator to the lamps have a resistance of 0.01 ohm. What must be the potential difference at the generator to maintain 110 volts at the lamps?

(41) If the incandescent lamps of problem (39) are connected five in series and these groups connected in multiple, what is the equivalent resistance? What current will be consumed if each lamp carries the same as before? What potential difference between the supply leads will be necessary?

PRACTICAL MEASUREMENTS OF ELECTRICAL QUANTITIES.

In the preceding lectures the relations between the several electrical quantities have been brought out, and the bases upon which the several units of measurement have been defined and established have been fully discussed. It is, of course, possible to measure these electrical quantities by methods based upon those relations and definitions. Measurements by such methods are called absolute measurements.

When treating of electric currents it was shown how the value of a current could be determined in absolute measure by means of the tangent galvanometer. The methods for the absolute measurement of potential and resistance are, however, too tedious and complicated to be made use of for general measurements, and are only resorted to for the purpose of constructing standards with which the quantities to be measured are thereafter compared. In the measurement of currents, even, the absolute methods are unsuitable for general work, and standards have been devised which render unnecessary the absolute determination of any current. After comparing the results of the

most accurate absolute determinations the Electrical Congress held in Chicago in 1893 fixed upon the following as the physical representatives of the electrical units:

“As the Unit of Current, the International Ampere, which is one tenth of the unit current of the c.g.s. system of electromagnetic units, and which is represented sufficiently well for practical use by the unvarying current which when passed through a solution of nitrate of silver in water and in accordance with the accompanying specification deposits silver at the rate of 0.001118 grammes per second.”

Similarly the International Volt is declared to be represented sufficiently well “by $\frac{1000}{1434}$ of the E.M.F. between the poles or electrodes of the voltaic cell known as Clark’s cell at a temperature of 15° C., and prepared in the manner described in the accompanying specification.”

And the International Ohm is declared to be “represented by the resistance offered to an unvarying electric current by a column of mercury at the temperature of melting ice, 14.4521 grammes in mass, of a constant cross-sectional area, and of the length of 106.3 centimetres.” The cross-sectional area of such a mass of mercury 106.3 cm. in length, is one square millimetre.

But it is not convenient in ordinary measurements to make use of these official representatives of the

units. For practical use instruments are constructed by which the electrical quantities may be measured much as we measure length by the foot-rule or tape-measure, or mass by the balance and weights. Ordinarily we accept the accuracy of such instruments as we accept the accuracy of the weights of the balance, upon the reputation of the manufacturer; but it must be remembered that the electrical instruments, especially those for measurement of potential and current, are likely to change with time, and all are liable to accidental derangements, and it is not safe to trust to their accuracy as we trust to the accuracy of the foot-rule or tape-measure for an indefinite period. For all important measurements the instruments employed should be carefully tested by comparison with standards of known accuracy.

MEASUREMENTS OF RESISTANCE.

Instruments.—Certified standard resistances.

Resistance sets. These are sets of resistance coils so arranged that any resistance from that of the smallest coil to the sum of all the resistances in the instrument may be employed at pleasure. There are two principal arrangements: coils of 1, 2, 2, 5, 10, 20, 20, 50, etc., ohms, or ten unit coils, ten 10-ohm coils, etc., are arranged in series, with provision for cutting in or out of circuit any desired portion.

Methods of Measurement.—*First. By direct comparison with known resistances :*

(a) *By substitution.* This consists in noting the deflection of a galvanometer when connected in circuit with the unknown resistance, then substituting for the unknown resistance known adjustable resistances, and adjusting these until the same deflection is obtained. The known resistance is then equal to the unknown.

(b) *By the differential galvanometer.* The differential galvanometer is an instrument having two coils of equal resistance, so adjusted as to have exactly the same influence upon the needle. With equal currents flowing in opposite directions in these two coils the needle would be undisturbed. To use the instrument, the unknown resistance is connected in circuit with one coil, and adjustable known resistances in circuit with the other, the two circuits being connected in multiple arc between the terminals of some electric source. When the known resistances are so adjusted that the galvanometer needle suffers no deflection, the known and unknown resistances are equal.

Second. By fall of potential. This is a method especially applicable to the measurement of small resistances. The resistance to be measured is connected in circuit with a galvanometer which will measure the current flowing. The difference of po-

tential between the two ends of the resistance is then measured by means of some instrument for measuring potential differences. If I be the current and e the difference of potential, then, from Ohm's law,

$$R = \frac{e}{I}.$$

The figure below illustrates the arrangement. R is the resistance to be measured, G the galvanometer, and V the potential instrument.

Third. By Wheatstone's bridge. This is an apparatus utilizing the principle illustrated in Fig. 9.

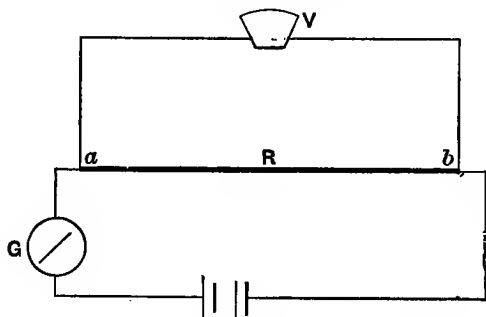


FIG. 10.

Suppose any one of the resistances of Fig. 9 to be unknown; it can be determined from equation (38). As the instrument is usually constructed, two of the resistances, as r , r_{10} , have a simple ratio, as 1:1, 1:10, 1:100. A third resistance, r_{100} , is known and adjustable. The unknown resistance is then con-

nected as $r_{,,,}$. The instrument is often called Wheatstone's *balance*; r and $r_{,,}$ are called the *arms* of the balance. The manipulation consists in varying the resistance r_1 until the needle G is undisturbed by the closing of the circuit.

Measurement of Insulation Resistance.—Insulation resistances up to ten megohms may be measured by means of the Wheatstone's bridge, but for the measurement of very high insulation resistances it is customary to use a delicate galvanometer which will give a deflection equal to one scale division for a difference of potential of one volt through a determined resistance of several megohms. This galvanometer is merely put in circuit with the insulation resistance to be measured, and the deflection for a given potential difference noted.

Measurement of Very Small Resistances.—For such measurements methods must be employed by which the resistances of the connections and contacts by which the resistance to be measured is connected to the apparatus are eliminated. The fall of potential method illustrated in Fig. 10 permits this. The connections a, b , to the potential instrument V are so made as not to include the contact resistances by which the battery is connected to the resistance R .

The method as before described necessitates the accurate observation of current and potential. The

arrangement shown in Fig. II does away with the necessity of observing either of these quantities, but permits, instead, the direct comparison of the resistance to be measured with a known adjustable resistance. A is the unknown resistance, R a known

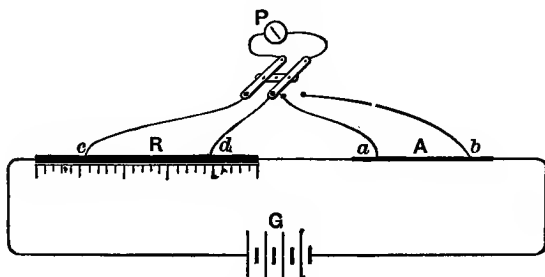


FIG. II.

resistance, such as a graduated wire. P is a delicate galvanometer, the value of whose indications need not be known. The operation consists in sliding the contacts cd along R until P shows the same deflection whether connected with R or A . The resistance between a and b is then the resistance between c and d .

If the deflections of the galvanometer are proportional to the differences of potential between its terminals, a fixed resistance R may be used in place of the calibrated wire. If d_1 be the deflection observed when the galvanometer is connected to R and d_2 that when connected to A , then $d_1 : d_2 :: R : A$. The galvanometer used must take so small a current that the difference of potential

between a and b or c and d will not be appreciably altered by connecting the galvanometer.

A modification of the Wheatstone bridge, known as the Thomson double bridge, is well adapted to the measurement of small resistances. Two pairs of ratio arms, r_1 and r_2 , a calibrated wire CD , and the resistance AB to be measured are connected as shown. (Fig. 12). The

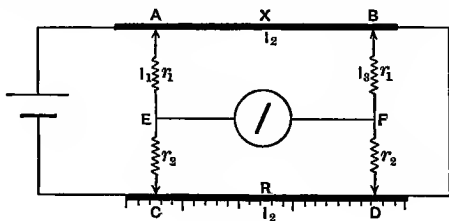


FIG. 12.

resistances r_1 and r_2 of the branch AC are equal respectively to r_1 and r_2 of the branch BD , and these are arranged for adjustment to some simple ratio as 10 : 10, 10 : 100, etc. The operation consists in adjusting r_1 and r_2 in both branches to a convenient ratio and moving the contacts C and D along the calibrated wire until the galvanometer shows no deflection. This shows that the points E and F are at the same potential, i.e., that the fall of potential from A to E is the same as that from A to F ; also that the fall of potential from E to C is the same as that from F to C . Denoting the current in AC by I_1 , in AB and CD by I_2 , and in BD by I_3 , the resistance AB by X and CD by R , and remembering that the fall of potential in any resistance is, by Ohm's law,

equal to the product of the resistance multiplied by the current in it, we have

$$I_1 r_1 = I_2 X + I_3 r_1 \quad \text{or} \quad r_1 (I_1 - I_3) = I_2 X$$

and

$$I_1 r_2 = I_3 r_2 + I_2 R \quad \text{or} \quad r_2 (I_1 - I_3) = I_2 R,$$

from which
$$\frac{r_1}{r_2} = \frac{X}{R}.$$

The advantage of this form of bridge over the ordinary Wheatstone, in the measurement of small resistances, comes from the fact that the contact resistances are thrown in with r_1 and r_2 which are themselves of such high resistance that the error caused by the addition of a small contact resistance is negligible (see problem (62)).

Measurement of Resistance of Electrolytes.—When an electric current flows through an electrolyte it not only does work in overcoming the true resistance, but it also does work in decomposing the electrolyte. This latter work is done in overcoming what is called the counter-electromotive force of the liquid. This is an apparent resistance which is independent of the dimensions of the liquid column, and depends only upon the nature of the liquid, assuming the liquid to have no action upon the electrodes. Means by which this apparent resistance may be eliminated must be employed for measuring the true resistance.

Fig. 13 shows one method. ab is a U tube containing the electrolyte, G is a battery, and R an adjustable resistance; c and d are platinum plates nearly filling the tube. Let R be adjusted until the galva-

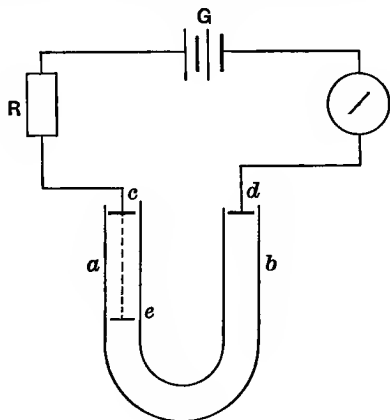


FIG. 13.

nometer gives a convenient deflection. Now let one of the platinum plates be lowered a measured distance—to e , say. Now adjust R until the galvanometer shows the same deflection as before. The increase in R is the resistance of the column of liquid ce .

If a column of an electrolyte is traversed by a rapidly alternating current, no permanent decomposition occurs, and no work is done except in overcoming the true resistance. The resistance may then be measured by any of the methods before described for

measuring the resistance of ordinary conductors, but, instead of the galvanometer, an electro-dynamometer or some instrument affected by alternating currents must be used. If a Wheatstone's bridge is employed with alternating currents for measuring the resistance of an electrolyte, a telephone may conveniently be used in place of the galvanometer to indicate when a balance is obtained.

The resistance of an electrolyte varies greatly with temperature and, if a solution, with the degree of concentration. Measurements are of no value unless these conditions are noted.

Resistance of Batteries.—The measurement of the resistance of battery-cells presents some difficulties on account of the electromotive force. The following are some of the methods employed:

(a) Two similar cells are connected by two like poles so that their electromotive forces are opposed. Their joint resistance may then be measured as in the case of ordinary conductors.

(b) *By Application of Ohm's Law.*—As stated on page 37, Ohm's law refers to a part of a circuit not containing an E.M.F. An equation of precisely the same form as (31) may also be written for a complete circuit, where E is the total E.M.F., i.e., the algebraic sum of all the E.M.F.'s in the circuit, R the resistance of the whole circuit and I the current. We may now deduce a form for Ohm's law for part of a circuit con-

If R is the resistance of the battery (Fig. 14) and E its electromotive force, i.e., E is the difference of potential between the terminals C and D when there is no current

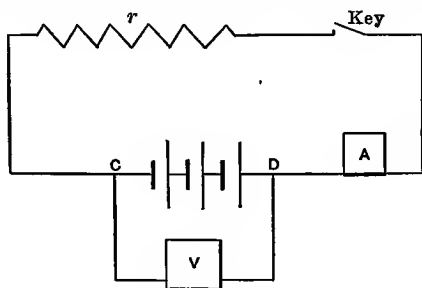


FIG. 14.

flowing (key open), and e the difference of potential between the battery terminals when the circuit is closed through the external resistance r , and I the current flowing. Then

$$I = \frac{E}{R+r} = \frac{e}{r}.$$

From which

$$IR + Ir = E$$

and

$$Ir = e;$$

subtracting

$$IR = E - e,$$

which gives

$$R = \frac{E - e}{I} \quad \text{and} \quad I = \frac{E - e}{R}. \quad \dots \quad (39)$$

It will be noted that equation (39) refers to a part of a circuit ($C-D$) containing an E.M.F. and that the current here referred to is in the direction of the E.M.F. If in any circuit the current flows in the opposite direction to an E.M.F., as in charging a storage battery, then e is larger than E and the direction of the current is indi-

cated by the negative sign. Evidently the expression for the current in the direction of the potential difference is

$$I = \frac{e - E}{R},$$

in which case E is called a counter-electromotive force.

This method of measuring the resistance of a battery consists in determining the values of E , e , and I by means of proper instruments and substituting them in the first of equations (39).

The current measuring instrument may be dispensed with if the whole external resistance r be known. Substituting in (39) for I its value e/r , we obtain

$$R = \frac{E - e}{e} r.$$

If $e = E/2$, then

$$R = r.$$

Hence we may observe the potential of the cell on open circuit, then close the circuit through a resistance which is so adjusted as to reduce the potential to one half. The known resistance in circuit is then equal to the resistance of the cell.

This method assumes that the E.M.F. of the cell remains constant during the measurements. This is not necessarily true.

MEASUREMENT OF CURRENT.

Measurements of current by means of the tangent galvanometer have already been fully explained. Other current-measuring instruments have been briefly

described. These are usually adjusted by the manufacturers to read directly in amperes, and it is only necessary to connect the instrument in the circuit where the current is to be measured, and note the reading. It is important in the use of all such instruments to place them where they will be uninfluenced by outside magnetic forces.

Current Measured by Fall of Potential.—In a conductor carrying a current there is always a fall of potential between its ends. This fall for the same conductor is proportional to the current, hence may be taken as a measure of the current. Fig. 15 shows

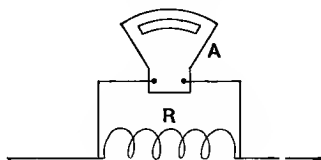


FIG. 15.

diagrammatically the arrangement of an instrument designed to utilize this method of measuring currents. R is the fixed resistance and A an instrument whose indications are proportional to the potential differences between its terminals. It is not necessary to know the resistance R . The instrument may be calibrated by direct comparison with some standard current-measuring instrument.

Examples of such instruments.

MEASUREMENT OF POTENTIAL.

By Electrostatic Forces.—This consists essentially in the measurement of the electrostatic forces existing between two bodies charged to the difference of potential to be measured. Instruments designed for such measurements may be so constructed that the potential difference may be computed from their dimensions and the forces observed. This is an absolute measurement, but is applicable only to the measurement of large potential differences.

The Quadrant Electrometer.

The Attracted-disk Electrometer.

By Comparison with a Known Potential Difference.—Fig. 16 illustrates this method. *ab* is a

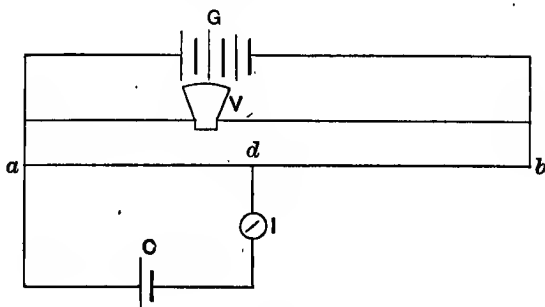


FIG. 16.

graduated resistance, such as a long wire or a series of resistance coils. *G* is a generator capable of main-

taining a constant potential difference between a and b , which must be known. C is a battery-cell whose E.M.F. is to be measured, so connected in the branch aCd that its E.M.F. is opposed to the E.M.F. acting along that branch in consequence of the fall of potential along ab . Now the point of contact d is moved along the resistance ab until the galvanometer I is undeflected. The potential difference between a and d now balances the E.M.F. of the cell C . If E be the potential difference between a and b , and E_1 the E.M.F. of the cell C , we have

$$\frac{\text{res. } ab}{\text{res. } ad} = \frac{E}{E_1}.$$

An instrument so constructed as to provide for the convenient application of the above method is called a *potentiometer*.

Different forms of potentiometer.

By the Current produced in Circuit of Given Resistance.—It follows from Ohm's law that E.M.F. is proportional to the current it develops in a given resistance. Hence the readings of any galvanometer are proportional to the potential difference between its terminals. If a galvanometer of high resistance be connected between two points differing in potential, its indications will be proportional to that potential difference, and the instrument may be graduated

to give the potential difference directly in volts. It is then called a *voltmeter*.

Different forms of voltmeter shown and described.

Since closing a circuit between two points may alter the potential difference between those points, the use of such voltmeters as are described above is inadmissible, except where the generating source is such as to maintain that potential difference notwithstanding the current consumed by the voltmeter.*

By the Ballistic Galvanometer.—If two bodies, as the two coatings of a Leyden jar or other condenser, be connected to two points of an electric circuit, those bodies will be charged to whatever potential difference may exist between those points. If they are afterward connected through a suitable galvanometer, they will be discharged, and the discharge-current flowing through the galvanometer coil will give the needle a sudden impulse, causing it to swing off a certain distance depending upon the quantity of electricity discharged, and this again is proportional to the potential difference and to the *capacity* of the condenser receiving the charge.

In this way potential differences may be measured by means of the galvanometer without actually forming a circuit and taking current from the source.

A galvanometer suitable for this purpose is one whose needle swings freely, with the smallest possible retarding influence, so that its needle once disturbed

* See Problem 45

will swing for a long time before coming to rest. It should also have a slow rate of vibration. Such an instrument is called a *ballistic galvanometer*.

[See Appendix].

TESTING AND CALIBRATING INSTRUMENTS.

Electrical instruments are liable to derangement and must be frequently tested to determine whether changes have occurred. This is especially true of instruments for the measurement of current and potential. Where a high degree of accuracy is required, instruments must be compared with accredited standards, their errors determined, and the necessary corrections applied when the instruments are used for measurements.

Tests of Resistance Sets.—It is seldom required to reproduce the mercury standard ohm for purposes of comparison. A certified standard one-ohm coil may be used instead. The one-ohm coil of the set is compared with the standard. Then this one-ohm coil plus the standard is compared with the two-ohm coil of the set, and so on until all are compared. In a decade set each one-ohm coil would be compared with the standard, then the ten one-ohm coils in series with each ten-ohm coil, etc.

Method of Comparison.—A form of Wheatstone's bridge known as the divided-metre bridge is usually employed for comparing resistances. Fig. 17 shows the arrangement. *AB* is a wire of as nearly as possi-

ble uniform cross-section. $G, G_1,$ etc., are heavy copper strips. E and F are two nearly equal resistances, which, to give the greatest sensibility, should be about the value of the resistances to be compared, which are connected in the two gaps C, D . I is now moved along the wire AB until the galvanometer is undeflected by closing the circuit. The resistances at C and D are now interchanged. It is plain that, if they are equal, the galvanometer will still be un-

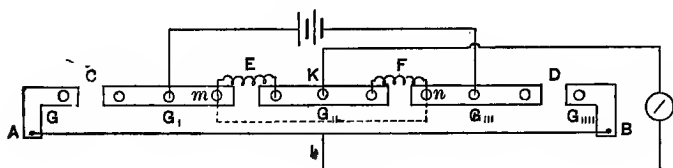


FIG. 17.

deflected by closing the circuit. If C and D are not equal, I will have to be moved in order to obtain a balance after the interchange. It is easy to show that the resistance of the bridge-wire between the two positions of I equals the difference between the resistances of the two coils that are being compared. The bridge-wire AB in the standard form of this apparatus is one metre in length, and under it is a scale divided into millimetres; hence the name. If the resistance of one millimetre of the bridge-wire is known, the difference in fractions of an ohm between two coils under comparison is at once given.

Calibration of the Bridge-wire.—It is rarely the case that the resistance of the bridge-wire is uniform. To determine its resistance in different parts of its length it must be calibrated. To effect the calibration the resistances E and F are removed, and the points m and n are connected by a wire as shown by the dotted line. The galvanometer connection K is now made on the wire mn by a movable contact-piece. Place at C a standard one-ohm coil, and at D a 1.01-ohm standard; then effect a balance by moving either I or K . Now interchange C and D and balance again by moving I . Evidently the resistance of the wire between the two positions of I is .01 ohm. Return C and D to their former positions, and, without moving I , balance by sliding K along mn . Again interchange C and D and balance by moving I . This will give another .01-ohm section of AB . Continuing this process step by step, the whole wire may be subdivided into .01-ohm sections, from which the resistance between any two points may be obtained.

In making such tests as those described, arrangements must be made for maintaining a constant temperature, and the connections at C and D must be so made that their resistances are extremely small and are invariable during all the interchanges.

Tests of Current Instruments.—*First.* Comparison with a standard. The instrument is connected in circuit with a silver voltameter and the test conducted

as directed on page 106 of "Physical Units" by Professor Magnus Maclean. This gives the true value of the reading for one point of the scale.

Second. Comparison of different scale-readings. Having found the value of the scale-reading for one point, the instrument is connected in circuit with a variable resistance whose values can be accurately determined, and a source of electricity giving a constant difference of potential. The constancy of the potential may be determined by the use of any potential indicator. It is not necessary that its value should be known. The test consists in varying the current by means of the variable resistance, and noting the resistance and corresponding readings of the instrument.

Tests of Instruments for Measuring Potential.
—Voltmeters may be tested by means of the potentiometer and the standard Clark cell. Referring to Fig. 16, ab is the potentiometer resistance, which should be as much as 10,000 ohms. V is the voltmeter to be tested, and C the standard cell. The generator G should have an E.M.F. greater than the highest reading of the voltmeter, and it will be convenient if its E.M.F. is adjustable. If this is not the case, the potential difference between a and b may be varied by shunting a part of the current away from ab .

The test consists in varying the potential difference

between a and b until the voltmeter gives a convenient reading. Then move the connection d until I is undeflected. We then have

$$\left. \begin{array}{l} \text{value of volt-} \\ \text{meter reading} \end{array} \right\} = \frac{\text{res. } ab}{\text{res. } ad} \times \text{E.M.F. of Clark cell.}$$

The E.M.F. of a Clark cell for any temperature t is

$$1.434 - .0012(t - 15).$$

Clark cells are themselves liable to derangement. It is best to have several of them, and compare them with each other by means of the potentiometer. If two or three of them agree at a given temperature, it is safe to assume that their E.M.F. at 15° C. is 1.434 volts.

When using a Clark cell it is necessary to place in series with it a protecting resistance of several thousand ohms to prevent passing through it too large a current. This resistance may be shunted for the purpose of obtaining a higher sensitiveness when the potentials are nearly balanced.

MEASUREMENT OF CAPACITY.

(1) By charging to known difference of potential and discharging through a calibrated ballistic galvanometer. (See Appendix page 114).

(2) By comparing with a standard condenser.

(a) By charging both to known potential differences

and discharging separately through a ballistic galvanometer, the difference of potential being so adjusted that the deflection is the same for each.

(b) By the bridge method in which the condensers whose capacities are to be compared are connected, as shown in Fig. 18. The measurement consists in

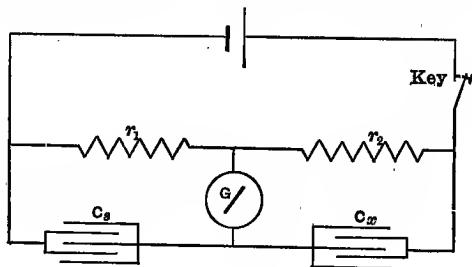


FIG. 18.

adjusting the resistances r_1 and r_2 until the sensitive galvanometer G shows no deflection on opening or closing the key. When this condition is obtained it is evident that the charges in the two condensers are equal and the differences of potential to which they are respectively charged are proportional to the resistances to which they are connected.

Hence

$$C_x E_x = C_s E_s,$$

from which

$$C_x = C_s \frac{E_s}{E_x} = C_s \frac{r_1}{r_2}.$$

PROBLEMS.

(42) Four conductors whose resistances are 1, 2, 3, and 4 ohms respectively are joined in multiple to a source maintaining a P.D. of 12 volts. Find the current in each, the total current, the equivalent resistance of the four conductors, the total power consumed, and the power consumed in each.

(43) If the resistance of the moving coil of an ammeter is 10 ohms, and if a current of .01 ampere is sufficient to cause a deflection across the full length of the scale, what must be the resistance of a 10-ampere shunt for the instrument? A 25-ampere shunt? A 50-ampere shunt? (By a 10-ampere shunt is meant a conductor such that when connected in multiple with the moving coil the latter will give a deflection equal to the full length of the scale when the total current in the line is 10 amperes.)

(44) What resistance must be put in series with the moving coil of the instrument of problem (43) so that it will give full scale deflection when connected to two points whose P.D. is kept at 150 volts? 15 volts?

(45) Ten coils having each a resistance of 10,000 ohms are joined in series to two points whose P.D. is maintained at 100 volts. What will be the P.D. between the terminals of each coil? What will be the reading of a voltmeter of 20,000 ohms when connected in multiple with one of the 10,000 ohm coils? If connected across the whole set of ten coils?

(46) A galvanometer whose resistance is to be found is connected in series with a megohm and a source maintaining a constant P.D. and the deflection noted. The megohm is then replaced by $\frac{1}{2}$ megohm and a variable resistance connected, as a shunt across the galvanometer. When the resistance of the shunt is 2172 ohms the deflection of the galvanometer is the same as before. Find the resistance of the galvanometer and give proof for the method used.

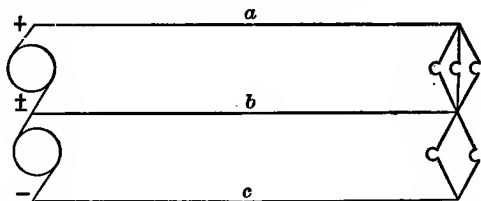
(47) If the resistance of a galvanometer is 2000 ohms, what is the resistance of its $1/10$ shunt? Of its $1/100$ shunt? (A $1/10$ shunt being such as will permit $1/10$ of the total current in the line to pass through the galvanometer.)

(48) What resistance must be put in series with the shunted galvanometer of the previous problem when the $1/10$ shunt is used so that the current in the circuit will be the same as when the galvanometer is used without a shunt?

(49) If in Fig. 9 the resistance of the galvanometer is 25 ohms and the resistances r , r_1 , r_2 , and r_3 are 5, 10, 15, and 20 ohms respectively, find the current in the galvanometer if the difference of potential between A and D is 2 volts.

(50) Two dynamos having each a P.D. of 120 volts are connected as shown. The wires a , b , and c have a resistance of 2 ohms each. Current in a is 15 amperes

and in c 10 amperes. Find the P.D. between the middle wire and each outside wire at the lamps.



(51) If the lamps between a and b of problem (50) have a resistance of 12 ohms and those between b and c 20 ohms, find the current in each of the three wires.

(52) From the data of problem (50) find the power furnished by the dynamos and the power used in the lamps.

(53) Seven cars a mile apart on a trolley line six miles long take 15 amperes apiece. If the resistance of the trolley wire is .52 ohms per mile and the rail return .04 ohm per mile, what is the P.D. between the wire and the rail at each car, when the power-station at the end of the line maintains a P.D. of 550 volts?

(54) Solve problem (53) assuming the power-station at the middle of the line.

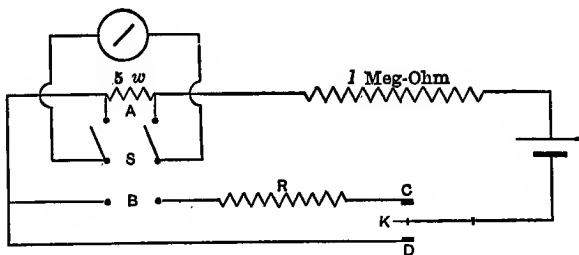
(55) 500 incandescent lamps having a resistance of 220 ohms each are connected in multiple. Current is supplied to the lamps from a generator 1000 feet distant by copper leads $\frac{1}{2}$ inch in diameter. (Resistance of copper 10.5 ohms per mil-foot.) What P.D. at the generator terminals will give 110 volts at the lamps?

(56) If in problem (55) the resistance of the generator armature is $.1$ ohm, what must be the E.M.F.?

(57) Current is to be furnished to a heating coil from a 120 volt source by two leads of $.5$ ohm each. What must be the resistance of the coil so that it will use 200 watts?

(58) A voltmeter whose resistance is 15,000 ohms and a resistance to be measured are connected in series to a source whose P.D. is 240 volts. The reading of the voltmeter is 12 volts. What is the value of the unknown resistance?

(59) A galvanometer whose resistance is 4995 ohms and whose deflections are proportional to the current in it, a 5-ohm shunt, a megohm coil, and a resistance R to be measured are connected to a source of constant



E.M.F., as shown in the accompanying figure. When the double pole double-throw switch S is turned to A and K turned to D the deflection is 20 scale divisions. When S is turned to B and K to C the deflection is 10 scale divisions. Compute R in megohms.

(60) A small resistance X and a standard $1/10$ -ohm coil are joined in series to a source of constant current. A galvanometer whose deflections are proportional to the current in it and whose resistance is 2000 ohms, having in series with it 8000 ohms, gives a deflection of 20 scale divisions when connected in multiple with the $1/10$ ohm, and 25 scale divisions when in multiple with X . Find the value of X in ohms. What resistance must be put in series with the galvanometer when it is in multiple with X so that the deflection will be 20 scale divisions for it also?

(61) If AB (Fig. 12) is a round wire 20 cm. long and 2.5 mm. in diameter, r_1 and r_2 being 10 and 1000 ohms respectively, and if the bridge is balanced when the resistance included between C and D is .0645 ohm, what is the absolute specific resistance of the material of which AB is made?

(62) What per cent error will be introduced in the result for problem (61) if the four contacts A , B , C , and D have each a resistance which may be as much as .01 ohm? If the same resistance were measured by an ordinary Wheatstone bridge, what per cent error would be introduced by .01 ohm contacts?

(63) Three small storage cells whose E.M.F.'s are 2 volts each and whose resistances are $1/10$ ohm each are being charged in series by a generator whose terminal P.D. is 120 volts. A resistance of 22.5 ohms is connected in series with the cells. Compute the current in

amperes, and the P.D. at the battery terminals. If the resistance of the generator be .5 ohm, what E.M.F. must it have?

(64) A galvanometer of high resistance whose deflections are proportional to the current sent through it, when connected to the terminals of a battery gives a deflection of 25 scale divisions. When a wire of 10 ohms resistance is connected in multiple with the galvanometer the deflection is 20 scale divisions. What is the resistance of the battery?

(65) A storage battery consisting of twelve cells in series, whose E.M.F. is 2.1 volts per cell and whose resistance is .05 ohm per cell, is to be charged from a generator having a terminal P.D. of 120 volts. What resistance must be put in series with the battery so that the charging current may be 10 amperes? What will be the P.D. across the terminals of the battery? What will be the total power consumed? The power consumed in the battery? Explain the difference between the results for power computations obtained from the formulæ I^2R and IE in the above.

(66) If a uniform wire 9 meters long is connected to the terminals of a dynamo, and if when the terminals of of cell whose E.M.F. is 1.35 volts is connected to two points on the wire 10 cm. apart, the galvanometer shows no deflection, what is the difference of potential between the dynamo terminals?

(67) In calibrating an ammeter by means of a poten-

tiameter and a standard cadmium cell whose E.M.F. is 1.0185, the potentiometer current is so adjusted that the E.M.F. of this cell is balanced when shunted across 10,185 ohms of the potentiometer wire. The ammeter is connected in series with a standard .01 ohm to a source of current. The fall of potential across the .01 ohm is balanced by the fall of potential in 2550 ohms of the potentiometer wire. If the ammeter reading is 25 amperes, what is its error?

(68) A uniform wire 100 feet long joins two points whose P.D. is 100 volts. The terminals of a condenser having a capacity of 10 microfarads are connected to two points on this wire 20 feet apart. What charge is given to the condenser?

(69) (a) If the condenser of problem (68) be discharged through a ballistic galvanometer and give a deflection of 20 scale divisions, what is the capacity of a condenser which gives the same deflection of the galvanometer after being charged by being connected across 65 feet of the wire.

(b) If the deflection of the galvanometer is proportional to the "quantity" discharged through it, what would have been the deflection of the galvanometer if the condenser of problem (69a) had been charged to the same P.D. as the condenser of problem (68)?

(70) Four condensers whose capacities are .5, .2, .2 and .1 microfarads respectively, are joined in series to a

charging source having a P.D. of 120 volts. What will be the total quantity discharged if they are discharged in series? What quantity will be discharged by each if after charging they be disconnected and discharged separately?

HEATING EFFECTS OF THE CURRENT.

When a current flows through a homogeneous conductor, that conductor is always heated.

Equation (32) shows that the energy spent in such a conductor per second is I^2R —directly proportional to the resistance, and to the square of the current. I being given in amperes and R in ohms, the heat generated is $.00024I^2R$ calories per second = $.000948I^2R$ British thermal units per second.

A 16-candle incandescent lamp consumes about 0.5 ampere at 110 volts. Its resistance is, therefore, 220 ohms. The energy expended in it is $110 \times .5 = 220 \times .5^2 = 55$ watts = $55 \times .00024 = .0132$ calorie per second = .074 H. P.

Temperature of a Conductor carrying Current.
—The temperature to which a conductor is raised by the current depends not only upon the rate of development of heat in it, but upon the rate at which heat escapes. The temperature becomes permanent when heat escapes as fast as it is generated.

For a round wire of given length the resistance is proportional to the inverse square of the diameter, while the radiating surface is directly proportional to

the first power of the diameter. The heat generated by the *same current* in a wire whose diameter is d , as compared to that generated in a wire whose diameter is unity, is, therefore, $\frac{1}{d^2}$, while the surface from which heat escapes is $\frac{d}{1}$ times as great. The heat which must escape from unit surface of the larger wire is, therefore, $\frac{1}{d^3}$ of that which must escape from unit surface of the smaller wire. If heat escaping per unit surface is proportional to the difference of temperature between the wire and its surroundings, the larger wire will rise in temperature only $\frac{1}{d^3}$ as much as the smaller.

Equation (33) shows that the heat developed in a wire is proportional to $\frac{E^2}{R}$.

This means that for the *same difference of potential* the heat generated in conductors of different resistances is inversely proportional to the resistance, and, since resistance for wires of the same length is proportional to the inverse square of the diameter, the heat generated in such wires when subjected to the *same potential difference* is proportional to the square of the diameter directly. Hence if two wires, diameter unity and diameter d , are connected in multiple between the terminals of an electric generator, d^2

times as much heat will be generated in the wire whose diameter is d . But its surface is only d times as great, hence d times as much heat must escape from unit surface, which requires that it rise in temperature d times as much. It follows that a coarse wire will be heated to a higher temperature than a fine one of the same length when connected across a circuit where the difference of potential is the same.

INCANDESCENT LIGHTING.

Description of the incandescent lamp.

Incandescent lamps are usually connected in multiple arc across a circuit from a generator capable of maintaining a constant difference of potential, whether lamps in use are few or many.

Fig. 8, on page 46, may be taken as a diagrammatic illustration of such a system.

Economy requires High Temperature.—Economy in incandescent lighting requires that the carbon filament shall be maintained at as high a temperature as it will bear without a too-rapid deterioration, for the reason that the ratio of light emitted to energy consumed increases very rapidly as the temperature increases. At the best, only about 5 per cent of the energy expended in the lamp appears as light; the remaining 95 per cent is dark heat, useless for illumination, and therefore wasted.

Incandescent Lamps of Different Candle-power.

—Since potential is constant, the power expended in an incandescent lamp is inversely proportional to its resistance (see equation (33)).

Let it be required to construct a 32-candle lamp, that is, a lamp of twice the usual illuminating power. This requires that twice the power be expended; hence that the resistance be reduced to one half. Since the temperature must remain constant, the radiating surface must be doubled.

Let l be the length, b the width, and d the thickness of the 16-c.p. filament, and let l_1, b_1, d_1 be the same for the 32-c.p. filament. Resistance is proportional to $\frac{l}{bd}$; hence

$$\frac{l}{bd} = 2 \frac{l_1}{b_1 d_1} \quad \dots \quad (a)$$

Radiating surface is proportional to $l(b + d)$; hence

$$2l(b + d) = l_1(b_1 + d_1) \quad \dots \quad (b)$$

In these two equations there are three unknown quantities. The values are therefore indeterminate; but if we assume the value of one, the other two are fixed. Assume, for example, $l_1 = l$; then from (a)

$$b_1 d_1 = 2bd;$$

from (b)

$$b_1 + d_1 = 2(b + d).$$

That is, we must double the cross-section and also double the periphery. To do this requires that the ratio of width to thickness must be changed, as will be seen by finding the values of b_1 and d_1 from the two equations above.

ARC LIGHTING.

Description of arc lamp.

Light mainly proceeds from a small intensely heated surface of the positive carbon, called the crater, from which the arc springs. Some comes from the red-hot ends of carbons. Very little comes from the arc itself.

Source of the Light.—In almost all arc lamps used for illumination the upper carbon is made positive and the crater is a small concave surface at its end. Light can only issue from this in a direction obliquely downward. Hence an arc lamp gives a very unequally distributed illumination. A so-called 2000-candle arc lamp gives its most intense light—about 1500 to 2000 candles—at an angle of 45° to 60° below the horizontal. From this direction the intensity rapidly diminishes until, on the horizontal plane through the lamp, the illumination amounts to only 200 to 300 candles.

As a result, a lamp suspended at a height of, say, 25 feet gives a most intense illumination on the ground

below over a circle of about 50 feet in diameter, beyond which the illumination rapidly diminishes.

The so-called 2000-candle arc lamp consumes about 10 amperès at 45 volts, or 450 watts. Of this 45 volts, about 39 volts seems to be expended on the surface of the crater, the remainder being expended in overcoming the resistance of the arc. That is, about seven eighths of the power is expended in the crater.

About 10 per cent of the power expended appears as light, the remaining 90 per cent appearing as dark heat.

The light produced by an arc lamp depends almost wholly upon the current, very little upon the potential difference so long as this is above 40 volts. Upon the latter depends the length of arc or the amount of separation of the carbons. About 45 volts is required to maintain a separation that will permit the free emergence of the light from the crater. Beyond this very little is gained by increase of potential.

Arc lamps are usually connected in circuit *in series*; hence the same current flows through all of them. The E.M.F. required for the operation of such a circuit is the E.M.F. required for one lamp multiplied by the number of lamps.

Enclosed arc lamps.

PROBLEMS.

(71) If d_1 , l_1 , c_1 be the diameter, length, and candle-power of a round incandescent lamp filament suitable for a potential difference E_1 , show that the diameter d_2 and the length l_2 of a second filament of the same material of candle-power c_2 suitable for potential difference E_2 are

$$d_2 = d_1 \sqrt[3]{\frac{E_1^2 c_2^2}{E_2^2 c_1^2}} \quad \text{and} \quad l_2 = l_1 \sqrt[3]{\frac{c_2 E_2^2}{c_1 E_1^2}}$$

both lamps being operated at the same temperature.

(72) If a round filament 4 inches long and .012 inch in diameter is suitable for a 16-c.p. lamp at 110 volts, find the length and diameter of a filament suitable for a 2-c.p. lamp to be used with a single storage cell having a P.D. of 2 volts.

(73) If the resistance of the 16-c.p. lamp of problem (72) is 220 ohms, what will be the resistance of the 2-c.p. lamp?

(74) Fifty arc lamps, requiring a current of 10 amperes at 45 volts each, are connected in series in a circuit 5 miles long, the conducting wire having a resistance of 0.25 ohm per thousand feet. What must be the E.M.F. of the generator?

(75) What energy (watts, horse-power) is consumed in the lamps of the last problem? What in the circuit?

(76) A 10-ampere, 45-volt arc lamp is connected in parallel with incandescent lamps across a 110-volt circuit. What resistance must be used in series with the lamp to reduce the potential to 45 volts? How much energy is expended? How much in the lamp?

(77) If two lamps like that of the last problem are placed in series across a 110-volt circuit, what resistance is required in series with them? How much energy is consumed? How much is wasted?

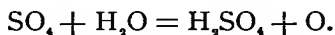
CHEMICAL EFFECTS.

Decomposition of Salts.—When two platinum plates immersed in dilute sulphuric acid are connected to the terminals of an electric generator, oxygen gas escapes in bubbles from the positive plate, and hydrogen from the negative plate. The relative proportions of oxygen and hydrogen are exactly the proportions in which they unite to form water.

In this experiment water is said to be decomposed by the current.

If the same plates be immersed in a solution of copper sulphate, copper is deposited on the negative plate, while oxygen escapes from the positive plate.

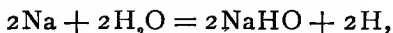
The operation here evidently is that the current separates the CuSO_4 into Cu and SO_4 , the Cu appearing at the negative and the SO_4 at the positive plate. But SO_4 attacks and decomposes the water, liberating oxygen and forming sulphuric acid:



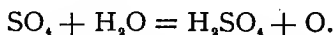
If a copper plate be substituted for the positive platinum plate, oxygen no longer escapes, but the

SO_4 combines with the copper, forming CuSO_4 , so maintaining the strength of the solution.

If the platinum plates are immersed in solution of sodium sulphate, Na_2SO_4 , hydrogen escapes from the negative and oxygen from the positive plate, while the current passes, but at the same time caustic soda is found at the negative and sulphuric acid at the positive plate. The operation here is, Na_2SO_4 is separated into Na_2 at the negative and SO_4 at the positive plate, but Na_2 decomposes water,—



the 2H escaping from the negative plate. At the same time SO_4 at the positive plate decomposes water, liberating oxygen there:



Definitions of Terms.—The two plates forming the generator terminals are called *electrodes*. The positive plate by which the current *enters* the solution is called the *anode*. The negative plate by which the current *leaves* the solution is called the *cathode*. The solution which is decomposed is called the *electrolyte*, and the operation is called *electrolysis*. The two parts into which the electrolyte is separated by the current are called *ions*. Thus Cu and SO_4 are the two ions when solution of CuSO_4 is the electrolyte.

Ions appear only at Electrodes.—The ions appear only at their respective electrodes. No indication of any separation is found elsewhere, if the electrolyte is continuous from electrode to electrode.

Theory of electrolysis.

Faraday's Laws.—Faraday demonstrated, first, that the quantity of an electrolyte decomposed in a given time is proportional to the current *as measured by the tangent galvanometer*; second, that the quantity of any ion set free per second by a given current is proportional to its *chemical combining number*. Thus, one ampere sets free in one second

0.001118	grammes of silver,
0.0003279	“ “ copper,
0.0003367	“ “ zinc,
0.00001038	“ “ hydrogen,
0.11746	cc. of hydrogen.

The combining numbers are:

Silver.....	107.7
Copper.....	31.59
Zinc.....	32.44
Hydrogen.....	1.

Because of this exact relation, which has been determined and verified by most careful experiments, the deposition of silver is taken as a means of standardizing current-measuring instruments.

Applications.—Electrotype.

Electroplating: Gold, silver, nickel.

Purification of metals by electro-deposition.

Energy required for Electrolysis.—The decomposition of a chemical compound is in general work that can only be accomplished by the expenditure of energy. Now work done by an electric current has been shown to be $W = EIt$, where E is the E.M.F. or potential difference required to force the current I through the conductor or apparatus where the work is performed. For many chemical compounds the energy required for decomposition is well known, and since the current required is also known, the E.M.F. can be determined. For example, the combustion of one gramme of hydrogen develops 34 calories = 141440 joules. To decompose sufficient water to produce one gramme of hydrogen will require the same energy. To produce one gramme of hydrogen per second would require $\frac{1}{.00001038} = 96,340$ amperes nearly. Hence the E.M.F. required is $\frac{141440}{96340} = 1.47$ volts, nearly. This is the *counter*-electromotive force of the electrolyte, and the decomposition of water with the visible formation of gas requires that this E.M.F., and as much more as is necessary to force the current through the liquid against its resistance, be supplied. The counter-E.M.F. is in-

dependent of the strength of the current, while the E.M.F. required to overcome resistance is proportional to the current and equal to IR . For the economical decomposition of an electrolyte IR should be small in comparison to the counter-E.M.F. That is, R must be made as small as possible.

When, as in most cases of electroplating, the anode is the same as the metal deposited, so that the composition of the electrolyte remains unchanged, the energy developed by the union of the negative ion with the anode exactly counterbalances the energy required to decompose the electrolyte. Hence the energy required for the operation in such cases is only I^2R , which goes to warm the electrolyte.

PROBLEMS.

(78) An apparatus for generating hydrogen and oxygen by means of the electric current, consisting of twelve decomposing cells arranged in series, furnishes 12 cubic feet of oxygen per hour. What current is employed ?

(79) Silver, copper, and zinc voltmeters are arranged in series on one circuit. A current of 20 amperes flows through them. How much metal per hour is deposited in each ?

(80) To determine the constant of an ammeter, a current is passed through it and through a silver voltmeter. A current giving a reading 25 deposits

104.6 grms. of silver per hour. What is the galvanometer constant ?

(81) In an apparatus for electrical separation of silver, 30,000 (Troy) ounces of silver are deposited every 24 hours. What current is employed ? What horse-power, assuming the E.M.F. to be 2 volts ?

One Troy ounce, 480 grains. 15.43 grains, one gramme.

ELECTROMAGNETIC INDUCTION.

It has been shown that the movement of a wire across the lines of force in a magnetic field produces an E.M.F. If this wire form part of a closed circuit, a *current* will be produced, and this consumes energy.

Direction of Current.—The direction of the current produced is such that the movement of the conductor is *opposed* by the mutual action between the current and the field.

Examples of electromagnetic induction.

Currents result in all cases from a change in the number of lines of force threading through the circuit.

Law of Lenz.—When a current is induced by *any change whatever* in the relations between a conductor and a magnetic field, that current is in such sense as to oppose the change that produces it.

It follows that mechanical energy is consumed whenever a current is induced through the relative motion of a conductor and a magnetic field. From the law of conservation this energy must be the equivalent of the electrical energy developed.

Electromotive Force Developed by Electromagnetic Induction.—Suppose a current I and an

E.M.F. E are induced by the movement of a wire in a magnetic field. The electrical energy developed in time t is EIt . To move the wire must, by the law of Lenz, require a force F , and if in time t the wire moves parallel to itself through a distance s , the work done is Fs . From the last paragraph

$$Fs = EIt. \quad \dots \quad (40)$$

It has been shown that the force F exerted by a current I upon a magnetic pole is (see equation (20))

$$F = \frac{ILp}{d^2}.$$

This is also the force which the pole exerts upon the current, but $\frac{p}{d^2}$ is the intensity of field at distance d from a pole whose strength is p . Calling this H , we have

$$F = ILH. \quad \dots \quad (41)$$

This is the force exerted upon current I when placed in a magnetic field whose intensity is H . Substituting this value of F in (40),

$$\text{or} \quad \left. \begin{array}{l} ILHs = EIt, \\ E = \frac{HLs}{t}. \end{array} \right\} \dots \quad (42)$$

But L is the length of the moving conductor and s the distance it moves parallel to itself. Ls is then the

area swept through by it, and HLs the total number of lines of force cut by it. $\frac{HLs}{t}$ is then the number of lines of force cut per second. We have then the E.M.F. developed by a conductor moving in a magnetic field is numerically equal to the rate of cutting of lines of magnetic force by that conductor.

In order that the conductor of the above discussion may generate a current it must form part of a closed circuit. It is evident that the lines cut by the conductor are either added to or subtracted from the circuit of which the conductor forms a part. Hence, finally, the E.M.F. developed in a circuit by electromagnetic induction is numerically equal to the rate at which lines of magnetic force are added to or subtracted from that circuit. If the lines of force here considered are c.g.s. lines, the E.M.F. is in c.g.s. units. To reduce to volts, divide by 10^8 .

ELECTROMAGNETISM.

It has been shown that a conductor carrying a current develops a magnetic field which may be represented by lines forming closed curves around the conductor.

In order that we may have a continuous current the conductor must be connected to the two terminals of a generator, and this, with the conductor, forms a closed electric circuit.

The electric circuit and the lines of magnetic force due to it therefore form two interlinking closed curves.

The Magnetic Circuit. — The intensity of the magnetic field set up by a current depends not only upon the strength of the current, but also upon the material that fills the space around the current and in which the magnetic lines must be formed. This material in which the magnetic lines are developed is considered as forming a *magnetic circuit*, akin to an electric circuit, and offering a greater or less opposition, depending upon the nature and dimensions of the materials composing it, to the development of

magnetic lines, just as an electric circuit offers more or less resistance to the flow of the electric current.

Magnetic Reluctance and Permeability. — The opposition offered by a magnetic circuit to the formation in it of magnetic lines is called *magnetic reluctance*. Compare electrical resistance. The reluctance of any part of a magnetic circuit, like the resistance of any part of an electric circuit, is directly as its length and inversely as its cross-section. It is also proportional to the specific reluctance of the material. But this specific reluctance, unlike the specific resistance of materials forming electrical conductors, often varies greatly with the amount of flux.

Magnetic *permeability* is the reciprocal of reluctance. It is akin to electrical *conductivity*.

Carrying the analogy of the magnetic to the electric circuit still farther, the magnetism developed is often spoken of as a flow of magnetism around the circuit, or as a *magnetic flux*. The cause of magnetic flux is called *magnetomotive force*.

Just as the total electromotive force of an electric circuit is measured by the work done in carrying a *unit charge* around the electric circuit, so the magnetomotive force of a magnetic circuit is measured by the work done in carrying a *unit pole* around the magnetic circuit. The c.g.s. unit of magnetomotive force exists in a magnetic circuit when one erg of work is done in carrying a c.g.s. unit pole around the circuit.

Magnetomotive Force of a Magnetizing Coil.— Consider a magnetic circuit in which the magnetic flux threads through n turns of a solenoid carrying the constant current I . Imagine a unit pole to start from some point A and be carried around the magnetic circuit back

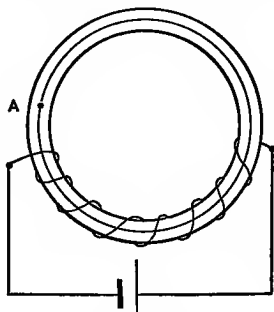


FIG. 19.

to A again. Each of its 4π lines will be cut n times by the wires of the solenoid. The total number of lines cut will be $4\pi n$. If the time required be t seconds the average E.M.F. developed in the coil will be

$$E = \frac{4\pi n}{t}.$$

If the current I flows against this E.M.F., the work done is EIt ergs, or putting in the value of E , the work is $4\pi nI$ ergs. If I is the current in *amperes* this becomes $\frac{4\pi nI}{10}$,* which is therefore the value of the magnetomotive force

* This may also be shown directly from the first of equations (42), which shows that the work done in causing a wire carrying a current to cut a magnetic field is equal to the product of the current strength by the total number of lines of force cut. Hence the work done in cutting $4\pi n$ lines is $4\pi nI$ ergs, where I is the current in the coil.

usually denoted by M . The product nI is called the *ampere turns* of the coil. The magnetic flux produced by this magnetomotive force is

$$N = \frac{4\pi nI}{10P},$$

where P is the reluctance of the magnetic circuit. The reluctance is derived from the dimensions and permeabilities of the different parts of the circuit. If a given part of the circuit has a length l , a cross-section A , and a permeability μ ,—that is, a specific reluctance $\frac{l}{\mu}$,—the reluctance of that part is $\frac{l}{A\mu}$. μ for air is unity; for iron μ varies from 3000 down to unity, depending upon the density of the magnetic flux through it. μ varies greatly also in different qualities of iron. It is, therefore, often necessary to determine its values for the particular quality of iron it is proposed to use in an electromagnet.

Measurements of Permeability.—To find the permeability of a specimen of iron, it is necessary to determine the magnetic flux corresponding to various magnetomotive forces. This is best done by determining the E.M.F. induced in a small test-coil surrounding the test-piece, when this test-piece is subjected to the influence of a suddenly applied or suddenly reversed magnetomotive force.

The test-piece may be made in the form of a ring which is uniformly wrapped with wire, through which an electric current can be sent to supply the magneto-

motive force. The small test-coil is formed by wrapping over a small portion of the ring a number of turns of fine wire. This is connected to the coil of a ballistic galvanometer. If now a current be sent through the magnetizing coil, magnetism is induced in the iron ring. This is equivalent to suddenly introducing a magnet into the test-coil, and induces in this a current which, acting for an instant upon the needle of the ballistic galvanometer, causes this to swing over a certain angle. The angle of this first swing is called the "throw" of the needle. If the current is of short duration compared with the time of vibration of the needle the total quantity of electricity that passes through the galvanometer may be determined by observing the throw. [See Appendix, page 114.] The quantity of electricity flowing is

$$Q = \frac{Et}{R},$$

where E is the E.M.F. developed in the test-coil, t the time it acts, and R the resistance of the test-coil circuit. But E is proportional to the rate of change of magnetic lines, and to the number of turns in the test-coil, or

$$E = \frac{N_1 n_1}{t \times 10^9} \cdot \cdot \cdot \cdot \cdot \quad (43)$$

where N_1 is the total change in magnetic flux, n_1 the

number of turns in the test-coil, and t the time occupied in making the change. Hence

$$Q = \frac{N_1 n_1}{10^8 R}.$$

It is usual in such measurements to reverse the current in the magnetizing coil. If N represent the total flux produced by the current in one direction, the total change due to reversal is $N_1 = 2N$, and

$$Q = \frac{2Nn_1}{10^8 R} \dots \dots \dots (44)$$

Solving for N ,

$$N = \frac{10^8 R Q}{2n_1} \dots \dots \dots (45)$$

If n be the number of turns in the magnetizing coil and I the current in amperes, the magnetomotive force is

$$M = \frac{4\pi n I}{10} \dots \dots \dots (46)$$

If l be the length of the ring, that is, the mean circumference, and A the area of its cross-section, the reluctance is

$$P = \frac{l}{A\mu}.$$

The total flux is then

$$N = \frac{M}{P} = \frac{4\pi nIA\mu}{10l}$$

Hence

$$\mu = \frac{N}{A} \div \frac{4\pi nI}{10l} \dots \dots \dots (47)$$

But $\frac{N}{A}$ is the magnetic flux per unit area, and is generally represented by the capital letter B . $\frac{4\pi nI}{10l}$ is the magnetomotive force per unit length, and is represented by H . Hence

$$\mu = \frac{B}{H}, \dots \dots \dots (48)$$

and finally

$$\mu = \frac{10^8 RQ}{2n_1 A} \times \frac{10l}{4\pi nI} \dots \dots \dots (49)$$

Some difficulty will be found in determining Q from the deflection of the galvanometer on account of the damping due to induced currents in the galvanometer circuit, caused by the swinging of the needle. This damping effect may be reduced by making the resistance of the circuit large, but equation (44) shows that this makes Q small and therefore necessitates a very large number of turns in the test coil.

Proper allowance can be made for this damping in the calibration of the galvanometer as follows: Discharge a

definite quantity q from a condenser and note the *second* swing with the circuit open. Again discharge the same quantity, but just as the needle passes its zero position on returning from its first swing close the circuit of the galvanometer through the same resistance as the test-coil circuit and note the *second* swing. This second swing is made under the same damping conditions as when the galvanometer is used in the permeability experiment. If we call the open circuit swing δ and the corresponding damped swing δ' , we may, by varying the quantity q , determine the values of δ corresponding to several values of δ' throughout the range of the instrument. A curve may now be plotted with δ and δ' as coordinates. We may then use the galvanometer on closed circuit and observe its damped deflections, and from the curve determine what the deflections would have been had there been no damping and from these the value of Q .

(See Appendix, page 114.)

The ring is not a convenient form for the test-piece for practical tests, as it is impossible to readily substitute one sample of iron for another. For practical tests a massive soft-iron forging in the form of a U is wrapped with the magnetizing coil. The test-piece, which is a straight round bar of much smaller cross-section, is clamped across the top of the U. Upon this test-piece the small test-coil is placed.

Different specimens of iron may be readily compared by preparing straight round bars of the same dimensions

and observing the effect of these upon a magnetic needle placed in a fixed position, when the test-pieces are in turn subjected to the influence of a magnetizing coil. This is called the magnetometer method. It is not adapted to exact determinations.

PROBLEMS.

(82) A conductor 10 meters long moves across a magnetic field whose intensity is .75 c.g.s. units, at the rate of 20 meters per second. What is the value of the E.M.F. generated?

(83) If the direction of motion of the wire of problem (78) be at an angle of 45° with the direction of the field, what will be the value of the E.M.F. generated?

(84) A bar of iron 60 cm. long and 4 cm.² in cross-section is bent into the form of a circle leaving an air gap 1 cm. long between its ends. A magnetizing coil of 200 turns is wound upon the bar. What must be the value of the current in the coil to produce a field of 4000 c.g.s. units in the air gap, the value of the permeability of the iron for this intensity of magnetization being 2000?

(85) A magnetic circuit consisting of two "cores," a "yoke," and two "pole pieces" of iron with an air gap 1 cm. long between the pole pieces, has the form of a rectangle with the following dimensions of its parts: Cores, cylindrical diameter 4 cm., length 10 cm.; yoke and pole pieces, rectangular section 5×5 cm. Mean

length of lines in yoke 15 cm., which is also the mean length in pole pieces and air gap combined. How many ampere turns will be necessary to produce a total flux of 100,000 lines, if the permeability of the cores is 1900 and of the yoke and pole pieces is 2400 at their respective intensities of magnetization?

APPENDIX.

Page 17.—The moment of the couple in any case is $H\rho \sin \theta \times l$, where θ is the angle made by the needle with the magnetic meridian, and $H\rho \sin \theta$ is the component of $H\rho$ at right angles to the needle, i.e., the *tangential component* of $H\rho$. If f is the tangential component acting upon an elemental mass m at a distance r from the axis, then $f=ma=mr\alpha$, where α is the angular acceleration imparted and $fr=mr^2\alpha$, and summing up for the whole needle,

$$\Sigma(fr) = \alpha \Sigma(mr^2),$$

but the sum of the moments of the forces is $H\rho l \sin \theta$ and Σmr^2 is the moment of inertia of the needle K ,

$$\therefore H\rho l \sin \theta = K\alpha,$$

and if θ be small enough,

$$H\rho l \theta = K\alpha. \quad (a)$$

In obedience to the forces $H\rho$ the needle performs regular vibrations upon the axis through A .

In obedience to the forces $H\phi$ the needle performs regular vibrations upon the axis through A . It is shown in discussing such vibratory motion that the angular acceleration

$$\alpha = \frac{4\pi^2}{T^2} \theta,$$

where T is the time of one complete vibration. Hence representing ϕl in the above formulæ (a) by M , and substituting for α its value, we have

$$HM\theta = \frac{4\pi^2}{T^2} \theta K.$$

Canceling θ and solving for T ,

$$T = 2\pi\sqrt{\frac{K}{HM}},$$

and if t be the time of a semi-vibration,

$$t = \pi\sqrt{\frac{K}{HM}},$$

which is formula (16).

Page 18.—In the actual measurement the deflection of B is read for A placed as shown, again with A reversed, and with A direct and reversed at an equal distance on the opposite side of B , making four measurements in all. If great accuracy is required, these four measurements are repeated with A at a different distance from B .

Formula (17) is derived as follows:

The field produced at B by the north pole of A is

$$\frac{\phi}{\left(r - \frac{l}{2}\right)^2},$$

and by the south pole of A

$$\frac{-\phi}{\left(r + \frac{l}{2}\right)^2},$$

so that the field produced at B by the magnet A is

$$h = \frac{\phi}{\left(r - \frac{l}{2}\right)^2} - \frac{\phi}{\left(r + \frac{l}{2}\right)^2}.$$

Since $\frac{l}{2}$ is always small in relation to r , $\frac{l^2}{4}$ may be omitted in the squares of the denominators and the value of h becomes

$$h = \frac{\phi}{r^2 - rl} - \frac{\phi}{r^2 + rl}.$$

Reducing to a common denominator,

$$h = \frac{2\phi l}{r^2 - rl^2} = \frac{2\phi l}{r^3} \left(\frac{1}{1 - \frac{l^2}{r^2}} \right).$$

But, referring to Fig. 2, page 18, it is plain that

$$\tan \theta = \frac{h}{H}.$$

Substituting the value of h and replacing ρl by M ,

$$\frac{M}{H} = \frac{1}{2} r^2 \tan \theta \left(1 - \frac{l^2}{r^2} \right). \quad (17a)$$

As an approximation, $\frac{l^2}{r^2}$ may be neglected, and the formula is then identical with (17).

If observations are made at another distance r_1 , giving a deflection θ_1 , we have

$$\frac{M}{H} = \frac{1}{2} r_1^2 \tan \theta_1 \left(1 - \frac{l^2}{r_1^2} \right). \quad (17b)$$

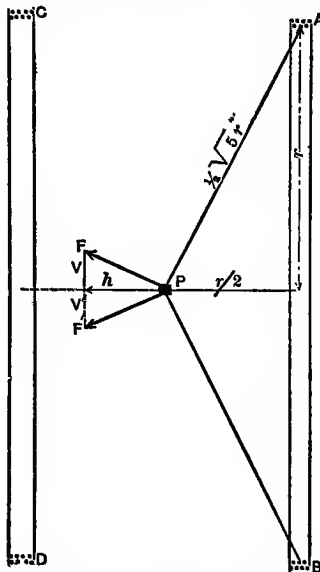
Between 17a and 17b, l , which is the uncertain distance between the poles of A , may be eliminated, giving

$$\frac{M}{H} = \frac{r^2 \tan \theta - r_1^2 \tan \theta_1}{2(r^2 - r_1^2)}. \quad (17c)$$

Page 27.—Let A, B, C, D of the figure represent a vertical section of a Helmholtz galvanometer. Consider the force acting upon a unit pole placed at P due to a current I in a very short segment of wire of length x at A . This will be at right angles to the line AP and will, from equation (20), be equal to $F = \frac{Ix}{\frac{1}{2}r^2}$. This force may be resolved into two components h parallel to the axis of the coils and v at right angles to h . From similar triangles $h : F :: r : \frac{1}{2}\sqrt{5}r$ from which

$$h = \frac{2}{\sqrt{5}} F = \frac{8Ix}{5\sqrt{5}r^2}.$$

For a similar segment of length x at B opposite to A we shall have a force F' perpendicular to PB whose vertical component v' exactly neutralizes v , and whose horizontal



component is equal to h and in the same direction. The sum of all the horizontal components due to segments x in one complete turn will be

$$\frac{8I \cdot 2\pi r}{5\sqrt{5}r^2} = \frac{16\pi I}{5\sqrt{5}r}$$

Moreover the effect at P of the current in a turn of wire on CD will be exactly the same as for a turn upon AB . Hence if n be the total number of turns on both coils we have the total component along the axis,

$$\frac{16n\pi I}{5\sqrt{5}r} = H_1.$$

If the plane of the coil is in the plane of the earth's magnetic meridian, we have, as in the case of the ordinary tangent galvanometer, since the needle will lie along the resultant field,

$$H_1 = H \tan \theta.$$

Substituting for H_1 its value gives

$$I = \frac{5\sqrt{5}rH}{16\pi n} \tan \theta = .222 \frac{Hr}{n} \tan \theta.$$

Pages 67-71 and 102.—*Law of the Ballistic Galvanometer.*—For the purpose of comparison of differences of potential or capacities, or for any measurement of quantity of electricity, the ballistic galvanometer may be calibrated. To do this a condenser is charged to several known potential differences, discharged through the galvanometer, and the deflections noted. If a curve be plotted, using deflections as ordinates and corresponding differences of potential as abscissæ, then the potential difference of any source within the range of the instrument may be found by charging the condenser from the source and discharging through the galvanometer. If the capacity of the condenser be known, the calibration curve may be plotted between deflections and corresponding quantities of electricity, and this calibration will serve for comparing either differences of potential or capacities.

It will be noted that in this calibration both the capacity and the potential differences used must be known, i.e.,

must be measured by other means. The ballistic galvanometer, however, may be used for the absolute measurement of quantity of electricity. The galvanometer for this purpose is constructed in precisely the same form as the tangent galvanometer, using a heavy needle suspended by a long torsionless fibre.

The magnetic field produced at the needle of such a galvanometer by a current of I amperes in a coil of n turns of radius r is (see equation (21)),

$$H_1 = \frac{2\pi n I}{10r}.$$

If I be the average value of a transitory current in the coil and t the time it lasts then the moment of the couple acting upon the needle whose magnetic moment is M is $\frac{2\pi n I}{10r} M$, and this multiplied by t gives the moment of the impulse. This must be equal to the moment of momentum produced, which is in turn equal to the moment of inertia K multiplied by the angular velocity ω_0 imparted. Hence

$$\begin{aligned} \frac{2\pi n M I t}{10r} &= K\omega_0, \quad \text{but } It = Q; \\ \therefore \frac{2\pi n M}{10r} Q &= K\omega_0. \quad \dots \dots \dots (a) \end{aligned}$$

The work done against the magnetic forces in turning the magnet through an angle θ in a magnetic field of horizontal intensity H is

$$W = MH(1 - \cos \theta) = 2MH \sin^2 \frac{1}{2}\theta.$$

The kinetic energy of the magnet when it has its greatest angular velocity is $E = \frac{1}{2}K\omega_0^2$, but this kinetic energy is

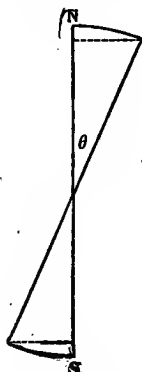


FIG. A.

just equal to the work necessary to turn the needle through the angle θ ,

$$\therefore \frac{1}{2}K\omega_0^2 = 2MH \sin^2 \frac{1}{2}\theta, \quad \dots \quad (b)$$

substituting in (a) the value of ω_0 obtained from (b) and solving for Q gives

$$Q = \left(\frac{10^9}{\pi n} \sqrt{\frac{KH}{M}} \right) \sin \frac{1}{2}\theta,$$

which shows that for such a galvanometer the quantity of electricity is proportional to the sine of $\frac{1}{2}$ the "throw."

The constant $\frac{10^9}{\pi n} \sqrt{\frac{KH}{M}}$ may be computed from its factors or it may be determined experimentally by sending a known quantity of electricity through the galvanometer and noting the deflection.

Other forms of ballistic galvanometer have been constructed, among which are those of the D'Arsonval type. In these the moving part consists of a wide coil moving in a nearly uniform radial field of a horseshoe magnet. The controlling force is the elastic return force of the suspending wire which forms one terminal of the coil. A horizontal section of such a galvanometer is shown in Fig. B, in which PP are the pole pieces of the magnet,

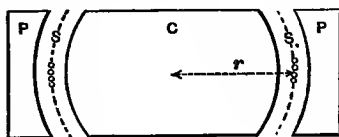


FIG. B.

C a soft iron core, SS the sections of the wires of the coil.

If L is the total length of wire in the field, H the field strength, and I the average value of the current during discharge, the tangential deflecting force (see equation (41)) is $F = ILH$.

If r is the distance from the axis to the wire, the moment of this force is $Fr = ILHr$, and if t is the time the current lasts, the moment of the impulse is $Frt = LHrIt = LHrQ$. But the moment of an impulse is equal to the moment of momentum imparted, which is in turn equal to the moment of inertia K multiplied by the angular velocity ω_0 produced,

$$\therefore LHrQ = K\omega_0. \quad (c)$$

If G be the moment of torsion of the suspending wire, i.e., G is the moment of a couple which will twist the wire through an angle of one radian, and θ the throw in radians, the average return moment in going from 0 to θ is $\frac{1}{2}G\theta$ and the work done is $(\frac{1}{2}G\theta) \cdot \theta = \frac{1}{2}G\theta^2$, but the work done in twisting the wire is equal to the kinetic energy of the coil when it has its greatest angular velocity,

$$\therefore \frac{1}{2}G\theta^2 = \frac{1}{2}K\omega_0^2,$$

from which

$$\omega_0 = \theta \sqrt{\frac{G}{K}}.$$

Substituting this in (c) gives

$$LHrQ = \sqrt{KG} \cdot \theta,$$

or

$$Q = \frac{\sqrt{KG}}{LHr} \theta,$$

which shows that in this form of galvanometer the quantity of electricity is proportional to the throw. The constant $\frac{\sqrt{KG}}{LHr}$ cannot be easily computed from its factors and must be determined experimentally as in the preceding type.

INDEX.

	PAGE
Acceleration, Unit of	4
Ammeter	28
Ampere	25
Ampere, International, Definition of	51
Anode	90
Arc Lighting	85
Ballistic Galvanometer	102, 114
Batteries, Resistance of	60
Bridge, Divided-metre	67
Bridge, Wheatstone's	54
Bridge-wire, Calibration of	69
Capacity	38-71
Cathode	90
Chemical Effects of Current	89
Clark's Cell	51, 70
Conductivity	44
Coulomb	30
Current, Chemical Effects of	89
Current, Heating Effects of	81
Current Instruments, Tests of	69
Current, Measurement of	62
Currents, Mutual Action of	29
Current, Unit of	25
Difference of Potential, Unit of	36
Differential Galvanometer	53
Divided Circuits	45
Divided-metre Bridge	67
Dyne	6
Earth's Magnetic Field, Horizontal Intensity of	16
Electric Current, Effects of	22
Electric Quantity	30

	PAGE
Electrolysis	90
Electrolysis, Energy Required	92
Electrolyte	90
Electrolytes, Resistance of	58
Electromagnet	106
Electromagnetism	98
Electromagnetic Induction	95
Electromotive Force, Definition of	37
Electromotive Force, Examples of	38
Energy	7
Erg	6
Fall of Potential, Current Measured by	63
Faraday's Laws	91
Filaments; Incandescent, Proportioning of	84
Force, Definition of	3
Force, Measurement of	6
Force, Unit of	6
Fundamental Units	2
Galvanometer, Ballistic	102, 114
Galvanometer, Constant of	27
Galvanometer, Differential	53
Gravitation Units	8
Heating Effects of the Current	81
Heat Units	9
Horizontal Intensity	15
Incandescent Lighting	83
Incandescent-lamp Filaments, Proportioning of	84
Induction, Electromagnetic	95
Inertia	3
Insulation Resistance	44
Insulation Resistance, Measurement of	55
Ions	90
Ions Appear Only at Electrodes	91
Joule, Definition of	8
Kinetic Energy	7
Lamp, Arc, Source of Light from	85
Law of Lenz	95

	PAGE
Length, Standard of	2
Lines of Force	13
Magnet	12
Magnetic Circuit	98
Magnetic Field	12
Magnetic Field Due to Current	22
Magnetic Field, Graphical Representation	15
Magnetic Field, Measurement of	16
Magnetic Field, The Earth's	15
Magnetic Field, Intensity of	14
Magnetic Flux	99
Magneto-motive Force	99
Mass, Standard of	2
Matter, Distinctive Characteristics of	3
Measurement of Current	62
Measurement of Potential	64
Measurement of Resistance	52
Megohm	44
Microhm	44
Motion	3
Motion, Uniformly Varied	4
Multiple, Conductors in	46
Ohm	44
Ohm, International	51
Ohm's Law	43
Permeability	99
Permeability, Measurement of	101
Potential	32
Potential Energy	7
Potential Instruments, Tests of	70
Potential, Measurement of	64
Potentiometer	65
Practical Units	8
Quantity, Unit of	30
Reluctance	99
Resistance	42
Resistance, Measurement of	52
Resistance Sets	52

	PAGE
Resistance Sets, Tests of	67
Resistance, Units of	44
Standard of Length	2
Standard of Mass	2
Specific Resistance	42
Tangent Galvanometer	26
Tests of Current Instruments	69
Tests of Instruments	67
Tests of Potential Instruments	70
Tests of Resistance Sets	67
Unit Acceleration	4
Unit Current	25
Unit Difference of Potential	36
Unit Electrical Quantity	30
Unit Force	6
Unit Magnetic Field	14
Unit Magnetic Pole	13
Unit Resistance	44
Unit Velocity	3
Unit Work	6
Units, Arbitrary	2
Units, C. G. S. System of	1
Units, Fundamental	2
Units, Gravitation	8
Units, Heat	9
Units, International	51
Units, Practical	8
Units, Relations of	9
Velocity, Unit of	3
Volt	36
Volt, International	51
Voltmeter	66
Watt, Definition of	8
Wheatstone's Bridge	54
Work, Measurement of	6
Work, Unit of	6

SHORT-TITLE CATALOGUE

OF THE

PUBLICATIONS

OF

JOHN WILEY & SONS,

NEW YORK.

LONDON: CHAPMAN & HALL, LIMITED.

ARRANGED UNDER SUBJECTS.

Descriptive circulars sent on application. Books marked with an asterisk (*) are sold at *net* prices only. All books are bound in cloth unless otherwise stated.

AGRICULTURE—HORTICULTURE—FORESTRY.

Armsby's Manual of Cattle-feeding.	12mo,	\$1 75
Principles of Animal Nutrition.	8vo,	4 00
Budd and Hansen's American Horticultural Manual:		
Part I. Propagation, Culture, and Improvement.	12mo,	1 50
Part II. Systematic Pomology.	12mo,	1 50
Elliott's Engineering for Land Drainage.	12mo,	1 50
Practical Farm Drainage.	12mo,	1 00
Graves's Forest Mensuration.	8vo,	4 00
Green's Principles of American Forestry.	12mo,	1 50
Grötenfelt's Principles of Modern Dairy Practice. (Woll).	12mo,	2 00
* Herrick's Denatured or Industrial Alcohol.	8vo,	4 00
Kemp and Waugh's Landscape Gardening. (New Edition, Rewritten. In Preparation).		
* McKay and Larsen's Principles and Practice of Butter-making	8vo,	1 50
Maynard's Landscape Gardening as Applied to Home Decoration.	12mo,	1 50
Quaintance and Scott's Insects and Diseases of Fruits. (In Preparation).		
Sanderson's Insects Injurious to Staple Crops.	12mo,	1 50
* Schwarz's Longleaf Pine in Virgin Forests.	12mo,	1 25
Stockbridge's Rocks and Soils.	8vo,	2 50
Winton's Microscopy of Vegetable Foods.	8vo,	7 50
Woll's Handbook for Farmers and Dairymen.	16mo,	1 50

ARCHITECTURE.

Baldwin's Steam Heating for Buildings.	12mo,	2 50
Berg's Buildings and Structures of American Railroads.	4to,	5 00
Birkmire's Architectural Iron and Steel.	8vo,	3 50
Compound Riveted Girders as Applied in Buildings.	8vo,	2 00
Planning and Construction of American Theatres.	8vo,	3 00
Planning and Construction of High Office Buildings.	8vo,	3 50
Skeleton Construction in Buildings.	8vo,	3 00
Briggs's Modern American School Buildings.	8vo,	4 00
Byrne's Inspection of Material and Workmanship Employed in Construction.	16mo,	3 00
Carpenter's Heating and Ventilating of Buildings.	8vo,	4 00

* Corthell's Allowable Pressure on Deep Foundations.....	12mo,	1 25
Freitag's Architectural Engineering.....	8vo,	3 50
Fireproofing of Steel Buildings.....	8vo,	2 50
French and Ives's Stereotomy.....	8vo,	2 50
Gerhard's Guide to Sanitary House-Inspection.....	16mo,	1 00
* Modern Baths and Bath Houses.....	8vo,	3 00
Sanitation of Public Buildings.....	12mo,	1 50
Theatre Fires and Panics.....	12mo,	1 50
Holley and Ladd's Analysis of Mixed Paints, Color Pigments, and Varnishes		
Large	12mo,	2 50
Johnson's Statics by Algebraic and Graphic Methods.....	8vo,	2 00
Kellaway's How to Lay Out Suburban Home Grounds.....	8vo,	2 00
Kidder's Architects' and Builders' Pocket-book.....	16mo, mor.,	5 00
Maire's Modern Pigments and their Vehicles.....	12mo,	2 00
Merrill's Non-metallic Minerals: Their Occurrence and Uses.....	8vo,	4 00
Stones for Building and Decoration.....	8vo,	5 00
Monckton's Stair-building.....	4to,	4 00
Patton's Practical Treatise on Foundations.....	8vo,	5 00
Peabody's Naval Architecture.....	8vo,	7 50
Rice's Concrete-block Manufacture.....	8vo,	2 00
Richey's Handbook for Superintendents of Construction.....	16mo, mor.,	4 00
* Building Mechanics' Ready Reference Book:		
* Building Foreman's Pocket Book and Ready Reference. (In Preparation).		
* Carpenters' and Woodworkers' Edition.....	16mo, mor.	1 50
* Cement Workers and Plasterer's Edition.....	16mo, mor.	1 50
* Plumbers', Steam-Filters', and Tinnere's Edition.....	16mo, mor.	1 50
* Stone- and Brick-masons' Edition.....	16mo, mor.	1 50
Sabin's Industrial and Artistic Technology of Paints and Varnish.....	8vo,	3 00
Siebert and Biggin's Modern Stone-cutting and Masonry.....	8vo,	1 50
Snow's Principal Species of Wood.....	8vo,	3 50
Towne's Locks and Builders' Hardware.....	18mo, mor.	3 00
Wait's Engineering and Architectural Jurisprudence.....	8vo,	6 00
Sheep,		6 50
Law of Contracts.....	8vo,	3 00
Law of Operations Preliminary to Construction in Engineering and Architecture.....	8vo,	5 00
Sheep,		5 50
Wilson's Air Conditioning.....	12mo,	1 50
Worcester and Atkinson's Small Hospitals, Establishment and Maintenance, Suggestions for Hospital Architecture, with Plans for a Small Hospital.		
12mo,		1 25

ARMY AND NAVY.

Bernadou's Smokeless Powder, Nitro-cellulose, and the Theory of the Cellulose Molecule.....	12mo,	2 50
Chase's Art of Pattern Making.....	12mo,	2 50
Screw Propellers and Marine Propulsion.....	8vo,	3 00
Cloke's Gunner's Examiner.....	8vo,	1 50
Craig's Azimuth.....	4to,	3 50
Crehore and Squier's Polarizing Photo-chronograph.....	8vo,	3 00
* Davis's Elements of Law.....	8vo,	2 50
* Treatise on the Military Law of United States.....	8vo,	7 00
Sheep,		7 50
De Brack's Cavalry Outpost Duties. (Carr.).....	24mo, mor.	2 00
* Dudley's Military Law and the Procedure of Courts-martial.....	Large 12mo,	2 50
Durand's Resistance and Propulsion of Ships.....		

* Dyer's Handbook of Light Artillery.	12mo,	3 00
Eissler's Modern High Explosives.	8vo,	4 00
* Fieberger's Text-book on Field Fortification.	Large 12mo,	2 00
Hamilton and Bond's The Gunner's Catechism	18mo,	1 00
* Hoff's Elementary Naval Tactics.	8vo,	1 50
Ingalls's Handbook of Problems in Direct Fire.	8vo,	4 00
* Lissak's Ordnance and Gunnery	8vo,	6 00
* Ludlow's Logarithmic and Trigonometric Tables	8vo,	1 00
* Lyons's Treatise on Electromagnetic Phenomena. Vols. I. and II. 8vo, each,	8vo, each,	6 00
* Mahan's Permanent Fortifications. (Mercur.)	8vo, half mor.	7 50
Manual for Courts-martial.	16mo, mor.	1 50
* Mercur's Attack of Fortified Places.	12mo,	2 00
* Elements of the Art of War.	8vo,	4 00
Metcalf's Cost of Manufactures—And the Administration of Workshops. 8vo, 5 00	8vo,	5 00
* Ordnance and Gunnery. 2 vols. Text 12mo, Plates atlas form	12mo, Plates atlas form	5 00
Nixon's Adjutants' Manual.	24mo,	1 00
Peabody's Naval Architecture.	8vo,	7 50
* Phelps's Practical Marine Surveying.	8vo,	2 50
Powell's Army Officer's Examiner.	12mo,	4 00
Sharpe's Art of Subsisting Armies in War.	18mo, mor.	1 50
* Tapes and Poole's Manual of Bayonet Exercises and Musketry Fencing.	24mo, leather,	50
* Weaver's Military Explosives.	8vo,	3 00
Woodhull's Notes on Military Hygiene.	16mo,	1 50

ASSAYING.

Betts's Lead Refining by Electrolysis.	8vo,	4 00
Fletcher's Practical Instructions in Quantitative Assaying with the Blowpipe.	16mo, mor.	1 50
Furman's Manual of Practical Assaying.	8vo,	3 00
Lodge's Notes on Assaying and Metallurgical Laboratory Experiments.	8vo,	3 00
Low's Technical Methods of Ore Analysis.	8vo,	3 00
Miller's Cyanide Process.	12mo,	1 00
Manual of Assaying.	12mo,	1 00
Minet's Production of Aluminum and its Industrial Use. (Waldo.)	12mo,	2 50
O'Driscoll's Notes on the Treatment of Gold Ores.	8vo,	2 00
Ricketts and Miller's Notes on Assaying.	8vo,	3 00
Robine and Lenglen's Cyanide Industry. (Le Clerc.)	8vo,	4 00
Ulke's Modern Electrolytic Copper Refining.	8vo,	3 00
Wilson's Chlorination Process.	12mo,	1 50
Cyanide Processes.	12mo,	1 50

ASTRONOMY.

Comstock's Field Astronomy for Engineers.	8vo,	2 50
Craig's Azimuth.	4to,	3 50
Crandall's Text-book on Geodesy and Least Squares.	8vo,	3 00
Doolittle's Treatise on Practical Astronomy.	8vo,	4 00
Gore's Elements of Geodesy.	8vo,	2 50
Hayford's Text-book of Geodetic Astronomy.	8vo,	3 00
Merriman's Elements of Precise Surveying and Geodesy.	8vo,	2 50
* Michie and Harlow's Practical Astronomy.	8vo,	3 00
Rust's Ex-meridian Altitude, Azimuth and Star-Finding Tables. (In Press.)		
* White's Elements of Theoretical and Descriptive Astronomy	12mo,	2 00

Abderhalden's Physiological Chemistry in Thirty Lectures. (Hall and Defren).
(In Press.)

* Abegg's Theory of Electrolytic Dissociation. (von Ende.)	12mo,	1 25
Adrlance's Laboratory Calculations and Specific Gravity Tables.	12mo,	1 25
Alexayeff's General Principles of Organic Syntheses. (Matthews.)	8vo,	3 00
Allen's Tables for Iron Analysis.	8vo,	3 00
Arnold's Compendium of Chemistry. (Mandel.)	Large 12mo,	3 50
Association of State and National Food and Dairy Departments, Hartford Meeting, 1906.	8vo,	3 00
Jamestown Meeting, 1907.	8vo,	3 00
Austen's Notes for Chemical Students	12mo,	1 50
Baskerville's Chemical Elements. (In Preparation).		
Bernadou's Smokeless Powder.—Nitro-cellulose, and Theory of the Cellulose Molecule	12mo,	2 50
* Blanchard's Synthetic Inorganic Chemistry.	12mo,	1 00
* Browning's Introduction to the Rarer Elements.	8vo,	1 50
Brush and Penfield's Manual of Determinative Mineralogy.	8vo,	4 00
* Claassen's Beet-sugar Manufacture. (Hall and Rolfe.)	8vo,	3 00
Claassen's Quantitative Chemical Analysis by Electrolysis. (Boltwood.)	8vo,	3 00
Cohn's Indicators and Test-papers.	12mo,	2 00
Testa and Reagents.	8vo,	3 00
* Danneel's Electrochemistry. (Merriam.)	12mo,	1 25
Duhem's Thermodynamics and Chemistry. (Burgess.)	8vo,	4 00
Eakle's Mineral Tables for the Determination of Minerals by their Physical Properties	8vo,	1 25
Eissler's Modern High Explosives.	8vo,	4 00
Effront's Enzymes and their Applications. (Prescott.)	8vo,	3 00
Erdmann's Introduction to Chemical Preparations. (Dunlap.)	12mo,	1 25
* Fischer's Physiology of Alimentation	Large 12mo,	2 00
Fletcher's Practical Instructions in Quantitative Assaying with the Blowpipe.	12mo, mor.	1 50
Fowler's Sewage Works Analyses.	12mo,	2 00
Fresenius's Manual of Qualitative Chemical Analysis. (Wells.)	8vo,	5 00
Manual of Qualitative Chemical Analysis. Part I. Descriptive. (Wells.)	8vo,	3 00
Quantitative Chemical Analysis. (Cohn.) 2 vols.	8vo,	12 50
When Sold Separately, Vol. I, \$6. Vol. II, \$8.		
Fuertes's Water and Public Health.	12mo,	1 50
Furman's Manual of Practical Assaying.	8vo,	3 00
* Getman's Exercises in Physical Chemistry.	12mo,	2 00
Gill's Gas and Fuel Analysis for Engineers.	12mo,	1 25
* Gooch and Browning's Outlines of Qualitative Chemical Analysis.	Large 12mo,	1 25
Grotenfelt's Principles of Modern Dairy Practice. (Woll.)	12mo,	2 00
Groth's Introduction to Chemical Crystallography (Marshall)	12mo,	1 25
Hammarsten's Text-book of Physiological Chemistry. (Mandel.)	8vo,	4 00
Hanousek's Microscopy of Technical Products. (Winton.)	8vo,	5 00
* Haskins and Macleod's Organic Chemistry	12mo,	2 00
Helm's Principles of Mathematical Chemistry. (Morgan.)	12mo,	1 50
Hering's Ready Reference Tables (Conversion Factors).	16mo, mor.	2 50
* Herrick's Denatured or Industrial Alcohol.	8vo,	4 00
Hinds's Inorganic Chemistry.	8vo,	3 00
* Laboratory Manual for Students	12mo,	1 00
* Holleman's Laboratory Manual of Organic Chemistry for Beginners, (Walker.)	12mo,	1 00
Text-book of Inorganic Chemistry. (Cooper.)	8vo,	2 50
Text-book of Organic Chemistry. (Walker and Mott.)	8vo,	2 50
Holley and Ladd's Analysis of Mixed Paints, Color Pigments, and Varnishes.		

Hopkins's Oil-chemists' Handbook.....	8vo,	3 00
Iddings's Rock Minerals.....	8vo,	5 00
Jackson's Directions for Laboratory Work in Physiological Chemistry.....	8vo,	1 25
Johannsen's Determination of Rock-forming Minerals in Thin Sections.....	8vo,	4 00
Keep's Cast Iron.....	8vo,	2 50
Ladd's Manual of Quantitative Chemical Analysis.....	12mo,	1 00
Landauer's Spectrum Analysis. (Tingle).....	8vo,	3 00
* Langworthy and Austen's Occurrence of Aluminium in Vegetable Products, Animal Products, and Natural Waters.....	8vo,	2 00
Lassar-Cohn's Application of Some General Reactions to Investigations in Organic Chemistry. (Tingle).....	12mo,	1 00
Leach's Inspection and Analysis of Food with Special Reference to State Control.....	8vo,	7 50
Löb's Electrochemistry of Organic Compounds. (Lorenz).....	8vo,	3 00
Lodge's Notes on Assaying and Metallurgical Laboratory Experiments.....	8vo,	3 00
Low's Technical Method of Ore Analysis.....	8vo,	3 00
Lunge's Techno-chemical Analysis. (Cohn).....	12mo	1 00
* McKay and Larsen's Principles and Practice of Butter-making.....	8vo,	1 50
Maire's Modern Pigments and their Vehicles.....	12mo,	2 00
Mandel's Handbook for Bio-chemical Laboratory.....	12mo,	1 50
* Martin's Laboratory Guide to Qualitative Analysis with the Blowpipe.....	12mo,	60
Mason's Examination of Water. (Chemical and Bacteriological).....	12mo,	1 25
Water-supply. (Considered Principally from a Sanitary Standpoint).....	8vo,	4 00
Matthews's The Textile Fibres. 2d Edition, Rewritten.....	8vo,	4 00
Meyer's Determination of Radicles in Carbon Compounds. (Tingle).....	12mo,	1 00
Miller's Cyanida Process.....	12mo,	1 00
Manual of Assaying.....	12mo,	1 00
Minet's Production of Aluminum and its Industrial Use. (Waldo).....	12mo,	2 50
Mixer's Elementary Text-book of Chemistry.....	12mo,	1 50
Morgan's Elements of Physical Chemistry.....	12mo,	3 00
Outline of the Theory of Solutions and its Results.....	12mo,	1 00
* Physical Chemistry for Electrical Engineers.....	12mo,	1 50
Morse's Calculations used in Cane-sugar Factories.....	16mo, mor.	1 50
* Muir's History of Chemical Theories and Laws.....	8vo,	4 00
Mulliken's General Method for the Identification of Pure Organic Compounds.		
Vol. I.....	Large 8vo,	5 00
O'Driscoll's Notes on the Treatment of Gold Ores.....	8vo,	2 00
Outwold's Conversations on Chemistry. Part One. (Ramsey).....	12mo,	1 50
“ “ “ “ “ Part Two. (Turnbull).....	12mo,	2 00
* Palmer's Practical Test Book of Chemistry.....	12mo,	1 00
* Pauli's Physical Chemistry in the Service of Medicine. (Fischer).....	12mo,	1 25
* Penfield's Notes on Determinative Mineralogy and Record of Mineral Tests.....	8vo, paper,	50
Tables of Minerals, Including the Use of Minerals and Statistics of Domestic Production.....	8vo,	1 00
Pictet's Alkaloids and their Chemical Constitution. (Biddle).....	8vo,	5 00
Pöole's Calorific Power of Fuels.....	8vo,	3 00
Prescott and Winslow's Elements of Water Bacteriology, with Special Reference to Sanitary Water Analysis.....	12mo,	1 50
* Reising's Guide to Piece-dyeing.....	8vo,	25 00
Richards and Woodman's Air, Water, and Food from a Sanitary Standpoint.....	8vo,	2 00
Ricketts and Miller's Notes on Assaying.....	8vo,	3 00
Rideal's Disinfection and the Preservation of Food.....	8vo,	4 00
Sewage and the Bacterial Purification of Sewage.....	8vo,	4 00
Riggs's Elementary Manual for the Chemical Laboratory.....	8vo,	1 25
Robine and Lenglen's Cyanide Industry. (Le Clerc).....	8vo,	4 00
Ruddiman's Incompatibilities in Prescriptions.....	8vo,	2 00
Why's in Pharmacy.....	12mo,	1 00

Ruer's Elements of Metallography. (Mathewson). (In Preparation.)		
Sabin's Industrial and Artistic Technology of Paints and Varnish.	8vo,	3 00
Salkowski's Physiological and Pathological Chemistry. (Orndorff.).....	8vo,	2 50
Schimpf's Essentials of Volumetric Analysis.	12mo,	1 25
* Qualitative Chemical Analysis.	8vo,	1 25
Text-book of Volumetric Analysis.	12mo,	2 50
Smith's Lecture Notes on Chemistry for Dental Students.	8vo,	2 50
Spencer's Handbook for Cane Sugar Manufacturers.	16mo, mor.	3 00
Handbook for Chemists of Beet-sugar Houses.	16mo, mor.	3 00
Stockbridge's Rocks and Soils.	8vo,	2 50
* Tillman's Descriptive General Chemistry.	8vo,	3 00
* Elementary Lessons in Heat.	8vo,	1 50
Treadwell's Qualitative Analysis. (Hall.).....	8vo,	3 00
Quantitative Analysis. (Hall.).....	8vo,	4 00
Turneure and Russell's Public Water-supplies.	8vo,	5 00
Van Deventer's Physical Chemistry for Beginners. (Boltwood.).....	12mo,	1 50
Venable's Methods and Devices for Bacterial Treatment of Sewage.	8vo,	3 00
Ward and Whipple's Freshwater Biology. (In Press.)		
Ware's Beet-sugar Manufacture and Refining. Vol. I.	Small 8vo,	4 00
" " " " " Vol. II.	Small 8vo,	5 00
Washington's Manual of the Chemical Analysis of Rocks.	8vo,	2 00
* Weaver's Military Explosives.	8vo,	3 00
Wells's Laboratory Guide in Qualitative Chemical Analysis.	8vo,	1 50
Short Course in Inorganic Qualitative Chemical Analysis for Engineering Students.	12mo,	1 50
Text-book of Chemical Arithmetic.	12mo,	1 25
Whipple's Microscopy of Drinking-water.	8vo,	3 50
Wilson's Chlorination Process.	12mo	1 50
Cyanide Processes.	12mo	1 50
Winton's Microscopy of Vegetable Foods.	8vo	7 50

CIVIL ENGINEERING.

BRIDGES AND ROOFS. HYDRAULICS. MATERIALS OF ENGINEERING. RAILWAY ENGINEERING.

Baker's Engineers' Surveying Instruments.	12mo,	3 00
Bixby's Graphical Computing Table. Paper $19\frac{1}{2} \times 24\frac{1}{2}$ inches.		25
Breed and Hosmer's Principles and Practice of Surveying.	8vo,	3 00
* Burr's Ancient and Modern Engineering and the Isthmian Canal.	8vo,	3 50
Comstock's Field Astronomy for Engineers.	8vo,	2 50
* Corthell's Allowable Pressures on Deep Foundations.	12mo,	1 25
Crandall's Text-book on Geodesy and Least Squares.	8vo,	3 00
Davis's Elevation and Stadia Tables.	8vo,	1 00
Elliott's Engineering for Land Drainage.	12mo,	1 50
Practical Farm Drainage.	12mo,	1 00
* Fiebeger's Treatise on Civil Engineering.	8vo,	5 00
Flemer's Photopographic Methods and Instruments.	8vo,	5 00
Folwell's Sewerage. (Designing and Maintenance.)	8vo,	3 00
Freitag's Architectural Engineering.	8vo,	3 50
French and Ives's Stereotomy.	8vo,	2 50
Goodhue's Municipal Improvements.	12mo,	1 50
Gore's Elements of Geodesy.	8vo,	2 50
* Hauch and Rice's Tables of Quantities for Preliminary Estimates.	12mo,	1 25
Hayford's Text-book of Geodetic Astronomy.	8vo,	3 00
Hering's Ready Reference Tables (Conversion Factors).	16mo, mor.	2 50
Howe's Retaining Walls for Earth.		

* Ives's Adjustments of the Engineer's Transit and Level.	16mo, Bds.	25
Ives and Hiltz's Problems in Surveying	16mo, mor.	1 50
Johnson's (J. B.) Theory and Practice of Surveying.	Small 8vo,	4 00
Johnson's (L. J.) Statics by Algebraic and Graphic Methods.	8vo,	2 00
Kinnicutt, Winslow and Pratt's Purification of Sewage. (In Preparation).		
Laplace's Philosophical Essay on Probabilities. (Truscott and Emory.)		
	12mo,	2 00
Mahan's Descriptive Geometry.	8vo,	1 50
Treatise on Civil Engineering. (1873.) (Wood.)	8vo,	5 00
Merriman's Elements of Precise Surveying and Geodesy.	8vo,	2 50
Merriman and Brooks's Handbook for Surveyors.	16mo, mor.	2 00
Morrison's Elements of Highway Engineering. (In Press.)		
Nugent's Plane Surveying.	8vo,	3 50
Ogden's Sewer Design.	12mo,	2 00
Parsons's Disposal of Municipal Refuse.	8vo,	2 00
Patton's Treatise on Civil Engineering.	8vo, half leather,	7 50
Reed's Topographical Drawing and Sketching	4to,	5 00
Rideal's Sewage and the Bacterial Purification of Sewage.	8vo,	4 00
Riemer's Shaft-sinking under Difficult Conditions. (Corning and Peele.)	8vo,	3 00
Siebert and Biggin's Modern Stone-cutting and Masonry.	8vo,	1 50
Smith's Manual of Topographical Drawing. (McMillan.)	8vo,	2 50
Soper's Air and Ventilation of Subways. (In Press.)		
Tracy's Plane Surveying.	16mo, mor.	3 00
* Trautwine's Civil Engineer's Pocket-book.	16mo, mor.	5 00
Venable's Garbage Crematories in America.	8vo,	2 00
Methods and Devices for Bacterial Treatment of Sewage.	8vo,	3 00
Wait's Engineering and Architectural Jurisprudence.	8vo,	6 00
	Sheep,	6 50
Law of Contracts.	8vo,	3 00
Law of Operations Preliminary to Construction in Engineering and Architecture.	8vo,	5 00
	Sheep,	5 50
Warren's Stereotomy—Problems in Stone-cutting.	8vo,	2 50
* Waterbury's Vest-Pocket Hand-book of Mathematics for Engineers.		
	2 $\frac{1}{2}$ × 5 $\frac{1}{2}$ inches, mor.	1 00
Webb's Problems in the Use and Adjustment of Engineering Instruments.		
	16mo, mor.	1 25
Wilson's Topographic Surveying.	8vo,	3 50

BRIDGES AND ROOFS.

Boller's Practical Treatise on the Construction of Iron Highway Bridges.	8vo,	2 00
Burr and Falk's Design and Construction of Metallic Bridges	8vo,	5 00
Influence Lines for Bridge and Roof Computations.	8vo,	3 00
Du Bois's Mechanics of Engineering. Vol. II.	Small 4to,	10 00
Foster's Treatise on Wooden Trestle Bridges.	4to,	5 00
Fowler's Ordinary Foundations	8vo,	3 50
French and Ives's Stereotomy	8vo,	2 50
Greene's Arches in Wood, Iron, and Stone	8vo,	2 50
Bridge Trusses.	8vo,	2 50
Roof Trusses.	8vo,	1 25
Grimm's Secondary Stresses in Bridge Trusses.	8vo,	2 50
Heller's Stresses in Structures and the Accompanying Deformations.	8vo,	
Howe's Design of Simple Roof-trusses in Wood and Steel.	8vo,	2 00
Symmetrical Masonry Arches.	8vo,	2 50
Treatise on Arches.	8vo,	4 00
Johnson, Bryan, and Turneure's Theory and Practice in the Designing of Modern Framed Structures.	Small 4to,	10 00

Merriman and Jacoby's *REAL-BOOK ON ROOFS AND BRIDGES:*

Part I. Stresses in Simple Trusses.....	8vo,	2 50
Part II. Graphic Statics.....	8vo,	2 50
Part III. Bridge Design.....	8vo,	2 50
Part IV. Higher Structures.....	8vo,	2 50
Morison's Memphis Bridge.....	Oblong 4to,	10 00
Sondericker's Graphic Statics, with Applications to Trusses, Beams, and Arches.....	8vo,	2 00
Waddell's De Pontibus, Pocket-hook for Bridge Engineers.....	16mo, mor,	2 00
* Specifications for Steel Bridges.....	12mo,	50
Waddell and Harrington's Bridge Engineering. (In Preparation.)		
Wright's Designing of Draw-spans. Two parts in one volume.....	8vo,	3 50

HYDRAULICS.

Barnes's Ice Formation.....	8vo,	3 00
Bazin's Experiments upon the Contraction of the Liquid Vein Issuing from an Orifice. (Trautwine.).....	8vo,	2 00
Bovey's Treatise on Hydraulics.....	8vo,	5 00
Church's Diagrams of Mean Velocity of Water in Open Channels.....	Oblong 4to, paper,	1 50
Hydraulic Motors.....	8vo,	2 00
Mechanics of Engineering.....	8vo,	6 00
Coffin's Graphical Solution of Hydraulic Problems.....	16mo, morocco,	2 50
Flather's Dynamometers, and the Measurement of Power.....	12mo,	3 00
Folwell's Water-supply Engineering.....	8vo,	4 00
Frizell's Water-power.....	8vo,	5 00
Fuertes's Water and Public Health.....	12mo,	1 50
Water-filtration Works.....	12mo,	2 50
Ganguillet and Kutter's General Formula for the Uniform Flow of Water in Rivers and Other Channels. (Hering and Trautwine.).....	8vo,	4 00
Hazen's Clean Water and How to Get It.....	Large 12mo,	1 50
Filtration of Public Water-supplies.....	8vo,	3 00
Hazlehurst's Towers and Tanks for Water-works.....	8vo,	2 50
Herschel's 115 Experiments on the Carrying Capacity of Large, Riveted, Metal Conduits.....	8vo,	2 00
Hoyt and Grover's River Discharge.....	8vo,	2 00
Hubbard and Kiersted's Water-works Management and Maintenance.....	8vo,	4 00
* Lyndon's Development and Electrical Distribution of Water Power.....	8vo,	3 00
Mason's Water-supply. (Considered Principally from a Sanitary Standpoint.).....	8vo,	4 00
Merriman's Treatise on Hydraulics.....	8vo,	5 00
* Michie's Elements of Analytical Mechanics.....	8vo,	4 00
Molitor's Hydraulics of Rivers, Weirs and Sluices. (In Press.)		
Schuyler's Reservoirs for Irrigation, Water-power, and Domestic Water-supply.....	Large 8vo,	5 00
* Thomas and Watt's Improvement of Rivers.....	4to,	6 00
Turneure and Russell's Public Water-supplies.....	8vo,	5 00
Wegmann's Design and Construction of Dams. 5th Ed., enlarged.....	4to,	6 00
Water-supply of the City of New York from 1658 to 1895.....	4to,	10 00
Whipple's Value of Pure Water.....	Large 12mo,	1 00
Williams and Hazen's Hydraulic Tables.....	8vo,	1 50
Wilson's Irrigation Engineering.....	Small 8vo,	4 00
Wolff's Windmill as a Prime Mover.....	8vo,	3 00
Wood's Elements of Analytical Mechanics.....	8vo,	3 00
Turbines.....	8vo,	2 00

MATERIALS OF ENGINEERING.

Baker's Roads and Pavements.	8vo,	5 00
Treatise on Masonry Construction.	8vo,	5 00
Birkmire's Architectural Iron and Steel.	8vo,	3 50
Compound Riveted Girders as Applied in Buildings.	8vo,	2 00
Black's United States Public Works	Oblong 4to,	5 00
Bleining's Manufacture of Hydraulic Cement. (In Preparation.)		
* Bovey's Strength of Materials and Theory of Structures.	8vo,	7 50
Burr's Elasticity and Resistance of the Materials of Engineering.	8vo,	7 50
Byrne's Highway Construction.	8vo,	5 00
Inspection of the Materials and Workmanship Employed in Construction.		
	16mo,	3 00
Church's Mechanics of Engineering.	8vo,	6 00
Du Bois's Mechanics of Engineering.		
Vol. I. Kinematics, Statics, Kinetics.	Small 4to,	7 50
Vol. II. The Stresses in Framed Structures, Strength of Materials and Theory of Flexures.	Small 4to,	10 00
* Eckel's Cements, Limes, and Plasters.	8vo,	6 00
Stone and Clay Products used in Engineering. (In Preparation.)		
Fowler's Ordinary Foundations.	8vo,	3 50
Graves's Forest Mensuration.	8vo,	4 00
Green's Principles of American Forestry.	12mo,	1 50
* Greene's Structural Mechanics.	8vo,	2 50
Holly and Ladd's Analysis of Mixed Paints, Color Pigments and Varnishes		
	Large 12mo,	2 50
Johnson's Materials of Construction.	Large 8vo,	6 00
Keep's Cast Iron.	8vo,	2 50
Kidder's Architects and Builders' Pocket-book.	16mo,	5 00
Lanza's Applied Mechanics.	8vo,	7 50
Maire's Modern Pigments and their Vehicles	12mo,	2 00
Martens's Handbook on Testing Materials. (Henning.) 2 vols.	8vo,	7 50
Maurer's Technical Mechanics.	8vo,	4 00
Merrill's Stones for Building and Decoration.	8vo,	5 00
Merriman's Mechanics of Materials.	8vo,	5 00
* Strength of Materials	12mo,	1 00
Metcalf's Steel. A Manual for Steel-users.	12mo,	2 00
Patton's Practical Treatise on Foundations.	8vo,	5 00
Rice's Concrete Block Manufacture.	8vo,	2 00
Richardson's Modern Asphalt Pavements.	8vo,	3 00
Richey's Handbook for Superintendents of Construction.	16mo, mor.,	4 00
* Ries's Clays: Their Occurrence, Properties, and Uses.	8vo,	5 00
Sabin's Industrial and Artistic Technology of Paints and Varnish.	8vo,	3 00
* Schwarz's Longleaf Pine in Virgin Forest.	12mo,	1 25
Snow's Principal Species of Wood.	8vo,	3 50
Spalding's Hydraulic Cement.	12mo,	2 00
Text-book on Roads and Pavements.	12mo,	2 00
Taylor and Thompson's Treatise on Concrete, Plain and Reinforced.	8vo,	5 00
Thurston's Materials of Engineering. In Three Parts.	8vo,	8 00
Part I. Non-metallic Materials of Engineering and Metallurgy.	8vo,	2 00
Part II. Iron and Steel.	8vo,	3 50
Part III. A Treatise on Brasses, Bronzes, and Other Alloys and their Constituents.	8vo,	2 50
Tillson's Street Pavements and Paving Materials.	8vo,	4 00
Turneure and Maurer's Principles of Reinforced Concrete Construction.	8vo,	3 00
Wood's (De V.) Treatise on the Resistance of Materials, and an Appendix on the Preservation of Timber.	8vo,	2 00
Wood's (M. P.) Rustless Coatings: Corrosion and Electrolysis of Iron and Steel.	8vo,	4 00

RAILWAY ENGINEERING.

Andrews's Handbook for Street Railway Engineers.....	3x5 inches, mor.	1 25
Berg's Buildings and Structures of American Railroads.....	4to,	5 00
Brooks's Handbook of Street Railroad Location.....	16mo, mor.	1 50
Butt's Civil Engineer's Field-book.....	16mo, mor.	2 50
Crandall's Railway and Other Earthwork Tables.....	8vo,	1 50
Transition Curve.....	16mo, mor.	1 50
* Crockett's Methods for Earthwork Computations.....	8vo,	1 50
Dawson's "Engineering" and Electric Traction Pocket-book.....	16mo, mor.	5 00
Dredge's History of the Pennsylvania Railroad: (1879).....	Paper,	5 00
Fiaber's Table of Cubic Yards.....	Cardboard,	25
Godwin's Railroad Engineers' Field-book and Explorers' Guide.....	16mo, mor.	2 50
Hudson's Tables for Calculating the Cubic Contents of Excavations and Embankments.....	8vo,	1 00
Ives and Hill's Problems in Surveying, Railroad Surveying and Geodesy.....	16mo, mor.	1 50
Molitor and Beard's Manual for Resident Engineers.....	16mo,	1 00
Nagle's Field Manual for Railroad Engineers.....	16mo, mor.	3 00
Philbrick's Field Manual for Engineers.....	16mo, mor.	3 00
Raymond's Railroad Engineering. 3 volumes.		
Vol. I. Railroad Field Geometry. (In Preparation.)		
Vol. II. Elements of Railroad Engineering.....	8vn,	3 50
Vol. III. Railroad Engineer's Field Book. (In Preparation.)		
Searles's Field Engineering.....	16mo, mor.	3 00
Railroad Spiral.....	16mo, mor.	1 50
Taylor's Prismoidal Formulæ and Earthwork.....	8vo,	1 50
* Trautwine's Field Practice of Laying Out Circular Curves for Railroads.....	12mo, mor.	2 50
* Method of Calculating the Cubic Contents of Excavations and Embankments by the Aid of Diagrams.....	8vo,	2 00
Webb's Economics of Railroad Construction.....	Large 12mo,	2 50
Railroad Construction.....	16mo, mor.	5 00
Wellington's Economic Theory of the Location of Railways.....	Small 8vo,	5 00

DRAWING.

Barr's Kinematics of Machinery.....	8vo,	2 50
* Bartlett's Mechanical Drawing.....	8vo,	3 00
* " " " Abridged Ed.....	8vo,	1 50
Coolidge's Manual of Drawing.....	8vo, paper,	1 00
Coolidge and Freeman's Elements of General Drafting for Mechanical Engineers.....	Oblong 4to,	2 50
Durley's Kinematics of Machines.....	8vo,	4 00
Emch's Introduction to Projective Geometry and its Applications.....	8vo,	2 50
Hill's Text-book on Shades and Shadows, and Perspective.....	8vo,	2 00
Jamison's Advanced Mechanical Drawing.....	8vo,	2 00
Elements of Mechanical Drawing.....	8vo,	2 50
Jones's Machine Design:		
Part I. Kinematics of Machinery.....	8vo,	1 50
Part II. Form, Strength, and Proportions of Parts.....	8vo,	3 00
MacCord's Elements of Descriptive Geometry.....	8vo,	3 00
Kinematics; or, Practical Mechanism.....	8vo,	5 00
Mechanical Drawing.....	4to,	4 00
Velocity Diagrams.....	8vo,	1 50
McLeod's Descriptive Geometry.....	Large 12mo,	1 50
* Mahan's Descriptive Geometry and Stone-cutting.....	8vo,	1 50
Industrial Drawing. (Thompson.).....		

Moyer's Descriptive Geometry.	8vo,	2 00
Reed's Topographical Drawing and Sketching.	4to,	5 00
Reid's Course in Mechanical Drawing.	8vo,	2 00
Text-book of Mechanical Drawing and Elementary Machine Design.	8vo,	3 00
Robinson's Principles of Mechanism.	8vo,	3 00
Schwamb and Merrill's Elements of Mechanism.	8vo,	3 00
Smith's (R. S.) Manual of Topographical Drawing. (McMillan.)	8vo,	2 50
Smith (A. W.) and Marx's Machine Design.	8vo,	3 00
* Titsworth's Elements of Mechanical Drawing.	Oblong 8vo,	1 25
Varren's Drafting Instruments and Operations.	12mo,	1 25
Elements of Descriptive Geometry, Shadows, and Perspective.	8vo,	3 50
Elements of Machine Construction and Drawing.	8vo,	7 50
Elements of Plane and Solid Free-hand Geometrical Drawing.	12mo,	1 00
General Problems of Shades and Shadows.	8vo,	3 00
Manual of Elementary Problems in the Linear Perspective of Form and Shadow.	12mo,	1 00
Manual of Elementary Projection Drawing.	12mo,	1 50
Plane Problems in Elementary Geometry.	12mo,	1 25
Problems, Theorems, and Examples in Descriptive Geometry.	8vo,	2 50
Weisbach's Kinematics and Power of Transmission. (Hermann and Klein.)	8vo,	5 00
Wilson's (H. M.) Topographic Surveying.	8vo,	3 50
Wilson's (V. T.) Free-hand Lettering.	8vo,	1 00
Free-hand Perspective.	8vo,	2 50
Woolf's Elementary Course in Descriptive Geometry.	Large 8vo,	3 00

ELECTRICITY AND PHYSICS.

* Abegg's Theory of Electrolytic Dissociation. (von Ende.)	12mo,	1 25
Andrews's Hand-Book for Street Railway Engineering.	3 X 5 inches, mor.,	1 25
Anthony and Brackett's Text-book of Physics. (Magie.)	Large 12mo,	3 00
Anthony's Lecture-notes on the Theory of Electrical Measurements.	12mo,	1 00
Benjamin's History of Electricity.	8vo,	3 00
Voltaic Cell.	8vo,	3 00
Betts's Lead Refining and Electrolysis.	8vo,	4 00
Claseen's Quantitative Chemical Analysis by Electrolysis. (Boltwood.)	8vo,	3 00
* Collins's Manual of Wireless Telegraphy.	12mo,	1 50
	Mor.	2 00
Crehore and Squier's Polarizing Photo-chronograph.	8vo,	3 00
* Danneel's Electrochemistry. (Merriam.)	12mo,	1 25
Dawson's "Engineering" and Electric Traction Pocket-book.	16mo, mor	5 00
Dolezalek's Theory of the Lead Accumulator (Storage Battery). (von Ende.)	12mo,	2 50
Duhem's Thermodynamics and Chemistry. (Burgess.)	8vo,	4 00
Flather's Dynamometers, and the Measurement of Power.	12mo,	3 00
Gilbert's De Magnete. (Mottelay.)	8vo,	2 50
* Hanchett's Alternating Currents.	12mo,	1 00
Hering's Ready Reference Tables (Conversion Factors)	16mo, mor.	2 50
Hobart and Ellis's High-speed Dynamo Electric Machinery. (In Press.)	8vo,	2 00
Telescopic Mirror-scale Method, Adjustments, and Tests.	Large 8vo,	75
* Karapetoff's Experimental Electrical Engineering.	8vo,	6 00
Kinzbrunner's Testing of Continuous-current Machines.	8vo,	2 00
Landauer's Spectrum Analysis. (Tingla.)	8vo,	3 00
Le Chatelier's High-temperature Measurements. (Boudouard—Burgess.)	12mo,	3 00
Löh's Electrochemistry of Organic Compounds, (Lorenz.)	8vo,	3 00
* Lyndon's Development and Electrical Distribution of Water Power	8vo,	3 00
* Lyons's Treatise on Electromagnetic Phenomena. Vols. I. and II.	8vo, each,	6 00
* Michie's Elements of Wave Motion Relating to Sound and Light.	8vo,	4 00

Morgan's Outline of the Theory of Solution and its Results.....	12mo,	1 00
* Physical Chemistry for Electrical Engineers.....	12mo,	1 50
Niaudet's Elementary Treatise on Electric Batteries. (Fishback)....	12mo,	2 50
* Norris's Introduction to the Study of Electrical Engineering.....	8vo,	2 50
* Parshall and Hobart's Electric Machine Design.....	4to, half morocco,	12 50
Reagan's Locomotives: Simple, Compound, and Electric. New Edition.		
	Large 12mo,	3 50
* Rosenberg's Electrical Engineering. (Haldane Gee—Kinzbrunner.)..	8vo,	2 00
Ryan, Norris, and Hoxie's Electrical Machinery. Vol. I.....	8vo,	2 50
Schapper's Laboratory Guide for Students in Physical Chemistry.....	12mo,	1 00
Thurston's Stationary Steam-engines.....	8vo,	2 50
* Tillman's Elementary Lessons in Heat.....	8vo,	1 50
Tory and Pitcher's Manual of Laboratory Physics.....	Large 12mo,	2 00
Ulke's Modern Electrolytic Copper Refining.....	8vo,	3 00

LAW.

* Davis's Elements of Law.....	8vo,	2 50
* Treatise on the Military Law of United States.....	8vo,	7 00
*	Sheep,	7 50
* Dudley's Military Law and the Procedure of Courts-martial....	Large 12mo,	2 50
Manual for Courts-martial.....	16mo, mor.	1 50
Wait's Engineering and Architectural Jurisprudence.....	8vo,	6 00
	Sheep,	6 50
Law of Contracts.....	8vo,	3 00
Law of Operations Preliminary to Construction in Engineering and Architecture.....	8vo	5 00
	Sheep,	5 50

MATHEMATICS.

Baker's Elliptic Functions.....	8vo,	1 50
Briggs's Elements of Plane Analytic Geometry. (Böcher).....	12mo,	1 00
* Buchanan's Plane and Spherical Trigonometry.....	8vo,	1 00
Byerley's Harmonic Functions.....	8vo,	1 00
Chandler's Elements of the Infinitesimal Calculus.....	12mo,	2 00
Compton's Manual of Logarithmic Computations.....	12mo,	1 50
Davis's Introduction to the Logic of Algebra.....	8vo,	1 50
* Dickson's College Algebra.....	Large 12mo,	1 50
* Introduction to the Theory of Algebraic Equations.....	Large 12mo,	1 25
Emch's Introduction to Projective Geometry and its Applications....	8vo,	2 50
Fiske's Functions of a Complex Variable.....	8vo,	1 00
Halsted's Elementary Synthetic Geometry.....	8vo,	1 50
Elements of Geometry.....	8vo,	1 75
* Rational Geometry.....	12mo,	1 50
Hyde's Grassmann's Space Analysis.....	8vo,	1 00
* Jonnson's (J. B.) Three-place Logarithmic Tables: Vest-pocket size, paper,		15
	100 copies,	5 00
*	Mounted on heavy cardboard, 8×10 inches,	25
	10 copies,	2 00
Johnson's (W. W.) Abridged Editions of Differential and Integral Calculus		
	Large 12mo, 1 vol.	2 50
Curve Tracing in Cartesian Co-ordinates.....	12mo,	1 00
Differential Equations.....	8vo,	1 00
Elementary Treatise on Differential Calculus. (In Press.)		
Elementary Treatise on the Integral Calculus.....	Large 12mo,	1 50
* Theoretical Mechanics.....	12mo,	3 00
Theory of Errors and the Method of Least Squares.....	12mo,	1 50
Treatise on Differential Calculus.....	Large 12mo,	3 00
Treatise on the Integral Calculus.....	Large 12mo,	3 00
Treatise on Ordinary and Partial Differential Equations..	Large 12mo,	2 50

Laplace's Philosophical Essay on Probabilities. (Truscott and Emory.)	12mo,	2 00
* Ludlow and Bass's Elements of Trigonometry and Logarithmic and Other Tables	8vo,	3 00
Trigonometry and Tables published separately	Each,	2 00
* Ludlow's Logarithmic and Trigonometric Tables	8vo,	1 00
Macfarlane's Vector Analysis and Quaternions	8vo,	1 00
McMahon's Hyperbolic Functions	8vo,	1 00
Manning's Irrational Numbers and their Representation by Sequences and Series	12mo,	1 25
Mathematical Monographs. Edited by Mansfield Merriman and Robert S. Woodward.	Octavo, each	1 00
No. 1. History of Modern Mathematics, by David Eugene Smith.		
No. 2. Synthetic Projective Geometry, by George Bruce Halsted.		
No. 3. Determinants, by Laenas Gifford Weld. No. 4. Hyperbolic Functions, by James McMahon. No. 5. Harmonic Functions, by William E. Byerly. No. 6. Grassmann's Space Analysis, by Edward W. Hyde. No. 7. Probability and Theory of Errors, by Robert S. Woodward. No. 8. Vector Analysis and Quaternions, by Alexander Macfarlane. No. 9. Differential Equations, by William Woolsey Johnson. No. 10. The Solution of Equations, by Mansfield Merriman. No. 11. Functions of a Complex Variable, by Thomas S. Fiske.		
Maurer's Technical Mechanics	8vo,	4 00
Merriman's Method of Least Squares	8vo,	2 00
Solution of Equations	8vo,	1 00
Rice and Johnson's Differential and Integral Calculus. 2 vols. in one.		
	Large 12mo,	1 50
Elementary Treatise on the Differential Calculus	Large 12mo,	3 00
Smith's History of Modern Mathematics	8vo,	1 00
* Veblen and Lennes's Introduction to the Real Infinitesimal Analysis of One Variable	8vo,	2 00
* Waterbury's Vest Pocket Hand-Book of Mathematics for Engineers.		
	2 $\frac{1}{8}$ × 5 $\frac{1}{8}$ inches, mor.,	1 00
Weld's Determinations	8vo,	1 00
Wood's Elements of Co-ordinate Geometry	8vo,	2 00
Woodward's Probability and Theory of Errors	8vo,	1 00

MECHANICAL ENGINEERING.

MATERIALS OF ENGINEERING, STEAM-ENGINES AND BOILERS.

Bacon's Forge Practice	12mo,	1 50
Baldwin's Steam Heating for Buildings	12mo,	2 50
Barr's Kinematics of Machinery	8vo,	2 50
* Bartlett's Mechanical Drawing	8vo,	3 00
* " " " Abridged Ed.	8vo,	1 50
Benjamin's Wrinkles and Recipes	12mo,	2 00
* Burr's Ancient and Modern Engineering and the Isthmian Canal	8vo,	3 50
Carpenter's Experimental Engineering	8vo,	6 00
Heating and Ventilating Buildings	8vo,	4 00
Clerk's Gas and Oil Engine	Large 12mo,	4 00
Compton's First Lessons in Metal Working	12mo,	1 50
Compton and De Groodt's Speed Lathe	12mo,	1 50
Coolidge's Manual of Drawing	8vo, paper,	1 00
Coolidge and Freeman's Elements of General Drafting for Mechanical Engineers	Oblong 4to,	2 50
Cromwell's Treatise on Belts and Pulleys	12mo,	1 50
Treatise on Toothed Gearing	12mo,	1 50
Durley's Kinematics of Machines	8vo,	4 00

Flather's Dynamometers and the Measurement of Power.	12mo,	3 00
Rope Driving.	12mo,	2 00
Gill's Gas and Fuel Analysis for Engineers.	12mo,	1 25
Goss's Locomotive Sparks.	8vo,	2 00
Hall's Car Lubrication.	12mo,	1 00
Hering's Ready Reference Tables (Conversion Factors).	16mo, mor.,	2 50
Hobart and Ellis's High Speed Dynamo Electric Machinery. (In Press.)		
Hutton's Gas Engine.	8vo,	5 00
Jamison's Advanced Mechanical Drawing.	8vo,	2 00
Elements of Mechanical Drawing.	8vo,	2 50
Jones's Machine Design:		
Part I. Kinematics of Machinery.	8vo,	1 50
Part II. Form, Strength, and Proportions of Parts.	8vo,	3 00
Kent's Mechanical Engineers' Pocket-book.	16mo, mor,	5 00
Kerr's Power and Power Transmission.	8vo,	2 00
Leonard's Machine Shop Tools and Methods.	8vo,	4 00
* Lorenz's Modern Refrigerating Machinery. (Pope, Haven, and Dean.)	8vo,	4 00
MacCord's Kinematics; or, Practical Mechanism.	8vo,	5 00
Mechanical Drawing.	4to,	4 00
Velocity Diagrams.	8vo,	1 50
MacFarland's Standard Reduction Factors for Gases.	8vo,	1 50
Mañan's Industrial Drawing. (Thompson.)	8vo,	3 50
* Parshall and Hobart's Electric Machine Design.	Small 4to, half leather,	12 50
Peele's Compressed Air Plant for Mines. (In Press.)		
Poole's Calorific Power of Fuels.	8vo,	3 00
* Porter's Engineering Reminiscences, 1855 to 1882.	8vo,	3 00
Reid's Course in Mechanical Drawing.	8vo,	2 00
Text-book of Mechanical Drawing and Elementary Machine Design	8vo,	3 00
Richard's Compressed Air.	12mo,	1 50
Robinson's Principles of Mechanism.	8vo,	3 00
Schwamb and Merrill's Elements of Mechanism.	8vo,	3 00
Smith's (O.) Press-working of Metals.	8vo,	3 00
Smith (A. W.) and Marx's Machine Design.	8vo,	3 00
Sorel's Carbureting and Combustion in Alcohol Engines. (Woodward and Preston.)	Large 12mo,	3 00
Thurston's Animal as a Machine and Prime Motor, and the Laws of Energetics.	12mo,	1 00
Treatise on Friction and Lost Work in Machinery and Mill Work.	8vo,	3 00
Tillson's Complete Automobile Instructor.	16mo,	1 50
	mor.,	2 00
* Titsworth's Elements of Mechanical Drawing.	Oblong 8vo,	1 25
Warren's Elements of Machine Construction and Drawing.	8vo,	7 50
* Waterbury's Vest Pocket Hand Book of Mathematics for Engineers.	2 $\frac{1}{2}$ × 5 $\frac{1}{2}$ inches, mor.,	1 00
Weishach's Kinematics and the Power of Transmission. (Herrmann—Klein.)	8vo,	5 00
Machinery of Transmission and Governors. (Herrmann—Klein.)	8vo,	5 00
Wolff's Windmill as a Prime Mover.	8vo,	3 00
Wood's Turbines.	8vo,	2 50

MATERIALS OF ENGINEERING.

* Bovey's Strength of Materials and Theory of Structures.	8vo,	7 50
Burr's Elasticity and Resistance of the Materials of Engineering.	8vo,	7 50
Church's Mechanics of Engineering.	8vo,	6 00
* Greene's Structural Mechanics.	8vo,	2 50
Holley and Ladd's Analysis of Mixed Paints; Color Pigments, and Varnishes.	Large 12mo,	2 50
Johnson's Materials of Construction.	8vo,	6 00
Keep's Cast Iron.	8vo,	2 50
Lanza's Applied Mechanics.	8vo,	2 50

Maire's Modern Pigments and their Vehicles	12mo,	2 00
Martens's Handbook on Testing Materials. (Henning.)	8vo,	7 50
Maurer's Technical Mechanics.	8vo,	4 00
Merriman's Mechanics of Materials.	8vo,	5 00
* Strength of Materials	12mo,	1 00
Metcalf's Steel. A Manual for Steel-users.	12mo,	2 00
Sabin's Industrial and Artistic Technology of Paints and Varnish.	8vo,	3 00
Smith's Materials of Machines.	12mo,	1 00
Thurston's Materials of Engineering.	3 vols., 8vo,	8 00
Part I. Non-metallic Materials of Engineering, see Civil Engineering, page 9.		
Part II. Iron and Steel.	8vo,	3 50
Part III. A Treatise on Brasses, Bronzes, and Other Alloys and their Constituents.	8vo,	2 50
Wood's (De V.) Elements of Analytical Mechanics.	8vo,	3 00
Treatise on the Resistance of Materials and an Appendix on the Preservation of Timber	8vo,	2 00
Wood's (M. P.) Rustless Coatings: Corrosion and Electrolysis of Iron and Steel.	8vo,	4 00

STEAM-ENGINES AND BOILERS.

Berry's Temperature-entropy Diagram.	12mo,	1 25
Carnot's Reflections on the Motive Power of Heat. (Thurston.)	12mo,	1 50
Chase's Art of Pattern Making	12mo,	2 50
Creighton's Steam-engine and other Heat-motors.	8vo,	5 00
Dawson's "Engineering" and Electric Traction Pocket-book.	16mo, mor.,	5 00
Ford's Boiler Making for Boiler Makers.	18mo,	1 00
Goss's Locomotive Performance	8vo,	5 00
Hemenway's Indicator Practice and Steam-engine Economy.	12mo,	2 00
Hutton's Heat and Heat-engines.	8vo,	5 00
Mechanical Engineering of Power Plants.	8vo,	5 00
Kent's Steam boiler Economy.	8vo,	4 00
Kness's Practice and Theory of the Injector.	8vo,	1 50
MacCord's Slide-valves.	8vo,	2 00
Meyer's Modern Locomotive Construction.	4to,	10 00
Moyer's Steam Turbines. (In Press.)		
Peabody's Manual of the Steam-engine Indicator.	12mo,	1 50
Tables of the Properties of Saturated Steam and Other Vapors.	8vo,	1 00
Thermodynamics of the Steam-engine and Other Heat-engines.	8vo,	5 00
Valve-gears for Steam-engines.	8vo,	2 50
Peabody and Miller's Steam-boilers.	8vo,	4 00
Pray's Twenty Years with the Indicator.	Large 8vo,	2 50
Pupin's Thermodynamics of Reversible Cycles in Gases and Saturated Vapors. (Osterberg.)	12mo,	1 25
Reagan's Locomotives: Simple, Compound, and Electric. New Edition. Large	12mo,	3 50
Sinclair's Locomotive Engine Running and Management.	12mo,	2 00
Smart's Handbook of Engineering Laboratory Practice.	12mo,	2 50
Snow's Steam-boiler Practice.	8vo,	3 00
Spangler's Notes on Thermodynamics.	12mo,	1 00
Valve-gears.	8vo,	2 50
Spangler, Greene, and Marshall's Elements of Steam-engineering	8vo,	3 00
Thomas's Steam-turbines	8vo,	4 00
Thurston's Handbook of Engine and Boiler Trials, and the Use of the Indi- cator and the Prony Brake.	8vo,	5 00
Handy Tables.	8vo,	1 50
Manual of Steam-boilers, their Designs, Construction, and Operation.	8vo,	5 00

Thurston's Manual of the Steam-engine.....	2 vols.,	8vo,	10 00
Part I. History, Structure, and Theory.....		8vo,	6 00
Part II. Design, Construction, and Operation.....		8vo,	6 00
Stationary Steam-engines.....		8vo,	2 50
Steam-boiler Explosions in Theory and in Practice.....		12mo,	1 50
Wehrenfenning's Analysis and Softening of Boiler Feed-water (Patterson)		8vo,	4 00
Weishach's Heat, Steam, and Steam-engines. (Du Bois.).....		8vo,	5 00
Whitham's Steam-engine Design.....		8vo,	5 00
Wood's Thermodynamics, Heat Motors, and Refrigerating Machines..		8vo,	4 00

MECHANICS PURE AND APPLIED.

Church's Mechanics of Engineering.....		8vo,	6 00
Notes and Examples in Mechanics.....		8vo,	2 00
Dana's Text-book of Elementary Mechanics for Colleges and Schools..		12mo,	1 50
Du Bois's Elementary Principles of Mechanics:			
Vol. I. Kinematics.....		8vo,	3 50
Vol. II. Statics.....		8vo,	4 00
Mechanics of Engineering. Vol. I.....		Small 4to,	7 50
Mechanics of Engineering. Vol. II.....		Small 4to,	10 00
* Greene's Structural Mechanics.....		8vo,	2 50
James's Kinematics of a Point and the Rational Mechanics of a Particle.			
Large.....		12mo,	2 00
* Johnson's (W. W.) Theoretical Mechanics.....		12mo,	3 00
Lanza's Applied Mechanics.....		8vo,	7 50
* Martin's Text Book on Mechanics, Vol. I, Statics.....		12mo,	1 25
Vol. 2, Kinematics and Kinetics.....		12mo,	1 50
Maurer's Technical Mechanics.....		8vo,	4 00
* Merriman's Elements of Mechanics.....		12mo,	1 00
Mechanics of Materials.....		8vo,	5 00
* Michie's Elements of Analytical Mechanics.....		8vo,	4 00
Robison's Principles of Mechanism.....		8vo,	3 00
Sanborn's Mechanics Problems.....		Large 12mo,	1 50
Schwamb and Merrill's Elements of Mechanism.....		8vo,	3 00
Wood's Elements of Analytical Mechanics.....		8vo,	3 00
Principles of Elementary Mechanics.....		12mo,	1 25

MEDICAL.

Abderhalden's Physiological Chemistry in Thirty Lectures. (Hall and Defren).			
(In Press).			
von Behring's Suppression of Tuberculosis. (Bolduan.).....		12mo,	1 00
* Bolduan's Immune Sera.....		12mo,	1 50
Davenport's Statistical Methods with Special Reference to Biological Variations.....		16mo, mor.,	1 50
Ehrlich's Collected Studies on Immunity. (Bolduan.).....		8vo,	6 00
* Fischer's Physiology of Alimentation.....		Large 12mo, cloth,	2 00
de Fursac's Manual of Psychiatry. (Rosanoff and Collins.).....		Large 12mo,	4 50
Hammarsten's Text-book on Physiological Chemistry. (Mandel.).....		8vo,	4 00
Jackson's Directions for Laboratory Work in Physiological Chemistry..		8vo,	1 25
Lassar-Cohn's Practical Urinary Analysis. (Lorenz.).....		12mo,	1 00
Mandel's Hand Book for the Bio-Chemical Laboratory.....		12mo,	1 50
* Pauli's Physical Chemistry in the Service of Medicine. (Fischer.).....		12mo,	1 25
* Pozzi-Escot's Toxins and Venoms and their Antibodies. (Cohn.).....		12mo,	1 00
Rostski's Serum Diagnosis. (Bolduan.).....		12mo,	1 00
Ruddiman's Incompatibilities in Prescriptions.....		8vo,	2 00
Whys in Pharmacy.....		12mo,	1 00
Salkowski's Physiological and Pathological Chemistry. (Orndorff.).....		8vo,	2 50
* Satterlee's Outlines of Human Embryology.....		12mo,	1 25
Smith's Lecture Notes on Chemistry for Dental Students			

Steel's Treatise on the Diseases of the Dog.	8vo,	3 50
* Whipple's Typhoid Fever.	Large 12mo,	3 00
Woodhull's Notes on Military Hygiene.	16mo,	1 50
* Personal Hygiene.	12mo,	1 00
Worcester and Atkinson's Small Hospitals Establishment and Maintenance, and Suggestions for Hospital Architecture, with Plans for a Small Hospital.	12mo,	1 25

METALLURGY.

Betts's Lead Refining by Electrolysis.	8vo,	4 00
Bolland's Encyclopedia of Founding and Dictionary of Foundry Terms Used in the Practice of Moulding.	12mo,	3 00
Iron Founder.	12mo,	2 50
" " Supplement.	12mo,	2 50
Douglas's Untechnical Addresses on Technical Subjects.	12mo,	1 00
Goesel's Minerals and Metals: A Reference Book.	16mo, mor.	3 00
* Iles's Lead-smelting.	12mo,	2 50
Keep's Cast Iron.	8vo,	2 50
Le Chatelier's High-temperature Measurements. (Boudouard—Burgess.)	12mo,	3 00
Metcalf's Steel. A Manual for Steel-users.	12mo,	2 00
Miller's Cyanide Process.	12mo	1 00
Minet's Production of Aluminum and its Industrial Use. (Waldo.)	12mo,	2 50
Robine and Lenglen's Cyanide Industry. (Le Clerc.)	8vo,	4 00
Ruer's Elements of Metallography. (Mathewson). (In Press.)		
Smith's Materials of Machines.	12mo,	1 00
Thurston's Materials of Engineering. In Three Parts.	8vo,	8 00
part I. Non-metallic Materials of Engineering, see Civil Engineering, page 9.		
Part II. Iron and Steel.	8vo,	3 50
Part III. A Treatise on Brasses, Bronzes, and Other Alloys and their Constituents.	8vo,	2 50
Ulke's Modern Electrolytic Copper Refining.	8vo,	3 00
West's American Foundry Practice.	12mo,	2 50
Moulders Text Book.	12mo,	2 50
Wilson's Chlorination Process.	12mo,	1 50
Cyanide Processes.	12mo,	1 50

MINERALOGY.

Barringer's Description of Minerals of Commercial Value. Oblong, morocco,	2 50
Boyd's Resources of Southwest Virginia.	8vo 3 00
Boyd's Map of Southwest Virginia.	Pocket-book form. 2 00
* Browning's Introduction to the Rarer Elements.	8vo, 1 50
Brush's Manual of Determinative Mineralogy. (Penfield.)	8vo, 4 00
Butler's Pocket Hand-Book of Minerals.	16mo, mor. 3 00
Chester's Catalogue of Minerals.	8vo, paper, 1 00
	Cloth, 1 25
Crane's Gold and Silver. (In Press.)	
Dana's First Appendix to Dana's New "System of Mineralogy."	Large 8vo, 1 00
Manual of Mineralogy and Petrography.	12mo 2 00
Minerals and How to Study Them.	12mo, 1 50
System of Mineralogy.	Large 8vo, half leather, 12 50
Text-book of Mineralogy.	8vo, 4 00
Douglas's Untechnical Addresses on Technical Subjects.	12mo, 1 00
Eakle's Mineral Tables.	8vo, 1 25
Stone and Clay Products Used in Engineering. (In Preparation).	
Egleston's Catalogue of Minerals and Synonyms.	8vo, 2 50
Goesel's Minerals and Metals: A Reference Book.	16mo, mor. 3 00
Greth's Introduction to Chemical Crystallography (Marshall)	12mo, 1 25

* Iddings's Rock Minerals.....	8vo,	5 00
Johannsen's Determination of Rock-forming Minerals in Thin Sections.....	8vo,	4 00
* Martin's Laboratory Guide to Qualitative Analysis with the Blowpipe.....	12mo,	60
Merrill's Non-metallic Minerals: Their Occurrence and Uses.....	8vo,	4 00
Stones for Building and Decoration.....	8vo,	5 00
* Penfield's Notes on Determinative Mineralogy and Record of Mineral Tests.....	8vo, paper,	50
Tables of Minerals, Including the Use of Minerals and Statistics of Domestic Production.....	8vo,	1 00
Pirsson's Rocks and Rock Minerals. (In Press.)		
* Richards's Synopsis of Mineral Characters.....	12mo, mor.	1 25
* Ries's Clays: Their Occurrence, Properties, and Uses.....	8vo,	5 00
* Tillman's Text-book of Important Minerals and Rocks.....	8vo,	2 00

MINING.

* Beard's Mine Gases and Explosions.....	Large 12mo,	3 00
Boyd's Map of Southwest Virginia.....	Pocket-book form,	2 00
Resources of Southwest Virginia.....	8vo,	3 00
Crane's Gold and Silver. (In Press.)		
Douglas's Untechnical Addresses on Technical Subjects.....	12mo,	1 00
Eissler's Modern High Explosives.....	8vo,	4 00
Goesel's Minerals and Metals: A Reference Book.....	16mo, mor.	3 00
Ihlseng's Manual of Mining.....	8vo,	5 00
* Iles's Lead-smelting.....	12mo,	2 50
Miller's Cyanide Process.....	12mo,	1 00
O'Driscoll's Notes on the Treatment of Gold Ores.....	8vo,	2 00
Peele's Compressed Air Plant for Mines. (In Press.)		
Riemer's Shaft Sinking Under Difficult Conditions. (Corning and Peele).....	8vo,	3 00
Robins and Lenglen's Cyanide Industry. (Le Clerc.).....	8vo,	4 00
* Weaver's Military Explosives.....	8vo,	3 00
Wilson's Chlorination Process.....	12mo,	1 50
Cyanide Processes.....	12mo,	1 50
Hydraulic and Placer Mining. 2d edition, rewritten.....	12mo,	2 50
Treatise on Practical and Theoretical Mine Ventilation.....	12mo,	1 25

SANITARY SCIENCE.

Association of State and National Food and Dairy Departments, Hartford Meeting, 1906.....	8vo,	3 00
Jamestown Meeting, 1907.....	8vo,	3 00
* Bashore's Outlines of Practical Sanitation.....	12mo,	1 25
Sanitation of a Country House.....	12mo,	1 00
Sanitation of Recreation Camps and Parks.....	12mo,	1 00
Folwell's Sewerage. (Designing, Construction, and Maintenance.).....	8vo,	3 00
Water-supply Engineering.....	8vo,	4 00
Fowler's Sewage Works Analyses.....	12mo,	2 00
Fuertes's Water-filtration Works.....	12mo,	2 50
Water and Public Health.....	12mo,	1 50
Gerhard's Guide to Sanitary House-inspection.....	16mo,	1 00
* Modern Baths and Bath Houses.....	8vo,	3 00
Sanitation of Public Buildings.....	12mo,	1 50
Hazen's Clean Water and How to Get It.....	Large 12mo,	1 50
Filtration of Public Water-supplies.....	8vo,	3 00
Kinnicut, Winslow and Pratt's Purification of Sewage. (In Press.)		
Leach's Inspection and Analysis of Food with Special Reference to State Control.....	8vo,	7 00
Mason's Examination of Water. (Chemical and Bacteriological).....	12mo,	1 25
Water-supply. (Considered principally from a Sanitary Standpoint).....	8vo,	4 00

* Merrimao's Elements of Sanitary Engineering.....	8vo,	2 00
Ogden's Sewer Design.....	12mo,	2 00
Parsons's Disposal of Municipal Refuse.....	8vo,	2 00
Prescott and Winslow's Elements of Water Bacteriology, with Special Reference to Sanitary Water Analysis.....	12mo,	1 50
* Price's Handbook on Sanitation.....	12mo,	1 50
Richards's Cost of Food. A Study in Diatarles.....	12mo,	1 00
Cost of Living as Modified by Sanitary Science.....	12mo,	1 00
Cost of Shelter.....	12mo,	1 00
* Richards and Williams's Dietary Computer.....	8vo,	1 50
Richards and Woodman's Air, Water, and Food from a Sanitary Standpoint.....	8vo,	2 00
Rideal's Disinfection and the Preservation of Food.....	8vo,	4 00
Sewage and Bacterial Purification of Sewage.....	8vo,	4 00
Soper's Air and Ventilation of Subways. (In Press.)		
Turneure and Russell's Public Water-supplies.....	8vo,	5 00
Venable's Garbage Crematories in America.....	8vo,	2 00
Method and Devices for Bacterial Treatment of Sewage.....	8vo,	3 00
Ward and Whipple's Freshwater Biology. (In Press.)		
Whipple's Microscopy of Drinking-water.....	8vo,	3 50
* Typhoid Fever.....	Large 12mo,	3 00
Value of Pure Water.....	Large 12mo,	1 00
Winton's Microscopy of Vegetable Foods.....	8vo,	7 50

MISCELLANEOUS.

Emmons's Geological Guide-book of the Rocky Mountain Excursion of the International Congress of Geologists.....	Large 8vo,	1 50
Ferrel's Popular Treatise on the Winds.....	8vo,	4 00
Fitzgerald's Boston Machinist.....	18mo,	1 00
Gannett's Statistical Abstract of the World.....	24mo,	75
Haines's American Railway Management.....	12mo,	2 50
* Hanusek's The Microscopy of Technical Products. (Winton).....	8vo,	5 00
Ricketts's History of Rensselaer Polytechnic Institute, 1824-1894.....	Large 12mo,	3 00
Rotherham's Emphasized New Testament.....	Large 8vo,	2 00
Standage's Decoration of Wood, Glass, Metal, etc.....	12mo,	2 00
Thome's Structural and Physiological Botany. (Bennett).....	16mo,	2 25
Westermaier's Compendium of General Botany. (Schneider).....	8vo,	2 00
Winslow's Elements of Applied Microscopy.....	12mo,	1 50

HEBREW AND CHALDEE TEXT-BOOKS.

Green's Elementary Hebrew Grammar.....	12mo,	1 25
Gesenius's Hebrew and Chaldee Lexicon to the Old Testament Scriptures. (Tregelles.).....	Small 4to, half morocco,	5 00

