

NORTH GEORGIA COLLEGE



3 0642 00152 7392



CYCLOPS • 1946

ARCHIVES U428 C9 1946C.3
North Georgia College
CYCLOPS

131008

University System of Georgia
North Georgia College
Dahlonega, Georgia

OFFICE OF THE PRESIDENT


April 8, 1946

To Our High School Friends:

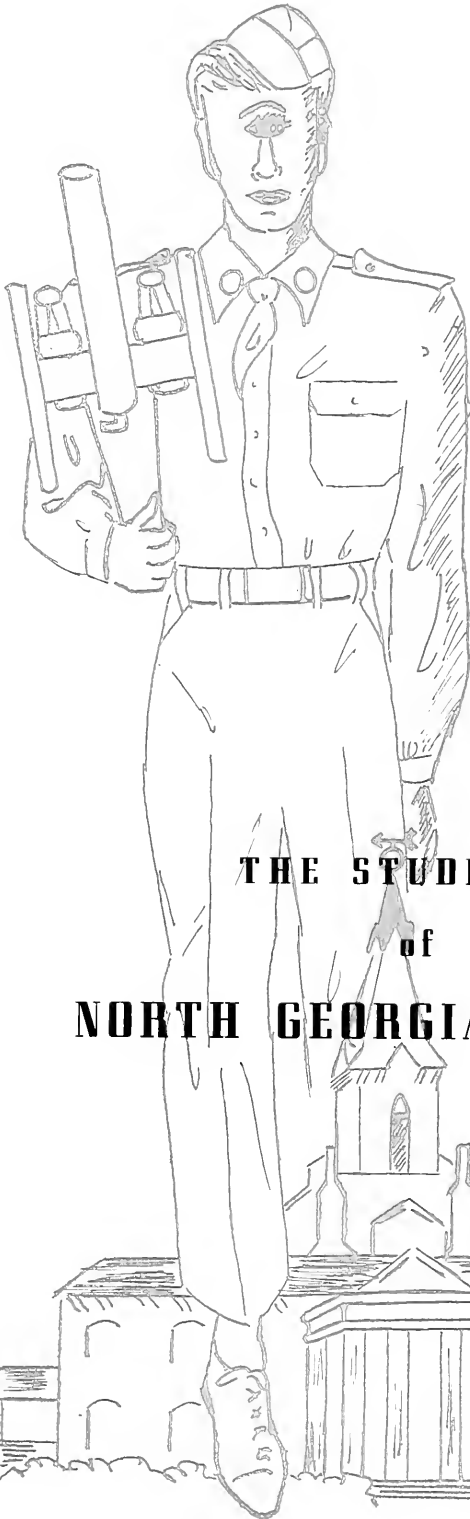
Under great difficulty our college Annual, the CYCLOPS, has been regularly published through the entire war period. With our hearty good wishes, we now present to your high school library a copy of the 1945-46 edition. In it, many of you will find familiar faces, and we hope you will otherwise enjoy the volume.

Of course you know that the University System Regents have authorized the development of North Georgia into a four-year or degree-granting institution. Hereafter your entire college course may be completed at North Georgia and the A. B. or B. S. degree earned. The new college will lose none of the vitality and attractions of the old North Georgia, but on the other hand, it will become one of the strongest senior colleges of the entire State University System. In this larger field we hope to serve the graduates of your high school for many years.

Sincerely yours,

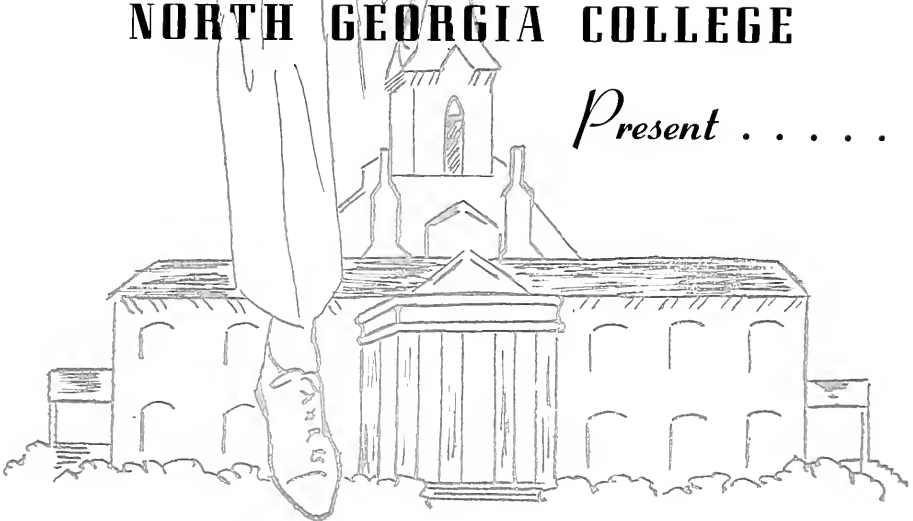

J. C. Rogers, President
North Georgia College

JCR:O



THE STUDENTS
of
NORTH GEORGIA COLLEGE

Present



Sp.Col. U 428 .No C9 1946
North Georgia College,
Cyclops / 131008



the **1946**

WILLIAM OWENS

Editor



CYCLOPS

REGII

E . . .

. Business Manager

131008



PROFESSOR ANDREW W. CAIN

DEDICATION

ANDREW W. CAIN
Professor of Social Science

This year it has been our aim to dedicate our annual to a person most representative of N.G.C. It is agreed that this person is Professor Andrew Cain better known to the students as "Padre" for it is he who has faithfully served our school for more than 25 years.

Professor Cain was born very near Dahlonga and attended grammar and high schools in neighboring towns. He entered N.G.C. at the time it was a four-year college and continued until graduation in 1900. During his school days at N.G.C. he made an excellent record. The first two years he entirely led his class, but after that, much of his time was devoted toward surveying in order that he might aid in paying his own way. He majored in Social Sciences, but was the winner of the Mathematics Medal. His lowest grade, which nearly broke his heart, was a 74 in Latin.

After graduation, Mr. Cain went to Texas as a teacher and principal in a high school. There he met the beautiful young lady who was later to become Mrs. Andrew W. Cain. The two decided to turn into adventurers and go to the Philippines as teachers. It was there that he attended one of

the world's best schools in Manila at night and earned his master's degree. Here also, he wrote his first book THE HISTORY OF THE PHILIPPINE GOVERNMENT in order that the people might study such a subject.

"Padre" became associated with N.G.C. as a teacher in 1920. In connection with his work here he made a trip to Europe in 1929 and visited the places of greatest historical value. His trip included an entire summer during which he saw the larger part of twelve major countries.

Also important in the life of Professor Cain are the two other books he wrote, METHODS FOR TEACHING and HISTORY OF LUMPKIN COUNTY. With all this we often wonder why his title remains Professor. He attended the University of Texas, University of California, University of North Carolina, University of Virginia, and Columbia University in addition to those already mentioned, but he pursued the subjects he desired rather than those required to get the Ph.D. Degree.

In token of our appreciation and through our love for him, it is with the greatest of pleasure that we dedicate our 1946 Cyclops to . . .

PROFESSOR ANDREW W. CAIN.



Professor Cain Delivers Fiery Armistice Address in Chapel

FOREWORD...

Probably the best record that a school has of its past year's activities and events is its Yearbook. The Yearbook isn't a record of scholastic achievement, and it isn't supposed to be. But it is a record of student life and student organizations. Without the Yearbook, perhaps no one could remember, after a few years have passed, all the persons that he or she came in contact with here in school. Therefore, the main purpose of the 1946 Cyclops is to try to help us never to forget our acquaintances at N.G.C. Of course, we cannot include everything we remember about the college, but we do hope that we have covered the most important features.

What You Will Find

THE COLLEGE



THE FACULTY



THE CLASSES



CAMPUS BEAUTIES



SPONSORS



SPORTS

THE MILITARY

FEATURES

THE COLLEGE

Proudly We Hail Thee,



DINING HALL



INFIRMARY

Reverence Thy Name,



BARRACKS



LIBRARY

Strive For Thy Glory



SANFORD HALL



BARNES HALL

And For Thy Fame

Loyal Forever We'll Be to Thee



PRICE MEMORIAL BUILDING



BAND HOUSE

Forsaking Never N. G. C.



Introducing



the FACULTY



NORTH GEORGIA'S PRESIDENT
DR. JONATHAN CLARK ROGERS, A.M., Ed.D.

ALICE DONOVAN
Dean of Women
Georgia State College for Women,
B.S.H.E.



JOHN C. SIRMONS
Dean
Emory University, Ph.B.;
Emory University, A.M.;
Graduate Student, Duke University



ADAMS



ANTHONY



ARY



BAILEY



BARNES

SARA FRANCES ADAMS
B.B.A. University of Georgia

ALLA M. BAILEY
Mathematics
Mississippi College, A.B.; University of Georgia, M.S.

JOHN DURHAM ANTHONY
Physics-Biology
Transylvania University, B.S.; Emory University, A.M.; Graduate Study, University of Kentucky.

JOHN C. BARNES
Mathematics
North Georgia College, B.S.; Graduate Student, Harvard University.

KERMIT R. ARY
Diploma of
David Lipscomb Harding College.



BARRE



BELCHER



BLACK



BOOTH



BRYAN

GILBERT BARRE
B. S., University of South Carolina; B.S. in C. E., University of South Carolina; M. S., University of South Carolina

DESMOND BOOTH
B. S., Georgia State College for Men; M.A., Emory University; Graduate Study, University of North Carolina.

ROBERT H. BELCHER
Chemistry-Physical Science
Georgia State College for Men, B.S.; University of North Carolina, M.S.; Graduate Study, University of North Carolina.

BESS BRYAN, R. N.
College Nurse.

RAY H. BLACK
Treasurer-Business Manager

FACULTY



BURTON



CAIN



CONNER



CRAIG



DISMUKES

NELL C. BURTON

Physical Education-Biology
Cumberland University, B.S.
George Peabody College, M.A.

GRACE CONNER

Graduate, North Georgia College.

ANDREW W. CAIN

Social Science

North Georgia College, A.B.; University of Philippines, A.M.; Graduate Study, University of Georgia, University of Texas, University of the Philippines, University of California, University of North Carolina, Columbia University, University of Virginia.

MATTIE CRAIG

Manager of Bookstore

CAMILLUS J. DISMUKES

French-Spanish

Birmingham-Southern College, A.B.; University of North Carolina, A.M.



FLANDERS



FORESTER



FREEMAN



GILBERT



GILLESPIE

BERT H. FLANDERS

English

emory University, A.B., A.M.; Duke University, Ph.D.

HOWARD H. GILBERT, JR.

Accountant

HARRY B. FORESTER

Biology

University of Alabama, M.S.; University of Wisconsin, Ph.D.

VERNELLE GILLESPIE

Secretary

Graduate, North Georgia College.

LORIMER B. FREEMAN

Geography-Commerce

University of Georgia, B.S.C.; University of Georgia, M.S.C.; Graduate Study, Northwestern University, Harvard University.

FACULTY

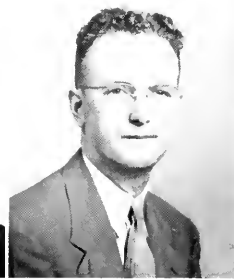
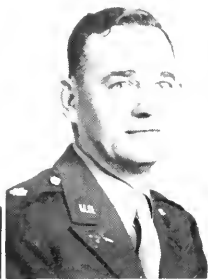
HARRIS

HUTCHERSON

LAWRENCE

McCANN

McMAHAN



SUSIE M. HARRIS

Librarian

A.B., Piedmont College; B.S. in L.S., Peabody College.

DELLA LEE McCANN

Assistant Librarian

Graduate, North Georgia College.

PAUL M. HUTCHERSON

Major, Infantry, U.S.A.

Professor of Military Science and Tactics.

O. H. McMAHAN

B.S., Oklahoma A. and M.; M.S., Oklahoma A. and M.; M.S., University of Arizona.

C. E. LAWRENCE

English

A.B., Mercer University; M.A., Emory University.

FACULTY

JEAN MEYER

Dietitian

B.S.H.E., Georgia State College for Women.

J. W. PHILLIPS

Assistant Bookkeeper

ELLA RAY OAKES

Assistant Registrar-Secretary

Eastern Kentucky State Teachers College, B.S.

EWELL G. PIGG

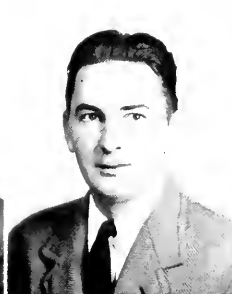
Physics

Central Missouri Teachers College, B.S.; Peabody College, A.M.

NEWTON OAKES

Commerce

University of Kentucky, B.S., A.M.; Graduate Study, University of Kentucky.



MEYER

OAKES

OAKES, N.

PHILLIPS

PIGG



G. WYATTE H. POWELL

Mathematics-Engineering
Emory University, B.S., M.S.; Wittenberg College, M.A., Ed.; Graduate Study, Duke University.

VERNELLE RAY

Home Economics
Alabama College, B.S.H.E.; George Peabody College, A.M.

MAHALA ELIZABETH REDD

Assistant Dietitian
B.S.H.E., University of Georgia.

C. A. SHEETS

Physical Education
University of Iowa, B.S., M.A.P.E.

JOHN C. SIMMS

Chemistry-Physical Science
Millsaps College, B.S.; Vanderbilt University, M.S.; Western Reserve University, Ph.D.

ESTELLA M. SIRMONS

English
Georgia State College for Men, B.S.; Special Graduate, LaGrange College; Graduate Study, University of Chicago, Emory University.



SIRMONS

FACULTY

F. C. STATON

Social Science
M.A., University of Georgia.

STATON



C. E. STEVENSON

Education
Oglethorpe University, A.B.; Graduate Study, University of Florida, University of Georgia, Duke University.

LAMBUTH R. TOWSON

Mathematics-Physics
Emory University, B.S.; University of Georgia, A.M.; Graduate Study, University of Chicago, University of North Carolina.

CHARLES M. YAGER

Physics-Engineering
University of Maryland, BS in MS, Duke University, M. Ed.

G. A. YORK

Mathematics
Elon College, A.B.; University of North Carolina, M.A.

WILLIAM D. YOUNG

Social Science
Cumberland University, A.B., A.M.; Graduate Study, University of Chicago, Peabody College for Teachers.



STEVENSON



TOWSON



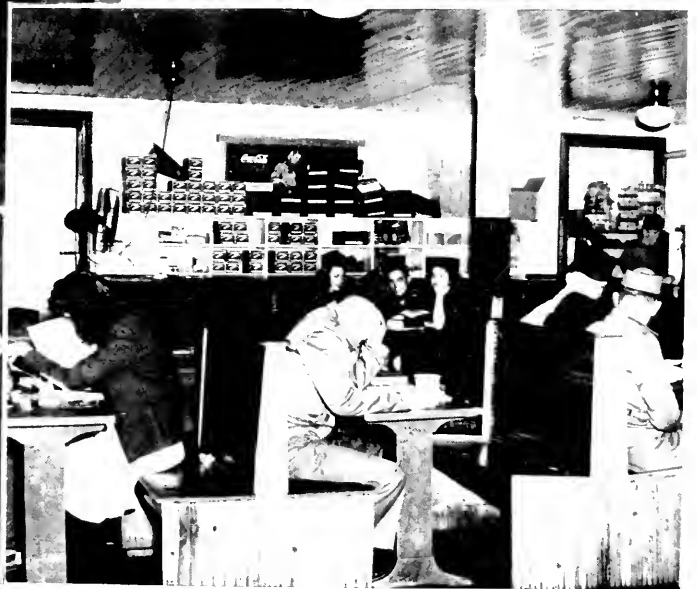
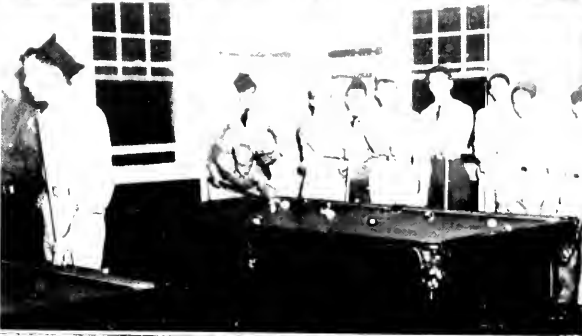
YAGER



YORK



YOUNG



Ye Olde

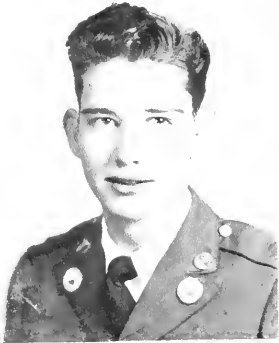


SOPHOMORES

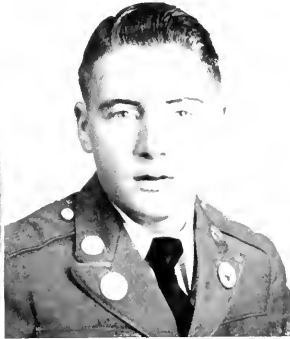
SOPHOMORE CLASS

OFFICERS

CLAUDE VANN President
HAROLD CRAIG Vice-President
DAVID TIPPINS Secretary
CHARLES CURLEY Treasurer



VANN



CRAIG



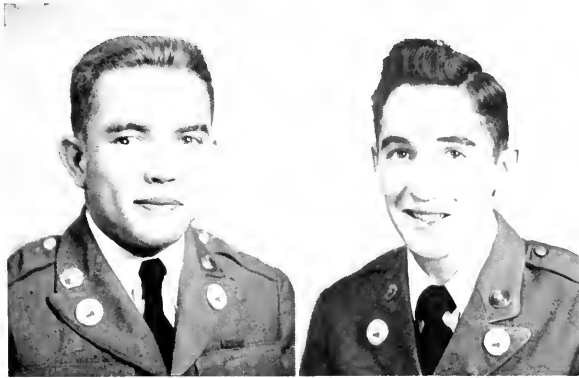
TIPPINS



CURLEY



SOPHOMORES



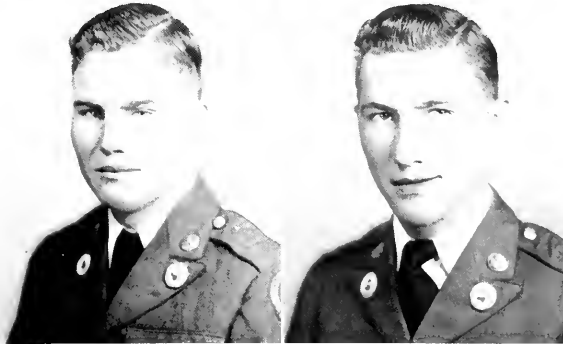
WILEY ANDERSON
West Point, Ga.
Sergeants' Club; Sergeant,
Company A.

WILLIAM C. BOLDING
Flowery Branch, Ga.
Sergeants' Club; Sergeant, Com-
pany B; Y.M.C.A. Council; Rex
Fraternity; Red Honor Bar.



MILDRED L. BAILEY
Macon, Ga.
Cyclops Staff; Cadet Bugler Staff;
Mercureans; White Honor Bar.

CHRISTINE BOLING
Cumming, Ga.
Phi Omicron.



SIMEON BELL
Munnerlyn, Ga.
Sergeants' Club; Sergeant, Com-
pany B; Y.M.C.A. Council.

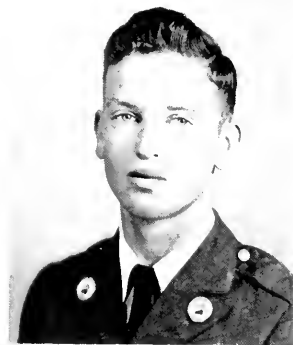
TED BURGESS
Summerville, Ga.
Sergeants' Club; Sergeant, Com-
pany B; Rex Fraternity.



VIRGINIA BISHOP
Watkinsville, Ga.
Cyclops Staff; Cadet Bugler Staff;
Glee Club; Hippolytan; Science
Club.

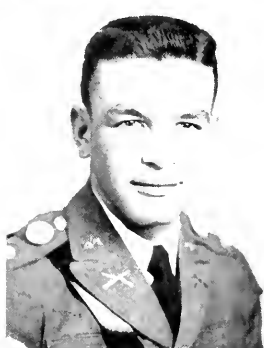
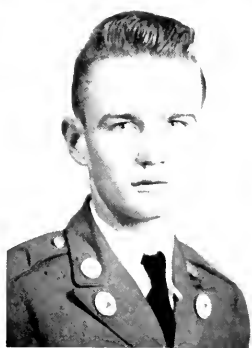
PATSY CARNEY
Tate, Ga.
Hippolytan.

S
O
P
H
O
M
O
R
E
S



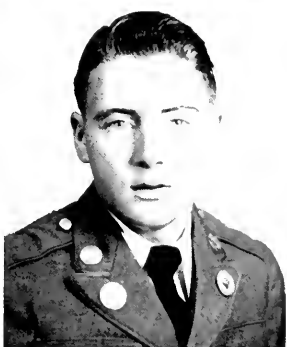
WARREN F. CARTER Bonaire, Ga.
Sergeants' Club; Sergeant, Company A.

JOHN MARSHALL CARTER Cordele, Ga.
Sergeants' Club; Sergeant, Company A; Rex Fraternity.



JOHN D. CLEMENTS Columbus, Ga.
Company A.

ROBERT W. COLLIER Blakely, Ga.
2nd Lt., Company A; Rex Fraternity; Officers' Club.



HAROLD CRAIG Lawrenceville, Ga.
Sergeants' Club; Sergeant, Company A; Rex Fraternity.

LEO OWEN CROSS Chicago, Ill.
Cadet Bugler Staff; 1st Lt., Company A; Pan-Hellenic Council; Sigma Theta Fraternity; Officers' Club Secretary-Treasurer of Sigma Theta.

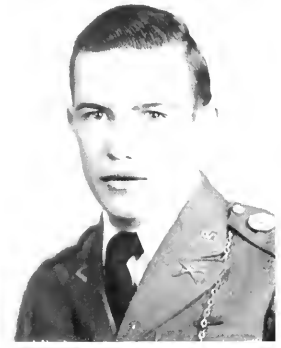
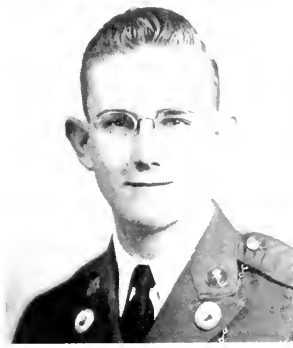


JAMES WALLACE CRUMP Tennille, Ga.
2nd Lt., Company B; Sigma Theta Fraternity; Officers' Club.

NINA CRUMP Toccoa, Ga.
Cyclops Staff; Mercurian; White Honor Bar; Cadet Bugler Staff.

S
O
P
H
O
M
O
R
E
S

CHARLES CURLEY West Point, Ga.
Sergeants' Club; Sergeant, Company A; Rex Fraternity; Secretary & Treasurer Rex Fraternity.



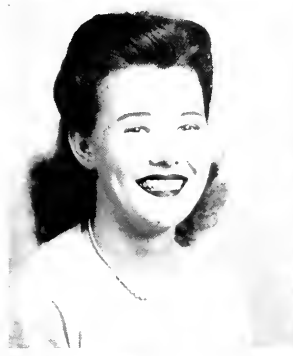
DOUG EDWARDS Gainesville, Ga.
2nd Lt., Company A; Red Honor Bar; Rex Fraternity; Officers' Club.

EVELYNE ELLIS Alpharetta, Ga.
Cyclops Staff; Glee Club; Mercurean; Blue Honor Bar.



ALICE EVELYN ETHRIDGE James, Ga.
Cyclops Staff; Cadet Bugler Staff; Glee Club; Phi Omicron; Physical Ed. Club; Science Club; White Honor Bar; Secretary of Phys. Ed. Club.

DORIS ANN FACKLER Atlanta, Ga.
Glee Club; Trahlytan; Y.W.C.A. Council; B.S.U. Council.



CELESTE FAUST Crawford, Ga.
Trahlytan; Red Honor Bar; Captain Trahlytan Team; Recreation Council.

KATHLEEN FRAZER Washington, Ga.
Cadet Bugler Staff; Home Ec. Club; Hippolytan; President Home Ec. Club.



HAROLD L. FOWLER Canton, Ga.
Sergeants' Club; Sergeant, Company B; Sigma Theta Fraternity, Pledge.

BRANSON GAYLER Lyerly, Ga.
Captain, Staff; Officers' Club.



BILLY GIRTMAN Hazlehurst, Ga.
Sergeants' Club; Sergeant, Company A.



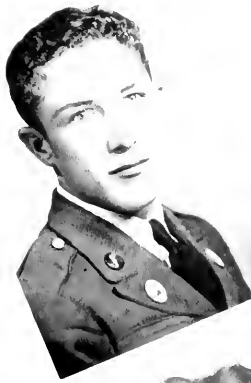
RAY F. GREESON
Chatsworth, Ga.
Company B.



BARBARA GOEBEL
Tallapoosa, Ga.
Trahlytan; Red Honor Bar.



COMER F. HAMPTON
Commerce, Ga.
Company A.



ERNEST GURLEY
Dahlonega, Ga.
Sergeants' Club; Sergeant,
Company A; Sigma Theta
Fraternity.



FRANCES HARBEN Dawsonville, Ga.
Phi Omicron Captain; Gold Honor Bar; Recreation
Council.

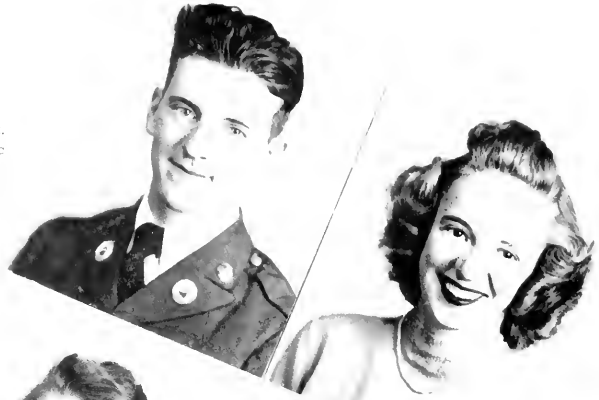


FORD HARBEN Dawsonville, Ga.
Sergeants' Club; Sergeant, Company A; Sigma Theta
Fraternity.

S O P H O M O R E S

GORDON HALL Valdosta, Ga.
Sergeants' Club; Sergeant, Company B; Rex Fraternity.

MARY HENDERSON Brooks, Ga.
Glee Club; Cadet Bugler Staff; Hippolytan; Dramatic Club; Wesley Foundation.



JANE HINTON
Tate, Ga.
Home Ec. Club;
Mercurean.



CAROLYN BELL HUFF
Buckhead, Ga.
Home Ec. Club; Glee Club; Phi Omicron.

RALPH IVEY
Cordele, Ga.
Cadet Bugler Staff;
Captain, Staff;
White Honor Bar;
Y.M.C.A. V-Pres.
Prog. Chm.; B.S.U. Pres.;
Sigma Theta Chaplain;
Science Club Prog.
Chm.; Y.M.C.A.
Council; B.S.U.
Council; Science Club;
Officers' Club; Sigma Theta Fraternity.



JESSE JACKSON
Mayfield, Ga.
Sergeants' Club; Sergeant, Company E; Red Honor Bar; Rex Fraternity.



H. G. JARRARD Gainesville, Ga.
Cadet Bugler Staff; Glee Club; Captain Band; White Honor Bar; Secretary Officers' Club; Vice-Pres., Rex Fraternity; Pan Hellenic Council.

BETTY JONES Tallapoosa, Ga.
Cyclops Staff; Mercurean; Science Club.

S O P H O M O R E S

S O P H O M O R E S



MARIE KENDALL
Dahlcnega, Ga.



PHOEBIE LANGFORD
Winder, Ga.
Hippolytan.



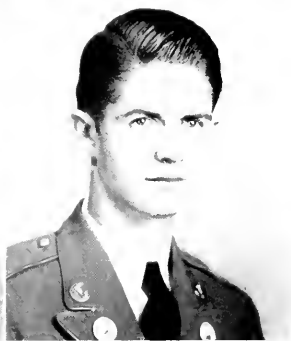
GEORGE HAROLD KILPATRICK
Forest Park, Ga.
Sergeants' Club; Sergeant, C. A.



SUZANNE LEAGUE
Gainesville, Ga.
Trahlytan.



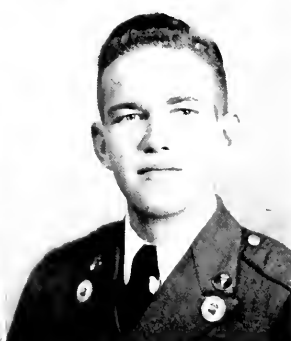
DORIS JEAN KING
Comer, Ga.
Cyclops Staff; Cadet Bugler Staff;
Glee Club; Trahlytan; Dramatic
Club; Wesley Foundation Council;
Blue-White-Blue Honor Bar.



ROY EDMOND McCARD
Thomaston, Ga.
Sergeants' Club; Glee Club, First
Sergeant, Band.



MARY EDNA KLING
LaFayette, Ga.
Glee Club; Phi Omicron; White
Honor Bar; Wesley Foundation
Council.



JOHN CHARLES MADDOX
Madison, Ga.
Sergeants' Club; Sergeant, Com-
pany B; Red Honor Bar; Y.M.C.A.
Council; Sigma Theta Fraternity.

S O P H O M O R E S



MARY ANNE MARTIN
 Commerce, Ga.
 Cadet Bugler Staff; Glee Club;
 Mercurean; Blue Honor Bar; Pres-
 ident, Y. W. C. A.; Y. W. C. A.
 Council.



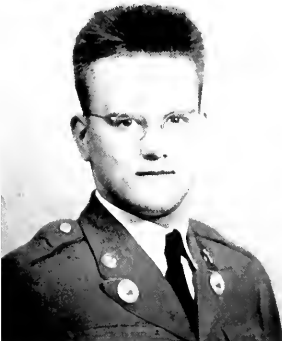
JOY MAYNARD
 Winder, Ga.
 Glee Club; Hippolytan; Wesley
 Foundation Council.



ELMA MATHEWS
 Winder, Ga.
 Hippolytan; Red Honor Bar.



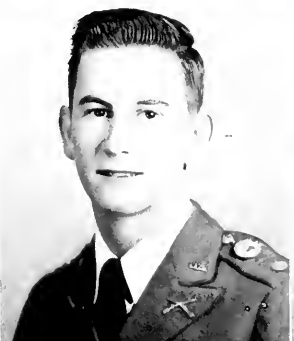
BETTY JEAN MERTZ
 Tennille, Ga.
 Hippolytans.



JAMES DAVIS MATTHEWS
 Gainesville, Ga.
 Band; Y.M.C.A. Council.



ELLEN MILLER
 Atlanta, Ga.
 Phi Omicron; Blue Honor Bar.

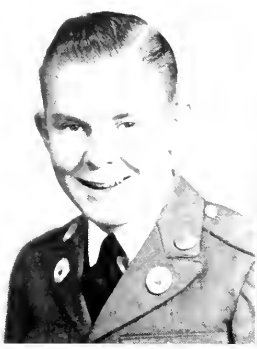


HARRY THOMAS MAY
 Sandersville, Ga.
 2nd Lt., Company B; Rex Fra-
 ternity; Officers' Club.



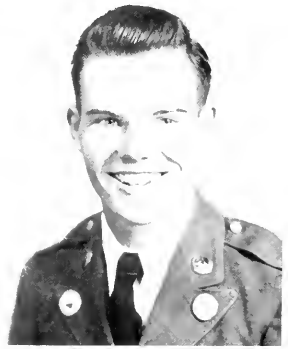
MARY ANNE MOORE
 Gainesville, Ga.
 Home Ec. Club; Mercurean.

S
O
P
H
O
M
O
R
E
S



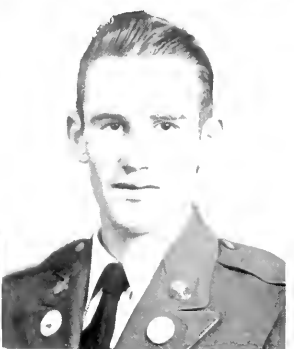
BILLY NICHOLS Jackson, Miss.
Sergeants' Club; Sergeant, Band.

MARY RUTH NIX Cleveland, Ga.
Trahlytan; Blue-White-Blue Honor Bar; Recreation
Council.



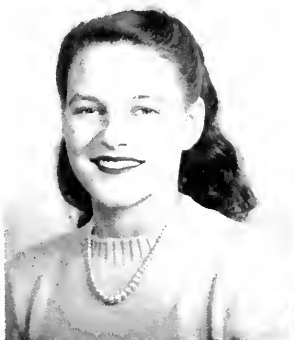
CHARLIE PAYNE Sea Island, Ga.
Cadet Bugler Staff; Physical Ed Club; 1st Lt. Com-
pany B; Treas., Phys. Ed. Club; Secy. & Treas.
Y.M.C.A.; Business Mgr., Cadet Bugler; 2nd Vice-
Pres., Rex Fraternity; Y.M.C.A. Council; Pan-Hellenic
Council; Rex Fraternity; Officers' Club.

JOHN BONNELL PEARCE Atlanta, Ga.
Sergeants' Club; Glee Club; Sergeant, Co. B;
Y.M.C.A. Council; Rex Fraternity; Red Honor Bar.



BILL PRESCOTT Conyers, Ga.
Captain, Company B; Red Honor Bar; Sigma Theta
Fraternity; President Sigma Theta; Vice-Pres. Pan-
Hellenic Council; Treasurer, Officers' Club.

BOB PURCELL Ball Ground, Ga.
Sergeants' Club; Sergeant, Company A, White Honor
Bar.

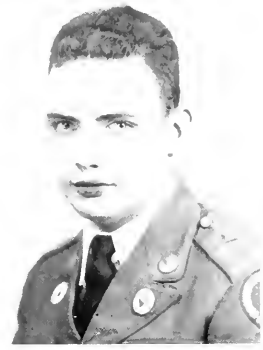
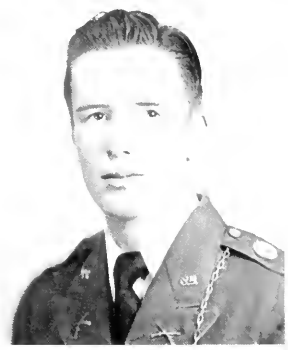


MATTIE REAMES Ridgeville, Ga.
Glee Club; Phi Omicron; Red Honor Bar.

ALICE BELLE REDMOND Decatur, Ga.
Home Ec. Club; Mercurean; Dramatic Club; Blue
Honor Bar; Pres. Sanford Hall; Y.W.C.A. Council.

S
O
P
H
O
M
O
R
E
S

ANDREW W. REID Athens, Ga.
Major, Staff; President, Officers' Club.



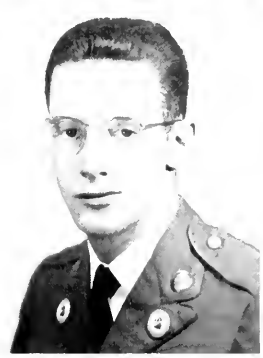
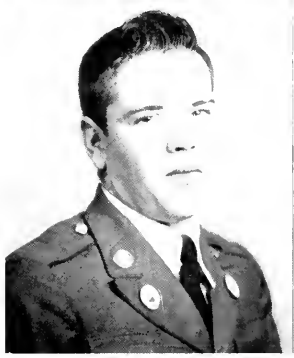
BILL ROBISON Monroe, Ga.
Company B; Rex Fraternity.

KATHRYN SESSOMS Avondale Estates, Ga.
Cyclops Staff; Cadet Bugler Staff; Trahlytan; White Honor Bar; Secretary & Treasurer, Y.W.C.A.; Y.W.C.A. Council; Recreation Council; Science Club.



WYNNETTE SMITH Newnan, Ga.
Hippolytan; Recreation Council.

JOE STEPHENSON Summerville, Ga.
Sergeants' Club; Sergeant, Company B; Rex Fraternity.



JULIUS A. STILL Gainesville, Ga.
Cadet Bugler Staff; Sergeants' Club; Glee Club; S/Sergeant, Band; Red Honor Bar; Y.M.C.A. Council; B.S.U. Council; Rex Fraternity.

BILL STOVER Sycamore, Ga.
1st Lt., Band; Blue Honor Bar; Officers' Club.



LENORA TATE Denton, Ga.
Cyclops Staff; Cadet Bugler Staff; Glee Clubs; Hippolytan; Dramatic Club; Science Club.

S O P H O M O R E S

LURENE TATE Gainesville, Ga.
Home Ec. Club; Glee Club; Hippolytan; Science Club.



JOAN TERRY Cumming, Ga.
Home Ec. Club; Glee Club; Hippolytan; Physical Ed. Club.

DAVID TIPPINS
Claxton, Ga.
Sergeant's Club; S/Sgt., Company B; Blue Honor Bar; Rex Fraternity.



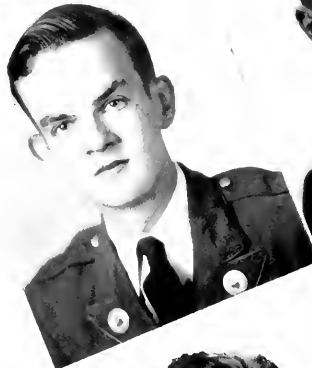
JOE THRASHER
Winder, Ga.
Cyclops Staff;
Sergeants' Club;
Sergeant, Company B;
Rex Fraternity;
Photographer,
Cyclops Staff.



CLARENCE L. TUCKER
Homer, Ga.
Sergeants' Club;
Sergeant, Co. B,
Officer, Rex Fraternity; Officer,
Sergeants' Club.



BILL TOWSON
Knucklesville, Ga.
Cyclops Staff; Cadet Bugler Staff;
Sergeants' Club; Physical Ed. Club;
Sergeant, Company A;
Blue-White-Blue Honor Bar; Glee Club;
Rex Fraternity, Pledge.



CLAUDE VANN Vidalia, Ga.
Sergeants' Club; S/Sgt., Company A; President, Sergeants' Club; Vice-President, Sigma Theta Fraternity; Pan-Hellenic Council.



LUTHER M. VINTON, JR. Atlanta, Ga.
Cadet Bugler Staff; Captain, Staff; Blue Honor Bar;
Co-editor, Cadet Bugler; President, Sigma Theta Fraternity; Secretary, Sigma Theta Fraternity; Officer.

S O P H O M O R E S

OVEDA WEHUNT Ball Ground, Ga.
Home Ec. Club; Phi Omicron.



JANIE WEST Sautee, Ga.
Glee Club; Phi Omicron.



WILLIAM PARKER WESTBROOK, JR.
Albany, Ga.
Captain, Co. A; Pres., Rex Fraternity; Vice-Pres., Officer's Club; Pres. Pan-Hellenic Council.

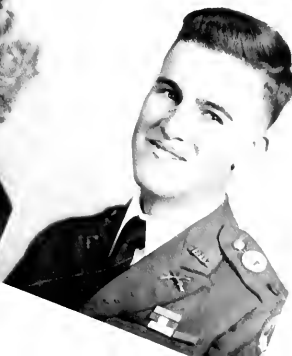


FLORA NELLE
WHITMIRE
Gainesville, Ga.
Glee Club; Trahlytan;
Physical Ed. Club.

ZELLA A. WILBANKS
Gainesville, Ga.



ELSIE WILLIAMS
Tallulah Falls, Ga.
Home Ec. Club; Captain, Mercureans; Dramatic Club.



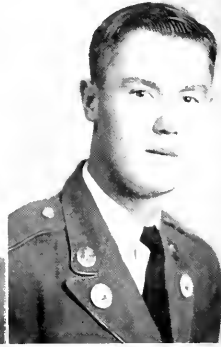
JOYCE EUGENIA WILLIS Chicopee, Ga.
Cyclops Staff; Glee Club; Hippolytan; Dramatic Club; Captain, Hippolytan; Recreation Council; Science Club.

BILLY BUCK WOODY Suches, Ga.
2nd Lt., Band; Gold Honor Bar; Y.M.C.A. Council; Officers' Club.

S O P H O M O R E S

ANN WOOLSEY
Woolsey, Ga.

Cyclops Staff; Cadet Bugler Staff;
Glee Club; Trahlytan; Dramatic
Club; Gold Honor Bar; Wesley
Foundation Council; Recreation
Council.



BEN YARBROUGH
Madison, Ga.

Sergeants' Club; Sergeant, Com-
pany B; Red Honor Bar.

DAVID WALTON WYNNE
Perry, Ga.

Cadet Bugler Staff; Sergeants'
Club; Glee Club; Dramatic Club;
Sergeant, Company A; Red Hon-
or Bar; Y.M.C.A. Council; B.S.U.
Council; Science Club.



SHIRLEY ZIEGLER
Avondale Estates, Ga.

Co-editor, Cadet Bugler Staff;
Glee Club; Trahlytan; Dramatic
Club; Blue-White-Blue Honor Bar;
Y.W.C.A. Council; President, Rec-
reation Council; Parliamentarian,
Science Club.



Eyeing

the **FRESHMEN**



KINGERY

OFFICERS

VIRGINIA KINGERY President
EDMUND BUTLER Vice-President



BUTLER

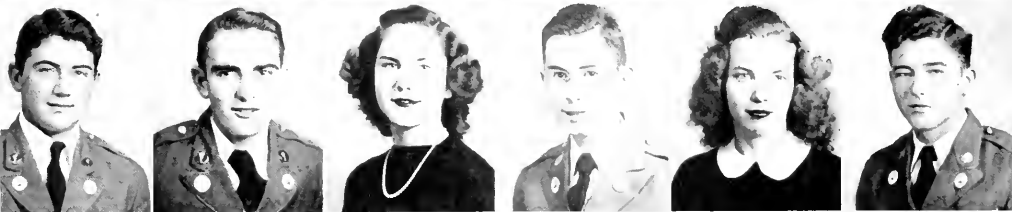
FRESHMAN CLASS

ALIGENE ABERCROMBIE Dahlonega, Ga.
MARVIN ADAMS Danielsville, Ga.
SAM ADAMS Hashville, Ga.
BETTYE ANDERSON Chatsworth, Ga.
RITA ANDREWS Hapeville, Ga.
ROANNE RUBY ARRENDALE Tiger, Ga.
GEORGE ARTHUR Chatsworth, Ga.
KENNETH L. BAILEY Sardis, Ga.
SARA BAKER Rockmart, Ga.
ARTHUR H. BARIE Marietta, Ga.
MIRIAM BARNETT Commerce, Ga.
JOSH BARROW Barwick, Ga.

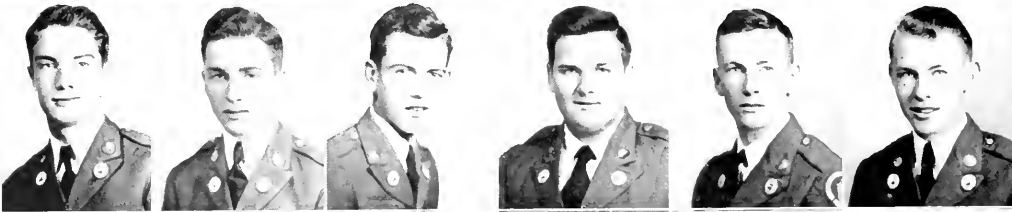
WILLIAM THOMAS BARRON Decatur, Ga.
WYNDLE BATES Atlanta, Ga.
BOWEN BAXTER Avondale Estates, Ga.
CHARLES BECKHAM Molent, Ga.
GEORGE BENTLEY Marietta, Ga.
JOEL T. BILES Griffin, Ga.
RACHEL BEDINGFIELD Tennille, Ga.
BARNEY B. BISHOP Fort Valley, Ga.
BETTY BLACKWELL Danielsville, Ga.
LEWIS DANIEL BLEDSOE Perry, Ga.
TED BLIZZARD Mt. Vernon, Ga.
ARGIN BOGGUS Fitzgerald, Ga.



ABERCROMBIE
ADAMS
AKINS
ANDERSON
ANDREWS
ARRENDALE



ARTHUR
BAILEY
BAKER
BARIE
BARNETT
BARROW

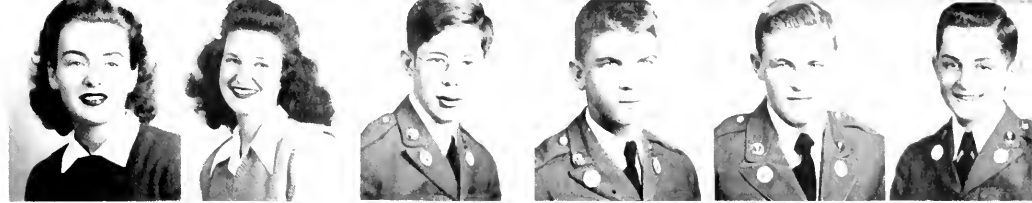


BARRON
BATES
BAXTER
BECKHAM
BENTLEY
BILES

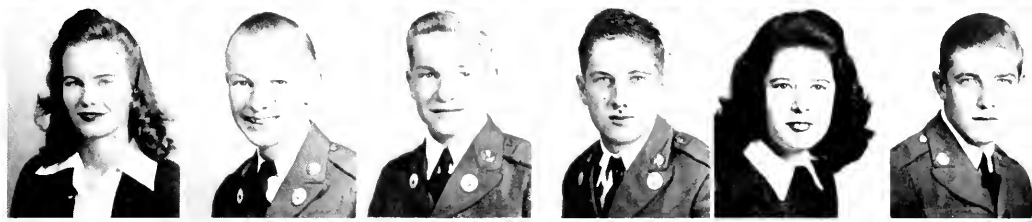


BEDINGFIELD
BISHOP
BLACKWELL
BLEDSOE
BLIZZARD
BOGGUS

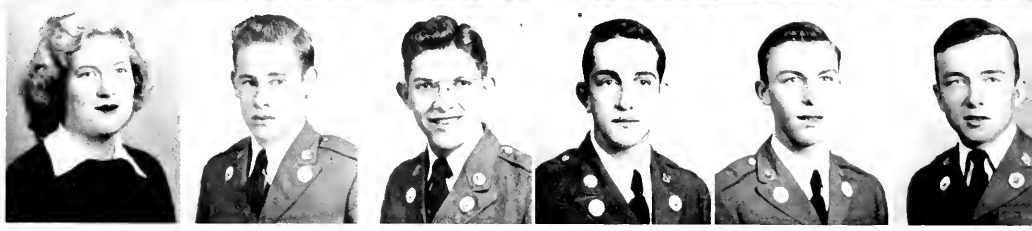
BOWERS, B.
BOWERS, J.
BOYD
BRANAN
BROOKS
BROWN, D.



BROWN, F.
BROWN, I. H.
BROWN, J. E.
BROWN, P.
BRUCE
BURCH



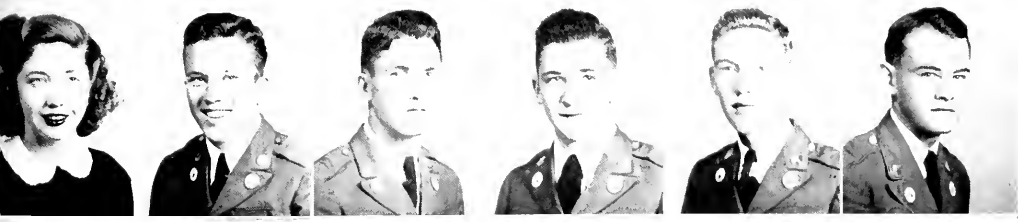
BURRELL
BURT
BUSSEY
BYRD
BUTLER, E.
BUTLER, W.



BEVERLY BOWERS Canon, Ga.
JEAN BOWERS Hapeville, Ga.
FRANK BOYD Dahlonega, Ga.
ALBERT HUGH BRANAN Gordon, Ga.
STAFFORD R. BROOKE Dalton, Ga.
DOYLE BROWN Bowersville, Ga.
FRANCES BROWN Jefferson, Ga.
JAMES HERMAN BROWN Gainesville, Ga.
JOE E. BROWN Hinesville, Ga.
PARKER BROWN Conley, Ga.
MARY BETH BRUCE Martin, Ga.
LONNIE F. BURCH Tennille, Ga.

THEDA BURRELL Tallulah Falls, Ga.
J. M. BURT, JR. Dawson, Ga.
PRESTON BROOKS BUSSEY Augusta, Ga.
DONALD BYRD Walnut Grove, Ga.
EDMUND R. BUTLER Cordele, Ga.
WALTER CLARK BUTLER Macon, Ga.
BETTY CALLOWAY Tallulah Falls, Ga.
LESLIE CANNADY Tallahassee, Fla.
RALPH T. CANNON Fort Valley, Ga.
PERRY CARMICHAEL Madison, Ga.
ISAAC FELTON CASSEY Dalton, Ga.
DONALD CHESNUT Macon, Ga.

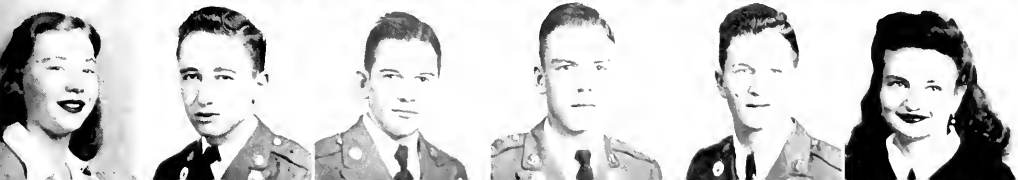
PHIL VESTON CLARK Tate, Ga.
ROBERT A. CLAY De Soto, Ga.
JIMMIE CLEMENTS Roswell, Ga.
MARGARET COBB Hartwell, Ga.
REUBEN E. COFER Rayle, Ga.
ESTELLE COFFEY Chatsworth, Ga.
ELOISE COGBURN Jasper, Ga.
HARRY COHEN Alma, Ga.
JAMES COLEMAN Doerun, Ga.
WILEY C. COLLIER Fort Valley, Ga.
ROBERT C. COLLINS Monlezuma, Ga.
BEVERLY COLWELL Hapeville, Ga.



CALLOWAY
CANNADY
CANNON
CARMICHAEL
CASSEY
CHESNUT



CLARK
CLAY
CLEMENTS
COBB
COFER
COFFEY



COGBURN
COHEN
COLEMAN
COLLIER
COLLINS
COLWELL

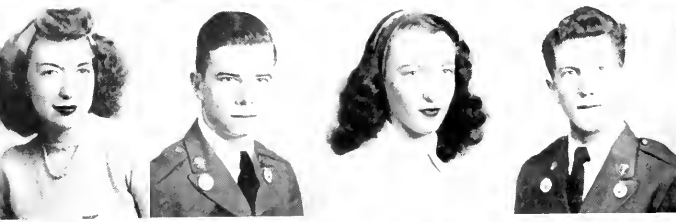
FRESHMEN



ELIZABETH COMBS Tunnell Hill, Ga.
 RUBY CONNELLY Monticello, Ga.
 HAROLD B. CONNER Gainesville, Ga.
 MARY COOPER Gainesville, Ga.



DOT CORN Blue Ridge, Ga.
 JOHN MARTIN COWART Arlington, Ga.
 KATHERINE COWART Elberton, Ga.
 LOUISE CRANE Cleveland, Ga.

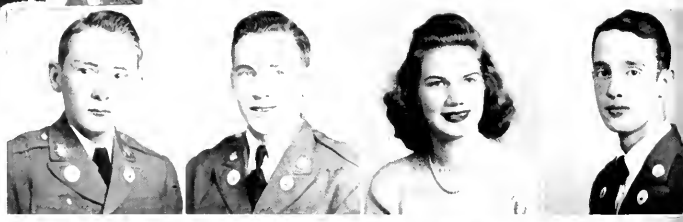


JO DANIELS Danielsville, Ga.
 CHARLES N. DAVIS Dixie, Ga.
 HAZEL ANNE DEAN Bowersville, Ga.
 BILLY F. DISMUKE Albany, Ga.



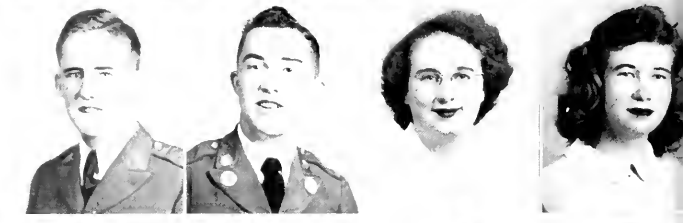
ALFRED GREER DOVER Ellijay, Ga.
 HILL DOVER Ellijay, Ga.
 MARY RUTH DRAKE Senoia, Ga.
 JOHN DUGGAN Macon, Ga.

BILLY COVINGTON DURANT Waycross, Ga.
 ALBERT EAGAN College Park, Ga.
 ANNE EDGE Calhoun, Ga.
 BRADLEY D. EDMONDSON Gainesville, Ga.

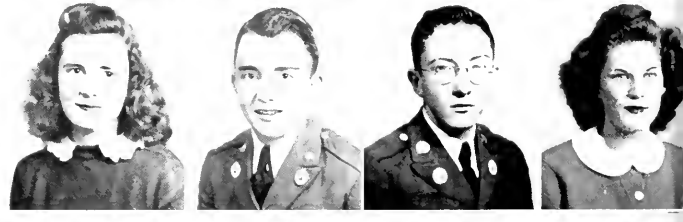


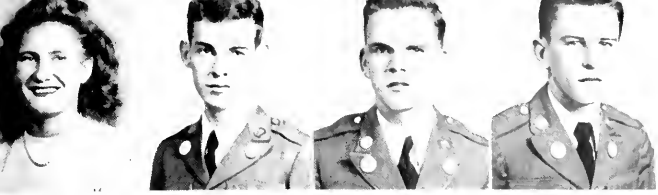
JOSEPH B. EDWARDS Raymond, Ga.
 JOSEPH N. EDWARDS Madison, Ga.
 SYBIL ELIZABETH ELDER Jefferson, Ga.
 BETTY JEAN ELLIS Cordele, Ga.

BETH ELROD Commerce, Ga.
 GENE ETHERIDGE Perry, Ga.
 JAMES T. ETHERIDGE Amsterdam, Ga.
 KATHLEEN ROSE EVANS Wadley, Ga.



JIMMIE FARMER Athens, Ga.
 FRANKIE FITTS Marble Hill, Ga.
 AILENE FOWLER Cartersville, Ga.
 ROBERT D. FREEMAN Nicholson, Ga.

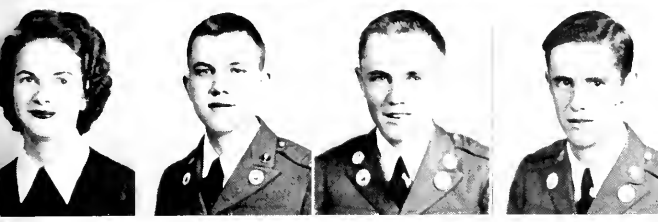




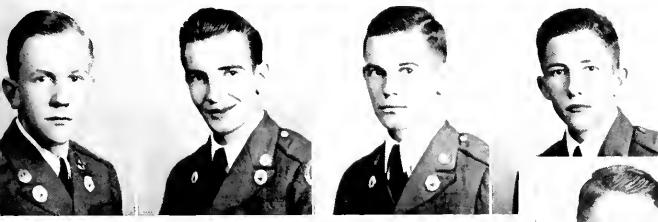
MORRAINE FRYE Tallulah Falls, Ga.
 THURSTON FUTCH Macon, Ga.
 BUSTER GARRISON Homer, Ga.
 W. M. GIGNILLIAT Brunswick, Ga.



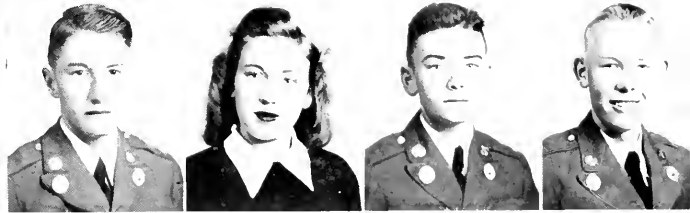
CLARK T. GILBERT Daring, Ga.
 VICTOR GOEBEL Tallapoosa, Ga.
 JOHN GOODING West Point, Ga.
 RAY FRED GORE Austell, Ga.



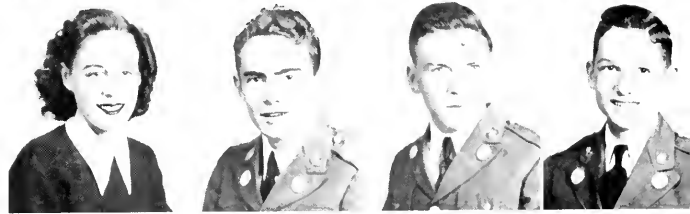
CLAUDIA GREEN Bostwick, Ga.
 LAMAR GREEN Canton, Ga.
 JAMES JATHAN GREGORY Chatsworth, Ga.
 JACK ROBERT GRIFFETH Tate, Ga.



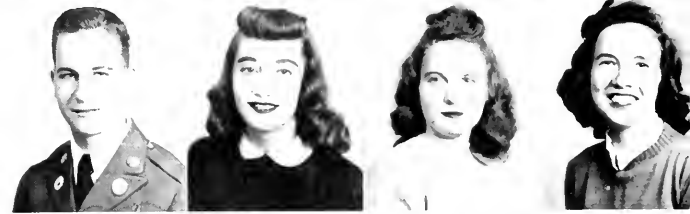
DUDLEY GUNN Millen, Ga.
 JOHN HINDSMAN HAINES Atlanta, Ga.
 JIMMY HANCOCK Louisville, Ga.
 THOMAS JULIAN HARDY Woodbury, Ga.



BILLY HARGETT Columbus, Ga.
 RUTH HARKINS Cleveland, Ga.
 JULIAN HARLEY Sparta, Ga.
 MERRILL W. HARPER Hartwell, Ga.



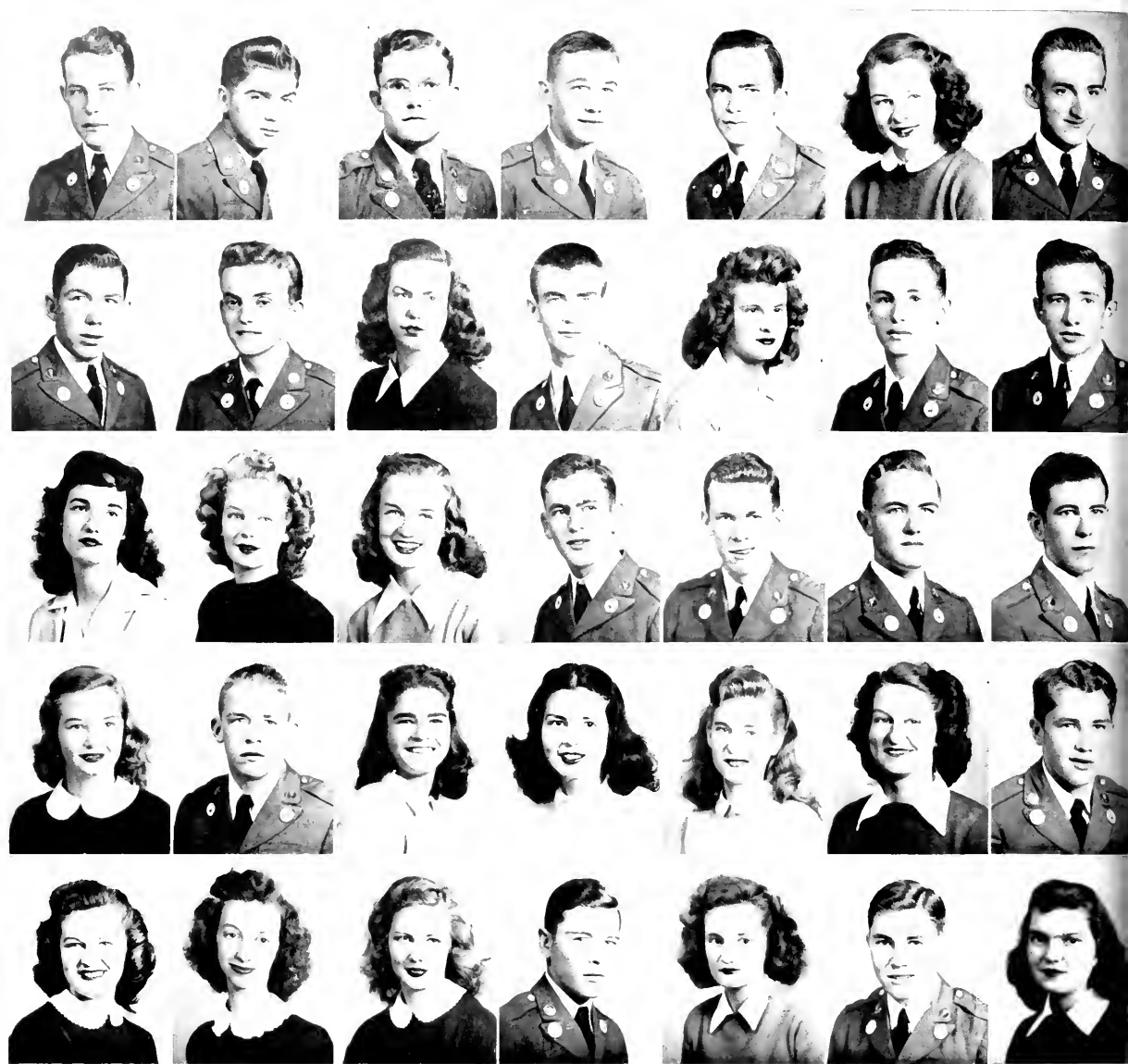
HARRIET HARGROVE Eaton, Ga.
 ADAIR HARRIS Decatur, Ga.
 LYNDON HARRIS Atlanta, Ga.
 ROY HARRIS Fort Valley, Ga.



WILLIAM H. HARRISON Boston, Ga.
 BARBARA ANN HAWES Norcross, Ga.
 MARTHA L. HAWKINS Canton, Ga.
 WANDA HAWKINS Ramhurst, Ga.



CROFFORD HAYES Calhoun, Ga.
 JEAN HEALAN Winder, Ga.
 EARL HEATH Junction City, Ga.
 SIDNEY HENDRY Hinesville, Ga.



F R E S H M E N

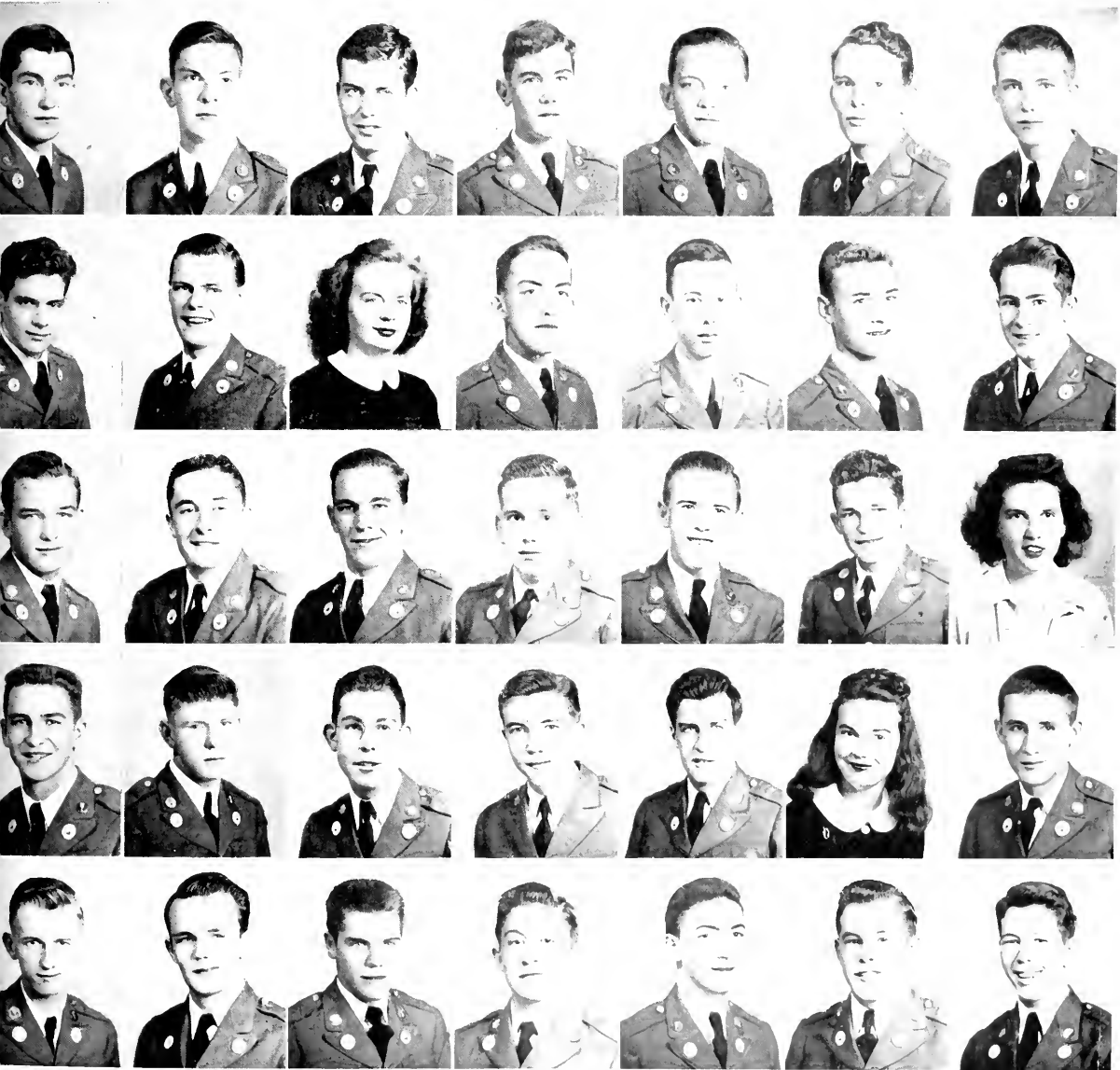
LESTER HENLEY Danielsville, Ga.
 CHARLES HERRING Cumming, Ga.
 BONSON P. HERRINGTON Sardis, Ga.
 ROY HICKS Yatesville, Ga.
 THOMAS W. HICKS Conyers, Ga.
 NANCY HINSON Folkston, Ga.
 HENRY HITCH Fitzgerald, Ga.
 HARRY HODGES Loganville, Ga.
 ROBERT JAMES HOLDT Demorest, Ga.
 MARTHA HOOD Lawrenceville, Ga.
 EUGENE LEWIS HORNE Augusta, Ga.
 MILDRED HORTON East Point, Ga.
 EDWARD J. HOWELL Vienna, Ga.
 JAMES H. HUBFARD Emmerson, Ga.
 ELIZABETH J. HUNTER Marietta, Ga.
 ALENE JOHNSON Ellijay, Ga.
 SARA ELIZABETH JONES Dahlonega, Ga.

NISBET S. KENDRICK, JR. Waynesboro, Ga.
 DEFOREST KENEMER Dalton, Ga.
 BOBBY KENNEDY Cobbtown, Ga.
 EUGENE M. KING Cartersville, Ga.
 VIRGINIA KINGERY Gordon, Ga.
 HERBERT KIZER Jefferson, Ga.
 ANNE E. KLING Lafayette, Ga.
 LYNDA LAMBETH Decatur, Ga.
 AUDREY LANE Alpharetta, Ga.
 LUCILE LEARD Bowersville, Ga.
 FRED LEON LEE Villa Rica, Ga.
 JEAN LEHNHERR Cartersville, Ga.
 ELAINE LEWIS Atlanta, Ga.
 JANE LEWIS Atlanta, Ga.
 LESLIE LEWIS Waynesboro, Ga.
 BETTY JEAN LIPSCOMB Dahlonega, Ga.
 CLABIE LLOYD Gainesville, Ga.
 DORIS LOWRY Lawrenceville, Ga.

F R E S H M E N

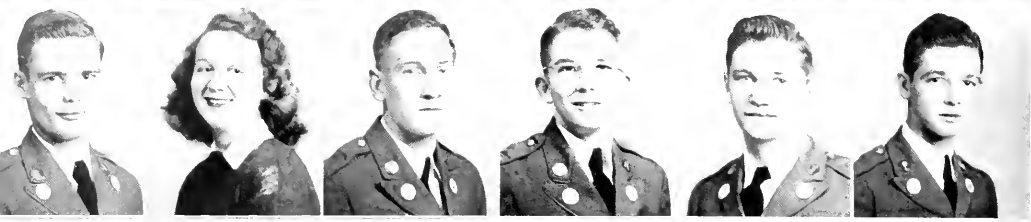
GENE J. LOWRY Lawrenceville, Ga.
 JIMMY LUKE Ashburn, Ga.
 HERBERT LEO McCOLLUM Canon, Ga.
 HENRY B. McCOY Woodbury, Ga.
 JOHN McDONALD Ashburn, Ga.
 WALTER MATTHEW McDONALD Decatur, Ga.
 GEORGE B. McKENNEY Austell, Ga.
 STEWART McLEOD Ellaville, Ga.
 BEN R. McREE Athens, Ga.
 CHARLOTTE MABRY Atlanta, Ga.
 STARR MADDOX Dalton, Ga.
 JACK MAEGER Dalton, Ga.
 R. H. MAHAFFEY Lawrenceville, Ga.
 CHARLIE CARROLL MARTIN Coolidge, Ga.
 EDWIN CANNON MARTIN Blakely, Ga.
 HAROLD MARTIN Gainesville, Ga.
 THOMAS J. MATHEWS Buena Vista, Ga.
 HOWELL MAYO Wrightsville, Ga.

CHARLIE JOE MEADOWS Mable, Ga.
 KENNETH MEDDERS Calhoun, Ga.
 JO MESCHINE Clarksville, Ga.
 MICKEY GREEN MIDDLETON Colquitt, Ga.
 HENRY MILES Dunwoody, Ga.
 H. J. MILLER Calhoun, Ga.
 COLLIER MILLS Fort Gaines, Ga.
 GEORGE E. MILLS Gainesville, Ga.
 BETTY JANE MITCHELL East Point, Ga.
 JIMMY MITCHELL Griffin, Ga.
 CHARLES B. MOODY Calhoun, Ga.
 SIDNEY MOODY Canton, Ga.
 GEORGE S. MOORE Calhoun, Ga.
 JACK MOORE Albany, Ga.
 JOHNNY MOORE Dahlonega, Ga.
 WHITEFORD MOORE Ludowici, Ga.
 WARREN MORAN Augusta, Ga.





MORELAND
MOTES
MOULTRIE
MOXLEY
MURDAUGH
MURPHY



MURRELLE
NASH
NELSON
NESBITT, J.
NESBITT, W.
NEWSOM



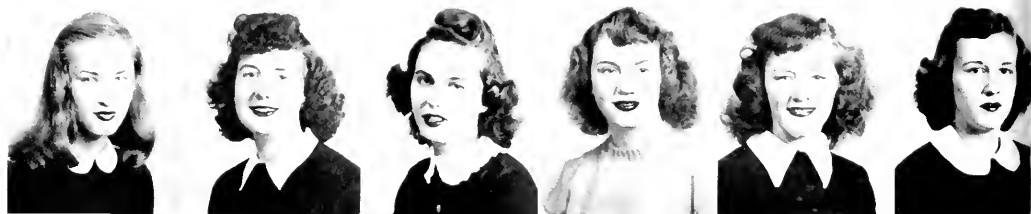
O'DILLON
OLVEY
O'NEAL
OSBORN
OWEN
OWENS

ROBERT H. MORELAND Statesboro, Ga.
SARA MOTES Rockmart, Ga.
MARGARET MOULTRIE Woodbury, Ga.
GEORGE K. MOXLEY Wadley, Ga.
L. LAMAR MURDAUGH McRae, Ga.
JIMMY MURPHY Morrow, Ga.
BILL MURRELLE Hollywood, Fla.
OPAL KATE NASH Decatur, Ga.
WILLIAM NELSON Thomaston, Ga.
JIMMIE NESBITT Leary, Ga.
WILLIAM F. NESBITT Calhoun, Ga.
ERIC NEWSOM Reynolds, Ga.

MARVIN O'DILLON Tennille, Ga.
SYLVIA OLVEY Blue Ridge, Ga.
JO ANN O'NEAL East Point, Ga.
CATHERINE OSBORN Ellinay, Ga.
DAVID M. OWEN Calhoun, Ga.
WILLIAM G. OWENS Dahlonega, Ga.
ANNE PALMER Loganville, Ga.
CAROLYN PALMER Hapeville, Ga.
ERNESTINE PALMER Dahlonega, Ga.
JULIA PALMER Atlanta, Ga.
NORMA PALMER Loganville, Ga.
NELL PARIS Rockmart, Ga.

HENRY A. PARRISH Wrens, Ga.
HARRY PARTRIDGE Lincolnton, Ga.
ALLIE PERKINS Rockmart, Ga.
EARL FRANKLIN PHILLIPS Hinesville, Ga.
GARLAND PINHOLSTER Valdosta, Ga.
HAROLD E. PINSON Gainesville, Ga.
MILES POPPELL Homerville, Ga.
BILLY POWELL Cairo, Ga.
HENRY G. POWELL Brunswick, Ga.
VIRGIL PRICE Vidette, Ga.
JOHN C. PROCTOR Brooklet, Ga.
LORSEY PURCELL Columbus, Ga.

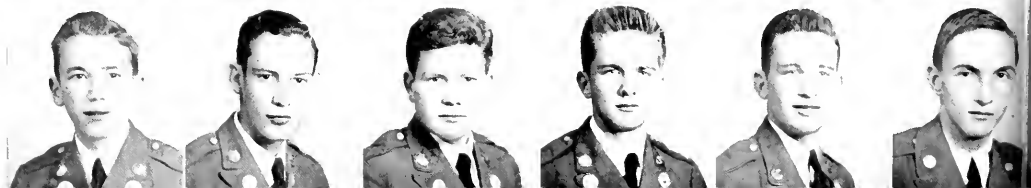
PALMER, A.
PALMER, C.
PALMER, E.
PALMER, J.
PALMER, N
PARIS



PARRISH
PARTRIDGE
PERKINS
PHILLIPS
PINHOLSTER
PINSON



POPELL
POWELL, B
POWELL, H
PRICE
PROCTOR
PURCELL



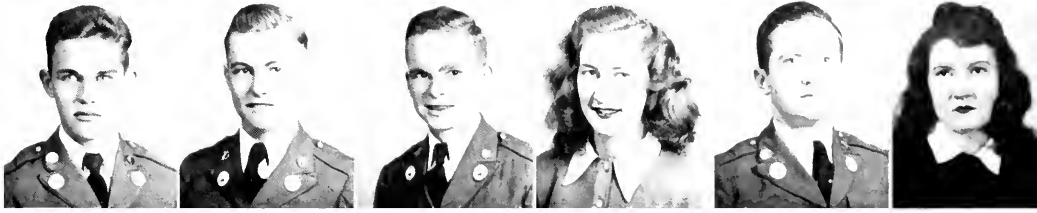
RAINES
RAY
REECE
REEVES
REYNOLDS
RICHARDS



RICHARDSON, R.
RICHARDSON, W.
ROBBINS
ROGERS, J.
ROGERS, O.
ROYAL



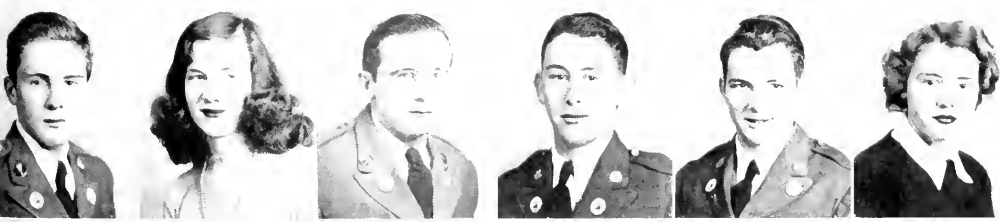
ROWLAND
SAFFOLD
SATTEFIELD, F.
SATTEFIELD, S.
SANDERS
SELF



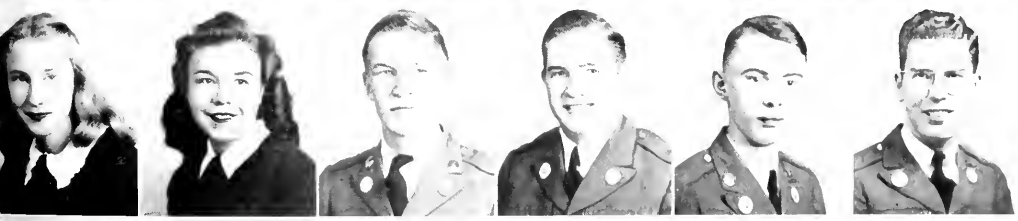
LULA RAINES Cordele, Ga.
HUBERT RAY Tate, Ga.
CATHERINE BERRELL REECE Ellijay, Ga.
JAMES L. REEVES Chester, Ga.
BOBBIE REYNOLDS Atlanta, Ga.
LUCILLE RICHARDS Marble Hill, Ga.
ROBERT C. RICHARDSON Lumpkin, Ga.
WILLENE RICHARDSON Hartwell, Ga.
BETTY JO ROBBINS Atlanta, Ga.
JEFF ROGERS Augusta, Ga.
OLIVER ROGERS Tunnel Hill, Ga.
PETE HARRIS ROYAL Statesboro, Ga.

JOE ROWLAND Wrightsville, Ga.
THOMAS NOEL SAFFOLD Madison, Ga.
WILLIAM C. SANDERS Cordele, Ga.
FRANK SATTEFIELD Perry, Ga.
SARA SATTEFIELD Dahonega, Ga.
CLARA JO SELF Blairsville, Ga.
DAN SHIRLEY Lavonia, Ga.
ELSIE SHORT Clarksville, Ga.
REX SHUGART Cuthoun, Ga.
WILLIAM MARVIN SISK Lexington, Ga.
ALBERT D. SMITH Lindale, Ga.
CATHERINE SMITH Toccoa, Ga.

CHARLIE CURTIS SMITH Fitzgerald, Ga.
MARY FRANCES SMITH Hopeville, Ga.
WILLIAM SMITH Avondale, Ga.
HENRY C. SPARKS Washington, Ga.
ROBERT L. SPENCER Perry, Ga.
WILLIAM DIFEE STANDARD Cordele, Ga.
JOHN C. STANTON, JR. Albany, Ga.
JOHN A. STARK Lawrenceville, Ga.
FRANCES STATION Gainesville, Ga.
DOROTHY STEPHENS Cordele, Ga.
ERBY T. STEPHENS, JR. Dawsonville, Ga.
JEAN STEPHENSON Waycross, Ga.



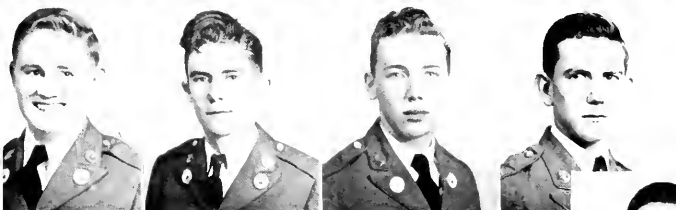
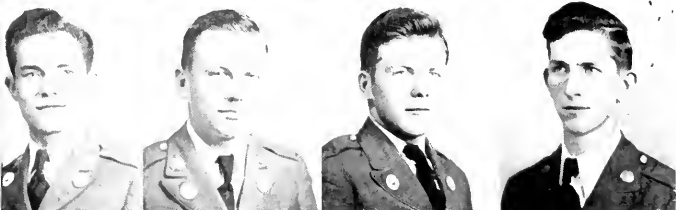
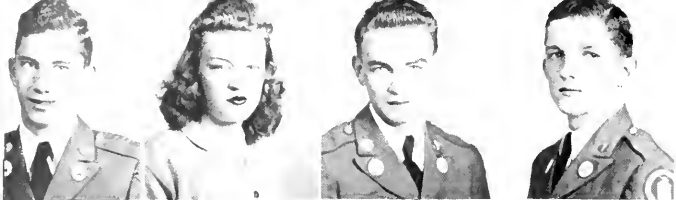
SHIRLEY
SHORT
SHUGART
SISK
SMITH A
SMITH C



SMITH, C C
SMITH, M
SMITH W
SPARKS
SPENCER
STANDARD



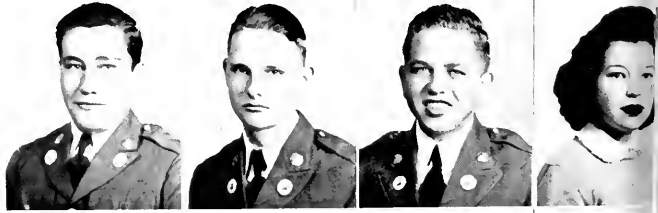
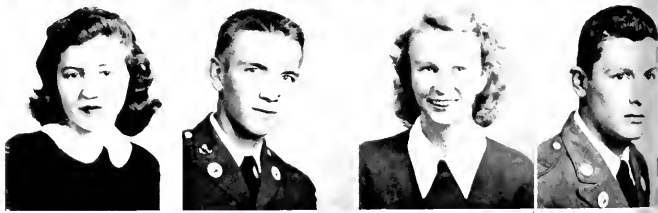
STANTON
STARK
STATION
STEPHENS I
STEPHENS, E
STEPHENSON I



CARTER M. STOUT McRae, Ga.
 HELEN TATUM Clarksville, Ga.
 PHILIP TEMPLES Blakely, Ga.
 GERALD DOSS THOMAS Cairo, Ga.
 JAMES THOMPSON Atlanta, Ga.
 RACHEL THORNTON Elberton, Ga.
 BERNICE TILLEY White, Ga.
 EDWIN O'NEAL TIMMONS West Point, Ga.
 EARL C. TROUP Fitzgerald, Ga.
 JAMES TRULUCK Vienna, Ga.
 JAMES C. TYGART Nashville, Ga.
 HAROLD VERNER Norcross, Ga.
 QUINCY VICKERS, JR. Darien, Ga.
 HUGH WALKER Fayetteville, Ga.
 RAY L. WARD Marietta, Ga.
 TURNER WARMACK Chatsworth, Ga.

FRESHMEN

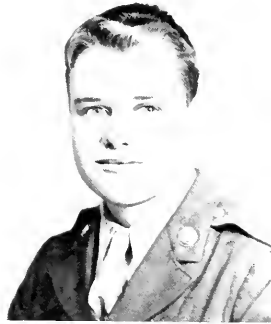
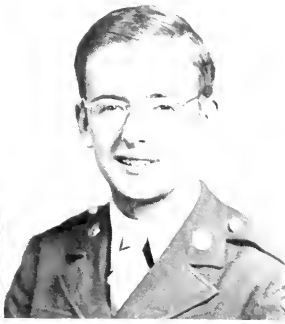
CLEALON WASDIN Screvin, Ga.
 JUNE WATSON Wadley, Ga.
 LOUISE WESTBROOK Gainesville, Ga.
 WILL WHATLEY Vidalia, Ga.
 BETTY ANN WHELCHER Clermont, Ga.
 HENRY C. WHELCHER Cordele, Ga.
 JEAN WHITE Suches, Ga.
 WILLIAM WHITTLE Brunswick, Ga.
 CHARLES H. WILKINSON Claxton, Ga.
 PAUL WILKINSON Claxton, Ga.
 ROBERT S. WILLIAMS Winder, Ga.
 MARIAN WOOD Alpharetta, Ga.
 EILL WOOLARD Sylvester, Ga.
 FREDDIE WOOTEN Homerville, Ga.
 CHARLES WRIGHT Summerville, Ga.
 JEAN ZIEGLER Avondale Estates, Ga.



Presenting



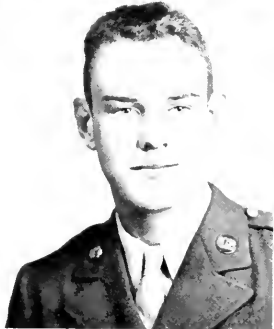
the A. S. T. R. P.



JOHN A. ALBERS
Dayton, Ohio

FRED BAKER
Boykins, Virginia

LESLIE A. BARR
Muncey, Indiana



CHARLES H. BEIGER
Logansport, Indiana

FLOYD R. BENNETT
Morganton, N. C.

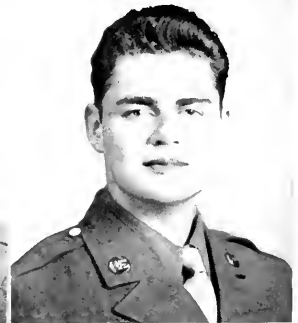
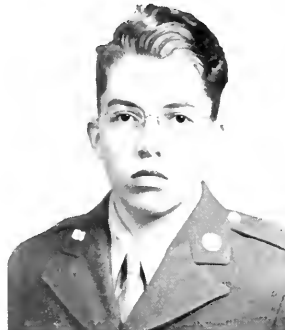
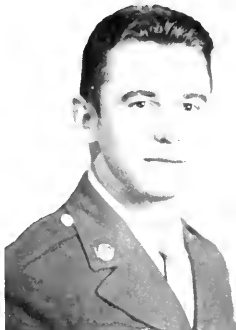
WILLIAM BLOOD
East Rochester, N. Y.

ARMY SPECIALIZED TRAINING RESERVE PROGRAM

WILLIAM BOLTON, JR.
Torrington, Conn.

JAMES WILSON BRISTOW
Inverness, Ala.

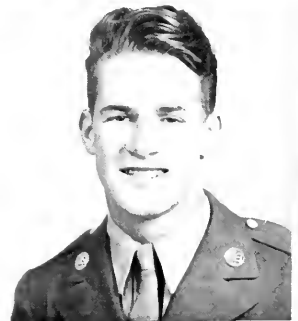
RUSSELL CALVIN
Phillipsburg, N. J.



CONRAD E. CARROLL
Mayfield, Ky.

ROBERT E. CLARK
Canandaigua, N. Y.

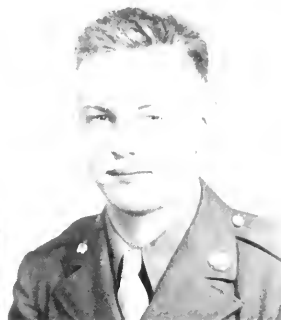
HARRY FRANKLIN LEGG
Funnell, Fla.



SANFORD L. CRAWFORD
Toledo, Ohio



ROLLIN LEE CULP
Cleveland Heights, Ohio



MALCOLM A. DACK
Syracuse, N. Y.

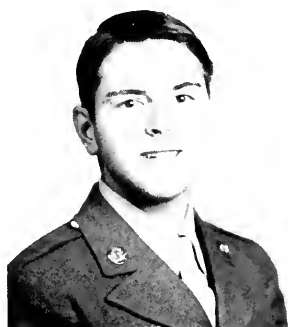
BERNARD E. DAVIS
St. Johnsville, N. Y.



THOMAS DeVENNY
Freeburn, Ky

VANCE DRAWDY
Jedburg, S. C

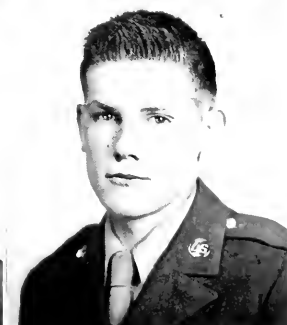
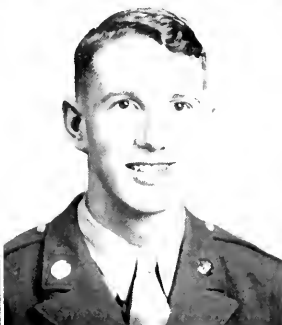
ARMY SPECIALIZED TRAINING RESERVE PROGRAM



EUGENE L. DUNN
Pertsmouth, Ohio.

JEROME C. ELLIOH, JR.
Atlanta, Ga.

PAUL ENGLISH
Greene, N. Y.

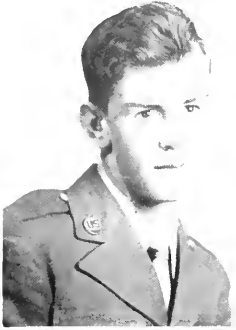


R. C. EUSTIS
Syracuse, N. Y.

DONALD B. FAIRCHILD
Ashland, Ky.

CHARLES RAYMOND FIELD
Pottersville, N. J.

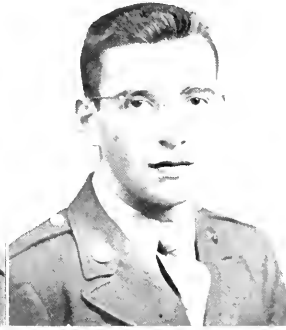
ARMY SPECIALIZED TRAINING RESERVE PROGRAM



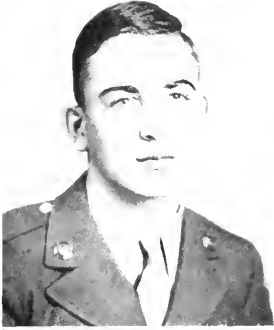
WILLIAM A. FOWLER
Thomaston, Georgia



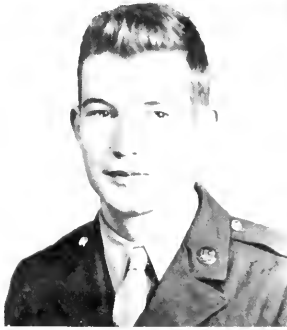
PHILIP FRANKLIN
Washington, D. C.



JERRY R. GUINE
Moundsville, W. Va.



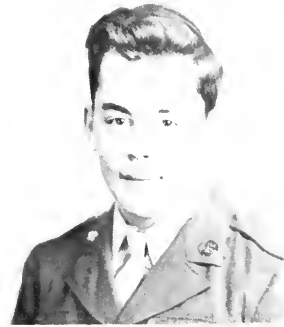
ROBERT LEE GUTSELL
Jasper, Indiana



CHARLES P. HAMER
Tatum, S. C.



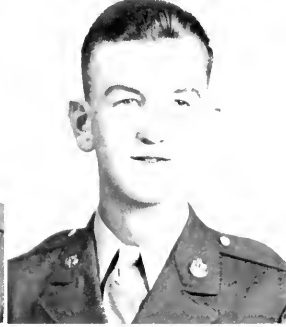
RICHARD G. HANNA
Chardon, Ohio



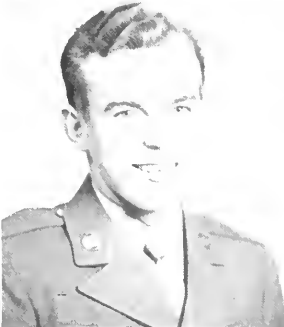
ALBERT C. HEGYBELI
Cleveland, Ohio



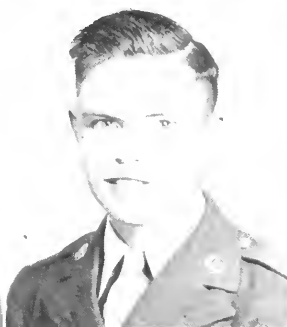
C. W. HOSKINS
Otway, Ohio



ARDEN JACKSON
Gassaway, W. Va.



CALWEY HARLAN JOHNSON
Cuyahoga Falls, Ohio



JACOB EDWIN JOINER
Sparks, Georgia



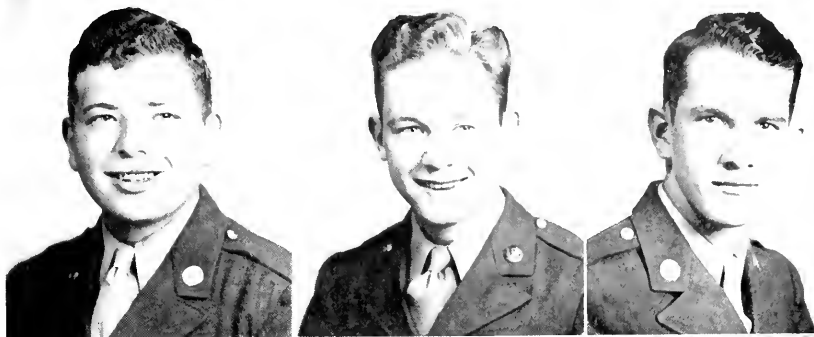
NELSON JONES
Gulfport, Mississippi

ARMY SPECIALIZED TRAINING RESERVE PROGRAM

STANLEY KALECH
Cleveland, Ohio

GEORGE M. KEADLE
Williamson, West Va.

GEORGE L. KELBERT
Bradenton, Fla.



MANFRED KRAUSE
Cincinnati, Ohio

ROGER W. KIRT
Toledo, Ohio

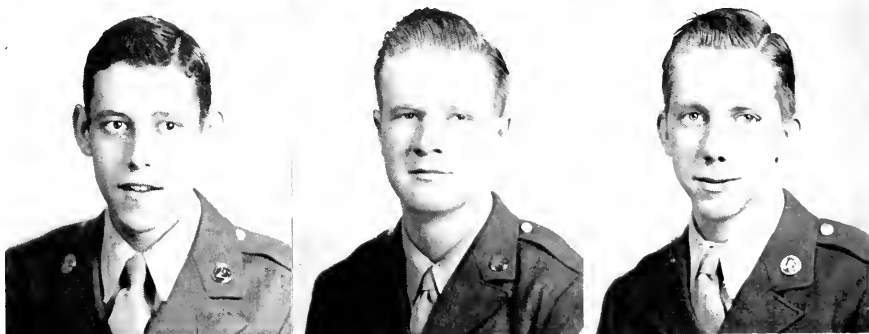
ROBERT E. LANGSTON
Athens, Ohio



TOM R. LEIST
Dayton, Ohio

JOHN THOMAS LENDRUM
Norwalk, Ohio

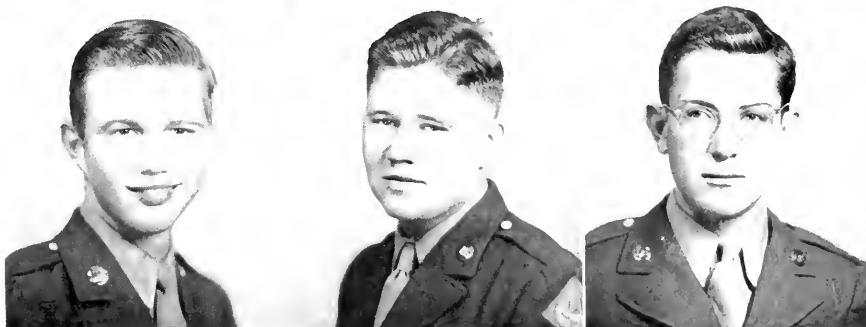
LELAND C. LONG
Huntington, West Va.



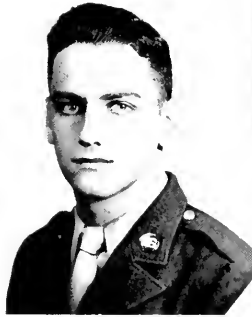
JAMES M. MASSEY
Florence, Alabama

RHEA MAYHUGH
Bradenton, Florida

JAMES MERCER
Tupelo, Miss.



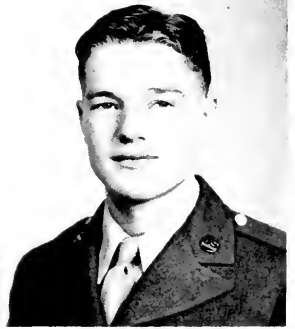
CHARLES A. MILLER
Isola, Miss.



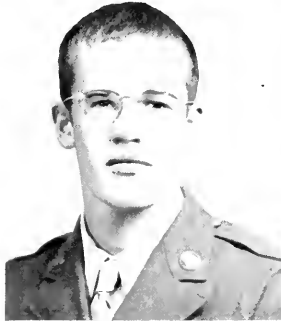
ELIJAH F. MOORE
Macon, Georgia



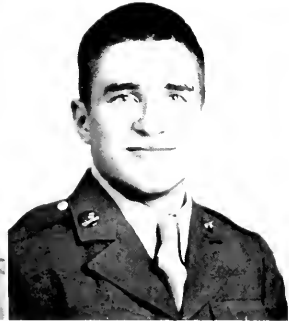
EUGENE M. NEWBERNE
Adel, Georgia



FREDERICK R. PARKER
Stone, Ky.



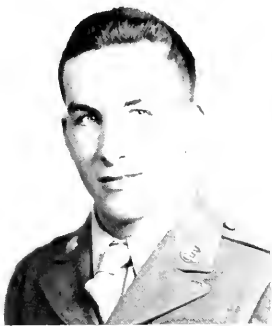
BILL PIPKIN
LaFayette, Tenn.



HERBERT POWELL
Urbana, Ohio



ARMY SPECIALIZED TRAINING RESERVE PROGRAM



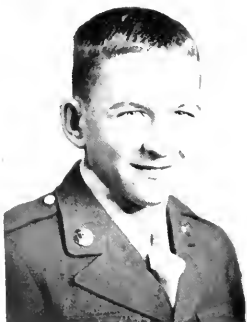
MARVIN E. RILEY
Richmond Dale, Ohio



J. O. ROBERTS, JR.
Gastonia, N. C.



DAVID RUSSELL
Birmingham, Ala.



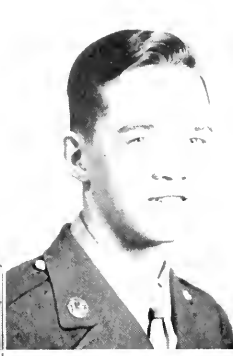
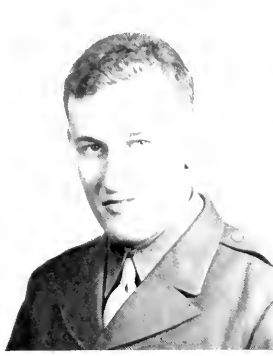
WILBERT W. SEABOCK
Hickory, N. C.



THEODORE KING SELKIRK
Cincinnati, Ohio



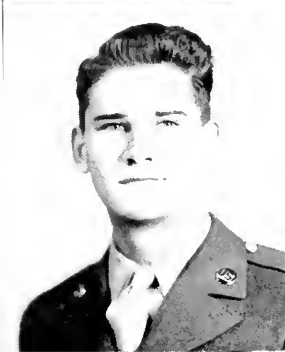
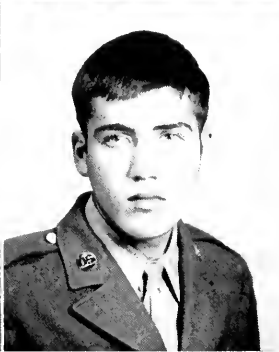
JOHN W. SHINE
New Albany, Indiana



JACK O. SHUFORD
Atlanta, Georgia

SOLOMAN SINGER
Miami, Fla.

CLYDE T. SIZEMORE
Greensboro, N. C.



FRANK SMITH
Largo, Fla.

SAM SUHRER
Mobile, Ala.

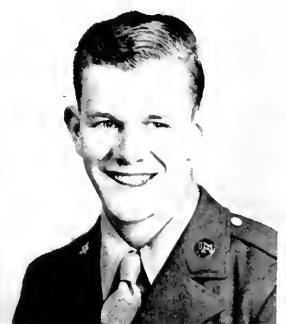
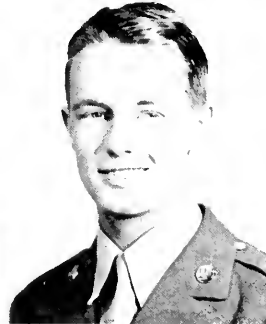
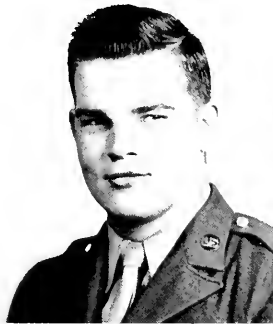
JAMES C. SULLIVAN
Hudson, N. C.

ARMY SPECIALIZED TRAINING RESERVE PROGRAM

ROBERT TESTERMAN
Kimball, West Va.

WILLIAM C. THORNE
Sumter, S. C.

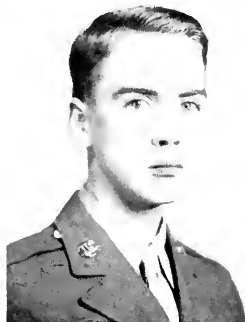
PHILIP E. VALENTINI
Washington, D. C.

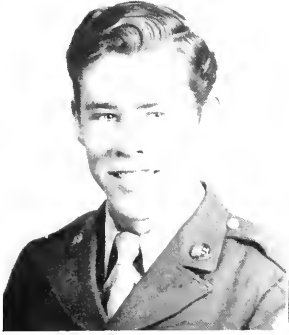


J. E. VAN VERTH
Huntington, West Va.

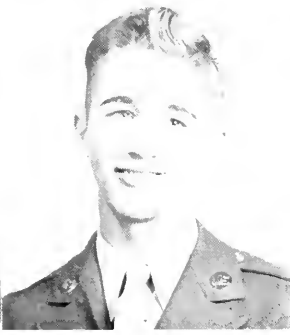
WAYNE EDWIN WAGGONER
Indianapolis, Ind.

ROBERT WALTON
English, Indiana





LOMAN WALLER
Wilson, N. C.



RICHARD H. WARNER
Canton, Ohio



HAL WARREN
Taylorsville, N. C.



ALBERT P. WHITE
McComb, Miss.

ARMY SPECIALIZED TRAINING RESERVE PROGRAM

Snapshots from the U. S. O.





Our

BEAUTIES

and

SPONSORS



ALICE REDMOND

Miss N. G. C.

C A M P U S



MISS LYNDA LAMBETH

B E A U T I E S



MISS SARA MOTER

C A M P U S



MISS BETTY JONES

B E A U T I E S



MISS ANNE EDGE

C A M P U S



MISS JEAN BOWERS

B E A U T I E S

S P O N S O R S



MISS EDITH OWENS
Dahlonega, Georgia
Sponsor for William Owens
Editor of The Cyclops

MRS. HENRY REID
Athens, Georgia
Sponsor of Officer's Club



MR. KENNETH ENGLAND
Wadley, Georgia
Sponsor of "The Cadet Bugler"



MISS MARGARET THOROUGHMAN
Thomasville, Georgia
Sponsor for Virgil Price
Business Manager of The Cyclops



MRS. C. O. VANN
Vidalia, Georgia.
Sponsor of Sergeant's Club



MISS MARY ANNE MOORE
Gainesville, Georgia
Sponsor of the Staff

MISS MARY RUTH NIX
Cleveland, Georgia
Sponsor of "C" Company

MISS ALICE REDMOND
Decatur, Georgia
Sponsor of "B" Company



MISS JO ANNE KELBERT
Bradenton, Florida
Sponsor of "D" Company



MISS KATHRYN SESSOMS
Avondale Estates, Georgia
Sponsor of "A" Company



S P O N S O R S

S P O N S O R S



MRS. H. G. JARRARD
Gainesville, Georgia
Sponsor of Band

MRS. ANNIE F. WOOLSEY
Woolsey, Georgia
Sponsor of Wesley Foundation



MRS. W. W. WOODY
Suches, Georgia
Sponsor of Y.M.C.A.



MRS. JOSEPH HARDMAN
Commerce, Georgia
Sponsor of Y.W.C.A.



MRS. M. L. IVEY
Cordele, Georgia
Sponsor of B.S.U.



MRS. G. A. ZIEGLER
Avondale Estates, Georgia
Sponsor of Rec Club

MRS. J. D. EDGE
Calhoun, Georgia
Sponsor of Physical
Education Club

MRS. WYATT FRAZER
Washington, Georgia
Sponsor of Home Economics Club



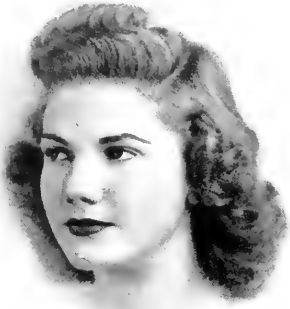
MISS SHIRLEY ZIEGLER
Avondale Estates, Georgia
Sponsor of Science Club

MISS MAHALA REDD
Cumming, Georgia
Sponsor of Generals



S P O N S O R S

S P O N S O R S



MISS ANNE EDGE
Calhoun, Georgia
Sponsor of Rex Fraternity

MISS MARY ANNE MARTIN
Commerce, Georgia
Sponsor of Sophomore Class



MISS JEAN MEYER
Winterville, Georgia
Sponsor of Pan-Hellenic Council



MRS. J. M. BURDETTE
Calhoun, Georgia
Sponsor of Sigma Theta Fraternity



MRS. E. H. KINGERY
Gordon, Georgia
Sponsor of Freshman Class



Reviewing

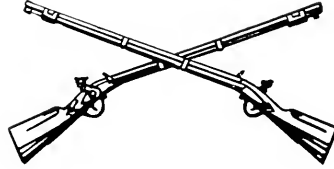


the MILITARY



MAJOR PAUL M. HUTCHERSON
Professor of Military Science and Tactics

CAPTAIN ROY D. HUTSON
Assistant Professor of
Military Science and Tactics



CAPTAIN FRANCIS C. WADE
Adjutant



SERGEANT WM. DAVIS
Assistant to Professor of
Military Science and Tactics



SERGEANT ARTHUR H. KERN
Assistant to Professor of
Military Science and Tactics

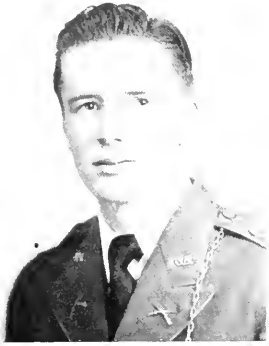


SERGEANT WM. SPRAYBERRY
Assistant to Professor of
Military Science and Tactics



SERGEANT WM. SNYDER
Assistant to Professor of
Military Science and Tactics

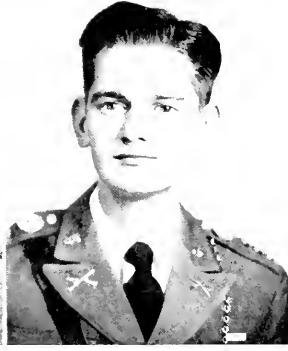
OFFICERS OF INSTRUCTION



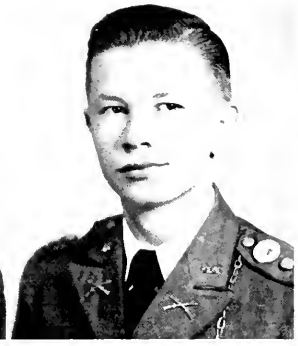
MAJOR REID



CAPTAIN VINTON



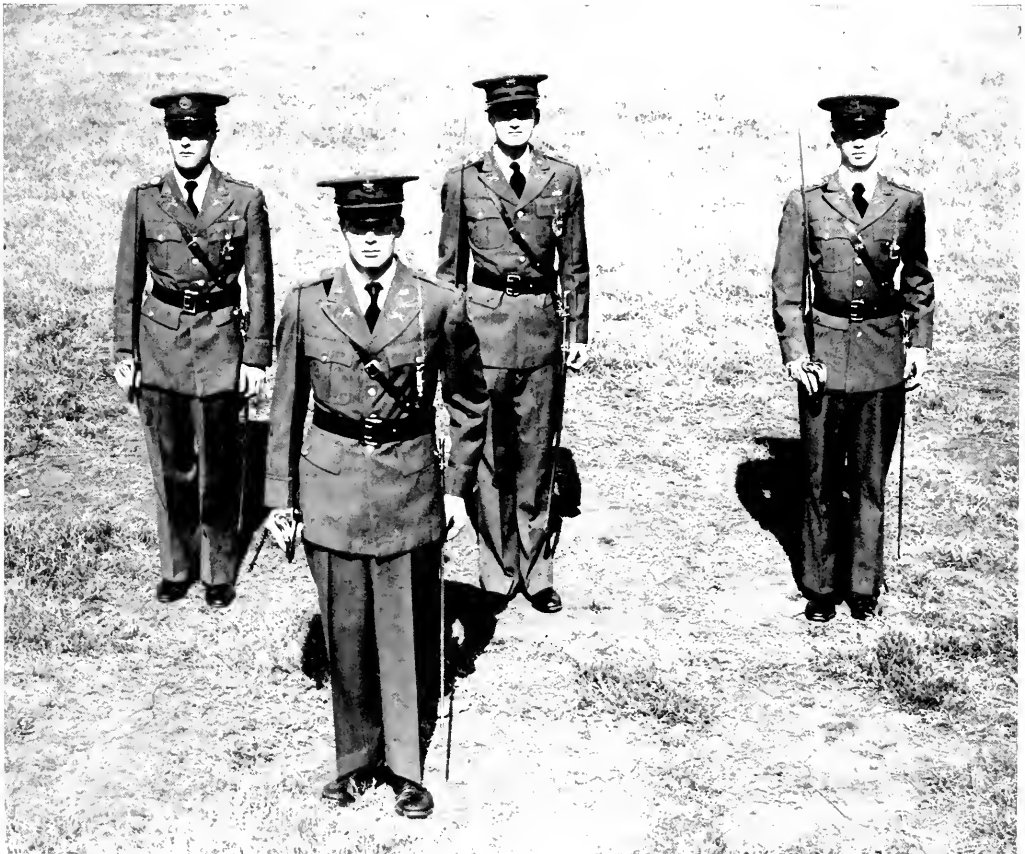
CAPTAIN IVEY



CAPTAIN GAYLER

THE BATTALION STAFF

CADET LIEUTENANT COLONEL JAMES BURDETTE . . . Battalion Commander
 CADET MAJOR ANDREW REID Executive and S-1
 CADET CAPTAIN LUTHER VINTON Adjutant
 CADET CAPTAIN RALPH IVEY S-2
 CADET CAPTAIN LOUIS MORRIS S-3
 CADET CAPTAIN BRANSON GAYLER S-4





THE BAND

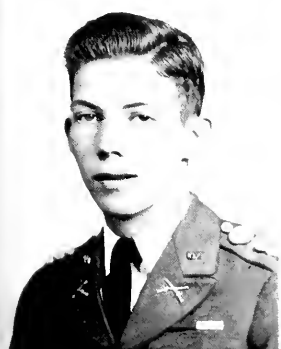
HENRY GRADY JARRARD Captain
WILLIAM STOVER	1st Lieutenant
BILLY BUCK WOODY	2nd Lieutenant
ROY McCARD	1st Sergeant

CADETS:

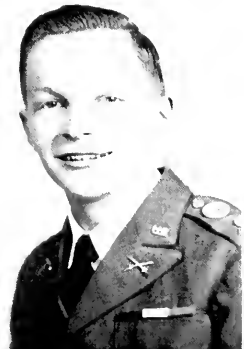
Sergeants:		
BILLY NICHOLS	ROY OWEN	JULIUS STILL
Privates:		
BAGWELL, W.	MCDONALD, J.	PROCTOR, J.
BARRON, W. T.	MAHAFFEY, R. H.	ROYAL, P.
BILES, J.	MATTHEWS, J.	SANDERS, B.
COWART, J.	MAYO, H.	SMITH, A.
ETHERIDGE, J.	MILLER, H. J.	SPARKS, H.
FUTCH, T.	MOODY, S.	STANDARD, D.
HARRIS, A.	NEWSOM, E.	WHELCHER, H.
LUKE, K.	OWEN, D.	

A.S.T.R.

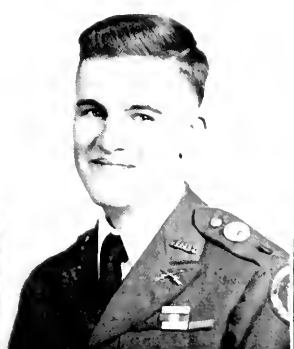
Sergeants:		
JAMES COOKSEY	EUGENE NEWBERNE	THOMAS SULLIVAN
Privates:		
ALBEE, J.	DUNN, E.	MAYHAUGH, R. E.
AUD, B.	ELY, G.	SELKIRK, T.
BENNETT, F.	HOUSE, J.	TILLMAN, R.
CLARK, N.		



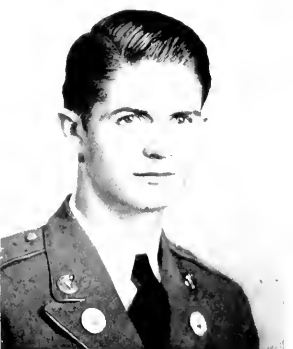
JARRARD



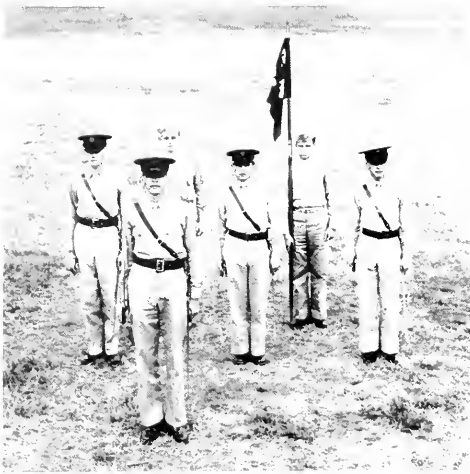
STOVER



WOODY



McCARD



COMPANY STAFF



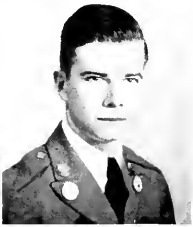
WESTBROOK
COLLIER



CROSS
CURLEY



EDWARDS
DAVIS



"A" COMPANY

WILLIAM WESTBROOK Captain
 CHARLES CURLEY First Sergeant
 CHARLES DAVIS Guidon Bearer

FIRST PLATOON

LEO CROSS Lieutenant
 CLAUDE VANN Platoon Sergeant
 MICKEY MIDDLETON Platoon Guide
 BILLY GIRTMAN, BILL TOWSON Sergeants

Privates:

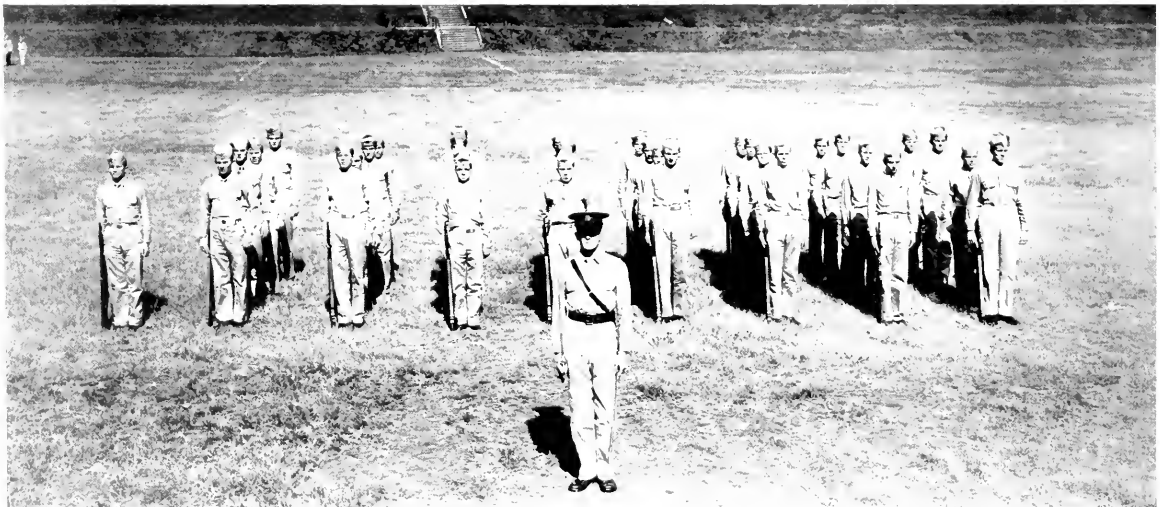
ARTHUR, G.
 BAILEY, K.
 BAXTER, B.
 BROWN, P.
 BUSSEY, P.
 BUTLER, E.
 CLEMENTS, J.

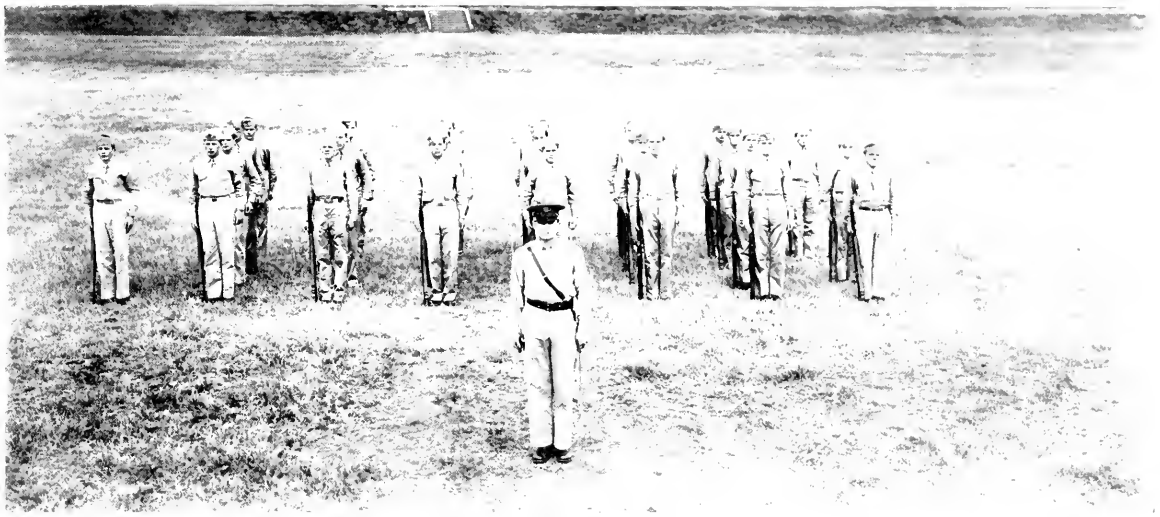
COLEMAN, J.
 CONNER, E.
 DISMUKE, B.
 DOVER, H.
 DUGGAN, J.
 EAGAN, A.
 EDMONDSON, B.

EVANS, R.
 GIGNILLIAT, W.
 GOEBEL, V.
 HERRINGTON, B.
 HODGES, H.
 KENNEDY, B.

LEWIS, L.
 LOWRY, G.
 MAEGER, J.
 McCOLLUM, L.
 MIDDLETON, M.
 MILLS, C.

REEVES, J.
 ROGERS, J.
 SELL, H.
 SMITH, B.
 STEVENS, R.
 WOOTEN, F.





SECOND PLATOON

DOUG EDWARDS Lieutenant
 WILEY ANDERSON Platoon Sergeant
 MILES POPPELL Platoon Guide
 ERNEST GURLEY, FORD HARBEN, HAROLD KILPATRICK Sergeants

Privates:

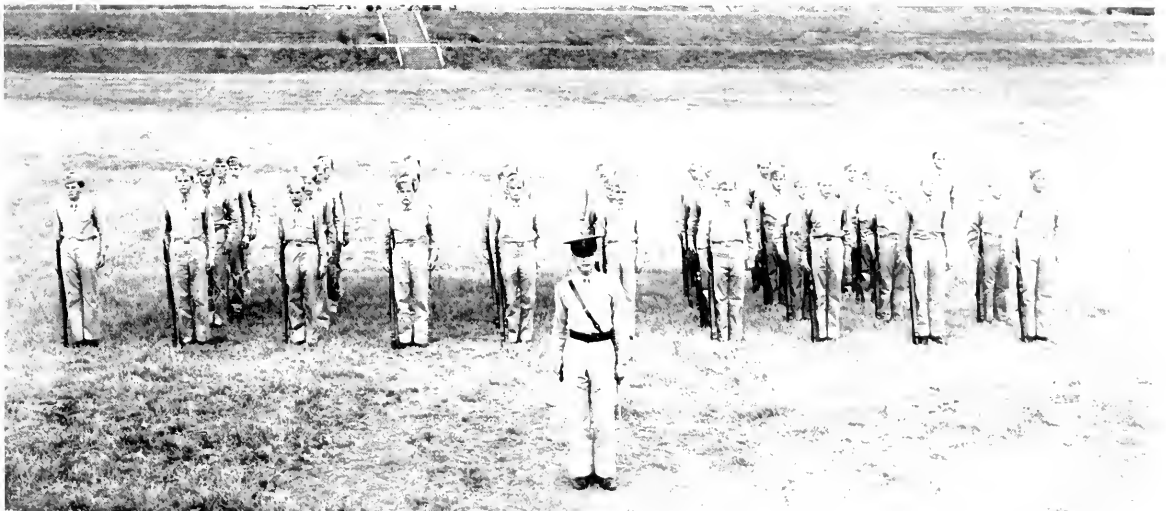
BISHOP, B.	GRIFFITH, J.	MAYS, D. A.	MURELLE, B.	STARK, J.
BRANNON, E.	HARRISON, W.	McREE, B.	PARTRIDGE, H.	TIMMS, H.
BROOKSHIRE, B.	HERRINGTON, C.	McCORKLE, J.	PRICE, V.	TROUP, E.
BYRD, D.	HITCH, H.	McDONALD, M.	SISK, MARVIN	VICKERS, O.
CANNADY, L.	HOLDT, R.	MORELAND, R. H.	STANTON, J.	WARMACK, T.
GILBERT, C.	HUBBARD, H.			

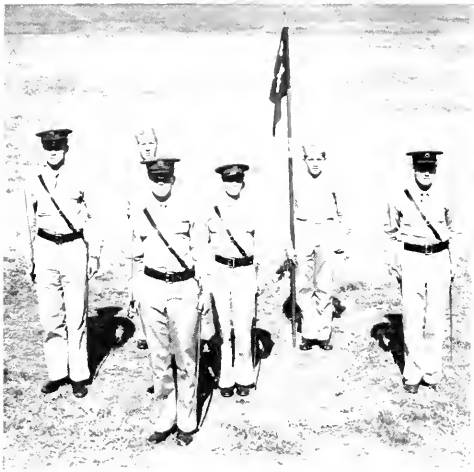
THIRD PLATOON

ROBERT COLLIER Lieutenant
 JOHN CARTER Platoon Sergeant
 WARREN CARTER Platoon Guide
 HAROLD CRAIG, WILLIAM OWENS,
 ROBERT PURCELL, DAVID WYNNE Sergeants

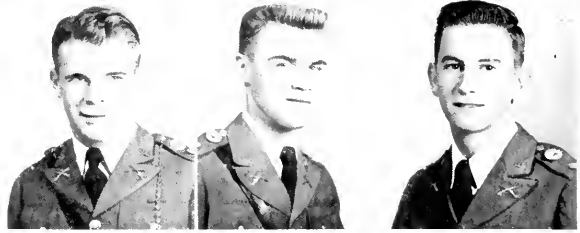
Privates:

ADAMS, M.	CLAY, R.	HARLEY, J.	MOORE, I.	SATTERFIELD, F.
BARROW, J.	COFER, R.	HENLEY, L.	MOORE, W., JR.	SHIRLEY, D.
BLEDSON, L.	ETHRIDGE, G.	HOWELL, E. J.	MORAN, W.	SPENCER, R. L.
BOYD, F.	GORE, R.	KENDRICK, N. S.	MURDAUGH, L.	STEVENS, D. T.
BURT, J. M. JR.	GREGORY, J.	KING, E.	NESBIT, J.	TIMMONS, E.
CLARK, P.	GUNN, J. D.	MEADOW, J.	RAY, H.	WINN, D.
		MITCHELL, J.		





COMPANY STAFF



PRESCOTT
CRUMP

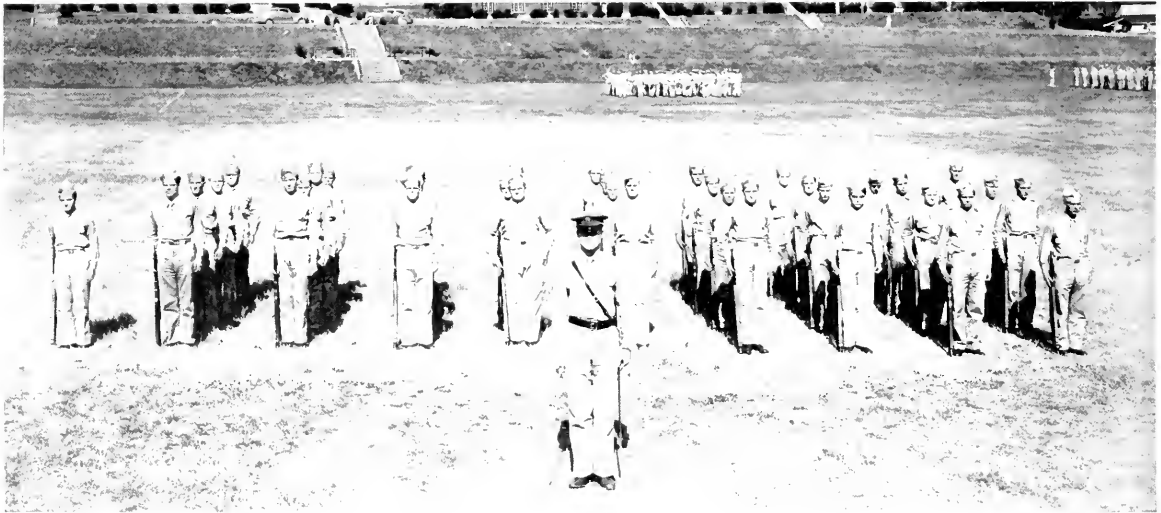
PAYNE
TUCKER

MAY
LEE



"B" COMPANY

BILL PRESCOTT	Captain
CLARENCE TUCKER	First Sergeant
FRED LEE	Guidon Bearer



FIRST PLATOON

CHARLES PAYNE	Lieutenant
BEN YARBROUGH	Platoon Sergeant
JESSE JACKSON	Platoon Guide
TED BURGESS, JOHN HAINES, JOHN MADDOX, JOE STEPHENSON	Sergeants

Privates:

AKINS, S.
BARRIE, A.
BECKHAM, C.
BENTLEY, G.
BLIZZARD, T.
BROWN, J.
CARMICHAEL, P.

COLLINS, R.
EDWARDS, J. B.
EDWARDS, J. N.
GARRISON, B.
HARPER, M.
HAYES, R. C.
HEATH, C.

HENDRY, C.
HERRING, C.
KING, J.
KIZER, H.
MARTIN, H.
MATHEWS, T.

McLEOD, L. S.
MILLS, G.
MOORE, J.
NESBIT, W. F.
PURCELL, D.
THOMPSON, J.

TRULUCK, J.
WALKER, H.
WALLACE, A.
WASDIN, C.
WILKINSON, C.
WRIGHT, C.

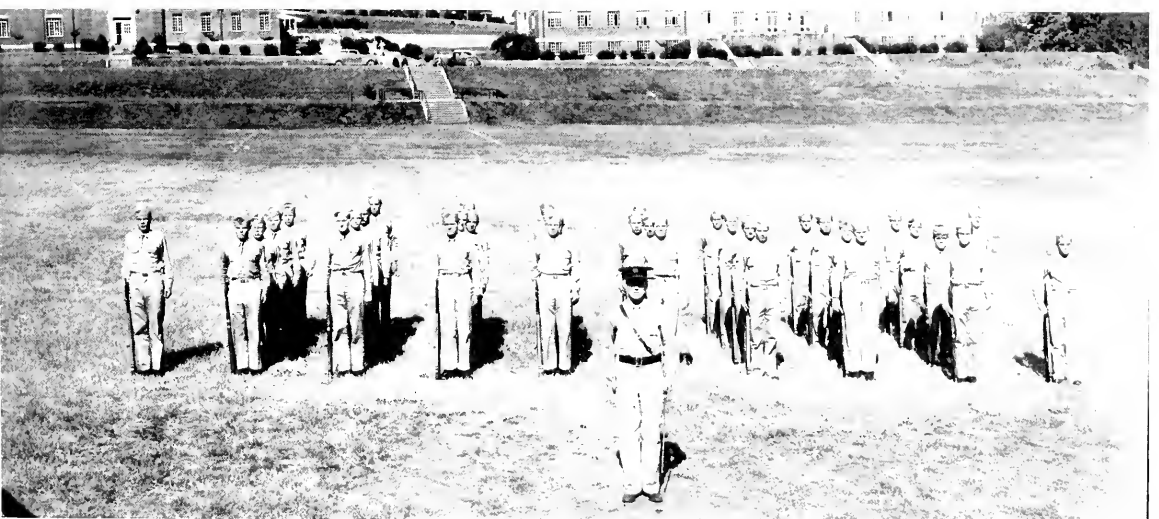


SECOND PLATOON

TOM MAY Lieutenant
 BILLY BOLDING Platoon Sergeant
 RALPH CANNON Platoon Guide
 HAROLD FOWLER, GORDON HALL Sergeants

Privates:

BATES, W.	DOVER, G.	HORNE, G.	O'DILLON, M.	ROBINSON, J.
BROOKS, S.	FARMER, J.	KENEMER, D.	PINHOLSTER, G.	ROGERS, O.
BROWN, D.	FREEMAN, R.	LLOYD, C.	PINSON, H.	SAFFOLD, T.
BURCH, L.	GREENE, L.	MADDOX, S.	POWELL, B.	SHUGART, R.
BUTLER, W. C.	GREESON, R.	McKENNY, G.	POWELL, H. G.	THOMAS, G.
CANNON, R.	HARDY, T.	MEADOW, C. J.	RICHARDSON, B.	WILLIAMS, B.
COHEN, H.	HARRIS, L.	MURPHY, J.	ROBINSON, B.	WOLLARD, B.



THIRD PLATOON

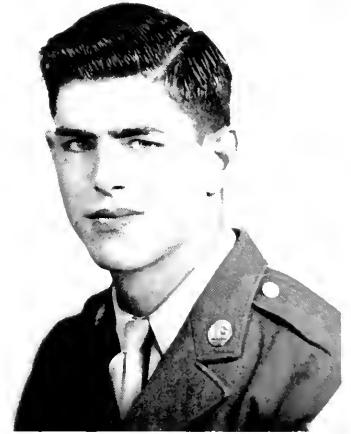
WALLACE CRUMP Lieutenant
 DAVID TIPPINS Platoon Sergeant
 CARTER COLLIER Platoon Guide
 SIMEON BELL, BONNELL PEARCE, JOE THRASHER Sergeant

Privates:

BOGGUS, A.	DURANT, B.	HICKS, T.	MOXLEY, P.	STOUT, C.
BRANNON, H.	GOODING, J.	MARTIN, C. C.	NELSON, W.	TEMPLE, P.
BROWN, H.	HANCOCK, J.	MARTIN, E.	FARRISH, H.	VERNER, H.
CASEY, F.	HARGETT, B.	McCOY, G.	PHILLIPS, E.	WARD, R.
CHESNUT, D.	HARRIS, R.	MILES, H.	POPE, M.	WHITTLE, E.
COLLIER, C.	HICKS, R.	MOODY, C.	ROWLAND, J.	WILKINSON, P.



COMPANY STAFF



ROBERTS

"C" COMPANY

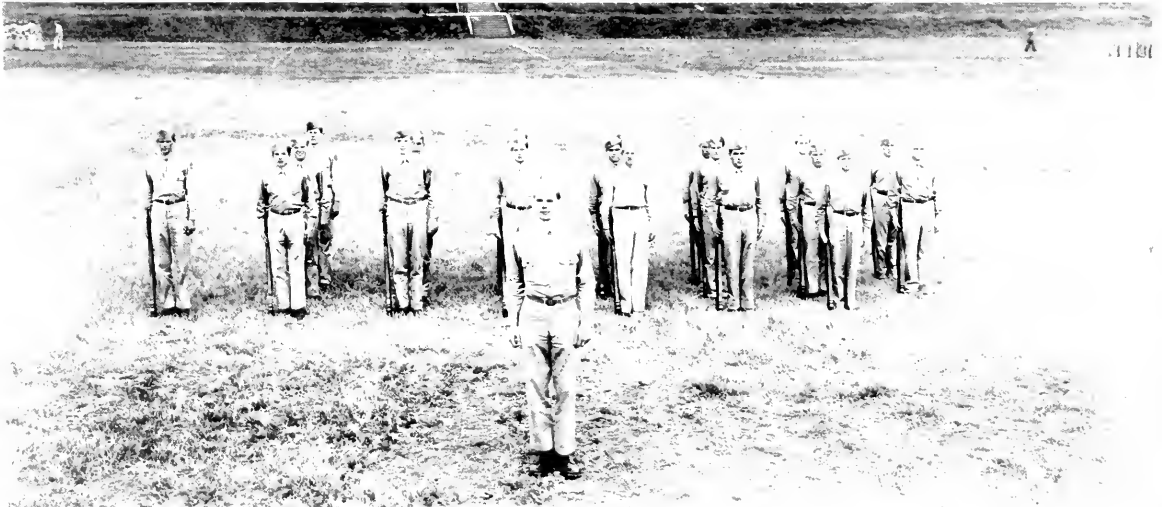
J. C. ROBERTS	Captain
ROBERT UTLEY	Athletic Officer
CARLTON JESTER	First Sergeant
FRANK O. PRUITT	Guidon Bearer

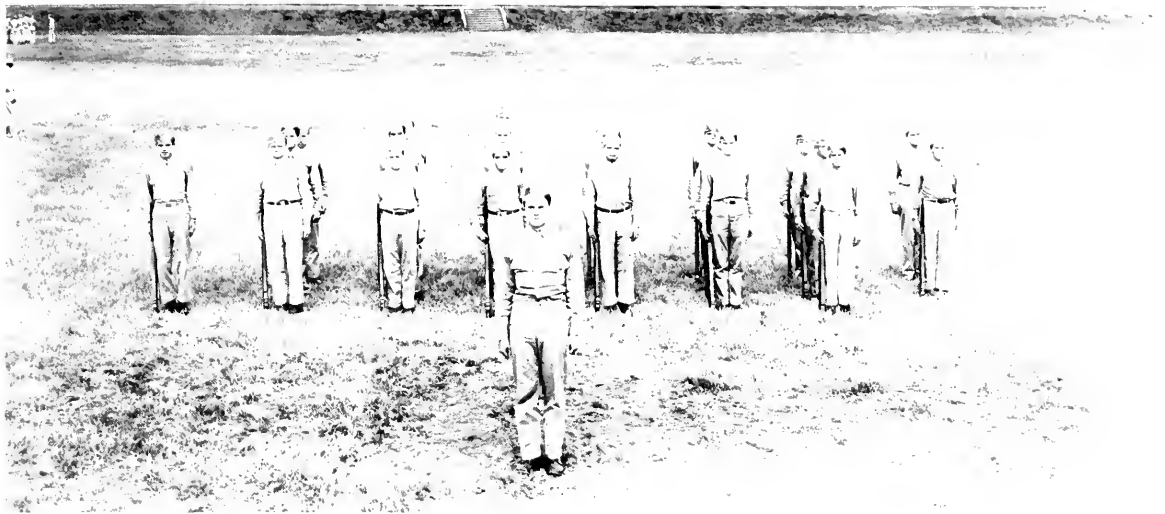
FIRST PLATOON

FREDERICK R. PARKER	Lieutenant
GEORGE KEADLE	Platoon Sergeant
WILLIAM FOWLER	Platoon Guide
BLAND BURNS, DONALD JOHNSON, JAMES LELAND	Sergeants

Privates:

BEAR, W.	DRAWDY, V.	HAMER, C.	McCORMICK, W.	SCHULZE, R.
BUNGER, K.	ELLIOTT, J.	HAYS, J.	ONDISHKO, J.	TESTERMAN, R.
DACK, M.	FERRELL, J.	JOINER, J.	RILEY, M.	WALTON, R.
DeVENNY, T.	GUTGSELL, R.	LYON, Z.		





SECOND PLATOON

BASIL BURKS Lieutenant
 WALTER EVERIDGE Platoon Sergeant
 DONALD WEINER Platoon Guide
 CHARLES BEIGER, RICHARD BOISTURE, ALAN CRANE Sergeants

Privates:

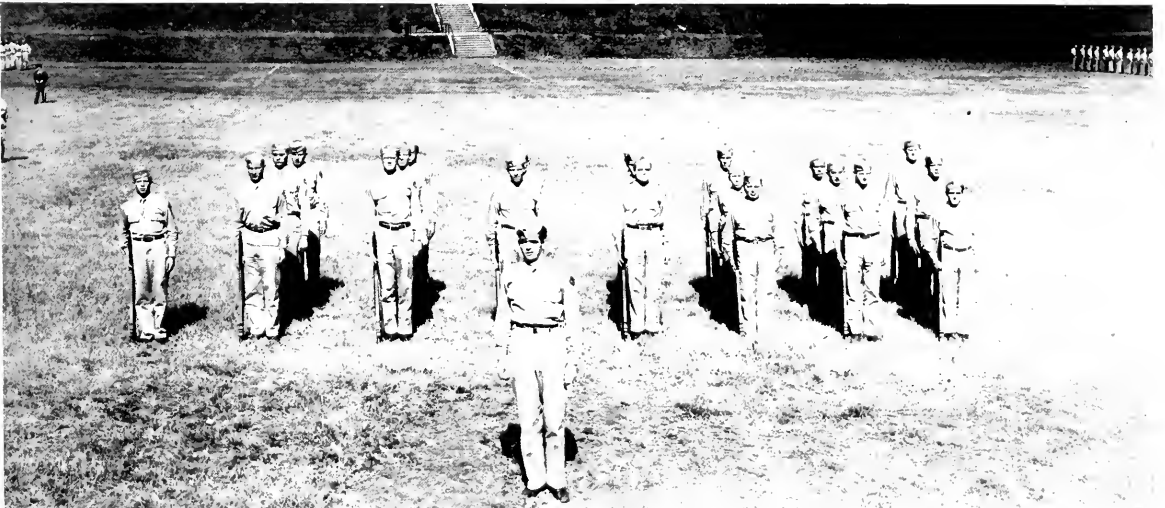
BOVINO, L.	ENGLISH, P.	GIBBONS, L.	KRAMER, C.	OPDYCKE, G.
COURTNEY, J.	EUSTIS, R.	JACKSON, H.	MULLINAX, R.	SEABOCK, W.
DIER, J.	FOSTER, D.	JACOBS, P.	NUSSEAR, J.	SULLIVAN, J.
		JAMES, P.		

THIRD PLATOON

WILLIAM PATRICK Lieutenant
 AUBREY STURGIS Platoon Sergeant
 RAYBURN SHETLER Platoon Guide
 DONALD BURBRINK, GLENN ISON, ROBERT LANGSTON Sergeants

Privates:

BARR, L.	HANNA, R.	JOHNSON, K.	OTTO, F.	THORNE, W.
BLOOD, W.	HARVARD, R.	KALECH, S.	POWELL, G.	WARREN, H.
CLARK, N.	HASKINS, F.	KORALEWSKI, L.	SCHULER, A.	WHITE, A.
CRAWFORD, S.	HILL, R.	NANCE, C.		

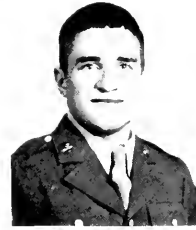




COMPANY STAFF



KELBERT
WALLER



PIPKIN
MILLER



SMITH
SIZEMORE



"D" COMPANY

GEORGE KELBERT	Captain
CHARLES MILLER	Athletic Officer
CLYDE SIZEMORE	First Sergeant
DAVID PRITCHARD	Guidon Bearer

FIRST PLATOON

BILLY PIPKIN	Lieutenant
ELIJAH F. MOORE, JR.	Platoon Sergeant
PHILIP FRANKLIN	Platoon Guide
ROBERT GUNNER, ROBERT MOSS, WILLIAM ZELL	Sergeants

Privates:

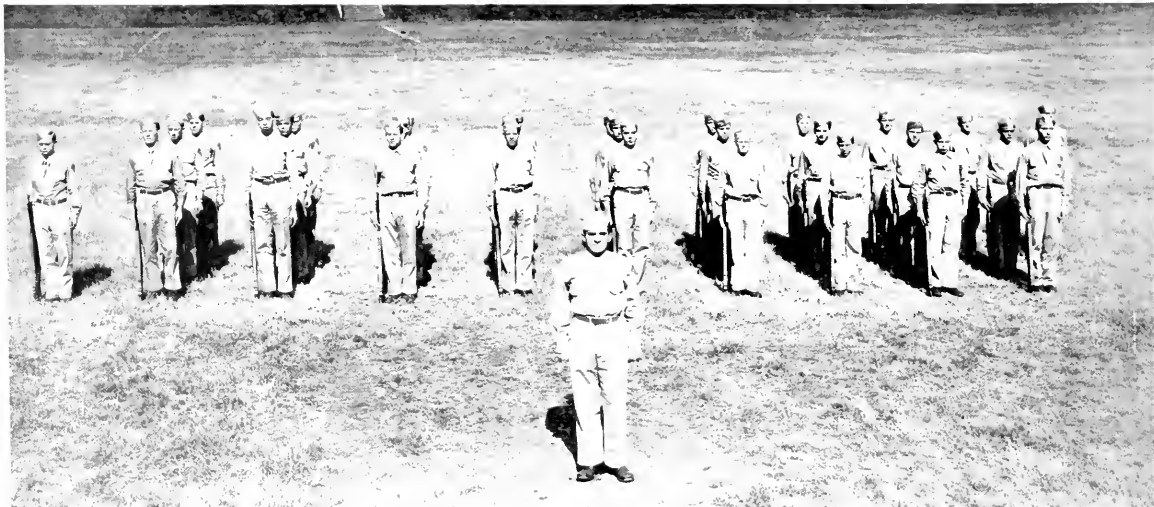
B. LYON, B.
BREZGER, D.
CAPP, L.
CLEGG, F.
DAVIS, R.

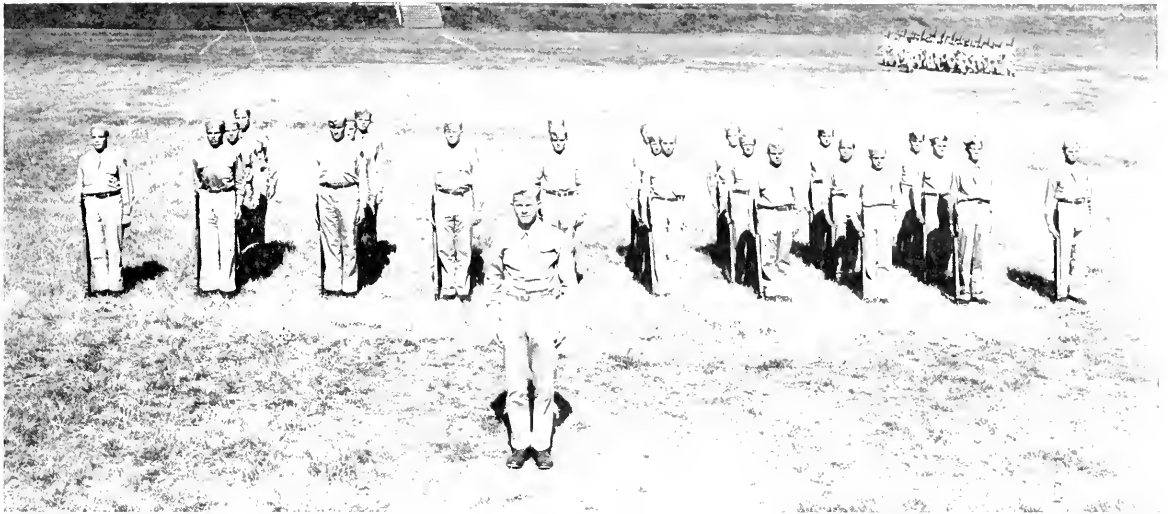
DEYLE, W.
EGERTON, J.
FIELD, C.
FISH, S.
FLOYD, A.

FRANKLIN, F.
GERARD, J.
JONES, N.
JURKO, M.
KRAUSE, M.

LEIST, T.
LONG, L.
MARSHALL, L.
PATTON, R.
QUELLER, J.

RUNYON, T.
SHINE, J.
STADSKLEY, G.
TOLARO, A.
VAN VERTH, J.





SECOND PLATOON

FRANK SMITH Lieutenant
 OLIVER ESCO Platoon Sergeant
 JERRY GUINE Platoon Guide
 CONRAD CARROLL, JACK EMERY, DAVID RUSSELL Sergeants

Privates:

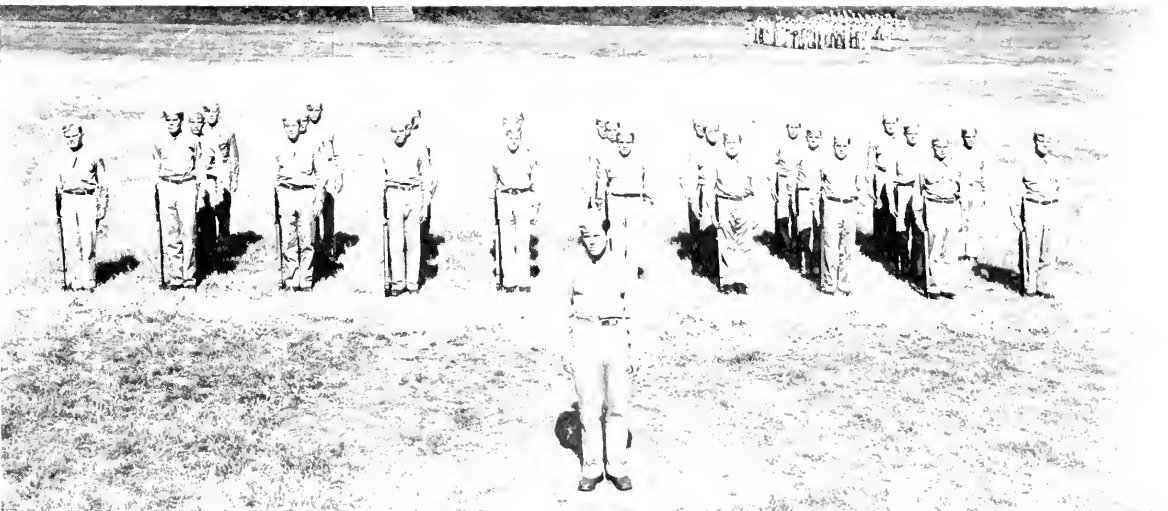
BAKER, F.	ELLIS, V.	LENDRUM, J.	PARKER, F.	SHUSTER, R.
BOLING, D.	HEGYBELI, A.	LEVIN, H.	POTTER, J.	SINGER, S.
CANNON, G.	HERHOLZER, F.	McLAUGHLIN, M.	SHEIFORD, J.	SPIES, D.
CHARSANKO, R.	KIRK, R.	MASSEY, J.	SHARCK, R.	SZANISZLO, E.
COKER, D.	KREMCHECK, J.			

THIRD PLATOON

LOMAN WALLER Lieutenant
 WAYNE WAGGONER Platoon Sergeant
 JOHN SLOAN Platoon Guide
 JOHN ALBERS, DONALD FAIRCHILD, SAMUEL SUHRER Sergeants

Privates:

BRISTOW, J.	FARNO, G.	MERCER, J.	SEILER, R.	VOGEL, R.
CALVIN, R.	FERREL, J.	MUDD, R.	SCHAMUS, I.	VOSS, T.
CULP, R.	HAUSER, G.	PETERS, L.	STEARNS, L.	WAGNER, F.
CUNNINGHAM, J.	IZYDORAK, J.	SANDERS, H.	VALENTINI, P.	WARNER, R.
ETTEL, C.	KAPECKY, R.			





1. New Recruit.
2. Marching into church.
3. Button being cut off.
4. Battalion Staff at Church Formation
5. Drill!! Drill!!
6. Vinton and Reid after a hard day's drill.
7. Practice makes perfect.

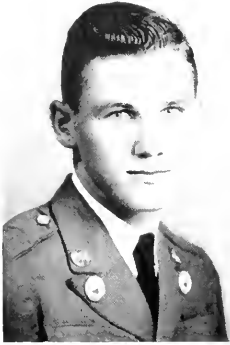


MILITARY SNAPSHOTS

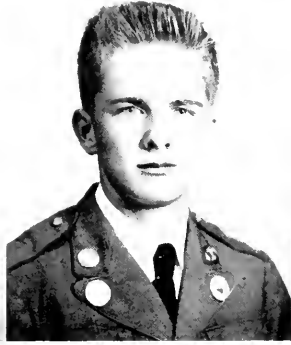
Presenting



The ORGANIZATIONS



OWENS



PRICE



LISMUKES



BARNES

THE 1946 CYCLOPS

The Last Cyclops Staff at N.G.C. as a Junior College

STAFF

- WILLIAM OWENS Editor
- VIRGIL PRICE Business Manager
- C. J. DISMUKES Faculty Adviser
- J. C. BARNES Faculty Adviser



EDITORIAL STAFF

WILLIAM OWENS Editor-in-Chief
 ANNE WOOLSEY Associate Editor, Page Arranger and Typist
 DORIS KING Copy Editor
 THEDA BURRELL Assistant Copy Editor
 KATHRYN SESSOMS Class Editor
 ANNE EDGE Assistant Class Editor
 EVELYN ETHRIDGE Assistant Class Editor
 MILLIE BAILEY Assistant Class Editor
 BEVERLY BOWERS Feature Editor
 EVELYN ELLIS Assistant Feature Editor
 BILL BARRON Military Editor
 LOUISE CRANE Assistant Military Editor
 NINA CRUMP Assistant Military Editor

BILL TOWSON Sports Editor
 ROBERT HOLDT Assistant Sports Editor
 ELOISE COGBURN Assistant Sports Editor
 JOE THRASHER Cadet Photographer
 KENNETH BAILEY Assistant Photographer
 BILL ROBINSON Assistant Photographer
 WILLENE RICHARDSON Co-ed Photographer
 MARY DRAKE Co-ed Photographer
 JULIA PALMER Art Editor
 BETTY JONES Assistant Editor
 BETH ELROD Assistant Page Arranger
 JOYCE WILLIS Typist
 LENORA TATE Typist

BUSINESS STAFF

VIRGIL PRICE Business Manager
 CHARLIE C. SMITH Assistant to Business Manager
 SARA BAKER Assistant to Business Manager

VIRGINIA BISHOP Assistant to Business Manager
 RACHEL THORNTON Assistant to Business Manager





ZIEGLER



VINTON



PAYNE



BOOTH



GILBERT

The CADET BUGLER

SHIRLEY ZIEGLER Co-Editor
LUTHER VINTON Co-Editor
CHARLES PAYNE Business Manager

W. D. BOOTH Faculty Adviser to Editors
H. H. GILBERT Faculty Adviser to Business Manager

The Cadet Bugler

The Voice Of North Georgia College
DUBLIN, GEORGIA, FOUNDED BY THE COLLEGE IN 1910

Owens Now Heads Cyclops; Vinton, Ziegler Hold Bugler

Sigma Theta Frat Initiates 21 New Members Sent. 30

Burdette Is Lt. Col., Reid Made Major

At 1915-M, the student body has the high honor of being the first to be found in arms with the new officers. The results of the election are as follows: Lt. Col. Burdette, Reid, Major; Capt.



673 Students Are Enrolled; Largest Group In History

Crown Mountain Clim

Freshman Talent Night Sponsored By the Y.M.-Y.W.

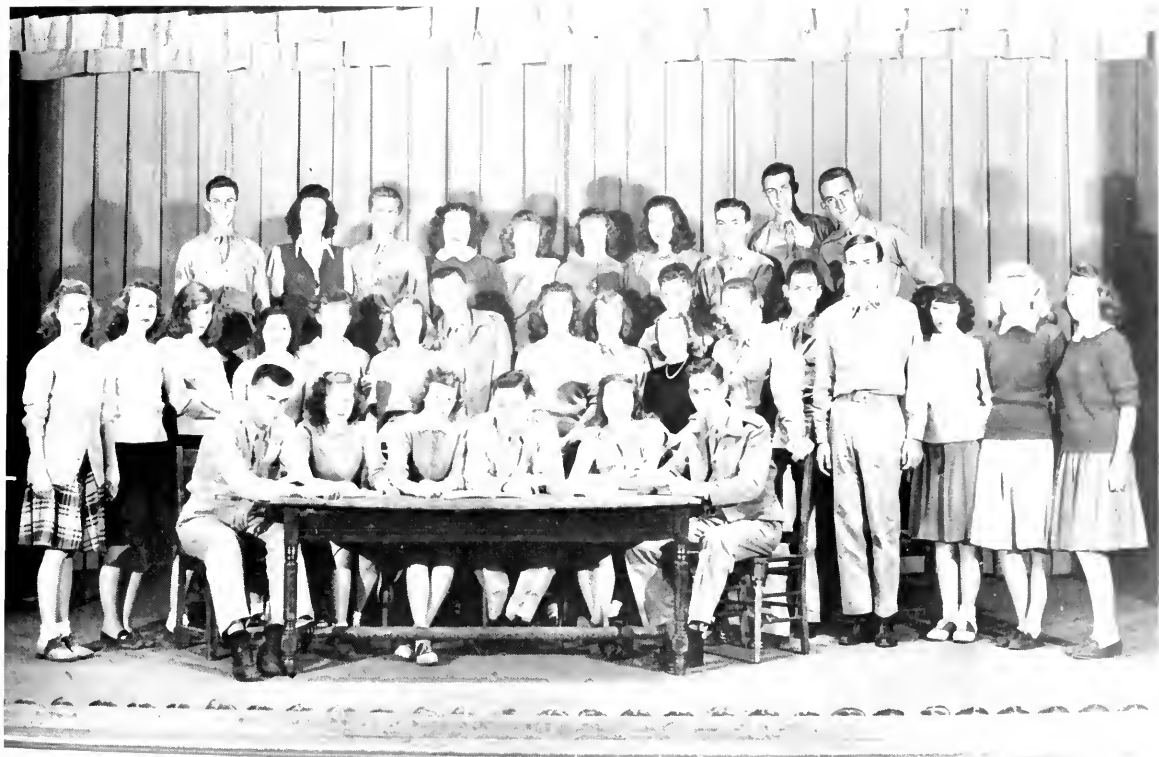
Prof. K. England Restores Will Teach At Georgia Tech

Seven Are Added To N.G.C. Faculty

Social Calendar

- 10 - 11 - 12 - 13 - 14 - 15 - 16 - 17 - 18 - 19 - 20 - 21 - 22 - 23 - 24 - 25 - 26 - 27 - 28 - 29 - 30 - 31

From Today
C. M. C.



STAFF

SHIRLEY ZEIGLER Co-Editor
 LUTHER VINTON Co-Editor
 MARY ANNE MARTIN Feature Editor
 CHARLES PAYNE Business Manager
 JEAN HEALAN Exchange Editor
 RALPH IVEY Sports Editor
 LEO CROSS Feature Writer
 KATHRYN SESSOMS Feature Writer
 JEAN ZEIGLER Feature Writer
 ANNE EDGE Feature Writer
 HENRY HITCH Feature Writer
 ROBERT HOLDT Feature Writer
 CHARLIE SMITH Feature Writer
 EDMUND BUTLER Feature Writer
 VIRGIL PRICE Feature Writer
 DORIS KING Reporter
 ANNE WOOLSEY Reporter
 MARY HENDERSON Reporter
 KATHLEEN FRAZER Reporter

ALIGENE ABERCROMBIE Reporter
 NANCY HINGSON Reporter
 DAVID WYNNE Reporter
 BERNICE CANNON Reporter
 GINNIE BISHOP Reporter
 LENORA TATE Reporter
 MARY EDNA KLING Reporter
 H. G. JARRARD Reporter
 JUDY PALMER Reporter
 BUDDY STANDARD Reporter
 ADAIR HARRIS Reporter
 BILL TOWSON Reporter
 MILDRED BAILEY Typist
 EVELYN ETHRIDGE Typist
 JUNE WATSON Typist
 NINA CRUMP Typist
 ELSIE SHORT Typist
 ROANNE ARRENDALF Typist



MARTIN



KINGERY



SESSOMS



DONOVAN

OFFICERS

MARY ANNE MARTIN President
 VIRGINIA KINGERY Vice-President
 KATHRYN SESSOMS Secretary and Treasurer
 MISS ALICE DONOVAN Faculty Adviser

CABINET MEMBERS

BETTY CALLOWAY
 ELOISE COGBURN
 DORIS FACKLER

NANCY HINSON
 LUCILLE LEARD
 ALICE REDMOND

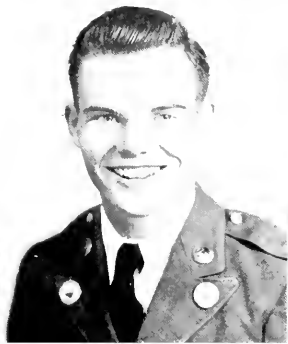
CHARLIE C. SMITH
 JEAN ZEIGLER
 SHIRLEY ZEIGLER

Y. W. C. A.

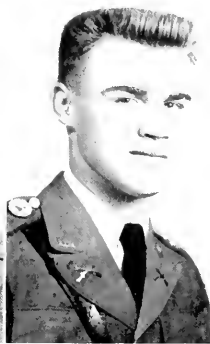




WOODY



PEARCE



PAYNE



FORESTER

OFFICERS

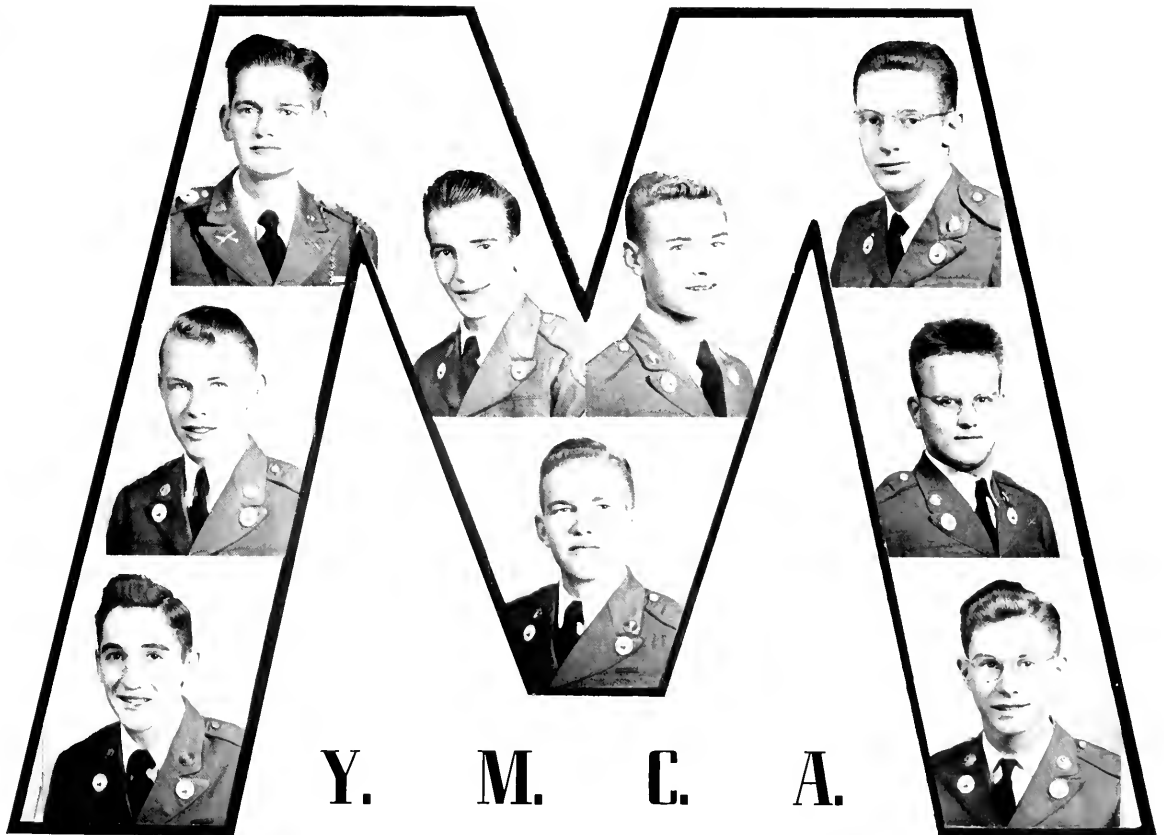
- BILLY WOODY President
- BONNELL PEARCE Vice-President
- RALPH IVY Program Chairman
- JULIUS STILL Social Chairman
- CHARLIE PAYNE Secretary and Treasurer
- DR. H. B. FORESTER Faculty Adviser

CABINET MEMBERS

JOEL BILES
BILL BOLDING

JOHN HAINES
JOHN MADDOX
R. H. MAHAFFEY

JIM MATTHEWS
DAVID WYNNE



Y. M. C. A.



BOOTH



DISMUKES



FLANDERS

CAMILLUS I. DISMUKES Director of Music
 W. DESMOND BOOTH Conductor of the Chorus
 BERT H. FLANDERS Accompanist

The GLEE CLUB

Sopranos

APERCROMBIE, ALIGENE
 BARNETT, MIRIAM
 BISHOP, VIRGINIA
 BOWERS, BEVERLY
 BURRELL, THEDA
 BROWN, FRANCES
 CANNON, BERNICE
 COMES, ELIZABETH

DOWART, KATHERINE
 FORN, DOROTHY
 ELLIS, EVELYN
 ELROD, BETH
 EVANS, ROSE
 FACKLER, DORIS
 GREEN, CLAUDIA

HENDERSON, MARY
 HORTON, MILDRED
 KING, DORIS
 KINGERY, VIRGINIA
 KLING, MARY EDNA
 LEWIS, ELAINE
 MARTIN, MARY ANNE

MAYNARD, JOY
 REAMES, MATTIE
 SMITH, CHARLIE CURTIS
 STEVENSON, JEAN
 TATE, LENORA
 TATE, LURENE
 TATUM, HELEN

TERRY, JOAN
 THORNTON, RACHEL
 TILLEY, BERNICE
 WEST, JANIE
 WHITMIRE, FLORA NELL
 WILLIS, JOYCE
 WOOLSEY, ANN

Altos

EHRIDGE, EVELYN
 HEALAN, JEAN
 LEHNHERR, JEAN
 PALMER, CAROLYN
 PALMER, JULIA
 RICHARDSON, WILLENE
 ZEIGLER, JEAN
 ZEIGLER, SHIRLEY

Tenors

BURT, J. M.
 FAGAN, ALBERT
 HICKS, TOMMY
 MCCARD, ROY
 PEARCE, BONNELL
 THOMPSON, ED
 WYNNE, DAVID

Basses

JARRARD, H. G.
 MAYO, HOWELL
 SMITH, BILLY
 STILL, JULIUS
 BILES, JOEL





IVEY
SMITH
HINSON

BURRELL
FACKLER
SANDERS

STILL
STEVENSON
WYNNE

STANDARD
BILES
COGBURN

BRUCE
REDD
FORESTER

OFFICERS

RALPH IVEY	President
CHARLIE SMITH	Vice-President (Enlistment)
NANCY HINSON	Vice-President (Social)
THEDA BURRELL	Vice-President (Devctional)
DORIS FACKLER	Secretary
BILLY SANDERS	Treasurer
JULIUS STILL	Chorister
JEAN STEVENSON	Pianist
DAVID WYNNE	Corresponding Secretary
BUDDY STANDARD	Paper Editor (BSU NEWS)
JOEL BILES	Publicity Director
ELOISE COGBURN	Sunday School Representative
BETH BRUCE	B.T.U. Representative
MISS MAHALA REDD	Student Secretary
DR. H. B. FORESTER	Faculty Adviser



REVEREND A. C. JOHNSON

B A P T I S T S T U D E N T U N I O N



T H E G E N E R A L S

Saxophones

ROBERT E. CLARK
EUGENE NEWBERNE
GEORGE ELY

Clarinet

JAMES COOKSEY

Trombones

NORMAN CLARK
PETE ROYAL

Accordion

EUGENE DUNN

Trumpet

R. H. MAHAFFEY

Piano

B. P. BUSSEY

Drummer

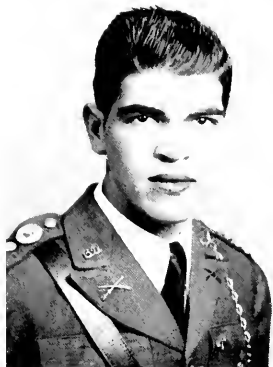
BILLY NICHOLS

Vocalist

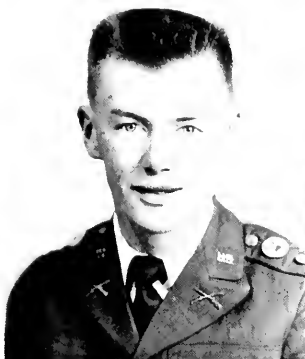
ROSE EVANS

Sponsor

MISS MAHALA REDD



WESTBROOK

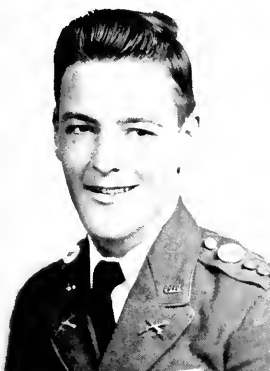


President
WILLIAM WESTBROOK



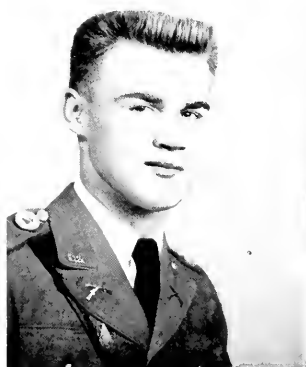
PRESCOTT

Secretary-Treasurer
LEO CROSS



Vice-President
BILL PRESCOTT

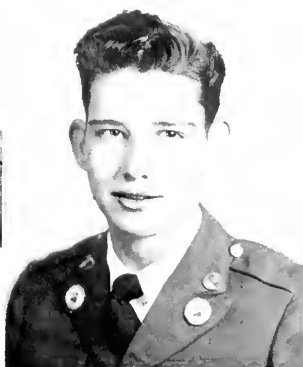
Sec. Treas. pro-tempore
LUTHER VINTON



PAYNE



CROSS
VINTON
JARRARD



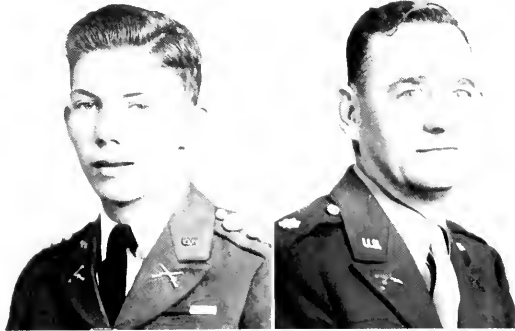
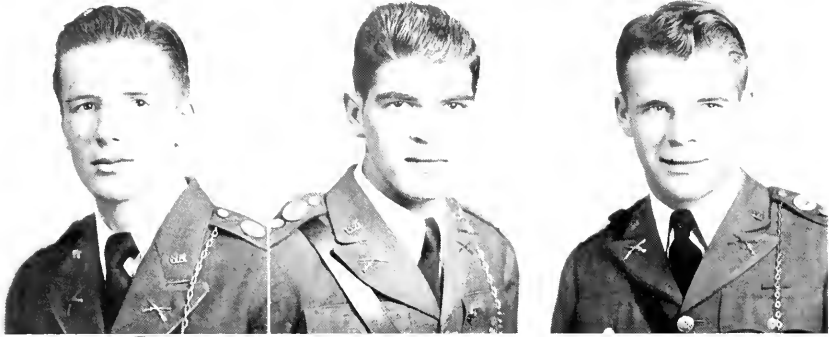
VANN

PAN - HELLENIC COUNCIL

ANDREW REID
President

WILLIAM WESTBROOK
Vice-President

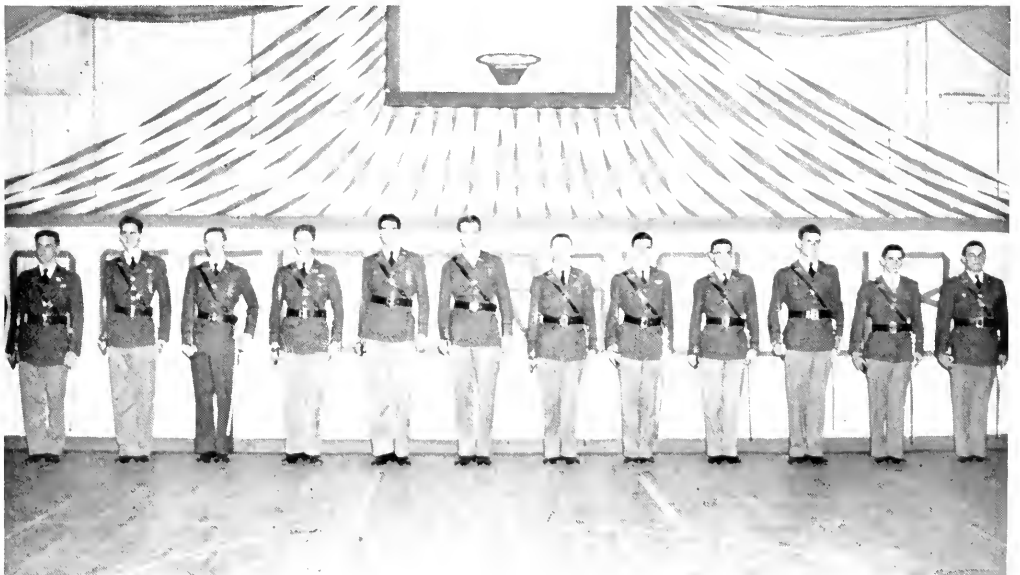
WILLIAM PRESCOTT
Treasurer



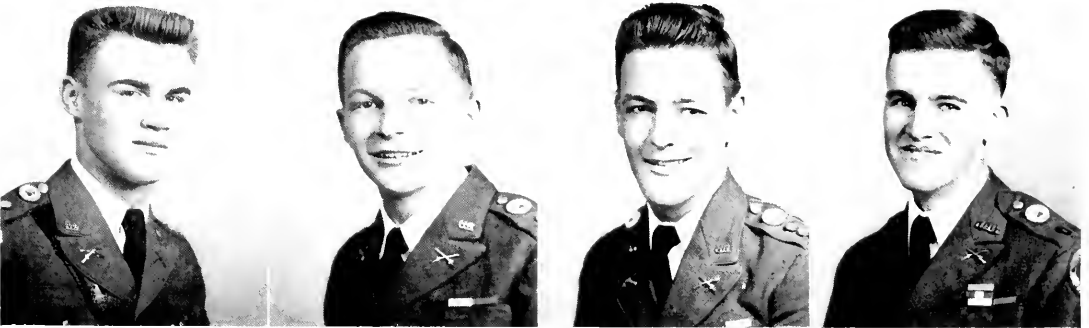
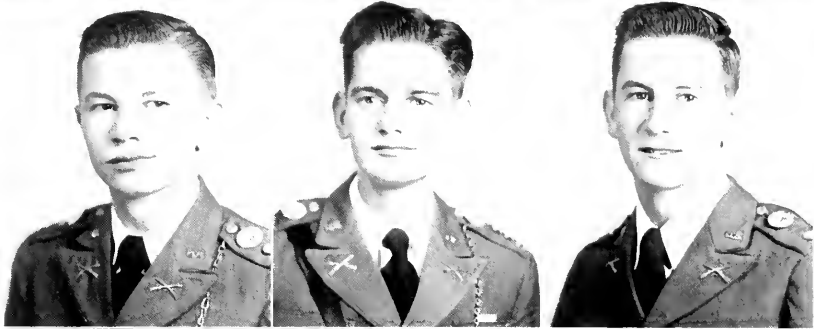
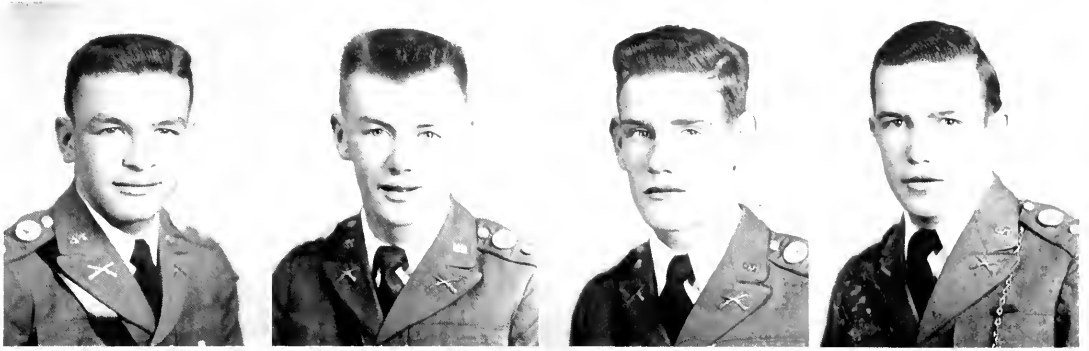
HENRY JARRARD, JR.
Secretary

MAJOR P. M. HUTCHERSON
Faculty Adviser

OFFICERS' CLUB



OFFICERS AT OFFICERS CLUB DANCE



COLLIER

CROSS

CRUMP

EDWARDS

GAYLER

IVEY

MAY

PAYNE

STOVER

VINTON

WOODY

MEMBERS

ROBERT COLLIER

RALPH IVEY

LEO O. CROSS

HARRY THOMAS MAY

WALLACE CRUMP

CHARLES G. PAYNE

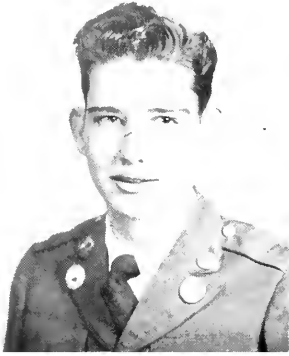
DOUGLAS EDWARDS

WILLIAM STOVER

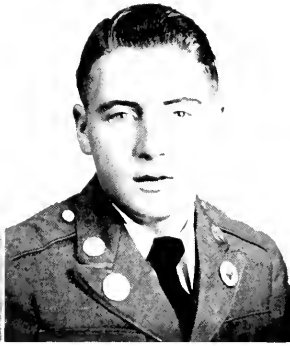
BRANSON GAYLER

LUTHER M. VINTON, JR.

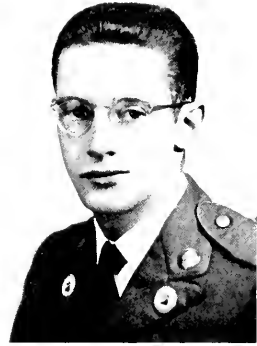
BILLY B. WOODY



VANN



CRAIG

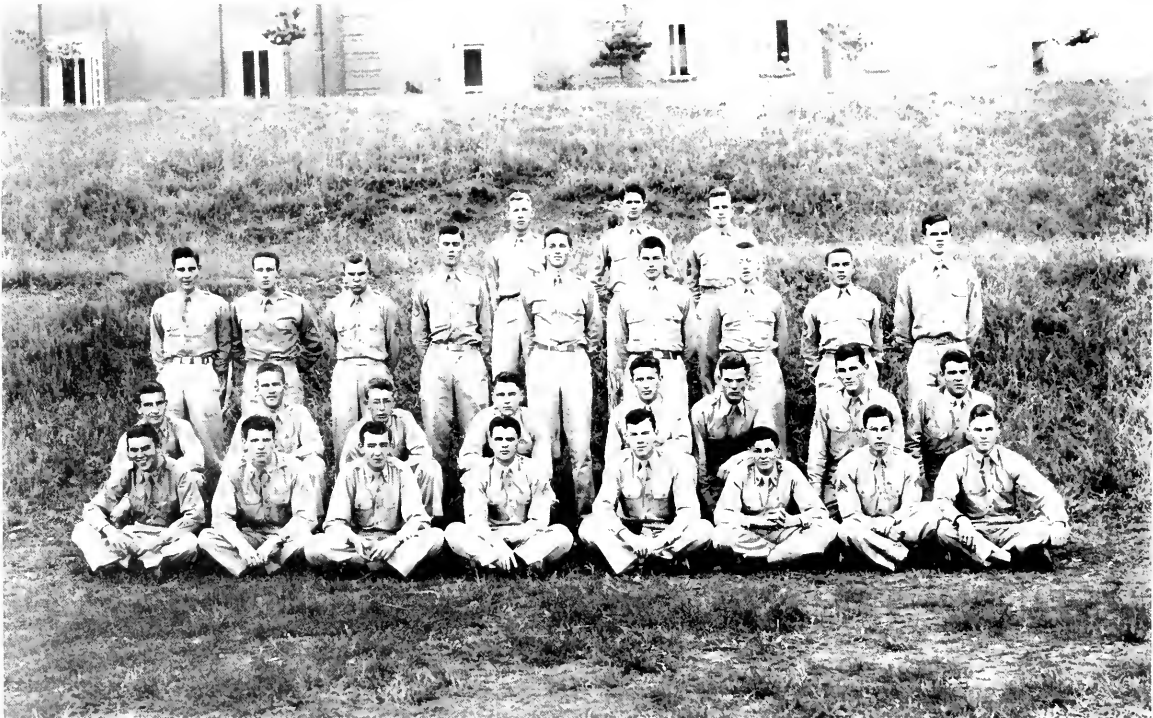


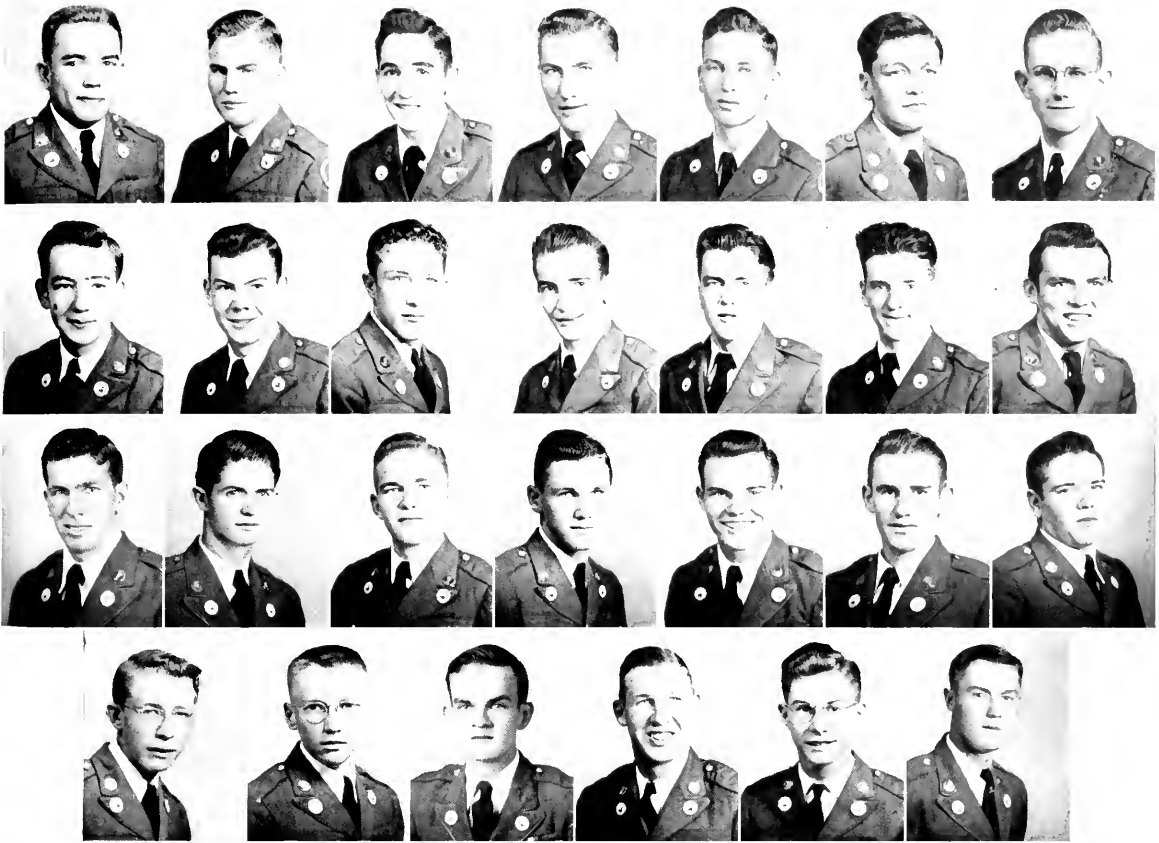
STILL

SERGEANTS' CLUB

OFFICERS

CLAUDE VANN	President
HAROLD CRAIG	Vice-President
JULIUS STILL	Secretary-Treasurer





MEMBERS

ANDERSON
FOWLER
KILPATRICK

THRASHER

BELL
GIRTMAN
McCARD

TIPPINS

BOLDING
GURLEY
MADDOX

TOWSON

BURGESS
HAINES
OWENS

TUCKER

CARTER J.
HARBEN
PEARCE

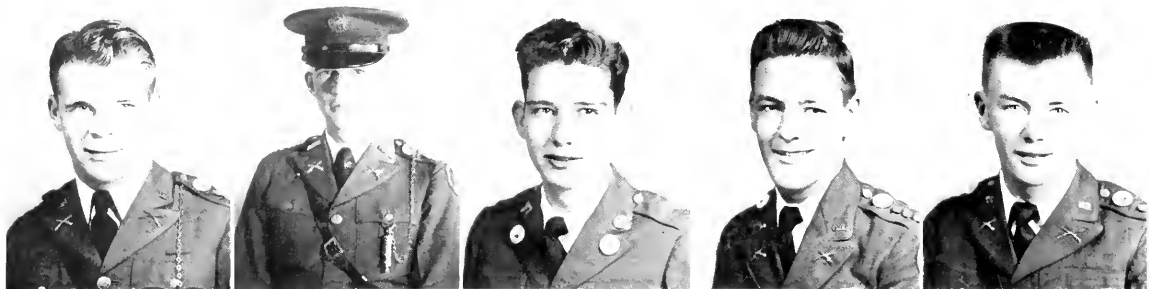
WYNNE

CARTER W.
HALL
PURCELL

YARBROUGH

CURLEY
JACKSON
STEPHENSON

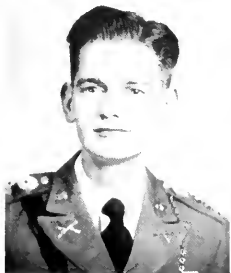
TRASH



BURDETTE

VANN

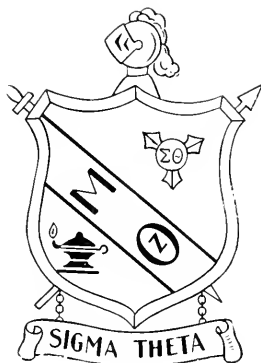
VINTON



PRESCOTT
IVEY



CROSS
ANTHONY



OFFICERS

BILL PRESCOTT President
 CLAUDE VANN Vice-President
 LUTHER VINTON Secretary
 LEO CROSS Treasurer

RALPH IVEY Chaplain
 J. D. ANTHONY Faculty Adviser
 JAMES BURDETTE President Emeritus

B. BISHOP
 W. CRUMP
 T. MATTHEWS

C. ECKHAM
 G. GURLEY
 G. MOXLEY

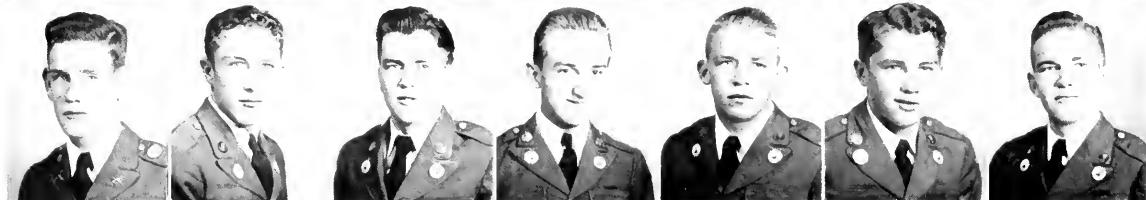
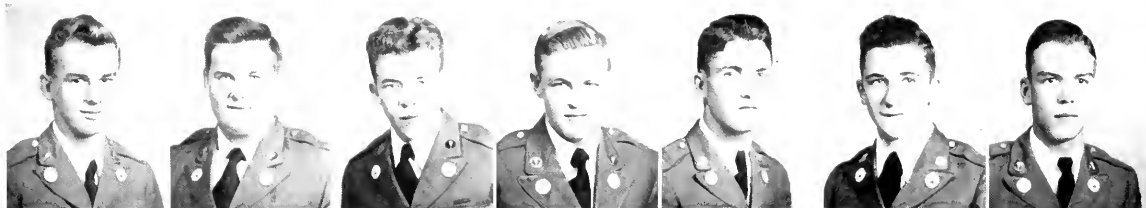
A. SUGRU
 F. HARBEH
 W. OWENS

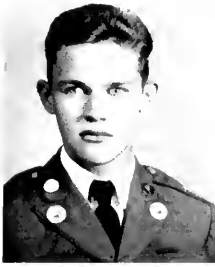
F. BROOK
 H. HITCH
 I. ROGERS

R. CANNON
 H. RIEER
 H. WHELHEL

P. CARMICHAEL
 F. LEE
 B. WOOLARD

C. COLLIER
 J. MADDOX
 F. WOOTEN

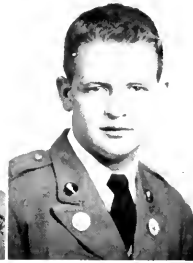




ROWLAND



FOWLER



WHATLEY



PRICE

SIGMA THETA PLEDGES

OFFICERS

JOE ROWLAND	President
HAROLD FOWLER	Vice-President
WILL WHATLEY	Secretary
VIRGIL PRICE	Treasurer



SCENES FROM THE HIKE

J. FARMER

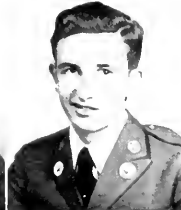
M. GIGHILLIAT

R. HARRIS

J. MEADOW

O'DILLON

W. WHITTLE





WESTBROOK



JARRARD



PAYNE



CURLEY



BOLDING



TUCKER

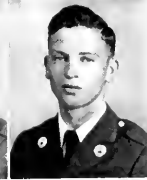


HUTCHERSON

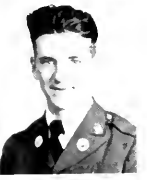
REX FRATERNITY

OFFICERS

WILLIAM WESTBROOK President
 H. G. JARRARD Vice-President
 CHARLES PAYNE Vice-President
 CHARLES CURLEY Secretary-Treasurer
 BILLY BOLDING Chaplain
 CLARENCE TUCKER Sergeant-at-Arms
 MAJOR HUTCHERSON Faculty Adviser



TED BLIZZARD
 TED BURGESS
 JOHN CARTER
 ROBERT COLLIER
 JOSH BARROW



HAROLD CRAIG
 DOUG EDWARDS
 BUSTER GARRISON
 JOHN HAINES
 GORDON HALL



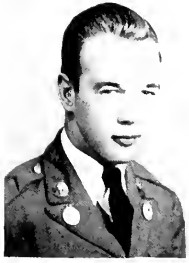
MERRILL HARPER
 CHARLES HERRING
 HARRY HODGES
 JESSIE JACKSON
 TOM MAY



STEWART McLEOD
 MICKEY MIDDLETON
 GEORGE MILLS
 WARREN MORAN
 BONNELL PEARCE



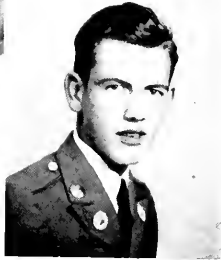
BILL ROBERTSON
 JOE STEPHENSON
 JULIUS STILL
 JOE THRASHER
 DAVID TIPPINS



CONNER



STARK



BAXTER

R E X P L E D G E S

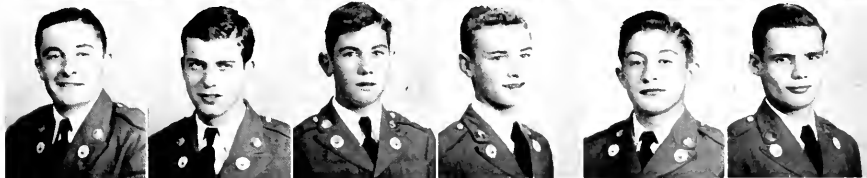
OFFICERS

HAROLD CONNER	President
JOHN STARK	Vice-President
BOWEN BAXTER	Secretary-Treasurer

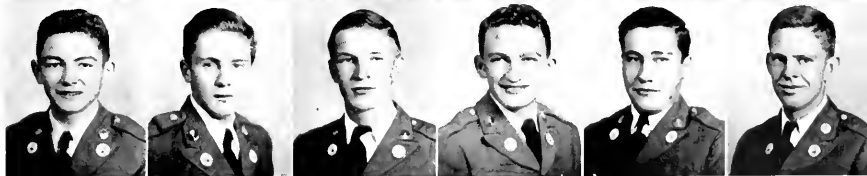
PRESTON BUSSEY
 JOHN COWART
 CHARLES DAVIS
 BILLY DISMUKE
 CLABIE LLOYD
 GENE LOWRY



HAROLD MARTIN
 LEO McCOLLUM
 BANKS McCOY
 R. H. MAHAFFEY
 JACK MOORE
 BILL MURELLE



HAROLD PINSON
 DAN SHIRLEY
 BILLY SMITH
 ED TIMMONS
 CHARLES WILKINSON
 CHARLES WRIGHT





ANNE WOOLSEY
President



DORIS KING
Secretary-Treasurer



REV. FRANK MOORHEAD
Adviser

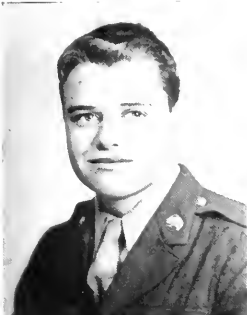
WESLEY FOUNDATION

COUNCIL

MIRIAM BARNETT
Pianist



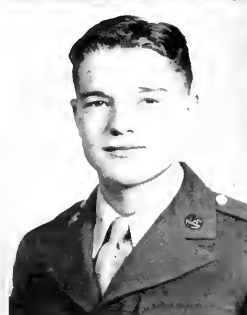
MARY EDNA KLING
News Editor



LESLIE BARR
Worship Chairman



JOY MAYNARD
Community Service Chairman



EUGENE NEWBERNE
World Friendship
Chairman



WILLENE RICHARDSON
Recreation Chairman



BROWN
GUINE
HORTON
MOXLEY
RUSSELL

COWART
HARGROVE
JONES
NASH
SMITH, F.

ELLIS
HARPER
KLING
PALMER
SMITH, M. F.

ELROD
HENDERSON
LAMBETH
RAINES
WALLER

ETHERIDGE
HICKS
MOORE
REYNOLDS
WHELCHEL

MEMBERS

JOE E. BROWN
KATHERINE COWART
BETTY JEAN ELLIS
BETH ELROD
JAMES T. ETHERIDGE
JERRY R. GUINE
HARRIET HARGROVE
MERRILL HARPER

MARY HENDERSON
THOMAS HICKS
MILDRED HORTON
SARA ELIZABETH JONES
ANNE E. KLING
LYNDA LAMBETH
ELIJAH F. MOORE
GEORGE K. MOXLEY
OPAL KATE NASH

CAROLYN PALMER
LULA RAINES
BOBBIE REYNOLDS
DAVID RUSSELL
FRANK SMITH
MARY FRANCES SMITH
LOMAN WALLER
BETTY ANN WHELCHEL



KATHERINE COWART
Secretary



KATHLEEN FRAZER
President



MISS RAY
Faculty Adviser



CHARLIE C. SMITH
Vice-President



LUCILE LEARD
Treasurer

HOME ECONOMICS CLUB



MEMBERS

BETTIE ANDERSON
BETTY CALLOWAY
ESTELLE COFFEY
DOROTHY CORN
HAZEL ANNE DEAN
ANNE EDGE
BARBARA HAWES

MARTHA HAWKINS
JANE HINTON
CAROLYN HUFF
LYNDA LAMBETH
MARY ANN MOORE
MARGARET MOULTRIE
OPAL KATE NASH
ALICE REDMOND

ELSIE SHORT
JEAN STEVENSON
LURENE TATE
HELEN TATUM
JOAN TERRY
OVEDA WEHUNT
ELISE WILLIAMS





SHIRLEY ZEIGLER
President



NANCY HINSON
Vice-President



ANNE WOOLSEY
Secretary



MARY RUTH NIX
Treasurer



MISS NELLE C. BURTON
Faculty Adviser

The Rec Club is a recreational organization that includes all the Co-eds on the campus. The governing body of the Club is the Council, composed of the officers, team captains, sports managers and faculty adviser. The four teams whose names are Hippolytans, Mercure-ans, Phi Omicrons and Trahlytans compete for first place in the various intramural sports such as speedball, softball, basketball, volley ball, hockey, tennis, table tennis and archery. They also sponsor dances, hikes, and other social activities. The Rec Club's formal dance given on St. Patrick's Day is one of the highlights of their social activities.

For recognizable work accomplished by the teams and their members, special awards are given. A loving cup is awarded the leading team at the end of each year. Individual members receive points on the basis of the Rec Club point system. Jackets are presented those having 2,000 or more points, large letters for 1,500 and small letters for 850 points. The outstanding award of the year is the loving cup that is awarded the Co-ed who best typifies the athletic spirit of North Georgia College. This year it was awarded the President of the Rec Club, Shirley Zeigler.

R E C C O U N C I L



CELESTE FAUST



FRANCES HARBEN



ELISE WILLIAMS



JOYCE WILLIS

VIRGINIA KINGERY



JO MESCHINE



KATHRYN SESSOMS



WYNNETTE SMITH





LUTHER VINTON
President



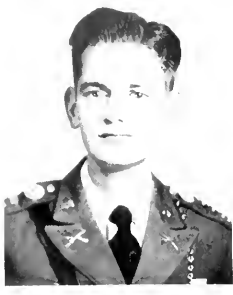
VIRGINIA KINGERY
Vice-President



NANCY HINDON
Secretary



SHIRLEY ZEIGLER
Parliamentarian



RALPH IVEY
Program Chairman

SCIENCE CLUB

MEMBERS

BISHOP
BOGGUS
BOYD
COGBURN

VIRGINIA BISHOP
ARGIN BOGGUS
FRANK BOYD
ELOISE COGBURN
JONNY COLLINS
ANNE EDGE
EVELYN ETHERIDGE
HARRY HODGES
BETTY JONES
JEAN LEHNHERR

STEWART McLEOD
ERIC NEWSOM JR.
JULIA PALMER
WILLENE RICHARDSON
KATHRYN SESSOMS
LENORA TATE
LURENE TATE
JOYCE WILLIS
DAVID WYNNE
JEAN ZEIGLER

TATE, LURENE
WILLIS
WYNNE
ZEIGLER, J

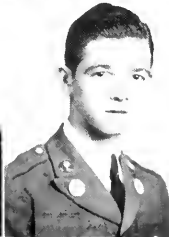


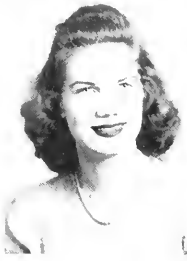
COLLINS
EDGE
ETHERIDGE

HODGES
JONES
LEHNHERR

McLEOD
NEWSOM
PALMER

RICHARDSON
SESSOMS
TATE, LENORA

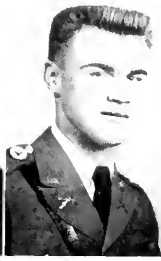




EDGE



ETHRIDGE



PAYNE



SHEETS



BURTON

P H Y S. E D. C L U B

OFFICERS

ANNE EDGE	President
EVELYN ETHRIDGE	Secretary
CHARLES PAYNE	Treasurer
C. A. SHEETS	Faculty Adviser
NELLE C. BURTON	Faculty Adviser



MEMBERS

LEWIS BLEDSOE
 HILL DOVER
 MARY DRAKE
 HARRIET HARGROVE
 AUDREY LANE
 FRED LEE

KENNETH MEDDERS
 JO MESCHINE
 BILL MURRELLE
 DAVID OWEN
 ANNE PALMER

NORMA PALMER
 EARL PHILLIPS
 REX SHUGART
 JOAN TERRY
 BILL TOWSON
 BILL WOOLARD

Cadet



S P O R T S

PHYSICAL TRAINING CLASSES

The Short Cut to the End of the Trail.



Everybody Does It. Why Shouldn't We, These Poor Boys Reason.

The goldbricks found their heaven in running the mountain, there were so many different new methods of cheating the coach. Perhaps some of the biggest goldbrickers were our officers, bless their hearts. Never will we forget the day Willie, Charlie, and Finky came in about two hours late, or the new freshman running the mtn. for the first time who got lost and did not get back to the college till nine that night. No one can say Coach Ary wasn't on the job guiding the new boys over the route, or maybe his Hudson couldn't take that steep climb.

Perhaps some of you will wonder at the title of this page, since all the pictures are of "mountain climbing," a favorite NGC sport. YEH!

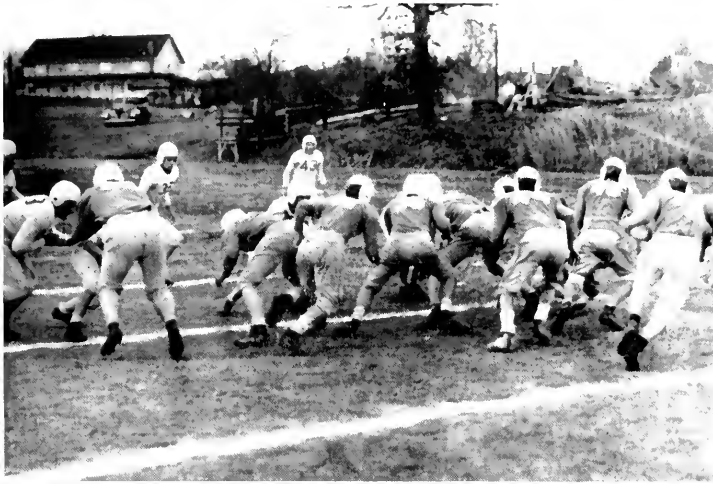
It probably is misnamed, but any boy will tell you that "THE HUMP," as it is affectionately known, is the biggest part of the p. t. program of N.G.C.

Waiting for Somebody?



Coach Checks in These Loyal Students Who Really Ran it, He Thinks.

FOOTBALL AT N. G. C.



The games played this fall had the following results:

ASTR OVER "A" CO.

"B" CO. OVER BAND

"A" CO. OVER "B" CO.

"A" CO. OVER BAND

Football was introduced into the sports program of N.G.C. after a long absence. We had all missed the traditional spirit that goes with tackle football, and thought that at long last we were to have something to fill up those bleak Saturday afternoons. But, it seems as if we were misinformed, for only three games were played this fall. Maybe the students will not be disappointed again next fall.



Outstanding players:

Canady—speed demon and ace passer
for "A" Co.

Lloyd—likewise for "B" Co.

Whelchel—Band's big hope.



FERBRINK



CARROLL



CRAIG

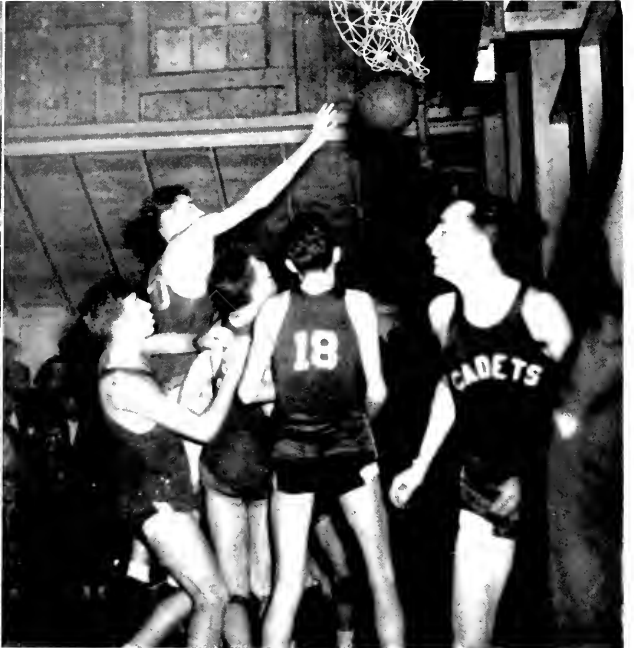


DISMUKE



EDWARDS

Carroll Shoots One in Practice Game



Dismuke Shooting in Game With Lawson General

Action in Game With Hiawasse

JALESON

JACOBS

KREMHECK

PINHOLSTER

SHRACK



B A S K E T B A L L



Left to right; Dismuke, Carroll, Berbrink, Kremcheck, Pinholster, Edwards, Jackson, Craig, Jacobs, Shrack.

The team this year had the disadvantage of starting from "scratch," but soon overcame this handicap by good teamwork. Although there can be no special mention of any one of the players without mentioning the rest, we can say that Jacobs and Carroll were great threats to all opponents. Everyone enjoyed watching our team in action this year. It proved to be capable of providing many an interesting evening.

Assets to the team this year were:

The fast and accurate passing and shooting of Jacobs and Carroll.

The height and size of Dismuke, a valuable player.

The surprise of Shrack, who looked very small, but was dynamite.

The mighty Pinholster.

The steady playing of Kremcheck, Berbrink, and Jackson.

Craig, an able pinch-hitter.

"Bo" Medders, a real scrapper.

The able leadership and coaching ability of Coach Sheets.



Left to right, standing: Coach Sheets, Pinholster, Berbrink, Dismuke, Carroll, Kremcheck, Coach Ary. Seated, middle row: Shrack, Jackson, Shugart, Edwards, Craig, Jacobs; Seated, front row: Carmichael, Kilpatrick, Owen, Matthews, Medders; Holding ball, Lee, manager.



1. The hardest obstacle: 5 1/2 miles.
2. Favorite sport: Football.
3. Johnny Moore breaks a record on the obstacle course, 25 minutes.
4. Mahaffey, eager to run the obstacle course.
5. Farrard and his Pop End at a Basketball game.
6. August Medical College Game: Carroll rings one.

Co-ed



S P O R T S



H I P P O L Y T A N S

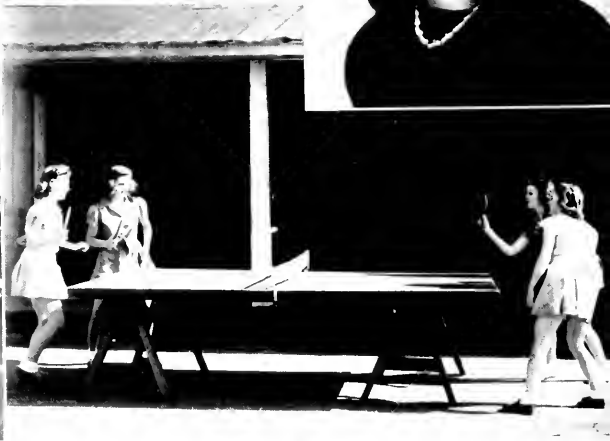
MEMBERS

JOYCE WILLIS
Captain

ABERCROMBIE, ALIGENE
BRUCE, BETH
CARNEY, PATSY
COGBURN, ELOISE
COOPER, MARY
ELLIS, BETTY
FOWLER, AILENE
FRAZER, KATHLEEN
HAWES, BARBARA
HENDERSON, MARY
HORTON, MILDRED
HUNTER, JO
JONES, BETTY
LANGFORD, PHOEBIE
LEWIS, ELAINE
TERRY, JOAN

MAYNARD, JOY
MATHEWS, ELMA
MERTZ, BETTY JEAN
OLVEY, SYLVIA
PALMER, ERNESTINE
RAINES, LULA
REYNOLDS, BOBBIE
SELF, CLARA JO
SHORT, ELSIE
SMITH, MARY FRANCES
SMITH, WYNETTE
STATION, FRANCES
STEPHENS, DOROTHY
TATE, LENORA
TATE, LURENE
WHITE JEAN

VIRGINIA BISHOP
Co-Captain





M E R C U R E A N S

ANDERSON, BETTY
 ARRENDALE, ROANNE
 BAILEY, MILDRED
 BAKER, SARA
 BOWERS, BEVERLY
 BURRELL, THEDA
 CALLOWAY, BETTY
 CANNON, BERNICE

COFFEY, ESTELLE
 CRUMP, NINA
 EDGE, ANNE
 ELLIS, EVELYNE
 FITTS, FRANKIE
 FRYE, LORRAINE
 HAWKINS, MARTHA
 HINSON, NANCY
 HINTON, JANE
 JONES, BETTY
 LAMBETH, LYNDA
 LEHNHERR, JEAN
 MARTIN, MARY ANNE
 MOORE, MARY ANNE
 MOTES, SARA
 NASH, OPAL KATE
 PALMER, ANNE

PALMER, JULIA
 PARIS, NELL
 PERKINS, ALLIE
 REDMOND, ALICE
 RICHARDS, LUCILLE
 SMITH, CHARLIE
 TATUM, HELEN
 TILLEY, BERNICE



ELISE WILLIAMS
 Captain



VIRGINIA KINGERY
 Co-Captain





PHI O M I C R O N S

ANDREWS, RITA
 BOLING, CHRISTINE
 BOWERS, JEAN
 COLWELL, BEVERLY
 COMBS, ELIZABETH
 CONNELLY, RUBY
 CORN, DOT
 COWART, KATHERINE
 CRANE, LOUISE
 DRAKE, MARY

ETHERIDGE, EVELYN
 GREEN, CLAUDIA
 HAWKINS, WANDA
 JOHNSON, ALENE
 KLING, ANNE
 KLING, MARY EDNA
 LEWIS, JANE
 MILLER, ELLEN
 MOULTRIE, MARGARET
 O'NEAL, JOAN
 OSBORN, CATHERINE

PALMER, CAROLYN
 REAMES, MATTIE
 REECE, CATHERINE
 RICHARDSON, WILLENE
 STEPHENSON, JEAN
 THORNTON, RACHEL
 WEHUNT, OVEDA
 WEST, JANIE
 WESTBROOK, LOUISE
 WHELCHER, BETTY ANNE

BETTY JANE MITCHELL
 Co-Captain

FRANCES HARBEN
 Captain





T R A H L Y T A N S

BARNETT, MIRIAM
 BEDINGFIELD, RACHEL
 BLACKWELL, BETTY
 BROWN, FRANCES
 COBB, MARGARET
 DANIELS, JO
 DEAN, HAZEL ANN

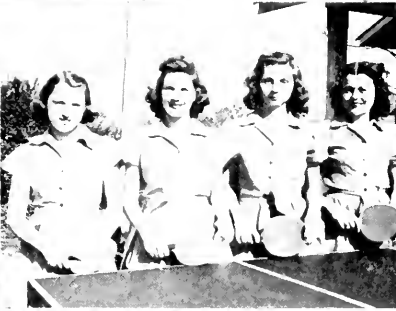
ELROD, BETH
 EVANS, ROSE
 FACKLER, DORIS
 GOEBEL, BARBARA
 HARGROVE, HARRIET
 HARKINS, RUTH
 HEALAN, JEAN
 HOOD, MARTHA
 LANE, AUDREY
 LEAGUE, SUZANNE
 LEARD, LUCILLE
 LIPSCOMB, BETTY JEAN
 LOWRY, DORIS
 MABRY, CHARLOTTE
 MESCHINE, JO
 NIX, MARY RUTH
 PALMER, NORMA
 ROBBINS, BETTY JO
 SATTERFIELD, SARA

SESSOMS, KATHRYN
 SMITH, CATHERINE
 WATSON, JUNE
 WHITMIRE, FLORA NELL
 WOOD, MIRIAM
 WOOLSEY, ANN
 ZEIGLER, JEAN

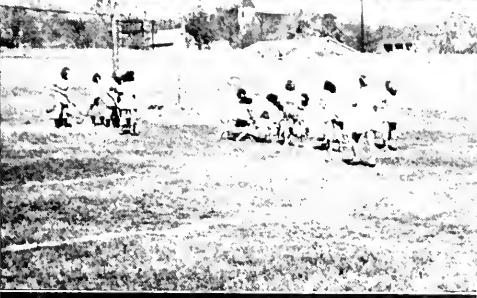
CELESTE FAUST
 Captain

DORIS KING
 Co-Captain





GIRLS' RECREATIONAL ACTIVITIES



N. G. C. Students All Say . . .

"Meet Me At . . .

GRIFFIN'S"

For

Sandwiches, Sodas, School Supplies, Toiletries,
Tobaccos, and a Friendly Game of Pool.



A Hearty Welcome Awaits You

"Where the Best Is Always Sold"



R. A. GRIFFIN, JR., *Proprietor*

COMPLIMENTS OF

THE NORTH GEORGIA COLLEGE
STUDENT EXCHANGE

“The Canteen”



An Excellent Staff of Students
“THE CENTER OF THE CAMPUS”
Supplies for Every Need
Your Patronage Makes This Convenience Possible



JACK ROBERTS, *Manager*

DAHLONEGA

GEORGIA

DAHLONEGA RECREATION CENTER

BOB EDWARDS, *Proprietor*

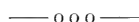


"All Kinds of Sandwiches and Cold Drinks"



The Recreation "Hub" of North Georgia College

DAHLONEGA



GEORGIA

ROBERT M. MOORE

Successor to John H. Moore & Son

General Merchandise



A Friend of North Georgia College



DAHLONEGA

GEORGIA

THE HUB

Complete Line of Clothing
For The Family

ENDICOTT JOHNSON SHOES

Gainesville, Georgia

Visit...

SMITH BROTHERS

for

Sandwiches — Drinks — Lunches

ROOSEVELT SQUARE

Gainesville, Georgia

Compliments of . . .

PARKS FEED STORE

Gainesville, Georgia

SERVING DAHLONEGA

Home of Georgia's Most Distinctive
EDUCATIONAL INSTITUTION

◇◇◇

STANDARD TELEPHONE CO.

W. A. WHITMIRE

Quality Merchandise

at

Popular Prices

Dahlonega, Georgia

CALENDAR HIGHLIGHTS

◇◇◇

SEPT. 20—2000 pool halls and honky-tonks close,
N.G.C. reopens.

◇◇◇

SEPT. 23 Freshmen get measured for rifles.

◇◇◇

SEPT. 24 —Sidney meets Mousey, Mousey meets
Sidney, 'nuff said!

◇◇◇

OCT. 1 Sanford Hall redecorated, 20,000 mice
seek new homes.

◇◇◇

OCT. 3 FINKY calls ANNE, telephone company
complains of melted wire.

◇◇◇

OCT. 5 Rate sheet comes out. Officers buy
larger hats.

◇◇◇

OCT. 10 Freshman talent night, Beverly Bowers
sings(?)

◇◇◇

OCT. 19 Prof. England leaves.

◇◇◇

OCT. 20—Free Weekend—2000 pool halls and
honky tonks reopen.

Compliments of . . .

CASH and CARRY CLEANERS

C. H. Davis, Prop.

"A Clean Place to Clean Clothes"

Just off the College Campus

Dahlonega, Georgia

Who's



CHARLIE SMITH
Friendliest Girl
Most Popular Girl



◀ **JOE THRASHER**
Photographer



NORMA PALMER and MILES POPPELL
Best Dancers



ALICE REDMOND
and BILL PRESCOTT
Couple Most in Love



HENRY GRADY JARRARD
Friendliest Boy - -



BRUNO
Most Military
(Popular Opinion)



BILL TOWSON
Best All-Round Boy
Biggest Bull Shooter



MARGARET COBB
Cutest Girl



CLAUDE VANN
Outstanding Sergeant

Who



HARLES HERRING
Biggest Romeo



BEVERLY BOWERS
Biggest Flirt



RACHEL THORNTON
Biggest Man Hater



ANDY REID ~
Biggest Goldbrick



TED BURGESS
Biggest Woman Hater



SHIRLEY ZEIGLER
Most Athletic Girl



CLABUS LLOYD
Most Athletic Boy



BILL PRESCOTT
Outstanding Officer
Most Popular Boy

BEST WISHES from . . .

**CHICOPEE MANUFACTURING
CORPORATION**

CHICOPEE



GEORGIA

**PACOLET MANUFACTURING
COMPANY**

Manufacturers of

DRILLS, TWILLS, SATEENS and PRINT CLOTHS

Number 6 Mill
Gainesville, Georgia

Number 4 Mill
New Holland, Georgia

COMPLIMENTS OF

“THE DIXIE”

GAINESVILLE, GEORGIA

Newest Releases Records and Albums — Both Popular and Classical

VICTOR — COLUMBIA — DECCA — CAPITOL

1860 Eighty-Six Years Old 1946

THE GAINESVILLE EAGLE

“Oldest and Largest Weekly Newspaper in Northeast Georgia”

Doing All Kinds of Commercial Printing and Doing It Right.

Compliments of . . .

GAINESVILLE JEWELERS

“The Store With the Blue Tile Front”

GAINESVILLE, GEORGIA

COMPLIMENTS OF

EDWARDS CAFE

GAINESVILLE, GEORGIA

“ASK FOR IT—if we haven't got it we'll get it”

To All Persons Entered in This Annual We Wish
Much Success and Good Luck



Compliments Of

DAHLONEGA-ATLANTA BUS LINE

MRS. FRED JONES, *Manager*



Leaves Dahlonega for Atlanta 7:30 a.m. E.S.T. and 3:00 p.m.
Leaves Dahlonega for Gainesville 9:30 a.m. E.S.T. and 1:30 p.m.
Leaves Atlanta for Dahlonega 8:00 a.m. E.S.T. and 3:00 p.m.
Leaves Gainesville for Dahlonega 12:30 p.m. E.S.T. and 5:00 p.m.

DAHLONEGA



GEORGIA

"UNIFORMS BY REEDS"

o o o ☆ o o o

For 121 years the statement . . . "*Uniforms by Reed*" has been a familiar one to buyers of uniforms in every state in the union.

JACOB REED'S SONS is proud of the great list of loyal customers it has acquired through years of outstanding service and the production of superior uniforms and uniform equipment.

We are particularly proud to count North Georgia College as one of our oldest and most loyal customers.

Remember, when it comes to uniforms and uniform equipment . . . "*It's Right at Reed!*"

o o o ☆ o o o

JACOB REED'S SONS

1424-26 Chestnut Street

Philadelphia, Pennsylvania

HENRY W. MOORE

Authorized

FORD SALES & SERVICE

DAHLONEGA

GEORGIA

SMALL-ESTES BAKERY

◇ ◇

Home of AUNT BETTY'S BREAD

◇ ◇

GAINESVILLE, GEORGIA

BANK OF DAHLONEGA

COURTESY ... SERVICE

... EFFICIENCY ...

◆◆◆

"A BANK YOU CAN BANK ON"

◆◆◆

Member of F.D.I.C.

DAHLONEGA

GEORGIA

CALENDAR HIGHLIGHTS

◇ ◇

OCT. 23 School reopens 2000 pool halls and honky tonks close.

◇ ◇

OCT. 24 Bruno appears at school.

◇ ◇

OCT. 26 Bruno disappears.

◇ ◇

OCT. 29 Hot dogs served in cafeteria.

◇ ◇

NOV. 1 WHO'S WHO POLL taken Leo nearly becomes Miss NGC.

◇ ◇

NOV. 12-Dean Sirmans claims he discovered America!

◇ ◇

NOV. 14 Pictures from the Cyyyycloppps will aaaaah be taken today!



- 1. PE IN ENGLAND
- 2. JANE BREK FALLS
- 3. SUMMER HIKE
- 4. TYPICAL CADET
- 5. BRUNO AGAIN
- 6. REID AND PRESENT
- 7. CRAP GAME
- 8. EFFENSE CHURCH
- 9. FORTIATION
- 10. DISASTROUS FIRE
- 11. WOODSHELL FURN
- 12. RE SULATION
- 13. FLUID PROGRAM
- 14. TOO LONG, PAL
- 15. SLEEPING BEAUTY

J. C. PENNEY CO.

Incorporated

GAINESVILLE

GEORGIA

Compliments of . . .

HULSEY'S

"The Ready-to-Wear Store"

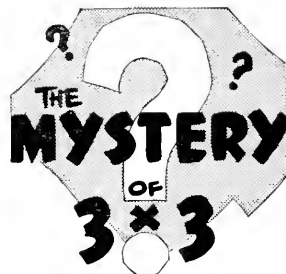
Gainesville

Georgia

ON THE SQUARE

DRINK

ROYAL CROWN COLA



**WHY IS IT... THAT NO
MATTER WHAT SOFT DRINK YOU
MAY NOW PREFER...YOU CAN'T
DRINK 3 DR. PEPPERS A DAY
FOR 3 DAYS AND *NOT* LIKE
DR. PEPPER BEST?**

IT'S A DARE... *try it!*



COMPLIMENTS OF

J. D. JEWELL

GAINESVILLE, GEORGIA

GALLANT-BELK COMPANY

"Gainesville's Largest and Most Complete Department Store"

ONE OF 250 BELK STORES

GAINESVILLE

GEORGIA

The
GAINESVILLE FLORIST

"Home of Fine Flowers"



"FLOWERS FOR EVERY
OCCASION"



111 S. Sycamore Street

Gainesville - o - Georgia

Compliments of . . .

CITY ICE COMPANY

Incorporated

"Modern Ice Refrigeration"

Quality Coal

Gainesville Georgia

BEST WISHES

from . . .

PIEDMONT DRUG COMPANY



GAINESVILLE GEORGIA

Compliments of

FRIERSON-McEVER COMPANY

MEN'S and BOYS' WEAR

GAINESVILLE GEORGIA

CALENDAR HIGHLIGHTS



NOV. 15—"Padre" Cain shifts into high gear.



NOV. 20—Spencer breaks down, changes socks.



NOV. 22—Kiljoy borrows five bucks.



NOV. 23 The Cook buys a new hat.



NOV. 30 Barron on time to Math Class.



DEC. 1 Dull as heck; same old thing.



DEC. 10- DOUBLE FEATURE HOLLY THEATRE - "Out of This World," starring Eddie Bracken and Diana Lynn, "Amen Corner," starring Kat and Willie.

The
GEO. P. ESTES COMPANY

Gainesville, Georgia

Department Store

Compliments of

MILLNER'S

"The Style Center of Gainesville"

Wearing Apparel and Shoes

GAINESVILLE GEORGIA

PIGGLY - WIGGLY

A Gainesville Institution

J. B. McKIBBON, *Owner*

Gainesville Georgia

Compliments of . . .

GEM JEWELRY CO.

"Jewelry on Credit at Cash Prices"

On the Spring Street
Side of the Square Georgia

Get the leaders at

THE LEADER

GAINESVILLE GEORGIA

CALENDAR HIGHLIGHTS

◇ ◇

JAN. 9 Rain.

◇ ◇

JAN. 11—Bridges washed cut, truck with load of pills for infirmary runs into river. Dead fish appear on surface.

◇ ◇

JAN. 12—Rain!

◇ ◇

JAN. 13 Rain.

◇ ◇

JAN. 14 Rain.

◇ ◇

JAN. 15—Rain.

◇ ◇

JAN. 16—Sleet, dark clouds, wind, freezing temperatures, snow, and RAIN, typical NGC weather.

◇ ◇

JAN. 17—Ha! Ha! Fooled you. It's a beautiful day.

◇ ◇

JAN. 19 Cyclops goes to press. WHEW!

CITY SHOE SHOP

W. A. HOUSLly, *Proprietor*

On the Square

DAILONLGA GEORGIA

Gainesville—Mather Company

Jewelry--Furniture--Furs

P. O. Box 544

107 W. Spring Street

GAINESVILLE GEORGIA

Compliments of . . .

J. S. SPEER

Dependable Insurance

Dahlonega, Georgia

Compliments of

**HIGHTOWER & POORE
SERVICE STATION**

Dahlonega, Georgia

**DAHLONEGA INSURANCE
AGENCY**

General Line of Insurance

B. B. FITE, *Manager*

**RUBY McELHANNON
SPECIALTY SHOP**

Gainesville, Georgia

Infants' and Children's Wear

also

Vanity Fair Underwear and Hose

WALL & JACKSON

Jewelers

The Original W. R. Hughes Store

Gainesville

Georgia

104 North Bradford Street

• • • •

Fine Watch Repairing

Watches

Silverware and

Rings

Photographs

BY

THE LITTLE STUDIO

57½ WHITEHALL STREET, S. W.

ATLANTA

GEORGIA

• • • •

COLLEGE ANNUALS A SPECIALTY

Photographs of All Kinds

• • • •

PORTRAITS

WEDDINGS

COMMERCIAL

Atlanta's Leading Family Photographers

E. L. HAWTHORNE

Supervisor

LIPSCOMB DRUG COMPANY

Phone 42

Nunnally's Candies

School Supplies

Prescriptions

DAHLONEGA

GEORGIA

When in Gainesville make your
headquarters

MAYFLOWER CAFE

Gainesville, Georgia

THE SMITH HOUSE

DAHLONEGA, GEORGIA

"A Good Place for Good People"

Also the Dahlonega guest home of parents
and loved ones, including the sweethearts of
the cadets and young ladies of North
Georgia College.

**PILGRIM—ESTES
FURNITURE COMPANY**

Complete Line of

HOME FURNISHINGS

Gainesville

Georgia

Compliments of...

**WOODY'S
BARBER SHOP**



ON THE SQUARE



DAHLONEGA

GEORGIA

COMPLIMENTS OF

**"THE
COOK"**



(unpaid advertisement)

A black and white photograph of a cloudy sky. The sky is filled with large, bright, fluffy clouds against a darker background. In the foreground, there are silhouettes of trees and a couple standing together, holding hands. The couple is positioned in the lower center of the frame. To the right, there is a silhouette of a building with a dome. The overall mood is romantic and classic.

ANNUALS
of
DISTINCTION

BOWEN, LONG AND YOUNG
Atlanta





Sp.Col. U 428 .No C9 1946
North Georgia College,
Cyclops / 131008

