

NORTH GEORGIA COLLEGE



3 0642 00152 7665

Cyclops  
1957

ARCHIVES U428 C9 1957c.3  
North Georgia College  
CYCLOPS

To Lewis Hall  
with the compliments  
and gratitude of the  
1957 Cyclops staff -





Editor . . .  
VERDA SMITH

Assistant Editor . . .  
CAROLYN MEBANE

Business Manager . . .  
LEONARD PARKS

# 1957 Cyclops

North Georgia College  
Dahlonega, Georgia



## ADMINISTRATION AND FACULTY



## CLASSES



## FEATURES



## SPORTS



## ORGANIZATIONS



## MILITARY



## ACTIVITIES

The theme of this annual is the people of North Georgia College—the students and those who lead them. The things we do here are important to us now, and they will be for the rest of our lives. We remember the past, live the present, and dream the future. We are proud of our school and of the position it holds in the state and in the nation. With this in mind, let us open the story of a full, happy year at North Georgia—the best school anywhere!



# Dedication



The 1957 edition of the *Cyclops* is dedicated to a teacher whose courses provide invaluable knowledge and guidance . . . to an administrator whose many years of service to North Georgia College and its students merit recognition and appreciation . . . to a man whose Christian life serves as a model for all to admire and follow. For these reasons and others too numerous to name, this annual is yours—Dean Will D. Young.



The Library



The Price Memorial Building



The Arch



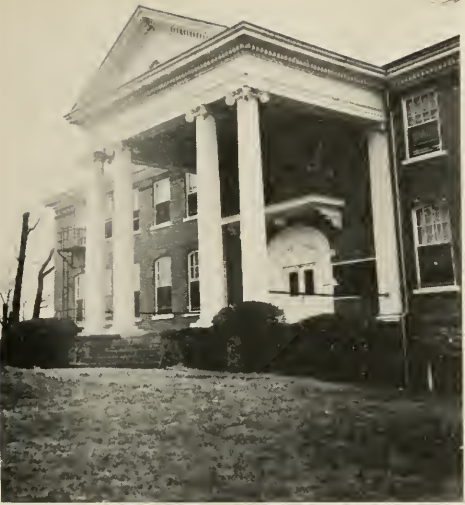
The President's Home



The New Gate

The Auditorium and Dining Hall





The Academic Building



The Science Building



The Home Economics Building



The Military Building



The Gymnasium



The Business Administration Building



Lewis Hall



Barnes Hall



Sanford Hall



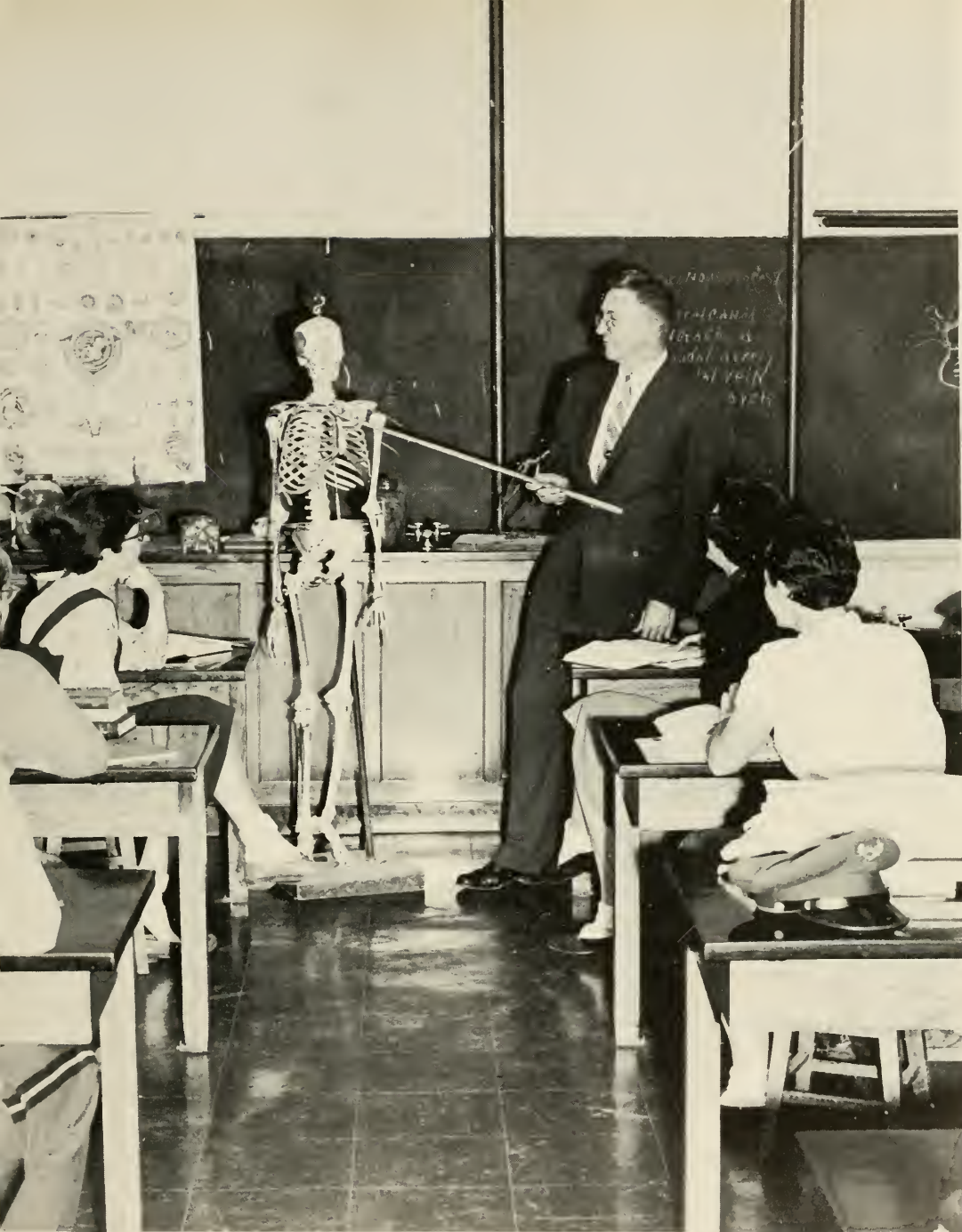
Company Barracks



Gaillard Hall



Band House



# Administration and Faculty



MERRITT E. HOAG  
President



WILL D. YOUNG  
Dean and Registrar



MISS ALICE DONOVAN  
Dean of Women



CAPTAIN ORVIL HAUSE  
Commandant of Cadets



HOWARD H. GILBERT, JR.  
Comptroller



J. W. PHILLIPS  
Assistant Comptroller



MRS. ELLA RAY OAKES  
Assistant Registrar



C. E. STEVENSON  
Director of Guidance



J. G. WOODWARD  
Physician



MRS. SARA M. WRIGHT  
Nurse



MRS. SUSIE M. HARRIS  
Librarian



MISS MARY E. HOOD  
Assistant Librarian



MRS. HAZEL B. TYREE  
Dietitian



MRS. PAULINE CROWE  
Dietitian



ROBERT RAGAN  
Manager, Student Canteen



J. J. HARRIS  
Assistant Canteen Mgr.



Estelle David  
Secretary to the President



Betty Jo Brogden  
Secretary to the Dean



Annette Johnson  
Accountant



Norma Ivester  
Bookkeeper



Juanita Fields  
Cashier



Anne Huff  
Secretary



Lucille Chambers  
Secretary to the Assistant  
Comptroller



The Canteen Staff:

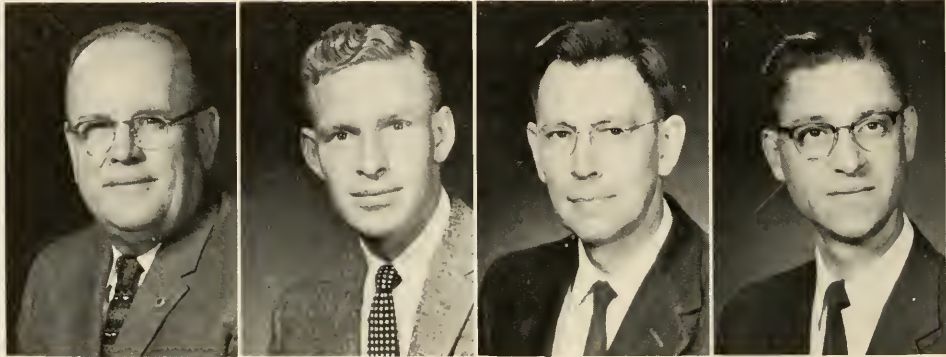
- Robert Ragan, Manager
- Mrs. Ola Brown
- Mrs. Dottie Brimer
- Mrs. Lula Dale

# Biology

**HARRY B. FORESTER** . . . Professor, B.S., Piedmont College; M.S., University of Alabama; Ph.D., University of Wisconsin.

**J. D. ANTHONY** . . . Associate Professor, B.S., Transylvania University; M.A., Emory University; Further Study, University of Kentucky

**BEN W. SANDERS** . . . Assistant Professor, B.S., University of Mississippi; M.S., University of Alabama; Further Study, University of Alabama



# Business and Administration

**NEWTON OAKES** . . . Professor, B.S., M.A., University of Kentucky; Further Study, University of Kentucky and Ohio State University

**CECIL W. ABEL** . . . Assistant Professor, B.S.C., M.B.E., Univer-

sity of Mississippi; Additional Graduate Work, University of Mississippi

**LORIMER B. FREEMAN** . . . Associate Professor, B.S.C., M.S.C., University of Georgia; Further Study, Northwestern University, Harvard University, and New York University.

**JASPER I. MALOY** . . . Assistant Professor, B.A., Henderson State Teachers College; M.B.A., University of Georgia; Further Study, University of Georgia



# Chemistry

**JOHN C. SIMMS** . . . Professor, B.S., Millsaps College; M.S., Vanderbilt University; Ph.D., Western Reserve University

**ROBERT H. BELCHER** . . . Associate Professor, B.S., Georgia State College for Men; M.S., University of North Carolina; Further Study, University of North Carolina and University of Wisconsin

# Education and Psychology

**ORBY SOUTHARD** . . . Professor, B.S., Arkansas State Teachers College; M.S., University of Arkansas; Ph.D., University of Pittsburgh

**MRS. MARIAN P. BOUFFARD** . . . Assistant Professor, A.B., Florida State College for Women; M.A., George Peabody College for Teachers; Further Study, University of Georgia and Ohio State University

**C. E. STEVENSON** . . . Associate Professor, A.B., Oglethorpe University; M.A., George Peabody College for Teachers; Further Study, University of Georgia and Duke University





## English and Modern Languages

CAMILLUS J. DISMUKES . . . Professor, A.B., Birmingham-Southern College; M.A., University of North Carolina; Ph.D., Laval University  
 W. DESMOND BOOTH . . . Assistant Professor, Director of Band and Glee Club, B.S., Georgia State College for Men; M.A., Emory University; Further Study, University of North Carolina and University of Michigan



DOROTHY BROWN . . . Associate Professor, A.B., M.A., University of Alabama; Ph.D., University of Colorado  
 G. H. ENGERRAND . . . Associate Professor, A.B., Texas Technological College; M.A., Ph.D., State University of Iowa  
 STEPHEN M. HUNTLEY . . . Associate Professor, A.B., M.A.,

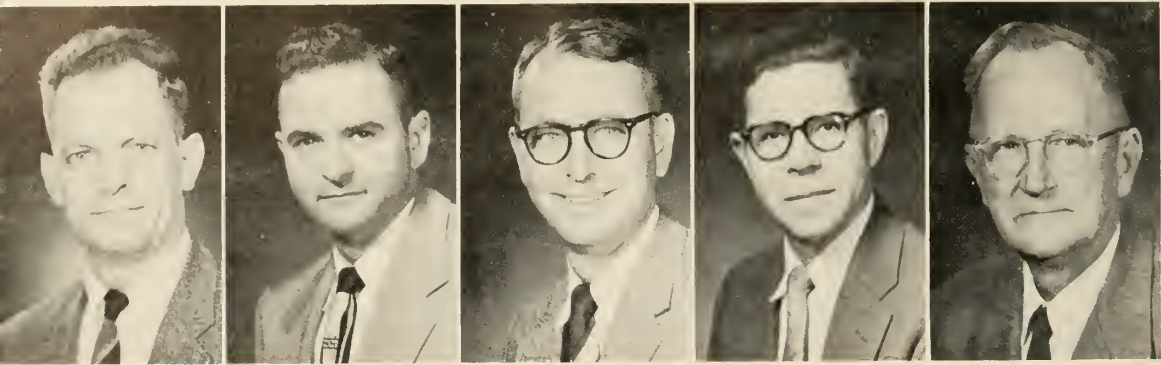
University of South Carolina; Ph.D., University of Toulouse  
 JOHN T. SIMPSON, JR. . . Assistant Professor, B.S., Mississippi State College; M.A., George Peabody College for Teachers; Further Study, George Peabody College for Teachers and Columbia University



MRS. ESTELLA SIRMONS . . . Assistant Professor, LaGrange College; Emory University; B.S. in Education, Georgia State College  
 HARRY R. SULLIVAN . . . Assistant Professor, A.B., Louisiana State University; M.A., Stanford University; Further Study, University of Mississippi, University of Toronto (Canada), and University of Georgia  
 JEAN WHITE . . . Assistant Professor, A.B., North Georgia College; M.A., Emory University; Further Study, George Peabody College for Teachers

## Home Economics

BESSIE LEE FREEMAN . . . Associate Professor, B.S., Oklahoma Central State College; M.S., Oklahoma Agricultural and Mechanical College  
 ALICE DONOVAN . . . Instructor, B.S.H.E., Georgia State College for Women



## Mathematics

MARION C. WICHT . . . Associate Professor, B.S., Mississippi Southern College; M.A., Vanderbilt University; Further Study, Louisiana State University and Alabama Polytechnic Institute  
 RALPH CAMPBELL . . . Assistant Professor, B.S., Jacksonville State College; M.Ed., Alabama Polytechnic Institute

WALTER J. CARPENTER . . . Assistant Professor, B.S., Western Carolina College; M.A., University of North Carolina; Further Study, University of North Carolina  
 RALPH SURASKY . . . Assistant Professor, B.S., M.A., University of South Carolina  
 LAMBUTH R. TOWSON . . . Associate Professor, B.S., Emory University; M.A., University of Georgia; Further Study, University of Chicago and University of North Carolina



## Physical Education

ROGER L. WILLIAMS, JR. . . . Assistant Professor, A.B., M.A., University of North Carolina  
 CLARIS D. BOAZ . . . Assistant Professor, B.S., Jacksonville State Teachers College; M.A., University of Alabama; Further Study, George Peabody College for Teachers  
 U. G. MATHERLY . . . Assistant Professor, B.S., Wittenberg College; M.P.H., University of Florida; Further Study Columbia University



## Physics

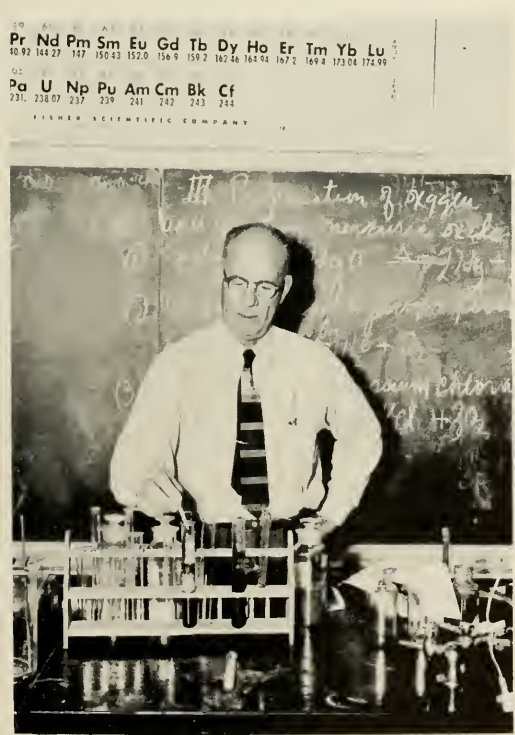
CHARLES M. YAGER . . . Associate Professor, B.S. in M.E., University of Maryland; M.Ed., Duke University; Further Study, University of Wisconsin  
 E. G. PIGG . . . Associate Professor, B.S., Central Missouri Teachers College; M.A., George Peabody College for Teachers; Further Study, University of Colorado



DR. T. CONN BRYAN . . . Professor, A.B., Duke University; M.A., University of North Carolina; Ph.D., Duke University  
 JAMES C. KIDD . . . Assistant Professor, A.B., Erskine College; M.A., University of North Carolina; Further Study, University of South Carolina  
 DR. WILLIAM P. ROBERTS . . . Assistant Professor, A.B.,

## Social Sciences

Emory University; M.A., Ph.D., University of North Carolina  
 FRANK M. SMITH . . . Assistant Professor, A.B., University of Georgia; M.A., University of North Carolina; Further Study, University of North Carolina and Duke University





## In Tribute .....

... to Mrs. Estella Sirmons, whose never-failing guidance and friendship have been generously bestowed upon North Georgia students during the years she has been with us. Such a charming personality can not leave a place entirely; she will always be remembered in the hearts of those who love and respect her. When Mrs. Sirmons retires at the end of this year, she takes our best wishes and fondest farewells with her.



# Classes

# Seniors



WARREN CAMP . . . . . *President*  
BESS DUNCAN . . . . . *Vice President*  
JEAN ODUM . . . . . *Secretary*  
GATES SCOVILLE . . . . . *Treasurer*



HAMP ALEXANDER — Adairsville, Georgia

Degree—B.S.—Dean's List, Varsity Baseball, Varsity Basketball, Officers Club, NCO Club, Letterman's Club—Pres.



Robert Hampton Alexander

NONA ALLEN — East Point, Georgia

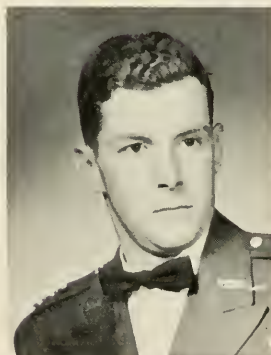
Degree—A.B. in English and Psychology—Chemistry Club, FTA—Sec., *Bugler* Feature Editor, Literary Editor, News Editor, *Commander* Staff, Phi Omicrons, Westminster Fellowship, Forensic Senate, Science Club, Modern Dance Club GSCW, YWCA, Dean's List, Honor's List



Nona Jean Allen

JOHN AVERA — Brunswick, Georgia

Degree—A.B.—Honor Platoon, Editor of *Commander*, NCO Club, Officers Club, *Cyclops* Literary Editor



John Byron Avera, Jr.

MRS. BARBARA BARDEN — Decatur, Georgia

Degree—B.S. in Elementary Education—Transferred from Piedmont College—Glee Club, FTA

JOYCE BELLAMY — Homer, Georgia

Degree—B.S. in Secretarial Science—BA Club—Sec., Westminster Fellowship—Treas., Vice-Pres., YWCA—Cabinet, Treas., Hippolytans, Dean's List, *Bugler* Feature Editor, *Cyclops* Staff, Who's Who in American Universities and Colleges

HUGH BO BENTLEY — Columbus, Georgia

Degree—B.S. in Business Administration—Baseball Team, Letterman's Club

REUBEN BLACK — Gainesville, Georgia

Degree—B.S. in Business Administration—Rex Fraternity—Vice-Pres., Scabbard and Blade—Commanding Officer, B Company Commander, Officers Club, DMS, Who's Who in American Universities and Colleges, Alpha Psi Omega, BA Club, Intramural Football, Basketball, Softball, Tennis



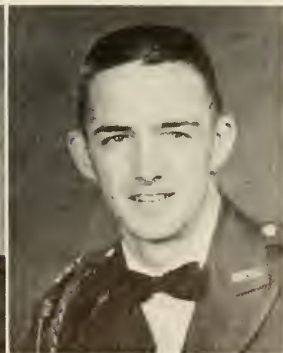
Mrs. Barbara Barden



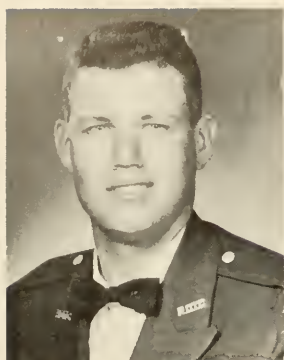
Nancy Joyce Bellamy



Hugh Bo Bentley



Reuben Black



James Cameron Bozeman

JAMES BOZEMAN — Sylvester, Georgia

Degree—B.S. in Business Administration—Rex Fraternity, BA Club, NCO Club, Officers Club

GUERRY BRANNON — Albany, Georgia

Degree—B.S. in Business Administration—YMCA, NCO Club, BA Club, Officers Club



Guerry Brannon

RICHARD BROWN — College Park, Georgia

Degree—B.S. in Middle Grades Education—Rex Fraternity, Scabbard and Blade, Intramural Basketball, Football, Volleyball, Track, Softball, NCO Club, Officers Club, FTA—Pres., State Pres, Junior Class—Vice-Pres., DMS

KENNETH BUTTERWORTH — Canton, Georgia

Degree—B.S. in Physics—Rex Fraternity, Scabbard and Blade, Nu Gamma Honor Society, DMS, Officers Club—Pres., NCO Club—Pres., *Cadet Bugler*—Sports Editor, Associate Editor, Clark Mathematics Medal, Freshman Mathematics Award, Dean's List, Quartermaster ROTC Award, First Battalion Commander



Suzanne Breedlove

BOB CALLAWAY — West Palm Beach, Florida

Degree—B.S. in Business Administration—Rex Fraternity, BA Club, Dean's List, NCO Club, Officers Club, Intramural Football, Basketball, Volleyball, Softball, Track, Ping-Pong

WARREN CAMP — Sylvester, Georgia

Degree—B.S.—Scabbard and Blade—Treas., NCO Club—Vice-Pres., Basketball, Senior Class—Pres., Junior Class—Sec., Officers Club, Lettermen's Club—Sgt. at Arms



Richard William Brown



Charles Kenneth Butterworth



Robert Joseph Callaway

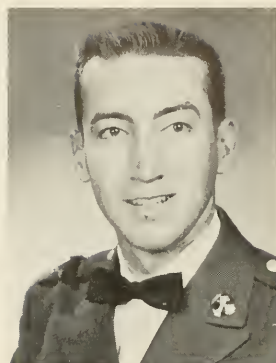


Warren L. Camp



HAROLD CARDER — Lithonia, Georgia

Degree—B.S. in Business Administration—BA Club



Harold Dee Carder

ROBERT CLARK — Columbus, Georgia

Degree—B.S.—Sigma Theta Fraternity—Sec., Dance Orchestra (Generals), NCO Club, BA Club, YMCA, Officers Club



Robert C. Clark, Jr.

WILLIAM COLE — Atlanta, Georgia

Degree—B.S. in Physics

ALFRED COLEMAN — Jackson, Georgia

Degree—B.S. in Biology—Science Club, Intramural Basketball, Football

PAT COMPTON — Atlanta, Georgia

Degree—B.S. in Elementary Education—YWCA, Cheerleader—Co-Captain, Dramatics Club, FTA Club, BA Club, Sweetheart of Co. B, Sponsor of 1st Battalion, Rec Club, Bugler Staff, Westminster Fellowship, "Most Popular"



William Marvin Cole

RALPH CORDELL — Hartwell, Georgia

Degree—B.S. in Business Administration—Sigma Theta Fraternity—Vice-Pres., BA Club, NCO Club, Officers Club, DMS, Scabbard and Blade, Second Battalion Commander, Dramatics Club

RICHARD COULTER — Columbus, Georgia

Degree—B.S. in Business Administration—Rex Fraternity, Scabbard and Blade, Varsity Baseball, Intramural Sports, All Star Football, Sophomore Class—Sec., BA Club, Dean's List, NCO Club, Officers Club



Alfred L. Coleman



Patricia Delores Compton



Ralph Durward Cordell



Richard Van Coulter



Thomas Gibson Crow



George Ellis Davison



Donald Dunagan



Bess Anne Duncan



William Hobert Ellis

THOMAS CROW — Adel, Georgia

Degree—B.S. in Physics and Math—Theta XI (Beta Alpha Chapter—Ga. Tech.) Dean's List, Radio Club (W4PYM)—Pres., College Orchestra, Glee Club, Bugler Staff

GEORGE DAVISON — Carnesville, Georgia

Degree—B.S. in Business Administration—Rex Fraternity, NCO Club, BA Club



DONALD DUNAGAN — Clermont, Georgia

Degree—B.S.—Science Club, Chemistry Club, Dean's List, Honor List

BESS DUNCAN — Clarkesville, Georgia

Degree—A.B. in English—YWCA, FTA Club, "Friendliest Girl," "Cyclops Queen," "Miss NGC," Rec Club

Carnage Fennel

WILLIAM ELLIS — Dalton, Georgia

Degree—B.S. in Chemistry—Chemistry Club—Pres., Assistant Commandant, Dean's List, Honor List



Norwood Speir Flanders

CARNAGE FENNEL — Wrightsville, Georgia

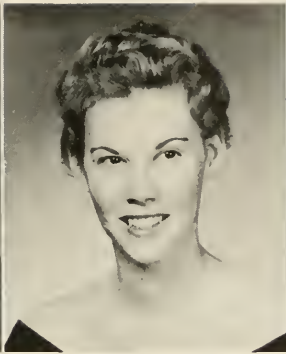
Degree—B.S. in Business Administration—Sigma Theta, Officers Club, BA Club, Dean's List

SPEIR FLANDERS — Scotland, Georgia

Degree—B.S. in Business Administration—Sigma Theta Fraternity, Scabbard and Blade, DMS



Henry G. Foster



Juanita Ann Foster



Mrs. Ruth Holcombe Fowler



William Asbury Geer, Jr.

HENRY FOSTER — Columbus, Georgia

Degree—B.S. in Business Administration—Rex Fraternity, NCO Club, Officers Club, BA Club

JUANITA ANN FOSTER — Clarkesville, Georgia

Degree—B.S. in Secretarial Science—Who's Who in American Universities and Colleges, Vice-Pres. and Pres. of Lewis Hall, "Most Dependable," BA Club, YMCA, Home Economics Club, Rec Club, *Cyclops* Staff, *Bugler* Staff, Beauty Court

MRS. RUTH HOLCOMBE FOWLER — Canton, Georgia

Degree—B.S. in Home Economics—Mercureans—Co-Captain, Captain, Rec Club Council, Home Economics Club—Pres., *Cyclops* Staff

WILLIAM ASBURY GEER — Colquitt, Georgia

Degree—B.S.—Rex Fraternity, NCO Club, Officers Club, Scabbard and Blade, Science Club, Varsity Rifle Team

CARL JULIAN GLASS, JR. — Albany, Georgia

Degree—A.B. in Languages—Rex Fraternity—Pres., C Company Commander, Pan-Hellenic Council, NCO Club, Dramatics—Vice-Pres., Alpha Psi Omega—charter member, Secretary, Vice-Pres., Scabbard and Blade—charter member, Secretary, Vice-Pres., YMCA, Officers Club, DMS, "Friendliest"

MRS. JOANNE GREEN — Villa Rica, Georgia

Degree—B.S. in Elementary Education—FTA, Dean's List

MRS. JACKIE WOODWARD HARRIS — Cedartown, Georgia

Degree—B.S. in Secretarial Science—Dean's List, Rec Club, BA Club, Home Economics Club, Cheerleader, YWCA, *Cyclops* Staff



Carl Julian Glass, Jr.



Mrs. Joanne Hannah Green



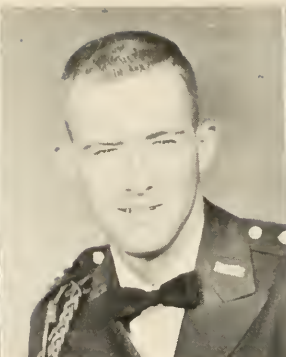
Mrs. Jacqueline Woodward Harris



Margaret Frances Hearn



James Robert Hensley



Terry Burnsed Horton



Joseph Benjamin Hunt



Miriam Shirley James

MARGARET HEARN — Clarkesville, Georgia

Degree—B.S. in Elementary Education—Transferred from Reinhardt College, YWCA—Cabinet, Rec Club, Wesley Foundation, FTA Club

JAMES HENSLEY — LaFayette, Georgia

Degree—B.S. in Business Administration—Sigma Theta Fraternity, *Commander* Staff, BA Club, NCO Club, Officers Club, YMCA



Thomas Elwyn Jenkins

TERRY HORTON — Brunswick, Georgia

Degree—B.S. in Business Administration—Scabbard and Blade—Vice-Pres., BA Club—Pres., NCO Club, Officers Club, Junior Class—Pres., DMS, Company D Commander

BEN HUNT — Blakely, Georgia

Degree—B.S. in Biology—Dean's List, Officers Club, NCO Club, Science Club, Chemistry Club, *Commander*—Editor

MIRIAM JAMES — Gainesville, Georgia

Degree—B.S. in Secretarial Science—BA Club, Dean's List, Rec Club, FTA Club, *Cyclops* Staff



Charles Buford Johnson, Jr.

THOMAS JENKINS — Gainesville, Georgia

Degree—B.S. in Business Administration—Rex Fraternity, YMCA, BA Club, NCO Club

CHARLIE JOHNSON — Oglethorpe, Georgia

Degree—A.B. in History—Rex Fraternity, Varsity Basketball, Intramural Football, Officers Club, NCO Club, YMCA, Letterman's Club



Ronald Douglas Johnson



Carl William Jones, Jr.



Tommy C. Jones



Helen Annette Kelley

RONALD JOHNSON — Chipley, Georgia

Degree—B.S. in Business Administration—Dean's List, Officers Club, NCO Club, BA Club, YMCA

CARL JONES — Albany, Georgia

Degree—B.S.—Officers Club, BA Club, NCO Club, Glee Club, Drill Platoon Leader, Dramatics Club

TOMMY JONES — Canon, Georgia

Degree—B.S. in Biology

ANNETTE KELLEY — Norcross, Georgia

Degree—A.B. in English—Dean's List, Honors List, *Cyclops* Staff, Rec Club, FTA—Vice-Pres.

JOE KNAPP — Thomasville, Georgia

Degree—B.S. in Business Administration—Dean's List, Officers Club, BSU, YMCA, NCO Club, BA Club, Intramural Sports

HAROLD LAMBERT — Atlanta, Georgia

Degree—B.S. in Physics and Math—Dean's List, Officers Club, Scabbard and Blade, DMS, *Cadet Bugler*—Sports Editor, Glee Club, *Cyclops* Staff, NCO Club, Intramural Sports Award, Honorary Mention Clark Math Medal

JAMES LAND — Gainesville, Georgia

Degree—B.S.—Sigma Theta, *Commander* Staff, BA Club, NCO Club, Officers Club, YMCA



Joseph Arthur Knapp



Harold Cheever Lambert



James Allen Land

JO CAROL LENDERMAN — Helena, Georgia

Degree—B.S. in Biology—Vice-Pres. and Pres. of Lewis Hall, *Bugler* Editor, Who's Who in American Universities and Colleges, Beauty Court, C. Company Sweetheart, "Most Versatile", "Most Likely to Succeed", *Cyclops* Staff, Science Club, Dean's List.

LILLAS LINDSLEY — Milledgeville, Ga.

Degree—B.S. in Chemistry and Biology—Dean's List, Honorary Mention Clark Mathematics Award, Chemistry Club—Sec.-Treas., Science Club, Y.W.C.A., Wesley Foundation, Rec Club, *Bugler* Staff.

JULIAN McBRIDE — Thomasville, Georgia

Degree—B.S. in Business Administration—Sigma Theta, NCO Club, B. A. Club— Vice-Pres., Officer's Club, College Orchestra—Officer in Charge.

JAMES McDONALD — El Paso, Texas

Degree—A.B. in History—Kappa Sigma, Scabbard and Blade, Officer's Club, NCO Club, Forensic Senate, *Cyclops* Organization Editor, Intramural Letterman, Westminster Fellowship.

EARL McSWAIN — Columbus, Georgia

Degree—A.B. in History—Sigma Theta, Scabbard and Blade, Officer's Club—Treas., D. M. S., NCO Club.

JULIAN McWHIRTER — Hapeville, Georgia

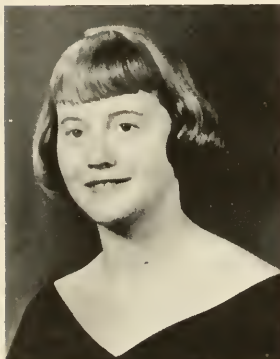
Degree—B.S. in Business Administration—Sigma Theta—Sec.-Treas., Best Drilled Freshman, Best Drilled Cadet, Dean's List, Rifle Team, *Bugler* Staff, *Commander* Staff, NCO Club—Chaplain, B. A. Club, YMCA, Officer's Club, Pan-Hellenic Council.

LENOX MARTIN — Toccoa, Georgia

Degree—B.S. in Biology—Rex Fraternity, Intramural Sports, Football.



Jo Carol Lenderman



Lillas Myrick Lindsley



Julian Davis McBride, Jr.



James C. McDonald, III



Joseph Earl McSwain



Julian Hubert McWhirter, Jr.



Willard Lenox Martin

CHARLIE MULLIS — Sylvester, Georgia

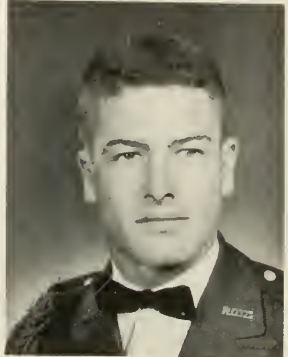
Degree—B.S. in Biology—Scabbard and Blade Fraternity, Officer's Club, NCO Club, Who's Who in American Universities and Colleges, Outstanding NCO, D.M.S., Regimental Commander.



Charles Herbert Mullis

JERRY NADER — Farmington, Illinois

Degree—B.S.—Rex Fraternity, Scabbard and Blade, D.M.S., Who's Who in American Universities and Colleges, Intramural Sports, Officer's Club, NCO Club, A Co. Commander.



Walter Eugene Nader

JEAN ODOM — Cedartown, Georgia

Degree—B.S. in Physical Education—Dean's List, Trahlytans—Capt., Rec Club—Pres., Varsity Cheerleader, Senior Class—Sec., Who's Who in American Universities and Colleges, YWCA.



Carolyn Jean Odom

NOEL PACE — Decatur, Georgia

Degree—A.B.—Commander—Editor, Glee Club, Dramatic Club, Science Club, NCO Club, Officer's Club.

REED PALMER — Dahlonga, Georgia

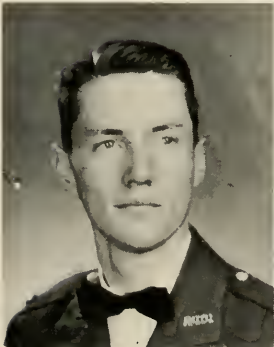
Degree—B.S. in Business Administration.

DEWAYNE PATRICK — Thomson, Georgia

Degree—B.S. in Physical Education—Rex Fraternity—Sgt. at Arms, Scabbard and Blade, Officers' Club, NCO Club, Intramural Football—Coach and Captain, Varsity Baseball Team, Letterman's Club—Vice-Pres., YMCA, Westminster Fellowship, "Most Athletic", "Most Versatile", *Cadet Bugler* Staff, Most Outstanding Football Player Award, D.M.S.

TROY PONDER — Waleska, Georgia

Degree—B.S. in Physics and Math—Freshman Math Award, Clark Math Award, Dean's List, Radio Club, Physics Club.



William Noel Pace, Jr.



Reed Palmer



Burton DeWayne Patrick



Troy W. Ponder



Margaret Elizabeth Puckett

BETH PUCKETT — Macon, Georgia

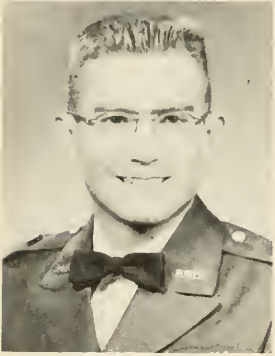
Degree—B.S. in Secretarial Science—Dean's List, Honors List, B.A. Club, Glee Club, Y.W.C.A.—Vice-Pres., Y.W.C.A.—Cabinet, Wesley Foundation—Secretary, Mercureans, Lewis Hall Secretary, *Cyclops* Editorial Staff Typist.

JOE PUETT — Atlanta, Georgia

Degree—A.B. in History—Dean's List, D.M.S. Who's Who in American Universities and Colleges, Forensic Senate, *Commander* Staff, *Bugler* Staff, Dramatics Club, NCO Club, Officers' Club—Vice-Pres., Y.M.C.A., Intramural Sports.

BOB PURCELL — Atlanta, Georgia

Degree—B.S. in Biology—Science Club—Pres., D.M.S., Chemistry Club, Officers' Club.



Joseph Fallaw Puett, Jr.

HOWARD RACHELS — Wadley, Georgia

Degree—B.S. in Business Administration—Rex Fraternity, Officers' Club, NCO Club, B.A. Club—Treas.

FREEMAN SANDERS — Bowersville, Georgia

Degree—B.S.—NCO Club, Officers' Club, Y.M.C.A., Dean's List.

BOB SCHLOESSER — Shrewsbury, New Jersey

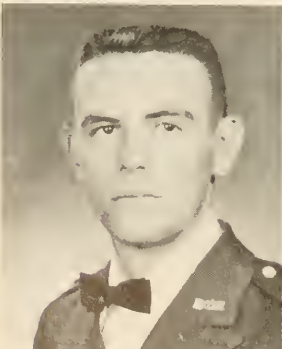
Degree—A.B.—Rex Fraternity, Dramatics Club—Pres., Alpha Psi Omega—Pres., Freshman Class President, Forensic Senate—Pres., Dean's List, Honors List, *Cadet Bugler* Staff—Business Manager, *Cyclops* Staff—Organization Editor, NCO Club—Sec.-Treas., Who's Who in American Universities and Colleges, Scabbard and Blade, D.M.S.

JOHN SCOTT — Cornelia, Georgia

Degree—B.S. in Business Administration—*Bugler* Staff, *Commander* Staff, *Cyclops* Staff, Junior Class Treasurer, NCO Club, B.A. Club, Letterman's Club.



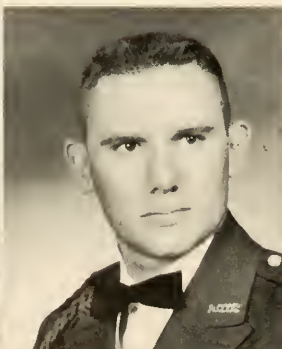
Robert Joseph Purcell



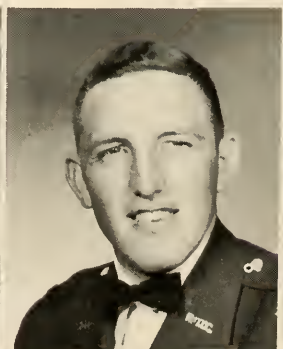
Ray Howard Rachels



Freeman Sanders



Robert Philip Schloesser



John Oliver Scott



GATES SCOVILLE — Thomasville, Georgia

Degree—B.S.—Kappa Alpha Order Fraternity (University of Georgia), Scabbard and Blade, Officers Club, NCO Club, Who's Who in American Universities and Colleges, Senior Class—Treasurer, Outstanding Bandsman



Oscar Gates Scoville

SHIRLEY SHAW — Pendergrass, Georgia

Degree—B.S. in Home Economics—Transferred from Berry College—Mercureans—Co-Captain, Secretary, YWCA, Home Economics Club, Wesley Foundation, *Cyclops* Staff



Shirley Ann Shaw

ELLIS SINGLETON — Rockmart, Georgia

Degree—B.S. in Business Administration—NCO Club, Officers Club, BA Club



Ellis Jackson Singleton, Jr.

BRUCE SNYDER — Dublin, Georgia

Degree—B.S. in Physics

JEANNE STEELE — Conyers, Georgia

Degree—B.S. in Physical Education and History—Transferred from Emory University—Phi Mu Sorority (Emory), Glee Club, Rec Club, YWCA, All Star Volleyball Team

BUDDY STIPE — Macon, Georgia

Degree—A.B. in History and English—Dean's List, Honor List, Intramural Football, Basketball, Volleyball, Track, Forensic Senate, Varsity Debater, Dramatics Club, *Cadet Bugler* Staff, Wesley Foundation—Vice-Pres., NCO Club, Officers Club, DMS, Who's Who in American Universities and Colleges

T. O. STURDIVANT — Atlanta, Georgia

Degree—B.S. in Business Administration—Alpha Psi Omega—Treas., Officers Club, BA Club, Dramatics Club



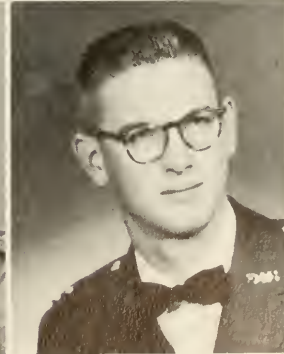
Bruce Snyder



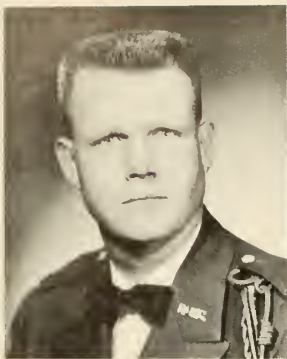
Jeanne Steele



Aquilla Everett Stipe



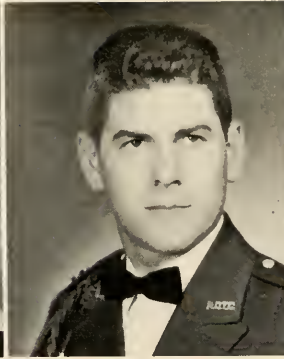
Thurman Olin Sturdivant, III



William Harry Sudlow



Ann Tingle



Leonard Martin Ward, Jr.



Clealon Elgene Wasdin



William Virgil Wigley

HARRY SUDLOW — Thomson, Georgia

Degree—B.S. in Biology and Chemistry—Scabbard and Blade, Rex Fraternity, Science Club, Officers Club, Letterman's Club, *Commander* Staff

ANN TINGLE — Jonesboro, Georgia

Degree—A.B. in English—Hippolytans, FTA Club—Sec., *Commander* Staff, *Cyclops* Staff, Wesley Foundation, Nu Gamma Honorary Society, Dean's List, Honors List

LEONARD WARD — Albany, Georgia

Degree—B.S. in Math—Sigma Theta Fraternity, YMCA—Treas., NCO Club, Officers Club, Scabbard and Blade



Richard Rush Wilder

CLEALON WASDIN — Screven, Georgia

Degree—B.S. in Business Administration—Who's Who in American Universities and Colleges, BA Club, YMCA—Pres., Baptist Student Union—Pres., Dean's List

BILLY WIGLEY — Rome, Georgia

Degree—B.S. in Business Administration—Rex Fraternity, Scabbard and Blade, BA Club, Officers Club, YMCA, NCO Club, Honor Platoon, Junior Varsity Basketball, Intramural Basketball, Softball, Volleyball, Rifle Team



Mrs. Carolyn Collier Wilson

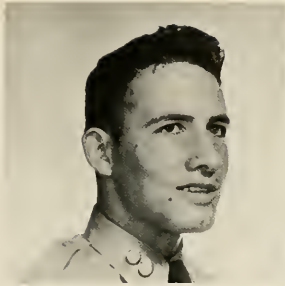
RICHARD WILDER — Atlanta, Georgia

Degree—B.S. in Business Administration—Rex Fraternity, *Cyclops* Staff, Military Editor, NCO Club, Officers Club

MRS. CAROLYN WILSON — Toccoa, Georgia

Degree—B.S. in Secretarial Science and Business Administration—Dean's List, Honors List, Phi Omicrons—Captain, BA Club—Sec., Reporter, YWCA

Not Pictured: Mildred Ash, Jack Grant, Patrick Malcom, Donald Mack Roberts, Henry Shanahan, William Walker



Hinton Amerson



James P. Crisp



Mary Dyer



Mrs. Elizabeth Gill



Mrs. Leota Jarrard Gooch



Mrs. Hazel Meaders Haynes



Mrs. Alice Kirk



Frances Palmour



Maxine Palmour



Dora Parks



Joe Rayder



Mrs. Maude F. Rayder



Mrs. Elsie T. Shipp



Minnie Belle Stargel



Mrs. Mae Woody White



Mrs. Virginia R. Williams

# Juniors

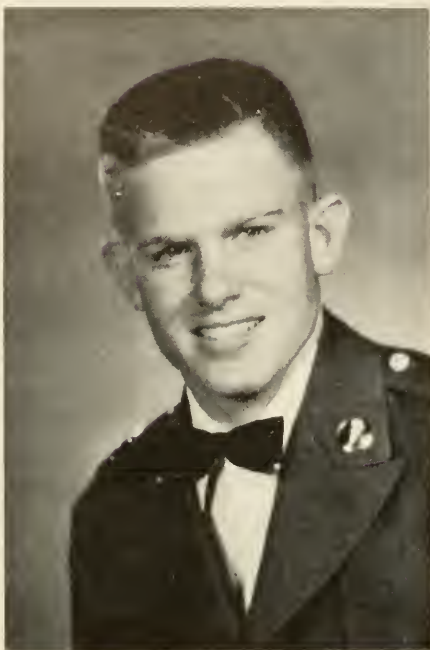


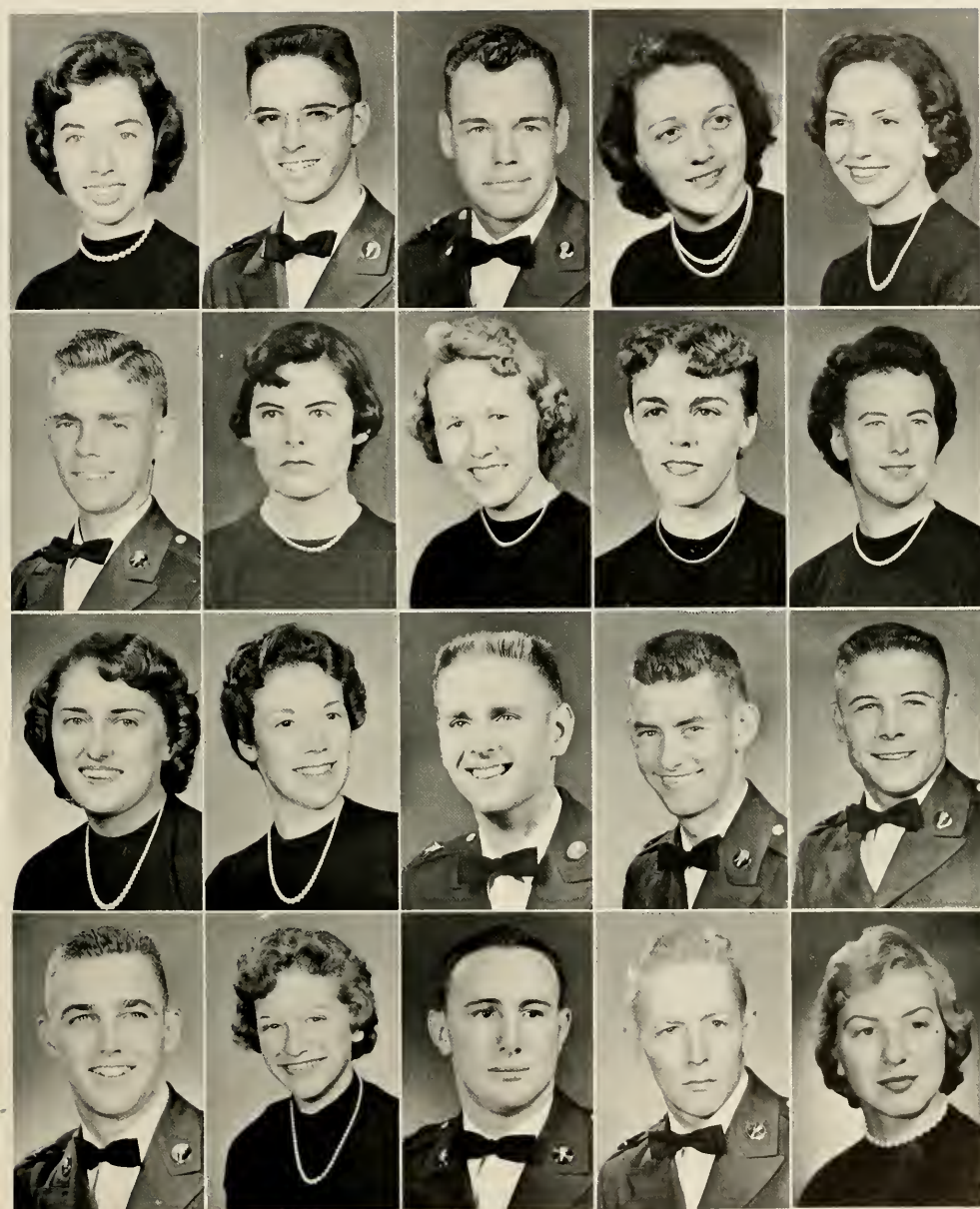
BILL GISSENDANER . . . . . *President*

TERRY GORDY . . . . . *Vice President*

LEE WALL . . . . . *Secretary*

GLENN EBERHARDT . . . . . *Treasurer*





Aaron, Sara Lou  
 Barden, Regginal Rondal  
 Carroll, Charlotte Mize  
 Crawford, Jon

Allen, Thomas McCall  
 Brown, Alice Nellie  
 Causey, Betty Anne  
 Cummings, Odette

Archer, Earnest Richard  
 Buice, Dorothy Helen  
 Channell, James Walter  
 Douglas, Wiley Eudonal

Avera, Gayl  
 Burrow, Sadie Miles  
 Cheek, Alton Jerome  
 Eberhardt, Glynn Edwin

Barnes, Nancy Lou  
 Carey, Jo Carol  
 Corbin, Richard Durham  
 Gibbons, Almira Eugenia



v /

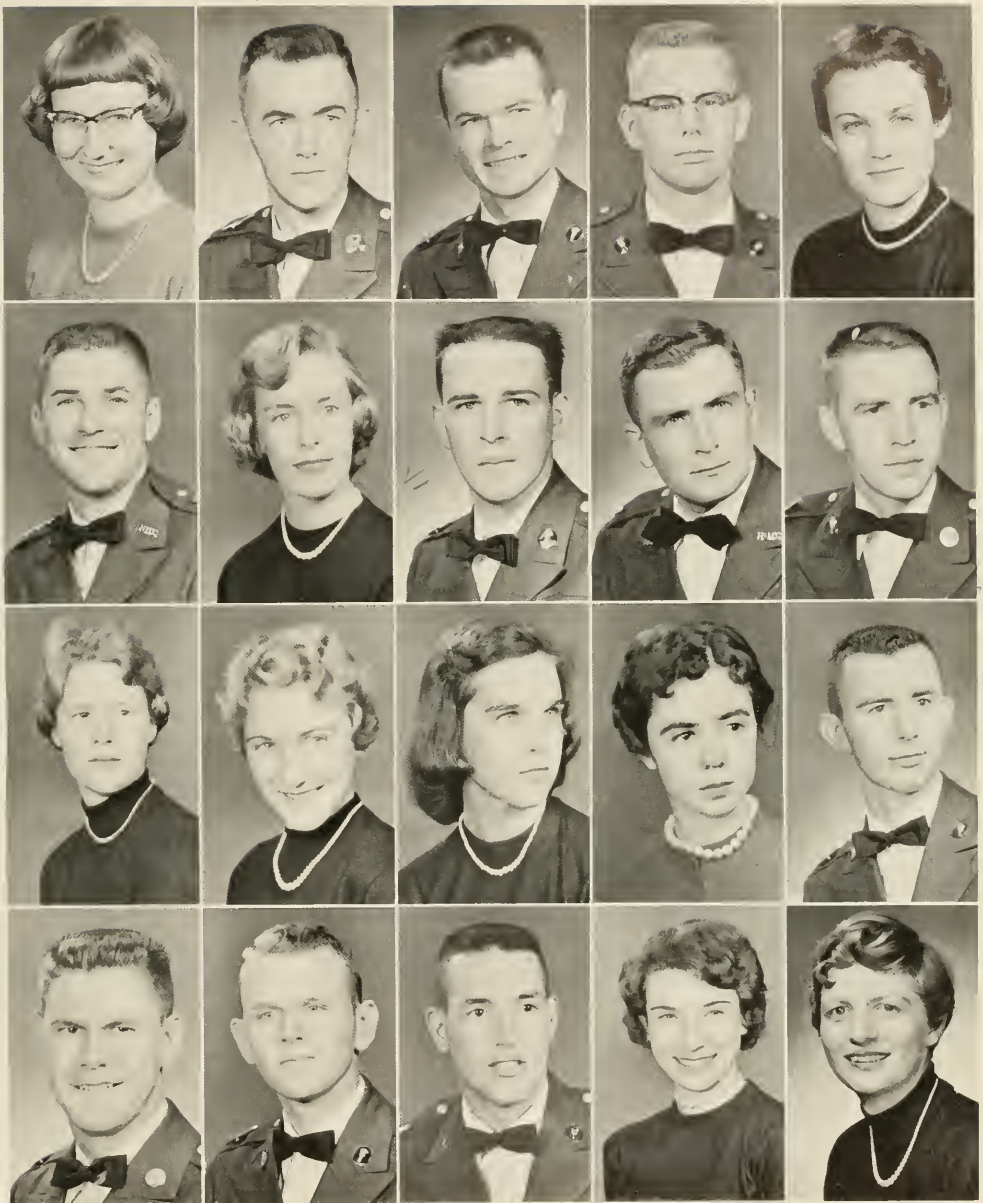
Gilleland, Raymond Roger  
 Hammond, William David  
 Horton, Barbara Osigian  
 Lawton, Vivian Harrison

Gissendener, William E., Jr.  
 Hawkins, Donald B.  
 Horton, Wilba Nelle  
 Littlefield, Barbara Anne

Greenway, Lula Bell  
 Higginbotham, Allen P., Jr.  
 Hudgins, Joy Pearl  
 Long, Mary Joann

Gudger, Sarah Lee  
 Hoag, Phillip Charles  
 Hyatt, Ruth Mavie  
 Lunsford, Harlan F., Jr.

Hale, Sanders Franklin  
 Hooper, Lila Latrelle  
 James, Margaret Lou  
 Lupo, William Phillip



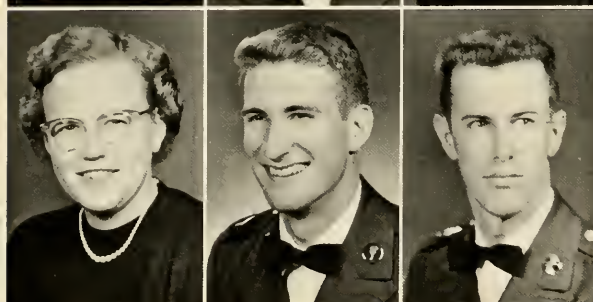
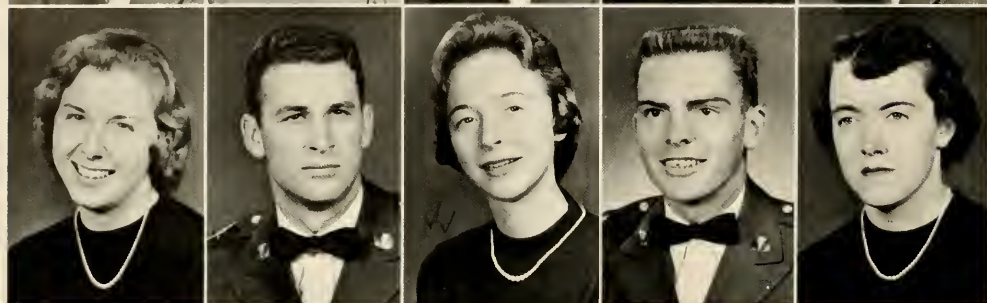
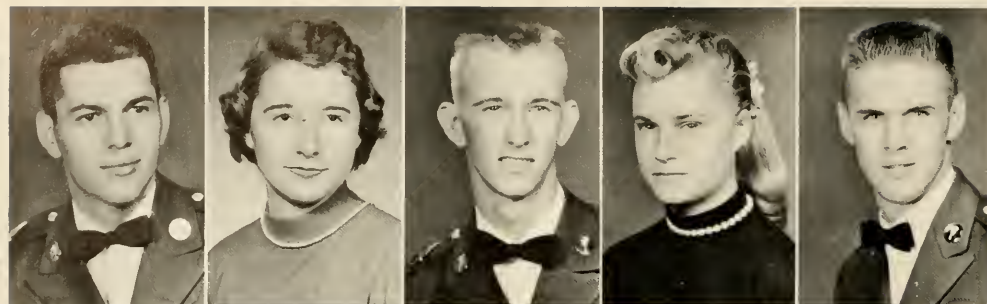
Mebane, Betty Carolyn  
 Pease, Henry Benning, Jr.  
 Reynolds, Hallie Sue  
 Shepherd, Donald Eugene

Moore, Charles Fredrick  
 Pinson, Margie Joyce  
 Robinson, Lola Caroline  
 Sigman, Hollis Daniel

Morrow, Douglas C.  
 Ponder, Thomas Brady  
 Rucker, Mary Elizabeth  
 Smart, William Earl

O'Kelley, James Thomas  
 Pridgen, Henry Albert  
 Salley, Carolan LeRoy  
 Smith, Nancy Eva

O'Kelley, Pauline  
 Reece, James Doyal  
 Sanders, Rabun Clifford, Jr.  
 Smith, Verda Belle



Van Geuns, Kitty  
Wayne, Ed Rivers

Van Meter, Harold Clayton  
West, Ramona

Not Pictured:  
Hensley, Charles William  
Holcombe, Leonard Bob

Stallings, Paul Thomas  
Vinson, Beverly Calhoun  
Wilbanks, Mary Ina

Steinmetz, Carole Shearer  
Wade, Harry Woodward  
Williams, Charles Ross

Stoner, Clifford David  
Wall, Virginia Lee  
Wilson, Horace R., Jr.





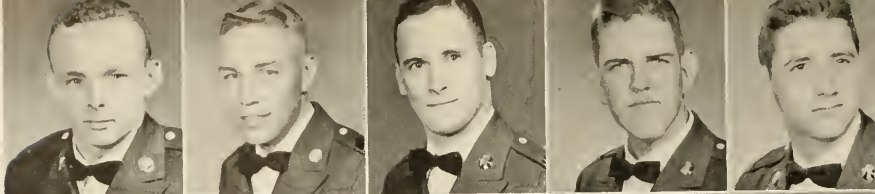
# Sophomores



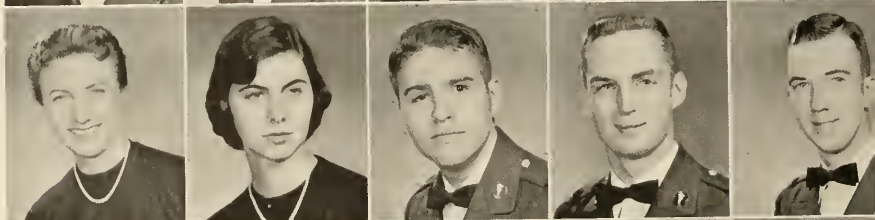
TOMMY MATTHEWS . . . . . *President*  
WALLY ZIPRIK . . . . . *Vice President*  
DONNA PHILLIPS . . . . . *Secretary*  
RONNIE PRESSLEY . . . . . *Treasurer*



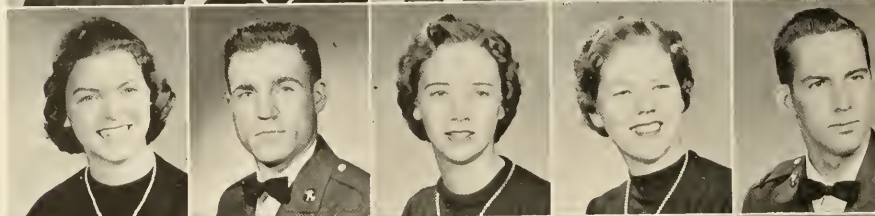
Adams, Hunter Wade  
 Akin, Jere Herbert  
 Allison, Samuel Cary, Jr.  
 Allred, Lester Lee, Jr.  
 Anderson, Henry Gilbert



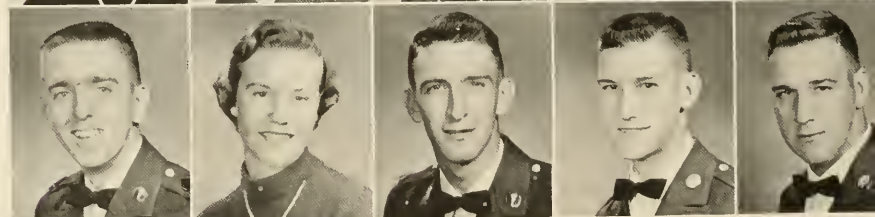
Anderson, Margaret Laflin  
 Anderson, Martha Sue  
 Askew, Ollie Frank  
 Bacon, William Gould  
 Bailey, Robert Thomas



Baldwin, Patricia Mee  
 Barden, Daniel Edward  
 Barrett, Carol Ann  
 Barrow, Mary Jane  
 Beck, William Richard



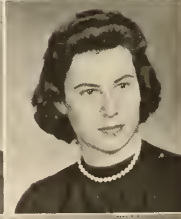
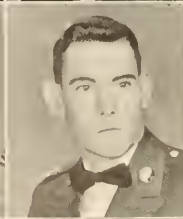
Breedlove, Joe Jordan  
 Brown, Barbara Ann  
 Brown, Kenneth Gene  
 Bruce, James Robert  
 Carter, Lewis Lovelace



Clemmer, Mary Frances  
 Cochran, Jere N.  
 Coleman, James Larry  
 Cook, Elizabeth Harper  
 Cooley, Jeanette



Corbin, Doris LaVassie  
 Cortelli, Richard Joseph  
 Cox, Mary Frances  
 Cozart, Martin Charles  
 Craig, Fred Robert, Jr.



Crاندall, James Earnest, Jr.  
 Crouch, Robert Otis  
 Cummings, Barbara Anne  
 Davenport, Stanley Mercer  
 Davis, Beverly Boyd



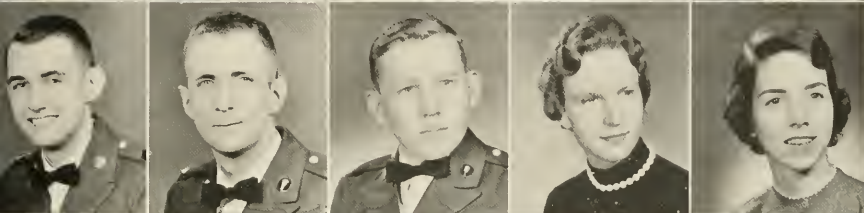
Deen, Floyd, Jr.  
 Dent, John Marshall, Jr.  
 Dexter, Charles E.  
 Duke, Janet Cobb  
 Durham, Edna Brock



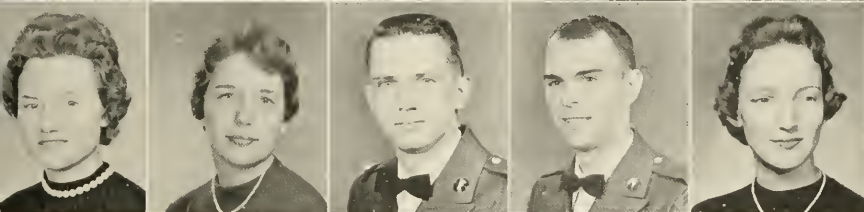
Dye, Jerry Brooks  
Farmer, Hugh Dorsey  
Fickling, Craig Proctor  
Fox, Claude Casey  
Gayler, James Max



Gordy, Terry Lawson  
Greson, James Henry  
Grice, Mary Ann  
Haight, David Henry, Jr.  
Hamil, Kirby Dow



Hamil, Richard Carlos  
Hamrick, Charles Joseph  
Harben, Sam Sloan  
Hawkins, Janice Carol  
Herring, Sarah Janis



Herring, Margaret Novella  
Holland, Luan  
Howell, James Hayden  
Ivester, Douglas Wendel  
Jackson, Eleanor Anne

Johnson, Claude William  
Johnson, Edward Oliver  
Johnson, James Alton  
Johnson, William Park  
Joiner, Douglas Madison



Jones, Bobby Neal  
Jordan, Donna Elaine  
LaFoy, Delores Ann  
Lane, Dorothea Lynn  
Leverette, Barbara Annette

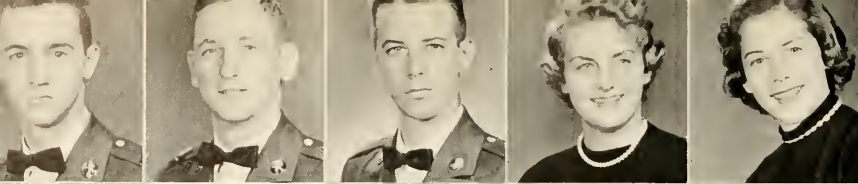


Loveless, Sarah Jeanette  
Lott, Tom Marion  
Low, Barbara Ann  
McCrary, Betty Jean  
McDonald, Charlie Donald, Jr.



McDuffie, Maureen Louise  
McLane, Bonnie Sue  
Magill, John Anderson  
Mann, Marion Edmond, Jr.  
Mason, Grady, Leon

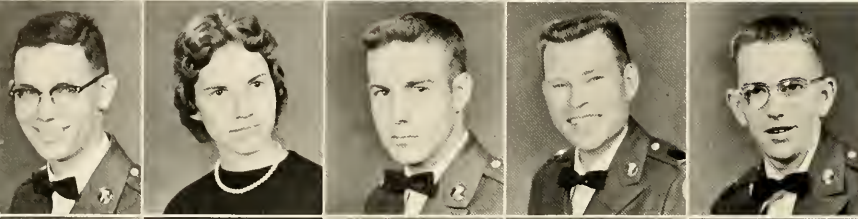




Meys, Aldine Marcus, Jr.  
Milam, Charles Ray  
Moore, Thomas Lee  
Mullin, Stella Margaret  
Newberry, Sandra Jane



Norman, James Guy  
O'Quinn, Gayle Patricia  
Parks, Leonard Cranford  
Patterson, John Stonie  
Patterson, Patricia Ann

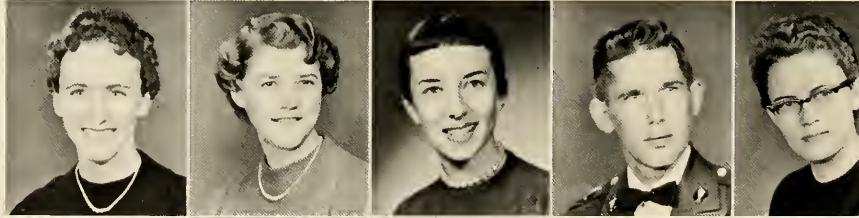


Peterson, John Holbrook, Jr.  
Phillips, Donna Anne  
Piland, Ashburn Richard, Jr.  
Pinson, Alton Joe  
Pittman, Chatty Roger

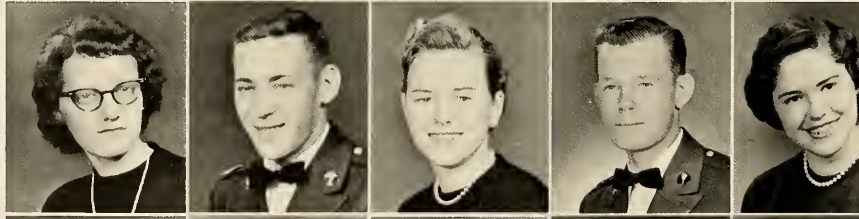


Poston, Jane Etta  
Powers, Margarette Fay  
Price, Betty Gail  
Rachels, George Wesley  
Reed, T. Kay

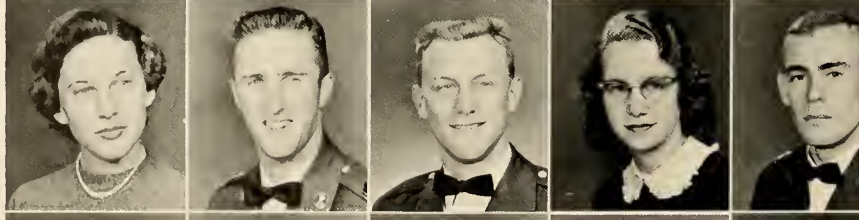
Robinson, Alice Elizabeth  
Sawyer, Dorothy Lee  
Scott, Martha Sue  
Seabolt, Hubert Allen  
Shiflet, Peggy Anne



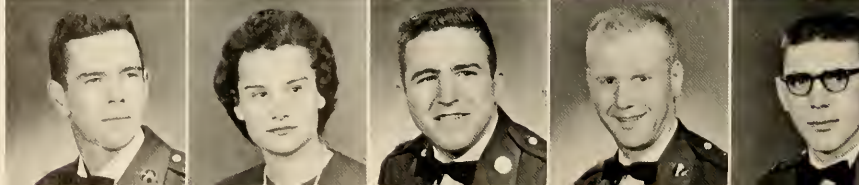
Shockley, Shirley Jean  
Shomake, Donald Hamilton  
Sikes, Laura Lee  
Simmons, Edward Daniel  
Sloan, Martha Nelle



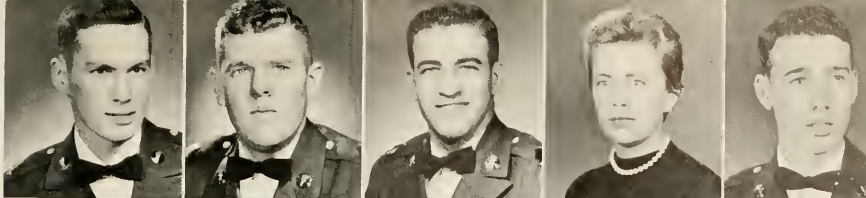
Smith, Nancy Beverly  
Smith, Jon Richard  
Smith, Robert V.  
Smith, Wilda Lenell  
Smith, Woodrow Wilson, Jr.



Stephenson, William Eli  
Thomas, Ann  
Thomas, Kenneth Balus  
Thomas, Robert Joseph  
Tilley, Robert Howard



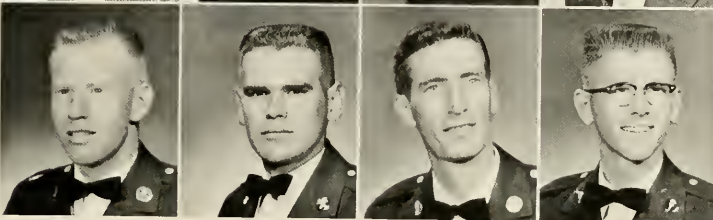
Todd, William Terry  
 Van Horn, James Thomas  
 Varnedoe, Jesse Virgil  
 Vaughn, Mary Carolyn  
 Waldrip, Donald Warren



Ward, Ferido N.  
 West, Myrna Yvonne  
 White, Alma Jean  
 White, Donald Raye  
 Wilbanks, Roland Reed



Wise, Ronald Terrell  
 Wise, William A.  
 Woody, Philip Douglas  
 Yeomans, William Albert

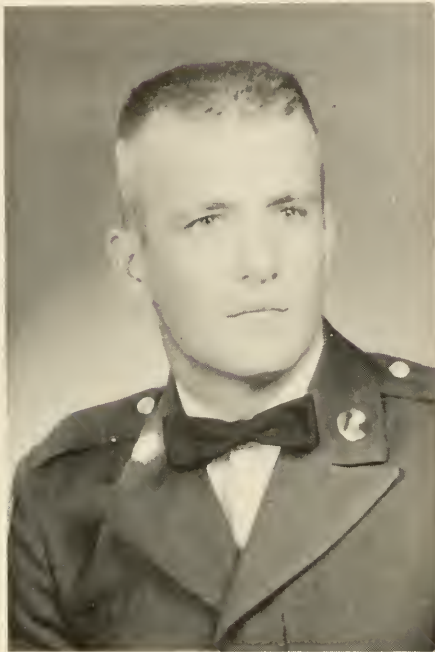


Not Pictured:

- Archer, John Ross
- Bates, Lynn
- Bradley, Max Donald
- Crowe, Carlton Theodore, Jr.
- Hulsey, Benjamin Jefferson
- Nicholas, Charles Harrington
- Vigil, Phillip Arnold
- Watkins, William Baker, III



# Freshman



JIMMY BURTON . . . . . *President*  
JIM RIVERS . . . . . *Vice President*  
DELTAH MOOR . . . . . *Secretary*  
MARILYN GRAINGER . . . . . *Treasurer*





Acree, Carole Anne  
Adams, Beverly Marvine  
Alexander, Robert  
Allen, Ernest Nelson  
Allen, George William



Allison, Barbara Ann  
Anderson, John Thomas  
Anderson, Philip Edward  
Andrews, Richard Michael  
Artley, Harry Edward



Avery, Shirley Marie  
Avery, Thomas Eugene  
Baggett, James Emory  
Bagwell, William Alvin  
Baker, Richard Franklin



Baker, Ruben  
Baldwin, Max Russell  
Barber, Norman  
Barfield, Curtis  
Barnes, Dudley H.



Barnes, Roy Clarence  
Barron, James William  
Barrow, Robert W.  
Bass, George D.  
Beauchamp, Margaret



Bell, Roy  
Benefield, Milton Joel  
Bennett, Paul W.  
Benson, Claire  
Berne, Richard C.



Bibb, Randolph T.  
Bigham, Randal  
Bilbro, Lynn  
Blackshear, Pam  
Blackstock, Thaddeus



Blackwell, Glenda  
Blair, Henry W.  
Blanchard, Mary Claire  
Bland, Alonzo O.  
Bledsoe, Carl Eugene



Boles, Myra Lee  
Bolton, Barbara Pansy  
Bourne, Jack M.  
Bowden, Royce Jean  
Bowen, William L.



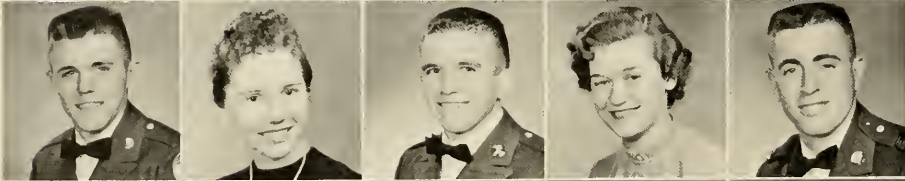
Boyd, Spencer  
 Brackett, Michael William  
 Bradley, Barbara Jo  
 Brady, Jack M.  
 Broadway, David R.



Brogdon, Vernis Dorman  
 Brooks, Marion Patricia  
 Brooks, Thomas Lee  
 Brown, Bernice W.  
 Brown, Douglas J.



Brown, Edward S.  
 Brown, Joetta Ann  
 Brown, Roberta  
 Brown, Shirley Ann  
 Bryant, Henry G.



Bryant, Jon M.  
 Bunch, June  
 Bunkley, Harry Frederick  
 Burnette, Betty Jean  
 Burnette, William H.



Burrows, Richard H.  
 Burrus, Ray B.  
 Burton, James Omer  
 Burton, James R.  
 Butler, Carlton Wayne



Butterworth, Virginia  
 Byrd, Walter J.  
 Caldwell, Milton Lee  
 Calhoun, Ann D.  
 Camp, Janice



Camp, Judy  
 Capps, Melvin  
 Carter, Glenn Edward  
 Carpenter, Latimer D.  
 Cartledge, William



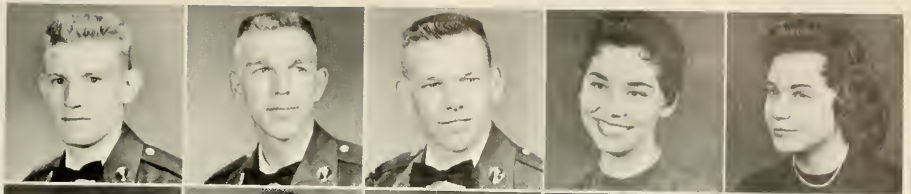
Cavender, John  
 Chapman, William S.  
 Chastain, Paul  
 Clark, Betty Rose  
 Clark, Albert Carlton, Jr.



Clark, Walter  
 Clary, Don  
 Clement, Joe Mark  
 Cobb, Allena  
 Cochran, Lloyd Glenn



Coile, James H.  
Cole, Daniel E.  
Cole, James  
Collins, Shirley Dean  
Conine, Frances Anita



Connell, Jerry  
Connell, Thomas T.  
Cook, Judith Diane  
Cook, Martha E.  
Cooper, Collier Thomas



Copeland, Don  
Costley, Kenneth  
Cowan, Harvey Dean  
Crain, James Thomas  
Crockett, Earl F.



Crowe, Eugene  
Crowe, J. T.  
Crumley, Henry R.  
Culpepper, Marion C.  
Dalton, Joe C.



Damianos, Ramona  
Daniel, Samuel Thomas  
Daniell, Alfred O.  
Daniell, James P.  
Daniell, James L.



Darden, Harold W., Jr.  
Dark, Philip J.  
Davis, John F.  
Davis, Theodore H.  
Deariso, Robert W.



Dickerson, John T.  
Dills, Ted L.  
Dorsey, Joan Carolyn  
Dorsey, James  
Dorsey, Ted E.



Driver, Lewis Frazer  
Duke, Joseph Reed  
Dukes, Eva Claire  
Dumas, Jesse Denny  
Dunahoo, Rebecca Ann



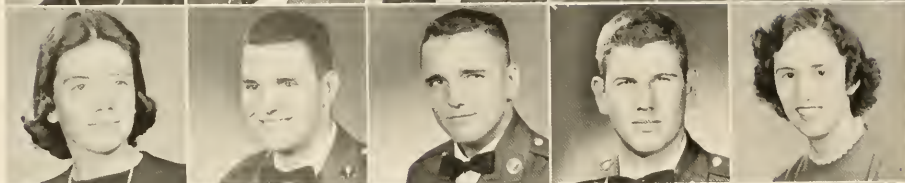
Dunn, Willis J.  
Dunson, Sarah Rogers  
Duren, Linda Carol  
DuVall, Ward Beecher  
Dyer, Roger Allen



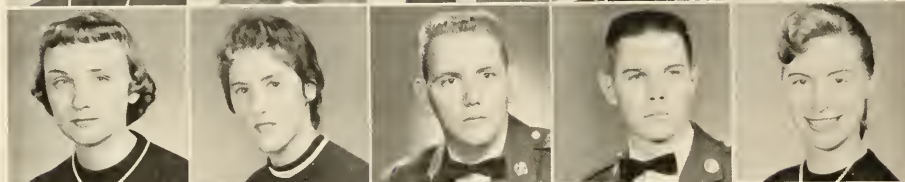
East, Barbara Joan  
 Edwards, Walter Milton  
 Elliott, J. W.  
 Ellis, Martha D.  
 Ellison, Robert E.



Ethridge, Sara Virginia  
 Eulenfield, Benjamin R.  
 Evans, James David  
 Farmer, Millard Wayne  
 Fielding, Pat



Finch, Margarite Joan  
 Fincher, Pat  
 Fisher, James Alva  
 Fletcher, Joel Franklin  
 Floyd, Glenda Faye



Floyd, Howard  
 Floyd, Rhoda Jacquelin  
 Foster, Claire  
 Fowler, James B.  
 Gaddis, Raymond H.



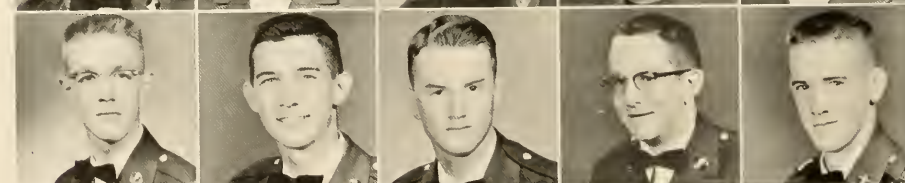
Gardner, Leroy Whitcomb  
 Garner, George Guy  
 Garrett, Billy R.  
 Garrison, Betty K.  
 Garrison, John



Garrison, Robert Hays  
 Gazaway, John Aubrey  
 Geiger, Lawson Adam  
 George, Sally  
 Gibson, James L.



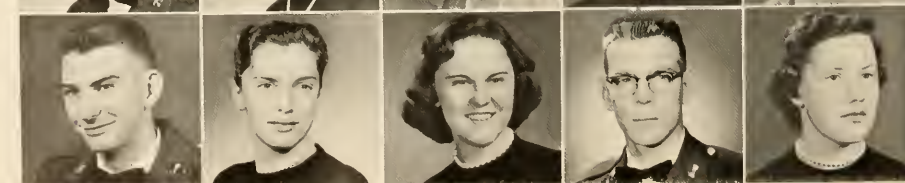
Glover, J. W.  
 Gober, Lenny Ira  
 Goins, Robert W.  
 Golden, James F.  
 Golden, Theron P.



Golding, James Ronald  
 Gooch, Patricia Jane  
 Goss, Shirley Gaines  
 Grainger, Marilyn  
 Green, Joyce



Grindle, Douglas  
 Groover, Gladys Elizabeth  
 Guest, Betty Ann  
 Guest, James Adrian  
 Haavie, Katherin F.

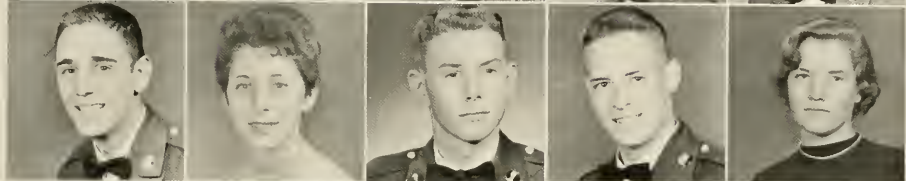




Hagin, Walter Allen  
Haley, Diane  
Hall, Orville  
Hamilton, Lionel K.  
Hannah, Evelyn



Harbin, Sandra  
Hardaway, Harry  
Hardin, William H.  
Hardy, Albert S.  
Harris, Charles



Harris, James  
Harris, Virginia  
Harrison, Ernest Lee  
Harrison, Eugene Ray  
Hawkins, Phebe



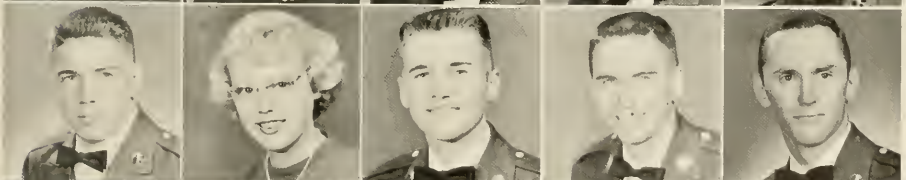
Hayes, Ralph  
Heath, Bobby  
Heeth, Wyman  
Henry, John E.  
Hensley, Edwin Ray



Herrington, Larry W.  
Herron, Frances Jeanette  
Higginbotham, James L.  
Hilgenberg, Gary L.  
Hill, Joseph William



Hill, Judy  
Hill, Sara L.  
Hinson, David A.  
Hodges, Gene R.  
Hodges, John C.



Hogsed, George Harold  
Holbrook, Roberta Mae  
Holbrook, Thaddeus B.  
Holcomb, Robert W.  
Holley, Thomas



Hollingsworth, Henry George  
Hood, James Victor  
Hood, Kenneth H.  
Hooks, Trinton  
Horton, Leland



Houston, Kenneth  
Howard, James R.  
Howell, Phillip  
Huff, Joseph W.  
Hurst, Lee L.



Hurst, William J.  
Ingram, Joyce  
Irby, James  
Irvin, Tommy  
Irwin, William



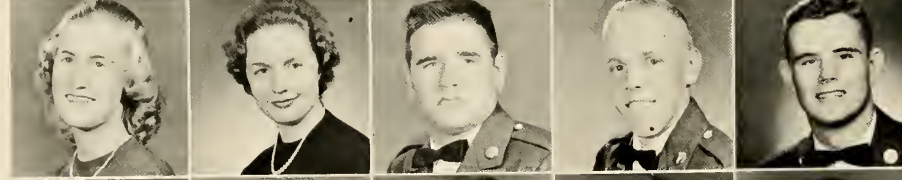
Ivey, Robert  
Jackson, Larry  
Jarrett, Jimmie  
Jennings, Laurice  
Jester, Joan



Johnson, Jeannine  
Johnson, John David  
Johnston, Frances  
Jolly, Albert  
Jordan, Sydney



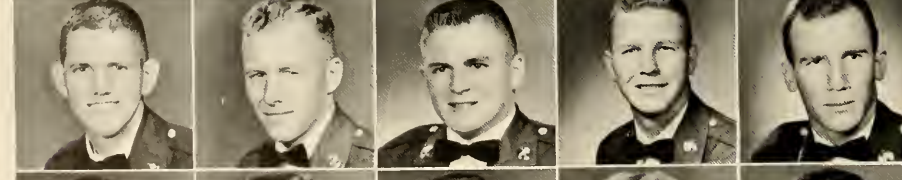
Jordan, Wayne  
Junghans, Karen  
Kanaday, Tona Wanda  
Kight, James  
King, Joe



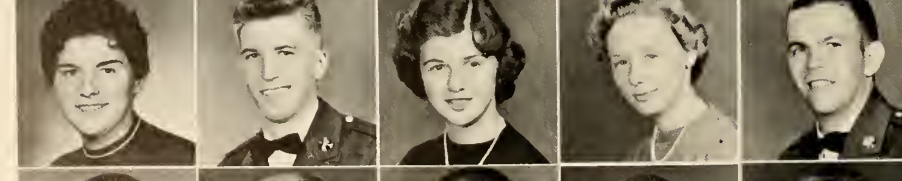
Knight, Barbara  
Knight, Pattie Lee  
Kolbie, Charles  
Lackey, Guy Robert  
Landrum, Horace



Langford, Wendell, Jr.  
Lenier, Bruce  
Lenier, Kenneth  
Lawson, Jo Anna  
Lecroy, Robert



Ledford, Ronald  
Lester, Jack P.  
Livingston, Jackie  
Loehr, Roy  
Lovett, James



Low, Peggy  
Lowe, James  
Loyd, Lynn  
McBreyer, Marilyn  
McDougal, Walter



McDougal, Albert  
McElmurray, Charles  
McGaughey, Robert  
McGregor, Charles  
McKie, Hugh

McLean, John  
McWilliam, Jane  
Macolly, James  
Macon, Carol  
Mangum, Ann



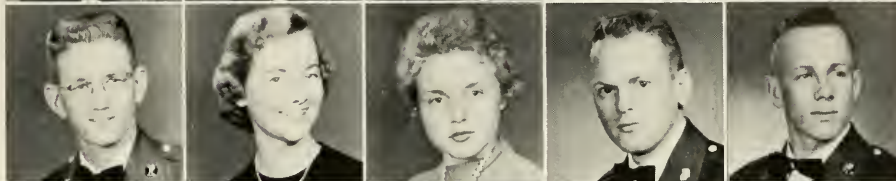
Menn, Arthur  
Marshall, Mead  
Martin, L. C.  
Matthews, Herman  
Matthews, Carolyn



Matthews, Thomas  
Mayo, George  
Melcher, John  
Merritt, William  
Miller, Alex



Mitchell, Tilden A.  
Moor, Deltah  
Morris, Bobby Jean  
Morrison, Lee  
Mosley, Wilson



Myers, James  
Neel, Armon  
Newton, Augustus  
Newton, James C.  
Newton, Pattie



Nichols, J. C.  
Nixon, Betty Ann  
Norman, Hugh  
Norman, James  
Nutt, Glynn



O'Connor, Paul B.  
O'Steen, Hansel  
Owens, Henry  
Palmer, Peter  
Parker, Henry



Parks, Barbara  
Parks, Walter  
Parrish, Charles  
Patterson, James  
Payne, Arville



Persall, Harry  
Pirkle, Jerry  
Pirkle, John  
Pittman, Arthur  
Ponder, Joseph



Pope, Cecil  
Pope, Fred  
Potter, John  
Powell, Gary  
Powell, Nick



Powell, Pat  
Prather, Larry  
Pressley, Ronnie  
Preston, William H.  
Price, James



Purdy, Alice  
Puryear, W. D.  
Querry, Glenda  
Rachels, Sally Ann  
Ragan, Phyllis



Raley, Michael  
Randall, Sylvin  
Rape, Michael  
Ray, Jo Ann  
Reece, Frank S.



Reed, Harold  
Reeves, Joe  
Reins, Tom  
Richards, Ernest M.  
Richardson, Carl



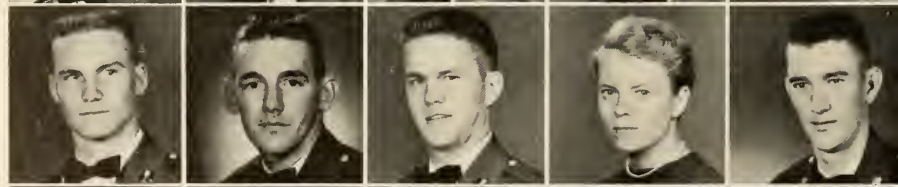
Riley, James  
Rivers, Jim  
Rowan, Joe  
Sanders, Karen  
Schulze, Mary Ann



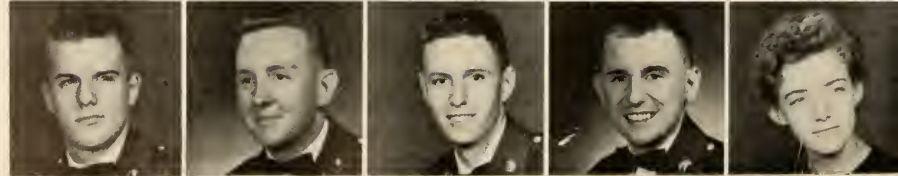
Searcy, Jim  
Sellers, James  
Sewell, Charles  
Shearouse, Julian  
Shore, Betty Ann



Sills, Edward  
Sims, Jackie  
Singletary, Joe  
Singleton, Lera  
Skelton, Edward



Skinner, Lester J.  
Smart, Roger  
Smenner, John  
Smith, Arthur  
Smith, Betty



Smith, Charles N.  
Smith, David M.  
Smith, Donald  
Smith, Guy  
Smith, John



Smith, John M.  
Smith, John Ray  
Smith, Peggy  
Smith, Sidney  
Snell, Donald



Snelling, Walter  
Spahos, Paul  
Speer, William  
Stanley, Ann  
Stephens, Ronnie



Stockton, Robert  
Story, Harriet  
Stovall, Anne  
Stover, J. F.  
Strickland, Grady



Strickland, James  
Sudlow, Robert  
Summerville, Bobby  
Tatum, Mary  
Templeton, Emily



Tharpe, Bill  
Thayer, Allen  
Thompson, Randy  
Thornton, William  
Tillman, Young



Tolbert, Sue  
Tommey, Carol  
Townsend, Helen  
Tritt, Katherine  
Trotman, Patsy



Turner, Donna  
Tyre, David H.  
Underwood, Jean  
Vaughn, Frances  
Vaughn, Frank



Villyard, Earl H.  
Vollenweider, Paul  
Waldrop, Roger  
Wallis, Thomas  
Walters, Ken





Warren, Don F.  
Walters, John  
Wells, Delayne  
West, John  
West, Wanda



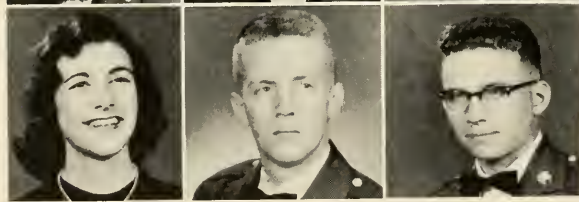
Westmoreland, June  
Whately, Perry  
White, Harry  
White, James  
White, William



Whitley, Jack  
Whitmire, Kenneth  
Whitlow, Nancy  
Wildes, Mark  
Williams, Jackie



Williams, Bonnie  
Williams, Roger  
Williams, William  
Winn, Howell  
Wishon, Hoyt



Wood, Joyce  
Woodbury, John  
Ziprik, Wallace

Not Pictured:

- |                     |                     |
|---------------------|---------------------|
| Adams, Bobby        | Melton, Kenneth     |
| Belfield, Thomas    | Miller, Gerald      |
| Boyd, James         | Mullinax, Ethelene  |
| Broadway, Mildred   | O'Kelley, George    |
| Bruce, Virginia     | Richardson, Carl    |
| Butler, Joe         | Ricks, Morris       |
| Casey, Truitt       | Roberts, Willie     |
| Cheves, Arthur      | Rogers, Gail        |
| Davis, Joseph       | Ruff, Robert        |
| Ehlers, Albert      | Spell, James        |
| Erwin, Charles      | Stewart, Hannah     |
| Eubanks, Nancy      | Styles, Henley      |
| Fitzpatrick, Delmer | Sweatt, Charles     |
| Gillean, Phillip    | Varnedoe, Heeth     |
| Harpold, Diane      | Westmoreland, David |
| Himes, Joseph       | White, Tommie       |
| Kent, William       | Williams, Bruce     |
| Marshall, William   |                     |







# Features



*Mr. and Miss N. G. C.*

CHARLES MULLIS

BESS DUNCAN



*Most Athletic*

JEAN ODOM

DEWAYNE PATRICK



*Cutest Couple*

MARGIE PINSON

REUBEN BLACK





*Most Dependable*

JUANITA FOSTER

KENNETH BUTTERWORTH

*Most Popular*

PAT COMPTON

CHARLES MULLIS



*Most Versatile*

JO CAROL LENDERMAN

DEWAYNE PATRICK



*Friendliest*

BESS DUNCAN

BUBBA COLEMAN

CARL GLASS





## *Most Dependable*

JO CAROL LENDERMAN

KENNETH BUTTERWORTH

Who's Who in American Universities and Colleges. *Left to right, front row:* Ralph Cordell, Joseph Puett, Juanita Foster, Bess Duncan, Joyce Bellamy, Jo Carol Lenderman, Robert Schloesser. *Back row:* Charles Mullis, Aquila Stipe, Oscar Scoville, Clealon Wasdin, Walter Nader, Reuben Black, Kenneth Butterworth.





CYCLOPS QUEEN



# Miss Bess Duncan

Seldom do we find in one person the many characteristics, the high ideals which are possessed by Bess Anne Duncan—*Cyclops* Queen of 1957. Her charm, beauty, personality, friendliness, and sense of humor have endeared her to the people of North Georgia College.

A senior from Clarksville, Georgia, Bess is majoring in English and Education. She likes to read, swim, and dance, and can always find enough time for a quick hand of bridge as she hurriedly drinks a cup of coffee between classes.

To someone loved and respected by those who know her, we would like to say, "Congratulations, Bess!"





*Miss Barbara Cummings*



*Miss Juanita Foster*



*Miss Jo Carol Lenderman*



*Miss Kay Reed*

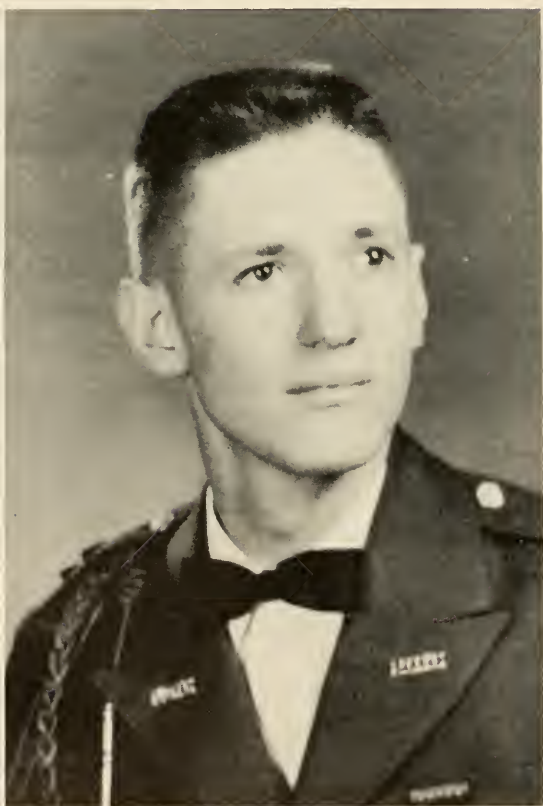


*Miss Betty Rucker*



*Miss Kitty Van Geuns*

# Nu Gamma Honorary Society



Kenneth Butterworth



Ann Tingle

The Nu Gamma Honorary Society is the most elite society on the campus. It is composed of those who have obtained an almost perfect scholastic average throughout their years at North Georgia College.

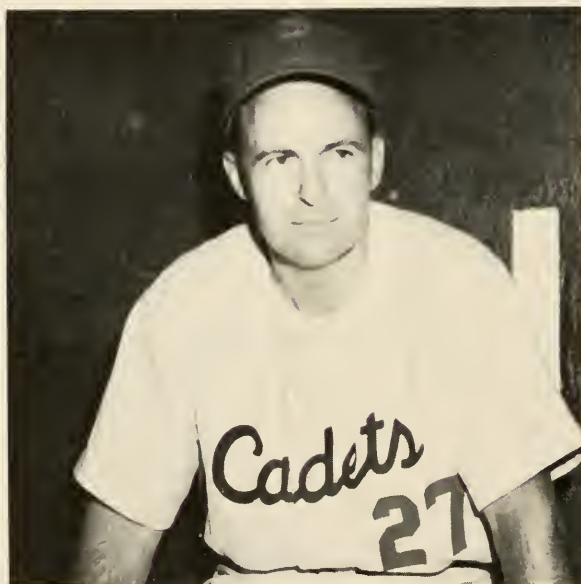




# Sports

# VARSITY SPORTS

## BASEBALL



Coach U. G. Matherly



Hamil R.

### Record

Ga. Teachers	14	2
Valdosta	9	1
Valdosta	8	9
Union City	2	11
Western Carolina	7	0
Mercer	2	0
Western Carolina	7	3
Berry	4	0
Ga. Teachers	11	2
Ga. Teachers	8	0
Erskine	6	5
Piedmont	7	2
Berry	7	5
Berry	8	7
Valdosta	3	13
Piedmont	3	9
Erskine	4	5
Piedmont	7	9

### Opponent N.G.

14	2
9	1
8	9
2	11
7	0
2	0
7	3
4	0
11	2
8	0
6	5
7	2
7	5
8	7
3	13
3	9
4	5
7	9



Alexander, H.



Coleman, L.



Hardis, J.



Singleton, R.



Bentley, H.



Hamil, K.



Cortelli, R.



Van Meter, H.



Cavender, J.



Patrick and Coleman



Scheff, P.

# BASKETBALL



Coach U. G. Matherly



Breedlove, J.

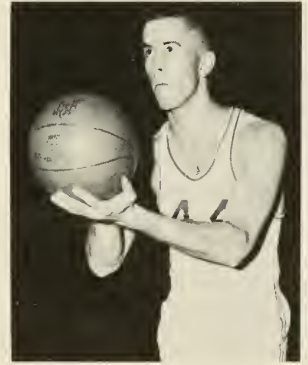
Record	Opponent	N.G.
Newberry	76	73
Oglethorpe	62	67
W. Carolina	78	48
Berry	49	56
Piedmont	75	42
Piedmont	57	61
Oglethorpe	72	81
Mercer	64	63
W. Carolina	76	59
Erskine	85	68
Valdosta	69	115
Ga. State	70	82
Piedmont	68	83
Troy State	80	62
Valdosta	63	93
Piedmont	86	90
Ga. State	55	68
Troy State	97	67
Mercer	88	108



First Row, Left to Right: Holley, T.; Cortelli, R.; Patrick, D.; Camp, W.; Lanier, B.; Shepherd, D.; Yeomans, A.; Second Row: Matherly, U. G.; Hamil, R.; Holcombe, W.; Cochran, B.; Alexander, H.; Van Meter, H.; Grindle, D.; Johnson, C. Third Row: Chapman, B.; Hamil, K.; Clary, D.; Akin, J.; Breedlove, J.; Wise, R.



Alexander, H.



Chapman, B.



Camp, W.



Patrick, D.



Van Meter, H.

# RIFLE TEAMS



First Row, Left to Right: Holland, L.; Cooley, J.; Newton, P.; Finch, J.; Robinson, C. Second Row: Mrs. Boaz; Low, P.; Templeton, E.; Ethridge, S.; Barrow, J.; Clemmer, F.; Hyatt, R.; SFC Barnard.

## GIRLS



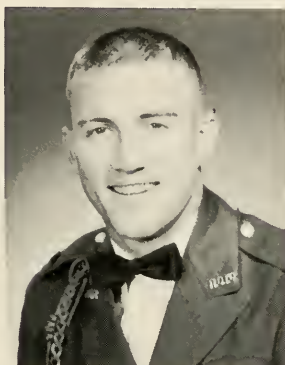
First Row, Left to Right: McWhirter, J.; Coulter, R.; Fox, C.; Evans, J.; Connell, T. Second Row: Maj. Davis; Geer, W.; Lupo, W.; Cozart, M.; Joiner, D.; SFC, Parker.

## BOYS

# CHEERLEADERS



Jean Odum  
Co-Captain



DeWawne Patrick  
Sponsor



Pat Compton  
Co-Captain



Left to Right: Barbara Cummings, Kay Reed, Janice Hawkins, Alma White, Jean Odum, Donna Phillips, Allena Cobb, Pat Compton.

# INTERCOMPANY SPORTS COMPANY A



First Row, Left to Right: Coulter, Roberts, McLean, Piland, Adams, Coleman, Sills, Nader. Second Row: Sanders, Martin, Heeth, Hall, Hodges, Ward, Cavender, Yeomans, Lupo, Foster. Third Row: Clary, Smart, Geer, Barnes, Carter, Van Meter, Varnadoe, Joiner, Shoemake, Cortelli.

W-3 L-2 T-0





# COMPANY B



First Row, Left to Right: Anderson, Snyder, Chastain, Snelling, Archer, Mann, Williams, Cheek, Elliott, Miller. Second Row: Baggett, Dumas, Lester, Culpepper, Ehlers, Duvall, Allen, Lambert, Patrick. Third Row: Alexander, Johnson, Sudlow, Black, Brown, Williams, Chapman, Scott.

W-5 L-0 T-0



# COMPANY C



First Row, Left to Right: Burton, Garrett, Cole, Haight, Cochran, Walters, Evans, Garrison. Second Row: Glass, Kight, Coleman, Pirkle, Norman, Bradley, Eberhardt, Pope, Hardy, Corbin, Thomas. Third Row: Crowe, Butler, Gillean, Magill, Bozeman, Fletcher, Reece, Crowe, Brannon, Parks, Rivers.

W-1 L-4 T-0



# COMPANY D



First Row, Left to Right: Horton, Ricks, Price, Eulenfield, Owens, Patterson, Bunkley, Crockett, Mitchell. Second Row: Rape, Jordan, Pope, Garrison, Livingston, Anderson, Wishon, Newton, King, Dorsey. Third Row: Deariso, Hawkins, Hammond, Broadway, Gaddis, Camp, Crawford, Hill, Mackey, Powell, Dalton.

W-4 L-1 T-0



# COMPANY E



First Row, Left to Right: Mays, McDonald, Ellison, Burton, O'Connor, Brooks, Norman, Clark, Jennings, Holcombe, Schloesser, Singleton. Second Row: Irby, Stallings, Van Horn, Smith, Pridgen, Hogsted, Bourne, Hamil, Barber, Macolly, Hayes, Daniell.

W-0 L-4 T-1



# COMPANY F



First Row, Left to Right: Golden, Douglas, Garner, White, Golden, Callaway. Second Row: Gissendaner, Skinner, Brown, Hinson, Delfield, Wilson, Henry, Kolbie. Third Row: Fickling, Hulsey, Stipe, Driver, Caldwell, Sweatt, Vollenweider, Burnett.

W-2 L-2 T-1



# TRACK



220 yd. Dash



880 yd. Relay



440 Dash



Cross Country



High Jump



High Jump

Broad Jump



Pole Vault



Shot Put



# CO-ED SPORTS HIPPOLYTANS



Sara Aaron  
Captain



Mrs. C. E. Aaron  
Sponsor



Betty Rucker  
Co-Captain



First Row, Left to Right: Loveless, J.; Salley, C.; East, J.; Mangum, A. Second Row: Parks, B.; Bilbro, L.; Hannah, E.; Cook, M. Third Row: Cooley, J.; O'Quinn, G.; Hearn, M.; Tolbert, S. Fourth Row: Burrow, S.; Vinson, B.; Brown, A.; Brown, S.; Shulze, M.; Bellamy, J. Fifth Row: Dunson, S.; Templeton, E.; Haavie, F.; Wood, J. Sixth Row: Brown, B.; Adams, B.; Querry, G.; Burnett, B.



# MERCUREANS



Joy Hudgins  
Captain



John Miller  
Sponsor



Claire Foster  
Co-Captain



First Row, Left to Right: Hudgins, J. Second Row: Foster, C.; Durham, E. Third Row: Johnston, F.; Clark, B.; Van Geuns, K.; Hill, J.; Low, P. Fourth Row: Jones, B.; Trotman, P.; Brown, J.; Duren, L.; Boles, M.; Smith, B. Fifth Row: Puckett, B.; Haley, D.; Shaw, S.; Clemmer, F.; Sawyer, D.; Moor, D. Sixth Row: Goss, S.; Damianos, R.; McBrayer, M.; Robinson, B.





# PHI OMICRONS



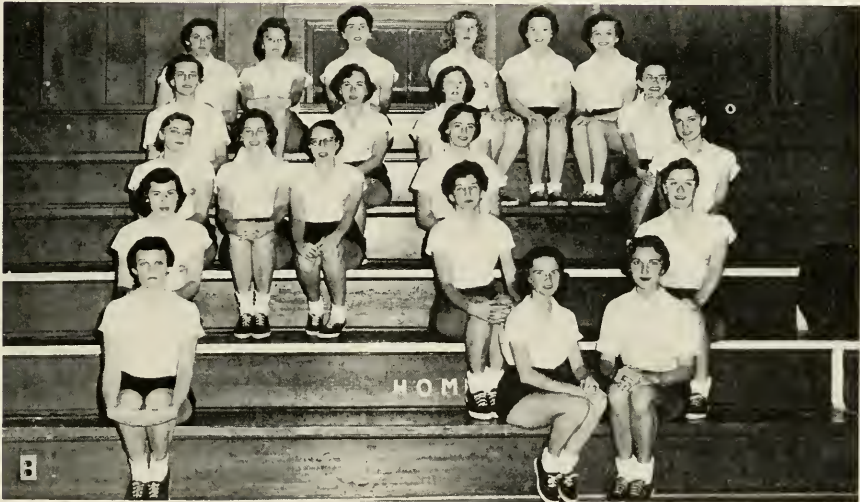
Sara Lee Gudger  
Captain



Charles Almond  
Sponsor



Caroline Robinson  
Co-Captain



First Row, Left to Right: O'Kelley, P.; Gudger, S.; Robinson, C. Second Row: Davis, B.; Hyatt, R.; Poston, J. Third Row: Wells, D.; Newberry, S.; Low, B.; Matthews, C.; Groover, E. Fourth Row: Randall, S.; Jordon, D.; Tatum, M.; Shifflet, P. Fifth Row: Stewart, H.; Camp, J.; Bowden, J.; Williams, J.; Herring, M.; Wilson, C.



# TRAHLYTANS



Luan Holland  
Captain



Max Hardie  
Sponsor



Patti Baldwin  
Co-Captain



First Row, Left to Right: Sanders, K.; Fielding, P. Second Row: Anderson, M.; Hooper, L.; Cummings, O. Third Row: Herron, J.; Smith, W.; Jarrett, J. Fourth Row: Baldwin, P.; West, R.; Brown, B.; Watson, M.; Holland, L. Fifth Row: Hawkins, P.; West, W.; Garrison, B.; Dunahoo, R.; Blackshear, P. Sixth Row: Barrett, C.; Dorsey, C.; Dukes, E.; Ray, J.; Collins, D.; Conine, A.; Calhoun, A.; Benson, C.; Avery, S.; Shore, B. Seventh Row: Leverette, A.; Harris, V.; Kanaday, T.; Allison, B.; Westmoreland, F.; Avera, G.; Blanchard, C.; Beauchamp, M.; Knight, B.; Barrow, J.





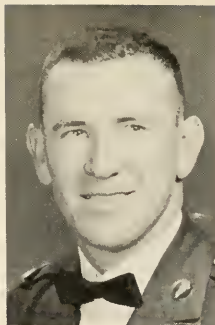
# Organizations



Verda Smith  
Editor



Carolyn Mebane  
Assistant Editor



Leonard Parks  
Business Manager



Mr. H. H. Gilbert  
Financial Adviser



Dr. Dorothy Brown  
Editorial Adviser



Mrs. Cortland V. Smith  
Sponsor



THE EDITORIAL STAFF: Vivian Lawton, Joyce Green, Beth Puckett, Jackie Harris, Caroline Robinson, Verda Smith, Ruth Fowler, Carolyn Mebane. Not Pictured: Suzanne Breedlove.



THE BUSINESS STAFF: Leonard Parks, Betty Rucker. Not Pictured: Reuben Black, Max Bradley.



THE CLASSES STAFF: Editors, Miriam James and Carolan Salley; Ann Tingle. Not Pictured: Nona Allen, Annette Kelley.

# The Cyclops Staff



THE ORGANIZATION STAFF: Editor, James McDonald; Patsy Trotman, Juanita Foster, Normar Barber.



THE PHOTOGRAPHY STAFF: John Peterson, Joyce Bellamy, Bill White.



THE MILITARY STAFF: Editor, Richard Wilder; Joe King. Not pictured: Carl Jones. THE SPORTS STAFF: Editor, Ronald Wise; Dot Buice. Not pictured: Robert Craig.



THE FEATURES STAFF: Editor, Lee Wall; Barbara Horton, Jo Carol Lenderman, Betty Price, Sue Reynolds.

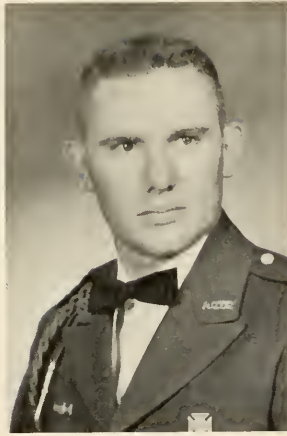
THE ART STAFF: Editor, Peggy Shiflet; Ronnie Pressley, Myrna West.



# The Cadet Bugler Staff



Jo Carol Lenderman  
Editor



Bob Schloesser  
Business Manager



Carolyn Mebane  
Alumni Editor



Janet Duke  
Assistant Editor



Miss Kitty Lenderman  
Sponsor



Mr. H. H. Gilbert  
Financial Adviser



Miss Jean White  
Editorial Adviser

Mac Allen  
Juanita Foster  
Carolyn Mebane  
Janet Duke  
Joyce Bellamy  
Lee Wall



Diane Haley  
Nancy Smith  
John Scott  
Carolyn Vaughn  
Pat Compton  
Verda Smith





Ben Hunt  
Editor



Phil Hoag  
Assistant Editor



Capt. C. W. Whittington  
Officer in Charge

Don Roberts  
Manager

# The Commander Staff

Left to Right: Hoag, Simmons, Archer, Allen, O'Kelley, Hunt, Ziprik, Smith, Melcher, Mebane, Capps.



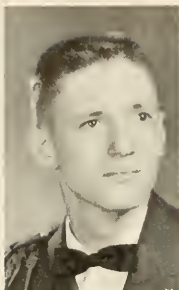




The COMMANDER Staff usually works pretty hard,

but . . .





C. K. Butterworth  
President



J. F. Puett  
Vice-President



J. O. Scott  
Secretary



J. E. McSwain  
Treasurer



O. G. Scoville  
Special Services Officer



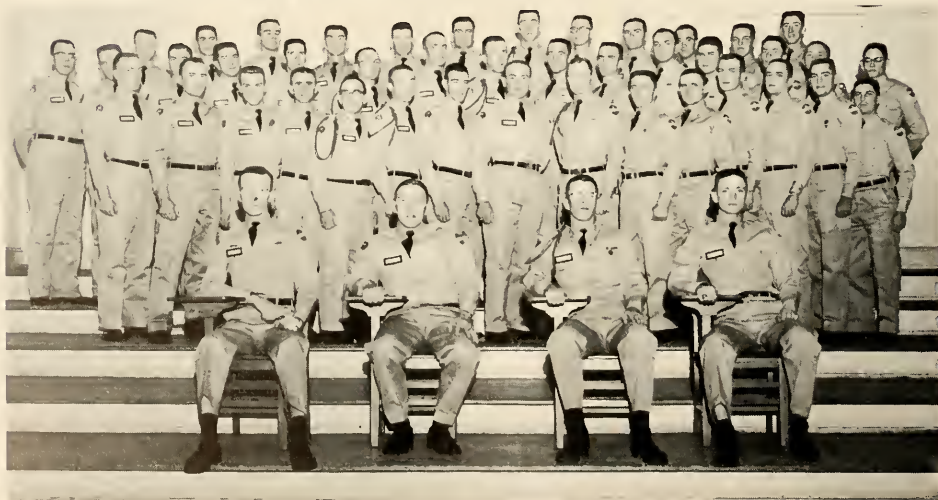
Major Bullard  
Adviser

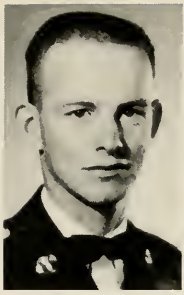


Captain Hause  
Adviser

## OFFICERS' CLUB

Seated, Left to Right: McSwain, Scott, Scoville, Butterworth. Front Row: MacDonald, Foster, Clark, Knapp, Roberts, Patrick, Bentley, Cordell, Brown, Coulter, Schloesser, Fennell, Walker, McBride, Pease. Second Row: Brannon, Wilder, Land, Hensley, Wigley, Mullis, Johnson, Horton, Stipe, Flanders, McWhirter, Ward, Pace, Glass, Hunt. Back Row: Sudlow, Geer, Johnson, Alexander, Bozeman, Pridgen, Camp, Sturdivant, Rachels, Singleton, Jones, Jones.





Sanders Hale  
President



Earl Smart  
Vice-President



Glynn Eberhardt  
Secretary-Treasurer



Charles Williams  
Sgt.-at-Arms



Harold Van Meter  
Chaplain



Captain Whittington  
Adviser

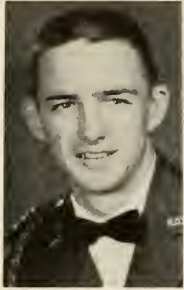
# NON-COMMISSIONED OFFICERS' CLUB

Seated, Left to Right: Eberhardt, Smart, Hale, Van Meter, Williams. First Row: Archer, Hawkins, Stoner, Wilson, Gordy, Cortelli, Sanders, Bruce, Haight, Lupo, Varnadoe, Corbin. Second Row: Milam, Lunsford, Ponder, Stallings, Sigman, Cochran, Crowe, Tilley, Barden, Gilleland, Douglas, Morrow. Back Row: Wise, Wade, Wayne, Allen, Shepherd, Hammond, Crawford, O'Kelley, MacDonald, Moore, Hoag.





# SCABBARD AND BLADE



Reuben Black  
Captain



Terry Horton  
1st Lt.



Warren Camp  
2nd Lt.



DeWayne Patrick  
1st Sgt.



Miss Margie Pinson  
Sponsor



Capt. C. W. Whittington  
Adviser



Mejr. R. Bullard  
Adviser



First Row, Left to Right: Flanders, Mullis, Roberts, Coulter, Schloesser, Cordell, Brown, Second Row: Geer, Sudlow, Wigley, Horton, Butterworth, Stipe, Scoville, Patrick, McSwain, Ward, McWhirter, Glass, Camp, MacDonald.

# BAPTIST STUDENT UNION



Ann Thomas  
2nd Vice President



Ellie Jackson  
3rd Vice President



Joan Long  
Secretary



Clealon Wasdin  
President



Patti Baldwin  
1st Vice President

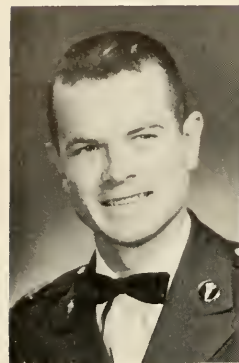


R. T. Bailey  
Treasurer

Front Row, Left to Right: White, Jackson, Wasdin, Baldwin, Matthews, Thomas. Second Row: Lane, Buice, Sanders, Morris, Jones, Loyd, Shiflet, O'Quinn, Low, Beauchamp. Back Row: Golden, Wise, Crandall, Craig, Bailey, Bowen, Andrews, Smith, Anderson.



# WESLEY FOUNDATION



Douglas Morrow  
President



Jana Poston  
Vice-President



John Peterson  
Vice-President



Donna Jordan  
Secretary



Kirby Hamil  
Treasurer

First row, left to right: Van Geuns, Puckett, Schulze, Herring, Cooley, Knight, Smith, Loveless, Jordan, Story, Thompson, Templeton. Second Row: McLane, Brown, Haavie, Steinmetz, Goss, Lindsley, Poston, Moor, McDuffie, McBrayer, Rev. Sherrod, Rev. Holt. Third Row: Lunsford, White, Dyer, Hinson, Loehr, Anderson, Jennings, Ward. Back Row: Spahos, Duvall, Morrow, Hamil, Van Horn, Hamil, Peterson.



# WESTMINISTER FELLOWSHIP



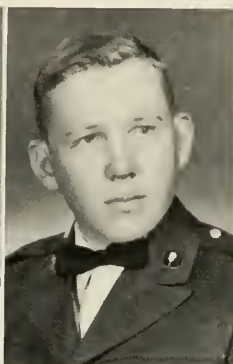
Joy Hudgins  
President



Joyce Bellamy  
Vice-President



Sara Lee Gudger  
Secretary-Treasurer



Sam Harben  
Program Chairman

Front Row, Left to Right: Benson, Hudgins, Bellamy, Gudger, Randall, Harben, Finch, Newton, Green, Mrs. Strickland. Back Row: Harben, McSwain, Garrison, McDonald, Davis, Crumley, Glover, Miller, Dr. Huntley, Rev. Strickland.



# Y W C A



Betty Rucker  
President



Donna Jordan  
Vice-President



Sandy Oxford  
Sponsor



Miss White  
Adviser



JoAnn Long  
Secretary



Joyce Bellamy  
Treasurer



We were indeed fortunate to have as our Religious Emphasis Week speaker Dr. Robert Strong of the First Presbyterian Church of Augusta. He delivered a series of inspirational messages which greatly moved all to whom he spoke. We thank him for the guidance he offered during those few short days.



# Y M C A



Dr. Forester  
Adviser



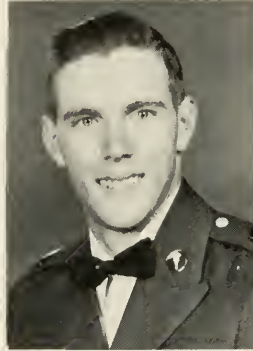
Maureen McDuffie  
Sponsor



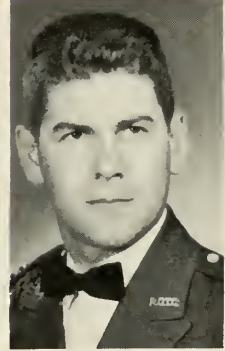
Clelon Wasdin  
President



Pal Lunsford  
Vice-President



Phillip Hoag  
Secretary



Leonard Ward  
Treasurer



Throughout the year, the Y's entertain by having informal dances in the gymnasium. It looks like everyone is having a good time!



# REX FRATERNITY



Carl J. Glass, Jr.  
President



Reuben Black  
1st Vice-President



Jerry Nader  
2nd Vice-President



Wiley Douglas  
Secretary-Treasurer



DeWayne Patrick  
Sgt-at-Arms



Harold Van Meter  
Chaplain



Major Ralph Davis  
Adviser



Miss Anna Laurie Tickner  
Sponsor



Miss Bessie Lee Freeman  
Hostess



Miss Janice Hawkins  
Sweetheart

Seated, Left to Right: Van Meter, Glass, Patrick, Douglas, Second Row: Coulter, Bozeman, Wilder, Roberts, Geer, Foster, Wigley, Schloesser, Brown, Butterworth. Back Row: Gaylor, Gordy, Hammond, Dumas, Smart, Williams, Fox, Eberhardt Lupo.



# SIGMA THETA FRATERNITY



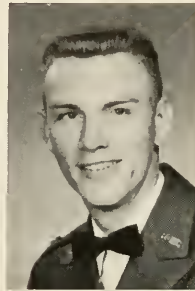
Earl McSwain  
President



Ralph Cordell  
Vice-President



Julian McWhirter  
Treasurer



Robert Clark  
Secretary

Max Bradley  
Sgt.-at-Arms



Mac Allen  
Chaplain

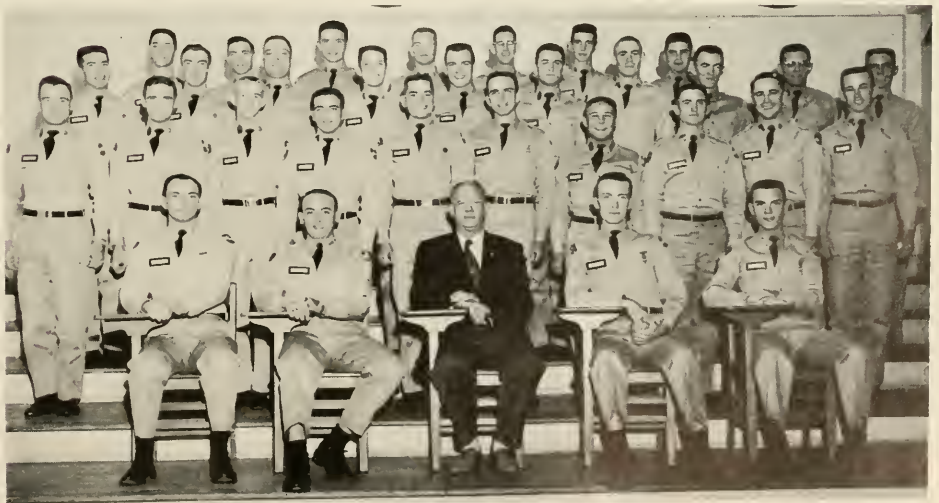


Mr. Belcher  
Adviser



Mrs. F. L. Langford  
Sponsor

First Row, Left to Right: McWhirter, Cordell, Belcher, McSwain, Clark. Second Row: Archer, Cochran, Stoner, Varnedoe, McBride, Flanders, Corbin, Johnson, Dye, Smith. Third Row: Hensley, Allen, Land, Hoag, Blackstock, Ziprik, Hollingsworth, O'Kelley, Fennell, Copeland, Wade, Dent, Ward, Moore, Crandall, Barden.



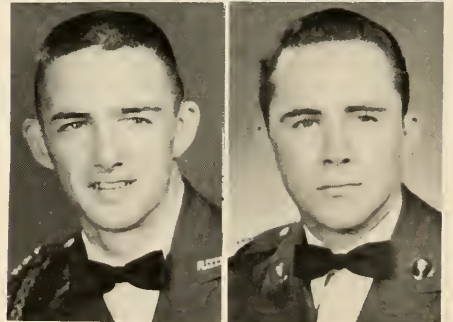
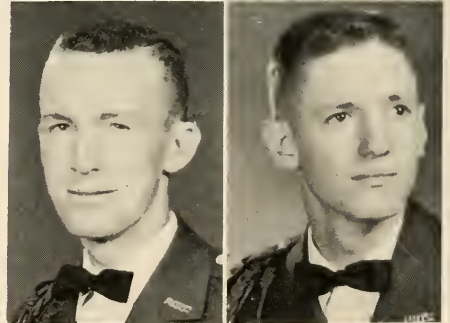
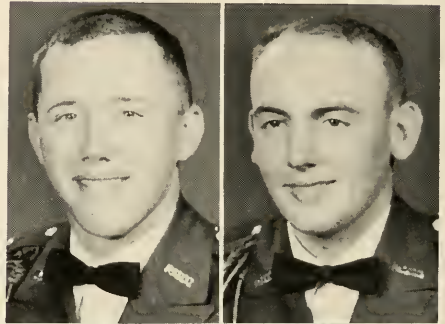
# INTER-FRATERNITY

## COUNCIL



Mrs. Winifred Glass  
Sponsor

General Sherman hangs in disgrace as he awaits his tragic end—death in the fire at the hands of the members of the Pan-Hellenic Council. This event took place to advertise their very successful Confederate Ball.

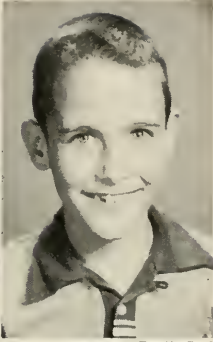
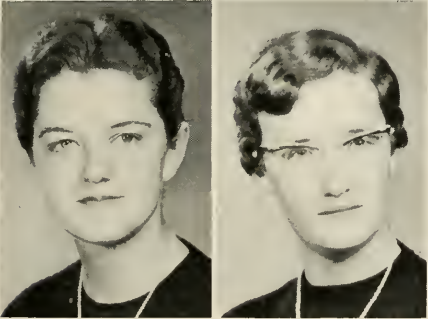
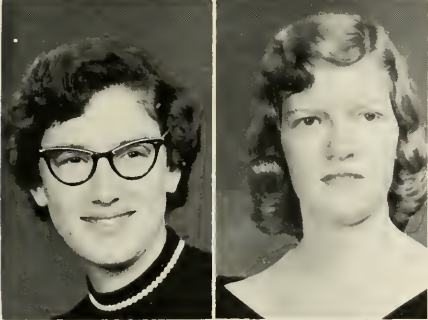
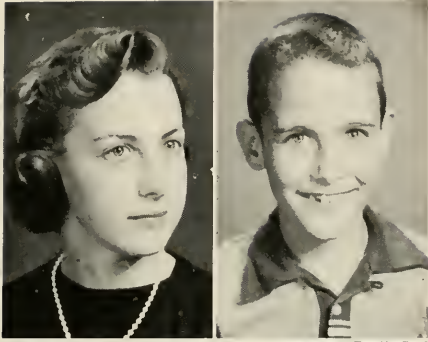


Carl Glass  
President  
Earl McSwain  
Vice-President  
Reuben Black  
Secretary-Treasurer

Members:  
Ralph Cordell  
Ken Butterworth  
Jerry Dye

# REC CLUB

## COUNCIL



Chick James  
President

Courtenay James  
Sponsor

Bobby Neal Jones  
Vice-President

Shirley Shaw  
Secretary

Fran Clemmer  
Treasurer

Edna Durham  
Reporter

Starting at the Base of the "R": James, Jones, Shaw, Clemmer, Durham, Odum, Hooper, Rucker, Foster, Aaron, Hudgins, Holland, Baldwin, Robinson, Gudger.



# Lewis Hall

Miss Alice Donovan  
Dean of Women



JUANITA FOSTER . . . . .	President
NANCY BARNES . . . . .	Vice-President
BETH PUCKETT . . . . .	Secretary
DOT SAWYER . . . . .	Treasurer
LEE WALL . . . . .	Reporter

## Seniors



Juniors



Mrs. L. B. Foster  
Sponsor

Sophomores



Freshmen



# DRAMATICS CLUB



Ed Simmons  
President



Carl Glass  
Vice-President



Jeanette Loveless  
Secretary and Treasurer



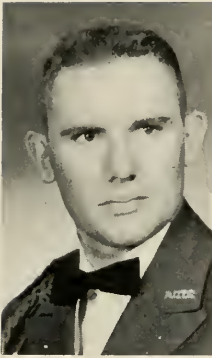
Mr. Simpson  
Adviser

First Row, Left to Right: Smith, Cook, Low, Ethridge, Floyd, Morris, Tommey, McWilliams, Compton, Mebane, Rachels. Second Row: Schloesser, Glass, Stanley, Knight, Bolton, Fincher, Jordan, Bradley, Thompson, Dunahoo, Story, Hooper, Trotman, Barrow, Loyd, Loveless, Mr. Simpson. Third Row: Spahos, Glover, Hooks, Huff, Lunsford, Jones, Pace, Sturdivant, Channell, Archer, Fletcher, Morrow, Simmons.

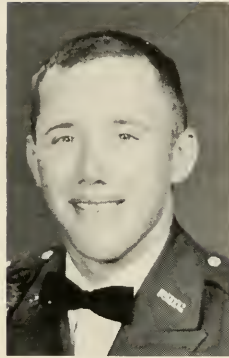




# ALPHA PSI OMEGA



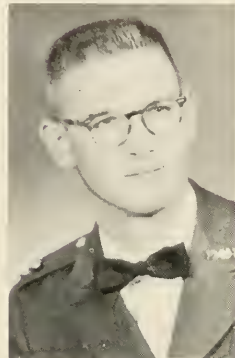
Robert Schloesser  
President



Carl Glass  
Vice-President

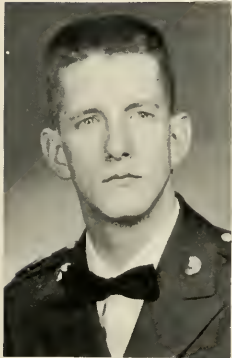


Reuben Black  
Secretary



T. O. Sturdivant  
Treasurer

The dramatic organizations on the campus present many outstanding plays each year. "Personal Appearance" was the first on the docket for this year, and others just as excellent followed.



Pal Lunsford  
Member



Carolyn Mebane  
Member



Mr. Simpson  
Adviser



# GLEE CLUB

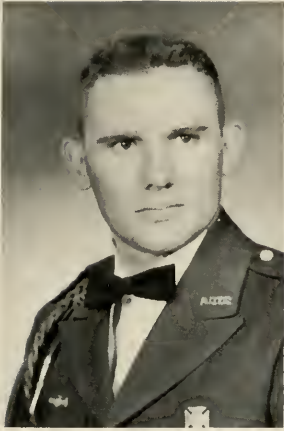
Desmond Booth  
Director

Mrs. Marian Bouffard  
Accompanist



Front Row, Left to Right: Puckett, Causey, Schulze, Ellis, Morris, Matthews, Baldwin, Tommey, Cook, McWilliams, Robison, Moor, Leverette, Harben. Second Row: Hood, Glover, Hooks, Benson, Shifflet, Brown, Burnette, Newton, Randall, Haavie, Hooper, Brown, White, Barden, Channell. Back Row: Dickerson, Rape, Simmons, McDonald, Crandall, Anderson, Blackstock, Pace, Jones, Lunsford, Baggett, Edwards, Magill.





Robert P. Schloesser  
President



Dr. Roberts  
Adviser

# FORENSIC SENATE

Front Row, Left to Right: Dr. Roberts, Jeanne Underwood, James McDonald, Aquilla Stipe. Back Row: Robert Schloesser, Joseph Puett, Harlan Lunsford.



# BUSINESS ADMINISTRATION CLUB



Terry Horton  
President



Julian McBride  
Vice-President



Joyce Bellamy  
Secretary



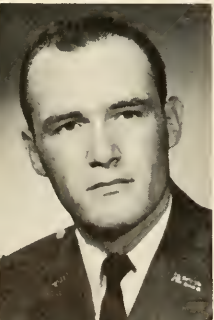
Howard Rachels  
Treasurer



Front Row, Left to Right: Wilson, Rachels, Bellamy, Horton, Puckett, McBride, Foster, H. Foster. Second Row: Hensley, Wigley, Clark, Scott, Flanders, Knapp, Carder. Third Row: Mr. Oakes, Land, Johnson, Fennell, Jones, McWhirter, Cordell, Wilder, Sturdivant, Bozeman.



Mr. Oakes  
Adviser



Henry Foster  
Parliamentarian



Carolyn Wilson  
Reporter

Front Row, Left to Right: Goss, Payne, Anderson, Burrow, Her-  
ring, Lawton, Buice,  
Trotman, Hyatt, Robin-  
son. Second Row: Var-  
nedoe, Archer, Causey,  
Stovall, Wells, Duren,  
O'Kelley, Gordy, Mor-  
row. Third Row: Gille-  
land, Patterson, Ziprik,  
Simmons.



# HOME ECONOMICS CLUB



SUZANNE BREEDLOVE . . . . . *President*  
 JANICE HAWKINS . . . . . *Vice-President*  
 BARBARA HORTON . . . . . *Secretary*  
 EDNA DURHAM . . . . . *Treasurer*  
 PEGGY SHIFLET . . . . . *Reporter*



Miss Bessie Lee Freeman  
Adviser



Mrs. H. P. Breedlove  
Sponsor

First Row, Left to Right: Sikes, Brown, Leverette, Phillips, Patterson, Cobb, Watson. Second Row: Shore, Cummings, Durham, Shiflet, Horton, Breedlove, Hawkins, Shaw, Loveless, West. Back Row: McLane, Fowler, McDuffie, Dorsey, Allison, Dukes, Harris, Anderson, Holland, Knight, Anderson, Damianos, Robinson, Loyd, Cox, Foster, Harris, Newberry, Reynolds, Steinmetz.





Lt. William Ellis  
President



Ben Hunt  
Vice-President



Betsy Cook  
Secretary-Treasurer



Dr. Simms  
Adviser

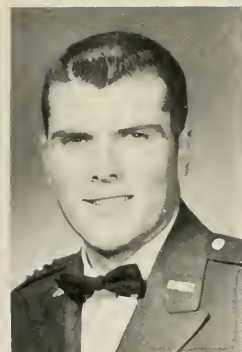
# CHEMISTRY CLUB



Left to Right: Parks, Gillean, Lindsley, Cook, Dr. Simms, Purcell, Hunt.



Left to Right: Loehr, Dyer, Griffis, Wood, Van Horn, Fincher, Howell, Powell.



Bob Purcell  
President



Margaret James  
Vice-President



Carolyn Mebane  
Secretary



Betsy Cook  
Program Chairman



Dr. H. B. Forester  
Adviser

Not Pictured:  
Gordon Kellett  
Parliamentarian

## SCIENCE CLUB

Left to Right: Templeton,  
O'Kelley, Duke, Clemmer, Low,  
Ellis.



Left to Right: Jones, Brown, Griffis, Purcell, Linds-  
ley, Cook.



Left to Right: Thomas, Mebane, Hunt,  
McDonald, Allen, Long, Kellett.



# W4PYM



Tommy Crowe  
Co-ordinator



Bill White  
Secretary-Treasurer

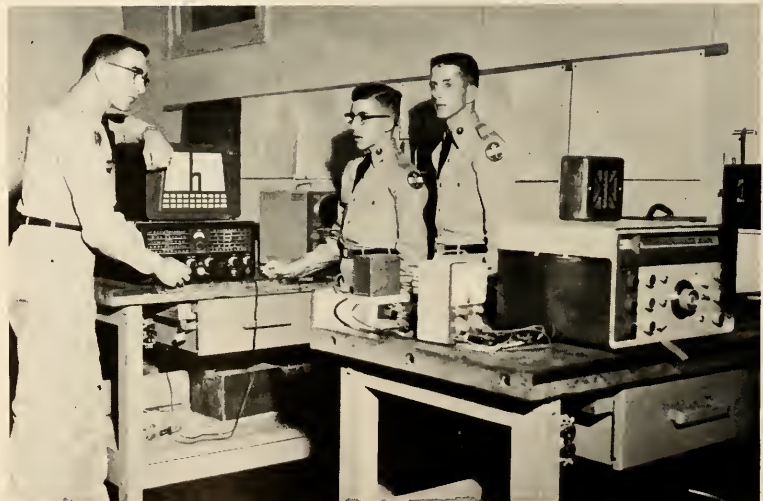


Mr. Ewell Pigg  
Sponsor



Charles Moore  
Tommy Crowe  
Allen Higginbotham

Tommy Crowe  
Perry Whatley  
Pal Lunsford







Wade Adams  
President



Carolan Salley  
Vice President



Nona Allen  
Secretary

# FUTURE TEACHERS OF AMERICA



Jimmie Jarrett  
Treasurer



Alice Brown  
Bookstore Operator



Dr. Orby Southard  
Adviser



Mrs. Marian Bouffard  
Adviser

Front Row, Left to Right: Poston, Salley, Adams, Jarrett, Brown. Second Row: Sawyer, Shockley, Pinson, Jordan, Compton. Third Row: Duncan, Hyatt, Sloan, Tingle, Aaron, Hooper. Fourth Row: Barden, Ash, Green, O'Kelley, Van Geuns. Fifth Row: Barnes, Brown, Smith, Hearn. Sixth Row: Mrs. Bouffard, Littlefield, Kelley, Allen, Jackson, Dr. Southard.



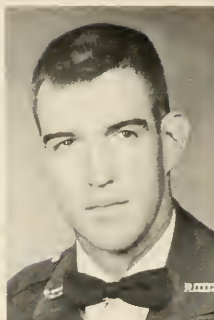
Hamp Alexander  
President



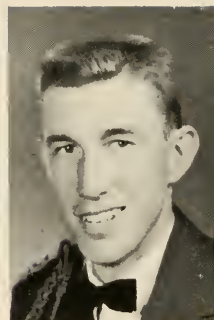
DeWayne Patrick  
1st Vice-President



Harold Van Meter  
2nd Vice-President



Hugh Bo Bentley  
Secretary-Treasurer



Warren Camp  
Sgt. at Arms



Joe Breedlove  
Reporter



Phillip Lupo  
Reporter



Coach Matherly  
Adviser



Major Davis  
Adviser



Mrs. Hamp Alexander  
Sponsor

## LETTERMAN'S CLUB



First Row, Left to Right: Patrick, Alexander, Matherly, Van Meter, Camp. Second Row: Breedlove, Ward, Cortelli, Singleton, Geer. Third Row: Hamil, Lupo, Hamil, Johnson, Joiner.



# Military



## REGIMENTAL SWEETHEART

Miss Betty Rucker



Miss Rucker and Colonel Mullis

# MILITARY DEPARTMENT



Maj. Ralph Davis  
Artillery  
Instructor



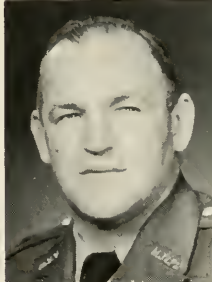
Maj. Robert L. Bullard  
Infantry  
PMS&T



Maj. Robert A. Smith  
Infantry  
Instructor



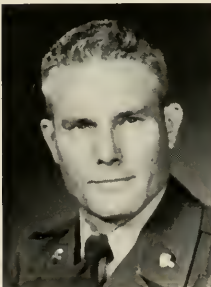
Capt. Charles  
Whittington, Artillery  
Instructor



Capt. Orvil Hause  
Commandant



1st Lt. William Ellis  
Assistant Commandant



M Sgt. George C. Long  
Armory Sergeant



SFC Henry T. Galloway  
Assistant Commandant



SFC William Barnard  
Detachment  
Sergeant Major



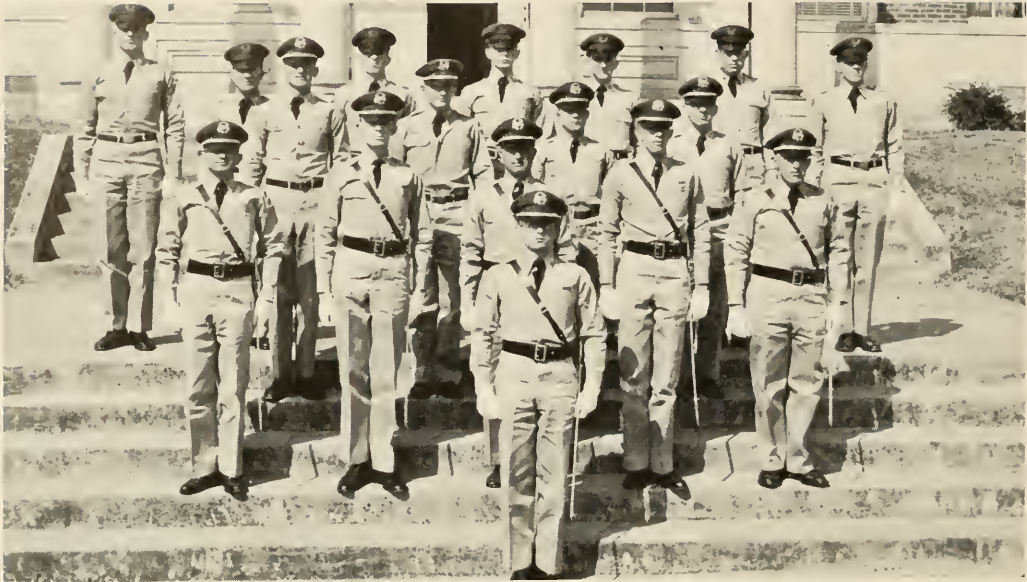
SFC Richard M. Parker  
Assistant Instructor



Mrs. J. W. Phillips  
Secretary to the PMS&T

Not Pictured:  
Sgt. Harrold L. Killian  
Assistant Instructor

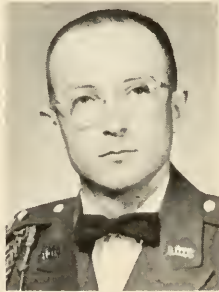
# REGIMENTAL STAFF



First Row: Mullis, C. H. Second Row: Puett, J. F., McSwain, J. E., Griffis, R. J., Scoville, O. G., Soctt, J. O. Third Row: Alexander, R. H., Hunt, J. B., Pease, H. B., Roberts, D. M. Fourth Row: Smart, W. E., Holcombe, L. B., Breedlove, J. J., Martin, W. L., Ponder, T. W., Pinson, A., Hoag, P. C.



Betty Rose Clark  
Sweetheart



Colonel Mullis  
Regt. Commander



Lt. Colonel Puett, Regt. Exec.



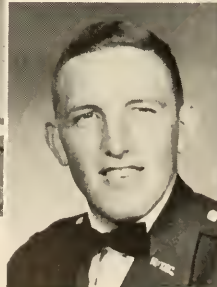
Robert Alexander, Jr., Sponsor



Major McSwain  
S-1



Major Scoville  
S-3



Major Scott  
S-4



M/Sgt. Smart  
Sgt. Major



Sgt. Breedlove  
Regt. Clerk

(Not Pictured)  
Major Griffis  
S-2

# BAND



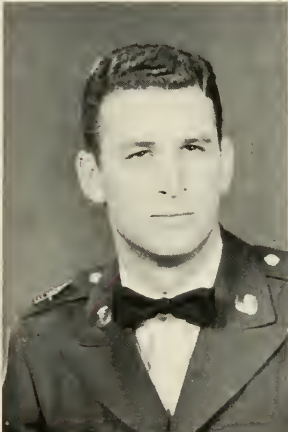
Nancy Barnes  
Sweetheart



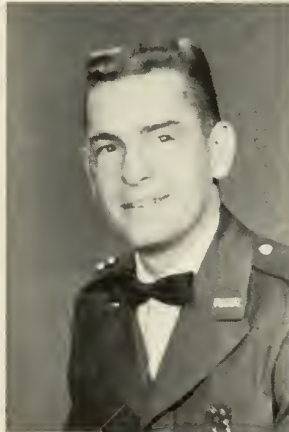
Capt. Flanders  
Company Commander



Mrs. N. L. Flanders  
Sponsor



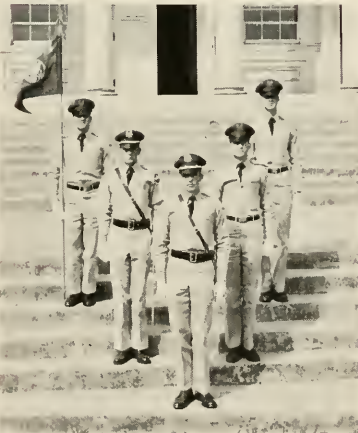
Ist Sgt. Wade  
Ist Sgt.



Ist Lt. McBride  
Company Exec.



SFC Van Meter  
Drum Major



First Row: Flander, N. S., Co. Commander. Second Row: McBride, J. D., Co. Exec., Wade, H. W., Ist Sgt. Third Row: Varnedoe, J. V., Co. Guidon Bearer: Van Meter, H. C., Drum Major.



Gold Rush Day



2nd Lt. Fennell

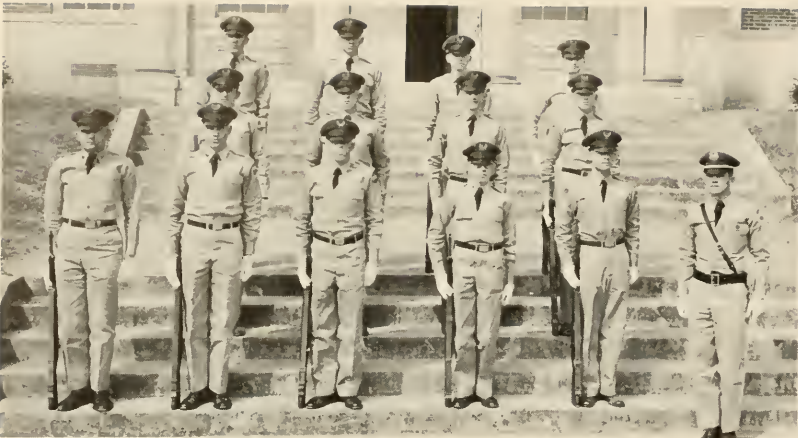
Plt. Leader

First Platoon

1st Sqd. Higginbotham, A. P., Akin, J. H. Lackey, G. R., Whitley, P. A., Melcher, J. F., Fennell, C. L.

2nd Sqd. Norman, J. G., Preston, W. H., Persell, H. V., Richards, E. M.

3rd Sqd. White, T. C., Barnes, R. C., Hooks, W. T., Cochran, J. N.



2nd Lt. Pace

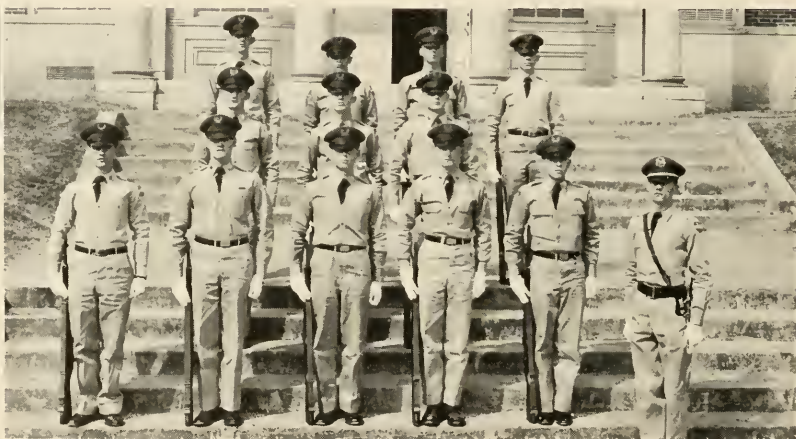
Plt. Leader

Second Platoon

1st Sqd. Gilleland, R. R., McDonald, C. D., Bland, A. O., Powell, P. M., Waters, J. L., Pace, N.

2nd Sqd. Bruce, J. R., Riley, J. R., Channel, J. W.

3rd Sqd. Copeland, D. G., Bibb, R. T., Reece, F. S., Barden, R. R.



2nd Lt. Clark

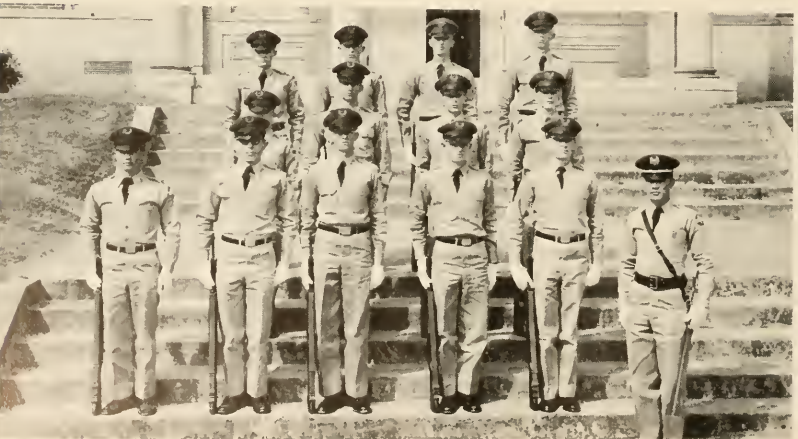
Plt. Leader

Third Platoon

1st Sqd. Gurdy, T. L., Tilley, R. H. Baker, R. F., Howard, J. R., Todd, W. T., Clark, R. C.

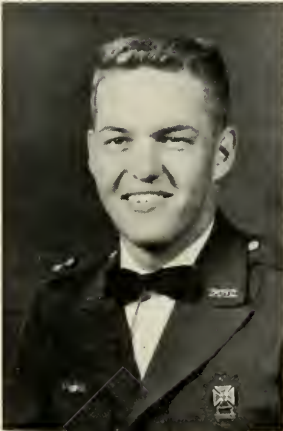
2nd Sqd. Golding, J. R., Baker, R. A., Connell, T. G., Lunsford, H. F.

3rd Sqd. Haight, D. H., McGregor, C. E., Brackett, M. W., Waldrop, W. R.





# DRILL PLATOON



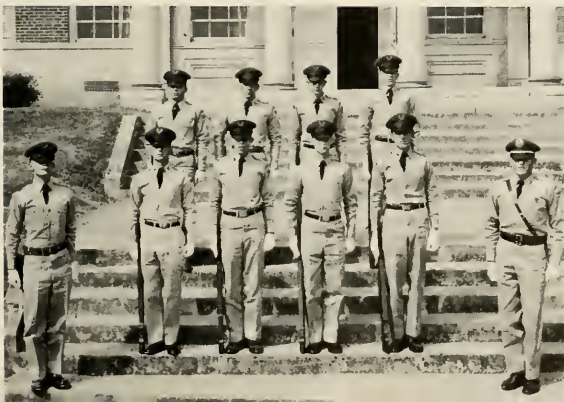
1st Lt. Jones  
Plt. Leader



Mrs. C. W. Jones  
Sponsor



SFC Simmons  
Plt. Sgt.



First Row: Simmons, E. D., Pressley, R. J.,  
Bacon, W. G., Smith, J. R., Burrus, R. B.,  
Jones, C. W. Second Row: Farmer, H.  
D., Bates, F. L., Bagwell, W. A., Lowe,  
J. E.

NORTH GEORGIA COLLEGE MARCHING BAND



# FIRST BATTALION

## BATTALION HEADQUARTERS



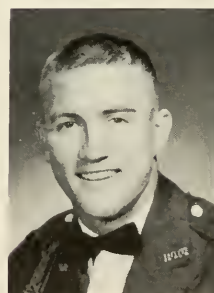
Sue Anderson  
Sweetheart



Pat Compton  
Sponsor



Lt. Col. Butterworth  
Bn. Commander



Major Patrick  
Bn. Exec.



Capt. Lambert  
S-1



Capt. Purcell  
S-3



Capt. Johnson  
S-4



M/Sgt. Williams  
Sgt. Major

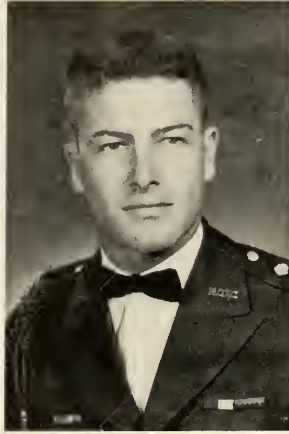


Cpl. Fox  
Clerk

# A COMPANY



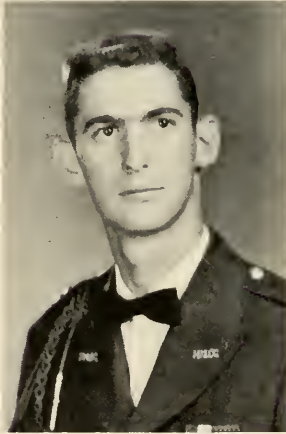
Barbara Littlefield  
Sweetheart



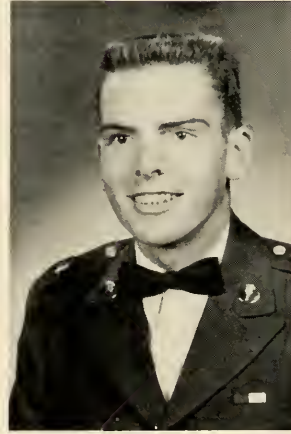
Capt. Nader  
Company Commander



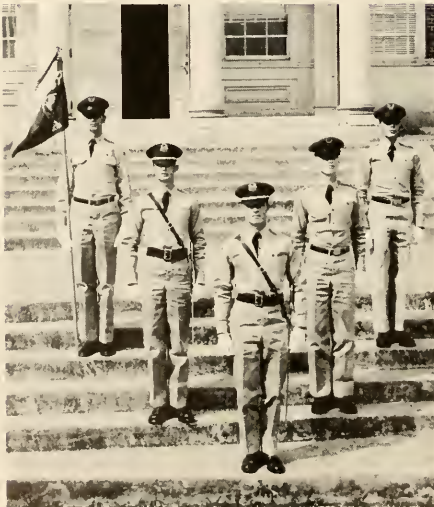
Mrs. R. L. Nader  
Sponsor



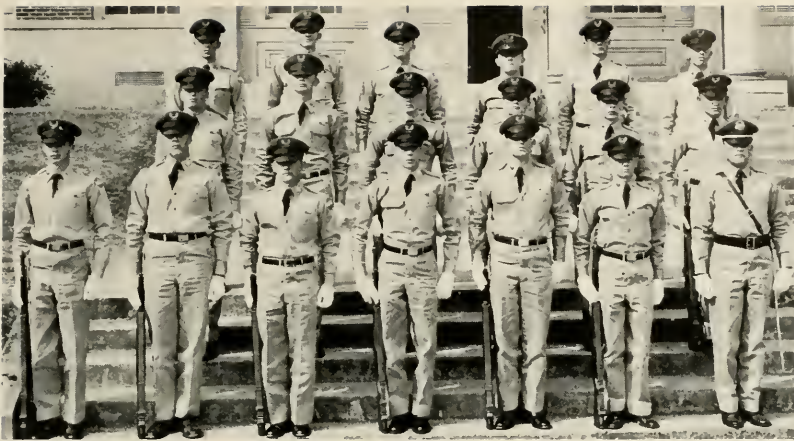
1st Lt. Geer  
Company Exec.



1st Sgt. Wayne  
1st Sgt.



First Row: Nader, W. E., Com-  
pany Commander. Second  
Row: Geer, W. A., Company  
Exec., Dexter, C. E., Co. Clerk.  
Third Row: Clary, D. M., Gui-  
don Bearer, Wayne, E. D., 1st  
Sgt.



2nd Lt. Foster

Plt. Leader

First Platoon

1st Sqd. Craig, F. R., Carter, L. L., Melton, K. E., Cooper, C. T., Hall, O. D., Cozart, M. C., Foster, H. G.

2nd Sqd. Heath, W. C., Lanier, K. B., McClean, J. M., Heath, B. C., Pirkle, J. E., Warren, D. F.

3rd Sqd. Moore, T. L., Grindle, D. L., Pirkle, J. E., Smart, R. B., Joiner, D. M., Wise, R. T.



2nd Lt. Sanders

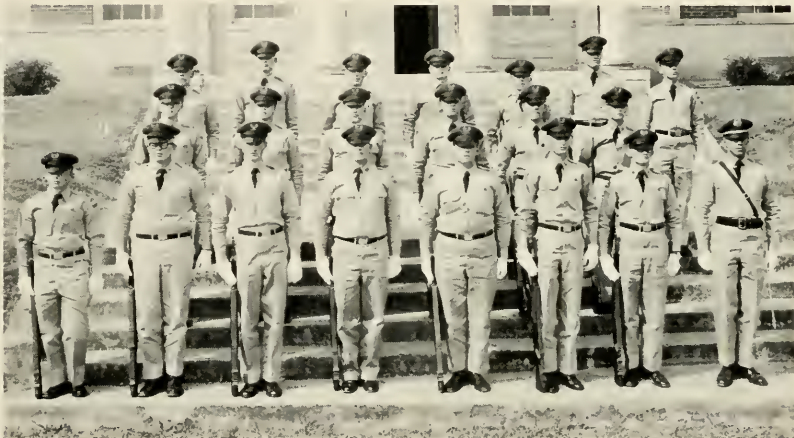
Plt. Leader

Second Platoon

1st Sqd. Adams, H. W., Varnedoe, H., Barnes, D. H., Farmer, M. W., Allen, B., Woody, P. D., White, D. R., Sanders, F. H.

2nd Sqd. Yoemans, W. A., Hodges, G. R., Crowe, J. H., Fitzpatric, D., Harris, J. H., Deen, F.

3rd Sqd. Coleman, J. L., Winn, W. F., Spahos, T. P., Adams, B., Prather, L. S., Dexter, C. E., Lupo, W. P.



2nd Lt. Coulter

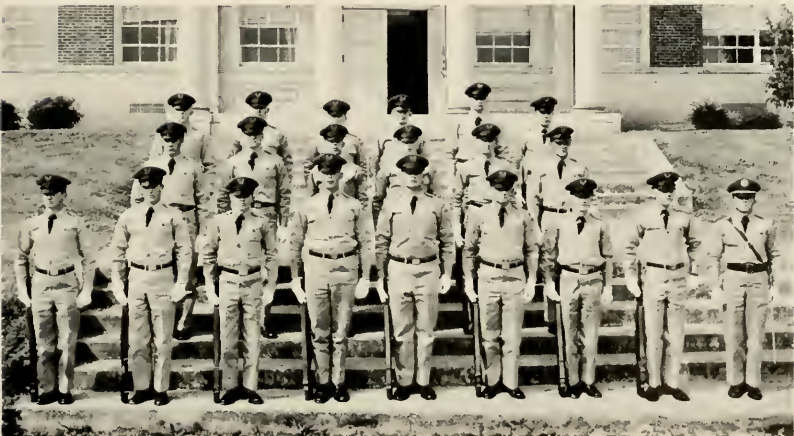
Plt. Leader

Third Platoon

1st Sqd. Gayler, J. M., Cavender, J. I., Bryant, J. W., Bennett, P. W., Connell, J. R., Ward, J. N., Coile, J. H., Barfield, C. W., Coulter, R. V.

2nd Sqd. Shoemaker, D., Tyre, D. H., Johnson, C. W., Hagin, W. A., Crumley, H. R., Cortelli, R. J.

3rd Sqd. Mayo, G. B., Sills, E. G., Morrison, R. N., Thayer, A. R., Anderson, H. G., Piland, A. R.



# B COMPANY



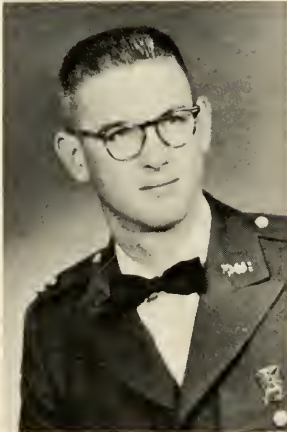
Margie Pinson  
Sweetheart



Capt. Black  
Company Commander



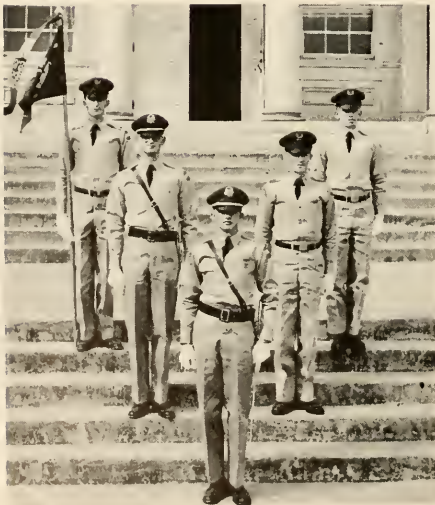
Allena Cobb  
Sponsor



1st Lt. Sturdivant  
Company Exec.

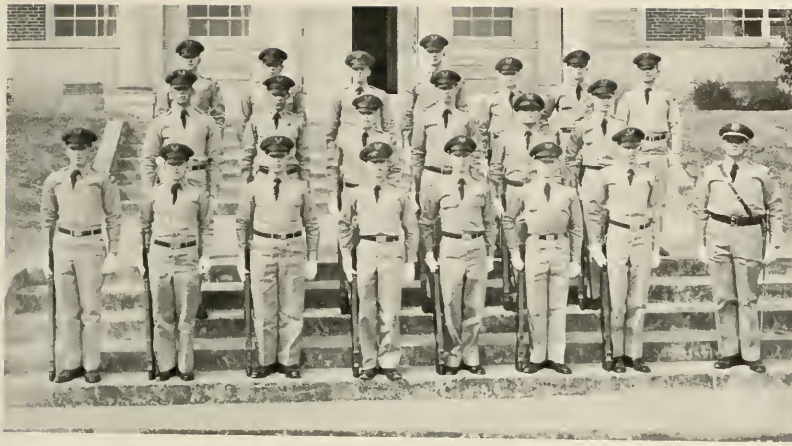


1st Sgt. Moore  
1st Sgt.



First Row: Black, R., Co. Commander.  
Second Row: Sturdivant, T. O., Co. Exec.,  
Moore, C. F., 1st Sgt. Third Row: Brown,  
K. G., Guidon Bearer, Smith, G. A., Co.  
Clerk.





2nd Lt. Sudlow

Plt. Leader

First Platoon

1st Sqd. Elliot, J. W., Chastain, P. E., Ponder, J. L., Cole, D. E., Allen, E. N., Mosley, W. D., Wilbanks, R. R., Sudlow, W. H.

2nd Sqd. Chapman, W. S., Whitmire, K. N., Herrington, L. W., Daniel, J. P., Anderson, J. T., Wallace, T. E.

3rd Sqd. Villyard, E. H., Dills, T. L., Capps, M. T., Cartledge, W. T., Costley, K. R., Boyd, S. S., Sanders, R. C.



2nd Lt. Wigley

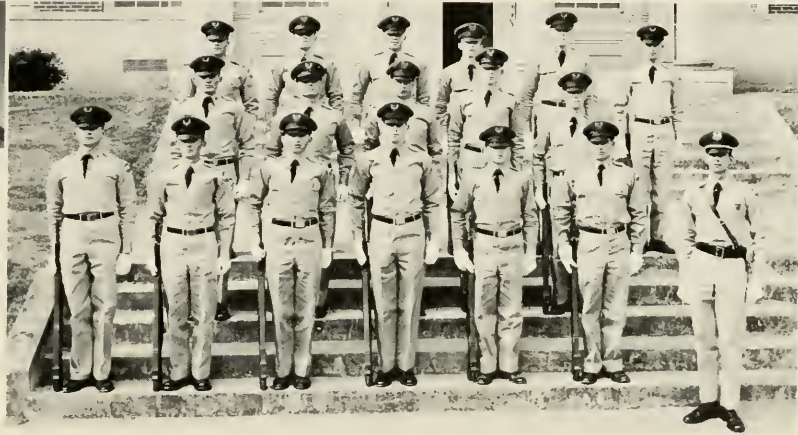
Plt. Leader

Second Platoon

1st Sqd. Morrow, D. C., Cemet, J. M., Merritt, W. R., Culpepper, M. C., Clark, A. C., Gibson, J. L., Wigley, W. V.

2nd Sqd. Rowan, J. B., Hood, K. H., Bagget, J. E., Dorsey, T. E., Glover, J. W.

3rd Sqd. Mann, M. E., Ledford, R. L., Lester, J. P., Ehlers, A. G., Harben, S. S., Cheek, A. J.



2nd Lt. Snyder

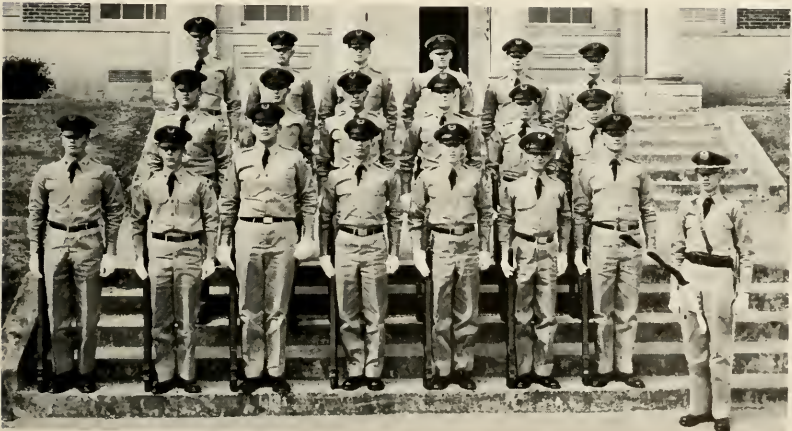
Plt. Leader

Third Platoon

1st Sqd. Dumas, J. D., Hensley, E. R., Williams, B. M., DuVall, W. B., Sudlow, R. W., Strickland, J. E., Goins, R. W., Snyder, B. D.

2nd Sqd. Snelling, W. C., Parks, W. C., Ivester, D., Gardner, L. W., Howell, P. L., Vaughn, F. D.

3rd Sqd. Miller, G. L., Reeves, J. F., Brown, E. S., Smith, J. D., Dunn, W. J., Archer, E. R.



# C COMPANY



Odette Cummings  
Sweetheart



Capt. Glass  
Company Commander

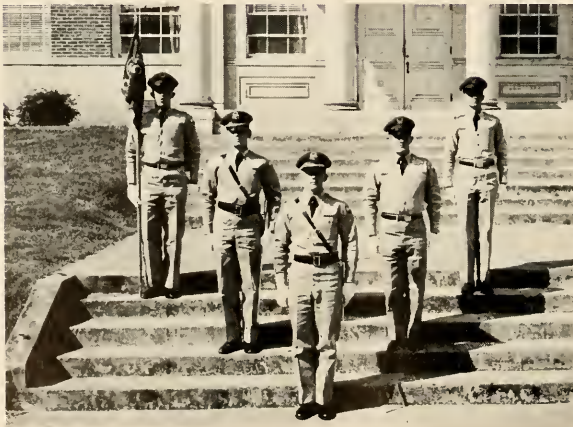


Mrs. Winifred Glass  
Sponsor



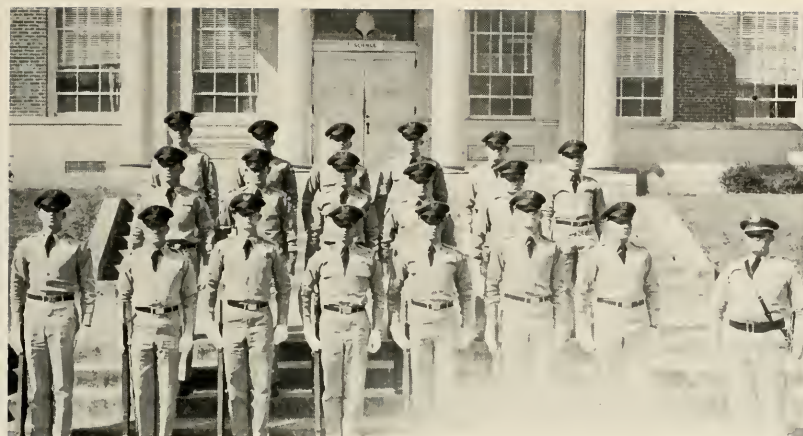
Ist Lt. Ward  
Company Exec.

Not Pictured:  
Ist Sgt. Bradley  
Ist Sgt.



First Row: Glass, C. J., Com-  
pany Commander. Second  
Row: Ward, L. M., Co. Exec.,  
Bradley, M. D., Ist Sgt. Third  
Row: Butler, C. W., Co. Gui-  
don Bearer, Howell, J. H., Co.  
Clerk.





2nd Lt. Bozeman  
Plt. Leader

First Platoon

1st Sqd. Reece, J. D., Thomas, R. J., Barrow, R. W., Daniell, A. O., Pirkle, J., Neel, A. B., Lott, T. M., Bozeman, J. C.

2nd Sqd. Parks, L. C., Brown, D. J., Davis, T. H., Newton, J. C., Tillman, H. Y.

3rd Sqd. Alfred, A. L., Garret, B. R., Holbrook, T. B., Thornton, W. F., Coleman, A. L.



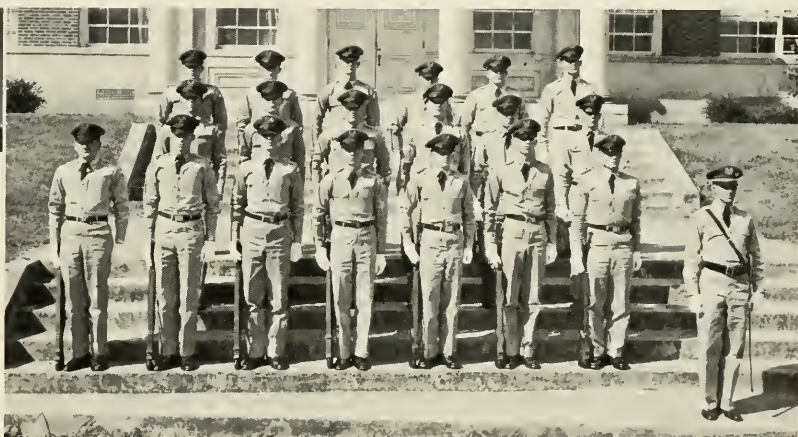
2nd Lt. Bentley  
Plt. Leader

Second Platoon

1st Sqd. Davidson, G. E., Waldrip, D. W., Bledsoe, C. E., Jackson, L. H., Jolly, A. H., Norman, J. H., Walters, K. W., Bentley, H. B.

2nd Sqd. Lanier, B. S., Fletcher, J. F., Pope, C. D., Kight, J., Geiger, L., Eberhardt, G. E.

3rd Sqd. Matthews, T. M., Woodberry, J. B., Skelton, S. E., Mann, A. A., Gillean, P., Jenkins, T. E.



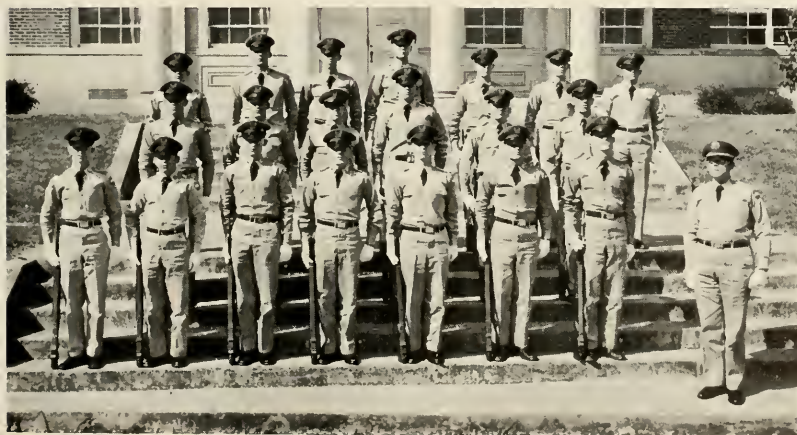
2nd Lt. Brannon  
Plt. Leader

Third Platoon

1st Sqd. Stoner, C. D., Cole, J. D., Strickland, G. W., Garrison, J. W., Hardy, A. S., Barton, J. R., Reins, T. W., Brannon, L. G.

2nd Sqd. McGill, J. A., Crowe, E. F., Cowan, H. D., Rivers, J. L., Evans, J. D., Raley, M. D.

3rd Sqd. Lecroy, R. P., Westmoreland, D., Powell, G. L., Stephens, R. D., Searcy, J. K., Mason, G. L., Crowe, C. T.





# SECOND BATTALION

BATTALION HEADQUARTERS



Betty Anne Causey  
Sweetheart



Lt. Col. Cordell  
Bn. Commander



Major McWhirter  
Bn. Exec.



Bobbie Gail Bishop  
Sponsor



Capt. Wilder  
S-1

Not Pictured:  
Capt. Walker  
S-2

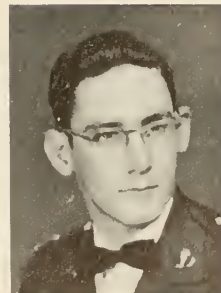
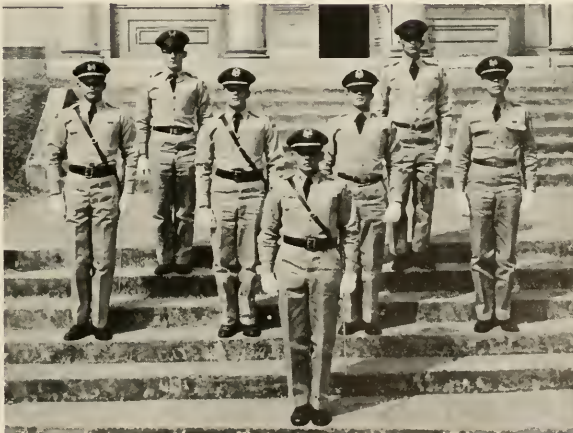


Capt. Avera  
S-3

Not Pictured:  
Capt. Grant  
S-4



M/Sgt. Crawford  
Sgt. Major

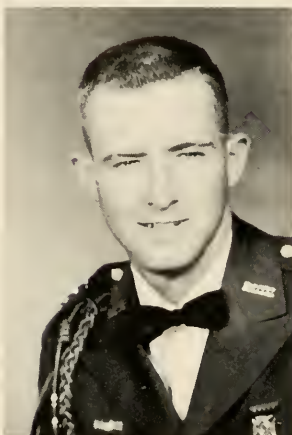


Cpl. Hurst  
Clerk

# D COMPANY



Mrs. Terry Horton  
Sweetheart



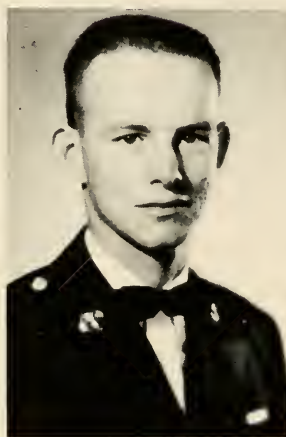
Capt. Horton  
Company Commander



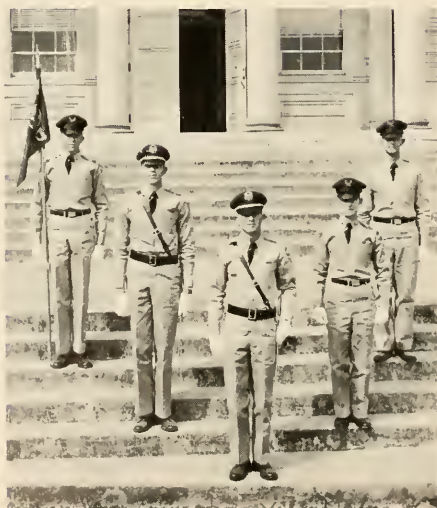
Mrs. M. C. Horton  
Sponsor



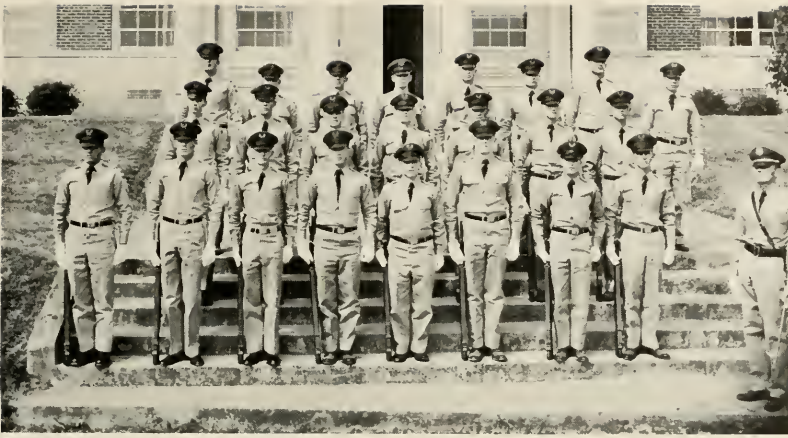
1st Lt. Camp  
Company Exec.



1st Sgt. Hale  
1st Sgt.



First Row: Horton, T. B., Co.  
Commander. Second Row:  
Camp, W. L., Co. Exec., Hale,  
S. F., 1st Sgt. Third Row:  
Smith, J. R., Guidon Bearer,  
Matthews, H. E., Co. Clerk.



2nd Lt. Rachels  
Plt. Leader

First Platoon

1st Sqd. Crandall, J. E., Smith, W. W., Houston, C. K., Newton, A. L., Pope, F. R., McKie, H. F., Dalton, J. C., Baldwin, R. M., Rachels, R. H.

2nd Sqd. Dent, J. M., Anderson, P. E., Crain, J. T., Floyd, H. J., Parrish, C. M., Huff, J. W., Matthews, H. E.

3rd Sqd. Dearison, R. W., Patterson, J. C., Irwin, W. J., Smith, S. P., Berne, R. C., Sellers, J. H., Williams, W. K., Hawkins, D. B.



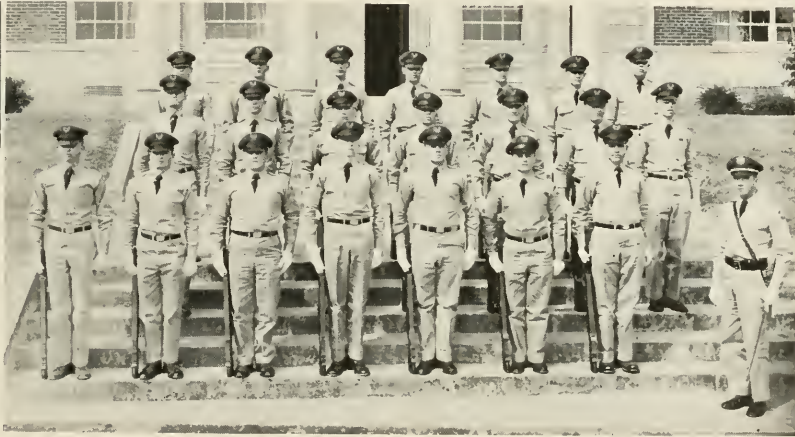
2nd Lt. Hensley  
Plt. Leader

Second Platoon

1st Sqd. Hammond, W. D., Powell, N., Daniels, S. T., Garrison, R. N., Patterson, J. S., Price, J. W., Askew, O. F., Hensley, J. R.

2nd Sqd. Rachels, G. W., Broadaway, D. R., Darden, H. W., Jordan, W., Stockton, R. W., Owens, H. E., Allen, T. M.

3rd Sqd. Stephenson, W. E., King, J. E., Hardin, H., Dickerson, J. T., Bryant, H. E., Rape, T. M., Blackstock, T. F.



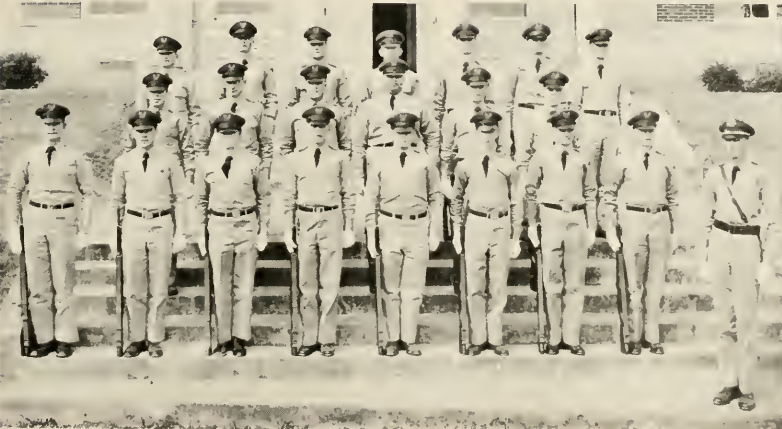
2nd Lt. Jones  
Plt. Leader

Third Platoon

1st Sqd. Shepherd, D. E., Dye, J. B., Bunkely, H. F., Gaddis, H. H., Livingston, J., White, J. R., Snell, D. J., Harrison, E. R., Jones, T. C.

2nd Sqd. Davenport, S. M., Burrus, R. H., Ricks, M. L., Edwards, M., Crockett, E. F., Wishon, H. S.

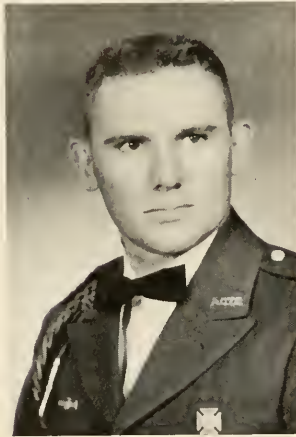
3rd Sqd. Johnson, J. D., Byrd, W. J., Eulenfield, R., Mitchell, T. A., Hill, J. W., Ruff, R. D., Sigman, H. D.



# E COMPANY



Pat Patterson  
Sweetheart



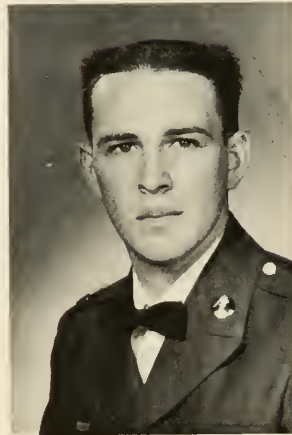
Capt. Schloesser  
Company Commander



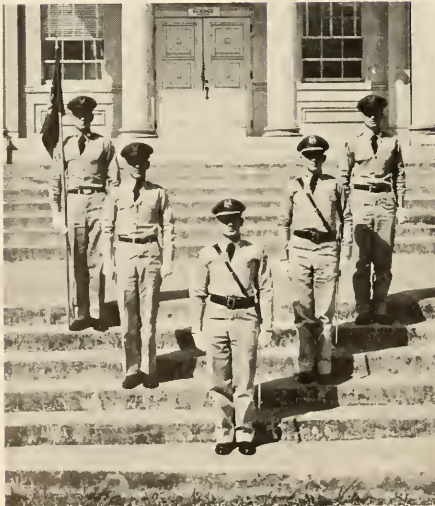
Mary Belle Watson  
Sponsor



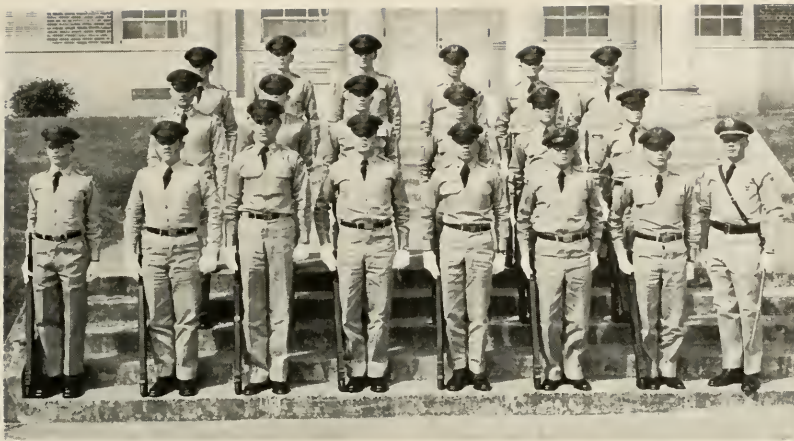
1st Lt. McDonald  
Company Exec.



1st Sgt. Ponder  
1st Sgt.



First Row: Schloesser, R. P., Company  
Commander. Second Row: Stallings, P.  
T., 1st Sgt., McDonald, J. C., Co. Exec.  
Third Row: Hayes, R. E., Co. Guidon  
Bearer, Holcombe, R. W., Co. Clerk.



2nd Lt. Land  
Plt. Leader

First Platoon

1st Sqd. Johnson, E. O., Van Horn, J. T., Bourne, J. M., Hamilton, L. R., Hogsed, R. E., Jennings, J. L., Smith, D. M., Land, J. A.

2nd Sqd. Hamil, R. C., Parker, H. B., Loehr, R. D., Dyer, R. A., McDougal, W. R., Summerville, B. J.

3rd Sqd. Pittman, A. L., Harrison, E. L., Carpenter, L., Clark, W. T., Bell, R. A., Norman, H. P.



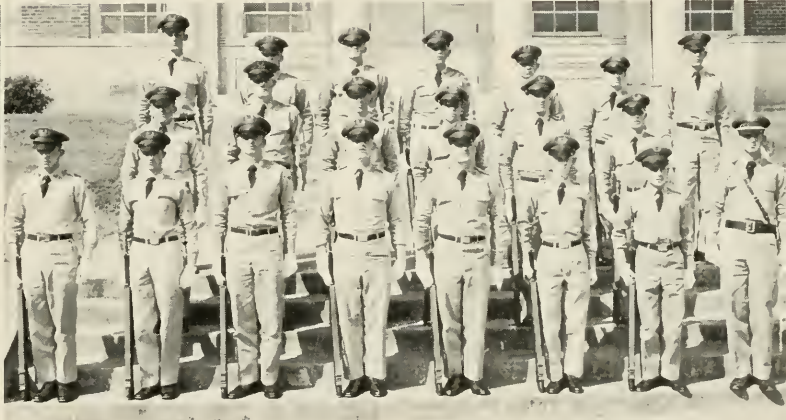
2nd Lt. Singleton  
Plt. Leader

Second Platoon

1st Sqd. Irby, J. C., Meys, A. M., Holcomb, R. W., Hurst, W. J., Artley, H. E., Alexander, R. L., Smith, A. R., Singleton, E. J.

2nd Sqd. Thomas, K. B., Ivey, R. L., Brooks, T. L., Wildes, M. W., Ellison, R. E., O'Connor, P. B.

3rd Sqd. Hamil, K. D., Macolly, J. W., Martin, L. C., Fisher, J. A., Reed, H. E., Seabolt, H. A.



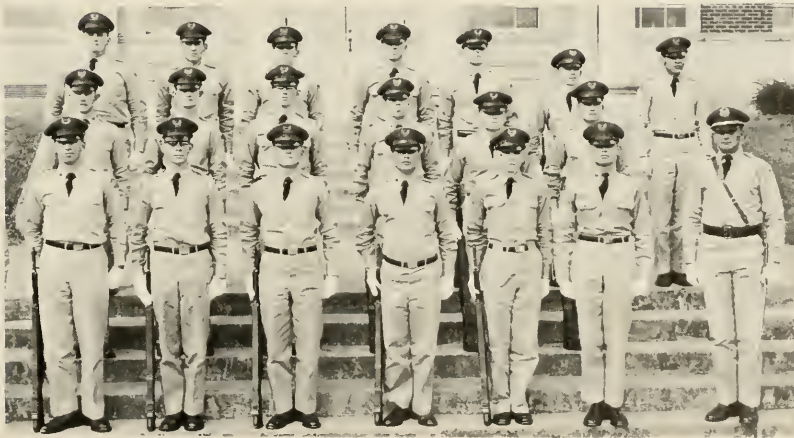
2nd Lt. Pridgen  
Plt. Leader

Third Platoon

1st Sqd. Smith, C. N., McElmurray, C. M., Lovett, J. D., Brogden, V. D., Daniell, J. L., Marshall, M. L., Stallings, P. T.

2nd Sqd. Davis, J. F., Shearouse, J. D., Cochran, L. G., Benefield, M. J., Horton, L. W., Langford, W. L.

3rd Sqd. Beck, W. R., Guest, J. A., Barber, N. S., Davis, J. A., Duke, J. R., Wise, W. A., Pridgen, H. A.



# F COMPANY



Sandra Newberry  
Sweetheart



Capt. Stipe  
Company Commander



Judy Taylor  
Sponsor



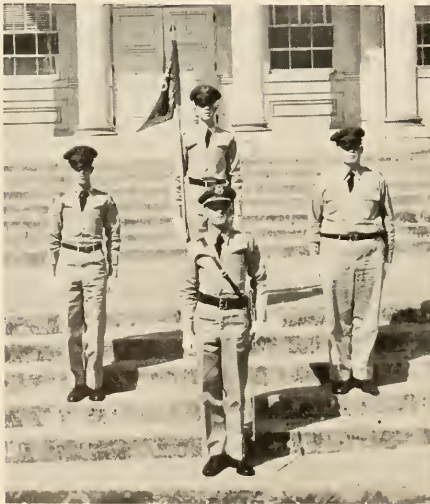
1st Lt. Brown  
Company Exec.



1st Sgt. Wilson  
1st Sgt.

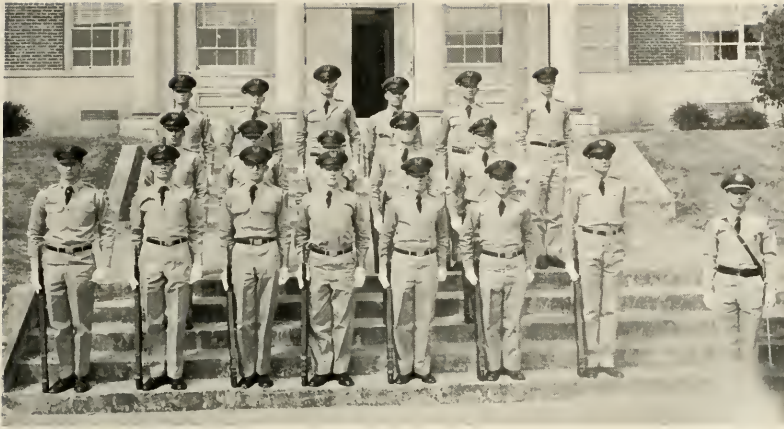


Douglas Hatch  
Mascot



First Row: Stipe, A. E., Company Com-  
mander. Second Row: Wilson, H. R., 1st  
Sgt., Cheves, A. A., Company Clerk.  
Third Row: Bailey, R. T., Company Gui-  
don Bearer.





2nd Lt. Knapp  
Plt. Leader

First Platoon

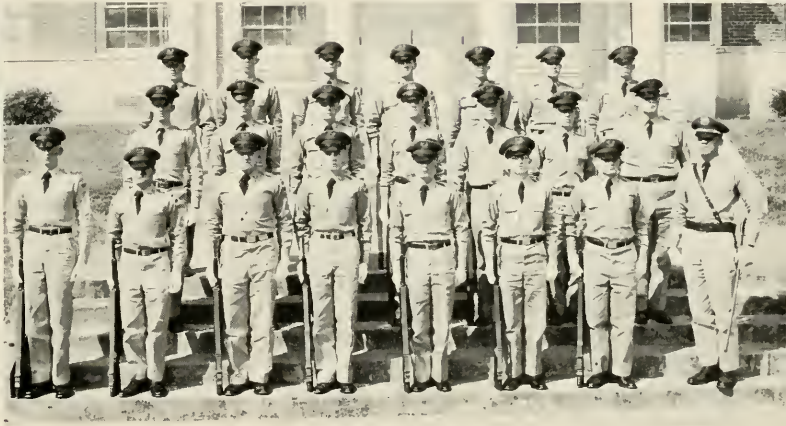
1st Sqd. Hulsey, B. J., Peterson, J., Geaway, J., Andrews, R., Bass, G. D., Palmer, P., Hamrick, C., Knapp, J.

2nd Sqd. Crouch, K. O., Kolbie, C. E., Golden, J., Smith, J., Henry, J.

3rd Sqd. Hollingsworth, H., Hinson, D., Driver, L., Bowen, W., Gober, L., O'Keley, J.



2nd Lt. Johnson  
Plt. Leader

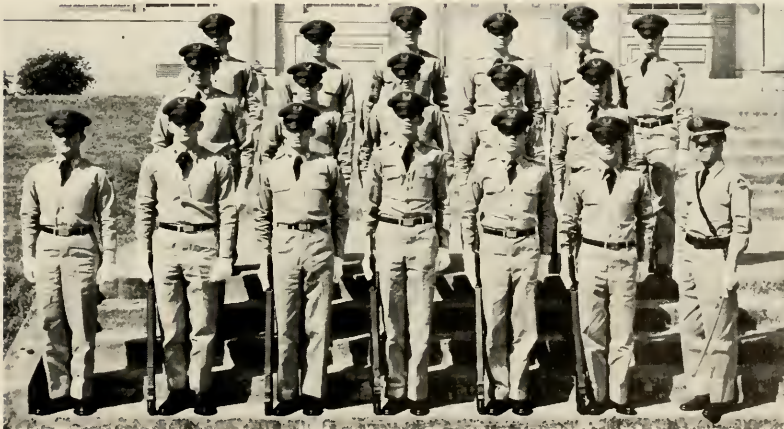


Second Platoon

1st Sqd. Milam, C., Allison, S., Garner, G., Sewell, C., Fowler, J., Myers, J., White, H., Johnson, R.

2nd Sqd. Golden, T., Hood, J., Speer, W., McDougald, A., Sweat, C., Blair, H., Cheeves, A.

3rd Sqd. Burnett, W., O'Kelley, G., Caldwell, M., Singletary, J., Smenner, J., Williams, B., Vollenweider, P.



2nd Lt. Callaway  
Plt. Leader

Third Platoon

1st Sqd. Archer, J., Nichols, J., Hodges, J., Miller, A., Harris, C., Skinner, L., Callaway, R.

2nd Sqd. Ziprick, W., Richardson, E., Therpe, B., West, J., Potter, J.

3rd Sqd. Carder, H., Belfield, T., Hilgenberg, G., Smith, D., Hardaway, H., Douglas, W.

# FIELD DAY



Assembly and Disassembly of the M-1 Rifle



Squads ready for competition



Voice and Command Competition



Triangulation



Girl's Dizzy Izzy



Coordinating



L. M. G. Drill



Mortar Drill



The Big Brass—

—On Parade



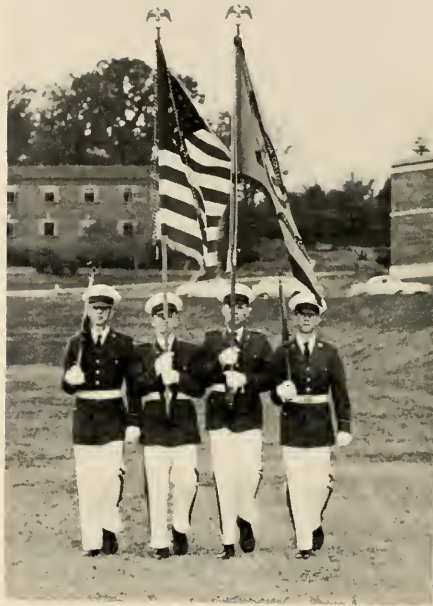
The Scabbard and Blade pledges demonstrate their skill as future army men by constructing a log bunker.

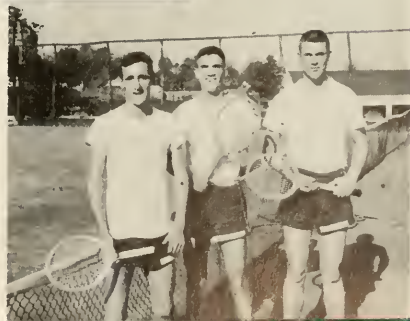
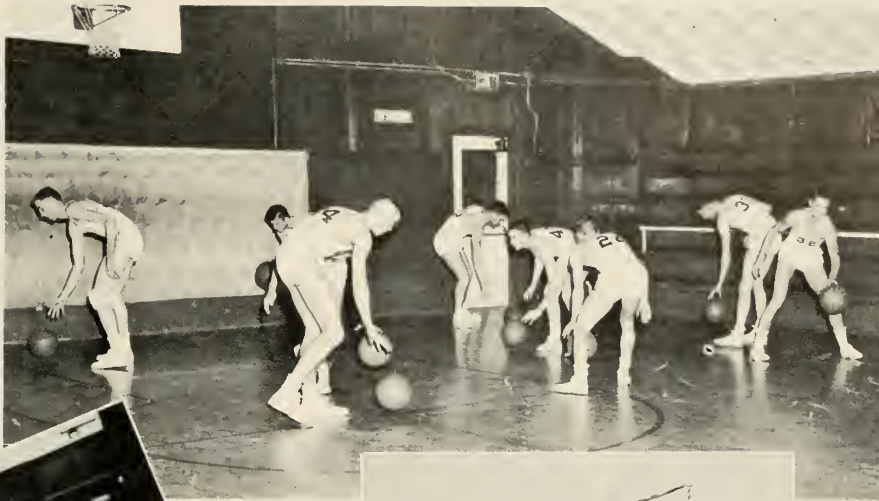




# Activities

As the story of the year draws to a close, let us look back and remember the things which stand out in our minds. We will think of the many events — and commonplace happenings, too — that have made North Georgia College our school. First we think of the dominant force behind our daily life — the military influence. We can see the parades and the never-ending drill and polishing jobs, but we all feel a surge of pride when our colors pass majestically before us. We then move on to other facets of the North Georgia scene.





We see ourselves engaging in a favorite pastime — from the sidelines or from the center of the field. We play for recreation with a touch of competition for good measure.



Now we see our professors — the guardians of our minds. We find them at work in their classrooms, and then later we meet them in the Canteen.



Next we look back to see the expression which means that a job has been well done. We see beautiful clothes and home furnishings displayed with justifiable pride. . . .





The good times we've had are coming into the picture. We can see the gang in the dormitory — waiting for Santa Claus or just enjoying a few minutes' free time together. . . .

We find ourselves in our favorite gathering spot, enjoying one of our favorite courses — Canteenology. . . .



Our life is not all play, for many hours of study are necessary, too. . . .





The memories of the fun-filled hours are still with us, and they will be for a long time.



With stars in our eyes, we remember the big dances in the beautifully-decorated gymnasium. . . .



We see the school float on Gold Rush Day, showing the past and the present of North Georgia. . . .

Pine Valley, the scene of many picnics comes into view. . . .



Suddenly, the days seem to move too quickly and Graduation Day is here. We see the final parade with its dignity and watch with our hearts in our throats as our friends receive recognition of their achievements. . . .



the shiny gold bar . . .



the Y Cup . . .

the Siler Scholarship Plaque . . .

and finally, the long-awaited diploma. . . .



The story has ended for another year.

Advertisements



Producers — Vantress - Nichols - Cross

## **Dahlonga Feed & Poultry**

Phone 120

P. O. Box L

DAHLONEGA, GEORGIA



*Johns Manville Approved Roofer*

## **BAILEY'S**

Est. 1935

ROOFING - SHEET METAL

P. O. Box 106

845 W. Broad

LI. 3-5281

ATHENS, GEORGIA



*Compliments of*

## **CHICOPEE MANUFACTURING CORPORATION**

CHICOPEE, GEORGIA



## **LIPSCOMB DRUG CO.**

*Your College Drug Store*

For Over 30 Years

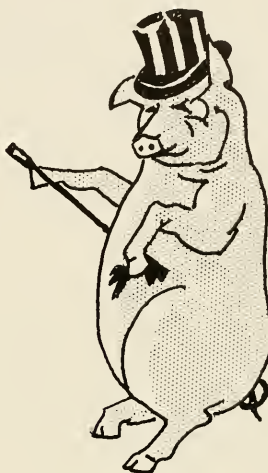
*"On the Square"*

DAHLONEGA, GEORGIA



Everyone

Welcome to



# PIG DRIVE-IN

Athens' Largest Restaurant and Drive-in

1855 W. BROAD — ATLANTA HIGHWAY

**ATHENS**

**GEORGIA**

11 A.M. - 11 P.M.—DINING ROOM

11 A.M.-12 P.M.—CURB SERVICE



# WHITAKER AND GARRETT

*Serving N. G. C.*

GAINESVILLE

GEORGIA



*Courtesy -- Progress*

## **BANK OF DAHLONEGA**

*"A Bank You Can Bank On"*

Member F.D.I.C.

DAHLONEGA, GEORGIA



*Compliments of*

## **TOWSON INSURANCE AGENCY**

W. E. TOWSON

PAUL STRINGER

DAHLONEGA, GEORGIA





Drugs ·· Sodas ·· Sundries

## DAHLONEGA PHARMACY

*Just as Your Doctor Ordered*

Phone 150

SEALTEST ICE CREAM

Your Walgreen Agency

*"On the Square"*

DAHLONEGA, GEORGIA

Telephone 26-R-2

## W. A. WHITMIRE

GENERAL MERCHANDISE

*"On the Square"*

DAHLONEGA, GEORGIA

## WEST CLEANERS AND LAUNDRY

DAHLONEGA, GEORGIA

Laundry agent for

## IDEAL CLEANERS AND LAUNDRY

331 Northside Drive

Phone LE. 4-5171

GAINESVILLE, GEORGIA

WHEN IN DAHLONEGA

visit

## THE SMITH HOUSE

*"Where the rooms are as nice as the meals are good"*

W. B. FRY, *Owner*

## **THERE WILL ALWAYS BE SOMEONE TAKING YOUR MEASURE**

Some measures are taken with a tape, but the more important measures of life are taken by the people who size us up, whether it be a sweetheart, a classmate, a son, a daughter, or a prospective employer. There is always some keen eye, whether we know it or not, scrutinizing the dimensions not only of our physiques but also of our minds, abilities and characters.

Your training at North Georgia College has been designed to improve the dimensions of both your mind and character so that when you graduate it can be said that here stands a Cadet fore-square to the world, ready and eager to shoulder the responsibilities which his particular talents and abilities qualify him to assume.

We measure Cadets for uniforms. Our customers measure us in their appraisal of our ability to execute a uniform contract satisfactorily. It will be a never-ending effort on our part to keep our measurements good in the eyes of North Georgia College.

We salute the Graduating Class and wish you all Godspeed in your chosen field of endeavor.

**IRVING L. WILSON CO.**

No. 1 Highland Ave.

Bala-Cynwyd, Pa.



## **GAINESVILLE PURE MILK COMPANY**

*Pure Pasteurized Dairy Products*

GAINESVILLE

GEORGIA

Phones: LEnox 4-5258 and 4-3306



**THE  
WESLEY  
FOUNDATION**  
of  
**DAHLONEGA METHODIST  
CHURCH**

**THE  
BAPTIST  
STUDENT UNION**  
of  
**DAHLONEGA BAPTIST  
CHURCH**

Inspiration -:- Christian Fellowship -:- Devotions -:- Recreation

FOR ALL STUDENTS OF N. G. C.



Potato Chips

Fritos

Cornetts

and

Go-B-Tweens

**HUBERT VICKERS**

**FUNERAL HOME**

*Morticians*

24-Hour Ambulance Service

Phone 54

DAHLONEGA, GEORGIA

COMPLIMENTS

of

**THE ROYAL THEATRE**

*"Movies are the Smart People's*

*Choice of Entertainment"*

GAINESVILLE

GEORGIA

**DAVIS - WASHINGTON**

**COMPANY**

*Everything for the Builder*

Phone LE. 4-5205

GAINESVILLE

GEORGIA

*"Eat With Us — Take Some Home"*

**PARKS' BAR-B-Q**

Ruby and Ed

Atlanta Highway

GAINESVILLE

GEORGIA

**Dunlap and Company**

INSURANCE

Candler Building

ATLANTA 3, GEORGIA

**GAINESVILLE FLORIST**

*"Home of Fine Flowers"*

111 South Sycamore Street

GAINESVILLE

GEORGIA

Phone LE. 4-7397

**The Cake Box Bakery**

*Everything in Bakery Goods*

Visit Our Coffee Bar

GAINESVILLE

GEORGIA

**DAIRY QUEEN**

of

GAINESVILLE, GEORGIA

*Nationally Known, Locally Owned*

**RED DOT SUPER MARKET**

Delivery

Phone 3

DAHLONEGA, GEORGIA

*Compliments of*

**North Georgia Shoe Shop**

DAHLONEGA, GEORGIA



*Compliments of*

**Roberts Book and Gift Shop**

GAINESVILLE

GEORGIA



**Orkin Exterminating Company**

124 N. Main Street

LE. 4-9964

GAINESVILLE

GEORGIA



SODAS, SANDWICHES, SWEETS,  
STATIONERY, AND OTHER PERSONAL  
NEEDS CAN BE OBTAINED AT THE  
NORTH GEORGIA COLLEGE  
STUDENT EXCHANGE

SUNDRIES AND POST OFFICE

# THE CANTEEN

ROBERT RAGAN, *Manager*

BOOKS, UNIFORMS, AND SCHOOL  
SUPPLIES AT THE LOWEST  
POSSIBLE PRICE. THE  
STUDENTS ARE ALSO INVITED  
TO ENJOY THE COLOR TELEVISION  
IN THIS PART OF CANTEEN.



**UNIFORM AND  
BOOK STORE**

THEY WALK WITH A MILITARY STRIDE



**CORCORAN INC.**

STOUGHTON, MASS.

---

COMPLIMENTS

of

**PACOLET MANUFACTURING COMPANY**

Gainesville, Georgia

New Holland, Georgia

*Compliments*

*of*

**George Moore Ice Cream Co.**

50-56 Alabama St., S.W.

ATLANTA

GEORGIA



*"Where Savings Are Greater"*

GAINESVILLE

GEORGIA

**Southeastern Mills, Inc.**

ROME, GEORGIA

*The South's Finest Flour Mill*

Manufacturers of:

HIGH-GRADE FAMILY FLOURS  
HIGH-RATIO CAKE FLOUR  
HARD WHEAT BAKERY FLOUR  
STIVERS' BEST CORN MEALS

*Compliments*

*of*

**Sawnee  
Provision Company**

CUMMING

GEORGIA

**CHEROKEE MOTEL AND RESTAURANT**

15 Modern Units With Baths

Regular Dinners with Complete Short Orders

Home-made Pies

DAHLONEGA

GEORGIA





Yarn Made By

**PINE TREE COMPANY**

DAHLONEGA

GEORGIA

---

*"Serving Northeast Georgia, America's Shangri La"*

**STANDARD TELEPHONE COMPANY**

CORNELIA

GEORGIA

---

**Bay Way Laundry and Dry Cleaning**

*Superior Laundering*

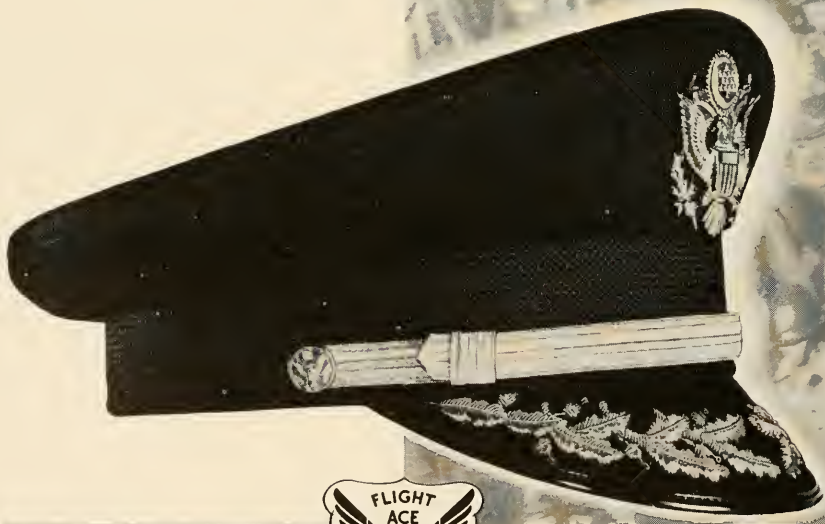
Phone LE. 4-7442

GAINESVILLE

GEORGIA

**... Army Greens by Ace**

All new Army caps  
in approved materials  
in Shade 44  
... also a complete line of  
Shade 150 Dress Blues.



ACE  
MANUFACTURING  
COMPANY  
333 EAST MARKET ST.  
SAN ANTONIO, TEXAS

**Ace**



## GORDON FOODS

ATLANTA

GEORGIA



## THE DUTCH MILL

*"Equal to the South's Best Barbecue"*

DULUTH

GEORGIA



## J. D. JEWELL, INC.

GAINESVILLE, GEORGIA



For the first time, foot and shoe move, and act, as one! Built-in "Powerlift", an elastic harness vulcanized into the sole, keeps the arch always in contact with every curve of the foot. Result: more speed! Foot cannot slide inside shoe; prevents irritations. "Powerlift" Band eases pressure from lacing.



Look for the "Pro"-Keds label on the shoe... be sure you get U. S. Royal by U. S. Keds

# U.S. "PRO" KEDS

*The Shoes of Champions*

**UNITED STATES RUBBER COMPANY**

TRY

## CRANE CLEANERS

for

Economy and Expert Workmanship

*Fluff Dry Cleaning*

DAHLONEGA

GEORGIA

COMPLIMENTS OF

•

# INDUSTRIAL PHOTOGRAPHY INC.

•

INDUSTRIAL

COLOR

POST CARDS

ADVERTISING

SCHOOLS

CONVENTIONS

PORTRAITS

WEDDINGS

PUBLICITY

•

## **INDUSTRIAL PHOTOGRAPHY INC.**

304 Ponce De Leon Ave., N. E.

ATLANTA, GEORGIA

*President*

# QUEEN CITY POULTRY & FEED CO.

Phone LEnox 4-3525

P. O. Box 646

117 Railroad Ave.

GAINESVILLE, GEORGIA

*"Thompson White Rocks and Vantress Cross"*

Chicks - Poultry - Feeds - Supplies

# BOB FRANKENFIELD, INC.

1313 Montgomery Street

Phone ADams 3-2166

**SAVANNAH, GEORGIA**

FOOD SERVICE EQUIPMENT AND SUPPLIES FOR HOTELS - RESTAURANTS - INSTITUTIONS

DISTRIBUTORS OF

COMMERCIAL  
REFRIGERATORS

## UNIFORM, INC.

Special Price for Graduating Army

R.O.T.C. Students

NO MONEY DOWN—6 MONTHS TO PAY

We Guarantee

THE FINEST QUALITY AT PRICES THAT

CAN'T BE BEAT

608 W. Peachtree

TR. 6-3677-8

ATLANTA, GEORGIA

Frosty Acres

Frosty Seas

## CAPITOL FISH COMPANY

777 W. Whitehall St., S. W.

ATLANTA, GEORGIA

PL. 5-4511

The South's Largest Seafood and

Frozen Foods Distributor

CAPITOL BRAND OYSTERS

MINUTE MAID

MORTON'S

4-FISHERMEN

TRADE WINDS

SWANSON

GOOD DUCHESS

## DAHLONEGA 5 & 10 STORE

DAHLONEGA

GEORGIA

A Personal Invitation to all Who Read This

to Visit Our New Modern Store

---

### BODY BY FISHER

In the low priced field, Chevrolet alone offers you the famous Body by Fisher  
—a symbol of engineering superiority.

### BUY — — CHEVROLET

America's first choice for over 21 years

*Sales - Service*

## FRED JONES CHEVROLET COMPANY

DAHLONEGA

GEORGIA

---

## CROWE-KNOWLES FURNITURE COMPANY

*Complete Home Furnishers*

Main Store—Corner Clayton and Lumpkin Streets

Annex Store—160 West Clayton Street

Phone LI. 3-2720

ATHENS

GEORGIA

---

## ROBERT M. MOORE'S STORE

*"A complete line of general merchandise"*

Friend of All North Georgia Students

DAHLONEGA

GEORGIA

ENJOY THE BEST IN MOVIE ENTERTAINMENT

at the

**HOLLY THEATER**

*With Cinemascope*

*on the New Wide Screen*

DAHLONEGA

GEORGIA

**C. M. HARRISON**

*Supplier of SINCLAIR PRODUCTS*

GAINESVILLE

GEORGIA

*Compliments*

*of*

**WOODY'S  
BARBER SHOP**

*"On the Square"*

DAHLONEGA, GEORGIA

**GEM**

**JEWELRY COMPANY**

*"On the Square"*

DAHLONEGA, GEORGIA



Other Stores:

Gainesville - Toccoa - Cumming



**Milton Bradley Company  
of Georgia, Inc.**

384 Forrest Ave., N. E.  
ATLANTA, GEORGIA

TOYS

GAMES

**PUTNEY  
FEED COMPANY**

*Purina Chow*

Box 236

Phone 231

DAHLONEGA, GEORGIA

*Compliments*

*of*

**George A. Hormel and Company**

252 Peters Street, S. W.

ATLANTA 3, GEORGIA

*Compliments*

*of*

**C. V. NALLEY, INC.**

GAINESVILLE

GEORGIA

*Compliments*

*of*

**Eli Witt Cigar and Candy  
Company**

ATHENS

GEORGIA

**H. D. QUINN**

**FLORIST**

LE. 4-7315

522 East Avenue

Gainesville

*Compliments of*

**GENERAL  
GAS CORPORATION**

GAINESVILLE, GEORGIA

**MINTZ JEWELERS**

*"On the Square"*

GAINESVILLE

GEORGIA

**Georgia Office Equipment  
Company**

Underwood Typewriters and Machines

*We Repair All Makes*

All Repair Work Cash

Telephone LE. 2-6044

109 N. Green

GAINESVILLE, GEORGIA

**PETE TANKERSLEY'S**

**SPORTING GOODS**

TOYS AND TIRES

222 S. Main Street

Thompson Bridge Road

GAINESVILLE

GEORGIA

*Compliments of*

**A FRIEND**

**GALLANT-BELK COMPANY**

Gainesville's Largest and Most Complete Department Store

*"On the Square"*

GAINESVILLE

GEORGIA

**MATTHEWS PRINTING COMPANY**

*Creators and Producers of Quality Letterpress and Litho Printing*

119 N. Main Street

Phone LE. 2-2481

GAINESVILLE, GEORGIA

COAL - OIL  
FROZEN FOODS

APPLIANCES      PUMPS

**CITY ICE COMPANY**

GAINESVILLE

GEORGIA

**CHAMBERS  
LUMBER COMPANY**

*Building Supplies*

LEnoX 4-3551

1125 S. Main

GAINESVILLE

GEORGIA

*Compliments*

*of*

**A FRIEND**

**FRIERSON-McEVER  
COMPANY**

MEN'S WEAR

GAINESVILLE

GEORGIA

*Compliments*

*of*

**FRIENDS**

*Compliments*

*of*

**PARKS FEED STORE**

GAINESVILLE

GEORGIA

**PATRONIZE THE ADVERTISERS**

**The Business Staff**

**1957 CYCLOPS**

*A Symbol of Excellence in Yearbooks*



FOOTE & DAVIES, INC.  
ATLANTA

*Growing with the South - Serving the Nation*







