

261

REPT BATR

Der

Bau des centralen Nervensystemes

der

ungeschwänzten Batrachier,

untersucht und beschrieben

von

Dr. E. Reissner,

Professor der Anatomie in Dorpat.

Atlas von zwölf Tafeln.

Dorpat, 1864.

Conn.
dc
669
1274
1764
collas

Ernst Mayr Library
Museum of Comparative Zoology
Harvard University

Fig. I.

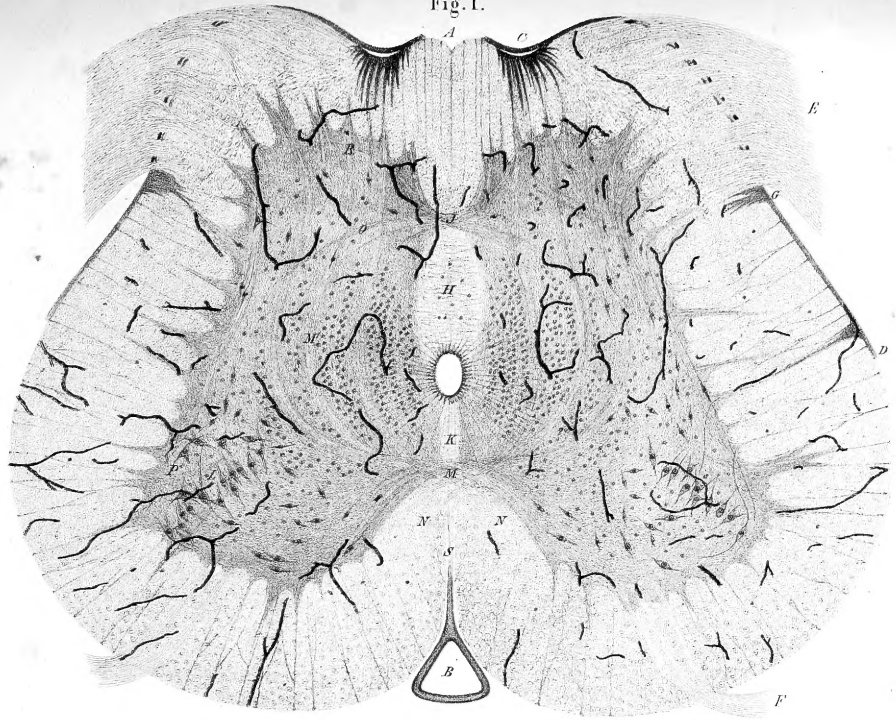


Fig. B.



Fig. A.



Fig. D.

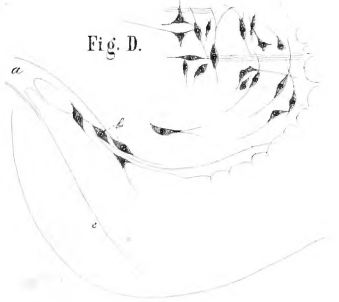
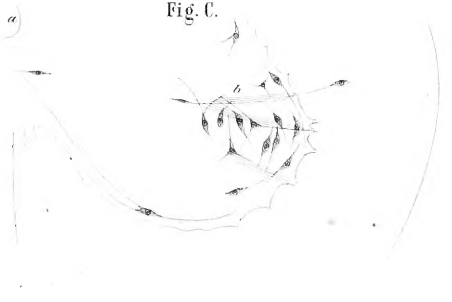


Fig. C.



I. Vascularis anterior
A. Commissura inferior, alba

Fig. IV.



Fig. II.

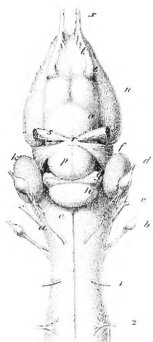
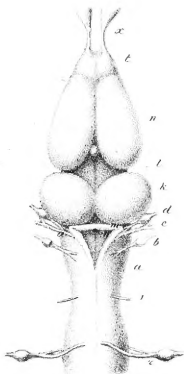


Fig. III.



I Lenticel Flecke des Stammes
 II Obere
 III Hinteres Ende der Membran oblongata

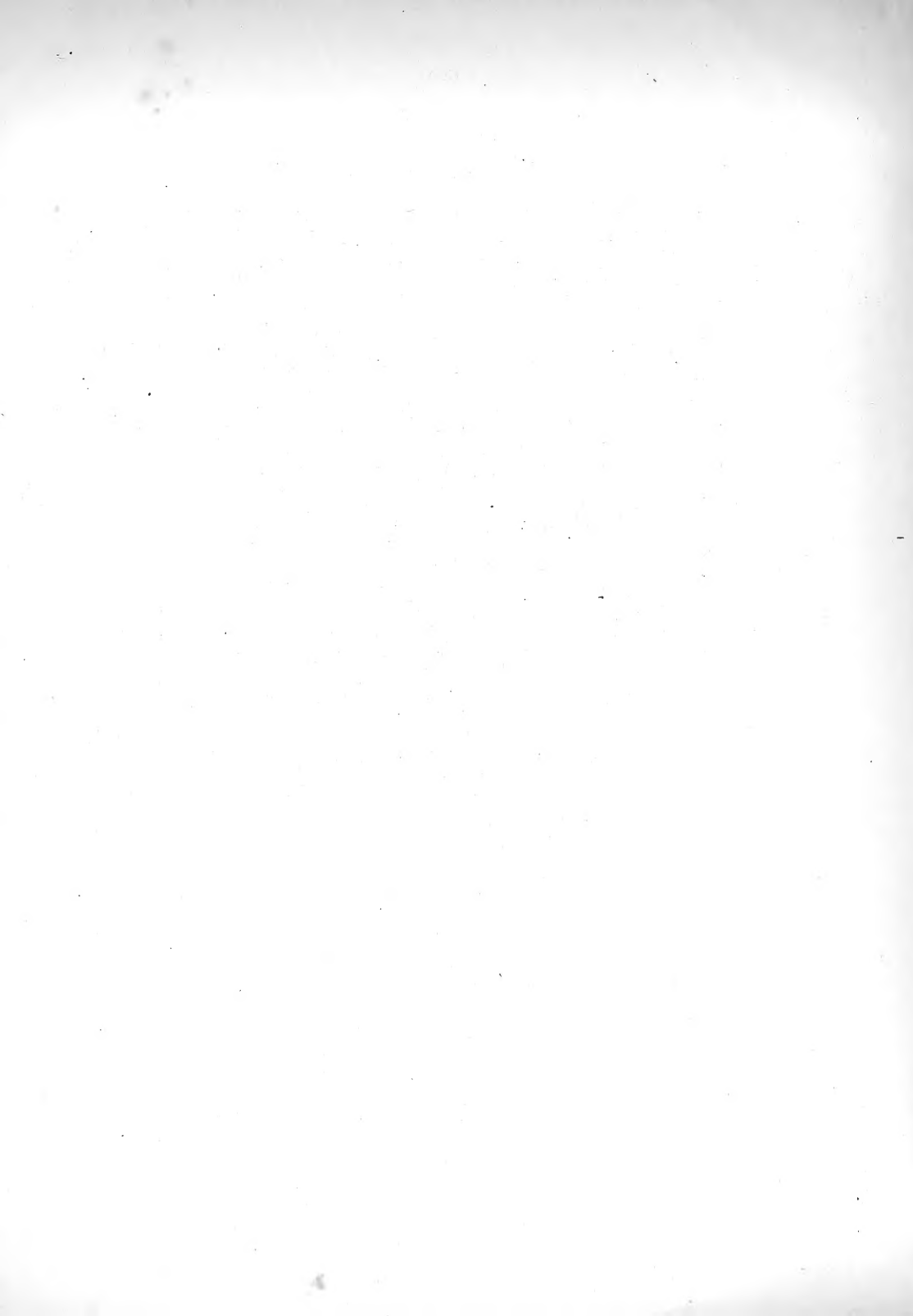


Fig V

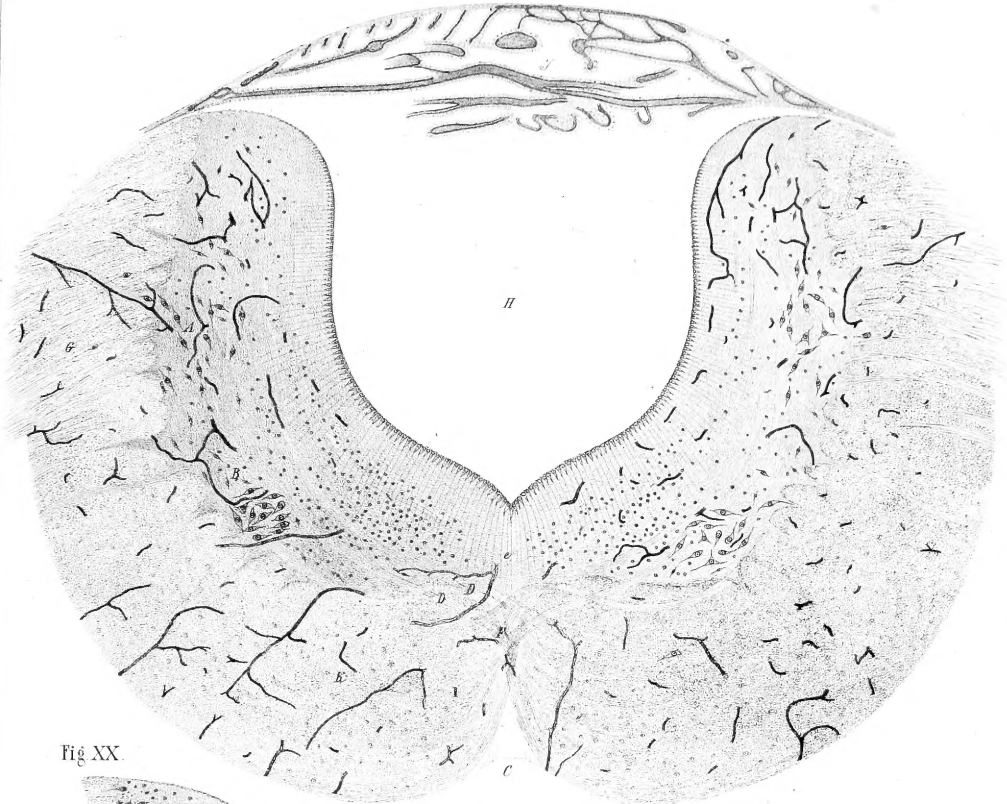


Fig XX

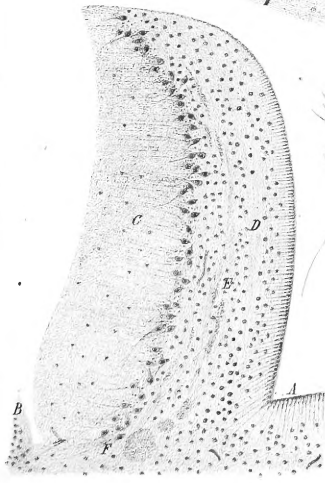


Fig G

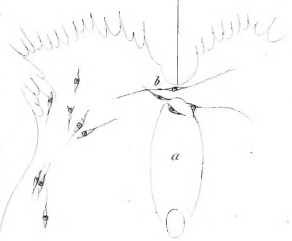


Fig E.

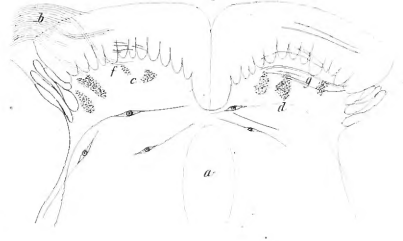


Fig H

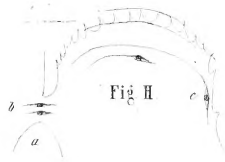
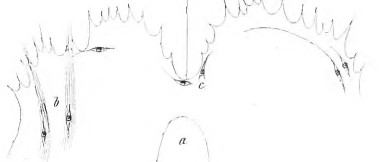


Fig F



V. Vorderer Theil des mesencephalicen Hirns
 X X. Dorsale Längsschnitt aus dem vorderen Theil
 E-H. Obere Hirnrinde des Rückenmarkes im Cervicalsegment

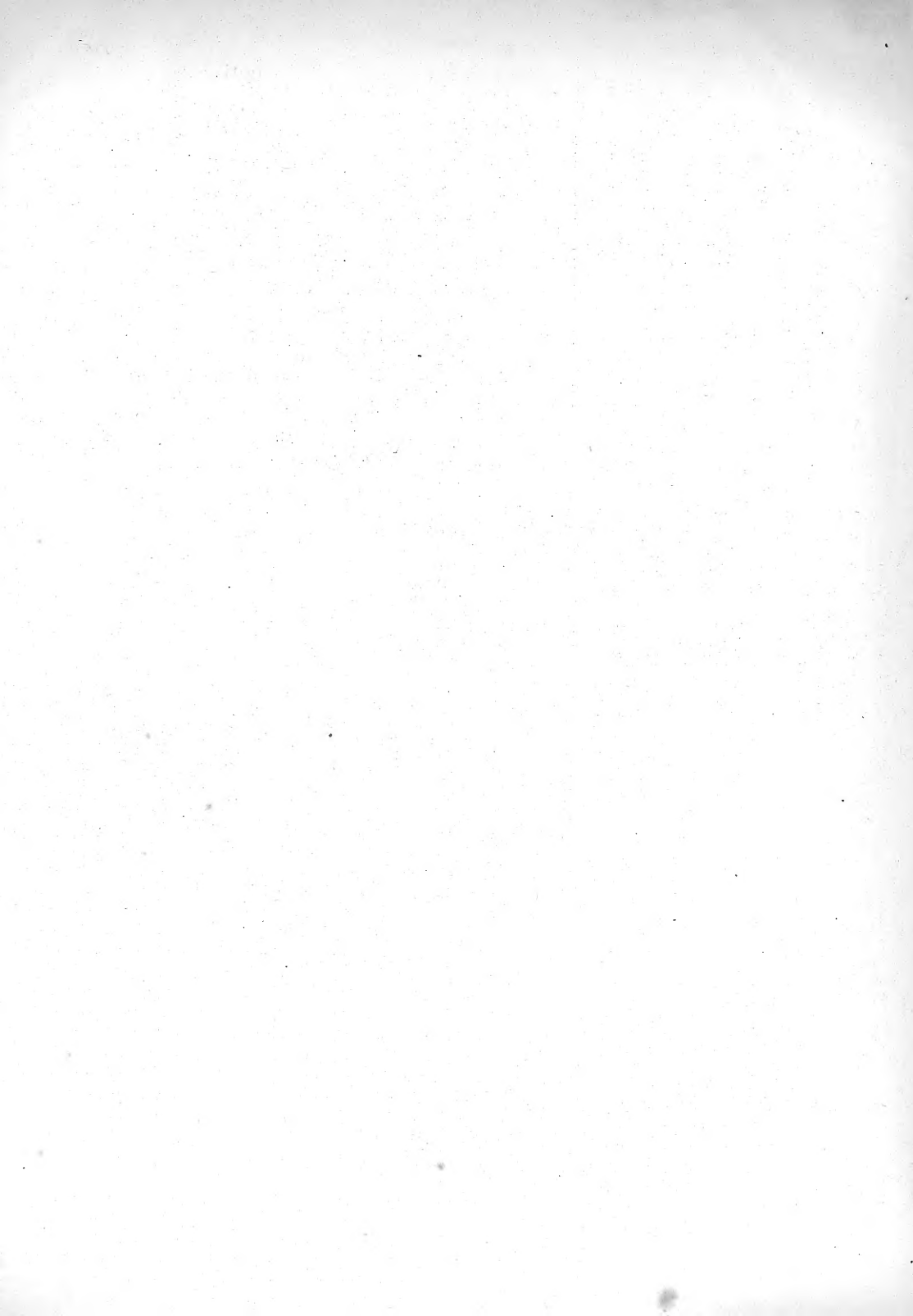


Fig. VI.



Fig. J.



Fig. L.



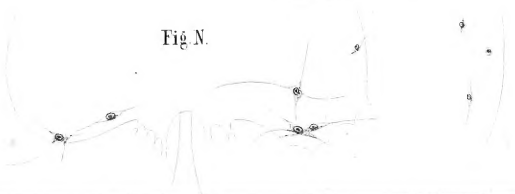
Fig. M.



Fig. K.



Fig. N.



VI Pars commissuralis una cordellum

Fig. VII.

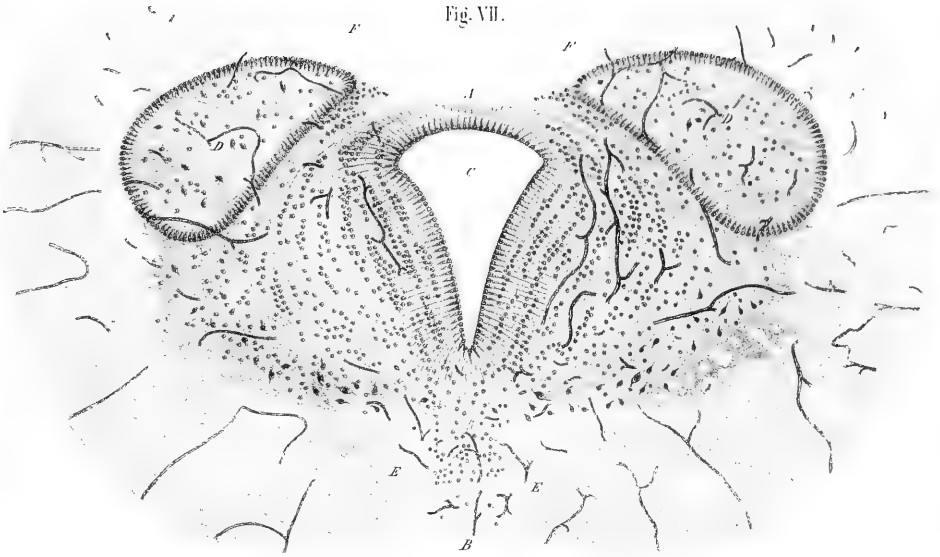


Fig. IX.



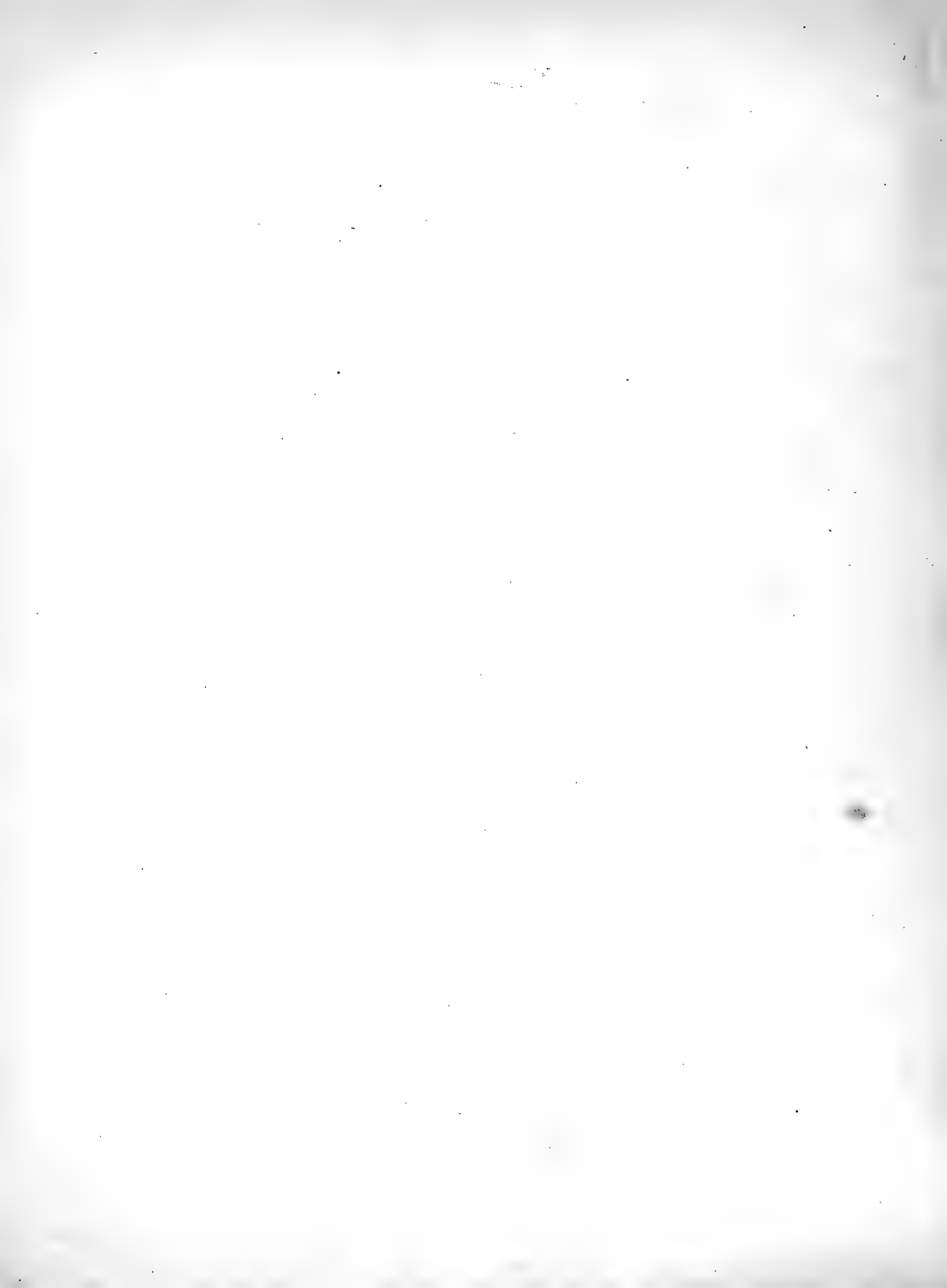


FIG. VIII.



Coelocystis guineensis, 4920 km mlt. 1891. c. 1891. 1891. 1891.

Fig XIV

Fig XI

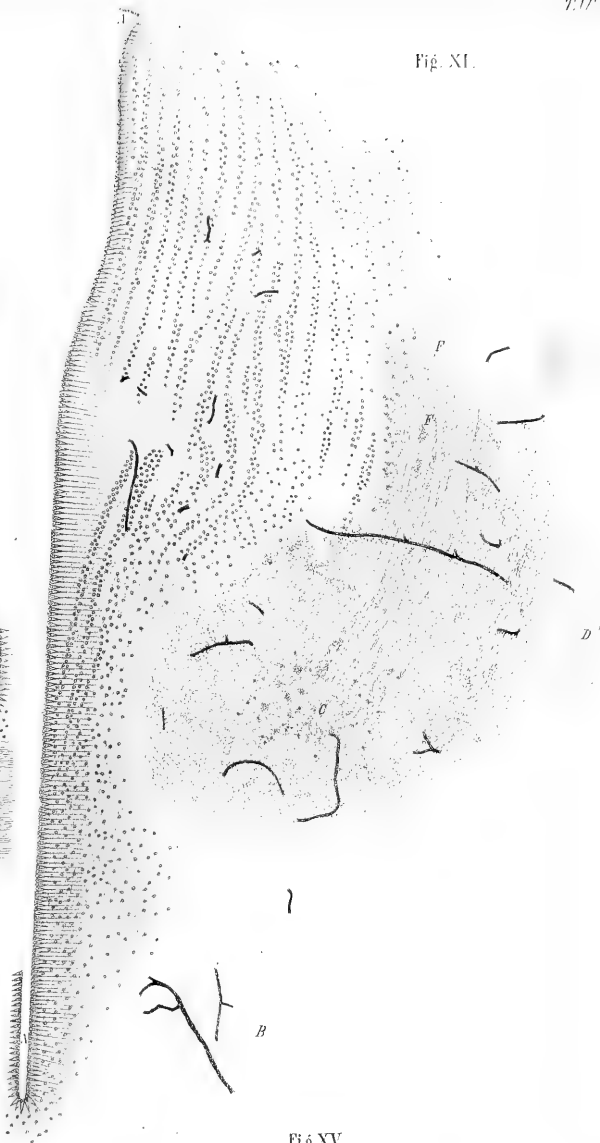
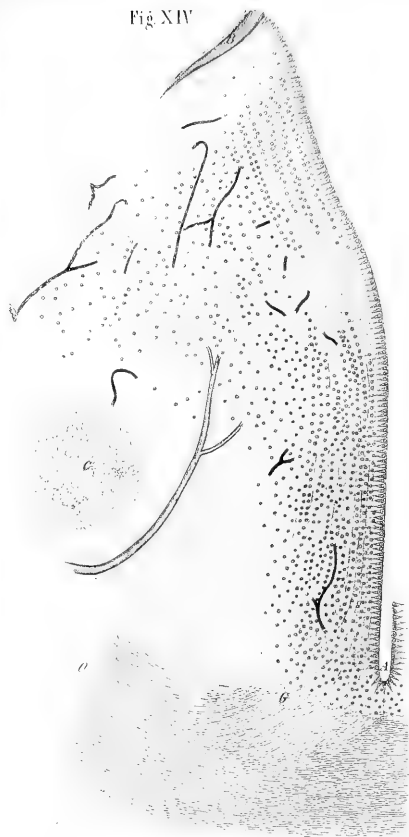


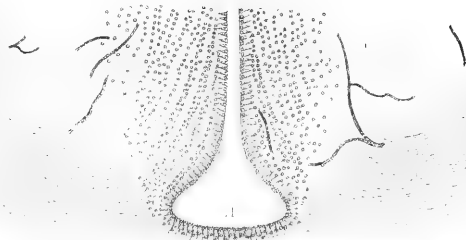
Fig P



Fig O



Fig XV



XIV *Chelidonium majus* Thelium effusa + Rana long
 XV *Sax. umbra* Eche am

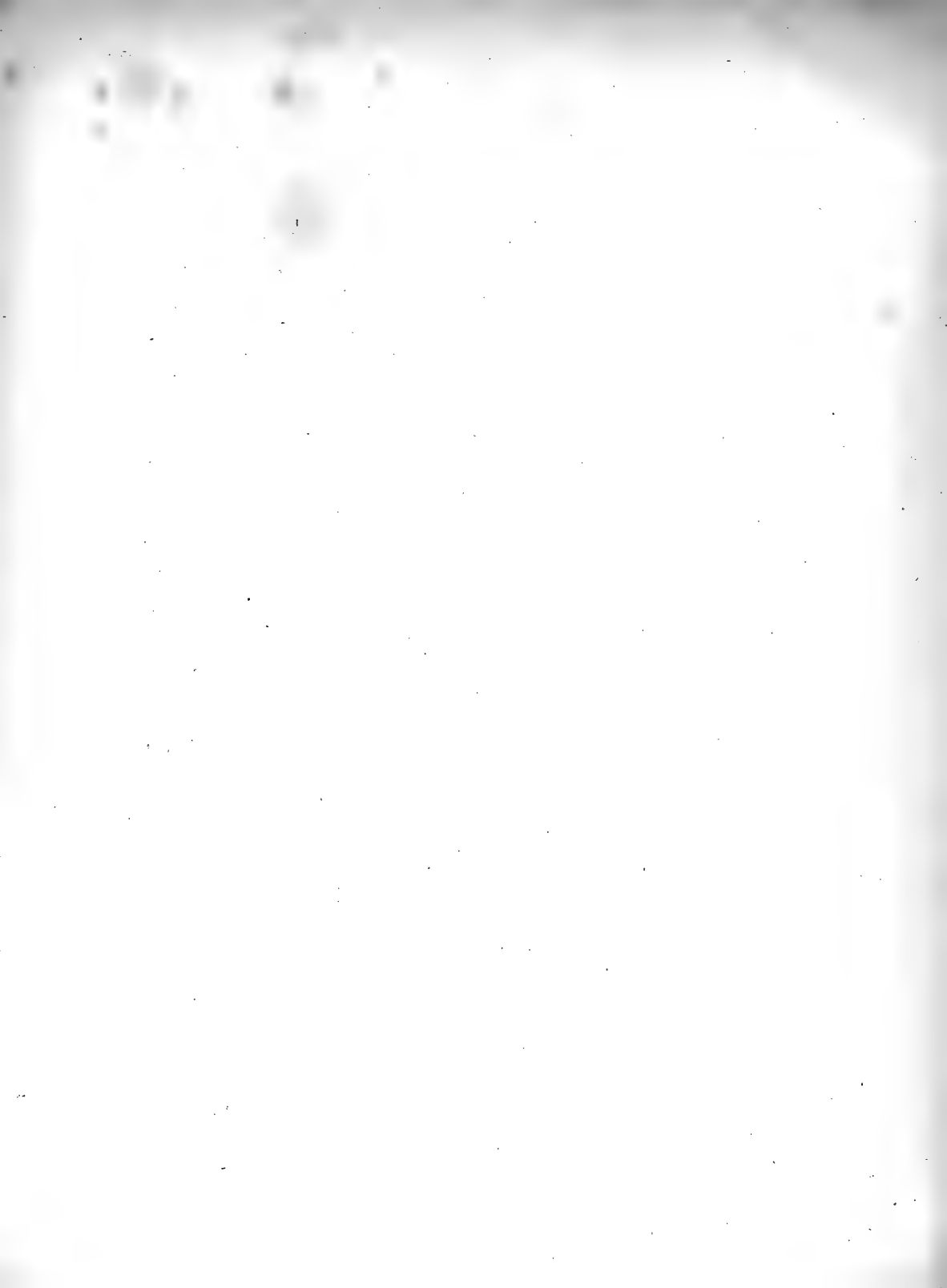


Fig XII



Fig XIII

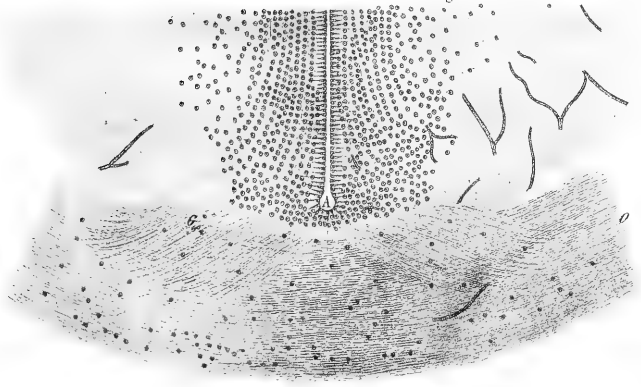
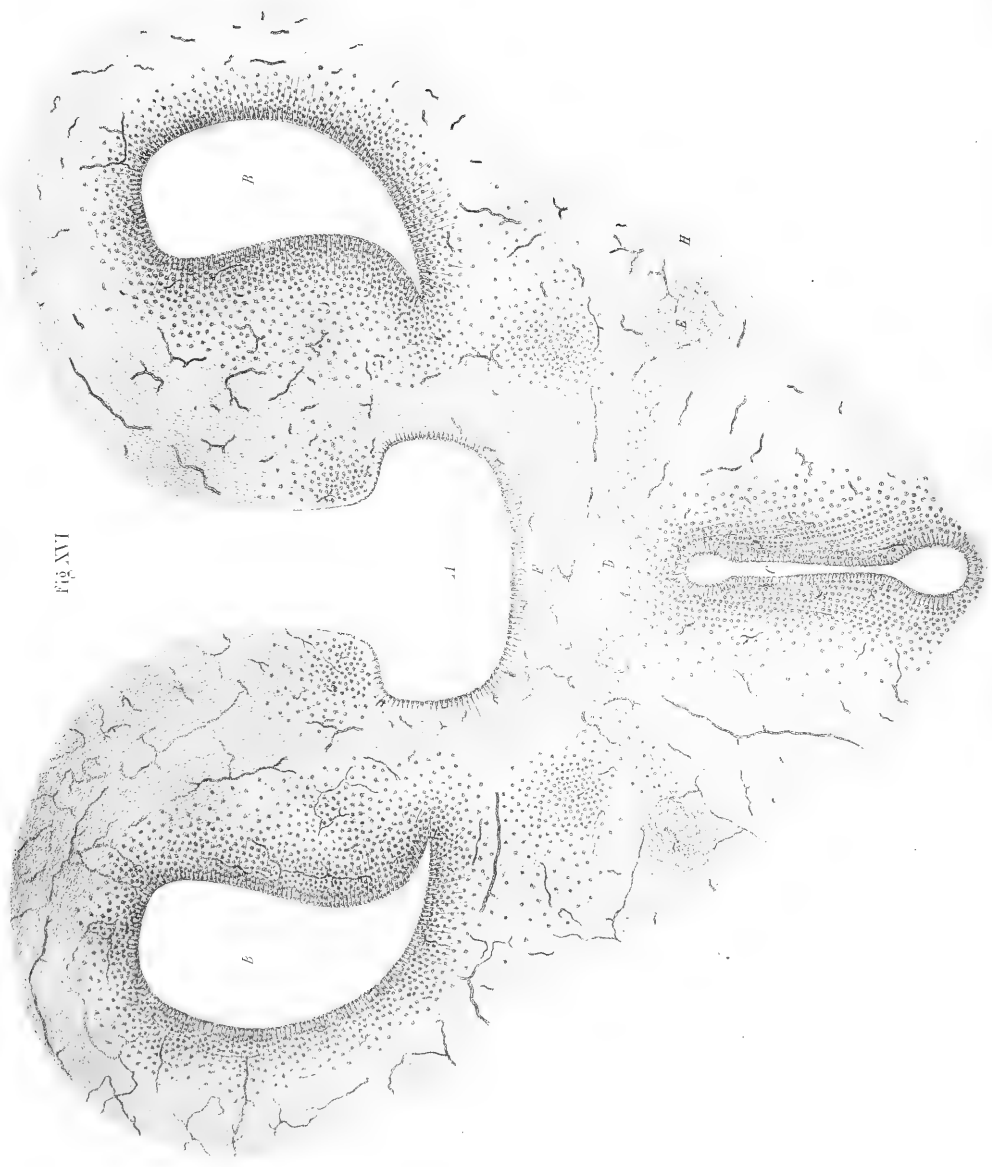


Fig. XVI



XVI. *Tabernaemontana cinnamomea* et *Tabernaemontana umbellata*.

Fig. XVII.

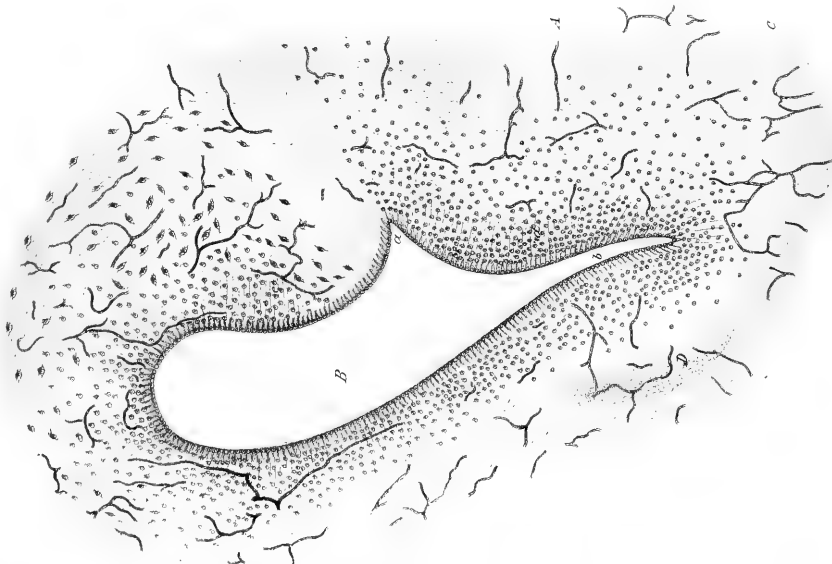


Fig. X.

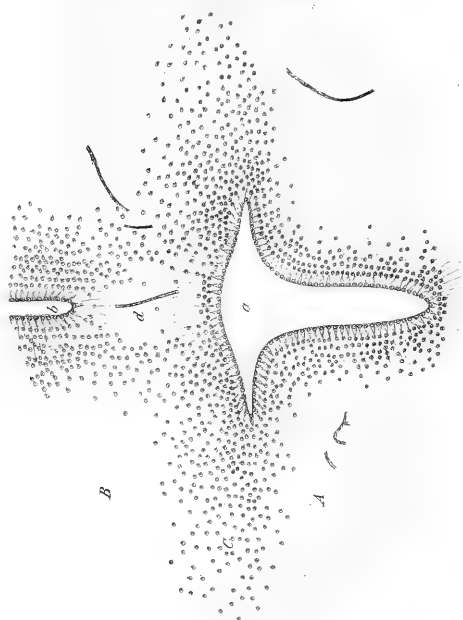


Fig. H.

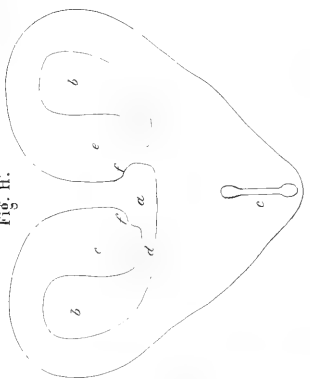


Fig. G.



XI *Trichocephalus*
 X *Trichocephalus* in *enem.* head or Tail end

Fig. XVIII.

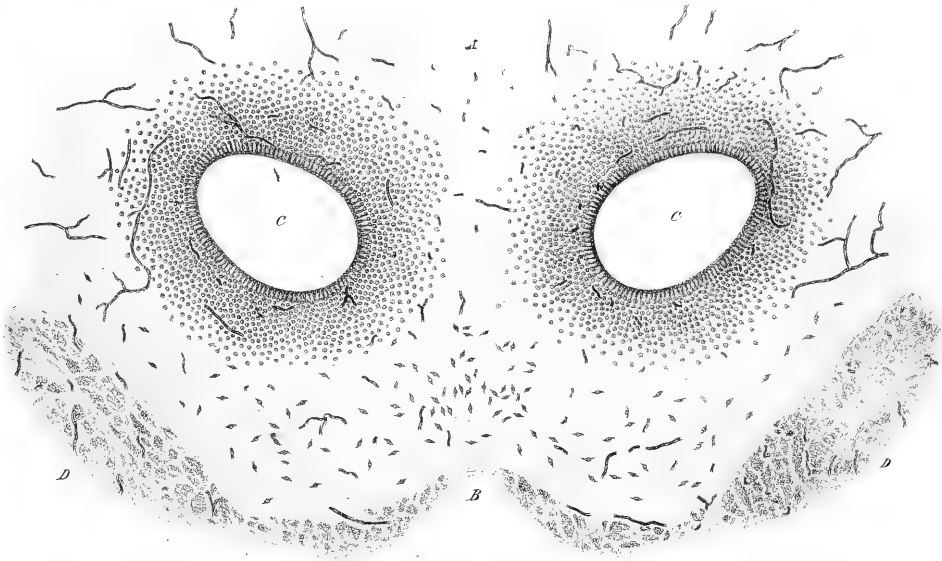
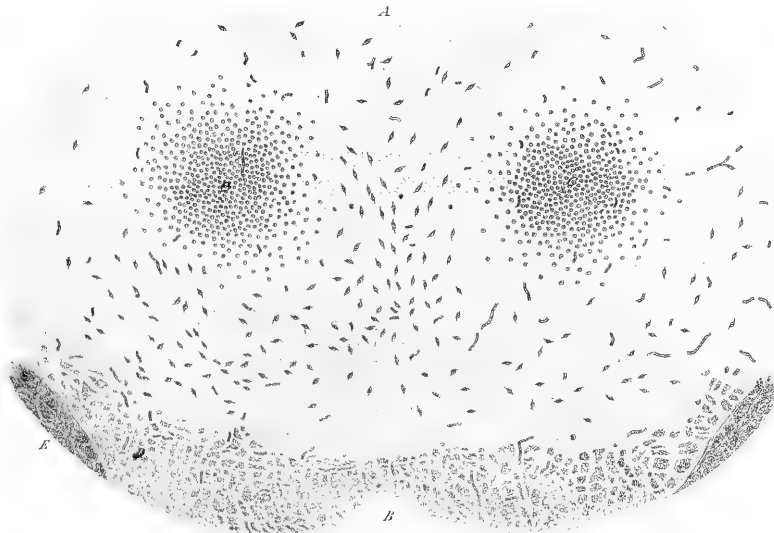


Fig. XIX.



XVIII) *Artemisia* ...
 XIX) *Vandera* ...

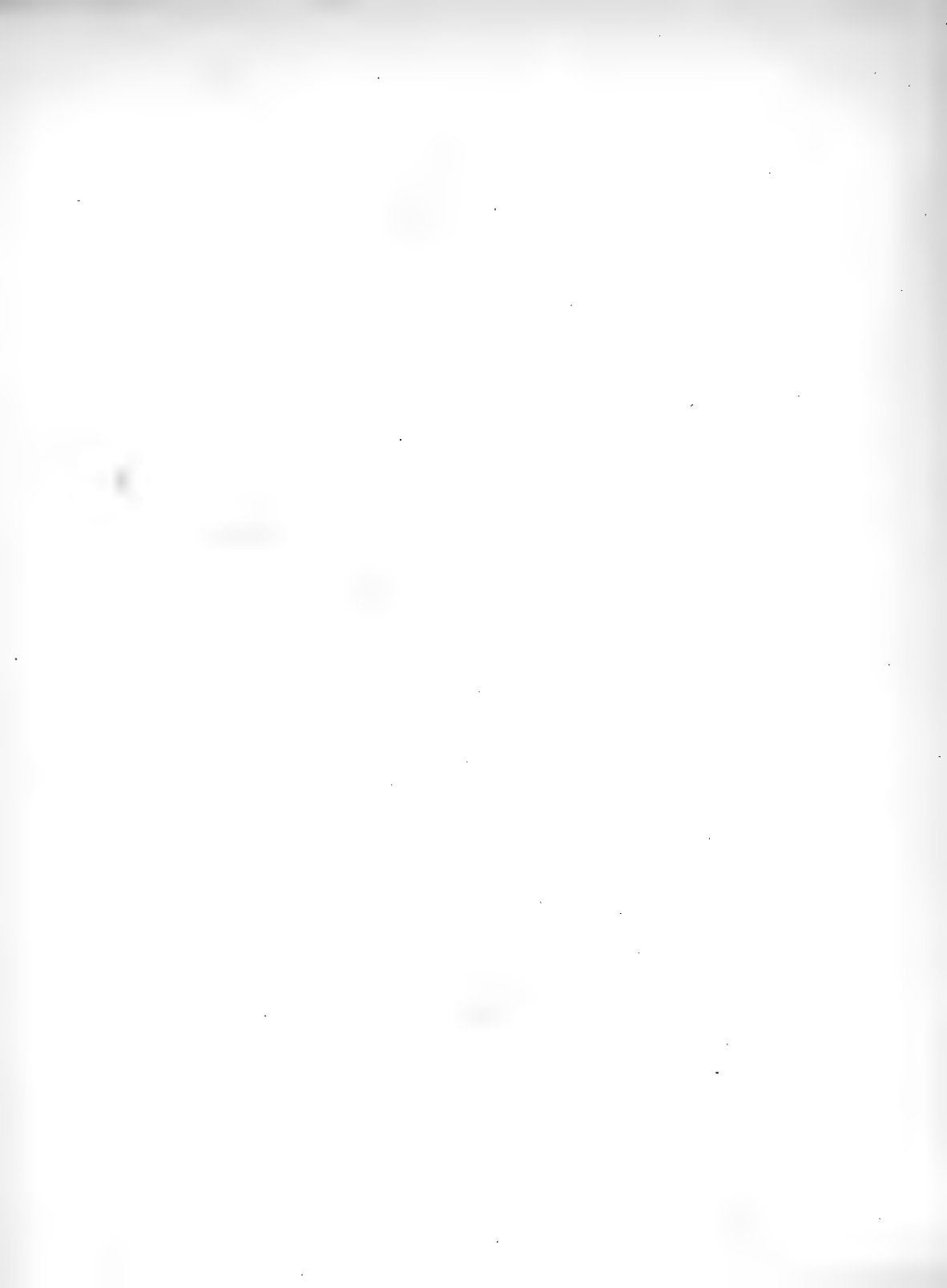


Fig. R

Fig. S

Fig. T

Fig. U

Fig. V

Fig. W

Fig. X

Fig. Y

Fig. Z

Fig. A'

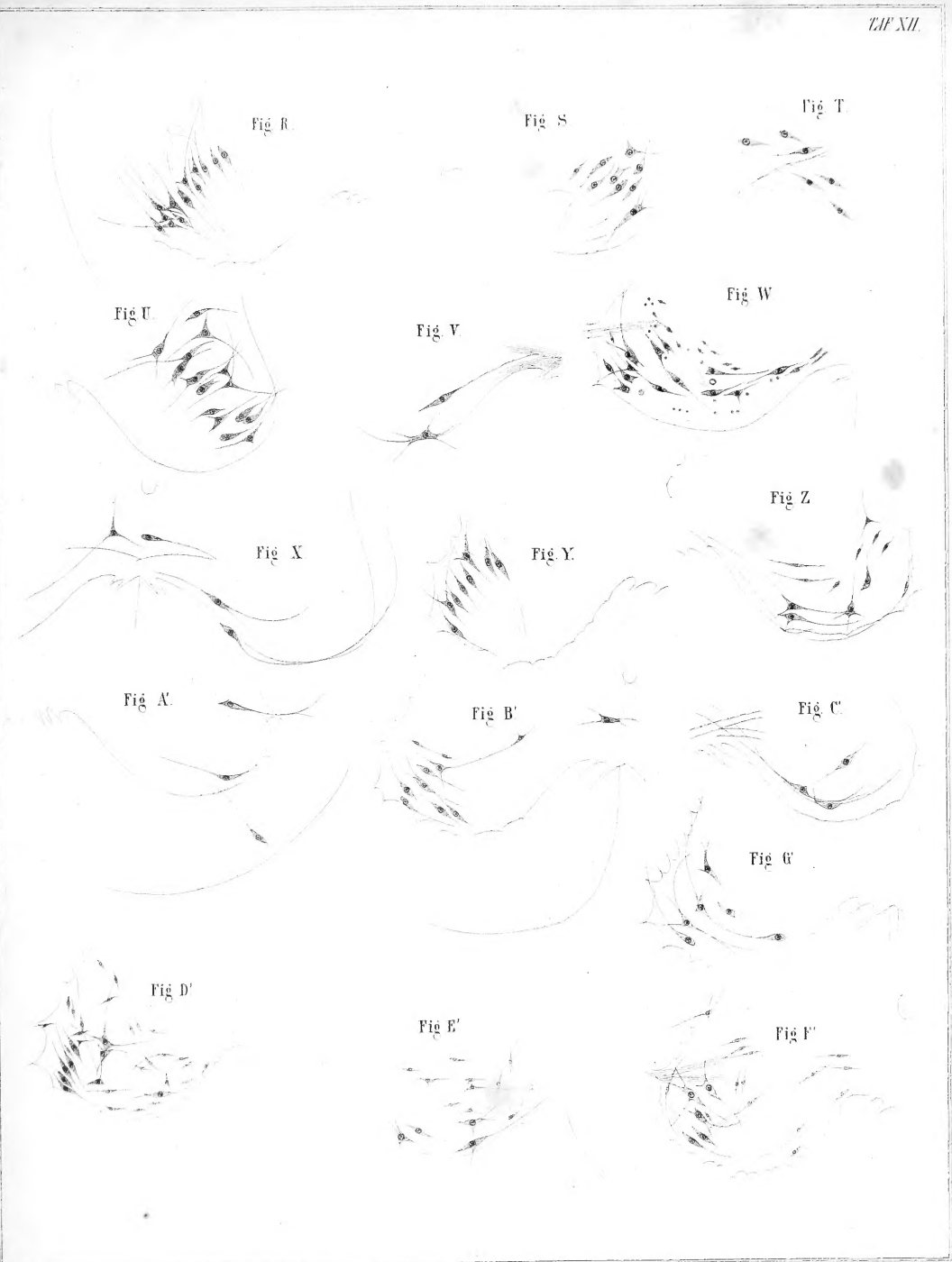
Fig. B'

Fig. C'

Fig. D'

Fig. E'

Fig. F'



ERNST MAYR LIBRARY



3 2044 114 207 848

