

\*CS 41  
1532  
1915

No CS71. B33 1915



Exchange from  
C. F. Libbie & Co.

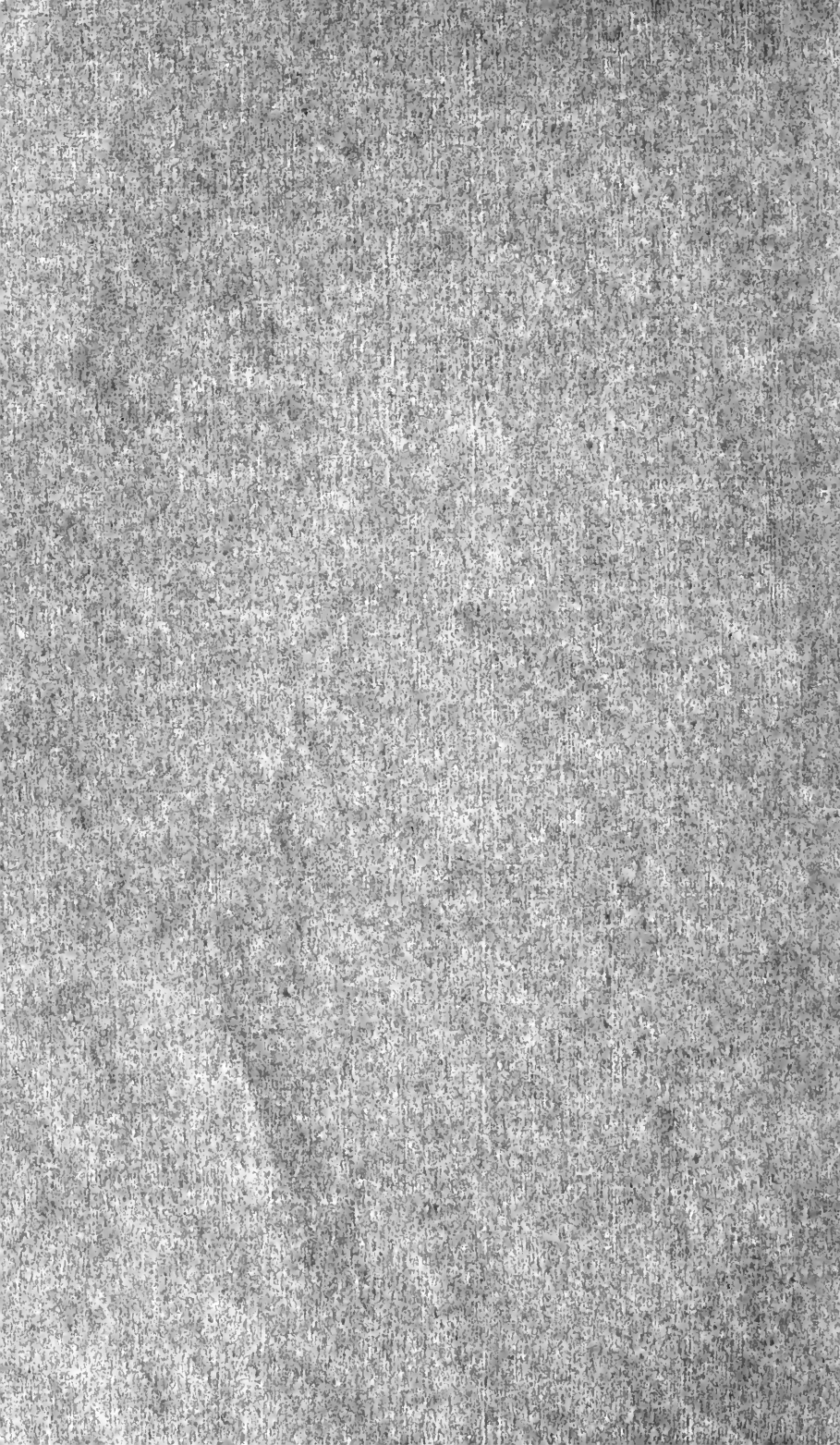
---

---

The Descendants  
of  
Samuel Colcord Bartlett  
and  
Eleanor Pettengill  
✻ ✻ his wife ✻ ✻

---

---



THE DESCENDANTS  
OF  
SAMUEL COLCORD BARTLETT

AND

ELEANOR PETTINGILL, HIS WIFE

OF

SALISBURY, NEW HAMPSHIRE

TO NOVEMBER 1, 1915

---

COMPILED BY EDWIN J. BARTLETT, OF HANOVER, N. H.

---

PRINTED AT THE DARTMOUTH PRESS  
HANOVER, N. H.  
1915

\*CS71

. B33

1915

1915

YSAAD : DLEUF  
MAY '96  
KOTSONROYTO

## The Ancestors of Hannah Colcord who married Dr. Joseph Bartlett<sup>6</sup>

(Abridged from "*The Colcord Genealogy*" by D. B. Colcord.)

EDWARD CALCOTT OR COLECORD<sup>1</sup> at the age of 15 came from Hants County, England, in 1631, to Portsmouth, N. H., and thence to Exeter.

SAMUEL<sup>2</sup> (Lieutenant), the 6th of 3 sons and 7 dau., b. 1656; d. Oct. 10, 1736; m. Mary Ayer, 1680, was in the Colonial Army in King Phillip's War in 1677.

SAMUEL<sup>3</sup> (Lieutenant), oldest of 4 sons and 3 dau., b. March 11, 1682; m. Elizabeth Folsom, 1707; lived at Kingston, N. H.; was in French and Indian War.

SAMUEL B.<sup>4</sup>, 3d of 3 sons and 2 dau., b. Aug. 22, 1710; m. Mehitable Ladd, 1732.

HANNAH<sup>5</sup>, 5th of 1 son and 4 dau., b. in Kingston, N. H., March 13, 1754; d. in Salisbury, N. H., Aug. 29, 1837.

---

## The Ancestors of Samuel Colcord Bartlett

(Abridged from "*The Bartlett Family*," by Levi Bartlett, lately of Warner, N. H., and from Rolfe's "*History of Salisbury, N. H.*")

RICHARD BARTLETT<sup>1</sup> came to Newbury, Mass., 1635, bringing with him the Bartlett Bible in which the records begin.

RICHARD<sup>2</sup>, oldest of 4, b. in England, 1621; d. 1698; m. Abigail — —.

RICHARD<sup>3</sup>, 2d of 4 sons and 3 dau., b. Feb. 21, 1649; m. Nov. 18, 1673, Hannah Emery, of Newbury, Mass., b. Apr. 26, 1654, dau. of John Emery<sup>3</sup> and Mary Webster.

STEPHEN<sup>4</sup>, 8th of 8 sons and 2 dau., b. Apr. 21, 1691; d. Apr. 20, 1773; m. Hannah Webster of Salisbury, Mass.

JOSEPH<sup>5</sup>, 2d of 5 sons of whom Gov. Josiah Bartlett was 4th; b. Apr. 18, 1720; d. 1753; m. Jane Colby.

JOSEPH<sup>6</sup>, 3d of 4 sons, b. Jan. 14, 1751 in Amesbury, Mass.; d. Sept. 20, 1800; m. Dec. 16, 1773, Hannah Colcord in Kingston, N. H.

They took residence in Salisbury, N. H., in 1773, where he was the first physician. He was enrolled in Captain Ebenezer Webster's company in 1775.

SAMUEL COLCORD<sup>7</sup>, 3d of 7 sons and 2 dau., b. Jan. 16, 1780.

---

### The Ancestors of Eleanor Pettengill

(Abridged from "*The History of Salisbury.*")

The Pettengill family came from Yorkshire, Eng., to Newburyport, Massachusetts, where they purchased land in 1640. The records at hand are incomplete.

Captain BENJAMIN PETTENGILL was b. in Haverhill, Mass., Mch. 16, 1730, removed to Plaistow, thence to Salisbury, N. H., prior to 1773; d. Mch. 15, 1805. He married Mehitable Kimball, b. in Haverhill, Mass., 1739; d. in Salisbury, N. H., Apr. 23, 1812. He was in Col. Meserve's regiment in the expedition against Crown Point in 1757; and a Benjamin Pettengill of Salisbury was in Captain Ebenezer Webster's company in Col. Moses Nichols' regiment in the expedition to Rhode Island in 1778.

AMOS, the 2d of 3 sons and 5 dau., of Benjamin Pettengill and Mehitable Kimball, was b. in Salisbury, Nov. 5, 1760; d. Mch. 18, 1840; m. (1) Feb. 2, 1786, Charlotte True, who d. June 26, 1834, aged 73. He was married twice after her death.

ELEANOR, the oldest of 2 sons and 5 dau. of Amos Pettengill and Charlotte True, was b. Dec. 26, 1786.



1. SAMUEL COLCORD BARTLETT<sup>7</sup>, b. in Salisbury, N. H., Jan. 16, 1780; d. Mch. 31, 1867; m. July 31, 1810, ELEANOR PETTENGILL, b. in Salisbury, Dec. 26, 1786; d. Mch. 7, 1861. Their children all born in Salisbury, were

2. i. *Amos Pettengill*,<sup>8</sup> b. May 14, 1812; d. April 11, 1895, in Peoria, Ill.
  3. ii. *Joseph*,<sup>8</sup> b. Jan. 26, 1816; d. Aug. 12, 1882, in Gorham, Me.
  4. iii. *Samuel Colcord*,<sup>8</sup> b. Nov. 25, 1817; d. Nov. 16, 1898, in Hanover, N. H.
  5. iv. *Levi James*,<sup>8</sup> b. Aug. 28, 1823; d. May 16, 1908, in Griggsville, Ill.
  6. v. *Alfred Henry*,<sup>8</sup> b. Apr. 19, 1825; d. Feb. 19, 1826, in Salisbury, N. H.
  7. vi. *William Henry*,<sup>8</sup> b. Aug. 20, 1827; d. Sept. 24, 1867, in Concord, N. H.
- 

2. AMOS PETTENGILL<sup>8</sup> (*Samuel Colcord*<sup>7</sup>) m. Oct. 4, 1836, in Lockport, N. Y., Sarah Maria Rogers, b. Nov. 10, 1815; d. in Peoria, Ill., Oct. 16, 1905. Their children all born in Peoria, Ill., were

8. i. *Mary Ellen*,<sup>9</sup> b. Aug. 20, 1840.
9. ii. *Sarah Maria*,<sup>9</sup> b. Sept. 15, 1842.
10. iii. *Samuel Colcord*,<sup>9</sup> b. Dec. 11, 1845; d. Mch. 19, 1893, in Winetka, Ill.
11. iv. *Anna Frances*,<sup>9</sup> b. Aug. 1, 1848; d. May 5, 1849.
12. v. *William Henry*,<sup>9</sup> b. Apr. 27, 1850.
13. vi. *Helen*,<sup>9</sup> b. Dec. 14, 1854.

3. JOSEPH<sup>8</sup> (*Samuel Colcord*<sup>7</sup>) m. Oct. 26, 1847, Margaret Motley, b. Gorham, Me., Dec. 22, 1818; d. in Gorham, Oct. 1, 1894. Their children were

14. i. *Ellen Motley*,<sup>9</sup> b. Feb. 7, 1849, in Buxton, Me.; d. in Gorham, Me., Aug. 26, 1882.
15. ii. *Sarah C.*,<sup>9</sup> b. July 27, 1853; d. Aug. 31, 1853.

4. SAMUEL COLCORD<sup>8</sup> (*Samuel Colcord*<sup>7</sup>) m. (1) Aug. 16, 1843, Laura Bradlee, dau. of Nehemiah Bradlee, in Peacham, Vt.; she d. December, 1843. m. (2) May 12, 1846, in Fall River, Mass., Mary Bacon Learned, dau. of

Rev. Erastus Learned; b. in Canterbury, Conn., Dec. 18, 1821; d. in Hanover, N. H., Apr. 2, 1893. Their children,

16. i. *Henry Bancroft*,<sup>9</sup> b. in Hudson, O., May 3, 1847; d. in Hudson, Aug. 23, 1847.
17. ii. *Laura Bradlee*,<sup>9</sup> b. in Hudson, May 21, 1848; d. in Hudson, June 23, 1849.
18. iii. *Edwin Julius*,<sup>9</sup> b. in Hudson, Feb. 16, 1851.
19. iv. *Alice Wheaton*,<sup>9</sup> b. in Manchester, N. H., Sept. 20, 1854.
20. v. *William Alfred*,<sup>9</sup> b. in Chicago, Ill., Feb. 17, 1858.
21. vi. *Samuel Colcord*,<sup>9</sup> b. in Chicago, Sept. 21, 1865.

5. LEVI JAMES<sup>8</sup> (*Samuel Colcord*<sup>7</sup>) m. Dec. 4, 1860, Harriet Greenleaf Crane; b. in Franklin, N. H., June 9, 1827; d. in Franklin, Oct. 14, 1909. Their children,

22. i. *Albert Joseph*,<sup>9</sup> b. Dec. 20, 1862, in Salisbury Center, N. H.
23. ii. *Grace Greenleaf*,<sup>9</sup> b. Oct. 28, 1869, in Griggsville, Ill.

7. WILLIAM HENRY<sup>8</sup> (*Samuel Colcord*<sup>7</sup>) m. May 8, 1856, Caroline Baker, b. Nov. 1, 1824; d. Jan. 16, 1905, at Concord, N. H.

---

9. SARAH MARIA<sup>9</sup> (*Amos Pettengill*<sup>8</sup>, *Samuel Colcord*<sup>7</sup>) m. in Peoria, Ill., June 23, 1868, John Sanborn Stevens, b. Sept. 16, 1839; d. in Peoria, Ill., Mch. 4, 1912. Their children,

24. i. *Bartlett Stevens*,<sup>10</sup> b. Nov. 9, 1874; d. Sept. 13, 1875, in Peoria, Ill.
25. ii. *John Sanborn Stevens*,<sup>10</sup> b. Feb. 10, 1879; d. Feb. 17, 1881, in Peoria.

10. SAMUEL COLCORD<sup>9</sup> (*Amos Pettengill*<sup>8</sup>, *Samuel Colcord*<sup>7</sup>) m. June 22, 1876, in St. Louis, Mo., Laura Amelia Benton, b. 1850. Their children,

26. i. *Samuel Colcord*,<sup>10</sup> b. in Peoria, Ill., Nov. 1, 1882.
27. ii. *Edmund Benton*,<sup>10</sup> b. June 27, 1888, in Peoria; m. Oct. 11, 1913, in Sewickley, Pa., Nanette Marie Huston, dau. of James A. Huston, b. Jan. 11, 1888.

12. WILLIAM HENRY<sup>9</sup> (*Amos Pettengill*<sup>8</sup>, *Samuel Colcord*<sup>7</sup>) m. Sept. 9, 1875, in Woodstock, Vt., Mary Wentworth Campbell, dau. of William M. Campbell and Mary

Wentworth Williams; b. Oct. 20, 1852; d. in Denver, Colorado, Dec. 2, 1904. Their children,

28. i. *Mary Wentworth*,<sup>10</sup> b. June 19, 1876, in Peoria, Ill.; m. Apr. 6, 1899, in Phoenix, Arizona, Charles William Case Deering, b. Oct. 18, 1876.
29. ii. *Norman Williams*,<sup>10</sup> b. in Peoria, July 19, 1878.
30. iii. *William Henry*,<sup>10</sup> b. in Peoria, June 22, 1880.

14. ELLEN MOTLEY<sup>9</sup> (*Joseph*<sup>8</sup>, *Samuel Colcord*<sup>7</sup>) m. Nov. 20, 1876, Frederick Pearson Hodgdon, b. in Portsmouth, N. H., Nov. 27, 1854; d. in Portland, Me., Nov. 4, 1889. Their children,

31. i. *Mary Frost Hodgdon*,<sup>10</sup> b. Aug. 28, 1877, in Gorham, Me.; d. Feb. 17, 1911, in S. Bethlehem, Pa.
32. ii. *Robert Bartlett Hodgdon*,<sup>10</sup> b. Dec. 16, 1880, in Gorham; d. Sept. 10, 1882, in Westbrook, Me.
33. iii. *Philip Frederick Hodgdon*,<sup>10</sup> b. Apr. 10, 1882; d. Mch. 2, 1883, in Westbrook, Me.

18. EDWIN JULIUS<sup>9</sup> (*Samuel Colcord*<sup>8</sup>, *Samuel Colcord*<sup>7</sup>) m. in Milwaukee, Wis., July 8, 1879, Caroline Elizabeth Rice, dau. of John Abbott Rice and Elizabeth Emmeline Foster; b. Bangor, Me., June 6, 1855. Their children, b. in Hanover, N. H.,

34. i. *Harriette Louise*,<sup>10</sup> b. July 29, 1880.
35. ii. *Edwin Rice*,<sup>10</sup> b. May 12, 1883; m. June 2, 1915, in Niagara Falls, N. Y., Margaret Jaffrey Porter, dau. of Alexander J. Porter and Maud Langmuir, b. Mch. 3, 1895.
36. iii. *Samuel Colcord*,<sup>10</sup> b. Nov. 26, 1886; m. in New York City, Feb. 15, 1915, Dorothy Hinman, dau. of Frank H. Hinman, and Mary M. Coleman, b. at Norfolk, Va., May 22, 1889.
37. iv. *John Foster*,<sup>10</sup> b. Nov. 17, 1889.

19. ALICE WHEATON<sup>9</sup> (*Samuel Colcord*<sup>8</sup>, *Samuel Colcord*<sup>7</sup>) m. in Chicago, Ill., Apr. 19, 1877, Henry Albert Stimson, b. in New York City, Sept. 28, 1842. Their children,

38. i. *Alice Mary Stimson*,<sup>10</sup> b. in Minneapolis, Minn., Sept. 6, 1879.
39. ii. *Julia Catherine Stimson*,<sup>10</sup> b. in Worcester, Mass., May 26, 1881.
40. iii. *Lucile Hinkle Stimson*,<sup>10</sup> b. in Worcester, Oct. 19, 1882.

41. iv. *Henry Bartlett Stimson*,<sup>10</sup> b. in Worcester, Nov. 24, 1884; m. in Lake Forest, Ill., Sept. 21, 1915, Isabelle McBirney, dau. of Hugh Johnstone McBirney and Mary Campbell, b. Nov. 30, 1890.
42. v. *Philip Moeu Stimson*,<sup>10</sup> b. in St. Louis, Mo., Nov. 1, 1888.
43. vi. *Dorothy Stimson*,<sup>10</sup> b. in St. Louis, Oct. 10, 1890.
44. vii. *Barbara Bartlett Stimson*,<sup>10</sup> b. in New York City, Feb. 14, 1898.

20. WILLIAM ALFRED<sup>9</sup> (*Samuel Colcord*<sup>8</sup>, *Samuel Colcord*<sup>7</sup>) m. in Chicago, Ill., Jan. 4, 1888, (1) Susan Lord Pitkin, b. Jan. 24, 1860; d. in Pasadena, Cal., Apr. 19, 1889; (2) Feb. 23, 1892, Esther Adelaide Pitkin, dau. of John Jay Pitkin and Susan Jeanette Thompson; b. Dec. 28, 1864. Their children,

45. i. *William Pitkin*,<sup>10</sup> b. Jan. 2, 1893, in Oak Park, Ill.; d. in Hartford, Ct., Dec. 1, 1910.
46. ii. *Doris Jeannette*,<sup>10</sup> b. Apr. 24, 1894, in Oak Park.
47. iii. *Richard Learned*,<sup>10</sup> b. Dec. 20, 1896, in Lowell, Mass.

21. SAMUEL COLCORD<sup>9</sup> (*Samuel Colcord*<sup>8</sup>, *Samuel Colcord*<sup>7</sup>) m. in Andover, Mass., July 11, 1894, Fanny Gordon, dau. of M. Lafayette Gordon and Agnes Helen Donald; b. in Osaka, Japan, Aug. 26, 1874. Their children,

48. i. *Samuel Colcord*,<sup>10</sup> b. Feb. 13, 1896, in Kioto, Japan.
49. ii. *Gordon*,<sup>10</sup> b. Mch. 12, 1898, in Tottori, Japan.
50. iii. *Robert Learned*,<sup>10</sup> b. Dec. 18, 1899, in Kioto.
51. iv. *Donald*,<sup>10</sup> b. Mch. 8, 1902, in Tottori.
52. v. *Agnes Vernon*,<sup>10</sup> b. Mch. 18, 1911, in Kioto.

---

26. SAMUEL COLCORD<sup>10</sup> (*Samuel Colcord*<sup>9</sup>, *Amos Pet-tengill*<sup>8</sup>, *Samuel Colcord*<sup>7</sup>) m. July 10, 1906, in Peoria, Ill., Harriet Mary Buck, dau. of Ira J. Buck, b. Feb. 9, 1881. Their child,

53. i. *Harriet Buck*,<sup>11</sup> b. in Chicago, Ill., Nov. 11, 1913.

30. WILLIAM HENRY<sup>10</sup> (*William Henry*<sup>9</sup>, *Amos Pet-tengill*<sup>8</sup>, *Samuel Colcord*<sup>7</sup>) m. Nov. 4, 1903, in Evanston, Ill., Virginia Louise Millard, dau. of Addison Millard; b. Oct. 2, 1881. Their children,

54. i. *Mary Wentworth*,<sup>11</sup> b. in Denver, Col., May 30, 1905.
55. ii. *Virginia*,<sup>11</sup> b. in Evanston, Ill., Feb. 22, 1908.

31. MARY FROST HODGDON<sup>10</sup> (*Ellen Motley (Hodgdon)*<sup>9</sup>, *Joseph*<sup>8</sup>, *Samuel Colcord*<sup>7</sup>) m. Aug. 4, 1903, Philip Mason Palmer, b. May 8, 1880, in Westbrook, Me. Their children,

56. i. *Philip Motley Palmer*,<sup>11</sup> b. in Bethlehem, Pa., Nov. 1, 1904.

57. ii. *Margaret Bartlett Palmer*,<sup>11</sup> b. in Bethlehem, Pa., Oct. Oct. 2, 1907; d. in the same place, Mch. 29, 1908.

34. HARRIETTE LOUISE<sup>10</sup> (*Edwin Julius*<sup>9</sup>, *Samuel Colcord*<sup>8</sup>, *Samuel Colcord*<sup>7</sup>) m. in Hanover, N. H., Dec. 28, 1904, Moses Bradstreet Perkins, b. May 27, 1881, in Salem, Mass. Their children,

58. i. *Richard Bartlett Perkins*,<sup>11</sup> b. Sept. 22, 1905, in Boston, Mass.

59. ii. *Eleanor Perkins*,<sup>11</sup> b. Apr. 7, 1908, in Exeter, N. H.

38. ALICE MARY STIMSON<sup>10</sup> (*Alice Wheaton (Stimson)*<sup>9</sup>, *Samuel Colcord*<sup>8</sup>, *Samuel Colcord*<sup>7</sup>) m. in New York City, Jan. 4, 1908, Wilson Fitch Smith, b. in New York City, Aug. 2, 1871. Their children,

60. i. *Wilson Fitch Smith, Jr.*,<sup>11</sup> b. New York City, Nov. 17, 1908.

61. ii. *Alice Bartlett Fitch Smith*,<sup>11</sup> b. in White Plains, N. Y., Oct. 11, 1910.

62. iii. *Shepherd Fitch Smith*,<sup>11</sup> b. in White Plains, Feb. 19, 1913.

40. LUCILE HINKLE STIMSON<sup>10</sup> (*Alice Wheaton (Stimson)*<sup>9</sup>, *Samuel Colcord*<sup>8</sup>, *Samuel Colcord*<sup>7</sup>) m. in New York City, Oct. 5, 1909, Elbert Alpheus Harvey, b. in Chicago, Jan. 9, 1877. Their children,

63. i. *Lucile Turlington Harvey*,<sup>11</sup> b. in Brookline, Mass., Sept. 20, 1911.

64. ii. *Elvira Sheridan Harvey*,<sup>11</sup> b. in Brookline, Oct. 7, 1913.

65. iii. *Henry Stimson Harvey*, b. in Brookline, Oct. 9, 1915.

## ADDITIONAL RECORDS

## ADDITIONAL RECORDS

## INDEX

Of members of the family from SAMUEL COLCORD BARTLETT.  
Numbers refer to the individual record. The surname by birth is  
in italics in cases in which the surname was changed by marriage.

### I. INDIVIDUALS OF THE BARTLETT NAME.

Agnes Vernon	52	Laura Bradlee	17
Albert Joseph	22	Levi James	5
Alfred Henry	6	Margaret Jeffrey <i>Porter</i>	35
Alice Wheaton	19	Margaret <i>Motley</i>	3
Amos Pettengill	2	Mary Bacon <i>Learned</i>	4
Anna Frances	11	Mary Ellen	8
Caroline <i>Baker</i>	7	Mary Wentworth	28
Caroline Elizabeth <i>Rice</i>	18	Mary Wentworth	54
Donald	51	Mary Wentworth <i>Campbell</i>	12
Doris Jeanette	46	Nanette Marie <i>Huston</i>	27
Dorothy <i>Hinman</i>	36	Norman Williams	29
Edmund Benton	27	Richard Learned	47
Edwin Julius	18	Samuel Colcord	1
Edwin Rice	35	Samuel Colcord	4
Eleanor <i>Pettengill</i>	1	Samuel Colcord	10
Ellen Motley	14	Samuel Colcord	21
Esther Adelaide <i>Pitkin</i>	20	Samuel Colcord	26
Fanny <i>Gordon</i>	21	Samuel Colcord	36
Gordon	49	Samuel Colcord	48
Grace Greenleaf	23	Sarah C.	15
Harriet Buck	26	Sarah Maria	9
Harriet Greenleaf <i>Crane</i>	5	Sarah Maria <i>Rogers</i>	2
Harriette Louise	34	Susan Lord <i>Pitkin</i>	20
Harriet Mary <i>Buck</i>	26	Virginia	55
Helen	13	Vilginia Louise <i>Millard</i>	30
Henry Bancroft	16	William Alfred	20
Isabelle <i>McBirney</i>	41	William Henry	7
John Foster	37	William Henry	12
Joseph	3	William Henry	30
Laura Amelia <i>Benton</i>	10	William Pitkin	45
Laura <i>Bradlee</i>	4		



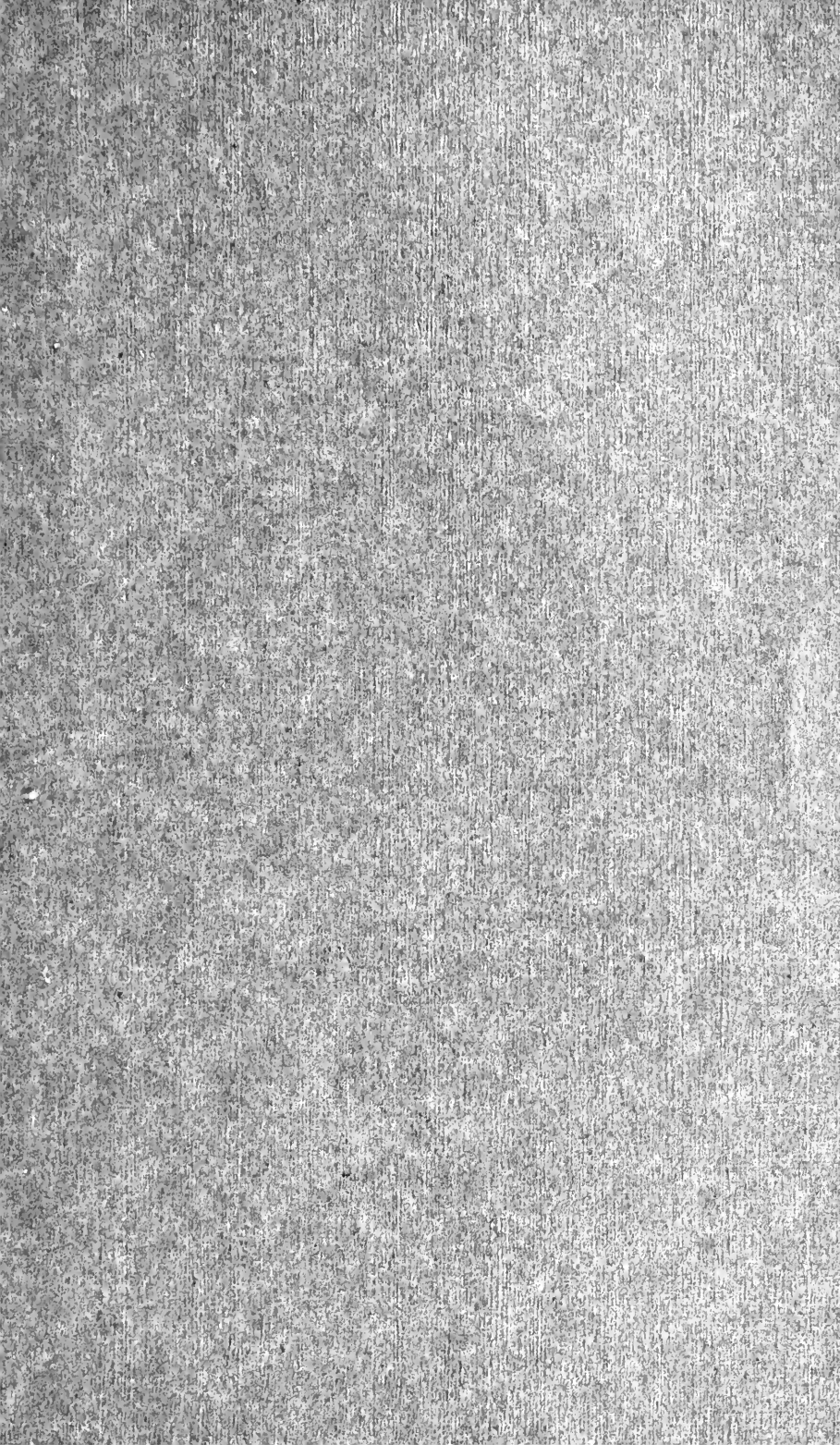
II. SURNAMES OTHER THAN BARTLETT.

<i>Baker</i> , Caroline	7	<i>Palmer</i> , Philip Motley	56
<i>Benton</i> , Laura Amelia	10	<i>Perkins</i> , Eleanor	59
<i>Bradlee</i> , Laura	4	<i>Perkins</i> , Harriette Louise	
<i>Buck</i> , Harriet Mary	26	<i>Bartlett</i>	34
<i>Campbell</i> , Mary Wentworth	12	<i>Perkins</i> , Moses Bradstreet	34
<i>Crane</i> , Harriet Greenleaf	5	<i>Perkins</i> , Richard Bartlett	58
<i>Deering</i> , Charles William		<i>Pettengill</i> , Eleanor	1
Case	28	<i>Pitkin</i> , Esther Adelaide	20
<i>Deering</i> , Mary Wentworth		<i>Pitkin</i> , Susan Lord	20
<i>Bartlett</i>	28	<i>Porter</i> , Margaret Jeffrey	35
<i>Gordon</i> , Fanny	21	<i>Rice</i> , Caroline Elizabeth	18
<i>Harvey</i> , Elbert Alpheus	40	<i>Rogers</i> , Sarah Maria	2
<i>Harvey</i> , Elvira Sheridan	64	<i>Smith</i> , Alice Bartlett Fitch	61
<i>Harvey</i> , Henry Stimson	65	<i>Smith</i> , Alice Mary <i>Stimson</i>	38
<i>Harvey</i> , Lucile Hinkle		<i>Smith</i> , Shepherd Fitch	62
<i>Stimson</i>	40	<i>Smith</i> , Wilson Fitch	38
<i>Harvey</i> , Lucile Turlington	63	<i>Smith</i> , Wilson Fitch, Jr.	60
<i>Hinman</i> , Dorothy	36	<i>Stevens</i> , Bartlett	24
<i>Hodgdon</i> , Ellen Motley		<i>Stevens</i> , John Sanborn	9
<i>Bartlett</i>	14	<i>Stevens</i> , John Sanborn	25
<i>Hodgdon</i> , Frederick Pearson	14	<i>Stevens</i> , Sarah Maria <i>Bartlett</i>	19
<i>Hodgdon</i> , Mary Frost		<i>Stimson</i> , Alice Mary (Smith)	38
(Palmer)	31	<i>Stimson</i> , Alice Wheaton	
<i>Hodgdon</i> , Philip Frederick	35	<i>Bartlett</i>	19
<i>Hodgdon</i> , Robert Bartlett	32	<i>Stimson</i> , Barbara Bartlett	44
<i>Huston</i> , Nanette Marie	27	<i>Stimson</i> , Dorothy	43
<i>Larned</i> , Mary Bacon	4	<i>Stimson</i> , Henry Albert	19
<i>McBirney</i> , Isabelle	41	<i>Stimson</i> , Henry Bartlett	41
<i>Millard</i> , Virginia Louise	30	<i>Stimson</i> , Isabelle <i>McBirney</i>	41
<i>Motley</i> , Ellen (Hodgdon)	14	<i>Stimson</i> , Julia Catherine	39
<i>Motley</i> , Margaret	3	<i>Stimson</i> , Lucile Hinkle	
<i>Palmer</i> , Margaret Bartlett	57	(Harvey)	40
<i>Palmer</i> , Mary Frost <i>Hodgdon</i>	31	<i>Stimson</i> , Philip Moen	42
<i>Palmer</i> , Philip Mason	31		











BOSTON PUBLIC LIBRARY



3 9999 06174 171 4







