

UNIVERSITY OF ILLINOIS
LIBRARY

Class
590.5

Book
FI

Volume
3

BIOLOGY

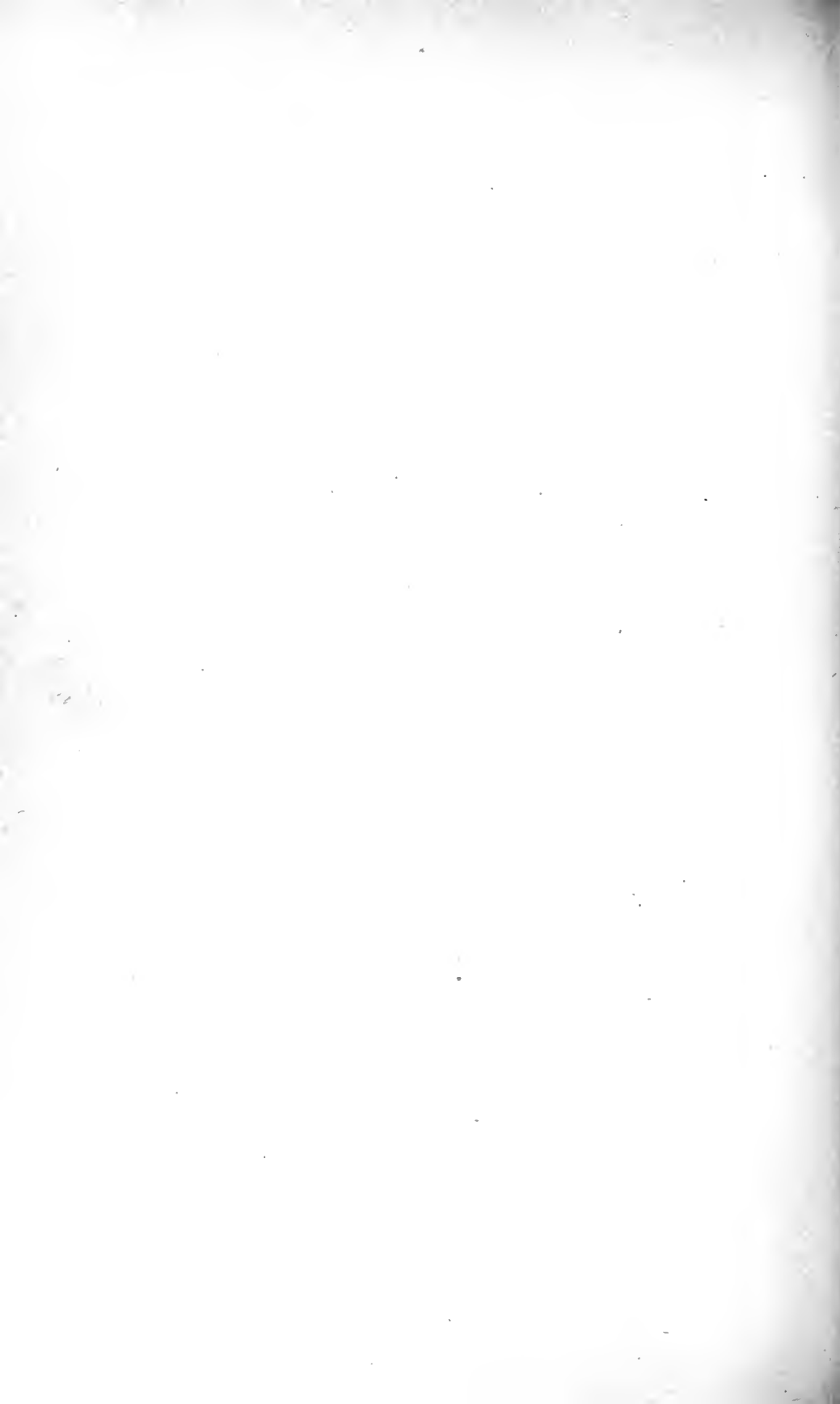
Return this book on or before the
Latest Date stamped below. A
charge is made on all overdue
books.

U. of I. Library

17625-S

Fieldiana

Zoological Series U.3



FIELD COLUMBIAN MUSEUM

PUBLICATION No. 90.

ZOOLOGICAL SERIES.

VOL. III, No. 15.

DESCRIPTIONS

OF

APPARENTLY NEW SPECIES AND
SUBSPECIES OF MAMMALS

AND

A NEW GENERIC NAME PROPOSED

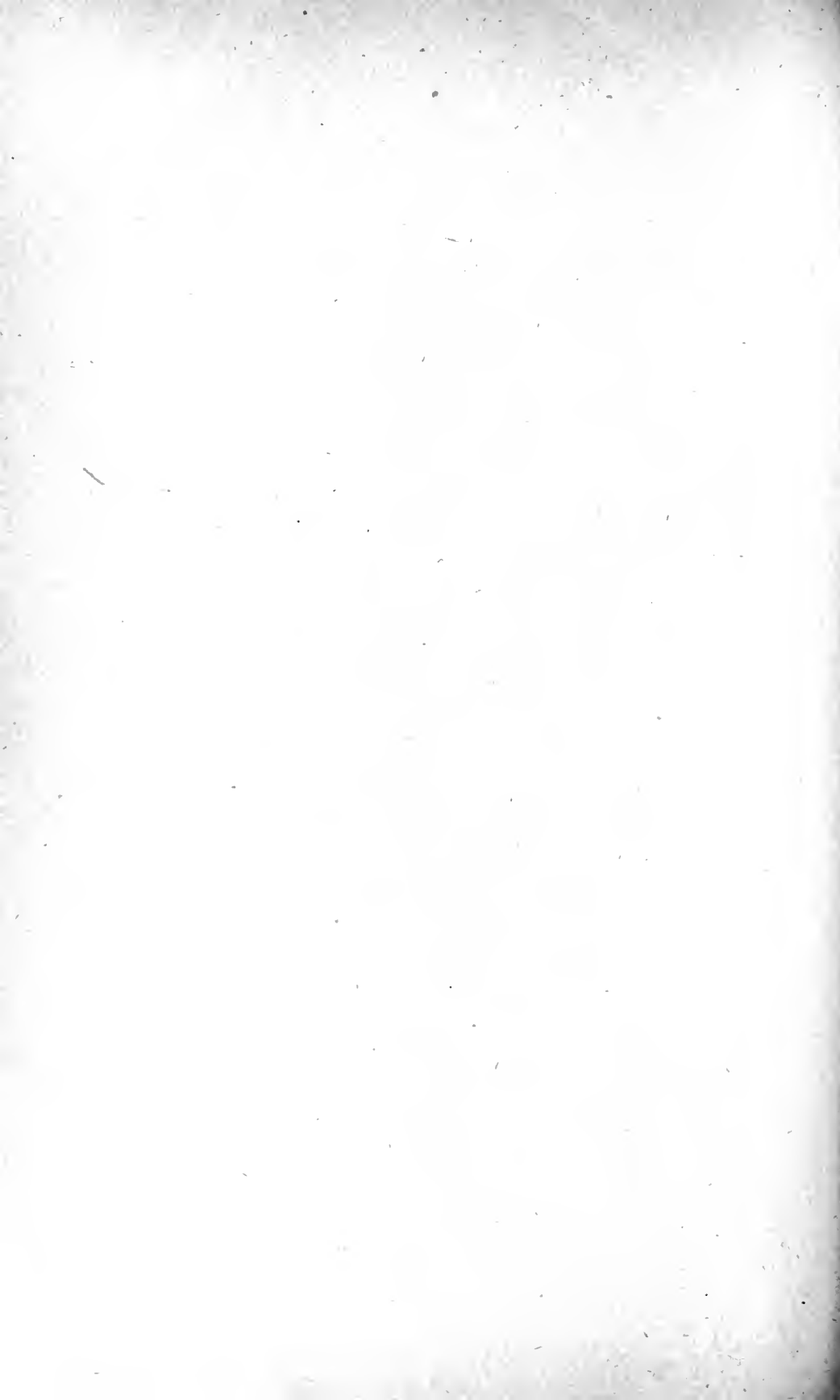
BY

D. G. ELLIOT, F. R. S. E., ETC.



CHICAGO, U. S. A.

March, 1904.



DESCRIPTIONS OF APPARENTLY NEW SPECIES AND
SUBSPECIES OF MAMMALS AND A NEW
GENERIC NAME PROPOSED.

BY D. G. ELLIOT, F.R.S.E., ETC.

FAM. SCIURIDÆ.

CITELLUS.

Citellus *nesioticus, Sp. nov.

Type locality. Santa Catalina Island, California.

Geogr. Distr. Santa Catalina Island, Santa Barbara Islands, California.

Genl. Char. Color very dark, with little or none of the yellowish brown hue so conspicuous in *S. v. beecheyi* and *S. v. fisheri*, but nearer to the latter on account of the extension of the white on shoulders, though this is rather indistinct on the present species. Color of tail entirely different. Skull compared with that of *C. v. fisheri* is much shorter and broader; malar broad and heavy; nasals short; braincase short, contracting rapidly anteriorly; antorbital processes very long; pterygoid fossa very short and the processes of the pterygoids very long and turning sharply outwards at tips; basioccipital short and broad; bullæ large; palate very broad; zygomatic arch widely expanded; occipital region low and broad; prominent azygos process on palatal arch.

Color. Type, Male. Top of head from fore part of forehead to between ears jet black with a few tawny ochraceous hairs mixed on certain parts; nose tawny ochraceous; sides of head tawny ochraceous and black mixed; hairs on sides of neck white tipped, extending in a long, narrow, indistinct line to behind shoulders; middle of back black and tawny ochraceous, the black predominating; lower part of back and sides tawny ochraceous and black, the first color predominating; under parts buffy ochraceous; hands and feet buff; ankles tawny; limbs buff and black mixed; tail above mixed buff and black giving a

* νησιωτικός—belonging to an island.

grayish appearance, and with a black border and pale buff fringe, beneath mixed buff and black with the black border showing indistinctly in places, most clearly shown at base and tip; ears black.

Measurements. Total length, 476.2; tail vertebræ, 184; hind foot, 60. Skull: occipito-nasal length, 60.5; zygomatic width, 39; interorbital constriction, 15.5; across postorbital processes, 27; width of braincase above zygomata, 25.3; length of braincase, occipital rim to frontoparietal suture, 31; median length of nasals, 19; lateral length of nasals, 20; length of basi occipital, 7; posterior width of basioccipital, 10; length of pterygoids, 11; palatal length, 30; length of bullæ, 12; width of bullæ, 10; length of upper tooth row, 12; length of mandible, angle to alveolus of incisor on inner side, 36; height at condyle, 19; at coronoid process, 19; length of lower tooth row, 11.

This is a well-marked island form, perhaps nearest to *C. v. fisheri*, but very much darker in general hue, with an entirely differently colored tail, and distinct cranial characters as given above. The skulls of the two forms on comparison are conspicuously different. The general tone of the pelage including the tail is a dark gray, with tawny ochraceous tints appearing amid black, and this last hue is massed on the middle of the back, but with tawny ochraceous showing in a diminished degree. Three specimens were procured on Santa Catalina Island by Mr. J. Rowley, a male and two females, the only difference perceptible between them being the absence of the black patch on the top of the head, this part on the females being tawny ochraceous mixed with black, like the major portion of the upper parts.

FAM. MURIDÆ.

PEROMYSCUS.

Peromyscus montipinoris, Sp. nov.

Type locality. Lockwood Valley, Mount Pinos, *Ventura County, California.

Genl. Char. Size, medium; tail very long, hairy, penicillate; ears large; hind foot long; color pale; skull similar to that of *P. truii*, but with longer nasals and a broader and longer braincase and narrower interorbital region.

Color. Top of head and back mixed cinereous and buff,

* In the description of *Perognathus elibatus*, Pub. 87, p. 252, Mt. Pinos was wrongly placed in Los Angeles County. It should be Ventura County.

darker than rest of upper parts; nose, nape, and rump buff; bright buff lateral line; upper parts of sides buffy; entire under parts white; hands and feet white; ankles dusky; tail above black, beneath yellowish white; ears dark brown.

Measurements. Total length, 214; tail vertebrae, 118; hind foot, 24.5; ear, 24.5. Skull: occipito-nasal length, 28; Hensel, 22; interorbital constriction, 4.5; zygomatic width, 13; greatest width of braincase, 13; length of nasals, 10; palatal length, 11; length of upper tooth row, 4; length of mandible, 12; lower tooth row, 4.

This species while somewhat similar, is larger than *P. truii*, and in color is paler and has a very much longer tail, longer foot, and shorter ear. These differences are emphasized in a series of *truii* before me. The coloring of the upper part of the tail is also quite different, for while that of the present form is black, that of *truii* is dark seal brown. The ears, while large, are considerably smaller than those of the species compared, which sometimes reach a length of 29 millimeters. Mr. Heller obtained only three specimens of this mouse, from Mount Pinos, in the vicinity of Fort Tejon, and he writes that it is a rather rare species on the mountains about Fort Tejon.

*Peromyscus *lasius*, Sp. nov.

Type locality. Hannopee Cañon, Panamint Mountains, Inyo County, California.

Geogr. Distr. Panamint and Inyo Mountains, Inyo County, California, and probably other neighboring ranges west of Death Valley.

Genl. Char. Allied to *P. megalotus* from Arizona, and *P. truii* from New Mexico, Arizona, and Nevada. The fur is fluffy and the general color above in adults is pale ochraceous buff, while *P. truii* is more of a clay color, and *P. megalotus* of a darker hue. The tail is also much longer, and the skull is heavier, with a longer, differently shaped braincase and longer rostrum.

Color. Nose and side of face gray, tinged with buff; orbital ring black; top of head and upper part of body pale ochraceous buff, mixed slightly with black on dorsal region; sides and lateral line from beneath eye to root of tail bright ochraceous buff; entire under parts, hands, and feet pure white; under fur

* *λάσιος*, woolly; referring to the long, fluffy fur.

plumbeous; tail hairy and penicillate, with a pale dusky line on top, rest white; ears large, naked, dusky brown.

Measurements. Total length, 208; tail vertebræ, 105; hind foot, 24; ear from notch, 27.5. Skull: total length, 29; Hensel, 21.5; zygomatic width, 14; interorbital width, 4; length of nasals, 9.5; length of braincase, frontal suture to occiput, 18.5; width of braincase above zygomata, 13.5; width at auditory meatus, 12; palatal length, 11; length of upper tooth row, 4; length of mandible, 12.5; length of lower tooth row, 4.

Out of a series of 32 specimens the one selected for the type has most of its measurements greater than those of any other. The average of twelve adults with perfect tails is 194; 97; 23.4; 26.7. This would show that beside the difference in color the present form is considerably larger than *P. truii*, a series of 16 of which from Anderson's Ranch, Nevada, before me, give much smaller measurements than even those of the average sized stated above, especially as regards total length, and that of the tail vertebræ. The only other species with which the present form requires comparison is *P. megalotis* Merriam, from Black Tank, Little Colorado Desert, Arizona, and by the kindness of Dr. Merriam, who loaned me three specimens of his species, I have been able to bring the two forms together. While resembling each other in color, *P. lasius* has a generally paler hue on the upper parts, pure white hands and feet (these in Dr. Merriam's examples being decidedly buff), a very differently colored tail on its upper side, and with a heavier skull, having a larger and longer braincase, longer and stouter rostrum, and with a heavier mandible, especially between the angle and coronoid process; the horizontal portion is also stouter. *P. megalotis* has the tail above seal brown, like the tail of *P. truii*, while the upper part of the tail of *P. lasius* is a rather pale dusky. Altogether the California mountain species seems to be a somewhat larger, heavier animal with marked differences in color and also in cranial character from both its relatives, the two species with which it has been compared.

ORYZOMYS.

Oryzomys jalapæ *apatelius, Subsp. nov.

Type locality. San Carlos, State of Vera Cruz, Mexico.

Genl. Char. Similar to *O. jalapæ* in color on upper parts, grayish buff beneath; tail shorter; hind foot longer. Skull with

* ἄπατηλός, deceitful.

longer and narrower braincase, zygomatic width less, nasals longer, anterior palatine foramina longer, mastoid width less, mandible more slender, narrower between angle and condyle.

Color. Above yellowish brown, lined with black, darkest on dorsal region; chin and throat pale gray; rest of under parts gray, tinged with buff; tail distinctly bicolor, above black, beneath yellowish white, naked; hands and feet buffy white; ears dark brown.

Measurements. Total length, 259; tail vertebræ, 130; hind foot, 31. Skull: occipito-nasal length, 31.5; Hensel, 29.7; inter-orbital constriction, 4.5; greatest zygomatic width, 16; least zygomatic width anteriorly, 13; width of braincase above zygomatica, 12; length of nasals, 12; palatal length, 13.5; length of incisive foramina, 11.4; length of upper tooth row, 5; length of mandible, angle to base of incisors, 15; height at condyle, 7; length of lower tooth row, 5.

While resembling *O. jalapæ* in the color of the upper parts, this Rice Rat differs so much in the hue of the under parts, the proportions of body and tail, and in the shape and dimensions of skull, that it seems more entitled to a distinct, independent rank than a subspecific one. The skulls of the present form and *O. jalapæ* are quite different and recognizable at a glance; the long, narrow braincase, restricted spread of the zygomatic arches, long anterior palatine foramina, and lighter mandible of the present form distinguishing it at once from its relative, not to mention the shorter tail and longer hind foot and pale under surface. By the kindness of my friend Dr. J. A. Allen I have been able to compare my specimens with topotypes of *O. jalapæ*. Seven specimens of the new form were obtained at San Carlos, Vera Cruz, by Mr. N. G. Buxton.

NEOTOMA.

Neotoma fuscipes **cnemophila*, Subsp. nov.

Type locality. Lockwood Valley, Mount Pinos, Ventura County, California.

Genl. Char. Size large; tail long, black above; general hue of upper parts buff.

Color. Upper parts and sides buff with the base of hairs dark plumbeous, and this latter coloring manifests itself on the dorsal region and head, causing these parts to be darker than

* *ἄνωγες*—heights, and *φιλῶς*—to love.

the rest; limbs mixed plumbeous and buff, the former hue predominating; chin, throat, and between thighs white; rest of under parts yellowish white, the hairs being white to the roots, excepting a line along the side where the base of the fur is plumbeous; hands and feet white; wrists and ankles dusky; tail above and on sides black, beneath grayish white; ears dark brown.

Measurements. Total length, 380; tail vertebræ, 176; hind foot, 39.5; ear, 33. Skull: occipito-nasal length, 46; Hensel, 38; zygomatic width, 23; interorbital constriction, 5.5; width of braincase, 18; length of nasals, 18.5; palatal length, 19; length of incisive foramina, 9; length of upper tooth row, 9; length of mandible, angle to base of incisor, 23; length of lower tooth row, 8.

This wood rat has quite a different appearance from its relative *N. mohavensis* of the Mohave Desert, being yellowish where the other is gray; and the upper part of the tail is a more intense black, that of the other form being of a bluish black. It is a mountain form, the small series before me having been procured by Mr. Heller at Mt. Pinos and other heights in the vicinity.

FAM. CANIDÆ.

UROCYON.

Urocyon cinereo-argenteus inyoensis, Subsp. nov.

Type locality. Beveridge Cañon, Inyo Mountains, Inyo County, California.

Genl. Char. Color silvery gray, much paler than *U. c. californicus*, without ochraceous lines anywhere, and black on lower part of back only.

Color. Adult. Entire upper part of breast and body and also sides silvery gray with a black streak over lower part of back; chin and nose above black; sides of neck and bar across lower part of neck buff; fore legs silvery gray above, wood brown on outer side, and whitish on inner side; hind legs silvery gray above, drab gray on outer side, whitish on inner side; under parts white; tail silvery gray, slightly tinged in places with buff, with a black curving line, tip black; ears brownish, mixed with silver white hairs on outside, white inside; head back of ears buffy.

Measurements. Total length, 950; tail vertebræ, 385; hind foot, 140; ear, 82. Skull: total length, 124; occipito-nasal length, 113. Hensel, 118; zygomatic width, 66; interorbital

width, 23.5; palatal length, 56; palatal arch to tip of pterygoid process, 20; anterior width of pterygoid fossa, 9; posterior width of basioccipital, 13; length of nasals, 40; length of upper tooth row from anterior edge of canine to posterior edge of last molar, 51; of lower tooth row, 57; length of mandible, 88.

This is a very pale form of *U. c. californicus*, with some of the rich ochraceous coloring of that race, and only tinged with buff in certain places as mentioned above. There are two specimens collected by Mr. Heller, the type with only a restricted amount of black on the back, and the other, younger, without any at all. The tail is very pale, quite different in color from that of *U. c. californicus*. The skull differs from all those before me of the race just named, in the greater separation of the temporal ridges, the width between them being retained nearly to their posterior junction, and not graduating posteriorly as in *U. c. californicus*. The pterygoid fossa is shorter and broader, and the basioccipital wider posteriorly.

FAM. VESPERTILIONIDÆ.

PIPISTRELLUS.

Pipistrellus hesperus *apus, Subsp. nov.

Type locality. Providentia Mines, State of Sonora, Mexico.

Genl. Char. About the size of *P. hesperus*, but quite different in color, and with a larger foot. Larger than *P. h. australis*, the exact color of which is not known.

Color. Upper parts wood brown, base of fur blackish; under parts pinkish brown; nose, space before and around eyes, wing and tail, membranes, feet and ears black.

Measurements. Total length, 72; tail vertebræ, 31.7; foot, 6.3; forearm, 30.5; thumb, 4; longest finger, 47; ear from meatus, 10. Skull: occipito-nasal length, 10.5; zygomatic width, 8; interorbital constriction, 3; width of braincase, 6.5; palatal length, 5; post-palatal length, to anterior rim of forearm magnum, 4; length of upper tooth row, premolars and molars, 3; length of mandible, 8.5; length of lower tooth row, premolar and molars, 3.

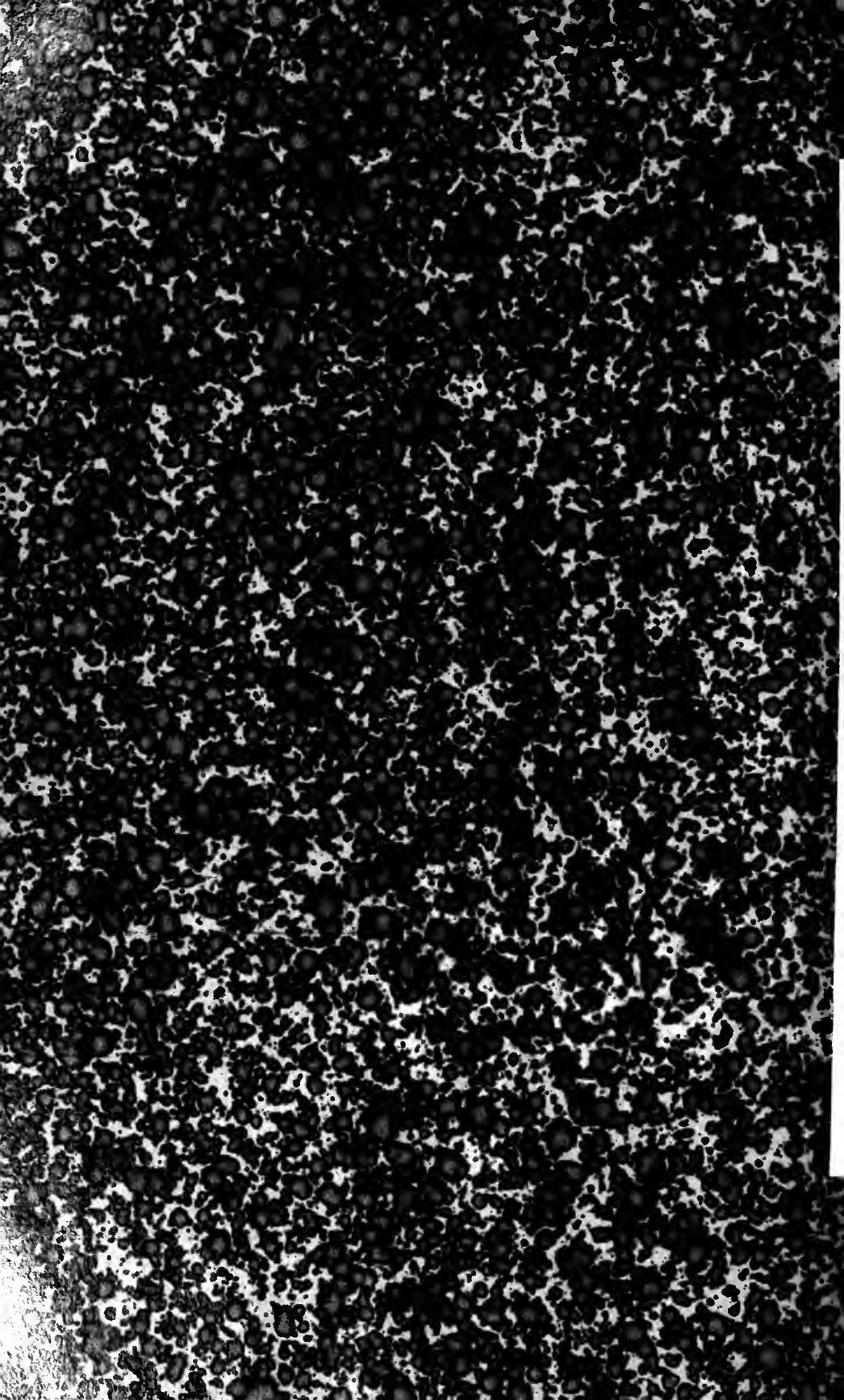
This apparently distinct race of *Pipistrellus hesperus* was procured by Mr. J. Rowley in the locality given above in the northern part of the State of Sonora. Four specimens were procured, and all are much darker, and of a different color from that of *P. hes-*

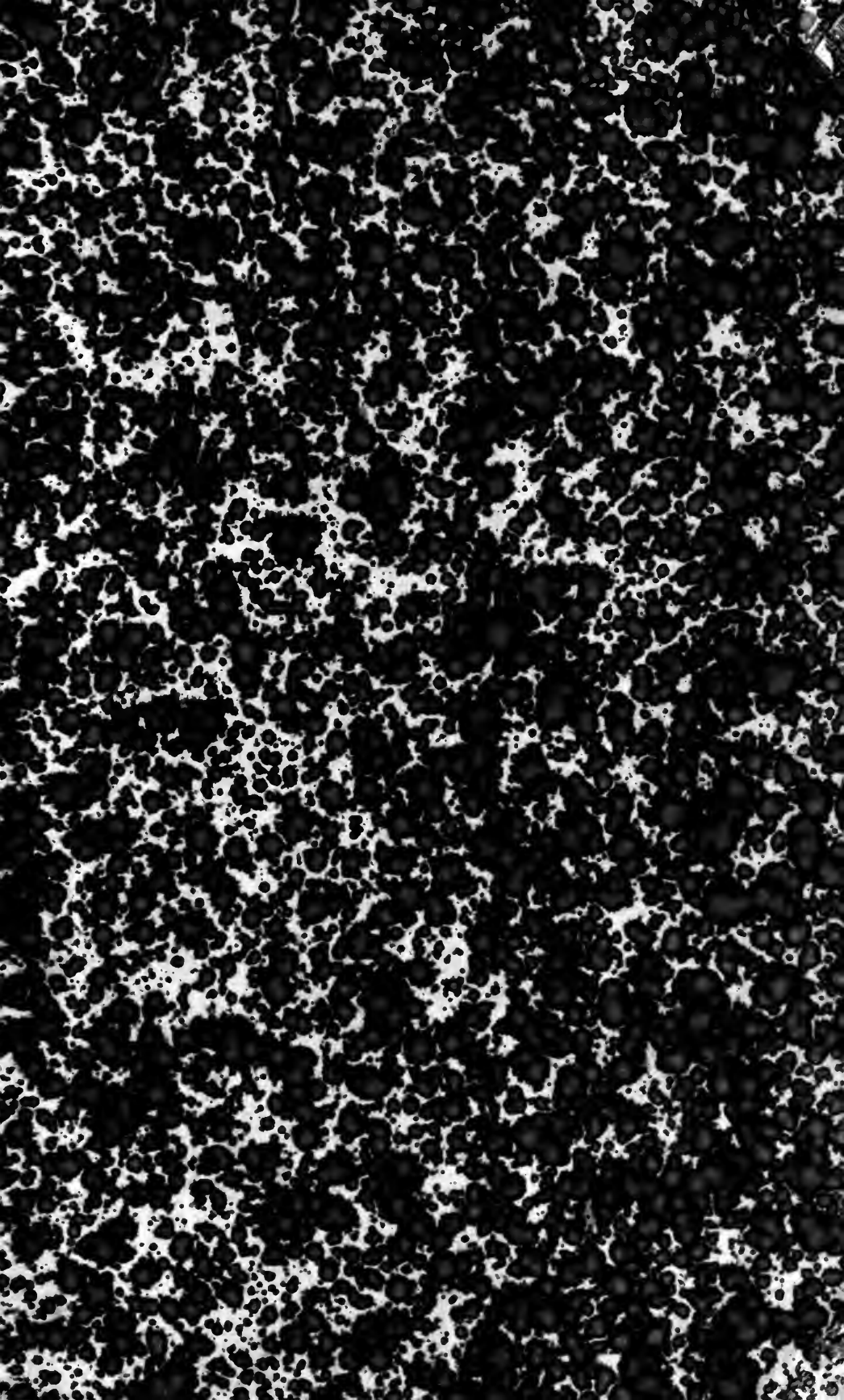
* *απυς*—swift.

perus. The specimens of *P. h. australis* from Jalisco described by Mr. G. S. Miller, Jr., had been long in alcohol and their exact color is not known, no skins having been obtained, but if the measurements given should be established by a series of specimens, it is a smaller race than the one here described, and probably with a different coloring. Additional material is necessary before this can be ascertained.

MOSCHOPHOROMYS.

In 1881, Trouessart (Le Naturaliste, Paris, III, No. 45, p. 357) proposed *Megalomys* as a generic name for *Mus pilorides* Desmarest from the Antilles. In 1903 (Ann. Mag. Nat. Hist., 7th Ser., XI, pp. 387-388), he considered this term preoccupied by *Megamys* (Dorbigny & Laurillard, Voy. Amer. Merid., III, 1842, p. 110, pl. XII, figs. 4-8, Paleontology), which, in accordance with the rules of nomenclature prescribed by the International Zoological Congresses, to be correctly spelled should stand as *Megalomys*. He, therefore, proposed in its place the term *Moschomys*. Unfortunately this name is preoccupied by *Moschomys* Bellberg, Syn. Faun. Scandinaviæ, I Mamm., Conspectus A, 1828, proposed for the Ondatra, Lacépède *Castor zibethicus*, Linn., and is not available. I, therefore, propose MOSCHOPHOROMYS, or Musk-bearing rat; $\mu\omicron\sigma\zeta\omicron\sigma$, $\psi\epsilon\rho\omega$, $\mu\omicron\sigma$, with *Mus desmaresti* Fisch (= *Mus pilorides* Desmarest), & *Oryzomys lucia* Major as the species, the former to be considered as the type.





UNIVERSITY OF ILLINOIS-URBANA

590.5F1 C001
FIELDIANA. ZOOLOGYSCHGO
3 1900-04



3 0112 009379600