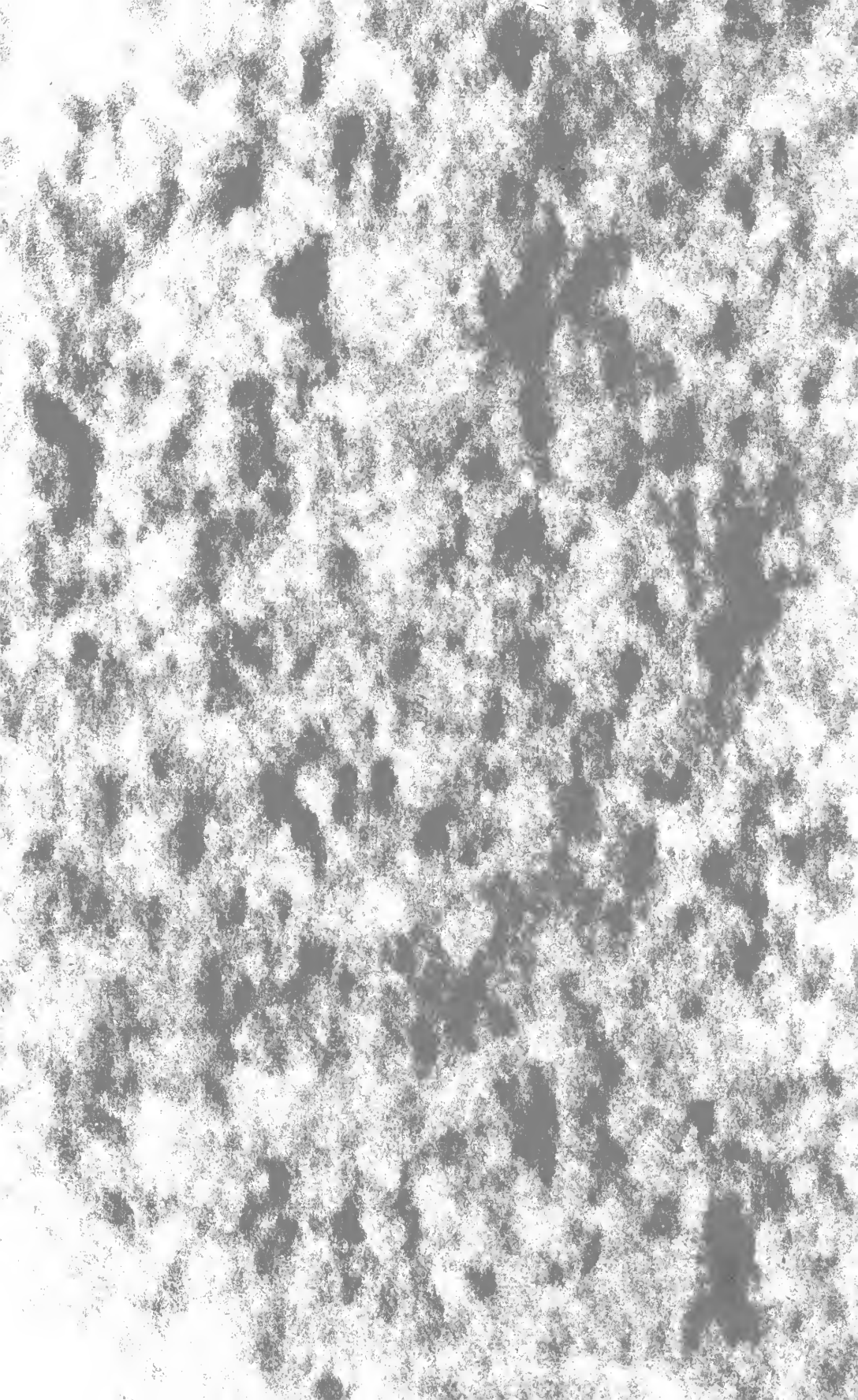


590.5

FI

v.18:1,11

cop.2



CENTRAL CIRCULATION BOOKSTACKS

The person charging this material is responsible for its renewal or its return to the library from which it was borrowed on or before the **Latest Date** stamped below. **You may be charged a minimum fee of \$75.00 for each lost book.**

Theft, mutilation, and underlining of books are reasons for disciplinary action and may result in dismissal from the University.

TO RENEW CALL TELEPHONE CENTER, 333-8400

UNIVERSITY OF ILLINOIS LIBRARY AT URBANA-CHAMPAIGN

JUL 21 1998

When renewing by phone, write new due date below
previous due date. L162

30.5
FI
.18.1,11
OP.2

FIELD MUSEUM OF NATURAL HISTORY

FOUNDED BY MARSHALL FIELD, 1893

PUBLICATION 272

ZOOLOGICAL SERIES

VOL. XVIII, No. 1

DESCRIPTIONS OF FIVE NEW
INDO-CHINESE BIRDS

BY

OUTRAM BANGS AND JOSSELYN VAN TYNE

WILFRED H. OSGOOD

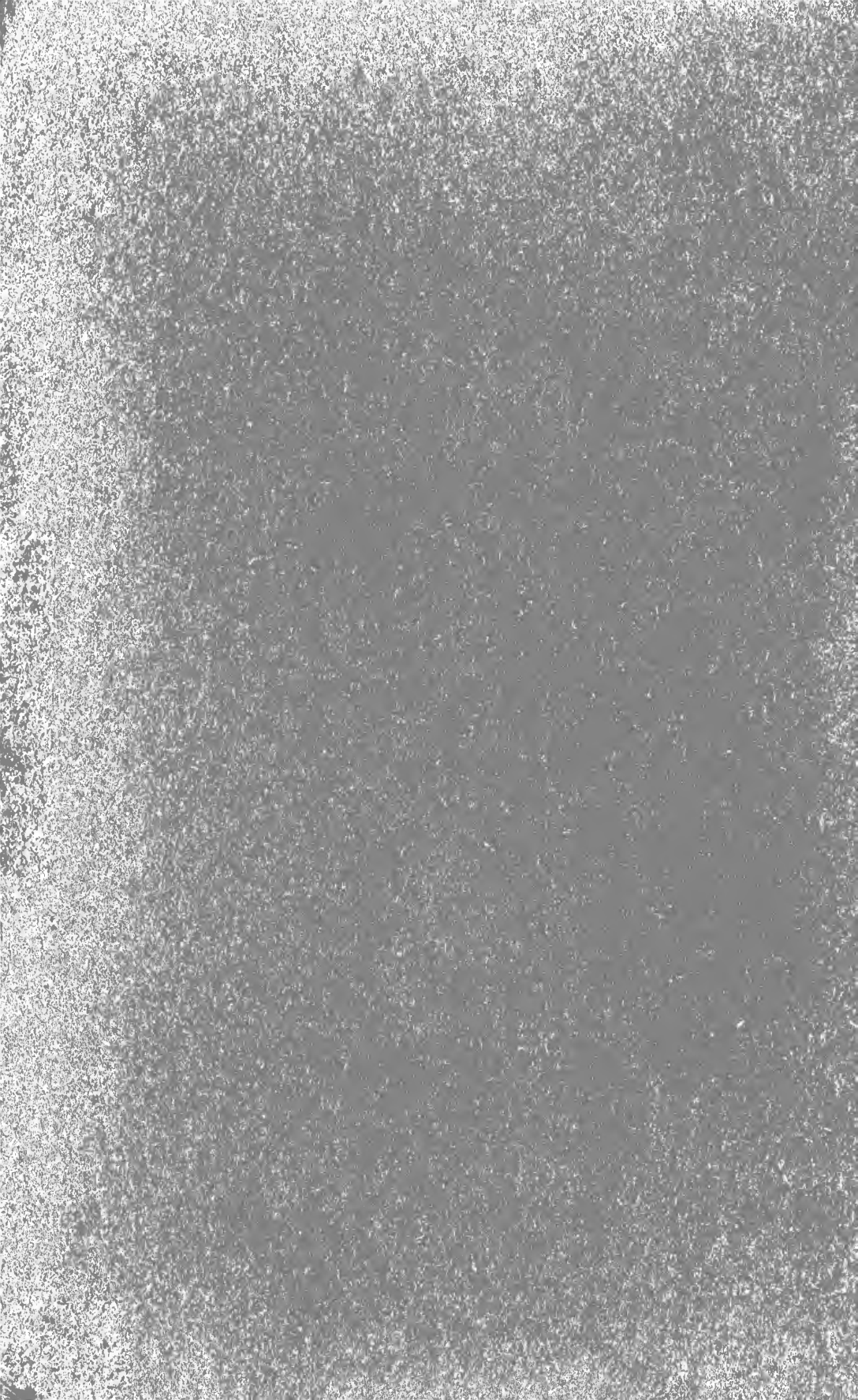
CURATOR, DEPARTMENT OF ZOOLOGY

EDITOR



CHICAGO, U. S. A.

APRIL 9, 1930



FIELD MUSEUM OF NATURAL HISTORY

FOUNDED BY MARSHALL FIELD, 1893

PUBLICATION 272

ZOOLOGICAL SERIES

VOL. XVIII, No. 1

DESCRIPTIONS OF FIVE NEW
INDO-CHINESE BIRDS

BY

OUTRAM BANGS AND JOSSELYN VAN TYNE

WILFRED H. OSGOOD

CURATOR, DEPARTMENT OF ZOOLOGY

EDITOR



CHICAGO, U. S. A.

APRIL 9, 1930

THE LIBRARY OF THE
DEC 9 - 1930

UNIVERSITY OF CHICAGO

PRINTED IN THE UNITED STATES OF AMERICA
BY FIELD MUSEUM PRESS

590.5
F.I.
v. 18'
cop. 2

DESCRIPTIONS OF FIVE NEW INDO-CHINESE BIRDS

BY OUTRAM BANGS AND JOSSELYN VAN TYNE

The five birds here named were secured by the members of the William V. Kelley-Roosevelts Asiatic Expedition of Field Museum of Natural History, Chicago, the Indo-China division of the expedition being under the leadership of Harold J. Coolidge, Jr. The large collection of birds obtained on this expedition is in our hands and we hope soon to publish a detailed account of it in a later number of Field Museum publication.

The present paper is a preliminary one containing only descriptions of some new forms.

***Garrulax erythrocephalus hendeei* subsp. nov.**

Type from Chapa, Tonkin. No. 68007 Field Museum of Natural History. Adult female. Collected February 15, 1929, by R. W. Hendee. Orig. No. 6.

Characters.—Of the eight forms that Stuart Baker (Fauna British India) considers geographical races of *Garrulax erythrocephalus* the new form needs comparison only with *melanostigma* Blyth, from which it differs in having the back slightly grayer, the throat duller reddish brown, and the sides of the neck and the entire chest strongly "scaled"—the feathers of these regions having pale gray edges and dusky centers. Wing of type, 95; tail, 97 mm.

This well-marked form is named for the able young naturalist Russell W. Hendee, whose death of tropical fever was a sad blow to his fellow members of the expedition.

***Cursonia crispifrons saxatilis* subsp. nov.**

Type from Nam Na River at Bac Tan Trai, Tonkin. No. 68008 Field Museum of Natural History. Adult male. Collected February 26, 1929, by J. Van Tyne. Orig. No. 430.

Characters.—Differs from *Cursonia crispifrons crispifrons* (Blyth) of the limestone ranges of Tenasserim in being gray in general coloration instead of olive brown. Upper parts grayish olive brown, the dark edges of the feathers deep black. Lower parts: throat white, heavily striped with deep black, breast and belly dark gray. Wing, 75; tail, 74 mm.

This very gray and black form was found only on the limestone hills whence came the type. Several were shot there by Mr. Coolidge but all but the type were lost in the holes in the rocks into which they fell.

Schoeniparus rufogularis kelleyi subsp. nov.

Type from Phuoc Mon, Quangtri, Annam. No. 68009 Field Museum of Natural History. Breeding male. Collected January 30, 1929, by J. Van Tyne. Orig. No. 167.

Characters.—A very distinct form, differing sharply from *S. r. major*, *S. r. blanchardi*, and *S. r. stevensi* in having the throat band broader and deep chestnut in color—very much darker than in any of the other known forms. The head and whole upper parts are much darker than in any of the other races. Wing of type, 66; tail, 50 mm.

Named for Mr. William V. Kelley, who financed the expedition.

Alcippornis poiocephala alearis subsp. nov.

Type from Muong Moun, Tonkin. No. 68010 Field Museum of Natural History. Adult male. Collected March 29, 1929, by J. Van Tyne. Orig. No. 921.

Characters.—Most nearly like *Alcippornis p. magnirostris* (Walden) and as in that form with sooty brown coronal stripes and grayish brown head (thus differing from *Alcippornis p. haringtoniae* Hartert). From *Alcippornis p. magnirostris* the new form differs in its darker, less olive brown back; duller, less cinnamon-rufous rump and outer edges of wing feathers; and in its more cinnamon-rufous under parts. Wing of type, 67; tail, 60 mm.

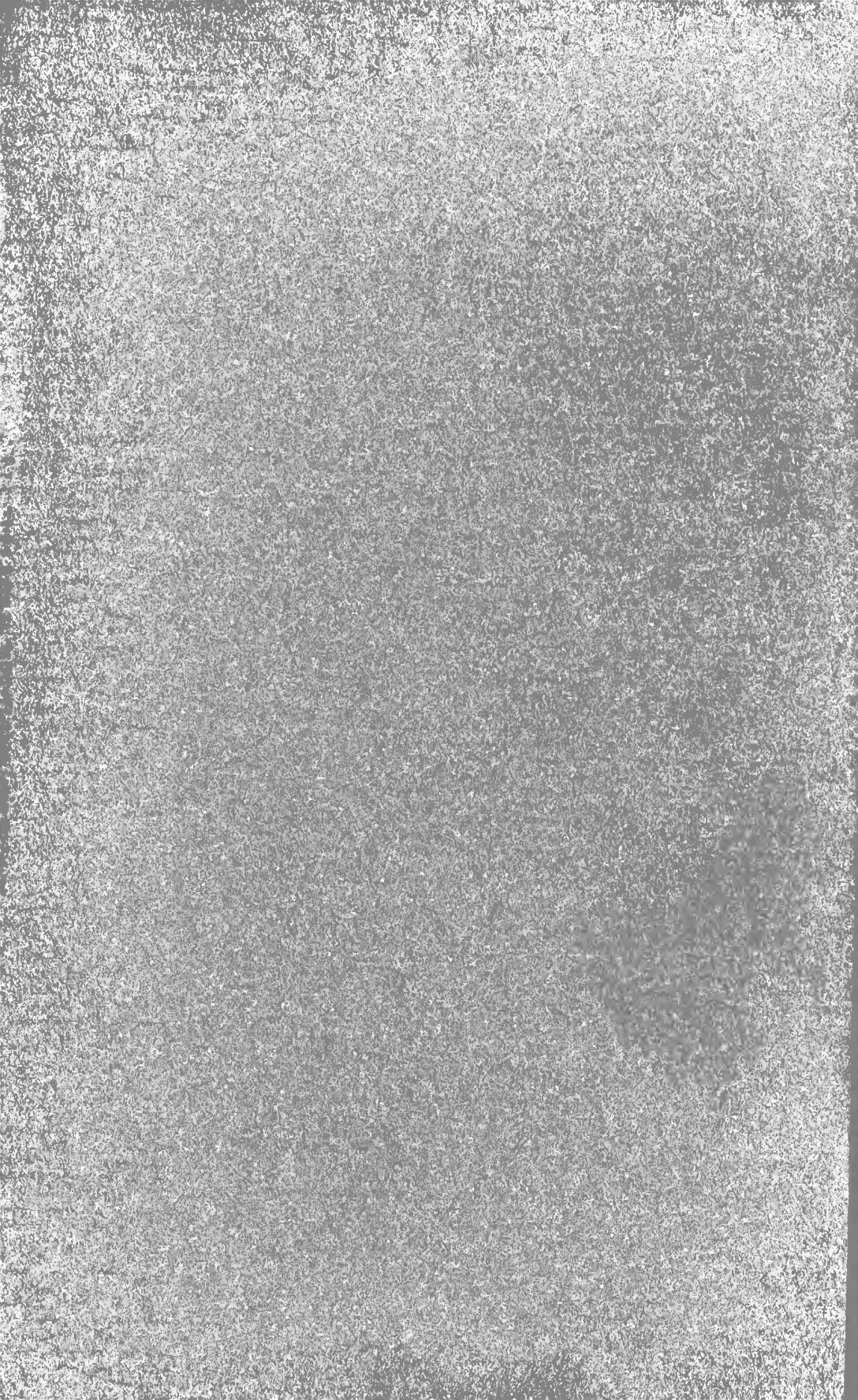
Phylloscopus pernotus sp. nov.

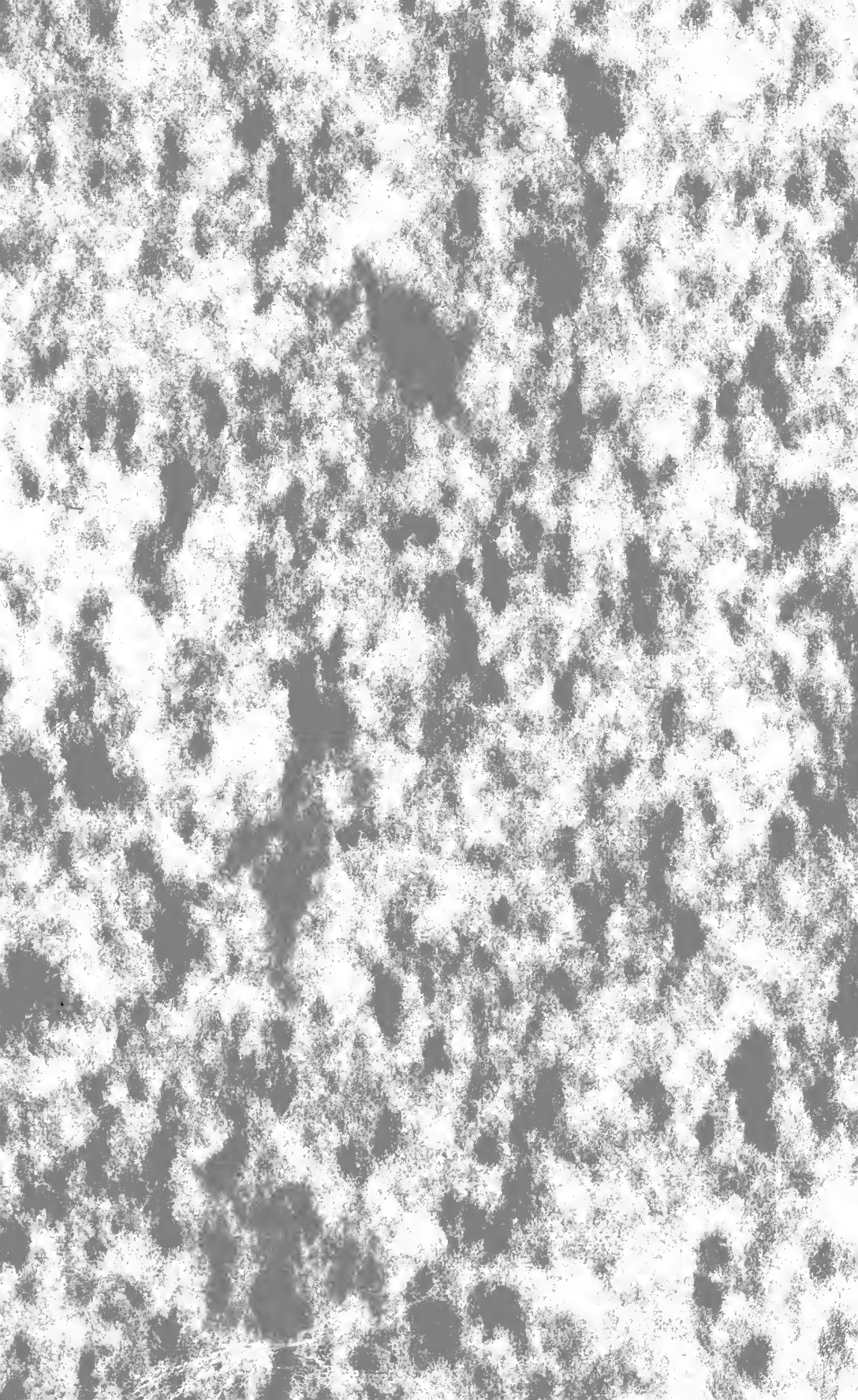
Type from Muong Yo, Laos. No. 68011 Field Museum of Natural History. Adult female. Collected May 19, 1929, by J. Van Tyne. Orig. No. 1734.

Characters.—Somewhat similar to *Phylloscopus trivirgatus ricketti* (Slater) but smaller, and breast and belly white instead of yellow.

Upper parts rather duller olive green than in *Phylloscopus t. ricketti* and dark head stripes duller—olivaceous dusky instead of black. Lower parts very different; throat and under tail coverts yellow, breast and belly white, becoming grayish on sides. Wing, 50; tail, 35.5 mm. (the wing in a long series of *Phylloscopus t. ricketti* measures 53 to 56 mm.).







UNIVERSITY OF ILLINOIS-URBANA



3 0112 042393345