

## Historic, archived document

Do not assume content reflects current scientific knowledge, policies, or practices.



1003

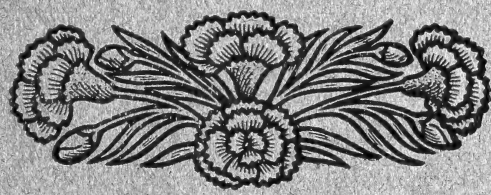
LIBRARY  
U. S. Department of Agriculture,  
Washington, D. C.

# Descriptive Catalogue

... OF ...

# FLOWERS

SEED PLANTS, BULBS, CACTI



Theodosia B. Shepherd Company  
Ventura-by-the-Sea, . . . . California

# DIRECTIONS FOR ORDERING.

PLEASE READ CAREFULLY BEFORE  
SENDING ORDERS.



Our catalogue is free to all customers. The price is ten cents to new applicants, which amount will be added in seeds to the first order amounting to 25 cents.

Write name and address plainly. We sometimes receive orders with the address omitted.

Send money by Express, Postoffice Money Order, Bank Draft, or Registered Letter. We cannot be responsible for money lost in the mail. Stamps can be sent for small orders amounting to less than one dollar.

Customers may select seeds to the value of 25 cents additional for each one dollar of their orders.

We will send twenty 10 cent packets of seeds for \$1.50; ten 15 cent packets for \$1.00; twenty 5 cent packets for \$1.00, postpaid. No premiums at these prices.

If plants or seeds arrive in bad condition, report must be made within ten days, and we will replace same; but can pay no attention to complaints made after some time has elapsed. *We will be pleased to receive expressions of satisfaction from purchasers regarding our plants and seeds.*



TO PATRONS: As will be seen in perusing this catalogue, there is probably not another in this country where so many novelties are to be had that have been originated by the persons offering them. Many are now disseminated far and wide, while many others are as yet offered by no one but ourselves.

Mrs. Shepherd has done much work with Cosmos, Nasturtiums, Begonias, Geraniums, Chrysanthemums, Amaryllis, and we claim that all of these beautiful creations are very superior.

We make a specialty of the above, and also of Cactus, and especially we commend the lovely Epiphyllum or Xmas Cactus, and Echinopsis Mulleri, which we grow in great numbers. Both are varieties that everyone can grow, both are showy and beautiful, blooming in early winter and spring at a season when other flowers are scarce. They make splendid house plants.

We will be pleased to give prices on special collections of any number of plants, or any class of plants, in large quantities.

We give the trade one-third discount from catalogue prices.

THEODOSIA B. SHEPHERD CO.







THEODOSIA B. SHEPHERD COMPANY.

Mrs. Theodosia B. Shepherd, Pres.

Mrs. Myrtle Shepherd-Lloyd, Vice-Pres.

Mrs. Margaret Shepherd-Oaks

Mrs. Edith Shepherd-Kelsey.

## TO FLOWER LOVING FRIENDS

AND

## CUSTOMERS :

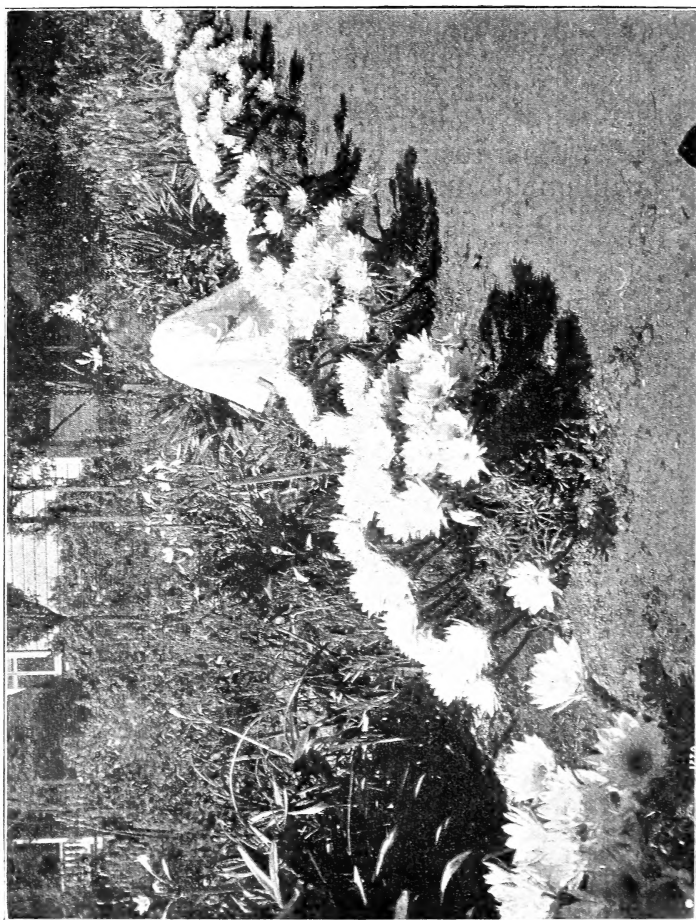
Since my last catalogue was issued my business has been incorporated, and I now introduce to you the Theodosia B. Shepherd Company, whose pictured faces you see on the opposite page. My association with these young women is not new, except in a business sense, as they are my daughters and have lived with me in a California flower garden all their lives. I trust the infusion of fresh young life into the business will enable us to give better satisfaction in our work, and in all our business relations.

It would give us great pleasure to send bits of our California climate and charming winter pictures, with our plants and seeds, to those who live where Jack Frost rules for six months of the year. From the bay window in our office (not ten minutes walk to the ocean) we look out at the distant blue mountain islands of Anacapa and Santa Cruz, which lie one to the east and one west of the town, with a space of several miles between. At evening, when the sky is red and gold with sunset lights, and islands and sea are rosy-hued, the tops of our feathery palms and star-like Norfolk Island pines, with a neighboring tower and spire, are silhouetted against the sky, while between them breaks the dashing surf. In the foreground are the roofs of houses, feathery pepper trees and stately eucalyptus mingling with palm and pine; while just below our window is our fragrant and brilliant garden, protected and happy in its wealth of color. In it are growing all of the beautiful things herein described. They are growing as plants or bulbs, or in Nature's sealed packets, awaiting your orders. Later on we hope they will demonstrate to you the great superiority of our California-grown plants and seeds.

Hoping for a share of your patronage for the new company, with greetings for 1903,

Cordially yours,

THEODOSIA B. SHEPHERD.



**SECTION OF CACTUS BORDER — ECHINOPSIS MULLERI.**

A Cactus that everyone can grow. Small plants come into bloom in two years. A 25-cent plant blossoms the first year. Flowers measure 4 to 5 inches across; color exquisite satin pink. See page 87.

# Theodosia B. Shepherd Company

VENTURA-BY-THE-SEA, CALIFORNIA

## Novelties and Specialties in Flower Seeds

---

++

### Two New Giant Comet Asters.

A most beautiful type of the large flowered Aster that attains a height of twelve to fifteen inches. It is early blooming, and entirely new in the form of the blossoms which often measure four to five inches across. They have long wavy, twisted petals, like half balls and resemble large flowered Japanese Chrysanthemums.

**The Bride.** Color is exquisite, the most delicate blush with a tinge of mauve:

**Pure White**, a most wonderful snow white. 10c each per pkt.

### New American Branching Aster.

A beautiful late blooming type of Comet Aster of very vigorous growth, giving very long stemmed branches crowned with soft, wavy, fluffy blossoms that are remarkably fine for cutting. It grows fifteen to eighteen inches high. Pure white, rose, crimson, blackish blue and purple. 10c per pkt.; 3 pkts. 25c.

### Agave Filamentosa.

This fine Agave does not bloom till it is many years old, and then like the Century Plant dies. It resembles a huge carved rosette prettily marked with white, with filaments at the edges of the leaves. Seeds are seldom offered and the plants give very few offsets, often none whatever, which makes them scarce and rare. 10c per pkt.

### Arctotus Grandis.

A very pretty Marguerite-like annual from South Africa, with handsome silvery foliage and long stemmed daisy-like flowers, with a soft blue center, ray petals, white on the inside and blue outside. The flowers are about two inches across. 5c per pkt.

### Mrs. Shepherd's New Chrysanthemum Flowered Cosmos, "Titania."

The most charming variety of Cosmos yet developed. It has fluffy, fascinating, fairy-like flowers, from  $2\frac{1}{4}$  to  $2\frac{1}{2}$  inches across, semi-double, with irregular lacinated petals of the purest snowy whiteness, that resemble Chrysanthemums in their pretty form. They are borne on slender stems in great profusion. The plants grow from three to four feet high. Occasionally the seeds give very pretty irregular full, single, Chrysanthemum-like flowers. 15c per pkt.

## Mrs. Shepherd's New Giant Red Cosmos, "Black Prince."

A splendid red Cosmos that, in its superb tones, suggests the old favorite; "Black Prince" rose; so rich and deep is its color, with the same velvety texture of the flowers. 15c per pkt; the two new Cosmos, 25c.

## Mrs. Shepherd's New Giant Gaillardia "Blazing Sun."

A gorgeous flower; the disk of yellow has a bronze red ring which is encircled by a wide band of rich brownish red, shaded into a wide lacinated margin of tawny yellow. A seedling from James Kelway. 15c per pkt.

## Luther Burbank's "Shasta Daisy."

This season we are able to offer seeds of this beautiful, hardy perennial daisy. The flowers are 3 to 3½ inches in diameter, and are borne on long slender stems that rise directly from the ground to the height of two feet. They have two rows of broad, snowy white petals that last a long time in perfection. It blooms from seed the first year and is fine for cut flowers. 15c per pkt.

The two above for 25c.

## Novelties for 1902.

## Mrs. Shepherd's New Giant Climbing Nasturtiums, "Jupiter."

This superb Nasturtium attracts instant attention by the great size and the exquisite form and rich color of the flowers. It is the largest Nasturtium that has ever yet been offered. The flowers measure 3¼ to 3½ inches in diameter, the petals 1¼ inches across. When the blossoms first unfold they have a most beautiful crinkled, crepe-like look that is very attractive and when well opened they retain much of the crepe-like effect. The petals overlap and the flowers are exquisitely formed. The color is a splendid rich brilliant yellow. They are very effective for vases, keeping for several days in water. 10c per pkt.

## "Saturn."

A fitting companion and a fine contrast to the beautiful crinkled flower Jupiter, is Saturn, a variety with large round smooth petals in shades of brightest tawny red, like rich velvet. The two upper petals are almost black at their base, the calyx bright yellow, which brings the dark gleaming red and black into fine relief. Both of the above are fine for cutting. 10c per pkt.

## Butterfly.

Color is a bright yellow, exquisitely marked with terra cotta red. In its lovely form and colors it suggests a gay yellow butterfly.

## Twilight.

One of the most exquisite nasturtiums ever offered. Its combinations of color reminds one of sunset skies, yellow overlaid with salmon pink, the two upper petals lined and feathered with red in the throat. The flower has the charm of varied shades, pink, yellow and salmon, blooming at first a rich pure salmon, and fading with age to lighter shades. 10c pkt.; the two for 15c.

Butterfly and Twilight are two of Mrs. Shepherd's giant varieties introduced by W. Atlee Burpee in 1900.

## Mrs. Shepherd's New Giant "Rainbow" Cosmos.

Everyone should have these magnificent new varieties, new departures in Cosmos. Colors, white, cream, blush and palest mauve, exquisitely flamed, flecked and penciled in many combinations; some have aurioles around the center of the flower; with red, lavender or pink bands around the eye. Some are daintily flecked like birds eggs; the petals are broad and over-lapping, pleated or frilled; edges plain, toothed or lacinated. Flowers very large, measuring from  $3\frac{1}{2}$  to 4 inches across. Perfect in form and color, all so exquisitely beautiful as to excite the most enthusiastic admiration. 10c per pkt.

## Splendid New Scarlet Salvias.

A choice mixture of these brilliant flowering plants. They are invaluable for bedding or pot plants, their long spikes of vivid scarlet blossoms giving a mass of color all through the season that is strikingly beautiful. They continue flowering into late winter and after being cut back come into full bloom again. The new varieties have larger spikes and larger flowers than the old Splendens. Easily grown from seed. Splendid mixed, 10c per pkt.

## General List of Flower Seeds.

**AGATHEA Coelestis. Blue Daisy.** A lovely perennial Daisy bearing numerous sky-blue flowers, always in bloom. 10c per pkt.

**ASTER. Peony Flowered Perfection,** A splendid fall bedding plant, one of the "Glories of Autumn." The flowers are white and all shades of pink, red, purple and variegated. Splendid mixed, 10c per pkt.

**ABUTILONS. California Bells.** This mixture is saved from a collection of very choice named varieties. Flowers of all colors and shades, pink, white, blush, yellow, orange, primrose, red; brown, selfs and variegated. Flowers flaring and parachute-shaped, or deep, like bells. All graceful and artistic in form. Grand mixed, 10c per pkt.

**AGAPANTHUS UMBELLATUS**, "Blue African Lily." This fine plant comes into bloom about the Fourth of July; giving fine blue flowers for combinations of red, white and blue. 10c per pkt.

**ANTIGONON Leptopus**. A magnificent climber; the foliage is very handsome; and the flowers, which are the most exquisite shade of pink; are produced in tendril-like racemes 10 to 12 inches in length.

**ALOES**. These interesting plants are very easily grown from seed, and very often bring new and handsome varieties. Splendid mixed, 10c per pkt.

**ASPARAGUS Sprengeri**. A most lovely trailer, invaluable as a pot plant, for baskets or for decorations; the numerous fronds are frequently 6 feet long, retaining their freshness for weeks after being cut; white flowers followed by red berries. A fine house plant, as it stands dry atmosphere. 10c per pkt.

## Beautiful Begonias.

Begonias are easily grown from seeds, especially the *Semper-florens* class, which bloom when only one or two inches high. They make fine bedding plants, giving a mass of color the entire season; stand the sun well, and require only a light rich soil, and plenty of water to make a fine show.

**Fibrous rooted**. Splendid mixed, 15c per pkt.

**Semper-florens hybrida**. Splendid mixed. 10c per pkt.

**Vernon**. Rich rosy red. 10c per pkt.

**Vulcan**. Scarlet Vernon. 10c per pkt.

**Bijou**. Dwarf Vernon. The "Carpet Begonia," forms small, round, very compact bushes of about 4 to 5 inches in height, possessing the same good qualities as its taller growing parent, namely, the brilliant red flowers and the brownish-red foliage.

**Freebeli**. Beautiful fiery-red, tuberous variety. 10c per pkt.

**Schmidtii**. A pretty dwarf variety with handsome velvety leaves and numerous white flowers; a fine bedder. 10c per pkt.

**Erfordia**. This is one of the most useful of all this class. It grows in bush form and is completely covered with dainty pink flowers all the year; fine for bedding. 10c per pkt.

**Rex**. Splendid mixed. 15c per pkt.

**Tuberous rooted**. Splendid mixed. 10c per pkt.

**BOUVARDIA**. Beautiful greenhouse plants that bear clusters of starry tubular flowers in shades of red, pink and white; hardy in Southern California. They germinate readily, and grow well from seed. Splendid mixed. 20c per pkt.



## Three Dainty Daisies.

**BELLIS Perennis Maxima.** "Double Daisy." New giant flowering double daisy; flowers larger than a half dollar. Splendid mixed. 10c per pkt.

**Longfellow.** Large dark rose colored flowers. 15c per pkt.

**Snowball.** Pure snowy-white. 15c per pkt. One packet of each sort. 25c.

**BIGNONIA Tweediana.** A charming vine with beautiful foliage and large golden-yellow flowers. 10c per pkt.

**GIANT BROWALLIA. Browallia Speciosa Major.** A most beautiful summer flowering plant for beds in summer and equally valuable for pot culture in winter. The plants grow about one foot high, are bushy and bear continuously large flowers from one to two inches across, of brilliant indigo blue enlivened with a white throat. 10c per pkt.

### Mrs. Shepherd's Grand Fancy Cosmos. The Finest in the World.

**New Early Blooming.** Grand Fancy Cosmos. The flowers are surpassingly beautiful. In the mixture are immense flowers, measuring from 4½ to 5 inches across; in white, pink, mauve and crimson. Some are shaped like single camellias, but larger and more beautiful; some of the crimson ones could almost be taken for single dahlias; other white ones have plaited petals prettily fringed, and resemble the Romneya Coulterii, or California Tree Poppy. The petals are plain in some flowers; in others pinked, toothed or fringed, and beautifully overlapping. The colors range from pure white through shades of pink and red. 10c per pkt.

**Pink Butterfly.** A magnificent new variety, the richest and loveliest shade of pink imaginable. Petals are very large, measuring from 2½ to 3 inches across, regularly plaited, giving a full and beautiful flower; edges evenly toothed; the flowers which are on long stems are quite deep, giving the appearance of large pink butterflies; they have a rich maroon ring around the eye. This is the most exquisite pink Cosmos that has ever been offered. 15c per pkt.

**Charmian.** A splendid flower of perfect form; color, pure bright pink; very large wide open flowers with overlapping petals; the eye is encircled by a rich red ring. 10c per pkt.

**White Pond Lily.** A most chaste and lovely flower, with large plain petals; so beautifully formed as to remind one of a large pond lily; plants grow about four feet high and are very bushy. Flowers are on long, strong stems; distinct and attractive variety. 10c per pkt. One of each of the above, 20c.

**Giant Red, Pink and White.** Separate. Flowers of perfect form, great size and beauty; measuring 4½ to 5 inches across. 10c pkt.; 3 varieties, 15c.



GROUP OF GIANT COSMOS.

**New Marguerite.** Mixed. One of the prettiest and daintiest varieties imaginable; the flowers measure from  $2\frac{1}{2}$  to 3 inches across; the petals are deeply and irregularly lacinated or fringed; the flowers resemble Marguerites, but are much more esthetic and beautiful. Colors are red, white, pink and tinted blush. 10c pkt.



MARGUERITE COSMOS.

**Improved Yellow.** The flowers are twice as large as they were the first year, about two inches in diameter; the plants are more upright; they attain a height of two feet, and begin blooming in a few weeks after the seeds are planted, and soon form a mass of brilliant yellow that continues the entire summer; very effective. 5c pkt.

### Orange Colored Cosmos, "Klondyke."

A gorgeous orange yellow variety, with very handsome foliage, more coarsely lacinated than the other sorts. The plants grow about four feet high, are very bushy and symetrical in form, and bear splendid orange colored flowers in great profusion. It is fine for pot plants, blooming in pots when six or eight inches high. 10c pkt.

**CALLIOPSIS Lanceolata Grandiflora.** "California Sunbeams." These lovely improved varieties are much larger than any heretofore offered; the flowers are beautifully formed. Some saucer-shaped, others flat, some exquisitely incurved, while others are like great buttercups. The petals are broad, with pinked, toothed or irregularly fringed edges. Some are very light yellow, others a deeper shade, darker around the eye, all so fine, it is difficult to say which is the most beautiful. A fine perennial. 10c pkt.

**Golden Wave.** Very bushy and compact, covered with hundreds of beautiful golden flowers, with small dark centers. Pretty annual. 5c pkt.

**COLEUS.** There are few seeds more easily grown than Coleus. A packet of seed will bring many new and pretty varieties. They can be planted in cigar boxes, and transplanted when the second leaves are formed, into larger boxes. When 3 or 4 inches high they can be potted, or transplanted into the garden. Splendid mixed. 10c per pkt.

"I must tell you that I have the most beautiful Coleus; planted from seed I bought of you last summer. \* \* \*

MRS. H. HARMON, San Diego, Cal.

**CHRYSANTHEMUMS.** "California Fantasies." The perennial Chrysanthemum is more interesting to grow from seed than most any other flower, owing to its wonderful diversity of form, color and beauty. All flowers seem to be the expression of ideas, but the Chrysanthemum more than others seems to have ideas of its own that are new and original, esthetic and artistic. One realizes this in growing seedlings, and watches with intense curiosity and pleasure to see what each unfolding flower will be. The seed offered in this mixture is saved from a most varied and beautiful collection. Splendid mixed. 15c per pkt.

**CINERARIA.** Beautiful plants easily grown from seed. Flowers in shades of blue, magenta, purple and white. They make fine pot plants, and do well bedded out in shaded places. Splendid mixed. 10c pkt.

**CALLA LILY.** 5c pkt. **Calla, Spotted Leaf.** 10c pkt.

**CARDIOSPERMUM Halicacabum.** "Balloon Vine." A very pretty and graceful annual climbing plant. 5c pkt.

## Beautiful Corn Flowers.

**GIANT WHITE CENTAUREA.** "Marguerite." This is entirely distinct from other Centaurias, and undoubtedly the most beautiful variety known. The plants grow about 18 inches high, and are of the easiest culture. The large flowers are of purest white, deliciously scented, exquisitely lacinated, and freely produced on long stems, which renders them invaluable for cutting. A highly decorative and particularly valuable white-flowering plant, and sure to excite admiration wherever grown. 10c pkt.

**CENTAUREA IMPERIALIS.** Splendid new varieties of Giant Sweet Sultan. These are more robust in habit, with larger flowers, more finely fringed, the stems are longer, and the foliage lacinated. For cut flowers Centaureas are invaluable, keeping a week or ten days in water. Hardy annuals. Three colors, separate, white, lavender and yellow. 10c pkt.; mixed, 10c pkt.

**CENTAUREA. "Blue Bottle" or "Corn Flower".** Is one of the most attractive of all hardy annuals, the graceful beauty of its old-fashioned flowers being universally admired. A hardy annual of the easiest growth, flowers exquisite blue; height 2 to 3 feet. 5c pkt.

**Cyanus.** Including dark and light blue, purple, pink, rose, white, etc. 5c pkt.

**Kaiser Wilhelm.** Of a rich deep blue color. 5c pkt.

**New Double.** So perfect that fully 80 per cent. of the flowers are double and semi-double. 10c pkt.

**New Dwarf Blue Victoria.** The compact and bushy plants, 6 to 9 inches high, present a mass of foliage and profusion of graceful azure-like flowers. In bloom one month after sowing seed; invaluable and showy for borders. 10c. pkt.

**BRILLIANT CANNAS. "Good Venture Strain."** Saved from a beautiful collection of very fine named varieties, and large seedlings of my own. The plants range from 22 inches to 3½ feet in height, they have very large flowers, of grand colors, splendid yellow, rich orange, red spotted, deep carmine, flaming scarlet deeply margined with gold, salmon red streaked with copper and cardinal. Some flowers have four or five petals. The foliage is rich and handsome, various shades of green, dark red streaked with greenish yellow, plain green and dark maroon. Splendid mixed. 10c. pkt.

**CARNATIONS.** (Perpetual or Monthly.) Carnations grow to the greatest perfection in California. Their magnificent flowers, long stems, beautiful forms, rich colors and delightful fragrance, make them wonderfully attractive. 25c. pkt.

**Marguerite.** Splendid mixed. A charming strain that blooms the first year from seed. Though not as fragrant and beautiful as the monthly carnation, yet very satisfactory and popular. 10c. pkt.

**CYCLAMEN Giganteum.** Giant flowered cyclamen. Splendid flowers of great beauty. Pure white 20c. pkt., red 20c. pkt., mixed 15c. pkt.

**CALENDULA. "Pot Marigold."** Splendid mixed. 5c. pkt.

**CELOSIA. "Ostrich Feather."** One of the most beautiful and showy annuals that has been introduced for years, and that deserves all the praise that has been given it. It is exquisitely beautiful on close examination, and at a distance is a mass of brilliant color. It blooms when only 12 inches high, and in California keeps its splendor until late December. Crimson and orange color. 10c. pkt.; two, 15c.

**CANDYTUFT. Empress."** Pure white. 5c. pkt.

**CLIANTHUS PUNICEUS.** Not new, but rare. It can be trained in bush form or to climb. The foliage is finely divided, and the flowers hang in clusters on thread-like stems. They are large and of a most vivid scarlet color, and shaped like a parrot's beak. A perennial shrub, very showy and beautiful. 10c. pkt.

**MRS. SHEPHERD'S GIANT CACTUS DAHLIA, "Monarch of Dahlias."** This beautiful Dahlia was named by Mr. Williams, of the San Francisco Examiner, when visiting in Ventura, in honor of that paper the "Monarch of the Dailies." The flowers are large, loose, very esthetic in form, and measure six or more inches across; the petals are very broad; the color deep, rich, dark red, having a beautiful bloom like velvet; flowers are borne on long stems, and are fine for cutting. The plants begin blooming very early in the summer and continue until late autumn, giving a brilliant show for three or four months. 10c. pkt.

**MRS. SHEPHERD'S LARGE. FLOWERING DWARF, SINGLE DAHLIAS. "Giants of California."** A strain of beautiful single dahlias, that grow into round, bushy plants, two to three feet high. The flowers are very large and of perfect form, with long stems; all plain, shades of color in scarlet, crimson, pink, orange, yellow, with their various tints, pure snowy-white and cream, and variegated flowers in infinite variety. They bloom when only 10 to 12 inches high, and make a bed of gorgeous color, that attracts great attention; they bloom from early autumn until late fall. 10c. pkt.

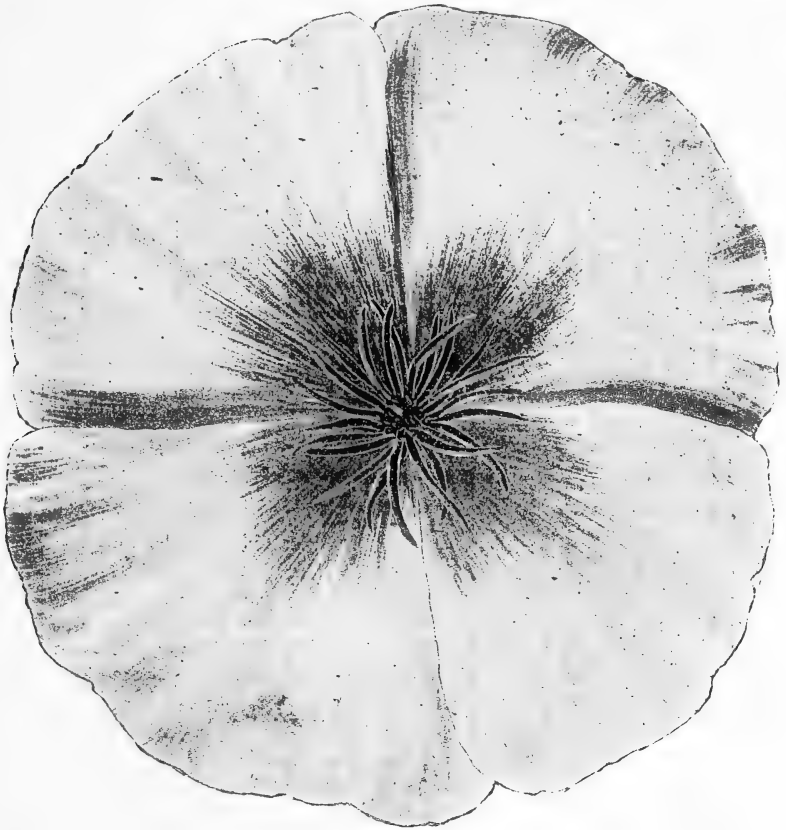
**Single.** Tall varieties; mixed. 5c. pkt.

**Cactus,** Splendid mixed. 10c. pkt.

**Double.** Very choice mixed. 10c. pkt.

**Imperialis, "The Giant Lily Dahlia."** The most beautiful of all Dahlias. It grows 10 to 12 feet high, and bears panicles of elegant lily-like flowers, measuring 8 inches from tip to tip of petal. The color is a delicate mauve, almost white, veined with old pink, and with a ring of pink around the orange-yellow center. It blooms from seed the first year. 15c. pkt.; two pkts. 25c.

**GIANT FLOWERED JAPANESE DIANTHUS, "Oriental Beauties."** These splendid flowers measure 2 to 3½ inches across, with petals 1½ inches in diameter. They are exquisitely formed, the petals being full, overlapping, crinkled and lacinated. The flowers possess that peculiar and artistic charm so noticeable in all plants from the Flowery Kingdom. They range in color from pure white, through shades of pink and crimson, many strikingly marked and variegated; the coloring and marking is rich beyond description; nothing could be more pretty and dainty than their charming ruffles and frills. They are perfectly hardy, are perpetual bloomers, needing only to be cut back occasionally for new growth. 10c. pkt.



MRS. SHEPHERD'S NEW CALIFORNIA POPPY, "THE GOLDEN WEST."

### Mrs. Shepherd's Giant Eschscholtzias.

**GOLDEN WEST.** Grand new Eschscholtzias, developed from *E. maretima*, a pretty variety, having light, canary-yellow flowers, with an orange blotch at the base of each petal, forming a Maltese cross in the center. The flowers are from 4 to 6 inches in diameter, with very large overlapping petals, often delicately waved at the edges. They are beautifully and variously formed; some flat and wide open, some saucer-shaped, others very deep with flaring edges. In some the orange blotch almost suffuses the whole flower, in others it runs into the yellow in fine penciled lines; others again have an orange center with a margin of clear yellow, while the Maltese cross is very distinct. Words are inadequate to describe the wondrous beauty of these magnificent flowers, their intense and shining color, immense size and lovely form. Invaluable for bedding plants. Splendid mixed. 10c pkt.; three pkt., 20c.

**California Poppy.** Old variety. 5c pkt.

**Eschscholtzia Hunnemannia.** A beautiful perennial shrubby variety, with large cup-shaped, single primrose colored flowers with bright orange stamens. They are borne on long stems and bloom nearly all the year; the flowers keep two weeks in water. 10c pkt.

**ERYTHRINA Crista Galli, "Coral Tree,"** A splendid tree or shrub that attains a great size in California. Its spikes of large pea-shaped flowers are grand. It can be wintered in a cellar in the east.

**FUCHSIAS.** Saved from a beautiful collection of named sorts. Fuchsias bloom from seed in about six months or a year, and are very interesting for amateurs. The plants are better bloomers than those grown from cuttings, and a new variety from seed gives great pleasure. 15c pkt.

**Cape Fuchsia. "Phygelius Capensis."** A distinct new species, blooming from May to late autumn. It bears long spikes of showy, scarlet, drooping, tubular flowers. Entirely different from any other variety. Hardy perennial; very showy; grows readily from seed. 5c pkt.

**FREESIAS.** Choice mixed. 5c pkt.

**GAILLARDIA. "James Kelway,"** A beautiful giant-flowering gaillardia, with magnificent flowers measuring 4 or 5 inches across, of the brightest scarlet, with a golden margin and fringed edges. A most persistent and perpetual bloomer. 10c pkt.

**GESNERIA Hybrida.** Beautiful flowering greenhouse bulbs with velvety foliage and charming flowers. Choice mixed. 15c pkt.

**MRS. SHEPHERD'S GRAND ZONALE GERANIUMS, "Good Venture Strain."** A grand strain of Geranium seed saved from my new seedlings and some of the new types from other sources. The flowers are very large and round, of the most perfect forms with splendid trusses, some of them forming balls 16 inches in diameter. The colors are shades of scarlet and crimson, rose pink, salmon, cream, veined pink, blush, and pure snowy white; many beautiful varieties of the Souvenir de Miranba type, greatly enlarged and improved, new auriole types with lovely rings and large white eyes. These all stand the hot sun and are sure to bring many new and lovely varieties. A finer collection has never been offered. 15c pkt.

**Geranium.** Single. Beautiful, large, round flowers in white, crimson, scarlet, pink, rose, salmon; etc.; often give lovely new varieties from seed. Splendid mixed, 10c pkt.; good mixed, 5c pkt.

**Double.** Choice mixed. 15c pkt.

**Bronze and Gold** 10c pkt.

**Tricolor.** The seeds offered below are saved from the beautiful geraniums, "Mrs. Pollock," "Glen Eyre Beauty," "Happy Thought," and "Sunset." In these charming plants all the colors of the rainbow are represented. Extra choice mixed. 10c pkt.

**Lady Washington.** In California these magnificent pelargoniums grow to the greatest perfection. Seeds offered are saved from a very fine collection of beautiful varieties. 15c pkt.



**Ivy Leaf.** Double. Splendid mixed, 15c pkt. single mixed, 10c pkt.

**Apple Scented.** 10c pkt.

One packet of each of the above sorts of Geraniums, 75c.

## Genista Monosperma Pendula.

**Bridal Veil.** One of the most beautiful half hardy shrubs in cultivation. It forms a large plant with long pendulous, silvery green branches without foliage. They are finely divided, round and rush-like, and are draped most of the time, their entire length with small, pea-shaped flowers, which are borne on two little spikes, from 1 to 3 inches in length, alternating on opposite sides of the stems; they are very close together, sometimes 15 flowers to a spike; are exquisitely fragrant. A plant three or four years from seed will cover a space from 12 to 15 feet square or more. It has a cloud-like, misty effect that is very attractive. Nothing could be more beautiful for contrast in shrubbery on large places. It has been compared to a bridal veil. 10c pkt.

**Eldorado.** A very pretty genista of spreading habit, completely covered with long spikes of soft, golden-yellow flowers most of the year. 10c pkt.

**GLOXINIA. Grandiflora Crassifolia Erecta.** Beautiful new varieties, of erect habit; greenhouse bulbs. 15c pkt.

**Emperor William.** Dark violet, bordered white. 15c pkt.

**Defiance.** Fiery Scarlet. Brilliant color. 15c pkt; one packet each sort, 35c.

**HARDENBERGIA Alba.** This beautiful plant, though not new, is still rare. It has handsome foliage and exquisite white flowers. It blooms from January to the last of March. The flowers appear at the axils of the leaves, and the entire plant is covered with spikes of small, round, snowy-white, pea-shaped blossoms. The stems are very slender, and the spikes of bloom are from 3 to 5 inches long. It is one of our loveliest white winter-blooming shrubs, and would be invaluable in the east for cut flowers. The seeds are slow to germinate, and should be soaked for 24 hours in water. Half hardy. 10c pkt.

**HEUCHERIA Sanguinea.** A charming new plant, that forms a low-growing rosette of pretty leaves, surrounded by slender stems crowned with a number of lovely airy, coral flowers. Beautiful for bouquets; 10c pkt.

**HELIOTROPE.** Very few people know that Heliotrope is quite readily raised from seed, and that young plants come into bloom very early. Those who grow flowers should have the pleasure of testing them. All varieties mixed. 5c pkt.

**Lemoines Giant Hybrids.** The flowers of these varieties are larger than the ordinary heliotrope; the foliage is also larger, and the trusses immense, often six inches across, very beautiful shades of purple. Splendid mixed. 10c pkt.

## Lovely Ipomoeas.

**"Heavenly Blue."** A beautiful annual morning glory. The flowers are in large airy clusters, and are of that indescribable heavenly blue so rarely seen in flowers. The throat is yellow inside, spreading softly into blue. The flowers measure  $4\frac{1}{2}$  to 5 inches across, and about 10 o'clock in the morning no lovelier sight can be imagined than this lovely vine; the great profusion of flowers almost rendering the foliage invisible. Every one who sees it for the first time is filled with delight at its beauty, exclaiming: "That is the loveliest thing I ever saw." To enjoy the beauty of this plant in the east, as early in the season as possible, success depends on cultivating the seedlings in the following manner: Having been potted off singly in small thumb pots, in light sandy soil, and being well-rooted, (pot-bound), they ought to be shifted to larger pots, using of course, the same light soil. In these pots the plants must remain until they show their flower buds, hardening them off in the meantime. Once they show these, the plants may be planted out in the open ground, but also in light sandy soil, where they will continue to produce their flowers freely. 10c pkt.

**Learii.** "Blue Dawn" flower. The flowers are of the most intense violet-blue, with reddish-purple rays, and are 4 inches across; there is nothing of its color that exceeds in richness the flowers of "Ipomoea Learii." A half hardy perennial. 10c pkt.

**White Tassel.** "Double Morning Glory." This might be called an "All Day Glory," as it remains open during the entire day. It is white, very double and fringed, with delicate purple marks in the center of the flower. Hardy annual. 10c pkt.

**Imperial Japanese.** Ruffled and frilled. A bewitching new class of morning glories from Japan. Beautiful colors in great variety. Hardy annual. 10c pkt.

**KENNEDYA Nigricans.** A splendid climber from Australia. Its rapid growth and wonderful hardiness should give it a place wherever a good thick impenetrable evergreen screen is wanted. It will cover a screen 20 feet high in 2 or 3 years if well watered. The flowers are quite inconspicuous, being yellow and black. It will climb 40 to 50 feet if encouraged. Soak seed in warm water over night and plant in good soil where wanted permanently, or sow in a box of fine soil with fibrous matter in it, 3 or 4 inches apart so the seedlings can be taken up nearly whole and planted. 10c pkt.

**Monophylla Lilacina.** This is also a native evergreen climber of Australia. The leaves are rather prettier than the *K. Nigricans*, but its great beauty consists in its perfect cloud of the loveliest lilac-blue flowers drooping gracefully, and covering the screen or pillar on which it is growing with a lilac sheet. Though a lovely evergreen climber, it is not to be compared to *Nigricans* for making a dense growth. 10c pkt.

Both stand heat and drouth splendidly. One packet of each of these Kennedyas for 15c. Sow in autumn or spring.

## Dainty Lobelias

### **LOBELIA Cardinalis.** "The Beautiful Cardinal Flower."

Bears spikes of the most brilliant cardinal, lobelia-like flowers on long stems. The dark foliage forms a fine contrast with the gorgeous flowers. 10 pkt.

**Crystal Palace Gem Compacta.** Fine for borders; deep, beautiful blue; very dwarf. Finest mixed. 5c pkt.

**Erinus Varieties.** Choice mixed. 5c pkt.

**Lobelia Ramosia, "Heavenly Blue."** Of an intense bright shade of blue of the Ramosia type, very large flowering and free growing. For borders or baskets this is desirable, and will produce a grand effect. 15c pkt.

**LATHYRUS Splendens.** "Pride of California." The most magnificent of native climbing plants. A splendid hardy perennial pea, with fine foliage and a profusion of large pea-shaped blossoms of a deep, rich, velvety crimson in clusters of ten or more. The buds are a charming rose-pink, and the contrast of buds and blossoms is most pleasing. No description can do justice to this lovely climber; it draws forth enthusiastic expressions of admiration from all who see it. Always scarce. 20c pkt.

**MARIGOLD.** "French Gilt-Edged." Splendid large double flowers, 4 inches across; velvety brown, edged with yellow. 10c pkt.

**Little Brownie.** A charming compact little marigold from 5 to 6 inches high, producing a fine effect in masses, and unrivalled for borders 5c pkt.

**MAURANDYA Barclaya.** An old and very pretty climber, with gloxina-shaped flowers, and dainty pointed heart-shaped foliage. Choice mixed. 5c pkt.

**MANDEVILLA Suaveolens Grandiflora.** Beautiful white climber, with fragrant flowers. See full description in plant list. 10c pkt.

**MYOSOTIS.** "Forget-me-not." Large flowering. Splendid mixed. 5c pkt.

**Victoria.** Sky blue; double centers. 10c pkt.

**MESEMBRYANTHEMUM.** Fine for borders, will thrive in a dry climate with very little water; easily grown from seed. Splendid mixed. 10c pkt.

**MIGNONETTE.** Choice mixed, 5c pkt. "Giant White Upright," Fine for bouquets and decorations. 5c pkt.

**"Golden Queen."** A fine variety, with flowers of a golden hue. Each variety, 5c pkt.



MRS. SHEPHERD'S NEW GIANT NASTURTIUM, "JUPITER."

## Mrs. Shepherd's Climbing Nasturtiums "California Giants."

Splendid varieties, with very large perfect flowers, with a very great range of exquisite colors, all plain shades of red from the deepest dark velvet, to lighter shades, tawny orange, terra cotta, and salmon pink, yellows in all shades to pale straw color; then all three shades variously and beautifully variegated, in most charming combinations. No one can fail to be delighted with them. Very fine for vases. Splendid mixed. 10c pkt.

**"Moonlight."** A beautiful pale straw color, which makes a fine contrast with Jupiter. 5c pkt.

## Nasturtium, Dwarf. "Gay and Festive."

**"Tom Thumb."** This is a most beautiful strain of Dwarf Nasturtiums. Clear, golden-yellow, salmon pink, dark red, golden-brown, all shades of yellow variegated with red and brown, canary color, terra cotta, orange and black, with all combinations, making a most beautiful showing. No one can fail to be pleased with them. Pkt. 5c.

**Empress of India.** Dark foliage and deep scarlet flowers; one of the finest varieties grown. 5c pkt.

**Liliput.** A very dwarf compact variety especially fine for borders or beds, very dainty, bright and effective. 10c pkt.; the three, 15c.

## Pansies.

**Mammoth Butterfly.** A strain of pansy which, for variety and beauty has never been excelled. Of matchless forms, colors and markings, with flowers half as large again as ordinary pansies. 25c pkt.

**Bugnots.** Splendid blotched. A celebrated French strain of extra large size, choicest colors, and with beautiful broad blotches and delicate penciling; a very shy seeder; the ground colors are generally white or very light, bringing the elegant and distinctive markings, in strong relief. 25c pkt.

**Giant Trimardeau.** The largest and strongest pansies grown, with immense flowers in splendid colors. They are deep rooting and drought withstanding. 15c pkt. Choice mixed. 10c pkt.

**PHLOX Drummondii.** Choice mixed. 5c pkt.

## Giant Petunias.

**"Giants of California."** The "Giants of California" bear gigantic flowers, often 5 inches and more in diameter, of an astonishing variety of colors. They embrace every conceivable shade of crimson, pink, lavender, pure white, etc. One of the chief points of excellence is the deep throat, and diversity of veins in the throat. Many of the flowers have a clear yellow throat, while others have a pure velvety black one, so deep that it seems to show no veining. 20c pkt.

**New Fringed Hybrid.** The loveliest petunias of all, with charming fringed flowers of exquisite form and beautiful colors. Splendid mixed. 15c pkt.

**New Double Fringed.** The grandest double petunias ever offered; perfectly round double flowers, exquisitely fringed. Pure white, pale bluish lavender, pink, deep rose, variegated, all shades imaginable. About 40 per cent. come double. Splendid mixed. 25c pkt.

## Palms.

**California Fan.** The seeds germinate in four or five weeks. Very easy to grow. 10c per  $\frac{1}{2}$  oz. pkt.

**Chamaerops Humilis.** A very pretty dwarf fan palm. 10c per pkt. 10 seeds.

**Phoenix Canariensis.** A very hardy pleasing variety. The seeds germinate readily and the plants grow fast and are very hardy. 10c pkt.

**Seaforthia Elegans** One of the most graceful and beautiful of palms. 15 seeds 10c.

## Gay and Festive Poppies.

**"Maid of the Mist."** Mrs. Shepherd's lovely single, peony-flowered, white poppy that rivals even the lovely *Romneya Coulteri* in beauty. Flowers from 7 to 9 inches across; petals very large, overlapping, daintily incurved, deeply and irregularly fringed. The ovary a beautiful, silvery, pea-green; the stamens long, with light, tan-colored anthers. The flowers are borne on long stems, and instead of looking upward, as do most poppies, turn their faces outward. The ovary, encircled with its fringe of stamens, and white, fluffy petals, suggests a pretty face looking out of the mist. A row of these graceful poppies in full bloom is a pretty picture which lingers long in the mind. 10c pkt.

**"Irresistible,"** This grand poppy conceived its name because every one who saw it wanted it, and to one it was irresistible; she picked the flowers without ceremony, saying for excuse: "I had to have them, they were so beautiful." It grows 5 feet or more in height; the flowers are immense and perfectly round. Color is a beautiful light red, petals fringed. It is the most showy and beautiful double paeony flowered poppy ever offered. 10c pkt.

**Oriental Hybrids.** Grand, hardy, perennial poppies. The flowers average 6 to 9 inches across. The flowers are splendid pink, blotched with purple; blood red, blotched black; glowing scarlet; reddish orange; salmon; etc. Choice mixed. 15c pkt.

**Iceland.** The fragrant, elegant, crushed, satin-like flowers, are produced in never-ending succession from the beginning of June to October. The flowers last quite a week, if cut as soon as opened. Colors are white, scarlet, yellow and crimson. Mixed. 10c pkt.

**Chamois Rose.** Most exquisite color, beautiful chamois-rose. 5c pkt.

**Fairy Blush.** A charming variety, with immense gobular, perfectly double flowers, which will measure from 10 to 12 inches in circumference. The petals are elegantly fringed and pure white; except at the tips, which are a rosy-cream color. The flowers at a little distance have the effect of large, white feathery balls, overcast with a rosy shade. Each plant has from 3 to 5 of these magnificent flowers open at one time, and lasting longer than any other poppy. 10c pkt.

**Snowdrift.** A most exquisite snowy-white poppy, with beautiful fringed petals. Very double. 5c pkt.

**Fayal.** Most beautiful and dainty of all poppies, every conceivable shade of red, pink, maroon and white, self and variegated, double and single, large and small flowers. One begins to wonder as they open what the next combination will be, there are so many and such pretty ones. No one can fail to be charmed with them. 5c pkt.

**Tulip Flowered.** A new poppy of great brilliancy and beauty, having a flower which in shade and color resembles a great flaming tulip. Its color is most intense scarlet, and it blooms at least two weeks earlier than any other poppy. 5c pkt.; one pkt. each variety, 50c.

### Passion Flowers.

**Scarlet.** The beautiful red passion vine of California. 15c pkt.

**Constance Elliot.** Pure white passion flower. 10c pkt.

**Edulis.** The edible passion vine. It has pretty white flowers; the corona or fringe surrounding the center is beautifully crinked. It bears a very pleasant flavored edible fruit. 10c pkt.; three varieties, 20c.

### Sweet Peas in Lovely Variety.

\***Salopian.** Deep rich crimson red; very large and fine.

**Captain of the Blues.** A wonderfully attractive variety, with purple wings and lavender standards.

**Burpee's Brilliant.** Bright crimson scarlet. Retains its fresh color in the hottest sun.

**Gorgeous.** Brilliant orange salmon, heavily veined in a deeper shade, very large flowers.

**Lovely.** Exquisite rose pink, extra fine.

**Stella Morse.** Creamy pink, clouded rosy apricot.

**Royal Rose.** Deep carmine, rose pink wings.

**Daybreak.** Lovely. Watered scarlet on a white ground.

\***Sadie Burpee.** Immense lovely white.

\***Her Majesty.** Large, bold flower; standards, bright rose carmine; wings, carmine lake.

\***Katherine Tracy.** Exquisite bright pink. Large perfect flowers.

**Aurora.** Gigantic, expanded, shell-formed flower. Striped orange and white.

\***Ramona.** Grand flowers of very large size and improved hooded form. It is a vigorous grower and bears three or four flowers to the stem. Its color-

ing is delicately beautiful; a creamy white daintily splashed with pale pink on standard and wings.

\***Celestial.** Lovely azure blue.

\***Blushing Beauty.** Soft pink, suffused with lilac.

\***Venus.** Lovely salmon-buff, shaded rosy pink.

**Apple Blossom.** Bright rose and pink; very beautiful.

**Blanche Ferry.** Pink and white, always charming.

\***Splendor.** Superb rose, shaded crimson.

**Fire Fly.** A deep brilliant scarlet,

**Imperial Blue.** Blue, shaded mauve.

**Emily Henderson.** Beautiful snowy-white, earliest white.

**Double White.** Very beautiful, with occasional double flowers.

\***Mrs. Dugdale.** Beautiful deep rose, fine for cut flowers.

\***Mars.** Echfords new bright scarlet.

\***Prima Donna.** Most lovely soft pink.

**Burpee's Earliest of All.** The earliest sweet pea by two or three weeks; soft pink and white.

\***Brilliant.** Bright scarlet; does not burn in the sun.

**Cupid.** Mixed.

Splendid mixed; any of the above 5c pkt.; 30 pkts., \$1.00.

The above are selected from among the very best and prettiest of all varieties.

**THE AUSTRALIAN PEA VINE.** This climber, though well-known in California, is not listed in any of the eastern catalogues. It has great powers of endurance, standing drought and heat with impunity, and should be hardy in the east. It is invaluable where rapid growth and an impenetrable screen are desired. The seeds germinate readily, and the plants grow very rapidly, beginning to bloom when quite young; the foliage is very pretty and graceful; the flowers are pea-shaped, the buds pink, when full blown, the flowers are pink shaded mauve; the plant is covered with blossoms in California, at all times. 10c pkt.

**Romneya or "Matilija Poppy."** The great California Tree Poppy. One of the grandest of California native plants, with beautiful pure white crinkled petals, and a mass of elegant yellow stamens. The flowers measure 5 to 6 inches across. It is very difficult to propagate, either from roots or seeds; but once started grows without care. It is rarely found in any nursery. Very slow to germinate. 10c pkt.

## ROSES.

### A Rare Mixture of Many Classes and Varieties.

Any one can grow roses from seed. The tea rose will bloom when only a few inches high, and will give most beautiful varieties. The seeds are slow to germinate, but when once started will make splendid plants in one season. Try for a few varieties. All sorts mixed. 10c pkt.

\*All marked thus are Giant Flowering varieties.



**ROSE NANA Multiflora Perpetua "Little Midget" or "Baby Rose."** A class of dwarf everblooming diminutive roses that are easily grown from seed; blooming when 2 or 3 inches high. The leaves are quite small and the little flowers are borne in large clusters, double and single, white, pink and red; they are one-half to one inch in diameter, and resemble fruit blossoms. They are exquisitely dainty and pretty, and are followed by bright red hips or berries, which should be cut away if continual flowers desired. They make beautiful borders for beds. 10c pkt.

## Choice Stocks.

**Cut and Come Again. "Princess Alice."** The best white stock grown, snowy-white flowers. 10c pkt.

**Giant Perfection.** Too much cannot be said in praise of giant perfection stocks. All who have ever seen them bloom are delighted with them. Their growth is strong, and the magnificent spikes of very large double flowers are superb. The colors are white, old rose, mauve, pink, purple, red and flesh. Each color separate. 10c pkt.; mixed, 5c pkt.; one pkt. each, 50c.

**SOLANUM Betaceum. "Tomato Tree."** A fine ornamental tree or shrub, a native of South America. The foliage is large and handsome, the branches spreading. The fruit, which hangs in clusters below the foliage, is the size of a large egg, a beautiful salmon-orange color when ripe. 10c pkt.; 3 pkts., 20c. For further descriptions see Plant Novelties and Specialties.

**STREPTOCARPUS Wendlandi.** Beautiful greenhouse bulbs with large, handsome, velvety foliage, and beautiful flowers. 15c pkt.

**STREPTOSOLEN Jamesonii.** A very beautiful showy plant, with great clusters of brilliant flowers; reddish-orange at first, turning to bright yellow later. A most persistent and perpetual bloomer. Easily grown from seed. 10c pkt.

**SWAINSONIA Alba.** A charming shrub for the house, with finely divided foliage and long spikes of snow white pea-shaped blossoms; invaluable for cut flowers and most ornamental in the garden; fine for the conservatory. The seeds germinate very slowly, and should be soaked before planting. 15c pkt.

**SCHINUS Molle. "California Pepper Tree."** 10c pkt.

**TORENIA Fournieri.** An exquisite basket plant, with lovely velvety shaded blue flowers. 10c pkt.

**Bailloni.** Fine, rich yellow flowers, with brown throat, contrasts beautifully with the blue variety. 10c pkt.; two for 15c.

**THUNBERGIA Alata.** A charming trailer for fences, trellises, etc. Fine for baskets and boxes. Foliage, arrow-shaped; flowers, gloxinia-like. Colors, white, buff and orange. Choice mixed. 5c pkt.

## Rare Tacsonias.

**Van Volxemi.** A tropical climber belonging to the same family as the passion vine but much handsomer, and with larger, richer-colored flowers, and a long tube at the back of the flower. This beautiful variety is always rare. The flowers are deep crimson, and hang from thread-like stems twelve inches or more in length. 25c pkt.

**Buchananii. Pink Tacsonia.** A lovely light pink variety, of most vigorous growth; a wonderful bloomer. It bears edible fruit. 10c pkt.

**Sutherlandi.** Is of a vigorous growth with a handsome three-lobed foliage, strong in texture, of a rich dark green color. The flowers measure four inches across. Color, exquisite carmine rose, shading darker in the center with purple fringe around the throat. The back of the petals is a light green. The tube measures  $1\frac{1}{2}$  inches in length; stem of flower  $2\frac{1}{2}$  inches so that the flowers stand out well from the foliage. It is a fine bloomer, rivalling even the scarlet passion vine, so named for the profusion and magnificence of its flowers. 10c pkt.; three varieties, 25c.

**TECOMA Velutina.** A splendid shrub that bears spikes of large flowering golden yellow flowers, resembling Allamandas. It blooms from seed when quite small and blooms all the time. It far surpasses *T. Smithii* in every way. 10c pkt.

**Mackennii.** A grand new climber, of rapid growth and habit. The foliage is very handsome and the long trailing branches are covered from May to October, with large spikes of exquisite pink gloxina-shaped flowers, the throat veined with darker shades of pink. A most showy, beautiful and satisfactory flower, and easily grown. 10c pkt.

**VERBENA. Mammoth.** Nothing can exceed the beauty of these splendid giant flowering verbenas, which every year bear witness to the wonderful qualities of Southern Californian soil and climate, in the great size and beauty of the flowers. Pure white, pink, and scarlet, separate; 10c pkt.; two pkts. 15c. Splendid mixed. 5c pkt.

**ZINNIAS. New Curled and Crested.** This splendid strain is all that is claimed for it. The large curled and crested petals give a softness and beauty to the flowers, that is most charming. The form and colors are beautiful, and have none of the stiffness of the old-fashioned zinnias. 5c pkt.

# Directions to Plant Buyers.

Please Read Carefully Before Ordering.

**W**e fill no plant orders for less than \$1.00, unless 10 cents extra is sent for postage and packing.

**A**lways send a second choice list, or state whether money shall be returned if we are out of varieties. We are often put to much unnecessary correspondence, and orders are delayed, by failure to comply with this, our frequent request.

**M**ail orders. We send only the smallest plants by mail postpaid.

**P**urchasers may select 10 cents worth of plants extra on each dollar of order.

**N**o premiums on plant orders for less than \$1.00. No premiums allowed on plants by the dozen, or on new and rare plants.

**E**xpress orders. All plants with soil, and the larger sizes, also all heavy bulbs, and cactus, will be sent by express or freight at customers expense.

**W**e will send 20 cents worth of plants extra, our selection, on each dollar, where orders are sent by express.

## Club Plant Orders by Express.

**W**e allow 25 per cent on plants extra, to the getter up of a club, his selection, and 10 cents in plants on each dollar to the individuals of the club, our selection. The order not to be less than \$3.00.

**O**n Club Orders by mail, we give a premium of 15 cents worth of plants extra on each dollar, his selection, to the getter up of the club, and ten cents worth, our selection, to the individual members of the club.

## Cheap Collections for \$1.10.

**W**e will send by mail postpaid, any one of the following collections, our selection of varieties:

No. 1. 1 small Seafortnia palm, 1 smilax, 1 calla, 2 Princess of Wales, violets, 1 fuchsia, 2 begonias, 1 heliotrope, 1 fern Pteris Tremula, 3 choice geraniums, 1 zephyranthus alba, 1 echeropsis Mullerii, 1 wax plant.

No. 2. 20 varieties of cactus and succulents.

No. 2. 20 varieties of very choice geranium cuttings, labeled; 10 foliage geraniums.

No. 3. 15 varieties of choice fuchsia cuttings and 10 cuttings of green house plants.

No. 4. 15 varieties of begonias and 6 assorted plants.

# NEW AND RARE PLANTS.

## Bougainvillia Lateritia.

Bougainvillia Lateritia is still so rare as to be classed among novelties, as it was impossible to secure stock of it last season. We have a limited supply of nice plants this season and will book orders in succession for delivery April 1st. It is a most beautiful climber, a rapid grower, and a winter bloomer. The foliage is handsome and the long branches are adorned with masses of rich, dark, terra cotta red flowers, or bracts, that shade lighter with age, giving a charming effect. It harmonizes with other colors most beautifully, and is a climber that delights every one. From 2½ inch pots \$1.00 each. Must be sent with soil.

## Grand New Canna Pennsylvania.

A splendid new orchid flowering canna, the flowers of which often measure seven inches across. The only pure deep red one of the orchid flowering class. It has splendid branching spikes of flowers, is a tremendous bloomer with good foliage and is so striking as to command instant attention. 50c each.

## Queen of Holland.

A beautiful pure deep orange flower, large and fine form, which makes a fine contrast with its handsome shaded bronze foliage. The combination is most unusual. 40c each.

## Evolution.

Another exquisite variety with beautiful shaded bronze foliage, its flowers shining with sunset tints of yellow gold and pink. 50c each.

## Cherokee.

A royal beauty, color rich dark maroon, a shade so fine and rich is seldom seen. The petals are two inches broad and as soft as velvet. It grows three feet tall. 30c each.

## Striped Beauty.

A very odd and handsome flower. Buff and yellow, canary and white, finely striped all over with soft red crimson, Flowers on long slender spikes. 25c each.

## New Bronze Leaved Evolution.

The most exquisite combination of colors that can be imagined. The foliage is dark rich shaded bronze. The flowers are large and very graceful, the graded color is pure yellow, the ends of the petals seem to have been dipped in rich golden yellow which shades through dainty tints of canary, lemon and sulphur yellow to a center of soft bluish pink; a rarely beautiful variety. 50c each.

### Betsy Ross.

This charming flower is said to be the "loveliest and sweetest and most beautiful of all pink cannas." Of moderate height, compact growth, it throws up fine trusses of the freshest tenderest shade of large pink flowers imaginable. 25c.

### Martha Washington.

The finest rose pink canna yet introduced, with splendid trusses, making a mass of color, bright clear rose pink. A great bloomer and rapid grower. 20c each.

### Luray.

A splendid shapely plant with fine foliage and massive heads of splendid bold flowers. Clear bright rose pink. Very attractive. 25c each.

### Lorraine.

A rare and charming combination of colors, fine flowers of soft rose pink widely bordered with creamy white; an exquisitely lovely flower. 25c each.

### Dr. Nansen.

A very distinct and beautiful variety of dwarf habit, that bears large trusses of very graceful pale yellow flowers, that fade straw color, and cream white. It is very dainty and makes a fine contrast with the pink varieties. 25c each.

### America.

The first giant flowered dark leaved canna. The foliage is magnificent, a fine bronze color with dark red hues shining as if varnished. The flowers are enormous, color a fine brilliant red flamed and striped 25c each. 20c each if entire set is taken.

## Beautiful New Carnations.

### Prosperity.

An exquisite new sort, most unusual in its shades. The color is white overlaid with rosy pink, the latter color deepening toward the center, and paling toward the edges of the petals. Most picturesque flowers which are borne on long strong stems. 20c each.

### Harry Fenn.

Another carnation that comes from the east highly recommended. Color a magnificent scarlet crimson. Its habit is rather slender, and the flowers are borne on fine long stems, very beautiful and most prolific and persistent bloomer. 20 each.

### Viola Allen.

A carnation that was named for the celebrated actress, Viola Allen, because it was her decided choice among many other wholly new sorts. It is a superb decorative flower. The color is a fine porcelain white, delicately edged and splashed with pure clear rose pink, having a rich spicy odor that is delightful 20c each.

### J. H. Manley.

A grand variety. Flowers average about 3 inches in diameter, color a most brilliant orange scarlet, very fragrant with prettily fringed petals, fine long stems. A great winter bloomer. 20c each.

### Appollo.

Flower a clear brilliant lasting geranium scarlet, very large flower, the outer petals forming a well defined circle, enclosing a well filled center, a vigorous quick growing variety, early and a fine bloomer. 20c each.

### Golden Beauty.

Flowers a clear lemon yellow slightly tipped with pink at edges of the petals. They are from 3 to 3½ inches in diameter, very long stiff stems. 20c each.

### Governor Roosevelt.

A plant of vigorous growth. Flower of full form with a large number of petals, regularly arranged, color deep rich brilliant scarlet shaded with maroon. 20c each.

### Estelle.

A splendid full brilliant scarlet with fringed edges; a fine bloomer. 15c each.

### Elma.

Flower full and large and finely rounded. Beautiful pink with a silvery sheen. 15c each.

### Ethel Crocker.

Said to be one of the very best pink varieties for cut flowers; the color is very fine, a lovely peach pink; very large and beautifully formed. 15c each.

### Mermaid.

A most pleasing shade of salmon pink, very easy culture, gives fine large flowers. 15c each.

### Morning Glory.

This beautiful carnation is an exquisite pale pink, resembling Day-break, but a little lighter shade, and one that is very attractive, an intermediate shade between pink and white. 15c each.

## Gerbera Jamesoni or Scarlet Marguerite.

The "Barborton Daisy" or Scarlet Marguerite is a native of Africa, and is one of the most valuable novelties introduced in many years, owing to its many admirable qualities. It will grow and bloom in California outside all the year, and in green houses in cold climates in winter. It is a plant of vigorous growth, forming a dense tuft of leaves from 10 to 12 inches long, and sends up stems from its center 12 to 18 inches long terminated by brilliant scarlet, or deep vermilion daisy-like flowers fully 4 inches across. It is very fine for cut flowers, keeping a long time, and is a great ornament to the garden. It is still very scarce. Strong plants from the ground April delivery, \$1.30 each.

## Mrs. Shepherd's New Climbing Rose, "Oriole."

This brilliant new climbing rose is a seedling from the dainty old rose, La Jonquille. It has the fine color of the Richardson rose, without any of its faults. The foliage is glossy, and flat regular. The stems of the plant are very clean and smooth and the thorns inconspicuous. Its habit of growth is spreading, so it can be grown to magnificent proportions in the open, or trained to veranda or trellis. The flowers are a clear beautiful rich orange color, the buds and half open flowers exquisitely formed; they fade to lighter yellow, then straw color, and later to cream white, giving several shades on the plant at one time. They are borne on long pliable graceful stems 15 to 20 inches in length, and have the true tea fragrance. Oriole is never without flowers, though it blooms most profusely from February till June. It is a great addition to the list of climbers and cannot fail to be in great demand wherever it is seen, on account of beautiful and unusual color, and its many other attractive qualities. Orders booked in succession for delivery May 1st. Small plants, \$1.00. Later in the season, larger size \$1.50.

## Tacsonia "Morning Star."

A beautiful new Tacsonia we grew from seed received from Australia, and to which we give the name Morning Star, from the charming star-like effect of the flowers. The sepals or outer part of the flowers is a lovely pink, the petals are white tinted pink. It gives the appearance of a white star set within a pink one. The flowers measure  $3\frac{1}{2}$  inches across and are borne at the axils of the leaves like other Tacsonias and Passifloras. It is equally vigorous as other Tacsonias and is a strikingly beautiful plant. We are the only ones offering this lovely new flower. Orders booked in succession for delivery after April 1. \$1.00 each.

# General Collection of Plants.

## Abutilons.

**Infanta Eulalie.** A very beautiful variety with large flaring flowers, a soft shade of pink.

**McKinley.** The counterpart of the above, but with lovely pale yellow flowers; very fine house plants.

**Savitsi.** The most beautiful foliage plant among Abutilons. Leaves are all white, variegated with green. It grows into bushy plants that are most striking and effective either as a pot plant or in the garden.

**Eclipse.** A charming trailing variety with beautiful foliage, variegated green and yellow, and having pretty drooping flowers. 10c to 25c each; \$1.00 to \$2.00 per doz.

## Agapanthus or African Lily.

**Umbellatus "The Blue African Lily."** Grand bedding plant and a splendid pot plant. It is especially fine in groups. The flowers are arranged in umbels on long stems, 25 to 30 or more, forming one head. Color is exquisite light blue, shaded lighter in the center. 15c, 25c and 50c each; \$2.00 and \$4.00 dozen.

**Umbellatus Alba.** A beautiful white variety of African Lily. The flowers grow in large umbels on long stems, and keep for two or three weeks in water. Always rare. 35c and 50c each.

**Umbellatus Variegata.** A more dwarf variety of the above with handsome foliage, beautifully striped green and white, white predominating. Flowers are blue like the plain variety, and contrast nicely with the foliage. A very pretty pot plant. 25 to 50c each.

**ANTHERICUM Picturatum.** Entirely distinct from the old *Anthericum variegatum*, having a rich creamy white band  $\frac{3}{4}$  of an inch wide running through the center of each leaf, margined each side with deep green. Fine for house plants; of very easy culture. 15c, 25c and 50c each.

**ASPIDISTRA Lurida.** One of the most satisfactory plants for house decoration; the leaves start from the ground on long slender stems, from 4 to 6 inches in length, and are from 8 to 20 inches long, and 4 to 6 inches in width, round at the base and pointed at the ends; are thick and leathery and a beautiful green. This plant will grow anywhere in the house, and needs very little care except to sponge the leaves occasionally, and supply it with water. Small size, 30c each; larger size, 50c to \$1.00 each; extra large size, \$1.50 to \$2.00 each.

**Lurida Variegata.** Like the above, except that the leaves are beautifully striped with white. 50c each; small plants only.



# Beautiful Begonias.

## Our Greatest Specialty.

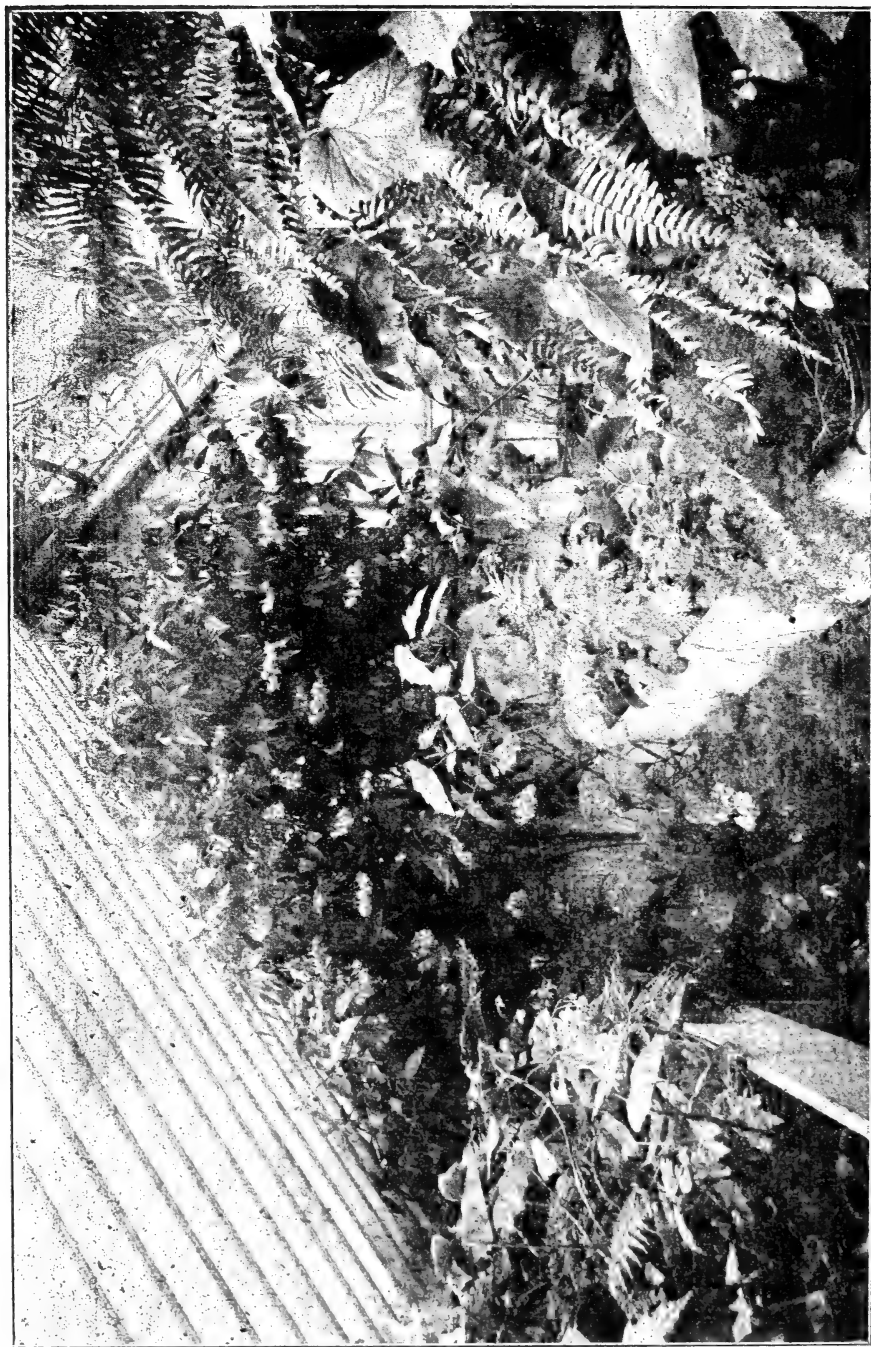
Begonias are the most fascinating plants, and our favorites above all others. The wonderful diversity of flowers and foliage, their beauty, grace and loveliness, their great adaptability and the ease with which they can be grown makes them invaluable for the conservatory, the house and the flower garden. Anyone can grow them who knows anything about the care of plants. We offer the finest collection in the country and are prepared to furnish plants in large quantities, and all sizes from the smallest size to large specimen plants.

## Marjorie Daw.

The original "Marjorie Daw" of Aldrich's charming story was only a beautiful dream girl, but our Majorie Daw is a living reality, a dream come true; not a happy accident made welcome, but a creation; demanded, planned for and developed. Her mother is a well known beauty; a brilliant brunette, almost everywhere loved and prized. Her father is an aristocrat; exclusive, yet immensely admired by those who have the honor of his acquaintance; a handsome blonde, cultured and refined, but lacking energy. The match was a happy one, and when Marjorie Daw came there was great rejoicing. She grew at first with little promise of the glorious beauty developed as she reached mature years. Surrounded by charming associations, no pains were spared in her culture. Companions were chosen with special reference to her care and development; it was seen that some day she would become a celebrity. Ambitious, generous, exquisitely graceful, she was born for a career. To see her was to admire and love her. She is tall and stately like her mother, but far more beautiful; a pure blonde with exquisite coloring and flower-like eyes. Dressed always in shades of green, with combinations of pink, white and light red she is a beauty. She has already visited many parts of California and the east, has journeyed to England, New Zealand, Australia and the Sandwich Islands, and is destined to travel through all the world. Who is this lovely creature and where is her home? Why have not the reporters sought her out; and the newspapers raved of her beauty? Because Marjory Daw is only a flower, but nevertheless she is a queen; the "Queen of all Begonias" at "Ventura-by-the-Sea."

MRS. T. B. SHEPHERD,

"Land of Sunshine." February, 1901.



“MARGORIE DAW,” IN THE BACKGROUND, HAVING 150 CLUSTERS OF BEDS AND BLOOMS.

## Mrs. Shepherd's Giant Climbing Begonia, "Marjorie Daw."

This superb Begonia is a cross between Rubra and Glaucophylla Scandens, and is a wonderfully strong and vigorous grower, and a splendid bloomer. A large, well established plant sends out great strong shoots from 5 to 10 feet high, that branch freely, giving quantities of handsome foliage and a great number of fine flowers. They are borne in large drooping clusters on strong stems. The individual flowers measure 2 inches in length. The color is a soft, beautiful pink, with at first a large white spot in the ovaries. They are very shining and waxy, and can be cut with the branches, keeping three or more days in water. The foliage is light green, thick and leathery, and resembles that of both parents. The large specimen in the illustration was 15 feet high, and 15 feet across. It had 150 buds and blossoms at the time the picture was taken. Marjorie Daw is a valuable addition to California climbing plants, being a "Native Daughter;" it is well adapted to the climate, and grows to perfection in sheltered places. Like all begonias it requires a light, rich soil and plenty of water. It is valuable for cut flowers; a large specimen giving great quantities of exquisite sprays for cutting. 2½ inch pots, 25c; \$2.50 doz.

## Mrs. Shepherd's Grand New Tree Begonias. Brilliant Leaves and Magnificent Flowers.

Words are inadequate to describe the beauty of these splendid Begonias as they appear in our lathhouses and greenhouses. Of the President Carnot type, but greatly superior in every way. All have large oblong leaves and immense panicles of very large flowers in shades of pink and red. They are tree-like, strong and robust; sending up a great number of canes to the height of 6 or 10 feet. The foliage is yellowish or bronze-green, exquisitely beautiful in texture, with a shining silken lustre. The difference between the various plants consists in size and shape of the leaves, and the brilliant colors with which they are at various times tinged or illuminated; they change in the different stages of growth. The shades of color are bronze red, terra cotta, old rose, delicate pink, wine color, copper, yellow-feathered green, and other blendings indescribable. The underside of the leaves is a rich wine color, claret, terra cotta, and in some varieties they are charmingly flushed with these lovely colors. The leaves measure frequently 15 inches in length, by 7½ inches across. The young foliage is sometimes spotted with silver.

**Atala.** Large leaves with three rather blunt points, dotted with large and small silver spots; mulberry red underneath. Young foliage a dark bronze red. Flowers bright pink. A splendid grower.

**Beatrice.** Truly a stately plant, with graceful arching branches and beautiful lustrous foliage that changes in all stages of growth like autumn leaves. They are a very bright terra cotta red underneath, and handsomely spotted with silver above. □ The flowers hang in long drooping graceful panicles; bright scarlet with rose colored petals.



LAWN HOUSE WITH MRS. SHEPHERD'S TREE BEGNIAS.

**Beauty.** This variety has very large, dark green leaves, having four points; the texture is exquisite, like changeable silk, and waved at the edges. Young foliage is old pink, veined green, changing to darker colors. The handsomest begonia of all.

**Kathleen.** A very tropical looking begonia, of the same type as others of this class, but having larger foliage. Leaves immense, dark red underneath, dark shining green above and closely covered with large silver dots. The large clusters of flowers are a rich, dark shining red.

**Daphne.** More dwarf in habit than the others, and grows in a bushy form. The leaves are red underneath, and a light satin green above; oblong, with one long point and lightly pointed above the lobe. The young foliage is a golden-copper color, veined with green. It is a splendid bloomer, being completely covered with panicles of lovely shaded pink flowers. A charming variety.

**Enchantress.** This charming variety has very large, shining, dark green leaves with dark red edge, very delicately waved; underneath they are rich shining wine color. The young foliage is a coppery green, shaded with terra cotta. Foliage when old is also brilliant; it bears immense clusters of very large flowers of a beautiful, rich rose color, shaded red.

**Ernani.** A tall stately plant, of magnificent habit; with splendid foliage. An old, well-established plant will throw up canes to the height of 8 feet, and form an imposing sight, with its splendid leaves and grand panicles of elegant flowers hanging from long stems. The foliage is beautiful at all times; the young growth being very bright, in striking contrast with the older growth.

**Flammarion.** A very rich looking plant, with the darkest foliage of all. The leaves are a deep green; mulberry red underneath; the leaf stem also very dark. The dark crimson flowers are in large panicles, and the plant is never without flowers.

**Heart's Delight.** This lovely begonia will delight the heart of any lover of these flowers. It does not grow as tall as the others; but has satiny changeable green leaves, with three points, edges delicately fluted and edged with dark red, underneath with changeable reddish-green, veined red. The flowers are pure coral-red, the pistillate flowers are 2 inches long, and 2 inches from tip to tip across the petals.

**Ianthe.** Of very strong habit; with handsome, large foliage; the leaves with four points, rich olive-green; surface of leaves like changeable silk; underside flushed and veined dark red. Very rich, shining, waxen, deep red flowers. Always in bloom and very striking.

**Yosemite.** A grand plant of very stately habit; leaves large, slightly drooping, with a lustre like changeable silk. Flowers in very large clusters, a lovely light pink; a very vigorous grower.



BEGONIA—"FAIR ROSAMOND"

**Fair Rosamond.** A splendid, stately begonia, that sends up strong canes to the height of 6 or 8 feet. The leaves are a lustrous, changeable bronze-green above and a rich wine color underneath. They measure 15 inches in length by  $7\frac{1}{2}$  inches in width and are oblong in shape, running to one long point, with 3 smaller points on the upper side. The young foliage is a bright red; sometimes spotted with silver. The magnificent panicles of exquisite waxen flowers hang from long stems and are a deep rose-red color, shaded lighter rose. The pistillate flowers measure  $2\frac{1}{2}$  inches in length.

**Day Dream.** The most rapid grower of all. The foliage is spotted silver; is smaller, and has sharper points than the other kinds. It has magnificent large clusters of exquisite pink flowers and makes a splendid tall large plant. We can supply these begonias from small mailing sizes to specimens in 8 inch pots. Smallest size 25c each, 5 for \$1.00; larger sizes, 35c, 50c, 75c \$1.00 to \$2.50 each; by the doz., assorted, \$3.50, \$5.00, \$7.50.

## Mrs. Shepherd's New Giant Begonias.

### Seedlings From Pink Rubra.

The charming mother of these Giant Begonias is thrown in the shade by her stately children. Their canes shoot up like stems of bamboo, some of which measure  $1\frac{1}{2}$  inches in diameter at the base. The leaves are thick and leathery, and often measure 10 inches long by  $4\frac{1}{2}$  inches across. The flowers, which hang on very long strong stems 5 to 7 inches in length, are double the size and number of those of the parent. They are prolific bloomers at all stages of growth.

**Hebe.** Light green foliage. Young leaves spotted with silver. Old leaves often measure 10 inches by  $4\frac{1}{2}$  inches. The plant, if allowed, will grow 6 to 8 feet high. The flowers are pale pink of an exquisite melting shade, indescribably beautiful; a perfectly lovely begonia. 25c to 50c each.

**Carmen.** A lovely variety: a wonderfully profuse bloomer that bears perfect showers of exquisite pink blossoms. The original plant stands 8 feet high, with four great canes, with wide spreading branches, resembling a great fan, drooping nearly to the ground with great clusters of flowers. So it has appeared for most of the past year. The foliage is similar to the other varieties described below. 25c each.

**"Striking Beauty."** Almost the counterpart of the Carmen with the same habit of growth, and large leathery foliage. The flowers, however, are more the color of Rubra, but it is a Rubra magnified several times, both in flower and foliage, and is the general favorite of all who see it. It makes a beautiful companion to "Carmen." 25c to 50c. Stock of these still scarce.

**Rubra "Bamboo."** The stems of this giant begonia shoot up like canes of bamboo. It has strong, rich foliage; thick and leathery. The bright young foliage is covered with large silver spots. It bears immense panicles of bright red flowers on very long, strong stems. 25c to 50c.

### Other Seedlings.

**Incarnata "California,"** A seedling from "Incarnata," of much stronger habit, with leaves twice as large, and prettily waved; flowers a deeper shade and much larger, and in larger panicles. A vigorous grower and always in bloom; beautiful for bouquets. 15c to 25c each.

**Sylvia.** A very pretty seedling from "Incarnata California," with a beautiful lacinated foliage and a profusion of dainty pink flowers in graceful drooping clusters. It throws up numerous shoots; forms a round handsome plant, and is always in bloom. An ideal basket plant. 15c to 25c each.

**"Dearest Mae."** A seedling from Odorata Alba. The leaves are larger than those of the parent plant, and are darker, as if varnished. The young leaves are exquisitely shining, and prettily ruffled at the edges. Flowers are in large panicles, blush white faced with pink. The plant is a rapid grower, and sends up many stems. 15c, 25c to 50c each

## General Collection of Fibrous or Shrubby Begonias.

No plants have more enthusiastic admirers than fibrous rooted Begonias. They consist of many classes and varieties, very diverse in flowers and foliage. A very beautiful, unique and interesting garden can be made of begonias with the addition of ferns and palms. They grow from 6 inches to 10 or 15 feet or more in height, and the always beautiful foliage measures from a half inch, to 15 or 20 inches in diameter. The flowers grow in fine feathery sprays, borne either upright, or in clusters, on long drooping panicles. The colors are white, blush, and shades of pink and red. Their habit is dwarf and dainty, gracefully spreading, or tall and stately; all are exquisitely lovely. They grow to the greatest perfection in California if given the proper environments. They require partial shade, a rich light soil, and plenty of water. Some varieties are fine bedders and stand the sunshine well, giving thousands of flowers, and blooming without interruption for months; others require a more sheltered location, but all are more hardy than their appearance would indicate.

### Large Leaved Begonias.

A class whose natural habit is to grow prostrate with heavy stems that root along the ground; and send up branches with numerous stems, and very long stemmed leaves and flowers.

**Ricinifolia.** A fine tropical looking plant with large ricinus-like leaves, 12 inches or more in diameter, on long stems; deep velvety green above, and purplish red underneath. The flower stems rise three or four feet, or more above the foliage, bearing aloft fine, large, airy panicles of beautiful pale pink flowers. The stems grow along the surface of the ground. It makes a fine pot plant, and grows very large when planted outside. Small plants 20c; larger sizes 30c, 50c and \$1.00 each.

**Ricinifolia Maculata.** A beautiful and rare variety having very large deeply lobed leaves with ruffled edges. The color is a rich yellowish green, stained and veined with lighter and darker shades. The flower stems are long; the flowers in spikes, and a beautiful pink, shaded light pea-green; they are very pretty and keep well; a winter bloomer. 50c each.

**Rubella.** A very popular variety, with leaves somewhat smaller than the two above. They are a pallid, shining brownish green, spotted with numerous irregular dark brown spots; pale pink flowers on rather long stems. 15c to 50c each.

**Carolinifolia.** A variety seldom seen. It has massive prostrate or leaning branches, and long stemmed handsome compound leaves, composed of eight simple oval leaves with stems joined together in the center; they sometimes measure a foot across; flower stems are two or three feet long. Flowers delicate blush pink in airy panicles. A grand begonia. 35c, 50c to \$1.00 each.



**Verschafeldti.** A most beautiful plant with numerous large, shining green leaves crowned by airy panicles of long stemmed soft pink flowers, so numerous as to give a lovely cloud-like effect. A winter bloomer. 25c to 50c each.

### New Double Flowered Begonias.

A most beautiful new type of Begonia of the *semper-florens* class, of strong, robust habit, and bearing from every branch clusters of charming double flowers, like miniature roses. They are equally free for bedding as the single varieties; standing the sun well.

**Triumph de Lorraine.** A profuse bloomer, flowers quite double with prettily lacinated petals; color of buds bright scarlet, changing to rosy carmine when opened. Stamens bright yellow, making a fine contrast with the red flowers. Rich dark foliage like Vernon. 15c to 50c.

**Boule de Nieve.** Light green waxy foliage, and clusters of charming flowers like little white roses. A perfect beauty. 15c to 50c.

**Double "Bijou."** A dainty double coral, red variety, that grow about 6 or 8 inches high. 10c to 25c.

**Double "Pink Vernon" and Double "White Vernon."** Charming new sorts with very pretty airy double flowers, pink and white; not of as robust growth as "Triumph de Lorraine" and "Boule de Nieve," 15c each, the two 25c.

### Small Leaved Varieties of Spreading Habit. Perpetual Bloomers.

**Hydrida Multiflora.** An old but always beautiful plant, with small oval shaped leaves, and showers of dainty drooping clusters of pink flowers. It grows very tall outside in California, and is invaluable in a collection.

**"Fuchoides Coccinea."** Of the same general habit, but with larger leaves and bright scarlet drooping fuchsia like flowers.

**"Foliosa."** Like the two above, but with smaller leaves that are daintily crinkled at the edges. It is always covered with pretty little white flowers shaded pink.

**"Robusta."** A very bushy, spreading graceful plant, with glossy foliage, and producing quantities of graceful deep pink flowers.

**Degswelliana.** Resembles the above, but with larger leaves, that are covered with minute hairs, and prettily crinkled at the edges. Flowers are white inside, with bright pink ovaries; outside of petals shaded pink.

**Chas. Roocker.** A very fine graceful plant with rather small shining leaves, and bearing numerous graceful, drooping clusters of bright scarlet flowers, always in bloom; very showy.

**Abundance.** The counterpart of the above; except that the flowers are a lovely soft rose color.

**Sandersoni.** Of one same class as the above, but growing only 18 inches high; always in bloom. Called the "Coral Begonia" from its brilliant deep red flowers. The above varieties 10c to 25c each; \$1.00 to \$2.50 per doz.

## Hybrids of the Metallic Type.

**Metalica.** A beautiful old variety with oblong pointed, crinkled leaves shaded yellowish green, covered with fine white hairs; red veins underneath, covered with hairs. Lovely white flowers, covered with pink hairs on the outside, like plush. 15c to 35c.

**Pictavense.** A superb variety of easy culture; always in bloom. The leaves are oblong, pointed, resembling plush; shining dark green above, dark red underneath. It bears enormous clusters of very long stemmed large white flowers, drooping over in the most graceful manner. The buds and the outside of the flowers are covered with long bright red hairs, giving a most unique and striking effect. 25c to 50c.

**Haagaena.** Has bright green, plush like leaves, and clusters of lovely pink chenile-like buds; flowers white inside. 15c to 25c.

**Thurstonii.** A beautiful stately plant with remarkably handsome, glossy foliage. The underside of the leaves is a rich, purplish red, the veinings very prominent; while the face or other side is a bronzy-green, shaded with olive, with a peculiar glossy metallic luster over all. Flowers rosy white in large clusters, well above the foliage, chenile-like buds. 25c each.

**Nobilis.** Resembling the above except that the leaves are larger and deep red underneath; chenile-like flowers, white when fully open. Stock of the five above named very limited. 25c each.

**"Ariadne."** The type of Pictavense; with very large, thick velvety leaves, rounded on the upper side and running to one long point; upper side brilliant shining green and overlaid with fine pile; under side like red plush; flowers in large trusses, resembling brilliant red chenille; opening out white, tinted with blush; they are borne on long stems, and last a long time. Small plants 35c.

**Marguerite.** Leaves narrower and much smaller than any of the above; very dainty chenile like buds; white, when fully opened. Very pretty and of easy culture. 10c to 25c each.

## Begonias of the Rubra Type.

This class of begonias sends up strong bamboo-like canes, oblong long pointed light green leaves, and fine panicles of large drooping fuchsia-like flowers on long stems.

**Rubra.** A well known old variety always in demand. It sends up erect canes with light green, oblong pointed leaves and panicles, of many large drooping clusters of handsome scarlet fuchsia-like flowers. 10c to 25c each.

**Pink Rubra.** The counterpart of the above except that the flowers are pink. 10c to 25c each.

**Alba Picta.** A miniature edition of Rubra, with very narrow, oblong pointed leaves ornamented with numerous silver dots. Flowers are greenish white, very numerous and drooping, giving a pretty cloud-like effect. 10c to 25c each.

**Rosea Picta.** Much like Alba Picta, except that the leaves are a little larger, and the flowers a beautiful rose-pink. A charming variety, 10c to 25c each.

**Wettsteinii.** Leaf is smaller and more ornamental than Rubra, with lovely shaded coloring. The flowers are quite similar to Rubra, but a brighter shade and much more numerous. A most beautiful plant.

**Rubra Alba.** The foliage resembles Rubra, only lighter green, and the flowers are greenish white, with beautiful orange-colored pistals. 10c to 25c each.

**Gloire de Lucerne.** A rare variety variety that is evidently a cross between Tuchereri and Rubra, both of which it resembles in foliage, while the bloom is a most beautiful rosy vermillion in large clusters. The leaves are of the most beautiful form, broad and deeply lobed, bronze-green above and purple below. The plant assumes a fine tree form with a little attention. 15c, 25c and 50c each.

**Argentea Guttata.** One of the most easily grown and satisfactory begonias for amateurs. It sends up very strong branching stems, and beautiful bronze-green leaves thickly spotted with silver, underneath purple. Flowers are blush-white, and always in blossom. 10c to 25c.

**Tuchereri.** A very charming begonia with very dark satiny, bronze-green leaves; and bears fine clusters of beautiful large white flowers, tinged with pink. It makes a fine contrast growing with the scarlet varieties. 15c, 25c to 50c.

## Begonias of Various Types.

**Semper-florens Gigantea Rosea** One of the best begonias. A vigorous and erect grower. It has a very large flower, of a clear, cardinal red, the bud only exceeded in beauty by the open flower, which is borne on a strong, thick stem. The leaves are smooth and glossy, and attached closely to the main stem; both leaf and stem quite upright growing, and forming a shrubby, round plant. It flowers continuously from October to May, and is withal one of the most satisfactory plants in the whole family. 10c, 25c to 50c each.

**Odorata Alba.** One of the most satisfactory begonias on the list. A strong rapid grower with handsome oblong, blunt pointed, glossy green leaves, surmounted at all times by very large, airy panicles of lovely white flowers, delicately scented, like wild flowers. 10c, 25c and 50c.

**Oderata Rosea or Nitida,** Similar to the above, but with thicker and more glossy leaves. The beautiful clusters of flowers stand out above the foliage. Buds are bright pink; and the flowers are, when opened, white inside, and pink outside; always in bloom. 10c, 25c to 50c.

**Gilsonii.** Large leaved, smooth, upright growing. The leaf is sharp pointed and regularly toothed; long, triangular form, very elegant. The staminate flowers are like a partially opened little shell, with the most exquisite dainty crinkled rosette in its center; forming a charming double flower. They are in clusters above the foliage; color, a delicate blush. 15c, 25c to 50c.

**Manicata Aurea.** Large, glossy leaves beautifully blotched with yellow, with carmine etching on the mature leaves. Flowers delicate blush white, on long stems. It is easily grown and is one of the finest ornamental foliage plants for the house imaginable. Always scarce. 25c to 50c each.

**Paul Bruant.** A very handsome and easily grown plant, always in bloom. The foliage is oblong, pointed, with eight pointed lobes, and beautifully toothed; edges red. The flowers are upright or half pendant. The color is soft pink, shaded green. 10c, 25c to 50c each.

**Jessie.** This begonia has very beautiful foliage of richest green, and is beautifully ruffled at the edges. It bears numbers of small pink flowers, so numerous at times as to give the whole plant a cloud-like appearance. 10c, 25c to 50c each.

**Compta.** A very distinct variety of tall growth, long light green leaves, and soft silvery gray lines, with ribs and veins like silver. The flowers are very small and grow above the foliage; and are fine snow white giving an exquisitely dainty appearance. 10c to 25c each.

**Sceptra.** Beautiful foliage, deeply lobed, light green, crinkled, and spotted silver. Evidently a seedling from Diadema. 20c each.

**Washingtoniana Rosea.** Dark green foliage, covered with a felt-like substance; pretty panicles of deep rose flowers: free winter bloomer. 10c each.

**Washingtoniana Alba.** Dainty panicles of pure white flowers, with fine glossy leaves; good winter bloomer. 10c each.

**Edmondsonii.** An old, but very handsome low growing plant with thick, round, shining olive green leaves; dark red underneath. It sends its flowers twelve inches or more above the foliage; which are soft light pink. It blooms in the fall and winter. Very easily grown. 15c to 25c each.

**Dr. Natchtegai.** A most beautiful plant with large shining, rather crinkled glossy leaves. Sends great spreading, graceful panicles of medium sized shaded pink flowers. A most lovely begonia—not new but rare. 25c.

**Washingtonia.** A very distinct old variety seldom seen, of very vigorous habit, attaining the height of 5 or 6 feet. The leaves are large, dark green and prettily crinkled; the flowers are very small and are borne well above the foliage, on light airy panicles of fairy like flowers, white delicately tinted mauve. 15c, 25c, 50c each.

**Evansiana or "Beefsteak" Begonia.** Beautiful sort with light green foliage, veined bright red underneath. It bears clusters of beautiful drooping pink flowers. It has a tuberous root and dies down every fall, and multiplies by little bulbils that form at the axils of the leaves. Dry bulbs from November till April, 5c to 15c each; 50c to \$1.00 doz. Plants from April to July, 10c to 35c each.

Twelve 10c begonias for \$1.00; twelve 25c begonias for \$2.50; twelve 50c plants, \$5.00.

Small begonias can be shipped safely on journeys of two or three days, but it is advisable for those sending from a long distance to order larger plants. When the wood is well hardened, begonias will endure safely journeys of two or three weeks, but when the shoots are young they are soft and watery and decay easily. Always send a second choice list. If any varieties of plants are out, substitution will have to be made or money returned, and often delay and correspondence required; frequently over a small amount.

## A Choice Collection of Rex Begonias.

Nature has bestowed on Rex Begonias many of her choicest gifts, uniting the radiance and brilliancy of precious jewels, the shining lustre of metals, with the beautiful colors and textures of the most costly fabrics. The leaves alone possess all these charms, while the dainty flowers add lightness and grace. The collection, offered below, consist of many of the rarest and most beautiful varieties.

**Le Soudsii.** One of the most beautiful of all Rex Begonias. The center of the leaf is a dark bronzy green, outlining the midribs; ground, light yellow-green; border, rich bright green, dotted with silver; edge, bronze beautifully waved. The entire leaf is blotched and spotted with shining silver, which gives it a rich metallic luster. Leaves are pointed and prettily lobed. Flowers are quite large and a lovely shade of pink.

**Mme. J. Menoreau.** This is intermediate between Rex and upright varieties. It is very easily grown; numerous small leaves; center, emerald green along the mid-ribs; the entire leaf light green, finely flecked with silver.

**Queen of Hanover.** A rarely beautiful variety; leaves like velvet or plush; center dark green with a broad silver band and a margin of dark green; the entire leaf is covered with fine hairs, bright red in the early stages of growth, changing to green with age.

**Stella.** A beautiful, new, quadri-colored Rex, with very broad, shining, silver zone that is veined and marked with bright, metallic bronze and violet shadings. The zone is banded with deep green, and the whole distinctly bordered with reddish bronze. One of the most attractive and beautiful of the Rex family.

**Clementina.** Beautifully lobed leaves; upper surface beautiful bronze ornamented with large silvery spots; underside bronzy-red, which produces a beautiful effect.

**Marquis de Peralta.** One of the freest flowering of the Rex Begonias. Throws out great clusters of leaves, which are exquisitely beautiful. Edged by narrow bands of silver of uniform width; this borders a bright green zone mottled in silver, which encloses the zone proper, and which is a broad silver band about a dark-rayed center.

**Mme. Le Boucq.** A very distinct variety, having the entire leaf of soft rosy-mauve color, with very high, silky luster, and occasionally touches of silver. One of the most attractive begonias of this class.

**Constance.** Broad, shining, silvery zone encircling a dark olive center; ground color deep green, bordered with a broad bronze margin that is beautifully spotted with silver.

**Rex.** A splendid old variety with very thick, large leaves. Ground color dark rich bronze, shaded green, with a silver center; a bright silver band.

**Queen Victoria.** A beautiful light green, silvered leaf, crinkled like crepe. Small bronze-green center, and delicately marked with a bronze-green margin.

**Louise Closson.** One of the most beautiful of the Rex class. Center of leaf rich bronze, with a broad band of silvery rose, finished by a wide margin of dark bronze; edge gracefully undulated. 35c to 50c each.

**Merville.** A charming variety with rather small leaves; center bronze-green, splashed with minute irregular silver spots; then an irregular band of silver with soft metallic shadings fills the center of the leaf, extending to the front; and last, a band of light green, and a bronze edge, both sprinkled thickly with silver. 15c, 25c, 50c each; \$1.50, \$2.50 to \$5.00 doz.

### Mrs. Shepherd's Three Rex Begonias.

**Amethyst.** A beautiful variety, with immense leaves running to a sharp point; ground, metallic silver; center, a skeleton-like oak leaf; the wide border consists of irregular lines of rich emerald-green, spotted silver; margin prettily waved, red bronze dotted with silver. The entire leaf has a changeable, amethystine lustre, with a deeper, violet tinge in the center that is indescribably beautiful. Young growth very beautiful.

**Tourmaline.** A splendid sort, with very large, broad leaves, rounded high on the upper side, and blunt pointed; midribs and veins, dark, rich green, changing to emerald-green; surface, between veins and midribs, bordered with shining silver spots. The leaf has a beautiful satiny bloom, and is lightly covered with long pale-green hairs. Stems and young growth, bright red, and covered with long bright red hairs.

**Silver Cloud.** Very pretty medium sized leaves; ground, dark, rich green. The entire leaf is blistered and clouded with silver, and dotted with silver spots on the bronze edge. 25c to 50c each.

Rex Begonias do well bedded out in a shaded location, in light soil, and plenty of water at the roots.

San Diego, Cal.

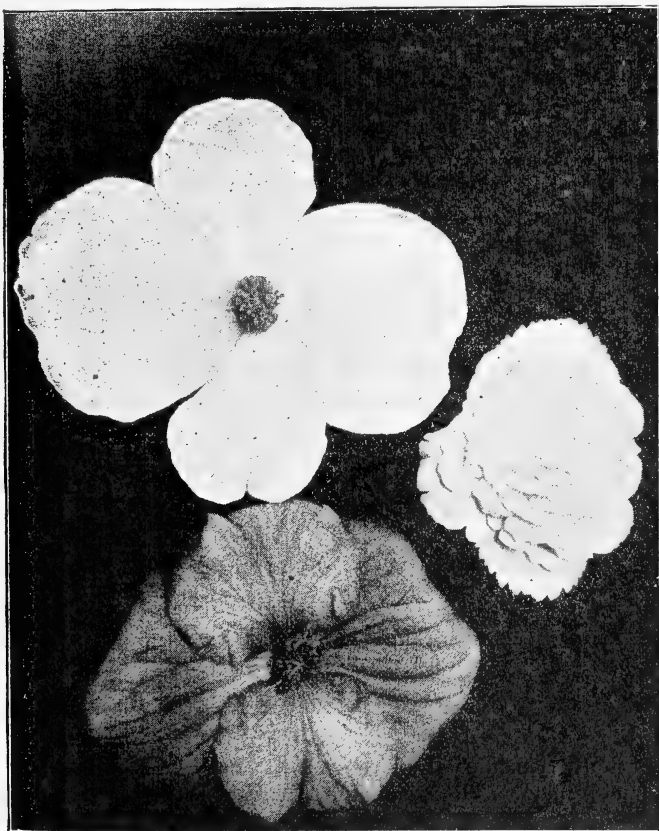
"The Begonias came a few days ago; am delighted with them. They are such fine plants, and so carefully packed."

MRS. H. HARMON.

## TUBEROUS BEGONIAS.

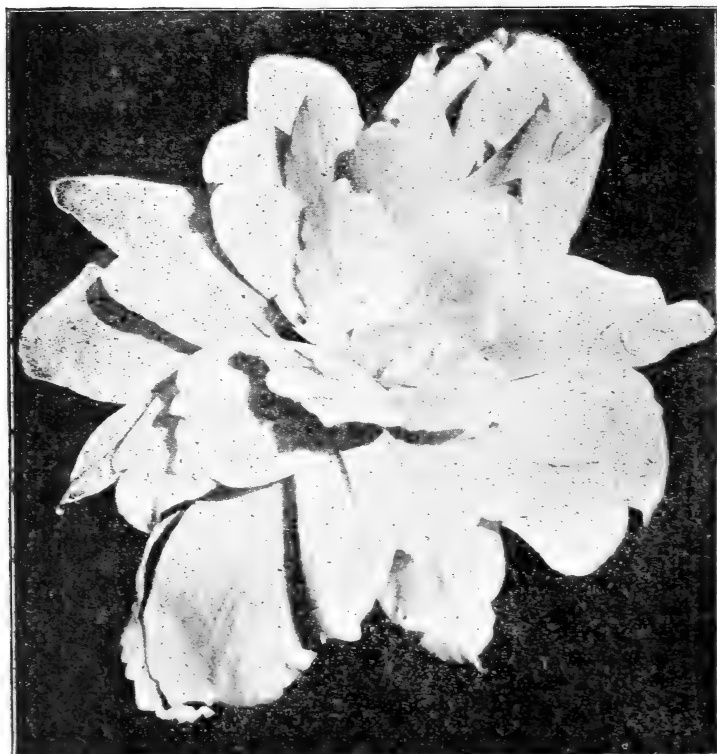
### “The Magic Begonia.”

A rare treat awaits those who are to see tuberous begonias in all their beauty for the first time, for one who has never seen them cannot imagine even from a description half of their loveliness. We have always admired them



immensely, but this last season we had a large collection of the various types in flower, and were completely captivated by them. So soon do they come into bloom after the rough brown tubers are planted, that it seems almost like magic. When planting time comes, which is in March or April, the dainty pink shoots peep through the tubers which means “we are coming.”

In six weeks after this pretty hint for care and attention has been taken, handsome leaves and beautiful flowers have developed together, and a show of flowers continues till the last of October. They will grow equally well in pots or baskets, or in beds in sheltered locations in the open ground, giving a wealth of splendid flowers from spring till late autumn, when they go to sleep for about  $4\frac{1}{2}$  months. The varieties are almost innumerable, the flowers all sizes from two to five inches in diameter, single and double, resembling hollihocks, roses, camelias, single ones with plain or fimbriated edges, or



with beautifully crested petals. The colors and shades are bewildering in their number and brilliancy. Red, from the deepest wine color, scarlet and crimson, terra cotta, orange scarlet, orange, yellow and straw color: and pink and rose that are dreams, some shaded and variegated, and the loveliest pure snowy white. They require equal parts of loam, sand and leaf mold, or thoroughly rotted manure. If in pots must have good drainage. If planted in beds it is well to mulch the surface of the ground to keep it from drying out. They should never be allowed to become dry, as dry roots cause the flowers and leaves to fall; but they must not be overwatered for that will



cause the roots to decay, and the leaves and flowers to fall. Everyone should try them. Write for particulars regarding rare sorts.

Choice mixed, single, dry bulbs, 15c each; \$1.25 doz.

Separate colors, red, yellow, white, pink, best quality, 25c each; \$2.00 doz.

Double choice mixed, 25c each; \$2.00 doz.

Double, separate colors, red, yellow, white, pink, 35c each; \$3.00 doz.

Extra choice varieties, single and double, 50c, 75c, \$1 ea. \$5 to \$8 per doz.

## Beautiful Carnations.

### "The Divine Flower."

**Strawberry Ice.** The coloring of this lovely variety is exquisite. The petals are a beautiful pink from the center out, blending softly into a cream white margin. Flowers large and prettily fringed; resembling the soft shades of melting strawberry ice.

**Anna H. Shaw.** A most persistent and perpetual bloomer, and of rapid growth. In a very short time it forms large, strong plants, full of buds and blossoms on long stems. The flowers are of medium size and perfect form, never bursting; white, occasionally tinged in the center with delicate blush; spicy and sweet; especially valuable in winter. Always in bloom.

**Pride of the Pacific.** A magnificent carnation, with strong, healthy foliage and perfect flowers, measuring 3½ inches across; the petals are very large, and the flower is formed like a rose; color, a beautiful rose pink.

**El Dorado.** Light yellow, edged pink; fringed.

**Grace Wilder.** Always a lovely flower. A soft exquisite pink.

**Los Angeles.** A magnificent white fringed variety.

**Brilliant.** Beautiful brilliant red.

**Corbett.** One of the best pink varieties; a new rich shade; handsomely fringed.

**Mrs. Joust.** A magnificent large exquisite pink carnation, with very large petals and long stemmed flowers. Fine for cut flowers. 15c each.

10c each, \$1.00 per doz.

## Large Flowering Cannas.

For brilliant show in the garden, no plants are more effective than cannas, with their tropical foliage and splendid spikes of brilliant flowers in shades of rich red, orange and yellow. They give a mass of splendid color from April till late autumn. The flowers are very large and beautiful which makes them fine for cutting and decoration. Altogether cannas occupy a place that can be filled by no other plant.

### Giant Orchid Flowering Cannas.

**"Mrs. Kate Grey."** One of the largest cannas introduced. Flower round, clear, wine color, suffused with gold. A magnificent variety of the Orchid flowering type. 20c each.

**Austria.** This grand mammoth canna grows 5 to 6 feet high, with leaves 15 to 18 inches long, and 8 to 10 inches broad; the flowers are 6 to 7 inches across, and borne erect in large, bold clusters; color pure, deep golden yellow; truly magnificent. 15c each.

**Italia.** Equally as large and similar in every way to Austria, except color, which is pure yellow, with a broad blotch of dark, rich maroon in the center of each petal. 15c each.

### Mrs. Shepherd's Beautiful Dwarf Canna, "Golden Beauty."

Very large flowers, rich, bright, golden-yellow, with a few taint spots in the center of the flowers. Splendid spikes of bloom. Grows only 2 feet high. A perfect beauty. 20c each. 60c for the four.

### Cannas of the Crozy Type.

**Black Prince.** Intense dark velvety crimson-maroon. Fine large trusses and flowers; great bloomer. 15c each.

**Sam Trelease.** Flowers open up flat, with round overlapping petals, Different from all others in form. Dazzling scarlet; base of petals rich yellow. 15c each.

**New Peachblow Canna.** "Alba Rosa Grandiflora," rose, pink, and sunset tints.

**Philadelphia.** Undoubtedly the brightest and most beautiful crimson canna in existence.

**Alsace.** The nearest pure white canna, pale sulphur-yellow, changing to creamy-white.

**"Queen Charlotte."** Very large scarlet flowers, deeply margined with gold.

**Florentine.** The very large flowers are frequently semi-double; an intense rich crimson color.

**Goldilocks.** A clear, rich yellow flower, with very broad petals, sometimes slightly spotted with red; dwarf habit.

**Vesuvius.** A beautiful combination of salmon, streaked with coppery red. Very large, handsome flowers.

**The Rival.** The flowers are similar in color to Madame Crozy, and bordered with yellow. It is immense in size, and truly a rival to the parent. 15c each.

**Mme. Crozy.** Dazzling crimson-scarlet, bordered with golden-yellow. The flowers are produced on long branching stems, which are closely set.

**President Carnot.** Fine dark foliage; crimson flowers flecked with darker red.

**Madam Allemany.** One of the best yellows; with short, broad petals of fine orange-yellow, spotted dark red. A rare and scarce variety. 15c each.

**Alphonse Bouvier.** A remarkably luxuriant grower, in rich ground attaining a height of 6 to 7 feet. Color is of a rich, brilliant crimson, almost approaching scarlet when the flower opens, changing to a deep, dazzling crimson as the flowers fully develop.

**Maranta.** Very handsome dark foliage, streaked with dark red and yellowish-green. Very dwarf habit. The leaves are so handsome as to resemble a Maranta; and the beautiful crimson, iris-like flowers are dotted with a darker red. Very dwarf habit; a fine pot plant. A mate to Rainbow 15c each.

**Dwarf Canna Rainbow.** A beautiful new canna that rivals the bright colored dracenas in the gay colors of its foliage. It makes a very handsome pot plant and is also a fine bedder. The leaves are dark maroon red, marked with green, white, pink and red. It grows 18 inches high, and is a little beauty. 10c each.

\$1.00 per doz. postpaid. Clumps 35c to 50c. \$3.75 to \$4.00 per doz.

## CHOICE CHRYSANTHEMUMS.

### "The Queen of Autumn."

We are apt to lose our interest in Chrysanthemums in the spring, because the blooming season seems so far away, but if we leave them out of our calculations till autumn and we see in other gardens stately specimens crowned with splendid flowers, or blooming in riotous profusion, we wish that we too, had paid our allegiance to the Queen of Autumn, for on her loyal subjects she bestows royal favors, and prepares her grand autumnal pageant; well worth months of devoted service. The best time for planting chrysanthemums is April, not later than May or the first of June. The ground should be perfectly cultivated and enriched, giving first a very thin sprinkling of wood ashes, and a bountiful supply of rotted manure. If large flowers are desired plants should be grown from cuttings, to prevent shoots from the roots; if masses of flowers are desired they can be grown from root divisions. They should never be allowed to suffer for water; to prevent baking of the soil it is well to have the ground mulched. About August 1st it is well to cut back the plants about half way, to prevent too early blooms and to make bushy plants. When the flower buds appear, if large flowers are desired, leave only the central bud to each shoot; if a mass of flowers, the small side buds should be pinched off leaving only the center ones on each branch. If the plants need support neat stakes can be supplied. With these requirements attended to, any one can grow a fine bed of chrysanthemums.

## Mrs. Shepherd's Artistic Chrysanthemums.

### Dreams of Beauty.

**Curly Locks.** This is a curly darling, a perfect beauty. Semi-double, petals long, quilled, opening about an inch from the tip; inner petals incurving, and curling gracefully over the center; outer petals long

and drooping; recurving prettily at the tips. The color of the flowers at first a beautiful pink, delicately penciled, changing to a waxen-white in the center, and shading blush to the ends of the petals. Can be grown 10 inches across. 15c.

**Golden Ball.** A magnificent ball of pure, bright canary-yellow, Petals slightly rolled at the edges, pointed at the tips, and a little recurved, all of an even length, coming down close around the stem. Flower is perfectly double, very full. 15c.

**Petaluma.** This is a grand flower. The petals are quilled the same size from base to tip, and are the size of a large knitting needle, and 3 inches in length. Flowers very double, and when fully developed are round as a ball. Color is pure nankeen yellow; old gold with age.

**Blazing Sun.** A splendid dahlia-flowered variety. Color at first a rich brownish-red, with center incurved; developing later into a large, flat flower, petals blazed with yellow in center, and flushed with brownish-red, broad and deeply recurved. Flower 7 inches across.

**Juno.** A beautiful cream-white flower; very distinct in the great width of its petals, which measure nearly  $\frac{3}{4}$  inches across, tubular at the center; they open out, curving slightly at the edges; long, pointed, and curved at the tips; the lower petals reflex and curve, while the upper ones curve gracefully toward the center.

**Ribbons.** A very beautiful and graceful flower; semi-double with broad petals; pale yellow in color, flushed pink half their length; flowers measure 7 inches across, and hang like great bunches of ribbons. Very lovely.

**Radiance.** A plant of this striking variety in full bloom is fairly radiant with brilliant starry blossoms. Flowers are single, with tubular petals closely set, and bright light-red around the center for about  $1\frac{1}{2}$  inches, then opening out broad, a lovely soft yellow. The contrast in color is very novel and striking, the flower being half yellow and half red.

**"Green and Gold."** A most striking variety which not only has the most splendid, double double flowers of perfect form and beauty, but also lovely foliage. The leaves are a rich shade of green, handsomely variegated with creamy yellow; the contrast being very decided. Some of the leaves are half yellow and half white. The plant retains its beautiful foliage in the hottest sunshine outside, and under glass is a splendid foliage plant, even when not in bloom. 25c.

**Parachute.** A most remarkable single flower. Petals measure  $\frac{1}{2}$  inch across and about  $3\frac{1}{2}$  inches in length, pointed at the tip. The color is a fine mauve-pink. Petals stand out from the center, so that the flower forms a perfect parachute. It is very beautiful. It can be grown 8 inches across.

**White Wings.** A very large semi-double variety. pure waxen white, very chaste and beautiful; petals at first tubular, opening flat and broad, and curling at the ends, a most exquisite variety.

**Firefly.** Beautiful bronzy-red with thread-like petals. The petals are lit up by crossbar lines of yellow; the base of the petals is yellow. A brilliant, charming flower: 15c each; \$1.25 doz. postpaid.

## Chrysanthemums From Various Sources.

**Belle of Castlewood.** A beautiful rich new shell pink, fine Japanese incurved form.

**Black Hawk.** Dark crimson scarlet, very large and beautiful.

**Early Everblooming Hardy.** Of the pompon class, a true ever-bloomer; two colors, white and yellow.

**Elmer D. Smith.** A very rich deep wine color, outside of petals silvery pink; a splendid flower.

**Fishers Torch.** Fine deep velvety red, very dark and handsome.

**Golden Plume.** A very late variety, flowers of medium size, intense rich yellow like handsome plumes; a most satisfactory variety in every way.

**Geo. W. Childs.** The very best crimson yet introduced.

**Helen Bloodgood.** A handsome shade of true clear pink; flowers of fine form.

**Lillian Bird.** Always beautiful, tubular petals; color silvery rose; very handsome flower.

**Lavender Queen.** A soft lovely large flower of clear lavender pink,

**Murillo.** A splendid rich brilliant red, very large and handsome, reverse of petals yellowish red.

**Mrs. S. F. Parks** A bright golden yellow, very fine incurved form.

**Mrs. E. G. Hill,** A good incurving pink, a splendid flower.

**Major Bonnafon.** One of the very best, incurved yellow flowers of beautiful form.

**May Flower.** Magnificent incurved white, lower petals reflexed, a very handsome flower. 25c,

**Minnie Wannamaker.** Creamy white, a magnificent flower resembling a large ball.

**Mrs. John Ills.** One of the very best white, late bloom, very large double flower especially fine for cut flower work.

**Mrs. Jerome Jones,** A very valuable white, fine for cutting.

**Norma Dee Childs.** A beautiful Chinese variety with enormous snowy white flowers.

**Omar.** Splendid rich blood red flower.

**Princess of Chrysanthemums.** One of the handsomest of all chrysanthemums and entirely distinct from all others, immense flower with long incurving tubular petals; color a soft shaded pearly pink, with a peculiarly waxy effect. It keeps a long time, and is superb.

**Philadelphia.** Of very graceful incurving globular form. White illuminated lemon yellow; a charming variety.

**Philadelphia Canary Tipped.** Like the above but with petals tipped with canary yellow,

**Puritan.** A snow white lovely large flower, one of the very best.

**Polly Rose.** Exquisite pure paper white, a fine variety.

**The Queen.** A very fine snowy white of beautiful form.

**Timothy Eaton.** One of the very largest white chrysanthemums ever introduced, of splendid form. It has created a great sensation wherever seen. 20c.

**Yellow Good Gracious.** A sport from Good Gracious; a fine variety with quilled petals, irregularly incurved; one of the largest flowers of any sort.

**Silver Wedding.** A fine white sport from Golden Wedding, a very beautiful and striking variety. 15c each except when noted; \$1.50 doz. by mail.

### Ostrich Plume or Hairy Varieties.

**C. B. Freeman.** A very fine hairy variety, changing from bronze yellow to pure yellow.

**Child of Two Worlds.** A lovely soft incurved white.

**Louis Boehmer.** Very hairy. Soft lovely shaded mauve pink.

**Locadie Gentils.** A beautiful yellow sport from Louis Boehmer.

**Improved Louis Boehmer.** A light pink sport from Louis Boehmer.

**Queen of Plumes.** A charming shade of bright pink, very hairy.

**Robt. M. Grey.** One of the handsomest of this class; flowers of fine form; color a rich yellowish brown shading later with yellow; very long hairs; most striking and beautiful. 15c each; set of seven 85c, postpaid.

34 varieties sent postpaid for \$3.40.

### Brilliant Coleus.

For brilliance of foliage united to the easiest culture no plants can excel Coleus. They start readily from seeds or cuttings, grow rapidly and make beautiful ornaments for the house, conservatory or garden in the shortest time of almost any plant we have; giving all the colors and shades of the rainbow. We offer 12 choice varieties, 10c, 15c, 25c each according to size; \$1.00 to \$2.00 per doz. Strong rooted cuttings, 50c doz. postpaid.

### The Shasta Daisy.

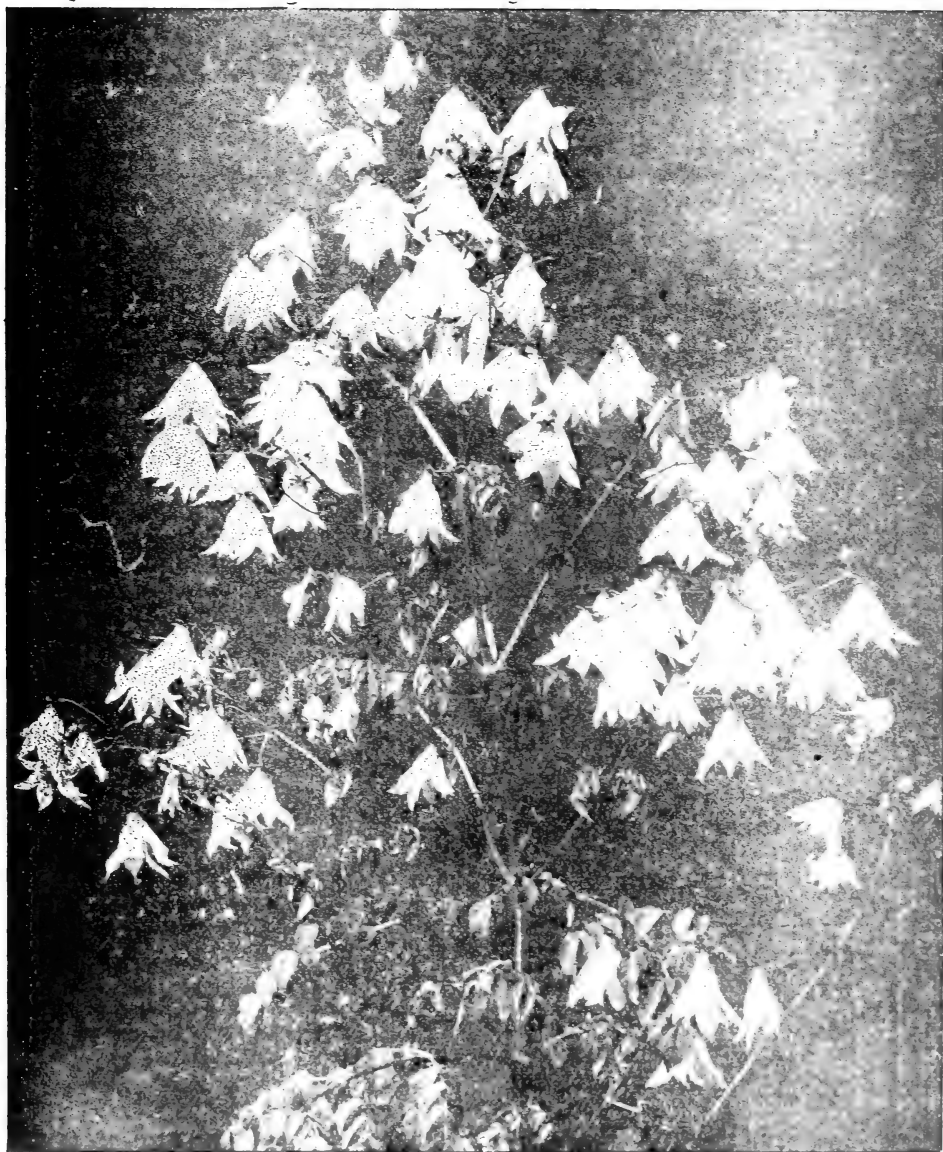
This beautiful novelty was called into expression by the great High Priest of Horticulture, Luther Burbank, who officiates at the weddings of fruits and flowers at Santa Rosa, California. Seeing possibilities of beauty of which no one else dreamed, he united the plebeian American field daisy, with the coarse, sturdy peasant daisy of Europe; then he brought from far away Japan a mate for his daisy children. The Shasta Daisy is the result of the cross. Last year Mr. Burbank gave to the world this child of his heart and brain. It is a hardy perennial, blooming in California nine months of the year. Foliage grows near the ground. The flowers are large and graceful, and have three or more rows of petals, of purest glistening white. They are borne on long, wirey stems, two feet in length. The flowers often measure four or more inches across. They have a charming effect in the garden, and are invaluable for cut flowers. 25c each; \$1.75 doz. Always send a second choice list.

## Two Rare Dahlias.



MRS. SHEPHERD'S GIANT CACTUS DAHLIA "MONARCH OF DAHLIAS.

**"Monarch of Dahlias."** Named by Mr. Thomas Williams, of the San Francisco Examiner, when visiting in Ventura, in honor of that paper, which is called the "Monarch of Dailies." It is intermediate between the double and the cactus varieties. The flowers are large, loose, very esthetic in form, and measure six or more inches across; the petals are very broad; the color is a deep, rich, dark red, having a beautiful bloom like velvet; flowers are borne on long stems, and are fine for cutting. 20c to 40c., dry tubers.



DAHLIA FLORATA "THE LILY DAHLIA."



## “The Lily Dahlia.”

This stately plant is a distinct species. It attains a height of 10 to 15 feet, and produces through the months of September and October innumerable large, single, drooping, lily-like flowers of a delicate pinkish mauve color. The broad petals are 4 inches long, and recurve, giving a bell-like appearance. There is a maroon ring around the yellow center, and a delicate pink edge around the maroon, making a charming combination of colors. The foliage is spreading and quite large. Nothing can exceed the grace and beauty of the fairy-like blossoms seen from a distance, as they swing and sway in the breeze. Nothing more lovely can be imagined than the delicate effect as one stands at the base of the plants and looks up into the depths of the bell-like flowers. 35c, 50c, 75c and \$1.00.

### Fuchias or Lady's Eardrop.

**M. Alphand.** Double. Of grand habit; very large recurving sepals of bright scarlet; very large corolla of soft reddish-violet.

**Arabella.** The best old pink variety; flowers large; sepals clear, waxen-white; corolla exquisite pink.

**Aurora Superba.** Beautiful waxen orange-scarlet flowers; truly superb.

**Black Prince.** One of the best. Single flowers, with flaring funnel-like corolla; color scarlet and purple-carmine.

**Carmelita.** A seedling of my own; a beautiful variety of dwarf habit. Gives showers of double scarlet and white flowers, always in bloom.

**Eugene Vercousin.** Double. Corolla rosy pink, shading to heliotrope; sepals rosy red. Color new and distinct.

**ESMERALDA.** A beauty, very double. Sepals crimson; corolla. a most lovely melting shade of violet-mauve, changing to pink. Very handsome foliage. 15c each.

**General Vandever.** A splendid variety, a seedling of my own, of vigorous climbing habit; with large, handsome yellowish-green foliage, and immense sprays of very large single flowers, sometimes semi-double; a fine purple and red. Will grow to the roof of a house in a few years.

**Heron.** A splendid large single flower of fine form; corolla, rich deep purple red, sepals dark scarlet. A very popular variety.

**Joseph Rosian.** Splendid dark double scarlet and violet-purple, marked with carmine; grand bloomer.

**Mrs. E. G. Hill.** Grand double, rich crimson and white; immense.

**OCTAVE FEULETT.** Sepals coral-red; corolla loose and flaring; color pinkish violet-mauve, veined deep rose; an exquisite sort. Very dainty. 20c each.

**Otto.** Splendid double scarlet and white; tree-shape; a most constant bloomer; flowers rich and handsome.

**Jupiter.** A magnificent double sort; sepals bright crimson scarlet, petals white; very large and full flowers. as large as Snow Storm but much better habit.

**Penelope.** A very graceful, dainty, scarlet and white, double drooping, flowers fully formed and beautiful; very graceful.

## Fuchias of Distinct Types.

**"Crimson Trumpets."** A tree fuchsia; a seedling from "Corymbiflora," but much prettier, with large waxen flowers of a soft clear rose-red. They measure three inches in length. The arrangement of the sepals and petals is especially pretty. Very easily grown and always in bloom. Their large corymbs of long flowers are very showy, and are followed by large dark berries. The foliage is large and velvety.

**Helene.** A tree fuchias; a seedling from "Fulgens," which it much resembles; of vigorous growth, with long green foliage. The flowers hang in graceful panicles. The individual flowers measure 3 inches in length; color a soft orange-scarlet. Half of the sepals, the pistal, and tips of the unopened buds are a beautiful pea green.

**Mary.** This is a new Fuchias of the Triphylla type. The plant is a profuse bloomer; the drooping flowers, over two inches long, are a brilliant crimson scarlet, and stand out prominently against the dark foliage. The young foliage is veined with dark red and is very velvety. Altogether it is a very unique plant, and a fine addition to the flower garden, window garden or conservatory.

**Syringiflora.** A variety of distinct habit and foliage, and very rapid growth, forms very large bushes, and bears large bunches of lilac mauve flowers, about the size of lilac blossoms and very much resembling them. They harmonize well with the magnificentagenta Bougainvillea flowers. It makes fine large bushes and is a very showy plant.

All fuchias 10c to 25c each; \$1.00 to \$2.25 doz.

## CHOICE FERNS.

**ADIANTUM Capillus Veneris.** The native maiden hair fern; forms large plants in a very short time. Every one can grow it. 10c, 25c, 50c each.

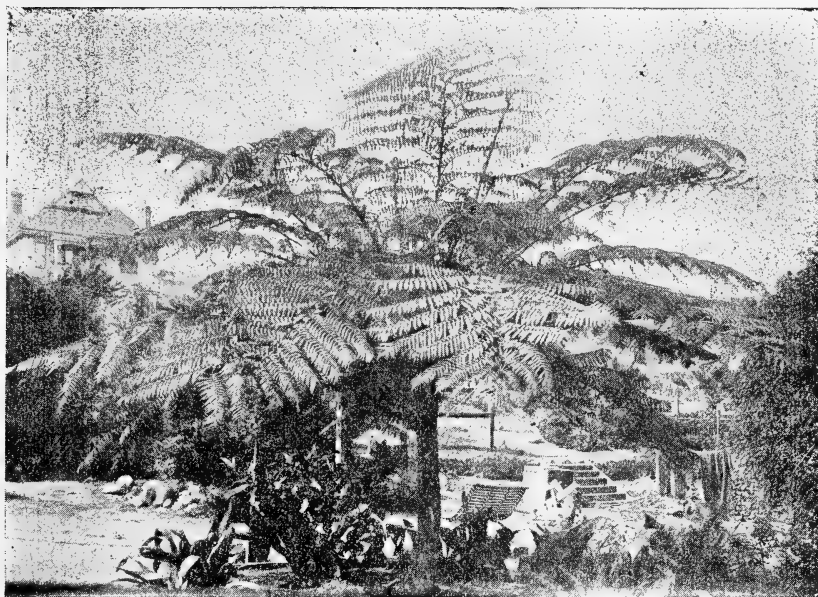
**CAPILLIS Veneris Magnifica.** A tall extra fine variety of the above, with purplish-black stems and very handsome leaves. 25c, 50c to \$1.00 each.

**Cuneatum.** A dainty "Maiden Hair" fern, much used in cut flower work. 20c to 50c each.

**Gracillimum.** A lovely maiden hair fern so full and graceful and dainty as to be called the "Mist Fern."

**ADIANTUM WILLIAMSII or Golden Maiden Hair Fern,** A very elegant and strong growing variety, with large yellowish fronds of yellowish green, with a golden powder on the underside; stems are black; and the plants grow 18 inches to 3 feet high, and by their great beauty excite universal admiration; a rare variety. 75c to \$1.25 each.

**ALSOPHYLA Australis.** An Australian tree fern; a magnificent variety, hardy in Southern California in frostless locations. It bears magnificent fronds that measure 6 to 8 feet long, and 3 to 4 feet in width. \$2.00 to \$4.00 each.



“ALSOPHYLLA,” AUSTRALIAN TREE FERN.

**Dicksona Antarctica.** A very fine tree fern, more hardy than *Alsophylla Australas*, but not of such vigorous growth; small plants only. \$1.00 to \$1.50 each.

**ASPLENIUM Belangeri.** A very elegant fern, easily grown, forming new plants on the surface of old leaves. It makes beautiful and graceful specimens. 15c to 50c each.

**Cyrtomium Falcatum.** The “Holly Fern.” A very easily grown variety with large shining green fronds; a very fine pot plant. 25c to 50c each.

**Davallia Dissecta.** A beautiful fern of the “Hare’s foot” class that sends up slender stemmed large triangular shaped fronds, very finely cut, and of a rich shining green. It grows rapidly and is valuable for baskets or large pans. 25c, 50c to \$2.00 each.

**Nephrolepis Exaltata Bostonensis.** “The Boston Fern.” No plant is so extensively used for decoration as the Boston fern. It differs from the older variety in having larger and broader fronds and is a fresher and brighter green. A beautiful plant for all decorative purposes. 25c, 50c, 75c; \$1.00 each.

**N. Exaltata.** The well known Sword Fern of the tropics with long narrow upright leaves. 25c to \$1.00 each.

**Nephrolepis Tuberosa.** A beautiful variety with tubers on the roots, fronds dark shining green, the panicles closely set; the fronds are more numerous than the Boston Fern. It makes very handsome specimens and is fine for baskets.

**Cordata Compacta.** A charming dwarf variety with narrow fronds that grow from one foot to fifteen inches high; of rapid growth.

**Phillipinense.** A very pretty sword fern, very dark green fronds, with the panicles prettily fluted at the edges. Very easily grown. 10c, 25c, 50c each.

**Pictenata.** A dwarf variety much resembling the Boston Fern. It is trailing in its habit, making it fine for baskets. 10c, 25c, 35c each.

**Duffi.** A very pretty dainty dwarf variety of sword fern; fronds tufted and branched. 15c to 25c each.

**PTERIS Tremula.** One of the finest for house decoration, growing very rapidly, and throwing up large handsome fronds; makes magnificent specimens. Easily grown and very popular. 15c to 50c each.

**Cretica.** A low growing variety with long divided fronds, triangular in shape, pretty and interesting. 25c to 50c each.

**Serulata.** A very pretty dwarf fern with long narrow divided leaves. 15c to 35c each.

**ONYCHIUM Japonicum.** A delicate Japanese fern, with dark green, glossy leaves; excellent for cutting; height 1½ feet. 25c each.

### Four Native Ferns.

**GRYMNOGRAMMA triangulus,** Or "Goldback fern;" beautiful dwarf variety, with divided triangular leaves, the underside covered with bright golden powder. 5c, 10c to 25c each; 50c to \$2.00 doz.

**PELLAEA**—or "**Coffee Fern.**" A very distinct and interesting fern with wiry stems. The fronds are long and very spreading, and the panicles leaves small and round. It grows on the dry hillsides or in barrancos. In the dry season the fronds turn a beautiful dark red color. 25c to 50c each.

**WOODWARDIA Radicans California.** A grand fern that in its native wilds sends up magnificent fronds six feet high and 1½ to 2 feet wide; they are a beautiful green and of firm texture, and handsomely wrinkled. It is a very beautiful fern and will be much used for decoration when its good qualities become known. The roots are quite large. 25c to \$2.00 each.

## RARE GERANIUMS.

We are headquarters for fine geraniums, eastern varieties and our own seedlings of the new large flowering types. No plants are more effective for garden decoration, their varied and brilliant colors and delicate tints render them invaluable for bedding and pot plants. Many of the new varieties have beautiful flowers on long stems, and are very effective for vases. They keep well for ten days or more.

## Mrs. Shepherd's Superb New Seedlings.

A most beautiful and varied set of new seedling geraniums. One who has had an intimate acquaintance with the family for years, said, "They can't be beat." It has been a delight to help them into expression. It was difficult to choose from among the many charming contestants the favored ones and to give them appropriate names. They are a brilliant, exuberant, gay and festive little collection sure to win favor wherever seen.

**Aurora.** A very beautiful variety; fine large graceful trusses of flowers, flushed with very delicate blush pink; veined deeper pink, with an auriole of salmon around the large white eye.

**Cerese.** Very fine round flowers, lovely cerese, delicately overlaid and veined with crimson on the lower petals.

**Crimson Ball.** A fine dwarf bedder, that grows about 18 inches high, bearing on long stems, high above the foliage, large balls of rich deep velvety crimson flowers.

**Castenet.** Fine flowers, shaded soft magenta; two lower petals, half magenta and half velvety salmon-scarlet extending into the edge

**Claravel.** Rich deep velvety magenta. Center of the flower and half of the lower petals, a rich shaded flaming velvety scarlet. The entire truss has a velvety fruit-like bloom, that is very attractive.

**Cymbel.** Rich, bright, purplish, velvety center, two lower petals, velvety scarlet, upper petals margined scarlet, most striking.

**Comet.** A splendid fiery scarlet, with fine trusses on long stems, a hybrid between the zonale and ivy section. A very striking variety.

**Estelle.** Beautiful large flowers, nearly 3 inches across, three lower petals blush, heavily flushed and veined salmon pink, two lower petals white, outer part shaded salmon, lower half, white, delicately tinged salmon.

**Faustina.** A fine cerese, with fan-shaped spots on the lower petals. of soft pink, very rich and handsome.

**Loveliness.** A lovely single seedling from Sou de Mirande; fine large flower with white center, margin daintily splashed and flecked, with pure salmon very light green foliage

**Peep of Day.** A pure soft peach pink, an unusual color, very fine large handsome flowers; exquisite.

**Peachblow.** Flowers delicate flesh color, exquisitely flushed in the center with salmon pink, and prettily veined with dark pink; large trusses on long stems.

**Redbird.** A superb scarlet, single, with fine trusses of very deep round flowers, so full and overlapping are the petals, that it seems almost semi-double, distinct and beautiful, a splendid color.

**Volunteer.** A fine double dwarf bedder, with pretty dark green zoned foliage, bearing on long stems, fine trusses of beautiful large crimson cerese flowers, a beautiful color.

**White Azalia.** An exquisite single variety, with large snow white flowers on long stems. They resemble clusters of white azalias.

**Zenobia.** Splendid large flower, overlaid and veined orange-scarlet; two lower petals veined maroon. A beauty.

15c each; \$1.50 doz., postpaid.

### Mrs. Shepherd's Seedlings, Older Varieties Single.

**The Peri.** A seedling from Souv de Miranda, and a perfect beauty. Lower petals are orange-salmon; white center overlaid with rose; lower petals half salmon; center white, lightly flushed deep rose; circle of salmon around the eye. Flowers very large and round; dwarf habit.

**Mad. Modjeska.** The flower is perfectly round. The buds when first unfolded are velvety orange salmon, and the fully opened flower pure salmon pink; edges of petals grow lighter with age; two upper petals veined pink at the center; with a fine white eye; very large. A superb flower.

**Desdemona.** A rare and unusual color. Flowers exquisite pure rose pink with a fine eye; deep pink lines at base of upper petals.

**Bonnie Rose.** Seedling from Souv. de Miranda. A charming variety and a splendid bloomer. The flowers have a white ground, beautifully flushed and marked with a most lovely shade of pink.

**Symphony in Red.** Flowers dazzling orange scarlet, very velvety and beautiful. A large white eye; a superb color.

**White Pearl.** Pure, pearly-white, very large, with perfectly round flowers. A valuable addition to the list of white geraniums.

**Pink Pansy.** Large flowers, beautifully marked, resembling a pansy. Center pure white, with a circle of bright salmon-pink; outer half of petals light pink, veined with salmon-pink; base of two lower petals veined light red.

**Surprise.** The two upper petals are blotched with velvety scarlet, veined dark red; the edges and three lower ones are a vivid purplish-crimson, clouded at the margin with bright crimson. Very dwarf habit.

**Pink Pearl.** Very large flowers; large trusses of soft pearl-pink; a beauty. 10c each, \$1.00 dozen; cuttings half price.

Always send a second choice list.

## Beautiful New Geraniums.

### From Various Sources.

**Dr. E. Hering.** A fine dwarf variety with large round flowers, brilliant red overlaid with scarlet; very gorgeous and effective.

**Emanuel Arene.** Very large double florets. Pure white, with broad bands of rosy scarlet, making a flower of rare beauty. Extremely vigorous grower, producing an abundance of trusses set well above the foliage. This variety should be in every collection.

**Hubert Charron.** Beautiful semi-double auriole. Clear white center with a broad band of reddish carmine around each petal. A very showy variety, and one of the finest in its class. This variety has given general satisfaction as a bedder, being a good grower and exceedingly free.

**Jean Viaud.** Semi-double. Very strong growth. The flowers are borne in immense trusses, which completely cover the plant. It is by far the loveliest pink geranium ever offered; the flowers are very large and of perfect form, while the color is exquisite.

**La Fraicheur.** Like a double picotee, pure snow-white, with a narrow distinct edge of rosy pink. Very striking and unique. Dwarf, compact grower.

**Mme. H. Tilmant.** Semi-double. White center, with broad margin of scarlet, similar to H. Charron. An exquisite flower.

**M. Canovas.** Double. Immense trusses of brilliant, fiery-scarlet flowers with velvet maroon shadings. Fine dwarf, spreading habit; very free. One of the darkest geraniums.

**"Mars."** A very pretty plant of very dwarf compact habit, that bears medium sized single flowers, brilliant salmon pink in the center, shading to white on the margin of the petals.

**Double "New Life."** A remarkable new variety, with pretty double deep red flowers. In the center of each, there appears a small white floret; an extremely pretty thing.

**Pierre Le Brun.** A fine variegated single. A charming combination of salmon-red, pink, and white, exquisitely blended. The flowers are very large, and are grown on stem 12 to 18 inches long. It is most charming for vases, keeping perfectly fresh and beautiful for ten days in water.

**Richelieu** A valuable addition to the double crimson section, being the strongest grower in this class. Extra long trusses and long stems. Color deep crimson maroon with dark orange center.

**Ryecroft Pride.** Double crimson, similar in color to a Meteor rose. Very large florets on strong stems. Very fine color.

## Older Geraniums From Other Sources.

### Single.

**Mme. Bruant.** White, veined with carmine-lake; florets regularly bordered with bright solferino. The arrangement of the color is exquisite, often intermingling and producing a striped effect.

**Fleur Poitevine.** Brilliant rose-carmine, marbled and striped pure white, producing an aureole of deep orange-carmine at the center.

**Mrs. E. G. Hill.** Enormous blooms, beautiful orange-pink.

**Souv de Miranda.** Each floret has a large creamy white center; the upper petals white, edged with soft rose. Lower petals a soft salmon rose with lighter shadings. Fine and effective for a hedge.

**L. Aubi.** Very large; fine snowy-white.

**Margaret de Laves.** Immense, large, snowy-white flowers.

**Bennie Cenant.** Immense orange-scarlet flowers, with large white eye.

### Double.

**J. Ricaud.** Enormous trusses, purplish-crimson of a very intense shade, center very distinctly marked white.

**Alphonse Ricard.** A strong grower, dwarf and branching, and producing flowers in great masses. Both floret and truss are of enormous size; double; color brilliant orange-red.

**Beaute Poitevine.** Semi-double; the grandest of all the light, fancy Bruants. Exquisite salmon-rose.

**Marquise de Galles.** Trusses of immense size; color a rosy-cerise, shading to orange; a very striking color; and quite new.

**Mme. Jaulin.** Center of flower very delicate pink, bordered with pure white; semi-double. Perfectly lovely.

**Crimson Velvet.** Magnificent dark crimson; fine for hedges.

**La Favorite.** Pure snowy-white.

**Mme. Hoste.** White, shaded salmon-pink.

**Pure Pink.** The most light lovely pink imaginable.  
10c each; \$1.00 doz.; cuttings, 40c doz.

## Bronze, Gold and Tricolor.

The Bronze and Tricolor geraniums are very effective bedding plants, the foliage being in many instances as beautiful and brilliant as flowers. They thrive in California, standing the sun well, and in winter their colors are much intensified, making them valuable ornaments when flowers are scarce. They should be largely planted in beds and for dividing lines.

**"Glints of Gold."** A splendid golden bedding variety of very vigorous growth; the large leaves are exquisitely tinged as if sunshine had passed over them leaving glints, of golden light; a faint reddish zone encircles them and no two leaves are alike, flowers scarlet. A most effective and striking plant. It stands the hot sun, and is a most splendid bedder.

**Dwarf Silver Geranium.** This new Geranium is a great improvement on "Mt. of Snow." The plant grows 18 inches high; the foliage is deeply and irregularly margined, and marked pure white; flowers rich velvety crimson. The two above are Mrs. Shepherd's seedlings. Cuttings one-half the price of plants. 10c.

**Beauty.** A most charming variety with leaves as beautiful as a flower. The coloring is exquisite. The zone is marked white, green, and pink, with black shadings, the pink being very decided and contrasting finely with the irregular broad cream white margin. The true name is lost. 20c each. No cuttings.



**Happy Thought.** Bright green foliage; light yellow center; dark band about the light zone; flowers scarlet.

**Mrs. Pollock.** Color of leaves bright bronzy-red; zone belted with crimson, edged with golden-yellow.

**Sunray.** Rich golden-yellow intersected with flame; scarlet tints on patches of dark brown.

**Mrs. Parker.** Leaves deeply margined with silvery-white, lightly zoned with black; very pretty double pink flowers.

**Hermione.** Light green leaves, broadly margined with white, zoned with black and pink; double red flowers.

**California.** Large golden-yellow foliage; soft shaded chocolate zone; scarlet flowers.

**Exquisite.** Foliage brilliant yellow; zone chocolate and red.

**Fanny.** Golden-yellow foliage, zoned slightly with chocolate; large pink flowers, 15c each.

**Cloth of Gold.** Bright yellow leaf with a green center.

**King of Bronzes.** Splendid variety; with broad, reddish-brown zone; center and edge leaf yellow.

10c each, \$1.00 doz.; cuttings, 40c doz., except where noted.

### Ivy-leaved Geraniums.

**Mrs. Shepherd's "Sweet Sixteen."** Charming flower, that in its soft contour and tender shade, reminds one of a fair and lovely girl. The color is a melting shade of pink; petals have a dainty curve and airy lightness that is very attractive; base of the lower petals is lined and spotted with velvety-red.

**Roi de Wurtemberg.** Semi-double, bright scarlet.

**Souv. de Chas. Turner.** Splendid deep pink flowers; feathered with maroon on upper petals.

**Galilee.** Glowing pink, splendid trusses.

**Garden Glory.** Magnificent, with double scarlet flowers.

**Joan d'Arc.** Double; snowy white.

**L'Elegante.** Ivy shaped leaves; beautifully variegated pink and white; white flowers, single, 15c to 25c each.

10c each, except where noted.

### Scented Geraniums, Etc.

**Apple Scented.** Leaves delightfully scented like apples.

**Rose Scented.** The old Rose Geranium.

**Distinction.** A fine dwarf variety; bright green leaves, prettily waved at the edges; distinctly banded with a narrow black zone; bright scarlet flowers. 10c each, \$1.00 doz.; cuttings, 40c doz.

We are prepared to furnish geraniums by the hundred or thousand; special prices on quantity; for hedges, etc.; also for geraniums in pots.

## Lady Washington Geraniums.

**Empress of Russia.** Ground color a very light lavender with almost white center, and shading to white at edges of petals; each petal with blotch of dark maroon surrounded by purplish-crimson.

**Innocente.** A grand flower of great substance. Of the purest white, with extra number of petals, beautifully fimbriated.

**Double White.** A grand semi-double white. A sport from Mme. Thibaut, and exactly like it, except that it is snowy-white. Petals elegantly frilled.

**Mme. Thibaut.** "The Queen of Pelargoniums." Blotched and marbled rose on white ground; upper petals marked with crimson-maroon; large white center; edges of petals also white.

**Prince Henry.** Soft rosy-red, shaded orange and chocolate; broad white margin and center; bold flowers of great substance; fine trusses. Raised from Madame Thibaut,

**Beauty of Oxford.** The upper petals are of a very rich maroon darkly blotched; under petals very dark crimson, shaded with maroon; light center; all the petals margined with white.

**Queen Victoria.** Flowers have beautiful crispy petals of a rich vermilion color, margined with pure white; upper ones blotched with maroon.

**Prince George.** Fine fringed white flowers, faintly suffused with blush, all the petals spotted with purple-lake, very handsome and distinct.

**Black Prince.** One of the darkest varieties; petals undulated, very dark red, blotched black; a very rich, fine sort,

**Mrs. John Saul.** Rich, glowing vermilion with a light center, and light margin of the petals; upper petals feathered with crimson.

**Mabel.** Lovely, large, velvety pink with black blotches.

**Golden Gate.** Magnificent trusses of large, deep, salmon-pink flowers, center shaded with light violet, edged with rose.

25c each: 5 for \$1.00; \$2.00 doz.

## Genista Monosperma Pendula.

### New Drooping White Genista "Bridal Veil."

Every one should have this lovely shrub, a striking ornament for the garden, and a beautiful greenhouse plant. The branches are valuable for decoration, and the flowers effective for evening wear. Its habit is spreading, growing 10 to 15 feet high; it has no leaves, but finely divided branches, round, and of a soft silvery green color. The flowers are small, white, pea-shaped, with a little flush on the petals, and are borne on little spikes, from 1 to 2 inches in length, alternating on opposite sides of the stems; they are very close together, sometimes 15 flowers to a spike; are exquisitely fragrant. A plant 3 or 4 years from seed will cover a space of 12 to 15 square

feet, or more. It has a cloud-like, filmy effect that makes it very attractive with its long drooping branches draped with flowers, resembling at a distance a soft white veil. Nothing could be more beautiful for contrast in shrubbery on large places. 2½ inch pots, 25c each. Ready in April.

## Rare Heliotropes.

**New Heliotrope "Purple Giant."** One of the new giant hybrid types, and a most vigorous grower of climbing habit. It has large, handsome foliage, and bears immense trusses of rich, purple flowers. It grows so fast and blooms so profusely, that it is invaluable in the garden.

**Purple and Gold.** A fine variety with bright yellow shaded foliage and immense trusses of lovely, pinkish-purple flowers. 10c each.

**Pink Beauty.** A charming variety, with great masses of mauve-pink flowers, the color of Mme. Millet violet. Very beautiful.

**The Prize.** A splendid variety with immense heads of grand, purple flowers.

**Egypt.** A very beautiful new heliotrope with black stems and handsome crinkled foliage so dark as to be almost black. Handsome dark purple flowers.

**Albert Deleaux.** One of the most beautiful varieties in cultivation. The foliage is yellow, marked with green. Very large flowers of a rich, deep purple. 15c to 25c each; \$1.25 to \$2.50 per doz.

**HEMEROCALLIS Auranticum.** A magnificent, rich, fragrant, orange-colored lily, with very large flowers measuring 5 or 6 inches across. The foliage is handsome, and a well established plant in full bloom is a beautiful sight; blooms almost perpetually. Hardy. 25c to 50c each.

**HEMEROCALLIS Kwanso.** Double variegated orange lily. A perfectly hardy variety that blooms for months during the summer and fall. It increases fast and makes very large clumps. 10c to 25c each; 75c to \$2.00 doz.

**HYDRANGEA Magnifica.** A splendid variety from Japan, having very thick, large leathery leaves, two or three times as large as any other variety. It bears enormous heads of blossoms, often measuring 30 inches in diameter. The individual flowers are very large and a beautiful shade of pink. It is a mass of color and continues blooming for several months after other varieties are resting. 15c, 25c and 50c each.

**Black Stemmed.** A very beautiful variety that has black stems and a profusion of lovely flowers that come pink at first and change to bright blue.

**HOYA Carnosa.**—Climbing wax-plant. Has thick, fleshy leaves, and bears umbels of beautiful flesh-colored flowers, like velvet. One of the best plants for house culture, as it stands the extremes of heat and cold better than most plants, and is not easily injured by neglect. Does well in shaded places outside where there is no frost. 10c to 20c each; splendid plants 50c to \$1.00 each.

**HIBICUS Sinesis, Sub-violaceous.** Splendid, half hardy shrub with enormous semi-double flowers, rich carmine tinted violet.

**Miniatus Semi-plena.** Large, semi-double, brilliant and attractive, bright vermilion-scarlet flowers; ought to be in every garden. 25c each.

**HYPERICUM, "St. John's Wort."** A beautiful evergreen shrub that bears large golden-yellow, satiny flowers, with numerous thread-like stamens. Always in bloom. 15c to 25c each.

**IMPATIENS Sultana.** A charming plant for pots or for a shaded location. It belongs to the balsam family. The leaves are a light green, stems transparent; flowers single, always in bloom, salmon-pink and bright pink. 10c to 25c each.

**LOPESIA Rosea. "Mosquito Flower."** Pretty plant completely covered all the year with airy branches of pink flowers, resembling mosquitos. Very useful for boquets and valuable for bedding. 10c to 25c each.

**LANTANA "GOLD LEAF."** Foliage handsomely variegated with bright yellow. Some of the leaves are all yellow; some have one-half of the leaf green and one-half yellow; others are green, prettily splashed with yellow. The flowers are yellow and pink.

**Dwarf "Golden Gem."** This pretty lantana grows about 1 foot high, forming a handsome compact bushy plant and bears clusters of bright golden-yellow flowers.

**Snow White.** A tall growing fine variety with large white flowers. 10c to 25c each; \$1.00 to \$2.50 per day per doz; seeds 10c pkt.

**LAURESTINUS Grandiflora.** Grand variety, flowers large and pure white, with clusters three times the size of the ordinary Laurestinus. 25c each.

**LIGUSTRUM Ova-folium.** A fine shrub with spikes of dainty, white, feathery flowers that bloom in early spring and summer; hardy. 15c to 50c each.

**LINUM Flavum.** A lovely perennial yellow flax; always in bloom; very showy. 10c to 25c each.

**LOTUS Pelyorensis, "Coral Gem."** A lovely new plant with fine silvery foliage. It is light and airy in its habit; when adorned with its bright coral-red flowers 2 inches in length it is charming. Very fine for trailing over walls and banks and effective for hanging baskets. 15c each, \$1.50 doz.

**LOBELIA.** Golden foliage and lovely blue flowers; the contrast is charming. 10c to 20c each; other sorts, 10c to 15c each; 75c to \$1.25 doz.

**LIBONIA Floribunda.** Beautiful dwarf shrub of compact growth, covered most of the year with pretty scarlet and yellow tubular flowers. Fine for driveways, for single specimens, and for pot plants. 10c to 25c each.

**NEW MARGUERITE Mme. Gaelebert.** A splendid new Marguerite with very broad petals. Surpasses all others in size and snowy whiteness. 10c to 25c each.

## Poinsettias.

**Pulcherrima.** A large plant of Poinsettia in full bloom is one of the most gorgeous and stately object of the California garden at Xmas time. It grows almost the size of a tree and the ends of the branches are crowned with floral bracts, of the most intense bright red, all sizes from 5 to 18 inches across; they are in great demand for Xmas decorations. They make fine pot plants, the beautiful bracts keeping fresh and bright for several weeks. Plants, 15c, 25c, 50c each.

**Double Poinsettia Rosette.** This splendid variety comes into bloom just as the single one is waning. The magnificent flower heads consist of an inside row of long floral bracts and a closely gathered rosette-like center of lanceolate bracts 4 or 5 inches long. The color is a deep rich, brilliant red, and the effect at a distance is like rich velvet. It is strikingly beautiful. Poinsettia heads will keep for some time if the stems are dipped in boiling water immediately after they are cut. 25c to 50c each.

**PHRYNIUM Variegatum** An elegant pot or bedding plant, the leaves of which are bright pale green, beautifully variegated with white and gold, the variegation being extremely diversified. It is a free, vigorous, and easy grower, succeeding in all situations and under all conditions. 25c each.

**PRIMULA Sinensis or Chinese Primrose.** One of the most valuable house plants, producing hundreds of charming flowers, very pretty at all times. Single, large flowers fringed white, pink and blue. 25c to 50c each

**PLUMBAGO Capensis.** A beautiful shrub with lovely, light blue flowers, always in bloom. It grows 10 to 12 feet high in California, forming immense plants, and should be cut back occasionally to induce new growth. 15c to 25c each.

**PETUNIAS. Single.** Choice assorted selection of Giants of California and Fringed Hybrids. \$1.50 doz.

**Double.** Choice very fine large flowers. Ready April 1st. Assorted, \$1.75 doz.

## Mrs. Shepherd's Little Midget or Baby Roses.

### The "Mother Goose" Set.

One feels like talking baby talk to these dear little things. The least little mites of plants bloom. They form pretty little bushes and grow from 12 to 15 inches high. The leaves are very small, and the flowers measure from 1 to 1½ inches across. They grow in clusters or sprays, and are beautiful for cut flower work, bouquets, boutonnières, or hanging baskets.

**Mistress Mary.** This variety has the largest flowers. The color is a delicate blush, shaded darker at edge of petals. Sprays quite large. Flowers single; 1½ inches across.

**Pretty Maid.** Small single flowers, about 1 inch in diameter, in beautiful airy sprays; color is delicate blush, resembling fruit blossoms. A little beauty.

**Baby Bunting.** The sweetest variety of all. Flowers are snowy-white, semi-double, with yellow stamen; 1 inch across.

**Little Bopeep.** Single flowers, charmingly colored; white center; outer part of petals pink; beautiful yellow stamens; measures  $1\frac{1}{4}$  inches across.

**Tommy Tucker.** A lovely semi double pink variety. Flowers are  $1\frac{1}{4}$  inches across. Lovely.

**Jack Horner.** A pale pink flower, scarcely an inch across; single. Very dainty and sweet. They are a great delight to children.

20c each, set of six for \$1.00.

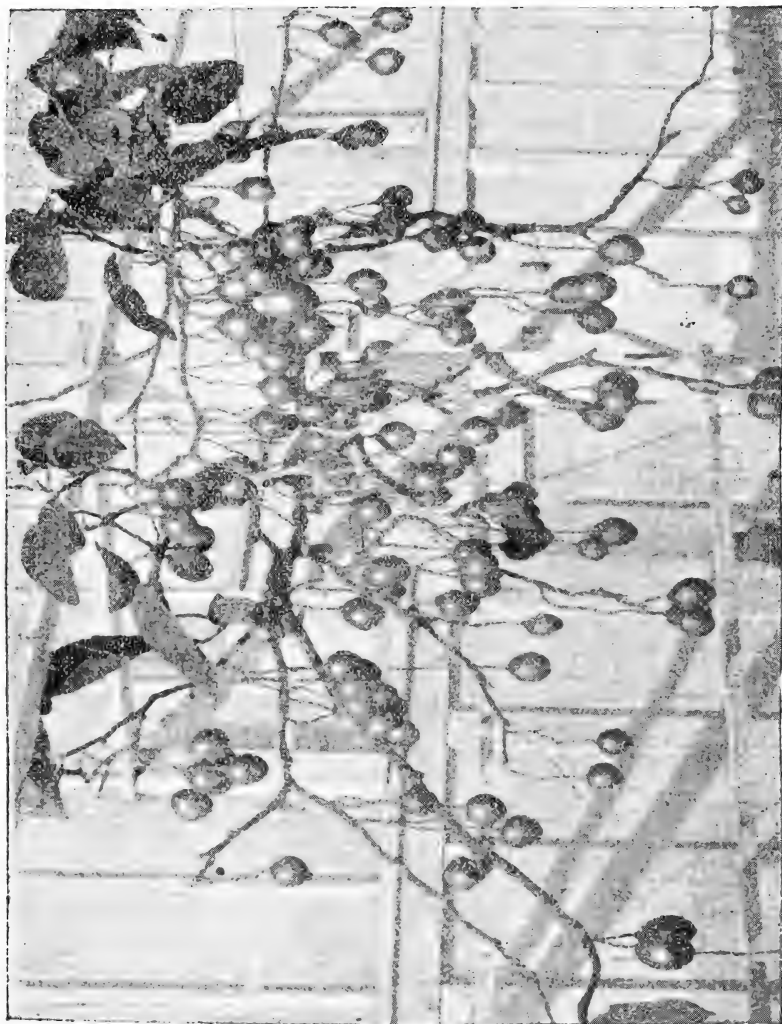
**RUDEBECKIA. "Golden Glow."** Splendid, hardy, perennial plant that dies down in the autumn, coming up early in the spring. Long stems, 5 to 8 feet high, bearing numerous splendid double, yellow flowers, resembling refined double sunflowers. Very decorative in the garden and especially fine for groups. 10c to 25c each; 75c to \$1.50 dozen.

**RUSSELLIA Juncea. "Scarlet Fountain Plant."** Brush-like foliage; covered with handsome scarlet flowers, always in bloom; drooping habit; fine for baskets or vases. 10c to 25c each.

**STREPTOSOLEN Jamesoni.** A plant for brilliant show; and always in bloom. No garden should be without it. At first the flowers are orange-red, changing to yellow with age, so that there are two or three shades of color on the plant at the same time. It grows very rapidly, and in the course of two or three years attains the height of 10 to 12 feet and 25 to 30 feet in circumference, and covered from base to top with great bunches of splendid flowers. A fine pot plant. 10c to 25c each.

## The South American Tomato Tree.

**SOLANUM Betaceum.** A fine ornamental tree or shrub; is a native of South America. It bears fruit from seed the second season. A young plant set out in the spring grows 6 feet high and comes into bearing by Xmas. The foliage is large and handsome, the branches spreading. The fruit hangs in clusters below the foliage, the size of a large egg, a beautiful orange-salmon color when ripe. It has a delicious sub-acid taste, slightly resembling the tomato. Is delicious raw, served with sugar and cream, or cooked as sauce, and for jam or jelly is very fine. It will keep for weeks, owing to a very tough skin and the solid nature of the fruit. It is so handsome that it would sell readily at sight, and if shipped east, during the holidays, would be immensely popular. In Ceylon and India it is extensively grown, and is known as the "Poor Man's Fruit." It is a showy plant for house and conservatory, and a most beautiful plant in the garden; will not stand frost. Plants, 15c, 25c and 50c each. Special rates on quantity. Seeds, 10c pkt.



LIMB OF SOLANUM BETACEUM OR TOMATO TREE IN FRUIT.

**TRADESCANTIA Multicolor.** Its prettily striped leaves show every tint of silver, bronze-green, pinkish-crimson, rose, and gray, in their markings. An extra fine basket plant. 10c each.

**TECOMA VELUTINA.** It is a most showy and valuable flowering shrub; far superior to *Tecoma Smithii*, in that it blooms when only 12 inches high from seed. The flowers are larger and a more beautiful color, while the plant is never out of bloom. The flowers are like beautiful Allamandas; large, gloxinia-like, pure golden-yellow; in great splendid spikes or clusters. It grows into a good sized tree in California. Half hardy; easily grown from seed. 25c to 50c each.

## Three Fine Salvias.

**Salvia Splendens grandiflora pendula.** A beautiful variety that bears very long drooping spikes of flowers, larger and handsomer than the old splendens. 25c each.

**Salvia, "Scarlet and Gold."** A handsome sort, that grows in round bushy plants, with bright golden leaves, and vivid scarlet flowers. 15c to 25c each; \$1.50 to \$2.50 doz.

**Salvia Splendens compacta.** A drooping bedding plant that grows in compact form, and produces numerous spikes of scarlet flowers. 20c each, \$2.00 a doz.

## Violets.

The ground for these sweet flowers should be level, well cultivated and thoroughly mulched with rotted manure or leaf mold. The plants should be set out from 1 to 2 feet apart, 3 feet between rows. They require watering at least once a week, with an occasional sprinkling in the evening or early in the morning.

**VIOLET "La France."** A fine large violet, even prettier than the beautiful "Princess of Wales." The petals of the flowers are broader, and the color a brighter blue. 10c each; 75c doz.

**"Farquhar" Violet.** This is said to be the finest double violet in cultivation. Color, a clear, beautiful dark blue; flowers with long stems, very fragrant. 10c each; 75c doz.

**Princess of Wales.** The foliage is very handsome, the flowers are large, most exquisite and deliciously fragrant, and measure 1½ inches across; the color is a lovely violet-blue. The stems are 8 to 10 inches long. 5c each; 50c doz.; \$3.00 per hundred.

**Swanley White.** A pure white double violet exquisitely pretty and sweet. 5c each; 50c doz.



## Climbing Plants.

**ASPARAGUS Plumosus Nanus.** A charming, dainty climber with leaves that are finer than fronds of some delicate fern. A beautiful vine for the house, invaluable for boquets and effective for decoration. Small plants, 25c each; strong, 50c, 75c and \$1.50 each.

**Sprengeri.** One of the most valuable introductions of many years. It grows rapidly and forms handsome plants in a short time. The branches start from the ground and attain a height of 6 feet or more. For several weeks in the year it is wreathed with innumerable white fragrant flowers that grow in spikes from 1½ to 4 inches in length. For cut flowers or for decorative purposes it is unequalled. One of the most useful and effective plants for hanging baskets. 10c, 25c to 50c each; specimen plants, \$2.00 each; small plants, \$1.00 doz.

**AMPELOPSIS Veitchii.** "Boston Ivy." Entirely hardy in the most exposed places; attaining a height of 20 to 30 feet in 2 or 3 years, clinging to stones, brick or wood with great tenacity. For covering dead trees, gateposts, boundary walls, etc., it has no equal. In summer, the foliage is a rich shade of green, but in the fall it assumes the most gorgeous tints of scarlet, crimson and orange, so dazzling as to be seen at a great distance.

**Royalii.** The old foliage is large, leathery, dark green. The new growth is a shining, bright red; foliage small, and hangs in long, beautiful festoons, or creeps in long wreaths, equally valuable and handsome. It is gorgeous in the autumn. 15c to 25c each.

**Tricolor.** Small foliage prettily variegated with white and pink; beautiful for hanging baskets. It grows well outside, and is very handsome in boquets. 25c each.

### Four Grand Bignonias.

**Venusta.** Nothing can exceed the magnificence of this brilliant climber in Southern California. It is evergreen and has handsome foliage with large clusters of trumpet-shaped orange-salmon flowers at the axil of every leaf; graceful branches hang like long wreaths, and the effect is wonderfully gorgeous. It is the most beautiful of all climbers, and is very effective for decoration; blooms through the winter and spring months. 25c, 50c to 75c each. Cannot be sent by mail.

**Speciosa.** As the flowers of *Bignonia Venusta* begin to wane, this fine variety comes in all its beauty. It has shining green foliage and long drooping branches. The large flowers are maurandia-like, of a soft violet shade, beautifully veined with purple and black; blooms through the spring and summer. 25c to 50c each.

**Siderafolia.** The next *Bigonía* in the list follows in the wake of *Speciosa*; and is a summer and fall bloomer, with the most rampant growth of all vines. The flowers come out in spikes, buds quite round, flowers gloxinia-like, of velvety texture, soft cream color, lined with yellow, exceedingly beautiful and graceful. 25c to 50c each.

**Tweediana.** One of the most beautiful climbers in existence. The foliage is very beautiful at all times; the young growth being a pale yellowish-green, which gives a soft filmy look that is most enchanting. The flowers come in early spring, and it continues to bloom for two or three months; they are borne in pairs opposite the axils of the leaves. They gem the masses of foliage and adorn the trailing branches, making an exquisite picture; are a bright canary-yellow, shaded darker in the lobes and throat. The vine clings by tiny tendrils, growing close to the surface of walls, roofs or trees, and is beautiful to trail over the ground. 25c to 50c each.

**BOUGAINVILLEA Glabra.** One of the most brilliant flowering climbers imaginable, and one that attracts all eyes and calls forth more admiration than any other. The foliage is shining green, and the plant is always covered with masses of brilliant magenta-rose bracts. In Southern California it makes splendid specimens. Hardy. Fine for greenhouse. 25c to \$1.00 each. Must be sent with soil.

**CLIANTHUS Puniceus or Parrot's Beak.** A most magnificent scandent shrub with long spreading branches; handsome, light-green pinnate foliage. Remarkable for its large showy flowers that are borne axillary racemes of the most brilliant crimson scarlet, resembling a parrot's bill. It grows well outside in California. Is especially fine for planting on the wall of a conservatory. 15c to 25c each.

**IPOMOEA Learii. "Blue Dawn Flower."** The flowers are the most intense violet blue with reddish-purple rays, and are 6 inches across; there is nothing of its color that exceeds in richness the flowers of "*Ipomoea Learii*," and it is the most rapid grower of any vine we have. 15c each; \$1.50 doz.

**JASMINUM Poeticum.** A very rapid grower with fine glossy foliage, covered through the spring and summer with a perfect cloud of airy, starry blossoms. 15c to 25c each.

**MANDEVILLA Suaveolens. "Grandiflora."** A grand improvement on the old sort. One of the most chaste and beautiful climbers, and a very rapid grower, with handsome foliage, graceful habit, and completely covered with its large snowy-white flowers through the spring and summer months. The flowers are in clusters, delightfully perfumed like the jasmine. Each flower measures  $2\frac{1}{2}$  inches across and somewhat resembles the single tuberose, but is much larger and more beautifully formed. No one who has once seen a large plant of this fine climber in the height of its beauty will ever forget it. 25c to 35c each.

**Violaacea.** A very desirable variety with dark purplish maroon-red flowers. 10c, 15c to 25c each.

**PASSIFLORA Scarlet.** One of California's most brilliant climbers. It will, in three years, reach the tops of the tallest trees, completely taking possession. With its handsome foliage and vivid scarlet flowers, it is wonderfully effective. Fine for the conservatory. Ready after April 15. 25 to 40c each. Should be sent with soil.

**SMILAX.** This plant has beautiful, small, glossy foliage. It is a rapid grower and, without exception, one of the finest climbing plants. 5c, 15c to 25c each.

**SOLANUM Wendlandii.** Has immense panicles of large violet-blue flowers  $2\frac{1}{2}$  to 3 inches across. It is indescribably lovely, and is one of the plants that sell at sight. It is a rapid grower, and of very easy cultivation. 15c to 25c each.

**TECOMA. Jasminoides Alba.** Flowers pure white, with a pale yellow throat. They are also larger, of heavier texture than the older varieties; and the lobes of the flower tube are fuller and overlap each other, giving a soft effect that is very beautiful. Very rare. 50c each.

**Jasminoides.** A very handsome climber, and always admired. Glossy foliage and clusters of large flaring, trumpet-like flowers, white with maroon-red throat, and pink with a red throat. White and pink, 25c each.

**Mackenii "Rosea."** A remarkably handsome climber from South Africa with handsome foliage and magnificent racemes of large showy flowers, that resembles pink azaleas. They are old rose, pink, veined darker pink. This beautiful plant can scarcely be too highly recommended. 25c to 50c each.

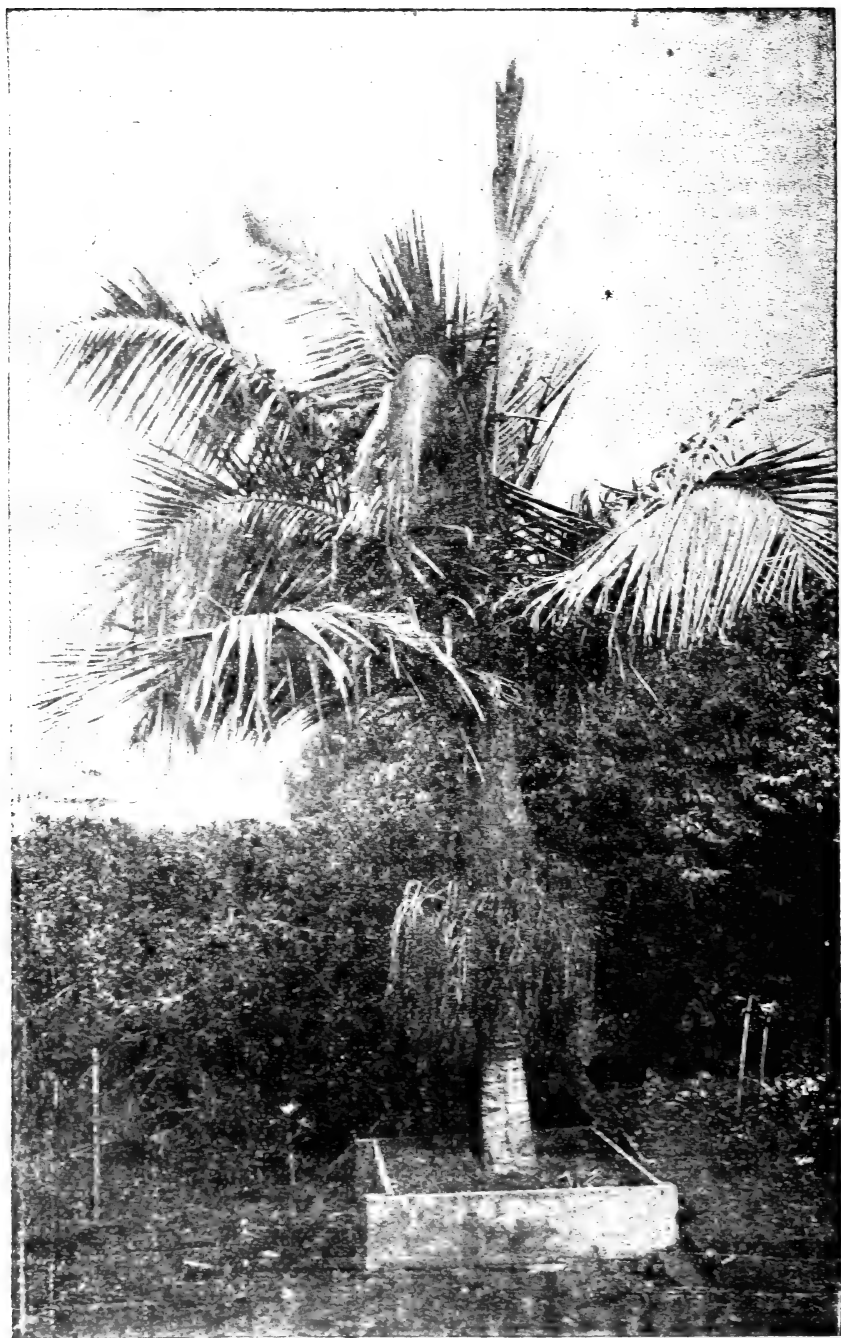
**TACSONIA "Sutherlandii."** Of vigorous habit, with handsome, large, shining, three-lobed foliage; strong texture, and rich dark green. The flowers measure 4 inches across. The color is an exquisite carmine rose, shaded darker in the center, with a tiny purple fringe around the throat. Fine for conservatory. Should be sent with soil. 25c to \$1.00 each.

## Palms, Dracaenas, Etc.

**BRAHEA Edulis.** A new variety of Fan Palm from Guadaloupe Island. Large plants, \$2.00 to \$2.50 each; small plants, 35c each.

**Filamentosa.** The hardy California Fan Palm, and a most vigorous growing plant. Foliage very regular, and of a bright green, deeply and regularly pinnated, the margins of each being covered with long hair-like filaments, giving them a remarkable appearance from other Fan Palms. Small plants, 15c, 25c to 50c each; large plants, \$1.00 each.

**CORYPHA Australis, Livistonia.** A very hardy Australian Palm; with dark green foliage, very symmetrically and regularly slit, the segments partly doubled from base of petioles or leaf-stock; which is thickly armed with crooked spines. Strong plants, 75c each; plants 2 to 5 feet high, \$1.50 to \$3.50 each.



SEEDLING PLANTS WITH SEEDS OF SEEDS.

**CHAMAEROPS Excelsa.** One of the most beautiful fan palms both for the house and outside. It has a smaller trunk than other fan palms and medium-sized leaves with slender stems and is very attractive. 35c to \$5.00

**KENTIA Belmoreana.** One of the most valuable house plants grown; from Australia. Elegant pinnate leaves beautiful even when very small. 50c to \$1.50 each.

**Fosteriana.** Resembling the above but of more upright habit. Invaluable for house decoration. 50c to \$1.50 each.

**LATANIA Borbonica.** The Chinese Fan Palm; a beautiful house palm; leaves fan shaped and a handsome shining green. Grows well outside in California. 25c to \$1.50 each.

**PHOENIX Canariensis** The handsomest and hardiest of the date palm family. Being a rapid grower, it soon develops into beautiful specimens, with pinnate, dark green leaves from 6 to 12 feet long; the divisions linear, lance-shape, and very much pointed. 25c, 50c to \$2.50 each.

**SEAFORTHIA Elegans.** One of the most graceful and beautiful of palms. It grows on long slender stems and bears long feathery arching leaves, and bears after maturity branches of long drooping ropes of bead like pinkish mauve flowers that develop into bright red seeds about the size of a small cherry. It is always blooming or seeding. It makes beautiful pot plants. We grow this in great quantity. Smallest size without character leaves, 15c to 25c; larger, \$1.00.

**DRACAENA Indivisa.** A fine plant for outdoor planting in California, and much in use for lawns, avenues, and parks. The plants are fine for window decoration. 25c, 75c to \$1.50 each.

**ARALIA Sieboldii.** A fine decorative plant with large shining light green leaves. It gives large clusters of small white flowers; is especially adapted for pot and house culture. 25c to \$1.00.

**PEPPER Tree.** 15c to 35c each; \$3.00 dozen.

## Ornamental Grasses, Etc.

**ARUNDO Donax Variegata.** Very broad corn-like foliage, beautifully striped with creamy-white and light green. It forms grand plants and grows 8 to 10 feet high. 25c to 50c each

**PAPYRUS Antiquorum.** "Egyptian Paper Plant." Is most elegant, graceful, and stately. It sends up reed-like stems, which on old plants rise from 8 to 10 feet high, crowned with a tuft or umbel of long, wiry grass that falls gracefully above and around the stem. 15c, 25c to 50c each.

**CYPERUS Alternifolius.** "Umbrella Grass." Slender grass, surmounted by alternate leaves, so arranged as to resemble the frame of an open umbrella; as beautiful and ornamental for house decoration as a palm. 10c to 25c each, \$1.50 to \$2.50 dozen.

**Alternifolius Gracilis.** A charming dwarf variety of umbrella grass, that does not grow over 18 inches high. 10c to 25c each.

**Grandes. "The New Umbrella Plant."** The slender stems are crowned with alternate leaves about  $\frac{1}{2}$  an inch wide, and about 4 inches long, that lie perfectly flat, and are surmounted by a tuft of dainty wiry grass, with stems 2 or 3 inches long, tipped with the flowers. 25c to 50c each.

**CAREX Japonica Variegata.** An exquisite grass with slender, arching, green foliage edged with white, and with an elegant habit that gives it a place not equalled by any other grass. 25c each.

**Basket Grass.** A very pretty variety that came without a name. The blades are very long and narrow and are daintily striped green and white. It bears long spikes of quite pretty flowers; fine for baskets. 10c to 25c each.

## Miscanthus Nepolense.

### "Himalaya Fairy Grass."

We have grown this valuable hardy perennial grass for three seasons, and heartily recommend it. Its beautiful long stemmed fairy like plumes are borne in great numbers making it a striking object for months; one large clump will grow several hundred plumes; curving gracefully, silky, feathery, a rich golden color, and they do not lose their beauty, retaining their golden color and billowy, cloud-like appearance for months. A long line of hundreds of fairy plumes is very unusual and effective. The plumes are 4 to 6 inches long, in the style of the Eulalias, but much larger and fuller, and softer they are beautiful dried, and do not shake off but keep their beauty for years. Every one should try this lovely plant. 15c to 25c each; clumps 50c.

## Bamboo.

Exceedingly ornamental for the garden, sending up the slender canes of feathery growth in splendid groups. They are destined to be extensively cultivated in California for their useful qualities as well as their beauty. For pots, and for cut decorations in halls and dwelling they are very effective.

**Metake.** A large leaved, rather dwarf growing variety, attains a height of 7 feet, grows erect, stems thickly tufted, and entirely covered with sheaves of the leaves. Native of Japan. 25c to 50c each.

**Common Giant.** Grows to the height of 25 feet. Useful for wind-breaks. The stems can be used for ornamental and useful purposes; for fences, plant stakes, and many other ways. 35c to 50c each.

**Striped.** Foliage green and white, stems yellow, with alternate sections of green. 75c each.

**Huro-Chiku, "Black Stemmed Bamboo."** One of the most beautiful. Stems 1 to 2 inches in diameter. Used for walking canes. 50c to 75c each. Three other fine tall feathery varieties, 35c to 50c each.

**PHORMIUM Tenax. "Variegated New Zealand Flax."** Grand decorative plant of most stately habit. The leaves are 2 to 4 inches broad. They have dark red edges, and are beautifully striped yellow and bluish-green. They are showy pot plants, rivaling with palms and dracaenas, fine for a lawn. 50c, 75c to \$1.25 each.

**Phormium Tenax.** Like the above except that the leaves are plain blue-green, edged red. Very beautiful. 25c to \$1.50 each.

All the above are too heavy to be sent by mail.

## Strelitzia.

### "The Bird of Paradise Plant."

Very strange, beautiful, and stately plants belonging to the same family, as the "Traveler's Palm," Banana, Plantain, etc. They are natives of the Cape of Good Hope, and were named for the queen of George Third, Charlotte of Mecklenburg-Strelitz. Rare and offered by a very few florists.

**STRELITZIA Gigantea.** This magnificent plant bears a strong resemblance to the celebrated "Traveler's Palm" of Madagascar. Specimens in our garden are 18 feet high, with stems measuring 30 inches around. The leaves are large, leathery, and massive, with a yellow midrib and ridges of parallel veins; they have long stems, very broad at the base, with which they alternately clasp the main stem, and stand out on each side, which gives a very beautiful fan-like effect, the first leaves starting out at the base of the plant. The flowers emerge from the base of every leaf, close to the main stem, and consist of a short stem and three long, pointed, boat-like, brownish-purple spathes, two at right angles and one standing out from the center. From these come numerous, large, bird-like flowers, with large pure white sepals and bright blue petals. A majestic plant blooming most of the year. It is very ornamental. For groups or lines is very effective, and makes a stately ornament for courts, conservatories, and sheltered places with other tropical plants. Large plants only. \$5.00, \$7.00, \$10.00 and \$15.00 each.

**Augusta.** Like the above, but more dwarf in habit; not so massive; very beautiful. \$5.00 to \$10.00 each.

**Regina.** A rare and beautiful plant. It forms large clumps, and makes a very showy ornament for the garden. Leaves are spade-like on long, slender stems, that start from the base of the plant. The flowers are borne on long stems high above the foliage from a spathe; sepals rich orange, petals bright blue. It is called the "Bird of Paradise Plant" from the resemblance of the flowers to the brilliant bird of the tropics. It makes a very handsome pot plant and blooms at intervals during the year. It is very beautiful and always excites much interest by its fine color and unusual appearance. Sent by express or freight only. Fine for house plants \$2.00 to \$3.00.

## CHOICE BULBS.

**AMARYLLIS BELLA DONNA**, the **Lovely Pink Bella Donna Lily**. This is one of the most satisfactory of Amaryllis; bearing on long stems clusters of 8 or 10 superb large pink, lily-like flowers. The



AMARYLLIS BELLA DONNA MAJOR.

color is perfectly pure pink, and the fragrance is like ripe apricots. The flowers keep for two weeks. It blooms in June and July, after the foliage dies down. Monster size, 50c each; second size, 25c each; third size, 15c each; \$1.50, \$2.50 and \$4.00 doz.

**Bella Donna Minor.** Like the above, only that the flowers stem is shorter, and the flowers have a white center; petals beautifully fea-



thered pink; it blooms the latter part of August and September. 25c to 50c each; \$2.50 to \$4.00 doz.

Small Bella Donna seedlings, 25c per doz.

**Grand New Hybrid Seedlings.** Fine blooming bulbs, some with a white ground, and lined, feathered, or penciled with delicate shades of red; petals daintily fluted; others a handsome shade of red, marked with white and maroon, fluted edges; others have broad flaring flowers, bright cherry red. 50c each; three for \$1.25; dozen, \$4.25, postpaid.

A few very beautiful and rare seedlings, 75c, \$1.50 to \$3.00 each.

Hybrid seedlings,  $\frac{3}{4}$  inch to 1 inch in diameter, 15c each, \$1.00 dozen.

**Aulica. "Lily of the Palace."** Summer and autumn bloomer. Handsome broad foliage and large spreading wide open flowers of rich crimson-scarlet, lined and penciled white and maroon. Blooming bulbs, 25c each, \$2.50 dozen; larger bulbs, 50c to 75c each, \$4.00 to \$6.00 dozen.

**Defiance.** A superb variety with immense trumpet-shaped sweet scented flowers; very broad petals, rich red, lined through the center with white penciled maroon. A grand variety that blooms at intervals through the year. Large bulbs from 50c to \$1.00; monster bulbs, 4 to 5 inches in diameter, \$2.50 each.

**Johnsonii.** A fine old variety; a small edition of the above. Good bulbs 25c each.

**Formosissima or Jacobean Lily.** A beautiful variety that blooms at intervals during the year. It is brilliant scarlet, and has two upright and three drooping petals. A very attractive and graceful flower, beautiful for borders and lines. 10c to 25c each; monster bulbs, 40c to 75c each; \$2.00 and \$3.00 dozen.

**Armoryllis Halli. "The Hardy Armoryllis."** This handsome bulb is perfectly hardy. In the early summer the bulbs throw up stout stems about 18 inches in height, bearing clusters of large and beautiful soft rose colored flowers. It is really a crinum. 25c, 50c to 75c each; extra large bulbs, 75c each; \$1.75 to \$4.00.

**VALLOTA purpurea or Scarborough Lily.** An evergreen bulb producing splendid spikes of brilliant large scarlet blossoms. It is one of the most showy of the Amoryllis family, is easily grown and blooms many times during the year. 15c, 25c, 50c each.

## Zephyranthes.

**Floribunda.** A charming variety, with large golden-yellow flowers borne in pairs on long slender stems. Very beautiful and fragrant. 15c each, \$1.50 dozen, postpaid.

**Rosea.** Flowers large, bright pink, lily-like, on slender stems. Not new, but very beautiful. 5c each; 50c dozen, postpaid.

**Alba.** A valuable variety for pots, and for the open border; it is evergreen, very easily grown, increases fast; a border of the large star-like white flowers in bloom is very handsome. The flowers keep for a week or ten days. 25c dozen; \$1.50 per hundred. Postage 35c per hundred. Add postage 5c to 10c on large bulbs.

# RARE SUCCULENT PLANTS.

## Nature's Wonderful Carving.

### Curious Wax Work and Unique Statuary.

No class of plants are more interesting than nature's carved and sculptured forms decorated in wondrous patterns and colored in rarest tints. Dainty bits of carving that have the surprising habit of bursting into charming and brilliant bloom. Among the most attractive are Echeverias, Sempervivums, Aloes, Rochea, Haworthias, and a long list of others fresh from the studio of the Great Artist. Then their kindred, the Cactus family, from pigmy to giant statues are ornamented with hooks and spears and spikes, pins, feathers or hairs, as may be, and decorated with flowers so magnificent in color and size that one is lost in wonder. Nearly all the succulent plants are fine for house and conservatory, and are very effective with cacti, adding much to the character of a collection.

### Aloes.

**Aloe Variegata or Pheasant Aloe.** One of the most interesting plants of this class. The leaves are spirally arranged, face concave, back keeled, bright green and white, beautifully striped and marked, resembling a pheasants' breast. Flowers bright red. Always in demand and always scarce. 10c, 15c, 25c, 35c, 50c each.

**Climbing Aloe Citiris.** This is a very handsome variety that grows very rapidly. It can be trained to trellis, house, wall, or fence. It has many branches, and bears its beautiful waxen tubular flowers on long slender stems. They are bright clear red, tipped with green. Always in bloom. 15c to 50c each.

**Striata.** A most beautiful variety with transparent leaves of light green, beautifully striped with yellowish-white; sometimes the leaves are half white and half green. It makes beautiful specimens. 25c, 35c, to 50c each.

**Hanburyana.** One of the most interesting and beautiful of all aloes, on account of the handsome shape and coloring of the leaves and the very large spreading panicles of exquisitely colored waxen flowers. The leaves are broad, flat, blunt pointed, 4 to 5 inches across, light bluish green, translucent, prettily marked, and have a pearly white line around the edge. The flower stem is very branching, 12 to 15 inches across when in bloom. The flowers are a fine waxen coral red, and stay out for several weeks. This variety makes a beautiful ornament wherever grown and is very fine for vases. It is very rare; small plants, 25c; large in April, 50c.

**Mitraeformis.** A very handsome variety with thick, short, fleshy leaves, decorated with short yellow thorns. It grows 2 or 3 feet high, requiring support, and bears fine red flowers. 15c, 25c, 50c, to \$1.00 each.

**EUPHORBIA SPLENDENS**, or "Crown of Thorns." A very interesting, thorny plant, that bears very beautiful bright scarlet flowers on slender stems. Always in bloom. Very showy in the garden.

**FURCRAEA Lindenii.** This valuable plant is a most beautiful and rare variety with broad, waved, thick green leaves, margined with white and pink. It makes a most effective pot plant; fine for house and conservatory, and also a very striking ornament in the garden. Small plants, 50c each; large, 75c to \$2.00.

**GASTERIAS.** Resembling Aloes in their leaves and habit of growth. They are very satisfactory as house plants or for bedding out in the garden; and stand moving well. Very handsome and showy, and bearing long spikes of brilliant scarlet and green waxen flowers that keep for a long time. The leaves are tongue-shaped, spotted with white or light green, or have raised spots of white. Some plants have large broad leaves, and others narrow. All are very handsome. 10c, 25c to 50c each; 50c, \$1.00 to \$2.50 dozen.

**HAWORTHIAS.** Dainty little Aloe-like plants of pretty, interesting forms, some with translucent leaves that are very beautiful. Easy to grow. Five sorts, 15c to 50c each; five for \$1.00.

**KLEINIA. Articulata** or "Candle Plant." Large, round, fleshy stems of a pretty frosted appearance, distinctly marked with curious designs; foliage cut cut like ivy, and prettily tinted purple underneath; inconspicuous yellow flowers. 10c to 20c each; cuttings, 5c each.

**Spiculosa.** Tall growing species. stems about 18 inches high, and not fleshy. Leaves are terete in shape, resembling those of Othonna or "Pickle Plant," only larger and two or more inches long. The whole plant is of a bluish color. 10c to 25c each; cuttings, 5c each.

**ROCHEA FALCATA.** A very handsome and curious plant with thick bluish light green leaves, looking as if pressed against the plant. They have a pretty frosted appearance, and contrast well with the clusters of the most intense scarlet flowers. 10c, 25c to 50c each.

**RHIPSALIS** or "Mistletoe Cactus." Very peculiar plants. Some have long, fleshy, whip-like branches and white berries similar to mistletoe; some resemble mesembryantheums, and some are mistaken for epiphyllums. The flowers are small, but produced in great abundance. Six sorts, 15c to 50c each.

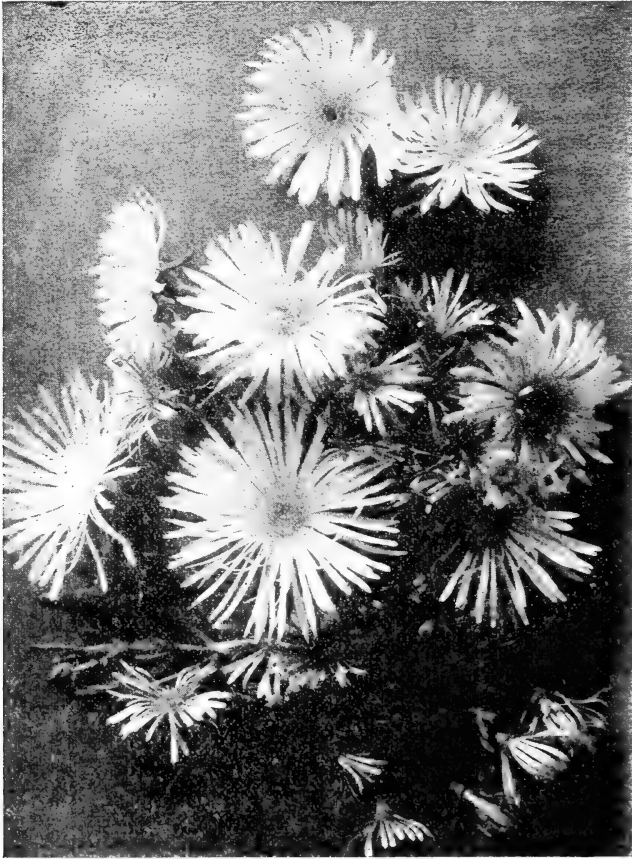
**STAPELIA** or "Starfish Cactus." Very curious plants, with fleshy leaves and flowers shaped like a star fish.

**Variegata.** Flowers buff yellow, spotted maroon-red. 15c to 25c.

**Grandiflora.** A rare variety, with very large star-shaped flowers; color of a rich maroon-red, covered with long reddish hairs. 10c to 25c. Two other sorts, 15c and 25c each.

**YUCCAS. Aloifolia Variegata.** A fine Yucca with bright green foliage, bordered with a band of yellow, and occasionally striped with lighter green next to the yellow band. 25c each.

**MESEMBRYANTHEMUMS.** From mesembria, midday, and anthemom, a flower; referring to the flowers opening on sunny days. The leaves are variable in shape, sometimes thick and fleshy, sometimes round and resembling the portulaca; frequently they are most curiously formed. The flowers are white, blush, pink, rose, bronze-red, crimson, magenta, and various shapes of yellow, and have a beautiful satin-like gloss. They measure from  $\frac{3}{4}$  of an inch



A GROUP OF MESEMBRYANTHEMUMS

to 3 inches in diameter. They will grow in any soil, and love the hot sun, and are especially suited to dry places and for covering hill-sides or bare places, or drooping over banks or for borders, or for baskets on verandas. A plant in full bloom is so completely covered with flowers as to be perfectly dazzling. Four varieties; 10c to 25c each. Rooted cuttings, \$3.00 per hundred.

**Mesembryanthemum Tigrinum.** A curious and handsome plant with arching leaves fringed at the edges with fine small teeth; they are formed like a tiger's jaw. The flowers are about two inches across, silky and a beautiful yellow, 25c to 50c each

**CARAGUACA** or "Heart of Fire." A very interesting plant of the Pine Apple family, which on account of its aggressive qualities, would be of little interest in the garden, were it not for the marvelous transformation that it assumes during the blooming period. The leaves on old plants are about 2 feet long; they are rigid, arching, deeply channelled, edged with shining hooks; the color is a light yellowish-green above, gray underneath. As the time for flowering approaches, the plain looking plant is suddenly metamorphosed; the leaves assume a reddish tinge, and the entire upper part, almost intense and brilliant strawberry-red; in the center rises a fiery red stem and alternate red leaves, tipped with a bunch of brush-like flowers, cream and purplish-mauve in color. For a month or more the brilliant fire flames through the plant. Then as seed begins to form, the illumination fades away, the grand display is over. Small plants only. 25c each.

**ECHEVERIAS.** A most interesting class of plants, always rosette like in form and variously colored and marked.

**Hoveyii.** "The Opal Echeveria." One of the most beautiful of this class. It is very brittle and requires much care in handling. This variety is very exquisite in its lovely opaline coloring of milky white, opal blue and pink—either distinctly marked in the three colors, or beautifully striated. It sports in three shades, rarely giving two plants alike. Always rare. 25c, 50c and \$1.00 each.

**Metallica.** A grand variety, with large foliage of a beautiful, pearly lavender pink color, a changeable metallic shade, that is a fine contrast to the tall spikes of the waxen, red flowers, with pinkish stems. Small plants 25c each, larger plants 50c each.

**Secunda.** Low-growing, light green rosettes and pretty red flowers; fine for borders. 5c, 10c and 15c each; 40c, 75c and \$1.00 per dozen.

**Secunda Glauca.** Resembling the above, but prettier; with glaucous green leaves. Flowers bright red. 5c, 10c, 15c and 20c each; 50c, 75c and \$1.00 dozen.

Four other choice sorts, 10c to 25c each.

**EUPHORBIAS.** Very peculiar plants; some thorny, some with slender stems without leaves, some with large foliage, others as if carved out of hard wood; all very interesting.

**Grandicornis,** One of the handsomest varieties. It looks as if carved of wood, the branches are angled and spined, and partly twisted. Variegated dark and light green. Cuts, 25c; small plants, 40c.

**Grantii.** Quite distinct; leaves large and handsomely variegated. It grows to be almost a tree; very stately. 15c, 25c to 50c each. Cuts, 10c.

## CACTUS.

The most satisfactory Cactus to grow are the large flowering varieties that give their superb flowers every year. Owing to the difficulty in securing collections of the globose Cactus, we offer only such varieties as we can depend on keeping in stock. These are beautiful large flowering varieties.

**ANHALONIUM Williamsii.** The top of the plant is round without any spines. Root long and turnip-shaped; a very curious cactus and extremely attractive; flowers pale rose. "Dumpling" and "Turnip" Cactus are names given to it. Each 25c to 50c.

**ASTROPHYTUM Myriostigma.** "Bishop's Hood." This, at a glance, appears to be scarcely a living plant; so regular, rigid, and unplant like is its form, that one might imagine that it had been carved from a piece of stone, beautifully spotted all over; fine yellow flowers. Prefers a sandy soil. Very rare. 75c to \$1.00 each.

## Cereus.

Our collection of Cereus embraces over fifty rare varieties; but the stock of many of these is very limited, so that they cannot be offered at this date. Occasionally there is an extra plant to spare for those who value rare cactus.



CEREUS TRIANGULARIS.

**Triangularis.** A fine night bloomer. Outside it grows to immense proportions, and if planted near a dwelling, the branches will flatten themselves against the side of the house, sending out long white roots on each side, which attach themselves tightly until the stems become hardened, when they loosen and hang like heavy gray strings. The flowers are superb; immense size, fine creamy-white, with magnificent clusters of

silky stamens and a light yellow pistil. Blooming plants, 25c, 50c, 75c and \$1.00 each; cuttings, 15c to 25c each; cuttings, 12 to 15 inches long for grafting, 35c each, postpaid. Cuts of *C. triangularis* are always heavy.

**Cereus Beauty.** A very beautiful and distinct variety which came unnamed, and is given the name "Beauty" on account of its handsome appearance. It is a strong, vigorous grower of the *Grandiflora* type. The stems have four or five very deep angles, which are ornamented at the eyes with handsome tubercles. The stems are a beautiful light green with a shiny waxen luster. The flowers are large with short broad petals, of a beautiful rich greenish-white. Small plants, 25c; second size, 50c each; cuttings, 15c each.

**Pink Night Blooming Cereus.** Of the *Grandiflora* type, five to six sided, very small spines, and a vigorous grower. It produces cup-shaped flowers, with old rose sepals and blush petals. A night bloomer. Small plants, 25c each; cuttings, 15c each.

**Grandiflorus "Queen of Night."** This magnificent night blooming cereus produces large flowers nearly a foot across, the sepals dark brown outside, yellowish within, the petals pure white. A great beauty. 15c, 50c to \$1.00 each; cuttings, 10c to 15c each.

**Flagelliformis "Creeping Cereus"** Very slender stems, about  $\frac{3}{4}$  inch in diameter, of pendulous habit, fine for grafting on *C. colubrinus*; pretty in baskets. Bright, rose-colored flowers, resembling the crab cactus. 15c, 25c, 50c each.

**Colubrinus.** A tall, robust column-like cactus of very rapid growth. It bears innumerable beautiful flowers, with light pinkish-brown sepals and creamy-white petals that are delicately incurved. 25c to \$1.00 each; cuttings, 10c to 25c each; cuttings for grafting, 12 inches long, 25c each. Specimens, \$1.00 to \$2.50 each.

**Splendens.** A tall variety, resembling the above, but with flowers one-third larger; stems and sepals deep brownish-red, petals creamy-white, flowers funnel-shaped. Both of these cacti bloom at night, and are fine bloomers. Especially useful for grafting. 25c to \$1.00 each; cuttings, 10c each. The two above are quite heavy.

**Emoryii. "Velvet Cactus."** A beautiful upright growing variety with light green stems, covered with shining, transparent golden spines of various length. The young growth resembles the prettiest green velvet, with a golden tint. It is very beautiful. The flowers are pale yellow and inconspicuous, but the plant is very handsome. Small plants, 25c.

**Tortuosus.** The stems of this plant are of a dark purplish-black color, spines long and dark, except on young growth, then nearly red. A fine plant on account of its grotesque growth; from Buenos Ayres. Cuttings 25c. Quite heavy.

**Rostratus.** A slender climber, with magnificent flowers like cereus grandiflorus. 25c to 75c each; cuttings, 10c each.

**Nyctacalus.** A splendid night bloomer of strong growth, with square stems and very small spines, which produces very large white flowers. 25c each.

**Cereus Gemmatus.** "Organ Pipe Cactus." A most interesting variety, with very smooth stems, divided into six deep ridges by long lines of short spines, resembling beading. The flowers are small, brownish red, 1 inch long, and are very close together. The beauty of the plant lies in its massive grandeur and bead-like lines of spines. It resembles, when well grown, a great organ pipe. Small plants are handsome. Small size, only 15c to 25c each.

**Cereus Formosus Monstrosus.** A curiosity among cereus; it appears like a green coxcomb at a glance, but on inspection proves to be a series of small tubecular branches. Cuts, 20c; plants, 40c.

## Echinopsis Mulleri.

### The Cactus for the Million.

Because any one can grow it. It is free from all insect pests. It grows rapidly and lives year after year without disease, and it is the most beautiful of all the globose cactus. It bloom at intervals during the year (when large) but comes out in a perfect glory of blossoms in March and April. The tube measures 6 inches in length and the semi-double flowers are 4 to 5 inches across. They are a most lovely pure satin pink, the throat lined with numerous white silken stamens. A border of this beautiful cactus is a charming sight as may be seen by the cut opposite fifth page of catalogue. We can furnish all sizes up to large specimen plants and clusters. 10c, 15c, 25c, 50c, \$1.00 each; 75c. \$1.00, \$2.00, \$4.00 doz. Special prices given on large quantities.

**Eyresii.** Like the above except that it has few spines, and pure white flowers. It is quite scarce and does not increase as rapidly as *E. Mulleri*. 25c each.

**ECHINOCEREUS Berlandieri.** A low growing, recumbent plant, slender stems; four-angled, with short spines. The sweetly fragrant flowers are nearly 4 inches across, bright purple and showy. An elegant species. 30c each.

**MAMILLARIAS.** These are beautiful little plants, the spines embrace all the colors of the rainbow, the flowers of many are large as well as brilliant; the seed-pods (delicate colored berries) remain for many months making them doubly attractive. They can be grown anywhere and in any kind of soil, if the pots are well drained.

**Nivea.** Most beautiful species, covered with fine white spines; rare and beautiful. Pretty flowers, followed by red berries. Rare. 50c each.

**Pusilla.** Very dainty, with soft silvery spines. 15c to 25c each.



**Stella Aurata. "Golden Star."** A most beautiful variety that grows stems 2 to 4 inches high and a half inch in diameter, branching freely and covered with spreading star-like, soft yellow spines tipped with reddish-brown. Small white flowers. 25c to 50c each.

**Minima.** Resembling the above, but of more dwarf habit and with smaller stems, which are covered with cream colored star-like spines; it also bears white flowers. 10c to 25c each.

**Elegans.** One of the most beautiful varieties, like a soft white ball. Small crimson flowers. 25c each.

**OPUNTIA Microdasys.** The prettiest of all Opuntias with handsome, pear-shaped leaves, of a fine green, dotted with tufts of small golden spines that resemble tufts of velvet. The contrast is very beautiful. 10c, 25c, 50c and 75c each; cuttings, 15c to 25c each.

**Monacantha Variegata.** A beautiful plant, the pear-shaped leaves of which are beautifully variegated white and green; young growth pink. 20c, 50c and 75c each. Six other choice varieties, cuttings, 10c to 25c each.

## Phyllocactus.

The most gorgeous and satisfactory of all the cactus family. A large plant will frequently carry fifty to a hundred buds and blossoms. The leaves are flat or triangular in shape, of various shades of green, sometimes shaded with dark red. The plants attain a height of 4 to 5 feet, and from every eye of their severely plain and unattractive leaves come forth suddenly and mysteriously small buds, which develop into large flowers 5 to 8 inches across; often these flowers almost overlap each other, and they are of such wonderful brilliancy as to fairly dazzle the eyes. Some are clear scarlet and cup shaped; others are deep crimson, with throats of metallic purple and long silken stamens; either pink or white; sometimes the pollen is pink, on others white. Then there are pale yellow, pink, and cream-colored flowers, exquisitely lovely in form and color. The Phyllos begin to bloom in February, and come on during the spring and summer months, the time of blooming depending upon the varieties. The secret of having blooming plants is to take cuttings from wood that has bloomed; it will then flower at the proper time the next season.

**Phyllocactus "Mainwaring's Red."** A stately, strong, vigorous grower, that makes an imposing plant, and produces very large; dark red, heavy flowers. 25c to 50c each.

**Mrs. Bouman.** Makes a fine large plant; with graceful slender stems. It is a most profuse bloomer, bearing many open flowers at once; which are of medium size, colored soft velvety-scarlet, and of great brilliancy. 25c, 50c to \$1.00 each; cuttings, 10c.

**Metallica.** Strong stocky grower. Flowers are red, tinted with purple; antlers and pistils very long and heavy. 25c, 50c to \$1.00 each; cuttings, 10c.

**Pfersdorffi.** A rare sort that bears flowers 8 to 10 inches in diameter; which have clear yellow sepals; very fragrant. Small plants, 50c each.

**Kermesinus Magnus.** An imposing plant, with great thick, heavy, rich colored stems, which produce extra large deep scarlet flowers most splendid to behold; 8 to 12 inches in diameter. Small plants, 50c each; larger size, 75c each; no cuttings.

**Jenkensoni.** "Case Knife Cactus." One of the oldest varieties, with flat stems and numerous handsome light scarlet flowers, about 3 or 4 inches long. It blooms when very small. 10c, 20c, 50c, 75c to \$1.00 each; cuttings, 5c to 10c each.

**Alice Wilson.** Very large elegant scarlet flowers; exquisitely shaded metallic purple. Stems very massive and of a rich color. Small blooming plants, 50c to 75c each; cuttings, 25c each.

**Orange Gem.** Resembling the above, but with massive foliage, that has a rich yellow tint. A grand sort. Small plants, 50c to 75c each; cuttings, 25c each.

**Refulgens.** Most beautiful flaring scarlet flowers, shaded metallic purple. 50c each; cuttings, 25c each.

**Speciosissimus.** Embracing all the colors of the rainbow. 25c, 50c to 75c each.

**Crenatus.** Extra fine; petals clear cream color; sepals brownish-green. Very free bloomer; strong, robust, upright grower. 25c to 50c each. cuttings, 10c each.

**Roseus.** Charming pink flowers. Small plants, 25c.

**Roseus Superbus.** Fine pink flowers; very free bloomer; one of the best sorts; charming. 25c and 50c each.

**Tettanus.** Inside violet, outside purple; very showy and rich in appearance. 50c each.

**Ackermanii.** One of the handsomest. The flowers are 6 to 8 inches across, of a rich, satiny scarlet or crimson, produced in profusion. 15c, 25c, 50c and 75c each; cuttings, 10c.

**Anguliger.** Deep notches are cut all along the leaves like the teeth of a large saw. The flowers are composed of a curved tube 6 inches long, long, spreading out at the top to the width of 6 inches, and surrounded by a whorl of pure white petals. 20c, 50c, 75c each; cuttings, 10c.

**Latifrons.** The "Queen Cactus" is the largest of the genus, growing 8 to 10 feet high, robust in habit; the stem 4 to 5 inches broad, flat, crenated; night-blooming. The flowers a beautiful creamy white; sepals and tube of a reddish hue. 25c to \$1.50 each; cuttings, 5c to 20c.

**Wrayi.** A grand flowering sort; flowers 5 inches long by 8 inches across; brown outside, yellow within; petals yellowish white; fragrant when first open. 15c, 25c to \$1.00 each; cuttings 10c.

## Seeds of Cacti and Succulents.

**CACTI FROM SEED.**—It is a delight to watch their growth from the time that the seed sprouts, until it develops into a spiny ball or column, and sends out its satiny blossoms. The seeds are all sizes, from a small pea to a grain of mustard seed. They should be planted almost on the surface in pots or cigar boxes, half filled with potsherds or gravel, with a couple of inches of sand, well watered and kept covered with glass. They generally sprout within ten days or a month. It is surprising to see the size of a plant that has come from a very small seed. They are beautiful little things; the most delicate colors, pale green, soft pink or pale yellow, and pure white; round or oval, and resemble precious gems. They will grow well in the sand for two or three months or until large enough to transplant well, when they should be planted in a compost of loam, sand and leaf mold; mixed with broken charcoal. They must always be given good of drainage.

**Very Choice Hybridized** seed of *Cereus* and *Phyllos*. Small pkt., 25c.

**Cereus Triangularis.** 15c pkt.

**Colubrinus.** 10c pkt.

**Mamillarias.** Choice mixed, 15c pkt.

**Echinocereus.** Choice mixed, 15c per pkt.

**Echinocactus.** Choice mixed, 15c per pkt.

**Epiphyllum.** Choice mixed, 25c pkt.

**Phyllocactus.** Hybridized, 35c pkt.

**Cereus Tortuosus.** 20c pkt.

**Very Choice Mixed.** All sorts, 15c pkt.

All of the above varieties for \$1.35.

**Gasteria.** Choice mixed, 10c pkt.

**Aloes.** Choice mixed. They are very easily grown, and very interesting at all stages. 10c pkt.

**Aloe Hanburyana.** A very beautiful variety with splendid branches of rich scarlet flowers. Very fine for pots and vases, 25c pkt.

**Agave Filamentosa.** A very beautiful variety resembling a huge rosette. The overlapping leaves are very numerous, prettily marked with white, pointed at the edges, and have gray threads or filaments at the margins. A full grown plant measures 20 inches across. The plants in the garden are ten years or more of age, and in that time have never multiplied, but this season sent up great spikes or stems, 8 or 10 feet high, covered with reddish maroon blossoms, so that for the first time we can offer the seed. All the *Yuccas*, *Agaves* and *Aloes* grow readily from seed, and are very interesting in all stages. 15c pkt.

**Yucca Filamentosa.** 10c pkt.

**Yucca Whippelii.** 10c pkt.

## Omissions.

**AGATHEA Coelestes Variegata.** "The Blue Daisy" with variegated foliage. It has exquisite sky blue flowers, and is always in bloom. It originated with us. We have the plain variety also. 10c to 25c each.

**CALLA BULBS.** Fine bulbs, 5c, 10c, 15c, and 25c each. 0c, 75c, \$1.00, \$2.50 per doz.

**CHEROKEE ROSE.** Single, the true variety. 25c each, \$2.50 dozen.

**CALLIOPSIS Lanceolata.** "California Sunbeams." A perennial always in bloom, with numerous large, long stemmed golden yellow flowers. 10c to 25c each; \$1.00 to \$2.50 dozen.

**FARFUGIUM Grande.** A splendid house plant, with handsome round leaves on long stems from the ground, ornamented with large round yellow spots; very showy. We have a big stock of this. 15c, 25c, 35c, 50c to \$1.00 each.

**FICUS Ripens.** A pretty plant that clings to walls like the Ivy; a rapid grower, fine for baskets. 25c to 50c each.

**MINA LOBATA.** A splendid climber with big spikes of brilliant flowers, the buds red, open flowers yellow; it looks when in bloom as if aflame with color. 10c per pkt.

**Seeds of Linum Rubrum or Scarlet Flax.** 50c per pkt.

## Hanging Baskets of Plants.

Various sizes—from \$1.25 up to \$3 00, Etc. We have little rustic receptacles filled with plants for hanging. 50c, 75c to \$1.00 each, according to size and plants contained.

**Poinsettias** can not be sent by mail in their growing season; they will not bear having their roots disturbed. When dormant, from the last of February till the middle of April, they can be sent without soil.

**Passifloras, Tacsonias and Bignonia Venusta** should be sent with soil; they dislike being disturbed and are slow to recuperate when roots are broken, except when plants are strong and the roots well hardened. When young, if sent by mail, we can not be responsible if they fail to grow.

## Prices Omitted.

Page 60—**Nephrolepis Tuberosa.** Price 25c, 50c, up to \$2.00 each.

Page 60—**Cordata Compacta.** 10c, 52c to 50c each.

Page 87—**Bougainvillea.** Called hardy; this is an error, it will not stand frost.

## EPIPHYLLUMS

### LOBSTER, OR CRAB'S CLAW CACTUS.



*Epiphyllum violaceum alba*, or Xmas Cactus.

The genus *Epiphyllum* (from *epi*, upon, and *phyllm*, a leaf,) from its handsome and graceful appearance would hardly appear to belong to the cactus family. Its native home is in the forests on the slopes of the Oregon mountains in Brazil, where it grows on the trunks and branches of large trees, occasionally on the ground, or upon rocks, at an elevation of 6,000 feet. It has long

slender branches which are formed of succulent, green, leaf-like branchlets, growing out of the ends of each other, to the length of three or four feet. They are grown on their own roots or grafted on *Pereskia* or *Cereus*. When grafted, they can be grown as tall as desired, and allowed to droop over. On their own roots, they soon form a large plant that droops low over the sides of the pot. They do well either way, and are exquisitely beautiful and refined in appearance when in bloom, having a fountain-like effect of brilliant color. The flowers are very numerous, and last several days. They bloom at the dull-est season of the year, when other flowers are scarce. The different varieties bloom in succession from the last of September until after Easter.

We have a large stock of plants of two varieties that bloom at Xmas, on roots and grafted. The grafted plants are all bushy and well grown; the taller ones are 18 inches to two feet high. Our stock of the other varieties is quite limited, and we offer only small plants. The names of *Epihyllums* have become very much mixed, so that we cannot be sure of the true name. Our plants can be relied on to come true to description, but we will not guarantee that they are correctly named.



"Xmas Cactus." Flowers two-thirds natural size.

This variety comes into bloom about the third week in December and continues until the latter part of February. The flowers are three inches long; tube white; sepals rich coppery red; petals tipped coppery red, shading to light rose in center; edges margined deep rose; an exquisitely beautiful flower.

On own roots, without soil, post paid, 12c, 25c, 50c, 75c.

Grafted, without soil, express pre-paid, \$1.25.

Grafted, nice bushy plants, with soil, from 18 inches to 2 feet high, splendid tops, express pre-paid, \$1.75 to \$3.00 each.

**LANERITUM ALBA.**—Resembling the above, but with rich reddish shaded leaves; flowers smaller, with the coppery shade more pronounced; exquisitely graceful; a fine bloomer; also a Xmas cactus, as it blooms at the same time. Same sizes and prices as *Violaceum alba*.

**SUPERBUM.**—Large fine flowers, with the coppery red shades predominating; a later bloomer. Small plants only 25c.

**SALMONIANUM.**—Quite distinct; tube white; petals exquisite shaded salmon red with white, edged deep rose; sepals tawny salmon red. Small plants only 25c.

**RUCKERIANUM.**—Rich, deep dark magenta rose. Small plants, 25c.

## AN EXTRAORDINARY OFFER.

 A MAGNIFICENT PREMIUM FOR A \$6.50 ORDER.

### “Country Life in America”

Subscription price \$3.00. For a \$6.50 order for plants, seeds, etc., by express, we will give this superb magazine for one year, and 50c extra in plants, or \$10.00 worth in all for \$6.50. “Country Life in America” is printed on the best of paper, exquisitely illustrated with numerous pictures of country homes, out-of-door sports, flowers, trees and gardens, birds, insects and animals, and filled with the best reading matter, it is without doubt a peer in its line. We will send the same order by mail, if desired, but do not pay charges with this premium. We quote the well-known florist Robert Scott in a late number of *The Florist Review* of Chicago:

“I can not refrain, although foreign to what this article is supposed to be, from asking you to subscribe for and read “Country Life in America.” It came into existence only last November. It will elevate your thoughts, educate you broadly about the beauties of everything ‘out of doors.’ The silent, majestic tree, the trout that eludes your fly, the bird of the air and the quadruped of the prairie and wood and mountain are brought to your close acquaintance, as well as the flowers and plants that supply us with a livelihood. Its prose articles are poetry and its poems are original gems. Its numbers should be on the table of every man or woman that owns a home, and it is one more factor that will lead our people to seek the fresh air and environment of the country and to make these homes beautiful in their surroundings. I did not intend to digress so widely, and am not paid to obtain subscriptions for this grand and beautiful “Country Life,” but I am just now chock-full of its inspirations and can’t help it.”

### Gardening Number of “Country Life in America.”

*March, 1903, which is to set a new top notch in beauty for “Country Life in America” and for every other American magazine.*

We also give prospectus for March number of “Country Life in America:”

#### CONTENTS.

Frontispiece from Home Flower Garden, etc.; The Home Flower and Vegetable Garden, L. H. Bailey; Making a Japanese Garden in America; The Modest Formal Garden; School Gardens; The Vacant-Lot Question, or Village Improvement Gardening; New Old-fashioned Hardy Gardening; The Sargent Estate, L. H. Bailey; Double-Page Sargent Estate; How to Grow Plants, L. H. Bailey; How to Develop the Home Grounds, Egan; The Back-Yard Garden; Practical Garden Matters from Practical People, Notes, Suggestions, etc.

To be included in these text pages or in the single column matter this month which is devoted to gardening and nursery matters: Vegetables for Five; Window Boxes; Vines for Walls and Arbors; Beautifying the Factory; The Street Fence; Farm Gardens, etc., etc.

## INDEX.

Directions for ordering.....	Cover	2		
Theodosia B. Shepherd Co.....		2	Astrophitum .....	Seeds 86
To Friends and Flower Lovers.....		3	Bamboo .....	78-79
	Seeds	Plants	Baskets .....	93
Abutilon .....	7	32	Begonia .....	8 33-49
Agapanthus .....	8	32	Bellis .....	9
Agathea .....	7	92	Bignonia .....	9 73-74
Agave .....	5-90	91	Bougainvillea .....	28-74-92
Aloes .....	8-91	82	Bouvardia .....	8
Amaryllis .....		80-81	Browallia .....	9
Ampelopsis .....		73	Brahea .....	22 75
Analonium .....		86	Cactus .....	90 85-90
Anthericum .....		32	Calendula .....	13
Antigonon .....	8	32	Calla .....	12 92
Aralia .....		77	Canna .....	13 28-49-50-51
Arctotus .....	5		Carex .....	78
Arundo .....		77	California Poppy.....	15-16
Asparagus .....	8	73	Calliopsis .....	12
Aspidistra .....		32	Candytuft .....	13
Aster .....	5-7		Cardiospermum .....	12

INDEX—CONTINUED.

Carnation .....	13	20-29-30	Lobelia .....	19	68
Caraguata .....		85	Lopesia .....		68
Certaurea .....	12-13		Lotus .....		68
Cereus .....		86-90	Mamillaria .....	90	87-88
Celosia .....	13		Mandevilla .....	19	74
Chamerops .....	22	77	Marguerite .....		68
Cherokee Rose....		92	Marigold .....	19	
Chrysanthemum ....	12	51-54	Maurandya .....	19	
Cineraria .....	12		Mesembryanthemum.	19	84 92
Clianthus .....	14	74	Mignonette .....	19	
Coleus .....	12	54	Miscanthus .....		78
Cornflower .....	13	75	Myosotis .....	19	
Corypha .....	13	75	Nasturtium .....	6-7-21	
Cosmos .....	5-6-7-10-11		Opuntia .....		85
Cyclamen .....	13		"Oriole" New Rose...		31
Cyperus .....		77-78	Palms .....	22	75
Dahlia .....	14	55-57	Pansy .....	21	
Daisy .....	6-9	54	Papyrus .....		77
Dianthus .....	14		Passiflora .....	23	75
Dracena .....		77	Pea, Australian ....	24	
Echeveria .....		85	Pea, Sweet .....	23-24	
Echinocereus .....	90	87	Petunia .....	21-22	69
Echinopsis .....		88	Pelargonium .....	16	66
Epiphyllum .....	90	93-94	Pepper Tree .....		77
Erythrina .....	16		Phoenix .....	22	77
Eschscholtzia .....	15		Phormium .....		79
Euphorbia .....		83-85	Phlox .....	21	
Farfugium .....		93	Phyllocactus .....		88-90
Ferns .....		58-60-92	Phrynium .....		69
Ficus .....		93	Plumbago .....		69
Freesia .....	16		Poinsettia .....		69
Fuchsia .....	16	57-58	Poppies .....	22-23	
Furcraea .....		83	Primula .....		69
Gaillardia .....	6-16		Pyrethrum .....	92	
Gasteria .....	91	83	Rhipsalis .....		83
Genista .....	17	66	Rochea .....		83
Geranium .....	16-17	60-66	Romneya .....	24	
Gerbera .....		31	Roses .....	24-25	31-69
Gesnera .....	16		Rudebeckia .....		70
Gloxinia .....	17		Russellia .....		70
Grasses .....		77	Salvia .....	7	72
Haworthia .....		83	Schinus molle .....	25	77
Hardenbergia .....	17		Seafortia elegans ..	22	75-76
Heliotrope .....	17	67	Sempervivum .....		85
Heuchera .....	17		Shasta Daisy .....	6	54
Hemerocallis .....		67	Smilax .....		75
Hibiscus .....		68	Solarium .....	25	70-75
Himalaya "Fairy Grass"		78	Stapelia .....		83
Hoya .....		67	Stocks .....	25	
Hydrangea .....		67	Streptocarpus .....	25	
Hypericum .....		68	Streptosolen .....	25	70
Impatiens .....		68	Strelitzia .....		79
Ipomoea .....	18	74	Swainsonia .....	25	
Jasmine .....		74	Tacsonia .....	26	31-75-92
Kennedya .....	18		Tecoma .....	26	72-75
Kentia .....		77	Thunbergia .....	25	
Kleinia .....		83	Torenia .....	25	
Lantana .....		68	Tradescantia .....		72
Latania .....		77	Vallota .....		81
Lathyrus .....	19		Verbena .....	26	
Laurestinus .....		68	Violets .....		72
Libonia .....		68	Yucca .....	91	11
Ligustrum .....		68	Zephyranthes .....		81
Linum .....	92	68	Zinnia .....	26	



# A TRIBUTE TO MRS. SHEPHERD'S GARDENS.

[Extract from The Sunday Los Angeles Times, Magazine Section, July 6, 1902.]

Mrs. Theodosia B. Shepherd's home is not far from the old mission gardens of San Buenaventura, where still stand the hoary olive trees and the two stately sister palms planted more than a century ago by the Spanish padres. Here lies Mrs. Shepherd's garden, flooded with sunshine and fanned by the softest sea breezes. Here grow rare palms from Australia and Guadaloupe as well as the graceful bamboo and the *Strelitzia reginae* from the Cape of Good Hope, its splendid coloring seeming a sunbeam incarnate. Here a great tree fern rises in semi-tropic beauty, and here flaunt scarlet poinsettias, the rainbow cosmos and the giant flowering canna. Myriads of carnations, "the divine flower," fill the air with spicy perfume. Purple heliotrope riots in long stretches of hedges, and great beds of *Belladonna Amaryllis* dazzle the eye with their richness.

Over great frames and across lath houses are thrown veils of blossoms of the magnificent *Bignonia venusta*, the rich magenta rose bracts of the *Bougainvillea*, the intense violet blue of the *Ipomea Learii*, or the rare and snowy *Mandavilla grandiflora*. Masses of glossy foliage, long, trailing, graceful branches, showy colors in flaring yellow, trumpet-like flowers, or airy clusters of *Ipomea*, "Heavenly blue," or rich rose-pink and scarlet blossoms of passion vines all charm the eye with their effective and exceeding loveliness. In the shadow of the lath houses, or growing near them in the open air, a hundred varieties of captivating begonias run riot, in myriads of exquisite flowers. While Flora has done much in these gardens, art has added greatly to her work, for Mrs. Shepherd has lived so many years close to the heart of nature, and has so truly been her interpreter, that through these years of careful selection and the method of cross-fertilization she has evolved many new types of flowers.

## THE CREATION OF FLORAL WONDERS.

[Extract from The Sunday San Francisco Chronicle, January 20, 1901.]

"When I was a girl," she said, smilingly, "I was often called by my family the 'The Night Blooming Cereus,' because I always seemed to develop my best faculties at night. I never had any regular hour for retiring, but read, or wrote, or prowled around, doing my greatest tasks 'in the wee sma' hours.'"

"I sometimes think," Mrs. Shepherd said, "that we do not choose our work, but are chosen or called to it. It has always seemed to me that I was called into the field of flowers with a special mission to perform for them, to grow and disseminate them where they are loved and appreciated, to write and talk about them, but, most of all, to create new varieties."

We stood by the cactus bed, for Mrs. Shepherd was hybridizing her cacti, the night-bloomers, those beautiful creations that nature produces only to attain their fullest perfection at night. I held the lamp, Mrs. Shepherd carried a little pair of scissors and some sheets of tissue paper. The many-ribbed night-bloomers stood in long rows like sentinels in the darkness. The flowers, a dozen or more in each column, gleamed in the dim light, funnel-shaped, with creamy white stamens and satin-fringed petals. I held the lamp high, throwing a fitful light over the great beds stretching away in the distance. I saw the showy *Phillo* cactus and the glorious blossoms of the *Cereus triangularis*, with many varieties, full of bristling spines and dainty blossoms. In the groups of these latter gleamed great starry flowers, while the beautiful *Manillaries* and the exquisite *Echinopsis* met the eye in countless numbers. Ghostly effects appeared here and there in the distance, where the curious "old man cactus" grew, with its strange covering of long, white hair.

"This is *Phyllocereus Ackermanni*, the pollen bearer," said Mrs. Shepherd, directing my attention to the plant. "These flowers have attained their fullest perfection—see, I cut away the anthers of the others, the *Cereus Colubrinus*," and as she spoke she clipped with the scissors the beautiful fringes of the flower, leaving the pistil high above in its satin cup. Then, with a little brush, she took the pollen carefully from *Phyllocereus Ackermanni* and dusted lightly with the pretty pink pollen the denuded flower. Little by little we moved down the long rows, treating each flower separately, and then, to protect the work from wandering night insects, each blossom was hooded with a square of tissue paper tied lightly to the stem, and the work was done.

# BOOKS ON Gardening, Floriculture, Etc.

BEGONIAS. TUBEROUS. Cultural Directions and General Management.	\$0 25
BOTANY. By Julia McNair-Wright.	50
BULBS AND TUBEROUS-ROOTED PLANTS. By C. Allen. Descriptive, Propagation and Culture in Dwelling, Greenhouse and Garden.	1 50
CACTUS CULTURE FOR AMATEURS. By W. P. Watson. (Imported)	2 00
CHRYSANTHEMUM CULTURE FOR AMERICA.	1 00
FERNS AND FERN CULTURE. By J. Berkenhead. (Imported)	75
GARDENING FOR PLEASURE. By Peter Henderson.	1 50
GARDEN-MAKING. By Prof. L. H. Bailey.	1 00
HAND BOOK OF PLANTS. By Peter Henderson. A Standard American Dictionary for Plants; invaluable as a Book of Reference.	3 00
HANDBOOK OF PRACTICAL LANDSCAPE GARDENING By B. R. Elliott.	1 50
HOUSE PLANTS. How to Succeed with Them. By Lizzie Hillhouse.	1 00
INSECTICIDES. By Prof. Weed. How to Combat Insects, in the Field, Garden, Greenhouse and Dwelling.	1 50
LILIES AND THEIR CULTURE. By Dr. Wallace.	1 75
THE STORY OF THE PLANTS. By Grant Allen. A charming book, delightfully instructive.	35
THE PRUNING BOOK. By Prof. L. H. Bailey. When and How to Prune Fruit and Ornamental Trees and Shrubs.	1 50
THE LANGUAGE OF FLOWERS. By J. Ingraham. (Imported) Includes floral poetry. Small edition, 50 cts.; cloth, \$1; gilt.	1 50
ROSES. A Book About. By Dean Reynolds Hole. (Imported)	1 25
SWEET PEAS Cultivation of. By Rev. W. T. Hutchinson	1 25
WILD FLOWERS OF CALIFORNIA. By Mary Elizabeth Parsons.	2 00

Any of the above books will be sent to any address in the United States, postage paid, upon receipt of the price.

**THEODOSIA B. SHEPHERD CO.**

VENTURA-BY-THE-SEA, CALIFORNIA.