



Digitized by the Internet Archive
in 2010 with funding from
Research Library, The Getty Research Institute

<http://www.archive.org/details/designsforsmallp00gyff>

D E S I G N S

FOR

S M A L L P I C T U R E S Q U E

COTTAGES,

&c.

S. GOSNELL, Printer, Little Queen Street.

D E S I G N S
FOR
S M A L L P I C T U R E S Q U E
COTTAGES AND HUNTING BOXES,

ADAPTED FOR
ORNAMENTAL RETREATS
FOR
HUNTING AND SHOOTING;

ALSO
S O M E D E S I G N S
FOR
PARK ENTRANCES, BRIDGES, &c.

CAREFULLY STUDIED AND THROWN INTO PERSPECTIVE.

By E. GYFFORD, ARCHITECT.

ENGRAVED ON TWENTY PLATES.

FORMING PART THE FIRST OF A SERIES OF SELECT ARCHITECTURE.

London :

PUBLISHED BY J. TAYLOR, AT THE ARCHITECTURAL LIBRARY, NO. 59, HIGH HOLBORN ;
J. HARDING, ST. JAMES'S STREET ; AND J. CARPENTER, OLD BOND STREET.

1807.

P R E F A C E.

THE Designs contained in this volume form the First Part of a Series of Studies and Designs in *Select Architecture*. In the Preface to the Second Part I have made some general observations upon the nature and character of buildings on a small scale intended for comfortable and retired residences, and on the stimulus which an anxious mind desirous of fame feels, when a candidate for public applause.

The Plans in this volume are constructed on a small scale of accommodations, yet the elevations present an ornamented and picturesque appearance ; they are calculated for the permanent residences of single gentlemen with a small establishment of servants ; or for occasional occupation only, in the season of

hunting and shooting, when, accompanied by a friend or two, the healthful sports of the field form the principal object for a temporary retreat from the more elegant amusements of the metropolis, or the more enlarged circle at the villa; and the accommodations are such as will, I flatter myself, be deemed sufficient for such occasional rustication:—some of the plans are sufficiently large for the permanent residence and required conveniences of a small family.

I conceive also that several of the Designs would form suitable residences for a bailiff, keeper, &c. to be built on picturesque situations, which may be seen at a distance from the mansion, affording a comfortable retreat for some respected and faithful servant, at the same time adorning and giving interest to the scenery of an extensive domain.

This First Part of my work contains those Designs for Picturesque Cottages and Boxes which may be considered of a minor character, while the Second Part embraces those Elegant Cottages and Villas which are of greater magnitude, accommo-

dation, and expense. The two Parts united, form a Series of *Select Architectural Designs*, useful to all Gentlemen, who wish information on so important a subject as a snug dwelling, combining taste and convenience with economy.

EXPLANATION,

&c.

PLATE I.

PLAN and View, designed for an ornamental and useful building, calculated to be erected on an eminence where the prospect is particularly interesting or extensive ; providing at the same time a convenient dwelling for a gardener or bailiff. On the ground floor is a living room, and between that and the prospect room, which is eighteen feet square, are two bed rooms.

The expense of this erection done in brick-work and stuccoed, the interior finished in a plain style, will amount to £400.

N. B. The whole of these calculations are exclusive of carriage of materials.

PLATE II.

PLAN and View of a building intended for purposes similar to the foregoing, but designed more particularly with a view to economy. It might be effected for the sum of £280.

PLATE III.

PLAN and View of a Greenhouse on a moderate scale, with accommodations for a gardener attached. The advantages of such an arrangement are so obvious as to preclude the necessity of commenting on them. The estimate for this is £240.

PLATE IV.

PLAN and View of a design intended to accommodate only a Gentleman and his Friend in the season of shooting, and to be erected in a part of the country, probably remote from a principal town. The expense of this box will be about £160.

It contains kitchen, eating room, and parlour, on the ground floor. The parlour occasionally to be converted into a bed room, will, with those over the centre part, make four bed rooms.

PLATE V.

PLAN and View of a Sporting Box, containing parlour, kitchen, and two bed rooms on the same floor, and designed under the same impression as the last. The estimate is £230.

PLATE VI.

PLAN and View, designed for similar purposes, having the sitting room in the centre.

The estimate for this is £265.

PLATE VII.

PLAN and View designed also for the same purposes as the three preceding plans; but from the singularity of its figure may be considered to possess more originality, and from its size more accommodations; having on the ground floor a dining room, kitchen, and vestibule, and above, three good bed rooms. The estimate for this building I make £550.

PLATE VIII.

PLAN and View of a Hunting or Shooting Box; having a kitchen, parlour, and two bed rooms on the ground floor, and two bed rooms over.

The estimate for the building is £430.

PLATE IX.

PLAN and View of a Hunting Box in the castle style, calculated to be built on the summit of a steep ascent. In this arrangement I have annexed the stables to the dwelling, although well aware that to a constant residence this would be objectionable, but for a temporary residence only, may be permitted. The ground floor contains dining room and kitchen; above are five bed rooms, and over the stables sleeping rooms for grooms, &c. The expense of this building I estimate at £750.

PLATE X.

PLAN and View of a Hunting or Shooting Box in the Chinese character; comprising a spacious dining room and kitchen, with four bed rooms, all on the same floor. The whole executed in this style would amount to £480.

PLATE XI.

SPORTING Villa in the character of a farm building. This has more extensive accommodations than either of the preceding plans, having a dining room, kitchen, two parlours, and a hall on the ground floor, and on the bed room floor five sleeping rooms. The expense of this building I estimate at £960.

PLATE XII.

DESIGN for a Shooting Box in the castle style ; comprising kitchen, dining room, drawing room, and library, of ample magnitude, on the ground floor, and four sleeping rooms above. To erect this building would require the sum of £1000.

PLATE XIII.

A SIMILAR subject, comprising kitchen and parlour, with four sleeping rooms on the same floor. The expense will be £480.

PLATE XIV.

HUNTING Box; comprising two bow rooms, kitchen, and vestibule, stairs and water closet on the ground floor, and three bed rooms above in the centre part. The expense of this design is estimated at £600.

PLATE XV.

PARK Entrance and Lodges.

PLATE XVI.

ANOTHER in the Doric character.

PLATE XVII.

THE same subject with one Lodge, intended as an entrance to two paddocks.

PLATE XVIII.

PLAN and View of an Iron Bridge of forty feet span, with a Chinese temple on the centre.

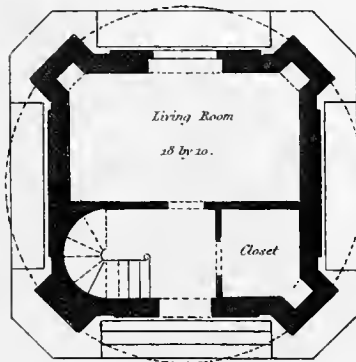
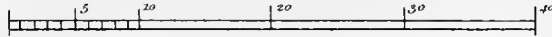
PLATE XIX.

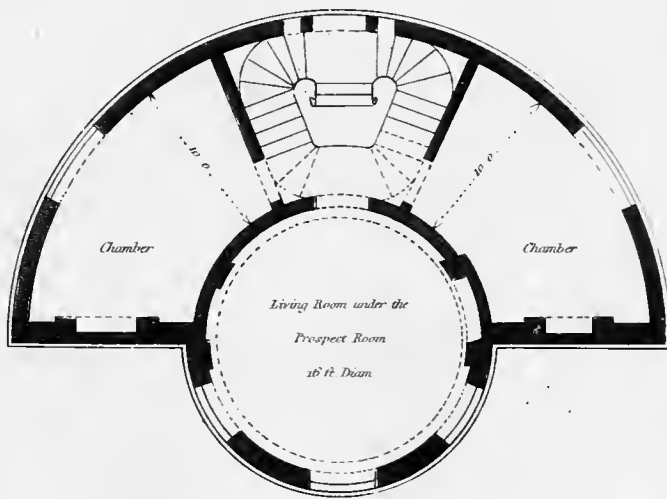
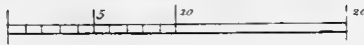
PLAN and View of an Iron Bridge fifty feet span, with temples of a fancy character at the extremities.

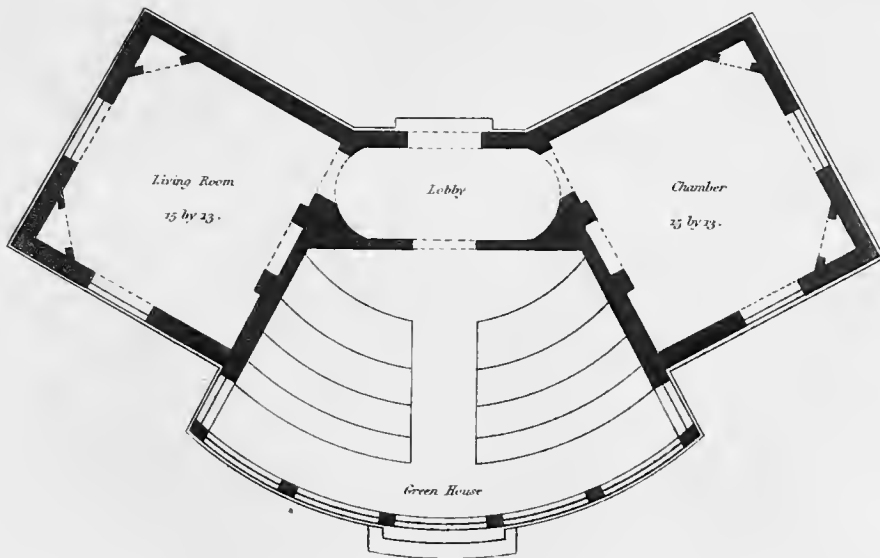
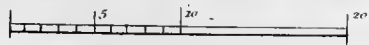
PLATE XX.

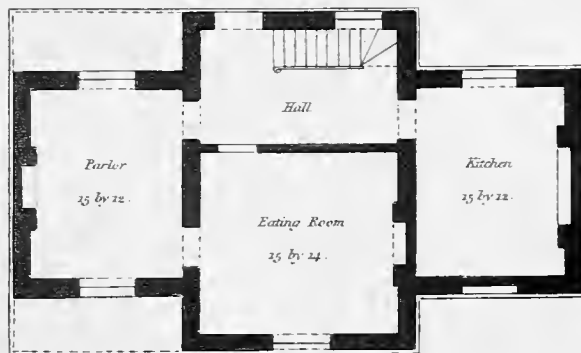
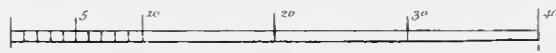
PLAN and View of a decorative Temple for park or grounds in the Chinese style.

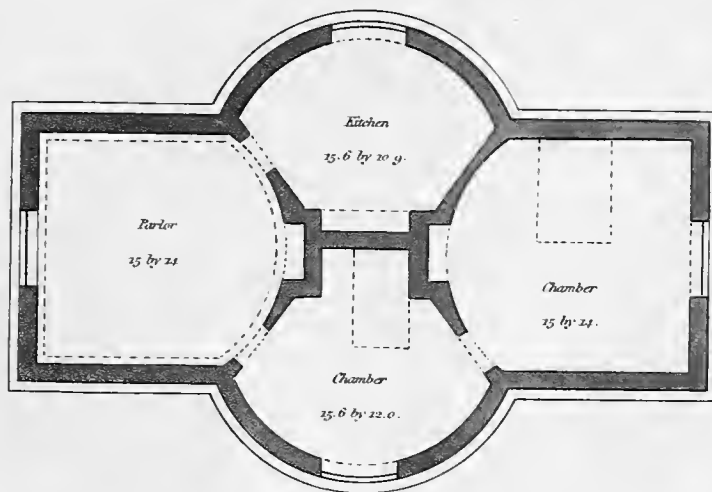
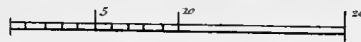
END OF THE FIRST PART.

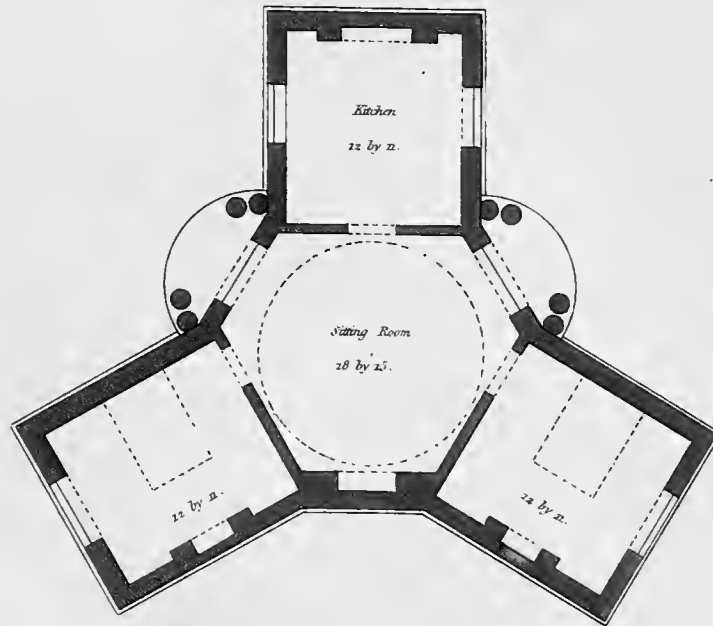
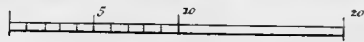


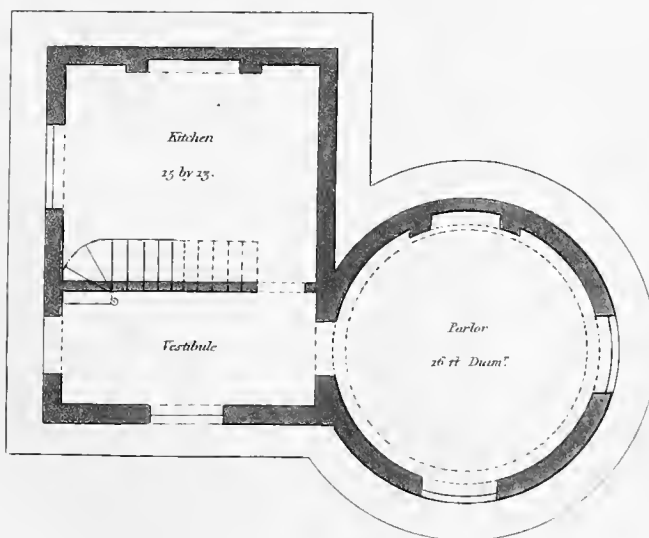
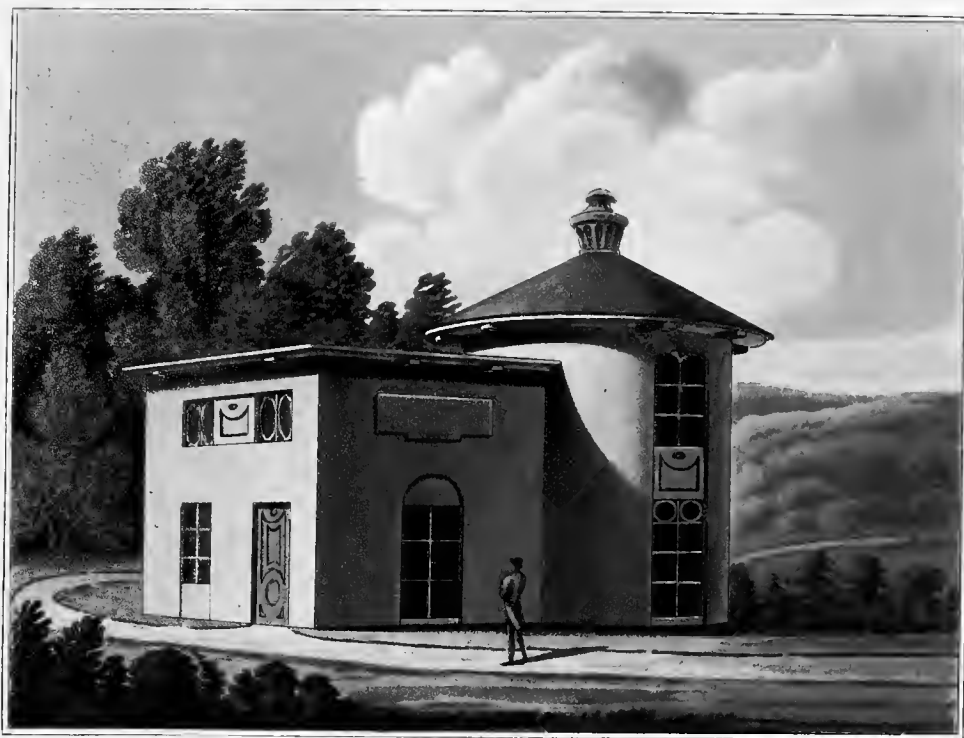


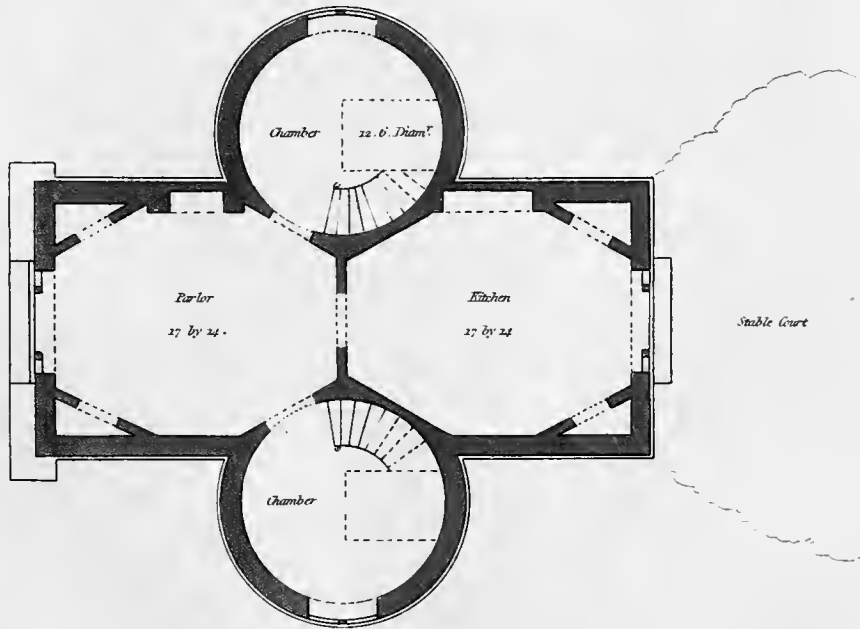
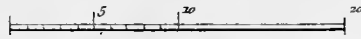


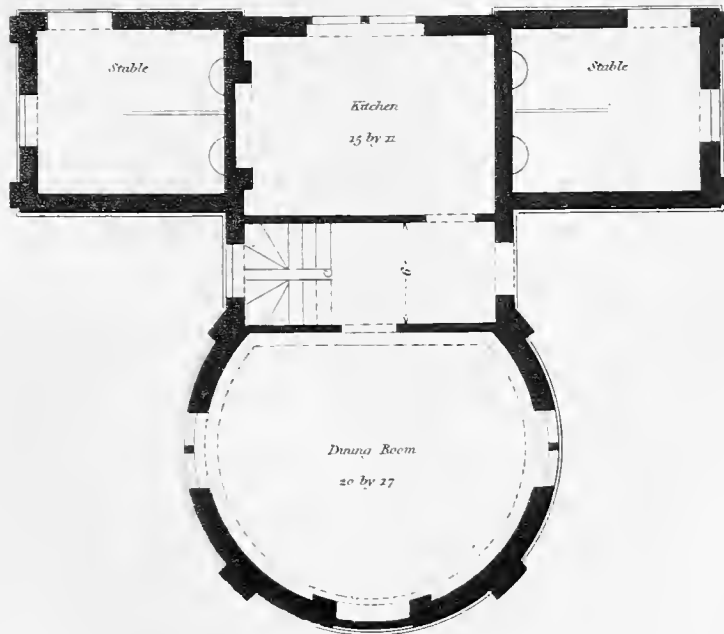
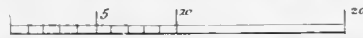


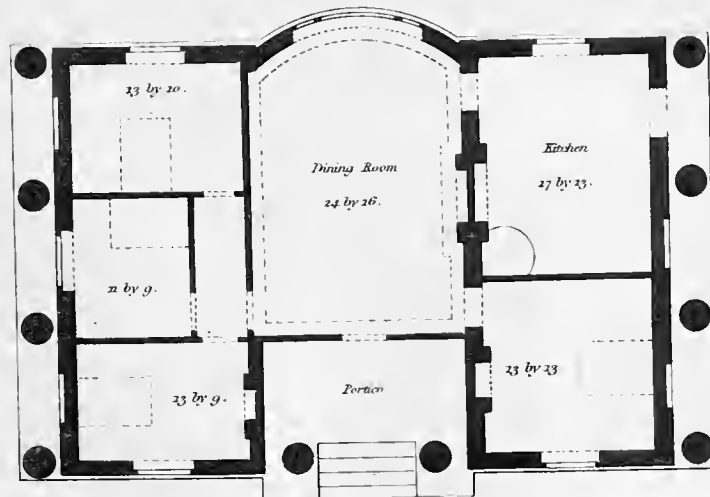
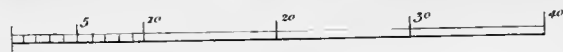


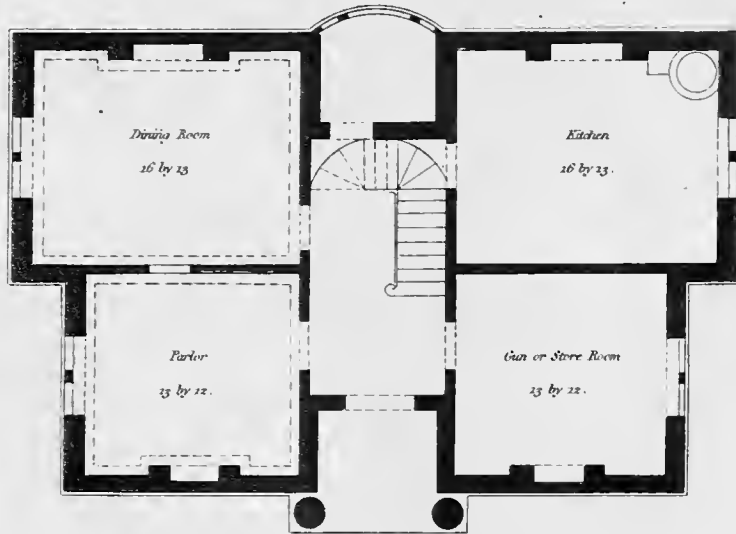


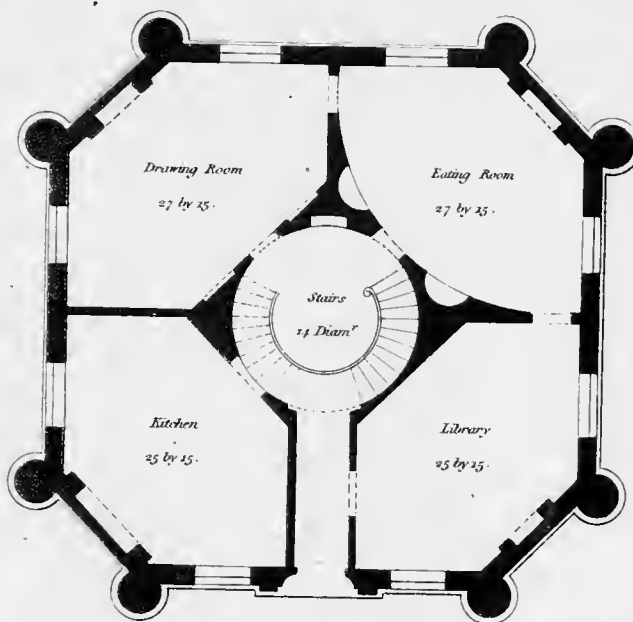
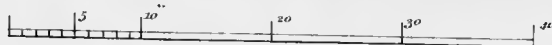


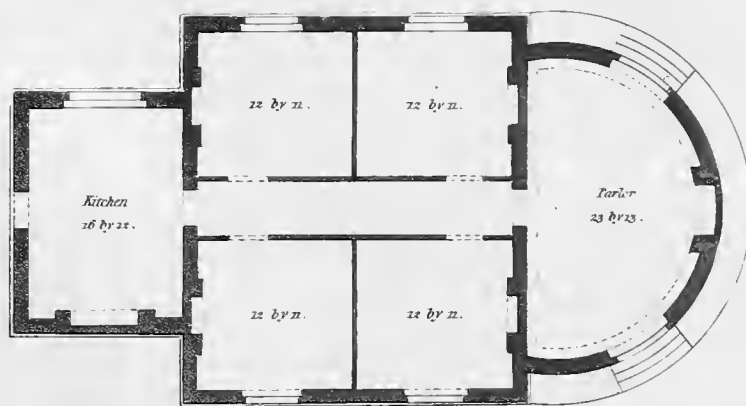
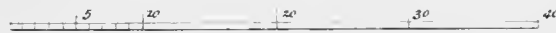


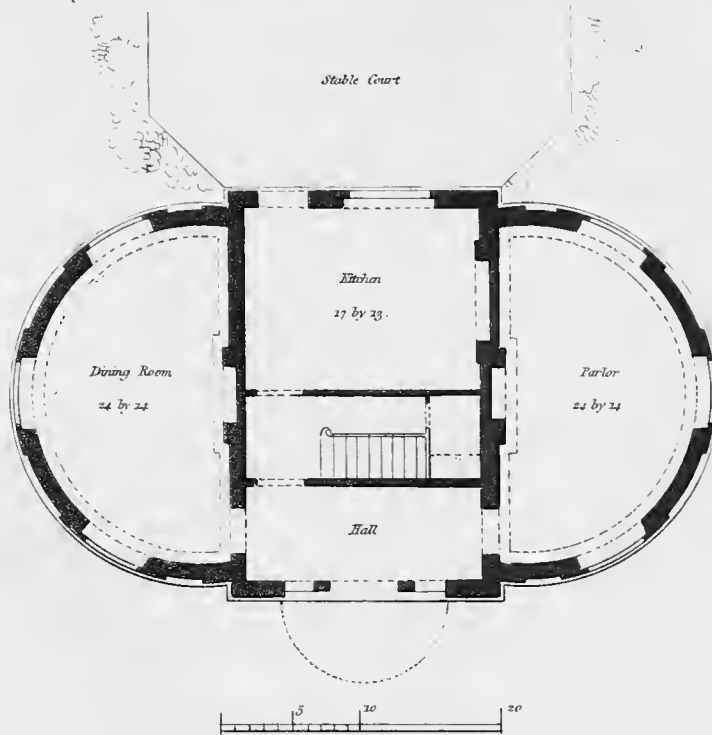








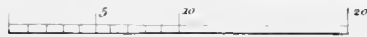




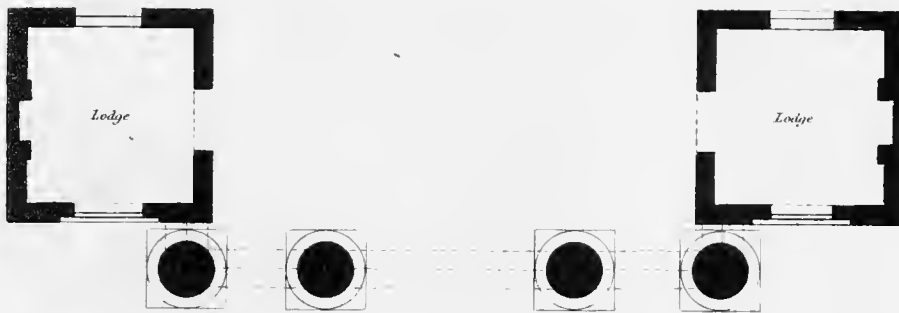


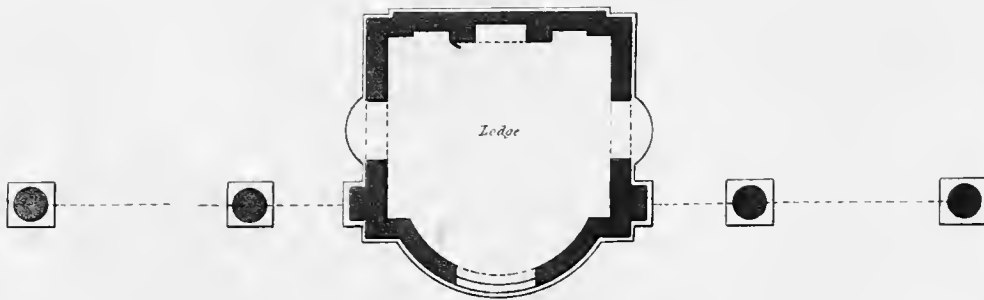
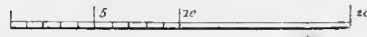
Park Gate with Lodges.



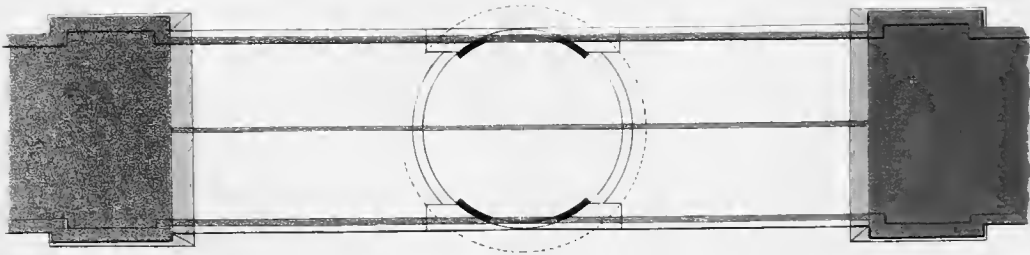
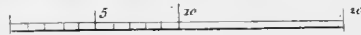


Park Gate with Lodges.

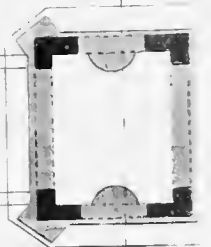
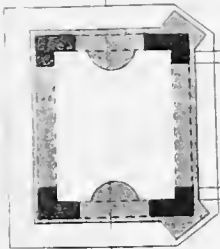




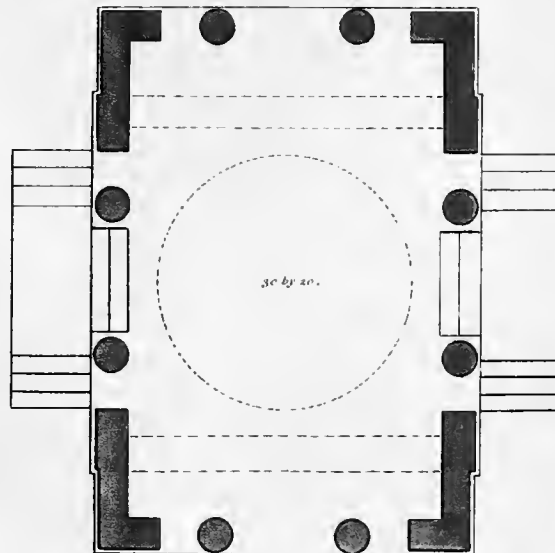
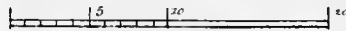
Park Entrance.



Design for a Bridge.



Design for a Bridge.



Temple in the Chinese style.

A LIST OF BOOKS
ON THE VARIOUS BRANCHES OF
ARCHITECTURE AND BUILDING,

PUBLISHED BY

J. TAYLOR, at the ARCHITECTURAL LIBRARY,
No. 59, HIGH HOLBORN, LONDON.

DOMESTIC AND ORNAMENTAL ARCHITECTURE.

1. **D**ESIGNS FOR VILLAS and other Rural Buildings. By EDMUND AIKIN, Architect, with Plans and Explanations. Together with an introductory Essay, containing Remarks on the prevailing Defects of Modern Architecture, and an Investigation of the Style best adapted to the Dwellings of the present Time. On 31 Plates, large Quarto, 1l. 11s. 6d. Boards.
2. *A Series of Designs for Villas and Country Houses*; adapted with Economy to the Comforts and to the Elegancies of Modern Life; with Plans and Explanations to each; to which is prefixed, an Essay on Modern architectural Taste. By C. A. BUSBY, Architect. Elegantly engraved on 24 Plates, large Quarto, 1l. 5s. Boards.
3. *Architectural Designs for Rustic Cottages, Picturesque Dwellings, Villas, &c.* with appropriate Scenery, Plans and Descriptions; to which are prefixed some critical Observations on their Style and Character; and also of Castles, Abbies, and ancient English Houses; concluding with Practical Remarks on Building, and the Causes of the Dry Rot. By W. F. POCOCK, Architect. Elegantly engraved on 33 Plates, large Quarto, Price 1l. 11s. 6d. in Boards.
4. *Sketches in Architecture*, consisting of original Designs for Cottages and Rural Dwellings, suitable to Persons of moderate Fortune, and for convenient Retirement; with Plans and appropriate Scenery to each; also some general Observations. By T. D. W. DEARN, Architect to His Royal Highness the Duke of Clarence. Elegantly engraved on 20 Plates, large Quarto, Price 1l. 7s. in Boards.
5. *Plans, Elevations and Sections of Hot-Houses, Green-Houses, an Aquarium, Conservatories, &c.* recently built in different Parts of England, for various Noblemen and Gentlemen. By G. TOD, Surveyor and Hot-House Builder. Including a Hot-House and a Green-House in Her Majesty's Gardens at Frogmore. On 27 Plates, elegantly coloured, with proper Descriptions, (folio.) 2l. 12s. 6d. in Boards.
6. *Lugar's Country Gentleman's Architect*, containing a Variety of Designs for Farm Houses and Farm Yards of different Magnitudes, arranged on the most approved Principles for Arable, Grazing, Feeding and Dairy Farms, with Plans and Sections, shewing at large the Construction of Cottages, Barns, Stables, Feeding Houses, Dairies, Brewhouse, &c. with Plans for Stables and Dog-kennels, and some Designs for Labourers' Cottages and

Books published by J. TAYLOR, High Holborn.

- small Villas. The whole adapted to the Use of Country Gentlemen about to build or to alter. On 21 Plates, with full Explanations to each. Quarto. 1l. 5s. in Boards.
7. *Lugar's Architectural Sketches*, for Cottages, Rural Dwellings, and Villas; with Plans; suitable to Persons of genteel Life and moderate Fortune; preceded by some Observations on Scenery and Character. On 38 Plates, Quarto. Boards 1l. 11s. 6d.—The same elegantly coloured, 2l. 12s. 6d.
 8. *Randall's Designs* for Villas, Casinos, Mansions, Lodges, and Cottages, in the Grecian, Gothic, and Castle Styles; engraved in Aquatinta, on 34 Plates, folio, 2l. 12s. 6d.—The same on Imperial Folio Paper, 3l. 13s. 6d.
 9. *Gyfford's Designs* for Small Picturesque Cottages, Hunting Boxes, Park Entrances, &c. Part I. On 20 Plates, Quarto. 1l. 1s. Boards; or elegantly coloured, 2l. 2s.
 10. *Gyfford's Designs* for Elegant Cottages, and small Villas, in Perspective, with General Estimates. Part II, on 26 Plates, Quarto. 1l. 11s. 6d. Boards.—The same elegantly coloured. 2l. 12s. 6d.
 11. *Plaw's Sketches for Country Houses, Villas, and Rural Dwellings*; calculated for Persons of moderate Income, and for comfortable Retirement. Also some Designs for Cottages, which may be constructed of the simplest Materials; with Plans and general Estimates. On 42 Plates, Quarto, 1l. 11s. 6d. in Boards.—The same elegantly coloured, 2l. 12s. 6d.
 12. *Plaw's Ferme Ornée, or Rural Improvements*, a Series of Designs, suited to Parks, Plantations, Rides, Walks, Rivers, Farms, &c. consisting of Fences, Paddock House, a Bath, Dog-kennels, Pavilions, Farm-yards, Fishing-houses, Sporting Boxes, Shooting-lodges, Single and Double Cottages, &c. calculated for Landscape and Picturesque Effects. On 38 Plates, with appropriate Scenery, Plans, and Explanations. Quarto. In Boards, 1l. 11s. 6d.
 13. *Plaw's Rural Architecture*, or Designs from the simple Cottage to the decorated Villa, including some which have been executed. On 62 Plates, with Scenery, half bound, 2l. 2s.
 14. *Laing's Hints for Dwellings*, consisting of Original Designs for Cottages, Farm-houses, Villas, &c. plain and ornamental; including some Designs for Town-houses. On 34 Plates, Quarto, 1l. 5s. in Boards.
 15. *Soane's Sketches for Cottages, Villas, &c.* with their Plans and appropriate Scenery; to which are added six Designs for *improving and embellishing Grounds*, with Explanations. On 54 Plates. Folio. 2l. 12s. 6d. half bound.
 16. *Soane's Plans, Elevations, and Sections* of Buildings, executed in the Counties of Norfolk, Suffolk, York, Wilts, Warwick, Stafford Somerset, &c. On 47 Folio Plates. 2l. 12s. 6d.
 17. *Plans, Elevations, and Sections* of Noblemen's and Gentlemen's Houses, Stabling, Bridges, &c. By *James Paine*, Architect. 2 Vols. 176 large Folio Plates. 6l. 16s. 6d. half bound.

Books published by J. TAYLOR, High Holborn.

18. *An Essay on British Cottage Architecture*, exemplified by fourteen Designs, with their Plans, &c. on 23 Plates. By James Malton. Quarto, Boards, 1l. 11s. 6d.—The same elegantly coloured, 2l. 12s. 6d.
19. *Miller's Designs* for Cottages, Farm-houses, Country-houses, Lodges for Park Entrances, and wooden Gates, with Plans of the Offices. On 32 Quarto Plates. Sewed, 10s. 6d.
20. *A Series of Plans, for Cottages or Habitations for the Labourer*. To which is added, an Introduction, containing many useful Observations on this Class of Building, tending to the Comfort of the Poor, and Advantage of the Builder; with Calculations of Expences. By the late Mr. J. Wood, of Bath. 30 Plates, large Quarto, 1l. 1s.
21. *Crunden's Convenient and Ornamental Architecture*. Original Designs; calculated both for Town and Country. On 70 Copper-plates. 16s. Boards.
22. *Middleton's Architect and Builder's Miscellany*. Designs for Country and Town Houses, Temples, Bridges, Lodges and Gates, &c. On 60 Plates, coloured. 1l. 1s. bound.
23. *Middleton's Designs* for Gates and Rails, suitable to Parks, Pleasure Grounds, Balconies, &c. On 27 Plates. Octavo, 6s.
24. *Decorations for Parks and Gardens*, Designs for Temples, Prospect Towers, Cattle Sheds, Ruins, Bridges, Green-houses, &c. Also a Hot-house, and Hot-wall. On 55 Plates, Octavo. 10s. 6d. sewed.
25. *Soane's Designs* for Temples, and other Buildings, for decorating Pleasure-grounds. On 38 Plates, Octavo; sewed, 6s.
26. *Grotesque Architecture*. Plans, and Elevations for Huts, Hermitages, Chinese, Gothic, and Natural Grottos; many of which may be executed with Flints, irregular Stones, rude Branches and Roots of Trees; 28 Designs. By W. Wright. Octavo; sewed, 4s. 6d.
27. *The New Vitruvius Britannicus*; consisting of Plans and Elevations of modern Buildings, public and private, erected by the most celebrated Architects. On 72 Plates. By G. Richardson, Architect. Imperial Folio, half bound, 5l. 15s. 6d.
N. B. Four Parts of the second Volume, containing 14 Plates each, are published. It will be continued in Parts, each 1l. 1s.
28. *Chambers's (Sir William) Treatise on Civil Architecture*, third Edition. Folio; half bound, 4l. 4s.
29. *Chambers's Buildings and Views of Kew Gardens*. Folio; half bound, 2l. 10s.
30. *Chambers's Designs for Chinese Buildings, &c.* hf. bd. 1l. 11s. 6d.
31. *The Rudiments of Ancient Architecture*; containing an Historical Account of the Five Orders, with their Proportions, and Examples of each from Antiques; calculated for the Use of those who wish to attain a summary Knowledge of the Science of Architecture; with a Dictionary of Terms; illustrated with 11 Plates. Octavo; Boards, 8s.

Books published by J. TAYLOR, High Holborn.

32. *Designs for the Decoration of Rooms*, in the various Styles of modern Embellishment; with Pilasters and Friezes at large. On 20 Folio Plates, drawn and etched by G. Cooper, Draftsman and Decorator. 1l. 1s.
Some Copies coloured according to the original Drawings, show the full Effect of the Rooms when finished. 4l. 4s.
33. *A Collection of Designs for Modern Embellishments*, suitable to Parlours, Dining and Drawing Rooms, Folding Doors, Chimney Pieces, Varandas, Friezes, &c. By C. A. Busby, Architect. Neatly engraved on 24 Plates, 14 of which are elegantly coloured, Price 1l. 12s. 6d.

PRACTICAL ARCHITECTURE.

1. *Nicholson's Carpenter's New Guide*; a complete Book of Lines for Carpentry and Joinery, treating fully on Practical Geometry, Soffits, Lines for Roofs and Domes, with a great Variety of Designs for Roofs, Trussed Girders, Floors, Domes, Bridges, &c. Stair-cases and Hand-rails of various Constructions. The whole founded on true Geometrical Principles; the Theory and Practice well explained and fully exemplified on 78 Copper-plates; including some Practical Observations and Calculations on the Strength of Timber. Quarto. 15s.
2. *Nicholson's Carpenter and Joiner's Assistant*; containing Practical Rules for making all Kinds of Joints, and various Methods of Hingeing them together; for fitting up Windows and Shutters to answer various Purposes, with Rules for hanging them; for constructing Roofs in the best Manner from a given Quantity of Timber; for placing of Bond Timbers; with a new Scheme for constructing Stairs and Hand-rails, &c. &c. To which are added, Examples of various Roofs executed, with the Scantlings from actual Measurements; with Rules for Mortices and Tenons, and for fixing Iron Straps, &c. Also Extracts from M. Belidor, M. du Hamel, M. de Buffon, &c. on the Strength of Timber, with practical Observations. Illustrated with 79 Plates, and copious Explanations. Quarto. 18s. bound.
3. *Nicholson's Student's Instructor*, in drawing and working the Five Orders of Architecture. On 33 Plates, Octavo. 6s. bound.
4. *Pain's British Palladio*, 42 Plates, Folio. 16s.
5. *Pain's Carpenter and Joiner's Repository*, 69 Plates, Folio. 16s.
6. *Pain's Practical Builder*, 83 Plates, Quarto. 12s.
7. *Pain's Practical House Carpenter*; containing a great Variety of useful Designs in Carpentry and Architecture; as Centering for Groins, Niches, &c. Examples for Roofs, Sky-lights, &c. The Five Orders. Mouldings, &c. at large, with their Enrichments. Houses for Town and Country, Lodges, Stables, &c. Variety of Stair Cases, with many other important Articles and useful Embellishments. To which is added, a List of Prices for Materials and Labour, Labour only, and Day Prices. The

Books published by J. TAYLOR, High Holborn.

whole illustrated and made perfectly easy by 148 quarto Copper-plates, with Explanations. The sixth Edition, with large Additions. 18s. bound.—*N. B.* This is PAIN's last Work.

8. *The Carpenter's Pocket Directory*; containing the best Methods of framing Timbers of all Figures and Dimensions, with their several Parts; as Floors, Roofs, Spires and Domes, Trussing Girders, Partitions, and Bridges, with Abutments; Centering for Arches, Vaults, &c. cutting Stone Ceilings, Groins, &c. with their Moulds; Centres for drawing Gothic Arches, Ellipses, &c. On 24 Plates, with Explanations. By *W. Pain*. Bound, 5s.
9. *Langley's Builder's Complete Assistant, or a Library of Arts and Sciences*. Exemplified on 77 large Quarto Plates. 2 Vols. Royal Octavo. Bound, 15s.
10. *Langley's Gothic Architecture improved*, 64 Plates, Quarto. 15s.
11. *Langley's Builder's Bench Mate*, 184 Plates. 4s. 6d.
12. *Designs for Shop Fronts and Door Cases*, Quarto. 10s. 6d.
13. *Richardson's Fancy Capitals and Friezes from the Antique*. 15s.
14. *Designs for Monuments*, including Grave-Stones, Wall-Pieces, and Tombs. Quarto. 16s.
15. *Elevation and Plan of Blackfryars' Bridge*. 5s.
16. *Plans, Elevations, and Sections of the Machines and Centering used in erecting Blackfryars' Bridge*, 10s. 6d. or with the Elevation, 15s.
17. *Observations on Brick Bond*; containing an Investigation of the best Disposition of Bricks in a Wall, for procuring the greatest possible Strength, with Figures. Octavo. 1s.

PERSPECTIVE.

18. *Dr. Brook Taylor's Method of Perspective made easy*, both in Theory and Practice, by *J. Kirby*, with 35 Plates, large Folio. 1l. 16s. half bound.
19. *The Perspective of Architecture*, deduced from the Principles of *Dr. Brook Taylor*; by *J. Kirby*; with 73 Plates, large Folio. 2l. 2s. half bound.
20. *The Description and Use of a new Instrument called the Architectonic Sector*, by *J. Kirby*. 25 Plates, large Folio. 1l. 10s. half bound.

MECHANICS.

In Octavo, illustrated by Fifteen large Plates, Price 10s. 6d. Boards,

1. *A Treatise on the Teeth of Wheels, Pinions, &c.* demonstrating the best Forms which can be given them for the various Purposes of Machinery; such as Mill-work, Clock-work, &c. and the finding of their Numbers. Translated from the French of *M. CAMUS*, with Additions.
2. *Smeaton's Experiments on Mills, Collision of Bodies, &c.* Octavo. Five Plates. 5s.
3. *Venturi's Experimental Enquiries concerning the Motion of Fluids*. Octavo. Two Plates. 3s.

Books published by J. TAYLOR, High Holborn.

Price 3s. sewed, corrected to MAY.

TAYLOR'S

ORIGINAL

BUILDER'S PRICE BOOK:

Containing a correct List of the Prices allowed by the most eminent Surveyors to Bricklayers, Carpenters, and Joiners; Sawyers, Carvers, Plasterers, Masons, Painters, Glaziers, Blacksmiths, Slaters, Plumbers, &c. including the Journeyman's Prices; with a Table of Scantlings, Duties on Windows and Houses, and the Rules for charging them.

By an EXPERIENCED SURVEYOR.

N.B. *Gentlemen are requested to be careful to order TAYLOR'S Builder's Price-book, corrected.*

FINE ARTS.

LANDSCAPE GARDENING.

This Day was published, a New Edition, elegantly printed by Bensley, on Imperial Quarto Paper, illustrated by numerous Plates, many of which are coloured, Price 5l. 5s. in Boards,

1. Observations on the Theory and Practice of Landscape Gardening, including some Remarks on Grecian and Gothic Architecture, collected from various Manuscripts in the Possession of the different Noblemen and Gentlemen for whose Use they were originally written. The whole tending to establish fixed Principles in the respective Arts.

By H. REPTON, Esq.

Also by the same Author, in Octavo, Price 5s.

2. An Enquiry into the Changes of Taste in Landscape Gardening, to which are added some Observations on its Theory and Practice, including a Defence of the Art.
3. Hints for *Picturesque Improvements*, in ornamented Cottages and their Scenery; including some Observations on the Labourer and his Cottage. By *E. Bartell*. With Six Plates, Royal Octavo. 10s. 6d. Boards.
4. *Cromer* considered as a Watering Place, with Observations on the Picturesque Scenery in its Neighbourhood. By *E. Bartell*, with two Views and a Map. Octavo. 8s. Boards.
5. A Treatise on Painting, by *Leonardo da Vinci*. Translated from the original Italian, and digested under proper Heads, by *J. F. Rigaud*, Esq. R. A. Illustrated with 23 Copper-plates and other Figures. Octavo. 9s. 6d. in Boards; large Paper, 13s. 6d.

Books published by J. TAYLOR, High Holborn.

FURNITURE DRAWINGS.

Dedicated [with Permission] to
His Royal Highness the PRINCE OF WALES.

THIS DAY WAS PUBLISHED,

Elegantly engraved in Aqua-tinta, on 158 Plates, with Explanations in Letter-press. Royal Quarto. Price, in Boards, 4l. 14s. 6d. and elegantly coloured, 7l. 17s. 6d.

A COLLECTION OF DESIGNS FOR

HOUSEHOLD FURNITURE,

AND INTERIOR DECORATION,

In the most approved and elegant Taste, viz.

Curtains; Draperies; Beds; Cornices; Chairs and Sofas for Parlours, Libraries, Drawing Rooms, &c.; Library Fauteuils; Seats; Ottomans; Chaises Longue; Tables for Libraries, Writing, Work, Dressing, &c.; Sideboards; Celerets; Bookcases; Screens; Candelabri; Chiffoniers; Commodes; Pier Tables; Wardrobes; Pedestals; Glasses; Mirrors; Lamps; Jardiniers, &c.: with various Designs for Rooms, Geometrical and in Perspective, shewing the Decorations, Adjustment of the Furniture, &c. also some general Observations.

By GEORGE SMITH,

Upholder Extraordinary to His Royal Highness the Prince of Wales.

The Parts, each containing 50 Plates, may be had separate, to complete Sets, Price 1l. 11s. 6d. each, plain; or elegantly coloured, 2l. 12s. 6d.

ROMAN ARCHITECTURE.

THE ANCIENT

BUILDINGS OF ROME,

Accurately measured and delineated,

By ANTONY DESGODETZ,

WITH

Explanations in French and English,

The Text translated, and the Plates engraved,

By the late Mr. GEORGE MARSHALL, *Architect.*

Two Vols. Imperial Folio, with 137 Plates. Price 6l. 16s. 6d. half bound, or 5l. 15s. 6d. sewed.

Desgodetz's Antiquities has ever been highly valued by Amateurs and Professors, for the Accuracy of the Measurements, and the Choice of elegant Subjects.

Books published by J. TAYLOR, High Holborn.

GRECIAN ARCHITECTURE.

The Nobility, Gentry, Amateurs and Artists, are respectfully informed that they may be supplied with good Impressions of that elegant and elaborate Work,

The ANTIQUITIES OF ATHENS,

MEASURED AND DELINEATED

By JAMES STUART, F. R. S. and F. S. A. and
NICHOLAS REVETT, Painters and Architects.

In Three large Volumes, Folio, Price 17l. 17s. in Boards.

The Third Volume may be had separate, to complete Sets, Price
6l. 13s. in Boards.

This Work contains 281 Plates, engraved by the best Artists, of Views, Architecture, Plans, &c. with Letter-press, Historical and Descriptive, illustrating by a Research of many Years Labour and great Expense, the purest Examples of *Grecian Architecture*, many of which no longer exist, and the Traces of them can be found only in this Work.

GOTHIC ARCHITECTURE.

This Day was published, handsomely printed in Royal Octavo,
12s. Boards,

1. *Observations on English Architecture*, Military, Ecclesiastical, and Civil, compared with similar Buildings on the Continent; including a critical Itinerary of Oxford and Cambridge; also historical Notices of stained Glass, ornamental Gardening, &c. with chronological Tables, and Dimensions of Cathedrals and Conventual Churches. By the Rev. James Dallaway, M. B. F. S. A.
2. *Essays on Gothic Architecture*. By the Rev. T. Warton, Rev. J. Bentham, Captain Grose, and the Rev. J. Milner, with 12 Plates of Ornaments, &c. calculated to exhibit the various Styles of different Periods. The second Edition; with a List of the Cathedrals of England and their Dimensions. Octavo. 10s. 6d. in Boards.
3. *Specimens of Gothic Ornaments*, selected from the Parish Church of Lavenham, in Suffolk. On 40 Plates. Quarto. 18s.
4. *Plans, Elevations, Sections and Views of the Church at Batalha in Portugal*. To which is prefixed an introductory Discourse on the Principles of Gothic Architecture. By James Murphy. Imperial Folio, with 27 elegantly engraved Plates. 4l. 14s. 6d. half bound.
5. *A West Elevation of York Minster*, elegantly engraved by Landseer, from a Drawing by J. Malton. 15s. Size 27 by 20.
6. *The Architectural Antiquities of Great Britain*, representing the most beautiful, curious, and interesting ancient Edifices, by J. Britton. Quarto, in Parts, 8 Plates, each 10s. 6d.; on large Paper, 16s. published Quarterly. Ten Parts are published.
7. *Twelve Perspective Views of the exterior and interior Parts of the Metropolitan Church of Canterbury*, accompanied by Two Ichnographic Plates, and an historical Account. By C. Wild. Folio, Price 3l. 13s. 6d. Boards; and with the Views elegantly coloured, 5l. 5s.





