

1903

1903

1903

1903

1903

1903

1903

The Library
of the
University of North Carolina



Endowed by The Dialectic
and
Philanthropic Societies



00030733252

FOR USE ONLY IN
THE NORTH CAROLINA COLLECTION







* DESIGNS * * * *
* FROM * THE * WORK * OF *
* FRANK P. MILBURN *
* ARCHITECT * * * *
* COLUMBIA, * S. * C. * *



PRESSES OF
THE STATE COMPANY
COLUMBIA, S. C.





Yours truly
Frank P. Milburn

154586

TO THE PUBLIC.

USEFUL information for those interested in the erection of buildings, artistic as well as durable. Much money has been spent on large buildings, without considering progressive ideas of construction, or pleasing effects in Architecture. One of the greatest points to be considered is the scientific, as well as the practical, manipulation of all raw material entering into these structures.

Long experience has taught me that nothing is too good in the way of material, and I spare no time or expense to secure the best results obtainable in preparing the plans and specifications, and superintending the construction. You may have an elegant set of plans, and if the builder does not follow them, the owner is the loser, and the architect has to shoulder the blame. So many of our profession understand the theory but are unable to put the same into practical execution.

On the following pages of this brochure will be found a few suggestions to the public, also a few cuts of a few buildings executed in my office.

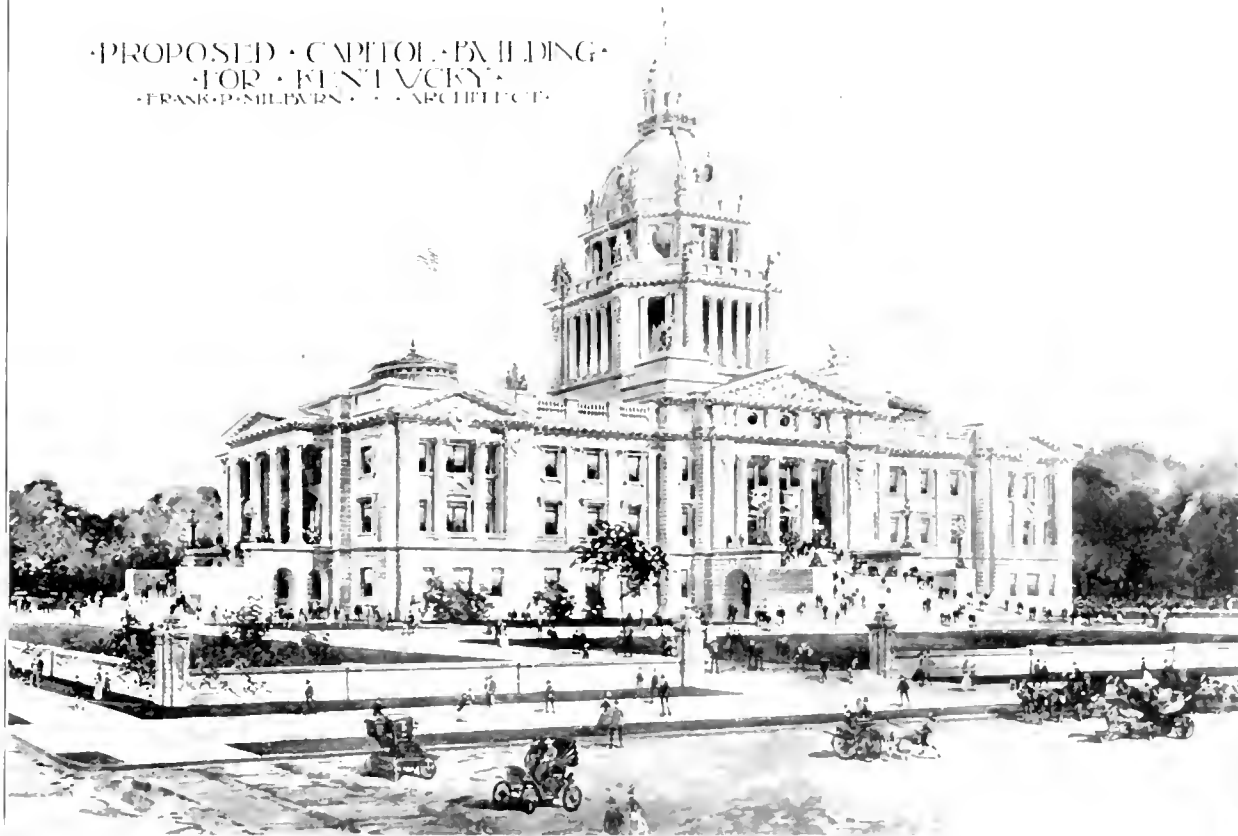
The well-known designer, MR. MICHAEL HEISTER, is now associated with me as designer and manager of the draughting department.

Yours respectfully,

FRANK P. MILBURN.

REFERENCES: Carolina National Bank, Columbia, S. C.
Merchants and Farmers National Bank, Charlotte, N. C.
First National Bank, Charlotte, N. C.
Savannah Trust Company, Savannah, Ga.
Palmetto Bank and Trust Company, Columbia, S. C.
Southern Railway Co.; Plant System; Seaboard Air Line; Atlantic Coast Line; Georgia Railway Co.
Bradstreet Mercantile Agency.
R. G. Dun & Co. Mercantile Agency.

• PROPOSED • CAPITOL • BUILDING •
• FOR • KENTUCKY •
• FRANK • P • MILBURN • ARCHITECT •



FRANK P. MILBURN, Architect

DESIGN FOR KENTUCKY CAPITOL BUILDING.

PLATE 100. 1905

COURT HOUSE.
Frank P. Milburn,
Architect.
Charlotte & Columbia.



FRANK P. MILBURN
Architect.

WYTHE COUNTY COURT HOUSE.

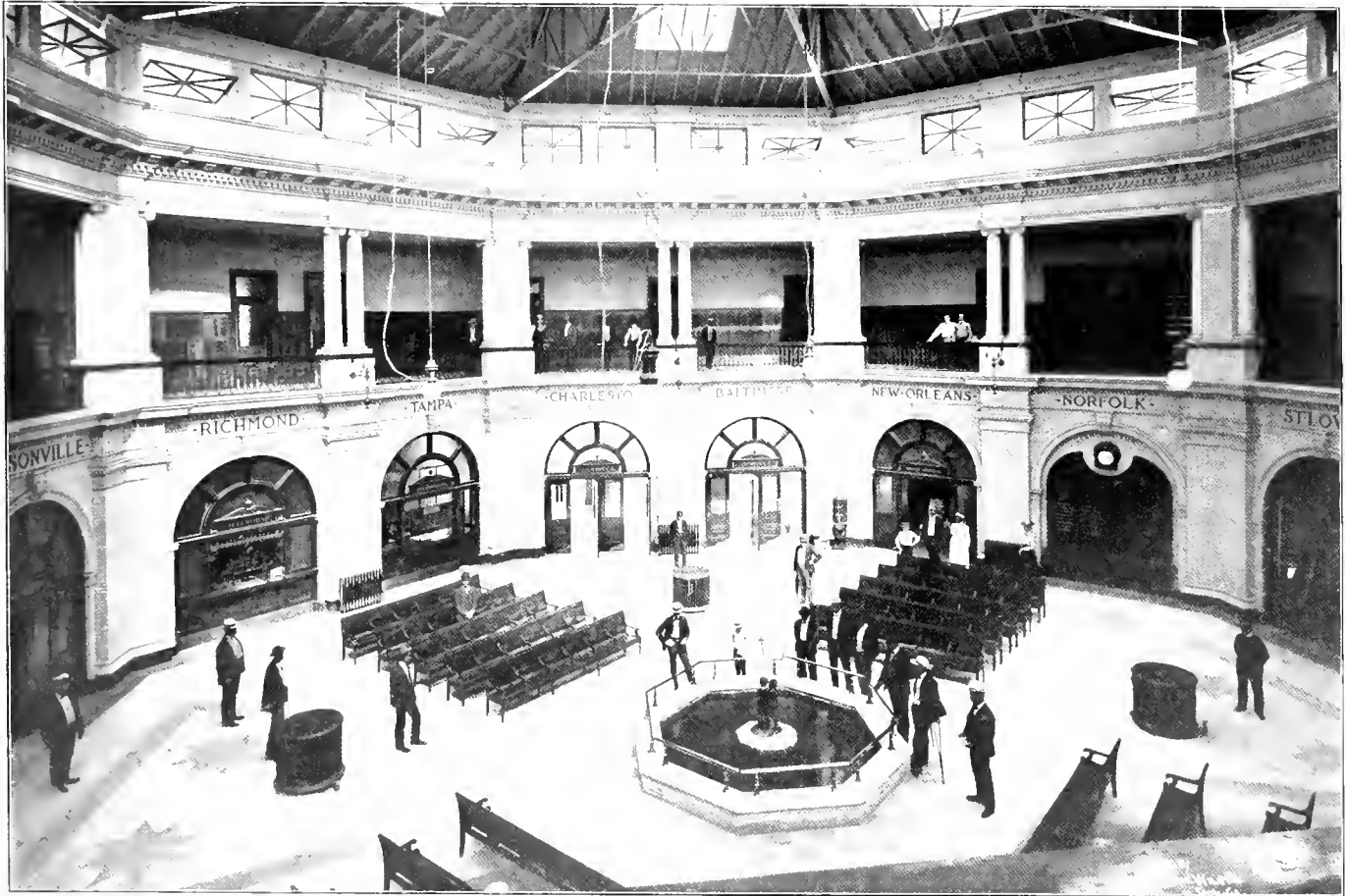
Wytheville, Va.,
J. F. Parrish, Contractor



BIRDSEYE VIEW, UNION STATION, SAVANNAH, GA.
For the Atlantic Coast Line, Seaboard Air Line and Southern Railways

FRANK P. MILBURN, Architect

Milburn, S. C.



FRANK P. MILBURN, Architect

GENERAL WAITING ROOM, UNION STATION.

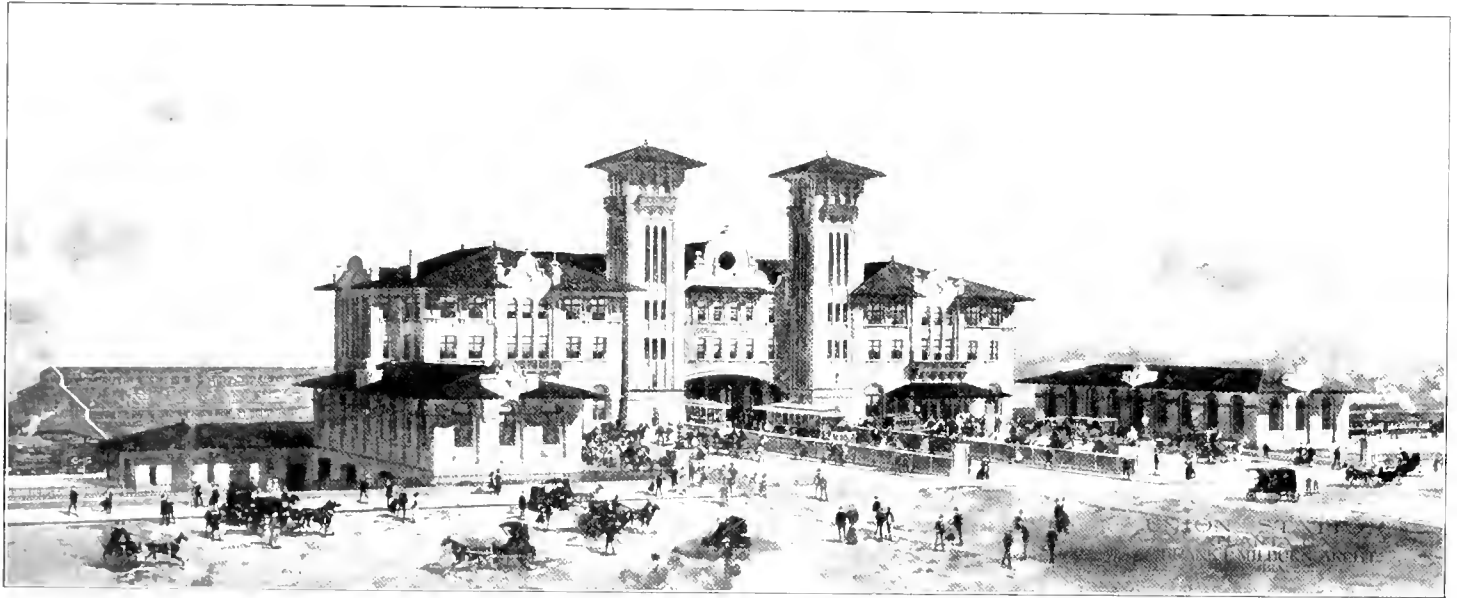
Savannah, Ga



FRANK MILLER, ARCHT.

STEEL TRAIN SHED, UNION STATION

1889



FRANK P. MILBURN Architect

DESIGN SUBMITTED FOR UNION STATION.

Atlanta, Ga.



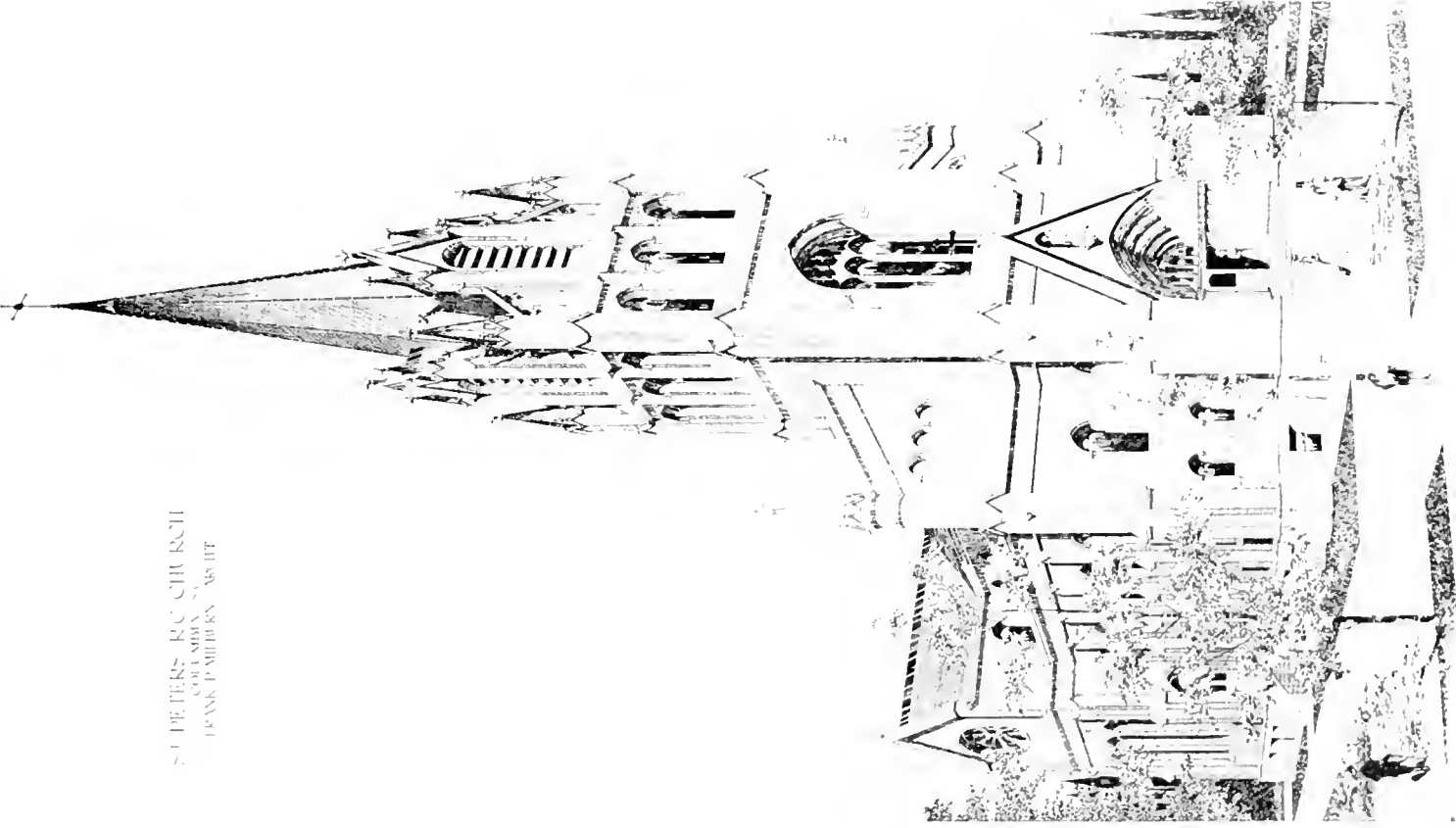
FRANK P. MILBURN,
Architect.

DESIGN FOR PRESBYTERIAN COLLEGE.

Charlotte, N. C.



S. PETERS R. C. CHURCH
COLLEMBY, W. ASHT
FRANK MILLER, ARCHT.



S. PETERS R. C. CHURCH

FRANK MILLER, ARCHT.

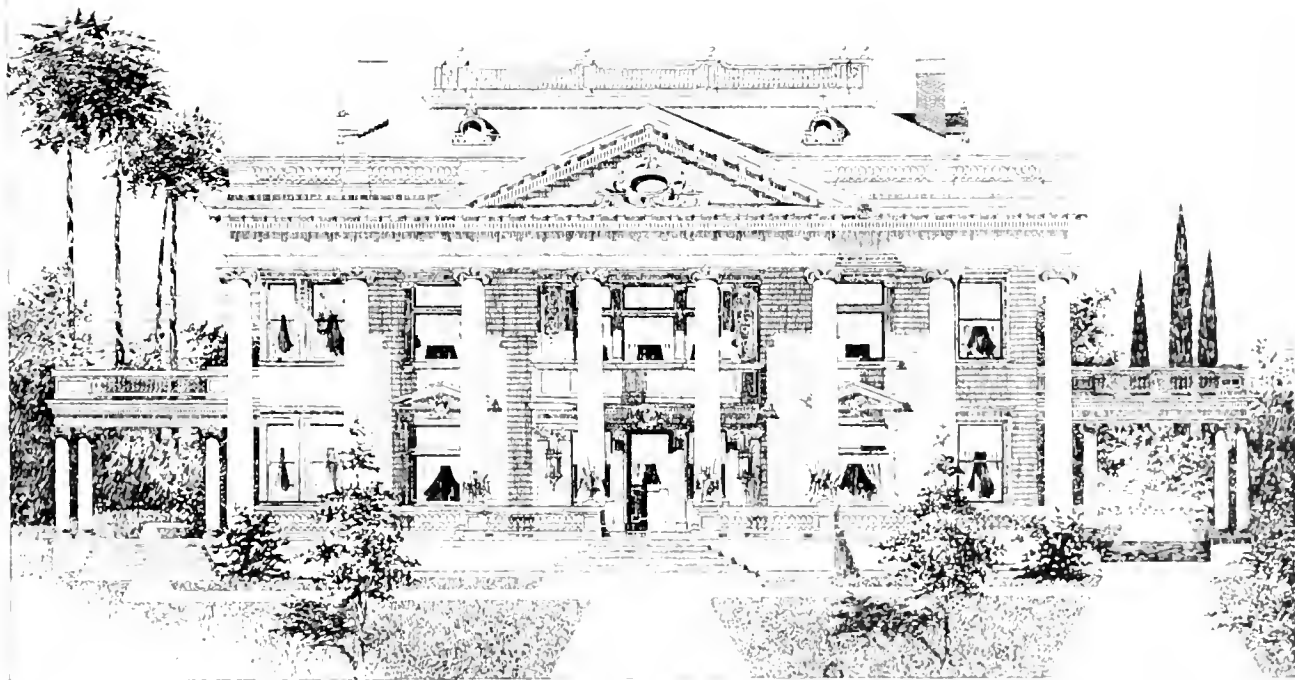
Copyright 1904



FRANK P. MILBURN,
Architect

HOTEL BLANCHE.

Lake City, Fla.
Otis & Co., Contractors



JAS. A. BENSON'S RESIDENCE.

FRANK P. MILBURN, Architect.

Washington, Ga.



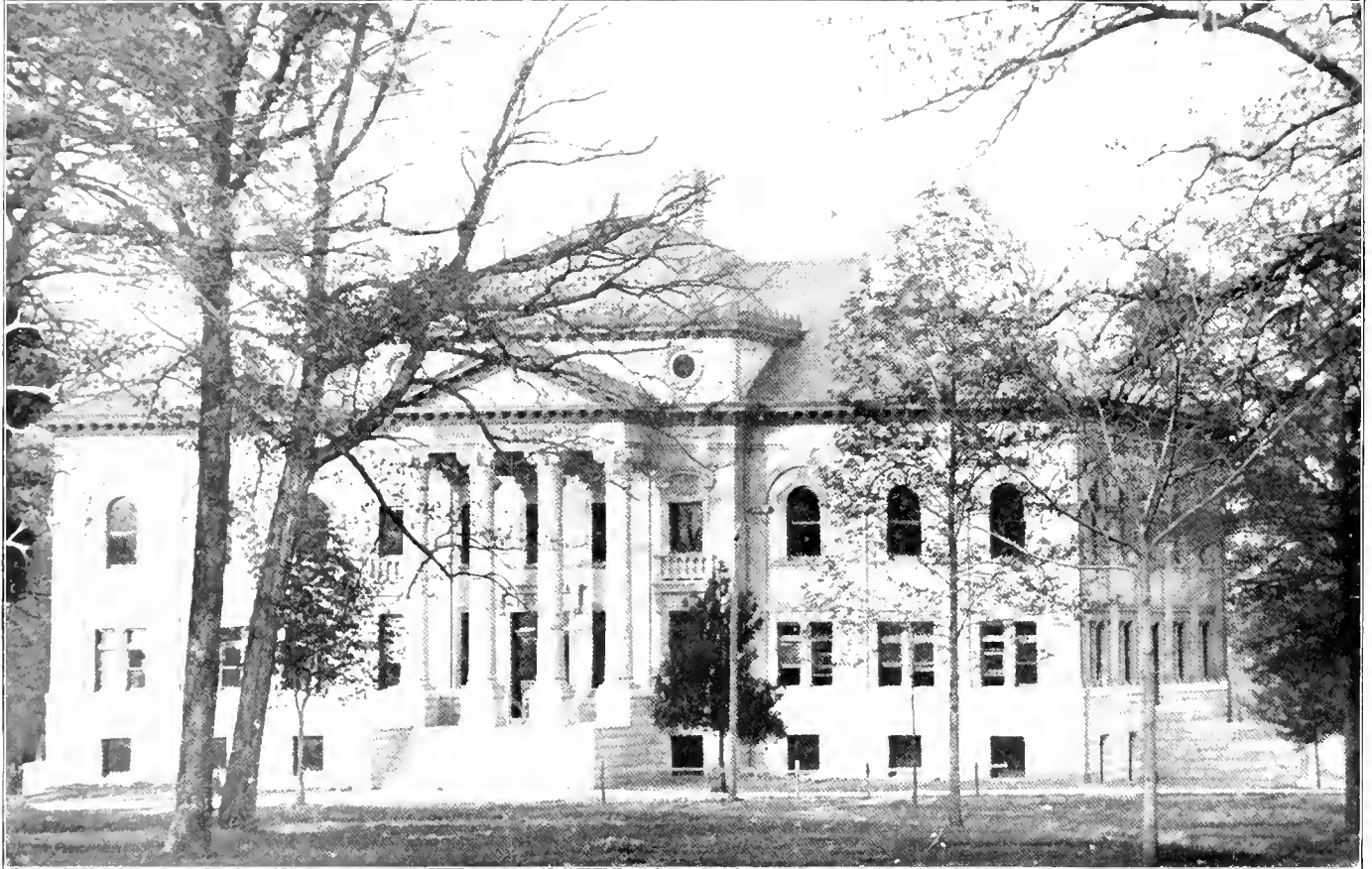
FRANK P. MILBURN, Architect.

BOURBON COUNTY COURT HOUSE,
Fire Proof,
Gibson & Crawford, Contractors.

Paris, Ky.



FRANK P. MILLER, ARCHT.
THOMSON AUDITORIUM
Built by the city for the Confederate Veterans' Reunion, 1897. Erected in ninety days. Seating capacity 1,800. Cost \$1,271,000.
McCraw & Sewell, Architects.



ALUMNI HALL, UNIVERSITY OF NORTH CAROLINA.

FRANK P. MILLBURN, Architect.

Chapel Hill, N. C.

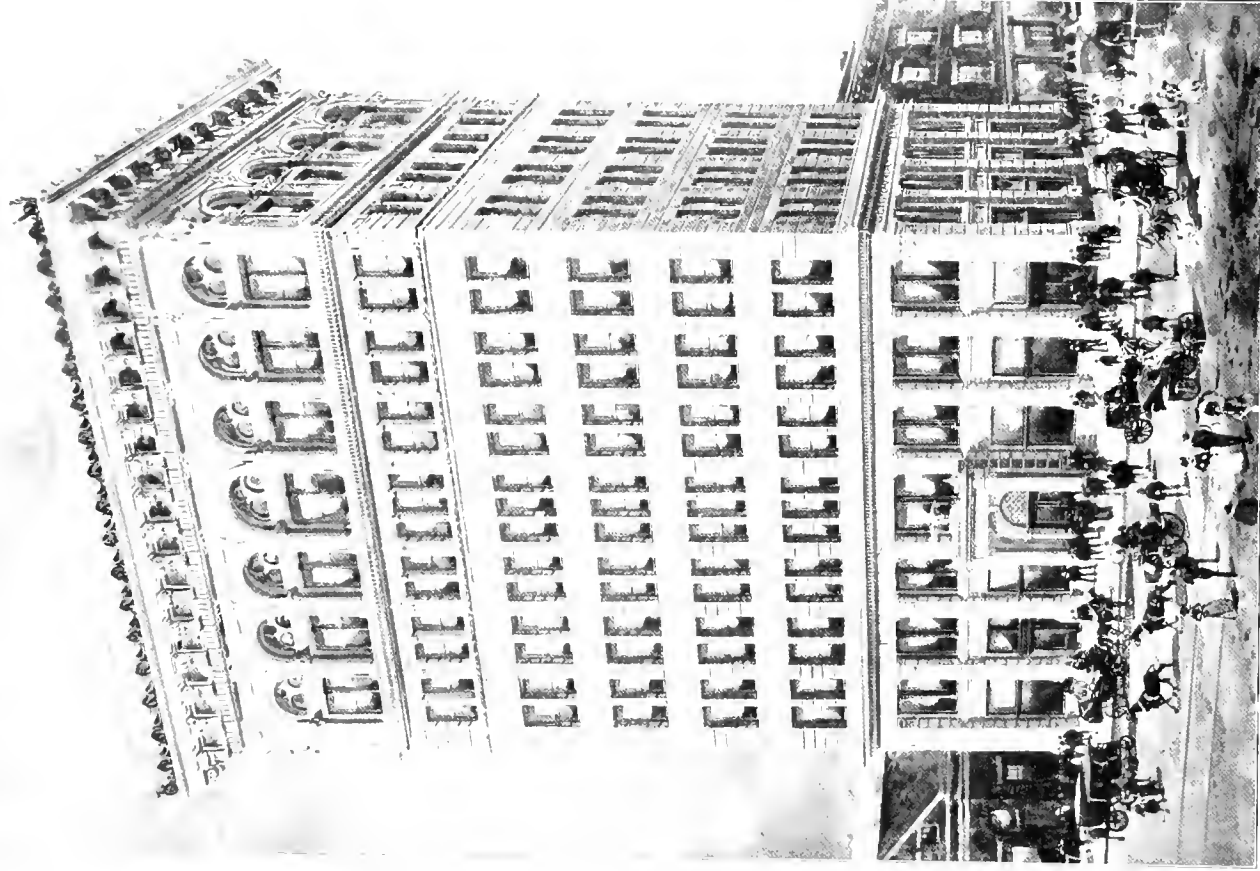


FRANK P. MILBURN, Architect

COUNTY COURT HOUSE.

11-33-00-1

Also built at Monticello, Ky.; Cadiz, Ky.; Salyersville, Ky.; Hinton, W. Va.; Winfield, W. Va. Cost, \$15,000 to \$200,000.



DESIGN FOR GERMANA BANK BUILDING.

Steel frame, fireproof

FRANK P. MILBURN, Architect.

Savannah, Ga



FRANK P. MILBURN,
Architect.

SOUTH CAROLINA STATE CAPITOL

Columbia, S. C.



UNION STATION,
For the Atlantic Coast Line, Southern and Georgia Railways.

FRANK P. MILBURN,
Architect

Augusta, G.
F. O. Brown & Son, Contractor



FLORIDA STATE HOUSE.

FRANK P. MILBURN,
Architect.

Tallahassee, Fla.
J. E. Parrish, Contractor.



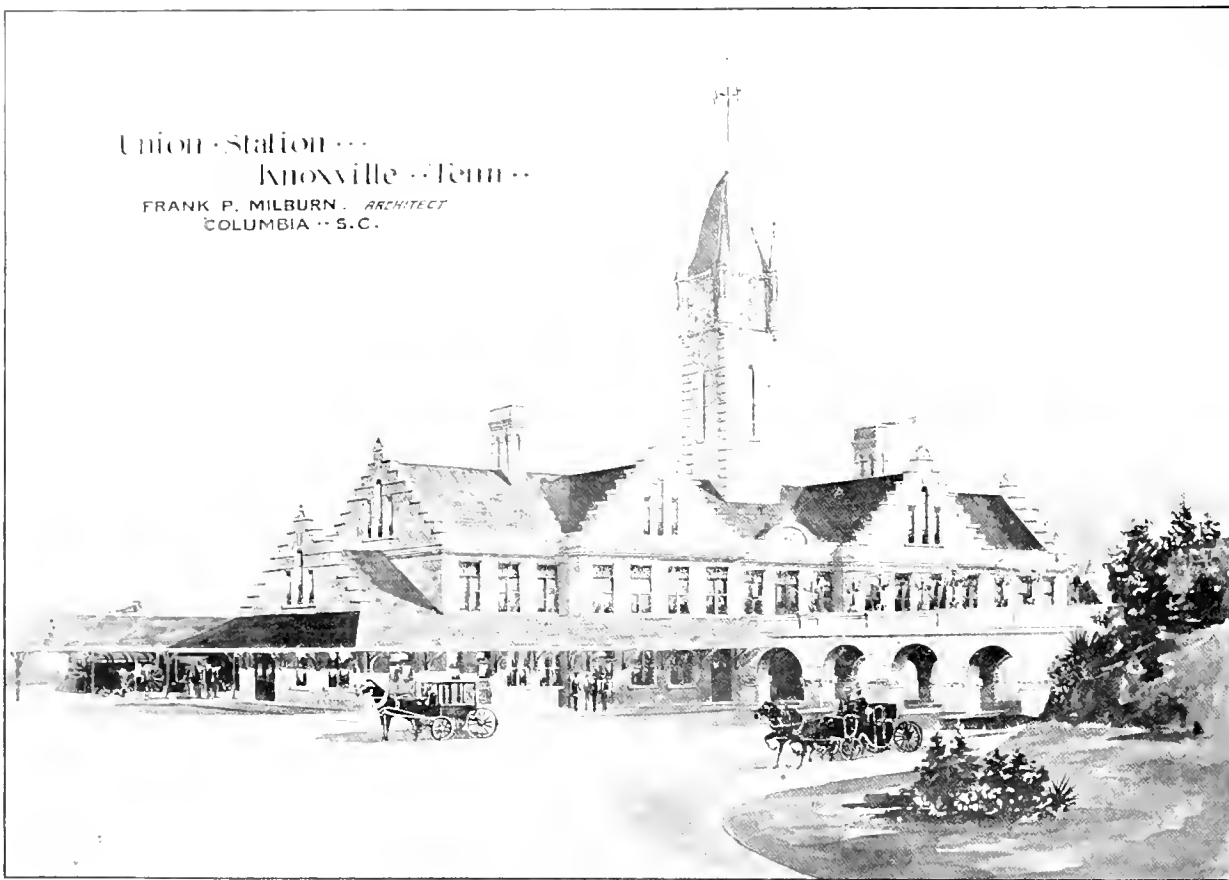
VIEW ON "SWANNEE RIVER"

The Atlanta Coast Line Ry. in the distance

101-1

Union Station ---
Knoxville --- Tenn ---

FRANK P. MILBURN, ARCHITECT
COLUMBIA --- S.C.



UNION PASSENGER STATION,
For the Southern Railway Co.

FRANK P. MILBURN,
Architect.

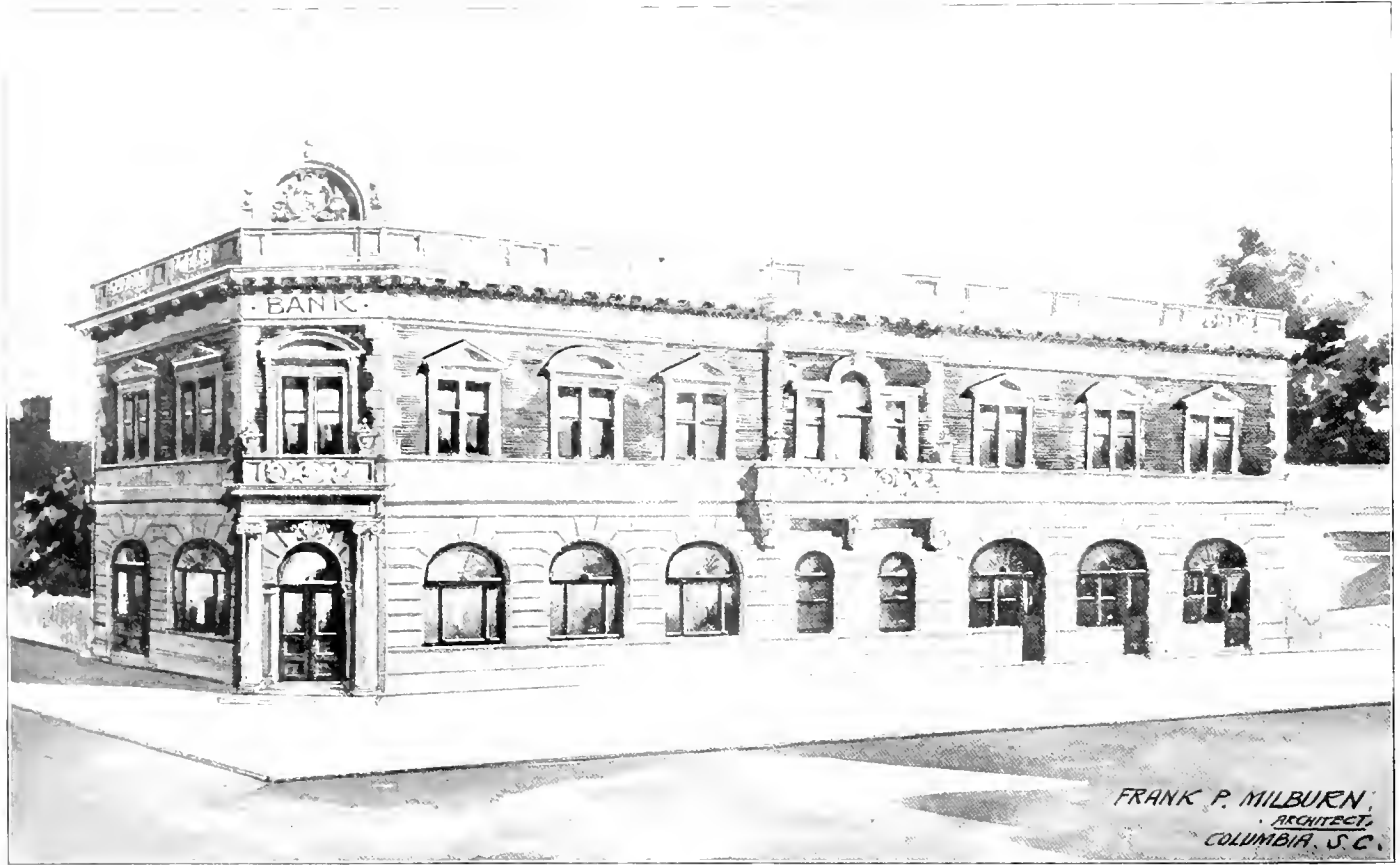
Knoxville, Tenn.
Nicholas Ittner, Contractor



CAPT. OWEN DALY'S RESIDENCE.

FRANK P. MILBURN, Architect

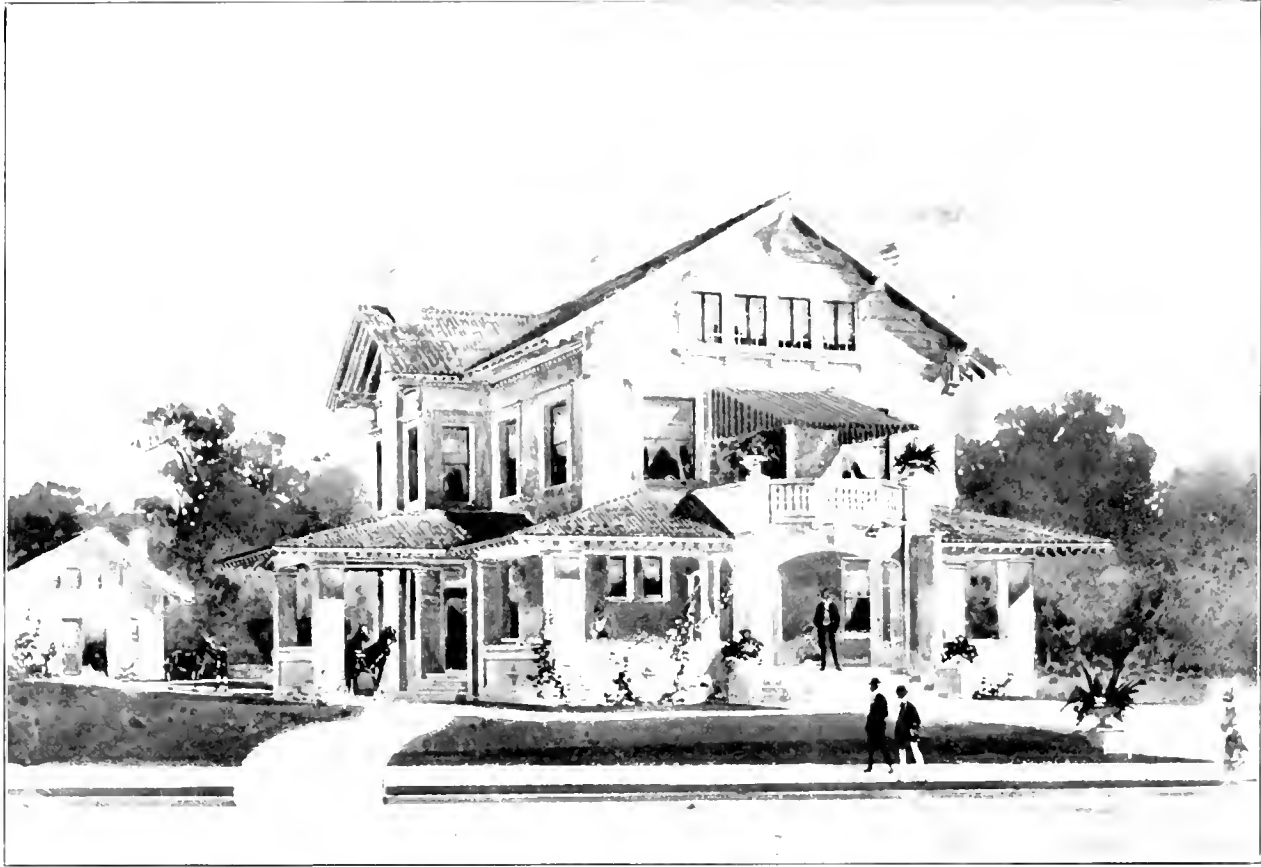
Columbia, S. C.



FRANK P. MILBURN,
Architect

PEOPLE'S BANK BUILDING.

Union, S. C.
Morgan Iron Works, Builders

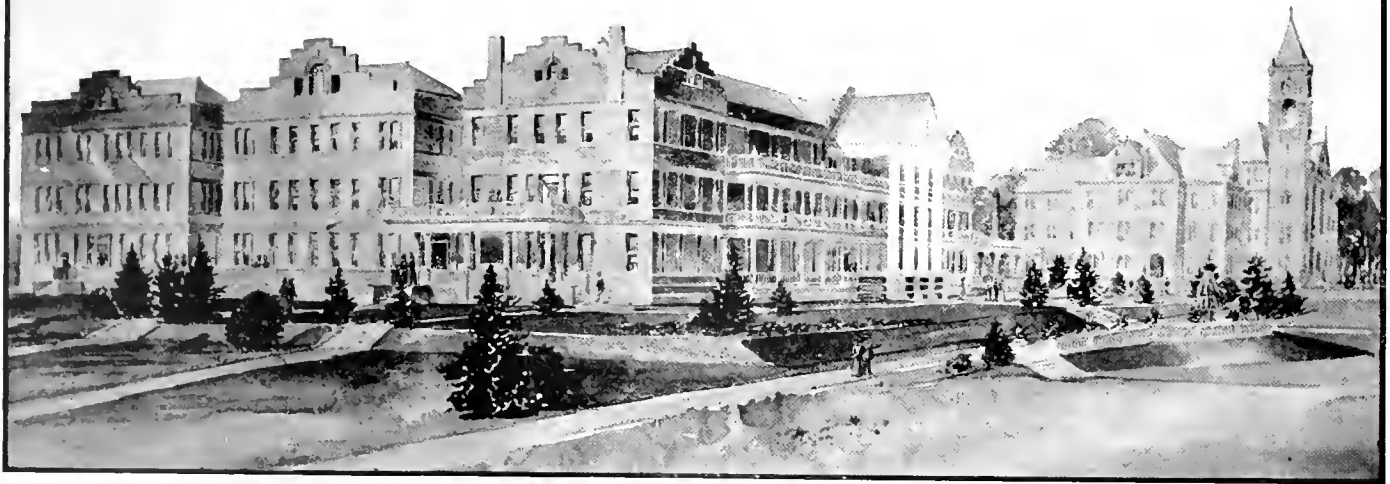


Pendleton Street.

FRANK P. MILBURN'S RESIDENCE.

© 1900 J. S. C.

EAST DORMITORY,
WINTHROP NORMAL
AND INDUSTRIAL
COLLEGE.
ROCK HILL, S. C.
FRANK P. MILBURN, ARCHITECT,
CHARLOTTE, N. C.



EAST DORMITORY, WINTHROP COLLEGE.

FRANK P. MILBURN, Architect.

Rock Hill, S. C.

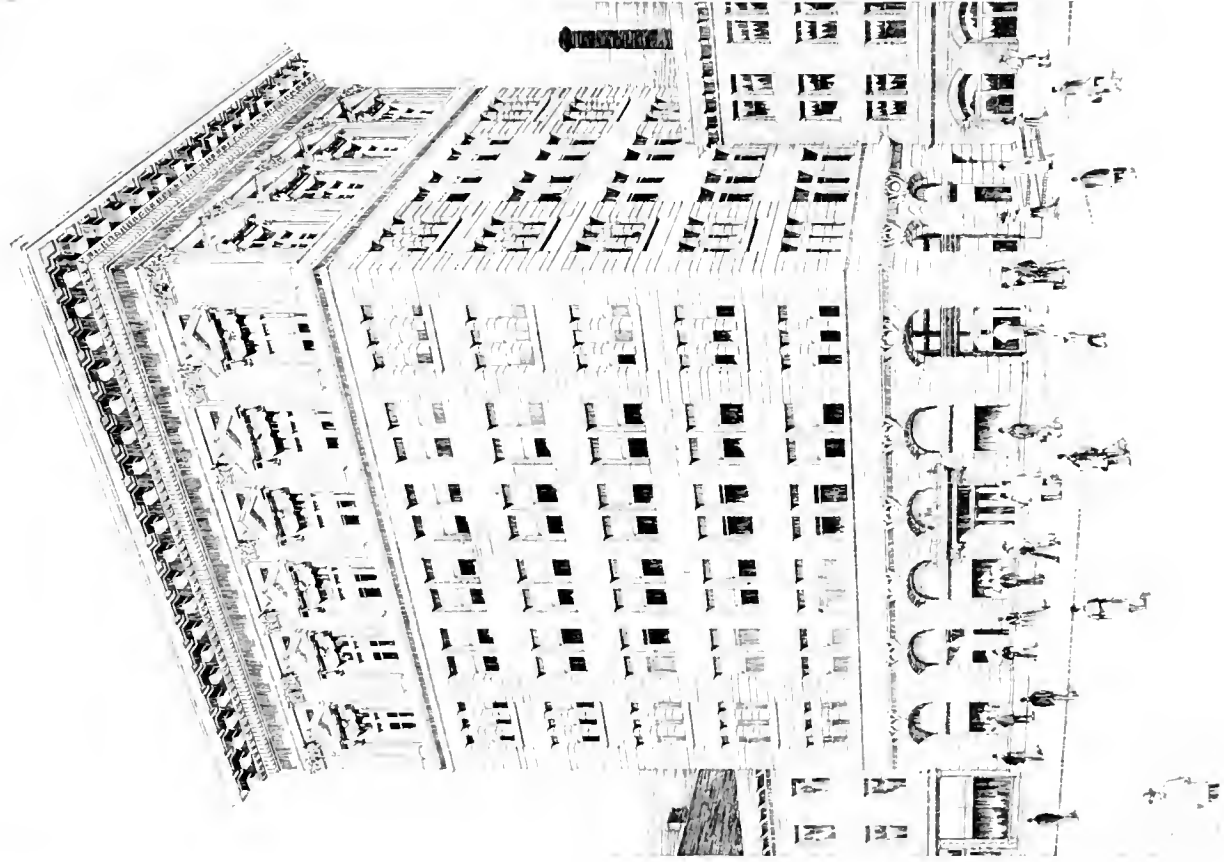


FRANK P. MILBURN,
Architect.

DESIGN FOR GOVERNOR'S MANSION.

Columbia, S. C.





DESIGN FOR OFFICE BUILDING

Steel frame - fireproof

FRANK P. MILBURN, Architect

Asheville, N. C.

Frank P. Milburn, ARCHITECT.
COLUMBIA, S. C.



FRANK P. MILBURN
Architect

COLUMBIA COUNTY COURT HOUSE.

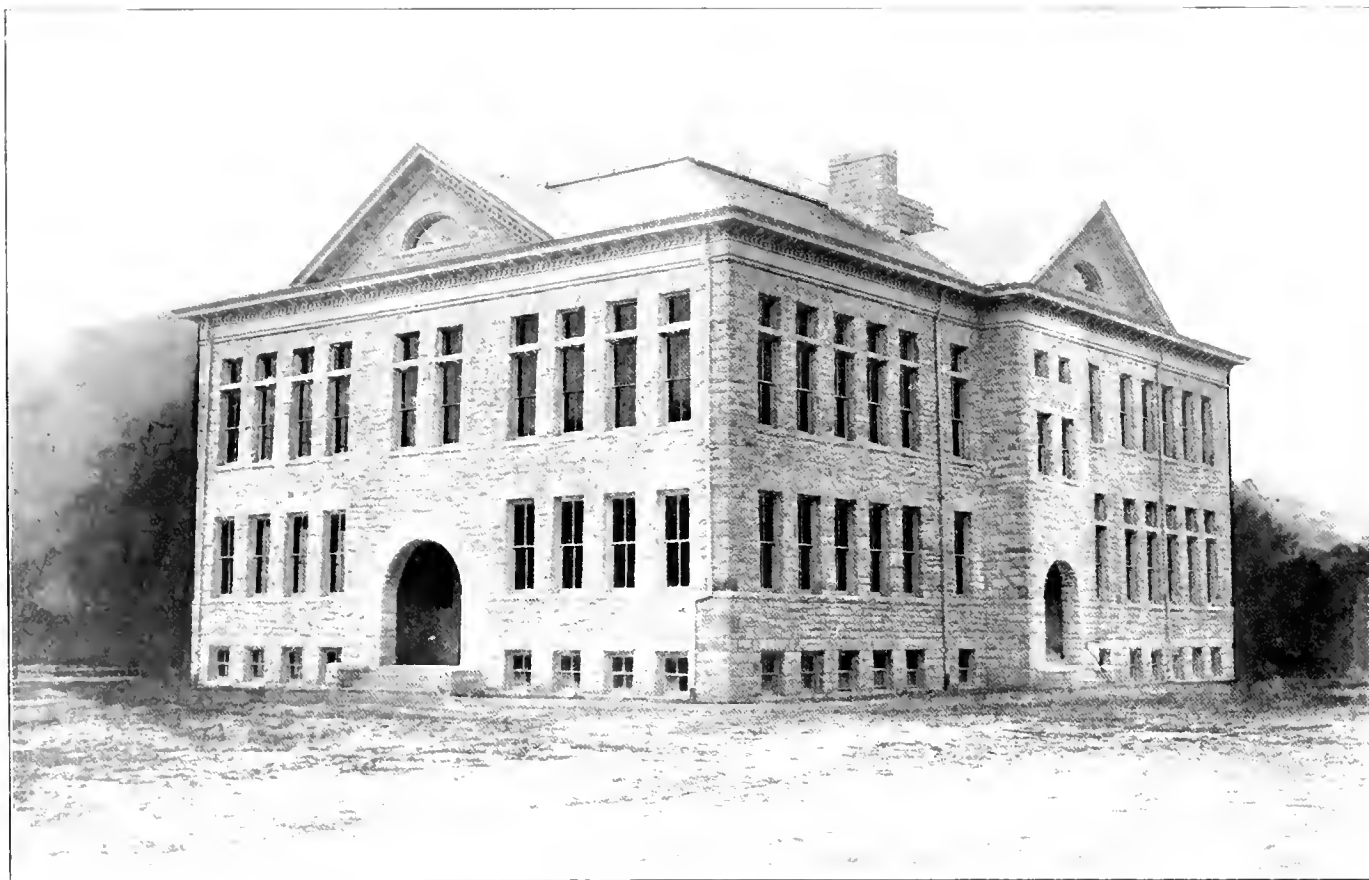
Lake City, Fla.
Otis & Co., Contractors



CITY HALL AND THEATRE.

FRANK P. MILBURN
Architect

Darlington, S. C.
W. J. Williams, Contractor



FRANK P. MILBURN Architect

PUBLIC SCHOOL BUILDING.

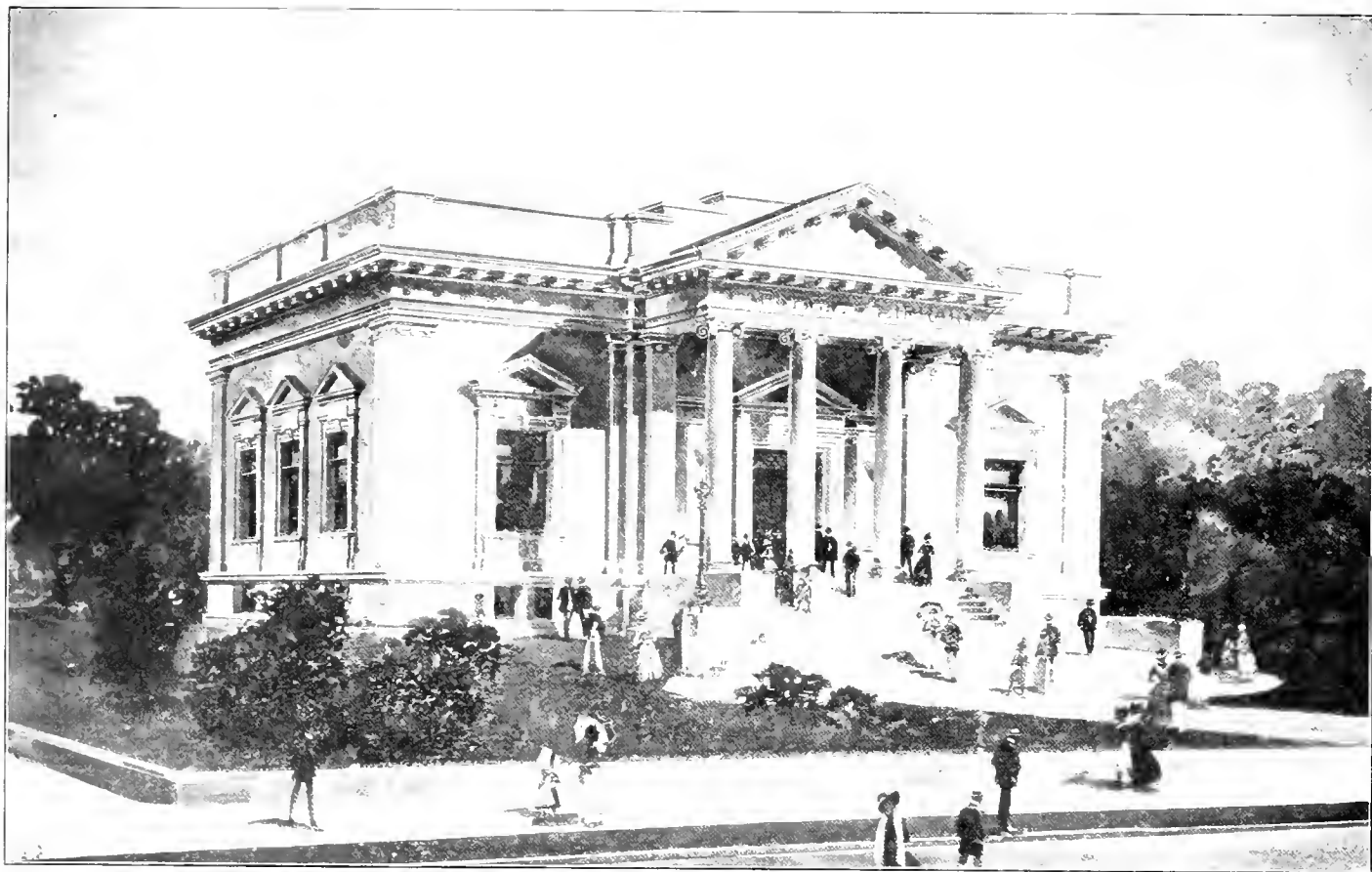
Big Stone Gap, Va



UNION PASSENGER STATION,
For the Atlantic Coast Line and Southern Railways

FRANK P. MILBURN
Architect

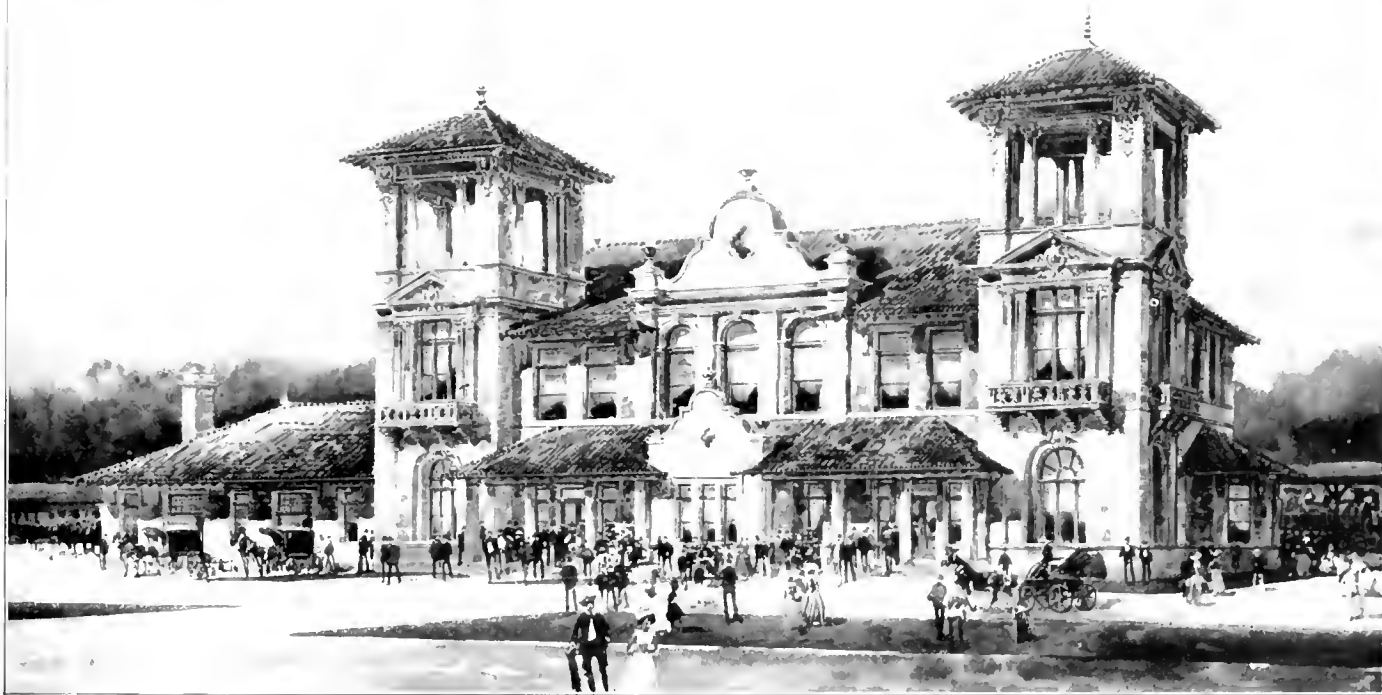
CHAS. S. COLE
N. Y. City, Contractor



FRANK P. MILBURN Architect

DESIGN FOR LIBRARY.

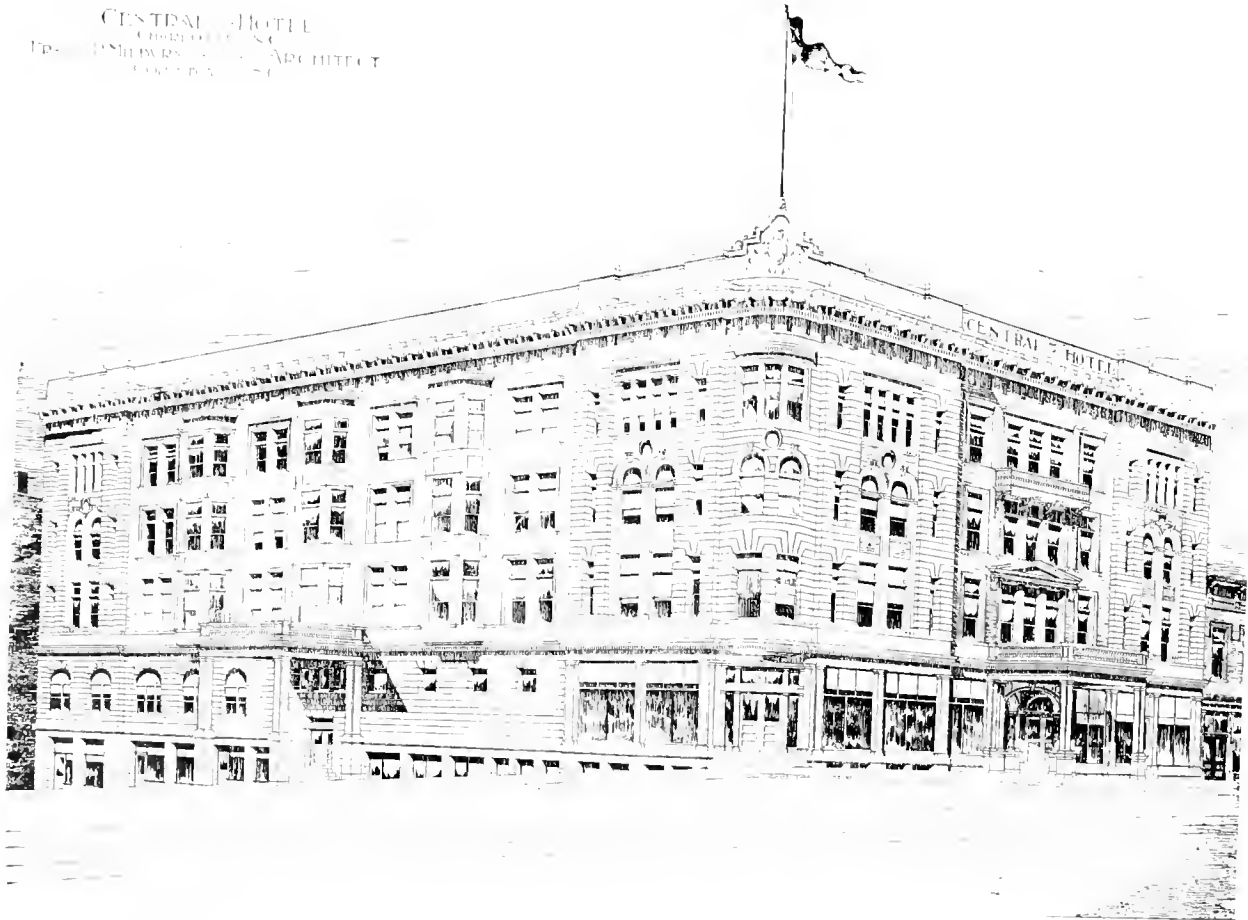
·UNION STATION
·SOUTHERN ·R·R·
·FRANK P. MILBURN ·ARCHT·
·COLUMBIA ·S·C·



DESIGN FOR UNION STATION.

FRANK P. MILBURN Architect

CENTRAL HOTEL
CHARLOTTE, N. C.
FRANK P. MILBURN, ARCHITECT
CORPORATION



FRANK P. MILBURN, Architect

NEW CENTRAL HOTEL.

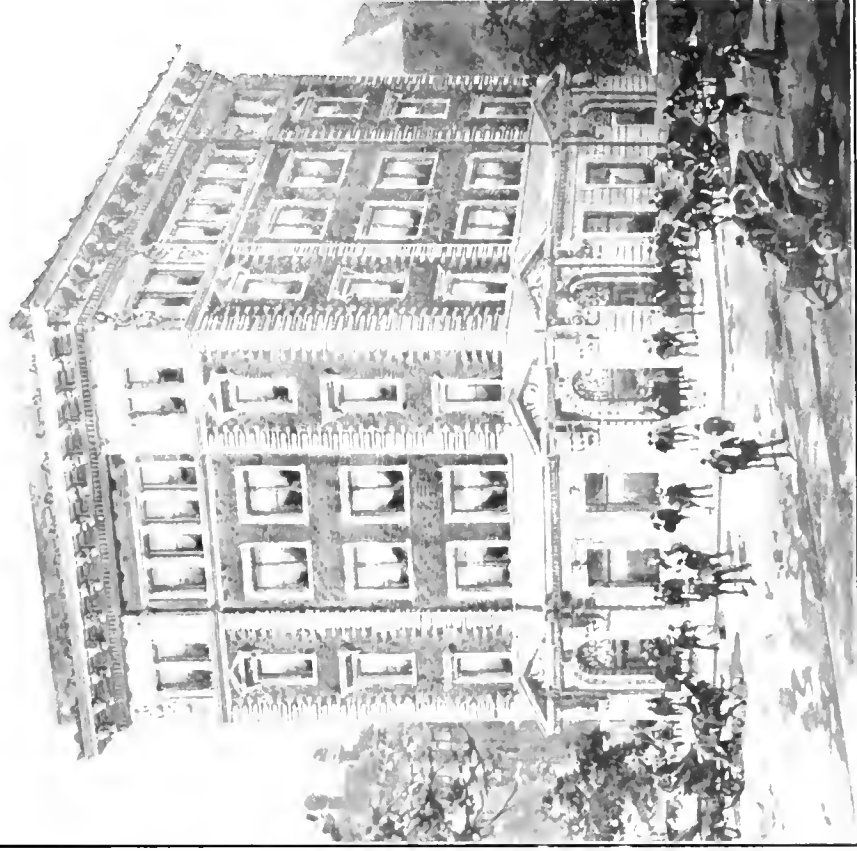
Charlotte, N. C.



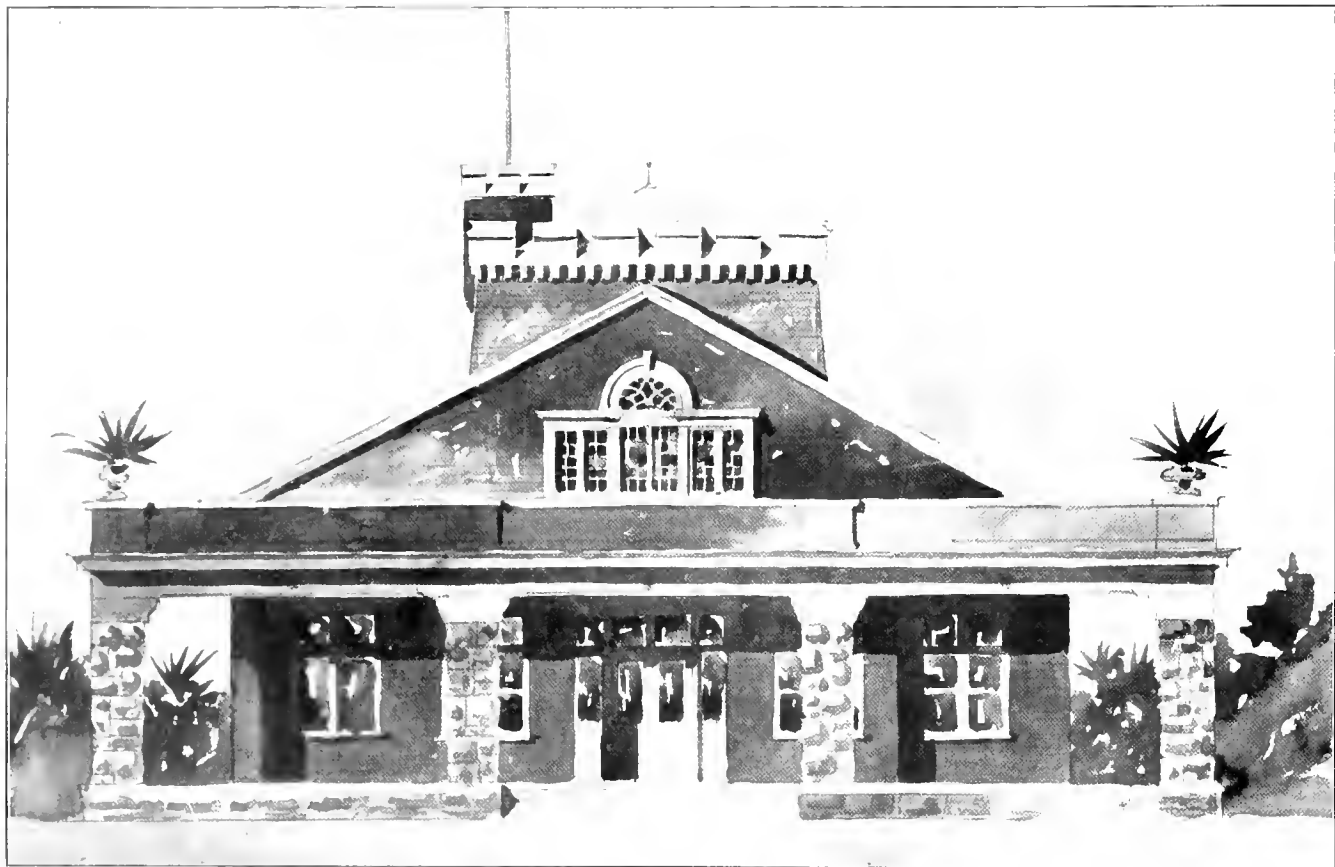
ALTERNATE DESIGN FOR UNION PASSENGER STATION
FRANK P. MILBURN,
Architect.

Savannah, Ga.

COMMERCIAL BANK BUILDING
NASSAU, GA.
FRANK P. MILBURN, ARCHITECT



COMMERCIAL BANK BUILDING



COUNTRY CLUB.

FRANK P. MILBURN, Architect.



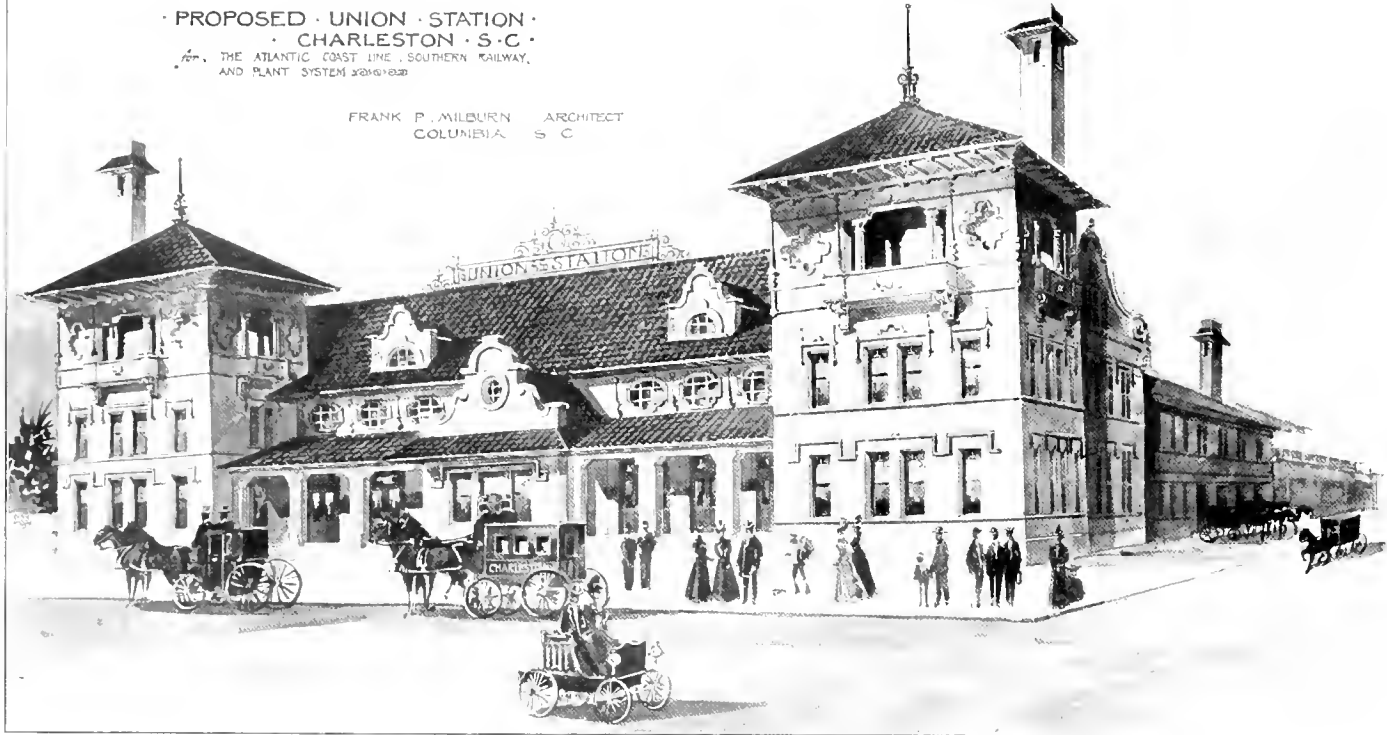
FRANK P. MILBURN
Architect

FITTS SCHOOL, WOFFORD COLLEGE

W. C. HARRIS
Photographer

· PROPOSED · UNION · STATION ·
· CHARLESTON · S · C ·
FOR THE ATLANTIC COAST LINE, SOUTHERN RAILWAY,
AND PLANT SYSTEM

FRANK P. MILBURN ARCHITECT
COLUMBIA S C



APPROVED DESIGN FOR UNION STATION.
For the Atlantic Coast Line and Southern Railways.

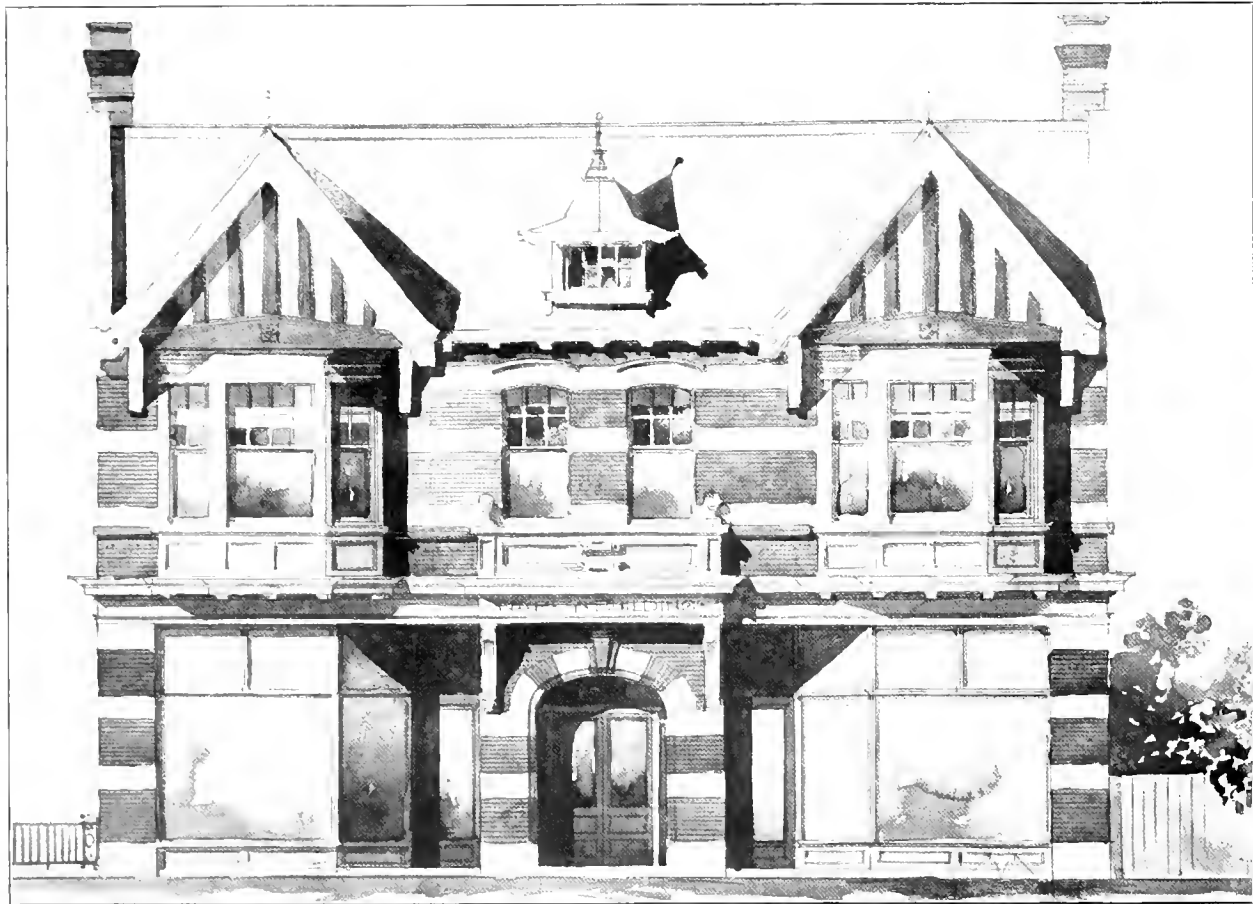
FRANK P. MILBURN, Architect

Charleston, S. C.



FRANK P. MILBURN, Architect

J. M. LIVELY'S RESIDENCE

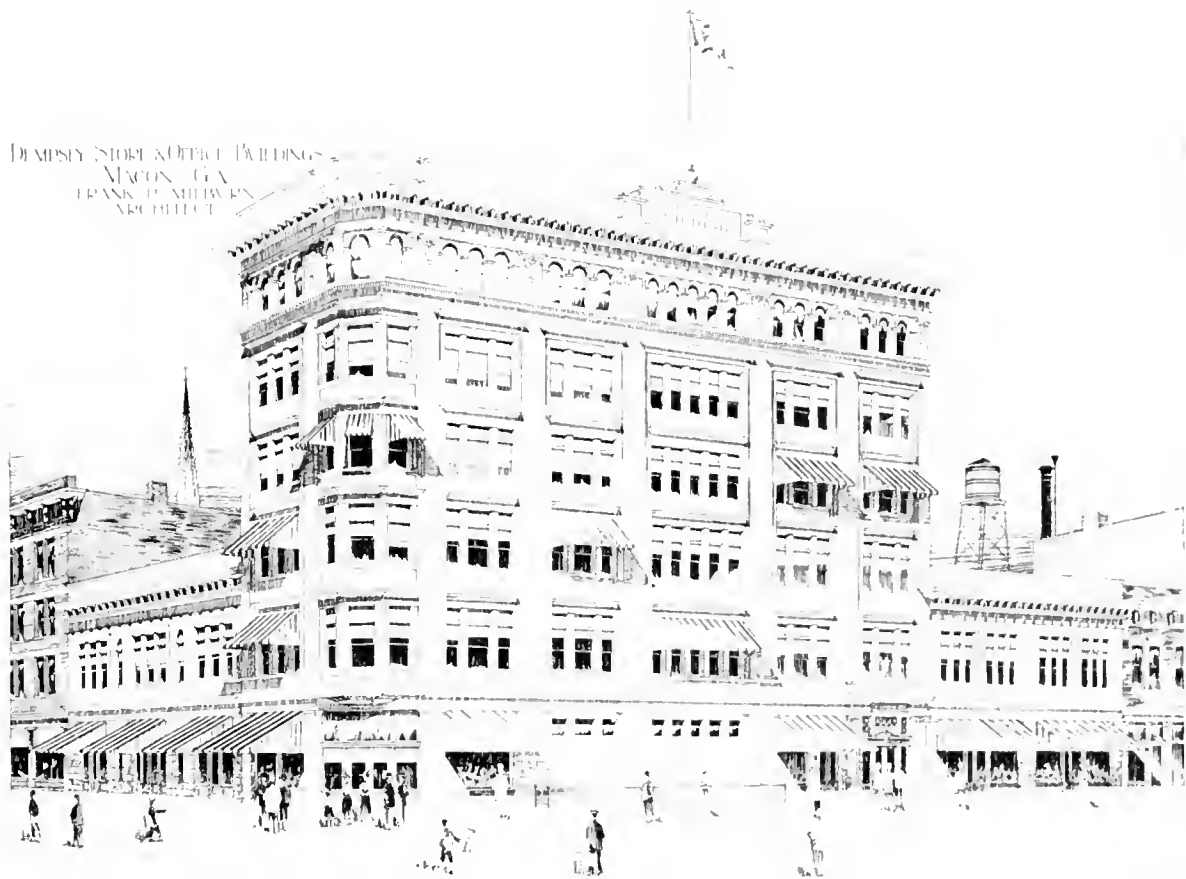


STORE AND FLAT BUILDING FOR CHAS. NAREY.

FRANK P. MILBURN, Architect

Columbia, S. C.

DEMPSY STORE & OFFICE BUILDINGS
MACON, GA.
FRANK P. MILBURN
ARCHITECT



DEMPSY BUILDING

FRANK P. MILBURN, Architect

ME 100 19



DESIGN FOR A RESIDENCE.

FRANK P. MILBURN, Architect.



FRANK P. MILBURN, Architect

A. R. F. CHURCH

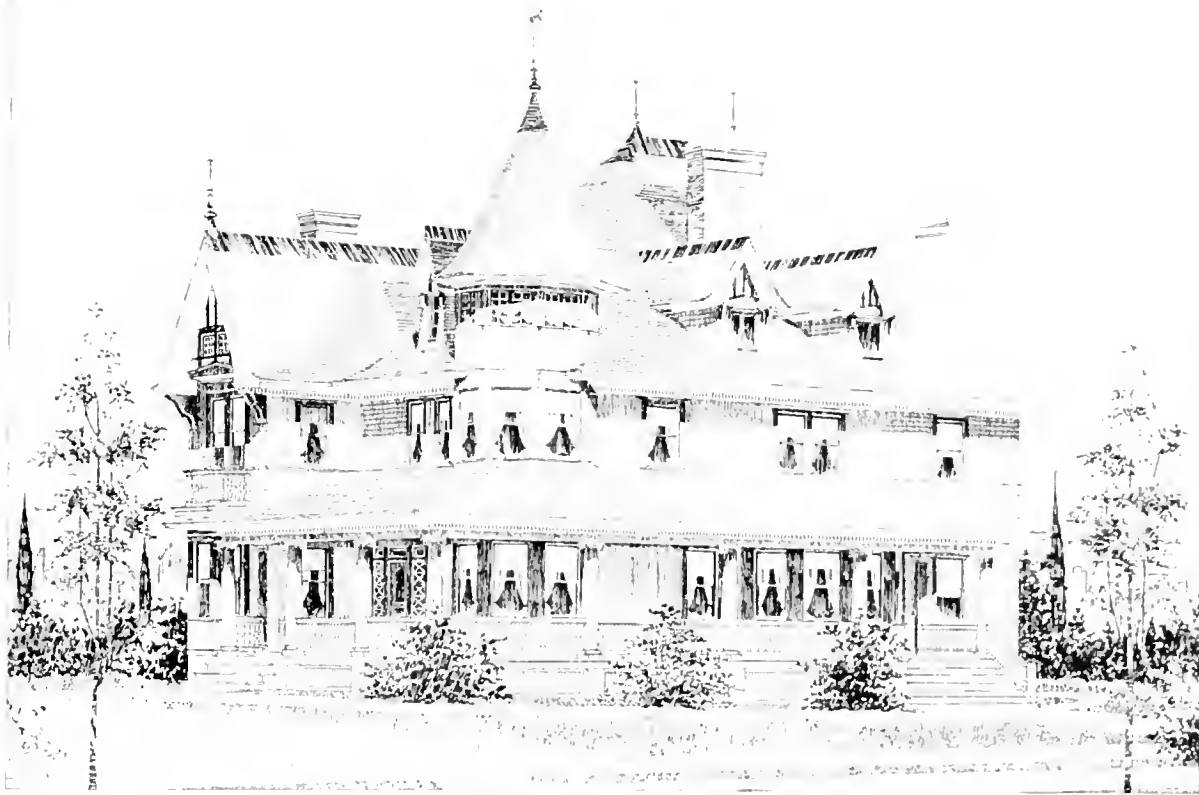
NEW YORK, N. Y.



SOUTHERN RAILWAY STATION.

FRANK P. MILBURN.
Architect

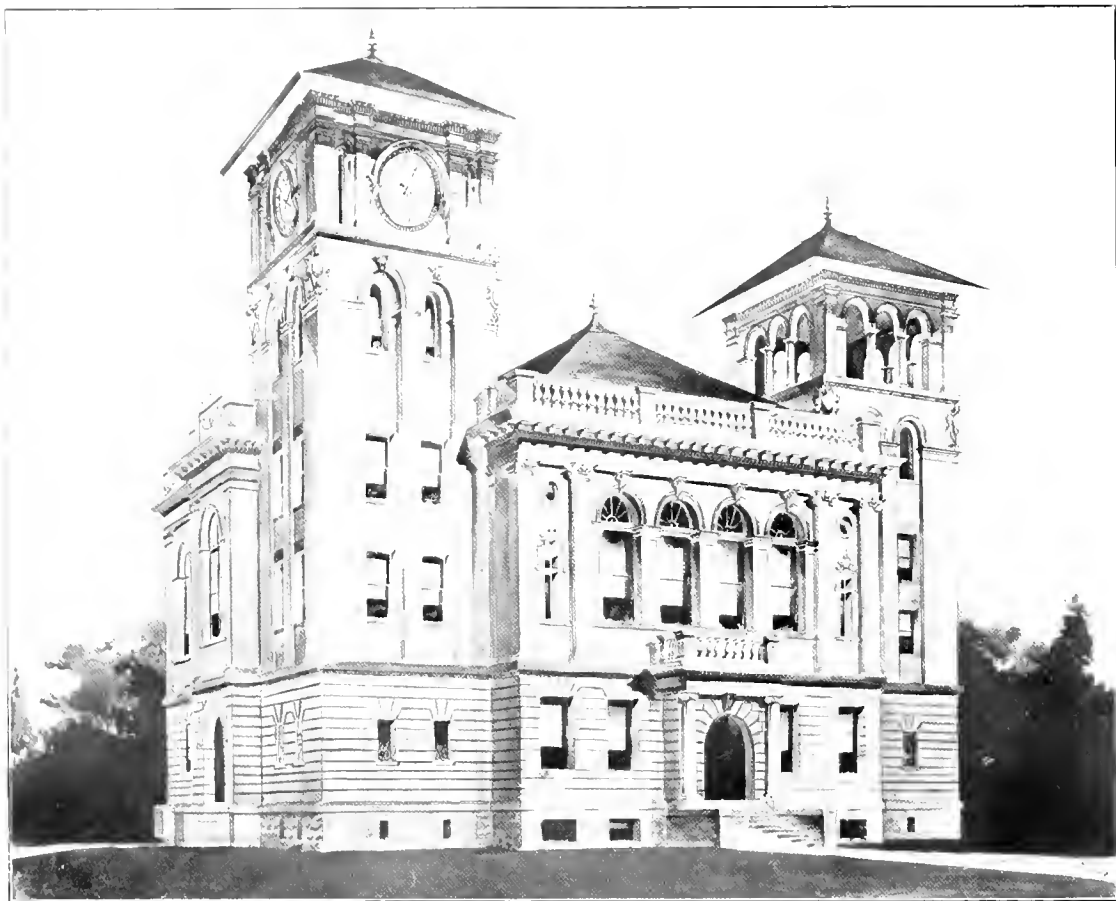
Danville, Va
Graham & Co., Contractors



MRS. E. L. DEMPSEY'S RESIDENCE

FRANK P. MILBURN, Architect

Englewood, Conn.



FRANK P. MILBURN,
Architect.

WISE COUNTY COURT HOUSE.
Fireproof

Wise, Va.
M. Gillum, Builder

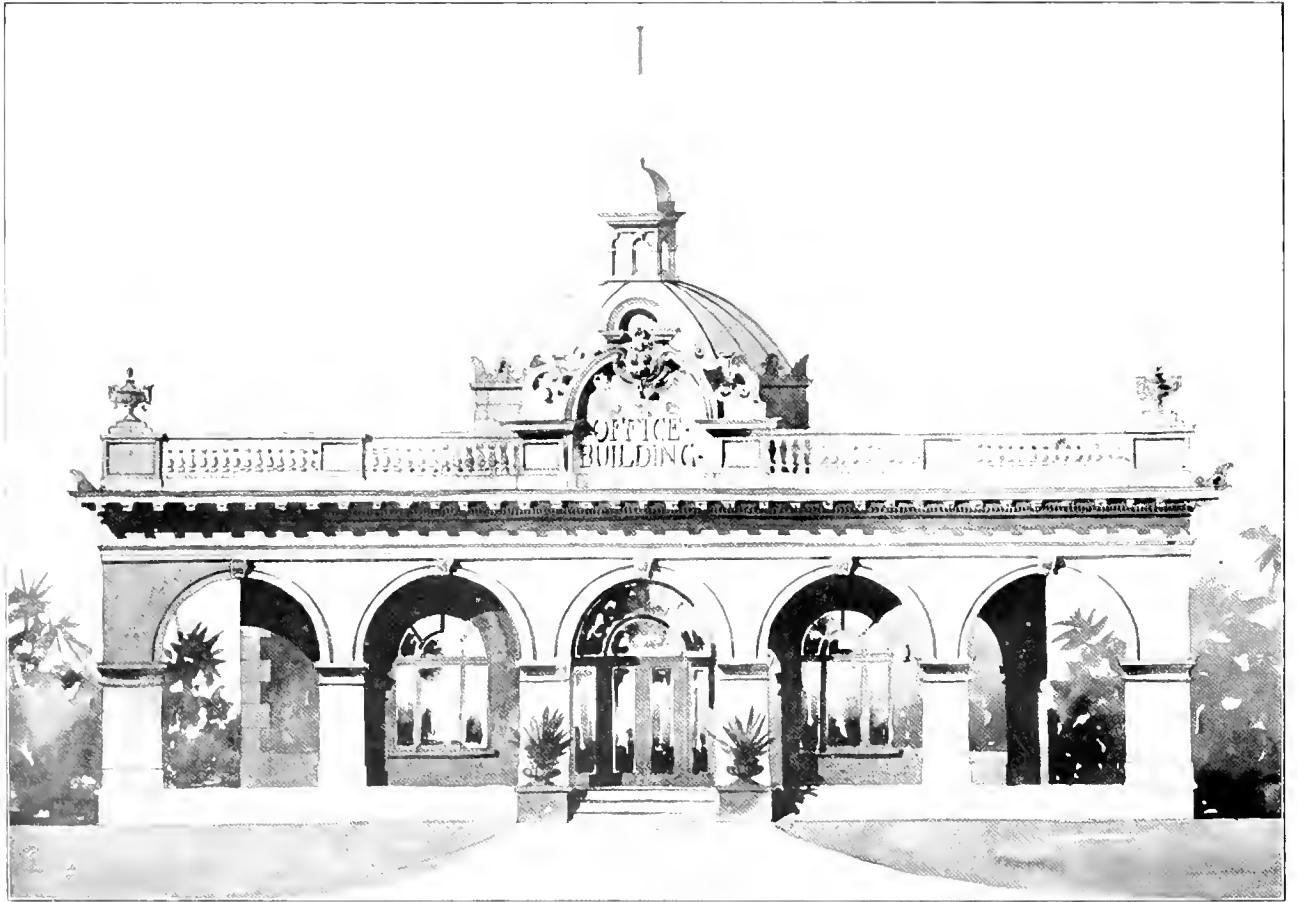


SOUTHERN LOAN AND TRUST CO.

FRANK P. MILBURN, Architect

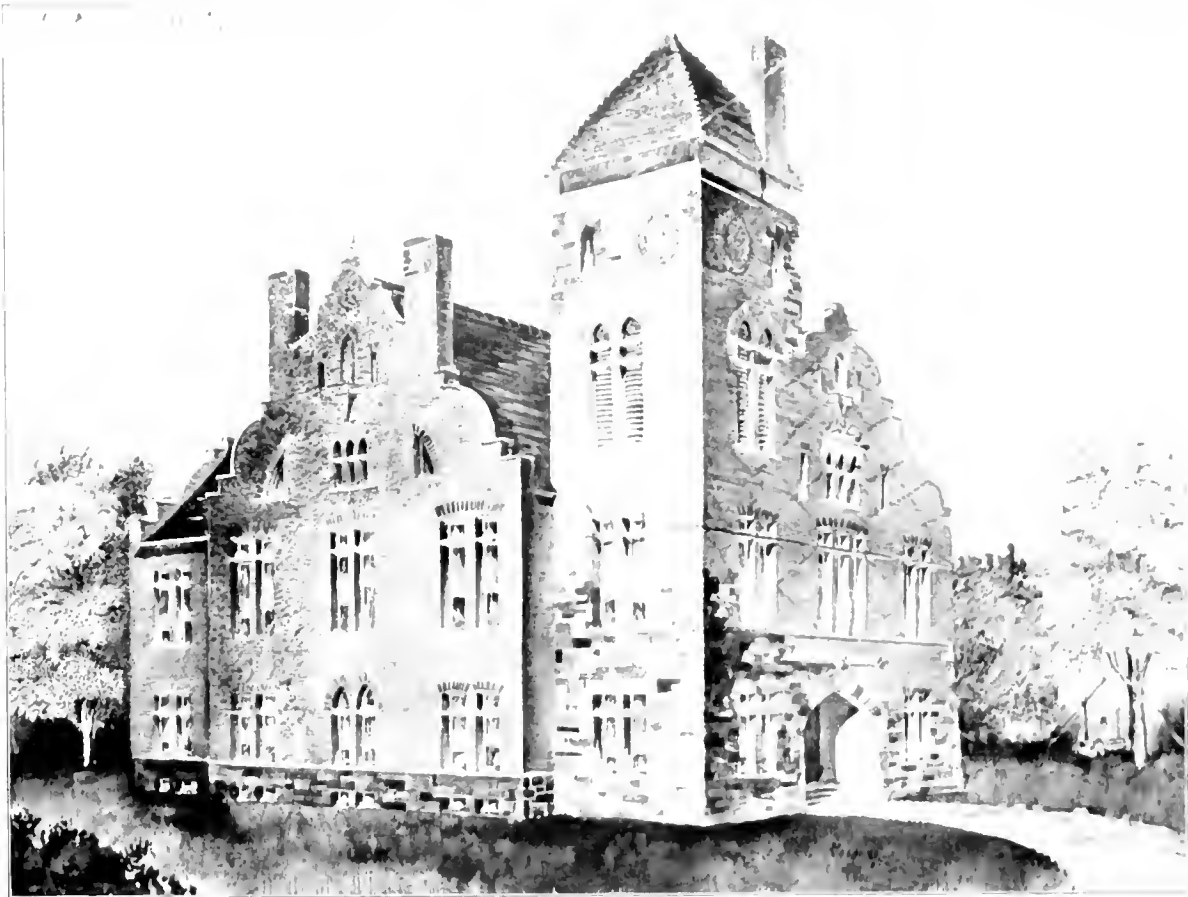
ORANGE, FLA.

1901



OFFICE BUILDING FOR COTTON MILL.

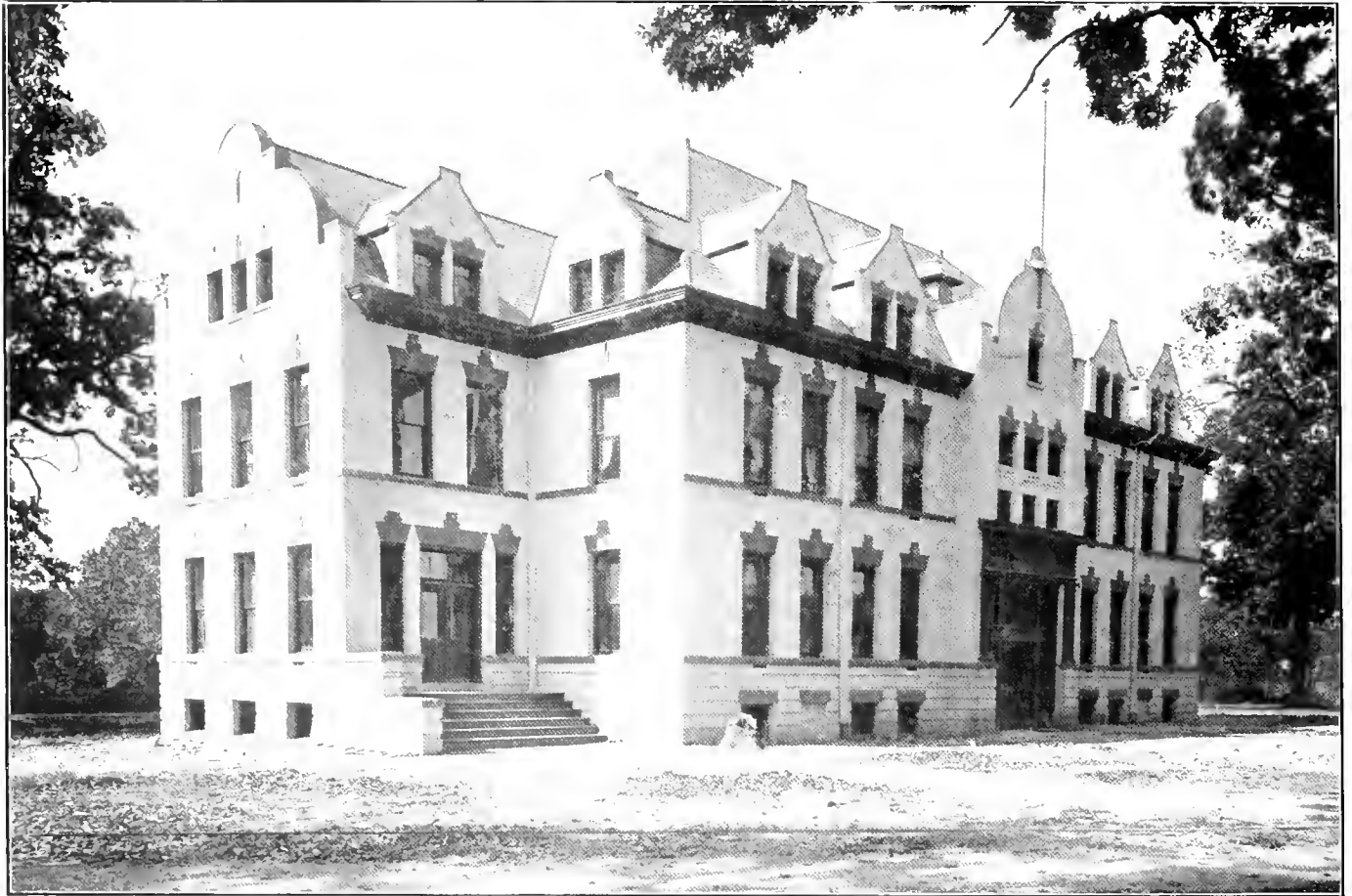
FRANK P. MILBURN, Architect.



FRANK P. MILBURN
Architect

WAYNE COUNTY COURT HOUSE

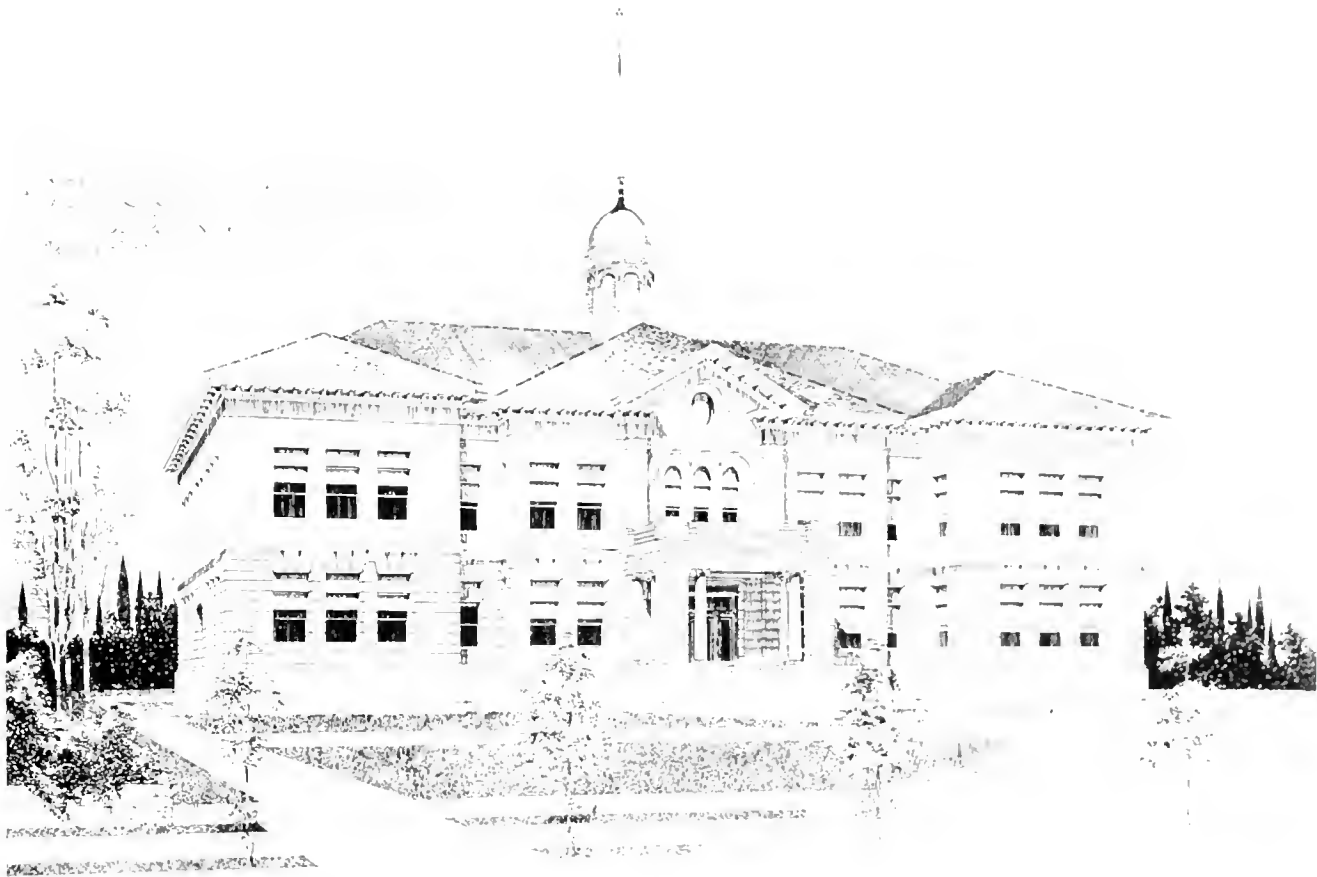
Wayne, W. Va.
Big Four Con. Co. Builders



MARY ANN SMITH BUILDING,
University of North Carolina.

FRANK P. MILBURN
Architect

Chapel Hill, N. C.
Zachary & Co., Contractors



DESIGN FOR MODERN SCHOOL BUILDING.

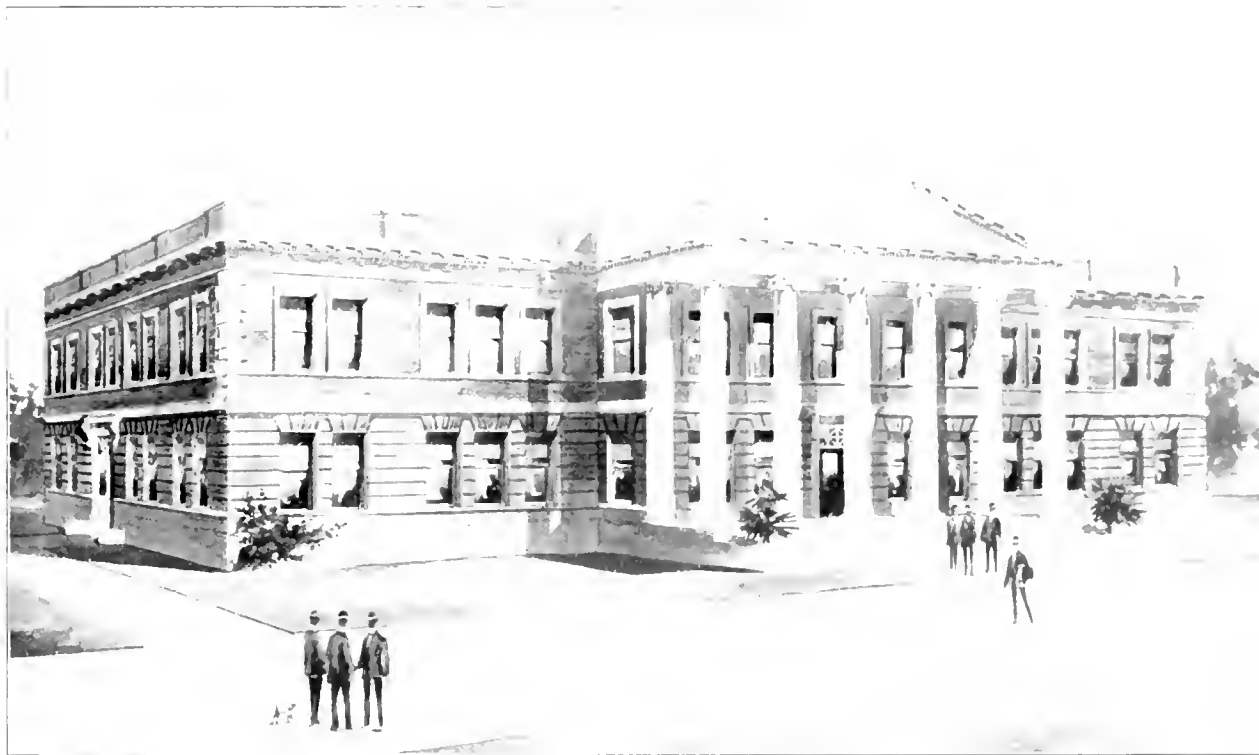
FRANK P. MILBURN, ARCHT. & C.



FRANK P. MILBURN
Architect

FORSYTHE COUNTY COURT HOUSE.
Fireproof.

Winston, N. C.
L. P. Hazen & Co., Contractors.



MAIN BUILDING, NEWBERRY COLLEGE

FRANK P. MILBURN, ARCHT.

NEWBERRY, S.C.



SKETCH FOR A CHURCH.

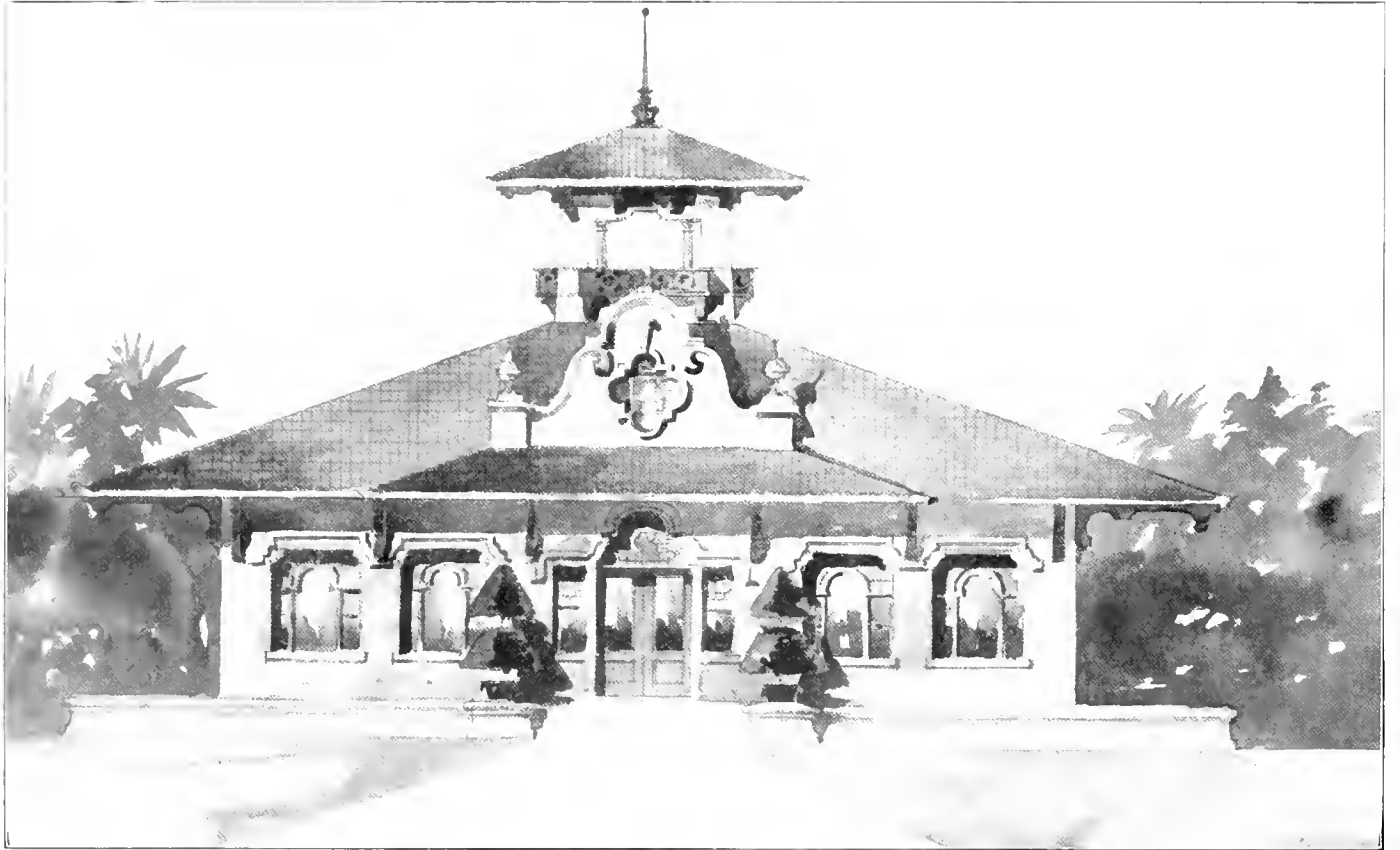
FRANK P. MILBURN, Architect.



MECKLENBURG COUNTY COURT HOUSE.
E. H. TATE ARCHT.

FRANK P. MILBURN
Architect

CHARLES N. J.
DEMOING, Contractor

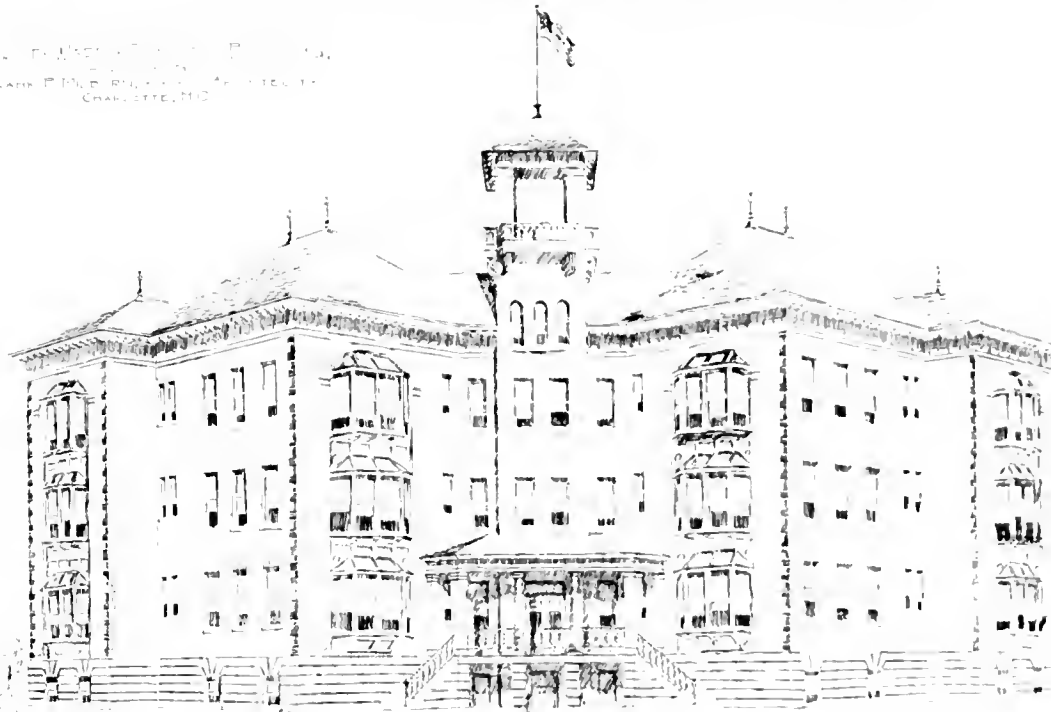


OFFICE BUILDING FOR BUFFALO COTTON MILLS.

FRANK P. MILBURN, Architect

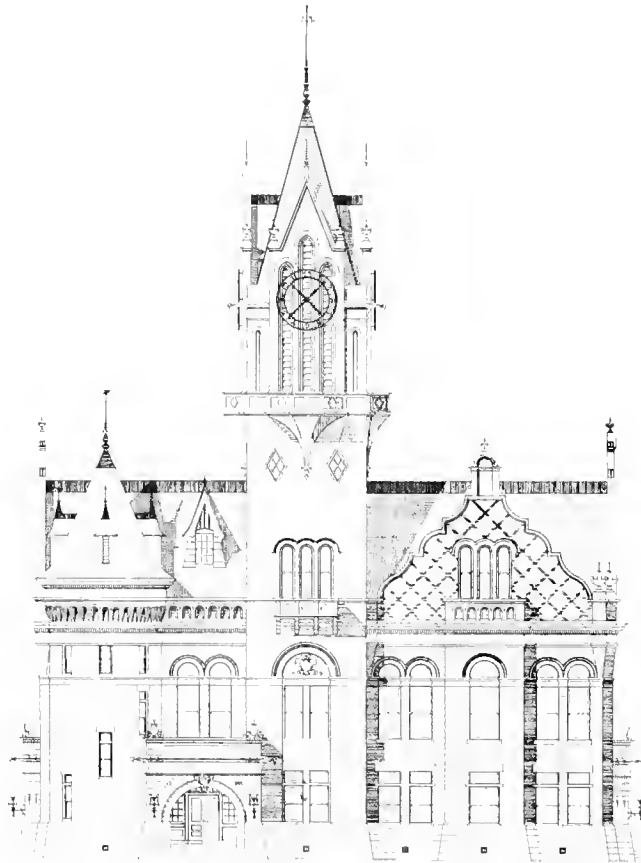
Union, S. C.

FRANK P. MILBURN, ARCHT.
110 N. W. COR. OF 11th & N. STS.
CHARLOTTE, N. C.

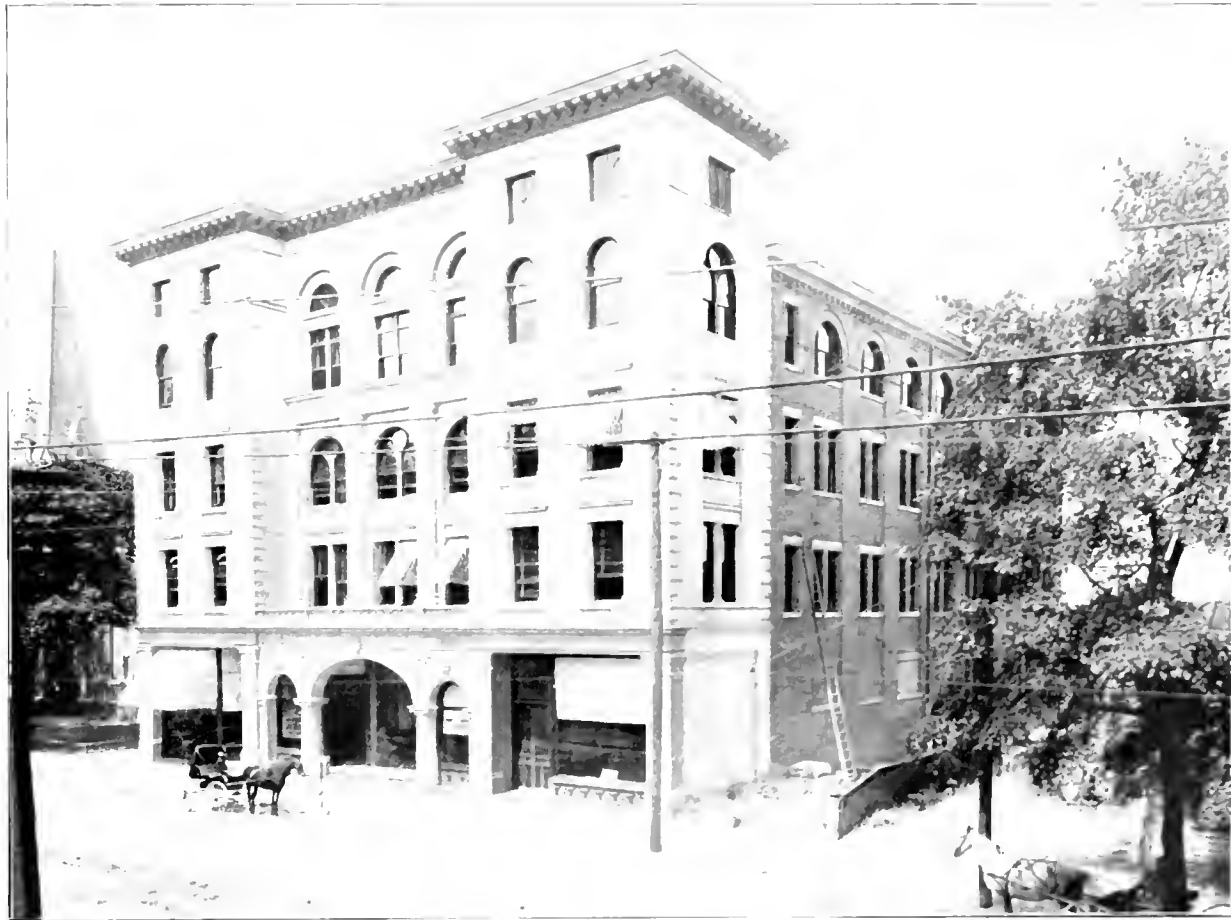


FIRST WARD SCHOOL BUILDING
The largest school building in the South

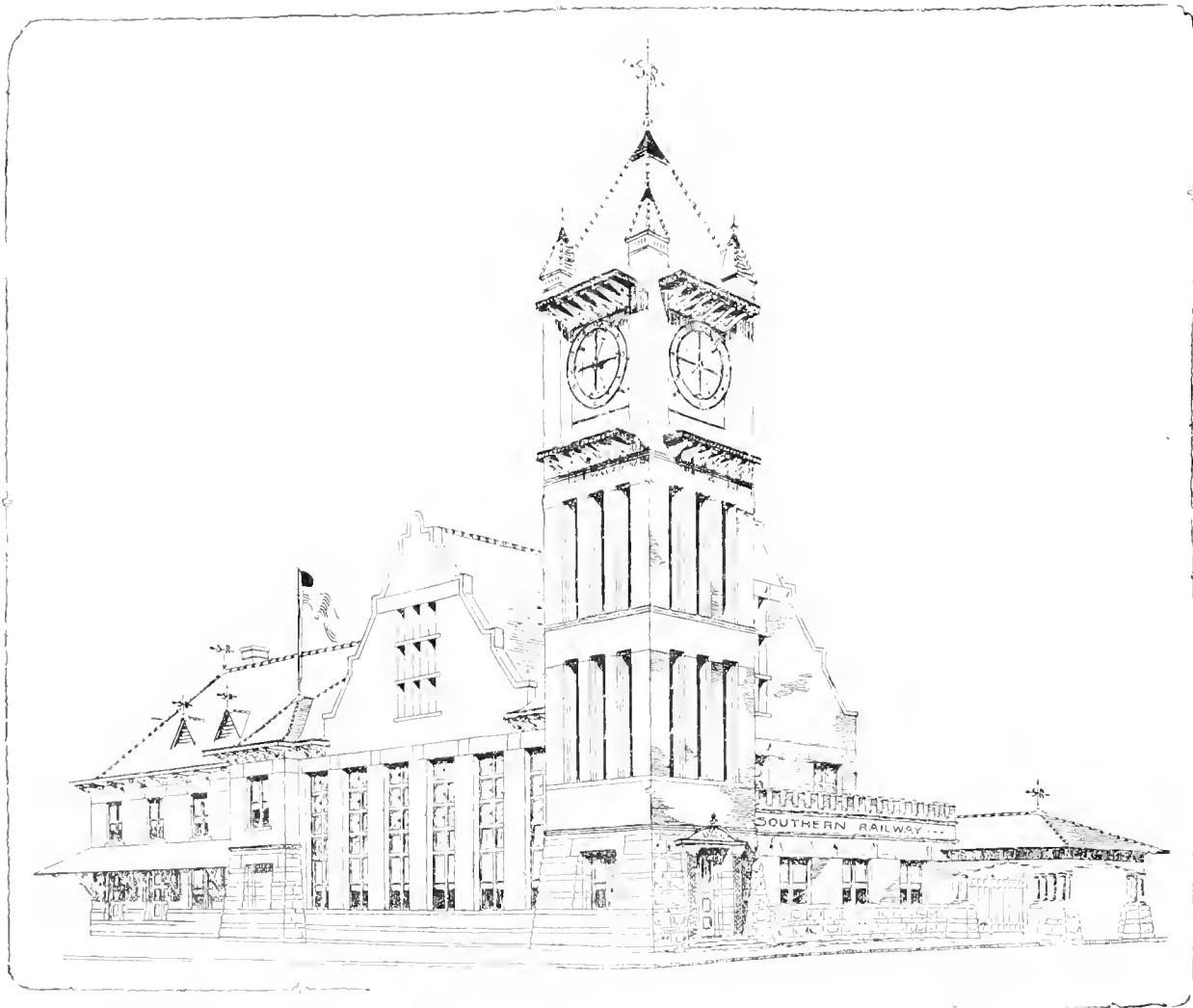
FRANK P. MILBURN
Architect



WALKER'S POINT, COVINGTON, MISSISSIPPI
FRANK R. MILBY, ARCHT.



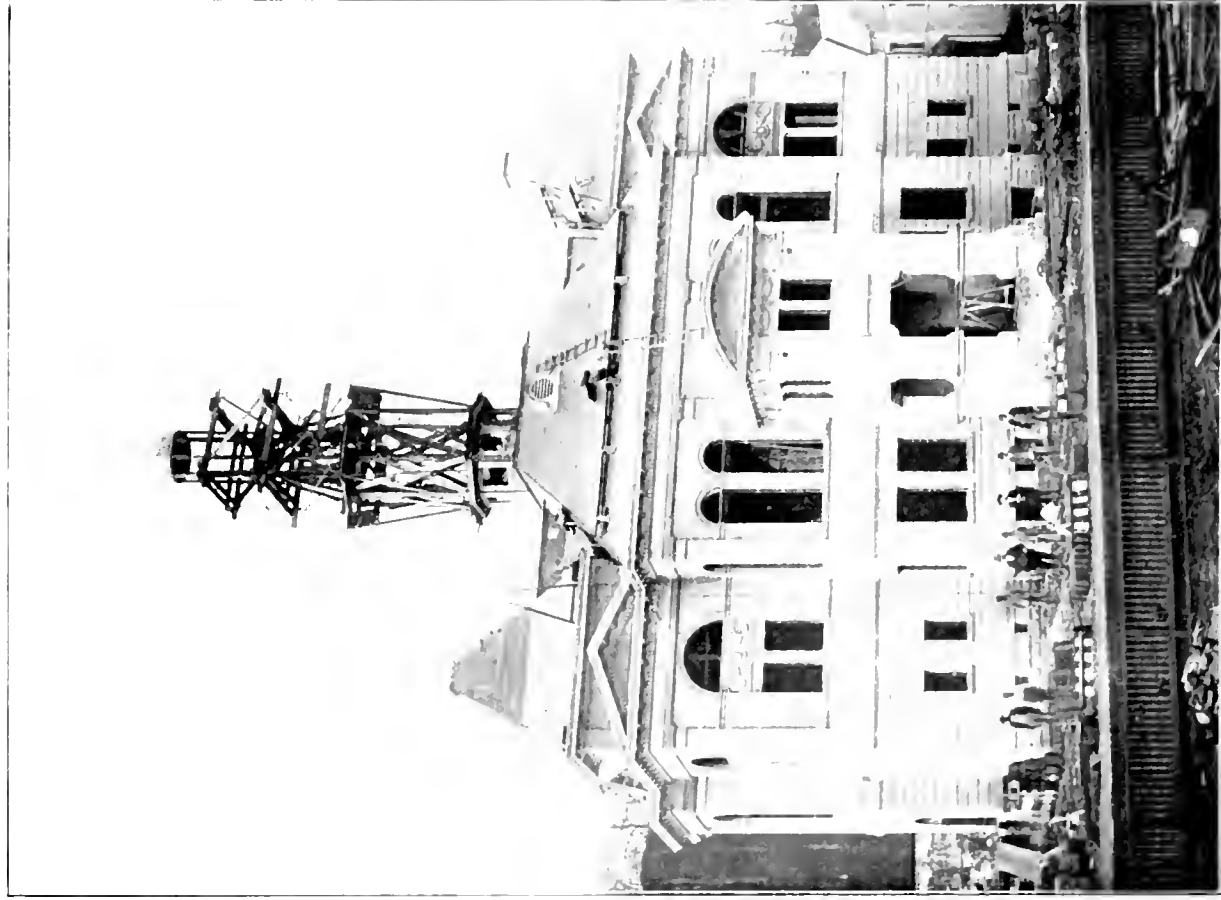
PIEDMONT OFFICE BUILDING.
The finest office building in North Carolina.



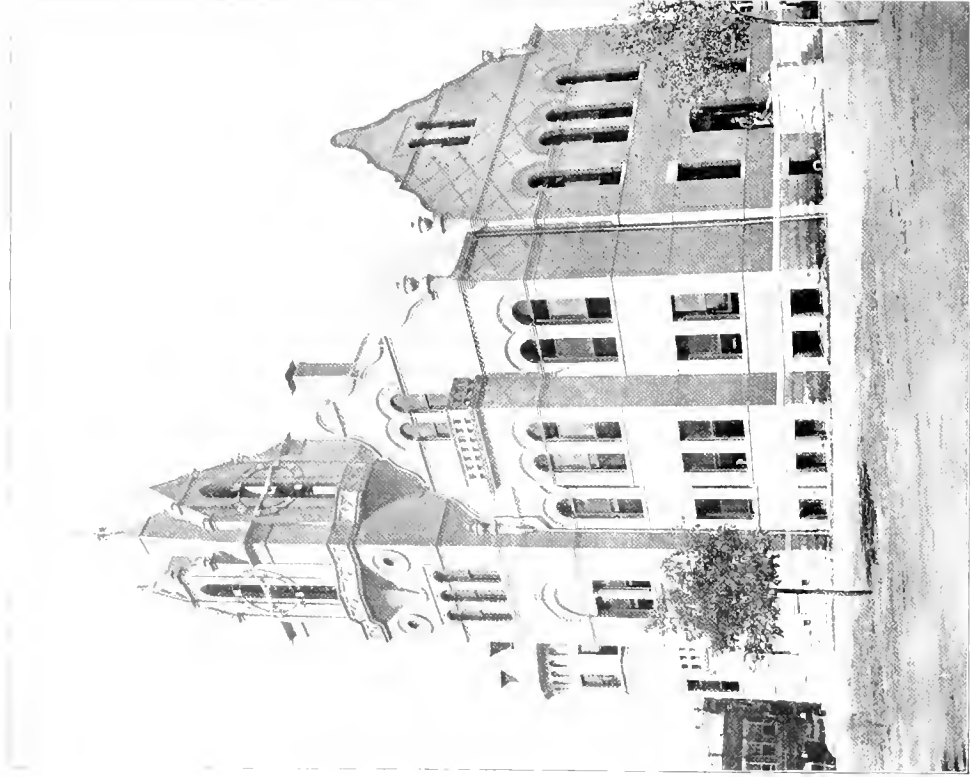
FRANK P. MILBURN,
Architect.

SOUTHERN RAILWAY STATION.

Richmond, Va
W. A. Chesterman, Contractor.



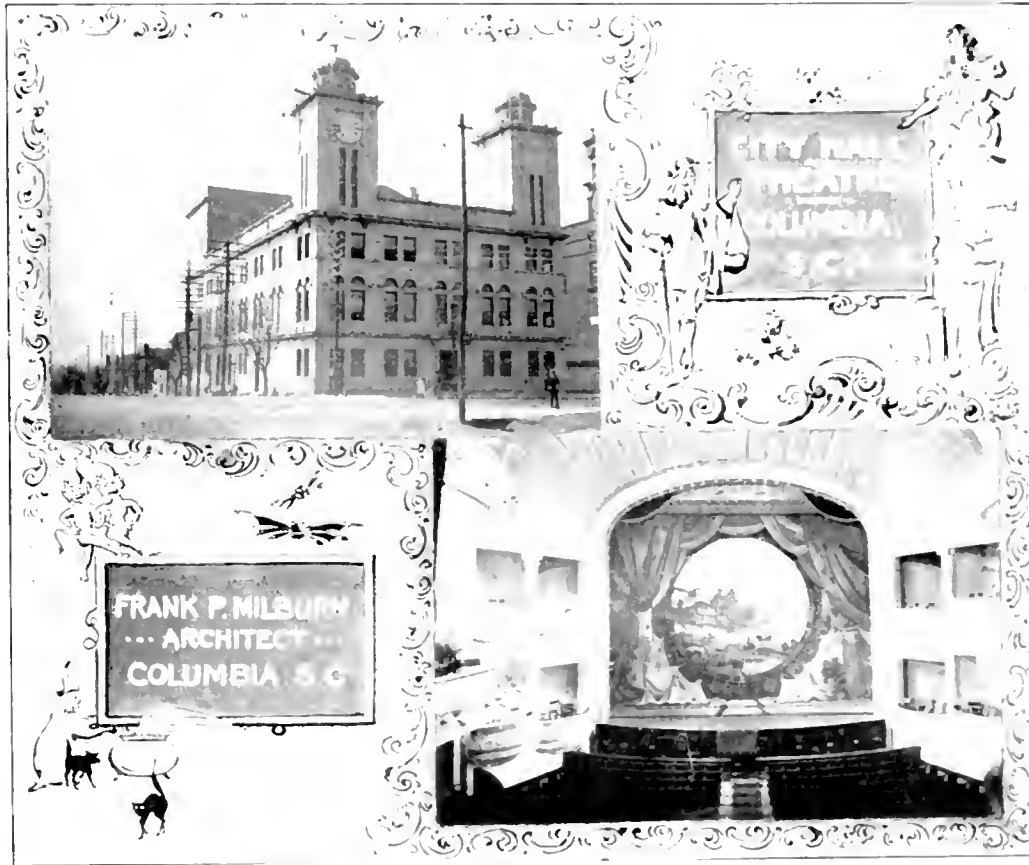
FRANK MURPHY
V. P. 1
MINGO COUNTY COURT HOUSE DURING CONSTRUCTION
W. A. MURPHY

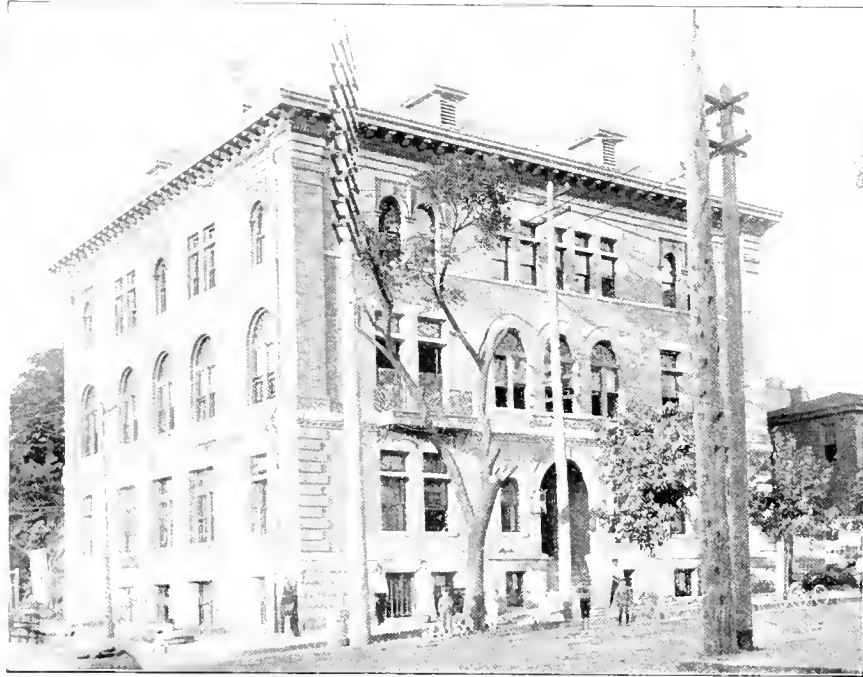


ANDERSON COUNTY COURT HOUSE.

FRANK P. MILBURN,
Architect

Anderson, S. C.
Carr & Williams, Builders





CAPITAL CLUB.

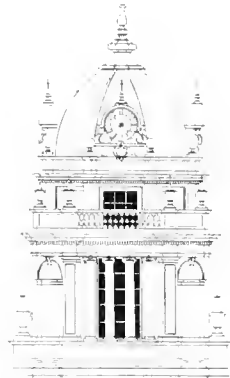
The finest club building in the State.

FRANK P. MILBURN, Architect.

Raleigh, N. C.

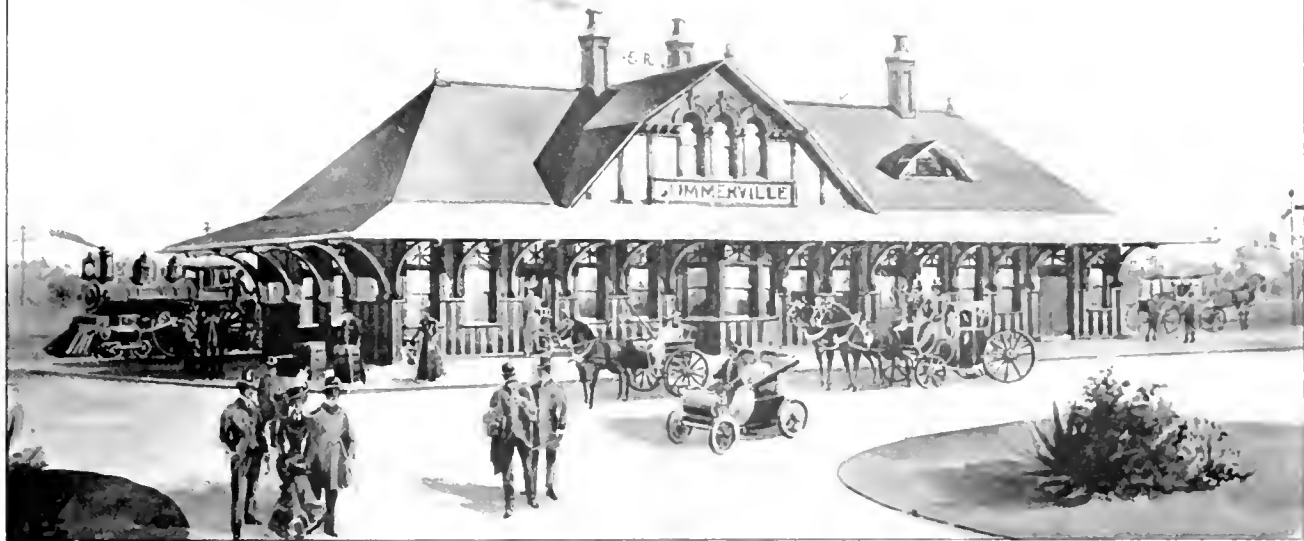


INTERIOR VIEW PARLOR AND DINING ROOM, CAPITAL CLUB.
FRANK P. MILBURN Architect Kilough, N. C.



PLEASANTS COUNTY COURT HOUSE - ST. MARYS, VA.
FRANK F. HALEY, ARCHITECT

Southern Railway Co.
Station at Summerville, S.C.
Frank P. Milburn, Architect.



PASSINGER STATION

FRANK P. MILBURN
Architect

D. E. & C. O.



DORMITORY, BLIND SCHOOL.

FRANK P. MILBURN,
Architect

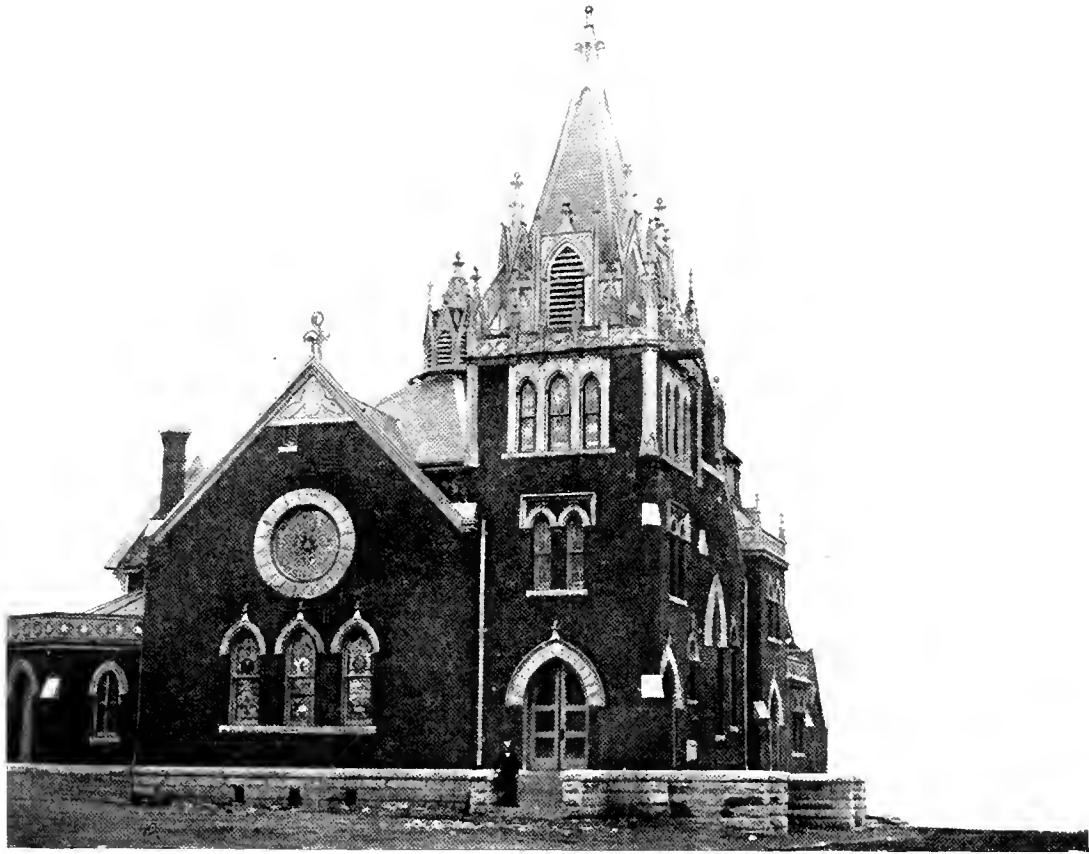
Raleigh, N. C.
J. D. Elliott, Contractor



HON. W. HUNT HARRIS RESIDENCE

FRANK C. MURKIN, ARCHT. 1909

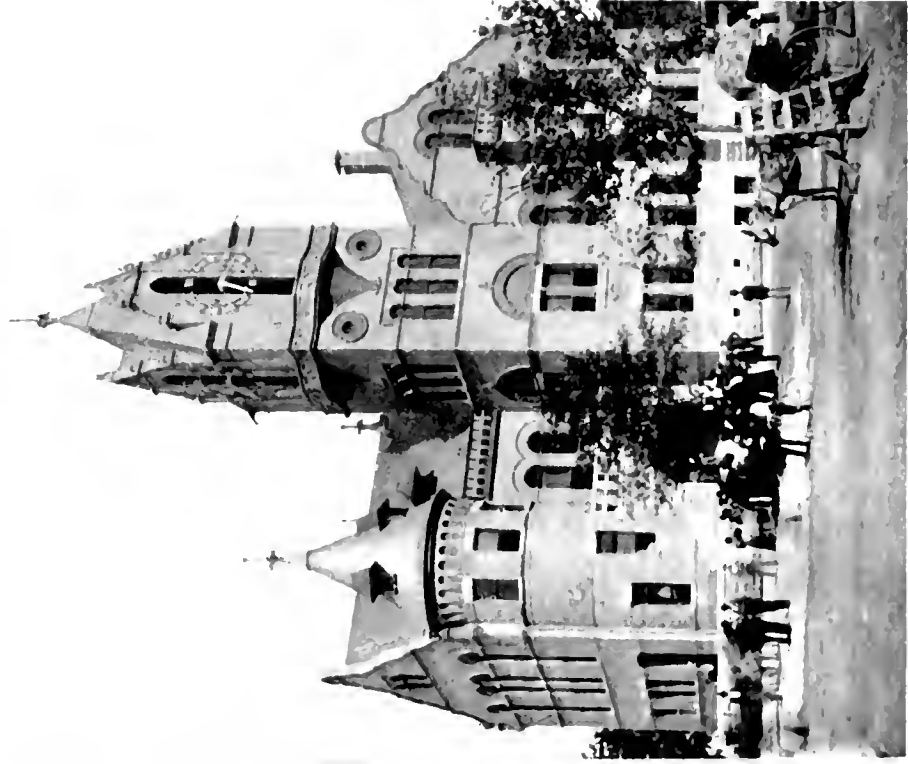
1909



FRANK P. MILBURN,
Architect

FIRST BAPTIST CHURCH.

Winston, N. C.
Loge Bros., Builders.



TUCKER COUNTY COURT HOUSE

FRANKFORD,
WEST VIRGINIA

Parsons, W.
Geo. Shaker



SOUTHERN RAILWAY STATION.

FRANK P. MILBURN, Architect

Aiken, S. C.



DESIGN FOR CITY HALL

FRANK P. MILLER, 11 1/2 1/2



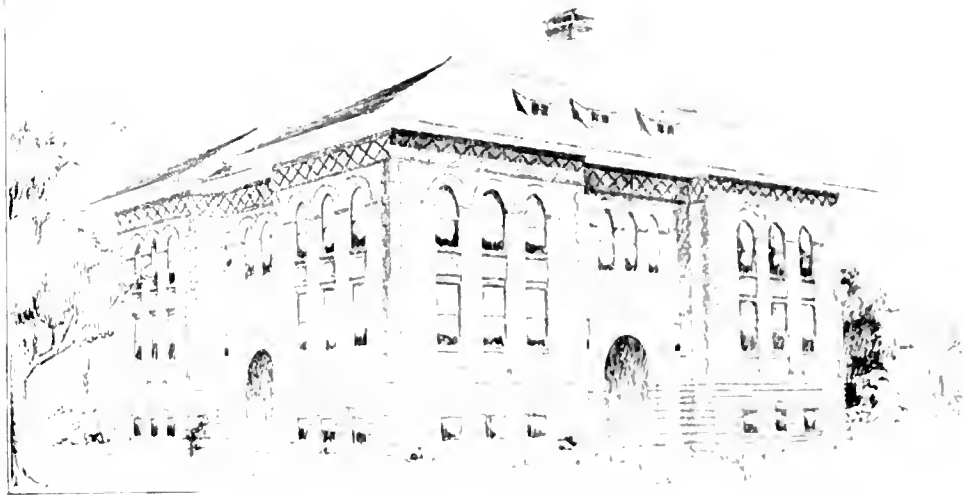
McDOWELL COUNTY COURT HOUSE AND JAIL.

FRANK P. MILBURN
Architect

Fireproof

Welch, W. Va.
Kush & Brother, Builders

MISSA WOODS
S.C.S.



FRANK DILLON ARCHT. SEVIER COLLEGE



FRANK P. MILBURN
Architect

COUNTY JAIL.

Built at Keyser, W. Va., Welch, W. Va.,
Williamson, W. Va., and Anderson, S. C.

STATE OF SOUTH CAROLINA,
EXECUTIVE CHAMBER.

COLUMBIA, S. C., December 26, 1922.

MR. FRANK P. MILBURN,
Columbia, S. C.

Dear Sir:

It gives me a great deal of pleasure to recommend you to any one who desires the services of an Architect. Your work at Winthrop College, the City Hall and the State Capitol shows that you are master of your profession.

Yours very truly,

M. B. McSWINEY, Governor.

FLORIDA CAPITOL COMMISSION.

At a meeting of the Capitol Commission held in the Executive Office, Tallahassee, Fla., December 15, 1922, the following resolutions were passed:

Resolved, That the Capitol Commission of the State of Florida extend its thanks to Mr. Frank P. Milburn and express its appreciation of his efficient services in the making of plans and specifications and supervision of the work of improving the Capitol. His work has been of inestimable value in connection with the building, and he is heartily commended to the public for work of a similar nature.

W. S. JENNINGS

Governor of Florida and Chairman of the Capitol Commission.

COUNTY COMMISSIONERS,
COLUMBIA COUNTY, FLORIDA.

LAKE CITY, FLA., September 1, 1902.

MR. FRANK P. MILBURN, Architect,
Columbia, S. C.

Dear Sir:

Believing that true merit should have its reward, we, the County Commissioners of Columbia County, Florida, desire to say to you that our new Court House, just completed and accepted, is the pride of our entire people. It has been remarked by many, among whom were our Governor and State Comptroller, that our building, in architectural design, attractiveness, comfort and convenience, has no equal in Florida. We are *perfectly satisfied*. And you, as the Architect of this building, have the gratitude of our whole people, and you should feel proud of your handiwork.

With the best of wishes for your future continued success, we are,

Yours very truly,

COUNTY COMMISSIONERS of Columbia County, Florida.
By R. T. BOOZER, Chairman.

BOARD OF SUPERVISORS, WYTHE COUNTY, VA.

WYTHEVILLE, VA., Nov. 28, 1901.

"*Resolved*, That the thanks of the Board of Commissioners of Wythe County be tendered to Mr. Frank P. Milburn, Architect, of Columbia, S. C., for his untiring interest in securing for Wythe County a creditable Court House, both in plan and construction, of which the County may be justly proud."

(Signed) A. L. PORTER, Chairman.

CHARLOTTE'S FINE COURTHOUSE.

A FEATURE of improvement in the South is the building of Court Houses under contract, or in contemplation of contract, and the erection of these structures, and as a result there is to be seen in every State. Herewith is illustrated the New Temple of Justice for Mecklenburg County in the State. It occupies the site of Queen Anne's Mill, and is a fireproof construction, 75x120 feet, with a magnificent interior of marble floors, and hardwood finish add to the beauty of the building. It cost \$250,000, and much credit is given the County Commissioners for the selection of Frank P. Milburn, of Columbia, S. C., and Charlotte, N. C., who was selected, after from all parts of the United States had been examined. The project is above, surmounted by a large dome of pleasing proportions. Manufactured by

BOARD OF COUNTY COMMISSIONERS.

To Whom it may Concern:

This is to certify that the Board of Commissioners of the Mecklenburg County Court House, at Charlotte, N. C., have accepted the plans submitted by Frank P. Milburn, Architect, for our new Court House. The same have been submitted from more than twenty Architects.

During the construction of our building, we found Mr. Milburn's plans to be of our entire satisfaction.

Yours truly,

OFFICE W. P. SNELGROVE, COUNTY SUPERVISOR.

Mr. FRANK P. MILBURN,

Charlotte, N. C.

Dear Sir:

At a meeting of our Building Committee, held on the 12th inst., we discussed his contracts. You have intelligently and conscientiously done your part in this reason of being the Architect of the new Court House, and we are glad to hear of the praises of both the jail and Court House.

The Court House is given up to be the grandest Court House in the South.

There has not been a hitch between the Building Committee and the Architect completed according to the plans and specifications furnished.

In addition, we want to say that you have made yourself available to refer it any and all times to either of us.

I hereby certify that the signature to the above is correct and true, and is so sealed this Aug. 12th, 1898.

Signed in Council, W. P. Snelgrove, County Supervisor, Mecklenburg County, N. C.

WHAT OTHERS SAY.

BAILEY BROS., TOBACCO MANUFACTURERS.

WINSTON, N. C., Dec. 4, 1896.

To Whom Concerned:

Mr. Frank P. Milburn was our Architect for the New Court House in this County, which cost \$60,000. His plans have worked out nicely, and we found him to be a practical superintendent in every respect. Our building is considered one of the best in the State and our people are well pleased. We with pleasure recommend Mr. Milburn to any one in need of an Architect, as an honest, capable man, worthy of the confidence of any one.

[SEAL.]

J. F. MILLER, C. B. B.

M. D. BAILEY, Chairman,
R. S. LIXVILLE,
E. W. HAUSER,

Com. of Forsythe Co., N. C.

G. B. BINGHAM,

JUDGE OF THE TRIGG COUNTY COURT.

CADIZ, KY., Nov. 11, 1895.

To Whom it may Concern:

We, the undersigned Commissioners of Trigg County, in the matter of erecting a new Court House for said County, do hereby certify that Mr. Frank P. Milburn was our Architect (having selected his plans from quite a number submitted to us), and as such was highly satisfactory. We cheerfully commend him as worthy of the consideration of any who may desire the services of a good man, a good Architect, and everything the term implies. We have a first-class building, and the best one we ever saw for the cost.

[SEAL.]

T. K. GRASTY, Trigg County Clerk.

(Signed)

G. B. BINGHAM,
JNO. D. SHAW,
J. M. TAYLOR,
R. A. BURNETT,

Committee.

COUNTY CLERK'S OFFICE.

WELCH, W. VA., May 4, 1895.

Know all Men by these Presents:

That we selected Frank P. Milburn as the Architect of our new Court House and Jail, having had plans from twelve different Architects to select from. Both buildings are now complete, at a cost to our County of \$54,000. They are a monument to our County, and a credit to the Architect. We are well pleased and satisfied with same, and do not hesitate to recommend Mr. Milburn to County officers in need of his services as a man worthy and well qualified in his profession.

[SEAL.]

W. BURRIDGE PAYNE, C. C. C. C.

(Signed)

T. K. TOTTEN,
W. C. DANIEL,
H. C. FLESHER.

“THE ARCHITECT.”

The *Architect* is regarded as an almost useless expense, by some people. There must be some reason why the profession should be so little understood. *Architecture* is in its nature a peculiar profession, a combination of art, science and business. The aim of all good *Architects* from earliest antiquity has been to build permanently and to build nobly. Civilization has no exponent more sensitive than Architecture, for it is an art not only absolutely indispensable, but which adapts itself practically and aesthetically to the conditions of things among which it grows.

The charges of all reputable *Architects* are the same. It is poor economy to employ a man who does not know his business because his price is less. You pay more for what you get, but do not know it.

A TRUISM.

“You shall see a man
Who never drew a line or struck an arc
Direct an *Architect* and spoil his work,
Because, forsooth! he likes a “tasteful” house,
He likes a muffin, but he does not go
Into the kitchen to instruct his cook
Nay, that were insult. He admires fine clothes,
But trusts his tailor. Only in those arts
Which issue from creative potencies
Does his conceit engage him. He could learn
The baker’s trade, and learn to cut a coat,
But never learn to do that one great thing
Which he essays.”

J. G. Holland.

SOME FACTS.

Heavy excavations should not be made during July and August in our southern climate.

Lay foundations with cement mortar. In freezing weather keep the brick dry; in hot weather wet them.

All floors should be double. The rough floor in frame buildings should extend to siding and will make a very good fire-stop, as this will catch falling mortar from the plastering.

Make wide verandas, and avoid using sap flooring.

Avoid openings to attic or resting places for birds at the cornice line.

Do not lay wood shingles in lead paint; it rots them.

Use only dry lumber for finish, and avoid using green lumber in the frame.

Attics should be well ventilated to carry out the heated air between ceiling and roof.

Chimneys should be built from the ground. Make walls of flues not less than 8 inches thick; flues for stove, 8 inches square; flue for fireplace not less than 8x12 inches.

Two-thirds of the fires are caused by defective flues and 4-inch walls. Chimney tops should be laid in cement mortar.

Hearths for fireplaces should be laid in cement mortar in order to prevent rats and mice from undermining them.

Avoid carpet strips between connecting doors. They are troublesome to the housekeeper.

See that your gas or electric outlets are located to be convenient, and in the places most needed.

See that proper spaces are provided for beds, bureaus, buffets, etc.

Doors should not open into closets or hallways.

Doors to buildings where large gatherings are held should open outside.

Locate dining-room according to prevailing breeze in summer.

Closets, moth-proof, can be had by using cedar ceiling.

Provide picture moulding. This saves the damage to plastering.

Staircases should be wide, well lighted, and have wide step with easy rise; 6½ inches is good height.

Avoid winding stairways, especially in public buildings.

When you have decided to build, consult a first-class Architect, who should be a master builder.

The charges of all reputable Architects are the same. It is poor economy to employ a man who does not know his business, at any price.

The Pacolet Granite was used in completing the State House.



Front Portico State Capitol Building, Columbia, S. C.

FRANK P. WILBURN, Architect.

For estimates on rough and finished granite work, write
KEYSTONE GRANITE COMPANY,
J. C. JOHNSTON, Manager. PACOLET, S. C.

Atlas Portland Cement

IS THE
STANDARD AMERICAN BRAND.



ATLAS PORTLAND CEMENT COMPANY,
30 Broad Street, New York.

Yearly Output Over 5,000,000 Barrels.



NO. 2045 PARTHENON. SCHOOL GREEK.
For Front Doors in Residences.

The Corbin Unit Lock Set

Is specified by leading architects for fine buildings in all parts of the country. It is

BUILT LIKE A FINE MACHINE

With all parts attached to a solid frame and accurately adjusted. It is shipped in one piece and applied without detaching a single part or disturbing the adjustment. The acme of security, reliability and convenience. Styles for all purposes. Ornamentation in all schools of design.

CORBIN HARDWARE

Used upon the following buildings shown in this book:

SOUTH CAROLINA STATE HOUSE,
SAVANNAH UNION STATION,
KNOXVILLE UNION STATION,
COURT HOUSE, LAKE CITY, FLA.
FLORIDA STATE HOUSE,
DANVILLE, VA., UNION STATION.

P. & F. CORBIN, New Britain, Conn.

NEW YORK

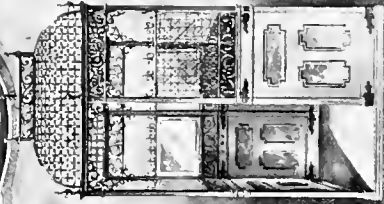
CHICAGO

PHILADELPHIA

Passenger and Freight

Hydraulic, Electric, Steam, Belt, Hand Power

Elevators



15,000 ELEVATORS SOLD

MORSE WILLIAMS & CO

MAIN OFFICES.

WEST END TRUST BUILDING. PHILADELPHIA.

SOUTHERN OFFICE, ATLANTA, GEORGIA



Steel Document Files and Roller Shelves

**Metallic Fixtures and Filing Devices
For Court Houses and Vaults**

Special Low-priced Document, Card Index and Letter Cabinets Carried in Stock

Art Metal Construction Co.

Jamestown, N. Y. Southern Office, Chattanooga, Tenn.

VARNISH IN ARCHITECTURE.

Trifles.

CANOVA, the sculptor, once told a would-be critic that perfection was made up of trifles, and that perfection was no trifle, and this trite saying may be well applied to Architecture. Because of their fidelity to the trifles of their art, the names of Phidias and Canova are as imperishable as their wonderful marbles.

If the "trifles" of modern Architecture were looked after as closely, there is one important feature of a building that would be the better for it, and that is the interior finish.

Just as surely as a trifle of a line under Canova's skilled hand meant the development of a muscle, or an expression that should lend grace, dignity and majesty to his work, so the interior finish either lends grace to the Architect's work, or mars it.

Varnish is admitted to be a bigger "trifle" than it was once considered, for it is Varnish that makes or mars the appearance of an interior. The finest interiors are finished with BERRY BROTHERS ARCHITECTURAL FINISHES.

Finished samples of wood and useful literature on natural wood finishing sent free for the asking.

BERRY BROTHERS (LIMITED), NEW YORK, CHICAGO, BALTIMORE, SAN FRANCISCO,
BOSTON, CINCINNATI,
VARNISH MANUFACTURERS PHILADELPHIA, ST. LOUIS, FACTORY DETROIT



Inside Venetian Blind Model



Outside Venetian Blind Inside View



Rolling Steel Shutter



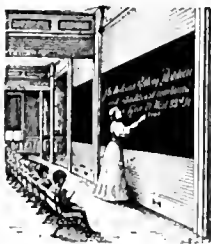
Rolling Steel Shutter

JAMES GODFREY WILSON,

Manufacturer of

Rolling Steel Shutters, Venetian Blinds, Rolling Partitions, Wood Block Floor.

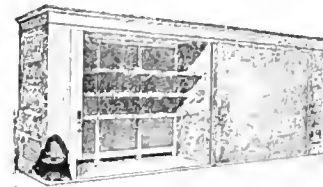
3 WEST TWENTY-NINTH STREET, NEW YORK CITY, N. Y.



Rolling Partitions



Venetian Awnings for Porches



Hygiene Wardrobe

BUILDING ^{A^ND} FINISHING SUPPLIES

ELEVATORS AND ELEVATOR ENCLOSURES OF ALL KINDS
PRESSED BRICK, TERRA COTTA, MARBLE, GRANITE, LIMESTONE
STEEL CEILINGS AND SHEET METALS OF ALL KINDS

Cast Iron,

Ornamental Iron,

Steel Joist Hangers,

Cast Iron Stairs,

Folding Partitions,

Rolling Partitions.



Wrought Iron,

Structural Iron,

Steel Beams,

Steel Partitions,

Rolling Steel Shutters,

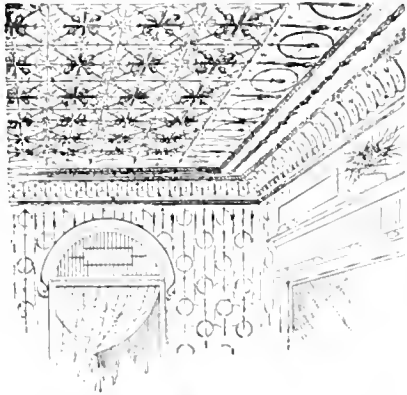
Illuminating Sidewalks.

VENETIAN BLINDS, ELASTIC PULP PLASTER
GLASS, PAINTS, VARNISH, FILLERS AND STAINS

LONG DISTANCE 'PHONE 2106 G. G. GLOWER & Co. 622 AUSTELL BLDG., ATLANTA, GA.

AN ORNAMENTAL CEILING

ADDS BEAUTY TO THE ROOM AND SHOWS
THE ARTISTIC TASTE OF THE OWNER



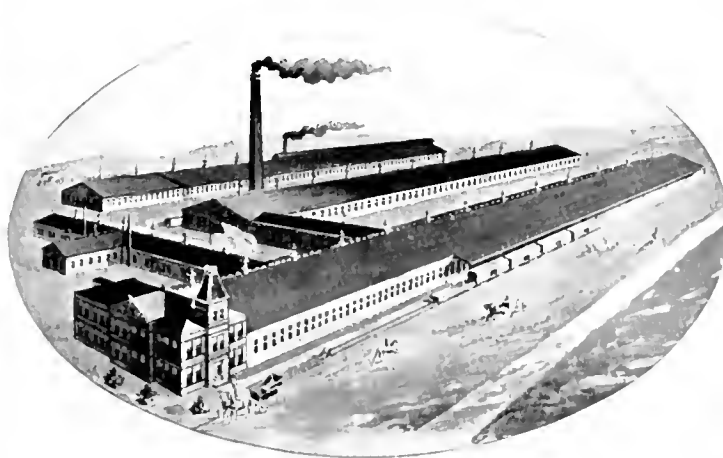
BERGER'S METAL CEILINGS

Are symmetrical and pleasing to the eye, and command the admiration of all. They can be used in all classes of buildings, are easy to apply, and highly ornamental. They don't shrink, crack, get water-soaked, or fall off. They are safe and sanitary. Their durability makes them the most economical ceilings in existence. Our "Classik" designs embrace variety of styles, and there is no building that we cannot match in its style of architecture. Ours is not only by far the most complete and comprehensive, but we are steadily adding to it, and if you wish to keep posted, it will pay you to keep in touch with

THE BERGER MFG. CO., Canton, Ohio

THE BERGER MANUFACTURING CO.

CANTON, OHIO



— MANUFACTURERS OF —

"MULTIPLEX" Steel Fireproofing, "ECONOMY" Partition Studs, Furring, etc.; Metal Lath, "LUMINOUS" Sidewalk Light, Galvanized and Black Sheets, Galvanized and Painted Roofing and Siding, Eaves Trough, Conductor Pipe, Elbows, etc.; Cornices and Architectural Sheet Metal Work; SPANISH TILE

OUR PRICES WILL INTEREST YOU

GRANOLITHIC, ARTIFICIAL STONE

AND CEMENT

S I D E W A L K S

STORE AND WAREHOUSE FLOORS

Best of references from ten cities and prominent business men. Contracts made anywhere in the South. Address

FRANK BARKER,

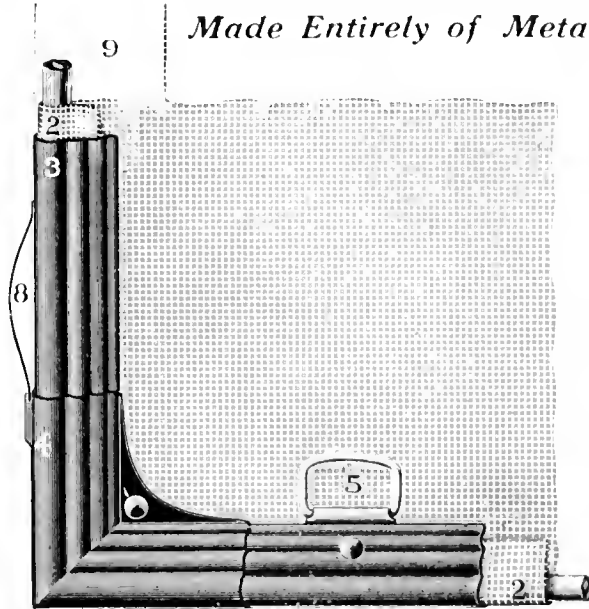
1312 BARNARD ST.,

SAVANNAH, GA.

The "HIGGIN"

*METAL FRAME WINDOW SCREEN
Does Not Shrink, Swell, Warp or Twist!*

Made Entirely of Metal; Not Affected by the Weather.



Sectional Cut Showing Construction of Screen.

Southern Representative

**Jas. G. Miller, 715 Empire Bldg.
Atlanta, Georgia**

There is an inside frame of 1-4 inch double coated steel rod (No. 1). Around this the wire cloth (No. 2) is drawn and stretched perfectly tight by a patented process. The outside moldings (No. 3) hold it securely in place.

We use exclusively genuine SOLID BRONZE CLOTH that will not rust or corrode.

The screen has side springs (No. 8), permitting it to slide with ease in the copper guide strip extending the full height of the window frame.



Just the thing for your home.

Keeps out Mosquitoes and other small Insects, as well as Flies.

Handsome, Strong, Efficient, Durable, Easily Operated.



**CATALOGUE FREE ESTIMATES MADE
WITHOUT CHARGE.**



Made Only By

The Higgin Mfg. Co., Newport, Ky.

SMITH-WARREN COMPANY

Automatic Closing Fireproof

METAL WINDOW FRAMES AND SASHES

H. Collier Smith's Patents

OFFICES: 93 Federal St., Boston; 253 Broadway, New York

TELEPHONES: 4064 Plain 7235 Cortland



FACTORIES IN

**Philadelphia
New York
Buffalo, N. Y.
Worcester, Mass.
Canton, Ohio
Detroit, Mich.
Louisville, Ky.
Atlanta, Ga.
Portland, Ore.**

Dowman-Dozier Mfg. Co.

ATLANTA, GA.

Manufacturing Agents of H. Collier Smith's Patent Metal Windows

ALSO MANUFACTURERS OF

SKYLIGHTS, CRESTINGS AND DIXIE VENTILATORS

Write for Prices

L. P. HAZEN & CO.

Building Construction

CINCINNATI, OHIO

Work Executed by the Contract or Percentage System

Correspondence Solicited

VARNISHES

ARCHITECTURAL

NUMBER

38 PRESERVATIVE

For Interior Work

Spar Finishing

... for all ...

Exposed Work

NUMBER

61 FLOOR VARNISH

For Floors

PRATT & LAMBERT

NEW YORK
LONDON

BUFFALO
PARIS

CHICAGO
HAMBURG

J. E. PARRISH
CONTRACTOR
LYNCHBURG, VA.

Public buildings a specialty. Will furnish
Estimates on all classes of work;
Send plans for estimates

“THAT HOUSE” MUST BE PAINTED TO PRESERVE AS WELL AS BEAUTIFY

It is not simply a question of covering so much surface to hide the plain boards—they must be protected. There are paints and paints, but they don't all preserve, nor even beautify; then why not insist upon

MOORE'S PURE HOUSE COLORS

The Standard—the one that is tried—the one producing the best results at the least cost. There is another item to be considered in “That House”—the walls and ceilings.

You're not going to leave them in their unfinished state. Won't harmonize with the furnishings.



A Pure Linseed Oil Paint.



MURESCO THEM

MURESCO is a superior interior finish. May be applied to new walls and ceilings without cracking, chipping, or rubbing off. Made in fourteen beautiful tints, or may be tinted any special shade.

BENJAMIN MOORE & CO., Sole Manufacturers, CHICAGO, ILLINOIS, BROOKLYN, NEW YORK
For Color Cards and Combinations, Address Department "A"

T. O. BROWN & SON

Contractors and Builders

AUGUSTA, GA.

*Will furnish estimates on all classes of buildings. Send
plans and specifications for estimates*

Masury's

PURE LINSEED OIL

House Paints

Have been for more
than a life-time

The Standard of Excellence

By which all other paints are judged.

Therefore, he who uses them is assured at the outset of the very best results possible, while he who EXPERIMENTS with paints that he knows not of, does so at considerable risk of trouble and loss.

The same HIGH STANDARD OF EXCELLENCE, UNIFORMITY AND RELIABILITY is maintained in

Masury's Crystal Spar Varnish (Interior)

Masury's Elastic Spar Varnish (Exterior)

Masury's Light Hard Oil Finish

Masury's Nomar Floor Varnish

Masury's Front Door Varnish

The Finest Architectural Finishes on Earth


JOHN W. MASURY & SON

New York

Chicago.

Columbia Lumber & Manufacturing Co.,

COLUMBIA, S. C.

Manufacturers of *Sash, Doors and Blinds,*
Interior Finish, Pine, Oak and
Cypress, Special Mill Work. 

SEND PLANS AND SPECIFICATIONS FOR DELIVERED PRICES

N. B. HANDY CO.

LYNCHBURG, VIRGINIA

... ROOFING TIN ...

Bryant's Old Method

Majestic Old Style

Banner, Virginia

Longdale, Low Moor

And Various Other Brands

METALS OF EVERY DESCRIPTION, ROOFERS' TOOLS
AND SUPPLIES, STRUCTURAL AND BUILD-

ERS' IRON AND STEEL

TERRA COTTA AND PLATE GLASS

MR. CHARLES EMMEL
383 ALBANY STREET
BOSTON, MASS.



Terra Cotta, Papier-mache Staff, Composition, Wood Carving for Interior and Exterior Decoration. Works Capable of Producing any Design in the Imagination of the Artist, and Guaranteed the Best that Can be Made

Write N. B. HANDY COMPANY, Lynchburg, Virginia

SOLE SOUTHERN AGENTS.

Our Goods are used in the Paris, Ky., Courthouse; see cut in this book.

MARBLEITHIC

FOR
FLOORS, WAINSCOTING, PARTITIONS

MOST
DURABLE, SANITARY, ARTISTIC

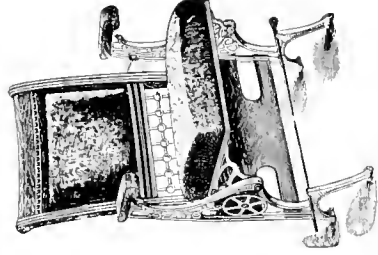
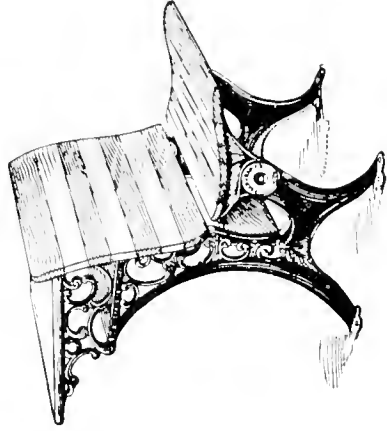
MADE ONLY BY
THE MARBLEITHIC COMPANY
DAYTON, OHIO.

Write us for prices. We will save you money.

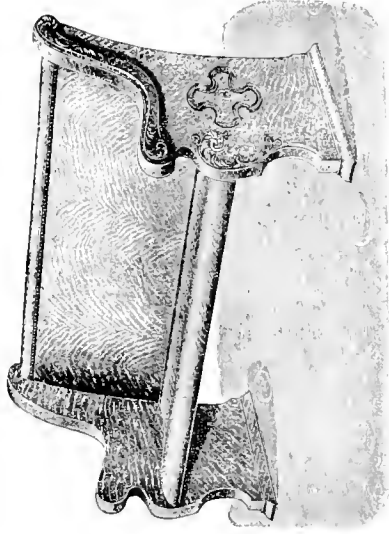
LARGEST FACTORY IN THE WORLD

—ENGAGED IN THE MANUFACTURE OF—

SCHOOL FURNITURE, OPERA CHAIRS



CHURCH FURNITURE



Address **GRAND RAPIDS SCHOOL FURNITURE WORKS**

22 WEST 19TH STREET, NEW YORK



CHARLOTTE BRICK CO.

MANUFACTURERS OF A

HIGH GRADE OF STIFF, MUD SIDE CUT BRICK

We have the advantage of a superior quality of river clay. We are equipped for an output of 50,000 per day, winter and summer.

Promptness guaranteed. Plant located on Catawba river. Shipping point, Grattan, S. C., near Fort Mill, S. C.

OFFICE, CHARLOTTE, N. C.

WITH S. S. MCNINCH & CO

Georgia
Wood Fiber
Plaster Co.



ATLANTA, GA.

Wood Fiber Plaster

Is a substitute for common plaster. The use of common mortar makes a weak and uncertain wall. Wood Fiber Plaster completely realizes that perfection so long sought after by architects, builders and owners, for interior walls and ceilings. Booklet sent free.



WOODWARD
LUMBER CO.

ATLANTA, GA.

Hardwood Interior Finish,
Bank, Office and Store Fixtures,
Doors, Sash and Blinds,
Mouldings, Etc.
Hardwood Mantels.

SOME OF THE BUILDINGS CONSTRUCTED

Ogle County (Ill.) Court House
Kane County (Ill.) Court House
Macon County (Ill.) Court House
La Porte County (Ind.) Court House
Cass County (Ill.) Criminal Court House
Warren County Court House, Monroeth, Ill.
Macon County (Ga.) Court House (Knoxville), La.
Cecil County (W. Va.) Court House, Huntington
De Pue County (Ill.) Court House, Wheaton
Clinton County (Ill.) Court House, Clinton, Ill.
New York, Biscuit Factory, Chicago, Ill.
Ray City (Mich.) Court House and Postoffice
Clarksville (Tenn.) Postoffice
Menon Freight House, Chicago, Ill.
Montgomery (Ala.) Union Passenger Station
C. & B. & Q. Freight House, Chicago, Ill.
Nashville Union Depot, Nashville, Tenn.
Cumberland Telephone Building, Memphis, Tenn.
Montgomery County Court House, Charlottesville, Tenn.
Topeka, Kansas, Court House and Postoffice
Pole Apartments, Nashville, Tenn.
Waverly Apartments, Philadelphia, Pa.
Buncombe County (N. C.) Court House, Asheville
Mingo County (W. Va.) Court House
McDowell County Bldg., Welch, W. Va.
Kalamazoo (Mich.) Paper Mill

CHAS. A. MOSES

General Contractor

309 Chamber of Commerce Bldg

CHICAGO

W. E. WOOD, Genl. Supt.



ENTRANCE GATES, RESIDENCE WM. L. ELKINS, OGONTZ, PA.

Painted with **DIXON'S SILICA-GRAPHITE PAINT** *for protection and effect*

The Property Owner Saves Money when the Iron Work or Tin Roof is Painted with

ONE
QUALITY **DIXON'S SILICA-GRAPHITE PAINT** **FOUR**
COLORS

Manufactured only by the

JOSEPH DIXON CRUCIBLE CO., Jersey City, New Jersey.



WALKER BLOCK, BIRMINGHAM, ALA.

This building was covered in 1889 with our Anchor Brand Roofing. It is
today in first-class condition

**WARREN'S ANCHOR BRAND
NATURAL ASPHALT ROOFING**

Designed for use on the highest
class of buildings in both warm
and cold climates. Twenty-five
years' experience has shown it to be

**THE STANDARD ASPHALT ROOF
OF AMERICA**

WARREN CHEMICAL AND MFG. CO.

170 BROADWAY, NEW YORK.

THE ELEMENTS

Are the only legitimate spoilers of paint. Paint that chalks, cracks, scales, darkens or discolors from inherent weakness is not good paint, and should be avoided in the specifications of the careful architect.

COMBINATION PAINTS

Based on ZINC WHITE have no inherent defects. The elements wear them away in time, but they do not decay, nor darken, nor change color. The careful architect, who values permanence of color and material, will specify an adequate proportion of ZINC WHITE in all house paints.

See our terse, practical Treatises:

"THE PAINT QUESTION,"
"PAINTS IN ARCHITECTURE,"

Mailed Free.



The New Jersey Zinc Co.

11 BROADWAY, NEW YORK.

W. J. WILKINS,
Contractor and Builder,

FLORENCE, S. C.

Send plans and Specifications for estimates.

The Columbus Brick and Terra Cotta Co.,

MANUFACTURERS OF

PLAIN AND
ORNAMENTAL **PRESSED BRICK**

In Standard, Roman and Norman Sizes.

BUFF, TERRA COTTA, GRAY, BUFF SPECKLED and GRAY SPECKLED

Main Office, Columbus, Ohio.

Works, Union Furnace, Ohio.

DAN'L A. FARRELL, Pres't.

JAS. E. FARRELL, Sec. and Treas.

FARRELL HEATING AND PLUMBING CO.

Incorporated.

HEATING, PLUMBING, LIGHTING, MUNICIPAL SEWERAGE,
WATER WORKS, FURNACE AND MILL WORK.

PLUMBERS', STEAM, GAS FITTERS' AND ELECTRICAL SUPPLIES.

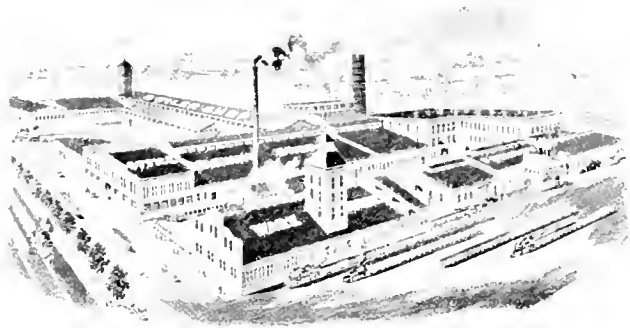
PUMPS, HOSE, VALVES, STEAM PIPE, FITTINGS, DRIVEN WELLS, HYDRAULIC RAMS.

We take contracts anywhere in the South.

Telephone 129-4.

ANNISTON, ALA.

Cor. 11th and Wilmer Sts.



LOMBARD IRON WORKS AND SUPPLY COMPANY

AUGUSTA, GA.

Foundry, Machine, Boiler and Bridge Works and Supply Store

CAST EVERY DAY---CAPACITY FOR 300 HANDS

Architectural Iron Work and High Grade Boilers for Heating and Power
Plants a Specialty

Builders and Dealers in

Engines, Boilers, Steel Bridges,
Roofs, Tanks, Towers and Build-
ing Construction

Cotton, Saw, Grist, Oil, Fertil-
izer, Gin, Press, Cane and Shingle
Mill Machinery and Repairs . .

Building, Bridge, Factory, Fur-
nace and Railroad Castings and
Supplies, Beams, Channels, Bolts,
Pipe and Fitting—Car Load or
Less

Belting, Packing, Injectors, Fit-
tings, Saws, Files, Oilers, Etc. . .

Shafting, Pulleys, Hangers and
Boxes, Mill Supplies and Tools

CHAS. WUICHET

GEORGE WUICHET

CHAS. WUICHET & CO.
DAYTON, OHIO.

Slate, Tile, Asphalt,

AND

All Kinds of Metal Roofing

Our Prices are Low for Good Work

Manufacturers

... of ...

GALVANIZED

Iron and Copper Cornices

AND

Building Trimmings

Write us for prices before you let contract. We did the Galvanized Iron and Slate Work on Winston, N. C., Welch, W. Va., and Williamson, W. Va., Court Houses ; cuts appear in this book.

Chattanooga Roofing and Foundry Co.

FORMERLY

Chattanooga Steel Roofing Co.

MANUFACTURERS OF

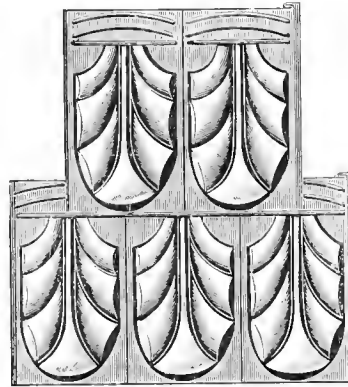
Sheet and Cast Metal
BUILDING MATERIAL

Galvanized
Iron Work

Cornice

Skylights

Gutters, etc.



STEEL ROOFINGS

Moomaw's Patent

Metal Shingle

Store Fronts

Columns, Lintels, Sills

WROUGHT IRON WORK

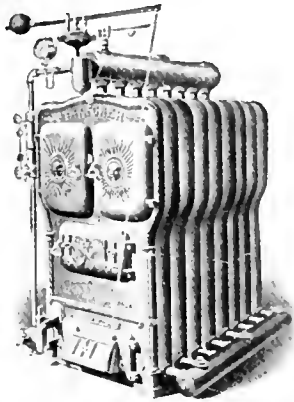
Awnings

Write for Catalogue

CHATTANOOGA, TENNESSEE

Established 1850

“THATCHER”



Furnaces, Ranges, Steam and Hot Water Heaters, are the result of 52 years successful experience making High Grade Heating Apparatus. They are used by leading architects and builders because of their superior quality and construction. Our method is to have the most skillful workmen put the best material together under our personal supervision. It means a better value---a stronger guarantee---things backed by a half century reputation.

FURNACES RANGES BOILERS

Send for Catalogue

THATCHER FURNACE CO.

WORKS, NEWARK, N. J.
240 WATER ST., NEW YORK




Tennessee Producers Marble Co.



MANUFACTURERS AND FURNISHERS OF

TENNESSEE MARBLE

WAINSCOTING, FLOOR TILE, STAIR
TREADS, BASEBOARD, TOILET MAR-
BLE, BASIN SLABS, DRINKING FOUN-
TAINS, EXTERIOR MARBLE FINISH,
SILLS, LINTELS, &c. 

All Work Carefully Executed

Correspondence Solicited



KNOXVILLE, TENNESSEE



USE

“Taylor Old Style” Roofing Tin

On All Structures Requiring

A Durable Covering

IT IS THE HIGHEST GRADE
ROOFING TIN MADE



FOR SALE BY ALL LEADING
HARDWARE JOBBERS

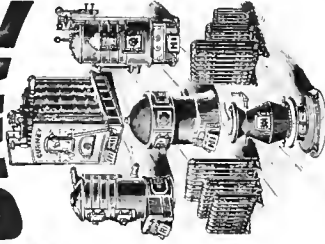
N. & G. TAYLOR CO.

SOLE MAKERS

Established 1810

Philadelphia, Pa.

GURNEY



HEATERS AND RADIATORS HOT WATER OR STEAM

BEST FOR ECONOMY-EFFICIENCY-DURABILITY

Used and Recommended by the Leading Architects and Engineers.

SEND FOR LATEST CATALOGUE

GURNEY HEATER MANUFACTURING CO.

74 FRANKLIN ST., BOSTON.

BRANCH: 111 FIFTH AVENUE, NEW YORK.

—THE—

"GURNEY" HEATERS

ARE USED IN MANY OF THE

LEADING BUILDINGS OF THE SOUTH

'PHONE 162 P. O. BOX 103

QUARRIES AT ARVONIA, VA.

Slate and Tile Roofing

THE WILLIAMS SLATE CO.

QUARRYMEN AND ROOFERS OF

Buckingham-Virginia ^{Building and} _{Roofing} Slate

18 South Ninth Street

RICHMOND, VA.

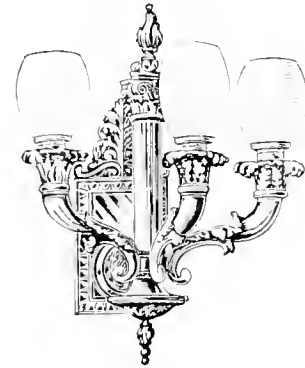
CASSIDY & SON MFG. CO.

Nothing shows to a better advantage than neat

GAS, ELECTRIC

AND COMBINATION

FIXTURES



Special Designs Executed Promptly.

133 and 135 West 23d Street and 124, 126 and 128 West 24th Street, NEW YORK.

E. J. ERBELDING

537 BROAD STREET
AUGUSTA, GA.

“THE PLUMBER”

STEAM AND HOT WATER HEATING

PLUMBING AND GAS FITTING

Contract Work a Specialty.
Out of Town Work Solicited.

WRITE
FOR
PRICES.

BELL PHONE 448.
STROWGER PHONE 825.



THE
J. L. Mott Iron Works

84 to 90 BEEKMAN ST., NEW YORK CITY

Manufacturers of

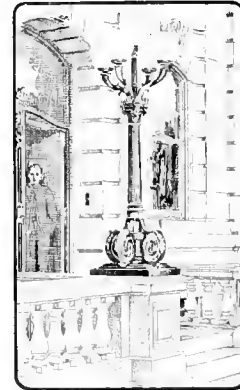
Fine Plumbing Material



COPYRIGHT, 1902, BY THE J. L. MOTT IRON WORKS

Artistic Work in Brass, Bronze and Wrought Iron
**Gates, Grilles, Fountains, Vases,
Stable Fittings**

ART METAL WORK FROM ORIGINAL DESIGNS
A SPECIALTY



COPYRIGHT, 1902, BY
THE J. L. MOTT IRON WORKS

V. H. KRIEGSHABER, President.

CHAS. BAERTSCHY, Vice-President.

THE ATLANTA TERRA COTTA CO.,

MANUFACTURERS OF

Architectural Terra Cotta.

OFFICE: No. 6 North Forsyth Street.

WORK: Cor. Wells and Bluff Sts.

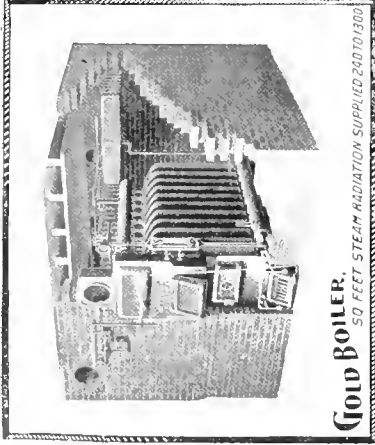
ATLANTA, GA.

Our Terra Cotta has been Used Extensively in many of Mr. F. P. Milburn's Buildings.

ESTIMATES FURNISHED ON APPLICATION.

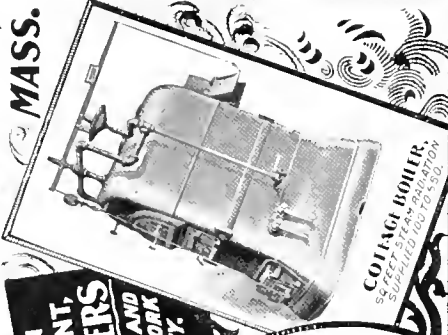
THE H.B. SMITH CO.

WESTFIELD,
MASS.

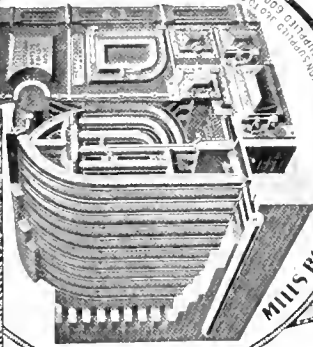


Gold Boiler.
50 FEET STEAM RADIATION SUPPLIED 200 TO 500.

**EUROPEAN
AGENT,
AUGGERS
BREMEN AND
NEW YORK
CITY.**

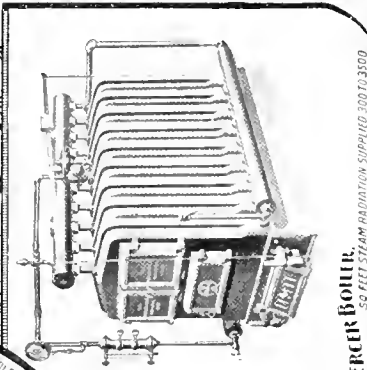


Cottage Boiler.
50 FEET STEAM RADIATION
SUPPLIED 1000 TO 2500.

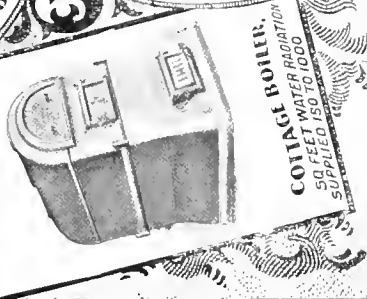


Mills Boiler. 50 FEET STEAM RADIATION
SUPPLIED 1000 TO 2500.
50 FEET WATER RADIATION
SUPPLIED 1000 TO 2500.

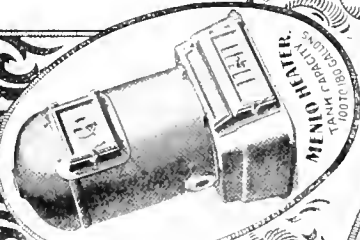
**PACIFIC
COAST
AGENTS
HOLBROOK,
MERRILL,
AND STETSON
SAN FRANCISCO,
CAL.**



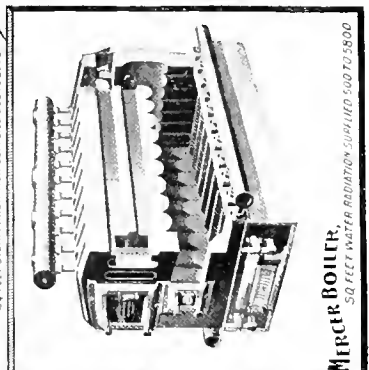
Mercer Boiler.
50 FEET STEAM RADIATION SUPPLIED 500 TO 3500.



Cottage Boiler.
50 FEET WATER RADIATION
SUPPLIED 150 TO 1000.



Mini Boiler.
100 TO 600 GAL.
100 TO 1000 GAL.



Mercer Boiler.
50 FEET WATER RADIATION SUPPLIED 500 TO 5800.

**SALESROOMS:
133 CENTRE ST.
NEW YORK CITY.
704 ARCH ST.,
PHILADELPHIA, PA.**

WE HAVE FURNISHED

Heating Apparatus for the Following Buildings

City Hall and Opera House,	Columbia, S. C.	Col. J. H. Estill	Savannah, Ga.
City Hall and Opera House	Darlington, S. C.	Edwm Gould	Jekyll Island, Brunswick, Ga.
"State" Newspaper Building	Columbia, S. C.	New Hebrew Temple	Atlanta, Ga.
John C. Wickers	Charleston, S. C.	Harrison Building	Augusta, Ga.
City Hall	Charleston, S. C.	Duval County Court House	Jacksonville, Fla.
Farmers and Mechanics Bank Building	Darlington, S. C.	Lake City College	Lake City, Fla.
State Normal School	Greensboro, N. C.	State Capitol	Tallahassee, Fla.
Hon. J. D. Bellamy	Wilmington, N. C.	Home of Washington	Mount Vernon, Va.
Carnegie Library	Charlotte, N. C.	Southern Railway Station	Richmond, Va.
E. S. Reid	Charlotte, N. C.	O. H. Berry & Company's Store	Richmond, Va.
Soldiers Home	Raleigh, N. C.	University of Virginia	Charlottesville, Va.
Julius Lewis	Raleigh, N. C.	City Hall	Lynchburg, Va.
Union Passenger Station	Savannah, Ga.	Christ Episcopal Church	Norfolk, Va.
Cathedral St. John the Baptist	Savannah, Ga.	Union Passenger Station	Knoxville, Tenn.

OUR NEW HOMESTEAD BOILER

Is Now Ready for Shipment

THE H. B. SMITH COMPANY

PHILADELPHIA

A Few Recent Southern References

Louisville & Nashville Terminal, Nashville, Tenn.
Florence County Court House, Florence, S. C.
Augusta Graded School, Augusta, Ky.
Tallahatchie County Court House, Charleston, Miss.
Harrison County Court House, Marshall, Texas.
City Hall, Bessemer, Alabama.
Lauderdale County Court House, Florence, Alabama.
Calhoun County Court House, Anniston, Alabama.
Union County Court House, Eldorado, Arkansas.
St. Matthew's German Lutheran Church, Charleston, S. C.
Wilson County Court House, Wilson, N. C.
Dale County Court House, Ozark, Alabama.
Carroll County Court House, Carrollton, Ga.
Lowndes County Court House, Columbus, Miss.
Central of Georgia Railroad Depot, Savannah, Ga.
Pointe Coupee Parish Court House, New Roads, La.
Hart County Court House, Hartwell, Ga.
Fulton County Court House, Atlanta, Ga.
Engine House, Savannah, Ga.
Colquitt County Court House, Moultrie, Ga.
Soule's Commercial College, New Orleans, La.
Twiggs County Court House, Jeffersonville, Ga.
Barton County Court House, Cartersville, Ga.
Okibbeha County Court House, Starkville, Miss.
Calcasieu Parish Court House, Lake Charles, La.
Woodruff County Court House, Augusta, Ark.
School Building, Jasper, Alabama.
Church, Seneca, S. C.

ESTABLISHED 1842.

THE
E. HOWARD
CLOCK COMPANY

MAKERS OF

TOWER CLOCKS

AND

WATCHMAN CLOCKS

BOSTON, NEW YORK AND CHICAGO

The Celebrated Bricks



MADE BY

The Powhatan Clay Mfg. Co.

RICHMOND, VA.

Cream White, Buff, Silver Gray, Salt and Pepper
Gray, Speckled, Iron Spot, Red and Other **Front Brick** in all Sizes
and Shapes

Samples and prices sent on application



A FEW OF OUR SOUTHERN REFERENCES.

Depots at Savannah, Columbia, Richmond, Petersburg, Farmville,
Bristol, Knoxville. Courthouses and City Halls at Wytheville, Va.,
Lake City, Fla.; Columbia and Darlington, S. C. Hotels: The Jef-
ferson and Murphy's, Richmond; The Windsor, Jacksonville; Cox,
High Point.

FIRE BRICKS FOR ALL PURPOSES

Buildings Bridges

Structural Steel

For Every Purpose

American of
Bridge New
Company York

CORCORAN ART GALLERY, WASHINGTON, D. C.

Structural Steel Furnished and Erected by

GENERAL OFFICES:

New York

Pittsburg

Chicago

