

DIE ÄLTERE EISENZEIT IN FINNLAND.

VON

ALFRED HACKMAN.

I.

DIE FUNDE AUS DEN FÜNF ERSTEN
JAHRHUNDERTEN N. CHR.

ATLAS.



HELSINGFORS 1905.

AKTIENGESELLSCHAFT F. TILGMANN'S BUCH- UND STEINDRUCKEREI.

DIE ÄLTERE EISENZEIT IN FINNLAND.

VON

ALFRED HACKMAN.

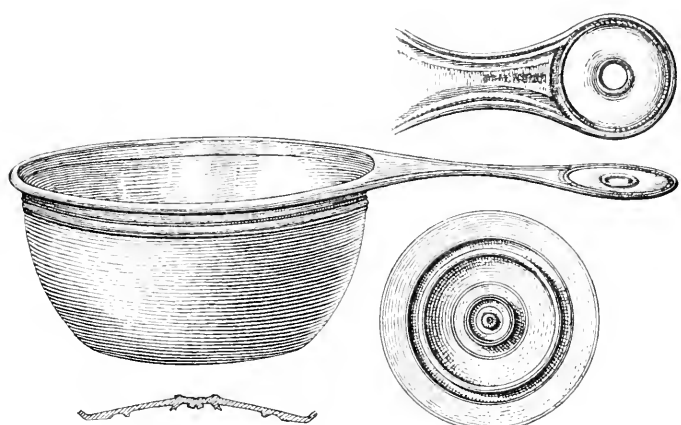
I.

DIE FUNDE AUS DEN FÜNF ERSTEN
JAHRHUNDERTEN N. CHR.

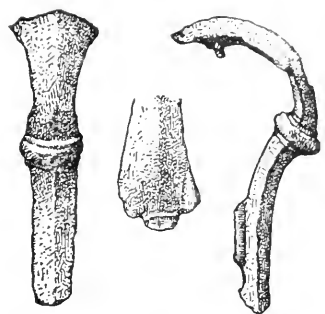
ATLAS.



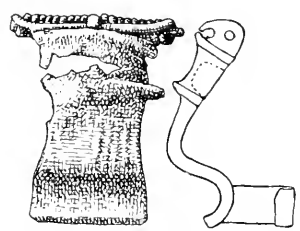
HELSINGFORS 1905.
AKTIENGESELLSCHAFT F. TILGMANN'S BUCH- UND STEINDRUCKEREI.



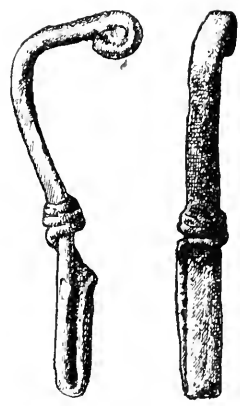
1. Lillkyro. Fund 58. Br. 3/8.



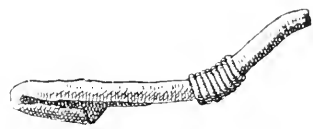
2. Nykyrko. Fund 20. Br. 1/4.



3. Letala. Fund 23. Br. 4/5.



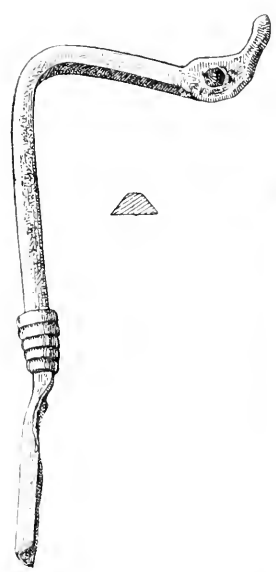
5. Bjerno. Fund 4. Br. 1/4.



6. Uskela. Fund 11. Br. 2/3.



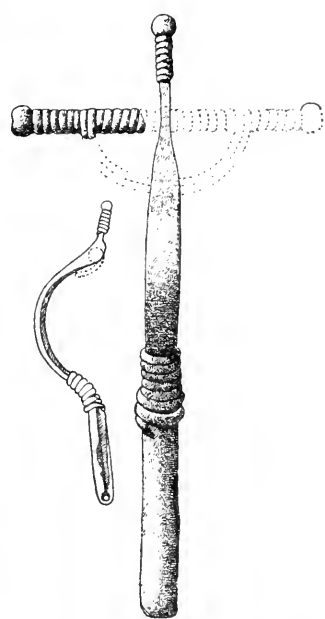
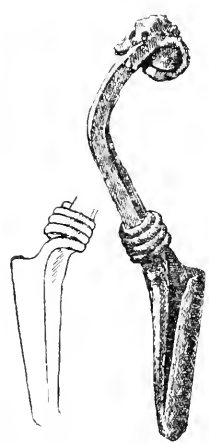
7. Kumo. Fund 35. Br. 3/4.



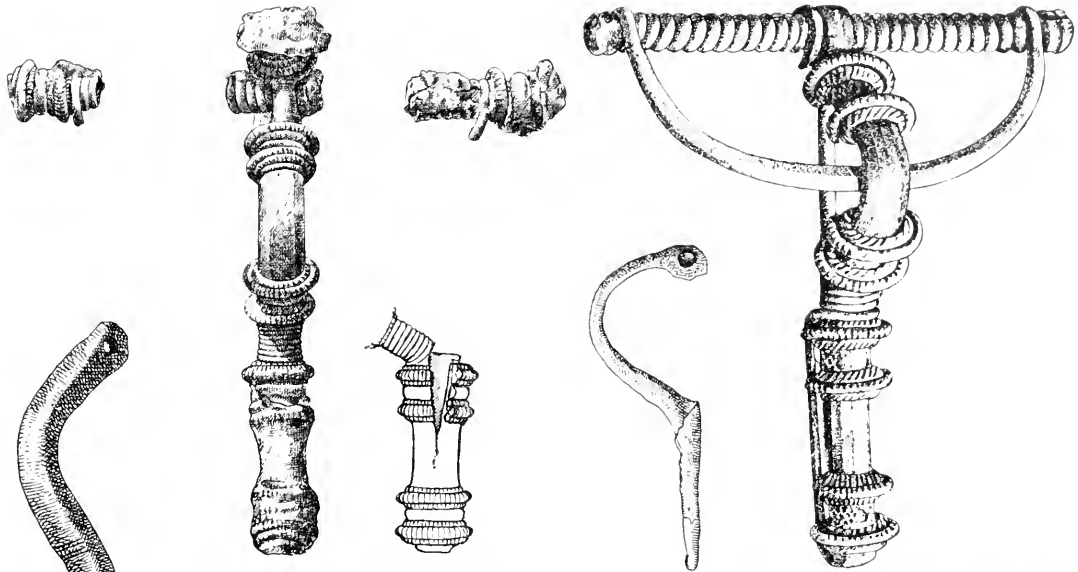
9. Bjerno. Fund 9. Br. 6/7.



4. Bjerno. Fund 6. Br. 3/4.



8. Kumo. Fund 32. Br. 2/3.



1. Bjerno. Fund 6. Br. 3/4.

5. Kumo. Fund 30. Br. 4/5.

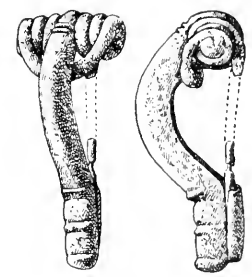
2. Kumo. Fund 31. Br. u. E. 2/3.



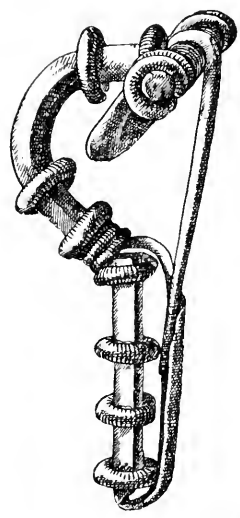
4. Malaks? Fund 53 a. Br. 6/7.



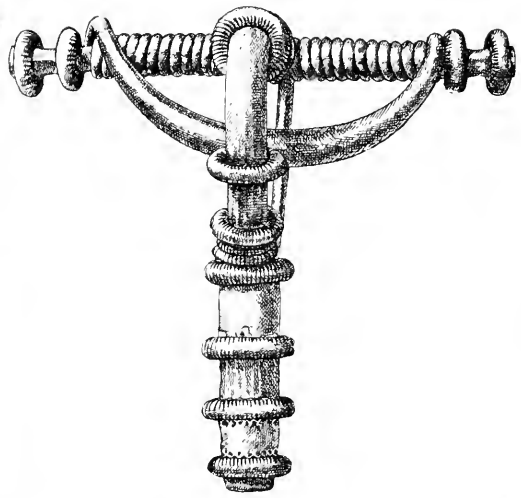
9. Uskela. Fund 11. E. 2/3.



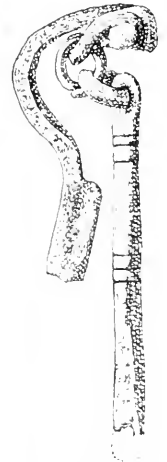
6. Laihela. Fund 57. Br. 3/4.



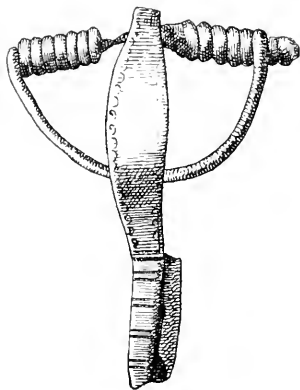
3. Abo. Fund 13. Silb. 2/3.



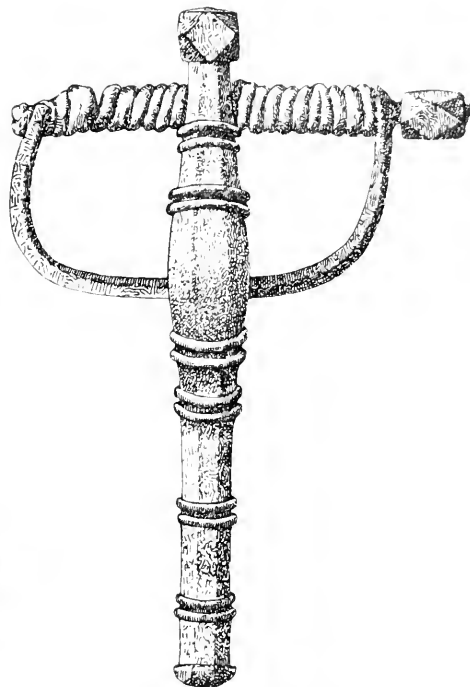
7. Lilkyro. Fund 80. Br. u. E. 6/7.



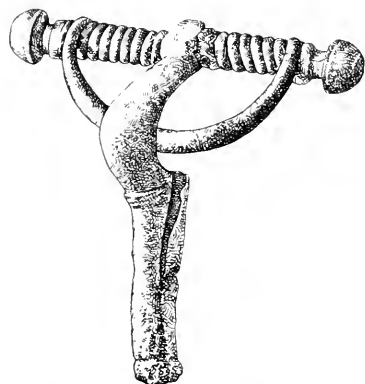
8. Nykyrko. Fund 22. E. 4/5.



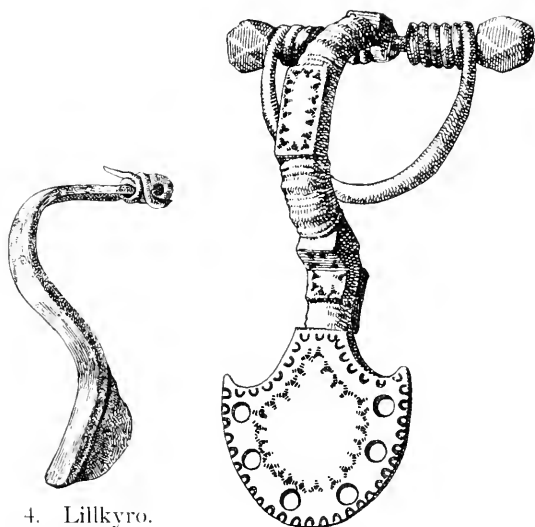
1. Urdiala. Fund 50. Br. u. E. $\frac{5}{6}$.



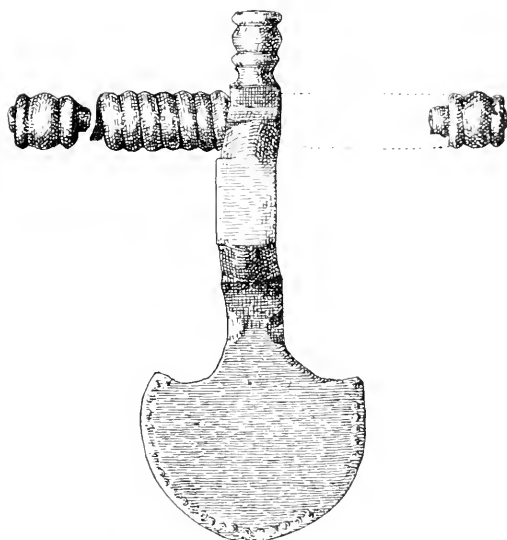
2. Malaks. Fund 55. Br. $\frac{3}{4}$.



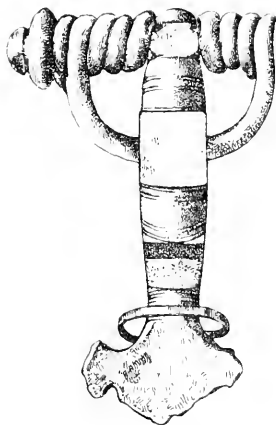
3. Tyrvis. Fund 42. Br. u. E. $\frac{4}{5}$.



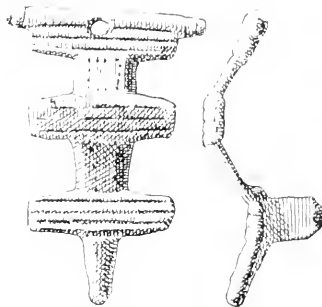
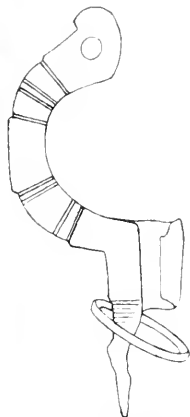
4. Lilkyro.
Fund 77.
Br. u. Silb. $\frac{7}{8}$.



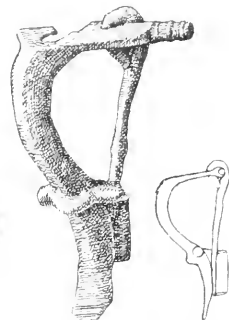
5. Urdiala. Fund 50. Br. u. E. $\frac{2}{3}$. 6. Malaks. Fund 53. Br. u. E. $\frac{5}{6}$.



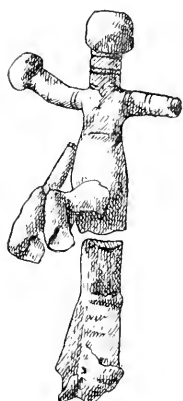
1. Lillkyro. Fund 61. Br. u. Gold. $\frac{5}{6}$.



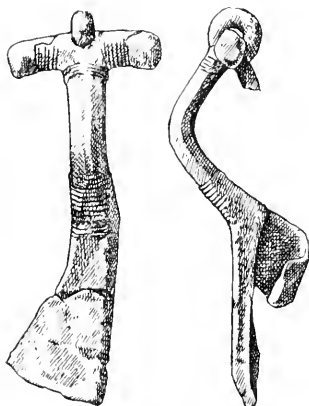
2. Vöra. Fund 83. Br. $\frac{4}{5}$.



3. Letala. Fund 24. Br. u. E. $\frac{2}{3}$.



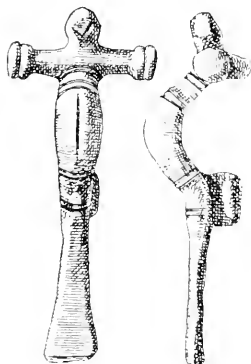
6. Lillkyro. Fund 64. Br. u. E. $\frac{5}{7}$.



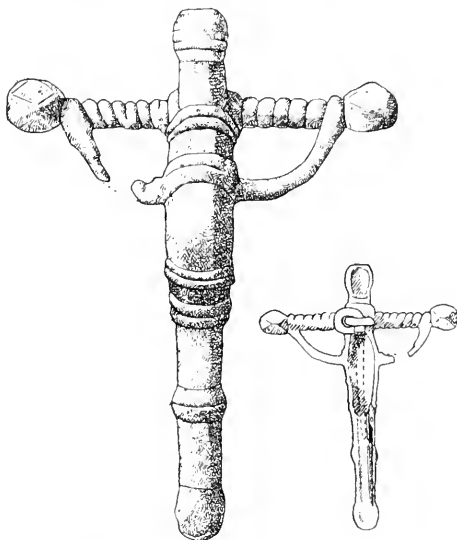
5. Lillkyro. Fund 64. Br. u. E. $\frac{5}{7}$.



4. Lillkyro. Fund 64. Br. u. E. $\frac{3}{4}$.



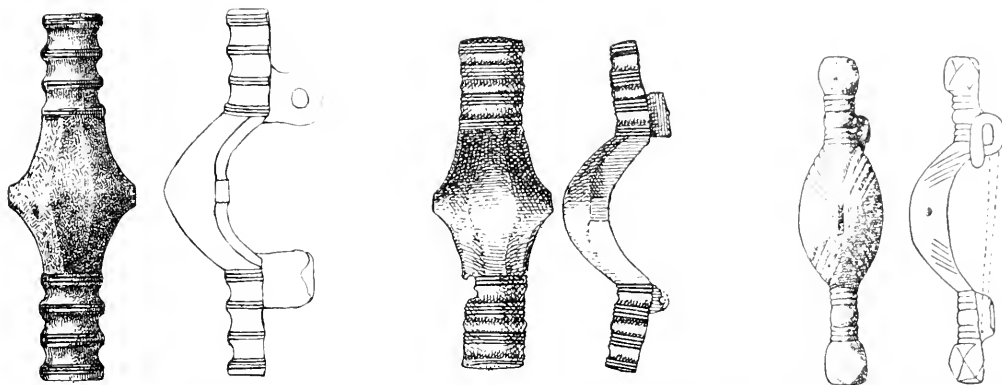
7. Lillkyro. Fund 62. Br. $\frac{3}{4}$.



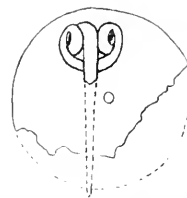
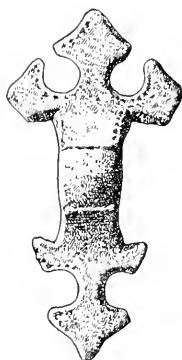
8. Malaks. Fund 54. Br. u. E. $\frac{3}{4}$.



9. Malaks. Fund 55. Br. u. E. $\frac{7}{8}$.



1. Lillkyro. Fund 59. Br. 7/8. 2. Lillkyro. Fund 63. Br. 3/4. 3. Malaks. Fund 54. Br. u. E. 3/4.



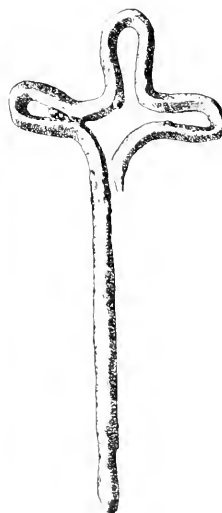
5. Laihela. Fund 57. Br. 3/4.

6. Lempäälä. Fund 47. Br. u. E. 3/4.

4. Malaks. Fund 55. Br. 3/4.



7. Laihela. Fund 57. Br. u. Silb. 4/5.



8. Nykyrko. Fund 20. E. 3/6.

9. Kumo. Fund 29. E. 2/3.

10. Bjerno. Fund 4. E. u. Br. 5/6.



1. Bjerno.
Fund 7.
Br. 7/9.



2. Tenala.
Fund 2.
Br. 1/1.



3. Lillkyro.
Fund 62.
Br. 4/5.



4. Uskela.
Fund 12.
Br. 3/4.



5. Tenala.
Fund 2.
Br. 1/1.



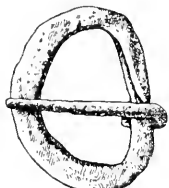
6. Kumo.
Fund 36.
Br. 3/6.



7. Tenala.
Fund 2.
Br. 1/1.



8. Tenala. Fund 2. E. 1/1.



9. Kumo. Fund 29.
E. 3/4.



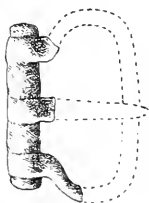
10. Kumo. Fund 38.
E. 4/5.



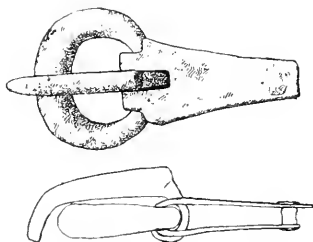
11. Laihela. Fund 57.
E. 3/4.



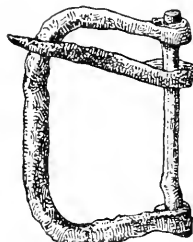
12. Nykyrko. Fund 22.
E. 6/7.



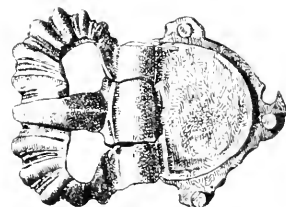
13. Bjerno. Fund 6.
Br. 3/7.



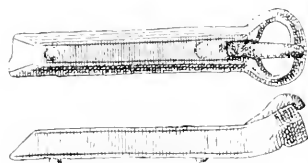
14. Malaks. Fund 54.
Br. 3/4.



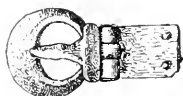
15. Kumo. Fund 35.
E. 4/5.



16. Lillkyro. Fund 59.
Br. 6/7.



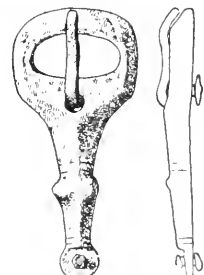
17. Lillkyro. Fund 63.
Br. 4/5.



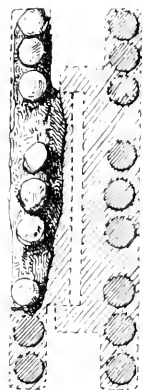
18. Lillkyro. Fund 59.
Br. 7/8.



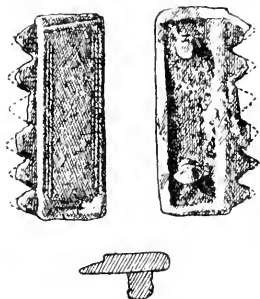
19. Tenala. Fund 1.
Br. 3/4.



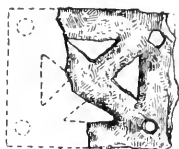
20. Nykyrko. Fund 22.
Br. 4/5.



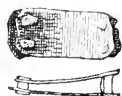
1. Lillkyro.
Fund 59.
E. u. Br. $\frac{1}{5}$.



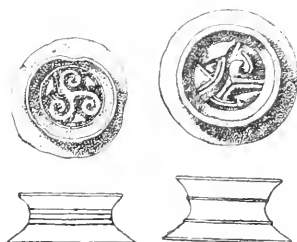
2. Tenala. Fund 2.
Br. $\frac{1}{4}$.



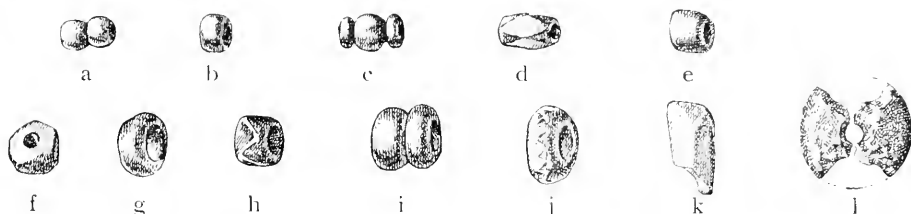
3. Kumo. Fund 29.
E. $\frac{6}{7}$.



4. Kumo. Fund 29.
Br. $\frac{4}{5}$.



5. Lillkyro. Fund 59.
Br. 7s.



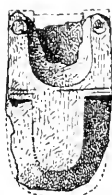
6. Bjerno. a u. b: Fund 7. d-1: Fund 4. a-c überfangen; d, g, i blaues durchsichtiges Glas; e weisses Email; f, k, l, Bernstein; h, j durchsichtiges hellgrünes Glas, gelbes Emailband. $\frac{5}{6}$.



7. Bjerno.
Fund 6.
Br. $\frac{3}{6}$.



8. Tenala.
Fund 1.
Br. 34.



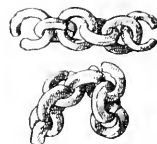
9. Lillkyro.
Fund 59.
Br. 7s.



10. Letala.
Fund 25.
Br. $\frac{4}{5}$.



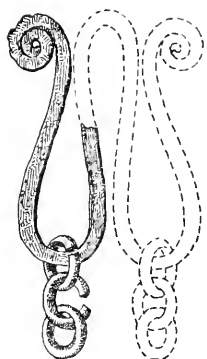
11. Lillkyro.
Fund 61.
Br. $\frac{5}{6}$.



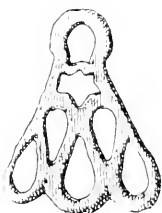
12. Bjerno.
Fund 6.
Br. 10, 11.



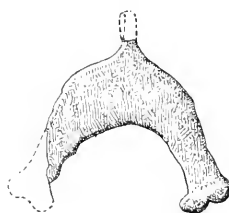
13. Kumo.
Fund 29.
Br. 56.



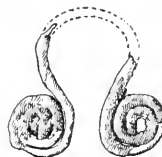
14. Kumo. Fund 32.
E. $\frac{5}{6}$.



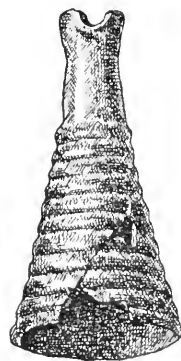
15. Nousis.
Fund 18.
Br. $\frac{2}{3}$.



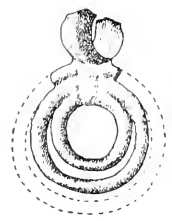
16. Kumo.
Fund 30.
Br. $\frac{5}{6}$.



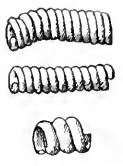
17. Bjerno.
Fund 4.
Br. $\frac{4}{5}$.



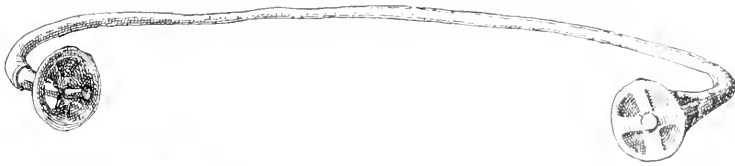
18. Esse. Fund 86.
Br. $\frac{1}{4}$.



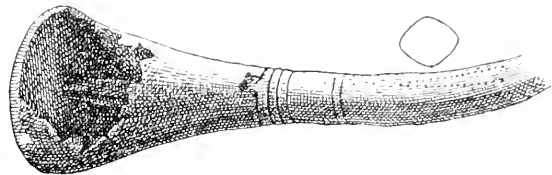
1. Esse. Fund 85. Br. 5/7.



2. Bjerno. Fund 6. Br. 5/6.



6. Nousis. Fund 17. Br. 2/7 u. 3/4.



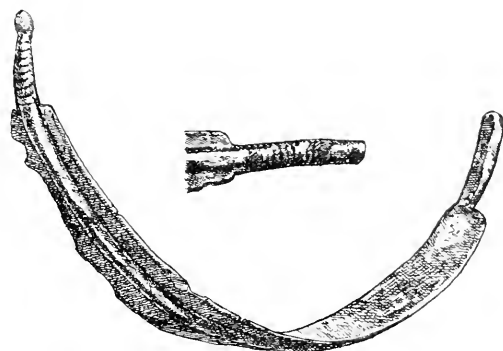
3. Nykyrko. Fund 22. Br. 1/5.



4. Malaks. Fund. 55. Br. 5/6.



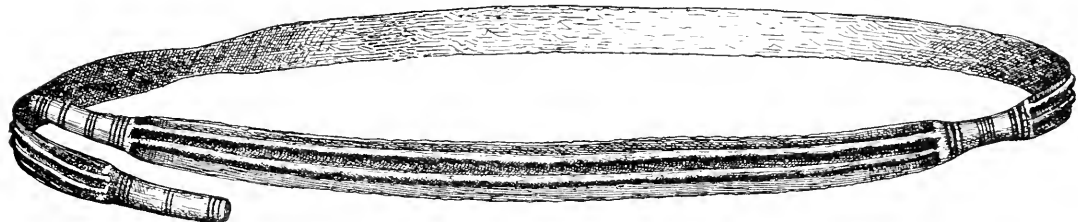
5. Lillkyro. Fund 59. Silb. 3/4.



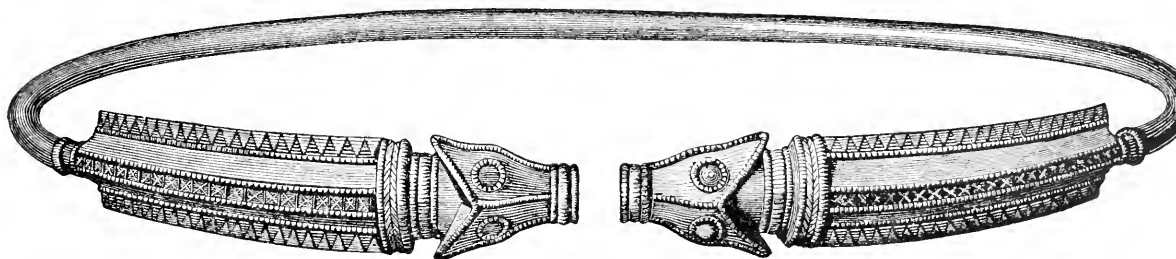
9. Nousis. Fund 18. Br. 2/3.



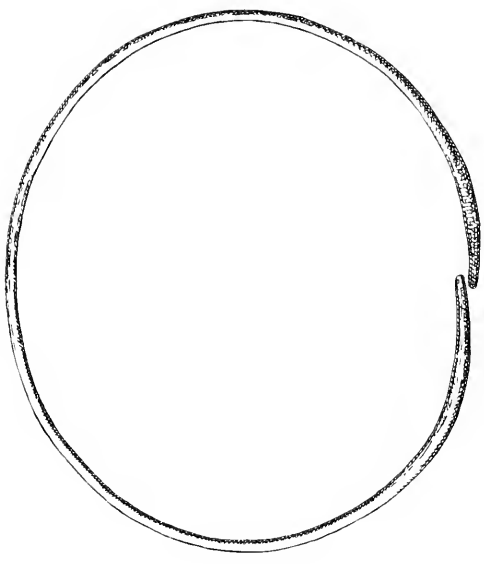
8. Nousis. Fund 17. Br. 3/4.



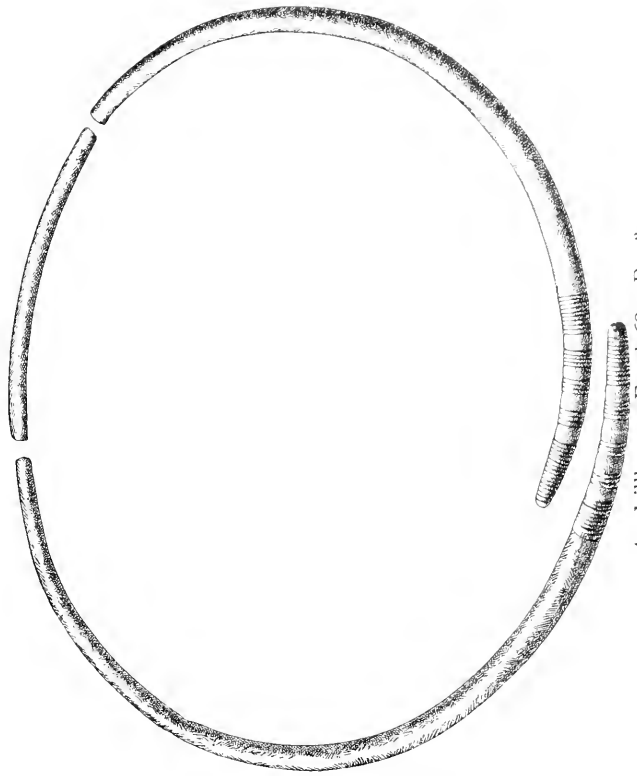
10. Nousis. Fund 18. Br. 4 5.



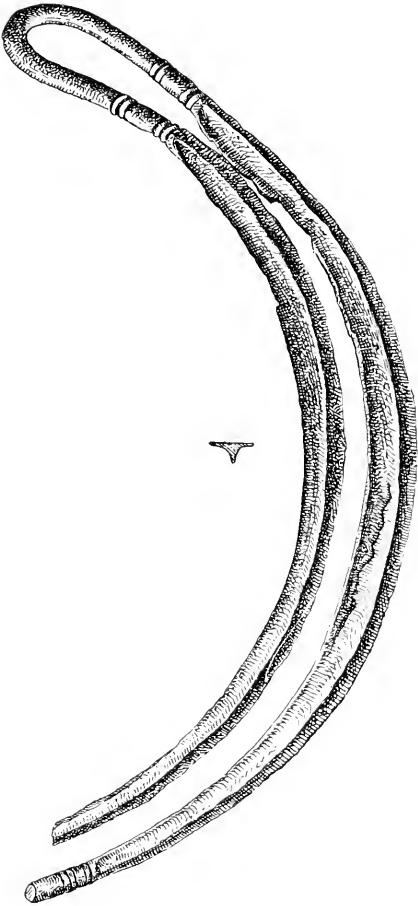
7. Nousis. Fund 16. Gold. 10/11.



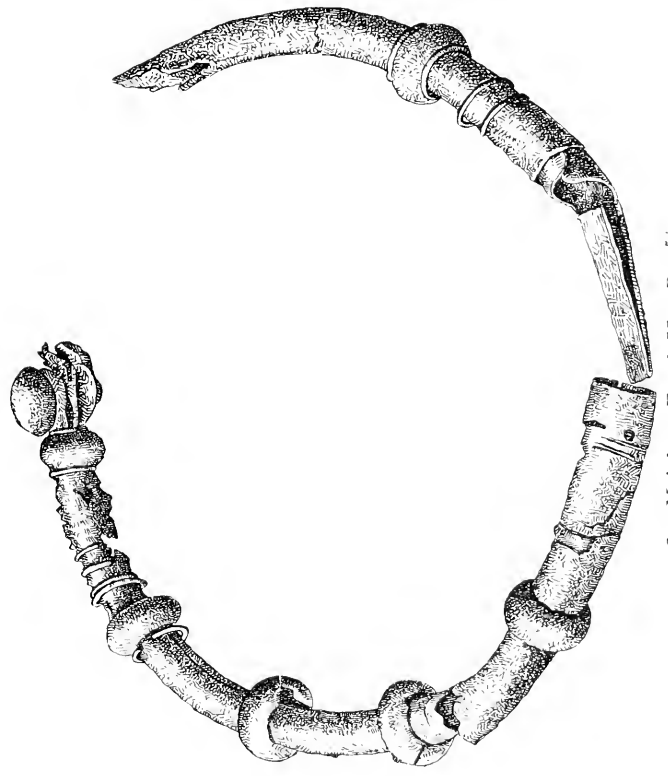
3. Kumo. Fund 36. Br. 3/8.



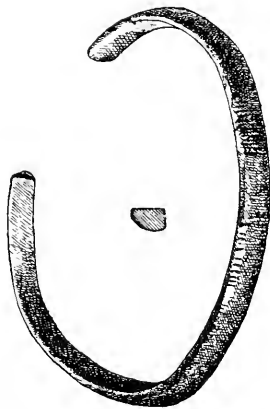
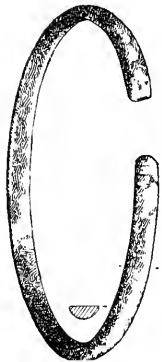
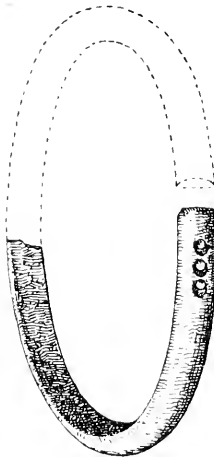
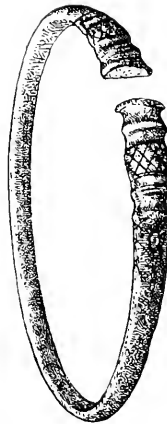
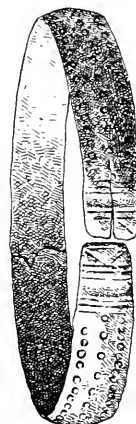
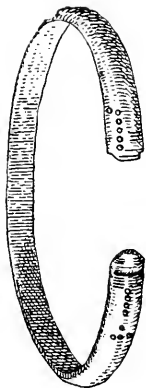
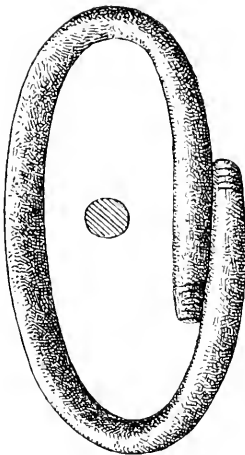
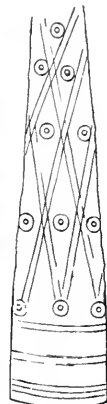
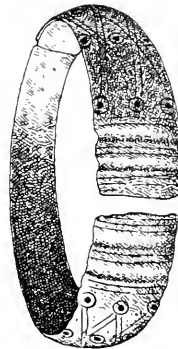
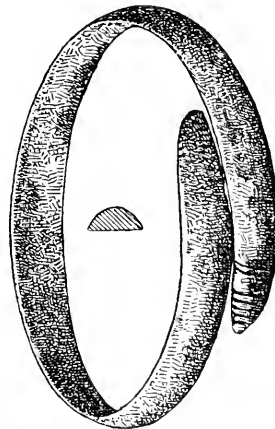
4. Lillkyro. Fund 63. Br. 2 3/8.

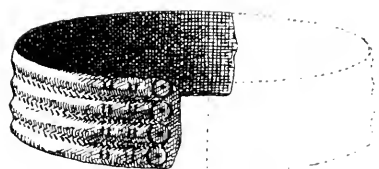
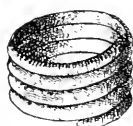
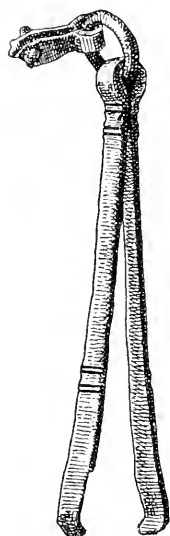


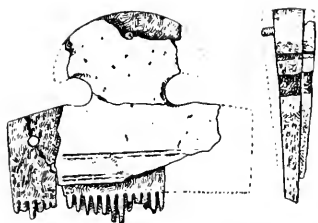
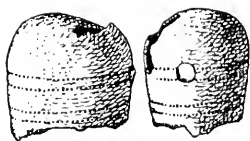
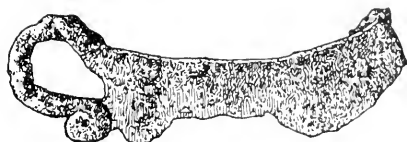
1. Lillkyro. Fund 61. Br. 4/5.



2. Malaks. Fund 55. Br. 5/9.

1. Kumo. Fund 30 Br. $\frac{4}{5}$.4. Bjerno. Fund 6. Br. $\frac{9}{10}$.2. Uskela. Fund 11. Br. $\frac{5}{7}$.5. Kumo. Fund 38. Br. $\frac{7}{8}$.8. Lillkyro. Fund 61. Br. $\frac{7}{8}$.10. Esse. Fund 85. Br. $\frac{5}{7}$.3. Uskela. Fund 11. Br. $\frac{5}{6}$.6. Lillkyro. Fund 70. Br. $\frac{3}{4}$.9. Kumo. Fund 29. Br. $\frac{2}{3}$ u. $\frac{3}{4}$.7. Lillkyro. Fund 77. Br. $\frac{7}{8}$.

1. Kumo. Fund 29. Br. $\frac{3}{4}$.2. Bjerno. Fund 6. Br. $\frac{4}{5}$.3. Lillkyro. Fund 62. Gold. $\frac{6}{7}$.4. Lillkyro. Fund 64. Br. $\frac{4}{5}$.5. Lillkyro. Fund 61. Br. $\frac{5}{6}$.6. Bjerno. Fund 7. Br. $\frac{8}{9}$.7. Uskela. Fund 11. Br. $\frac{3}{4}$.8. Kumo. Fund 29. Br. $\frac{4}{5}$.9. Kumo. Fund. 29. Br. $\frac{4}{5}$.10. Lillkyro. Fund 59. Gold. $\frac{5}{6}$.12. Tenala. Fund 2. Br. $\frac{1}{1}$.16. Bjerno. Fund 6. Br. $\frac{2}{3}$.17. Lillkyro. Fund 59. Br. $\frac{5}{6}$.11. Kumo. Fund 29. Br. $\frac{1}{1}$.13. Esse. Fund 86. Br. $\frac{1}{1}$.14. Letala. Fund 24. Br. $\frac{4}{5}$.15. Nykyrko. Fund 22. Br. $\frac{6}{7}$.18. Bjerno. Fund 3. E. $\frac{5}{7}$.19. Malaks. Fund 54. E. $\frac{5}{6}$.20. Tyrvis. Fund 42. E. $\frac{3}{4}$.

1. Tyrvis. Fund 42. Kn. $\frac{4}{5}$.2. Kumo. Fund 30.
Br. $\frac{3}{4}$.3. Nykyrko. Fund 22. E. $\frac{3}{4}$.4. Letala.
Fund 23.
E. $\frac{7}{8}$.5. Urdiala.
Fund 50.
E. $\frac{3}{7}$.6. Kumo.
Fund 32.
E. $\frac{1}{2}$.7. Tenala.
Fund 1.
E. u. Br. $\frac{1}{2}$.8. Bjerno.
Fund 6.
E. u. Br. $\frac{1}{3}$.10. Kumo. Fund 29. E. $\frac{2}{3}$.11. Nykyrko. Fund 22. E. $\frac{1}{2}$.9. Bjerno.
Fund 6. E. $\frac{1}{2}$.



1. Nousis.
Fund 18.
E. $\frac{6}{7}$.



9. Kumo.
Fund 30.
Basisches
Gestein. $\frac{4}{5}$.



2. Letala.
Fund 24.
E. $\frac{1}{2}$.



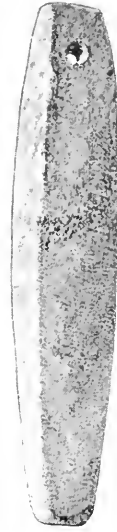
3. Lillkyro.
Fund 70.
E. $\frac{4}{5}$.



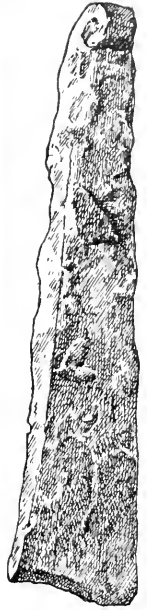
4. Nykyrko.
Fund 21.
E. $\frac{1}{2}$.



5. Nykyrko.
Fund 22.
E. $\frac{1}{2}$.



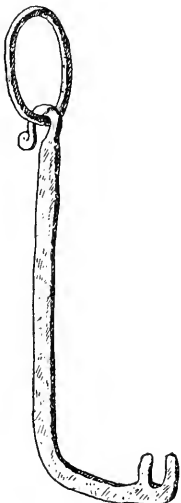
7. Bjerno.
Fund 6.
Gneiss. $\frac{1}{2}$.



8. Bjerno.
Fund 6.
E. $\frac{4}{5}$.



6. Laihela. Fund 57. E. $\frac{1}{4}$.



10. Akkas.
Fund 49.
E. $\frac{1}{4}$.



11. Tyrvis.
Fund 42.
E. $\frac{3}{4}$.



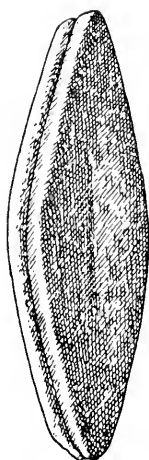
12. Kumo.
Fund 30.
E. $\frac{2}{3}$.



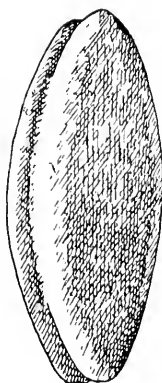
13. Kumo.
Fund 30.
E. $\frac{2}{3}$.



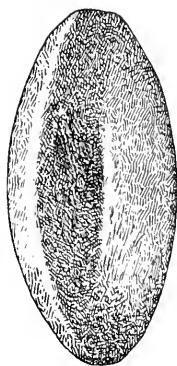
14. Urdiala.
Fund 50.
E. $\frac{1}{2}$.



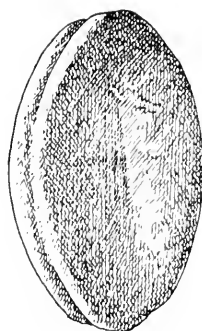
a.
1. Saltvik.
Fund I: 1.
Quarzit. $\frac{3}{4}$.



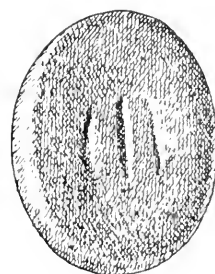
b.
2. Ikalis.
Fund III: 51.
Quarzit. $\frac{3}{4}$.



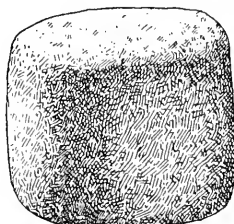
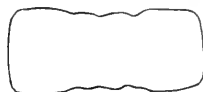
c.
3. Pemar.
Fund II: 10.
Quarzit. $\frac{3}{4}$.



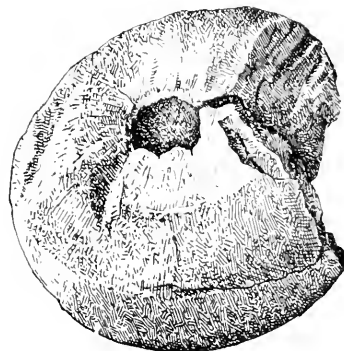
d.
4. Ilmola.
Fund V: 10.
Quarzit. $\frac{3}{4}$.



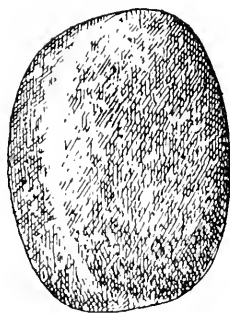
e.
5. Satakunta?
Fund IX: 3.
Quarzit. $\frac{3}{4}$.



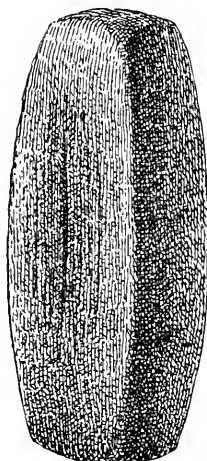
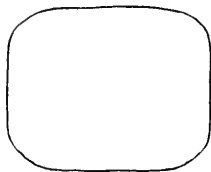
8. Kumo. Fund 32.
Granit. $\frac{1}{2}$.



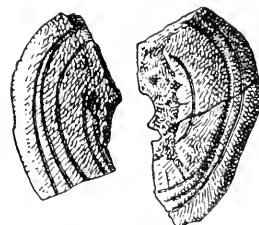
10. Lillkyro. Fund 61.
Ton. $\frac{4}{5}$.



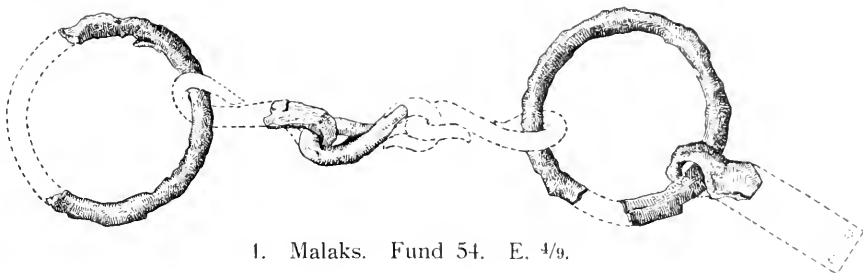
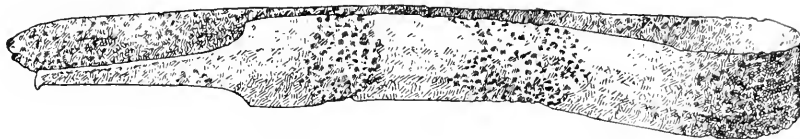
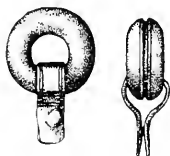
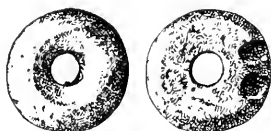
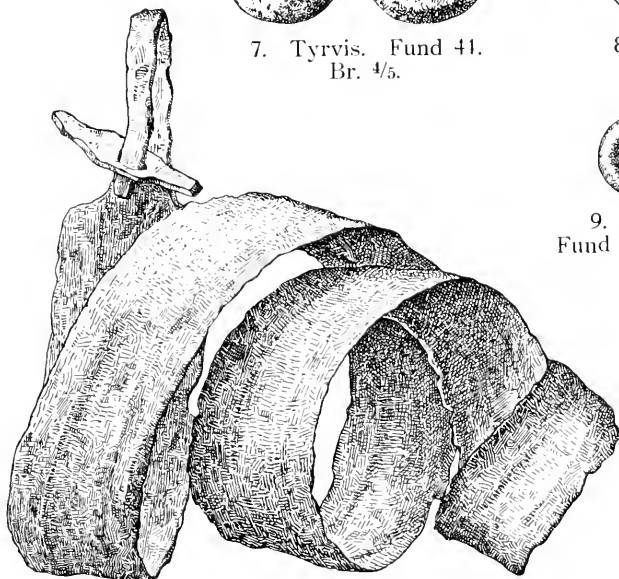
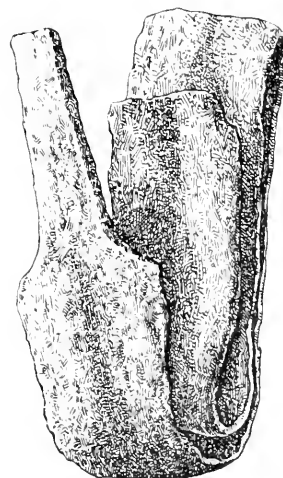
f.
6. Ylistaro.
Fund V: 19.
Quarzit. $\frac{3}{4}$.

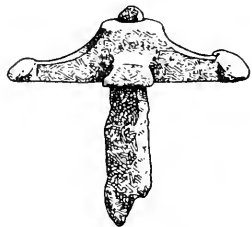


g.
7. Storkyro. Fund V: 29.
Quarzit. $\frac{4}{7}$.



9. Lillkyro. Fund 64.
Kn. $\frac{3}{4}$.

1. Malaks. Fund 54. E. $\frac{4}{9}$.2. Kumo. Fund 36. E. $\frac{1}{4}$.3. Tenala. Fund 1.
E. $\frac{1}{8}$.6. Lempäälä. Fund 48.
Br. $\frac{4}{5}$.11. Malaks. Fund 54.
E. $\frac{3}{4}$.10. Malaks.
Fund 54. Br. $\frac{7}{8}$.7. Tyrvis. Fund 41.
Br. $\frac{4}{5}$.8. Malaks. Fund 54.
Br. $\frac{3}{4}$.9. Lillkyro.
Fund 62. Br. $\frac{5}{7}$.4. Masku. Fund 15. E. $\frac{1}{2}$.5. Kumo. Fund 37. E. $\frac{3}{5}$.



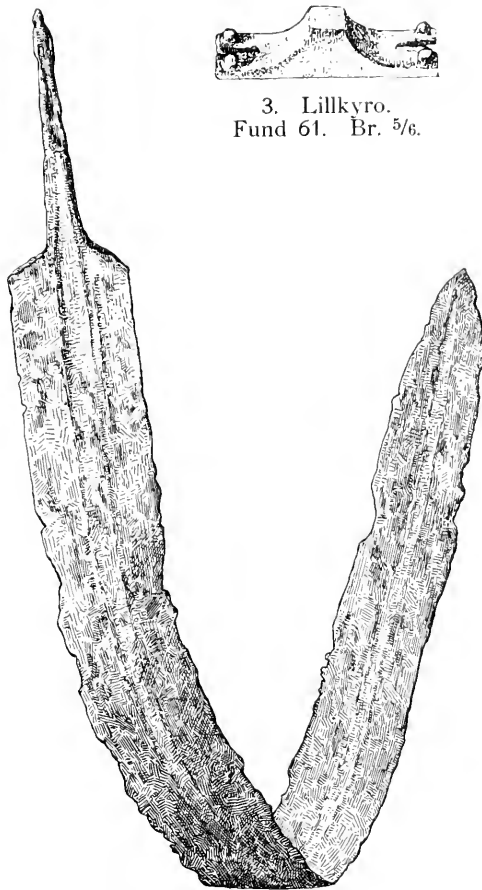
2. Malaks. Fund 54.
E. u. Br. $\frac{3}{4}$.



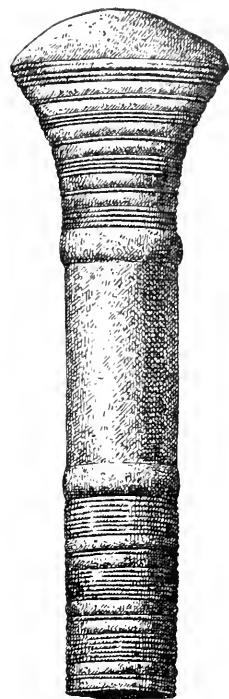
5. Malaks. Fund 54.
Silb. $\frac{3}{4}$.



3. Lillkyro.
Fund 61. Br. $\frac{5}{6}$.



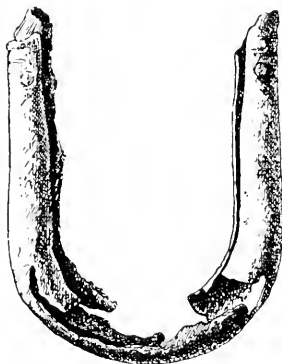
1. Masku. Fund 15. E. $\frac{1}{3}$.



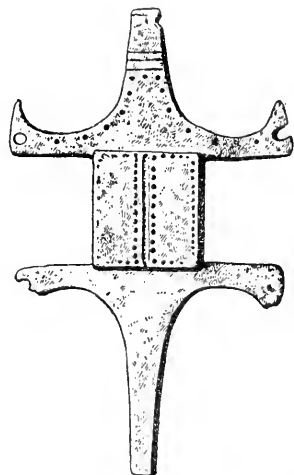
4. Laihela. Fund 57.
Br. $\frac{1}{1}$.



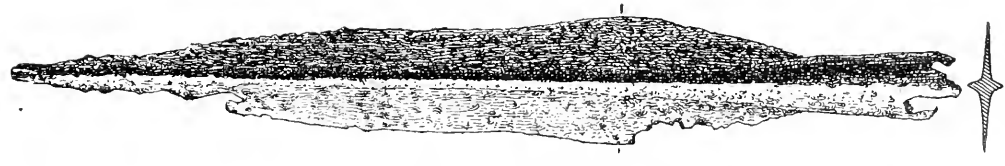
6. Esse. Fund 84. Br. $\frac{5}{7}$.



7. Laihela. Fund 56. Br. $\frac{1}{1}$.



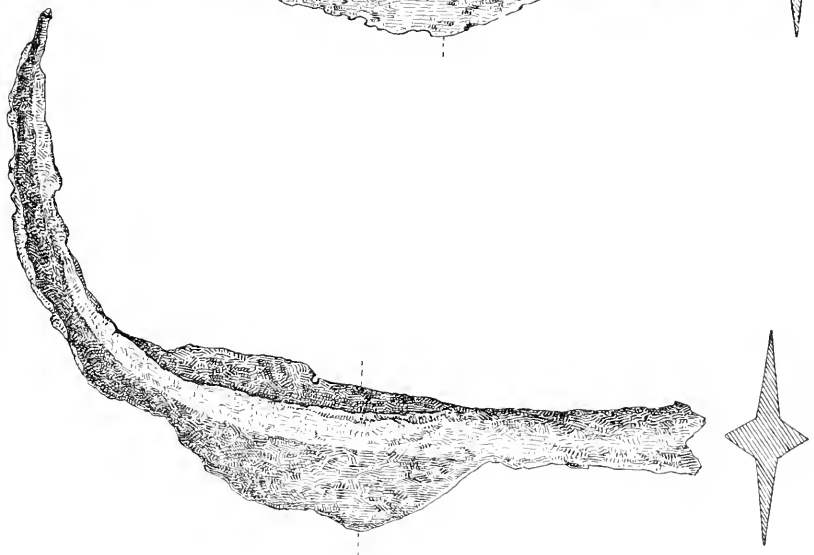
8. Birkala. Fund 45. Br. $\frac{2}{3}$.



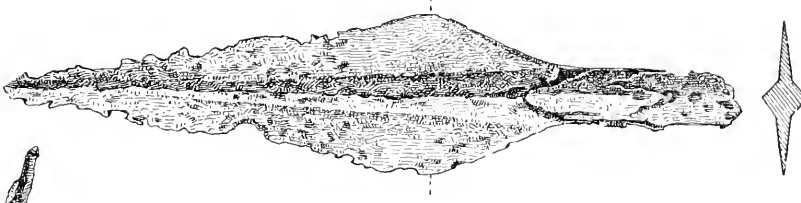
1. Witasari.
Fund 51. E. 3/7.



2. Ikalis.
Fund 44. E. 3/7.



3. Lillkyro.
Fund 67. E. 2/3.



4. Rusko.
Fund 14. E. 1/2.



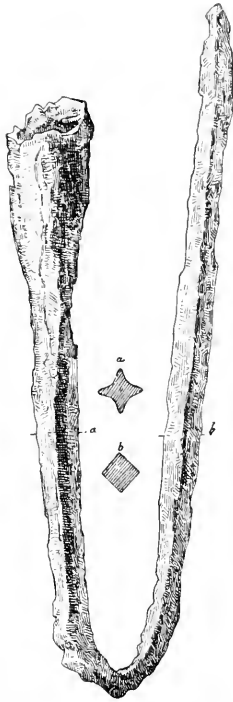
5. Masku.
Fund 15. E. 2/3.



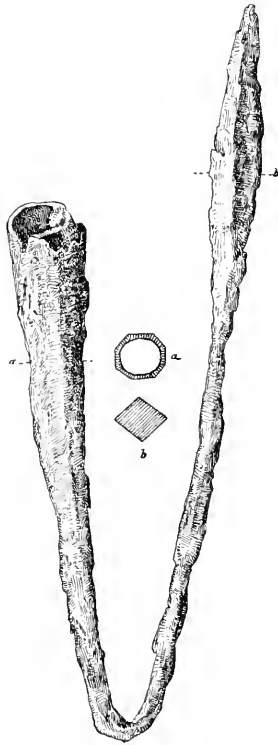
6. Ylistaro.
Fund 82. E. 3/3.



1. Akkas. Fund 49.
E., Ku. u. Silb. $\frac{2}{3}$.



2. Masku. Fund 15. E. $\frac{4}{9}$.



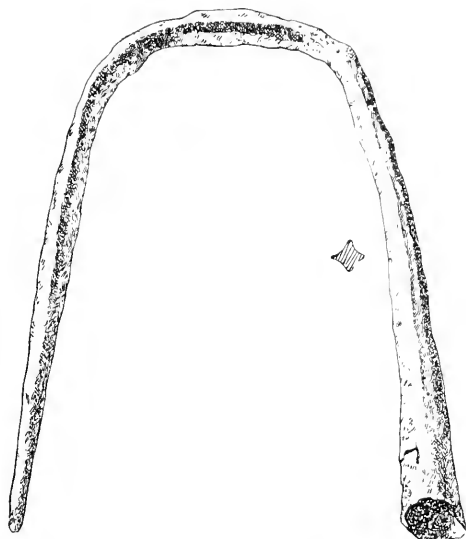
3. Masku. Fund 15.
E. $\frac{4}{9}$.



4 u. 5. Tavastkyro.
Fund 43. E. $\frac{2}{3}$.



6. Masku.
Fund 15. E. $\frac{1}{2}$.



1. Kumo. Fund 37. E. $\frac{3}{5}$.



2. Eura. Fund 27.
E. $\frac{4}{7}$.



3. Urdiala.
Fund 50. E. $\frac{4}{9}$.



4. Nykyrko. Fund 22.
E. $\frac{1}{2}$.



5. Kumo. Fund 37.
E. $\frac{5}{9}$.



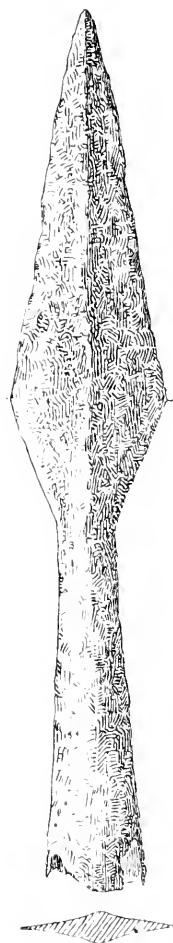
6. Lempäälä.
Fund 48. E. $\frac{5}{11}$.



1. Tenala. Fund 2.
E. 1/1.



2. Kumo. Fund 35.
E. 2/3.



3. Malaks. Fund 55.
E. 1/2.



4. Muurla. Fund 10. E. 4/9.



5. Kumo. Fund 36.
E. 2/5.



6. Muurla. Fund 10. E. 4/9.



7. Kumo. Fund 31.
E. 1/2.



1. Lillkyro. Fund 79.
E. $\frac{4}{5}$.



2. Kumo.
Fund 34.
E. $\frac{2}{3}$.



3. Kumo.
Fund 30.
E. $\frac{3}{4}$.



4. Kumo. Fund 29.
E. $\frac{7}{10}$.



5. Tavastkyro.
Fund 43. E. $\frac{1}{2}$.



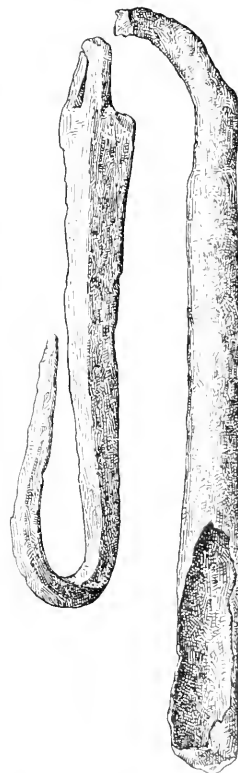
7. Kumo.
Fund 30. E. $\frac{2}{5}$.



8. Kumo. Fund 36.
E. $\frac{1}{2}$.

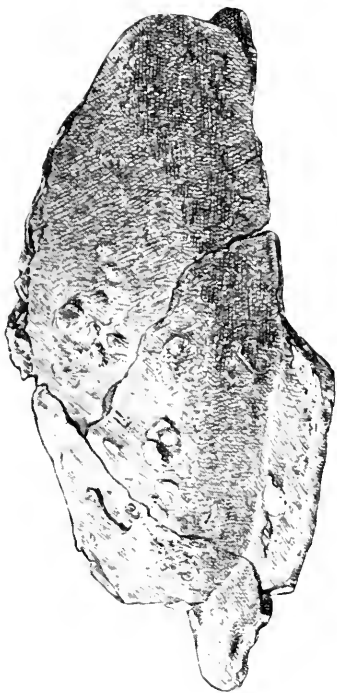


9. Urdiala.
Fund 50. E. $\frac{3}{7}$.



10. Kumo. Fund 37.
E. $\frac{5}{9}$.

6. Nousis. Fund 18.
E. $\frac{1}{2}$.



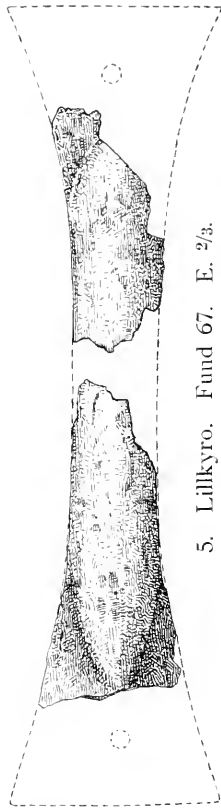
1 u. 2. Bjerno. Fund 6. E. $\frac{1}{2}$.



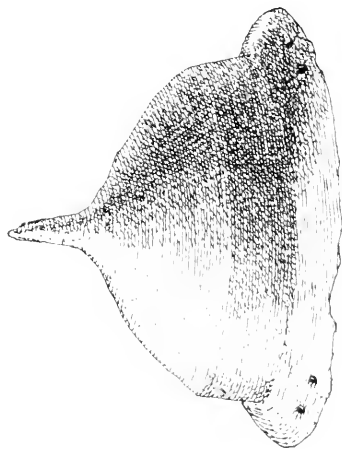
3. Muurla. Fund 10. E. $\frac{1}{3}$.



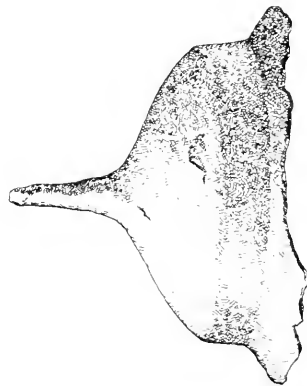
4. Masku. Fund 15. E. $\frac{1}{3}$.



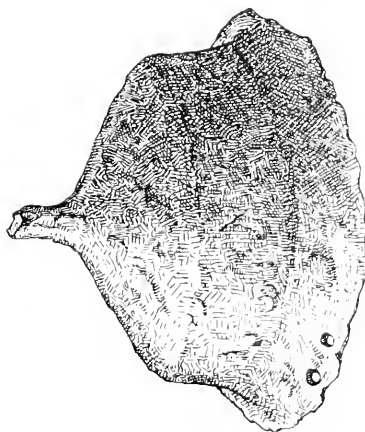
5. Lillkyro. Fund 67. E. $\frac{2}{3}$.



6. Kumo. Fund 36. E. $\frac{2}{5}$.



7. Malaks. Fund 54. E. $\frac{2}{5}$.



8. Masku. Fund 15. E. $\frac{1}{3}$.

