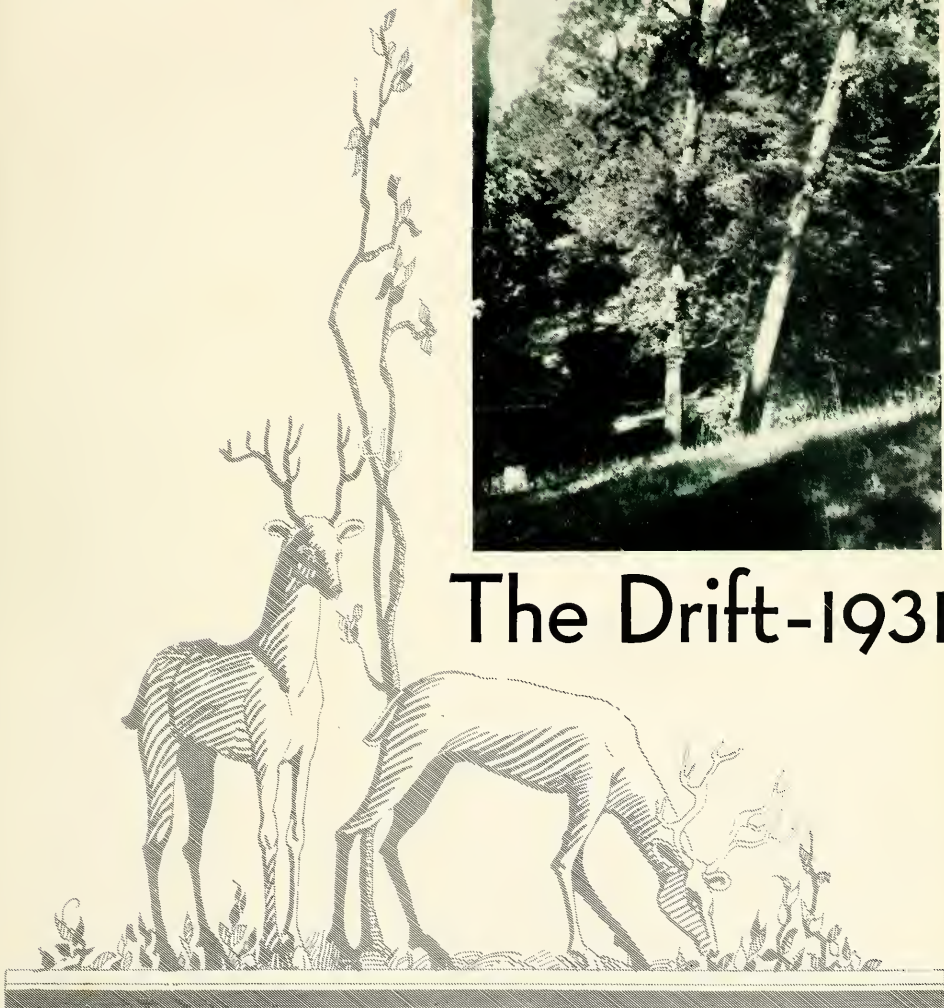


Digitized by the Internet Archive
in 2010 with funding from
Lyrasis Members and Sloan Foundation

<http://www.archive.org/details/drift1931juni>



The Drift-1931



There is little doubt that the vicinity of Fairview was a natural beauty spot long before the coming of man.

COPYRIGHT BY

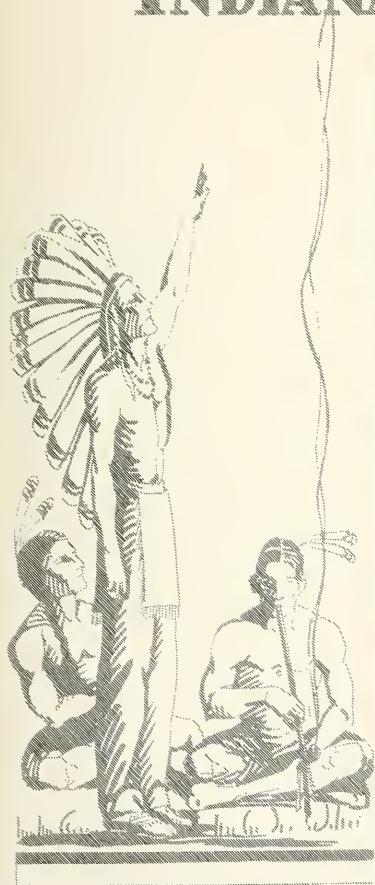
THURMAN G. RIDGE

EDITOR-IN-CHIEF

ROBERT A. BLACKBURN

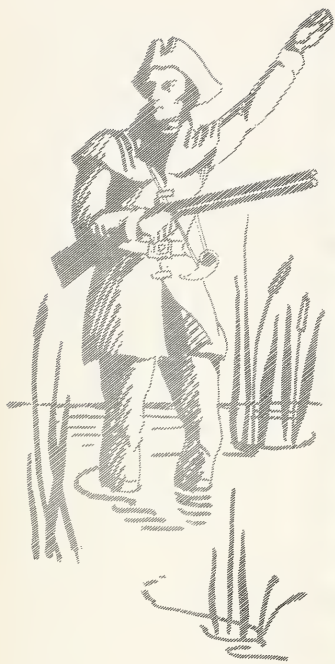
BUSINESS MANAGER

THE 1931 D R I F T BUTLER UNIVERSITY INDIANAPOLIS, INDIANA



Memories of the Indian occupation still linger in the annual presentation of Hiawatha along the banks of the canal.





The relation of beauty to knowledge is a problem which has been considered by thinkers of all ages. That there is a relation, few have doubted Modern education inherits three ideals, all developed before the Christian era strength from the Romans, righteousness from the Hebrews, and beauty from the Greeks. And it seems significant that it was the Greeks who also opened the way to the great fields of knowledge. . . . It may have been with these facts in mind that the directors of our university chose the traditional beauty of Fairview as the environment for the new Butler Our aim has been to suggest that beauty, and to make you consciously proud that you are in a position to share in it.



FOREWORD

Many carefree picnickers have unwittingly followed trails marked out here years before Fairview became a park.



DEDICATION

acclaim which is due them. There are others who from preference or necessity do great things in an unassuming manner, and are content that no one know It is of the great works of modest people that the world loves most to hear, and that the writer loves most of all to tell And so it is not altogether with an unselfish motive that we dedicate this book to Alice Bidwell Wesenberg.

And there is little doubt that homesteaders here have worked as hard on their humble cabins as our engineers have on the beautiful Jordan towers.

There are philanthropists whose means are as great as their inclinations, and their fame spreads in proportion to their means. There are others with more limited opportunities and they are seldom heard of There are educators who touch a popular theme, or write a popular book, or derive popularity from a prominent environment, and they receive the



CONTENTS

BOOK I . UNIVERSITY

BOOK II . MEN

BOOK III . WOMEN

BOOK IV . ACTIVITIES

BOOK V . ATHLETICS

And our grandparents on a holiday may have strolled along the paths now followed by the Butler dilettantes.



University



University

CONTENTS

BOOK I - UNIVERSITY

BOOK II - MEN

BOOK III - WOMEN

BOOK IV - ACTIVITIES

BOOK V - ATHLETICS

Published by the University of
the Pacific
1911





HILTON U. BROWN

Summary of School Year 1930-31

THE fall of 1930 found Butler university with a new College of Education in addition to the College of Religion and the College of Arts and Sciences.

On December 5, on the fourth anniversary of the death of Dr. Eliza M. Blaker, its founder, the Teachers' College of Indianapolis was formally accepted by Butler university and with the Department of Education formed the College of Education. At the same time, Dr. William Leeds Richardson was inducted as dean of the new college.

Approximately 1,000 persons, including presidents of many Indiana colleges and universities and students of the three colleges, attended the services, which were held in the gymnasium. Mayor Reginald H. Sullivan, mayor of Indianapolis, sent his greetings as well as the president of the University of Toronto.

Second in importance only to the acquisition of the new college was the resignation of President Alely after ten years at Butler and fifty-two years of teaching. Dr. Alely left his residence to the university, and an-

BOARD OF DIRECTORS

*First row--*Arthur Jordan, Emsley Johnson, R. A. Long, Mrs. Z. T. Sweeney, Lee Burns, John Canaday, Hugh Miller.

*Second row--*Arthur Brown, Crate Bowen, William Smith, Albert Snider, William Irwin, Clarence Goodwin, John Atherton.

*Third row--*Henry Kahn, Thomas Grafton, Scot Butler, Peter Reilly, Perry Clifford, James Clark.





ROBERT J. ALEY

nounced his intention of spending his time in travel and writing.

Edward Green was production manager of the third annual Fairview Follies, which was held at Caleb Mills Hall early in April. The Junior prom, in charge of Ralph Brandt, was given May 1 at the Indiana ballroom, with music by Austin Wylie.

The greatest day in the whole year for the school was the day when Butler was recommended for reinstatement in the North Central Association of Colleges and Secondary Schools by the association's board of review at the annual convention held in Chicago in March. The board's report read, "Butler has cleaned house and is now worthy of reinstatement."

Improvements in the athletic and library conditions were mentioned. According to Leland R. Smith, librarian, an increase was made from 35,000 volumes in March, 1930 to 52,000 volumes in March, 1931. Of these 43,000 are in the main library in Arthur Jordan Memorial hall and 9,000 are in the library at the College of Education. The students put on a book drive which also helped to increase the number of volumes in the library.

THE DEANS

DR. PUTNAM



DR. KERSHNER



DR. RICHARDSON



HENRY LANE BRUNER,
Ph.D.

Professor of Zoology.



ELIJAH N. JOHNSON
A.M., M.S., D.Sc.

Professor of Mathematics
and Treasurer.

CATHARINE MERRILL
GRAYDON, A.M.
Litt. D.

Catharine Merrill Professor
of English Literature Emeritus.

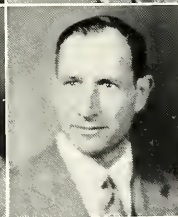


HENRY MILLS
GELSTON
A.B., LL.D.

Professor of Latin.

MILTON D.
BAUMGARTNER
Ph.D.

Armstrong Professor of Germanic
Languages.



GINO A. RATTI
Ph.D.

Professor of French.

PAUL LELAND
HAWORTH
Ph.D.

Professor of History.



FRANK HATCH
STREIGHTOFF
Ph.D.

Acting Professor of
Economics

RAY CLARENCE
FRIESNER
Ph.D.

Professor of Botany.



BRUCE L.
KERSHNER
A.M.

Goodwin Professor of New
Testament Language and
Literature.

G. I. HOOVER
B.D., A.M.

Professor of Practical
Theology.



TOLBERT F. REAVIS
A.M., Ph.D., LL.D.

Professor of Sociology.



EVERARD ROY MOON
A.M., B.D., D.D.
F.R.G.S.

Professor of English Bible
and Missions.



CLAUDE SIFRITT
A.M.

Professor of Public Speaking.



DEFORREST O'DELL
A.M.

Professor of Journalism



CAMPBELL GARNETT
A.M., Litt.D.

Professor of Philosophy.



WILLARD N. CLUTE
Curator Herbarium,
Director Botanical Gardens.



THOR GRIFFITH
WESENBERG
Ph.D.

Professor of Romance
Languages.



IDA B. WILHITE
A.M.

Professor of Home
Economics.



CORRINE WELLING
A.M.

Associate Professor of
English.



AMOS B. CARLILE
Ph.D.

Associate Professor of
Education.



IRVIN T. SHULTZ
Ph.D.

Associate Professor of
Education.

KARL STONE MEANS
Ph.D.

Associate Professor of
Chemistry.



S. E. VITTORIO
MONCADA
A.M., D.Sc.

Associate Professor of
Romance Languages.

PLEASANT R.
HIGHTOWER
Ph.D.

Associate Professor of
Education.



STANLEY ADAIR CAIN
M.S.

Associate Professor of
Botany.

ALICE BIDWELL
WESENBERG
A.M.

Assistant Professor of
English.



SARAH ELIZABETH
COTTON
A.B.

Examiner and Registrar.

CHARLES W. WILSON
Secretary.



JUNA MARIE LUTZ
A.M.

Assistant Professor of
Mathematics.

ALBERT MOCK
A.M.

Assistant Professor of
Education.



CHARLES MERVIN
PALMER
M.S.

Assistant Professor of
Botany.



MARTHA MAY KINCAID
A.M.

Assistant Professor of
French.



SARAH HILL
BAUMGARTNER
A.B.

Assistant Professor of
German.



CHESTER B. CAMP
M.S.

Assistant Professor of
Economics.



FLORENCE I.
MORRISON
A.M.

Assistant Professor of
Romance Languages.



RUSSELL G. WEBER
M.S.

Assistant Professor of
Zoology.



J. DOUGLAS PERRY
A.B.

Assistant Professor of
Journalism and Acting Head
of Department.



ALLENA GRAFTON
A.M.

Assistant Professor of
Religious Education.



MERWYN G.
BRIDENSTINE
Ph.D.

Assistant Professor of
Economics.



SARAH SISSON
A.M.

Assistant Professor of
English.



HAZEL WHISENAND
A.M.

Assistant Professor of
Spanish.

KATHRYN JAMISON
JOURNEY
A.M.

Assistant Professor of
Home Economics.



GEORGE FRANKLIN
LEONARD
A.M.

Acting Assistant Professor
of Education.

W. A. SHULLENBERGER
D.D.

Lecturer in Practical
Theology.



JULIANA M.
THORMAN
A.B.

Instructor in German.

NATHAN G.
CARDER
A.M.

Instructor in English.



GEORGE W. HARRIS
A.B.

Instructor in Journalism.

DEAN E. WALKER
B.D.

Instructor in Church
History.



VIOLET KATHERINE
BECK
A.B.

Instructor in German.

NORMAN R.
BUCHAN
A.B.

Instructor in Journalism.



HENRY G. NESTER
A.M.

Instructor in Zoology.

ALFRED T.
DEGROOT
A.M., B.D.
Instructor in Old Testament.



HELEN JANE CADE
B.S.
Instructor in Home
Economics.



FRIEDA S. ROBINSON
A.B.
Acting Instructor in
English



CHARLES HENRY
WALTERS
A.B.
Assistant in Public Speaking.



LOUISE MARGUERITE
SCHULMEYER
Director of Physical Edu-
cation for Women



SUSIE E. HARMAN
A.B.
Assistant in Physical Edu-
cation for Women



HERMON PHILLIPS
B.S.
Instructor in Physical
Education.



DON SPARKS
A.M.
Instructor in English.



DAN THOMAS
A.M.
Instructor in History.



KARL STEGEMEIER
M.B.A.
Instructor in Economics.



JOHN GRISWOLD
A.M.
Instructor in Economics.



CLYDE CLARK
A.M.
Instructor in Romance
Languages.



EMMA COLBERT
B.S.

Assistant Dean and Assistant
Professor of Education.



BLANCHE G.
MATHEWS
Registrar.

EDITH M. FOUNTAIN
Librarian.



JULIA MOORE
A.M.
Assistant Professor of
Social Science.

FAYE HENLEY
B.S.
Assistant Professor of
Elementary Education.



MARIA WOOLLEN
HYDE
A.M.
Assistant Professor of
Mathematics.

FAY MARSHALL
M.S.
Assistant Professor of
Elementary Education.



RUTH O. BENEDICT
A.B.
Assistant Professor of
Public School Music.

ANNA L. FERN
B.P.
Assistant Professor of
Industrial Arts.



RUTH PATTERSON
B.S.
Supervisor of Kindergarten.

ELIZABETH E.
BETTCHE
A.M.
Director Elementary School
Student Teaching.



ELIZABETH
DOWNHOUR
A.B.
Assistant Professor of
Natural Science.

JESSIE B. CRAIG
Demonstration Grades VII
and VIII.



LUELLA M. ATER
B.S.
Demonstration Grades
I and II.



MABEL CULMER
B.S.
Demonstration Grades
V and VI.



MARY LORETTA
McCORMICK
A.B.
Assistant in Romance
Languages.



LELAND SMITH
A.M.
Librarian.



JAMES B.
VANDAWORKER
Director of Band.



EVAN B. WALKER
Director of Publicity.



PEARL HAVILL
Nurse.



PAUL D. HINKLE
B.S.
Assistant Athletic Director.



ROBERT L. NIPPER
A.B.
Assistant in Athletics.



WILLIAM MCGILL
Assistant Coach.



RICHARD BAXTER
B.S.
Assistant Coach.



Classes





DONALD YOEEL



JANE HALL

Senior Class

THE class of '31, the third to graduate from the Fairview campus, is the largest group which has yet received degrees from new Butler. The class includes students from Teacher's College, John Herron Art Institute and the Arthur Jordan Conservatory of Music as well as from Butler university.

The class began its successful college career by inaugurating the Freshman Rose Dance and by setting the precedent of electing a Freshman Rose.

In both the freshman and sophomore years the members of the class defeated their opponents in the annual freshman-sophomore scrap.

HONOR DAY



Senior Class



HONOR GREGORY



EDWARD GREEN

The Junior Prom that year was one of the best. It was held at the Indiana Ballroom, and Jean Goldkette's orchestra supplied the music. Marthalou Schoener led the grand march as prom queen, with Robert Butterworth, the class president.

In its senior year the class again set a new standard by abolishing senior dues. The revenue needed was procured by a slight profit on caps and gowns, and on graduation programs.

Donald Youel was elected to lead the class in the senior year as president. The other officers were Jane Hall, vice-president; Honor Gregory, secretary, and Edward Green, treasurer.

HONOR DAY





Helen Arnold

English

Kappa Alpha Theta, Phi Kappa Phi.

Theodosia Arnold

Latin

B.U.S.T.A., Y. W. C. A., Woman's League, Phi Kappa Phi.



Paul Baker

*Business Administration
and Economics*

Glee Club, Thespis, Commerce club, International Relations.

Seward Baker

Delta Tau Delta, Fairview Follies (1,2,3)



Margaret Barker

*Latin, Mathematics,
Education*

Kappa Kappa Gamma, Woman's League (treas.), Y. W. C. A. (sec.), Torch (pres.), B.U.S.T.A. (pres.), Classical club (pres.), Math club, Bluesters, Republican club.

Betty Jane Barrett

Journalism

Kappa Kappa Gamma, Rido, Thespis, Collegian, Y. W. C. A., Woman's League, W. A. A.



Ward Barrick

Public Speaking

Lambda Chi Alpha, Swimming, Thespis.

Carlyle Bauermeister

Zoology

Lambda Chi Alpha, Blue Key, football, baseball, 2,3, track, freshman basketball, Zoology club.



Fred Baumgartner

Zoology

Philosophy club, Zoology club, German club, Phi Kappa Phi.

Reuben Beabout

Zoology

Sigma Nu, Zoology club, Sphinx, Zoological Literature club.





Paul Becker
Spanish
Lambda Chi Alpha.



Jacob Beem
History and Spanish
Sigma Chi.



Louise Berndt
Mathematics
Zeta Tau Alpha, Math club,
German club, Y. W. C. A.,
Woman's League.



Margaret Bradburn
History and French
Alpha Delta Theta, Thespis,
Woman's League (poster
committee), Y. W. C. A.,
Panhellenic council, Torch.



Marjorie Brownlee
English
Delta Delta Delta, Y. W.
C. A.

Mary Louise Beem
French

Kappa Kappa Gamma,
French club, Spanish club,
Woman's League, Y.W.C.A.



Dorothy Behmer
English

Pi Beta Phi, Woman's League,
Y.W.C.A.



Robert Boesinger
Zoology and Chemistry

Phi Delta Theta, Zoology assistant,
Interfraternity baseball,
Botany club, Zoology club,
Chemistry club.



Olga Brown
English

Glee club.



Beatrice Borgan
Journalism

Pi Beta Phi, Scarlet Quill,
Torch, Chimes, Kappa Tau
Alpha, Woman's League,
Theta Sigma Phi (pres.),
Collegian (city editor), Cap
and Gown committee.





Robert Butterworth
Economics

Phi Delta Theta (pres.),
Junior president, Blue Key.



Dorothy Canary
Sociology

Trianon, Woman's League.



Cortland Carrington
Economics

Sigma Nu, Tennis, Commerce club.



Genevieve Clark
Physics and Math

Chi Theta Chi, Woman's League, Y.W.C.A., basketball, volleyball, Glee club, Math club.



Nina Collier
Music

Kappa Beta.



Owen Calvert
Economics

Delta Tau Delta, Kappa Kappa Psi, Band, Commerce club, Folies orchestra.



Elizabeth Carr
Journalism

Kappa Kappa Gamma, Scarlet Quill (pres.), Theta Sigma Phi (sec.), Kappa Tau Alpha, Collegian, Woman's League, Student Budget, Cap and Gown committee, French club, Bluesters.



Leland Clapp
Philosophy

Philosophy club.



Phyllis Cofield
Home Economics

Pi Beta Phi, Woman's League, Y.W.C.A., Oklahoma college.



Lois Cowgill
English

Kappa Beta (pres.), Woman's League, Y.W.C.A.



Irene Cravens

Biology

Delta Delta Delta, Woman's League, Y.W.C.A., Classical club, Zoology club.



Elizabeth Dalman

Latin

Delta Delta Delta, Woman's League (sec.), Scarf club, Classical club, Class Day chairman, Y.W.C.A., Rido.



Betty Jean Davis

English, Journalism

Kappa Kappa Gamma (class vice-pres. 1929) Bluesters, Woman's League, Student Council, Pan-hellenic council.



Ruth Davis

Art



Ruth Dobson

Sociology

Kappa Beta.

Howard Crise

English

Sigma Nu (pres.), yell leader, Sphinx, National Collegiate Players, Thespis.



Bernice Darnall

Home Economics

Alpha Delta Pi, Y.W.C.A., Woman's League.



Elizabeth L. Davis

English

Scarlet Quill, Tower (editor), Drift (associate editor), Poetry club, Phi Kappa Phi.



Alice Dickey

Latin and English

Zeta Tau Alpha, Y. W. C. A., Classical club, Woman's League, B.U.S.T.A., Bluesters, Student Industrial committee.



John Eastes

Chemistry

Kappa Kappa Psi, band (1,2,3,4), Chemistry assistant (3) (4), Catalyst club (pres.)





Arthur Echternacht
Chemistry, Zoology

Chi Rho Zeta, Drift (photographer), Catalyst club, Zoology club, Interfraternity council, Men's Union, Math club.



Pauline Elvers
Mathematics

Alpha Delta Theta, Math club, Woman's League, Y. W.C.A.



Edith Eytcheson
English
Assistant librarian.



Harold Farmer
History
Men's Union, International Relations club.



Granville Geisert
Economics
Phi Delta Theta, Blue Key, Commerce club, Democratic club.

Helen Eiser
English

Delta Delta Delta, Y. W. C. A., Woman's League, Bluesters, Rido, Home Arts club.



Susan Erlewine
English

Zeta Tau Alpha, Y.W.C.A., Woman's League, International Relations club.



Frank Fairchild
Economics

Delta Tau Delta, Track, cross-country, class president, 1929.



Kenton Gardner
Spanish

Phi Delta Theta, Track.



Henry Gibson
English

Delta Tau Delta, class treas. 1930, National Collegiate Players, golf, Thespiis, Student Budget committee, Glee club, Fairview Follies.





Elsie Gilkison
French

Alpha Chi Omega, Woman's League, Y.W.C.A., Fairview Follies (usher committee), Zoology club, Bluesters.



Victor Griffin

B.S.L. graduate student.



Claribel Hacker
English

Alpha Chi Omega, Y.W.C.A., Bluesters, Woman's League, Glee club, Zoology club.



William Hantzis
Public Speaking

Tau Kappa Tau.



Helen Harding
English and Latin

Y. W. C. A.

Edward Green

English and Public Speaking

Phi Delta Theta, National Collegiate Players, Thespis (pres.), Sphinx, Fairview Follies (2,3,4), Men's Union (governing board 3, pres. 4), class treasurer 4, Rido.



Naomi Guild

French

Alpha Chi Omega, Bluesters, Fairview Follies, Woman's League, Y.W.C.A.



Jane Hall

Botany

Alpha Chi Omega, Y. W. C. A., Woman's League, Scarf club, Student Council, W.A.A., class vice-president 1931.



Virginia Harbaugh

French

Kappa Beta, Glee club accompanist, Y.W.C.A., Sandwich club (treas.), Woman's League.



Margaret Harrison

Mathematics

Kappa Alpha Theta, Math club, Woman's League, Y. W. C. A.





Nicholas Hatfield

Zoology and Chemistry

Biology club, Zoological Literature club, Botany Journal club.



Emmett Hayth

English



Evelyn Henschen

English

Zeta Tau Alpha (pres.), Bluesters, Woman's League, Y. W. C. A., Panhellenic Council.



Alice Hill

English and Latin

Alpha Omicron Pi, Woman's League, Y. W. C. A., Fairview Follies, Classical club.



Virginia Hill

Home Economics

Pi Beta Phi, Woman's League, Chimes, Collegian, June Day breakfast.

Gladys Hawickhorst

Mathematics and French

Alpha Omicron Pi (pres.), Phi Kappa Phi, Chimes, Torch, Math club (pres.), Woman's League (practical accomplishments committee), freshman scholarship cup, Le Cercle Francaise, senior scholarship.



Frank Heddon

Journalism

Lambda Chi Alpha, Blue Key, football, basketball student manager.



Alice Higman

History and Public Speaking

Delta Zeta, National Collegiate Players, Thespiis, Rido, Glee club, Woman's League, Y.W.C.A., Zoology club, International Relations club.



Martha Hill

Latin

Delta Delta Delta, Woman's League, Zoology club (sec.), W.A.A., Y.W.C.A.



Hubert Hinchman

Economics

Phi Delta Theta, Blue Key, football, baseball, basketball, track.





Helen Hitch
Journalism

Delta Delta Delta, Rido, Bluesters, Collegian (society editor), Advertising club (vice-pres.), Woman's League (Athletic committee), Y.W.C.A. (social service committee), writers' club.



Mary Hoover
English

Kappa Alpha Theta, class vice-pres. 1928, Scarf club, Woman's League (sec.), Bluesters, Y.W.C.A., Fairview Follies, Student Council, W.A.A.



John Hussey
Chemistry

Sigma Chi, Glee club.



Warren Isom
History

Lambda Chi Alpha, Student Council, Y. M. C. A., Men's Union (governing board).



Eldred Johnston
New Testament

Kappa Alpha, Stray Greeks (pres.), Ichthus, Alpha Phi Epsilon.



Elizabeth Hodges
English

Kappa Alpha Theta (pres.), Woman's League, Y.W.C.A.



Anna Lee Howell
Public Speaking

Kappa Kappa Gamma, National Collegiate Players (vice-pres.), Woman's League, Scarf club (pres.), Y.W.C.A., B.U.S.T.A.



Edmund Huxley
Chemistry

Chi Rho Zeta, Catalyst club, Growlers, Men's Union (governing board), chemistry assistant, Junior prom committee.



Beatrice Johnson
Art

Alpha Chi Omega.



Walter Johnston
Economics

Sigma Nu, football, Men's Union (governing board), Tau Kappa Alpha, debating team.



Berwyn Jones
*Old and New Testament
History*
Kappa Delta Rho, Track,
cross-country.



Gretchen Kemp
English
Alpha Chi Omega, debating
team, Collegian, Council of
Sorority Presidents, B. U. S.
T. A., Woman's League, Y.
W.C.A., Math club, League
of Women Voters.



Ruth Landers
English
Pi Beta Phi.



Marifrances Lee
Journalism
Zeta Tau Alpha, Y.W.C.A.,
Woman's League, Drift
Staff, Collegian, Student
Handbook, Bluesters.



Maynard Lemen
Journalism
Sigma Nu, Sigma Delta Chi
(pres.), Blue Key, Kappa
Tau Alpha, managing editor
Collegian, Drift staff (3),
Phi Kappa Phi.

Helma Kahn
German

Zeta Tau Alpha, Woman's
League, Y.W.C.A., Classical
Club, German Club, Scarf
club, Torch, Student Indus-
trial committee.



Katherine Kinnaird
Journalism

Kappa Kappa Gamma, Wom-
an's League, Collegian, Y.
W. C. A., Bluesters, Follies,
Glee Club, W.A.A.



Mayburn Landgraf
Business Administration

Sigma Alpha Epsilon, Blue
Key (pres.), Student Coun-
cil, Junior Prom chairman,
Student Budget committee,
Stray Greeks, Fairview Fol-
lies, Chairman Senior Fin-
ance committee, Student
Council Election committee.



Mary Leedy
Home Economics

Alpha Chi Omega, Y. W. C.
A., Woman's League, Home
Arts club.



Virginia Lett
Journalism

Zeta Tau Alpha, Torch,
Bluesters, Y.W.C.A., Wom-
an's League.





George Lloyd
Journalism

Lambda Chi, Sigma Delta Chi, student manager varsity football.



William McCarthy
History and Journalism

Phi Delta Theta, football, Wings.



Florence McDonald
English

Alpha Delta Pi, Y. W. C. A., Woman's League, Scarf club, Bluesters, Panhellenic Council, Council of Sorority Presidents.



Madge McPherson
Home Economics

Pi Beta Phi, Woman's League, Y.W.C.A., Scarf club.



Mildred McCormick
Public Speaking

Alpha Delta Theta, National Collegiate Players, Thespis, Y.W.C.A., Woman's League, Torch.

Virginia Logan
English

Delta Delta Delta, Woman's League, Y.W.C.A.



Ruth McClurg
History

Alpha Omicron Pi, Y. W. C.A., Woman's League, Panhellenic Council, Bluesters.



Lorena McKim
Public Speaking



Earl McCormick
History

Sigma Nu.



Elizabeth Martin
English

Kappa Kappa Gamma, Bluesters, Y. W. C. A., Woman's League, Democratic Club.





Catherine Matthews
French and Mathematics

Delta Delta Delta, Pan-Hellenic Council, Y. W. C. A., Woman's League.



Muriel Maze
Economics

Trianon, Woman's League, Y.W.C.A., Geneva Stunts.



Mary Mills
English

Kappa Alpha Theta, Woman's League.



Florence Morris
Journalism

Delta Gamma, Woman's League, Collegian, basketball, Hamilton College (1) (2).



Gladys Mower
Art

Alpha Chi Omega, assistant and feature editor 1930 Drift, feature editor 1931 Drift, Y.W.C.A., Woman's League, (poster committee).

Marcella Mathews
French

Delta Zeta, Girl's Glee club (pres.), Y.W.C.A., Woman's League, International Relations.



Donald Meid
Business Administration
Commerce club, baseball.



Norma Minkner
French and Spanish

Chi Theta Chi, Y.W.C.A., Woman's League, B. U. S. T. A., French club.



Mary Jane Morris
English

Kappa Alpha Theta, Y. W. C. A., Woman's League, Thespis.



Elizabeth Myers
Chemistry and Zoology

International Relations, Zoology club, Philosophy club, Cosmopolitan club (secretary).





Edwin Ogborne
English and Journalism

Sigma Nu, Blue Key, Sigma Delta Chi, baseball, Tower editor (3), Drift staff (2).



Rodney Perkins
Philosophy

Phi Delta Theta, Sphinx, Philokurian, Tower staff, Drift editor (3).



Evelyn Pier
Journalism

Pi Beta Phi, Y. W. C. A., Woman's League, Democratic club, Scarf club, Fairview Follies, Chairman Senior banquet.



Morris Pullin
Hebrew



Bessalee Reavis
Home Economics

Kappa Beta, Y. W. C. A., Woman's League, Fairview Follies, Glee club (pres.), chairman music committee, activity points committee, June Day ticket committee.



Madonna O'Hair
Latin and Mathematics



Jean Peterson
English

Kappa Kappa Gamma, Woman's League, Y.W.C.A.



Lillian Pierson
English

Kappa Kappa Gamma, Y.W.C. A., Woman's League, Thespiis, Collegian.



Florence Rathert
German and Mathematics

Chi Theta Chi (pres.), German club, Math club, B. U. S. T. A., Panhellenic Council, Y. W. C. A., Woman's League.



Dora Mae Rees
Home Economics

Deutsche Verein.



Florence Renn
Sociology

Alpha Chi Omega, Woman's League (pres.), song book committee (2,3), Scarlet Quill, chairman Senior gift committee, vice-pres. Junior class, Chimes (pres.), Senior advisor, Torch (vice-pres.), Y.W.C.A. (pres.), program chairman, cabinet, Drift staff 3,4, Thespis, Glee club (treas. 1,2), Student budget 2,3,4, German club, Fairview Follies, Zoology club, League of Women Voters, Jun. rep. election com., Bluesters.

Jane Riddell
Journalism

Kappa Alpha Theta, Woman's League, W.A.A. (pres.).



Esther Sacks
German and English

Dis, Avukah, German club.



Clara Schell
Spanish

Delta Delta Delta, Debating team, Bluesters, Y. W. C. A., Woman's League.



Margaret Schumacher
English

Kappa Kappa Gamma, Junior Prom committee, Woman's League (chairman building fund committee), Y.W.C.A.



Morton Renn
Journalism

Sigma Delta Chi, Drift editor 3, business manager Tower, Collegian.



Maxine Rigsbee
Home Economics

Pi Beta Phi, Woman's League, Y.W.C.A.



Marjorie Schaefer
History and French

Alpha Omicron Pi, Y. W. C. A., Bluesters, Woman's League, Math club.



Marthalou Schoener
English

Pi Beta Phi, Prom Queen 3, Panhellenic Council, Freshman class secretary, Y. W. C. A., Woman's League, Glee club, Fairview Follies, W. A. A.



George Shelby
Economics

Delta Alpha Pi, band, Commerce club, Men's Union, Kappa Kappa Psi.



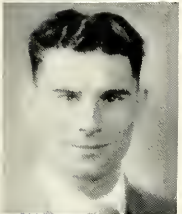
Lois Sherrill
Art

Pi Beta Phi, secy.-treas. Senior class Art School, Drift 2, 3.



Wilhelmina Shirtz
History

Alpha Delta Theta.



Harrison Sibbitt
Economics

Delta Tau Delta, football, track.



Joe Sivak
Economics

Delta Tau Delta, Blue Key, track (capt.)



Helen Sommer
Home Economics

Woman's League.



Alice Shirk
Philosophy and Economics

Delta Gamma, Fairview Folies, Glee club, Y. W. C. A., Woman's League.



Wendell Shullenberger
Zoology, Chemistry

Sigma Chi, Blue Key, Drift staff 3.



Myron Simpson
English

Kappa Beta, Y. W. C. A., Woman's League.



Robert Snodgrass
Mathematics

Math club.



Oran Stanley
Botany

Kappa Delta Rho, Botany club, German club, Zoology club, Interfraternity Council.



Robert Stearns
Journalism

Sigma Chi, Sigma Delta Chi, Glee club (pres.), Zoology club, Fairview Follies, Collegian (news editor 3, city editor 4).



Clara Lynn Stoops
Bible

Kappa Beta, Glee club, Sandwich club, Y.W.C.A., Woman's League.



David Stutsman
Physics



Rosalind Taylor
Latin and History

Woman's League, Y.W.C.A., B.U.S.T.A., Classical club, International Relations club.



Mary Elizabeth Thumma
Spanish

Delta Zeta (pres.), Glee club, International Relations club, Y.W.C.A., Woman's League, Council of Sorority Presidents.

Dorothy Stoelting
Zoology

Zoology club, Woods Hole scholar, Zoology assistant, B.U.S.T.A.



James Strahl
Public Speaking

Phi Delta Theta, Sphinx, football, track, debating team, Democratic club, "B" men's club.



Robert Shultz
Physics and Mathematics

Physics assistant, band, Kappa Kappa Psi, Men's Union, Fairview Follies orchestra director.



Harold Templeton
Journalism

Lambda Chi Alpha, Blue Key, football, track, Collegian (sports editor), Advertising club.



Russell Townsend
Zoology and Chemistry

Phi Delta Theta, Student Council (pres.), Blue Key, Tau Kappa Alpha (vice-pres.), debating team, Student Council 2,3, Bus. Mgr. 1930 Drift, Fairview Follies staff, Inter-fraternity council 3, Repub. club, Butler cor. Indianapolis Star.





Myra Triller

Art

Alpha Chi Omega, art editor Drift 3,4, Woman's League.



Flora Walters

Art

Kappa Alpha Theta, Drift staff 3.



Max White

Economics

Lambda Chi Alpha, Interfraternity Council, Commerce club.



Richard Williams

Bible

Philosophy club.



Lucile Wright

Latin and French

Alpha Omicron Pi, Classical club, Woman's League, B.U. S.T.A., Phi Kappa Phi, Y.W. C.A.

Truth Wakeman

English

Pi Beta Phi, Thespis, National Collegiate Players, Zoology club, Botany club, Y. W. C. A.



Ralph Walton

Journalism

Phi Delta Theta (pres.), Y. M. C. A., Men's Union, band, Rido, Geneva stunts, Varsity golf 3,4, (capt. 3), Interfraternity Council, Botany club, Zoology club, Repub. club, Wings, Drift photographer 3, pub. mgr. 4, Collegian (assoc. editor 3, telegraph editor 4), Blue Key, Sigma Delta Chi, Prom chairman 3.



Neta Williams

History

Y.W.C.A., Woman's League, International Relations club, Scarf club.



Willard Worth

Chemistry

Phi Delta Theta, Sphinx, football.



Gilbert Ulmer

Mathematics and Physics

Math club, German club, Purdue 1,2,3.





Ralph Urbain
Mathematics and Physics
Kappa Delta Rho, Math club, track, B.U.S.T.A.



Harold Vehling
Economics
Kappa Delta Rho (pres.), Commerce club (pres.), Men's Union (pres.).



Kathryn Yeaman
Mathematics
Alpha Delta Theta, Math club, B.U.S.T.A., Woman's League.



Donald Youel
Chemistry
Delta Tau Delta, Senior class Pres., Student Council, Blue Key, Rep. Student 3, Student mgr. track 3, Fairview Follies, 2, Collegian staff 1, Catalyst club, Varsity golf, Chemistry assistant.



Harold Irby
A.B.,
Graduate student in History.



Ray Urbain
Mathematics and Physics
Kappa Delta Rho, Math club, B.U.S.T.A., cross-country, track.



Mary Ellen Yarling
French
Kappa Kappa Gamma, Democratic club, Rido, Woman's League, Bluesters.



Crawford Yeazel
Economics
Phi Delta Theta, Sphinx (pres.), football, Commerce club.



Charles Gunsolus
Graduate student in Bible.



Beatrice Borgan

Journalism

Pi Beta Phi, Theta Sigma Phi (pres.), Collegian (assistant managing editor), Scarlet Quill, Chimes, Drift staff.



Leland Clapp

Philosophy

Philosophy club.



Marguerite Doriot

Journalism

Delta Gamma, Scarlet Quill, Kappa Tau Alpha, Collegian (editorial writer), Torch, Woman's League, Y.W.C.A.



Richard Elrod

Journalism

Phi Delta Theta, Sigma Delta Chi, Commerce club.



Constance Glover

Botany

Alpha Chi Omega, Freshman Rose, Glee club, Woman's League (practical accomplishments committee), W.A.A. (sec'y.), Botany assistant, Y. W. C. A. (pres.), Bluesters, Chimes, Scarlet Quill (sec'y.)

Honor Gregory

Journalism

Zeta Tau Alpha, Senior class secretary, Kappa Tau Alpha, Theta Sigma Phi, Phi Kappa Phi, Writers' club, Drift (proof reader 3, literary editor 4), Collegian (literary editor), Y. W. C. A., Woman's League.



Harlan Hadley

Journalism

Phi Delta Theta (pres.), Sphinx, Sigma Delta Chi (pres.), Men's Union, Interfraternity council (chairman social committee), Jr. Prom com. (3), Collegian (asst. city editor 2, city editor 3, night city editor 2, asst. man. ed. 3, man. ed. 4.)



Ralph McElroy

Economics

Phi Delta Theta, Blue Key (treas.), Junior Prom committee 3.



Dorothy Quick

Journalism

Kappa Kappa Gamma, Theta Sigma Phi, Kappa Tau Alpha, Scarlet Quill, Collegian (city editor), Woman's League.



Virginia Seeds

Journalism

Pi Beta Phi, Theta Sigma Phi, Collegian (asst. city editor), Council of Sorority Presidents.





ROBERT BLACKBURN



VIRGINIA TAYLOR

Junior Class

THE class of '32 has been successful thus far in its venture in college. It began its sophomore year by founding the Utes club, sophomore men's honorary fraternity, to establish new traditions and to keep old ones. The club is petitioning Skull and Crescent, national sophomore honorary.

The same year the Utes club sponsored the "If" club, a freshman men's organization.

CHIMES SWEETHEART BANQUET



Junior Class



HARRIET MCGAUGHEY



MALCOLM SNODDY

The Sophomore Cotillion, official class dance, was held on May 3.

The Junior Prom this year featured a sketch by John Held, collegiate artist, which appeared on all tickets and advertising posters.

Robert Blackburn led the class as junior president. His supporting cast was Virginia Taylor, vice-president; Harriet McGaughey, secretary, and Malcolm Snoddy, treasurer.

BLUE KEY FOOTBALL BANQUET





Muriel Adams
Mathematics

Kappa Alpha Theta, Y. W. C. A., Woman's League, Math club.



Kathryn Allison
English

Pi Beta Phi, Woman's League, Y.W.C.A., Florida State College for Women.



Russell Artist
Botany

Botany club, Botany assistant.



Charles Barry
English

Sigma Nu, Blue Key, Interfraternity Council, Tau Kappa Alpha (pres.).



Addison Beavers
Political Science

Lambda Chi Alpha, Men's Union, Debate.



Mary Lou Allen
Economics

Zeta Tau Alpha, Panhellenic Council, Glee club, Bluesters, Y. W. C. A., Woman's League.



Margaret Anderson
English and Spanish

Trianon, Y.W.C.A., Woman's League, Spanish club, Bluesters.



Worth Barnett
English

Thespis, National Collegiate Players, swimming, Poetry club, Tower staff.



Mildred Beard
Journalism

International Relations, Y. W. C. A., Woman's League, Collegian, Bluesters.



Thelma Bingman
English

Chi Theta Chi, Glee club, Bluesters, Woman's League, Y.W.C.A., Fairview Follies '29, World Fellowship.



Robert Blackburn

Journalism

Phi Delta Theta, Sphinx,
Junior class pres., Drift business mgr., Sigma Delta Chi.



Edward Bolin

Chemistry

Phi Delta Theta, Rido, Glee club.



Kenneth Booz

Economics

Phi Delta Theta, Blue Key, football, track.



Ralph Brandt

Business Administration

Phi Delta Theta, Varsity football, Men's Union, Rido, Blue Key.



Robert Brown

Economics

Sigma Chi, Commerce club, Advertising club.



George Boersig

Business Administration

Delta Tau Delta.



Louise Bolin

English

Glee club, Torch.



Dorothy Boyle

History

Alpha Omicron Pi, Woman's League.



Iris Brannigan

English

Chi Theta Chi, Scarf club, Torch, Y.W.C.A., Woman's League.



Rosemary Brown

Romance Language

Alpha Delta Pi.



John Burns
Chemistry

Sigma Nu, Lombard College
1,2.



Eugene Campbell
Economics

Kappa Delta Rho, Commerce
club.



Ralph Coble
German

Sigma Chi.



Ann Cooper
Home Economics

Delta Gamma, Y. W. C. A.
Woman's League, Glee club
(v. pres.), basketball, Fair-
view Folies.



Calvert Craig
Economics

Phi Delta Theta, Commerce
club (v. pres.), Earlham.

Thomas Butz
Economics

Lambda Chi Alpha (pres.),
cross-country, track, foot-
ball.



Clementine Casmire
Public Speaking

Delta Delta Delta, Rido,
Girls' Debate club, Woman's
League, Y.W.C.A.



Robert Cook
Biology

Chi Rho Zeta, Drift staff 3,
Inter-fraternity Council,
Junior Prom committee,
Glee club, Men's union
(sec.)



Dorothy Covey
Latin

Classical club, Y. W. C. A.,
Woman's League.



Ruth Dale
Music

Alpha Omicron Pi, Kappa
Beta, Glee club, Torch,
Chimes.





Marie DeBurger
German

Collegian, Woman's League,
Kappa Tau Alpha, B. U. S.
T. A.

Dorothy DeFrees
Spanish

Kappa Alpha Theta, Y. W.
C. A., Woman's League, In-
ternational Relations.



Marjory Demaree
College of Religion

Kappa Beta, Y. W. C. A.,
Sandwich club.

Gustav Dongus
History

Sigma Nu, Utes, tennis, stu-
dent budget, Democratic
club.



Mary Frances Douglass
Mathematics

Chi Theta Chi.

Louis Eggert
Economics

Tau Kappa Tau.



Lawrence Elshoff
College of Religion

Delta Alpha Pi.

Betty Jane Emmett
Business Administration

Pi Beta Phi, W.A.A., Y.W.
C.A., Woman's League.



Margaret Esterline
English

Alpha Delta Theta, Woman's
League, Y.W.C.A..

Wilhelmina Feaster
History and Mathematics

Trianon, Woman's League,
Scarf club, Math club (v.
pres.)





Virginia Fleming
English

Kappa Alpha Theta, Y. W.
C. A., Woman's League,
Fairview Follies 1930.



Margaret Frazier
French

Kappa Kappa Gamma, Wom-
an's League, French club,
Rido.



Edith Gauld
English

Alpha Delta Theta, Wom-
an's League, Y. W. C. A.,
W. A. A., Bluesters.



Sterling Given
Mathematics



Pearl Goodman
English

Glee club.



Clarence Frazier
Economics

Kappa Delta Rho, Sphinx.



Katherine Force
Zoology

Zoology club.



Rosalind Gibson
Business Administration

Delta Delta Delta, Woman's
League, Bluesters, Y.W.C.A.



Ruth Goans
Education

Delta Zeta, Bluesters, Wom-
an's League, Y.W.C.A.



Adelaide Gould
Journalism

Kappa Kappa Gamma, Drift,
Collegian, Bluesters, Y. W.
C. A., Geneva Stunts, Wom-
an's League, Republican
club, Theta Sigma Phi.



Margaret Gowdy
English and Science

Alpha Omicron Pi, Thespis, International Relations, Zoology club, Y. W. C. A., Woman's League.



Milton Green
English

Men's Union, International Relations club, Men's Literary club.



Loujean Gullett
English

Zeta Tau Alpha, Y.W.C.A., Woman's League, Bluesters.



Margaret Harris
English and Latin

Trionon, Woman's League, Y. W. C. A., Classical club, Bluesters.



Louise Headrick
Spanish

Delta Zeta, Y. W. C. A., Woman's League.



Waneta Graves
Home Economics

Delta Delta Delta, French club, Home Arts club, Y.W.C.A., Woman's League.



Himie Greenberg
Economics

Tau Kappa Tau, baseball, basketball.



Jane Hadley
Journalism

Pi Beta Phi, Collegian, Chimes, Woman's League, W.A.A., Theta Sigma Phi.



William Haslett
Economics

Chi Rho Zeta, Intrafraternity council, basketball.



Virgil Hebert
Business Administration

Delta Tau Delta, student director of band, Sphinx, Kappa Kappa Psi, Commerce club, Glee club, Geneva Stunts, Fairview Follies '28-'29, Delt trio.



Gilberta Heid

English

Alpha Delta Theta.

Victor Hertz

Economics

Delta Tau Delta, Advertising club, Commerce club.



Kenneth Higgins

Zoology

Vera Hinshaw

English

Pi Beta Phi, Scarf club, Woman's League, Y.W.C.A.



Lois Hodgins

Chemistry

Alpha Delta Pi, Glee club, French club, Woman's League, Y. W. C. A., Catalyst club (treas.)

Hilda Hollingsworth

Public Speaking

Scarf club, Rido, Zoology club.



Iris Hollins

Mathematics

Zeta Tau Alpha, Y.W.C.A., Torch, Woman's League, Student Council '29-'30, Scarf club (treas.)

Virginia Holt

English

Delta Delta Delta, Woman's League, Y.W.C.A.



Hilda Hooten

Spanish

Chi Theta Chi, Woman's League.

Robert Houser

Education

Tau Kappa Tau.





Richard Huggins
Zoology

Delta Tau Delta.



Mardenna Johnson
Botany

Kappa Alpha Theta, Zoology club, Botany club, International Relations (sec.), Collegian, Drift.



Frank Jones
Economics

Sigma Chi, Blue Key.



Dione Kerlin
Mathematics

Kappa Kappa Gamma, Torch, Rido, Math club, Glee club, Woman's League, Y.W.C.A.



Mary Jane Krull
Spanish

Kappa Alpha Theta, Y. W. C. A., Woman's League, W.A.A., Spanish club.

Lola Johnson
English

Alpha Delta Theta, Y. W. C. A.



Margaret Johnson
English

Y.W.C.A., Woman's League, Social Service committee.



Thomas Kelley
Journalism

Lambda Chi Alpha.



Edward Kimberlin
Economics

Band.



Jacque Lacker
Journalism

Alpha Omicron Pi, Collegian, Thespiis, Rido, International Relations.





Charles Leeds
Economics



Abraham Letiff
Economics
Lambda Chi Alpha, Blue Key, Utes club, Debate team, Collegian, freshman baseball.



Betty Lower
History
Kappa Alpha Theta, Chimes, Y.W.C.A., cabinet, International Relations club (sec.)



Louise Mann
Latin
Alpha Delta Theta, Y. W. C. A., Woman's League, Classical club, Botany club, Math club.



Katherine Maurer
Mathematics
Alpha Delta Theta, Scarf club, Torch, Math club, Classical, Bluesters, Woman's League.

Elsie Mae Leslie
Botany

Alpha Delta Pi, Y.W.C.A., Woman's League, Botany club, Bluesters.



Catherine Loudon
Art

Delta Gamma.



Helen Lucas
Journalism

Kappa Alpha Theta, Collegian, Woman's League, Y. W. C. A.



Robert Mathers
Economics

Kappa Delta Rho, Thespis.



Harriett McGaughey
English

Kappa Alpha Theta, Y. W. C. A., Woman's League, Panhellenic Council, Secy. Junior class.





Mary McIlvain
English and French

Y. W. C. A., Zoology club,
Woman's League, Interna-
tional Relations club.



Lowell McPherson
History

Lambda Chi Alpha, Sphinx,
Y. M. C. A., Men's Union,
Democratic club (pres.)



Ralph Mecum
Public Speaking

Phi Delta Theta, football,
Thespis, Blue Key, track.



Max Miller
Economics

Delta Tau Delta, Men's
Union, Commerce club.

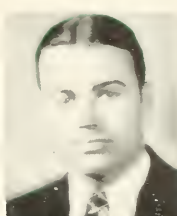


Richard Mitchell
Journalism

Collegian, band, Sigma Del-
ta Chi.

Wayne McMahan
*Business Administration
and Economics*

Kappa Delta Rho, football,
Math club, Interfraternity
Council, Y. M. C. A., Men's
Union.



Aliene Mead
Journalism

Delta Delta Delta, Rido,
Collegian (society ed.),
Y.W.C.A., Woman's League.



Valentia Meng
History

Kappa Alpha Theta, Thespis,
Rido, International Relations
club (pres.), History club,
National Collegiate Players,
Woman's League.



Mary Mitchell
English

Chi Theta Chi, Woman's
League, Y.W.C.A., Bluesters,
Glee club, Fairview Follies
'29, DePauw 1,2,3.



Ruell Moore
History

Delta Tau Delta, band, Glee
club, Fairview Follies,
Sphinx.





Harold Moreland
Journalism

Lambda Chi Alpha, Blue Key, Sigma Delta Chi, Collegian.



Catherine Murdoch
English

Pi Beta Phi.



Willodean Nease
English and Public Speaking

Delta Zeta, Glee club, Woman's League, Y.W.C.A., International Relations club.



Shirley Nelson
English

Alpha Delta Pi, Pan-hellenic Council (secy.-treas.), Y.W.C.A., Woman's League, Scarf club.



Bernice Mull
Home Economics

Delta Gamma, Woman's League, Glee club, Y. W. C. A.



Cecile Nease
English and Spanish

Alpha Chi Omega, Y. W. C. A. cabinet, Woman's League.



Bert Nelson
Journalism

Phi Delta Theta, track, Sphinx, Rido, Men's Union, Y.M.C.A., Growlers, Collegian, Glider club.



Dorothy Neptune
Mathematics

Delta Zeta, Woman's League, International Relations.



Julia North

English

Alpha Chi Omega, Torch,
Chimes, Debate, W. A. A.,
Bluesters, Y.W.C.A., Woman's
League.



William Ogden

Public Speaking

Kappa Delta Rho.



Charles Pahud

English

Sigma Nu, swimming.



Jeanette Palmer

Alpha Chi Omega, Glee club
(sec.), Woman's League,
Y.W.C.A.

George Nulf

Economics

Delta Tau Delta, football,
baseball, Blue Key.



Idamadge Overstreet

Bible

Kappa Beta, Glee club.



Ruth Pahud

English

Delta Gamma, Scarf club,
Chimes, Woman's League,
Y.W.C.A., W.A.A.



Dorothy Parker

Botany

Botany assistant, Y.W.C.A.,
Woman's League.





Lowell Parker

Journalism

Lambda Chi Alpha, Sigma
Delta Chi, Drift.

Ruby Pasho

English

Kappa Alpha Theta, Rido,
Republican club, Woman's
League, Y.W.C.A.



Urban Pflum

Mathematics

Kappa Delta Rho (pres.),
Math club, German club.

Nellie Plummer

Mathematics

Math club, Classical club.



Ruth Marie Price

Journalism

Delta Zeta, Y. W. C. A.,
Woman's League, Debating,
Collegian, International Re-
lations club, Kappa Tau Al-
pha.

Jesse Pritchett

History and Public Speaking

Delta Tau Delta, band, Utes,
Thespi, Glee club, R i d o ,
Speaker's Bureau, Radio Bu-
reau, Nat. Collegiate Players,
Fairview Follies, Kappa Kap-
pa Psi.



James Puett

History

Delta Tau Delta, football,
basketball, track, Blue Key.

Kathryn Quinn

English

Delta Zeta, Y. W. C. A.,
Woman's League.





Ruth Randall

French

Alpha Chi Omega, Y. W.
C. A., Woman's League.



Jane Riddell

Journalism

Kappa Alpha Theta.



Evelyn Rodibaugh

Latin

Woman's League, Classical
club (secy.)



Lois Rude

Journalism

Collegian, Woman's League.

Josephine Ready

French and English

Delta Zeta, Woman's League,
Y. W. C. A., Rido, Bluesters,
International Relations club.



Thurman Ridge

English

Phi Delta Theta, Drift
(editor-in-chief), Blue Key,
Sigma Delta Chi, Tower
(assoc. ed.), Poetry club,
Philokurean.



Betty Romack

English and Music

Kappa Kappa Gamma, Rido,
Woman's League, DePauw.



Elma Rose Sailors

French

Kappa Alpha Theta, Student
Council, Geneva Stunts,
Torch, Chimes, W. A. A.,
class vice-pres. 1930.





Anna Marie Sander
History

Delta Delta Delta, Woman's League, Y.W.C.A., Pan-hellenic Council, History club, Democratic club, secy. class 1930.



Thomas Scanlon
Philosophy

Delta Tau Delta, band, Thespis, Utes, Sphinx, Kappa Kappa Psi.



Joseph Schaub
Economics

Henry Scheidker
Economics

Chi Rho Zeta, Commerce club.



Max Schneider
Journalism
Sigma Delta Chi, Collegian.

Thad Schoen
Economics

Delta Tau Delta, Sphinx, Interfraternity Council.



Gwendolyn Schort
Public Speaking

Pi Beta Phi, Torch (pres.), Chimes, Thespis, Woman's League, National Collegiate Players.

Dorothy Serees
Education

Pi Beta Phi, Y. W. C. A. Woman's League, Thespis, Student Council.





Margaret Shively
Sociology

Delta Delta Delta, Scarf club, Y. W. C. A., Woman's League.



Harrison Sibbitt
Economics

Delta Tau Delta, football.



Myla Smith
English

Kappa Kappa Gamma, Woman's League, Y. W. C. A., Rido, Panhellenic Council.



Malcolm Snoddy
English

Delta Tau Delta, Sphinx, Student Council, Thespis, Rido (pres.), Fairview Folies 2,3, Glee club, class treas. 1931.



Duane Shute
Economics

Chi Rho Zeta.



Martha Slaymaker
English

Kappa Alpha Theta, Y. W. C. A., Woman's League, International Relations club.



Wales Smith
Sociology

Phi Delta Theta, Student Council, Geneva Stunts, International Relations club, Y. M. C. A., Ichthus, Blue Key, Men's Union, Philosophy club, Swarthmore.



Charles Sohl
History and Science

Phi Delta Theta, Sphinx, football, band, basketball, Zoology club.



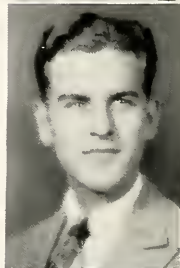
Constant Southworth
Economics
Delta Tau Delta.

Dorothy Squires
History
Woman's League, Y.W.C.A.



Martha Mae Stanton
Public Speaking
Alpha Delta Pi, Glee club.

Lowell Sumner
German
Kappa Delta Rho, Glee club,
Catalyst club.



Herbert Sweet
Science
Delta Tau Delta, Rido, Utes,
cross-country, Glee club,
Advertising club.

Marshall Tackett
History
Lambda Chi Alpha, Demo-
cratic club, basketball, Blue
Key.



Virginia Taylor
Home Economics
Delta Delta Delta, class
vice-pres. 1931, Chimes
(pres.), Torch (treas.),
Y.W.C.A. cabinet, Woman's
League, Bluesters.

Cora Trefz
Mathematics and German
Kappa Beta.





Harriette Trinkle

English

Delta Delta Delta, Thespis, Glee club, Rido, Y.W.C.A. cabinet, Chimes, Woman's League.

Ronald Van Arsdale

Public Speaking

Thespis, National Collegiate Players, Fairview Follies 1931.



Robert Walden

Economics

Sigma Nu, Commerce club, Gliders club.

Dorothy Webster

Education

Teachers' College.



Helen Weyl

French

Pi Beta Phi, Y. W. C. A., Woman's League.

Ruth Willcox

English

Alpha Delta Theta, Woman's League, W.A.A., Y. W. C. A.



Thelma Williams

French

Zeta Tau Alpha, Woman's League, Y. W. C. A., Torch, Fairview Follies, basketball, W.A.A.

Betty Wilson

Journalism

Delta Zeta, Collegian, Rido, Spanish club, Y. W. C. A., Woman's League.





June Wilson

Spanish

Delta Zeta, Spanish club,
Rido, International Relations
club, Woman's League, Y.W.
C.A.



Theodore Woelfing

Philosophy

Men's Union (governing
board), Philosophy club.



Donald Wood

Zoology and Chemistry

Sigma Chi, Zoology club
(treas.)



Mary Margaret Woods

English

Chi Theta Chi, Woman's
League, Y.W.C.A., Panhel-
lenic Council.



Walter Witt

English

Lambda Chi Alpha.



Richard Wolfe

Economics

Chi Rho Zeta, football, bas-
ketball, Blue Key, baseball,
track, Interfraternity Council,
Men's Union.



Rosemary Woodworth

French

Alpha Delta Theta, Y. W.
C. A., Torch, Bluesters,
Woman's League.



Frances Zaring

English

Kappa Alpha Theta, Rido,
Y. W. C. A., Woman's Le-
gue.

Extra Panels



MRS. EDNA CHRISTIAN, A.B.
Social Director

THE following pictures were received or identified after the regular panels had been made up. The Drift staff, though not responsible for this unfortunate situation, expresses its apologies to the persons affected.



JAMES H. PEELING, Ph.D.
Associate Professor
of Social Science

UPPERCLASSMEN



First row--Edith Barnhill, Lilyan Brañford, Anita Brownlee, Isabel Campbell, Mary Virginia Clark.
Second row--Lawrence Davis, Ina Lawrence, Ava Louise Reddick, Gerald Sharrer, Hilda Schmidt.

UNDERCLASSMEN

First row--Allen Bailey, Harriet Gamble, Louise Phillips, Hope Willcutts, Thelma Wise, Helen Carver, Helen Gearen, Dorothy Lewis, Edward Perry, Katherine Silliman.
Second row--Ruth Young, Esther Arnott, Irene Bickel, Vera Black, Ruth Carr, Margaret Edwards, Mary Rooksberry, LaVonne Rutherford, Orpha Thomas.





GEORGE MARSHALL



HELEN LOUISE LANGSTON

Sophomore Class

THE class of '33 made a successful start in college by overcoming the sophomores in putting the class flag on the flag pole, and in putting the numerals on the water tower, but the freshmen presented too strong an opposition in numbers for the sophomore-freshman scrap.

In its freshman year the "If" club was organized for freshmen men, sponsored by Utes Club, sophomore men's honorary.

At the Freshman Rose dance a year ago a silver loving cup was presented to Louise Wyrick, Freshman rose, by Edward Campbell, class president.

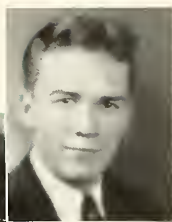
1928



Sophomore Class



SARAH HILL



JOHN LOOKABILL

The class retained its physical supremacy in its sophomore year by keeping the flag on the pole despite the efforts of the frosh to drag it down. The attempt to put the class flag on the Arthur Jordan Memorial Hall flag pole was frustrated, however.

George Marshall was the leader of the sophomore class. Other officers were Helen Louise Langston, vice-president; Sarah Ellen Hill, secretary, and John Lookabill, treasurer.

1931





Virgil Adams
Sam Arnett
Ann Arnold
Helen Arzett
Nina Baas

Theresa Bagnoli
Martha Jane Baker
Agnes Ball
Bertha Barker
Randall Bass

Helen Barchelor
Fred Baxter
Florence Behymer
Byron Benson
Evelyn Bently

Thomas Biggs
William Billings
William Boles
Helen Louise Bolyard
Maurice Boyd

Kenneth Brady
Jeanette Bradley
June Brossart
Helen Jane Brown
Helen Louise Brown

Frances Brumit
Virginia Bugbee
Robert Buschman
Edward Campbell
Burchard Carr

Helen Carver
Jerry Carver
Howard Chadd
Helen Chapman
Harry Chickadantz

Eleanor Clark
Waldo Clark
Mary Clifton
Mariadna Colburn
Maurine Collins

Thomas Cory
Virginia Craig
Mary Frances Cray
Francele Crenshaw
Gordon Culloden

Josephine Davidson
Bet Davis
Mary Deveny
William Weiss
Harriet Dickerson

Morris Dowd
Ward Ehrhart
Donald Ellis
Margaret Ensley
Mary Jeanette Evans

James Everline
Hugh Ewing
Carlin Felter
Charles Ferrell
Thelma Flack

Dick Fogarty
Elizabeth Forsythe
William Franklin
George Gable
Stanley Garner

Laura Garrison
Isabelle Garrison
Frances George
Dee Gill
Mary Elizabeth Goodnight

Jack Gulling
Steve Hadley
Robert Halbert
Allen Hall
Betty Hall

Jean Hamlet
Glen Hanning
Lawrence Hardy
Mary Harvey
Louise Haworth





Mary Love Hewlett
Thelma Hinshaw
Edwin Hobson
William Hoffman
Edith Hoopingarner

Alice Hopkins
William Horn
Edward Homer
Kenneth Hufford
Richard Hunt

William Hunt
Mary Insley
J. Thomas Isaacs
Lois Jackson
William Jennings

Bruce Johnson
Leland Johnson
Helen Johnston
Kathryn Jose
Nancy Kalleen

Marshall Kealing
Howard Kemper
Mary Kettler
Edward Kimberlin
Clara Mae Kirtley

Robert King
Eugene Knisely
Anita Knox
Allison Koelling
Robert Lang

Esther Mae Langdon
Helen Louise Langston
Donald Lankford
Dortheam Lawrence
William Layton

Luina Lee
Jack Lederer
Robert Lewis
Arthur Loftin
Thomas Long

John Lookabill
Carl Lutz
James Lynch
Dorothy Mae Lyons
Marjorie Lytle

Joe Macy
Mary Lou Mannan
Eleanor Marshall
George Marshall
Jewell Martin

Genevieve Maxwell
John McCreary
Fvelyn McDermitt
Anne McDevitt
Zoe McFadden

John McHenry
Margaret McLaughlin
Martha Metcalf
Mary Louise Metsker
Ralph Meyers

Alice Miller
Ray Miller
Aurzella Mogel
Louise Moon
Mary Katherine Moore

Nancy Moore
Ralph Moore
Evelyn Munday
Elizabeth Munson
Robert Murray

Elizabeth Mushlitz
John Newby
Robert Ogborne
Maxine Ornbaum
Margaret Overman

Ben Parrish
George Payton
Evelyn Payton
Charlotte Peele
Gertrude Pence





William Phipps
Mary Alice Pierson
Helen Pitt
Agnes Postma

Lois Power
Searle Proffitt
Evelyn Rabb
Jack Ranney

Betty Remy
Thomas Ressler
Ernest Robinson
Pauline Rock

Elise Schmidt
Louis Schriber
Robert Schulmeyer
Hannah Louise Sectors

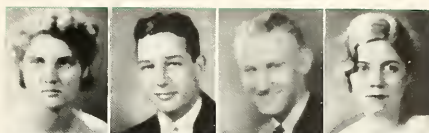
Jack Shaffer
Maurice Shelton
Jane Sherer
Julia Shugert

Norman Singleton
Mary Skelly
Mildred Snell
Katherine Snow

Samuel Southworth
Arle Spurlock
Dorothy Squires
Willard Stamper

Sidney Stevens
Dorothy Stewart
Jessie Lucille Strickland
Joe Sullivan

Marjorie Tate
Paul Tauer
Harry Tedrow
Martha TeWalt



Catherine Thurston
Katherine Tinsley
Violet Tipps
Evelyn Todd



Helen Tolson
Richard Trotter
Helen Tumbleson
Martha Tutewiler



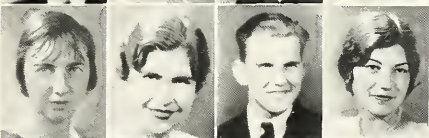
Jean Underwood
Jean Vander Vennet
Ruth Alice Van Matre
Robert Walker



Harry Weaver
Mary Louise Wheeler
Lawrence White
Ardith Whitmire



Mariana Williams
Mary Jane Williston
Edward Wilson
Myrtle Wilson



Fred Winter
Lyle Withrow
Dorothy Wright
Louise Wyrick



John Yager
Jean Yates
Josette Yelch
Myrtle Zaring





frank reissner



betty ramey



marjorie carr



fred engelking

Freshman Class

THE Freshman class of 1931 has lived up to the many traditions which have been established for it. In the first class meeting which was held last fall, Frank Reissner was elected president; Betty Ramey, vice-president; Marjorie Carr, secretary, and Fred Engelking, treasurer. Dorothy Jane Atkins was presented with a loving cup and a large bouquet of American Beauty roses at the Rose dance which was held at the Knights of Columbus hall.

The Freshman class also sponsored a campaign to increase Butler's enrollment for the second semester. A committee composed of two representatives from each Indianapolis high school was appointed. Members were given lists of the January seniors of their respective high schools, on whom they made personal calls.

A GREEN CROP



magdalene adams
elizabeth akin
ruth jean ale
aleen alexander
lorna alexander

mary elizabeth adams
dorothy arnholter
doris arnold
dorothy atkins
marguerite bader

dorothy baldridge
betty jeanne balz
grace barnett
betty barone
robert barry

edward baxter
josephine bennett
donald billings
elizabeth bissell
mary louise bohnstadt

lee boling
charles bolles
joan boswell
edward bowman
edward bradford

bertha bretzman
robert brickett
frances brittain
frances brusck
harold buckhorn

kathryn budd
george burkert
barbara butler
florence butterworth
catherine butz
eloise byrkit

marjorie campbell
marjorie mae campbell
charlotte carl
marjorie carr
charlotte cashion
gifford cast

dorothy chaplin
harry claffey
viola cochran
vincent concannon
florence condrey
joseph coons





julia cooper
roberta cramer
clarence cross
evelyn crostreet
dorothy dauner

gene demmary
louise dennany
edward dentry
louise dodd
betty dadds

anna marie dungan
james dunlavy
jack dyer
stanley edwards
mozelle ehnes

douglas elwood
edward emery
fred engelking
warren eikenberry
e. p. erwin

orval evans
richard everline
josephine fassler
princess finney
katheryn fitchev

winifred fithian
jane fliedner
harriet ford
laura foy
joan freeman

robert fuller
la vonne fullgraff
jane gardner
mabel gearhart
marie george
elbert gilliom

katherine glidden
dorothy goddard
lois golden
margaret goulding
john gowdy
alecene green

mary griswold
eleanor hack
william hamilton
harry harlan
margaret harrison
nantelle harvey

ruth heaton
o. lorance hedge
martha hellers
allen helt
julia henderson

bertha herrick
margaret hollen
edmund hornbeck
jane horne
ruth hyatt

elmer jackson
janet jerman
charles johnson
emsley johnson
donald jones

helen mae jordan
agnes kalleen
harry koss
evelyn kellogg
hunter kennedy

opal keran
charles kilgore
loretta kittle
fred kline
lillian knapp

vera b. kunse
james lambert
mae lane
robert lang
nellie larkins

ralph lett
margaret lewis
john long
harold love
mary rose lowry
lyle mabe

edwin manouge
cecil marion
margaret mattingly
william mc clelland
alene mc comb
elizabeth mc cracken

louise mc dermott
josephine mc elhaney
wilhelmina mc elroy
ellen mc fadden
jacquelyn mc kee
charles meeks





madge mehring
edward meith
catherine merrick
harold miles
harrison miller

jean misch
john montani
daniel morgan
david moriarity
jack moore

al mowbray
woodrow moyer
bruce munro
charles nail
lillian naïsmith

james nesmith
joseph newman
elizabeth nichols
mary nicodemus
katherine nitterhouse

martha o'banion
john l. orr
myra orr
thomas osborne
mary ruth palmer

mary parr
mary eleanor peggs
norman peine
johanne perrin
james perry

virginia plack
william raffensperger
sheldon raiser
elizabeth ramey
william rasmussen
eleanor rathert

cecil ray
rosalyn reed
frank reissner
helen richwine
harry riddell
helen riggins

pauline rock
marvin rosaa
madeline sander
elaine schmidt
cosette scholl
marian schulz

ruth schwab
clinton scott
chrman scott
mary search
carl seet

erma seitz
marie shaner
mary sharpe
ruth shields
martha shirk

gale shullenberger
william smith
dorothea smock
harrison snider
vangel snodgrass

marvel snyder
maxine spough
alberta speicher
florinda stant
james Stewart

elinor stiers
mary stierwalt
robert stone
eric storz
mary m. strickler
ralph stych

john v. sullivan
webster terhune
richard thompson
emma lou thornbrough
lena tobey
emma louise trees

gail vandover
robert wagner
ruth waldbieser
granville ward
john ward
lucine warfel

henry watkins
marjory watkins
oran watts
elaine wilson
lenora winter
evelyn wolfard

marion wooley
harold worth
frances wysong
betty yoder
helen young
mable zetterberg





OFFICERS

Teachers' College

(The Drift has been fortunate enough to secure a brief history of the College of education by Mrs. Lois Grosvenor Hufford, Dean Emeritus and well-known Indianapolis educator).

THE Teachers' College of Indianapolis has a record of long and honorable achievement. In 1882 the then newly organized Free Kindergarten and Childrens' Aid Society invited Mrs. Eliza A. Blaker to become superintendent of the kindergartens established by that associa-

INSTALLATION OF THE COLLEGE OF EDUCATION



tion. Mrs. Blaker, a graduate of the Centennial Kindergarten Training school of Philadelphia, realizing that the best effects could not be accomplished by volunteer workers, opened a school for the training of kindergartners. That school became the nucleus of the Blaker Teachers' College. By 1900, 701 student teachers had been graduated.

For twenty years the free kindergartens were maintained by voluntary subscriptions, by silver offerings at afternoon teas, and by other efforts of the association.

Meantime, Mrs. Blaker had succeeded in obtaining legislative enactments authorizing the opening of public kindergartens in cities having a population of 5,000 or more. Several Indiana towns established free kindergartens under that authorization.

Mrs. Blaker's forceful personality, together with her unbounded faith in the work of training young women for the profession of mother-

SENIOR CLASS



hood, as well as that of teaching, so impressed other able men and women that she never failed to receive financial as well as moral support.

The year 1903 has a two-fold importance in the history of this institution. In that year the Jackson memorial building was erected on land purchased by the association at Alabama and Twenty-third streets. During the preceding twenty-one years the school had had no regular abiding place.

In 1903 also the Indiana legislature adopted a measure permitting cities of one hundred thousand inhabitants and in which twelve free kindergartens were maintained by regularly organized societies to assess a tax of one-half cent, such moneys to be distributed by the city school commission.

Up to 1910 the regular training course had been completed in two years. By order of the Indiana State Board of Education it was then extended to a period of four years.

FRESHMAN CLASS



In 1914 the next important step was taken. The Free Kindergarten Association constituted itself a separate body, yet it still retained Mrs. Blaker as superintendent. Then twelve members of the association took out articles of incorporation under the name Teachers' College of Indianapolis. They elected Mrs. Charles F. Sayles president of the board of trustees and Mrs. Eliza A. Blaker president of the Teachers' College for life.

In 1915 a second building was erected on the ground east of the Jackson memorial, its cost being largely contributed by Mrs. Sayles. In memory of her mother it was named the Armenia B. Tuttle memorial.

In the course of succeeding years, the trustees acquired the remainder of the south half of the block on Alabama street, including a double residence. They also erected two buildings for the use of the model school which provided training for children in the elementary grades.

At the Commencement of 1917 the degree of Bachelor of Pedagogy was conferred upon two graduate students. At the close of the school

ART CLUB



year in 1930, ninety students had received that degree. The total number of graduates was then 4050.

In 1920 Mrs. Evans Woolen Sr. was elected president of the board of trustees, a position which she held until 1930 when the Teachers' college became a department of the Butler university College of Education. To her liberality and her wise conduct of affairs the Teachers' college owes much of its success in later years.

On December 4, 1926 Eliza A. Blaker died. She had desired to have her Teachers' college affiliated with Butler university and had initiated that movement. The presidency of the college was held by Mrs. Alice Corbin Sies during the three following years.

The motto of the Teachers college of Indianapolis is "More Light". In taking its place as a part of the Butler College of Education, it is inspired by that principle.

ATHLETIC CLUB



Men

...and that degree. The total number of teachers in the district is 1,000.

The board of education is the highest authority in the district. The board of education is composed of 12 members, 10 of whom are elected by the Teachers' Association and 2 are appointed by the board of education. The board of education is responsible for the management of the district's schools and for the appointment and removal of the superintendent of schools.

The superintendent of schools is the chief executive officer of the district. He is responsible for the management of the district's schools and for the appointment and removal of the principals and teachers. The superintendent of schools is also responsible for the management of the district's financial affairs and for the management of the district's personnel.

The principals are the chief executive officers of the schools. They are responsible for the management of the schools and for the appointment and removal of the teachers. The principals are also responsible for the management of the schools' financial affairs and for the management of the schools' personnel.

Men





Representative
Men





EDWARD GREEN



MAYNARD LEMEN



THOMAS SCANLON



WALES SMITH

Representative Men

THE Representative Men were chosen by a committee of faculty members. Mrs. Alice Bidwell Wesenberg, chairman of the university social committee, acted as chairman, assisted by Dr. Janet McDonald, advisor to the Student Council, and J. Douglas Perry, acting advisor to the university publications.

The two junior men and two senior men pictured were chosen from the following students--Mayburn Landgraf, Crawford Yeazel, Russell Townsend, Edward Green, Harlan Hadley, Maynard Lemen, Richard Fogarty, Thomas Scanlon, Wales Smith and Maurice Boyd.

Only men who had no connection with the DRIFT and had not received the honor in previous years were considered.

Inter-Fraternity

REPRESENTATION in the Interfraternity council is limited to two men from each national fraternity and each local organization having a membership of twenty-five or more on the Butler campus.

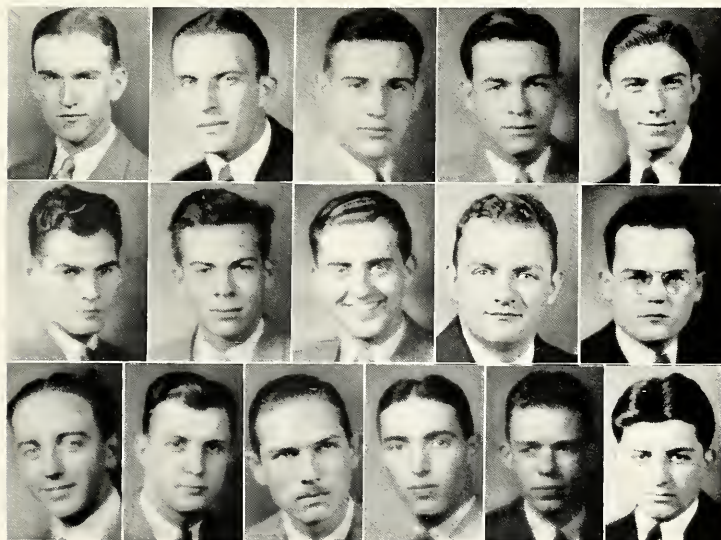
The council aims to maintain harmony among the component organizations. It regulates intramural sports and extra curricular and social activities.

Meetings are held weekly at the various fraternity houses. Officers for the year were: Richard Fogarty, president; Richard Wolfe, secretary, and Gerald Sharrer, treasurer.

First row--Richard Fogarty (pres.), Richard Wolfe (secy.), Charles Sohl, Stephen Hadley, Burchard Carr.

Second row--Arthur Loftin, Thad Schoen, Max White, Gerald Sharrer, Charles Barry.

Third row--George Payton, Richard Frazier, Oran Stanley, Himie Greenburg, Robert Houser, William Haslet.



Phi Delta Theta



Founded December 26, 1848, at Miami University

Indiana Gamma Chapter Established October 22, 1859

First row--

Harlan Hadley (pres.)
 Frederick Baxter
 Robert Boesinger
 Robert Butterworth
 Richard Elrod
 Kenton Gardner
 Granville Geisert

Fifth row--

Ralph Brandt
 Bert Davis
 Stephen Hadley
 Norman Hanna
 Lawrence Hardy
 William Hoffman
 William Horn

Second row--

Edward Green
 Hubert Hinchman
 William McCarthy
 Ralph McElroy
 James Strahl
 J. Russell Townsend Jr.
 Ralph Walton

Sixth row--

Robert King
 Howard Kemper
 John McCreary
 Ben Parrish
 Willard Stamper
 Joseph Sullivan
 Lee Boling

Third row--

Willard Worth
 Crawford Yeazel
 Rodney Perkins
 Robert Blackburn
 Kenneth Booz
 Merlin King
 Ralph Mecum

Seventh row--

Calvert Craig
 Elbert Gilliom
 Charles Johnson
 Harold Love
 Jack Moore
 Bruce Munro
 Albert Mowbray

Fourth row--

Bert Nelson
 Thurman Ridge
 Wales Smith
 Charles Sohl
 Sam Arnett
 Allen Bailey
 Edward Bolin

Eighth row--

Edward Perry
 William Raffensperger
 Sheldon Kaiser
 James Stewart
 Robert Stone
 Eric Storz
 Webster Terhune



Sigma Chi



Founded March, 1855 at Miami University

Rho Chapter Established April 10, 1865

First row--

Donald Woods (pres.)
Jay Beem
Richard Boles
Maurice Boyd
Edward Bradford
Robert Brown

Fourth row--

Edward Horner
John Hussey
Frank Jones
William Layton
Arthur Loftin
John Long

Second row--

Burchard Carr
Harry Chickadantz
Ralph Coble
Joseph Coons
Clarence Cross
Gordon Culloden

Fifth row--

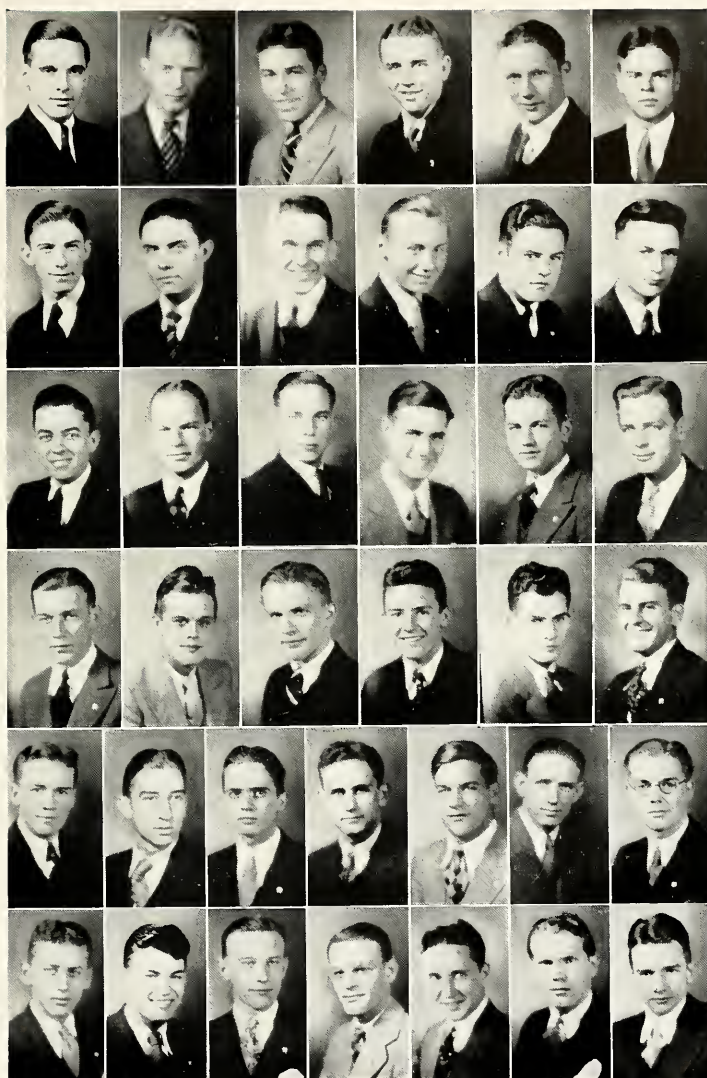
John Lookabill
James Lowry
Pearce McClelland
Ralph Moore
John Orr
Searle Proffitt
William Rasmussen

Third row--

Morris Dowd
James Everline
Richard Everline
George Gable
John Gowdy
William Hamilton

Sixth row--

Frank Reissner
Jack Schaffer
Gale Shullenberger
Wendell Shullenberger
Robert Stearns
Richard Trotter
Robert Walker



Delta Tau Delta



Founded 1859 at Bethany College

Beta Zeta Chapter Established February 11, 1878

First row--

Seward Baker
Donald Billings
George Boersig
Robert Buschman
Owen Calvert
Edward Campbell

Fifth row--

Max Miller
Ruell Moore
Joe Newman
George Nulf
William Phipps
Jesse Pritchett
James Puett

Second row--

Gifford Cast
Howard Chadd
Tom Cory
Jack Dyer
Don Ellis
Frank Fairchild

Sixth row--

Tom Ressler
Harry Riddell
Tom Scanlon
Thad Schoen
Maurice Shelton
Harrison Sibbitt
Joe Sivak

Third row--

Henry Gibson
Jack Gulling
Robert Halbert
Virgil Hebert
Allen Helt
Victor Hertz
Edmund Hornbeck

Seventh row--

Harrison Snyder
Malcolm Snoddy
Constant Southworth
Robert Southworth
Herbert Sweet
Joe Taylor
Granville Ward

Fourth row--

Richard Huggins
John Thomas Isaacs
Emsley Johnson
Charles Kilgore
Jack Lederer
George Marshall
Harrison Miller

Eighth row--

John Ward
Henry Watkins
Harry Weaver
Joseph Wilson
Marion Wooley
John Yeager
Donald Youel



Lambda Chi Alpha



Founded November 2, 1909 at Boston University

Alpha Alpha Chapter Established December 15, 1915

First row--

Tom Butz (pres.)
Paul Baker
Ward Barrick
Carlyle Bauermeister
Addison Beavers
Paul Becker

Fifth row--

Carl Lutz
James Lynch
Edwin Manouge
Lowell McPherson
Albert Middlesworth
Ray Miller
Harold Moreland

Second row--

Dwight Billings
Harry Claffey
Vincent Concannon
William Weiss
Richard Fogarty
Robert Fuller

Sixth row--

David Moriarity
Woodrow Moyer
Robert Murray
John Newby
Lowell Parker
James Perry
Cecil Ray

Third row--

Frank Heddon
Kenneth Hufford
Warren Isom
Elmer Jackson
Bruce Johnson
Leland Johnson

Seventh row--

Paul Robinson
Marvin Rosaa
George Schreiber
Clinton Scott
Chester Sceright
William Smith
Ralph Stych

Fourth row

Tom Kelley
Harry Koss
Donald Lankford
Abraham Letiff
Ralph Lett
George Lloyd
Tom Long

Eighth row--

Harold Templeton
Richard Thompson
Marshall Tackett
Max White
Ed Wilson
Fred Winter
Walter Witt



Tau Kappa Tau



Founded January 8, 1919 at Butler University

First row--

Waldo Clark
William Franklin
William Hantzis

Third row--

Himie Greenberg
Robert Houser
Charles Leeds
Harry Claffey

Second row--

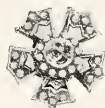
Lewis Ruffi
Louis Eggert
Sterling Given

Fourth row--

Carlin Felter
William Hunt
Tom Biggins
Harold Worth



Sigma Nu



Founded January 1, 1869, at Virginia Military Institute

Epsilon Mu Chapter Established May 6, 1926

First row--

Howard Crise (pres.)
Charles Barry
Randall Bass
Reuben Beabout
Byron Benson

Fourth row--

Ralph Meyers
Delmas Moon
Edwin Ogborne
Robert Ogborne
Thomas Osborne
Gerald Sherrer

Second row--

Raymond Burns
Cortland Carrington
Theodore Cline
Gustav Dongus
Ward Ehrhart

Fifth row--

Norman Singleton
Robert Walden
Lyle Withrow
Robert Barry
Edward Dentry
James Dunlavy

Third row--

Dee Gill
Stanley Garner
Richard Hunt
Walter Johnston
Allison Koelling
Earl McCormick

Sixth row--

E. P. Erwin
Harry Harlan
Olin Hedge
Marshall Kealing
Paul Lambert
Joe Macy



Chi Rho Zeta



Founded February 5, 1925, at Butler University

First row--

William Haslet (pres.)
Robert Cook
Arthur Echternacht
Edmund Huxley

Second row--

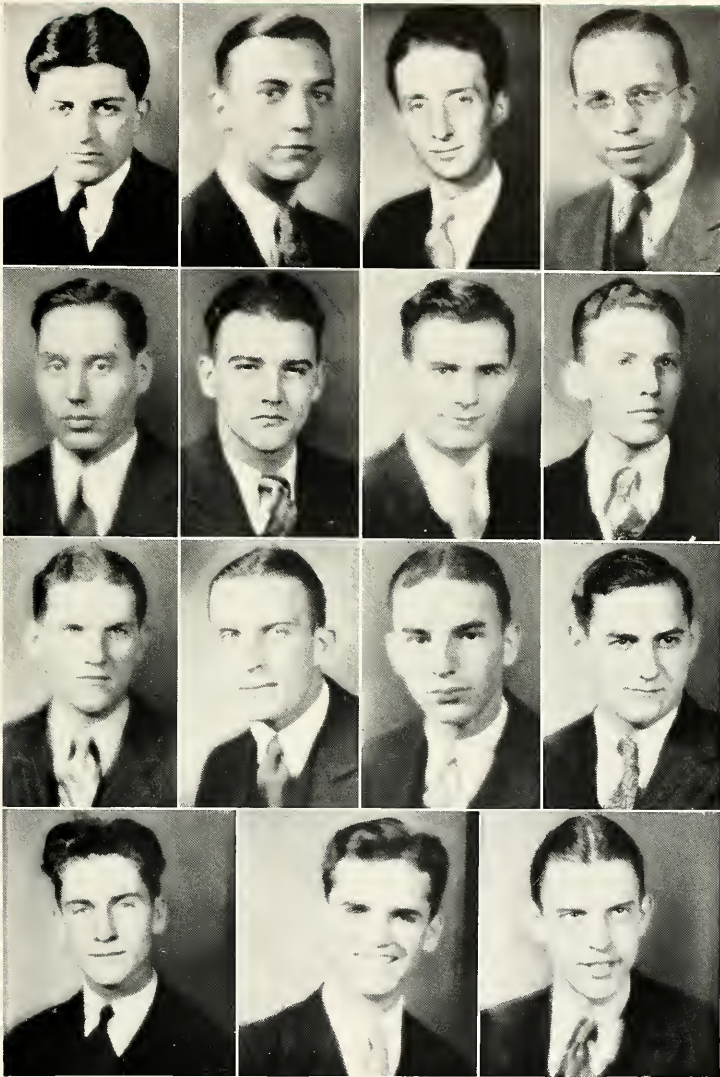
James Moody
Virgil Adams
Lawrence Davis
Henry Scheidker

Third row--

Duane Shute
Richard Wolfe
Kenneth Brady
Eugene Kniseley

Fourth row--

Hugh Ewing
Hunter Kennedy
James Nesmith



Delta Alpha Pi



Founded November 22, 1919, at Ohio Wesleyan University

Epsilon Chapter Established May 31, 1927

George Shelby (pres.)

Edward Baxter

Roger Estep

George Paton

Jack Ranney

Ehrmann Scott

Robert Shulmeyer



Kappa Delta Rho



Founded 1905, at Middlebury College

Omicron Chapter Established January 7, 1928

First row--

Harold Vehling (pres.)
Berwyn Jones
Robert Mathers
Oran Stanley

Second row--

Ralph Urbain
Ray Urbain
Clarence Frazier
Douglas Elwood
Donald Jones

Fourth row--

Charles Meeks
Edward Meith
Albert Middlesworth
John Montani
Charles Nail

Third row--

Robert Brickert
Harold Buckhorn
Eugene Campbell
Stanley Edwards
Wayne McMahan

Fifth row--

William Ogden
Urban Pilum
Joe Ruddick
Lowell Sumner
Oran Watts



Y. M. C. A.

ONE of the oldest organizations on the campus is Y.M.C.A., the main purpose of which is good fellowship among the students, especially between the freshmen and the upper classes.

One of the Y.M.C.A.'s largest projects is co-sponsorship with the Y.W.C.A. of the annual Christian World Education Conference. Students are excused from classes to hear lectures by competent authorities on world problems. Approximately 2,000 students attended the conference.

Another project which Y. M. C. A. shares with Y.W.C.A. is the "Quiet Hour", held on alternate Friday noons. Several prominent Butler people give talks at these open noon meetings.

The annual Geneva stunts, a group of skits by each fraternity on the campus, were given this year at Caleb Mills Hall on March 1. Delta Tau Delta was awarded a cup for having the best stunt. The proceeds of the program are used to send a delegate to the annual Mid-West College Y.M.C.A. Conference at Lake Geneva, Wis.

Out of the discussion groups this year has grown an inter-racial study group which meets the second Tuesday of each month.

A number of supper meetings were held at which noted lecturers spoke.

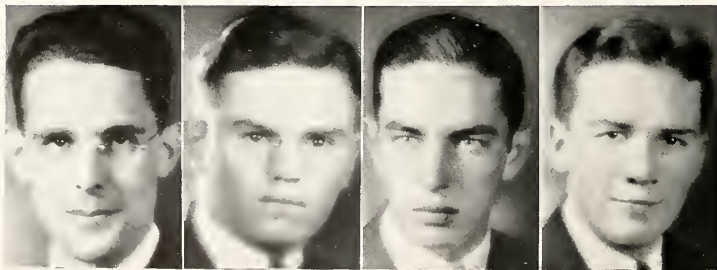
The officers for 1930-'31 were: Wales E. Smith, president; Warren Isom, vice-president; William Hoffman, secretary, and John Lookabill, treasurer. Officers for the next year are: William Hoffman, president; Lee Boling, vice-president; Hoyt Hurst, secretary, and John Lookabill, treasurer.

WALES SMITH
President

WARREN ISOM
Vice-President

WILLIAM HOFFMAN
Secretary

JOHN LOOKABILL
Treasurer



Men's Union

MEN's Union was founded in 1925. The purpose of the organization is to promote school spirit through the medium of varied social functions throughout the year, including all-school dances, bridge tournaments, mixers and other events.

The main project of the Union this year was the Fairview Follies, an all school musical comedy, which was presented at Caleb Mills Hall on April 10 and 11.

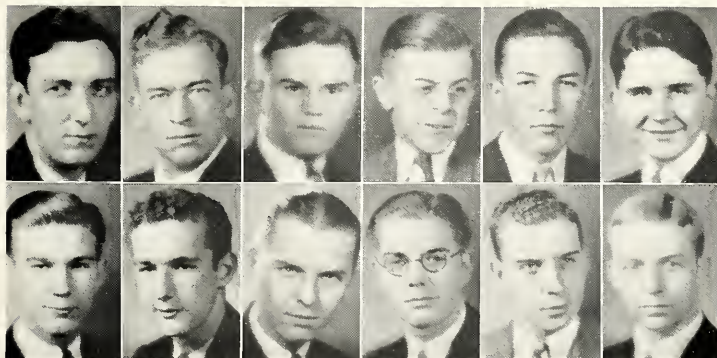
The Union's first activity of the year was to sponsor an all-school dance following the first football game of the season. A get-together dinner was held at the Campus Club December 12, following which the men attended the opening basketball game against Cincinnati university. The proceeds of the game were donated to the Indianapolis Times "Clothe a Child for Christmas" fund.

The Union also sponsored the mid-semester sale of freshman caps. The annual inter-sorority and inter-fraternity bridge tournament was held at the Campus Club the latter part of May. Honor Day was celebrated late in the year and awards were made to Butler men outstanding in athletics and campus activities.

Eventually the Men's Union hopes to build a club house for all school men, and the profits from all financial enterprises are set aside in a special fund for this purpose.

First row--Edward Green (pres.), Harold Vehling (v. pres.), Warren Isom (sec'y.), Emsley Johnson (treas.), Elbert Gilliom, Milton Green.

Second row--Tom Long, Albert Mowbray, Edward Perry, William Rasmussen, Joseph Schaub, Theodore Woelfling.



Blue Key



SKULLS chapter of Blue Key was established on the Butler campus in 1926 as the twentieth chapter of the national honorary fraternity, founded at the University of Florida in 1924. The Butler chapter existed first as the Skulls Club founded in 1920 by "Pat" Page. The membership is limited to Junior and Senior men, chosen on the basis of all-round leadership, college activities and character. Blue Key has continued to raise its qualifications for membership until now the pledge group is limited to ten men.

Blue Key began its year of activity with a "send off" for Harry Bell, the football coach, at the opening game which included a huge pep session and the sponsoring of a hundred percent attendance record.

For the fourth consecutive year, Blue Key took charge of the Homecoming activities. A mammoth parade opened one of the greatest homecomings in the history of Butler University. Following the homecoming game a dance took place and silver loving cups were awarded to Kappa Kappa Gamma and Sigma Chi for the best floats.

Members of Blue Key ushered at the Shortridge-Cathedral Benefit football game in the Butler stadium Thanksgiving morning.

The annual football banquet given by Blue Key in recognition of the varsity, was held at Coopers supper Club. The one hundred guests included the varsity and freshman teams, the Board of Directors, and prominent Indianapolis men.

An initiation banquet was held at the Marott Hotel for fifteen men. A Blue Key was awarded to Marshall Tackett by the active chapter for recognition as the most outstanding pledge. John W. Atherton, the principal speaker at the banquet, presented the award key.

Officers for the year were: Mayburn Landgraf, president; Wendell Shullenberger, vice-president; Carlyle Bauermeister, secretary; and Ralph McElroy, treasurer.

First row--Mayburn Landgraf (pres.), Carlyle Bauermeister (sec'y.), Ralph McElroy (treas.), Robert Butterworth, Granville Geisert.

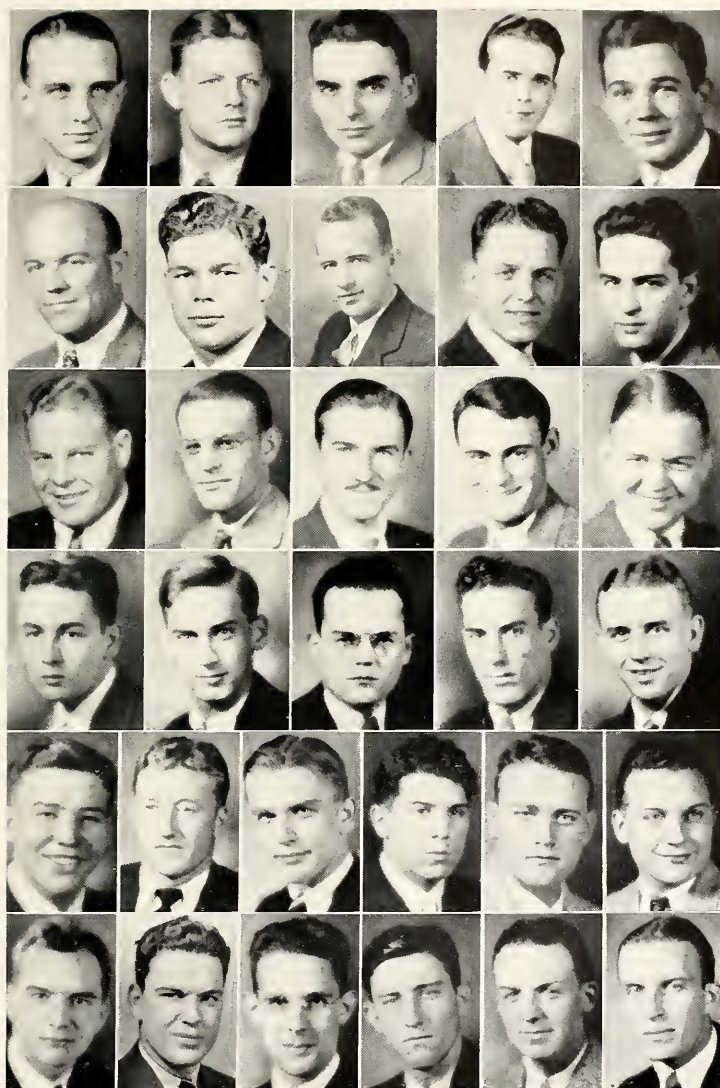
Second row--Frank Heddon, Hubert Hinchman, Maynard Lemen, George Nulf, Edwin Osborne.

Third row--James Puett, Wendell Shullenberger, Joe Sivak, Harold Templeton, Russell Townsend.

Fourth row--Ralph Walton, Donald Youel, Charles Barry, Kenneth Booz, Maurice Boyd.

Fifth row--Ralph Brandt, Howard Chadd, Frank Jones, Abe Letiff, Ralph Mecum, Harold Moreland.

Sixth row--Thurman Ridge, Lewis Rulfi, Wales Smith, Marshall Tackett, Lyle Withrow, Richard Wolfe.



Sphinx

SPHINX was installed on the Butler campus in 1921 by a team from Wabash. Just a year before a group of representatives of the national fraternities at Butler had organized and petitioned for a charter.

The ideals of the Sphinx organization are the cultivation of an interest in extra-curricular projects and the maintenance of high standards and good fellowship among undergraduates. Members are selected from national fraternity men who have shown interest in sports and other activities.


Pledge ribbons are the fraternity colors of black and white. The active pin is a gold sphinx head. The officers for the year were: Crawford Yeazel, president and Ruell Moore, secretary and treasurer.

First row--Crawford Yeazel (pres.), Ruell Moore (secy.-treas.), Reuben Beabout, Edward Green, Harlan Hadley, Virgil Hebert, Kenneth Hufford.

Second row--Lowell McPherson, Gerald Sharrer, James Strahl, Willard Worth, Robert Blackburn, John Burns, Tom Butz, Howard Crise.

Third row--Richard Fogarty, Clarence Frazier, Arthur Loftin, Bert Nelson, Tom Scanlon, Thad Schoen, Malcolm Snoddy, Charles Sohl.





Women

Sphinx

Sphinx was organized by the Barlow campus in 1921 by a team from *Synthesis*. It is a club for a group of representatives of the national fraternities of Barlow and is organized and governed for a charter.

The motto of the Sphinx is "The cultivation of an interest in every student's progress and the maintenance of high standards of scholarship." The club is open to all students who are members of the national fraternities of Barlow and who are interested in the club's work.

The club is organized into three divisions: the *Sphinx*, the *Sphinxette*, and the *Sphinxette*. The *Sphinx* is the main body of the club and is composed of the members of the national fraternities of Barlow. The *Sphinxette* is a group of students who are interested in the club's work and who are not members of the national fraternities of Barlow. The *Sphinxette* is a group of students who are interested in the club's work and who are not members of the national fraternities of Barlow.

nemoW

The *nemoW* is a group of students who are interested in the club's work and who are not members of the national fraternities of Barlow. The *nemoW* is a group of students who are interested in the club's work and who are not members of the national fraternities of Barlow.

The *nemoW* is a group of students who are interested in the club's work and who are not members of the national fraternities of Barlow. The *nemoW* is a group of students who are interested in the club's work and who are not members of the national fraternities of Barlow.





Representative
Women





ROSEMARY BRETZMAN



MARGARET BARKER



VALENTIA MENG



ELMA ROSE SAILORS

Representative Women

THE Representative Women were chosen in the same manner as the Representative Men, and by the same committee, consisting of Mrs. Alice Bidwell Wesenberg, chairman; Dr. Janet McDonald and J. Douglas Perry.

The selection of the two juniors and two seniors was made from the following candidates: Rosemary Bretzman, Elizabeth Carr, Honor Gregory, Constance Glover, Dorothy Quick, Margaret Barker, Lilyan Brafford, Valentia Meng, Dorothy Screes and Elma Rose Sailors.

As in the case of the Representative men, those who had attained the honor in previous years were excluded from consideration.

Panhellenic Association

At least a generous part of the triple purpose of Panhellenic association gained a closer realization this year than perhaps in any year since the founding of the association in 1924. Besides centering activities around regulating rush conditions and unifying the interests of sororities, Panhellenic this year strove doubly hard to promote greater fellowship and democracy among organized women.

Most outstanding among the year's social affairs for all organized women was the Grecian dinner, January 8, in the Marott hotel. Completeness according to classic traditions of custom, program, decorations and food made it the first of its kind ever held in the Middle West.

Of even more widespread recognition for the local organization, though, was the election of Helen Weyl to the presidency of the National Panhellenic Association of Urban Universities and her appointment of Harriet McGaughey as secretary. Miss Weyl and Miss McGaughey were also largely instrumental in bringing the 1932 convention to Indianapolis.

The scholarship cup awarded annually by Panhellenic to the sorority making the highest scholastic average went this year to Chi Theta Chi.

Officers for the association were Rosemary Bretzman, president, and Shirley Nelson, secretary-treasurer.

First row--Rosemary Bretzman (pres.), Shirley Nelson (v. pres.), Margaret Harrison, Harriet McGaughey, Betty Jean Davis, Myla Smith, Marthalou Schoener, Helen Weyl.
Second row--Catherine Matthews, Anna Marie Sander, Mary Lou Allen, Geraldine Kuntz, Mildred McCormick, Edith Barnhill, Marcella Matthews, Anita Brownlee.
Third row--Cecile Nease, Hilda Schmidt, Lilyan Brafford, Mary Virginia Clark, Ruth McClurg, Ava Louise Reddick, Florence Rathert, Mary Margaret Woods.



Kappa Alpha Theta



Founded January 27, 1870, at DePauw University

Gamma Chapter Established February 27, 1874

First row--

Valentia Meng (pres.)
Margaret Harrison
Harriet Henderson
Elizabeth Hodges
Mary Hoover
Mary Mills
Mary Jane Morris

Second row--

Flora Walters
Muriel Adams
Dorothy DeFrees
Virginia Fleming
Mardenna Johnson
Mary Jane Krull
Betty Lower

Third row--

Harriet McGaughey
Ruby Pasho
Jane Riddell
Elma Rose Sailors
Frances Zaring
Martha Adams
Ann Arnold

Fourth row--

Martha Jane Baker
Helen Batchelor
Helen Bolyard
Mary Elizabeth Goodnight
Virginia Goodwin
Mary Insley
Catherine Jose

Fifth row--

Loretta Kittle
Helen Louise Langston
Helen Lucas
Marjorie Tate
Mary Louise Wheeler
Louise Wyrick
Magdalene Adams

Sixth row--

Mary Elizabeth Adams
Grace Barnett
Joan Boswell
Mary Clifton
Virginia Craig
Robertta Cramer
Harriet Dickerson

Seventh row--

Jane Anne Gardner
Lois Golden
Eleanor Hack
Ruth Heaton
Julia Henderson
Jane Howe
Mary Eleanor Peggs
Betty Ramey

Eighth row--

Mariamelia Schmidt
Dorothea Smock
Mary Alice Skelley
Martha Slaymaker
Elinor Stiers
Mary Jane Stout
Lucine Warfel
Evelyn Woolford
Myrtle Zaring



Kappa Kappa Gamma



Founded October 13, 1870, at Monmouth College

Mu Chapter Established January 2, 1878

First row--

Betty Jean Davis (pres.)
Margaret Barker
Betty Jane Barrett
Elizabeth Carr
Anna Lee Howell
Katherine Kinnaird
Jean Peterson

Second row--

Lillian Pierson
Dorothy Quick
Margaret Schumacher
Mary Yarling
Mary Louise Beam
Margaret Frazier
Adelaide Gould

Third row--

Nancy Kalleen
Dione Kerlin
Elizabeth Martin
Myla Smith
Vangel Snodgrass
Frances Brusch
Virginia Bugbee

Fourth row--

Barbara Butler
Mariadna Colburn
Isabel Garrison
Jean Hamlet
Glen Hanning
Sarah Hill
Anita Knox

Fifth row--

Nancy Moore
Elizabeth Munson
Evelyn Payton
Mary Alice Pierson
Lois Power
Betty Remy
Jane Scherer

Sixth row--

Elise Schmidt
Jessie Strickland
Martha Tewalt
Martha Tutewiler
Jean Underwood
Jane Williston
Betty Balz

Seventh row--

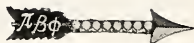
Betty Dodds
Katherine Fitchie
Agnes Kalleen
Margaret Lewis
Jacqueline McKee
Delight Morrison
Johanne Perrin

Eighth row--

Elizabeth Romack
Cosette Scholl
Mary Elizabeth Search
Mary Stierwalt
Jane Flieger
Marjorie Watkins



Pi Beta Phi



Founded April 27, 1867, at Monmouth College
 Indiana Gamma Chapter Established August 27, 1897

First row--

Virginia Seeds (pres.)
 Dorothy Behmer
 Beatrice Burgan
 Phyllis Cofield
 Virginia Hill
 Ruth Landers
 Madge McPherson

Second row--

Catherine Murdock
 Evelyn Pier
 Maxine Rigsbee
 Marthalou Schoener
 Lois Sherrill
 Truth Wakeman
 Jane Allison

Third row--

Betty Jane Emmett
 Jane Hadley
 Vera Grey Hinshaw
 Edith Hoopingardner
 Gwendolyn Schort
 Dorothy Screes
 Helen Weyl

Fourth row--

Helen Arzet
 Agnes Ball
 Frances George
 Alice Hopkins
 Lois Jackson
 Luana Lee
 Mary Rose Lowry

Fifth row--

Evelyn McDermett
 Ellen McEadden
 Margaret McLaughlin
 Mary Lou Mannan
 Martha Metcalf
 Louise Moon
 Betty Mushlitz

Sixth row--

Hope Willcutts
 Jean Yates
 Lorna Alexander
 Dorothy Arnholder
 Dorothy Jane Atkins
 Betty Barrone
 Helen Carson

Seventh row--

Anna Murie Dunnean
 Helen Gearen
 Marcele Glidden
 Dorothy Goddard
 Elizabeth Hadley
 Nantelle Harvey
 Ruth Hyatt

Eighth row--

Janet Jerman
 Evelyn Kellogg
 Dorothy Lewis
 Betty McCracken
 Dorothy Jane McMasters
 Jean Misch
 Mary Ruth Palmer
 Madeline Sanders



Delta Delta Delta



Founded November 24, 1888, at Boston University

Delta Lambda Chapter Established May 18, 1914

First row--

Catherine Matthews (Pres.)
 Marjorie Brownlee
 Irene Cravens
 Elizabeth Dalman
 Helen Eiser
 Martha Hill

Fourth row--

Margaret Shively
 Virginia Taylor
 Harriette Trinkle
 Louise Bolin
 Helen Brown
 Isabelle Campbell

Second row--

Virginia Logan
 Clara Schell
 Clementine Casmire
 Rosalind Gibson
 Waneta Graves
 Helen Hitch

Fifth row--

Evelyn Crostreet
 Mary Harvey
 Mary Kettler
 Clara Mae Kirtley
 Eleanor Marshall
 Genevieve Maxwell

Third row--

Virginia Holt
 Ruth Kennedy
 Ann McDevitt
 Aliene Mead
 Maxine Ornbaum
 Anna Marie Sander

Sixth row--

Josephine McElhaney
 Mary Moore
 Gertrude Pence
 Julia Shugert
 Catherine Butz
 Marjorie Carr

Eighth row--

Charlotte Cashon
 Josephine Fassler
 Bertha Herrick
 Margaret Hollen
 Lillian Naismith
 Katherine Silliman
 Louise Trees



Zeta Tau Alpha



Founded October 25, 1898, at Virginia State Normal

Alpha Delta Chapter Established June 5, 1920

First row--

Evelyn Henschen (Pres.)
Louise Berndt
Alice Dickey
Susan Erlewine
Honor Gregory

Third row--

Iris Hollins
Thelma Williams
Nina Baas
Elizabeth Forsythe
Geraldine Kuntz

Second row--

Helma Kahn
Marifrances Lee
Virginia Lett
Mary Lou Allen
Loujean Cullett

Fourth row--

Mildred Lawler
Mariana Williams
Marie George
Martha Heller
Ethel Merrick

Fifth row--

Mary Lou Metsker
Kathryn Nitterhouse
Agnes Postma
Marie Shaner
Katherine Snow



Alpha Delta Theta



Founded January 1, 1919 at Transylvania College

Epsilon Chapter Established October 13, 1923

First row--

Mildred McCormick (pres.)
Margaret Bradburn
Pauline Elvers
Wilhelmina Shirtz

Third row--

Edith Gauld
Gilberta Heid
Emma Louise Mann
Katherine Maurer

Second row--

Kathryn Yeaman
Mabel Zetterberg
Edith Barnhill
Margaret Esterline

Fourth row--

Martha O'Banion
Ruth Willcox
Rosemary Woodworth
June Brossart
Dorthemae Lawrence

Fifth row--

Evelyn Munday
Helen Pitt
Evelyn Rabb
Viola Cochran
Frances Wyson



Delta Zeta



Founded October 24, 1902, at Miami University

Alpha Nu Chapter Established June 17, 1924

First row--

Mary Elizabeth Thumma (Pres.)
Ruth Goans
Alice Hignan
Marcella Matthews
Anita Brownlee

Third row--

Josephine Ready
Betty Wilson
June Wilson
Esther Langdon
Zoe McFadden

Second row--

Louise Headrick
Willodean Nease
Dorothy Neptune
Ruth Marie Price
Kathryn Quinn

Fourth row--

Dorothy Wright
Marguerite Bader
Mary Bohnstadt
Frances Brittain
Marjorie Campbell

Fifth row--

Harriet Ford
Mabel Gearhart
Aliene Green
Alene McComb
Billie McElroy
Helen Riggins



Alpha Chi Omega



Founded October 15, 1885, at DePauw University

Alpha Chi Chapter Established February 28, 1925

First row--

Cecile Nease (Pres.)
Rosemary Bretzman
Elsie Gilkison
Constance Glover
Naomi Guild
Claribel Hacker
Jane Hall

Fourth row--

Mary Evans
Louise Haworth
Helen Johnston
Mary Hewlett
Harriet Gamble
Alice Miller
Margaret Overman

Second row--

Beatrice Johnson
Gretchen Kemp
Mary Leedy
Gladys Mower
Florence Renn
Myra Triller
Julia North

Fifth row--

Vera Sudbrock
Violet Tipps
Myrtle Wilson
Josette Yelch
Josephine Bennett
Bertha Bretzman
Kathryn Budd

Third row--

Jeanette Palmer
Ruth Randall
Evelyn Bentley
Janet Bradley
Mary Frances Cray
Francelle Crenshaw
Leila Elliott

Sixth row--

Eloise Byrkit
Louise Denny
Mozelle Elnes
Joan Freeman
Mae Henri Lane
Marjorie Lytle
Mary Rosalind Parr

Seventh row--

Ruth Shields
Maxine Spaugh
Dorothy Stewart
Lovanna Talbott
Ruth Waldbieser
Betty Yoder
Mary Zimmerley



Alpha Delta Pi



Founded May 13, 1851, at Wesleyan College

Alpha Phi Chapter Established April 4, 1925

First row--

Florence McDonald (Pres.)
Bernice Dornall
Elsie May Leslie
Lois Hodgkin

Third row--

Thelma Hinshaw
Catherine Thurston
Evelyn Todd
Ruth Van Matre

Second row--

Shirley Nelson
Hilda Schmidt
Martha Stanton
Dorothy Baldrige

Fourth row--

Elizabeth Bissell
Elaine Schmidt
Rosemary Brown



Delta Gamma



Founded January 2, 1874, at Mississippi Women's Institute

Alpha Tau Chapter Established October 3, 1925

First row--

Ina Lawrence (Pres.)
Rachel Crew
Marguerite Doriot
Kathryn Haugh
Florence Morris
Alice Shirk

Second row--

Lilyan Brafford
Mary Virginia Clark
Ann Cooper
Catherine Loudon
Bernice Mull
Ruth Pahud

Third row--

Florence Behymer
Jerry Carver
Helen Chapman
Margaret Ensley
Katherine Tinsley
Helen Tolson

Fourth row--

Betty Akin
Jean Als
Aleen Alexander
Dorothy Dauner
Laura Foy
Jean Goulding

Fifth row--

Helen Jordan
Vera Kuase
Nellie Larkins
Margaret Mattingly
Elizabeth Nichols
Virginia Flock

Sixth row--

Rosalyn Reed
Helen Richwine
Phyllis Sharp
Martha Shirk
Marion Schulz
Emma Lou Thornbrough



Alpha Omicron Pi



Founded January 2, 1897, at Barnard College

Beta Theta Chapter Established October 1, 1927

First row--

Gladys Hawickhorst (Pres.)
Mary Margaret Beeson
Dorothy Boyle
Helen Brown

Third row--

Margaret Gowdy
Elizabeth Hall
Alice Hill
Aurzella Magel

Second row--

Florence Butterworth
Ruth Dile
Princess Finney
Winifred Fithuan

Fourth row--

Dorothy Lyons
Ruth McClurg
Lillian Lackner
Charlotte Peele

Fifth row--

Ava Louise Reddick
Marjorie Schaefer
Hannah Settler
Lucile Wright
Ruth Young



Chi Theta Chi



Founded April 26, 1928, at Butler University

Petitioning Kappa Delta

First row--

Florence Rathert (Pres.)
Genevieve Clark
Norma Minkner
Thelma Birgman

Third row--

Mary Margaret Woods
Helen Tumbleson
Ardith Whitmire
Julia Cooper

Second row--

Iris Branigan
Mary Frances Douglass
Hilda Hooten
Mary Mitchell

Fourth row--

Mary Nicodemus
Eleanor Rathert
Mary Margaret Strickler





Trianon

Founded at Cincinnati December 28, 1929

Butler Chapter Established December 28, 1929

First row--

Muriel Maze (Pres.)
Dorothy Canary
Wilhelmina Feaster

Third row--

Laura Garrison
Margaret Harris
Marian Schleicher
Doris Arnold

Second row--

Mary Heaton
Maxine McGaughey
Priscilla Shearer
Margaret Anderson

Fourth row--

Maurine Collins
Alice Perrine
Grace Robards
Jeanne Vander Vennet





DELTA SIGMA EPSILON



Bernadine Clashman (pres.)
 Sherley Farmer
 Alta Keeler
 Virginia Wayman

Helen Egbert
 Elizabeth Haynes
 Lucille Leffingwell
 Effie Wadley

Margaret Fitzgerald
 Ruth Smith
 Estelle Williamson

Meta Fogas
 Winifred Hall
 Huldah Todd
 Erna Winkelmier

SIGMA SIGMA SIGMA



Mrs. Haynes (sponsor)
Katherine Blake
Evelyn Hodges
Juanita Miller

Dorothy Yagerline (pres.)
Jessie Cundiff
Mary Hoover
Marie Ruske
Betty Stall

Mildred Bennett
Althea Curry
Annabelle Hostetter
Dorothy Thomas

ALPHA SIGMA ALPHA



Miss Mary Turner (sponsor)
Geraldine Hutton
Margaret Schofield
Edith Spangler

Carolyn Bareford
Helen Kenemer
Josephine Sherrod
Sally Westerman

Mary Winkle

Catherine Faust
Helen Risley
Margaret Snyder
Jeanette Woods

PI KAPPA SIGMA



Mrs. James H. Peeling (sponsor)
Ruth Brown
Elsie Humphrey
Elinor Mason

Grace Major
Yevie Coffel
Marian Koontz
Marjorie Morford

Ruby Reed

Alice Ashley
Viola Haney
Mary Martin
Frances Smith

Y. W. C. A.

MEMBERSHIP in Y. W. C. A. is open to all women students of the university; it entitles members to such privileges as swimming and skating at the central Y.W.C.A. as well as all the privileges of the Butler branch.

A delegate is sent every year to the conference at Lake Geneva, Wis. Proceeds of the Geneva Stunts, presented each year by various campus organizations in competition, are used to finance the trip.

Members of the Butler cabinet attended the state convention of Y.W.C.A. which was held at Indiana university, April 10, 11, and 12. The informal program included discussions of child labor and school attendance law, unemployment and international affairs.

Following an old tradition, Christmas carols were sung through the halls the day before holiday vacation. Proceeds from the annual Doll Show were given to social service work in hospitals which is being carried on by the Social Service committee. Y.W. also sponsored the second-hand book store.

Officers for this year were: Constance Glover, president; Ina Lawrence, vice-president; Margaret Barker, secretary, and Maxine Rigsbee, treasurer. Those elected for 1931-'32 are Virginia Taylor, president; Betty Lower, vice-president; Dione Kerlin, secretary, and Marjorie Demaree, treasurer.

Faculty advisors are Miss Allena Grafton, assistant professor of religious education, Miss Helen Cade, instructor in the home economics department, Mrs. J. W. Putnam and Mrs. Clide Aldrich.

CONSTANCE GLOVER
President

INA LAWRENCE
Vice-President

MARGARET BARKER
Secretary

MAXINE RIGSBEE
Treasurer



Woman's League

WOMAN's League was organized in 1923 and is comprised of all women, both student and faculty who are connected with Butler university. Woman's League strives to create a unified spirit among women, to promote and maintain high social and moral standards and to support student activities.

The first event of the year was the annual President's Day Luncheon which was held at the Lincoln hotel on November 1. The freshman scholarship cup was given to Helen Johnston. The attendance cup went to Kappa Kappa Gamma with Delta Delta Delta placing second. February 27 was the date of the annual Women's League dance which followed the Butler-Wabash game at the Riley room of the Claypool hotel. The proceeds from the dance were added to the woman's building fund. The "March Hare Frolic," the annual all-ceed cotillion, took place at the Campus Club on March 25.

Florence Renn and Margaret Barker represented the League at the National Woman's Student Government Association convention at Ann Arbor, April 22 to 26.

The main project of the organization was the annual May Day celebration. Following the pageant and the crowning of the May queen, the Feast of May was celebrated. The day's activities came to a climax with a dance in the evening.

The sale of the Butler song book and the rental of lockers was continued by the League again this year.

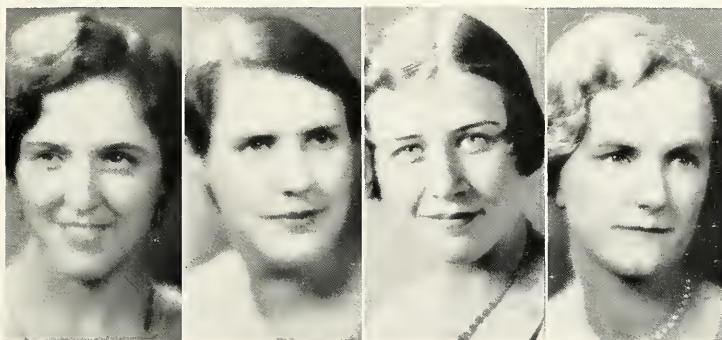
The officers for the year were: Florence Renn, president; Ina Lawrence, vice-president; Betty Dalman, secretary, and Margaret Barker, treasurer. Miss Kathryn Journey was faculty advisor for the League.

FLORENCE RENN
President

INA LAWRENCE
Vice-President

ELIABETH DALMAN
Secretary

MARGARET BARKER
Treasurer



Council of Presidents of Women's National Fraternities

REPRESENTATION and cooperation in a single, active group of the heads of the eleven national women's fraternities on the campus has brought about something vitally important in the way of university organizations.

Until the founding by Dean Evelyn Butler, last year, of the Council of Presidents of Women's National Fraternities, Greek organizations had been forced to work as lone groups rather than finding aid and cooperation in their various problems through intimate contact which others faced, perhaps, with similar difficulties.

This year the new council, headed by Virginia Seeds, president; Betty Jean Davis, secretary; and with Mrs. Edna Christian, social director, acting as both member and advisor, has set goals and already found attainment of certain objectives.

To discuss and solve mutual problems, to promote interfraternity fellowship, and to cooperate in a constructive way with the Women's Council is its three-fold object.

First efforts toward a later fuller realization of those standards were evidenced during the year by the luncheon and discussion meetings on the fourth Tuesday of every month in the various sorority houses and by the tea near the beginning of the second semester for all new freshman women.

*First row--*Elizabeth Hodges, Betty Jean Davis, Virginia Seeds, Catherine Matthews, Evelyn Henschen.

*Second row--*Mildred McCormick, Florence McDonald, Gretchen Kemp, Mary Elizabeth Thumma, Ina Lawrence, Gladys Hawickhorst.



Scarlet Quill

To foster scholarship and interest in extra-curricular activities is the endeavor of Scarlet Quill, senior honorary for women. The organization was founded in 1921 for the purpose of petitioning Mortar Board, national senior honorary. Members are chosen from the outstanding women in the Junior class; these ten women are elected on the basis of scholarship, activities and personality. Initiation is held before the close of school.

The largest project of Scarlet Quill is the annual presentation of a year's scholarship to the woman in the sophomore class with the highest scholastic average. Evelyn Rodibaugh received the scholarship for this year. Funds for the award were raised this year by two bridge parties.

Mrs. Alice Bidwell Wesenberg, the faculty sponsor, entertained the active and alumnae members of the honorary organization at a tea in her home.

Officers for the organization were: Elizabeth Carr, president; Beatrice Burgan, vice-president; Constance Glover, secretary, and Marguerite Doriot, treasurer.

Pledge ribbons of Scarlet Quill are red and midnight blue. Felt scarlet quills are worn by the members on senior jackets as the official garb of the organization.

First row--Elizabeth Carr (pres.), Margaret Barker, Beatrice Burgan, Elizabeth Davis.

Second row--Marguerite Doriot, Constance Glover, Ina Lawrence, Dorothy Quick, Florence Renn.



Chimes

CHIMES, women's junior honorary, was founded in 1924 by Professor Evelyn Butler. The primary function of Chimes is to aid in helping to acquaint freshmen women with Butler traditions, institutions and customs.

Early in September eight girls are chosen from the junior class. Personality, activities and grades are the deciding factors in the selection.

Before the opening of college in the fall each girl entering Butler for the first time receives a letter from Chimes welcoming her to the University. She is then entertained by Chimes and their "colleagues" at a tea preceding matriculation day.

In November Chimes extended personal invitations to every freshman girl to attend a Beowulf swimming party at the gym. Water stunts were given by Ruth Pahud, Mary Helen Dunnington and Ruth Hazlett.

The Campus Club was the scene of a "Hit and Miss" party March 18, planned for second semester freshmen women.

The annual sweetheart dinner was given April 28. The officers for the year were Virginia Taylor, president; Elma Rose Sailors, vice-president; Ruth Pahud, secretary; Dione Kerlin, treasurer, and Florence Renn, senior advisor. Mrs. Edna Christian was sponsor of the organization during the year.

First row--Virginia Taylor (pres.), Elma Rose Sailors (v. pres.), Ruth Pahud (secy.), Dione Kerlin (treas.), Ruth Dale, Jane Hadley, Betty Lower.

Second row--Julia North, Gwendolyn Schort, Hariette Trinkle, Florence Renn (senior advisor), Beatrice Burgan, Constance Glover, Gladys Hawickhorst, Virginia Hill.



Torch

TORCH, women's sophomore honorary organization, was founded in 1920 as Phi Delta Phi. Its essential purpose is to foster democratic principles by encouraging friendliness and cooperation among women students.

The membership of the organization is composed of one sophomore representative from each Greek letter sorority and one non-sorority woman. Those chosen remain members throughout their junior year although they are active only in their sophomore year. The selection of these representatives is based upon excellency in scholarship, womanliness and service.

Torch's first project this year was a Hallowe'en costume party. This event was given for freshmen women and also served the purpose of introducing the new initiates to the campus. In keeping with the idea of promoting good fellowship, Torch sponsored the annual all-coed "Kid Kaper" dance which was held at the Campus Club April 22. The guests dressed as children while the Torch members acted as governesses. This year the decorations carried out the setting as a playground.

The meetings of the organization are held once a month at the various sorority houses. The colors of Torch are black and white, and the pin is a flaming gold torch formed by the Greek letters Phi Delta Phi.

The officers for the year were: Virginia Goodwin, president; Geraldine Kuntz, vice-president; Sara Ella Hill, secretary, and Betty Hall, treasurer. Miss Susie Harmon was the Torch sponsor.

First row--Virginia Goodwin (pres.), Geraldine Kuntz (v. pres.), Sara Hill (sec'y.), Betty Hall (treas.), Evelyn Bentley, Isabel Campbell, Mary Helen Dunnington, Thelma Flack.
Second row--Thelma Hinshaw, Zoe McFadden, Evelyn Mundy, Mildred Snell, Ardith Whitmire, Lilyan Brafford, Anita Brownlee, Helma Kahn, Ruth Dale.
Third row--Mary Frances Douglass, Iris Hollins, Dione Kerlin, Kathryn Maurer, Elma Rose Sailors, Hilda Schmidt, Gwendolyn Schott, Virginia Taylor, Rosemary Woodworth.



Scarf Club

SCARF club was founded at Butler in 1921 under the guidance of Corinne Welling, associate professor of English, as an honorary society for freshmen women. Miss Welling served as faculty sponsor until the fall of 1930 when her place was taken by Miss Helen Cade of the Home Economics department. The club has as its purpose the maintenance of good fellowship and cultural pursuits among underclassmen and promotion of support of campus activities by the student body.

The Scarf club pledge pin is black and white, and white silk scarfs with the name of the organization in black letters are worn by the sophomores.

Among the various social functions held throughout the year was the "Jinx" party on February 13. Helen Jane Brown was general chairman.

The organization assisted in serving at the May Day Feast, which is a part of the annual May Day celebration sponsored by Woman's League. A sum of money was given by the club to provide food and clothing for needy families at Thanksgiving time.

Meetings are held each month at the various sorority houses. The officers for this year were: Marjorie Lytle, president; Thelma Flack, vice-president; Ruth Hazlett, secretary; Mary Helen Dunnington, treasurer, and Betty Dodds, pledge president.

First row--Frances Wyson, Martha Metcalf, Francele Crenshaw, Marjorie Lytle, Thelma Flack, Ruth Hazlett, Betty Dodds.

Second row--June Kemp, Helen Gearten, Mildred Lawler, Helen Jane Brown, Evelyn Rabb, Theresa Bagnoli, Doris Arnold.

Third row--Evelyn Munday, Shirley Harvey, Marguerite Emery, Joan Boswell, Eleanor Rathert, Doris Gregory, Betty Armos, Virginia Mitch, Mary Helen Dunnington, Myra Orr.

Fourth row--Bernice Brown, Mary Lucille Tregger, Mary Alice Burch, Ardith Whitmire, Alene Green, Winifred Fithian, Emma Lou Thornburg.



KAPPA BETA



Merna Collier
Marjorie Demaree
Idamadge Overstreet

Lois Cowgill
Ruth Dobson
Bessalie Reavis
Cora Stroops

Hazel Cunningham
LaVonne Fullgrath
Clara Schell
Cora Trefz

Ruth Dale
Virginia Harbaugh
Myron Simpson

Bluesters

BLUESTERS was organized in 1930 by Miss Louise Schulmeyer of the physical education department as a group to create pep and enthusiasm at athletic events. Five girls from each sorority on the campus were chosen as the nucleus of the organization.

The Bluesters selected as their official garb blue berets, white jerseys and blue skirts. Dressed in these costumes they have occupied a special section at the football and basketball games, and have instituted some new features into the general cheering. The group has also appeared in the Armistice Day parade and at the school convocations innovated this year.

Present officers are Mary Lou Mannan, president; Irene Spurgeon, vice-president, and Evelyn McDermit, secretary-treasurer.

*First row--*Vangel Snodgrass, Katherine Fitchie, Jean Yates, Mary Lou Mannan, Evelyn McDermit, Evelyn Kellogg, Marcele Glidden.

*Second Row--*Madeline Sander, Evelyn Byrkit, Florence Renn, Elizabeth Hadley, Helen Tumbleson, Nantelle Harvey, Dorothy Lewis.

*Third row--*Margaret Lewis, Joan Freeman, Mary Ruth Palmer, Ardith Whitmire, Thelma Bingman, Jean Misch, Betty McCracken.

*Fourth row--*Helen Carver, Louise Headrick, Katherine Nitterhouse, Loujean Gallet, Mary Lou Allen, Martha Heller.





Activities

Bluesters

Bluesters was organized in 1937 by Miss Louise Schulmeyer of the Student Activities Association, in a attempt to create pep and enthusiasm for the football team. The first year only twenty-two of the campus were a part of the organization.

Each Bluester wears a blue blazer with blue letter, white jerseys and blue slacks. During the three seasons they have occupied a special section at the football and basketball games and have secured some new feature into the general sporting. The Bluesters also participated in the Armory Picnic and were the most successful group in the parade this year.

President, Miss Lou Mannan, president Irene Spurgens, secretary and Evelyn McDermit, secretary-treasurer.

Activities

Activities are conducted as follows: Jean Yates, Miss Lou Mannan, Evelyn McDermit, Evelyn Spurgens, Myrtle Giffin.

Miss Lou Mannan, secretary, Evelyn Spurgens, Forester Jones, Elizabeth Hadley, Helen Tumbleton, Nancy Jones, Frances Paine.

Miss Lou Mannan, secretary, Evelyn Spurgens, Forester Jones, Ruth Elder, Adith Whitmire, Thelma Bingman, Jean Yates, Betty McDermit.

Miss Lou Mannan, secretary, Evelyn Spurgens, Forester Jones, Ruth Elder, Mary Lou Allen, Betty McDermit.





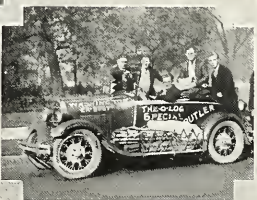
Features



FAIRVIEW FOLLIES 1931



THE PUBLICITY HOUNDS



THE PAIR SEASON



CAMPUS HASH



THE BUTLER HOVELS



AXΩ

BEER
ENTRANCE IN
REAR



ΦΔΘ



ΑΟΠ



ΚΑΘ



ΚΚΓ



ΥΛΕΝΣ



ΔΔΔ



ΑΔΘ



ΖΤΑ

MORE HOVELS

"3 MORE
PAYMENTS AND
THEY'RE OURS"



ΔΑΠ



ΤΚΤ



ΠΒΦ



ΚΔΡ



ΔΖ



ΔΓ



ΛΧΑ



ΣΝ



ΖΤΑ

Student Council

THE Butler university Student Council which was founded more than two years ago devotes its efforts to constructive work on school problems.

Membership in the council consists of the president, five seniors, four juniors and three sophomores. Two faculty members are elected each year by the council from a list submitted by the president of the university.

Russell Townsend was president of the group this year, and faculty advisors were Dr. Janet MacDonald and Prof. Gino Ratti.

The council sponsored an all-school drive in which books were collected for the university library; regulated organizations on the campus; supervised school elections and the student budget, and proposed a change in class schedules in order to provide an hour one day a week for class meetings.

*First row--*Russell Townsend (pres.), Betty Jean Davis, Edward Green, Jane Hall.

*Second row--*Mary Hoover, Donald Youel, Warren Isom, Elma Rose Sailors.

*Third row--*Wales Smith, Malcolm Snoddy, Virginia Goodwin, Lois Jackson, John Lookabill.



Publications





THURMAN G. RIDGE

The Drift

THE Drift of 1931 is not the book that it could have been. It is not commensurate with the size and ambitions of Butler, because it is not given support from the tuition fees, as are those of the standard American university.

It was delayed in publication, and contains many errors in identification and inclusion of portraits, due to an unfortunate choice of photographer.

Rearrangements of the staff due to unjudicial choice of workers, and the editor's own tendency toward inefficiency deterred the Drift from reaching the goal envisioned for it twelve months ago.

Yet, from a selfish standpoint, we consider the year well spent. It was a revelation to see the loyalty with which certain members of the staff performed their tasks, and departed from their assigned routines to further the whole work.

Elizabeth Davis, who assisted in every phase of the work from the preliminary planning to the final proof reading; Lilyan Brafford, who

First row--Elizabeth Davis (assoc. ed.), Lilyan Brafford (fraternity ed.), Honor Gregory (literary ed.), Marifrances Lee (compilation ed.)

Second row--Norman Hanna (asst. bus. mgr.), Gladys Mower (feature ed.), Lowell Parker (sports writer), Arthur Echternacht (photographer.)

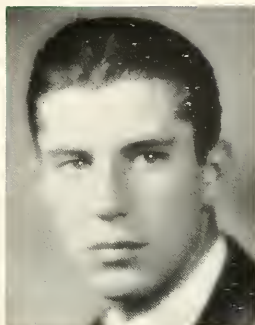


had the tedious job of making up all the organization rosters and assembling their appropriate portraits, and further assisted in compiling the class panels; Marifrances Lee, in charge of the class compilation; Honor Gregory, who was responsible for all the writeups, and Robert Blackburn, who supervised the individual and group photography in addition to his duties as business manager, may all feel that any success which the book may have is due to their efforts.

Ava Louise Reddick, Mardenna Johnson, Marie DeBurger, Dorothy Wright, Adelaide Gould, Agnes Postma and Evelyn McDermitt deserve special credit because they conscientiously performed such tasks as typing, mounting and reporting, which are not even rewarded with any personal glory.

It has been a worthwhile experience to work in the offices of the Indianapolis Engraving company, and Noble Ropke and Fudick Goodrich of that company assisted materially in the planning and the details of the Drift.

To summarize, we have not done as well as we wished to do, but we have done our best.



ROBERT A. BLACKBURN

First row--Myra Triller (art), Richard Fogarty (sports editor), Ava Louise Reddick, (mounting), Mardenna Johnson (mounting).

Second row--Charles Sohl (sports writer), Marie DeBurger (editorial), Theresa Bagnoli (compilation), Florence Renn (editorial), Adelaide Gould (editorial).





MAYNARD LEMEN

Butler Collegian

THIS year the Butler Collegian completes forty-five years of publication history. It began as a semi-monthly periodical and expanded until it was being issued daily. At the beginning of the second semester this year, however, a change in the method of journalism laboratory instruction resulted in the Collegian appearing only once a week. It is printed under the supervision of the journalism department, and the staff is composed of students from that department.

Any student who is interested in reporting, however, may attain a position on the staff by doing the required work.

Maynard Lemen was the managing editor for the first semester, and Harlan Hadley took over his position after his graduation in January. Norman Buchan, instructor in journalism, is faculty advisor. The Col-

First row--Beatrice Burgan (asst. managing editor), Dorothy Quick (city editor), Adelaide Gould (asst. city editor), Edwin Hobson (news editor), Morton Renn (asst. news editor.)

Second row--Norman Hanna (night editor), Harold Templeton (sports editor), Harrison Miller (asst. sports editor), Ralph McElroy (asst. sports editor), Lilyan Brafford (editorial writer.)

Third row--Marguerite Doriot (editorial writer), Theresa Bagnoli (women's editor), Honor Gregory (literary editor), Martha Adams (feature editor), Mildred Beard (rewrite editor.)



Butler Collegian

legian has a complete news coverage of all departments in the university, as well as business places, churches, and clubs of the north side. The large staff of reporters is amply qualified to turn out copy on all events of any importance whatsoever.

The Capitol News Service, operated by Joseph Thomas, assistant in the journalism department, is being used by the embryo journalists to gain more experience in stories occurring outside of college life. It has been in existence for two years and serves as Indianapolis correspondent for twenty-six newspapers over the state.

Students are showing remarkable enthusiasm in putting out the paper, which is also circulated through the north side; and the Collegian has thus made a name for itself among leading college newspapers of today.



HARLAN HADLEY

*First row--Evelyn Bentley, Maurice Boyd, Jacque Lackey, Luana Lee, Evelyn Lucy McDermit.
Second row--Josephine McElhaney, Elizabeth Munson, Agnes Postma, Marjorie Watkins, Dorothy Wright.*





ELIZABETH L. DAVIS

The Tower

THE Tower was founded in 1927, as the Cocoon, a joint enterprise between the journalism and English departments, with Mrs. Alice Bidwell Wesenberg as sponsor.

This associate enterprise was maintained until this year, when the journalism department abandoned it. As is well known to every university which supports a literary magazine, it must be either endowed or supported by the university to survive. Neither landfall occurred to The Tower, and as a result this year's issues were reduced to two, supported largely by faculty subscription.

The first issue printed the manuscripts which were entered in the 1930 Butler literary contest, and the second, in an effort to appeal to the general student taste, was a short story number.

Elizabeth L. Davis is editor of The Tower.

*First row--*Thurman Ridge (assoc. editor), Morton Renn (bus. mgr.), Gladys Mower (art).

*Second row--*Worth Barnett (editorial), Rodney Perkins (editorial), Norman Hanna (asst. bus. mgr.)



Public Speaking
and
Music



Thespis

SINCE its organization in 1927, Thespis has been the most active dramatic club on the campus. It was founded for the purpose of organizing the students interested in dramatic work, and of serving as a stepping stone to membership in the National Collegiate Players, national dramatic honorary. Members are selected from tryouts, who must have had courses in the department of public speaking.

The major production of Thespis this year was *The Goose Hangs High*, given at Caleb Mills hall. The weekly noontide performances were one-act plays and scenes from old classics studied in the English department. The club also completed a curtain for the stage, which was used for the first time in the second noontide play. A vast amount of time and energy expended by the members in improving the acoustics and appearance of the Thespis room came to naught when the new fixtures were alleged to be fire hazards, and condemned.

Officers are: Ronald Van Arsdale, president; Mary Jane Morris, vice-president; Martha Isham, second vice-president; Betty Jane Barrett, corresponding secretary; Valentia Meng, recording secretary; Eugene McMannamon, treasurer; Mary Frances Cray, librarian, and Edward Green, business manager.

First row--Eugene McMannamon, Alice Higman, Evelyn Bently, Jacque Lacker, Helen Maxine Ornbaum, Lillie Hamblen, Margie Walden, Ronald Van Arsdale.

Second row--Miles Sweeney, Luana Lee, Mary Frances Cray, Maude Perry, Harriet Trinkle, Martha Isham, Aliene Harding, Helen Spurgeon.

Third row--Margaret Bradburn, Ray Brock, Margaret Gowdy, Paul Duncan, Dave Milligan, Worth Barnett, Geraldine Kuntz, Karl Brandt, Eleanor Marshall, Edward Green.



National Collegiate Players

REALIZED visions of every Thespian come when he has been appointed to membership in National Collegiate Players, the pinnacle of dramatic honors in Butler, and is privileged to wear the symbol of his achievement, the golden key with the classic masks of comedy and tragedy.

Pi Epsilon Delta, chartered in 1925 as the local chapter of the national group, requires that its members shall have shown outstanding ability as members of Thespis, have attained fifteen hours credit in dramatic study, have participated in a major production of Thespis, be upper classmen with at least a B average, and have written and directed a play.

Chiefly honorary in its nature, National Collegiate Players makes little effort toward public activity. But this year, in addition to its annual major production, Pi Epsilon Delta has secured not only recognition but increased merit in the eyes of many through the initiation of Stuart Walker as honorary member of the local chapter. Initiation services, conducted by Pi Epsilon Delta officers, were held on the stage of the English theater following the performance by the Stuart Walker company of "It's a Wise Child".

Officers for the year are: Alice Higman, president; Anna Lee Howell, vice-president; Ed. Green, secretary; Henry Gibson, treasurer; Mildred McCormick, corresponding secretary.

First row--Henry Gibson, Edward Green, Alice Higman, Anna Lee Howell.

Second row--Mildred McCormick, Valentin Meng, Jesse Pritchett, Ronald Van Arsdale, Truth Wakeman.



Men's Debate

THE mens' debate squad this year was composed of Russell Townsend, Charles Drake, William Weiss, Paul Duncan, William Hoffman, Edward Fillingworth, Eugene McMannamon, Harold Love, Walker and Clarence McKinn.

The schedule included no-decision debates with Miami and Purdue and decision debates with the Detroit City College, the University of Florida and the University of Toledo.

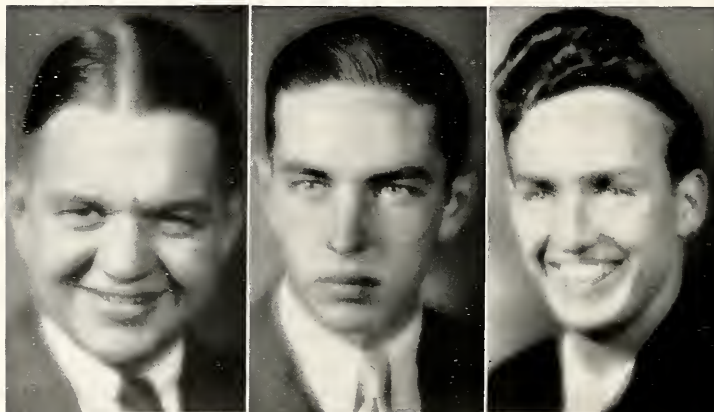
The questions debated were, "Resolved, that the states should adopt a system of compulsory unemployment insurance," "Resolved, that the nations should adopt a policy of free trade," and "Resolved, that the distinction between amateurism and professionalism for participation in intercollegiate activities should be abolished in those sports to which admission is charged."

The debaters have done good work and a large group of experienced men has been created as a nucleus for next year's squad.

J. RUSSELL TOWNSEND JR.

WILLIAM HOFFMAN

HAROLD LOVE



Women's Debate

SUCCESS of the women's debate squad this year in winning two out of its three decision debates scheduled and in presenting what judges considered winning arguments in the majority of no-decision debates was undoubtedly due to the fact that the three team members were all experienced debaters from last year. Clara Schell, Helen Johnston and Clementine Casmire, this year's squad, had each been a member of the Butler negative team last year.

Coached throughout the season by C. H. Walters, the team and its two chief alternates, Mary Louise Wheeler and Betty Jane Barrett, debated on three major questions with seven near-by colleges and universities. Debates on "State Medicine" with Albion, Miami, Western State Teacher's college, Wheaton and Purdue were all no-decision debates with the exception of the victory scored over Western State Teacher's college.

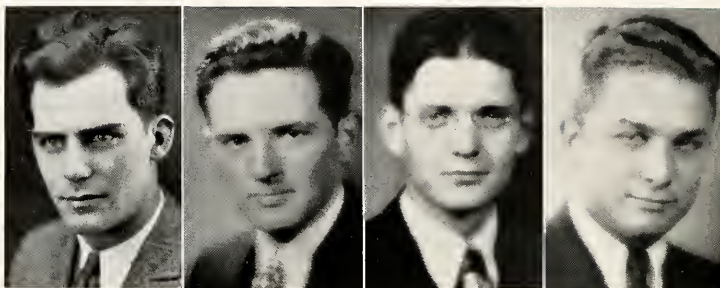
Victory here and defeat there was the result of two debates scheduled with the College of the City of Detroit on "Auto Liability Insurance". The final debate of the season on "Chain Stores", scheduled with Ohio Wesleyan was a no-decision contest.

Besides coaching the five active debaters, Mr. Walters spent part of the season training and instructing four others in preparation for later debate seasons. Considerable reference work and necessary study was done throughout the year by the on-coming debaters, Margaret Anderson, Clara Mae Kirtley, Johanne Perrin and Antoinette Filliatreau.

First row--Clara Schell, Helen Johnston, Clementine Casmire, Mary Louise Wheeler.

Second row--Betty Jane Barrett, Johanne Perrin, Margaret Anderson, Clara Mae Kirtley.





URBAN WILDE
President

OWEN CALVERT
Vice-President

JOHN EASTES
Secretary

GEORGE SHELBY
Treasurer

Kappa Kappa Psi

BETA Mu Sigma, a fraternity organized among band members, received a charter from Kappa Kappa Psi, national band fraternity, May 31, 1928.

In October Kappa Kappa Psi sponsored an appreciation banquet given in honor of close friends of the band. In November a dance was given. During the football season the fraternity sponsored trips to Purdue, Wabash and Illinois. The annual sweetheart dinner was held in May.

Mr. J. B. Vandaworker, the director of the Butler band, is the national vice-president of Kappa Kappa Psi, and the local chapter advisor.



The Men's Glee Club

THE officers of this club are Frederick Winter, president; Burchard Carr, vice-president; Conrad Boardman, secretary; Ralph Moore, treasurer, and Joe Macy, librarian.

Franklin N. Taylor, a member of the Arthur Jordan Conservatory of Music, directs this club. The club is very young, but it includes many talented members.

The Mixed Group

The youngest of all the musical organizations at Butler is the selected group from the two glee clubs. This group was organized to meet the demands of churches for mixed voices. The director is Mr. Taylor and the officers are Marcella Mathews and Frederick Winter. Only religious music is studied.



The Girls' Glee Club

At Christmas the Girls' Glee Club presented "The Adoration" at the Women's Department Club and at Butler for the Y.W.C.A. meeting and again before the College of Religion group.

During the year selective programs were presented at New Augusta, at Brownsburg and in Indianapolis at the Hillside Christian church, the Englewood Christian church, the Northside Methodist church and at the Masonic Temple. Two request broadcasts were well received.

The group, composed of sixty-five members, is directed by Franklin N. Taylor, a prominent member of the Arthur Jordan Conservatory of Music.

The club has as soloists Mary Rose Lowry, Virginia Lett, Ruth Dale, Pearl Goodman, Julia Bowman and Mary Ruth Palmer. Geraldine Kuntz and Harriet Trinkle are the readers for the club. The accompanists are Virginia Harbaugh and Bessa Lee Reavis.

The officers were: Marcella Mathews, president; Ann Cooper, vice-president; Jeanette Palmer, secretary; Alice Higman, treasurer, and Doris Arnold, librarian.



Clubs



Der Deutsche Verein

DER Deutsche Verein--"The German Club"--is an organization of students in the German department, who are interested in conversing in German, singing German student songs, and becoming familiar with German literature and legends. There are about twenty-five members of the club.

Aside from the regular meetings on the second Thursday of each month, Der Deutsche Verein produces a play each year before a public audience.

The club concludes its activities for the year each June with a picnic in the country.

Officers for 1930-'31 were: Florence Rathert, president; Miriam Foreman, vice-president; and Henri Stegemeier, secretary-treasurer. Dr. Baumgartner, Mrs. Baumgartner, and Miss Thorman are sponsors of the club.

*First row--*Rosemary Woodworth, Ruth Foreman, Esther Sacks, Florence Rathert.

*Second row--*Mary Frances Douglas, Mrs. Baumgartner, Elsie May Leslie, Dorothy Kohnstaedt.

*Third row--*Fred Baumgartner, Miss Brunson, Miss Beck, Elise Schmidt, Miriam Foreman, Dr. Baumgartner.

*Fourth row--*Richard Etter, Rodney Perkins, Theodore Woelfing, Gilbert Ulmer.



Advertising Club

THE Advertising club was founded in 1929 by students who intended to take up advertising as their life work. Since that time the membership has increased steadily, and now anyone interested in advertising is eligible to join.

Meetings of the club are held every second Tuesday noon. Problems of advertising and writing are discussed. This year the club has been interested in the Sears-Roebuck company contest, and several members have won prizes in the competition. The club has also arranged for several prominent Indianapolis men in the advertising field to speak to the club members and to the advertising classes.

A petition to Alpha Delta Sigma, national advertising fraternity, is now pending.

Mr. Irby of the journalism faculty is the sponsor. Thomas Cory is president; Helen Hitch, vice-president; Clara Mae Kirtley, secretary, and Maurice Boyd, treasurer.

First row--Betty Jean Davis, Elizabeth Carr, Adelaide Gould, Mary Harvey, Clara Mae Kirtley, Katherine Silliman, Helen Hitch.

Second row--Robert Stearns, Victor Hertz, William Weiss, Maurice Boyd, Robert Brown.

Third row--Edward Campbell, George Burkert, Tom Cory, Calvert Craig, Harold Cashion.



Zoology Club

To interest students of the department in the practical and theoretical research of zoology is the purpose of the Zoology club, which is sponsored by Dr. Henry Lane Bruner, head of the department. Membership is limited to members of the faculty of the zoology department, zoology assistants and majors, and students with grades of B- or better.

Besides the regular meetings, which are held on the second Tuesday of each month, the outstanding project of the club is the annual award of a scholarship for a summer's study at the Marine Laboratories at Wood's Hole, Massachusetts.

Present officers are: Frederick Baumgartner, president; Dorothy Stoelting, vice-president; Martha Hill, secretary, and Donald Wood, treasurer.

First row--Margaret Snyder, Dorothy Stoelting, James Dunlavy, Reuben Beabout, Carlyle Bauermeister, Fred Baumgartner, Frank Reissner, Martha Shirk.

Second row--Stanley Garner, Katherine Force, Don Woods, Jack Schaffer, Jean Yates, Martha Hill, Robert Stearns, Peace McClelland, Jean Misch, Helen Gearen, Evelyn McDermitt.

Third row--Gordon Thompson, Donald Smith, Lowell Shanklin, Dr. Pearson, Frances Brumit, Wendell Shullenberger, Norval Folkening, Mary Ruth Palmer, Morris Pullin.

Fourth row--Dr. Bruner, Dr. Nestor.



Classical Club

THE Classical club, one of the older organizations surviving from Butler in Irvington, is sponsored by Dr. Janet MacDonald and Prof. Gelston of the Classical language department. Latin and Greek students form the nucleus of the group, which includes students interested in early Mediterranean culture.

Meetings are held on the second Thursday of each month. These meetings are usually informal, and current classical problems and archeological discoveries are reviewed. Lantern slides are shown, and there have been four speakers, from the faculty and persons interested in the classics, at the meetings this year.

Officers at present are Margaret Barker, president; Josephine Davidson, vice-president; Charlotte Burce, secretary, and Thelma Flack, treasurer.

First row--Josephine Davidson, Margaret Barker, Evelyn Rodibaugh, Margaret Harris, Dorothy Covey.

Second row--Alice Hill, Thelma Flack, Neta Williams, Helen Riggins, Dr. MacDonald, Nellie Plummer, Rosalind Taylor, Helen Arzett, Theodosia Arnold.

Third row--Lorena Denham, Lucille Wright, Florence Butterworth, Ava Louise Reddick, Mariana Williams.



Commerce Club

THE Commerce club was revived in the spring of 1930 after having been inactive for several years. It was organized to acquaint economics students with the practical aspects of business by conducting weekly trips through various business enterprises of the city.

Each year the club takes an extensive out-of-town tour to inspect some of the larger businesses in other cities. This spring the major trip was made to Chicago. Cicero, Whiting and Indiana Harbor were stopping points on the inspection tour.

Meetings are held weekly, and are alternately featured by inspection trips and speakers from local industries. The club also attended the World Trade Club convention held in Indianapolis February 20.

Dean J. W. Putnam is honorary sponsor, and Prof. M. G. Bridenstine, Prof. C. B. Camp, Mr. Stegemeier and Mr. Griswold are active sponsors. Officers of the club are Harold Vehling, president; Kenneth Hufford, vice-president; Hollis Leedy, secretary, and Max White, treasurer.

*First row--*Prof. Bridenstine, Dean Putnam, William Rasmussen, Harold Cashon, Richard Swift, William Weiss, Lee Newland, Robert Brown, C. W. Ferguson.

*Second row--*Prof. Camp, Mr. Griswold, Richard Wright, Victor Hertz, Hollis Leedy (secretary), Osborne Dickson, L. W. Herrington, Paul Baker, George Boersig, Harold T. Vehling (president).

*Third row--*Richard Reddie, Dean Farnum, Max White (treasurer), Sam Arnett, Jack Ranney, Dwight Kelly, Calvert Craig.

*Fourth row--*Virgil Hebert, Bruce Johnson, Jack Moore, Emsley Johnson Jr., Owen Calvert, Carson Bennett, William Raffensperger.

*Fifth row--*George Shelby, George Payton, Henry Schickler, Roger Estep, Myles Sweeney.

*Sixth row--*Earl Shoemaker, Cortland Carrington, Kenneth Hufford (vice-president), Theodore Woolfing, John Barrage.

*Seventh row--*Tom Butz, Walt Perry, Ward Ehrhart, Roland Barnes, William Dawson.

*Eighth row--*Jim Lynch, Dave Moriarity, Neal Prewitt, John Baldwin.

*Ninth row--*Don Weddle, Harold Baker, Ray Prigger.



International Relations Club

THE International Relations club was organized five years ago under the sponsorship of Prof. Dale Beeler of the history department. Members of the club study world problems and help to promote understanding among the various races.

The group is affiliated with the Carnegie Endowment for World Peace, and has given twelve volumes to the library of the institute during the time of affiliation.

Prominent speakers talk to the members at the regular meetings on subjects of current interest. Dr. Cristo Nizamoff, local representative of Macedonia, was one of the speakers this year.

Membership is composed largely of students in the department of history and political science. Officers are Warren Isom, president; Victor Griffin, vice-president; Betty Lower, secretary; Milton Green, treasurer, and Valentia Meng, librarian.

First row--Marjorie Campbell, Mary Elizabeth Thumma, Josephine Ready, Sally Clutz, Anita Brownlee, Wilhelmena MacElroy, Ruth Heaton, Roberta Kramer.

Second row--Dorothy Neptune, Mildred Beard, Ruth Marie Price, Neta Williams, Willodean Nease, Rosalind Taylor, Dorothy Chaplin, Eleanor Hack, Betty Lower, Dorothy DeFrees, Phylis Sharpe, Mardenna Johnson.

Third row--Albert Esculto, Evelyn Crostreet, Mary Harvey, Alice Higman, Virginia Craig, Maurine Collins, Mary McIlvain.

Fourth row--J. Douglass Brown, Warren Isom, Milton Green, Pearl Goodman, Edward Fillingworth.



B. U. S. T. A.

THE Butler University Student Teachers' Association, popularly known as "Busta", is composed of students in the education department who have maintained a scholastic average of B- or higher, and who do practice teaching in the Indianapolis schools as part of their work in the department.

The association is working on a petition to present to Kappa Delta Pi, national educational fraternity. With the department of education amalgamated with the Indianapolis Teacher's college as an independent college, a national education fraternity is highly desirable, and chances seem bright for the acceptance of the petition.

Officers this year are Margaret Barker, president; Lucille Wright, vice-president; Rosalind Taylor, secretary, and Kathryn Yeaman, treasurer.

First row--Margaret Bradburn, Margaret Barker, Theodosia Arnold, Florence Rathert, Gladys McNally, Alice Hill.

Second row--Joan Sink, Dorothy Stahling, Rosalind Taylor, Louise Berndt.

Third row--Kathryn Yeaman, Gretchen Kemp, Alice Dickey, Mr. Schultz.

Fourth Row--Ray Urbain, Ralph Urbain, Robert Schultz.



Honoraries



Phi Kappa Phi

MEMBERSHIP to Phi Kappa Phi, national scholastic honorary fraternity, is probably the most coveted honor in scholastic attainment sought by seniors. Election of members is made by the faculty members of the organization twice a year, from those students ranking scholastically in the upper fifth of the class at the end of three years, in a four year course leading to a bachelor degree.

The twelve seniors selected for the honor the first semester were: Mrs. Helen Arnold, Lois Cowgill, Marguerite Doriot, Clyde Fisher, Honor Gregory, Gladys Hawickhorst, Florence Rathert, Oran Stanley, Cora Stopps, Rosalind Taylor, and Lucille P. Wright.

The following were elected the second semester: Theodosia Arnold, Douglas I. Brown, Margaret Barker, Frederick M. Baumgartner, Rosemary Bretzman, Elizabeth Davis, Barbara Alice Dickey, John Wesley Eastes, Warren Isom, Mary Alice Jay, Helma Kahn, Gretchen Kemp, Maynard Lemen, Norma Minkner, Maurice Pullin, Joan Sink, Dorothy Stoelting, Harold Vehling, Dorothy Quick, Hilda Reeder, Frieda Binninger, John Potzger, A.B., and Dean E. Walker, B.D.

Officers for the fraternity for the first semester were Dr. Guy H. Shadinger, president; Dr. Elijah Jordan, vice-president; Miss Helen Hoover, secretary, and Miss Juna Lutz, treasurer. Dr. Elijah Jordan was elected president for the new year, and Dr. Paul Leland Haworth took the office of vice-president. Miss Hoover and Miss Lutz were re-elected.

First row--Helen Arnold, Lois Cowgill, Florence Rathert, Oran Stanley, Cora Lynn Stopps.

Second row--Rosalind Taylor, Lucile Wright, Theodosia Arnold, Frederick Baumgartner, Alice Dickey.

Third row--John Eastes, Helma Kahn, Gretchen Kemp, Norma Minkner, Maurice Pullin, Dorothy Stoelting.



Tau Kappa Alpha

TAU Kappa Alpha, national debating fraternity, was organized at Butler in 1908. There are now seventy-eight chapters in American universities.

The fraternity was organized for the purpose of creating a higher standard of oratory and greater excellence of public speaking among its members. Only those who have participated in at least two intercollegiate debates are eligible. Initiation is held each spring after the conclusion of the debating season. Members are marked by the watch charm of key and scroll.

Tau Kappa Alpha has started the project of erecting a memorial plaque commemorative of its founding at Butler. Officers for the year were: Charles Barry, president; J. Russell Townsend, vice-president; William Weiss, secretary-treasurer.

First row--Russell Townsend, Charles Barry.

Second row--William Weiss, William Hoffman, Harold Love.



Sigma Delta Chi

THE annual Blanket Hop, highlight of the fall social season, was Sigma Delta Chi's big achievement the first semester of this year. The dance was held at the Hotel Antlers, and a razz sheet was peddled by the "cubs" between dances.

Harlan Hadley and George Lloyd, chapter representatives to the national convention at Columbus, were accompanied by several other members of the Butler group.

The climax of the spring semester came April 16, with the annual Founders' Day banquet at the Columbia club. The Butler chapter, including seven men initiated and five pledged that afternoon, attended in a body. Founder's Day marked the twenty-second anniversary of the national organization and the fifth of the local chapter, which was established on the campus in 1926.

First row--Maynard Lemen (pres., first semester), Harlan Hadley (pres., second semester), G. Crispin Lloyd (sec'y.-treas.), Luke Walton, Richard Elrod, Morton Renn.

Second row--Edwin Ogborne, Richard Fogarty, Robert Blackburn, Arthur Loftin, Richard Mitchell, Harold Moreland.

Third row--Lowell Parker, Thurman Ridge, Max Schneider, Robert Stearns, Harold Templeton, Russell Townsend.



Kappa Tau Alpha

KAPPA Tau Alpha, national scholastic journalism fraternity, the newest journalistic organization on the campus, was formally installed at Butler on December 17, 1929, permission for the chapter having been given that spring. Members are selected by the journalism faculty for excellency in scholarship.

The "Phi Beta Kappa of Journalism" as Kappa Tau Alpha is called, was founded at Illinois university, and the fraternity started the new year with fifteen chapters.

Members of the local chapter are: Beatrice Burgan, Elizabeth Carr, Virginia Seeds, Rosemary Bretzman, Honor Gregory, Marie DeBurger, Dorothy Quick and Marguerite Doriot.

The new pledges are: Lilyan Brafford, Adelaide Gould, Margaret Marker, Betty Wilson, Dvera Cohen and Edwin Hobson.

*First row--*Lilyan Brafford, Rosemary Bretzman, Beatrice Burgan, Elizabeth Carr, Marie DeBurger.

*Second row--*Marguerite Doriot, Adelaide Gould, Honor Gregory, Edwin Hobson, Maynard Lemen.

*Third row--*Lillian Pierson, Ruth Marie Price, Dorothy Quick, Virginia Seeds, Betty Wilson.



Theta Sigma Phi

ALPHA Iota chapter of Theta Sigma Phi, women's national journalistic fraternity, was installed on the Butler campus March 1, 1926. Women entitled to wear the gold matrix inscribed with the Greek letters, Theta Sigma Phi, are chosen from journalism majors who intend to make journalistic work their life profession, and who have shown outstanding ability by their activities in the journalism field.

The Matrix Table banquet, given annually by the organization, was held at the Campus Club, February 17 of this year. The club took on the appearance of a steamer, "The S. S. Matrix", for the gala affair, and all decorations were carried out in the nautical idea. Members of the fraternity were garbed as sailors, and Beatrice Burgan presided as the ship's captain, "Neptunus Rex".

Mrs. Kathryn Turney Garten, author and book reviewer, was the speaker of the evening. Prominent upperclassmen, ten chosen sophomores, faculty women and local newspaper women were guests.

Literary teas are held monthly by the group, and prominent speakers are honor guests at each meeting.

The June Day edition of the "Collegian" is always put out by Theta Sigma Phi. Officers for this year were: Beatrice Burgan, president; Dorothy Quick, vice-president; Elizabeth Carr, corresponding secretary, and Rosemary Bretzman, treasurer. Spring pledges are Adelaide Gould, Jane Hadley and Theresa Bagnoli.

*First row--Beatrice Burgan, Theresa Bagnoli, Betty Jane Barrett, Rosemary Bretzman, Elizabeth Carr.
Second row--Adelaide Gould, Honor Gregory, Jane Hadley, Dorothy Quick, Virginia Seeds.*



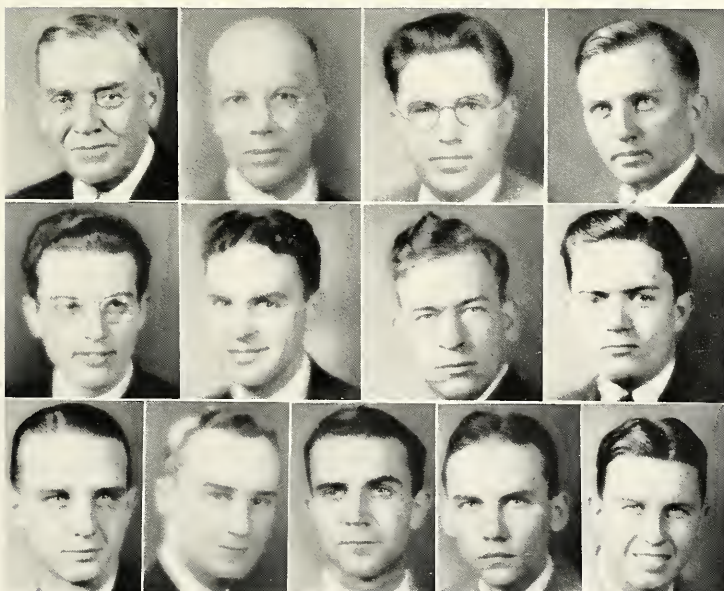
Alfred Marshall Honor Society

THE founding of the Alfred Marshall honor society was announced January 17, 1931 by the faculty of economics and business administration. The founders are members of the economics department; J. W. Putnam, dean, Dr. F. H. Streightoff, Chester B. Camp, M. G. Bridenstine, J. A. Griswold and Karl Stegemeier.

The purpose of the society is to recognize and encourage scholarship among students majoring in economics. Membership will be extended each year to a limited number of juniors and seniors. Alumni who were economics majors and members of Phi Kappa Phi will be invited to become honorary members.

The honorary has been named in honor of Prof. Alfred Marshall who occupied a position of pre-eminence in the economic world. The society will establish a sophomore scholarship. Officers of the organization are: Harold Vehling, president; Hollis Leedy, vice-president; Don Meid, secretary, and Jack Kingsolver, treasurer.

*First row--Dean Putnam, Professor Streightoff, Professor Bridenstine, Professor Camp.
Second row--Mr. Griswold, Mr. Stegemeier, Harold Vehling (pres.), Donald Meid (secy.)
Third row--Mayburn Landgraf, Seward Baker, Frank Fairchild, Victor Hertz, Max Miller.*



Frosh Honorary

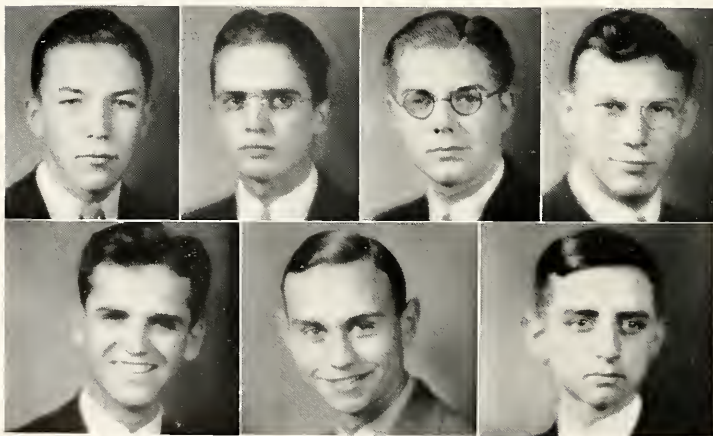
AN innovation on the campus this year was the establishment of a freshman scholastic honorary group which is petitioning Phi Eta Sigma, national scholarship fraternity for freshmen men.

Dr. Stanley A. Cain, chairman of the Men's Council, directed the founding of this group for the purpose of emphasizing the value of scholarship at the beginning of the academic career.

The charter members are Herbert Egbert, William Gearhart, Elbert Gillion, Hunter Kennedy, William P. McClelland, William Peacock, William Rasmussen, Carl W. Seet, Joseph Taylor, Richard Thompson and Julius Thorman.

Members of the Men's Council who will act as sponsors of the organization are Dr. Cain, Dr. A. C. Garnett, Professor Russell G. Weber, Prof. Clyde Clark, Prof. A. B. Carlyle and Dr. Merwyn Bridenstine.

*First row--Elbert Gilliom, William McClelland, William Rasmussen, Richard Thompson.
Second row--Hunter Kennedy, Joseph Taylor, Carl Seet.*



The background of the page is a faded, sepia-toned photograph of a dense forest. A light-colored path or clearing winds through the trees, leading towards the background. The overall tone is vintage and nostalgic.

Athletics

Frosh Honorary

A new addition to the program this year was the establishment of a Frosh Honorary organization which is petitioning Phi Iota Sigma to grant honorary membership to the freshmen men.

Dr. Harold A. Clark, president of the Men's Council, directed the formation of this group. One of the reasons for sponsoring the value of character at the beginning of the academic career.

The charter members are Herbert Egbert, William Gearhart, Elbert Gillion, Hunter Kennedy, William P. McClelland, William Peacock, William Rasmussen, Carl W. Seel, Joseph Taylor, Richard Thompson and Julius Thorman.

Members of the Men's Council who will act as sponsors of the organization are Dr. Clark, Dr. A. C. Gagnier, Professor Russell G. Weber, Dr. George Clark, Prof. C. B. Gandy and Dr. Myron Eridenstine.

From left: Elbert Gillion, William McClelland, William Peacock, Richard Thompson, Hunter Kennedy, Joseph Taylor, Carl Seel.





Coaching Staff

"SMILING" HARRY

HARRY M. Bell, formerly of Lombard college, tossed his hat into the Butler arena of sports as athletic director last fall and fell heir to one of the most difficult schedules ever attempted by a secondary college. If you consider victories, perhaps "Smiling" Harry failed to come up to standard in football, but if you consider the injection of whole-hearted enthusiasm which he piled into the students, the firm athletic foundation which he established and immediately started building upon, or if you consider the fact that Mr. Bell produced a sportsmanlike team that was the victim of bad breaks, unfortunate ineligibilities, a stiff schedule and

still won its important game of the year against Wabash college, 13 to 7, you cannot consider Harry Bell as anything but a one hundred per cent success.

Bell brought with him from Lombard Dick Baxter, who serves as football line coach, assistant track coach and tennis coach.

Tony Hinkle, head basketball coach, has whipped the sectional champions of the United States consistently, and turned out a national championship team in 1929. He also helps out in the football camp.

Hermon "Flip" Phillips, former Butler star and Olympic athlete, has turned out such stars as Sivak, Nelson and Jones, all of whom have gained nation-





Tony Hinkle Bob Nipper Wee Willie McGill Flip Phillips Whispering Bell Dick Baxter

al recognition. Phillips is head of the department of physical education, and helps out with the freshman grid-candidates.

Bob Nipper is freshman football and basketball coach, and Wee Willie McGee is trainer for the whole outfit.

THE YELL LEADERS

Howard Crise Jack Shaffer Maurice Boyd



Football





COACH BELL

Football, 1930

PLAYING a schedule fit for the Notre Dame national champions, considering the per capita rating of football material, the 1930 Butler Bulldogs suffered through seven defeats and only two victories, with a squad of thirty-nine men, the smallest turnout in years.

The first victory was won in a walk over Indiana Central, in the opening game of the season and the first night football game ever played in the Butler bowl. The idea of night football caught on readily with increased and more responsive attendance, even the

most blase of coeds forgetting their fall pastime of holding hands with the nearest ed long enough to emit a few shrills now and then.

Both teams played so aimlessly during the first quarter that even the coeds thought it was a terrible football game. Indiana Central pushed its nose into the danger zone twice during the early part of the game, but it was punched back into place by tight defense work. In the second period, the Blue and White found itself, and the big parade started, the Butler backs pounding the visitors' line unmercifully to lead, 19-0 at the half.

Hinchman, Booz, Yeazel, Raber and Reynolds continued to the scoring during the second half under the capable leadership of Sammy Polizotto, who thrust himself into the limelight by pushing his dainty little foot against the pigskin for three points after touchdown. Hinchman also took time out from his duty as police officer of the backfield to boot one through the uprights.

BUTLER, 7; OHIO UNIVERSITY, 12

With a chip on its shoulder and a punch in its bag to back it up, the Gold and Black from Ohio university invaded the bowl on a clear, starlit night and hung a dark cloud over the Butler offense and defense in the last quarter of a hard fought ball game to earn a 12-7 decision and hold on to its record of being undefeated in two years.

A long pass, Hinchman to Miller, put the Bulldogs into scoring distance in the second quarter after Ohio had taken a 6-0 lead, and with a sudden show of dexterity, Hinchman pushed through a half dozen tacklers to score the marker. Polizotto scored the point that put Butler ahead, using a place kick.

After the boys had had a little rest, and the customers a few of Jim Makin's long life hot dogs, Ohio U. came back, but didn't seem to be go-iny anywhere in particular. Then the middle of the Butler line began talking about rose bushes in New Zealand and woke up too late to keep the visitors from eking out a victory in the closing minutes.

BUTLER, 0; ILLINOIS, 27

Another defeat, but not a dark spot, appeared on Butler's record when Gil Berry led Bob Zuppke's Illini to a 27-0 triumph over the Blue and White.

Imitating Red Grange's famous performance at Pennsylvania in 1926, Berry ripped, tore, sidestepped and plunged through and around Butler tacklers for runs of 60 and 80 yards each. His teammate Yanuskus plowed through for the other two markers. With a helpless offense and a fighting defense, Bell's boys were outclassed and make the best of it.

BUTLER, 0; ST. LOUIS, 7

The St. Louis University walked off with the bacon and the Sigma Nu glider in the homecoming game by dint of a lone touchdown in the third quarter that climaxed a drive starting with the old wedge formation from kickoff. LaPresta added the point. The Bulldogs threatened consistently, but their attack failed even more consistently when yards meant touchdowns. Curly Hinchman played a stellar game until forced from the game in the second quarter because of injuries. Booz took hold of the reins and hoisted a few nice punts that showed the "show me" boys the color of the terra firma in their own back yard.

Corky Bauermeister aided materially in the defense work of the line, received a black eye or so, but claims he administered even more, which goes to show that even if referees aren't blind, they sometimes act as if they were.

BUTLER, 13; WABASH, 7

The Bulldogs added one to the right side of the ledger, made everybody happy and filled the local boys' pockets with coin of the realm by winning the important game on the schedule from Wabash, 13-7.

Wabash started out like a house afire, scoring a touchdown in the first quarter and burned out even more quickly as the game went along when Mecum and Zimmerman cavorted over the Red and White line for markers.

The score was tied at 7 all at half time. The cavemen held the Blue and White away from score several times in the third quarter, but the Bulldogs were not to be denied, Booz cracking the line for 15 and Mecum for the last 5 yards after a bad punt had given the Bulldogs a fresh start.

Bauermeister, Mecum, Booz, Zimmerman and Puett carried away the laurels for the day's combat. No coherent accounts of the night's frolic were available.

BUTLER, 0; LOYOLA, 33

Using all the tricks of the trade, the Wolfpack from New Orleans chased the Bulldogs back to their kennel nursing a 33-0 defeat, and took revenge for the sound plastering they had received at the Butler bowl the year before.

Hinchman and Ennis played a good ball game, but their nine assistants were unable to stop the flashy work of the Wolf backfield, which



slipped through and around the legs of the heavier Butler squad. Loyola piled up most of its advantage in the first half before the Blue and White caught on to the Wolfe's tricks. A tight defense kept the scoring to a single touchdown in the last quarter.

BUTLER, 0; PURDUE, 33

The Bulldogs bumped up against their second Big Ten opponent, Purdue, and got bumped off with lusty strokes administered mainly in the second half to the tune of 33-0.





Heroic work done by Templeton, Bauermeister and Sohl coupled with Polizotto's fierce tackling behind the line of scrimmage kept the score 6-0 in the first half. Butler's lack of reserve power enabled the Black and Gold to march through almost at will in the second period.

BUTLER, 0; HASKELL INDIANS, 27

Wilson Charles, flashy Indian back, handed Butler its next bunch of crepe, leading the braves to an easy 27-0 victory. Rabbit Weller, All-American candidate, stuck to the bench all afternoon and watch-





ed his warriors slaughter the Bulldogs with no mercy. The score at the half was 7-0. Lack of competent reserves again weakened Bell's defense until the Blue and White line looked like tissue paper in the wind.

BUTLER, 0; MARQUETTE, 25

One defeat that nobody minded was handed to the Bulldogs by Marquette, 25-0, in a Thanksgiving encounter played on a nicely frozen field. It was the first Turkey Day game lost by Butler in the last four years. The defeat by a team that walloped Detroit, undefeated in two years, Boston





college, conquerors of Fordham, and some of the East's best, however, was not a calamity.

In the second quarter, the Blue and White kept the Golden Avalanche away from its goal line, but the Milwaukee boys walked away with things in the second half.

The game marked the end of the college football careers of Curly Hinchman, star Butler back for three years, Harold Templeton, Jim Puett, Corky Bauermeister, Walter Johnson, Goof Reynolds and Speed Allen.

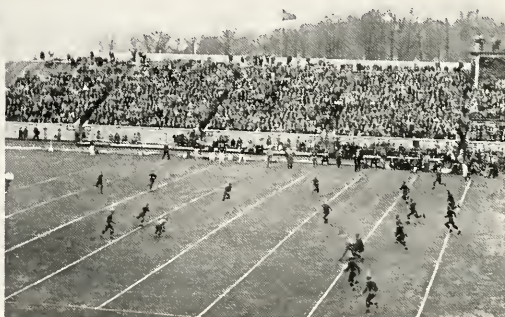




The men who were rewarded with letters for their season's work were: Hinchman, Puett, Reynolds, Allen, Templeton, Johnson, Bauermeister and Yeazel, seniors; Booz, Sohl, Brandt, Wolfe, Brock and Ruffi, juniors; and Mecum, Ennis, Elser, Miller, Raber, Sullivan and Polizotto, sophomores.

FRESHMAN FOOTBALL

Faced with the same deficit in freshman material that Coach Bell found in varsity men, coach Bob Nipper turned out the us-





ual scrapping Bullpup squad. Likely candidates for next year's varsity were not entirely lacking, with Jim Stewart, Petey Ray, Pete Garatoni, Harry Koss, Stafford, Billings, Erbecker and Blinn showing up well in the frosh workouts.

The Bullpup schedule was limited to one game, played against the Louisville university rhinies. Led by Ray, snappy little quarterback from sunny Tennessee, the frosh battled the colonels to a standstill, and with Stafford intercepting two passes, had little trouble winning 13-0.





FRESHMAN SQUAD

*First row--*Shepherd, Ray, Lockman, Miller, Garatoni, Snider.

*Second row--*Stafford, Etter, Boling, Billings, Orr.

*Third row--*Kilgore, Erbecker, Biggins, Nipper (coach), Phillips (asst. coach), Stone, Stewart, Cain.

The men who received awards on the freshman squad are Billings, Cast, Erbecker, Garatoni, Harlan, Kilgore, Koss, Munro, Miller, Orr, Smelser, Stafford, Stone, Snider, Stewart and Terhune.

*First row--*Sullivan, McMannamon, Sullivan, Polizotto, Horn, Wolfe, Ennis, Brock.

*Second row--*Brandt, McCarty, Koelling, Bauermeister, Weer, Puett, Templeton, Reynolds.

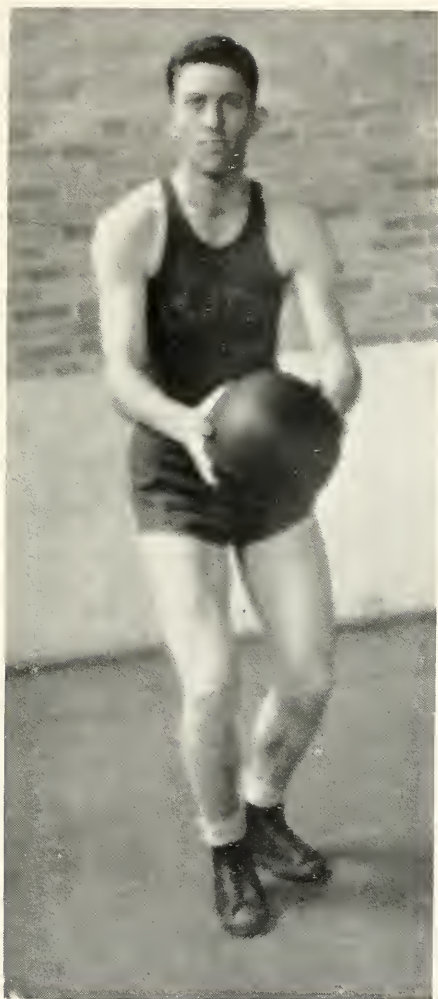
*Third row--*Raber, Hinchman, Allen, Johnson, Heddon, Greatbatch, Ressler, Benson, Lederer, Mecum.

*Fourth row--*Zimmerman, Sohl, Yeazel, Booz, Compton, Cook, Reeves, Strahl, Elser.

*Fifth row--*Baxter (asst. coach), Hinkle (asst. coach), Mabe (frosh mgr.), Nipper (asst. coach), Hulse (manager), Rubin (manager), Bell (coach.)



Basketball



Basketball



COACH HINKLE

STATE and conference champions were on the schedule which the Butler netmen faced at the beginning of the 1930-'31 basketball season. Practice began early in November and a squad of fifteen men was developed. A few veterans went to form the nucleus around which was formed a team whose chances for going through the schedule credibly were of the best.

December 12 brought Cincinnati to the fieldhouse and officially opened Butler's basketball activities for the year. Although the Bulldog offense seemed a bit inexperienced, the U. of C. bearcats left the floor on the short end of a 36-12 score.

The next week-end brought a team of westerners to the fieldhouse. Brigham Young university had a squad of sizeable basketeters and a fast offensive that kept the Butler men at top speed. The 45-34 score gave Butler an eleven point win.

Loyola of Chicago, a notable opponent and considered last year's national champs, came to Butler December 23. Butler took a well-earned 27 points, leaving the Chicagoans a score of 22.

University of Alabama, undefeated Southern Conference champs, was next. They were finally defeated 23-20 after a desperate struggle.

January 2 brought more southerners--University of Arkansas, Southwestern Conference champions. At the half the score stood 23-7 in favor of Butler. But the Razorbacks were not a setup team. Their scoring percentage took a flight and the game ended 37-21 with Butler holding the 37. This tilt was featured by clever passing.

Then came the first game with an Indiana opponent, a team that would play Hoosier basketball. Indiana State Normal started the game with a rush that gave them a four point lead. Chadd, Withrow and Miller then began sinking baskets, and left the score 16-9, Butler, at the half. Snappy shooting more than doubled this score in the second period, and the game ended as another Butler victory with the score 35-23.



FRANK HEDDON



The Bulldog netters took their first road trip January 10, meeting the University of Louisville five, Kentucky conference champions. When the final gun sounded, Butler left the floor with another victory. This time they doubled the score on their opponents, making a final score of 33-16.

Next came a short jaunt to Wabash, traditional Butler rival. The game was rough with plenty of fouling on both sides--nine on Butler and eight on the Cavemen. The game ended 30-20 with Wabash taking the lower figure.

From Kalamazoo came the Western State college squad, champions of Michigan. For the first time in the season the Bulldogs were behind at the half, the score standing 16-14. Then Chadd came through with some rapid-fire point making. Withrow contributed and Butler took the game 31-28.

Mid-semester vacation started Coach Tony Hinkle and his crew on a long trip through the south and west. At Evansville they stopped long





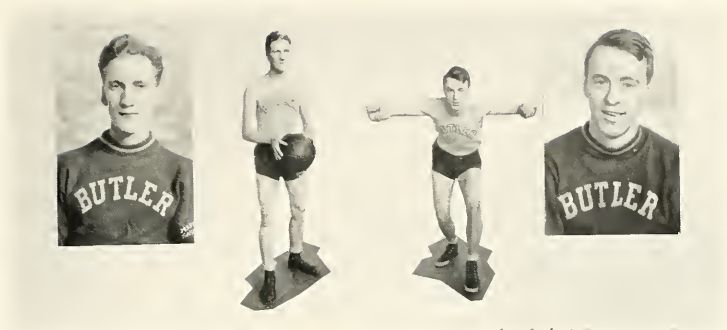
enough to administer a 24-17 trouncing to Evansville college. Then westward to St. Louis and a 30-23 victory over Concordia college.

But the Concordia victory was not so easily won, for in this game the flashy playing Withrow was injured after contributing four field goals to the score. A bit shaky because of the loss of Withrow, the Bulldogs pushed on to Lincoln, Nebraska, and tragedy, the first defeat of the season. Eleven successive games had been won. It was the greatest number of consecutive games ever taken by a Butler squad. But the University of Nebraska Cornhuskers ran away with the score and the game ended 32-14.

A championship team in spite of this defeat the Bulldogs journeyed south to Louisiana and more than doubled the score on the Centenary Gentlemen. The game ended 34-16. Here Davis got his first varsity experience and contributed four field goals, shooting from mean positions on the floor.

The Bulldogs traveled to Franklin February 12 for the first of the two games scheduled with Franklin college. This was a fast, running





game with a great deal of roughness in the play. However, the Bulldogs were in no danger at any time. Butler ran up a score of 25 as compared to Franklin's 18.

Two days later and the fieldhouse squad met Louisville in a return game. Again the Kentucky netters were defeated, this time by a score of 23-18. Miller and Withrow starred in this tilt.

Then came the second--and final--defeat of the season. The Bulldog squad journeyed to South Bend where Coach Keogan's five trounced them 27-19. The game was featured by ragged, inaccurate playing that was not at all like the Fairview brand of ball.

Wabash came to Butler February 27 and offered one of the best scraps of the season, as had been expected. It was a fast rough game with both sides taking many charity tosses at the basket. Butler won with a final score of 23-18. The Bulldogs were leading at the half 9-7.

Franklin appeared at Butler for their return chance and went home with the short end of a 19-14 game that was somewhat more interesting than the first. Withrow was the Bulldog star.





*First row--Davis, Tackett, Proffitt, Miller, Chickadantz, Wolfe, Anderson, Arbuckle.
Second row--McGill (trainer), Heddon (student manager), Chadd, Tony Hinkle (coach), Haslet, Bailey, Hulse, Nipper (freshman coach).*

March 10 brought down the Notre Dame netters for the last game of a tough season. Undoubtedly it was the best scrap of the year and the Hinklemen finished their schedule battling in a breath taking way. Following out the tradition of a loss at South Bend and a win at the field-house, the Bulldogs finally trounced the Notre Dame five 20-15.

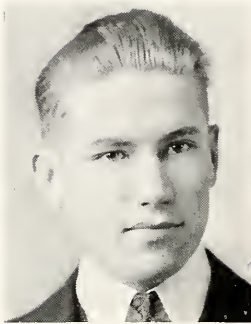
FRESHMAN SQUAD

*First row--Gilliom, Sullivan, Boling, Irwin, Snyder.
Second row--Stewart, Stafford, B. Blinn, Terhune, Lankford, Rainey.
Third row--Nipper (coach), Baird, Hornbeck, Demaree, Reissner, H. Blinn, Grossert (student manager), McGill (trainer).*



Track





COACH PHILLIPS

Track

WITH a nucleus of men who had starred in past seasons coach Hermon Phillips organized his 1931 track squad. Events started early in the year when two indoor meets were scheduled. The first of these took place at South Bend on January 31 when the Butler thinlies competed against Notre Dame, traditional track and basketball rivals. It was rather a poor start as the Bulldogs were defeated 62-38, but unusual talent had been shown by several members of the squad and they were not discouraged.

The second indoor meet was with Western State Teachers College at Kalamazoo, Michigan. This time the blue clad Hoosiers were successful and brought home a $68\frac{1}{2}$ - $44\frac{1}{2}$ victory.

The outdoor competition began with the Cleveland Relays. Butler only entered a few men, but took third in the mile relay and Sivak, one of the old timers, captured first in the mile.

Ball Teachers college, another annual rival in track and field events, was our first Hoosier opponent. Here the Bulldogs ran away with the meet to the tune of $75\frac{1}{2}$ - $43\frac{1}{2}$.

First row--Jones, Hadley, King, Boaz, Sivak, Seeright, Phegley.

Second row--Brock, Felton, Knisely, Allen, Cotton, Bailey, Ward, Compton.

Third row--McGill (trainer), Mecum, Elser, Tauer, Kistler, Kealing, Burns.

Fourth row--Schoen (student manager), Horner, Baxter (assistant coach), Phillips (coach.)



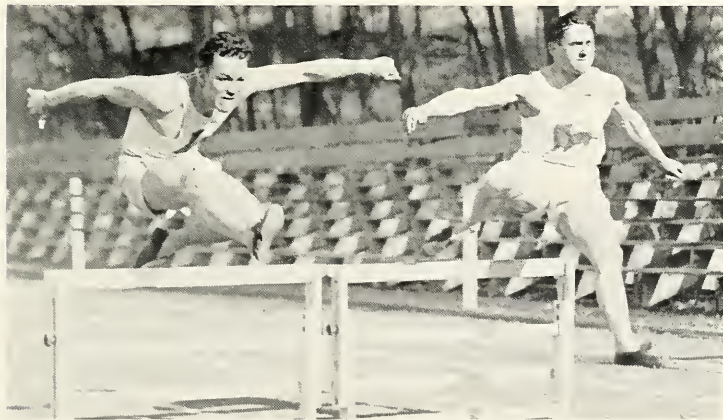


BERT NELSON

As usual Coach Phillips sent men to both the Kansas and Drake Relays. The Kansas meet brought us second in the quarter mile relay run. At Drake the Bulldogs took second in the medley and second in the four mile relay. A little later at the Ohio Relays the Butler men won the medley run, breaking the Butler record in this event.

Then came another Hoosier meet, this time with Indiana State Normal. Again Butler ran away from the field, taking an $80\frac{1}{2}$ - $42\frac{1}{2}$ victory.

BROCK AND KNISELY





JUMPERS

The Little State Meet at Muncie on May 9 was one of the chief events of the season for which the Bulldog squad had been training. The fact that the blue thinlies had really been training was proven by their most decisive victory over all competition. Butler took the meet with 75 points, the largest score made by any squad since the beginning of the Little State. This was the first Little State victory for Butler in seven years. Ball State and DePauw placed second and third respectively.

The following week-end, the Bulldogs followed up with third place in the Big State Meet, scoring 33 points to Notre Dame's 49 $\frac{3}{5}$ and Indiana's 44 $\frac{3}{5}$. Bunny Burns boosted the record for the 220 yard

SPRINTERS



dash again in this meet. Urbain and Sivak took second and first in the mile, and Mecum led the field in the shot put. The relay team took third place, and Jones, Nelson, Elser and Knisely placed in their events.

This meet closed the 1931 season, one of the best in the recent history of Butler, to quote Coach Phillips.

Automatically six seniors were eliminated from further track competition with the end of this season--Johnson, Wolf, Seeright, Sivak, Urbain and Jones, all veterans on the Bulldog squad. However, much new material was developed among the varsity group during this past season as well as some discoveries made among the freshman squad. With these men in view Butler and coach Phillips have every sort of hope for successfully going through the 1932 schedule.



WEIGHT THROWERS

MIDDLE DISTANCE RUNNERS





DISTANCE RUNNERS

BUTLER RECORDS

Coach Phillips has placed in a prominent place in the field house the records established by Butler's athletes. They are reproduced here:

100-yd. dash.	Gray, Allen	9:8	1925, '30
220-yd. dash.	Gray, Burns	21:3	1925, '31
440-yd.	Phillips	48:3	1927
880-yd. run	Phillips	1:56:3	1927
Mile run	Sivak	4:18:3	1930
2 mile run	Jones	9:40:6	1929
High jump	Nelson	6' 5"	1930
Broad jump	Woods	24' 1"	1925
Pole vault	Graham	12' 6"	1924
High hurdles	Woods	15:6	1925
Low hurdles	Ham	24:3	1925
Shot put	Mecum	44' 5 3/4"	1931
Discus	Griggs	134' 8"	1924
Javelin	Summers	178' 3"	1926

RELAYS

440-yard	Caraway, Kilgore, Phillips, Gray	41:7	1925
880-yard	Caraway, Ham, Phillips, Gray	1:27:8	1925
Mile	Caraway, Kilgore, Phillips, Gray	3:18:2	1925
4 mile	Jones, Urbain, Kistler, Sivak	18:05:3	1930
Medley	Burns, Urbain, Jones, Sivak	10:25:8	1931

URBAIN

BOAZ

JONES

BURNS



Minor Sports





DELTA TAU DELTA

Intramural Football

DELTA Tau Delta emerged victor in the 1930 struggle for intramural football championship. The season's games proved to be very closely contested with many of the teams showing varsity material.

For the Delts, Chadd, Nulf and Sibbett were outstanding; Worth, Hadley, Geisert and Kemper played heads up for the Phi Delts; Butz, Smith and Barrick were the Lambda Chi mainstays. The Sigma Nu's and D. A. Pi were battling with

Sharrer, Dongus, Walden, and Ranney and Ball, respectively.

In the first round the Delts won from Lambda Chi in the playoff of a scoreless first game, while the Phi Delts downed the D. A. Pi's, both 12-0. The Delts won their way to the finals by whipping the strong Sigs, 7-6, while the Phi Delts were winning over Sigma Nu, 6-0.

A blinding snowstorm and the brilliant runs of Nulf, an ex-varsity man, featured the final game. Frequent fumbles at untimely intervals cost the Phi Delts their first loss of the intramural supremacy in seven years. The score was 19-0.

ALL-FRATERNITY TEAM

L. E.--CHADD (Delt)

L. T.--MORGAN (Sig)

L. G.--SIBBITT (Delt)

C.--WARD (Delt)

R. G.--WORTH (Phi Delt)

R. T.--BUTZ (Lambda Chi)

R. E.--KEMPER (Phi Delt)

Q.--NULF (Delt)

L. H.--HADLEY (Phi Delt)

R. H.--SMITH (Lambda Chi)

F.--SHARRER (Sig Nu)

Honorable mention: Steger (Delt), Geisert, Blackburn (Phi Delt), Townsend (Tau Kap), Selby (Sig Nu), Chicadantz, Bolte (Sig), Barrick (Lambda Chi).

Intramural Basketball



ULENS

THIS year the intramural basketball trophy was won by the fast Ulen team, composed of unorganized men. Much credit for their long string of victories goes to Jim Makin, their loyal sponsor and coach.

To win the championship, in the semi-finals, the Ulen's overcame a ten-point lead gained by the Phi Delt's in the opening minutes, nosing them out by the score of 21-18. In the final round they completely routed the Lambda Chi Alpha team 54-19. This score did not justify the Lambda Chi team, however; they seemed to be far off form.

For the Ulen's, Reinking and Mozingo were the highlights; Lankford and Fogarty proved outstanding for the Lambda Chis. Booz, Horst and Sohl led the Phi Delt's while Nulf, Steger and Schmedel looked good in the Delt lineup. Ely and Bolte were best for the Sig Nus and Sig Chis respectively. The Ball brothers were outstanding for Delta Alpha Pi.

THE ALL-INTER-FRAT TEAMS

FIRST

Ulen	Reinking
AXA	Lankford
ΦΔΘ	Booz
ΦΔΘ	Horst
AXA	Lankford
Ulen	Mozingo
ΔΤΔ	Nulf
ΦΔΘ	Sohl

SECOND

Ely	ΣΝ
Ball	ΔΑΠ
Rufli	TKT
Ranney	ΔΑΠ
Blackburn	ΦΔΘ
Schmedel	ΔΤΔ
Bolte	ΣΧ
Walton	ΦΔΘ



PHI DELTA THETA

Novice Track Meet

EIGHT fraternities were entered in the first indoor track meet held in March at the fieldhouse under the direction of Herman Phillips. Phi Delta Theta was first, Lambda Chi Alpha, second, with Sigma Nu tying Tau Kappa Tau for third place.

Phi Delta Theta won first place in all events except pole vault, winning second place in that event. Lankford of Lambda Chi Alpha was first in this event. Conrad of the Phi Delts won the individual point trophy with Booz, also of the Phi Delts, winning the second point trophy.

The meet counted 500 points toward the intramural championship.

The outstanding feature of the meet was the fact that Phi Delta Theta placed a first and at least a second or a third in all but one event.

Much promising material was uncovered in this novice meet and these meets will have a place in the athletic events of the future, according to Coach Phillips.

Woman's Athletic Association

THE Woman's Athletic Association at Butler is a local association for women, namely, the American Conference of College Women. Its purpose is to promote a higher efficiency among the women of the University by fostering an interest in the Physical Education department and to promote school spirit and fellowship.

Butler has an active chapter of thirty-three members and a pledge chapter of twenty-two members, making a total membership of fifty-five. The officers of the organization are Jane Riddell, president; Mary Helen Dunnington, vice-president; Ina Lawrence, secretary, and Panoria Apostol, treasurer. Miss Louise Shulmeyer and Miss Susie Harmon of the Department of Physical Education for women constitute the advisory board.

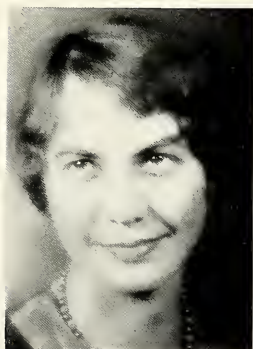
To be eligible for membership to this organization one must be enrolled in the physical education department. Underclassmen or juniors and seniors must have the required number of credits in gym work and must have earned fifty points according to the point system of the Association. To remain a member one must gain fifty additional points per semester which are given for participation on class and varsity teams in various seasonal sports, high point girl and runner-up in track meet, final and semi-final in tennis tournament, extra hours of gym, swimming achievements and hiking. The Association awards the basketball cup known as the Shulmeyer Trophy to the team having the highest average at the end of the inter-sorority basketball series. This year Zeta Tau Alpha won the cup after beating the Delta Gammas by a score of 9 to 2. These points were the only ones scored against the Zeta Tau Alpha team all season.

It has become a tradition of the Association to give a banquet in honor of the senior girls. The pledges of the Association are initiated at this banquet. Eighteen were initiated this year.

It is also a tradition to present the awards of the organization on May Day. Sweaters are given to girls acquiring 1,000 points and monograms to those acquiring 700 points.



MISS SHULMEYER



MISS HARMON

WOMEN'S ATHLETICS



Associated Schools





ARTHUR JORDAN

Arthur Jordan Conservatory of Music

THE Arthur Jordan Conservatory of Music is closing a successful year in which growth and progress have been commensurate with its aims and ideals. The history of the schools forming the Conservatory is well known and the high standard upheld by them is increasingly maintained by the Conservatory. Courses in all branches are full and up to date, and the members of the faculty are teachers of high standing and eminently fitted for their particular lines of work.

By the affiliation with Butler, the two schools jointly confer degrees in Public School Music. This has proven mutually advantageous. Butler professors hold classes in the Conservatory in the required academic subjects. The Public School Music course which leads to a degree of Bachelor of Music, is accredited in Indiana and other states. Courses in language, dramatic art and dancing are included in separate departments. An organ department is maintained, of which a course in church music and hymnology is a part.

Special students may enter at any time but will not be accepted

BOARD OF DIRECTORS

First row--Mrs. Henry Schurmann, pres., Blanche M. Harrington, secy.-treas., Hugh Mason, director, Glenn Frierimood.

Second row--Flora E. Lyons, Hugh McGibeny, Edward Nell, Leslie Peck.



for less than one term of ten weeks. A summer session for the training of Supervisors of Public School Music and grade teachers is scheduled for June 15 to July 17, 1931. These courses are to apply if necessary on the two and four year and degree courses offered in connection with Butler university. Practically the entire faculty will be available during the summer session. Oxford Piano Methods Normals are a feature in the School and the usual Summer Normal will be held this year.

The orchestra and string orchestra are a great asset to the Conservatory. Both accompanied the chorus in the rendition of Haydn's oratorio, "The Creation" during Music Week. Each year the Conservatory presents special musical activities and "The Creation" was the latest one.

Lecture recitals on Russian music were featured during the winter to great advantage to students and a music loving public. Programs by the faculty and students were broadcast weekly for three months over WKBF demonstrating all music departments.

Five fraternities are located in the Conservatory, the latest being the Delta Alpha chapter, (dramatic art) of Phi Beta which was very recently organized.

The Conservatory has four units of buildings. The former Metropolitan School unit at 106 E. North street faces the beautiful memorial plaza and is convenient for students in the downtown districts. The class rooms, offices and studios are housed in two fine old residences at 1204 N. Delaware street, in beautiful, spacious grounds. The north unit at 3411 N. Pennsylvania street is a charming colonial home among forest trees and lovely shrubbery, making a sylvan stage for pageantry and out of door plays.

FACULTY

*First row--*Frederick A. Barker, Frances E. Beik, Tull E. Brown, Lenora Coffin, Lorle Krull.

*Second row--*Clarence Loomis, Henry Marshall, Isabelle Mossman, Adolph Schellschmidt, Franklin N. Taylor, Donn Watson.



STUDENTS



Wilma Ault
Robert Bennett
Aline Black
Conrad Boardman
Asher Booth
Jean Brown

Virginia Byrd
Theresa Carroll
Ellis Carroll
Varner Chance
Lester DeBard
Alberta Denk

Cordelia Dritt
Wilma Friddle
Ruth Gant
Harold Gibbs
Myrtle Gleason
Alice Goddard

Mary Ruth Gunkel
Luella Hopkins
Louise Hopkins
Susannah Jones
Margaret Kelley
Ruth Kennedy
Thelma King

Hilda Korff
Lorenz Korff
Virginia Leyenberger
Eleanor Maris
Hugh Mason
Clara Meek
Van Miller

Velma Miller
William Miller
Josephine Mills
Mary Katherine Minch
Eva Nave
Mildred Noward
Sarah Olinger

Raymond Oster
Clarice Overstreet
Madge Parker
Mabel Pruitt
Marthellen Ratcliffe
Edward Saxton
Rebecca Shields

Velva Shirley
Katherine Sommers
Florinda Stant
Howard Thomas
Beatrice Westfall
Dalton Wicker
Mary Zimmerly

Arthur Jordan Conservatory of Music



Delaware at Twelfth



Delaware at Eleventh



Pennsylvania at North



Pennsylvania at Thirty-fourth

Music Sororities

PHI-MU ALPHA-SINFONIA FRATERNITY

A chapter (Alpha Sigma) of Phi Mu Alpha-Sinfonia, a national honorary musical fraternity for men, was organized at the Metropolitan School of Music. Earl Howe Jones is president of this chapter.



Earl Howe Jones

The motive of this fraternity is that of drawing together music students and musicians in a closer bond of fellowship for the purpose of encouraging and stimulating each other along their various lines. It is also organized for the purpose of advancing American music and musicians.

New members are chosen annually on a basis of high musicianship.

SIGMA ALPHA IOTA

Sigma Alpha Iota, the oldest national professional musical fraternity, has sixty-one active chapters. The objects of the fraternity are: to form bodies of representative women who shall uphold the highest ideals of musical education; to raise the standards of productive musical work among women students; to give moral and material aid to its members, and to promote and dignify the musical profession.

The local chapter, the Zeta chapter, maintains a "Student Aid Fund" available to members only, and gives a yearly scholarship open to competition. Mrs. Frank B. Hunter is president of the chapter and Mrs. Bernard Batty is province president.



Mrs. Frank B. Hunter

MU PHI EPSILON

Selma Zahl Searcy is president of the Kappa chapter of Mu Phi Epsilon, a national honorary musical fraternity which has fifty-five active chapters and twenty-nine alumni organizations.

Its objects are the advancement of music by the high standards of schools where chapters are located, the high scholastic attainments required of its members, the maintenance of a Benefit Scholarship Fund for members in need of assistance and by the maintenance of Chapter Scholarship funds with the aim of stimulating endeavor in the entire student body. Mu Phi Epsilon has a national clubhouse located centrally in New York City.



Selma Zahl Searcy

PHI SIGMA MU

Eta chapter of Phi Sigma Mu, national honorary and professional fraternity, was granted its chapter in March, 1930, at the Arthur Jordan Conservatory of Music. Jeanette Slocum is president of the local organization.

Phi Sigma Mu has seven chapters in colleges and conservatories. Members of other musical fraternities are eligible.



Jeanette Slocum

PHI BETA

The Delta Alpha chapter of Phi Alpha, national professional music and dramatic fraternity, was granted its charter in February, 1931 in the Arthur Jordan Conservatory of Music. This chapter is wholly dramatic and has twenty-five charter members. Ruth Wagner is president of the local chapter.

The purpose of the fraternity is to sponsor the best in music and drama, to foster college spirit and to advance its members professionally.

Phi Beta chapters are in conservatories, colleges or special schools devoted to the two arts.



Ruth Wagner

Indiana Law School



IN memory of the late Dean James A. Rohbach, loved and respected by his friends in the legal profession and his boys in the Indiana Law School, to whom he so wholeheartedly devoted his time and his energy for thirty years. His was a guiding influence in the life of each--the best friend a young lawyer ever had. His abilities as an educator stand second only to his qualities as a man, and his passing marks the close of a life dedicated to love and service for his fellows.

FACULTY

THOMAS A. DAILY, LL.B.

Common Law Pleading, Code Pleading and Appellate Procedure

HENRY M. DOWLING, A.B., LL.B.

(Member of Executive Committee)
Real Property and Special Lecturer on Ethics

LOUIS B. FWBANK, LL.B.

(Member of Executive Committee)
Special Lecturer on Pleading and Practice

SAMUEL E. GARRISON, LL.B.

Negotiable Instruments

RALPH B. GREGG, LL.B.

Contracts and Conveyancing and Abstracting

JAMES W. INGLES, A.B., LL.B.

Elementary Law, Bankruptcy and Public Corporations

JOHN W. KERN, A.B., LL.B.

(Judge Marion Superior Court)
Bailments, Carriers, Partnership, Private Corporations

FLOYD J. MATTICE, LL.B.

(Chief Deputy Prosecutor)
Criminal Law and Criminal Procedure

CLARENCE F. MERRELL, LL.B.

Suretyship

JAMES M. OGDEN, A.B., LL.B.

(State Attorney General)
(Executive Committee)
Special Lecturer on Negotiable Instruments and Practice

WILLIAM G. WHITE, LL.B.

Agency, Torts, Domestic Relations, Probate Law, Negligence, Sales, Workmen's Compensation, Justice Practice, Mortgages, Wills, Damages.

JOSEPH G. WOOD, LL.B.

(Secretary of School)
Evidence, Equity and Insurance

L. ROY ZAPP, A.B., LL.B., M.DIP.

Constitutional Law, International Law, Conflict of Laws

The School Year

THE Commencement exercises on the third of June will mark the close of the thirty-sixth year of the Indiana Law School. It was originally under the direction of Dean William P. Fishback, its founder, and for the last thirty years under Dean James A. Rohbach. Immediately after Dean Rohbach's death last August, an executive committee consisting of Henry M. Dowling, Judge Louis Ewbank, and James M. Ogden was selected to manage the affairs of the school during the period of reorganization.

The two remaining trustees after Dean Rohbach's death, Dr. Mathias L. Haines and Mr. Hilton U. Brown, ratified the work of the committee during their absence and requested that it should remain in office.

Mr. Joseph G. Wood was appointed secretary of the school and is the director of all the activities.

In the course of last year there have been several social functions which brought the students into closer association. Early in the fall a smoker was held for the faculty and students, and there have been three dances.

The Alumni Association received new impetus and shows promise of becoming an important part of the law school.

MOOT COURT

During the past year several moot courts have been held for the benefit of the students. The purpose of these courts is to give the stu-

SENIORS





JUNIORS

dent practise in the actual experience of conducting himself in the court room.

It is so arranged that every student who graduates will have had experience of this kind at one time or another during his schooling.

THE SENIOR CLASS

The Senior Class is the nucleus around which the activities of the school are centered. Glenn Funk, a senior, is coach of the debating teams,

FRESHMEN



and Louis Phipps coaches the basketball squad. Besides Funk, three other seniors are on the debating team.

The *Obiter Dictum*, a newspaper under the direction of John Conner, has been established and appears weekly.

Approximately half of the seniors are actively engaged in the practise of law and several have opened up offices.

During the fall term the seniors elected officers, and due to the complications which arose during the various elections, three full sets of officers were selected and have held office simultaneously since that time.

SECOND YEAR CLASS

The second year class has been active in the affairs of the school during the past year. There were representatives from the class on both the debating and the basketball squads.

The outstanding achievement of the class was the Founders' Day banquet which they supervised. It was held at the Severin hotel on March 11. Each class was represented at the speakers' table and members of the faculty spoke in accord with the occasion. Clyde Hoffman acted as toastmaster. Frederick Schortemeier was the principal speaker.

Floyd Burns, outstanding student, athlete and orator, represented his class among the speakers.

The officers of the class are: John Goddard, president; Buren Darrough, vice-president; Edward Snyder, secretary; William Burger, treasurer, and Don Becker, sergeant-at-arms.

DEBATING TEAM



FIRST YEAR CLASS

The Freshman class this year has the largest enrollment in the history of the school. There was a total registration of seventy-six. The class has taken part in all of the school activities and has backed the school's enterprises with enthusiasm. The class was well represented on the basketball team and placed one member on the debating team.

The majority of the students have attended college and a good percentage are graduates. Two-thirds of those enrolled come from outside the city and several represent other states.

During the winter term the freshmen sponsored a dance for the school which was entirely successful.

The officers for the class were B. Nelson Deranian, president; John Hughes, vice-president; Florine Phipps, secretary, and Harry Kennerk, treasurer.

THE STUDENT COUNCIL

Representatives from each of the three classes were selected at the beginning of the school year to serve on a student council. This is the first year such an organization has been in operation. It has been active in carrying out the policies of the school and creates a connecting link between the faculty and the student body.

The freshmen members are: John T. Rocap, Howard Simmons, Andrew T. Baret, Leo Wagman; second year: Edward Schurmann,

STUDENT COUNCIL



James E. Ramsey, Paul Duncan, Abe Farb; third year: Thomas J. Cory, Jack Tilson, Claude C. Hatfield, John A. Kendall.

THE DEBATING TEAM

The Indiana Law School was represented in debating by an affirmative and a negative team under the direction of Glenn Funk, a senior. The affirmative team consisted of Funk, captain, and Norman Buchan and Richard Oberreich, first and second speakers, respectively. The negative team was captained by Jack Crabtree. John Conner and Clyde Hoffman were first and second speakers.

BASKETBALL TEAM

The basketball team has been under the direction of Louis Phipps during the past season. This is the first year that the school has been represented on the hardwood. The team defeated Huntington in two contests and suffered defeat at the hands of Indiana Central College, N.A.G.U., Rose Poly, and Benjamin Harrison Law School.

The members of the team were: Burns, Hughes, Simmons, Mazelin, Smith, Marx, Alspach, Ernschaw, Lehman, and Stroehl.

BASKETBALL TEAM



Catachumen's Catechism (or sompin')

CAMPUS CLUB--luxuriously appointed lounge room where Fairview's intelligensia foregather to discuss relativity and predestination over demitasses of the finest Mocha.

DELTS--members of Butler's political organization. Adept at controlling school elections when they are represented on the student council.

SIGS--these beetle-browed yeggs with the bulging muscles whom you may hear calling for mayhem and murder at any track meet. Used as strong-arm men to further the political designs of the Delts.

THETAS--those regal dames who go about cherishing a precious secret. We tell you here what modesty forbids them to tell--they are the oldest sorority on the campus!

THE TOWER--one of those cheap magazines which bases its claim to prestige on mammoth circulation figures. Run as a business proposition by Betty Davis.

SPHINX--consolation prize for athletes and politicians who are overlooked by Blue Key.

PRINCIPLES OF EXPRESSION--snap course rapidly replacing journalism in the courses selected by athletes.

FAIRVIEW FOLLIES CAST



KAPPAS--coy, diminutive six-footers who may be identified in any portrait by the door keys worn just under the collar.

COLLEGIAN--propaganda sheet--the best medium outside of the Drift for furthering personal designs.

TRI DELTS--The Butler oil cans. Remarkable for their ability to support several political rivals in the same election.

TRACK--that branch of athletics which doesn't pay so well because the salaries aren't so high.

KAPPA PHIS--Alpha Delta Thetas.

SCARLET QUILL--Blue Key's little sisters.

DELTA ZETAS--not such finished workers as the Tri Delts.

JUNIOR PROM--a chance for squawkers to squeak.

LAMBDA CHI--the racketeers of Sunset Avenue. Naturalization--pardon us, initiation--services held twice a year.

THETA SIGMA PHI--alleged journalistic organization founded for the purpose of disposing of the old newspapers in the morgue.

STUDENT COUNCIL--headquarters of the anti-graft squeakers.

FAIRVIEW FOLLIES--a chance for the chorus men to show their stuff and the chorus ladies to _____ (censored.)

GENEVA STUNTS--see Harrison.

HOMECOMING--the day that the Scarlet Quills borrow a spiffy car and ten red berets and give the old town a treat.

PHI DELTS--the boys that the Lambda Chis look for when they're thirsty.

BLUE KEY--local chapter of Rotary International.

"A LITTLE BIT OF EVERYTHING"



ANOTHER FLOAT



MUSICAL FLOAT



CAR FLOAT



WAITING



PIERCING PROBLEMS



AFTER THE BRAWL
WAS OVER



AXIS FLOAT



FERRELL'S FAIRS



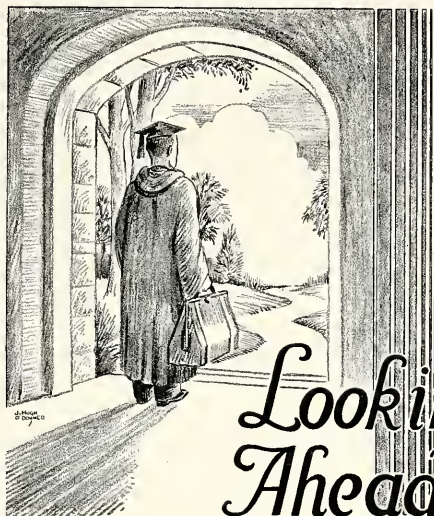
THE TOWER

To Our Advertisers

THE fine spirit in which the Advertisers listed herein, have responded to the solicitation of the Drift Staff has been a real source of inspiration to those responsible for the financial success of this publication.

The advertisements listed in this book are an indication alike of the value of The Drift as an advertising medium and the friendliness of those Advertisers toward the University.

To these Advertisers we express our gratitude and thanks for their fine support and good will and certainly we bespeak for them a splendid reciprocation from Butler students, alumni and friends.



Looking Ahead!

Butler students through earnest effort today are preparing for tomorrow.

Likewise the Indianapolis Water Company, through careful preparation today, is guaranteeing an adequate water supply for tomorrow.

The Company is anticipating the City's steady development and is providing an enlarged plant for that Indianapolis of the Future among whose leading citizens will be the 1931 graduates.

Major steps in this forward looking program, already completed or now in progress, are:

- The installation of a new 40 Million Gallon Daily Capacity Centrifugal Pumping Unit;

- The erection of a 1,500,000 Gallon Elevated Storage Tank for the Eastern portion of the City;

- The building of a 60-in. Reinforced Concrete Filtered Water Conduit from the Filtration Plant to the Riverside Pumping Station;

- The construction of a large Impounding Reservoir on Fall Creek, thirteen miles northeast of the City, with a capacity in excess of 4 Thousand Million Gallons of water.

These large projects, together with necessary additions to the Distribution System, involve expenditures running into Millions of Dollars and provide an invaluable guarantee against water shortage.

Butler students, and other interested persons, are invited to visit the properties constituting the public water supply system of Indianapolis--much of interest may be seen.

INDIANAPOLIS WATER COMPANY



Educational Activities Center at

THE CLAYPOOL

*The Riley Room is Instinctively Chosen for
University Social Functions*



BUTLER UNIVERSITY

Uses POLK'S MILK

"Food for thought"

THE POLK SANITARY MILK CO.

1100 East 15th Street

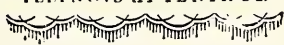


SHIRLEY
BROTHERS

Funerals

*A Shirley Service is a
Remembered Service*

THE MORTUARY TEMPLE
ILLINOIS AT TENTH ST.



THE COVER on this book
is the product of an organization
of specialists whose sole work is
the creation of unusual covers for
School Annuals, Set Books, Histories,
Catalogues, Sales Manuals and
other Commercial Publications

THE DAVID J. MOLLOY CO.
2857 North Western Avenue
CHICAGO

STEWART BATH BUDS

For a
Refreshing Bath
any time

ONE BUD TO A TUB

*Softens and Perfumes the Water
...They even leave the Tub Clean...*

7 BUDS IN A BOX FOR 50c
16 BUDS IN A BOX FOR \$1.00

At Your Drug Store
or Toilet Goods Dealer

Manufactured By

Kiefer-Stewart
Company

Attend This Depend-
able All-State School

Strong business, stenographic,
secretarial, accounting and business
administration courses; individual
instruction in major subjects; large
faculty; direct preparation for de-
sirable positions; free replacement
service.

This is the Indiana Business Col-
lege of Indianapolis. The others are
at Marion, Muncie, Logansport,
Anderson, Kokomo, Lafayette, Col-
umbus, Richmond and Vincennes
—Ora E. Butz, President.

For Budget of Information and
full particulars, get in touch with
the point you prefer, or see, write
or telephone Fred W. Case, Prin-
cipal.

Central Business College

Architects and Builders Bldg.,
Penn & Vermont Sts. Indianapolis

A TRUST COMPANY QUALIFIED BY 38 YEARS EXPERIENCE

Practically every kind of Trust problem that may arise has been met and solved by this Company during its thirty-seven years' experience. The best evidence of the public's confidence reposed in us is the fiduciary business now in our charge.

Value of Trusts and Estates on which we are now

administering \$ 41,937,040.35

Value of corporate trusts 101,669,670.00

TOTAL TRUSTS \$143,606,710.35

We cordially invite individuals and corporations, regardless of residence, who require trust service, to correspond with the President or other officers of this Company.

OFFICERS

ARTHUR V. BROWN	President
JOHN E. REED	Vice-President
MERLIN M. DUNBAR	Vice-President and Tax Officer
CHARLES N. FULTZ	Vice President and Trust Officer
HARRY F. McNUTT	Treasurer
ALFRED F. GAUDING	Secretary
CORNELIUS O. ALIG	Assistant Treasurer
ALAN A. RITCHIE	Assistant Secretary
J. FLOYD KING	Assistant Treasurer
RICHARD A. KURTZ	Assistant Secretary
EVERETT E. LETT	Assistant Secretary
ARTHUR V. BROWN, JR.	Assistant Secretary
GEORGE A. BUSKIRK	Trust Officer
CHARLES T. BLIZZARD	Auditor

DIRECTORS

FRED G. APPEL	JEDGAR H. EVANS
President Gregory and Appel	President Acme-Evans Co.
ARTHUR R. BAXTER	HENRY H. HORN BROOK
President The Keyless Lock Co.	Attorney-at-Law
HENRY W. BENNETT	WILLIAM G. IRWIN
President Indianapolis Stove Co.	President Irwin-Union Trust Co.
ARTHUR V. BROWN	Columbus, Ind.
President	WALTER C. MARMON
VOLNEY M. BROWN	Chairman of the Board
Attorney-at-Law	Indianapolis Power & Light Co.
THOMAS C. DAY	NORMAN A. PERRY
of T. C. Day & Co., Mortgage Loans	Capitalist
BERKLEY W. DUCK	SAMUEL E. RAUH
President The Spann Co.	President Belt Railroad & Stock
G. A. EFROYMSON	Yards Co.
President H. P. Wasson & Co.	PETER C. REILLY
HENRY EITEL	President Republic Cressoting Co.
Vice-President Indiana National Bank	FRANK D. STALNAKER
MERLIN M. DUNBAR	President Indiana National Bank
Vice-President	SAMUEL B. SUTPHIN
	President Beveridge Paper Co.

THE UNION TRUST COMPANY OF INDIANAPOLIS

The Leading Trust Company of Indiana
INDIANAPOLIS

INDIANA

-:-

...GEORGE S. OLIVE...
CERTIFIED PUBLIC ACCOUNTANT

PACE, GORE & McLAREN
ACCOUNTANTS AND AUDITORS
GEORGE S. OLIVE, *Resident Partner*

OFFICES IN PRINCIPAL CITIES
OF UNITED STATES, CANADA
AND CUBA

AUDITS--SYSTEMS
INCOME TAX PRACTICE

THIRD FLOOR
CHAMBER OF COMMERCE
BUILDING

INDIANAPOLIS IND.

Tell Her With

FINE
HOME-GROWN
FLOWERS



from

Bertermann's

241 MASS. AVE. RILEY 7535
INDIANAPOLIS

Flowers Telegraphed

A GREATER BUTLER



As citizens of Indianapolis we should co-operate
in every way toward the development of
Butler University



INDIANAPOLIS STREET RAILWAY
COMPANY

PENNANT SYRUP

With That Delicious Maple Taste

Made By

UNION STARCH & REFINING CO.

Columbus, Ind.

...Sold By All Grocers...

For Every Occasion--



Churned Fresh Daily
in Indianapolis

THE WADLEY COMPANY

335 West North Street

Riley 4484

BUTLER UNIVERSITY

INDIANAPOLIS

COURSES OFFERED

in the

COLLEGE OF LIBERAL ARTS

COLLEGE OF RELIGION

COLLEGE OF EDUCATION

LEADING TO THE

BACHELOR OF ARTS

BACHELOR OF SCIENCE

BACHELOR OF MUSIC

BACHELOR OF FINE ARTS

BACHELOR OF SACRED LITERATURE

BACHELOR OF DIVINITY

MASTER OF ARTS

MASTER OF SCIENCE

DEGREES

Certificates for teaching in kindergarten, primary and elementary grades offered by the College of Education

BUTLER IS AFFILIATED WITH THE

ARTHUR JORDAN CONSERVATORY OF MUSIC

JOHN HERRON ART INSTITUTE

For Information Write, THE REGISTRAR, Butler University

Those who
REALLY know--
prefer ICE

Those who are
particular
prefer.....

POLAR ICE
& FUEL CO.

PROGRESS.....

"the soft water"

LAUNDRY

If its a Laundry Service
WE HAVE IT

Telephone Riley 7373 for Laundry
and Dry Cleaning Service



WONDERFUL FOOD at
REASONABLE PRICES.....

Club Breakfasts 25c-50c
Noon Luncheons 50c

Table de Hote Dinners
\$1.00 and \$1.25
Also a la carte

SUMMER
Art School

Of the John Herron Art
Institute

To be held in Indianapolis
June 15th to July 25th

*Catalogue will be sent upon
request*

Tal. 1446

16th & Penn. St.

ARTHUR JORDAN CONSERVATORY OF MUSIC

Affiliated with Butler University
Formerly

Metropolitan School of Music
Indiana College of Music and Fine Arts

Certificates, Diplomas and Degrees Public School Music Course Dramatic Art Dancing

OFFICERS AND DIRECTORS

Mrs. Henry Schurmann	<i>President</i>	Glenn Friermood	Hugh McGibney
Arthur Jordan	<i>Vice-President</i>	Flora E. Lyons	Edward Nell
Blanche Harrington	<i>Secretary-Treasurer</i>		Leslie E. Peck
Arthur W. Mason	<i>Educational and Musical Director</i>		

INSTRUCTIONAL STAFF

THEORETICAL DEPARTMENT

ARTHUR W. MASON, B.M., Educational and Musical Director

Appreciation

(Cultural and Teaching) Lenora Coffin
Composition Clarence Loomis
Conducting Frederic A. Barker
Counterpoint Clarence Loomis
Ensemble (String) Adolph Schellschmidt
Ensemble (Piano) Clarence Loomis
Dancing Madame Gano
Dancing Louise Pursell Powell
Folk Dancing Norma J. Antibus
Form Analysis Tull E. Brown
General Survey Flora E. Lyons
Harmony Clarence Loomis
Keyboard Harmony Adolph Schellschmidt
Harmonic Analysis Clarence Loomis
History of Music Donn Watson

Instrumentation Frederic A. Barker
Melody Writing Adolph Schellschmidt
Methods (Instrumental) Frederic A. Barker
Methods (String) Henry Marshall
Public School Methods
(Grade) Lorle Krull
Public School Methods
(High School) Elizabeth Kaltz Cochran
Sight Singing, Dictation Flora E. Lyons
Art of Expression and
Diction Frances Beik
Play Acting and Play
Analysis Frances Beik
Piano Class Normal—Oxford
Method Geraldine Trotter

FACULTY

Norma J. Antibus	Grace Dorothy Flagg	Henry Marshall	Georgiana Rockwell
Frederic A. Barker	Glenn Friermood	Martha G. Martin	Christine Roush
Georgia H. Baumann	Ila Friermood	Florence Keepers	Eleanor M. Saunders
Nora Beaver	Mme. Leontine Gano	Lewis	Adolph Schellschmidt
Frances Beik	Jeanette Gardiner	Wesley Lewis	William Schwenger
Fanetta Hitz Brady	Lillian Carr Greene	Mary Caroline Means	W. T. Shannon
Blanche D. Brown	Frieda Heider	Pasquale Montani	Benjamin F.
Lulu Brown	Fairy Hendricks	Edward Nell	Swarthout
Tull E. Brown	Fred Jetrv	Ruth Ranier Nessler	Ida Belle Sweeney
Louise Mason	Virginia Jeffy	Stanley Norris	Franklin N. Taylor
Caldwell	Earl Howe Jones	Raymond Oster	Bernice Van Sickle
Myra G. Clippinger	Edwin Jones	George Patterson	Lucile Wagner
Elizabeth Kaltz	May Autderheide	Leslie E. Peck	Ruth Wagner
Cochran	Kolmer	Benjamin Pierson	Donn Watson
Lenora Coffin	Lorle Krull	Thomas Poggiana	Gertrude Whelan
Bomar Cramer	Paul Lindstaedt	Louise Powell	Mary E. Wilhite
Iva E. Duckwall	Clarence Loomis	Henry O. Pruitt	Frances Anne
Cecile A. Earle	Flora E. Lyons	Helen Louis Quig	Wishard
Allie Frances	Hugh McGibney	Leone Kinkler	Marie Manthay Zorn
Eggleton	F. Elmer Marshall	Pickman	

Summer Session for Supervisors in Public School Music, June 15 to July 18, 1931

Six weeks credit

Piano Class Normal—Oxford Method

Students who desire private work in any branch may enroll at any time

LOCATIONS

106 E. North Street
3411 N. Pennsylvania Street
INDIANAPOLIS

1204 N. Delaware Street
1116 N. Delaware Street
INDIANA

Fall Term Open Monday, Sept. 8th, 1931

New 1931-'32 Year Book Sent on Request

QUALITY

Schoen Bros'
THE CLEANERS

SERVICE

CALL AND DELIVERY DEPARTMENT

Main Office: Lincoln 1645—Lincoln 2451

Branch Office: Riley 7296

Our Complete "Fashion Show" of Fine Plumbing Fixtures
is Permanently Open to the Public

BEAUTIFUL BATHROOM AND KITCHEN FIXTURES

CENTRAL SUPPLY CO.

210 South Capitol Avenue

Indianapolis, Ind.

KING BAND INSTRUMENTS

Everything Musical

COMPLETE REPAIR DEPARTMENT

THE CARLIN MUSIC COMPANY

143 East Washington Street

OTTINGER & DAVIS

GROCERIES *and* MEATS

Wash. 1318

Four Deliveries Daily

3962 Blvd. Pl.

MEET ME AT THE

GREEN PARROT RESTAURANT

and SANDWICH SHOP

Is the Slogan of the Whole Student Body

QUALITY FOOD

-:-

SUPERIOR SERVICE

Meridian at Fall Creek

THE THORP AWNING SHOPPE, Inc.

FINE AWNINGS FOR FINE HOMES

2407 College

-:-

HEmlock 4091

TOASTED SANDWICHES
STEAKS

THE HOME OF GOOD CHILE

BUSINESS MEN'S LUNCH
CHOPS

D. C. BLACKER'S CHILE PARLORS

OPEN ALL NIGHT

No. 1—555 Mass. Ave.—LJ 0562

No. 3—139 S. Illinois St.—LJ. 0731

No. 2—46 W. Ohio St.—LJ. 0229

No. 4—320 E. Washington St.

Office, 555 Massachusetts Avenue

Phone, Riley 2654

Indianapolis

HOMER L. COOK, 'TEACHERS' AGENCY

(LICENSED)

Calls the Year 'Round. Enroll Now!

Write for Contract

No Advance Fees

HOMER L. COOK, Mgr.—[A Butler "B" Man]

325 Circle Tower

-:-

Indianapolis, Ind.

EXCELSIOR LAUNDRY

840-848 N. New Jersey Street

Try Our New Dry Cleaning Department
With Your Next Suit or Dress

Branch Offices

907 Ft. Wayne Avenue
Riley 3591

224 North Alabama Street
Indianapolis

The commercial and group photographs in this book
were made by the Butler Publicity photographer,

F. M. KIRKPATRICK

619 West Washington St.

Indianapolis, Ind.

AKRON SURGICAL HOUSE, INC.

PHYSICIANS', SURGICAL, SICK ROOM and HOSPITAL SUPPLIES

Elastic Hosiery and Abdominal Supporters. Orthopedic Appliances
Phones: LINcoln 1506 and 1507

221-223 Pennsylvania St.

Indianapolis, Ind.



STYLE AND SPEED IN INDIANAPOLIS
In the Days When "Grain Dealers Mutual"
Was Young

Write For Details of The
Scholarship Award of Grain
Dealers Mutual.

Still Youthful in Our Outlook . . .

. . . It isn't your age, it's your vision, and by that we don't mean astigmatism. If we call it outlook, will that suit, for what we mean is, we can see modern problems, and we know how to meet them from an insuring standpoint.

. . . Possibly you haven't an insurance problem today, but when it does come up tomorrow, remember the young fellows at "Grain Dealers Mutual". And don't let the name scare you. You don't have to have a pocket full of bird seed to get insurance on your car or dad's house with us.

{ INSURING ALL CLASSES
OF PROPERTY }

Grain Dealers' National Mutual Fire Insurance Company

J. J. FITZGERALD, Secy.-Treas.

OF INDIANAPOLIS

T R A V E L

Safely--Cheaply

on INDIANA'S STEEL HIGHWAYS

Forget about traffic jams and the expense of driving an auto. Ride, read and relax in a comfortable steel car as you speed through the countryside.

Fast, convenient service to almost everywhere in Indiana--Indianapolis, Fort Wayne, Muncie, Peru, Kokomo, Lafayette, Anderson, and Louisville, Ky.

It's by far the most economical way to travel

Week End Excursions--Round Trip; 10c
plus regular one-way fare

INDIANA RAILROAD SYSTEM

Indiana Railroad--Public Service Co. of Ind.
Indiana Service Corp.--Northern Indiana Power Co.

SEVILLE TAVERN

Indiana's FINEST RESTAURANT
Platter Luncheons Platter Dinners
Grill Specials
Sandwiches Pasteries
NORTH MERIDIAN AT WASHINGTON ST.

S. S. KRESGE COMPANY

Two Stores:

25c to \$1.00 DEPARTMENT STORE

41 East Washington St.

5c, 10c and 25c STORE, 17 West Washington St.

...THE PRATT POSTER CO....

Printcraft Building

Telephone: RI 4561

225 North New Jersey Street

INDIANAPOLIS

COMPLIMENTS
OF A FRIEND

...HOTEL ANTLERS...

200 Rooms--All with Bath

CATERING TO

Announcement Parties

Dinner Dances

-:-

Card Parties

SWIMMING POOL

Open All Year

Catering to Parties and Fraternity Functions

LI. 2351

Constantly Searching



Established 1895

FOR centuries astronomers have looked into the skies searching for new worlds, constellations and stars. Aside from their interesting research work, they have learned much that is of practical scientific value.

Similarly, in the field of student publications, the Indianapolis Engraving Company searches constantly for new ideas, plans and methods that will assist year-book staffs to publish successfully books characteristic of their school and community. The results of these efforts are gratifying.

The Annual Planning and Designing Department welcomes your inquiries for further information.

INDIANAPOLIS ENGRAVING COMPANY

Department of Annual Planning and Designing

INDIANAPOLIS, INDIANA

UNIVERSITY OF INDIANAPOLIS

DEPARTMENT OF LAW



INDIANA LAW SCHOOL

FACULTY

Thomas A. Daily
Henry M. Dowling
Louis B. Ewbank
Samuel E. Garrison

Ralph B. Gregg
James W. Ingles
John W. Kern
Floyd J. Mattice

Clarence F. Merrell
James M. Ogden
William G. White
Joseph G. Wood
L. Roy Zapf

The course extends over three years. Each year is divided into three terms. All subjects are required subjects. The curriculum and mode of instruction is similar to that followed by leading law schools. The "Case" system is followed with some text books and lectures. Graduates receive the LL.B. degree. Every instructor is a practising lawyer. Access is had to all the courts. Tuition is \$150 per year. Book expense is minor.

Office of the Secretary

Telephone RI ley 3433

302 Columbia Securities Bldg.

143 East Ohio St.

Indianapolis, Indiana



The Champion Coated Paper Company made the paper for the 1931 DRIFT. Champion paper was chosen by the DRIFT Business Manager and the printer as the best paper in value (price and quality) for their purpose.

THE CHAMPION COATED PAPER
... COMPANY ...
Hamilton, Ohio

Manufacturers of Coated and Uncoated
Advertisers' and Publishers' Papers, Card-
boards and Bonds--Over a Million Pounds
a Day.

DISTRICT SALES OFFICES
NEW YORK CHICAGO PHILADELPHIA
CLEVELAND BOSTON ST. LOUIS
CINCINNATI

From
a
Friend

SPINK ARMS HOTEL

INDIANAPOLIS' FINEST RESIDENTIAL, TRAN-
SIENT APARTMENT HOTEL

ABSOLUTELY FIREPROOF

410 North Meridian

Overlooking Meridian Plaza

We are devoting our greatest efforts toward making the SPINK ARMS
the rendezvous for all special luncheon and dinner parties,
club and fraternal dances, in fact, the sort of
hostelry where personal service rules
throughout.

YOU CAN'T BE TOO CAREFUL

PROTECT AND PRESERVE

YOUR CAR



FURNITURE



OR METALS



Blue Ribbon Products
Made in Indianapolis by
International Metal Polish Co.

Quill Street and Belt Railroad

This Book

is a
Product
from the
Presses
of

*The Herald
Publishing Company*

Anderson, Indiana



Autographs

