





THE ECHO



PUBLISHED BY THE
STUDENTS' ASSOCIATION
GREENSBORO COLLEGE FOR WOMEN
GREENSBORO, NORTH CAROLINA

1919

ORDER OF BOOKS

**BOOK ONE
THE COLLEGE**

**BOOK TWO
THE CLASSES**

**BOOK THREE
ORGANIZATIONS**

**BOOK FOUR
ATHLETICS**

**BOOK FIVE
THE COLLEGE
YEAR**

**BOOK SIX
PUBLICATIONS
HUMOR**

FOREWORD

Years hence, when you feel sad and lonely, and long for the old days spent at G. C. W., if you will glance over the pages of this volume and let the voice of your ever-faithful friend, your Alma Mater, echo through the years and awaken in you the memory of the days of 1918-'19, eventful days, when a world-war raged without, but you on your quiet college hill worked, studied, and played; and let her voice bring a note of cheer and happiness to you by inspiring you to things worth while, then our purpose in publishing this book will have been accomplished

Dedication

to

Professor Leonard B. Hurley

in

*Sincere appreciation of his unbounded
enthusiasm, sympathetic interest, wise
counsel, and willing co-operation,
which have been a constant incentive
to us in our efforts for:*

*A GREATER GREENSBORO
COLLEGE FOR WOMEN*

We dedicate this volume of

THE ECHO



LEONARD BURWELL HURLEY, A.M.

Professor of English



A FACULTY GROUP

Top row, left to right—HURLEY, HARRELL, BATES, TUCKER, NICHOLSON, ROBINSON, BROWNING, FERGERSON, CURTIS, STEARNS, LAUSER.
Second row, left to right—KILGO, ALLEY, RICKETTS, CLARKE, ROBERTSON, PORTER, HAMILTON, BROCK, CHASTEN.

Faculty

REV. S. B. TURRENTINE, D.D., *President*

A. B., A. M., University of North Carolina, Vanderbilt University
Professor of Bible

MRS. LUCY H. ROBERTSON, *President Emerita*
Professor of Religious Education

MISS M. E. RICKETS

Graduate of Wesleyan Institute, resident student in Berlin, course at La Sorbonne, Paris; course at Columbia University

Professor of French and Dean of the Household

REV. W. M. CURTIS, Ph.B.

University of North Carolina; Vanderbilt University
Associate Professor of Bible

MISS ANNIE MCKINNIE PEGRAM

A. B., A. M., Trinity College; Graduate courses at Columbia University

Professor of Mathematics and Science

MISS JENNIE THORNLEY CLARKE

A. M., Peabody College for Teachers, Diploma Sauveur School of Languages, Graduate Courses in University of Chicago and Harvard University

Professor of History and Social Science

DAVID F. NICHOLSON

A. B., University of North Carolina, Post-Graduate Emory College,
A. M., Harvard University

Professor of Science and Education

LEONARD BURWELL HURLEY

A. B., A. M. Trinity College, Graduate Work University of Chicago

Professor of English

MISS ELIZABETH A. WEBER

A. B. and Bachelor's Diploma in Education, Teachers' College George Washington University

Professor of Latin and Associate Professor of History

MISS LINNIE MARIE WARD

A. B., Greensboro College for Women, Graduate Courses at Peabody College for Teachers, and at the University of North Carolina

Associate Professor of English

MISS MARGUERITE TUTHILL

A. B. Greensboro College for Women

Instructor in Chemistry

CONRAD LAHSER

Royal Academy of Art, Hochschule fuer Musik, Berlin, Germany, Graduate Courses in Columbia University

Professor of German and Theoretical Branches of Music and Director of Music

BENJAMIN S. BATES

New England Conservatory of Music Normal Department, Pupils of Arthur J. Hubbard, Boston, Signor Dante Del Papa, Rome, and Charles H. Stevens, Boston

Professor of Voice

MORTIMER BROWNING

Graduate in Organ, Peabody Conservatory of Music Baltimore, Md.

Professor of Organ and Associate Professor of Piano

MISS AGNES HALL CHASTEN

Graduate of New England Conservatory of Music
Associate Professor of Piano and Theory of Music.

Faculty

MISS CAROLYN V. STEARNS

A. B., Smith College

Associate Professor of Piano and History of Music

MISS FLORENCE VIOLA TUCKER

Graduate in Piano, Peabody Conservatory, Baltimore, Md.

Associate Professor of Piano and Instructor in Sight Reading

MISS HELEN MAYER

B.M. Chicago Musical College, Pupil of Professor SÁVÁK Prague, Bohemia, Professor Pless, Berlin

Professor of Violin and Stringed Instruments

MISS THELMA HARRELL

B.M. Greensboro College for Women

Assistant in Voice Department

Supervisor of Piano Practice

MISS EILEEN KILGO

A. B. Graduate Landis College Courses in Home Economics at Greenville Woman's College, George Peabody College for Teachers, and Columbia University

Professor of Household Economics

MISS DINIE ROBINSON, B.E.

Vanderbilt University Peabody College for Teachers, Columbia School of Expression, Chicago, Ill.

Professor of Expression and Physical Culture

E. J. PORTER

The Art Students League of New York, Graduate New York School of Design, Graduate Courses in Art in New York City and Paris

Professor of Art

MATTIE H. CALDWELL

Greensboro College for Women, State Normal and Industrial College

Professor of Bookkeeping and Stenography

OTHER OFFICERS AND ASSISTANTS

REV. EDWIN L. BAIN, D.D.

Chaplain

REV. W. M. CURTIS

Secretary and Treasurer

MISS ELIZABETH C. HAMILTON

Supervisor of Buildings and Infirmary

MISS AMMIE Z. WILSON

Supervisor of Kitchen and Dining Room

MRS. REUBEN R. ALLEY

Librarian

MISS NELL FERGUSON

Bookkeeper

MISS LETHA BROCK

Registrar

MISS MINNIE B. ATWATER

College Chaperon

MISS REUBEN R. ALLEY

Instructor in Physical Culture

MISS LETHA BROCK

Instructor in Mathematics

STUDENT ASSISTANTS

MISS NELL DAVIS

MISS MARTHA ADAMS

MISS MYRTIE HUMBLE

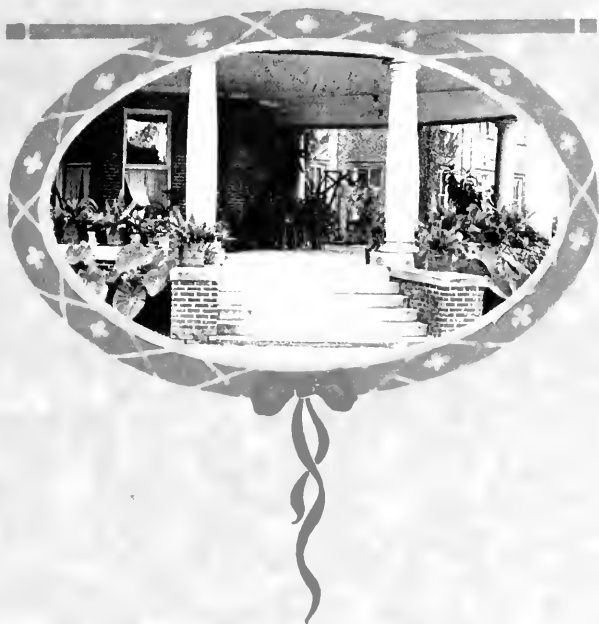
Student Assistants in English

MISS MAURINE BRITAIN

Student Assistant in French

MISS VELMA LEE PARISH

Assistant in Art



BOOK I
OUR COLLEGE IN
WAR TIME



1900
MAY 12 1900
LIBRARY



In Memoriam

SERGEANT. FLETCHER WIN-
STEAD MERRETT

ROXBORO, N. C.
Co. H. 120th Infantry, 30th Division;
killed in action August 20th, 1918.

CAPTAIN B. F. DIXON

GASTONIA, N. C.
Company K. 30th Division; killed in
attack on Hindenburg line, Sept. 29th,
1918.

CAPTAIN W. T. SHAW

WELDON, N. C.
Third Division; killed in the second
Battle of the Marne.

GEORGE E. GALLOWAY

FAIRMONT, N. C.
First Trench Mortar Battery; killed in
France Feb. 27, 1918.



Our Heroes

- LIEUT. J. B. ADAMS—Fort McPherson, Atlanta, Ga.
- LIEUT. H. B. ADAMS—Headquarters, Camp Gordon, Atlanta, Ga.
- LIEUT. J. W. AVERA—Fort Worth, Texas.
- LIEUT. K. B. BAILEY—C. O. T. S., Camp Lee, Petersburg, Va.
- SERGT. ALBERT W. BAILEY
- ORION B. BELLE—U. S. S. Harrisburg Bridge, N. Y.
- HARRY BLACKWELL—Camp Meade, Md.
- MARION BLACKWELL—Aucon, Panama, C. Z.
- SERGT. C. D. BRITTAIN—30th Division, 105 Reg. Co. C., A. E. F.
- AGT. C. W. BLOUNT—31st Div., Co. H., 321st Inf., A. E. F.
- CORPORAL G. R. BLOUNT—29th Div., Co. E., 110th Inf., A. E. F.
- L. J. BROAGWELL—45th Co., 5th Reg.
- JONUS BROTHERS—5th Platoon, 31st Reg., Ft. Thomas, Ky.
- LEMUEL B. BROOME—5th Anti-Air Craft Brg., France.
- CARL F. BUNTING—Commandant's Office, 5th Naval District, U. S. S., Pilgrim, Norfolk, Va.
- SERGT. HUNTER G. BURGESS—105th Engs., A. P. O., 749, A. E. F.
- CORPORAL J. G. BURGESS—120th Inf., A. P. O., 749, A. E. F.
- AGT. MAJ. W. W. BURGESS—156th Depot Brg., Reg-Hdqrs., Camp Sevier, S. C.
- J HARVEY BURGESS—Cooks and Bakers Co., Camp Merritt, N. J.
- ERTEL CARLYLE—Hampson Roads, Va.
- CORPORAL FLOYD C. CAVINESS—C. O. T. S., Camp Lee, Va.
- JOSEPH S. CLARKE—Hospital School, Newport, R. I.
- HERBERT D. CLARKE—21 Battery, Oct. A. R. D., A. E. F.
- GRAY CRAVEN—826, 4th St., Portsmouth, Va.
- CORPORAL W. A. DAVIS—107 Administration Bldg., Q. M. C., Newport News, Va.
- CAPT. C. J. DAVIS, JR.—116th Engs., A. E. F.
- SERGT. WAOE F. DENNING—14th Balloon Div., A. E. F.
- FRANK W. ELLIOTT—Red Cross, Camp Scott, Chicago, Ill.
- LIEUT. KERLER C. ELLIOTT—100th Air Squadron, A. E. F.
- H. Y. EDGERTON—M. M. I. C. W. S., Headquarters, Paris.
- B. D. EFRID—Base Spare Parts Depot No. 2, A. P. O. No. 772, A. E. F.
- LIEUT. JOHN ERWIN—A. S. S. O. R. C., France.
- CLYDE ERWING—Co. 56, Unity X Naval Operating Base, Hampton Roads, Va.
- J. ASHLEY FARMER—Headquarters Co., 55th Pioneer Inf., A. E. F.
- CORPORAL CLARENCE FERGUSON—20 Co., 4th Reg. Air Service Mechanic, A. P. O., 730, A. E. F.
- CORPORAL PAUL B. FOLGER, 119th Inf., M. G. Co., A. E. F.
- SERGT. HOWARD E. FULTON—Camp Taylor, Ky.
- MANLEY K. FULLER—U. S. S. Richmond, Camp Perry, Norfolk, Va.
- B. E. GRIFFIN—U. S. S. Jan Van Nassan, Wilmington, N. C.
- PERCY L. GROOME—321 Amb. Corps, 81st Div., A. E. F.
- PRIVATE R. G. GROOME—8th Co., Potomac, Ft. Washington, Md.
- DEWEY E. GROOME—321 Amb. Co., 81st Div., A. E. F.
- JOHN D. GROOME—Co. C., West Raleigh, N. C.





Our Heroes

- PRIVATE GEO. E. GALLOWAY—killed in action.
SERGT. W. H. HARRIS—11th Barracks, Columbus, Ohio.
- RANSON HARRIS—U. S. S. Utah, N. Y.
G. WAVERLY HARRIS—Machine Gun Co., 30th Div., A. E. F.
- MATTHEW HATCHER—Wrightstown, N. C.
PRIVATE HENRY A. HARRELL—Battery F., 7th Reg. Brigade Camp.
- SERGEANT PAUL S. J. HEATH—113th F. A., A. E. F.
- IRA G. HINSHAW, C. and R. Civ. Q. M. C., Camp Sevier, S. C.
- BASCOP HOLT—A. P. O. 716, Base Hospital, A. E. F.
- BRANTON JONES—O. M. S., Hampton Roads.
HENRY JOYNER—Battery Park, 4th Co., Art. Part., A. E. F.
- JOHN LEE JOHNSON—Battery F, 330th F. A
HENRY L. JOHNSON—Merchant Marines, Detroit, Mich.
- EDGAR B. JENKINS—U. S. Naval Operating Base, Hampton Roads, Va.
- J. R. LONG—Co. B., 4th Regt., Camp Gordon, Atlanta, Ga.
- CARLOS U. LOWRANCE—Co. A., 105th M. P. 30th Div., A. E. F.
- CORPORAL J. WALTER LAMBETH—A. P. O., 714 A. E. F.
- LIEUT. EVERETT A. LIVINGSTON—326 Ambulance Co., A. P. O., 742.
- CORPORAL R. L. MCNEELY—113th F. A., A. E. F.
- PRIVATE FRED MCNEELY—118th Amb. Co., A. E. F.
- WILBUR C. ORMOND—Princeton, N. C.
HARPER QUINN, JR.—Co. E., 199th Inf., A. E. F.
- LIEUT. J. L. RAWLES—Camp Greenleaf, Ga.
- CAPT. C. P. ROBERTS—117th Inf., A. E. F.
LIEUT. R. G. ROBERTS—308th F. A., A. E. F.
LIEUT. ADRIAN ROBINSON—Love Field, Dallas, Texas.
- JAMES F. ROBERTS—Co. A., 105th M. P., 30th Div., A. E. F.
- LIEUT. L. O. STONE—Pine Beach Hotel, Hampton Roads, Va.
- LIEUT. BEVERLY SNOW—Camp A. A. Humphrvs, D. F. SASSER—U. S. Steam Eng. School, Hoboken, N. J.
- ROBT. Y. SASSER—Camp Meade, Md.
CAPT. WILLIAM T. SHAW—Killed in action.
- LIEUT. JOHN STOKES—A. E. F.
WENDELL B. STONE—A. E. F.
- CORPORAL HARRY S. TAYLOR—Supply Train No. 6, 81st Div., A. E. F.
- RICHARD H. TAYLOR—Ambulance Co., 317, A. E. F.
- JAMES B. TAYLOR—321 Inf., Co. G., A. E. F.
WILBUR C. TURRENTINE—A. P. O., 762, Co. F., 4th Prov. Tr. Rg., A. E. F.
- LIEUT. A. H. WELLS—Camp Gordon, Ga.
LIEUT. C. F. WEST—934 Cargie St., Cape May, N. Y.
- R. R. WEST—(Yeoman), Hampton Roads, Va.
CECIL WORSHAM—Co. B., 3rd Prov. Reg., 156 Depot Brigade, Camp Sevier, S. C.
- PRIVATE SIMON WARLICK—Co. A., 1st Bn., 117th A. E. F.
CAPT. ANDREW WARLICK—A. E. F.
LIEUT. ELI WARLICK—A. E. F.
- PRIVATE FRANK WARLICK—Garden City, N. C.
RALPH D. WILLIAMS—8th Reg., Barracks B., Princeton Unit, Pelham Bay, N. Y.
- SERG. JOHN A. YOUNG, JR.—Co. D., 186th Depot Brigade, Camp Sevier, S. C.
HERBERT YOUNG—Fort Thomas, Ky





OUR HEROES



OUR HEROES



WAR CLUBS

(1) War Knitters. (2) Red Cross. (3) Liberty Bond Holders
(18)



WAR CLUBS

(1) Sophomore Service Club. (2) W. S. S. Club



Our
Service Flag
94
Stars



THE G. C. W. GIRL OF THE MEXICAN WAR



THE G. C. W. GIRL OF THE CIVIL WAR



THE G. C. W. GIRL OF THE SPANISH-AMERICAN WAR



THE G. C. W. GIRL OF THE GREAT WAR

(24)



FLOOR II
THE CLASSES





MISS AGNES CHASTEN
Senior Class Officers

Motto: "Carpe Diem."

Colors: Red and White.
OFFICERS

Flower: Sweet Pea.

- MYRTIE HUMBLE
- CARRIE ERWIN
- FLOSSIE DENNY
- NELL GROOME
- MISS AGNES CHASTEN

- President
- Vice-President
- Secretary
- Treasurer
- Faculty Member



Senior Class

ESTHER AYCOCK, A.B. Pantego, N. C.

Emerson Literary Society, Vice-President of Class (11), Secretary (29, 43); Chief Chapel monitor (32); Y. W. C. A. Cabinet (31), President of Students' Association (11)

Sentimentality, that's "grandma" all over! (though she insists it isn't). Seldom blue, she has a peculiar fondness for "Red." Saucy from her upturned nose to her imprudently high heels, yet with such an ample supply of good common sense and dependability that Esther has made the Students' Association a big success, and that is "jest" all there is to it.



Senior Class

RUTH BELL, A.B. Belhaven, N. C.

Emerson Literary Society; Secretary Class (1); Vice-President Class (2.)

Sleeping is Ruth's chief amusement; she is always ready to take a nap and even indulges in class if the opportunity presents itself. Perhaps her late hours as proctor may partly account for this tendency. We have to give it to Ruth that she is a good proctor, possibly a little too good for some of us. Furthermore, she has a sweet disposition. We sometimes wonder if the boxes of candy she receives has anything to do with it!



Senior Class

MAY MAURINE BRITTAIN, A. B., B.M.

Summerfield, N. C.

Emission Literary Society, Vice-President of Class (1); Chaplain E. L. S. (2); Class Treasurer (2); Class Tennis (2); Class Champion Doubles (1); Track Team (1); Class Basketball Team (2); Class Basketball (5); Club (2); Class Messenger (1); Class Nominating (1); Class President Northern Club (1); Class Club (1); Class Historian (1); Vice-President of Students' Association (1); Annual Staff (1); Equal Club (1); President E. L. S. (1); President of Athletics (2); Testator (1).

Maurine is our sunshine, and even on rainy days and blue Mondays she makes us feel bright and happy. She really is the most winsome girl in school as has been proved by the hearts she has won. Furthermore, Maurine can sing. We are looking forward to the time when Mme. Brittain's name appears in bright lights on Broadway as the renowned prima donna popular for her bird-like trills.



Senior Class

LUCY BROTHERS, A.B. La Grange, N.C.

Emerson Literary Society, Atlantic Christian College (1), (2), Treasurer E. L. S. (3); Y. W. C. A. Cabinet (3), Student Council (3), House President Fitzgerald (3), Annual Staff (3), Student Council (4); Class Basketball (5), (6); President Y. W. C. A. (4).

Lucy is to be the most accomplished graduate of the class if she ever keeps up with all her little half-hour art, expression, and domestic science periods. Yet every one knows that "Luke" can do every thing from successfully managing the Y. W. C. A. to cooking a good square meal; of course every one knows that it "pays to advertise," but we aren't going to tell how much she paid for this ad.



Senior Class

EDNA CAVINESS, A.B. Asheboro, N. C.

Emerson Literary Society; Nordien Club (2); Tribunal E. L. S. (3); Treasurer (4); Class Track Team (2, (3), (4)); Y. W. C. A. Cabinet (4); Annual Staff (4.)

Edna felt very uncomplimented at being called the drollest in the class, for she thought that it meant "countified." What an idea! That may have been the case when she appeared on the college hill with a certain large picture in one hand and a pillow in the other, but that was four long years ago. Of her future we are not able to divine because we are not sure when the 30th Division is coming home.



Senior Class

FLOSSIE DENNY, A.B. Greensboro, N. C.

Irving Literary Society; Browning Club (2), (2); Nordica Club (1, 2, 3), (4); Secretary
 Class (4); Diploma in Voice (3.)

Flossie came to us from last year's Senior Class. Since she had succeeded so well in becoming nearly as good in her line as Farrar, she decided to try the A.B. Even though she has a diploma in voice we cannot persuade her to sing in public, and the only time she lets out her melodious warbling is early in the morning. Her chief worry is astronomy, for visitors always find her deep in this subject. But with it all she is afraid that she never can understand all the peculiarities of the moon.



Senior Class

CARRIE ERWIN, A.B. Asheboro, N. C.

Durham College (1), (2), Emmons Literary Society, Chaplain E. L. S. (2); Y. W. C. A. (4); Alpha (1), (1), Message Staff (2), Nucleus Club (2), Vice-President Class (1); Vice-President Student Association (1), Executive Council (1).

No wonder Carrie was voted the greatest bluffer in the class. Why, she stars as a fortune-teller, and judging from appearances the fate of several persons is wavering in her hands. Sometimes we quiver when we think of her own future, for how she carries such a heavy course is a mystery to us. Nevertheless, she manages to come out on top. Besides classwork she can manage to find time for social service. In fact, Carrie is a valuable friend as everyone will testify.



Senior Class

ELIZABETH GIBSON, B.M. Laurinburg, N. C.

Irving Literary Society, Class Treasurer (2), (3), House President of Main Hall (5), Tribunal E. L. S. (1); Browning Club (1); Treasurer of Y. W. C. A. (1).

Here is the future business woman of our class; efficient, steady, and dependable exactly describes Elizabeth. Whether she is keeping her hall quiet, or practicing her four hours, you may be sure that it is going to be done thoroughly and well. Furthermore, our great confidence in her ability is shown in the trusty offices she has filled, for our class flourished under her management of its coffers. This year we are wishing the Y. W. C. A. an even greater success.



Senior Class

NELLIE GROOME, B.M. Greensboro, N. C.

Irving Literary Society; Class Basketball (1), (2); Browning Club (1), (2), (3), (4); Tribunal I. L. S. (1); House President of Main Hall (1), Treasurer Class (4)

No wonder all the boys consider Nell a good pal, for she has had a great deal of experience with gentlemen. Think of having seventy-two first cousins! Does it surprise you that she is kept busy running from the postoffice to the parlor? We are forgetting, however, to mention her personal charms and the fact that she can play anything from "*Hindostan*" to one of Beethoven's Sonatas.



Senior Class

CARRIE HARRIS, A.B. Oxford, N. C.

Irving Literary Society; Treasurer of Dramatic Club (2); Class Historian (3); Secretary Dramatic Club (3); Vice-President of Y. W. C. A. (4); Quill Club (4); Editor-in-Chief of Annual (4).

Will Carrie ever stop giggling? We hope not, for it is such a happy sound to all of us who love her. If you think her entirely frivolous watch her secure a twenty-dollar Ad. for the Message. In fact, she stars in almost anything she undertakes—History, especially; we could prove this by her grades, but believe us, they are A's. If there's anything else you want to know about Carrie, consult this Annual—She was Editor-in-Chief.



Senior Class

ANNA HOLSHOUSER, B.M. Salisbury, N. C.

Emerson Literary Society; Class Basketball (11, 12); President of Class (2); Triphumal F. L. S. (2); Y. W. U. A. (2); Class Tennis (2); Student Council (2); President Browning Club (1)

Anna objected to being called the frailest, so we compromised by telling her weight, 146 pounds, to prove that she is not just a pack of skin and bones. She decided that she did not want to be a Pad-
 erewski, since music could not cure soldiers, but John Hopkins suited her exactly. But now we are wonder-
 ing if she will not give that up and get a very different degree since the war is over!



Senior Class

MYRTIE HALL HUMBLE, A.B. New Bern, N. C.

Trinity College: (1), (2); Emerson Literary Society; House President Indson (3); Student Council (3); Annual Staff (3), (4); Y. W. C. A. Cabinet (4); Quill Club (4); Vice-President E. L. S. (4); Class Basketball (4); Class President (4); Class Prophet (4)

Myrtle, our big-hearted President! Don't tell me that being a preacher's daughter doesn't develop talent; why you just ought to see her make what she has, get what she wants. Maybe the serene atmosphere of the parsonage gave her that even temper, quick sense of humor, and bright disposition. Anyway, she seems to enjoy belonging to a minister's family, and we predict for her a very useful life with her bright smile ever carrying an Humble-Ray of sunshine.



Senior Class

KATE HUTTON, B.M. Greensboro, N. C.

Emerson Literary Society; Nordica Club (1), (2); Browning Club.

Speaking of music, here is Kate. She can play almost anything and play that well. We are expecting her to become a great pianist and in the future may even rival John Powell. Kate's ways are as sweet as her music. We did not really appreciate her until she came to live with us on the college hill, then we found that the more you knew of Kate the better you liked her.



Senior Class

ATTRICE KERNODLE Greensboro, N. C.

Member Emerson Literary Society.

Attrice's ready wit keeps us in a constant state of laughter, for we never know what she is going to say next. The most brilliant in our class did you say?—Yes—She even elects physics as a pastime. We were not at all surprised to learn that she is going to continue her work at a Northern university next year. We shall send her forth with our best wishes, believing that she will distinguish herself.



Senior Class

DAISY ERNESTINE LAMBETH, A.B. Thomasville, N. C.

Emerson Literary Socy, Marshal E. L. S. (1), Tribunal (2), Class Basketball (2), (1), Track Team (2), (1), Class President (2), Business Manager (4), (3), (2), (1), Club (2), Vice-President Athletic Association (2), Secretary E. L. S. (2), Y. W. C. A. Cabinet (1), Message Staff (2), Glee Club (2), (1), Nominating Club (2), (1), Annual Staff (2), (1), Historian (1), President E. L. S. (1)

"Steenie" is not little but is loud. However, with all her loudness we love and admire her, for she has "Pep" enough for all of us. If you want anything done in a hurry, Steenie is the lady for the job. She is also the most attractive girl in school. Maybe that accounts for her long string from which she keeps her "Cotche" Bobbing; perhaps for the flowers and numerous specials, too.



Senior Class

MARTHA ELIZABETH MOORE, A.B. Snow Hill, N. C.

Living Literary Society, Treasurer of I. L. S. (1); Business Manager of Message (1)

Martha, the chatterbox of the class talks of everything in general and Sam in particular. The Senior privilege of going down town has peculiar fascination for her, and this very privilege keeps her rushing from Elm street to class, and from class to Elm street again. Don't get the wrong impression when you hear her singing away during the early morning hours; she really isn't practicing for a voice lesson, that's her way of expending energy.



Senior Class

JESSIE PILLOW, A.B. McCleansville, N. C.

Emerson Literary Society.

We are justly proud of Jessie. Anyone deserves praise, who gets up at five-thirty on a cold, winter morning to catch a train, but she comes to college that way every day and goes home in the afternoon. We often envy her the last privilege. She is the most demure little lady you ever saw, and if she was dressed as a Puritan maid, you would think her much better than the original.



Senior Class

LILLIE GAY SHAW, A.B. Weldon, N. C.

Irving Literary Society; Nordica Club (1), (2), (3); Tribunal Irving Literary Society (2);
Treasurer (2); Secretary (4); Chief Chapel Monitor (3); Class Basketball (3); Class Business
Manager (3); Message Staff (1); Annual Staff (4); Road Glee Club (4); Quill Club (4); Chief
Marshal, Class Song (4).

Poise and dignity are rarely combined with a ready wit and an endless supply of jokes; yet in Gay we see a mixture much better than Dukes; though without any apparent effort, she seems to achieve what is nearly impossible these days—a string of masculine admirers much longer than—well, longer than Mr. Hurley's longest English requirements! Don't you wish that you knew her secret?



Senior Class

MARY EXUM SNOW, A.B. Durham, N. C.

Emerson Literary Society, Red Cross Secretary (2), Y. W. C. A. Cabinet (2), 44; Message Staff (2); Editor-in-Chief Message (1), Echo Staff (1), Student Council (2); Class Poet (2), 14.

Rex is a good old sport and voted decidedly the most original girl in school. There's nothing she had rather do than bother the proctors unless it is to order suppers at the Hennesses which brings in a larger bill than she can pay. Rex is going to be a business body, too, and has begun her career as Editor-in-Chief of the Message. If she makes as big a success of her business life as she has of the Message, we predict for her a bright future.



Senior Class

VERDIE TROLLINGER, A.B. Burlington, N. C.

Emerson Literary Society; Marshal of E. L. S. (1); Chaplain (4); Vice-President Class (2); Secretary of Athletic Association (5); Annual Staff (2); Secretary Y. W. C. A. (1); Business Manager of Echo (1).

Verdie has so many strings that she is never quite sure which one to pull. Just the same, everyone considers her a good old sport and loves her for always being just herself. She is quite a versatile young lady; her ability ranging all the way from drawing advertisements out of harsh business men to drawing music from a violin. Just now she is very much concerned about what she shall do next year. Whatever it is we are hoping and expecting great success for her.



Senior Class

GLADYS WHEDBEE, A.B. Corapeake, N. C.

Living Literary Society; Marshal of I. L. S. (2); President of Tribunal (4); Message Staff (3), (1); House President of Fitzgerald Hall (1); Track Team (2), (3), (4.)

The firecracker of the class explodes at the most unexpected moments, incidentally at the expected, too. Withal she is a good old sport, jolly and—stern did you say? Well just ask the girls in Fitz.—and conscientious in her work, that's Gladys all over. She does not believe in procrastination even in physics.



Senior Class

AMMIE WILSON, A.B. Forest City, N. C.

Member of Emerson Literary Society; Supervisor of dining-room.

Ammie's middle name should be efficiency. She superintends the dining room and even though the girls grumble because the food doesn't suit all two hundred of them—the dining room is run just the same—complaints never disturb the even tenor of her way, and her gentle voice usually quiets the hungriest fusser. If you need any further recommendation, consult the faculty and get their testimony that she never shirks her work.



Senior Class

MARJORIE WORSHAM, B.M. Ruffin, N. C.

Living Literary Socy. A, Treasurer of Athletic Association (2); President of Athletic Association (2); Censor of I. L. S. (4); Chief Chapel Monitor (1); Class Tennis (1), (2), (3), (4); Champion Tennis Doubles (2); Champion Tennis Singles (2)

Marjorie is the only Senior who has had a chance to become really familiar with the parlor. In so much as she has company every Saturday night, it is no wonder that we were not surprised when we heard that she had climbed down the ivy and eloped with "Jim." Though it was a false alarm, we did not doubt it, for Marjorie is a fine athlete and holds the tennis championship of G. C. W. It is needless to say how much the class prizes her.








Senior Class

GAYNELLE BARNES, Graduate in Piano Lumberton, N. C.

Emerson Literary Society.

Gaynelle is an ever-present proof that one can be gay and yet not noisy. She goes quietly about her work, and if all of us would take her as a model, would not the proctors have a cinch, and what a peaceful abode Senior Hall would be—not to mention the fact that we would reform enough to be living examples of dignity to the unsophisticated Freshmen!

 RUTH SLEEPYEST	19  MYRTLE BIGGEST HEARTED	19  ANNA FRANKEST	 HOWARD SCHEMEST
 VERDIE GREATEST GAD-ABOUT	 MILDRED BEST BELOVED	 EONA DROLLEST	 KAY WITTIEST
 ANNIE MOST ECONOMIC	 MARY BEST SPORT	 CARRIE "GIGGLES"	 HOWARD SCHEMEST
 GLADYS GREATEST FIRE-CRACKER	 ELINOR MOST BUSINESS-LIKE	 NELL GREATEST LETTER-WRITER	 HOWARD SCHEMEST
 ATTIE MOST DILIGENT	 FOSFIE "SKEERIEST"	 LILY GREATEST DREAMER	 CARRIE BIGGEST BLUFFER

AS THE SENIORS SEE EACH OTHER

Senior Class History



It happened in the Fall of '15 a merry crew of twenty-one began anew their course in Life. They realized that now they must say good-by to childhood days, although not forgetful of their sweet memories. They were beginning this new period in life as one starting on a long sail out into the tossing, foaming sea. The boat glided along slowly at first, not exactly sure of its route, its pilot or its mates. This did not last long, however, for as they sailed out farther into the sea of life they grew daring, anxious, eager to reach, with the best possible success, their goal. The course became surer, the sea calmer, the pilot stronger, and bound more closely to each of the mates.

The sail was not always smooth or the waters calm; for many times there came storms, torrents, loss of classmates in this course of life, but ever the boat glided on, speeding toward its destination.

The boat sailed, sailed, sailed, and the mates realized that life was not a bubble. They saw its perplexities, snares, reefs, but ever on the breeze of the ocean, whether rough or calm, the whisper of Duty called them on.

Now the boat nears anchor. Through waves, stormy and serene, it has steered ever onward. The crew will soon scatter and each must now guide her course alone. What the future holds for us, no one knows; but we feel a nobler impulse to accomplish the tasks awaiting us.

"What does life hold for us?
What is our task?
How shall our course be run?
Youth! Can'st thou ask!
Here waits the world for thee,
Thy service give!
Go, eager, loving hearts—
Go forth and live!



DAVID NICHOLSON
Senior Mascot

Senior Poem

I.

Four years! It seems but yesterday
We sadly bade farewell
To loved ones dear, and gathered here
To study, work and play.

II.

It seems but yesterday since we,
A class of youth inspired,
Went through the maze of college days
To win fame in G. C.

III.

Four Years! Old Time is flying fast!
We cast a fond regret
O'er treasured reminiscences
And memories of the past.

IV.

Four years? Through all eternity
We'll carry in our hearts
"The high ideals and truths" we've learned
To love in dear G. C.

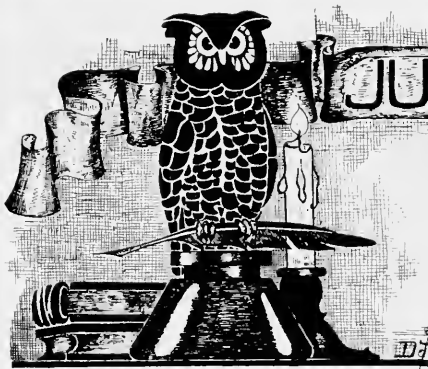
Senior Class Song

LILLIE GAY SHAW

Oh, G. C. daughters, awake to glory,
Your Alma Mater bids you rise;
Oh! Class of '19, tell the story!
Oh! Sing her praises to the skies!
Behold thy daughters, Greensboro College!
Thy dear name we'll ere uphold;
Within thy walls we have gained knowledge
We have toiled and labored for the goal.

CHORUS

We'll sing, we'll sing to thee,
Alma Mater, dear G. C.
Thy name, thy name
Fore'er renowned
From sea to sea shall sound.



CLASS OF 1920



LEONARD B. HURLEY
Faculty Member of Junior Class

Junior Class Officers

Motto: Per Ardua ad Astra.
Flowers: Aster.

Colors: Silver Grey and Royal Purple
Animal: Gabberwock.

OFFICERS

MARTHA ADAMS	President
ELIZABETH AUSTIN	Vice-President
NELL DAVIS	Secretary
MARY LOUISE HARRELL	Treasurer
PROF. LEONARD B. HURLEY	Faculty Member



Junior Class

MARTHA FITZGERALD ADAMS
Goldsboro, N. C.

MARGARET ELIZABETH AUSTIN
Shelby, N. C.

BESSIE LOIS BUCKNER
Salisbury, N. C.

ELIZABETH ATHALIA COX
Richlands, N. C.

MARY LILY COX
Jacksonville, N. C.



Junior Class

LOUISE SNOW DAVIS
Crandall, Fla.

NELL CHESTER DAVIS
Crandall, Fla.

ERDINE DENNING
Albemarle, N. C.

LOUISE ELLIOTT
Catawba, N. C.

BLANCHE ERWIN
Asheboro, N. C.



Junior Class

LOUISE FOY
Mount Airy, N. C.

ANNIE HARRIS
Oriental, N. C.

ANNIE ETTA GRIFFIN
Manteo, N. C.

RUBY MARGE FULLER
Whiteville, N. C.

MARY LOUISE HARRELL
Cates, N. C.



Junior Class

SALLIE GARRETT HOLT
McLeansville, N. C.

CARRIE LOUISE McNEELY
Lake Toxaway, N. C.

NELLIE KRIEBEL MUSE
High Point, N. C.

NAOMI HOWIE
Albemarle, N. C.

MARY LUCILE MORRIS
Asheboro, N. C.



Junior Class

BERNICE HUNTER NICHOLSON
Washington, N. C.

LEONA MAY ROBINSON
Mount Airy, N. C.

MADGE TEMPERANCE SILLS
Winston-Salem, N. C.

MARTHA EVELYN MORRIS
Asheboro, N. C.

INEZ SMITHWICK
La Grange, N. C.



Junior Class

NELLIE KATHERINE WHITE
Wilkesboro, N. C.

ETHEL LOUISE VON CANON
West End, N. C.

KATE WARLICK
Newton, N. C.

MABEL YOUNG
Greensboro, N. C.

MARY BERTHA WILSON
Warren Plains, N. C.

MARIE YOUNG
Greensboro, N. C.

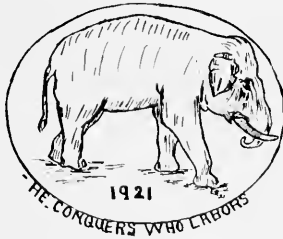


JUNIOR STATISTICS



CLASS OF 1921

SOPHOMORE
MASCOT



THE WHITE
ELEPHANT

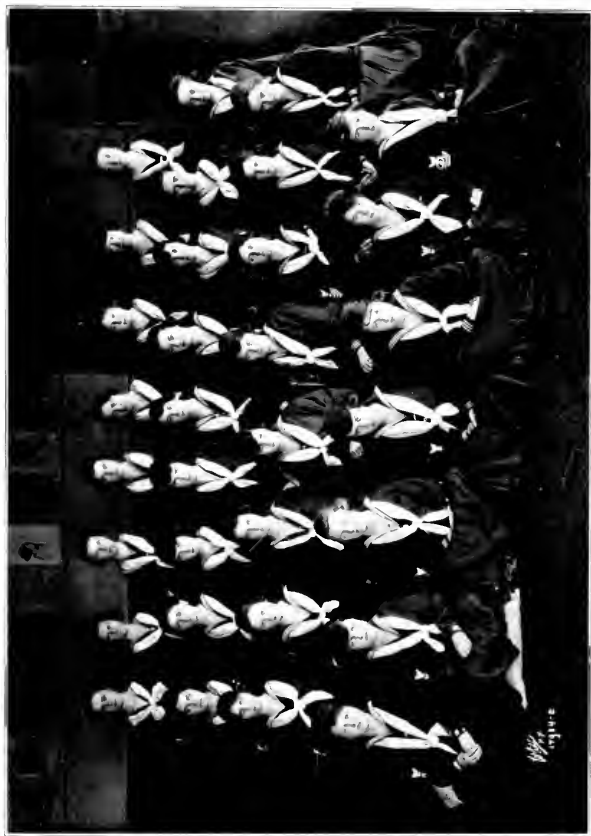
Sophomore Class

Colors: Blue and Gold

Flower: Violet

OFFICERS

EMMA BAILEY	President
ESTHER REA	Vice-President
LOUISE QUINN	Secretary
LUCILE JOHNSON	Treasurer



SOPHOMORE CLASS

Sophomore Class

MEMBERS

EMMA BAILEY
PAULINE BLALOCK
URSULA BOYD
MARGARET BUNTING
LULA FAY CLEGG
MARY COLE
ANNIE GILES
LUCY HARRIS
LELIA HUMBLE
BLANCHE HINSHAW
SADIE JENKINS

LUCILE JOHNSON
FRANCES JONES
GLADYS KEEL
MOZELLE KING
ANNIE LAURIE LOWRANCE
MARY LYALL LANE
ERNESTINE MATTHEWS
HELEN McCARY
DOROTHY McKEE
MARGARET MARTIN

EGLANTINE MERRITT
LOUISE QUINN
ESTHER RAE
MARY STOKES
LOUISE SLOAN
FAVE SAVAGE
RACHEL MAE TAYLOR
MARION WILSON
PAULINE WOOLSEY
MAUDE WEBSTER
MAE WEST





SOPHOMORE STATISTICS



CLASS OF 1922



LINNIE MARIE WARD
Faculty Member of Freshman Class

Freshman Class Officers

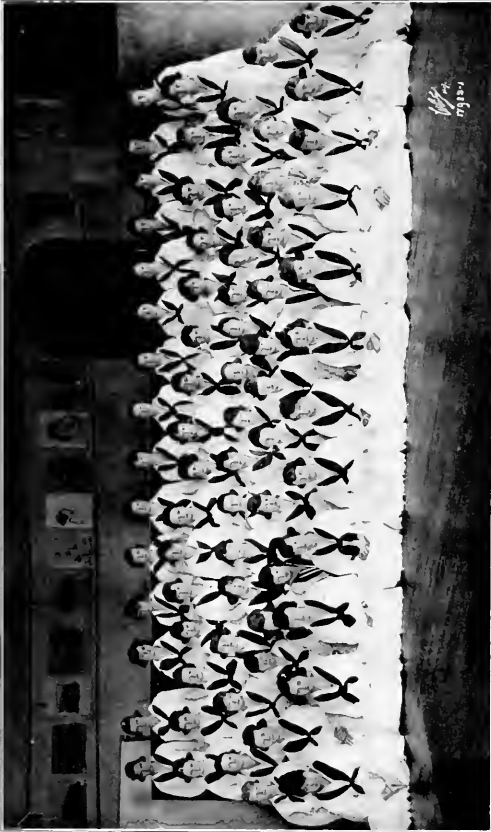
Motto: Per Angusta ad Augusta

Flower: White Rose.

Colors: Light Blue and White.

OFFICERS

ODELL PEACOCK	<i>President</i>
DOROTHY AYCOCK	<i>Vice-President</i>
HAZEL CARLYLE	<i>Secretary</i>
HELEN BLACKWELL	<i>Treasurer</i>
MISS LINNIE WARD	<i>Faculty Member</i>



FRESHMAN CLASS

Freshman Class

MEMBERS

FLORENCE ADAMS
EDITH ADER
ANNIE LEE ATWATER
CAROLINE AVERA
DOROTHY AYCOCK
RUTH BALSAM
HELEN BLACKWELL
BESSIE MAE BELL
GRACE BENCINI
NELLIE BLOUNT
KIVA BROADWELL
OCTAVIA BROOME
ELIZABETH BAILEY
EVELYN BURTON
HAZEL CARLYLE
BESSIE CLARKE
CATHERINE CLEGG
LUCY CLAPP
MARGARET CRAVEN
ALTA DEBNAM
VERNA EDWARDS
INEZ EDGERTON
EULA MAY FARMER
LOIS FRYE
MABEL FISHER
LONNIE FULLER
RUTH FULTON
KATHARINE GALLOWAY

LUCY GARMON
HELEN REYNOLDS
KATHLEEN RHEM
ELIZABETH ROBBINS
RUTH RODGERS
ANNIE MAE ROBBINS
MARY RONE
FOSTER SHAW
MARY LILLIAN SINK
TREVA SMITHERMAN
JULIA STONE
FANNIE SUTTON
JOSEPHINE SUNDEAN
MARY TATE
ELIZABETH GOODE
GALATA GRANDY
MARJORIE HARPER
LOUISE HARRIS
ETHEL HATCHER
NINA HICKMAN
BESSIE HUCKABEE
MARY HUGGINS
MARGARET JOHNSON
LUCILLE JONES
ALEPH JONES
ROSE JONES
MARGARET JOYNER
MARGARET LANE

JANIE LIVINGSTON
SADIE LIVINGSTON
PEARL LONG
OTIS MARSH
CLARA MOORE
MARGARET MOORE
EVA MILLS
CHRISTINE NICHOLS
ANNIE NOBLE
IRENE ORMOND
EDNA ORMOND
OTHA PARKER
ODELLE PEACOCK
PAULINE PEELER
MILDRED PRUDEN
ALVA SHEEK
LOUISE SLOAN
RUTH SMITHWICK
ALTA STONE
LOUISE SYKES
WINIFRED SUNDEAN
MILDRED WALSER
CHRISTINE WALKER
BEULAH WILLIAMS
MILDRED WILLIAMS
MARY WILSON
MINNIE WOODARD
CARA WREN

 <p>DOROTHY GREATEST LOVER-OF- UNIFORM</p>	 <p>MILDRED MOST MODEST</p>	 <p>ODELLE MOST DEMOCRATIC</p>	 <p>MARY LILLIAN SWEETEST</p>
 <p>HELEN MOST ORIGINAL</p>	 <p>EDNA MOST NATURAL</p>	 <p>EDNA MIDWINTER</p>	 <p>HELEN MOST INTERESTING</p>
 <p>MARY MOST EASILY STRUNG</p>	 <p>EDNA BEST SPORT</p>	 <p>EDITH MOST STUDIOUS</p>	 <p>MARY BIGGEST EATER</p>
 <p>PEARL HANDSOMEST</p>	 <p>EDNA MOST ATHLETIC</p>	 <p>EDNA MOST SENSIBLE</p>	 <p>HELEN BIGGEST CHATTER-BOX</p>
 <p>VERA HEARTEST</p>	 <p>EDNA WITTIEST</p>	 <p>EDNA GREATEST LAD-ABOUT</p>	 <p>BILLIE LIVELIEST</p>
 <p>ETHEL MOST STAY-AT-HOME</p>	 <p>EDNA NEARTEST</p>	 <p>EDNA LUTEST</p>	 <p>FLORENCE MOST POPULAR</p>

19 22



Business Class

OFFICERS

MARGARET BUNTING	President
OHNA HARRIS	Vice-President
ANNA JONES	Secretary and Treasurer

MEMBERS

BESSIE BARNETTE
 MARGARET BUNTING
 LILLIAN CARDWELL
 NELL CARSON
 ELIZABETH CUNNINGHAM
 HATTIE DICK
 GRACE EFIRO
 ELIZABETH FERGUSON
 JULIET FOLGER
 ROSA FULCHER
 NELL FULTON
 IRENE GRIMSLEY
 CORNELIA HALL

OHNA HARRIS
 NINA HOLT
 ANNA JONES
 EMMA LEE JONES
 SARAH ELLEN LIGHTFOOT
 MABEL LONG
 ROSE MILLER
 HELEN MOORE
 FANNIE OWENS
 MARGARET PHOENIX
 ELIZABETH ROBERTS
 EMILY ROBERTS
 NINA ROCHELLE
 MARGARET RUSH

MARY LEWIS SASSER
 GRACE SHAVENDER
 MARY EXUM SNOW
 OLLIE STADLER
 MARY STOKES
 METTIE SUTTON
 THELMA STONE
 CLYDE TAYLOR
 FLORA TAYLOR
 JULIA TURNER
 CAMMIE VAUGHN
 LALLAGE WHISNANT



Art Class

MEMBERS

FLORENCE ADAMS
RUTH BALSAM
MARY FRANCES BARRHAM
HELEN BLACKWELL
LUCY BROTHERS
LORRAINE BURGESS

MARY COLE
BESSIE DIXON
PAT FORESTER
LUCY GARMON
MARIE GREGSON
PEARL LONG
VELMA PARIS

MARY FRANCES RANKIN
RUTH WILLARD RODGERS
GRACE SHAVENDER
ELVA SHEEK
THELMA STONE
LUCILE TEETER



BOOK III
ORGANIZATIONS



THE NEW YORK PUBLIC LIBRARY
ASTOR LENOX AND TILDEN FOUNDATIONS
500 5TH AVENUE
NEW YORK, N. Y.



COLLEGE LIFE



OFFICERS OF THE STUDENTS' ASSOCIATION



Student Council

OFFICERS

ESTHER AYCOCK	<i>President</i>
CARRIE ERWIN	<i>Vice-President</i>
INEZ SMITHWICK	<i>Secretary</i>
ANNIE LAURIE LOWRANCE	<i>Treasurer</i>

MEMBERS

BERNICE NICHOLSON	GLAOKS WHEDBEE	NELLIE WHITE
BESSIE BUCKNER		NELL GROOME



OFFICERS OF YOUNG WOMANS CHRISTIAN ASSOCIATION



Y. W. C. A. Executive Cabinet

LUCY BROTHERS	<i>President</i>
CARRIE HARRIS	<i>Vice-President</i>
VERDIE TROLLINGER	<i>Secretary</i>
ELIZABETH GIBSON	<i>Treasurer</i>
NAOMI HOWIE	<i>Chairman Religious Meetings Committee</i>
MARTHA ADAMS	<i>Chairman Membership Committee</i>
CARRIE ERWIN	<i>Chairman Social Service</i>
LOUISE ELLIOTT	<i>Chairman Missionary Committee</i>
MADGE SILLS	<i>Chairman Social Committee</i>
MARY EXUM SNOW	<i>Chairman Publicity Committee</i>



Irving Literary Society

OFFICERS

LOUISE DAVIS	<i>President</i>	MARTHA MOORE	<i>Treasurer</i>
MADGE SILLS	<i>Vice-President</i>	MARJORIE WORSHAM	<i>Censor</i>
LILLIE GAY SHAW	<i>Secretary</i>	NELL DAVIS	<i>Critic</i>

MEMBERS

ELIZABETH AUSTIN	HELEN BLACKWELL	RUTH BALSAM	RUTH COTTON
FLORENCE ADAMS	LORRAINE BURGESS	BESSIE MAE BELL	LILLIAN CARDWELL
LUCY ELLEN	ELIZABETH BOYD	NELLIE BLOUNT	LUCY CLAPP
MYRTLE ASHWORTH	URSULA BOYD	PAULINE BLALOCK	MARY CHANLER
CAROLYN AVERA	ELIZABETH BASS	FAYE CLEGG	LOUISE DAVIS
ELIABETH BAILEY	JESSIE BRADLEY	KATHERINE CLEGG	NELL DAVIS



Irving Literary Society

MEMBERS

FLOSSIE DENNY	ETHEL HATCHER	BERNICE NICHOLSON	MARY LEWIS SASSER
ERDENE DENNING	BESSIE HUCKABEE	CHRISTINE NICHOLS	JULIA STONE
VERNA EDWARDS	LOUISE HARRIS	ANNA JONES	TREVA SMITHERMAN
INEZ EDGERTON	GALATA GRANDY	FANNIE OWENS	ALTA STONE
GRACE EFIRD	LUCY GARMON	ELLA MAE PACKER	RACHEL MAE TAYLOR
LOUISE FOY	BLANCHE INGRAM	MILDRED PRUDEN	LUCILE TEETER
PAT FORRESTER	LUCILE JOHNSON	OPHA PARKER	MARY TATE
RUBY FULLER	MAE JOHNSON	ODELLE PEACOCK	MABEL LONG
LONNIE FULLER	LUCILE JONES	EDNA ORMOND	ETHEL VONCANON
MILDRED FRYE	LOUISE JEANETTE	IRENE ORMOND	RUTH VONCANON
LOIS FRYE	GLADYS KEEL	MAY ROBINSON	GLADYS WHEDBEE
JULIET FOLGER	HELEN KNOWLES	ESTHER REA	NELLIE WHITE
ELIZABETH GIBSON	MARY LYALL LANE	NINA ROCHELLE	MARJORIE WORSHAM
ANNIE GRIFFIN	PEARL LONG	RUTH REITZEL	MAE WEST
NELL GROOME	SADIE PITTS	PEARL ROGERS	MILDRED WALSER
RUBY GROOME	JANIE LIVINGSTON	RUTH ROGERS	MARION WILSON
MARIE GREGSON	SADIE LIVINGSTON	EMILY LEE ROBERTS	ELIZABETH WHITE
LOUISE GREEN	MARGARET MOORE	HELEN REYNOLDS	MINNIE WOODARD
ANNIE GILES	DOROTHY MOORE	IRENE ROBINSON	MILDRED WILLIAMS
CARRIE HARRIS	CLARA MOORE	MARY E. RONE	CAPA WREN
OHNA HARRIS	HELEN McCRARY	LILLIE GAY SHAW	LALLAGE WHISNANT
HELEN HOOD	NELLIE MUSE	FOSTER SHAW	SARAH ELLEN LIGHTFOOT
MARY LOUISE HARRELL	DOROTHY MCKEE	MADGE SILLS	MARGARET MARTIN
LELIA HUMBLE	LUCY MAYO	MARY STOKES	KIVA BROADWELL
BLANCHE HINSHAW	MARY MENDENHALL	MARY R. STOKES	ELIZABETH ROBERTS
ANTIONETTE HILL	LADY MITCHELL	FAYE SAVAGE	LOUISE SYKES
NINA HICKMAN	GRACE BENCINI	WINIFRED SUNDEAN	MARIE YOUNG
NORMA HEATH	OTIS MARSH	JOSEPHINE SUNDEAN	MABEL YOUNG



Officers of the Emerson Literary Society

ERNESTINE LAMBETH	<i>President</i>
MYRTIE HUMBLE	<i>Vice-President</i>
NAOMIE HOWIE	<i>Secretary</i>
EDNA CAVINESS	<i>Treasurer</i>
INEZ SMITHWICK	<i>Censor</i>
MARTHA ADAMS	<i>Critic</i>



Emerson Literary Society

MEMBERS

MARTHA ADAMS	ELIZABETH FERGUSON	LOIS HOWIE	KATHLEEN RHEM
ANNIE MAY ATWATER	MABEL FISHER	ELOISE HARRIS	GRACE SHAVERD
ESTHER AYCOCK	ROSA FULCHER	BROMA HUMBLE	MARY SHERWOOD
DOROTHY AYCOCK	KATHARINE GALLOWAY	MABEL HAUSER	INEZ SMITHWICK
ANNIE LEE ATWATER	ELIZABETH GOODE	ROSE JONES	MARY EXUM SNOW
EDITH ADER	ANNIE HARRIS	EMMA LEE JONES	RUTH SMITHWICK
EMMA BAILEY	SALLIE HOLT	SADIE JENKINS	LOUISE SLOANE
GAYNELLE BARNES	ANNA HOLSHOUSER	MARGARET JOYNER	THELMA SANFORD
MYRTLE BARNES	MYRTIE HUMBLE	ALEPH JONES	MARY LILLIAN SINK
FANNIE BANE	NAOMI HOWIE	ATTRICE KERNODLE	LELIA STRAUGHN
RUTH BELL	CORNELIA HALL	MOZELLE KING	FANNIE SUTTON
MAURINE BRITTAIN	MARY HUDGINS	ERNESTINE LAMBETH	OLLIE STADLER
LETHA BROCK	MARJORIE HARPER	ANNIE LAURIE LOWRANCE	METTIE SUTTON
LUCY BROTHERS	MARGARET CRAVEN	ERNESTINE MATTHEWS	VERDIE TROLLINGER
BESSIE BUCKNER	KATHERINE CURTIS	EGLANTINE MERRITT	CLYDE TAYLOR
MARGARET BUNTING	BESSIE CLARKE	CARRIE MCNEELY	FLORA TAYLOR
BESSIE BARNETT	LOUISE DIXON	EVA MILLS	CAMMIE VAUGHN
EVELYN BURTON	ALTA DEBNAM	ANNIE NOBLE	KATE WARLICK
MARY FRANCES BARHAM	JENNIE MAY DIXON	JESSIE PILLOW	MAUDE WEBSTER
ETHEL BOST	BESSIE DIXON	PAULINE PEELER	AMMIE WILSON
OCTAVIA BROOME	LOUISE ELIOTT	ADDIE PRIDGEN	MARY WILSON
EDNA CAVINESS	BLANCHIE ERWIN	LOUISE QUINN	ANNIE LAURA WALKER
MARY COLE	CARRIE ERWIN	MARY FRANCES RANKIN	CHRISTINE WALKER
ELIZABETH COX	RUTH FULTON	ELIZABETH ROBBINS	HORTENSE WELLS
MARY LILY COX	EULA MAE FARMER	ANNIE MAY ROBBINS	BEULAH WILLIAMS
HAZEL CARLYLE			MARY WILSON



Dramatic Club

OFFICERS

NELLIE MUSE	<i>President</i>
LOUISE DIXON	<i>Vice-President</i>
RACHAEL MAE TAYLOR	<i>Secretary-Treasurer</i>

MEMBERS

MARTHA ADAMS	INEZ EDGERTON	LUCY MAYO
RUBY ALLEY	LOIS FRYE	EGLANTINE MERRITT
MYRTLE ASHWORTH	RUBY GROOME	CELIA SCOTT
LUCY BROTHERS	ANNIE GRIFFIN	ALTA STONE
KIVA BROADWELL	MARY HUDGINS	FOSTER SHAW
LUCY CLAPP	MARGARET JOHNSON	RACHEL MAE TAYLOR
LULA FAY CLEGG	ATTRICE KERNODLE	MARY WILSON
LOUISE DIXON	NELLIE MUSE	MARION WILSON



Nordica Club

MARTHA ADAMS
 FLORENCE ADAMS
 PAULINE BLALOCK
 MAURINE BRITTAIN
 BESSIE BUCKNER
 HAZEL CARLYLE
 FLOSSIE DENNY
 LOUISE ELLIOTT
 BLANCHE ERWIN
 JULIET FOLGER
 MARY LOUISE HARFELL
 ELOISE HARRIS
 NINA HICKMAN

BESSIE HUCKABEE
 SADIE JENKINS
 MARGARET JOYNER
 GLADYS KEEL
 ERNESTINE LAMBETH
 DOROTHY MOORE
 NELLIE MUSE
 DOROTHY MCKEE
 BERNICE NICHOLSON
 IRENE ORMOND
 HELEN REYNOLDS
 ANNIE MAE ROBBINS
 MARY RONE

FOSTER SHAW
 LILLIE GAY SHAW
 MARY STOKES
 LOUISE SLOAN
 JOSEPHINE SUNDEAN
 RUTH SMITHWICK
 GRACE SHAVENDAR
 CHRISTINE WALKER
 MISS CHASTEN
 MISS HARRELL
 MISS PEGRAM
 MISS WARD
 MISS WEBER



G. C. W. Traveling Glee Club

OFFICERS

1918-19

Mr. BENJAMIN S. BATES *Director*
 Mr. L. B. HURLEY *Manager*
 Miss ANNIE PEGRAM *Chaperone*

SOPRANO

PAULINE BLALOCK
 MAURINE BRITTAIN
 BESSIE BUCKNER
 FLOSSIE DENNY
 GLADYS KEEL
 ERNESTINE LAMBETH
 DOROTHY MOORE
 HELEN REYNOLDS
 MARY STOKES

SECOND SOPRANO

LOUISE ELLIOTT
 MARGARET JOYNER
 DOROTHY MCKEE
 BERNICE NICHOLSON
 FOSTER SHAW
 LOUISE SLOANE
 CHRISTINE WALKER

ALTO

HAZEL CARLYLE
 BLANCHE ERWIN
 MARY LOUISE HARRELL
 SADIE JENKINS
 NELLIE MUSE
 LILLIE GAY SHAW

MARTHA ADAMS
 LOUISE ELLIOTT
 GLADYS KEEL

READER

LOUISE DIXON

INSTRUMENTS

NELLIE MUSE
 BERNICE NICHOLSON

LILLIE GAY SHAW
 FOSTER SHAW
 JOSEPHINE SUNGEAN

ACCOMPANIST

MISS THELMA HARRELL



String Band

NELLIE MUSE

MARY LILLIAN SINK

LILLIE GAY SHAW

BERNICE NICHOLSON

RUTH SMITHWICK

LOUISE ELLIOTT

MARY STOKES

MARTHA ADAMS

FLORENCE ADAMS

MARTHA EVELYN MORRIS

HELEN McCRARY

INEZ EDGERTON

FOSTER SHAW

MABEL LONG

TREVA SMITHERMAN

MARY LILY COX

LUCILE JOHNSON

ROSE JONES

GLADYS KEEL

INEZ SMITHWICK

JOSEPHINE SUNDEAN



Quill Club

EDITH ADER
 REUBEN ALLEY
 ANNIE LEE ATWATER
 OCTAVIA BROOME
 MARY FRANCES BARHAM
 ETHEL BOST
 EVELYN BURTON
 LETHA BROCK
 RUTH BALSAM
 HAZEL CARLYLE
 BESSIE CLARKE
 RUTH COTTON
 KATHERINE CLEGG
 MARY LILY COX

LUCY CLAPP
 ETHEL VONCANON
 ALTA DEBNAM
 INEZ EDGERTON
 EULA MAE FARMER
 MABEL FISHER
 MARY HUGGINS
 CARRIE HARRIS
 LELIA HUMBLE
 BLANCHE INGRAM
 SAOIE JENKINS
 PEARLE LONG
 MARGARET LANE
 EGLANTINE MERRITT
 MARGARET MARTAIN

MARGARET MOORE
 HELEN McCRARY
 ODELLE PEACOCK
 MARY RONE
 HELEN REYNOLDS
 IRENE ROBINSON
 KATHLEEN RHEM
 WINNIE SUNDEAN
 MADGE SILLS
 LILLIE GAY SHAW
 FOSTER SHAW
 MARY EXUM SNOW
 FANNIE SUTTON
 CARA WREN



Browning Club

OFFICERS

ANNA HOLSHOUSER	President
NAOMI HOWIE	Vice-President
NELL DAVIS	Secretary and Treasurer

MEMBERS

FLORENCE ADAMS
 MARGARET BUNTING
 PAULINE BLALOCK
 RUTH BALSAM
 ELIZABETH BOYD
 NELL DAVIS

ELIZABETH GIBSON
 NELL CROOME
 ANNA HOLSHOUSER
 NAOMIE HOWIE
 KATHERINE HUTTON
 MOZELLE KING

MARTHA EVELYN MORRIS
 DOROTHY MCKEE
 CHRISTINE NICHOLS
 HELEN REYNOLDS
 THELMA SANFORD
 LOUISE SYKES



SCHOOL OF MUSIC

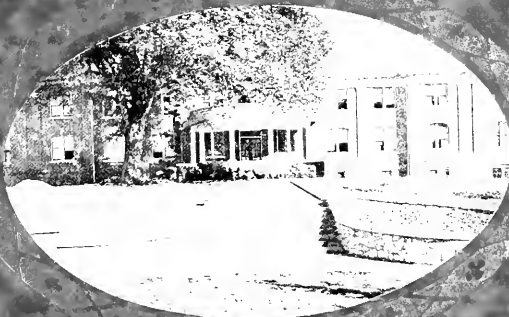
School of Music

MEMBERS

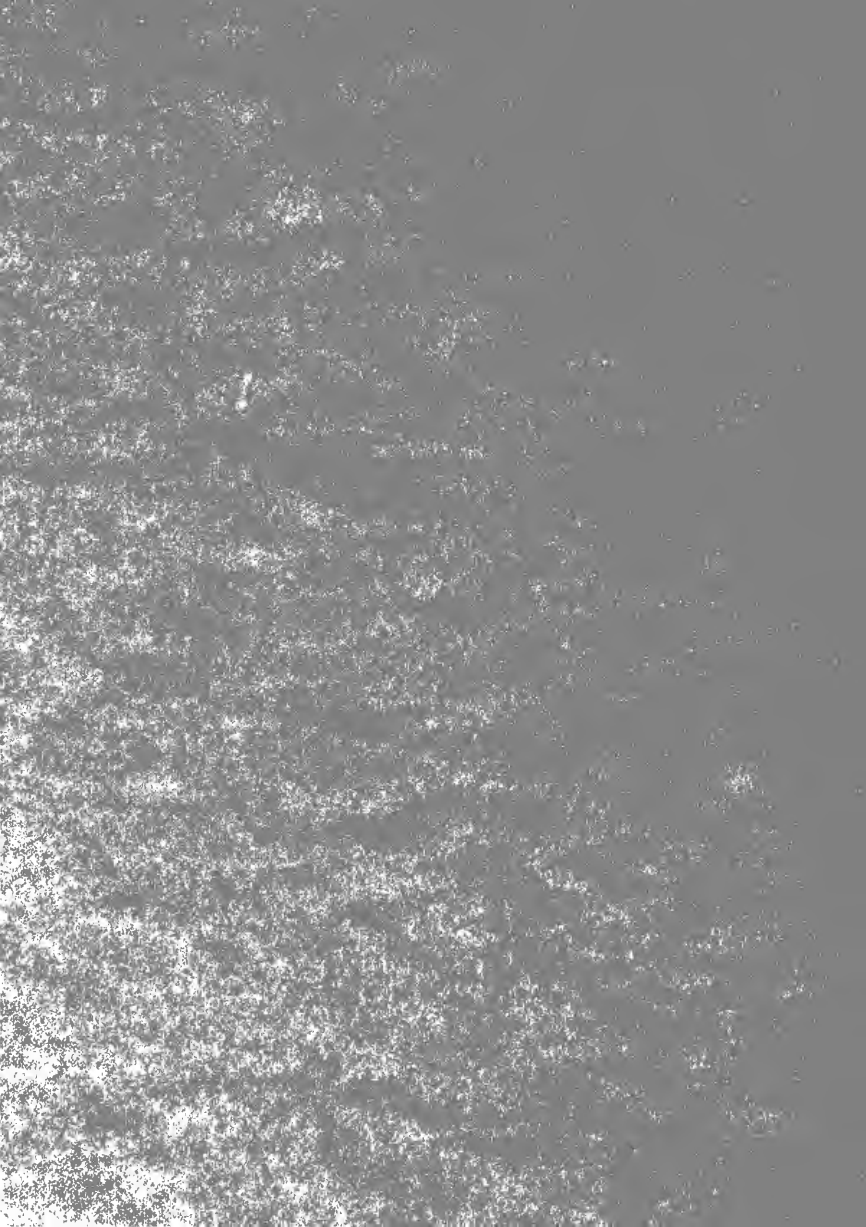
FLORENCE ADAMS	NELL GROOME	MILDRED PRUDEN
EDITH ADER	RUBY GROOME	GRACE SHAVENDER
ANNIE LEA ATWATER	ELOISE HARRIS	HELEN REYNOLDS
RUTH BALSAM	NINA HICKMAN	ELIZABETH ROBBINS
GAYNELLE BARNES	ANNA HOLSHOUSER	ANNIE MAE ROBBINS
BESSIE BELL	NAOMI HOWIE	MAE ROBINSON
PAULINE BLALOCK	BESSIE HUCKABEE	IRENE ROBINSON
ETHEL BOST	MARY LOUISE HARRELL	PEARL RODGERS
ELIZABETH BOYD	LUCILE JONES	LOUISE SLOAN
MARGARET BUNTING	SADIE JENKINS	THELMA SANFORD
MAURINE BRITAIN	LUCILE JOHNSON	MARY LILLIAN SINK
BESSIE BUCKNER	ROSE JONES	RUTH SMITHWICK
MARY CHANDLER	MARGARET JOYNER	MARY STOKES
BESSIE CLARKE	HELEN KNOWLES	LELIA STRAUGHN
RUTH COTTON	GLADYS KEEL	LILLIE G. SHAW
CHRISTINE NICHOLS	LYALL LANE	ALTA STONE
NELL DAVIS	MARGARET LANE	MARY TATE
MABEL DAWSON	JANIE LIVINGSTON	VERDIE TROLLINGER
ALTA DEBNAM	ERNESTINE LAMBETH	CAMMIE VAUGHAN
JENNIE MAE DIXON	MABEL LONG	ANNIE LAURIE WALKER
ERDENE DENNING	OTIS MARSH	CHRISTINE WALKER
VERNA EDWARDS	ERNESTINE MATTHEWS	HORTENSE WELLS
GRACE ETIRD	EVA MILLS	MILDRED WILLIAMS
LUCY ELLEN	LADY MITCHELL	BEULAH WILLIAMS
LOUISE ELLIOTT	MARGARET MOORE	MARY WILSON
MABEL FISHER	DOROTHY MOORE	MAE WEST
JULIET FOLGER	MARTHA E. MORRIS	MAUDE WEBSTER
PAT FORESTER	NELLIE MUSE	MINNIE WOODWARD
LOIS FRYE	DOROTHY MCKEE	MARJORIE WORSHAM
LONNIE FULLER	CHRISTINE NICHOLS	MARY E. WHITE
ANNIE GILES	IRENE ORMOND	INEZ ELGERTON
ELIZABETH GIBSON	PAULINE PEELER	OTHO PARKER
ELIZABETH GOODE	SADIE PITTS	ELIZABETH BASS



GLEE CLUB READY FOR THE ANNUAL TOUR



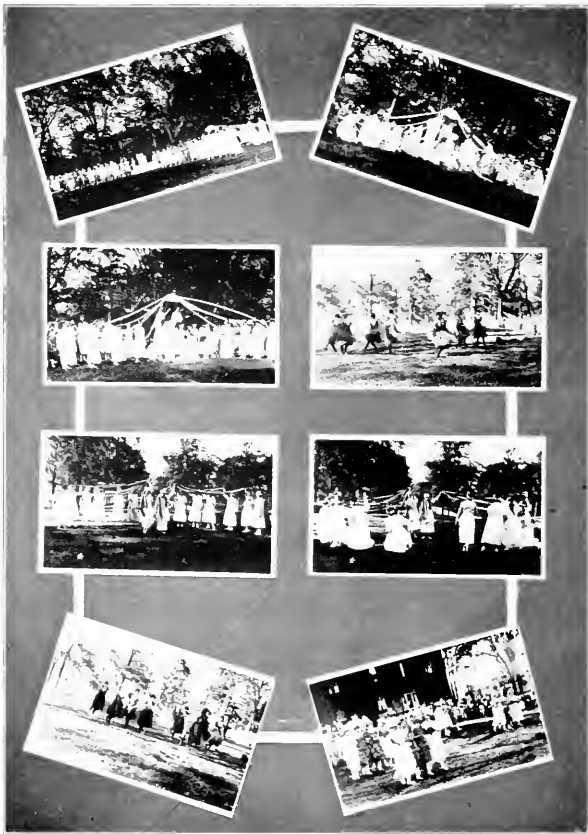
LOOK IV
ATHLETICS





Athletic Association Officers

MAURINE BRITTAIN	<i>President</i>
BLANCHE ERWIN	<i>Vice-President</i>
LELIA HUMBLE	<i>Secretary</i>
ESTHER REA	<i>Treasurer</i>



MAY DAY



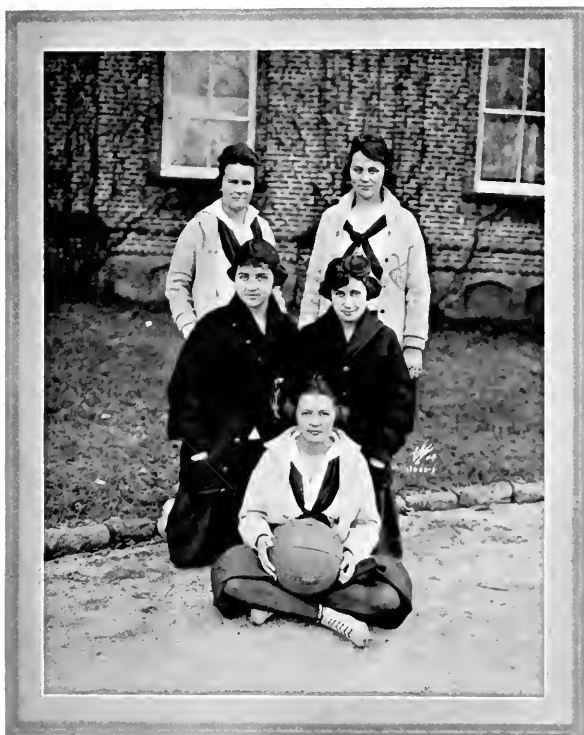
MAY DAY
(97)



WEARERS OF THE "G"

Upper row—left to right—HUMBLE, BRITAIN, LAMBETH, WARLICK, MORRIS. Lower row—left to right—ROBINSON, ERWIN, MUSE.

FIRST PLACE WINNERS IN SPRING FIELD MEET

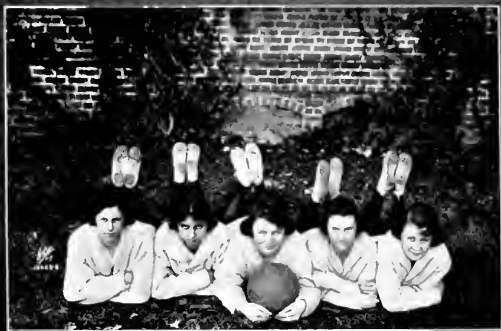


Varsity Basketball Team

Kate Warlick
Lucile Jones

Lucile Morris

Esther Rae
Myrtle Humble



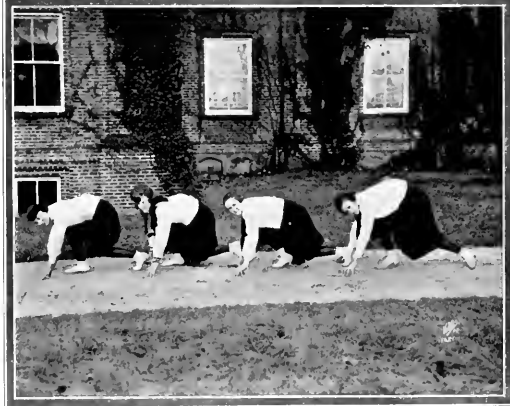
BASKETBALL TEAMS

SENIOR TEAM—left to right—HUMBLE, BROTHERS, LAMBETH, HOLSHOUSER, BRITAIN. SOPHOMORE
 TEAM—left to right—QUINN, MERRITT, REA, TAYLOR, HUMBLE.



BASKETBALL TEAMS

JUNIOR TEAM—MORRIS, YOUNG, WARLICK, ERWIN, ROBINSON. FRESHMAN TEAM—STONE, JONES,
CARLYSLE, FRYE, BALSAM, ORMOND.



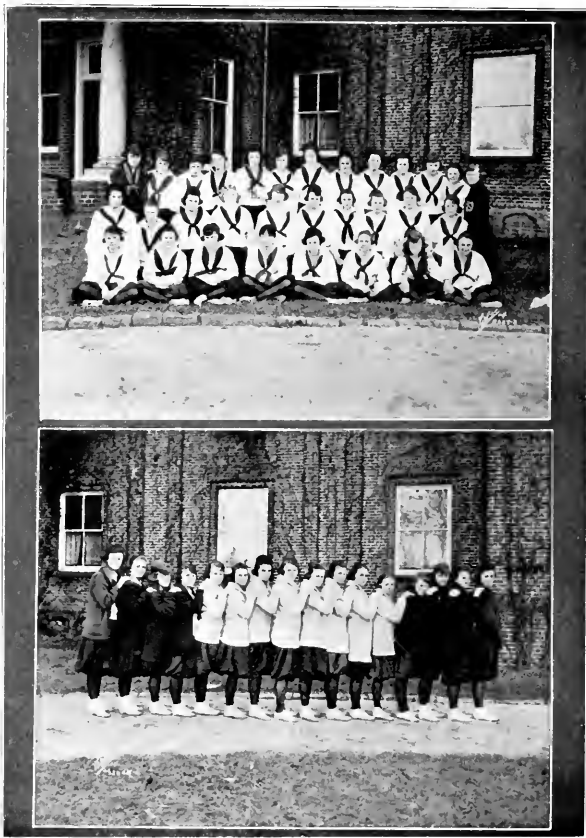
RELAY TEAMS

SENIOR TEAM—left to right—CAVINESS, WHEDBEE, LAMBETH, SNOW. FRESHMAN TEAM—left to right—BLACKWELL, WOODARD, ORMOND, CARLYSLE.



RELAY TEAMS

JUNIOR TEAM—left to right—GRIFFIN, ERWIN, WARLICK, MORRIS. SOPHOMORE TEAM—left to right—HUMBLE, JOHNSON, REA, TAYLOR.



VARSITY TRACK TEAM
VARSITY RELAY TEAM
(104)



SENIOR TEAM
BRITTAIN AND WHEDBEE



TENNIS TEAM

SOPHOMORE TEAM
HARRISS AND BAILEY



FRESHMAN TEAM
BALSAM AND SUNDEAN



JUNIOR TEAM
DAVIS AND MUSE

TENNIS TEAM

Athletics

EARLY in the morning of the fourth of May, every one was up and getting ready for a busy day—for Greensboro College girls believe in the old and predigested slogan, "All work and no play makes Jack a dull boy." Even a casual observer would have known that something unusual was about to happen. It was Field Day. Here and there—from mountain and cupola—waved the hues of blue and white, red and white, purple and silver grey, and blue and gold; and from a tall, imposing mast borne by loving and adoring subjects beamed the Jabberwock. Soon a great crowd was collected in two distinct groups about the tennis court and the tennis doubles started the program. Rackets clicked—and after a brisk and sharp battle between the Senior and Junior classes the Senior representatives, Catherine Hubbard and Maurine Brittain, came out ahead. This gave the Senior Class the championship in tennis and the champion cup.

Immediately following, amid songs and yells, one of the most exciting games of the season took place. It was the basketball game between the Sophomore and Freshman teams, and after strenuous tussling with the ball, which continually soared and dropped like a bomb into one of the goals, the score was found to be in the Sophomores' favor. This gave the Sophomores the championship in basketball and the champion cup. Marjorie Worsham, representative of the Junior class, won in tennis singles. This made her the champion tennis player. "Freshie" Morris was the prettiest vaulter. Virginia Gibbs the most graceful runner. Aldine O'Neal the most graceful walker.

The relay runners started with their messages amid much excitement, and the last Freshman messenger reached the starting point first. Marie Faison, runner for the Sophomore class, won the hundred-yard dash. This ended the athletic program—with the Sophomores victoriously leading in points and their Jabberwock beaming more than ever.

The May Day festivities began at five o'clock, a large crowd already having assembled under the trees on the front campus. The procession, led by Catherine Sykes, the Senior class mascot, marched around the circular walks and assembled around the throne, where the May Queen was crowned. After a springtime greeting the dances and drills were given. The elves, butterflies, and roses, clad in their fluffy costumes, made a charming sight. The Snake Skinners' stunt was very amusing. That was followed by a patriotic drill and the singing of "The Star-Spangled Banner," which brought the memorable day of feats to a close, everyone declaring it a glorious success.

As for the 1918 Fall Athletics, they were unfortunately interrupted by the influenza epidemic. Instead of chasing basket balls and sending curves over the tennis net, we got our proper amount of exercise running from the "flu" and battling with him when he was victorious in the chase. However, we are looking forward to many Spring fetes on the playgrounds and great plans are being made for Field Day, May 4th, 1919.

The Sophomore Maids On Thanksgiving

O, Sophomores, O, Sophomores,
Our sister class so dear,
We are glad that you are here,
To bring Thanksgiving cheer;
With hash and beans and turnip greens
Your service has been fine.
We cheer the Sophomores,
Dear old Sophomores,
You're the class that shine.

Holly-goo-noo—goo nac, goo nac,
Holly-goo-noo—goo nac, goo nac,
W-r-r-r-p—W-r-r-r-p,
Seniors! Seniors!
Rah! Rah!

Juniors Song to Freshmen

'20 TO '22

We love the purple and the grey,
We love them more and more each day,
We love the blue and white, too,
For they belong to our sisters true.
We love them each and every one,
And when all else is said and done,
We'll sing to you, oh, dear Twenty-two,
For we love you the best of all.

Sophomore Songs

(Tune: "Smiles")

Sophomores, we love you ever,
Sophomores, we're always true.
With our motto, "He who labors, conquers,"
We will be a class that is true blue.
With our modest little flower, violet,
And our colors of the "Gold and Blue,"
We will be a class that "G. C. W."
Will not forget all the long years through.

(Tune: "Tickle-Toe")

Everybody listen here,
We're the Sophomores of the year,
And we want you all to know it,
For we are always going to show it,
Soph-o, sopho-O, Sophomores, we the kitchen realms explore,
And it keeps us saying, Oh! Sophs! more chops,
Till we feel like—Oh, surely everybody knows
That we are the Sophomores.



BOOK V
THE COLLEGE YEAR.



THE COLLEGE LIBRARY

Senior Honors and Degrees, 1918

CANDIDATES FOR A.B. DEGREE

MAY MAURINE BRITTAIN	ROSA CLAIRE HARRIS
MYRTLE CAVINESS	CATHERINE HUBBARD
KATHERINE OTHELIA CONROY	ANNIE RICHARD LONG
LUCY KENDALL CURTIS	SARAH ELIZABETH MERRITT
THELMA LOUISE DIXON	JESSIE LELIA REEVES
MINNIE EVELYN GARRETT	MATTIE ELMA REGISTER
MARGUERITE GERTRUDE WILSON	

CANDIDATES FOR B.S. DEGREE

REUBEN GERTRUDE ALLEY	FRANCES ELIZABETH DERICKSON
-----------------------	-----------------------------

CANDIDATES FOR B.M. DEGREE

KATE THELMA HARRELL	SADY ALBERTA TROLLINGER
---------------------	-------------------------

GRADUATES SCHOOL OF MUSIC

<i>Piano</i>	<i>Voice</i>
FLOSSIE HURDLE DENNY	FLOSSIE HURDLE DENNY

CANDIDATES FOR TEACHER'S CERTIFICATE IN DOMESTIC SCIENCE

KATHERINE INEZ BAILEY	LUCY KENDALL CURTIS
MARY LILLIE COX	

CERTIFICATE IN DOMESTIC SCIENCE

VIRGINIA GIBBS	MARY KEITH HUCKABEE
MINNIE EVELYN GARRETT	LYDA MARGARET NICHOLS

SENIOR HONORS

MAGNA CUM LAUDE

REUBEN GERTRUDE ALLEY	SARA ELIZABETH MERRITT
KATHERINE OTELIA CONROY	MAY MAURINE BRITTAIN
CATHERINE HUBBARD	

HIGHEST HONORS OF THE CLASS OF 1918.

SARAH ELIZABETH MERRITT



Statistics

NELL DAVIS	<i>Most Typical G. C. W. Girl</i>
HELEN MCCRARY	<i>Prettiest</i>
LOUISE DAVIS	<i>Most Popular</i>
ERNESTINE LAMBETH	<i>Most Attractive</i>
MVURINE BRITAIN	<i>Most Winsome</i>
MAY ROBINSON	<i>Best All Around</i>
BERNICE NICHOLSON	<i>Most Brilliant</i>
MARY ENUM SNOW	<i>Most Original</i>
HELEN BLACKWELL	<i>Wittiest</i>
MARTHA ADAMS	<i>Handsomest</i>

Type Girls

DOROTHY AYCOCK	<i>Spring</i>
MARY LILLIAN SINK	<i>Summer</i>
NELLIE MUSE	<i>Autumn</i>
GRACE BENCINI	<i>Winter</i>



NELL DAVIS
Typical G. C. W. Girl



HELEN MCCRARY
Prettiest



LOUISE DAVIS
Most Popular

ERNESTINE LAMBETH
Most Attractive



MAY ROBINSON
Best All Round

MAURINE BRITAIN
Most Winsome



BERNICE NICHOLSON
Most Brilliant

MARY EXUM SNOW
Most Original



MARTHA ADAMS
The Handsomest

HELEN BLACKWELL
The Wittiest



G. C. W. TYPES
THE SUMMER GIRL—MARY LILLIAN SINK



G. C. W. TYPES
THE AUTUMN GIRL—NELLIE MUSE



G. C. W. TYPES
THE WINTER GIRL—GRACE BENCINI



G. C. W. TYPES
THE SPRING MAID—DOROTHY AYCOCK



Thursday, May 10th, 1911, 8:30 P. M.

Graduating Recital

MISS DELIMA HARBOLD

Violinist for the B. M. T. Co.

Program

Violin Concerto, Op. 35, No. 1, Mendelssohn

Violin Sonata, Op. 45, No. 1, Mendelssohn

Violin Sonata, Op. 45, No. 2, Mendelssohn

Violin Sonata, Op. 45, No. 3, Mendelssohn

Violin Sonata, Op. 45, No. 4, Mendelssohn

Violin Sonata, Op. 45, No. 5, Mendelssohn

Violin Sonata, Op. 45, No. 6, Mendelssohn

Violin Sonata, Op. 45, No. 7, Mendelssohn

Violin Sonata, Op. 45, No. 8, Mendelssohn

Violin Sonata, Op. 45, No. 9, Mendelssohn

Violin Sonata, Op. 45, No. 10, Mendelssohn



Thursday, May 11th, 1911, 8:30 P. M.

Graduating Recital

MISS SAUL C. THOLINGLE, Piano

Pianist for the B. M. T. Co.

Program

Piano Concerto, Op. 25, No. 1, Mendelssohn

Piano Concerto, Op. 25, No. 2, Mendelssohn

Piano Concerto, Op. 25, No. 3, Mendelssohn

Piano Concerto, Op. 25, No. 4, Mendelssohn

Piano Concerto, Op. 25, No. 5, Mendelssohn

Piano Concerto, Op. 25, No. 6, Mendelssohn

Piano Concerto, Op. 25, No. 7, Mendelssohn

Piano Concerto, Op. 25, No. 8, Mendelssohn

Piano Concerto, Op. 25, No. 9, Mendelssohn

Piano Concerto, Op. 25, No. 10, Mendelssohn

GRADUATING RECITALS



JUNIOR MARSHALS
SENIOR MARSHALS



JOHN POWELL

MAY PETERSON

GREENSBORO COLLEGE FOR WOMEN
COLLEGE AUDITORIUM

MAY PETERSON, Soprano
METROPOLITAN OPERA CO

Greensboro, N. C., February 18, 1919
8.30 P. M.

- | | |
|--|-------------------|
| 1. Deb Vieni (Le Nozze di Figaro) . . . | Mozart |
| Warning | Mozart |
| Amarelli | Caecius |
| Allelujah! (Air from Esultate) | Mozart |
| 2. Aria, "La Gavotte," from Macou | Musset |
| 3. Crepuscule | Musset |
| Contemplation | Widor |
| La Pavane | Brancozzi |
| La Papillon | Fourdrain |
| 4. Folk lore | |
| El Cant Dos Arcelles | Don Louis Millet |
| (A Catalan Cant of XV Century, arranged by Kurt Schickler) | |
| El Majo Daqueto (18th Century) | Granados |
| De Ol' Ark's a Movera' (Negro Spiritual) | Gossin |
| 17th Warm' Awa', Juan | Old Scotch |
| Three Cavaliers (Russian Folk-song) | arr. by Schickler |
| 5. I Came With a Song | La Forge |
| Snowflakes | Mallinson |
| Just Before the Lights Are Lit | Brancozzi |
| Magic of Your Eyes | Fenn |
| Walter Godek at the Piano | |

Miss Peterson makes records exclusively for the Arden Vocalion

SCHOOL OF MUSIC
Greensboro College for Women

Greensboro, North Carolina

SAMUEL B. FURBERGHE, President
LORNAE LARSEN, Director



Kerital

GIVEN BY

JOHN POWELL, Pianist

Thursday Evening, January 30th, 1919, at 8.30 O'clock

Program

- | | |
|-----------------------|---------------------------|
| I | CHACONNE |
| BACH-BESONI | |
| II | THREE WALTZES |
| BEETHOVEN | |
| III | BOLEBO |
| CHOPIN | THREE MAZURKAS |
| | WALTZ |
| | POLONAISE, F. SHARP MINOR |
| | IV |
| LISZT | DANCE OF THE Gnomes |
| | TARENTELLA |

Thursday, April 25th, 1918
8.30 o'clock
Graduating Voice Kerital
GIVEN BY
MISS FLOSSIE DENNY, Mezzo-Soprano
Pupil of Mr. John G. Jones
ASSISTED BY
MESSES ANNE CRUTIN AND NELLIE MUSE
Pupils of the same teacher

Graduating Piano Kerital
GIVEN BY
MISS FLOSSIE DENNY, Piano
Pupil of Mr. John G. Jones
ASSISTED BY
MR. BENJ. S. FATES, Tenor
Monday, May 13th, 1918
8.30 O'clock

Greensboro College for Women

Greensboro, North Carolina

SAMUEL B. FURBERGHE, President
LORNAE LARSEN, Director



Junior Kerital
GIVEN BY
MISS MARGORIE WORSHAM
Pupil of Mr. John G. Jones
MISS KATHERINE HUTTON
Pupil of Mr. John G. Jones
Friday, April 26th, 1918
8.30 o'clock

Junior Kerital
GIVEN BY
MESSES ANNA HOLMHOUSER AND
NELLIE GROOMER
Pupils of Mr. John G. Jones
MISS ELIZABETH GIBSON
Pupil of Mr. John G. Jones
Tuesday, May 7th, 1918
8.30 o'clock

Dramatics

SENIOR PLAY

"Reveille"

Written and staged by Reuben Alley, Catherine Hubbard and Sadie Trollinger, assisted by Class

Monday, June 3rd, 1918

Time: Before America's entry into the war.

ACT I.

Scene 1—Woodland Walk. The conspiracy against Columbia.

Scene 2—The Garden of Gaiety. Columbia bound and unseeing.

ACT II.

Scene 1—The place of clear vision. Columbia's awakening.

Madeline Strickland at the piano

Hawaiian Players—Ruby Spencer, Martha Adams, Bernice Nicholson

Fairies—Lucile Morris, Loraine Burgess

Butterflies—Mildred Walsler, Lucile Morris, Loraine Burgess, Lily Nelson Mason, Lelia Humble

Seasons—Ernestine Lambeth, Mary Reece, Amelia Poindexter, Lucy Turner

CAST OF CHARACTERS

PLEASURE	Maurine Brittain	RUSSIA	Thelma Dixon
FASHION	Thelma Harrell	JAPAN	Elizabeth Merritt
WEALTH	Sadye Trollinger	ENGLAND	Reuben Alley
COLUMBIA	Annie Long	VICTIM OF THE "LUSITANIA"	Claire Harris
COQUETTE	Elizabeth Derickson	RED CROSS NURSE	Kathleen Conroy
SMILES	Marguerite Wilson	KNITTER	Marguerite Wilson
BEAUTY	Minnie Garrett	GIRL GARDENER	Mattie Register
SNOB	Reuben Alley	FOOD CONSERVER	Minnie Garrett
DEMOCRACY	Myrtle Caviness	AMERICAN SAILOR	Catherine Hubbard
BELGIUM	Lucy Curtis	AMERICAN SOLDIER	Jessie Reeves
FRANCE	Elizabeth Derickson	WAITRESSES, Thelma Dixon, Catherine Hubbard	

The Trouble at Satterlee's

Thursday, Dec. 19, 1918

CAST OF CHARACTERS

DOROTHY	Rachel Mae Taylor
ALICE	Annie Griffin
MILDRED	Mary Wilson
BERTHA	Lois Frye
MARIAN	Nellie Muse

(Who belong to Miss Satterlee's Select Seminary for Young Ladies.)

MISS OPHELIA SATTERLEE, the lady principal Martha Adams

KATHLEEN, a Celtic maiden employed in the Seminary Louise Dixon

Costumes Modern

Scene: Dorothy's little sitting-room

Junior Stunt

April 6, 1918

An Ideal G. C. W.

DANIEL, the Janitor	Atrice Kernodle
MRS. SILER	Myrtie Humble
MR. HURLEY	Gladys Whedbee
JOHN, a Soldier	Mary Exum Snow
JULIET	Ernestine Lambeth
ROMEO	Virginia Gibbs

MEMBERS OF ENGLISH III. CLASS

ESTHER AYCOCK	CARRIE ERWIN	MYRTIE HUMBLE
LUCY BROTHERS	VIRGINIA GIBBS	ERNESTINE LAMBETH
RUTH BELL	ELIZABETH GIBSON	MARTHA MOORE
GAYNELLE BARNES	CARRIE HARRIS	LILLIE GAY SHAW
EONA CAVINESS	NELL GROOME	VERDIE TROLLINGER
MABEL DAVIS	MARY HUCKABEE	MARJORIE WORSHAM

ACT I.—An Ideal English III. Class
ACT II.—An Ideal Field Day
ACT III.—An Ideal Social???

Freshman Stunt

GREENSBORO COLLEGE FOR WOMEN

Saturday, April 20, 1918

What Next

CAST OF CHARACTERS

FRESHMEN	Lelia Humble, Rachel Mae Taylor
COLLEGE CHAPERONE	Margaret Brown
DEAN	Aldine O'Neil
MAID	Wilhemna De Laney
HOMESICKNESS	Helen McCrary
FRIVOLITY	Margaret Martin
WORK	Lucile Todd
FRESHMEN	Connelly, E.fird. Hill, Ellen, Keel, Rankin, Sommers, Windley.
OLD GIRLS	Savage, Johnson, Harris, M. Cole, Jones, Rea, Stokes, Merritt, West, Putnam, S. Cole, Jackson, Kornegay, McKee, Troutman, Bailey, Bunting, Ewing, Packer, Jenkins, Mendenhall.

SYNOPSIS

ACT I.—Reception Hall at Greensboro College
Arrival of Freshmen
ACT II.—Society Rush, Decision Night
ACT III.—After the Rush

Senior Stunt

The Temple of Fame

CAST OF CHARACTERS

QUEEN	Ernestine Lambeth
HERALD	Rachel May Taylor
PAGES	Leila Humble, Annie Laurie Lowrance
ATTENDANTS	Kate Hutton, Flossie Denny, Martha Moore, Elizabeth Gibson, Gaynelle Barnes
CHRISTOPHER COLUMBUS	Ammie Wilson
VIRGINIA DARE	Lucy Brothers
POCAHONTAS	Carrie Harris
RUTH	Esther Aycock
GEORGE WASHINGTON	Verdie Trollinger
BETSY ROSS	Nelle Groome
ROBERT BURNS	Gladys Whedbee
IMOGEN	Marjorie Worsham
MR. JIGGS	Mary Exum Snow
MRS. JIGGS	Attrice Kernodle
ANNIE LAURIE	Carrie Erwin
ROSA BONHEUR	Myrtie Humble
DR. ANNA HOWARD SHAW	Anna Holshouser
ROBERT W. SERVICE	Edna Caviness
JOAN OF ARC	Lillie Gay Shaw
EDITH CAVELL	Ruth Bell
SPIRIT OF DEMOCRACY	Maurine Brittain

SYNOPSIS

The Temple of Fame represents a contest for a wreath, and the notable characters, duly costumed, appear one after the other and present their claims in words or song. The Queen of Fame is greatly puzzled as to the decision, and while deliberating, the Spirit of Democracy enters. The other characters immediately renounce their claims in favor of Democracy and the crown is bestowed on her.

Evening of Miscellaneous Readings

THE EAVESDROPPER	Miss Foster Shaw
THE LEGEND OF THE DIPPER	Miss Lucy Mayo
THE LITTLE RED HEN	Miss Marion Wilson
TWO LITTLE COOKS	Miss Nellie Muse
HAN'S DOG	Miss Lucy Brothers
WAKEWA'S EAGLE	Miss Lucy Clapp
THE PIG BROTHER	Miss Attrice Kernodle
DEY AIN'T NO GHOST	Miss Margaret Johnson
BIDDY'S TROUBLE	Miss Kiva Broadwell

JUNIOR STUNT

Dark Town Minstrel Show

March 15, 1919

CAST OF CHARACTERS

INTERLOCUTOR Blanche Erwin

END MEN

ABANEZER GIGGERFOOTE Kate Warlick
CORNELIUS LOTUS LEAF Nellie Muse
AMOS KIDER Louise Foy
PETER LOOSELEMB Carrie McNeilly
MAC SHOESLINGER Annie Griffin
RESSIE MAUSELINE Nell Davis

GOLD DUST TWINS

CHERRY BLOSSOM "Freshie" Morris
LILY PETAL Inez Smithwick

ROPE WALKERS

SNOW BALL Mary Lily Cox
DEW DROP Martha Evelyn Morris

CHORUS

SYLVIA ANN COBBLE Marie Young
PEARLINE GINGERSNAP Naomie Howie
LIVINY FIGGS Madge Sills
PINKIE PERIWIGG Erdine Denning
SOPHIA MERCANTILE Martha Adams
LAZENY LANGERENE Annie Harris
CYNDY LINDSEY Nellie White
ZILLY TAMERSHANTER Louise Davis
TEMPTATION TEMPERINE Ruby Fuller
LIZA LOVERLY Mary Louise Harrell
TESSIE TIMROD Myrtle Barnes
SANDY SANWICHSNATCHER Bessie Buckner
JOSHUA KNEEDEEP Elizabeth Austin
SOLIMON STUDBAKER Ethel Von Cannon
SIMON SLICKPENNY Mary Wilson
JOSEPHINE JERREOSTHINE Louise Elliott
TIMOTHY TICKLEPITCHER Mary Robinson
ISAIAH INCULATOR Bernice Nicholson
WOODERO VANDERBUILT Elizabeth Cox
MACBETH MACINTOSH Mabel Young

Social Calendar

APRIL 1, 1918—FEBRUARY 28, 1919

APRIL

- 9—Bertha Koonz Baker Recital.
- 13, 14, 15—Trip of G. C. W. Glee Club to A. & E., Trinity and the University of North Carolina.
- 13—Liberty Day.

MAY

- 3—Juniors entertained by Freshmen.
- 3—Sophomores entertained by Seniors.
- 4—Field Day. "The Man of the Hour," given by Carolina Dramatic Club.
- 12—Senior Stunt.

JUNE

- 1-4—Commencement Exercises.
- 1—An evening of readings by Virginia Gibbs, Annie Griffin, Charlotte McMichael and Louise Dixon.
- 2—Anniversary Service of Young Women's Christian Association.
- 3—Class Day Exercises.
- 3—Class Play, "Reveille."
- 4—Graduating Exercises.
- 4—Concert by School of Music.

SEPTEMBER

- 7—New Girls entertained by Y. W. C. A.
- 9—New Girls entertained informally by Student Association.
- 23—Y. W. C. A. at home to the Day Students.
- 25—Informal reception given to the new members of the Irving and Emerson Literary Societies.

OCTOBER

- 3—Annual Staff Stunt.

NOVEMBER

- 27—Sophomore Party for their President.
- 27—Thanksgiving.

DECEMBER

- 1—Junior Dinner Party.
- 8—Student Association Stunt.
- 17—Lecture by Prof. Frederick H. Koch of the State University: "Shakespeare and the People."
- 19—Annual Christmas Dinner, followed by presentation of gifts to the maids. Play by the Dramatic Club in the evening. Seniors entertained by Miss Chasten.

JANUARY

- 10—Girls entering since Christmas entertained by Y. W. C. A. Cabinet.
- 11—Lecture by Prof. George McKee. Reading, "The Man Who Stayed at Home."
- 18—Sophomore-Freshman Party.
- 21—Lecture by Prof. Koch, "The Heart of Youth in Romeo and Juliet."
- 30—First of Lyceum Course numbers, Piano Recital by John Powell.

FEBRUARY

- 15—Senior Stunt, "The Temple of Fame."
- 18—May Peterson, Recital.

Year's Work of the Y. W. C. A.

In September, 1918, our Y. W. C. A. Cabinet took up its work with eager interest and buoyant hope for the coming year. Our president, Miss Anna Holshouser, assisted by her loyal co-workers, immediately launched into their task. On every hand we met with enthusiastic co-operation from both old students and new, and by October 6th every girl in Greensboro College for Women was enrolled as a member of the Y. W. C. A.

Just after achieving this unprecedented success, Miss Holshouser was forced to resign her position as president of the Association on account of ill health. We regretted her resignation, but we welcomed the election of Miss Lucy Brothers as her successor. Miss Brothers energetically entered upon her duties as president. Our Association work was progressing admirably, when, on account of the influenza epidemic, school was suspended for one month. Of course this interruption proved in a measure detrimental to the work of the Y. W. C. A., but soon after our return the organization was again running smoothly.

This year for the first time we have been using the departmental plan, and it has proved a success. The various committees included in this system have helped to make the Association a real and vital part of our college life. From time to time the program committee has secured noted persons to lecture to the student body. The committee on social standards has also been quite diligent in its efforts for a higher plane of living. It has sought to instill into the hearts of the G. C. W. girls that reverence for high ideals which is so necessary for the development of perfect womanhood.

One of the greatest triumphs of the Y. W. C. A. was our subscription to the United War Work Campaign. The quota for G. C. W. was \$1,200, but it was with great pleasure that the Cabinet saw the Association go over the top by nearly doubling its assessment. Much enthusiasm was evident among both the faculty and student body. The larger portion of our pledge was raised at a patriotic rally held in the College Chapel, where the students and faculty enthusiastically pledge \$2,320. This generous gift from the Association has been a great blessing.

During the year we have been trying to make our Association one of the best in every respect. There have been times of discouragement when we seemed to fail in our attempts to attain the goal which we had set before us, but we believe that those times of depression gave us renewed strength for the future. As a result of our efforts we are hoping that next year we may be so fortunate as to have an annual member from our Association.

Every member of the Y. W. C. A. has had a part in making the year a success, and to every member belongs a share of the satisfaction which comes from the consciousness of work well done.

The Year in Students' Association

The Students' Association of Greensboro College for Women entered upon the Fall term of '18 with the determination to make this year the best in the history of the College.

Student Government having been firmly established, the Association has been able to carry on its work with great success, constantly assured of the co-operation of all its members.

In the early Fall the Association showed its patriotic spirit by investing two hundred and fifty dollars in Liberty Bonds. Then came the Red Cross Drive, which proved very successful, every girl in school becoming a member of that organization.

At a meeting of the Association on September 23rd, it was voted by the students to buy a service flag, to be placed in the College Chapel. This was done and the College is very proud of the ninety-four stars, which represent those brothers and fathers who are serving their country.

The Association work was then interrupted for some time because of the suspension of college on account of the influenza epidemic.

All the students returned at the end of a month's holiday, ready and eager for work. The "flu," however, again visited the college and work was necessarily disorganized for several weeks.

Just before the Christmas holidays the Students' Council, assisted by the various classes, gave a "stunt" representing the various weaknesses in our college life and suggested ways in which we might improve. Each class showed its desire to make the Students' Association an even greater success.

Another decided advance over previous years has been the organization of a fire company under Captain Erwin. Although we do not especially approve the idea of having our peaceful slumber disturbed by the noisy clanging of the fire bell at five o'clock in the morning, we rise gallantly to the occasion.

Our two delegates who represented us last year at the Student Government Conference in Tallahassee returned quite enthusiastic. They were assured that we were "a la mode" as regards student government. We are hoping that the delegates who are representing us this year at Hollins will bring back with them still further evidence of the progress made by our Students' Association.



FAMILIAR FACES OF LAST YEAR

(133)



AN OLD FASHIONED QUILTING BEE
GEORGE WASHINGTON PARTY



HUMOROUS MASQUERADE PARTIES

(135)



DEBBIE
MOST ATTRACTIVE



BECK
MOST MISCHIEVOUS

LUNNIMONRA



GREATEST LOVER OF UNIFORM



ROBERTA
SWEETEST



LEONOR
CUTEST



CECILE
MOST INDEPENDENT



BECKY
HERTEST



CORNELIA
MOST SOPHISTICATED



ROBERTA
MOST SENSIBLE



LEONOR
WITTIEST



CLYDE
PRIMEST



STEARLY
MOST INNOCENT



DELLA
VAUGHN



ROBERTA
MOST ACCOMMODATING



FAY JOE
CLASS BABY



GRELLA
BEST ALL-ROUND



TURKISH
BIGGEST BLUFF



MARGARET
CLASS VOGUE



LEONOR
GREATEST FLIRT



MARGARET
MOST PROMISING



GEORGE
GREATEST CHATTER-BOX



FULLER
QUIETEST



JANE
MOST INQUISITIVE



LEONOR
GREATEST GAD ABOUT



ROBERTA
MOST DEPENDABLE

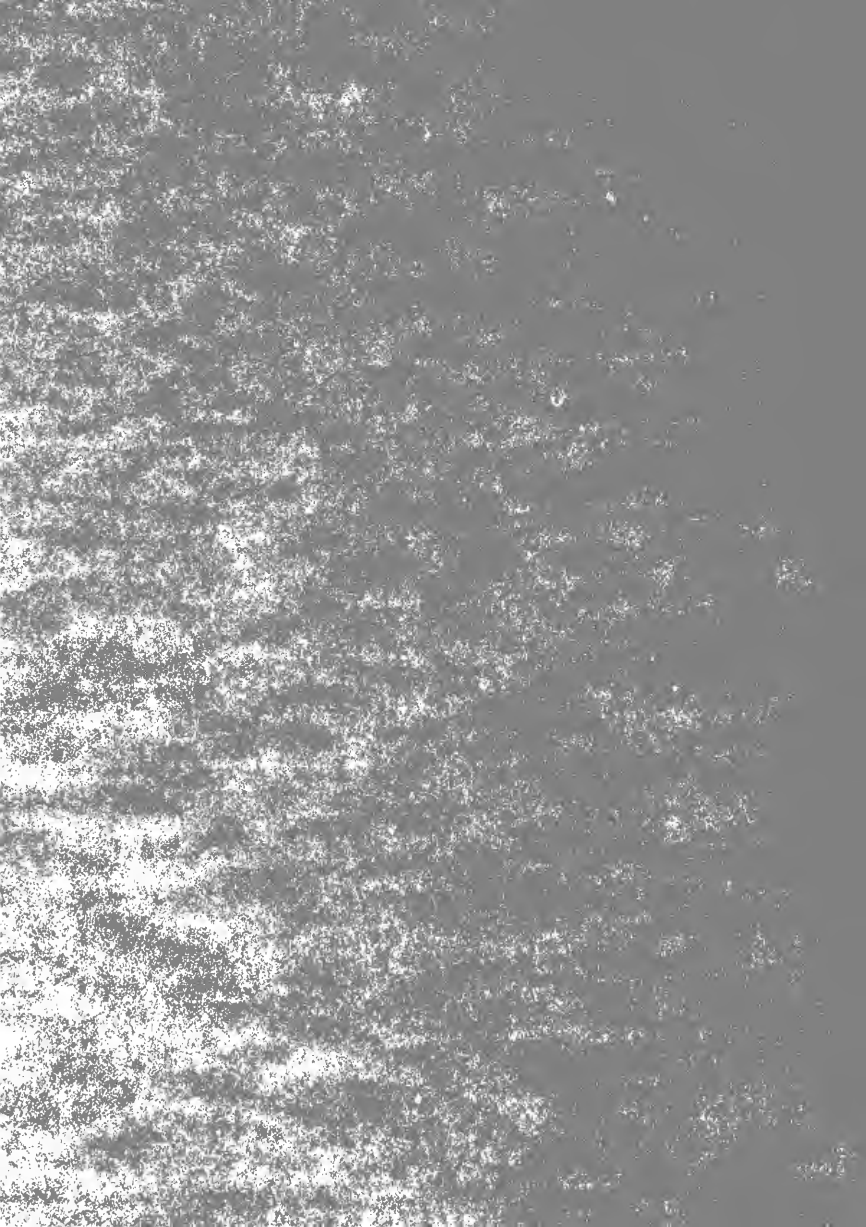


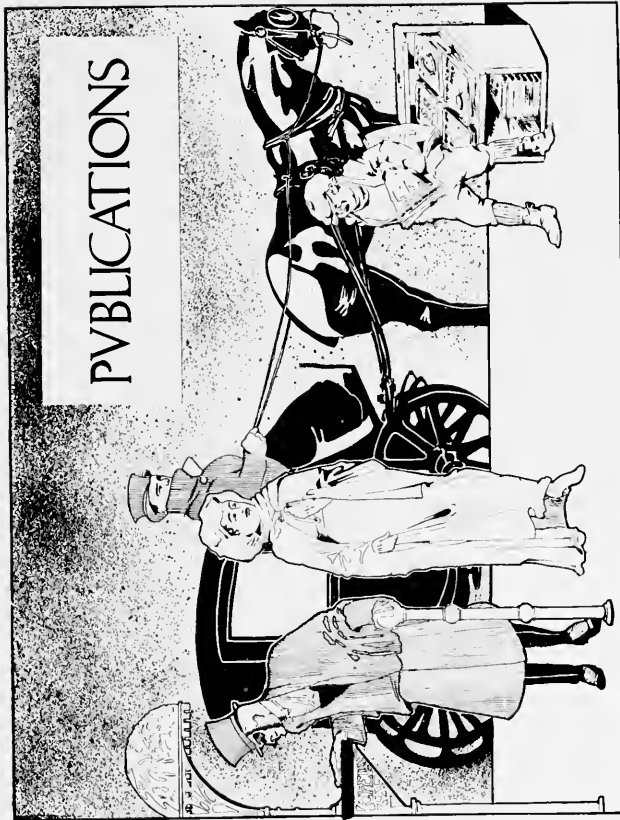
FAY JOE
BIGGEST ARGUER

BUSINESS CLASS STATISTICS



THE
FUNCTIONS
OF
MONEY







THE ECHO STAFF

Echo Staff

CARRIE HARRIS	<i>Editor</i>
MAURINE BRITAIN	<i>Associate Editor</i>
NELL DAVIS	<i>Associate Editor</i>
LILLIE GAY SHAW	<i>Associate Editor</i>
VERDIE TROLLINGER	<i>Business Manager</i>
EDNA CAVINESS	<i>Business Manager</i>
NELLIE MUSE	<i>Business Manager</i>
LOUISE ELLIOTT	<i>Photographer</i>
MARTHA ADAMS	<i>Photographer</i>
ERNESTINE LAMBETH	<i>Photographer</i>
LELIA HUMBLE	<i>Art</i>
PROF. HURLEY	<i>Art</i>
MARY LILY COX	<i>Athletics</i>
NELLIE WHITE	<i>Athletics</i>
MYRTIE HUMBLE	<i>Literary Editor</i>
HELEN MCCRARY	<i>Literary Editor</i>
MADGE SILLS	<i>Humor</i>
KATE WARLICK	<i>Humor</i>
HELEN BLACKWELL	<i>Humor</i>

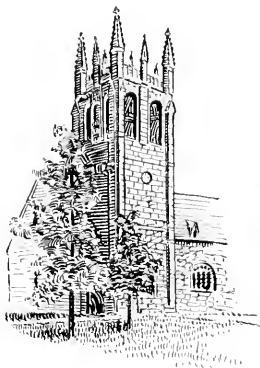




THE MESSAGE STAFF

Message Staff

MARY EXUM SNOW	Editor-in-Chief
HELEN MCCRARY	Assistant Editor
MARTHA MOORE	Business Manager
BLANCHE ERWIN	Assistant Business Manager
NAOMI HOWIE	Exchange Editor
MADGE SILLS	Exchange Editor
ELLA MAY PACKER	Local Editor
ETHEL VONCANON	Local Editor
LILLIE GAY SHAW	Y. M. C. A. Editor
GLADYS WHEOBEE	Y. M. C. A. Editor
RACHEL MAE TAYLOR	Athletic Editor
EMMA BAILEY	Athletic Editor
MARY LILY COX	Humor Editor
LELIA HUMBLE	Humor Editor



HUMOR.



L. Hurley

Ideal Rules

All girls must go to the little store every day or remain on the campus the following Sunday.

Do not report to breakfast more than twice a week, as it displays greediness.

Girls must refrain from sleeping until 12 P. M., in order to keep the rats off the halls.

The following articles are given away: Door keys, mail boxes (with guarantee to be filled), meal tickets, stamps, and hair curlers.

Each girl must spend six week-ends away from the college, otherwise she will become timid.

Each girl must cut as often as her beauty sleep requires. Beauty is the first requisite to a gentle woman.

Girls must be instructed in dancing in order to preserve graceful equilibrium.

Show your appreciation for your neighbor's taste by borrowing her dress at least four times a week.

Conserve college food by going out to dinner as often as possible.

Electric toasters will be delivered to each girl upon request.

The student may do as she pleases, and when she pleases, at all times.

* * *

Good morning, my dear young ladies. I am sorry to have been ten minutes late, but I had to confer with the classification committee. Was certainly sorry, young ladies, that I didn't get you word that this class would not meet last Tuesday, but I left in a hurry for Chapel Hill, and, after tearing myself away from my wife and child, barely made the train.

A father and husband undergoes bitter anguish in separating from his family only a short while. But as I was saying, I went to Chapel Hill and for the first time in many years strolled beneath those mighty trees. "Thy son has come. To do thee honor, mother, kind and dear, within thy time-worn walls he is at home. Both proud and happy to be once more here."

Oh, they were great days. Miss ——, you've heard your father speak of them. Ha! Ha! Yes, he and I were good friends.

But we must get down to psychology, and get the fine points in this interesting lesson. One, two, ten, sixteen—one girl absent. All right, er—Miss Atwater. Now let's concentrate, young ladies—think until it hurts. So few people ever learn this, but we must get the fine points. I learned, young ladies, all of my Shakespeare by concentrating in the fine points in repeating it over and over from my boarding place to Harvard!

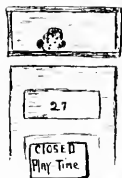
But as I say, the fine points are as clear as crystal. Since you have not allowed anything to come into the fringe of your consciousness, I am sure you understand the lesson thoroughly or you have been—or are—well, a bonehead. But the bell has interrupted our interesting discussion. Finish the chapter for next time.



Camouflage



First Aid



In The Guard House



The Infantry



TRAPS



Facing The Powder



Quarter Master



Sharp Shooters



K.P.

Seph



Reveille



Second Line of Defense

Rapid Fire



THE Council As THEY ARE - And - As THOUGHT TO BE



q. c. w specials
at Greensboro Drug Co



Fire Drill at 6 A.M.



Taking 'Gym'



Aviation Corps

Bob Wire
Entanglement



Freshie - Sept. 1 1918 Freshie - June. 1 1919



Sunday Morning
Inspection
12.26.21

Jokes

Freshy: Prof., is it ever possible to take the greater from the less?

Prof: There is a pretty close approach to it when the conceit is taken out of a Sophomore.

* * *

Newly Appointed Y. W. President: Don't let me forget to go to the attic tomorrow.

Naomi: Why?

Newly Appointed Y. W. President: Got to get my Bible out of my trunk.

* * *

N. White: Why all the excitement?

H. Blackwell: I have just been encored on three of my exams.

* * *

Freshy: What do you like best at G. C. W.

Second Freshy: Teachers, of course.

First Freshy: Why?

Second Freshy: Because they are so homely.

* * *

Fresh: What Science do you take?

Senior: Physics.

Fresh: What are they?

* * *

Nellie B.: Did you hear Mae Peterson last night?

Evelyn B: No; what was the matter with her?

* * *

DAD'S WAIL

My check book, 'tis of thee,

Sad wreck of penury,

To thee I cling.

Figures I fain had lied

Yet are the kids supplied

So let us sing.

—*Selected.*

* * *

Waiter in Guilford Hotel: How will you have your steak, sir?

Dr. Turrentine (absent-mindedly): "Well done, thou good and faithful servant."

Tell me not in truthful accents
Every girl may have a beau,
For there's many who can't find one
Though they seek one high and low

Life is real, life is earnest,
Matrimony is the prize;
But here's one who can not gain it,
Though she's witty, gay and wise.

Wives of great men all remind us
We could make our lives sublime,
If we only had a husband
Who could dress us up to time.

Husbands, who, when walking with us
Through the crowded streets,
Make us envied by all others
Whom we chance to meet.

In this world's broad field of battle,
In the busy hum of life,
No one wishes to be single—
All had rather be a wife.

Then let us be up and doing,
Wait, watching for a man;
And, if one should come to us,
Chain and keep him if we can.

* * *

M. Robinson: I can't play tennis.

S. E. Lightfoot: Why?

M. R.: I am so quiet; tennis must be played with a racket.

* * *

"Won't you take this seat," said a young man in the car, rising and lifting his hat.
"No, thank you," said the pretty girl. "I have been skating, and I'm tired of sitting
down."

* * *

R. Fuller: Where are you from?

W. Sundean: Minneapolis.

R. Fuller: What part of North Carolina is that in?

He could draw anything on earth,
But, sir, he met his death,
Because at forty years from birth
He could not draw his breath.

* * *

Tom: Pa, what's a Board of Education?

Pa: When I was in school, it was a pine shingle.

* * *

Mr. Nicholson: I don't know of any country that has not been discovered. (Strange to say.)

* * *

An Uncertain Age—Marriage.

A Mysterious Age—Sausage.

* * *

A college that delights most youths—Eat-on.

* * *

Take my math and let it be
Buried in the deep blue sea,
That my moments and my days
May be spent in better ways.

Take the formulas and let them go
To the depths of earth below,
Take them all and let them be
Never seen again by me.

* * *

Under the mistletoe old maids rush in where pretty girls do not have to tread.

* * *

B. Ingram: Who wrote Franklin's Autobiography?

Wise Soph: Griggs.

* * *

Miss Weber: Tell of Joan of Arc's girlhood.

G. Barnes: She was a lad of 17.

* * *

The hours I spent on English II
Are as a million years to me;
I count them over every one apart:
Just years to me—just years to me.

Each hour I hear that teacher—well,
I sigh again—I want to tell
That I do wish he was in Trinity,
And there with Greene and Burns to dwell.

Oh, memories of English II,
How long I will remember you!
I tell each girl to pass word on:
Ten minutes more! Ten minutes more!

A pair in a hammock
Attempts to kiss,
And in less than a jiffy
They land like this

* * *

M. B. Social Events

- Sept. 4—Oh, Dry Those Tears (opening day).
Sept. 5—Oh, Promise Me (society rush begins).
Sept. 7—It Looks Like a Night Tonight (Y. W. Reception).
Sept. 8—Oh, How I Hate to Get Up in the Morning (classes begin).
Sept. 9—(9:30) One Fleeting (?) Hour (1st class over).
Sept. 10—How the Money Rolls In (1st check from Dad).
Sept. 14—Oh, Johnny (1st date in parlor).
Sept. 27—I'm On My Way to Hellegoland (1st campus slip received).
Oct. 9—Who Knows (decision night).
Oct. 10—I'm Sorry, Dear, I Made You Cry (the morning after the night before).
Oct. 15—Where Do We Go From Here, Boys (home for the vacation).
Nov. 11—Liberty Bell (peace).
Nov. —N'Everything (Thanksgiving).
Dec. 1—Strutters' Ball (Junior dinner party).
Dec. 17—There's a Romeo for Every Juliet (Dr. Kotch's Lecture).
Dec. 19—Pass Around the Bottle, etc. (Xmas dinner).
Dec. 20—Home, Sweet Home (Xmas holidays begin).
Dec. 29—So Long, Mother (return).
Jan. 1—Oh, Death, Where Is Thy Sting? (exams).
Jan. 30—Night o' Gladness (John Powell's Recital).
Feb. 4—Whispering Hope (exams parted).
Feb. 5—Goodbye, Girls, I'm Through (exams over).
Feb. 14—Have a Heart (Fresh. Valentine Party).
Feb. 28—Listen to the Mocking Bird (Mae Peterson's Recital).

College men are awfully slow,
They seem to take their ease,
For even when they graduate,
They do it by degrees.

He stood on the bridge at midnight,
Interrupting my sweet repose;
For he was a tall mosquito,
And the bridge was the bridge of my nose.

* * *

Mr. Curtis (reading in Chapel): The hairs of my head are numbered.
Fresh: I don't doubt it.

* * *

Helen Blackwell (handing Miss Hamilton a prescription): Please have by description filled.

* * *

J. Sundean: Do you expect to spend a pleasant Christmas?
K. Warlick: I ought to. That's about all I have to spend.

* * *

Miss Ward: How long can a person live without a brain?
Hazel Carlyle: I don't know. How old are you?

WELL KNOWN SAYINGS ILLUSTRATED



CUTTING GLASS



SAT UPON



THERE GOES THE BELL

Schedule

- 5:15—Eng. 2. Students crawl out.
5:30—Radiator tune up for ensuing day.
6:00—Night watchman makes his first round.
6:30—Opening number of the alarm clock symphony.
6:35—Alarm clocks and inmates sleep peacefully.
7:00—6:45 bell peals forth; few open one eye and immediately close it.
7:15—Tom's itinerary with hand-bell.
7:25—H. McCrary yells: "Has the bell rung?"
7:26—The sleepy-headed fall out and fall in.
7:30—100-yard dash—breakfast.
7:35—Brains—Prunes—Appetite.
8:00—First disappointment. No mail, long faces.
8:15—Reconstruction Period.
8:29—Second call from H. McCrary: "Has bell rung."
8:30—Classes begin—blank faces.
8:45—Mr. Lasher arrives for 8:30 class.
9:00—Juanita begins her circuit.
10:00—Mr. Browning rushes madly through the hall, ejaculating, "Where is that miserable coon."
10:30—Holy order. We hear of the recent itinerary over the State.
10:45—Miss Clarke's second announcement.
10:46—Invited Speaker adds a word (if possible) between announcements.
1:00—Great discovery—a floating bit of protoplasm in bowl of water.
2:00-4:00—Sleep, "Ukes," Biology lab.
4:00—"Stepping Heavenward" (Refer to College Library).
4:00-6:00—"Vanity as the Spice of Life." (West's sideshow trip to little store; train passes.)
6:00—Catastrophe—Registers closed.
6:06—Late arrivals ease in.
6:07—Miss Ricketts causes late arrivals to ease out again, carrying their dogs behind them.
6:30-7:30—Infirmary Office Hour. Miss Hamilton at picture show.
7:30-10:30—Text books exposed (little harm done).
10:30—Light bell.
10:31—Light bell forgotten.
10:31 1-2—All retire to hall to watch proctors go by.
11:00—A few retire early.
12:00—Others follow suite. Rat serenade commences.

Latin is a dead language:
All the people died who wrote it;
All the people died who spoke it;
All the people died who learn it;
Blessed death! They surely earn it.
—Selected.

.....

A P P R E C I A T I O N

.....

The Editors of "The Echo" wish to thank every one who has aided us in making this book a reality, especially:

Misses Humble, McCrary, Packer, Jenkins, Taylor, Bailey, Rea, Boyd, Stokes and McKee, our Sophomore sisters who assisted us in canvassing the college.

Miss Jennie T. Clarke for her valuable suggestions.

Miss Porter and Miss Ricketts for their kindness in permitting us the use of their studios.

The girls in the business department for their assistance in copying.

The splendid work of White's Studio, The Benson Printing Company, Jahn and Ollier Engraving Company, and our advertisers.

.....



Forty-One College Annuals

Representing Colleges in Seventeen
States is Our Record for
This Season

Benson Printing Company is a printing plant specially equipped for every kind of school and college work. It is a complete organization with artists and designers and workmen whose thought and inspiration is concentrated in the production of College Annuals and School Literature.

This year we are printing for such institutions as: Georgetown College, Alabama Woman's College, Millsaps College, Wofford College, Brenau College, Mercer University, Judson College, University of Alabama, Transylvania College, Kentucky College for Women, Tennessee College, Greensboro Woman's College, Trouble County High School, Sewanee University, Greenville Woman's College, Alabama Polytechnic Institute, Tulane University, Kentucky State University, Belhaven College, Seawanee Military Academy, Dickinson College, Blue Mountain College, Muskingum College, University of Mississippi, Ouachita College, Furman University, Mississippi Woman's College, Hillman College, Branham and Hughes Military Academy, Davidson College, Birmingham Southern College, The Citadel, Henderson-Brown College, Westhampton College, Trinity College, Central College, State Normal School, Alabama Presbyterian College, Central High School, Vanderbilt University, Howard College.

Samples and Prices
Upon Request



College Annual
Experts

This Book is a Sample of Our Work

JAHN & OLLIER ENGRAVING COMPANY

*Designers and Engravers
of Highest Quality*
ANNUALS



Makers of
Illustrations, Designs
Photographs
Half-tones, Line and
Ben Day Zinc Etchings
Three and Four Color
Process Plates -
Acid Blast Quality

Main Office and Plant 2 CHICAGO Atlanta - Davenport - Kansas City
554 W. Adams Street Milwaukee - South Bend - Toledo

FARMERS BANK & TRUST COMPANY

La Grange, North Carolina

H. W. BROTHERS.....	<i>President</i>
D. W. WOOD.....	<i>Vice-President</i>
SAMUEL ABBOTT.....	<i>Cashier</i>
J. R. MURVIN.....	<i>Vice-President</i>
E. R. BURKE.....	<i>Assistant Cashier</i>



Capital \$25,000

Surplus \$12,500

Resources Over \$350,000

PROMPTNESS IS OUR MOTTO

HOWERTON'S DRUG STORE

Prescription
Druggists

Agents for Norris Candy

Telephones 46 and 47
PROMPT DELIVERY
Guilford Hotel Corner

Since You Must Pay More
for Most Everything
You Buy

*You Will Find It the Part of
Economy and Thorough Satisfac-
tion to Purchase the Very Best
Qualities*

If you have decided to have only one suit or one dress or one hat this season instead of two or more as heretofore, and this by reason of the higher costs—then by all means see to it that that one suit or dress, or hat, as the case may be, contains the best fashion features and materials that will wear.

WE GIVE TRADING STAMPS
Meyers
DEPARTMENT STORE GREENSBORO N.C.

The Pilot Company

Is The Policy Holder's Company
Southern Life & Trust Co.

GREENSBORO, N. C.



A. M. McAlister.....President
R. G. Vaughn.....First V.-Pres.
A. M. Scales.....Second V.-Pres.
R. J. Mebane.....Third V.-Pres.
Arthur Watt.....Secretary

Guilford Insurance & Realty Company

REAL ESTATE, LOANS
AND INSURANCE

O. L. GRUBBS, *President*
A. K. MOORE, *Sec. and Treas.*
109 East Market Street
GREENSBORO, N. C.

Woman's Exchange and Green Tea Room

Special Lunches At All Hours

HOME COOKING

105 EAST SYCAMORE STREET
GREENSBORO, N. C.

QUALITY COUNTS

Do not buy cheap Shoes this spring just because good footwear costs a little more than you have been accustomed to paying

IT IS NOT ECONOMY

One good pair of Shoes will outwear two pairs of inferior quality and retain their shape throughout long service. You'll have to pay more for Shoes whichever way you figure, and one pair of good Shoes is actually cheaper than two pairs of cheap ones. Considered from the point of economy it is far better for you to Buy Good Shoes.

DOBSON-SILLS

EVERY INCH A SHOE STORE
Greensboro and Winston-Salem

SCHIFFMAN JEWELRY CO.



LEADING
JEWELERS
AND GEM
MERCHANTS



MAKERS OF G. C. W. JEWELRY
AND SOCIETY PINS

R. C. BERNAU

The Popular
JEWELER



CLASS RINGS, PINS AND
COLLEGE JEWELRY
MADE TO ORDER

GREENSBORO, NORTH CAROLINA

DONNEL MOORE SHOE COMPANY
THE COLLEGE GIRL'S
SHOE STORE



OFFERS

Footwear Novelties That Are Most Highly Favored
By Smartly Dressed College Girls

CALL OR PHONE
US YOUR WANTS

You Will Be Pleased
With Our Courtesy, Accuracy, Service.

Prompt Delivery Our Motto

Ralph J. Sykes
Drug Store

350 South Elm Street
Near Southern Depot
Telephones 1923 and 1924

We French Dry-Clean
and Dye

All Classes of Garments, Gloves
Plumes, Etc.

At Reasonable Prices



PARCELS POST ORDERS GIVEN
PROMPT ATTENTION

COLUMBIA
LAUNDRY CO.

112-114-116 Fayetteville Street
GREENSBORO, N. C.

ELLIS, STONE & COMPANY

A Store Dedicated to Women's Service
First Of All

In the search for the "New and Beautiful" for each coming season; in appointment of the store in its entirety; in real service that must mean absolute satisfaction, this store is at all times the Store for Women First of All.

Every plan that is laid; every new idea that is developed; every effort to bring out the unusual has been with one idea—PLEASE, to receive its stamp of approval from you.

"The House of Quality"

ELLIS, STONE & COMPANY

GREENSBORO'S
MAIN DRUG STORE

THE STORE THAT APPRECIATES
YOUR BUSINESS IS

FARRIS-KLUTZ
DRUG STORE

If it is kept in any drug store they
have it, and the price is never too
high.

"On the Square" You Will Find

GREENSBORO
DRUG CO.

Where every customer gets what she
wants. They carry the best assort-
ment of Toilet Articles in the city,
and their fountain drinks and ice
cream cannot be surpassed.

EVERETT
WADDEY CO.

The Largest Engraving Establish-
ment In the South

Calling Cards and
Monogram Stationery
Wedding
and Commencement
Invitations

RICHMOND, VA.

ANSCOIZE YOUR SCHOOL DAYS

KEEP A PICTURE RECORD WITH YOUR ANSCO CAMERA OF
YOUR COLLEGE COMPANIONS AND EVENTS ABOUT THE
CAMPUS.

One of Our Albums Filled With Such Pictures Will be Doubly Appreciated
In After Years.

We Carry a Complete Line of
Anso Cameras and Supplies

AND ARE WILLING AT ALL TIMES TO HELP
YOU IN YOUR EFFORTS FOR BETTER RE-
SULTS. LET US DEVELOP AND PRINT YOUR
PICTURES

ODELL HARDWARE COMPANY

INSIST ON BEING SERVED

ARCTIC ICE CREAM



The Smile Follows the Spoon
Telephones 1822, 1823, 1824

Arctic Ice Cream Co.
Greensboro, North Carolina

FRAZIER PIANO COMPANY

INCORPORATED



Largest and Oldest
Piano House In
This Territory



GREENSBORO, N. C.

GUILFORD CAFE

Caters to the Best Class Trade



DINNER PARTIES A SPECIALTY

Greensboro, North Carolina

GREENSBORO COLLEGE FOR WOMEN

The A-Grade Woman's College

OF THE

The Methodist Conferences
of North Carolina

CHARTERED 1838

Confers the Degrees of A.B. and B.S. in the Literary Departments, and
B.M. in the Music Department



In addition to regular classical course, special attention is called to the departments of Home Economics, Expression, Business, Art, Education, Sunday School Teacher Training, Piano Pedagogy, and to our complete School of Music.



Fall Term Opens September 4, 1919

For Further Information Apply To

REV. S. B. TURRENTINE, A.M., D.D., *President*
GREENSBORO, N. C.

Students of Greensboro College for Women
When In Greensboro You Used

VAN LINDLEY'S
Flowers



WHEN YOU GO HOME DO NOT FORGET
THAT WE ARE AS NEAR YOU AS YOUR
TELEPHONE OR TELEGRAPH OFFICE.



VAN LINDLEY COMPANY
FLORISTS

FLOWERS THAT PLEASE
GREENSBORO, N. C.

☐ Engraved Invitations, Visiting
Cards and Monogram Stationery.
☐ Loose Leaf Memo Books and
Sheet for Same. Best Quality Box
Stationery in quire or ream packages.

**JOS. J.
STONE & CO.**

Office Equipment and Sup-
plies, Printers, En-
gravers and Book
Binders

110-112 East Sycamore Street
GREENSBORO, N. C.

**J. M. HUNT &
W. W. HUNT**

PLUMBING

Steam and Hot Water
Heating

Greensboro, North Carolina

PENNSYLVANIA TIRES
6,000 Mile Guarantee
FIRESTONE TIRES
3,500 Mile Guarantee

Vulcanizing and Retreading

DIXIE SALES CO.
Rubber Tire Hospital
105 West Market Street

SEND YOUR ORDERS FOR
ATHLETIC AND
SPORTING GOODS

TO

BALL SUPPLY CO.

CHARLESTON, S. C.

**Thomas & Howard
Company**

Wholesale Grocers

Durham, N. C. Greensboro, N. C.
Columbia, S. C. Greenville, S. C.
Spartanburg, S. C.

**HANES
GROCERY CO.**

FANCY GROCERIES
FRUITS, CANDY
CAKES

1005 Spring Garden Street
Telephones 2200-2201
GREENSBORO, N. C.

MOON SHINE
KISSES



MADE BY

Ballance & Company

GREENSBORO, N. C.

HUNTLEY
STOCKTON
HILL CO.

DEALERS IN

EDISON
PHONOGRAPHS

AND

FURNITURE

GREENSBORO, N. C.

1858

1919

COSTUMES

*For Plays, Operas and Pageants
and Academic Caps and Gowns*
Of a superior excellence supplied on
rental basis. Booklet sent on ap-
plication.

WAAS & SON

PHILADELPHIA, PA.

MATLOCK
Staple and Fancy
Groceries, Fruits and
Vegetables

902 Spring Garden Street
Telephone 159
GREENSBORO, N. C.

OUR FRAMING DEPART-
MENT IS OPERATED IN
THE MOST EFFICIENT
MANNER

The young ladies of the Greensboro
College are invited to call and in-
spect our Samples and Work.

**WILL'S BOOK &
STATIONERY CO.**

B. B. TATUM

TRANSFER AND LIVERY
STABLES

MOVING VANS, TRUCKS
AND CITY DRAYS

Automobile and Horse-Drawn Ve-
hicles for All Occasions



White
STUDIO

COMPLIMENTS OF
D. M. BALSAM

W. P. REAVES, M.D.
C. R. REAVES, M.D.

Reaves Eye, Ear, Nose
and Throat Infirmary

117 W. Sycamore Street
GREENSBORO, N. C.

LEWIS & ANDREWS

EXCLUSIVE MILLINERY

10% off for College Girls
108 W. Washington Street
Greensboro, N. C.

FOUNDED IN 1838

CHARTERED IN 1859

TRINITY COLLEGE

DURHAM, N. C.

A well endowed old college with handsome new buildings, a large, beautiful campus, first-class special and general equipment, and a nation-wide reputation for high standards and progressive policies. Fees and expenses low. Classical and scientific courses leading to Bachelor's degrees. Graduate courses in all departments. Schools of Engineering, Education, and Law.

For catalogue and illustrated booklet, address

R. L. FLOWERS

Secretary to the Corporation.

