



*The*  
**ECHO**  
1925

Digitized by the Internet Archive  
in 2010 with funding from  
University of North Carolina at Chapel Hill

<http://www.archive.org/details/echo1925gree>



# The ECHO 1925



*Published by*  
THE STUDENT'S  
ASSOCIATION

**GREENSBORO COLLEGE**  
Greensboro, N.C.



# CONTENTS



BOOK ONE  
THE COLLEGE

BOOK TWO  
THE CLASSES

BOOK THREE  
ORGANIZATIONS

BOOK FOUR  
ATHLETICS

BOOK FIVE  
THE COLLEGE YEAR



# FOREWORD

*AS WE COME TO THE LAST LAP OF OUR  
JOURNEY WHICH BRINGS US NEARER  
THE GOAL OF GRADUATION, WE WISH  
THIS, THE EIGHTY-SEVENTH VOLUME  
OF THE ANNUAL, TO BE A LIVING ECHO  
OF OUR COLLEGE LIFE. MAY IT BRING  
GOLDEN MEMORIES TO THOSE WHO  
HAVE COMPLETED THE JOURNEY IN  
PRECEDING YEARS; AND MAY IT  
HELP TO GUIDE THE GIRLS  
OF THE YEARS TO COME.*

## DEDICATION



TO one who has devoted fifty years of her life to  
this college,

TO one who has always been sympathetic and  
kind,

TO one who has helped to mould our lives  
into Christian womanhood,

TO one who has been the mother of  
us all,

TO

**Mrs. Lucy H. Robertson**

We, the Class of 1925, the year of her fiftieth anniversary in our Alma Mater, do hereby dedicate this, our volume of  
THE ECHO.

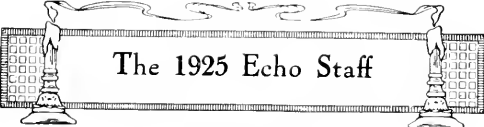
## RESPONSE TO DEDICATION



The heart has a language all its own, but seldom is it translatable into the speech of every-day life. Nevertheless, the gracious tribute with which the Class of '25 has marked the fiftieth year of my association with their Alma Mater has kindled such a glowing warmth of appreciation that it must find expression, though inadequately, of my deep sense of the honor conferred in the dedication of their annual to me, whose affectionate interest will follow the Class of 1925 through the years to come, wishing for each one full fruition of the bright hopes which beckon to them as they enter joyously upon the journey of life.



ECHO STAFF



# The 1925 Echo Staff

MAUDE COTTON  
*Editor-in-Chief*

ELVA FAISON  
*Business Manager*

AUGUSTA SAMPLE  
*Associate Editor*

DORCAS MCKINLEY  
*Associate Editor*

CAROLYN GLASCOCK  
*Assistant Business Manager*

EVELYN SAWAGE  
*Assistant Business Manager*

JONCH CASWELL  
*Photograph Editor*

IRINE CHANDLER  
*Photograph Editor*

ETHEL BURKHARD  
*Photograph Editor*

JOHNIE CONLY  
*Literary Editor*

HOPE HARDISON  
*Literary Editor*

EUNICE GOODWIN  
*Athletic Editor*

LIANNA GIBBIE  
*Athletic Editor*

ALICE WHITE  
*Humor Editor*

SARAH PHARR  
*Humor Editor*

RUTH DAVENPORT  
*Humor Editor*

NELL MOORE  
*Art Editor*

GRACE YARBROUGH  
*Art Editor*

MILDRED SINGER  
*Dramatic Editor*



MAUDE COTTON  
*Editor-in-Chief 1925 Echo*

ELVA FAISON  
*Business Manager 1925 Echo*



BOOK ONE  
THE COLLEGE





## Historical Sketch



GREENSBORO COLLEGE, located at Greensboro, N. C., has a history reaching far back into the period of ante-bellum life. It was chartered in 1838 as Greensboro Female College, and is the second oldest chartered institution for women in the South. The cornerstone of the first building was not laid until 1843, and it was not until 1846 that the school opened its doors for the students. The first president was the Rev. Solomon Lea, who was rated as a capable and well-equipped teacher, and he was assisted by an able faculty. At once the college drew to its halls many students from the far Southern states.

Dr. Lea was succeeded in the presidency by Dr. A. M. Shipp, a man whose record as an educator is written high in the years of service. He administered the affairs of the college for three years, after which he resigned to accept a professorship in the University of North Carolina. His successor was Dr. Charles F. Deems, afterwards widely known as the pastor of the Church of Strangers, in New York City. Under the presidency of Dr. Deems the college enjoyed an era of great prosperity. The fourth president of the college, successor of Dr. Deems, was Mr. T. M. Jones, whose memory hundreds of noble women rise up to call blessed. During the presidency of Dr. Jones, the main building of the college was destroyed by fire. This calamity, joined by misfortunes brought by war, necessitated the closing of the school for ten years. The cornerstone of a new building was laid in 1871, and in August, 1873, the school opened its doors to the reception of students.

Dr. Jones continued at the head of the institution until his death in 1890, greatly lamented by the church and the constituency he had served so well. Dr. B. F. Dixon was his successor. His presidency extended over a period of three years, when he was succeeded by Dr. Frank L. Ried, who was at the time of his election editor of *The Raleigh Christian Advocate*. He had fairly begun what promised to be a great and successful experience in the charge of his duties, when he was suddenly called from his earthly activities by the messenger of death. Dr. Dred Peacock, who had been a useful member of the faculty, was elected to the presidency on the death of Dr. Ried. On account of ill health, Dr. Peacock resigned his post in 1902, when Mrs. Lucy H. Robertson was elected as his successor. She had been, for a number of years, connected with the school as a member of the faculty, and the success which attended her administration was no surprise.

Between 1902 and 1904 untoward conditions came upon the college. First, its Board of Trustees was greatly discouraged on account of stringent financial conditions, and decided to put the property in process of liquidation. Later the main building was destroyed by fire. The end of the institution now seemed to have come; but, through the almost superhuman efforts of the alumnae and the co-operation of the annual conferences, a new and splendid building was erected in 1904, and the school opened with the largest registration of students known in its history. Since then its prosperity has continued. During the year 1906-1907 the attendance reached the high-water mark, and the same conditions have continued down to the year 1924. A new dormitory was erected in 1912, known as Fitzgerald Hall. The building was named in honor of Mr. J. W. Fitzgerald, of Linwood, who gave \$10,000 towards its erection. This building was filled to its capacity as soon as it was opened to students. In the

year 1913, Mrs. Robertson having resigned, Rev. S. B. Turrentine, D.D., a member of the Western North Carolina Conference, was elected president. Since his election a new dormitory has been erected and was opened in the fall of 1917. This building is named Hudson Hall, in memory of Mrs. Mary Lee Hudson, of Shelby, N. C., whose donations to the college amount to more than \$13,000. A beautiful building for the Conservatory of Music has lately been erected as the gift of Mr. J. A. Odell of Greensboro.

## The Greensboro College Creed



WE BELIEVE in being rather than seeming; in the devotion to high ideals; in daring to do our duty as we understand it.

We believe in having an attentive eye, a listening ear, a busy brain, in keeping the mind clear and bright, filling it with wholesome thoughts of life; in losing ourselves in useful industry.

We believe in being worthy at all times; in having grim energy and resolute courage for the conquest of fear; in gaining confidence in our own ability.

We believe in service, in doing kind deeds, thinking good thoughts, in being strong, gentle, pure, and good, steady, loyal, and enduring.

We believe in reverence for the truth; humility; in great aspirations and high ambitions; in toiling ever upward.

We believe in cultivating the bright virtue of patriotism and the holy passion for friendship.

We believe in studying hard, thinking quietly, speaking gently, acting frankly; in listening to the winds, the trees, the stars, and the birds, to babes and sages with open hearts; we believe in being glad, in loving all, in hating none, in doing all bravely, bearing all cheerfully, awaiting occasions, hurrying never.

We believe in striving to gain sound knowledge, not content simply to know, but determined to use knowledge for the highest purpose.

We believe in man and woman, in God's unending love, and in the future.



SAMUEL B. TURRENTINE, A.M., D.D., *President*

## Former Presidents of Greensboro College

(1838-1913)

DR. SOLOMON LIA  
DR. A. M. SHIPP

DR. CHARLES F. DELMS  
DR. T. M. JONES  
DR. B. F. DIXON  
DR. FRANK L. REID

DR. DRED PEACOCK  
MRS. LUCY H. ROBERSON

## Faculty



METTIE E. RICKETTS

METTIE E. RICKETTS  
*Dean of Women and Professor  
of French*

Graduate of Wesleyan Institute,  
Staunton, Va.; Resident Student  
in Paris and Berlin; Graduate  
Courses at Columbia University.



ANNIE MCKINNIE PEGRAM

ANNIE MCKINNIE PEGRAM  
*Professor of Mathematics*

A. B., A. M., Trinity College; Gradu-  
ate Courses at Columbia University.



MRS. LUCY H. ROBERTSON

MRS. LUCY H. ROBERTSON  
*Professor of Religious Education*

Misses Nash and Pollock's School.

ROSCOE HOWARD VINING  
*Professor of English*

Ph.D., Boston University



ROSCOE HOWARD VINING

ELLIOTT O. WATSON  
*Professor of History and Eco-  
nomics*

A. B., M. A., Watford College;  
Graduate Work at George Wash-  
ington University, Peabody Col-  
lege, and University of Michigan.



REV. W. M. CURTIS

DAVID F. NICHOLSON  
*Professor of Education and  
Philosophy*

A. B., University of North Caro-  
lina; Postgraduate, Emory Col-  
lege, A. M., Harvard University.



DAVID F. NICHOLSON

## Faculty



LINNIE MARIE WARD

LINNIE MARIE WARD  
*Professor of Latin*

A. B., Greensboro College; A. M.,  
University of North Carolina.



MARGARET G. PERRY

MARGARET G. PERRY  
*Professor of Spanish*

A. B., North Carolina College for  
Women; A. M., University of North  
Carolina; Graduate Courses Col-  
umbia University, University of  
Jena, Germany; University of  
Puerto Rico.



CONRAD LAHSER

CONRAD LAHSER  
*Professor of German and French*

A. M., Columbia University; Royal  
Academy of Art, Hochschule fuer  
Musik, Berlin, Germany; Dir. Mus.  
Southern Conservatory.



PAUL M. GINNINGS

PAUL M. GINNINGS  
*Professor of Chemistry and  
Physics*

B. S., M. S., Ph. D., University of  
Illinois

ELBA HENNINGER  
*Professor of Expression and  
Physical Education*

Graduate Martha Washington Col-  
lege; Teachers' Diploma from the  
School of Expression, Boston,  
Mass.; Certificates in Physical Ed-  
ucation from the School of Ex-  
pression and University of Ten-  
nessee.



ELBA HENNINGER

MRS. REUBEN R. ALFAY  
*Librarian*

CARL BUEHL  
*Director of Music*

Graduate Michigan Conservatory  
of Music; Piano Student with Al-  
berto Jonus, Berlin, Germany; Or-  
chestration and Conducting, with  
Prof. Paul Prill, Berlin, Germany



MRS. REUBEN R. ALFAY

## Faculty



GILMAN F. ALEXANDER

GILMAN F. ALEXANDER  
*Professor of Voice*

Ph.B., Elton College, Graduate Courses at University of Chicago; Graduate Southern Conservatory, in Voice and Piano, Teacher's Certificate, American Conservatory, Student under Karlton Harbeck, David Ruschman, and Horatio Connel.

L. PEARL SEILER  
*Associate Professor of Piano*

Graduate of New England Conservatory under Carl Reumann, Postgraduate Work under Alfred De Voto, Special Courses under Ernest Hutcheson and Percy Grainger.



L. PEARL SEILER

IDA M. BRIDGMAN  
*Professor of Organ and Associate Professor of Piano, Ear-Training and Harmony*

Graduate in Piano, N. E. Conservatory of Music; Pupil of George C. Vied, Pianist, Boston; Studied Organ with Wallace Goodrich, Dean of N. E. College of Music; Wilson T. Moag, Professor of Organ in Smith College; J. J. Bishop, Springfield, Mass.; Summer courses Ernest Hutcheson, at New York Chautauque, 1925.



GERALDINE HOWARD SMITH

GERALDINE HOWARD SMITH  
*Associate Professor of Physical Education*

A.B., Greenham College, Graduate Work at Columbia University.



IDA M. BRIDGMAN

ROBERT LUDWIG ROY  
*Professor of Violin and Stringed Instruments*

Royal Conservatory of Music, Dresden; Concert Meister Gents, Berlin.



ROBERT LUDWIG ROY

EDNA EARL SHILLON  
*Associate Professor of English*

A.B., M.A., University of South Carolina, Graduate Work at University of Virginia and Columbia University.



BONNIE LEE ENOCH

BONNIE LEE ENOCH  
*Assistant in Art*

## Faculty



LETHA BROCK  
*Registrar*



ELIZABETH J. PORTER  
*Professor of Art*

The Art Students' League of New York; Graduate New York School of Design; Graduate Courses in Art in New York City and Paris.



MARY LYON  
*Professor of Biology*  
B.S., B.L., Indiana University;  
Graduate Work at Columbia University.



MRS. TENNIE B. SHARPE  
*Supervisor of Buildings*



KATHERINE HUTTON  
*Instructor in Piano and Theoretical Music*

B.M., Greensboro College; Post-graduate Work with Mortimer Browning; Special Course under Percy Grainger.



DAISY ELIZABETH BROOKS  
*Dietitian*



OLA EUGENE CALLAHAN  
*Bookkeeper*



MARY E. WALKER  
*Graduate Nurse, Supervisor of Infirmary*

Dedicated to the Memory  
OF  
Jennie Thoruley Clarke  
OF THE FACULTY

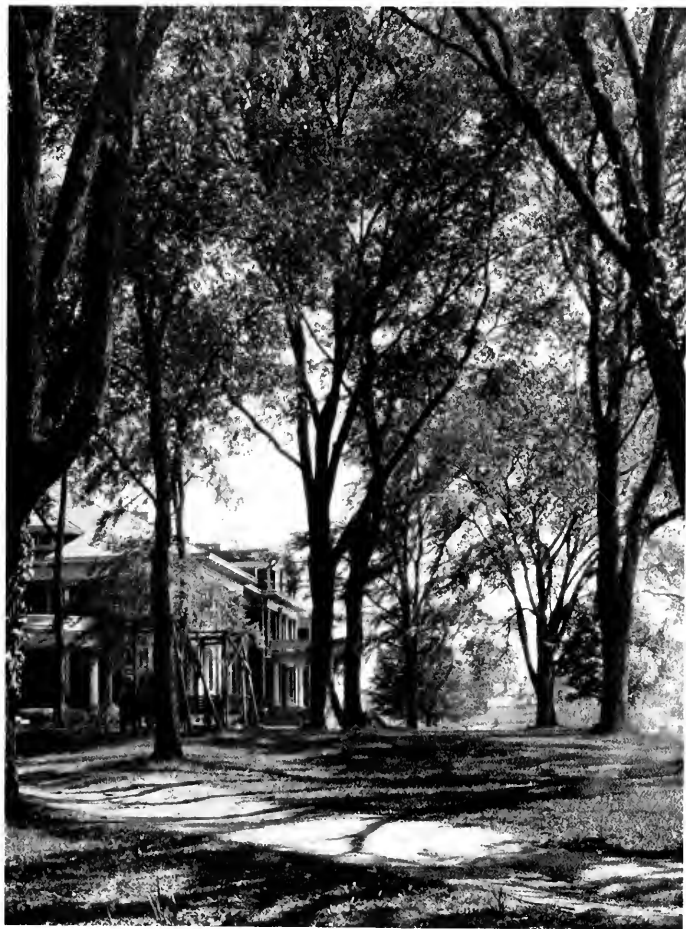
*September 20, 1860*

*December 27, 1924*























BOOK TWO  
THE CLASSES





## Senior Class

### OFFICERS

NELL MOORE . . . . .	President
JONCIE CASHWELL . . . . .	Vice-President
DIXIE REAVES . . . . .	Secretary
LUCILLE FULP . . . . .	Treasurer
MORTIS MAYNARD . . . . .	Council Representative



JOHN LEONARD MAULTSBY  
*Mascot Class '25*



ET NIVE GIBBS ADAMS, A.B.

DUNN, NORTH CAROLINA

Emerson Literary Society, Tennis (1), Marshal Emerson Literary Society (2), Critic Emerson Literary Society (3), Vice-President Emerson Literary Society (4), Treasurer Class (1), Dramatic Club (1, 2), Secretary Dramatic Club (1), College Marshal (4), Y. W. C. A. Cabinet, Science Club.



SARAH LOIS ALFRED, B.M.  
GREENSBORO, NORTH CAROLINA

Living Literary Society, School of Music '17-'18, 14, Enterte Club '18.



ZELDA RALSTON BARNES, A.B.  
CLAYTON, NORTH CAROLINA

Emerson Literary Society, School of Music (1, 2), Browning Club, Y. W. C. A. Cabinet (3, 4), Query Club (4); Math Club (1); Secretary Math Club (1).



FRANCES ETHEL BURKHEAD, A.B.  
CANDOR, NORTH CAROLINA

Irving Literary Society, Basketball Team (1); Class Secretary (2), International Relations Club (2, 3); Y. W. C. A. Cabinet (3); Science Club (3); Honor Society (2); Executive Student Council (3, 4); Class Testator (4); College Council (3, 4); Corresponding Secretary Students Association (3); Vice-President Students Association (1); Query Club (4).





MARY BLANCHIE BURRUS, B.M.  
WEAVERVILLE, NORTH CAROLINA

Emerson Literary Society; School of Music (1, 2, 3, 1); Treasurer Y. W. C. A. (2); Accompanist  
Y. W. C. A. Choir (3), Vice-President Y. W. C. A. (1), Euterpe Club (1), Honor Society.



JONCIE CASHWELL, A.B.  
MAXTON, NORTH CAROLINA

Emerson Literary Society, Fire Lieutenant (1), Y. W. C. A. Cabinet (1), Math Club (1), Hikers Club (2, 3), Art Class (1), "Echo" Staff (1), Query Club (1), Critic of Query Club (1), Photograph Editor "Echo" (1), Vice-President Class (1).



EDITH HELENA COBB, A.B.  
TA GRANGI, NORTH CAROLINA

Emerson Literary Society, Math Club (2, 3, 4), Y. W. C. A. Cabinet (2, 3), Query Club (4), College Council (2, 3), Class Basketball Team (4), Hikers Club (4), Art Class (2, 3, 4), President of Hudson Hall (3), Executive Student Council (3), Fire Lieutenant (3), Fire Chief (4), College Marshal (4).



JOHSIE CONLEY, A.B.  
MARION, NORTH CAROLINA

Irving Literary Society, Class Critic (24), Hikors Club (23), "G" Club (22), Glee Club (1, 2, 3, 4), Home Economics Club (2), Conson Irving Literary Society (4), Chief Marshal (4), "Belo" Staff (4), Query Club (4), Y. W. C. A. Column (4).



MAUDE GARLAND COTTON, B.M.

WASHINGTON, NORTH CAROLINA

Living Literary Society, School of Music (1, 2, 3, 4), Order of Nightingale (5, 4); Glee Club (1, 2, 3, 4); Euterpe Club (1); Y. W. U. A. Cabinet (2, 3); Y. W. U. A. Executive Cabinet (3); Y. W. U. A. Choir (1, 2, 3, 4); International Relations Club (2, 3, 4); Class Representative to Student Council (2); Budget Collector (3); College Council (2, 3); Messngo Staff (2); College Marshal (1); Honor Society (5, 4); Editor-in-Chief of 1925 "Echo."



MILDRED HOLLOWELL DARDEN, A.B.  
KENSLEY, NORTH CAROLINA

Living Literary Society, Class Terms (I, 2), Class Critic (2), Secretary Living Literary Society (1),  
College Marshal (1).



RUTH ELOWESE DAVIS, A.B.  
GLEN ALPINE, NORTH CAROLINA

Living Literacy Society, Hikers Club (2, 3), Math Club (1), Fire Lieutenant (2), School of Music (1, 2).



ADELAIDE DUNSTAN  
ELIZABETH CITY, NORTH CAROLINA

Irving Literary Society, Y. W. C. A. Cabinet (3, 4), "Echo" Staff (3), Society Marshal (2),  
Y. W. C. A. Choir (3, 4), Spanish Club (2), Class Historian (1), Class Treasurer (2), Home  
Economics Club (1, 2), Treasurer Home Economics Club (1), Secretary Home Economics Club (2),  
Fire Lieutenant (2)





ELIZABETH LOLITA ELLIS, B.M.  
WILMINGTON, NORTH CAROLINA

Irving Literary Society, Y. W. C. A. Cabinet (1, 2, 3, 4), Glee Club (1, 2, 3, 4), Order of Nightingale (1, 2, 3, 4), School of Music (1, 2, 3, 4), International Relations Club (2, 3), Y. W. C. A. Executive Cabinet (2, 3, 4), Y. W. C. A. Choir (1, 2, 3, 4), Assistant Director Y. W. C. A. Choir (2, 3, 4), Honor Society (2, 4), Class Reporter (23), Delegate to National Convention of Y. W. C. A., New York City (3); Query Club (1), Enterprise Club (4), Student Council (1), Presidents' Forum (1), Manager Glee Club (2, 4), President Y. W. C. A. (1), Class Poet (1).



KATHLEEN ERVIN, A.B.  
NEWTON, NORTH CAROLINA

Emerson Literary Society, Catawba College (1, 2), Hikers Club (3), German Club (2); Query Club (1), Vice-President English Club (4).



ELVA JANE FAISON, A.B.  
FAISON, NORTH CAROLINA

Irving Literary Society, Science Club (2), Math Club (1), Vice-President of Fitzgerald Hall (2); Treasurer Athletic Association (2); Class Cheer Leader (2), College Marshal (4), Business Manager "Echo" (1), Witham and Mary Summer School (3), Track (1, 2, 3), "Echo" Staff (1); Y. W. C. A. Cabinet (2, 3, 4), Relay Team (1), Marshal Irving Literary Society (1)



OLLIE MAE FENTRESS, B.M.  
FRANKLINVILLE, NORTH CAROLINA

Emerson Literary Society, School of Music (1, 2, 3, 4), Elterne Club (4), Life Service Band (2, 3, 4), President Life Service Band (31), Y. W. C. A. Cabinet (2), Honor Society.



**BOBBIE JEAN FOSTER, A.B.**

HICKORY, NORTH CAROLINA

Emerson Literary Society; Lenoir-Rhyne College (1, 2); Hibers' Club (2); Y. W. C. A. Cabinet (1);  
Math Club (1); Science Club (1); Vice-House President Fitzgerald Hall (1); College Marshal (1).



LUCILLE FULP, A.B.  
KERNERSVILLE, NORTH CAROLINA

Living Literary Society, Order of Nightingale 110, Gerson Living Literary Society 120, Assistant Business Manager, "Echo" 131, N. W. 87, A. Calhoun 141, 14, Treasurer, Class 144, Officer - Marshal 141, Art & Lib. 129, Home-Economic Club 140, Query Club 144, Centre Query Club 140.



EUNICE GODWIN, A.B.  
ELIZABETH CITY, NORTH CAROLINA

Irving Literary Society, Captain Basketball Team (1), Vice-President Class (1), Y. W. C. A. Cabinet (1, 2, 3, 4), Treasurer Students' Association (2), Budget Collector (2), Student Council (2), Class Cheer Leader (2), Hikers Club (2), Assistant College Cheer Leader (2), Assistant Business Manager "Echo" (3), Secretary Athletic Association (3), Vice-President Triennial Irving Literary Society (3), "Message" Staff (3), College Council (2, 3), Sorority Togatae (2, 3, 4), College Cheer Leader (2, 4), Glee Club (2, 4), "Echo" Staff (2, 4), Athletic Delegate Blue Ridge (4), Y. W. C. A. Executive Cabinet (2, 4), Track Team (2, 4), Athletic President (4), Class Gatorade (4), Presidents' Forum (4), Spanish Club (4), Query Club (4).



KATHRYNE HOPE HARDISON, A.B.

PLYMOUTH, NORTH CAROLINA

Ivings Literary Society, Student Council (1, 4), Culture (1), Secretary Home Economics Club (2), President Home Economics Club (2), Assistant Editor "Echo" (2); Associate Editor "Message", International Relations Club (2), Treasurer International Relations Club (3); Honor Society (3, 4), Glee Club (3, 4), Class Reporter (1), Y. W. C. A. Cabinet (2, 3); Literary Editor of "Echo"; President of Ivings Literary Society (1), Presidents' Forum (1), Query Club (1), Vice President of Hudson Hall (2), Spanish Club (2, 3)





SARAH ELIZABETH HARRIS, A.B.

ELKIN, NORTH CAROLINA

Irving Literary Society; Track Team (1, 2, 3); Sorores Togatae (2, 3, 4); "G" Club, Hikers Club (2, 3); First Place Winner (2, 3); Class Representative (3); College Council (3, 4); Treasurer of Sorores Togatae (2); Science Club (3); College Marshal (4); Executive Student Council (4); Art Class (4); Vice-President Sorores Togatae (4); Vice-President of Athletic Association (4); Vice-President of Chemical Club (4); House President of Fitzgerald Hall (4); Hiking Leader (3)



MARY FRANCES HENNINGER, A.B.

STATESVILLE, NORTH CAROLINA

DAVID LITERARY SOCIETY, Treasurer (2), Track Team (2), First Place Winner (3, 4) Club (2), "Messag" Club (2, 3, 4), Y. W. C. A. Cabinet (2, 3, 4), Presidents' Forum (2, 3, 4), Editor, College (2, 3, 4), Echo's Staff (2), Delegate Blue Ridge Convention (2), Undergraduate Representative (1, 2, 3, 4), Y. W. C. A. Executive Cabinet (3, 4), College Council (3, 4), President Young Men's Torians (1), Query Club (1), Class Troop (1), College Marshal (1).



GLADYS LANE HOLT, A.B.  
SPENCER, NORTH CAROLINA

ITA - Literary Society, Y. W. C. A. Cabinet (2, 4), Student Volunteer Board (1, 2, 4), President Student Volunteer Board (4), Sorores Tokatze (2, 4), Spanish Club (4), Post-Graduate (4)



OLIVE RUTH HOYLE, B.M.

CORNELIUS, NORTH CAROLINA

Emerson Literary Society, School of Music (1, 2, 3, 4), Officers Club (2, 3, 4), Hiking Leader (24);  
44<sup>th</sup> Club (3, 4), Art Club (2), Y. W. C. A. Cabinet (2, 3), Secretary Class (2); Captain E. L. S.  
(2); "Message" Staff (2, 4), Y. W. C. A. Choir (3, 4), Order of Nightingale (1); College Marshal (1);  
Query Club (1), Secretary North Carolina Collegiate Press Association (4); Editor-in-Chief "Message"  
(4), Euterpe Club (1); Assistant Chapel Monitor (2)



DOROTHY IVEY, A.B.

HICKORY, NORTH CAROLINA

Emerson Literary Society, School of Music, Hikers Club, Track Team, Fire Lieutenant, Browning Club, Order of Nightingale, Y. W. C. A. Cabinet, Society Tribunal, Science Club, College Marshal, Math Club.



LOUISE VIRGINIA JONES, A.B.  
GREENSBORO, NORTH CAROLINA

Division Literary Society - Quince Club, etc.



GEORGIA RAY KINSLAND, A.B.  
ASHEVILLE, NORTH CAROLINA

Emerson Literary Society, Science Club (3), Hikers Club (2), Art Club (2), Student Council (1),  
Chemical Club (1)



VIRGINIA BLAIR LOWRANCE, B.M.  
CALAWBA, NORTH CAROLINA

Emerson Literary Society, School of Music (1, 2, 3, 4), Enterprise Club (1), Glee Club (3, 4); Class President (1), Class Cheer Leader (2); Track Team (2); Y. W. C. A. Cabinet (2, 3); International Relations Club (2, 4), Honor Society (2, 4), Y. W. C. A. Choir (4), "Message" Staff (2); Student Council (2, 4), Delegate to Student Volunteer Convention, Indianapolis, Indiana (3), Delegate to Student Government Conference, Columbus, Mississippi (2), Executive Student Council (2, 4); President's Forum (1, 4), Recording Secretary Students' Association (2), President of Students' Association (1).





JOSEPHINE MORRIS MCCRACKEN, A.B.  
SANFORD, NORTH CAROLINA

Emerson Literary Society, Browning Club (1), School of Music (1), French Club (2), Home Economics Club (2), Treasurer Emerson Literary Society (3), Y. W. C. A. Cabinet (3, 4)



KATHERINE HOLMES MCINTYRE, A.B.  
MERANI, NORTH CAROLINA

TRAVELING LITERARY SOCIETY, Flora McDonald College (1, 2), Y. W. C. A. Choir (2, 3), Order of Night  
Angels (2), School of Music (2), Hibernia Club (1), Glee Club (2, 3)



MURFIN LUCILLE MAYNARD, B.M.  
SALISBURY, NORTH CAROLINA

Emerson Literary Society, Y. W. C. A. Cabinet (2, 3, 4), Y. W. C. A. Reporter (1), House President (Emerson) (2), Kappa Kappa Student Council (3), College Council (3, 4), Class Representative (4), School of Music (1, 2, 3, 4)



NELL AUGUSTA MOORE, A.B.

CLIFFSIDE, NORTH CAROLINA

Emerson Literary Society, Basketball Team (1), Sorores Togatae (2, 3, 4); Y. W. C. A. Cabinet (2, 3, 4), Vice President Sorores Togatae (2), Vice President of Class (3), Class Tennis Team (3, 4), Hikers Club (3), Secretary Sorores Togatae (4); "Echo" Staff (4); Presidents' Forum (4), President of Class (4), Query Club (4).



SARAH PHARR, A.B.  
ROWLAND, NORTH CAROLINA

Irving Literary Society, Echo Staff (4), Humor Editor (1), Ex. Lieutenant (2)



DIXIE REAVES, B.M.  
RAFFORD, NORTH CAROLINA

Irving Literary Society, School of Music (1, 2, 3, 4), Glee Club (2, 3, 4), Hikets Club (1, 2), Vice-President of Fitzgerald Hall (2), Y. W. C. A. (1, 2), Secretary of Irving Society (3), "Message" Staff, Secretary of Class (1), Business Manager of "Message" (1); Euterpe Club (1); President of Query Club (1)



EMMA ISABEL RUSSELL, B.M.  
GREENSBORO, NORTH CAROLINA

FOUR LITERARY SOCIETY School of Music of U. C.



MILDRED ELEANOR SINGER, A.B.  
EAR ROCKAWAY, NORTH CAROLINA

Kinston Literary Society, Dramatic Club (1, 2, 3, 4), Secretary and Treasurer of Dramatic Club (1), Diploma in Expression, "Message" Staff (1, 4), Math Club (1), Query Club (1), Honor Society (7-4), President Dramatic Club (1).





LOIS STAMEY, A.B.  
GREENSBORO, NORTH CAROLINA

Irving Literary Society, Y. W. C. A. Cabinet C2, D., Dramatic Club C1, 25, Quincey Club C0.



WILLARD FEINSTER SHARPE, A.B.  
STATESVILLE, NORTH CAROLINA

Emerson Literary Society Mitchell College (1), Y. W. C. A. Cabinet (2), French Club (2), Math Club (2, 3, 4), Dikers Club (2), "G" Club.



MAUD LE TYSOR, A.B.  
TRICE, NORTH CAROLINA

Emerson Literary Society, Assistant Chapel Monitor (2), Math Club (2), (3), (4), Chemistry Club (2, 3, 4),  
President of Chemistry Club (4), College Marshal (4), Laboratory Assistant in Chemistry (4).



LUCY GLADYS THOMPSON, A.B.

ASHEVILLE, NORTH CAROLINA

Young Literary Society, Maryville College (C), N. C. C. W. Summer School (C), Spanish Club (C), Query Club (C), Secretary Query Club (C).



HALLIE M. TROLLINGER, A.B.  
BURLINGTON, NORTH CAROLINA

Elon College: (1) Emerson Literary Society, French Club (2), Home Economics Club (3).



MARY LOU WINSTEAD, A.B.  
ROXBORO, NORTH CAROLINA

Emerson Literary Society, College Marsden (1); Vice President Triennial (1); Editors Club (2); 24.  
Trinity College Summer School Fire Lieutenant (1)



MARY BETH WILKINS, A.B.  
SANTORD, NORTH CAROLINA

Emerson Literary Society, Peace Institute (1, 2), Y. W. C. A. Cabinet (4)



NELLIE BIRD WOODS, B.M.  
ROXBORO, NORTH CAROLINA

Emerson Literary Society, School of Music (1, 2, 3, 4), Y. W. C. A. Cabinet (1, 2); Vice-President of Class (2); Hiking Club (2), President of Class (3); Query Club (1), Euterpe Club (1), College Marshal (1), Presidents' Forum (2, 4), College Council (1); President Emerson Literary Society (1).





THELMA YOUNG, A.B.  
SHELBY, NORTH CAROLINA

Irving Literary Society, School of Music (1, 2, 3, 4); Y. W. C. A. Cabinet (2), Choir Chapel Moaltor  
(3), College Council (2).



ZOEN KUH ZIEN, A.B.  
SHANGHAI, CHINA

Irving Literary Society, Spanish Club, Life Service Band, Student Volunteer, Y. W. C. A. Cabinet

# CLASS HISTORY

There is nothing greater than the realization that the goal toward which you set out is within your reach. The Blue and Gold of the Class of Nineteen Hundred and Twenty-five now rests on the top round of the ladder. As we stand on the brink, ready to face the great problems of life, our eyes are well-nigh dim, and our memory carries us back to the beginning of our life at G. C., to pleasant memories that cluster about the year in which we first met our classmates, who have been as sisters to us.

With our introduction to the institution came many new customs with which we were unfamiliar. We did not know what to expect, but there were others who knew their business well, and it was but a short time before we were finding out and experiencing the life of a freshman, which comes but once in a lifetime, and then only really at the institution—thus our cup of experience began to fill. We soon learned, however, that all our college experiences are not rosy, for being homesick and feeling so green had never crossed our minds. However, the Y. W. C. A. received us with understanding hearts and sympathy. Then came the students' and athletic parties, and also the faculty and Y. W. C. A. receptions, which soon made us forget where we were and all our troubles. And then, don't let us forget the society rush, which ended in our climbing to the top of the steps of our beloved society.

But probably the most important event that occurred during our first year at G. C. was our stunt, which was claimed to be one of the best given that year.

At last we began to enjoy the sunshine of our second year. Settling down, we gradually realized the seriousness of what was before us, and thought of the future and our life's work. Our sophomore year was distinguished by a notable event, the picnic given to us by our senior sisters. We were given favors with a little verse on each favor, saying, "One week from this date meet at the stump, stop, look, and listen, and follow the elephant's trunk." The white elephant was our sisters' mascot, and he led us around the stumps and campus until we came to a standstill. There he revealed to us the secret that we, for one day, were to enjoy the privileges of our sisters, the seniors, while they were to be poor little sophs. And, finally, Commencement came, and with it the daisy chain.

And now we are juniors. What does this mean? More burdens to bear, more sorrows to share, for we are big sisters. Yes, truly, the years have been only a dream. We made sandwiches and sold ice cream just as often as we could, for we wanted our junior-senior banquet to be a success—and it was. We missed the "Curtis" banquet this year, which the juniors always looked forward to, but we found a big treat from Mr. Curtis in the supply room, after all.

In September, we found ourselves back at G. C., ready to start on the final stretch which leads to that goal that has been our heart's desire for four years. The class, now composed of forty-five members, stepped into the shoes of last year's graduating class, hoping that we should be able to set a mark beyond that of any of our predecessors. Although we are seniors, we are sad when we think of having to leave G. C. and the girls who have lived with us, played with us, and hoped with us these four years. Well do we remember the hours we spent together, wandering near the little brook which winds onward to the sea, and at eventide, when we strolled among the pines up the pathway, trusting our secrets to one another and looking forward to the days to come when, down life's pathway, we would be strolling with our memories. The winds of fortune will carry us far away, and scatter us over the earth, but not so far that we shall not be bound by the indissoluble ties of love into one endless chain, linked to our Alma Mater. It is with sad hearts that we say good-bye to each other, and to a place that for four years has been our foster mother.

And now, with one last, reluctant farewell, we bid good-bye to the Classes of '26, '27, and '28, and we extend to them our heartiest best wishes for their success.

ABELAIDE DUNSLAN, *Historian.*

# CLASS PROPHECY

By MARY FRANCES HENNINGER

It was a year ago today that I had what I consider the most interesting of experiences. It had been my delight and privilege to spend some time abroad. I had visited many places and seen many strange things. At last I reached Egypt—Egypt, the land of mystery, the land of secrets. When our caravan started slowly across the desert, I felt as if I were under a spell. The feeling was strange, mystical. I could not analyze it. It lasted for several days, during which time my mind kept revolving about my Alma Mater and my old classmates. It was impossible for me to direct my thoughts into other channels, however hard I might try. But the thoughts were pleasant, and not having heard the fate of some of the members of the Class of '25, I began to wonder. One evening, when the sun was sinking red beneath the western sands, we made camp in a beautiful, green oasis. I learned from one of the camel drivers that we were in the vicinity of the pyramids and the sphinx. A thought came to me. I determined to make a pilgrimage to the sphinx that night and send forth an invocation concerning my friends and classmates. I procured a guide, and we set forth just as the desert moon made her appearance. We soon reached our destination. I bade my guide wait for me behind one of the pyramids while I accomplished my mission. With my heart beating madly and my body trembling, I hoveled down in the awful presence of the sphinx. For the space of a minute I was at a loss what to say, but at last words came to me. I spoke:

"O mighty Solver of Mysteries and Discloser of Secrets, reveal unto me, I pray, the mysteries which I would know, that, going hence, I may tell my people."

I was startled by an awful sound. The Sphinx spoke:

"Hasten, and thou shalt know, Evolved Protoplasm."

"The College of Greensboro," I said. "Dost thou know it, and the destiny of those that went forth from its portals in the year 1925, O Awful Intelligence?"

"I know well that institution of learning, and the destinies of thy classmates, O Atom of Nothingness. Listen, and I will reveal my knowledge unto thee."

Then the Sphinx discovered, in the following manner:

"Presumptuous Mortal, hear then the varied experiences of thy classmates which have betfallen them in the last decade.

"Madame Lolita Ellis, a Metropolitan Opera singer, will make her first appearance on the concert stage of France on October 6, 1935. Madame Ellis is the favorite dramatic soprano of today. She has sung in many parts of the old world, and America is at her feet.

"Thou already knowest, O Groveler in the Dust, that Elva Faison is the president of the United States, for thou cast thy paltry vote for her.

"Learn, O Less than Nothing, that Johnsie Conley is an author. Her most notable work is 'How to Catch a Man and Hold Him,' which appeared under an assumed name. Johnsie is also married, but the name of her spouse is not given unto me.

"The cartoons which appear anonymously in 'The Home Town Gazette' are the work of thy beloved classmate, Nell Moore. Her name shall soon rival that of George McManus or Bud Fisher.

"O Grain of Dust, thou wilt rejoice to know that Jo McCracken, Hallie Frollinger, Louise Jones, Thelma Young, Zelda Barnes, and Kathleen Ervin are called the Jolly Six of the Ziegfeld Follies.

"O Thou of Little Worth, thou shalt soon meet one in China, who is zealously Christianizing the heathen. She is rendering efficient service. Her name is Gladys Holt.

"Lucy Thompson is a much beloved teacher of primary children. She has deserved praise.

"O Ignorant Protoplasm, Preacher, of the Class of 1925, is wedded, and is now very much engaged with the care of her second pair of twins.

"Edith Cobb is at this moment signing a contract to paint the portrait of the King of England.

Edith is a rival of Betsy Harris in portrait painting, but Edith is married, and so other things demand her time. Therefore, Betsy may win in the race, but Betsy is deeply in love, and it is rumored that she may be married soon.

"Mary Lou Winstead has been married for lo, these ten years. Her domestic life is exceedingly full of peace.

"O One of No Renown, Mildred Darden is a model in a select French modiste shop. Her occupation elates her to the nth degree. She, too, is married, but she does not let that interfere with business or a good time.

"Lucille Fulp is very successful as a member of Sousa's Band. She plays the horn. But this is not strange, for, as thou rememberest, she once held the position of chief tooter.

"Bobbie Jean Foster and Dorothy Ivey are enjoying life in the garden of Flowers. Thou canst construe a double meaning to that statement if thou dost desire it.

"Thou knowest already that Mildred Singer is now president of the beloved institution. She is loved by every member of the college household, and she has succeeded in making a vast improvement at the College of Greensboro.

"Mary Wilkins, with the help of her loving spouse, is getting rich quick managing a chicken farm.

"Thou wilt be surprised to know that Eunice Goodwin is married, for she was sworn into the club of Man-Haters in the year 1926, but Eunice has a career, too. She has taken the honored place of Louise Fazenda in the movies. Her husband is her director.

"O Thou of Little Worth, know that Sarah Pharr is the official organizer of revolutions for college students against the faculty. She is very efficient in her work, and she never fails in her purpose. Her husband is jealous of her work, however, as it takes her so much away from him.

"Zoen Kuh Zien has returned to China, where she enjoys working as a teacher among her own people.

"Willard Sharpe is the proprietor of a lingerie shop in Statesville, N. C. The name of her worthy place of business is The Sharpe Silk Shop for Every Shape.

"Ethel Burkhead, Eloise Davis, Katherine McIntyre, and Nellie Bird Woods are all enjoying married bliss. One thing is strange about Nellie Bird—her house is shaded by Birch trees.

"Know, O Worm of the Earth, that a new tractor is on the market, and it has acquired a fortune for its inventor. It is called the Virginia Tractor, and the U. S. patent shows the name Lowrance.

"Emma Russell and Lois Allied reign supreme over their respective domestic circles in Greensboro.

"Blanche Burrus and Ollie Mae Fentriss are on the concert stage and are fast winning renown.

"Hope Hardison is Hardison no longer. She is the wife of a wealthy insurance man of the city—well, never mind. Hope has been the winner of many beauty contests.

"Ruth Hoyle is painting scenes. They are all studies in brown. This is not strange, for her name is Brown.

"Dixie Reaves is superintendent of schools in New York. She is also married, but not being content with married bliss, she became prominent in school affairs.

"Murtis Maynard is the accompanist of Galli Curci. She merits praise.

"Lois Stoney is a model for Harrison Fisher. She has become very wealthy. It is rumored that she will be on the stage soon.

"This knowledge will surprise thee, O Insignificance. Erstwhile Latty Dunstan is a slender Broadway hit. After her discovery of her anti-fat, she became very slim, and signed a contract with the manager of the Hippodrome. She is now a graceful Pierrette.

"Maude Cotton is enjoying a perfect round of gaiety in New York. She is married to a wealthy broker and is the leader of New York society.

"Jonnie Cashwell is the contented wife of a Methodist minister. Several little ones bless their household."

Here the Sphinx closed her awful mouth. She had told something of every member of the class but myself. I, having had an uneventful decade, wished to learn of my future. I therefore invoked the awful presence:

"O August Personification of Knowledge," I prayed, "Tell me of my future."

There was no answer.

"Mighty Survivor of the Ages, reveal unto me my fate."

But the ancient lady refused to speak, and I went on my way, rejoicing in the knowledge I had gained of my former classmates.



# CLASS POEM

*Within old G. C.'s ivy-twined walls  
Ambition waved and bade us call.  
We heeded, in Nineteen Twenty-two,  
And enlisted with class banner of gold and royal blue.  
Just freshmen, oh, yes! at the threshold of knowledge—  
Frolicsome, jolly, but loyal to our college,  
To classes we went alone or in masses,  
Merry youths, yet studious or nonchalant lasses.  
Oh! Hark to the songs, stunts, and cheers—  
Our field day attainments, despite forecast of fears!  
Upward we aimed in many, various ways—  
Ah! Memoirs of our freshman days!*

*The second year just merely sophs,  
Possessed with characteristic dignity.  
"Sophs are seniors," so the old adage says.  
This is still true, if only for the day  
When our big sisters of '23,  
Guided by the elephant's trunk,  
Led us to the fable stump of the tree,  
And gave us their privileges, with the best of luck.  
"Daisies won't tell"—thus the axiom goes;  
Then, behold! the secrets which only our daisy chain knows.  
Lo! the bird notes, heralding clear  
At springtime—the closing of our sophomore year.*

*The next year, higher still—  
Endowed with junior sobriety, yet gay;  
Working for honors or to pass at will  
Ere the foreshadow of graduation day.  
A soft voice from memory whispered,  
"Big sister, play your part;*

*To your freshman sister sing sweet lays  
And love sincere impart,  
Unfold through expression of your daily lives  
Worth-while deeds—if small as the violet's eyes,  
And thoughts not molded of quicksilver-clay."  
Ah! Memoirs of our junior days!*

*In 1925 we reached our mountain of vision—  
Paid tribute to noble Fate, who dubbed us a senior legion,  
Ah, grassy solitudes! Ah, azure hills!  
Ah, murmuring brook, beckoning to you tiny rills!  
Ever we will cherish thee in memory dear,  
The place of our abode for four college years,  
As the curtain falls on our school career,  
May we face life squarely for having been here,  
A cross-word puzzle of ups and downs, it may be,  
But solved by our watchword, "They conquer who labor for thee."  
Lo! sweet strains, antheming Commencement chimes—  
A prelude to life on the threshold of time.*

*Our school days are over only in name  
With the dawn of graduation day,  
Life's a school with daily lessons to say,  
Forbid that they are half-learned when our temples are gray,  
Now out in the world our deeds may be unknown—  
We may not reap columns of type or others of stone,  
Our steps toward the ladder of fame may be of feeble and of slow pace,  
But we will prance as the rivulet, with soft, luxurious grace,  
Thank God for gardens and beauties of nature,  
For this spot of His firmament and flowery slopes of grandeur,  
For ambrosial air, the canopy of trees and rainbow sky,  
Dew grass, where fairyland vines of magic web lie.*

*Oh, Greensboro College, to thee we exalt praise—  
Alma Mater dear, with thy noble heritage!  
Before us as a guide we will keep thy lofty creed,  
That the Class of '25 for the Harvester may sow rich, abundant seed.*

LOLITA ELLIS, *Class Poet.*



CLASS OF 1925





### Junior Class

#### OFFICERS

VIRIIE UMSTEAD . . . . .	President
IRINI CHANDLER . . . . .	Secretary
MARY PENDER HALLS . . . . .	Treasurer
MULDI HOOKER . . . . .	Council Representative





RUTH BOYLES  
THOMASVILLE, N. C.

LILLIAN CALDWELL  
NEWTON, N. C.

IRENE CHANDLER  
MAXTON, N. C.

### Junior Class

Ruth has a peculiar fondness for collecting little bits of sentimental poetry in cute little note books. Honest truth! We wonder what the outcome will be—probably an edition of "Heart Throbs."

"True and sincere, loyal and kind,  
Another just like her, you'll never find."

"Your very frowns are fairer far  
Than smiles of other maidens are."





ALBERTA DAVIS  
FRANKLINTON, N. C.

KATHERINE COLF  
FAIRMONT, N. C.

LULA NORRIS COX  
FLM CITY, N. C.

## Junior Class

"True-hearted, whole-hearted, faithful, and loyal."

"The sweetest, the dearest,  
The most lovable, too—  
Best kind of a sport,  
And a pal true blue."

"She was cute, she was coy,  
She had strings on many a boy."



KATHELEEN DAYVAULT  
CHINA GROVE, N. C.

NELLIE DODSON  
WINSTON-SALEM, N. C.

GLADYS DWIGGINS  
MOCKSVILLE, N. C.

### Junior Class

"Just being happy is a fine thing to do,  
Looking on the bright side, rather than the blue."

Nellie is fine in art and dancing. What could we do without her?  
Love or bugology—Which shall it be?





ISIZ FELMET  
ASHEVILLE, N. C.

CAROLAN GLASCOCK  
GREENSBORO, N. C.

GLADYS FOUST  
HIGH POINT, N. C.

## Junior Class

"She'll make some man a good wife"  
Applies to Inez, all right;  
For not only does she cook and sew,  
And all the household tactics know,  
But she's an ideal pal and, so, an ideal wife.

Of me you may write, in the blackest of ink,  
"I say what I mean, and I know what I think."

To Gladys goes a double share of our love; first, to our classmate, and second, to the little girl.





DIXIE HINES  
CLINTON, N. C.

MILDRED GODFREY  
SPENCER, N. C.

MARY PENDER HALES  
CLAYTON, N. C.

## Junior Class

"A sunshine heart, a soul for song,  
Love for hate, and right for wrong."

Golden hair, big brown eyes, a sunny disposition, a lover of music—that's Mildred.

"Pen" is one of the "best all-round" members of our class. Her friendliness and cheerfulness make us all love her. She is truly indispensable.



FRANCES FORMY-DUVAL  
WHITEVILLE, N. C.

LEANNA GEDDIE  
RAEFORD, N. C.

MAUDE HOOKER  
KINSTON, N. C.

### Junior Class

If a vote were taken for the jolliest junior, there's no doubt that Formy would be unanimously elected. There's no such thing as blues when she's around.

"She's petite, witty, and pretty, too,  
And we wouldn't swap her for fifty like you."

When Maude starts to count-er-point, "better late than never."





RUTH JOHN  
LAURINBURG, N. C.

MAXINE JOHNSON  
PANTEGO, N. C.

NELL JOYNER  
FRANKLINION, N. C.

### Junior Class

"A smile for all, a greeting glad,  
A lovable, jolly way she had."

"The world's no better if we worry,  
Life's no longer if we hurry."

Who was it said, "None knew her but to love her, none named her but to praise?" Anyway, that's how we feel about Nell.







RUTH KENNEDY  
GREENSBORO, N. C.

VERA LEFLER  
MOUNT ULLA, N. C.

MARY BURGE KIMBALL  
MANSON, N. C.

### Junior Class

Ruth is one of our "daily attenders." She has ideas of her own, and doesn't hesitate to express her opinion on all occasions.

Vera is a real asset to our class. Her good nature and willingness to help has won for her the friendship of us all.

"Boo" is a combination of sweetness, attractiveness, loveliness, and modesty.



DORCAS MCKINNIE  
LOUISBURG, N. C.

THELMA MAXWELL  
WHITEVILLE, N. C.

JULIA MCGREGOR  
LILESVILLE, N. C.

## Junior Class

Conscientious in performance of duty, earnest and diligent in work and play, she will be a success in any sphere of activity in which her life may be spent.

We sometimes wonder why Thelma doesn't run down. Maybe it's the surplus energy stored away in her surplus avoidupois that keeps her wound up so good.

For the combination to accommodation, see Julia.



JEANETTE NANCE  
ASHVILLE, N. C.

PRENTISS ODOM  
RED SPRINGS, N. C.

LOUISE PIERCE  
WELDON, N. C.

## Junior Class

"And still the wonder grew that one small head could carry all she knew."

Prentiss is our class athlete. The high-score sweater she's wearing is sufficient proof.

What would we do for a comedian if it wasn't for Lou?





VIRGINIA POE  
BOSTIC, N. C.

AUGUSTA SAMPLE  
ELIZABETH CITY, N. C.

MARY EXUM ROSE  
FRANKLINTON, N. C.

## Junior Class

Poe's got the joy of living and everlasting pep, a four-square girl who's good on all four sides.

Many times we've heard the cry of, "Man on the campus!" and we got all scared. But it turned out to be "Gus" going to a play rehearsal. Then we got all thrilled, for she makes a grand-looking hero.

"She is gentle, but not shy,  
She has mischief in her eye."



JULIA SANDERSON  
RALEIGH, N. C.

FRANCES TAYLOR  
EMPORIA, VA.

ELIZABETH WELCH  
ASHEVILLE, N. C.

## Junior Class

Here she is, folks. Just look her over. Though she comes in the "sample size," she is thoroughly genuine, and her true worth cannot be overestimated.

"She is jolly, good-natured, and true,  
And her share she is willing to do."

There isn't a girl in our number who has more class spirit than "Lib." We can always depend on her to do a thing—and to do it well, too.





SUE FRANK WHITE  
HERTFORD, N. C.

VERTEE UMSTEAD  
STEM, N. C.

ALICE WHITE  
MANSON, N. C.

## Junior Class

A combination of brown eyes, mischief, and pep.

Vertee believes in stars, whether gazing at stars or starrng in Chemistry.

If you want fun, she's with you;  
If you are in trouble, she's for you;  
If you need a friend, she's near you;  
That's "Al."



LOUISE WOMBLE  
GOLDSTON, N. C.

LILA WINN  
COLUMBUS, GA.

MARGUERITE YORK  
ASHEBORO, N. C.

## Junior Class

Louise—you ought to see her write! Clever poetry is her cue.

Small and dainty, but with a head full of knowledge.

A little coquette with dazzling eyes, but a heart within where true love lies.





FRANCES FOY  
MOUNT AIRY, N. C.

MADGE TAYLOR  
NORTH WILKSBORO, N. C.

BETHE HARDIE TAYLOR  
HOOKFRIEN, N. C.

### Junior Class

"Not too serious, not too gay,  
But a rare good fellow when it comes to play."

Though with us but a short time, Madge quickly became one with us, and it was with a feeling of regret that we lost her.

Her entrancing eyes and charming personality have won for "Bet" scores of friends, not only at G. C., but among the opposite sex as well.





CLASS OF 1926



JUNIOR SNAPSHOTS



Sophomore Class

OFFICERS

MARTHA CAMERON . . . . .	<i>President</i>
NORMA HIPPS . . . . .	<i>Vice-President</i>
MYRTIS BROOKS . . . . .	<i>Secretary</i>
EVELYN SAVAGE . . . . .	<i>Treasurer</i>
ELIZABETH CAMPBELL . . . . .	<i>Cheer Leader</i>
SALLIE GORDON . . . . .	<i>Assistant Cheer Leader</i>
NELLIE COWAN . . . . .	<i>Council Representative</i>



### Sophomore Class

LUCILE ALLEN  
WILSON, N. C.

WILMA BAIRD  
VALLE CRUCIS, N. C.

MELISSA BLACKWELL  
DANVILLE, VA.

AURIE BOBBITT  
MACON, N. C.

BLANCHÉ BODENHEIMER  
THOMASVILLE, N. C.

MARGARET BOONE  
ANDREWS, N. C.

SISSE BOWEN  
HAMELI, N. C.

MIRIIS BROOKS  
HENDERSONVILLE, N. C.



### Sophomore Class

SARA BLANCHÉ BRIDON  
MOUNT GILAD, N. C.

MARTHA CAMERON  
KINSTON, N. C.

ELIZABETH CAMPBELL  
SULLY, VA.

GERTRUDE CAPEL  
TROY, N. C.

DORIS CHRISTI  
NORFOLK, VA.

ALLINE COVIS  
WILLOW SPRINGS, N. C.

MAMIE COVARD  
NORTH WILKESBORO, N. C.

MARY COLLIERAN  
HAMILTON, N. C.



### Sophomore Class

NETTE COWAN  
SMYVA, N. C.

HALLE CROSS  
SUNBURY, N. C.

ODESSA CROUSE  
GREENSBORO, N. C.

JANE CUNNINGHAM  
APEX, N. C.

RUTH DAVENPORT  
SANDFORD, N. C.

FRANCIS DIXON  
DIXTON, N. C.

MARJORIE DODSON  
WINSTON-SALEM, N. C.

NELLI FARP  
LYNCHBURG, VA.



### Sophomore Class

ELLANOR EDWARDS  
WYDEN, N. C.

RUTH ERVIN  
MAIDEN, N. C.

CARMILL FERGERSON  
GREENSBORO, N. C.

EVILYN FOX  
SILER CITY, N. C.

RUFNA VISTA FULLER  
WHITEVILLE, N. C.

FLOY GABRIEL  
NEWTON, N. C.

GILMORE GORDON  
HAMLET, N. C.

SALLIE GORDON  
HAMLET, N. C.



### Sophomore Class

ROSIELEE HAPPERFIELD  
WINSTON SALEM, N. C.

NELLIE HAUSER  
PLATTOWN, N. C.

NORMA HIPPS  
CANTON, N. C.

MARGARET HOLLMAN  
CHARLOTTE, N. C.

BERTIE HURLEY  
TROY, N. C.

LEARY JENKINS  
HENDERSONVILLE, N. C.

LOUISE JOHN  
LAURINBERG, N. C.

MAUDE JOHNSON  
RENSON, N. C.





### Sophomore Class

MARY JOHNSON  
YANCEYVILLE, N. C.

RIBA McNAIR  
MAXTON, N. C.

Gwendolyn MITCHELL  
CLAYTON, N. C.

ELIZABETH JONES  
HAMELI, N. C.

HELEN MORGAN  
TRYON, N. C.

NORMA MANNARD  
SALISBURY, N. C.

MOZELLE KIBLER  
MORGANTON, N. C.

GERTRUDE MURRAY  
MAIDEN, N. C.



### Sophomore Class

ETHEL BRIDGES  
DUM CHY, N. C.

RIVA REYNOLDS  
CANTON, N. C.

LIZABELL RHODES  
SYIVA, N. C.

MADITH RUTHERFORD  
CANTON, N. C.

EVELYN SAVAGE  
POKISSMOUTH, VA.

IRENE SEXTON  
ROCKY MOUNT, N. C.

MILDRED SHILL  
DUNN, N. C.

GEORGIE SINCLARE  
WAYLRY HALL, GA.



### Sophomore Class

EVELYN TAYLOR  
EMPORIA, VA.

CHARLOTTE TAYLOR  
MOUNT OLIVE, N. C.

ELISE THOMPSON  
GRAHAM, N. C.

HAZEL THOMPSON  
ASHEVILLE, N. C.

GLADYS WATSON  
CARTHAGE, N. C.

DOROTHY WHITE  
HERTFORD, N. C.

GRACE YARBOROUGH  
GLENDALE, CAL.

REBECCA YOUNG  
HENDERSON, N. C.



CLASS OF 1927





### Freshman Class

#### OFFICERS

VIRGINIA STEVENS . . . . .	President
DOROTHY CURRIN . . . . .	Vice-President
JUANITA GREGG . . . . .	Secretary
EPHIE PEYLER . . . . .	Treasurer
JEAN WYBB . . . . .	Council Representative



### Freshman Class

ANNIE ADER  
MOUNT HOLLY, N. C.

ISABEL BABBITTON  
GASTONIA, N. C.

MARY BELL  
MURPHY, N. C.

WILLIE MAE BIBBE  
SPRAY, N. C.

HAZEL BLACK  
LANDIS, N. C.

IRENE BROOKS  
HENDERSONVILLE, N. C.

VIRGINIA BUNDY  
JAMESTOWN, N. C.

ISABEL CALDWELL  
NEWTON, N. C.

MARY CARTER  
HENDERSON, N. C.

GLADYS CHANDLER  
MAXTON, N. C.

PAULINE CHANDLER  
BROADWAY, N. C.

MARGARET CLAYWELL  
MORGANTON, N. C.

EMILY COMMANDER  
ELIZABETH CITY, N. C.

MARGARET COZARD  
FRANKLIN, N. C.

LILLIAN CRAWFORD  
FAVTTIEVILLE, N. C.

WILMA CROSS  
SALFM, VA.

## Freshman Class

- ANN CROWELL  
CANDLER, N. C.
- ELEANOR CROWELL  
CONCORD, N. C.
- LUCY CROWELL  
CONCORD, N. C.
- AUGUSTA CUTHBERTSON  
MORGANTON, N. C.
- ELIZABETH CURRIE  
MAXTON, N. C.
- DOROTHY CURRIN  
GREENVILLE, N. C.
- FRANCES DAILEY  
WILSON, N. C.
- EUGENIA DAVIS  
GASTONIA, N. C.
- FRANCES DAVIS  
CLARKSVILLE, VA.
- RUTH DAVIS  
CHARLOTTE, N. C.
- IVA DIXON  
GRIFTON, N. C.
- ELIZABETH EAVES  
RUTHERFORDTON, N. C.
- WILMA ELDER  
NORFOLK, VA.
- LILLIAN EZZELL  
DUNN, N. C.
- MARY EMBREY FAULKNER  
GREENSBORO, N. C.
- MARGARET FISHER  
ANDREWS, N. C.





## Freshman Class

HELEN FOGLEMAN  
LIBERTY, N. C.

EDITH FOSTER  
WILKESBORO, N. C.

FLEANOR FRANKLIN  
WINSTON-SALEM, N. C.

OLEMA FREEMAN  
HAMLET, N. C.

LA RUE FRY  
CANDOR, N. C.

EDNA FUSSEL  
ROSE HILL, N. C.

ADDIE MAE GATLIN  
RAEFORD, N. C.

OLIVE GEDDIE  
RAEFORD, N. C.

MARGARET GLENN  
ASHVILLE, N. C.

ELSIE GREEN  
HIGH POINT, N. C.

JUANITA GREGG  
LIBERTY, N. C.

MARY ELIZABETH HARRIS  
LEACHVILLE, N. C.

LOUISE HATCHER  
FAISON, N. C.

MIRIAM HEARON  
BISHOPVILLE, S. C.

DAISY HERRIN  
BURGAW, N. C.

ETHEL HERRIN  
NORFOLK, VA.



## Freshman Class

MARGARET HILDEBRAND  
CANTON, N. C.

DOROTHY HUDSON  
GREENSBORO, N. C.

MARY VIRGINIA JOYNER  
GARYSBURG, N. C.

EVELYN KIBLER  
MORGANTON, N. C.

MAUDE KNIGHT  
WINSTON-SALEM, N. C.

GERTRUDE KNOX  
LELAND, N. C.

FRANCES LINEBERRY  
NORTH WILKESBORO, N. C.

ROBERT HENRY LYON  
SALEMBURG, N. C.

NELLIE MAHALEY  
SALISBURY, N. C.

GLADYS MAKEPEACE  
SANFORD, N. C.

ANNA JONES MANNING  
BETHEL, N. C.

OLIVIA MATTHEWS  
SANFORD, N. C.

DELLA McCLURE  
INMAN, S. C.

ISMAY McCracken  
WINSTON-SALEM, N. C.

LOUISE McCracken  
CUILFORD COLLEGE, N. C.

CAROL McDEVITT  
MARSHALL, N. C.





## Freshman Class

ALMA MEEKINS  
MANTEO, N. C.

ADELLA MERONEY  
ANDREWS, N. C.

JOSEPHINE MURRAY  
MAIDEN, N. C.

VIRGINIA OWEN  
WELDON, N. C.

MARGARET PAYNE  
CHARLOTTE, N. C.

EPIE PLYLER  
RALEIGH, N. C.

DOROTHY PHILLIPS  
BLACK MOUNTAIN, N. C.

ROBERTA PORTER  
GREENSBORO, N. C.

SELMA RECTOR  
MARSHALL, N. C.

LOUISE ROBBINS  
SYLVA, N. C.

TOM MAE RUSII  
CANDOR, N. C.

ARLENE SAPRIT  
MOUNT GILEAD, N. C.

ANNA SANFORD  
HAMLET, N. C.

JANIE SANDS  
REIDSVILLE, N. C.

HAZEL SASSER  
MOUNT OLIVE, N. C.

LUCY PALMER SCOGGINS  
WARRENTON, N. C.

## Freshman Class

MARY SHEETS  
WINSTON-SALEM, N. C.

ANNETTE SHINN  
NORWOOD, N. C.

FANNIE WATSON SMITH  
GREENSBORO, N. C.

MARGARET SMITH  
SALISBURY, N. C.

MARY SMITH  
LITTLETON, N. C.

JEWEL SNEAD  
RAEFORD, N. C.

LORENE SNOW  
ELKIN, N. C.

VIRGINIA STEVENS  
RICHMOND, VA.

DOROTHY SUGGS  
KINSTON, N. C.

BYRD SUTER  
GARYSBURG, N. C.

IRENE SYKES  
GARYSBURG, N. C.

KATHRYN WARLICK  
GRANTIE FALLS, N. C.

BEULAH WAUGH  
NORTH WILKESBORO, N. C.

VARENA WAY  
BEAUTORT, N. C.

JEAN WEBB  
NORFOLK, VA.

AILEEN WEST  
HICKORY, N. C.





### Freshman Class

CLAIRE WORTHINGTON  
KINSTON, N. C.

SARA MARGARET WRENN  
SILER CITY, N. C.

MARY WRENN  
SILER CITY, N. C.

MARGARET WRENN  
SILER CITY, N. C.

ZILLA WINN  
NORFOLK, VA.

VIRGINIA YOPP  
WILMINGTON, N. C.

ELIZABETH YOW  
THOMASVILLE, N. C.

LEOTA HENLEY  
CHARLOTTE, N. C.

MAE KINSLAND  
ASHVILLE, N. C.



CLASS OF 1928





FRESHMAN SNAPSHOTS





BOOK THREE  
ORGANIZATIONS







### Presidents' Forum

VIRGINIA LOWRANCE

HOPE HARDISON

NELLIE BIRD WOODS

NELL MOORE

VERTIE UMSTEAD

MARTHA CAMERON

VIRGINIA STEVENS

LOLITA ELLIS

EUNICE GOODWIN

FRANCES HENNINGER



### Students' Association Officers

VIRGINIA LOWRANCE . . . . . *President*  
 ETHEL BURKHEAD . . . . . *Vice-President*  
 RUTH JOHN . . . . . *Second Vice-President*  
 ELIZABETH WELCH . . . . .

JVANNETTE NANCE . . . . . *Recording Secretary*  
 FRANCES FORMY-DUVAL . . . . . *Corresponding Sec'y*  
 RUTH ERWIN . . . . . *Treasurer*  
 . . . . . *Budget Collector*



## Student Council

### MEMBERS

VIRGINIA LOWRANCE  
 NELLIE BIRD WOODS  
 HOPE HARDISON

ETHEL BURKHHEAD  
 RUTH JOHN  
 EUNICE GOODWIN

FRANCES HENNINGER  
 JEANNETTE NANCE  
 FRANCES FORMY-DUVAL

RUTH ERWIN  
 ELIZABETH WELCH  
 ELIZABETH HARRIS

EDITH COBB  
 ALBERTA DAVIS  
 JULIA MCGREGOR

LOLITA ELLIS  
 MURTIS MAYNARD  
 MAUDE JOHNSON  
 JEAN WEBB





Y. W. C. A.

OFFICERS

- LOLITA ELLIS . . . . . President
- BLANCH BURRUS . . . . . Vice-President
- DORCAS MCKINLEY . . . . . Secretary
- ALICE WHITE . . . . . Treasurer
- FRANCES HENNINGER . . . . . Undergraduate Representative





### Y. W. C. A. Cabinet

LOLLA ELLIS	<i>President</i>	IRENE CHANDLER . . . <i>Chmn. Social Committee</i>
BLANCHE BURRUS . . .	<i>Chmn. Mem. Committee</i>	DORIS CHRISTIE . . .
DORCAS MCKINSEY . . .	<i>Secretary</i>	. . . <i>Chmn. World Fellowship Committee</i>
VIRGINIA POE . . .	<i>Chmn. Religious Meetings</i>	GRACE YARBOROUGH . . . <i>Chmn. Publicity Com.</i>
EUNICE GOODWIN . . .	<i>Chmn. Service Committee</i>	ALICE WHITE . . . <i>Chmn. Finance Committee</i>



### Emerson Society

#### OFFICERS

NELLIE BIRD WOODS . . . . .	President
EUNICE ADAMS . . . . .	Vice-President
MAXINE JOHNSON . . . . .	Secretary
CARDLYN GLASCOCK . . . . .	Treasurer
IRENE CHANDLER . . . . .	Censor
LULA NORRIS COX . . . . .	Critic



EMERSON LITERARY SOCIETY

- |                   |                  |                       |                      |                     |                    |
|-------------------|------------------|-----------------------|----------------------|---------------------|--------------------|
| Estelle Adams     | Stacy Chestnut   | Carroll Peterson      | Luith Hays           | Alma Mackley        | Belle Hardy Taylor |
| Annie Adair       | Aileen Coats     | Margaret Fisher       | Maxine Johnson       | Elizabeth Mitchell  | Hattie Trollinger  |
| Sarah Alfred      | Edith Coak       | Bobbie Jean Foster    | Mabelle Johnson      | Minnie Lee Moore    | Maudie Lov Tysor   |
| Eddie Barrow      | Matherine Cobb   | Edith Foster          | Louise Jones         | Maude Lee Moore     | Edith W. Tysor     |
| Walter Blair      | Margaret Cobb    | Floy Gabriel          | Maie Klusland        | Gertrude Murray     | Edna W. Vaughn     |
| Willie Mae Bilbee | Lula Norris Cox  | Carolyn Glascock      | Gertrude Knox        | Josephine Murray    | Albany Watson      |
| Melissa Blockwell | Margaret Cozart  | Caroline Glavin       | Luella Lohr          | Jeanette Sauer      | Elizabeth Welch    |
| Edna Blockwell    | Luanna Cousins   | Margaret Glover       | Virginia Lowrey      | Frederic Schaefer   | Edith Williams     |
| Mary Boyton       | Anne Crowell     | Blaise Green          | Frances Lohrberry    | Prerlyce Odum       | Lila With          |
| Ruth Boyton       | Lucy Crowell     | Mary Tender Hales     | Josephine Macrae Ken | Mary Lou Windstead  | Mary Lou Windstead |
| Martha Brock      | Elizabeth Currie | Edith Hays            | Josephine Macrae Ken | Elizabeth Patterson | Maude Williams     |
| Frene Brooks      | Elizabeth Currie | Helen Harris          | Josephine Macrae Ken | Elizabeth Patterson | Maude Williams     |
| Blanche Burgess   | Dorothy Curry    | Mary Elizabeth Harris | Josephine Macrae Ken | Elizabeth Patterson | Maude Williams     |
| Mary Burgess      | Edith Curry      | Laura Harris          | Josephine Macrae Ken | Elizabeth Patterson | Maude Williams     |
| Leah Caldwell     | Kathleen Dwyvath | Lucy Herrin           | Josephine Macrae Ken | Elizabeth Patterson | Maude Williams     |
| Clara Callahan    | Roby Dawson      | Lucy Herrin           | Josephine Macrae Ken | Elizabeth Patterson | Maude Williams     |
| Maria Cameron     | Nedie Dodson     | Margaret Bolderbrand  | Josephine Macrae Ken | Elizabeth Patterson | Maude Williams     |
| Maria Cameron     | Nedie Dodson     | Margaret Bolderbrand  | Josephine Macrae Ken | Elizabeth Patterson | Maude Williams     |
| Janice Caswell    | Naile Eddy       | Hazel Holmes          | Josephine Macrae Ken | Elizabeth Patterson | Maude Williams     |
| Ruth Chandler     | Kathleen Erwin   | Lucy Hooper           | Josephine Macrae Ken | Elizabeth Patterson | Maude Williams     |
| Clady Chandler    | Inez Palmer      | Nettie Hooper         | Josephine Macrae Ken | Elizabeth Patterson | Maude Williams     |
| Pauline Chandler  |                  |                       | Josephine Macrae Ken | Elizabeth Patterson | Maude Williams     |



### Irving Literary Society

#### OFFICERS

- |                   |                |
|-------------------|----------------|
| HOPE HARDISON     | President      |
| FRANCIS HENNINGER | Vice-President |
| MILDRED DARDEN    | Secretary      |
| DORIS CHRISTIE    | Treasurer      |
| LUCILLE ALLEN     | Critic         |
| JOHNSIE CONLY     | Censor         |







## IRVING LITERARY SOCIETY

Lucille Allen  
 Louis Alfred  
 William B. Bick  
 Virginia Hundy  
 Isabel Babbington  
 Alice Babbitt  
 Fannie Burnett  
 Ethel Burthead  
 Frances Gibson  
 Mary Elizabeth Carter  
 Hattie Cross  
 Nellie Cowley  
 Sadie Conley  
 Gertrude Copel  
 Mabel Cotton  
 Doris Christie  
 Margaret Cuthbert  
 Jeanie Cunningham  
 Emily Combs  
 Augustus Curbertson  
 Eva Hippe  
 Ruth Davis  
 Ruth Davisport  
 Ruth Davis  
 Michele Dunstan  
 Eugenia Davis  
 Mildred Jarden  
 Frances Johnson  
 Frances Bailey  
 Lolla Ellis  
 Elizabeth Enyes  
 Lillian Ezzell  
 Beulah Freeman  
 Eleanor Franklin  
 Vista Fuller  
 Helen Fuldman  
 Elva Faison  
 Gladys Fouset  
 Edna Fuesel  
 Frances Fox  
 Le Rue Frye  
 Leanna Goddie  
 Polly Goodrich  
 Mildred Godfrey  
 Juanita Gregg  
 Elizabeth Harris  
 Ethel Herring  
 Dorothy Huslon  
 Eva Hippe  
 Beulah Johnson  
 Gladys Galt  
 Hope Hardison  
 Frances Hamner  
 Maude Hooker  
 Louise John  
 Elizabeth Jones  
 Ruth John  
 Leary Jenkins  
 Mary Johnston  
 Mabelle Kibler  
 Evelyn Kibler  
 Mary Berde Kinsell  
 Theolina Kinsell  
 Lorraine Maxwell  
 Nellie Maxwell  
 Elizabeth Mann  
 Katherine Mann  
 Maudie Marley  
 Virginia Owen  
 Elizabeth Oliver  
 Edith Payer  
 Edith Payer  
 Dorothy Phillips  
 Shera Pharr  
 Alice Payne  
 Evelyn Redden  
 Emma Russell  
 Mary Esam Rose  
 Tommie Rush  
 Lois Starnwy  
 Lory Palmer Siggins  
 Annette Shimi  
 Byrd Sulter  
 Virginia Stevens  
 Evelyn Savage  
 Jamie Sunde  
 Maudie Sunde  
 Maudie Sunde  
 Lorene Snow  
 Julia Sanderson  
 Hazel Sasser  
 Augustus Sample  
 Irene Sexton  
 Mary Smith  
 Mildred Stanley  
 Charlotte Taylor  
 Evelyn Taylor  
 Frances Taylor  
 Vortoe Unstead  
 Norma Wray  
 Gene Webb  
 Gene Webb  
 Alice White  
 Maudie Wray  
 Maudie Wray  
 Katharine Wardle  
 Peggy Wray  
 Maudie Wray  
 Sue Frank White  
 Alona West  
 Zilla Wynn  
 Maudie Wynn  
 Thelma Young  
 Zeal Kub Zien



## Honor Society

### MEMBERS

MAUDE COTTON  
 LOLITA ELLIS  
 OLLIE MAE FENTRISSE  
 ETHEL BURKHEAD

BLANCHE BURRUS  
 HOPF HARDISON  
 VIRGINIA LOWRANCE  
 MILDRED SINGER  
 JEANNETTE NANCE

NELLE JOYNER  
 DIXIE HINES  
 ALBERTA DAVIS  
 ELIZABETH WELCH



## Glee Club, 1924-1925

### OFFICERS

MR. GILMAN F. ALEXANDER	<i>Director</i>	MISS GRACE YARBOROUGH	<i>Reader</i>
MISS CLYDE KEARNS . . . .	<i>Accompanist</i>	MARY PENDER HALES . . . .	<i>Manager</i>
MISS AUGUSTIA SAMPLE . . . .	<i>Reader</i>	KATHLEEN DAVVAULT . . . .	<i>Treasurer</i>

### MEMBERS

SEPPIE BOWEN	ELIZABETH EAVES	GWENDOLYN MITCHELL
MAUDE COLLON	LOLITA ELLIS	MENSAIE LEE MOORE
JOHNSIE CONLEY	MARGARET FISHER	DORCAS MCKINNEY
ELIZABETH CAMPBELL	OLIVE GIDDIE	EPPIE PLYLER
ELIZABETH CURRIE	SALLIE GORDON	DIXIE REAVES
FRANCIS DAILEY	MARY PENDER HALES	DOROTHY SUGGS
KATHLEEN DAVVAULT	MAUDE JOHNSON	MARY SHEETS
	VIRGINIA LOWRANCE	MILDRED SHELL
	MADGE MARLEY	



## Order of the Night-in-Gale

### MEMBERS

MAUDE COITON

LOLITA ELLIS

RUTH HOYLE

VIRGINIA LOWRANCE

MARY PENDER HALES

DORCAS MCKINNEY

MARY EXUM ROSE

MARGARET BOONE

SARA BLANCHE BRUTON

ELIZABETH CAMPBELL

MAUDE JOHNSON

MINNIE LEE MOORE

GEORGIE SINCLAIR

ISABEL BARRINGTON

SARAH CONLEY

WILMA CROSS

ELIZABETH CURRIE

FRANCES DAILEY

ELIZABETH EAVES

MARY EMBREY FAULKNER

MARGARET FISHER

MARGARET GLENN

SALLIE GORDON

MIRIAM HEARON

MADGE MARLEY

GWENGLYN MITCHELL

EVELYN MORGAN

MILDRED SHELL

FANNIE WATSON SMITH

DOROTHY SUGGS

MARY WRENN

LILA WINN





## Math Club

### OFFICERS

ELVA FAISON ..... *President*  
 VERTEE UMSTEAD ..... *Vice-President*  
 ZELDA BARNES ..... *Secretary*  
 CHARLOTTE TAYLOR ..... *Treasurer*

### MEMBERS

MISS ANNIE M. PEGRAM	ELVA FAISON	VIRGINIA POE
ZELDA BARNES	BOBBIE JEAN FOSTER	WILLARD SHARPE
JOSIE CASHWELL	FLOY GABRIEL	CHARLOTTE TAYLOR
EDITH COBB	DIXIE HINES	MAUDE LEE TYSOR
LULA NORRIS COX	BURDIE HURLEY	VERTEE UMSTEAD
ELDISE DAVIS	DOROTHY IVEY	SUF FRANK WHITE
	DORCAS MCKINNEY	
	ELIZABETH OLIVER	





## Art Class

### MEMBERS

BONNIE ESCH  
 MARTHA CAMLRON  
 ALLEN COVIS  
 EDITH COBB  
 HARRIET CROSS  
 RUTH CURTIS  
 NELLIE DOBSON

LARUE FRYE  
 MARGARET GLOVER  
 DORIS CHRISIE  
 EVELYN FOX  
 ELIZABETH HARRIS  
 LEOTA HENLFY  
 LOUISE MCCRACKEN  
 HELEN MORGAN  
 ANNA SANFORD  
 GERALDINE SMITH  
 VIVIAN SULLIVAN  
 BETTIE HARRY TAYLOR

CLAIRE VAUGHN  
 PAULINE PHILLIPS  
 SADIE MAY WALTON  
 ETHEL BURKHEAD  
 DOROTHY NICHOLS  
 MRS. ESTELLE CRAIGEN  
 KATHLEEN DAYVAULT





## Science Club

### MEMBERS

DR. GINNINGS  
GEORGE RAY KINSLAND  
VETEE UMSTAD  
MAUDE LEE TYSOR  
THELMA MAXWELL  
PRENTISS ODOM  
MARY COHIRAN  
CHARLOTTE TAYLOR  
ELIZABETH HARRIS  
JEANNETTE NANCE



### Freshman Commission

- MEMBERS  
ALICE BOBBITT  
DORIS CHRISTE  
HALLIE CROSS  
RUTH DAVENPORT  
MARGARET HOLLIMAN  
EVELYN SAVAGE





## Y. W. C. A. Choir

### MEMBERS

DORCAS MCKINNEY  
DOROTHY NICHOLS  
MARY WRENN

EMILY COMMANDER  
FANNY WATSON SMITH  
MARGARET WRENN

ELIZABETH WELCH  
LOLITA ELLIS  
KATHRYN MCINTYRE

MARGARET FISHER

KATHLEEN DAYVAULT

MARY PENDER HALLS

MAUDE COTTON

ABELAIDE DUNSTAN

JULIA SANDERSON

MARY EXUM ROSE

NELLIE LEE MURALEY

MAUDE JOHNSON

ELIZABETH EAVES

VIRGINIA LOWRANCE

SARA MARGARET WRENN

MARY SMITH





## School of Music

### MEMBERS

LOIS ALLRED  
 ETHEL BURKHARD  
 BLANCHIE BURRUS  
 MAUDE COTTON  
 LOLLIE ELLIS  
 OLLIE MAE FENTRESS  
 RUTH HOYLE  
 DOROTHY IVEY  
 VIRGINIA LOWRANCE  
 MURKIS MAYNARD  
 DIXIE REAVES  
 EMMA RUSSELL  
 NELLIE BIRD WOODS  
 TIFFLMA YOUNG  
 LILLIAN CALDWELL  
 KATHLEEN DAYVAULT  
 CAROLYN GLASCOCK  
 MILDRED GODFREY  
 MARY PENDER HALES  
 MAUDE HOOKER  
 VERA HEFLER  
 DORCAS MCKINNEY  
 MARY EXAM ROSE  
 JULIA SANDERSON  
 ELIZABETH ALLBRIGHT  
 WILMA BAIRD  
 ALICE BOBBITT  
 BLANCHIE BOEFHEIMER  
 MARGARET BOONE  
 SARA BLANCHIE BRITON

ELIZABETH CAMPBELL  
 DORIS CHRISTE  
 FRANCIS DIXON  
 NELLIE EARP  
 CARMELL FERGUSON  
 VISTA FULLER  
 ROSINELL HAPPERFIELD  
 MAUDE JOHNSON  
 ELIZABETH MANN  
 LUCY MAST  
 NORMA MAYNARD  
 ELIZABETH MOORE  
 MINNIE LEE MOORE  
 REVA REYNOLDS  
 GEORGIE SINCLAIR  
 GLADYS WATSON  
 DOROTHY WHITE  
 ANNIE ADER  
 SARA ALLRED  
 ISABEL BABBINGTON  
 MARY BELL  
 WILLIE MAE BIBB  
 HAZEL BLACK  
 ISABEL CALDWELL  
 MARGARET CLAYWELL  
 EMILY COMSANDER  
 SARAH CONLEY  
 WILMA CROSS  
 ELIZABETH CURRIE

FRANCIS DALLA  
 ELIZABETH EAVES  
 MARY EMBREY FAULKNER  
 MARGARET FISHER  
 ELEANOR FRANKLIN  
 MARGARET GLYNN  
 GILMORE GORDON  
 SALLIE GORDON  
 ELSIE GREENE  
 MIRIAM HEARON  
 MARGARET HILDEBRAND  
 LEAHY JENKINS  
 REBA MCNAIR  
 MADGE MARLEY  
 LOIS WOMBLE  
 ELIZABETH WELCH  
 GWENDOLYN MITCHELL  
 EVELYN MORGAN  
 DOROTHY PHILLIPS  
 SELMA RECTOR  
 JANIE SANDS  
 MILDRED SHILL  
 ANNETTE SHINN  
 FANNIE WATSON SMITH  
 DOROTHY SUGGS  
 ZILLA WINN  
 MARGARET WRENN  
 ELIZABETH YOW  
 LILA WINN  
 MARY WRENN



THE MESSAGE STAFF

## Message Staff, 1924-25

RUTH HOYLE . . . . .	<i>Editor-in-Chief</i>
DIXIE REAVES . . . . .	<i>Business Manager</i>
DIXIE HINES . . . . .	<i>Assistant Editor</i>
MAXINE JOHNSON . . . . .	<i>Assistant Business Manager</i>
DORIS CHRISTE . . . . .	<i>Associate Editor</i>
RUTH BOYLES . . . . .	<i>Associate Business Manager</i>

### *Circulation Manager*

KATHERINE COLI

### *Assistant Circulation Manager*

MILDRED GODFREY

### *Faculty Advisory Committee*

R. H. VISING, *Chairman*

A. M. PEGRAM

EDNA SHELLON

### *Literary Editors*

FRANCIS HENSINGER

MILDRED SINGER

FRANCIS FBY

ELIZABETH WELCH

### *College Activities*

NELL JOYNER

MELISSA BLACKWELL

### *Humor*

SEPPIE BOWEN

JEANNETTE NANCE



RUTH HOYLER  
*Editor-in-Chief of Message*

DIXIE RIAVIS  
*Business Manager of Message*





BOOK FOUR  
ATHLETICS





Athletic Association

OFFICERS

EUNICE GOODWIN . . . . .	President
ELIZABETH HARRIS . . . . .	Vice-President
NORMA HIPPS . . . . .	Secretary
RUTH DAVENPORT . . . . .	Treasurer





### First Place Winners

*Spring, 1924*

SUE FRANK WHITE  
KATHERINE JONES

SARAH BELL  
EVELYN FOX  
EUNICE GOODWIN

PRENTISS ODOM  
AUGUSTA SAMPLE

MARY BROCK  
JESSIE THOMPSON  
JEANNETTE NANCE  
ELIZABETH HARRIS  
HANNAH WASHBURN

MARY SUE FARRELL  
ELIZABETH JONES

ANNA MARIAH THOMPSON  
MARIHA CAMERON  
AGNES EDWARDS



## "G" Club

### MEMBERS

KATHERINE COLE  
FRANCES FOY  
EUNICE GOODWIN  
ELIZABETH HARRIS  
RUTH HOYLE  
RUTH JOHN  
MARY B. KIMBALL  
GEORGIA RAY KINSLAND  
DORCAS MCKINNEY

PRENTIS ODOM  
AUGUSTA SAMPLE  
JULIA SANDERSON  
WILLARD SHARPE  
BERTIE UMSFAD  
ALICE WHITE  
SUE FRANK WHITE  
LOUISE WOMBLE  
LOUISE HATCHER  
MARY WRENN  
MARGARET WRENN  
VIRGINIA STEVENS  
EPIE PLYLER  
ELFANOR FRANKLIN  
HAZEL SASSER

ANNA JONES MANNING  
JOSEPHINE MURRAY  
ISABEL BABBINGTON  
MELISSA BLACKWELL  
ROSINELL HAPPERFIELD  
DOROTHY WHITE  
FRANCES DIXON  
ELIZABETH WELCH  
LEANNA GEDDIE



## Hikers' Club

### MEMBERS

HAZEL BLACK  
 RUTH BOYLES  
 WILLIE MAE BIBB  
 VIRGINIA BUNDY  
 WILMA CROSS  
 MARY COLIHAN  
 MAMIE COLVARD  
 FRANCIS DIXON  
 WILMA ELDER  
 NELL EARP  
 HELEN FORTMAN

GLADYS MAKEPACI  
 LIANNA GEDDIE  
 JUANITA GREGG  
 LOUISE HAICHER  
 ROSINELL HAPPERFIELD  
 GERILUDE KNOX  
 ROBERT HENRY LYON  
 DOROTHY NICHOLS  
 ANNA JONIS MANNING  
 KATHERINE MCINTYRE  
 VIRGINIA OWEN  
 TOM MAE RUSH  
 FAYLYN SAVAGE

VIRGINIA STEVENS  
 HAZEL THOMPSON  
 MARY WELAN  
 MARGARET WRENN  
 PEGGY WRENN  
 JEAN WEBB  
 LILLIAN EZZELL  
 DAISY HERRING  
 MARY VIRGINIA JOYNER  
 BYRD SUTLER  
 ABBIE MAE GATLIN



NORMA HIPPS

*Jumping Center on the Sophomore Basketball Team*





### Sophomore Basketball Team

ALICE BOBBITT  
MARJORIE DODSON  
ETHEL PRIDGEN  
NORMA HIPPS  
REVA REYNOLDS  
GERTRUDE MURRAY





### Junior Basketball Team

SUE FRANK WHITE  
ELIZABETH WELCH  
PRENTISS ODOM  
JEANNETTE NANCE  
RUTH BOYLES  
VIRGINIA POE





### Freshman Basketball Representatives

EPPIL PLYLER  
ELEANOR FRANKLIN

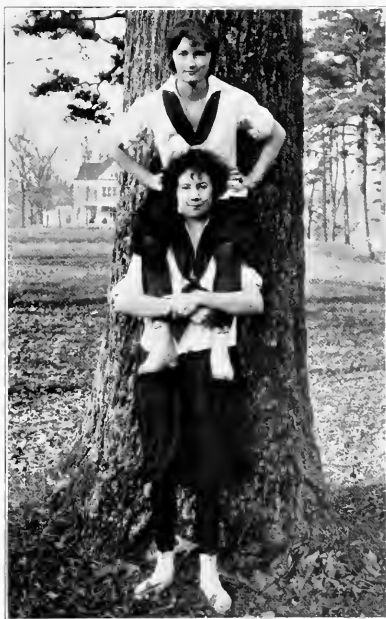
ISABEL BABBINGTON  
MARY ELIZABETH HARRIS  
EDITH HERRING  
MARGARET PAYNE  
SADD CONLEY  
LOUISE ROBBINS  
ZILLA WISS

ANNA JONES MANNING  
FRANCY DAILEY



ELIZABETH HARRIS—SENIOR  
*Winning High Points in Track*





Senior Track Team

ELIZABETH HARRIS  
EUNICE GOODWIN



Sophomore Track Team

DORIS CHRIST  
ROSINELLE HAPERHED  
RUTH ERWIN



### Junior Track Team

PRENTISS ODOM  
JEANNETTE NANCE  
DORCAS MCKINNIE  
AUGUSTIA SAMPLE  
JULIA SANDERSON  
MARY PENDER HALES



### Freshman Track Team

ELIJANOR CROWLL  
MARY WRENN  
ISMAY McCRACKEN  
ANNETTE SHINN

## Track Events, Field Day, April 26, 1924



MISS MARTHA CAMERON, freshman, took off highest honors in the track event, occasioned by her winning first places in running broad jump, high jump, and dash. First places in vaulting and basketball throw were won by Eunice Goodwin, junior. Jeannette Nance, sophomore, won first place in hop-skip-jump. Miss Nance's record was 31 feet, 5½ inches. Prentice Odom, sophomore, had a record in the same event of 31 feet, 1 inch. Mary Brock, senior, who has for several years been known as "queen bee" when it comes to walking for speed, lost out this year, being beaten by a member of her own class, Jessie Thompson, who walked the distance in ten seconds. Miss Thompson also showed her ability to walk gracefully as well as speedily, for she won first place in walking for grace and ease. Susie Dixon, senior, won first place in running for grace and ease. In the relay race the sophomores were outrun by their big sisters, the seniors. The final score for the day was: Freshmen, 49 points; seniors, 40 points; juniors, 30 points; and sophomores, 26 points.

### Champion Tennis Team, 1924

Misses Evelyn Fox and Sara Bell, of the Freshman Class, won the tennis doubles over their opponents, Misses Louise Cunningham and Lula Mae Edgerton, of the Senior Class. Both teams played exceptionally well, and the game was an exciting one.

### Tennis Champion

Miss Louise Cunningham, representing the Senior Class, won the distinction of college tennis champion on field day, April 26, 1924. Miss Cunningham had as her opponent Miss Sara Bell, freshman. Miss Bell did good work, but was eclipsed by her opponent, who has been in the field longer.

## Basketball, Field Day, April 26, 1924

The sophomore team, although in good shape, had the game forfeited to them because of lack of practice on the part of the freshman team. This was a source of disappointment to the school at large, as well as to the sophomore team. The basketball cup, which has been held by the Class of '22 up until this field day, was won by the Class of 1926.





EVELYN FOX

*One of Freshman Team Winning Tennis Doubles in Spring, 1924*



### G. C. Tennis Team

LEANA GEDDIE  
 MELISSA BLACKWELL  
 JANE CUNNINGHAM  
 EVELYN FOX  
 JUANITA GREGG  
 MARY EXUM ROST

MARY SMITH  
 EDNA FUSSELL  
 ELIZABETH WELCH  
 EPPH PLYLER  
 RUTH BOYLES  
 NELL MOORE

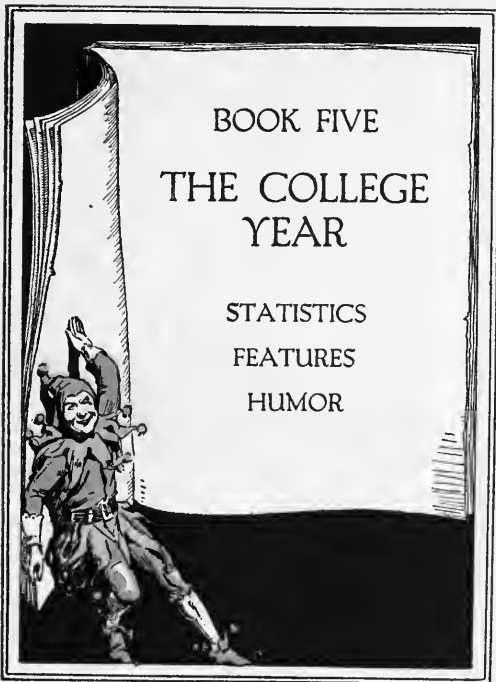


*Senior Tennis Singles—Nell Moore*  
*Junior Tennis Teams—Ruth Boyles, Leanna Geddie, Mary Exum Rose, Elizabeth Welch*  
167





*Sophomore Tennis Representatives—Melissa Blackwell, Janie Cunningham, Evelyn Fox  
Freshman Tennis Representatives—Edna Fussell, Juanita Gregg, Mary Wrenn*



BOOK FIVE

THE COLLEGE  
YEAR

STATISTICS

FEATURES

HUMOR





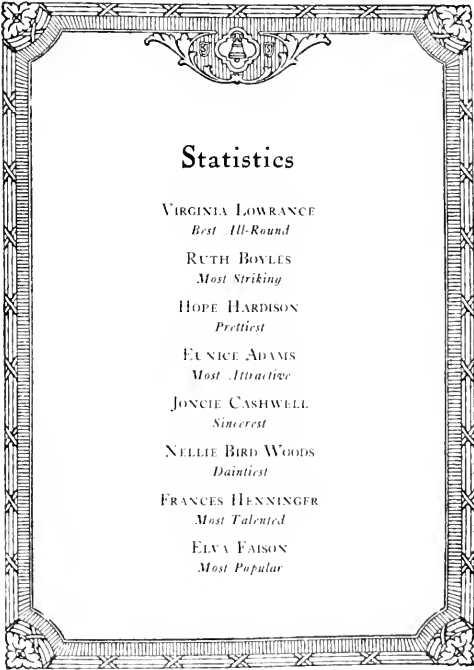
## Marshals

*JOHNSIE CONLEY, Chief Marshal*

EUNICE ADAMS  
EDITH COBB  
JOHNSIE CONLEY

MAUDE COTTON  
MILDRED DARDEN  
ELVA FAISON  
BOBBIE JEAN FOSTER  
LUCILLE FULP  
ELIZABETH HARRIS  
FRANCES HENNINGER  
RUTH HOYLE  
DOROTHY IVEY

MAUDE LEE TYSOR  
MARY LOU WINSTEAD  
NELLIE BIRD WOODS



## Statistics

VIRGINIA LOWRANCE

*Best All-Round*

RUTH BOYLES

*Most Striking*

HOPE HARDISON

*Prettiest*

EUNICE ADAMS

*Most Attractive*

JONCIE CASHWELL

*Sincerest*

NELLIE BIRD WOODS

*Daintiest*

FRANCES HENNINGER

*Most Talented*

ELVA FAISON

*Most Popular*





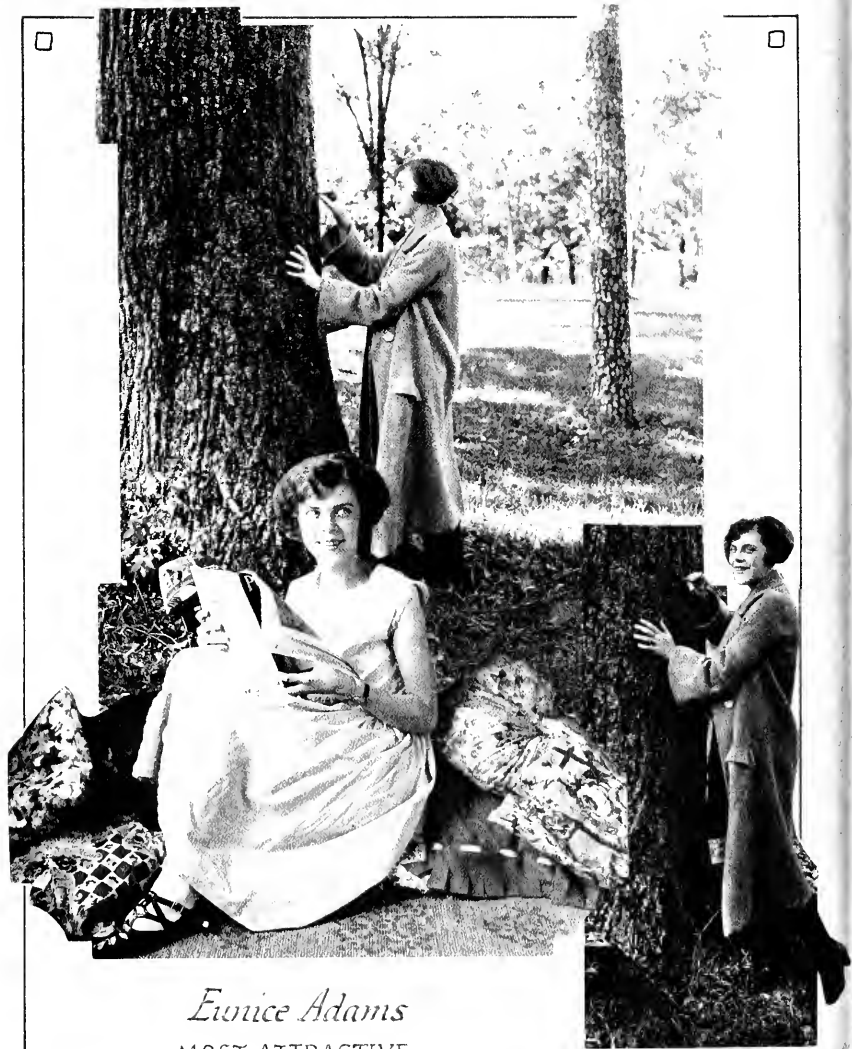
*Virginia Lowrance*  
BEST-ALL-AROUND



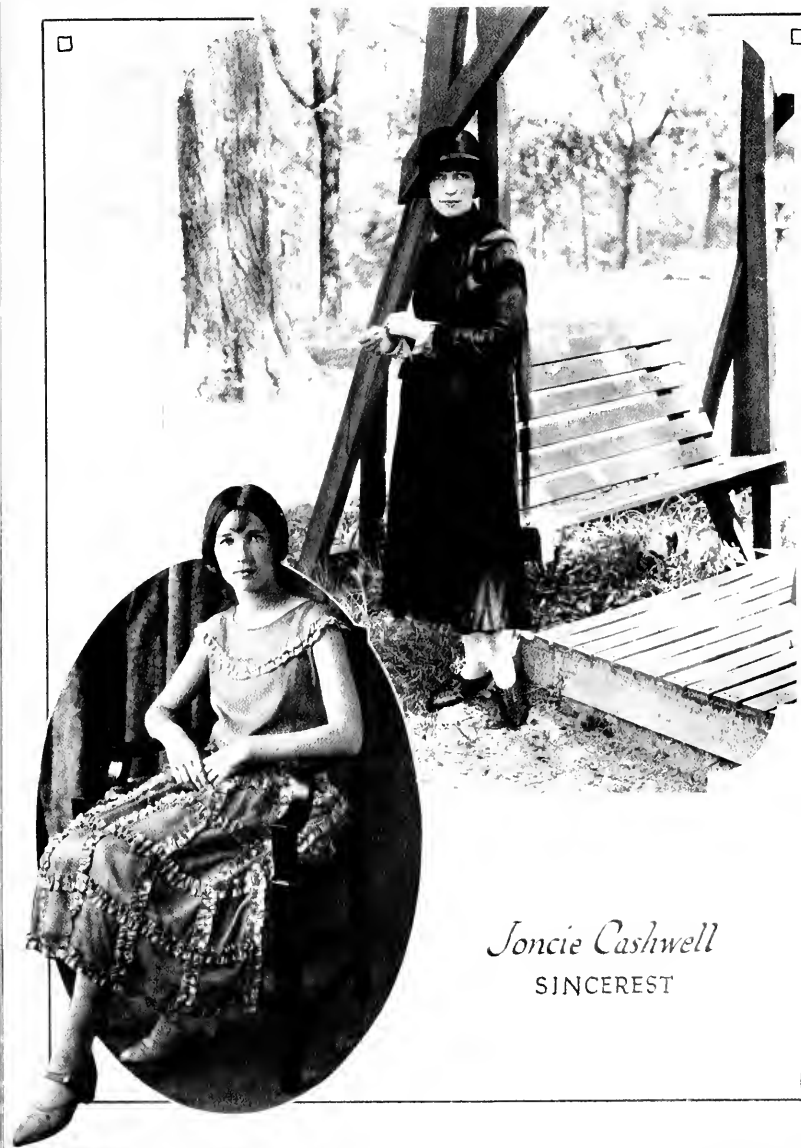
*Ruth Boyles*  
MOST STRIKING



*Hope Harrison*  
with the



*Eowice Adams*  
MOST ATTRACTIVE



*Joncie Cashwell*  
SINCEREST



*Nellie BirdWoods*  
DAINTIEST



*Frances Henninger*  
MOST TALENTED



*Elva Faison*  
MOST POPULAR



## Senior Honors and Degrees, 1924

### *Graduates School of Art*

MARY CAHLEEN BROCK      NELLIE PLITT DODSON

### *Graduate School of Expression*

JULIA MARSHALL LITTLE

### *Candidates for A.B. Degree*

ENOLA ABERNATHY	MARY GROOM	EUNICE PERRY
MARION ANDERSON	MYRA GULLEY	MABEL PITTS
EUGENIA BLANCHARD	RUTH HADLEY	LAURA ROBERTS
MARY BROCK	MARY NORMAN HARGRAVE	ELIZABETH SCARBOROUGH
ESTELLE CHERRY	GLADYS HARRELL	ANNA SHAW
PAULINE CONLEY	SABIE HENLEY	ELEANOR STANBACK
RUTH COTTON	LILLIAN HOOPER	MARY ELIZA SUTTON
MARY NEIL DAVIS	ELIZABETH HUTTON	ANNIE MARIAH THOMPSON
SUSIE DIXON	EULA MAE KEEL	JESSIE THOMPSON
MARION DUNN	MAUDE LEIGH	VIVIAN TILLEY
EULA MAE EDGERTON	JULIA MARSHALL LITTLE	EMILY TUTTLE
RUBY EVANS	VERNA MOORES	HANNAH WASHBURN
SALLIE FERGUSON	HELEN MORTON	GRACE WILSON
MAXINE GARDNER	HAZEL PATRICK	WINNERED WITHERSPOON
ANNIE GROOM	MARJORIE PATRICK	ALMA WRENN
	CATHERINE PENN	

## Senior Honors

### *Summa Cum Laude*

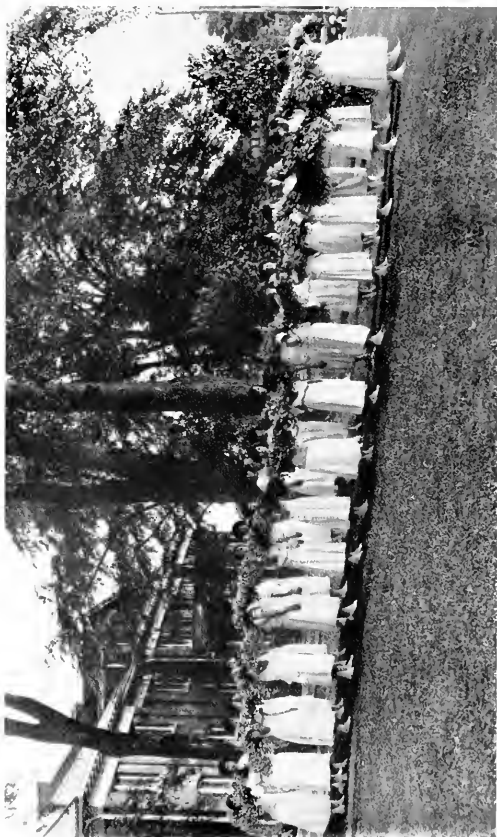
RUTH COTTON      LAURA ROBERTS  
MARY ELIZA SUTTON

### *Magna Cum Laude*

ENOLA ABERNATHY	MAUDE LEIGH	JESSIE THOMPSON
MARY BROCK	JULIA MARSHALL LITTLE	EMILY TUTTLE
MYRA GULLEY	MARY LONG	BALFY WALSON
MARY NORMAN HARGRAVE	VERNA MOORES	WINNERED WITHERSPOON
	MABEL PARKER	
	ELIZABETH SCARBOROUGH	

### *Highest Honors*

RUTH COTTON



SOPHOMORE DAISY CHAIN



COMMENCEMENT DAY, 1924—ACADEMIC PROCESSION

## Program for Graduating Exercises

May 27, 1924

Hymn No. 78—"Holy, Holy, Holy"

Invocation

Vocal Solo

Vocal Solo . . . . . MR. GILMAN F. ALEXANDER

Presentation of Certificates

Presentation of Diplomas

Conferring of Degrees and Presentation of Bibles

Serenade for Flute, Violin, and Piano . . . . . *Till*

MR. R. L. ROY, *Violin*

DR. CONRAD LAHSER, *Flute*

MISS PEARL SEILER, *Piano*

Address

DR. ASHLEY C. CHAPPELL

Asheville, N. C.

Organ Solo . . . . . MR. FRANK M. CHURCH

Announcements

Doxology

Benediction

## Class Day Exercises, May 26, 1924

### *The Assembling*

Senior Leader . . . . . AGNES GRAHAM

Greetings Call . . . . . MARY NORMAN GARGRAVE

Last Roll Call . . . . . LOUISE CUNNINGHAM

Class History . . . . . ELIZABETH SCARBOROUGH

Class Poem . . . . . EMILY TUTTLE

Class Prophecy . . . . . JULIA MARSHALL LITTLE

Last Will and Testament . . . . . MYRA GULLEY

Gittorian . . . . . EULA MAE EDGERTON

### *Love's Last Encircling*

Love's Guide Down Love's Lane . . . . . MILDRED JOHNSON

### *College Song*



MAY DAY, 1924





Red-Letter Days at  
G. C.

+

*Decision Day*

*Carolina-Virginia Game*

*Intersociety Reception*

*Stunt Night*





DECISION DAY



CAROLINA VIRGINIA GAYE





INTER SOCIETY RECEPTION, FEBRUARY FOURTEENTH, 1924



STREET NIGHT

## Greensboro College Y. W. C. A.



O live unreservedly Jesus' Law of Love has been the watchword of the Young Women's Christian Association. The present administration of this association began in April, 1924. With the retirement of the old cabinet we were instructed to ever keep real the vision of the association as a vital force in the lives of students. This has proven to be our policy and the mission upon which we have centered our thoughts. We guarded the heritage from the Christian endeavors of our predecessors.

Our purpose to us has been vital. In trying to live unreservedly Jesus' law we have determined to break down barriers and deepen thinking. We have attempted to carry out this purpose by securing interesting speakers who have benefited the students mentally and spiritually. We count it a privilege that we could have as our speaker and friend at our anniversary service last commencement Bishop Collins Dennis. Other helpful and interesting speakers that have visited our college have been: Dr. J. M. Culbreth and Miss Helen Hodson, of the M. E. Board, Nashville, Tenn., who conducted a series of evangelistic services in our college; Miss Katherine Lumpkin, Y. W. C. A. secretary of New York; Mr. Keeny, representative from the Student Friendship Bureau; Rev. C. G. Hounshell, D.D., of the M. E. School Board, Nashville, Tenn., and Mr. Courtney, of the Centenary Board. They gave us a keener insight into world thought and Christian responsibility. Mr. John Kirk, our college chaplain, has meant much to our student body. He has given us some very inspirational messages at our chapel exercises.

As another means of accomplishing our purpose we have endeavored to lend our help freely in Christian service. During the harvest season at Thanksgiving time and prior to the solitude of Christmas, we visited our less fortunate neighbors and gave them tokens of love. Our gifts included the inmates of the Masonic Home, the Children's Home, County Home, and St. Leo's Hospital. It was one of our greatest pleasures to provide a Christmas tree for the poor children of the city.

This year, instead of devoting our interests to several missionary activities, we have worked particularly for one activity—our Centenary. Our donations go for the McEyre School in Shanghai, China. Next year, with a contribution of \$200, our pledge, made by a former class of over \$3,000, will be paid. The mission study courses covering a period of six weeks were beneficial. Missionary activities have increased as a result.

There are many branches of service which have given zest to our daily lives. Our vesper services have been very interesting and well attended. The budget for this year has been comparatively small. We trust that next year with a decrease of the \$6.00 voluntary fee to \$3.00 the association will receive larger funds with which to carry on its work.

The Young Women's Christian Association endeavors to satisfy the desires of each student in the symbols of the Blue Triangle—mental, physical, and moral—and toward this goal each representative from the various departments of our organization has faithfully tried to perform her part to the best of her ability. It is the earnest desire of our association to meet the needs of every student, to strengthen their spiritual life, provide new outlooks, recenter their interests, rebuild student morale, and lead them to the highest source of power. Thus will the Y. W. C. A. make use of its great possibilities for developing Christian citizenship, giving to mankind women with deep religious convictions, broad sympathies, knowledge, ability, those prepared for a wide point of view and to live the "life abundant."

### Student Government, 1924-25

The year 1924-25 marks another stepping-stone in our path to the goal. We have endeavored to make student government a reality on our campus—not a mere term to be passed over and forgotten. Strengthened by the belief that self-government in our college life makes directly for the best womanhood and that it is the corner-stone for character building, we have emphasized this in every thought and activity.

The student body of Greensboro College has been permeated with a spirit of self-sacrifice, its liberal contributions to all worthy appeals attesting to this in a material way. The year's work, with its successes and failures, has fallen far short of our ultimate aims, and we know that their realization lies only in those who are to follow.

So, to you of the future, we throw the burning torch, heartened with the conviction that you will "carry on."



THE AMERICAN GIRL  
OF YESTERDAY

1. THE INDIAN GIRL.
2. THE QUAKER MAID.
3. THE COLONIAL DAME.
4. THE GIRL OF 1861.

*And*

THE AMERICAN GIRL  
OF TODAY

1. THE GIRL OF THE WORLD  
WAR.
2. THE SOCIETY GIRL.
3. THE DOMESTIC GIRL.
4. THE ATHLETIC GIRL.



THE INDIAN GIRL



THE OCEAN MIST



THE GORGON DANCE



THE GIRL OF 1861

Photo by Mrs. Miss Galtman





THE GIRL OF THE WORLD WAR



THE SOCIETY GIRL



THE DOMESTIC GIRL




THE ATHLETIC GIRL

## Those Who Have Fallen by the Way

EVELYN ALBRIGHT  
 MARIE BARRIER  
 LOUISE BASNIGHT  
 INA BEACHMAN  
 RUBY BISSETT  
 ANNIE MAE BUNDY  
 LUCY NEAL CARR  
 LUCILLE COTTER  
 ANSIE MAE DORSILL  
 HELEN DOVE  
 LUCILLE EDWARDS  
 KATHERINE FLOYD  
 GERTRUDE FOSCUY  
 RUTH GEFER  
 OLIVIA GODDE

MARION GORHAM  
 GLADYS HARGETT  
 NELLIE HAYDEN  
 MILDRED HOBBS  
 HANNAH HOLDING  
 KATHERINE HOLMES  
 DORIS HOOKER  
 SUSIE HOOPER  
 ELIZABETH HOWARD  
 LUCILLE JOHNSON  
 LOUISE KENDALL  
 CARRIE MAE KENDALL  
 ARLENE KUCK  
 MIRIAM LEE  
 MARGIE LEWIS  
 MARGARET McCLAMMY  
 KATHLEEN MASE  
 MARY MITCHNER  
 MARION OWENS  
 HELEN POE  
 MARGARET REAVES  
 SADDIE RIPPPE  
 CLEOPATRA RICHARDSON  
 CHARLOTTE SHAVENDER  
 BEANCHIE SHAW  
 LUCILLE SHERRÖD  
 ALBERTA SHINN  
 MONYA SIMS

LUCILLE SMITH  
 NELLIE SMITH  
 ELIZABETH STEED  
 NELLIE SWAN  
 RUBY SWINDELL  
 DOROTHY TAYLOR  
 EURLINE THOMAS  
 BONNER THOMPSON  
 ELEANOR TOMLIN  
 MARY BELLE UMBERGER  
 FANNY SMITH WALKER  
 CLAIRE WAINSON  
 MABEL WILLIAMS  
 VIOLETTE WILSON  
 HELEN WOLLEY



To Our G. C. Sisters

*BECAUSE* of the love and loyalty which you bear our Alma Mater; because of your faith, trust, and hope for the brightest of futures for our college home; because we are so closely bound in memories of the days spent within these walls, whether it be to the girls of long ago or to our younger sisters of today, we, the Class of '25, dedicate the following pages.

# Dramatics





DRAMATIC CLUB

Mildred Singer, President, Augusta Sample, Vice-President, Maxine Johnson, Secretary and Treasurer, Hattie Anthony, Sappie Bowen, Wilma Cross, Jamie Cunningham, Gertrude Capel, Eugenia Davis, Frances Bailey, Ruth Davenport, Frances Davis, Luanita Gregg, Carolyn Glascock, Miriam Henton, Maxine Johnson, Mae Kinsland, Robert Henry Lyon, Louise McCracken, Nellie Mahaley, Eddie Plyler, Madith Rutherford, Byrd Sarter, Augusta Sample, Mabel Singer, Tommie Watlington, Mary E. Walker, Grace Yarborough, Geraldine Smith.

Associate Members: Addie Mae Gatlin, Dixie Hines, Rebecca Young, Elizabeth Welch, Kathleen Dayvaull, Ethel Herring.



LINA BEANS



## O. Henry Recital

THURSDAY, 8:30 P. M., JANUARY 29, 1925, ODELL MEMORIAL BUILDING

## PROGRAM

"If ever in American literature the place and the man met, they met when O. Henry strolled for the first time along the streets of New York."

"Streets, parks, squares, buildings, even the multitudinous life itself that flowed consciously before him were to him but the outward and visible signs of a life, a spirit, that informed all and energized all."—C. Alphonso Smith.

1. "While the Auto Waits" . . . . . ("The Voice of the City")  
Miss Ruth Davenport (Santord, N. C.)
2. "A Comedy in Rubber" . . . . . ("The Voice of the City")  
Miss Juanita Gregg (Liberty, N. C.)
3. "Sisters of the Golden Circle" . . . . . ("The Four Million")  
Mrs. J. P. Lynch (Salisbury, N. C.)
4. "The Last Leaf" . . . . . ("The Trimmed Lamp")  
Miss Virginia McClunrock (Greensboro, N. C.)
5. "A Harlem Tragedy" . . . . . ("The Trimmed Lamp")  
Miss Grace Yarbrough (Glendale, Cal.)
6. "The Defeat of the City" . . . . . ("The Voice of the City")  
Miss Tommie Watlington (Greensboro, N. C.)
7. "The Third Ingredient" . . . . . ("Options")  
Miss Gertrude Capel (Troy, N. C.)
8. "The Badge of Policeman O'Roon" . . . . . ("The Trimmed Lamp")  
Miss Augusta Sample (Elizabeth City, N. C.)



## Dramatic Club

FRIDAY, 8:30 P. M., NOVEMBER 14, 1924, ODELL MEMORIAL BUILDING

### PROGRAM

1. "The Trysting Place" . . . . . Booth Tarkington  
*A Farce in One Act*

#### CHARACTERS

(In order of their appearance)

Mrs. Curtis . . . . .	MISS MAXINE JOHNSON
Lancelot Briggs . . . . .	MISS FRANCES DAVIS
Mrs. Briggs, his mother . . . . .	MISS MARY E. WALKER
Jessie, his sister . . . . .	MISS ROBERT HENRY LYON
Rupert Smith . . . . .	MISS MAE KINSLAND
Mr. Ingold-by . . . . .	MISS TOMMIE WALLINGTON
The Mysterious Voice . . . . .	MISS HALLIE ANTHONY

Time: Afternoon.

Place: A hotel at a fashionable country resort.

Scene: A room just off the "lounge."

2. "Three Pills in a Bottle" . . . . . Rachel Lyman Field  
*A Fantasy in One Act*

#### CHARACTERS

(In order of their appearance)

Tony Sims . . . . .	MISS RUTH DAVENPORT
The Widow Sims, his mother . . . . .	MISS MATHIE RUTHERFORD
A Middle-Aged Gentleman . . . . .	MISS EPIE PLYLER
His Soul . . . . .	MISS GERTRUDE CAPEL
A Scrub Woman . . . . .	MISS ALMA MEEKINS
Her Soul . . . . .	MISS NELLIE MAHALYA
A Scissors-Grinder . . . . .	MISS GERTRUDE CAPEL
His Soul . . . . .	MISS SEPPH BOWEN

Time: Now and then.

Place: Anywhere or nowhere.

Scene: A room in the Widow Sims' house.

3. "Everybody's Husband" . . . . . Gilbert Cannan  
*A Play in One Act*

#### CHARACTERS

A Girl . . . . .	MISS GRACE YARBROUGH
Her Mother . . . . .	MISS MILDRED SINGER
Her Grandmother . . . . .	MISS AUGUSTA SAMPLE
Her Great-Grandmother . . . . .	MISS WILMA CROSS
A Maid . . . . .	MISS LOUISE McCRACKEN
A Domino . . . . .	MISS JUANITA GRICE

Scene: A girl's boudoir.

Costumes and wigs for "Everybody's Husband" furnished by Waas and Son, Philadelphia.

## Dramatic Club

WEDNESDAY, 8:30 P. M., FEBRUARY 25, 1925, ODELL MEMORIAL BUILDING

### PROGRAM

1. "In the Spring, a Young Man's Fancy" . . . . . *Will Smith Ranson*  
*A Comedy in One Act*

#### CHARACTERS

Mrs. Jack Hilliard, the chaperon . . . . .		MISS WILMA CROSS
Jean Laurens	}	Her "five little JS"
Jacqueline Vance		
Jo Struthers		
Julia Osborne		
Janet Mason		
Marie, a maid		MISS EUGENIA DAVIS
Dickey Trent, the young man . . . . .		MISS JUANITA GREGG

Time: Late afternoon in May.  
 Place: Paris.  
 Scene: Sitting room of a suite in the Hotel Ritz.  
 Note: All parts in this play taken by freshmen.

2. "Over the Banisters" . . . . . *Carolyn Wells*

MISS EUGENIA ISLER

3. "Rehearsal" . . . . . *Christopher Morley*  
*A Comedy in One Act*

#### CHARACTERS

Freda, the director . . . . .		MISS AUGUSTIA SAMPLE
Christine	}	The Players
Barbara		
Gertrude		
Sonia		
Marjorie, the stage carpenter and property man . . . . .		

Scene: Rehearsal of a play to be given by a college dramatic club.

*N. B. The play they are at work on is supposed to be one of those Irish peasantry things.*

4. (a) "Encouragement" . . . . . *Paul Lawrence Dunbar*  
 (b) "Fool Younguns" . . . . . *James Whitcomb Riley*  
 (c) "Almost Beyond Endurance" . . . . . *James Whitcomb Riley*

MISS LOUISE McCracken

5. "'Op-o'-Me-Thumb" . . . . . *Frederick Fenn and Richard Pryce*  
*A Play in One Act*

#### CHARACTERS

Madame Jeantte Marie Napoleon de Gallifet Didier . . . . .		MISS MARY E. WALKER
Clem (Mrs.) Galloway . . . . .		MISS TOMMIE WATLINGTON
Rose Jordan . . . . .		MISS MAE KINSLAND
Celeste . . . . .		MISS FRANCES DAVIS
Amanda Afflick . . . . .		MISS GERTRUDE CAPPL
Horace Greensmith . . . . .		MISS EPIE PUYLER

Music by the Dramatic Club Orchestra

## An Evening With Shakespeare

## PROGRAM

1. "Much Ado About Nothing" . . . . .
- William Shakespeare*

## CHARACTERS

Benedick  
Don Pedro  
Claudio  
Leonato  
Hathasbar  
Beatrice  
Hero  
Margaret  
Ursula

Miss Mary E. Walker  
Miss Margaret Felmister  
Miss Maxine Johnson  
Miss Tommie Watlington  
Miss Mary Pender Hayes  
Miss Ruth Davidson  
Miss Geraldine Smith  
Miss Nellie Mahaley  
Miss Wilma Cross

Act II, Scene 3.  
Act III, Scene 1.  
Place: Leonato's garden.

2. "As You Like It" . . . . .
- William Shakespeare*

## CHARACTERS

Orlando  
Jacques  
Touchstone  
William  
Rosalind  
Celia  
Audrey

Miss Eric Pyster  
Miss Tommie Watlington  
Miss Augusta Sample  
Miss Madith Ruthford  
Miss Grace Yarbrough  
Miss Gertrude Capel  
Miss Mildred Singer

Act III, Scene 2, Scene 3.  
Act IV, Scene 1.  
Act V, Scene 1.  
Place: The forest of Arden.

3. "Macbeth" . . . . .
- William Shakespeare*

## CHARACTERS

Macbeth  
Lady Macbeth  
A Messenger

Miss Hallie Anthony  
Miss Mary E. Walker  
Miss Madith Ruthford

Act I, Scene 3, Scene 7.  
Place: A room in Macbeth's Castle.

4. "The Merchant of Venice" . . . . .
- William Shakespeare*

## CHARACTERS

Bassanio  
Antonio  
Lorenzo  
Gratiano  
Launcelot  
Soliphano  
Portia  
Nerissa  
Jessica

Miss Juanita George  
Miss Hallie Anthony  
Miss Augusta Sample  
Miss Mae Kinsland  
Miss Frances Davis  
Miss Robert Henry Lyon  
Miss Maxine Johnson  
Miss Laine Cunningham  
Miss Eugenia Davis

Act V.  
Place: Portia's garden.

## MUSICAL NUMBERS

1. "Sigh No More, Ladies" (Shakespeare) . . . . .
- Tschaine*

Miss Mary Pender Hayes

2. "Blow, Blow, Thou Winter Wind" (Shakespeare) . . . . .
- Roger Quilter*

Mr. Rufman F. Alexander

3. "Under the Greenwood Tree" (Shakespeare) . . . . .
- Dr. Augustine Irnie*

(1719-1778) Arr. by Harry Rowe Shubel

4. "It Was a Lover and His Lass" (Shakespeare) . . . . .
- Thomas Morley*

Arr. by George Rathbone

5. "Tell Me, Where Is Fairy Bred?" (Shakespeare) . . . . .
- J. G. Callott*

Misses Lottie Ellis, Gayandyn Mitchell, Dorothy Singer, Mary Pender Hayes,  
Elizabeth Campbell, Maude Cotton  
Students of the Voice Department

6. "Andante" . . . . .
- Gluck*

Mr. Robert L. Roy



SOPHOMORE SNAPSHOTS

## Senior Stunt



OTH the originality and ability of the Senior Class were shown to good advantage November 30, 1924, when they presented a one-act play entitled, "Hearts of Sawdust." The play was skillfully arranged and directed by Frances Henninger. The scene was laid in a toy shop at night during the Christmas season. A little girl (Ethel Burkhead), separated from her mother (Blanche Burrus), falls asleep in a toy shop, and is locked in by the toy keeper (Zelda Barnes). In her dreams the dolls are brought to life by Puck (Frances Henninger) when he touches them with his wand. The clown (Eunice Goodwin) is under a spell, and is in love with Peggy, a beautiful doll (Nellie Bird Woods), but on account of his position feels that he cannot win her. The prince (Nell Moore) is also in love with Peggy, but Puck, understanding the true state of affairs, rights matters by giving to the clown a small fiddle, which breaks the spell, and turns the clown back to his original form, a prince. The prince then marries Peggy, and the man who thought he was the prince marries the Flapper Doll (Lucile Fulp).

Numerous dolls of the toy shop were presented by other members of the class. Several clever choruses were introduced during the play.

## Junior Stunt

The Junior stunt, "Memories", was successfully presented by the Juniors in the college chapel on December 13, 1924. It was the story of an old man dreaming of his youth. In the first act he is telling of the hall and of the heartache at seeing his sweetheart in the arms of another man. The man is really her brother, but he will not believe her explanations. Later, after nineteen years, he takes the daughter of his old sweetheart into his home and sends her to boarding school. He realizes his great mistake in doubting her mother. He falls in love with the daughter and they are finally married. The choruses were especially good and added much to the interest of the program. Real talent was seen in some of the acting. Misses Augusta Sample and Katherine Cole as David Knight and Judith Amherst were especially good.

The stunt was written and directed by Miss Elizabeth Welch.

## Sophomore Stunt

The Sophomore stunt, "What Every Girl Wants (in seven letters)", was presented with much success on the night of March 7, 1925. Mona La Marr, the heroine, who has suffered a loss of memory, is invited upon a house party given by Madame Palmer, her fashionable society friend. Here she encounters Peter Paige, her lover at the time of the shipwreck, in which the loss of memory occurred, and whom she cannot remember. He is desperate in his efforts to make her remember him, and finally achieves this desire by staging another wreck, the counterpart of the first one. He takes her to the island of Spanish Gypsies by whom she was rescued the first time, and with whom she remained for a few years before returning to her own country to pursue her study of art; and it is among these friends that her memory is restored. In the end, it is discovered that "What Every Girl Wants" is R-O-M-A-N-C-E. Mildred Shell as Mona La Marr, Evelyn Faylor as Peter Paige, and Margaret Holliman as Madame Palmer, showed real artistry and talent in their acting. The supporting characters also did good work. An especially attractive feature of the play was the Cross-Word Puzzle Chorus; and others which added to the interest of the program were the Sleep Chorus, the Sailor Chorus, and the Gypsy dancers.

The stunt was written and directed by Miss Doris Christie.



## PROGRAM OF THE RENOWNED

## RHONDDA WELSH MALE GLEE SINGERS

Musical Director: PROF. TOM MORGAN

Prof. EMLYN JONES, A. R. C. M.

Director of Tour:

Accompanist:

MR. JOHN COSGROVE

SELECTED FROM FOLLOWING

Chorus	Composer
1. March of the Men of Harlech	Welsh Air
2. The Arms	Mander
3. Castilla	Dr. D. Protheroe
4. Image of the Rose	Reichardt
5. Where Is He?	Beethoven
6. Y Gwawr Fych	Arr. E. T. Davies
7. Molligan Musketeers	Atkinson
8. Y Delyn Aur	Dr. Pugh Evans
9. Italian Salad (Musical Jest)	Gance
10. Hues of Day	Barbour
11. Ingeho's Gwyneth Gwyn	Harry Evans
12. The Sandman	Dr. D. Protheroe
13. On the Sea	Dudley Buck
14. O Penitential Night	E. German
15. Invitations	Dr. D. Protheroe
16. Scottish Marching Song	Dr. D. Protheroe
17. Killarney	Bliss
18. Elphidra	John Pursell
19. Lullaby	Byrdnes
20. Sleep, Dear One, Sleep	Dr. T. D. Edwards

## EMLYN JONES, A. R. C. M., Accompanist

Organ Selections.

1. Overture, "William Tell"	Rossini
2. Fun March (Hymn of Strophes)	Gaillard
3. Egyptian Ballet Suite	Liszt
4. Prelude in C Major	Vodanicki

## W. TUDOR WILLIAMS, Tenor

1. Arise, O Sun	Maud Clarke Day
2. Calmette	R. C. Clarke
3. I Hear You Singing	Eric Coates
4. My Heart Stings to You	Claude Ashby
5. Sea Rapture	Eric Coates

## STEPHEN JENKINS, Tenor

1. The Rose-Royal	DeWood
2. Still	Rogers
3. Lesson of Mine	J. Wall
4. Mountains of Allah	Goebel
5. Boats of Mine	Stratton

## RICHARD OWEN, Tenor

1. Trusting Eyes	Clarence Gartner
2. Friend	Mrs. C. Novelle Davies
3. On With the Motley	Pugh Jones
4. Nani & Myriad	W. Davies
5. Lullaby	

## JACOB JOHN, Tenor

1. Half Wind & Nghomedraeth	Perry
2. Island of Dreams	Adams
3. Garden of Your Heart	David
4. Roses	Adams

Final—"Hen Wlad Iy Nhadu" (Land of My Fathers), Welsh National Anthem, "America"

## SIDNEY CHARLES, Tenor

1. My Dreams	Tosti
2. Nivana	Adams
3. Elcanos	Coleridge Taylor
4. Marie My Girl	Atkin
5. Homing	Ringo

## ROBERT HOPKINS, Baritone

1. If I Were a Rose	E. Hesseberg
2. Since Last I Saw You	Oscar Alby
3. Little Player	P. Alitson
4. Vale	Kennedy Russell
5. Making of a King	Lila Ray

## WALTER EVANS, Baritone

1. The Desert	Emmanuel
2. Sing Alone, Charmeth My Sadness Gumbo	
3. Barber of Turin	K. Russell
4. Torpedo	Blizet
5. Smother	Clarke

## DAVID REES, Bass

1. Hear Me, Ye Winds and Waves	Handel
2. Miss Kitty O'Toole	Dr. Protheroe
3. Y Marchog	Dr. Pugh
4. Facing the Sun	McLeod Steel
5. See the Raging Flames Arise	Handel

## EDWARD HOPKINS, Bass

1. The Voice of the Storm	Cuthbert Clarke
2. Song of Hydras, the Cretan	Elliot
3. Mighty Deep	J. H. Jude
4. Red Star of the Romney	W. Anderson
5. Vulcan	Bond Andrews

## DUETS

1. The Gondoliers	Offenbach
2. The Battle-axe	Bonheur
3. Mae Cynhad Eriad	Dr. Pugh
4. Tenor and Baritone	Lane Wilson
5. Plant a Cotton	Perry
6. The Moon Hath Raised Her Lamp Above	
7. Flow Gently, Twa	Benedict
8. Watchman, What of the Night?	Sargent
9. The Saxony	Paxton

## QUARTETS

1. Lullaby	Byrdnes
2. A Catastrophe	Sparque
3. They Kissed	Hawley
4. The Little Shamrock	Irish Airs
5. In Absence	Dudley Buck
6. Lovely Night	Howard
7. Every Rustling Tree	Kulhan



## Greensboro College Lyceum Course

PRESENTS

## GAYLORD YOST

IN VIOLIN RECITAL  
ODELL MEMORIAL AUDITORIUM

FRIDAY EVENING, FEBRUARY 6, AT 8:30

## PROGRAM

- Handel . . . . . Sonata in E  
Adagio, Allegro, Largo, Allegro
- Brahms . . . . . Concerto in G minor  
Allegro moderato, Adagio, Finale  
Allegro energico
- Schubert-Spalding . . . . . 'Hark! Hark! The Lark  
From Zumbalst' . . . . .  
Improvisation on a Japanese Tune  
Chopin-Maximilian . . . . . Maiden's Wish  
Air, by Juno Manton . . . . . Turkey in the Straw
- Hyork-Kreuder . . . . . Slavonic Dance No. 2  
Searlatt-Primerose . . . . . Capriccio  
Pitz-Kriehler . . . . . La Gitana  
Zarzynski . . . . . Mazurka  
At the Piano—Mr. Carl Beutel

## Recital of Piano Music

TO BE GIVEN BY

## MR. CARL BEUTEL

IN THE ODELL MEMORIAL AUDITORIUM,

THURSDAY EVENING, MARCH TWELFTH

## PROGRAM

- |                        |  |
|------------------------|--|
| Mozart . . . . .       | Fantasia in C minor                      |
| Raff . . . . .         | Fantasia and Paganini in D minor         |
| Chopin . . . . .       | Nocturne in B major                      |
| Chopin . . . . .       | Mazurka in B minor                       |
| Chopin . . . . .       | Walse in C sharp minor                   |
| Chopin . . . . .       | Ballade in A flat                        |
| Giazonov . . . . .     | Etude, "La Nuit"                         |
| Zamella . . . . .      | Tempo di Minuetto                        |
| Wagner-Liszt . . . . . | Closing Scene                            |
| Carl Beutel . . . . .  | Novelletto, La Coquette, A Chinese Dance |
| Liszt . . . . .        | Legende—St. Francis Walking on the Waves |

## EMORY GLEE CLUB

SEASON 1924-25

## PROGRAM

- PART I
- Laurel . . . . . Tromzetti  
Orchestra
  - Now Let Every Tongue Adore Thee . . . . . Bach  
Glee Club
  - The Keys of Heaven . . . . . Ver. by Button  
Quartet
  - Two Choruses from the Huguenots—Meyerbeer  
(a) Orgia  
(b) RotaPlan
  - Sylvia . . . . . Speakes  
Mr. James Stiles
  - Negro Spirituals—Recorded by Curtis-Budlin  
Glee Club
  - Adagio . . . . . Beethoven  
Mr. Ferguson, violin, Mr. Harkin, cello,  
Mr. Morgan, piano
  - Drake's Drum . . . . . Coleridge-Taylor  
Glee Club
- Intermission (five minutes)

## PART II

- Catalina, being a Life of Ancient Rome by  
Gordon Watson.  
Characters as they appear:  
First Lictor . . . . . Neely, Peacock  
Second Lictor . . . . . Wrench, Whipple  
Antony . . . . . Jack Stewart  
Septim . . . . . Edwin, Sheppe  
Newstox . . . . . Robert, Crayford  
Cleopatra . . . . . Edith, Reeves  
Catalina . . . . . Gordon, Watson  
Pallas . . . . . Lester, Barton  
Cep . . . . . Ellis, Hale  
Germanicus . . . . . Bennett, Billhey  
Cicero . . . . . Trigg, James  
Caesar . . . . . George, Baker
- Act I, Roman Forum,  
Act II, Roman Senate
- Interludes . . . . . Selected
  - Excerpts from Pinocchio . . . . . Gilbert-Sullivan  
Glee Club and Orchestra

## Organ Recital

BY

## IDA M. BRIDGEMAN

OF THE FACULTY

ODELL MEMORIAL AUDITORIUM, WEDNESDAY

EVENING, DECEMBER 17, AT 8:30

## PROGRAM

- |                            |                          |
|----------------------------|--------------------------|
| Rheinberger . . . . .      | Sonata in E Minor        |
| Largo, Intermezzo          | Scherzo, Presto, Andante |
| Wagner-Westbrook . . . . . | Waltham's Prize Song     |
| Kinder . . . . .           | Serenade                 |
| Lemare . . . . .           | Lullaby                  |
|                            | (With Chimes)            |
| Fubas . . . . .            | Invocation               |
|                            | Grand Chorus             |

## Greensboro College Glee Club

ODELL MEMORIAL BUILDING, 8:30 P. M., TUESDAY, DECEMBER 2, 1924

## PROGRAM

Op. Carmina . . . . . Cooke	The Lion and the Lady . . . . .
The Ladies of St. James . . . . . Warner	. . . . . Marjorie Benton Cooke
Evening Calm . . . . . Grant	(A Play in One Act)
Glee Club	CHARACTERS
At the Movies . . . . . Mary Monique Parker	Henry Earlford, an Actor . . . . .
Grace Yarborough	Lady Margaret Mandeville . . . . . Grace Yarborough
"Delight," Waltz Song . . . . . Luckstone	(Students of the Expression Department)
Gwendolyn Mitchell	Scene . . . . . Henry Earlford's study
The Swan . . . . . Saint-Saens-Pago	Nocturne . . . . . Chopin
My Heart at Thy Sweet Voice . . . . .	Hark! Hark! The Lark . . . . . Schubert-Liszt
. . . . . Saint-Saens-Shelley	Country Gardens . . . . . Grainier
Glee Club	Miss Seiler
Intermission	Song of the Shepherd . . . . . Fox
"Toreador Song" from "Carmen" . . . . . Bizet	Trees . . . . . Hahn
Mr. Alexander	Sombody's Knocking at Your Door . . . . . Dett
	Glee Club
	Miss Ellis, Soloist

## Advanced Student Recital

ODELL MEMORIAL BUILDING MONDAY EVENING, APRIL 6, 1925, AT 8:30

## PROGRAM

Mendelssohn . . . . . On the Wings of Song	Osborne . . . . . Blow, Blow, Thine Winter Wind
Mildred Godfrey	Margaret Fisher
Beethoven . . . . . Sonata in A major	Dreyshock . . . . . Gavotte and Musette
First Movement	Louis Alfred
Nellie Bird Ross	Chopin . . . . . Polonaise in C minor
Collan . . . . . I Shall Not Care	Maud Howker
Lawson . . . . . My Love in the Garden	Paine . . . . . Trade Winds
Mary Embury Faulkner	Peery . . . . . Joy Is in My Heart
MacDowell . . . . . Scotch Poem	Elizabeth Currie
Dobler . . . . . Nocturne	Mendelssohn . . . . . Capriccio Brillant
Maud Cotton	Emma Russell
Stoddens . . . . . Two Songs of the Months	Forsythe . . . . . Snow Fairies
Madge Marley	Nevin . . . . . My Desire
Schumann . . . . . Songing	Frances Dailey
Ruth Hoyle	Rachmannoff . . . . . Valse in A
MacDowell . . . . . Perpetual Motion	Kathleen Dayvant
Muriel Maynard	Chopin . . . . . Berceuse
Thayer . . . . . My Lullaby	Chopin . . . . . Scotch Dances
Vaughan . . . . . June Is in My Heart	Bianche Burrus
Mildred Howell	MacDowell . . . . . A Maid Sings Light
Beethoven . . . . . Concerto in C major	MacDowell . . . . . Long Ago, Sweetheart Mine
Second Movement	Bassett . . . . . Take Joy Home
Lucy Mast	Gwendolyn Mitchell
Beethoven . . . . . Concerto in C major	Chopin . . . . . Concerto in F minor
First Movement	Ellie Mae Ferriss
Sara Alfred	
Irish Tune, arr. by Hibb.	
World God I Were the Tender Apple Blossom	

## Student Recital

ODELL MEMORIAL AUDITORIUM, MONDAY EVENING, FEBRUARY 2, AT 8:15

## PROGRAM

Fiddler . . . . . Pompee Valsante	Handel . . . . . Air and Variations
Isabel Caldwell	Lucy Mast . . . . . Sea Rapture
Rachmannoff . . . . . Melodie in E	Madge Marley . . . . . Sonata in D minor
Mary Bell	Gardner . . . . . En Courant
Hollander . . . . . Hunting Song	Sara Alfred . . . . . To Spring
(The Left Hand Alone)	Gird . . . . . No. Eight
Mildred Godfrey	Gird . . . . . Eye Hath Not Seen
Arthur Nevin . . . . . A Vision of Beauty	Chopin "The Holy City"
Dorothy Singer	Mrs. Pender Hales
Gracie . . . . . Klisch	Edna . . . . . Impromptu in F minor
Janet Brook Sands . . . . .	Stinson . . . . . Fantasia
Murmuring Zephyrs	Lillian Caldwell
Ellen Green	
Beethoven . . . . . Sonata, Op. 11, No. 2	
First movement	
Sara Bianche Burton	





## A Reverie

Time: Monday night before Christmas holidays.

Scene: The Chapel. The students are lounging informally around in their seats, gossiping and popping gum.

Dramatis Personae: Student president, recording secretary, and members of the student body—with the exception of those who have gone uptown to dinner, or have gone riding, or are having a date.

Enter Virginia and Jeannette. With their entrance, the popping of gum grows a little less noisy, the talking subsides in a measure.

Virginia: "For heaven's sake, girls, can't you keep some fuss in here? It is really depressing in here. Sara, will you and Elva go down and see if the boy has arrived with the dopes and sandwiches? I want us to have something to eat and drink. I really think we'd get more out of the meeting."

"Well, Jeannette, you may read the minutes. No, it's not necessary. It just takes up time for nothing, and we'll need it for something better." Yawns, and says:

"Anybody got anything interesting? Please don't bring up any dry, monotonous business. Remember, we are here for a little fun. All right Gladys, what is it you are going to say?"

Gladys Dwiggin assumes a reclining position on the seat and says:

"As a proctor on junior hall, I want to ask you to stir the juniors up a little. The silence over there is becoming so oppressive that last night I yelled out loud. I'm going to resign my proctorship if things don't liven up a bit. Louise Womble did sprain her wrist last night by falling from her window seat. She was looking at the moon, and she must have forgotten that there were no masculine arms there to catch her when she swooned."

Virginia: "Sue Frank, I appoint you to relieve the distressing situation. Don't let them take life so seriously. Tell them that having a good time is far superior to preparing les-

sons— And that reminds me—Dr. Lasher asked me to tell all the French classes not to take any assignment for the next two weeks. He is becoming alarmed over their mental diligence. He will meet the classes, but the time will be used for teaching the newest dance steps, and practicing the latest song hits. All right, who's next? Make it snappy! Haven't any of you heard any gossip?"

Frances Henninger: "Yes, I heard that two more weeks are to be added to our Christmas holidays. That gives us a month in all. What can the faculty be thinking about? It's so heavenly here that I don't even want to stay away so long. Oh, Elva, pass the dopes this way. And you've got chewing gum, too! How delicious! Give me a whole pack. I want to see if I can chew as much at a time as Lou Pierce can."

Virginia: "Alberta, did you want to say something?"

Alberta Davis: "The chapel attendance is working me. I want you girls not to be so punctilious about coming. We're not going to give call-downs any more unless you take thirty cuts. Please stay away some. It really is annoying to have you here so much. And when you do come, don't sit in your regular seats. I'm getting bored to death with so much system."

Virginia: "Jeannette, honey, don't try to take down these minutes. It's too great a mental strain. Just rest your mind a while."

Mildred Darden: "I have an announcement to make, Madame President. The new shipment of bridge cards has reached the book store, and Mr. Curtis urges that we buy them all right away. I'm going to have a bridge party up in the attic tomorrow night during study hour, and as many of you as want to come please raise your hands. Mildred Shill, I appoint you to take down the names and order the refreshments."

Enter Miss Ricketts: "Girls, girls, this is the quietest meeting I've ever seen. Can't you sing 'Jingle Bells' to liven it up a little?"



I have a special purpose in coming to this meeting. I want to urge you to go off for more week-ends. Go to the dances at Davidson, Carolina, and State. Dance and be happy. I wouldn't have you to grow up old maids—and I entreat you—get out in the night air more. If you can't find a way to ride, why walk. It's wonderful for your constitution. And just one more thing and I'll be through. Stop rushing so to get to breakfast in time. You may come in any time.

Miss Brooks says the doors will be kept open until 10:30 a. m."

Virginia: "If there's nothing further, you may go. Oh, just one thing! All restrictions will be lifted for Christmas shopping, and you won't have to make the time up, either. That's all, and please don't leave the chapel like you're going to a funeral. Yell, scream, sing, oh, do anything—just so you make a fuss." (Curtain)

## A True Story

REAL FACTS BY A REAL PERSON

She was only a pure, innocent girl, who had never went out much. Then she came to college and late entered her life with a bang. She sacrificed everything—

"All for Love," or  
"A Mushroom Affair"

How should a young girl act when she goes to college? Should she drift, merely accepting the trials and joys as they come, or should she seek to make every moment count? Ah, would that I had thought the whole thing out and planned my life by the schedule, but such a thing never entered my head until too late.

The first three weeks were "rush weeks," and how happy I was! Work and play were only pleasure, because there wasn't much work to do then; my drug store and movie bills were paid; tales were not known to me, and friends came and went.

"Friends came and went"—my lips curl cynically at the phrase, for I am different now from the carefree girl I once was. Battered and torn by the shocks of love, I am hardly able to write this, but I felt that I must take up my pen once more for what I feel is a great cause. My one purpose is to warn some poor, hapless girl who may be hesitating over this, and that, and the other. You, Poor Innocent, as you read this take heed, for all unbeknownst to you your life may be shaping itself into a cataract of acts! And you—Experienced and Hard-Boiled—multiply this story by the millions of others

that could be written like it, and let remorse eat on you! You who concocted that burning fluid—dopes—read and beware, for here you see the results! You who invented that hideous method of combining bread with other substances, think upon the error of your ways.

One night along about the first of school some girls were grouped about having a truth meeting. It was here that I learned by a last-go-trade that Sallie Lou had said something nice about me! She whom I had admired from afar, and for whom my heart grew even fonder! I said nothing much—just passed it off with a mere word. That strengthened my secret resolve, and I went over to her room that night to see her. This was the beginning. After this I went many times. I gradually lost my shyness, and then, how I loved to talk with her! I told her everything and was so thrilled when she responded with some little confidence. Things went on in this way until I was hardly able to eat or sleep for thinking of her. I cared nothing for classes, letters, or conversations, except as they centered about Sallie Lou. Finally, I got up enough courage to ask her to go to the little store with me to get a dope and a sandwich. Never was such bliss as this! She seemed then to return the affection I had for her.

Of course, people began to notice our close friendship and apply to it the hated word "crush." But I only laughed, for I knew

or thought I knew—that our love for each other was built on a higher plane than that. I felt that it would last.

It all went well until Norma, another student, considered rather pretty and attractive, began to frequent Sallie Lou's society. I noticed that Sallie Lou was often with Norma, and, O bitter curse! less and less with me. I ceased my visits, but it did not seem to matter to her. I was truly hurt and sick at heart, for I had given up friends, studies, rules, money—all.

One day I met Sallie Lou on the campus, chattering with Norma and some other girls. They winked at each other, and Sallie Lou carelessly said, "Hello, there, you've certainly deserted me lately. You never come over any

more like you used to." This was the last straw. It was a blow that I could not bear quietly. I lost control, burst into tears, and as I already had a cold, I rushed over to the infirmary, but I had small hopes of recovery.

So here I am now, afflicted with flu and a broken heart. My head aches, my eyes burn, and my spirit is broken. The girls do not write me notes, and the nurse here will not allow me sandwiches and dopes to satisfy my craving, and I am totally undone.

My only solace is that this may be a warning to someone. To reveal the inner secrets of one's life is not easy, but the knowledge may be worth something to others—the deep, dark, burning secrets of one who has loved, suffered, and paid the price.



## Troubles

(By One Who Has 'Em)

- A black cat crossed my path today,  
I throwed a horseshoe wrong;  
It's Friday the thirteenth,  
And been raining all day long.
- There ain't nobody lovin' me,  
There ain't nobody nowhere  
Who even likes what I like,  
And I'm 'sposed not to care.
- My beauty clay's done turned out wrong—  
It makes my face all bumpy,  
I dieted to get real thin,  
And 'stead of that, I'm lumpy.
- I ain't, to say, attractive,  
I've never been no beaut;  
N body's even thought of me  
As trying to be cute.
- I've never been no flapper,  
The boys don't sheik me none;  
And the man I thought wuz different,  
I've found is only dumb.
- He rooked me once too often—  
To me he is no more;  
He said he never loved me much,  
(I've heard that line before.)
- I've got a bunion on my foot,  
And corns on all my toes;  
Now, how I'll walk (I shore can't ride)  
Goodness only knows.
- My tennis shoes is all wore out,  
My racket strings is busted.  
I haven't never beat a game,  
Some folks would be disgusted.
- I wuz looking at the hardwood floor  
And fell and skint my knee—  
What folks around wuz laughing at,  
I never did see.
- I've never saw a elephant,  
Nor met up with a clown—  
The day that I set out to go,  
The circus had left town.
- The teachers think I've got no sense,  
They flunk me one by one;  
They ain't no use to try to work,  
Nor try to have no fun.
- I don't deserve no luck like this,  
I ain't done nothing tur it;  
I ain't so much as smiled out loud  
To cause me all this worrit.
- The world might have a heap of things—  
As some great poet said—  
But: it what I know about is all,  
I'd just as soon be dead.
- This poem that I've writ is bad,  
It don't possess no charm;  
But I hope you'll all remember this—  
I never meant no harm.

## Faculty Statistics

Daintiest—Mr. Beutel.  
 Most Attractive—Dr. Vining.  
 Quietest—Miss Ricketts.  
 Most Charming—Mr. Nicholson.  
 Most Conceited—Mr. Alexander.  
 Most Honored—Mrs. Robertson.  
 Most Dignified—Miss Smith.  
 Most Popular—Dr. Ginnings.  
 Faculty Sheik—Mr. Watson.  
 Faculty Flapper—Miss Shelton.

\* \* \*

"Rene Chandler: "Did something fall?  
 What was that noise?"

Lillian Caldwell: "Oh, just a racket."

\* \* \*

You can always tell a senior, she's so sedately  
 dressed;

You can always tell a junior by the way she  
 swells her chest,

You can always tell a freshman by her timid  
 looks and such,

You can always tell a sophomore—but you  
 can't tell her much.

\* \* \*

"Please show me a petticoat."

Clerk: "You will find an antique shop on  
 the fifth floor, madame."

\* \* \*

"Boo" Kimball: "I'm going to file all my  
 love letters from Branch."

Dixie: "I didn't know they were as rough  
 as that."

\* \* \*

Gertrude Capel: "Say, girls, have you  
 heard about Miss Ricketts having delirium  
 tremens? Her French class got their note-  
 books in on time, and nobody flunked on the  
 last quiz!"

\* \* \*

Announcement by Dr. Vining: "Instead of  
 saying, 'Bring me a chair,' those in my Eng-  
 lish classes are requested to say, 'Pray, ap-  
 proximate hither that sedentary portion of  
 conversational intercourse.'"

When Mary Pender Hales, is Katherine  
 Cole?

If Margaret is a Fisher and catches a  
 Herring, will Maude Hooker?

If a Lyon declares Waugh on a Campbell,  
 will Emily Commander and Gladys Make-  
 peace? If so, is Evelyn Savage and Hattie  
 Cross?

If Annie Ader a Fox, would Vista still be  
 Fuller?

Should Tom Mae Rush into Nellie Bird  
 Woods, would Byrd Suiter?

Is Hazel Black or Maude Knight?

If Thelma is Young, is Wilma Elder?

If Gertrude Knox, will Hazel Sasser?

Why is Elsie Green and Sue Frank White?

If Thelma is a Maxwell and Dorothy is  
 a Hudson, is Eleanor a Franklin?

If Mary is a Wrenn, why is Mildred the  
 Singer?

When Mary Exum Rose, did Nelle Joyner?

\* \* \*

We once knew two freshmen—roommates,  
 mind you—who were so modest they would  
 not even do improper fractions. They were  
 shocked at the bare facts of history, and they  
 only used proper nouns in their themes.

\* \* \*

Miss Shelton, at breakfast table: "These  
 eggs certainly are fried indiscriminately."

Ruth Boyles, from other end of table: "Miss  
 Shelton, what did you say they were fried  
 in?"

\* \* \*

Vertee Umstead: "You know, I've just de-  
 cided why everything goes in one of my ears  
 and comes out the other."

Frances Formy: "Why, Vertee?"

Vertee: "Because there's nothing in be-  
 tween to stop it."

\* \* \*

Preacher Adams: "Mildred, you know that  
 play last night made me think."

Mildred Darden: "What was it? It must  
 have been a miracle play."

\* \* \*

Slogan of the Modernist: "Keep that drug-  
 store complexion."



Equipped With Many Years' Experience for Making  
Photographs of All Sorts Desirable for Illus-  
trating College Annuals



PHOTOGRAPHERS OF THE ECHO

Address Requests for Information to Our Executive Offices  
1546 Broadway, New York City

WE MAKE PHOTOGRAPHS  
*THAT PLEASE*

We Have Frames That Make Your  
Pictures Look Better

**THE FLYNT STUDIO**

209 WEST MARKET STREET  
GREENSBORO, N. C.



Fashion,  
First and  
Finest, to  
Meet That  
Need of  
Those Who  
Appreciate  
Exclusive  
Quality in  
Apparel We  
Offer at  
Moderation  
That Spells  
Economy.

MILLINERY—MEZZANINE  
SLIPPER—SHOP

FASHION—FABRICS  
FASHION—FLOOR

ELLIS, STONE & COMPANY

"The College Girl's Store"

WE CARRY A COM-  
PLETE LINE OF

Hardware  
China  
Sporting Goods  
Toys

WE MAKE A  
SPECIALTY OF

COLLEGE  
SWEATERS

*Make Our Store  
Headquarters  
When Down  
Town*



ODELL'S

Incorporated



WESLEY  
LONG  
HOSPITAL

*Training School  
for Nurses*

INCORPORATED

Full Teaching Staff  
Course Three Years  
Theoretical and  
Practical

COLLEGE  
GRADUATES  
PREFERRED

# A Lyda

APPAREL CO.  
MILLINERY READY-TO-WEAR & ACCESSORIES

## JUST A REMINDER

When Out Shopping,  
Be Sure to Look Us Up

On North Elm, Opposite the O'Henry Hotel  
The Fashion Center

Dresses for All Occasions, Exclusive Millinery,  
Spring Coats in Half Sizes—To  
Suit the College Miss.

No Two Hats or Garments Alike

*Things That Are Different At  
Reasonable Prices*



## FEMININITY

Desires and Admires Youthful Beauty  
and Dignity in

## FOOTWEAR

This Becomes an Actuality When  
You Wear

## HINE'S

*Shoes—Hosiery—Repairing*



## SHOE SERVICE

Means Quality, Style  
and Fit

WE SELL QUALITY

And Give You Style and Fit

**J. M. Hendrix Co.**

223 South Elm Street

Greensboro, N. C.

HOSIERY, TOO

Like this edition of Echo,  
The Quality Shop only re-  
flects that which is good.

You Reflect in Words, We in Wears.

Your Interest in This Issue Shows That  
You Like That Which is Good. For  
That Reason We Are Anxious to  
Serve You.

Upstairs Expenses Are Less, So Are  
Upstairs Prices. Get the Habit of  
Looking Here When It Is a Dress, a  
Coat, or Wearing Apparel of Any  
Kind.

**The Quality Shop**

T. B. BULLOCK, *Manager*

Over McLelan's 5 and 10c Store



One of the Most Popular  
Hostelries

## THE GUILFORD HOTEL

GREENSBORO, N. C.

BRING YOUR FRIENDS  
TO DINE

AT THE

### CAFE-CAFETERIA



### GET YOUR SHOES

ALSO

### HOSIERY

AT

### DOBSON-SILL

THE STORE NOTED  
FOR STYLE

*Superior Fitting Science*

The Largest and Oldest  
Shoe Store



## Stratford-Weatherly Drug Company

*"We Always Sell the Best"*

GREENSBORO, N. C.

Carrying Exclusive Lines That Appeal  
to the Most Discriminating

*Whitman's Candies*

*Nunnally's Candies*

*Houbigant Perfumes*

*Fiore! Perfumes*

*Coty's Perfumes*

*Parker Fountain Pens*

KODAKS AND SUPPLIES

EXPERT DEVELOPING

## When College Days Are Over

And You Are Ready to Plan Your  
Home, Let Us Help You To

PARK FOR LIFE  
IN  
SUNSET HILLS

A. K. Moore Realty  
Company





MISS MILDRED DARDEN

*With the*

**New Arm Corsage**

*of*

Roses and Lilies-of-the-Valley

**Van Lindley Co.**

*Florists*

Greensboro

High Point

North Carolina



## Exquisite Apparel

*Specially Selected for the  
College Miss*

Frocks for Formal and  
Informal Wear

Coats in Dress or Sport  
Styles

Ensembles in Exquisite Taste  
Silk or Woolen

Hats to Complete Any Costume

**HARRISON'S**

*The Shop of Distinction*

212 S. ELM STREET



## FIRST REALTY & LOAN CO.

*"The Home Folks"*

Southern Life and Trust Building  
Telephone 1603

*Real Estate  
Insurance  
Loans  
Developing*

BOOSTERS FOR G. C. W.

## National Theatre

THE HOME OF THE BEST  
AND NEWEST

### PICTURES

This Popular Young Lady of Greens-  
boro College Echoes the Opinion  
of the School When She Says:

Three Cheers to the  
National Theatre



## SPORT APPAREL

In the Approved Mannish  
Mode

Knickers! Sweaters! Hiking Hose!  
To be fashionable and fine fitting,  
the cut must be correct and tailored to a  
"T." Our new Sport Shop now of-  
fers finer feminine fashions, made in the  
mannish mode.

*Vanstory*  
CLOTHING COMPANY  
C. H. MCKNIGHT, PRES. & MGR

JEFF.  
STAN.  
BLDG.



We cater especially to special orders  
for entertainments and parties, and can  
furnish anything in ice creams, sherbets,  
water ices; also fancy individual molds.



CHAPIN-SACKS CORP.

Phones 3471-3472

GREENSBORO, N. C.



Diamonds  
Precious Stones  
Platinum

*Master Creations  
of Jewellery*

**SCHIFFMAN'S**

GREENSBORO, N. C.

**WILLS BOOK  
AND STATIONERY  
STORE**

*Headquarters for*

**Fine Stationery  
Memory Books  
Pennants**

**AND ALL KINDS OF  
FANCY GOODS**

**HONNET 1867**

**A JEWEL AND  
GIFT SHOP**

ON

Jefferson Square

## The Advocate Printing House

Is Prepared to Take Care of  
**ALL KINDS OF  
PRINTING**

No job too big for us to handle.  
None so small but what we appreciate it.

110 EAST GASTON ST.  
GREENSBORO, N. C.  
PHONE 1285

Monogram Stationery

Engraved Invitations

Visiting Cards

Engraved Cards

Cards of Greeting

Loose Leaf Memo. Books  
and Sheets for the same

**JOS. J. STONE  
& CO.**

110-112 EAST SYCAMORE ST.  
GREENSBORO, N. C.

## THE GREENSBORO DAILY NEWS

Largest and Best Paper  
in the State

GREENSBORO, N. C.

## EFIRD'S

You Can Find What You  
Want When You Want It and

*at a*

Reasonable Price

*at*

## EFIRD'S

Special Consideration to the  
College Girls

## BROWN BELK COMPANY

*Department Store*

One of the Thirty-five  
Belk Stores

If You Don't Trade With Us,  
We Both Lose Money

*Headquarters for*  
**College Gym Suits**



## Greensboro's Supreme Achievement

In Store Buildings, Stocks, and  
Service

**Meyer's**  
DEPARTMENT STORE GREENSBORO, N.C.

*Shoppers' Paradise*

The New Store Bids  
You Welcome

DR. C. W. BANNER, M.D., F.A.C.S.  
DR. A. C. BANNER, M.D.

**Drs. Banner & Banner**

Eye, Ear, Nose and Throat

GREENSBORO, N. C.

Office: Banner Building  
Office Hours: 9 to 1

## "KENDALL"

Engraver and Printer

COLLEGE PRINTING A  
SPECIALTY

216 N. Elm St. Greensboro, N. C.

## Winder Oil Co.

GREENSBORO, N. C.

GASOLINE, KEROSENE  
MOTOR OIL

*Texaco Products*

SEE

## NICK MEBANE

For Your Next Pair of

## SHOES

and Save the Difference

Phone 1186

114 W. Market St.

**Robt. A. Sills Co.**

*The Latest Styles*

Expert Fitting Service

Elm Street

GREENSBORO, N. C.

**TIPP**

Ready-to-Wear and  
Millinery

104 S Elm St., Opposite Post Office

"FOR BUDDING CHARM"

A schoolgirl's love of the mode and her mother's sense of the appropriate both are satisfied by the merchandise we offer the jeune fille. And their prices are in harmony with a schoolgirl's budget.

**Shahane R. Taylor, M.D.**

Ear, Eye, Nose and Throat

JEFFERSON BUILDING

GREENSBORO, N. C.

Office Hours:

9 to 12, 2 to 4, and by Appointment

*A Mile From High Prices*

**SASLOW & COHEN**

Incorporated

Jewelers. Diamonds. Watches

*Repairing a Specialty*

306 South Elm, Op. National Theater

Phone 1787 Greensboro, N. C.

Our Customers Are Our Friends

**PORTER LYON  
DRUG CO.**

Refreshing Eats and Drinks

GREENSBORO, N. C.

**MARTHA WASHINGTON  
CANDIES**

*Sweet as the scent of roses, pure as the  
fallen snow, and "We Make 'Em"*

Special Party Candies, Nuts and Sand-  
wiches Made to Order

ICE CREAM, COLD DRINKS

FANCY BOXES, NOVELTIES

Opp. Cullford Hotel Phone 1013

**PATRONIZE OUR  
ADVERTISERS**

GO TO THE  
**CABANESS STORE**

For Beautiful and Exclusive  
GOWNS FOR ALL  
OCCASIONS

Suits, Coats

R. J. SYKES  
President

A. S. THOMAS  
Treas. and Mgr.

Courtesy and Accuracy of Service  
and Prompt Delivery

## SYKES DRUG CO., INC.

Phones 1923-1924 234 S. Elm St.

## W. H. Fisher Co.

### Printing, Engraving Designing

GREENSBORO, N. C.

You will enjoy the fine flavored Home-Made  
Candies we make. Our 5c Sandwiches are  
hard to beat and easy to eat.

## SPRING GARDEN CANDY KITCHEN

904½ SPRING GARDEN ST.

Chocolates, Taffies, Caramels, Creams,  
Sandwiches

Pimento Cheese, Ham, Deviled Egg 5c  
Chicken Salad 10c

## THE RAGGED ROBIN TEA SHOP

MRS. PEARSON, *Manager*

### Best Home-Cooked Food

*Dinner Parties a Specialty*

115 Odell Place  
GREENSBORO, N. C.

## Conyers & Fordham Incorporated

Prescription Druggists

Nunnally's and Norris' Candies

Phones 9 and 10 229 S. Elm St.

GREENSBORO, N. C.

## Mrs. Pattie McNairy

### MILLINERY

206 NORTH ELM STREET

Opposite City Hall Phone 2314

GREENSBORO, N. C.

10 Per Cent Discount to College Girls

Manicuring, Shampooing, Hairdressing, Electrical  
and Vibratory Facial and Scalp  
Treatment, Violet Ray

## Milady's Beauty Parlor

SELMA LAND BUILDING

Every Time You Spend \$10.00 Here You Make  
\$1.00

Save Your Cash Register Receipts

### MRS. E. B. HERR

PHONE 2626

## PATRONIZE OUR ADVERTISERS



THIS BOOK PRINTED BY BENSON



LARGEST COLLEGE ANNUAL  
PUBLISHERS IN THE WORLD

HIGHEST QUALITY WORKMANSHIP  
SUPERIOR EXTENSIVE SERVICE



COLLEGE ANNUAL HEADQUARTERS



## "Jahn and Ollier Again"

**T**HE largest personal service school annual engraving house in America. More than twenty years of successful experience in Year Book designing and engraving. Three hundred craftsmen, specially skilled in Annual production. Over 40,000 square feet of operating space in our own fireproof building. A specially organized system of production that insures individual attention to each Annual, efficient manufacture, and on-time delivery. The personal co-operation of a creative and research service department with a reputation.

THIS ANNUAL ENGRAVED BY

**JAHN & OLLIER ENGRAVING CO.**

*Photographers, Artists, and Makers of  
Fine Printing Plates for Black or Colors*

**817 Washington Boulevard-Chicago**  
(COR. GREEN ST.)



# GREENSBORO COLLEGE

THE A-GRADE WOMAN'S COLLEGE  
OF THE  
METHODIST CONFERENCES  
OF NORTH CAROLINA

Chartered 1838

Confers the degrees of A.B. in the Literary Department and B.M. in the Music Department

In addition to regular classical course, attention is called to the departments of Home Economics, Expression, Art, Education, Sunday School Teacher Training, Piano Pedagogy, and to our complete School of Music.

Fall Term Opens September, 1925

FOR FURTHER INFORMATION APPLY TO  
REV. S. B. TURRENTINE, A.M., D.D.

*President*

GREENSBORO, N. C.









