





Eduo White
Greensboro College

Copyright

Doris Marie Gillette
Editor

Gretta May Waggoner
Bus. Mgr.

The
1929 *Echo*



The Royal Road to Romance

The
1929

Echo



Published by the
SENIOR CLASS
of
GREENSBORO
COLLEGE
Greensboro, N.C.





*Sphinx and Pyramids
Gizeh Egypt*

Dedication

To the Youth of
Yesterday ~
Today ~
and
Tomorrow

*The Casino
Monte Carlo*



Foreword

HEREIN you find our experience of one "Glorious Adventure" on the "Royal Road to Romance." For our journeying, we mount the fairy carpet of imagination that our dreams may thus come true. Our dreams—those fragile cobwebs of thought—materialize into the reality, which is youth. May you feel with us that "There is absolutely nothing in the world but youth." To that end we offer these glimpses of our joyous venture. Blown by the soft southern breeze we drift from the moonlit Taj Mahal to the ice-clad Matterhorn; from sunny Java to the shimmering blue Nile; and ever you will find there the timeless spirit of youth.



Temple of Heaven
Peking, China

Contents

*College
Classes
Organizations
Athletics
Features
Advertisers*

*Angkor Temple
French Indo China.*





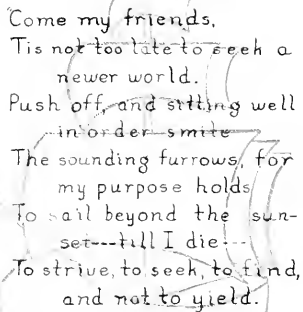
The Echo Staff

DORIS GILLETTE
GRETTA WAGGONER
MILDRED CROSS
A. ELIZABETH CROSS
MARY DAVIS
JUDITH ALBERT
RUTH CURTIS
IRENE NANCE
THELMA THOMPSON
MARY KELLAH OUTZS
GRACE SHEETS
MARY DRUM
MARY EMILY CARR
EIFNE MCGIRT
JANIE SINCLAIR
VIRGINIA MOSS FORMY DUVAL

Editor-in-Chief
Business Manager
Assistant Editor
Assistant Business Manager
Art Editor
Literary Editor
Literary Editor
Snapshot Editor
Snapshot Editor
Dramatic Editor
Athletic Editor
Photographic Editor
Photographic Editor
Humor Editor
Humor Editor



THE ECHO STAFF



Come my friends,
Tis not too late to seek a
newer world.
Push off, and sitting well
in order smite
The sounding furrows, for
my purpose holds
To sail beyond the sun-
set---till I die---
To strive, to seek, to find,
and not to yield.



COLLEGE



The Nottshorn



Thy eternal summer shall not fade

Sonnet



The building is the site of the "Midsummer Song"
A Midsummer Song



"A shadow came and lingered where the sunlight stood before."
—The Sword of Damocles



When thou dost sparkle into song and fill the woods with light
Friend Brook



*"And stoned windows ubly diabt
Castina a dany rebonous habi"* II Pensicoso



*When you do dance I wish you a wave o' the sea
That you e'er micht do nothun but that" — Winters Tale*

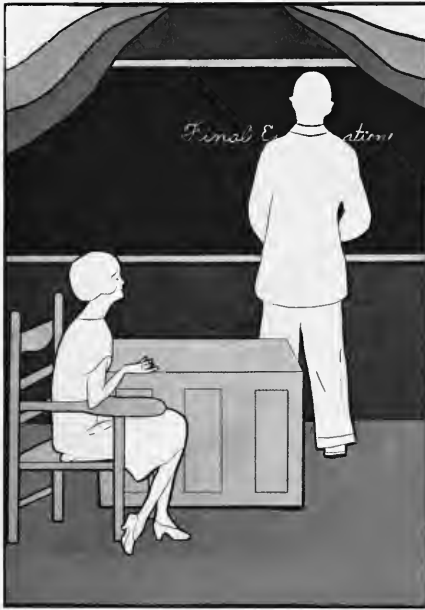


*"No tree in all the grove but has its charm
Though each its hue peculiar."* —The Task



"O Winter! ruler of th'inverted year."

—The Task.



FACULTY



SAMUEL B. TURRENTINE, A. B. A. M. D. D.
President

Samuel Brvant Turrentine, A. B., A. M., D. D., has been President of Greensboro College for the past fifteen years. During this administration he has met with great success and each year brings further achievements and honors. He graduated from the University of North Carolina in 1884, and the following year received the Master of Arts degree. His theological training was secured at Vanderbilt University. The degree of Doctor of Divinity was conferred upon him by Trinity College. Dr. Turrentine has had varied experience as a teacher and superintendent and his ministerial life has included a number of important pastorates, among them Centenary, Winston; Trinity, Charlotte; West Market, Greensboro. He has also been presiding elder of the Greensboro district. In 1912, he came to Greensboro College as its President.

Former Presidents of Greensboro College

1838—1913

DR. SOLOMON LEE
DR. A. M. SHIPP
DR. CHARLES E. DEEMS
DR. T. M. JONES

DR. B. F. DINON
DR. FRANK L. REID
DR. FRED PEACOCK
MRS. LUCY H. ROBERTSON

The Greensboro College Creed

WE BELIEVE in being rather than in seeming; in the devotion to high ideals; in daring to do our duty as we understand it.

We believe in having an attentive eye, a listening ear, a busy brain, in keeping the mind clear and bright, filling it with wholesome thoughts of life; in losing ourselves in useful industry.

We believe in being worthy at all times; in having grim energy and resolute courage for the conquest of fear; in gaining confidence in our ability.

We believe in service, in doing kind deeds, thinking kind thoughts, in being strong, gentle, pure, and good; steady, loyal, and enduring.

We believe in reverence for the truth; humility; in great aspirations and high ambitions; in toiling ever upward.

We believe in cultivating the bright virtue of patriotism and the holy passion for friendship.

We believe in studying hard, thinking quietly, speaking gently; acting frankly; in listening to the winds, the trees, the stars, and the birds; to babes and sages with open hearts; we believe in being glad, in loving all, in hating none, in doing all bravely, bearing all cheerfully, awaiting all occasions, hurrying never.

We believe in striving to gain sound knowledge, not content to simply know, but determined to use knowledge for the highest purpose.

We believe in man and woman, in God's unending love, and in the future.



MRS. LUCY H. ROBERTSON
President Emerita



MISS MUTTIE E. RICKETTS
Dean of Women



Faculty

IDA M. BRIDGMAN

Professor of Organ and Associate Professor of Piano and Theoretical Music

Graduate in Piano, N. E. Conservatory of Music, Pupil of George C. Voth, Pianist, Boston. Studied Organ with Wallace Goodrich, Wilson T. Young, and J. J. Bishop, Summer Courses, Ernest Hutcheson at New York, Chautauqua, 1927.

GILMAN I. ALEXANDER

Professor of Voice

Ph.D., Elon College, Graduate Courses at University of Chicago, Graduate Southern Conservatory, in Voice and Piano, Teacher's Certificate, American Conservatory, Student under Kathleen Hackett, David Bishop, and Horatio Cornell.

MRS. GEORGE K. HIBBETS

Professor of Violin

B.M., University of Wisconsin, Public School Music with Peter Diskema; Theatrical Music with Dr. Chas. H. Mills, Violin Pupil of Waldemar von Golik and Cecil Birtleigh.

MR. GEORGE K. HIBBETS

Professor of Piano and Theoretical Music

A.B., Gannett College, 1921, American Conservatory, Summers of 1922 and 1925, University of Wisconsin, Summer Session 1927, Pianoforte Pupil of Bertha Shatts Smiley and Josef Uranium, Theory with Elias Blum.

BLANCHE BURRUS

Assistant Professor of Piano and Theoretical Music

B.M., Greenboro College; Summer Courses at Chautauqua, New York; Special Courses in Piano with Ernest Hutcheson.

MILDRED TOWNE

Associate Professor of Piano and Theoretical Music

A.B., Missouri State Teachers' College, B.M., Oberlin Conservatory.

GWENDOLYN MITCHELL

Assistant in Voice and Public School Music
B.M., Greenboro College.

AUDREY BRUTON

Accompanist

ELLA M. MARTIN

Professor of Biology

B.A., Lawrence College; M.A., and Ph.D., University of Wisconsin.

MARY LYON

Associate Professor of Biology

B.S., Indiana University, Graduate Work at Carolina University and Indiana University.



Faculty

PAUL M. GINNINGS
Professor of Chemistry and Physics
 B.S., M.S., Ph.D., University of Illinois.

FLORENCE ELIZABETH OLIVER
Assistant in Chemistry and Physics
 A.B., Greenboro College.

CONRAD LASHER
Professor of German
 A.M., Columbia University, Royal Academy of Art, Hochschule fuer Musik, Berlin, Germany, Doc. Mus., Southern Conservatory.

MARGARET G. PERRY
Associate Professor of Spanish
 A.B., North Carolina College for Women, A.M., University of North Carolina, Graduate Courses, Columbia University, University of Jena, Germany, University of Porto Rico, Diploma El Centro de los Estudios Historicos (Madrid).

ROBERT T. DUNSTAN
Professor of Latin and Romance Languages
 A.B., Trinity College of Duke University, M.A., University of Wisconsin, Research in National Library, Madrid, Ph.D., University of Wisconsin.

CLARA MAE BROWN
Associate Professor of Latin
 A.B., Shorter College, M.A., University of Georgia, Graduate Work, Emory University Summer School.

MARY I. GINN
Associate Professor of English
 A.B., Central College, Lexington, Missouri, M.A., Columbia University.

WILLIAM STANFORD WEBB
Professor of English
 B.A., Vanderbilt University, M.A., University of North Carolina, Ph.D., Johns Hopkins University.

MARION A. LANDRUM
Professor of Art
 B.S., West State Teachers' College.

BONNIE LEE ENOCH
Assistant in Art
 Graduate in Art, Greenboro College.



Faculty

MRS. REUBEN R. ALLEY

Librarian

HAZEL F. KING

Assistant Librarian

ELLIOT O. WATSON

Professor of History and Economics

A.B., M.A., Watford College, Graduate Work at George Washington University, Peabody College, and University of Michigan.

DOLLY M. CALLAHAN

Assistant Professor of History and Economics

A.B., M.A., George Washington University.

LILBA HINNINGER

Professor of Spoken English and Dramatic

Graduate, Martha Washington College, Teachers' Training, the School of Post-Session, Boston, Mass.; Teachers' Certificate, The American Academy of Dramatic Arts, New York.

ANNIE McKINNIE PEGRAM

Professor of Mathematics

A.B., M.A., Duke University, Graduate Courses at Columbia University.

DAVID F. NICHOLSON

Professor of Education and Philosophy

A.B., University of North Carolina; Post-Graduate, Emory College; A.M., Harvard University, Graduate Courses at Columbia University.

ETHEL HERRING

Assistant in Mathematics

A.B., Greensboro College.

EDWARD L. AYERS

Professor of Religious Education

A.S.B., Ph.B., Mount Union College; S.T.B., Boston University; A.M., Harvard University; Ph.D., University of Berlin; S.T.D., Mount Union College; Amherst Theological Seminary, 1907-'03.

MARGARET D. STEWART

Professor of Home Economics

Graduate, Alma College, Ontario, Canada; Graduate, McDonald School of Home Economics, Ontario; Post-Graduate Certificate Teachers' College, Columbia University.



Faculty

DAISY ELIZABETH BROOKS

Dietitian

LEIHA BROCK

Registrar

PEARL W. TURNER

Graduate Nurse, Supervisor of Infirmary
Graduate of Wilson Sanatorium; Post Graduate
Work at Boston Floating Hospital, Boston, Mass.;
Dr. Howard A. Kelly's, Baltimore, Md.; The Jet-
terson, Roanoke, Va.

THEODOCIA BLACKMON

Bookkeeper

REV. W. M. CURTIS

Business Manager and Treasurer

REV. LOY D. THOMPSON

Chaplain

NOMA DOBSON

Director of Physical Education

A.B., University of Alabama; Candidate for
M.A. at George Peabody's College for Teachers.

MRS. D. D. BEANE

Office Assistant

MRS. ALICE H. WINN

Supervisor of Buildings

Miss Kate Shipp's Private School, Graduate of
the Lewis Hotel Training Schools, Washington,
D. C.

MARY BROCK

Alumnae Secretary





CLASSES



*Native Hut
in Java*



CAP AND GOWN



ETHEL HERRING
PRESIDENT

O
F
F
I
C
E
R
S
'29



MARGARET BOOTH
VICE-PRESIDENT



SOPHIE HARGETT
SECRETARY



ELIZABETH ANDREWS
TREASURER



OCTAVIA HATCH
COUNCIL REPRESENTATIVE



PAUL ROWE GINNINGS
Greensboro, N. C.

People say he's the jolliest member of '29, and no one dares deny it, for his laughing brown eyes, friendly chatter, and general inquisitiveness have endeared him to all of us. Paul is the "man" of our class and commands the heart of every girl in our "no man's land."

Good luck to you, Paul, and the best wishes of your fellow "classmates" always.

*"Ah what would the world be to us
If the children were no more?
We should dread the desert behind us
Worse than the dark before."*

—Children.

Irving Literary Society.
Home Economics Club (2, 3, 4);
Hikers' Club (2, 4); Y. W. C. A. Cabinet (3);
Class Representative to Council (3);
Secretary Home Economics Club (4);
Le Cercle Français (4);
Collegian Staff (4).



ELIZABETH ADAMS, A.B.

GIBSON, N. C.



Elizabeth speaks but little, but when you do hear from her you may well depend upon what she says. She is not at all aggressive, but she is thoroughly capable in whatever duties she may have to perform.

Although she is quiet and modest, her sweetness of character and her sincerity of heart have won for her numerous friends. "Lib" is studious and conscientious, and will be sure to get her "sheepskin." After that, she will probably travel abroad on the sea of matrimony.

"What sweet delight a quiet life affords."

—Sonnet.



ELIZABETH ANDREWS, A.B.
BETHEL, N. C.

Irving Literary Society:
School of Music (1, 2); Zoology Club, (2); Hikers' Club (2); Class Treasurer (4); College Marshal (4); World Affairs Club (3, 4); Fire Squad (4).

Ever ready to smile when you're glad, ever ready to sympathize when you're sad—that's "Bit." Truly she is a little "Bit," but she has proven that small packages may contain the most valuable articles.

A truer and more sincere friend cannot be found anywhere. Her droll wit makes her welcome to everyone who is sad and blue.

"How much lies in laughter; the cipher key, wherewith we decipher the whole man."

—Sartor Resartus.



Emerson Literary Society:
 House President of Main (2);
 Student Council (2, 3); Class
 Representative to Student Council
 (2); Executive Council
 (2); President of Emerson
 Literary Society (3); Presi-
 dents' Forum (3); Mathe-
 matics Club (2, 3, 4); Basket-
 ball Team (3, 4); Captain of
 Basketball Team (4); Hikers'
 Club (4); Class Prophet (4).



LOUISE AUSTIN, A.B.

CHARLOTTE, N. C.



Lively, lovely, and laughing—that's Louise! If there's any excitement around, "Heavy" is in the middle. Ready for anything from sleeping on the roof to directing "rush season." Her's is a personality which is a combination of seriousness and fun.

Always dependable when you're in trouble, Louise is always sympathetic and right there with a solution for them. We can't decide who loves her the most—"Jim," or the Senior class.

"Humor has justly been regarded as the finest perfection of poetic genius."

—Essays.



MARTHA AUSTIN. A.B.
ALBEMARLE, N. C.

Irving Literary Society;
School of Music (1, 2, 3, 4);
Sorores Togatae (1, 2, 3, 4);
Cheer Leader (3); Class Treasurer (3); World Affairs Club (3, 4); Secretary and Historian of World Affairs Club (4); Assistant Editor ECHO (3); Associate Editor *Collegian* (4); Glee Club (2, 3, 4); Y. W. C. A. Choir (2, 3, 4); Assistant Manager Glee Club (3); Manager Glee Club (4); Euterpe Club (4).

Martha is more than talented. She has an unusually fine voice, and also possesses the coveted talent of acquiring hosts of admirers, both from her schoolmates and the opposite sex. Martha's poise, graciousness of manner and calm disposition, are qualities of the true southern lady so fast disappearing.

A life of conventionality, of enjoyment of the best the world has to offer will bring Martha to the desirable goal of a ripe old age filled with naught but pleasant memories.

"Sweetest the strain when in the song the singer has been lost."
—The Poet and The Poem.



Irving Literary Society;
Hikers' Club (1, 2); Basket-
ball Team (3); Carolina Sum-
mer School ('27); Dramatic
Club (4); Le Cercle Français
(4).



ELIZABETH T. BELVIN, A.B.
DURHAM, N. C.



Endowed with the choicest of life's gifts—sincerity, frank-
ness and sweetness, we shall always remember "Lib" as one of
the most lovable members of our class.

But—her charm lies not only in the fact that she is a very
small blonde—but also in the fact that the mischievous twinkle
that lurks in her blue eyes never vanishes. However, this does
not keep "Lib" from being the kind of a friend that one can
depend on at all times.

"Mine's not an idle cause."

—Othello.



EMMALOU BENNICK, A.B.

CANTON, N. C.

Emerson Literary Society;
Elon College (1, 2); Duke
University Summer School (2);
Botany Club (3, 4); Hikers'
Club (3, 4); Spanish Club
(4); Lake Junaluska Summer
School (3); Zoology Club
(4); "G" Club (4); Col-
legian Staff (4).

Elon College's loss was G. C.'s gain when Emmalou decided to come to us in '27, and although she has been with us only two years we feel as if we have known her always. As a classmate, we find in her a true friend, sympathetic and understanding. She hardly ever worries (except about a certain dark blue serge coat).

Be always as we have found you, Emmalou, and may the best of good luck and happiness come to you.

*"She knew not those sweet words she spoke
Nor knew her own sweet way."*

—Daisy.



Irving Literary Society.
Hikers' Club (1); Naturalist
Club (2); Home Economics
Club (1, 3); Spanish Club (3,
4); Duke University, Summer
School ('27); State Summer
School ('28).



KATHLEEN BEST, A.B.

RALEIGH, N. C.



Kathleen is an earnest worker and a good sport; her rare sense of humor has saved many situations. She has the practical ability from "fixing things up right" to making staunch friends. Unselfish, dependable, sympathetic, loyal, gentle, and sincere is not a sum total of all we know about "Kat."

But it is said that true worth cannot be hidden, so we will call her "Best" and trust that her natural gifts and captivating personality will insure her success. Memories of our lovable "Senorita" Kathleen will ever live in the hearts of '29.

"Knowledge comes but wisdom lingers."

—Locksley Hall



LEOLA BLACK, A.B.

THOMASVILLE, N. C.

Lovable, loyal and sympathetic—that's "Slim"! A conscientious worker, a diligent student and a faithful friend to everyone. Her room is always crowded, for we all know that we'll have plenty of fun if we stay near Leola.

Brains and a rare sense of humor cleverly combined make her one of the most interesting girls in our class. She has sailed the bark *Collegian* safely through the rough storms—and added another successful year to its history. We can even be safe in saying that a newspaper is more than a newspaper—with Leola as editor.

"The hand that follows intellect can achieve."

—The Artist.



Emerson Literary Society:
Hikers' Club (1, 2); Spanish
Club (1, 2, 3, 4); Treasurer
Spanish Club (3); Lenoir
Rhyne College Summer School
(28); Editor-in-Chief of *Col-
legian* (4); Class Historian
(4).

Irving Literary Society.
 Louisburg College ('25, '26).
 School of Music (3); Biology
 Club (4); Sorores Togatae (3,
 4); Vice-President of Sorores
 Togatae (4); Honor Society
 (3, 4); Y. W. C. A. Choir
 (3, 4); Glee Club (3, 4);
 College Marshal (4); Society
 Marshal (4); Secretary of Ath-
 letic Association (4); Basket-
 ball Team (3, 4); Track Team
 (3, 4); Le Cercle Français
 (4); Winner of T. C. Smith
 Scholarship (3).



EVA BELLE BOBBIT, A.B.
 MACON, N. C.



Earnest, sincere, a friend at all times and a lovable pal is Eva Belle. Although she has been with us only two years, we have learned to love her and we realize how fortunate we were in receiving her from Louisburg College.

Bound to succeed wherever she goes and whatever she does. It takes girls like Eva to make this old world move cheerfully. Good luck and bon voyage in her journey through life.

*"Violets transform'd to eyes
 Inshrined a soul within their blue."*

—Evenings in Greece.



MARGARET BOOTH, A.B.
FOUNTAIN INN. S. C.

Irving Literary Society:
School of Music (1, 2, 3);
Hikers' Club (2, 3); Naturalist
Club (1, 2); Zoology Club
(3, 4); President Zoology Club
(3, 4); Honor Society (3, 4);
Sorores Togatae (2, 3, 4);
President Sorores Togatae (4);
Vice-President Class (4).

Modest, attractive, ready to help—that spells Margaret. She's the kind of girl who makes life worth living, who lends an attentive ear to everyone's troubles, and who adds tact to efficiency and executive ability. Margaret has meant much to our class for she has helped in upholding its ideals, with her loyalty, her enthusiasm and her influence.

Beautiful in character and outstanding in intellectual ability, Margaret was made to love and to be loved. Her many friends make us realize that such popularity must be deserved. We know that success and happiness will always be hers.

"How near to good is what is fair."

—Love Finds from Ignorance and Folly.



Emerson Literary Society.
Hikers' Club (1); School of
Music (1, 2); Society Marshal
(2); Zoology Club (2);
"Cutest" (2); Secretary of So-
ciety (3); Spanish Club (3,
4); Presidents' Forum (4);
Student Council (4); College
Marshal (4); President of Em-
erson Literary Society (4).



RUBY BRASWELL, A.B.

ELM CITY, N. C.



Ruby is the "little girl" of our class and her daintiness and congenial nature go to make up her unique personality. She is frank, unselfish and accommodating. Her freshness, her gaiety, her entrancing vitality and her warm friendship make her loved by all.

Big, laughing eyes—so clear and blue, so confidently merry, and a smile ready and winsome. There is a rare sweetness about this cute, petite girl and spontaneous charm which wins to irresistibly all who come in contact with her.

"Eyes so transparent

That through them one sees the soul."

—To Two Beautiful Eyes



RUTH BURKE, A.B.
GIBSONVILLE, N. C.

Irving Literary Society;
Hikers' Club (1); Secretary-
Treasurer of German Club (3);
German Club (3, 4); World
Affairs Club (3, 4); Program
Chairman of World Affairs
Club (3, 4); Sorores Togatae
(4); Student Council (4);
Fire Chief (4); ECHO Staff
(3); Assistant Business Man-
ager Message (3); Business
Manager Message (4).

Ruth is unique, talented, "herself."
Better to attempt an analysis of the ancient Greek oracles
than to attempt to analyze one of G. C.'s most individual per-
sonages. Ruth has the uncanny wisdom of a person much older
and more experienced, the frankness of one who has unshakable
faith in her own convictions; and a worldly poise unexcelled by
those far advanced in years. A striking personality indeed will
win for Ruth a place in her own world.

"The only jewel which will not decay is knowledge"
—The Praise of Books.



Emerson Literary Society:
Salem College ('25, '26); So-
ciety Censor (4); Spanish Club
(3, 4); Basketball Team (2,
3, 4); Hikers' Club (3).



JULIA PEGRAM BULLOCK, A.B.
HENDERSON, N. C.



Julia is a bundle of natural humor and accommodations which are paralleled only by her jolly disposition. She is the joy of the class with her bubbling spirits and capricious ways. Always cheerful, gay and optimistic, it is indeed a sad day for the rest of us when Julia forgets to smile. Her humor is catching—you aren't surprised when you laugh at what she says, you are rather surprised if you don't laugh.

Basketball is her long suit. Her playing of the game has been a wonder to her classmates, since she came to G. C. from Salem in '27. It is a mystery to everyone how she bounces nimbly over the court, everywhere at once—stockings torn, knees skinned but never giving up.

"Her smile was prodigal of summery shine."

—Old Songs and New.



MARY BADGETT BYRUM, A.B.
HIGH POINT, N. C.

Irving Literary Society.
High Point College (1); Hikers' Club (3); Mathematics Club (3, 4); High Point College Summer School ('28); "G" Club (4); Zoology Club (4).

Much can be said of Mary Badgett. One who saw her for the first time would say: "She's mischievous. I know!" She is that, and her shining brown eyes and her little grin show that she is ready for a good time—always. But back of her care-free attitude is a wealth of good sound reasoning and common sense.

Besides being our "gloom chaser," we always find her to be loyal, dependable and sincere. She possesses unusual intellectual attainments and is ever champion for the right. Her genuine qualities and her ambition and never failing optimism assure us that she is headed for the goal of success.

"Noble by birth, yet nobler by great deeds."
—Emma and Egnhard.



Irving Literary Society:
Salem College (1, 2); Glee
Club (3).



DOROTHY CALL, A.B.,
NORTH WILKESBORO, N. C.



Dimpled cheeks, sparkling blue eyes, blonde hair, pearly white teeth, and a winsome smile; these things characterize "Dot."

Charming, gentle, dignified and capable, she knows the art of using her time to the best advantage by dividing it between her studies and her social activities. She has such a sunny disposition that it is a pleasure to be in her company. "All the world loves a lover"—may well be said of "Dot."

"I would be friends with you and have your love."

—Merchant of Venice.



MARY EMILY CARR, A.B.
WALLACE, N. C.

Emerson Literary Society:
Hikers' Club (1); Fire Lieutenant (1, 3); Life Service Band (1, 2, 3, 4); Spanish Club (2, 3); Vice-President in Hudson Hall (2); Freshman Commission (2); President Spanish Club (3); German Club (3, 4); Business Manager of German Club (3); Y. W. C. A. Choir (3); Secretary of Class (3); Y. W. C. A. Cabinet (3, 4); World Affairs Club (3); Secretary of German Club (4); Photographic Editor of ECHO (4).

Merry, care-free, good-humored—that's Mary Emily. Always greeting you with a smile and never making others feel blue, her motto seems to be: "Pack up your troubles in your old kit bag and smile, smile, smile," for when "Mem" forgets to smile it is indeed a woeful day.

Can't isn't to be found in Mary Emily's vocabulary. She's always willing to do anything she can for others. With her accommodating manner she is bound to succeed in whatever she undertakes.

"Tidings do I bring, and lucky joys, and golden times."

—Henry VI



Irving Literary Society:
 Life Service Band (1, 2, 3, 4);
 Hikers' Club (1, 4); Class
 Representative (2); School of
 Music (2, 3); Chief Chapel
 Monitor (2, 3); Student Council
 (2, 3); Second Place Winner
 Bannaro (3); First Place
 Winner Horseshoe Pitching
 (2); Le Cercle Français (4);
 Monogram Club (4); World
 Affairs Club (4); Message
 Staff (4).



MARY ELIZABETH CARTER, A.B.
 HENDERSON, N. C.



Multiply the many traits that make up an all around good sport and the sum total will be Mary! She is diligent and earnest at the right time, but during recreation hours she makes an agreeable companion also. Her ability to be an excellent student as well as an excellent athlete verifies Mary's popularity.

Cautious for the welfare of others always, we feel that our class gained when the class of '28 lost. Perhaps, some of the students do not understand Mary's taste for "hamburger sandwiches," but the senior class does at any rate!

"A true friend is forever a friend."

—The Marquis of Lossie.



LOUISE CAVENESS, A.B.
GREENSBORO, N. C.

Emerson Literary Society.
German Club (1, 2, 3, 4); Bi-
ology Club (2); Art Club (1,
2); Corresponding Secretary of
German Club (4).

Louise, how difficult it is to write something characteristic of you! Even the seniors who know you best have not ceased to discover charming traits that have not been found before. Although she is a fun-loving and merry senior, she is reserved and refined to the *nth* degree.

Courteous as Louise is, she may seem rather reticent at times but this is one trait that accentuates her individuality, and not unfriendliness. She is queenly, both in attitude and manners, and perhaps this accounts for her interest in literature—take "Spenser's" *Faerie Queen* for instance!

"A smile that glow'd
Celestial rosy red, love's proper hue."

—Paradise Lost.



Irving Literary Society:
Critic Society (2); Censor Society (3, 4); Hikers' Club (1); Biology Club (2); School of Music (1, 2); Spanish Club (3, 4); Vice-President Spanish Club (4); Chief College Marshal (4).



HAZEL CHAMBLEE, A.B.
ZEBULON, N. C.



How scant and clumsy words seem to be when it comes to describing a girl like Hazel. Webster even turns traitor! Twashtai's materials may have been exhausted in the making of man but we doubt it, for a glance at Hazel shows us that she received her full share.

Clear, blue eyes, strangely sweet and appealing in expression—a snug cap of soft golden hair curling over her forehead and around her face—and most of all her attractive personality and winning smile has won for her the admiration of everyone. She has an abundance of common sense, being staunch in her convictions and always a champion for the right. When Hazel leaves us there will ever be a feeling that "somethings missing."

"Her very frowns are fairer far, than smiles of other maidens."
—She is Not Fair.



ELIZABETH E. CROSS, A. B.

SANFORD, N. C.

Emerson Literary Society;
Hikers' Club (1); Freshman
Commission (2); Vice-Presi-
dent of Class (2); Executive
Student Council (2); Treasurer
of Student Association (2);
Associate Editor *Collegian* (2,
3); Spanish Club (1, 2);
Home Economics Club (1, 2,
3, 4); Treasurer of Home Eco-
nomics Club (2); President of
Home Economics Club (3);
Experimenters Club (2, 3, 4);
Art Club (3); Naturalist Club
(4); Biology Club (3, 4);
Editor of Students Handbook
(3); College Council (2, 3,
4); Budget Collector (3); As-
sistant Editor of *Message* (3);
Assistant Business Manager of
ECHO (3); Y. W. C. A. Exec-
utive Cabinet (3, 4); Presi-
dents' Forum (4); World Af-
airs Club (4); Delegate to
Student Volunteer Conference,
Duke University (3); Repre-
sentative to Blue Ridge (3);
Y. W. C. A. President (4).

Energy and efficiency are Elizabeth's watchword. She never fails to do and do well anything for which she is called upon. Earnest, dependable, self-sacrificing, we wish there were more girls like Elizabeth. We often marvel at her alertness and vitality and wonder how one mere individual can do so many things and be so many places at the same time.

Consistent, sincere, and reliable, Elizabeth has won the love of her classmates and teachers alike. She is always ready to do her part of the task, and more if necessary. Elizabeth has the traits of a real leader. Her ability has been shown along many lines of endeavor and has culminated in the splendid work which she has done as president of the Y. W. C. A.

"Cheerfulness is an offshoot of goodness and of wisdom."
—Summaries of Thought.



Irving Literary Society.
 School of Music (1, 2, 3, 4);
 Secretary Athletic Association
 (2); Freshmen Commission
 (2); Life Service Band (1,
 2); Y. W. C. A. Cabinet (2);
 Biology Club (2); Class Ten-
 nis (1, 2, 3, 4); Vice-Presi-
 dent Athletic Association (3);
 Basketball Team (3, 4); Col-
 legian Staff (3); Le Cercle
 Français (4).



JESSIE RUTH CUNNINGHAM, A.B.

APEX, N. C.



Just a ray of sunshine on a rainy day and a fountain of consolation to one in trouble, no matter how blue one may be. Jessie will drop in and turn a tear to a smile in a minute by her ever-radiant smile. Her friendliness makes her an ideal pal, yet her disposition is unequalled and has won for her a multitude of friends.

Care free and witty, naughty but nice. You could search for miles and miles and never find a better sport anywhere than Jessie

"Friendship is love without either flowers or veil."

—Guesses at Truth.



RUTH E. CURTIS, A.B.

GREENSBORO, N. C.

Emerson Literary Society:
Tennis Team (3, 4); Le Cercle
Français (4); Dramatic Club
(4); Home Economics Club
(4); Tennis Champion (4).

Ruth—although very reserved and reticent from all outward appearances, we have found that she is extremely lovable and amiable on the inside. She is intelligent and studious—and this is proof enough that she is liked by all the faculty as well as her classmates. Not only does she excel in academic work, but she has won many honors in athletics also.

Calm and courteous at all times, Ruth can be depended on for everything. She is indifferent to praise but does her best in anything that she attempts. Ruth is talented in art—especially in cartooning the various types of faculty members. She is indeed one of the members of the senior class who is indispensable.

"My heart is ever at your service."

—Timon of Athens.



Irving Literary Society:
Hikers' Club (1, 2, 3); Home
Economics Club (1); Spanish
Club (2, 3, 4); Naturalist
Club (2); College Marshal
(4); Basketball Team (2, 3).



DELLA DEES, A.B.
FREMONT, N. C.



Do you know the girl with the bright eyes, the winsome smile, the heart full of love . . . that's Della. Her magnetic personality and her knack for winning hearts has gained for her innumerable friends, and in making her friends she constantly holds this idea in mind. "To have a friend is to be one."

Della herself is ever so tiny—but just remember: "Things of the greatest value are done up in the smallest packages," and too, you will agree that it is "better to be small and shine than to be great and cast a shadow." Thus we predict for Della a happy future filled with golden sunshine and crowned with noble success.

"I would help others out of a fellow feeling."

—Anatomy of Melancholy.



ANNIE LEE DENNING, A.B.
BENSON, N. C.

Emerson Literary Society:
School of Music (1, 2, 3);
Fire Lieutenant (1); Spanish
Club (1, 2, 3); German Club
(2, 3, 4); Sorores Togatae
(1); Collegian Staff (4); Y.
W. C. A. Choir (1, 2); Re-
porter of German Club (4);
Life Service Band (1, 2).

Among our few perfect blondes is Annie Lee. She possesses a dual personality which makes her vastly interesting to both sexes. When ready for town we find her strikingly vivid and attractive. When ready for books equally determined and persevering.

Daring to stand by her opinions has won for her many friends and she has kept them by her frankness and sincerity. Once a friend, always a friend, that's Annie Lee. And may the best of luck and happiness always be hers.

"I wish you all the joy that you can wish."

—Merchant of Venice



Irving Literary Society;
 Life Service Band (2, 3, 4);
 Music Chairman of Life Service
 Band (4); Y. W. C. A. Choir
 (2, 3, 4); Y. W. C. A. Cabin-
 et (3); School of Music (1,
 2, 3, 4); Spanish Club (1, 2,
 3, 4); Secretary of Spanish
 Club (3); Hikers' Club (1, 2,
 3, 4); Class Basketball Team
 (2); Track Team (2, 3, 4);
 First Place Winner (2, 3, 4);
 Delegate to N. C. C. W., Play
 Day (4); "G" Club; "Miss
 '29" (3); "Miss G. C." (3);
 Vice-President of Athletic As-
 sociation (4); Euterpe Club
 (4); Reporters Club (4);
 ECHO Staff (4); Honor So-
 ciety.



MARY DRUM, B.M.
 CATAWBA, N. C.



Much can be said of Mary Drum. She's just the kind of girl with whom one could be cast away on a desert island and never be lonely. She has curly hair, fair complexion, and "absolute pitch." As a student, she stands in the front ranks; moreover, she does not have to "dig" for it. Because Mother Nature chose to endow her with quick, sharp intellect as a tool for learning. In musical technique she is unexcelled. When there is anything pertaining to athletics, Mary Drum always has plenty of energy and pep. She plays the game fair and square and always come out with the winner.

Democratic, industrious, conscientious and gifted with ability, and yet vivacious and gay, spreading joy with her laugh are only a few things we know about Mary. We wonder which will determine her future, her "absolute pitch," or her "two miles."

"Youth comes but once in a lifetime."

—Hyperion



ELEANOR EDWARDS, A.B.
KINSTON, N. C.

Irving Literary Society.
Hikers' Club (1); Society Marshal (2); Duke University Summer School ('26); Treasurer of Society (3); May Court (3); Secretary of Society (4); College Marshal (4); Dramatic Club (4); World Affairs Club (4); Beauty (4).

Eleanor has been given the most coveted honor of being our prettiest girl at G. C. "Lady Fate" not only gave her beauty, but she waved her magic wand again and bestowed upon her charm and a lovable personality.

Eyes that are brown, mischievous and sparkling, reflecting happiness and the joy of living. She is a friend one often reads about, but finds only once in a life time. May she continue throughout life to display that same happy disposition—making this world a bit more beautiful for having lived in it.

*"Beautiful in form and feature
Lovely as the day,
Can there be so fair a creature
Formed of common clay?"*

—Masque of Pandora.



Irving Literary Society:
Track Team (1); Sorores To-
gatae (1, 2, 3, 4); Secretary of
Sorores Togatae (4); Basket-
ball Team (1, 3); ECHO Staff
(3); Y. W. C. A. Choir (2,
3); Snapshot Editor of ECHO
(3); Fire Squadron (4); Le
Cercle Français (4).



LILLIE GILL EVERHART, A.B.
NEWTON, N. C.



"Gay Lillie," as she is known to us, loves her fun! She is in for anything that calls for a little bit of mischief—her sparkling brown eyes say that for her. Since the gods have endowed her with an exceedingly brilliant intellect, she has found it easy to combine work and play.

Ever a friend, if once a friend, Gill has found a place in the hearts of all of us. We can imagine her in the future doing anything—from studying in "Gay Paree" to receiving the love of her "Prince Charming." And we wish for her, happiness always.

"The human heart finds nowhere shelter but in human kind."
—The Spanish Gypsy.



FRANCES FELMET, A.B.
ASHEVILLE, N. C.

Emerson Literary Society;
Freshman Commission; *Collegian* Staff (1); Biology Club
(1); Class President (2, 3);
Life Service Band (2, 3);
Secretary of Life Service Band
(3); Assistant Manager of
Collegian (2); Assistant Busi-
ness Manager of *Message* (2);
Dramatic Club (1, 2, 3, 4);
Secretary of Dramatic Club
(2); Second Vice President of
Students' Association (2);
Treasurer of Y. W. C. A. (3);
Business Manager of Dramatic
Club (3); G. C. Players (3,
4); World Affairs Club (3);
Honor Society (3, 4); Assis-
tant in French (3, 4); Chaplain
Emerson Literary Society (3);
Editor-in-Chief of *Message*
(4); Vice-President of Y. W.
C. A. (4); Assistant in Stage-
craft (4); Le Cercle Français
(4); President of Le Cercle
Français (4); Most Versatile
(4).

Faithful, loyal and loving to everyone alike—this sums up Frances! Merry blue eyes that laugh and crinkle up in a most bewitching way that captivates everybody—from the timid "freshie" to the sternest of instructors. And how!

Faith an' begorra, if she isn't a typical Irish lady when it comes to joking and playing tricks! Not only can she be a friend in the true sense of the word but she can make the highest of grades with no effort at all—seemingly. Frances has a wonderful dramatic ability, and she can play with perfect ease the part of the child as well as the part of the adult. She does numerous things along different lines and does them all well, and we certainly hope she will succeed in life as well as she has succeeded in her college activities.

*"So well she acted all and every part
By turns—with that vicious versatility."*

—Don Juan.



Emerson Literary Society.
Lousburg College ('25, '26);
Naturalist Club (3); Spanish
Club (3); School of Music
(3). Le Cercle Français (4).
Zoology Club (4).



NANNIE ELIZABETH FIELDS, A.B.
KINSTON, N. C.



No better companion and mate e're tread the earth than Nannie. Just as quiet, serene and wise as an owl, pleasant and unassuming, we know you, and to know you is to love you. You are a very conscientious worker and a diligent student, yet you believe in having a good time in the right way.

Few girls possess such an attractive personality, which combined with your ability and determination will win success for you in whatever you undertake.

"Friend more divine than all divinities."

—The Spanish Gypsy.



FRANCES FORREST, A.B.
HILLSBORO, N. C.

Irving Literary Society.
Vice-President Society (4);
Hikers' Club (1); Spanish
Club (2, 3, 4); Sorores To-
gatae (4); Executive Council
(2, 3); Vice-President Hudson
Hall (3); Register Inspector
(4); Y. W. C. A. Cabinet (1,
2, 3); Y. W. C. A. Executive
Council (2); Fire Lieutenant
(1); Collegian Staff (4); Mes-
sage Staff (2, 4); World Af-
fairs Club (3, 4); Business
Manager of the Handbook (3).

Funny how it is so hard to find just the right thing to say for Frances. There are so many nice things that one hardly knows where to begin—as for looks, she is all there; a better sport could never be found; all in all, she is keen.

Forgettable? I should say not! She is "just the type" to be remembered by all who have ever known her. Frances has been well known about the campus the four years that she has been at G. C., and we know that she will make her Alma Mater proud of her by making a mark in the world.

"Nothing great was ever achieved without enthusiasm."

—Essay.



Irving Literary Society;
Le Cercle Français (4).



IDA MAE FREELAND, A.B.
GREENSBORO, N. C.



If you can hear a merry little giggle and a soft drawing voice say, "Well, I declare," you may be quite sure that's Ida Mae! She is already for a good time. A little mischievous? Perhaps, but she can be serious.

Friendly to all about her, kind and considerate of others. Happiness and enjoyment she sees in everything. This marvelous ability helps to make the dreary things in life shining and lovely.

"With thee conversing, I forget all time."

—Paradise Lost.



CORNELIA FRIZZELLE. A.B.
SNOW HILL. N. C.

Irving Literary Society;
Zoology Club (4); German
Club (3, 4); Vice President
German Club (4); Louisburg
College ('26); Salem College
('27).

"Connie" is the kind of girl who always comes "smiling thru" in 'most everything—whether good or bad. She has a big heart and a congenial nature. She is always ready to laugh with you when you are happy and sympathize with you when you are unhappy.

Faithful and loyal to everyone! If there is anything that she can do for you, she will do it gladly. Her friends are many—both on and off the campus. We are certain that Cornelia will be successful in anything, from teaching school to "making a home."

*"So light a foot
Will ne'er wear out the everlasting flint."*

—Romeo and Juliet.



Emerson Literary Society;
Experimenters' Club (2, 3, 4);
Zoology Club (4); Botany
Club (3, 4); President Botany
Club (4); Honor Society (4).



HELEN GILL, A.B.

EMPORIA, VA.



How little or how much the task may be or mean to her she has a hand ready to do each bit with a thoroughness characteristic only of those people we call "scientists." The realm of experimenters is truly her calling and the joy of her school life lies in the heart of her work. Go where you may or do what you will. Helen, your lot will be one of success and attainment because you possess a willing hand, a smiling face, and a keen sense of humor; qualities which demand respect and love

"How my achievements mock me! I will go meet them."

—Troilus and Crisseda.



DORIS GILLETTE, A.B.

ROCHESTER, N. Y.

Delectable Doris, who can resist thee? Doris' affectionate nature, coupled with charm and a winning personality, compels the admiration of both sexes. How can she help it if a dozen men find themselves in love with her at the same time? Her warm and affectionate disposition is as natural as for the sun to send forth its rays, and her vivacious charm is just as irresistible.

Golden hair and sparkling brown eyes are indicative of her spice and wit. She talks interestingly on a host of subjects, and knows how to do an unbelievable number of things. To top it all, she is a rare good sport, daring and unafraid. If you get into a tight place—go to Doris. She has a head full of ideas and is generous to offer them. She is easily our "most original."

*"I dreamt I was in love again
With the one before the last."*

—The One Before the Last.

Emerson Literary Society:
School of Music (1, 2); Hikers' Club (1, 2); Spanish Club (2, 3); Zoology Club (3); Experimenters' Club (4); Art Club (4); Critic Society (3); University of Rochester Summer School ('28); Collegian Staff Typist (3); Editor-in-Chief of ECHO (4); Most Original (4).



Irving Literary Society;
 Glee Club (1); School of
 Spoken English and Dramatic
 Art (1, 2, 3, 4); Dramatic
 Club (1, 2, 3, 4); Vice-Presi-
 dent of Dramatic Club (3);
 Y. W. C. A. Choir (1, 2, 3,
 4); Chaplain of Irving Literary
 Society (2); Vice-President of
 Irving Literary Society (3);
 Y. W. C. A. Executive Cabinet
 (2, 3); Y. W. C. A. Social
 Committee Chairman (2);
 Secretary of Y. W. C. A. (3);
 Most Charming (3); ECHO
 Staff (3); World Affairs Club
 (3, 4); Freshman Commis-
 sion; G. C. Players (3, 4);
 President of Irving Literary So-
 ciety (4); College Marshal
 (4); Presidents' Forum (4);
 Big Council (4); Art Club
 (4).



VIRGINIA DAVIS GRIFFIN, A.B.

CHARLOTTE, N. C.



Visualize for yourself the dainty lady with the golden curls and blue eyes of long ago who danced the minuet, and one can imagine the Virginia of 1929 in modern attire, but with the same charming personality. Perhaps, our Virginia may not be quite as timid and demure as the one of old, but we must remember that this is the twentieth century.

Gifted with the art of speaking as well as dramatic ability, she has become one of the foremost G. C. players. And some day she will probably become popular in the theatrical world and pay her own bills, but sometimes "bills" can become very troublesome.

"A Rower in the moonlight, she was there—"

—Blue Evening.



SOPHIA HARGETTE, A.B.

MT. OLIVE, N. C.

Emerson Literary Society;
 Biology Club (2); Zoology
 Club (3, 4); Chairman of
 Program Committee of Zo-
 ology Club (4); Publicity
 Chairman of Zoölogy Club
 (4); Y. W. C. A. Cabinet (3,
 4); *Message Staff* (3); *Col-
 legian Staff* (4); Life Service
 Band (2, 3); World Affairs
 Club (4); Publicity Chairman
 of World Affairs Club (4);
 Secretary of Class (4).

Sunshine, cheer, good nature, happiness—that's Sophia! If all were like her this ole' world would be a much happier place to live. Her cares—she really has them! They are hidden under a joke to cheer up our blues. She radiates sunshine wherever she goes and is known for the readiness of her wit.

Happy is the one whom Sophia chooses as a friend. Sincere, lovable, thoughtful, she is a friend who "loveth at all times." Her broad sympathies and willingness to help anyone in need makes her sought by all as a confidant.

"He had a head to contrive, a tongue to persuade, and a hand to execute any mischief."

—History of the Rebellion.



Emerson Literary Society;
School of Music (1); Hikers'
Club (1, 2); "G" Club (2,
3, 4); Life Service Band (1,
2); N. C. C. W. Summer
School ('27, '28); World Af-
fairs Club (4).



CLARA HARRISON, A.B.
THOMASVILLE, N. C.



Clear, sparkling, brown eyes always come into one's mind when Clara's name is mentioned. Indeed, her eyes are true windows of her soul, from whence shines a light as pure and loving and beautiful as the girl herself.

Happy in her own sweet way and with a happiness that is ever contagious, she is seen going about her work. And surely she has grit, for it is not everyone who can drop out of school for a whole year and still be able to graduate with her class.

"Our deeds determine us, as much as we determine our deeds."

—Adam Bede.



OCTAVIA HATCH. A.B.

LIBERTY, N. C.

Irving Literary Society:
School of Music (1, 2, 3, 4):
Life Service Band (1, 2, 3, 4):
Secretary of Life Service Band
(2); Y. W. C. A. Cabinet
(2); Y. W. C. A. Executive
Cabinet (2, 3); World Affairs
Club (3, 4); Reporters' Club
(4); Class Representative to
Student Council (4).

O might well stand for optimism, of which Octavia possesses an abundance. Her cheerfulness and enthusiasm in work or play account for her steady progress. With her pleasing personality, capability and diligence, she will make an excellent music teacher, or teacher in whatever field she may choose.

Hi for helper. Who is more willing to do her share than Octavia? We hope we haven't imposed on her kindness, but it is such a pleasure to call on one who is so dependable and who always responds. We predict for her a happy future crowned with success. Our love and best wishes go with her.

"Few persons have courage enough to appear as good as they really are."

—Guesses at Truth.



Irving Literary Society:
 Dramatic Club Orchestra (1, 2); Treasurer of Students' Association (2); Student Council (2); Mathematics Club (1, 2, 3, 4); Secretary Mathematics Club (2); Vice-President of Mathematics Club (3); Treasurer of Mathematics Club (4); President of Class ('28); Editor of Handbook (2); ECHO Staff (3); Collegian Staff (3, 4); College Marshal (4); Experimenters' Club (4); Honor Society (3, 4); Y. W. C. A. Cabinet (3, 4); Undergraduate Representative (4); Student Delegate to Blue Ridge (3); President of Senior Class (4); Presidents' Forum (2, 4); Mathematics Assistant (4); World Affairs Club (4); President of World Affairs Club (4); Freshman Commission; Most Intelligent (4).



ETHEL HERRING, A.B.

NORFOLK, VA.



Ethel is the efficient, intelligent and brilliant member of our class. She is talented in everything that we have given her to do so far—from the trifles of our class to the really big things. She is indeed the most capable, and when a task is given to her to accomplish one can rest assured that it will be done to the best of her ability and to the satisfaction of everybody.

Humor and happiness are favorite traits—and Ethel possesses both. If we should speak of the senior class as one "big family," we should speak of Ethel as "the family counsellor," because we consider her advice in everything as the very best. She is gifted also in the art of writing, and we know that Ethel will be successful in anything that she chooses as her life's work.

"Genius must be born, and never can be taught."

—To Conquer



ANNIE FAYE HUNT, A.B.

MARION, N. C.

Irving Literary Society;
President Athletic Association
(4); First Place Winner (1, 2,
3, 4); Track Team (1, 2, 3,
4); Hikers' Club (1, 2, 3, 4);
Freshman Commission (2);
Home Economics Club (3, 4);
President Home Economics
Club (4); Y. W. C. A. Exec-
utive Council (1, 2); Student
Council (1, 3); Executive
Council (1, 3); "G" Club (2,
3, 4); Delegate to Blue Ridge
(3); House President, Main
Building (1); House President,
Hudson Hall (3); Most Ath-
letic (2); Y. W. C. A. Choir
(2, 3, 4); School of Music
(1); Presidents' Forum (4);
Fire Lieutenant (1); Life
Service Band (1, 2, 3); Class
Basketball Team (1, 2, 3, 4);
Class Tennis (4); Miss '29
(2); High Scorer in Track
(3); Sportsmanship (4);
Cheer Leader (4).

Faye is one of the most popular and dependable members of our class. Her eternal bigness of heart we all admire; her disposition to always "lend a helping hand" has won for her many friends. As Athletic President she has proved herself to be a leader.

Her quaint charm and her all-round qualities have won for her the best wishes of all G. C.

"Affection is the broadest basis of a good life."

—Daniel Deronda.



Irving Literary Society.
Botany Club. Zoology Club:
Experimenters' Club: Honor
Society (3, 4).



FRANCES KIME, A.B.
GREENSBORO, N. C.



Far and wide would one have to search before she would find a truer and better friend than Frances. Those who have been fortunate enough to come into close friendship with Frances have found her to be a hard worker and a sincere character.

Kind, accommodating and dependable, she has done much to make Greensboro College a pleasant place, and if her future can be judged by her past, we predict for Frances a successful career in whatever field of work she may undertake.

*"How poor are they, that have not patience!
What wound did ever heal but by degrees?"*

—Othello.



LILY CARY KING, A.B.
RUFFIN, N. C.

Irving Literary Society;
Davenport College (1, 2);
Carolina Summer School; Duke
Summer School; Basketball
Team (3); Class Cheer Leader
(3, 4).

Lest ye forget—but then one could never forget Lily after having once known her! For was she not the one who started that notorious oculai epidemic which wrought havoc upon all G. C.? Even at that, Lily's good qualities are far too numerous to mention: It would be superfluous to write about her individuality, her sweet and unselfish nature, but we would like to say that one of her greatest assets is her ability to put her whole soul into any activity that arrests her attention.

Knowing Lily as we do, we should predict for her a future of love and happiness—no matter what course she pursues.

"Be loving and you will never want for love."

—Olive.



Irving Literary Society;
 Dramatic Club (1, 2, 3, 4);
 Greensboro College Players (3,
 4); School of Expression (1,
 2, 3, 4); Raphael Art Club
 (4); World Affairs Club (3,
 4); "G" Club (2, 3, 4); Hike-
 ers' Club (1, 2, 3); First Place
 Winners (1, 2, 3, 4); Basket-
 ball Team (1, 2, 3, 4); Cap-
 tain Basketball Team (1, 2,
 3); Relay Team (1, 2, 3, 4);
 Track Team (1, 2, 3, 4);
 Vice-President of Dramatic
 Club (4); President, Hudson
 Hall (3); Executive Council
 (3); Student Council (3);
 Y. W. C. A. Cabinet.



ELIZABETH KNOWLES, A.B.
 HERTFORD, N. C.



Elizabeth is candid, positive and frank. She is a trifle conventional, for nothing of the radical ever takes root in her nature. Elizabeth never compromises; she meets life's problems with unflinching determination and she faces the issues squarely.

Knowing that her rôle in life is one so usually filled uncapably, Elizabeth has become very accommodating, serving where others fail. A bit curious is she—a bit sensitive; every inch the womanly woman.

"Nothing endures but personal qualities."
 —Song of the Broad Axe.



GERTRUDE KNOX, A.B.
LELAND, N. C.

Emerson Literary Society;
Home Economics Club (2, 3, 4); Botany Club (3, 4); Zoology Club (3, 4); Experimenters' Club (4); Second Vice-President Student Council (4); Secretary Zoology Club (4).

Gee! How can anyone write something about a person with so many admirable traits? It would be impossible to say in a few words how much our class values Gertrude, because of her dependability and faithfulness.

Kindliness and amiability are characteristics that anyone would be proud to possess. And certainly Gertrude ought to be praised, because hasn't she used these traits to the best of her ability for the benefit of our class?

"Character is higher than intellect."
—The American Scholar.



Irving Literary Society;
School of Music (1, 2, 3, 4);
Life Service Band (2, 3, 4);
Euterpe Club (4); World Affairs Club (4).



LUCY LAMBETH, B.M.

JONESBORO, N. C.



Long would one have to search to find a truer one than Lucy. She is always endeavoring to help someone. She is one of the few people who can always find something good to say about everybody. Although she is very quiet and reserved, the class of '29 thinks that Lucy Lambeth is one of the truest and sincerest friends.

Lucy is also one of the few in our class who has continued in her music course during all four years. She has been an earnest worker in everything she has undertaken. Much success and happiness are wished for Lucy in her future life.

"The mould of a man's fortune is in his own hands."

—Essay of Fortune.



SELMA LANE, A.B.
STANTONSBURG, N. C.

Irving Literary Society.
Spanish Club (2, 3, 4); Nat-
uralist Club (2); Home Eco-
nomics Club (1); Art Club
(2); Hikers' Club (1, 2, 3);
Basketball Team (2, 3, 4);
Track Team (3); First Place
Winner (2, 3).

Say! are you looking for a girl whose face is a letter of recommendation and whose heart is a letter of credit? Well, here she is. She's more'n likely to do you lots of good; but there's one thing about old Selma; if she doesn't do you any good, she "ain't gonna do you no harm!" She's kind, she's modest, she's sincere and true.

Lovable and patient is Selma; we wish we had a dozen more like her. The more one knows her the more one loves her. We predict for Selma a bright and happy future with many successes.

"The only way to have a friend is to be one."

—Essay on Friendship.



Irving Literary Society;
 Life Service Band (2); Hikers'
 Club (1, 2, 3); Naturalist
 Club (2); Zoology Club (3,
 4); Mathematics Club (2, 3,
 4); President Mathematics Club
 (4); Secretary Mathematics
 Club (3); Vice-President Zo-
 ology Club (4); "G" Club (2,
 3, 4); Track Team (3); First
 Place Winner (3); Sorores
 Togatae (2, 3, 4); Honor So-
 ciety (3, 4); Laboratory As-
 sistant in Zoology (4).



SARAH LEROY, A.B.
 NEWBERRY, S. C.



"Still waters run deep." This may well be applied to Sarah, for she is a girl of sterling qualities. She has a brilliant mind and is not only a good student but a good sport as well. Sarah has taught us that true efficiency is the exercising of common sense plus practical ideas.

Loyal, dependable, sincere and frank, do not make a sum total of all we might say about Sarah. Once she has chosen you for a friend, she is your friend forever. May the best life has to offer be hers!

"Thy modesty's a candle to thy merit."

—Tom Thumb the Great.



SARA LUCILLE LOVE, A.B.
KINGS CREEK, S. C.

Emerson Literary Society:
Columbia College (25); Ger-
man Club (2, 3, 4); Treasurer
German Club (4); Exper-
imenters' Club (3); Art Club
(4).

Sweet—twenty and never been—but you know the rest of it. North Carolina gained when South Carolina lost Sara—but what are we going to do when she goes back to stay? Though she has only belonged to us these past two years, we feel that she can be trusted with the secrets of the four-year olds.

Love—her very name proves her character. Surely there's nothing wrong with a flapper if she's like Sara. She goes merrily through life—or rather from one boy to another—and finds joy in everything. Even her victims will admit that they enjoy having their hearts broken—when she breaks them!

"Was ever a feather so lightly blown to and fro as this?"
—Henry VI.



Irving Literary Society.
 Freshman Commission: Hikers'
 Club (1, 2): Home Economics
 Club (1): Art Club (2):
 Treasurer Athletic Association
 (2): Experimenters' Club (2,
 3, 4): President of Experi-
 menters' Club (3): Honor So-
 ciety (3, 4): Zoology Club
 (3): Vice-President of Class
 (3).



ELENE WILLIAMS MCGIRT, A.B.
 WILMINGTON, N. C.



Elene, with an air of utter indifference; Elene, with a calm-
 ness of manner and unruffled disposition. Elene, with an hour
 to live and all the best of life to cram in an hour; Elene, with
 honor grades; Elene, with 'most everything from A to Z—
 'mostly "Z"'

Much can be written about this rather unique member of
 the senior class, but nothing this side of a Philadelphia lawyer
 could analyze her actions. Perhaps it would better characterize
 her make-up if we should write: "Elene acts through a natural-
 ness all her very own and that is the reason all the rest of the
 senior write-ups won't help us!" She is Elene, our Elene,
 whom we love, admire and wish for her an unrivalled success of
 the good record she has made at G. C.

"Charms strike the sight, but merit wins the soul."

—Rape of the Lock.



HELEN MARSH, A.B.
HIGH POINT, N. C.

Her friendliness toward everybody, sincerity in everything and splendid character make Helen one of the most popular and best-loved members of our class. Forever even-tempered, calm, and resolute in a given trust, she never flatters. Helpful to the last degree, her magnanimity of soul has never been crowded. She will always be loyal, gentle and cultured.

More than few hearts has she won by her old-fashioned charm combined with the best parts of a modern girl's life. She has more dates, more "specials" and a bigger picture than any of us to explain it all. "Jimmy," you are a lucky boy—"did you know it?"

"He is gentle that doeth gentle deeds."

—Canterbury Tales.

Irving Literary Society;
School of Music (1); Hikers'
Club (1); Society Marshal
(2); World Affairs Club (4);
College Marshal (4).



Emerson Literary Society:
Freshman Commission (2):
Dramatic Club (3): World Affairs Club (3, 4): Class Cheer Leader (2): Vice-President Society (3): Hikers' Club (1): Fire Squad (4).



LETTIE MITCHELL, A.B.
KINSTON, N. C.



Lovable Lettie, one of the most popular members of our class, has been endowed with a combination of charms: Attractiveness and the ability to make friends easily. Brim full of fun and laughter, Lettie always seems to be running over with the joy of living. Never disheartened herself, she is ever-ready to drop a word of cheer to those about her.

Mischief is in her make-up too, but was he not right who said, "He who hath not a dram of folly in his mixture, has pounds of much worse matter in his composition?" Lettie's fun is always welcome, for she is always a sure cure for the blues. We love her because she is a loyal, sincere and constant friend

"I have a heart with room for every joy."

—Festus.



NIGHTINGALE MOORE, A.B.
SPRAY, N. C.

Emerson Literary Society.
Asbury College ('25): Hikers'
Club (2, 3, 4); Life Service
Band (2, 4); N. C. C. W.
Summer School ('28); Nat-
uralist Club (4); Home Eco-
nomics Club (4); Senior Track
Team (4); First Place Winner
(4); "G" Club (4).

Now who can the little girl be tripping so gayly down the walk? Of course, we all know it is "Gale" with another "special." For who has more candy and dates, and who has a larger picture than "Gale?" She has so many calls, it has been suggested that a phone be installed in her room for her own private use.

Moreover, "Gale" is just the girl we want in work or play—always kind and sympathetic. Then too, when she sets out to do something she's sure to win. A good sport, a pal "true-blue," a sunny disposition—that's "Gale!" We couldn't do without you!

"There's mischief in this man."

—Henry VIII.



Emerson Literary Society;
Message Staff (1, 2, 4); Lenoir
Rhyne College (3); Home Eco-
nomics Club (2, 4); Spanish
Club (1, 2); President of Life
Service Band (2).



CAROLYN NICHOLS. A.B.
HICKORY, N. C.



Carolyn is one of our most unusual girls—original in expression—staunch and plain-spoken in her convictions. She has a little of the "take it or leave it" style in her make-up that renders her all the more attractive; for, who does not love independence?

Nevertheless, Carolyn's independence takes not a whit from her lovable womanliness in appearance or actions. We never find her idle, for she is always busy with embroidery, books, or dates. So here's to you, little one, may the best of happiness be yours!

*"As frank as rain
On cherty blossoms."*

—Aurora Leigh.



LENA MAE PALMER, A.B.
SANFORD, N. C.

Lena Mae is both a student and a friend—but we all agree that she is very real and individual. By individual, we mean that she is a type who resembles none other. She is true to all her friends. Because of her sincerity, individuality and honesty, she has "hitched her wagon" to a star far above the average, and her sunny disposition will help her win success.

Personal qualities—they are indefinable! She is symbolic of the lovely ladies of long ago, but these qualities cannot be appreciated until one has broken through the reserve that surrounds her. She will always be your friend and pal, because Lena Mae appears this way to her class: "I'm no traitor to one who has been my friend."

"Of their own merits modest men are dumb."
—Epilogue to the Heir-at-Law.

Emerson Literary Society;
Sorores Togatae (2, 3, 4);
Y. W. C. A. Choir (3); Vice
House President of Hudson Hall
(3); Spanish Club (3, 4);
Duke University Summer School
('28); Le Cercle Français (4).



Emerson Literary Society;
Hikers' Club (1); Fire Lieutenant (2); Life Service Band (1, 2, 3, 4); Y. W. C. A. Choir (3); Dramatic Club (3); World Affairs Club (3, 4); Y. W. C. A. Cabinet (3, 4); Home Economics Club (4); Le Cercle Français (4).



SELMA RECTOR, A.B.
MARSHALL, N. C.



Sincere, forever even-tempered, sympathetic and understanding; all of these qualities go to make up Selma. "None knew her but to love her." When it comes to friends, she's got 'em! She is always ready for a good time, yet she is more than willing to do her share of the work.

Reliable in all things she undertakes, and ever-ready to help, her heart is as big as any of her beloved mountains. Good luck to you, Selma, and success ever!

"The mind, the music breathing from her face."

—Bride of Abydos.



MARGARET RIVES, A.B.
SANFORD, N. C.

Emerson Literary Society;
Dramatic Club (1, 2, 4); Secretary of Class (2); Freshman Commission; Reporter on *Collegian* Staff (2); Manager of "Y" Store (2); Second Place Winner (2); Hikers' Club (1, 2); N. C. C. W. Summer School ('28).

Many pupils she had last year, but many subjects she has this year. However, with all this, Margaret, with a cheerful and optimistic attitude will graduate with the class of '29 and will be one loved by many.

Ready at all time to do her duty; with a personality combining seriousness and fun—more fun—she is sure to find a silver lining behind every cloud. Men! She has them on the string. "No kiddin'" when it comes down to brass tacks, Margaret is the one we can depend on. We wish for her luck and much of it throughout her life.

"O lady, nobility is thine and thy form is the reflection of thy nature."

—Euripides.



Irving Literary Society;
 School of Spoken English and
 Dramatic Art (1, 2, 3, 4);
 Dramatic Club (1, 2, 3, 4);
 G. C. Players (3, 4); Secretary
 and Treasurer of Dramatic
 Club (4); Business Manager of
 Dramatic Club (4); ECHO Staff
 (4); Student Council (3);
 Spanish Club (3); Le Cercle
 Français (4); Hikers' Club (1,
 2); Assistant Chapel Monitor
 (2); Chief Chapel Monitor
 (3).



GRACE SHEETS, A.B.
 WINSTON-SALEM, N. C.



Generally these Winstonites are apt to be the least bit disdainful of the other cities in this state—but not Grace. A friend to everyone, and a staunch '29er. Her room is always crowded, for she knows how to have lots of fun, as well as to help solve our troubles.

Seeking for help? Just find Grace—she's the backbone of the Dramatic Club this year—that is, if you call being everything from scenery shifter to master of ceremonies being the backbone. Anyway, we could not get along without her.

"Bid me discourse, I will enchant thine ear."

—Venus and Adonis.



JANIE SINCLAIR, A.B.
WAVELY HALL, GA.

Emerson Literary Society:
Freshman Class Representative (1); Student Council (1);
Freshman Commission (1);
May Day Attendant (1, 2);
Collegian Staff (2); Society
Marshal (2); Treasurer Emerson
Literary Society (3); Bas-
ketball (3, 4); Hikers' Club
(4); College Marshal (4);
Vice-President Emerson Literary
Society (4); ECHO Staff (4)

Jolly and merry are two adjectives that describe Janie—absolutely! She bubbles over with fun and gaiety, and therefore proves herself to be an excellent addition to our class—but who wouldn't be with a disposition like Janie's?

Sincerity and loyalty are two of Janie's finest traits—to her class and to her friends. It is evident with all of these admirable characteristics that she will make a success in anything that she will attempt, but judging from the many dates with "a certain party," her career will not be a business one!

"He wears the roses of youth upon him."

—Anthony and Cleopatra.



Irving Literary Society;
Zoology Club (3, 4); Botany
Club (3, 4); Wake Forest
Summer School ('27); Experi-
menters' Club (4); World Af-
fairs Club (3, 4).



BETTY HUNTER STALLINGS, A.B.

MACON, N. C.



Blessed is she with a deep, sincere friendship and loyalty to those whom she calls friends. To the one who gave her "Hunter" as a middle name we would extend a word of commendation, for truly you must have forseen the nature which causes Betty to seek and find the things that are worthwhile. *Duty* is her motto, but when duty is done—she has her play. There is a touch of "imp" in her nature which reveals in Betty a combination of seriousness and playfulness.

Somewhere in the world, Betty, there is a place for you to fill, and as you go forth to face the future of things unknown—may you bring much joy into the lives of those with whom you are associated. Our wish for you is that success may always attend your undertakings, and that you may always find happiness.

"Sweet are the slumbers of the virtuous!"

—Cato.



CAMILLE STATON, A.B.
BETHEL, N. C.

Irving Literary Society:
School of Music (1); Department of Spoken English and Dramatic Art (2, 3, 4); Property Manager of Dramatic Club (3); Publicity Manager of Dramatic Club (4); Greensboro College Players (3, 4); Zoology Club (3); World Affairs Club (3, 4); Assistant Business Manager of ECHO (3); Hikers' Club (1); Basketball Team (3); Business Manager of *Collegian* (4); Delegate to the North Carolina Collegiate Press Association (3, 4).

Capable Camille has been weighed in the balance and been found *not* wanting. Her talents are innumerable. She can do anything from playing the part of a bent old man in the Dramatic Club performance to donning her most dignified air and soliciting ads for the *Collegian*.

Tall, stately, fair, and retaining all the charms of a perfect woman we see Camille. We predict for her a brilliant future, whether it be on the stage, in the home, or in the business world.

*"Her air, her manners, all who saw admitted;
Courteous, though coy, and gentle though retired."*
—Parish Register.



Irving Literary Society;
 School of Music (1, 2, 3, 4);
 Life Service Band (1); Nat-
 uralist Club (2); World Af-
 fairs Club (2, 3); Euterpe
 Club (4); Winner of Half
 Theodore Presser Scholarship
 (3, 4); Delegate from Students'
 Association to Blue Ridge (3);
 Delegate to Southern Intercol-
 legiate Association of Student
 Government at Lynchburg, Va.
 (3); Executive Council (3,
 4); College Council (3, 4);
 Recording Secretary of Students'
 Association (3); Presidents'
 Forum (4); President of Stu-
 dents' Association (4); Effi-
 ciency (4).



CLARA EUGENIA STROUD, B.M.
 LIBERTY, N. C.



Commanding the respect and admiration of the whole stu-
 dent body, Clara's calmness, efficiency and utter disregard for self
 have promulgated an influence unrivalled by any other student.

Saving the best for the last—Clara is a rare, good sport,
 "sorta like" the kick to the punch, yet ever-tempered by true
 Southern gentility. Enough of a woman's curiosity has made
 Clara the classmates' ideal confidant. From all these, we expect
 to see the lives of those about her happier, and the better for
 having known her.

"All people said she had authority"

—The Princess.



KATHLEEN TAYLOR, A.B.
AYDEN, N. C.

Irving Literary Society.
Zoology Club (2); Spanish
Club (2, 3, 4).

Kathleen is rather reserved, but those of us who know her have found out that she is a good sport, and that a quantity of mischief lurks behind the wall of her reserve.

Truly, although "Kat" is one of our littlest members, there is not a girl in the school with a bigger heart.

"Life is not measured by the time we live."

—The Library.



Irving Literary Society;
Hikers' Club (1); Naturalist
Club (2); Home Economics
Club (1, 3, 4); German Club
(3); Treasurer of Home Eco-
nomics Club (4); Duke Uni-
versity Summer School ('27);
N. C. C. W. Summer School
('28).



THELMA THOMPSON, A.B.
HAW RIVER, N. C.



The jolly never-to-be-forgotten, always ready for fun—that's Thelma! Delightfully delectable, never neglectable, greatly respectable, always "cosmeticable." Every day she attends the movies whether it is John Gilbert or Ben Turpin that attracts her, it's hard to tell.

To sleep is her favorite pastime; she is always ready to take a nap, and even indulges in class if the opportunity presents itself. This quotation characterizes Thelma better than any words: "Hang sorrow! Care will kill a cat, and therefore, let's be merry."

*"Heart on her lips, and soul within her eyes
Soft as her climate, and sunny as her skies."*

—Bippo.



ELIZABETH THORNE, A.B.
AIRLIE, N. C.

Irving Literary Society;
Hikers' Club (1, 2); Sorores
Togatae (1, 2, 3, 4); Zoology
Club (2, 3, 4); Treasurer of
Sorores Togatae (2); Secretary
of Sorores Togatae (3); Stu-
dent Council (+); First Vice-
President of Student Council
(+); World Affairs Club (3,
+); Botany Club (2, 3); As-
sistant in English (3, 4).

Eligible for any honor that one might place upon her. This typifies "Liz T." exactly! She is an earnest and efficient worker and she is capable of the many offices that she has held during her sojourn at G. C. Can she joke, play and sing with the rest of the class? I should say so! Positively!

Taciturn—perhaps, and a little reserved but this does not detract from Elizabeth's personality. In fact, this adds a great deal of uniqueness to her character—and the art of being unique in this fast moving age is sadly lacking. We wish for "Liz T." the best that life can offer to anyone, and most assuredly she deserves the best.

"Sincerity is the way to heaven."
—Ideal of the Perfect Man.



Irving Literary Society;
 Queens College (1, 2); Zoology Club (3); German Club (3, 4); Athletic Reporter for the Greensboro *Daily News* (3, 4); Chairman of the Program Committee, German Club (3); President of German Club (4); Reporters' Club; *Collegian* Staff (4); Delegate to North Carolina Collegiate Press Association (3, 4); Le Cercle Français (4); Business Manager THE ECHO (4); Class Poet (4).



GRETTA MAY WAGGONER, A.B.

CHARLOTTE, N. C.



Gee! What would the class of '29 do without Gretta? In the two years that she has been with us we have learned to love her unselfish nature and lovable disposition. Her poetic ability is very evident, and many and varied are the themes of her poetry—from humorous satires on our faculty to woeful dirges.

Woe to the one who fails to cross his fingers when he spies Gretta and her fatal right eye! Her accomplishments are too many to enumerate. She even rivals Al Jolson in singing "Sonny Boy" (with a slight change in the pronunciation of "Sonny"). We dare not attempt to predict the future of one who has so many possibilities in various lines. But—whether she be the star reporter on the *New York Times*, a jazz song writer, or devoting her life to making the "home for two"—we know that she will be a great success.

"Wit and humor belong to genius alone"

—Cervantes.



EDNA WHITE, A.B.
ROSMAN, N. C.

Emerson Literary Society;
Weaver College (1, 2); Botany
Club (3, 4); Home Economics
Club (3, 4); Life Service Band
(3, 4); Art Club (4).

Everyone admits that Edna is one of the finest girls on our campus, for in her we find a noble and conscientious girl, a girl who believes in the best and highest ideals and who upholds these ideals.

Willing at all times to do whatever she is asked to do, Edna has made many friends at G. C. during her two years here. Because she seeks the best—giving in return the best she has to offer—we know that life will give to her the happiness that she deserves.

"A soul as white as heaven."
—The Maids Tragedy.



Irving Literary Society;
Marshal of Irving Literary Society (2); Freshman Commission; Class Treasurer (2); Hikers' Club (1, 2); Le Cercle Français (+); College Marshal (+).



LILLIAN WILKINSON, A.B.
KENLY, N. C.



Ladies and knights of long ago immediately come into our minds when we think of Lillian. She is refined and modest—typical features, in fact, of the dainty ladies of the Middle Ages. It is possible that all the students do not know her enough to appreciate her sterling qualities, but everything must be tested.

Winning and captivating in her manners, she not only holds the love of her classmates, but also the esteem of her teachers. Lillian is clever and witty—making out of somewhat serious and sad occasions very happy and gay events. It is certain that if Lillian is as successful in a career (or whatever she may choose as her life work), as she is in College, she may expect the best from life.

"The noblest mind the best contents."

—The Faerie Queen.



ALMA WILSON, A.B.
BENSON, N. C.

Irving Literary Society;
Critic of Society (3); Spanish
Club (1, 2, 3, 4); President of
Spanish Club (4); Life Service
Band (1); Home Economics
Club (4); Y. W. C. A. Choir
(1, 2); Student Council (2);
Executive Council (2); School
of Music (1); Y. W. C. A.
Cabinet (2).

A student's life is full of cares, but why should we mind as long as Alma is with us? No better companion and mate could ever be found with such a sweet disposition and winning personality. We know her to be considerate, pleasant and sincere, and to know her is to love her.

Willing to do all she can to help others, Alma is bound to succeed in life. She's a good student and a hard worker, but she is always ready for a good time.

"Her smile was like a rainbow flashing from a misty sky"
—The Sword of Damocles.



Irving Literary Society.
 School of Music (1, 2, 3, 4);
 Euterpe Club (4); Basketball
 Team (1); Executive Council
 (4); Most Studious (2); Zo-
 ology Club (2); Student Coun-
 cil (4); Life Service Band. Le
 Cercle Français (4); House
 President. Fitzgerald Hall (4).



DOROTHY WORSHAM, B.M.
 RUFFIN, N. C.



Dear to the hearts of us all is "Dot's" ever-ready smile and friendly greetings. As a classmate, we find in her a true friend, sympathetic and understanding. "Dot" is fine and true-blue: she is always willing to lend a helping hand, and she possesses a most unselfish disposition.

Willing, loyal, helpful, kind, gentle and friendly, Dorothy is all that a friend and classmate should be: she excels in scholastic ability, she serves her class and her school with a steadfast desire for the right; she enters into social life with a smile; and, when music is mentioned, Dorothy is "sitting on top of the world"—for it is there she is at her best.

"Virtue is her own reward."

—Tyrannic Love.



MARTHA BAGLEY YELVERTON, A.B.
STANTONSBURG, N. C.

Irving Literary Society:
Louisburg College ('26, '27);
Brenau College ('28).

Martha came to us only during her senior year but she has won a place in the hearts of all, nevertheless. Her unusual charm and personality make her loved by all.

Yet Martha's work is never neglected. She is a person of rare ability and intelligence who strives always for the best in everything she undertakes. Not only have the gods endowed her with a lovable character but also a striking appearance.

*"Kind hearts are more than coronets
And simple faith than Norman blood."*

—Lady Clara Vere de Vere.



Emerson Literary Society;
Brenan College (1); Censor of
Society (3); School of Spoken
English and Dramatic Art (1,
2, 3, 4); Dramatic Club (2,
3, 4); Greensboro College
Players (3, 4); President of
Dramatic Club (4); May Day
Court Attendant (2); Hikers'
Club (4); Biology Club (2);
Art Club (4); College Marshal
(4).



ANNIE FULLER YOUNG, A.B.
HENDERSON, N. C.



A head of golden curls, statue of Venus, eyes of blue that lure and charm all those she passes. Fascinating, attractive and all like adjectives could be applied in a full description of Annie Fuller.

Yes, all these and even more: she is dependable always, from putting on a play to helping us out when in trouble. With your brilliant mind and your vivid personality, Annie, you will persevere in anything that you set your head to accomplish.

"Pluck up thy spirits, look cheerfully upon me."

—Taming of the Shrew.



SARAH ERWIN ZACHARY, A.B.
COOLEMFE, N. C.

Irving Literary Society;
Hikers' Club (1); Vice-Presi-
dent Le Cercle Français (4);
Message Staff (+); Spanish
Club (+); College Orchestra
(+); Advertising Asst. ECHO
Staff (+).

Some people are very easy to get acquainted with, but others are more reserved. Sarah is the type of girl one must know to really appreciate her worth. Once a friend, always a friend, true, sincere in every respect. Sarah is always ready to go and have a good time, but when time for work arrives she is on the dot. She is capable in many things—especially in her art for writing poetry—and she is very dependable.

Zealous for the welfare of others, self-sacrificing, witty and original, Sarah is always ready to lend a helping hand to anyone in need. Her winning smile and witty remarks will always be remembered by her classmates.

"Wit is the flower of the imagination."

—Levy.



Senior Class Prophecy

HAVING returned to Greensboro after an absence of ten years, I was amazed at the marked changes that had taken place along the old streets with which I had once been so familiar. Possibly through force of habit cultivated in my college days, I found myself in Nowell's Pharmacy. Imagine my surprise in finding that the old college 'hang-out' had changed hands, and was now under the management of Frizzelle and Yelverton? While I was there I learned that two of my former classmates, Frances Felmet and Sophie Hargett, were being featured in a vitaphone presentation. Delighted at the prospect of seeing and hearing our beloved jokers once more, I hurried down to the Carolina, which was now under double management, Juha managing Gene, and Gene managing the theatre. Later I chanced to see Dorothy and Jimmy Carter, who informed me that Louise Caveness and Spenser Blavlock, having been welded into the bonds of wedlock, were now two of the State's most renowned lawyers. Lily King and Wade Phillips were happily married, with two little Nigs and one fair Lily.

Out at the college I found that Ruth Curtis was head of the English department, and was continually endeavoring to uphold the wonderful traditions of our Alma Mater. Numerous improvements had been made in the old college home. Grace Sheets assisted capably in the alumnae office, while Selma Rector had succeeded Mrs. Alley and was well established in the handsome library just opposite Odell. She explained to me that the loud applause that I heard coming from the new chapel building was the response to the talk given by Miss Kathleen Taylor, who was supplementing Miss Ricketts' lectures to the freshmen on 'How to keep cool.'

After several enjoyable days at G. C., I met up with Carolyn Nichols, who had upheld her statement that she would never marry. Since we were both headed toward Charlotte, we decided to revive some of the old college spirit by 'hitch-hiking' to that city. We did not fear the oncoming storm, however, for we had reached one of the comfortable waiting rooms along the highway, which had been erected through the efforts of the famous philanthropist, Sara Zachary, whose recent lad was to encourage thrift by protecting 'bummers' from all kinds of weather. While we were waiting, the worst dream of our college days came true, for Miss Pegram drove up in her cherished Essex. We were glad that she asked us to ride, however, for we were anxious to move on.

Charlotte was the scene of the International Flyers' Convention. Among the visiting fliers were Thelma Thompson, Selma Lane, Kathleen Best and Della Dees, who excelled in nose dives, tail spins and what nots. It was rumored that Thelma, the best pilot, carried her trio aloft so that they might perform acrobatic stunts. In recognition of her skill as a pilot, Thelma had been appointed by the Department of Aviation as captain of a fleet of rescue planes, which were going in search of the lost scientists: Frances Kime, Betty Stallings and Helen Gill, who had been working hard to find a chemical that would facilitate travel in the frozen North. Members of this rescue party were Sara LeRoy, Mary Badgett Byrum, Gertrude Knox, Margaret Booth, Margaret Powell, Dorothy Worsham. Mesdames Bud Greene and Bill Stone, formerly Lave Hunt and Virginia Griffin, were joint hostesses at a bridge luncheon which was given at the Hotel Charlotte as a farewell to this rescue party. Gertrude Knox won high score. She had, since leaving G. C., won the American bridge title, and had not been known to make an imperfect play in several years.

The following week I boarded the train for Memphis, and from there I went on to Ashland Mo., where Slim Black was managing the newspaper that her old journalism professor was editing. She gave me a copy of the afternoon edition of her publication, and in black headlines across the front page I read, "Mrs. A. J. Hanner Sues for Divorce." Clara's grounds

for legal separation was based on A. J.'s persistence in brushing up his car and neglecting his wife. A smaller news item stated that Mrs. Z. Whitely was successful in her attempt to file separation papers. There was also an article in the paper explaining an advanced theory in astrology: Dr. Ethel Herring, the only member of our class who had attained her doctor's degree, was the author of this article.

Several days later I stepped off the train at Los Angeles. A few blocks from the station I found that Emmalou Bennick and Lena Mae Palmer had opened a beauty shoppe called "The Modern Venus." They guaranteed to transform anyone to correct height and weight, whether the victim be tall, short, fat or thin. Evidently their cure must have been of eminent worth, for two of the most constant patrons of this shoppe, Eleanor Edwards and Hazel Chamblee, still retained the beauty that was theirs ten years ago, thus contesting successfully in the Hollywood Beauty Festivals.

In another section of the city, Mary Emily Carr and Elizabeth Adams were the gracious hostesses at a fashionable club, where the slogan was "Open Twenty-four Hours Out of the Twenty-four." Several visits to this club affirmed my opinion that Letty Mitchell, Helen Marsh and Elizabeth Knowles were frequent guests at its social functions.

Returning to the East, I stopped for a while in Chicago, with the charming wife of a prosperous undertaker, for Sara Love, upon consulting Dr. Avers' wide knowledge of statistics, had found that the death rate in Chicago held great promise for her husband's business. Mary Drum, who was pursuing her study of music in that city, had been awarded the Carnegie Medal for rescuing the famous swimmer, Clara Harrison. Miss Harrison had become exhausted while trying to reach land after a long swim. Thus, a prospective case was snatched from the hands of Sara's husband.

The night before I left Chicago, Mrs. David M. Quate, Jr., entertained at a formal reception in honor of Gretta M. Waggoner, noted philosopher and writer, whose most well known songs were: "I'm Just Foolin'", "Annie," and "Mett Had a Wrinkle in Her Sock." I had been wondering whether "Gale" and Gretta had gotten together on those football players. Margaret Rives, the well-known impersonator of Japanese characters, and Mrs. Bernice Shamburger were also present. Miss Rives was starring in "Madame Butterfly" at the Opera House, while "Mary Carter" was attending a dental convention with her husband.

My next stop was in New York, at the "Little Church Around the Corner," where three of our most competent class leaders took prominent parts. Elizabeth Cross and "Liz T." Thorne were engaged in personal evangelistic work while Martha Austin was the leading soprano soloist of the choir. These three directed us to the White Hatch Manor, which was located near Columbia University. Over the manor flashed the inviting letters "Eat, Drink, and be Merry!" Who would have believed that one could have met Edna and Octavia here? Inside, Elizabeth Belvin was micing on the usual-between-class sandwich. She looked very tired and disgusted as she related that she was still trying to get her M.A.; then she broke down and confessed that she had never been entirely happy since the Waggoner-Zachary Transfer Company was no longer near enough to carry her to Durham every week-end.

Just then my attention was drawn to another corner. I recognized Lillie Gill, Frances Forrest and Alma Wilson, who had returned from Paris, where they had received merit in the World Fashion Show. They had won the distinguished titles of "Miss America," "Dame Fashion" and "Madame '39."

Sometime after that, I happened to be passing through a business section on Fifth Avenue. Knowing that Camille Staton, the great psychologist, was located there, I stopped in to see her.

On my way to her office I bumped into a red-headed girl. "Why, Doris Gillette! What are you doing here?" "I came up to get some advice from Camille about my divorce." "But I thought you had already been divorced seven times!" "Yes," Doris said, "I have, but this one is in favor of Richard Halliburton. Didn't I tell you that I would get him eventually!"

My first stop on my return South was Washington. At the Union Station I met Annia Lee Denning. I was surprised to hear that she was now a senator, representing the Tar Heel state. She told me that Eva Belle Bobbitt was one of the Representatives to the House. I inquired about her old friend, Jessie Ruth. She had always had a great desire to see the world, and was now traveling abroad demonstrating Madame Coo-Coo's reducing exercises. Her companions were Lillian Wilkinson and "Bit" Andrews.

During a stop-over in Gibsonville, N. C., my attention was called to a loud commotion on the street corner. I saw Ruth Burke standing on an overturned tub, speaking earnestly to a group of people who had gathered about her. I gleaned from the few words that my ear detected that her speech was on "How to Keep the City Clean." It was at this time that Mayor Burke turned on the radio. I recognized the announcer's voice to be that of Nannie Fields. Then Lucy Lambeth's voice could be heard bemoaning the evils in the present civic government.

I was met at the Winston-Salem airport by Mr. and Mrs. Harvey Regan and son, Harvey, Jr., who promised me safe transportation by way of airplane from Winston-Salem to Annie Fuller's new home in Georgia. As we neared our destination, Jane pointed out to me a white colonial house, which rested in a shady grove. I could see Annie Fuller herself, pensively waiting for "Charlie." But

Just as we were trying to make a smooth landing, the plane made a downward swoop . . . down, down, down and then a crash! I awoke with a start—why I had just been dreaming—it was still just 1929 but I wonder





"TO THE PEAK"





TEA GARDEN



MADRED CROSS
PRESIDENT

OFFICERS '30



KATHERINE WALLACE
VICE-PRESIDENT



ELEANOR BENT
SECRETARY



JOYCE FLAVIN
TREASURER



GEORGIA DAVIS
COUNCIL REPRESENTATIVE



JUDITH ALBERT

SALEM, VA.

MARY JANE ANDREWS

INMAN, S. C.



VIRGINIA APPLEWHITE

STANTONSBURG, N. C.

LOUISE ATWELL

CORNELIUS, N. C.



ELSIE BEAMAN
SNOW HILL, N. C.

ELEANOR BEST
FREMONT, N. C.

PRESTINE BLAKENEY
MONROE, N. C.

VIRGINIA BOND
ELIZABETH CITY, N. C.





RUTH BURRUS
RUTHERFORDTON, N. C.

ANNE CATCHINGS
JACKSON, MISS.

GERTRUDE CLAY
WINSTON-SALEM, N. C.

FLORINE CORBELL
SUNBURY, N. C.



FRANCES COX
JACKSONVILLE, N. C.

ANNIE ELIZABETH CROSS
SUNBURY, N. C.



MILDRED CROSS
SANFORD, N. C.

REBECCA CURRIE
LUMBER BRIDGE, N. C.





GEORGIA DAVIS
GOLDSBORO, N. C.

FRANCES DORSETTE
SILER CITY, N. C.



MARY MARSHALL DUNLAP
ROXBORO, N. C.

MARGARET ELLIOT
EDENTON, N. C.



HELEN EVANS
EDENTON, N. C.

MARGARET FARRAR
MOUNT HOLLY, N. C.

JOYCE FLIPPIN
PILOT MOUNTAIN, N. C.

JENNY LIND FOX
SILER CITY, N. C.



JOSEPHINE FRUTCHY
MT. GILEAD, N. C.

VENICE GADDY
MORVEN, N. C.

WHITNELL GILLAM
WINDSOR, N. C.

DORIS HARDFE
GREENVILLE, N. C.



HOVIS HIPPS
MOORESVILLE, N. C.

MAXINE HOLMES
RIDSVILLE, N. C.

MARY LEILA HONIKER
GREENSBORO, N. C.

MARY COOPER HOOKER
KINSTON, N. C.

Class of 1918



VIRGINIA HORDE
LINCOLNTON. N. C.

ELIZABETH HUNT
JAMESTOWN. N. C.

FRANCES KOONTZ
COMFORT. N. C.

KATHERINE LEGGETT
EDENTON. N. C.



HELEN DAVIS LONG
CATAWBA. N. C.

KATHERINE MCCALL
MARION. N. C.

NELLIE MCKEEL
AHOSKIE. N. C.

MARY GILBERT MCKENZIE
GIBSON. N. C.



LAZELLE MITCHELL
CRAMERTON, N. C.

CATHFRINE MOORE
MOORESVILLE, N. C.

LOUISE MOSS
FAZEWELL, N. C.

IRENE NANCE
ASHEVILLE, N. C.



OLLIE NICHOLS
DURHAM, N. C.

MARY KELLAH OUTZS
MARION, N. C.



MARY LECKIE READF
PALMER SPRINGS, VA

DOROTHY ROBBINS
STATEN ISLAND, N. Y.



DORIS ROGERS
CREEDMOOR, N. C.

PANSY RUTHERFORD
ANDREWS, N. C.

LUCILLE SANDLIN
VERONA, N. C.

REBECCA SMART
CONCORD, N. C.



GRACE SNOW
ELKIN, N. C.
MARGARET TOWE
HERTFORD, N. C.

ADELAIDE TURNAGE
AYDEN, N. C.

MARY VANN
CLINTON, N. C.



OTELIA VAUGHN
ROANOKE RAPIDS, N. C.

LAVINIA VEAL
CHARLOTTE, N. C.

CATHERINE WALLACE
MOREHEAD CITY, N. C.

JANIE WEAVER
WINSTON-SALEM, N. C.



FRANCES WILKINS
SANFORD, N. C.

MARY AGNES WILLIAMS
MULLINS, S. C.



TENNILLE WILLIAMS
COFIELD, N. C.



30

Junior Statistics

"The Sirens of Seville"

MARGARET TOWE	<i>Most Sophisticated</i>	MILDRED CROSS	<i>Most Curious</i>
PRESTINE BLAKNEY	<i>Sleepy Head</i>	MARY LEILA HONIKER	<i>Most Talkative</i>
HELEN DAVIS LONG	<i>Most Fickle</i>	GEORGIA DAVIS	<i>Biggest Flirt</i>
MARY COOPER HOOKER	<i>Biggest Giggler</i>	MARY A. WILLIAMS	<i>Most Absent-minded</i>





SOPHOMORES



THELMA TATE
PRESIDENT



JOSIE ADAMS
VICE-PRESIDENT



MYRTLE COX
SECRETARY



MADGE PETTUS
TREASURER



RUTH HARRISON
COUNCIL REPRESENTATIVE

OFFICERS '31



JOSIE ADAMS
GIBSON, N.C.



MARTHA AUTEN
CHARLOTTE, N.C.



KATHERINE BAXTER
RIDGEWAY, N.C.



FRANCES BLAKENEY
MONROE, N.C.



ESTELLE BOGER
ALBEMARLE, N.C.



KATHERINE BOYO
SPRAY, N.C.



SUE LINA BROCK
TRENTON, N.C.



HAZEL BROOKSHIRE
TROUTMAN, N.C.



HELEN BUMPASS
GREENSBORO, N.C.



CHI YI CHEN
SHANGHAI, CHINA



ZON TSUNG CHEN
SHANGHAI, CHINA

SOPHOMORES



JEAN COLE
CHARLOTTE, N.C.



MYRTLE COX
WINSTON-SALEM, N.C.



RUTH COX
GILEAD, N. C.



RACHEL CREECH
SMITHFIELD, N. C.



LOUISE DANIEL
ELM CITY, N. C.



LOUISE DAVIS
WARRENTON, N. C.



MARY DAVIS
DURHAM, N. C.



LOUISE MANNING
BENSON, N. C.



ARLENE EVERETT
FOLKSTONE, N. C.



MARGARET FEARING
ELIZABETH CITY, N. C.



MARY FERREE
WINSTON-SALEM, N. C.

SOPHIOMORES



LENA FIELDS
WINSTON, N.C.



EDITH FLOYD
FAIRMONT, N.C.



VIRGINIA FORMY-DUVAL
SANFORD, N.C.



IRENE FOWLER
PILOT MOUNTAIN, N.C.



MINNIE GILLIAM
WINSOR, N.C.



KLYCE HAMPTON
LEAKSVILLE, N.C.



LEAH HARGRAVE
CANTON, N.C.



RUTH HARRISON
THOMASVILLE, N.C.



CHRISTINE HATCH
LIBERTY, N.C.



FRANCES HAYES
WILMINGTON, N.C.



MILDRED HIGGS
MOORESVILLE, N.C.

SOPHOMORES



NELLIE D. HORNADAY
BURLINGTON, N.C.



GRACE JOHN
LAURINBURG, N.C.



ELIZABETH W. HAFFNER
SALEN, N.C.



KATHARINE KING
RUFFIN, N.C.



LOUISE KNOWLES
HERTFORD, N.C.



NANCY LANE
TANTONSBURG, N.C.



EDITH LAUGHRIDGE
MARION, N.C.



ELIZABETH LEWIS
TABOR, N.C.



LOIS LIVELY
FIELDSVILLE, N.C.



SARA LANE
LANE UNALUSKA, N.C.



ROSA FOVE
KINGS CREEK, S.C.

SOPHOMORES



VIRGINIA LUMPKIN
DANVILLE VA



SUSAN McLEAN
ABENDEEN N.C.



ANNI S MANN
GREENSBORO NC



DOROTHY MATLOCK
GREENSBORO N.C.



EDYT MATLOCK
GREENSBORO N.C.



KATHERINE MENDENHALL
THOMASVILLE N.C.



MARGARET MILLER
FRONT ROYAL VA



LINA B. LORE
BYNUM, N.C.



MILDRED MOORES
FOREST CITY, N.C.



GLADYS MORGAN
WINSTON-SALEM N.C.



RUTH PERRY
TROUTMAN, N.C.

SOPHOMORES



MADGE PETTUS
EDENTON, N.C.



FRANCES REDMON
GREENSBORO, N.C.



FRANCES RIDDLE
SANFORD, N.C.



BEATRICE RIMEL
SALEM, VA.



FRANCES SHARPE
SELMA, N.C.



FRANCIS SMITH
RAHEUR, N.C.



MILDRED SMITH
CONWAY, N.C.



WILMA SPENCE
GOLDSBORO, N.C.



MAE SUE STACK
GREENSBORO, N.C.



THELMA TATE
CANTON, N.C.



RUTH THACH
HERTFORD, N.C.

SOPHOMORES



ELIZABETH WATKINS
TROY, N.C.



NANCY WATKINS
TROY, N.C.



LOIS WHISNANT
HENNIETTA, N.C.



ANNIE C. WHITMORE
REIDSVILLE, N.C.



MARGARET WINN
DANVILLE, VA.



RUBY WILLIAMS
REIDSVILLE, N.C.



DOROTHY WOODARD
FAYETTEVILLE, N.C.



ELIZABETH YEARBROUGH
THOMASVILLE, N.C.



LAURA YEARBY
RAEFORD, N.C.



HETTIE B. YELVERTON
FREMONT, N.C.

SOPHOMORES



Sophomore Statistics

"Circe the Enchantress"

JEAN COLE
 VIRGINIA MOSS FORMY-DUVAL
 MILDRED HIPPS
 LEAH HARGROVE
 RUTH THACH
 MYRTLE COX
 RUBY WILLIAMS
 THELMA TATE
 CHI YI CHEN

Most Popular
Friendliest
Cutest
Prettiest
Most Athletic
Most Sincere
Most Studious
Best All Around
Most Humorous





THE ARRIVAL



ANNE FREEMAN
PRESIDENT

O
F
F
I
C
E
R
S
'32



SOPHIE C. CAMPEN
VICE-PRESIDENT



FRANCES MITCHELL
SECRETARY



RUTH DAVIS
TREASURER



ESTHER PATE
COUNCIL REPRESENTATIVE



ELSIE ADER
WINSTON-SALEM, N.C.



ELIZABETH ANDERSON
PARIS, Ky.



MARGARET ALLRED
GREENSBORO, N.C.



HELEN ANDREWS
INMAN, S.C.



DOROTHY BILLUPS
NORFOLK, Va.



MARY F. BOST
BOST'S MILLS, N.C.



MARIE BOUSHEE
WILMINGTON, N.C.



GERTRUDE BROWNING
BURLINGTON, N.C.



MARGARET BURKHEAD
CANDON, N.C.



SOPHIE C. CAMPEN
ZEBULON, N.C.



ELLEN CLARK
STUART, Va.



MARY H. CLARK
STUART, Va.



RUTH CLARK
STUART, Va.



MARION CURTIS
GREENSBORO, N.C.

FRESHMEN



ALMA DAILY
PITTSBORO, N.C.



RUTH DAVIS
WILMINGTON, N.C.



JUANITA DILLON
GREENSBORO, N.C.



VIRGINIA EDWARDS
SILER CITY, N.C.



MYRTLE ELMORE
DOVER, N.C.



MARION ERWIN
CANTON, N.C.



MARY FARMER
BAILEY, N.C.



VIRGINIA FORT
CLAYTON, N.C.



LOIS FREELAND
GREENSBORO, N.C.



ANNE FREEMAN
CRAWFORD, GA.



ANNIE HINKLE
THOMASVILLE, N.C.



RUTH HUFFMAN
GIBSONVILLE, N.C.



ALICE R. INGRAM
MOUNT GILEAD, N.C.



LUCY G. JACKSON
WAKE FOREST, N.C.



LETA G. JOHNSON
BENSON, N.C.

FRESHMEN



CLARICE JONES
LA GRANGE, N. C.



CATHERINE R. KING
WILMINGTON, N. C.



LOIS KIRK
GREENSBORO, N. C.



ELIZABETH LANG
FARMVILLE, N. C.



LOUISE LAUGHRIDGE
OLD FORT, N. C.



GENEVA MABRY
NORWOOD, N. C.



CHARLOTTE MAKEPEACE
SANFORD, N. C.



HELEN MANNING
BETHEL, N. C.



AUDREY MARTIN
RICH SQUARE, N. C.



MILDRED MARTIN
POLKTON, N. C.



JOSEPHINE MESSER
HORSE SHOE, N. C.



FRANCES MITCHELL
WINSTON-SALEM, N. C.



LOUISE MITCHELL
AHOSSIE, N. C.



JUANITA MOFFITT
SANFORD, N. C.



IRENE MORGAN
PROSPECT HILL, N. C.

FRESHMEN



CORNELIA MORRISON SARA MURRAY THELMA NEWSOME
 NEWTON, N.C. BURLINGTON, N.C. AHSOSKIE, N.C.



SARA NORWOOD ESTHER O'BRIENT ELIZABETH PATE ESTHER PATE
 NORWOOD, N.C. DURHAM, N. C. ROWLAND, N.C. PIKEVILLE, N.C.



EVELYN FELL IRMA PRICE CAROLINE RHODES LAVERA RICHIE
 PILOT MOUNTAIN, N.C. SCOTLAND NECK, N.C. SYLVA, N.C. GASTONIA, N.C.



GRACE ROBERTSON ELIZABETH ROWLAND MARY H. SCARBOROUGH FRANCES SHEPPARD
 CLAYTON, N.C. RICHMOND, VA. MOUNT GILEAD, N.C. GREENSBORO, N.C.

FRESHMEN



MARY SHORT
GREENSBORO, N.C.



LAURA M. SMART
CONCORD, N.C.



LOIS SMATHERS
ASHEVILLE, N.C.



LILLIAN SMITH
PIKEVILLE, N.C.



MARIE SMITH
HENDERSON, N.C.



ELIZABETH STACY
FALLSTON, N.C.



LETA STAFFORD
GREENSBORO, N.C.



GLADYS STROUD
KINSTON, N.C.



CARRIE W. STUTTS
MOUNT GILEAD, N.C.



MARGARET SULLIVAN
FORT LAUDERDALE, FLA.



MARY F. SWARINGER
NORWOOD, N.C.



GRACE TATE
MARION, N.C.



LOUISE TATE
MARION, N.C.



EVANGELINE TAYLOR
MOUNT OLIVE, N.C.



MARY TOWE
HERTFORD, N.C.

FRESHMEN



ELIZABETH W. TURNER
GREENSBORO, N.C.



EUNICE VARNON
GREENSBORO, N.C.



EULA VAUGHN
GREENSBORO, N.C.



MARY VEAL
CHARLOTTE, N.C.



EULDAH WY
GREENSBORO, N.C.



MARGARET WEAVER
MOUNT ULLA, N.C.



ELIZABETH WEBSTER
MADISON, N.C.



MARGARET WEHRLE
GREENSBORO, N.C.



FLORA WILSON
WARRENTON PLAINS, N.C.



LINDA WOMBLE
GOLDSTON, N.C.



LU'Y WYLIE
RAMSEUR, N.C.



MARGARET YAREBROUGH
REIDSVILLE, N.C.



VIRGINIA YEATTS
DANVILLE, VA.



KATHERINE YOUNG
HENDERSON, N.C.

FRESHMEN



ORGANIZATIONS



Gibraltar



ORGANIZATIONS



CLARA STROUD
PRESIDENT



ELIZABETH THORNE
1ST VICE-PRESIDENT



GERTRUDE KNOX
2ND VICE-PRESIDENT



LAVINIA VEAL
RECORDING SECRETARY



JANIE WEAVER
COR. SECRETARY



MARTHA AUTEN
TREASURER



IRENE NANCE
BUDGET COLLECTOR

OFFICERS OF STUDENTS' ASSOCIATION



PRESIDENTS' FORUM

ELIZABETH CROSS
CLARA STROUD
FAYE HUNT

VIRGINIA GRIFFIN
RUBY BRASWELL

ETHEL HERRING
MILDRED CROSS
THELMA TATE



STUDENT COUNCIL

CLARA STROUD
ELIZABETH THORNE
GERTRUDE KNOX
LAVINIA VEAL
JANIE WEAVER
MARTHA AUTEN

IRENE NANCE
ELIZABETH CROSS
FAYE HUNT
ETHEL HERRING
FRANCES FORREST
RUTH BURKE
VIRGINIA GRIFFIN

RUBY BRASWELL
OCTAVIA HATCH
GEORGIA DAVIS
VIRGINIA MOSS FORMY-DUVAL
JUDITH ALBERT
DOROTHY WORSHAM



FRANCES FELMET
VICE-PRESIDENT

ELIZABETH CROSS
PRESIDENT

MARY K. OUZT'S
SECRETARY

YWCA



MARY C. HOOKER
TREASURER

ETHEL HERRING
UNDERGRADUATE REPRESENTATIVE

A. ELIZABETH CROSS
MANAGER Y STORE

Y. W. C. A OFFICERS



OCTAVIA HATCH
WORLD FELLOWSHIP

JOYCE FLIPPIN
RELIGIOUS EDUCATION

VIRGINIA FORMY-DUVAL
SOCIAL

YWCA



MYRTLE COX
SOCIAL SERVICE

CATHERINE MOORE
MUSIC

GERTRUDE CLAY
PUBLICITY

Y. W. C. A. CABINET



RUBY BRASWELL
PRESIDENT



JANIE SINCLAIR
VICE-PRESIDENT



WILMA SPENCE
SECRETARY



MILDRED CROSS
TREASURER



MAXINE HOLMES
CENSOR



HELEN D. LONG
CRITIC



Emerson Literary Society

MEMBERS

LOUISE AUSTIN	MARION ERWIN	SARA LOVY	MARGARET RIVKS
MARSHA AULIN	MARGARET FARRAR	ROSA LOVY	FRANCES RICHMOND
MARGARET ALLRED	FRANCES FELMET	HELEN DAVIS LONG	ELIZABETH ROWLAND
ESIE AHR	MARY FERRE	ELIZABETH LEWIS	GRACE ROBERTSON
RUBY BRASSWELL	VIRGINIA MOSS FORMY-DUVAL	VIRGINIA LYMPHAIN	LAVRA RUTHERFORD
LEOLA BLACK	JOYE FIPPIN	LETTIE MITCHELL	PAULEY RUTHERFORD
JULIA BULLOCK	IRENE FOWLER	NELLIE MCKEE	LUCILLE SANDLIN
HELEN BUMPASS	LENA FIELDS	NIGHTINGALE MOORE	JUNIE SINCLAIR
EMERALD BENNICK	NANNIE FIELDS	MILDRED MOORES	MAI SUE STACK
KATHERINE BOYD	ANNE FREEMAN	KATHERINE MENDENHALL	WILMA SPENCE
GERTRUDE BROWNING	VIRGINIA FORT	SUSAN McLEAN	REBECCA SMART
RUTH BYRNES	VENICE GAUDY	HELEN MANNING	LAURA SMART
ANNE CATCHINGS	DORIS GLETTIE	CHARLOTTE MARSHALL	LOIS SHATHERS
MARY EMILY CARR	CORNELIA GIER	CORNELIA MORRISON	MARY FRANCES SWABINGEN
LOUISE CAVENESS	SOPHIA HARGETT	SARA MURRAY	THELEMA TAYL
FRANCES COX	CLARA HARRISON	MILDRED MARTIN	EVANGELINE TAYLOR
ELIZABETH CROSS	MARIE HOLMES	IRENE MORGAN	BETTY WALKER TURNER
MILDRED CROSS	VIRGINIA HORDI	FRANKIE MOPFAT	LARSEN VYAL
REBECCA CURRIE	LEAH HARGROVE	FRANCES MITCHELL	MARY VYAL
RUTH CURTIS	FRANCES HAYES	GLADYS MORGAN	EULA VAUGHN
MYRTLE COX	NELLIE DACE HORNADAY	GENEVA MARRY	ETHEL VAUGHN
CHI YI CHEN	KYCE HAMPTON	MARGARET MILLER	RUBY WILLIAMS
ZOK TSUNG CHEN	RUTH HARRISON	IRENE NANCE	FRANCES WILKINS
MARION CURTIS	ANNIE HENKLE	SARA NORWOOD	DOROTHY WOODARD
ANNIE LEE DENNING	ELIZABETH HUNT	CAROLYN NICHOLS	LOIS WHISNANT
LOUISE DENNING	RUTH HUFFMAN	LENA MAE PALMER	EDNA WHITE
MARY MARSHALL DUNDY	LEILA GOLD JOHNSON	MARGE PETTUS	ANNIE CARR WHITTEMORT
LOUISE DANIELS	GERTRUDE KNOX	EVELYN PELL	LINDA WOBBLER
AGNETE ESKRETTE	KATHERINE LUGGITT	FRANCIS RIDDLE	ANNIE PELLER YOUNG
			ELIZABETH YARBROGGI

EMERSON LITERARY SOCIETY MARSHALS

KATHERINE BOYD
KYCE HAMPTON

ZOK TSUNG CHEN
CHI YI CHEN



VIRGINIA GRIFFIN
PRESIDENT



ELEANOR EDWARDS
SECRETARY



FRANCES FORREST
VICE-PRESIDENT



CATHERINE MOORE
TREASURER



HAZEL CHAMBLEE
CRITIC



ELEANOR BEST
CENSOR



Irving Literary Society

MEMBERS

ELIZABETH ADAMS
 JOSIE ADAMS
 ELIZABETH ANDREWS
 HELEN ANDREWS
 MARY JOSE ANDREWS
 JUDITH ALBERT
 ELIZABETH ANDERSON
 VIRGINIA APPLEWHITE
 LOUISA ATWELL
 MARTHA AUSTIN
 CATHERINE BAXTER
 ELIZABETH BEAVIN
 EVA BELLE BOBBETT
 VIRGINIA BOND
 MARI BOUSHIE
 MARY FRANCES BOST
 DOROTHY BILLUPS
 ESTELLE BOGER
 SUE LINA BROCK
 HAZEL BROOKSHIRE
 MARY BUDGETT BYKUM
 FRANCIS BEARNEY
 PRESTINE BEARNEY
 KATHLEEN BEST
 ELSIE BEAMAN
 MARGARET BYKHEAD
 RUTH CLARK
 SOPHIA CABELL CAMPEN
 ANNE ELIZABETH CROSS
 JESSIE RUTH CUNNINGHAM
 HAZEL CHAMBER
 GERTRUDE CLAY
 FLORENCE CORDELL
 RUTH COX
 JEAN COLE
 DOROTHY CALL
 KATHLEEN CREECH
 ALMA DAILEY
 RUTH DAVIS

MARY DAVIS
 JUANITA DILLON
 MARY DREM
 DEBRA DEES
 GEORGINA DAVIS
 FRANCIS DORSETT
 LOUISE DAVIS
 MILDRED DREM
 ELEANOR EDWARDS
 LILLIE GILL EVERHART
 MARILEE ELMORE
 FRANCIS FOREST
 JOSEPHINE FRUTCHY
 JENNY LIND FOX
 MARGARET FEARING
 EVELYN FLOYD
 MARY FARKER
 AILEE FOUNTAIN
 LOIS FREELAND
 BEATRICE GARNOR
 WHITFIELD GILLIAM
 MINNIE LEW GILLIAM
 DORIS HARDIE
 HOELS HEPES
 MILDRED HIPPS
 FAYE HUNT
 OCTAVIA HATCH
 CHRISTINE HAYCH
 MARY COOPER HOOKER
 ETHEL HERRING
 MARY LELIA HONTKER
 ALICE BELO INGRAM
 LUCY GOODE JACKSON
 CLARICE JONES
 ELIZABETH KNOWLES
 LOUISE KNOWLES
 ELIZABETH KAPP
 FRANCIS KOONTZ
 KATHERINE KING
 LELY KING
 CATHERINE KING
 FRANCIS KING

LOIS KIRK
 LUCY LAMBETH
 SELMA LANE
 NANCY LANE
 SARAH LEBOY
 ELIZABETH LANG
 LOUISE LAUGHRIDGE
 HELEN MARSH
 LOUISE MOSS
 AUDREY MARTIN
 CATHERINE MOORE
 LAZELLE MITCHELL
 ANNIE SPROUD MANN
 EDVITH MATLOCK
 JOSEPHINE MESSER
 KATHERINE McCULL
 EILEEN MCGIRT
 THELMA NEWSOME
 MARY KELLAR OUTZS
 ESTHER O'BRIENT
 ELIZABETH PAUL
 ESTHER PATE
 RUTH PERRY
 KATHERINE PARSONS
 IDUNA PRIGS
 LOUISE PHILLIPS
 DOROTHY ROBBINS
 BEATRICE REMEL
 CAROLINE RHODES
 MARY LECKIE RFADE
 DORIS ROGERS
 GRACE SHEETS
 ELIZABETH STACY
 MILDRED SMITH
 LILLIAN SMITH
 MARIE SMITH
 FRANCIS SMITH
 MARY SCARBOROUGH
 CARRIE WALL STUTTS
 GLADYS SPROUD
 CLARA STROUD
 LITA STAFFORD

BETTY STALLINGS
 FRANCIS SHEPPARD
 CAMILLE STATON
 MARY SHURT
 KATHLEEN TAYLOR
 THELMA THOMPSON
 MILDRED THOMPSON
 ELIZABETH THORNE
 ANNELOIDE TRISAGLE
 MARGARET TOWE
 MARY TOWE
 LOUISA TAYLOR
 GRACE TATE
 RUTH TRATCH
 RUBY TVSOR
 EUNICE VARNON
 MARGARET WEATNER
 JANE WEATNER
 DOROTHY WORSHAM
 FLORA WILSON
 ALMA WILSON
 TENSILLE WILLIAMS
 HULDAH WAY
 CATHERINE WALLACE
 MARGARET WARRLE
 LILLIAN WILKINSON
 KATHARINE WHITENER
 GARETT WAGGONER
 MARGARET WINN
 MARY AGNES WILLIAMS
 NANCY WATKINS
 ELIZABETH WATKINS
 RUTH WATSON
 LUCY WYLIE
 ELIZABETH WEBSTER
 FLETH BELLE YELVERTON
 MARTHA BAGLEY YELVERTON
 LAURA YEABRY
 VIRGINIA YEATTS
 KATHERINE YOUNG
 SARAH ZACHARY

IRVING LITERARY SOCIETY MARSHALS

DOROTHY ROBBINS

FRANCES DORSETT

MARY AGNES WILLIAMS

EVA BELLE BOBBETT



Honor Society

MEMBERS

ELSIE BEAMAN
EVA BELLE BOBBITT
MARGARET BOOTH
GERTRUDE CLAY
MARY ELIZABETH DRUM
FRANCES FELMET
HELEN GILL
ETHEL HERRING

MARY LEILA HONIKFR
FRANCES KIME
SARAH LEROY
KATHERYN MCCALL
ELENE MCGIRT
OLLIE NICHOLS
DOROTHY ROBBINS
CATHERINE WALLACE





Le Cercle Francais

OFFICERS

FRANCES FELMET
 SARAH ZACHARY
 NELLIE MCKEEL
 TENNILLE WILLIAMS
 OLLIE NICHOLS

President
Vice-President
Secretary-Treasurer
Reporter
Chairman of Program Committee

MEMBERS

LOUISE ATWELL
 VIRGINIA APPLEWHITE
 ELIZABETH BELVIN
 FRANCES BLAKNEY
 MYRTLE COX
 MARY CARTER
 MILDRED CROSS
 MARY DAVIS
 ROBERT T. DUNSTAN
 MARGARET FARRAR
 JOSEPHINE FRUTCHEY
 FRANCES FELMET
 VIRGINIA M. FORMY-DUVAL

MINNIE LEW GILLIAM
 DORIS HARDEE
 MARY COOPER HOOKER
 ELIZABETH HUNT
 LOUISE KNOWLES
 FRANCES KOONTZ
 ELIZABETH KAPP
 LAZELLE MITCHELL
 MARY GILBERT MCKENZIE
 MILDRED MOORES
 NELLIE MCKEEL
 OLLIE NICHOLS

MARGARET POWELL
 KATHERINE PARSONS
 MADGE PETTUS
 MARY LECKIE READE
 SELMA RECTOR
 GRACE SHEETS
 ADELAIDE TURNAGE
 MARGARET TOWE
 GRETTA WAGGONER
 TENNILLE WILLIAMS
 DOROTHY WORSHAM
 LAURA YEABY
 SARAH ZACHARY



Spanish Club

OFFICERS

ALMA WILSON
HAZEL CHAMBLEE
MILDRED HIPPS
LEOLA BLACK
MINNIE LEW GILLAM

President
Vice-President
Secretary-Treasurer
Chairman Program Committee
Reporter

MEMBERS

JUDITH ALBERT
ELIZABETH ANDERSON
KATHLEEN BEST
LEOLA BLACK
VIRGINIA BOND
MARIE BOUSHEE
RUBY BRASWELL
SUE LINA BROCK
JULIA BULLOCK
RUTH BURRUS
HAZEL CHAMBLEE
GEORGIA DAVIS
MARY DRUM
ARLENE EVERETT
MARY FERREE

EDITH FLOYD
IRENE FOWLER
MINNIE LEW GILLAM
DORIS HARDEE
LEAH HARGROVE
HOVIS HIPPS
MILDRED HIPPS
NELLIE DACE HORNADAY
GRACE JOHN
CATHERINE KING
SARA LONG
HELEN DAVIS LONG
SUSAN McLEAN
KATHRYN MENDENHALL
LINA B. MOORE

CATHERINE MOORE
LENA MAE PALMER
LOVERA RITCHIE
FRANCES RIDDLE
BEATRICE RIMEL
LETA STAFFORD
MARGARET SULLIVAN
RUTH THATCH
ALMA WILSON
FRANCES WILKINS
MARGARET WINN
ANNIE CARR WHITTEMORE
HETTIE BELLE YELVERTON
SARA ZACHARY



Der Deutscher Virein

OFFICERS

GRETTA WAGGONER
 CORNELIA FRIZZELLE
 MARY EMILY CARR
 SARA LOVE
 GERTRUDE CLAY
 LOUISE CAVENESS
 RUBY WILLIAMS
 ANNIE LEE DENNING

President
Vice-President
Secretary
Treasurer
Business Manager
Publicity Manager
Chairman of Program Committee
Reporter

MEMBERS

ELSIE ADER
 MARIE BOUSHEE
 MARY BROCK
 MARGARET BURKHEAD
 MARY EMILY CARR
 LOUISE CAVENESS
 CHI YI CHEN
 ZOK TSUNG CHEN
 GERTRUDE CLAY
 RUTH COX
 LOUISE DENNING

ANNIE LEE DENNING
 CORNELIA FRIZZELLE
 MARY LELIA HONIKER
 MARY RUTH HUFFMAN
 LETA GOLD JOHNSON
 DR. CONRAD LASHER
 LOIS LIVELY
 HELEN DAVIS LONG
 ROSE LOVE
 SARA LOVE
 GLADYS MORGAN

DORIS ROGERS
 FRANCES SHARPE
 GLADYS STROUD
 MARGARET TOWE
 LAVINIA VEAL
 GRETTA WAGGONER
 ELIZABETH WATKINS
 RUBY WILLIAMS
 DOROTHY WOODARD
 VIRGINIA YEATTS



Sorores Togatae

OFFICERS

MARGARET BOOTH

President

EVA BELLE BOBBITT

Vice-President

LILLIE GILL EVERHART

Secretary

MARY GILBERT MCKENZIE

Treasurer

MARY KELLAH OUTZS

Reporter

MEMBERS

MARTHA AUSTIN

SARAH LEROY

EVA BELLE BOBBITT

MARY GILBERT MCKENZIE

MARGARET BOOTH

LOUISE MOSS

RUTH BURKE

MARY KELLAH OUTZS

LILLIE GILL EVERHART

LENA MAE PALMER

FRANCES FORREST

MADGE PETTUS

ELIZABETH THORNE



Mathematics Club

OFFICERS

SARAH LEROY
 WHITNELL GILLAM
 MARGARET WINN
 ETHEL HERRING
 MADGE PETTUS
 DOROTHY ROBBINS

President
Vice-President
Secretary
Treasurer
Chairman of Program Committee
Reporter

MEMBERS

LOUISE AUSTIN
 MARY BADGETT BYRUM
 ELSIE BEAMAN
 ELEANOR BEST
 ANNE CATCHINGS
 CHI YI CHEN
 ZOK TSUNG CHEN
 A. ELIZABETH CROSS
 LOUISE DANIELS

LENA FIELDS
 WHITNELL GILLAM
 MARY COOPER HOOKER
 ETHEL HERRING
 KATHRYN LEGGETT
 SARAH LEROY
 MARY G. MCKENZIE
 MADGE PETTUS
 DOROTHY ROBBINS

MARGARET WINN



Zoology Club

OFFICERS

MARGARET BOOTH
 SARAH LEROY
 GERTRUDE KNOX
 SOPHIA HARGETT
 LAVINIA VEAL

President
Vice-President
Secretary-Treasurer
Chairman of Program Committee
Reporter

MEMBERS

JUDITH ALBERT
 MARY JANE ANDREWS
 KATHERINE BAXTER
 FRANCES BLAKNEY
 PRESTINE BLAKNEY
 VIRGINIA BOND
 MARGARET BOOTH
 RUTH BURRUS
 MARY BADGETT BYRUM
 GERTRUDE CLAY
 RUTH COX
 MILDRED CROSS
 ELIZABETH CROSS
 LOUISE DANIEL
 VIRGINIA M. FORMY-DUVAL
 JOYCE FLIPPIN
 IRENE FOWLER

CORNELIA GEER
 SOPHIA HARGETT
 LEAH HARGROVE
 CHRISTINE HATCH
 DORIS HARDEE
 VIRGINIA HORD
 NELLIE DACE HORNADAY
 ELIZABETH HUNT
 GRACE JOHN
 ELIZABETH KAPP
 LOUISE KNOWLES
 GERTRUDE KNOX
 LOUISE LAUGHRIDGE
 ELIZABETH LEWIS
 SARAH LONG
 EDYTH MATLOCK
 LINA B. MOORE

MARY KELLAH OUZTS
 RUTH PERRY
 MARY LECKIE READE
 DORIS ROGERS
 PANSY RUTHERFORD
 BEATRICE RIMFL
 REBECCA SMART
 RUTH THATCH
 GRACE TATE
 ELIZABETH THORNI
 ELIZABETH WATKINS
 LINDA WOMBLE
 LUCY WYLIE
 LAURA YEABRY
 SARAH LEROY
 LAVINIA VEAL



Botany Club

OFFICERS

HELEN GILL
LAVINIA VEAL
RUBY WILLIAMS
NELLIE MCKEEL
GERTRUDE CLAY

President
Vice-President
Secretary-Treasurer
Reporter
Chairman of Program Committee

MEMBERS

JUDITH ALBERT
LOUISE ATWELL
MARTHA AUTEN
ELSIE BEAMAN
EMMALOU BENNICK
MARY FRANCES BOST
CHI YI CHEN
ZOK TSUNG CHEN
ELLEN CLARK
MYRTLE COX
ELIZABETH CROSS
LOUISE DANIEL
LOUISE DAVIS

MARGARET ELLIOT
MARION ERWIN
MARY FARMER
MARY LEILA HONIKER
LOUISE KNOWLES
FRANCES KIME
GERTRUDE KNOX
EDITH LAUGHRIDGE
ROSA LOVE
MISS MARTIN
LAZELLE MITCHELL
GLADYS MORGAN

IRENE MORGAN
NIGHTINGALE MOORE
THELMA NEWSOM
CAROLINE RHODES
DOROTHY ROBBINS
LUCILLE SANDLIN
LAURA MAE SMART
BETTY STALLINGS
MARGARET SULLIVAN
RUTH WATSON
HULDAH WAY
EDNA WHITE
LOIS WHISNANT



Home Economics Club

OFFICERS

FAYE HUNT

JOYCE FLIPPIN

ELIZABETH ADAMS

THELMA THOMPSON

President

Vice-President

Secretary

Treasurer

MEMBERS

ELIZABETH ADAMS

THELMA THOMPSON

ELIZABETH CROSS

GERTRUDE KNOX

SARA NORWOOD

KATHIRINE MENDENHALL

CHAPLOTTE MAKEPEACE

NIGHTINGALE MOORE

LOUISE TATE

MARY HOWARD CLARKE

HELEN CURTIS ANDREWS

HAZEL BROOKSHIRE

SELMA RECTOR

ELIZABETH ANDERSON

ALMA WILSON

LAVINIA VEAL

CORNELIA MORRISON

NANCY WATKINS

ELIZABETH PATE

SARA LONG

EDITH MATLOCK

IRENE FOWLER

EDNA WHITE

LENA FIELDS

FAYE HUNT

JOYCE FLIPPIN

LOUISE DAVIS

MARY DAVIS

MARY FERREE

NELLIE MCKEEL

ARLENE EVERETT

CAROLYN NICHOLS

KLYCE HAMPTON

MARGARET FEARING

KATHLEEN BEST

DELLA DEES

SELMA LANE

MARGARET MILLER



Experimenters' Club

OFFICERS

DOROTHY ROBBINS

President

LAVINIA VEAL

Vice-President

GERTRUDE CLAY

Secretary and Treasurer

MEMBERS

ANNE CATCHINGS

ETHEL HERRING

GERTRUDE CLAY

MARY COOPER HOOKER

ELIZABETH CROSS

GERTRUDE KNOX

LENA FIELDS

FRANCES KIME

ELENE MCGIRT

KATHERINE LEGGETT

HELEN GILL

MARY GILBERT MCKENZIE

DORIS GILLETTE

KATHERINE PARSONS

WHITNELL GILLAM

DOROTHY ROBBINS

CHRISTINE HATCH

BETTY STALLINGS

LAVINIA VEAL



The Art Club

OFFICERS

JUDITH ALBERT
FRANCES BLAKNEY
ELIZABETH KAPP

President
Vice-President
Secretary-Treasurer

MEMBERS

JUDITH ALBERT
FRANCES BLAKNEY
MARY BROCK
FLORINE CORBELLE
LOUISE DENNING
ALMA DAILEY
MARY DAVIS
MARY MARSHALL DUNLAP
LOUISE DANIEL
BONNIE ENOCH
FRANCES FELMET
JOYCE FLIPPEN

VIRGINIA GRIFFIN
DORIS GILLETTE
ELIZABETH KAPP
ELIZABETH KNOWLES
MARION LANDRUM
ROSA LOVE
SARA LOVE
GWENDOLYN MITCHELL
MARGARET MILLER
MAE SUE STACK
GRACE SHEETS
EDNA WHITE

ANNIE FULLER YOUNG



Marshals

HAZEL CHAMBLEE, *Chief*

ELIZABETH ANDREWS

RUBY BRASWELL

EVA BELLE BOBBITT

DELLA DEES

ELEANOR EDWARDS

VIRGINIA GRIFFIN

ETHEL HERRING

HELEN MARSH

JANIE SINCLAIR

LILLIAN WILKINSON

KATHARYNE WHITENER

ANNIE FULLER YOUNG





Life Service Band

OFFICERS

NELLIE MCKEEL
 RUBY WILLIAMS
 FRANCES MITCHELL
 MARGARET WEAVER

President
Vice-President
Secretary-Treasurer
Publicity Chairman

MEMBERS

HELEN ANDREWS
 ELSIE BEAMAN
 RUTH BURRUS
 MARY CARTER
 MARY EMILY CARR
 CHI YI CHEN
 ZOK TSUNG CHEN
 GERTRUDE CLAY
 ELIZABETH CROSS
 MYRTLE COX
 MARY DAVIS
 MARY DRUM
 FRANCES FELMET
 OCTAVIA HATCH
 MARY HOWARD CLARK

ELIZABETH HUNT
 GERTRUDE KNOX
 LUCY LAMBETH
 SARAH LONG
 CATHARINE MCCALL
 NELLIE MCKEEL
 CATHERINE MENDENHALL
 FRANCES MITCHELL
 LAZELLE MITCHELL
 GLADYS MORGAN
 NIGHTINGALE MOORE
 PANSY RUTHERFORD
 LAVINIA VEAL
 EDNA WHITE
 RUBY WILLIAMS

MARGARET WEAVER



Freshman Commission

MARTHA AUTEN

RUTH COX

MYRTLE COX

CHI YI CHEN

ZOK TSUNG CHEN

JEAN COLE

VIRGINIA M. FORMY-DUVAL

LOUISE KNOWLES

ELIZABETH KAPP

MILDRED MOORES

THELMA TATE





The Message

The Message, the Greensboro College magazine, is published monthly by the Emerson and Irving Literary Societies. This magazine contains interesting stories, poems, editorials, book reviews, character sketches and jokes. It is through the publication in this magazine that the student's ability for writing is discovered, and also her desire for writing is increased, and proficiency is achieved. Each issue of the publication has a central theme. The December, 1928, *Message* was a drama number in which was published a most interesting story of the Little Theatre movement entitled: "The Little Theatre Grows Up," written by Miss Elbe Henninger, Professor of Spoken English and Dramatic Art.

The Message has a wide circulation on the campus and among the alumnae. It also has a large exchange with similar publications of other colleges. The title, *The Message*, typifies its contents, and it is conducive to the best literary interests of Greensboro College.





The Message Staff

FRANCES FELMET
 MARY KELLAH OUTZS
 MARY MARSHALL DUNLAP
 RUTH BURKE
 ANNE CATCHINGS
 FRANCES FORREST
 GERTRUDE CLAY
 JENNY LIND FOX
 SARAH ZACHARY
 RUBY WILLIAMS
 NELLIE MCKEEL
 VIRGINIA M. FORMY-DUVAL
 MADGE PETTUS
 RUTH COX
 JANIE WEAVER
 MILDRED HIPPS
 OTELIA VAUGHN
 MILDRED MOORES
 MARY CARTER
 CAROLYN NICHOLS
 MARY FERREE
 W. S. WEBB
 A. M. PEGRAM
 M. L. GINN

Editor-in-Chief
Assistant Editor
Associate Editor
Business Manager
Assistant Business Manager
Associate Manager
Art Editor

Literary Editors

Circulation Managers

Exchange Editors

Typists

Advisory Committee



The Collegian

The Collegian is our college newspaper that is published twice a week. Although this publication is not very old, it is already a member of the North Carolina Collegiate Press Association that convenes semi-annually. The delegates obtain much information from these conventions and in this way our paper improves a great deal.

There is a very complete staff and each member has specialized duties to perform. The news events concern only Greensboro College affairs, which includes the organizations, society and very well-chosen jokes. The editorials are a source of much conversation because they deal with the every-day affairs of the college—from praise to grievances. The business staff gains practical business knowledge from financing *The Collegian* through the securing of advertisements of local business establishments. Aside from the training that one acquires in composing the news for publication, *The Collegian* has become a popular newspaper for the students as well as for the faculty.





The Collegian Staff

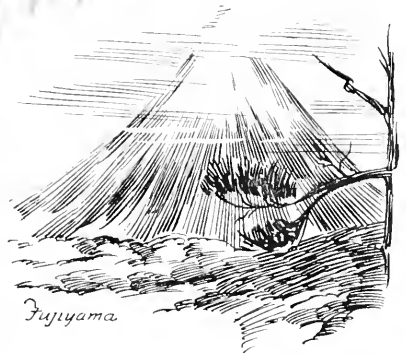
LEOLA BLACK
CAMILLE STATON
MARGARET TOWE
CATHERINE MOORE
NELLIE McKEEL
MARTHA AUSTIN
ETHEL HERRING
ANNIE LEE DENNING
SOPHIA HARGETT
MARY BROCK
MISS MARY GINN
ESTELLE BOGER
MARY LEILA HONIKER
EMMALOU BENNICK

Editor-in-Chief
Business Manager
Assistant Manager
Assistant Editor
Managing Editor
Associate Editor
Literary Editor
Society Editor
Humor Editor
Alumnae Editor
Faculty Advisor
Circulation Manager
Exchange Editor
Typist





ATHLETICS



Fujiyama





FIELD DAY



THE ATHLETIC ASSOCIATION

MARY DRUM	FAYE HUNT, <i>President</i>	KATHERINE McCALL	<i>Custodian</i>
MARY COOPER HOOKER	<i>Vice President</i>	GRIFFA WAGGONER	<i>Reporter</i>
EVA BILLY BOBBITT	<i>Treasurer</i>	MARY DAVIS	<i>Publicity Chairman</i>
	<i>Secretary</i>		



MISS NOMA DOBSON
Director of Physical Education



MISS "G. C." —MARY DRUM
Freshman Score, Field Day, 1928



"G" CLUB

MARY BURGESS BYRUM
MARY CARTER
MILDRED CROSS
ELIZABETH CROSS
RUTH CURTIS
ROBERTA CURRIE
FRANCIS DORSETTE

MARY DRUM
JENNA LEID FOX
CLARA HARRISON
FAUL HUNT
ELIZABETH KNOWLES
LOUISE KNOWLES
SARAH LEROY

ROSS LOYD
KATHERINE McCALL
NORTHINGTON MOORE
MARY KELLAH OZZIS
RUTH TRACHE
MARGARET TOWE
LUCY VAIL



HIGH SCORERS

MARY DRUM, '29
MARGARET TOWE, '30

RUTH THACH, '31
MARION CURTIS, '32



CHEER LEADERS

MILDRED CROSS
L AYE HUNT

LOUISE KNOWLES

RUTH DAVIS
CATHERINE MOORE



MISS RUTH CURTIS
Tennis Champion, 1929

Tennis

Tennis this year was unusually interesting as the contestants were very evenly matched. The seniors and freshmen won out in preliminaries entitling them to play on Field Day. The seniors were represented in doubles by Jessie Ruth Cunningham and Ruth Curtis. Freshmen playing were Ruth Davis and Marion Curtis.

Sister classes supported their players loyally with their continual yelling throughout the game. Victory fell to the seniors with a score of 6-3, 9-7. Ruth Curtis represented the seniors again in singles; opposing her was her sister, Marion, representing the freshmen. Victory again fell to the senior class, and Ruth Curtis was named college tennis champion, and was presented with the tennis cup.





1ST PLACE DOUBLES
JESSIE R. CUNNINGHAM
RUTH CURTIS



2ND PLACE DOUBLES
MARION CURTIS
RUTH DAVIS



1ST PLACE SINGLES
RUTH CURTIS



2ND PLACE SINGLES
MARION CURTIS

WINNERS IN TENNIS

Soccer

Soccer is a new game on the G. C. campus, but nevertheless it proved to be a very popular sport on Field Day, judging by the number of participants. The junior and freshman teams fought a hard game.

At the end of the third quarter the score was tied; excitement ran high; both junior and freshman classes were yelling and supporting their teams as "big sisters" played their "little sisters." But chance seemed to be in favor of the freshmen, for a goal was made just before time was called.

Both teams showed the results of their splendid training under the direction of Miss Dobson, and their captains, Ruth Davis and Margaret Towe.





JUST BEFORE THE BATTLE



FRESHMEN VS SOPHOMORES 2-1

SOCCER

Basketball

Early in the morning on Field Day there was an unusual hurry and hustle about the campus. Girls were speculating as to who would be the winner of the basketball game, played by the juniors and the sophomores.

The game proved to be a "thriller." The juniors were playing for the championship cup, having been victorious the previous year, and the sophomores were equally anxious to display their athletic ability.

The game was fought to a 32-30 finish, the juniors winning by a goal thrown just as the whistle blew.

Starring for the juniors were Margaret Towe and Mildred Cross; for the sophomores, Ruth Thach.



REPRESENTATIVES AT N. C. C. W. PLAYDAY



SOPHOMORE BASKETBALL TEAM

MARtha AUTEN, MARY DAVIS, IRENE FOWLER, LOUISE KNOWLES, ROSA LOVE, RUTH THACH. *Substitutes:* NANCY LANE, EDITH LAUGHRIDGE.



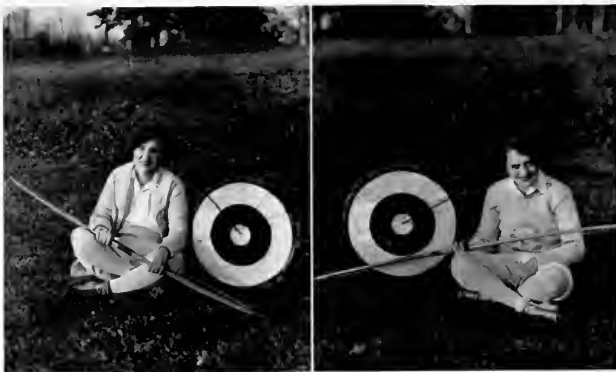
JUNIOR BASKETBALL TEAM

MILDRED CROSS, ELIZABETH CROSS, REBECCA CURRIE, FRANCES DORSETTE, JENNY LIND FOX, MARGARET TOWE. *Substitutes:* ANNE CATCHINGS, FRANCES COX.



DASH
RUTH THACH, ANNIE HINKLE

WALKING FOR SPEED
MARY KELLAH OUZTS



BONARIO
First Place Winner, MARY DRUM, Second Place Winner, FAYE HUNT

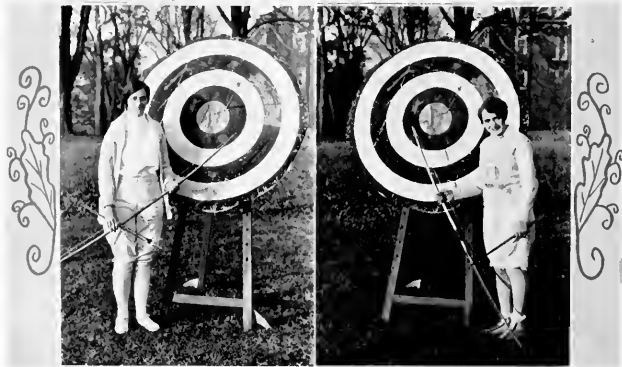


FAYE HUNT. *High Scorer in Track Events*

Track

The senior class had the honor of winning the highest number of points Field Day, November 10, 1928. The senior class also received the tennis and track cups. Mary Drum was named "Miss G. C." as winner of the highest number of individual points. The basketball cup was won by the juniors. Mary Drum was named "Miss '29," Margaret Towe, "Miss '30:" Ruth Thatch, "Miss '31," and Marion Curtis, "Miss '32." Faye Hunt, Mary Drum, Elizabeth Knowles, and Nightingale Moore won the relay race; archery, first place, Mary Carter; second place, Faye Hunt; bonnario, first place, Mary Drum; second place, Faye Hunt; basketball throw, Ruth Thach. Mary Carter won first place in pitching horseshoes, with Edith Laughridge second.

In walking for speed, Mary Kellah Ouzts was first, Faye Hunt, second. Dash was won by Ruth Thatch, Annie Hinkle winning second.



ARCHERY

First Place Winner, MARY CARTER; Second Place Winner, FAYE HUNT



FIRST PLACE WINNERS IN TRACK EVENTS

MARY CARTER, MARY DRUM, ANNIE HINKLE, FAYE HUNT, ELIZABETH KNOWLES,
NIGHTINGALE MOORE, MARY KELLAH OUZTS, RUTH THACH.



SECOND PLACE WINNERS IN TRACK EVENTS

ANNIE HINKLE, FAYE HUNT, ELIZABETH KNOWLES



Hikers' Club

ELIZABETH ADAMS
 ELIZABETH ANDERSON
 LOUISE AUSTIN
 MARY JANE ANDREWS
 HELYN ANDREWS
 MARY FRANCES BOST
 PRISTINE BLAKENEY
 EMMALOU BENNICK
 MARY BAGGETT BYRUM
 MARY CARTER
 MARY HOWARD CLARK
 MARY DRUM

ANNI FREEMAN
 CORNELIA GFER
 ELIZABETH HUNT
 CATHERINE KING
 EDITH LAUGHRIDGE
 SARAH LE ROY
 NIGHTINGALE MOORE
 LAZELLE MITCHELL
 CORNELIA MORRISON
 FRANCIS MITCHELL
 JOSEPHINE MYSSER
 SARAH NORWOOD

EVELYN PELL
 ELIZABETH PATE
 PANSY RUTHERFORD
 CAROLINE RHODES
 JANE SINCLAIR
 LOUISE TATE
 MARY VEAL
 LAVINIA VEAL
 LUCY WYLLIE
 ELIZABETH WATKINS
 ANNIE FULLER YOUNG





FEATURES



*An Indian
Snake Charmer*





Long life to the 1929 "Echo"

Richard Mulholland





Miss Alice Williams
Phot. by Miss Alice Williams



GRACE - Posed by Mrs. Francis Dorsette

Mrs. Dorsette is wearing a dress by Mrs. A. J. C. and a fan by Mrs. A. J. C. The vase is by Mrs. A. J. C. and the flowers are by Mrs. A. J. C.



PAULINE — Posed by Miss Maxine Holmes

A young and charming woman with a face and dancing eyes has become a beauty in the eyes of the world and a successful life. Discover the secret of her success.



PRINCESS PADMINI—Posed by Miss Virginia Griffin

As lovely a little maiden as I had seen in India. She was not over sixteen, and, with pale to coloring, weighed down with silver jewelry and draped in a combination of colors, she suggested the rainbow.



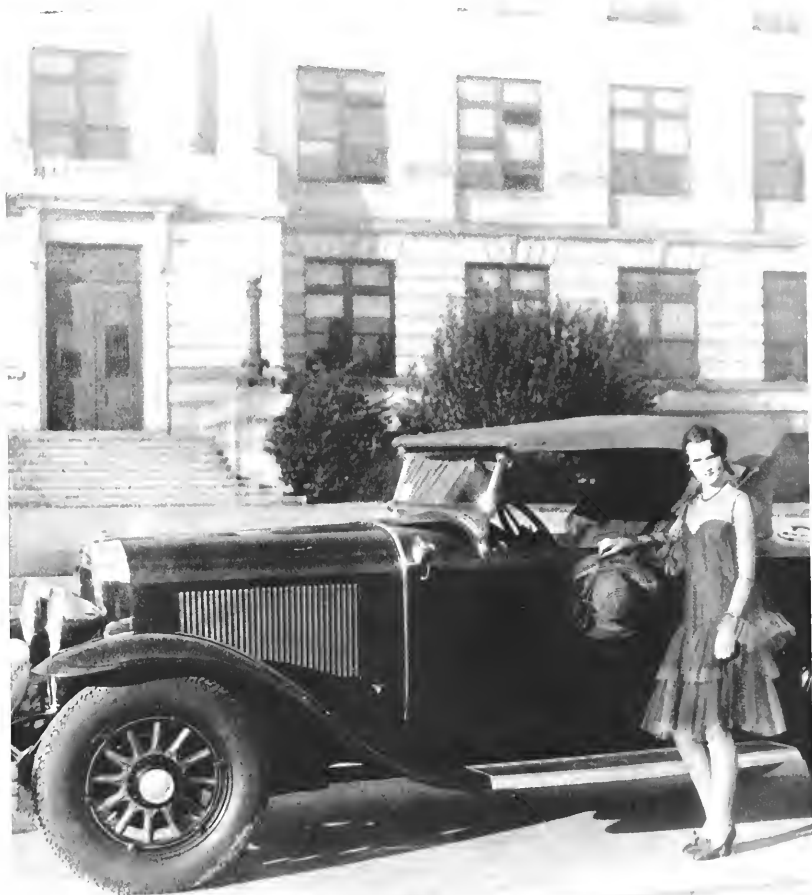
Ray A. Poul for Miss Ruth Bruce

Copyright © 1911 by The Photo-Engraving Co., New York, N. Y.



JIMMY— Posed by Miss Annie Fuller Young

Everything about her was eloquent of England— her brogues, her tailored clothes, her fair complexion. Her hair was blonde as sunbeams. English blonde. She looked so bright and adorable and so bored with archeology.



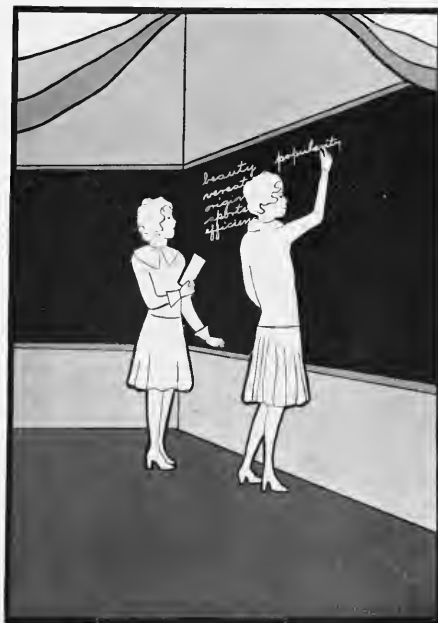
MIGNON - Posed by Mrs. Doris Hardee

*Mignon is a perfect complement to Immo. With her dark eyes and hair she will find
more than her share of admirers. There are no other cars about her. She is an absolute
Immo car imp.*



TANA—Posed by Mrs. Elizabeth Thorpe

*It brings you back to the land Tana, the daughter would tell a story of a
mother's tale. Speaking different languages, knowing different a day, we would
each under the rising sun a laughing a night as it we were of one race and one day.*



STATISTICS



Eleanor Edwards . . . "Beauty"



Frances Felmet . . . "Versatilitg"



Clara Stroud *Efficiency*



Faye Hunt . . . "Sportsmanship"



Mildred Cross . . . "Popularity"



Doris Gillette... "Originality"



Gertrude Clay *'Talent'*



Ethel Herrina . . . "Intelligence"



Miss Angelita Hurrelson . . . Queen O' Mau



May Day, 1928

A gay procession led by a red-coated peasant playing a rollicking folk tune on his clarinet. In his wake horn-bearers, clad in knee-length brown smocks bedecked with the signs of the zodiac, bearing aloft deer antlers and branches of oak . . . Peasants in holiday attire tripping merrily across the green-sward, losing themselves in the joyous abandon of their beloved folk dances.

Then, suddenly, the ceasing of the dancing, stillness everywhere; only the turning of all eyes to watch for the coming of the May Queen . . . eagerness, expectancy.





May Day, 1928

The attendants of the Queen. First, Misses Eleanor Franklin and Elizabeth Eaves of the senior class, dressed in bouffant gowns of soft green, followed by Misses Eleanor Edwards and Thelma Thompson of the junior class, gowned in delicate pink; next, Misses Mary Agnes Williams and Frances Dorette of the sophomore class, clad in blue gowns, followed by Miss Ruth Cox and Katherine Brower of the freshman class, wearing deep yellow . . . In their places around the throne of the Queen . . . The Maid of Honor, Miss Katharyne Whitener, lovely in orchid . . . Little Master Harrelson, brother of the Queen, as crownbearer. Finally, the Queen herself! Miss Angelita Harrelson passed with gracious dignity through the assemblage of devoted subjects and ascended the throne.

After her coronation with a dainty crown, folk dances, folk songs were given in honor of the Queen . . . Then the departure of the Queen and her court . . . A scene from medieval England—fairy-like, dream-like, passed into memory.



EMERSON LITERARY SOCIETY
ESTABLISHED 1890



IRVING LITERARY SOCIETY
ESTABLISHED 1882

DECISION DAY, 1928



Thanksgiving at G. C.

Thanksgiving was observed at G. C. in keeping with the former custom. The first observance of Thanksgiving was held Wednesday evening at Vespers. At this time the social service committee gave a short one-act play entitled, "The Spirit of Thanksgiving."

Activities to celebrate the day began early Thursday morning. The college family was hailed with strains of Thanksgiving hymns leading from a sunrise service held in the chapel to a serenade under the windows of the dormitories. The girls were asked to dress like pilgrims for breakfast.

After breakfast the real work of the day began. Fruit was carried to the Childrens' Home, the Masonic Home, and to a few private homes, and an appropriate service held at the institutions. Delightful games were played and stories told to the children. A service composed chiefly of songs was held at the Masonic Home.

The girls who took part in the play on Wednesday evening were asked to go to the city jail and present the same for the jailers, after which they helped serve their Thanksgiving dinner.

A delightful and well-prepared dinner was served at two o'clock. After this the afternoon was given over to calling, movies, and other amusements. In short, a most pleasant day was enjoyed by the students as well as the faculty.

Commencement Program

SATURDAY, MAY 26

8 30 P. M.—Annual Guest Performance, by the Greensboro College Players.

SUNDAY, MAY 27

11 00 A. M.—Baccalaureate Sermon Bishop Edwin D. Mouzon, D. D. I. E. D., Charlotte, N. C.

8 00 P. M.—Anniversary Young Women's Christian Association Bishop Edwin D. Mouzon.

MONDAY, MAY 28

3 00 P. M.—Annual Business Meeting of the Alumnae Association

5 00 P. M.—Class Day Exercises

6 00 P. M.—Alumnae Student Dinner

8 30 P. M.—Annual Concert

TUESDAY, MAY 29

10 30 A. M.—Opening Exercises

Annual Address

Graduating Exercises

President Charles J. Turck Centre College, Danville, Ky.

GRADUATES SCHOOL OF SPOKEN ENGLISH AND DRAMATIC ART

MARGUERITE JUANITA GREGG

ETTA MAE KINSLAND

B. M. DEGREES AWARDED

VELMA ELOISE BASS
MARY MARGARET BELL
ANNIE MAE BROWN

ELIZABETH RUCKER LAYES
ELLENOR HOLMES FRANKLIN
EMMA CARDWELL LIVELY

MADGE ELLEN MARLEY
JANIE BROOKS SANDS
ELIZABETH YOW

A. B. DEGREES AWARDED

ANNIE RACHEL ADER
LINORA FRANCES BACON
SARAH ALLEN BLAYLOCK
IRINI MCKAY BROOKS
MRS. LILLIAN B. BROWN
FANNIE MAY BURNETT
ETHEL ENA BUTT
LYDIA BRISCOE CAVINESS
BESSIE AILEEN CHAMBERLAIN
EMILY RAMSEY COMMANDER
FRANCIS CATHRYN DAILY
IVA GENOA DIXON
MARY EMBREY FAULKNER
LILLIAN FOSTER
GRACE IRWIN FRIELAND

ADDIE MAE GATLIN
MARGARET E. GLENN
OTILIA DORIS GOODE
MARGUERITE J. GREGG
ANGELITA HARRILSON
ANNIE LOUISE HATCHER
LUCIE SUTTON HAYES
DAISY HENRY HERRING
MARGARET E. HILDEBRAND
DOROTHY DIAN HUDSON
JESSIE HARRISS KEARNS
ETTA MAE KINSLAND
DELLA McCLEURG
SARAH ISMAI McCRAKEN
AGNES MINERVA MABRY
MARGARET FRANCES PAYNE

MARY ELLEN POWELL
BEULAH LUNETA PRAFF
CLARA WARD RIGSBEE
CREFLMAN ROWLAND
MILDRED ARLINE SAFRIT
LUCY PALMER SCOGGIN
MARY ELIZABETH SHEPHERD
ESTHER HYETT SHERRILL
ANNETTE HARRIS SHINN
LUNICE MILDRED SIMONS
VARENA CALLO WAY
RUTH ELIZABETH WILLIAM
ZILLA LE CATO WINN
LILLIAN C. WORTHINGTON
SARAH MARGARET WRIGAN

SENIOR HONORS

Magna Cum Laude

ANNIE RACHEL ADER
MARY MARGARET BELL
MRS. LILLIAN B. BROWN

OTILIA DORIS GOODE
ANGELITA HARRILSON
DOROTHY DIAN HUDSON
BEULAH LUNETA PRAFF

MILDRED ARLINE SAFRIT
JANIE BROOKS SANDS
ANNETTE HARRIS SHINN

HIGHEST HONORS

OTILIA DORIS GOODE

ANGELITA HARRILSON



THE DAISY CHAIN



CLASS DAY EXERCISES 1928



Class Day Exercises

MAY 28, 1928

THE ASSEMBLING

GREETINGS	Annie Ader
LAST ROLL CALL	Angelita Harrelson
CLASS POEM	Zilla Winn
CLASS HISTORY	Eleanor Franklin
CLASS PROPHECY	Annette Shinn
LAST WILL AND TESTAMENT	Margaret Wren
GH-ORIAN	Angelita Harrelson
LOVE'S LAST ENCIRCLING	
LOVE'S GUIDE DOWN THE LANE OF LOVING HEARTS	Mildred Cross

Reception of the Class of 1928 into the Alumnae Association





To Our Sister Classes

*"We did so laugh and cry with you,
We've half a mind to stay with you,
Dear friends, if you must stay."*

IT would not be fitting to close this book without a word to you, who for four long years have been warmed with us under the genial smile of our Alma Mater; you who have been companions of our work and play; you who have been sharers of both the good and the bad which have come to us.

Therefore, because you are so woven in the fabric of the memories which we hold dear, we dedicate this page to you—Our Sister Classes.





VA. AND LILLIE



A CLASS IN PAINTING
— NOT FACES.



THE FRESHMEN AND
THE FOUNTAIN



WE HAVE SNOW



OUR CO-ED



"ON THE HILL"



DRAMATICS



Dramatic Club

OFFICERS

ANNIE FULLER YOUNG
ELIZABETH KNOWLES
GRACE SHEFFTS

President
Vice-President
Secretary-Treasurer

MEMBERS

JUDITH ALBERT, VIRGINIA APPLEWHITE, MARTHA ACTEN, ELIZABETH BELVIN, GERTRUDE BROWNING, RUTH BERRUS, CABEL CAMPEN, GERTRUDE CLAY, ELLEN CLARKE, JEAN COLL, FLORENCE CORRELL, RUTH COX, MARY COX, RUTH CURTIS, MARY DAVIS, RUTH DAVIS, MARY MARSHALL DUNLAP, ELIZABETH EDWARDS, MARGARET FARROW, MARY FARMER, FRANCES FELMET, CORNELIA GOSK, VIRGINIA GRIFFIN, CATHERINE KING, ELIZABETH KNOWLES, VIRGINIA LUMPKIN, MILDRED MOORES, BEATRICE RIMMEL, LOVERNA RITCHIE, CAROLINE RHODES, MARGARET RYAN, ELIZABETH ROWLAND, GRACE SHEFFTS, LAURA MAE SMART, LITA STAFFORD, CAMILLE STANTON, MARGARET TOWT, RUTH WATSON, ELIZABETH WEBSTER, ANNIE F. YOUNG, MARGARET WYNN.





"QUALITY STREET"
BY
JAMES MATTHEW BARRIE
PRESENTED NOVEMBER 19TH



"TURTLE DOVE"
BY
MARGARET SCOTT OLIVER
PRESENTED DECEMBER 11TH



MUSIC



The College Orchestra

GEORGE K. HIBBETS, *Director*

JOSIE ADAMS

MARY JANE ANDREWS

HAZEL BROOKSHIRE

MARY LIELA HONIKER

NANCY LANE

DR. CONRAD LASHER

LOIS LIVELY

MRS. GEORGE K. HIBBETS

CHARLES LEWIS MCNEILL

MARGARET MILLER

THELMA NEWSOME

EUNICE VARNON

MYRTLE VARNON

OTELIA VAUGHN

CATHERINE WALLACE

ANNA MAY WILLIAMS



Recital
OF
MUSIC FOR TWO PIANOS

by
MISS MILDRED TOWN
and
MISS BLANCHE BURRUS

TUESDAY, OCTOBER 2, 1928, 8:30 P.M.

PROGRAM

SONATA, D MAJOR

Allegro con spirito

Andante

Allegro molto

LE MATIN

EASTERN INTERMEZZO

MINUET A L'ANTICO

THE VILLAGE FAIR

CONCERTO, A MINOR

Adagio

Allegro marcato

Mozart

Chaminade

Granget

Seeboeck

Kramm

Grieg

Recital

BY

RUTH HUFFMAN, *Soprano*

THELMA TATE, *Pianiste*

ODFLL MEMORIAL AUDITORIUM

Tuesday Afternoon, February 26, at 4:30

PROGRAM

WITH A VIOLET

AS THE DAWN

SONATA IN E MINOR

Allegro Moderato

IF I WERF A BIRD

SPARKS

HAD I BUT YOU

RFD. RFD ROSE

WANITA

ETUDE IN A FLAT

PRELUDE IN A FLAT

WALTZ IN C SHARP MINOR

MISS HUFFMAN

MISS TATE

MISS HUFFMAN

MISS TATE

Grieg

Cantor

Grieg

Henselt

Mozzkowski

Chapman

Folwell

Harling

Chopin

Chopin

Chopin



Glee Club Personnel

MARTHA AUSTIN
CATHERINE MOORE
JENNY LIND FOX
MAXINE HOLMES
AUDREY BRUTON
GILMAN ALEXANDER
GWENDOLYN MITCHELL

Manager
Vice-President
Secretary-Treasurer
Publicity
Accompanist
Director
Assistant Director

First Sopranos

MADGE MARLEY
GWENDOLYN MITCHELL
GLADYS STROUD
RUTH HUFEMAN
FRANCES RIDDLE
ALMA DAILEY

First Altos

HOVIS HIPPS
ANNIE MANN
MAXINE HOLMES
MARGARET LITTLE
ELIZABETH ANDREWS
MARTHA AUSTIN

Second Sopranos

FRANCES DORSETTE
MARY HOOKER
LOUISE ATWELL
LETA JOHNSON
MILDRED HIPPS
RACHEL CREECH

Second Altos

MARION ERWIN
CATHERINE MOORE
GRACE ROBERTSON
ETHEL HERRING
EVA BOBBITT
VIRGINIA FORT



Glee Club

PROGRAM

Three 17th Century Italian Songs—*Arranged by Deems Taylor*

TURN NOT FROM ME

DANCE, LITTLE MAID

IF FLORINDO BE FAITHFUL

THE CLUB

Bononcini

Durante

Scarlatti

MY DESIRE

SONG OF THE ROBIN WOMAN, FROM THE OPERA "Shanewis"

MADGE MARLEY

Nevin

Cadman

BY MY WINDOW

PLEADING

THERE WAS A PIG, Old English Playing Song

THE CLUB

Arranged by *Grainger*

Bliss

Kramer

IRIS

A SERGEANT OF THE LINE

GILMAN ALEXANDER

Wolf

Squire

BARCAROLA

MADGE MARLEY, GWENDOLYN MITCHELL AND GILMAN ALEXANDER

Campana

STAR EYES

CARMENA

GWENDOLYN MITCHELL

Speaks

Wilson

AH, LOVE, BUT A DAY

SAY, WHAT SHALL WE DANCE

NEGRO SPIRITUAL

THE CLUB

Beach

Harris

Turner



Y. W. C. A. Choir

The Y. W. C. A. Choir is a recent organization which plays an important part in the vesper services held at the college each week. The members are composed of the students who will voluntarily give their services each week in helping with the music, and certainly this adds a great deal of interest to the Y. W. C. A. program as well as to the interest of the members of the Y. W. C. A.





HUMOR



A MARTYR TO HER GAUZE

STOP! THIEF!

SHE IS NOT KNOCK-KNEED



SCRATCH MY BACK

LEARN YOUR FUTURE

THE RESCUE

The Echo



FRESHMAN WHO
GO TO CHURCH — NOW.



N.B THE BACK-END
OF A FORD TRUCK



FAYE TAKE A TRIP
TO STATESVILLE



WHAT PRICE BEAUTY
"A PERMANENT BURN" A LA HATBOX



SERVICE
A LA HATBOX



THE "THREE MUST
GET THEIRS"

Jokes

WANTED

- A position or a man—Senior Class.
An odorless and noiseless substitute for chewing gum—Mrs. Alley.
A college girl whose nose will stay at the same angle when hot dogs and sauer kraut are placed before her.
A freshman class who will not forget their inferiority—Upper Classmen.
Girls who can clog lightly (those above me make too much noise)—Miss Ricketts.
Students who are strong enough to stand up in chapel—Dr. Ginnings.
A class who will do all their dreaming at night—Miss Perry.
A freshman who can work an example at least after five explanations—Miss Pegrum.
A monitor with an elastic conscience—Elizabeth Rowland.

TUNE: "Beloved"

We can't play bridge
We cannot dance
At Greensboro College,
If we step out
We take a chance
At Greensboro College,
The days are long,
The nights are sad,
When we get caught
The council's glad,
There is no glee
Oh woe is me'
At Greensboro College!

RESOLUTIONS

I resolve to be prompt to my classes
(Whenever I possibly can)
And to study each daily lesson
(Unless they interfere with my plans).
I resolve to do a good turn daily
(When there's nothing else to do)
And to keep up my correspondence
(If correspondents keep it up, too);
I resolve to be neater in appearance
(Provided I have plenty time)
And not spend money extravagantly
(With exceptions of nickles and dimes);
In fact, I resolve to do everything
(That I resolved the year before)
And I promise to keep them faithfully
(Until they begin to be bores)!

"MOST ANY STUDENT"

I straggle into the classroom
With a slow and dragging pace,
And stir up much commotion
Trying to get into my place,
Then because I haven't studied
(But went to town instead)
I crouch down low into my chair
And hide behind some head'
The teacher doesn't call on me
So I think I'm quite the stuff
To get by without studying
And to pull such an excellent bluff'
I try the scheme again and again—
It worked as well as before,
Until exam time comes around
(Then I wished I'd studied more).
I think that teachers sometimes
Must get tired of a lazy class,
But they can well repay us
In this way, "They shall not pass!"
So I guess that in the years to come
All students will try to get by,
I like YOU did in school, dear teacher
When you were as young as I'

WE: Lindy,
It Clara Bow
I' Dr Ayers

CLAYTON: "On what grounds does your father object to me dearest?"
JOYCE: "On our grounds principally. He says if he catches you there again he'll sic the dog on you."

FRANCES: "I go to bed with the chickens when I'm at home."
SOPHIA: "Do they mind?"

DOCTOR: "Your condition requires that you go to bed every night between nine and ten."

K. BEST: "Now doctor, that's just too many for one bed!"

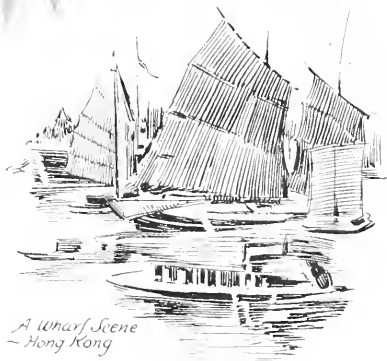
PAT LUMPKIN: "Why do all Carolina Playmakers smoke pipes?"

MISS HENNINGER: "They know smoking is good for hams (ham actors)."

"Are skeleton keys made of bone?"



ADVERTISING



*A Wharf Scene
- Hong Kong*

GREENSBORO COLLEGE

Greensboro College is a member of the Association of Colleges and Secondary Schools of the Southern States.

Chartered in 1838. Confers the degree of A.B. in the literary department and B.M. in the music department.

In addition to the regular classical course, special attention is called to the departments of Home Economics, Art, including Industrial and Commercial Art, Spoken English and Dramatic Art, Education, Sunday School Teacher Training, Piano Pedagogy, and to the complete School of Music.

For further information apply to

SAMUEL B. TURRENTINE
President

GREENSBORO NORTH CAROLINA



MISS RACHEL CREECH

The Flynt Studio

GREENSBORO, N. C.

Official Photographers for the Echo



MISS ELIZABETH ROWLAND
Uses and Endorses
D'ORSAY'S PERFUMES AND
TOILET ARTICLES
—Ed. Nowell's Pharmacy.



“Jahn & Ollier Again”

WE are America's largest school annual designers and engravers because we render *satisfaction* on more than 400 books each year. Intelligent co-operation, highest quality workmanship and on-time deliveries created our reputation for dependability.

JAHN & OLLIER ENGRAVING CO

*Photographers, Artists and Makers of
Fine Printing Plates for Black or Colors.*

817 W. Washington Boulevard • Chicago

Telephone MONROE 7080



*(We do not sub-let any
art or engraving)*



ANOTHER ONE OF THE
MANY COLLEGE AND
HIGH SCHOOL ANNUALS
PRINTED IN OUR SHOP

ANNUAL PRINTERS FOR THIRTY YEARS

HAVE YOU ever considered the quality of your Annual from the standpoint of careful typography and accurate proofreading? The reputation of The Observer Printing House, Inc., as Annual Printers, has been established through accuracy and attention to the little details that enter into the publication of a Year Book.

THE OBSERVER PRINTING HOUSE

INCORPORATED

29 South Church Street

CHARLOTTE, N. C.



MISS KATHERINE KING

Head Colds relieved with vapors

Snuff a little Vicks well up the nose or melt in a spoon or cup of hot water and inhale.

Medicated vapors reach the air passages direct.

For other cold troubles rub Vicks on throat and chest.

acts **2** ways
at once

VICKS
VAPORUB
OVER 21 MILLION JARS USED YEARLY



MISSSES ELIZABETH BELVIN AND
SARAH ZACHARY

THE VELVET KIND ICE CREAM

A Product of

SOUTHERN
DAIRIES

For All Occasions

Phones 3471 and 3472

GREENSBORO, N. C.



MISS MARY MARSHALL DUNLAP

+++
**KING
 COTTON
 HOTEL**
 250 Rooms
 250 Baths
 Market and Davie Streets

+++



MISS MARIE SMITH



MISS LILY KING

The Carolinas' Outstanding Store for Men and Boys

That well dressed appearance is the mark of success that shows on the man who takes pride in his apparel.

This store with its forty years experience in outfitting men in apparel that is necessary for every occasion is completely equipped to please you.

1917

VANSTORY CLOTHING COMPANY

Jefferson Bldg.—GREENSBORO, N. C.



MISS ANNIE CARR WHITTEMORE

Beginning Early but Beginning Right

We like to see the pleasant smiles of the college girls.

May we always enjoy the pleasant relationship that exists between us.

"SYKES' SERVICE
SATISFIES"

SYKES' DRUG Co., Inc.

230 W. Market Street
GREENSBORO, N. C.

SOCIETY NEWS

of Greensboro College is an important part of THE RECORD. A column of personal chats for girls and women and the latest style hits from New York and Paris appear daily in the

GREENSBORO DAILY
RECORD

Phone 4800



MISS ELEANOR BEST

Stratford-Weatherly Drug Company

+ + +

"We Always Sell the Best"

Nunnally Candy—Factory Branch
Bulk and Box Candy—Favors

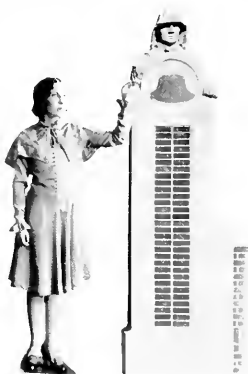
Parker—Sheaffer—Waterman
Fountain Pens

Guerlan—Elizabeth Arden
Perfumes and Toilet Water

*Finest Soda Service in
Greensboro*



MISSES FRANCES DORSETTE AND
HELEN MANNING



MISS THOMPSON FINDS THE PILOT IS NO
SPHINX WHEN IT COMES TO TALKING
LIFE INSURANCE PROTECTION

Remember the Pilot for
"Better Protection."

And when you meet
"The Man" take him out
and introduce him to Pilot
Life.

Neither of you will ever
regret it!

+ + +

PILOT LIFE
INSURANCE COMPANY
GREENSBORO, N. C.

The Advocate Publishing House

Our new building and new
and better equipment enable us
to do better work than ever be-
fore.

Give us a trial.
We do our best to please.

429 W. GASTON STREET

PHONE 1285

GREENSBORO, N. C.

JOHNSON-TAYLOR

*Greensboro's Most
Attractive Store*

+

Where fashions of New York
and Paris first find their
way to North Carolina

+

DRESSES, WRAPS
ENSEMBLES AND
ACCESSORIES

+

106 NORTH ELM STREET



MISS MARY DAVIS

We are proud of the name O. Henry. We are proud of this edition
We are proud of the

O. HENRY DRUG STORES

and we are proud of and appreciate the patronage of the college girls.

Visit our stores often. You will always find a welcome—courteous employees and good service.

WE SAVE YOU MONEY, TOO
OUR FOUNTAIN SERVICE IS THE BEST
THREE CONVENIENT LOCATIONS

THE CAROLINAS'
GREATEST
HARDWARE
AND SPORTING
GOODS STORE

BUY AT
Odell's
WHERE QUALITY TELLS

GREENSBORO, N. C.

Sykes'
Florists

Incorporated



Successors to
Van Lindley

GREENSBORO HIGH POINT
WINSTON-SALEM



MISS NANCY LANE

GRADUATION—
AND THEN—?

WHEN YOU
GET
MARRIED

Buy Your Home
From Me

C. C. HUDSON

*We Furnish the Home
Site
We Build the House*

Owners and Developers of
IRVING PARK
Greensboro's Country Club District
and
SEDFIELD
Recreation Center of the Piedmont

Property listed with us for sale
given prompt attention

INSURANCE OF ALL KINDS
Guaranteed Real Estate Loans

Southern Real Estate Co.

104 North Elm Street
Phones 107-108

The
Carolina

"A Greensboro Institution"

Thirty-five Years of
Mutually Pleasant
Business Relations



Schiffman's

LEADING
JEWELERS

GREENSBORO, N. C.



MISS GRETTA WAGGONER

YOU ARE WELCOME
at
KING COTTON
DRUG STORE

AT ANY TIME

We want you to feel at home in our
store. To serve you satisfactorily is
our greatest aim. COMMAND US.

King Cotton Hotel Building
Phone 2213

FLASHES
OF
FASHION

Catering to the Miss of
Discriminating Taste



WILLIAMS

"For Women Who Love Beautiful
Clothes"

The Editor

Harrison's

*The Shop of
Distinction*

212 South Elm Street



SMART STYLES
FOR THE
COLLEGE MISS



MISS ETHEL HERRING

ELLIS STONE & CO.

The Quality Store

+ + +

WHERE

The College Girl Finds the
Newest in Quality Merchandise
at Moderate Prices

Ready-to-Wear
Millinery
Footwear
Dress Accessories
Piece Goods

+ + +

ELLIS STONE & CO.

*Carolina's Largest
Home Furnishing
Institution*



MORRISON NEESE

Furnishers of Successful Homes

GREENSBORO, N. C.

Meyer's
DEPARTMENT STORE GREENSBORO N. C.

*Quality! Service!
Values!*

Are a Certainty at Meyer's

*The Harmonizing
Ensemble for Spring*

Harmony from the head of her smooth-fitting hat to the toe of her impeccable shoe — nothing less will pass muster in the Spring review of woman's dress. All the fashion departments of the store aid and abet the cause of the matching costume.



MISS MAXINE HOLMES

Ten Per Cent Discount
to College Girls

MRS. PATTIE McNAIRY

Millinery

117 South Greene Street

W. H. Fisher Co.

PRINTING
ENGRAVING
DESIGNING

GREENSBORO, N. C.

110-112 EAST GASTON STREET

PROMPTNESS

and

QUALITY

First

Last and Always

McNEELY'S DRUG STORE

718 West Market Street

GREENSBORO, N. C.

"FOR THE COLLEGE GIRL"

STATIONERY

If it's Crane's Stationery you may
be assured of

STYLE and QUALITY

WILLS BOOK & STATIONERY
COMPANY

107 South Greene Street
GREENSBORO N. C.

POWELL'S WALK-OVER SHOP

Shoes and Hosiery

115 South Elm Street
GREENSBORO, N. C.

ALL WORK GUARANTEED TO PLEASE

HOLDEN'S SHOE SHOP

409 TATF STREET

GREENSBORO DAILY NEWS

GREENSBORO, N. C.

The *Greensboro Daily News* is a
newspaper with a purpose, viz.

Dissemination of the news and views
relative to the State's progress.

"For the One Who Cares"

Peerless Cleaners, Inc.

208 N. ELM STREET

Your Call is Our Self Starter

881—Phones—882

FOR HEALTH'S SAKE

Eat Fruit and Green Vegetables

W. I. ANDERSON

(Wholesale only)

Atlantic Produce Co.

Headquarters for

FANCY FRUIT AND
PRODUCE

GREENSBORO, N. C.

Foster-Caviness, Inc.

Wholesale

FRUITS AND PRODUCE

Beautiful
Marcel
Permanents



Exquisite
Finger
Waving

THE PERMANENT WAVE SHOP

Top Floor Room 1102
Greensboro Bank & Trust Bldg.
Telephone 25-40

SYKES
SHOE
SHOP
AND
SHINE PARLOR

THE FRIENDLY CAFETERIA

"Every Meal a Pleasant Memory"

Acknowledgments

In the publication of this book we wish to acknowledge the kindness of Hamilton Art Shop, Morrison-Neese, Johnson-Forbis-Simmons, Meyers, Sykes Drug Store, Sutton's, Carolina Theater, Maynard's Music Store, and Buick Garage.

The staff wishes also to acknowledge the many helpful suggestions and sympathetic coöperation of its printers and engravers, The Observer Printing House, Inc., of Charlotte, N. C., and the Jahn & Ollier Engraving Co., of Chicago, Ill.

“Back to Earth—”

—Halliburton.

