



Digitized by the Internet Archive
in 2010 with funding from
University of North Carolina at Chapel Hill

<http://www.archive.org/details/echo1932gree>



1932
COPYRIGHT

RUTH DAVIS
EDITOR-IN-CHIEF

MARGARET NEAL
BUSINESS MANAGER.



The 1932

ECHO



*Published
by the*

SENIOR
CLASS
of

GREENSBORO
COLLEGE

GREENSBORO, N. CAROLINA





JULIA BROOKSHIRE LYNCH



"Greensboro College from its beginning has had but one standard of living and education for its daughters. The teaching of Christianity and the systematic development of the natural talents are the same in 1932 as in years of yesterday. The impressions that have been received and the morals taught have gone to influence the homes and the girls of those homes who eventually enter Greensboro College. I can speak from experience since I am one of the third generation from the College."

JULIA BROOKSHIRE LYNCH
*President Greensboro College
Alumnae Association*



DEDICATION



TO the Greensboro College girl of yesterday—to you who, too, have helped to keep alive that spark of love and faith which characterizes our Alma Mater—we, as Greensboro College girls of today lovingly dedicate this volume.



C O N T E N T S

BOOK I
THE COLLEGE

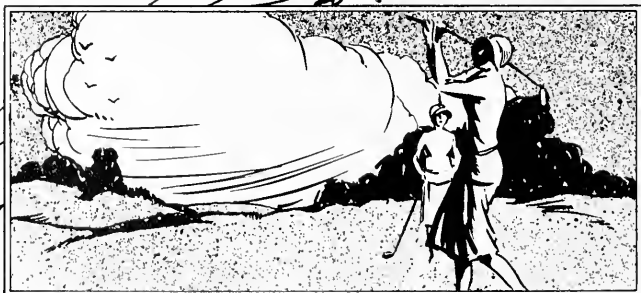
BOOK II
THE CLASSES

BOOK III
ORGANIZATIONS

BOOK IV
ATHLETICS

BOOK V
FEATURES

BOOK VI
ADVERTISEMENTS



FOREWORD



Because we feel that it is, and should be, something near and dear to the hearts of everyone of us, we have chosen the history of our Alma Mater as a theme for this volume, hoping that our efforts may in years to come renew in the hearts of G. C. girls wherever they may be, that unending love for the home which has given to us the heritage of a century.





The Echo

RUTH DAVIS
Editor-in-Chief

MARGARET NEAL
Business Manager

THE ECHO attempts to picture life at G. C. as it is: to picture it in such a way that in years to come when eyes and cheeks are faded, when all that remains for us of these happy days is a loving memory, when we, too, have become the "G. C. girl of yesterday," THE ECHO will remain one of our most valued possessions.



Standing- LASSITER, MORECOCK, KELLY, LYTCH.
Sitting- WILLIAMS, DAVIS, PEYATT, EFIRD.

The Echo Staff

RUTH DAVIS
 MARGARET NEAL
 BAILEY WEBB
 MARY NELSON HOYLE
 MARTHA LYTCH
 VIRGINIA PEYATT
 MARY ELIZABETH MORECOCK
 LOUISE EFIRD
 ANNABELLE HICKS
 EULA VAUGHN
 FRANCES MARTIN
 RUTH CLARK
 IMOGENE BOYLES
 MARGARET WILLIAMS
 ANNIE MAE WILLIAMS
 SUE FLEMING THOMPSON
 TOMMY LOUISE MITCHELL
 EVA MAE LASSITER
 INEZ KELLY

Editor-in-Chief
Business Manager
Assistant Editor
Assistant Business Manager
Assistant Business Manager
Assistant Business Manager
Literary Editor
Literary Editor
Literary Editor
Art Editor
Assistant Art Editor
Photographic Editor
Dramatic Editor
Athletic Editor
Music Editor
Humor Editor
Snapshot Editor
Snapshot Editor
Typist

Class Poem

Ah! Time, how very fast you fly—
You're far too quick for mortal eye,
Our mem'ries you will e'er defy,
And race us so we stop to sigh,
Yet, bear with us and do not fail
While we go back down Mem'ries Trail.

'Twas only four short years ago,
Yet years in which destiny lay,
We woke and wished for morning's glow,
But no glow would we see that day,
For a dense fog lay all about,
Obscured from sight all things without.

Despite the fog we could not stay:
On our journey we must set out,
We labored, toiled, rough was the way
Being blinded by fogs about,
Though loudly we for help did cry,
None came on which we could rely.

The road, though treacherous and rough,
We plodded on and on our way,
And now the mist had cleared enough
So we could see 'twas near mid-day,
There, lo! so much to our delight
The second mile-post passed from sight.

This gave us hope and courage strong,
And hard worked we while it was light,
With quickened paces went along,
Too soon would fall the shades of night,
Still on we trudged with heavy load
Thus passed the third mile of the road.

Through this the last mile of the way,
Our spirits were run high with pride,
With raptured hearts at close of day
We glimpsed the portals opened wide,
Illumined by the sun's last beam,
Till stars sent forth a welcome gleam.

Too soon the stars were hid from sight
By blackest clouds dimming the light,
Lett, then, were we in depths of night
With naught to lead our steps aright,
Till comes a new day giving hope,
As all must seek a wider scope.

Thus pass we on from races run,
To find Life's race had scarce begun.



C O L L E G E



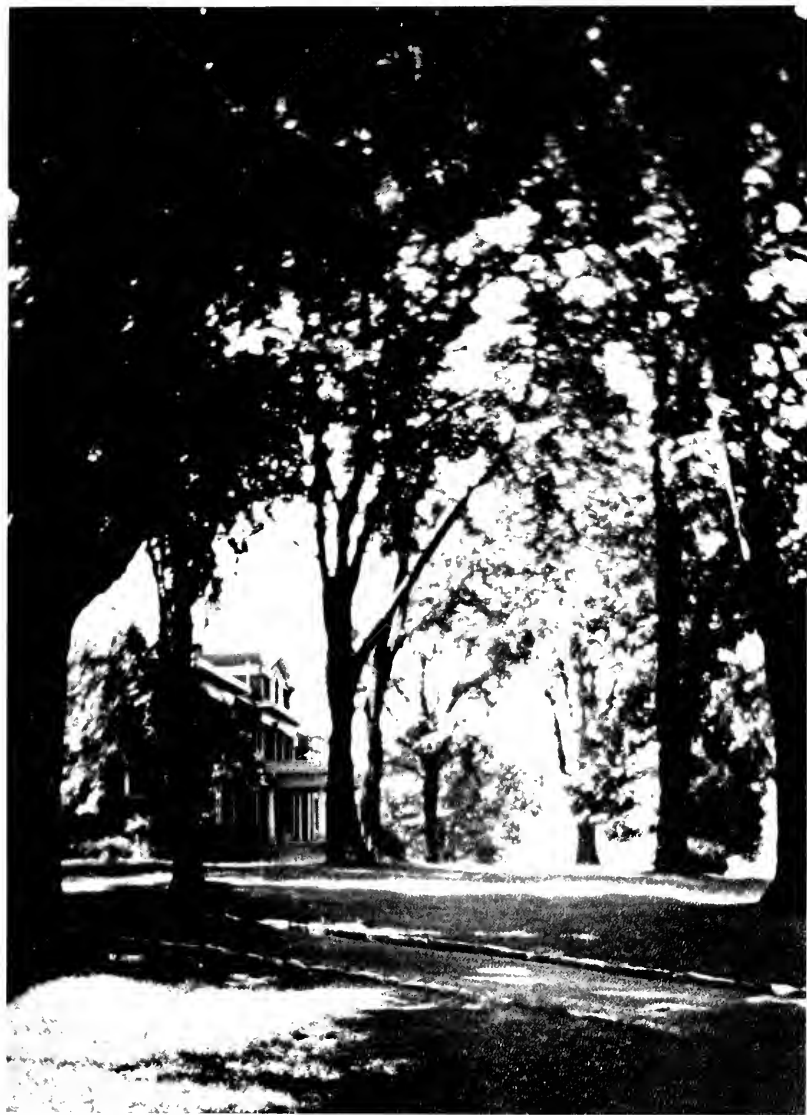
Hudson Hall

Designed by the architect, J. W. B. Smith, and built by the contractor, J. W. B. Smith, in 1885.



Odell Memorial

*From where the sun rises, the world is softer, full of things that
are in the air, and the sun is that is his, and he is when we are not.*



Emerald Hall

The main residence of the Emerald Hall, built in 1892, is now the property of the University of California.



The Fountain

THE FOUNTAIN WAS DESIGNED BY THE ARCHITECT, J. W. WATSON, AND WAS
ERECTED IN 1887. IT IS ONE OF THE MOST BEAUTIFUL AND INTERESTING
SIGHTS IN THE CITY.



Rotunda Main

For an impression of the early "Bardonia" (1827) see the "Bardonia" (1827) and part of the "Bardonia" (1827) at night. The "Bardonia" (1827)



Forest of Madras



The Brook

When these dais sparkle into song and stir the water with life

LESLIE BROWN



Campus Trees

On the trees of the campus all the dreams and wishes of youth are strengthening throughout the year.

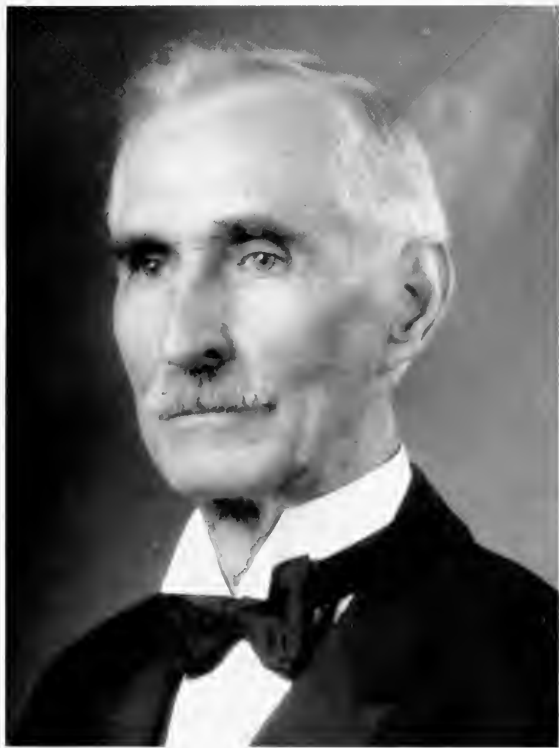


Faculty

Alma Mater

*Our Alma Mater, high thy praise
Was sung by girls of yore,
Thine own dear name of stainless fame
Shall live forever more.
Then, sisters, may each heart and voice
To her be lifted high
While still we live to her we'll give
A love that shall not die.*

*Our Alma Mater, strong in each voice
The song rings true and sweet:
Thy pride and honor fill loving hearts
And thrill in every beat,
The days of yore return no more,
Though still we feel them near:
And firm we stand a loyal band
Thy memory to revere.*



SAMUEL B. TURRENTINE, A.B., A.M., D.D.
President



MISS MATTIE E. RICKETTS

Dean of College Home

For four years now, Miss Ricketts, as dean of our college life, has watched over our lives with loving care. None of our problems have been too small or too large for her to spend her time on, and always she has worked with the interest of each of us at heart. Perhaps sometimes, in the haste characteristic of our youth, we have not been able to see things through her experienced eyes and have not understood exactly the "whys and wherefores"; but now as we come to the end of our college career, we realize that it is largely through her influence that our Alma Mater has been truly our *College Home*.

Faculty

ANNIE MCK. PEGRAM
Professor of Mathematics



ROBERT T. DUNSTAN
*Professor of Latin and
Romance Languages*



ELLIOTT O. WATSON
*Professor of History and
Economics*



CAMILLA T. MOLITOR
*Associate Professor
of Voice*



PAUL M. GINNINGS
*Professor of Chemistry
and Physics*



ELBA HUNNINGER
*Professor of Spoken Eng-
lish and Dramatic Art*



MARION A. LANDRUM
Professor of Art



NILA BANTON SMITH
Professor of Education



ELLA M. MARTIN
Professor of Biology



NOMA DOBSON
*Professor of Physical
Education*



EDWARD E. AYERS
*Professor of Rhetoric
Education*



REV. W. M. CURTIS
*Business Manager and
Treasurer*

Faculty

METTIE E. RICKETS
*Associate Professor
of French*



J. RODDFY MILLER
Professor of English



GEORGE K. HIBBETS
*Professor of Piano and
Theoretical Music*



MARY L. GINN
*Associate Professor
of English*



IDA M. BRIDGMAN
*Professor of Organ and
Associate Professor of
Piano and Theoretical
Music*



CLARA MAE BROWN
*Associate Professor of
Latin and English*



EDWARD MOLITORF
Professor of Voice



CONRAD LAHSER
Professor of German



DOLLY M. CALLAHAN
*Associate Professor of
History and Economics*



MARGARET G. PERRY
Professor of Spanish



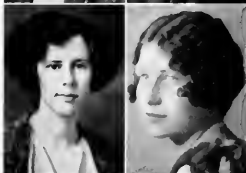
Faculty

MRS. REUBEN R. ALLEY
Librarian



AUGUSTA SAMPLE
*Assistant in English and
Dramatic Art*

PAIGE LEONARD
Assistant Librarian



ETHEL W. HERRING
Assistant in Mathematics

MILDRED TOWN
*Associate Professor of
Piano and Theo-
retical Music*



AUDREY MAE BRUTON
Accompanist

BLANCHE BURRUS
*Assistant Professor of
Piano and Theo-
retical Music*



MARGARET LUDWIG
*Professor of Public
School Music*

DOROTHEA MCNUTT
Instructor in Biology



MRS. GEO. K. HIBBETS
Professor of Violin

Faculty

ROSA ELIZABETH LOVE
Assistant in Biology



MARY C. BROCK
Alumnae Secretary



VIRGINIA SHEFFIELD
Assistant in Music



MINNIE B. ATWATER
*College Chaplain and
Dean's Assistant*



EDITH HARGROVE
*Treasurer of Book Store
and Postmistress*



PEARL W. TURNER
R.N.
Supervisor of Infirmary



THEODOCIA BLACKMON
Accountant



MRS. ALICI H. WINN
Supervisor of Buildings



LITHA BROCK
Registrar



DAISY E. BROOKS
Dietitian



C L A S S E S



Seniors



OUR MASCOT

WILBUR TURRENTINE, JR.

Big brown eyes, a smiling face, a sense of humor, and a mind that can never be caught sleeping—that's Wilbur. Who could resist him? Keep it up, big boy, and you'll capture the heart of the world, just as you have that of the Class of '32.



ERWIN

PRICE

RICHIE

TAYLOR

SCARBOROUGH

Senior Class

OFFICERS

MARION ERWIN

President

IRMA PRICE

Vice-President

EVANGELINE TAYLOR

Secretary

LOVERA RICHIE

Treasurer

MARY HAAS SCARBOROUGH

Council Representative

ELSIE GRACE ADER, A.B.
FRANKLIN, N. C.

Emerson Literary Society; Class Treasurer (2); Math Club (1, 2, 3, 4); Reporter (2); Treasurer (3); Vice-President (4); German Club (1, 2, 3, 4); Treasurer (2); President (3); Zoölogy Club (2); Chairman Program Committee (2); Reporters' Club (3); *Collegian* Staff (4).



DOROTHY BURBRIDGE BILLUPS, B.M.
NORFOLK, VA.

Irving Literary Society, President (4); School of Music; ECHO Staff (3); Delegate to Blue Ridge (2); Y. W. C. A. Cabinet (2, 3, 4); Vice-President Y. W. C. A. (4); *Collegian* Reporter (2); Class Secretary (3); Freshman Commission Advisor (4); College Marshal (4); Presidents' Forum (4); Euterpe Club (4).



MARGARET EVELYN BLAYLOCK, A.B.
GREENSBORO, N. C.

Irving Literary Society; Day Students' Association; Treasurer (3); Math Club (3); Dramatic Club (2).

MARY FRANCES BOST, A.B.
BOSTS MILLS, N. C.

Irving Literary Society; Class Soccer (1, 2, 3); Class Basketball (2, 3); "G" Club (2, 3); Custodian Athletic Association (2); Botany Club (1, 2, 3, 4); Secretary and Treasurer (2); President (4); Zoölogy Club (2); Le Cercle Français (2); Dramatic Club (2); International Relations Club (2); Math Club (2, 3, 4); Vice-President (3); President (4); Y. W. C. A. Cabinet (3, 4); Delegate to Blue Ridge (3); Business Manager Handbook (3); *Collegian* Staff (4); Student Council (4).





ELLEN JEFFERSON CLARK, A.B.
STUART, VA.

Irving Literary Society; Botany Club (1, 2, 3); Hiking Club (2); Dramatic Club (1, 2, 3, 4); Wardrobe Mistress (2, 3); G. C. Players (3, 4); Soccer Team (1, 3); Basketball Team (3).



SOPHIA CABELL CAMPEN, A.B.
ZEBULON, N. C.

Irving Literary Society, Chaplain (2), Vice-President (3); G. C. Players (2, 3, 4); Dramatic Club (1, 2, 3, 4), Assistant Wardrobe Mistress (1), Wardrobe Mistress (2), Secretary (3), President (4); Freshman Chairman (1); Class Secretary (2); Fire Lieutenant (4); ECHO Staff (2), *Collegian* Staff (3); Spanish Club (2); Zoology Club (2); May Queen (4); May Day Court (3); College Marshal (4).

EMILY MARIE BOUSHEE, A.B.
WILMINGTON, N. C.

Irving Literary Society; Spanish Club (1, 2, 3, 4); International Relations Club (2, 3, 4); Experimenters' Club (2, 3); Class Soccer (1, 2, 3), Captain (2); Vice-President Main (1); Budget Collector (4); Class Basketball (1, 2, 3); Student Council (4); "G" Club (2, 3, 4).



KATHERINE GAFFNEY BOYD, B.M.
LEAKSVILLE, N. C.

Emerson Literary Society, Marshal (2), Treasurer (3); School of Music; Vice-President of Class (3); Honor Society (3, 4); Euterpe Club (4).



MARY HOWARD CLARK. A.B.
STUART, VA.

Irving Literary Society; Home Economics Club (1, 2, 3, 4); Botany Club (2, 3, 4); Experimenters' Club (1, 2); Zoology Club (3); Raphael Art Club (3); Dramatic Club (4); *Message* Staff (4); Life Service Band (1, 2, 3); Student Volunteer (1, 2, 3); Fellowship Club (4).



RUTH CARLTON CLARK. B.M.
STUART, VA.

Irving Literary Society; School of Music; Le Cercle Français (1, 2); Glee Club (2); Student Council (2, 4); First Vice-President of Students' Association (4); Reporters' Club (3, 4); ECHO Staff (4); Euterpe Club (4); Honor Society (4); Delegate to National Students' Federation of America Conference, Duke University (3).



RUTH GRAFFLIN DAVIS. A.B.
WILMINGTON, N. C.

Irving Literary Society; Dramatic Club (1, 2, 3, 4), Assistant Publicity Manager (2), Vice-President (3), Secretary (4); G. C. Players (2, 3, 4); *Collegian* Staff (2, 3); *Message* Staff (3); ECHO Staff (3, 4), Editor-in-Chief (4); Class Treasurer (1); Class Soccer (1, 2, 3); Tennis (1, 2, 3); Class Basketball (1, 2, 3); "Miss G. C." (1).



WILMA JUANITA DILLON. B.M.
GREENSBORO, N. C.

Irving Literary Society; School of Music; Day Students' Association; Assistant Business Manager of *Collegian* (3).



MYRTLE ELMORE, A.B.

DOVER, N. C.

Irving Literary Society; *Collegian* Staff (2); Fire Lieutenant (4); Chief College Marshal (4); Dramatic Club (4); Chaplain of Society (3); Society Marshal (2); May Day Court (1); Spanish Club (2); International Relations Club (3); School of Music (1); Vice-President of Fitzgerald (4).



MARION ERWIN, A.B.

CANTON, N. C.

Emerson Literary Society, Treasurer (3); Class President (4); Honor Society (3, 4); Y. W. C. A. Cabinet (3); Glee Club (1, 2, 3, 4), Assistant Manager (3), Business Manager (4); *Collegian* Staff (1, 2); College Council (4); College Marshal (4); Fire Lieutenant (4); Math Club (2, 3, 4), Secretary (3); Botany Club (1, 2, 3); Le Cercle Français (1, 2); Zoölogy Club (2).

MARY FARMER, A.B.

BAILEY, N. C.

Irving Literary Society; School of Spoken English (1, 2); Class Soccer (1, 2, 3); First Place Winner in Track (1, 2); "G" Club (2, 3, 4); Zoölogy Club (2, 3), Secretary (2); Botany Club (1, 2, 3); Reporters' Club (4); Le Cercle Français (2, 3, 4).



LOIS KATHERINE FREELAND, A.B.

GREENSBORO, N. C.

Day Students' Association (1, 2, 3, 4); Irving Literary Society (1, 2, 3, 4).



CORNELIA GEER, A.B.
RUTHERFORDTON, N. C.

Emerson Literary Society; Davenport College (2); Zoology Club (1); Spanish Club (3); Dramatic Club (1, 2, 3, 4); Cheer Leader (4).

MARY ANN HINKLE, A.B.
THOMASVILLE, N. C.

Emerson Literary Society; "Miss G. C." (2, 3); First Place Winner in Track (2, 3); Class Basketball (2, 3); Class Soccer (1, 2, 3); Captain (3); President of Athletic Association (4); College Council (4); Y. W. C. A. Cabinet (4); Raphael Art Club (2); Le Cercle Français (1); Botany Club (4); Home Economics Club (2, 3, 4); Vice-President (3); President (4); Fire Lieutenant (4); "G" Club (1, 2, 3, 4); Delegate to Blue Ridge (3); Class Testator (4).



MARY NELSON HOYLE, A.B.
SALISBURY, N. C.

Irving Literary Society; Davenport College (1, 2); Dramatic Club (3, 4); Reporters' Club (4); Class Soccer (3); Class Basketball (3); ECHO Staff (4); International Relations Club (4); G. C. Players (4).



MARY RUTH HUFFMAN, B.M.
GIBSONVILLE, N. C.

Emerson Literary Society; Der Deutscher Verein (1, 2); President (3); School of Music (1, 2, 3, 4); Glee Club (1, 2, 3); Fellowship Club (4); Honor Society (3, 4); Stenographer to Dean and Business Manager.



LETA GOLD JOHNSON, A.B.

BENSON, N. C.

Emerson Literary Society, Censor (3), Marshal (2); *Message Staff* (2, 3, 4); *Collegian Staff* (+); Reporters' Club (1, 2, 3); Fire Chief (+); Marshal (4); Y. W. C. A. Cabinet (3); College Council (4); International Relations Club (3); Glee Club (1, 2, 3, 4), Treasurer (+); May Day Attendant (1); Zoology Club (2); German Club (1, 2); Class Historian (+).



CLARICE JONES, A.B.

LA GRANGE, N. C.

Irving Literary Society; Le Cercle Français (2); Zoology Club (2); Raphael Art Club (3); International Relations Club (+).

LOIS EVELYN KIRK, B.M.

GREENSBORO, N. C.

Emerson Literary Society; Day Students' Association (1, 2, 3, 4); School of Music (1, 2, 3, 4).



ELIZABETH LANG, B.M.

FARMVILLE, N. C.

Irving Literary Society; School of Music; Spanish Club (1, 2); Treasurer Students' Association (2); Delegate to Blue Ridge (3, 4); Y. W. C. A. Cabinet (3, 4); Practice Monitor (3, 4); Euterpe Club (+).



MARGARET GRAY LITTLE. *B.M.*
GREENSBORO, N. C.

Irving Literary Society, Marshal (3); Glee Club (1, 2, 3); School of Music; Day Students' Association; College Marshal (4).



MARY KIRK LOVE. *A.B.*
MONROE, N. C.

Emerson Literary Society; N. C. C. W. (1); Davenport College (2); International Relations Club (3, 4); Botany Club (3).



GENEVA MABRY, *A.B.*
NORWOOD, N. C.

Emerson Literary Society; Day Students' Association (4); Spanish Club (2, 3, 4); Zoology Club (2); Class Soccer (2, 3); Class Basketball (1, 2, 3); "G" Club (3, 4).



HELEN LOUISE MANNING, *B.M.*
BETHEL, N. C.

Emerson Literary Society; Class Soccer (1, 2, 3); Class Basketball (1); "G" Club (1, 2, 3, 4); Le Cercle Français (1); Society Marshal (3); Glee Club (4); Librarian (4); May Day Attendant (3); Fire Lieutenant (4); College Marshal (4).



ANNABEL MARTIN, A.B.

POLKTON, N. C.

Emerson Literary Society; Queens College (1); Wake Forest Summer School ('28); Botany Club (2, 4); International Relations Club (2, 3, 4).



FRANCES FLORENCE MITCHELL, A.B.

WINSTON-SALEM, N. C.

Emerson Literary Society; Class Secretary (1), President (2); Assistant Chapel Monitor (2); Life Service Band (1, 2, 4); Secretary (2); Delegate to Y. W. C. A. Conferences (1, 2, 3, 4); Botany Club (1, 2, 3, 4); Math Club (2, 3, 4); Le Cercle Français (2); Zoology Club (1, 2, 3); "G" Club (3, 4); Class Soccer (1, 2, 3); Student Council (2, 4); Secretary to State Y. M.-Y. W. C. A. Conference (+); President Y. W. C. A. (4); Y. W. C. A. Cabinet (1, 2, 3, 4).

MARTHA LOUISE MITCHELL, A.B.

AHOSKIE, N. C.

Irving Literary Society; Zoölogy Club (2); Reporters' Club (2); Council Representative (2); Botany Club (2, 3); Spanish Club (2, 3, 4); Class Treasurer (3); Colledge Marshal (4); ECHO Staff (2).



LILYAN VIRGINIA MORGAN, A.B.

ALBEMARLE, N. C.

Irving Literary Society; Davenport College (1, 2); Math Club (3, 4); Day Students' Association (+).



MARGARET VANCE NEAL, A.B.
GREENSBORO, N. C.

Irving Literary Society; N. C. C. W. (1); German Club (2, 3); Dramatic Club (2, 3, 4); Assistant Publicity Manager (3); Day Students' Association, Vice-President (2); International Relations Club (3); G. C. Players (3, 4); *Collegian* Staff (3); ECHO Staff (3, 4); Business Manager (4); Delegate to N. C. Press Convention (3).



MYRTLE ELZORA NORRIS, B.M.
NORTH WILKESBORO, N. C.

Irving Literary Society; School of Music (3, 4); Davenport College (1, 2).



ESTHER O'BRIENT, B.M.
DURHAM, N. C.

Irving Literary Society; Students' Association (1, 3, 4); President (4); Vice-House President (3); Presidents' Forum (4); President (4); College Council (3, 4); Delegate to N. S. F. A., Toledo, Ohio (4); Delegate to Blue Ridge (3); Delegate to N. C. S. F. (3); German Club (1, 3); Writers' Club (4); *Message* Staff (4); Y. W. C. A. Cabinet (4); School of Music (1, 3, 4); Duke University (2).



ELIZABETH PATE, A.B.
ROWLAND, N. C.

Irving Literary Society; Home Economics Club (1, 2, 3, 4); Botany Club (2, 3, 4); Experimenters' Club (1, 2); Zoölogy Club (3); Raphael Art Club (3); Dramatic Club (4); Class Soccer (1, 2, 3); "G" Club (2, 3, 4); Council Representative (3); Life Service Band (1, 2, 3); Fellowship Band (4).





ESTHER PATE. A.B.

PIKEVILLE, N. C.

Irving Literary Society, Critic (4); Council Representative (1); Spanish Club (2, 3, 4); Botany Club (2, 3); House President (2); May Day Court (2, 4); Reporters' Club (3); Home Economics Club (2); Executive Council (1, 2); Y. W. C. A. Cabinet (3).



MARGARET LOIS PEELE. A.B.

GUILFORD COLLEGE, N. C.

Irving Literary Society (1, 2, 3, 4); Botany Club (1, 2, 3); Day Students' Association (1, 2, 3), Secretary (3); Math Club (2, 3).

IRMA VANCE PRICE. A.B.

SCOTLAND NECK, N. C.

Irving Literary Society; Zoölogy Club (2); Spanish Club (2, 3, 4), Vice-President (3), President (4); Raphael Art Club (3); Chapel Monitor (3); Vice-President Class (4).



MARY CAROLINE RHODES. A.B.

SYLVA, N. C.

Irving Literary Society; Spanish Club (1, 2); Botany Club (1, 2); Zoölogy Club (2); Dramatic Club (1, 2, 3, 4); "G" Club (2, 3, 4); Soccer Team (2); Editor of *Collegian* (4); *Message Staff* (3); G. C. Players (3, 4); Class President (3); Correspondent for *Daily Record* (4); Secretary of Writers' Club (4); ECHO Staff (3); Class Prophecy (4).



LOVERA RICHIE, A.B.

GASTONIA, N. C.

Emerson Literary Society; Spanish Club (1, 2); Zoology Club (2); Dramatic Club (1, 2, 3, 4); G. C. Players (3, 4); Corresponding Secretary of Students' Association (3); Editor of Students Handbook (4); *Message Staff* (3); Reporters' Club (4); First Place Winner in Track (2, 3); Treasurer of Class (4); Class Soccer (1, 2, 3).



GRACE ROBERTSON, B.M.

CLAYTON, N. C.

Emerson Literary Society; Marshal (2), Vice-President (3), President (4); School of Music; Glee Club (1, 2, 3, 4), Assistant Manager (2), Manager (3); Greensboro College Trio (2, 3); Euterpe Club (4); Student Council (3); Presidents' Forum (4); Fire Lieutenant (4); Class Soccer (3); College Marshal (4); May Day Attendant (4).



ALIA JOSEPHINE ROSS, B.M.

GREENSBORO, N. C.

Emerson Literary Society; German Club (2, 3, 4), Secretary (2); International Relations Club (4); College Orchestra (3, 4); Honor Society (4); School of Music.



LORE ROYALL, A.B.

SALEMBURG, N. C.

Emerson Literary Society; Pineland College (1, 2); Botany Club (3); Dramatic Club (3); Track (3); Delegate to Blue Ridge (3); Glee Club (4); International Relations Club (4); Fellowship Club (4), Secretary (4); Reporters' Club (4); *Message Staff* (4); Honor Society (4).



MARY HAAS SCARBOROUGH, *B.M.*
MOUNT GILEAD, N. C.

Irving Literary Society, Chaplain (4); School of Music; Glee Club (3, 4); Advertising Manager (4); Reporters' Club (3); *Collegian* Staff (4); Spanish Club (1, 2); Council Representative (4); Y. W. C. A. Cabinet (3); College Council (4).



LAURA MAIE SMART, *A.B.*
CONCORD, N. C.

Emerson Literary Society, Vice-President (4); Dramatic Club (1, 2, 3, 4); G. C. Players (3, 4); *Collegian* Staff (4), Business Manager (4); Botany Club (1, 2, 3, 4); Fire Lieutenant (3, 4); Class Soccer (1); Delegate to Dramatic Festival (2); Y. W. C. A. Cabinet (3).

LILLIAN BELLE SMITH, *A.B.*
PIKEVILLE, N. C.

Irving Literary Society; Zoölogy Club (2); Spanish Club (2, 3, 4); ECHO Staff (2, 3); Life Service Band (1, 2); International Relations Club (3); Delegate to Student Volunteer Conference (2, 3).



GLADYS LOUISE STROUD, *A.B.*
KINSTON, N. C.

Irving Literary Society; German Club (1, 2, 3); International Relations Club (2, 3, 4); Society Marshal (2); Y. W. C. A. Cabinet; Glee Club (1, 2, 3, 4); Fire Lieutenant (4); College Marshal (4); Raphael Art Club (3).



LOUISE ELIZABETH TATE, A.B.

MARION, N. C.

Irving Literary Society; Secretary Athletic Association (3); Vice-President (+); "G" Club (1, 2, 3, 4); Class Basketball (1, 2, 3); Captain (1, 2, 3); Class Soccer (1, 2, 3); Home Economics Club (1, 2, 3, 4); Vice-President (2, 4); Secretary (3); Raphael Art Club (2); Botany Club (3, 4); Collegian Staff (2, 3); ECHO Staff (2, 3); Zoology Club (+); Experimenters' Club (3); Spanish Club (2).



EVANGELINE TAYLOR, A.B.

MOUNT OLIVE, N. C.

Emerson Literary Society, Marshal (2), Critic (3); Spanish Club (1, 2), Secretary (2); International Relations Club (2, 3, 4); Big Cabinet (4); Class Secretary (4); Fire Lieutenant (4); College Marshal (4); May Court (3).



ELIZABETH STACY, A.B.

FALLSTON, N. C.

Irving Literary Society; Le Cercle Français (2, 3); Home Economics Club (2); Class Soccer (1, 2, 3).



EMMA FRANCES ROGERS, A.B.

CREEDMOOR, N. C.

Irving Literary Society; Louisburg College (1, 2); German Club (3, 4); Zoology Club (3).



MILDRED THOMPSON, A.B.

PILOT MOUNTAIN, N. C.

Irving Literary Society; Day Students' Association, Vice-President (4).



MARY CASSANDRA TOWE, A.B.

HERTFORD, N. C.

Irving Literary Society; *Message Staff* (3, 4); Business Manager (4); *Collegian Staff* (4); Student Council (4); Class Soccer (1, 2, 3); "G" Club (3, 4); Latin Club (2, 3, 4); President (3); Fire Lieutenant (4); College Marshal (4); Dramatic Club (4); Zoology Club (2); Le Cercle Français (2, 3, 4); Class Basketball (2, 3); Big Cabinet (4).

BETTY WALKER TURNER, A.B.

GREENSBORO, N. C.

Emerson Literary Society; Spanish Club (1, 2); Math Club (1, 2, 3, 4); Botany Club (2, 3, 4); Zoölogy Club (2); Day Students' Association; Honor Society (4).



RUBY TYSOR, A.B.

ERECT, N. C.

Irving Literary Society; Day Students' Association, Secretary (2), President (4); Botany Club (1, 2, 3, 4), Reporter (2), Vice-President (4); Math Club (2, 3, 4); Spanish Club (1, 2).



EULA VAUGHN, A.B.
GREENSBORO, N. C.

Emerson Literary Society; Raphael Art Club (1, 2, 3, 4); Vice-President (3); President (4); Student Assistant Art Department (4); Day Students' Association; ECHO Staff (4).



MARY ELIZABETH VEAL, A.B.
CHARLOTTE, N. C.

Emerson Literary Society; Class Soccer (1, 2, 3); Class Basketball (3); Spanish Club (1); Zoology Club (1); Wrote Class Stunts (1, 3); Dramatic Culb (3, 4); ECHO Staff (2, 3); Message Staff (2, 3), Editor-in-Chief (4); "G" Club (2, 3, 4); Writers' Club (4); President (4); Life Service Band (3).



HULDAH OBERA WAY, A.B.
GREENSBORO, N. C.

Emerson Literary Society; Day Students' Association, Secretary (2); Botany Club (1).



MARGARET JANE WEHRLE, A.B.
GREENSBORO, N. C.

Irving Literary Society; Spanish Club (2); Botany Club (2); International Relations Club (4); Day Students' Association, Council Representative (4).



LINDA PASCHAL WOMBLE, A.B.

GOLDSTON, N. C.

Emerson Literary Society; Zoology Club (1, 2); Raphael Art Club (3); International Relations Club (+); Glee Club (2, 3, +); Class Poet (+).



LUCY LORAIN WYLIE, A.B.

RAMSEUR, N. C.

Irving Literary Society; Zoology Club (1, 2); Spanish Club (2); Raphael Art Club (3); International Relations Club (+).



Prophecy

Having left my room and an endless discussion of horoscopes and fortunes, I had strolled out into the flurryng snow and had wandered into a little sheltered ravine, where only a few stray flakes meandered through the dense growth. I obtained a curious warmth here, and too lazy to restrain my fancy, let it wander back to our horoscopic discussion, which led me to note the peculiar star-shaped snow flakes drifting leisurely by. As one lit beside me, I designated it as Capricornus, the January star, and waited to see where my fancy would lead.

Strange to say, I saw the flake opening up like a revolving disc, and knew at once that my imagination had gone off on a tangent. Ceasing its movement, the disc revealed Myrtle Norris rushing arrogantly around in a fish hatchery in an attempt to find C scale. Nearby, Lucy Wylie and Huldah Way were building a child-centered school, and seemed to be having difficulty keeping the children in the center.

Another flake adjusted itself to Aquarius and February. Here Elsie Ader was sitting on a broken-down wagon, yelling—"Wait!" A volume of smoke rose off the next scene, where Ellen Clark, in a famous melodrama, had refused to mellow. In India, I caught a glimpse of Marie Bousbec vainly trying to convince the great missionary, Margaret Peele, that she was not a native.

The scene imperceptibly changing, I next noticed a crystal stream and, gazing into its depths, beside a nodding narcissus knelt Evangeline Taylor, her feet already beginning to look somewhat stem-like.

In Pisces, my March fancy, Ruth Clark and Gladys Stroud were hibernating in tiger skins, in prevailing styles which favored fat women. Lucky Elizabeth Lang, in the glory of a goddess, posed in some flimsy robe for a famous sculpturor. To while away Ljib's" weary hours, Cabell Campen was playing a brilliant selection on the xylophone, which she had learned was good for the nerves.

In a crowded street outside, Leta Gold Johnson, assisted by Juanita Dillon (who collected the funds), was holding forth very sanctimoniously on the social evils of the day. Nearby in a theatre, Mary Nelson Hoyle, rushing around like a bat out of Hades, was setting stage scenery by means of push buttons. Elizabeth Stacy, I noted, was selling peanuts as a pastime.

Aries and April drew my attention to Grace Robertson who, deluged in letters of her own composition, had succeeded in making a record in writing ten a minute. Contrasted to Mary Kirk Love, whom I saw presiding over her family with dignity and a rolling pin, was Lillian Smith, to whom silence had become so golden that she fancied herself wealthy, and had gone bankrupt from her illusion.

Aries, leaving only its damp remains, the next starry shape took the form of Taurus, the May star, wherein I saw a groom distractedly searching for his bride, Helen Manning, who had forgotten to appear at the wedding. Further inspection revealed Marion Erwin answering the pleas of fifty superintendents who sought her as a math teacher. In more peaceful surroundings, Mary Haas Scarborough was teaching her two small lads the value of optimism in life. Louise Tate, I discovered, had at last acquired a real ship and was sailing away, with Geneva Mabry at the lookout.

Again seeking a new interest in an irregular Gemini star of June, I saw Ruth Davis frantically retracing her round-the-world trip in an endeavor to find at least a presentable portion of her wardrobe. Margaret Neal was paying expenses by painting trees in local theatres.

Margaret Blaylock, I saw, was perfecting a dance number called "the dance of the weeping willow," while Margaret Little played her accompaniment on a reed pipe.

In the July or Cancer symbol, I noted Neal Geer directing an orchestra composed only of human voices, and Frances Mitchell was cheering those who felt ill from exhaustion. A glimpse of Ruby Tysor trying to survey herself under a microscope, led my eye to a cannery where Clarice Jones and Myrtle Elmore were eating pickles in an attempt to improve their dispositions. Alva Ross, I saw, had taken up the study of the bagpipe.

The August star revealed Lillian Morgan writing an essay on "The Uses of Fur," assisted by Annabel Martin, who furnished the historical background. Mary Howard Clark and Betty Pate, I noticed, were conducting a cooking school, its theme being "A hundred different ways of cooking spinach."

My fancy, giving the interest of September's Virgo star to the next flake, brought into view Katherine Boyd, Esther O'Brien, and Frances Rogers running a school in China, the idea being to teach the natives to eat white toast. I received a real shock next, however, upon perceiving that Lovera Richie had dyed her hair for radio broadcasting, the red causing television to become too warm.

Libra and October displayed Eula Vaughn painting signboards, while Margaret Where lazily held her paint bucket. Mary Veal, I saw, had dreamed herself entirely out of reality, and with a number of lame ducks had collected around a little cottage, where Irma Price dwelled as a benign sister of mercy.

In a well known theatre, Laura Maie Smart was recuperating from one of her public reading recitals which persistently resulted in exhausting her self-assurance. Linda Womble I discovered talking over a telephone, having acquired an ear muff which enabled her to turn a deaf ear to the pleas of those who waited. In a garden nearby Louise Mitchell was raising peacocks, whose noisy strutting had so distracted the English professor, Mildred Thompson, in a neighboring school, that she was tearing nouns and adjectives from her grammar to throw frantically at her assistant, Lois Freeland.

The October symbol fading, Scorpio, September's symbol, drifted along, and I saw a school for child prodigies established by Lore Royall.

Mary Farmer, I noticed, had become a bell hop in a hotel, but was threatened with a discharge as she refused to hop to anything but the telephone. At the seashore, Dorothy Billups and Mary Towe, in their seventh heaven, were seating shrimp, untringly collected by Ann Hinkle.

I now realized that I was approaching the end of my little glimpse into the future and eagerly awaited the December star Sagittarius, which disclosed Ruth Huffman, accompanied by Lois Kirk, a little blue in the face from singing songs of that nature. Esther Pate had fled to the seashore to escape any suggestion of finger waves.

Just before this flake sank into oblivion, it revealed Mary Frances Bost raising goats, assisted by Betty Walker Turner, who amputated the horns.

This faded, and though snowflakes continued to wander knowingly through the trees, I had lost interest in what else they might reveal and, rising, I made my way out into a world white with a drifted blanket of snow.

—CAROLINE RHODES, '32.

Last Will and Testament

We, the Class of 1932, wise or otherwise, graduating from Greensboro College, City of Greensboro, County of Guilford, State of North Carolina, realizing the dangers and discomforts which may be occasioned by the rough sea, excitable and chattering passengers being in sound and sane minds, do hereby take this opportunity of calm and peace to bequeath our worldly possessions to our chosen heirs.

ARTICLE I

1. To Dr. Trenton we bequeath our devotion and gratitude for all he has done for us at Greensboro College.
2. To Miss Rickerts we leave our latest invention - an automatic questionnaire.
3. To Dr. Smith we will, on sincerest appreciation for all she has done for our college, and especially for our class.
4. To Miss Dobson, we leave the patience to endure all, anything and everything, for heroes are made, not born.
5. To Mrs. Alley, we bequeath our books and trust that the dust which has so peacefully rested for four years, will not be disturbed in the moving of our books to the library where all volumes of knowledge are kept.
6. To the entire faculty, we leave, without embarrassment, the startling facts found on our examination papers and hope their hearts continue to beat.

ARTICLE II

1. To our beloved school, we gladly leave our questionable records made during the four years of struggle for knowledge.
2. To the Junior Class we bequeath unrestrictedly all our privileges on condition that they "use them and not abuse them"
3. To our "Little Sisters," we will a portion of our undying love for our Alma Mater.
4. To the Freshmen, we leave our delightful discovery - ignorance is bliss.

ARTICLE III

1. Mayon Faxon leaves her ability to preside over meetings to the Justice of the Supreme Court of the United States.
2. Esther O'Brien leaves her love for writing letters to people in foreign countries to whom it may concern.
3. Frances Mitchell leaves her guiding hand that so faithfully guided the Seniors in the straight and narrow path to Fannie House Seeger.
4. To Sue Fleming Thompson, Leta Gold Johnson bequeaths her placid and uninterrupted love affair.
5. Margaret Little and Juanita Dillon reluctantly will to Mildred Regall their most excellent blurring power, which they have used so skillfully.
6. "Rusty" Richie very thoughtfully leaves to Elizabeth Jessup her lovable disposition that is her ability to love the boys.
7. Marie Bonshire reluctantly leaves her delightfully pleasant laugh, which is known to have split at least thirteen ear drums to Florence Denning, knowing that Florence will know the opportune time to use the said ability.
8. Laura Mae Smart wills her shy, modest manner which she has fully developed by staying on the campus each and every weekend to Alice Barrow.
9. Lois Freeland, Elsie Aita, and Mildred Thompson leave their boisterousness to Edith Gray Wade.
10. Helen Manning thoughtfully wills her much used, but still useful, chewing gum to Margaret Barton. Although the flavor is gone, we guarantee it will still pop with vim and vigor.
11. With many fond memories, Alia Ross leaves Alice Wharton her make up box and all its contents.
12. Mary Nelson Hays fondly leaves her silent tongue to "Slim" Williams and desires that "Slim" please to G. O. that silence is really golden.
13. Elizabeth Lang wills her formula for reducing curves to Frances Ham in hopes that Frances will get rid of some of her surplus fat.
14. To the Freshmen of next year, Franceline Taylor wills her much practiced baby talk.

15. Ruby Maynard bequeaths her flirting ability to Anna Mae Williams, with the request that Anna Mae use it as faithfully as she has.
16. Neal Geer cheerfully leaves her extreme quietness on all occasions to Joyce Belton.
17. Ruth Davis leaves to next year's editor of THE ECHO, all surplus money left from this year's annual.
18. Clarice Jones, Ellen Clark, Lillian Morgan, Lucy Wylie and Hullah Way leave the remainder of their Golden Gint to Jamie Taylor in hopes that she will get enough to make her hair red.
19. Mary Frances Bost bequeaths her ability as a "campus-snapper" to "Bill" Fowler.
20. Margaret Peele and Ruby Tysor leave their dearly beloved cat, "Macbeth Jones," to whosoever may take physiology next year.
21. To Lous Bond, Lous Kirk leaves her innocent face
22. Linda Womble and Mary Farmer leave to Elizabeth Taylor their one thousand three hundred and thirteen daily telephone calls - in hopes that Elizabeth may succeed in getting a private telephone.
23. To Francina Worrell, Elizabeth Stacy willingly wills her ability to tap dance.
24. Mary Haas Scarborough and "Dot" Billups will to Edith Neaves their ability to arrange their organ practice schedule so that that particular time never comes.
25. To "Dot" Cross, Grace Robertson cheerfully wills her Austin, Big Ben, bottle of "Early Rises," books on "Early to Bed and Early to Rise," in hopes she will be able to get to class at least once on time, as Grace did once herself.
26. Louise Mitchell wills the Junior class her outstanding ability to attract superintendents of schools through pictures.
27. To Kay Evans, Gladys Stroud and Myrtle Norris leave their smooth and even dispositions.
28. Ruth Hoffman leaves to Alma Vester and Barley Webb her new patented *noiseless* typewriter.
29. Mary Kirk Lowe leaves to Margaret Love enough "sisterly advice" to last through Margaret's Senior year.
30. Eula Vaughn sadly leaves to Elizabeth Burke her water colors.
31. Lillian Smith and Esther Pate leave their love for the infirmity to Esther Pringle.
32. Rosa Love leaves to the Freshman Class of 1942 her ways and means at Oak Ridge
33. "Kat" Boyd and Frances Rogers leave to Dorothy Barrow and Jacque Gwyn their undying love for each other
34. To Virginia Poyatt, Ruth Clark wills her daily memorandum.
35. Margaret Blylock leaves to Boddie Campen her "Water of Gold."
36. Mary Towe cheerfully makes Louise Eford the sole heir to her "Interlinear Translations" of all Latin books.
37. Margaret Wheeler wills to Frances Poole her book on "How to Gain Weight."
38. Margaret Neal pleases the faculty by willing Katrine Smith a place to live near school - May she get to school before the half-hour bell!
39. Cabell Campen leaves her charm and personality to the students most desiring such characteristics.
40. Ann Hinkle leaves her week-end privileges and numerous brothers to the Thomasville girls.
41. Caroline Rhodes sadly leaves her foginess and absent mindedness to the Student Council.
42. Myrtle Elmore leaves to Galy Hippis her feminine traits.
43. "Lou" Tate leaves her ability to select one from the many Greensboro boys to Mary Belle Wilson.
44. Irma Price leaves to Vera Falls her "ways and means"
45. Mary Howard Clark wills to Mary Little Fletcher and Annie John Williams her compeetish ways.
46. To Julia Martin, Geneva Mabry leaves her ability to patch hoeshoes.
47. Annabel Martin leaves to the Freshmen her knowledge.
48. Mary Veal leaves to Margaret Ward a copy of her love poems.
49. Mary Nelson Hoyle and Loué Royall leave their personal references on Dr. Smith's class to future classes
50. Myron Erwin, Helen Manning, Mary Haas Scarborough, Ann Hinkle, Cabell Campen, Grace Robertson, "Dot" Billups, Neal Geer, Marie Boushee, Margaret Blylock, leave their "going summer's" privileges, contact insider knowledge, love for Winston-Salem and Reidsville, nine months of ten o'clocks, et cetera, to the "Sophomore Flirty Dozen."

IN WITNESS WHEREOF, we, the Senior Class, do hereby set our hands and seals, this sixth day of April, 1942.

Signed, sealed, and declared by the said members of the Senior class to be their Last Will and Testament, in the presence of us who at their request do describe our names as witnesses into

ANN HINKLE, Testator.

Witnesses:

MYRON ERWIN,
HELEN MANNING.

Class Day Exercises

MAY 28, 1932

Greetings - - - - - MARIAN ERWIN

Last Roll Call - - - - - EVANGELINE TAYLOR

Class Poem - - - - - LINDA WOMBLE

Class History - - - - - LETA GOLD JOHNSON

Class Prophecy - - - - - CAROLINE RHODES

Last Will and Testament - - - - - ANN HINKLE

Giftorian - - - - - RUTH DAVIS

Love's Last Encircling

Love's Guide Down the Lane of Loving Hearts

EVA MAE LASSITER

Reception of the Class of 1932 into the Alumnae Association.



Juniors



FLETCHER

SCARBOROUGH

WYBB

EXUM

HARRISON

Junior Class

OFFICERS

MARY LITTLE FLETCHER

President

MARGARET SCARBOROUGH

Vice-President

SUSAN EXUM

Secretary

BAILFY WYBB

Treasurer

DORIS HARRISON

Council Representative



BOND
CROSS

BUNN
CREECH

CAMPEN
EFIRD

COLE
EXUM

Juniors

LOIS BOND
GREENSBORO, N. C.

DOROTHY CROSS
SUNBURY, N. C.

ROWENA BUNN
LAURINBURG, N. C.

ISABEL CREECH
LA GRANGE, N. C.

ELIZABETH CAMPEN
ZEBULON, N. C.

LOUISE EFIRD
ALBEMARLE, N. C.

EMILY COLE
CHARLOTTE, N. C.

SUSAN EXUM
SNOW HILL, N. C.



FLETCHER
HICKS

FOWLER
HOOVER

HARRISON
JESSUP

HEATH
LYTCH

Juniors

MARY LITTLE FLETCHER
GIBSON, N. C.

ANNA BELLE HICKS
SNOW HILL, N. C.

MARY FOWLER
PILOT MOUNTAIN, N. C.

BLANCHE HOOVER
DENTON, N. C.

DORIS HARRISON
ELIZABETH CITY, N. C.

ELIZABETH JESSUP
CEDAR CREEK, N. C.

RUTH HEATH
AUGUSTA, GA.

MARTHA LYTCH
LAURINBURG, N. C.



NEESE
SCOGGIN

PEYATT
SPEIGHT

ROYALL
THOMPSON

SCARBOROUGH
VESTER

Juniors

MARGARET OPAL NEESE
HIGH POINT, N. C.

FANNIE HOUSE SCOGGIN
WARRENTON, N. C.

VIRGINIA PEYATT
LIBERTY, N. C.

BIRDIE SPEIGHT
STANTONSBURG, N. C.

MILDRED ROYALL
SALEMBURG, N. C.

SARAH LOUISE THOMPSON
HAW RIVER, N. C.

MARGARET SCARBOROUGH
MOUNT GILEAD, N. C.

ALMA VESTER
SPRING HOPE, N. C.



WADE
A. J. WILLIAMS

WARD
A. M. WILLIAMS

WARREN
M. WILLIAMS

WEBB
WORRELL

Juniors

EDITH GRAY WADE
DUNN, N. C.

ANNIE JOHN WILLIAMS
REIDSVILLE, N. C.

MARGARET WARD
ROWLAND, N. C.

ANNA MAY WILLIAMS
OAK RIDGE, N. C.

EMMA BLANCHE WARREN
SNOW HILL, N. C.

MARGARET WILLIAMS
FOREST CITY, N. C.

BAILLY WEBB
OXFORD, N. C.

FRANCINA WORRELL
RICH SQUARE, N. C.



Sophomores



WINN

JOHNSON

THOMPSON

DENNING

WEAVER

Sophomore Class

OFFICERS

MAD-LINE MAPP WINN

President

FLORENCE DENNING

Vice-President

SUE FLEMMING THOMPSON

Secretary

HATTIE MAE JOHNSON

Treasurer

MINNIE WEAVER

Council Representative

Sophomores

ALICE BARROW
Elizabeth City, N. C.

IMOGENE BOYLES
Thomasville, N. C.

ELIZABETH BURKE
Burlington, N. C.

MARIE COBB
Elm City, N. C.

MILDRED CORNETTE
Greensboro, N. C.

KATHLEEN CRAVEN
Mocksville, N. C.

GRACE CROCKER
Stantonsburg, N. C.

LUCILLE DAILEY
Durham, N. C.

IRENE DORSETT
Greensboro, N. C.

FLORENCE DENNING
Benson, N. C.

GLENNIE DRAPER
Conway, N. C.

CAMILLA FOREMAN
Elizabeth City, N. C.

MARY KING FOUNTAIN
Fountain, N. C.

DORIS GARRIS
Greenville, N. C.



Sophomores



FRANCES HAM
Morven, N. C.

EMI HINOHARA
Hiroshima, Japan

HATTIE MAE JOHNSON
Benson, N. C.

INEZ KELLY
Mt. Holly, N. C.

EVA MAE LASSITER
Spring Hope, N. C.

MARY LOUISE LYTCH
Laurinburg, N. C.

FRANCES MARTIN
Winston-Salem, N. C.

JULIA MARTIN
Mt. Olive, N. C.

TOMMY LOUISE MITCHELL
Kinston, N. C.

MARY E MORECOCK
Halifax, N. C.

AGNES OLIVER
Marietta, N. C.

FRYF PETTUS
Edenton, N. C.

ESTHER PRIDGEN
Elm City, N. C.

LORRAINE SILLS
Nashville, N. C.

Sophomores

KATRINE SMITH
Greensboro. N. C.

MARGARET STATON
Bethel. N. C.

ELIZABETH TAYLOR
Southport. N. C.

JANIE TAYLOR
Harrellsville. N. C.

LOUISE TAYLOR
Greenville. N. C.

SUF F. THOMPSON
Creedmoor. N. C.

MINNIE WEAVER
Rich Square. N. C.

SARA WARINER
Ruffin. N. C.

ANNIF WHITEHEAD
Dunn. N. C.

CHRISTINE WILSON
Benson. N. C.

MARY BELLE WILSON
Benson. N. C.

ELIZABETH WINN
Washington. D. C.

MADELINE WINN
Washington. D. C.





To Our Sister Classes

Into Life's fragile, lace-like pattern go many slender threads spun from the ceaseless wheel of our experience. One of the most beautiful figures on our finished tapestry will be your friendship to us, Little Sisters. So to you we lovingly dedicate this page.



Freshmen



COLTRANE

PENDER

STRONG

POOLE

Freshman Class

OFFICERS

GRACE COLTRANE

President

FRANCES POOLE

Vice-President

FREDA STRONG

Secretary

RUTH PENDER

Treasurer

Freshmen

INA ANDREWS
Asheboro, N. C.

DOROTHY BARROW
Zebulon, N. C.

JOYCE BELVIN
Durham, N. C.

MARY DAVIS BIVENS
Marshville, N. C.

ENNIS BOLES
Pinnacle, N. C.

BESSIE BOLING
Troy, N. C.

MILDRED BOOZE
Winston-Salem, N. C.

KATHERINE BOST
Bost's Mills, N. C.

CLAUDIA BOYD
Waynesville, N. C.

ISABEL BOYLES
Thomasville, N. C.

SARA BRADSHAW
Wilmington, N. C.

ELIZ. BRANTLEY
Spring Hope, N. C.

CATHERINE BURNHAM
Mullins, S. C.

VIVIAN COBB
La Grange, N. C.

SALLY CAMPEN
Alliance, N. C.



Freshmen



GRACE COLTRANE
Zebulon, N. C.

MARGARET CRYMES
Climax, N. C.

HAZEL DELOZIER
Candler, N. C.

KAY EVANS
Asheville, N. C.

EDNA GARRETT
Waynesville, N. C.

ELIZABETH GARRETT
Waynesville, N. C.

JACQUE GWYN
Winston-Salem, N. C.

CODY HIPPS
Kannapolis, N. C.

NINA JONES
Granite Falls, N. C.

MARY SCOTT JONES
Greensboro, N. C.

KATHERINE KILLIAN
Newton, N. C.

FRANCES G. LOFTIN
Glen Alpine, N. C.

HELEN LONG
Burlington, N. C.

MARGARET LOVE
Monroe, N. C.

I. MCSPARROW
Danville, Va.

KATHERINE MADDON
Greensboro, N. C.

Freshmen

MARTHA MARTIN
Greensboro, N. C.

MARY E. MASSIE
Waynesville, N. C.

MARY ELLEN MILLARD
Greensboro, N. C.

EDITH NEAVES
Elkin, N. C.

RUTH PENDER
Tarboro, N. C.

FRANCES POOLE
Stoneville, N. C.

LAURA PREDDY
Durham, N. C.

CYNTHIA PREVETTE
N. Wilksboro, N. C.

ALICE HILL REEVES
Ivanhoe, N. C.

EVELYN STAFFORD
Oak Ridge, N. C.

ELIZABETH STRONG
Sanford, N. C.

FRIDA STRONG
Sanford, N. C.

KATIE SUE TAYLOR
Winston-Salem, N. C.

SARAH THOMPSON
Mocksville, N. C.

ANNABEL VESTER
Spring Hope, N. C.

RUTH WATSON
Columbia, S. C.

EMMA SALLBY
Suk-el-Gharb,
Lebanon, Syria







ORGANIZATIONS



O'BRIENT

CLARK

VESTER

TOWE

LISSITER

FOWLER

BOUSHEE

Student Association

OFFICERS

ESTHER O'BRIENT

President

RUTH CLARK

First Vice-President

MARY TOWE

Second Vice-President

MARY FOWLER

Recording Secretary

ALMA VESTER

Corresponding Secretary

EVA MAE LISSITER

Treasurer

MARIE BOUSHEE

Budget Collector

Since the fall of 1914, when the Students' Association was organized at G. C., each succeeding group of officers, with the coöperation of the student body, has worked steadfastly upward. Slowly toward an ideal type of government wherein will be attained the highest ideals of college life and conduct.



TYSOR THOMPSON DORSETT PEELE WEHRELE

Day Students

OFFICERS

RUBY TYSOR

President

MILDRED THOMPSON

Vice-President

MARGARET PEELE

Secretary

IRENE DORSETT

Treasurer

MARGARET WEHRELE

Council Representative

The Day Students' organization is one of the youngest of the organizations on our campus, dating only from 1929. Since that time, by the faithful work of its members, it has grown in importance until it is now recognized as one of the most outstanding bodies. Its purpose is to "bring closer contact and fellowship with the resident students and to uphold the rules of the Students' Association."



BILLUPS

HICKS

SCOGGIN

BUNN

MITCHELL

LYTCH

EXUM

LANG

TAYLOR

GARRIS

FOUNTAIN

Y. W. C. A.

OFFICERS

FRANCES MITCHELL

President

DOROTHY BILLUPS

Vice-President

FANNIE HOUSE SCOGGIN

Secretary

SUSAN EXUM

Treasurer

ANNA BELLE HICKS

Manager Y. W. Store

EXECUTIVE COMMITTEE CHAIRMEN

MARY KING FOUNTAIN

ELIZABETH LANG

ROWENA BUNN

MARTHA LYTCH

ELIZABETH TAYLOR

DORIS GARRIS

The Y. W. C. A. of Greensboro College, was organized in 1896. For many years there was a missionary society on the campus, but this work is now carried on in conjunction with the Y. W. C. A. While this organization seeks primarily to strengthen and enrich the heart lives of each student, the social side of life also has its recognition.



ROBERTSON

SMART

BOYLES

CREECH

FOWLER

Emerson Literary Society

OFFICERS

GRACE ROBERTSON

LAURA MAIE SMART

ISABEL CREECH

IMOGENE BOYLES

MARY FOWLER

*President**Vice-President**Secretary**Treasurer**Chaplain*

The Irving Literary Society remained the only literary society on the G. C. campus from 1882 until 1892, when the Emersons formed themselves into a group. Almost immediately there was evident a spirit of rivalry between the two groups which spurred each on to improvements in its purpose and meeting places. We wonder whether that friendly rivalry cannot be traced back to the "forties" and the old Sigsourneyen and Philocoechem societies. Be that as it may, the loyalty to her society and the joy she feels as its victory on Decision Day is dear to the heart of every G. C. girl. Long may it live!



MARY VEAL
Editor



MARY TOWE
Business Manager

The Message

In 1885 and '86 we find the first record of the publication of *The Message*. At that time it was published monthly for seventy-five cents per year and was not only a literary magazine but took the place of *The Collegian*, serving to keep the members of the alumnae association in touch with one another. Today we find it a well established literary unit and outlet for the talents of the literary inclined and as source of enjoyment for each G. C. student.



CREECH
SMITH
GARRETT

EFIRD
WEAVER
TAYLOR

MARTIN
VESTER
GEER

JOHNSON
MORECOCK
CRAVEN

JESSUP
WINN
ROYALL

The Message Staff

MARY VEAL
ISABEL CREECH
LOUISE EFIRD
FRANCES MARTIN
LETA GOLD JOHNSON
ELIZABETH JESSUP }
KATRINE SMITH }
MINNIE WEAVER }
ALMA VESTER }
ESTHER O'BRIENT }
MARY ELIZABETH MORECOCK }
EDNA GARRET }
ELIZABETH WINN }
EVA MAE LASSITER }
JANIE TAYLOR }

Editor-in-Chief
Assistant Editor
Associate Editor
Art Editor
Exchange Editor

Literary Editors

Poetry Editors

Typists

Humor Editors

BUSINESS STAFF

MARY TOWE
CORNELIA GEER
KATHLEEN CRAVEN
MARY HOWARD CLARK
LORE ROYALL
DR. MILLER, MISS GINN, MISS PEGRAM

Business Manager
Assistant Business Manager
Associate Manager
Circulation Manager
Assistant Circulation Manager
Faculty Advisors



CAROLINE RHODES
Editor



LAURA MAIE SMART
Business Manager

The Collegian

The Collegian is comparatively a new publication on our campus, being published for the first time in 1926. Up until that time *The Message* had done the work both of a literary magazine and a newspaper. Since 1926, however, *The Collegian* has made for itself a place in G. C. lives that could be filled by no other organ. It serves to keep students and alumnae in touch with school news and as an outlet for those students desiring journalistic training and experience.



Standing LASSITER, EFIRD, VESTER, ADER.
Sitting CREECH, RHODES, BOST, TAYLOR.

The Collegian Staff

EDITORIAL STAFF

CAROLINE RHODES
 ISABEL CREECH
 LETA GOLD JOHNSON
 MARION ERWIN
 ELSIE ADER
 MARY BROCK
 MARY TOWE
 MARY HAAS SCARBOROUGH
 MISS MARY L. GINN
 EVA MAE LASSITER

Editor
Managing Editor
Assistant Editor
Associate Editor
Society Editor
Alumnae Editor
Joke Editor
Joke Editor
Faculty Adviser
Typist

BUSINESS STAFF

LAURA MAE SMART
 MARY FRANCES BOST
 KATRINE SMITH
 FLORENCE DENNING
 IMOGENE BOYLES
 LOUISE TAYLOR
 FLORENCE DAVIS

Business Manager
Assistant Business Manager
Assistant Business Manager
Circulation Manager
Assistant Circulation Manager
Exchange Manager
Assistant Exchange Manager

REPORTERS' CLUB

MARY NELSON HOYLE
 RUTH CLARK
 CABELL CAMPEN
 LOUISE EFIRD

VERA FALLS
 ALMA VESTER
 EVA MAE LASSITER
 MADELINE WINN

MARY FARMER
 MARY H. SCARBOROUGH
 ELIZABETH WINN
 LOVERA RICHIE



Top Row—SMATHERS, SCARBOROUGH, MANNING, SMITH, ROBERTSON, TAYLOR, GWYN, BOYLES, ERWIN, HIPPS.
Second Row—LASSITER, SILLS, FOREMAN, BRUTON, EDWARD MOLITORE, MOLITORE, WOMBLE, CLAPP, STATON.
Front Row—BARROW, JOHNSON, WORRELL, M. ROYALL, WILSON, L. ROYALL, PENDER.

Glee Club

EDWARD MOLITORE
 AUDREY BRUTON

Director
 Accompanist

FIRST SOPRANO:

ALICE BARROW
 DOROTHY FRANKLIN
 CAMILIA FOREMAN
 JACQUE GWYN
 LETA GOLD JOHNSON
 PHYLLIS CLAPP
 GLADYS STROUD
 LINDA WOMBLE
 FRANCINA WORRELL
 MARGARET STATON

SECOND SOPRANO:

RUTH MAYNARD
 HELEN MANNING
 MARGARET NEFCE
 LORRAINE SILLS
 KATIE SUE TAYLOR
 MARY BELLE WILSON
 MARY HAAS SCARBOROUGH

ALTO:

ISABEL BOYLES
 MARION ERWIN
 CODY HIPPS
 RUTH PENDER
 GRACE ROBERTSON
 MILDRED ROYAL
 LORF ROYAL
 MARY VEAL



HICKS PEYATT BOYLES BUNN FLETCHER DAVIS FOWLER TAYLOR

Dramatic Club

OFFICERS

CABELL CAMPEN	<i>President</i>
ANNA BELLE HICKS	<i>Vice-President</i>
VIRGINIA PEYATT	<i>Business Manager</i>
IMOGENE BOYLES	<i>Assistant Business Manager</i>
ROWENA BUNN	<i>Publicity Manager</i>
MARY LITTLE FLETCHER	<i>Assistant Publicity Manager</i>
RUTH DAVIS	<i>Secretary</i>
MARY FOWLER	<i>Wardrobe Mistress</i>
ELIZABETH TAYLOR	<i>Assistant Wardrobe Mistress</i>

Dramatics have taken a long step forward since the good old days at G. F. C. when acting was considered quite outside the pale of decency: the days when "The Merchant of Venice" was presented (with much unfavorable comment) in Shakespearean costumes from the waist up only, in order that the long skirts of the day might furnish the necessary decency.





A T H L E T I C S



TATE

WILLIAMS

EXUM

FLETCHER

HINKLE

GEER

Athletic Association

OFFICERS

ANN HINKLE

LOUISE TATE

SUSAN EXUM

MARGARET WILLIAMS

MARY LITTLE FLETCHER

CORNELIA GEER

*President**Vice-President**Secretary**Treasurer**Custodian**Cheer Leader*

Athletics at G. C. have taken a long step forward since the days when undergraduates indulged in the strenuous sport, croquet, hampered in their progress by too numerous petticoats and too long skirts.

Today, under the guiding hand of Miss Noma Dobson, each student is a member of the Athletic Association and takes part whole-heartedly (knowing full well the advantages to her mentally, morally, and physically) in such sports as tennis, basketball, soccer, track, horseback riding, and folk dancing.



Left to right: PRUDEN, LASSTER, CRAVEN, WINN, WEAVER, MURKIN, MITCHELL.

Basket Ball

Three cheers for the Sophs and their championship basket ball team! The invigorating freshness of the early morning November air seemed to spur them on Field Day, and as the score rolled up slowly but surely in their favor, the opposing team of plucky Freshmen, turned necessarily to the defensive. When the timer blew the whistle and a hard-fought game ended 15 to 5, the Freshmen slapped their victors on the backs and said with a grin, "good going! But just wait until spring field day."



*Back Row: PRIDGEN, COBB, WINK, WEAVER, WARNER, CRAVER, LUTCH
Front Row: WILSON, LASSITER, KELLY, TAYLOR (Captain), L. TAYLOR, MARTIN, CROCKER*

Soccer

Encouraged by their basket ball victory, the Sophs took their places opposite the rival Juniors. Far down the field loomed the white goal post, and as the whistle blew, every girl became alert and concentrated her efforts in that direction. It was a hard game, and both teams fought hard to carry their team to victory.

No score! The game must end a scoreless tie! A Sophomore sends it through the goal post! Deafening cheers! Breathless moments! The shrill sound of the timer's whistle, and the Sophs are champions!



BAILEY WEBB, EMILY COLE
First Place Winners, Doubles



EVA MAI LASSITER
First Place Winner, Singles

Tennis

Tennis, the ever popular sport: as popular in the days of our grandmothers as it is today. Interest is never as keen as it is on Field Day. And on this fall Field Day, particularly, competition ran high. Both games were hotly contested, but at last the Sophomores came through victorious in singles, while the rival Junior class won the doubles.



G. C. Sports

Seemingly going back to the days of her grandmother, many a G. C. girl has become this fall and spring an ardent devotee of that ancient and honorable game, croquet. And again at that time of year the thoughts of many a girl turn from motor cars to that old but ever new sport, horseback riding. Perhaps she is reminded of that day long ago when great grandfather hitched old Dobbin to the buggy, tied the trunk on behind and therewith deposited grandmother at the door of G. F. C.

Even though, however, we do turn back, we cannot forget our favorite sports, born of a more modern day: soccer, basket ball, track, tennis, swimming, etc.



EVA MAE LASSITER, '34

“Miss G. C.”

Each Field Day the title “Miss G. C.” is given to that student winning the greatest number of points. This fall, Eva Mae Lassiter, with forty points to her credit, replaced Margaret Williams, who won the title last spring. Eva Mae proved her versatility when her points were found to have been made in five different sports: tennis, basket ball, soccer, baseball, and javelin throw.

By winning the highest number of points in her class, Margaret Williams became “Miss '33” ; Eva Mae Lassiter, “Miss '34” ; and Freda and Elizabeth Strong, Elizabeth Benbow and Mary Ellen Millard tied for “Miss '35.”



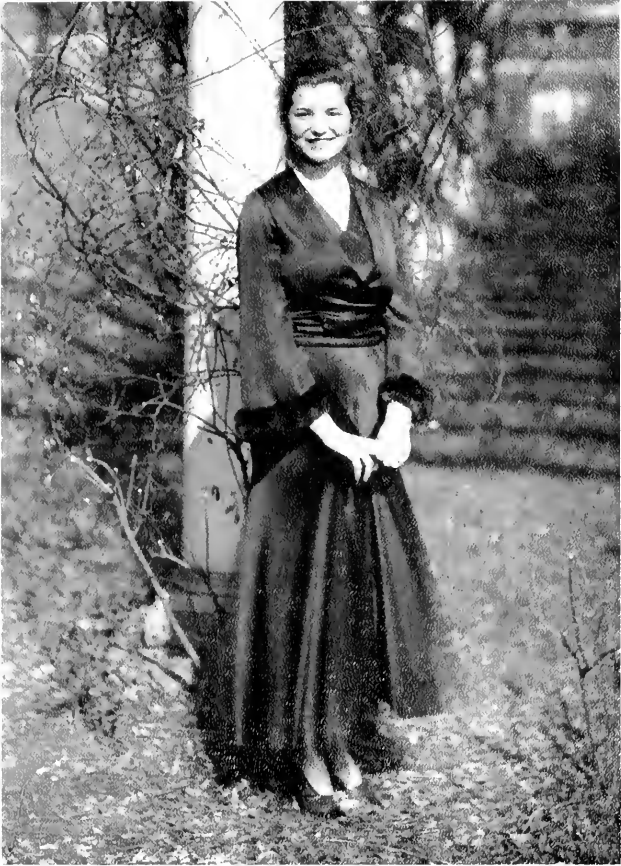
F E A T U R E S



Superlatives



Best -All -Round
Miss -Ilma -Vester



Most Striking
Miss Imogene Boyles



Most Popular
Miss Amy Hinkle



Most Efficient
Miss Esther O'Brient



Most Athletic
Miss Margaret Williams



Most Personality
Miss Ruth Davis



Most Clever
Miss Caroline Rhodes



Most Charming
Miss Cabell Campen



May Day, 1931

As the setting sun cast its golden shadows over the west campus, warning notes from the bugles of two heralds brought a hush over the waiting throng. Expectant eyes turned toward the green hill slope where the maid of honor, Miss Evangeline Taylor, gowned in orchid net over satin and carrying an arm bouquet of vari-colored spring flowers, was taking her place. Then by two's, the Ladies of the Court arranged themselves on either side of the ivy twined throne until the green hill slope was transformed into a garden of spring flowers. Misses Edith Floyd and Susan McLean, gowned in blue, made a lovely pair; Misses Cabell Campen and Helen Manning wore green. Misses Miriam Watkins and Lucille Bivens, yellow, and Misses Grace Crocker and Christine Wilson, pink.

Presenting a figure of queenly beauty, in white bridal satin, with a train of white net, Miss Rachel Creech advanced and was crowned Queen of the May by the maid of honor. She ruled over the occasion with an air of regal graciousness.



May Day Program

"Playing Ball"—Lock	- - - - -	JUNIORS
"Court Jester"	- - - - -	TOMMY LOUISE MITCHELL
"Spring"—English Folk Dance		HAZEL AND CHRISTINE SMATHERS
"At Dawning" (Arr. by Miss Tate)	- - - - -	LOUISE TATE
"Hobo Dance"	- - - - -	SOPHOMORES
"To A Wild Rose"—Macdowell	- - - - -	JUNIORS
"Combat" (Warrior's Song)—Heller		Laura Smart and Mary Nelson Hoyle
Field Day Awards	- - - - -	ANN HINKLE
"Beautiful Blue Danube"—Strauss	- - - - -	JANICE LANE
"Ballet"—Tschaikowsky		E. ADER, L. MITCHELL, R. CLARK, L. RITCHIE, M. ELMORE
May Pole	- - - - -	FRESHMEN

The Good Old Days At G. F. C.

(*Extracts From College Catalogues*)

"Parents having daughters fitting for college, will do well to see that they are thoroughly trained upon spelling, reading, writing, geography, and arithmetic. Time spent upon the more advanced studies is frequently almost lost."

"Each pupil is supposed to be present at every recitation . . . once a week each one makes a report of her own delinquencies in the presence of all the faculty and pupils assembled."

"The young ladies boarding in the college are permitted to receive visits from no one but their nearest relatives . . ."

"Parents are requested not to send their daughters boxes and food."

"Parents deposit in the hands of the president of the college as much money as they choose to have their daughters spend. Purchases will be made by the teachers, and the direction of parents will be strictly followed."

"Religious services will be had in the college chapel three times every Sabbath day, so that there will be no occasion to visit the town of Greensborough for public worship."

"No jewelry is allowed to be worn at any time . . ."

"The correspondence of the young ladies will be under the direct supervision of the President. He allows no correspondence with young gentlemen, except by permission of parents or guardian."

Commencement Program, 1932

FRIDAY, MAY 27

8:15 P. M.—Annual Concert

SATURDAY, MAY 28

3:00 P. M.—Annual Business Meeting of the Alumnae Association

5:00 P. M.—Class Day Exercises

6:00 P. M.—Alumnae-Student Dinner

8:30 P. M.—Annual Guest Performance, by the Greensboro College Players

SUNDAY, MAY 29

11:00 A. M.—Baccalaureate Sermon—Bishop Edwin D. Mouzon, D.D., Charlotte, N. C.

8:00 P. M.—Anniversary Young Women's Christian Association—Bishop Edwin D. Mouzon

MONDAY, MAY 30

10:30 A. M.—Opening Exercises

Annual Address—Rev. Gilbert T. Rowe, D.D., Durham, N. C.

Graduating Exercises



Jokes and
Ads

GREENSBORO COLLEGE

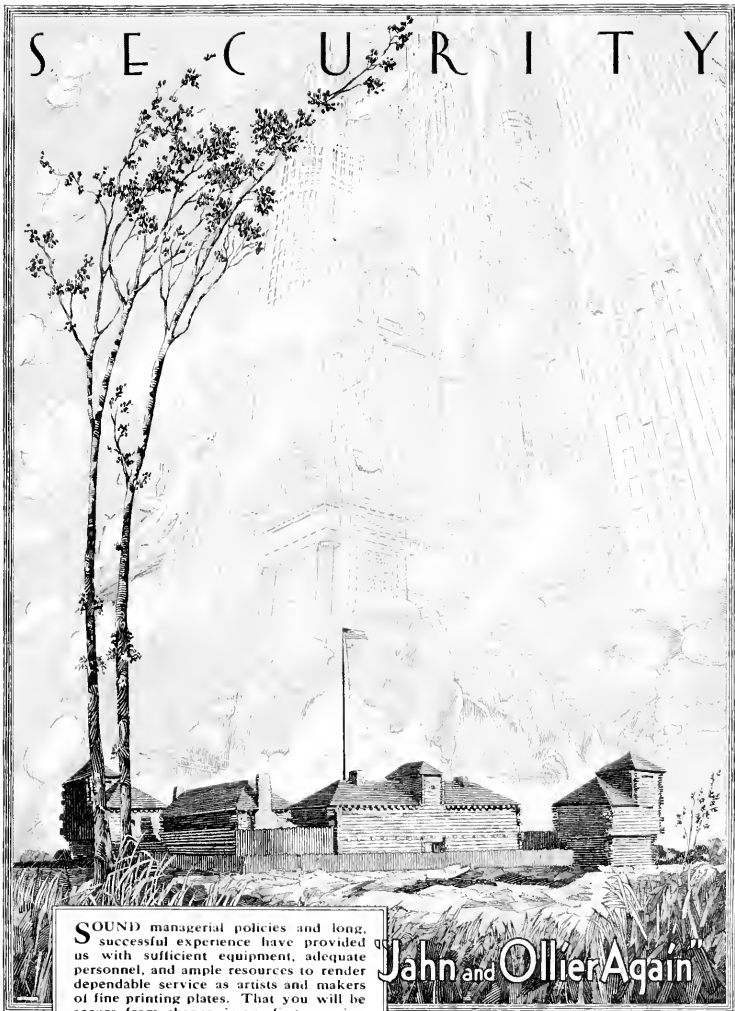
*A Standard College For Women. Member of Association
of Colleges and Secondary Schools of the Southern
States. The Oldest Chartered College For
Women in the State—Chartered 1838.
Confers the Degrees of Bachelor of
Arts and Bachelor of Music.*



In addition to the regular classical course, special attention is called to the departments of Home Economics, Arts, including Industrial and Commercial Art, Spoken English and Dramatic Art, Education, Sunday School Teacher Training, Piano Pedagogy, and to the complete School of Music.

For further information, apply to
SAMUEL B. TURRENTINE, *President*
GREENSBORO, NORTH CAROLINA

S E C U R I T Y



SOUND managerial policies and long, successful experience have provided us with sufficient equipment, adequate personnel, and ample resources to render dependable service as artists and makers of fine printing plates. That you will be secure from chance, is our first promise.

JAHN & OLLIER ENGRAVING CO.
817 West Washington Blvd., - Chicago, Illinois

Jahn and Ollier Again

In the foreground - Ft. Dearborn re-erected
in Grant Park on Chicago's lake front.
Illustration by Jahn & Ollier Art Studios.

TRUST
ONE WHO
KNOWS...!!!

THE OBSERVER PRINTING HOUSE — the home of better annuals — has gained a wealth of valuable experience through thirty-five years of specialization in this field, the benefit of which is yours for the asking.

We offer you the services of a highly trained and efficient organization which will aid you in the planning and compilation of your yearbook, thereby minimizing the worries and uncertainties incident to the publication of an annual.

CORRESPONDENCE INVITED

THE **OBSERVER**
PRINTING HOUSE, INC.
322-324 S. CHURCH ST.
CHARLOTTE, NORTH CAROLINA

ESTABLISHED 1888

A QUARTER CENTURY OF
COLLEGE PHOTOGRAPHY



220 WEST 42nd STREET
NEW YORK

Completely Equipped to Render the
Highest Quality Craftsmanship and
An Expedited Service on Both Per-
sonal Portraiture and Photography
For College Annuals

OFFICIAL PHOTOGRAPHER TO
THE ECHO, 1932



MISS CABELL CAMPEN



A PRODUCT OF
**SOUTHERN
DAIRIES**
FOR ALL OCCASIONS



Phone 2-1125
GREENSBORO, N. C.

Ellis Stone & Co.

THE QUALITY STORE

Where the College Girl finds the
newest in quality merchandise
at moderate prices.



*Ready-to-Wear
Millinery
Footwear
Dress Accessories
Piece Goods*

Ellis Stone & Co.

The Finest in
Jewelware

Schiffman's



GREENSBORO N C

**STRATFORD-WEATHERLY
DRUG COMPANY**

Corner Jefferson Building

SIP YOUR SODAS

UNDER

OUR SILVER CEILING

*Complete Nunnally Candy
Department*

Box Candy Bulk Candy

Party Favors

Parker and Sheaffer Fountain
Pens

Chanel, Guerlain, Helena Rub-
enstein, Elizabeth Arden

Toilet Articles
and Perfumes

WE ALWAYS SELL THE BEST

SYKE'S

FLORISTS

Incorporated



GREENSBORO HIGH POINT
WINSTON-SALEM

**KING
COTTON
HOTEL**

250 ROOMS
250 BATHS

Market and Davie Streets

COMPLIMENTS OF
S. H. KRESS

**The Advocate
Printing House**

SPECIALISTS IN COLLEGE
PRINTING



PROGRAMS—STATIONERY
ENGRAVING



*SPECIAL PRICES TO G. C.
STUDENTS*

429 W. GASTON ST.
GREENSBORO, N. C.

The Carolinas' Greatest
Hardware and Sporting Goods
House

BUY AT
Odell's
WHERE QUALITY TELLS

McNeelys

Are Always Glad to Have You Back



DIAL 5057
718 W. Market St.

GREENSBORO

Coca-Cola

BOTTLING CO.

DRS. BANNER AND BANNER

*Eye, Ear, Nose, and Throat
Specialists*

BANNER BLDG. ELM ST.

BELK'S

DEPARTMENT STORE

The Home of Better Values

Complete Women's Wear
Department

GREENSBORO, N. C.

*Picture Frames Kodak Finishing
Commercial Photography*

THE ART SHOP

Over Liggett's
TELEPHONE 5315

THE O. HENRY HOTEL



GREENSBORO'S POPULAR
PLACE TO DINE

AND

A GOOD HOTEL
IN A GOOD TOWN

McLELLAN'S

5c AND \$1.00 STORES

S **SHOE** **S**
SHOP
SHOES
SHOES
SHOES

110 W. MARKET ST.

Jokes

MR. WATSON: "Why didn't you answer my question?"

MARIE: "I did. I shook my head."

MR. WATSON: "Well, you don't expect me to hear it rattle from here, do you?"

MISS RICKETTS: "Well, Grace, and how do you like school?"

GRACE: "When it's closed."

MISS GINN: "Give me a sentence using the word, 'miniature'."

ESTHER PATE: "The miniature asleep you begin to snore."

VOICE OVER PHONE: "Mary says she isn't in. Is there any message?"

OTHER END OF LINE: "Yes, tell her that I didn't call her."

THE CLASSES THAT WE CUT

The classes we attended
Will never matter much
Of knowledge that we gathered
There's scarcely left a touch.

But oh, the leafy foot-paths,
Today we still can shut
Our eyes, and happy, dream
about

The classes that we cut!

—MARY CAROLYN DAVIES.

Clean *Quick*

THE PURITAN CAFE

218 N. ELM STREET

FOR LADIES AND GENTLEMEN

Prompt Service *PHONE 4945*

COMPLIMENTS OF
F. W. Woolworth
Company

FASHION—
AND THRIFT

Meyer's
GENUINE FUR & CLOTHING CO.

Jokes

LAURA: "I wonder if I shall ever live to be a hundred."¹

LETA GOLD: "Not if you remain twenty-two much longer."²

MARY VEAL: "I suppose your home town is one of those where every-one goes to meet the train."

BOST: "What train?"

WIFE: "Do you realize, dear, that it was twenty-five years ago that we became engaged?"

ABSENT-MINDED PROFESSOR: "Twenty-five years' Bless my soul! You should have reminded me before. It's certainly time we got married."

LIB.: "I have a terrible rumbling on my stomach. It's like a wagon going over a bridge."

MISS TURNER: "It's most likely that truck you ate this morning for breakfast."

A certain member of the senior class was applying for a job in the big city when she was put to the test by her prospective employer.

"Well, Miss, what would you do with a million dollars?" he asked.

"Oh glory! I don't know—I wasn't expecting that much at the start."

LITTLE JOHNNY: "Yah, I saw you kiss my sister."

BOY FRIEND (hurriedly): "Ah er-her's a quarter."

LITTLE JOHNNY: "And here's ten cents change. One price to all, that's the way I do business."

AUTOGRAPHS



FINIS





