

THE  
ECHO  
1933



1987. 1.7



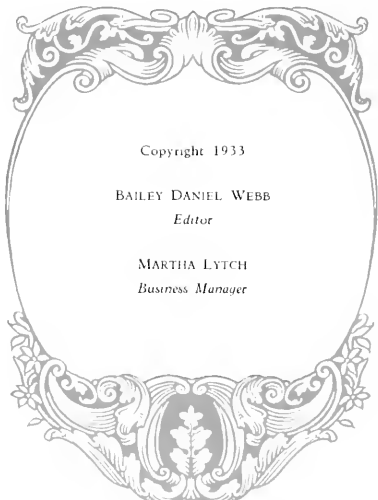
Digitized by the Internet Archive  
in 2010 with funding from  
University of North Carolina at Chapel Hill

<http://www.archive.org/details/echo1933gree>





THE  
1933 ECHO



Copyright 1933

BAILEY DANIEL WEBB  
*Editor*

MARTHA LYTCH  
*Business Manager*





THE  
1933 ECHO

PUBLISHED BY THE  
SENIOR CLASS  
OF  
GREENSBORO COLLEGE  
GREENSBORO, N. C.



MISS ANNIE MCKINNIE PEGRAM



# DEDICATION

TO the Freshmen of the fall of 1929, Miss Pegram was the dignified person whose domain was the mathematics classroom. We felt small in her presence because of her great knowledge.

Before we had been on the campus long, we learned from other people and from seeing her ourselves that she was one whom those in distress sought for comfort and help—never too tired to listen to one who needed her. We, too, find her ever ready to help us with our personal problems when we ask her.

We still admire the great knowledge we admired as Freshmen, but we love her for her unselfishness, which after all, is her greatness. Because of our love and esteem for her, we wish to dedicate this volume of THE ECHO to


MISS ANNIE MCKINNIE PEGRAM.





## FOREWORD

*COLLEGE* life is a drama—one hour we sit with age to "Search the Scriptures" and in seriousness follow the "Good Counsel" of our teachers; the next, we dash through the country on a "Morning Ride" or stop in the quiet coolness of the woods to play with "The Pet." Dusk may find us in daisy fields seeking the "Prophecy of the Flower," or thoughtfully "Dusting Cupid" as the shadows fall. The night may see us huddled in a corner telling "Ghost Stories" or watching for the "Reaper's Return." And then as soft sleep gathers around us we feel the protecting arms of our Alma Mater—our "Light in the Darkness."





# CONTENTS

Book I.....	THE COLLEGE
Book II.....	THE CLASSES
Book III.....	ORGANIZATIONS
Book IV.....	ATHLETICS
Book V.....	SUPERLATIVES
Book VI.....	ADVERTISEMENTS



## Theme Explanation

AT TIMES each and every one of us likes to spend a rainy day in the attic looking through old trunks or over old books. One day a quaint old book attracted my attention and I took it to my grandmother. She opened it tenderly and her eager smile told of old memories it brought back. Some member of her family had had bound the frontispieces and attractive "embellishments" of the old *Godey's Ladys' Books* with a few engravings here and there from the old *Sartain's* and *Peterson's Magazines* of 1851. To me these pictures seemed quaint at first, but as my grandmother bent over them to tell the stories which they illustrated, their beauty grew and I, too, learned to love them—not in the same way she did, but with the respect of youth for the past.

Some of these old pictures which found their way into the hearts of the nation through the pages of the old *Godey's Ladys' Books*, *Sartain's* and *Peterson's Magazines* have found their way into our 1933 ECHO.

Maybe some day we will pick up our annual, which other interests have caused us to lay aside, and may it too "Echo" pleasant memories of the past.



## Light in Darkness

(Engraved expressly for *Godley's Ladies' Book* by A. B. Walter.)

## COLLEGE

*Knowledge is the light in the darkness of  
ignorance and sympathetic understanding bright-  
ens the deepest despair.*







*A magic tower . . . glittering through a lace-work of verdant trees . . . sacred pilot to the souls of the dreamy-hearted maidens . . . overflowing with loveliness and life.*





*Where laughter rings and sobs are hushed, where youth seeks youth and hearts touch hearts. A home at night when we are tired.*



*The tread of feet . . . rhythmic . . . eager . . . softer . . . falling . . . and wearied youth  
pauses in the cool shadow . . . lingers near the stone bench . . . to love . . . to think . . . to  
dream . . . Low prayers at sunset.*



*Soft shadows of the friendly sycamore  
and dignity and dreams hover near the soul  
to come.*

*creep toward the lonely pines as ideals  
whispering tantalizing secrets of years yet*





## Good Council

(Engraved by T. B. Welch expressly for *Godey*.)

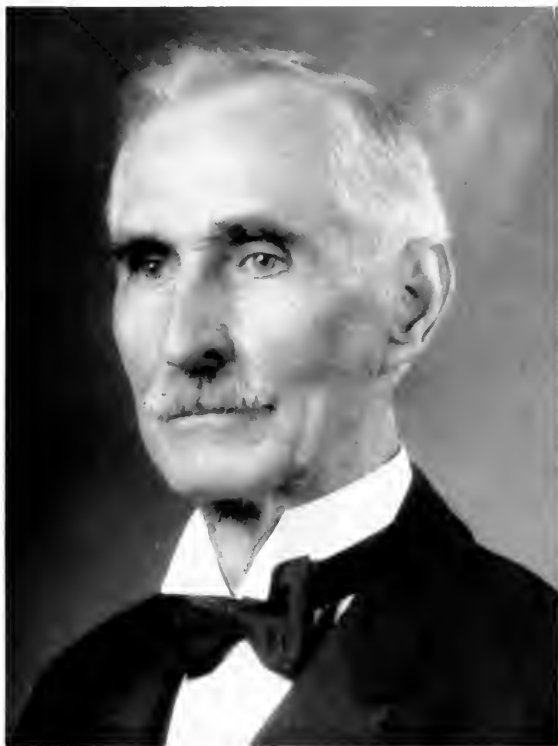
## FACULTY

*Those who know the way must guide the feet of youth in unfamiliar paths. With slow steps youth thoughtfully learns the way.*

## To the Faculty

(In Appreciation)

TO YOU, WHO WITH "GOOD  
COUNSEL" HAVE DIRECTED US  
IN THE PATHS OF KNOWLEDGE,  
WE WISH TO EXPRESS OUR AP-  
PRECIATION FOR YOUR CARE-  
FUL AND PATIENT GUIDANCE.



SAMUEL B. TURRINTINE, A.B., A.M., D.D.  
*President*



MISS METTIE E. RICKETTS  
*Dean of College Home*



## Faculty

ANNIE M. PEGRAM  
*Professor of Mathematics*



MARGARET G. PERRY  
*Associate Professor of Spanish*

PAUL M. GINNINGS  
*Professor of Chemistry and Physics*



CONRAD LAHSER  
*Professor of German*

DOROTHEA MCNUTT  
*Associate Professor of Biology*



J. RODDEY MILLER, JR.  
*Professor of English*

MARGARET D. STEWART  
*Professor of Home Economics*



MARY L. GINN  
*Associate Professor of English*

ROBERT T. DUNSTAN  
*Professor of Latin and Romance Languages*



ELLIOTT O. WATSON  
*Professor of History and Economics*

METTIE E. RICKETS  
*Associate Professor of French*



ELIZABETH B. YOUNG  
*Professor of Education*

## Faculty

MARION A. LANDRUM  
*Professor of Art*



BLANCHE BURRUS  
*Associate Professor of Piano  
and Theoretical Music*

EDWARD E. AYERS  
*Professor of Religious  
Education*



MARGARET I. LUDWIG  
*Lecturer in Public School  
Music Methods*

ELBA HENNINGER  
*Professor of Spoken English  
and Dramatic Art*



VIRGINIA L. SHEFFIELD  
*Instructor in Piano,  
Children's Department*

AUGUSTA A. SAMPLE  
*Assistant Professor of  
Spoken English and  
Dramatic Art*



EDWARD MOLITORE  
*Professor of Voice*

GEORGE K. HIBBETS  
*Professor of Piano and  
Theoretical Music*



CAMILLA T. MOLITORE  
*Associate Professor of Voice*

MILDRED TOWN  
*Professor of Piano, Organ,  
and Theoretical Music*



MRS. GEORGE K. HIBBETS  
*Professor of Violin*

## Faculty

MRS. REUBEN R. ALLEY  
*Librarian*



MARY C. BROCK  
*Alumnae Secretary*

PAIGE LEONARD  
*Assistant Librarian*



PEARL W. TURNER  
*Supervisor of Infirmary*

REV. W. M. CURTIS  
*Business Manager and  
Treasurer*



NOMA DOBSON  
*Professor of Physical  
Education*

THEODOCIA BLACKMON  
*Accountant*



MRS. ALICE H. WINN  
*Supervisor of Buildings*

ESTHER O'BRIEN  
*Treasurer of Book Store  
and Postmistress*



SARAH RICKMAN  
*Dietitian*

LETHA BROCK  
*Registrar*



MINNIE B. ATWATER  
*College Chaplain and  
Dean's Assistant*

## The Greensboro College Creed

WE BELIEVE in being rather than in seeming; in the devotion to high ideals; in daring to do our duty as we understand it.

We believe in having an attentive eye, a listening ear, a busy brain, in keeping the mind clear and bright, filling it with wholesome thoughts of life; in losing ourselves in useful industry.

We believe in being worthy at all times; in having grim energy and resolute courage for the conquest of fear; in gaining confidence in our ability.

We believe in service, in doing kind deeds, thinking kind thoughts, in being strong, gentle, pure and good; steady, loyal, and enduring.

We believe in reverence for the truth; humility; in great aspirations and high ambitions; in toiling ever upward.

We believe in cultivating the bright virtue of patriotism and the holy passion for friendship.

We believe in studying hard, thinking quietly, speaking gently; acting frankly; in listening to the winds, the trees, the stars, and the birds, to babes and sages with open hearts; we believe in being glad, in loving all, in hating none, in doing all bravely, bearing all cheerfully, awaiting all occasions, hurrying never.

We believe in striving to gain sound knowledge, not content to simply know, but determined to use knowledge for the highest purpose.

We believe in man and woman, in God's unending love, and in the future.



## Search the Scriptures

(Painted by Dawes and engraved expressly for *Godly's Ladies' Book* by W. I. Tucker.)

## CLASSES

*There comes a time in every young life when  
play is cast aside and youth sits with age in  
thoughtful study.*





## The Prophecy of the Flower

(Engraved by H. E. Tripler and J. Bannister—the original by John Phillip.)

## SENIORS

*We are all just plucking daisy petals, for we  
know not what the future holds for us.*



JIMMIE HARDIN  
*Mascot of Senior Class*

## Senior Class Mascot

Six years ago Heaven's supply of "honey, milk and flowers" ran over! White drops of richest milk splashed gently down to earth, and the glow of flowers o'er-chased it! Then into the pinkish, youngish form melted the golden sweetness of the honey! They called the result "Jimmie."

One year ago the Senior class began their search for a proper mascot. Many little boys and girls were suggested, but something vital lacked within them. Then the Senior President knocked on the kindly door of Rev. and Mrs. H. G. Hardin's home. Out scampered "Jimmie"! He was different—only that the sun had kissed the pink, and that life had mellowed the honey sweet. He did not pause at the doorway . . . he did not pause at the gate . . . he dashed straight into the hearts of those breathless Seniors . . . and there he has made for himself a place.





EFIRD  
SCARBOROUGH

PEYATT

FALLS  
WARREN

## Senior Class Officers

VIRGINIA PEYATT

*President*

LOUISE EFIRD

*Vice-President*

VERA FALLS

*Secretary*

MARGARET SCARBOROUGH

*Treasurer*

EMMA B. WARREN

*Council Representative*

*Page Twenty-seven*



LOIS BOND, A. B.  
GREENSBORO, N. C.

Irving Literary Society; Day Students' Association (3, 4); Zoology Club (1); Spanish Club (1, 2, 3, 4); International Relations Club (3).

She is known on the campus for her inexhaustible supply of dry wit, which is somehow just a part of Lois. Underneath this surface of humor, however, there is a seriousness which those who really know her may easily detect. She is earnest in her desire to fulfill the duties required of her, while at the same time, she is interested in really enjoying life. Lois is a very likeable girl, ready to be accommodating, and always anxious to help a friend. She is wide awake, always knowing and being interested in what is going on around her.

ROWENA JOSEPHINE BUNN, A. B.  
LAURINBURG, N. C.

Irving Literary Society; Chairman of Publicity, Y. W. C. A. (2); Chairman of Religious Education, Y. W. C. A. (3); Vice-President of Y. W. C. A. (4); Assistant Business Manager of *The Collegian* (4); Dramatic Club (1, 2, 3, 4); G. C. Player (2, 3, 4); Life Service Band (2); Treasurer Zoology Club (2).

Rowena has been quite active in the work of the Dramatic Club and the Y. W. C. A. on the campus. She knows her own mind, and when she sets out to do a thing, she has the determination to go ahead and finish it. With her friends she is generous and understanding, willing to help them at all times. She has an enviable self-confidence and finds it easy to talk fluently on almost any subject. Readiness to come forward and give original ideas is one of her outstanding traits. Rowena is attractive in appearance and personality.



MARY ELIZABETH CAMPEN, A.B.  
ZEBULON, N. C.

Irving Literary Society, Secretary (4), Salem College (1); St. Petersburg Jr. College (2); May Day Attendant (3); College Marshal (1); Spanish Club (3, 4), President (4).

Since "Biddie" came to us our Junior year, she has made many friends and endeared herself to us in numerous ways. Conscientious in her work, but always ready for a good time, she has proved to be a happy medium. Her sincerity and friendliness, combined with a certain attractiveness, gives to "Biddie" a most pleasing personality, of which she is entirely unconscious. Her frank and unassuming manner attracts people to her and makes them want to do things for her. "Biddie" is a real girl, happy and good-natured, and everything that a real fine girl signifies.



EMILY DIX COLE A.B.  
CHARLOTTE, N. C.

Irving Literary Society; Home Economics Club (1, 2, 3, 4), President (4); Botany Club (2, 3, 4), Vice-President (4); Second Place Winner Tennis Singles (2); Second Place Winner Tennis Doubles (2), First Place Winner Tennis Doubles (3), Second Place Winner Tennis Singles (3); Second Place Winner Tennis Singles (4); Second Place Tennis Doubles (4), "G" Club (4).

Emily has an interesting personality which reveals new traits the longer one knows her. Sincerity is her outstanding characteristic. She is frank and helpful with every one. Her intelligence makes it easy for her to discuss practically any subject and to form definite opinions on any matter that comes up. Those who know her best love her for her individuality shown in the little things of life as well as in the important things.



ISABEL CREECH  
LA GRANGE, N. C.

Emerson Literary Society, Secretary (3), President (4); Presidents' Forum (4); Freshman Commission (2); House President Hudson Hall (3); Correspondent for Greensboro Daily News (3, 4); Literary Editor *The Mesquite* (2); Assistant Editor (3); Managing Editor *The Collegian* (3, 4); College Council (3, 4); International Relations Club (1, 2, 3, 4); Writers' Club (3, 4); Reporters' Club (1, 2).

Isabel's chief interest lies in the field of newspaper work, in which she has shown a great deal of talent and proven herself very capable. She is known for her dignified, yet friendly reserve. At the same time, however, with her friends she has an individual frankness and an unusual kindness. We wish for Isabel much happiness in her chosen work.

DOROTHY MILDRED CROSS, A. B.  
SUNBURY, N. C.

Irving Literary Society, Marshal (2), Treasurer (3), Vice-President (4); Freshman Commission (1); Social Chairman Y. W. C. A. (4); Advertising Manager *Enno* (4); Home Economics Club (1, 2, 3, 4); Secretary and Treasurer (2); Chairman of Program Committee (4); Marshal (3); Botany Club (2, 3, 4); Spanish Club (1, 2); Reporter Spanish Club (2); Basketball Team (1, 2, 3); Soccer Team (1, 2, 3); Track Team (1); Fire Department (4); Delegate to Blue Ridge (3).

A capable girl with a great deal of initiative! She has certainly proved this to us in her programs for the literary society and the delightful "gym" parties that she has planned. Then too she has the ability of making good decisions and carrying them through. Many of us would do well to learn her formula for combining fun and work so successfully, for rest assured that she will have her recreation and amusements. Dot's the type of a friend that we pride ourselves in having. Get the most out of life. Dot, we know that you can.



FLORENCE LUCINE DAVIS, B.M  
MANNING, S. C.

Irving Literary Society, Censor (2); Converse College (3); Secretary Class (1); Freshman Commission (2); Y. W. C. A. Choir (1, 2, 4); Glee Club (1, 2, 4); Assistant Manager (4); Cheer Leader (4); Co-Author Sophomore Stunt (2).

Although she isn't as large as a minute, Flop has a heart big enough for everybody. She makes many friends wherever she goes by her attractiveness and her understanding manner. Flop thoroughly enjoys "living," mixing good times with more serious matters. In her work she is faithful and thorough; but outside her work she is the life of whatever fun is going on. Her friends know her high ideals which she tries to live up to all the time, and they admire her for them. She is a lovable "little Flop."

EDNA DOWDY, A.B.  
GOLDSTON, N. C.

Emerson Literary Society; Day Students' Association (3, 4); Mathematics Club (2, 3, 4); Rotary Club (2, 3); Science Club (4); International Relations Club (3, 4); Life Service Band (1); Council Representative for Day Students (4).

Sincerity and earnestness are Edna's chief characteristics. Cheerful and smiling, she tackles any task that comes her way and does it to the best of her ability. Anywhere there is a math problem to be solved, she is somewhere nearby. When Edna makes a friend, she keeps her, because to know her is to love her. She is ready to enter into any worthwhile undertaking, showing her splendid spirit of cooperation. Fun-loving and yet conscientious, she is a well-rounded girl.





MARY LOUISE EFIRD. A.B.  
ALBEMARLE. N. C.

Irving Literary Society, Vice-President of Class (1, 4), College Council (3), Chief Chapel Monitor (3); Sorores Togatae (1, 2); Literary Editor of *The Message* (2), Associate Editor (3); Associate Editor of *The Collegian* (2), Literary Editor (4); Honor Society (3, 4), Reporters' Club (3); Writers' Club (3, 4), President (4); Botany Club (2, 3, 4), Secretary and Treasurer (4); Fire Lieutenant (4).

Dependableness, resourcefulness, intelligence, straightforwardness, and sincerity—combine these qualities and you'll have Louise. It was easy for her, with her natural ability, to be a member of the Honor Society, to major in French and English and even to minor in Latin. At the same time she has found time for the many pleasures of college life. She has contributed a great deal through her writing ability towards the success of the college publications. We predict for "Liza" a great future.

SUSAN VIRGINIA EXUM. A.B.  
SNOW HILL. N. C.

Irving Literary Society; Freshman Commission (1); Big Cabinet Y. W. C. A. (2, 3, 4), Y. W. C. A. Choir (4); Secretary Athletic Association (3); Fire Chief (4), Secretary Class (2, 3); "G" Club (3, 4); Life Service Band (1, 2); Botany Club (2); International Relations Club (2); Spanish Club (2); May Day Attendant (3, 4); Marshal (3); Snapshot Editor Ecoto (4); College Council (4); Dramatic Club (4).

Lovable Sue! She's the very embodiment of true womanliness; dignity, sincerity, and beauty of mind as well as body. Few girls have the charming personality and even temper that Susan possesses—for it is she that is the same on "blue Mondays" as on a bright sunny day in May. It is because of her sweetness and sympathetic nature that Susan is loved by the girls of the college. Though her one misgiving is to arrive at a place at an appointed hour—we can say this for her, she's "slow but sure."



VERA RHEE FALLS. A. B.  
KINGS MOUNTAIN, N. C.

Emerson Literary Society, Freshman Commission (1); Secretary Class (4); Delegate to Student Volunteer Convention at Buffalo, N. Y. (3); Secretary N. C. Student Volunteer Union (4); Life Service Band (1, 2); Leader Fellowship Club (3); International Relations Club (1, 2, 4); *Der Deutscher Verein* (1, 2), Publicity Agent (2); Reporter's Club (3).

Vera's greatest ambition is to become a missionary to Brazil. She has made good preparation for this worthy calling while right here on our campus, for one rarely saw her when she wasn't busy with some Student Volunteer plan. Vera was capable and persevering in college, and is one of the luckiest members of our class, for she has already succeeded in gaining a position as a "school teacher," since she left us at mid-term. We hope that she will some day go to Brazil and that her most cherished dream will prove a reality.

MARY LITTLE FLETCHER. A. B.  
GIBSON, N. C.

Irving Literary Society, Custodian Athletic Association (3), Dramatic Club (1, 2, 3, 4), Assistant Publicity Manager (3); President Class (3); Editor-in-Chief Students' Handbook (3); Editor-in-Chief *The Collegian* (4).

Mary Little is one of our most efficient classmates. At all times she is dependable and ready to do any task, great or small. She is conscientious to the extent that she believes in doing everything well. "Fletcher" is serious-minded; yet one never sees her when she is lacking sparkling dry wit and humor, they are two of her most outstanding characteristics. Mary Little stands for excellence and is satisfied with nothing less than the best.



MARY ELIZABETH FOWLER. A.B.  
PILOT MOUNTAIN, N. C.

Emerson Literary Society, Chaplain (3), Recording Secretary (4); Wake Forest Summer School (32); Recording Secretary Students' Association (3); Business Manager Students' Handbook (3); Dramatic Club (1, 2, 3, 4); Assistant Wardrobe Mistress (2); Wardrobe Mistress (3); Publicity Manager (4); G. C. Player (2, 3, 4); College Council (3); International Relations Club (3, 4); Freshman Commission Chairman (4); "G" Club (2, 3, 4); Spanish Club (2, 3); German Club (2); Fire Department (4); Marshal (4); Soccer Team (1, 2, 3); Basketball Team (1, 2, 3); Track Team (2).

Just to look at "Bill" one might say—"she's happy-go-lucky with never a serious thought." Only those who know her most intimately can judge her real value. She has her worries and cares, but few know this, for she conceals them behind a radiant smile. She is capable, lovable and efficient. "Bill" is the kind of a friend one prides in having.

DORIS WRIGHT HARRISON. A.B.  
ELIZABETH CITY, N. C.

Irving Literary Society; Sorores Togatae (1); Dramatic Club (1, 2, 3, 4); "G. C." Player (2, 3, 4); Vice-President Dramatic Club (4); Council Representative of Class (3); College Marshal (4); Business Manager *The Collegian* (4); College Council (3).

A mischievous twinkle of the eye and a bit of seriousness, coupled with dependability, capability—all these characterize Doris. Surging with a tide of energy and harboring a heart of rarest gold, she is ever ready to help in the college activities. With her sparkling personality she has won for herself lasting friends on the campus. "As merry as the day is long," that's the Doris we know.





IDA RUTH HEATH. A. B.  
AUGUSTA, GA.

Emerson Literary Society; Wesleyan College, Macon, Ga. (1, 2); Vice-President Hudson Hall (3); Fellowship Club (3); International Relations Club (3, 4); Spanish Club (3).

Happy-go-lucky girl! Never a worry and never a care. She believes in living for today and letting tomorrow take care of itself. She is ready for a good time always, but back of her care-free spirit is a wealth of good sound reasoning and common sense. She is sincere, earnest, and always ready to lend a helping hand when help is needed.

ANNA BELLE HICKS. A. B.  
SNOW HILL, N. C.

Irving Literary Society; First Vice President Students' Association (4); Freshman Commission (2); Manager Y. W. C. A. Store (3); College Marshal (4); Dramatic Club (1, 2, 3, 4); Vice-President (3); Secretary (4); "G. C." Player (4); International Relations Club (1, 2, 3); Vice-President (2, 3); Spanish Club (2); Life Service Band (1, 2); College Council (4); Wake Forest Summer School ('32).

Amiable to all about her, kind and considerate to all, and friendly to young and old—that's Anna Belle. Her kind-heartedness, united with true unselfish friendliness, has won for her a multitude of friends on the campus.



EMI HINOHARA. A.B.  
HIROSHIMA, JAPAN

Davenport College (1, 2); Irving Literary Society; Science Club (3, 4); Math Club (3, 4); Fellowship Club (4); Home Economics Club (3, 4).

Emi came to us our Junior year, and, true to Greensboro College, she has made good. Although Emi is soon to leave us and go far away to the "land of cherry blossoms," her name will ever be carved in the friendship of our hearts. We like her for her pleasantness and jovial disposition, we admire her for what she stands, we respect her for her conscientiousness and honesty, and we love her for herself. We predict for her success in all things worthwhile.

BLANCHE HOOVER, A. B.  
DENTON, N. C.

Irving Literary Society; Davenport College (1, 2); Dramatic Club (3, 4).

How fortunate the Class of '33 was that Blanche came to G. C. for her last two years. From the first it was learned that she was endowed with the choicest of life's gifts—sincerity, sweetness and frankness. Possessing a great deal of energy, she goes about her work with an earnest zest and at the close of it she is never too tired for a big time. She enters into all her activities in a jolly, good-natured manner so is it any wonder that she has such a large number of friends?



MARY LEE HUNT, A.B.  
TROUTMAN, N. C.

Emerson Literary Society; Davenport College (1, 2); Botany Club (3, 4); Fellowship Club (3, 4); Librarian of N. C. S. V. M. (4).

Mary Lee's petite form 'may not suggest "bigness," but there is evident a "bigness" in her character, made by the thoughtfulness, calmness of spirit and friendliness that are hers. She has been with us but two years of her college life, but during this time she has won the love of every girl who knows her. "Still waters run deep," and they usually flow toward that which is worthwhile.

MARTHA ISENHOUR, A.B.  
SANFORD, N. C.

Emerson Literary Society; Brenau College (3); Vice-President Fitzgerald Hall (4); Spanish Club (2); Class Basketball Team (1).

A heart of pure gold! That's what the Class of '33 thinks about Martha, the tall, striking brunette. She left us our Junior year, but when she returned last fall how glad we were that she was once more in our class. She has keen judgment and sound opinions. She is a thoroughly capable person, never putting off until tomorrow what can be done today. The best o' luck, Martha.



HARRIET ELIZABETH JESSUP. A.B.  
CEDAR CREEK, N. C.

Emerson Literary Society; Literary Editor *The Message* (3); Joke Editor *ECRO* (4); Honor Society (3, 4); Home Economics Club (1, 2, 3, 4); Vice-President (4); Botany Club (2, 3, 4); Secretary and Treasurer (3); Writers' Club (4).

Sparkling wit and absolute cleverness combined with a fascinating personality make our "Lib." She always has a sunny smile and a cheerful greeting even on the gloomiest days. If she has any worries no one knows them. She is original, sincere, intellectual and capable of doing most anything from chemistry analysis to writing short stories. No one can be blue around "Lib" for she just will not let one have anything but cheerful thoughts. We wish her all the success that we feel she deserves.

REBEKAH JANE LOWE. B.M.  
GREENSBORO, N. C.

Emerson Literary Society; Treasurer Day Students' Association (2); College Marshal (4); Glee Club (1, 2, 4); Euterpe Club (4); Honor Society (3, 4).

"Becky" has that get-up-and-go air about her which characterizes the person possessing a high ambition. After working with her for four years and watching her thorough and capable efforts, we are prophesying for her a most successful future. We want her to forge ahead and to be fully repaid for her well-spent time.

"Becky" is an exceptional student and her ability to apply herself to her chosen work is admirable. She is always gracious with her music and is always willing to give her time and talent when she is asked to sing or play.



MARTHA ELIZABETH LYTCH. A.B.  
LAURINBURG, N. C.

Irving Literary Society; Second Vice-President Students' Association (4); Delegate to N. C. Federation of Students at N. C. C. W. (3); Treasurer Y. W. C. A. (3); Y. W. C. A. Choir (4); Register Inspector (2); "G" Club (3, 4); Home Economics Club (1, 2, 3, 4); Botany Club (2, 3, 4); Life Service Band (2); Assistant Business Manager Echo (3); Business Manager (4); College Council (2, 4); Class Soccer Team (1, 2, 3); Class Basketball Team (1, 2, 3); Track Team (2); Science Club (4).

"Peggy" is a most admirable girl—a willing worker, a good sport, and the soul of dependability. She is amiable to all about her, and kind and considerate of everyone. "Peggy" is one of our most sincere colleagues and she has won a host of friends by her "big-heartedness" and understanding. She stands for high ideals and standards and seeks only these. Much success must be in store for one so deserving.

ANNIE RUTH MARTIN, B.M.  
DAWSON, GA.

Irving Literary Society; Wesleyan Conservatory of Music, Macon, Ga. (1, 2); Assistant Hostess to Dean (4); Practice Monitor (4); Enterprise Club (4).

This little girl from Georgia came to us our Sophomore year. Ruth is even tempered, reserved and quiet and it did not take us long to recognize her as being a conscientious willing worker and one whom we were glad to welcome to G. C. "Connie" always has a friendly greeting for every one. Back of her smile is often a homesickness which she conceals, except when we find her reading her "home town paper." She's another of our musicians and one who is capable of making a mark in the musical world. We wish you luck galore. "Connie," and happiness too!



VIRGINIA HOBSON PEYATT. A.B.  
LIBERTY, N. C.

Irving Literary Society; President of Class (1, 4); Presidents' Forum (1, 4); College Marshal (4); Freshman Commission (2); Most Versatile of Class (3); Best All 'Round (4); Y. W. C. A. Choir (2, 3, 4); Dramatic Club (1, 2, 3, 4), Assistant Business Manager (2), Business Manager (3), President (4); "G. C." Player (2, 3, 4); International Relations Club (1, 2, 3); Botany Club (1, 2); Life Service Band (1, 2); Spanish Club (1, 2), Chairman Program Committee (2), Reporter (3); Secretary-Treasurer Writers' Club (4); Fire Lieutenant (4); Class Soccer Team (1, 2, 3); Assistant Business Manager Echo (3); Wake Forest Summer School (32).

A versatile girl of the Class of '33—she's an actress, a leader, a student, an athlete, and an ideal friend. Her dramatic ability has been acclaimed over and over in the college play productions. Her capability as an efficient leader was evident when she was elected the Freshman class president and reelected her Senior year. Is there any wonder that Pevatt was voted the "Best All 'Round"?

MILDRED ROYALL. B.M.  
SALEMBURG, N. C.

Emerson Literary Society; Meredith College (1); Glee Club (2, 3, 4), Assistant Manager (4); Y. W. C. A. Choir (2, 3, 4); Der Deutscher Verein (2, 3, 4); Spanish Club (4); Marshal (3).

A true artist in singing! She has sung her way into the hearts of the girls the three years that she was with us and we are predicting for her great success in this field. A pretty face, a loving nature, a care-free, irresponsible disposition, make up a complete picture of Mildred. She's ready for a big time. We see her hustling to or from her numerous jaunts to town, or planning a dozen other things. The best o' luck to Mildred, who has gained much distinction with her talent.



EMMA AYOUB SALEEBY, A.B.  
SUK EL-GHARB, LEBANON, SYRIA

Emerson Literary Society; American Junior College, Beirut, Syria (1, 2); Day Students' Association (3, 4); Vice-President (4); Raphael Art Club (3, 4); Vice-President (4); Home Economics Club (3, 4).

Emma won her way into our hearts soon after she came to us by her friendliness and by her splendid spirit of cooperation. She is always ready to help wherever she can, is interested in what her classmates are doing and gives new ideas for accomplishing any task assigned to her. Outstanding among other qualities is her sincerity. When Emma begins a thing, she works at it with real earnestness. She is one of the most interesting girls on the campus, both in manner and background.

MARGARET L. SCARBOROUGH, A.B.  
MOUNT GILFAD, N. C.

Living Literary Society, Freshman Commission (2); Vice-President Athletic Association (4); Vice-President Class (3); Treasurer (4); Best All Round (2); Honor Society (3, 4); "G" Club (3, 4); First Place Winner Horse Shoe Pitching (1); Botany Club (1, 2); Secretary-Treasurer (2); International Relations Club (2, 3, 4); President (3, 4); Spanish Club (2, 3); Secretary (2); Captain Class Soccer Team (3).

Few writers can pen the comfort of Margaret's gentle smile and easy, comforting moments. During the past four years she has quietly contributed her time and talents in all phases of college life and at the same time set a scholastic example that is excellent in its thoroughness. Margaret is lovable and wholesome, and through her merry eyes there creeps a charming light that represents the very secret of her popularity.



FANNIE HOUSE SCOGGIN. A.B.  
WARRENTON, N. C.

Irving Literary Society; Freshman Commission (2); Chairman Social Service Y. W. C. A. (2); Secretary Y. W. C. A. (3); President (4); Presidents' Forum (4); Delegate Blue Ridge (3); Delegate Y. W. C. A. Conference, Chapel Hill and Duke (3, 4); Delegate Methodist Student Conference at Duke (4); Vice-President Methodist Student Federation (4); Custodian Athletic Association (2); First Place Winner Archery (1); Home Economics Club (1, 2, 3, 4); Secretary-Treasurer (3); Botany Club (2, 3, 4); College Council (4).

Fanny has poise. And with that poise is a quiet, penetrating air of friendliness. One looks upon her dignified countenance and is reminded of sterling silver, of strength and powerful personality. One longs to feel the warmth of her friendship and dreads the fine scorn that cannot help but show for all that is weak and wrong. Perhaps this is because she herself has shown such a fine spirit in her work, and has been so openly admired by the four classes and faculty.

CORA LOUISE SCOTT. A.B.  
POLKTON, N. C.

Louisburg College (1, 2); Irving Literary Society.

Although we have known her but a year, we find in Cora a true friend and one who understands the meaning of friendship. She has an optimistic temperament and her appreciation of life enables her to retain the coveted place she has won in the hearts of her fellow students. Cora is a willing worker, a good sport, and a true friend. We hold her in high esteem and expect nothing other than success of her. We admire her and wish for her all success when she leaves us.





BIRDIE ELIZABETH SPEIGHT, A. B.  
STANTONSBURG, N. C.

Irving Literary Society.

A rare good friend. Birdie's the big hearted type of girl who shares her pleasures with you and delights in so doing. One can not forget her admirable qualities of trustworthiness, sincerity, and dependability. Then, too, she is one who ever enjoys gay times and she gets plenty out of life. The Seniors regret that she hasn't spent all four of her college years in the dormitories, but the short while that she was living with us, her joyous laughter and pranks were enjoyed by all who knew her.

SARAH ETHEL STOUT, B. M.  
GUILFORD, N. C.

Irving Literary Society; President Day Students' Association (4); Presidents' Forum (4); Enteric Club (4).

Characterized by a poise and dignity possessed by few, Ethel is one of the students whose unassuming air and quiet manner make her outstanding. Ethel is a good scout even if she is the type that is "seen and not heard." Her friendliness sparkles from her blue fun-loving eye; and there is a wholesomeness and freshness about her which brings out a personality that is sincere and true. Nor does this small person lack initiative as proven by her work as president of the Day Students' Association. In the years to come we are looking for Ethel to come out on top. She's that kind



SARAH LOUISE THOMPSON A.B.  
HAW RIVER, N. C.

Ivyng Literary Society, Treasurer (4); House President Hudson Hall (2); College Council (2); May Court Jester (3); Most Likeable of Class (2); Most Popular (4); Science Club (4), President (4); Home Economics Club (1, 2, 3, 4); Botany Club (1); Der Deutscher Verein (1, 2); "G" Club (3, 4); "Miss '33" (2); Basketball Team (1, 2, 3); Soccer Team (1, 2, 3); First Place Winner Track Team (1, 2, 3).

If Chicky-Lucky's sky should fall, we believe "Stick" would stand firm with that self same, happy go-lucky smile on her pleasant face and ask matter of factly "Can I help some one?" If her own skies were to fall she would be willing to let them tumble in order to be of assistance to someone else. "Stick" may know the meaning of blue days, but she does not impart this knowledge—and oh! we admire her cheerfulness and loyalty.

ALMA FRANCES VESTER, B.M.  
SPRING HOPE, N. C.

Ivyng Literary Society; Corresponding Secretary Students' Association (3), President (4); Presidents' Forum (4); Honor Society (3, 4); Marshal (3); Y. W. C. A. Cabinet (4); Most Character of Class (2); Best All 'Round (3); "G" Club (3, 4); Writers' Club (3, 4); Reporters' Club (3); Der Deutscher Verein (1, 2); Literary Editor *The Mes sage* (3); Music Editor *Echo* (2); House President Hudson Hall (2); College Council (2, 3, 4); Euterpe Club (4); Delegate to Blue Ridge (3); Delegate to N. C. Federation of Students at N. C. C. W. (3); Delegate to N. S. F. A. at New Orleans (4); Soccer Team (1, 2, 3); Basketball Team (1, 2, 3); Fire Department (4); Class Poet (4); Author and Director of Class Stunt (2).

A typical college girl! Anyone deserves praise who can be an honor student, a leader, a dependable friend, and yet find time for pleasures and books—all these things we find in Alma. A rare good sport, true blue; in fact, good all round—that's Alma



EDITH GRAY WADE. A.B.  
DUNN. N. C.

Irving Literary Society, Censor (3), President (4); Ward-Belmont School for Girls and Peace Junior College (1); Presidents' Forum (4); College Council (4); College Marshal (4); Home Economics Club (2); Spanish Club (3, 4).

Happy-go-lucky Edith Gray possesses a magnetic personality, and laughing brown eyes—sparkling with mischief—yet serious. She may have her troubles and cares, but we see only the sunshine of her soul! She likes to tease, but in turn she can take a lot herself. A loyal Irving we have found her to be, and a hard worker for the society that hails her president. Edith Gray likes to have a good time, but she does her work well, too. In fact, so well that she left us at mid-term. The Class of '33 predicts happiness for a jolly good sport.

MARGARET McRACKAN WARD. B.M.  
ROWLAND. N. C.

Irving Literary Society; Y. W. C. A. Choir (3, 4); Honor Society (4); Life Service Band (1, 2), German Club (2, 3, 4); Enterpe Club (4), Orchestra (4); Practice Monitor (3, 4); Class Soccer Team (1, 2).

A tiny little girl with abounding energy and ambition to become a great musician—that's Margaret. A professor of talent, she is a hard worker and always ready to lend her musical fingers—at a moment's notice, whether it is to broadcast over WBIG or to accompany a soloist or violinist for some program. With the start that she has already made, she will reach her goal, we are sure. It takes patience and a keen desire to succeed but Margaret has both.



EMMA BLANCHE WARREN, A.B.  
SNOW HILL, N. C.

Living Literary Society, Marshal (2); Treasurer of Class (2); Council Representative of Class (4); Freshman Commission (2); May Day Attendant (1); Maid of Honor (3); Chief Marshal (4); Zoology Club (1); International Relations Club (2, 3, 4); Spanish Club (2); Raphael Art Club (2); Fire Lieutenant (4); Class Soccer Team (1, 2); Dramatic Club (4).

To know Emma Blanche is to love her! At first sight one does not know her true worth because she is very reserved and dignified. Nature has blessed her with "good looks," but she is not the least bit conceited about her many admirable traits nor her attractiveness. Emma is talented in art and never seems to tire of sketching pictures or making posters to aid someone else. She is always kind, thoughtful, and considerate of others. She is an unselfish, capable and dependable lady; one who seeks the best and will be satisfied with nothing that falls short of that!

BAILEY DANIEL WEBB, A.B.  
OXFORD, N. C.

Emerson Literary Society, Chaplain (4); Chairman Freshman Class (1); Class Council Representative (1); College Council (1); Treasurer Class (3); Mathematics Club (2, 3, 4); Chairman Program Committee (2, 3); President (4); Freshman Commission (2); Honor Society (3, 4); Writers' Club (4); "G" Club (3, 4); Home Economics Club (1); Dramatic Club (2); Life Service Band (1); Second Place Winner Tennis Singles (2); First Place Winner Tennis Doubles (3); First Place Winner Tennis Singles (3); "Miss '33" (3); Student Assistant in Biology and Chemistry (4); Fire Lieutenant (4); Typist for *The Message* (2); Typist for *The Echo* (1); Literary Editor (2); Assistant Editor (3); Editor-in-Chief (4).

Remarkable! That such a little girl as our Bailey should carry the burdens and honors of her career without so much as a falter. But it is not strange. We know her, love her, and acknowledge the thoroughness, determination and initiative that is hers.



ANNIE JOHN WILLIAMS, A. B.  
REIDSVILLE, N. C.

Emerson Literary Society; Assistant Register Inspector (3); Der Deutscher Verein (1, 2); Life Service Band (1, 2, 3); Botany Club (2); Mathematics Club (2, 3, 4); Chairman Program Committee (4).

Sincere, loyal, jolly, and "true blue" are the adjectives most applicable to "Johnnie." Her hobbies are math and chemistry, but she is not so scientifically inclined that she fails to see the sunny side of life. She is a practical, Christian girl, and a good sport about everything. "Johnnie" possesses a keen intellect and with a little effort makes good grades, in fact, she made them so rapidly that she chose to remain with us only one semester of this year. She is capable of succeeding in most anything that she attempts. Luck to you, "Johnnie"!



ANNA MAY WILLIAMS, B.M  
OAK RIDGE, N. C.

Emerson Literary Society; Dramatic Club (3, 4); College Orchestra (1, 2, 3, 4); "Tea House Harmonizers" (1, 2); Life Service Band (1); Enterpe Club (4).

Tall, dark, and attractive, with sleek raven locks that add sophistication to an otherwise quaint, reserved and all-friendly Anna May, who has dreamy gray eyes that reveal a tender heart and true individuality. Anna May thrills everyone when she plays the violin, and we are certain that there are more thrills in store when she climbs still higher in the realm of music. She is good-natured and a friend to many admirers. May the years be full of joy and success! These are the wishes from the Class of '33.



MARGARET NELL WILLIAMS. A.B.  
FOREST CITY, N. C.

Irving Literary Society; Treasurer Athletic Association (3); President (4); Presidents' Forum (4); College Council (4); "G" Club (2, 3, 4); Miss "G. C." (1, 2); "Miss '33" (1, 2, 3); Captain Basketball Team (2, 3); Most Athletic (3); International Relations Club (2, 3, 4); Secretary and Treasurer (3); Athletic Editor Echo (3); Delegate to Blue Ridge (3); Soccer Team (1, 2, 3); Basketball Team (1, 2, 3); Reporter for International Relations Club (4); Writers' Club (4); Fire Department (4); Dramatic Club (4).

Slim's popularity is due largely to her good disposition. She's so jolly and good-natured that there was never a better sport. We love her for her admirable qualities. She's a born leader, a willing worker, an original thinker, and back of her individuality there is seriousness and intellectuality. She is energetic and capable. "Slim" always sees the sunny side of life and makes others see it with her. She strives only for the best and doesn't fail to obtain it.

LILLIAN FRANCINA WORRELL. B.M.  
RICH SQUARE, N. C.

Emerson Literary Society, Critic (4); Society Marshal (1); Council Representative Freshman Class (1); Cheer Leader (1); Y. W. C. A. Choir (3, 4); Glee Club (3, 4).

Jolly "Frank"! That sunny smile and flashing wit have carried her through many situations in which other girls on the campus would have failed. She's out for a big time. With her sparkling personality she has won a vast number of friends. Underlying the "care-free spirit" of this peppy, fun-loving girl, there is a strong current of seriousness. At least twice a year we see her surrounded by books of knowledge, cramming for what she would term "horrible exams." Here's to you, "Frank"!



SENIOR WHAT'S WHAT



## Senior Class Prophecy

Well, all I know is what I read in the papers. I kinda thought that technocracy would die with Howard Scott, but it seems that Bailey Webb is to carry on the government. Seeing her name in the headlines last week led me to wonder about the rest of the game with whom I graduated ten years ago. We were all a half-woking bunch, and I was curious to know if so much leisure was to come to them as it was to me.

I hopped on my mechanical mule and rode over to Leisureville to consult with Isabel Creech, editor of the *Idle Whole Daily*. I made it a point to get there during office hours, as she spends her leisure time writing sketches which she hopes to publish in book form soon. Isabel had just received a news story that Doris Harrison was due at the airport in ten minutes. I jumped on Democracy, my mechanical mule, so named for sentimental reasons, and was at the airport when Doris alighted. "Little Doris! Same ole kid as of our college days. She had heard that Bailey was to govern the people of America in the name of technocracy, and suggested that we fly to Washington and demand a technological position in the name of "Auld Lang Syne."

Well, I filled Democracy up, put him in my pocket, and climbed in the plane. Doris was a dandy little pilot and effected a success-ful "take-off" after three attempts. Though aiming the jostle Democracy had poked me in the ribs, I maintained a calm and was able to smile when Doris flashed a big grin in my direction. As in days of old, Doris was in a talkative mood and I questioned her about our classmates.

It seemed that she had just received a letter from Peggy Lytch, who had gone in training immediately after graduation from U. C., and who was associated with the hospital staff at Duke. Peggy wrote of a patient who had suffered a nervous breakdown as a result of overwork. I wasn't surprised to learn that it was Ruth Heath for four hours a day would be a strain on her, I know. Peggy also wrote of having attended the voice recital of Rebekah Lowe in the chapel of Duke.

"I let it was in French," Doris grinned back at me.

"I took out!" I shouted, just in time to avert a head-on collision with a mountain peak.

A little shaken by the near accident, Doris remained quiet for almost ten minutes. Feeling the need of a little sustenance, I swallowed a capsule containing the ingredients of a bowl of soup, a slice of ham, a potato, a roll and a cup of coffee. Doris would not share my lunch with me until she was assured that the capsule bore the Gaidmark, Cole & Cross. Strange I had been eating the capsules daily without associating the names with my old classmates. Emily and Dot, Doris informed me, were technicians in the "Stuck" Thompson Calorie Dispensary. "Stuck, Emily and Dot" what a time! No wonder the capsules sold like hot cakes.

Doris piloted me to the White House airport and we met Technocrat Webb just as she was entering her office.

Emergence, efficient Bailey! She gave us a short and basty hand shake and pointed to some chairs, where she told us to wait until her four hours of work were over.

This was my first visit to the capital since Roosevelt was impeached and Scott enthroned, so I decided to spend the time seeing what the technocrat had done for the city.

Unbidding Democracy, I rode to the Congressional Library, mainly to see how people spent their surplus time reading. The first person I saw was Annie John Williams, buried in a modernized math book reading about certainties, and wondering if she might not desire a scheme whereby she would be able to save a few. At her suggestion, I sauntered around to the desk to find my friend Slim Williams, recently appointed librarian. She suggested that Doris, Bailey and I have dinner with her at eight. I accepted for Doris and myself and promised to do all in my power to bring Bailey with us.

As I left the building, I began unbidding Democracy and was making ready for a gallop through the streets when I heard a buzzing above my head. Looking up, I saw what seemed to be a big bird descending, growing smaller as it neared the earth, until it was the size of a toy automobile. Out jumped Elith Gray Wade and Bridie Cannon. I learned that they were both married and had come to Washington to see if Bailey could reduce the working hours of their husbands to three hours, as four hours left them so little time for pleasure and recreation.

Technocrat Webb and Doris were waiting for us on the White House steps. After exchanging a few casual remarks, we told her that we were seeking government positions under the new regime. She laughed and suggested that I would perhaps enjoy keeping her advisor, Mr. Robot, oiled and dusted. I wasn't keen for the job but I did want to meet the gentleman. Bailey took us into her office, and there seated by her desk, reclining in her easy chair, was the robot himself. This odd piece of mechanism sent a shiver through me.

"How in the world do you stay in the room with this thing?" I asked.

"Why don't you at least put some clothes on it," Doris suggested.

"I couldn't see him work at I did, Doris."

"Work? Let's see him work."

Bailey touched a button and the wheels began turning. Almost noiselessly the mechanisms in this young man began to work.

"Well, what is he doing?" I dumbly asked.

Bailey suppressed a smile and explained patiently that he was thinking and that if we were interested he would have him think aloud. We nodded inquisitively. She touched a button and instantaneously the spoken words lit our cat brains.

"Webb, I advise that you investigate conditions at the University of South Carolina. Dowdy, head of Engineering School, has rigged up a device which automatically corrects and scores exam papers. The students are rebelling against being graded by the machine monitor, and there is likely to be a strike."

Bailey cut the machine out, turned to us saying, "That's Edna Dowdy he was speaking of. I'll have to appoint some one to go to the University and try to help Edna. You girls will be safe here with the robot. I'll have him tell you about some of our classmates."

Whispering in his ear, I judge it was his ear, and affectionately patting the old boy on the shoulder, Bailey left us. A glance at Doris was sufficient for me to know that she did not relish the company of this odd, interfering pet of Bailey's any more than I did, but what were we to do.



"So you want to know about your classmates, do you?"

I halted upright in my chair. Doris shrank further down into hers. Neither of us spoke.

"Of whom would you like to hear?"

"Tell us about Cora Scott, please."

"Cora is married and lives in Charlotte, N. C., and so does Lois Bood. Lois is buyer for the ladies' ready-to-wear department at Ivey's. Cora spends her leisure in the park with her two little boys, to whom she is perfectly devoted."

"Thank you," Doris managed to say, as she drew herself up from the depths of her chair. "And now tell us about Mildred and Francina."

"Neither is married, which must surprise you having known them in college. Just now they are popular broadcasts from WJZ. Their specialty is skit music. Birdie Speight is with them, acting in capacity of business manager. Goodness knows, they need some one to keep their contracts straight."

"What about Margaret Ward and Alma Vester?" I asked, moving over to a chair near the fascinating instrument.

"Margaret is enjoying a popular career as accompanist for Emu Hamahara, whose voice is quite in demand the world over. Just now they are in Syria, where Emu is to give a concert in the Saleeby School for Girls at Sukel-Gharb, of which your old friend Emma is dean. And Anna May Williams, by the way, is traveling with Emu and Margaret."

"You asked about Alma. Bailey has changed her assignments three times already and hasn't yet found anything at which Alma wants to work four hours a day. Her leisure hours are no burden, though she is planning to publish soon a book of poems that she has written."

A pause followed. A crunching, eating noise came from the middle part of the machine. Doris and I looked at each other. Another silence. The same noise again.

"He must have the stomach ache," Doris suggested.

Suddenly there was a peal of bells and a flare of red lights from every conceivable direction in the room. When the door opened the maid found Doris and me locked in each other's arms, on the point of jumping out the window. Hastening to the robot, the maid produced a cup of whale oil and proceeded to grease the machine. Bells, hubbub and the lights went out. Doris and I released our grip of each other and ventured nearer. Imagine our surprise in discovering that the maid was Elizabeth Jessup. She informed us that Bailey was particular about who administered to the needs of this city and that it was her special duty to answer his every request.

Doris asked what was the matter with the robot. Jessup explained that his brain had become hot and needed greasing. "You should hear him when he has the headache," she said as she left the room.

We took our seats, but not quite so close to the old boy, and waited his majesty's will. Presently he spoke.

"Mary Little, did you know that Margaret Scarborough is teaching history at Greenboro College? She has been there two years."

Wondering what had become of Mr. Watson, I remained silent, hoping for an explanation, but he gave none.

Doris glanced at her watch and remarked, "It will soon be time to go to Slim's for dinner."

Without waiting for Bailey to return, Doris and I went to Slim's for dinner.

What a great day we are living in! Television brought to our drawing room our own little Flop Davis as she appeared in a radio broadcast from WXY. It would seem that Fats had a part in the program for she sang as her final number "Although," the song that she composed while at G. C.

After dinner Margaret read us a letter which she had received from Emma Blanche Warren. Emma Blanche is living at Snook Hill. Married? Yes. She wrote that Susan had just returned from a visit with Anna Belle Hicks in Hollywood. Anna Belle is dramatic director for the Warner Brothers, film producers. Susan saw Bill Fowler, too, who, until the time of her recent marriage to an actor, was wardrobe mistress for the same company. Emma Blanche wrote of having attended a dramatic recital given by Virginia Pesatt, under the auspices of the Barn Dramatic School at Raleigh. After leaving G. C., both Rowena and Pesatt continued their study of dramatics and both had achieved a noteworthy success. Pesatt as a dramatic reader and Rowena as director of the school.

Technocrat Welsh dashed in at this time all excited about the trip to Columbia. Having smoothed over the trouble for Dowdy, she had started homeward when she bumped into Fanny House Seegen, head secretary of the Y. W. C. A., who was en route to Los Angeles to attend a convention of our trip. As Doris tried to imagine our surprise to find May Lee Hunt teaching at the college for a music lesson. Bailey said she had to laugh when she learned that the child's teacher was Annie Ruth Martin.

Since Doris insisted her husband would worry if she failed to get in early, we both mounted Democracy and rode back to the White House airport.

We had been flying for about an hour when Doris decided she needed some oatmeal. Looking through all the pill boxes, I discovered that our food supply was low. As we neared the next town, Doris wailed lower and lower, took a nose dive, and when I looked up, we were landing at the McLeod Dairy Farm. Imagine our surprise to find May Lee Hunt mistress of the farm. We found Blanche Hoover and Martha Isehour, who were en route to Washington to demand a technological government position for their respective husbands.

As we glided in port, Doris spotted her husband and all but spilled us both. With him was Louise Ebel and her husband, who, as reporter for the local paper, wanted an account of our trip. As Doris tried to give him the facts, I talked to Louise. She had just had an interview with Vera Falls, a returned missionary from Brazil. Vera devoted to government by technology as it allowed her only four hours a day in which to tell missionary societies of her work abroad.

Happy to have heard from all of my classmates, bewildered by the unbelievable wonders of science, and hungry for an honest-to-goodness sandwich not a pill, but a sandwich, I mounted Democracy and headed for home.

## Last Will and Testament

WE, the Senior Class of Greensboro College, nineteen hundred and thirty-three, City of Greensboro, State of North Carolina, being of sound minds, do hereby make, publish, and declare this to be our Last Will and Testament.

### ARTICLE I

- 1 To Dr Turrentine we bequeath our sincere appreciation for all that he has done for us at Greensboro College
- 2 To Miss Ricketts we leave our appreciation for making it possible for us to enjoy our many new privileges
- 3 To the entire faculty we leave our admiration and thanks for their interest and help which they have patiently extended to us throughout our college days.

### ARTICLE II

- 1 We leave to our beloved school our valuable records with our photographs
- 2 To the Junior Class we gladly bequeath all our privileges, including those we did not use
- 3 To our "Little Sisters" we leave a love, which has been and always will be, one of our most sacred and beautiful memories of Greensboro College
- 4 To the Freshmen we will our knowledge with the provision that they become wise young Sophomores next year

### ARTICLE III

- 1 Lois Bond leaves to Marv Alice Pickens her raven locks
- 2 Rowena Bunn wills her jumping rope to Nina Jones
- 3 'Biddie' Campen thoughtfully leaves to Janie Taylor her chair at McNeely's.
- 4 Emily Cole leaves to the Strong sisters any dead tennis balls they may find on the court
- 5 To Grace Coltrane Isabel Creech wills her ability to stay awake until "the wee small hours."
- 6 Dorothy Cross makes Alice Hill Reeves the sole heir to her most difficult jg-saw puzzle
- 7 'Flop' Davis wills her stack of the latest popular tunes to Freda Strong
- 8 Edna Dowdy gladly leaves her much used Calculus book to Louise Taylor in the hope that the problems worked out in the back of the book may be used as references.
- 9 To Julia Martin, Louise Ebird leaves her three pet dogs, Dick, Predict and Moby Dick
- 10 Susan Exum wills to Katherine Isenhour her ability to talk fast when she is excited.
- 11 Vera Falls bequeaths to Dorothy Clay her love for the Student Volunteer
- 12 Mary Little Fletcher leaves her ability to hike to the high school to Miss Gunn in hopes that in time she can walk it in fifteen minutes
- 13 'Bill' Fowler wills the penants and stickers which she has collected from various colleges to Claudia Bowd
- 14 Doris Harrison wills her favorite nursery rhyme "Little Miss Muffet" to Sue Thompson
- 15 Ruth Heath wills and bequeaths her ability of worrying about her work to Mary Ellen Millard
- 16 Anna Belle Hicks leaves to Imogene Boyles her paint smeared smock, knowing that it will be of benefit to her in dramatic lab
- 17 Ima Hinohara wills the ability to say 'Oh yeah' to faculty members to anyone who can not use that expression at the most opportune time

- 18 Mary Lee Hunt leaves her love for dormitory life to Katrine Smith  
 19. To Eva Mae Lassiter, Blanche Hoover wills her appetite  
 20 Martha Isenhour wills to her sister, Jane, her privilege of going home every week-end.  
 21 Rebekah Lowe bequeaths to Janie Taylor her much coveted ability "to come to grips with Morrison"  
 22 Mildred Royal leaves her love for the college campus to Cody Hipps  
 23 Margaret Scarborough wills her dependability and her quiet manner to the loudest and most fickle member of the Junior class  
 24 Virginia Peyatt gladly leaves her love for math to Sally Campen  
 25 Peggy Litch wills and bequeaths her favorite doll, Pollyanna, to her cousin, Mary Louise  
 26 Emma Saleeby wills her love for Greensboro College to all the students  
 27 To the new Irving president, Edith Gray Wade leaves her "rushing" tactics in hope that they are as successful as she was  
 28 Margaret Ward gladly wills her romantic disposition to Alice Barrow  
 29 Alma Vester wills and bequeaths her much used note pad and handbook to Kathleen Craven  
 30 "Stuck" Thompson and Francis Worrell leave to Frances Martin and "Lib" Burke their room by the telephone  
 31 Cora Scott wills her ability to work crossword puzzles to Tommy Mitchell.  
 32. "Lib" Jessup thoughtfully wills and bequeaths to Nell Johnson her ability to overcome homesickness.  
 33 Ethel Stout wills her daintiness to Nancy Gregson  
 34 Birdie Speight wills her lyric soprano voice to Katie Sue Taylor  
 35 To Rozelle Wilhamson, Emma Blanche Warren leaves her teaching ability.  
 36 Annie John Williams wills her hours spent in chemistry lab to Madeline Winn  
 37 Bailey Webb reluctantly wills and bequeaths her teaching position at Big Timber to any one desiring same.  
 38 Anna May Williams wills her Saturday classes to Frances Smoak  
 39 Lannie House Scoggin leaves her leadership which has made the "Y" a success to Mary King Fountain  
 40 "Slim" Williams bequeaths to "Dot" Earrow her attitude of thoughtful meditation and of calm impressive silence, which so easily impressed her teachers with her knowledge  
 41 Ruth Martin thoughtfully leaves to the most conscientious girl in the Junior class, her nickname, "Connie"

In witness whereof, we, the Senior Class, do hereby set our hands and seals this third day of April in the year of our Lord nineteen hundred and thirty-three.

Signed, sealed, and declared by the said members of the Senior Class to be their Last Will and Testament, in the presence of us who at their request do ascribe our names as witnesses unto,

ELIZABETH JESSUP, *Testator.*

*Witnesses:*

IDA RUTH HEATH  
 ANNIE JOHN WILLIAMS



## Class Poem

The trees we've loved, the path we've  
trod,

Their beauty drawing us near God  
Will ever to us changeless be  
A sign of all infinity.

And as we leave, we cannot say  
How much has meant along the way  
The visions by communion wrought  
With friends whose comforts we  
sought.

The truth, the trust, and faith in life,  
Our Alma Mater serene from strife  
We leave to others to carry on  
The dream and purpose that we have won.

—ALMA VESTER.

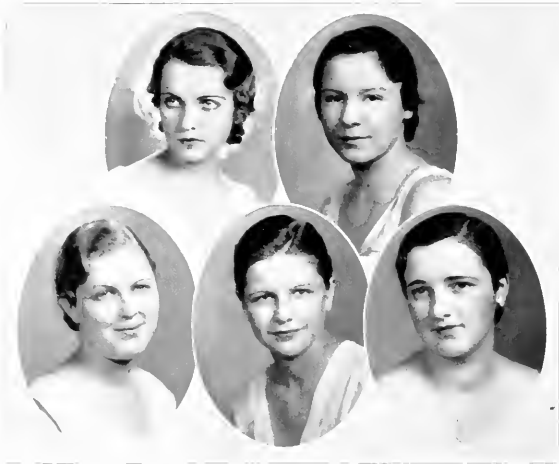


## The Pet

(Engraved expressly for *Peterson's Magazine*.)

## JUNIORS

*A young girl leaves her path to play with her pet; and happy is she, for she knows not that on the morrow the reins of dignity and responsibility will guide her nimble feet.*



WINN

Craven

LASSITER

KELLY

SHERRILL

## Junior Class Officers

KATHLEEN CRAVEN

*President*

INEZ KELLY

*Vice-President*

ELIZABETH WINN

*Secretary*

EVA MAI LASSITER

*Treasurer*

MARY SHERRILL

*Council Representative*



ANDREWS  
COLTRANE

BARROW  
CORNETTE

COBB  
CRAVEN

## Juniors

SARA ANDREWS  
MOUNT GILEAD, N. C.

ALICE BARROW  
ELIZABETH CITY, N. C.

MARIE COBB  
ELM CITY, N. C.

LALA COLTRANE  
GREENSBORO, N. C.

MILDRED CORNETTE  
GREENSBORO, N. C.

KATHLEEN CRAVEN  
MOCKSVILLE, N. C.



FOREMAN  
JOHNSON

FOUNTAIN  
KELLY

HAM  
KIBLER

## Juniors

CAMILLA FOREMAN  
ELIZABETH CITY, N. C.

MARY K. FOUNTAIN  
FOUNTAIN, N. C.

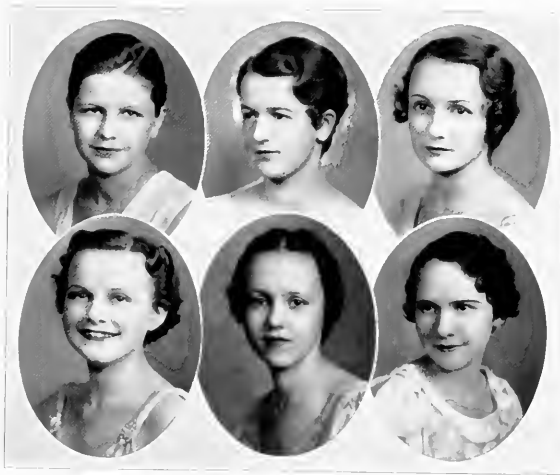
FRANCES HAM  
MORVEN, N. C.

NELL JOHNSON  
STEDMAN, N. C.

INIZ KELLY  
MOUNT HOLLY, N. C.

VIRGINIA KIBLER  
MORVEN, N. C.





LASSITER  
J. MARTIN

LATCH  
MITCHELL

F. MARTIN  
OSBORNE

## Juniors

EVA MAE LASSITER  
SPRING HOPE, N. C.

MARY L. LYTCH  
LAURINBURG, N. C.

FRANCES MARTIN  
WINSTON-SALEM, N. C.

JULIA MARTIN  
MOUNT OLIVE, N. C.

TOMMY L. MITCHELL  
KINSTON, N. C.

LETHA OSBORNE  
SOUTHMONT, N. C.



E. SHERRILL  
J. TAYLOR

M. SHERRILL  
L. TAYLOR

E. TAYLOR  
THOMPSON

## Juniors

EDITH SHERRILL  
STATESVILLE, N. C.

MARY SHERRILL  
STATESVILLE, N. C.

ELIZABETH TAYLOR  
SOUTHPORT, N. C.

JANIE TAYLOR  
HARRELLSVILLE, N. C.

LOUISE TAYLOR  
GREENVILLE, N. C.

SUF. F. THOMPSON  
CREEDMOOR, N. C.



WILLIAMS  
M. WINN

WILLIAMSON  
WOODCOCK

E. WINN  
YARBROUGH

## Juniors

ELIZABETH WILLIAMS  
GREENSBORO, N. C.

ROZELLE WILLIAMSON  
CARTHAGE, N. C.

ELIZABETH WINN  
WASHINGTON, D. C.

MADLINE WINN  
WASHINGTON, D. C.

MARY E. WOODCOCK  
GREENSBORO, N. C.

IRFNE YARBROUGH  
THOMASVILLE, N. C.

JUNIOR  
SUPERLATIVES  
CLASSES



*Most Typical*  
K CRAVEN



*Most Personality*  
J. TAYLOR



*Most Popular*  
E. LASSITER



*Most Charming*  
J. MARTIN



*Best-all-round*  
M. WINN



## High Life

(Engraved expressly for *Peterson's Magazine*.)

## SOPHOMORES

*With superiority "High Life" looks down with scorn upon "Low Life" and wonders how one could live on such a lowly plane.*



STRONG                      VESTER                      MILLARD                      LOVE                      BOST

## Sophomore Class Officers

ANNABEL VESTER	<i>President</i>
MARGARET LOVE	<i>Vice-President</i>
FREDA STRONG	<i>Secretary</i>
MARY ELLEN MILLARD	<i>Treasurer</i>
KATHERINE BOST	<i>Council Representative</i>



BOYLES      BARROW      BURNHAM      BIVENS      BOST      COLTRANE      BOYD      DELOZIER

## Sophomores

DOROTHY BARROW  
ZEBULON, N. C.

MARY D. BIVENS  
MARSHVILLE, N. C.

KATHERINE BOST  
CONCORD, N. C.

CLAUDIA BOYD  
WAYNESVILLE, N. C.

ISABEL BOYLES  
THOMASVILLE, N. C.

KATHERINE BURNHAM  
MULLINS, S. C.

SALLY CAMPEN  
ALLIANCE, N. C.

GRACE COLTRANE  
ZEBULON, N. C.

HAZEL DELOZIER  
CANDLER, N. C.



LOFTIN      EVANS      LONG      M. S. JONES      LOVE      N. JONES      MASSIE      KILLIAN      McSPARRAN

## Sophomores

KAY EVANS

ASHEVILLE, N. C.

FRANCES GRAY LOFTIN

GLEN ALPINE, N. C.

MARY SCOTT JONES

GREENSBORO, N. C.

HELEN LONG

BURLINGTON, N. C.

NINA JONES

GRANITE FALLS, N. C.

MARGARET LOVE

MONROE, N. C.

KATHRINE KILLIAN

NEWTON, N. C.

MARY EMMA MASSIE

WAYNESVILLE, N. C.

FRANCES McSPARRAN

DANVILLE, VA.





MILLARD  
 F. STRONG      TAYLOR      PREVETTE      THOMPSON      REEVES      VESTER      E. STRONG      WATSON

## Sophomores

MARY ELLEN MILLARD  
GREENSBORO, N. C.

FREDA STRONG  
SANFORD, N. C.

CYNTHIA PREVETTE  
NORTH WILKESBORO, N. C.

KATIE SUE TAYLOR  
WINSTON-SALEM, N. C.

ALICE HILL REEVES  
IVANHOE, N. C.

SARAH ELIZABETH THOMPSON  
MOCKSVILLE, N. C.

ELIZABETH STRONG  
SANFORD, N. C.

ANNABEL VESTER  
SPRING HOPE, N. C.

RUTH WATSON  
COLUMBIA, S. C.



*Left to Right VESTER, F. STRONG, TAYLOR, E. STRONG, BOYLES, BIVENS, JONES.*

## Freshman Commission

The Freshman Commission is composed of those girls in the Freshman class who have been outstanding in scholarship and leadership during the year. They help in their Sophomore year in various ways to make our college home a more pleasant place in which to live.

### MEMBERS

DOROTHY BARROW

CLAUDIA BOYD

ISABEL BOYLES

MARY DAVIS BIVENS

GRACE COLTRANE

NINA JONES

HELEN LONG

EDITH NEAVES

ELIZABETH STRONG

FREDA STRONG

KATIE SUE TAYLOR

ANNABEL VESTER

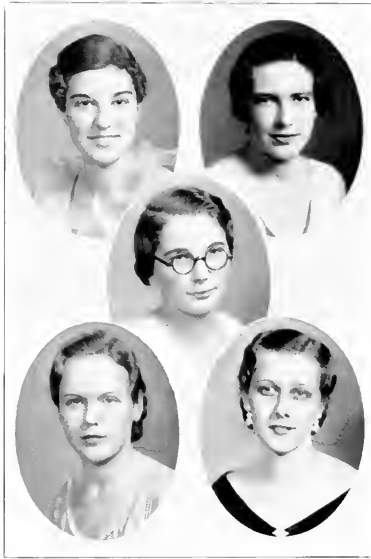


## Low Life

(Engraved expressly for *Peterson's Magazine*)

## FRESHMEN

*"Low Life" rests in utter contentment, for it knows not of "High Life."*



FAW

BREEDLOVE

CLAY

BOOZE

JOHNSTON

## Freshman Class Officers

DOROTHY CLAY

*President*

ELIZABETH FAW

*Vice-President*

BESS BREEDLOVE

*Secretary*

VIRGINIA BOOZE

*Treasurer*

EVELYN JOHNSTON

*Council Representative*

## Freshmen

VIRGINIA BOOZE  
Winston-Salem, N. C.

BESS BREEDLOVE  
Durham, N. C.

SARAH BRINN  
Hertford, N. C.

DOROTHY CLAY  
Winston-Salem, N. C.

DOROTHY COLE  
Durham, N. C.

NOVILLEAN COOPER  
Greensboro, N. C.

DOROTHY DEES  
Fremont, N. C.

ELIZABETH FAW  
North Wilkesboro, N. C.

JULIA M. FLETCHER  
McColl, S. C.

HELEN FOLEY  
New York, N. Y.

JANE GOODE  
Lincolnton, N. C.

MARIE GORDON  
Marion, Va.



## Freshmen



FRANCES HOYLE  
Lincolnton, N. C.

LIL KIRK HUGGINS  
Marshville, N. C.

EVELYN JOHNSTON  
Winston-Salem, N. C.

JEAN LEFTWICH  
Stanlev, N. C.

MARY LINEBERGER  
Shelby, N. C.

MARION NAFF  
Greensboro, N. C.

ELIZABETH NICHOLSON  
Guilford College, N. C.

MARY L. PEGRAM  
Winston-Salem, N. C.

MARY O. RELFF  
Hertford, N. C.

JOYCE STOKES  
Hertford, N. C.

HAZEL WADDELL  
Durham, N. C.

GRACE WILLIAMS  
Marshville, N. C.



## Ghost Stories

(Engraved expressly for *Peterson's Magazine*.)

# ORGANIZATIONS

*You read a ghost story, and then I'll read  
one. 'Sh-sh. Listen' I think there must be  
'hants' in this place.*







THOMPSON

HICKS

VISTER

LYTCH

FOREMAN

LONG

MITCHELL

## Students' Association Officers

ALMA VISTER

*President*

ANNA BELLE HICKS

*First Vice-President*

MARTHA LYTCH

*Second Vice-President*

SUE FLIMING THOMPSON

*Recording Secretary*

CAMILLA FOREMAN

*Corresponding Secretary*

HELEN LONG

*Treasurer*

TOMMY L. MITCHELL

*Budget Collector*



*First Row* (left to right): VESTER, THOMPSON, HICKS, O'BRIEN, WADE, FLETCHER.  
*Second Row*: SHERRILL, HAM, SCOGGIN, EXUM, LYTCH.  
*Third Row*: FOREMAN, LONG, JOHNSTON, WINN, WARREN, BOST.

## Big Council

The officers of the Students' Association, the President of the Young Women's Christian Association, the Presidents of the two literary societies, the President of Athletic Association, the Chief Chapel Monitor, the House Presidents, Fire Chief, Register Inspector and one representative from each of the four college classes constitute the student council. It is the purpose of the council, as the executive body of the Students' Association, to effect a sympathetic and loyal cooperation between the faculty and students and to attain the highest ideals of college life and conduct.

### MEMBERS

KATHERINE BOST  
 ISABEL CREECH  
 EDNA DOWDY  
 SUSAN EXUM  
 CAMILLA FOREMAN  
 MARY LITTLE FLETCHER  
 FRANCIS HAM

ANNA BELLE HICKS  
 EVELYN JOHNSTON  
 MARTHA LYTCH  
 MARY LOUISE LYTCH  
 HELEN LONG  
 TOMMY L. MITCHELL  
 MARJORIE O'BRIEN  
 FANNIE HOUSE SCOGGIN

MARY SHERRILL  
 SUE FLEMING THOMPSON  
 ALMA VESTER  
 EDITH GRAY WADE  
 EMMA BLANCHE WARREN  
 MARGARET WILLIAMS  
 MADELINE WINN



*First Row: WILLIAMS, CLAY, CRAVEN, A. B. VESTER, A. VESTER  
 Second Row: SCOGGIN, PEYATT, WADE.*

## Presidents' Forum

The Presidents' Forum is composed of the presidents of Students' Association, Young Women's Christian Association, the Athletic Association, the Irving Literary Society, the Emerson Literary Society, the Senior, Junior, Sophomore and Freshman classes. The purpose of the forum is to promote a spirit of coöperation among the student organizations and to discuss and plan how to overcome the problems that arise on the campus.

### MEMBERS

DOROTHY CLAY

KATHLEEN CRAVEN

ISABEL CREECH

VIRGINIA PEYATT

FANNIE HOUSE SCOGGIN

ALMA VESTER

ANNABEL VESTER

EDITH GRAY WADE

MARGARET WILLIAMS



BUNN

TAYLOR

SCOGGIN

WINN

BIVENS

## Y. W. C. A. Officers

FANNIE HOUSE SCOGGIN

*President*

ROWENA BUNN

*Vice-President*

ELIZABETH TAYLOR

*Secretary*

MADLEINE WINN

*Treasurer*

MARY DAVIS BIVENS

*Manager "Y" Store*



STOUT

DOWDY

SALEEBY

JONES

COLTRANE

## Day Students' Association Officers

ETHEL STOUT

*President*

EMMA SALEEBY

*Vice-President*

LALA COLTRANE

*Secretary*

MARY S. JONES

*Treasurer*

EDNA DOWDY

*Council Representative*



CROSS  
S. L. THOMPSON

WADE  
S. F. THOMPSON

WADE  
LASSITER

CAMPEN  
MARTIN

## Irving Literary Society

### OFFICERS

EDITH GRAY WADE  
DOROTHY CROSS  
ELIZABETH CAMPEN  
SARAH LOUISE THOMPSON  
SUE F. THOMPSON  
EVA MAE LASSITER  
JULIA MARTIN

*President*  
*Vice-President*  
*Secretary*  
*Treasurer*  
*Chaplain*  
*Censor*  
*Critic*

### IRVING SONG

I m an Irving born  
I m an Irving bred;  
And when I die  
I m an Irving dead.  
So it s rah' rah'  
For Irving' Irving'  
Rah' rah' for Irving' Irving'  
Rah' rah' for Irving'  
Rah' rah' rah'



L. TAYLOR

MITCHELL

J. TAYLOR

CREECH

WEBB

FOWLER

WORRELL

## Emerson Literary Society

### OFFICERS

ISABEL CREECH  
 TOMMY L. MITCHELL  
 MARY FOWLER  
 LOUISE TAYLOR  
 JANIE TAYLOR  
 BAILEY WEBB  
 FRANCINA WORRELL

*President*  
*Vice-President*  
*Recording Secretary*  
*Corresponding Secretary*  
*Treasurer*  
*Chaplain*  
*Critic*

### EMERSON SONG

Here come the Emersons, Emersons,  
 Here come the Emersons, Emersons,  
 We hail from old G C  
 We've got the spirit in it,  
 We've got the girls to win it,  
 We've got the colors green and gold,  
 So it's fight, fight, fight for Emersonians  
 As Ralph did in days of old,  
 As we gather 'round the well  
 We will cheer our girls and yell  
 For the glory of E. I. S



WARR

LYTCH

## The Echo Staff

BAILFY WEBB

MARTHA LYTCH

*Editor-in-Chief*

*Business Manager*

THE ECHO attempts to capture a spark of the real Greensboro College campus life and to tell the story of the year in picture. It endeavors to reveal only the pleasant memories and to leave the unpleasant, if there should be any, to the erasing hand of time.





*First Row: LYTCH, BIVENS, MARTIN, STRONG, WEBB.  
 Second Row: PEGRAM, MILLARD, JONES, EXUM, LOFTIN  
 Third Row: CLAY, FOUNTAIN, CROSS, JESSUP, KELLY, CRAVEN*

## The Echo Staff

INEZ KELLY  
 ELIZABETH WINN  
 ELIZABETH STRONG  
 DOROTHY CLAY  
 FRANCES GRAY LOFTIN  
 FRANCES MARTIN  
 KATHLEEN CRAVEN  
 MARY KING FOUNTAIN  
 MARY ELLEN MILLARD  
 SUSAN EXUM  
 NINA JONES  
 ELIZABETH JESSUP  
 MARY DAVIS BIVENS  
 DOROTHY CROSS  
 TOMMY MITCHELL  
 LOUISE TAYLOR

*Assistant Editor  
 Literary Editor  
 Literary Editor  
 Photographic Editor  
 Photographic Editor  
 Art Editor  
 Dramatic Editor  
 Music Editor  
 Athletic Editor  
 Snapshot Editor  
 Snapshot Editor  
 Humor Editor  
 Typist  
 Advertising Manager  
 Assistant Business Manager  
 Assistant Business Manager*



## The Collegian Staff

MARY LITTLE FLETCHER  
*Editor*

LOUISE EFIRD  
*Literary Editor*

DORIS HARRISON  
*Business Manager*

Last year the *College Message* was combined with *The Collegian*, which is now the only student publication on the campus. The paper seeks to record the activities of every club and every class, there being a reporter for every department in school. Students may express themselves concerning campus problems through *The Collegian*. The *Alumnae News* claims a space in every edition.

Besides recording student activities and student opinions, the paper affords a chance for creative writing, one section being devoted to the short stories, sketches, poems, and book reviews submitted to the staff by the students. Literary efforts are encouraged and any one may contribute to the page.



*First Row: MISS GINN, F. STRONG, JONES, HAM, HARRISON, FLETCHER,  
Second Row: E. STRONG, EFIRD, M. WINN, E. WINN, CRAVEN.*

## The Collegian Staff

ISABEL CREECH  
ELIZABETH TAYLOR  
ELIZABETH STRONG  
RUTH MAYNARD  
MADELINE WINN  
MARY BROCK  
NINA JONES  
EVA MAE LASSITER  
MISS MARY GINN  
EDNA GARRETT  
ELIZABETH WINN  
ROWENA BUNN  
FRANCES HAM  
FREDA STRONG

*Managing Editor*  
*Assistant Editor*  
*Associate Editor*  
*Associate Editor*  
*Society Editor*  
*Alumnae Editor*  
*Joke Editor*  
*Sports Editor*  
*Faculty Advisor*  
*Typist*  
*Typist*  
*Assistant Business Manager*  
*Circulation Manager*  
*Exchange Manager*



*First Row.* WEBB, KELLY, LOWE, WARD, BARROW.  
*Second Row.* SCARBOROUGH, JESSUP, VESTER, WILLIAMS, M. WINN, E. WINN.

## The Honor Society

In order to become a member of the Honor Society, a student must be a Junior or Senior and must have averaged at least ninety on all the work that she has passed at Greensboro College. It is toward this goal that all the students strive; few reach; and any may be proud to attain. The organization works through the members, individually, each of whom tries to make Greensboro College a better place in which to stay.

### MEMBERS

ALICE BARROW  
 LOUISE EFIRD  
 REBEKAH LOWE  
 ELIZABETH JESSUP  
 INEZ KELLY  
 MARGARET SCARBOROUGH

ALMA VESTER  
 MARGARET WARD  
 BAILEY WFB  
 MARGARET WILLIAMS  
 ELIZABETH WINN  
 MADELINE WINN



*Vertical Row (top to bottom): WINN, DOWDY, BOOZE, MISS PEGRAM, KELLY, WEBB, STRONG.  
Horizontal Row (left to right): HINOHARA, DEES, TAYLOR, BOYLES.*

## Mathematics Club

Only the advanced mathematics students are members of the Mathematics Club. The programs are varied and every effort is made to make them interesting as well as instructive. Sometimes outside speakers talk to the club on topics of interest.

### OFFICERS

BAILEY WEBB  
EDNA DOWDY  
MADELINE WINN  
LOUISE TAYLOR  
ANNIE JOHN WILLIAMS

*President*  
*Vice-President*  
*Secretary*  
*Treasurer*

*Chairman of Program Committee*

### MEMBERS

MARY DEES  
MILDRED BOOZE  
HAZEL BOWMAN  
ISABEL BOYLES  
CATHERINE BURNHAM  
LUCILE CHENAULT  
EDNA DOWDY

EMI HINOHARA  
INEZ KELLY  
FREDA STRONG  
LOUISE TAYLOR  
BAILEY WEBB  
ANNIE JOHN WILLIAMS  
MADELINE WINN



*First Row:* HINOHARA, L. TAYLOR, M. WINN, J. KELLY, WATSON, DELOZIER, MISS McNUFT.  
*Second Row:* WEBB, E. STRONG, STAFFORD, F. STRONG, DEES, M. LYTCH, DR. GINNINGS.  
*Third Row:* OLIVER, S. L. THOMPSON, DOWDY, JESSUP.

## Science Club

The Science Club is composed of students on the campus who have made a certain average in any of the subjects in the science department and those who have shown their interest by taking more than one year of science. It is a combination of the former Botany, Zoölogy and Experimenters' Clubs. The members are interested in anything pertaining to the field of science and endeavor to find unusual items that would be worthy of discussion in the club.

### OFFICERS

SARAH THOMPSON  
 EMILY COLE  
 LOUISE EFIRD  
 DOROTHY CROSS  
 KATHLEEN CRAVEN

*President*  
*Vice-President*  
*Secretary-Treasurer*  
*Chairman of Program Committee*  
*Reporter*

### MEMBERS

HAZEL DELOZIER  
 MARY DEES  
 EDNA DOWDY  
 EMI HINOHARA  
 ELIZABETH JESSUP  
 DR. GINNINGS

INFZ KELLY  
 MARTHA LYTCH  
 MISS McNUFT  
 AGNIS OLIVER  
 EVELYN STAFFORD  
 ELIZABETH STRONG

FREDA STRONG  
 LOUISE TAYLOR  
 SARAH LOUISE THOMPSON  
 RUTH WATSON  
 BAILEY WEBB  
 MADELINE WINN



Left to Right: ANDREWS, THOMPSON, SCOGGIN, CROSS, GORDON, HINOHARA, KELLY, OLIVER, COLE, WATSON, SALEEBY, M. LYTCH, MISS STEWART.

## Home Economics Club

The Home Economics Club is composed of all the students in the department of Home Economics. Meetings of this club are held once a month and various topics of interest to the members are discussed. Lectures and demonstrations pertaining to the field of home economics are obtained when possible. Each year the club works out a specified project.

### OFFICERS

EMILY COLE  
ELIZABETH JESSUP  
INEZ KELLY  
DOROTHY CROSS  
RUTH WATSON

*President*  
*Vice-President*  
*Secretary-Treasurer*  
*Chairman Program Committee*  
*Reporter*

### MEMBERS

JOSEPHINE ALBRIGHT  
SARA ANDREWS  
EMILY COLE  
DOROTHY CROSS  
NANCY ROSE EVERHARDT  
MARIE GORDON

EMI HINOHARA  
KATHERINE ISENHOUR  
ELIZABETH JESSUP  
EVELYN JOHNSTON  
INEZ KELLY  
MARTHA LYTCH  
FRANCES MALONE

AGNES OLIVER  
EMMA SALEEBY  
FANNIE HOUSE SCOGGIN  
SARAH LOUISE THOMPSON  
MARY TUGGLE  
RUTH WATSON



First Row: KELLY, SALEERY, SCARBOROUGH, BIVENS, HEATH, MR. WATSON.  
 Second Row: McSPARRAN, DeLOZIER, KIBLER, WILLIAMS, M. WINN, E. WINN, CRAVEN.

## International Relations Club

The International Relations Club is one of the honor organizations on the campus. Its members, which are limited in number, have to meet a certain scholastic requirement and then, too, they have to manifest a certain interest in international problems.

Twice each month this club meets in the Irving Society Hall. Some programs are conducted by different members of the club while others are given over to special speakers.

The club sends representatives to the Southern Students' Conference on International Relations, which meets each spring. These conferences keep us in touch with the other clubs of the Southern states.

### OFFICERS

MARGARET SCARBOROUGH  
 KATHLEEN CRAVEN  
 ELIZABETH WINN  
 MARGARET WILLIAMS  
 MR. ELLIOTT O. WATSON

*President*  
*Vice-President*  
*Secretary-Treasurer*  
*Reporter*  
*Faculty Advisor*

### MEMBERS

MARY DAVIS BIVENS  
 ENNIS BOLES  
 KATHLEEN BOST  
 KATHLEEN CRAVEN  
 ISABEL CREBICH  
 HAZEL DELOZIER  
 EDNA DOWDY  
 SUSAN EXUM

VERA FALIS  
 MARY FOWLER  
 FRANCES HAM  
 RUTH HEATH  
 ANNABEL HICKS  
 INEZ KELLY  
 VIRGINIA KIBLER

FRANCES McSPARRAN  
 VIRGINIA PEYATT  
 MARGARET SCARBOROUGH  
 ELIZABETH TAYLOR  
 EMMA BLANCHE WARREN  
 MARGARET WILLIAMS  
 ELIZABETH WINN  
 MADELINE WINN





*First Row (seated):* WINN, BURKE, MARTIN, PEGRAM, OSBORNE.  
*Second Row (standing):* SPEIGHT, STAFFORD, BIVENS, MISS LANDRUM, ANDREWS, SALEEBY, DeBUTTS

## Art Club

The Raphael Art Club is one of the most active on the campus. It is made up of the girls in the Art Department who are vitally interested in the fine arts. The club, under the leadership of Miss Landrum, has done much toward the creation of an appreciation for art and culture in our school.

### OFFICERS

FRANCES MARTIN  
 EMMA SALEEBY  
 ELIZABETH BURKE  
 EVELYN STAFFORD  
 MARY L. PEGRAM

*President*  
*Vice-President*  
*Secretary-Treasurer*  
*Reporter to Collegian*  
*Reporter to Daily News*

### MEMBERS

SARAH ANDREWS  
 MARY D. BIVENS  
 ELIZABETH BURKE  
 ELLEN DeBUTTS  
 FRANCES MARTIN

LETHA OSBORNE  
 MARY L. PEGRAM  
 EMMA SALEEBY  
 BIRDIE SPEIGHT  
 EVELYN STAFFORD

MADFLINE WINN



First Row: SILLS, V. BRIZK, BARROW, WARD, WOODCOCK, M. BOOZE  
 Second Row: TAYLOR, NICHOLSON, KILLIAN, DEES, VESTER, DR. LAHSER.

## German Club

"Once a member always a member" is our motto. Der Deutscher Verein was organized so that the interest in Germany and its language might be stirred in the minds of the German students. As the German language is essential in many fields; namely, art, music, science, aviation, and navigation, facility in reading German is of vast importance. These fields are discussed in our programs. The meetings held bi-weekly consist of a business meeting and a program, which are followed by short social periods.

### OFFICERS

KATIE SUE TAYLOR  
 MILDRED BOOZE  
 ALICE BARROW  
 MARY DEES

*President*  
*Vice-President*  
*Secretary*  
*Treasurer*

### MEMBERS

ALICE BARROW  
 MARY DEES  
 MILDRED BOOZE  
 VIRGINIA BOOZE  
 HAZEL BOWMAN

NOVILLEAN COOPER  
 KATHERINE KILLIAN  
 BETTY NICHOLSON  
 MILDRED ROYALL

LORRAINE SILLS  
 KATIE SUE TAYLOR  
 ALMA VESTER  
 MARGARET WARD  
 MARY ELIZABETH WOODCOCK



First Row: EFIRD, STRONG, WEBB, SCARBOROUGH.  
 Second Row: JONES, PEYATT, WILLIAMS, CREECH, VESTER.  
 Third Row: DR. MILLER, JESSUP, CLAY.

## Writers' Club

The Writers' Club is one of the youngest clubs on the campus. It was organized last year with ten charter members and is composed of those members of the Sophomore, Junior and Senior classes who are most interested in creative writing. Membership in the club is based upon the quality of work presented by these students and by the degree of interest manifested. Meetings are held at set dates, at which times the original stories, poems or other literary articles are read and criticized of the writer. Inspiring talks by interesting people also have a part in the program of the club.

### OFFICERS

LOUISE EFIRD  
 ALMA VESTER  
 VIRGINIA PEYATT

*President*  
*Vice-President*  
*Secretary-Treasurer*

### MEMBERS

DOROTHY CLAY  
 ISABEL CREECH  
 MARY LITTLE FLETCHER  
 ELIZABETH JESSUP

NINA JONES  
 RUTH MAYNARD  
 MARGARET SCARBOROUGH  
 KATRINE SMITH

ELIZABETH STRONG  
 ANNABEL VESTER  
 BAILEY WEBB  
 MARGARET WILLIAMS



Seated S. CAMPEN, GORDON, BIVENS, MILLARD, STRONG  
 Standing JONES, WATSON, EVANS, COLTRANE, MASSIE, LOVE, RELFE, STOKES, E. CAMPEN, BRINN,  
 WADE, TAYLOR, BOST, REEVES, MISS PERRY.

## Spanish Club

### OFFICERS

ELIZABETH CAMPEN	<i>President</i>
KATHLEEN CRAVEN	<i>Vice-President</i>
MARY DAVIS BIVENS	<i>Secretary</i>
RUTH WATSON	<i>Treasurer</i>
TOMMY L. MITCHELL	<i>Chairman Program Committee</i>

### MEMBERS

ALICE BARROW	ELIZABETH GARRETT	MARY ELLEN MILLARD
DOROTHY BARROW	EDWINA GIDNEY	TOMMY LOUISE MITCHELL
MARY DAVIS BIVENS	JANE GOODE	MARY ALICE PICKENS
LOIS BOND	MARIE GORDON	CYNTHIA PREVETTE
CATHERINE BOST	NANCY GREGSON	ALICE HILL REEVES
SARAH BRINN	IDA HOLLOWELL	MARY ONELLA RELFE
CATHERINE BURNHAM	CODY HIPPS	JUNE ROBINSON
ELIZABETH CAMPEN	FRANCIS HOYF	MILDRED ROYALL
SALLY CAMPEN	LIL KIRK HUGGINS	JOYCE STOKES
LUCIE CHENAULT	CATHERINE ISNHOUR	FREDA STRONG
GRACE COLTRANE	NINA JONES	MARGARET SCARBOROUGH
KATHLEEN CRAVEN	EDITH JESSUP	LOUISE TAYLOR
WINNIE DOROTHY DEES	EVELYN JOHNSTON	MARY TUGGLE
ELLN SYDOR DEBUTTS	MARY LINBERGER	HAZEL WADDELL
KAY EVANS	MARGARIT LOVE	EDITH GRAY WADE
NANCY ROSE IVIRHARDT	FRANCES MALONE	RUTH WATSON
EDNA GARRETT	JULIA MARTIN	IRINE YARBROUGH
	MARY EMMA MASSIE	



*First Row (left to right): WEBB, M. WILLIAMS. Second Row, HICKS, EXUM.  
Third Row, PEYATT, CROSS, A. VESTER, EFIRD, CREECH, FOWLER.*

## Fire Department

The Fire Department is made up entirely of Seniors. The fire chief is appointed by the Student Council and she in turn appoints her lieutenants who are to serve with her. It is the duty of this fire squad to conduct fire drills during the year and train the girls how to leave building with least confusion in case of a real fire.

SUSAN EXUM, *Chief*

ISABEL CREECH  
DOROTHY CROSS  
LOUISE EFIRD  
MARY L. FLETCHER  
MARY FOWLER  
ANNA BELLE HICKS

VIRGINIA PEYATT  
MARGARET SCARBOROUGH  
ALMA VESTER  
EMMA B. WARREN  
BAILEY WEBB  
MARGARET WILLIAMS



*Left to Right: HICKS, CROSS, EXUM, CREECH, LOWE, PEYATT, WARREN, Chief, VESTER,  
FOWLER, WADE, CAMPEN, HARRISON, ROYALL.*

## Marshals

At every function on Odell memorial sponsored by the college the marshals are to be seen finding seats for others and making themselves generally useful. They can always be distinguished from the other girls by their green and white regalia. The marshals are selected because of their personality and charm.

EMMA BLANCHE WARREN, *Chief*

ELIZABETH CAMPEN

ISABEL CREECH

DOROTHY CROSS

SUSAN EXUM

MARY FOWLER

DORIS HARRISON

ANNA BELLE HICKS

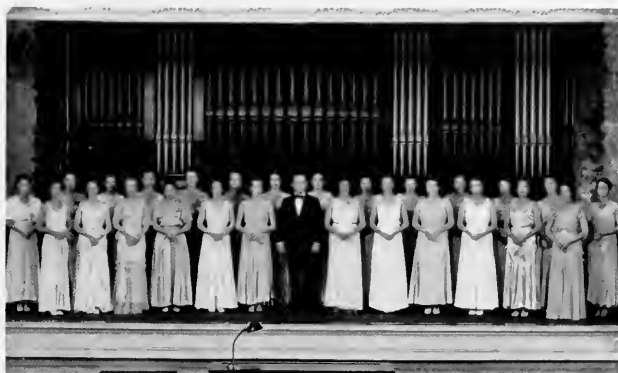
REBEKAH LOWE

MILDRED ROYALL

VIRGINIA PEYATT

ALMA VESTER

EDITH GRAY WADE



*Left to Right:* WORRELL, DAVIS, LOWE, BARROW, EVANS, FELDER, JOHNSTON, LASSITER, WADDELL, ROYALL, FRANKLIN, BOOZE, HIPPS, MOLLIBRE, *Director*, TAYLOR, FOREMAN, HAMMER, MITCHELL, MASSIE, JONES, BOYLES, WARINER, SMATHERS, SILLS, D. BARROW, MAYNARD, LYTCH.

## Glee Club

### OFFICERS

CAMILLA FOREMAN  
MILDRED ROYALL  
ISABEL BOYLES  
FRANCINA WORRELL

*Manager*  
*Assistant Manager*  
*Treasurer*  
*Publicity Chairman*

### MEMBERS

#### *First Soprano:*

ALICE BARROW  
FLORENCE DAVIS  
KAY EVANS  
ANNIE LAURIE FELDER  
CAMILLA FOREMAN  
DOROTHY FRANKLIN  
EVELYN JOHNSTON  
REBEKAH LOWE  
HAZEL WADDELL  
FRANCINA WORRELL

#### *Second Soprano:*

CHARLOTTE HAMMER  
NINA JONES  
MARY L. LYTCH  
RUTH MAYNARD  
TOMMY L. MITCHELL  
LORRAINE SILLS  
MARGARET SMATHERS  
KATIE TAYLOR  
SARA WARINER

#### *Alto:*

DOROTHY BARROW  
VIRGINIA BOOZE  
ISABEL BOYLES  
CODY HIPPS  
EVA MAE LASSITER  
ELIZABETH LODGE  
MARY E. MASSIE  
MILDRED ROYALL



Left to Right, Mrs. Hibbets, Williams, Dr. Lahser, Davis, Sink, Cooper, Mr. Hibbets, Director, McNutt, Wariner, Lassiter, Killy, Clingman, Coley, Ward (standing).

## Orchestra

GEORGE K. HIBBETS, *Director*

This organization is made up of members of the Ensemble class and musicians residing in Greensboro. Only the best orchestra literature is studied and played. The orchestra plays at many of the college functions and assists at the Dramatic Club programs. Concertos are presented on the programs of advanced students in the School of Music.

### *First Violins*

MRS. GEORGE K. HIBBETS  
*Concert Mistress*  
ANNA MAY WILLIAMS

### *Second Violins*

EVA MAE LASSITER  
SARA WARINER  
MARIE COOPER

### *Clarinet*

MARY SINK

### *Trumpet*

INEZ KELLY  
JACK COLEY  
JACK CLINGMAN

### *Viola*

MR. LAWSON

### *Flute*

DR. CONRAD LAHSER

### *Cello*

MISS DOROTHEA McNUTT

### *Tumpani*

MARGARET WARD

### *Piano*

NELL DAVIS





*Left to Right: HICKS, FOUNTAIN, WARD, WADDELL, M. LYTCH, COLTRANE, JONES, TAYLOR, BOOZE, PEYATT, WORRELL, BOYLES, ROYALL, HAMMER, FOREMAN, WARINER, SILLS, M. L. LYTCH, BARROW.*

## Y. W. C. A. Choir

The Y. W. C. A. Choir is made up of girls who are willing to give their time and talents to make our vesper services better. Every Sunday night their gowns add inspiration to the services.

ALICE BARROW  
ISABEL BOYLES  
VIRGINIA BOOZE  
GRACE COLTRANE  
CAMILLA FOREMAN  
MARY KING FOUNTAIN  
CHARLOTTE HAMMER  
ANNA BELLE HICKS  
NINA JONES  
EVA MAE LASSITER

MARTHA LYTCH  
MARY LOUISE LYTCH  
VIRGINIA PEYATT  
MILDRED ROYALL  
LORRAINE SILLS  
KATIE SUE TAYLOR  
ALMA VESTER  
HAZEL WADDELL  
MARGARET WARD  
SARA WARINER

FRANCINA WORRELL



DR. MILLER  
THOMPSON  
J. TAYLOR

BUNN  
HARRISON

MISS HENNINGER  
HICKS  
FLETCHER

E. TAYLOR  
CRAVEN

MISS SAMPLE  
FOWLER  
PEYATT

## Greensboro College Players

ROWENA BUNN  
KATHLEEN CRAVEN  
MARY LITTLE FLETCHER  
MARY FOWLER  
DORIS HARRISON  
ANNA BELLE HICKS  
MISS HENNINGER

MARGARET NEAL  
VIRGINIA PEYATT  
MISS SAMPLE  
KATRINE SMITH  
JANIE TAYLOR  
ELIZABETH TAYLOR  
SUE THOMPSON

### GUEST PLAYERS

JOHN ATWATER  
PAUL K. GYLFS  
FRANK HALF  
DR. J. R. MILLER

WATKINS NOWLIN  
AUBREY PERKINS  
WILSON STOKES  
RUFUS WHITE

PROGRAM OF  
*Première Performance*  
"Uncle Remus' Creeturs"

*from*

"UNCLE REMUS"

By JOEL CHANDLER HARRIS

ODELL MEMORIAL AUDITORIUM

OCTOBER 28, 29, 1933

---

*Dramatization by* DR. J. R. MILLER

*Staging by* MISS ELBA HENNINGER

---

ORIGINAL CAST

Uncle Remus		DR. J. R. MILLER	
The Little Boy		JOHN HILL NEAL	
Brer Rabbit		SUE FLEMING THOMPSON	
Brer Fox		REFUS WHITE	
Brer Wolf		PAUL K. GYLES	
Brer Tarrypin		ROWENA BUNN	
Brer B'ar		JOHN ATWATER	
Mis' Meadows		LAURA MAHE SMARI	
Mis' Motts	} <i>De Gals</i>	{ JULIA MARTIN	
Sis Jones			{ JANIE TAYLOR
Narcis			{ DORIS HARRISON

---

SCENES

SCENE 1: In Uncle Remus's Cabin.

SCENE 2: By the Mill Pond.

SCENE 3: In Mis' Meadows' Cabin.

SCENE 4: In a Cotton Patch.

SCENE 5: In Brer Fox's Cabin.

Intermission--5 Minutes

SCENE 6: By the Big Road Near a Briar Patch.

SCENE 7: In Mis' Meadows' Cabin.

SCENE 8: In Uncle Remus's Cabin.

TIME: Once Upon a Time.



BRER FOX CATCHES BRER RABBIT  
AT MISS MEADOWS.



BRER RABBIT  
COMING OUT OF HIDING.



BRER RABBIT  
CAUGHT BY THE TAR BABY.



UNCLE REMUS  
AND  
THE LITTLE BOY



THE CREATURES EXAMINE  
DE TAR BABY



BRER RABBIT GOING TO SEE "DAID"  
BRER FOX.

SCENES FROM "UNCLE REMUS' CREATURES," by DR. J. R. MILLER



## The Morning Ride

(Engraved expressly for *Godey's Ladus' Book* by F. Humphrys.)

# ATHLETICS

*Youth flings its cares to the four winds and  
races and frolics with the gods.*





LASSITER

SCARBOROUGH

WILLIAMS

KELLY

DAVIS

## Athletic Association Officers

MARGARET WILLIAMS

*President*

MARGARET SCARBOROUGH

*Vice-President*

EVA M. LASSITER

*Secretary*

INEZ KELLY

*Treasurer*

FLORENCE DAVIS

*Cheer Leader*



FOWLER EXUM COLE  
 THOMPSON A. VESTER  
 CREECH  
 WILLIAMS  
 WEBB LASSITER  
 LYCH LOFTIN SCARBOROUGH

### "G" Club and Miss "G. C."



MISS "G. C."  
 EVA MAE LASSITER

To win a beautiful green "G" gives each girl a feeling of accomplishment, for she knows that only after much hard work, tedious practice, and a struggle against her opponents has she been able to obtain the required number of points, but not only has she gained the letter; she has learned the true value of good sportsmanship and loyalty in every field of which the "G" is a true symbol.

An even greater honor, however, is to be Miss "G. C." The girl who obtains the greatest number of points on Field Day receives this title. And due to her versatility in her athletic field, Miss Eva Mae Lassiter holds this distinction for the third time.





FREDA AND ELIZABETH STRONG

## Tennis

Tennis, that ever popular game, held an important spotlight on our campus this Field Day. The contests in the singles were finally narrowed down to two contestants, Eva Mae Lassiter representing the Junior class, and Bailey Webb, the Seniors. The afternoon was perfect and because the two were so evenly matched, the game was viewed with much interest. After much see-sawing back and forth, the score finally mounted in favor of the Juniors.

In the doubles the two contesting teams came from the Sophomore and Senior classes. The Seniors opposed a sister team of Elizabeth and Freda Strong. As in the singles, the games were close finally reaching the scores of 9-7, 4-6, and 7-5 in favor of the Sophomores. The Seniors were consoled in their loss by holding such a "strong team" to so close a score.



EVA M. LASSITER

## Basketball

The basketball game, one of the most important events of Field Day, started the day off with a great deal of enthusiasm. The Juniors, having defeated their "Little Sisters" in the preliminaries, were scheduled to play the Sophomores. As the brightly clad players dashed upon the court, a lusty cheer went up from the sidelines. The Freshmen enthusiastically supported their "big sisters" and the Seniors encouraged and urged the Sophomores to fight with all their might; while other spectators shouted for first one side and then the other.

Each team realized that it was equally matched and that it would have to put up a hard struggle in order to win. The game started vigorously, with neither team winning many points during the first quarter, but soon the Sophomores began to gain. Each player worked hard and fast but the Sophomores had been so encouraged by the success of the season before and their good beginning this year that their score began rapidly to climb up against the Juniors. The game ended with the Sophomores possessing twice the score of their opponents. The defeated players good-naturedly wished the Sophomores luck the following season, but their tone betrayed them, for it implied, "You'll need luck if you intend to beat us next time."

## Soccer

Encouraged by their success at the Spring Field Day, the Sophomores met the Freshmen with the determination to put up a good fight to maintain their title of supremacy. The Freshmen were just as eager to down the Sophomores, so the game was fast and furious, displaying excellent tactics and skill which comes only from hard and diligent training. The teams were so evenly matched that at the end of the game the score was 1-1. After a short consultation of the captains with the referee, they decided to continue the game for another ten minutes in order to break the tie if possible. The two teams, tired and dirty, set to work with a grim determination and just a few seconds before the whistle, a Soph kicked a goal. Immediately a yell of joy mingled with a slight sigh of regret from the Freshmen, spread over the field. The whistle blew, a yell for the opposing team and the conqueror and conquered trudged off the field arm in arm.



SOPHOMORE BASKETBALL TEAM

*Seated:* E. STRONG, *Captain.* *Kneeling* (left to right): MILLARD, BOYLES, VESTER, LOFTIN, CAMPEN. *Standing* (left to right): MASSIE, WATSON, TAYLOR, McSPARRAN, BOYD.



SOPHOMORE SOCCER TEAM

*Left to Right, Seated:* F. STRONG, STAFFORD, LOFTIN, E. STRONG, BOYLES. *Kneeling:* COLTRANE, MILLARD, BIVENS, JONES, VESTER, BOYD. *Standing:* BOST, McSPARRAN, WATSON, MASSIE, EVANS, BARROW, TAYLOR, REEVES.



FIELD DAY SNAPS



## The Rivals

(Engraved expressly for *Peterson's Magazine* by I. D. Gross.)

# SUPERLATIVES

*We are all, consciously or unconsciously,  
rivals for the affection and esteem of our fellow  
men.*





MISS MARGARET SCARBOROUGH - - - - *Most Sincere*



MISS VIRGINIA PEYATT - - - - - *Best All 'Round*





MISS SARAH L. THOMPSON - - - - *Most Popular*



MISS EVA M. LASSIER

*Most Athletic*



MISS ROZELLE WILLIAMSON - - - - - *Most Original*



MISS TOMMY MITCHELL . . . . . *Most Attractive*



MISS CABELL CAMPEN - - - - - May Queen



MAY DAY SNAPS



## Dusting Cupid

(Engraved expressly for the *Godey's Ladies' Book* by S. Walmsley.)



## FEATURES

*Fair maidens with tender smiles dust the frail form of Cupid lest his beauty should be marred.*



*Dress—The Maker*

Posed by MISS ANNA MAY WILLIAMS





*Dress—The Wearer*  
Posed by MISS SUSAN EXUM



*The Italian Flower Girl*  
Posed by MISS EDITH GRAY WADE



*The Reaper's Return*  
Posed by MISS EMILY COLE



*Our Alice*

Posed by MISS ANNA BELLE HICKS



## Taking the Queue

(Engraved by H. L. Wagner for Godey.)

## HUMOR AND ADS

*Take the cue lest you be caught napping,  
for one person's ignorance of a situation is fun  
to the person who knows.*

## Jokes

PEYATT: I saw Mary Brown at Kress's in a riding habit!

ALMA (in great consternation): Walking?

---

DR. MILLER: What is an epigram, Miss Smathers?

MARGARET: I can't explain it, but it is one of those things found on tombstones.

---

LIL KIRK (on chemistry lab.): Bailey, were we supposed to use consecrated sulphuric acid?

---

DR. AYERS (on Bible class): What is meant by the sins of omission, Miss Watson?

RUTH: The sins we should have committed but didn't.

---

### OR THE SUN RISING

DORIS: I heard a noise when you came in last night.

PEGGY: That was just the night falling.

DORIS: No, it wasn't: it was the day breaking.

---

Miss Perry was giving a written examination in geography. One question was: "Why does the sun never set on the British flag?"

Louise Taylor wrote for the answer: "Because they take it in at night."

---

### WE'LL BITE

MISS GINN: Robert Burns wrote "To a Fieldmouse."

BLONDIE: Did he get an answer?

---

### WHEN THE FUN STARTS

SMALL BOY: Grandmother, when are you going to start playing football?

GRANDMOTHER: Why, sonny, I can't play football. Why?

SMALL BOY: Well, papa says he is going to buy a new car as soon as you kick off.—*Carolina Buccameer.*

---

### THE JOKE WAS ON THEM

The boys of one of Dr. Stryker's classes at Hamilton College got a goose and tied it securely in his chair and pushed the chair under the desk just before his expected arrival. He entered, pulled out his chair and saw the goose occupying it.

"I beg your pardon, gentlemen," said he, "I did not know you were having a class meeting."

---

"I have nothing but praise for the sermon," said the Scot, and he proved it.

## Jokes

### HE WINS THE THISTLE

"What became of that clerk you had here?"

"I had to fire him. A man came with his bride to buy a book for reading on his honeymoon and the stupid assistant offered her 'Travels With a Donkey.'"—*Das Kleine Witzblatt*.

---

"Mamma, I've got a tummy ache," said Peggy, aged five.

"That's because you haven't had any lunch yet," answered Peggy's mother. "Your tummy is empty. You would feel better if you had something in it."

That afternoon a friend called, and in the course of conversation remarked that he had been suffering all day with a severe headache.

"That's because it's empty," said Peggy, brightly. "You'd feel better if you had something in it."—*Children*.

---

### WE HOPE IT HELPED HER

The professor had just finished an evening talking on Sir Walter Scott and his works, when a lady said: "Oh! Professor, I have so enjoyed your talk. Scott is a great favorite of mine."

"Indeed," said the Professor. "Which one of his books do you like best?"

"Oh," said the lady, "I haven't read any of his books, but I am so fond of his Emulsion—I've used a lot of that."

---

The teacher was using the phonograph to make children familiar with good music. Two famous opera singers had just finished a duet, and the teacher said:

"Now, children, who can tell me the names of the singers we have just heard?"

"Caruso," replied a small boy.

"Yes, and who was singing with Caruso?"

"His man, Friday," was the disconcerting answer.—*Christian Advocate*.

---

A grammar school student was set a question in an examination paper: "If twenty men reap a field in eight hours, how long will it take fifteen men to reap the same field?"

The student thought long and carefully before writing the answer, and when he handed in his paper this is what the examiner read:

"The field, having been reaped by the twenty men, could not be reaped by the fifteen."—*Clipped*.

## GREENSBORO COLLEGE

*A Standard College For Women. Member of Southern  
Association of Colleges and Secondary Schools.*

*The Oldest Chartered College For Women  
in the State—Chartered 1838. Con-  
fers the Degrees of Bachelor of  
Arts and Bachelor of Music.*



In addition to the regular classical course, special attention is called to the departments of Home Economics, Arts, including Industrial and Commercial Art, Spoken English and Dramatic Art, Education, Sunday School Teacher Training, Piano Pedagogy, and to the complete School of Music.

*For further information, apply to*  
SAMUEL B. TURRENTINE, *President*  
GREENSBORO, NORTH CAROLINA





# “Jahn & Ollier Again”

WE are America's largest school annual designers and engravers because we render *satisfaction* on more than 400 books each year. Intelligent co-operation, highest quality workmanship and on-time deliveries created our reputation for dependability.

JAHN & OLLIER ENGRAVING CO.

*Photographers, Artists and Makers of  
Fine Printing Plates for Black or Colors.*

817 W. Washington Boulevard · Chicago

Telephone MONROE 7080



*( We do not sub-let any  
art or engraving )*



# What is an annual?

- ... to some . . . just another printing order.
- ... to us an opportunity to record history in its making . . . for an annual is a history of the school for the year in which it is published.

It is made today for its value tomorrow, to bring back to mind the happy memories of school days.

And with a keen appreciation of this future value, coupled with the experience of more than thirty years, we work closely with, and for, the school that the annual may be a complete, interesting history.

It may be next term . . . or a few years away in college . . . but when your thoughts turn to the publication of an annual may we have the opportunity of telling you more of the service we can render.

**OBSERVER**  
**PRINTING HOUSE**  
CHARLOTTE -- North Carolina



THE PHOTOGRAPHS  
in The Echo  
WERE MADE BY  
DUNBAR & DANIEL, INC.  
RALEIGH, N. C.



*"The Largest College Annual Photographers  
in the South"*





DOROTHY CROSS

For Finest Cut Rate Drugs

TRY

West Market Street  
Pharmacy



457 W. Market Street

Phone 4007

**EFIRDS DEPARTMENT  
STORE**

*The Home of Better Values*

**KING COTTON  
HOTEL**

250 ROOMS - 250 BATHS  
Market and Davie Streets

Dial 8193 And Let The  
**COLUMBIA LAUNDRY**

— Do It —  
Dry Cleaning, Dyeing and  
Pressing

*"We Do It Better"*

**DRS. BANNER AND  
BANNER**

*Eye, Ear, Nose, and Throat  
Specialists*

BANNER BLDG. ELM ST.

WHY TEACHERS GET GRAY

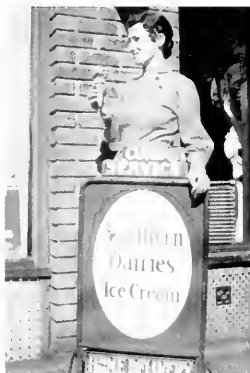
"Dear Teacher:

"Please excuse Henry for not being at school yesterday. He fell in the pig sty and got terribly dirty. By doing the same you will greatly oblige his mother."



A PRODUCT OF  
**SOUTHERN  
DAIRIES**  
FOR ALL OCCASIONS

Phone 2-1125  
GREENSBORO, N. C.



PEGGY LYTCH

**BELK'S**  
College Girls' Headquarters  
We Sell It For Less For  
CASH

COMPLIMENTS OF  
**M. V. MORAN**

FASHION—  
AND THRIFT

**Meyer's**  
A PART OF THE MEYER GROUP

**McLELLAN'S**  
5¢ AND \$1.00 STORES

#### WHERE WHOPPERS BREED

"Can any of you," the teacher asked, "tell me what 'amphibious' means, and give a sentence to illustrate?"

A bright little negro held up his hand. "I know, sah! It's fibbing. Mos' fish stories am fibious!"—*Boston Transcript*.

*Catering to the College Girl's  
Needs For Over Three  
Decades*



That's why College girls come to Ellis Stone's. . . . They find the smartest and newest at a price they can afford to pay. Nothing of doubtful merit, but QUALITY that remains long after the price is forgotten.

*Ellis Stone & Co*

"Greensboro's Best Store"

**Come to Wills for:**

GREETING CARDS      SCHOOL SUPPLIES  
STATIONERY              RENTAL LIBRARY  
GIFTS                      BOOKS



**Wills Book & Stationery Co.**

107 S. GREEN ST.      GREENSBORO, N. C.

The Carolinas' Greatest  
Hardware and Sporting Goods  
House

BUY AT  
**Odell's**  
**WHERE QUALITY TELLS**

GREENSBORO

*Coca-Cola*

BOTTLING CO.

DICKS' LAUNDRY  
COMPANY

*High Class Launderers and  
Dry Cleaners*



328-332 E. Market Street  
GREENSBORO, N. C.  
Dial 7101 or 7102

COMPLIMENTS OF

S. H. KRESS

SHOES OF ALL TYPES FOR  
THE COLLEGE MISS  
At Moderate Prices



**Bell Shoe Store**  
209 S. Elm St. Arcade Bldg.

**McNeelys**  
Are Always Glad to Have  
You Back



DIAL 5057  
718 W. Market Street



## Acknowledgment

We, the staff of the 1933 ECHO, wish to acknowledge the cooperation of the student body, the business men of Greensboro, the Jahn & Ollier Engraving Co., the Observer Printing House, Inc., and the Dunbar & Daniel Studio in making possible this volume of THE ECHO.



## Directory

ARMELLD LINDA LOUISE E A 2	Route 3, Box 242, Greensboro, N C
ALBRIGHT, JOSEPHINE ANITE 1 A 2	Route 3, Box 499, Greensboro, N C
ANDREWS, SARA ALLEN, 1 A 2	Mount Gilead, N C
BARNES, CLARA ADELAIDE 1 A 2	314 Houston Street, Monroe, N C
BARROW, ALICE FEARING, 1 A 2	610 W Main Street, Elizabeth City, N C
BARROW DOROTHY, 1 A 2	Zebulon, N C
BIVENS, MARY DAVIS, 1 A 2	Marshallville, N C
BOLLES ENNIS RUBENA E A 2	Pinnacle, N C
BOLING, BESSIE LEE, 1 A 2	Troy, N C
BOOTH, HULDAH FRANCES, E A 2	625 Ashboro Street, Greensboro, N C
BOOZE MARY MILDRED, E A 2	Children's Home, Winston-Salem, N C
BOOZE VIRGINIA MANSFIELD 1 A 2	Children's Home, Winston-Salem, N C
BOST KATHERINE ROSETTA 1 A 2	Route 7, Concord, N C
BOWMAN, HAZEL IRENE, E A 2	1304 Carolina Street, Greensboro, N C
BOYD CLAUDIA LUCILLE, 1 A 2	Route 2 Box 90, Waynesville, N C
BOYLES ISABEL EUNICE, 1 A 2	107 West Main Street, Thomasville, N C
BOYLES, IMOGENE VILNA, E A 2	107 West Main Street, Thomasville, N C
BREEDLOVE, BESSIE BASSETT 1 A 2	1004 West Trinity Avenue, Durham, N C
BRINN SARAH ELLANORA 1 A 2	47 Front Street, Hertford, N C
BUNN ROWENA JOSEPHINE 1 A 2	714 South Main Street, Laurinburg, N C
BURKE ANNIE ELIZABETH E A 2	603 Fountain Place, Burlington, N C
BURNHAM MARY CATHERINE, 1 A 2	27 Park Street, Mullins, S C
CAMPEN, MARY ELIZABETH, 1 A 2	Zebulon, N C
CAMPEN, SALLY WASKETT 1 A 2	Alliance, N C
CHENAULT, ELMALOUIS, E A 2	712 Silver Avenue, Greensboro, N C
CHENAULT, LUCILE MARY, E A 2	712 Silver Avenue, Greensboro, N C
CLAY, DOROTHY SHERRILL, 1 A 2	2055 Academy Street, Winston-Salem, N C
COBB, MARIE, E A 2	Elm City, N C
COLE, DOROTHY PROCTOR, 1 A 2	506 Watts Street, Durham, N C
COLE, EMILY DIX, 1 A 2	1200 The Plaza, Charlotte, N C
COLTRANE, GRACE MERRITT, 1 A 2	Zebulon, N C
COLTRANE, PEARL EULALIA, 1 A 2	Route 1, Greensboro, N C
COOPER, MARIE ROGERS, 1 A 2	44 Arden Road, Forest Hill, Asheville, N C
COOPER, NOVILLAN ASSELLE 1 A 2	215 South Mendenhall, Greensboro, N C
CORNETTE WILLIE MILDRED, E A 2	447 Arlington Street, Greensboro, N C
CRAVEN, KATHLEEN MILDRED, 1 A 2	Mocksville, N C
CRITCH, ISABEL ANNI, E A 2	LaGrange, N C
CROSS, DOROTHY MILDRED, 1 A 2	Sunbury, N C
DALLEY, LUCILLE PARK, E A 2	2041 Englewood Avenue, Durham, N C
DAVIS, FLORENCE LUCINE, 1 A 2	Manning, N C
DAVIS, NELL JENKINS, 1 A 2	1181 S Mendenhall Street, Greensboro, N C
DEBUTIN, ELLEN SYDNER, E A 2	409 West Bessemer Avenue, Greensboro, N C
DEES, MARY JANE, E A 2	707 Dover Road, Greensboro, N C
DELS, WINNIE DOROTHY, 1 A 2	1 remont, N C
DELOZIER, HAZEL MAIVARY, E A 2	Route 2, Candler, N C
DOWDY, EDNA, E A 2	Goldston, N C
EFFIRD, MARY LOUISE, 1 A 2	154 South First Street, Albemarle, N C
EVANS, KAY JOHNSON, 1 A 2	55 Woodward Avenue, Asheville, N C
EVERHARDT, NANCY ROSE, 1 A 2	West Seventh Street, Newton, N C
EXUM, SUSAN VIRGINIA, 1 A 2	Snow Hill, N C
FALLS, VERA RHIL, E A 2	Kings Mountain, N C
FAY, ANNI ELIZABETH, 1 A 2	209 Sixth Street, North Wilkesboro, N C
FELDER, ANNIE LAURIE, E A 2	408 South Mendenhall Street, Greensboro, N C
FELTNER, JULIA MARGARET, 1 A 2	McColl, S C
FELTNER, MARY LITTLE, 1 A 2	Gibson, N C
FOLLY, HELEN F., E A 2	324 East Greenway Street, Greensboro, N C
FORMAN, CAMILLA WOODLEY, 1 A 2	203 West Main Street, Elizabeth City, N C
FOUNTAIN, MARY KING, 1 A 2	1ountain, N C
FOWLER, MARY ELIZABETH, E A 2	Pilot Mountain, N C
GARRETT, EDNA MAE, 1 A 2	Waynesville, N C
GARRITT, MARY ELIZABETH, 1 A 2	Waynesville, N C
GIDNEY, EDWINA THOMPSON, E A 2	209 East Marion Street, Shelby, N C



GOODE, MARY JANE, I A ♀ Lincoln, N. C.  
 GORDON, MARIE ANTOINETTE, E A ♀ Marion, Va.  
 GRAHAM, ELIZABETH, I A ♀ 510 Summit Avenue, Greensboro, N. C.  
 GREGSON, NANCY DIX, I A ♀ Siler City, N. C.  
 HAM, FRANCIS MARTIN, I A ♀ Morven, N. C.  
 HAMMER, CHARLOTTE AMANDA, E A ♀ 14 Tenth St., N.E., Washington, D. C.  
 HARRISON, DORIS WRIGHT, I A ♀ 118 North Road St., Elizabeth City, N. C.  
 HEATH, IDA RUTH, E A ♀ 323 Ellis Street, Augusta, Ga.  
 HICKS, ANNA BELLE, I A ♀ Snow Hill, N. C.  
 HINOHARA, EM, I A ♀ 125 Noboricho, Hiroshima, Japan  
 HIPPS, CODY, E A ♀ 314 West Avenue, Kannapolis, N. C.  
 HIX, MARY FERGUSON, I A ♀ 308 Eighth St., North Wilkesboro, N. C.  
 HOLLOWELL, IDA MASTERS, E A ♀ 512 Woodlawn Avenue, Greensboro, N. C.  
 HCOVER, BLANCHE, I A ♀ Denton, N. C.  
 HOYLE, FRANCES MARION, I A ♀ 116 West Main Street, Lincoln, N. C.  
 HUGGINS, LIL KIRK, I A ♀ Marshville, N. C.  
 HUNT, MARY LEE, E A ♀ Troutman, N. C.  
 ISAACS, ELIZABETH BEVERLY, I A ♀ Zebulon, N. C.  
 ISENHOUR, JANE MOOSE, E A ♀ 413 Summit Avenue, Sanford, N. C.  
 ISENHOUR, KATHERYN MARGARET, E A ♀ 601 West Innes Street, Salisbury, N. C.  
 ISENHOUR, MARTHA MARGARET, E A ♀ 413 Summit Avenue, Sanford, N. C.  
 JESSUP, EDITH EMILY, E A ♀ Guilford College, N. C.  
 JESSUP, HARRIET ELIZABETH, E A ♀ Cedar Creek, N. C.  
 JOHNSTON, RUTH EVELYN, I A ♀ 316 Lockland Avenue, Winston-Salem, N. C.  
 JOHNSON, NELLIE GARDNER, I A ♀ Stedman, N. C.  
 JONES, MARY SCOTT, E A ♀ 209 West Smith Street, Greensboro, N. C.  
 JONES, NINA ELIZABETH, E A ♀ Granite Falls, N. C.  
 KELLY, INEZ, E A ♀ Mount Holly, N. C.  
 KIBLER, VIRGINIA McLEAN, I A ♀ Morven, N. C.  
 KILLIAN, KATHERINE APPIE WHITE, I A ♀ 132 W Seventh Street, Newton, N. C.  
 LASSITER, EVA MAE, I A ♀ Spring Hope, N. C.  
 LEFTWICH, EUGENIA MADELINE, I A ♀ Route 1, Stanley, N. C.  
 LINDBERGER, MARY MUNDY, I A ♀ Belvedere Park, Shelby, N. C.  
 LODGE, ELIZABETH, I A ♀ Hickory, Va.  
 LOFTIN, FRANCES GRAY, I A ♀ Glen Alpine, N. C.  
 LONG, HELEN BROOKS, E A ♀ Burlington, N. C.  
 LOVY, MARGARET, I A ♀ Monroe, N. C.  
 LOWE, REBEKAH JANE, E A ♀ 314 Murray Street, Greensboro, N. C.  
 LYTCH, MARTHA ELIZABETH, I A ♀ Laurinburg, N. C.  
 LYTCH, MARY LOUISE, I A ♀ Laurinburg, N. C.  
 McSPARRAN, FRANCES ELIZABETH, I A ♀ 927 Green Street, Danville, Va.  
 MALONE, FRANCES COOPER, E A ♀ Mebane, N. C.  
 MARTIN, FRANCES ANGELINE, I A ♀ 614 Hawthorne Road, Winston-Salem, N. C.  
 MARTIN, GRACE ELLINGWOOD, I A ♀ 408 South Mendenhall, Greensboro, N. C.  
 MARTIN, JULIA VIOLA, I A ♀ Mount Olive, N. C.  
 MARTIN, ANNIE RUTH, I A ♀ 445 Church Street, Dawson, Ga.  
 MASSIE, MARY EMMA, I A ♀ Waynesville, N. C.  
 MAYNARD, RUTH ELIZABETH, E A ♀ 916 Walker Avenue, Greensboro, N. C.  
 MILLARD, MARY ELLEN, E A ♀ Route 4, Greensboro, N. C.  
 MINOR, SALLIE LOU, E A ♀ 625 Ashboro Street, Greensboro, N. C.  
 MITCHELL, TOMMY LOUISE, E A ♀ 607 West Vernon Avenue, Kinston, N. C.  
 NAFF, MARION ELIZABETH, I A ♀ 1809 Madison Avenue, Greensboro, N. C.  
 NICHOLSON, MARY ELIZABETH, I A ♀ Guilford College, N. C.  
 O'BRIEN, MARJORIE ANN, I A ♀ 1111 Urban Avenue, Durham, N. C.  
 OLIVER, AGNES, E A ♀ Marietta, N. C.  
 OSBORNE, FIFTHA GRIFFIN, I A ♀ Southmont, N. C.  
 PEGRAM, MARY LUCILE, I A ♀ 449 Sprangue Street, Winston-Salem, N. C.  
 PERRY, MARGARET LOUISE, I A ♀ Rocky Mount, N. C.  
 PEYATT, VIRGINIA HOBSON, I A ♀ Liberty, N. C.

PICKARD, MILDRED JUANITA, E. A. ♀  
 PICKENS, MARY ALICE, I. A. ♀  
 PREVETTE, CYNTHIA NELLE, E. A. ♀  
 REEVES, ALICE HILL, I. A. ♀  
 RELFF, MARY ONELLA, I. A. ♀  
 ROYALL, MILDRED, E. A. ♀  
 SALEEBY, EMMA, E. A. ♀  
 SCARBOROUGH, MARGARET LANIER, I. A. ♀  
 SCOGGIN, FANNIE HOUSE, I. A. ♀  
 SCOTT, CORA LOUISE, I. A. ♀  
 SHERRILL, EDITH VIRGINIA, E. A. ♀  
 SHERRILL, MARY ELLEN, E. A. ♀  
 SILLS, ISA LORRAINE, I. A. ♀  
 SINK, MARY LELIA, I. A. ♀  
 SMATHERS, MARGARET BROOKS, E. A. ♀  
 SMITH, KATRINE REECE, E. A. ♀  
 SMOAK, FRANCES ELIZABETH, I. A. ♀  
 SPEIGHT, BIRDIE ELIZABETH, I. A. ♀  
 STAFFORD, EVELYN WOODS, I. A. ♀  
 STOKES, JOYCE CLARKE, I. A. ♀  
 STOUT, SARAH ETHEL, I. A. ♀  
 STRONG, ELIZABETH LOWMAN, I. A. ♀  
 STRONG, FREDA, I. A. ♀  
 TAYLOR, ELIZABETH LARMINE, E. A. ♀  
 TAYLOR, JANIE WALTON, E. A. ♀  
 TAYLOR, KATIE SUE, E. A. ♀  
 TAYLOR, MARIE LOUISE, E. A. ♀  
 THOMPSON, SARAH ELIZABETH, I. A. ♀  
 THOMPSON, SARAH LOUISE, I. A. ♀  
 THOMPSON, SUE FLEMING, I. A. ♀  
 TUGGLE, MARY ELIZABETH, I. A. ♀  
 VESTAL, ALICE MAE, E. A. ♀  
 VESTER, ALMA FRANCES, I. A. ♀  
 VESTER, ANNABEL, I. A. ♀  
 WADE, EDITH GRAY, I. A. ♀  
 WADDELL, HAZEL MARTIN, E. A. ♀  
 WARD, MARGARET MCCRACKAN, I. A. ♀  
 WARINER, SARA NARCISSUS, I. A. ♀  
 WARREN, EMMA BLANCHE, I. A. ♀  
 WATSON, RUTH, I. A. ♀  
 WEATHERLY, CAROLYN PENFLOP, E. A. ♀  
 WEBB, BAILLY DANIEL, E. A. ♀  
 WILLIAMS, ANNIE JOHN, E. A. ♀  
 WILLIAMS, ANNA MAY, E. A. ♀  
 WILLIAMS, ELIZABETH IFF, I. A. ♀  
 WILLIAMS, GRACE, E. A. ♀  
 WILLIAMS, MARGARET NELL, I. A. ♀  
 WILLIAMSON, ROZELLE, E. A. ♀  
 WINN, MADDAINI MAPP, I. A. ♀  
 WINN, MARY ELIZABETH, I. A. ♀  
 WOODCOCK, MARY ELIZABETH, I. A. ♀  
 WORRELL, FRANCES, E. A. ♀  
 WEAVER, MINNIE, E. A. ♀  
 YARBROUGH, ROSI BEUL, E. A. ♀

1020 W. Lee Street, Greensboro, N. C.  
 292 South Church Street Spartanburg, S. C.  
 North Wilkesboro, N. C.  
 Ivanhoe, N. C.  
 Hertford, N. C.  
 Salemburg, N. C.  
 Suk-el-gharb, Lebanon, Syria  
 Mount Gilead, N. C.  
 Warrenton, N. C.  
 Polkton, N. C.  
 413 S. Tradd Street, Statesville, N. C.  
 413 West End Avenue, Statesville, N. C.  
 Nashville, N. C.  
 North Wilkesboro, N. C.  
 101 Westover Terrace, Greensboro, N. C.  
 2702 Oakland Avenue, Greensboro, N. C.  
 1102 St. Augustine Pl. N. E., Atlanta, Ga.  
 Stantonsburg, N. C.  
 Oak Ridge, N. C.  
 Hertford, N. C.  
 Guilford, N. C.  
 200 Gulf Street, Sanford, N. C.  
 200 Gulf Street, Sanford, N. C.  
 Southport, N. C.  
 Harrellsville, N. C.  
 142 W. E. Boulevard, Winston-Salem, N. C.  
 Greenville, N. C.  
 Mocksville, N. C.  
 Haw River, N. C.  
 Creedmoor, N. C.  
 Keyville, Va.  
 23 West First Avenue, Lexington, N. C.  
 Spring Hope, N. C.  
 Spring Hope, N. C.  
 Dunn, N. C.  
 Roxboro Road, Durham, N. C.  
 Rowland, N. C.  
 Ruffin, N. C.  
 Snow Hill, N. C.  
 1314 Lady Street, Columbia, S. C.  
 Mebane, N. C.  
 Box 223, Oxford, N. C.  
 34 North Main Street, Reidsville, N. C.  
 Oak Ridge, N. C.  
 1412 Randolph Avenue, Greensboro, N. C.  
 2623 Camden Road, Greensboro, N. C.  
 Forest City, N. C.  
 Carthage, N. C.  
 20 Ninth Street S.E., Washington, D. C.  
 20 Ninth Street S.E., Washington, D. C.  
 118 McIver Street, Greensboro, N. C.  
 Rich Square, N. C.  
 Rich Square, N. C.  
 105 College Avenue, Thomasville, N. C.

## AUTOGRAPHS



## The Last Visit

(Engraved for *Godey's Ladys' Book*.)

## TUE END

*As the Indian who with his squaw in wretched silence paus the last visit to the grave of his father and pushes on to leave his all to the "paleface," we pause with solemn reflection before we pass on to a new world and leave our Alma Mater silhouetted in our memories.*







