




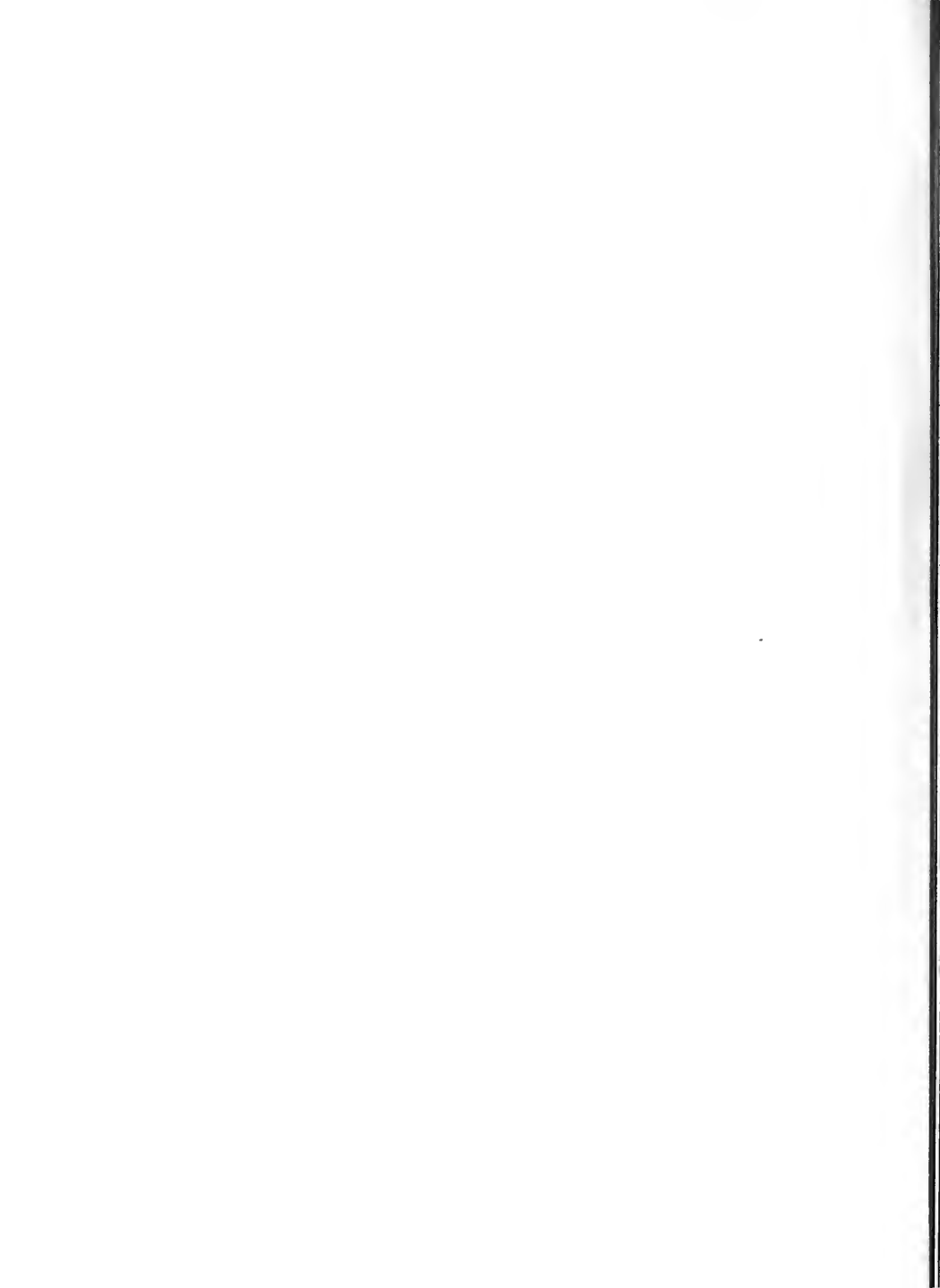
THE ECHO
1948





Digitized by the Internet Archive
in 2010 with funding from
University of North Carolina at Chapel Hill

<http://www.archive.org/details/echo1948gree>



L. L. Ebbel - (Personal)

Title:

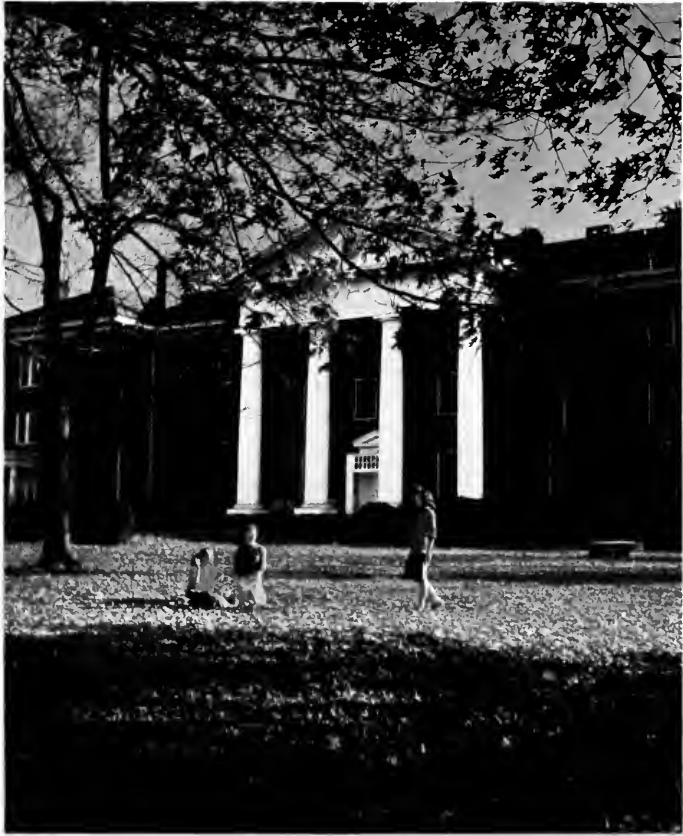
THE ECHO

Place:

GREENSBORO COLLEGE

Time:

1948



... the Setting

Characters:

STUDENTS OF G. C.

Student Director:

PATRICIA FERGUSON

Business Manager:

MARY DULA

... the CURTAIN goes



up on Our G. C. CAMPUS.



To

A backdrop of little things—an understanding smile, an encouraging word, sunlight through an old oak tree, the mellowing tenderness of having a friend and being a friend—little things that are entwined about precious memories never to be forgotten

Flickering tones of light and shade, gay moments and sad
Comedy: laughter, loyalty, love. Tragedy: tenseness, worry, tears

The power of new found skills . . . humility before depths never explored

Fleeting days gone forever . . . the satisfaction of tasks well done, of days well spent, of a scene well portrayed in the unfolding drama of life.



... a backdrop in black and white

TO ONE, BEHIND THE SCENES OF G. C. LIFE,

who hasn't forgotten he was once just a lowly student,
whose wise counseling in a certain favorite G. C. course
is given humbly, honestly, with kindly humor.

For his Thursday 12 o'clock, for his shy puns, for his
understanding smile, the senior class of 1948 select the
"star" in their hearts as

DR. RAYMOND A. SMITH



DR. RAYMOND A. SMITH



The "Chief" Director, President LUTHER L. GOBBEL,
A.B., A.M., Ph.D.

Assistant

DIRECTORS . . . 1948



SAMUEL B. TURRENTINE,
A.B., A.M., D.D.
President Emeritus



PAUL M. GINNINGS
B.S., M.S., Ph.D.
Dean of Instruction



ETHEL TILLEY
A.B., A.M., Ph.D.
Dean of Students



GUSTAV NELSON
B.M., M.M.
Dean of the School of Music

Production

MRS. JESSIE ALDERMAN
Professor (part time) of Violin and Instructor in Piano

MARTHA AYRES, A.B., L.S.
Assistant Librarian

CARL C. BAUMBACH, B.M., M.M.
Associate Professor of Theoretical Music and Instructor in Orchestral Instruments

BEATE C. BERWIN, Ph.D.
Instructor (part time) in German

THEODOCIA BLACKMON
Accountant

LETHA BROCK, A.B.
Registrar

MARY BROCK, A.B.
Alumnae Secretary and Assistant Registrar

BLANCHE BURBUS, B.M.
Assistant Professor of Piano and Theoretical Music

JAMES M. CARPENTER, A.B., A.M., Ph.D.
Professor of English

EVELYN COLE, A.B., A.M.
Instructor in Biology and Chemistry

IRENE CULLIS, A.B., A.M.
Associate Professor of Art

MRS. F. I. DORSETT, A.B.
Secretary to the President

ROBERT T. DUNSTAN, A.B., A.M., Ph.D.
Professor of Romance Languages

RHODA C. EDMISTON, A.B., A.M., Ph.D.
Associate Professor of Philosophy and Religion

E. C. FEW, A.B., D.D.
Chaplain

LOIS FITCH
Manager of Bookstore

MARY L. GINN, A.B., A.M.
Associate Professor of English

PAUL M. GINNINGS, B.S., M.S., Ph.D.
Professor of Chemistry and Physics

T. C. HARRELL
Business Manager and Treasurer

DOROTHY H. HEHRMANN, A.B., A.M., Ph.D.
Assistant Professor of Spanish and Spanish-American History

MRS. THOMAS KILKELLY, B.M.
Instructor (part time) in Piano

GUDMUNDUR KRISTJANSSON
Assistant Professor of Voice

MRS. H. H. MARTIN, B.O.
Instructor in Speech

MRS. J. M. MILLIKAN
Part time Assistant to Dean of Students



Managers

GUSTAV NELSON, B.M., M.M.
Dean of the School of Music and Professor of Piano and Theoretical Music

BETTIE JANE OWEN, B.S.
Assistant Director of Physical Education

OUIDA FAY PAUL, A.B., B.S., A.M.
Instructor in Public School Music

ANNIE M. PEGRAM, A.B., A.M.
Professor of Mathematics

ZELDA C. PEMBERTON, A.B., A.M., Ed.D.
Assistant Professor of Education and Social Studies

MRS. WALDO PORTER
Supervisor of Buildings and Assistant to Dean of Students

MARVIN L. SKAGGS, A.B., A.M., Ph.D.
Professor of History and Economics

MRS. ADA K. SMITH
Dietitian

MARY BELLE SMITH, A.B., A.M.
Associate Professor of Speech

PAULINE K. SMITH, A.B., M.S.P.H., M.Ed.
Associate Professor of Biology

RAYMOND A. SMITH, A.B., B.D., Ph.D.
Professor of Religious Education

FRANCES SEWELL, B.S.
Instructor in Home Economics

MADLINE G. STINSON, A.B., A.M., Ph.D.
Associate Professor of Romance Languages

GRACE TICKLE, B.S. in Ed., A.M.
Associate Professor of Home Economics

MILDRED TOWN, A.B., B.M., M.M.
Professor of Organ and Associate Professor of Piano and Theoretical Music

PEARL TURNER, B.N.
Supervisor of Student Hospital

CHARLES COLL UNDERWOOD
Associate Professor of Voice

MABEL C. WHITE
Assistant Accountant

HILDEO WOLFE, B.S., A.M.
Director of Physical Education

MARY ELIZABETH WOODCOCK, A.B., B.S. in L.S.
Librarian and Instructor of Children's Literature

ELIZABETH B. YOUNG, A.B., A.M., Ph.D.
Professor of Education

Not Pictured:
 MARIAN H. BLAIR, A.B., M.A.
Assistant Professor of English





ACT I...



CLASSES

Day in—day out; the curtain ever rising and falling.
New facts—and old. Learning—forgetting—cramming—
but ever growing.

Scene I . . . Senior

This scene takes place in Fitzgerald Hall, beloved home of our seniors. The rooms are painted in delicate shades of the rainbow and our characters occupy the "new Fitz" during its second year after having its face lifted.

The furniture is simple, comfortable, and newly decorated: the closets larger and beds softer than ever before.

There has been a change in atmosphere from past years—a soft warm glow, a different and glorious feeling that goes only with being a dignified senior.

With practice teaching there comes an unexpected thrill and excitement of having to be really grown-up for the first time, and being called "Miss".

Two of our characters, Midge and Ginny, are married and are living off campus this year.

Twelve o'clocks on Saturday night, unlike anything in the past, add a new joy with no worrying about rushing home.

Caps and gowns lend an air of dignity as the seniors march down the aisle to chapel.

As usual, graduation brings unexperienced joy and yet the sorrow of leaving dear friends.

Class . . . 1948



officers

- MARTHA HOLLOWELL *President*
MARY BETH JOYNEB *Vice-President*
JUDY DEHART *Secretary*
MIRIAM BARRON *Treasurer*
REBECCA HENDLEY *Council Representative*

Senior Class

MIRIAM LETITIA BARRON
FRANKLIN, VA.

Major: *Music Education*
Minor: *Piano*

Glee Club . . . Sextet . . . Music Club
German Club . . . Treasurer, Senior
Class . . . Gold Book . . . Future Teachers
Club . . . Music Editor, Echo . . . Literary
Staff Colleague . . . Irving Critic
Little Sisters: Mary Davis and Gene Lester.
Irving



FLORA LEE BOBITT
CHARLOTTE, N. C.

Major: *English* Minor: *History*

International Relations Club . . . German
Club . . . Religious Education Club . . .
Junior Honor Society . . . Program Chairman
Greensboro College Honor Society . . .
Highest Proficiency Scholarship Junior Year
. . . Gold Book
Little Sisters: Jane Graves and Margaret
Wiggins. Emerson

MARY KIME BOWMAN
LUMBERTON, N. C.

Major: *A.B. in Music* Minor: *French*

French Club . . . Secretary, Glee Club
Sextet . . . College Choir . . . Irving
Marshal . . . Senior Marshal . . . Inter-
national Relations Club . . . Music Club
Town Choir . . . Gold Book . . .
Freshman Counselor.
Little Sister: Sarah Gobbel. Irving



JEAN ELIZABETH BRADLEY
GREENSBORO, N. C.

Major: *Voice*
Minor: *Music Education*

Music Club . . . Gold Book . . . Future
Teachers Club . . . French Club . . .
Emerson Marshal and Chaplain . . . Federa-
tion of Music Clubs Scholarship to Julliard.
Little Sister: Anne Simpson. Emerson

Greensboro



MYRTLE VIRGINIA BREWER
NORWOOD, N. C.

Major: *Religious Education*
Minor: *English*

Junior Transfer from Brevard Junior College (Secretary Euterpean Literary Society . . . Secretary Sophomore Class . . . Vice President Christian Workers' Club . . . Secretary Sigma Xi Alpha . . . Phi Theta Kappa . . . Christian Student Movement Council . . . International Relations) . . . Secretary Religious Education Club . . . Future Teachers Club . . . YWCA Cabinet.
Little Sister: Mary Kindig Irving

BETTY JORDAN BRYAN
BATTLEBORO, N. C.

Major: *Elementary Education*
Minor: *History*

Junior Transfer from Peace (P. S. C. A. Cabinet . . . Student Council) . . . House President 109 . . . International Relations Club . . . Future Teachers Club . . . Freshman Counselor.
Little Sister: Edna Whitthead, Emerson



RACHEL MARCELAINE BUEH
NEWTON, N. C.

Major: *Sociology* Minor: *English*

Speech Club . . . Spanish Club . . . International Relations Club . . . Math Club . . . Gold Book . . . Future Teachers Club . . . Business Staff Echo . . . Freshman Counselor . . . Religious Education Club.
Little Sister: Anna Jane Ingram, Emerson

MARGARET PERRITT BURDELL
FLORENCE, S. C.

Major: *Piano* Minor: *Voice*

Glee Club Librarian . . . Sextet . . . Music Club . . . Gold Book . . . Freshman Counselor . . . Senior Marshal . . . Presser Music Scholarship.
Little Sister: Peggy Wheeler, Irving

Senior Class

MYRA DOUGLAS BUTLER
ROSE HILL, N. C.

Major: *English* Minor: *French*

French Club . . . Treasurer Sophomore Class . . . House President 116 . . . Recording Secretary Students' Association . . . Athletic Board . . . Gold Book . . . President Future Teachers Club . . . Freshman Counselor . . . Hockey, Softball, and Speedball Varsityes.

Little Sister: Ann McAffy. Irving



JEAN GREY COBLE
BURLINGTON, N. C.

Major: *Art* Minor: *English*

Secretary-Treasurer French Club . . . Secretary Treasurer and President Art Club . . . Speech Club . . . Literary Staff Collegian . . . International Relations Club . . . Freshman Counselor . . . Future Teachers Club . . . Gold Book . . . Senior Class Gift Committee.

Little Sister: Anne Taylor. Emerson



MARGARET THOMAS DAMERON
YANCEYVILLE, N. C.

Major: *Elementary Education*
Minor: *Religious Education*

International Relations Club . . . G. C. Daughters . . . Religious Education Club . . . Treasurer Future Teachers Club . . . YWCA Cabinet . . . Freshman Counselor.

Little Sister: Veta Foote. Emerson

ANNA BETH DAVIS
CLAYTON, N. C.

Major: *Biology* Minor: *English*

International Relations Club . . . G. C. Daughters . . . Fire Warden and Chief . . . Biology Club . . . Athletic Board . . . Sports Editor Collegian . . . Treasurer and Vice President Athletic Association . . . Head of Swimming . . . Softball, Speedball, Soccer, Hockey, and Volleyball Varsityes.

Little Sister: Ann Buzzell. Irving

Greensboro



JUDITH RAY DEHART
 DRAPER, N. C.

Major: *Sociology* Minor: *English*
 Junior Transfer from Pfeiffer Junior
 College . . . Gold Book . . . Town Students'
 Association . . . Secretary Senior Class.
 Little Sister: Jeanette Vogler. Irving

REBECCA LEIGH DELK
 MOORESVILLE, N. C.

Major: *English* Minor: *Speech*
 Speech Club . . . International Relations
 Club . . . Future Teachers Club . . . Spanish
 Club . . . Emerson Attendant . . . Glee
 Club . . . Junior May Court Attendant . . .
 Literary Staff *Collegian*.
 Little Sisters: Mary Fisher Finch and
 Marston Smith. Emerson



KATHERINE STREET DIXON
 JAMESTOWN, N. C.

Major: *Primary Education*
 Minor: *French*
 Presiding Officer P. K. Club . . . President
 French Club . . . International Relations
 Club . . . Art Club . . . Future Teachers
 Club . . . Gold Book.
 Little Sister: Mabel Smith. Emerson

MARY ELIZABETH DULA
 WILKESBORO, N. C.

Major: *Biology* Minor: *English*
 Vice-President International Relations
 Club . . . Gold Book . . . Freshman Coun-
 selor . . . Executive Committee Future
 Teachers Club . . . Advertising Manager
 Collegian . . . Business Manager Echo . . .
 Religious Education Club . . . Senior
 Marshal.
 Little Sisters: Anne Simpson and Alice
 Futrell. Emerson

Senior Class

EDLA SMITH EARLEY
 NORFOLK, VA.

Major: *Voice*
 Minor: *Music Education*

Irving Treasurer and President . . . Vice-President Freshman Class . . . Freshman Counselor . . . Glee Club Librarian . . . Sextet . . . French Club . . . G. C. Daughters . . . Vice-President U. D. C. . . Cheerleader Athletic Association . . . YWCA Cabinet . . . Athletic Board . . . Gold Book . . . Senior Superlative "Best-all-round."

Little Sisters: Gretchen White and Dorothy Taylor. Irving



ROSA GLYNN ELLERBE
 ROCKINGHAM, N. C.

Major: *Music Education*
 Minor: *Voice*

Council Representative Freshman Year . . . International Relations Club . . . Secretary and Librarian Glee Club . . . Sextet . . . Music Club . . . Town Choir . . . Vice-President U. D. C. . . Future Teachers Club.

Little Sister: Ernestine Smith. Irving



MARY PATRICIA FERGUSON
 RICHMOND, VA.

Majors: *Art and English*

Editor Echo . . . Sports Editor Echo . . . Sports Editor Collegian . . . YWCA Cabinet . . . Athletic Board . . . Art Club . . . Freshman Counselor . . . G. C. Daughters . . . "G" Club . . . Junior Superlative "Most Original" . . . Senior Superlative "Most Popular" . . . Softball and Speedball Varsityes . . . "WNSF" Chairman.

Little Sister: Virginia DeFord. Emerson

EVELYN ROSE FIELDS
 GREENSBORO, N. C.

Major: *Religious Education*
 Minor: *Speech and Dramatic Art*

Secretary, Student Council Representative, and President Town Students' Association . . . International Relations Club . . . Religious Education Club . . . Speech Club . . . Assistant Business Manager G. C. Flyers . . . YWCA Cabinet . . . Secretary Sophomore Class . . . Literarv Staff Collegian . . . College Editor Echo . . . Gold Book.

Little Sister: Hazelanne Adams. Emerson

Greensboro



PEARLE HELEN FINK
CONCORD, N. C.

Major: *Religious Education*
Minor: *English*

Sophomore Transfer from Brevard Junior College (Methodist Students Club . . . Minemosinean Literary Society . . . Photographers' Club) . . . Speech Club . . . French Club . . . Religious Education Club . . . Gold Book.
Little Sister: Katherine Yarborough. Irving

MARY LEE GARDNER
NORTH WILKESBORO, N. C.

Major: *Primary Education*
Minor: *English*

Junior Transfer from Virginia Intermont Junior College (YWCA . . . BSU . . . Check Club . . . Tar Heel Club . . . Twp Club . . . Student Council) . . . International Relations Club . . . Religious Education Club . . . Future Teachers Club . . . Gold Book.
Little Sister: Martha Jane Rogers. Emerson

LILLA CAROLINE GATES
CANTON, N. C.

Major: *Music Education*
Minor: *Organ*

Glee Club . . . Town Choir . . . Accompanist . . . French Club . . . Spanish Club . . . President Music Club . . . Gold Book . . . YWCA Cabinet . . . Freshman Counselor . . . Future Teachers Club.
Little Sister: Lois Rouse. Emerson

ELIZABETH HALL
YADKINVILLE, N. C.

Major: *Music Education*
Minor: *Voice*

International Relations Club . . . French Club . . . Glee Club . . . Music Club . . . Future Teachers Club . . . Emerson Marshal, Treasurer, and Recording Secretary . . . Senior Marshal . . . Gold Book.
Little Sisters: Dorothy Bristor and B. J. Erlanson. Emerson

Senior Class

JOSEPHINE ROTHROCK HARTMAN
MOCKSVILLE, N. C.

Major: *Piano*

Minors: *Music Education and Organ*

Glee Club . . . Music Club . . . YWCA
Cabinet . . . Athletic Board . . . House
President Hudson . . . Junior Honor Society
. . . President Greensboro College Honor
Society . . . Fire Warden . . . Gold Book
. . . Freshman Counselor . . . Accompanist
. . . *Who's Who Among Students in
American Universities and Colleges.*

Little Sister: Helen Rhodes. *Emerson*



MARY GEORGIANNA HAYES
HICKORY, N. C.

Major: *English* Minor: *French*

President International Relations Club
. . . French Club . . . Future Teachers Club
. . . Freshman Counselor . . . Art Club
. . . Gold Book.

Little Sisters: Julia Dew and Nancy Peal.
Irving



RUTH OWEN HENDERSON
DURHAM, N. C.

Major: *Music Education*
Minor: *Piano*

Music Club . . . Dance Group . . . Glee
Club . . . French Club . . . Future Teachers
Club . . . Gold Book.

Little Sister: Joyce Pollock. *Emerson*

OLIVIA REBECCA HENDLEY
WALESBORO, N. C.

Major: *Sociology* Minor: *History*

Athletic Board . . . International Relations
Club . . . Speech Club . . . Future Teachers
Club . . . Religious Education Club . . .
Freshman Counselor . . . Student Council
Representative Senior Class . . . Hockey
and Speedball Varsityes.

Little Sister: Betty Jean Teal. *Emerson*

Greensboro



MARTHA ANNE HOLLOWELL
 AULANDER, N. C.
 Major: *Sociology* Minor: *English*
 International Relations Club . . . G. C. Daughters . . . U. D. C. . . . Religious Education Club . . . Future Teachers Club . . . Vice-President Junior Class . . . President Senior Class . . . Gold Book . . .
 Little Sister: Alice Wynn Saiter. Irving



MARY ANN HOUCK
 HICKORY, N. C.
 Major: *Primary Education*
 Minor: *English*
 Treasurer Freshman Class . . . Secretary Speech Club . . . Poetry Club . . . Art Club . . . Marb Club . . . Gold Book . . . Secretary and President U. D. C. . . Future Teachers Club . . . Irving Marshal and Recording Secretary . . . Business Staff Collegian . . . International Relations Club.
 Little Sister: Nancy Nowwood. Irving

SARAH MINISH INGRAM
 LENOIR, N. C.
 Major: *Piano* Minor: *Voice*
 Irving Accompanist . . . Glee Club . . . Sextet . . . YWCA Cabinet . . . Junior Honor Society . . . Secretary-Treasurer Greensboro College Honor Society . . . National Methodist Scholarship . . . Gold Book.
 Little Sister: Patsy Monroe. Irving

MARY EDITH JENNINGS
 ELIZABETH CITY, N. C.
 Major: *French* Minor: *Spanish*
 French Club . . . Religious Education Club.
 Little Sister: Mary Louise Mitchell. Irving

Senior Class

ADELAIDE JANE JOHNSON
WINSTON-SALEM, N. C.

Major: *Sociology* Minor: *English*

Junior Transfer from Pfeiffer Junior College (Editor *Pa Pa Ja* . . . Home Economics Club . . . Secretary Book Club . . . Reporter for Newspaper . . . Deadline Club . . . International Relations Club . . . Athletic Board . . . Religious Education Club . . . International Relations Club . . . Athletic Board . . . Volleyball Varsity.

Little Sisters: Pat Hardwick and Shirley Brown.



MARTHA LEE JOHNSON
ROANOKE RAPIDS, N. C.

Major: *Journalism* Minor: *Biology*

News Bureau . . . International Relations Club . . . Spanish Club . . . Future Teachers Club . . . Home President Hubert and Fitz . . . Business Manager *Handbook* . . . Assistant Editor *Collegian*.

Little Sisters: Marian Smith and Mary Fisher Finch.

MARY BETH JOYNER
SILER CITY, N. C.

Major: *Religious Education*
Minor: *Speech*

Irving Chaplan . . . Speech Club . . . Vice President P. K. Club . . . International Relations Club . . . French Club . . . Religious Education Club . . . Assistant Business Manager and President G. C. Players . . . Vice-President and President G. C. Daughters . . . President Junior Honor Society . . . Greensboro College Honor Society . . . Literary Staff *Collegian* . . . Assistant Literary Editor *Echo* . . . Gold Book . . . Highest Proficiency Scholarship Freshman and Sophomore Years . . . Junior and Senior Superlative "Most Intellectual" . . . Leroy Lee Smith Memorial Scholarship . . . Dr. T. C. Smith Scholarship . . . Freshman Counselor . . . YWCA Cabinet and Executive Committee . . . Council of N. C. Methodist Student Movement . . . Who's Who Among Students In American Universities and Colleges.

Little Sister: Laura Izu.



MARGARET ANNE KENDRICK
MOUNT HOLLY, N. C.

Majors: *Sociology* Minor: *English*

Orchestra . . . Spanish Club . . . Speech Club . . . International Relations Club . . . Religious Education Club . . . Treasurer Bit 'n' Spur . . . Literary Staff *Collegian* . . . Photographic Staff *Echo* . . . Junior Superlative "Most Popular."

Little Sisters: Kay Maxwell and Gary Ellis.

Emerson

Greensboro



HATTIE LEE LANE
STANTONSBURG, N. C.
 Major: *English*
 Minor: *Religious Education*
 G. C. Daughters . . . U. D. C. . . .
 International Relations Club . . . Religious
 Education Club . . . Speech Club . . .
 French Clubs . . . Future Teachers Club
 . . . College Choir . . . Gold Book.
 Little Sister: Rose Marsh. Irving



LEWIN LARUE LANGLEY
ELM CITY, N. C.
 Major: *Music Education*
 Minors: *Piano and Voice*
 Town Choir . . . Gold Book . . . French
 Club . . . Society . . . Secretary Future
 Teachers Club . . . Emerson Critic . . .
 Treasurer Glee Club.
 Little Sister: Sara Petrine Carlin. Emerson

ANNE MCCOLLUM
WENTWORTH, N. C.
 Major: *Home Economics*
 Minor: *Science*
 Emerson Attendant and Chaplain . . .
 Art Club . . . Home Economics Club . . .
 Speech Club . . . Future Teachers Club . . .
 Junior and Senior May Court Attendant
 . . . Senior Marshal.
 Little Sisters: Mavis Earwood and Iva
 Lee McGrady. Emerson

SARA LILLIAN MACDONALD
GREENSBORO, N. C.
 Major: *Religious Education*
 Minors: *Spanish and Speech*
 Spanish Club . . . Religious Education
 Club . . . Speech Club . . . Junior Honor
 Society . . . Greensboro College Honor
 Society . . . Gold Book . . . Freshman
 Counselor . . . Treasurer Town Students'
 Association.
 Little Sister: Martha Schenck. Emerson

Senior Class

RUBY ANN MANESS

ROXBORO, N. C.

Major: *Biology*

Minors: *Chemistry and Mathematics*

Reporter and Vice President Math Club
 P. K. Club . . . Secretary and President
 Athletic Association . . . Student Council
 Representative Sophomore Class . . . Junior
 and Senior Superlative "Most Athletic" . . .
 Hockey, Soccer, Softball, Speedball, and
 Volleyball Varsityes.

Little Sisters: Julia Dew and Nancy Peal.
Emerson



JANE TOLER MASSEY

GREENVILLE, N. C.

Major: *Sociology* Minor: *English*

Emerson Queen . . . International Re-
 lations Club . . . Spanish Club . . . "G"
 Club . . . Sophomore May Court Attendant
 . . . Junior Superlative "Most Attractive"
 . . . Junior Maid of Honor . . . May Queen
 . . . Gold Book . . . Freshman Counselor
 . . . Literary Staff Collegian . . . Assistant
 Business Manager Collegian . . . Glee Club.
 Little Sisters: Dorothy Bristor and B. I.
 Emerson



GERALDINE ESTELLE MILLER

SALISBURY, N. C.

Major: *Religious Education*

Minor: *Sociology*

P. K. Club . . . Spanish Club . . . YWCA
 Cabinet . . . President Religious Education
 Club . . . Secretary and Treasurer Inter-
 national Relations Club . . . Athletic Board
 . . . Fire Warden . . . Freshman Counselor
 . . . Junior Superlative "Best-all-round"
 . . . Volleyball Varsity . . . School Head of
 Tennis.

Little Sister: Cynthia Alwright. *Emerson*

JOYCE VANN MITCHELL

FUQUAY SPRINGS, N. C.

Major: *Spanish* Minor: *English*

Junior Transfer from Peace Junior College
 Dees Camera . . . Rho Delta Chi Society
 . . . Spanish Club . . . Art Club . . .
 International Relations Club . . . Spanish
 Club . . . Future Teachers Club.

Little Sisters: Jane Thorp and Eleanor Bell.
Irving

Green-boro



MARY SUSAN NORRIS
 CHARLOTTE, N. C.
 Major: Art Minor: Spanish
 Freshman May Court Attendant . . .
 Sophomore at Queens College (Art Club
 Spanish Club) . . . Math Club . . .
 Gold Book . . . Art Club . . . Spanish
 Club . . . Future Teachers Club.
 Little Sisters: Marilyn Burns and Yvonne
 Herndon.

MARGARET RACHEL PAGE
 RALEIGH, N. C.
 Major: Piano
 Minor: Music Education

Sophomore Transfer from Wake Forest
 . . . Irving Accompanist . . . Treasurer
 Junior Class . . . Treasurer and Business
 Manager Glee Club . . . Sextet . . . French
 Club . . . Music Club . . . Freshman
 Counselor . . . Future Teachers Club . . .
 Gold Book . . . YWCA Cabinet . . . Junior
 Honor Society . . . Greensboro College
 Honor Society . . . Second Vice-President
 Students' Association . . . Chairman Social
 Standards Committee . . . Literary Staff
 Echo . . . Who's Who Among Students
 In American Universities and Colleges.
 Little Sisters: Gene Lester and Mary Davis.
 Irving



DORIS ELAINE PRYCE
 ROCKINGHAM, N. C.
 Major: Home Economics
 Minor: General Science

International Relations Club . . . Secretary
 Home Economics Club . . . Religious Edu-
 cation Club . . . Vice-President Math . . .
 President Junior Class . . . Vice-President
 Future Teachers Club . . . Freshman Coun-
 selor . . . Gold Book.
 Little Sisters: Betty Cooper and Gwynelle
 Cavin.

NADA LOU PUGH
 ELIZABETH CITY, N. C.

Major: Art Minor: Math
 Sophomore Transfer from Meredith . . .
 President Math Club . . . Vice-President Art
 Club . . . Athletic Board . . . Art Editor
 Collegian . . . Art Editor Echo . . . Future
 Teachers Club . . . Gold Book . . . Soccer
 Varsity.
 Little Sisters: Helen Schwarzhard and
 Mary Lih Bush. Emerson

Senior Class

MARY MALISSA RATLIFF
MORVEN, N. C.

Major: *English* Minor: *Sociology*
 Speech Club . . . International Relations Club . . . Freshman Counselor . . . Gold Book . . . Literary Staff Collegian . . . Literary Editor Echo . . . Editor Handbook . . . Future Teachers Club . . . Junior Honor Society . . . Vice-President Greensboro College Honor Society . . . Who's Who Among Students in American Universities and Colleges.
 Little Sister: Anne Johnson. *Emerson*



MABEL LOIS ROBERTS
REIDSVILLE, N. C.

Major: *Music Education*
 Minor: *Piano*
 International Relations Club . . . Future Teachers Club . . . Music Club . . . Gold Book . . . Literary Staff Collegian . . . Senior Marshal.
 Little Sister: Emily Angel. *Emerson*

BETTY ANN ROLLINS
ROCKINGHAM, N. C.

Majors: *English and General Science*
 Irving Marshal and Corresponding Secretary . . . German Club . . . International Relations Club . . . Future Teachers Club . . . Business Staff Echo . . . Collegian Typist . . . Math Club.
 Little Sisters: Martha Gasque and Peggy McNair. *Irving*



TOBY GILDA RONES
AUGUSTA, GA.

Major: *Music Education*
 Minor: *Piano*
 Emerson Marshal, Accompanist, and Treasurer . . . Spanish Club . . . G. C. Orchestra . . . Music Club . . . Executive Committee Future Teachers Club . . . Gold Book.
 Little Sisters: Mary Jane Castevens. *Emerson*

Greensboro



REBECCA ELIZABETH ROYALL

HAMLET, N. C.

Major: *Home Economics*

Minor: *Science*

Irving Marshal, Critic, and Vice-President
 Club . . . Home Economics Club . . . Speech
 Club . . . Secretary G. C. Players . . .
 French Club . . . Future Teachers Club
 . . . Chief Senior Marshal . . . Gold Book
 . . . House President Home Management
 House . . . Council Representative Junior
 Class . . . Freshman and Senior May Court
 Attendant . . . Literary Staff Collegian . . .
 Literary Staff Echo . . . Business Staff Echo.
Little Sister: Audrey Jacobs. *Irving*



JESSIE ALMA RUDISILL

LINCOLNTON, N. C.

Major: *Primary Education*

Minor: *English*

International Relations Club . . . Poetry
 Club . . . Glee Club . . . Double Sextet
 . . . Freshman Counselor . . . Typist for
 Collegian . . . Business Staff Echo . . .
 Executive Committee of YWCA Cabinet
 College Choir . . . Secretary N. C.
 Future Teachers Association.
Little Sisters: Peggy Bailey and Dixie Huske.
Emerson

BETTY SHANKLE

ANSONVILLE, N. C.

Major: *Home Economics*

Minor: *General Science*

Junior Transfer from Pfeiffer Junior Col
 lege (Home Economics Club . . . Internation
 al Relations Club . . . PMMC Science Club)
 . . . Home Economics Club . . . Future
 Teachers Club.
Little Sisters: Marilyn Allred and Peggy
 Hurley. *Emerson*

MARIAN MARGARET SOCKWELL

GIBSONVILLE, N. C.

Majors: *A.B. in Music and Religious
 Education*

Religious Education Club . . . President
 German Club . . . International Relations
 Club . . . Glee Club . . . Music Club . . .
 Future Teachers Club . . . Gold Book . . .
Little Sisters: Marilyn Allred and Peggy
 Hurley. *Emerson*

Senior Class

OLIVE RUTH SOCKWELL
GIBSONVILLE, N. C.

Major: *Home Economics*
Minor: *General Science*

International Relations Club . . . German Club . . . Future Teachers Club . . . Treasurer Home Economics Club . . . Gold Book.
Little Sister: Ruby Aiken. *Emerson*



JEANNE AXTELL STURGEON
SUFFOLK, VA.

Major: *Sociology* Minor: *English*

Home Economics Club . . . French Club . . . International Relations Club . . . Future Teachers Club . . . Gold Book.
Little Sister: Elizabeth Eberwine. *Irving*

DOROTHY GLENN SUGG
GRIFTON, N. C.

Major: *Journalism*
Minor: *Sociology*

International Relations Club . . . Senior Marshal . . . Gold Book . . . Future Teachers Club . . . Bit 'n' Spur . . . Senior Life Saving . . . Exchange and Photographic Editor *Collegian* . . . Advertising and Business Manager *Collegian* . . . News Bureau . . . Athletic Board . . . House President 116 . . . "C" Club . . . Basketball, Softball, and Volleyball Varsityes.
Little Sister: Janet Highhill. *Irving*



ELLEN JUNE SULLIVAN
GREENSBORO, N. C.

Major: *Religious Education*
Minor: *Sociology*

Religious Education Club . . . Speech Club . . . Treasurer and Vice President Town Students' Association . . . Secretary Junior Class . . . Gold Book . . . Freshman Counselor.
Little Sister: Mary Ellen Matthews. *Irving*

Continued



BETTY HAZEL SWOFFORD

WALKERTOWN, N. C.

Major: Music Education
Minor: Piano

Emerson Accompanist . . . Music Club
. . . French Club . . . Glee Club Accompanist . . . Secret Accompanist . . . Vice-President and Secretary P. K. Club . . . Gold Book.
Little Sisters: Mavis Earwood and Iva Lee McGady. Emerson

THELMA MILDRED TANENBAUM
SPARTANBURG, S. C.

Major: Journalism Minor: Art

Emerson Censor and Vice-President . . . House President Main . . . Art Club . . . French Club . . . President Sophomore Class . . . Reporter, Managing Editor, and Editor Collegian . . . News Bureau . . . Gold Book . . . Who's Who Among Students In American Universities and Colleges.
Little Sisters: Helen Schwartzbard and Mary Lib Bush. Emerson



MARGARET RUTH TAYLOR

ASHEVILLE, N. C.

Major: Religious Education
Minor: Speech

Treasurer, Vice-President, and President YWCA . . . Speech Club . . . Religious Education Club . . . Glee Club . . . Gold Book . . . Freshman Counselor . . . Secretary Junior Honor Society . . . Greensboro College Honor Society . . . Balmainton Champion . . . Senior Superlative "Most Likely to Succeed" . . . Who's Who Among Students In American Universities and Colleges.
Little Sister: Lou Lane. Emerson

MARJALENE MIDGETT THOMAS

MANTEO, N. C.

Major: Voice
Minor: Music Education

Emerson Recording Secretary and Vice-President . . . Glee Club . . . Sextet . . . Music Club . . . Secretary German Club . . . Secretary and Cabinet YWCA . . . Gold Book . . . Home President 107 and Hudson . . . Basketball Varsity . . . Who's Who Among Students In American Universities and Colleges.
Little Sister: Charlotte Hall. Emerson

Laura Frances Tilson
Lincolnton, N. C.

Major: *Primary Education*
Minor: *English*

Glee Club . . . Spanish Club . . . Math Club . . . Irving Marshal . . . International Relations Club . . . Executive Committee Future Teachers Club . . . Typist for Collegian . . . Religious Education Club . . . Gold Book.
Little Sisters: Marilyn Burns and Yvonne Herndon.



Virginia Carter Tucker
Greensboro, N. C.

Major: *Religious Education*
Minor: *History*

Art Club . . . Religious Education Club . . . Future Teachers Club . . . Gold Book.
Little Sisters: Mary Frances Foy and Betty Jean Teal. *Emerson*

Della Geneva Umstead
Durham, N. C.

Major: *Art* Minor: *English*

President Emerson Literary Society . . . "G" Club . . . Art Club . . . Home Economics Club . . . Future Teachers Club . . . Typist for Collegian . . . Speechball Varsity.
Little Sister: Alice Gaul. *Emerson*



Mary Allen Warren
Garland, N. C.

Major: *Primary Education*
Minor: *English*

Irving Chaplain . . . House President Hudson . . . Second Vice-President and First Vice-President Students' Association . . . Chairman Freshman Counselors . . . Typist for Collegian . . . International Relations Club . . . Art Club . . . Speech Club . . . Future Teachers Club . . . Gold Book.
Little Sisters: Maxine Banton and Mary Lou Weatherly. *Irving*



CAROL WHITTAKER
HAMDEN, CONN.

Major: *Biology* Minor: *Sociology*

Junior Transfer from Pfeiffer Junior College (Treasurer PBMC Science Club . . . Internationally Relations Club . . . Girls' Choir . . . Secretary and Treasurer Merrow Hall . . . Woman's Athletic Association Club, YWCA) . . . Internationally Relations Club.

Little Sisters: Gaynelle Gwyn and Betty Cuiper. *Emerson*

IDA CAMERON WILLCOX
CARTHAGE, N. C.

Major: *Speech* Minor: *English*

Emerson Marshal . . . Secretary and Vice-President Speech Club . . . Secretary, C. C. Players . . . House President Man . . . Corresponding Secretary and President Students' Association . . . Gold Book . . . Freshman Counselor . . . Who's Who Among Students In American Universities and Colleges.

Little Sisters: Gary Ellis and Kay Maxwell. *Emerson*

ANNIE VIRGINIA WRIGHT
WADESBORO, N. C.

Major: *Home Economics*
Minor: *Science*

Scrapbook Keeper, Vice-President, and President Home Economics Club . . . Gold Book . . . Future Teachers' Club . . . Secretary N. C. Home Economics Workshop . . . Senior Marshal.

Little Sisters: Shirley Brown and Pat Hardwick. *Emerson*

MARTHA SHERRILL YOUNG
GREENSBORO, N. C.

Major: *Speech* Minor: *French*

President Speech Club . . . Business Manager G. C. Players . . . Glee Club . . . Secret . . . Gold Book.

Little Sisters: Ann Guphill. *Irving*

Miss Ruth Taylor

*Most Likely to Succeed . . .
aware, poised—a gentle way*



Miss Jean Coble

*Most Original . . .
demure, creative—a radiant brunette*

Miss Ella Earley

*Best All Round . . .
spontaneous, vivacious—a gifted voice*





Miss Ruby Maness

Most Athletic . . .
steady, dependable—a sharp tennis star

Miss Mary Beth Joyner

Most Intellectual . . .
modest, reliable—mental alertness



Miss Patricia Ferguson

Most Popular . . .
sympathetic, enthusiastic—ever faithful to the Echo





Scene II . . . Junior

The curtain rises on Act I, Scene II. Time: the same. Place: the long-coveted Hudson dormitory, freshly painted in pale colors, shining from top to bottom.

The furniture: very similar to that used in scene I.

The atmosphere of this stage is filled with a joy of living together again as one big happy family under the same roof. There is a thought and sorrow of missing friends who did not return.

Our characters are proud to have become "big sisters"—happy to be able to extend a loving and guiding hand.

There has been a change in rules, and with that change comes a new joy of eleven-thirty's for the Juniors.

The big event of the year, a first Junior-Senior in the parlor, is carried out in glorious splendor, soft lights, music, and a special date.

All during the year the Juniors live with one idea in mind—the anticipation of coming back in '48 as dignified Seniors, and living up to the role.

Class . . . 1948

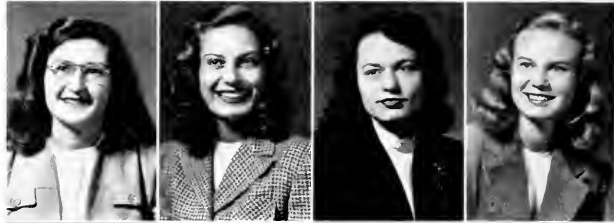


officers

DOROTHY STEEDMANPresident
MARION SMITHVice-President
ETHEL WILLIAMSSecretary
PEG HARTSELLTreasurer
LIB LOUGEECouncil Representative

Junior Class

RUBY AIKEN Connelly Springs
 SHIRLEY ALLEN Fayetteville
 CAROLYN BALLARD Greensboro
 LUCY BANE Belmont



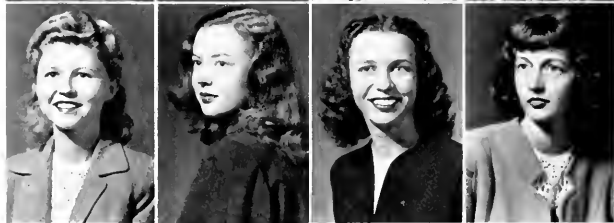
ANNE BIZZELL Kinston
 JEAN BRADLEY Whitakers
 TEMPE BRADLEY Henderson
 BARBARA BOBEN Greensboro



CELIA BROWN Troy
 HELEN ELIZABETH BURROWS, Roanoke, Va.
 NANCY CASEY Mount Olive
 BEVERLY CAUSEY Greensboro



MOLLY JEAN CHERRY Durham
 BETTY ANN CLARK Fayetteville
 MARY CLEGG Greensboro
 JOAN COOK Canton



BILLY COOPER Statesville
 NORMA COX Jonesboro
 COLBY CRITCHER Burlington
 JILL DELLINGER Lincolnton





MARY ELLA ETHERIDGEWhitakers
 VETA FOOTEAsheville
 MARIAN FOUSTMebane
 JANE GRAVES Charlotte

ELLEN HARDINSparta
 AGNES HARBRELL Greensboro
 LOREE HARBILL Cliffside
 RUTH HARBILL Rutherfordton

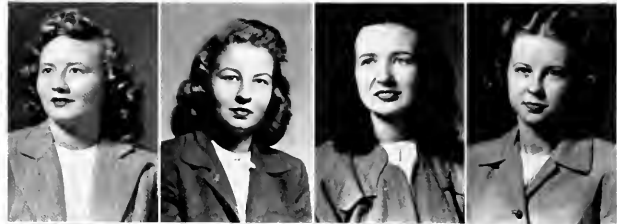
PEG HARTSELL Charlotte
 MILDRED HAYWORTH Greensboro
 JANE HERRINGSnow Hill
 MARTHA L. HOFENER Salisbury

MARGIE HUGHES Greensboro
 MARY CHARLOTTE HUNT, Pleasant Garden
 MARY KATHERINE INGLESalisbury
 RUTH JONESLakeland, Fla.

COLLEEN LITTLEJefferson
 ELIZABETH LOUGEEDurham
 BETTY JO LOWDERRutherford College
 EULALAH LOWDERAbemarle

Junior Class

MOZELLE McCORMICKMt. Airy
 PEGGY McMURRAY Greensboro
 BEVERLY McNAIRY Greensboro
 ANN MARTINMt. Olive



BARBEE MEWSHAWNorfolk, Va.
 ANNE ODOMRed Springs
 SUE PAGEAsheboro
 MARGARET PARKER Greensboro



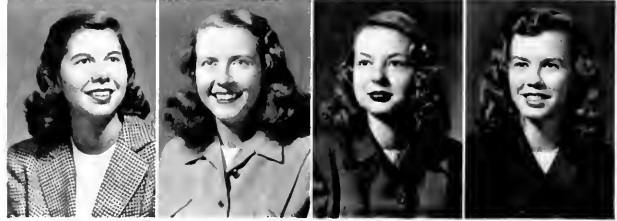
PEGGY PENNINGTONMcBee, S. C.
 MARTHA JOAN PLINTWinston-Salem
 RITA PONSValdese
 ANNIE LEE POWELLGreenville



BETTY SUE QUINTONLincolnton
 REBECCA RAPERAsheboro
 IRIS BICHClinton
 BESSY ANN ROBARDSHenderson



MARLHA ANNE ROGERS Greensboro
 RAMONA ROUSEWalstonburg
 CAROLINA ROZZILLIWinston-Salem
 JOSEPHINE STARSGoldsboro



Class . . . 1948



MARTHA SCHENCK Greensboro
 BETTY JANE SISK Asheville
 MARION SMITH Statesville
 TRESCA SPAIN Durham



NANCY JEAN STALLINGS Erwin
 DOROTHY STEEDMAN Asheville
 JANE STEPHENSON Carysburg
 DORIS STOUT Siler City



MARGIE STOLTZ Rural Hall
 ALICE W. SUITER Rocky Mount
 MARY ALLEN TATUM Norfolk, Va.
 ELOISE TAYLOR Conway



SARAH TAYLOR Richlands
 MARGARET TUCKER Wadesboro
 MARY JO USHER Greensboro
 DORIS VEREEN Greensboro
 ANN WATSON Ahsokic



HILDA WEST Garland
 RACHEL WHITENER Stanley
 ETHEL WILLIAMS Greensboro
 MARTHA WILLIAMS Blackstone, Va.
 DOROTHY YARBROUGH Salisbury

Miss Jill Dellinger
Most Attractive



Miss "Lib" Lougee
Best All Round



Miss "Chickie" Clegg
Most Original





Miss Margaret Tucker
Most Athletic

Miss "Peg" Hartsell
Most Intellectual



Miss Barbee Mewshaw
Most Popular



Scene III . . . Sophomore

The curtain rises on Act I, Scene III. Our Sophomores appear, living in Main and the houses.

There is a high and mighty feeling—for twenty-four hours, at least, when the Sophs reign over the Freshmen on Rat Day!

Light cuts and no closed study certainly have advantages.

An added feeling of culture and importance comes with the Sophomore tests.

Graduation holds a treat in the form of a trip to the daisy fields at five o'clock in the morning—knee-deep in dew—and then the pride of making the traditional daisy chain. Last come tears and fond embraces over farewells to the beloved "big Sis".

Class . . . 1948



officers

- MARY LIE BUSH *President*
KAY MAXWELL *Vice-President*
ANN GUPILLI *Treasurer*
MARY ELLEN MATTHEWS *Secretary*
GAYNELLE GWYN *Council Representative*

Sophomore

HAZELANNE ADAMS Carthage
 CYNTHIA ALBRIGHT Greensboro
 MARILYN ALBRED Jacksonville, Fla.
 EMILY ANGELL Winston-Salem
 PEGGY BAILEY Walnut Cove

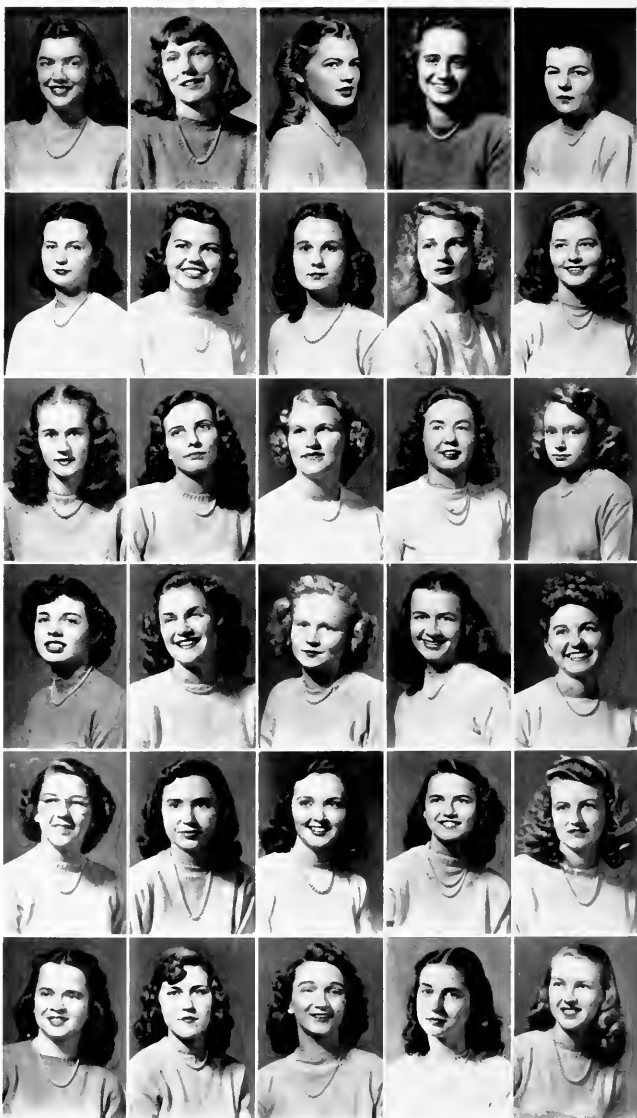
SHIRLEY BROWN Wilmington
 MARILYN BURNS Sanford
 MARY ELIZABETH BUSH Lenoir
 SARA PERINE CARLINE Alexandria, Va.
 MARY JANE CASSTEVENS Greensboro

MARY VIOLA DAVIS Graham
 VIRGINIA DEFORD Norfolk, Va.
 JULIA DEW Wilson
 MAVIS EARWOOD Biltmore
 ELIZABETH EBERWINE Suffolk, Va.

EDITH GARY ELLIS Warrenton
 BARBARA JEAN ERLANDSON Raleigh
 MARY FISHER FINCH Zebulon
 MARY FRANCES FOY Scotts Hill
 ALICE FUFRELL Winston-Salem

ALICE GAUL Philadelphia, Pa.
 MARTHA GASQUE Rockingham
 SARAH GOBBEL Suffolk, Va.
 ANN GUPTELL Newington, Conn.
 GAYNELL GWYN Aberdeen

CHARLOTTE HALL Yadkinville
 PATRICIA HARDWICK Wrightsville Beach
 YVONNE HIRSDON Durham
 JANET HIGHILL Waxhaw
 PEGGY HURLEY Troy



Class . . . 1948



DIXIE HUSKE Fayetteville
 ANNA JANE INGRAM Wadesboro
 AUDREY JACOBS Forest Hills, N. Y.
 FLORENCE ANN JOHNSON Suffolk, Va.
 ELSIE JORDAN Winton



MARY KINDT Ocala, Fla.
 LOUISA LANE Stantonsburg
 GENE LESTER Wilson
 MARTHA McAFFERY St. Petersburg, Fla.
 IVA LEE McGRADY Durham



ROSE MARSH Wadesboro
 MARY ELLEN MATTHEWS Greensboro
 KATHERINE MAXWELL, Merchantville, N. J.
 MARY L. MITCHELL Washington, D. C.
 PATSY MUNROE Asheville



NANCY NORWOOD Charlotte
 NANCY PEAL Chadbourne
 LOIS ROUSE New Bern
 HELEN SCHWARTZBARD
 Highland Park, N. J.
 MARIE SHENG Shanghai, China



ANNE SIMPSON Salisbury
 ERNESTINE SMITH Roanoke Rapids
 MABEL SMITH Jamestown
 ANNE TAYLOR Blanch
 BETTY JEAN TEAL Wadesboro



LAURA VOGLER Charlotte
 PEGGY WHEELER Walnut Cove
 GRETCHEN WHITE Hampton, Va.
 EDNA WHITEHEAD Scotland Neck
 MARGARET WIGGINS Norfolk, Va.
 KATHERINE YARBOROUGH Fayetteville

Scene IV . . . Freshman

The final curtain of Act I, Scene IV is just going up. Our actresses for this scene are scattered throughout Main Dormitory. A grown-up feeling of at last having come to college is quite evident in this scene.

The first week is filled with unexpected thrills and rushing, and comes to a close with a final decision for "the" society.

Nothing can ever replace the growing love one feels after having a "Big Sister".

Then comes Rat Day with our Freshmen on their hands and knees in front of the mighty Sophomores.

There is a new joy at the end of the first six weeks—a trip home again at last.

Much excitement fills the air after a long three weeks Christmas vacation, and there's so much to tell dear friends missed during that time.

EXAMS!—very unlike anything experienced in the past.

With a full life and a future ahead for the freshmen, they have hope of someday being seniors.

Class . . .1948



officers

- DIXIE LEE FISHER *President*
- FAY MASSENGILL *Vice-President*
- FRANCES SUE MARQUIS *Secretary*
- DOROTHY SAVAGE *Treasurer*
- BETTY LOU O'MASTER *Council Representative*

MARY ELIZABETH ALLIGOOD Durham
 FRANCES ROSEMOND AMAN Greenville
 DOROTHY ANGLIN Winston-Salem
 HAZEL VIRGINIA ARMSTRONG Mount Gilead
 ANN ELLIOTT ASHMORE Yanceyville



MARINA ATHENAELOS Kannapolis
 JOAN BROOKS AUTRY Fayetteville
 PEGGY FLOWE BEARD Fayetteville
 BARBARA BELCH Lincolnton
 FRANCES JEAN BIZZELL Kinston



RUTH M. BLALOCK Oxford
 MARY ALICE BROGAN Wilmington, Del.
 JOE ANNE BROWN Enoree, S. C.
 MARIAN BROWN Greenville
 EMMA DEAN CALFEE Belhaven



PATSY THOMAS CAPPS Arcola
 JEAN COBLE New Bern
 VIRGINIA ROSE COOKSEY Roanoke Rapids
 AUDREY CORWIN Towaco, N. J.
 AGNES CRAWFORD Wadesboro



DOROTHY JEAN CURTIS Asheville
 BETTY DAVIS Raeford
 KATHLEEN DAVIS Weldon
 SHIRLEY DAVIS Graham
 JEAN DEW Wilson



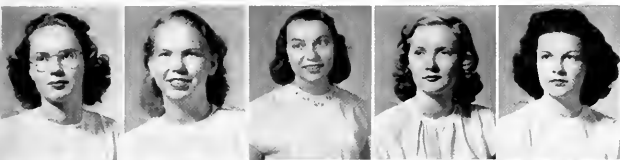
FRANCES DIXON Walstonburg
 PATRICIA DIXON Laurinburg
 BETTY SUE DOLES Elm City
 BETTY ANN DOVLER Asheville
 JOYCE DUKI Greenville



BETH ELLEN EDWARDS Sunbury
 CELIA ANN EDWARDS Asheville
 DORLA DEAN EVANS Kernersville
 MARGARET E. FIELDS Walstonburg
 BARBARA ELIZABETH FICHT Norfolk, Va.



Class ... 1948



DIXIE LEE FISHERFairmont
 EUNICE BLAIR FLOYDRaleigh
 SUSAN FULKPilot Mt.
 BETTY SUE FULLERLiberty
 NANCY GARDNERAsheville



JACQUELYN GARNERAsheboro
 SARAH CAROLYN GABRETTBurlington
 JANICE MARIE GIBSONGibson
 NANCY GREENEThomasville
 FRANCES ELIZABETH GRIFFITHHigh Point



PATRICIA ANN GROSSBrooklyn, N. Y.
 RUBY HALLThomasville
 FLORENCE EDWINA HALLEMANGoldsboro
 SONIA HAMBURGHighland Park, N. J.
 PEGGY HAMMONDSpartanburg, S. C.



BURDETTE CARLTON HARDEEDurham
 BETSY HARDINHigh Point
 ETTA LOUISE HARRISWarrenton
 RUTH EDWIN HARTNorfolk, Va.
 PATRICIA ANN HARTERSummerville, S. C.



JEANNIE HARTMANLincolnton
 ELSIE LAVERA HARTNETTCharlotte
 VIRGINIA HATCHWilmington
 BECKY HAYESNorth Wilkesboro
 KATHERINE HEGEWinston-Salem



LUCY PARKE HENLEYFairfield, Va.
 JOYCE HERNDONDurham
 BETTY SUE HICKMAN...West Palm Beach, Fla.
 HELEN B. HILLKinston
 JEANNETTE HINNANTWilson



BECKY LOUISE HOLCOMBGrifton
 RUTH MARIE HOOKERKinston
 PATSY HORTONHigh Point
 BARBARA JEAN HOVISGreensboro
 MARY HESTER HUNTDurham

Freshman

CAROLYN JAMESLincolnton
 MARY LOUISE JEFFREYSSelma
 IMOGENE JOHNSONStokesdale
 MELVARENE JOHNSONDunn
 IDA RUTH JONESHigh Point

BETTY LAMBETHBrown Summit
 MOLLY HELEN LAMBETHThomasville
 JOAN CAROL LANDAUERNorfolk, Va.
 JANE SPIVEY LASSITERWeldon
 MOLLY GLENWOOD LEGGETTKinston

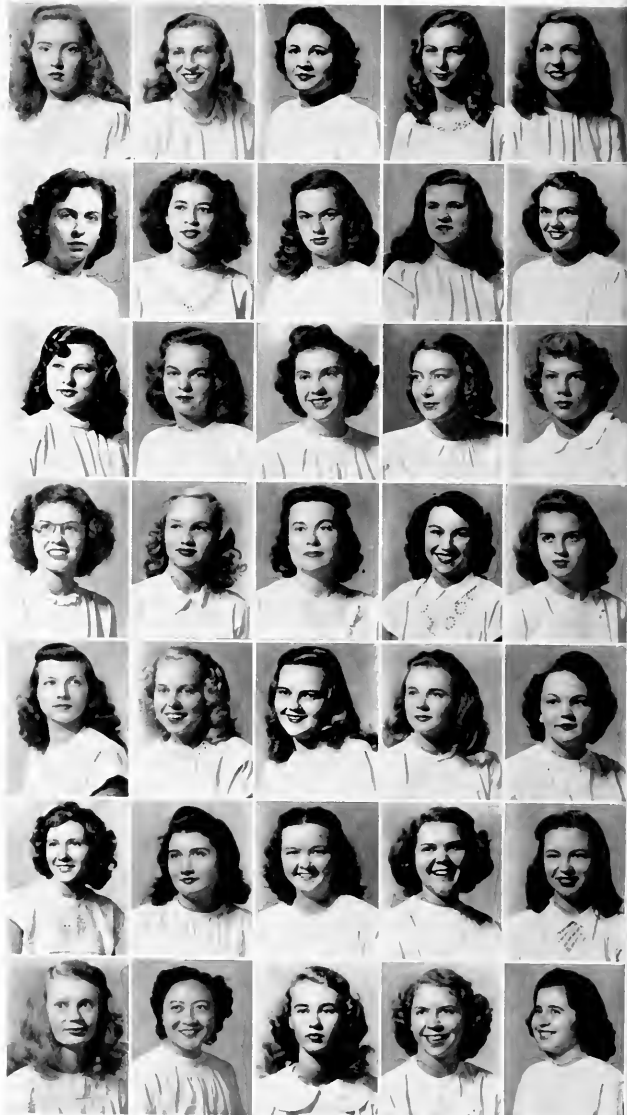
VIRGINIA DARE LEWISKinston
 ANN LINDSEYWadesboro
 BETTY LEE MCCORLEMt. Holly
 JEAN MCGOWANGreenville
 JOYCE McLEANAberdeen

MARY McLENDONLexington
 BETTY WARD MANESSRaleigh
 FRANCES SUE MARQUISGreensboro
 FAYE MASSENGILLKinston
 MILDRED MELTONBrevard

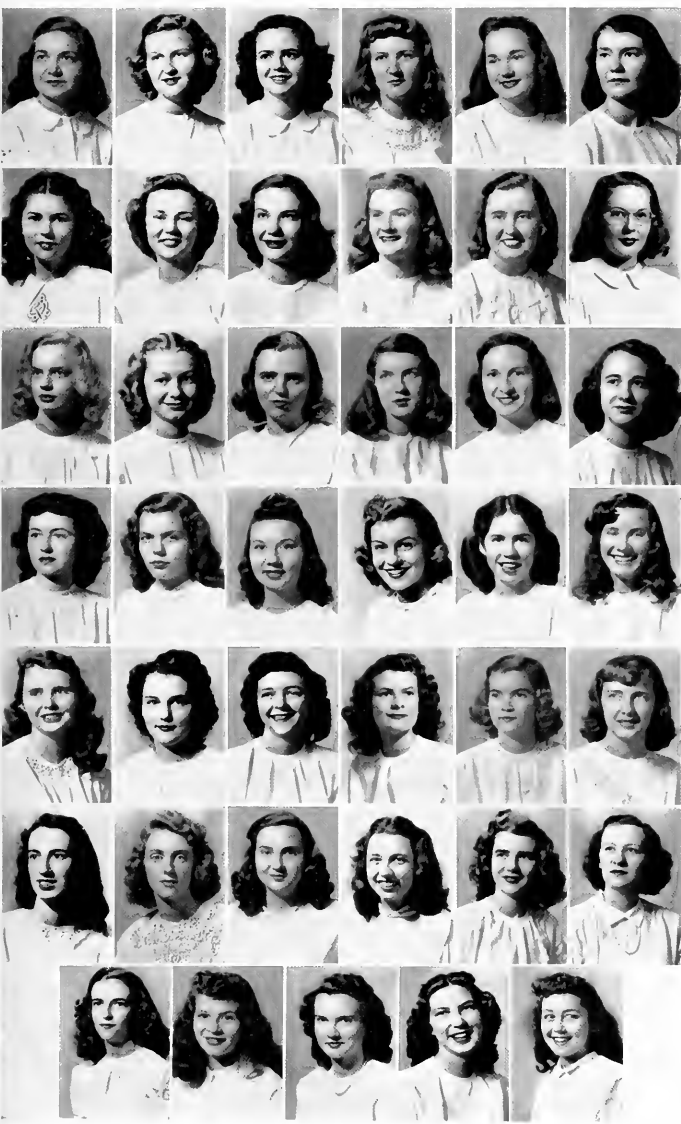
JACQUELINE LEE MERRITTChapel Hill
 KITTY MILLERSalisbury
 SARAH MOGERPinebluff
 BETTIE LOU MOOREMount Holly
 CAROLYN ANN MOORENorth Wilkesboro

MOXIE LEE MOOREDurham
 ROBERTA ANNE MOOREReidsville
 THELMA LOUISE MOORECharlotte
 FRANNINE MOORMANRoanoke, Va.
 ALICE MARIE MORGANAsheville

MARSHA GRACE MORRISForest City
 NYI TSUNG TSUShanghai, China
 ANN OARLEYGreenville
 BETTY LOU O'MASTERWilmington
 MARY ELIZABETH PATTERSONFayetteville



Class . . . 1948



JEAN PAYNE Winston Salem
 DE NEALE PEELER Lexington
 JEAN WILMONT PENNY Raleigh
 MARGARET LOUISE PHILLIPS West Jefferson
 BILLEE PRATHER Mt. Airy
 LENORA CAMILLE PRICE Onley, Va.

PEGGY REID Greenville
 EMILY ANN RHODES Washington
 JOELLA RICHARDSON Fremont
 DONNA JEAN RING Lexington
 VERNIDA GREEN ROBERSON Robersonville
 JULIA ANN ROBINSON Reidsville

BETTY JEANNE ROGERS Greenville, S. C.
 ROSA LEE SATTERWHITE Cleveland
 DOROTHY SAVAGE Greenville
 LETTIE L. SHILEK Mocksville
 MARY JANE SHELTON Yanceyville
 BETTY JEAN SHIELDS High Point

DOROTHY J. SHIELDS Fort Wayne, Indiana
 MARILYN SHUFORD Lincolnton
 ELEANOR SIMMS Blanton, Alabama
 ETTA JANE SMITH Ashboro
 IRIS ELAINE SMITH Holdcroft, Va.
 PHYLLIS EILEEN SMITH Wilmington

JO ANNE SNEAD Wilmington
 MARTHA ANN STARKE Roanoke Rapids
 FRANCES V. STARNES Mt. Gilead
 ILLA ANN STEADMAN Rockingham
 MARVEL STOKES Stokes
 MARGARET SUGG Gritton

NANCY P. SUGG Princeton
 DORIS TALBERT Winston Salem
 NANCY SUE THOMPSON Pittsboro
 JEAN TYREE Rocky Mount
 LOUISE WADE Dunn
 SALLY MAY WALKER Long Island, N. Y.

CAROLYN WARD Walkertown
 FRANCES WARREN Burlington
 CAROLYN WILKINSON Greensboro
 ELLIS HENRY WILLIAMS Wallace
 NINA WILSON Burlington



ACT II...



ACTIVITIES

Little themes—little scenes—parts of a powerful whole . . . busy rushed moments . . . restful fellowship . . . the rising and falling inflections of a drama complete. . .

Students' Association

Came the first Saturday night of the new school year, and seniors proudly announced to their dates that they could now stay out until 11:30! This was but one of the accomplishments that the Student Council carried out in connection with their program of democratic government.

Cam, aided by able officers, presided at the long table and administered justice in an understanding but firm manner. The students realized more than ever before that their council was working for them. Closer harmony between students and faculty—a goal always to be desired—was achieved by an enthusiastic and always alert group of representatives.



CAMERON WILLCOX



STUDENT COUNCIL

- CAMERON WILLCOX, *President*
- MARY ALLEN WARREN, *Vice President*
- RACHEL PAGE, *Second Vice President*
- AGNES HARBELL, *Recording Secretary*
- JILL DELLINGER, *Corresponding Secretary*
- GAYNELLE GWYN, *Treasurer*
- MARY CLEGG, *Town Students' Representative*
- MARSHA ELL JOHNSON, *House President*
- MARGARET TUCKER, *House President*
- KAY MAXWELL, *House President*
- JUANITTE VOGLER, *House President*
- MOLLY DI FORD, *House President*
- HELEN SCHWARZBARD, *House President*
- ANNE JOHNSON, *House President*





RUTH TAYLOR

Y. W. C. A.

With a zeal born of the realization of their tasks, the Y. W. C. A. cabinet devoted their energies to creating and maintaining a finer spirit of Christian fellowship on campus. Without Ruth Taylor as capable president, the plans so carefully and enthusiastically laid could not have been carried out so successfully.

More than ever before the "Y" cabinet strove to enroll every member of the student body and worked always to increase the efficiency of the workers. The Freshman party, Fellowships, the Thanksgiving basket, Religious Emphasis Week, "Y" Retreat—these merely suggest a few of the year's activities.

"A lighted candle, whose rays are as challenges to those who would seek His way."



OFFICERS

RUTH TAYLOR	President
BARBEE MEWSHAW	Vice-President
DOROTHY STEEDMAN	Secretary
SHIRLEY BROWN	Treasurer

THE CABINET

MARY BETH JOYNER	BETSY ANN ROBARDS	CAROLINE GATES
ALICE GAUL	MARGARET TUCKER	JUNIE JONES
MARY KINDT	JEAN COBLE	SARAH INGRAM
MYRTLE BREWER	CELIA ANNE EDWARDS	RACHEL PAGE
MARJALENE MIDGETT	JEANNIE HARTMAN	MARGIE STOLTZ
EDLA EARLEY	HELEN BURROWS	PAT FERGUSON
ROSE MARSH	MARY CLEGG	NANCY GARDNER
PEG HARTSELL	AGNES HARRELL	NANCY SUE THOMPSON
JERRY MILLER	MARGARET HUGHES	BETSY HARDIN
EVELYN FIELDS	JOSEPHINE HARTMAN	THELMA MOORE
ANN McAFFRY		FRANCES SUE MARQUIS



EDMISTON, STINSON, SMITH, TILLEY



MISS CAMBRON WILLCOX



MISS RUTH TAYLOR



MRS. MARJALENE THOMAS



MISS JOSEPHINE HARTMAN

WHO'S WHO 1948

These girls have been chosen for "Who's Who Among Students In American Universities and Colleges" to represent the highest standards of leadership, scholarship, and character of the class of 1948.

"Cam", vivacious student president, headed for stardom
"Ruthie", conscientious "Y" president, most likely to succeed
Rachel, gracious campus leader, accomplished pianist
Mary Beth, versatile office holder, everybody's friend
"Midge", dynamic promoter, cheery personality
Mary, diligent *Handbook* editor, earnest
"Tee", progressive *Collegian* editor, keen mind
"Jo", industrious honor society president, friendly

MISS RACHEL PAGE

MISS MARY BETH JOYNER

MISS THELMA TANENBAUM

MISS MARY RATLIFF



The Greensboro College Honor Society



Seated:

JOYNER
PAGE
RATLIFF
HARTMAN
BOBBITT
MACDONALD

Standing:

TAYLOR
INGRAM



Seated:

DELLINGER
HARTSELL
STEDMAN
HOFFNER

Standing:

SMITH

The Honor Society has as its aim to encourage scholarship, to improve character and attitudes in general, and to further in every way possible the ideals and worthy traditions of the college it represents.

The main function of this organization is the tapping of new members in November, which is followed by a society banquet.

In order to be eligible for membership one must be of junior or senior rank with an average of 90, be recommended for membership by the Honors Committee, be approved by the faculty as to character and attitudes, and be unanimously approved by the membership of the society.

Officers of the society: Jo Hartman, president; Mary Ratliff, vice-president; and Sarah Ingram, secretary and treasurer.

TOWN STUDENTS ASSOCIATION

The Town Students' Lounge, one of the most lived-in spots on campus, is always a beehive of activity. Here gather the versatile and vivacious town girls for their numerous between-class sessions. There's always talk of parties, week-end dates, and new "flames". From time to time there are more serious "bull-sessions" concerning such subjects as religion, philosophy, and the fine arts.

The town girls not only participate in all the activities on campus, but maintain their own club. Included in their full program for the year are the annual Valentine Dance, the banquet, tea for the new students, and numerous other projects and activities.

Whether studying or playing, the town girls radiate a warm and friendly atmosphere. The "Welcome" on the mat is not only for Town Students, but for any campus cuties who would like to drop by.

Officers of the organization: Evelyn Rose Fields, president; Ethel Williams, vice-president; Mary Ellen Matthews, secretary; Sara Macdonald, treasurer; Mary Clegg, council representative.

Members: Cynthia Albright, Barbara Boren, Dorothy Brister, Beverly Causey, Mary Clegg, Evelyn Fields, Barbara Hovis, Margaret Hughes, Mildred Hayworth, Imogene Johnson, Louise Lucas, Sarah MacDonald, Peggy McMurray, Frances Sue Marquis, Margaret Parker, Peggy Perry, Martha Jane Rogers, Martha Schenck, June Sullivan, Virginia Tucker, Alice Varner, Jean Bradley, Ethel Williams, Janice Whitley, Carolyn Wilkinson, Marjlene Thomàs.





SUGG, BURDELL, McCOLLUM, ROBERTS, DYLA, CHIEF ROYALL, BOWMAN,
BUTLER, WRIGHT, RONES, HALL.

SENIOR MARSHALS

Who grace the doors of Odell with bundles of programs in their arms at Chapel time? Who direct each guest to the very best seat for the plays, the commencement program, and special musical concerts? The answer . . . why, the Senior Marshals, of course, under the direction of Chief Marshal Becky Royall.

They are the diplomats of the doors.

EDITORIAL STAFF

- PAT FERGUSON
Editor
- MARY RATLIFF
Literary Editor
- MARY BETH JOYNER
Assistant Literary Editor
- BECKY BOYALL
College Editor
- EVELYN FILDS
College Editor
- MOLLY JEAN CHERRY
Club Editor
- DOROTHY STEEDMAN
Club Editor
- BETH DAVIS
Sports Editor
- ANN GUTHRIE
Sports Editor
- ANN KENDRICK
Photographic Editor
- SIPLEY BROWN
Photographic Editor
- RACHEL PAGE
Music Editor
- MIRIAM BARBON
Music Editor
- NADA PUGH
Art Editor
- TEMPE BRADLEY
Art Editor



The ECHO of 1948

It's been proved! An annual, especially a G. C. annual, can be fun . . . heart-felt fun!

The first new idea, the exciting layout, afternoon "dates" with Mr. Hitch and Mr. Keck, Carol's "cheese pictures," Mr. Flynt's helping hand, Dr. Carpenter's ever-ready enthusiasm and guidance, the "art gallery" in Hudson—all these and a dependable staff add up to (we hope) your favorite Echo!

PAT FERGUSON
Editor



MARY DULA
Business Manager



We've given our "Ipana grins", we've twisted arms, we've practically beaten Greensboro business men in the heads . . . and now we give you our part of the 1948 Echo.

This combing of Greensboro has been quite an experience . . . one we have really enjoyed and one that we shan't soon forget.

We only hope that you'll decide that the 1948 Echo is the best ever.

BUSINESS STAFF

MARY DULA
Business Manager

RACHEL BUIE
Assistant Manager

JESSIE RUDISILL
Assistant Manager

MILDRED HAYWORTH
Assistant Manager

AGNES HARBELL
Assistant Manager

BEVERLY MCNAIRY
Assistant Manager

MARTHA GASQUE
Assistant Manager



The 1948



Under the watchful eyes of "Fee" and Dot, the *Collegian* staff, though threatened with shortages of almost everything except ingenuity, reported all the "reportable" bits of news (adding an occasional juicy scoop) and collected ads and mo' ads from the local merchants. This year's *Collegian* would have been a credit to any college and has served to keep the students, faculty, and alumnae informed of the activities of the College. We know that a feat like that couldn't be done in a day, but with much perseverance and mental as well as physical strain, we may label the job "Well done."



"TEL" TANENBAUM, Editor

COLLEGIAN



"Dot" Sugg, Business Manager

Thelma Tanenbaum, *Editor-in-Chief*; Jill Dellinger, *Manager Editor*; Dorothy Sugg, *Business Manager*.

Martha Lee Johnson, *Assistant Editor*; Martha Gasque, *Society Editor*; Dorothy Steedman, *Alumnae Editor*; Shirley Brown, *Photographic Editor*; Della Umstead, Mary Allen Warren, Frances Tilson, Jessie Rudisill, Betty Rollins, *Typists*.

DEPARTMENTAL EDITORS

Helen Schwartzbard, Betty Jo Lowder, *Exchange Editors*; Rebecca Royal, Mary Radliff, Ann Kendrick, *Special Features*; Molly Jean Cherry, *Music*; Evelyn Fields, *Day Students*; Ann Gaptill, *Sports*; Dorothy Bristor, *Faculty*; Marilyn Burns, "Y" and *Special Features*; Tempe Bradley, Nada Pugh, *Art Editors*; ? ? ? ? ? , *The Spinal Column*.

BUSINESS STAFF

Mary Ann Houck, Jane Massey, *Assistant Business Managers*; Erhel Williams, Ann Bizzell, Jane Herring, Mary Clegg, *Advertising Managers*.

Reporters: Tresca Spain, Ann McAffry, Janet Highfill, Barbee Mcwshaw, Mavis Earwood, Jean Coble, Marilyn Alred, Gaynelle Gwyn, Mary Louise Mitchell, Patsy Munroe.

The Handbook

The purpose of *The Handbook* is to extend the welcome hand to all new students and serve as a friendly reminder to the old students.

Inside those small covers, there is a well of information. There one becomes familiar with the school organizations, their officers, the school calendar of events, and the rules which every G. C. girl soon makes her own. What to bring, where to go, what to do, when and where—here the handbook is our faithful guide.

The editor of the 1947-1948 handbook, Mary Rathff, was very ably supported by Margaret Hughes and Ethel Williams, co-business managers.



Social Standards Committee

The Social Standards Committee was organized for the purpose of maintaining and raising the social standards of Greensboro College. It is the special effort on the part of these students to maintain high standards of etiquette and natural courtesy that give G. C. a distinction which makes her admired and highly respected. We can well afford to be proud of the committee which furthers our progress in social graces.

The chairman of the committee is Rachel Page. Other members: Dorothy Steelman, Alice Wynne Suter, Elaine Price, and Margaret Wiggins.

Margaret Stuart Home Economics Club

From afternoons in the lab in Hudson to the six weeks residence in 109 Odell Place these girls have really mastered the techniques and tastes for good meals and well made clothes. Through club activities of working together on projects of cooking and sewing and listening to the experience of many demonstrators, they have rated an A1 on the mastery of culinary and household arts. The leadership this year was headed by Virginia Wright, president, Marjorie Stoltz, vice president, and Nancy Casey, secretary. Charlotte Hall, treasurer, Anne McCollum, scrapbook keeper, Becky Bowall, reporter, Miss Grace Tickle, sponsor.

Members: Baby Allen, Peggy Bailey, Jo Ann Brown, Shirley Brown, Marilyn Burns, Helen Burrows, Agnes Cavahall, Mary Davis, Shirley Davis, Betty Dow, Gary Ellis, Mary Ella Fanning, Doris Evans, Barbara Eibt, Sarah Garrett, Alice Gant, Pat Grace, Kaynoble Lewis, Katherine Hays, Betty Helms, Barbara Hester, Carolyn Jones, Miranda Johnson, Betty Landish, Rose Marsh, Anne McCallum, Margaret Parker, Elaine Price, Becky Rowell, Betty Shunkle, Ruby Swallow, Bertha Suttler, Jean Sturgeon, Ann Taylor, Margaret Wiggins, Carolyn Wilkerson.



The French Club

Under the guiding "ouïs" and "non's" of Drs. Simson and Dunstan, the French Club kept alive on campus the spirit of courtly France.

Representative games and songs, interesting speakers who made France real—these are but a suggestion of the activities that captured the attention of the members of this wide-awake organization throughout the year.

Officers: Katherine Dixon, president; Carolyn Ballard, vice-president; Anne Simpson, secretary-treasurer.

Members: Georganna Hayes, Kime Bowman, Mable Jean Cherry, Alice Wayne Souter, Lou Lane, Betty Jean Teal, Jean Coble, Betty Swafford, Peggy Pennington, Mary Elith Jennings, Betty Moore, Janet Highfill, Betty Al-Corkle, Peggy Beard, Ruth Blahak, Elsie Jordan, Jeanne Moorman, L. Jean Coble, Mary McLenahan, Jean McGowan, Ida Ruth Jones, Dixie Huske, Pearl Ink, Jane Shelton, Sally Walker, Ann Ingram, Mary Jane Castevens, Mary Allgood, Ann Steadman, Betty Cooper.



Spanish Club

Though all of them don't warble Spanish fluently, they would comment that the programs this year have been "muy bien." Much of the functional Spanish taught in the classrooms has been tried out in the informal meetings with great satisfaction, both to the students and the professors in the Department of Romance Languages. . . and no doubt, through an acquaintance with Spanish life and customs as they are today. Spanish students have attained a "rise" in grades. Officers: Elizabeth Lougee, president; Ramona Rouse, vice-president, and Mary Clegg, secretary-treasurer.

Members: Frances Aman, Hazelanne Adams, Celia Ann Brown, Mary Alice Brigham, Mary Lib Bush, Babbe Jo Belch, Frances Bizzell, Marjorie Brown, Agnes Crawford, Dorothy Jean Curtis, Patsy Capps, Emma Jean Callee, Virginia Delord, Gary Ellis, Margaret Fields, Jane Graves, Pat Gross, Bardsley Hurdle, Becky Hayes, Susan Johnson, Mable Leggett, Collette Little, Rose Marsh, Mary Lou Mitchell, Carolyn Moore, Kitty Miller, Peggy McMurray, Sara Macdonald, Joyce Mitchell, Anne Odum, Joan Platt, Nancy Peal, Lenora Price, Betty Jean Rogers, Jo Ellen Richardson, Betty Sisk, Dot Shields, Dot Savage, Doris Stout, Margie Sultz, Dot Steadman, Mary Ellen Latham, Margaret Tucker, Mary Jo Usher, Gretchen White, Dr. Hieronimus.



The Annie M. Pegram Math Club

From many angles the girls in the Annie M. Pegram Mathematics Club recognize that math certainly sharpens one's wits. An intellectual curiosity for this interesting and extensive science prompts them to "square away" useful knowledge about its functions. Monthly meetings featuring programs on the how and why of mathematics give the members a chance to assimilate some of this knowledge. Nada Pugh, president, Celia Brown, vice-president, Dixie Huske, secretary-treasurer, Audrey Jacobs, reporter, and Gaynelle Gwyn, program chairman.

Members: Audrey Jacobs, Ruby Meness, Lou Lane, Sue Norris, Ann Gupstih, Margaret Locker, Sue Page, Dot Steadman, Gaynelle Gwyn, Dixie Huske, Nada Pugh, Celia Brown.

International Relations Club

Those who have an active interest in international affairs are welcome here. The club tries to further an intelligent interest in current affairs by means of forums and the study of governmental and social problems.

During the year, discussions are held by speakers well-versed in international relations. Members of this club are always aware of how the world is turning on its axis and how we as a people are affecting and are being affected by it. For leadership in international relations, we of G. C. look to the I. R. C.

Officers: Georgianna Hayes, president; Veta Foote, vice-president; Jerry Miller, secretary-treasurer; and Marilyn Burns, reporter.

Members: Ruby Aiken, Marina Athanaelos, Mary Kime Bowman, Carolyn Ballard, Rachel Buie, Betty Bryan, Flora Lee Bobbitt, Jean Coble, Betty Cooper, Mary Clegg, Margaret Dameron, Katherine Dixon, Mary Dula, Marian Foust, Mary Ann Houck, Becky Hendley, Martha Hollowell, Adelaide Johnson, Ida Ruth Jones, Elsie Jordan, Anne Kendrick, Colleen Little, Ann Martin, Joyce Mitchell, Jane Massey, Mozelle McCormick, Kitty Miller, Elaine Pryce, Jean Penny, Jo Richardson, Julia Roberson, Mary Ratliff, Betty Rollins, Carolina Rozzelle, Jessie Rudisill, Jane Stevenson, Jeanne Sturgeon, Marian Sockwell, Ruth Sockwell, Dot Sugg, Helen Schwartzbard, Jo Sears, Margie Stoltz, Frances Tilson, Margaret Tucker, Jo Usher, Mary Allen Warren, Carol Whitaker.





G. C. Daughters

The tradition of keeping Greensboro College as the family alma mater has been practiced by many families for years. Linking past generations with the future, G. C. Daughters stroll down the paths once trod by mothers, grandmothers, and even great-grandmothers. Each year a project of beautifying in some way a part of the campus gives the girls a chance to show their loyalty to the college. Diversified programs under the planning of the vice-president, Mary Charlotte Hunt, bring the girls together for monthly meetings, under the bond of their predecessors, to keep the honor and ideals of G. C. on the highest level. Mary Beth Joyner, president; Mary Charlotte Hunt, vice-president; Mildred Hayworth, secretary; Beverly McNairy, treasurer; and Tempe Bradley, reporter.

Members: Peggy Bailey, Barbara Boren, Jean Bradley, Tempe Bradley, Celia Ann Brown, Betty Ann Clark, Mary Clegg, Margaret Dameron, Beth Davis, Jean Dew, Julia Dew, Pat Dixon, Edla Earley, Pat Ferguson, Mary Fisher Finch, Gynelle Gwyn, Helen Hill, Martha Hollowell, Ruth Marie Hooker, Betty Lambeth, Molly Lambeth, Hattie Lane, Lou Lane, Jane Lassiter, Anne Odom, Margaret Parker, Billee Prather, Becky Raper, Betsy Ann Robards, Lettie Sheek, Doris Stout, Alice Wynn Suiter, Jean Tyree, Rachel Whitener, Margaret Wiggins, Miss Mary Brock.

The United Daughters of the Confederacy



The members of this group have as their purpose to join with all U.D.C. organizations in furthering projects which include giving scholarships, supporting orphanages, and contributing to the welfare of elderly people. The programs are based on the historical background of the War Between the States.

Officers: Mary Ann Houck, president; Rosa Glenn Ellerbe, vice president; Beverly McNairy, secretary; Dixie Huske, treasurer; and Hilda West, historian.

Members: Beverly McNairy, Martha Hollowell, Elsie Jordan, Doris Stout, Lattie Lane, Lou Lane, Mary Charlotte Hunt, Jane Herring, Ann Bizzell, Beth Edwards, Ella Larley, Rosa Glynn Ellerbe, Mary Ann Houck, Katherine Yarbrough, Margaret Wiggins, Dixie Huske, Hilda West.

Freshman Counselors

With little white handbooks clutched firmly under their arms, the Freshman Counselors began on that first exciting day of school to introduce the new students to the specifications of the blueprints of college life. Under the guidance of these capable counselors, the newcomers quickly became a part of Greensboro College.

Members: Mary Allen Warren, Chairman; Betty Bryan, Myra Butler, Peg Burdell, Jean Coble, Mary Dula, Jo Hartman, Caroline Gates, Georganna Hayes, Elaine Peave, Mary Radtch, Rachel Bunn, Becky Hendley, Jerry Miller, Jane Massey, Sarah Alma Taylor, Tempe Bradley, Veta Joote, Peg Harwell, Jane Herring, Charlotte Hunt, Sue Page, Alice Wyatt Suter, Shirley Brown, Marilyn Harris, Mary Tib Bush, Barbara Jean Handson, Sarah Gaddell, Pat Hatfield, Anne Johnson, Ann McAlvey, Kay Maxwell, Janet Hughfill, Margaret Wiggins.

P. K. Club

A close bond of friendship joins heart and heart in the P. K. Club, for here are the girls whose fathers are united under a common purpose. Parties and programs through the year help to establish the feeling of kinship of being Preachers' Kids. Patterned after the organization of the North Carolina Conference, this club is unique in the rules of its officers. Guiding this club are: Bishop, Katherine Dixon, District Superintendent, Betty Swafford, Pastor, Janet Hughfill, Chairman of the Board of Stewards, Carolina Bozzelle, Chairman of the Board of Trustees, Jerry Miller, and President of the Woman's Society of Christian Service, Rita Pons.

Members: Mary Beth Fowler, Eulw Minnes, Ann Ashmore, Jean Brooks, Anita, Jo Ann Brown, Betty Jordan, Foy's Henck, Ila Eulw Jones, Kitty Miller, Lenora Pons, Virginia Starnes, Janet Hughfill, Carolina Bozzelle, Rita Pons, Jerry Miller.



The Religious Education Club

The Raymond A. Smith Religious Education Club is an organization which contributes, by its many facets, to the spiritual enrichment of our campus. The club, which is composed largely of religion majors and minors, has many functions and projects during the year. Each member is enabled to keep up with the current religious ideas and to enrich her own spiritual life by means of club discussions, visits to churches, and the contribution of guest speakers.

The officers of the Religious Club: Jerry Miller, president; Peg Hartsell, vice-president; Myrtle Brewer, secretary; Mary Kindt, treasurer; and Ann McAlroy, reporter.

Members: Alice Gaul, Joan Plint, Marian Loust, Jean Bradley, Martha Hoffner, Anne Kendrick, Cottie Cletcher, Dot Swedman, Betty Sisk, Betsy Ann Roberts, Ruth Jones, Mary Beth Jovner, Mary Edith Jennings, Elaine Lane, Flora Lee Bihlart, Martha Williams, Janet Highfill, Mary Dula, Elaine Price, Ethel Williams, Adelaide Johnson, Dorothy Yarbrough, Esther Aiken, Pearlie Link, Marion Sackwell, Virginia Tucker, Louise Hartzell, Peggy Pennington, Marilyn Burns, Ruth Taylor, Becky Hendley, Margaret Tucker, Nancy Gardner, Sarah Macdonald, Mozelle McCormick, Margaret Damerin. (Freshmen—none in picture) Dixie Lee Fisher, Pat Lloyd, Frances Bizzelli, Jane Shelton, Joella Richardson, Ann Oakley, Frances Aman, Nancy Thompson, Frances Warren, Margaret Smeig, Margaret Feliks, Molly Leggett, Betty Jean Rogers, Jeannine Moorman, Jean Tyree, Thelma Moore, Marvel Stakes, Kitty Miller.



The Music Club

The Music Club is a 1947 addition to our campus. A noteworthy organization composed of music majors and minors having a "C" average, the club has as its purpose to contribute to the organization of musical activities on the campus. Guest speakers, discussion groups, and talent from among the club members are principal features of the programs. The project for the year is the production of a school-wide concert in the spring which will unite the efforts of the Dance, Art, Drama, and Music departments.

Officers of the club: Caroline Gates, president; Marion Smith, vice-president; Sue Page, secretary; and Mary Ellen Matthews, treasurer.

Club advisers: Miss Ouida Paul, Mr. Charles Underwood, and Dean Gustav Nelson.

Members: Caroline Gates, Marion Smith, Sue Page, Mary Ellen Matthews, Marian Barron, Kmie Bowman, Peggy Bantell, Joan Conley, Betty Cooper, Irla Larley, Meran Faust, Sarah Gubbel, Liddy Hall, Jo Hartman, Ruth Henderson, Janet Highfill, Sarah Ingram, Mary Katherine Ingle, Anne Johnson, LaRue Langley, Lufalah Loydler, Rachel Page, Fita Pons, Lou Roberts, Gilda Romes, Mabel Smith, Marian Sackwell, Alice Myra Satter, Bette Swafford, Elsie Taylor, Sarah Taylor, Marjane Thomas, Doris Vececa, Jean Bradley, Dorothy Meiners, Miss Blanche Buttriss, Miss Mildred Town, Mr. Gustav Nelson, Mr. Charles Underwood, Miss Ouida Lay Paul, Mr. Gudmundur Kristjansson.



Fire Wardens

This year our fire drills had the added attraction of a fire captain and the big red truck. Chief Veta Fowle and her able assistants had drilled us well in order that we might carry out most successfully what had been planned. In spite of the discomforts of being called out into the night when least expected, we cheerfully accepted these nocturnal drills as a part of the precautionary measures set up for our safety.

Late Chief: Veta Fowle.

Wardens—Ann Alice Gaul, Dixie Lee Fisher (assistant); Fredson Jane Strickman, Marion Smith (assistant); Fitzgerald Josephine Hartman, Georgina Hayes (assistant); Holmes—107; Ann McAlroy, 109; Jacqueline Garner, 116; Helen Schwarzbard, 120; Pat Dixon. (Fireman in picture: W. McFarland).

Art Club

No one knows better than the art-lovers of our campus just exactly why our modern art has come to be, why our fashion trends change as they do, why art varies so the world over, or why—right here on our campus—art adds to our amenities. But the members of the art club don't have to depend on their own talent and knowledge alone for their success, for Miss Cullis and various noted speakers keep them well-informed. They all help to prove to us that "Art is man-made magic."

Members: Jean Grey Coble, President; Nada Pugh, Vice-President; Mary Clegg, Secretary-Treasurer; Shirley Davis, Margaret Phillips, Ann Martin, Betty Sue Hickman, Georgianna Hayes, Sarah Garrett, Jo Ann Brown, Shirley Allen, Jo Sears, Mary Charlotte Hunt, Tempe Bradley, Barbara Ficht, Jane Herring, Carolyn James, Ann Steadman, Sue Quinton, Ann Taylor, Margie Stoltz, Veta Foote, Agnes Harrell, Carolina Rozzell, Jean Dew, Jeanette Vogler, Jeanne Hartman, Marie Sheng, Ann Oakley, Jean Coble, Pat Ferguson, Becky Halcomb, Kash Davis, Helma Fannenbaum, Sue Norris, Della Umstead, Agnes Crawford, Peggy McMurray, Billee Prather, Kitty Yarbrough, Cynthia Albright, Hilda West, Beverly McNairy, Miss Irene Cullis, teacher.





Future Teachers' Club

Here are the seniors tasting the first successes and failures of being a teacher. At this time they put into practice all the things which over the years they have wished for in their own teachers and now have the chance of exhibiting in themselves. These young ladies of the "book and ruler" are the teachers of tomorrow, banded together for the purpose of gaining experience for their profession. Advisers: Drs. Young and Pemberton and Miss Paul. Officers: Myra Butler, president; Elaine Pryce, vice-president; LaRue Langley, secretary; Margaret Dameron, treasurer.

Members: Miriam Barron, Rosa Glynn Ellerbe, Caroline Gates, Ruth Henderson, LaRue Langley, Marjalene Thomas, Lois Roberts, Gilda Bones, Betty Swofford, Jean Bradley, Libby Hall, Myrtle Brewer, Virginia Tucker, Marian Sockwell, Betty Bryan, Margaret Dameron, Katherine Dixon, Mary Lee Gardner, Jessie Rudisill, Frances Tilson, Mary Allen Warren, Mary Ann Houck, Rachel Buie, Myra Butler, Judith DeHart, Georgianna Hayes, Martha Hollowell, Martha Lee Johnson, Hattie Lane, Mary Ratliff, Betty Rollins, Rebecca Delk, Dorothy Sugg, Jean Coble, Sue Norris, Nada Pugh, Della Umstead, Rebecca Hendley, Anne McCollum, Elaine Pryce, Betty Shankle, Ruth Sockwell, Virginia Wright, Rebecca Rovall, Mary Dula.



G. C. PLAYERS

The Greensboro College Players is one of the most active organizations on campus. Each year the members present four major productions notable for apt portrayals and technical effectiveness.

It is a great honor to be named a G. C. Player, for to attain this achievement a girl must not only be outstanding in speech and dramatic art, but must have spent many hours rehearsing on stage and working with scenery, property, and lighting. Then she must be elected unanimously to this organization of merit.

Officers: Mary Beth Joyner, president; Becky Rovall, secretary; Martha Young, business manager; Evelyn Rose Fields, assistant business manager; Patsy Manroe, co-publicity manager; Iris Rich, co-publicity manager; Mary Charlotte Hunt, scrapbook custodian.

Members: Marilyn Allred, Peggy Bailey, Marvis Earwood, Iva Lee McGrady, Anne Simpson, Tresca Spain, Ruth Taylor, Camerson Wilcox.

Students of the dramatic department also have their own special club for purposes of broadening their theatrical abilities and proving their talents. Besides the various programs of the year, at which guest artists frequently speak, members delve into other more strenuous activities, such as making themselves useful behind the scenes of every play presented on our campus. Watch out for these young enthusiasts . . . they may be the stars in the show some day.

Members: Martha Young, president, Mary Beth Joyner, Iris Rich, Pearl Fink, Sara Macdonald, Tresca Spain, June Sullivan, Ruth Hooker, Evelyn Fields, Jo Usher, Annie Lee Powell, Ruth Taylor, Leticia Sheek.



The Elba Henninger SPEECH CLUB





ACT III...



ATHLETICS

Loyalty—cooperation—sportsmanship. Rivalry—trophies; wins—losses. New skills—new joys in playing. Endless scenes in a drama of work and play.

The Athletic Board



Ruby Maess
Athletic President



COACHES WOLF AND OWEN

The Athletic Board under president Ruby Maess began an active year with Play Day and a picnic in a sudden rainstorm. Their ill luck with weather continued, many tournament games being washed out, but the sports heads managed to keep interest alive and complete a successful athletic year.

In October the top players of G. C. met W. C., Duke, Peace, and Guilford, proving stiff competition in hockey and capturing top tennis honors.

The Association held its annual dance, sponsored the swim meet and horse show, and closed the year with a banquet and program, awarding to worthy athletes letters, pins, and trophies.

Members: Ruby Ann Maess, President; Beth Davis, Vice-President; Margaret Tucker, Secretary; Kay Maxwell, Treasurer; Edla Larley, Cheerleader; Mvra Butler, Mary Clegg, Ann Gupstill, Gavnelle Gavin, Becky Hendley, Adelaide Johnson, Lib Lougee, Jo Lowder, Ann McAltry, Beverly McNary, Nada Pugh, Anne Simpson, Dot Sugg, Eloise Taylor.



"G" CLUB

One goal every G. C. sportster shoots for is the "G" Club. Only those who strive endlessly, with a love for the game, whether in the pool, on the field, or down a trail, may hope to accumulate enough points to win the honored "G" or to climax their sporting days with the athletic pin.

Members: Nancy Jean Stallings, Ruby Maness, Beth Davis, Jane Massey, Becky Hendlev, Myra Butler, Della Umstead, Dot Sugg, Margaret Tucker, Pat Ferguson, Ann Odom.



Miss G. C.

"Hot cinders!" That's Ruby—and where she is there's sure to be excitement. She was chosen by the Athletic Board this year as "Miss G. C."—not merely because her batting average rivals that of Ted Williams. She has proved her abilities as a leader by carrying the board through a successful run of tournaments and led the club in sponsoring the best dance in years. These accomplishments, plus a limitless supply of energy, add up to one thing—G. C.'s favorite sportswoman of 1948.



Bit 'n Spur

Down across the dusty trails dash the riders . . . nope, it's not the Lone Ranger and his Indian friend, but the Bit 'n Spur members practicing their long jumps, while trying to sit steady with knees in and heels down. These riders are picked for their expert horsemanship by the club, which admits only a few members each year.

Many memories remain with the club, their first timid ride, the time Brandy ran away, the smell of burning leaves in a yard, racing across an open field, and the figure eight which always seems to be a zero—all of these and many more, but the most vivid picture tucked away is the crowning of the champion riders at the horse show.

Members: Ann Odom, president; Gary Ellis, secretary; Anne Kendrick, treasurer; Perine Carlin, Barbee Mewshaw, Carolyn Ballard, Dot Sugg.

ANNE ODOM

Anne Odom everyone knows her—every one likes her. For two years she has done a capable job of managing the affairs of the Bit 'n Spur, with the added responsibilities of the Horse Show. Her horsemanship is evidenced in her show ribbons, and her popularity in her re-election as president.



Riding

Rustling leaves, a cool breeze a clear blue sky, the toot of a horn . . . Sarge is waiting for the girls to tumble pell-mell into his station wagon. Spot pricks his ears, Midnight stretches, Powder Puff whinnies, Indian summer calls the riders and horses back down familiar trails.

Every Spring in the horse show the contenders exhibit their skills in the art of riding. For a month before the big day the riders push all else from their thoughts, and the whole campus feels the tingle of excitement sifting through the air. With the show over, and the winners announced, the official riding season is brought to a close . . . but for the horsewomen riding never ends.



Soccer

Girls at Greensboro College refuse to be left out of the fray on fall days as the toe itches to kick that old leather ball. A little less violent than football, soccer still manages to thrill the energy plus G. C. ites.

Badminton

A sport suited to less ambitious athletes yet as much fun as any on the roster is badminton. Don't let the skilled fool you; it's not so easy as it appears. Do as the photographer says, "Keep your eye on the bidie" and you'll come out a winner.



Swimming

Trudging uphill to the pool, donning those glamorizing tank suits, shivering in cold water, coming out with dripping hair, and warming up later over a cup of coffee, all these add up to a fish like development and a smooth speedy stroke to surprise the boys with in the summer.

The tanksters gave a colorful water pageant to demonstrate their precision and excellent form in December.

Hockey

Only the brave dare venture out when the cold winter wind sweeps across an unprotected hockey field. Frosty breath, shrill shouts, and clashing sticks tell the story of the fight to victory in the final tournament game.



SPORTS at G. C.

Softball

"Batter up!" On a warm spring night before 7:30 the dorms are completely empty--everyone's on the athletic field trying her best to hit a minute ball with a too-thin stick called a *bat*. They may not be stiff competition for members of the World's Series, but they do have fun!

Hiking

"Merrily we walk along," sing the hikers as they amble out the portals of G. C., whether it be on dusty byways, down leaf covered sidewalks, through slushy snow, or under the flowering apple trees. An inquisitive mind, a rambling mood, and strong feet are all this hobby requires of a sportster.





Tennis

Tennis calls one and all spectator and participant alike. As years pass, memories will return of the hard fought victory that our Champs of the campus, Nancy Jean Stallings and Pat Dixon, won over Duke for first place in the state-wide play day held at W. C. in November.

ATHLETICS

Basketball

Slippery hills—cold weather—Central High—these three things put together mean only one thing to those athletically inclined: basketball. The freshmen liked the fact that it excluded them from closed study once a week; the sophomores enjoyed the spirit of the game; the juniors pretended indifference; and the seniors found it relaxing after a week of studies.





..... 1948

Modern Dance

Birth of a new organization on campus this year brought thrills to all those who have yearnings toward the fantastic toe. The modern dance group sponsored by the Athletic Association, with Miss Betty Jane Owen as its leader, participated in *The Student Prince*, a city performance, as well as college drama, and in the spring a dance recital. Members of this group are selected for their skill and originality in dance work, the following girls are founders; Dottie Yarborough, president; Lib Lougee, vice president; Eloise Taylor, secretary treasurer; Ruth Henderson, Tiesca Spain and Butchie Johnson.



Archery

*"I shot an arrow into the air
It fell to earth, I knew not—"*

It's in the target, of course. The G. C. archers are out to roll up some high scores with their bows and arrows.



ACT IV...



FEATURES

The thrill of on-stage performance, the power of friendship, the dignity of true loveliness . . . the beauty of a scene tenderly portrayed . . . the essence of gracious living. . .

DELLA UMSTEAD, *President*



The Emerson Society

From top to bottom:

LANGLEY, BRADLEY, THOMAS,
UMSTEAD, LOUGEE, TANNENBAUM,
HALL, RONES, SWOFFORD.

OFFICERS

MARJALENE THOMAS, *Vice-President*

LIBBY HALL, *Recording Secretary*

LIB LOUGEE, *Corresponding Secretary*

GILDA RONES, *Treasurer*

LAROE LANGLEY, *Critic*

THELMA TANNENBAUM, *Censor*

JEAN BRADLEY, *Chaplain*

BETTY SWOFFORD, *Accompanist*

MARY BUSH, ANN GUPTILL, GAYNELLE GAWN,

CHARLOTT HALL, JANET HIGHTHILL,

ANNI SIMPSON, *Marshals*





Standing: GWYN, HIGHFILL. Seated: BUSH, SIMPSON, HALL, GUPTILL.

The Marshals

Victory for the Emersons in '47-'48!

Always to be remembered are the traditional "Moon River" program . . . the snack bar . . . the string band from Durham singing "Atomic Power" . . . the Autumn Nocturne dance . . . and the crowning of lovely queen Betsy Hardin. Yes, "Old Emersons, we are proud that we belong to you."

One of the most enjoyable events at G. C. is the friendly competitive contest for new members between the Emersons and Irvings each year. Rush week, the time when upperclassmen bend the knee to the Freshmen, is an event never to be forgotten by Society members, whether their society happens to be the winner or not.

EDLA EARLEY, *President*



The Irving Society

From top to bottom:

HUNT, INGRAM, JOYNER,
EARLEY, DELLINGER, ROYALL,
BARRON, HOUCK, ROLLINS.

OFFICERS

BECKY ROYALL, *Vice President*

MARY ANN HOUCK, *Recording Secretary*

BETTY ROLLINS, *Corresponding Secretary*

JILL DELLINGER, *Treasurer*

MARY CHARLOTTE HUNT, *Critic*

MIRIAM BARRON, *Censor*

MARY BETH JOYNER, *Chaplain*

SARAH INGRAM, *Accompanist*

SHIRLEY BROWN, MARY JANE CASSTEVENS,

MARY FRANCIS FOY, SARAH GOBBEL,

MARILYN BURNS, PAI HARDWICK, *Marshals*





Seated: BROWN, BURNS, CASTLEVENS, FOY. Standing: GOBBEL, HARDWICK.

The Marshals

The Irvings smiled bravely through their defeat of rush week, and pluckily congratulated the Emersons on their day of great joy and victory. The spirit had been clean, fair, and lively, and Edla Earley's excellent leadership will not soon be forgotten.

Unforgettable memories linger of the fellowship and joy shared from the circus, the gala Indian feast, the serenity of "Pipe Dreams," the uproar of the "Bloody Gulch Saloon," and the beauty of the marriage ceremony uniting the new girls to the old, in the form of Betty Ward Maness to Edla Earley. These reminiscences and many more help to assure in our hearts the conviction that no defeat could ever change the high aims of the Irvings.

The "can-can" girls, the "human totem pole," laughs over "Lady on the Train," a favorite date at the Intersociety Dance, all serve to remind us that another September is not far away, with another chance for Victory.



Glee Club

They are hard to beat, you must admit, these joyful songsters. What would we do without their music that lends itself so beautifully to the reverence of our Thursday chapel programs? Or what should we ever find as a substitution for the Christmas and Spring concerts they bring to us? Not only is our Glee Club popular, but it is famous all over the state for the pleasure brought to many people. We think our Glee Club is tops.

MEMBERS

Soprano: Edla Earley, Doris Vereen, Business Manager, Jean Bradley, Joan Cooke, Mary Katherine Ingle, Alice Futrell, Frances Starnes, Mary Jeffreys, Betsy Ann Robards, Jeannine Moorman, Melvarene Johnson, Hazelanne Adams, Joyce McLean, Nancy Sue Thompson, Sarah Moger, Peggy Wheeler.

Second Soprano: Rosa Glynn Ellerbe, Secretary, Sally Walker, Anne Johnson, Librarian, Ruth Hart, Janet Highfill, Moxie Moore.

First Alto: Rita Pons, Marian Smith, Betty Cooper, Librarian, Dorothy Anglin, Hazel Armstrong, Jean Payne.

Second Alto: Becky Raper, Loree Harrell, Betty Sisk, Gaynelle Gwyn, Edna Whitehead, Frances Griffith.

Double Sextet

Mr. Kristjansson enthusiastically presents his pride and joy—the double sextet, with songs that make us feel that all is well with the world. The girls know how much those extra specials mean on any program, and they always come through with those we like best. Visits to many towns, far and wide, as well as to Greensboro's churches and civic clubs, have established their reputation, and here at G. C. we are proud to call them our own.

Members: Mary Kime Bowman, LaRue Langley, Alice Varner, Jessie Rudisill, Ruth Hart, Frances Warren, Mary Jeffreys, Becky Raper, Rita Pons, Nancy Gardner, Saa Moger, Lenora Price, Ann Johnson. Accompanist: Betty Swofford.





UNDER THE SPOTLIGHTS

CECILIA, by Marie Doran

In the production of *Cecilia*, a Greensboro College troupe, aided by the college glee club and art department, brought to life the dark age of Christianity as revealed in the story of the lovely patron saint of music, Cecilia.



THE GLASS MENAGERIE,

by Tennessee Williams

A crippled girl, trying to lose herself in her glass collection; an over-anxious mother, craving success for her children; a son who is a poetic dreamer; and a gentleman caller who understands and yet can do nothing—these were portrayed in a moving memory play that pulled at the heart strings.



THE TAMING OF THE SHREW,

by William Shakespeare

Under the flood lit terraces of Main Building, *The Taming of the Shrew* climaxed the year for the speech and dramatic departments, bringing fun and entertainment to the audience by means of the antique costumes and rollicking humor.

MEMORABLE MOMENTS

A white tree gleaming with Yuletide lights, reindeer racing across the walls, provided the atmosphere for the Holiday dance, sponsored by the Athletic Association. Under a canopy of green-and-white crepe paper, many a happy smile followed the dancing couples, swaying to the dreamy music of David Hollowell's orchestra.

The members of the Athletic Board (with their escorts) carried mysterious Christmas packages as they entered through an illuminated evergreen arch to form a semi-circle. Turning over the packages, they revealed letters spelling out "A Merry Christmas to You." It was with reluctance that the couples danced their last dance of 1947 at Greensboro College and added it to their growing list of "Memorable Moments."

EMERSON IRVING—First dance of the year held in October. Theme: Autumn Nocturne.

HOLIDAY DANCE—Sponsored by the Athletic Association—Saturday night before Christmas holidays begin.

VALENTINE DANCE—Sweetheart dance, sponsored by the Town Students Association—this year on Valentine Day itself.

FRESHMAN SOPHIOMORE—Mid-winter dance for the first and second year G. C. ites.

JUNIOR SENIOR—Sponsored by the Juniors in honor of the Seniors—in the Spring in three main parlors of Main Building.

MAY DAY DANCE—Held the night of May Day, with the May Court in the figure.





Miss Jane Massey

May Queen

Miss Jill Dellinger

Maid of Honor



MAY DAY . . . 1947

Against the resplendent background of the white pillars of Main Building, Queen Janice Whitley and her attendants presided over the festivities of the May Day. With their escorts, these beauties saw unfolded before them the bewitching tale of the Sleeping Beauty. The music was sung and directed by members of the conducting class, while the physical education classes danced the choreography. Long after the last rainbow-colored dress had faded out of sight, the magic of another world pervaded the campus of Greensboro College.



MISS JANICE WHITLEY
1947 May Queen





HAYWORTH
ROYAL

MCCOLLUM
ODOM

THE 1948 MAY

Senior Attendants: ANNE MCCOLLUM, BECKY ROYAL
Junior Attendants: MILDRED HAYWORTH, ANNE ODOM



GWYN
HARDEN

PRATHER
ADAMS

COURT ATTENDANTS

Sophomore Attendants: HAZELINE ADAMS, GAYNELLE GWYN

Freshman Attendants: BLISS HARDEN, BILLIE PRATHER

Miss Mary Dula

Sponsored by
THE FUTURE TEACHERS



Our ECHO
19

Miss Jane Massey

Sponsored by
THE SPANISH CLUB



*Miss Betty Ward
Maness*

Sponsored by
THE G. C. HONOR SOCIETY

Beauties

48

Miss Betsy Hardin

Sponsored by
THE INTERNATIONAL RELATIONS CLUB



Miss Rachel Page

Sponsored by
THE P. K. CLUB



*Our 1948 Echo Beauties were selected
by John Robert Powers, president of the
country's outstanding modeling agency.*

Miss Sarah Gobbel

Sponsored by
THE MUSIC EDUCATION CLUB





Miss Billie Prather

Sponsored by
THE ART CLUB

JOHN ROBERT FOWELS
1111 1/2 W. 11th St.
New York City 14

Dear Miss Prather:

"The Interloper Program"
Editor, "Miss"
685 2nd St. Chicago
Chicago, Ill. Sep 11th

Dear Miss Prather:

It has been a great pleasure to select the beautiful Mrs. J. R. Fowels, "Miss," the author of the conditions, with the understanding, was all constructive that I found it difficult to make a decision. It was also difficult to say by what means I should thank you for your contribution.

The winners were selected on the basis of their ability, character, and intelligence, as well as their interest in the program. I hope you will continue to be interested in the future of the Interloper Club.

If it is possible to see you in New York, it would be a pleasure to meet you. With best wishes to you and your family, I am, as ever, your sincere friend.

Sincerely yours,

John Robert Fowels
John Robert Fowels

20. 06



Miss Frances Tilson

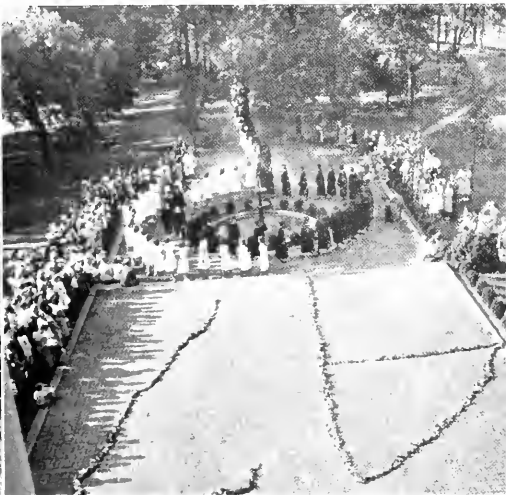
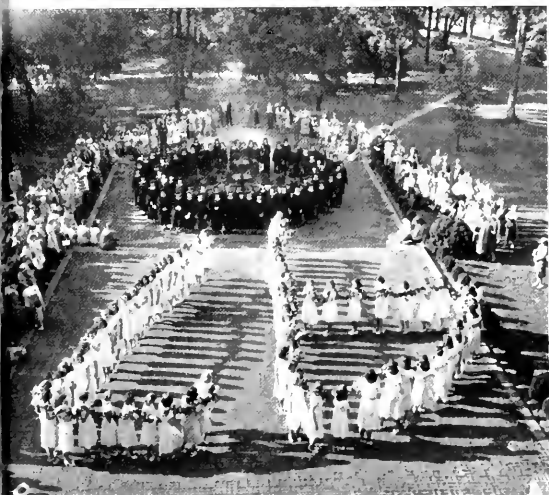
Sponsored by
THE SOCIAL STANDARDS COMMITTEE



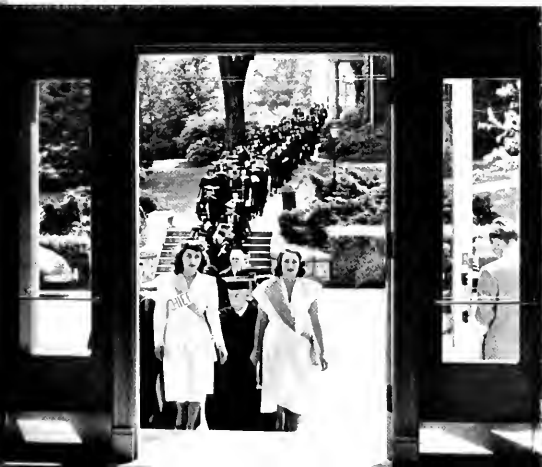




Commencement



With mingled emotions the seniors walked solemnly across Odell Court into the auditorium. For them this last short walk over a way worn smooth by the countless steps of their predecessors, marked the culmination of four years of work, fellowship, and dreaming. These seniors had a right to lift their shoulders a little higher, for they were facing a world that needed the competent training that was theirs. The class of 1947 left in their wake a Greensboro College made stronger by their suggestions, contributions, and love.





Curtain's Going Down on the ECHO of 1948

Just like any two "ham actresses", we had to make one curtain call . . .

It's been hard . . . sometimes we weren't sure . . . but we never lost sight of that day when we could say, "This is it. Yours to Have and to Hold."

We want you, the characters of the show, to love and live the Echo of '48.

We wish to express our appreciation to those merchants whose support of this year's annual made possible for us the presentation of the 1948 Echo.

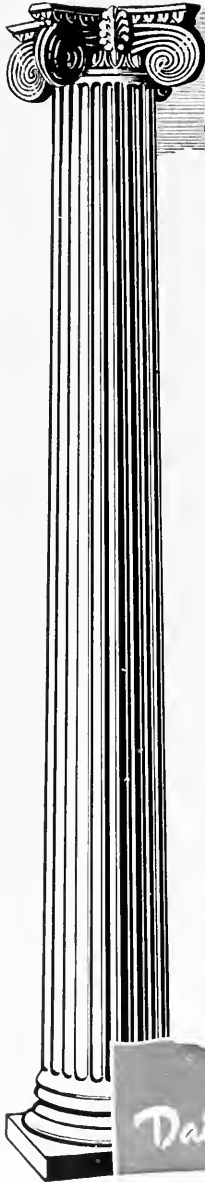
LET OUR ADVERTISERS BE YOUR GUIDE!

MARY AND PAT

TO BE REMEMBERED . . .

Barron, MiriamFranklin, Va.
Bobbitt, Flora Lee1923 Dilworth Rd., E., Charlotte
Bowman, Mary KimeLumberton
Bradley, JeanNo. 1, Vance Apts., Greensboro
Brewer, MyrtleBox 229, Norwood
Bryan, Betty JordanBattleboro
Buie, Rachel217 W. 8th St., Newton
Burdell, PeggyLaurel St., Ext., Florence, S. C.
Butler, MyraRose Hill
Coble, Jean Grey610 S. Broad St., Burlington
Dameron, MargaretYanceyville
Davis, BethClayton
DeLart, JudithDraper
Delk, RebeccaMooresville
Dixon, KatherineJamestown
Duda, Mary ElizabethWilkesboro
Earley, Edla203 Carlisle Way, Norfolk 5, Va.
Ellerbe, Rosa Glynn601 Ann Street, Rockingham
Ferguson, PatriciaMalvern Hill Farm,
Rt. 5, Richmond, Va.
Fields, Evelyn Rose521 Jefferson St., Greensboro
Fink, Pearle HelenCity Route 8, Concord
Gardner, Mary LeeFinley Park, N. Wilkesboro
Gates, Lilla CarolineCanton
Hall, ElizabethYadkinville
Hartman, JosephineMocksville
Hayes, Georgianna1624 15th St., Hickory
Henderson, Ruth913 Chester St., Durham
Hendley, RebeccaWadesboro
Hollowell, MarthaAulander
Houck, Mary Ann1307 18th St., Hickory
Ingram, Sarah330 S. Mulberry St., Lenoir
Jennings, Mary Edith109 Perse St., Elizabeth City
Johnson, AdelaideWalkertown Rd., Rt. 3,
Winston-Salem
Johnson, Martha Lee923 Hamilton St., Roanoke Rapids
Jovner, Mary BethSiler City
Kendrick, AnneMt. Holly

Lane, Hattie LeeStantonsburg
Langley, Lewin LaRueBox 41, Elm City
McCollum, AnneRt. 4, Reidsville
MacDonald, Sara1005 Pearson St., Greensboro
Maness, Ruby AnnRoxyboro
Massey, Jane1127 Dickinson Ave., Greenville
Miller, Geraldine215 S. Church St., Salisbury
Mitchell, JoyceFuquay Springs
Norris, SusanPetersburg, Va.
Page, RachelBox 1963, Raleigh
Pryce, Doris ElaineBox 805, Rockingham
Pugh, Nada Lou422 Colonial Ave., Elizabeth City
Ratliff, Mary M.Box 137, Morven
Roberts, LoisBox 1115, Reidsville
Rollins, BettyRockingham
Rones, Gilda349½ Green St., Augusta, Ga.
Rovall, Rebecca514 Oak Ave., Hamlet
Rudisill, JessieLincolnton
Shankle, BettyRt. 2, Polkton
Sockwell, MarionRt. 1, Elon College
Sockwell, RuthRt. 1, Elon College
Sturgeon, Jeanne544 Second Ave., Suffolk, Va.
Sugg, DorothyGrifton
Sullivan, JuneRt. 2, Greensboro
Swofford, BettyWalkertown
Tannenbaum, Thelma, 540 Poplar St., Spartanburg, S. C.
Taylor, RuthRt. 2, Asheville
Thomas, Mrs. HarryManteo
Tilson, Frances512 E. Pine St., Lincolnton
Tucker, Mrs. Roger1717 Elwood Ave., Greensboro
Umstead, Della1010 Minerva Ave., Durham
Warren, Mary AllenGarland
Whittaker, Carol104 Carleton St., Hamden 14, Conn.
Willcox, CameronCarthage
Wright, Virginia46 W. Ave., Wadesboro
Young, Martha1025 N. Elm St., Greensboro



Dinkler Hotels

SERVE EIGHT GREAT SOUTHERN CITIES

ATLANTA The Ansley

"Jae" Cracy, Manager

BIRMINGHAM The Tutwiler

Ira Patton, Manager

NEW ORLEANS The St. Charles

Jahn "Mike" O'Leary, Vice President & Gen. Mgr.

SAVANNAH The Savannah

George Fowler, Manager

NASHVILLE The Andrew Jackson

Len Murrell, Manager

MONTGOMERY The Jefferson Davis

Homer Spiva, Manager

LOUISVILLE The Kentucky

James Rushin, Manager

GREENSBORO The O. Henry

Leon Wamble, Manager

CARLING DINKLER, President

CARLING DINKLER, Jr., Vice Pres. and Gen. Mgr.

Daily Hosts to more than 10,000 Guests



Anne McCollum models a dinner gown from our collection of Designer Originals.

Soonik's

The Boar and Castle

*"Greensboro's Most Popular
Sandwich Shop"*



WEST MARKET STREET EXTENSION

Phone 3-2205

SUNSET CLEANERS

"For Quality Cleaning Service"

1616 Friendly Road

Phone 5650

*Congratulations to the Seniors
from*

Younts DeBoe Clothing Co.

106 N. Elm Street

GREENSBORO, N. C.

S. T. WYRICK & COMPANY

OFFICE EQUIPMENT AND SUPPLIES
PRINTING—ENGRAVING

119 N. Greene Street

GREENSBORO, NORTH CAROLINA

Compliments of

THOMAS & HOWARD CO.

WHOLESALE GROCERS

E. Gaston St.

Phone 5171

GREENSBORO, N. C.

THE JEWEL BOX

*Greensboro's Diamond and Gift Store
For Over 25 Years*

134 South Elm Street

MAISON JOLINE

"We Love to Dress College Gals"

JEFFERSON BUILDING

SNOW CREAM FLOUR



*"IT'S WHITE AS SNOW
AND PURE AS CREAM"*



STATESVILLE FLOUR MILLS COMPANY

538 S. Ashe

Phone 9631

NEALE'S

"Smart Apparel for All Occasions"

119 N. Elm

Phone 6677

Compliments of

CAROLINA WILLYS CO., INC.

432 N. Eugene St.

OLIVER'S

"A Good Drug Store"

457 West Market Street

"HALF WAY UP TOWN"

Motion Pictures
Are Educational
And Your Best

ENTERTAINMENT

★ Carolina
★ National
★ Imperial
Theatres



Really Medicated

... with throat-soothing ingredients of Vicks VapoRub. That's why they bring such wonderful relief from coughs, throat irritations, huskiness of colds. Try 'em! Vicks Medicated Cough Drops!

HAYWORTH'S

Finest In Diamonds
Watches And Jewelry

110 West Market Street

Drink

ORANGE-CRUSH

In the Brown Bottle 5¢

EGERTON WHOLESALE CO.

Wholesale

CANDIES—CIGARS

224 N. Forbis Street

*You trust
its quality*



Each time you taste ice-cold Coca-Cola, you are reminded that here is the quality of genuine goodness. Experience... many a refreshing experience... has taught people everywhere to trust the quality of Coca-Cola.

BOTTLED UNDER AUTHORITY OF THE COCA-COLA COMPANY BY



Greensboro Coca-Cola Bottling Company



350 ROOMS

350 BATHS

THE ROBERT E. LEE

WINSTON-SALEM, N. C.

5TH AND CHERRY STREETS



Rates \$3.50 to \$6.00

Double bed \$5.00 to \$8.00



FRANK L. SWADLEY

General Manager

*Congratulations to the Seniors
from*

ELLIS STONE

226 South Elm Street

IDEAL DRY GOODS COMPANY

Ladies' Ready-to-Wear, Millinery,
Dry Goods, Notions, Etc.

Telephone 5161 WINSTON-SALEM, N. C.

Compliments of

CHANDLER MOTOR COMPANY

Packard Sales and Service

For All Your Needs Visit

THE COLLEGE SHOP

405 Tate Street

PICCADILLY RESTAURANT

Good Food and Good Company

708 W. Market

Phone 7612

Compliments of

ARMOUR and COMPANY

GREENSBORO, N. C.

Sutton's

FOR

FLOWERS



MARKET AND GREENE STS.

Phone 2-4127

Compliments of

HUNT COAL CO.

Dial 2-3161

STEAM AND
DOMESTIC COAL

FREDERICK
STOKERS

MONTGOMERY WARD CO.

featuring

COLLEGE FASHIONS

ON MEZZANINE

THE LOTUS RESTAURANT

CHINESE AND AMERICAN DISHES

105 SOUTH GREENE STREET

Air Conditioned

Telephone 2-4224

For the finest and promptest
Precision Watch Repairing

It's

NEESE JEWELERS

SINCE 1900

325 South Elm Street

**OFFICIAL RAILWAY
WATCH INSPECTORS**

featuring

ELGIN WATCHES SHEAFFER PENS
DELTAH PEARLS

Complete line of COSTUME JEWELRY

And

ART CARVED DIAMOND RINGS
by J. R. Wood & Sons

VICTORY

Your Neighborhood Theater

326 Tate Street

Phone 3-3010

ROGERS PAINT STORE

Complete line of
ARTISTS' SUPPLIES
Grumbacher—Brushes—Oils

Phone 2-2187

GREENSBORO, N. C.

Compliments of

THE ART SHOP

118 WEST MARKET

THE KING COTTON

GREENSBORO



HAYWOOD DUKE
Manager

Compliments of

GREENE STREET DRUG CO.

Phone 5177

124 SOUTH GREENE ST.



SANDWICHES—SODAS
MAGAZINES—CANDY
TOBACCO—SUNDRIES

City-Wide Delivery

Compliments of

MORRISON-NEESE

"Carolina's Leading Home Furnishers
For 31 Years"

112 S. Greene St.

GREENSBORO, N. C.

Compliments of

S. H. KRESS AND COMPANY

GREENSBORO, N. C.



Burlington Mills

RAYON FABRICS BY-THE-YARD

Crepes, Satins and Failles for Lingerie and Blouses;
Alpacas, Semi-Sheers, Crepes and Failles for Dresses;
Fine Spuns for Sportswear and Suits;
Crisp Taffetas for party dresses;
Luxurious Bridal Satins for wedding gowns.
Featured by fine stores everywhere



BURLINGTON MILLS CORPORATION • Executive Offices • Greensboro, N. C.

Keep in Touch

With

GREENSBORO COLLEGE NEWS

GREENSBORO NEWS

WORLD NEWS

in the

Greensboro Daily News

Greensboro Record

W. I. ANDERSON & CO.

GREENSBORO, N. C.

**WHOLESALE FRUIT AND PRODUCE
FRESH—FROZEN**

*A Colonial Home With True
Southern Hospitality*

**VICTORY MANOR
and
MOTOR COURT**

1045 West Market St. GREENSBORO, N. C.

Telephones
"The Right Place for Your" Business 3-2792
Parents and Friends" Guests' 9542

Compliments of

ANCHOR COMPANY

Shopping Center of

WINSTON-SALEM, N. C.

Fourth at Trade

Dial 6126

Compliments of

HARRY D. KELLETT, Inc.



DODGE—PLYMOUTH

**DODGE *Job-Rated*
TRUCKS**



317 West Market

Phone 2-1122

MASON & PETTEY

Florists

CUT FLOWERS PLANTS

*Specializing In
Corsages and Party Flowers*

CITY-WIDE DELIVERY

Dial 2-2313

Nights—Sundays—Holidays 3-2120
1701 Spring Garden



"Dad has talked so much about the G. C. girls he photographed for The Echo that we want to be G. C. girls too!"

MARTIN'S STUDIO

Photographer: C. W. Martin

112 East Gaston

Greensboro, N. C.

Compliments of

MONTALDO'S COLONY SHOP



CLOTHES FOR EVERY OCCASION
FOR THE COLLEGE GIRL

SWEET MEMORIES

Compliments of

Peck's Bakery

330 West Washington St.
GREENSBORO, N. C.

Let's All Get Together at

THE COLLEGE BOOK STORE

DRINKS—SCHOOL SUPPLIES

Miss Lois Fitch, *Manager*

Compliments of

BINES JEWELERS

119 South Elm

Phone 8787

Portraits for You

ST. JOHN'S STUDIO

BELK'S DEPARTMENT STORE

McNEELEY'S DRUG STORE

Just Across the Way

Phone 5117

718 W. Market Street



GREENSBORO, N. C.

"Your Friendly Westinghouse Dealer"

Guilford Appliance Co.

255 N. Greene St.

Phone 3-7529



GREENSBORO COLLEGE

GREENSBORO, N. C.

CHARTERED 1838

The Pioneer of Higher Education for Women in North Carolina

ACCREDITED by the North Carolina College Conference, the Southern Association of Colleges and Secondary Schools, and the National Association of Schools of Music. Member, also of Southern Association of Colleges for Women, Association of American Colleges, and National Conference of Church Related Colleges.

PRACTICAL: While pursuing courses leading toward the A.B. or B.M. degrees, students may secure prevocational training leading toward dietetics, nursing, laboratory technique, medicine, library science, social service, church work, home making, and so forth. Opportunity is afforded students to qualify for Class-A Teachers' Certificates in Primary, Grammar Grade, and High School fields.

"Greensboro College through a long period of years has rendered outstanding service to the educational needs of this State."—CLYDE A. ERWIN, *State Superintendent of Public Instruction*.

PROGRESSIVE: Rich in traditions of a century, meeting present day needs, and entering a second century of even greater usefulness. Regular liberal arts curriculum adapted and enriched in line with modern world conditions.

DISTINCTIVE: Emphasizing not size but quality, Greensboro College is small enough for variety and for breadth of culture. Beautiful campus dotted with tall pines, stately oaks, and sturdy elms, with ivy-clad buildings modernized and homelike.

CHRISTIAN: Although not sectarian, Greensboro College rests frankly and firmly upon religious morals and moral and religious sanctions.

"Greensboro College offers young women unexcelled advantages in higher education. Her graduates are 'polished after the similitude of a palace'."
—BISHOP CLARE PURCELL.

"An ever-growing and expanding institution dedicated to the building of true and noble womanhood."—BISHOP W. W. FEELE.

For further information write THE REGISTRAR

GREENSBORO COLLEGE

GREENSBORO, N. C.



SEE HISTORIC
GREENSBORO
FROM OUR ROOF



*"Up Where the
Blue Begins"*



JEFFERSON ROOF RESTAURANT
17TH FLOOR JEFFERSON STANDARD BUILDING

HERE'S THE LINE UP!

JOSEPH M. HUNT, JR.
GEORGE W. PERRETT
ROBERT G. TROXLER
HERBERT G. CHASE
RICHARD A. STONE
CHARLES C. WIMBISH

*They're all too old for dates
But just the right age to buy
Insurance from*

WIMBISH INSURANCE AGENCY

922-930 Southeastern Building

Telephone 2-4174 GREENSBORO, N. C.

SPIC AND SPAN

332 TATE STREET

BREAKFAST

WAFFLES

STEAKS AND CHOPS

SEBURN'S

*"For the Finest in China,
Silver, Crystal, and
Giftware"*

Keepsake Diamond Rings

116 N. Elm St.

Phone 2-1771

7123

Phones

7124

WILKERSON-McFALLS DRUG CO.

"Service to the Sick"

*Greensboro's Most Modern
Drug Store*

123 N. Elm Street

We deliver to any part of City

Prescription Department Telephone 8116



*"When You Drink a Dr. Pepper,
You Drink a Bite to Eat"*

**Dr. Pepper Bottling Co.,
Incorporated**

1409 W. Lee St.

Phone 9703

FLYNT STUDIOS



MAKERS OF

FINE MINIATURES, COPIES
AND PORTRAITS



228 WEST MARKET STREET

GREENSBORO, N. C.



Greensboro NEHI Bottling Co., Inc.

Compliments of

SASLOW'S, Inc.

Greensboro's Largest Credit Jewelers

214 South Elm St.

Phone 2-1307

CONVENIENT TERMS TO SUIT

AT NO EXTRA COST

KEARNS PAINT COMPANY

112 N. Greene

Telephone 2-4171

DEVCO PAINTS—SPORTING GOODS

WALLPAPER—ARTISTS' SUPPLIES

GREENSBORO, N. C.

MICKEL-HOPKINS COMPANY

Washington and Lyndon Streets
GREENSBORO, NORTH CAROLINA

Food Service Equipment To The

INSTITUTIONAL—HOTEL—COLLEGE
RESTAURANT

And Other Places of Food Service

CHINA SILVERWARE GLASSWARE

DICK'S LAUNDRY COMPANY



Launderers and Cleaners

PHONE 7101

Southern Dairies

Sealtest
ICE CREAM

210 Price Street

Phone 2-1125

TUCK PHOTO SUPPLIES, INC.

CAMERAS DARKROOM SUPPLIES
PROJECTORS
FILMS MOVIE CAMERAS
225 North Elm St. Phone 3-7170

CITY OPTICIANS

W. H. LIGHTFOOT

Jefferson Building
Phone 2-4693 GREENSBORO, N. C.

Compliments of

JEWEL'S BEAUTY SALON

West Market Street

27 Years of Radio Service
In Greensboro

PICKETT'S, INC.

Next to Masonic Temple
West Market Street

HOME OF

KAISER-FRAZER

LEONARD MOTOR COMPANY

231 COMMERCE PLACE



"One of the Nicest Places to Eat"

BLISS, INC.

Caterers of Fine Foods

GREENSBORO, N. C.

1416 Northwood at Wendover Phone 2-1450

BANNER-TRULOVE CO.

Wholesalers

DEALERS IN STANDARD
AND FANCY GROCERIES

218 Hughes St.

Phones 2-1105
2-1106

"Greensboro's Smartest Shop"

FIELD'S

102 SOUTH ELM STREET

BEST WISHES, SENIORS

THE EMERSONS

Congratulations to the Seniors

from

THE IRVINGS



W B I G

"THE PRESTIGE STATION
OF THE CAROLINAS"

FUR CLEANERS STORAGE RUG CLEANERS

DRY **K** OONTS
LEANING
OMPANY CLEANERS

Office and Plant

340 N. Greene Street

GREENSBORO, N. C.

PATTIE McNAIRY & CO.

MARGARET MOORE, SUCCESSOR

Millinery and Accessories

117 So. Greene Street

Telephone 5469

GREENSBORO, N. C.

LET OUR
ADVERTISERS
BE YOUR GUIDE



**CHARLOTTE
ENGRAVING
COMPANY**

Engravers and Designers of College Yearbooks

CHARLOTTE, N. C.





