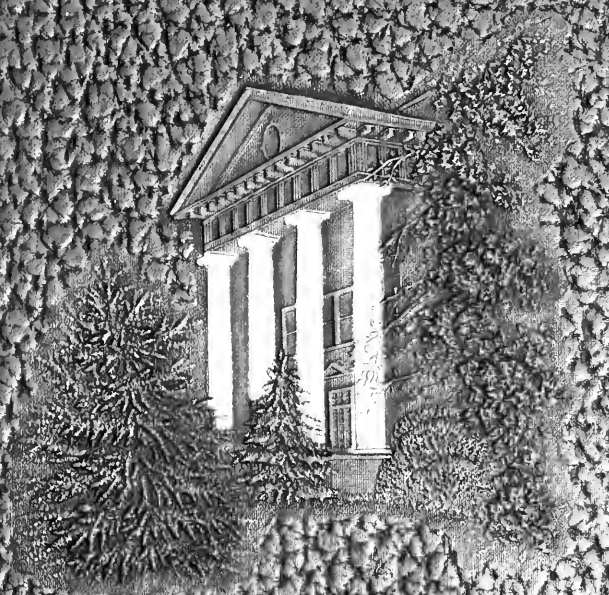



The 1949

# Echo







Digitized by the Internet Archive  
in 2010 with funding from  
University of North Carolina at Chapel Hill

<http://www.archive.org/details/echo1949gree>



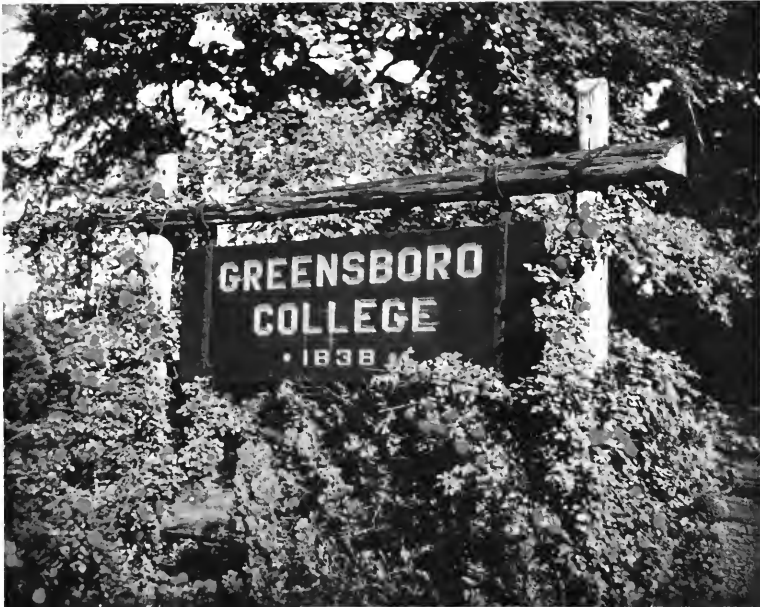


The Senior Class of  
Greensboro College, Greensboro, N. C.

. . . presents the

Veta Foote, editor . . .

nineteen hundred



Beverly McNairy, business manager,  
and forty-nine

# To

*Through these portals pass the gay, the melancholy, the rich, the poor, the friendly, the shy, the wise, the talented.*

*Four years—of life at its richest—laughter and love, learning and living, long to be remembered, never to be regained.*

*Opportunities, goals to achieve, joy to share, friends to make.*

*Memories—little things, big things, but all of them G. C.*





# Dedication

## WE REMEMBER

the first warm welcome to G. C. and one who made us feel important even as lowly freshmen . . .

the G. C. Day banquet and one who, with his quips and cranks on G. C. girls, made us laugh and feel that he was a real part of college life . . .

the many helpful chapel programs and one who has so fittingly presided . . .



WE ARE MINDFUL OF

his years of service to G. C. and the community . . .

his ever helpful outlook for our college . . .

his belief that "Nothing less than the best is good enough for the G. C. girl."

And in grateful memory we, the Senior Class, dedicate the 1949 Echo to our friend and president—

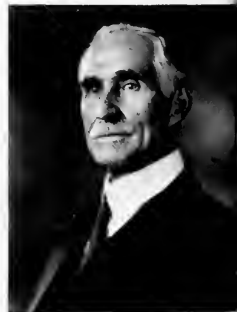
DR. LUTHER L. GOBBEL.



PRESIDENT LUTHER L. GOBBEL

## Administration

DR. S. B. TORRENTINE,  
AB., A.M., D.D.  
*President Emeritus*



DR. PAUL GINNINGS, B.S., M.S., Ph.D.

*Dean of Instruction*

MISS STELLA WARD, B.A.

*Dean of Students*

MR. GUSTAV NELSON, B.M., M.M.

*Dean of the School of Music*



GINNINGS

WARD

NELSON

ALDERMAN  
AYRES  
BAUMBACH  
BERWIN  
BLACKMON



BOYD  
L. BROCK  
M. BROCK  
BURBUS  
BURTON



CARPENTER  
COLL  
CULLIS  
DUNSTAN  
DOBSETT



## Faculty . . . .

EDMISTON  
FEW  
FITCH  
GINN  
GINNINGS



HABILL  
HEBRONMUS  
KIRRELLY  
LITZ  
MARLIN



MILIKAN  
NELSON  
OWEN  
PAUL  
PENNINGTON



MRS. JESSE ALDERMAN, Professor (part time) of Violin and Instructor in Piano  
MARTHA AYRES, A.B., L.S., Assistant Librarian  
CARL C. BAUMBACH, B.M., M.M., Associate Professor of Theoretical Music and  
Instructor in Orchestral Instruments  
BEATE C. BERWIN, Ph.D., Instructor (part time) in German  
THEODOCIA BLACKMON, Accountant  
ELIZABETH N. BOYD, A.B., M.A., Ph.D., Professor of Mathematics  
LETHA BROCK, A.B., Registrar  
MARY BROCK, A.B., Alumnae Secretary and Assistant Registrar  
BLANCHE BURRUS, B.M., Assistant Professor of Piano and Theoretical Music  
VIVIAN BURTON, A.B., B.L.I., A.M., Associate Professor of Speech  
JAMES M. CARPENTER, A.B., A.M., Ph.D., Professor of English  
EVELYN COLE, A.B., A.M., Instructor in Biology and Chemistry  
IRENE CULLIS, A.B., A.M., Associate Professor of Art  
ROBERT T. DUNSTAN, A.B., A.M., Ph.D., Professor of Romance Languages  
MRS. F. I. DORSETT, A.B., Secretary to the President

# Greensboro College . . . 1949

RHODA C. EDMESTON, A.B., A.M., Ph.D., Associate Professor of Philosophy and  
Religion  
E. C. FEW, A.B., D.D., Chaplain  
LOIS FITCH, Manager of Bookstore  
MARY L. GINN, A.B., A.M., Associate Professor of English  
PAUL M. GINNINGS, B.S., M.S., Ph.D., Professor of Chemistry and Physics  
T. C. HARRELL, Business Manager and Treasurer  
DOROTHY H. HEIRONIMUS, A.B., A.M., Ph.D., Assistant Professor of Spanish and  
Spanish-American History  
MRS. THOMAS KILKELLY, B.M., Instructor (part time) in Piano  
VIRGINIA LUTZ, B.M., Assistant Professor of Voice  
MRS. H. H. MARTIN, B.A., Instructor in Speech  
MRS. J. M. MILLIKAN, Part Time Assistant to Dean of Students  
GUSTAV NELSON, B.M., M.M., Dean of the School of Music and Professor of Piano  
and Theoretical Music  
BETTIE JANE OWEN, B.S., Director of Physical Education  
OUIDA FAY PAUL, A.B., B.S., A.M., Assistant Professor of Music Education  
ZELDA C. PEMBERTON, A.B., A.M., Ed.D., Assistant Professor of Education and  
Social Studies

PORTER  
SKAGGS  
A. SMITH  
K. SMITH  
R. SMITH



SOWELL  
STINSON  
TICKLE  
TOWN  
TURNER



TUTTLE  
WHITE  
WILLIAMS  
WOODCOCK  
YOUNG



# Faculty

- MRS. WALDO PORTER, Supervisor of Buildings and Assistant to Dean of Students  
 MARVIN L. SKAGGS, A.B., A.M., Ph.D., Professor of History and Economics  
 MRS. ADA K. SMITH, Dietitian  
 PAULINE K. SMITH, A.B., M.S.P.H., M.Ed., Associate Professor of Biology  
 RAYMOND A. SMITH, A.B., B.D., Ph.D., Professor of Religious Education  
 FRANCES SOWELL, B.S., Instructor in Home Economics  
 MADELINE G. STINSON, A.B., A.M., Ph.D., Associate Professor of Romance Languages  
 GRACE TICKLE, B.S. in Ed., A.M., Associate Professor in Home Economics  
 MILDRED TOWN, A.B., B.M., M.M., Professor of Organ and Associate Professor of Piano and Theoretical Music  
 PEARL TURNER, R.N., Supervisor of Student Hospital  
 EMILY TUTTLE, A.B., M.A., Assistant Professor of English  
 MABEL C. WHITE, Assistant Accountant  
 E. I. WILLIAMS, Associate Professor of Voice  
 MARY ELIZABETH WOODCOCK, A.B., B.S. in L.S., Librarian and Instructor of Children's Literature  
 ELIZABETH B. YOUNG, A.B., A.M., Ph.D., Professor of Education

*Not Pictured:*

- ELLA S. CLAIR LEE, A.B., Assistant Director of Physical Education  
 LUCY I. JONES, Secretary in the Administrative Offices



The rare treat of one of Mrs. Smith's *special* banquets and the expansive cheerfulness and camaraderie of the faculty as they doff their academic austerity . . . the exclusiveness of the male "Lunch Club" in one corner of the bookstore . . . jesting and joking at the G. C. Day banquet . . . a whole-hearted tribute of the faculty to the retiring Miss Pegrum.



... ..



Looking toward the future with eager eyes and hopeful hearts, reminiscing about the glorious year in Fitz—the class of 1949.

Remembering, upon first walking into Fitz, the unaccustomed effort to maintain the dignity becoming a senior . . . the joys and sorrows during those first hectic weeks of being a student teacher . . . the “Monday Night Club” on second Fitz . . . the excitement that followed the receiving of each new pin or ring . . . and the mixed emotions on “Senior Day”—all events of the last year in college.

The dignity that came with caps and gowns, the sadness of leaving friends, and the thrill of new adventure—experiences long to be remembered.

Senior Class Officers .

Summer 1944



ROZZELLE, SEARS, WEST, CAUSEY

CAROLINA ROZZELLE, *President* . . . JOSAPHINE SEARS, *Vice-President*  
BEVERLY CAUSEY, *Secretary* . . . HILDA WEST, *Treasurer*  
PEG HARTSELL, *Council Representative*



AIKEN



ALDRIDGE



ALLEN



BALLARD

# Senior

RUBY IRENE AIKEN . . . Connelly Springs, N. C. . . . Major: Home Economics; Minor: General Science . . . Publicity Chairman, Home Economics Club . . . Future Teachers Club . . . Religious Education Club . . . Freshman Counselor . . . Gold Book . . . Little Sisters: Lenora Price, Carolyn Ward . . . Society: Emerson.

MARGARET TUCKER ALDRIDGE . . . Charlotte, N. C. . . . Major: Religious Education; Minor: Mathematics . . . Secretary, President, Athletic Association . . . Editor, *Student Handbook* . . . House President, Hudson and 107 . . . Student Council . . . Y.W.C.A. Cabinet . . . Math Club . . . International Relations Club . . . Junior Honor Society . . . Little Sisters: Ann Steadman, Joyce Herndon . . . Society: Emerson.

MARY SHIRLEY ALLEN . . . Fayetteville, N. C. . . . Major: Elementary Education; Minor: Speech . . . German Club . . . Elba Henninger Speech Club . . . Art Club . . . International Relations Club . . . Assistant Business Manager, G. C. Players . . . Business Staff, Echo . . . Senior Marshal . . . Little Sisters: Mary McLendon, Patricia Ann Gross . . . Society: Irving.

CAROLYN VIRGINIA BALLARD . . . Washington, D. C. . . . Major: English; Minor: French . . . Athletic Board . . . House President, Fitzgerald Hall . . . President, Bit 'n' Spur . . . Speech Club . . . Vice President, Spanish Club . . . Senior Marshal . . . International Relations Club . . . Little Sister: Jane Lassiter . . . Society: Irving.

BANE  
BIZZELL



BRADLEY  
BRADLEY



# Class

LUCY LEE BANE . . . Belmont, N. C. . . Major: Sociology; Minor: English . . . Irving Treasurer . . . International Relations Club . . . United World Federalists Chapter . . . German Club . . . Speech Club . . . Religious Education Club . . . Little Sisters: Sarah Garrett, Ida Ruth Jones, Carolyn James . . . Society: Irving.

ANN BIZZELL . . . Goldsboro, N. C. . . Major: English; Minor: Biology . . . French Club . . . Advertising Manager, *Collegian* . . . United Daughters of the Confederacy . . . Cenozoic Club . . . Little Sisters: Ann Moore, Rosa Satterwhite . . . Society: Emerson.

JEAN BRADLEY . . . Whitakers, N. C. . . Major: English; Minor: Religious Education . . . House President, 107 . . . G. C. Daughters Club . . . Religious Education Club . . . Little Sister: Dixie Lee Fisher . . . Society: Emerson.

TEMPE LOUISE BRADLEY . . . Henderson, N. C. . . Major: Art; Minor: English . . . Reporter, G. C. Daughters . . . Mathematics Club . . . Spanish Club . . . Art Editor, *ECHO* . . . Art Editor, *Collegian* . . . Gold Book . . . Freshman Counselor . . . Art Club . . . Executive Committee, Future Teachers Club . . . Literary Editor, *ECHO* . . . Little Sisters: Betty Lou Moore, Melvarene Johnson . . . Society: Irving.



BROWN  
BURROWS



CASEY  
CAUSEY

# Senior

CELIA ANNE BROWN . . . Troy, N. C. . . Major: Sociology; Minor: Mathematics . . . G. C. Daughters . . . Spanish Club . . . International Relations Club . . . Future Teachers Club . . . Gold Book . . . President, Mathematics Club . . . Little Sisters: Frances Dixon, Jeannine Moorman . . . Society: Irving.

HELEN ELIZABETH BURROWS . . . Roanoke, Va. . . Major: Sociology; Minor: Art . . . Art Club . . . French Club . . . International Relations Club . . . Y.A.W.C.A. Cabinet . . . Treasurer, United World Federalists Chapter . . . Gold Book . . . Little Sisters: Peggy Beard, Sue Fulk . . . Society: Irving.

NANCY CASEY . . . Mount Olive, N. C. . . Major: Home Economics; Minor: General Science . . . Secretary, Home Economics Club . . . Gold Book . . . House President of 109 . . . Future Teachers Club . . . Typist, *Collegian* . . . Little Sister: Becky Hayes . . . Society: Emerson.

BEVERLY JOYCE CAUSEY . . . Greensboro, N. C. . . Major: Religious Education; Minor: Sociology . . . Art Club . . . Business Staff of *Echo* . . . Secretary, Senior Class . . . Treasurer, Town Students' Association . . . Little Sister: Barbara Hovis . . . Society: Irving.



CLARK  
CLEGG



COOKE  
COOPER



# Class

BETTY ANN CLARK . . . Fayetteville, N. C. . . . Major: Biology and English . . . G. C. Daughters . . . French Club . . . Secretary-Treasurer, Cenozoic Club . . . Future Teachers Club . . . Little Sisters: Betty Davis, Mildred Melton . . . Society: Irving.

MARY CLEGG . . . Greensboro, N. C. . . . Major: Art, Minor: History . . . Glee Club . . . G. C. Daughters . . . International Relations Club . . . Secretary and Treasurer, Spanish Club . . . Athletic Board . . . Y.W.C.A. Cabinet . . . Student Council . . . Secretary, Treasurer, President, Art Club . . . Business Manager, Art Editor, *Collegian* . . . Art Editor, *Handbook* . . . Junior and Senior Superlative: "Most Original" . . . Art Editor, *Ecto* . . . Gold Book . . . Chairman, United World Federalists Chapter . . . Senior Marshal . . . Senior Gift Tags . . . Little Sisters: Pat Dixon, Lynne Goodman . . . Society: Emerson.

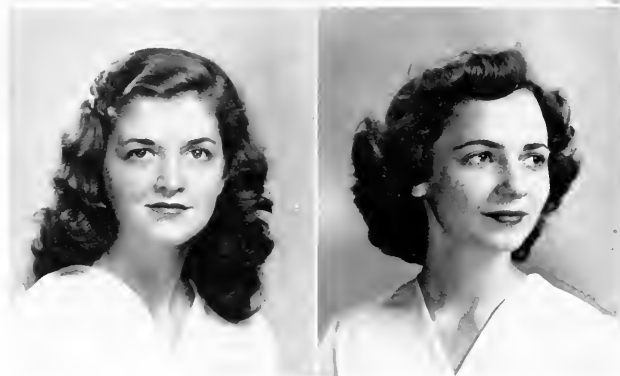
JOANNE COOKE . . . Canton, N. C. . . . Major: Public School Music; Minor: Voice . . . German Club . . . Glee Club . . . Euterpe Symphonia . . . Music Club . . . Y.W.C.A. Cabinet . . . Future Teachers Club . . . Art Club . . . Gold Book . . . Freshman Counselor . . . Little Sisters: Martha Grace Morris, Betty McCorkle . . . Society: Emerson.

BETTY ELLEN COOPER . . . Statesville, N. C. . . . Major: Voice; Minor: Music Education . . . Sophomore Transfer from Mitchell College . . . Art Club . . . French Club . . . Music Club . . . International Relations Club . . . Future Teachers Club . . . Vice-President, Glee Club . . . Senior Chief Marshal . . . Little Sisters: Vernida Roberson, Dorothy Anglin . . . Society: Emerson.



COX

CRITCHER



DELLINGER

FOOTE

## Senior

**NORMA MARGARET COX** . . . Sanford, N. C. . . . Major: Religious Education; Minor: English . . . German Club . . . International Relations Club . . . Religious Education Club . . . Advertising Manager, *Collegian* . . . Math Club . . . Future Teachers Club . . . Little Sisters; Margaret Fields, Rose Cooksey . . . Society: Emerson.

**MARTHA COTTEN CRITCHER** . . . Durham, N. C. . . . Major: Religious Education; Minor: English . . . Chaplain, Irving Society . . . Religious Education Club . . . P. K. Club . . . Glee Club . . . German Club . . . International Relations Club . . . Treasurer, Future Teachers Club . . . Little Sister: Jean Dew . . . Society: Irving.

**JILL DELLINGER** . . . Lincolnton, N. C. . . . Major: Religious Education; Minor: English . . . President, Freshman Class . . . Irving Bride . . . Y.W.C.A. Cabinet . . . Gold Book . . . May Court Attendant . . . Religious Education Club . . . Irving Treasurer . . . Corresponding Secretary, Student Council . . . Junior and Senior Honor Societies . . . Junior Superlative, "Most Attractive" . . . Highest Proficiency Scholarship . . . International Relations Club . . . Society Editor, Managing Editor, Editor-in-Chief, *Collegian* . . . May Queen . . . *Who's Who Among Students in American Universities and Colleges* . . . Little Sisters: Hazel Armstrong, Alice Marie Morgan . . . Society: Irving.

**VIVA MERLE FOOTE** . . . Asheville, N. C. . . . Majors: History and English; Minor: Art . . . Sophomore Transfer from Asheville-Biltmore College . . . Art Club . . . Vice-President, International Relations Club . . . Junior and Senior Honor Societies . . . Fire Chief . . . Freshman Counselor . . . Gold Book . . . Editor, *Echo* . . . *Who's Who Among Students in American Universities and Colleges* . . . Little Sisters: Carolyn Clark, Jean Payne . . . Society: Emerson.

FOUST  
HARDIN



HARBELL  
HARBELL



# Class

MARIAN FOUST . . . Mebane, N. C. . . Major: Music Education; Minor: Piano . . . Glee Club . . . International Relations Club . . . Religious Education Club . . . Music Club . . . Euterpe Symphonia . . . Gold Book . . . Executive Committee, Future Teachers Club . . . Little Sisters: Eleanor Simms, Etta Louise Harris . . . Society: Irving.

LETA ELLEN HARDIN . . . Sparta, N. C. . . Major: Music Education; Minor: Piano . . . French Club . . . Music Club . . . Glee Club . . . Future Teachers Club . . . Euterpe Symphonia . . . Little Sisters: Betty Jean Shields, Joyce Duke . . . Society: Emerson.

AGNES DUPAY HARBELL . . . Greensboro, N. C. . . Major: Art; Minor: English . . . Vice-President, Freshman Class . . . President, Sophomore Class . . . Secretary, Art Club . . . International Relations Club . . . Irving Marshal . . . Ecno Business Staff . . . Y.W.C.A. Cabinet . . . Gold Book . . . Future Teachers Club . . . Recording Secretary and First Vice-President, Students' Association . . . *Who's Who Among Students in American Universities and Colleges* . . . Little Sister: Billee Prather . . . Society: Irving.

IDA LOREE HARBELL . . . Cliffside, N. C. . . Major: Religious Education; Minor: English . . . Junior Transfer from Brevard Junior College . . . Vice-President, Religious Education Club . . . Glee Club . . . Gold Book . . . Freshman Counselor . . . Little Sister: Ann Ashmore . . . Society: Irving.



HARRILL

HARTSELL



HAYWORTH

HERRING

# Senior

RUTH ELIZABETH HARRILL . . . Rutherfordton, N. C. . . Major: Religious Education; Minor: English . . . Glee Club . . . International Relations Club . . . G. C. Double Sextet . . . Religious Education Club . . . Little Sister: Burdette Hardee . . . Society: Emerson.

MARGARET HARTSELL . . . Charlotte, N. C. . . Major: Religious Education; Minor: Mathematics . . . President, Junior Honor Society . . . Vice-President, Senior Honor Society . . . Secretary and Vice-President, Religious Education Club . . . Junior and Senior Superlative: "Most Intellectual" . . . Y.W.C.A. Cabinet . . . Highest Proficiency Scholarships . . . Junior Class Treasurer . . . Gold Book . . . Irving Secretary . . . Student Council . . . Future Teachers Club . . . Little Sisters: Helen Hill, Celia Edwards . . . Society: Irving.

MILDRED HAYWORTH . . . Greensboro, N. C. . . Major: Sociology, Minor: English . . . French Club . . . International Relations Club . . . May Court Attendant . . . G. C. Daughters . . . Secretary, Town Students' Association . . . Business Staff, Fcno . . . Little Sister: Frances Sue Marquis . . . Society: Irving.

JANE HERRING . . . Snow Hill, N. C. . . Major: Art, Minor: English . . . Art Club . . . French Club . . . Treasurer, United Daughters of the Confederacy . . . Future Teachers Club . . . Freshman Counselor . . . Gold Book . . . Business Staff, Collegian . . . Little Sisters: Betty Sue Hickman, Kathleen Davis.

HOFFNER

HUNT



INGLE

JONES



# Class

MARTHA HOFFNER . . . Salisbury, N. C. . . Major: Religious Education; Minor: Speech . . . Glee Club . . . International Relations Club . . . Gold Book . . . Junior Honor Society . . . Secretary-Treasurer, Senior Honor Society . . . G. C. Players . . . President, Religious Education Club . . . Dramatics Editor, *Collegian* . . . Club Editor, *Echo* . . . Freshman Counselor . . . Future Teachers Club . . . Speech Club . . . Little Sisters: Peggy Hammond, Joyce Atkinson . . . Society: Emerson.

MARY CHARLOTTE HUNT . . . Pleasant Garden, N. C. . . Major: Speech; Minor: English . . . Glee Club . . . Speech Club . . . Vice-President, President, G. C. Daughters . . . Art Club . . . Censor, Vice-President, Irving Society . . . United Daughters of the Confederacy . . . Scrapbook Keeper, President, G. C. Players . . . Freshman Counselor . . . International Relations Club . . . Spanish Club . . . Future Teachers Club . . . May Court Attendant . . . Little Sister: Joan Landauer . . . Society: Irving.

MARY KATHERINE INGLE . . . Salisbury, N. C. . . Major: Music Education; Minor: Piano . . . Glee Club . . . Music Club . . . Freshman Counselor . . . International Relations Club . . . German Club . . . Future Teachers Club . . . Irving Accompanist . . . Senior Marshal . . . Little Sisters: Mary Jeffreys, Emily Ann Rhodes . . . Society: Irving.

EUNICE RUTH JONES . . . Lakeland, Fla. . . Major: Religious Education; Minor: Voice . . . Religious Education Club . . . French Club . . . Glee Club . . . Y.W.C.A. Cabinet . . . Music Club . . . Freshman Counselor . . . Gold Book . . . United World Federalists Chapter . . . Senior Marshal . . . Little Sisters: Nancy Sue Thompson, Nancy Gardner . . . Society: Emerson.



LOUGEE

LOWDER



LOWDER

McAFFRY

# Senior

ELIZABETH ANN LOUGEE . . . Durham, N. C. . . Major: Spanish; Minor: English . . . "G" Club . . . Athletic Board . . . President, Spanish Club . . . Vice-President, President, Modern Dance Group . . . Junior Superlative, "Best All-Round" . . . Council Representative, Junior Class . . . Corresponding Secretary, President, Emerson Society . . . Little Sisters: Jean McGowan, Nancy Greene . . . Society: Emerson.

BETTY JO LOWDER . . . Rutherford College, N. C. . . Major: Biology; Minor: Chemistry . . . International Relations Club . . . Spanish Club . . . Freshman Counselor . . . Athletic Board . . . Exchange Editor, *Collegian* . . . President, Cosmos Club . . . Gold Book . . . Little Sisters: Beth Ellen Edwards, Thelma Moore . . . Society: Irving.

MARY EIHALALI LOWDER . . . Albemarle, N. C. . . Major: Piano; Minor: Organ . . . Music Club . . . International Relations Club . . . United World Federalists Chapter . . . Future Teachers Club . . . Business Staff, Echo . . . Accompanist, Glee Club . . . Presser Scholarship . . . Little Sister: Donna Ring . . . Society: Emerson.

MARTHA ANN McAFFRY . . . St. Petersburg, Fla. . . Major: Religious Education; Minor: English . . . Gold Book . . . Reporter, *Collegian* . . . Religious Education Club . . . Spanish Club . . . French Club . . . International Relations Club . . . Athletic Board . . . N.A.A.C.P. Cabinet . . . "G" Club . . . Freshman Counselor . . . Social Standards Committee . . . Censor, Emerson Society . . . Little Sisters: Bette Baker, Virginia Coble . . . Society: Emerson.

McCORMICK

McNairy



MARTIN

Mewshaw



# Class

MOZZELLE McCORMICK . . . Mt. Airy, N. C. . . . Major: History; Minor: English . . . Transfer from Pfeiffer Junior College . . . President, International Relations Club . . . Religious Education Club . . . Dining Room Hostess . . . House President, Fitzgerald Hall . . . Little Sister: Mary June Shelton . . . Society: Emerson.

BEVERLY McNAIRY . . . Greensboro, N. C. . . . Major: Primary Education; Minor: English . . . Speech Club . . . Spanish Club . . . Treasurer, G. C. Daughters . . . Secretary, United Daughters of the Confederacy . . . Irving Marshal . . . Athletic Board . . . Critic, Irving Society . . . Business Manager, Echo . . . Vice-President, N. C. State Future Teachers of America . . . Little Sisters: Kitty Miller, Ruby Hall . . . Society: Irving.

ANN MARTIN . . . Mount Olive, N. C. . . . Major: Art; Minor: English . . . French Club . . . Art Club . . . Religious Education Club . . . International Relations Club . . . Fire Warden . . . Little Sisters: De Neale Peeler, Phyllis Smith . . . Society: Emerson.

JEAN BARBÉE MEWSHAW . . . Norfolk, Va. . . . Major: English; Minor: Speech . . . Treasurer, Vice-President, Y.W.C.A. . . . Bit 'n Spur Club . . . Speech Club . . . House President, 116 . . . Social Standards Committee . . . G. C. Players . . . Religious Education Club . . . President, Students' Association . . . Little Sister: Faye Massengill . . . Society: Irving.



PAGE  
PARKER



PENNINGTON  
PLYNT

# Senior

SUE PAGE . . . Asheboro, N. C. . . . Major: Piano; Minor: Mathematics . . . German Club . . . International Relations Club . . . Secretary-Treasurer, Math Club . . . Recording Secretary, Irving Society . . . Senior Marshal . . . Gold Book . . . Accompanist, G. C. Double Sextet . . . Freshman Counselor . . . Secretary and President, G. C. Music Club . . . House President, Haulson . . . Y.W.C.A. Cabinet . . . Chairman, Social Standards Committee . . . Accompanist, Modern Dance Group . . . Future Teachers Club . . . Little Sisters: Patsy Capps, Frances Amin . . . Society: Irving.

MARGARET REBECCA PARKER . . . Greensboro, N. C. . . . Major: Home Economics; Minor: General Science . . . G. C. Daughters . . . Courtesy Chairman, Home Economics Club . . . Gold Book . . . Religious Education Club . . . Future Teachers Club . . . Y.W.C.A. Cabinet . . . Little Sister: Ellis Henry Williams . . . Society: Irving.

MARGARET PENNINGTON . . . McBee, S. C. . . . Major: Religious Education; Minor: English . . . Junior Transfer from Brevard Junior College . . . Religious Education Club . . . French Club . . . Secretary, Y.W.C.A. . . . G. C. Little Singers . . . Assistant Business Manager, Echo . . . Chaplain, Emerson Society . . . Little Sisters: Betty Lou O'Master, Joan Brooks Autry . . . Society: Emerson.

MARTHA JOAN PLYNT . . . Winston Salem, N. C. . . . Major: Religious Education; Minor: Sociology . . . Transfer from Pfeiffer Junior College . . . Religious Education Club . . . Vice-President, Spanish Club . . . International Relations Club . . . Freshman Counselor . . . Senior Marshal . . . Little Sisters: Molly Lambeth, Sarah Mozer . . . Society: Emerson.



POSS  
POWELL



QUINTON  
RAPER



# Class

RITA POSS . . . Rutherford College, N. C. . . . Major: Music Education; Minor: Piano . . . French Club . . . President W.S.C.S. and Bishop, P.K. Club . . . Literary Staff, *Collegian* . . . Music Club . . . Modern Dance Group . . . G. C. Sextet . . . G. C. Little Singers . . . Fire Warden . . . President, Glee Club . . . Future Teachers Club . . . Senior Superlative, "Most Popular" . . . Little Sister: Pat Harter . . . Society: Irving.

ANNIE LEE POWELL . . . Greenville, N. C. . . . Major: English; Minor: Speech . . . Transfer from Mary Washington College, University of Virginia . . . Speech Club . . . Future Teachers Club . . . Typist, Echo . . . Little Sister: Mary Elizabeth Patterson . . . Society: Irving.

BETTY SUE QUINTON . . . Lincolnton, N. C. . . . Major: Art; Minor: English . . . Spanish Club . . . Vice President, Art Club . . . International Relations Club . . . Freshman Counselor . . . Senior Marshal . . . Little Sisters: Betty Sue Fuller, Ann Oakley . . . Society: Irving.

REBECCA RAPER . . . Asheboro, N. C. . . . Major: Religious Education; Minor: English . . . Glee Club . . . G. C. Daughters . . . G. C. Double Sextet . . . Religious Education Club . . . Future Teachers Club . . . United Daughters of the Confederacy . . . Class Editor, Echo . . . Little Sisters: Marian Brown, Ming Yang Sung . . . Society: Irving.



RICH

ROBARDS



ROGERS

ROUSE

# Senior

IRIS LUCILLE RICH . . . Clinton, N. C. . . . Major: Biology; Minor: Speech . . . Speech Club . . . Glee Club . . . Spanish Club . . . Vice President, Cenozoic Club . . . Business Manager, G. C. Players . . . Gold Book . . . President, Irving Society . . . Little Sisters: Margaret Sugg, Dorothy Shields, Ruth Blalock . . . Society: Irving.

ELIZABETH ANN ROBARDS . . . Henderson, N. C. . . . Major: Primary Education; Minor: Speech . . . Glee Club . . . Spanish Club . . . Vice President, G. C. Daughters . . . Treasurer, Religious Education Club . . . G. C. Double Sextet . . . Speech Club . . . G. C. Players . . . Y.W.C.A. Cabinet . . . Future Teachers Club . . . International Relations Club . . . Little Sisters: Eunice Blair Floyd, Marilyn Shulford . . . Society: Irving.

MARTHA JANE ROGERS . . . Greensboro, N. C. . . . Major: Primary Education; Minor: English . . . Transfer from Virginia Intermont College . . . International Relations Club . . . Future Teachers Club . . . Little Sisters: Mary Alice Brogan, Marilyn Penegar . . . Society: Irving.

RAMONA ROUSE . . . Walstonburg, N. C. . . . Major: Religious Education; Minor: Biology . . . Y.W.C.A. Cabinet . . . Secretary, Treasurer, Vice President, President, Spanish Club . . . Religious Education Club . . . Staff, *Collegian* . . . Freshman Counselor . . . United World Federalists Chapter . . . Program Chairman, Cenozoic Club . . . Little Sisters: Iris Smith, Virginia Hatch . . . Society: Irving.

ROZZELLE

SEARS



SISK

SMITH



# Class

CAROLINA ROZZELLE . . . Winston-Salem, N. C. . . Major: English and History . . . Treasurer, P.K. Club . . . Art Club . . . United World Federalists Chapter . . . International Relations Club . . . Future Teachers Club . . . Gold Book . . . President, Senior Class . . . Little Sister: Agnes Crawford . . . Society: Irving.

JOSEPHINE ELIZABETH SEARS . . . Goldsboro, N. C. . . Major: Primary Education; Minor: Art . . . Art Club . . . French Club . . . Emerson Marshal . . . Treasurer, Sophomore Class . . . International Relations Club . . . Gold Book . . . Future Teachers Club . . . Senior Marshal . . . Vice-President, Senior Class . . . Little Sisters: Peggy Reid, Louise Wade . . . Society: Emerson.

BETTY JANE SISK . . . Asheville, N. C. . . Major: Religious Education; Minor: English . . . Junior Transfer from Mars Hill College . . . Religious Education Club . . . Spanish Club . . . Math Club . . . Y.W.C.A. Cabinet . . . Freshman Counselor . . . Collegium Staff . . . Echo Staff . . . Vice-President, Emerson Society . . . Class Prophet . . . Little Sister: Mary Hester Hunt . . . Society: Emerson.

MARION BEATRICE SMITH . . . Statesville, N. C. . . Major: Organ; Minor: Piano . . . Sophomore Transfer from Mitchell College . . . Emerson Accompanist . . . Junior Honor Society . . . President, Senior Honor Society . . . Vice-President, Music Club . . . French Club . . . Second Vice-President, Students' Association . . . Y.W.C.A. Cabinet . . . Vice-President, Junior Class . . . Freshman Counselor . . . Gold Book . . . Literary Staff, Echo . . . Future Teachers Club . . . Glee Club . . . Social Standards Committee . . . Senior Superlative, "Best-All-Round" . . . Little Sisters: Dorothy Jean Curtis, Edwina Hallman . . . Society: Emerson.



SPAIN  
STEEDMAN



STEPHENSON  
STOLTZ

# Senior

TERESA WRAY SPAIN . . . Durham, N. C. . . Major: Speech; Minors: English and History . . . Speech Club . . . Modern Dance Group . . . Literary Staff, *Collegian* . . . Business Manager, G. C. Players . . . Little Sister: Shirley Davis . . . Society: Irving.

DOROTHY VERA STEEDMAN . . . Asheville, N. C. . . Major: Religious Education; Minor: English . . . Religious Education Club . . . Vice-President, Spanish Club . . . Speech Club . . . Mathematics Club . . . Gold Book . . . Marshal, Emerson Society . . . Freshman Counselor . . . Treasurer, Athletic Association . . . Alumnae Editor, *Collegian* . . . Club Editor, Feilo . . . Social Standards Committee . . . Junior and Senior Honor Societies . . . President, Junior Class . . . Future Teachers Club . . . Senior May Court Attendant . . . Secretary and President, Y.W.C.A. . . . *Who's Who Among Students in American Universities and Colleges* . . . National Methodist Scholarship . . . Little Sisters: Audrey Corwin, Joyce McLean . . . Society: Emerson.

JANI TURNER STEPHENSON . . . Garysburg, N. C. . . Major: Sociology; Minor: English . . . Junior Transfer from Peace College . . . Vice-President, Athletic Board . . . "G" Club . . . Fire Warden . . . Business Staff, *Collegian* . . . International Relations Club . . . Spanish Club . . . United World Federalists Chapter . . . Little Sisters: Joella Richardson, Jean Penny . . . Society: Emerson.

MARSH MAXINE STOLTZ . . . Rural Hill, N. C. . . Major: Home Economics; Minor: General Science . . . Spanish Club . . . Art Club . . . Y.W.C.A. Cabinet . . . Gold Book . . . International Relations Club . . . Vice-President and President, Home Economics Club . . . President, Future Teachers Club . . . Religious Education Club . . . Freshman Counselor . . . Little Sister: Jane Tracy . . . Society: Irving.

STOUT  
TATEM



TAYLOR  
TAYLOR



# Class

DORIS ELIZABETH STOUT . . . Siler City, N. C. . . Major: Primary Education; Minor: English . . . G. C. Daughters . . . Spanish Club . . . Future Teachers Club . . . President, United Daughters of the Confederacy . . . Little Sisters: Jackie Merritt, Ruth Hooker . . . Society: Irving.

MARY ELLEN TATEM . . . Norfolk, Va. . . Major: English; Minor: Spanish . . . Art Club . . . Spanish Club . . . Mathematics Club . . . Future Teachers Club . . . Exchange Editor, *Collegian* . . . Photographic Editor, *Echo* . . . Senior Marshal . . . Little Sisters: Eita Jane Smith, Lucy Henley . . . Society: Irving.

FLORENCE ANNE TAYLOR . . . Blanch, N. C. . . Major: Costume Design; Minor: English . . . Home Economics Club . . . Spanish Club . . . Art Club . . . International Relations Club . . . Reporter, *Collegian* . . . Senior Gift Tags . . . Leroy Smith Scholarship . . . Little Sisters: Betty Bame, Allene Williams, Caroline Wright . . . Society: Irving.

ELOISE TAYLOR . . . Conway, N. C. . . Major: Music Education; Minors: Piano and Violin . . . G. C. Orchestra . . . Athletic Board . . . "G" Club . . . Music Club . . . Secretary, Future Teachers Club . . . Secretary and Treasurer, Modern Dance Group . . . Little Sisters: Marvel Stokes, Jeannie Hartman . . . Society: Irving.



TAYLOR  
USHER



VEREEN  
WATSON

# Senior

SARAH ALMA TAYLOR . . . Richlands, N. C. . . . Major: Music Education; Minors: Piano and Voice . . . Glee Club . . . German Club . . . International Relations Club . . . Religious Education Club . . . Freshman Counselor . . . G. C. Sextet . . . Vice-President, Music Club . . . Vice-President, Future Teachers Club . . . Little Sisters: Frances Griffith, Ruth Hart . . . Society: Emerson.

MARY JO USHER . . . Greensboro, N. C. . . . Major: Sociology; Minor: English . . . Glee Club . . . Spanish Club . . . Vice-President, International Relations Club . . . United World Federalists Chapter . . . Secretary, Treasurer, Vice-President, Bit 'n Spur Club . . . Speech Club . . . Little Sisters: Jo Ann Sneed, Lettie Sheek . . . Society: Irving.

DORIS VEREEN . . . Greensboro, N. C. . . . Major: Music Education; Minor: Voice . . . Music Club . . . Future Teachers Club . . . President, Glee Club . . . Little Sisters: Betty Sue Doles, Martha Starke . . . Society: Irving.

ANN WATSON . . . Ahoskie, N. C. . . . Major: Primary Education; Minor: Journalism . . . Glee Club . . . French Club . . . International Relations Club . . . Future Teachers Club . . . Music Editor, *Collegian* . . . Little Sisters: Julia Ann Robinson, Dorla Dean Evans . . . Society: Irving.

WEST  
WHITENER



WILLIAMS  
WILLIAMS



# Class

HILDA HOCUITT WEST . . . Garland, N. C. . . . Major: Primary Education; Minor: English . . . Religious Education Club . . . Spanish Club . . . Art Club . . . International Relations Club . . . Freshman Counselor . . . Historian, United Daughters of the Confederacy . . . Future Teachers Club . . . Treasurer, Senior Class . . . Little Sister: Ann Lindsey . . . Society: Irving.

RACHEL WHITENER . . . Stanley, N. C. . . . Major: Primary Education; Minor: Biology . . . Religious Education Club . . . Future Teachers Club . . . G. C. Daughters . . . Art Club . . . Spanish Club . . . Cenozoic Club . . . International Relations Club . . . Little Sisters: Mary Allgood, Frances Starnes . . . Society: Irving.

ETHEL MAE WILLIAMS . . . Greensboro, N. C. . . . Major: Religious Education; Minor: Sociology . . . Advertising Manager, *Collegian* . . . Gold Book . . . Business Manager, *Handbook* . . . Religious Education Club . . . Secretary, Junior Class . . . Vice-President and President, Town Students' Association . . . Business Staff, Echo . . . Future Teachers Club . . . Little Sister: Doris Talbert . . . Society: Irving.

MARTHA WILLIAMS . . . Blackstone, Va. . . . Major: Religious Education; Minor: English . . . Religious Education Club . . . International Relations Club . . . United Daughters of the Confederacy . . . Future Teachers Club . . . Little Sisters: Katharine Hege, Virginia Dure' Lewis . . . Society: Emerson.



Mrs. MARGARET TUCKER ALDRIDGE  
*Most Athletic*



Miss MARY CLEGG  
*Most Original*



Miss AGNES HARBELL  
*Most Poised*

## Senior Class

Whether it's speedball or tennis, Margaret is there doing her best for her team! Her executive ability has made her an excellent president of the Athletic Association.

Fresh scintillating ideas seem to come in a steady stream from "Chickie." She's always using her nimble fingers to fashion a novel poster, or, her limitless imagination to produce delightful dance decorations.

We're often unaware of Agnes as she works with the student government and the "Y," but we always feel her quiet influence. Her good taste and sound judgment have proved most valuable to us.



"Peg," one of our most capable R.E. majors, is devoted to the "Y," her W. S. S. E., and to doing every job superbly. With such enthusiasm, is it any wonder she's our most intellectual senior?

Lively "Ponsie" is constantly on the run—practice teaching, working with the Glee Club, and practicing piano. Still she keeps her merry smile ready for anyone who needs a lift.

Although "Smitty" is at her best when she plays our chapel organ preludes, she excels in other fields as well. She's interested in athletics (particularly tennis), the Honor Society's activities, and many other campus doings.

## Superlatives



MISS "PEG" HARTSELL  
*Most Intellectual*



MISS RITA PONS  
*Most Popular*



MISS MARION SMITH  
*Best All-round*

Ah, the life of an upperclassman! Farewell to lowly freshman blues and sophomore pangs of inferiority, for being a junior opens up superior vistas of life. Take, now, the elite feeling a Junior gets at her first Junior-Senior prom in the parlor, or the protective urge that comes with having "little sisters" under her wing, or that new look of respect from underclassmen. Goodness, who wouldn't feel just a little class-conscious?

Alas, however, Junior life is not all a bed of roses. Professors seem to expect a little more in the way of intelligence from such important personages. They seem to think, too, that Juniors might act a little more dignified—just as good training for that all-important senior year.

All in all, though, it's the ideal time of college life—two years of work are over, yet two years of opportunity are ahead. Make way for the Juniors!

## Junior Class Officers . . .

# Junior Class



SCHWARTZBARD, McGRADY, DAVIS, GAUL, DEFORD

HELEN SCHWARTZBARD, *President* . . . MARY DAVIS, *Vice-President*  
IVA LEE McGRADY, *Secretary* . . . VIRGINIA DEFORD, *Treasurer*  
ALICE GAUL, *Council Representative*

# 1949 Junior Class



ALBRIGHT  
ALLRED  
BAILEY  
BROWN  
BUSH



CASSTEVENS  
CURFMAN  
DAVIS  
DEFORD  
FINCH



FOWARD  
GAUL  
HALL  
HIGHFILL  
HURLEY

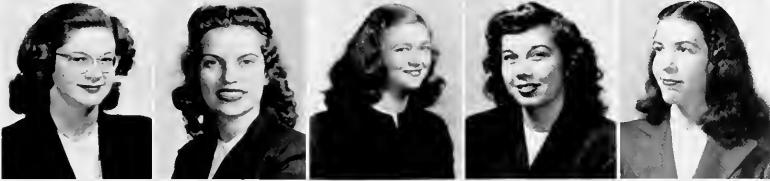
## The Echo

Cynthia Albright . . . Greensboro . . . Marilyn Allred . . . Jacksonville, Fla. . .  
 Peggy Bailey . . . Walnut Cove . . . Shirley Brown . . . Wilmington . . . Mary  
 Elizabeth Bush . . . Lenoir . . . Mary Jane Casstevens . . . Greensboro . . . Frances  
 Curfman . . . Norfolk, Va. . . Mary Davis . . . Burlington . . . Virginia DeFord,  
 Norfolk, Va. . . Mary Fisher Finch . . . Zebulon . . . Elaine Foward . . . High  
 Point . . . Alice Gaul . . . Philadelphia, Pa. . . Charlotte Hall . . . Yadkinville  
 . . . Janet Highfill . . . Waxhaw . . . Peggy Hurley . . . Troy.

HUSKE  
INGRAM  
JAMES  
JOHNSON  
KINDT



KIRK  
LANE  
McGRADY  
MARSH  
MATTHEWS



MAXWELL  
MUNROE  
PEAL  
RAST  
SCHWARTZBARD



SHENG  
SIMPSON  
SMITH  
TSU  
WHEELER



# of G. C.

Dixie Huske . . . Fayetteville . . . Anna Jane Ingram . . . Wadesboro . . . Mary Virginia James . . . Norfolk, Va. . . Ann Johnson . . . Suffolk, Va. . . Mary Kindt . . . Ocala, Fla. . . Margaret Kirk . . . Cooleemee . . . Louisa Lane . . . Stantonsburg . . . Iva Lee McGrady . . . Durham . . . Rose Marsh . . . Wadesboro . . . Mary Ellen Matthews . . . Greensboro . . . Katherine Maxwell . . . Merchantville, N. J. . . Patsy Munroe . . . Asheville . . . Nancy Peal . . . Chadbourne . . . Sue Rast . . . Dillon, S. C. . . Helen Schwartzbard . . . Highland Park, N. J. . . Marie Sheng . . . Shanghai, China . . . Anne Simpson . . . Salisbury . . . Mabel Smith . . . Jamestown . . . Nye-Tsung Tsu . . . Shanghai, China . . . Peggy Ann Wheeler . . . Walnut Cove.



MISS CYNTHIA ALBRICHT  
*Most Original*



MISS MARILYN ALLRED  
*Most Intellectual*



MISS MARY DAVIS  
*Best All-round*

## Junior Class

Anyone who saw the art exhibit, attended the rush week program, or enjoyed the Junior decorations for Homecoming can witness that "Cindy" puts all her charming personality into making her work original.

Wouldn't it be wonderful to be able to discuss *Harvard Classics* or Beethoven's "Sixth" with equal ease? Who can manage such a feat? Why, Marilyn, of course!

Who makes all her clothes? Who always serves on the committees for the dances? Who is always one hundred per cent for her society? She's our best all-round Junior—Mary.

Whether going out on a "big" date or sitting in the smoker on blue Monday, the most popular Junior is the one with the broadest smile—Kay.

Winning blue ribbons in the horse show at Sedgefield and soliciting Juniors to play soccer are a few of Iva Lee's many accomplishments in athletics.

Pouring tea, writing stories for the *Record*, presiding over class meetings—whatever the situation may be, Helen always has it well in hand.

## Superlatives

---



MISS KAY MAXWELL  
*Most Popular*



MISS IVA LEE McGRADY  
*Most Athletic*



MISS HELEN SCHWARTZBARD  
*Most Poised*

Being a sophomore undeniably has its advantages:

"Mighty sophs" reigning supreme on Rat Day, every whim attended to by freshman rats . . . no lights out at that eternal 10:45 and no closed study . . . plenty of football week-ends usually dreamed of last year . . . the important feeling of having survived the "tortures" of Sophomore Culture Tests . . . the Freshman-Sophomore Dance—glorious decorations, special music, and (what a treat!) *men*.

Finally, graduation day with all its charms:

Millions of daisies to pick . . . the forming of the long traditional daisy chain . . . the breath-taking moment as each "big sister" gets her diploma . . . the tear-filled moment of the inevitable "goodbyes" to the Big Sister Class. In brief, it is the half-way mark: two years down and two to go, with the last-minute check to see that the signals are pointing straight ahead to two more years of happiness and work and success at Greensboro College.

Sophomore Class Officers . . .



# Sophomore Class



HAMMOND, PRATHER, EDWARDS, JOHNSON, GRIFFITH

BILLEE PRATHER, *President* . . . FRANCES GRIFFITH, *Vice-President*

PEGGY HAMMOND, *Secretary* . . . MELVARENE JOHNSON, *Treasurer*

CELIA ANN EDWARDS, *Council Representative*

# Sophomore



MARY ALLIGOOD ..... Durham  
 FRANCES AMAN ..... Greenville  
 DOT ANGLIN ..... Winston Salem  
 ROSE COOKSEY ..... Roanoke Rapids  
 ANN ASHMORE ..... Yanceyville

MARINA ATDANAELOS ..... Kannapolis  
 JOYCE ATKINSON ..... Siloam  
 JOAN BROOKS AUBRY ..... Fayetteville  
 PEGGY BEARD ..... Fayetteville  
 RUTH BLALOCK ..... Oxford

MARY ALICE BROGAN ..... Wilmington, Del.  
 MARIAN BROWN ..... Greenville  
 PATSY CAPPS ..... Arcola  
 CAROLYN CLARK ..... Greenville  
 HAZEL ARMSTRONG ..... Mount Gilead

AUDREY CORWIN ..... Towaco, N. J.  
 AGNES CRAWFORD ..... Wadesboro  
 DOROTHY JEAN CURTIS ..... Asheville  
 BETTY DAVIS ..... Raeford  
 ELIZABETH MAE DAVIS ..... Blatch

KATHLEEN DAVIS ..... Weldon  
 SHIRLEY DAVIS ..... Burlington  
 JEAN DEW ..... Wilson  
 FRANCES DIXON ..... Walstonburg  
 PATRICIA DIXON ..... Honolulu, Hawaii

BETTY SUE DOLES ..... Elm City  
 BETH ELLEN EDWARDS ..... Sunbury  
 CELIA ANN EDWARDS ..... Asheville  
 DOBIE EVANS ..... Kernersville  
 MARGARET FIELDS ..... Walstonburg

# Class

DIXIE LEE FISHER ..... Fairmont  
 EUNICE FLOYD ..... Raligh  
 SUSAN FULK ..... Pilot Mountain  
 BETTY SUE FULLER ..... Liberty  
 NANCY GARDNER ..... Asheville



SARAH GABRETT ..... Burlington  
 NANCY GREENE ..... Thomasville  
 FRANCES GRIFFITH ..... High Point  
 PATRICIA GROSS ..... Brooklyn, N. Y.  
 RUBY HALL ..... Thomasville



EDWINA HALLEMAN ..... Aberdeen  
 PEGGY HAMMOND ..... Spartanburg, S. C.  
 BURDETTE HARDEE ..... Durham  
 BESSY HARDIN ..... High Point  
 ETIA LOUISE HARRIS ..... Warrenton



RUTH HART ..... Norfolk, Va.  
 PAT HARTER ..... Summerville, S. C.  
 JEANNIE HARTMAN ..... Lincolnton  
 VIRGINIA HATCH ..... Wilmington  
 BECKY HAYES ..... North Wilkesboro



KATHERINE HEGER ..... Winston-Salem  
 LUCY HENLEY ..... King George, Va.  
 JOYCE HERNDON ..... Durham  
 BETTY SUE HICKMAN ..... W. Palm Beach, Fla.  
 HELEN HILL ..... Kinston



RUTH HOOKER ..... Kinston  
 BARBARA HOVIS ..... Greensboro  
 MARY HESTER HUNT ..... Durham  
 MARY JEFFREYS ..... Selma  
 MELVARENE JOHNSON ..... Dunn



# ECHO



IDA RUTH JONES ..... High Point  
 MOLLY LAMBETH ..... Thomasville  
 JOAN LANDAUER ..... Norfolk, Va.  
 JANE LASSITER ..... Weldon  
 VIRGINIA LEWIS ..... Kinston

ANN LINDSEY ..... Wadesboro  
 BETTY McCORKLE ..... Mount Holly  
 JEAN McGOWAN ..... Greenville  
 JOYCE McLEAN ..... Aberdeen  
 MARY McLENDON ..... Lexington

FRANCES SUE MARQUIS ..... Greensboro  
 FAYE MASSENGILL ..... Kinston  
 MILDRED MELTON ..... Brevard  
 JACKIE MERRITT ..... Chapel Hill  
 KITTY MILLER ..... Salisbury

SARAH MOGER ..... Pinebluff  
 ANN MOORE ..... Reidsville  
 BETTY LOU MOORE ..... Mount Holly  
 JEANNINE MOORMAN ..... Roanoke, Va.  
 ALICE MARIE MORGAN ..... Asheville

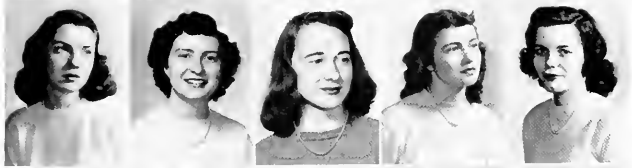
MARTHA GRACE MORRIS ..... Forest City  
 ANN OAKLEY ..... Greenville  
 BETTY LOU O'MASTER ..... Wilmington  
 ANNE PARKER ..... Greensboro  
 ELIZABETH PATTERSON ..... Fayetteville

JEAN PAYNE ..... Winston Salem  
 MARILYN PENLGAR ..... Gastonia  
 JEAN PINNY ..... Raleigh  
 BILLYE PRATHER ..... Mount Airy  
 LEXORA PRICE ..... Onley, Va.

PEGGY REID ..... Rose Hill  
 JOELLA RICHARDSON ..... Fremont  
 DONNA RING ..... Lexington  
 JULIA ROBINSON ..... Reidsville  
 ROSA LEE SATTERWHITE ..... Cleveland



LETTIE SHEEK ..... Mocksville  
 JANE SHELTON ..... Yanceyville  
 BETTY SHIELDS ..... High Point  
 DOT SHIELDS ..... Fort Wayne, Ind.  
 MARILYN SHUFORD ..... Lincolnton



ELEANOR SIMMS ..... Blanton, Ala.  
 IRIS SMITH ..... Holderroft, Va.  
 ETTA JANE SMITH ..... Asheboro  
 PHYLLIS SMITH ..... Wilmington  
 JO ANNE SNEAD ..... Wilmington



MARTHA ANNE STARKE ..... Roanoke Rapids  
 FRANCES SPARNES ..... Mount Gilead  
 ANN STEADMAN ..... Rockingham  
 MARVEL STOKES ..... Stokes  
 MARGARET SUGG ..... Grifton



MING YANG SUNG ..... Shanghai, China  
 DORIS TALBERT ..... Winston Salem  
 NANCY THOMPSON ..... Pittsboro  
 JEAN TYBEE ..... Rocky Mount  
 LOUISE WADE ..... Dunn



CAROLYN WARD ..... Walkertown  
 FRANCES WARREN ..... Burlington  
 ELLIS WILLIAMS ..... Wallace



That first day at G. C.! It's not really so tragic as the expressions on the faces in Main would lead one to think. College life begins, it is true, with sporadic tearfulness and a rather "green" outlook. But the first week passes in a flash of rushing and excitement . . . then Decision Night—the time to go Emerson or Irving . . . later Rat Day, interrupting all study—each "rat" obsequiously obeying any almighty Sophomore. . . . Then pass six long weeks of "confinement," and at long last the Freshmen are homeward bound! . . . But, alas, back to studies once more with cheerful "big sisters" and counselors always around to help ease the bumps along the way.

There is a definite tingle, a lift, in the air with the thought of Christmas vacation—its cedar-tree smells and the long anticipated days at home. Finally, as the year draws to a close, the "green" freshman gradually ripens to the ways of college life—a life that has been a memorable experience leaving each one awaiting her chance to join the ranks of the mighty upperclassmen.

## Freshman Class Officers

# Freshman Class



ROYALL, GOODMAN, GREENE, JONES, WILLIAMS

ELIZABETH ROYALL, *President* . . . JOAN WILLIAMS, *Vice-President*

LYNNE GOODMAN, *Secretary* . . . LINDA GREENE, *Treasurer*

MARGARET JONES, *Council Representative*



CAROLYN ALLIGOOD ..... Durham  
 ANN ATWATER ..... Fayetteville  
 MALINDA AYERS ..... Richmond, Va.  
 BETTY BAKER ..... Wadesboro  
 BETTY BAME ..... Carolina Beach

BETTY ELCK ..... Pilot Mountain  
 MARY NELL BODDIE ..... Durham  
 ELIZABETH BOWLES ..... Winston-Salem  
 JOAN BOYD ..... Greensboro  
 DOT BOYETTE ..... Kinston

JEAN BRADSHAW ..... Roxboro  
 MARY BRINKLEY ..... Durham  
 REBEKAH BROWN ..... Mount Holly  
 ADELE BURANELLI ..... Tenafly, N. J.  
 BETSY BUTLER ..... Chattanooga, Tenn.

ELIZABETH CALLIS ..... Bessemer City  
 AILEEN CASEY ..... Mount Olive  
 ALICE CHAMPION ..... Raleigh  
 LILA CROSS CHAPMAN ..... Salem, Va.  
 MALISSA CHRISTIE ..... Durham

CATHERINE COBLE ..... Burlington  
 VIRGINIA COBLE ..... Burlington  
 PHYLLIS COGIN ..... Star  
 JACQUELINE COLLIE ..... Barley  
 PHYLLIS COTHMAN ..... Altavista, Va.

JANICE COVINGTON ..... Rockingham  
 SUE CULLIFER ..... Murfreesboro  
 JEAN DAVIS ..... Kings Mountain  
 CAROLYN DIBBY ..... Ferrum, Va.  
 OLA NELL EDMONDSON ..... Bethel

SUZANNE ELLIOTT ..... Forest City  
 FAYE EVANS ..... Lexington  
 ANN FISCH ..... Smithfield  
 ESTELLE FYLE ..... Battleboro  
 NANCY CAROLYN FONVILLE ..... Burlington



CARLENE FREEMAN ..... Raeford  
 ELEANOR GARRISON ..... Asheville  
 CAROLYN GILLESPIE ..... Greensboro  
 JOAN GOFORTH ..... Rutherfordton  
 LYNNE GOODMAN ..... Greensboro

ANNE GRAY ..... Wadesboro  
 LINDA GREENE ..... Rocky Mount  
 MAE AYERS HACKNEY ..... Washington  
 JETTIE HATTICOCK ..... Mount Gilead  
 GAYNELL HALL ..... Ararat

JOANNE HARRIS ..... Lenoir  
 LOUISE HARRIS ..... Roxboro  
 VIRGINIA HARRIS ..... Durham  
 ELIZABETH HEDGEPEATH ..... Warrenton  
 DORIS HELMS ..... Durham

NANCY HULEMAN ..... Burlington  
 ANNETTE INGE ..... Fayetteville  
 NANCY INGRAM ..... Greensboro  
 PATRICIA JACKSON ..... Ayden  
 MARY JEWELL JENKINS ..... Norwood

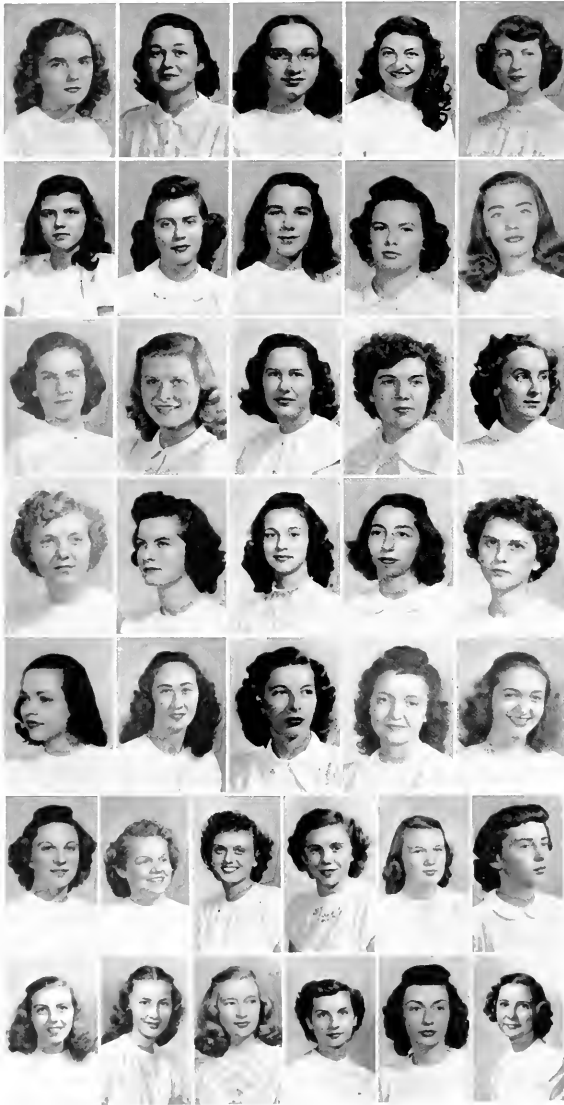
SALLY JEROME ..... Rose Hill  
 JANICE JOHNSON ..... Robersonville  
 MARGARET SUE JONES ..... Winston Salem  
 EDITH JUDKINS ..... Alexander, N. Y.  
 PEGGY JOYCE KELI ..... Rocky Mount

AGNES KENESELY ..... North Wilkesboro  
 JO ANN KINCAID ..... Kannapolis  
 MARY ELIZABETH LASLEY ..... Winston Salem  
 BETTY LAACH ..... Thomasville  
 IDA LEWIS ..... Keny

REBECCA LOWDERSHILK ..... Greensboro  
 PEARL LUNSFORD ..... Warrenton, Va.  
 MARILYN MALLARD ..... Greensboro  
 MILLICENT MARSH ..... High Point  
 ELLANOR MARTENS ..... Burlington



# Whitman Class



CLARIANN MASSEY ..... High Point  
 CAROLYN MERRITT ..... Hickory  
 ANNIE RUTH METZ ..... Mooresville  
 ETHELL PATE ..... Fayetteville  
 JUSTINE PATRICK ..... Englehart

SUE PERKINS ..... Gastonia  
 ELCINA PHELPS ..... Winston-Salem  
 DOROTHY FLYLER ..... Thomasville  
 JACQUELINE POLLOCK ..... Trenton  
 PHYLLIS POOLE ..... Durham

JOAN RABB ..... Lenoir  
 ELIZABETH ANN ROYALL ..... Elkin  
 LOUISE SANFORD ..... Bahama  
 SARALYN SCHUMANN ..... Rochester, N. Y.  
 ELLEN SMITH ..... Colfax

PATRICIA SMITH ..... Goldsboro  
 JUVLYN SPARGER ..... Mount Airy  
 PATSY STEPHENSON ..... Garysburg  
 CAROL LOU SUMMERFIELD ..... Wilson  
 KATHERINE SUTTON ..... Candor

LINDA TAYLOR ..... Bethel  
 BARBARA ANN THOMPSON ..... Winston-Salem  
 BARBARA JEANNE THOMPSON ..... Warsaw  
 JIAN TUCKER ..... Chicod  
 PATRICIA TUCKER ..... Greensboro

NANCY TYSINGER ..... Thomasville  
 MARIAN VAUGHN ..... Stokesdale  
 BETTY WADDE ..... Winston-Salem  
 ELLA FRANCES WARBLEN ..... Newton Grove  
 MARY SHIR WARBLEN ..... Newton Grove  
 JIAN WEBB ..... Kings Mountain

BETTY ROSE WILKERSON ..... Farmville  
 AILEEN WILLIAMS ..... Erwin  
 JOAN WILLIAMS ..... Dunn  
 BETTY ROSS WILLIAMSON ..... Raleigh  
 JIANNIE WOODLIEF ..... Rocky Mount  
 CAROLYN WRIGHT ..... Jarvisburg



# From 7 to

Ding! Dong!—the unearthly toll of the breakfast bell breaking into that old-so-wonderful dream . . . the inevitable "Fall out!"—"To wash and dress and eat and drink" . . . another day at G. C. begins.

Then: Mail time!—two possible reactions here: a gleeful "Wee!" or a dismal "Oh me," depending upon the presence or absence of reading matter in a certain P. O. box.

Next: 8 o'clock for the ill-fated, more civilized hours for the blest. Necessary accouterments: books, paper, pencils, and intelligent expressions, either innate or carefully cultivated.

Hard labor follows: ten lbs. of dirty clothes plus one box of soap plus one flick of the switch equals ten lbs. of clean clothes. Time limit: one half hour. Courtesy: Bendix, Inc.



# 11 at G. C.

And now, bankruptcy: A pleasant but expensive interlude in the bookstore . . . Sales resistance and fabulous bank accounts vanish as students face the irresistible lure of cokes, shmooiches, cheese crackers, and Butterfingers.

In the afternoon: for the artists on campus, a lengthy session at the keyboard . . . For the less talented, quite frequently Big City enticements—shopping, movies with “in-and-out” cards properly endorsed, *of course*.

Later, supper . . . still later, best dress, glamorous make-up, phone rings, and the long-awaited “you have a call-ler!” . . . uh, pardon us . . . we, “the less fortunate,” were only dreaming . . . “Full moon and empty . . .”—arms full of big dusty books!

Another bell and time to retire: a last bull session . . . a polite “pipe down” from the housemother . . . and so good night—another day is gone.







# Students' Association

Have you experienced it? . . . being called to the council room some Monday evening to meet the green-robed executive board of the Students' Association! There you face a group which combines understanding with firmness and the relentless purpose of maintaining the honor system and achieving close relations between students and faculty.

Apart from their role as executives, solving the students' problems, the counselors direct the May Day dance. And last spring Barbee and Agnes represented G. C. at the Southern Conference of Students' Associations in Tallahassee, Florida.



BARBEE MEWSHAW  
*President*



DIXON, SMITH, HARRELL, MEWSHAW, HIGHALL, BUSH, ALBRIGHT.



## Student Council

- BARBEE MEWSHAW, *President*  
 AGNES HARRELL, *Vice-President*  
 MARION SMITH, *Second Vice-President*  
 MARY ELIZABETH BUSH, *Recording Secretary*  
 JANET HIGHALL, *Corresponding Secretary*  
 PATRICIA DIXON, *Treasurer*  
 CYNTHIA ALBRIGHT, *Day Students' Representative*  
 SHIRLEY BROWN, *House President*  
 KATHLEEN DAVIS, *House President*  
 RUBY HALL, *House President*  
 MOZELLE McCORMICK, *House President*  
 MARYLYN PENEGAR, *House President*  
 CAROLYN WARD, *House President*



*Seated:* Brown, McCormick.  
*Standing:* Hall, Ward, Davis, Penegar.



# Y. W. C. A.

"Hello, may I help you?" asked the "Y." This question has been at the root of all the "Y" activities through the year, as the cabinet tried to give each student what she needed and wanted. Whether at vespers or at a square dance, at "Y" fellowship or at a picnic, one of the chief aims of the "Y" has been to make each girl on campus feel that she, too, belongs.



DOROTHY STEEDMAN  
*President*



Stinson, Gobel, Edmeston, Smith, Ward.

## OFFICERS

DOROTHY STEEDMAN ..... *President*  
 ALICE GAUL ..... *Vice President*  
 PEGGY PENNINGTON ..... *Secretary*  
 RUTH HOOKER ..... *Treasurer*

## CABINET MEMBERS

Mary Brinkley, Helen Burrows, Betsy Butler, Lula Chapman, Joanne Cooke, Jill Dellinger, Celia Edwards, Margaret Fields, Dixie Fisher, Nancy Gardner, Alice Gaul, Linda Greene, Peggy Hammond, Betsy Hardin, Agnes Harrell, Peg Hartsell, Janet Highfill, Ruth Hooker, Pat Jackson, Mary Kindt, Frances S. Marquis, Millicent Marsh, Rose Marsh, Ann McAlfry, Ann Oakley, Sue Page, Margaret Parker, Peggy Pennington, Ramona Rouse, Betty Sisk, Jo Anne Sneed, Marion Smith, Ann Steadman, Dorothy Steedman, Margie Stoltz, Joella Richardson, Nancy S. Thompson, Jean Tvee, Betty R. Wilkerson.

# WHO'S WHO 1949



JILL DELLINGER  
PEG HARISELL

VETA FOOTE  
MARJHA ANN McAFFERY

AGNES HARRELL  
DOROTHY STEEDMAN

Because of their high standards of leadership, scholarship, and character, these girls have been chosen to represent the class of 1949 in *Who's Who Among Students in American Universities and Colleges*:

JILL, versatile, lovely, able *Collegian* editor  
VETA, conscientious, competent *Echo* editor  
AGNES, artistic, efficient, friendly campus leader  
PEG, quiet, keen-minded student, earnest worker  
"TUT," ambitious, sincere, supporter of campus activities  
"DOT," assured, enthusiastic "Y" president

# The Greensboro College Honor Society

One of the most active organizations on the campus! Despite long hours in the library, and often heavy extracurricular activities, G. C.'s honor students finally survive the trying days of exams with an equanimity that only the intelligentsia can enjoy.

The outcome of a year's work is the awarding of proficiency scholarships to the members with the highest averages—a challenging reward for deserving scholars!

Officers: Marion Smith, president; Peg Hartsell, vice-president; Martha Hoffner, secretary-treasurer.



## SENIOR SOCIETY

SMITH  
HOFFNER  
ALLRED  
DELLINGER  
FOOTE  
STEDMAN



## JUNIOR SOCIETY

Seated:  
MARQUIS  
LASSITER  
HALL  
PRICE  
FISHER  
Standing:  
FLOYD  
RICHARDSON  
TYREE  
DAVIS



*Seated on wall: Williams, Causey, Mallard, Ingram, Rogers, Vereen. First row on steps: Parker, Goodman. Second row: Hovis, Boyd, Gillespie. Third row: Clegg, Aldridge, Hayworth.*

## Town Students' Association

Vibrant, vital, versatile—that describes the spirited town students. Whether they're sponsoring a romantic Valentine dance, entertaining graciously at the new students' tea, or knowing all the answers on that terrific pop quiz this morning, they add verve and dash to all their activities.

Witness the day students' room—fireside atmosphere that just naturally lends itself to gab fests, interesting and well-planned meetings, new paint jobs, slip covers and draperies—all products of town student imagination and ingenuity.

In short, if you want personality plus, just look up a town student.

Officers: Ethel Williams, president; Barbara Hovis, vice-president; Mildred Hayworth, secretary; Beverly Causey, treasurer; Cynthia Albright, council representative.

# Senior Marshals

"Angels?" Well, that is the impression many people have of our senior marshals. Gowned in long, flowing white dresses, these girls are always present to grace the doors of Odell and to welcome guests when there is a performance of any kind—a recital, a play, or a town meeting on books.

Marshals: Betty Cooper, Chief; Joan Plint, Mary Katherine Ingle, Mary Ellen Tatem, Betty Sue Quinton, Ruth Jones, Josephine Sears, Sue Page, Carolyn Ballard, Mary Clegg, Shirley Allen.

Page, Ingle, Tatem, Sears, Plint, Cooper, Jones, Quinton, Ballard, Clegg, Allen.



# The 1949 Echo



VETA TOOLE  
*Editor*



BEVERLY MCNARY  
*Business Manager*



## Editorial Staff

- Seated:*  
AUBREY  
TAYLOR  
BAPPE
- Standing:*  
MCLINDON  
SCHWARZBAUM  
PERRY  
LYELL  
HUSKI  
HOLTSER  
CLEGG  
SISK  
SMITH  
HALL



# Editorial Staff

VETA FOOTE .....	Editor
TEMPE BRADLEY .....	Literary Editor
MARILYN ALLRED .....	Assistant Literary Editor
BECKY RAPER .....	Class Editor
MARTHA HOFFNER .....	Club Editor
MARION SMITH .....	Music Editor
JEAN TYBEE .....	Sports Editor
MARY CLEGG .....	Art Editor
MARY ELLEN TATEM, BETTY SISK, JEAN PENNY .....	Photographic Editors
RUBY HALL, DIXIE HUSKE, MARY McLENDON, HELEN SCHWARTZBARD, IRIS SMITH	Staff Writers
ELIZABETH EBERWINE, VIRGINIA HATCH, ANNIE LEE POWELL .....	Typists

Ever "on the go" for the ECHO!—that's the '49 staff.

It was a busy fall—a freshly painted Echo room luring us back to work, a secret layout waiting to be filled with write-ups, and Bev's car ever ready to carry her "ad-getters" to victory.

It is true that the maze of work and obstacles seemed, at times, insurmountable. But—thanks to Dr. Carpenter's encouragement at those 5 o'clock conferences, Mr. Martin's patience with blinking posers, Mr. Coursey's interest, and the visits of Mr. Keck and Mr. Hitch—we met our deadlines and completed the work.

And now, here is your own '49 edition—to keep as an echo of another year full of work, play, friends, and memories at G. C.

# Business Staff

BEVERLY McNAIRY, *Manager*  
SHIRLEY ALLEN  
BETTY DAVIS

CELIA ANN EDWARDS  
JANET HIGHFILL  
BEVERLY CAUSEY

EULALAH LOWDER  
PEGGY PENNINGTON  
ETHEL WILLIAMS



*In Front:*  
PENNINGTON  
WILLIAMS

*Behind:*  
EDWARDS  
LOWDER  
DAVIS  
HIGHFILL  
CAUSEY

With Jill as editor of the *Collegian*, the work for 1948-1949 has been fun. Always there was the collecting of news, writing it up in Miss Ginn's favorite "journalistic style," racing to get a scoop on other reporters, chasing down people to learn more about what happened and where, and "bowing and scraping" before local merchants for those precious ads. All this adds up to the fun and work of the staff in making this year's *Collegian* for G. C. girls a passing moment's entertainment, and for the alumnae and public a clearing house for outstanding college events and happenings.



JILL DELLINGER, Editor-in-Chief

# The 1949

Seated:  
 WATSON  
 CURTIS  
 McLENDON  
 MILLER  
 FIELDS  
 HARDEN  
 HOOKER  
 CLEGG  
 BORNBER  
 TAYLOR  
 HARDY  
 PENNA

Standing:  
 ALFRED  
 MANNING  
 OAKLEY  
 MUNDHO  
 McVEEY  
 TABLE  
 SISK  
 FISHER  
 SCHWARTZBERG  
 FLOYD  
 ARMSTRONG  
 ROUSE  
 LOWDER  
 HIGHLEY  
 DELLINGER  
 PONS







MARY CLEGG, *Business Manager*

JILL DELLINGER, *Editor-in-Chief*  
 MARY CLEGG, *Business Manager*  
 HELEN SCHWARTZBARD, *Managing Editor*  
 MARILYN ALLRED, *Assistant Editor*

LITERARY STAFF

BETSY HARDIN ..... *Society Editor*  
 DOROTHY CURTIS ..... *Alumnae Editor*  
 CINDY ALBRIGHT ..... *Day Student Editor*  
 DIXIE FISHER, KITTY MILLER ..... *Sports Staff*  
 MARY CLEGG ..... *Art Editor*  
 JEAN PENNY, SHIRLEY BROWN ..... *Photographers*  
 MARTHA HOFENER ..... *Dramatic Editor*  
 ANN WATSON ..... *Music Editor*  
 FAYE MASSENGILL, RITA PONS, ANN TAYLOR, *Special Feature Editors*  
 BETTY JO LOWDELL, MARY E. TATEM ..... *Exchange Editors*  
 PATSY MUNROE, PAT FLOYD ..... *Faculty Editors*  
 JEAN TYBEE ..... *"Y" Editor*  
 NANCY CASEY, IRIS SMITH, RAMONA ROUSE, MOLLY  
 LAMBETH, PHYLLIS SMITH, PEGGY BAILEY ..... *Typists*  
 HAZEL ARMSTRONG, JANET HIGHILL, MARGARET  
 FIELDS, CELIA ANN EDWARDS, ELEANOR SIMMS,  
 BURDETTE HARDEE, NANCY GREENE, TUD McAFERY,  
 ROBY HALL, RUTH HOOKER, MARGARET SUGG ..... *Reporters*

BUSINESS STAFF

Rose Marsh, *Assistant Manager*; Nancy Peal, Jane Stephenson,  
 Norma Cox, Ann Oakley, Joan Brooks Astry.

# Collegian



CLEGG  
 STEPHENSON  
 OAKLEY  
 COX  
 PEAL  
 MARSH

# The Handbook

What book does every G. C. girl have in her possession? Yes, you guessed it—*The Handbook*. A few weeks before the opening of college each student, both old and new, receives a copy. The purpose of *The Handbook* is to extend welcome to all students, to help the new girls learn the "ropes," and to remind the old ones of a few things they have forgotten.

*The Handbook* contains brief information about all clubs and organizations on campus, a calendar of school events, a list of rules, and many helpful hints about what to bring and what to leave at home.

Officers: Margaret Tucker Aldridge, editor; Cynthia Albright and Mary Ellen Matthews, co-business managers; Mary Clegg, art editor.



ALDRIDGE, MATTHEWS, ALBRIGHT, CLEGG.

# Social Standards Committee

Not only Emily Post but also the Social Standards Committee regulates the social behavior of G. C. girls. By encouraging high standards of etiquette and natural courtesy, this committee promotes social graces on the campus.

This year they have been active in installing a new seating arrangement for the dining room, orienting new students to the habits of college, and encouraging proper dress for all occasions.

Members: Sue Page, chairman; Marion Smith, Ann McAffry, Janet Highhill, Joella Richardson, Betsy Har din, and Eunice Floyd.



SMITH, PAGE, FLOYD, HIGHHILL, MEWSHAW.

## Freshman Counselors



"Ignorance of the law excuseth no man" becomes the by-word with freshman counselors each year as they start out to help the new girls set the stage for a life of happiness at Greensboro College. The counselors try to help them learn to experience all the joys that come from college life, to face the confusing and baffling problems that come up, and to realize the ideals for which Greensboro College stands.

Under the guidance of these counselors, the "new girls" are quick to become "G. C. girls."

*First row:* Harrell, Davis, West, Aiken, Quinton, Robinson, Hall, Rouse, Flint, Harrill, Lambeth, Edwards. *Second row:* Sisk (standing), Richardson, Hall, Huske, Jones, Pons, Cooke, Brogan, Smith (standing). *Third row:* Lowder (standing), B. Edwards, Hardee, Hoffner, Ingle, Sneed, McAffry, Tyree, Capps (standing). *Fourth row:* Hunt, Dean Ward, Allen.

## Future Teachers' Club



Today members of the Future Teachers' Club are students seeking information and knowledge. Tomorrow they will be leaders, guiding youth—four years of work and study having gone into their preparation. And as club associates they have sought to widen their interest and to grow into closer relationship with the significant problems of education in North Carolina and the country at large. Here they are, seniors all, standing on the threshold of a great adventure.

*Officers:* Margie Stoltz, president; Sarah Alma Taylor, vice-president; Eloise Taylor, secretary; Cottie Criccher, treasurer.

*First row:* McNaiv, Criccher, Clark, Whitener, Sears, Robards, Rouse, Allen, Taylor, Pons, Page. *Second row:* Stoltz, Bradley, Vereen, Steedman, Aiken, Parker, Foust, Raper, Tatem, Stout, Smith, West, Hardin. *Third row:* Rozzelle, Hunt, Cooke, Cooper, Ingle, Watson, Brown, Williams, Rogers, Cox, Hoffner, Lowder.

# Spanish Club

The air is filled with "Si, senorita," "muchas gracias," and "Como a usted?" when the girls in the Spanish Club get together. They do not always build "castles in Spain," but at their informal meetings, they keep the present day life of the Spaniards uppermost in their minds. The Spanish customs are a source of great interest to the club members. Anything representative of Spain—old or new—is enough to attract and hold the attention of this alert group.

Officers: Ramona Rouse, president; Joan Plint, vice-president; Margaret Fields, secretary-treasurer. Advisors: Dr. Dorothy Heironimus and Dr. R. T. Dunstan.

First row: Brogan, Rouse, Johnson, Hickman, Coble. Second row: Ward, Capps, Bovette, Wade. Third row: Atry, Usher, Plint, Taylor, Beck, Crawford, Edwards, Oakley, Lougee, Curtis, Hardee, Heironimus, Morgan. Fourth row: Kindt, Tatem, Shields, Miller, Price, Steedman, Clegg, Fields, Satterwhite, Williams, Richardson, Davis, Hatch.



# Annie M. Pegram Math Club

"Wow!" Did you see that girl pitch that ball?"

"Sure! She's a member of the Math Club. She learned to pitch by taking math. She waddled up every other example, threw it into the trash can, and worked it over again."

Outdoors and indoors at club meet ings the members of the Annie M. Pegram Math Club and their sponsor, Dr. Elizabeth Boyd, have fun. Once a month they throw aside their books and figures to enjoy speakers, music, and various forms of entertainment.

Officers: Celia Anne Brown, president; Dixie Huske, vice-president; Sue Page, secretary-treasurer; Mary Clegg and Jane Lassiter, program chairmen; Dorothy Jean Curtis, reporter.

First row: Brown, Huske, Page, Tenley, Curtis, Penny, Thompson, Shong. Second row: Clegg, Lane, Sanford, Merritt, Godorth, James, Cox, Jackson. Third row: Hatch, Aldridge, Steedman, Greene, Rowall, Jenkins, Beard, Latem, Sisk, Boyd. Fourth row: Hardee, Lewis, Massengill, Stokes, Lassiter.



# French Club



Throughout the year the members enjoy group participation in playing French games and in singing French songs. One of the favorite songs is "Alouette." Freshmen hum it, sophomores come out loudly on the word *Alouette*, then die down suddenly, while juniors get in an extra word here and there; but some seniors actually finish with the sponsors, Dr. Stinson and Dr. Dunstan.

Even more than this the members like to play Santa Claus each Christmas to the boys and girls of France. They collect clothing and gifts from the student body, wrap them festively, and mail them to *les enfants de France*.

Officers: Anne Simpson, president; Frances Griffith, vice-president; Ruby Hall, secretary-treasurer.

*First row:* Gardner, Henley, Penny, Reid, Davis, Royall, Williams. *Second row:* Simpson, Griffith, Coble, Phelps, Patterson, Dixon, Massey, Tyree. *Third row:* Martens, Evans, Bufanelli, Fulk, McGowan, Lewis, Hill, Massengill. *Fourth row:* Jones, Gray, McCorkle, Stephenson, Shelton, Casstevens, Moor man, Beard.

# Margaret Stuart Home Economics Club



"Sugar and spice and everything nice"—that's what the members of the Home Economics Club think of. In this group the girls work together to learn about cooking, sewing, interior decorating, and child care—in fact, all of the arts that will make them better homemakers some day in the future. Their monthly meetings are held in the "lab" under the able supervision of Miss Tickle, their sponsor.

Officers: Margie Stoltz, president; Mary Davis, vice president; Charlotte Hall, secretary; Sarah Garrett, treasurer; Agnes Crawford, scrapbook keeper; Ruby Aiken, publicity chairman. Sponsor: Miss Grace Tickle.

*First row:* Hall, Hege, Parker, Garrett, Marsh. *Second row:* Etheridge, Stoltz, Cochran, Jones, Marsh, Davis, Crawford, Sparney. *Standing:* A. Casey, N. Casey, Smith, Merritt, Forward, Atkinson, Arken, Alligood, Evans, Pollock.

# United Daughters of the Confederacy

The spirit of the Confederacy still lives in the hearts of G. C. girls. It began when "soldiers in grey" pitched their tents on front campus during the War Between the States. Once a month strains of "The Bonnie Blue Flag" and " Dixie" float from the parlor where the present girls are keeping up the tradition in their U.D.C. meeting.

Our group on campus plays an active part in the state activities of the U.D.C., giving, as the most important event of the year, a program for the Guilford Chapter—the mother chapter.

Officers: Doris Stout, president; Dixie Huske, vice president; Beth Ellen Edwards, secretary; Jane Herring, treasurer; Lou Lane, historian.

Seated: Stout, Huske, Herring, McNaixy. Standing: Patterson, Lane, Hunt, Bizzell.



# P. K. Club

Being the daughter of a minister is the ticket of admission to the P.K. Club. Each month these "preachers' kids" get together for a lively conference, with plenty of fun and fellowship. At the first meeting of the year the main topic discussed is "Where do you suppose we'll be living now?" Ably led by "Ponsie," the P.K. Club is completing another successful year at G. C.

Officers: Rita Pons, bishop; Ida Ruth Jones, district superintendent; Kitty Miller, pastor; Betsy Hardin, chairman of the board of trustees; Janet Hightbill, president of the Woman's Society of Christian Service.

First row: Brown, Price, Henley. Second row: Bozelle, Hightbill, Jenkins, Miller. Third row: Rust, Jones, Hardin, Autry.



# United World Federalists



Atlas has nothing on G. C. members of the United World Federalists. They, too, in seeking world government and peace as an end, are carrying the world on their shoulders. To promote the interest of the organization on campus, the club sponsored a world government week from November 29 to December 3. Prominent speakers, a banquet, and a special movie helped to make it a success.

**Officers:** Mary Clegg, president; Patsy Munroe, secretary; Helen Burrows, treasurer; Carolina Rozzelle, program chairman; Ruth Hooker, activities chairman; Phyllis Smith, publicity chairman.

**Seated:** Foote, Penny, Stephenson, Usher, Burrows, McCormick. **Standing:** Hooker, Eberwine, Richardson, Fields, Smith, Rouse, Clegg, Munroe.

# G. C. Daughters



It is a great thrill to hear a girl say, "My mother came to G. C."—and an even greater one when the reply comes, "So did my mother—and grandmother!"

And so it goes. These girls and many others are proud that they are able to carry on the tradition begun by their mothers, grandmothers, and, in some cases, great-grandmothers. It gives them a special sense of pride in taking as their yearly project some phase of beautifying the campus so well remembered and loved by others. Tradition will always be synonymous with the G. C. Daughters.

**Officers:** Mary Charlotte Hunt, president; Betsy Robards, vice-president; Pat Dixon, secretary; Lou Lane, treasurer; Molly Lambeth, reporter. **Advisor:** Miss Mary Brock.

**First row:** Hayworth, Bailey, McNairy, Clark, Parker, Finch, Lane, Whitener, Raper, Stout. **Second row:** Tvee, Hill, Harris, Hooker, Prather, Brock, Coggin, Cullifer, Royall. **Third row:** Hunt, Dixon, Clegg, Chapman, Thompson, Shelton, Marsh, Lambeth, Harris, Brown, Atkinson, Robards, Hackney, Merritt.

# Music Club

Presenting "Orpheus" was seemingly "all in the day's work" to the newly organized Music Club. Moreover, in milder moments members sponsor receptions after recitals or prepare for the appearance of concert artists on the campus. Whatever they do, these musicians are helping to make G. C.'s musical moments memorable.

Officers: Sue Page, president; Sarah Alma Taylor, vice-president; Janet Highfill, secretary; Ruth Hart, treasurer. Advisers: Dean Gustav Nelson, Miss Blanche Burras, and Mr. Carl Baumbach.

First row: J. Jones, Page, Foust. Second row: Harter, Pons, Hallman, Jeffreys, I. Jones, Matthews, Marion Smith, Mabel Smith, Lowder. Third row: Gardner, Morgan, Payne, Aman, Morris, Vereen, Baumbach, Cooper, Burras, Cooke, Nelson, Ingle, Hardin, Hart, Taylor, Highfill.



# Religious Education Club

The Raymond A. Smith Religious Club is one of the most inclusive on campus. The reason? It is eager to welcome as members all interested students regardless of class, rank, or vocational aspirations.

By means of discussion, guest speakers, and workshops, it keeps its members well informed on current religious issues. For example, this year the girls gained valuable experience through visiting local churches as "deputation teams." All in all, it has a wholesome influence, stimulating its members to become useful and helpful.

Officers: Martha Hoffner, president; Loretta Harrill, vice-president; Joella Richardson, secretary; Mary Hester Hunt, treasurer; Peggy Hammond, reporter.

First row: Hoffner, Vaughn, Foreward, Hooker, Gardner, Hammond, Carrett, Morgan, Miller, Beard, Platt, Satterwhite, Webb. Second row: Fisher, Marquis, Edwards, Robinson, Hall, Callis, Hill, Tyree, Cox, Eberwine, Hunt, Kenerly, James, Rouse. Third row: Judkins, Hood, Gault, Steedman, Jackson, Fields, Cooksey, Aiken, Harrill, Jones, Aligood, Williams. Fourth row: Davis, Hackney, Dellinger, Hatch, Wikerson, Shelton, Evans, Baper, Stung, Moore, Arm strong. Fifth row: Williams, Richardson, Davis, Moorman, Hughtill, Harrill, Brown, Nesal, McFry, Kinsit, Sisk, Talbert.





# Art Club



You are not a member of the Art Club? Well, if you are puzzled about abstract art (and who isn't!)—in doubt as to what is really fashionable in clothes this season—would like to know more about advertising art—why not drop in on an Art Club meeting some night? You might hear all sorts of interesting and informative bits concerning modern art in all its various phases. Miss Cullis and many well-known speakers lead the lively discussions, the girls chiming in eagerly with questions and problems. It is definitely one of the more informed circles on the campus.

Officers: Mary Clegg, president;  
Betty Sue Quinton, vice-president;  
Anne Steadman, secretary-treasurer.

# International Relations Club



Is there a dispute in Korea? Or a peace conference in Paris? Be sure the International Relations Club is informed. On its agenda are such items as a mock U.N. meeting, speakers, films, discussions on international affairs, and forums and debates on world controversies. And this year the I.R.C. is establishing on the campus a United World Federalist chapter. Twice a month this wide-awake group meets with its stimulating leader, Dr. Skaggs.

Officers: Mozelle McCormick, president; Jo Usher, vice-president; Elizabeth Eberwine, secretary-treasurer; Joella Richardson, librarian.

# G. C. Players

"What's all the fascination in working on plays, anyway?" practical souls ask G. C. Players. "Plays are just a lot of make-believe." Chances are a player can't answer that question exactly. For it's the little intangible things that make backstage work so alluring—simple things like the inimitable smell of grease paint, the breathtaking moment just before the curtains open on Act I, Scene I, and the time the leading lady tripped over the carpet during her big scene.

It takes hard work to be a G. C. Player, that's true, but any member will tell you it's worth all the effort in the world and more.

Officers: Mary Charlotte Hunt, president; Tresca Spain, business manager; Shirley Allen, assistant business manager; Patsy Munroe, secretary; Frances Sue Marquis and Marilyn Allred, copublic chairmen; Dot Jean Curtis, scrapbook keeper.

*Seated:* Marquis, Snead, Bailey, Allred, Hunt, Mewshaw, Edwards.  
*Standing:* Allen, Lambeth, Wheeler, Munroe, Hoffner, Hunt, Burton, Roberts, Fields, Curtis, Henley, Spain.



# Speech Club

Knees shake and hearts thump. The speaker's stand gets a good workout, members practicing up on gesturing, the "conversational tone," the use of notes, et cetera. It's another meeting of one organization that really pays dividends in personality development. Come now, where could you find a more poised, confident group than members of the Elha Henninger Speech Club?

*First row seated:* Lewis, Edwards, Marquis, Curtis, Hunt. *Second row seated:* Roberts, Wheeler, Munroe, Rich, Mewshaw, Capps, Henley, Allen, Hill. *Standing:* Snead, Moorman, Kindt, Lambeth, Fields, Usher, Shuford, Hoffner, Spain, Steedman, Allred.



# Cenozoic Club



"Look out! Don't drop that slide."  
 "Well, I was just holding it up to the light to see what's on it. What is it?"

"That, my dear, is brain tissue."

This conversation originated during a recent visit made by members of the Cenozoic Club to Dr. Lennon's Pathological Laboratory in Greensboro. During the past year, through trips to centers of scientific research, its members gained valuable knowledge concerning current scientific happenings.

Officers: Betty Jo Lowler, president; Iris Rich, vice-president; Betty Anne Clark, secretary-treasurer; Ramona Rouse, program chairman. Advisers: Miss Pauline Smith and Miss Evelyn Cole.

Left to right: Rich, Clark, Bizzell, Corwin, Peal, McGrady, Fuller, Lowder, Edwards, Smith, Rouse, Whitener. Standing: Pauline Smith, Cole, Rast, Ingram, Dixon.

# Fire Wardens



Dong! Dong! "Oh, my goodness, a fire drill! Roommate, wake up! Hurry! Here's your raincoat—put it on. We must be calm. Roommate, you are supposed to wear two shoes! Now, what else? Oh, close the windows."

We file out into the hall, down the stairs, out the door, our wet towels hanging limply over our arms. This is the familiar scene which takes place whenever Chief Charlotte Hall calls a fire drill.

Wardens: Main: Jane Lassiter, Louise Harris, Hudson; Janet Highfill, Ann Oakley, Fitzgerald; Ann Martin, Rita Pons; 107: Billee Prather; 109: Betty Lou O'Master; 120: Joyce McLean.

"Chief" Hall, Lassiter, Martin, McLean, Oakley, Prather, Highfill, Pons, O'Master, Fire Chief C. W. Wyrick.







Seated: McEan, Stephenson, Lougee, Lambeth, Miller, Prather, Aldridge, Beard, Dixon, McAffry, Fisher. Standing: Sheng, Taylor, Gaul, Floyd, Maxwell, McGrady, Hightlll



MARGABEL ALDRIDGE  
*President*

OFFICERS

MARGABEL ALDRIDGE  
*President*

JANE STEPHENSON  
*Vice President*

KAY MAXWELL  
*Secretary*

PAT DIXON  
*Treasurer*

## The Athletic Board

The Athletic Board surely must have run a marriage bureau. For in addition to sponsoring the sports on campus, the board managed to marry off two presidents in one year. Anne Odom and Margaret Tucker. However, in spite of the "changing horses," the board sponsored events were quite successful: the annual Play Day, postponed only once, the square dance, held on the tennis courts, the Christmas dance, financed by the sale of Christmas cards, and the swimming meet, held at W. C.

COURTES OWEN AND TEE



# “G” Club

At last! The months of working for points are over, and the final sum is the right one. The “G” Club has a new member. To the girls who love sports, obtaining a letter presents a challenge and a goal which only too few reach.

Members: Margaret Tucker Aldridge, Ann McAffry, Kay Maxwell, Lib Lougee, Jane Stevenson, Eloise Taylor.



## Miss G. C.

Need a volleyball coach? Need a helping hand at planning a dance or teaching Sunday School? The girl you want is “Tut” McAffry—a capable miss in any one’s language. Possessed with startling blue eyes, a winning way, and a mean tennis arm, “Tut’s” got what it takes in any assignment, be it badminton or baby-sitting. Yes, she’s vivacious, ambitious, generous. She’s class tennis expert, badminton champ, and sports head. She’s the athlete of the year—she’s Miss G. C. of 1949!



Left to right: McAffry, Maxwell, Lougee, Stevenson, Aldridge.



# Bit 'n Spur



CAROLYN BALLARD, *President*

They're off! No, not the horses—the booted, jodhpur-clad, mud-coated riders, who pick themselves up off the ground. For, as most of the Bit 'n Spur members can tell you, it takes a fall to make a good rider.

These expert riders enjoy several outings a year on the trail, riding such favorites as Duke, Judy, Jenny Lee, and Spot.

Members: Carolyn Ballard, president; Jo Usher, Barbee Mewshaw, Ruth Hooker, and Billee Prather.



PRATHER  
BALLARD  
USHER  
MEWSHAW  
HOOKER



# Horseshow

A sunny April afternoon . . . horses trotting swiftly around the ring . . . colorful riding habits of riders fluttering in the wind . . . a judge of equitation scrutinizing every move of horses and riders—yes, the athletes of G. C. present their annual horseshow.



"trot your horses"

As the white-suited ringmistresses award blue ribbons and cups, the intent spectators readily agree that the thrills witnessed at Sedgefield stables help to make the horseshow one of the exciting events of the year.

In the 1948 show Gary Ellis won the championship for her jumping and drill work. First places were awarded to Anna Ingram, beginning class; Iva Lee McGrady, intermediate I class; Peggy McMurray, intermediate II class; and Gary Ellis, advanced class.

"Powder Puff, he good!"



"the winner!"



## Badminton

Spring . . . birdies . . . a racquet  
and an afternoon on the courts.



## Archery

Whoops and hollers on the archery  
field—not Indian war cries, but  
"A bull's eye!"

## Hockey

Clashes in January . . . hockey  
players battling it out down on the  
field.



# Sports At G. C.

"Safe!" shouted the umpire as the girl slid into home base. And safe she was, back at G. C. for another year of hard work and equally hard play. The changing seasons brought changing sports to the athletic field and the tennis courts.

As the leaves began to fall, loyal classmates lined up in the field for the first soccer game of the season. The whistle blew, and toes once more felt the hard leather of the ball. Following on the heels of soccer was the hockey season. Eyes turned to the all-important ball, hands gripped the stick, knees quivered beneath knee-pads as the team waited tensely for the game to begin. Then the scene shifted, bringing cold, clear nights just right for basketball games. As the girls climbed the hill on their return from the gym, their shouts and songs of victory rang through the air.



Regardless of the weather, there were some girls who stayed in the game all year around. Frozen bangs ignored in the discussion of a new swimming stroke, chill bumps forgotten in the graceful movements of the modern dance, sore feet overlooked in the tenseness of the golf game—all signify a wholesome love of sports.

In spring the scene shifted to the athletic field again for softball games. Shouts such as "Strike!" and "Out!" drifted over to the tennis courts, where players were getting in last bits of vigorous practice before the tournaments. On another part of the campus, girls set up targets and nets in preparation for the archery and badminton contests. Another year was ending, and the girls began to use their energy to pack trunks rather than to chase balls.



## The Sports Year

Wham! The first volleyball of the season skimmed over the net. Across the street a solid whack was accompanied by a sudden outburst of shouting. Beside the tennis courts "Tut" McAffry and Molly Lambeth were ping-ponging a badminton bird back and forth. On all three counts the 1948 Athletic Association Play-day was an Emerson victory. The biggest event of the day, however,

came later when Libby Rowall out-pitched "Bob Feller" Williams to an 18-17 win for the students. Faculty and students alike, sitting on benches, perched on logs, or sprawled on the ground, saw the students "have it on" the faculty for once.



In October "Tut" McAffry, volleyball "sports head," got the volleyball tournament under way. The seniors, proving that "experience is the best teacher," came out on top. The best players from all the classes were chosen for the varsity: Betty Baker, Lucy Bane, Pat Dixon, Edith Judkins, "Mac" Inge, "Tut" McAffry, Libby Rowall, and Jane Stephenson.

By November G. C. athletes turned to soccer, with Fib Lougee as sports head. They slushed down the muddy field, running from the cold wind toward the goal. Again the seniors were victorious. And



finally, rounding out the early events of another sports year, the girls chosen for the varsity soccer squad were the following: Jane Stephenson, Mozelle McCormick, "Tut" McAffry, Marilyn Shuford, Jean Dew, Kitty Miller, Sue Fulk, Joyce McLean, Pat Jackson, Pat Dixon, and Fib Lougee.

*[Faint, illegible handwriting]*



# The Emerson Society

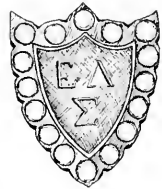
Victory for the Emersons in '48-'49!

Saturday morning in the "Barn" with hillbillies, square dances, and apple cider . . . "making merry" around the bonfire on a chilly fall evening . . . the strains of soft serenades filtering through the halls of Main into the hearts of the freshmen—all were part of the hearty welcome given by the Emersons to the new girls.

Decision Night with "little sisters" and newly-won friends "going Emerson," old members proud and happy. But whether winning or losing, the spirit of friendly competition makes rush week an exciting and successful welcome to new G. C. girls.



ELIZABETH LOUGEE  
President



First row: Sheng, Hall, Pennington. Second row: Sisk, Lougee, Highfill. Standing: McAffry, Maxwell.

## OFFICERS

- ELIZABETH LOUGEE . . . . . President  
 BETTY SISK . . . . . Vice-President  
 CHARLOTTE HALL . . . . . Recording Secretary  
 KAY MAXWELL . . . . . Corresponding Secretary  
 JANEY HIGHFILL . . . . . Treasurer  
 MARY SHENG . . . . . Critic  
 ANN McAFFRY . . . . . Censor  
 PEGGY PENNINGTON . . . . . Chaplain  
 MARION SMITH . . . . . Accompanist
- MARSHALS: Betsy Hardin, Melvarene Johnson, Pat Dixon, Kathleen Davis, Joyce McLean, Peggy Reid.



McLEAN, DAVIS, JOHNSON, DIXON HARDIN, REID





Iris Rich, President

# The Irving Society

First, the hilarious open house with its "hep cats," "hot licks," and chocolate sundaes at the Irving Happy Shack. . . . Then, the solemnity and beauty of the ceremony uniting the new girls (Betty Beck, "bride") to the old girls (Iris Rich, president). . . . All proved that "In victory or in defeat" the loyalty and high aims of the Irvings are dauntless.



First row: McNairy, Hartsell, Page. Second row: Critcher, Rich, Ingle. Standing: Davis, Hunt.



GARBETT, MERRITT, CAPPS, STEADMAN, PRATHER, HOOKER.

## OFFICERS

- IRIS RICH . . . . . President
- MARY CHARLOTTE HUNT . . . . . Vice-President
- SUE PAGE . . . . . Recording Secretary
- PEG HARTSELL . . . . . Corresponding Secretary
- LUCY BANE . . . . . Treasurer
- BEVERLY McNAIRY . . . . . Critic
- MARY DAVIS . . . . . Censor
- COTTY CRICHLER . . . . . Chaplain
- MARY K. INGLE . . . . . Accompanist
- MARSHALS: Billee Prather, Sarah Garrett, Ruth Hooker, Patsy Capps, Jackie Merritt, Ann Steadman.



*First row:* Williams, Hammond, Gardner, Morgan, Massee, Keel, Kenerly, Colton, Pons, Payne, Lowder. *Second row:* Sutton, Tucker, Vaughn, Edmondson, Johnson, Wright, Starnes, Shelton. *Third row:* Kincaid, Moger, Wade, Griffith, Perkins, Chapman, Jefferys. *Fourth row:* Marsh, Bradsher, Hart, Culliter, Ingle, M. Smith. *Fifth row:* Gillespie, Warren, Davis, Athanahos, Matthews, H. Smith, Johnson. *Sixth row:* Williamson, Wilkerson, Martens, Anglin, Harris, Cooper.

## Glee Club

Those queer noises coming up from the basement of Odell? Why, that's the Glee Club, struggling over some tricky phrase—but be well assured, before all's over they'll polish it into a beautiful anthem or concert number.

If you "belong," you'll never forget the fun you had on crowded buses, singing everything from "Tell Me Why" to Mountain Dew" as you traveled over North Carolina, giving concerts to the most appreciative audiences in the world: your own home-town friends. The dearest friend and severest critic of the group is Mr. E. L. Williams, conductor and adviser extraordinary.

Officers: Rita Pons, president; Betty Cooper, vice-president; Betty Wade, secretary; Dot Anglin and Marian Vaughn, librarians.

## G. C. Little Singers

"Music has charms," particularly when harmonized by the voices of "G. C. Little Singers." This double quintet of music makers sings in chapel, on the radio, and for local churches and civic organizations. And besides sacred music, the girls perform several old English madrigals under the direction of Miss Lutz.



*First row:* Lutz, Thompson, Robinson, Morgan, Pons. *Second row:* Warren, Williamson, Harris, Indlms, Chapman, Pennington.

# Footlight Features

## ORPHEUS

By GLUCK

Add one great opera score expertly interpreted by director and orchestra, one chorus of talented voices, and one cast of outstanding soloists; sprinkle lavishly with hard labor from the art, drama, and music departments, and what have you? What else but the School of Music's presentation of Gluck's opera *Orpheus*—the outstanding musical event of the year.



## MIDSUMMER NIGHT'S DREAM

By WILLIAM SHAKESPEARE

For really entertaining theatre, nothing equals the hard—or so audiences discovered at the College Players' outdoor production of Shakespeare's *Midsummer Night's Dream*. Misguided lovers, mischievous fairies, and hempen homespuns added up to an evening of fantasy and hilarity not soon forgotten.



## OUR TOWN

By THORNTON WILDER

A haunting combination of philosophical fancy and down-to-earth reality was the drama department's presentation of *Our Town*, by Thornton Wilder. The absence of scenery and the presence of a stage manager who explained the play to the audience made the production as unusual as it was moving.





# G. C. Day

Greensboro College Day:

The Freshmen singing their songs to the upperclassmen . . . the Sophomores listening seriously as a toast is offered . . . the Juniors laughing hilariously at Dr. Gobbel's tribute to the G. C. girl (a skillful combination of popular slogans) . . . the Seniors, pensive as they listen to their little sisters sing, putting the whole dining room in stitches as they give imitations of faculty members.



Memory echoes of songs, skits, toasts, and laughter . . . shrieks and roars of the prize winners . . . the Juniors winning the song contest . . . the Seniors most original in table displays.



G. C. Day is a day into which much work goes, and out of which comes a bond of closer union between the classes.



# Ballroom Fantasies

Whirling dancers execute an intricate fox trot or a graceful waltz. The dining room, undergoing its inevitable face-lifting, is always transformed into a Cinderella ballroom; for Halloween there are masks and jack o' lanterns; for Christmas, tinsel and mistletoe; for Valentine, hearts and flowers. In the spring, Juniors rate the parlor; Freshmen content themselves with an old Dutch garden. This is the G. C. formal, complete with its traditional "figure," the G. C. "special"—lime punch, and a stag line of flirtatious femmes.

It's all a matter of a favorite dress, a favorite beau, a favorite tune that add up to romantic memorable moments.





*Miss Jill Dellinger*

*May Queen*

*Miss Mary Jane Casstevens*

*Maid of Honor*



# May Day

# 1948



May Day—an exquisite combination of fair attendants and beautiful May Queen Jane Massey . . . the delicate tracery of soft yellow leaves against baby blue skies . . . the front campus abounding with twirling May pole ribbons, prankish clowns, and old English Morris dancers—a magical herald of spring and May.



PRATHLE, GWYN, ODOM, MCCOLLUM, MASSEY, DELLINGER, ROYALL, HAYWORTH, ADAMS, HARDIN





Hodin

Hunt

Bush

Jackson

## THE 1949 MAY

*Senior Attendants:* MARY CHARLOTTE HUNT, DOROTHY SLEEDMAN  
*Junior Attendants:* SHIRLEY BROWN, MARY ELIZABETH BUSH





Steedman

Beck

Steedman

Brown

## COURT ATTENDANTS

*Sophomore Attendants:* BESSY HARDIN, ANN STEEDMAN

*Freshman Attendants:* BETTY BECK, PATRICIA JACKSON

# 1949 ECHO



*Patricia Jackson*

Sponsored by the  
MATH CLUB

*Mary Charlotte Hunt*

Sponsored by  
THE G. C. PLAYERS



# BEAUTIES

*Mildred Hayworth*

Sponsored by the  
TOWN STUDENTS'  
ASSOCIATION



*Ann Steadman*

Sponsored by the  
ART CLUB

# 1949 ECHO

The 1949 Echo Beauties were selected by Harry Conover, president of one of the country's foremost modeling agencies.

*Josephine Sears*

Sponsored by the  
FUTURE TEACHERS CLUB



*Betsy Hardin*

Sponsored by the  
FRENCH CLUB



# BEAUTIES

*Harry Conover*

Dec 15th '41

Dear Miss Gotsch  
Enjoyed judging the  
Beauty Section of the Eds.  
Actually you had 16 winners  
Best wishes to all.  
*Harry Conover*

*Melvarene Johnson*

Sponsored by the  
SPANISH CLUB



*Jill Dollinger*

Sponsored by the  
INTERNATIONAL RELATIONS  
CLUB



## Commencement

Commencement: the supreme moment. Silence, memories . . . pride and eagerness mingle and blend into a long line of black robed figures.

Dignity and bearing belong to this moment: martial music . . . measured steps . . . high-held heads . . . a sea of faces turning to look.

This is the end and the beginning—this is four years wrapped up in a rolled scrap of sheepskin—this is graduation.

# To Be Remembered...

Aiken, Ruby .....Route 2, Connelly Springs  
 Aldridge, Margaret .....Box 642, Charlotte  
 Allen, Shirley .....221 Valley Road, Fayetteville  
 Ballard, Carolyn .....Apt. 101, 2028 First Davis St.,  
 Southeast, Washington 20, D. C.  
 Bane, Lucy .....Belmont  
 Bizzell, Ann .....105 S. James St., Goldsboro  
 Bradley, Jean .....Whitakers  
 Bradley, Tempe .....215 Belle St., Henderson  
 Brown, Celia .....Troy  
 Burrows, Helen .....3201 Somerset St., Prospect Hills,  
 Roanoke, Va.  
 Casey, Nancy .....Mt. Olive  
 Causey, Beverly .....2301 Walker Ave., Greensboro  
 Clark, Betty Ann .....712 Athens Ave., Fayetteville  
 Clegg, Mary .....315 S. Spring St., Greensboro  
 Cooke, Joanne .....82 Trammell Ave., Canton  
 Cooper, Betty .....902 Boulevard, Statesville  
 Cox, Norma .....2006 Lee Ave., Jonesboro Heights, Sanford  
 Critcher, Cotty .....1210 Broad St., Durham  
 Dellinger, Jill .....Lincolnton  
 Etheridge, Mary Ella .....Whitakers  
 Foote, Veta .....10 Springdale Rd., Morningside, Asheville  
 Foust, Marian .....Mebane  
 Hardin, Ellen .....Sparta  
 Harrell, Agnes .....703 Cypress Ave., Greensboro  
 Harrill, Lorce .....Box 13, Cliffside  
 Harrill, Ruth .....306 Pine St., Rutherfordton  
 Hartsell, Peg .....1614 The Plaza, Charlotte  
 Hayworth, Mildred .....715 Northridge St., Greensboro  
 Herring, Jane .....Snow Hill  
 Hoffner, Martha .....1210 W. Innes St., Salisbury  
 Hunt, Mary Charlotte .....Pleasant Garden  
 Ingle, Mary Katherine .....Milford Hills, Salisbury  
 Jones, Junie .....Box 94, Lakeland, Fla.  
 Lougee, Elizabeth .....2113 Roxboro Rd., Durham  
 Lowder, Betty Jo .....Rutherford College  
 Lowder, Eulalah .....540 N. First St., Albemarle

McAffry, Ann .....856 Preston Ave., South,  
 St. Petersburg, Fla.  
 McCormick, Mozelle .....Route 3, Mt. Airy  
 McNairy, Beverly .....405 W. Radiance Dr., Greensboro  
 Martin, Ann .....Mt. Olive  
 Mewshaw, Barbee .....1358 Westmoreland Dr., Norfolk, Va.  
 Page, Sue .....Worth St., Asheboro  
 Parker, Margaret .....2015 Asheboro St., Greensboro  
 Pennington, Peggy .....McBee, S. C.  
 Plint, Joan .....2229 Westover Dr., Winston Salem  
 Pons, Rita .....Rutherford College  
 Powell, Annie Lee .....Box 305, Greenville  
 Quinton, Betty Sue .....Lincolnton  
 Raper, Rebecca .....Box 116, Asheboro  
 Rich, Iris .....Box 430, Clinton  
 Robards, Betsy Ann .....301 Charles St., Henderson  
 Rogers, Martha .....2512 Sylvan Road, Greensboro  
 Rouse, Ramona .....Walstonburg  
 Rozzelle, Carolina .....646 S. Hawthorne Rd., Winston-Salem  
 Sears, Josephine .....401 S. Oleander Ave., Goldsboro  
 Sisk, Betty .....3 Merrimon Bd., Asheville  
 Smith, Marion .....106 Feimster St., Statesville  
 Spain, Tresca .....305 N. Driver Ave., Durham  
 Steedman, Dorothy .....14 Rosewood Ave., Asheville  
 Stephenson, Jane .....Garysburg  
 Stoltz, Margie .....Route 1, Rural Hall  
 Stout, Doris .....610 W. Fifth St., Siler City  
 Tatem, Mary Ellen .....2714 Marlboro Ave., Norfolk, Va.  
 Taylor, Anne .....Blanch  
 Taylor, Eloise .....Conway  
 Taylor, Sarah .....Richlands  
 Usher, Mary Jo .....408 Asheboro St., Greensboro  
 Vereen, Doris .....309 Woodbine Court, Greensboro  
 Watson, Ann .....324 West St., Ahoskie  
 West, Hilda .....Garland  
 Whitener, Rachel .....Stanley  
 Williams, Martha .....5085 Main St., Blackstone, Va.  
 Williams, Ethel .....312 Jackson St., Greensboro



Mary Charlotte Hunt

wears a gown

with turn-of-the-century  
elegance. From a collection  
of designer originals.

Snead & Craven

● WINSTON-SALEM





SHIELDS DALTON

Miss Mary Jane Casstevens, of Greensboro, modeling a formal gown from our second floor Debutante Collection.

**SOSNIK'S**

Compliments of

**HARRY D. KELLETT, Inc.**



**DODGE—PLYMOUTH**

**DODGE *Job-Rated*  
TRUCKS**



317 West Market

Phone 2-1122

Compliments of

**Morrison-NEESE**

"Carolina's Leading Home Furnishers  
For 33 Years"

112 S. Greene St.

GREENSBORO, N. C.

SWEET MEMORIES

Compliments of

**Peck's Bakery**

330 West Washington St.

GREENSBORO, N. C.

"Greensboro's Smartest Shop"

**Field's**

120 SOUTH ELM STREET

**EGERTON WHOLESALE CO.**

Wholesale

**CANDIES—CIGARS**

224 N. Forbis Street

For the finest and promptest  
Precision Watch Repairing  
It's

**NEESE JEWELERS**

SINCE 1900

325 South Elm Street

**OFFICIAL RAILWAY  
WATCH INSPECTORS**

featuring

**ELGIN WATCHES SHEAFFER PENS  
DELTAH PEARLS**

Complete line of COSTUME JEWELRY

And

**ART CARVED DIAMOND RINGS**

by J. R. Wood & Sons



Greensboro NEHI Bottling Co., Inc.

*Compliments of*

**S. H. KRESS & CO.**

5, 10, 25 Cent Store

GREENSBORO, N. C.

**S Y K E S**  
Shoe Shop and Shine Parlor  
105 N. Greene St.  
*For Quick Service*

*Compliments of*

**BLUEBIRD TAXI, Inc.**

*Fast Efficient Service*

Phone 5112

*Compliments of*

**GREENE STREET  
DRUG CO.**

Phone 5177

127 SOUTH GREENE ST.



**SANDWICHES—SODAS  
MAGAZINES—CANDY  
TOBACCO—SUNDRIES**

*City-Wide Delivery*

**THE KING COTTON**

GREENSBORO



HAYWOOD DUKE

*Manager*

**CITY OPTICIANS**

W. H. LIGHTFOOT

Jefferson Building

Phone 2-4693

GREENSBORO, N. C.

**SEBURN'S**

"For the Finest in China,  
Silver, Crystal, and  
Gifts"

**Fine Diamonds  
Fine Line of Watches**

116 N. Elm Street

Phone 2-1771

*You trust  
its quality*



Each time you taste ice-cold Coca-Cola, you are reminded that here is the quality of genuine goodness. Experience... many a refreshing experience... has taught people everywhere to trust the quality of Coca-Cola.

BOTTLED UNDER AUTHORITY OF THE COCA-COLA COMPANY BY



Greensboro Coca-Cola Bottling Company

EYE - LURING . . .

**MOJUD**

NYLON  
STOCKINGS

So sheer . . .

So sleek . . .

So smooth fitting . . .

Ask for them at  
better stores  
everywhere



MOJUD HOSIERY CO., INC. GREENSBORO, N. C.

*Let's All Get Together at*

**THE COLLEGE BOOK STORE**

DRINKS—SCHOOL SUPPLIES

Miss Lois Fitch, Manager

*Compliments of*

**HUNT COAL CO.**

Dial 2-3161

STEAM AND  
DOMESTIC COAL

FREDERICK  
STOKERS

**ROGERS PAINT STORE**

*Complete line of*

ARTISTS' SUPPLIES  
Grumbacher—Brushes—Oils

Phone 2-2187

GREENSBORO, N. C.

**McNEELEY'S DRUG STORE**

*Just Across the Way*

Phone 5117

718 W. Market Street

●  
GREENSBORO, N. C.

## The Hoar and Castle

*"Greensboro's Most Popular  
Sandwich Shop"*



WEST MARKET STREET EXTENSION

Phone 3-2205

## SUNSET CLEANERS

*"For Quality Cleaning Service"*

1616 Friendly Road

Phone 5650

## ELLIS BEAUTY SHOP

*Individualized and Personalized Styling*

MRS. SELMA ELLIS, Owner

Telephone 3-1606

101 N. Mendenhall

## S. T. WYRICK and COMPANY

OFFICE EQUIPMENT AND SUPPLIES  
ENGRAVED WEDDING INVITATIONS

119 N. Greene Street

Phone 2-4133

GREENSBORO, N. C.

*Compliments of*

## THOMAS & HOWARD CO.

WHOLESALE GROCERS

E. Gaston St.

Phone 5171

GREENSBORO, N. C.

## OLIVER'S

*"A Good Drug Store"*

457 West Market Street

*"HALF WAY UP TOWN"*

## HAYWORTH'S

Finest In Diamonds  
Watches And Jewelry

110 West Market Street

## SNOW CREAM FLOUR



*"IT'S WHITE AS SNOW  
AND PURE AS CREAM"*



## STATESVILLE FLOUR MILLS COMPANY

538 S. Ashe

Phone 9631

## PICCADILLY RESTAURANT

*Good Food and Good Company*

708 W. Market

Phone 7612

FUR CLEANERS STORAGE RUG CLEANERS

DRY **K** OONTS  
LEANING COMPANY **CLEANERS**

Office and Plant

340 N. Greene Street

GREENSBORO, N. C.

## BANNER-TRULOVE CO.

*Wholesalers*

DEALERS IN STANDARD  
AND FANCY GROCERIES

218 Hughes St.

Phones 2-1105  
2-1106

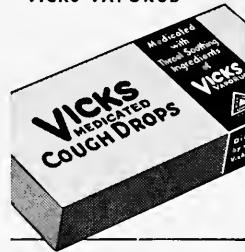
Motion Pictures  
Are Educational  
And Your Best

## ENTERTAINMENT

★ Carolina  
★ National  
★ Center  
Theatres

# Actually

MEDICATED WITH  
THROAT-SOOTHING  
INGREDIENTS OF  
VICKS VAPORUB



## PATTIE McNAIRY & CO.

MARGARET MOORE, SUCCESSOR

*Millinery and Accessories*

117 So. Greene Street

Telephone 5469

GREENSBORO, N. C.

*Congratulations to the Seniors  
from*

## ELLIS STONE

Greensboro's Best Store

## MAISON JOLINE

*"We Love to Dress College Girls"*

JEFFERSON BUILDING

# Moving Forward with the South . . .

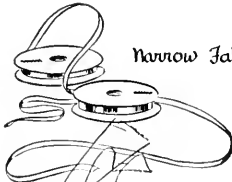


Women's Wear



Outer Wear

Men's Wear

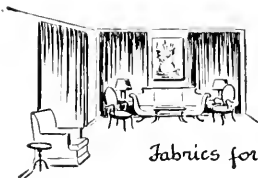


Narrow Fabrics



Hosiery

Yarns



Fabrics for the Home

The production of better type fabrics has grown to tremendous proportions in the South. Paralleling this outstanding progress made by the textile industry has been the resultant higher standard of living.

Burlington Mills is proud to be a part of this progress . . . proud of the fact that this Company has invested millions of dollars in the future of the South. By ever-expanding its own production, Burlington is contributing to the rapid increase in business activity—the yardstick of prosperity. For economic stability, Burlington maintains a program of financial soundness, reflected in its net worth of over \$100,000,000.

Through this extensive program for economic progress, Burlington Mills' 83 plants have been able to produce the best possible products at the lowest possible prices. These quality fabrics are truly "woven in the life of America." That's why over 28,000 employees are going forward with Burlington Mills.

## Burlington Mills

"Woven into the Life of America" ••



Executive Offices • GREENSBORO, N. C.

Maker of Women's Wear Fabrics . Men's Wear Fabrics . Decorative Fabrics . Cotton Piece Goods and Yarns . Hosiery . Ribbons



*Compliments of*

# MONTALDO'S COLONY SHOP



*Clothes For Every Occasion  
For The College Girl*

# DICK'S LAUNDRY COMPANY



*Launderers and Cleaners*

PHONE 7101

For All Your Needs Visit

# THE COLLEGE SHOP

405 Tate Street

## FRED AYERS MUSIC COMPANY

253 North Greene Street Phone 6000

Used Records, Latest Hits—25¢  
New Records—Regular Price

## CLEGG-KING MOTORS, INC.

510-512 N. Elm Street Phone 5196

GREENSBORO, N. C.

## W. I. ANDERSON & CO.

GREENSBORO, N. C.

Fruit & Vegetables  
Fresh—Frozen

O & C Frost Sealed Foods

Hammock Oranges

Dixie Margarine



For your piano needs, see us for Quality  
Grands, Spinets, and Studios  
Convenient Terms

## FRAZIER PIANO COMPANY, Inc.

*"Oldest Piano House"*

125 S. Davie Street

Phone 2-1462



"We are learning to be pretty so we can be G C girls about 1963 .  
we can hardly wait! Dad says they're tops he enjoys taking their  
pictures so much "

# MARTIN'S STUDIO

*Photographers*

C. W. MARTIN

MALCOLM MILLER

112 East Gaston

GREENSBORO, N. C.



# GREENSBORO COLLEGE

GREENSBORO, N. C.

CHARTERED 1838

*The Pioneer of Higher Education for Women in North Carolina*

**ACCREDITED** by the North Carolina College Conference, the Southern Association of Colleges and Secondary Schools, the University Senate of The Methodist Church, and the National Association of Schools of Music. Member, also, of Southern Association of Colleges for Women, Association of American Colleges, and National Conference of Church-Related Colleges.

**PRACTICAL:** While pursuing courses leading toward the A.B. or B.M. degrees, students may secure prevocational training leading toward dietetics, nursing, laboratory technique, medicine, library science, social service, church work, home making, and so forth. Opportunity is afforded students to qualify for Class-A Teachers' Certificates in Primary, Grammar Grade, and High School fields.

"Greensboro College through a long period of years has rendered outstanding service to the educational needs of this State."—CLYDE A. ERWIN, *State Superintendent of Public Instruction*.

**PROGRESSIVE:** Rich in traditions of over a century. Regular liberal arts curriculum adapted and enriched in line with modern world conditions.

**DISTINCTIVE:** Emphasizing not size but quality, Greensboro College is small enough for personal contacts and close friendships and big enough for variety and breadth of culture. Beautiful campus dotted with tall pines, stately oaks, and sturdy elms, with ivy-clad buildings modernized and homelike.

**CHRISTIAN:** Although not sectarian, Greensboro College rests frankly and firmly upon religious morals and moral and religious sanctions.

"An ever-growing and expanding institution dedicated to the building of true and noble womanhood."—BISHOP W. W. PEELE.

*For further information write THE REGISTRAR*

**GREENSBORO COLLEGE**

GREENSBORO, N. C.

*Compliments of*

## SASLOW'S, Inc.

Greensboro's Largest Credit Jewelers

214 South Elm St. Phone 2-1307

CONVENIENT TERMS TO SUIT  
AT NO EXTRA COST

*Flowers by Wire*

## LOMAN'S FLOWERS

WOODY LOMAN

GREENSBORO, N. C. 223 Summit Avenue

8112 Phone 8113

*Flowers Whisper What Words  
Can Never Say*

## KENNEDY'S

REAL OLD SOUTHERN BARBECUE

West Market Street Extension

Phone 3-3603

*Cater to Small or Large Parties*

## KEARNS

PAINT COMPANY

112 N. Greene Telephone 2-4171

DEVCO PAINTS—SPORTING GOODS

WALLPAPER—ARTISTS' SUPPLIES



"When You Drink a Dr. Pepper,  
You Drink a Bite to Eat"

Dr. Pepper Bottling Co.,  
Incorporated

1409 W. Lee St. Phone 9703

## SUNSET FOOD CENTER

1610 Madison Avenue

BRANDED WESTERN BEEF  
FANCY GROCERIES

Plenty of Parking Space

*We Appreciate Your Patronage*



**TUCK**  
**PHOTO SUPPLIES, Inc.**

225 North Elm Street

CAMERAS—PROJECTORS—FILMS  
 DARKROOM SUPPLIES  
*Expert Photo Finishing*

GREENSBORO, N. C.

Phone 3-7170



*Southern Dairies*



210 Price Street

Phone 2-1125

**SUNSET HILLS**  
**RESTAURANT**

1618 Friendly Road at Aycock

ROY HEMPHILL

JOHN COURIS

ERNEST KALATHAS

Phone 2-4239

GREENSBORO, N. C.



B 930



LET OUR

ADVERTISERS

BE YOUR GUIDE



**CHARLOTTE  
ENGRAVING  
COMPANY**

*Engravers and Designers of College Yearbooks*

**CHARLOTTE, N. C.**



# *Working* **TOGETHER...**



**W**orking together is the theme of the OBSERVER PRINTING HOUSE publications department. We cannot do our best work without your assistance—you cannot expect to get the best results from your efforts without willing assistance and coöperation from your printer.



ARTISTS AND CRAFTSMEN WORK  
TOGETHER IN CREATING IMPRESSIVE  
AND LASTING RECORDS OF YOUR  
YEARS IN SCHOOL—













