

ECHO



1950





Digitized by the Internet Archive  
in 2010 with funding from  
University of North Carolina at Chapel Hill

<http://www.archive.org/details/echo1950gree>

Nineteen and Fifty





Annual Publication of the Senior Class of  
Greensboro College, Greensboro, N. C.



JANET HIGHFILL, *Editor-in-Chief*  
CYNTHIA ALBRIGHT, *Business Manager*

To

THANKS

For external campus beauty - - -  
columns, varying shades of


For guidance through the year

For friendships - - - happy "hi's,"

For being our school.







swaying trees, chattering squirrels, massive  
clinging ivy, mellow brick walls . . .

- - understanding, helping, suggesting, teaching, knowing . . .

gay camaraderie, sense of well being, fun, laughter, tears . . .

# DEDICATED

with love and gratitude to one

Who in every phase of college life has constantly demonstrated loyalty and devotion . . .

Who has ever maintained an intelligent interest in each one of us . . .

Who has given inspiration by her noble living.

Who has always shown unswerving faith in us—to our friend



Mrs. J. M. Millikan



Dr. S. B. FURBURTH has been an integral part of Greensboro College for thirty-six years. With the welfare of the students and college always uppermost in his mind, he proved himself ever loyal both as president and president emeritus. With his keen sense of humor, his natural dignity, and his understanding and love of the college he still lives in the memories of G.C. students and alumnae.

# COLLEGE





Mus



THE GARDEN







OMIENCI  
MI NI



# Our President

DR. LUTHER L. GOBBEL

A.B., A.M., PH.D.

# DEANS

MISS STELLA WARD, A.B., A.M.

*Dean of Students*

DR. PAUL GINNINGS, B.S., M.S., Ph.D.

*Dean of Instruction*

MR. GUSTAV NELSON, B.M., M.M.

*Dean of the School of Music*



WARD



GINNINGS



NELSON

# Faculty

MRS. JUDY O. ADAMS, B.S., Secretary to the President

MRS. JESSE ALDERMAN, Professor (part time) of Violin and Instructor in Piano

MARTHA AYERS, A.B., L.S., Assistant Librarian

CARL C. BAUMBACH, B.M., M.M., Associate Professor of Theoretical Music and Instructor in Orchestral Instruments

BEVIE C. BERWIN, Ph.D., Instructor (part time) in German

THEODOCIA BLACKMON, Accountant



ADAMS  
BOYD

ALDERMAN  
BROCK

AYERS  
BROCK

BAUMBACH  
BUBBIS

BERWIN  
CARPENTER

BLACKMON  
COLE

ELIZABETH N. BOYD, A.B., A.M., Ph.D., Professor of Mathematics

ETHA BROCK, A.B., Registrar

MARY BROCK, A.B., Alumnae Secretary and Assistant Registrar

BLANCHE BUBBIS, B.M., Assistant Professor of Piano and Theoretical Music

JAMES M. CARPENTER, A.B., A.M., Ph.D., Professor of English

EVELYN COLE, A.B., A.M., Instructor in Biology and Chemistry



# of G. C.

GAYLAN COLLIER, A.B., A.M., Associate Professor of Speech

IRENE CULLIS, A.B., A.M., Associate Professor of Art

ROBERT T. DUNSTAN, A.B., A.M., Ph.D., Professor of Romance Languages

E. C. FEW, A.B., D.D., College Chaplain

LOIS FITCH, Manager of Bookstore

PHYLLIS FRASER, A.B., Assistant Director of Physical Education



COLLIER  
GINN

CULLIS  
GINNINGS

DUNSTAN  
HARBELL

FEW  
HEIRONIMUS

FITCH  
KILKELLY

FRASER  
LONG

MARY L. GINN, A.B., A.M., Associate Professor of English

PAUL M. GINNINGS, B.S., M.S., Ph.D., Professor of Chemistry and Physics

T. C. HARBELL, Business Manager and Treasurer

DOROTHY H. HEIRONIMUS, A.B., A.M., Ph.D., Assistant Professor of Spanish  
and Spanish-American History

MRS. THOMAS KILKELLY, B.M., Instructor (part time) in Piano

GRADY LONG, A.B., Librarian

# Faculty

VIRGINIA LUTZ, B.M., Assistant Professor of Voice

MRS. H. H. MARTIN, B.O., Instructor in Speech

ALPHA MAYFIELD, B.S., A.M., D.Mus., Assistant Professor of Music Education

MRS. J. M. MILLIKAN, Part Time Assistant to the Dean of Students

SIBYL MITCHELL, A.B., A.M., Director of Physical Education

GUSTAV NELSON, B.M., M.M., Dean of the School of Music and Professor of Piano and Theoretical Music



LUTZ  
PIMBERTON

MARTIN  
PORTER

MAYFIELD  
RAMSAY

MILLIKAN  
SKAGGS

MITCHELL  
SMITH

NELSON  
SMITH

ZELDA C. PIMBERTON, A.B., A.M., Ed.D., Assistant Professor of Education and Social Studies

MRS. WALDO PORTER, Supervisor of Buildings and Assistant to Dean of Students

CHARLES M. RAMSAY, A.B., B.D., Ph.D., Associate Professor of Philosophy and Religion

MARVIN L. SKAGGS, A.B., A.M., Ph.D., Professor of History and Economics

MRS. ADA K. SMITH, Dietitian

PAULINE K. SMITH, A.B., M.S.P.H., M.Ed., Associate Professor of Biology



# of G. C.

RAYMOND A. SMITH, A.B., B.D., Ph.D., Professor of Religious Education

FRANCES SOWELL, B.S., Instructor in Home Economics

DOROTHY STEEDMAN, A.B., Promotional Secretary

MADLINE G. STINSON, A.B., A.M., Ph.D., Associate Professor of Romance Languages

GRACE TICKLE, B.S. in Ed., A.M., Associate Professor of Home Economics

MILDRED TOWN, A.B., B.M., M.M., Professor of Organ and Associate Professor of Piano and Theoretical Music



SMITH                      TURNER                      SOWELL                      TUTTLE                      STEEDMAN                      WHITE                      STINSON                      WILLIAMS                      TICKLE                      YOUNG                      TOWN

PEARL TURNER, R.N., Supervisor of Student Hospital

EMILY TUTTLE, A.B., A.M., Assistant Professor of English

MABEL C. WHITE, Assistant Accountant

E. L. WILLIAMS, A.B., M.M., Professor of Voice

ELIZABETH B. YOUNG, A.B., A.M., Ph.D., Professor of Education







# CLASSICS



# SENIOR

The senior year! A year that proved to be the end of a beginning. A year packed with special experiences.

The strange disbelief at being called a "senior" . . . the small but versatile class, living together in Fitz . . . those long-dreamed-of "12 o'clocks" on Saturday nights . . . the tremors, work, and thrills of practice teaching and senior recitals . . . the self-conscious attempts at dignity to match the coveted caps and gowns . . . "Senior Day" and the realization of being rather special . . .

---

1950

## OFFICERS

MARY LIB BUSH  
*President*

VIRGINIA DeFORD  
*Vice-President*

MARY DAVIS  
*Secretary*

DIXIE HUSKE  
*Treasurer*

LOUI LANE  
*Council Representative*



MARY LIB BUSH



VIRGINIA DeFORD

# CLASS

the joyous excitement over new frat pins and rings . . . that nagging worry before "comprehensives" . . . graduation, bittersweet with its smiles and tears.

So ended at G.C. the final year for the Class of '50—a year filled with memories of little things.

## ECHO

---



MARY DAVIS



DIXIE HUSKI



LOU LANE



CYNTHIA ALBRIGHT ... Greensboro, N. C. ... Major: Art; Minor: English ... Secretary, Freshman Class ... Council Representative, Day Students ... Day Student Editor, *Collegian* ... Business Manager, *Handbook* ... President, Day Students ... Secretary, *Bit 'n Spur* ... Business Manager, *Echo* ... Little Sisters: Carolyn Gillespie, Juan Boyd ... Society: Emerson.

MARILYN ALLRED ... Jacksonville, Fla. ... Major: Speech; Minor: Spanish ... Highest Proficiency Award ... News Bureau ... Junior Superlative, Most Intellectual ... Assistant Literary Editor, *Echo* ... Reporter, Assistant Editor, Editor, *Collegian* ... Publicity Manager, G. C. Players ... Senior Superlative, Most Intellectual ... Gold Book ... *Who's Who* ... Little Sister: Jean Bradsher ... Society: Emerson.

PEGGY BAILEY ... Walnut Cove, N. C. ... Major: Home Economics; Minor: Science ... Art Club ... G. C. Daughters ... Home Economics Club ... *Bit 'n Spur* ... French Club ... "G" Club ... Typist *Collegian* ... Future Teachers' Club ... President, G. C. Players ... Little Sisters: Malinda Ayers, Elizabeth Callis, Jean Davis ... Society: Emerson.

MABEL SMITH BOWEN ... Greensboro, N. C. ... Major: Music Education; Minor: Piano ... Religious Education Club ... Glee Club ... French Club ... Symphonia ... Future Teachers' Club ... Music Club ... Little Sister: Caroline Wright ... Society: Emerson.

The much too soon clang clang of the rising bell  
And struggles with the lock of unruly hair,  
The prayer of thanks when you are too dead to tell  
Just what it means, but miss it when it's not there.

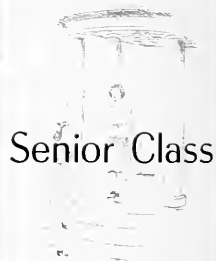
The moans and groans of those who have class at eight  
And frantic cramming when there's a history test,  
The last few jokes, a match, and then run you're late!  
Belief, regret that comes when you've done your best.

of 1950

---

PEGGY, MABEL, CINDY, AND MARILYN.





## Senior Class

SHIRLEY BROWN ... Wilmington, N. C. ... Major: Home Economics, Minor: Science ... Treasurer, Chairman of Finance, Home Economics Club ... Treasurer, Y.W.C.A. ... House President, Main and Hudson ... Marshal, Irving Society ... May Court ... Literary Staff, *Collegian* and *Echo* ... Senior Marshal ... Little Sisters: Aileen Casey, Mickey Marsh ... Society: Irving.

MARY ELIZABETH BUSH ... Lenoir, N. C. ... Major: Sociology; Minor: English ... Vice President, Freshman Class ... Spanish Club ... President, Sophomore Class ... Freshman Counselor ... Marshal, Emerson Society ... Corresponding Secretary, Student Council ... May Court ... Cabinet Member, Y.W.C.A. ... President, International Relations Club ... President, Senior Class ... Exchange Editor, *Collegian* ... *Who's Who* ... Gold Book ... Little Sisters: Joanne Harris, Betty Beck ... Society: Emerson.

MARY JANI CASSHVENS ... Greensboro, N. C. ... Major: Primary Education; Minor: French ... French Club ... Marshal, President, Irving Society ... International Relations Club ... Art Club ... Mad of Honor, May Court ... Future Teachers' Club ... Senior Superlative, Most Popular ... May Queen ... Little Sisters: Betty Rose Wilkerson, Agnes Kemerly ... Society: Irving.

FRANCIS CURFMAN ... Norfolk, Va. ... Major: Religious Education, Minor: English ... Junior Transfer, William and Mary College, Norfolk, Va. ... Cabinet Member, Y.W.C.A. ... President, Religious Education Club ... Music Editor, *Collegian* ... Little Singers ... Gold Book ... Little Sisters: Allene Williams, Virginia Coble, Ann Finch ... Society: Irving.

The phone which rings outside the first Spanish class,  
A fatal yawn that's caught in the latter stage,  
A hon, my deah, oh won't the time ever pass?  
A Monday morn professor in righteous rage.

Unopened parasols in the midst of rain,  
A bunch of cherries, mice, and two greenish cars,  
A crooked tie, a watch chain which swings again,  
Q. T., well now, and once I hit under par.

of 1950

---

SIBBLEY, MARY LEE, CASSIE, AND FRANCES.





## Senior Class

MARY DAVIS ... Burlington, N. C. ... Major: Home Economics; Minor: Science ... Art Club ... International Relations Club ... Freshman Counselor ... House President, 107 Odell ... Vice-President, Reporter, Home Economics Club ... Vice President, Junior Class ... Junior Superlative, Best All Round ... Censor, Vice President, Irving Society ... Senior Marshal ... Secretary, Senior Class ... Vice President, Future Teachers' Club ... Little Sisters: Mary Nell Bodie, Nancy Huffman ... Society: Irving.

VIRGINIA DEFORD ... Norfolk, Va. ... Major: Elementary Education; Minor: English ... Spanish Club ... International Relations Club ... House President, 107 Odell ... Freshman Counselor ... Treasurer, Junior Class ... Editorial Staff, Ferno ... Future Teachers' Club ... Vice President, Senior Class ... Senior Marshal ... Little Sisters: Dorothy Bovette, Dorothy Leonard ... Society: Irving.

MARY FISHER FINCH ... Zebulon, N. C. ... Major: Elementary Education; Minor: English ... Spanish Club ... G. C. Daughters ... International Relations Club ... Treasurer, Future Teachers' Club ... Little Sisters: Malissa Christie, Lave Dean Evans, Fleamur Hatcher ... Society: Emerson.

ELAINE FORWARD ... High Point, N. C. ... Major: Home Economics; Minor: Science ... Junior Transfer from High Point College ... Art Club ... Religious Education Club ... Home Economics Club ... Typist, *Collegian* ... Senior Marshal ... Little Sisters: Suzanne Elliott, Joan Williams ... Society: Emerson.



Roy's rolls and peas when lunch bell has finally rung,  
The rush for chairs for playing canasta, then  
The crazy songs and jingles that you've all sung  
Until the bell which signals that labs begin.

Three hours of fear in case you do something wrong,  
Free leaves, unknowns, a portrait, or killing white mice,  
Clock watching, wondering why the cake cooks so long,  
Returning tired to find roommate sleeping—nice?

of 1950

MARY, ELAINE, MOLLY, AND FISH.





SARAH GARBETT ... Burlington, N. C. ... Major: Home Economics; Minor: General Science ... Highest Proficiency Award ... Marshal, Irving Society ... Religious Education Club ... Art Club ... Cabinet Member, Y.W.C.A. ... Business Staff, *Collegian* ... Future Teachers' Club ... Treasurer, Vice President, Home Economics Club ... Little Sisters: Martha Downer, Lucille Morrison ... Society: Irving.

ALICE GAUL ... Philadelphia, Pa. ... Major: Religious Education; Minor: Home Economics ... Fire Warden ... Home Economics Club ... Religious Education Club ... Business Staff, *Collegian* ... Athletic Board Council Representative, Junior Class ... Vice President, President, Y.W.C.A. ... Little Sisters: Lula Cross Chapman, Mary Brinkley ... Society: Irving.

CHARLOTTE HALL ... Yadkinville, N. C. ... Major: Home Economics; Minor: Science ... Art Club ... International Relations Club ... Marshal, Secretary, President, Emerson Society ... Fire Chief ... Business Staff, *Collegian* ... Chairman, Social Standards Committee ... Treasurer, Secretary, President, Home Economics Club ... Future Teachers' Club ... Gold Book ... Little Sisters: Carolyn Fonville, Jackie Collie ... Society: Emerson.

JANET HIGBIE ... Lowesville, N. C. ... Major: Religious Education; Minor: Music ... Religious Education Club ... Marshal, Treasurer, Emerson Society ... House President, 107 Odell ... Freshman Counselor ... French Club ... Literary Staff, *Collegian* ... Secretary, P. K. Club ... Program Committee, Secretary, Music Club ... Social Standards Committee ... Secretary, Student Council ... Cabinet Member, Y.W.C.A. ... Athletic Board ... Editor, *Ferno* ... *Who's Who* ... Gold Book ... Little Sisters: Gay Hall, Mary Jewell Jenkins, Carolyn Allgood ... Society: Emerson.

The times you dress for dinner and get a run,  
"Y" Fellowship, class meetings which end in gore,  
And council bringing worries of what you've done  
Or didn't do, or what you have said before . . .

Time out from books for just a few playful pranks—  
Perfume infernos, watergun fights, pie beds,  
A cat's paw, soap, and what you get—no thanks!  
Sardines in closets helpless to raise their heads.

of 1950

ALICE, JANET, SARAH, AND CHARLOTTE.





## Senior Class

PEGGY HURLBY ... Troy, N. C. ... Major: English, Minor: Speech  
 ... May Court ... Art Club ... Crime, Emerson Society ... Secretary,  
 Future Teachers' Club ... G. C. Players ... Little Sisters: Annette Inge,  
 Sue Cullifer ... Society: Emerson.

DIXIE HUSKI ... Fayetteville, N. C. ... Major: Mathematics; Minor:  
 English ... House President, 120 College Place ... Freshman Counselor  
 ... Treasurer, Vice President, United Daughters of the Confederacy ...  
 Secretary-Treasurer, Vice President, President, Math Club ... Who's Who  
 ... Treasurer, Irving Society ... Treasurer, Senior Class ... Editorial  
 Staff, I.C.T.O. ... Future Teachers' Club ... Senior Marshal ... Gold Book  
 ... French Club ... Little Sisters: Carlene Freeman, Pat Jackson ...  
 Society: Irving.

ANNA INGRAM SCOTT ... Wadesboro, N. C. ... Major: Biology;  
 Minor: English ... Sophomore Transfer, Flora Macdonald College ...  
 French Club ... International Relations Club ... Photographer, *Collegian*  
 ... Treasurer, Emerson Society ... House President, Fitz ... President,  
 Cenozoic Club ... Senior Marshal ... President, Senior Class ... Gold  
 Book ... Little Sisters: Mary Lasley, Peggy Joyce Keel ... Society:  
 Emerson.

MARY VIRGINIA JAMES ... Norfolk, Va. ... Major: Religious Edu-  
 cation; Minor: English ... Junior Transfer, William and Mary College,  
 Norfolk Division ... Religious Education Club ... Math Club ... Inter-  
 national Relations Club ... Gold Book ... Little Sisters: Joan Goforth,  
 Barbara Thompson ... Society: Emerson.

The good intentions smashed by the name of "coke,"  
The book store lure when books are piled elbow high,  
The trips down hill at night when you're almost broke,  
The midnight oil turned out with a tired sigh.

The weekly feasts when someone's received some food,  
Alarm clock chime for vespers about the stair,  
A minute's thought, a song about what is good,  
Then rush right back to bones that are almost bare.

of 1950

---

MARY, DIMIT, ANNA, AND PEGGY





ANNE JOINSON ... Suffolk, Va. ... Major: Music Education; Minor: Voice ... Freshman Counselor ... House President, 120 College Place ... Librarian, Glee Club ... Hostess, Dining Room ... President, Future Teachers' Club ... Senior Marshal ... Sextet ... Music Education Club ... Little Sisters: Sue Warren, Linda Greene ... Society: Irving.

MARY KINDT ... Ocala, Fla. ... Major: Religious Education; Minor: Spanish ... Cabinet Member, Y.W.C.A. ... Treasurer, Religious Education Club ... Speech Club ... Vice President, Spanish Club ... Glee Club ... Student Assistant in Business Office ... Little Sisters: Patricia Tucker, Virginia Culbreth ... Society: Irving.

MARGARET KIRK ... Coolemeec, N. C. ... Major: English; Minor: French ... French Club ... International Relations Club ... Senior Marshal ... Future Teachers' Club ... Little Sisters: Marian Vaughn, Helen Smith ... Society: Emerson.

LOU LANE ... Stantonburg, N. C. ... Major: Mathematics; Minor: Religious Education ... French Club ... Religious Education Club ... Historian, President, G. C. Daughters ... Treasurer, President, United Daughters of Confederacy ... Secretary, Math Club ... Council Representative, Senior Class ... Future Teachers' Club ... Little Sisters: Jo Ann Kincaid, Katherine Sutton, Janice Johnson ... Society: Irving.

The frantic rush from classes to pack your bag,  
The call of football even when test time's near,  
The lonely feeling when it's behind you lag,  
The date on Sunday evening to give you cheer.

Unbroken silence when all are gone but you,  
A game of jackrocks or a short trip to Mac's,  
A magazine, a joke to prevent the blues,  
The shouts of laughter when the lucky are back.

of 1950

---

ANNE, MARY, LOU, AND MARGARET.





## Senior Class

IVA LEE McGRADY ... Durham, N. C. ... Major: Religious Education; Minor: Biology ... French Club ... Religious Education Club ... G. C. Players ... Cenozoic Club ... "G" Club ... Junior Superlative, Most Athletic ... Secretary, Junior Class ... Vice-President, Bit 'n' Spur ... Vice-President, Athletic Association ... Gold Book ... Little Sisters: Eleanor Martens, Betty Leach, Doris Helms ... Society: Irving.

ROSE MARSH ... Wadesboro, N. C. ... Major: Home Economics; Minor: General Science ... Spanish Club ... Cabinet Member, Y.W.C.A. ... Home Economics Club ... Business Manager, *Collegian* ... Future Teachers' Club ... Little Sisters: Anne Gray, Clarianne Massey, Sue Perkins ... Society: Emerson.

MARY ELLEN MATTHEWS ... Greensboro, N. C. ... Major: Music Education; Minors: Piano and Organ ... Secretary, Day Students' Association ... Secretary, Sophomore Class ... Business Manager, *Handbook* ... Treasurer, President, Music Club ... Future Teachers' Club ... Symphonia ... Glee Club Accompanist ... Gold Book ... Little Sisters: Ida Lewis, Justine Patrick ... Society: Irving.

KATHERINE MAXWELL ... Merchantville, N. J. ... Major: Sociology; Minor: English ... Spanish Club ... "G" Club ... House President, Man ... Vice-President, Sophomore Class ... Junior Superlative, Most Popular ... Senior Superlative, Most Athletic ... Treasurer, Secretary, President, Athletic Association ... Little Sisters: Catherine Coble, Virginia Harris ... Society: Emerson.



The worried editors as they scold the staff,  
The squirming council when they're in a tough spot,  
The campus clowns at "Y" when they want a laugh,  
Team captains dragging those who can play or not.

Recitals, plays to give when there's little time,  
A watermelon feast and your part's the rind,  
A poem to write when anyone needs a rhyme,  
Responsibilities till you lose your mind.

of 1950

---

IVA LEE, KAY ROSE, AND MARY ELLEN





## Senior Class

FRIEDA MORGAN ... Abilene, N. C. ... Major: Religious Education; Minor: English ... Religious Education Club ... Little Sisters; Evangeline Tucker ... Society: Emerson.

NANCY PEAL ... Chadburn, N. C. ... Major: Biology; Minors: Sociology ... Spanish Club ... Business Staff, Collegian ... Secretary-Treasurer, Cenozoic Club ... Corresponding Secretary, Emerson Society ... May Court ... Chief Senior Marshal ... Little Sisters, Annie Ruth Metz, Elgina Phelps ... Society: Emerson.

PIGGY PERRY ... Greensboro, N. C. ... Major: Theory, Minor: Voice ... Day Students' Association ... Little Sisters, Lynn Goodman, Nancy Ingram ... Society: Irving.

SARAH PUFFE ... Dallas, N. C. ... Major: Religious Education; Minor: Science ... International Relations Club ... Religious Education Club ... World Federalists Organization ... Little Sisters: Mildred Stephenson, Georganna Humbley ... Society: Irving.

The climbing ivy on red ancient walls,  
The stately columns on the high front of Main,  
The squirrels playing, scampering near the halls,  
The cherry trees that blossom in spring again.

The little stream that bubbles along its way,  
The lake which gently ripples when blows the breeze,  
Stone benches, willow trees whose arms wave away  
The fog which settles near the small cedar trees.

of 1950

---

PEGGY, NANCY, AND SARAH





## Senior Class

**SUE RAST** ... Dillon, S. C. ... Major: General Science; Minor: English ... Junior Transfer, Lander College ... Vice-President, P. K. Club ... Program Chairman, Cenozoic Club ... House President, Hudson ... First Vice President, Student Council ... Senior Marshal ... May Court ... Honor Society ... Little Sisters: Bettie Baker, Laura Sue Thomas ... Society: Emerson.

**HELEN SCHWARTZBARD** ... Highland Park, N. J. ... Majors: History and Journalism ... International Relations Club ... United World Federalist Organization ... Fire Warden ... House President, 116 College Place ... Exchange Editor, Managing Editor, *Collegian* ... Editorial Staff, *Ecno* ... Junior Superlative, Most Poised ... President, Junior Class ... News Bureau ... Bit 'n' Spur ... Senior Superlative, Most Likely to Succeed ... President, Student Council ... Little Sisters: Edith Juddins, Sarahyn Schumann ... Society: Emerson.

**MARIE SHENG** ... Shanghai, China ... Majors: Art; Minor: French ... Math Club ... Censor, Emerson Society ... President, Art Club ... President, Dance Club ... Art Editor, *Ecno* ... Glee Club ... Athletic Board ... Little Sisters: Louise Sanford, Dorothy Plyler ... Society: Emerson.

**ANNE SIMPSON** ... Salisbury, N. C. ... Majors: English and French ... International Relations Club ... Glee Club ... Secretary, President, French Club ... Athletic Board ... G. C. Players ... Program Chair man, Future Teachers' Club ... Editor, *Handbook* ... Literary Editor, *Ecno* ... Special Features Editor, *Collegian* ... Marshal, Emerson Society ... *Who's Who* ... Little Sisters: Phyllis Poole, Pearl Lunsford, Barbara Jeanne Thompson ... Society: Emerson.

**NYI-TSUNG ISU** ... Shanghai, China ... Majors: Elementary Education; Minor: Art ... Cabinet Member, Y.W.C.A. ... Art Club ... Chaplain, Emerson Society ... Math Club ... Home Economics Club ... Little Sisters: Patricia Smith, Patsy Blake ... Society: Emerson.

All these and countless more are the little things  
Which you'll remember in the days yet to come;  
The things which cause a bell in the past to ring  
When you are far from G.C., your college home.

The big events you perhaps will forget in years,  
But long as you have a spot in your heart to spare,  
The little things will linger through smiles or tears,  
And you'll say, What fun little things have been there.

of 1950

LAURA, SIMPSON, MARIE, SUL, AND HELEN



# JUNIORS of Nineteen

## Juniors at last . . . the campus sophisticates!

Worldly-wise enough to guide the faltering steps of a little sis . . . aristocratic enough to waltz in the parlor . . . privileged enough to rate an extra night out a week.

Supposedly with such newly acquired savoir-faire come added brain cells. At least, so think the profs who serve up a few more assignments . . . a few more pages of Greek-like thoughts . . . a few more term papers with just a dash of that bane of existence, the pop quiz, to spice things up a bit.

But still Juniors manage to be the frosting of the cake . . . the feminine gay-blades of G.C. . . . and not only that, but they'll be Seniors come '51!

# Hundred and Fifty



RUTH HOOKER, *Treasurer*  
DIXIE LEE FISHER, *Council Representative*  
JOLLY RICHARDSON, *Secretary*  
JO ANN SNIAD, *Vice President*  
CAROLYN WARD, *President*

# Junior

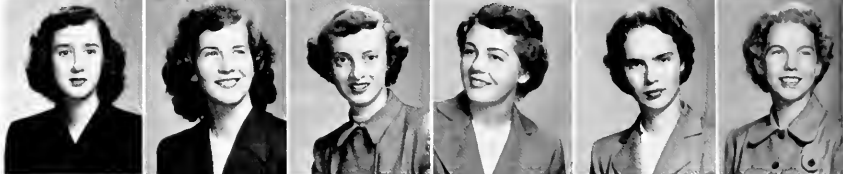
ALLIGOOD  
AMAN  
ARMSTRONG  
ASHMORE  
BEARD  
BROGAN



CAPPS  
CONNELL  
CRAWFORD  
CURTIS  
DAVIS, B.  
DAVIS, S.



EDWARDS  
EUBY  
EVANS  
FIELDS  
FISHER  
FLOYD



FULK  
GARDNER, J.  
GARDNER, N.  
GRIFFITH  
HALL  
HALLMAN



Mary Alligood, Durham . . . Frances Aman, Greenville . . . Hazel  
Armstrong, Mount Gilead . . . Ann Ashmore, Yanceyville . . . Peggy  
Beard, Fayetteville . . . Mary Alice Brogan, Wilmington, Del.

Patsy Capps, Areola . . . Ann Connell, Mt. Holly . . . Agnes Craw  
ford, Wadesboro . . . Dorothy Curtis, Asheville . . . Betty Davis,  
Greensboro . . . Shirley Davis, Burlington.

Celia Ann Edwards, Asheville . . . Martha Euby, Concord . . . Dora  
Evans, Kernersville . . . Margaret Fields, Walstonburg . . . Dixie  
Fisher, Fairmont . . . Pat Floyd, Raleigh.

Sue Fulk, Pilot Mountain . . . Jean Gardner, Warsaw . . . Nancy  
Gardner, Asheville . . . Frances Griffith, High Point . . . Gay Hall,  
Ararat . . . Edwina Hallman, Aberdeen.





# Class



HAMMOND  
HARDEE  
HART  
HARTER  
HOOK  
HOOK  
HAYES

HENLEY  
HOOKER  
HUNNICUTT  
HUNT  
JONES  
LAMBETH

LEWIS  
LINDSEY  
MARQUIS  
MICKY  
MILLER  
MOGER

MOORE  
MOORMAN  
MORGAN  
MORRIS  
PARKER  
PATELIDAS

Peggy Hammond, Spartanburg, S. C. . . . . Burdette Hardee, Durham  
Ruth Hart, Norfolk, Va. . . . . Pat Harter, Summerville, S. C. . . . .  
Mary Margaret Hook, Rutherford College . . . . . Becky Hayes, North  
Wilkesboro.

Lucy Henley, Flint Hill, Va. . . . . Ruth Hooker, Kinston . . . . . Jackie  
Hunnicuttt, Wingate . . . . . Mary Hester Hunt, Durham . . . . . Ida Ruth  
Jones, High Point . . . . . Molly Lambeth, Thomasville.

Virginia Lewis, Kinston . . . . . Ann Lindsey, Wadesboro . . . . . Frances  
Sue Marquis, Greensboro . . . . . Doris Mickey, Greensboro . . . . . Kitty  
Miller, Charlotte . . . . . Sarah Moger, Pine Bluff.

Betty Lou Moore, Mt. Holly . . . . . Jeannine Moorman, Roanoke, Va.  
Alice Morgan, Asheville . . . . . Martha Grace Morris, Forest City  
Anne Parker, Greensboro . . . . . Mary Patelidas, Asheville.



# Junior Class

PATTERSON  
PAYNE  
PEELER  
PENEGAR  
PRICE  
RICHARDSON



ROBINSON  
ROBERSON  
RUDSILL  
SCOTT  
SHELTON  
SHIELDS



SMITH, I.  
SMITH, J.  
SMITH, P.  
SNEAD  
STARKE  
STEADMAN



SUGG  
TYREE  
WALLIS  
WARD



Mary Elizabeth Patterson, Fayetteville . . . . . Jean Payne, Winston Salem  
DeNeale Peeler, Lexington . . . . . Marilyn Penegar, Gastonia . . . . .  
Lenora Price, Richmond, Va. . . . . Joella Richardson, Fremont.

Julia Ann Robinson, Reidsville . . . . . Vernida Roberson, Robersonville  
Jeannie Rudsill, Greensboro . . . . . Rachel Scott, Concord . . . . .  
Jane Shelton, Yanceyville . . . . . Dorothy Shields, Fort Wayne, Ind.

Iris Smith, Holdercroft, Va. . . . . Etta Jane Smith, Asheboro . . . . . Phyllis  
Smith, Wilmington . . . . . Jo Anne Snead, Wilmington . . . . . Martha  
Starke, Roanoke Rapids . . . . . Ann Steadman, Rockingham.

Margaret Sugg, Grafton . . . . . Peggy Reid, Greenville . . . . . Jean Tyree,  
Rocky Mount . . . . . Beryl Wallis, Winston Salem . . . . . Carolyn Ward,  
Walkertown.



# SOPHOMORES of Nineteen

September, 1949! The returning Sophomores felt a strong pulse-beat of unity as upperclassmen, even though a few had been added to the class and some were gone. Those who returned, now knowing their way around, found new delights at G.C. . . . no more "lights out," closed study, or orientation to suffer through . . . their fairest serving as society marshals . . . an extra night out each week . . . rushing instead of being rushed. Then those smiles of welcome to the newcomers changed to grins of torture on Rat Day.

But there was more in being a sophomore than just ruling over rats and having unrestricted week ends. There were culture tests, new and more difficult courses, the choice of a major, lastly the myriad of G.C. traditions to uphold. Then came the traditional daisy chain and the sad farewell to their Big Sister class. It was a good year—one to remember and cherish. But best of all, there are still two more years of fun and work for them at G.C.

# Hundred and Fifty



IVAN DAVIS, *Vice President*  
LYNNE GOODMAN, *Secretary*  
LYNDA GREENE, *President*  
JANICE JOHNSON, *Treasurer*  
MARY EASTLY, *Council Representative*

Carolyn Allgood, Durham Malinda Ayers, Richmond, Va. Bettie Baker,  
Wadesboro Betty Beck, Pilot Mountain Patsy Blake, Stedman Mary  
Nell Boddie, Durham.

Jean Boyd, Greensboro Dot Boyette, Kinston Jean Bradsher, Roxboro  
Mary Brinkley, Durham Elizabeth Callis, Bessemer City Aileen Casey,  
Mount Olive.

Lula Cross Chapman, Salem, Va. Malissa Christie, Durham Catherine  
Coble, Burlington Virginia Coble, Burlington Jacqueline Collie, Bailey  
Virginia Culbreth, Greensboro.

Sue Cullifer, Murfreesboro Suzanne Elliott, Forest City Anne Etheridge,  
Whitakers Faye Dean Evans, Lexington Ann Finch, Smithfield  
Carolyn Fonville, Burlington.

Carlene Freeman, Raeford Eleanor Garrison, Asheville Carolyn Gillespie,  
Greensboro Joan Golorth, Rutherfordton Lynne Goodman, Greensboro  
Anne Gray, Wadesboro.

# Sopho



ALLGOOD  
AYERS  
BAKER  
BECK  
BLAKE  
BODDIE

BOYD  
BOYETTE  
BRADSHER  
BRINKLEY  
CALLIS  
CASEY

CHAPMAN  
CHRISTIE  
COBLE, C.  
COBLE, V.  
COLLIE  
CULBRETH

CULLIFER  
ELLIOTT  
ETHERIDGE  
EVANS  
FINCH  
FONVILLE

FREEMAN  
GARRISON  
GILLESPIE  
GOLORTH  
GOODMAN  
GRAY

Linda Greene, Rocky Mount . . . Joanne Harris, Lenior . . . Virginia Harris, Durham . . . Doris Helms, Durham . . . Elizabeth Hogan, Kinston . . . Nancy Huffman, Burlington.

Georganna Hnudley, Thomasville . . . Annette Inge, Fayetteville . . . Nancy Ingram, Greensboro . . . Patricia Jackson, Avden . . . Mary Jewell Jenkins, Norwood . . . Janice Johnson, Robersonville.

Edith Judkins, Alexander, N. Y. . . Peggy Keel, Rocky Mount . . . Agnes Kenerly, North Wilkesboro . . . Jo Ann Kincaid, Kannapolis . . . Mary Lasley, Winston Salem . . . Betty Leach, Thomasville.

Dor Leonard, Durham . . . Ida Lewis, Kenly . . . Pearl Lunsford, Warrenton, Va. . . Millicent Marsh, High Point . . . Eleanor Martens, Burlington . . . Clariann Massey, High Point.

Annie Ruth Metz, Mooresville . . . Lucille Morrison, Statesville . . . Justine Patrick, Engelhard . . . Sue Perkins, Mobile, Ala. . . Elgina Phelps, Winston Salem . . . Dorothy Plyler, Thomasville.

mores

GILENE  
HARRIS, J.  
HARRIS, V.  
HELMIS  
HOGAN  
HUFTMAN



HUNDLEY  
INGE  
INGRAM  
JACKSON  
JENKINS  
JOHNSON



JUDKINS  
KEEL  
KENERLY  
KINCAID  
LASLEY  
LEACH



LEONARD  
LEWIS  
LUNSFORD  
MARSH  
MARTENS  
MASSEY



METZ  
MORRISON  
PATRICK  
PERKINS  
PHELPS  
PLYLER

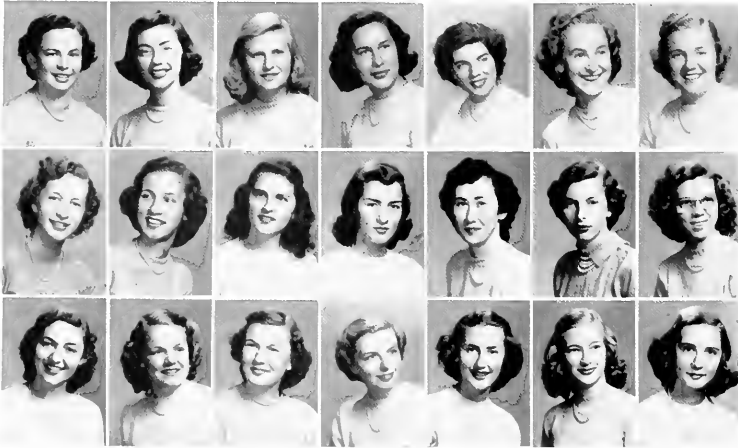


# Sophomores

Jacquelyn Pollock, Trenton . . . Phyllis Poole, Durham . . . Elizabeth Royall, Elkin  
 . . . Louise Sanford, Bahama . . . Saralyn Schumann, Rochester, N. Y. . . Helen  
 Smith, Jamestown . . . Pat Smith, Goldsboro.

Mildred Stephenson, Garysburg . . . Patsy Stephenson, Garysburg . . . Katherine  
 Sutton, Candor . . . Laura Sue Thomas, Carthage . . . Barbara Ann Thompson,  
 Winston-Salem . . . Barbara Jeanne Thompson, Warsaw . . . Evangeline Tucker,  
 Kernersville.

Patricia Tucker, Greensboro . . . Marian Vaughn, Stokesdale . . . Mary Sue Warren,  
 Newton Grove . . . Betty Rose Wilkerson, Farmville . . . Allene Williams, Erwin  
 . . . Joan Williams, Dunn . . . Carolyn Wright, Jarvisburg.



POLLOCK  
 POOLE  
 ROYALL  
 SANFORD  
 SCHUMANN  
 SMITH, H.  
 SMITH, P.

STEPHENSON, M.  
 STEPHENSON, P.  
 SUTTON  
 THOMAS  
 THOMPSON, B. A.  
 THOMPSON, B. J.  
 TUCKER, E.

TUCKER, P.  
 VAUGHN  
 WARREN  
 WILKERSON  
 WILLIAMS, A.  
 WILLIAMS, J.  
 WRIGHT





# FRESHMEN

## of Nineteen

Who could ever forget that first G.C. year!

The quivering butterflies in the pit of your stomach on the first day . . . new clothes, new faces, and new activities . . . Rush Week, chocked full with surprises and parties . . . the shaky feeling before descending the steps on Decision Night . . . those six weeks of fighting off sleep in orientation . . . the first dance, with its new experience of going "stag" . . . the love and friendly advice of your "big sis" . . . that "ratty" feeling when the mighty Sophs reigned . . . the joyous spurt of freedom that came with the holidays . . . the dread of exams and their consequences . . . the strange mixture of sadness and carefreeness at leaving for the summer months.

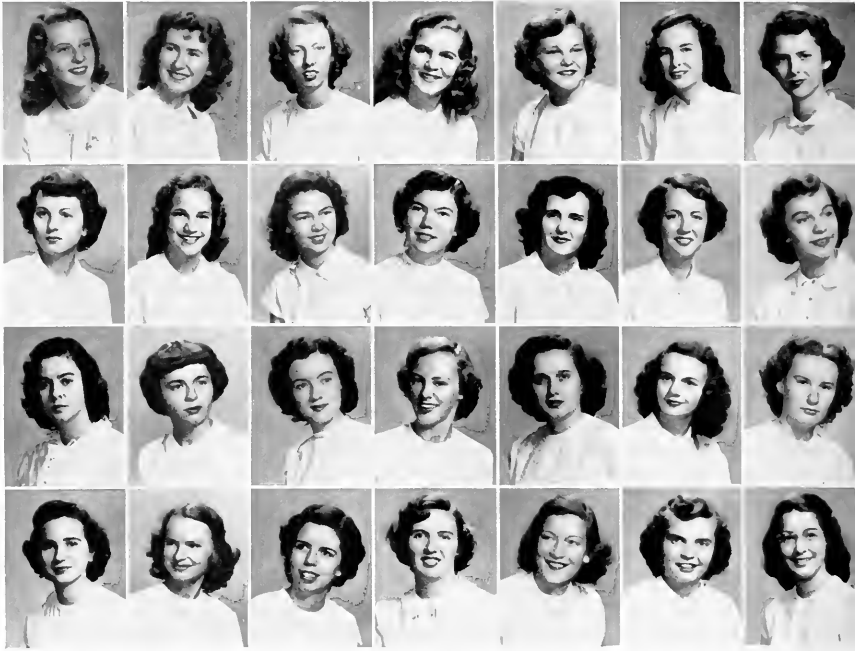
As the uncertainty and greenness wore off, the realization suddenly dawned of a newly acquired school of friends. With the end of the first year at G.C. came anticipations of the next—the first year as an upperclassman!

# Hundred and Fifty



*SYLVIA BOHR, Vice President*  
*NANCY HOBBS, Treasurer*  
*JOY LITTLE, President*  
*JANE BEAM, Council Representative*  
*SHIRLEY PEELER, Secretary*

# Freshmen



Janice Alexander, Siler City . . . Margaret Allen, Rockingham . . . Mary Catherine Baldwin, Norfolk, Va. . . . Mable Ballard, Fuquay Springs . . . Caroline Barringer, Salisbury . . . Marilyn Baxley, Rockingham . . . Jane Beam, High Point.

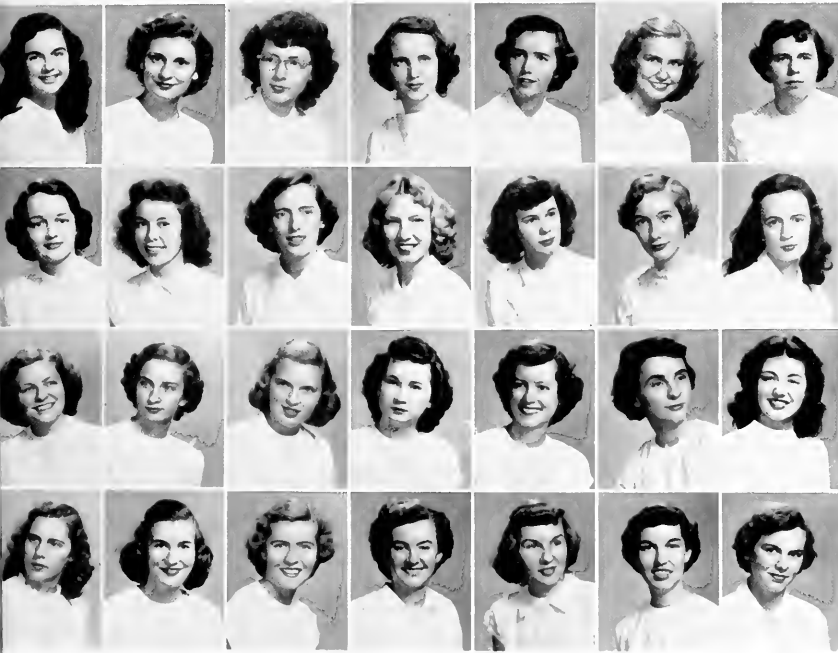
Doris Billingsley, Duncan, Arizona . . . Sylvia Bodie, Williamsburg, Va. . . . Ann Brooks, Roxboro . . . Judy Brown, Greensboro . . . Martha Burch, Burlington . . . Mary Elizabeth Burnett, Carolina Beach . . . Jeannie Byrd, Mocksville.

Miriam Byrd, Worthville . . . Doris Casey, Mount Olive . . . Jeannette Chance, Lumberton . . . Addie Belle Clemmons, Greensboro . . . Jean Cobb, La Grange . . . Florence Cornatzer, Mocksville . . . Betty Costner, Greensboro.

Jane Council, Charlotte . . . Elizabeth Anne Cousins, Enfield . . . Catherine Covington, Greensboro . . . Madelen Covington, Pinnacle . . . Barbara Cox, Asheboro . . . Lou Dail, Winterville . . . Ann Marie Daniel, Charlotte.



# of 1950



Anita Dixon, Charlotte . . . Martha Downer, Lilesville . . . Betsy Ann Edwards,  
West Jefferson . . . Gerry Lee Elrod, Henderson . . . Carolyn Evans, Raleigh . . .  
Anne Ewing, Ellerbe . . . Ann Fields, Greensboro.

Sara Elizabeth Fonville, Burlington . . . Alice Garrett, Burlington . . . Jean Gowdy,  
Fayetteville . . . Dolores Hagan, Burlington . . . Marguerite Hartman, Lincolnton  
. . . Eleanor Hatcher, Mt. Airy . . . Betty Faye Hedgecock, High Point.

Betty Hendricks, Greensboro . . . Mary Alda Hileman, Kannapolis . . . Nancy  
Hobbs, Rocky Mount . . . Dorothy Holt, Wakefield, Va. . . . Nancy Holt, Erwin  
. . . Mary Sue Ingram, Sanford . . . Beverly Ivester, Winston Salem.

Sue Evelyn Jenkins, Dallas . . . Carolyn Jones, Roanoke, Va. . . . Dorothy Jones,  
Durham . . . Gaydara Kendrick, Spindale . . . Jacqueline Knott, Kinston . . .  
Betsy Lawrence, Fayetteville . . . Barbara Lee, High Point.



# Freshmen



Joyce Lewis, Bosboro . . . Shirley Lewis, Buena Vista, Va. . . . Joy Little, Denver  
 . . . Mary Blades Love, Elizabeth City . . . Joann McCoy, Sumter, S. C. . . .  
 Marilu McGerity, West Palm Beach, Fla. . . . Mozelle Masters, Candler.

Jackie Miles, Greensboro . . . Sara Bloomau, Petersburg, W. Va. . . . Alice Moore,  
 Granite Falls . . . Regenia Neighbors, Dunn . . . Josie Neel, Washington . . . Betty  
 Jean Owen, Asheville . . . Kitty Owen, Fayetteville.

Patricia Owen, Lincolnton . . . Joyce Parker, Princeton . . . Vera Parker, Greens-  
 boro . . . Shirley Peeler, Salisbury . . . Paula Pegg, Seaboard . . . Jeanne Penny,  
 Murphy . . . Peggy Pinner, Suffolk, Va.

Anne Powell, Blanch . . . Barbara Pritchett, Reidsville . . . Jeanne Redick, Walston  
 burg . . . Mary Jo Reid, Salisbury . . . Joyce Bouse, Walstonburg . . . Anne Rudd,  
 Greensboro . . . Ann Russell, Greensboro.



# of 1950



Ruth Scarborough, Greensboro . . . Nancy Scott, Concord . . . Gloria Singleton,  
Washington . . . Barbara Smith, Elizabeth City . . . Ann Smithleal, Raleigh . . .  
Miriam Sollee, Tarboro . . . Besslyn Spivy, Clinton.

Mirvine Squier, Greensboro . . . Hazel Stallings, Lynnhaven, Va. . . Carolyn Stan-  
ford, Chester, S. C. . . Peggy Stanton, Kittrell . . . Sue Steele, Burlington . . .  
Betty Stroupe, Mount Holly . . . Martha Craig Suiter, Garysburg.

Christine Sugg, Snow Hill . . . Sarah Swain, Greensboro . . . Barbara Anne Tatum,  
Norfolk, Va. . . Mary Dudley Taylor, Chocowinity . . . Ema Thornburg, Asheboro  
. . . Ann Thrasher, Stoneville . . . Emily Tillman, Greensboro.

Janice Turnage, Ayden . . . Pauline Walker, Thomasville . . . Jo Ann Watkins,  
Charlotte . . . Louise Webb, Louisburg . . . Elizabeth Wellman, Concord . . .  
Katherine Wilkerson, Sims . . . Angelyn Wethington, Fayetteville . . . Dawn  
Young, Canisteo, N. Y.







# ACTIVITIES



BETTY DAVIS  
*Day Students' Representative*

SUE RAST  
*First Vice President*

HELEN SCHWARTZBARD  
*President*

JEAN TYBEE  
*Recording Secretary*

MICKY MARSH  
*Treasurer*

PATSY CAPPS  
*Second Vice President*

IDA RUTH JONES  
*Corresponding Secretary*



## Students' Association

"The Council wants to see you right away!" Have you ever trembled in your shoes and had your knees buckle upon hearing this? However, the green-robed girls on either side of the long table turned out to be human and understanding after all.

Elected by the Students' Association, these girls endeavor to uphold the honor system in all phases of campus life. Their foremost aim is that of helping the student body keep the freedom and liberty that is enjoyed only by enforced rules.



HELEN SCHWARTZBARD

### HOUSE PRESIDENTS

PHYLLIS POOL  
ANNA INGRAM SCOTT  
AILENE WILLIAMS  
ELLANOR MARLINS  
MARTHA ANN STARRK





*ALICE GAUL  
President*

*CELIA EDWARDS  
Vice-President*

*PEGGY HAMMOND  
Secretary*

*LULA CROSS CHAPMAN  
Treasurer*

## Y. W. C. A.

From the very first day, when greeting the freshmen, on through to the last Wednesday night fellowship, the "Y" has filled a unique place in the year's activities. Pleasant memories linger about the varied events . . . Religious Emphasis Week, with Rev. D. D. Holt and Miss Clarice Bowman . . . another successful W.S.S.F. drive . . . vespers every Sunday evening . . . and last of all the fun we had at the student body picnic. The "Y" activities have a place in the life of every G.C. girl.

*Cabinet members:* Frances Aman, Mary Brinkley, Mary Lib Bush, Lib Callis, Lula Cross Chapman, Frances Curfman, Celia Anne Edwards, Margaret Fields, Dixie Fisher, Pat Floyd, Nancy Gardner, Sarah Garrett, Alice Gaul, Lynn Goodman, Frances Griffith, Peggy Hammond, Ruth Hooker, Nancy Huffman, Pat Jackson, Mary Jewell Jenkins, Frances Sue Marquis, Rose Marsh, Joella Richardson, Alice Marie Morgan, Libby Rowall, Jeanne Rudisill, Iris Smith, Joan Sneed, Ann Steadman, Laura Tsu, Jean Tyree.



*ALICE GAUL*



### ADVISERS

- DEAN WARD
- DR. SMITH
- MISS CULLIN
- DR. GOBBEL
- DR. STINSON

# WHO'S WHO at G. C.

Because of high standards of scholarship, character, and leadership, the following students of the class of 1950 have been chosen as representatives of "Who's Who in American Universities and Colleges."

MARILYN: keen intellectual student      alert "Collegian" editor      gifted interpreter of drama.

MARY LEE: attractive and precise senior      serious campus leader      able F.R.C. president.

IANET: bright, cheerful friend      earnest "Echo" chief      competent organizer.

DIXIE: conscientious, hard worker of quiet sincerity      patient future Math teacher      possessor.

ANNE: versatile Handbook editor      poet with a touch of genius      enthusiastic class leader.

MARY LEE BUSH, MARILYN, ALBERT, DIXIE, POL HUSKI, ANNE SIMPSON, IANET HIGHTHET





MARILYN ALLRED  
 MARY ALICE BROGAN  
 BETTY DAVIS  
 DIME LEE FISHER  
 PAT FLOYD  
 FRANCES SUE MARQUIS  
 LENORA PRICE  
 SUE RAST  
 PEGGY REID  
 JOELLA RICHARDSON  
 JEAN TYBEE

## Greensboro College Honor Society



CATHERINE COBLE  
 JEAN DAVIS  
 PAT JACKSON  
 MARY JEWELL JENKINS  
 AGNES KENERLY  
 ELIZABETH ROYALL  
 ALLENE WILLIAMS  
 JOAN WILLIAMS

"What a brain!" Obviously the speaker is talking about a member of the honor society. However, G.C.'s honor students are all-round girls. While participating in school and club activities, they can still keep a firm grasp on academic work. That's where the difference comes in!



## Town Students' Association

"Hey, sharpen this pencil for me, will ya? I can't step over all these people gabbing about 'last night.'"

Whether dashing in and out of the Day Students' room, flopping books down between one class and the next, swapping jokes and experiences, or planning the Valentine dance, the "day hops" have a jolly time. Despite the difficulties and advantages in scurrying back and forth to school every day, they are handy to have around in all campus activities.

*Officers:* Cynthia Albright, president; Anne Parker, vice-president; Lynne Goodman, secretary; Nancy Ingram, treasurer; Betty Davis, council representative.

*Members:* Albright, Boyd, Costner, Covington, Cullbreth, Gillespie, Goodman, Hendricks, Miles, Parker, Perry, Russell, Scarborough, Squier, Swain.

# Senior Marshals

No matter what the occasion at G.C., whether May Day, graduation, recitals, plays, or Homecoming—the senior marshals are always on hand in their flowing white evening dresses with green and white ribbons. Always gracious and courteous, they see that each student and guest alike is furnished with a program and a good seat.

Nancy Peal, *Chief*, Mary Lih Bush, Shirley Brown, Mary Davis, Molly DeFord, Elaine Forward, Charlotte Hall, Dixie Huske, Anne Johnson, Margaret Kirk.



Officers: Anne Simpson, editor, Betty Davis, business manager.



## THE HANDBOOK

"Why are the little green-and-white books in all the dorm rooms?"

Yes, she's a new student here, as you can see. For of course every G.C. girl knows the purpose of the handbook. It extends greetings to all students, informs the new girls—reminds the old—of the "laws we live by." Interesting information about the school calendar year, clubs and organizations on campus, rules and regulations, and a few "words to the wise"—all combine to make *The Handbook* a helpful piece of property.

## SPANISH CLUB

Whether the student speaks Spanish fluently, a little, or not at all, she enjoys the fun and fellowship of the Spanish Club. Here she has a chance to throw aside the textbook and to learn something about political, economic, and social life in Spanish-speaking countries. This active group is advised by Dr. Dunstan and Dr. Heironimus.



Officers: Carolyn Ward, president, Mary Kindt, vice-president; Burdette Hardee, secretary; Dorothy Plyler, treasurer.

Members: Allen, Ballard, Beck, Bothe, Brogan, Callis, Capps, Cox, Crawford, Culbreth, Dail, Evans, Greene, Hardee, Hileman, Hobbs, Jackson, Jenkins, Keverly, Kindt, Little, McGrerty, Metz, Miller, Monahan, Owen, Peeler, Perkins, Plyler, Pollock, Price, Richardson, Sanford, Stanton, Starke, Tatam, Tiller, Tillman, Thrasher, Ward, Wellman, Williams.





Members: Charlotte Hall, chairman; Ann Steadman, Joanne Harris, Patricia Jackson, Mary Nell Boddie, Celia Ann Edwards, Jo Ann Snead, Helen Schwartzbard, Miss Irene Cullis, Miss Grace Tickle, and Miss Stella Ward.

## SOCIAL STANDARDS COMMITTEE

Are you up on your "do's and don't's"? If not, never mind writing Emily Post—just call on the Social Standards Committee right here on campus.

This committee guides G.C. girls in their social behavior and enhances their role of social graces. Through its efforts our Alma Mater holds a distinction which makes her highly respected.

## FRENCH CLUB

"Parlez vous Francais?" If you do, then you are accustomed to hearing the "ouis" and "nons" that fill the air every third Tuesday night. The enthusiastic French Club members keep alive on our campus the spirit of "la belle France." Music, games, and an occasional speaker make France real and interesting.

But this club exists not only for itself, one of its main activities is that of collecting clothes and other relief articles for our French friends across the sea. This annual project helps to make friends and to create good will between our two countries.

Officers: Frances Griffith, president; Mary Allgood, vice-president; Doris Helms, secretary-treasurer.

Members: Avres, Baker, Beam, Casstevens, Chance, Chapman, Christie, Coble, Cullifer, Dixon, Edwards, Evans, Ewing, Fields, Freeman, Garrett, Griffith, Hedgecock, Helms, Holt, Huffman, Hutto, Ivester, Kendrick, McCoy, Martens, Moore, Morrison, Neighbors, Parker, Phelps, Reil, Shelton, Simpson, Solec, Stanford, Steele, Sutton, Tyree, Watkins, Wilkerson, Williams.



## Freshman Counselors

Capable Freshman Counselors began on that first eventful day of school to introduce new students to the whys and wherefores of Greensboro College life. They didn't know all the answers, but they worked with G.C.'s initiates in translating the conglomeration of words in the *Students' Handbook* into sensible suggestions for living and getting along together. These advisers were proud when their counceilees became full-fledged members of the college clan—able to carry on for and by themselves.

## United World Federalists

Doing their share of work for federal world government are the G.C. girls who belong to the United World Federalists. During the year this active group has held study groups, had interesting programs, and helped in an institute for world government.

## Music Club

"Save me a practice room" . . . "Have you done your sight-singing?"

In Odell these familiar sounds ring out all day among the do-re-mi's. Still the members of the Music Club manage to attend to all music affairs on campus, such as receptions after recitals and concert appearances. With all their activities, these musicians contribute much to culture at G.C.



Beck, Brinkley, Callis, Chapman, Davis, DeFord, Greene, Helms, Hooker, Johnson, Lambeth, Marquis, Miller, Morgan, Plyler, Rast, Reid, Richardson, Rowall, Schumann, Scott, Sneed, Tvee, Ward, Williams.



Margaret Fields, chairman; Phyllis Smith, secretary; Becky Hayes, Ruth Hooker, Sarah Puett, Joella Richardson, Sally Schumann



Mary Ellen Matthews, president, Pat Harter, vice president; Ruth Hart, secretary, Mary Jewell Jenkins, treasurer.

Aman, Bolen, Bradsher, Chapman, Hallman, Hammond, Harris, Helms, Huffman, Inge, Kincaid, Martens, Morgan, Morris, Perkins, Sutton, Warren

## ANNIE M. PEGRAM MATHEMATICS CLUB

Math drudgery? Why, no, not to the members of the Mathematics Club! Whether attending a regular meeting in the parlor or engaging in some outside diversion, these girls know how to combine mathematics and fun. For example, in our regular meetings one speaker pointed out the relationship between mathematics and insurance. Another explained its use in the precarious science of trying to outsmart the stock market. In way of diversion the club had the fascinating experience of going to Chapel Hill to see the planetarium.

*Officers:* Dixie Poe Huske, president; Jeannine Moorman, vice-president; Lou Lane, secretary; Lib Callis, treasurer.

*Members:* Ashmore, Beard, Bovette, Burnett, Callis, Daniels, Fields, Goodman, Gowdy, Gray, Hardee, Hobbs, Huske, Lane, Lawrence, Miles, Moorman, Neighbors, Owen, Sanford, Smith, Stanton, Suiter, Thornberg, Tsu.



## P. K. CLUB

Outdoors, indoors, in autumn, winter, or spring, the meetings of the P.K. Club are fun. This lively group is composed of the students who are the daughters of ministers — "preachers' kids." They have had a very successful year, with one of the largest groups in its history.

*Officers:* Ila Ruth Jones, bishop; Sue P.A.T. district superintendent; Kitty Miller, minister; Lucy Henlev, chairman of board of stewards; Jean Penny, chairman of Woman's Society of Christian Service.

*Members:* Henlev, Highhill, Hobbs, Jenkins, Jones, Masters, Miller, Pegg, Penny, Plyler, Price, Rust, Scott, Stanford.



## CENOZOIC CLUB



Has the "bug" bitten you yet? . . . Do you like to delve in the mysteries of the biological world? . . . Want to know the latest discovery on what makes us tick? . . .

Then the Cenozoic Club is for you. The members of the Cenozoic Club further their knowledge of scientific happenings through visits to laboratories of scientific research. There are many matters that the average student wonders about, but which the "Cenozoican" knows about!

*Officers:* Anna Ingram Scott, president; Nancy Peal, secretary-treasurer; Sue Rast, program chairman.

*Members:* Jackie Collie, Suzanne Elliott, Pearl Lunsford, Betty Lou O'Master, Nancy Peal, Sue Rast, Anna Ingram Scott, Phyllis Smith.

## G. C. DAUGHTERS



"Say, did you know that my mother came to G.C.?"

"That so? Well, mine did too, and so did my grandmother!"

"Well, I've heard some girls say their great-grandmothers came too."

Thus tradition is in keeping with Greensboro College as the present generations go down the same lanes as did those of long ago.

With some annual project, the G.C. Daughters take pride in preserving and adding beauty and comfort to the college campus.

*Officers:* Lou Lane, president; Ruth Hooker, vice-president; Mickie Marsh, treasurer; Sue Cullifer, secretary; Libby Royall, reporter.

*Members:* Alexander, Chapman, Cox, Cullifer, Dixon, Finch, Harris, Hobbs, Hooker, Ingram, Lambeth, Lane, Marsh, Moore, Owen, Parker, Peeler, Royall, Shelton, Sugg, Thompson, Thrasher, Turnage, Tyree, Walker, Mary Brock, Letha Brock.

## International Relations Club

Did you see those serious-faced girls going into West Parlor last Monday night? Do you suppose that worried expression was due to closed Monday nights? It's much more likely that they are members of the International Relations Club, going to a bi-weekly meeting to discuss current world affairs. This club is one of the most active organizations on campus.

## Art Club

Whether presenting a fashion show or entertaining guests at tea during the senior exhibit, the art club members are equally at ease.

The programs throughout the year are as varied as the interests they provide for. Ceramics, wood-carving, painting, designing, advertising, and teaching, all come into their own as guest speakers meet with the group to discuss different topics. The members are learning the importance of art in everyday living, and are enjoying the experience.

## Margaret Stuart Home Economics Club

Do you want to learn how to make a suit, bake an apple pie, or decorate the living room of your dream house? Then make an appointment with one of the home economics girls.

These future homemakers meet with their sponsor, Miss Tickle, once a month to discuss topics of interest in every branch of home economics.



Mary Tob Bush, president, Phyllis Smith, treasurer, Jean Davis, librarian.

Baker, Ballard, Beck, Brogan, Capps, Casstevens, Chance, Christie, C. Coble, V. Coble, Cullifer, J. Davis, M. Davis, Evans, Fields, Fisher, Floyd, Freeman, Laulk, Hall, Hogan, Hurto, Kirk, Laslev, Leach, Lee, McGenty, Marquis, Marsh, Martens, Metz, Miller, Moore, O'Masters, Pater, Richardson, Royall, Schumann, Schwartzbard, Scott, Shelton, Robinson, Thompson, Tyree, Wallis, Watkins, A. Williams, J. Williams, Wilkerson.



Marie Sheng, president, Ann Steadman, vice president, Jeanne Rudisill, secretary treasurer, Cynthia Albright, reporter.

Beam, Boyette, Brooks, Capps, Casstevens, Cornatzer, Freeman, Fulk, Gillespie, Goodman, Little, Miller, Morrison, Parker, Penegar, Poole, Robinson, Thompson, Tst, Watkins, Wellman.



Charlotte Hall, president, Sara Garrett, vice president, Shirley Davis, secretary, Mary Laslev, treasurer, Mary Davis, reporter.

Allgood, Babey, Casey, Connell, Crawford, Evans, Forward, Gardner, Muth, Morrison, Pollack, Roberson, Smith, Tucker, Williams.

*Officers:* Anne Johnson, president; Mary Davis, vice-president; Peggy Hurley, secretary; Mary Fisher Finch, treasurer.

*Members:* Peggy Bailey, Shirley Brown, Mary Jane Casstevens, Mary Davis, Molly DeFord, Mary Fisher Finch, Elaine Forward, Sarah Garrett, Peggy Hurley, Dixie Huske, Anne Johnson, Margaret Kirk, Lou Lane, Rose Marsh, Mary Ellen Matthews, Sarah Puett, Anne Simpson.



## FUTURE TEACHERS' CLUB

"No, I can't go out tonight. I have to make my lesson plans for tomorrow." . . . "Yes, and I have three sets of math papers to grade, plus darning a pair of hose to wear to school." . . . "I surely do hope those children don't throw chalk at me again. At this rate I'll have white hair at twenty-five."

Such familiar remarks may be heard when a group of future teachers get together. These seniors, representing every department in school, are united in their effort to learn more about educational needs and what they can do about them.

## UNITED DAUGHTERS OF THE CONFEDERACY

As straws of "Dixie" float from the parlor, the G.C. Chapter of the U.D.C. begins its meetings. First, after the pledge to the Confederate flag and to the Stars and Stripes, begins the series of programs steeped in Southern lore. In brief the year's activities are centered around the purpose of keeping alive the tradition of the Old South.

*Officers:* Lou Lane, president; Dixie Huske, vice-president; Lynne Goodman, secretary; Elizabeth Patterson, treasurer; Anne Parker, historian; Malinda Avers, chaplain.

*Members:* Malinda Avers, Lynne Goodman, Dixie Huske, Lou Lane, Betsy Lawrence, Ann Parker, Vera Parker, Elizabeth Patterson, Jane Shelton, Patsy Stephenson, Barbara Thompson.







*Officers:* Peggy Bailey, president; Celia Edwards, vice-president; Dot Jean Curtis, business manager; Molly Lambeth, advertising manager; Lucy Henley, scrap-book keeper.

*Members:* Allred, Bailey, Curtis, Edwards, Hall, Henley, Hurlev, Lambeth, Marquis, Moore, Reid, Schumann, Sneed, Williams.

## GREENSBORO COLLEGE PLAYERS

Something about the stage gets into a person's blood, and that's what happened to the girls in the G.C. Players. Whether they are working in dungarees on a backstage crew, or acting before the bright lights, their spirit of enthusiasm in putting on our plays makes them the leaders in dramatics on our campus.

## FIRE WARDENS

"Clang! Clang! Clang!"

A terrifying fire alarm breaks the silence of the night. Immediately our efficient fire wardens are up on their toes to see that everyone grabs a cold wet towel and gets out of the building quietly and orderly. Such an alert sense of duty assures us that the G.C. fire wardens will be on the job.



Phyllis Poole, Eleanor Martens, Betty Lou O'Master, Anne Simpson, Aileen Casev, Carolyn Ward, Jean Tiller, Janice Johnson, Kitty Miller, chief.

## RELIGIOUS EDUCATION CLUB

Varied activities such as club discussions, guest speakers, and group projects create lively interest in the Raymond A. Smith Religious Education Club. Membership is open not only to majors and minors, but to others seeking to broaden their religious and spiritual horizons.

*Officers:* Frances Curfman, president; Pat Floyd, vice-president; Elizabeth Callis, secretary; Agnes Kenerly, treasurer; Doris Talbert Mickey, publicity chairman.

*Members:* Allen, Ballard, Beam, Beard, Byrd, Callis, Christie, Cousins, Edwards, A. Fields, M. Fields, Floyd, Gabriel, A. Garrett, S. Garrett, Gaul, Griffith, Hileman, Hogan, Hooker, Houk, Jenkins, Kenerly, Kindt, Lee, Little, Marquis, Metz, Miller, Moorman, Morgan, Morrison, McGrady, K. Owen, P. Owen, Perkins, Price, Puett, Richardson, Robinson, N. Scott, R. Scott, Shelton, Smith, Stanfield, Thomason, Walker, Wallis, Watkins.



## GERMAN CLUB

"Ich spreche Deutsch." . . . "Guten Abend." . . . "Danke schon." No, it isn't Greek—although the members of the German Club may sometimes think it is. The German conversation flows freely, however, at the regular monthly meeting, where fun and frolic with the foreign tongue is enjoyed by all.

*Officers:* Mary Sue Warren, president, Jean Payne, vice-president, Mary Jewell Jenkins, secretary-treasurer.

*Members:* Burch, Jenkins, Moger, Payne, Penny, Tucker, Turnage, Vaughn, Warren, Dr. Berwim.



# PUBLICATIONS



JANET HIGHFILL

"But I dunno anything to say" . . . the mad  
scramble of write ups and rewrites . . . Layouts,  
closed doors, dark blue secrets . . . Agility of hand-  
ling photographic equipment after weeks of prac-  
tice . . . Grouping, regrouping, checking with club  
sponsors . . . Handling money with utmost care  
. . . Pounding the pavement in search of ads.

EDITORIAL STAFF

- JANET HIGHFILL . . . . . *Editor*
- ANNE SIMPSON . . . . . *Literary Editor*
- JEAN TYREE . . . . . *Assistant Literary Editor*
- MOLLY DEFORD . . . . . *Class Editor*
- MARGARET SUGG . . . . . *Club Editor*
- IDA LEWIS . . . . . *Music Editor*
- ETTA JANE SMITH . . . . . *Sports Editor*
- MARIE SHENG . . . . . *Art Editor*
- DIXIE HUSKE . . . . . *Photographic Editor*
- CAIHERINE COBLE, CELIA ANN  
EDWARDS, JOAN GOERTH, JANICE  
JOHNSON, MOLLY LAMBETH,  
FRANCES SUE MARQUIS, ALLENE  
WILLIAMS . . . . . *Staff Writers*



# The 1950 Echo



CYNTHIA ALBRIGHT



Thrills of creating after receiving red penciled first copy . . . "Sawful stuff, but it has possibilities"  
. . . Hard work and plenty of it . . . Dr. Carpenter's guidance, Mr. Coursey's helpful hints, Mr. Keck's visits, Mr. Martin's patience—and at long last, the 1950 Echo.

BUSINESS STAFF

CYNTHIA ALBRIGHT

MALINDA AYERS

BILLY LOU O'MASTER

ANNE PARKER



Flash! *Collegian* "scoops" the *Greensboro Daily News* as typewriters click and haggard reporters race across campus with reports on the hockey tournament and the latest romance, while the "chief," Marilyn, paces the floors of Odell.

Despite a hard-working literary staff, the *Collegian* still could not be were it not for Rose Marsh and her capable business staff, who scour every inch of Greensboro's business district every two weeks for ads.



MARILYN ALLRED



ROSE MARSH

The

On Friday night students rush from the dining hall into Main Parlor to read the latest news of the G.C. sporting world, day-student antics, the many activities of our faculty and alumnae, Windy's gossip of campus affairs, and Date Dud's suggestions for that special "Carolina Week-end." Furthermore, they find in the editorials and special features the added alchemy which goes to make up G.C.'s bi-monthly prodigy—a job of which the staff is justly proud.

**BUSINESS  
STAFF**

BELOV DAVIS  
 SHIRLEY DAVIS  
 SARAH GABRIEL  
 ROSA MORSE  
 NANCY PEAT  
 CAROLYN WARD



# Collegian

**LITERARY  
STAFF**

MARILYN ALDRID  
 HAZEL ARMSTRONG  
 MARY ED BISH  
 ELLIEN CROSS CHAPMAN  
 CATHERINE COBLE  
 FRANCES COBLEMAN  
 BELOV DAVIS  
 CELIA ANN EDWARDS  
 CARLENE FLEMING  
 LANS GOODMAN  
 NANCY HOFFMAN  
 LYNNE JOHNSON  
 MOLLY LAMBLETT  
 BOB LEWIS  
 FRANCES SUE MARGRIS  
 PEGGY REED  
 ANNA SCOTT  
 ANNE SIMPSON  
 TASH SMITH  
 BOB SNEED  
 MARGARET SING  
 JEAN TAYLOR  
 VIVIAN WILLIAMS  
 BOB WILLIAMS







# ATHLETICS



# Athletic Association

As always the Athletic Association's year began with Play Day. After the Emersons and Irvings fought to their victories in various team sports, they all joined together to fight against the faculty in an exciting game of softball. Then the dinner bell rang as a signal that the Board members were playing host to the whole student body. With the year successfully begun, competition became the watchword for that class spirit which pulls the team to victory.

"Hey, come out and play softball this afternoon. The Juniors are playing the Freshmen and we gotta win! Come on, please!" That's the familiar yell you hear ringing in the halls for whatever sport is in season—be it softball, soccer, speedball, hockey, or volleyball.



KAY MAXWELL

Baker, Cullifer, Fisher, Floyd, Fulk, Harter, Inge, Jones, Lambeth, Laslev, McGrady, Marsh, Maxwell, Miller, Rudisill, Simpson.



# 1950 G CLUB

To every G. C. sportster there is a home run to hit, a stroke to perfect, a goal to shoot for—the "G" Club.

Only those who strive endlessly with their hearts in the game may add up enough points to win that long-cherished "G." Result; one goal achieved to climax their sports days!

Members: Peggy Bailey, Dixie Lee Fisher, Sue Fulk, Alice Gaul, Iva Lee McGrady, Kay Maxwell, Kitty Miller.



Miss G. C.



For her persistent and outstanding participation in practically all the various sports, and because of her love for the fun of it and her smile for the work of it, Miss Kay Maxwell has been chosen the athlete of the year. Here's to you, Kay—"Miss G. C." of 1950.



*Officers:* Ruth Hooker, president, Iva Lee McGrady, vice-president, Mickey Marsh, treasurer.

*Members:* Peggy Bailey, Ruth Hooker, Iva Lee McGrady, Mickey Marsh, Betty Lou O'Master, Helen Schwartzbard, Gloria Singleton.



# 'N SPUR

And there they go! Not racing, but enjoying the companionship of fellow riders and the beautiful scenery while galloping along the trails at Sedgefield. A few tumbles maybe, but they all go to make better horsewomen-- as the Bit 'n Spur members well know.



RUTH HOOKER





## TENNIS

Pretty weather and crowded courts. Our most popular sport—or rather the only one that people play without compulsion. Champs Ward, Fisher, and Starke regular participants.



## PING-PONG

The baby of the sports program on campus, yet one of the most popular. That fascinating game of tennis in miniature—Ping pong.



## VOLLEYBALL

The highlighted Emerson vs. Irving game on Play Day. A smash, a serve and Captain "Choo Choo" Baker leading her Emerson team to a 31-26 victory! And then the fall tournament with its fair weather and hard fought games ending with the Juniors victorious.

## ARCHERY

The G.C. archery girls may not be descendants of William Tell, but they *do* get an occasional bull's eye. They're pretty good, and they have fun, too.



## HOCKEY

Watch out! You'll trip somebody with that stick! Oops, keep that swing shoulder high! You guessed it—the Hockey field in winter.



## SOFTBALL

Play Day ... faculty vs. students ... Skaggs vs. Gowdy in the pitcher's box ... "batter up" ... a mighty swing and a student victory!







# FEATURES



#### OFFICERS

MARY JANE CASSTEVENS  
*President*

MARY DAVIS  
*Vice President*

ETTA JANE SMITH  
*Recording Secretary*

RUTH HOOKER  
*Corresponding Secretary*

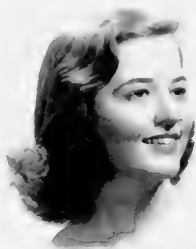
DIXIE HUSKE  
*Treasurer*

CAROLYN WARD  
*Critic*

SUE FULK  
*Censor*

JULIA ANN ROBINSON  
*Chaplain*

NANCY HULLMAN  
*Accompanist*



MARY JANE CASSTEVENS

## Irving Society

Remember the snack bars, the favors, open house, the marshals and officers in white dresses, the formal meetings? This all adds up to Rush Week. Now focus the camera of memory on the winding stairs of Odell. See that laughing girl, with tears streaming down her face, encircled by friendly arms? Shield your ears from the shrill cheers. Yes, it's Decision Night, and though the Irvings trailed by eleven members, they maintained their tradition by annexing some of the best and most charming G. C.-ites.

#### MARSHALS

JEAN BRADSHIRE

PAT JACKSON

DOT BOYLED

ELIZABETH ANN ROYALI

BILLY BECK

ANN FINCH





OFFICERS

CHARLOTTE HALL  
*President*

BUTTY LOU O'MASTER  
*Vice President*

AGNES CRAWFORD  
*Recording Secretary*

NANCY PEAL  
*Corresponding Secretary*

ANNA INGRAM SCOTT  
*Treasurer*

PEGGY HURBLEY  
*Critic*

MARIE SHUNG  
*Censor*

LAURA TSU  
*Chaplain*

MARTHA GRACE MORRIS  
*Accompanist*

# Emerson Society

Mmm! Some chow at the Emerson Chinese snack bar, and barrels of fun and cider at the barn dance filled us to the brim with Emerson friendliness and genuine interest in learning to know each other. Candlelight and well worded whispers made tears seem very near the surface. We laughed, we cried, we became acquainted, and then again we won!



CHARLOTTE HALL



MARSHALS

CLARIANN MASSEY

JOAN WILLIAMS

MICHEL MARSH

IDA LEWIS

ALLENE WILLIAMS

ELGINA PHELPS

# Glee Club

"How many songs have you memorized?"

This is the main theme of the Glee Club members. They struggle and practice for many hours before presenting the all but flawless concerts that we hear. Yet not one of them would trade those "vocal sessions" and tours over the Old North State for anything. The warm response gained from their audiences is compensation for the longest hours. The favorite man of the group is their capable conductor, Mr. E. L. Williams.

*Members* Bradsher, Brinkley, Burch, Burnett, Chapman, Cousins, Gardner, Griffith, Harter, Hammond, Holt, Hunt, Ivester, Johnson, Jones, Judkins, Kenerly, Kincaid, Kuntz, Love, Matthews, McCoy, Moore, Morris, Moorman, Martens, Morgan, Payne, Penny, Perkins, Robinson, Sanford, Sheng, Smithdeal, Smith, Spivey, Stanton, Sutton, Thomas, Thrasher, Turnage, Vaughn, Walls, Wright.





Members: Mary Jo Reid, Frances Curfman, Barbara Tatem, Joanne Harris, Betty Costner, Nancy Hobbs, Mary Sue Ingram, Jean Tiller, Nancy Huffman, Miss Lutz.

Shades of Queen Elizabeth! The Little Singers have as much fun singing here at G.C. and also on tour as did the folk in Merrie England. A madrigal group, the Little Singers sit around the table and sing in the manner of the 16th century.

## The Little Singers



## ON THE STAGE

There was a professional touch in the G.C. Players' production of an insanity-ridden melodrama, *Children of the Moon*. Three acts of suspense; well acted, skillfully directed, excitingly paced, and romantically staged.

As *You Like It* served up as we like it at G.C. . . . proscenium arch—the steps . . . backdrop—the white column sentinels of Main [ . . . stage right—a cherry tree with spring lever . . . stage left—portly elms . . . curtain—a sheer, sheer veil of nocturnal ozone . . . stage company—the G.C. Players in their annual open-air Shakespearean production.



G. C.



DANCES

To recall G. C. Dances is to envisage stary-eyed G. C.ites and their best beaux . . . the whirl of hoopskirts and the flash of white ties and tails . . . the famous "girls' break"

holly and mistletoe and a real Christmas tree in Main Parlor for the Athletic Association's Holiday Dance . . . May Day and its traditional figure of May Court attendants and Student Council members . . . In brief, an exciting combination of that special occasion, that special formal, and that special "someone."







May



Day

*Ann Steadman*

*Maid of Honor*

With characteristic rush, whirl, and fanfare, May Day 1950 was ushered in with gay costumed students and well-dressed visitors, all intent on one purpose: to catch a glimpse of the G.C. girl now become beauty queen and her equally beautiful attendants. There was the same fear of rain, the same craning of necks and trampling of toes, the blinding flashes of newsmen's cameras, the numerous obtrusions of amateur photographers, the stately queen's uneasy glances at the antics of the train bearers as she walked to the throne—all of which had happened before but still were new and exciting, because there was a new May Queen and a new court of G.C. beauties.

*Mary Jane Casstevens*

*May Queen*



*Agnes Crawford*

*Gay Hall*

*Nancy Peal*

*Peggy Reed*

*Allene Witham*

*Julie Miles*

*Sue Seeb*

*Sue Rust*





May Day  
1949



The strange, underworld phantasy of the sea took over the terrace of Main for the 1949 May Day. Flanked by King Neptune and his sea nymphs, Jill Dellinger reigned as May Queen, whose court included G.C. beauties in their colorful costumes.



# SENIOR CLASS

SUE RAST  
*Best All-Round*



HELEN SCHWARTZBARD  
*Most Likely to Succeed*



MARILYN ALLRED  
*Most Intellectual*



SUE—Winning personality . . . handy girl about the lab . . . always confident and apt.

HELEN—An efficient leader . . . avid student of people and life . . . broad-minded and understanding.

MARILYN—Tireless worker . . . a genius with a pen . . . capable and aware.

# SUPERLATIVES

KAY MAXWELL  
*Most Athletic*



MARY JANE CASSTEVENS  
*Most Popular*



CYNTHIA ALBRIGHT  
*Most Original*



KAY—A well-spring of laughter . . . loyal to teammates . . . spontaneous and enthusiastic.

CASSIE—Friendly conversationalist . . . good sport in any field . . . striking yet unassuming.

CINDY—A versatile lass with a charm all her own . . . creative and demure.

# JUNIOR CLASS

JEANNIE RUDISILL  
*Most Original*



KITTY MILLER  
*Most Athletic*



ANN STEADMAN  
*Most Attractive*



JEANNIE is a life-saver with her endless ideas, and a magic-worker with her paint brush.

KITTY is tiny, but her flashing speed, accuracy, and undaunted cheerfulness seem always to lead to victory.

ANN is our brunette beauty whose flashing smile and perfect grooming lend her personality and charm.



# SUPERLATIVES

MARGARET SUGG  
*Most Popular*

JOELLA RICHARDSON  
*Most Intellectual*

CAROLYN WARD  
*Best All-Round*



"M" is the gayest girl in the class, who with her ready laugh, is everybody's friend.

JOELLA is quiet and assured—a hard worker and a capable student.

CAROLYN is our efficient class president—clever, good looking, and popular.



## The Year at

September comes: time for wooing and winning those coy freshmen, who lead pursuing Irvings and Emersons a right jolly chase for 1949 rush week. The victors? Why, the Emersons—no less.

But what have we here? Only October and alas, alack, the courtship is over—the mighty sophs relegate the once proud and noble freshmen to their proper place in the cellar—playing rats to sophomore cats.

Pause for remembrance in December, where past heritage and future greatness meet: Founders and Benefactors Day, 1949.

And then sweet spring and that mad and merry melee of song and feast—G.C. Day—planned by the students, for the students.





## G. C. . . 1950

And always, mixed in with passing feature attractions: the ever present but ever-entertaining Wednesday night "Y" fellowships.

And lest we forget: G.C. artists take to the boards of Odell, turning on the talent for public recitals.

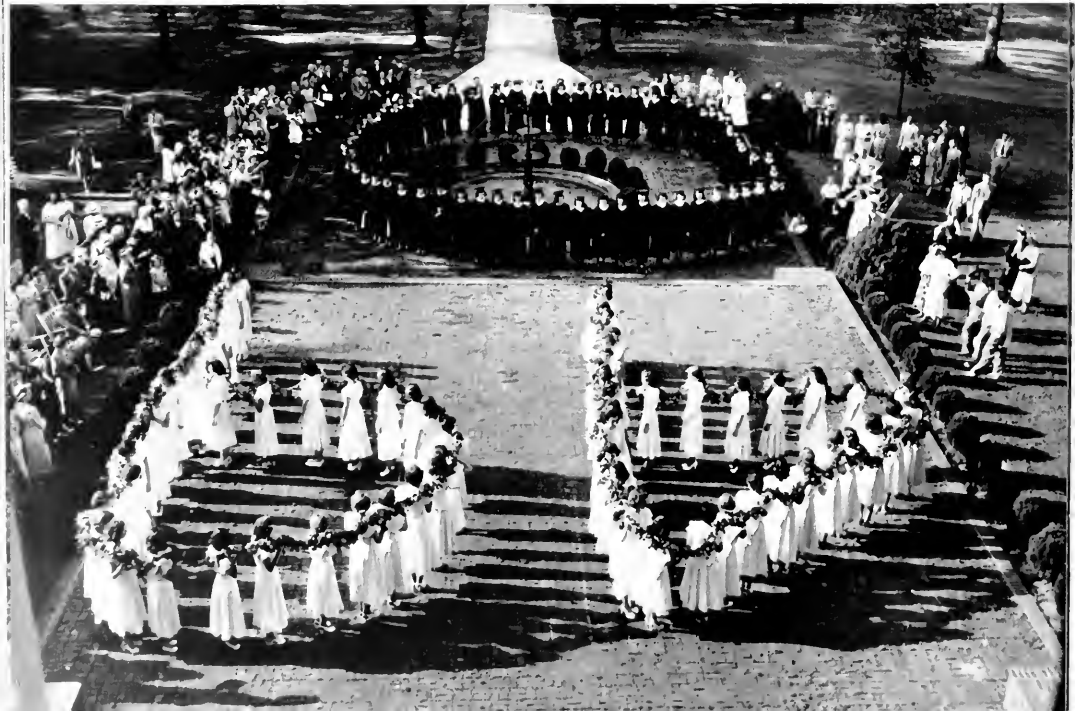
No softies here, mind you, but the stark reality of life for usually sheltered G.C. lassies: yes, exams, exams, exams! Character make up for this touching scene: pathetic expressions, doleful eyes, and swimming brains for Little Eva students, fierce, hard eyes, bristling brows, and unrelenting jaws for Simon Legree profs.

And, ah! home, sweet home—the inner confines of a dormitory.



# Commencement

LAST OF ALL - THE BITTERSWEET ENDING FOR THE G.C.  
SAGA: GRADUATION - THAT PARADOX WHICH ENDS ALL,  
BEGINS ALL - THE LONG-AWAITED AND YET THE LONG  
REGRETTED.





Like Bessie, we have lost our head  
A time or maybe two,  
And lost our arms from pencil cramp  
In writing this for you.  
But now that all the work and fun  
Are over, done and through,  
We're in the clouds with Bessie's wings;  
Our best is all for you!

*The Staff*

*Compliments of*

**GREENE STREET  
DRUG COMPANY**

Phone 5177

127 South Greene St.

**LANE'S LAUNDRY**

**Made-Rite Sandwich Co.**

MADE-RITE SANDWICHES

MADE FRESH EVERY DAY UNDER  
THE HIGHEST SANITARY CONDITIONS

715 Battleground Ave.

Phone 2-0549

***Stamper* OPTICAL COMPANY**

206 N. Elm Street  
GREENSBORO, N. C.  
*Your Guild Optician*



**THE MECCA CAFE**

*"The Oasis of Good Foods"*

228 W. Market

2-1272

MOTION PICTURES *Your Best*  
ENTERTAINMENT

★ Carolina Theatres

**PET DAIRY  
PRODUCTS**

PASTEURIZED VITAMIN "D" SWEET  
MILK, WHOLE LACTIC VITAMIN  
"D" MILK, SKIM LACTIC BUTTER-  
MILK, CHOCOLATE MILK,  
BUTTER, EGGS

*"Where to Buy Them"*

**PET DAIRY PRODUCTS CO.**

410 Summit Ave.

6131

***The Lotus Restaurant***

CHINESE AND AMERICAN DISHES

105 SOUTH GREENE STREET

Air Conditioned

Telephone 2-4224

*You are always welcome at  
your College Book Store*

**THE COLLEGE BOOK STORE**

MISS LOIS FITCH, *Manager*

*Congratulations to the Seniors  
from*

## ELLIS STONE

Greensboro's Best Store

## OLIVER'S

"A Good Drug Store"

457 West Market Street

"HALF WAY UP TOWN"

## PICCADILLY RESTAURANT

*Good Food and Good Company*

708 W. Market

Phone 7612

## CITY OPTICIANS

W. H. LIGHTFOOT

Jefferson Building

Phone 2-4693

GREENSBORO, N. C.

## MAISON JOLINE

*"We Love to Dress College Girls"*

JEFFERSON BUILDING

## HAYWORTH'S

Finest In Diamonds  
Watches And Jewelry

110 West Market Street

*Compliments of*

## HUNT COAL CO.

Dial 2-3161

STEAM AND  
DOMESTIC COAL

FREDERICK  
STOKERS

*Compliments of*

**Morrison-NEESE**

"Carolina's Leading Home Furnishers  
For 34 Years"

112 S. Greene St.

GREENSBORO, N. C.

## ROGERS PAINT STORE

*Complete line of*

ARTIST'S SUPPLIES

Grumbacher—Bushes—Oils

Kem-Tone—Kem-Glo

Phone 2-2187

GREENSBORO, N. C.

LET OUR  
ADVERTISERS  
BE YOUR GUIDE

# Sosnik-Thalhimer's

Winston-Salem, North Carolina

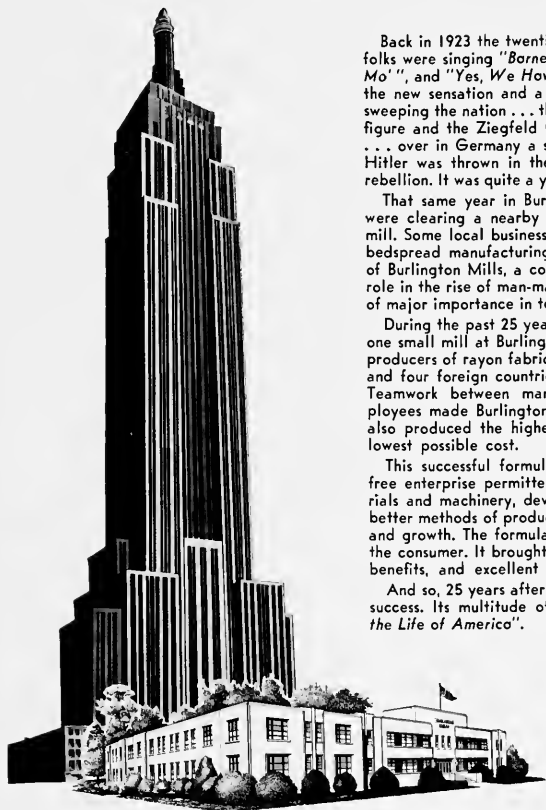


Miss Peggy Hurley of Troy and  
Miss Mary Davis of Burlington wearing two  
of our most fascinating formals from our incomparable

Designer's collection.



# A Short Course in Success



Back in 1923 the twenties were just beginning to roar . . . folks were singing "Barney Google", "Ain't Goin' Rain No Mo'", and "Yes, We Have No Bananas" . . . jazz music was the new sensation and a dance called the *Charleston* was sweeping the nation . . . the ladies were striving for a boyish figure and the Ziegfeld Girls were the toast of Broadway . . . over in Germany a scrawny little Nazi named Adolph Hitler was thrown in the clink for fomenting a beer-hall rebellion. It was quite a year.

That same year in Burlington, North Carolina, workmen were clearing a nearby cornfield to build a small textile mill. Some local businessmen were risking their money in a bedspread manufacturing venture. That was the beginning of Burlington Mills, a company destined to play a leading role in the rise of man-made yarn from obscurity to a place of major importance in textiles.

During the past 25 years Burlington Mills has grown from one small mill at Burlington into one of the world's largest producers of rayon fabrics. It now has 74 plants in six states and four foreign countries employing over 27,000 people. Teamwork between management and skilled, loyal employees made Burlington Mills a textile leader. Teamwork also produced the highest quality textile products at the lowest possible cost.

This successful formula was possible because American free enterprise permitted constant improvements in materials and machinery, development of our human resources, better methods of production, and an incentive for progress and growth. The formula brought better quality fabrics to the consumer. It brought better jobs, higher pay, increased benefits, and excellent working conditions to employees.

And so, 25 years after, Burlington Mills wears a badge of success. Its multitude of products are truly "*Woven into the Life of America*".

Sales Offices: New York, N. Y.

Executive Offices:  
Greensboro, N. C.

Burlington Mills   
"*Woven into the Life of America*"

MAKER OF WOMEN'S OUTERWEAR AND UNDERWEAR FABRICS • MEN'S WEAR FABRICS • DECORATIVE FABRICS • CAMEO STOCKINGS  
COTTON PIECE GOODS AND YARNS • RIBBONS • INDUSTRIAL AND TRANSPORTATION FABRICS

SWEET MEMORIES

*Compliments of*

**Peck's Bakery**

210 South Greene St.  
GREENSBORO, N. C.

*"Greensboro's Smartest Shop"*

**Field's**

120 SOUTH ELM STREET

**S Y K E S**  
Shoe Shop and Shine Parlor  
105 N. Greene St.  
*For Quiek Service*

**ELLIS BEAUTY SHOP**

*Individualized and Personalized Styling*

MRS. SELMA ELLIS, *Owner*

Telephone 3-1606      101 N. Mendenhall

**N. C. TOURIST HOME**

GUEST ROOMS WITH RUNNING WATER  
PRIVATE BATHS AND SHOWERS  
Steam Heat—Garages

1044 West Market St.      Tel. 9441

**McNEELY'S DRUG STORE**

*Just Across the Way*

Phone 5117      718 W. Market Street

●  
GREENSBORO, N. C.

**DICK'S LAUNDRY  
COMPANY**



*Launderers and Cleaners*

PHONE 7101

*Compliments of*

**BLUEBIRD TAXI, INC.**

*Fast Efficient Service*

PHONE 5112

FOR THE FINEST AND PROMPTEST  
PRECISION WATCH REPAIRING  
IT'S

**Neese Jewelers**

Since 1900

325 South Elm Street

*Official Railway Watch Inspectors*  
ELGIN WATCHES—SHEAFFER PENS  
DELTAH PEARLS



*Compliments*

A FRIEND

*of*

GREENSBORO COLLEGE



"When You Drink a Dr. Pepper,  
You Drink a Bite to Eat"

**Dr. Pepper Bottling Co.  
Incorporated**

1409 W. Lee St.

Phone 9703



# GREENSBORO COLLEGE

GREENSBORO, N. C.

CHARTERED 1838

*The Pioneer of Higher Education for Women in North Carolina*

**ACCREDITED** by the North Carolina College Conference, the Southern Association of Colleges and Secondary Schools, the University Senate of The Methodist Church, and the National Association of Schools of Music. Member, also, of Southern Association of Colleges for Women, Association of American Colleges, and National Conference of Church-Related Colleges.

**PRACTICAL:** While pursuing courses leading toward the A.B. or B.M. degrees, students may secure pre-vocational training leading toward dietetics, nursing, laboratory technique, medicine, library science, social service, church work, home making, and so forth. Opportunity is afforded students to qualify for Class-A Teachers' Certificates in Primary, Grammar Grade, and High School fields.

"Greensboro College through a long period of years has rendered outstanding service to the educational needs of this State."—CLYDE A. ERWIN, *State Superintendent of Public Instruction.*

**PROGRESSIVE:** Rich in traditions of over a century. Regular liberal arts curriculum adapted and enriched in line with modern world conditions.

**DISTINCTIVE:** Emphasizing not size but quality, Greensboro College is small enough for personal contacts and close friendships and big enough for variety and breadth of culture. Beautiful campus dotted with tall pines, stately oaks, and sturdy elms, with ivy-clad buildings modernized and homelike.

**CHRISTIAN:** Although not sectarian, Greensboro College rests frankly and firmly upon religious morals and moral and religious sanctions.

"An ever-growing and expanding institution dedicated to the building of true and noble womanhood."—BISHOP W. W. PEELE.

*For further information write THE REGISTRAR*

**GREENSBORO COLLEGE**

GREENSBORO, N. C.

EYE - LURING . . .

MOJUD

NYLON  
STOCKINGS

So sheer . . .

So sleek . . .

So smooth fitting . . .

Ask for them at  
better stores  
everywhere



MOJUD HOSIERY CO., INC. GREENSBORO, N. C.

## THE O. HENRY

*"Greensboro's Leading Hotel"*



Convenient and Comfortable. 300 Rooms,  
Each with Bath. Coffee Shop and Dining  
Room. Air-Conditioned Banquet and Con-  
vention Facilities.



NOLAN B. WILLIAMS, *Manager*  
GREENSBORO, NORTH CAROLINA

## THE KING COTTON

GREENSBORO



HAYWOOD DUKE  
*Manager*

ICE-COLD COCA-COLA IS EVERY PLACE ELSE...



...IT BELONGS IN YOUR ICE-BOX AT HOME!

Serve it the same refreshing way at home



SB-168-45

COCA-COLA BOTTLING COMPANY

Greensboro, N. C.

*Congratulations*

TO THE 1950 ECHO STAFF

*from*

MARTIN'S STUDIO



portraiture by  
**TAYLOR-STALEY STUDIO**

118 north greene + greensboro + telephone 2-0197



**CHARLOTTE  
ENGRAVING  
COMPANY**

*Engravers and Designers of College Yearbooks*

**CHARLOTTE, N. C.**





# *Working* **TOGETHER...**



**W**orking together is the theme of the OBSERVER PRINTING HOUSE publications department. We cannot do our best work without your assistance—you cannot expect to get the best results from your efforts without willing assistance and coöperation from your printer.



ARTISTS AND CRAFTSMEN WORK  
TOGETHER IN CREATING IMPRESSIVE  
AND LASTING RECORDS OF YOUR  
YEARS IN SCHOOL—





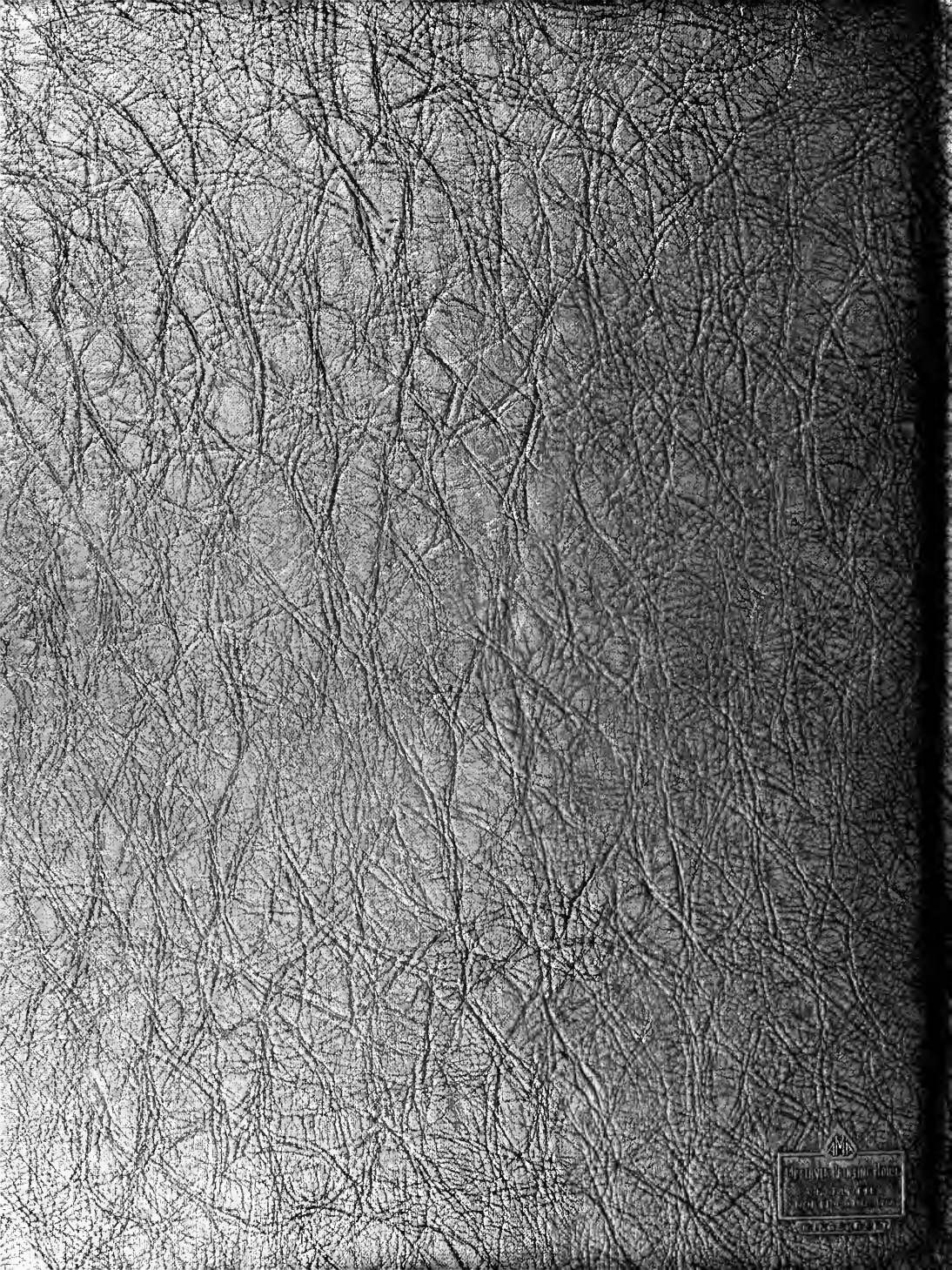












THE  
OFFICE OF THE  
LIBRARIAN  
OF CONGRESS  
WASHINGTON, D. C. 20540