

1953

*Echo*



Digitized by the Internet Archive  
in 2010 with funding from  
University of North Carolina at Chapel Hill

<http://www.archive.org/details/echo1953gree>





The towering fountain . . .  
white columns in the sunshine

. . . symbols of G. C., giving us  
strength, hope, inspiration.

Presenting the 1953

*Echo*

of Greensboro College  
Greensboro, North Carolina

A Senior Class Publication

Peggy Stanton, Editor  
Betsy Lawrence, Business Manager






. . . Our gratitude to



R.C.



A large crowd of people, likely students, is gathered on a campus. In the background, there are classical buildings with tall columns and arched windows. The scene is bright and somewhat overexposed, with a soft, hazy atmosphere. The people are mostly seen from the back or side, looking towards the buildings.

For her beautiful campus—the stately columns, frisky squirrels, clinging leaves of ivy, blossoming cherry trees . . .

For her memories—friendly “hello’s” to everyone, watching TV in the hut, parties in the dorms, worries over exams . . .

For her leadership—guidance, teaching, helpfulness . . .  
In fine, for being the school dearest to our hearts.



*H*OW happy have been our days at G.C. — greeting  
our friends with a cheery “Hi!” — lazily watching the fish in the pond  
behind the hut — being professional educators in the four o’clock  
seminar — rushing from breakfast to prepare for that eight o’clock  
sloshing to chapel in the rain — reading never ceasing parallel

. . . Memories we

# Cherish

Browsing in the library lounge, sometimes falling asleep . . .  
slipping to the movies once in a while . . . gab sessions before  
we fall asleep at night . . . G. C. means this to us, our home,  
our help, the stabilizer of our dreams.





Strolling on  
front campus

*Main, Fitz, Odell*



Enjoying the  
winter's snow

Odell at night





# Dedicated to one

Who with her friendly smile has helped many at G. C. . . .

Who has concern and interest in each one of us . . .

Who has supported the G. C. campus in its many activities . . .

Who through all our hardships and anxieties has remained our friend—

DR. BEATE C. BERWIN

*One of Dr. Berwin's hobbies—playing the flute.*



*Listening to records—a favorite pastime for Dr. Berwin.*





## Our President

DR. HAROLD H. HUTSON  
A.B., B.D., Ph.D.



# Deans of Administration

MISS STELLA WARD, A.B., A.M.

*Dean of Students*

DR. PAUL GINNINGS, B.S., M.S., Ph.D.

*Dean of Instruction*

MR. GUSTAV NELSON, B.M., M.M.

*Dean of the School of Music*



WARD



GINNINGS



NELSON

VIRGINIA BARNES, A.B., B.S., <i>Assistant Librarian</i>	BARNES
H. T. BAWDEN, Ph.B., A.M., Ed.D., <i>Professor of Education</i>	BAWDEN
MRS. THOMAS V. BELL, B.S., M.A., <i>Director of Health and Physical Education</i>	BELL
BEATE C. BERWIN, Ph.D., <i>Instructor (part time) in German</i>	BERWIN
THEODOCIA BLACKMON, <i>Accountant</i>	BLACKMON
ELIZABETH N. BOYD, A.B., A.M., Ph.D., <i>Professor of Mathematics</i>	BOYD
CALLIE BRASWELL, <i>Instructor (part time) in Art</i>	BRASWELL
LETHA BROCK, A.B., <i>Registrar</i>	
MARY BROCK, A.B., <i>Alumnae Secretary and Assistant Registrar</i>	L. BROCK
MRS. FRANCES BRUCE, B.S., M.S., <i>Instructor in Home Economics</i>	M. BROCK
BLANCHE BURRUS, B.M., A.M., <i>Associate Professor of Piano and Theoretical Music</i>	BRUCE
JAMES M. CARPENTIER, A.B., A.M., Ph.D., <i>Professor of English</i>	BURRUS
EVELYN COLE, A.B., A.M., <i>Assistant Professor of Biology and Chemistry</i>	CARPENTIER
IRENE CULLIS, A.B., A.M., <i>Professor of Art</i>	COLE
ROBERT T. DUNSTAN, A.B., A.M., Ph.D., <i>Professor of Romance Languages</i>	CULLIS
MRS. ARTHUR W. FALVEY, <i>Part Time Assistant to the Dean of Students</i>	
E. C. FEW, A.B., D.D., <i>College Chaplain</i>	DUNSTAN
LOIS FITCH, <i>Manager of Bookstore</i>	FALVEY
MARY L. GINN, A.B., A.M., <i>Associate Professor of English</i>	FEW
PAUL M. GINNINGS, B.S., M.S., Ph.D., <i>Professor of Chemistry and Physics</i>	FITCH
DON HANSEN, B.M., M.M., <i>Assistant Professor of Music</i>	GINN
T. C. HARBELL, <i>Business Manager and Treasurer</i>	GINNINGS
DOROTHY HEIRONIMUS, A.B., A.M., Ph.D., <i>Assistant Professor of Spanish and Spanish-American History</i>	HANSEN
MRS. LOUISE KOCH, <i>Instructor in Piano</i>	
ALPHA MAYFIELD, B.S., A.M., <i>Associate Professor of Music Education</i>	HARBELL
GUSTAV NELSON, B.M., M.M., <i>Dean of the School of Music and Professor of Piano and Theoretical Music</i>	HEIRONIMUS
ZELDA C. PEMBERTON, A.B., A.M., Ed.D., <i>Assistant Professor of Education and Social Studies</i>	KOCH
MRS. CHARLOTTE SPARLES PERKINS, A.B., A.M., <i>Professor of Speech and Dramatic Art</i>	MAYFIELD
MRS. WALDO PORTER, <i>Superintendent of Buildings and Assistant to the Dean of Students</i>	NELSON
CHARLES M. RAMSAY, A.B., B.D., Ph.D., <i>Associate Professor of Philosophy and Religion</i>	PEMBERTON
VERGE SINGER, B.M., M.M., <i>Assistant Professor of Voice</i>	PERKINS
MARVIN L. SKAGGS, A.B., A.M., Ph.D., <i>Professor of History and Economics</i>	
MRS. ADA K. SMITH, <i>Dietitian</i>	PORTER
PAULINE K. SMITH, A.B., M.S.P.H., M.Ed., <i>Professor of Biology</i>	RAMSAY
RAYMOND A. SMITH, A.B., B.D., Ph.D., <i>Professor of Religious Education</i>	SINGER
MADELINE C. STINSON, A.B., A.M., Ph.D., <i>Associate Professor of Romance Languages</i>	SKAGGS
MRS. ELIZABETH THIEL, B.S., <i>Assistant Director of Physical Education</i>	A. K. SMITH
MRS. DAVIS THOMPSON, <i>Secretary to the President</i>	F. K. SMITH
GRACE TICKLE, B.S. in Ed., A.M., <i>Professor of Home Economics</i>	R. SMITH
MILDRED TOWN, A.B., B.M., M.M., <i>Professor of Organ and Associate Professor of Piano and Theoretical Music</i>	
PEARL TURNER, R.N., <i>Supervisor of Student Hospital</i>	STINSON
EMILY TUTTLE, A.B., A.M., <i>Assistant Professor of English</i>	THIEL
FRANCIS WATERS, B.S., A.M., M.A.I.S., <i>Librarian</i>	THOMPSON
MABEL C. WHITE, <i>Assistant Accountant</i>	TICKLE
E. I. WILLIAMS, A.B., M.M., <i>Associate Professor of Voice</i>	TOWN
ROBERT WOLD, B.M., M.M., <i>Assistant Professor of Music</i>	TURNER
	TUTTLE
	WATERS
	WHITE
	WILLIAMS
	WOLD

. . . These struck the spark with love and care . . .







. . . Labs . . . lectures

. . . current events maps

. . . no time for play now

CLASS OFFICERS

*President* CAROLYN STANFORD

*Vice President* DAUN YOUNG

*Secretary* ANNE EWING

*Treasurer* MARY ALDA HILLMAN

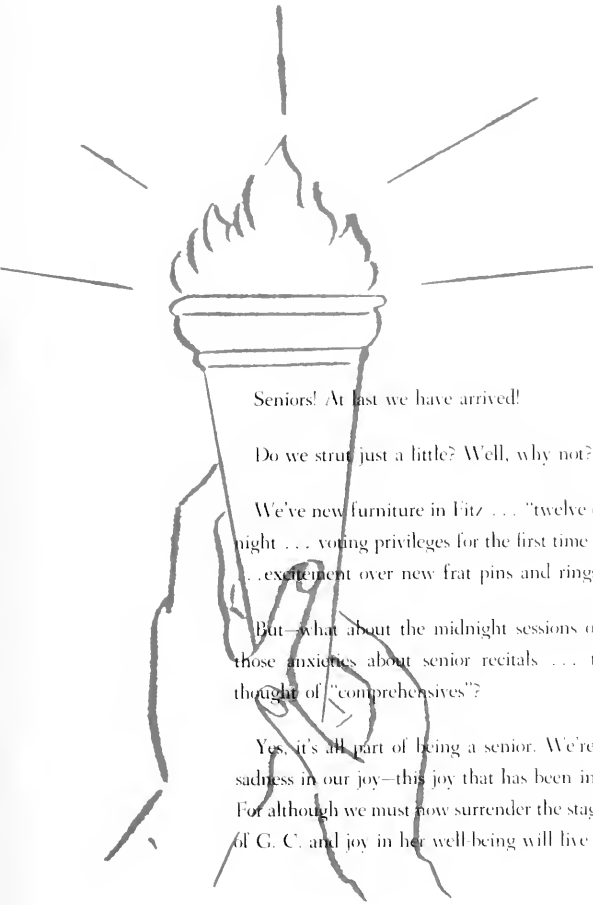
*Council Representative* JUAN BYRD

# Seniors . . . 1953

ANNE, DAUN, MARY ALDA, CAROLYN, JUAN



. . The torch of knowledge will light the future's maze . . .



Seniors! At last we have arrived!

Do we strut just a little? Well, why not?

We've new furniture in Fitz . . . "twelve o'clocks" on Saturday night . . . voting privileges for the first time in a national election . . . excitement over new frat pins and rings . . .

But—what about the midnight sessions over lesson plans . . . those anxieties about senior recitals . . . the horrors over the thought of "comprehensives"?

Yes, it's all part of being a senior. We're happy, yet there's a sadness in our joy—this joy that has been in our hearts for years. For although we must now surrender the stage to others, memories of G. C. and joy in her well-being will live in our hearts forever.

. . . Experiences we'll never forget . . .

"TV-ing" in a moment of relaxation . . .

## 1953 Senior Class

STEVE, MARGARET, JANICE, JOYCE, MARY, JANE





ALEXANDER  
ALLEN  
BALLARD



BEAM  
BODIE  
BOONE



JANICE ALEXANDER . . . Siler City, N. C. . . . Major: Primary Education; Minor: French . . . Reporter, Sports Editor, *Collegian* . . . Literary Staff, *Ecno* . . . Athletic Board . . . House President, 107 . . . Little Singers . . . President, French Club . . . President, Junior Honor Society . . . Treasurer, Irving Club . . . Freshman Counselor . . . Treasurer, Athletic Association . . . Vice-President, President, G. C. Daughters . . . Gold Book . . . Senior Honor Society . . . Junior Superlative, Most Athletic . . . Editor, *Handbook* . . . Future Teachers' Club . . . *Who's Who Among Students in American Universities and Colleges* . . . Little Sister: Nancy Stedman . . . Society: Irving.

JANE BEAM . . . High Point, N. C. . . . Major: Sociology; Minor: Religion . . . Reporter, Art Club . . . French Club . . . International Relations Club . . . Religious Education Club . . . Publicity Chairman, World Federalist . . . Glee Club . . . Cabinet Member, Y.W.C.A. . . . Council Representative, Freshman Class . . . Art Editor, *Collegian* . . . Assistant Literary Editor, Art Editor, *Ecno* . . . Athletic Board . . . Junior Honor Society . . . Gold Book . . . Freshman Counselor . . . May Court . . . Senior Honor Society . . . Marshal, Chaplain, Vice-President, Irving Society . . . Vice-President, Students' Association . . . *Who's Who Among Students in American Universities and Colleges* . . . Little Sister: Mary Schremp . . . Society: Irving.

MARGARET ALLEN . . . Rockingham, N. C. . . . Major: Religious Education; Minor: Speech . . . Religious Education Club . . . Literary Staff, *Collegian* . . . International Relations Club . . . Math Club . . . Spanish Club . . . Cabinet Member, Y.W.C.A. . . . Cabinet Member, S.C.F. . . . Freshman Counselor . . . Gold Book . . . Secretary, Junior Class . . . Little Sister: Mary Ann Callihan . . . Society: Emerson.

SYLVIA BODIE . . . Williamsburg, Va. . . . Major: Violin . . . Vice-President, Freshman Class . . . Emerson Queen . . . Spanish Club . . . Music Club . . . President, Chamber Orchestra . . . Marshal, Emerson Society . . . Cabinet Member, Y.W.C.A. . . . Cabinet Member, S.C.F. . . . String Quartet . . . Senior Marshal . . . Literary Staff, *Collegian* . . . Gold Book . . . May Court . . . Senior Honor Society . . . Little Sisters: Betty Hackett and Lorena Leftwich . . . Society: Emerson.

MABLE BALLARD . . . Fuquay Springs, N. C. . . . Major: Primary Education; Minor: English . . . Religious Education Club . . . Spanish Club . . . International Relations Club . . . Athletic Board . . . Future Teachers' Club . . . Critic, Emerson Society . . . Council Representative, Junior Class . . . Cabinet Member, Y.W.C.A. . . . Junior Superlative, Most Popular . . . "G" Club . . . Secretary, President, Athletic Association . . . Little Sisters: Helen Dickens and Elizabeth Walker . . . Society: Emerson.

JOYCE BOONE . . . Nashville, N. C. . . . Major: Elementary Education; Minor: English . . . Dramatics Club . . . International Relations Club . . . Literary Staff, Editor, *Columns* . . . Glee Club . . . Vice-President, Phi Theta Kappa . . . Chief Marshal . . . Delta Psi Omega . . . May Court . . . Beta Phi Gamma . . . Brantley Medal . . . Salutatorian . . . Junior Transfer, Loursburg College . . . Gold Book . . . Literary Staff, Associate Editor, *Collegian* . . . Future Teachers' Club . . . Little Sister: Peggy Strayhorn . . . Society: Irving.

Haven of the hungry!

# 1953 Senior Class

JUDY, JEANIE, BETTY, CAROLYN, JEAN, MARTHA



BROWN  
BURCH  
BYRD



CHIATHAM  
COBB  
COSTNER



JULIA BROWN . . . Greensboro, N. C. . . . Major: Sociology; Minor: English . . . Freshman Counselor . . . Cabinet Member, Y.W.C.A. . . . Class Editor, *Ectio* . . . Day Students' Representative, Students' Association . . . Gold Book . . . Recording Secretary, Irving Society . . . Business Manager, *Collegian* . . . Little Sister: Laila Vittands . . . Society: Irving.

MARTHA BURCH . . . Greensboro, N. C. . . . Major: Voice . . . German Club . . . Vice-President, President, Glee Club . . . French Club . . . Music Club . . . Business Manager, *Handbook* . . . Little Sister: Ann Jenkins . . . Society: Emerson.

JEAN BYRD . . . Mocksville, N. C. . . . Major: History, Minor: Sociology . . . G. C. Daughters . . . French Club . . . World Federalist . . . International Relations Club . . . Future Teachers' Club . . . Gold Book . . . Council Representative, Senior Class . . . Exchange Editor, *Collegian* . . . Little Sisters: Joyce Talton and Marie Craven . . . Society: Emerson.

CAROLYN JONES CHIATHAM . . . Roanoke, Va. . . . Major: Music Education, Minor: Piano . . . Glee Club . . . French Club . . . Modern Dance Group . . . Religious Education Club . . . Vice President, President, Music Educators Club . . . Music Club . . . Social Standards Committee . . . Cabinet Member, Y.W.C.A. . . . President, Future Teachers' Club . . . Little Sister: Gwendolyn Maples . . . Society: Emerson.

JEAN COBB . . . La Grange, N. C. . . . Major: Religious Education; Minor: English . . . French Club . . . Religious Education Club . . . World Federalist . . . Future Teachers' Club . . . International Relations Club . . . Freshman Counselor . . . Cabinet Member, Y.W.C.A. . . . Gold Book . . . Cabinet Member, S.C.F. . . . President, Junior Class . . . House President, Fitz . . . Athletic Board . . . Class Editor, *Ectio* . . . Junior Superlative, Most Original . . . Prophet, Senior Class . . . Little Sister: Elizabeth Huggins . . . Society: Irving.

BETTY COSTNER . . . Greensboro, N. C. . . . Major: Voice; Minor: Religious Education . . . Little Singers . . . German Club . . . Vice President, Music Club . . . Student Director, Glee Club . . . Secretary, Day Students' Association . . . Gold Book . . . Senior Superlative, Most Likely to Succeed . . . Little Sister: Luidie Maxwell . . . Society: Emerson.

Lmn . . . Plans for June?

# 1953 Senior Class

LUIS ANNE ANN CAROLIN CATHERINE ANNE



COUSINS  
COVINGTON  
ELROD



EVANS  
EWING  
FIELDS



ANNE COUSINS . . . Enfield, N. C. . . . Major: Religious Education; Minor: Mathematics . . . Religious Education Club . . . Publicity Chairman, Math Club . . . International Relations Club . . . Freshman Counselor . . . Gold Book . . . Junior Honor Society . . . Business Staff . . . Collegian . . . Senior Honor Society . . . Little Sister: Mary Lu Starke . . . Society: Emerson.

CATHERINE COVINGTON . . . Greensboro, N. C. . . . Major: Primary Education; Minor: Music . . . Music Club . . . French Club . . . Chamber Orchestra . . . Future Teachers' Club . . . International Relations Club . . . Cabinet Member, Y.W.C.A. . . . Cabinet Member, S.C.F. . . . Vice-President, Day Students' Association . . . Business Staff, Echo . . . Little Sisters: Charlene Baddur and Jane Robins . . . Society: Irving.

GERRY LEE ELROD . . . Henderson, N. C. . . . Major: Elementary Education; Minor: General Science . . . Spanish Club . . . World Federalist . . . Cenozoic Club . . . United Daughters of the Confederacy . . . Athletic Band . . . G Club . . . Vice-President, President, Bit 'n Spur . . . Testatrix, Senior Class . . . Little Sisters: Shelton Owens and Nancy Halbom . . . Society: Irving.

CAROLYN EVANS . . . Raleigh, N. C. . . . Minor: Sociology; Minor: English . . . Spanish Club . . . Literary Staff . . . Collegian . . . International Relations Club . . . Athletic Board . . . Business Staff, Echo . . . Social Standards Committee . . . Modern Dance Group . . . Chairman, World Student Service Fund Drive . . . World Federalist . . . Captain, President, Irving Society . . . Testatrix, Senior Class . . . Cabinet Member, S.C.F. . . . Little Sister: Frances Estner . . . Society: Irving.

ANNE EWING . . . Ellettsville, N. C. . . . Major: Primary Education; Minor: Music . . . French Club . . . Music Club . . . International Relations Club . . . Glee Club . . . Future Teachers' Club . . . Secretary, Senior Class . . . House President, Fire . . . Gold Book . . . Little Sister: Elizabeth S. Harris . . . Society: Emerson.

ANN FIELDS . . . Greensboro, N. C. . . . Major: Religious Education; Minor: Sociology . . . Music Club . . . Religious Education Club . . . French Club . . . Junior Honor Society . . . Cabinet Member, Y.W.C.A. . . . Gold Book . . . Little Sister: Phyllis Strough . . . Society: Emerson.

Make it chocolate, please, Mrs. Mac . . .

## 1953 Senior Class

BETTY, SARA, BECKY, SUE, MARGARET, ALICE



FONVILLE  
FRAZIER  
GARRETT



GIBBS  
GOODMAN  
HENDRICKS



SARA FONVILLE . . . Burlington, N. C. . . Major, Home Economics; Minor: General Science . . . French Club . . . Marshal, Emerson . . . Future Teachers' Club . . . President, Home Economics Club . . . May Queen . . . Little Sister, Allie Carr . . . Society, Emerson.

REBECCA FRAZIER . . . Greensboro, N. C. . . Major, Biology; Minor, English . . . Chamber Orchestra . . . French Club . . . Secretary-Treasurer, President, Cenozoic Club . . . Literary Staff, *Collegian* . . . Secretary, Sophomore Class . . . Secretary, Day Students' Association . . . Future Teachers' Club . . . Business Staff, Echo . . . Gold Book . . . May Court . . . Day Student Representative, Students' Association . . . Little Sisters: Mary Jo Caudle and Jean Hooper . . . Society, Irving.

ALICE GARRETT . . . Burlington, N. C. . . Major, History; Minor: English . . . Religious Education Club . . . International Relations Club . . . French Club . . . Math Club . . . Future Teachers' Club . . . Secretary-Treasurer, President, World Federalist . . . Secretary, Sophomore Class . . . Cabinet Member, Y.W.C.A. . . . Gold Book . . . House President, Hudson . . . Critic, Irving Society . . . State Student Legislature Delegate . . . Senior Marshal . . . Poet, Senior Class . . . Chairman, Social Standards Committee . . . Little Sister, Jane Edwards . . . Society, Irving.

SUE JENKINS GIBBS . . . Cedar Falls, N. C. . . Major: Primary Education; Minor: Religious Education . . . Religious Education Club . . . International Relations Club . . . Spanish Club . . . Cabinet Member, Y.W.C.A. . . Marshal, Emerson Society . . . Future Teachers' Club . . . Cabinet Member, S.C.F. . . . Scrapbook Custodian, Secretary, Business Manager, G. C. Players . . . Senior Marshal . . . Little Sister, Peggy Smith . . . Society, Emerson.

MARGARET GOODMAN . . . Chadbourne, N. C. . . Majors: English and Music . . . Accompanist, President, Glee Club . . . Leader, Prayer Band . . . Student Council . . . Dean's List . . . St. Cecilia Music Club . . . Zetesian Society . . . Junior Transfer, Flora Macdonald College . . . Music Club . . . Chamber Orchestra . . . French Club . . . Music Educators Club . . . Future Teachers' Club . . . Religious Education Club . . . Senior Honor Society . . . Historian, Senior Class . . . Gold Book . . . Accompanist, Emerson Society . . . Cabinet Member, S.C.F. . . . Literary Editor, Echo . . . Little Sisters: Norma Jean Lackey and Ann Brady . . . Society, Emerson.

BETTY HENDRICKS . . . Greensboro, N. C. . . Major, Piano; Minors: Organ and Theory . . . Chamber Orchestra . . . Junior Honor Society . . . Music Club . . . President, German Club . . . Treasurer, Day Students' Association . . . Cabinet Member, Y.W.C.A. . . . Freshman Counselor . . . Secretary-Treasurer, President, Senior Honor Society . . . Little Sister, Virginia Swain . . . Society, Emerson.

Aw, please, girls. It's a long distance!

# 1953 Senior Class

GUYDANA, MARY ALDA, NANCY, BARBARA, BETSY, EDITH





HILEMAN  
HOLT  
HUTTO



KENDRICK  
LAWRENCE  
LEE



MARY ALDA HILEMAN . . . Kannapolis, N. C. . . Major: History; Minor: Religious Education . . . Spanish Club . . . Religious Education Club . . . International Relations Club . . . World Federalist . . . Future Teachers' Club . . . Treasurer, Senior Class . . . Cabinet Member, S.C.E. . . . Little Sister: Jean Turner . . . Society: Emerson.

NANCY HOLT . . . Erwin, N. C. . . Major: Primary Education; Minor: English . . . Future Teachers' Club . . . Fire Warden . . . Senior Marshal . . . Little Sister: Ruth Lynch . . . Society: Irving.

EDITH HUTTO . . . Bidgeaway, S. C. . . Major: Biology; Minor: English . . . French Club . . . International Relations Club . . . Cenozoic Club . . . Marshal, Irving Society . . . May Court . . . Little Sisters: Ruth Caudle and Augusta Gibson . . . Society: Irving.

GUYDANA KENDRICK . . . Spindale, N. C. . . Major: Piano; Minor: Organ . . . French Club . . . Treasurer, Modern Dance Group . . . Junior Honor Society . . . Glee Club . . . Gold Book . . . President, Music Club . . . Freshman Counselor . . . Senior Honor Society . . . Little Sister: Alice Savage . . . Society: Emerson.

BETSY LAWRENCE . . . Fayetteville, N. C. . . Major: Mathematics; Minor: Music . . . Music Club . . . Secretary, United Daughters of the Confederacy . . . President, Sophomore Class . . . Cabinet Member, Y.W.C.A. . . . Future Teachers' Club . . . Vice President, President, Math Club . . . Class Editor, Business Manager, Echo . . . Gold Book . . . Who's Who Among Students in American Universities and Colleges . . . Little Sister: Virginia Kiser . . . Society: Irving.

BARBARA LEE . . . High Point, N. C. . . Major: Primary Education; Minor: History . . . Spanish Club . . . International Relations Club . . . Cabinet Member, Y.W.C.A. . . . Religious Education Club . . . World Federalist . . . Marshal, Emerson Society . . . House President, 107 . . . Business Staff, Collegian . . . Assistant Business Manager, Echo . . . State Student Legislature Delegate . . . Future Teachers' Club . . . May Court . . . Treasurer, Vice-President, Athletic Association . . . Vice-President, Emerson Society . . . Senior Superlative, Most Athletic . . . Little Sisters: Helen Turlington and Jeanne Ellis . . . Society: Emerson.

Hope Mr. Harrell comes by!

# 1953 Senior Class

MOZELLE, JOANN, MARILU, BILLY JEAN, JOY, KELLY



LITTLE  
McCoy  
McGIBITY



MASTERS  
OWEN, B.  
OWEN, K.



JOY LITTLE . . . Denver, N. C. . . . Major, Religious Education; Minor, Art . . . Spanish Club . . . Art Club . . . Religious Education Club . . . Literary Staff, *Collegian* . . . Assistant Literary Editor, *Echo* . . . President, Freshman Class . . . G. C. Players . . . Leroy Lee Smith English Award . . . Secretary, Vice-President, Y.W.C.A. . . . Gold Book . . . Junior Honor Society . . . Senior Honor Society . . . Giltorian, Senior Class . . . President, S.C.E. . . . *Who's Who Among Students in American Universities and Colleges* . . . Little Sisters: Sally Wagner and Mary Lee White . . . Society, Emerson.

JOANN MCCOY . . . Sumter, S. C. . . . Major, Primary Education; Minor, Music . . . French Club . . . International Relations Club . . . Glee Club . . . Modern Dance Group . . . Treasurer, Future Teachers' Club . . . Splash Club . . . Music Club . . . Athletic Board . . . Cabinet Member, S.C.E. . . . Little Sister, Ann Taylor . . . Society, Irving.

MARBLU MCGIBITY . . . Durham, N. C. . . . Major, Elementary Education; Minor, History . . . International Relations Club . . . World Federalist . . . Future Teachers' Club . . . Spanish Club . . . Little Sister, Betsy Stoner . . . Society, Irving.

AVOZELIE MASTERS . . . Avondale, N. C. . . . Major, Religious Education; Minor, Music . . . Religious Education Club . . . P. K. Club . . . Math Club . . . Music Club . . . International Relations Club . . . World Federalist . . . Art Club . . . Future Teachers' Club . . . Gold Book . . . Senior Marshal . . . Little Sisters: Jane Connelly and Amelia Wilkie . . . Society, Emerson.

BETTY JEAN OWEN . . . Asheville, N. C. . . . Major, Elementary Education; Minor, Sociology . . . Cabinet Member, Y.W.C.A. . . . President, German Club . . . Treasurer, Modern Dance Group . . . Cabinet Member, S.C.E. . . . Future Teachers' Club . . . Marshal, Recording Secretary, President, Emerson Society . . . May Court . . . Little Sister, Jean Greene . . . Society, Emerson.

KATHERINE OWEN . . . Fayetteville, N. C. . . . Major, Home Economics; Minor, General Science . . . Religious Education Club . . . Treasurer, G. C. Daughters . . . Treasurer, Reporter, Home Economics Club . . . Program Chairman, Cenzoze Club . . . Cabinet Member, Y.W.C.A. . . . Photographic Editor, *Echo* . . . International Relations Club . . . Secretary, Future Teachers' Club . . . Gold Book . . . Senior Honor Society . . . Little Sister, Sue Plumt . . . Society, Irving.

Busy! Gab fest in session!

# 1953 Senior Class

ANNE, PAOLA, BARBARA, JEAN, ANNE, PAI



OWEN, P.  
PEGG  
PENNY



PRITCHETT  
RUDD  
RUSSELL



PATRICIA OWEN . . . Lincolnton, N. C. . . . Major: Sociology; Minor: Religious Education . . . Spanish Club . . . Vice-President, Math Club . . . International Relations Club . . . Treasurer, Sophomore Class . . . House President, Main . . . Cabinet Member, Y.W.C.A. . . . Freshman Counselor . . . Publicity Chairman, Vice President, President, Religious Education Club . . . Literary Staff, ECHO . . . Business Staff, Assistant Business Manager, *Collegian* . . . Giltorian, Senior Class . . . Little Sister: Anita Betts . . . Society: Irving.

BARBARA PRITCHETT . . . Beidsville, N. C. . . . Major: Home Economics; Minor: General Science . . . Secretary, Home Economics Club . . . International Relations Club . . . Future Teachers' Club . . . Gold Book . . . Chief, Senior Marshal . . . May Court . . . Little Sister: Joann Gaddy . . . Society: Irving.

PAULA PEGG . . . Nashville, N. C. . . . Major: History; Minor: Sociology . . . Secretary, P. K. Club . . . Council Representative, Sophomore Class . . . World Federalist . . . Freshman Counselor . . . Fire Warden . . . Future Teachers' Club . . . Senior Marshal . . . Cabinet Member, S.C.F. . . . Gold Book . . . Senior Honor Society . . . President, International Relations Club . . . Little Sister: Sarah Ann Bates . . . Society: Irving.

ANNE RUDD . . . Greensboro, N. C. . . . Major: Primary Education; Minor: Sociology . . . Spanish Club . . . House President, Main . . . Cabinet Member, Y.W.C.A. . . . Freshman Counselor . . . Literary Staff, Business Staff, *Collegian* . . . Business Staff, ECHO . . . Recording Secretary, Students' Association . . . Marshal, Corresponding Secretary, Irving Society . . . Senior Marshal . . . Little Sisters: Janet Brown and Martha Driesell . . . Society: Irving.

JEAN PENNY . . . Gibsonville, N. C. . . . Major: Voice . . . German Club . . . Religious Education Club . . . Music Club . . . French Club . . . Assistant Librarian, Glee Club . . . House President, Main . . . Program Chairman, Treasurer, President, P. K. Club . . . Cabinet Member, S.C.F. . . . Little Sisters: Mary Pugh and June Foust . . . Society: Irving.

ANNE RUSSELL . . . Greensboro, N. C. . . . Major: Piano; Minors: Organ and Theory . . . Program Chairman, Music Club . . . French Club . . . Gold Book . . . Accompanist, Glee Club . . . Vice-President, Day Students' Association . . . Accompanist, Irving Society . . . String Quartet . . . Librarian, Chamber Orchestra . . . Business Manager, *Handbook* . . . Little Sister: Mary Jo Davis . . . Society: Irving.

Time out for culture!

# 1953 Senior Class

RUTH, PAUL, BARBARA, ANNE, HAZEL, CAROLYN, ROSLYN



SCARBOROUGH  
SMITH, B.  
SMITH, P.



SPIVEY  
STALLINGS  
STANFORD



RUTH SCARBOROUGH . . . Greensboro, N. C. . . Major: Art; Minor: History . . . Art Club . . . International Relations Club . . . G. C. Daughters . . . Future Teachers' Club . . . Little Sister: Shirley Windham . . . Society: Irving.

BARBARA ANNE SMITH . . . Elizabeth City, N. C. . . Majors: Spanish and French . . . Religious Education Club . . . French Club . . . Publicity Chairman, Math Club . . . Junior Honor Society . . . World Federalist . . . International Relations Club . . . Future Teachers' Club . . . Treasurer, President, Spanish Club . . . Senior Honor Society . . . Highest Proficiency Award, 1952 . . . Literary Staff, Editor, *Collegian* . . . *Who's Who Among Students in American Universities and Colleges* . . . Little Sisters: Lael Corzine . . . Society: Emerson.

PATRICIA SMITH . . . Goldsboro, N. C. . . Major: Home Economics; Minor: Science . . . Art Club . . . Spanish Club . . . Cenozoic Club . . . International Relations Club . . . Future Teachers' Club . . . Scrapbook Keeper, Vice President, Home Economics Club . . . Gold Book . . . Little Sisters: Patricia Wright . . . Society: Irving.

ROSELYN SPIVEY . . . Clinton, N. C. . . Major: Music Education; Minor: Piano . . . French Club . . . Music Club . . . Religious Education Club . . . House President, 120 . . . Glee Club . . . Vice-President, Future Teachers' Club . . . Vice President, Music Educators Club . . . Senior Marshal . . . Little Sisters: Helen Harwood and Ann McCollum . . . Society: Emerson.

HAZEL STALLINGS . . . Bayside, Va. . . Major: Speech; Minor: English . . . Spanish Club . . . International Relations Club . . . Social Standards Committee . . . Athletic Board . . . Fire Warden . . . Future Teachers' Club . . . Gold Book . . . Photographic Editor, *Ecno* . . . President, Modern Dance Group . . . Senior Superlative, Most Original . . . Best Actress, President, G. C. Players . . . Little Sisters: Louise Hutchins and Jane Chick . . . Society: Irving.

CAROLYN STANFORD . . . Chester, S. C. . . Major: Piano; Minor: Organ . . . French Club . . . Program Chairman, Secretary, P. K. Club . . . Religious Education Club . . . Cabinet Member, Y.W.C.A. . . Social Standards Committee . . . Music Club . . . Music Editor, *Collegian* . . . Junior Honor Society . . . Freshman Counselor . . . Accompanist, Corresponding Secretary, Irving Society . . . President, Senior Class . . . Gold Book . . . Highest Proficiency Award, 1951 . . . Junior Superlative, Most Likely to Succeed . . . Senior Honor Society . . . Sally Southall Cotton Scholarship . . . *Who's Who Among Students in American Universities and Colleges* . . . Little Sisters: Edith Rose and Mary Louise Gunter . . . Society: Irving.

All aboard for a week-end of fun!

# 1953 Senior Class

MARY JANE, ELIZABETH, MARTHA, CHRIS, PEGGY, PEGGY





STANTON  
STEMBRIDGE  
STOTT



SUGG  
SUITER  
THOMPSON



PEGGY STANTON . . . Henderson, N. C. . . . Major: English; Minor: Religious Education . . . Math Club . . . International Relations Club . . . Secretary, Religious Education Club . . . Secretary, Spanish Club . . . Vice-President, Sophomore Class . . . Future Teachers' Club . . . Junior Honor Society . . . Gold Book . . . Senior Honor Society . . . Junior Superlative, Best Student . . . Senior Superlative, Best Student . . . Literary Staff, Club Editor, Editor, Echo . . . Little Sisters: Betty Jo Benfield and Ramona Morton . . . Society: Irving.

MARY LANE STEMBRIDGE . . . Danville, Va. . . . Major: Religious Education; Minor: Music . . . President, Freshman Class . . . Newspaper Staff . . . Honor Council . . . President, Sophomore Class . . . Student Council . . . May Court . . . Nemo Society . . . Junior Transfer, Averett College . . . Little Singers . . . Cabinet Member, Y.W.C.A. . . . Cabinet Member, S.C.F. . . . Secretary, Religious Education Club . . . International Relations Club . . . United Daughters of the Confederacy . . . Literary Staff, *Collegian* . . . Senior Superlative, Most Popular . . . Prophet, Senior Class . . . Little Sister: Patricia Fields . . . Society: Irving.

MARTHA STOTT . . . Whiteville, N. C. . . . Major, Religious Education; Minor: Music . . . Pledge, Little Theater . . . German Club . . . Glee Club . . . Wesley Foundation . . . Astrotect Society . . . Sophomore Transfer, Meredith College . . . German Club . . . Religious Education Club . . . Glee Club . . . International Relations Club . . . Treasurer, G. C. Daughters . . . Gold Book . . . Little Sister: Martha Glosson . . . Society: Irving.

CHRISTINE SUGG . . . Snow Hill, N. C. . . . Major: Home Economics; Minor: General Science . . . French Club . . . Social Standards Committee . . . Religious Education Club . . . Future Teachers' Club . . . Secretary, G. C. Daughters . . . Scrapbook Keeper, Home Economics Club . . . Senior Marshal . . . Little Sister: Barbara Craven . . . Society: Irving.

MARTHA SUITER . . . Garsburg, N. C. . . . Major: Elementary Education; Minor: Mathematics . . . French Club . . . Math Club . . . Future Teachers' Club . . . Little Sister: Jean Gentry . . . Society: Emerson.

ELIZABETH THOMPSON . . . Sierra Madre, Calif. . . . Major: Voice; Minors: Theory and English . . . Glee Club . . . Chamber Orchestra . . . Music Club . . . German Club . . . French Club . . . International Relations Club . . . Future Teachers' Club . . . World Federalist . . . Little Sister: Doris Starnes . . . Society: Irving.

We're getting that professional look!

# 1953 Senior Class

JACKIE, DAUN, LOU, ERMA, JO ANN, ANGIE



THORNBURG  
WATKINS  
WEBB



WETHINGTON  
WINTERS  
YOUNG



ERMA THORNBURG . . . Asheboro, N. C. . . . Major: Mathematics; Minor: Science . . . Math Club . . . French Club . . . Future Teachers' Club . . . Senior Marshal . . . Gold Book . . . Little Sister: Mary Jo Harris . . . Society: Emerson.

JO ANN WATKINS . . . Charlotte, N. C. . . . Major: Home Economics; Minor: General Science . . . French Club . . . Religious Education Club . . . Art Club . . . Cenozoic Club . . . International Relations Club . . . Future Teachers' Club . . . Vice-President, Junior Class . . . Vice-President, Home Economics Club . . . Gold Book . . . Senior Marshal . . . Little Sister: Ethel Jolliff . . . Society: Emerson.

LOUISE WEBB . . . Louisburg, N. C. . . . Major: History. Minor: English . . . Vice-President, International Relations Club . . . House Vice-President, Main . . . House President, 107 . . . President, World Federalist . . . Treasurer, Y.W.C.A. . . . Reading Clerk in Senate, State Student Legislature . . . Future Teachers' Club . . . Modern Dance Group . . . Cabinet Member, S.C.F. . . . Business Staff, Echo . . . Senior Superlative, Best All-Round . . . Corresponding Secretary, President, Students' Association . . . Little Sister: Rachel Gobbel . . . Society: Irving.

ANGELYN WETHINGTON . . . Fayetteville, N. C. . . . Major: Elementary Education, Minor: Religious Education . . . Religious Education Club . . . Secretary, French Club . . . Math Club . . . World Federalist . . . International Relations Club . . . Cabinet Member, Y.W.C.A. . . . Chairman, World Student Service Fund Drive . . . Exchange Editor, *Collegian* . . . Little Sister: Thelma Albritton . . . Society: Emerson.

JACQUELINE KNOTT WINTERS . . . Guilford College, N. C. . . . Major: Home Economics, Minor: General Science . . . Home Economics Club . . . Modern Dance Group . . . Treasurer, Junior Class . . . Future Teachers' Club . . . Little Sister: Martha Waugh . . . Society: Irving.

DAUN YOUNG . . . Camsteo, N. Y. . . . Major: Chemistry, Minor: English . . . Math Club . . . Chamber Orchestra . . . Vice-President, German Club . . . Treasurer, Vice-President, Modern Dance Group . . . Athletic Board . . . "G" Club . . . Secretary, Athletic Association . . . Vice-President, Senior Class . . . Little Sister: Maxine Scarborough . . . Society: Irving.

BETTY COSTNER  
MOST LIKELY TO SUCCEED

PERSONALITY: ambitious      motto: f



## Senior Class

LOUELLA WEBB

MOST LIKELY TO SUCCEED

PERSONALITY: ambitious      motto: f



HAZEL STALLINGS

MOST LIKELY TO SUCCEED

PERSONALITY: ambitious      motto: f



BARBARA LEE  
ROCK ATHLETIC

1920 1930 1940 1950



MARY LANE STIMMIDGE

1920 1930 1940 1950

1920 1930 1940 1950

# Superlatives



PEGGY STANTON

1920 1930 1940 1950

1920 1930 1940 1950

CLASS OFFICERS

*President:* JEANETTE HESLER

*Vice-President:* EMMA MAXWELL

*Secretary:* EVELYN LOVEN

*Treasurer:* PATRICIA LONG

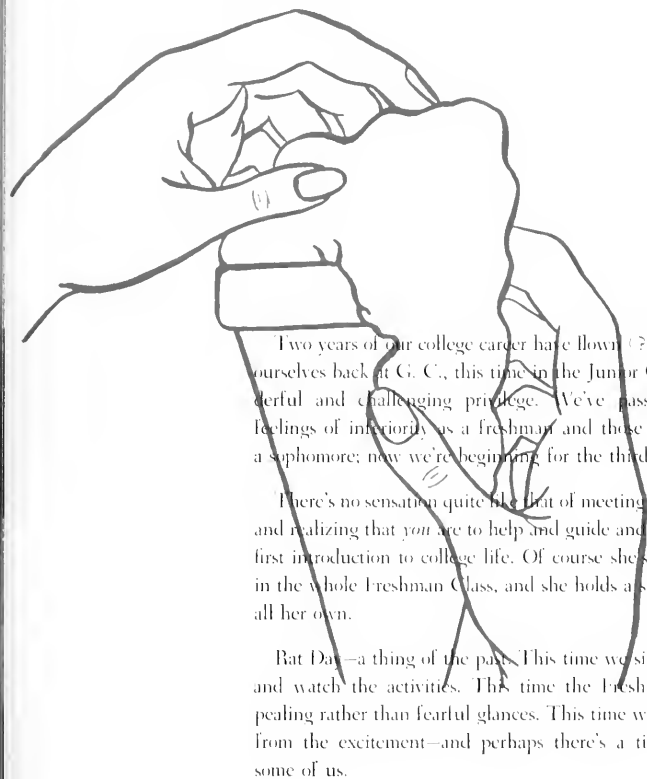
*Council Representative:* NANCY CRANFORD

# Juniors ... 1953

PATRICIA, EVELYN, NANCY, EMMA, JEANETTE



. . . A shape begins to rise and form . . .



Two years of our college career have flown (?) by and we find ourselves back at G. C., this time in the Junior Class. It's a wonderful and challenging privilege. We've passed through the feelings of inferiority as a freshman and those of superiority as a sophomore; now we're beginning for the third time.

There's no sensation quite like that of meeting your Little Sister and realizing that *you* are to help and guide and direct her in her first introduction to college life. Of course she's the sweetest gal in the whole Freshman Class, and she holds a spot in your heart all her own.

Rat Day—a thing of the past. This time we sit on the sidelines and watch the activities. This time the Freshmen give us appealing rather than fearful glances. This time we feel quite apart from the excitement—and perhaps there's a tinge of regret in some of us.

Now, for the first time, we elect those superlatives from our class—those among us who we think are especially outstanding. It's certainly an honor and a thrill to be elected, isn't it, Penny?

. . . Then, that long-awaited-for occasion . . .

Our representatives in the Play Day.



Anne Acey  
Jean Armstrong  
Dorothy Baber  
Harriett Blackwell  
Mildred Bradshaw  
Sylvia Bradsher

Jane Brinkley  
Mary Esther Brown  
Martha Buie  
Carroll Butler  
Jean Campen  
Nancy Cranford



Cold but happy.

Jo Cross  
Faye Dail  
Janette Davidson  
Jolyn Davidson  
Sylvia Diehl  
Ellen Faulkner

### ... the wonderful Junior-Senior!

The reflections of the lights the happy smiles strains of the orchestra the colors of the decorations the magic of the last dance all the hard work behind the scenes the laughter and sighs of tearing down the carefully arranged decorations the pleasant, lingering memories and, finally, the satisfaction that comes with knowing that our dance for the Seniors was a huge success. All these and more, too, is the Junior-Senior Dance.

May Day, with all its color and gaiety, is one of the celebrations we'll all remember when we think about G. C., especially this year since we chose the honor attendant. We're awfully proud to have Jo representing us.

Diamonds and frat pins really start piling up this year as the girls discover they don't have too much longer to wait for that "Big Day." We all wish them the best of luck.

But we've got so much more work and responsibility; the schedule of a junior at G. C. is a very full one. Rush week pop quizzes labs tests term papers parallel chapel programs added club activities gab sessions plans for the future moments of quiet meditation.

Frances Finch  
Letty Jean Foster  
Jean Gilliam  
Mary Lou Goforth  
Martha Goodman  
Betty Groah

Louise Harbison  
Marlene Harmon  
Jeanette Hester  
Rose Holland  
Shirley Homesley  
Joann Hoyle

### ... Yes, opportunities bring responsibilities ...

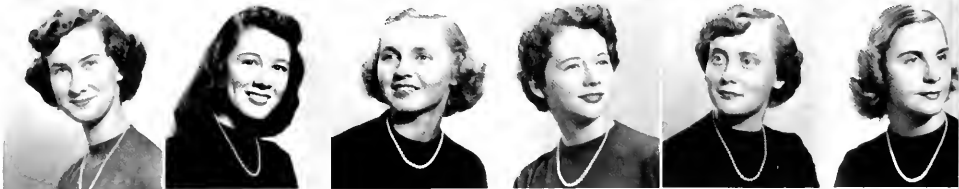
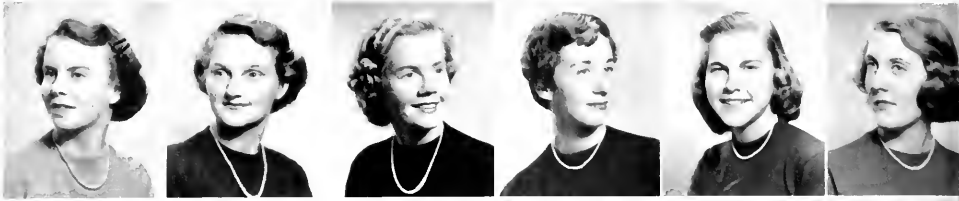
"Sweet" songs to the other classes on G. C. Day.



Susan Jackson  
Bobbie Jones  
Peggy Ann Joyner  
Frances Kendrick  
Glista Kiser  
Judy Knight







Jeanne Koonts  
 Jo Alyce Lackey  
 Margaret Long  
 Patricia Long  
 Evelyn Loven  
 Mary Louise McDonald



*Birthday parties costumes parties  
 —we're not particular! Fun only is our  
 goal—when 10 o'clock rolls around!*

Carolyn McElrath  
 Claudia Marsh  
 Patricia Massey  
 Emma Maxwell  
 Lee Neal  
 Eleanor Payne

## ... where are our once carefree days?

With all this it seems we never can manage to take our "much-looked-forward-to" three nights out. However, in the midst of the flurry of papers and the rush of meeting deadlines, a certain contentment and satisfaction takes hold. We pause and realize that this is *our* year . . . this is the year we can study those subjects we are most interested in. This is the year when a vocation in life becomes a reality, and we understand, perhaps more than ever, the importance of our job here. It's a wonderful and humbling experience. The friends and memories of this year will go with us through our whole life. We have but one more year in which to cram everything we can into our college life. We've begun for the third time!

Mary Payne  
 Modena Penland  
 Peggy Polk  
 Wanda Price  
 Ann Reid  
 Elizabeth Robinson

Sue Robinson  
 Sue Ross  
 Frances Sanders  
 Johannah Schwarz  
 Blanche Selden  
 Frances Sharpe

Mary Ada Shuller  
 Peggy Simpson  
 Dorothy Smith  
 Nancy Kerr Snyder  
 Edna Stokes  
 Ruth Troutman



Martha Widenhouse  
 Betty Anne Williford



*By Jolyn Davidson*

Dana Tyson  
 Bennie Ruth Via  
 Gladynell Watkins  
 Eleanor Webb  
 Margaret Anne White  
 Peggy Whitfield



Betty Wilson  
 Virginia Anne Wyne

MILDRED BRADSHAW  
 MOST LIKELY TO SUCCEED  
 Competent . . . informed . . . resolute



Junior Class

FRANCES FINCH  
 MOST ORIGINAL  
 Consideration . . . lover . . . of the



MARY PAYNE  
 MOST POPULAR  
 Visionary . . . energetic . . . winning



MARY ESTHER BROWN  
BEST ALL-ROUND  
Enthusiastic . . . willing . . . capable



PEGGY ANN JOYNER  
BEST STUDENT  
Industrious . . . conscientious . . . worthy

# Superlatives



MARLENE HARMON  
MOST ATHLETIC  
Dependable . . . energetic . . . zealous

CLASS OFFICERS

*President* BETTY HACKETT

*Vice President* LUISE JOFFEY

*Secretary* MARIE CRAVEN

*Treasurer* JANE CONNELLY

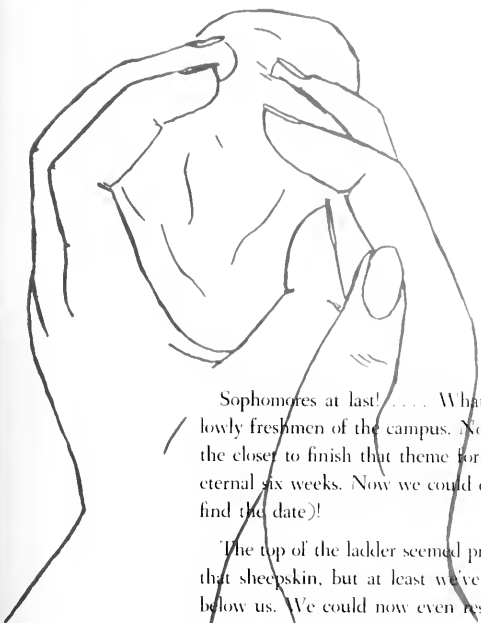
*Council Representative* HELEN FURLINGTON

# Sophomores

BETTY, JANE, HELEN, LUISE, MARIE



. . . Our hands touch and grasp an unknown mass . . .



Sophomores at last! . . . What a glorious feeling! No more being the lowly freshmen of the campus. No more closed study, lights out, sitting in the cloister to finish that theme for English, or staying on campus for that eternal six weeks. Now we could even date during the week (if we could find the date)!

The top of the ladder seemed pretty far away . . . with the faint sign of that sheepskin, but at least we've succeeded in getting one rung of that below us. We could now even respond to the exalted name "sophomore" without looking around to see whom the person was speaking to.

Oh, certainly, it was wonderful to be welcomed to G. C. for the first time, but it was even nicer to be among the welcoming group ourselves. This time we could really join in the fun of Rush Week—planning secrets in both societies, "rushing" the freshmen to the bookstore for cokes and nabs, serenading with high hopes, and then, on Decision Night, being part of the welcoming body again!

. . . Slowly our lives took on a more sedate pose . . .

Thelma Albritton  
 Charlene Baddour  
 Sarah Bates  
 Betty Jo Benfield  
 Anita Betts  
 Ann Brady  
 Janet Brown



Mary Ann Callahan  
 Alice Cain  
 Mary Jo Caudle  
 Ruth Caudle  
 Jane Chick  
 Jane Connelly  
 Lael Cozine



Barbara Craven  
 Marie Craven  
 Mary Jo Davis  
 Helen Dickens  
 Martha Driscoll  
 Elizabeth Edwards  
 Jane Edwards



Jeanne Ellis  
 Patricia Fields  
 Frances Fisher  
 June Foust  
 Jean Gaddy  
 Jean Gentry  
 Augusta Gibson



Martha Glesson  
 Rachel Gobbel  
 Joan Greene  
 Mary Louise Gunter  
 Betty Hackett  
 Nancy Halton  
 Elizabeth Harris



Mary Jo Harris  
 Helen Harwood  
 Jean Hooper  
 Elizabeth Huggins  
 Louise Hutchins  
 Ann Jenkins  
 Ethel Jolliff



Virginia Kiser  
 Norma Jean Lackey  
 Lorna LeFevre  
 Ruth Lench  
 Ann McCollum  
 Carolyn Maples  
 Ramona Morton







*Hoping to beat  
the faculty?*



*Oh, no! Not "schedule  
time" again!*

. . . things were different now.

We were the "cats"—instead of the lowly "rats." We were doing the meowing instead of the bowing. No longer did we have to repeat that bated phrase, "We are the frosh . . ."

Soon after "Rat Day" came something new—"Help Day." Our class had a big part in creating this, and we were happy over it! "Help Day"? That was the day (believe it or not) when Sophomores and Freshmen got *together* and went to work on old G. C., making several improvements, including painting the vesper room on third Main.

Then came the unforgettable Freshman-Sophomore dance with its "Autumn Bowl" theme. Everyone was gay and happy. Autumn leaves, school pennants, goal posts, and the large football surrounded by yellow chrysanthemums—our spirits soared high. The football theme was carried out to a "T"—the T-formation figure led by Jane Cocks and our own president, Betty Hackett.

. . . Joyous times came next . . .



*Rushing to the dining  
room after chapel!*

*Honoring our Big Sisters with the Daisy Chain.*



. . . Thanksgiving and Christmas were here . . .

*Before: The fun is just beginning.*



*After: Somebody must have had a good time!*

These were wonderful holidays—but too soon they were all over. Santa Claus certainly was good to some girls—diamonds and fraternity pins really took the limelight.

Almost before we realized it, second semester was upon us, and with it, our frequent trips to Miss Letha Brock's office. Yes, we sophomores were trying to get courses lined up for a major and minor—and we thought we had a complicated schedule our first semester at G. C.!

Then came the Cap and Gown ceremony when we placed the caps and gowns on our Big Sisters. A lump in our throats took the place of the happy feeling we usually had when we were with them—for we knew graduation was not too far off.

And finally—the big day! We carried the daisy chain for our Big Sisters—and later proudly watched them march down the aisle to receive their well-earned diplomas. It was hard to believe that two years had passed since first we met them.

Now we look forward to next year—we'll be juniors, with even more thrills to enjoy. But we'll always remember our sophomore days, and what fun we had!



*By Ramona Morton*



Shelton Owens  
 Mary Pugh  
 Julia Ratliff  
 Jane Robins  
 Edith Rose  
 Alice Savage  
 Maxine Scarborough



Mary Schremp  
 Jacqueline Sigman  
 Peggy Smith  
 Mary Lou Starke  
 Doris Starnes  
 Nancy Stedman  
 Betsy Stoner



Phyllis Stough  
 Peggy Strayhorn  
 Virginia Swain  
 Joyce Talton  
 Ann Taylor  
 Helen Turlington  
 Jean Turner



Joyce Via  
 Laila Vittands  
 Sally Wagner  
 Elizabeth Walker  
 Martha Waugh  
 Mary Lee White  
 Amelia Wilkie



Shirley Windham  
 Patricia Wright

CLASS OFFICERS

*President* JANE COCKE

*Vice President* PEGGY BALLARD

*Secretary* MARY LEE WELLS

*Treasurer* BETTY BISHOP

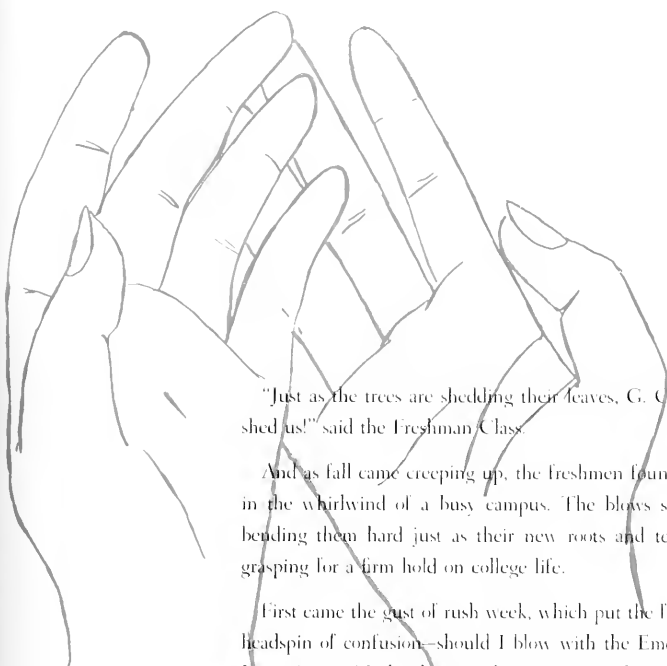
*Council Representative* NANCY FRANCIS

# Freshmen

NANCY, MARY LEE, BETTY, PEGGY, JANE



. . . Our eager hands expectant lie . . .



"Just as the trees are shedding their leaves, G. C. is trying to shed us!" said the Freshman Class.

And as fall came creeping up, the freshmen found themselves in the whirlwind of a busy campus. The blows seemed to be bending them hard just as their new roots and tentacles were grasping for a firm hold on college life.

First came the gust of rush week, which put the freshmen in a headspin of confusion—should I blow with the Emersons or the Irvings? Oops! What happened? Down to earth again! No more rush of sunny politeness for the freshmen. The upperclassmen left them in the cold bitter wind. The chilled feeling of registration, buying books, and trying to find the right classroom brought their heads low. Oh, but the S.C.F. brought milk, nabs, and apples at night to shelter them from the gathering black clouds . . .

. . . Look out!!! What's that ahead? . . .

Kathrine Anthony  
 Nancy Bam  
 Janelle Baker  
 Peggy Ballard  
 Marcia Bays  
 Marjha Beal  
 Rachel Beasley



Frances Bellamy  
 Betty Bishop  
 Ann Bronnck  
 Grace Brantley  
 June Bunn  
 Sara Lee Cullhan  
 Bessie Clawson



Kathryn Clegg  
 Bernell Cochran  
 Jane Cooke  
 Milcent Coley  
 Shirley Connater  
 Patsy Craver  
 Patsy Crawford



Joy Crowder  
 Marilyn Crowell  
 Nettie Dameron  
 Betty Delt  
 Frances Dörner  
 Eleanor Dudley  
 Lorraine Dull



Elizabeth Floyd  
 Jean Fortner  
 Nancy Francis  
 Helen Garrett  
 Juanita Garris  
 Janie Gibbs  
 Lorraine Gillespie



Patsy Graham  
 Olema Grant  
 Joan Greenberg  
 Phyllis Greenhill  
 Lucy Ellen Gwyn  
 Mollie Harmon  
 Maude Elizabeth Harris



Ann Hart  
 Janice Hart  
 Sue Hays  
 Margaret Heath  
 Ann Hendrix  
 Margaret Higgins  
 Ruth Hinkle



Elizabeth Holt  
 Marilyn Heim  
 Julia Himmigant  
 Katherine James  
 Patricia Jones  
 Ann Kell  
 Kahl Kugel



Mabel Kuo  
 Margaret Knight  
 Nancy Knox  
 Mary Jane Lassiter  
 Ann Lee  
 Martha Lee  
 Jane Lewis





*Bowing to a "mighty" Sophomore.*



*Open House—planned especially for us!*

. . . The powerful gale of the first day of classes roared forward.

A puff of assignments, a whiff of tests, a blow of "unsats"—it seemed they were moving in circles.

Oh, happy day, a ray of sunshine sent every freshman home after six weeks. C-r-a-c-k! The warmth of home almost shattered their numb feelings. This time the soft breeze of friendship gave them the spunk to hold on. Besides, by this time orientation programs had given them that brisk feeling of "being in the know."

Hold your hats! The hurricanes are coming—every night, in fact. At 6:30 promptly the high gales raced through the halls of Main. Suddenly the awful void of study brought peace and quiet. Huh, 10 o'clock already? The other side of the hurricane struck again, scattering cokes, candy, nabs, and gossip all over the place. Then was the calm after the storm. All was safe and sound at 10:45 on the dot.



*Closed study! How we "loved" it!*

. . . Gentle, soothing winds came . . .

*Decision Night—at last we  
have made up our minds!*



. . . the freshmen swayed with the fun.



*Getting ready for Play Day.*

They drifted with the thrill of the Freshman-Sophomore dance. Then came the excitement of Thanksgiving and Christmas. But watch for the tornado! Exams came rushing on with a swift and strong current. Hold tight—it is now or never!

Slowly the steady breeze of campus activities floated the new students into the routine of upper-classmen. Second semester found the freshmen swaying and moving into the rhythm of May Day. They were holding on with both hands now. There was no way of blowing them off!

Yep, at times the freshmen felt green, yellow, and even a bit "rusty"; but unlike the autumn leaves, they hung on tightly. Now firmly fixed, they have drifted into the real G. C. spirit—ready for vacation and a new year!

*By Jean Cobb*







Judith Longest  
 Elizabeth Love  
 Ann McLain  
 Doris McRae  
 Louisa Matthews  
 Martha May  
 Jo Anne Merseth

Barbara Merritt  
 Doris Mudgett  
 Alice Miller  
 Ferta Vann Mitchell  
 Sylvia Moffitt  
 Mary Lou Montgomery  
 Margaret Noland

Eleanor Oakley  
 Ava Ray Owen  
 Jo Ann Padley  
 Mary Palmore  
 Anne Parker  
 Katherine Patchidas  
 Patricia Riley

Carolyn Reebuck  
 Stella Russell  
 Shirley Seagrowes  
 Marilyn Shepherd  
 Valoree Shinn  
 Mary Nell Sillmon  
 Nancy Sneed

Barbara Stalvey  
 Geraldine Stanley  
 Norma Steedman  
 Sara Ann Stewart  
 Olivia Tappan  
 Patricia Teague  
 Carolyn Thompson

Betty Ann Tysinger  
 Peggy Jane Tyson  
 Sarah Varner  
 Mary Lou Vaughan  
 Norma Jean Warren  
 Patsy Washam  
 Jane Wells

Mary Lee Welk  
 Peggy West  
 Doris White  
 Ruth Ann White  
 Anne Wilkinson  
 Beach Wilson  
 Midge Wilson



Ellen Winslow  
 Joyce Workman





. . . Tours to the planetarium . . . club parties . . .  
speakers — the fellowship of common interests.



Left to right: Nancy Cranford, Rebecca Trazier, Day Students' Representative; Nancy Halton, Treasurer; Mildred Brakshaw, Corresponding Secretary; Jane Beam, First Vice-President; Louise Webb, President; Johann Schwartz, Recording Secretary; Helen Dickens, Second Vice-President; Jean Bird, Nancy Francis, Helen Turlington.

## The Portias Of G. C.

A burst of laughter — a busy hum of voices — a gentle rap on the table — thus begins the council meeting of the STUDENTS' ASSOCIATION on Monday night.

What's on the agenda for tonight? Amending the constitution? Giving call-downs and restrictions? Discussing ways to uphold the honor system?

Yes, the girls on the council are always busy; but with such capable leaders, G. C. marches ahead.



Louise Webb  
President

House Presidents  
JEAN COBB  
ELIZABETH HUGGINS  
FRANCIS FENCH



First row: Buje, Butler, Marlene Harmon, Corzine, Huggins, Secretary; Stough, Gentry, Harbison, Covington.

Second row: Pegg, S. Gibbs, Armstrong, Finch, F. Kendrick, Schremp, Allen, Gubbel, Bodie.

Third row: Acev, M. Payne, Penny, M. Brown, Vice-President; Cobb, Maxwell, Evans, Stenbridge, Margaret Goodman, Joy Little, President; Jolyn Davidson, Treasurer.

Not pictured: Hileman, B. Owen, McCoy, D. Tyson, L. Webb.



## Friendship Is Their Motto

"Howdy, gals! Swing your partner and promenade! all join hands and circle left!"

Strains from the hut? Yes, and it's the STUDENT CHRISTIAN FELLOWSHIP cabinet girls on the job again. Besides greeting the new students the first day of school, providing fun and frolic on Wednesday evenings, planning Sunday and dorm vespers, and making Religious Emphasis Week a success, the girls on the cabinet find time to plan and have fun, too. These things make the Fellowship live for every girl on campus, and every "G. Cite" is proud to be called a member of it.



JOY LITTLE  
President



### ADVISERS

Seated: Dr. Stinson, Miss Cullis.  
Standing: Dr. Ramsay, Dr. Hutson,  
Dr. Smith.

Not pictured: Dean Ward.

Who are the girls best known at G. C.? Who is who on the college campus?

The Class of '53 has six representatives in *Who's Who Among Students in American Universities and Colleges*. They were chosen because of high scholastic standing, campus leadership, character and moral standing, and possibility for future leadership.

JANI—diligent, progressive vice-president of the Students' Association

CAROLYN—talented, conscientious president of the Senior Class

BEISY—intellectual, industrious business manager of the Ectio

BARBARA ANNE—keen-minded, competent editor of the *Collegian*

JOY—sincere, inspiring president of the S.C.F.

JANICE—versatile, capable editor of the *Handbook*

# Who's Who

Among Students In American Universities And Colleges





**SENIOR HONOR SOCIETY**

*Seated:* Hendricks, *President*; Hovle, B. Smith, Little, Armstrong, Beam, Cousins.

*Standing:* Alexander, Ivner, *Secretary and Treasurer*; Massey, Harbison, Bodie, Stanford, Pegg, K. Owen, C. Kendrick, Stanton.

*Not pictured:* Laughlin.



**JUNIOR HONOR SOCIETY**

*Left to right:* Davis, Gobbel, Baddour, *Secretary Treasurer*; Janet Brown, Benfield.

*Not pictured:* Mary Lee White, *President*.

*Jane Beam  
Carolyn Stanford  
Betsy Lawrence*

*Barbara Anne Smith  
Joy Little  
Janice Alexander*

## Slow: Young Ladies Working!

"Does he expect us to do that? He must think time grows on trees . . . I'll never wade through all this . . ." Thus lament HONOR SOCIETY students. But somehow, somehow, they always come out on top.

## Always On The Go

"I'll surely wear out the street from home to G. C. campus if I follow this schedule all year," Becky exclaims.

"My watch is never right with school time—either too fast or too slow!" complains Catherine.

Yes indeed—the DAY STUDENTS have problems too, even though they are never homesick.

Like clockwork, they always come through with their best foot forward, as they busily meet their well-filled schedule. Through the year they participate in numerous activities on campus—a tea for new students, a Christmas party, a dance, and a banquet in the Spring.

This group is a real asset to Greensboro College.

### OFFICERS

*President:* CATHERINE COVINGTON

*Vice-President:* WANDA PRICE

*Secretary:* MARY JO CAUDLE

*Treasurer:* MARY LEE WHITE

*Council Representative:* REBECCA FRAZIER

*First row:* Frazier, A. Russell, Julia Brown, M. Callihan, S. Callihan, Warren, Covington, Mary Lee White, M. Caudle, Wright.

*Second row:* R. Scarborough, Price, Higgins, M. Craven, J. Wells, Costner, Hendricks, Waugh, Windham, Love.

*Third row:* Burch, Clegg, M. Wells, Sigman, Hooper, Lewis, D. White, Robins, Stuart.

*Not pictured:* Widenhouse, M. Hayes, Winters, Rudd.







*Seated:* Erma Thornburg, Sylvia Bohe, Barbara Pritchett, *Chief:* Joann McCoy, Nancy Holt.  
*Standing:* Mozelle Masters, Roselyn Spruey, Sue Gibbs, Paula Pegg, Christine Sugg, Anne Budd, Alice Garrett, Jo Ann Watkins.

## Ambassadors Of Charm

Girls in white—the SENIOR MARSHALS . . . always eager to help . . . flitting here and there . . . smiling graciously at guests . . . trekking down the long aisle with late-comers. . . .

Yes, these are the attentive, attractive hostesses of Odell, extending warm hospitality to G. C.'s visitors.

Left to right: Susan Jackson, Alice Garrett, Chairman; Maxine Scarborough, Margaret Long, Dorothy Baber.

## Bib 'N Tucker Team

"Alice, can the music students wear blue jeans to Odell? Gosh, Dot, why can't I wear my pajamas to the bookstore? They're silk. What about Jitterbugging in the parlor?"

If you want someone who can answer your questions about your social manners and dress, just head for a member of the SOCIAL STANDARDS COMMITTEE. These are the well-versed girls who can be your chief problem-solvers.



## With Eyes On Tomorrow

"Children, let's sing about Jack and Jill. Give me that sling shot, Johnny. Bill, you can date outside of class."

The FUTURE TEACHERS say take your choice—primary, elementary, high school—you'll still be an old maid. Most of them say "We don't really plan to teach, but just in case" in case they graduate! After all is said and done, however, each will admit that teaching is a wonderful and inspiring experience long hoped for.



First row: Alexander, Boone, B. Owen, Rudd, Stallings, Lee, Finch, A. Garrett, Heleman, I. Webb. Second row: Irving, Lawrence, Covington, Spivey, Vice President, Greene, Stoner, Bradsher, Wilkie, Fisher, Wehrington. Third row: Cheatham, President, Baber, Marge White, Knotts, Field, Schwarz, M. Brown, Pezz, Sharpe, Massey, L. Kiser. Fourth row: McKon, Treasurer, Cobb, Stanton, M. Long, Blackwell, Homesley, Campen, Jackson, P. Long, S. Robinson. Fifth row: D. Smith, Foster, D. Eason, Starke, Owens, Maples, J. Edwards, Marsh. Sixth row: S. Gibbs, J. Watkins, Lind, N. Holt, Sanders, Librarian, Margaret Goodman, B. Wilson, Rathell. Seventh row: L. Thompson, M. Pauer, Jody Davidson, J. Knight, Price, Lettwich, Savage, Jenkins. Eighth row: Pritchett, K. Owen, Secretary, Selden, Stokes, Joyner, Thornburg, Suter. Advisors: Dr. Pemberton, Dr. Bawden, Dr. Mayfield.

First row: S. Robinson, Selden, P. Fields, D. Tyson. Second row: Koonts, Willford, M. Scarborough, Marlene Harmon, Hahorn, Allen, Bane, Janet Brown. Third row: Stokes, Massey, John Davidson, Baldwin, Lovens, Searnes, Stanford, Homesley. Fourth row: Gerry, Crawford, M. Payne, Morton, Jackson, Maxwell, Campen, M. Craven, Beam, Chairman Pegg. Not pictured: Dickens, Hester.



## Top Sergeants

"Don't forget to sign out!  
Just remember closed study...."

A puzzled freshman? One who doesn't know the rules? Why, there is no such thing around here. The FRESHMEN COUNSELORS see to that! With their friendly advice, they do all they can to make the new students feel right at home.



## Return Performance

A certain group of our students most probably heard about G. C. over one of those first breakfasts of pabulum or milk toast. They are our G. C. DAUGHTERS, one of the mainstays of our honorable tradition. Theirs is the duty to keep G. C.'s standards as high as they were when Mother chose it to be her Alma Mater. Here's hoping from them we'll see some G. C. Granddaughters, too.

First row: Margie White, Glosson, Walker, B. Craven. Second row: Jenkins, Harbison, Secretary: R. Scarborough, F. Robinson, Treasurer: Alexander, Presidents: Koonts, Vice Presidents: S. Hayes, Floyd, Dameron. Third row: Miss Letta Brock, M. Long, Graham, Merritt, Stott, M. Larty, Betsy Harris, Turner, Miss Mary Brock. Fourth row: Little, Anthony, Bain, Davis. Not pictured: Byrd, M. Callahan, S. Callahan, Campen, Joiner, V. Kiser, K. Owen, Schwarz, Sugg, Swain.



First row: M. Craven, Publicity Chairman; Midgett, J. Knight, Washam, Cocks, Gentry, Sharpe, Swain, Shinn, Workman, Talton, Faulkner, Vice President; P. Owen, President. Second row: Starnes, Treasurer; Varner, Crowder, Beal, Bain, M. Wilson, Miller, Humesley, Martha Goodman, Turner, Stalvey, A. Owen, Brantley, Joliff, A. Fields, Reid, M. Scarborough, Beslev, J. Edwards, McLain, Hirt, Gillespie, Tvinger, Marlene Harmon. Third row: Cousins, Betts, Minton, McLarty, Cochran, N. Lackey, Huggins, Joyner, Cobb, Stokes, D. Tyson, Masters, Stott, Hester, Dull, Connelly, Margaret Goodman, Bradshaw, Stemberge, Allen, P. Tyson, Wyne, Blackwell, Haltom.

## Religion In Action

"Who put that surprise in your P. O. box this morning?"

"That was from my Secret Pal—she has really been good to me this year."

Each of the eighty members of the RELIGIOUS EDUCATION CLUB had a "Secret Pal" to be especially nice to during the year. This helped to make the members feel more a part of the organization.

A few of the many interesting programs of the year included a tour through the new local churches; a talk by a missionary to Africa, Lorena Kelley; and discussions of caravanning and work camps that were held in several states.

Left to right: Bradshaw, Wethington, L. Webb, Stoner, Schwarcz, Greene, Martha Goodman, Luch, Publicity Chairman; B. Lee, M. Brown, M. Long, Secretary-Treasurer; Kooms, Reid, A. Garrett, President; Campen, Humesley, Hileman, Blackwell, Evans, Haltom, M. Scarborough. Not pictured: B. Via, Loven, Groah, G. Watkins.

## Peace Through One World

"We believe that world peace can be created and maintained only under a world federal government. . . ." This is the voice of the Greensboro College chapter of the UNITED WORLD FEDERALISTS—one of the most interesting organizations on our campus. These girls learn how they can help to create a united and peaceful world.



## Politically-minded Girls

In times like these every campus has a strong need for an INTERNATIONAL RELATIONS CLUB. G. C. is very fortunate to have such an active one. The I.R.C. has been successful in promoting interest on campus in national and international affairs. By informing and arousing interest in the girls, the club is able to influence others with whom G. C. girls come in contact.

Election year gave the I.R.C. new incentive and purpose. It was able to give the girls good over-all pictures of both candidates; so that, had they been eligible, they would have voted wisely. Thus they are making better citizens and leaders for tomorrow.



*First row:* R. Scarborough, Marsh, J. Robinson, Betty Wilson, Bue, *Secretary-Treasurer:* Homesley, *Vice-President:* Pege, *President:* Janet Brooks, *Literarian:* McCoy, Hilsman, E. Lee, A. Garrett, Wilkie, Connelly. *Second row:* Stenbridge, Reid, Marlene Harmon, Groah, Koons, Rose, Cobb, J. Lackey, Pritchett, Maples, Gadrith, Harbison, Maxwell, Martha Goodman, Betty Harris, Gentry, Blackwell, Radtch, Hugueny, P. Fields, Stoner, Greene. *Third row:* Evans, M. Brown, M. Scarborough, Owens, Williford, Cousins, P. Owen, K. Owen, Byrd, John Davidson, Schwarz, Massey, Curzime, Bradshaw, Campen. *Not pictured:* Cross, J. Webb, Simpson, Lynch, P. Long, Stott, B. Smith, Baber, Westington, Lovon, Bates, M. Harris, Schremp, G. Kiser, M. Long, J. Kendrick, G. Watkins, Lynch, McElrath, Pugh.

*First row:* Masters, Seagroves, Hooper, Schremp, Gubbel, M. Harris, Wright, J. Edwards, McElrath, Starke, *President:* Owens, *Secretary-Treasurer:* Second row: Harris, Beasley, Horn, Brinkley, Heath, Coley, Lynch, Bradsher, Gibson, G. Watkins, Dicht. *Third row:* Stanley, Knox, Oakley, Little, A. Owen, Crawford, Bradshaw, R. Scarborough, Cranford, Tysinger, Maxwell. *Publicity Chairman:* Miss Cullis. *Not pictured:* Baker.



## "A Thing Of Beauty Is A Joy Forever"

The smell of paint the joy  
of creating something beautiful  
the triumph of an exhibit  
well done the posters you  
just don't have time to finish  
the problems, "Which colors do  
you mix, now?" the rush  
the fun the accom-  
plishments.

Yes, everybody will agree that  
the ABE CLUB has a big part  
in making the G. C. campus what  
it is.

Left to right: Baddour, Jackson, Secretary, S. Robinson, M. Payne, S. Gibbs, Business Manager; Massey, Marlene Harmon, Gilliam and Bradshaw, Publicity Chairmen; Gosh, Stillings, President; Acey, Pugh. Not pictured: Little.



## Cue For Fun

"Hey, Pugh, I stuck muh thumb through this flat. What happens now? Gosh, Mrs. Perkins, I *can't* feel this line. It just sounds dead. Help! Sue, somebody stepped on the train of my dress..."

Weird conversation? Nope, just the common vocabulary for the gals who claim the stage as their habitat.

Loving the smell of grease paint, not minding having mashed the best thumb while making a flat, knowing the thrill that the words "Places, everybody; lights, curtain" bring, and rejoicing with a fellow over a role well played—these are the things closest to the gal who proudly beams, "I am a G. C. PLAYER."



First row: Blackwell, Mutton, Program Chairman of Women's Society of Christian Service, Lynch, Chairman of the Board, Benfield, District Superintendent, Penny, Bishop, Fowler, Munsie, Washam, McEarty. Second row: Taylor, Heath, Acey, Mary Lee White, Goshik, Sough, Bens, Palmore. Third row: Peng, Bantley, Hart, Shupe, Masters, Price, I. Payne, Stanford. Not pictured: John Davidson, Kim, Lewis, Shuller, Widenhouse.

## Girls Without A Hometown

"You should've heard what the parsonage committee said when they saw the hole in the living room ceiling where my little brother fell through from the attic!"

"Bet you were moved when conference met that fall."

So goes some of the conversation at a meeting of the P. K. CLUB.

If you want to talk with girls who have had a variety of experiences, just drop in on an informal meeting of the "preachers' kids."

The life of a P. K. is one that is never dull, and the G. C. group is no exception.

Left to right: Dr. Mayfield, Troutman, Selden, Spivey, Vice President, Carr, Janette Davidson, Foster, Ross, Neal, Reporter; Cheatham, President; Strayhorn, Margie White, Secretary Treasurer; Hutchins, Wagner. Not pictured: Costner, Foust.

## Musical ABC's

"One, two, three, clap your hands!"

If you ever pass a practice room in Odell and see a girl who looks as if she's old enough to know better singing something like this, you'll know she's a MUSIC EDUCATOR. These girls, who practice-teach with every age group from kindergarten through high school, work harder than most for the coveted degree, "Bachelor of Music Education."



## Rhythm Masters

"Swing hip, two, three, four. Face front, reverse, fall!" Our recital was a big success, don't you think so? Carolyn, how did you like the choreography of this number? ..."

When you hear this lingo, you'll know that our creative gals of the MODERN DANCE GROUP are in action again. These are the students who seek new ways for self-expression—and do doggone well at it, too!



Left to right: Mrs. Bell, Neal, Evans, Cheatham, Young, Vice President, B. Owen, L. Webb, Hoyle, Secretary-Treasurer, Margie White, Jackson, Stallings, President, Starke. Center: McCoy.

## The Little Rebels

"Are you from Dixie? Yes, I'm from Dixie..."

Yes, the G. C. Chapter of the UNITED DAUGHTERS OF THE CONFEDERACY strives to keep alive the spirit of the South. Meetings open with a loyalty ritual to the United States flag and the Confederate flag. Also included are visits to homes and museums with Confederate background and a joint meeting with the Greensboro Chapter of U.D.C. A big feature this year was a play showing G. C. days during the early 1900's.

All these activities are designed to pay loving tribute to our Confederate ancestors.



*First row: Beach Wilson, Savage, Chaplain; Margie White, President; Dickens. Second row: Willford, Vice President; Connolly, Treasurer and Historian; Lawrence, McElrath, Janet Brown, Secretary; Schwarz, Huggens. Not pictured: Gunter, Registrar; Wright, Stoner, Elrod.*

*Seated: Baber, J. Lackey, S. Robinson, G. Kiser, Secretary; Dail, I. Edwards, Treasurer. Standing: E. Robinson, M. Long, Vice President; J. Watkins, Pritchett, K. Owen, Sugg, M. Callihan, Gunter. Not pictured: Fonville, President; Patricia Smith, Winters, S. Callihan, J. Via.*

## Artisans Of Living

"The way to a man's heart..."

Of course, these smart girls know that there's more to the art of keeping house than having the entrees ready when the bread gets done! You've already figured out their major, but just to make sure, folks... This is the HOME ECONOMICS CLUB.

Lucky guys!







Seated: Frazier, President; Shuller, Holland, Secretary. Standing: Vittands, Publicity Chairman; Turlington, Elrod, Miss Cole, Goddard, Vice President; M. Long, Miss Smith, Sanders. Not pictured: K. Owen, Program Chairman; Watkins, Hutto, Baddour, Patricia Smith.

First row: J. Knight, Vice-President; Batliff. Second row: Fisher, Owens, Starke, Cousins, Publicity Chairman; Padley, Greenberg, Blackwell, Secretary-Treasurer; Stokes, Thornburg, Lawrence, President. Not pictured: Connelly, Corzine, Cross, J. Gibbs, Harbison, Massey, Palmore, Simpson, Stalvey, Suiter, Varner, Vaughn, Vittands, Washam, T. Webb, Wilkie, Wilkinson, Betty Wilson, Workman.



## The Einsteins Of G. C.

Would you like to know why poison is poison or how scientifically to blow up the Arts and Science Building?

How about a visit to the city laboratory, or even better, to the state laboratory in Raleigh?

The members of the CENOZOIC CLUB are up on the scientific facts of the times. Someday we will not be surprised to hear that one of these girls has received the Nobel Prize in physics or chemistry.

## Math And Aftermath

The G. C. MATH CLUB finds that algebra and geometry can be fun. The annual trip to the Planetarium at Christmas is always a big feature. Add movies, parties, and business men to discuss the relationship of math to the business world, and you're sure to come out with interesting programs.

Yes, these girls know how to get the most out of two plus two.

Left, Swain, Assistant in Mann; Selden, Gaddy, Chick, Connelly, Betts, Marlene Harmon, Chief Warden. Right, Shinn, Knox, Craver, Francis, Bass, Gilliam, Assistant in Hudson; Pegg, Wethington, Stallings, Assistant in Fitz; E. Robinson, M. Scarborough. Not pictured: N. Holt.



## Hose And Ladder

An alarm clock set for an unthinkable hour . . . a flashlight with ever-ready batteries . . . a meeting behind closed doors of the coming event . . . a towel, coat, and shoes near the bed . . . a struggle with a reluctant riser . . . roll call in the freezing night air . . . a broken alarm box that won't stop ringing. . . .

Yes, these are some of the highlights in the life of the FIRE WARDENS—G. C.'s own indispensable firewomen to whom we owe a big hand for hard work well done.



## Down Mexico Way

"Hi, what's the rush?"

"I want to make it to the SPANISH CLUB meeting. Tonight Dr. Heironimus is going to teach us Christmas carols in Spanish."

"*Dios mios!* Wasn't that poem beautiful that Dr. Dunstan gave in Spanish?"

You have just heard some girls who work with the Spanish tongue and have *mucho* fun while doing it. With the leadership of Dr. Heironimus and Dr. Dunstan, these students get the genuine thrill of mastering the Spanish way.

First row: Slough, Jenkins, Finch, Craven, Janet Brown, Secretary; Betty Harris, Ratliff, Merritt. Second row: D. Smith, President, Harry, Streedman, Gobbel, Starke, B. Smith, Owens. Standing: Heath, B. Craven, Treasurer, Holmes, Bain, Dr. Heironimus, Swain, Connelly, Gentry, Wilkie, J. Edwards, Fisher, Vice President. Not pictured: Crawford, M. Bae, Coley, A. Lee, Driesell, P. Fields, Dr. Dunstan.

## Deutsch Klub

*Willkommen! Wir sind sehr froh, euch in unserem Klub zu begrüssen!*

No, you're not actually in Germany, but you're just as near to it as you can get on the G. C. campus. It's the GERMAN CLUB meeting to be sure! There's loads of fun and fellowship, and all in German, too.



Seated: Beach, Wilson, Stalvey, S. Robinson, Vice President; Armstrong, Seagraves, E. Thompson. Standing: Troutman, Knox, Benfield, President; James. Not pictured: Letwich, Secretary; Turlington, Treasurer; Gillespie, McDonald, May, Mitchell, Patelidas, Sneed, J. Via.

## Mademoiselles Of Paris

The hut sailed for Paris, France, with Captain Joyner and her crew every second Tuesday of the month. These tours—none other than the FRENCH CLUB meetings—were trips filled with music, games, discussions, and interesting speeches. Even if all you could say was *Oui* or *Non*, you were welcomed aboard.

Now we say *Bon voyage* after another very successful year under the guidance of Dr. Stinson, the club's adviser.



First row: Gibson, Bishop, Vaughan, Koons, Bradshaw, Vice President; Joyner, President; Crowder, West, Beasley, Baldour, Higgins, Corzine, J. Thompson. Second row: Matthews, Brady, Siedman, Clisson, Rose, M. Callahan, Halton, Oakley, Hart. Third row: Dameron, Alexander, Fackel, Harwood. Secretary Treasurer: Foist, Savage, Bell, Carr. Fourth row: R. Smith, Wethington, Lassiter, Badsher, Betty Harris, Maples, Selden, Blackwell, M. Scarborough, Brammick, Gwyn. Fifth row: Keil, Dull, Sigman, M. Lee, Wright, Mary Lee White, F. Hild, Bass, Graham. Not pictured: Dickens, Davis, Walker, McClain, J. Gibbs, Morton, Vattakis.

# Echo Bards And Business

The trouble all started last spring—phone calls, innumerable letters, appointments, contracts. Even in the summer the burden and dread continued. Then this fall—an autumn obstacle course! The wording and rewording of endless pages of copy . . . plaguing thoughts of “deadlines” . . . the clutter-clatter of typewriters, their rhythm sounding late into the night . . . scheduling of pictures . . . pleading for snapshots . . . or with tear-filled eyes begging hard-boiled businessmen for ads . . . relay races to get last minute shots to engravers . . . and finally the message to importunate overlord editors and engravers:

“Yes, we *are* on schedule!”

Then, believe it or not, the brighter side came! Deadlines were met . . . ad-getters once more raised their heads . . . a snappy staff cheered, saying, “Sign on the dotted line below.” These and numberless other things. Result? 1953 ECHO.

*Left to right: Stanton, Editor; Stallings, Photo Editor; Greene, Literary Staff; Cobb, Class Editor; P. Owen, Literary Staff; Beam, Art Editor; Reid, Janet Brown, Pugh, Frazier, Covington, B. Lee, Blackwell, M. Long, Business Staff; Neal, Sports Editor; Lawrence, Business Manager; Joyner, Assistant Literary Editor; Margaret Goodman, Literary Editor; Starnes, Morton, Jackson, Literary Staff. Not pictured: Jolyn Davidson, Club Editor; Howle, Music Editor; Seagoves, Knox, M. Payne, Literary Staff; Rudd, Gilliam, Business Staff.*



PEGGY STANTON  
*Editor-in-Chief*



BETSY LAWBENCI  
*Business Manager*

# Magnates



# The Mouthpiece

BARBARA ANNE SMITH  
*Editor in Chief*

A mad rush to the Advocate office, an Ipana smile for the businessmen of Greensboro, a frantic effort to find room for a last minute article. . . . But it's worth every minute of it for members of the LIBRARY AND BUSINESS STAFFS when on Friday night they hear someone say, "O goody, goody, it's COLLEGE time again!"





**JULIA BROWN**  
Business Manager

## Printer's Ink Club

Have you ever wondered how the news of G. C. gets out to the public? This responsibility falls to none other than the PRESS CLUB, and under the guidance of their faculty adviser, Miss Ginn, these budding journalists really do an excellent job. They send articles to the Greensboro papers and also to the Christian Advocate.



**JANET BROWN**

**RUTH LAUGHLIN**

**MISS GINN**

*Farther table:* Betts, Frazier, M. Long, Albritton, Reid, B. Lee, Janet Brown, Baddour, J. Knight, Acey, Assistant Editor; Neal, Goforth, McElrath, Driesell, Homeslev, Jackson, J. Lackey, Cross, Jovner, Managing Editor, Gobbel. *First table:* Corzine, Marlene Harmon, Stavin, Schremp, Butler, P. Owen, Assistant Business Manager, Cousins. *Table at right:* D. Smith, A. Fields, Wethington, B. Smith, Editor, Morton, Vittands, Diehl, Starnes, Mary Lee White, Davis, Stanford, Bodie, Byrd. *Not pictured:* Julia Brown, Business Manager; Boone, Marje White, Foster, K. Owen, Dail, Baie, Huggins, Stenbridge, Rathill, Peggy Smith, Whitfield.



**JANICE ALEXANDER**  
Editor



**MARTHA BURCH**  
Business Manager

## "Ignorance . . . Excuseth No Man"

"To go . . . or not to go. . ."

If that's the question, girls, you'll find the answer to it and many similar questions all drawn up for you in the student HANDBOOK. This little volume is designed to serve as a pocket guide to G. C. . . . rules, regulations, organizations, calendar of events, and all!



MABLE BALLARD  
President

## Stand-by For Action

"Some day we're going to beat that faculty! . . . Let's hurry up so we can get in front of the hamburger line!"

You guessed it—Play Day is over, and the faculty has won another softball game! Thanks to the ATHLETIC BOARD, G. C. girls have lots of sporting activities to look forward to throughout the year. These girls work hard to see that the tournaments, picnics, the swimming meets, and the horse show really go over in a big way.

Seated: Ballard, President; B Lee, Vice-President; Young, Secretary; Alexander, Treasurer; Steadman, Cheerleader; Huggins, Marlene Harman, McCoy, Harbison. Standing: Cobb, Holland, Cross, Flood, Winton, Beam, Neal. Not pictured: Stenbridge.





## Miss G. C.

Who's the gal that arranges the Faculty-Student games during the year?

Who plans a Play Day with several neighboring colleges?

Who is the girl who's around just when she's needed?

You guessed it! She's our "Mabc." Miss G. C. of 1953—Mable Ballard.

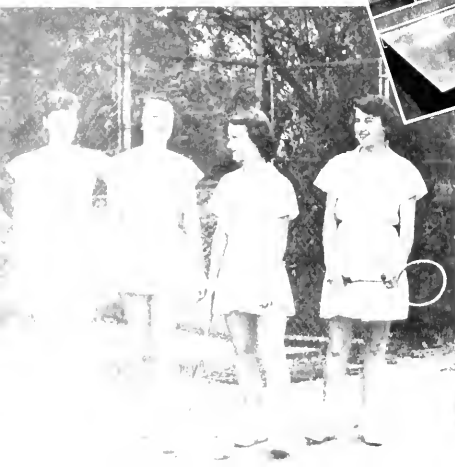


## Athletes Of The Year

Members of the "G" CLUB have been awarded letters for outstanding participation in sporting events. Those green-and-white "G. C." sweaters are few and far between, but the girl who wears one is recognized all over campus as being a real leader in athletics!



*Left to right: Hod, Ballard, Young, B. Lee*





## Another "G. C.-ite" Hits The Trail

"Tell me, Lou, about the BIT 'N SPUR CLUB."

"Oh, it's wonderful and so exciting—the uneasiness of try-outs; the amazement of being accepted; the thrill of hurrying to Sedgewick twice a month to hit the trail again on that favorite horse; the "cook-out" in the midst of all nature's beauty. Then, "Blue Ribbon Day"—the day of the horse show, when all the riders show their skill in riding. All this and much more go to make up the G. C. Bit 'n Spur Club."

The members of the club: Ann Brady, Portia Mitchell, Shelton Owens, *Secretary-Treasurer*; Betty Harris, Cerry Lee Elrod, *President*; Mary Lou Goforth, Louise Harbison, *Vice-President*; Mrs. Thiel, and Margaret Knight (not pictured).

## Sports Calendar

What, in our eventful days at G. C., will stick in our memories and go down the years with us?

Can we ever forget the golf games in the autumn, with the colored leaves blowing to spoil our aim? And those long cold walks to the "Y" before we plunged into even colder water for swimming class?

What about the aching muscles caused by modern dance and horseback riding? The badminton, tennis, and archery games in the spring when the blustering wind blew our carefully-aimed shots off their course? Or the hilarious fun of folk dancing, and the scrambled melee of the volleyball and basketball games?

No, we answer promptly; these things we'll never forget. They have been a very important part of our days at G. C., and we'll always remember them.





. . . Rush Week . . . memories of the Christmas  
Dance . . . May Day—the social whirl of G. C.



# At Ease

Dining, dancing, watching TV in the hut—all before the big Holiday Dance in December.

Rush Week—that “get acquainted” first week of school—brought a G. C. “Carmen Miranda” to the Irving open house.

“Stevenson’s the man for us! . . . Let’s clean up Washington—put Ike in!” G. C. really went all out for the candidates on Rally Day in chapel.

G. C. Day . . . with all its fun and hilarity. Each class tried to out-do the other—in songs, decorations, jokes. Wonder where these girls got those be-yu-ti-ful hats?

Watch those Seniors smile! They have finally “grasped” that precious sheep skin!





Shouts, tears, laughter! It was Decision Night again! After weeks of planning and rushing, that victorious night finally came!

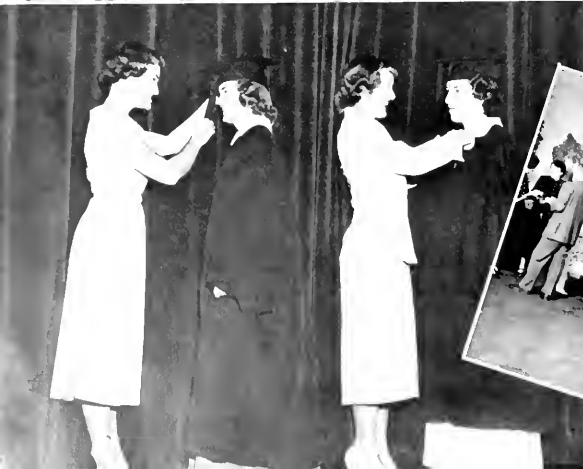
Painting scenery, giving the finishing touches to the costumes, arranging the furniture. . . . The girls backstage are always busy getting everything ready for the first "curtain call" that will come only too soon.

The Cap and Gown Ceremony the day when the Seniors really became Seniors! From then on, every Thursday, they dignifiedly walked down the aisle in chapel, wearing their "precious" attire.

Going down the receiving line . . . talking to Catherine, Becky, and the others. . . . The Day Students' Tea here again! This is the time when faculty and campus students become better acquainted with the town students.



## Keynote: Good



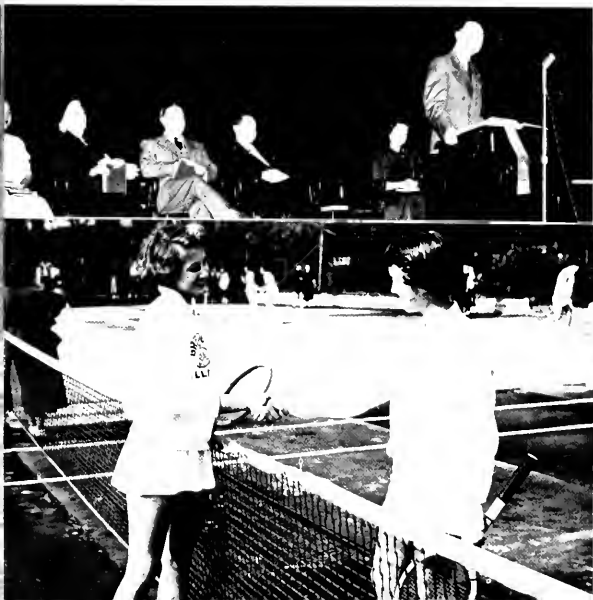




# Times

Gathered at the P. O. — hoping for some mail. Finally getting *the letter*. Took us if the college set some interesting meal huh. The faculty was tops again in softball and volleyball. Seems there's no getting around it they really keep the students on their toes. — Play Day in November withough being college proved to be lots of fun. Tennis and volleyball were the order of the day. We were proud

of our G. C. C. — Seeing old friends again. — eating buffet style in the dining room. — pointing out to others the new facilities at G. C. C. Homecoming was all this to it. — Decorating the Christmas tree was fun, but even more fun was the joy of singing carols around the lighted tree. If we didn't have the holiday spirit before, we certainly got it then!







CAROLYN EVANS  
President

## Irving Society

### OFFICERS

Seated: Luven, Censor; P. Long, Chaplain; Evans, President; Gaddy, Accompanist. Standing: Koonts, Critic; Cross, Treasurer; Stanford, Corresponding Secretary; Julia Brown; Recording Secretary; Beam, Vice President.

### MARSHALS

Left to right: Taylor, Haltom, Schremp, Harwood, Huggins, Stedman.



## Emerson Society

### OFFICERS

Seated: Corzine, Corresponding Secretary; B. Owen, President; J. Knight, Censor. Standing: B. Lee, Vice-President; Margaret Goodman, Accompanist; Marlene Harmon, Critic; G. Kiser, Treasurer; M. Payne, Recording Secretary. Not pictured: Acev, Chaplain.

### MARSHALS

Left to right: Dickens, Swain, Starke, Connelly, Hackett, Morton.



BETTY JEAN OWEN  
President

Everywhere the gold and purple greeted the new students.

"Da-da, da-da, da-da-da-da-da, da-da . . ."

"C'mon, gals, let's do the Mexican hat dance . . . Look, I just drew the lucky number for a real date!"

Yes, the Irvings were on the job again—welcoming the Freshmen to G. C. and their Mexican fiesta. Everything was in full swing, but the fun really came on Decision Night, when the members were received by the old Irvings "with open arms."

The political thrill of the "be all and the end all" of the Emerson contest . . . shoes worn out from too much square dancing . . . clapping and singing with the Minstrel's Dixie . . . white-robed group singing and presenting a candle-lit "E" between the dorms . . . the impressive tableau of all the thrill of being able to say truthfully on Saturday night—"We've put old Emerson on top."

# With Songs In Their Hearts

## OFFICERS

*President:* MARTHA BURCH

*Vice-President:* HELEN DICKENS

*Secretary:* ELOISE HARRISON

*Librarian:* AUGUSTA GIBSON

*Business Manager:* MARY ESTHER BROWN

*Accompanist:* ELEANOR PAYNE

*Student Director:* BETTY COSTNER

Practice, study, diction, breathing, rhythm, dynamics—these notes join to form the harmony of the GLEE CLUB.

Constant reminders—"Drop the jaw . . . feel it, girls . . . put on that aspirate . . . um'laut that 'U' . . . look at me!"

Work and worry and grow to love it, so that on the tours we may share one of God's great gifts with others.

*First row:* Gibson, McCoy, Hoyle, Wagner, McLarty, F. Thompson, Benfield, Simpson, Cosmer, S. Russell, Bunn, Grant, Huggins, Troutman, Ellis, Janet Brown, Foust, Carr, Acey, Corzine, Harrison, Mr. Williams. *Second row:* D. Smith, McDonald, Penny, Hackett, Betts, Price, James, M. Wilson, G. Kendrick, Keil, I. Wells, Oakley, Jolliff, Haltom, Montgomery, Dickens, Selden, Gobbel, Sharpe, S. Hayes, Tappan. *Third row:* Snyder, Padley, Hutchins, P. Owen, Burch, R. White, Morton, Palmore, Mallie Harmon, Dull, P. Tyson, Janette Davidson, Stott, M. Brown, Moffitt, M. Craven, Beam, Armstrong. *Center:* F. Payne. *Not pictured:* Bishop, Ratliff, Stalvey.





First row: E. Thompson, Butler, Driesell, Davis, Treasurer, Price, Hoyle, Secretary; Margie White, G. Kendrick, President; Troutman. Second row: Miss Singer, Spivey, McGov, Bodie, Penny, Stanford, Hester, Costner, Vice President, Hendricks, Dean Nelson. Third row: Lawrence, Ewing, Armstrong, Snyder, E. Payne, Statt, Neal. Fourth row: Cheatham, Burch, Selden, Ross, Foster, Janette Davidson, McDonald. Not pictured: Betts, Carr, M. Caudle, Chick, Cotzine, B. Craven, M. Craven, Foust, Gaddy, Hackett, Harbison, Hutchins, Jolliff, Masters, Morton, Russell, Stenbridge, Wagner, Windham.



First row: Bodie, President; Mrs. Hansen, Love, E. Thompson, Wagner. Second row: J. Wells, Davis, Steedman, M. Caudle, Armstrong, Vice-President; Neal, Treasurer; Ross, Noland, Stravhorn, Dudley, Covington, Hendricks. Third row: Margaret Goodman, Hoyle, Gilliam, C. Thompson, M. Welk, Mitchell. Center: Mr. Hansen. Not pictured: Lewis, A. Russell, Librarian.



## Keeping In Tune

Sponsored by Dean Nelson and Miss Singer, the G. C. MUSIC CLUB is neither sharp nor flat, but right on key.

Snappy rhythm and true pitch measure the activities of these music majors and minors.

They share their musical talents in various worthwhile projects, including benefit programs. These girls keep in tune by creating blended harmony on campus.

## Harmony Hep

"Somebody give me an A please; I know this violin's out of tune! . . . Mr. Hansen, my valve's stuck again, and I can't find my music!" . . . All to the accompaniment of the twingles and twangles of orchestra tuning.

Despite the squeaks and groans that go hand-in-hand with a group of twenty-five assorted musicians, the G. C. CHAMBER ORCHESTRA plays its merry way through the school year, adding the warmth and color of good music to many college functions.

# Curtain Going Up

It was indeed a real thrill when Madame Arcati conjured Charles' first wife back to the house he occupied with his second wife, Ruth. The complications that followed provided fun for the audience as well as the cast in "Blithe Spirit."



In "Uncle Remus," the young and old delighted in seeing all the creatures come to life for a rollicking scene around the mill pond where Brer Rabbit fooled everyone into thinking the moon had actually dropped into the water.

Measures





With sleigh bells ringing the arrival of G. C. Belles, the parlor gives the enchanting effect of a Winter Wonderland. The gentle melodies of dance music — soft shuffling of feet gliding across the floor — and the Holiday Dance becomes one of the highlights of the year.

Black and white tuxedos — swirling skirts — another of the G. C. dances is well under way. The dining room, transformed into an Autumn Bowl, provides the setting for the Freshman Sophomore Dance.



## Danced Well

Favorite beaux — favorite tunes — gay spirits — all combine to form the Junior Senior — the unforgettable dance of the year for the upperclassmen.





## May Day . . . 1952

A few seconds of breathless expectation, then the moment we had waited for . . . the highlight of the day when the lovely Queen of May was crowned.

There was merriment on this gala occasion . . . Hansel and Gretel came to life . . . excited voices filled the air . . . beauty was on parade . . . the chorus set the mood for festivity . . . all paid homage to our queen . . . mirth was the keynote of May Day.





May  
Day



*Miss Sara Fouille*  
*May Queen*

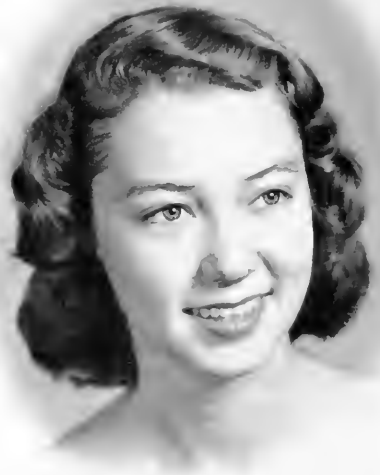
*Miss Jo Cross*  
*Maid of Honor*

May

*Miss Barbara Pritchett*  
*Senior Attendant*

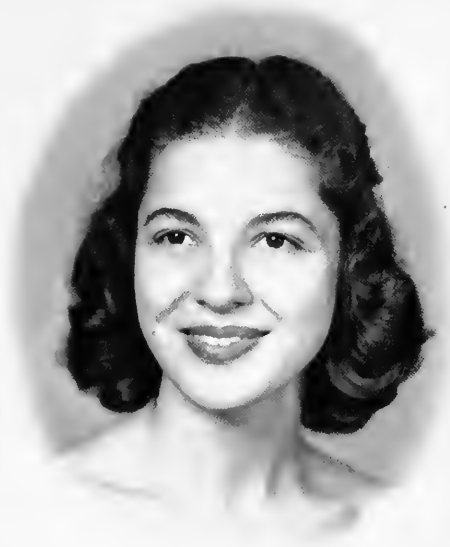
19

*Miss Rose Holland*  
*Junior Attendant*



Day

*Miss Betty Jean Owen*  
*Senior Attendant*



53



*Miss Sae Robinson*  
*Junior Attendant*

*Miss Maxine Scarborough*  
Sophomore Attendant



*Miss Shirley Seagroves*  
Freshman Attendant

May

19



*Miss Nancy Stedman*  
Sophomore Attendant

Day

*Miss Barbara Stulvey*  
Freshman Attendant

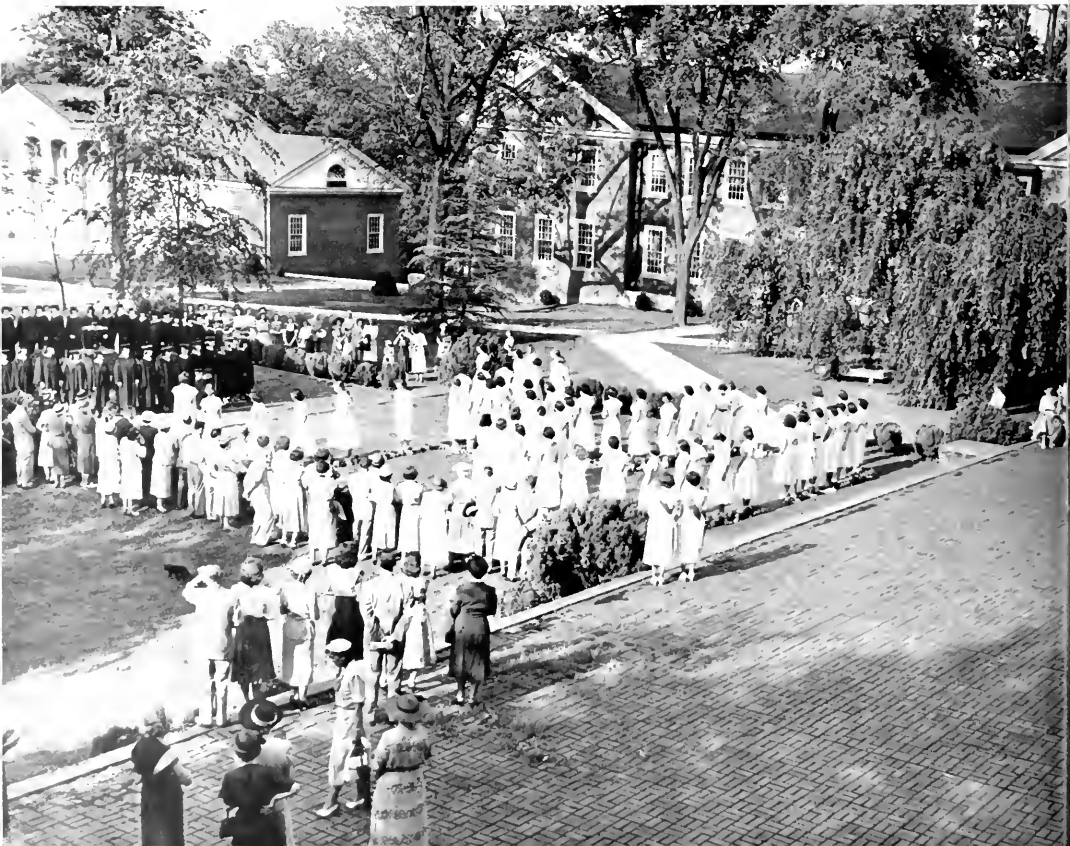


53

# The Time Has Come

We paused before the doors of Odell — a long line of black-robed, black capped figures . . . a moment this side of the future . . . a grain in the hour-glass of time, preparing to drop swiftly.

Memories of the past four years appeared and fled quickly before our eyes—years of study, gossip, tears, and forming friendships, each girl remembering the precious moments which symbolized her college days. But then, too soon, the music led our venturing feet down the well-worn aisles, and as it swelled to a throbbing pitch, each of us heard the grain fall to join eternity—for we were then graduates.





## Commencement Program

FRIDAY, MAY 29, 1953

7:30 p.m.—Meeting of the Executive Committee of the Alumnae Association

SATURDAY, MAY 30, 1953

10:30 a.m.—Annual Meeting of the Alumnae Association—Odell Auditorium

1:00 p.m.—Alumnae-Student Luncheon including Banquet of the "Forty-Niners"—College Dining Room

3:00 p.m.—Reunion Class Meetings

4:00 p.m.—"Forty-Niners" Pilgrimage to the Bumpas-Troy Home

5:00 p.m.—Class Day Exercises—Terrace

6:30 p.m.—Senior Class Dinner

SUNDAY, MAY 31, 1953

11:00 a.m.—Baccalaureate Sermon—West Market Street Methodist Church  
Bishop Costen J. Harrell, D.D., Litt.D., *Bishop of Western North Carolina Conference*

2:00-4:00 p.m.—Art Exhibit—Art Studio

4:00 p.m.—Reception by President and Mrs. Harold H. Hutson honoring members of the graduating class—Parlors, Main Building

MONDAY, JUNE 1, 1953

10:30 a.m.—Graduating Exercises—Odell Memorial Auditorium

Annual Address—Dr. T. Chadbourne Dunham, M.A., Ph.D.  
*Professor of German and Humanities,  
Ohio Wesleyan University,  
Delaware, Ohio*

# Student List

Acey, Anne Darden, 160 Hawthorne Drive, Danville, Va.  
Albritton, Thelma, Snow Hill, N. C.  
Alexander, Janice, Chatham Hotel, Siler City, N. C.  
Allen, Margaret, 102 Dewees Ave., Rockingham, N. C.  
Anthony, Katherine, 110 Pine St., Gaithers, S. C.  
Armstrong, Jean, 22 Poplar St., Belmont, N. C.

Baber, Dorothy, 115 West Graham St., Shelby, N. C.  
Baddour, Charlene, 806 Stewart Ave., Clinton, N. C.  
Bain, Nancy, 335 Fountain Place, Burlington, N. C.  
Baker, Janelle, 1222 Mav Court, Burlington, N. C.  
Ballard, Mable, Rt. 2, Fuquay Springs, N. C.  
Ballard, Peggy Ann, 1424 Waverly Ave., Charlotte, N. C.  
Bass, Marcia, Sackett Point Road, North Haven, Conn.  
Bates, Sarah Ann, 1214 Princeton Ave., Charlotte, N. C.  
Beal, Martha, 506 Hillcrest Ave., Burlington, N. C.  
Beam, Jane, 612 Sunset Drive, High Point, N. C.  
Beasley, Rachel, Box 474, Mayfield, N. C.  
Bellamy, Frances, 1918 Market St., Wilmington, N. C.  
Benfield, Betty Jo, Walkertown, N. C.  
Betts, Anita, Caixa Postal 208, Passo Fundo-R.G.S., Brazil  
Bishop, Betty, 900 Courland St., Greensboro, N. C.  
Blackwell, Harriett, 1312 Rivermont Ave., Lynchburg, Va.  
Bodie, Sylvia, Camp Peary, Williamsburg, Va.  
Boone, Joyce, Rt. 2, Nashville, N. C.  
Bradshaw, Mildred, 237 West Elm St., Graham, N. C.  
Bradsher, Sylvia, Crestwood Drive, Roxboro, N. C.  
Brady, Elizabeth Ann, Rural Hall, N. C.  
Brannock, Ann, 1210 Aycock Ave., Burlington, N. C.  
Brantley, Grace, 120 Church St., Henderson, N. C.  
Brinkley, Jane, 315 W. Guilford St., Thomasville, N. C.  
Brown, Janet, 711 W. Fifth Ave., Lexington, N. C.  
Brown, Julia, 3605 Madison Ave., Greensboro, N. C.  
Brown, Mary Esther, 188 Flint St., Asheville, N. C.  
Baie, Martha, Biscoe, N. C.  
Bunn, June, 501 Center St., Nashville, N. C.  
Burch, Martha, 322 S. Mendenhall St., Greensboro, N. C.  
Butler, Carroll, Box 205, Spray, N. C.  
Byrd, Jean, Mocksville, N. C.

Callihan, Mary Ann, 2909 Wildwood St., Greensboro, N. C.  
Callihan, Sara Lee, 2909 Wildwood St., Greensboro, N. C.  
Campan, Eugenia, Alliance, N. C.  
Carr, Allie, Roseboro, N. C.  
Caudle, Mary Jo, 1607 Asheboro St., Greensboro, N. C.  
Caudle, Ruth, Rt. 1, Yadkinville, N. C.  
Cheatham, Carolyn Jones, 1877 Blenheim Rd., Roanoke, Va.  
Chawson, Bessie Ann, Rt. 4, Box 303, Kannapolis, N. C.  
Clegg, Kathryn, 2610 Springwood Drive, Greensboro, N. C.  
Clark, Jane, Box 332, Mocksville, N. C.  
Cobb, Jean, La Grange, N. C.  
Cochran, Bernell, 5 Farly Ave., Spray, N. C.  
Cocke, Jane, 430 Merrimon Ave., Asheville, N. C.  
Coley, Millicent, 115 Ashe Ave., Newton, N. C.  
Connatser, Shirley, Rt. 3, Waynesville, N. C.  
Connelly, Jane, Swannanoa, N. C.  
Cozine, Lael, 34 N. Crowell St., Concord, N. C.  
Coster, Betty, 4507 Winston Rd., Greensboro, N. C.  
Cousins, Anne, Enfield, N. C.  
Covington, Catherine, 1026 W. Market St., Greensboro, N. C.  
Cranford, Nancy, 206 Stone St., Thomasville, N. C.  
Craven, Barbara, Main St., Rameur, N. C.  
Craven, Marie, 214 S. Tremont Drive, Greensboro, N. C.

Craver, Patsy, 328 West Sixth St., Lexington, N. C.  
Crawford, Patsy, Box 134, Rowland, N. C.  
Cross, Jo, West Street, Huntersville, N. C.  
Crowder, Joy, 27 Majestic Ave., Asheville, N. C.  
Crowell, Marilyn, 413 S. Aspen St., Lincolnton, N. C.

Dail, Faye, Strawberry Hill, Edenton, N. C.  
Dameron, Nette Russell, Rt. 1, Yanceyville, N. C.  
Davidson, Janette, Rt. 3, Box 330, Greensboro, N. C.  
Davidson, Jolyn, 2909 Cameron Mills Road, Alexandria, Va.  
Davis, Mary Jo, Box 36, West End, N. C.  
Deik, Betty, 118½ N. Main, High Point, N. C.  
Duckens, Helen, Halifax, N. C.  
Diehl, Sylvia, 208 Rose St., Rocky Mount, N. C.  
Draper, Frances, 106 Park St., Martinsville, Va.  
Driessell, Martha, 207 Carlisle Way, Norfolk, Va.  
Dudley, Eleanor Ann, Metcalf Road, Shelby, N. C.  
Dull, Joanne, C206 Robin Hood Road, Winston-Salem, N. C.

Edwards, Elizabeth, 314 East 50th St., Savannah, Ga.  
Edwards, Jane, Box 12, Red Oak, N. C.  
Ellis, Jeanne, 116 East Church St., Nashville, N. C.  
Elrod, Gerry Lee, Box 19, Henderson, N. C.  
Evans, Carolyn, 1312 Brooks St., Raleigh, N. C.  
Ewing, Anne, Box 233, Ellerbe, N. C.

Faulkner, Ellen, 1953 Woodcrest Ave., Charlotte, N. C.  
Fields, Ann, Box 179, Rt. 4, Greensboro, N. C.  
Fields, Patricia, Rt. 1, Pleasant Garden, N. C.  
Funch, Frances, 533 South 3rd St., Smithfield, N. C.  
Fisher, Frances, Rt. 1, Canton, N. C.  
Floyd, Elizabeth, 125 Glenwood Ave., Raleigh, N. C.  
Fonville, Sara, 113 Bolling Road, Burlington, N. C.  
Fortner, Jean, Box 112, Davidson, N. C.  
Foster, Letty Jean, Mocksville, N. C.  
Foust, June, 206 N. 9th St., Mebane, N. C.  
Francis, Nancy, 312 Boundary St., Waynesville, N. C.  
Frazier, Rebecca, 2404 Sylvan Rd., Greensboro, N. C.

Gaddy, Joann, Longhurst, N. C.  
Garrett, Alice, 415 Tarpley St., Burlington, N. C.  
Garrett, Helen, 213 Main St., Hazelwood, N. C.  
Garris, Juanita, 403 Montague Ave., Aviden, N. C.  
Gentry, Jean, Box 583, Roxboro, N. C.  
Gibbs, Jayne, 358 Brevard Road, Asheville, N. C.  
Gibbs, Sue Jenkins, Cedar Falls, N. C.  
Gibson, Augusta, 416 Arbor Road, Winston-Salem, N. C.  
Gillespie, Lorraine, 107 Queens Road, Jacksonville, N. C.  
Gilliam, Jean, 204 Montlieu Ave., Thomasville, N. C.  
Glosson, Martha, 112 North Rose Ave., Kannapolis, N. C.  
Gobbel, Rachel, 534 Lambuth Blvd., Jackson, Tenn.  
Golorth, Mary Lou, 205 Pine St., Rutherfordton, N. C.  
Goodman, Margaret, Chadburn, N. C.  
Goodman, Martha Louise, Chadburn, N. C.  
Graham, Patsy, 705 West Main St., Ikin, N. C.  
Grant, Olema, Rt. 1, La Grange, N. C.  
Greenberg, Joan, 303 J. Hendrix, Greensboro, N. C.  
Greene, Joan, 7 Hillcrest Drive, Lexington, N. C.  
Greenhill, Phyllis, 119 West Wilson Ave., Mooreville, N. C.  
Gresh, Betty, 924 N. Main, Danville, Va.  
Gunter, Mary Louise, Box 36, Pittsboro, N. C.  
Gwyn, Lucy Ellen, Rt. 2, Mount Airy, N. C.



# Student List

- Hackett, Betty, Box 2075, Durham, N. C.  
Haltom, Nancy, 315 Ardmore Circle, High Point, N. C.  
Harbison, Louise, 911 N. Washington St., Shelby, N. C.  
Harrison, Mallie Sue, Rt. 4, Linwood Rd., Gastonia, N. C.  
Harmon, Marlene, Rt. 4, Linwood Rd., Gastonia, N. C.  
Harris, Elizabeth, 3 Pine Tree Rd., Asheville, N. C.  
Harris, Mary Jo, % Duke Power Co., University, N. C.  
Harris, Maude Elizabeth, 412 E. Geer St., Durham, N. C.  
Harty, Ann Allison, 411 Dale Ave., Gastonia, N. C.  
Hart, Janice, 216 Branner Ave., Jefferson City, Tenn.  
Harwood, Helen, 125 Love St., Albemarle, N. C.  
Hayes, Marjorie, 1304 Elwell Ave., Greensboro, N. C.  
Hayes, Sue, 304 South Connor St., Wilson, N. C.  
Heath, Margaret, Box 244, Clinton, N. C.  
Hendricks, Betty, 510 Woodlawn Ave., Greensboro, N. C.  
Hendrix, Ann Louise, 2420 Fairway Drive, Winston-Salem, N. C.  
Hester, Jeanette, 4401 Oakland Ave., Greensboro, N. C.  
Higgins, Margaret, 1610 Walker Ave., Greensboro, N. C.  
Hileman, Mary Alda, Box 125, Kannapolis, N. C.  
Holland, Rose Mae, 519 South 5th St., Smithfield, N. C.  
Holmes, Ruth, 1611 Branch St., Wilson, N. C.  
Holt, Elizabeth, 401 East H St., Erwin, N. C.  
Holt, Nancy, 401 East H St., Erwin, N. C.  
Homesley, Shirley, 121 West Main St., Cherryville, N. C.  
Hooper, Jean, 907 McGee St., Greensboro, N. C.  
Horn, Marilyn, % The Man's Store, Forest City, N. C.  
Hoyle, Joann, Spring St., Thomasville, N. C.  
Huggins, Elizabeth, 406 S. Poplar St., Lincolnton, N. C.  
Hunnicut, Julia, Box 92, Franklin, N. C.  
Hutchins, Louise, Rt. 1, Box 86, Bellevue Creek, N. C.  
Hutto, Edith, Rt. 2, Box 132, Ridgeway, S. C.
- Jackson, Susan, 810 W. Fourth St., Ayden, N. C.  
James, Katherine, 24 Tryon St., Asheville, N. C.  
Jenkins, Mary Ann, 813 S. York St., Gastonia, N. C.  
Jolliff, Ethel, 5 Hillcrest, Enka, N. C.  
Jones, Bobbie, Ramseur, N. C.  
Jones, Patricia, Rt. 1, Graham, N. C.  
Joyner, Peggy, 316 East Third St., Siler City, N. C.
- Keil, Ann, 2320 Harvie Rd., Richmond, Va.  
Kendrick, Frances, 120 Oakland St., Mt. Holly, N. C.  
Kendrick, Guydana, 411 Ohio St., Spindale, N. C.  
Kiger, Ivah Mae, Rural Hall, N. C.  
Kim, Soo Johung, 8 Sin-chang Dong 2 Ka, Pusan, Korea.  
King, Mabel, 120 N. Hilliard Street, Nashville, N. C.  
Kiser, Gilsta Ann, Bessmer City, N. C.  
Kiser, Virginia, 1404 West First St., Winston-Salem, N. C.  
Knight, Judy, 12 Linden Ave., Asheville, N. C.  
Knight, Margaret, Box 96, Whitakers, N. C.  
Knox, Nancy, 1228 S. Live Oak Parkway, Wilmington, N. C.  
Koonts, Jeanne, 56 Lakeshore Drive, Asheville, N. C.
- Lackey, Jo Alyce, 411 N. Green St., Wadesboro, N. C.  
Lackey, Norma Jean, Stony Point, N. C.  
Lassiter, Mary Jane, 520 W. Gaston St., Greensboro, N. C.  
Laughlin, Ruth, Box 564, Rt. 6, Greensboro, N. C.  
Lawrence, Betsy, 500 Cape Fear Ave., Fayetteville, N. C.  
Lee, Ann, 4109 Park Avenue, Richmond, Va.  
Lee, Barbara, 311 Church St., High Point, N. C.  
Lee, Martha, 301 East F St., Erwin, N. C.  
Leftwich, Lorena, Rt. 1, Box 250, Mt. Airy, N. C.  
Lewis, Jane, 2206 Spring Garden St., Greensboro, N. C.
- Little, Joy, Denver, N. C.  
Long, Margaret, 207 E. Harden St., Graham, N. C.  
Long, Patricia, 1049 Front St., Burlington, N. C.  
Longest, Judith, 329 N. Main St., Graham, N. C.  
Love, Elizabeth, 1309 Northfield St., Greensboro, N. C.  
Loven, Evelyn, Spruce Pine, N. C.  
Lynch, Ruth, Box 90, Catawba, N. C.
- McCollum, Ann, Rt. 3, Monroe, N. C.  
McCoy, Joann, 13 Warren Court, Sumter, S. C.  
McDonald, Mary Louise, Carthage, N. C.  
McElrath, Carolyn, 18 Pennsylvania Ave., Canton, N. C.  
McGerity, Marilu, 402 Carolina Circle, Durham, N. C.  
McLain, Ann, Rt. 7, Box 696, Charlotte, N. C.  
McLarty, Margaret, 108 N. Academy Street, Mooreville, N. C.  
McRae, Doris, Rowland, N. C.  
Maples, Gwendolyn, 330 S. Green St., Wadesboro, N. C.  
Marsh, Claudia, 215 Brent St., Wadesboro, N. C.  
Massey, Patricia, 900 N. Hamilton, High Point, N. C.  
Masters, Mozelle, Avondale, N. C.  
Matthews, Louisa, 14 Washington Place, Greenville, S. C.  
Maxwell, Emma, Stedman, N. C.  
May, Martha, 149 Brevard Road, Asheville, N. C.  
Meredith, Jo Anne, Rt. 1, Thomasville, N. C.  
Merritt, Barbara, P. O. Box 684, Hickory, N. C.  
Midgett, Doris, 203 South 21st St., Morehead City, N. C.  
Miller, Alice, Rt. 4, Statesville, N. C.  
Mitchell, Portia Vann, Fuquay Springs, N. C.  
Moffitt, Sylvia, 217 Chisholm St., Sanford, N. C.  
Montgomery, Mary Lou, 109 South Main St., Reidsville, N. C.  
Morton, Ramona, East Marion Station, Marion, N. C.
- Neal, Lee, Keyssville, Va.  
Noland, Margaret, Rt. 1, Box 38, Clyde, N. C.
- Oakley, Eleanor, 229 North Pierce St., Washington, N. C.  
Owen, Ava Ray, Raeford Rd., Fayetteville, N. C.  
Owen, Betty Jean, 16 Vance Crescent, Asheville, N. C.  
Owen, Katherine, Rt. 3, Raeford Rd., Fayetteville, N. C.  
Owen, Patricia, 210 Crowell Rd., Lincolnton, N. C.  
Owens, Shelton, East Main, Plymouth, N. C.
- Padley, Jo Ann, 505 S. Lee St., Ayden, N. C.  
Palmore, Mary Helen, 2005 Colonial Pl., Winston-Salem, N. C.  
Parker, Anne, Box 386, Littleton, N. C.  
Pateljadas, Katherine, 18 Swannanoa Ave., Asheville, N. C.  
Payne, Eleanor, Box 606, Galax, Va.  
Payne, Mary, 501 North Sixth Ave., Hopewell, Va.  
Pegg, Paula, Nashville, N. C.  
Penland, Modena, 2 Von Ruck Terrace, Asheville, N. C.  
Penny, Jean, Box 77, Gibsonville, N. C.  
Polk, Peggy, Rt. 1, Midland, N. C.  
Price, Wanda, 808 Brown St., Greensboro, N. C.  
Pritchett, Barbara, Rt. 6, Reidsville, N. C.  
Rugh, Mary, Rt. 5, Fayetteville, N. C.
- Ratliff, Julia, Box 35, Rockingham, N. C.  
Reid, Mary Ann, 79 Cumberland Ave., Asheville, N. C.  
Riley, Patricia Ann, 1420 Enclid Ave., Charlotte, N. C.  
Robins, Jane, 207 Elnow Drive, Greensboro, N. C.  
Robinson, Hannah Elizabeth, 27 Morven Rd., Wadesboro, N. C.  
Robinson, Sue, Norlina, N. C.  
Roebuck, Carolyn, 306 N. Main St., Farmville, N. C.

# Student List

- Rose, Edith Powell, 421 S. Third St., Smithfield, N. C.  
Ross, Sue, Rt. 1, Thomasville, N. C.  
Rudd, Anne, 109 Kensington Rd., Greensboro, N. C.  
Russell, Anne, 410 S. Mendenhall St., Greensboro, N. C.  
Russell, Stella, 215 High School Drive, Roxboro, N. C.
- Sanders, Frances, 1119 E. Franklin Ave., Gastonia, N. C.  
Savage, Alice, Roseboro, N. C.  
Scarborough, Maxine, Box 294, Manteo, N. C.  
Scarborough, Ruth, 634 Walker Ave., Greensboro, N. C.  
Schremp, Mary, 2940 Northumberland Ave., Richmond, Va.  
Schwarz, Johannah, 84 Seneca Ave., Tuckahoe, N. Y.  
Seagroves, Shirley, 115 Stradleigh Rd., Wilmington, N. C.  
Selden, Blanche, 605 Cedar St., Weldon, N. C.  
Sharpe, Frances, Rt. 5, Monroe, N. C.  
Shepherd, Marilyn, 20 Ideal Way, Concord, N. C.  
Shinn, Valoree, 400 Pine St., Kannapolis, N. C.  
Shuller, Mary Ada, Conway, N. C.  
Sigman, Jacqueline, 1022 Westover Terrace, Greensboro, N. C.  
Sillmon, Mary Nell, Rt. 1, Greensboro, N. C.  
Simpson, Peggy, Stokesdale, N. C.  
Smith, Barbara Anne, 405 E. Burgess St., Elizabeth City, N. C.  
Smith, Dorothy, 812 W. Mountain St., Kings Mountain, N. C.  
Smith, Patricia, Rt. 1, Goldsboro, N. C.  
Smith, Peggy, Rt. 3, Thomasville, N. C.  
Snead, Nancy, 2725 S. Uhle St., Arlington, Va.  
Snyder, Nancy Kerr, 2356 Lurway Ave., Winston-Salem, N. C.  
Spivey, Roselyn, 204 Johnson St., Chnton, N. C.  
Stallings, Hazel, Rt. 1, Box 1A, Bayside, Va.  
Stalvey, Barbara, 918 Courtland Ave., Reidsville, N. C.  
Stanford, Carolyn, Lancaster Rd., Chester, S. C.  
Stanley, Geraldine, Elizabethtown, N. C.  
Stanton, Peggy, Rt. 4, Henderson, N. C.  
Starke, Mary Lou, 801 Jackson St., Roanoke Rapids, N. C.  
Starnes, Doris, Rt. 5, Monroe, N. C.  
Stedman, Nancy, Pittsboro, N. C.  
Steedman, Norma, 14 Rosewood Ave., Asheville, N. C.  
Stenbridge, Mary Lane, 132 West End Ave., Danville, Va.  
Stewart, Sara Ann, 731 S. Fayetteville St., Asheboro, N. C.  
Stokes, Edna, Box 111, Pinetops, N. C.  
Stoner, Betsy, 512 Fairview Dr., Lexington, N. C.  
Stott, Martha, 403 N. Madison, Whiteville, N. C.  
Stough, Phyllis, Rt. 3, Albemarle, N. C.  
Strayhorn, Peggy, Rt. 2, Durham, N. C.  
Stuart, Sallie, 1011 Elwell Ave., Greensboro, N. C.  
Sugg, Christine, Snow Hill, N. C.  
Sutler, Martha, Garysburg, N. C.  
Swain, Virginia, Box 57, Catechee, S. C.
- Talton, Joyce, Rt. 2, Smithfield, N. C.  
Tappan, Olivia, 300 N. Collins St., Nashville, N. C.  
Taylor, Ann, 240 Walnut St., Statesville, N. C.
- Teague, Patricia, Box 616, Marion, N. C.  
Thompson, Carolyn, 417 West Marion St., Shelby, N. C.  
Thompson, Elizabeth M., Box 426, Sierra Madre, Calif.  
Thornburg, Erna, 226 E. Wainman Ave., Asheboro, N. C.  
Trotman, Ruth, Pinebluff, N. C.  
Furlington, Helen, 310 Woodland Dr., Jacksonville, N. C.  
Turner, Jean, Fair Bluff, N. C.  
Tysinger, Betty Ann, 210 Stone St., Thomasville, N. C.  
Tyson, Dana, 16 Vail Place, Portsmouth, Va.  
Tyson, Peggy Jane, Rt. 1, Stantonburg, N. C.
- Varnet, Sarah, Rt. 1, Staunton, Va.  
Vaughan, Mary Lou, Box 15, Prospect, Va.  
Via, Bennie Ruth, 18 Ellsworth St., Martinsville, Va.  
Via, Joyce, 18 Ellsworth St., Martinsville, Va.  
Vittands, Laila, 12 School St., Boston 13, Mass.
- Wagner, Sally, 113 Kimball St., Kannapolis, N. C.  
Walker, Elizabeth, 101 Spruce St., Thomasville, N. C.  
Washam, Patsy Ann, Box 155, Bessemer City, N. C.  
Warren, Norma Jean, 935 South Park St., Asheboro, N. C.  
Washam, Patsy Ann, Box 155, Bessemer City, N. C.  
Watkins, Gladynell, Sulphur Springs Rd., Forest City, N. C.  
Watkins, Jo Ann, Rt. 7, Box 1166, Charlotte 5, N. C.  
Waugh, Martha, 810 Courtland St., Greensboro, N. C.  
Webb, Eleanor, Long Ave., Rockingham, N. C.  
Webb, Louise, Louisburg, N. C.  
Wells, Jane, 1008 McGee St., Greensboro, N. C.  
Wells, Mary Lee, 1008 McGee St., Greensboro, N. C.  
West, Peggy, 35 West St., Asheville, N. C.  
Wethington, Angelyn, 1620 Ramsey St., Fayetteville, N. C.  
White, Doris, Rt. 1, Greensboro, N. C.  
White, Margaret Anne, Hawkins Ave., Sanford, N. C.  
White, Mary Lee, 1215 16th St., Greensboro, N. C.  
White, Ruth Ann, 7463 Gleneagles Rd., Norfolk, Va.  
Whitfield, Peggy, Rt. 4, Box 63, Wilson, N. C.  
Widlenhouse, Martha, Rt. 8, Box 410, Greensboro, N. C.  
Wilkie, Amelia, 515 West Main St., Forest City, N. C.  
Wilkinson, Anne, 611 Goodwin Ave., Anniston, Ala.  
Willford, Betty Anne, 905 Elm St., Lumberton, N. C.  
Wilson, Betty, Box 5181, Biltmore, N. C.  
Wilson, Madge, Rt. 1, Frimay, N. C.  
Wilson, Marion Beach, Box 37, Roseboro, N. C.  
Windham, Shirley, 1305 Cardinal Place, Greensboro, N. C.  
Wmslow, Ellen, 15 West Main St., Plymouth, N. C.  
Winters, Jacqueline Knott, Box 153, Guilford College, N. C.  
Workman, Joyce, Rt. 1, Mebane, N. C.  
Wright, Patricia, 400 Adams St., Greensboro, N. C.  
Wyne, Virginia Anne, Box 154, Boydton, Va.
- Young, Damm Ann, 45 West Main St., Cameto, N. Y.



DR. PEPPER BOTTLING CO., INC.  
GREENSBORO, N. C.

"If it is for the office, we have it"

OFFICE FURNITURE AND SUPPLIES

Engraved Wedding Invitations and  
Announcements

**S. T. WYRICK AND COMPANY**

117 N. Greene Street  
Phone 2-4133

## THE BOAR & CASTLE

"Greensboro's Most Popular  
Sandwich Shop"

Spacious Parking Ground

West Market Street Extension

## GREEN VALLEY GOLF COURSE

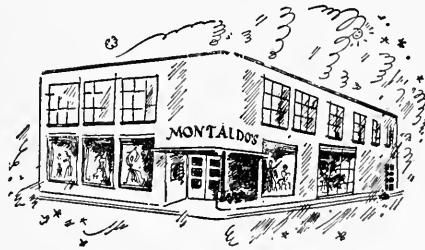
CONGRATULATES THE '53 SENIORS

Aubrey C. Apple, Pro

# MONTALDO'S

ELM AT GASTON

GREENSBORO, N. C.



COATS—SUITS—DRESSES

SWEATERS—SKIRTS—JACKETS

HATS—RAINCOATS—SHOES

COSMETICS—ACCESSORIES—FURS



© 1946 The C.C. Co.

5¢

BOTTLED UNDER AUTHORITY OF THE COCA-COLA COMPANY BY

Greensboro Coca-Cola Bottling Company  
GREENSBORO, N. C.

## Does Climbing Stairs Wear You Out?

Make it easier for older folks and  
invalids to get upstairs.

Install an  
ELEVETTE (Home Elevator)  
or an  
INCLINATOR (Stair Climber)

These are attractive and safe. They are operated  
by ordinary house current.

Call

**Monarch Elevator & Machine Co.**

Greensboro, N. C.

Phone 2-4563

Compliments of

**THOMAS & HOWARD CO.**

E. Bessemer Avenue

Phone 2-5171 or 4-2878

Compliments of

**MORRISON-NEESE**



"Carolina's Leading Home  
Furnishers for 36 Years"



112 S. Greene St.  
GREENSBORO, N. C.

Compliments of

**HANES**

Funeral-Ambulance Service  
Telephone 2-5158

**QUALITY CLEANERS  
NEW ERA CLEANERS**

231 Summit Avenue

Phone 2-2181

**PHIPPS HARDWARE COMPANY, INC.**

215 N. Elm Street

Phone 2-0179

GREENSBORO, N. C.

Reach Sporting Goods, Hardware, Shop Equipment, Appliances  
Gift Department — 2nd Floor

**BANNER TRUELOVE CO.**

WHOLESALE GROCERS

GREENSBORO, NORTH CAROLINA

**HOME SPECIALTY  
FLOORCOVERING  
BLINDS & SHADES**

1300 Battleground  
GREENSBORO, N. C.

**S Y K E S  
SHOE SHOP S  
& SHINE PARLOR**

**SOUTHERN SALES CO.**

ELECTRICAL APPLIANCES  
KELLY SPRINGFIELD TIRES

224 East Market St.  
P. O. Box 615

Greensboro, N. C.  
Phone 3-3437

Compliments of

**HARRY D. KELLETT, INC.**

DODGE—Sales & Service—PLYMOUTH

449 West Market Street

Greensboro, N. C.

*Everything Musical*  
**MOORE MUSIC COMPANY**

615 W. Market Street  
GREENSBORO, N. C.

Compliments of

**EARL'S SERVICE**

700 W. Market St.

Greensboro, N. C.

**SEDGEFIELD INN**

## SUNSET HILLS RESTAURANT

1618 Friendly Road at Aycokk

Phone 2-4239

GREENSBORO, N. C.



MANUFACTURED IN  
GREENSBORO BY

### H. W. LAY COMPANY, INC.

3300 Spring Garden Street

## Methodist Board of Publication, Inc.

Box 508

Greensboro, N. C.

Publishers of  
N. C. CHRISTIAN ADVOCATE  
N. C. Methodism's News Weekly Magazine  
OPERATORS OF PIEDMONT PRESS  
COMMERCIAL PRINTERS

A Home with True Southern Hospitality

### DOGWOOD INN

TOURIST HOME

900 W. Market St.

Greensboro, N. C.

Mr and Mrs S W Easty

Phone 3-5014

Compliments

# PEPSI-COLA

Phone 2-3461

106 Pearson Street  
GREENSBORO, N. C.

You are always welcome at  
your College Book Store

## THE COLLEGE BOOK STORE

Miss Lois Fitch, Manager

## The Lotus Restaurant

CHINESE AND AMERICAN DISHES

105 South Greene St.

We prepare orders of chow mein  
and chop suey to take out.

we invite you to visit

## Ellis Stone

the store of individual shops  
especially for the college girl

## FOSTER-CAVINESS CO., INC. WHOLESALE FRUITS AND VEGETABLES

Phone Sales Dept. 2-5175

Phone Office 3-0571

409 Morehead Avenue  
GREENSBORO, N. C.

*Gladys says . . .*

For Delicious Ice Cream—Banana Splits—

Sundaes—and Milk Shakes

Bring the gang out to the

## **GUILFORD DAIRY BAR**

WEST MARKET STREET EXTENSION

Air-Conditioned the Year 'Round

Open Daily 'til 11:00 P.M.



### **WILLIAM E. PANAS HAM'S SUNDRY STORE**

For Delicious Sandwiches, Hamburgers  
Hot Dogs, Thick Milk Shakes, Ice Cold Drinks  
Drugs—Magazines

Stop at Ham's Drive In

Aycock & Friendly Road

GREENSBORO, N. C.

We Deliver

Call 3-5658

### **THE JEWEL BOX**

Greensboro's Leading

Diamond and Gift Store

For Over Thirty Years

134 South Elm St.

Greensboro, N. C.

1952

1953

Oh! What Sweet Memories

### **PECK'S BAKERY**

210 South Greene Street

GREENSBORO, N. C.

### **MADE RITE SANDWICH COMPANY**

FRESH SANDWICHES—WHOLESALE ONLY

Telephone 2-0549

715 Battleground Ave.

GREENSBORO, N. C.

FOR PARTIES, PICNICS, MEETINGS

# ROYAL CROWN REG. U. S. PAT. OFF. COLA

**BEST BY TASTE-TEST**

GREENSBORO NEHI BOTTLING COMPANY, 823 Battleground Avenue

TOWN  
*And*  
Country  
GIFT & ART SHOP  
1606 MADISON AVENUE  
For Unusual Gifts

McNeely's Drug Store

Just Across the Way

Phone 5117

718 W. Market St.

GREENSBORO, N. C.

BLISS', INC.

*Home of Fine Foods*

GREENSBORO, N. C.

Telephone 2-1450

L. J. Bliss, Pres.

1416 Northwood at Wendover

LITTLE'S

SUPER FOOD VALUES

403-5 Tate Street

GREENSBORO, N. C.

Wash-O-Mat

SELF-SERVICE LAUNDRY

328 Tate St.

Phone 2-1329

OLIVER'S DRUG STORE

457 W. Market St.

The Store of Personal Service

Half Way to Town

Phone 2-4007



S & W  
CAFETERIAS

ASHEVILLE, N. C. WASHINGTON, D. C. KNOXVILLE, TENN.  
ATLANTA, GA. CHATTANOOGA, TENN. RALEIGH, N. C.  
CHARLOTTE, N. C. GREENSBORO, N. C. ROANOKE, VA.

Over twelve million meals served yearly





The James Addison Jones Memorial Library

# GREENSBORO COLLEGE

Chartered 1838

The Pioneer of Higher Education for Women in North Carolina

**ACCREDITED** by the North Carolina College Conference, the Southern Association of Colleges and Secondary Schools, the University Senate of the Methodist Church, and the National Association of Schools of Music, Member, also, of Southern Association of Colleges for Women, and Association of American Colleges.

**PRACTICAL:** While pursuing courses leading toward the A.B. or B.M. degree, students may secure pre-vocational training leading toward dietetics, nursing, laboratory technique, medicine, library science, social service, church work, home making, and so forth. Opportunity is afforded students to qualify for Class-A Teachers' Certificates in Primary, Grammar Grade, and High School fields.

"Greensboro College through a long period of years has rendered outstanding service to the educational needs of this State."—CLYDE A. ERWIN, *Late State Superintendent of Public Instruction.*

**PROGRESSIVE:** Rich in traditions of over a century. Regular liberal arts curriculum adapted and enriched in line with modern world conditions.

**DISTINCTIVE:** Emphasizing not size but quality, Greensboro College is small enough for personal contacts and close friendships and big enough for variety and breadth of culture. Beautiful campus dotted with tall pines, stately oaks, and sturdy elms, with ivy-clad buildings modernized and homelike.

**CHRISTIAN:** Although not sectarian, Greensboro College rests frankly and firmly upon religious morals and moral and religious sanctions.

"I have heard of Greensboro College since my childhood. I have been acquainted with a large company of its alumnae. I have observed its work through many years. It maintains a noble Christian atmosphere and genuine scholastic standards."—BISHOP COSTEN J. HARRELL.

For further information write **The Registrar**

**GREENSBORO COLLEGE**

GREENSBORO, N. C.



We rate. We are the luckiest girls to get our pictures in the G. C. Echo again. But . . . how do the college girls do their homework? Ours is so hard.

Sandy and Nancy Martin.

## MARTIN'S STUDIO

112 E. Gaston Street

GREENSBORO, N. C.



### BE A COLLEGE PHOTO FAN!

Your pictures of school activities will be greatly prized in the years ahead. Good snaps are easier than ever to get—indoors or out—in black-and-white or color.

For cameras, film and flash bulbs drop in at  
**THE ART SHOP, INC.**

118 W. Market Street

ENJOY 'S & P'

Wherever You Meet for Refreshing Treats

Peanut  
Butter  
Sandwiches



Peanuts  
Candy  
Potato Chips

*Remember This Seal—It's Your Assurance of the Best*

Compliments of

**C. A. McNAIRY POULTRY CO.**

812 South Ashe

Phone 2-5726

GREENSBORO, N. C.

**LOUISE P. WALTERS**

*Flowers*

Phone 3-6811

High Point Road

GREENSBORO, N. C.

Compliments of

**MOJUD HOSIERY COMPANY**

GREENSBORO, NORTH CAROLINA

# TUCK PHOTO SUPPLIES, Inc.

225 N. Elm Street

CAMERAS—PROJECTORS—FILMS  
DARKROOM SUPPLIES—PHOTO FINISHING

GREENSBORO, N. C.

Phone 3-7170

## DICKS LAUNDRY COMPANY

*Launderers and Cleaners*

Phone 7101

ELLEN *Fields*  
212 So. Greene

the Shop for the

# TALL

Girl

and

“The Not  
so Slender”

Size  
38 to 54  
12' to 26'

Compliments of

## NEESE SAUSAGE COMPANY

Alamance Road

Dial 2-4000

For the BEST in MOTION  
PICTURE entertainment attend  
Greensboro's Finest Theatres!  
**CAROLINA CENTER  
NATIONAL**

Don't Miss  
*Dream Time on WBIG*  
11:15-12 Midnight

A dreamy program of uninterrupted music heard  
each week-night, with your favorite WBIG an-  
nouncers . . . choosing their favorite music

W  
CBS  
GREENSBORO, N. C.



**BLUEBIRD TAXI, INC.**

Dial 2-5112

Dial 2-5112

Two-way Radio Equipped Cabs

Congratulations to another great Greensboro  
Institution

**W. H. ANDREWS, C.L.U.**

Manager and Associates

Home Office Agency

Jefferson Standard Life Insurance Company

**LEON**

Continuity of study plus application—make this  
the salon for the ultimate in hairdressing.

PERMANENT WAVING

Tate at Walker

Phone 6526

**FRANKLIN'S DRUG STORE**

Prescription Druggists

Where G. C. and W. C. Girls Meet

401 Tate at Walker Ave.

Greensboro, N. C.

**Matlock's Self-Service Stores**

950 Walker Avenue

3813 E. Bessemer Avenue

Compliments of

**SPIC AND SPAN GRILL**

332 Tate

Telephone 4-7261

**THE O. HENRY**

*"Greensboro's Leading Hotel"*



Convenient and Comfortable. 300 Rooms,  
Each with Bath. Coffee Shop-Restaurant.  
Air-Conditioned Banquet and Convention  
Facilities.



Nolan B. Williams, Manager

GREENSBORO, NORTH CAROLINA

GREENSBORO'S LARGEST  
HOME OWNED AND OPERATED  
FURNITURE STORE



## LIBERTY MARKET

334 South Elm Street

Phone 2-4139

FRESH AND CURED MEATS

Compliments of

## COLUMBIA LAUNDRY

Bottleground Ave. at Cedar

Telephone 8193

Compliments of

## PET DAIRY PRODUCTS CO.

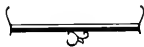
OFFICIAL PHOTOGRAPHERS FOR THE

1953 ECHO



# COLONNA STUDIOS, INC.

*Photographers of College Yearbooks*



114 Park Row, New York 7, New York

**JOHNSON'S ESSO SERVICE**

24 Hour ESSO Service

600 West Market St.

Greensboro, N. C.

**SASLOW'S, INC.**

Nationally Advertised Silver

Diamonds and Watches

Greensboro's Largest Credit Jewelers

Compliments of

**S. H. KRESS & CO.**

**PLANTATION SUPPER CLUB**

**THE COLLEGE SHOP**

Walker Ave. at Tate St.

**GREENSBORO, N. C.**

KNITTING SUPPLIES—SCHOOL SUPPLIES—GIFT ITEMS

**THE KING COTTON  
GREENSBORO**



**Haywood Duke**

Manager

*Don't Say Bread, Say*

*Holsum*

**JONES BROTHERS  
BAKERY, INC.**



**GREENSBORO, NORTH CAROLINA**

**POWELL'S SHOES**

I. MILLER—MADEMOISELLE

WALK-OVER—JOYCE

115 South Elm St.

Greensboro, N. C.

Compliments of

**VICTORY ART THEATRE**

326 Tate St.

Phone 3-3010





**CHARLOTTE  
ENGRAVING  
COMPANY**

*Engravers and Designers of College Yearbooks*

**CHARLOTTE, N. C.**





# *Working* **TOGETHER...**

**W**orking together is the theme of the OBSERVER PRINTING HOUSE publications department. We cannot do our best work without your assistance—you cannot expect to get the best results from your efforts without willing assistance and coöperation from your printer.



ARTISTS AND CRAFTSMEN WORK  
TOGETHER IN CREATING IMPRESSIVE  
AND LASTING RECORDS OF YOUR  
YEARS IN SCHOOL—

