

• • • **Echo**

Digitized by the Internet Archive  
in 2010 with funding from  
University of North Carolina at Chapel Hill

<http://www.archive.org/details/echo1955gree>







G. C. 1955



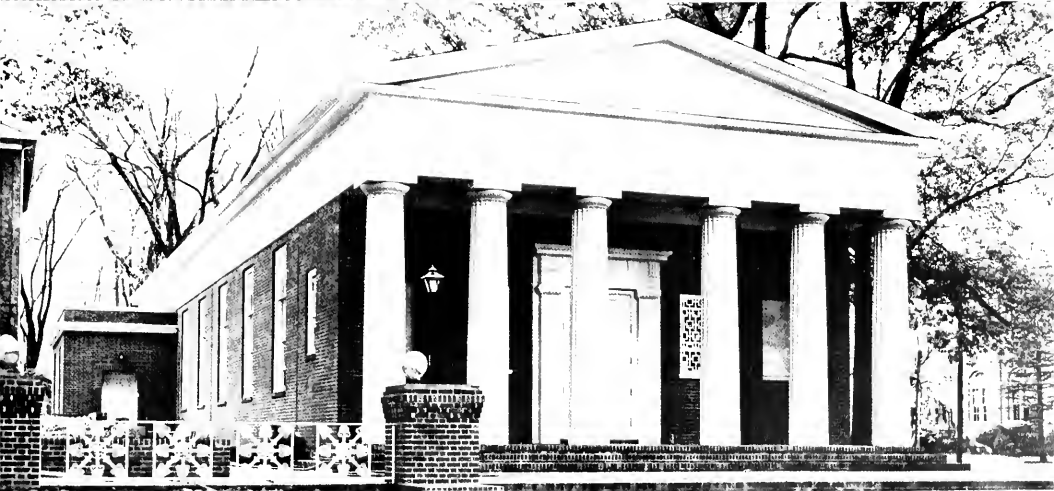
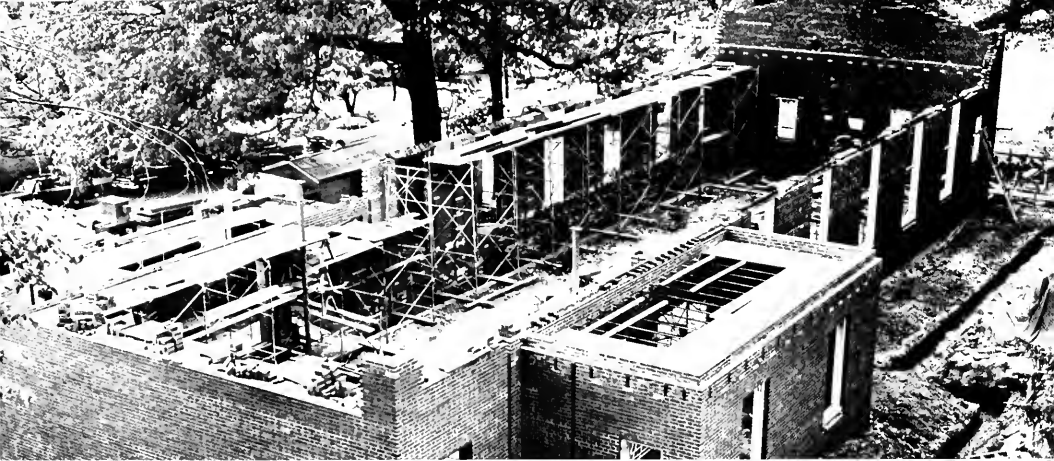
# *The* Echo

Published by the Senior Class of  
GREENSBORO COLLEGE  
GREENSBORO, NORTH CAROLINA

MARY PUGH  
EDITOR-IN-CHIEF

JULIA MARSHALL RATLIFF  
BUSINESS MANAGER

# 1955



Something





*"Mr. Clark, do you  
know the answer?"*

# New . . . has been added!

Masculine voices answering the class roll . . .  
trousers and sports jackets spicing the campus  
. . . broad smiles of "hello" at the door of the  
Arts and Science . . . addresses in chapel  
beginning "ladies and gentlemen" . . . queries  
of "who'll date 'em first" . . . the nice sound  
of the word "coed" . . . We're awfully glad  
you're here!



*An added attraction to  
Tuesday and Thursday chapels.*



*The age of chivalry is  
not dead yet!*



*What time will you be here?*

## The Cultural Life

Trudging back from the library on rainy Saturday evening . . . the ring of the telephone that turns out to be *your* date . . . the scurry of who gets the shower first . . .

*What a time for a zipper to get stuck.*





*"Was that phone for me?"*

at G. C. . . .

"Oh, what'll I wear?" "Boonie, may I borrow?" "I'll never be ready on time!" "I have a CMTFR!" "Whew! Never thought I'd make it!" "The Dance I Dance With You . . ."

*"Boonie, he's here!"*





## Dedicated to . . .

To one whose gracious ways truly  
bless the G. C. campus,

To one whose friendly smile and  
words of encouragement brighten  
each student's life,

To one whose constructive counsel  
solves many problems,

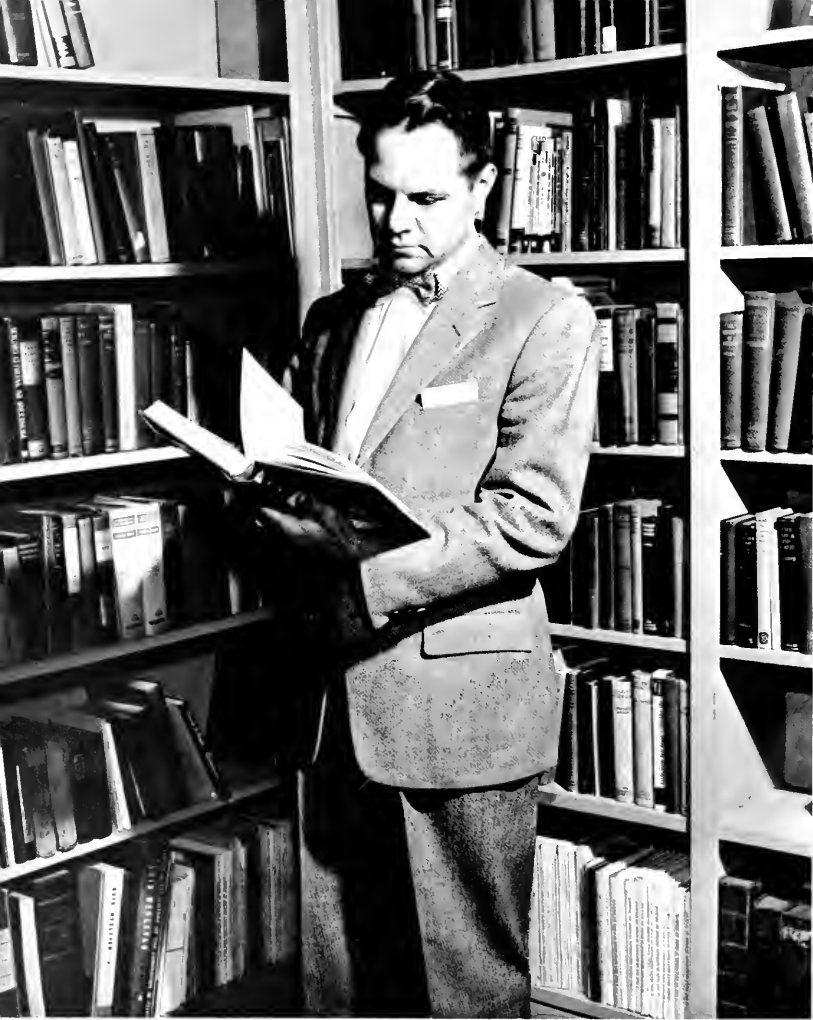
To one whose quiet voice leads us  
in chapel prayer—

DR. RAYMOND SMITH

# With Love In Our Hearts . . .

RAYMOND A. SMITH, A.B., B.D., Ph.D  
*Professor of Religious Education*





WILLIAM C. THOMAS  
PRESIDENT

Brilliant bow ties flashing about the campus . . . that broad grin we all know so well . . . the cheery "TH" that portrays the genuine interest for each of the G. C. students . . . the wisecracks mixed with capability . . . this is the man we point to with pride—OUR PRESIDENT.



DR. JACK R. MILLER  
*Dean of Students*



DR. P. M. GINNINGS, B.S., M.S., Ph.D.  
*Dean of Instruction*

## DEANS

Whether it's problems of what course to take, how many quality points to graduate, which boy shall I date for the dance, or shall I give my ring back, our two Deans can come up with just the right answer.



# Faculty

Having to face a group of droopy eyed people at 8:00 Monday morning, lecturing when only a third of the class is paying attention, listening to grumbles and groans when the needed quizzes are assigned . . .

Burning the midnight oil grading impossible answers written so it requires a writing expert to interpret, consultations and counsels and giving expert advice . . .

Bestowing friendly smiles and words of encouragement when the way gets a little rough, offering congratulations for a job well done, showing concern for each student's welfare . . .

All these things spell to us—although at times we fail to appreciate their worth—the truly great group of folk we have for a faculty. Thanks—from the bottom of our hearts.

- VIRGINIA BARNES, A.B., B.S., Assistant Librarian  
 I. T. BAWDEN, Ph.B., A.M., Ed.D., Professor of Education  
 BLATE C. BERWIN, Ph.D., Instructor (part time) in German and Geography  
 THEODOCIA BLACKMAN, Accountant  
 ELIZABETH N. BOYD, A.B., A.M., Ph.D., Professor of Mathematics  
 CALLIE BRASWELL, Instructor (part time) in Art  
 LETHA BRUCK, A.B., Registrar  
 MARY BROCK, A.B., Alumnae Secretary and Assistant Registrar  
 PEGGY BURDELL, B.M., Instructor (part time) in Piano  
 FLANCIE BURRIS, B.M., A.M., Associate Professor of Piano and Theoretical Music  
 CLARK R. CAHOW, A.B., B.D., Director of Public Relations  
 EVELYN COLE, A.B., A.M., Assistant Professor of Biology and Chemistry  
 IRENE CULLIS, A.B., A.M., Professor of Art  
 ROBERT T. DUNSTAN, A.B., A.M., Ph.D., Professor of Romance Languages  
 E. C. FEW, A.B., D.D., College Chaplain  
 LOIS FITCH, Manager of Bookstore  
 SEYMOUR FINK, B.A., M.M., Assistant Professor of Piano  
 MARY E. GINN, A.B., A.M., Acting Chairman of English Department  
 PAUL M. GINNINGS, B.S., M.S., Ph.D., Professor of Chemistry and Physics  
 MRS. JOE PLUM HANSEN, B.M., M.M., Instructor (part time) in Strings  
 I. C. HARBELL, Business Manager and Treasurer  
 DOROTHY HIBONISIMUS, A.B., A.M., Ph.D., Assistant Professor of Spanish and Spanish-American History  
 MRS. ALLEN W. HUNTER, B.S.H.E., Instructor (part time) in Home Economics  
 UMPHREY LEE JR., A.B., M.A., Assistant Professor of English

- GORDON LOVEJOY, B.A., M.A., Ph.D., Visiting Professor of Sociology  
 DR. JACK R. MILGAR, JR., A.B., LL.B., Ph.D., Administrative Counselor, Associate Professor of Marriage and Family Relations  
 MRS. CORA C. MIZELL, Resident Counselor, Assistant to the Dean of Students  
 THOMAS J. NICHOLS, B.M., M.M., Assistant Professor of Piano  
 MARY BEAUME PARKER, Ph.D., Associate Professor of Speech and Dramatic Art  
 ZELDA C. PEMBERTON, A.B., A.M., Ed.D., Assistant Professor of Education and Social Studies  
 CARL N. SHULL, B.S.M.E., M.M., Assistant Professor of Music Education  
 MRS. ROBERTA K. SIMMONS, B.Ed., M.Ed., A.T.C.M., Instructor (part time) in Psychology  
 MARVIN L. SKAGGS, A.B., A.M., Ph.D., Professor of History and Economics  
 MRS. ADA K. SMITH, Dietitian  
 RAYMOND A. SMITH, A.B., B.D., Ph.D., Professor of Religious Education  
 PAULINE K. SMITH, A.B., M.S.P.H., M.Ed., Professor of Biology  
 MADLEINI G. STINSON, A.B., A.M., Ph.D., Associate Professor of Romance Languages  
 GRACE TICKLE, B.S. in Ed., A.M., Professor of Home Economics  
 MILDRED TOWN, A.B., B.M., M.M., Professor of Organ and Associate Professor of Piano and Theoretical Music  
 EMILY TUTTLE, A.B., B.M., M.M., Associate Professor of English  
 CATHERINE UPFURCHER, A.A., B.S., P.L., Director of Physical Education  
 FRANCES WALLERS, B.S., A.M., M.A.L.S., Librarian  
 MRS. CHARLOTTE WHITE, A.B., Instructor (part time) in Speech Correction  
 MABEL C. WHITE, Assistant Accountant  
 E. E. WILLIAMS, A.B., M.M., Associate Professor of Voice  
 ROBERT WOOD, B.M., M.M., Assistant Professor of Music

MRS. CORA MIZELL, Resident Counselor

MRS. RACHEL PORTER, Resident Counselor





BARNES  
 BAWDIN  
 BEWEN  
 BLACKMAN  
 BOYD  
 BRASWELL



BROCK, L.  
 BROCK, M.  
 BURDLE  
 BURBUS  
 CAYBOW  
 COLE



COLLIS  
 DUNSTAN  
 LEW  
 FINE  
 FINK  
 GISS



GISSMANS  
 HANSEN  
 HEBBLE  
 HERONIMUS  
 HUNTER  
 LEE



LOVJOY  
 MIZELL  
 NICHOLS  
 PARKER  
 FARMERSON  
 SHULT



SIMMONS  
 SKAGS  
 SMITH, A. K.  
 SMITH, E.  
 SMITH, P. K.  
 STINSON



TICKET  
 TOWN  
 TUTTLE  
 UPCHURCH  
 WAILES  
 WHITE, C.



WHITE, M.  
 WILLIAMS  
 WOLF





**CLASSES**



## Four Happy Years . . . .

Monday morning eight o'clocks, quizzes and pops and tears of "unsats," jaunts down to the bookstore between classes, midnight coffee before final exams, freshmen, sophomores, juniors—at last, we're SENIORS!





"Big Sis . . ."

"Two hearts . . ."



"She's lovely,  
she uses Ponds!"

## Seniors . . . 1955

BEFORE:  
"Those dear little kids."

AFTER:  
"Mean little brats!"



# Class Officers

*President:* JOANN GADDY

*Vice-President:* ELIZABETH WALKER

*Secretary:* JEAN TURNER

*Treasurer:* RUTH LYNCH

*Council Representative:* BARBARA COX

Moving into Fitz, screams over summer-acquired diamonds and pins—the year has begun.

The Cap and Gown Ceremony means we're full fledged seniors at last—the culmination of four years together at G. C. So many things to place in memory.

Our freshman year with all its newness, the sophomore thrill of having "Rats", the opportunity of being a junior and a "Big Sis", and the knowledge of "three down and one to go."

The strains of Pomp and Circumstance blare forth. Now we're graduates! And, to G. C., we'll always love you!

LIB, RUTH, JOANN, JEAN, BARBARA



# Seniors

...1955

"HERE COMES THE BRIDE . . ."

SUE, CHARLENE, ANITA, JEAN, THELMA, SARAH





ALBRITTON  
THELMA

THELMA ALBRITTON . . . Snow Hill, N. C. . . Major: Education; Minor: Speech Therapy . . . G.C. Players . . . Spanish Club . . . Athletic Board . . . House President, Fitz . . . Junior Superlative, Most Athletic . . . F.T.A. . . Little Sister: Betty Stanford . . . Society: Irving . . . Pres. Y.D.C.

CHARLENE BADDOUR . . . Clinton, N. C. . . Major: Spanish; Minor: English . . . French Club . . . G.C. Players, Publicity Manager, Business Manager . . . Freshman Counselor . . . Junior Honor Society . . . Senior Honor Society . . . Cenozoic . . . F.T.A. . . English Club . . . Y.D.C. . . Business Staff, *Collegian* . . . Gold Book . . . Little Sisters: Layne Ballard, Lucy Ann Carney . . . Society: Irving.



BADDOUR  
CHARLENE

SARAH ANN BATES . . . Bainbridge, Ga. . . Majors: Primary Education and Religious Education . . . Freshman Counselor . . . Senior Marshal . . . S.C.F. Cabinet . . . Secretary F.T.A. . . Religious Education Club . . . I.R.C. . . Business Staff, Echo . . . Little Sister: Helen Stephens . . . Society: Irving.

JEAN GENTRY BEAM . . . Roxboro, N. C. . . Major: Philosophy and Religion; Minor: History . . . Y.W. C.A. Cabinet . . . Freshman Counselor . . . Recording Secretary, Students Association . . . Gold Book . . . Spanish Club . . . Religious Education Club . . . I.R.C. . . F.T.A. . . Y.D.C. . . Assistant Business Manager, *Collegian* . . . Editor, *Handbook* . . .



BATES  
SARAH ANN

Secretary, Judicial Board . . . Senior Superlative, Most Popular . . . Little Sisters: Cecil Brown, Ann Long . . . Society: Irving.

SUE BENSON . . . Greensboro, N. C. . . Major: English; Minor: Biology . . . English Club, Speech Club.

ANITA SCOTT BETTS . . . Brazil, S. A. . . Major: Philosophy and Religion; Minor: Music . . . English; Minor: Biology . . . Recording Secretary, S.C.F. . . Music Club . . . Religious Education Club . . . Freshman Counselor . . . P.K. Club . . . Gold Book . . . Glee Club . . . Fire Warden . . . Literary Staff *Collegian* . . . Little Sister: Betsy Carroll . . . I.R.C. . . Chapel Choir . . . Society: Irving.



MARY JO, JANE I, BARBARA, LAEL, JANE, JANE

"WHICH WAY DOES IT GO?"

Seniors

...1955



JANE BRINKLEY . . . Thomasville, N. C. . . Major: Primary Education, Minor: Sociology . . . Art Club . . . F.T.A. . . . Marshal . . . Social Standards Committee . . . Chapel Choir . . . Little Sister: Virginia Higgins . . . Society: Emerson.

JANET LEE BROWN . . . Lexington N. C. . . Major: Sociology; Minor: History . . . Press Club . . . Spanish Club, Vice-President, Secretary . . . U.D.C. Secretary . . . I.R.C. Librarian . . . Gold Book . . . "G" Club . . . House President, Main, Hudson . . . Junior Honor Society . . . Freshman Counselor . . . Y.D.C., Executive Committee . . . Business Staff, Echo . . . Reporter, Sports Editor, Editor, *Collegian* . . . Junior Class Superlative, Most Likely to Succeed . . . Glee Club . . . G.C. News Bureau . . . State Student Legislature, Interim Council, Recording Clerk . . . F.T.A. . . . World Federalist Club . . . Chapel Choir . . . English Club . . . Pen Club . . . President's Council . . . N.S.A. Committee . . . Publications Board . . .

Who's Who . . . Little Sister: Susan Edmonson . . . Society: Irving.

MARY JO CAUDLE . . . Greensboro, N. C. . . Major: Flute; Minor: Music Education . . . Glee Club . . . Secretary, Council Representative, Day Students Association . . . Business Staff, *Collegian* . . . Secretary, Orchestra . . . Music Club . . . Music Education Club . . . Gold Book.

JANE CONNELLY . . . Swannanoa, N. C. . . Major: Social Studies; Minor: Religion . . . Spanish Club . . . Math Club . . . I.R.C. . . . World Federalist . . . Treasurer, President, U.D.C. . . . Treasurer, Sophomore Class . . . Athletic Board . . . Glee Club . . . S.C.F. Cabinet . . . Business and Literary Staffs, *Collegian* . . . Gold Book . . . Fire Warden . . . Campus Chest Chairman . . . Marshal, Treasurer, President, Emerson Society . . . Little Sisters: Sally Caton, Barbara Bradley . . . Y.D.C. . . . Society: Emerson.

LAEI CORZINE . . . Concord, N. C. . . Major: Religious Education; Mi-

nor: Music . . . S.C.F. Cabinet, Social Service Chairman . . . House President . . . Main . . . Freshman Counselor . . . Athletic Board . . . Vice-President, Athletic Association . . . Literary and Business Staffs, Echo . . . Literary and Business Staffs, *Collegian* . . . Gold Book . . . Corresponding Secretary, Emerson Society . . . Fire Chief . . . Math Club . . . Religious Education Club . . . French Club . . . Secretary and Treasurer, I.R.C. . . . Glee Club . . . Emerson Queen Attendant . . . Y.D.C. . . . Modern Dance Club . . . Little Sisters: Janet Berkeley and Betty Rae Owen . . . Society: Emerson.

BARBARA ANN COX . . . Charlotte, N. C. . . Major: Religion; Minor: English . . . Junior Transfer, Pfeiffer Jr. College . . . Council Representative, Senior Class . . . Asst. Editor, *Collegian* . . . Literary Staff, Echo . . . Publicity Chairman, S.C.F. Cabinet . . . Glee Club . . . I.R.C. . . . Religious Education Club . . . Fire Warden . . . Press Club . . . Little Sister: Ann West . . . Society: Irving.



BRINKLEY  
CONNELLY



BROWN  
CORZINE



CAUDLE  
COX



# Seniors ...1955

"WAITING FOR THE TRAIN TO COME IN . . ."

MARIE, MARY JO, JANE, MARTHA, BARBARA, HELEN





BARBARA ANN CRAVEN  
DICKENS

MARIE CRAVEN  
DREISEL

DAVIS  
EDWARDS

BARBARA ANN CRAVEN . . . Rainsour, N. C. . . . Major: Primary Education; Minor: Piano . . . Spanish Club . . . Treasurer, Math Club . . . E.T.A. . . . G. C. Daughters, President . . . Freshman Counselor . . . Irving Society, Censor . . . Senior Marshal . . . Literary Staff, Echo . . . House President, Hudson . . . Religious Education Club . . . Little Sister. Barbara Reynolds . . . Society: Irving.

MARIE CRAVEN . . . Greensboro, N. C. . . . Major: Religion; Minor: Music . . . Publicity Chairman, Religious Education Club . . . Freshman Counselor . . . Glee Club . . . Little Sisters: Dorothy Hart, Ruth Rush . . . Society: Irving.

MARY JOSEPHINE DAVIS . . . West End, N. C. . . . Major: Piano; Minor: Theory and Composition . . . G.C. Daughters . . . French Club . . . Treasurer, Music Club . . . Junior Honor Society . . . Senior Honor So-

ciety . . . Gold Book . . . Little Singers . . . Orchestra . . . Literary Staff, Music Editor, Departmental Editor, Collegian . . . Business Staff, Echo . . . Highest Proficiency Award . . . Senior Marshal . . . Theodore Presser Scholarship . . . Senior Superlative, Best Student . . . Little Sisters: Nan-cetta Hudson, Anne Fowler Jones . . . Society: Irving.

HELEN DICKENS . . . Halifax, N. C. . . . Major: Sociology; Minor: Religion . . . President, Vice-President, Glee Club . . . French Club . . . I.R.C. . . . World Federalist . . . Secretary, U.D.C. . . . Religious Education Club . . . "G" Club . . . Marshal, Emerson Society . . . Gold Book . . . Chairman, N.S.A. . . . Chapel Choir . . . Y.D.C. . . . Little Sister: Beverly Hardin . . . Society: Emerson . . . Freshman Counselor . . . Class Representative, Second Vice-President, First Vice-President, Student Council . . . Hudson, House

President . . . AA Board . . . Who's Who.

MARTHA DRUMMOND DREISEL . . . Norfolk, Va. . . . Major: Piano; Minor: Theory . . . Spanish Club . . . President, Vice President, Music Club . . . Gold Book . . . Freshman Counselor . . . Senior Marshal . . . Literary Staff, Collegian . . . Orchestra . . . S.C.F. Cabinet . . . Little Sister. Joanna Steed . . . Society: Irving.

VIRGINIA JANE EDWARDS . . . Red Oak, N. C. . . . Major: Home Economics; Minor: General Science . . . Home Economics Club, Treasurer, Vice-President . . . Spanish Club . . . Art Club . . . Fire Warden . . . Cheerleader, Athletic Association . . . Religious Education Club . . . Censor, Emerson Society . . . Social Standards Committee . . . Freshman Counselor . . . G.C. Daughters . . . Cenozoic Club . . . F.T.A., Treasurer . . . Little Sisters: Beverly Cox, Sally Jo Coley . . . Society: Irving.



ERIS, MARY LOU, PAT, NANCY, JOANN, JUNE

"SPLIT FORMATION, GIRLS!"

# Seniors ...1955

ERIS OBELL EURE . . . Eure, N. C.  
 . . . Major: English; Minor: French  
 . . . Junior Transfer, Meredith . . .  
 Art Club . . . English Club . . . Lit-  
 erary Staff, Echo . . . Little Sisters:  
 Reita Groce, Ann Gray . . . Society:  
 Emerson.

PATRICIA JANE FIELDS . . . Pleasant  
 Garden, N. C. . . Major: Religion,  
 Minor: Social Studies . . . Gold Book  
 . . . S.C.F. Cabinet . . . Campus Chest  
 Chairman . . . F.T.A. National Stu-  
 dents Association, Chairman . . . Student  
 Council . . . Freshman Counselor  
 . . . Business Staff, *Collegian* . . . Sec-  
 retary, Religious Education Club . . .  
 Vice-President, I.R.C. . . . World Fed-  
 eralists . . . Spanish Club . . . Chapel  
 Choir . . . N.S.A. Delegate . . . Senior  
 Superlative, Most Likely to Succeed  
 . . . Little Sisters: Doris Oliver and  
 Claudia Covington . . . Society:  
 Emerson.

JUNE FOUST . . . Mebane, N. C. . .  
 Major: Music Education; Minor:  
 Voice . . . French Club . . . Music  
 Education Club, Secretary-Treasurer  
 . . . Music Club . . . Glee Club . . .  
 Religious Education Club . . . F.T.A.  
 . . . Chapel Choir . . . Little Sisters:  
 Libby Reiner, Barbara Tuttle . . .  
 Society: Irving.

JOANN GADDY . . . Biscoe, N. C. . .  
 Major, Piano; Minor: Theory . . .  
 Glee Club . . . French Club . . . Music  
 Club . . . Freshman Counselor . . .  
 Accompanist, Vice-President, Irving  
 Society . . . President, Senior Class  
 . . . Little Sister: Brownie Morgan . . .  
 Senior Attendant May Court . . .  
 Chapel Choir . . . Society: Irving.

MARY LOUISE GUNTER . . . Pittsboro,  
 N. C. . . Major: Home Economics;  
 Minor: General Science . . . U.D.C.,  
 Vice President . . . Art Club . . .  
 Cenozoic Club . . . Home Economics

Club . . . Little Sister: Retta Goodwyn  
 . . . Society: Irving.

NANCY ANNE HALTOM . . . High Point,  
 N. C. . . Major: Speech Therapy;  
 Minor: English . . . Treasurer, Cor-  
 responding Secretary, President,  
 Students Association . . . Gold Book  
 . . . Business Staff, Echo . . . ex-  
 officio member S.C.F. Cabinet . . . ex-  
 officio member Judicial Board . . .  
 Junior Superlative, Best All Around  
 . . . Senior Superlative, Best All  
 Around . . . Freshman Counselor . . .  
 Interim Delegate and Senatorial Dele-  
 gate to State Student Legislature, Re-  
 cording Clerk of Senate . . . Delegate,  
 N.S.A. Convention . . . Marshal, Irving  
 Society . . . Modern Dance Group . . .  
 French Club . . . F.T.A. Religious  
 Education Club . . . World Federalist  
 . . . G.C. Players . . . Glee Club . . .  
 Who's Who . . . Chapel Choir . . .  
 Little Sisters: Beth Buie, Sara Glenn  
 . . . Society: Irving.



EURE  
 GADDY

FIELDS  
 GUNTER

FOUST  
 HALTOM

# Seniors ...1955

"OH, IT'S ONLY 1000 CALORIES . . ."

ALLIE, MARY JO, JEAN, LIBBY, ETHEL, BETTY





ELIZABETH STRONG HARRIS  
HUGGINS

ELIZABETH STRONG HARRIS . . . Asheville, N. C. . . . Major: Sociology. Minor: History . . . French Club . . . I.R.C. . . . President, World Federalist . . . Athletic Board . . . Bit "N" Spur . . . Home Economics Club . . . *Motiv*e Chairman . . . Little Sisters: Faye Pritchard, Wallace Waymick . . . Society: Emerson.

MARY JO HARRIS . . . Hillsboro, N. C. . . . Major: Elementary Education and Art . . . Vice-President, Art Club . . . Freshman Counselor . . . Business Staff, Echo . . . F.T.A. . . . Publicity Chairman, S.C.F. . . . Campus Chest . . . French Club . . . Gold Book . . . I.R.C. . . . Little Sisters: Jane Love, Nancy Shoullars . . . Society: Irving.

AGNES JEAN HOOPER . . . Greensboro, N. C. . . . Major: Art. Minor: English . . . Transfer, Atlantic Christian College . . . Art Club, Secretary-Treasurer



MARY JO HARRIS  
JOLIFFE

. . . French Club . . . F.T.A. . . . English Club . . . Little Sister: Frances Y. Du Bose . . . Society: Irving.

ELIZABETH ANN HUGGINS . . . Lincoln, N. C. . . . Major: Religious Education, Minor: Social Studies . . . House President, Main . . . Judicial Board, Chairman . . . S.C.F., Secretary, Vice-President . . . Vesper Committee, Chairman . . . Athletic Board . . . Religions Education Club . . . I.R.C. . . . World Federalist . . . Glee Club . . . Chapel Choir . . . U.D.C. . . . French Club . . . Modern Dance Group . . . Literary Staff, *Collegian* . . . "G" Club . . . Irving Marshal, Irving Bride . . . Bit "N" Spur (Honorary Member) . . . Gold Book . . . State Student Legislature Delegate . . . Y.D.C. . . . Little Sisters: Jean Dail, Willadene Duckett . . . Society: Irving.



HOOPER  
KIM

LILLIE JOLIFFE . . . Enka, N. C. . . . Major: Religion. Minor: Music . . . President, Religious Education Club . . . Glee Club . . . French Club . . . Chapel Choir . . . World Federalist . . . Gold Book . . . Vice-President, Sophomore Class . . . Ecumenical Secretary, S.C.F. . . . I.R.C. . . . Little Sisters: Edith Marie Bowman, Joanne La Prade . . . Society: Emerson.

ALLIE CARB KIM . . . Roseboro, N. C. . . . Major: Music Education, Minor: Piano . . . Secretary, Music Club . . . French Club . . . Bit "N" Spur . . . Glee Club . . . Freshman Counselor . . . President, Music Education Club . . . Business Staff, Echo . . . Chapel Choir . . . Recording Secretary, Irving Society . . . Chief Senior Marshal . . . Little Sisters: Carolyn Dedmon, Joann Webster . . . Society: Irving.



RUTH, RUTH, VIRGINIA, EVA, LORENA, GWEN, ANN

"OFF WE GO INTO THE WILD BLUE YONDER . . ."

# Seniors ...1955

Ruth Fysch . . . Catawba, N. C.  
 Major, Elementary Education, Minor  
 Religion . . . S.C.F. Cabinet Member  
 Freshman Counselor . . . Treasurer,  
 P.K. Club . . . Spanish Club . . .  
 Math Club . . . Religious Education  
 Club . . . Project Chairman, I.L.A.  
 . . . Fire Warden . . . F.C.O. Business  
 Staff . . . Literary Staff, *Collegian*  
 . . . Treasurer, Senior Class . . . Little  
 Sisters . . . Pat Croy and Betty Boyst . . .  
 Society . . . Irving





RUTH LATHAM . . . Greensboro, N. C.

LOBENA LEFTWICH . . . Mount Airy, N. C. . . . Major: Elementary Education; Minor: Religion . . . Religious Education Club . . . Secretary, German Club . . . Treasurer, Future Teachers . . . Home Economics Club . . . Little Sister: Virginia Gunn . . . Society: Emerson.

GWENDOLYN ESTHER MAPLES . . . Wadesboro, N. C. . . . Major: Primary Education; Minor: English . . . French Club . . . Future Teachers . . . I.R.C.

. . . Secretary, Junior Class . . . Little Sister: Betty Grant . . . Society: Emerson.

VIRGINIA NASH KISER . . . Winston-Salem, N. C. . . . Major: Elementary Education; Minor: Speech Correction . . . G.C. Daughters . . . Secretary, Program Chairman, G.C. Players . . . F.T.A. Gold Book . . . Main, House President . . . Literary Staff, *Collegian* . . . Freshman Counselor . . . Little Sister: Margaret Hafer . . . Society: Irving.

EVA GRAY McCLAMROCK . . . Thomasville, N. C. . . . Majors: English and Religion . . . Transfer, Pfeiffer Junior College . . . Religious Education Club . . . Art Club . . . P.K. Club . . . English Club . . . Literary Staff, Echo . . . Little Sisters: Liz Mustian, Dot Limer . . . Society: Irving.

FRANCES ANN McCOLLUM . . . Monroe, N. C. . . . Major: Elementary Education; Minor: English . . . Spanish Club . . . Religious Education Club . . . I.R.C. . . . F.T.A. . . . Chapel Choir . . . Y.D.C. . . . Little Sister: Wilma Saunders . . . Society: Irving.



LATHAM  
KISER

LEFTWICH  
McCLAMROCK

MAPLES  
McCOLLUM

RAMONA CEELESE MORTON  
 Marlon, N. C. . . . Major, Religion  
 Minor Music . . . President Freshman  
 Class . . . Religious Education Club  
 . . . Music Club . . . Glee Club . . .  
 Program Chairman, P.K. Club . . .  
 Freshman Attendant, Marshal, Emerson  
 Society . . . President, French Club  
 . . . Fire Warden . . . Freshman Com-  
 seler . . . Gold Book . . . Junior Su-  
 perlative, Most Popular . . . Literary  
 Staff, *Collegian* . . . Literary Staff,  
 Echo . . . Christian Citizenship Stu-  
 dent Seminar Delegate . . . Dorm Ve-  
 per Chairman, Secretary, President,  
 S.C.F. . . . Chapel Choir . . . Who's  
 Who in American Colleges and Uni-  
 versities . . . Little Sisters, Carol Fer-  
 guson and Doris Wilkerson . . . So-  
 cety Emerson.



# Seniors ...1955

"BACK TO THE SECOND CHILDHOOD . . ."

RAMONA, PEGGY, JULIA, JACKIE, MARINE, SUE, MARY





PUGH  
SCARBOROUGH

RATLIFF  
SIGMAN

ROBINSON  
SMITH

MARY PUGH . . . Fayetteville, N. C. . . . Major: English; Minor: Speech . . . French Club . . . Religious Education Club . . . I.R.C. . . . World Federalist . . . F.T.A. . . . Corresponding Secretary, Emerson Society . . . Freshman Counselor . . . S.C.F. Cabinet . . . Literary Staff, *Collegian* . . . Business Staff, Editor in Chief, *Ecno* . . . G.C. Players . . . Received Best Technician Awards, 1953, 1954 . . . "G" Club . . . Y.D.C. . . . N.S.A. . . . Gold Book . . . English Club . . . Who's Who in American Colleges and Universities . . . Little Sister: Nellie Allen . . . Society: Emerson.

Book . . . Glee Club . . . English Club . . . Little Sisters: Julia Sanders, Eleanor Grayson . . . Society: Irving.

STEE ROBINSONS . . . Norlina, N. C. . . . Major: Home Economics; Minor: General Science . . . F.T.A. . . . S.C.F. Cabinet . . . G.C. Players . . . Chairman Social Standards Committee . . . President, Home Economics Club . . . Vice-President, German Club . . . Junior Attendant, May Court . . . Senior Marshal . . . Freshman Counselor . . . Vice-President Dormitory . . . Little Sister: Shirley Seagraves . . . Society: Irving.

Attendant, May Court . . . Business Manager, *Handbook* . . . Y.D.C. . . . Senior Marshal . . . Little Sister: Barbara Hedgecock . . . Society: Irving.

JACQUILINE MAE SIGMAN . . . Orange, New Jersey . . . Major: English; Minor: Music . . . French Club . . . Music Club . . . S.C.F. Cabinet . . . Critic, Emerson Society . . . Junior Attendant, May Court . . . President, Day Students Association . . . F.T.A. . . . English Club . . . Chapel Choir . . . Little Sisters: Ellen Stephens, Sue Manning . . . Society: Emerson.

JULIA MARSHALL RATLIFF . . . Buckingham, N. C. . . . Major: English; Minor: Social Studies . . . Assistant Literary Editor, Business Manager, *Ecno* . . . Freshman Counselor . . . Math Club . . . Religious Education Club . . . World Federalist . . . Typist, Reporter, Associate Editor, *Collegian* . . . F.T.A. . . . Senior Marshal . . . I.R.C. . . . Spanish Club . . . Gold

MAXINE HOWLEY SCARBOROUGH . . . Manteo, N. C. . . . Majors: History and Sociology . . . Freshman Counselor . . . Exchange Editor, *Collegian* . . . Business Staff, *Ecno* . . . Social Standards Committee . . . Vice-President Junior Class . . . Gold Book . . . Publicity Manager, World Federalist . . . President, I.R.C. . . . French Club . . . F.T.A. . . . Religious Education Club . . . Sophomore and Senior

PEGGY GWYN SMITH . . . Thomasville, N. C. . . . Major: Primary Education; Minor: Religion . . . Spanish Club . . . Religious Education Club . . . Math Club . . . Publicity Chairman, F.T.A. . . . Literary, Business Staffs, *Collegian* . . . Business Staff, *Ecno* . . . Senior Marshal . . . Recording Secretary, Emerson Society . . . Little Sisters: Sylvia Gregg, Sara Burkhead . . . Society: Emerson.



MONA, DORIS, ANN, VIRGINIA, MARY LOU, PHYLLIS

"THESE NEW-ANGLED CONTRAPTIONS . . ."

# Seniors ...1955

MONA STADLER . . . Burlington, N. C.  
 . . . Major: Home Economics; Minor:  
 General Science . . . Home Economics  
 Club . . . Y.D.C. . . . Transfer from  
 Mars Hill . . . Little Sister: Carole  
 Brogden . . . Society: Irving.

MARY LOU STABKE . . . Roanoke  
 Rapids, N. C. . . . Major: Elementary  
 Education; Minor: Art . . . F.T.A.,  
 President . . . Treasurer, Junior Class  
 . . . House President, Hudson.

DORIS STARNES . . . Montic, N. C. . . .  
 Majors: Elementary Education and  
 Religious Education . . . S.C.F. Cab-  
 inet . . . Treasurer, Religious Educa-  
 tion Club . . . I.R.C. . . . Gold  
 Book . . . Junior Honor Society  
 . . . F.T.A. . . . French Club . . .  
 Freshman Counselor . . . President,  
 Junior Class . . . Business Manager,  
 Literary Staff, *Collegian* . . . Literary  
 Staff, *ECHO* . . . State Student Legis-  
 lature Delegate . . . Junior Superlative.

Best Student . . . Who's Who in  
 American Colleges and Universities . . .  
 Little Sisters: Pat Chennis, Ann Crof-  
 ton . . . Society: Irving.

PHYLLIS ANNE STOUGH . . . Welcome,  
 N. C. . . . Major: Primary Education,  
 Minor: Religion . . . S.C.F. Cabinet  
 . . . Secretary, President, P.K. Club  
 . . . Council Representative, Junior  
 Year . . . F.T.A. . . . Math Club . . .  
 Spanish Club . . . Freshman Counselor  
 . . . Gold Book . . . Little Sisters:  
 Martha Rhodes, Carol Marshburn . . .  
 Society: Irving.

VIRGINIA FARRELL SWAIN . . . Cate-  
 chee, South Carolina . . . Major:  
 Elementary Education; Minor: Reli-  
 gious Education . . . Spanish Club . . .  
 Religious Education Club . . . Cabinet  
 Member, S.C.F. . . . Typist, *Collegian*  
 . . . Glee Club . . . Fire Warden . . .  
 Chief of Main . . . F.T.A. . . . Speaker,  
 G.C. Day . . . House President, Main

. . . Vice-President G.C. Daughters  
 . . . Campus Chest Committee . . .  
 N.S.A. Board . . . Corresponding Sec-  
 retary, Emerson Society . . . Business  
 Manager, President, G.C. Players . . .  
 Little Sisters: Priscilla Ippock, Sarah  
 Leak . . . Society: Emerson.

ANN WEBB TAYLOR . . . Statesville,  
 N. C. . . . Major: English; Minor:  
 Speech . . . Marshal, Recording Sec-  
 retary, President, Irving Society . . .  
 House President, Hudson . . . Secre-  
 tary, G.C. Players . . . French Club  
 . . . Math Club . . . P.K. Club . . .  
 President, English Club . . . Social  
 Standards Committee . . . May Court,  
 Maid of Honor, May Queen . . . Lit-  
 erary Staff, *ECHO* . . . Gold Book . . .  
 F.T.A. . . . Class Speaker, G.C. Day  
 . . . Senior Honor Society . . . Chapel  
 Choir . . . Little Sisters: Frances Nu-  
 zum, Anne Woodward . . . Society:  
 Irving.



STADLER  
STOUGH



STABKE  
SWAIN



STARNES  
TAYLOR



# Seniors ...1955

"LOOK WHAT G. C. HAS TURNED OUT ..."

BIT, CAROLINE, SALLY, JEAN, JOYCE, LIB





TAYLOR  
VIA

TUBLINGTON  
WAGNER

TURNER  
WALKER

CAROLINE CROSWILL TAYLOR . . . Greensboro, N. C. . . Major: Elementary Education; Minor: Religious Education . . . German Club . . . Second Vice-President, Students Association . . . Religious Education Club . . . I.R.C. . . World Federalist . . . F.T.A. . . Gold Book . . . Society: Irving.

HELEN TUBLINGTON . . . Jacksonville, N. C. . . Major: Biology; Minor: Chemistry . . . German Club, Treasurer . . . I.R.C. . . World Federalist . . . F.T.A. . . Cenozoic Club, Vice-President . . . Class Representative to Council . . . Secretary, President, Athletic Association . . . Critic for Emerson Society . . . Freshman Counselor . . . State Student Legislature . . . National Students' Association Regional Conference . . . "G" Club . . . Pm Club . . . Y.D.C. . . "Miss G.C." 1955 . . . Society: Emerson . . . Little Sister: Kay Greene.

JEAN LOUISE TURNER . . . Fair Bluff, N. C. . . Major: Religion; Minor: Sociology . . . S.C.E. Cabinet . . . Gold Book . . . Freshman Counselor . . . Business Staff, *Collegian* . . . Glee Club . . . G.C. Daughters . . . Math Club . . . Religious Education Club . . . I.R.C. . . Secretary, Senior Class . . . Chapel Choir . . . Little Sister: Betty Wilkinson . . . Society: Emerson.

SALIYE JOYCE VIA . . . Martinsville, Va. . . Major: Home Economics; Minor: Science . . . Sophomore Transfer, Longwood College . . . Home Economics Club, Vice-President . . . German Club . . . Gold Book . . . Literary Staff, *Collegian* . . . Social Standards Committee . . . N. C. Home Economics Club, Reporter . . . Little Sister: Patricia Lane . . . Society: Irving.

SALLY SIDES WAGNER . . . Kannapolis, N. C. . . Major: Music Education; Minor: Organ, Voice . . . Spanish Club . . . Glee Club, Secretary and Treasurer, Vice-President, Student Director . . . Orchestra, Secretary and Treasurer . . . Music Education Club, Vice-President . . . Music Club . . . S.C.E., Cabinet, Chairman Music Committee . . . Gold Book . . . F.T.A. . . Chapel Choir Director . . . Junior Superlative, Most Original . . . String Ensemble . . . Little Sisters: Shirley Falls, Lib Walker . . . Society: Irving.

ELIZABETH ANGELA WALKER . . . Thomasville, N. C. . . Major: Elementary Education; Minor: Speech . . . Scrapbook Custodian, G.C. Players . . . I.R.C. . . Vice-President, G. C. Daughters . . . F.T.A. . . Freshman Counselor . . . Chapel Committee . . . U.D.C. . . Little Sisters: Tyleta Williams, Linda Sloan . . . Society: Irving . . . Vice-President of Senior Class.



GAIL, CARRIE, SHIRLEY, MARY LEE, PVT, AMELIA  
"ALL WE NEED IS A BOY FRIEND . . ."

# Seniors ...1955

MARTHA ELIZABETH WAUGH  
Greensboro, N. C. . . . Major: Ele-  
mentary Education, Minor: English . .  
Secretary-Treasurer of Day Students  
Association . . . F.T.A. . . . Little Sis-  
ter: Elmor Wallace . . . Society:  
Emerson.





GAIL WHITAKER . . . Yadkinville, N. C. . . . Major: Religion; Minor: English . . . Junior Transfer, Pfeiffer Junior College . . . Judicial Board . . . S.C.F. Cabinet . . . Glee Club . . . Literary Staff, Echo . . . I.R.C. . . . Athletic Board . . . Religious Education Club . . . Chapel Choir . . . Senior Superlative, Most Athletic . . . Little Sisters: Dorothy Dey, Jean Woody . . . Society: Irving.

MARY LEE WHITE . . . Greensboro, N. C. . . . Major: Education; Minor: English . . . French Club . . . P.K. Club . . . Gold Book . . . President, Junior Honor Society . . . Treasurer, Day Students Association . . . Literary Staff, *Collegian* . . . Received Highest Proficiency Award . . . Fire Warden

. . . F.T.A. . . . Business Staff, Echo . . . Senior Marshal . . . President, Senior Honor Society . . . Little Sisters: Barbara Moore, Peggy Stephens . . . Society: Emerson.

AMELIA WILKIE . . . Forest City, N. C. . . . Major: Primary Education. Minor: Mathematics . . . Spanish Club . . . F.T.A. . . . Secretary-Treasurer, President, Math Club . . . Gold Book . . . Senior Marshal . . . Treasurer, Campus Chest . . . Little Sisters: Harriet Bobbitt and Barbara Stockton . . . Society: Emerson.

SHIRLEY LEE WINDHAM . . . Greensboro, N. C. . . . Major: English; Minor: Music . . . Vice-President, Day Students Association . . . Music Club . . . English Club . . . Little Sister: Joyce Pate . . . Society: Irving.

PATRICIA JANE WRIGHT . . . Greensboro, N. C. . . . Major: Art; Minor: English . . . Art Club . . . French Club . . . Glee Club . . . U.D.C., Page at '52 Convention . . . Junior May Day Attendant . . . Senior Marshal . . . F.T.A. . . . English Club . . . Little Sister: Barbara Newton . . . Society: Emerson.

LADA CAROLINE YORK . . . Canton, N. C. . . . Major: Art; Minor: Religious Education . . . Junior Transfer, Western Carolina College . . . Religious Education Club . . . Art Club . . . S.C.F. Cabinet . . . Literary Staff, Echo . . . Gold Book . . . Choral Choir . . . Senior Superlative, Most Original . . . N.S.A. Committee . . . Little Sisters: Betty Wray Lester, Betty Jean Padley . . . Society: Irving.



WHITAKER  
WINDHAM

WHITE  
WRIGHT

WILKIE  
YORK

# WHO'S WHO

## In American Colleges and Universities

On December 2, 1955, seven members of the senior class were tapped into the distinctive society of WHO'S WHO. Outstanding in activities and scholarship throughout her college years, this is a distinctive honor to each girl. One well to be justly proud of and long remembered!

|                     |  |
|---------------------|--|
| MISS RAMONA MORTON  | <i>President of the S.C.F.</i>                           |
| MISS MARY LEE WHITE | <i>President of the Senior Honor Society</i>             |
| MISS NANCY HALTOM   | <i>President of the Student's Association</i>            |
| MISS HELEN DICKENS  | <i>First Vice-President of the Student's Association</i> |
| MISS MARY PURCH     | <i>Editor-in-Chief of the ECHO</i>                       |
| MISS JANET BROWN    | <i>Editor-in-Chief of the Collegian</i>                  |
| MISS DORIS STARNES  | <i>Business Mgr. of the Collegian</i>                    |





*Chief: Albe Carr Kime.*

*Left to Right: Edwards, Wilkie, Robinson, Scarborough, Barlett, Smith, Craven, Driesell, Davis, White, Bates, Brinkley.*

## Senior Marshals

Lovely white evening dresses flitting among the crowd in Odell, lovely smiles, gracious manners. Maintaining quiet as the programs begin, showing the audience to their seats—these are our Marshals!

# Senior



*Most Likely to Succeed*  
MISS PAI FIELDS

*Most Popular*  
MRS. JEAN BEAM

*Best All Around*  
MISS NANCY HALTOM



# Superlatives

*Most Athletic*

MISS GAIL WILLAKER

*Most Original*

MISS CARRIL YORK

*Best Student*

MISS MARY JO DAVIS





"Sh . . . Genius at Work . . ."

"Which twin has the Toni . . .?"



"Name of Caller? Jimmy!"

"Mother's little helper . . ."

"But, Father, you can't mean that . . ."



# Class Officers

*President:* JUNE BUNN

*Vice-President:* ANN HARRY

*Secretary:* ANN WILKERSON (Special student)

*Treasurer:* SARA STEWART

*Council Representative:* BETSY HARRIS

The thrill of being a "Big Sis" . . . the knowledge that we've passed the halfway mark of our G. C. days . . . the surprise at not taking all three nights out . . . gab sessions over popcorn and cokes . . . last minute changes of majors and minors . . . the thrill of frat pins and diamonds . . . our first superlatives . . . the work and anticipation of the Junior-Senior . . . hilarious comparisons of conventions and conventions and conventions . . .

The panic before and after general quizzes and Ramsay's little exams . . . the overwhelming knowledge that we know so little . . . the dates outside Hudson's north door and the audiences on the rotunda . . . the summer romances from caravans and work camps . . . the new spirit under the honor system . . . May Court and our own Maid of Honor . . . these things make up our Junior year. These we keep forever in our hearts.

ANN, BETSY, ANN, SARA, JUNE



# Junior



JANELLE BAKER, Burlington  
RACHEL BEASLEY, Mayodan  
ANDIE BOOE, King



GRACE BRANTLEY, Burlington  
JUNE BUNN, Nashville  
PATSY CRAVER, Lexington



PATSY CRAWFORD, Rowland  
BEVERLY COX, Ramscur  
NETTIE DAMERON, Yanceyville



FRANCES DRAPER, Martinsville, Va.  
JOANNE DULL, Winston-Salem  
JEAN FORINER, Davidson



NANCY FRANCIS, Waynesville  
HELEN GARRETT, Hazelwood  
ORLENA GRANT, LaGrange



JOAN GREENBERG, Greensboro  
LUCY ELLEN GWYN, Mount Airy  
MOLLIE HARMON, Gastonia



# Class

BETSY HARRIS, Durham  
ANN HARRY, Salisbury  
JANICE HART, Jefferson, Tenn.



CAROLYN HORTON, Williamsburg, Va.  
EDWINA HOUSER, Chetryville  
SOO JOHUNG KIM, Seoul, Korea



NELLIE KNOTTS, Charlotte  
NANCY KNOX, Wilmington  
MARY JANE LASSITER, Greensboro



JANE LEWIS, Greensboro  
DORIS LONG, Jonesville  
ELIZABETH LOVE, Greensboro



ANN McLAIN, Charlotte  
MARGARET McLARTY, Mooresville  
DORIS McRAE, Rowland



BARBARA MERRITT, Hickory  
DORIS MIDGETT, Morehead City  
SYLVIA MOFFITT, Sanford



# Junior Class



MARGARET NOLAND, Clyde  
Jo ANN PADLEY, Ayden  
ANN PARKER, Littleton



SHIRLEY SEACROVES, Wilmington  
VALOREE SHINN, Kannapolis  
BARBARA SMITH, Archdale



BARBARA STALVEY, Reidsville  
NONNIE STEDMAN, Asheville  
SARA ANN STEWART, Alhambra, Va.



BIBBIE TAPPEN, Nashville  
CAROLYN THOMPSON, Shelby  
PEGGY TYSON, Stantonsburg



SARAH VARNER, Staunton, Va.  
NORMA JEAN WARREN, Asheboro  
PATSY WASHAM, Bessemer City  
MARY LEE WELLS, Greensboro



RUTH ANN WHILE, Norfolk, Va.  
ELIZABETH WILKIE, Forest City  
ANN WILKINSON, Anniston, Alabama  
MADGE WILSON, Trinity



# Junior



*Best All Round*  
MISS ANN WILKERSON  
(special student)



*Most Likely to Succeed*  
MISS MADGE WILSON



*Best Student*  
MISS JUNE BUNN

# Superlatives

*Most Popular*

MISS NANCY KNOX



*Most Original*

MISS SYLVIA MOFFITT



*Most Athletic*

MISS ANN McLAIN



*"I never get any mail."*



*"The results of the Freshman Sophomore."*

## Sophomores



*"Kneel, lovely rat!"*

# Class Officers

*President:* CAROL MARSHBURN

*Vice-President:* LUCY ANN CARNEY

*Secretary:* BARBARA STOCKTON

*Treasurer:* KAY GREEN

*Council Representative:* BETTY RAY OWEN

It's unbelievable, but here we are, yep . . . SOPHOMORES. An eternal six weeks before a heavenly weekend away? Back seats in Chapel? Rats? Frustrated freshmen? Nope! It's HUDSON! STUDY WHERE AND WHEN YOU PLEASE! UNLIMITED WEEKENDS! MORE DIGNIFIED SEATS IN CHAPEL! CATS! UPPER-CLASSMEN!

Yes, and this is the time for sharing those final thrilling experiences with our Big Sisters —cap and gown ceremony, daisy chain, graduation. For now we begin to take our responsibilities a little more seriously, because, you know, next year we'll have Little Sisters too.

BETTY RAY, KAY, BARBARA, CAROL, LUCY ANN



# Sophomore



NELLIE ALLEN  
Fayetteville  
MARY LAYNE BALLARD  
High Point  
JANET BARKLEY  
Statesville  
CHARLES BISSETT  
Greensboro



HARRIETT BOBITT  
Charlotte  
EDITH BOWMAN  
Randleman  
BETTY BOYD  
Charlotte  
BARBARA BRADLEY  
Charlotte



CAROL BROGDEN  
Louisburg  
CECIL BROWN  
Madison  
BETH BULL  
Biscoe  
SARA BURRHEAD  
Asheboro



LUCY ANN CARNEY  
Wilmington  
ELIZABETH ANN CARROLL  
Hickory  
SALLY CATON  
Concord  
PAT CHINNIS  
Wilmington



SALLY JO COLEY  
Wadesboro  
CLAUDIA COVINGTON  
Wadesboro  
JANE CRAVLE  
Lexington  
MARY ANNE CROFTON  
Reidsville



PAT CROY  
Winston Salem  
JEAN DAIL  
Greenville  
CAROLYN DEDMON  
Shelby  
DOT DEY  
Yadon, Penn.



LINDA DOWNUM  
Edcote  
SUE EDMONDSON  
Hassell  
SHIRLEY JANE FALLS  
Kings Mountain



# Class

CAROL FERGUSON  
Kannapolis



PEGGY GIBBS  
Greensboro



BETTY GRANT  
Jackson



ANNE GRAY  
Durham



CAROLYN GRAYSON  
Marion



KAY GREENE  
Gates



SYLVIA GREGG  
Fair Bluff



REITA GROSE  
Charlotte



VIRGINIA GUNN  
Leaksville



MARGARET HAFLER  
Hickory



BEVERLY HARDIN  
Fairmont



DOROTHY HART  
Greensboro



BARBARA HEDGECOCK  
High Point



VIRGINIA HIGGINS  
Shelby



NANCETTA HUDSON  
Goldshoro



PRISCILLA IPOCK  
New Bern



ANNI JONES  
Winston-Salem



PAT LANE  
Norfolk, Va.



JOAN LA-PRADE  
Greensboro



SARA LEAK  
Charlotte



BETTY WRAY LESTER  
Reidsville



DOT LINER  
Lake Junaluska



ANNE LONG  
Boxboro



JANE LOVI  
Wilmington



SUE MANNING  
Middlesex



MARY PLYDE MARSH  
Wadesboro



CAROL MARSHBURN  
Charlotte



BARBARA MOORE  
Reidsville



# Sophomore Class



BROWNIE MORGAN  
Sarıbury  
LIZ MUSTIAN  
Kittrell  
BARBARA NEWTON  
Statesville  
FRANCES NUZUM  
Newton  
DORIS OLIVER  
Greensboro

BETTY RAY OWEN  
Norfolk, Va.  
BETTY JEAN PABLEY  
Ayden  
JOYCE PALE  
Rowland  
FAYE PITCHARD  
Elizabeth City  
BARBARA RYANOLDS  
Fayetteville

MARIE RHODES  
Fayetteville  
RUTH RUSH  
Asheboro  
JULIA SANDERS  
Taboro  
WILMA SANDERS  
Reidsville  
NANCY SHOULERS  
Rich Square

LINDA SLOAN  
Waynesville  
BETTY STANFORD  
Kinston  
JOANNA STELL  
Candor  
ELLEN STEPHENS  
Yanceyville  
HELEN STEPHENS  
Charlotte

PICCY STEPHENS  
Charlotte  
BARBARA STOCKTON  
Charlotte  
BARBARA TULLI  
Stoneville  
ELIZABETH WALKER  
Gibson  
ELINOR WALLACE  
Smithfield

WALLACE ANNE WAINICK  
Reidsville  
JO ANN WEBSTER  
Draper  
ANN WISE  
Reidsville  
DORIS WILKERSON  
Farmville  
BETTY JEAN WILKINSON  
Lexington

TALLEY WILLIAMS  
Matthews  
ANNE WOODWARD  
Statesville  
JEAN WOODY  
Durham



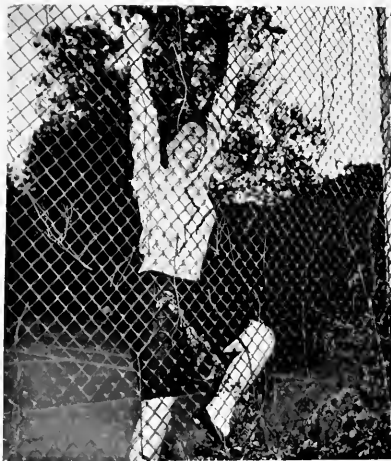
*"Gotta get pretty . . ."*



*"Now Ramses II . . ."*

## Freshmen

*"Oh, if I had the wings of an angel . . ."*



# Class Officers

*President:* KATE GLADSTONE

*Vice-President:* JUDY McMICHAEL

*Secretary:* MARY MEERINS

*Treasurer:* GWEN PONS

*Council Representative:* GENE EDWARDS

*Athletic Association Representative:* CAROLINA FERGUSON

"I'm no lowly Freshman! I'm queen of the campus. I didn't have closed study as did my predecessors. I was 'rushed' for almost a whole week in September. I was the belle of the ball at Freshman-Sophomore dance. Even during the first six weeks, I became very attached to G. C. Let's face it—I'm a cute Chick!"

"Wouldn't you like another night out . . . lights on late . . . being a 'cat'?"

"I'm a queen of the campus. But to the sophomores I descend. (Gee, so much to look forward to. I can hardly wait—A soph at last!)"

KATE, MARY, JUDY, GWEN, GENE, CAROLINA



# Freshman



ZELMA ANDREWS  
Silet City  
GAIL ARMSTRONG  
High Point  
NANCY AILET  
Greensboro  
MARY ASHTON BERTON  
Kinsale, Va.  
PAT BAUM  
Mantco



JANET BEST  
Whiteville  
PAT BLANKS  
Milledgeville, G.  
CAROLYN BOONE  
Greensboro  
ROSE MARIE EOOOTH  
Rocky Mount  
MARY ALICE BOWLIN  
Oxford



MARY JANE BOYLES  
Elkin  
MARGARET BRADLEY  
Lenoir  
SHARLA BRANSONING  
Wadesboro  
MAE BRASWELL  
Mt. Giload  
ANNE BROWN  
High Point



ANNA RUTH CABLER  
Wilkesboro  
DORIS CLONINGER  
Paw Creek  
MARY FRANCIS COLVERT  
Greensboro  
ANN CORNELL  
Lexington, Ky.  
EMILY COX  
Rainscut



NANCY DILTZ  
Weldon  
GENE EDWARDS  
Winston-Salem  
BLTTY JANE FARBLLI  
Greensboro  
CAROLINA FERGUSON  
Ferguson  
KATE GLADSTONE  
Winston-Salem



MARY ELLEN GRAHAM  
Dobson  
HELEN SUL HARPER  
Burlington  
DON HENRIHLL  
Greensboro  
NANCY HILL  
High Point  
HELEN HOLLOWELL  
Wake Forest



MARIANNA HOUSER  
Cherryville  
PHYLLIS JEAN HINSI  
Sophia, West Va.  
ANN IVLY  
Albemarle  
RUTH ANNE JIANNETTI  
Norfolk, Va.  
PEGGY ANN JOHNSON  
Greensboro

# Class

RUBY KELTON  
Oxford  
JANE LEACH  
Thomasville  
JANE LEARY  
Gastonia  
MILDRED ANNE LEGGITE  
Rocky Mount  
CRISSY LEONARD  
Lexington



ELIZABETH LEWIS  
High Point  
LINDA LEWIS  
Baldw  
ANN LUTZ  
Shelby  
ANN MCLONDON  
Cottageville, S. C.  
JOLIA McMICHAEL  
Winston-Salem



NANCY McWHIRLER  
Charlotte  
SYLVIA MARTIN  
Jonesville  
MARY MELKINS  
Columbia  
JUNE MILLS  
Concord  
ELLIE MITCHELL  
Oxford



NANCY MOODY  
Clemmons  
ANNE MURFORD  
Wakefield, Va.  
DELORES MURRAY  
Siler City  
RUTH NEISLER  
Concord  
ELLEN PALMER  
Albemarle



PAI PARRISH  
Burlington  
MIRIEL PEARSON  
Fayetteville  
GWEN PONS  
Valdese  
PEGGY ANN PRALL  
Kinston  
PAT PUGH  
Shawboro



PAT ROBINSON  
Clarendon  
MIRIAM SCRUGGS  
Charlotte  
MIRIAM SEAWELL  
Charlotte  
GLINDA SHAW  
Fayetteville  
ELIZABETH SHILARIN  
Warrington



KEENER SMATHERS  
Greensboro  
SARAH SYMILE  
Norfolk, Va.  
MARY WHEELER SMITH  
High Point  
BETTY SMITHSON  
Wilmington  
JANILLE SNIED  
Raeford



# Freshman Class



STARR STARLING  
Mooreville  
JOYCE STEELE  
Greensboro  
MARY JACQUELINE STEVENSON  
New Bern



ANNA BYRD STOUT  
Siler City  
LIBBY STRAUGHN  
Fayetteville  
OLIVE TATE  
Chadbourn



JACQUELINE TAYLOR  
Morehead City  
EMILY THOMAS  
Erwin  
MARIE TUTTLE  
Stoneville



BARBARA TYSON  
Stantonsburg  
REBECCA WALLACE  
Troy  
ALTA WARREN  
Erwin



FAYE WEAVER  
Durham  
ROBERT WELCH  
Greensboro  
SARA WHEATLEY  
Kinston



PAUL WILMOTH  
Farmville, Va.  
GAIL WOODBRIDGE  
Mt. Holly, N. J.  
EDNA FRANCES YOUNG  
Beaufort



*In Memoriam*



MIRIAM SCRUGGS

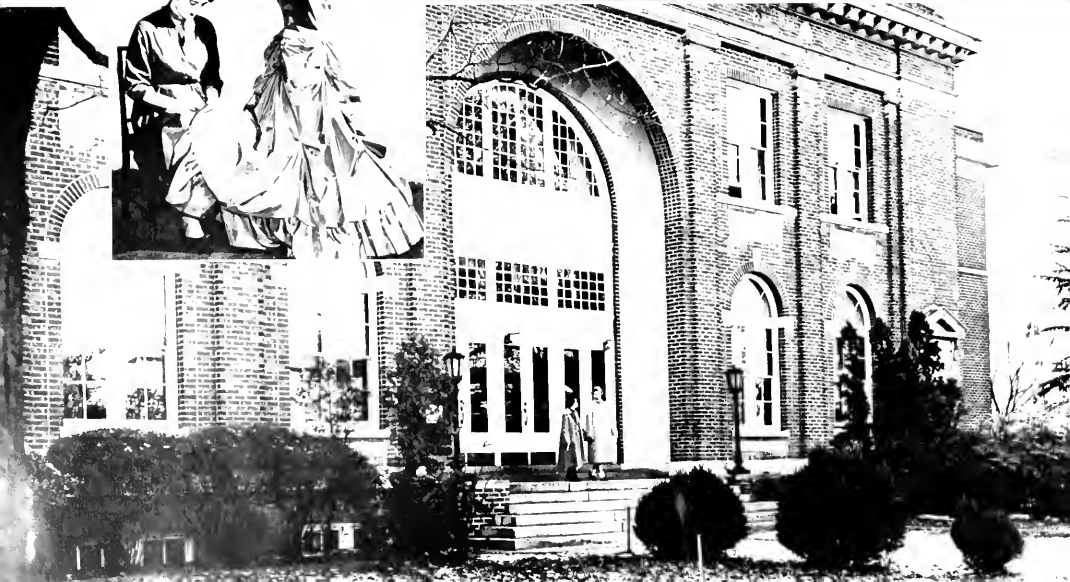
Born: December 17, 1936

Died: January 16, 1955



# ORGANIZATIONS

Piano notes, shrill voices, the scrape of dancing feet, the rise of voices from the Odell stage, the pound of hammers, and the grate of saws—activities of Odell.





## Glee Club

*First row:* Stalvey, Accompanist; Wagner, *Vice-President*; Williams, McLarty, Caudle, Tuttle, Kim, Mr. Williams. *Second row:* Wilson, *Business Manager*; Padley, Walker, Baie, Clominger, Draper, Boone. *Third row:* Mumford, Gregg, Webster, Stanford, Kime, Baum, Dickens, *President*. *Fourth row:* Manning, Lewis, Booe, McLain, Wells, Corzine. *Fifth row:* Duckett, Reynolds, Martin, Carper, Marsh, *Librarian*; Woodward, Secretary; White. *Sixth row:* Steed, Warren, Crov, Stedman, Harmon, Horton, Dudley.



## Chamber Orchestra

*First Row:* Mrs. Hansen, McWhirter, Davis, *President*, Moore, Simmons, Love, *Secretary*; Harmon, Hill. *Second Row:* Woudridge; Lewis, Sellars, ———, Caudle, Steedman, *Treasurer*; Falls, Lovelace, Thompson, Mary Lee Wells, Chappell, Grey, *Librarian*. *Third Row:* Mrs. Robert Simmons, Driesell. *Directing:* Mr. Hanson. *Not Pictured:* Maxine Wells, Wagner.



## Music Education Club

*Front Row:* Norma Chapel, Mary Plide Marsh, *Sec.-Treas.*; Jovce Pate, Barbara Tuttle, Andy Booe, Jane Lewis. *Second Row:* Mr. Shull, *Adviser*; Sally Wagner, *Vice-Pres.*; June Foust, Allie Carr Kime, *President*; Betty Stanford, *Reporter*; Jo Webster. *Standing:* Nancy Moody, Shirley Falls, Carolyn Horton, Mary Jo Caudle. *Not Pictured:* Barbara Reynolds.

## Chapel Choir

*First row:* Gregg, J. Padley, Wilson, Walker, Bradley, Crow, Stevens, Wagner, *Director*. *Second row:* Mustian, Ferguson, Laue, Sigman, Betts, Jolliff, York. *Third row:* Ipuck, Dedmon, Gunn, B. J. Padley, Woody, Morton, Sanders. *Fourth row:* Fields, Gaddy, Baie, Hallow, Grant, Turner, Kime. *Fifth row:* Brown, McCollum, Huggins, Dickens, Stanford, Hardin, Whitaker.





## Music Club

*Front row:* Cecil Brown, Joyce Pate, *Secretary:* June Foust, Miss Towne, *Sponsor:* Carolyn Horton, *Vice-President:* Martha Driesell, *President:* Mary Jo Davis, Lib Walker, Mary Jo Caudle. *Second Row:* Betty Stanford, Mary Plyde Marsh, Peggy Tyson, Lib Love, Joann Gaddy, Mallie Harmon, Ruth Ann White, Frances Draper, Allie Carr Kime, Jo Ann Padlev, Betty Rae Owen, Anne Woodward, Barbara Reynolds, Sally Wagner.

## Modern Dance

*Wagner, McLarty, Secretary:* Corzine, Beasley, Wilson, *President:* Not pictured. *Baum, Treasurer:* Robinson, Stout, Chambless.





MRS. MARY BRAEME PARKER  
Director



## G. C. Players

Twelve o'clock rehearsals . . . the smell of grease paint and cold cream . . . the feel of trying on the new costume . . . the thrill of "putting it all together . . ."

The mixing of paint and horsehair brushes . . . scrubbing off six layers of paint . . . cracked fingernails and smashed fingers . . . the strain of putting up the set . . .

The loyalty of the group . . . the capability and willingness . . . the binding tie of "Once a Player, always a Player."

*Front row: Virginia Swain, President; Grace Brantly, Barbara Merritt, Lib Walker, Scrapbook Custodian; Nancy Helton, Charlene Baddout, Business Manager; Janice Hart. Second row: Valoree Shinn, Mary Lou Vaughn, Thelma Albritton, Ann Taylor, Secretary; Nancetta Hudson, Joan Greenberg, Publicity Chairman; Mary Pugh. Not Pictured: Jean Dail and Virginia Kiser, Program Chairman.*



Virginia, my costume needs taking up . . .  
Joanie, hurry with my make-up . . . Barbara,  
have you learned the first Act yet? . . .  
Thelma, those balcony spots aren't set right  
. . . Mary, the whole set just fell flat on the  
stage . . .

Sure, it's work! Sure, it's hard to work off  
the 120 hours for membership! Oh, no, we  
never get tired or upset—hardly! Do it again?  
You bet your life!



November 19, 1954, Odell Auditorium,  
*"The Heiress"*

*"Now this is the way you do it . . ."*



# Emerson Society



JANE CONNELLY  
President



First row: Bobbit, Hudson. Second row: Pate, Walker.  
Third row: Hedgecock, Marsh.

Waving banners of "Go Emerson" . . .  
Specks of candle light among the serenaders  
. . . Wild decorations of beach sand and sea  
shells . . . gracefully accepting defeat on  
Decision Night . . . trips to the polio hospital  
. . . co-sponsor of the Valentine Dance . . .  
"Old Emersons we are proud . . ."

Seated: Fortner, Chaplain; Owen, Accompanist; Sigman, Critic. Standing: Smith, Recording  
Secretary; Swain, Corresponding Secretary; Connelly, President; Stark, Vice President; Caton,  
Treasurer. Not pictured: Edwards, Censor.





# Irving Society



ANN TAYLOR  
President

The Irvings win again . . . gaily decked hall of bunny rabbits and pink trees . . . strains of "Do the Bunny hop" . . . co-ed members . . . the changing of the Irving song . . . sponsor of a noted hair stylist . . . joining with the Emersons with the Valentine Dance . . . "Proud to show our gallant colors . . ."



First row: Woodward, Wilkenson. Second row: Oliver, Love. Third row: Buie, Wallace.

Seated: Gaddy, Vice President; Merritt, Treasurer. Standing: Padley, Chaplain; Craven, Censor; Kime, Recording Secretary; Taylor, President; Harris, Corresponding Secretary; Reynolds, Accompanist; Kim, Critic.





# Publications



**BUSY**





MARY PUGH  
Editor in Chief

Pictures every Tuesday and Thursday from three o'clock on . . . Why did she forget to come . . . leading Miller over hill and terrain . . . appreciating his kindnesses and patience . . . taking pictures even in the snow . . . pleas of get that copy typed and label those pictures . . . the first Publications Banquet . . . selling tickets for movie week . . . racing to finish up with the pictures and type up the copy . . . the Echo is complete! A sense of accomplishment—an experience never to be forgotten.

## Echo Editorial Staff

*Front Row:* McClamrock, Bobbitt, Whitaker, Pugh, Editor, Craven, Eare, Harris. *Back Row:* York, Vaughan, Barbara Cox, Rush. *Not Pictured:* Merritt, Stalvey, Abbitt.





JULIA MARSHALL RATLIFF  
*Business Manager*

Just fifteen blocks to walk . . . repeated echoes of "I can't work into my budget . . ." Determination mixed with a little intestinal fortitude . . . "How in the world do you draw up the ad section" . . . the satisfaction of exceeding the quota . . . aching feet . . . "But, Julia, this is the eighth time I've called . . ." . . . Rush, rush, rush, the deadline's almost here . . . a job well done, a swell group of gals!

## Echo Business Staff

*Seated:* White, Smith, Ratliff, Business Manager; Washam. *Standing:* Jones, Webster, Kimc, Starke, Davis, Scarborough, Harris, Bates, Lynch, Corzine, Sanders. *Not Pictured:* Lassiter.



# Collegian

A newspaper full of spice and variety . . . constructive editorials and informative features . . . news while it is new . . . repeated trips to Piedmont Press . . . Signs of "Collegian Literary Meeting" . . . assignments and more assignments . . . having to work on a budget cut . . . learning the meaning of Publications Committee . . . hard work and aggravation . . . its issue a real pleasure to all the G. C. students, our hats off to the gals who make it possible!



JANET BROWN  
Editor in Chief

## Literary Staff

*First Row: Knox, Hart, Stalvey, Managing Editor, Connelly. Second Row: Cox, Assistant Editor; White, Stanford, Stephens, Bobbitt, Rush, Craver, Smith, Faust. Third Row: Wilkinson, Carnev, Harris. Not Pictured: Merritt, Janet Brown, Editor, Davis, Harry.*





Seated: Wells, Turner, Starnes, *Business Manager*. Standing: Ferguson, Smith, Midgett, Bowman, Vaughan, Beam, Caudle, Parker.

Ads, ads, and more ads . . . We'll never get them collected in time for the next edition . . . (But they always do!) . . . the theme song of "Heart of Stone" as far as some of the business concerns go . . . coming through just in the nick of time . . . You gals are on the ball!

## Business Staff



DORIS STARNES  
*Business Manager*

# Handbook

The little white book with the green lettering . . . the second Bible of any G. C.-ite . . . "Didn't you read in the handbook where you aren't supposed to wear p.j.'s in the dining hall?" . . . long, endless hours of work compiling and writing during the summer months . . . mailing and addressing copies . . . a big responsibility carried through with capability and success.



JEAN BEAM, Editor

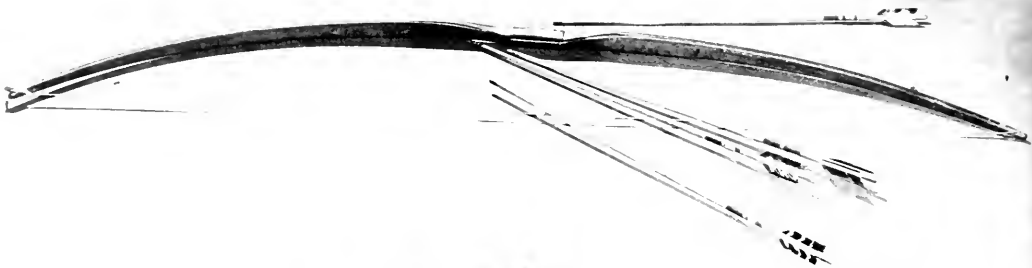
MAXINE SCARBOROUGH, Business Manager



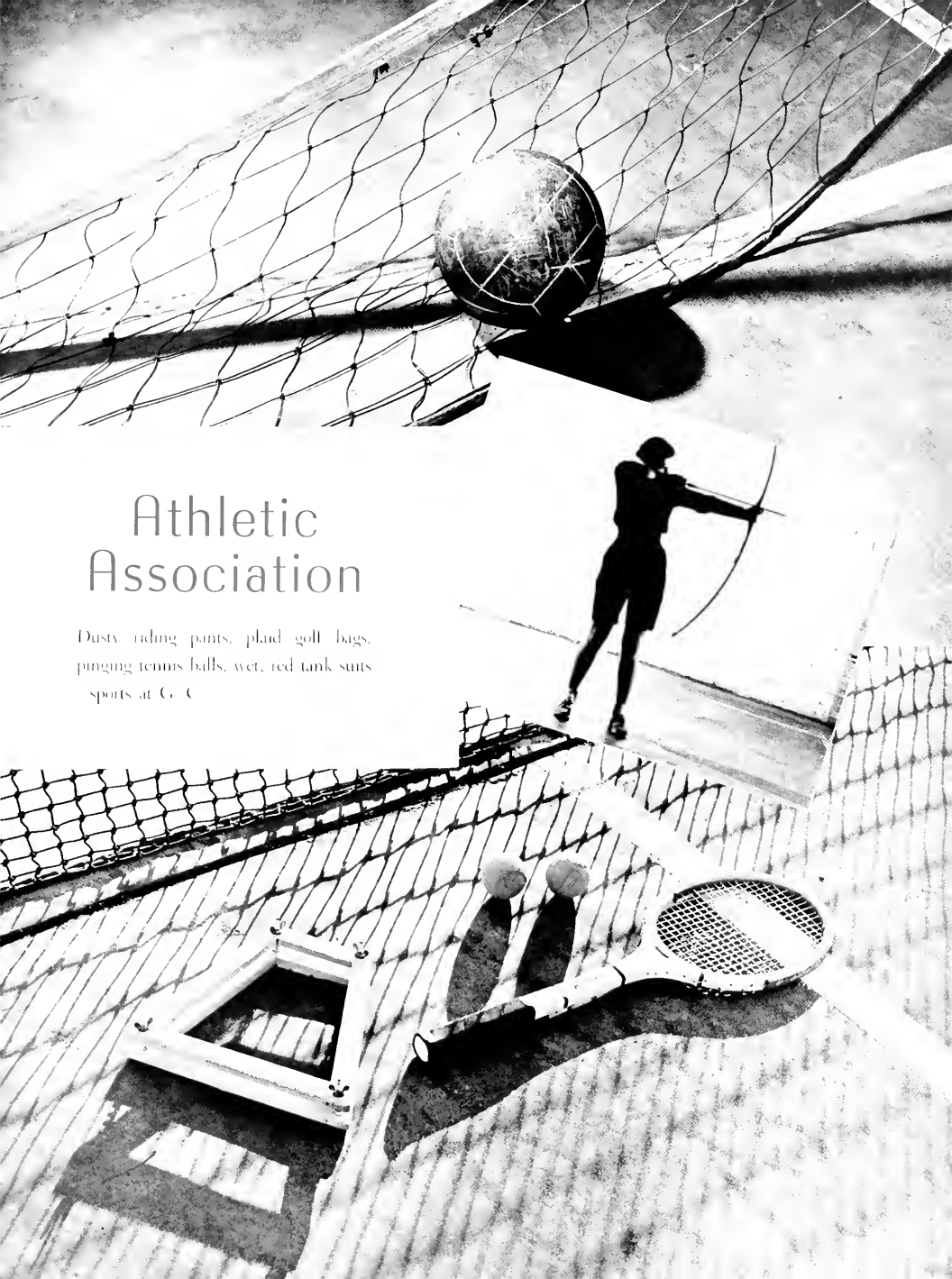
## Press Club

BROWN—State wide releases  
HART—The Record  
KNOX—The Daily News  
MISS MARY L. GINN, Adviser

Ever wonder how all the G. C. news gets into all the papers? These are the people who keep G. C. and its "doings" in the public eye. Taking pictures, making endless write-ups—they do a marvelous job of it all!







# Athletic Association

Dusty riding pants, plaid golf bags,  
pinging tennis balls, wet, red tank suits  
spots at G. C.

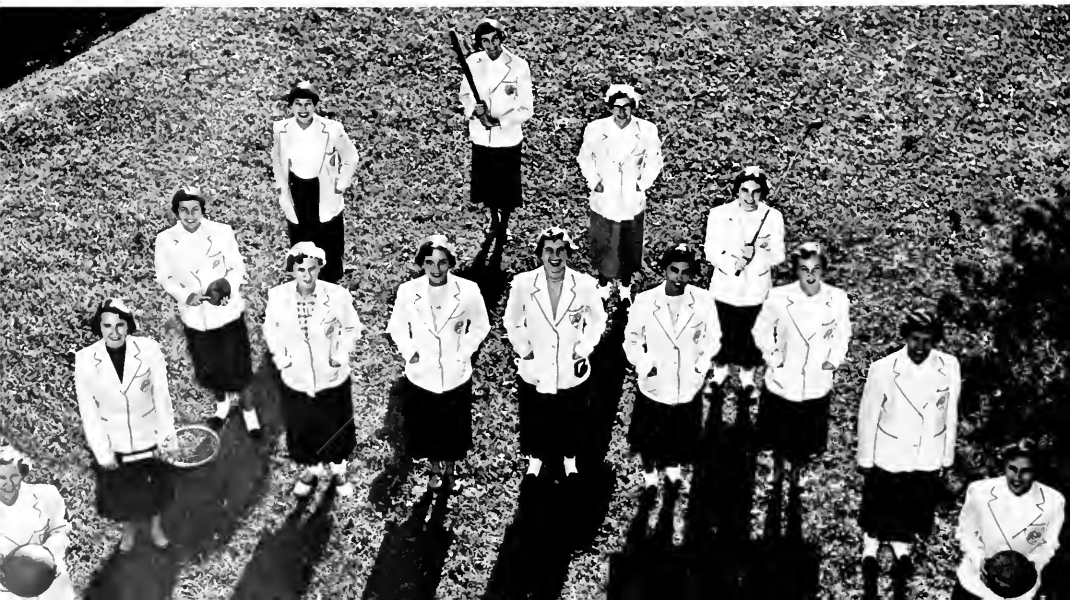


HELEN TUBLINGTON  
President

"Hey, Helen, what time's the basketball game tonight?" . . . "Now, don't forget, we've got to work hard for money for the new gym" . . . "Don't forget we've got to plan for playday tonight" . . . Where would you hear these remarks? Why from the A. A., of course . . . Here they are . . . the brains behind playday, the workers behind the student faculty games, and the brains behind all of our recreational sports. We say congrats for a job well done!

## Athletic Association

Middle: McLain, Secretary; Corzine, Vice-President; Tublington, President; Shoulars, Treasurer; Colton, Cheerleader. Outside: Whitaker, Craver, Morgan, Moffitt, LaPrade, Marshburn, Pace, Downum, Publicity; Wallace. Not pictured: Wilson.





HELEN TURLINGTON

## Miss G. C.

Who's the gal who runs around gathering people together for tournaments and meets? Who marks off volley ball court lines in the snow for playday? Who always manages to get things accomplished? No other, of course, than "Bit" Turlington—Miss G. C.

## Bit and Spur

"Help, where are the brakes on this thing?" You won't be hearing this from these "first ladies of the saddle." It takes skill to ride one of these things . . . you don't believe it? Well, you *try* it!

*Front: Know, Noland, Kime. Center: Snead, Armstrong, Croton, Secretary-Treasurer. Back: Harris, Moffitt, President.*





Seated: Turlington, Brown, Pugh. Standing: Huggins, Corzine, Dickens, Albritton.

## “G” Club

You're mighty right—these bruises aren't from playing tiddle-de-winks. They're from experience and participation in practically every sport on campus. Those letters are well deserved!

## Sports at G. C.

A spotlight follows a group of swimmers, the pictures of grace, through a beautiful act. The dust flies up from the horses' feet, the slap of volley balls echo. The rise and fall of tennis rackets, the quick darting of basketball players, the flash of white gym suits . . . sports? You bet your life!

Albritton, Turlington. Not Pictured: Brown, Corzine.

## Pin Club

“No, I wasn't pinned last night, but it looks *almost* as good as a 'frat' pin!” Well, you've sure got just reason to be proud. It isn't easy to acquire those 1000 points to become a member of the Pin Club.





Miss Kelly Upchurch  
Physical Education Director

The first Playday . . . "F.C.C. got all the trophies" . . . the swimming pageant . . . the work of Co-Sponsor of the Christmas dance . . . the enjoyment of working and playing together. The A.A. makes for each G.C. student a source of relaxation and fun!



"Can't we talk it over . . .  
All these decorations . . .  
"What a wonderful dance . . ."



# Student Government





NANCY HALTOM  
President



Left to right: Whitaker, Haltom, Merritt, Recorder, Varner, Beam, Secretary Huggins, Chairman, Dr. Millar.

## Judiciary Board

Patience, thoughtfulness, friendship, capability, willingness—these are the features of those who make up the Student Council and Judiciary Board, there always to give expert advice and offers to help. . . . Busy with freshman orientation and "Matters of State."

## Student Government Association

First Row: Pat Fields, N S A Chairman, Lib Love, Bash, Treasurer, Knox, Corresponding Secretary, Haltom, President, Seagroves, Second Vice President, Helen Dickens, First Vice President, Barbara Stalvey, Recording Secretary. Second Row: Owen, Lovelace, Men's Day Student Rep., Cox, Harris, Not Pictured: Albritton, Tyson, Gray.



# Student Christian Fellowship







RAMONA MORLON  
President



ADVISORY COMMITTEE  
Miller, Smith, Hansen,  
Hanson, Dunstan

Fellowship on Wednesday night, dorm vespers, Christmas parties, Campus Chest campaign, retreats—the S.C.F. is behind them all. Fellowship and lun with the constant effort of bringing Christ closer to the hearts and minds of the G. C. students.

First row: Pugh, Padley, Cox, Bue, Treasurer; McLain, White, Vice President, Corzine, Morton, President, Wilson, Betts, Secretary, Hart, Washam, Stewart, Hany, Albritt, Sigman, York.  
Second row: Fortner, Wagner, Chinnis, Haltom, Long, Brantley, Kim, Lynch, Connelly, Huggins, Leak, Bobbitt, Hudson, Whitaker, Vaughan, Shinn, Starke, Wilkenson. Not pictured: Gray, Harris.



# Day Students

Running back and forth from home to class, wondering if we'll get there on time, trying to learn all the dorm student's names—what a problem we have!

Co-ed members in our ranks, the annual Day Student Tea, the work of the Christ mas dance—what pleasant memories! Years, months, hours, minutes—our life at G. C.

*Front Row: Jackie Sigman, President; Mary Lee Wells, Jane Lewis, Martha Waugh, Secretary, Treasurer, Maxine Wells. Center Section: Tib Lowe, Council Representative; Joyce Steele, Jean Hooper, Peggy Gibbs, Vice-President; Pat Wright. Back Row: Robert Welch, Robert Harris, Keeter Smathers, Marie Craven, Dottie Hart, Caroline Taylor, Ruth Latham, Shirley Windham.*



## Seniors



## Juniors



*Top—Seated:* Taylor, Cox, Hatris, White, *President;* Harrv, *Secretary;* Bunn, Vaughan, Wells.  
*Standing:* Starnes, McClamroch, Davis, Baddour. *Not pictured:* Washam.

*Bottom—Seated:* Mustian, Dail, *Secretary;* LaPrade, Pritchard, *President;* Baie. *Standing:* Boyst, Covington, Bowman, Stephens.

## Honor Societies

Conscientious students, industrious and intelligent. Book Worm?  
Nope! All around student? You can say that again! Reason to  
be proud? Justly so!





*"Winter Wonderland . . ."*



*"Da, Da, Da, Da, Da, Da, -jump, jump, jump . . ."*

# FEATURES



*Miss Ann Webb Taylor*

*May Queen*

May Day  
1955

*Miss Nettie Dameron*  
*Maid of Honor*





*Miss Joann Gaddy*

*Senior Attendant*

## May Court

*Miss Barbara Merritt*

*Junior Attendant*





. . . . 1955



*Miss Masine Scarborough*

*Senior Attendant*



*Miss Shirley Seagraves*

*Junior Attendant*



*Miss Doris Oliver*  
*Sophomore Attendant*

## May Court

*Miss Ellen Palmer*  
*Freshman Attendant*



. . . . 1955



*Miss Jane Love*  
*Sophomore Attendant*



*Miss Carolina Ferguson*  
*Freshman Attendant*

# Departmental Clubs



## G. C. Daughters

My mother was here in '33, and you should hear some of the rules *they* had! My mother can remember when the science lab exploded! Generations of G. C. ites!

*Front Row:* Emily Thomas, Betsy Harris, Secretary; Margaret McLarty, Treasurer; Barbara Craven, President; Barbara Merritt. *Second Row:* Mary Ann Croton, Elinor Wallace, Ellen Graham, Jean Turner, Barbara Bradley, Jane Bowles, Virginia Swain, Anna Stout, Mary Jo Davis, Jane Edwards, Starr Starling, Ann Brown. *Not Pictured:* Lib Walker, Vice-President; Virginia Kiser, Babs Tyson, Sara Burkhead, Jane Craver, Nettie Dameron, Betty Jane Farrell, Jane Love, Lib Walker.

*Seated:* Taylor, President; Sigman, Vice-President; Moore, Secretary-Treasurer; Knox, Stalvey, Hooper, Windham, Dedmon, Cox. *Standing:* Baddour, Lester, Benson, Carney, Wilkmon, Rathfi, Rush, Stockton, Brown, Merritt, Warren. *Not pictured:* Fure, McClamroch.

## English Club

"Romeo, Romeo, where are you, boy?" Read Shakespeare this way? Of course not! The English Club has a fine appreciation for all the truly great works of prose and poetry.





First row: Ferguson, Dull, J. Padley, Vice President, Jolili, President, Bowman, Swain, Morton. Second row: Graham, Bra-  
 sington, Huggins, Fields, Starnes, Turner, Lettwich. Third Row: Beasley, E. Cox, Tuttle, B. Cox, Knotts, Lane, Carper, Betts.  
 Fourth row: Mustian, Dev, Murray, Stanford, B. Bradley, Covington, Saunders. Fifth row: Dull, Bane, B. J. Padley, Chinnis,  
 Taylor, Best, Leach, Mills. Sixth row: Washam, Wilson, Leak, Stockton, Kim, Woody, McLain, Vaughan. Seventh row:  
 Sneed, Sloan, Allen, Hardin, Shaw, Lutz, Gladstone, Scruggs. Not pictured: Dickens, Marshburn, Woodward, Wallace, Learay,  
 Barkley, West, Wallace, Lewis, Newton, Wilmouth, Tate, Shoulars, Groce, Connolly, Scovell, Bramley, Futner, Barton,  
 Jeanette, Greene, McClamrock, York, Midgett, Wilkenson, McLendon, Grant, Keiten, Gregg, Mitchell, Pons, Beam, Booth,  
 Leggett, P. Bradley, Warren, Parrish, B. A. Cox, Croften.

## Religious Education Club

"Wonder which church I'll be D.R.E. of next year?" "I'll never learn the Order of Worship in time to carry it out next Sunday?" These are the problems of the Religious Education Club. Problems they solve successfully!

Left to right: Sally Jo Coley, Ann Dudley, Ellen Stephens, Sue Robinson, Chairman, Jane Brinkley, Jane Edwards.



## Social Standards

"Shall we go to Joe's Nite Spot or 'The Plantation'?" Are we supposed to wear hats to church? Just ask the Social Standards Committee. They can give the right answer every time!



Harris, President; Skaggs, Sponsor. First Row: Brown, Connelly, Grant, Ratliff, Scarborough. Second Row: Dickens, Fields, Dameron, Jolliff. Third Row: Corzine, Bush, Secretary-Treasurer.

## World Federalists

"Did you know that Russia had vetoed *again*?" "Let's talk about it in our meeting to-night!" Affairs of the world are the interests of these gals; and if you don't believe that they are on their toes, just ask them a question.

## Future Teachers

"I have the sweetest group of children." "How lucky you are! Mine are brats!" All in all, we just can't wait to become full fledged teachers. And no matter how hard or trying, we still like the teaching profession!

First row: Carney, B. Wilkerson, Vice-President; M. J. Harris, Lettwich, Treasurer; Washam, Graham, Brasington, Carroll, Grant, Midgett. Second row: Edmondson, Swain, Boddour, Bates, Secretary; Starke, President; Maples, Wells, Stanford, Warren. Third row: Newton, Tuttle, Craven, Wilkie, B. Harris, Wagner, Walker, Lassiter, Dameron, Caudle, Beam, C. Taylor, Haltom. Fourth row: B. Cox, E. Cox, Noland, McRae, A. Taylor, Latham, Lynch, Stough, Fields, Sanders. Fifth row: White, Smith, Hooper, Baic, Tyson, Garrett, Tappan, Craver, Crawford, Ratliff, Scarborough, Sigman, Warren, Stewart, Waugh, Wright, Starnes. Not Pictured: Pugh, Furlington, A. Wilkinson.



## Freshman Counselors

"Now, this is what is meant by a campus . . ." Our job? Orientation of the freshmen to the campus life—the do's and don'ts of G. C.



*First row:* Hudson, Jolliff, Ferguson, Cozine, Huggins, Gaddy, Driesell, Dickens, *Chairman;* Varner, Pugh. *Second row:* Buic, McLarty, Baddour, Edwards, Lynch, Stough, Turner, Kime, Betts, Hardin, Washam, Fortner. *Third Row:* Wilson, Tyson, Thompson, Merritt, Gibbs, Harmon, Love, Padlev, Midgett. *Not pictured:* Barkley, Bates, Bowman, Harris.

*Front Row:* Kun, *Minister;* Hart, Washam, Lynch, McLarty, Abston, Carper, Edwards, Meekins, Barton, Starling, Taylor. *Back Row:* D. S. McClamrock, Betts, B. Smith, Carroll, *Program Chairman;* White, Bowman, *Chairman of Board;* A. Brown, Grose, Crow. *Above:* Stough, Bishop. *Not Pictured:* Brantley, Robinson, Wright, Smathers.



## Preachers Kids

"Wonder where I'll move this year?" "Are you going to conference?" These girls' motto: "Home is where the heart is!"



*First row - Brasington, Barkley, Vice President, Lane, Smith, Mustan, Secretary, Jones, Second row - Kneisler, Bradley, Barton, Bue, Steel, LaPrade, President Third row - Chinnis, Greene, Morton, Kim, Covington, Stephens, Newton, Hooper Not pictured - Oliver, Wallace, Gorce, Woodward, Saunders, Gray, Moore, Midgett, Carroll, Wilmoth, Pons, B. Smith, Love, Owens, Sanders, Caton, Stinson.*

## French Club

"Have you read LE PETIT PRINCE? You haven't! We had a review of the book in French Club last night. It's funny, you know - but I feel much closer to France after hearing of their home life from Dr. Dunstan and Dr. Stinson."

*First row - Love, Publicity Chairman; Hooper, Secretary Treasurer, Wright, Hudson, Gann, Barkhead, Nazum, Knox, Scatgroves, President, Harris, Vice President, Wroody, Wilkerson, Second row - Harrs, Beasley, Downum, Fear, Ferguson, Not pictured Whitaker, York, Fure, Starke, McClamrock, Crawford, Huggins, Cornell.*

## Art Club

"Have you finished your pastel yet?" Sketches, etches, anything in art, the members of the Art Club can accomplish!







Left to right: Swain, Vaughan, Fields, President; Hardin, Varner. Not pictured: Armstrong.

## National Students Association

For a new organization on campus, this group has really made itself known. Pat even got elected Vice-Chairman for Educational and Student Affairs (whew!) of the Carolinas Virginia Region, at Iowa this summer. They keep us posted on national student affairs.

*Front row:* Allen, Padley, Mitchell, Higgins, Graham, Hedgecock, Vaughan, Stockton, Leck, Coy, Vice-President; De, Hieronimus, Ballard, President; Wilkie, Secretary; Treasurer, Wilkinson. *On steps:* Gami, Sison, Bellmon, Brock, Shoukars, Frey, Beauman, Ferguson, Woodruff; Hanser, Shaw, Best, Meekins, Cox, Gladstone, Wilkerson. *Between posts:* Leonard, Smithson, Brown, Harris, Sneed. *Not pictured:* Johnson, Mills, Lewis, Wallace, Palmer, Colvert, Lewis, Moody, Sterling, Bowling, Nixson, Wood, Harris, Barkhead, Freeman, Lutz, Grant, Elmouson, Raynor, Cornell, Pugh, Stephens, Weaver, Seawell, Reynolds, Hill, Thayer, Bogden, Straughn, Carper, Wayne, Pearson, Grayson, Mumford, Edwards.



## Spanish Club

"If we go see the movie, then we don't have class tomorrow." Who's sponsoring it? The Spanish Club, of course! Has anyone seen Juan Hose?



*First row: Boyd, Kneisler, Pritchard, I. Wilkie, Vice-President; Mustian, Kim, Thompson, A. Wilkie, President. Second row: Lutz, Ballard, Publicity Chairman; Moffitt, Bunn, Wilkenson, MacMichael, Wheatley. Third row: Pratt, Gladstone, Marshburn, Hedgecock.*

## Math Club

"Which end of this compass do you put down on the paper?" "What made you survey the distance from the third floor of Main, down the fire escape to the ground?" Fun with figures? Yes, indeed!

*Harris, Secretary; Parker, Via, Vice-President; Robinson, President; Coley, Treasurer; Wallace, Staller, Gunter, Harris, Baker, Edwards.*

## Home Economics Club

"Which side of the plate does the salad fork go on?" You don't know? The members of the Home Economics club can tell you, and just ask them any other question about being a successful home maker!



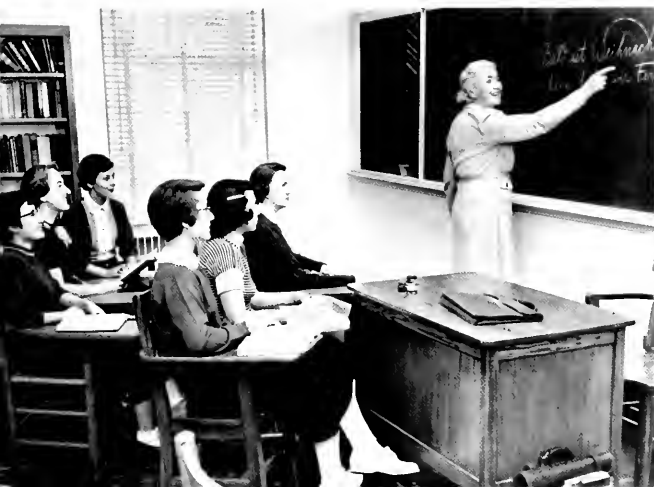


*First Row: Kim, Midgett, Secretary; Treasurers, Damon, Varner, Vice President, Gwyn, Baker, Lassiter, Grant, Carroll, Scarborough, President, Second Row: Knotts, Williams, Steel, Boyman, Covington, Harry, Terusa; Third Row: McLeon, Washam, Hart, Starnes, Betts, McCrae, Crawford; Fourth Row: Dickens, Jelliff, Fields, Rathliff, Turner, Harris, Connelly, Vaughn; Last Row: Moore, Saunders, Mustian, Lester, Skaggs. Sponsor: Not Pictured: Bue, Former, Huggins, Corzine, Padley, Late, Scruggs, Beam, West, Greenburg.*

## International Relations Club

"Wasn't that the cutest Turkish boy we had for a speaker tonight?" "Did you hear the mock session of the General Assembly of the United Nations that the International Relations Club sponsored?" Usefulness to the campus? Very much so!

*Back row: Kim, Secretary, Woody, Pritchard, Treasurer, Front row: Draper, Webster, Rush, President, Dr. Berwin, Not pictured: Hudson, Vice President, Hill, McEnty, Cox.*



## German Club

"But, I'll never be able to say it like Dr. Berwin!" Maybe not, but the girls of the German Club can clue you in on the German language and the life of its people!

# Young Democrats Club

Who'll run for president in '56? What are the principles of the Democratic party? "Hold that Confederate money!" Politics, conventions, and rallies! Our Y.D.C. is on the ball!

*Pictured from bottom to top: Craver, Second Vice-President, Owens, Albritten, President; Baddour, McCollum, Treasurer; Brown, Tappan, Swain, Huggins, Ratliff, Houser, Carney, Wilkenson, Lettwich, Brasington, McRae, Crawford, Graham, Fields, Stockton, Gregg, Hardin, Covington, Dickens, Starnes, Bradley, Hart, Lester, First Vice President; Steed, Scarborough. Not pictured: Noland, Secretary; Knox.*



# Fire Wardens

One o'clock—the pierce of a bell! What's up? What is it? Then it rains! Another fire drill, no less. Doors close, wet towels draped, coats buttoned, files of figures down the stairs . . . Who administers all this? The Fire Wardens of G. C.

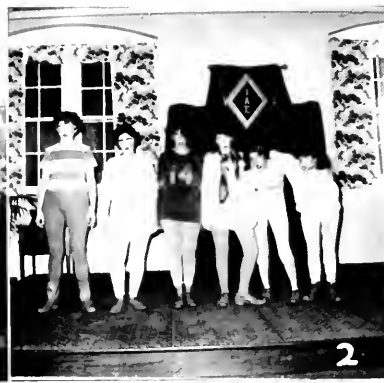
*Craver, Chief; Ballard, Brown, McCrae, Armstrong, Crawford, Gross, Wilkenson, Dietz, Wallace, Lutz, Wilkinson, Martin.*



1. "Just HFI from gay Paree"
2. "Visiting ballet group . . ."
3. "Me and my teddy bear . . ."
4. "Dem bones, dem bones . . ."
5. "Pretty good catch . . ."
6. "The pause that refreshes . . ."
7. "Poor practice teachers . . ."
8. "Ten Shun"
9. "Our Man Friday - Papa Harrell"



1



2



3



4



5



6



7



8



9



1 "Man of Distinction"

4 "Boys, boys, boys."

7 "Always in the middle of things"

2 "Oh, my head . . ."

5 "Unnn, mee . . ."

8 "Wonder what I got?"

3 "What did you say?"

6 "Yankee tourist . . ."

9 "Back on the farm . . ."



1. "Packed and ready"

4. "Guess who?"

7. "Mr. and Mrs. at home"

2. "Variety - the spice of life"

5. "Anybody seen Alchit?"

8. "Ku Klux Klan at work"

3. "Pass the salt"

6. "Beauty on parade"

9. "Meditation"

# Student List

Albritton, Thelma Pauline, Snow Hill  
Allen, Nellie, 221 Valley Road, Fayetteville  
Andrews, Zelma Rossel, Box 85, Siler City  
Armstrong, Gail, 906 Johnson Street, High Point

Baddour, Joan Charlene, 806 Stewart Avenue, Clinton  
Baker, Janelle, 1222 May Court, Burlington  
Ballard, Mary Layne, 316 Howell Street, High Point  
Barkley, Janet Lee, 203 South Green Street, Statesville  
Barton, Mary Ashton, Kinsale, Virginia  
Bates, Sarah Ann, Box 5, Bainbridge, Georgia  
Baum, Patricia Anne, Box 204, Manteo  
Beam, Mrs. Jean Gentry, Box 103, Cavet  
Beasley, Rachel Delight, Box 474, Mayodan  
Benson, Mrs. Sue Hedden, 1405 W. Wendover Avenue, Greensboro

Best, Janet, c/o Mr. J. B. Speight, Winterville  
Beets, Anita Scott, 306 Florence Street, Greensboro, Caixa Postal 267, Instituto Porto Allegre, Porto Allegre, R. G. S., Brazil  
Bissette, Mr. Charles Causey, Box 23, McLeansville  
Blanks, Patricia Ruth, Box 86, Milledgeville, Georgia  
Bobbitt, Harriet McFadden, Boylan Apt. D-101, Raleigh  
Booc, Mary Anderson, King  
Boone, Carolyn Dean, 2217 Wright Avenue, Greensboro  
Bowlin, Mary Alice, Route 3, Box 175, Oxford  
Boyman, Edith Marie, Box 65, Randleman  
Boyles, Mary Jane, 727 West Main Street, Elkin  
Boyst, Elizabeth Anne, 717 E. Kingston Avenue, Charlotte  
Bradley, Barbara Ann, 2208 Vail Avenue, Charlotte  
Bradley, Margaret Loftin, 200 Norwood Street, Lenoir  
Brantley, Grace Smith, 1509 Granville, Burlington  
Brasington, Sharlia Dunlap, 12 Plunkett Avenue, Wadesboro  
Braswell, Mae Baldwin, Box 103, Mount Gilead  
Brinkley, Daisy Jane, 315 W. Guilford Street, Thomasville  
Brogden, Mrs. Carol, 611 North Main Street, Lousburg  
Brown, Anne Crews, 609 Highland Avenue, High Point  
Brown, Janet Lee, 714 West Fifth Avenue, Lexington  
Brown, Mary Cecil, 231 Dalton Street, Madison  
Bue, Elizabeth Thomas, Biscoe  
Bunn, June Lancaster, 501 Center Street, Nashville  
Burkhead, Sara Frances, 147 Randolph Avenue, Asheboro

Carney, Lucy Ann, 121 Brookwood Avenue, Wilmington  
Carper, Anna Ruth, 407 Sixth Street, North Wilkesboro  
Carroll, Elizabeth Anne, 252 Third Avenue, N.W., Hickory  
Caton, Sara Ann, 335 Kerr Street, Concord  
Cauldie, Mary Josephine, 1607 Ashboro Street, Greensboro  
Chambliss, Marjorie Ann, Commodore Park, 214 Bodman Road, Norfolk, Va.  
Chappell, Norma Faye, 139 Cooper Avenue, Henderson  
Chirnis, Patricia Dayle, 2109 Metts Avenue, Wilmington  
Clark, Mr. Robert G., 322 S. Edgeworth Street, Greensboro  
Clominger, Doris I., Box 700, Paw Creek  
Coley, Sally Jo, 212 West Wade Street, Wadesboro  
Colvert, Mary Frances, Sedgefield Inn, Greensboro  
Connelly, Marjorie Jane, Swannanoa  
Cornell, Lorena Ann, 621 Orchard Avenue, Lexington, Kentucky  
Corzine, Lael Suther, 34 N. Crowell Street, Concord  
Covington, Frances Claudia, 222 East Morgan Street, Wadesboro  
Cox, Barbara, York Road, Rt. 3, Charlotte  
Cox, Beverly Dianne, Ramscur  
Cox, Verna Emily, Ramscur  
Craven, Barbara Anne, Ramscur  
Craven, Marie, 214 South Fremont Drive, Greensboro  
Craver, Cornelia Jane, Route 3, Lexington

Craver, Patsy Joan, 328 West Sixth Street, Lexington  
Crawford, Alicia Sumner, Box 134, Rowland  
Crofton, Mary Anne, Box 626, Reidsville  
Croy, Patricia Elizabeth, 3420 Rosemont Avenue, Winston Salem

Dail, Jean Dolores, Box 717, Greenville  
Dameron, Nettie Russell, Route 1, Yanceyville  
Davis, Mary Josephine, Box 36, West End  
Dedmon, Carolyn, Rt. 5, Ross Grove, Shelby  
Dey, Dorothy Mary, 1215 S. Longacre Blvd., Yeadon, Pennsylvania  
Dickens, Helen, Halifax  
Dietz, Nancy Ann, 607 Elm Street, Weldon  
Dawnum, Linda Anzelle, 115 Pembroke Circle, Edenton  
Draper, Frances Madge, 106 Park Street, Martinsville, Virginia  
Driesell, Martha Drummond, 207 Carlisle Way, Norfolk, Virginia  
Duckett, Wylladene, Route 2, Candler  
Dull, Joanne Elizabeth, 3700-B1, Robin Hood Road, Winston-Salem

Edmondson, Susan Moore, Hassell  
Edward, Gene Farrow, 2209 Greenway Avenue NE., Winston-Salem  
Edwards, Virginia Jane, Box 12, Red Oak  
Eure, Eric Odell, Eure

Falls, Shirley, 311 E. King Street, Kings Mountain  
Farrell, Betty Jane, 207 West Bessemer Avenue, Greensboro  
Ferguson, Carol Lee, 110 S. Boston Street, Kannapolis  
Ferguson, Carolina, River Plain Farms, Ferguson Fields, Patricia Jane, Route 1, Pleasant Garden  
Furmer, Laura Jean, Box 112, Davidson  
Francis, Nancy, 312 Boundary Street, Waynesville  
Foust, Annie June, 206 N. 9th Street, Mebane  
Freeman, Mr. Duane S., Jr., (Special) 413 E. Raliance Dr., Greensboro

Gaddy, Joann, Box 393, Biscoe  
Garrett, Margaret Helen, 213 Main Street, Hazelwood  
Gibbs, Peggy Joan, 403 Aberdeen Terrace, Greensboro  
Gladstone, Kate Ogburn, 2362 Patterson Avenue, Winston Salem  
Goodwyn, Retta Weaver, 1015 Rose Hill Avenue, Durham  
Graham, Mary Ellen, Route 2, Dobson  
Grant, Elizabeth Carter, Jackson  
Grant, Olema, Box 198, Route 2, Snow Hill  
Grayson, Carolyn Eleanor, 129 N. Main Street, Marton  
Greenberh, Joan, 303 E. Hendrix Street, Greensboro  
Greene, Kay Frances, Route 2, Box 154, Gates  
Gregg, Sylvia Gayle, Fair Bluff  
Grose, Reita Robinson, 2121 Belvedere, Charlotte  
Gunn, Virginia Carter, 519 Moir Street, Leaksville  
Gunter, Mary Louise, Pittsboro  
Gwyn, Lucy Ellen, Box 546, Mount Airy

Hafer, Margaret Virginia, 1053 Fifth Avenue Court, N.W., Hickory  
Haltom, Nancy Anne, 315 Ardmore Circle, High Point  
Hardin, Beverly Jean, Route 2, Box 215, Fairmont  
Harrmon, Nellie Sue, Route 4, Gastonia  
Harper, Sue, 1603 Woodland Avenue, Burlington  
Harris, Elizabeth Strong, 3 Pine Tree Road, Asheville  
Harris, Mary Jo, Box 386, Route 2, Durham  
Harris, Maude Elizabeth, 2315 University Drive, Durham  
Harris, Mr. Robert Davis, Jr. (Special), 922 Dillard Street, Greensboro



# Student List

- Harry, Ann Allison, 1524 Statesville Road, Salisbury  
Hart, Dorothy Miller, 1205-A Whilden Place, Greensboro  
Hart, Sarah Janice, 216 Branner Avenue, Jefferson City, Tennessee  
see  
Hedgecock, Barbara Jean, Route 2, Winston Road, High Point  
Hemphill, Mr. Donald, 524 Arlington Street, Greensboro  
Hendrix, Ann Louise, 2420 Fairway Drive, Winston-Salem  
Higgins, Virginia Edwards, 700 East Marion Street, Shelby Hill, Nancy Mary, 1202 Cedrow Avenue, High Point  
Hollowell, Barbara, 548 South Main Street, Wake Forest  
Hooper, Agnes Jean, 907 McGee Street, Greensboro  
Horton, Mrs. Carolyn Roebuck, 306 North Main Street, Farmville  
Houser, Edwina, 307 South Elm Street, Cherryville  
Houser, Marianna, 307 South Elm Street, Cherryville  
Hoyle, Nancy Jean, 316 Spring Street, Thomasville  
Hudson, Nancetta Joyce, Evergreen Avenue, Goldsboro  
Huggins, Elizabeth Ann, Crowell Park, Lincolnton
- Ipock, Priscilla Lammeter, Route 2, New Bern  
Ivey, Eleanor Ann, 642 Cannon Avenue, Albemarle
- Jennette, Ruth Anne, 501 Brackenridge Avenue, Norfolk 5, Virginia  
Johnson, Peggy Ann, 622 Mendenhall Street, Greensboro  
Joliff, Ethel Steere, 5 Hillcrest, Enka  
Jones, Anne Fowler, 606 Boshyn Road, Winston-Salem
- Keeton, Ruby Ann, Route 5, Oxford  
Kim Soo Johang, 91 Chong Ro, 2 Ka, Seoul, Korea  
Kime, Allie Carr, Box 86, Roseboro  
Kiser, Virginia Nash, 1404 West First Street, Winston-Salem  
Knotts, Nellie Frances, Route 8, Charlotte  
Knox, Nancy Jean, 1229 S. Live Oak Parkway, Wilmington
- Lane, Patricia Ann, 2837 Earl Court Avenue, Norfolk, Virginia  
LaPrade, Sylvia Joanne, 3311 Triangle Lake Road, High Point  
Lassiter, Mary Jane, 520 W. Gaston Street, Greensboro  
Latham, Mrs. Ruth Lucas, Route 5, Box 190-C, Greensboro  
Leach, Mary Jane, Forest Drive, Thomasville  
Leak, Sarah Elizabeth, 3332 Selwyn Avenue, Charlotte  
Leary, Margaret Jane, 1208 Wilkerson Boulevard, Gastonia  
Lettwich, Lorena Adaline, Rt. 5, Box 129, Mount Airy  
Leggett, Mildred Aone, 923 Arlington Street, Rocky Mount  
Leonard, Crissy Sylvia, Route 8, Lexington  
Lester, Elizabeth Wray, Route 2, Reidsville  
Lewis, Elizabeth Hayes, 1305-C Eaton Place, High Point  
Lewis, Jane Eleanor, 2206 Spring Garden Street, Greensboro  
Liner, Dorothy Lane, Lake Junaluska  
Long, Ann Carol, Box 364, Roseboro  
Long, Doris Elaine, Jonesville  
Love, Elizabeth Jean, 1309 Northfield Street, Greensboro  
Love, Jane Williams, 516 Market Street, Wilmington  
Lovelace, Mr. Nathan Thomas (Special), 119 Oak Court, Greensboro  
Lutz, Ann Gray, 508 West Sumter Street, Shelby  
Lynch, Sara Ruth, Box 90, Catawba
- McClamroch, Eva Gray, Box 283, Thomasville  
McCullum, Frances Ann, Route 3, Montic  
McLain, Elizabeth Ann, Route 4, Box 436, Charlotte  
McLarty, Margaret Elizabeth, 108 N. Academy Street, Mooreville  
McLendon, Ann, Cottageville, South Carolina  
McMichael, Judy, Reidsville Road, Winston-Salem
- McRae, Doris Pate, Rowland  
McWhirter, Nancy Marilyn, 901 Berryhill Street, Charlotte  
Manning, Sue, Middlesex  
Marks, Gwendolyn Ester, 330 South Green Street, Wadesboro  
Marsh, Mary Plyde, 215 Brent Street, Wadesboro  
Marshburn, Carol Henrietta, 2601 Sharon Road, Charlotte  
Martin, Sylvia Dawn, Jonesville  
Meekins, Mary Telle, Columbia  
Merritt, Barbara Saiter, Box 684, Hickory  
Midgett, Doris Jean, 203 South 21st Street, Morehead City  
Mills, June, Box 451, Kannapolis  
Mitchell, Elsie Blalock, 401 Broad Street, Oxford  
Moffitt, Sylvia Louise, 217 Chisholm Street, Sanford  
Moody, Nancy, Clemmons  
Moore, Barbara Ann, Route 1, Reidsville  
Morgan, Beulah Brown, Box D, Sunbury  
Morton, Ramona Celeste, East Marion Station, Marion  
Munford, Anne Moyler, Wakefield, Virginia  
Murray, Delores, 717 N. Third Avenue, Siler City  
Murtagh, Mary Elizabeth, Box 84, Kittrell
- Neisler, Margaret Ruth, Rt. 3, Box 61, Concord  
Newton, Barbara Grace, 204 Feinster Street, Statesville  
Noland, Margaret Dowse, Route 1, Clyde  
Nazam, Frances Lee, 614 W. 8th Street, Newton
- Oliver, Doris Evelyn, Rt. 10, Box 112, Greensboro  
Owen, Betty Rae, 140 Fayton Avenue, Norfolk, Virginia
- Padley, Betty Jean, 505 S. Lee Street, Ayden  
Palmer, Ellen Priscilla, 208 Palmer Street, Albemarle  
Parker, Anne Rue, Box 386, Littleton  
Parrish, Patricia, 607 S. McBane Street, Burlington  
Pate, Joyce Anne, Box 205, Rowland  
Pearson, Ellen Merel, 1002 Pine Hill Road, Fayetteville  
Pons, Gwendolyn E., Box T, Valdeese  
Pratt, Peggy Ann, 1411 N. Queen Street, Kinston  
Pritchard, Joan Faye, 503 W. Broad St., Elizabeth City  
Pugh, Mary Delia, Route 5, Fayetteville  
Pugh, Patricia Louise, Shawboro
- Ratliff, Julia Marshall, 1107 Fayetteville Road, Rockingham  
Ravoor, Elizabeth Ann, 800 W. Carr Street, Dunn  
Reynolds, Barbara Paula, Box 1141, Fayetteville  
Rhodes, Martha Anee, 240 Pinecrest Drive, Fayetteville  
Robinson, Allyn, Conway, Michigan  
Robinson, Patricia Lee, Hudson  
Robinson, Sue Maben, Norlina  
Rush, Eleanor Ruth, 144 S. Main Street, Asheboro
- Sanders, Julia, 112 Howard Circle, Tarboro  
Saunders, Wilma Ann, 405 Harrison St., Reidsville  
Scarborough, Maxine, Box 294, Manteo  
Scruggs, Miriam, 1345 Durwood Drive, Apt. 3, Charlotte  
Seagroves, Shirley Ann, 115 Stradleigh Road, Wilmington  
Seawell, Miriam Hull, 2101 Brandon Circle, Charlotte 7  
Shaw, Glenda Geradine, Route 3, Box 44, Fayetteville  
Shearin, Elizabeth Royce, Box 365, Warrenton  
Shetter, Rachel, 404 Court Street, Hattiesburg, Mississippi  
Shinn, Valoree Elizabeth, 400 Pine Street, Kannapolis  
Shoulars, Nancy Elizabeth, Rich Square  
Sigan, Jacqueline Mae, 1516 Oriole Place, Greensboro  
Sivills, Sarah Virginia, 426 Westover Avenue, Norfolk, Virginia  
Sloan, Linda Stringfield, Box 4, Waynesville



Don't Say Bread, Say

*Holsum*

**JONES BROTHERS BAKERY, Inc.**

GREENSBORO, NORTH CAROLINA

Manor  
Motel



1045 West Market Street

Telephone 3-2517

GREENSBORO, N. C.

**FORBIS & MURRAY SERVICE**

AMBULANCE

Dial 8165

Bring Your Dates

To

**McCLURE'S RESTAURANT**

3000 High Point Road

GREENSBORO, N. C.

## HAM'S SUNDRY STORE

Specializes in

Kosher Style Sandwiches, Fried Chicken in Basket, Hamburgers, Hot Dogs, Thick Milk Shakes, Ice Cold Drinks, Drugs, Magazines

**STOP AT HAM'S DRIVE-IN**

Aycock and Friendly Road

Phone 3-5658

GREENSBORO, N. C.

## HOME SPECIALTY

"Floor Coverings Our Specialty"

VENETIAN BLINDS

ASPHALT TILE

WINDOW SHADES

RUBBER TILE

CARPETS

PLASTIC TILE

1300 Battleground Ave.

Phone 3-3736—8894

GREENSBORO, N. C.



One of The South's Finest Dairy Plants

# GUILFORD DAIRY

COOPERATIVE

Greensboro's "Hometown Dairy"

3939 West Market Street

MILK

ICE CREAM



IN EVERY AREA  
ONE GREAT STORE STANDS OUT—  
IN THE SOUTH IT'S

*Thalhimer's*

## THE JEWEL BOX

Greensboro's Leading  
Diamond and Gift Store  
For Over Thirty Years

134 South Elm St. Greensboro, N. C.

## MOORE MUSIC CO.

BALDWIN—WURLITZER  
HAMMOND—CONN

Everything Musical

615 W. Market St. Phone 4-4636

GREENSBORO, N. C.

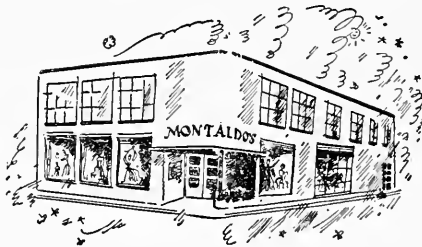
## SEDFIELD INN



# MONTALDO'S

ELM AT GASTON

GREENSBORO, N. C.



FOR THE VERY BEST—  
AND MODERATELY PRICED—  
SHOP AT MONTALDO'S

## CORNATZER AND MOCK

MEN'S WEAR

121 West Market St.

Phone 4-2394

GREENSBORO, N. C.

Compliments of

**HANES**

Funeral Ambulance Service

Telephone 2-5158

**SASLOW'S, INC.**

Nationally Advertised Silver

Diamonds and Watches

Greenboro's Largest Credit Jewellers

## Cook Office Machine Co.

Royal Typewriters

Victor Adding Machines

720 W. Market St.

Phone 8346

GREENSBORO, N. C.

Compliments of

# NEESE SAUSAGE COMPANY

Alamance Road

Dial 2-4000

## THOMAS & HOWARD CO.

WHOLESALE GROCERS  
Phone 2-5171 or 4-2878  
GREENSBORO, N. C.

## SUNSET HILLS RESTAURANT

1618 Friendly Road at Aycock  
Phone 2-4239  
GREENSBORO, N. C.



You  
are cordially invited  
to an  
Evening of

*Dining and Dancing*  
AT

*Fred. Henry's*

## PLANTATION SUPPER CLUB

"SOUTH'S FINEST FOODS"

ORCHESTRA AND FLOOR SHOW NIGHTLY

## JOHNSON'S ESSO SERVICE

24 Hour ESSO Service  
600 West Market St. Greensboro, N. C.

## Phipps Hardware Company, Inc.

215 N. Elm Street Phone 2-0179  
GREENSBORO, N. C.

Reach Sporting Goods, Hardware, Shop Equipment,  
Appliances

Gift Department — 2nd Floor

Compliments of

# PEPSI-COLA

Phone 2-3461 106 Pearson Street  
GREENSBORO, N. C.

## Egerton Wholesale Company

224 North Forbis Street  
CIGARS, CONFECTIONS, FOUNTAIN AND  
INSTITUTIONAL SUPPLIES

**LOUISE P. WALTERS**

*Flowers*

Phone 3-6811

High Point Road

GREENSBORO, N. C.

"If it is for the office, we have it"

**OFFICE FURNITURE AND SUPPLIES**

Engraved Wedding Invitations and  
Announcements

**S. T. Wyrick and Company**

117 N. Greene Street

Phone 2-4133

## DICKS LAUNDRY COMPANY

Launderers and Cleaners

Phone 7101

**FRANKLIN'S DRUG STORE**

Prescription Druggists

Where G. C. and W. C. Girls Meet

401 Tate at Walker Ave.

Greensboro, N. C.

**J. ELWOOD MITCHELL COMPANY**

Insurance—Bonding

115 Jefferson Bldg.

Phone 7186



**CASEY'S**

The World's Best Barbeque

Country Park Branch

Nathaniel Greene Drive

Phone 5-2476

Compliments of

**S. H. KRESS AND CO.**

Compliments of

**KRISPY KREME DONUT COMPANY**

402 South Greene Street

"Always A Tasty Treat"

**KEARNS PAINT COMPANY, INC.**

112 North Greene Street

Devoe Paints

Sporting Goods—Artists' Materials

GREENSBORO, N. C.





The James Addison Jones Memorial Library

# GREENSBORO COLLEGE

- Chartered 1838, the pioneer of higher education for women in North Carolina
- A small college, limited to 400 students
- A college where personal relationships count; one faculty member for every fourteen students
- A college with high academic standing, approved by the major accrediting agencies
- Major emphasis upon liberal arts, with excellent resources also for Religious Education, Home Economics, Art, Speech, Music, and Teacher Training
- Democratic in atmosphere, Christian in tone



**HAROLD H. HUTSON, President**  
**GREENSBORO, NORTH CAROLINA**

"EVENING DRESSES ARE ALWAYS  
PRETTIEST AT MAISON-JOLINE!"



"JUST WHAT I NEED FOR THE  
MAY DAY DANCE!"

MAISON-JOLINE

FASHIONS FOR THE  
LONG STEMMED  
AMERICAN BEAUTY

Fields **TALL** SHOP

*A world of fashion  
just for you if  
you are 5'7" or over*

COATS      SUITS      DRESSES  
SPORTSWEAR      LINGERIE

North and South  
Drive-Ins



"Everybody's Going  
To The  
Drive-In!"

North—Reidsville Rd.      South—High Point Rd.  
GREENSBORO, N. C.



The New Virginian Series—Genuine Maple and Cherry Woods

# Sandhill Furniture Corporation

Manufacturers of

**ODD BEDS AND BEDROOM SUITS**

**WEST END, NORTH CAROLINA**

"The Largest Bed Manufacturers in the World"

Thanks for the privilege of writing your  
Students' Accident Insurance

## Chamblee Insurance Agency



### WASH-O-MAT

SELF-SERVICE LAUNDRY

328 Tate St.

Phone 2-1329

Corsages Are Our Specialty

### SYKES FLORIST CO.

120 West Market St.

Phone 2-5131

Nite Phone 3-2768

Over 50 Years of Satisfactory Service

Compliments of

### HUNT COAL COMPANY

COAL

FUEL OIL

### BLAND'S MUSIC STORE

Pianos—Greeting Cards  
Toys—Gifts

129 West Market St.

Phone 2-4524

GREENSBORO, N. C.

Dial 2-5112

Dial 2-5112



# BLUEBIRD TAXI INC.

RADIO EQUIPPED CABS

BAGGAGE TRANSFER

**SEBURN'S**  
THE BRIDAL CENTER

Silver, China, Crystal  
In Popular Patterns

Assortment of Fine Gifts

116 N. Elm St.

Greensboro, N. C.

**Greensboro Bowling Alley**

The place to meet your friends  
For an evening of fun

341 N. Elm St.

Phone 8046



**BANNER TRUELOVE CO.**

WHOLESALE GROCERS

Phone 2-1105—2-1106

**SOUTHERN SALES CO.**

ELECTRICAL APPLIANCES

KELLY SPRINGFIELD TIRES

Compliments of

**GLASS HOUSE**

900 Bessemer Ave.

Hours 7:00—10:00

**Stamper**  
OPTICAL CO.

206 North Elm Street

Phone 2-0021

**EARL'S SERVICE**

Market and Cedar Streets

**GILMORE BEAUTY SHOP**

521 Jefferson St.

Phone 2 1670

**OLIVER'S DRUG STORE**

457 W. Market St.

'The Store of Personal Service'

Hall Way to Town

Phone 2-4007

**CITY OPTICIANS**

COMPLETE EYE GLASS SERVICE

Prescriptions Filled

Latest Styles and Frames

W H Lightfoot

106 Jefferson Bldg.

Phone 2-4693

**Greensboro Marble & Tile Co.**

1711 Spring Garden

GREENSBORO, N. C.



Pilot to Protection Since 1903

A good company to be insured in,

A good company to work for.

**PILOT LIFE INSURANCE CO.**

GREENSBORO, NORTH CAROLINA

## THE KING COTTON GREENSBORO



Haywood Duke  
Manager

# MOJUD CO., INC.

GREENSBORO, NORTH CAROLINA

### Mills

GREENSBORO, N. C.

WILMINGTON, N. C.

DECATUR, ALA.

LONG ISLAND CITY, N. Y.

### Sales Offices

385 FIFTH AVENUE  
NEW YORK CITY

CHICAGO BRANCH  
THE MERCHANDISE MART

LOS ANGELES BRANCH  
122 EAST 7TH STREET

130 PARKHOUSE  
DALLAS, TEXAS

"If It's Real Estate Or Insurance"

See

**RICHARDSON REALTY, INC.**

Hoyt W Boone

R. Staley Baylor

O Frank York, Jr.

602 Piedmont Bldg.

Phone 2-2139

**POWELL'S SHOES**

I. MILLER—MADEMOISELLE  
WALK-OVER—JOYCE

115 South Elm St.

Greensboro, N. C.

Compliments of

**Morrison-NEESE**



"Carolina's Leading Home  
Furnishers for 38 Years"



112 S. Greene Street  
GREENSBORO, N. C.

**THE O. HENRY**

"Greensboro's Leading Hotel"



Convenient and Comfortable. 300 Rooms,  
Each with Bath. Coffee Shop and Dining  
Room. Air-Conditioned Banquet and Con-  
vention Facilities.



Nolan B. Williams, Manager  
GREENSBORO, NORTH CAROLINA



**BE A COLLEGE PHOTO FAN!**

Your pictures of school  
activities will be greatly  
prized in the years ahead.  
Good snaps are easier than  
ever to get—indoors or out—  
in black-and-white or color.

For cameras, film and flash bulbs drop in at

**THE ART SHOP, INC.**

118 W. Market Street

You are always welcome at  
your College Book Store

**GREENSBORO COLLEGE  
BOOK STORE**

Miss Lois Fitch, Manager

# L. B. GALLIMORE

GENERAL CONTRACTOR

508 Jackson St.

Phones 2-4597—2-4598

GREENSBORO, N. C.

## THE LOTUS RESTAURANT

CHINESE AND AMERICAN DISHES

105 South Greene St.

We prepare orders of chow mein  
and chop suey to take out.

## SPIC AND SPAN GRILL

"Meet your friends here

Where the food is good"

322 Tate St.

Phone 4-7261

## FOSTER-CAVINNESS CO., INC.

WHOLESALE FRUITS AND VEGETABLES

Phone Sales Dept. 2-5175

Phone Office 3-0571

409 Morehead Avenue  
GREENSBORO, N. C.

## GREEN VALLEY GOLF COURSE

CONGRATULATES THE '55 SENIORS

Aubrey C. Apple, Pro.

# LIBERTY MARKET

334 South Elm Street

Phone 2-4139

FRESH AND CURED MEATS



# The Hoar and Castle

"Greensboro's Most Popular  
Sandwich Shop"



Spacious Parking Ground



West Market Street Extension

## VESTAL'S FLOWER SHOP

Summit Shopping Center  
Phone 2-5470  
GREENSBORO, N. C.

DIAL

**2-5161**

## YELLOW TAXI CO.

CABS RADIO DISPATCHED  
All New Equipment



## LITTLE'S

SUPER FOOD VALUES

403-5 Tate Street

Greensboro, N. C.

## A FRIEND

## **U-Save-It Food Stores, Inc.**

Quality Groceries and Meats

224 West Market Street

2100 North Elm Street

Where You Are Always Welcome

Compliments of

## **BESSEMER GOLF RANGE**

Golf Lessons by  
**CLARENCE CALLAWAY**

Single or in Groups

A Home with True Southern Hospitality

## **DOGWOOD INN**

TOURIST HOME

900 W. Market St.  
Mr. and Mrs. S. W. Easty

Greensboro, N. C.  
Phone 3-5014

BEST WISHES

## **North State Chevrolet Co., Inc.**

451 North Eugene St.  
GREENSBORO, N. C.

## **GREENSBORO BAG COMPANY**

INCORPORATED

Dealers in

Burlap and Cotton Bags

Industrial Wiping Cloths

Steel Drums and Wooden Barrels

Remnants

Phone 3-2148      621 Stirling St.  
GREENSBORO, N. C.

## **MADE RITE SANDWICH COMPANY**

FRESH SANDWICHES—WHOLESALE ONLY

Telephone 2-0549      1111 Battleground Ave.  
GREENSBORO, N. C.

FOR PARTIES, PICNICS, MEETINGS

Open 7 days each week till 12:00 midnight

Closed Christmas Day

## **MIDGET GROCERY**

211 West Market Street

Home of

**COUNTRY HAMS—MEATS**

**GROCERIES—PRODUCE**

Compliments of

## **THE OAKS MOTEL**

1118 Summit Ave.  
GREENSBORO, N. C.

Inside City On U. S. Highway No. 29 North

Phone 2-0107

## **F. W. WOOLWORTH CO.**

130 Elm Street

For the BEST in MOTION  
PICTURE entertainment attend  
Greensboro's Finest Theatres!

**CAROLINA**

**NATIONAL**

# TUCK PHOTO SUPPLIES, Inc.

225 N. Elm Street

CAMERAS—PROJECTORS—FILMS  
DARKROOM SUPPLIES—PHOTO FINISHING

GREENSBORO, N. C.

Phone 3-7170

## *Dr Pepper*

**Dr. Pepper Bottling Co., Inc.**

GREENSBORO, N. C.

Compliments of

**C. A. McNAIRY POULTRY CO.**

812 South Ashe

Phone 2-5726

GREENSBORO, N. C.

### **Methodist Board of Publication, Inc.**

Box 508

Greensboro, N. C.

Publishers of  
NORTH CAROLINA CHRISTIAN  
ADVOCATE

N. C. Methodism's News Weekly Magazine

OPERATORS OF PIEDMONT PRESS

COMMERCIAL PRINTERS

NOW

## *Ellis Stone*

has individual shops

especially for the college girl



# S & W CAFETERIAS

ASHEVILLE, N. C.    WASHINGTON, D. C.    KNOXVILLE, TENN.  
ATLANTA, GA.    CHATTANOOGA, TENN.    RALEIGH, N. C.  
CHARLOTTE, N. C.    GREENSBORO, N. C.    ROANOKE, VA.

Over twelve million meals served yearly

Compliments of

# MARTIN'S STUDIO



112 E. Gaston Street

GREENSBORO, NORTH CAROLINA

OFFICIAL PHOTOGRAPHERS FOR THE

1955 ECHO

# Colonna Studios, Inc.

PHOTOGRAPHERS OF COLLEGE YEARBOOKS

114 Park Row, New York 7, New York



**CHARLOTTE  
ENGRAVING  
COMPANY**

*Engravers and Designers of College Yearbooks*

**CHARLOTTE, D. C.**



# *Working* **TOGETHER...**



**W**orking together is the theme of the OBSERVER PRINTING HOUSE publications department. We cannot do our best work without your assistance—you cannot expect to get the best results from your efforts without willing assistance and coöperation from your printer.



ARTISTS AND CRAFTSMEN WORK  
TOGETHER IN CREATING IMPRESSIVE  
AND LASTING RECORDS OF YOUR  
YEARS IN SCHOOL—

