

EMBLEM
1934

Registra



THE EMBLEM



CHICAGO
NORMAL COLLEGE

1934

CONTENTS

DEDICATION

CAMPUS

ADMINISTRATION

SENIORS

FEBRUARY

JUNE

NOVEMBER

APRIL

CLASSES

UPPER JUNIORS

LOWER JUNIORS

UPPER FRESHMEN

LOWER FRESHMEN

ACTIVITIES

ORGANIZATIONS

CLUBS

ATHLETICS

WOMEN'S

MEN'S

FEATURES

HUMOR

ADVERTISING

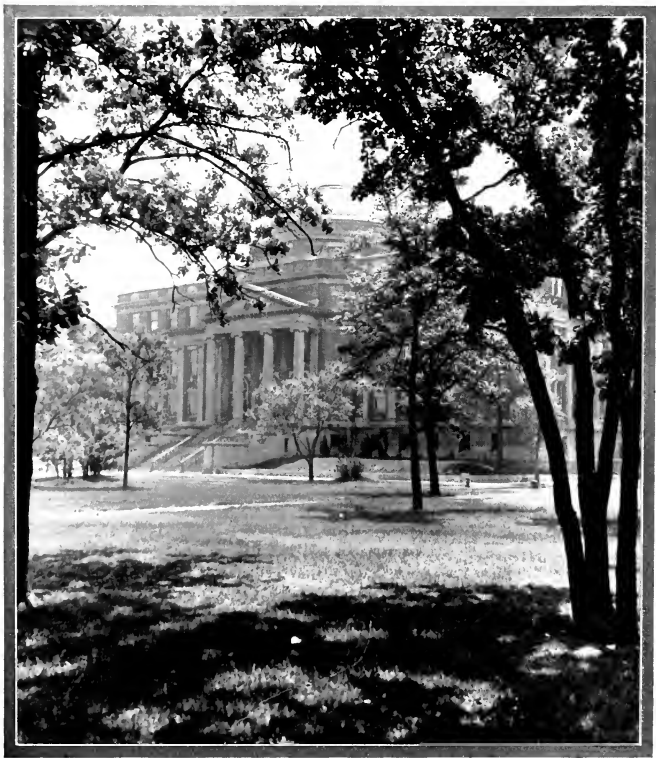


DEDICATION

This book of service we dedicate to one whose cooperation and enthusiasm have made possible the success of our class activities; whose sympathy with our ideals has made our college years rich and happy; whose friendship to us has been an inspiration . . . to our adviser

DOROTHY E. WILLY

CAMPUS



Sunshine and June



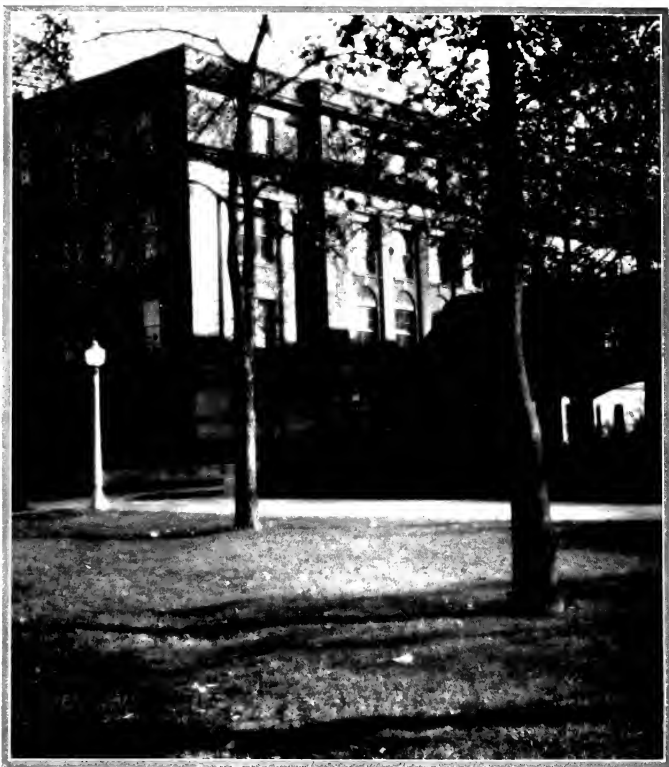
Winter's Mantle



Stairway, Front Corridor



Greenhouse



Lengthening Shadows

ADMINISTRATION



THE FACULTY

Butler Laughlin, President Emma Fleer Muller, Dean
 William G. Wilson

EDUCATION AND PSYCHOLOGY

Edwin Brye John J. DeBoer Sol R. Eilert
 *Denton L. Geyer Willard C. Gore Marie Hallinan
 Grace E. Munson Russell L. Wise

ENGLISH

Elvira D. Cabell Sophia C. Camenisch
 *W. Wilbur Hatfield Louise M. Jacobs

GRAPHIC ART

Agnes E. Doyle *Henry G. Geilen
 Jean Hutchison Elmer A. Morrow

INDUSTRIAL ART

Frank X. Henke Louis V. Newkirk ‡William G. Wilson

KINDERGARTEN

‡Ellen M. Olson Dorothy E. Willy

MATHEMATICS

Edgar C. Hinkle ‡John T. Johnson Orion M. Miller

MUSIC

‡Alice L. Garthe Louise M. Gildemeister Frances Peickert

PHYSICAL EDUCATION

Gertrude Byrne ‡Nellie B. Cochran James J. Griffin
 Joseph Kripner Louise Robinson Augusta A. Swawite

SCIENCE

Mary P. Blount Mary E. Freeman *Earl E. Sherff
 Grant Smith John H. Whitten

SOCIAL STUDIES

*Fred K. Branom George H. Gaston Ross Herr
 Lucie H. Schacht



John J. DeBoer, Supervisor of Practice Students
 Grace E. Munson, Supervisor of Cadets

FACULTY OF LEAVE OF ABSENCE TEACHERS

- | | | |
|----------------------|---------------------|---------------------|
| George C. Atterberry | John A. Bartky | Beulah Berolzheimer |
| Vernon L. Bowyer | Milton J. Cohler | Elzy F. Downey |
| Josiah L. Geist | Clarence W. Gifford | Mary C. Gillies |
| Daniel Hannan | William L. Kaiser | Lucile H. Newkirk |
| James B. Parsons | George C. Phipps | Andrew Stauffer |
| Elmer C. Stauffer | Catherine M. Taheny | Eloise S. Thetford |
| | Horace Williston | |

LIBRARIANS

- | | |
|----------------|------------------|
| Flora J. Bates | Lorene Johnstone |
|----------------|------------------|

CLERKS

- | | | |
|---------------------|----------------------------|---------------------|
| Elizabeth Bennema | Catherine Conner | Veronica Dilzer |
| Mabel T. Lulu | Anna B. Otto | Margaret S. McMahon |
| °Head of Department | ‡Acting Head of Department | |



O SENIOR

When the path of life grows narrow,
And the lights beyond grow dim;
When ambition clouds with sorrow,
Then is the time to fight and win.

When life seems full of failures
Crushing the fair hopes of youth
Push on! Be not in soul deceived.
Stand up. Face facts, and seek the truth.

When the day is over-shadowed
And success is checked by doubt,
Lose not your courage in despairing.
Press on. High aim will bring you out.

And when your path seems roughest
And the light begins to fade,
Remember that—you'll be rewarded
With the richness of life you've made.

—Betty Harnden.

SENIORS



CLASS OF FEBRUARY 1934

OFFICERS

President.....	Mary Corcoran
Vice-President.....	Bessie Finkel
Secretary.....	Mary Riordan
Treasurer.....	Zelda Tanzer

COLORS

Green and White

GIFT

The Murals

ADVISERS

Miss Peickert
Miss Garthe
Miss Cabell

VIOLA ADAMOWSKI, 623

Jr. Choir 1, 2; Geography 4; Cui Bono 3-6; Foreign Culture 5, 6; Polish, Vice-Pres. 4; Baseball 1, 3, Capt. 1; Soccer 2, 4; Captain Ball 2; Volley Ball 3.

ALICE BLACK, 623

Class Office Com. Chrm. 5, 6; High School Day Com. 2; St. Coun. Assembly Com. 5; Geography 4-6; Volley Ball 5; Captain Ball 6.

HELEN BRACHTL, 622

Class Sec. 3, 4; Commencement Day Chrm. 5, 6; Section Chrm. 1, 2; Hall Duty Com. 4; Bulletin Bd. Com. 2; St. Coun. Publicity Com. 3; Luncheon Com. 5; Class Program Com. 1, 2; Fellowship Sec. 6; Normalite 3, 4; Jr. Choir 1; Geography 1-5; Little Theatre 3, 4; Cui Bono 5, 6; Camera 5; Poetry 2; Captain Ball 6.

JEAN CARMICHAEL, 622

Class Day Chrm. 5, 6; Section Chrm. 3; Executive Judiciary 5; Bulletin Bd. Com. Chrm. 2; Class Publicity Com. 1, 2; Fellowship Social Com. Chrm. 6; Geography 2-4; Cui Bono 3-6; Art Guild 3; Poetry 1; Baseball 1; Volley Ball 1, 3; Captain Ball 6.

ROSEMARY COMERFORD, 623

Fellowship Rose Sale Com. 2; W. A. A. Rep. 1; Jr. Choir 1, 3; Geography 3, 4; Art Guild 2; Poetry 4.

MARY CORCORAN, 622

Class Pres. 6; Section Chrm. 2; Executive Judiciary 3; St. Coun. Nominating Com. 6; Luncheon Com. 2; Class Social Com. Chrm. 3, 4; Usher 4; Jr. Choir 1; Geography 3; Baseball 1; Volley Ball 1; Soccer 2; Captain Ball 6.

MARIE DEAN, 623

Fellowship Rep. 5, 6; Rose Sale Com. 3; Jr. Choir 1, 2; Geography 1-5; Art Guild 1-6; Poetry 3, 4, Pres. 5, 6.

**VIRGINIA DYSON, 623**

Class Day Com. 5, 6; St. Coun. Publicity Com. 5; Class Social Com. 1, 2; Nominating Com. 1, Publicity Com. 3, 4; Fellowship Refreshment Com. 3; Geography 4-6; Cui Bono 4-6; Foreign Culture 5, 6; Dance 6; Baseball 1, 3; Volley Ball 1, 3, 5; Soccer 2, 4; Captain Ball 2, 4.

LUCY HARD, 622

Class Program Com. Chrm. 5, 6; Class Song Com. 5, 6; Special Choir 4-6; Geography 4, 5; Cui Bono 3-6; Poetry 1, 3, 4, Sec. 3.

JANE HOLMAN, 622

Class Vice-Pres. 3, 4; St. Coun. Nominating Com. 3; Class Program Com. Chrm. 1, 2; All-City Girls' Conference Delegate 4; Commencement Ticket Taker 4; Normalite 1-5; News Ed. 3, Ed-in-Chief 4; Geography 2, 4; Cui Bono 4, 6; Art Guild 3; Sketch 6; Baseball 1; Volley Ball 1; Soccer Capt. 2.

CATHERINE JONES, 623

Cap. and Gown Com. Chrm. 5, 6; Section Chrm. 5, 6; St. Coun. Auditing Com. 6; Assembly Com. 4; Class Social Com. 1, 2, Program Com. 3, 4; Usher 5; Fellowship Service Com. 5; W. A. A. Rep. 1; Board 2; Geography 1-5, Vice-Pres. 2; Little Theatre 2, 3, Pres. 4, 5; Cui Bono 4, 5; Baseball 1, 2; Volley Ball 1, 3; Captain Ball 2, 4; Captain Ball 2, All Star 6; Swimming 3.

HYMAN KAPLAN, 623

M. A. A. 1-6; Orchestra 3, 4; Men's Chorus 1, 2; Football, 1, 2, 6; Track 1-6.

MARJORIE LINTING, 623

Class Treas. 1, 2; Class Day Com. 5, 6; Class Publicity Com. 3, 4; Geography 4-6; Cui Bono 4-6; Foreign Culture 5, 6; Dance 6; Baseball 1, 3; Volley Ball 1, 3, 5; Soccer 2, 4; Captain Ball 2, 4, 6.

MARY LISCHALK, 623

Pin and Ring Com. 5, 6; Geography 5; Sketch 5; Captain Ball 6.

MARY MATTOON, 622

Class Social Com. 4, Song Com. Chrm. 5, 6; Usher 4, Special Choir 1-6; Geography 4; Cui Bono 4-6.

VIRGINIA PANICI, 623

Pin and Ring Com. 5, 6, Class Song Com. 5, 6; Geography 5, 6; Cui Bono 5; Sketch 4, 5; Foreign Culture 5, 6; Dance 6; Volley Ball 3, 5; Soccer 2, 4; Captain Ball 2, 6.

ELSA PETERSEN, 623

Geography 3, 4; Cui Bono 3, 4; Baseball 3; Volley Ball 4; Captain Ball 4.

LILLIAN RAINS, 622

Class Song Com. 5, 6; Fellowship Rep. 2, 3, 6; Jr. Choir 1; Geography 1, 4; Little Theatre 2, 3; Art Guild 5, 6; Sketch 4-6.

MARY RIORDAN, 622

Class Sec. 5, 6; Section Chrm. 5, 6; Executive Judiciary 2; Class Constitutional Com. 1; Social Com. Chrm. 1, 2; Nominating Com. 1, 4, Chrm. 1; Publicity Com. Chrm. 3, 4; Usher 4; Fellowship Rep. 4; W. A. A. Rep. 4; Geography 2-4; Cui Bono 4, 6; Art Guild 3; Poetry 1; Baseball 1; Volley Ball 1, 3; Soccer 2; Captain Ball 2, 6.

MIRIAM ROSEN, 622

Geography 2-4; Little Theatre 1, 4; Cui Bono 4-6.

LILLIAN SEIFERT, 622

Cap and Gown Com. 5, 6; Fellowship Social Com. 2-4, Rep. 5; Geography 1-5; Cui Bono 4-6; Avukah 5, 6; Volley Ball 3; Captain Ball 2, 6, Capt. 2.



LILLIE SHKOLER, 622

Geography 4; Little Theatre 1.

SARAH SILVERMAN, 622

Geography 3, 4; Little Theatre 1.

EDITH SPELLENBERG, 622

Class Office Com. 5, 6; Section Chrm. 3, 4; St. Coun. Nominating Com. 3; Student Service Com. 3; High School Day Com. 3; Emblem Rep. 1; Geography 4; Cui Bono 4-6; Art Chrm. Spring Festival, Christmas Festival 6; Sketch 3-6; Baseball 1, 3; Volley Ball 1, 3, 5; Soccer 2, 4; Captain Ball 2, 6.

SARAH STAGMAN, 622

Pin and Ring Com. Chrm. 5, 6; Fellowship Rose Sale Com. 4; Geography 4; Little Theatre 1-6; Cui Bono 4, 5; Avukah 5, 6; Volley Ball 3, 6.

ANN SUCHANEK, 622

Bulletin Bd. Com. 4; Class Auditing Com. 1, 2; Commencement Ticket Taker 4; Normalite 1-4, Feature Ed. 3; Geography 2, 3; Cui Bono 4, 5; Baseball 1; Volley Ball 1, 3; Captain Ball 6.

ZELDA TANZER, 622

Class Treas. 6; Class Program Com. 3-5; Geography 1-4; Little Theatre 4; Volley Ball 1, 3, Capt. 1.

AGNES VIALI, 622

Class Vice-Pres. 1, 2; Announcements Com. Chrm. 5, 6; Section Chrm. 2; Girls' Room Com. 2, 3; Charity Com. 1; High School Day Com. 2; Class Newspaper Ass't. Ed. 3; Usher 4; Student Adviser 6; Fellowship Fudge Sale Com. Chrm. 6; Jr. Choir 1, Vice-Pres. 2; Geography 2-5; Cui Bono 4, 5; Pres. 6; Art Guild 2-6; Vice-Pres. 3; Poetry 3-5, Sec. 4.

MAE WILLIAMSON, 622
 Commencement Com. 5, 6,
 Emblem Rep. 1; Orchestra
 1-6; Sec.-Treas. 2; Vice-
 Pres. 3; Geography 4, 5;
 Volley Ball 1, Capt. 3; Soccer
 2; Captain Ball 2.



OTHER GRADUATES

Marianne Boeticher, 622	Bessie Finkel, 622	Margaret Myers, KG6
Esther Browne, 622	Geraldine Gray, 623	Juanita Louise Parsons, 623
Marjorie Burnett, KG6	Camille Hamilton, FT	Bernard Quish, 622
Verda R. Churchill, FT	Lucille Hanley, KG6	Rose Schultz, 622
Margaret V. Davis, FT	Helen Housler, 623	Minnie Vonderheidt, 700
Beatrice Felt, 700	Margaret Mulvihill, 700	Josephine Wall, KG6
	Helen H. McFadden, FT	

APRIL 1934

Grace Carroll, UT	Dorothy Holmes, 700	Marcella McGoldrick, 700
Genevieve Fahey, UT	Louise Mary Hynes, UT	Therese M. McNellis, 634
Henry Freeberg, 700	Evelyn Illion, 700	Catheryn J. Roach, UT
Mildred Gustafson, UT	Mary Margaret Ley, 700	Marion C. Smith, UT



CLASS OF JUNE 1934

OFFICERS

President.....	Helen Zimmerman
Vice-President.....	Esther Mies
Secretary.....	Emily Flosi
Treasurer.....	Sam Wallace
Sergeant-at-arms.....	Ruth Lundgren

COLORS

Green and Silver

PLATFORM

Campus Beautiful

GIFT

Women's Lounge Fund

ADVISERS

Miss Willy
Miss Garthe
Miss Freeman
Mr. Herr
Mr. Gaston

WESLEY AMAR, 700

Normalite 2, 3.

HELEN ANDERSON, 634

Emblem, Art 6; Geography 1-3, Vice-Pres. 4; Little Theatre, 1, 3, 4; Cui Bono 2, 3; Sketch 1-6; Soccer 1; Captain Ball 1.

JEANETTE ANDERSON, 634

Class Nominating Com. 1; Special Choir 2, 3; Geography 2, 4; Cui Bono, 2, 3; Dance 1; Soccer 1; Volley Ball 2.

FLORENCE ARMIN, 632

Fellowship Rep. 1-6; Normalite 6; Jr. Choir 1, 2; Geography 3-5; Soccer 1; Captain Ball 1; Baseball 2.

LILLIAN ASTRACHAN, 633

Special Choir 3-6; Geography 4; Little Theatre 4-6; Geography 1-4; Avukah Executive Com. 3, 4; Volley Ball 2.

MILDRED BAGY, 634

Pin and Ring Com. 5, 6; Emblem, Co-Ed. Humor 6; Fellowship Rep. 4; Normalite 4-6; Geography 1-4; Little Theatre 3, 4; Cui Bono 3; Creative Writing 3, 4; Soccer 1, 3; Baseball 2, 4; Volley Ball 2.

EILEEN BAINE, 633

Geography 1-4; Art Guild 3; Sketch 2-5; Baseball 2; Volley Ball 4, 6.

**VIRGINIA BLYTH, 635**

Girls' Room Com. 3; Health Com. 5; Geography 2, 4; Poetry 2; Dance 1.

MARIE BRENNAN, 635

Cap and Gown Com. 5, 6; Hall Duty Com. 5; Class Auditing Com. 3, 4; Jr. Choir 1, 2; Geography 1, 2, 4; Camera 3, 4; Math. 6; Soccer 1; Captain Ball 1; Baseball 2; Volley Ball 2.

ELIZABETH BROWNING, KG6

Class Nominating Com. 1, 2; Chrm. 4; Fellowship Rep. 1-5; Election Com. Chrm. 5; W. A. A. Rep. 6; Kg-Primary 1-6; Art Guild 4, 5; Camera 4, 5, 6; Dance 1, 2, 3.

JAMES BURD, 632

Commencement Day Chrm 5, 6; St. Coun. Publicity Com. Chrm. 3; St. Coun. Auditing Com. 2; Mens' Room Com. 3; Class Publicity Com. 4; Class Auditing Com. Chrm. 1, 2; Class Publication Com. 3; Normalite Feature Ed. 3, 5; Club Ed. 4, Ed-in-Chief 6; Men's Chorus 1; Geography 1, Treas. 2; Cui Bono 4, Sec.-Treas. 5, 6.

BETTY BUTLER, 635

Class Social Com. 5, 6; Normalite 2; Geography 1-4; Cui Bono 4-6; Camera 3, 4; Math. 6; Soccer 1, 3; Captain Ball 1, 5; Baseball 2; Volley Ball 2, 4; Swimming 4.

EVELYN BUZA, 632

Geography 4; Dance 1, 2; Soccer 1; Captain Ball 1; Baseball 2; Volley Ball 2, 4.

EILEEN CASEY, 634

Cap and Gown Com. 5, 6; Student Daily Com. Chrm. 5; Girls' Room Com. 4; Emblem, Co-Ed. Humor 6; Fellowship Rep. 3; Fudge Sale Com. 1; Normalite 2-6; Geography 4; Little Theatre 1-4; Soccer 3, 5; Captain Ball 1, 3; Baseball 2, 4; Volley Ball 4; Swimming 4; Bowling 2.

MARIE CASEY, 634

Normalite 1-6; Geography 2-6; Dance 5.

VALLI CASEY, 632

Fellowship Service Com. 4; Geography 1-4; Sketch 2-6; Art Guild 2-6; Little Theatre 1; Cui Bono 4-6; Dance 1; Soccer 1; Captain Ball 1; Baseball 2.

DOROTHY CHESLER, 634

Class Publicity Com. 5, 6; Normalite 1, 2; Special Choir 4, 6; Geography 2, 3; Little Theatre 3-5; Cui Bono 3, 4.

AMY CLARAS, 635

Class Day Stunt Com. 5, 6; Section Chrm. 5, 6; Hall Duty Com. 3; Girls' Room Com. Chrm. 5; Jr. Choir 1-5; Geography 2, 4; Little Theatre 2; Cui Bono 5; Art Guild 3, 4; Soccer 3; Captain Ball 3, 5; Volley Ball 4.

HELEN COLLINS, 632

Class Auditing Com. 2; Student Adviser 6; Geography 3, 4; Little Theatre 1, 2; Cui Bono 4-6; Sketch 2-5; Art Guild 2-5; Dance 1; Soccer 1; Captain Ball 1; Baseball 2; Volley Ball 2.

MARGARET CONDON, KG6

Prom Arrangements Com. Chrm. 5, 6; Section Chrm. 1, 2; Bulletin Bd. Com. Chrm. 5; St. Coun. Publicity Com. Chrm. 5; Class Auditing Com. 3, 4; Fellowship Treas. 5; Rose Sale Com. 3; Kg-Primary 1-6; Treas. 3, 4; Jr. Choir 1, 2; Geography 1, 2; Little Theatre 3, Sec. 4; Art Guild 3-6; Soccer 1; Captain Ball 1.

ROSALIND CONLEY, 632

Soccer 1; Captain Ball 1; Baseball 2; Volley Ball 2.



FRANCES DAVEY, 632

Hall Duty Com. 3; Lunchroom Com. 6; Girls' Room Com. 2, 3, 6; Student Service Com. 2, 3, 6; Chrm. 3; Big Sister Party Com. 3; Class Printing Com. 5, 6; Special Choir 1-6; Geography 4; Little Theatre 4; Cui Bono 4-6; Dance 2.

EVELYN DAVIDSON, KG6

Section Chrm. 5; Kg-Primary 1-6; Geography 3-5; Camera 5, 6; Mask 6; Poetry 1-3.

MARJORIE DELANEY, 632

Class Constitutional Com. Chrm. 1; Geography 4; Art Guild 2; Poetry 1.

DOROTHY DIETRICK, 634

Section Chrm. 1, 2; Student Daily Com. 3; Bulletin Bd. Com. 3; Girls' Room Com. 2, 3; St. Coun. Auditing Com. 3; Geography 1-5; Cui Bono 3; Jr. Choir 1, 2.

DOROTHY DODGE, KG6

High School Day Com. 2; Class Social Com. Chrm. 5, 6; Class Program Com. 1, 2; Rose Sale Com. 4; W. A. A. Rep. 3, 4; Kg-Primary 1-6; Jr. Choir 1; Geography 1-5; Little Theatre 2-4; Art Guild 2-4; Soccer All Star 1; Hockey 1.

MARY DONOGHUE, 633

Class Nominating Com. 2; Jr. Choir 1; Geography 1, 4; Sketch 4; Art Guild 3, 4; Clay Modeling 2.

MARY DRAINE, 632

Executive Judiciary Com. 2; Bulletin Bd. Com. 4; Book Exchange Com. 2, 3; Class Office Com. Chrm. 5, 6; Emblem Staff Typist 6; Jr. Choir Vice-Pres. 2; Geography 3, 4; Art Guild 4.

AGATHA DUNNE, 632

Jr. Choir 1, 2; Geography 2-4; Art Guild 4; Soccer 1; Captain Ball 1; Baseball 2; Volley Ball 2.

FLORENCE DURKIN, KG6

Class Nominating Com. 1; Emblem Rep. 1; Kg-Primary 1-6; Little Theatre 1, 2; Camera 4, 5.

MARGARET DWYER 633

Cap and Gown Com. 5, 6; Section Chrm. 1, 2; Student Adviser 6; Rose Sale Com. 4; Jr. Choir 1; Geography 4; Art Guild 4; Sketch 3.

DOROTHY EIRICH, 635

Section Chrm. 3, 4; Normalite 1-4; Club Ed. 5, 6; Cui Bono 4-6.

WINIFRED ERICKSON, 634

Prom Publicity Com. Chrm. 5, 6; Class Nominating Com. Chrm. 1; Emblem Co-Ed. 5, 6; Fellowship Refreshment Com. 3; Normalite Exchange Ed. 1, Club Ed. 2, 3, News Ed. 4, Ed.-in-Chief 5; Cui Bono 3-5; Soccer 1, 3; Captain Ball 5; Baseball 2; Volley Ball 4; Bowling 2.

LUCILE FAIRBAIRN, 632

Queen of the May 6; Class Social Com. 5, 6; Jr. Choir 1, 2; Geography 1-4; Art Guild 4; Soccer; Captain Ball 1; Baseball 2.

IRENE FERMIER, 633

Prom Music Com. 5, 6; Social Hr. Com. Chrm. 6; Class Program Com. 2; Class Music Com. 2-4; Emblem, Freshman Features Ed. 6; Usher 4, 5; Normalite 3-6; Geography 3, 4; Little Theatre 3, 4; Poetry 2; Soccer 1, 3; Captain Ball 1, 3; Baseball 2, 6; Volley Ball 2, 4, 6, Capt. 2; Tennis 3, 4, 6.



MARY FINAN, 635

Tickets and Announcements Com. Chrm. 5, 6; Social Hr. Com. 4; Chrm. 5; Class Publicity Com. 3, 4; Fellowship Social Com. Chrm. 4; Normalite 1-3; Special Choir 2, 3; Geography 1-4; Cui Bono 4; Christmas Festival Chrm. 5; Soccer 1, 3; Captain Ball 1, 3, 5; Baseball 2, 4; Volley Ball 2, 4; Swimming 2, 3.

MARY FITZGERALD, 632

Pin and Ring Com. 5, 6; Section Chrm. 1, 2; Class Social Com. 3, 4; Fellowship Rep 2; Jr. Choir 1, 2, Pres. 1; Geography 1-4; Cui Bono 4-6; Sketch 3, 4; Art Guild 4; Soccer 1; Captain Ball All Star 1; Baseball 2; Volley Ball 2.

EMILY FLOSI, 635

Class Sec. 5, 6; Student Service Com. 3; Class Music Com. 3, 4; Special Choir 2-4, Vice-Pres. 6; Jr. Choir 1; Geography 1-3; Sec. 3; Cui Bono 4-6; Soccer 1, 3; Captain Ball 3, 5; Baseball 2; Volley Ball 2, 4; Tennis 3-5.

LORETTA FRANCIS, 633

Jr. Choir 1, 2; Geography 1-4; Art Guild 2; Creative Writing 3.

VIRGINIA FRISBIE, 632

Class Music Com. 5, 6; Jr. Choir 1; Art Guild 2.

SYLVIA GOLDMAN, 634

Normalite 1, 2; Geography 1; Little Theatre 2-5.

DOROTHY GOLLER, KG6

Prom Publicity Com. 5, 6; Hall Duty Com. 5; Social Hr. Com. 2; Student Service Com. 3, 4; Lost and Found Com. 4, 5; Class Program Com. 3, 4; Rose Sale Com. 3; Fudge Sale Com. 4; Kg-Primary 1-6; Special Choir 3, 4; Jr. Choir 1; Geography 1, 2; Little Theatre 3, 4; Cui Bono 4-6, Vice-Pres. 5; Art Guild 5, 6; Mask 5; Soccer All Star 1; Captain Ball 1; Volley Ball All Star 2; Tennis 1-3.

GERTRUDE GRAF, KG6

Section Chrm. 3, 4; Class Office Com. Chrm. 5, 6; Fudge Sale Com. 3; W. A. A. Rep. 1; Kg-Primary 1-6; Special Choir 5; Jr. Choir 1; Geography 1; Soccer All Star; Captain Ball 1; Baseball 2; Volley Ball 2.

EDITH GRAY, 632

Geography 2-4.

MARIE HAHN, 634

Class Day Luncheon Arrangements Com. 5, 6; Class Social Com. 3, 4; Student Adviser 5; Fellowship Rep. 5, 6; Normalite 4, 5; Piano Methods 1, 2; Geography 1, 3, 4; Little Theatre 3, 4; Cui Bono 3-5; Soccer 1, 3; Captain Ball 1; Baseball 2; Volley Ball 2, 4.

ALICE HANSON, 633

Prom Invitations and Bids Com. 5, 6; Section Chrm. 3, 4; St. Coun. Pres. 6; Nominating Com. 4; Executive Judiciary 4; Class Program Com. 1, 2; Emblem, Features Ed. 6; Usher 4, 5; Rose Sale Com. 4; W. A. A. Rep. 6; Normalite 1-6; Geography 1-4; Vice-Pres. 2; Little Theatre 3, 4; Cui Bono 5; Art Guild 1-4; Soccer 1, 3; Captain Ball 1, 3, Capt. 1; Baseball 2, 4; Volley Ball 2, 4, 6; Tennis 2, 3.

ETHEL HELANDER, 634

Girls' Room Com. 4; Big Sister Party Com. 5; Class Program Com. 3, 4; Special Choir 5, 6; Jr. Choir 2; Piano Methods 1, 2; Geography 2-6; Treas. 5; Captain Ball 1, 3, 5, Capt. and All Star 1; Volley Ball 2, 4.

KATHERINE JANSSON, KG6

Class Vice-Pres. 3, 4; Emblem Co-Ed. 5, 6; Class Day Luncheon Arrangements Com. Chrm. 5, 6; St. Coun. Sec. 5; Executive Judiciary 5; Class Program Com. Chrm. 1, 2; Class Nominating Com. 1; Fellowship Service Com. 4; Normalite 1, Copy Ed. 2-6; Kg-Primary 1-6; Jr. Choir 1; Geography 1-3; Little Theatre 3, 4; Cui Bono 4-6; Sketch 3-6; Art Guild 3-6; Soccer 1; Captain Ball 1; Volley Ball 2; Hiking 5, 6.

MARGARET KELLIHER, 632

Class Nominating Com. 1, 3; Class Auditing Com. 5, 6; Emblem, Copy Desk Ed. 6; Normalite 1-4, Copy Ed. 5, 6; Geography 4; Cui Bono 4-6; Art Guild 4-6.

**CLARA KLONHAUS, 635**

Section Chrm. 1, 2; Rose Sale Com. 3; Jr. Choir 4, 5; Geography 1, 3, 4; Soccer 1, 3; Captain Ball 1, 3, 5; Baseball 2, 4; Volley Ball 2, 4.

ANGELA KNUDTZON, 632

Class Day Stunt Com. 5, 6; Fellowship Rep. 3; Special Choir 5, 6; Geography 3, 4; Dance 1, 2; Soccer 1; Captain Ball 1; Baseball 2; Volley Ball 2.

HELEN KUGLIN, 635

St. Coun. Vice-Pres. 5; Hall Duty Com. 3, 4; Class Program Com. 5, 6; Rose Sale Com. 3; W. A. A. Sec. 3; Bowling Mgr. 2, Board 3; Rep. 4; Geography 2-6; Little Theatre 4-6; Sketch 3, 4; Dance 1; Captain Ball 1, 3, 5; Volley Ball 2, 4, 6; Bowling 1-6.

MARGARET LALOR, 633

Jr. Choir 1, 2; Geography 4; Soccer 1; Captain Ball 1.

FLEMMIE LANCIANESE, 634

Girls' Room Com. 5; Student Service Com. 2; Lost and Found Com. 1; Fellowship Treas. 4; W. A. A. Rep. 2; Ping Pong Mgr. 4; Vice-Pres. 5; Special Choir 3, 5, 6; Jr. Choir 1, 2; Geography 2-4; Little Theatre 2-4; Cui Bono 4, 5; Soccer 1, Capt. 3; Baseball Capt. 2, All Star 4; Volley Ball 2, Capt. 4.

LILLIAN LEHMAN, KG6

Class Day Chrm. 5, 6; Section Chrm. 5, 6; Hall Duty Com. 3; Emblem, Photography Ed. 6; Student Adviser 5, 6; Normalite 4-6; Kg-Primary 1-6; Special Choir 5; Jr. Choir 1; Geography 1, 3; Cui Bono 4-6; Soccer 1; Tennis 2.

DOROTHY LEMBACH, 635

Class Pres. 3, 4; St. Coun. Pres. 5; Nominating Com. 3; Charity Tea Com. 3; Freshman Tea Com. 3, Chrm. 4; Assembly Program Com. 3; Class Social Com. 1, 2; Class Music Com. 1, 2, 5, 6; Orchestra 3-6; Piano Methods 1, 2; Geography 1-6, Pres. 2; Cui Bono 4; Soccer 1, 3, All Star 1; Captain Ball 1, 3, 5; Baseball 2, 4; Volley Ball 2; Swimming 2.

CHARLOTTE LEVINSON, 632

Student Daily Com. 6; Class Social Com. 1, 2; Class Office Com. 5, 6; Emblem, Ass't. Club Write-Up Ed. 6; Normalite 1-4; News Ed. 6; Geography 4; Soccer 1; Captain Ball 1; Baseball 2; Volley Ball 2; Bowling Mgr. 5.

BETTY LIKAS, 634

Social Hr. Com. 2, 3; Big Sister Party Arrangements Com. Chrm. 4; Entertainment Com. 5; Fellowship Rep. 5; W. A. A. Rep. 1; Hike Mgr. 2; Board 3; Pres. 4; Swimming Mgr. 5; Special Choir 4-6; Jr. Choir 2; Little Theatre 2-4; Cui Bono 3-5; Soccer 1; Captain Ball 1; Baseball 2; All Star 4.

LEAH LINDENBERG, 635

Student Service Com. 5, 6; Fellowship Rep. 3; Jr. Choir 1, 4; Geography 2, 4; Cui Bono 4-6; Avukah 5; Soccer 3; Captain Ball 1, 3, 5; Baseball, All Star 2, 4; Volley Ball 2, 4.

LILLIAN LIPOFSKY, 632

Section Chrm. 1; Girls' Room Com. 2; Geography 2.

LILLIAN LIPSCHULTZ, 633

Section Chrm. 5; Class Publicity Com. 5, 6; Jr. Choir 1; Geography 4; Cui Bono 4, 5; Poetry 1; Avukah 4; Executive Com. 6; Soccer 1; Captain Ball 1; Baseball 2.

ALVA LOVELESS, KG6

Prom Music Com. 5, 6; Class Entertainment Com. 1, 2; Fudge Sale Com. 3; Kg-Primary 1-6; Jr. Choir 1; Geography 2; Sketch 5; Soccer 1; Captain Ball 1; Baseball 2; Volley Ball 2.

RUTH LUNDGREN, 635

Class Sergt.-at-Arms 5, 6; Social Hr. Com. 5; St. Coun. Auditing Com. 5; Class Auditing Com. 3, 4; Fellowship Refreshment Com. 4; W.A.A. Rep. 3; Normalite 3; Jr. Choir 4; Geography 2-4; Art Guild 4; Poetry 1; Soccer 1; Capt 3; Captain Ball 1; Baseball 2; All Star 4; Volley Ball, All Star and Capt. 2, 4, 6; Tennis 4, 5; Swimming 4, 5.



RITA MAHER, KG6

Girls' Room Com. 3; Kg-Primary 1-6; Special Choir 3, 4; Jr. Choir 1, 2; Geography 1, 2; Soccer 1.

FRED M. MANZ, 633

Tickets and Announcements Com. 5, 6; Social Hr. Com. 6; Emblem Rep. 6; Normalite Business Mgr. 6; Men's Chorus 1, 2; Geography 1, 4, 6; Little Theatre 4-6; acting class sec. 1.

MILDRED MARANO, 635

Fellowship Refreshment Com. 2; Jr. Choir 1; Geography 1-6; Cui Bono 4-6; Soccer 1, 3; Captain Ball 1, 3; Baseball 2; Volley Ball 2, 4.

MARY MATJASIC, 633

Hall Duty Com. 2; Chrm. 4; Bulletin Bd. Com. Chrm. 3; Social Hr. Com. 6; Class Song Com. 2-4; Rose Sale Com. 4; W. A. A. Rep. 2; Special Choir 3-6; Jr. Choir 1, 2; Geography 4; Art Guild 2-4; Soccer 4; Captain Ball 1, 3; All Star 1; Baseball 2, 4; Volley Ball 2, 4, 6.

ROBERT McCANN, 632

Class Sergt.-at-Arms 3, 4; Social Hr. Com. 3; Men's Room Com. 3; Class Social Com. 1, 2; Class Program Com. Chrm. 5, 6; Fellowship Treas. 6; Normalite Circulation Mgr. 6; Men's Chorus 3, 6; Geography 3, 4; Little Theatre 3.

MARY McCULLOUGH, 634

Class Treas. 1, 2; Section Chrm. 3, 4; St. Coun. Vice-Pres. 4; Auditing Com. 3; Girls' Room Com. 2; Freshman Tea Program Com. 2, 3; Class Publication Com. 3, 4; Class Printing Com. 5, 6; Horse Back Rldmg Mgr. 1, 5; Geography 1-4; Pres. 3; Little Theatre 2; Cui Bono 4; Soccer 1, 3; Volley Ball 4; Archery 5, 6.

MARY McDONNELL, 633

Executive Judiciary Com. 1; Class Nominating Com. 1; Jr. Choir 1; Geography 4; Little Theatre 3; Sketch 4, 5; Soccer 1; Capt. 3; Volley Ball 2, 3.

MARIE McKILLIP, KG6

Tickets and Announcements Com. 5, 6; Bulletin Bd. Com. 5; Book Exchange Com. 3; St. Coun. Publicity Com. Chrm. 3; High School Day Com. 2; Kg-Primary 1-6; Jr. Choir 1; Little Theatre 3, 4; Vice-Pres 5; Cui Bono 4-6; Art Guild 4-6; Sketch 3; Mask 5; Soccer 1; Volley Ball 2.

CAROLYN McLAUGHLIN, KG6

Class Music Com. Chrm. 1-6; Fellowship Rep. 1, 2, 4; Fudge Sale Com. 5; Kg-Primary 1-6; Orchestra 4-6; Piano Methods 1, 2.

CATHERINE McNELLIS, 634

Class Treas. 3, 4; P. n. and Ring Com. Chrm. 5, 6; Section Chrm. 5, 6; Big Sister Party Entertainment Com. 5; Fellowship Entertainment Com. 4; Geography 2-4; Sec. 5; Little Theatre 1, 3, 4; Cui Bono 3, 4; Dance 2; Soccer 3; Captain Ball 2, 5; Baseball 2, 4; Volley Ball 2, 4.

ELEANOR MOORE, 633

Fellowship Rep. 3, 4; Jr. Choir 1; Geography 4; Art Guild 2; Soccer 1.

ELIZABETH MUELLER, 632

Section Chrm. 5, 6; Book Exchange Com. 2; W. A. A. Rep. 1-6; Sec. 2; Pres. 5; Swimming 2-5; Mgr. 4; Capt. 3-6; Jr. Choir 1, 2; Cui Bono 3-6; Foreign Culture 4; Soccer Capt. 1; Captain Ball 1; Baseball Capt. 2; Volley Ball Capt. 2; Tennis 2, 4, 6.

MAE NEELY, 633

Jr. Choir 1, 2; Geography 4; Cui Bono 4-6; Sketch 3, 5, 6; Soccer 1, 3; Captain Ball 5; Baseball 2; Volley Ball 2, 4, 6.

FRANCES NEITZ, 634

Class Social Com. 5, 6; Jr. Choir 1; Geography 3, 4; Cui Bono 5; Dance 2; Soccer 1; Captain Ball 1; Baseball 2; Volley Ball 2, 4.

**MILDRED NEUFFER, KG6**

Prom Publicity Com. 5, 6; Social Hr. Com. 5; Book Exchange Com. 4; Girls' Room Com. 2; Chrm. 3; Health Com. 3; Fellowship Rose Sale Com. 3; Publicity Com. 5; Fudge Sale Com. 4; Kg-Primary 1-6; Sec. 2-4; Jr. Choir 1; Geography 1-3; Little Theatre 2-4; Sketch 3-5; Art Guild 4, 5; Soccer All Star 1; Captain Ball 1; Baseball 2; Volley Ball 2.

ADELAIDE NICHOLS, 635

Orchestra 3-6; Geography 4-6; Cui Bono 4-6; Soccer 1; Capt. 3.

MARGARET O'CONNELL, 633

Fellowship Rep. 1; Jr. Choir 1, 2; Geography 1; Soccer 1; Captain Ball 1; Volley Ball 2.

MARY O'CONNOR, 632

Geography 4; Little Theatre 1; Captain Ball All Star 1.

ESTHER PALLIN, 634

Special Choir 6; Jr. Choir 2; Geography 4; Dance. 1.

BEATRICE PENNINGTON, 633

Prom Arrangements Com. 5, 6; Social Hr. Com. 3, 6; Bulletin Bd. Com. 2; Girls' Room Com. 6; Class Program Com. 3, 4; Class Publicity Com. Chrm. 2; Usher 4, 5; W. A. A. Tennis Mgr. 3; Rep. 4; Special Choir 3-6; Geography 4; Little Theatre 1; Soccer 3; Captain Ball 1, 3; Baseball 2, 4; Volley Ball 2, 4, 6.

HELEN PETERSON, 633

Class Pres. 1, 2; Prom. Com. Chrm. 5, 6; St. Coun. Vice-Pres. 3; Nominating Com. 1, 2; Bulletin Bd. Com. Chrm. 2; Charity Com. Chrm. 4; Freshman Tea Com. 6; Emblem, Senior Write-Up Ed. 6; Usher 4, 5; All-City Girls' Conference Del. 3; Sec. 3, 4; Student Adviser 4; Special Choir 6; Geography 4; Little Theatre 1; Cui Bono 4.

LUCILLE POLLEY, 634

Book Exchange Com. 4; Freshman Tea Com. 5; Student Daily Com. 3; Geography 1, 3, 4; Little Theatre 1, 4, 6; Cui Bono 5; Poetry 3; Soccer 1; Captain Ball 1.

GENEVIEVE RABIG, 635

Bulletin Bd. Com. 4; Student Service Com. 3; Geography 1-4; Little Theatre 1; Soccer 1; Captain Ball 1; Hiking 5.

ANTONIA RAGO, 635

Student Daily Ed. 2, 4, Emblem, Advertising Mgr. 5, 6, W. A. A. Rep. 2; Normalite Advertising Mgr. 5; Geography 3, 4; Little Theatre 1-6; Foreign Culture 3-6; Soccer 1; Captain Ball 1; Baseball 2; Volley Ball Capt. 2, All Star 2, 4, 6; Swimming 4; Tennis 3.

MOLLIE RAIDER, 634

Geography 3, 4; Little Theatre 4-6; Cui Bono 3, 4; Sketch 2-4.

HELEN REGAN, 635

Charity Com. 4; Bulletin Bd. Com. 3; Class Music Com. 5, 6; Fellowship Rep. 1, Sec. 3; Entertainment Com. 4; W. A. A. Sec. 2; Geography 2, 3, 4; Cui Bono 4-6; Sketch 3, 4; Poetry 1; Soccer 1, 3; Captain Ball 3; All Star 5; Volley Ball 2; Swimming 1.

GRACE RENSHAW, 633

Class Auditing Com. 1, 2, 5, 6; Jr. Choir 1, 2; Geography 1, 2, 4; Cui Bono 4-6.

MARY RICE, 632

Prom Arrangements Com. 5, 6; Special Choir 3-6; Jr. Choir 1, Treas. 2; Geography 4; Little Theatre 4; Soccer 1; Baseball 2; Volley Ball 2.

**MARGARET ROBERTSON, 634**

Class Nominating Com. 4, 5; Fellowship Rep. 3, 4; Special Choir 5, 6; Jr. Choir 1, 2; Geography 1-6; Little Theatre 2-6; Camera 2 3; Soccer 1 3; Captain Ball 1, 3, 5; Baseball 2, 4; Volley Ball 2, 4.

VIRGINIA ROHEN, 635

Special Choir 5, 6; Geography 2-4, Cui Bono 4-6, Sec. Treas. 5; Mask 5, 6.

DAVIDA SCHER, 633

Class Day Stunt Com. Chrm. 5, 6; Bulletin Bd. Com. Chrm. 4; Freshman Tea Com. Chrm. 6; Class Nominating Com. 4, 5; Class Campus Com. Chrm. 1-4; Emblem Ass't, Senior Write-Up Ed. 6; Usher 4, 5, W. A. A. Rep. 2; Normalite 1; Special Choir 6; Geography 4; Little Theatre 1, 3; Soccer 1, 3; Captain Ball 1; Baseball 2; Volley Ball 2, 4.

SARAH SCOTT, KG6

Kg-Primary 1-6; Jr. Choir 1-3; Geography 1, 2, 6; Soccer 1.

JANET SMITH, 635

Fellowship Rep. 3; Geography 4; Cui Bono 5; Soccer 1; Captain Ball 1; Baseball 2; Volley Ball 2.

CHARLINE SNIDER, 635

Class Sec. 3, 4; St. Coun. Fee Acc't 5; Freshman Tea Com. 2; Class Program Com. Chrm. 2; Printing Com. Chrm. 5, 6; Emblem, Club Write-Up Ed. 6; Fellowship Service Com. Chrm. 4; Normalite 2, 3; Feature Ed. 4, News Ed. 5; Geography 2-4; Little Theatre 1, Cui Bono 4, 5; Camera 3; Soccer 3; Captain Ball 5; Volley Ball 2, 4; Tennis 4, 5; Bowling 4-6; Riding 5, 6; Hiking 5, 6.

MARION SWENSEK, 634

Executive Judiciary Com. 5; Jr. Choir 1, 2; Geography 1-4; Cui Bono 3.

MERCEDES THOMPSON, 633

Class Sec. 1, 2; Prom Invitations and Bids Com. Chrm. 5, 6; Student Daily Ed 6; Emblem, Senior Features Ed. 6; Fudge Sale Com. 4; W. A. A. Rep. 5; Normalite 2-6; Geography 1-4; Little Theatre 3, 4; Cui Bono 4-6; Art Guild 1-4; Poetry 1; Soccer 1, 3; Capt. 1; Captain Ball 1, 3; Baseball 2, 4; Volley Ball 2, 4, 6; Tennis 2-6.

SYLVIA TITELBAUM, 632

Prom Invitations and Bids Com. 5, 6; Section Chrm. 3, 4; Class Nominating Com. 2; Normalite 1, 2; Geography 4; Cui Bono 4-6; Soccer 1, 2; Captain Ball 1; Volley Ball 2.

RUTH VAN DERVELDE, 635

Social Hr. Com. 5; Geography 4; Sketch 2, 3; Mask 5, 6; Soccer All Star 1; Baseball Capt. 2.

SAM WALLACE, 632

Class Treas. 5, 6; M. A. A. Rep. 1; Men's Chorus 1; Little Theatre 3, 6; Sketch 2, 3.



ETHEL WARNER, KG6

Fellowship Rep. 5; Kg-Pri-ary 1-6; Jr. Choir 1; Camera 4, 5; Mask 6.

GERTRUDE WARREN, 635

Student Service Com. 5; Class Publicity Com. Chrm. 5, 6; Fellowship Rep. 4; W. A. A. Rep. 3; Geography 2-4; Art Guild 2, 3; Sketch 3-5; Poetry 1, 2.

ETHEL WASHINGTON, 634

Special Choir 2-6; Jr. Choir 1, 2; Geography 2, 4; Soccer 1; Captain Ball 1; Baseball 2; Volley Ball 2.

MARGARET WIBORG, 632

Geography 2-4.

HELEN ZIMMERMAN, 635

Class Pres. 5, 6; Section Chrm. 3, 4; Social Hr. Com. 5; St. Coun. Nominating Com. 5; W. A. A. Rep. 1; Special Choir 1-4; Geography 4; Cui Bono 4, 5; Volley Ball 2, 4; Soccer Capt 1; Baseball 2.

OTHER GRADUATES

Charlotte Adler, 633
Mavis Blackwell, 633
Kathryn Burke, 632
Nettie Chaitkin, 632
Pauline Degan, UT
Charlotte Dolan, 700
James Ferguson, 700
Elsie L. Friedman, FT

Mary Ellen Gillooly, 633
Mercedes Harmon, 633
Kathryn Hoffman, 632
Claudia Jackson, 633
Anna Levin, 635
Frances Maloney, 633
Katharine Mann, 632
Bernice Mayor, 633
Viola D. McDaniel, 634

Lucille McLeod, KG6
Anne Cecelia Reim, 633
Gertrude Rosenfield, 632
Elizabeth Simonton, FT
Bessie Smith, 635
Anna B. Sosna, FT
Tillie W. Strauss, 634
Lorraine Sublette, 700

NOVEMBER GRADUATES

When the special courses at Normal were discontinued, making it necessary for many to transfer to an elementary course, graduation was automatically postponed for those in these courses. Some of these students are graduating this November, while many of them will not graduate until February or June.

MARION BERTOSSA

Roller Skating Mgr. 4; Geography 1-6; Little Theatre 2-5; Dance 1.

GUSTAVA CARTER

Class Day Luncheon Com. 5, 6; Freshman Tea Com. Chrm. 5; St. Coun. Assembly Com. 4; Fellowship Refreshment Com. 2, 3; Special Choir 5, 6; Geography 2; H. A. 1-4.

FRANCES FISCELLE

Fellowship Rep. 1; Special Choir 3-6; Jr. Choir 1, Pres. 2; Little Theatre 1-4; Geography 1-6, Sec. 2; Sketch 1, 3, 6; Soccer 1; Captain Ball 1; Volley Ball 2.

ISABEL GOSCICKI

Class Day Luncheon Com. 5, 6; Section Chrm. 3-6; Executive Judiciary 6; Freshman Tea Com. 4-6; Lunch-room Com. Chrm. 5; Big Sister Party Com. 5; Charity Tea Com. 3; Class Nominating Com. 4; Fellowship Refreshment Com. 1-4, Party Com. Chrm. 6; Geography 5, 6; Cui Bono 4-6; Sketch 2; H. A. 1-4; Jr. Choir 5; Swimming 6; W. A. A. Rep. 2, 3; Math. 6.

GENEVIEVE GRABER

Class Vice-Pres. 5; Section Chrm. 1, 2, 5; Lunchroom Com. Chrm. 5; Big Sister Party Refreshment Com. 4, Chrm. 6; Freshman Tea Com. 4, Chrm. 5; Usher 5, 6; Student Adviser 5, 6; All-City Girls' Conference Del. 4; Special Choir 5, 41A, 51A; H. A. 1-5, Treas. 3; Cui Bono 4-6, 41A, 51A; St. Coun. Nominating Com. 5; Charity Tea Com. 4; Class Program Com. 1, 2; Fellowship Rep. 1, Refreshment Com. 2, 3; Geography 4, 5, 41A, 51A; Little Theatre 51A.

LOUISE GRAY

Geography 1; Soccer 1; Captain Ball; Baseball 2; Tennis 1.



ETHEL GROSSE

Special Choir 5, 41A; Jr. Choir 4, 5; Geography 4, 5, 41A; H. A. 5.

ELIZABETH HARNDEN

W. A. A. Roller Skating Mgr. 3, Refreshment Com. Chrm. 3; Normalite 1-4; Geography 1-4; Poetry 1, 5.

LOUISE HERST

Jr. Choir 1, 2; Soccer 1; Captain Ball 1.

LILLIAN KACZMARSKI

Jr. Choir 1, 2; Geography 1, 2; Foreign Culture 4; Baseball Capt. 2; Volley Ball 2, 4.

MILDRED MAY

Section Chrm. 1, 2, 6; Class Social Com. 5, 6; Fellowship Rep. 2, Refreshment Com. 3; W. A. A. Rep. 2; Jr. Choir 5; H. A. 4-6; Little Theatre 1.

VIOLA McDONNELL

RITA McTIGUE

Pin and Ring Com. 2; Section Chrm. 1, 2; Big Sister Party Com. 4; Freshman Tea Com. 4; Class Refreshment Com. 3, 4; Fellowship Refreshment Com. 6; W. A. A. Rep. 3-6; Swimming Team 5; Mgr. 5; H. A. 1-4; Geography 1, 2, 4; Baseball Capt. 5; attendant to Queen of May, 6.

ESTHER MIES

Class Vice-Pres. 5, 6; Big Sister Party Com. 3; Student Adviser 6; Fellowship Rose Sale Com. 1, Rep. 3; Refreshment Com. Chrm. 3; Pres. 4; W. A. A. Rep. 1; H. A. 1-4, Sec. 3; Geography Vice-Pres. 6; Luncheon Com. 3; Charity Com. 5; Class Refreshment Com. 3, 4; Cu Boro 4-6; Jr. Choir 5.

KAY MULHERN

Freshman Tea Com. 5; Class Program Com. Chrm. 3, 4; Rose Sale Com. 6; Special Choir 3; Jr. Choir 1, 2; Geography 1-6; Art Guild 1; Soccer 1, 3; Captain Ball 1.

LUCILLE MURRAY**ELEANOR NASH**

Fellowship Rep. 6; H. A. 5, 6.

**HELEN NASH**

Special Choir 5; Jr. Choir 2, 3; Dance 1, 2, 5; Soccer 1; Captain Ball 1; Baseball 2; Volley Ball 2.

MARION NORMOYLE

Geography 1-6; Little Theatre 2-4; Dance 1-4; Baseball 2; Volley Ball 2.

BEATRICE SCHAFFER

Freshman Tea Com. 2, 6; Luncheon Com. 4; Big Sister Party Refreshment Com. 51A; Class Social Com. Chrm. 5; Class Program Com. 41A, 51A; Class Newspaper Com. 3; Fellowship Refreshment Com. Chrm. 2, 5; Treas. 3; Student Adviser 4; H. A. 1-5; Vice-Pres. 2, 4, Pres. 5; Social Choir 5; 41A, 51A; Geography 4-6, 41A, 51A; Little Theatre 51A; Cui Boro 4-6, 41A, 51A; Avukah 5; Vice-Pres. 41A.

MARGARET TAHENY

Section Chrm. 3, 4; Big Sister Party Refreshment Com. 4; Chrm. 5; Freshman Tea Com. 4; Class Social Com. 4; Class Publicity Com. 3, 4; Fellowship Refreshment Com. 2; Chrm. 3; Vice-Pres. 4; H. A. 1-5; Jr. Choir Pres. 51A; Geography 4-6.

ROSE WIMBY

Jr. Choir 2; Geography 3, 4; Soccer 1; Captain Ball 1; Volley Ball 2; Archery 4.

CLASSES



CLASS OF FEBRUARY 1935

President.....	Walter Fasan
Vice-President.....	Virginia Larson
Secretary.....	Marjorie Winslow
Treasurer.....	Elizabeth Lewis
Class Historian.....	Jean Dearborn

Section before self, class before section, school before class: this is the motto of the Class of February, 1935.

The membership of the class is 140 students, including a number of former HA's, PE's, and IA's, added in the reorganization of courses in September, 1933. Leading and directing the class in all its undertakings are the advisers: Dr. Newkirk, chairman, Miss Freeman, Miss Willy, Mrs. Cochran, Dr. Gore, Mr. Wise, and Dr. Sherff.

The social life of the Lower Seniors has been enlivened by periodical class meetings and a number of parties. At one of these during the past semester, Section 552 gave a "Radio Revue" and "Crazy to Reduce," and Section 551, a musical program and skit. For the Friday assembly, the class put on, in its Freshman year, two delightful little plays, an adaptation of Pearl Buck's novel, "The Good Earth," and "A Glimpse of the Desert;" and later, "Thanks Awfully," a very successful original musical comedy.

Chairmen and their committees for the Lower Senior Class, already selected by the president for their last year at Normal, include: program chairman, Harry Lawler; publicity, Helen Price; auditing, Josephine La Placa; social, Virginia Larson; general chairman of Commencement, Ernelle Carlson; office, Mildred Sika; cap and gown, Grace Mac Downey; pin and ring, Betty Lou Bills; tickets and announcements, Selma Goldman; printing, Robert Kaeding; class song, Naomi Stein; general chairman of Class Day, Dorothy Rietz; luncheon, Rae Chanenson; musicale-stunt, Ruth Hopkins; general chairman of Prom, Mary E. Chandler; arrangements, Eileen Keena; music, Helen Marie Kelley; invitations and bids, Joseph Twomey; and publicity, Lucille McKeag.



CLASS OF JUNE 1935

President.....	James Egan
Vice-President.....	Mary Elizabeth Townsend
Secretary.....	Gertrude McGuire
Treasurer.....	Margaret Trudeau

The Class of June 1935 originally consisted of two elementary sections, a kindergarten section, a household arts section, a physical education section, and a manual training section. In September, 1933, due to the discontinuance of all special departments, the class was reorganized, all students becoming automatically members of the elementary department though retaining their sectional groupings. Other additions to the class were the former IA4's and the university students who entered in September. So reconstructed, the class has as advisers Dr. Blount, most helpful of chairmen, Miss Doyle, Miss Willy, Miss Freeman, Mrs. Cochran, Miss Camenisch, Mr. Henke, and Dr. Newkirk.

At the beginning of the present year, the class, then the Lower Juniors, had a get-together party after summer vacation, with dancing, a program, and refreshments. To this affair all the men of the school were invited, and a seven-piece orchestra made the occasion outstanding.

Later in October the class gave a "Welcome Tea," which officially welcomed into the class the new members, the IA's, UT's, and several others. Tea was served, and a musicale was given. Two more social affairs, a dance in the gymnasium during May and a tea in June, rounded out the year's activities.

The class has two outstanding committees. The first, the social committee whose duty it is to plan all class activities such as parties, has for its chairman, Lucille Schaffer. Through her efforts plans for the two big parties were made and executed. The second committee, namely the program committee, has as chairman Helene Quast. Because of her clever management the class was provided with entertainment for all parties and meetings.

It is the Upper Juniors' hope that their final year will prove as successful and enjoyable as this year.



CLASS OF FEBRUARY 1936

President.....	Columba Zarega
Vice-President.....	Lillian Anderson
Secretary.....	Rosanna Garrison
Treasurer.....	Lucile Walp
Historian.....	Elizabeth Bard

"To make the class a more united body and as a whole to enable it to uphold and support the high standards of the Chicago Normal College; and to be loyal to the class and instructors in thought, word, and deed, and to give forth its best efforts in their behalf" is the purpose of the class of February, 1936. Other objectives are: to support the Normal College Parent-Teachers Association; and to beautify the campus.

The first officers of the present Lower Juniors were: president, Mary Leonard; vice-president, Ada Blakeway; secretary, Carol Wise; treasurer, Mary Cummings; historian, Helen Youngreen. There are four standing committees: auditing, program, social, publications and publicity.

During their first semester at Normal and after they had become more acquainted with College customs and activities, the Lower Juniors presented at an assembly a pageant play entitled "The Freshmen's Reactions the First Day at Normal."

Further to bring the class of fifty-five together, various parties were carefully planned. In June of the first semester, a beach party at Jackson Park was largely attended and much enjoyed. At Christmas, the class gave a merry party of welcome to the Freshmen, in which a grab bag containing gifts for all proved an effective "ice-breaker," followed by games in the holiday spirit.

The class advisers, Mrs. Cochran, Miss Gildemeister, and Mr. Hannan, with Miss Olson as chairman of advisers, have guided the class over the difficulties encountered. Faculty counsel and understanding prove important the first three semesters when organization of the class into smooth-running order is so necessary.



CLASS OF JUNE 1936

President.....Betty Sundmacher
 Vice-President.....Grace Dunn
 Secretary.....Marguerite Klein
 Treasurer.....Kathryn Bonfield

"The aim of the Class of June 1936 is that education may be realized more fully, that the welfare of the teaching profession may be promoted, that future teachers may know what is considered proper procedure, and may bring to their professional relations higher standards of conduct." This platform of the June '36 Class is directly quoted from the preamble to their constitution, drawn up last semester by Rachel Rosen, the chairman.

Seventy-three students are in this class, of which there are four sections. The section advisers include Mr. Brye, Mrs. Schacht, Miss Swawite, and Miss Hutchison. Mr. Brye acts as chairman of advisers.

Eight class meetings have been held within the year. To cope with the sundry activities, several committees were appointed: a social committee, Florence Wiaduck, chairman; a program committee, Elaine Skelton; an auditing committee, Evelyn Glazer; a publicity committee, Glenn Armstrong.

At the end of the first term, a change was made in the organization of the several sections, in the interest of greater class solidarity and co-operation, and each student found himself in a new group. Other means of drawing the class more closely together have been the three parties, with their pleasant programs of dancing, music, pantomime, and recitation.

On Friday, April 20, an assembly explaining the work being done by section 201, one of the two experimental sections in the school, was presented. With Miss Garthe directing, a scene, "An Experiment in Music," depicting the way creative music work could be conducted with school children, was put on by this section. The rest of the assembly was devoted to a representation of typical classes, discussions, and work done by the group.

CLASS OF FEBRUARY 1937

Seventy students compose the Lower Freshman Class. There are three elementary sections under the helpful supervision of their faculty advisers, Miss Byrne, Miss Cabell, and Miss Jacobs. Mr. Brye acts as chairman of advisers to these lower freshmen, as yet unorganized as a class. Following the program which was adopted last fall, section 161 was chosen as the experimental group.



ACTIVITIES



EMBLEM STAFF

EMBLEM

Winifred Erickson Co-Editor	Katherine Jansson Co-Editor	
William Wilson General Adviser	Franke Henke Business Adviser	Elmer Morrow Technicalities Adviser
Edmund Kubik Business Manager	Antonio Rago Advertising Manager	Phil Lewis Circulation Manager
Lillian Lehman Photo Editor	Joseph Twomey Asst. Photo Editor	Davida Scher Asst. Senior Write-Up Editor
Charline Snider Write-Up Editor	Charlotte Levinson Asst. Write-Up Editor	Harry Lawler Sports Editor
Helen Anderson Art Editor	Mercedes Thompson Senior Features	Alice Hanson Junior Features
Eileen Casey Humor Editor	Mildred Bagy Humor Editor	Mary Draine Staff Typist
		Paul Enrietto Publicity Manager
		Helen Peterson Senior Write-Up Editor
		Evelyn Schwartz Asst. Write-Up Editor
		Irene Fermier Freshman Features
		Margaret Kelliher Copy Desk Editor

The Emblem represents the successful culmination of plans carefully laid last December. Two and a half years had passed since the annual of the College had been published. To issue the book costs were pared to a minimum and an Emblem of sixty-four pages planned.

"Hand-picked" from the student body by the co-editors, the staff was small, but their cooperation was a splendid thing to see. Philip Lewis as circulation manager boosted sales to an undreamed-of height. Antonia Rago, advertising manager, promised to secure ten pages of advertising and then proceeded to fulfil this obligation. Paul Enrietto, in his capacity of publicity manager, papered the corridors with posters urging students to order an annual. Business manager Edmund Kubik, working with Mr. Henke, business adviser, assured the staff in February that the Emblem was a sound fact financially.

So successful were the sales and advertising campaign that the book was increased in size from sixty-four to one hundred and eight pages. Sheer simplicity was the ideal set by the art editor, Helen Anderson.

The myriad of technical details that are connected with publishing the Emblem are not visible to the casual observer. Only staff members can fully appreciate the painstaking effort involved in compiling and editing the senior write-ups. This task fell to Helen Peterson and Davida Sher.

The organization, writing, and re-writing of over thirty-five write-ups was accomplished by Charline Snider, write-up editor. There may be much controversy as to whose was the hardest job, but Charline is entitled to a strong vote. Charlotte Levinson, Evelyn Schwartz and Harry Lawler were her assistants. To Lillian Lehman the important job of scheduling seniors for photographs was delegated.

With Joseph Twomey in charge of group pictures, this part of editing the book went smoothly. Irene Fermier, Alice Hanson, and Mercedes Thompson capably handled the features of the Emblem, and Mildred Bagy and Eileen Casey edited the humor. To Margaret Kelliher, copy desk editor, and Mary Draine, staff typist, goes the credit of accurate copy and mistake-free page proof.

Worry and disappointments were minimized because of the cooperation of Mr. Wilson as general adviser, Mr. Morrow, technical adviser, and Mr. Henke, business adviser.



NORMALITE

Winifred Erickson.....	Editor-in-Chief.....	James Burd
Charline Snider.....	News Editor.....	Charlotte Levinson
James Burd.....	Feature Editor.....	Ruth Horlick
Dorothy Eirich.....	Club Editor.....	Louise Barzan
Paul Enrietto.....	Sports Editor.....	Helene de Lhorbe

To keep the student body well informed on every Normal College activity is the goal toward which the Normalite staff is constantly striving. The Normalite aims to represent the students and to uphold the ideals of the school.

The Normalite is divided into the literary and business departments. The business department embraces advertising, circulation, and finances. In the literary field, news of general interest to the student body, editorial comment and features, club and class activities, and sports reviews are covered.

A luncheon and a tea at which the succeeding editors are introduced, are traditional semester high-lights. The staff is indebted to the advisers, Dr. Newkirk, Miss Cabell, and Miss Byrne.





STUDENT DAILY

Eileen Casey.....Editor.....Mercedes Thompson

A unique publication is situated in Normal's north corridor for who-ever cares to see it. It is the Student Daily, a small bulletin board, which, nevertheless, is a potent factor in school life, expressing student opinion.

Student Daily assumed significance not only in spreading student opinion, but also as a means of advertising and of bringing activities to the notice of the College. On days of important elections, such as Student Council, Fellowship, and May Queen, the Student Daily is devoted to pictures and write-ups of the candidates. Assemblies, parties, sales, and similar events are publicized through this medium.

Established in 1930 in answer to a desire of the student body for un-censored publicity, the Student Daily appears with only two restrictions upon the material used in it; first, there must be no criticism of the "insti-tution as a whole," and finally, no criticism of the "faculty as individuals."

The organization of Student Daily is simplicity itself. An editor and a general committee are appointed each semester by the president of Stu-dent Council. These, together with a representative elected by each section, are responsible for the publication of Student Daily.

The policy adopted by Student Daily varies every semester with the individual editor. During the fall term sections used the board to acquaint the College with the members and activities of their group. This spring semester an experiment has been conducted in having one member of the Student Daily Committee responsible for each class. This semester's com-mittee included Charlotte Levinson, Lorraine Malmberg, Mary O'Malley, and Harold Winegar.



STUDENT COUNCIL

Dorothy Lembach.....	President.....	Alice Hanson
Helen Kuglin.....	Vice-President.....	Eva Basara
Katherine Jansson.....	Secretary.....	Marjorie Landis
Joseph Portle.....	Treasurer.....	Vincent Conroy
Charline Snider.....	Fee Accountant.....	Jane Bevan

The Student Self-Government Association was organized in 1924 for the purpose of promoting solidarity in the student body and of uniting students and faculty in constructive effort for the welfare of the school. Each student becomes a member of the Association upon entering the College.

The Student Council, the governing body of the Association, is composed of the presidents of the classes, the chairmen of sections, and the faculty advisers, Mrs. Muller, Miss Robinson, and Dr. Branom.

The Council discusses and acts upon many matters concerning activities and interests of the student body; brings suggestions from the faculty to the student body and from the student body to the faculty; represents and acts for the students in philanthropic enterprises, as at Thanksgiving and Christmas time; and maintains standing committees which initiate or direct various movements among the student body.





FELLOWSHIP

Louise Barzan.....	President.....	Lillian Friedman
James Jabrosky.....	Vice-President.....	Betty Williamson
Helen Brachtl.....	Secretary.....	Ruth Hopkins
Margaret Condon.....	Treasurer.....	Robert McCann

Fellowship is a club to which every student at Normal belongs since it is one of the organizations which is supported by the registration fee. It is a philanthropic organization which aids schools situated in districts where the children do not have proper nourishment. It maintains a lunch and milk fund at the Hamline and Hedges Schools and a lunch fund at the Sherwood. Plans have been made to add another school to these three, and thus further enlarge the scope of Fellowship's activities. At Thanksgiving, baskets are distributed to needy families.

Funds for carrying out this work are raised by various means: by a Rose Sale, held once during each semester (this last semester it chanced to come on the first day of spring!); by fudge sales, conducted every Wednesday; a Toy Week; the sale of Christmas seals; and a program to which admission is charged. Each semester two social functions are held. Miss Robinson, the Fellowship adviser, has given invaluable help in all these activities.





SPECIAL CHOIR

President.....Muriel Dodd
 Vice-President.....Emily Flosi
 Secretary-Treasurer.....Grace McDowney

The Special Choir, under the direction of Miss Garthe, is one of the largest clubs at Normal, having a membership of approximately one hundred twenty-five. It consists of a select group of voices chosen by Miss Garthe.

The main purpose of the club is to bring together those who love to sing, so that they may enjoy an hour of beautiful, inspiring music.

During the year, the Special Choir prepares two outstanding programs, one at Christmas time, composed of Christmas songs, and one to celebrate the coming of spring.

For this semester's spring program the Special Choir presented the two selections, "Love's Dream," by Franz Liszt, and "Seraphic Song," by Rubinstein. Some Chorus members took part in a program at the Englewood Woman's Club.





ORCHESTRA

The Chicago Normal College orchestra, under the leadership of Miss Peickert, has been in existence for the past two years. Much credit is due Miss Peickert, who organized the orchestra. It is composed of members who have had previous training in any of the instruments. Various types of music are played at the club hour meetings, which are a source of enjoyment to the members. The orchestra plays for the Commencement exercises in February and June.

MEN'S CHORUS

Stimulated by a real desire to sing, and inspired by a love for good music, the Men's Chorus, though a comparatively new organization, is progressing rapidly, under the capable leadership of Miss Gildemeister. It was organized three semesters ago under the direction of Miss Taheny. There are about twenty-five members. During the club hour the group practices on four-part songs of both humorous and classical types.





ART GUILD

To develop art in connection with all school activities; to offer students added opportunities in poster-making, sketching, and work in the various crafts; and to keep the student body informed on all current art activities, such as lectures, exhibits, or other art interests, is the purpose of the Art Guild, an organization sponsored by the Graphic Art Department. It has monthly meetings. The club owes its growth and development to the advisers, Miss Hutchison and Mr. Geilen.

SKETCH CLUB

Lillian Rains.....Student Leader.....Catherine McCafferty

The Sketch Club, which meets under the direction of Mr. Geilen during club hour, gives members many opportunities to sketch, using various mediums, different posing figures. Some typical poses sketched by the club within the last year have been from Spanish, Scotch, ballet, tennis, and formally garbed models.





MASK AND PHOTOGS CLUBS

The Photogs, under Mr. Morrow's direction, for those who desire to make a more effective use of their cameras, are interested in snap-shots, enlargements, slide-making, colored photos, portraits, movies, theatrical photos, and scientific photography.

People who are interested in mask-making meet with Miss Doyle during club hour. Masks are made for personal use in dramatics, for wall decorations, or for puppets and marionettes.

POETRY CLUB

The Poetry Club was formed by a group of students who love poetry and enjoy hearing it read. This year has seen a number of vitally interesting discussions at the meetings; an informal debate concerning "the poets of the people" was one of these. The members of the club have appreciated Miss Camenisch, their adviser, whose enthusiasm and interest have helped to make the club worth while.





LITTLE THEATRE

President.....Joseph Portle
 Vice-President.....Jean Sandahl
 Secretary.....Mary Azzarello
 Treasurer.....Harriet Jacobsen

Because of each member's spirit of co-operation, the Little Theatre is successful with its six departments, Art, Business, Make-Up, Marionette, Stagecraft, and Players. These work together and combine their efforts in a climax the night of the "big" production or evening play to which the public is invited.

Taking over the art side of the plays the Art Group is responsible for making posters and bulletin boards advertising all performances. Planning excursions, printing "Little Theatre News," and running the financial end of the organization are the duties of the Business Group. Little Theatre has a Make-Up Group of which it may be justly proud. Making puppets and staging marionette shows make up the activities of the Marionette Group. The Stagecraft Department has charge of the stage for big plays





as well as the plays given at club meetings. The Players' Group is divided into smaller sections, each section giving a short play at one of the meetings.

Activities of the Little Theatre this year have been varied. The Players' Group presented the following plays at the Club meetings: "The Florist Shop," "Too Many Marys," "Six Cups of Chocolate," "Bird's Christmas Carol" (an original dramatization by Normal students), "Grandma Pulls the String," and "Thank You, Doctor." The Make-Up Group gave a demonstration of its talent at one meetings. The officials of these groups were: Make-Up: Mary Ronan, chairman, Margaret Wilson, instructor; Marionette: Elizabeth Holmes, chairman; Stagecraft: Dorothy Been, chairman, Roy Lundahl, stage manager; Players: Mary Elizabeth Chandler, chairman; Art: Lorayne Carroll, chairman; Business: Loraine Malmberg, chairman; Marjorie Winslow, editor of Little Theatre News. A Hallowe'en party at Hull House, a visit to the Chicago Lighting Institute, and several theatre parties were among other activities.

On Friday, April 20, Little Theatre presented "The Charm School." The play, ably directed by Miss Jacobs, the club sponsor, and handled by an adequate cast, was very successful.





GEOGRAPHY CLUB

Lucille McKeag.....President.....Helen Baldry
 Betty Williamson.....Vice-President.....Esther Mies
 Catherine McNellis.....Secretary.....Marion Panko
 Ethel Helander.....Treasurer.....Mary Leonard

Organized in 1925, the Geography Club has for its basic purpose the promotion of an active interest in geography. In addition the club's policy has furthered a spirit of fellowship and friendly cooperation among its members. Four standing committees, selected by the president, assist in managing the affairs of the club. They are social, publicity, membership, and excursion committees.

Variety and originality are the keynotes of the programs presented every other Thursday at three o'clock. Usually each meeting is in charge of a group of students from the same section. Guest speakers, lantern slides, moving pictures, and plays provide material for many interesting features, all presented in an informal and enjoyable way.





Typical of the novel programs were those given the second semester of the school year. Piloted by one of the sections, an imaginative trip to Utopia was taken. The voyage was in the form of a play, and two of the faculty members were prominent characters depicted. Another program which proved to be of great interest to the College geographers was that concerning the Kentucky Mountain region of the United States. Grey Earth, an American Indian who spoke of his life and travels in a manner calculated to excite his listeners, made a third meeting entertaining.

An innovation seen this last year is a membership drive. In the spring semester the club was divided into four teams who competed with one another in enrolling new members in a club that already had more followers than any other in the College. The names of countries were used to distinguish each team, and their progress was represented in a graph. Winners of the contest were announced at a party, the one wholly social event of the Geography Club calendar.

The club reflects in a very great measure the attitude of its sponsor, Dr. Branom. He encourages an active and vital interest in geography and because of his spirit of friendliness the club is one of real comradeship.





CUI BONO

Agnes Viall.....President.....Harry Osterherdt
 Katharine Mann.....Vice-President.....Lucille McKeag
 Virginia Rohen.....Secretary.....Virginia King
 James Burd.....Treasurer.....Dorothea Epstein

The Cui Bono Club occupies the same position at Normal that national honor clubs and societies hold at other colleges throughout the country. This club today is the oldest organization in the school, as it was founded twenty-five years ago in 1908 by Myron Ashley, then an instructor at the College.

Membership is limited, being granted only on recommendation of a faculty member, and after an official acceptance. At present it is about seventy-five. Meetings are held twice a month, at which planned programs consisting of reports, discussions, and talks by invited guests or faculty members, are given. A party and trips are also sponsored. The success of the activities has been due to the direction of the sponsor, Miss Hallinan.





KINDERGARTEN-PRIMARY CLUB

That the students taking the Kindergarten-Primary Course might become better acquainted, and that further interest in professional activities might be awakened, the Kindergarten-Primary Club was formed. Its activities, however, have centered around the studying of other fields, so that the students will have a well-rounded development. In their work the girls have had the sympathetic cooperation of Miss Olson and Miss Willy, their advisers.

MATH CLUB

To keep abreast of problems of geometry, algebra, and trigonometry; to make a study of the entertainment side of mathematics; and to make a survey of college mathematics with purposeful introduction: such is the three-fold purpose of the reorganized Math Club under the able sponsorship of Mr. Miller. This semester, a guest speaker, Mr. H. B. Loomis, and Mr. Geilen presented interesting programs on mathematical tricks and puzzles.





FOREIGN CULTURE CLUB

The Foreign Culture Club, directed by Miss Hallinan, was formed to further the study of the culture of foreign peoples. During the past semester the art, music, and education of foreign countries were discussed at the club meetings, and several excursions were taken to foreign centers in Chicago. This club has no dues nor officers, but at each meeting a chairman is appointed to lead the next discussion.

AVUKAH

The Chicago Normal College Avukah, sponsored by Mr. Wise, is a chapter of the Avukah Organization of Chicago which has branches on other Chicago college campuses. The campus groups strive to promote interest in Jewish culture among the Jewish students and their friends. At the Normal meetings events, personalities, and literature are discussed by the members of the club, and outside speakers are also featured.





SOCIAL DANCING CLUB

To do away with the stag line at Social Hour and by so doing to teach those to dance who haven't learned before, is the aim of the Social Dancing Club. Ably sponsored by Miss Byrne, the members are instructed by Harriett Smith and assisted by Agnes Grosche, who strive to cover all the fundamental dance steps, and this semester are stressing the waltz and the two-step.

SOCIAL HOUR

Social Hour, sponsored by Student Council and arranged by a committee under Irene Fermier, chairman, is a period of social dancing. It is held in the gymnasium every Friday afternoon from October to May. Social Hour provides an opportunity for students to meet one another on a social status, and it offers the added chance for students of different sections and classes to become better acquainted with one another.





LIBRARY

The library of the Normal College is impressive. Redesigned and rebuilt two years ago, it is one of the beauty spots of the College. It houses 32,000 volumes—fiction, poetry, reference books on every subject matter of the curriculum, and a particularly complete collection of bound periodicals, professional and general, from their first issue to the present. In respect of this type of reference material, the library has been, up to the past year, the equal of any in the Middle West. The present financial condition of the Board of Education, however, perils the future of this collection. This year most of the one hundred and sixty magazines have been discontinued, leaving only a few of the most important. Of these, educational journals form of course the major part, and most of these were either contributed or paid for by friends of the library.

A part of the library which has not received as much attention from the student body as it deserves, is the fine collection of pictures over a wide range of subjects. Students may take these out on their library cards. In the southwest corner of the library is a subdivision which Miss Bates, the head librarian, hopes to devote to the exhibition of beautiful and unusual books, featuring particularly illustrated books for children.

Books are arranged by the Dewey decimal system of classification. Students, however, are not free to go to the stacks. Assisting Miss Bates are Mrs. Johnston, assistant librarian, and a number of volunteer student workers.

SENIOR PROM

To the strains of Bob Keath's orchestra, a host of Normal's students and faculty members with their guests, danced in the beautiful club room on the seventeenth floor of the Furniture Mart. It was Friday evening, June 1, and the event was the Senior Prom. Cool breezes from Lake Michigan helped to make the affair one to be remembered.

Helen Peterson, chairman of the committee that planned this delightful evening, was assisted in her work by the following people: Margaret Condon, Beatrice Pennington, and Mary Rice of the arrangements committee; Tillie Strauss, Irene Fermier, and Alva Loveless of the music committee; Mercedes Thompson, Alice Hanson, and Sylvia Titelbaum of the invitations and bids committee; and Winifred Erickson, Mildred Neuffer, and Dorothy Goller of the publicity committee. The first girl in each of these groups served as chairman of the committee.

CLASS DAY

One of the most memorable events of graduation week is Class Day, which usually includes a morning assembly, a luncheon, and stunts in the afternoon. This is the last social function of the seniors before Commencement. Class Day uniquely combines entertainment with a program in which the seniors are privileged to participate.

The Class Day of June 1934 was marked by the spirit of fun and comradeship which characterized the social college career of the seniors. In the morning the traditional program was given in which President Laughlin and the class officers took part. The Class Day luncheon, the one feature of the day exclusively for the Upper Senior Class, was successful and contributed greatly to the friendliness and enthusiasm with which the seniors presented the afternoon stunts. Each stunt was given by one of the graduating sections, and the resulting program was a blending of capers, music, and humor. Much credit was due to Lillian Lehman, who was chairman of the committee.

COMMENCEMENT

Entering to the stately strains of the processional march played by the College orchestra, the class of June 1934 culminated its term at Normal on Friday, June 15, at ten o'clock, in the College auditorium. After a program of several musical numbers had been played, President Laughlin introduced the Commencement speaker, Dr. Harold Leonard Bowman, minister of the First Presbyterian Church, to the audience.

Dr. Bowman has achieved an enviable reputation by his vigorous and fearless defense of education against its enemies during the recent educational crisis. His insight into education and the current problems which have assailed it on all sides made his address particularly significant to an understanding and appreciative audience.

Presentation of diplomas to the graduates by President Laughlin followed the Commencement address. The class song, an original composition of one of the class, was sung by the graduates.

ASSEMBLIES

After listening to Roscoe Conkling Simmons' address at the first assembly of the semester, students of Normal went back to their classes with a new and better insight into the life and ideals of one of America's greatest men, Abraham Lincoln. Mr. Simmons, a nephew of Booker T. Washington and editor of a leading colored newspaper, spoke of Lincoln as "King of Men."

Lithography, a highly developed art in the printing industry, was the theme of the guest speaker, Mr. Raymond Nelson, at the assembly on February 23. Mr. Nelson placed considerable emphasis on the modern trend toward appreciation of color in our surroundings, citing as instances the color effects of A Century of Progress Exposition and the adoption of varied colors for cars by the automobile industry. In order to give his audience an understanding of what lithography is and how it functions, Mr. Nelson traced the process from its discovery to its present highly specialized state. He exhibited varied samples of lithography, one of which illustrated the process in a series of steps to the final product. Mr. Robert French, formerly an instructor at the Normal College, gave a brief address on art and drawing which he illustrated with a sketch.

The Geography Club took charge of the assembly on March 12. An example of one of the numbers was section 411's illustration of the origin of the fan, in a scene called "The Story of Fan Shi Chu." This program was typical of the ones given at the bi-monthly meetings of the Geography Club.

Mr. Irvin A. Wilson, principal of the Delano School and past president of the Principals' Club, was the speaker at the Cui Bono assembly. His talk was on "Education or Catastrophe, Which?" Mr. Wilson said that in order to make democracy safe for the world, the school of tomorrow would have to be an institution organized for social democracy; both its pupils and its teachers would have to be so completely unshackled that they would be able to express their thoughts and to carry out their ideas regardless of politics or other factors.

A particularly fine assembly was given April 6, when section 632 presented as part of their course in auditorium work a fantasy entitled "1784-1934," adapted from the famous "Berkeley Square." Sam Wallace played the part of Peter Standish, a young man obsessed with the idea of living in the eighteenth century, who, finally succumbing to the influence of a house two centuries old, came to believe that he really was living at that time. Angela Knudtson was the lovely heroine, while Kathryn Burke took the part of the Duchess. Others who acted in the play were Helen Louise Collins, Mary Rice, James Burd, Rosalind Conley, and Robert McCann. Appropriate lighting effects and costuming were largely responsible for the air of reality which pervaded the play.

On April 20, the experimental group gave an assembly in which they told of their work and activities. May 11 saw the W. A. A. assembly feature a variety program in the physical education field. Included among the exhibits were ping pong, dancing, first aid, and a play. The M. A. A. assembly, an original novelty, was the last of the year. James Egan, president of the M. A. A. was chief overseer, and the program was planned by Philip Lewis and John Byrne.

PARENT-TEACHER ASSOCIATION

Honorary President.....	Mrs. Wm. Hefferan
President.....	Mrs. Christian Pedersen
First Vice-President.....	Mrs. Wm. Jahnke
Second Vice-President	Dr. Sherff
Third Vice-President.....	Fred Anderson
Secretary.....	Mrs. Wm. Wigger
Corresponding Secretary.....	Mrs. F. J. Snowden
Treasurer.....	Mrs. Harold Kaeding
Honorary Director.....	President Laughlin

The Chicago Normal College Parent-Teachers Association is unique of its kind; it is the only parent-teacher association in an Illinois College. Since the students of the school are future teachers, they are logically members, and one of the chief purposes of organizing the Association was to bring these members into contact with parent-teacher members and acquaint them with the possibilities of such an organization.

The Association was organized on the evening of February 6, 1933, primarily for helping to avert a rumored crisis—the closing of the College—and at various crucial times it has effectively abetted this cause. Throughout the following spring it was very active. On April 4, a program was presented at the College, features of which were a String Ensemble, led by Miss Peickert; a play by the Little Theatre, under Miss Jacobs, Barrie's "Twelve-Pound Look;" vocal solos by Jeanne DeVaney; and an exhibition of work done by the crippled children of the Christopher Public School. On May 19, the Association sponsored the Little Theatre play, "Mrs. Bumpstead-Leigh," sharing the profits. On graduation day Mrs. Pedersen presented this money in a check to President Laughlin, to be used for subscription to current magazines for the College library.

On November 9, as a contribution to Education Week, the Association sponsored an assembly program which included talks by students and an address by Mr. Peter Mortenson, former superintendent of schools and former principal of the Parental School. Within the last semester, the Association has had no public meetings but continues to show an ever-ready co-operative spirit in connection with whatever the College undertakes.

The present committee chairmen of the Association are: membership, Miss Gildemeister; hospitality, Miss Peickert; ways and means, Miss Hallinan; and publicity, Miss Jahnke. Of these, the first three are College instructors.

CHRISTMAS FROLIC

Originated by the late president of the Normal College, Dr. William Bishop Owen, the Christmas Frolic has become a tradition at Normal.

As is customary at this gathering, the whole school turns out—all sections and faculty members—and each class comes arrayed in a different gaily decorative costume, indicative of the Christmas spirit. The costumes, made of inexpensive materials, are designed and submitted to the art department by various art representatives. A winning costume is chosen for each class to make in an art class and to display in the Grand March. Thus among the festively clad frolickers may be seen Santas, poinsettias, skaters, candles, stars, and other seasonal representations.

At the Christmas Frolic this year the sixty-fifth birthday of Normal was celebrated. After the classes had assembled in the gymnasium in their respective places, in marched the Birthday Cake, Guards, while Dorothy Blyth carried the cake. The "Guards" led the rest of the students and faculty in the Grand March. As features of the program a novelty dance was presented by each class, and Christmas surprises to the members of the faculty were given when all were gathered around the Christmas tree. Then Christmas songs, dances, music, and finally social dancing held sway.

Helping to make this annual school party one of the most successful and outstanding events of the year, were Mary Finan, chairman of the social committee of Student Council, and Sam Wallace, Master of Ceremonies.

SPRING FESTIVAL

One of the oldest, and undoubtedly one of the most colorful traditions of the college is the annual Spring Festival, which takes place in the gymnasium the Friday before spring vacation. Together with the Christmas Frolic, it was evolved to make school life real and fine in a spiritual way at certain times of the year.

The scene on Friday, April 27, was indeed one of colorful pageantry. Lucille Fairbairn, Queen of May, looked very regal in her long flowing gown of gold satin and her high crown ornamented by a wreath of yellow and white roses. Her attendants, Agnes Grosche, Marjorie Landis, Rita McTigue, Helen Peterson, and Betty Williamson helped to adorn the already impressive dais upon which the throne was placed. The guards of the Queen, twenty-four in number, were dressed in elaborate costumes of the Roman legionnaire type. They gave a feature dance and drill preliminary to escorting the Queen to her throne where she received her crown from Mrs. Muller.

The crowning of the Queen was followed by a May pole dance given for the pleasure of the Queen and the entire group of revelers. The program was concluded with the May Day gallop, in which the whole school was invited to participate.

ATHLETICS



ADVISORY BOARD

FEBRUARY TO JUNE 1934

Jane Bevan, Gladys Fox, Helen de Lhorbe, Florence Westermeyer, Katherine Imhahn, Lauretta Kotwicki, Mary Pratscher, Rita McTigue.
 Mildred Sika, Eleanore M. Young, Mrs. Nellie Cochran, Mildred Greene, Mildred Williams.
 Alice McCarthy, Clarice Lee.



ADVISORY BOARD

SEPTEMBER TO FEBRUARY 1933-34

Mary McCullough, Charlotte Levinson, Mildred Williams, Gladys Fox, Alice McCarthy.
 June Rades, Flemmie Lancianese, Helen Marie Kelley, Betty Likas, Thelma Lundgren.





CAPTAIN BALL—ALL STAR

BACK ROW—Edna Sonken, Jane Bevan, Margaret Fitzgibbons, Laurretta Kotwicki, Ruth Duff, Agnes Grosche, Hazel Lindquist, Thelma Schulfer, Irma Widman, Florence Westermeyer, Catherine McCafferty.

FRONT ROW—Margaret Krafft, Eleanor M. Young, Betty Sundmacher, Stasia Hayman, Mildred Williams, Mildred Greene, Dorothy Rietz, Mary Pratscher, Alice McCarthy, Clarice Lee.



CAPTAIN BALL CHAMPS—SECTION 43B

BACK ROW—Mary Pratscher, Laurretta Kotwicki, Hazel Lindquist, Esther Hicks, Carmela Petrone.

FRONT ROW—Mildred Greene, Helen Marie Kelley, Agnes Grosche, Mildred Williams, Helen Peacock.



CAPTAIN BALL—RUNNER-UP—SECTION 342

BACK ROW—Harriet Jacobsen, Virginia Henaghan, Helen Youngreen, Thelma Lundgren, Gertrude Riordan, Sarajane Caddick.

FRONT ROW—Lucille Sullivan, Phyllis Ebert, Ada Blakeway, Leona Stein, Alyss DeMarais, Lois Bruckner, Colomba Zerega.



VOLLEY BALL—ALL STAR

Antonia Rago, Mary Pratscher, Lillian Anderson, Hazel Taylor, Frances Macy, Laretta Kotwicki, Mildred Williams, Carmela Petrone, Jessie Shults, Eleanor M. Young, Alice McCarthy, Helen Peacock.



VOLLEY BALL CHAMPS—SECTION 53B

Mary Pratscher, Alma Grimmick, Laretta Kotwicki, Hazel Lindquist, Mildred Williams, Carmela Petrone.



VOLLEY BALL—RUNNER-UP—SECTION 341

BACK ROW—Mary Cummings, Genevieve Larson, Frances Macy, Elizabeth Bard, Carol Wise, Lillian Anderson.
 FRONT ROW—Clarice Lee, Alice McCarthy, Elizabeth Vogeley, Eleanor Elesberg, Elvira Streisinger.



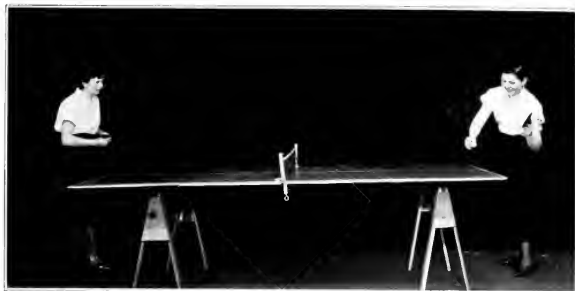
TENNIS TEAM

Helen Youngreen, Frances Macy, Laretta Kotwicki, Carol Wise, Gladys Fox,
Mary Leahy, Mary Pratscher.



ARCHERY CLUB

Irene Ratsky, Laretta Kotwicki, Gladys Fox.



PING-PONG

Mildred Williams, Carmela Petrone.



HORSEBACK RIDING

Lorraine Zimmer, Kay Imhahn, Lois Schuman, Charline Snider, Alma Grimmick,
Gladys Fox, and Tony Rago.



SWIMMING TEAM

Rita McTigue, Mildred Greene, Elizabeth Mueller, Lauretta Kotwicki, Hazel Taylor, Rosanna Garrison, Mary Kamber, Thelma Schulfer, Betty Gislason, Antonia Rago.



LIFE-SAVERS

BACK ROW—Dorothy Roberts, Virginia Larson, Elizabeth Mueller, Lucile Fairbairn, Rosanna Garrison, Thelma Schulfer, Mary Matjasic, Grace McDowney, Helene deLhorbe.

MIDDLE ROW—Hazel Taylor, Mildred Green, Lauretta Kotwicki, Rita McTigue, Gladys Fox, Eileen Baine, Frances Macy.

FRONT ROW—Betty Gislason, Ada Sexauer, Antonia Rago, Marguerite Klein.



MEN'S ATHLETIC ASSOCIATION

There may be only one man to every five-point-four girls in Normal, but no one would ever think so from the activities of the Men's Athletic Association. In addition to supporting the regular activities such as basketball, baseball, track, tennis and golf, it re-furnished the Men's Room; invited the whole school to a dance in the Arts gymnasium; gave one of the best assemblies of the year; sponsored a ping-pong tournament and an archery club, and completed the year with a banquet at which the letters were awarded.

It took true leadership ability to run such a program, and Lloyd Mabbott, president; Phil Lewis, vice-president; Maurice Lawler, secretary; Maurice Swiryn, treasurer, and Glenn Armstrong, manager, with the able help of Mr. Brye and Mr. Kripner, proved that they had what it took. They carried out everything planned with an admirable spirit and vigor; so successful were they that their enthusiasm spread throughout the school, and the turnouts for games and tournaments were noticeably larger and louder.

The M. A. A., its officers and sponsors, wish to take this opportunity to thank the student body for their whole-hearted support of the athletic activities during the past year.





BASKETBALL

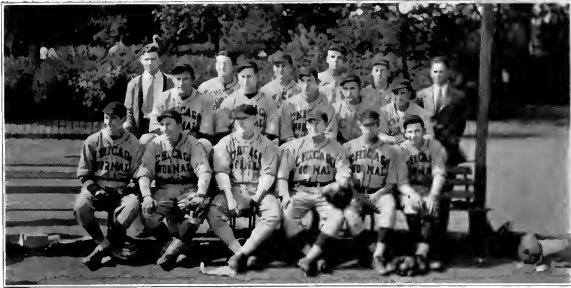
The most popular game at Normal, from the spectator standpoint, is basketball, and deservedly so. The five that represented the school in the Conference this year exhibited a scrappy, never-know-when-they're-licked brand of ball that brought the students out in droves and sent them home glad they came.

The team tied for second in the Conference and "thereby hangs a tale—." Until January the mainstays were Captain Louie Gratch, Roy Buchanan, Maurice Swiryn, Jimmie Egan, "Fuzzy" Fasan, and Alex Tudyman. At that time the first three became eligible, and hopes of finishing out of last place were very dark; but the silver lining showed up when the Freshman Class came up with three men, Solomon, Peterson, and Wolinski. These, with Flugel, Gross, Quinn, and Cleary, soon became Conference material and Normal entered the state Junior College Tournament.

In the state tournament the first opponent was Morton, a team that had beaten the College five easily a few weeks before; we won by two points. Normal next beat a down-state school to make the semi-finals, La Grange took the team by a point and North Park took third away by three points. Normal got a fourth; Egan, the captain, and Solomon, center, were selected on All-Star teams.

Not a little of the credit for the season's success belongs to Louie Gratch, one of the smartest basketball men this school has ever had; he assisted Mr. Kripner in coaching and was a big factor in the quick reorganization of the team. All together, in conference competition, and in practice games, the team won eighteen out of twenty-eight games played.

The team has great hopes for next year and with a little luck will be among the top three at the end of the season; this is especially likely to be true if the student support continues at as high a standard as it has this year.



BASEBALL

Practice contests revealed much material for Normal's regular nine, and Coach Kripner and his aggregation of sluggers headed for a fine year on the diamond. The first game of the season with the strong Armour nine ended in a four to four tie after seven innings of very cold weather. In that game the team played heads-up ball and backed the pitching of Solomon, a newcomer who has a nice curve, with good hitting. The cold winds that swept over the railroad tracks and then wrapped themselves around the freezing players prevented a good showing by either team.

Eighteen men are on the squad at present, including Capt. Smith, and Peterson, catchers; Solomon, Grashoff, Mabbott, H. Lawler, Shapero, and Loess, pitchers; Maloff, Egan, Kass, Gratch, Swiryn, and Perlstein, infielders; and Kruse, Silver, Flugel, and Zindel, outfielders. Because of the lack of material in the lower classes this year the team is composed of men from the whole school and is playing an independent schedule. Opponents will include Aurora, the University of Chicago, Morton, North Park, Joliet, and others in the Junior College Conference.

Last year, under Capt. Smith, the team played a ten-game schedule, winning six and losing four. At times they did very well and at other times their work was faulty, but at all times they refused to quit, even though many runs behind. At Lisle, for instance, they were losing nine to one going into the eighth; they came out of it leading, and won the game.

Under the capable leadership of Mr. Kripner and Capt. Smith, the team has enjoyed very successful competition. It is regrettable that the faculty does not have the time to attend the exciting games which are so numerous during the season.



TENNIS

Eleven meets have been scheduled in the Conference tennis schedule by the Normal squad. This year, with a strong team, they expect to do better than last year. In the season's opener, at La Grange, they lost, three to two, by very close scores. Johnson, Fasan, Wigger, Armstrong, and Krupsky are the present representatives of Normal on the courts. Mr. Griffin, coach, says they are good and will play to win.

TRACK

Last year the track team took third in the conference on two firsts by Captain Maravolo, a second and third by Weis, and a fourth by Swee. This year Maravolo will take care of the jumps; Weis, Quinn, and Cleary will enter in the dashes; Quinn and Tesmer are 440 men; Mehrlinger and Solomon are in the shot, discus, and javelin; Bell, Uber, and Kaplan are running the mile in fast time; Wolinski is the hurdler; and with Mr. Griffin and Johnny Piippo coaching, the team seems to be going places.



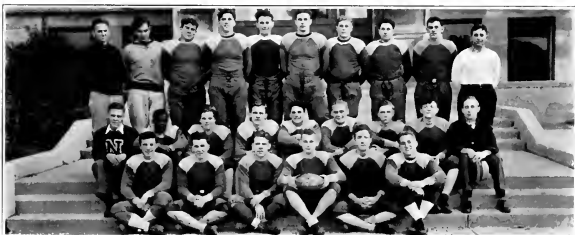


GOLF

Although golf is not one of the major sports in junior college competition, there has always been awarded to it one of the high places in Normal athletics. The men who represent the College in tournaments are Wolinski, Kruse, Moeller, Nelson, Walters, and Kaeding. The team, a scrappy one coached by Mr. Kripner, is one of the most promising squads Normal has had in a number of years.

FOOTBALL

For several semesters the number of men entering Normal has not been sufficient for a football team. The last team Normal had was in the Fall of 1932 under the leadership of Captain Mabbott. This picture is published because there has not been an Emblem since the team played and most of the men on it are still in school. Bob Gustavel and Johnny Piippo coached this squad.





FEATURES
HUMOR
ADVERTISING

THE MICRO-EYE AND -EAR

"You are about to witness the testing of a great invention—the micro-eye and ear. Although we are many miles away we will focus on the front corridor of the Chicago Normal College on this morning in 1937 at 8:59 in the morning.

"Look!—there are Florence Beal, Evelyn Ferchoff, and Eleanor Irmen discussing Student Daily, while Mary Nolan, censor, is critically eyeing some remark about Mary Woodward. Catherine Toomey, Mildred Stehl, Minnie Langdell, and Esther Garber are nervously awaiting an interview with Mrs. Muller. Irma Filippi and Ruth Urban are posting the baseball schedule for the coming tournament. Across the corridor Genevieve Sowa and Gertrude Terwee are pinning the last few articles, including a picture of Fred Gunderman, who is leading man in the coming play, on Little Theatre Bulletin. Just at this time Miriam Gershman, Alice McFarland, Lois Schuman, and Hazel Taylor dash by and frantically call to their section mates in a last vain attempt to get to Dr. Sherff's class on time. Pssss—Oh! a short circuit and we can see no more."

CHEZ DALTON ET DOBB

Marguerite Krafft, celebrated star of the American stage, opened her morning mail. Her face was relieved of its rather bored expression when she noticed—

Chez Dalton et Dobb invite you to their advance showing of Fashions of the Hour.

Calling to Alice O'Shea, her masseuse, she began preparation for the style show.

Five o'clock, and Madame Krafft entered the exclusive salon on Fifth Avenue. She joined her friends, Irene Liszt, concert pianist, and Ethel Steinberg of the Metropolitan Opera Company just as the curtain opened. The first scene was the ideal Cocktail Hour. Grace Dunn in a crimson hostess gown was dispensing hospitality to Dorothy Horrocks. Dorothy was dressed in gray bengaline with chinchilla and Betty Cowell in black velour with silver fox. The last ensemble appealed greatly to Amalia Monaco, distinguished hostess, who indicated to Madame Dalton that she wished to purchase the gown.

A scene that aroused much interest was a series of sports tableaux. Ruth Kennedy, renowned parachute jumper, modeled an appropriate costume for flying; Marjorie Newlands, Edna Sonken, and Margaret Clinch, swimming and diving stars, displayed the latest in beach wear; Marilyn Ferguson, Mildred Joens, tennis doubles champions, modeled the acme in comfort for the courts; Dorothy Johnson and Mary McMahan, winner and runner-up in the Women's National Open Tournament exhibited smart golf-wear. Myrtle Lynch, Grace Martinek, and Josephine McGrath, prominent debutantes of the season, bought clothes for their favorite sports following the examples of this exhibit. Madame Krafft, having completed her arrangements for the fitting of a salmon pink formal, ordered her about-the-town car and with dignity swept from the room.

EXTRA! EXTRA!

"Opponents Engage in Hand to Hand Battle" ran the headlines in Chicago's leading newspapers! The rivals in the most exciting mayoralty campaign in years were both women—which, no doubt, explains the excitement. Olive May Wilhelms and Josephine McGrath were the aspiring young politicians. The latter was a Democrat and was sponsored by Margaret O'Brien and Mary O'Connor, ward bosses, and by Ruth O'Connor, editor of one of the Hearst newspapers. Olive May Wilhelms, Republican, was the "fair-haired girl" of the American Legion, and was also being backed by the owners of the stockyards, Eugenia Shea and Florence Westermeyer.

The president of Normal, Elaine Skelton, refused to commit herself, but Isabelle Pozer, head of the League of Women Voters, denounced both of the candidates as tools of the capitalists. Beatrice Kramer, chairman of the board of directors of the First National Bank, poured money into the campaign funds of both parties.

It was a close fight. On election day, news from the polls was awaited eagerly by both groups. Josephine Nohelty and Mary Simpson, Democratic and Republican campaign managers, were anxious. And, finally, the long expected results! "Lucille Rice, Socialistic candidate, wins by a landslide." She was sponsored by the school teachers of Chicago, and three of them—Frances Rudy, Marion Riordan, and Mary Roy—formed her brain trust.

Three cheers for education!!!

WHO'LL BE WHAT AT NORMAL IN '36

Herein lies the prediction of the Three Little Pigs as to "Who'll be What at Normal in '36"—Do you agree?

Little theatre will be presided over by Lenore Drury with Evelyn Glazer as vice-president. Virgie Harmon will be the chairman of the Book-Exchange committee and will be relieved at various times by Morris Solomon and Rose Davis. Betty Sundmacher will be President of Student Council and will have as her vice-president Ruth Duff. Glenn Armstrong will be the tennis champion of the school and will have defeated as runners-up Evener Craig, Lillian Bencur, and Martha Bolling. The Savage girls, Eve'yn and Louise, will be Dr. Smith's most dependable animal care-takers. The Student Daily will have as its editor Gertrude Roy with a staff consisting of Joel Walters, Olga Yrmluk, Felicia Pacelli and Ruth Porter. The Geography Club will be directed by Rachel Rosen and Julia Giles. Florence Wiaduck will be president of her class. The chief equestrian will be Walter Johnson, who will have as companions Margaret Johnson, Margaret Fitzgibbons, Robert Cleary, and Edward Quinn. Jane Hobbs will be Social Hour chairman, with Eileen Levander, Marguerite Klein, Libuse Baitel, Kathryn Bonfield, Elizabeth Fosse, Charles Kolar, Roland Loess, Ernest Mehninger, Knute Peterson, and John Prendergast as assistants.



TEA FOR TWO

"It's really fun working in this very exclusive tea-room on Michigan Blvd. Why, only this afternoon I saw Rosemary Dushek entertaining Mary Ellen Cahill, Martha Bolling, Matty Elaine Gilbert, Do'lores Hurney, Anna Keating, and Mary Leyden. I understand that Rosemary announced her engagement at the party."

"Oh, really—how grand! But do you ever see or hear anything about those old fraternity fellows? You know, Julius Silverman, Edward Switzer, Henry Tessmer, Lawrence Turner, and—Oh, who are the rest?"

"Yes, I remember. Let's see, there's August Flugel, John Wallace, Bennie Wolinsky, and—"

"And for heaven's sake, don't forget Fred Gunderman."

"They were in here last night after the theatre. They certainly are "men about town" now and the fraternity is still in existence. They're planning on giving a cabaret party in the upstairs ballroom next Saturday night. It's going to be quite an affair I guess. Lola Bright, Helen Dolbinsky, Marcella Fefer, Bernice Kuellmer, and Joanna Lombardo are among the girls that are going to come."

"I wonder if a poor soul like me could barge in on an affair like that. I'd just love to see some of the girls again."

"Well, here's your chance because here comes Yvonne Van Lent and Iona Pronger. You know they are both modeling at Fairway's Department Store. I hear Evelyn Knoppel is starting to work there tomorrow."

"And speaking of models—Eleanor Harris, Evelyn Hauser, Emilie Utteg, and Mary Kamber are doing commercial posing at Sak's Fifth Avenue. Oh, but my dear, it's almost four o'clock and I have an appointment at four-fifteen. I can rely on you, then, for making the arrangements for tea on Tuesday? Will you make place cards for Harriet Wilson, Dorothy Roberts, Marie Love, Gladys Olson, Mildred Cohen, and Hazel Taylor? I'd like your French pastry specialties for dessert—the rest I'll leave to you—"

RAMBLINGS OF A DIM WIT

For no reason at all, particular individuals create certain irrelevant images in one's mind. Be that a psychological principle or not, doesn't much matter. Just for amusement, however, allow your well-disciplined mind to wander, and see if your unconscious thoughts compare with curs: June Rades, daisies in a blue vase on a sunny window sill . . . Lois Bruckner, a prettily pouting child . . . Gertrude Riordan, stars in a dark sky . . . Helen Youngreen, a stimulating winter wind . . . Eleanor Young, room 18A . . . Iggie Anziferoff, gypsy fires on a Russian steppe . . . Ted Sunko, protractor and compass . . . Virginia Henaghan, an Irish jig . . . Alfhild Molander, a ski slide shadowed by dark pines . . . Lucille Walp, starched white linen . . . Clarence Bell, a brief case . . . Elvera Streisinger, conversation on a street car . . . Mildred Erickson, notebooks . . . Rochelle Pritzker, crisp lettuce and red tomatoes . . . Ada Sexauer, charts and graphs . . . Andrew Moore, neutral colored tweed.

What we like about these people:

Ann Rita Kelly's devastating indifference,
Marge Wilson's smile,
James Jabrosky's obliging willingness,
Bill Poore's character dancing,
Stephanie Kara's name,
Mary Leahy's Irish wit,
Miriam Allen's earnestness,
Jeanne Collins' voice,
Mary Byrne's cool good looks,
Dorothy Schnabel's efficiency,
Tom Deacy's way with the ladies,
Robert Reinsch's ability to enjoy himself,
Nick Maravolo's inscrutability,
The breadth of John Yara and Leroy Pfister,
Louie Gratch's basketball technique,
Maurie Swiryn's dancing,
Alex Tudyman's intriguing reserve.

Dear Diary:

Stasia Hayman and I were riding to school this morning when we started discussing people we know. The members of our class are really quite interesting. Take Miriam Dierkes, for instance. She comes from Oak Park every morning, works at Field's sometimes, studies occasionally, enjoys herself tremendously, and still keeps up her good looks as well as her athletic interests. She is an excellent boatman. Valeria Molseed successfully combines personal charm with intelligence. Mary Liz Townsend and Margaret Trudeau are very much alike, possessing the same kind of prettiness and dramatic ability. Joe Portle is amazingly capable; people vote him into all kinds of offices because of his genuine reliability. William Sturgeon is one of those rare men who blush, Frances Curtin is a UT who actually wants to know what's going on, and Chester Dobrzynski, we decided, is a man with his own will.

Today was Normalite deadline. When I went down to give Ruth Horlick my editorial, Mary Ann Kielbasa, Anne Matanky, Dorothy Been, Paul Enrietto, and Chesna Cohen were all there, writing very vociferously. (Get the implication?) Little Theatre was holding another rehearsal, so I stopped a while to watch Sally Seitz, Helene Quast, Bill Wigger, and Jean Sandahl putting the polish on a clever piece, before going home to plan the Student Daily for tomorrow. I hope it's as good as Lucille Schaffer's, but yet escapes the scissors of Censor Loraine Malmberg. Evelyn Schwartz phoned to check up on that committee I'm on—she's so efficient that I feel ashamed. Evelyn Olson, too, is like that and still she's a very pleasant, likable person. I'm getting sleepy, so goodnight, little book.



What a Hall Guard Sees:

Catherine McCafferty and Jane Bevan strolling to Sketch Club. Martha Ericson scurrying to Student Council. Ruth Cohn sauntering out to lunch. Now Gertrude McGuire passes, surrounded by Tommy O'Dowd, Emmett Gartland, and Russell Griffin. Hearing an ear-splitting shriek from above, we turn to see Joan Scully tumbling down the stairs with aluminum bird patterns and mimeographed sheets fluttering after her. An agonized moan penetrates the door of a room near by, and we rush in to find that Linnea Lindquist has unsuspectingly sat upon a primary reading chart prepared with hours of toil by Laura Pierce and Rita Youngerman. "Ooh, my dress!" cries Linnea.

"You unfeeling brute! Not your dress, but our chart has been ruined," howl the other two. We quietly withdraw as letter stamps and bottles of printer's ink beg'n to fly through the air.

Dashing hurriedly around the corner we find ourselves in the midst of Irving Silver and Roy Buchanan on the way to their subterranean lockers. Extricating ourself, we hasten to return to our post, which we find now in the possession of Dominic Nuccio, Elizabeth Brown, Sara O'Brien, Hilbert Stewart, and Baraba Jane Clark, who seem to be holding an open forum on anything anyone wants to argue about. At the approach of Dr. Blount, however, the group vanishes in the atmosphere.

When we are again seated, concentrating on last month's "Screen" magazine, we are once more disturbed, this time by the spectacle of Marion Jayne Watson, hair disheveled, with glazed, unseeing eyes. She mumbles, "So Titty Mouse jumped over the stile, and Tatty Mouse jumped over the stile, and then Titty Mouse and Tatty Mouse—." Her voice fades as she ascends the stairs, still in her curious trance.

With a whoop, Ada Brown sails past on her roller skates, Helen Hayes closely pursuing her. Carolyn Crystal shrieks after them, "But why do I always have to serve on refreshment committees?" Myrtle Thorsen, Mary Ronan, Isabelle Stevenson, and Dorothy Thullen succeed in quieting these exuberant classmates of theirs so that they may have a peaceful atmosphere in which to prepare their panel discussion on "Physical Education for the Under-privileged Child." Eva Basara and Rae Chanenson are on their way to Mr. Hatfield's children's literature class, judging from the books they carry, when they are stopped by the antics of "Uncle Fred" Anderson and Walter Brenke, who are dueling for the honor of being May King's first attendant. Bill Hermes, with Marge Landis, look on in horror, while Frank Jewett and Betty Lou Bills clap their hands in gleeful applause. Roger Frantz puts an end to the terrific slaughter with a fittle arbitration, and the corridors resume their wonted air of dignity.

Then the bell rings.

REPORTER INTERVIEWS JUNETTA JUNIOR

Seriously, Junetta Junior examined her olive and nut on whole wheat as she squirmed uneasily in her booth at Miller's. "Well", she welled, "I feel it would be sort of treason, as it were, if you get my point—"

"Oh, but not at all," said I, firmly. "Publicity is good for anyone. You don't feel that your class ought to be left out of the Annual, do you?"

"If you never tell a soul I told you," she breathed, "I guess it will be all right. But people's private lives—"

"Come now, no stalling. I want information. Let's start with Harold Winegar."

"Did you know he leads a double life? By night he plays in an orchestra in a tavern. Yes, actually—he does his thinking on the way to school. Lillian Anderson, Alice McCarthy, Clarice Lee, and Thelma Lundgren forget their inhibitions in strenuous athletics. I guess Elinor Elisberg's main joy in life is activity. Her energy is astounding. That striking Leona Stein, with Ed Uber and Harriet Jacobsen, devotes all her extra time to Little Theatre. Lucille Sullivan and Carol Wise delight in working on committees, and Ada Blake-way doesn't. Lucille's such a comforting person. Carl Welin specializes in the social life. Please, can't I stop? That should be enough."

"If you don't go on," I threatened, "I might happen to mention your real name, merely because of lack of material, don't you know?"

"Oh, very well," as she cowered against the wall, "I may as well be hanged for a sheep as a lamb, as spoke the Prophet.....Lillian Friedman really enjoys her duties as president of Fellowship, Coralie Wilkes herself will tell you anything you want to know, and J. Curtis Glenn is understood by his wife—she inspires his accordion outbursts. Normalite couldn't be published without Sarah Jane Caddick. Mary Leonard's self-possession and stage presence are the envy of everyone, and, if you want to know a real secret, Jimmy Egan's sweet disposition is the real cause of his popularity. Betty Gislason is awfully obliging, as is Colomba Zerega, who is, incidentally, also terrifically active. Rosanna Garrison's carefully concealed hobby is drawing. . . .Here comes Alyss DeMarais. She mustn't see me with you; it would be disastrous." And with these words, Junetta stealthily crept out the back door.

SPECIALTIES

Gustava Carter.....	orange nut bread
Isabel Goscicki	judicial execution
Genevieve Graber	personality
Ethel Grosse	collars and cuffs
Mildred May	grins
Esther Mies	offices
Lucille Murray	permanents
Rita McTigue	dimples
Eleanor Nash	tangos
Beatrice Schaffer	ripping
Margaret Taheny	brimmed hats

NORMAL SIDESHOW



POEM

Bielenberg went walking on a fine spring day,
Carroll was talking in a very silly way;
Degan smiled so sweetly that all could see
That her friend Gen. Fahey was coming to tea.
Gustafson is a lady who is very well known,
And Hynes just devours Southern corn pone.
Kravitz is the man in the salt and pepper suit,
And Nordblad is the backbone of our institute.
Roach is not an insect but everybody's pal,
Marion Smith is a most intelligent gal;
Turner is known for her way with gents
But excuse us please—this is all nonsense.

EARLY MORNING IN SPRING

"Wait'll I tell you the funny dream I had as I slept on the 'L' this morning," cried Cecelia McGough to Elizabeth Bard, Jacob Knaizer, Elizabeth Vogelei, John Gross, and Katherine Geiger.

Cecelia continued with, "It was strange. Little Bo-Peep Callahan was weeping about her lost sheep when Simple Simon Osterman sat down beside her and growled, 'Fee, fo, fi, fum!' Then Old Mother Quintana rode up on her broom stick, followed by the black sheep Edith Bernstein, Genevieve Larson, Mary Agnes Mulvihill, Beatrice O'Connor, Margaret O'Donnell, Lilamae Murray, and Harriet Shure. Their expressions were a sight to behold. Little Boy Blue Rehder laughed and laughed until an Ogress roared, 'Is that exactly in keeping with your professional attitude?' Before this awful blast they all melted away, and I sank through the ground till I found myself sliding down the glass hill which Alice Cook, Margaret Lee, and Angela Lemna were attempting to climb. Margaret Clyne, Shirley Jean Latham, Martha Macku, and Rose Shiff were chanting, 'Sing a song of sixpence,' when Dorothy Frankel sighed, 'It's always tea-time here.' Adele Ignowski and Jennie Landa joined hands and screamed across the water at Muriel Shely and Dorcee Branson, who became very red and suddenly metamorphosed into little radishes. Also in this garden were Delia Cesaria, Phyllis Ebert, Adeline Bodian, and Mary Rita Davis, the blushing roses; Rose Boland, Mamie Zaretsky, and Frances Macy, bouncing Bets; Margaret Hefernan and Frances Barre, field daisies; and a few pansies. Dancing on the green were John Nelson, Ed Kubik, Leo Zindel, Joe Bucaro, Bernard Schapero, William Weis, and William Kaplan, blithely led by Harry J. Lawler. Through this mesa wandered Allen Kruse and Betty Sunmacher, babes in the wood running away from the ogress, who cried, 'Off with their heads!' Morrie Beitman and Maurice Maloff, in medieval armor, hastened to obey her command. . . . I woke up as Jessie Shults screamed, '69th Street! End of the Line!'"

LAST WILL AND TESTAMENT

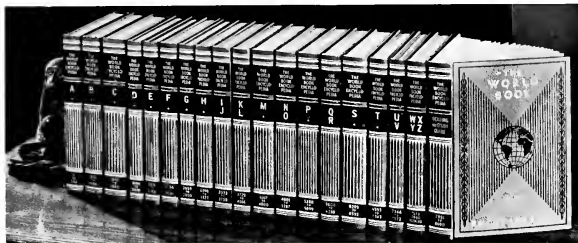
Helen Anderson wills the task of making posters to Mary O'Malley.
Jeannette Anderson leaves samples from her hope chest to Mildred Ross.
Mildred Baggy and Eileen Casey abdicate as court jesters to Byrne and Lewis.
Marion Bertossa leaves her Rock Island pass to Alice Costin.
Marie Casey leaves her good nature to Ruth Hopkins.
Dorothy Chesler leaves her conscience to Ed. Scharbach.
Dorothy Dietrich leaves her scouring power to Muriel Dodd.
Winnie Erickson leaves many positions unfilled.
Sylvia Goldman leaves her "sunny disposition" to Ray Grasshof.
Louise Gray bestows upon Lucille Walp her undying energy.
Marie Hahn donates her fiery blushes to Jane Bevan.
Ethel Helander leaves her practical jokes to Joe Twomey.
Lillian Kaczmarski bequeaths her good nature to Eleanore Young.
Flemmie Lancianese contributes her voice to Alvah Armstrong.
Betty Likas leaves Dan Lynch to Mazie Rabig.
Mary McCullough gives her saddle to Kay Imhahn.
Viola McDaniel leaves her gestures to Helen Marie Murphy.
Viola McDonnell leaves her Joan Crawford style to Grace MacDowney.
Catherine McNellis contributes her sense of responsibility to Margaret Harris.
Helen Nash bequeaths her mascara to Hazel Whalen.
Frances Neitz donates her dignity to Helen Marie Kelley.
Marion Normoyle and Marion Swensek bestow their timidity upon Mamie Laitchin.
Lucille Polley leaves her political aspirations to Rosanne Schatzman.
Molly Raider commits her Russian songs to Al Kosloff.
Marge Robertson donates her "formals" to Bunny Spain.
Viola Warren bequeaths her orchids to Judith Carroll.
Ethel Washington gives her gym suit to Ruth Ryder.

PROPHECY

I see in the crystal, that—

Agnes Azzarello and Dorothy Rietz will be aviators. Josephine LaPlaca and Naomi Stein are destined to become a song and dance team. Rudell Cox will move furniture. Mary Chandler's name will become known as that of a press agent for movie stars, among them Marjorie Winslow and Anna Mackin. Dorothy McCormick will publish books—the love stories of Lucille McKeag. Helen Baldry and Betty Williamson will be business executives, and Lillian Miransky will sing in grand opera. Doris Martin's portrait in her Olympic costume will be painted by Evelyn Schiesser, famous artist. Marian Panko will model "formals" designed by the firm of Goldman and Garel. Florence Cohen, as a crime detector, will solve the mysteries of the age. And Helen de Lhorbe will be a school teacher.

. . *The* **WORLD BOOK**
ENCYCLOPEDIA



“The Most Popular Reference Set . . . ”

New 1934 Edition in 18 Volumes and Guide

The WORLD BOOK ENCYCLOPEDIA will save you endless time and energy . . . and will be a vital educational force to you and to the children you serve. If you haven't seen this **new 18 Volume Edition** write for our free examination offer to

W. F. QUARRIE & COMPANY, publishers

The WORLD BOOK ENCYCLOPEDIA

9,200 Pages — 14,000 Illustrations

154 East Erie Street — Chicago

REMINISCENCES

It was October, 1936, and the Olympiad at Berlin was a thing of the past. But not for Mrs. Cochran and Mr. Kripner—not when some of their proteges had made such outstanding records.

Mary Pratscher, Laretta Kotwicki, Millie Williams, and Carmela Petrone had broken all previous records in the women's relay. In the low hurdles Dot Davidson and Irene Ral came through with new records. "Lindy" had put the shot for an unequalled distance, almost hitting Virginia Kent. First and second place in the high hurdles were taken by Mary Tullock and Esther Hicks.

In the water events Mildred Greene won first in the back stroke, and Agnes Grosche's first in the 100 yard free style brought the United States points.

Loyal rooters for the United States—and incidentally Normal's—Olympic team were Howard Beasley, Si Kass, Dot Blyth, Bill Everson, Gladys Fox, Alma Grimmich, Maurice Lawler, Bill Moeller, Helen Peacock, and Marvin Perlstein. At a party in a "biergarten," among those present were Mr. and Mrs. Swee, Millie Sika, Walter Smith, and Thelma Schulfer. Lloyd Mabbott had organized the "brawl" and Vince Conroy was the life of the party.

MUSICAL FANTASY

Jennie Balhouse hummed "Penthouse Serenade" because she and Virginia King "We're in the Money." "Let's Have a Party" cried Lorayne Carroll and Ruth Olson, but Grace Henning and Sylvia Malter both shrieked "I Love a Parade," so they compromised on "Louisiana Hayride." Virginia Barton and Ruth Heffernan each wore "An Alice Blue Gown." Walter Fasan whispered a "Cheerful Little Earful" to Ernelle Carlson while "Orchids Bloom in the Moonlight." It was "Darkness on the Delta;" Eileen Keena and Albert Brooks began to do the "Carioca." Meanwhile Harry Osterherdt murmured "You Have Taken My Heart" to Louise Barzan, who answered "Let's Fall in Love." Betty Lou Bills and Robert Kaeding planned "A Little Grass Shack," but Sara Dearborn and Lillian Yoelin preferred a "Little Dutch Mill."

It was "One Minute to One" when Josephine Dunne said, "Let's Make Hay While the Sun Shines," so Dorothea Epstein and Blanche Hughes went home to "Spin a Little Web of Dreams." Helen Price and Virginia Larson harmonized on "Au Revoir, Pleasant Dreams;" and Lois Purcell and Vera Spikula, "Going to Heaven on a Mule," caroled "I Gotta Get Up and Go to Work." Edythe Weidenaar and Irma Widman repaired the "Wagon Wheels." Everyone went home singing "It's a Great Life if You Don't Weaken."

BRUCE and BETTY Train for Leadership



"ENROLL AT BRYANT & STRATTON THAT IS MY ADVICE. THEY TRAIN LEADERS."



"HERE IS THE PLACE, BETTY."



"THIS LOOKS LIKE A LIVE SCHOOL BRUCE"

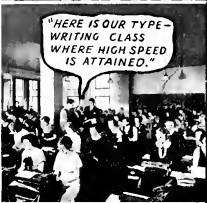


"LET ME PRESENT MR HAZLETON, OUR PRINCIPAL"

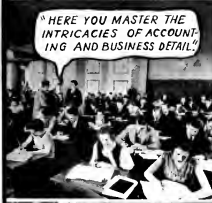
"GLAD TO MEET YOU SIR, WE ARE HERE TO TOUR THE SCHOOL."



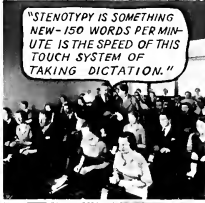
"THIS IS OUR DICTATION ROOM WHERE STUDENTS WRITE UP TO 125 WORDS A MINUTE."



"HERE IS OUR TYPE-WRITING CLASS WHERE HIGH SPEED IS ATTAINED."



"HERE YOU MASTER THE INTRICACIES OF ACCOUNTING AND BUSINESS DETAIL"



"STENOGRAPHY IS SOMETHING NEW-150 WORDS PER MINUTE IS THE SPEED OF THIS TOUCH SYSTEM OF TAKING DICTATION."



"MR HAZLETON, WE WANT TO ENROLL-I IN BUSINESS ADMINISTRATION, BETTY IN EXECUTIVE SECRETARIAL"



"WORKING AT LAST, ISN'T IT GOOD TO HAVE A PREFERRED POSITION AT GOOD PAY."



"THANKS TO BRYANT & STRATTON WHO TRAINED US AND PLACED US, WE ARE ON THE WAY TO SUCCESS"

Visit the school for a personal trip of inspection. Here the pick of the youth of the middle West are training for leadership in business. Sixteen practical courses including Business Administration and Executive Secretarial. Convenient coupon below brings you catalogue.

At the heart of the World's Fair.



Bryant & Stratton

An Executive School

18 South Michigan Ave., Chicago, Rand. 1575

Please mail me complete catalogue

Name

Address

OFFICIAL
PHOTOGRAPHERS
FOR
THE EMBLEM
1934



Marshall Studio

140 North State Street

**THE UNIVERSITY IN WHICH A SPIRIT
OF HELPFULNESS PERMEATES
EVERY CLASSROOM**

**DE PAUL UNIVERSITY
CHICAGO**

Summer Session June 26 to August 4

GRADUATE SCHOOL

College of Liberal Arts

School of Music

College of Law

Department of Drama

College of Commerce

Secretarial Department

"Special attention given to Normal College graduates who wish to complete degree requirements"

For information address the Registrar

Depaul
UNIVERSITY
L

64 East Lake Street

Chicago, Illinois

LITERATURE LIGHTS

Agatha Dunne and Florence Armin respectfully submit to your notice the list of their stock in trade of June, 1934

DETECKATIF STORIES

Buza, "Bloody Murder;" Conley, "Help Police!;" Collins, "Hollywood Hanging;" Fairbairn, "Spot X;" Hoffman, "Sorority Queen."

LOVE STORIES

Casey, "Loves of Marge Delaney;" Fitzgerald, "Rings on Her Fingers;" Wiborg, "Her Man;" Flanagan, "The Early Bird;" Frisbie and Gray, "Sweet and Petite."

DRAMA

Davey, "How to Act;" Wallace, "Peter the Great;" Mann, "Hit Producing;" Titelbaum, "Normal to Broadway;" Farrell, "Impersonation as an Art."

SPORTS

Mueller, "Music vs. Swimming;" Levinson, "Baseball Stars;" Burd, "Five Points to Croquet;" Kelliher, "How to Tackle."

TOPICS OF THE DAY

Lipofsky, "Intelligence in 10 Lessons;" Burke, "How to Be Popular;" McCann, "Life as a Boy Scout;" Chaitkin, "Communism;" Lowe, "Hi-de-Ho;" Rice, "The Chinese Food;" Draine, "The Science of Notebooks."

HUMOR

Rosenfield and O'Connor, "Music of Mathematics;" Wimby, "Life of Whimpy;" Lewis, "Golfin' Be Gay;" Knudtson, "Nuts to You."

CIRCUS DAY

June 1940, and the circus was in town. Eileen Baine, Loretta Francis, Eleanor Moore, and Berenice Mayor, tired school teachers, approached the ticket booth. To their surprise Charlotte Adler, Lil Lipschultz, and Lil Astrachan were acting as "barkers" and ticket agents. Entering the side-shows they were confronted with the spectacle of Louise Herst and Marion Kostow—living skeletons; Mavis Blackwell, fat lady; Fred Manz, wild man from Borneo; Mary Giloolly and Anne Reim, sword swallowers and fire eaters; Cutie Fermier, Hootcha Hanson, and Dolly Thompson, muscle dancers extraordinaire; and Grace Mulhern, charming snakes.

The show opened with a trapeze and tumbling troupe including Mary Dcnoghue, Peg Dwyer, Fran Maloney, Mung O'Connell, Peg Lalor, Mary McDonnell, and Grace Renshaw. The ringmaster, Claudia Jackson, next introduced her trained seals—Mary Matjasic and Bea Pennington. The show was climaxed by the bareback riders, Jane Johnson and Mercedes Harmon. Following Mae Neely's thrilling animal act Davida Scher played the calliope while Helen Peterson did a rushing business in peanuts.

TELEPHONE MIDWAY 3935

CLARKE - McELROY
PUBLISHING COMPANY

"School Printers"

6140 COTTAGE GROVE AVENUE

CHICAGO



PRINTERS OF THE EMBLEM

Intensive 3 month's course **Shorthand and Typing For College Trained People**

New students are received for this course any Monday in our Loop School. Our regular tuition fees are charged for this course. This is an opportunity open to Chicago Normal College students to qualify in the shortest possible time and at a minimum expense.

You are invited to call for a personal interview

METROPOLITAN BUSINESS COLLEGE

37 South Wabash Ave. Phone Randolph 2637
Chicago, Illinois.

What a Dietician Ought to Know about

Orange Crush

A Carbonated Beverage
or Still Drink



ACCEPTED BY THE AMERICAN
MEDICAL ASSOCIATION

Special methods of preparation, bottling and delivery enable retention in high degree the delightful goodness of the orange juice and tang of the fresh fruit peel. Orange-Crush Carbonated Beverage is a refreshing, wholesome beverage that children enjoy.

Orange - Crush Carbonated Beverage contains pure, sparkling, carbonated water, pure cane sugar, fresh orange juice, flavor of peel, fruit acid, certified food color and one-twentieth of one per cent benzoate of soda.

One 6 oz. drink of Orange-Crush supplies the same food value in terms of calories as a banana, two oranges, a bowl of oatmeal, a dish of spinach, or a fried chicken leg according to Dr. Wm. D. McNally. This well known food authority is a member of the American Medical Association. Experiments with guinea pigs conducted by Elizabeth M. Koch and F. C. Koch, Department of Physiological Chemistry and Pharmacology, University of Chicago, proved that the Vitamin C content of Orange-Crush syrup is kept equal in quality to that of fresh oranges for months.

ORANGE-CRUSH COMPANY

318 West Superior Street Chicago

OUR LAST WON'TS

Virginia Blyth won't write term papers anymore.
Marie Brennan, Leah Lindenberg, and Adelaide Nichols won't ride on the "L" again.
Betty Butler won't commute.
Amy Claras and Bessie Smith won't do natural dancing.
Dorothy Eirich, Betty Harnden, and Charline Snider won't worry over Normalite assignments.
Mary Finan, Dorothy Lembach, and Kay Mulhern won't go to Social Hour.
Frances Fiscelle and Emily Flosi won't harmonize.
Clara Klomhaus won't read John Dewey.
Billie Kuglin won't bowl for Normal.
Anne Levin and Tony Rago won't stay single.
Ruth Lundgren won't play volley ball.
Mildred Marano and Lucille Williams won't carry brief cases.
Gen. Rabig and Helen Zimmerman won't be together.
Helen Regan, Virginia Rohen, and Ruth Van Dervelde won't eat lunch at Miller's.
Willia Wendt won't compete in Normal's swimming meets.
Gertrude Warren won't be with her shadow.
Esther Pallin won't blow her pitchpipe.

BULLETIN—TEACHERITE SCHOOL

This select young ladies' establishment offers a superior course in general culture. The principal, Mrs. Sosna, is well known, as is her assistant, Bailey Bishop. Alva Loveless heads the gym department. Rita Maher is in charge of dancing, and Sarah Scott heads tennis. Midge Landis has as her aides in the philosophical department Elizabeth Lewis, Gertrude Graf, and Irma Davis. Isabelle Thomson teaches embroidery, Ruth Hopkins, bread-making, and Mildred Neuffer, coquetry.

Teacherite emphasizes the arts. Carolyn McLaughlin's music, Marie McKillip's elocution, Dorothy Dodge's etiquette, and Catherine McNellis' china painting are essential to the well-educated young woman. Elsie Friedman and Elizabeth Simonton lecture alternately on clothes and cosmetics.

For summer students, Teacherite maintains a camp. Margaret Condon is chief counsellor, Lillian Lehman superintends tea-raising, and Dorothy Goller is the director of bees and butterflies.

Come to Teacherite and learn right.

Kay Jansson, Publicity Manager.

NO TIME OFF FOR GOOD BEHAVIOR!

With five months' work before us
Before we reach our goal
We graduate with honors—
The Seniors on Parole!

Says Campus Clarice: "I'm afraid that I'll never learn anything in golf class. I just waste my time puttering around."

PRACTICE ROMANCE

I've been married off by a hundred men (?)
Quite without love and kisses.
Instead, by school boys' persistent way
Of calling each teacher, "Mrs."

NORMAL COLLEGE LUNCHROOM

WHOLESOME FOOD

CONGENIAL SURROUNDINGS

EFFICIENT SERVICE

Margaret J. Moulton, Manager.



IT'S WISE

TO BUY

SUNKIST PIES

3548 So. Shields Avenue

Boulevard 7670



EARL BROWN'S ORCHESTRA

MUSIC FURNISHED

FOR ALL OCCASIONS

(The Five T's)

Tunes That Tickle The Toes

Address

6827 So. Marshfield Ave.

Phone

Prospect 7124

The upper class of 1936 takes this opportunity to express their faith in education. For education alone will make for a social order that is the hope of society.

DO YOU REMEMBER AWAY BACK WHEN
THERE WERE REALLY MT's?

LOST HERO

I liked you!
I don't know why.
You did more
Than coldly pass me by.
You said, "Hello"
In a non-committal way.
It gave me a thrill
But it didn't pay.
It hurt.
You had many a predecessor,
You'll have many a follower too.
You're just another fancy
That didn't come true.
I look at you now,
More critical I be!
And find you amusing—
Just another MT.

Lamenting Lou

LAMENTING LOU

I read last week in your column
Of the sorrows of a maid,
Of her boasted recovery,
Of her illusions frayed.

I thought this over deeply,
And I couldn't help but see
That he, lost lamented hero
Could be no one else but me.

The reason for my decision
Most shyly I'll reveal;
I know of no other IA
That has my sex appeal.

But cheer up, pretty maiden,
I take pity on your plight;
If you want to join my admirers,
The line forms to the right.

Don Juan, the IA

Reprinted from the Normalite.

EVENTUALLY

Little boners, now and then,
Will come off a student's pen.
And though on tests they don't score high,
They'll be printed by and by.

•

Five: What was the matter with the
school you practiced at?

Six. Aw, it wasn't the school, it was the
principal of the thing!

•

The crooner who sang, "River, stay 'way
from my door" evidently forgot about the
big, bad wolf.

Mr. Eilert: When does the period of
learning take place the fastest?

Student: After a warning.

•

Sez Normal Norma: The difference be-
tween bed sheets and mimeograph sheets
is that you cover the bed with the first
kind and the floor with the other.

•

Four: Why is a woman entering an empty
street car like a Normal co-ed learning to
skate?

Five: Eventually, they both take a seat!

FISHER ICE CREAM CO.

Wholesale Manufacturers of

ICE CREAM AND ICES

Telephones — Austin 2525—Village 6867

500 North Boulevard

OAK PARK, ILLINOIS

Eat at the Drug Store

JODAR AND STUCKEY

69th and Stewart Ave.

**MILLER'S FOUNTAIN
LUNCH
AND SCHOOL SUPPLIES**

It Pleases Us to Please You

350 W. 69th St. Englewood 9814

SPEEDWRITING

is the **SHORTHAND**

that qualifies beginners to take rapid dictation in 6-8 weeks. Not a machine.

LOW TUITION

DEMONSTRATION DAILY

BOTH SEXES

CHICAGO BUSINESS COLLEGE

190 North State Street

Franklin 4122-3-4-5

Compliments of

SHERLOCK BROTHERS

5440 Wentworth Avenue

Distributors of Quality Confections

Business Phone: Canal 5253

Residence: Vincennes 10304

FRED LA MANTIA

WHOLESALE

FRUITS AND VEGETABLES

Hotels, Restaurants, Institutions and Hospitals Supplied

62 South Water Market

WENDELL & COMPANY

31 North State Street

Chicago Normal College Sole Official Jewelers

LOWER JUNIORS
OFFER YOU
WISHES OF
EVERY JOY
RIGHT THRU

JUST DO
UNDERSTAND THAT
NONE CAN EXPRESS OUR
INTENTIONS FOR YOU
OF
REAL
SUCCESS

NONE-SUCH BRAND
Food Products



Supreme

Quality

YOUR GROCER CAN
SUPPLY YOU

None-Such products satisfy the epicurean tastes of discriminating diners. Ask your Independent Merchant for None-Such Food Products and be assured of getting the best.

Durand-McNeil-
Horner Co.

*Importers, Manufacturers and
Wholesale Grocers*

251 E. Grand Ave., Chicago, Ill.



BEST WISHES
TO THE
GRADUATES
FROM
CLASS OF JUNE 1935



CASE & MOODY
PIE CO.

"For the Best"

Wood and Walnut Streets

Seeley 3424



WE TOOK ZOOLOGY FROM DR. SMITH

TO A SILK WORM

You wormy, squirmy, wiggley thing,
You'll never know the pain you bring.
You have given me some shocks,
When I missed you from your box;
For I did have a horrified hunch
You might have strayed into my lunch.
Indeed it was quite some relief,
To find you asleep beneath the leaf.
Never will I be satisfied,
Till you're safely in formaldehyde;
For then at last will I be free—
I fear you're not the pet for me.

Zoo-ridden 400

Miss Gildemeister Disillusioned Us as to Our Vocal Capacity

MONOTONE LULLABY

Her babe she could not lull to sleep,
When nightly it did moan;
She had to let it weep, because
She was a monotone.

Emile's Sophia

A FINAL ROMANCE

Longingly he gazed at her,
He wondered if she knew
He'd had to take a chance—
The time was nearly through.

He moved a little closer;
He tapped her on the arm;
He just would have to ask her;
It couldn't do any harm.

He took the fatal step;
She answered clear and true,
And now you know the story
Of how he passed in Zoo.

Nuthatch

Material on this page was reprinted from the
Normalite through the courtesy of the
UPPER SENIOR CLASS

THREE MONTHS' COURSE
FOR COLLEGE STUDENTS AND GRADUATES

*A thorough, intensive, stenographic course—
starting January 1, April 1, July 1, October 1,
Interesting Booklet sent free, without obligation
—write or phone. No solicitors employed.*

moser
BUSINESS COLLEGE

PAUL MOSER, J.D., PH.B.

*Regular Courses, open to High School Grad-
uates only, may be started any Monday. Day
and Evening. Evening Courses open to men.*
116 S. Michigan Ave., Chicago, Randolph 4347

**S. Houston
& Son**

Established 1883

Fancy Fruits and Vegetables

Poultry and Game of All Kinds

GENERAL COMMISSION MERCHANTS

Exclusive Purveyors to

Hotels, Restaurants, Institutions,

Clubs, Dining Cars, Steam Boats,
Our Specialty

157 South Water Market

5 Trunk Lines: Phone Canal 7440

We Ship Everywhere



Compliments of

**SOUTH SIDE
CANDY CO.**

305 South Normal Parkway

Phone Normal 6741



Phones Boulevard 0412-0413

H. LANG & SON

ARTIFICIAL ICE

5208-10-12 Wentworth Ave.

Plant: Acme Ice Company

3604 W. 59th St.



Northwestern Photo-Engraving Co.
Operating 24-hours Daily Har. 5062-3-4
720 S. Dearborn St. Pickup and Delivery Anytime

Compliments of
A FRIEND

Fred C. Krabbenhoff

Wholesale Fish
NORDIC DISTRIBUTOR
Bus. Phones Radcliffe 1222-1223
7838 So. Racine Avenue
Chicago, Ill.

NORMAL BOWLING
HEADQUARTERS

**Crocombe's Woodlawn
Recreation**

6225 Cottage Grove Avenue

School Supplies
Special Attention Given to
Teachers' Orders

**GARDEN CITY
EDUCATIONAL CO.**

529 South Wabash Ave.

**CONTINENTAL
COFFEE CO.**

375 W. Ontario Street
Whitehall 4633

REPRINTED FROM "NORMAL LIFE 1911," THE FIRST
YEARBOOK AT NORMAL

MR. HINKLE

Comrades, listen to my tinkle,
Of this wondrous man named Hinkle,
Dwel's in room two hundred nine,
Second in the southwest line.

Mathematics doth he teach,
Interspersed with gospel speech,
And his human kindness overflows,
For his answer all alone he knows.

Yea, his knowledge is so great
To sequel it there is no "pate."
Minds may with numbers labor,
Yet of his wisdom never savor.

A "Lower Junior," I by fate
Experienced this in time but late,
A clever quiz did he devise,
With loss of weight to be the prize.

Of all his creed he gave,
'Twas little I did not save,
For could I but repeat it all,
Thankfully my bulk should fall.

Scientifically my system was wasted,
While my mind of number tasted,
In my waking hours much augmented,
With the gas bill jumping unrelented.

Thoughts of finding on my locker nailed,
Semester's notice I had failed,
To my brain, my conscience would not send,—
The creed knew I, from end to end.

The scale, with city sealer's stamp so true,
Swore I weighed in pounds one-hundred-two;
And the system praised I, loudly to the school room door,
Horrors! I discovered then, I had not weighed myself before.

^oThis poem is based on Mr. Hinkle's statement that pupils who could prove loss of weight in preparing for examinations would augment their mark for the same.

PRACTICE PICTURE

They call it a school
And that's their story.
But me, I call it
An observatory.

NATURAL HISTORY

A froggie would a-woooing go,
And whom he wooed, he won;
But he never knew
'Til he was through
All the work she'd done.

PRACTICAL POLLYANNA (before a test)

Out into the cold, cold world I pass,
For I've been invited to "leave the class."
In deep, deep disgrace I should feel I be,
But, hurrah!—time to study Philosophy.

To the Graduates:

Best wishes for a happy and
successful future.

PARENT-TEACHER ASSOCIATION
Chicago Normal College



Compliments of

A FRIEND



AUTOGRAPHS

Compliments of the Lower Senior Class

Page One Hundred Seven

ADVERTISERS' INDEX

	Page
Brown's Orchestra	97
Bryant and Stratton	89
Case and Moody Pie Co.	101
Chicago Business College	100
Clarke-McElroy Publishing Co.....	93
Classes—	
600's	102
500's	107
400's	101
300's	101
200's	97
Compliments of a Friend	106
Compliments of a Friend	104
Continental Coffee Co.	104
Crocombe's Woodlawn Recreation	104
DePaul University	91
Durand-McNeil-Horner Co.	101
Fisher Ice Cream Co.	99
Garden City Educational Co.	104
Houston and Son	103
Jodar and Stuckey	99
Krabbenhof, Fred	104
LaMantia, Fred	100
Lang and Son	103
Marshall Studio	90
Metropolitan Business College	94
Miller's Fountain Lunch	99
Moser Business College	103
Northwestern Photo Engraving Co.	104
Normal College Lunch Room	96
Orange-Crush Co.	94
Parent-Teachers' Association	106
Quarrie and Co.	87
Sherlock Brothers	100
South Side Candy Co.	103
Sunkist Pie Co.	96
Wendell and Co	100

Patronize Our Advertisers





