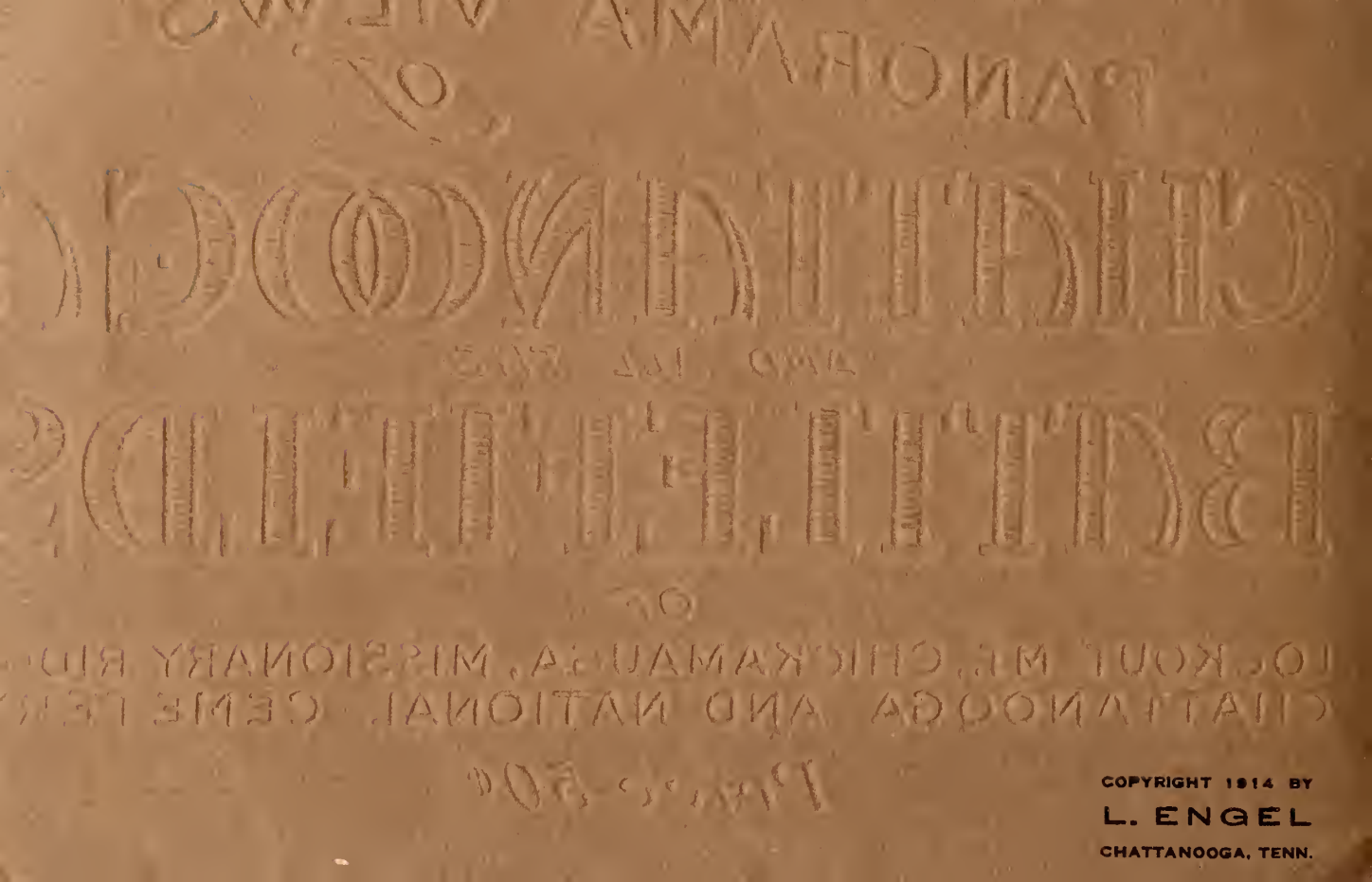


ENGEL'S
PANORAMA VIEWS
OF
CHATTANOOGA
AND ALL THE
BATTLEFIELDS
OF

LOOKOUT MT., CHICKAMAUGA, MISSIONARY RIDGE
CHATTANOOGA AND NATIONAL CEMETERY

Price 50¢



COPYRIGHT 1914 BY
L. ENGEL
CHATTANOOGA, TENN.



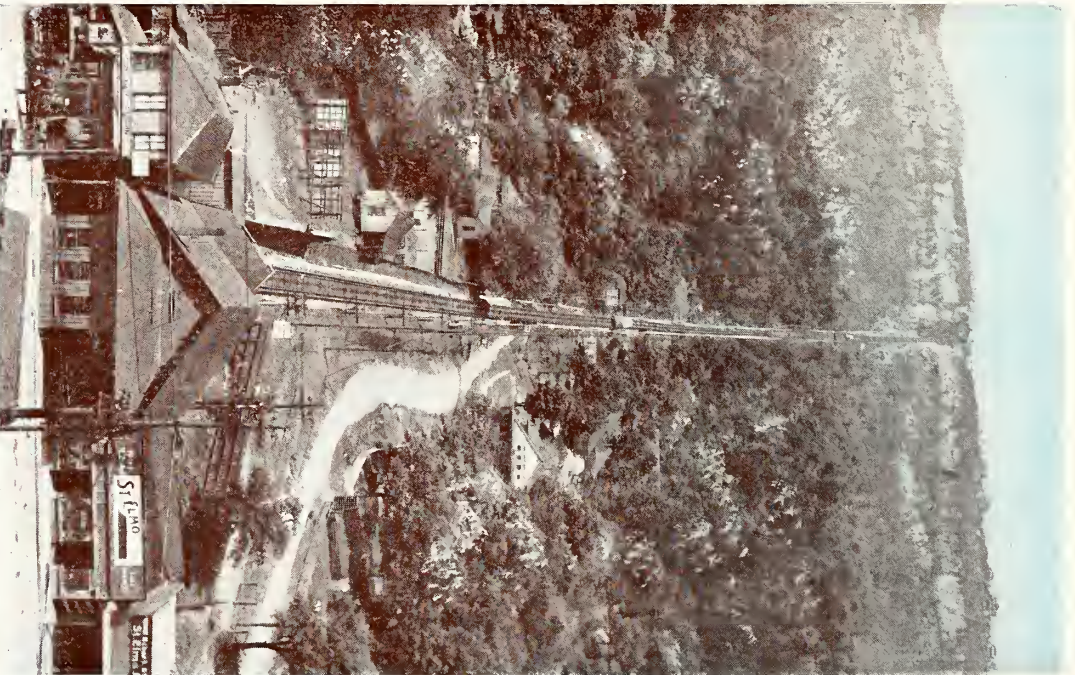
The "Battle Above the Clouds"

In the early part of September, 1863, General Bragg held Chattanooga. Rosecrans, to gain this important position, determined by outflanking him to compel his adversary to withdraw. He succeeded in crossing, with the main body of the Federal army, the Tennessee River some miles below the city. Bragg promptly moved south as far as Lafayette, Ga., and the two armies fought the terrible Chickamauga battle.

The exhausted Union army retired to Chattanooga. Soon General Grant assumed the command of the Federal forces, and, heavily reinforced, on November 23d ordered a general attack on the enemy's lines. General Hooker carried Lookout Mountain, and the divisions under Thomas carried Mission Ridge, on November 25th. After the famous three days' battle, Bragg withdrew his army into Georgia.

According to Col. Archer Anderson, the Federal force numbered 59,000, the Confederate about 55,000. Generals Boynton and Cist claim that the Confederates outnumbered their adversaries by several thousand. The Federal loss was more than 16,000, that of the Confederates between 17,000 and 18,000, on each side considerable more than 25 per cent of the whole force. In the battles about Chattanooga the Union losses were nearly 5,300; the Confederate loss is not known. There were many famous soldiers connected with the military movements about Chattanooga and Chickamauga in the fall of 1863. The following is a partial list of Union officers: Grant, Rosecrans, Thomas, Sherman, Hooker, Sheridan, Wood, O. O. Howard, and Garfield, then an officer on Rosecrans' staff. Gen. W. H. Lytle, a poet of considerable reputation as well as a gallant soldier, was killed at Chickamauga. On the Confederate side were such men as Bragg, Longstreet, D. H. Hill, Polk, N. B. Forrest, John B. Hood, Buckner, and others.

Two incidents of these battles have become famous. The first was the gallant stand made by General Thomas, after the rout of the right wing of the Federal army at Chickamauga. For several hours he stood at bay against overwhelming numbers, and by his action saved the army from destruction. The second was Hooker's "Battle above the Clouds," since celebrated in song and story.



INCLINE UP LOOKOUT MOUNTAIN,
CHATTANOOGA, TENN.

Showing full length from St. Elmo Junction to the highest point of historic Lookout Mountain. This incline is 4,750 feet in length, and as it approaches the top has a grade of 69 feet per 100. Altitude, 1,700 feet.



VISTA FROM INCLINE, LOOKOUT MOUNTAIN.

From the windows of the Incline Car as it ascends Lookout Mountain a magnificent view of Tennessee River, the City of Chattanooga and surrounding historical country is obtained.

LOOKOUT MOUNTAIN FROM MOCCASIN BEND.



ELECTRIC RAILWAY ON WEST SIDE OF
LOOKOUT MOUNTAIN.

SNAKE ROCK AND WEST VALLEY FROM
LOOKOUT MOUNTAIN.



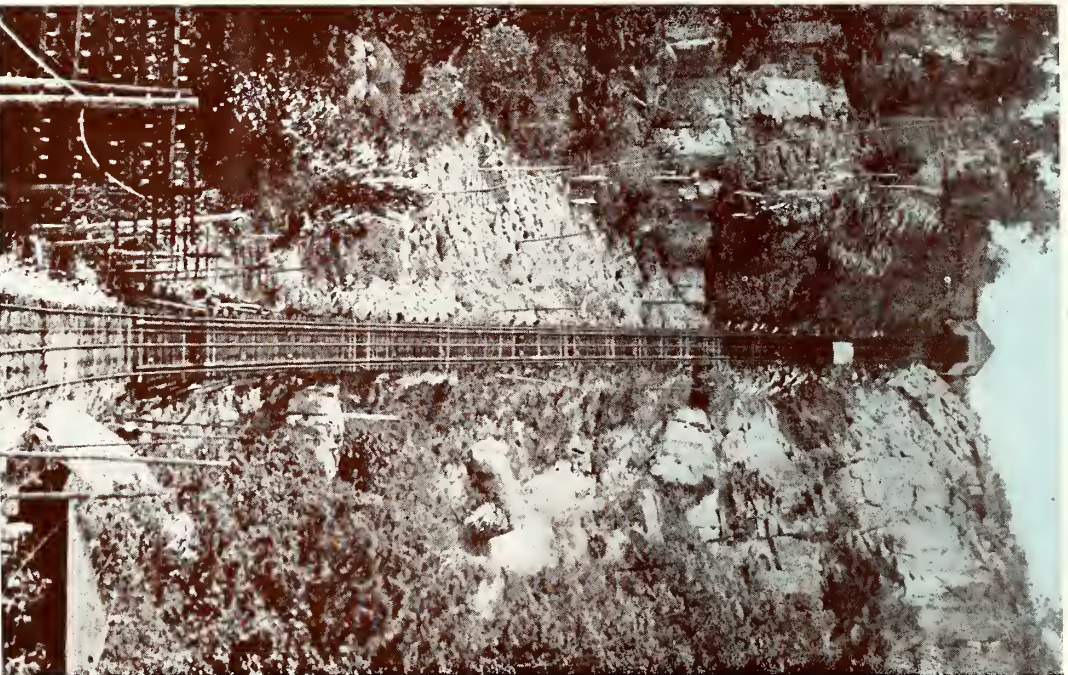
CONFEDERATE GUNS ON WEST SIDE OF
POINT PARK.



FOOT OF LOOKOUT MOUNTAIN AND
TENNESSEE RIVER.



LOVER'S LANE, LOOKOUT MOUNTAIN, TENN.



STEEP GRADE INCLINE RAILWAY UP
LOOKOUT MOUNTAIN.

Battlefield Station on the right of the track. This Cable incline is 4,750 feet in length, and as it approaches the top has a grade of 69 feet per 100. Altitude, 1,700 ft.



MAKING THE ASCENT UP LOOKOUT MOUNTAIN.

Showing the car on the steep grade just before entering the narrow passage between the rocks. The grade at this point is 69 feet raise in 100.



RATTLESNAKE CURVE.
New Autodrive up Lookout Mountain.



ENTRANCE TO POINT PARK, LOOKOUT MOUNTAIN.
Erected of mountain sandstone by the U. S. Government at a cost of \$20,000.00.



THE OLD MAN OF THE MOUNTAIN NEAR
NATURAL BRIDGE.



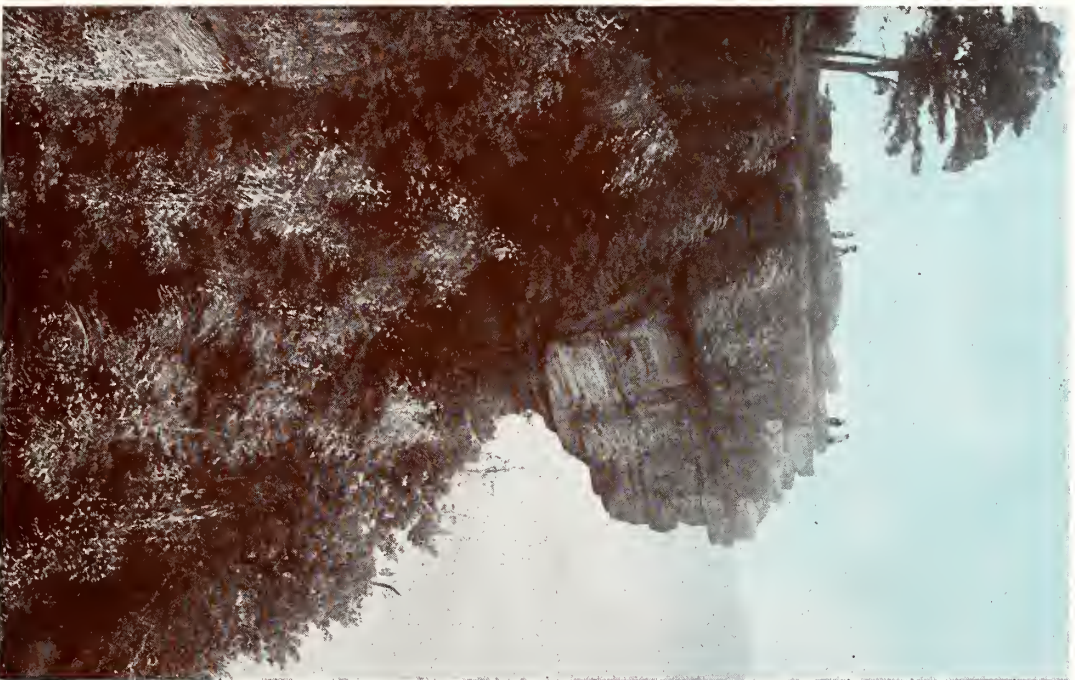
ROPEKS ROCK.

So called because a corporal of Co. C, 78th Penn. Regiment, by that name, stepped backward off the rock and was killed. The steps are located where the first Union troops scaled the palisades.



LULAH FALLS, 130 FEET HIGH.

The Falls are just below Lulah Lake. The Descent is nearly 130 feet, or about the same as Niagara. All of the scenery about the Falls and Lake are wildly picturesque.



SUNSET ROCK.

On the western side of the mountain; projects over the valley from a prodigious height. From it one may look sheer down for 400 feet. Some of the sunset views from this point are indescribably beautiful.



LOOKOUT MT. BATTLEFIELD FROM SUMMIT OF PALISADES.

Below is the Craven's House, Iowa Monument and New York Monument. The part of Tennessee River, or Moccasin Bend.



Ten minutes walk to Point Park from the Incline and Engel's Museum.



LOOKOUT MOUNTAIN FROM CAMERON HILL.



GARRITY'S ALA. BATTERY, LOOKOUT MOUNTAIN.

2,500 feet above sea level, 1,750 feet above valley. This is the gun that kept the Union Army out of Chattanooga.



UMBRELLA ROCK.

It is a great mass of sandstone, resembling an umbrella. It stands on Point Rock, and commands an unrivaled view. This is a favorite place for visitors to have their pictures taken.



THE CONFEDERATE CANNONS IN POINT PARK, LOOKOUT MOUNTAIN.



LENORA SPRINGS, LOOKOUT MOUNTAIN.
The Union Army got water here in 1863.



Gen. Kilpatrick Gen. Thomas Gen. Williams ? Gen. Brannan ? ? Gen. Whipple Lt. Kelly Lt. Kellogg
 LOOKOUT MOUNTAIN, 1863.

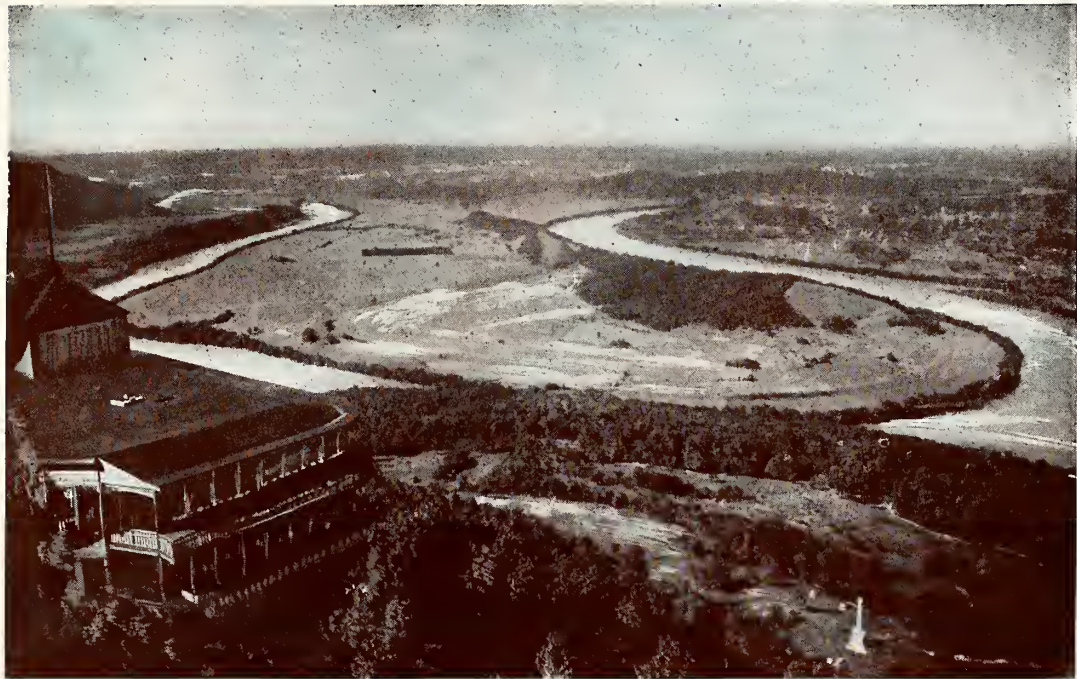
THE SENTINELS.

Entrance to Rock City, Lookout Mountain. Rock City is four miles from Point Park.



LULAH LAKE.

This romantic little lake is on the top of Lookout Mountain, about seven miles back from the Point. There is a splendid carriage road leading to it from Lookout Incline.



MOCCASIN BEND.

This view is taken from Point Lookout, and is one of the finest views in America. Note how the river forms the Indian Moccasin in its winding. The river is 1,700 feet wide at this point.

TWIN SISTERS, ROCK CITY, LOOKOUT
MOUNTAIN.



Anvil Rock, Rock City,
Lookout Mountain.

Fat Man's Squeeze, Rock
City, Lookout
Mountain.





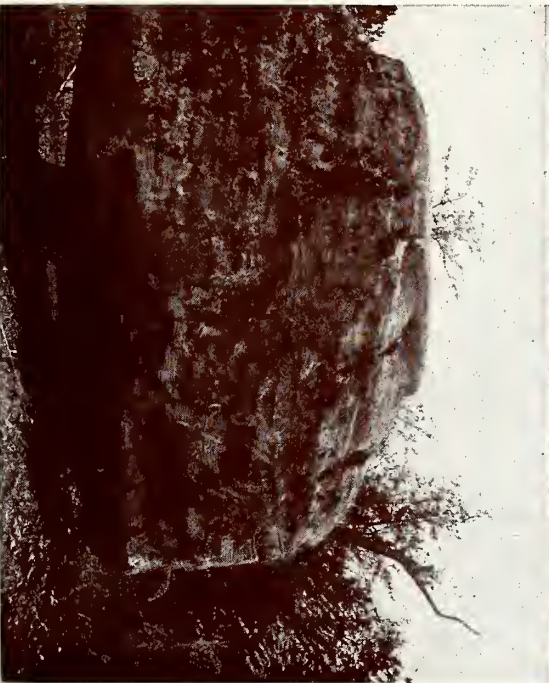
We carry the largest assortment of Souvenirs on Lookout Mountain. We have a fine lunch-room and make the best sandwiches in the South.



NATURAL BRIDGE, LOOKOUT MOUNTAIN.

It is located at the end of the electric railroad. It is a very sigular sandstone formation about 25 ft. long and 4 ft. wide.

PULPIT ROCK, LOOKOUT MOUNTAIN.



PEDESTAL ROCK, ROCK CITY.
Weight 200 tons, Lookout Mountain.



CHATTANOOGA IN 1863.



BIRD'S-EYE VIEW OF CHATTANOOGA, TENN.
The tall buildings are James Building, Hamilton National Bank, and Paltin Hotel.



VIEW OF MARKET STREET.
From Ninth, looking north, Chattanooga, Tenn.



THE BRIDGE GOING OVER TENNESSEE RIVER.



CHATTANOOGA IN 1863. LOOKOUT MOUNTAIN IN THE DISTANCE.

This shows the straggling village of war-time fame. In the foreground are some of the army tents, the soldiers at this date forming the bulk of the population. Then, as now, Lookout Mountain formed an impressive background.



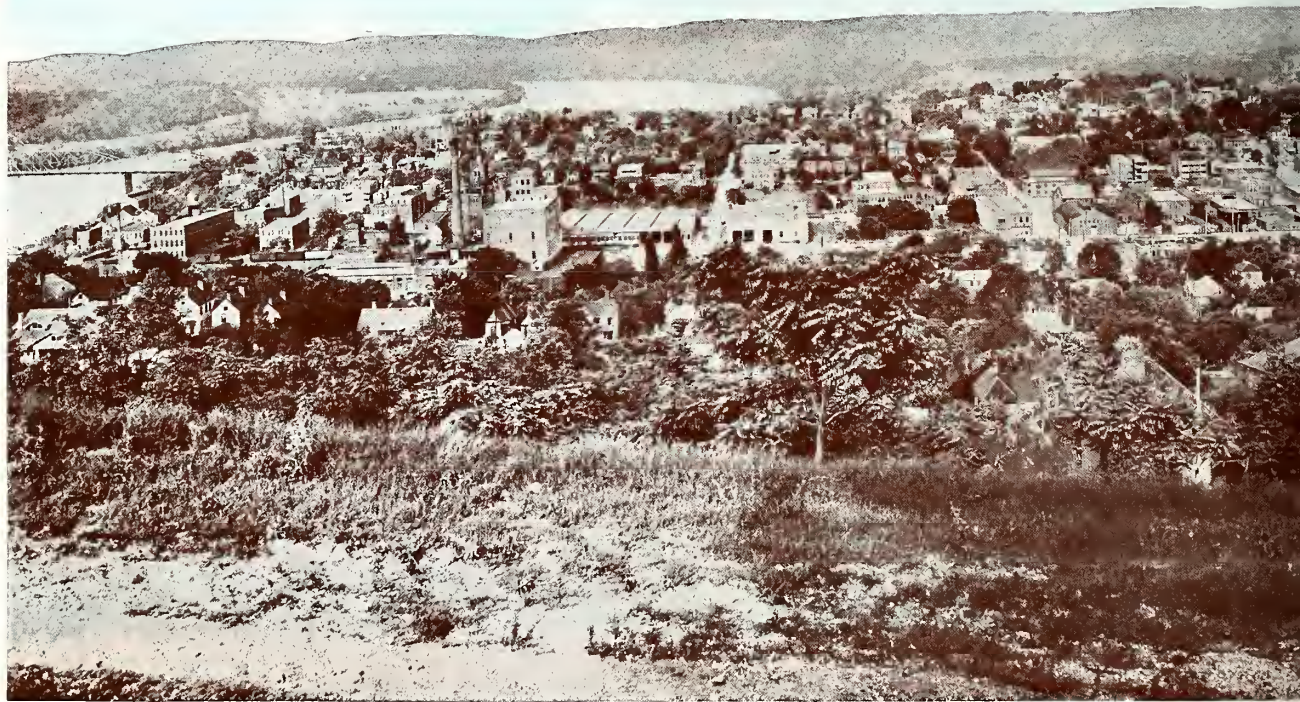
G. A. R. PARADE ON MARKET STREET IN CHATTANOOGA.



MARKET STREET, LOOKING NORTH AT NIGHT, CHATTANOOGA.



U. C. V. PARADE IN CHATTANOOGA, ON BROAD STREET.



BIRD'S-EYE VIEW OF CHATTANOOGA FROM CAMER



HILL WITH MISSIONARY RIDGE IN THE BACKGROUND.



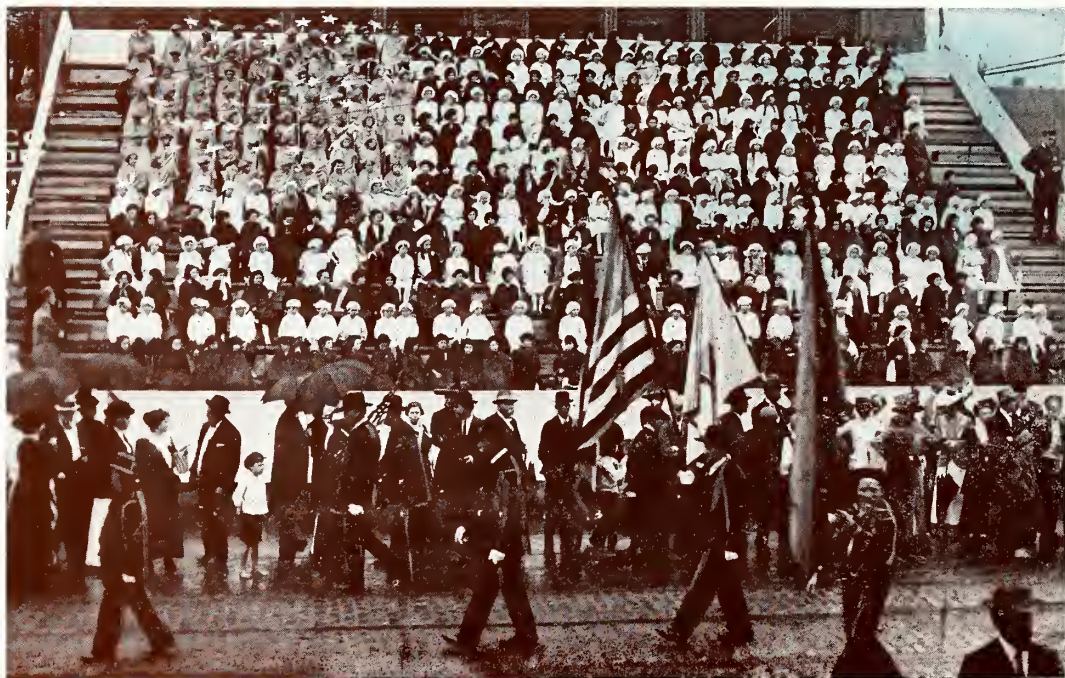
MAJOR-GENERAL HOOKER AND STAFF IN 1863.

This view shows General Hooker and Staff in their winter quarters in the Lookout Valley at the base of Raccoon Mountains, during the winter of 1863-'64.



GENERAL GRANT AND STAFF. TAKEN ON POINT LOOKOUT, 1863.

The above is a picture of considerable historic interest. The greatest of the Union Generals, and, in some respects, the most famous battlefield of the war are here shown together.



School children of Chattanooga in Grand Stand during the parade, representing the American Flag.



ENTRANCE TO NATIONAL CEMETERY.



THE OLD TRANSPORTATION AND THE NEW IN THE SUNNY SOUTH.



THE GOOD OLD SUMMER TIME IN EAST CHATTANOOGA.



ENTRANCE CONFEDERATE CEMETERY, EAST OF FOURTH STREET,
CHATTANOOGA, TENN.



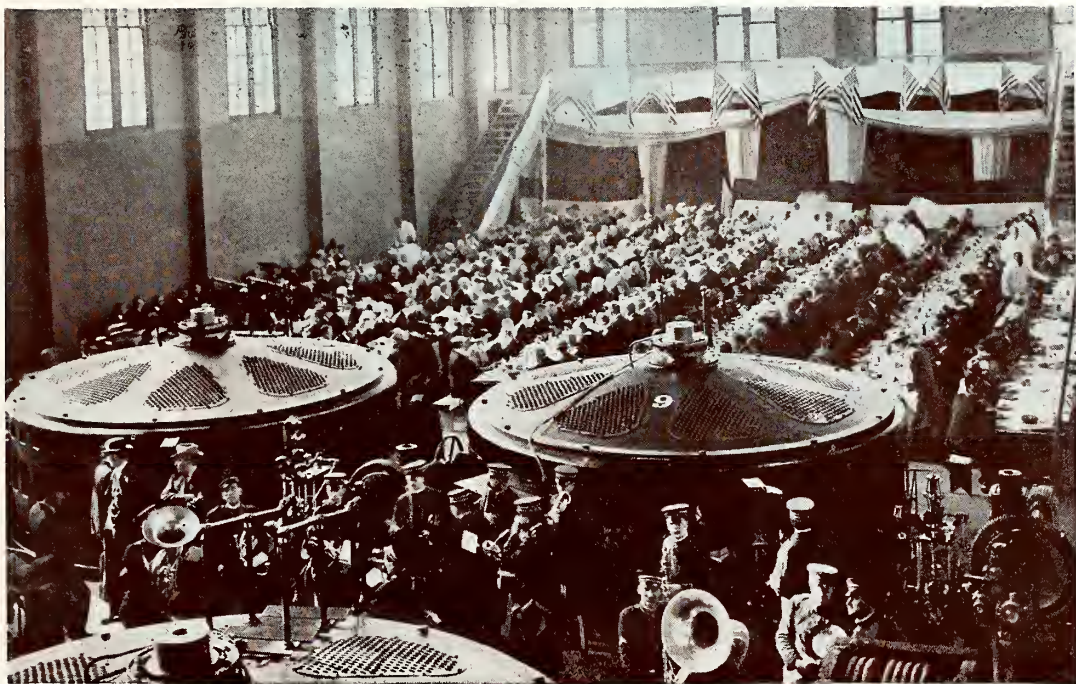
PATHWAY LEADING TO UMBRELLA ROCK.



WEST SIDE OF LOOKOUT MT.



TENNESSEE RIVER AND LOOKOUT MOUNTAIN IN DISTANCE.



INTERIOR OF POWER HOUSE AT HALE'S BAR ON OPENING DAY.



HALE'S BAR POWER HOUSE ON THE TENNESSEE RIVER.

Cost \$10,000,000 to generate 65,000 horse-power electricity. Located 28 miles from Chattanooga.



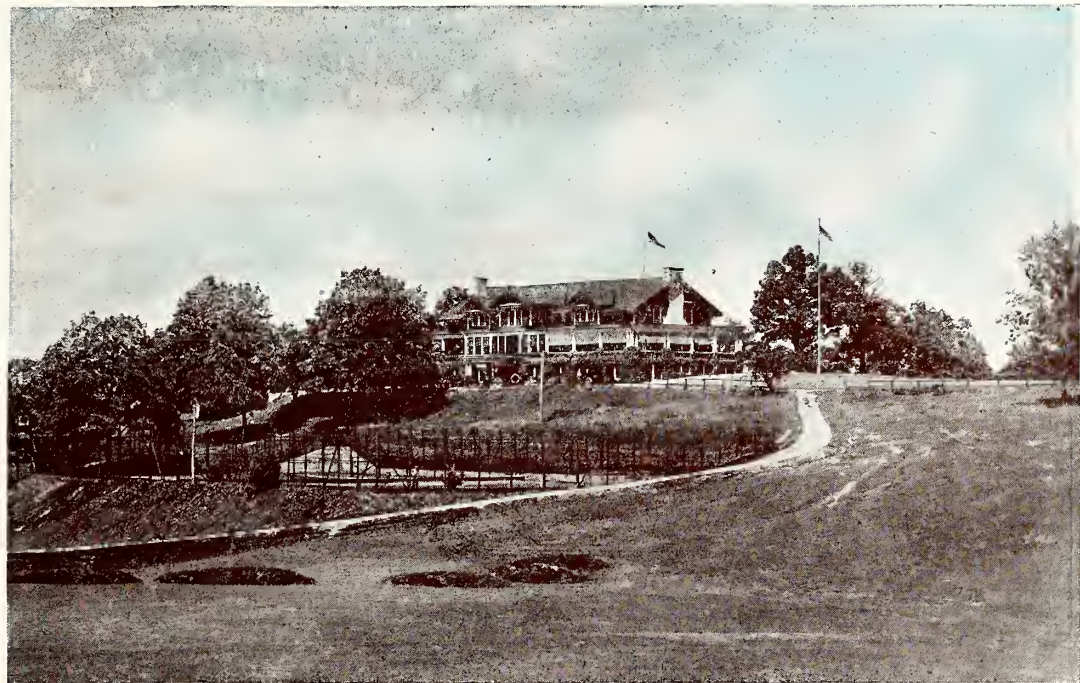
TERMINAL STATION, CHATTANOOGA, TENN.



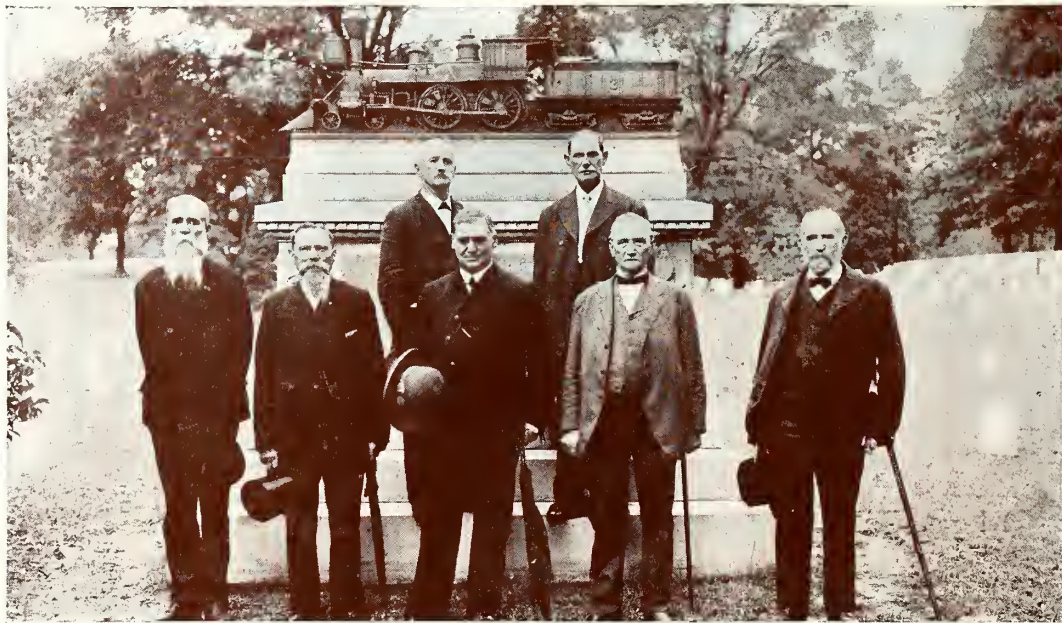
BRAGG'S HEADQUARTERS, MISSIONARY RIDGE.

The second of the observation towers on Missionary Ridge stands beside "The Lone Pine Tree" that marks General Bragg's headquarters. From these towers is a splendid view of Lookout Mountain, the entire Chattanooga Valley, including the city and the battlefield, and even a glimpse may be had of the distant Chickamauga Park.

Golf and Country Club three miles north of Chattanooga, in Hill City.



GOLF AND COUNTRY CLUB THREE MILES NORTH OF CHATTANOOGA, IN
HILL CITY.



ANDREW'S RAIDERS MONUMENT.

D. A. Dorset, J. R. Porter, Jacob Parrott, W. J. Knight, Wm. Bensinger, Jno. A. Wilson
and W. W. Brown, the survivors of Andrew's Raiders, National Cemetery.

STORY OF THE LOCOMOTIVE "GENERAL"

CAPT. JAS. J. ANDREWS, WITH TWENTY VOLUNTEERS FROM SILL'S BRIGADE, MITCHELL'S CORPS, U.S.A., AND A CITIZEN OF KENTUCKY, ALL DRESSED AS CIVILIANS, CAPTURED THE "GENERAL" AT BIG SHANTY, APRIL 12, 1862, WHILE THE TRAIN CREW AND PASSENGERS WERE TAKING BREAKFAST. THE PURPOSE OF THE CAPTURE WAS TO DESTROY THE BRIDGES ON THE WESTERN & ATLANTIC R.R. AND THEREBY CUT OFF THE CONFEDERATE ARMY FROM ITS BASE OF SUPPLIES. CONDUCTOR W.A. FULLER ACCOMPANIED BY ENGINEER JEFF CAIN AND ANTHONY MURPHY, FOREMAN OF THE W.&A. SHOPS, COMMENCED PURSUIT ON FOOT. THEY SOON SECURED A HAND CAR AND, IN SPIKE OF THE OBSTRUCTIONS PLACED ON THE TRACK BY ANDREWS' RAIDERS, MADE RAPID PROGRESS. THEY FOUND THE ENGINE "YONAH" AT ETOWAH, AND THE PURSUIT THEN WAS AT SUCH A RAPID PACE, THAT SERIOUS DAMAGE TO THE RAILROAD BY THE RAIDERS WAS IMPOSSIBLE. THE "GENERAL" WAS ABANDONED BY THE RAIDERS ON ACCOUNT OF LACK OF FUEL, AND THE CLOSE PURSUIT OF CONDUCTOR FULLER AND HIS PARTY.

JAS. J. ANDREWS, FLEMINGSBURG, KY.	JNO. A. WILSON	Co. C, 21 st OHIO VOL. INF.	WM. PITTENGER, Co. C, 2 nd OHIO VOL. INF.
M. A. ROSS, 2 nd OHIO VOL. INF.	MARK WOOD,	Co. C,	JACOB PARROTT, Co. K, 33 rd
C. D. WILSON, Co. B,	J. R. PORTER,	Co. C,	WM. H. REDDICK, Co. B,
C. P. SHADRACH, Co. K,	W. W. BROWN,	Co. F,	ROB. BUFFUM, Co. H, 21 st
J. M. SCOTT, Co. F, 21 st ,	WM. KNIGHT,	Co. E,	WM. BENSINGER, Co. C,
S. SLAVENS, Co. E, 33 rd ,	D. A. DORSEY,	Co. H, 33 rd ,	E. H. MASON, Co. K,
S. ROBERTSON, Co. C,	MARTIN HAWKINS,	Co. A,	WERE EXCHANGED FROM LIBBY PRISON.
W. H. CAMPBELL, CITIZEN OF KENTUCKY.	JOHN WOLLAM,	Co. C,	

WERE EXECUTED IN ATLANTA AS SPIES, ESCAPED FROM PRISON AND REACHED THE UNION LINES.
 PROMINENT AMONG THE PURSUERS WERE, SMITH, STEVE STOKELY, PETER BRACKEN, F. COX, A. MARTIN, H. HANEY.

FOUNDRY OF N. C. & ST. L. RY. JUNE, 1901.

THE STORY OF THE LOCOMOTIVE "GENERAL."



“GRAVES OF THE UNKNOWN” NATIONAL CEMETERY,
CHATTANOOGA.

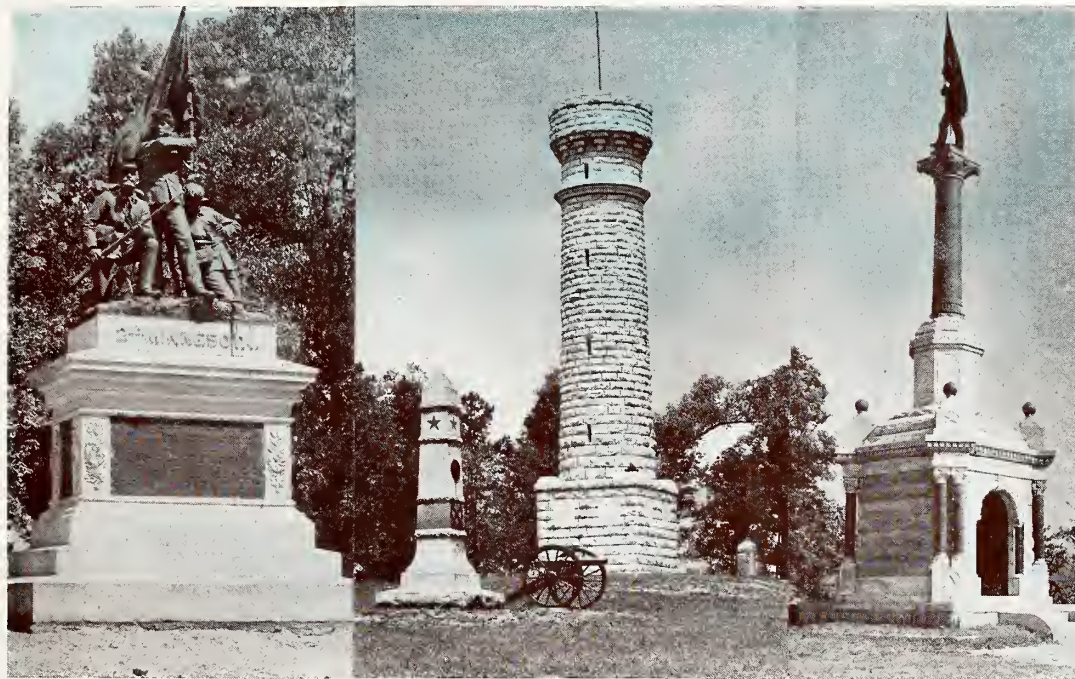
More than 13,000 soldiers have been buried here. The above shows that portion of the Cemetery where some thousands of the “unknown” men who died for their country lie at rest.



This house is the oldest house in the State-line of Tennessee and Georgia, stationed in Rossville Gap. This house was built by John Ross, chief of the Cherokee Indians. It was built in 1817.



LEE AND GORDON'S MILL, CHICKAMAUGA PARK.



2nd Minnesota Monument,
Snodgrass Hill, Chicka-
mauga Park.

Wilder's Brigade Monument,
Chickamauga Park.

Illinois Monument,
Chickamauga Park.



Georgia Monument,
Chickamauga Park.

Kentucky Monument,
Chickamauga Park.

Alabama Monument,
Chickamauga Park.

Poe Field, Chickamauga Park.



Georgia Monument in Kelly Field,
Chickamauga Park.



BROTHERTON HOUSE,
Chickamauga Park.

Longstreet's columns held the woods in front.
This house is located on Lafayette Road.

Snodgrass Hill, Chickamauga Park.



Iowa Monument,
Rossville Gap.

Ohio Monument,
Missionary Ridge.

Illinois Monument, Looking North, on
Crest of Mission Ridge.
Orchard Knob, General Grant's Head-
quarters, extreme left.

Maryland Monument,
Orchard Knob,
Gen. Grant's Headquarters.



New Jersey Monument,
Orchard Knob.



ORCHARD KNOB.

SNODGRASS HOUSE, CHICKAMAUGA PARK.

Near Chattanooga, Tenn.

Snodgrass House as it appeared after the Civil War. General Geo. H. Thomas checked the victorious Confederates and saved the forces of Rosecrans at this point. The battle was bloody in the extreme. This is the most historical spot in the Park. The house still stands, although remodeled.

General Thomas' Headquarters,
Chickamauga Park.



Poe Field, Chickamauga Park.

Snodgrass Hill, Chickamauga Park.



Florida Monument,
Chickamauga Park.



New York Monument.
Erected in Point Park by
the State of New York; cost
\$100,000.00.

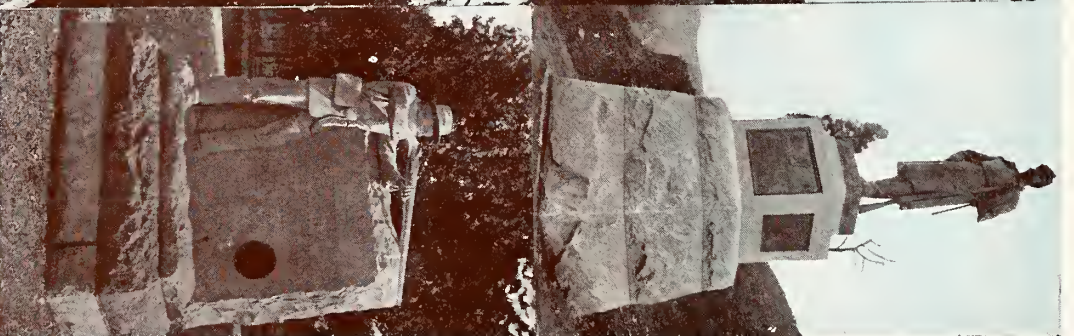


Monument to Harker's
Brig., Wood Div., 21st
Army Corps.

19th Illinois Infantry
Monument,
Chickamauga Park.



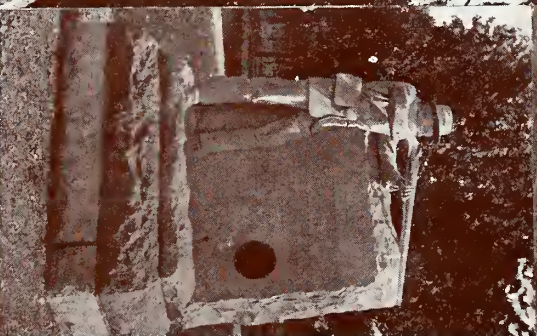
Monument to the 46th
Penn. Infantry, Orchard
Knob, 15th Brigade, 1st Division,
Joe Hooker's Command.



Monument to the 26th
Ohio Infantry near Vineard
House, Chickamauga Park.



Michigan Monument,
Chickamauga Park.



Monument to the 37th
Indiana Infantry,
Chickamauga Park.



10th Wisconsin Infantry
Monument,
Chickamauga Park.



Battery B, 1st Ohio Light
Artillery,
Chickamauga Park.

Monument to 68th Indiana
Infantry,
Chickamauga Park.

An interesting story is told about the horse shown here. It is said that early in one of the battles, his soldier rider was shot from him, but showing almost human bravery and loyalty, he continued in line of battle with his companion horses for more than two hours, riderless, but displaying that fine courage which is so much admired in animals.



Thomas' Right 12th Ohio Infantry,
Chickamauga Park.
Battery E, Penn. Vol., Orchard Knob.



BATTLE OF LOOKOUT MOUNTAIN.

November 24, 1863—4th and 14th Corps, Army of the Cumberland and Geary's Div. O, 12th Corps, and 11th and 15th Corps, A. O. T. Tenn. engaged.



BATTLE OF CHATTANOOGA.

November 23rd-25th, 1863. Union (Gen. Grant) Loss: 757 Killed, 4,529 Wounded, 330 Missing. Confederate (Gen. Bragg), Loss: 8,684 Killed, Wounded and Missing.



BATTLE OF MISSIONARY RIDGE.
Fought November 23-25, 1863.



BATTLE OF CHICKAMAUGA.

September 19th and 20th, 1863, Federal Loss: 1,644 Killed, 9,262 Wounded, 8,000 Prisoners (Gen. Rosecrans, Com.). Confederate Loss: 1,394 Killed, 8,974 Wounded, 2,003 Prisoners (Gen. Bragg, Com.).



BATTLE OF NASHVILLE.

December 15th, 16th, 17th and 18th, 1864. Union (Gen. Thomas) Loss : 400 Killed, 1,740 Wounded. Confederate (Gen. Hood) Loss : 287 Officers, 1,524 Killed and Wounded, 13,189 Prisoners, 72 Guns. Whole Army Routed.



BATTLE OF FRANKLIN.

November 30, 1864. Union (Gen. Schofield) Loss: 189 Killed, 1,033 Wounded, 1,104 Prisoners. Confederate (Gen. Hood) Loss: 1,750 Killed, 3,800 Wounded, 702 Prisoners.



BATTLE OF SHILOH.

April 6th-7th, 1862. Union (Gen. Grant) Loss: 1,754 Killed, 8,408 Wounded, 2,885 Missing. Confederate (Gen. Beauregard) Gen. A. S. Johnston Killed, Loss: 1,728 Killed, 8,012 Wounded, 957 Missing.



ASSAULT ON FORT SANDERS.

November 29th, 1863. Union (Gen. Burnside) Loss: 8 Killed, 5 Wounded, 30 Captured.
Confederate (Gen. Longstreet) Loss: Over 500 Killed and Wounded.



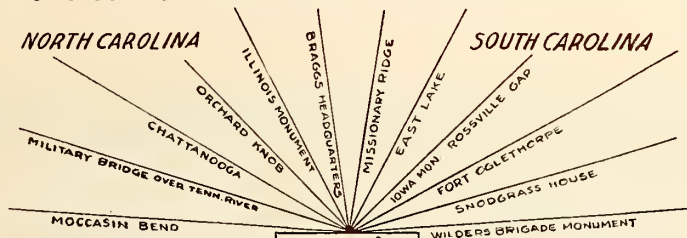
BATTLE OF KENESAW MOUNTAIN.

June 27th, 1864. Union (Gen. Sherman, Com.) Loss: Gen. Harker, Cols. McCook, Rice and 3,000. Confederate (Gen. Johnston, Com.) Loss: 600.



BATTLE OF ATLANTA.
Death of Gen. James B. McPherson, July 22d, 1864. Army of Tennessee Engaged.

GO ON THE BACK PAVILION AND SEE THE 12 POINTS OF INTEREST



TENNESSEE
YOU CAN SEE FOUR

ENGEL'S
PAVILION
LOOKOUT MT. TENN.

GEORGIA
STATES FROM THIS POINT

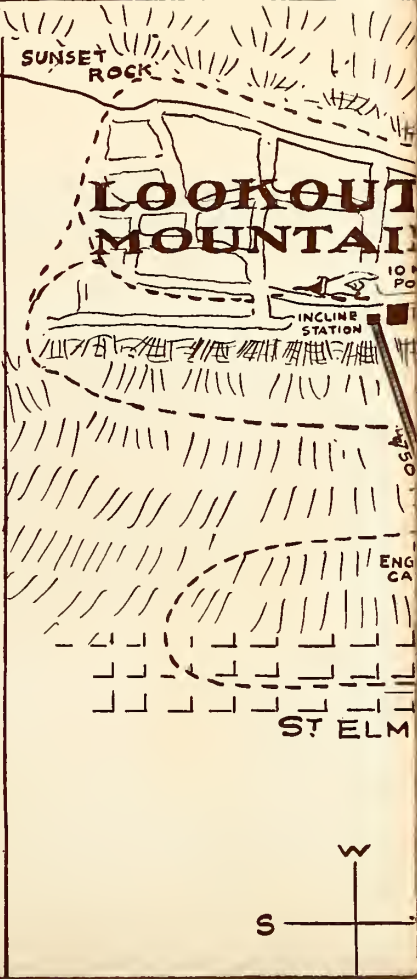
THIS MOUNTAIN IS 85 MILES LONG, RUNNING IN THREE STATES. TENNESSEE, ALABAMA, GEORGIA. 1700 FT. ABOVE THE VALLEY 2500 FT. ABOVE THE SEALEVEL

Lookout Mountain, the Battle Above the Clouds, Chickamauga Battlefield, Missionary Ridge, Orchard Knob, National Cemetery, Chattanooga Battlefield, Gen. Bragg's Headquarters, Gen. Sherman's Headquarters, Missionary Ridge, and you can see all points of interest on the map from ENGEL'S PAVILION, next to the Incline, Lookout Mountain, Tennessee.

Population of Chattanooga is about 100,000. The climate is moderate.

Don't Fail to Visit **ENGEL'S MUSEUM** When On the Mountain.

It takes 30 minutes to come to Lookout Mountain from Market St. Incline, by way of surface car one hour. From the Terminal Depot to Chickamauga Park by car line it takes 40 minutes





BATTLE OF ATLANTA.

Death of Gen. James B. McPherson, July 22d, 1864. Army of Tennessee Engaged.



MOCCASIN BEND AND CHATTANOOGA, TENN., FROM POINT PARK, LOOKOUT MOUNTAIN

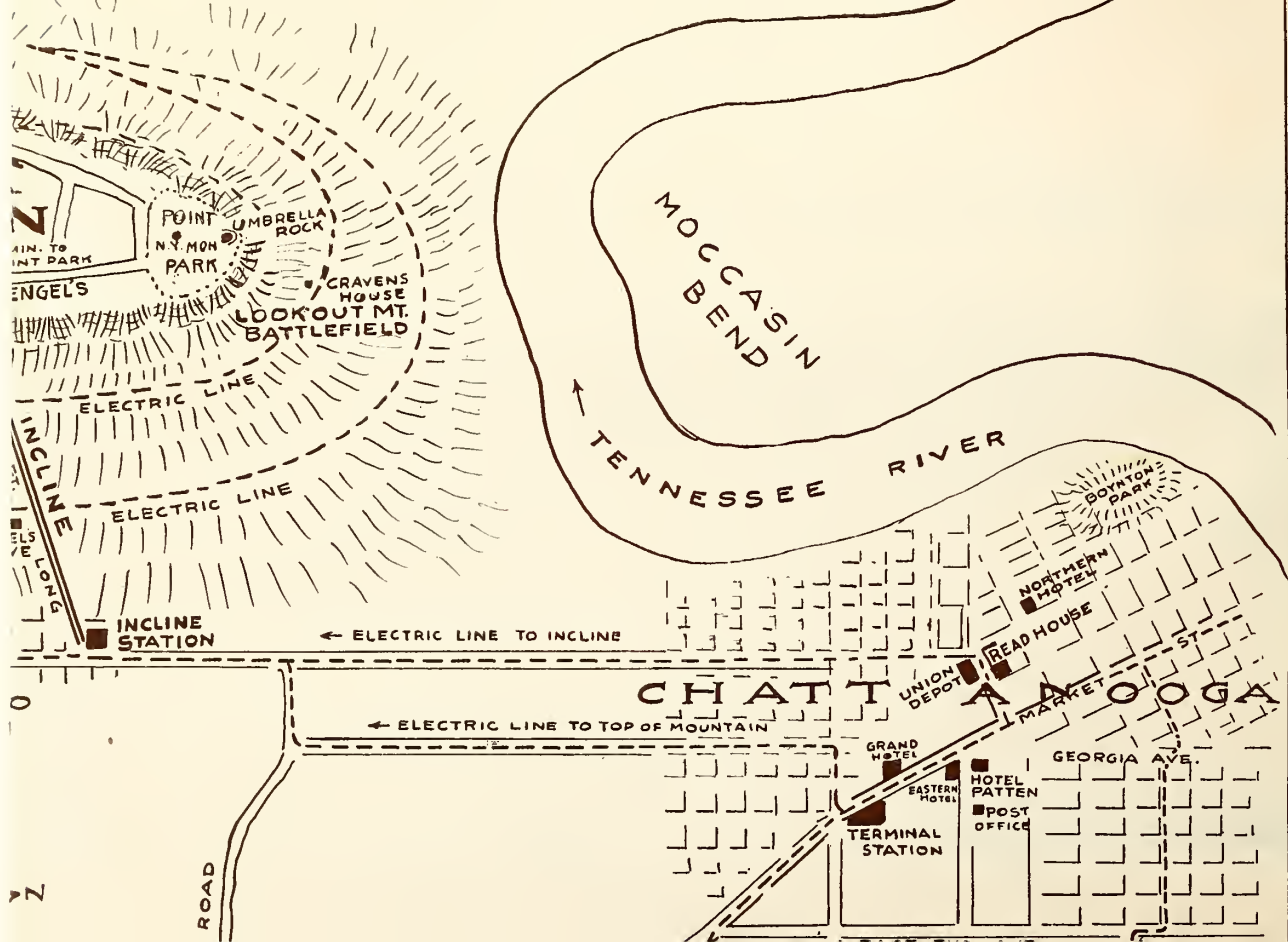
A MOST MAGNIFICENT VIEW SHOWING SEVEN STATES

This view alone is worth a trip to Lookout Mountain, and is enthusiastically conceded by all who have seen it to be one of the finest in the world. Henry M. Stanley, the African explorer, standing on Point Lookout, said: "This is the most magnificent view in the world." Prince Henry, of Prussia, exclaimed: "This is magnificent; there is nothing in all Europe that is finer!" George Bancroft, the eminent historian, at the age of 87, said of it: "In all my travels I have never seen any scene to exceed its sublime grandeur." This wonderful panorama, with its splendid variety of scene and intense historical interest, is visited by people from all parts of the world. The seven States to be seen are: Tennessee, Georgia, Alabama, Kentucky, North Carolina, South Carolina, and Virginia.

Lookout Mountain is one of the "beauty spots" in a land of beauty; in addition to this, it furnishes the most thrilling page in all the history of Tennessee, bearing as it does the marks of many wars, and of two distinct races. First, the habitation of the Indians, from whom the great river washing its base received the name, that afterward became the name of the State — Tennessee, a spoon.

Visitors from the North make special pilgrimages to Lookout Mountain, and are unanimous in pronouncing the view unsurpassed by any in Europe. Off to the west, the purple line of mountains marks the trend of Sand and Raccoon. Easily the eye may follow the line of Walden's Ridge, another historic battlefield; with Sherman Heights and Cameron Hill, Missionary Ridge, and the faint, far purple of the Great Smokies making the last link in this magnificent mountain circumference. Legends and lore of the most thrilling nature attach to this region.

A trolley ride of seven miles on top of the mountain connects the Incline Railway station with the Mountain House, Sunset Park and Point Lookout. This is a thrilling ride and one of the grandest in the country, giving visitors a view of Wauhatchie Valley, 1,500 feet below; views north, east, south and west, as the car winds around the summit of grand old Lookout. From the Point an excellent view is had of the Craven's House and the battlefield, famous as the "Battle Above the Clouds."



GO ON THE BACK PAVILION AND SEE THE 12 POINTS OF INTEREST



TENNESSEE
YOU CAN SEE FOUR
THIS MOUNTAIN IS 0.5 MILES LONG, RUNNING IN THREE STATES. TENNESSEE,
ALABAMA, GEORGIA. 1700 FT. ABOVE THE VALLEY 2500 FT. ABOVE THE SEALEVEL

**ENGEL'S
PAVILION
LOOKOUT MT. TENN.**

GEORGIA
STATES FROM THIS POINT

Lookout Mountain, the Battle Above the Clouds, Chickamauga Battlefield, Missionary Ridge, Orchard Knob, National Cemetery, Chattanooga Battlefield, Gen. Bragg's Headquarters, Gen. Sherman's Headquarters, Missionary Ridge, and you can see all points of interest on the map from ENGEL'S PAVILION, next to the Incline, Lookout Mountain, Tennessee.

Population of Chattanooga is about 100,000. The climate is moderate.

Don't Fail to Visit **ENGEL'S MUSEUM** When On the Mountain,

It takes 30 minutes to come to Lookout Mountain from Market St. Incline, by way of surface car one hour. From the Terminal Depot to Chickamauga Park by car line it takes 40 minutes.

You can see four states and Chickamauga Park with your natural eye from Engel's Porch.

The **MAIN POINT OF INTEREST IS LOOKOUT MT.**

