



ETONIAN
1946

ZUC MEMORIAL LIBRARY
ELIZABETHTOWN COLLEGE
ELIZABETHTOWN, PENNA.


**REFERENCE
MATERIAL**

FOR

**LIBRARY
USE ONLY**

E. S. Meyer.

Elizabethtown, Pa.



Digitized by the Internet Archive
in 2011 with funding from
LYRASIS members and Sloan Foundation

<http://www.archive.org/details/etonian19461947eliz>

The Etonian



The

ETONI AN



Presented by the
Classes
of
1946 - 1947

**ELIZABETHTOWN
COLLEGE**

Elizabethtown, Penna.



B

ZUG MEMORIAL LIBRARY
ELIZABETHTOWN COLLEGE
ELIZABETHTOWN, PENNA.



MARY A. ALBRIGHT

RICHARD ALBRIGHT

STANLEY DISNEY

EDMUND W. DUCKWORTH

JOHN ESPENSHADE

JOHN D. GITER

HENRY L. METZLER

RICHARD M. PALMER

ADDA JANE PATTERSON

LUKE SAUDER

RALPH E. SHANK

Dedication



The classes of 1946 and 1947 dedicate their issue of the *ETONIAN* to the former students and alumni of Elizabethtown College who died while in service for their country.

Almost two hundred former students of our Alma Mater served in the armed forces and in Civilian Public Service during World War II, and out of this number eleven were called upon to make the supreme sacrifice.

May we not lose faith with these who fought for our nation's avowed purposes of freedom and democracy for all. Let us all strive to understand our brothers regardless of race, color or creed and build together "One World."



Foreword



World War II was not the answer to man's age-long plea for world peace, as some people hoped it would be. Minor wars were being fought for freedom from suppression in several sections of the world scarcely a month after V-J Day. If anything, the war left the world in a worse state of affairs than it was previous to hostilities.

Again man is struggling with the problem of building a unified world, this time with the horrible threat of atomic energy confronting him. Scientists tell us that we have one of two choices; co-operation or extermination. We cannot remain an isolated nation; we must learn to live peaceably with England, Japan, Russia, Germany and the rest of the nations of the world. We must learn that the peoples of these nations have the same aspirations and feelings as we have. Just as the colonies formed into one united nation so must the nations of the world unify into One World.

Empires, nationalistic patriotism, and cut-throat economic competition are as incompatible with Christianity as they are with our vision of One World.



President's Message

To the Members of the Class of 1946

Greetings:

I was very much pleased when I learned that your class had selected the theme "One World" for your edition of the *Etonian*. According to my way of thinking, you could not have selected a more appropriate subject.

Wendell Willkie, as a candidate for the presidency of the United States, never really aroused the people of the country until he traveled around the world, talked with prime ministers and kings, teachers, soldiers, factory workers and farmers in all countries. He came back and wrote

his great message expressed in two words, "One World." His message was based upon the conviction that everywhere all races, all creeds, all nations were struggling for essentially the same things in life. He stamped upon the thinking of the world the great ideal that if peace is to be made secure for any one nation anywhere it must be extended to the whole world and to all peoples everywhere.

Nor was Wendell Willkie's message a new one. Jesus urged His disciples to widen their horizons and broaden their outlook. Again and again Jesus tried to interpret His message in terms of the whole world. In His parting message He said to His disciples, "Go ye into all the world . . ."

The Apostle Paul also stressed the "One World" view when he said, "God has made the world and all things therein . . . and hath made of one blood all nations of men for to dwell on the face of the earth." Professor Conklin of Princeton University said, "Biology and the Bible agree that God hath made of one blood all nations of men for to dwell on all the face of the earth."

Sir Frederick Banting, the discoverer of insulin, could have been a wealthy man if he had "cashed in" on his discovery by taking advantage of the patent laws. But he refused to do so. He wanted the victims of diabetes everywhere to have the benefit of his remarkable discovery, and so he gave it to the whole world.

There is no American chemistry, no English biology, and no Russian medicine. Electricity belongs to the whole world. Christianity is for all mankind everywhere.

"One World" is the Christian ideal. May your goal be no less.

Board of Trustees



Executive Committee

J. E. TRIMMER

J. W. KETTERING

J. M. MILLER

J. LINWOOD EISENBERG

SAMUEL S. WENGER

Finance Committee

MICHAEL KURTZ

J. Z. HERR

J. W. KETTERING

N. K. MUSSER

JOHN K. SPRENKLE

Equipment Committee

J. Z. HERR

F. S. CARPER

RUFUS ROYER

PAUL M. GRUBB

K. EZRA BUCHER

Officers of the Board

R. P. BUCHER, *Chairman*

J. W. KETTERING, *Secretary*

J. E. TRIMMER, *Vice-Chairman*

J. Z. HERR, *Treasurer*

• • • FACULTY



HENRY G. BUCHER

*Dean and Professor of Education
Administrative Committee*

A man of dignity, who will always condescend to lend a helping hand. Friend to all, and by all respected.



RALPH W. SCHLOSSER

Professor of English

"The best is yet to be." A truly magnificent personality, and a man of high ideals.



FREDERICK NEUMAN

Professor of Modern Languages

New addition to the faculty, but already he has shown his beliefs that through language study we can gain—one world.



CARL E. HEILMAN

Professor of Physics and Mathematics

A sense of humor, individualistic ideals, a man of virtue. He looks at everything through mathematical eyes.

FACULTY • • •

HARLAN R. BROOKS

Professor of Sociology and History

Former missionary to India and only a temporary faculty member; his character reflects inspiration.



ELEANOR NEUMAN

Instructor in German

An intelligent person can hold many a conversation, and who doesn't enjoy a conversation with an interesting personality like Mrs. Neuman.



JOHN R. HAUBERT

Professor of Business Education

Unmistakable efficiency and a likeable manner have won a host of friends his first year on the campus.



CHARLES APGAR

Professor of Biology

Patience and kindness to all have gained for him the admiration of all his students.



• • • FACULTY



LUELLA BREITIGAN

Professor of Shorthand and Typewriting

A conscientious instructor, years of service in her department are to her credit.



MARTHA MARTIN

Associate Professor of Bible

An inspiration to all who study under her. Her genial smile cheers everyone.



EPHRAIM G. MEYER

Professor of Voice and Director of Music

"Music is an expression of the soul." His diligence and application have given him many favorable results.



GERTRUDE R. MEYER

Instructor in Piano

Her nimble fingers make the piano talk. Her likeable personality supplies her with numerous friends.

FACULTY • • •

GALEN C. KILHEFNER

General Psychology

His pleasant "Hello" greets anyone at any time. His cheerful disposition makes up for his small stature.



VERA R. HACKMAN

Dean of Women and Professor of History

Efficiency, capability—an impressive knowledge at her fingertips. She accomplishes great things.



ISABEL McCURDY

Librarian

She knows her library like an open book. She has a friendly word for all.



IRA R. HERR

*Instructor in Physical Education and
Coach of Athletics*

Coach, adviser, and friend with a heart of gold. His understanding of human nature makes him especially popular.



• • • FACULTY



SAMUEL S. WENGER

Instructor in Law

His store of knowledge seems inexhaustible. His friendly manner is an asset that leads to his success.



GALEN HERR

Instructor in Orchestra

A sense of humor, joviality and at all times sincerity are traits that are distinctly his.



MARY B. REBER

Instructor in Art

Her quiet, pleasant ways have gained much of her success on the hill. Her ability means much to her students.



KATHRYN N. HERR

Instructor in French

Petite, charming, and admired by all who know her. Her pleasant, friendly ways gain for her the admiration of all.

FACULTY • • •

DR. CHARLES WEAVER

Instructor in Medical Technique

Sobriety seems to be prominent, but this man of few words has done noble deeds.



K. EZRA BUCHER

*Treasurer and Business Manager,
Administrative Committee*

Possessing a sense of humor with few words forcefully spoken, he is enthusiastic and interested in the betterment of the college.



MISS EFFIE SHANK

Secretary to Dean

Her kindness, generosity, and willingness to aid makes her a favorite with everyone.



REV. NEVIN ZUCK

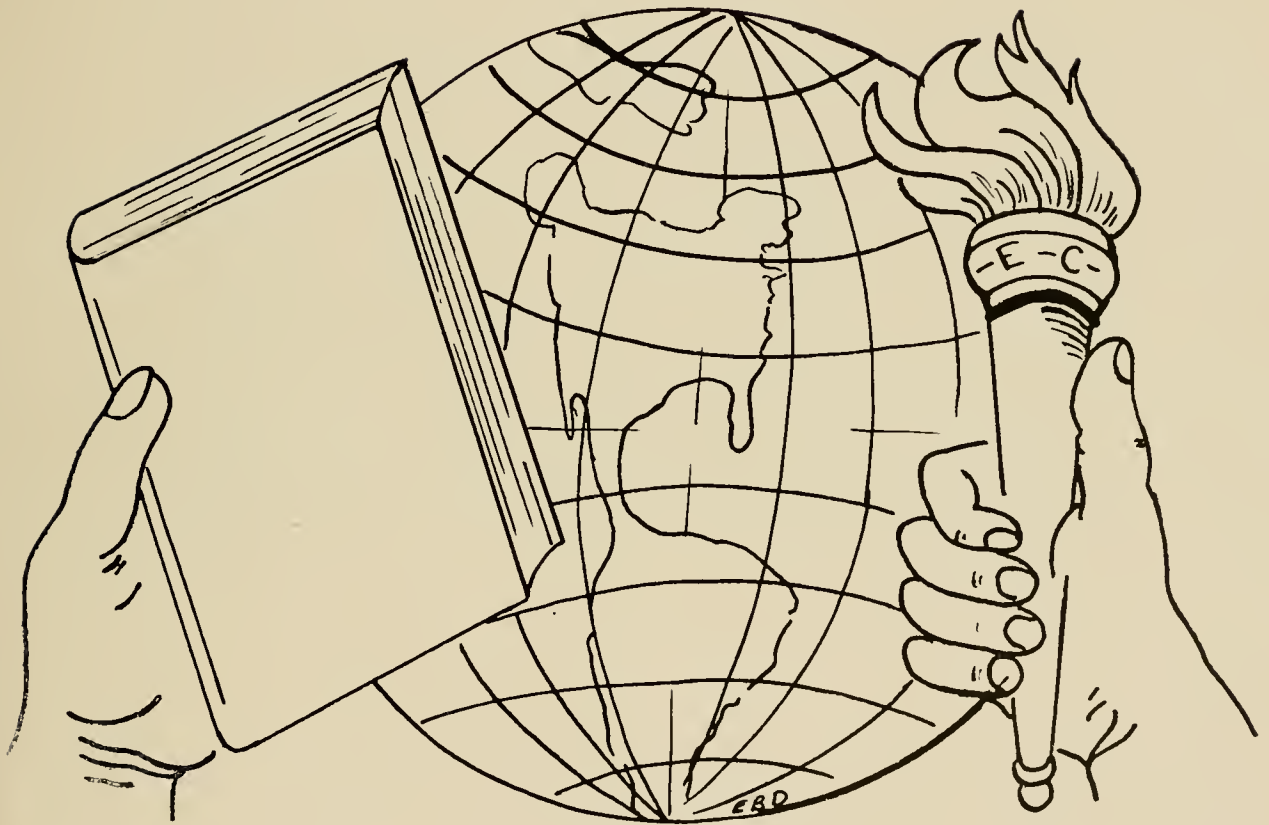
Religious adviser on campus and pastor of the Church of the Brethren in Elizabethtown





BRIDGEMAN
SCHAW

Classes . . .



SENIOR CLASS HISTORY



One bright day in September, nineteen forty-two, the lives of some fifty high school graduates were changed by the new contacts they made. It's strange how matter-of-factly those green freshmen took the transition. Of course there was quite a bit of confusion until they realized that they were part of a group—a new group—and must take responsibilities in order to reap the rewards waiting for them. The days of dinks and windsor ties seemed quite novel and passed quickly—and the class of '46 was put on an equal basis with the upperclassmen. Our first president was Ben Hess.

When the class returned in nineteen forty-three it was to find that the class was definitely reduced in the male section. The draft boards had played havoc with our class enrollment. Of course, athletics suffered with the decrease of men, but Coach found consolation in the girls' team—and our class made great contributions to this cause. Guy Buch was elected president of our sophomore class.

In nineteen forty-four we found our numbers decreased again. Many of the girls who came in with the class of '46 were taking two-year courses. It seemed strange to be so few. Regardless of the changes, the Junior Class adapted itself very well and set about performing the tasks required of it. The big event of this year was the Jr.-Sr. Banquet. The class worked hard to have a nice affair and felt repaid when the Seniors seemed to appreciate it. This year our president was Donald Lefever.

Our senior year finds the group appearing for the last time as the class of '46. We seemed to have worked so hard and long and yet it didn't seem possible that we were about to leave the hill. Although our class has had several additions, the male section is still in the minority. Florence Seaks served as president of the class in our Senior year.

We have had our share of college life now and are prepared to leave—hoping to be able to create something worth-while in the world. The most we can hope for in the future is to feel that we have been able to do something to help make our world into a united world—One World.

SENIOR CLASS OFFICERS



President

FLORENCE SEAKS

Vice-President

DONALD LEFEVER

Secretary

ROMAINE NISSLEY

Treasurer

FRANCES TRACY



• SENIORS •



GEORGE ALTHOUSE

B.S. Science

Baseball 1, 2, 3; Basketball 1, 2, 3, 4; Soccer 1, 2, 3.

George is one of our returned servicemen who is mending the strands of his educational rope which were severed when he left. George is one of our sportsmen and has been active in basketball since he is back. He is a friendly, happy fellow and an all-around good sport.

VIRGINIA BAKER (Junior-Senior)

B.S. Secondary Education

Y.W.C.A. 1, 2, 3; Etownian 2; International Relations Club 3; Sigma Kappa Xi 3.

When you hear laughter or an argument—look for Ginny—she's either there or will soon arrive. Music lovers—classical and boogie woogie—are fascinated by her piano playing. Ginny is a very intelligent conversationalist and shows evidence of profound thinking. She is preparing to teach science and social studies.



ZATAE E. BEETEM

B.S. Secondary Education

Choir 2, 3, 4; Y.W.C.A. 1, 2, 3, 4; Student Volunteers 1, 2, 3; Sigma Kappa Xi 1, 2, 3, Sec.-Treas. 4; Recreation Comm. 2; Class Vice Pres. 3; Basketball 3, 4; International Relations Club 2, 3, 4; L.S.A. 4.

Wherever there is loud laughter you'll find Zatae. Full of fun and merriment, she will make a hit with her students when she enters the teaching profession.



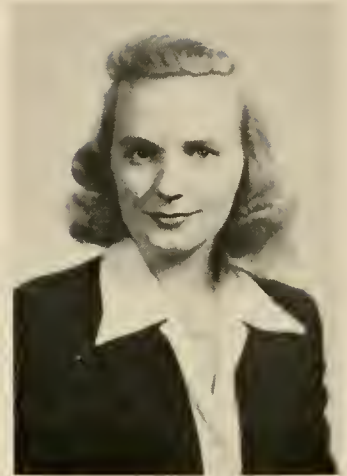
• SENIORS •

LOUISE BAUGHER BLACK

B.S. Commercial Education

A Cappella Choir 1, 3, 4, Sec. 2; Y.W.C.A. 1, 2, 3; Student Volunteers 2; Sock and Buskin 1, 2, 4, Vice Pres. 3; Class Sec. 2; Basketball 1, 2, 3, 4; Etonian Staff 2; Cheerleader 2, Captain 3; Commercial 1, 2; Senior Play 2, 4; Etonian Staff 2, 4, News Editor 3.

Energetic and vivacious is Louise. If you have any business advertising to be done, see Louise. She is efficient and capable and has a sparkling personality that won her a husband. Right, Merle?



VERNA MAE BRANDT

B.S. Science

Y.W.C.A. 4.

Verna will be remembered for her intelligence, conscientiousness in her class work and her interesting sense of humor. We are quite sure she will do well in her chosen profession—that of becoming a medical doctor. This day student is definitely scientifically minded.

RUFUS P. BUCHER, II

B.S. Science

Y.M.C.A. 2, 3, 4; Sigma Kappa Xi 3, 4; Baseball 2, 3; Basketball 3, 4; Student Council 4.

Rufus is quiet and unassuming. His main interest lies in science. He is also interested in basketball and has played on the varsity for two years. He is preparing for the medical profession.



• SENIORS •

MIRIAM FORNEY

A.B. Liberal Arts

Student Volunteers 1, 2, 3; Choir 1, 2, 3; Sigma Kappa Xi 2, 3; Sock and Buskin 1, 2, President 3; President Athletic Association 2; Y.W.C.A. 2, 3; Orchestra 1, 2; Basketball 1, 2, 3; President Student Senate 3.

Mim is known as the all-around girl on our campus. She participates in athletics, dramatics, musical activities and various other clubs. We all thought of Miriam as a successful career woman but we found her ultimate goal is becoming a doctor's wife—reason for thinking thus: a diamond third finger left hand.



SARAH B. GONZALEZ

B.S. Commercial Education

Basketball 1, 2; Comerciantes 1, 2, 4; Y.W.C.A. 1, 2, 4.

Gooky is a girl of varied interests and abilities ranging from her bilingual gift to Spanish music. We shall all remember her for her colorful personality and her love for good times. Those around her always enjoy her sense of humor and also her views on the serious side.

IRENE M. GROFF

B.S. Elementary Education

Y.W.C.A. 1, 2, 3, 4; Student Volunteers 1, 2; Class Secretary 3; Orchestra 3, 4.

Irene is one of the few quiet girls in the Senior Class. She seems quite serious much of the time and one thing she is very serious about is her piano playing. We will remember her playing in chapel and the recitals. We all feel that Irene will make an interesting and efficient teacher.



• SENIORS •



MARY E. HEISEY

B.S. Science

Student Volunteers 4; Chorus 4.

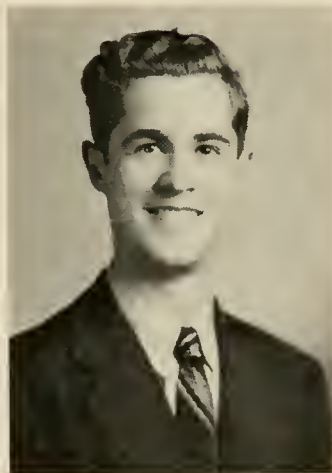
Mary is the professional woman of the class. She is a registered nurse and serves as Dr. Weaver's able assistant in the medical courses. Mary is very studious and very much interested in the medical field. Another interest of hers is that of music shown by her participation in chorals.

MYRON HORST (Junior-Senior)

A.B. Liberal Arts

Student Volunteers 1, 2; Choir 1, 2, 3, 4.

Myron is one of the creative members of our class. This can readily be seen in his music and thinking. Although his main interest seems to be music, he has a wide range of other interests. He enjoyed his work with high school students and hopes to continue it next year.



FRIEDA S. JONES

B.S. Elementary Education

Basketball 1, 2, 4; Y.W.C.A. 1, 2, 4; L.S.A. 4.

Jonesy has joined our class this year after having had several years of teaching experience. Her interests turn toward athletics, especially basketball. Her car, filled to the brim, is always heading for town and food. Although Jonesy has enjoyed teaching, her main interest is Galan who, we hope, will soon be home to stay.



• SENIORS •



HELEN L. LAUSHEY

B.S. Secondary Education

Sigma Kappa Xi 1, 2; Student Volunteers 1, 2, Sec. 3, 4; Student Senate 4, Treasurer 3; Y.W.C.A. 1, 2, 3, Pres. 4; International Relations Club Secretary 2, 3, President 4.

We remember Helen for her participation in religious activities. Although most of her interest seems rather serious, she has quite a sense of humor and she is remembered in Alpha for her corny jokes. Helen is the only mathematics major in the class and perhaps that is why she is so studious.

DONALD R. LEFEVER

Business Administration

Y.M.C.A. 1, 3, 4, Treas. 2; Ministerium 1, Vice Pres. 2; Student Volunteers 1, 2; Baseball 1, 2, 3; Basketball 2, 3; International Rel. Club 1, Vice Pres. 3, 4; Peace Team 1, 2, Leader 3, 4; Etownian 1, 4, Circulation Mgr. 2, Sports Ed. 2, 3; Etonian 4, Editor; Men's Student Council 2, 3, 4.

Don is one of our active young leaders whose main interest is in co-operatives. He is one of our pacifists and has done much active work to further his ideals. Pleasant personality and full of fun, he is sure to succeed in his business of co-ops. Good luck, Don.



RUTH MUSSER

B.S. Secondary Education

Y.W.C.A. 3, 4.

Ruth's intelligence and attitude will take her a long way. She is majoring in modern languages which she has mastered. She will be remembered for her friendliness and her consideration for others. Ruth is another of our day students who manages to get to classes on time and regularly.



• SENIORS •

CARL E. MYERS

A.B. Liberal Arts

Class President 1, 2; Y.M.C.A. 1, 2, Pres. 4; Student Volunteers, 1, 4, Pres. 2; Ministerium 1, Pres. 2, 4; Sock and Buskin 1, 2, Vice Pres. 4; Choir 1, 2, 4; International Rel. Club 1, 2, 4; Peace Team 1, 2, 4; Etownian 1, Asst. Ed. 2; Etonian Staff 4; Basketball 1, 2; Baseball 1, 2; Men's Student Council 1, 2, 4; Senior Class Play 2.

Carl is one of the outstanding religious leaders on our campus. As a ministerial student he has been a leader in his group and other groups on and off campus. We call him 'Etz' and he says 'prune juice.' He's one of the few who doesn't have to study to get an A, so he's an all-around fellow.

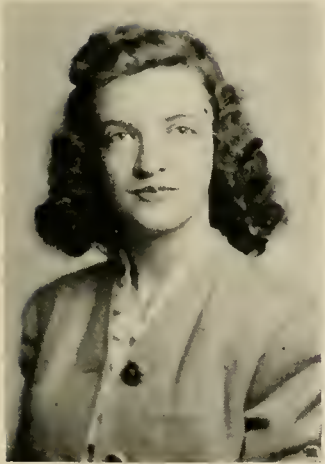


ROMAINE M. NISSLEY

B.S. Elementary Education

Y.W.C.A. 1, 2, 3, 4; Class Secretary 4; Student Council Vice Pres. 4.

Romaine is planning to teach but she has other interests and abilities. If she tires of teaching she can always turn to sewing; she's quite efficient. Her car is a familiar sight on campus as she is a day student who hails from Middletown. By the way, Bunny received her nickname from her love for carrots.



EDNA M. SCHOCK

B.S. Commercial Education

Y.W.C.A. Cabinet 4; Student Volunteers 2, 3, 4.

We always associate Edna with the commercial field. This year Edna has been kept very busy keeping the accounts of the college, since she has taken over the duties of bookkeeper in addition to her courses. Edna has been an active participant in religious activities on campus and we all shall remember her friendly spirit.



• SENIORS •

FLORENCE L. SEAKS

B.S. Secondary Education

Y.W.C.A. 1, 2, 3, 4; L.S.A. 2, 3, 4; Etownian Staff 3, 4; Etonian Staff 4; Class Treasurer 3; Class President 4; Student Council 3; Student Senate 3, 4.

"Flossie" (that's what everyone calls her) is preparing for the teaching profession. She can look gruff at times but her happy, congenial smile will bring her success. Her literary talent will be a definite contribution to her profession.



MARY MAXINE STRAW

Business Administration

Student Volunteers 1; Y.W.C.A. 2, 3, 4; Commerciantes 3, 4.

Max is a very proficient business woman—when in doubt about a business matter, consult Max; she can explain the problem. She appreciates Pennsylvania but is looking forward to the day when she can go back to New York State. She is very happy this year as Jack has returned.

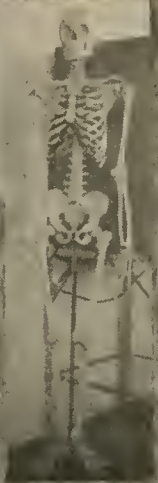
FRANCES I. TRACY

B.S. Elementary Education

Y.W.C.A. 1, 2, 3, 4; Student Volunteers 1, 2; Student Council President 4; Class Treasurer 4.

If you wish to have something done well, see Frances. When you need help for anything, she will lend a hand. She is studious and will probably turn out to be the best teacher in the class. By the way, do not be misled by her quietness—she has quite a sense of humor.





JUNIOR CLASS HISTORY



Has it really been three years since a group of thirty-four new Freshmen rather timidly, but none the less eagerly, began their college careers? Through the bewildering process of registration, through the parties and get-togethers planned to make us feel at home, through lectures, formal and informal, on how to behave away from home, we plunged. We survived the harrowing experience of the first week of classes. We even began to remember the names of some profs and fellow students.

Say—this college life wasn't bad at all! In fact it was fun.

The long-awaited week of Sophomore initiation arrived, and turned out to be much less fearful than expected. In fact, even that was fun! And it was almost sad to part with those dinks and pins when the initiation was over.

Where did that year get to? Late-hour gab sessions, parties in the gym, midnight oil burned over term papers, cramming for examinations, basketball games, plays, club meetings—oh yes, and the little matter of going to classes—May came before anyone knew what had happened.

What a thrill to be a Sophomore—to be able to tell the new kids where room 286 is and what time breakfast is served. We hoped the Freshmen were impressed with the fact that we were old hands at this. Now we were really a part of campus life. How in the world did we ever think we were busy last year, when there now was much more work and more responsibilities! Our class was well represented in all the campus activities.

The third year, as Juniors, our number was greatly decreased—seven of our classmates were two-year students and left to be lab techs. The rest carried on, with even more responsibilities. Several who were originally in our class advanced through summer work. However, we also acquired some new members who started later than we did.

Now with our last year of college approaching fast, we can't help feeling a little sad about the end of our school life. Hard work? Yes, college is! But a wonderful experience! Ask any member of the class of '47.

JUNIOR CLASS OFFICERS



President

FRANCES KREBS

Vice-President

BEVERLEY LAY

Secretary

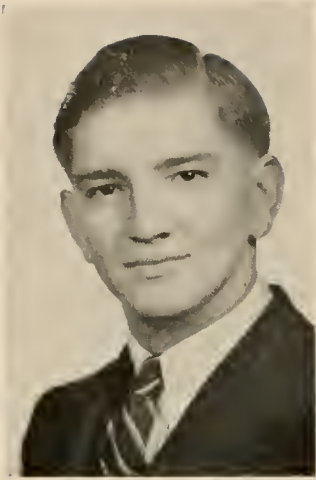
JANET SENFT

Treasurer

ARLENE KETTERING



JUNIORS



EDWIN BOLL

B.S. Science

Y.M.C.A. 1, 2; Student Senate 1, 2; Baseball 1, 2; Soccer 1, 2; Basketball 1, 2, 3; Class President 2; Sock and Buskin 2; Candles Club 2; Science Club 2.

Eddie has proven himself quite efficient in sports, but in his scientific efforts he is really outstanding. It seems he was born with a natural gift for solving scientific problems. Is that true, Eddie?

WILLIAM O. BOSSERMAN

A.B. Liberal Arts

Choir 2; Y.M.C.A. 2; Ministerium 2; Student Volunteers 2; Peace Team 2, 3.

Bill Bosserman is one of the married members of the student body—with two children to prove it. A pre-ministerial student, Bill has proved that he will have much success in his chosen work by his participation in the religious activities.



RUTH N. CROMIE

B.S. Secondary Education

Basketball 1, 2, 3; Y.W.C.A. 1, 2, 3; Sigma Kappa Xi 3; L.S.A. 3; Int. Rel. Club 3.

Meet the mathematician of the class. 'Cromie' believes in concentrating on what she likes, and she definitely likes anything along the line of math. A swell basketball player and a lot of fun to have around, she's a friend to all on campus. Cromie is also famous for her fiery red blushes.



JUNIORS

ESTHER B. DOURTE

B.S. Elementary Education
Etonian 3.

Friendly, quiet Esther has come to E-town only recently, and she has already found an important place for herself. Her drawings in the Etonian are ample proof of her drawing ability, just as her standing as a student is proof of her industriousness.



ESTHER GOLDFUS

B.S. Elementary Education

Esther is a comparative newcomer to the class, but a very welcome one. She has proven in the short time she has been on campus that she can be depended upon for good work. Among many other qualities, she has a sense of humor and a friendly smile for everyone.



KATHRYN K. HOFFMAN

A.B. Liberal Arts

Choir 1, 2, 3; Student Volunteers 1, 2, Secretary 3; Y.W.C.A. 1, 2, Secretary 3; Int. Rel. Club 3; Etonian Circulation Manager 3.

How does Kay ever manage to be so jolly and yet look so dignified at the same time? Kay has many assets that have made her invaluable on campus, including musical ability and a knack for helping everyone. She is often found at a typewriter or a mimeograph machine.



JUNIORS

FRANCES I. KREBS

B.S. Commercial Education

L.S.A. 1, 2, Vice Pres. 3; Commerciautes 1, 2, Vice Pres. 3; Choir 2, 3; Basketball 1, 2, 3; Etownian Staff 2, 3; Assistant Editor Etonian 3; Class Pres. 3; Y.W.C.A. 1, 2, 3; Orchestra 1, 2; Student Council 3.

Krebs is another of our all-around classmates. One of the basketball stars, an excellent student, and a swell person to be around, the president of our class can't help being successful in whatever she does. Her efforts have done much to insure the success of both the Etonian and the Etownian, and as a commercial teacher we know she'll be loved by those she teaches.



BEVERLY A. LAY

A.B. Liberal Arts

Student Senate Sec. 3; Student Council 3; L.S.A. 1, 2, 3; Etonian 3; Etownian 3; Y.W.C.A. 1, 2, 3, Sec.; Vice Pres. Junior Class.

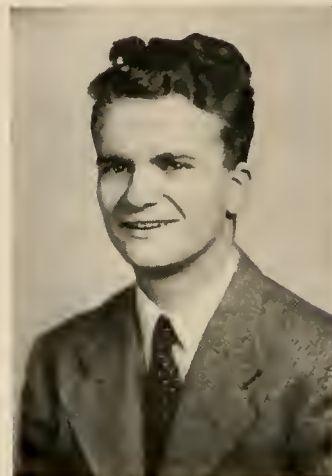
Beverly is known as 'Bev' to her close associates. She is preparing in the field of Liberal Arts. Attractive and friendly, she will find no difficulty in succeeding.

DAVID J. MARKEY

A.B., Liberal Arts

Student Volunteers 2, 3; Int. Rel. Club 3, Pres. 2; Choir 1, 2, Pres. 3; Y.M.C.A. 1, 2, 3; Peace Team 2, 3; Sock and Buskin 1, 2, 3; Baseball 1, 2; Basketball 1, 2; Student Senate 1, 2, 3; Ministerium 3; Etownian 2, 3; Etonian 3; Class V.-Pres. 2; Sec. Athletic Association 2.

Now here's a very versatile fellow, as you can easily see. Dave has been a tremendous asset on campus and has proved to be a dependable leader as well as an excellent student. He has participated very energetically in all activities. No one who knows him can doubt that he will succeed in anything he attempts. Best wishes, Dave.



JUNIORS



REBA M. SEBELIST

B.S. Science

Choir 1; Y.W.C.A. 1, 2, 3; Student Volunteers 2, 3; Int. Rel. Club 3; Sigma Kappa Xi 3; L.S.A. 1, 2, 3.

Here we have one of the scientists of the class. Besides hydrochloric acid and amphioxus, Reba seems to be interested in books of all kinds, because she's a very able assistant to Miss McCurdy. And who can forget her dry humor?

JANET A. SENFT

A.B. Liberal Arts

Class Sec. 3; Y.W.C.A. 1, 2, Treas. 3; Etownian Asst. Ed. 3; Choir 1, 2, 3; L.S.A. 2, 3.

A really earnest and conscientious worker, Janet has been an honor student since the first day of school. Friendly and likeable, she is outstanding in that she not only has high standards, but that she also lives up to them. We owe much to her as assistant editor of the Etownian.



GLADYS C. WEAVER

B.S., Elementary Education

Y.W.C.A. 1, Cabinet 2, 3; Student Volunteers Treas. 2, 3; Choir 1, 2, 3; Bus. Mgr. Etownian 3.

One of the most energetic people in the school, Gladys will be long remembered by her fellow students for her hearty laughs and cheerful disposition. She can be counted on to enter wholeheartedly into any activity, whether it is fun or work, and to contribute her share of ideas.



JUNIORS



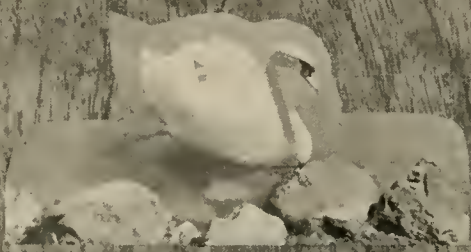
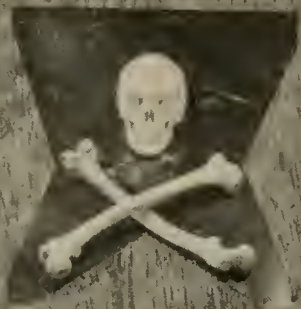
DORIS H. WITTER

B.S. Commercial Education

Y.W.C.A. 1, 2, 3; Commerciantes 1, Sec.-Treas. 2, Pres. 3;
L.S.A. 1, 2, 3; Student Vol. 1; Sec.-Treas. Athletic Assn. 3.

One of our future commercial teachers, Witter has her feet planted firmly (if a little on an angle) on the road of success. Although she can work hard, she never lets work depress her buoyant spirits. Her friends can testify to her sense of humor and dependability. But don't ever try to change her mind once she's made a decision.





SOPHOMORE CLASS HISTORY



It was in September, 1944, that the majority of our class gazed upon E'town College for the first time. I suppose we appeared shy and backward to some of the upperclassmen who smiled understandingly behind our backs, but despite the fact that we were in a strange environment we soon learned to feel at ease. Particularly so after we knew that everything was fine if we walked the straight and narrow path. Following the initial social activities, we settled into deep concentration.

We became active in sports with Nancy Bucher, Nancy Forney, Audrey Kopp, Joyce Longwell, and Pat Mahan assisting the women's team. Tossing for the men were Donald Bohrer, Wilbur Graham, Vernon Bricker, George Weiss, and Charles Whitacre. In the latter part of the year seven of our men were called to serve Uncle Sam. Undaunted, we moved forward with Lowell Zuck, president; Esther Straley, vice-president; Joyce Longwell, secretary, and Dick Wenger, treasurer.

According to the signs of the times and the number of credits, we are now Sophomores actively engaged in all phases of campus activity. We find that college life is not all work nor all play but a combination of both and wise is the student who learns to appropriate his time!

Our days at college have been happy days of immeasurable value to each one of us. From washing dishes to holding places of responsibility as officers, from the social life to semester exams, we are living in a world of experiences that determine our future history. We are making history every day and we, the Sophomore Class, hope that our history will be such that we can proudly look back upon it with satisfaction, knowing that we have contributed our best of body, mind, and soul.

SOPHOMORE CLASS OFFICERS



President

LOWELL ZUCK

Vice-President

RICHARD WENGER

Secretary

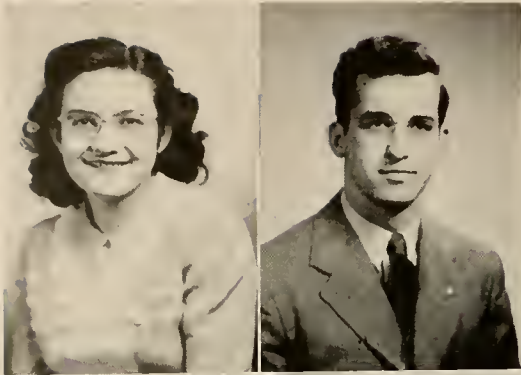
BETTY LAUSHEY

Treasurer

PATRICIA MAHAN



SOPHOMORES



SMARO ARAPOLU

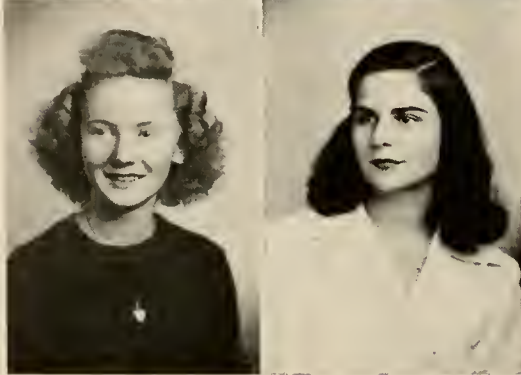
Laboratory Technician

Y.W.C.A. 1, 2.

MEBLE E. BLACK

Business Administration

Basketball 1, 2, 3; Baseball 1; Soccer 1; Choir 1, 2; Y.M.C.A. 1, 2; Commerciales 1, Pres. 2; Class V.-Pres. 1.



RUTH V. BOEPPLE

Laboratory Technician

L.S.A. 2; Sigma Kappa Xi 1, 2; Y.W.C.A. 1, 2.

NANCY M. BUCHER

A.B. Liberal Arts

Y.W.C.A. 1, 2; Basketball 1, 2; Student Volunteers 1, 2; Etownian 1, 2; Etonian 2; Choir 1.

BETTY M. BURKHOLDER

Music

Student Volunteers 1, 2; Orchestra 1, 2; Basketball 1, 2; Choir 1, 2; Y.W.C.A. 1, 2.

DOREEN M. CRIST

A.B. Liberal Arts

Student Volunteers 1, 2; Y.W.C.A. 1, 2; Int. Rel. Club 2; Basketball 1; Choir 1, 2; Peace Team 1, 2; Sock and Buskin 1, 2; Etownian 1, 2; Etonian 2.

GEORGE H. DeFREHN

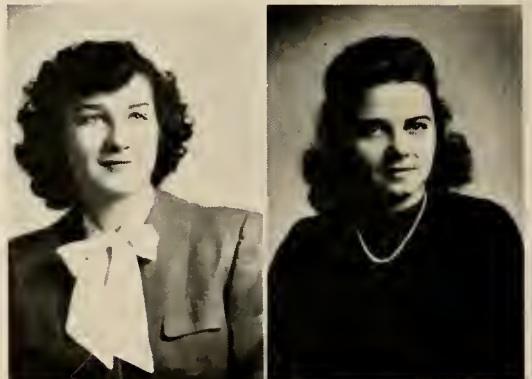
A.B. Liberal Arts

L.S.A. 1, Pres. 2; Ministerium 2; Sock and Buskin 2; Y.M.C.A. 1, 2; Etownian 2.

HELEN I. DEGLER

Medical Assistant

Y.W.C.A. 1, 2.



SOPHOMORES

D. JEAN DeVERTER

Medical Secretary

Y.W.C.A. 2; Comerciantes 1, 2.

JOHN W. DUNHAM

Pre-Law

EMMA RUTH ENGLE

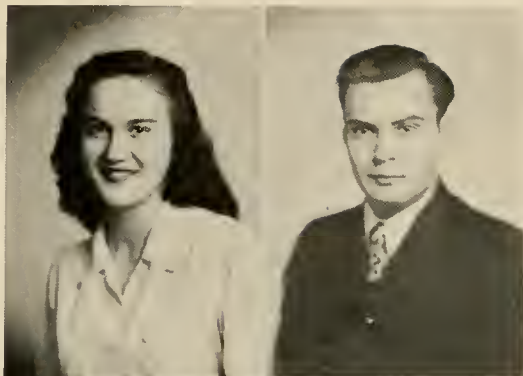
A.B. Liberal Arts

Student Volunteers 2; Y.W.C.A. 2; Int. Rel Club 2.

NANCY P. FORNEY

Medical Secretary

Basketball 1, 2; Cheerleader 1; Comerciantes 1, 2; Student Council 2; Y.W.C.A. 1, 2.



JOE GINGRICH

Business Administration

DANIEL C. HALDEMAN

A.B. Liberal Arts

Student Volunteers 1, 2; Y.M.C.A. 1, 2; Peace Team 1, 2; Basketball 1; Choir 1, 2; Sock and Buskin 1, 2.



MARY A. HESS

Elementary Education

CLIFFORD B. HUFFMAN

A.B. Liberal Arts

Student Volunteers 1, 2; Y.M.C.A. 2; Peace Team 2; Int. Rel. Club 2.

SOPHOMORES

ANNA L. KENDIG

Laboratory Technician

Etownian 1; Student Volunteers 1; Choir 1; Y.W.C.A. 1, 2.

GRACE L. KING

Secretarial

Student Volunteers 1; L.S.A. 2; Commerciantes 1, 2; Choir 1, 2; Y.W.C.A. 1, 2; Orchestra 1, 2.

GLENN E. KINSEL

A.B. Liberal Arts

Student Volunteers 1, Pres. 2; Y.M.C.A. 1, Treas. 2; Sock and Buskin 1, Treas. 2; Ministerium 1, 2; Peace Team 1, 2; Int. Rel. Club 2; Athletic Assn. Pres. 2; Orchestra 1, 2; Choir 1, 2.

DOROTHY A. KLINE

Elementary Education

Student Volunteers 1; L.S.A. 2; Y.M.C.A. 1, 2; Basketball 2.



CHARLOTTE M. KNAUB

Elementary Education

Student Volunteers 1, 2; Y.W.C.A. 1, 2; Choir 1, 2.

AUDREY V. KOPP

Commercial Education

Basketball 1, 2; Commerciantes 1, Sec.-Treas. 2; L.S.A. 1, Sec.-Treas. 2; Y.W.C.A. 1, 2.

ELIZABETH M. LAUSHEY

Medical Secretary

Class Sec. 2; Student Volunteers 1, 2; Y.W.C.A. 1, 2; Commerciantes 1, 2; Girls' Basketball Manager 1, 2.



SUSAN LITTLE

Medical Assistant

Student Volunteers 1; Y.W.C.A. 1.

SOPHOMORES



PATRICIA ANN MAHAN

A.B. Liberal Arts

Student Volunteers 1, 2; Y.W.C.A. 1, V.-Pres. 2; Sock and Buskin 2; Treas. Student Senate, 2; Class Treas. 2; Basketball 1, 2.

DORIS F. MYERS

Laboratory Technician

Student Volunteers 1; Y.W.C.A. 1, 2; L.S.A. 2; Sigma Kappa Xi 1, 2; Choir 1, 2.



ROSEMARY E. NOLT

Secretarial

Basketball 1; Cheerleader 1, Captain 2; Y.W.C.A. 1, 2; Commerciantes 1, 2; Y.W.C.A. Cabinet 2.

DOROTHY E. PFALTZGRAFF

Medical Secretary

Student Volunteers 1, 2; Choir 1, 2; Girls' Basketball Manager 1, 2; Y.W.C.A. 1, 2; Commerciantes 1, 2.

SARA C. PRICE

A.B. Liberal Arts

Student Volunteers 1, V.-Pres. 2; Choir 1, Sec. 2; Etownian 2; Y.W.C.A. 1, Cabinet 2; Int. Rel. Club 2.

HELEN REBERT

B.S. Secondary Education

L.S.A. 1, 2.

PAUL E. REED

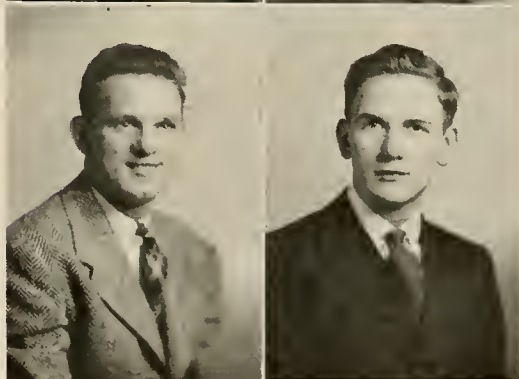
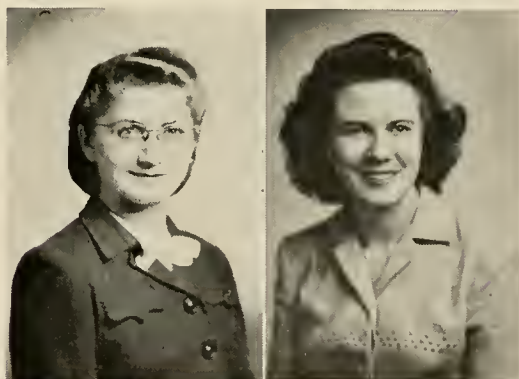
B.S. Science

Basketball 2.

CLYDE R. SHALLENBERGER

A.B. Liberal Arts

Y.M.C.A. 1, 2; Student Volunteers 1, 2; Basketball 1; Ministerium 1, 2; Choir 1; Peace Team 1, 2; Int. Rel. Club 2; Etownian 2.



SOPHOMORES



JEAN SHARPE

A.B. Liberal Arts

Student Volunteers 1, 2; Y.W.C.A. 1, 2; Sock and Buskin 1, 2; Etownian 1; Student Council 1; Int. Rel. Club 2.

MARIAN RUTH SHaub

Elementary Education

Student Volunteers 1, 2; Y.W.C.A. 1, 2; Choir 1, 2.

ESTHER K. STRALEY

A.B. Liberal Arts

Y.W.C.A. 1, 2; Etownian 1, Editor 2.

SARA SWARTZ

A.B. Liberal Arts

Etownian 2; Choir 2; Y.W.C.A. 1, 2, 3; Student Volunteers 1, 2, 3; Int. Rel. Club 3.

LIDA ANNE SWOPE

Commercial Education

Y.W.C.A. 1, 2.

RICHARD C. WENGER

A.B. Liberal Arts

Y.M.C.A. 1, Sec. 2; Student Volunteers 1, 2; Ministerium 1, 2; Basketball 1; Choir 1, 2; Peace Team 1, Treas. 2; Int. Rel. Club 2; Sock and Buskin 1, 2; Etonian 2; Baseball 1; Class Treas. 1; Class V.-Pres. 2.

CHARLES J. WHITACRE

A.B. Liberal Arts

Sock and Buskin 1, 2; Peace Team 1, 2; Y.M.C.A. 1, 2; Ministerium 1, 2; Basketball 1, 2; Baseball 1; Student Volunteers 1, 2; Student Senate 1; Int. Rel. Club Sec. 2; Choir 1, 2.

LOWELL H. ZUCK

A.B. Liberal Arts

Student Volunteers 1, 2; Choir 1, Treas. 2; Ministerium 1, V.-Pres. 2; Etownian 2; Etonian 2; Y.M.C.A. 1, 2; Class Pres. 1, 2; Int. Rel. Club 2; Men's Student Council 2; Peace Team 1, Sec. 2.





FRESHMAN CLASS HISTORY



The third week in September fifty students (that's what we'd like to think we are) arrived at college. Some of us were a little scared and homesick too but we found everyone so friendly and willing to help that we soon forgot our fright and began enjoying ourselves. In spite of the continual downpour of rain, the upper-classmen succeeded in giving us an interesting week's entertainment. The climax came when we were capped at Commencement. From then, we were to wear those patches of felt called dinks and carry our handbooks.

All of us quickly learned to recognize the three maidens farthest from home: Senorita Buena Machuca of Colombia, South America, and the Misses Marjorie Brower of California and Eunice Breshears of Washington state.

With Professor Haubert as our adviser, we soon organized our class and elected officers. Eugene Witmer was chosen president with Maxine Bowman, vice-president: Kathleen Baugher, secretary, and Marjorie Brower, treasurer.

Surviving initiation with all its tribulations, we became full-fledged Freshmen of Elizabethtown College. The "greenies" were beginning to ripen into something worth-while, at last.

This class proudly boasts three outstanding basketball men, Dick Hivner, Frank Keath, and Bob Shiffer. Their splendid playing was a valuable asset to the team.

Everybody has fond and unusual memories of the skating party which we sponsored on December 7. Those of us who attended had a grand time. Every time we see a milk truck we remember the mishap of losing a wheel.

Now that we are accustomed to life on the Hill, it is with great pleasure that we look forward to our Sophomore year. As we proceed toward our goal may we be a profitable addition to Elizabethtown College.

FRESHMAN CLASS OFFICERS



President

EUGENE WITMER

Vice-President

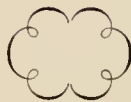
MAXINE BOWMAN

Secretary

KATHLEEN BAUGHER

Treasurer

MARJORIE BROWER



FRESHMEN

ESTHER BACHMAN

Laboratory Technician
Choir, Y.W.C.A., Basketball

BEULAH I. BARNHOUSE

Secretarial
Y.W.C.A., Choir, Student Volunteers

KATHLEEN D. BAUGHER

Commercial Education
Choir, Cheerleader, Etownian, Y.W.C.A., Class Secretary, Sigma Kappa Xi.

MAXINE BOWMAN

Secretarial
Y.W.C.A., Cheerleader, Choir, Class Vice-President, Basketball.



ELSIE RUTH BRANDT

Science
Y.W.C.A., Sigma Kappa Xi.

EUNICE MARIE BRESHEARS

Secretarial
Student Volunteers, Y.W.C.A. Treasurer.

SARA M. BRETZ

Liberal Arts
Y.W.C.A.

MARJORIE BROWER

Liberal Arts
Class Treasurer, Student Volunteers, Y.W.C.A., Peace Team, Int. Rel. Club, Choir.

FRESHMEN



ARLETTA MAE BYERS

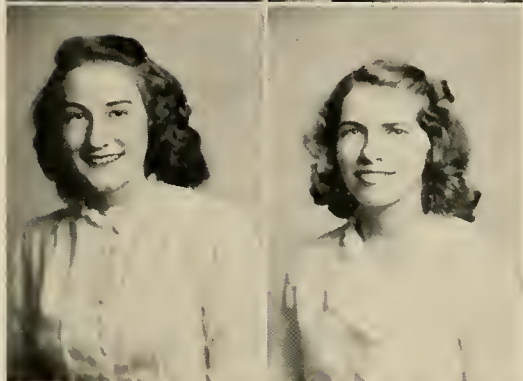
Elementary Education

Y.W.C.A.

PHYLLIS V. DRUCK

Liberal Arts

L.S.A., Student Volunteers, Y.W.C.A.



ROMAINE LUCILLE EVANS

Medical Secretary

Y.W.C.A.

ELBERTA FOX

Laboratory Technician

Student Volunteers, Y.W.C.A., Choir.

M. JANE FREY

Secondary Education

Y.W.C.A., Sigma Kappa Xi.

JOHN M. GARBER

Liberal Arts

Ministerium, Y.M.C.A., Choir, Orchestra

DORIS J. GARVER

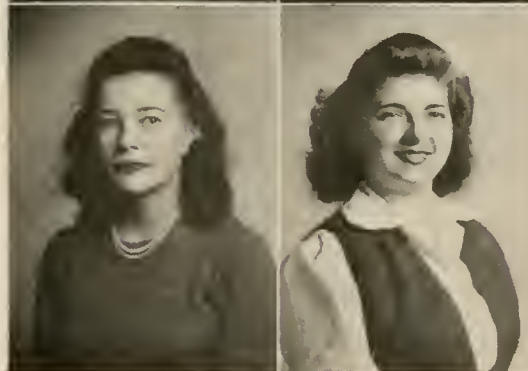
Liberal Arts

Y.W.C.A.

R. ARLENE GEIB

Medical Assistant

Y.W.C.A.



FRESHMEN



WALTER C. GINGRICH

Science

Orchestra, Choir, Sigma Kappa Xi, Y.M.C.A.,
Basketball.

BETTY JANE GRIMM

Elementary Education

Student Volunteers, Y.W.C.A.



JANE HERNLEY

Science

Y.W.C.A., Choir.

ETHEL HERSHEY

Secretarial

Y.W.C.A.

RICHARD L. HIVNER

Secondary Education

Y.M.C.A., L.S.A., Basketball.

LOIS HOLSINGER

Pre-Medical

Student Volunteers, Y.W.C.A.

FRANK W. KEATH

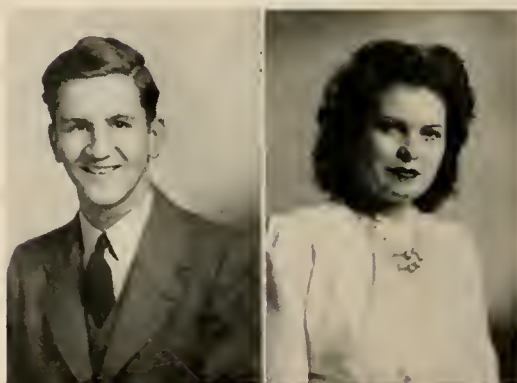
Secondary Education

Y.M.C.A., Basketball.

ANNA M. KEPNER

Elementary Education

Y.W.C.A., Int. Rel. Club, Basketball, Etonian.



FRESHMEN

HAZEL D. KREIDER

Liberal Arts

Student Volunteers, Y.W.C.A., Basketball, Int. Rel. Club.

MARY K. LEMON

Secondary Education

Y.W.C.A.

ATHA LIGHTY

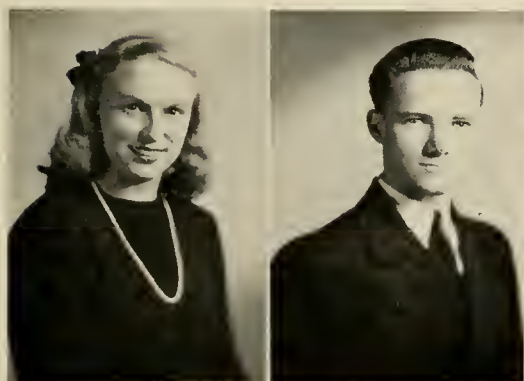
Science

Y.W.C.A., Basketball, Sigma Kappa Xi.

BUENA MACHUCA

Secretarial

Y.W.C.A., Comerciantes.



PATRICIA McCARTY

Liberal Arts

Student Volunteers, L.S.A., Y.W.C.A., Cheerleader

MATTHEW MEYER

Liberal Arts

Peace Team, Basketball, Choir, Y.M.C.A.



PHYLLIS M. MEYERS

Secretarial

Student Volunteers, Y.W.C.A., Int. Rel. Club.

RALPH L. MUSSER

Business Administration

Choir, Basketball Manager, Y.M.C.A.

FRESHMEN

NANCY ELIZABETH NISSLEY

Elementary Education

Y.W.C.A.

JOANNE A. POSEY

Secretarial

Y.W.C.A., Orchestra.

MRS. MYRLE RADLINGER

Medical Assistant

Y.W.C.A.

G. ROBERT SHIFFER

Pre-Engineering

Basketball



ENOLA M. SMITH

Liberal Arts

Student Volunteers, Y.W.C.A., Orchestra, Choir.

DOROTHY ELIZABETH SPROUT

Elementary Education

Choir, Y.W.C.A.

JOHN H. STAUFFER

Pre-Medical

Cheerleader

MARY ELIZABETH STONER

Elementary Education

Y.W.C.A.

FRESHMEN



FERN A. SWEIGART

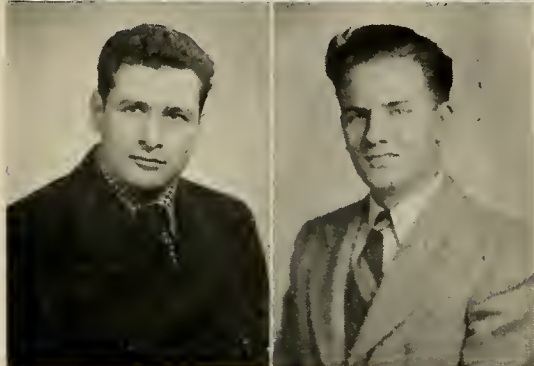
Liberal Arts

Student Volunteers, L.S.A., Int. Rel. Club,
Y.W.C.A., Choir

DORIS JEAN THATCHER

Liberal Arts

L.S.A., Basketball, Y.W.C.A., Choir.



HARRY STRAW

Liberal Arts

EUGENE R. WITMER

Business Administration

Y.M.C.A.

JEAN T. YOUNG

Liberal Arts

Student Volunteers, Basketball, Y.W.C.A., Int.
Rel. Club.

JOHN J. YUSKO

Science

MARY B. ULRICH

Medical Secretary

Y.W.C.A.

RUTH A. ZIMMERLY

Secretarial

Student Volunteers, Int. Rel. Club, Y.W.C.A.,
Basketball.



CHIROPRACTORS



NORVAL H. BACON, York, Pa.

EMMA J. BEETEM, Carlisle, Pa.

A. MARY BROWN, Chambersburg, Pa.

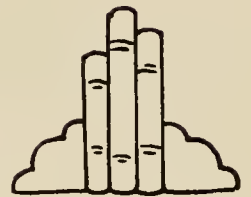
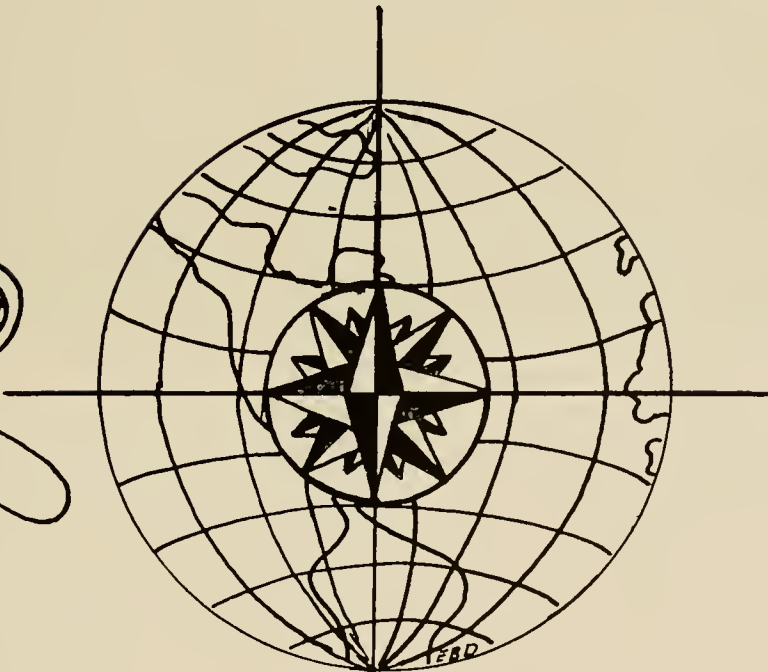
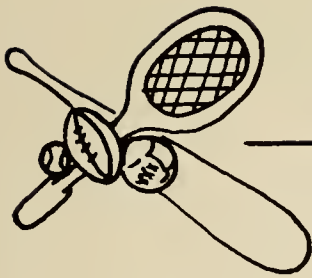
HOWARD C. PAINE, Lebanon, Pa.

REUBEN D. SHAAK, Lebanon, Pa.

DANIEL D. ULRICH, Lebanon, Pa.

BYERS L. ZENTMYER, Waynesboro, Pa.

Activities . . .



ETONIAN STAFF



EDITORIAL STAFF

<i>Editor</i>	DONALD LEFEVER
<i>Assistant Editor</i>	FRANCES KREBS
<i>Athletic Editor</i>	NANCY BUCHER
<i>Senior Editor</i>	FLORENCE SEAKS
<i>Junior Editor</i>	BEVERLEY LAY
<i>Sophomore Editor</i>	CHARLES WHITACRE
<i>Freshman Editor</i>	ANNA KEPNER
<i>Snapshot Editor</i>	RICHARD WENGER
<i>Art Editor</i>	ESTHER DORTIE

BUSINESS STAFF

<i>Business Manager</i>	GLADYS WEAVER
<i>Assistant Business Manager</i>	LOWELL ZUCK
<i>Advertising Manager</i>	CARL MYERS
<i>Assistant Advertising Manager</i>	DOREEN CRIST
<i>Circulation Manager</i>	HELEN REBERT
<i>Assistant Circulation Manager</i>	DAVID MARKEY

ETOWNIAN STAFF



Editor-in-chief

ESTHER STRALEY

Assistant Editor

JANET SENFT

Business Manager

DAVID MARKEY

Adviser

VERA HACKMAN

A CAPPELLA CHOIR



OFFICERS

President

DAVID MARKEY

Secretary

SARA PRICE

Treasurer

CHARLES WHITACRE

Director

E. G. MEYER



One of the best ways to express one's soul is through singing, and the A Cappella Choir provides such an outlet through the rendition of the sacred concerts which are given the second semester in various churches throughout the brotherhood of Eastern Pennsylvania.

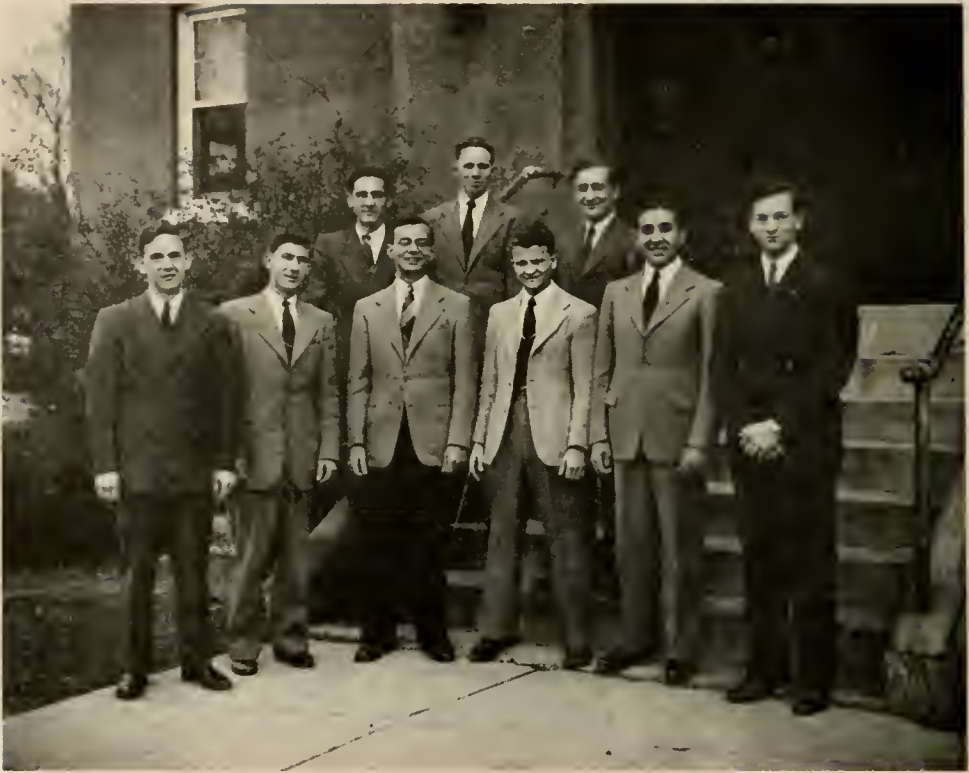
This year's program has as its theme "An Orison for Peace." The members of the choir feel deeply indebted to Professor and Mrs. Meyer for their faithful service to the choir.

ORCHESTRA



The orchestra is beginning to recover from the effects of the wartime shortage of students. The size has increased considerably this year, and under the capable leadership of Mr. Galen Herr it is beginning to resume its former place in campus activities. May we hear it more often in the future!

MINISTERIUM



OFFICERS

<i>President</i>	CARL MYERS
<i>Vice-President</i>	LOWELL ZUCK
<i>Secretary</i>	DANIEL HALDEMAN
<i>Treasurer</i>	WILLIAM BOSSERMAN
<i>Adviser</i>	REV. NEVIN ZUCK



The Ministerium is an organization of ministers and students interested in ministerial work.

The organization is comprised of both active and honorary members. The active members are those students on campus interested in the work of the ministry and faculty members are eligible for honorary membership if they are ministers.

The Ministerium endeavors to maintain a high respect for the calling of the ministry: to seek opportunity for practical experience while preparing for the ministry: and to foster an academic, pretheological training.

STUDENT VOLUNTEERS



OFFICERS

<i>President</i>	GLENN KINSEL
<i>Vice-President</i>	SARA PRICE
<i>Recording Secretary</i>	HELEN LAUSHEY
<i>Corresponding Secretary</i>	KAY HOFFMAN
<i>Treasurer</i>	GLADYS WEAVER
<i>Adviser</i>	MARTHA MARTIN



The Student Volunteers is the basic religious organization on the campus. To provide a stimulus for those who are preparing themselves for active Christian duty is the purpose of the group.

Eager to uphold the principles for which they stand, the Volunteers carry on an inspiring program throughout the year. Bimonthly meetings have organized the work among the students, and deputation teams were sent out to a majority of the churches in eastern Pennsylvania and several in the southern district of the state. The programs given by these teams were built around Christian living.

High points in this year's activities were: Brethren Student Christian Conference held at Manchester College, North Manchester, Indiana, which was well represented by the Elizabethtown Volunteers; and Christian Emphasis Week, held on the campus.

SOCK AND BUSKIN



OFFICERS

President

MIRIAM FORNEY

Vice-President

CARL MYERS

Secretary

HELEN REBERT

Treasurer

GLENN KINSEL

Adviser

VERA R. HACKMAN



The Sock and Buskin is the dramatic club on E. C.'s campus which welcomes all students interested in participating in the field of dramatics.

“Miss Lulu Bett”



“Miss Lulu Bett,” one of the best performances the club has given on the Hill, was this year’s production. It was presented two evenings and was enthusiastically received by both audiences. The club is planning several trips to see professional actors and to get any tips which might prove helpful to them.

Miss Vera Hackman directed the play and deserves the appreciation of the cast for her fine work.

Last year the club presented “Letters to Lucerne” as its annual performance. It was a timely and colorful play with the action taking place in Switzerland. The cast was largely women since men were not very plentiful; however, that did not lessen the splendid performance which the club gave.

PEACE TEAM



OFFICERS

Leader

DONALD LEFEVER

Secretary

LOWELL ZUCK

Treasurer

RICHARD WENGER



For a number of years the Peace Team has been an active organization on the Hill. The group meets semimonthly to discuss such problems as peacetime conscription, international relations, economic problems, racial problems, and pacifism. Each meeting is opened with a brief period of worship.

During the past two years the group has carried on an active program opposing peacetime conscription, supporting Brethren Service and placing over a score of books and pamphlets in the college library.

MALE QUARTETTE



CARL MYERS, DAVID MARKEY, CHARLES WHITACRE, LOWELL ZUCK



These four boys have really won a name for themselves with their marvelous singing. Besides contributing their share of the entertainment in innumerable campus activities, they have also given programs for various churches and other organizations in this vicinity.

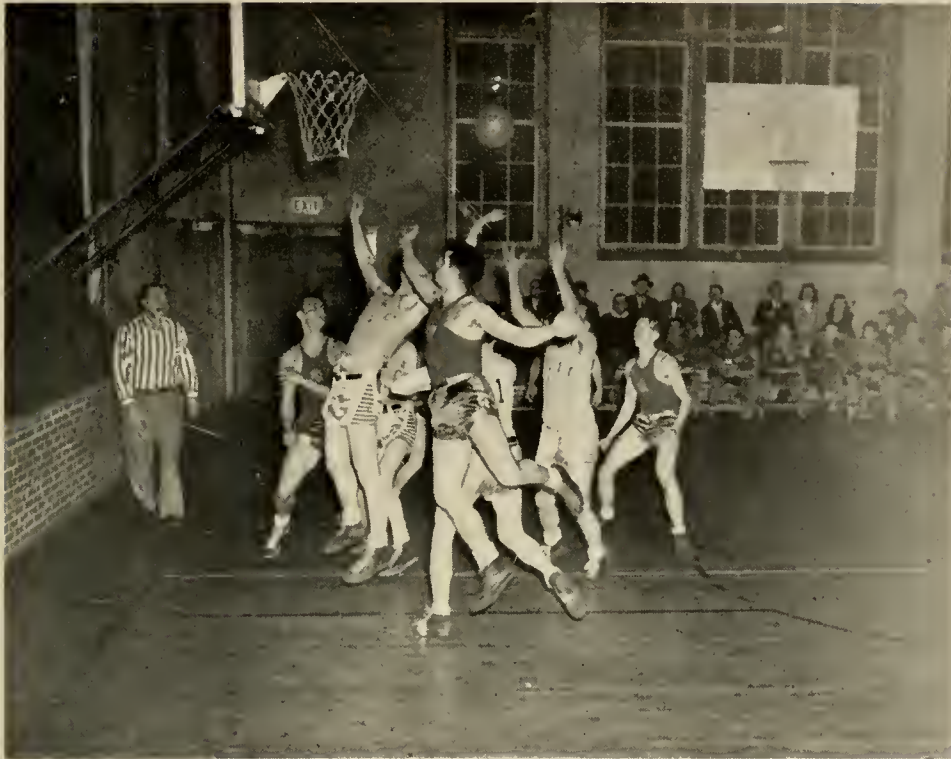
BOYS' VARSITY BASKETBALL



With several Freshmen, some players from last year, and a number of returned war veterans, Coach Ira Herr produced the most successful basketball team that Elizabethtown has seen in many seasons. Success lay not only in the number of victories but in the real competition our team offered to its opponents.

The college was fortunate in securing several high school stars among whom were Keath and Hivner. A number of the war veterans proved to be excellent material and Coach Herr had a good selection from which to choose his varsity team.

Kutztown-Elizabethtown Game



Lopsided scores, so prevalent in previous seasons, were few this year. The Gray Ghosts were off to a good start and with their determination they got somewhere.

A full schedule was booked for the season including games with Gettysburg, Kutztown, Bloomsburg, Bridgewater, Lebanon Valley, Dickinson, Albright, St. Joseph's of Philadelphia, Juniata, Susquehanna, and Haverford.

GIRLS' BASKETBALL TEAM



Many girls, eager to keep Elizabethtown's colors waving, responded to the call for basketball in the fall. With practically a veteran squad, a most successful season was in store.

The coed team started off with two victories with St. John's and York Junior College followed by a thrilling battle with Lebanon Valley which our girls lost by one point. Careful guarding and excellent teamwork, characteristic of the team, brought many more victories and provided real competition for their opponents.

A heavy schedule was planned with the following colleges: St. John's (Reading), York Junior College, Lebanon Valley, Moravian, East Stroudsburg, Bridgewater, Penn Hall, Lock Haven, and Albright.

CHEERLEADERS



ROSEMARY NOLT. *Captain*

JOHN STAUFFER

PATRICIA McCARTY

KATHLEEN BAUGHER

MAXINE BOWMAN

BASEBALL TEAM



Despite the fact that there was a war going on, the Hill baseball team of 1945 braved various teams.

Winning two out of the seven games they played, the team displayed persistence although their competition was great.

The varsity consisted of several veterans and a number of Freshmen. Their spirit was good and they can be credited for playing clean games.

The year's schedule included games with Bucknell, Bridgewater, Bloomsburg, Haverford, and Juniata.

LUTHERAN STUDENT ASSOCIATION



OFFICERS

<i>President</i>	GEORGE DEFREHN
<i>Vice-President</i>	FRANCES KREBS
<i>Secretary and Treasurer</i>	AUDREY KOPP
<i>Adviser</i>	REV. W. O. MOYER



The Lutheran Student Association, organized on Elizabethtown College campus with Rev. W. O. Moyer as adviser in 1942, has grown to be a rather large and active organization. This year Elizabethtown had the honor of being host to the Middle Atlantic Associations Conference. In fact, this was quite an honor in that we have set a precedent for future conferences. Activity has been increased this year, and the L. S. A. is looking forward to more of it in the future.

COMMERCIANTES



OFFICERS

<i>President</i>	DORIS WITTER
<i>Vice-President</i>	FRANCES KREBS
<i>Secretary and Treasurer</i>	AUDREY KOPP
<i>Adviser</i>	JOHN R. HAUBERT



With the increase of enrollment, the Commercial Club is expecting an increase also. Professor Haubert has proved to be a most capable and industrious adviser. The monthly meetings have been varied and the future holds big things in store.

SIGMA KAPPA XI



OFFICERS

<i>President</i>	RUFUS BUCHER
<i>Vice-President</i>	ARLENE KETTERING
<i>Secretary-Treasurer</i>	ZATAE BEETEM
<i>Adviser</i>	CHARLES APGAR



The Science Club has a twofold purpose: (1) to encourage undergraduate work in science, and (2) to provide closer contacts for students interested in science.

There are two types of membership—associate and active. Active membership is limited to junior and senior students majoring in science or mathematics whose scholarship and character are of the highest type.

The club sponsors projects for the improvement of the Science Departments of the college and presents papers on current scientific topics at monthly meetings.

This club has grown in recent years and is becoming quite active so that it has become well integrated into our activities program.

STUDENT SENATE



OFFICERS

President

MIRIAM FORNEY

Vice-President

FLORENCE SEAKS

Secretary

BEVERLEY LAY

Treasurer

PATRICIA MAHAN

MEMBERS

Helen Laushey

Glenn Kinsel

David Markey

MEN'S STUDENT COUNCIL



DONALD LEFEVER, CARL MYERS, RUFUS BUCHER, WILLIAM BOSSERMAN, LOWELL ZUCK

WOMEN'S STUDENT COUNCIL



FRANCES TRACEY, ROMAINE NISSLEY, FRANCES KREBS, BEVERLEY LAY, NANCY FORNEY

Y.W.C.A.



President, HELEN LAUSHEY; Vice-President, PATRICIA MAHAN; Secretary, KAY HOFFMAN; Treasurer, JANET SENFT; Adviser, LUELLA BREITIGAN

Y.M.C.A.



President, CARL MYERS; Vice-President, CHARLES WHITACRE; Secretary, RICHARD WENGER; Treasurer, DANIEL HALDEMAN

INTERNATIONAL RELATIONS CLUB



OFFICERS

President HELEN LAUSHEY
Vice-President DONALD LEFEVER
Adviser FREDERICK NEUMAN



The International Relations Club is a member of the Carnegie Endowment for International Peace. The club places in the library each year ten or more books on world affairs. Semimonthly meetings are held.

The club feels fortunate to have a man with the social vision of Dr. Neuman as its adviser.

PERSONS NOT PICTURED



FACULTY:

Edward R. Cook

FACULTY AIDES:

Mrs. Elva Halk, *House Mother*

Betty Hollinger, *Secretary*

STUDENTS:

Acker, Robert G.

Alwine, Paul E.

Angst, John

Boepple, Rolland

Bohner, Edna M.

Browning, William

Bryer, Clarence

Demuth, William

Dotterer, Stanley S.

Ebersole, Joseph E.

Ehrlen, H. Ruth A.

Forney, Charles B.

Greenawalt, Robert A.

Grove, Anna Ruth

Heisey, Stanley

Hitz, George

Hollenbaugh, William H.

Hostetter, Frank B.

Irvine, Charles J.

Kettering, Arlene E.

Kingsbury, Robert

Kiscaden, Russel

Knight, William I. C.

Knox, Winifred A.

Lehman, Jay W.

Leicht, Paul F.

Leidner, Robert

Lentz, Evelyn G.

Leshner, Robert G.

Lighty, Robert

Manbeck, Lewis M.

McMinn, David

Messerley, Dorothy

Miller, Jay R.

Mohler, Harold

Moore, Frederick

Mumpler, Dale

Musser, Richard L.

Reinecker, Walter

Reingold, Edwin M.

Reinhold, LeRoy

Schrifer, Paul

Shirk, Eugene R.

Smith, J. Robert

Swift, Mary S.

Toland, William B.

Velter, Alfred K.

Wallick, Melvin D.

Wenger, Henry

Wentzel, William

Williams, Lewis

Wolfe, Elwood J.

Yeager, Floyd

Zink, Franklin

Zink, Robert

SPECIAL:

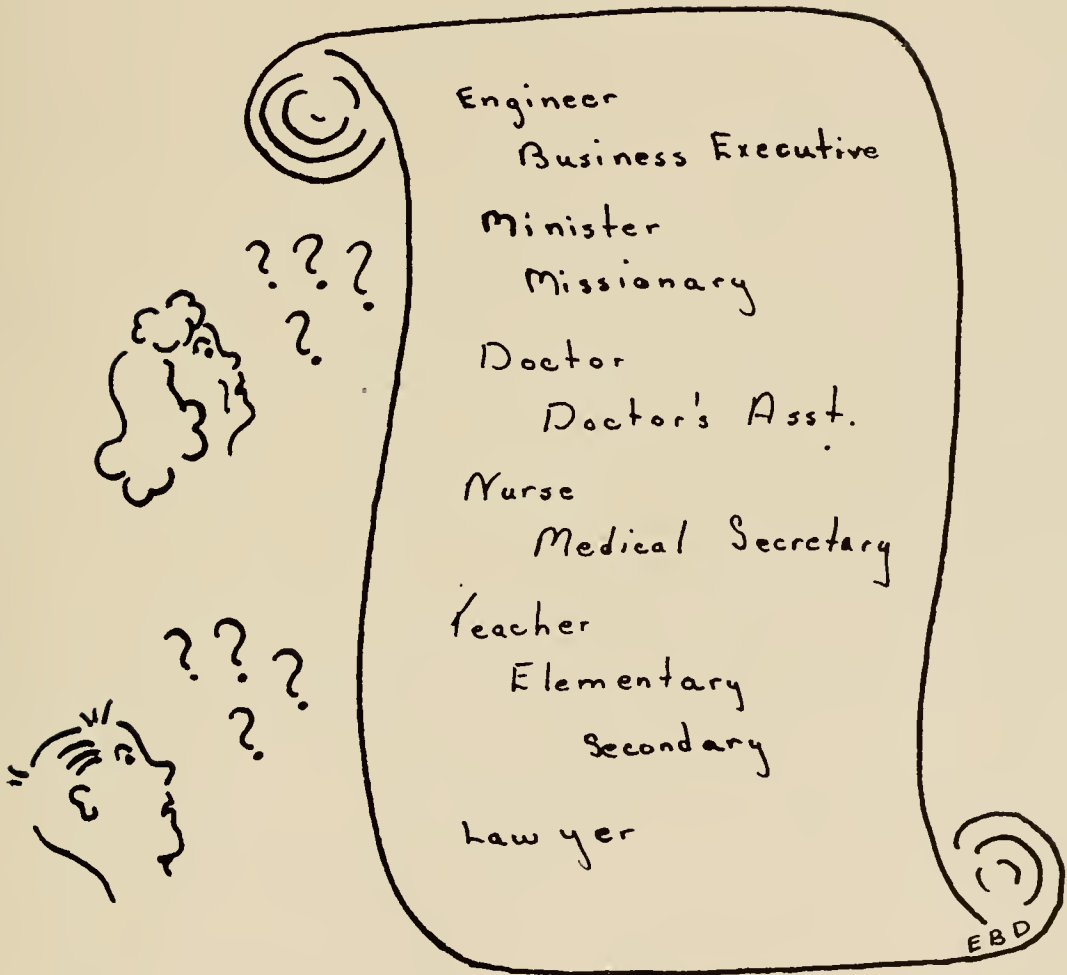
Eshelman, Charles W.

Horner, Nancy Joan

Michel, William



Features . . .



Senior Class Prophecy



The year is 1966. We are now deep in the atomic era. Things are not the same. For example, let us follow Zatae Beetem as she leaves her school teaching for a week end to visit Louise and Merle Black and family who have recently moved to Mars.

As she approaches the ticket window to purchase her ticket on the "Greased Lightning," a rocket ship designed by Carl Myers, soon after he graduated from E. C., she is surprised to find Maxine Straw selling the tickets.

On boarding the ship, she finds "Jonsie" at the controls, assisted by Laushey who is navigator. Edna Schock takes her ticket and makes a very capable conductor. Beetem settles into her seat, and prepares for one of her frequent naps, but just as she is dropping off to sleep she hears a familiar voice singing, "Off We Go Into the Wide Blue Yonder." Upon investigation, she discovers that it is none other than Madame Doolynsky, nee "Flossie" Seaks, the famous Metropolitan Opera star. Jonsie invites Beetem up to explore the mechanism. Just then they pass over Fairview and Jonsie gives her usual signal—several beats on the horn.

On returning to her seat, Beetem hears someone calling — "Peanuts, popcorn, chewing gum." Yes, you're right, it's Rufus P. Bucher, II.

Now she gazes out the window and her eye catches a glimpse of a huge sign which reads: "Mid-way between Mars and Earth, the Inter-Planet Co-operative—Manager, Don Lefever."

The doctor and nurse are making their usual rounds and Beetem gazes up into the faces of Dr. Verna Brandt and Nurse Mary Heisey.

Putting on her earphones, Beetem catches the last words of a news correspondent, George Althouse, who was broadcasting an E. C. sports review.

Mars is now in view. The rocket has stopped and Beetem alights. Who does she see but "Porky" Leicht who is now a radar operator.

Time has come for afternoon tea and Beetem enters Skyland Plantation. She is greeted by Hostess Sara Gonzalez who leads her to a table next to Ruth Musser, interpreter between Mars and Earth. "Order, please" is heard and Beetem beholds Irene Groff who relates that Tracey is chief cook and Beetem sneaks into the kitchen and has a little chat.

As she returns to her table, the afternoon entertainers begin their performance. Beetem hears the famous duet, Miriam Forney and Myron Horst, accompanied by Virginia Baker.

So now Beetem departs in an automobile to the home of Mr. and Mrs. Black.

Impossible, you say? Well, perhaps. Perhaps even a bit ridiculous, and yet with a new age before us, the advances of the next twenty years must be great. As college Seniors, we don the robe of dignity and responsibility, after this one last fling.

ELIZABETHTOWN COLLEGE

Elizabethtown, Pa.



You will always remember ELIZABETHTOWN for her

BEAUTIFUL CAMPUS
THOROUGH TEACHING
FRIENDLY SPIRIT
CHRISTIAN IDEALISM

These are the values you will cherish long after your college days
have been completed



COURSES IN:

Science
Education
Liberal Arts
Secretarial Science
Business Administration
A.B. and B.S. Degrees State Accredited



MEMBERSHIP IN:

The Association of American Colleges
The National Conference of Church-related Colleges

GRUBB AND BRENEMAN

•
COAL - FEED

SHENK BROS.

•
SPORTING GOODS
and
TOYS

•
Lancaster, Pa.

**BUCH
MANUFACTURING
COMPANY**

•
AGRICULTURAL
IMPLEMENTS

•
Elizabethtown, Pa.

BISCHOFF'S JEWELRY STORE

•
Watches, Diamonds
and Jewelry

•
25 Centre Square
Elizabethtown, Pa.

Compliments

of

A FRIEND

KENNEWOOD HOTEL

•
Elizabethtown, Pa.

•
Alumni Headquarters

FRANK S. MILLER

Trading as
HARRY MILLER & SON

•
Elizabethtown, Pa.

**KLEIN
CHOCOLATE
COMPANY
INC.**

Wishes
the Class of 1945 and 1946
the Best of Success
and Happiness

ROBERT A. HAMILTON

•
Watchmaker
and
Jeweler

•
Elizabethtown, Pa.

Senior Class Will



We, the Senior Class of the Elizabethtown College of Elizabethtown, Lancaster County, State of Pennsylvania, having reached the conclusion of our college career, being of good judgment and resounding mind, do hereby make, publish and declare this to be our last will and testament, hereby revoking all former wills by us at any time heretofore made. We hereby make the following bequests:

To the faculty: We leave them our sympathy for the past four years you endured and our hope that future classes will not bring you so many problems.

To the Junior Class: We leave them a sincere wish that you may have your deserved happiness and the satisfaction of a job well done in your Senior year.

To the Sophomores: We leave them courage and a box of vitamins for the road ahead.

To the Freshmen: We leave them the hope that their seemingly endless supply of energy will last until they are Seniors.

To selected members of the remaining classes we bequeath the following:

Virginia Baker leaves her gift of gab to Jean Young.

Irene Groff leaves her piano playing ability to Ruth Cromie.

Mary Heisey leaves her quiet, demure ways to Anna Kepner.

Ruth Musser leaves her gift in modern languages to William Bosserman.

Frances Tracey leaves her wit to Clyde Shallenberger (he needs some new jokes).

Helen Laushey leaves her industriousness to Joanne Posey.

Verna Brandt leaves her ability in physics to Lowell Zuck.

Sarah Gonzalez leaves her position as Spanish consultant to Buena Machuca.

Zatae Beetem wills her unique name to Beulah Barnthouse.

Carl Myers leaves his moodiness to Ruth Boepple.

Miriam Forney leaves her ability to accomplish things to Glenn Kinsel.

Rufus Bucher leaves his undertone to Arlene Geib.

Frieda Jones leaves her parking space to Lida Anne Swope.

Maxine Straw leaves her industrious, efficient manner to Ralph Musser.

Zatae Beetem leaves her lack of interest in men to Maxine Bowman.

George Althouse leaves his pleasant smile to Gladys Weaver.

Don Lefever leaves his interest in Co-ops to Doris Witter.

Myron Horst leaves his creativeness to Matthew Myer.

Florence Seaks leaves her sense of humor to Richard Wenger.

Edna Schock leaves her bookkeeping ability to Grace King.

Romaine Nissley leaves her sewing ability to Bev Lay.

Sarah Gonzalez leaves her disarming manner to Phyllis Druck.

Carl Myers leaves his blond curly hair to Frank Keath.

As classes always leave this one specific thing to the faculty—so we leave them the privilege of writing recommendations for us as we go out to make history.

To all who have not been definitely mentioned in this will, we extend the invitation to take as your own any qualities, abilities, or interests with which you may have been favorably impressed in some Senior, and may all our bequests bring only happiness and advancement to those who follow us.

As our last official act, we hereby appoint the president of the Junior Class of the Elizabethtown College as Executor of this, our last will and testament.

Compliments of
GARBER MOTOR COMPANY

•
Home of Ford Products

•
Elizabethtown, Pa.

SPICKLER'S DAIRY

•
Pasteurized and Viscolized
MILK, CREAM
and
BUTTERMILK

•
Also Choice Butter
Chocolate and Orange Drinks

•
Phone: 57 Park Street

CLASSIC HOSIERY MILL, INC.

•
Manufacturers of
Full-Fashioned Hosiery

•
Elizabethtown, Pa.

AUNT SALLY'S KITCHEN

•
Elizabethtown, Pa.

MILTON F. EBERLY

•
Furniture of Character
at
Reasonable Prices

•
Route 3 — Phone: 917-R-11
Elizabethtown, Pa.

•
Our Location Saves You Money

S. G. HERSHEY & SON

•
Department Store

•
Elizabethtown, Pa.

HAVE you enjoyed looking at the family album that your grandmother cherished? Sure you have.

In the years ahead of you, this school annual will probably be handled by future generations with the same kind of chuckles you gave out when you looked at the pictures of grandma as a girl.

Today Grandma's pictures are old fashioned. Yours are modern. In the years to come yours will be old fashioned too, for new techniques in the printing business will make them so.

Having printed Grandma's pictures in the past and yours today, we hope to print those of your children in the future as they graduate from the schools of Pennsylvania.



INTELLIGENCER PRINTING CO.

8 WEST KING STREET

LANCASTER, PENNSYLVANIA

Founded 1794



Compliments of
ELIZABETHTOWN GARMENT COMPANY

ZARFOSS HARDWARE

On The Square

Elizabethtown, Pa.

SHEARER'S

Furniture Store

"The Largest Furniture Store Between
Lancaster and Harrisburg"

•

35-37 South Market Street

Elizabethtown, Pa.

Phone: 12-W

Compliments of

IRVING REINGOLD

Tailor and Cleaner

•

We Operate Our Own Cleaning Plant

Phone: 144-W

RIDER HARDWARE COMPANY

25 South Market Street

Sole distributors for
WILLIAM WATERIL CO., PHILA., PA.

Manufacturers of
Paints, Varnishes, Stains and Enamels

We Deliver

TOOLS

ROOFING

GAY GIBSONS and MINX MODES

Styled for Juniors

•

GRACE C. BLOUGH

116 SOUTH MARKET STREET

ELIZABETHTOWN, PA.



MUSSER FARMS

•

Like the Creams of
Delicious Rich Creamy Milk
The Ideals
of a Christian College
Surely Will Rise to the Top

•

COLUMBIA, PA.

ELIZABETHTOWN PLANING MILL

L. B. HERR & SON

•

Stationery
Books
Printing
School Supplies

•

46-48 West King Street
Lancaster, Pa.

Now More Tempting Than Ever

WENGER'S PRETZELS

•

Elizabethtown, Pa.

Compliments

of

A. S. KREIDER

Shoe Manufacturing
Company

•

Elizabethtown, Pa.

Compliments of

LEVI C. HERSHEY

SHENK & TITTLE

•
"Everything for Sport"

•
313 Market Street
Harrisburg, Pa.

When You Think of Music
Think of
KIRK JOHNSON & CO.

•
Serving the Musical Needs of
Lancaster Co. for over 60 years

LEAMAN'S TIRE SERVICE

•
Recapping
and
Vulcanizing

•
Elizabethtown, Pa.

HEISEY BROTHERS QUARRIES

•
Rheems, Pa.



Established 1868

MILLER & HARTMAN

•

WHOLESALE GROCERS

•

Lancaster, Pennsylvania

ROTH'S FURNITURE STORES

•

Furniture Dealers

•

206-210 South Market Street
Elizabethtown, Pa.
Phone: 84-R

Kodaks

Stationery

DORSHEIMER'S

"Centre Square"

Sporting Goods

Confectionery

LEO KOB

•

Plumbing and Heating
Contractor

Compliments of

JAC. B. FISHER

Music Store

•

Elizabethtown, Pa.

**LANCASTER
PAINT & GLASS CO.**

Mfgs. of
Quality
Paints



Dealers in
Glass
and
Brushes

235 North Prince Street
Lancaster, Pa.

**ELIZABETHTOWN
FARMERS SUPPLY, INC.**

Farm Machinery
Repair and Supplies

Compliments of
THE GADDHERS

Compliments of
DR. SAMUEL G. WENGER

Chiropractor

327 North Lime Street
Lancaster, Pa.

For Finer, Fresher Foods
For Prompt and Courteous Service

GREINER BROS.

On The Square
Elizabethtown, Pa.
Phone: 1267

M. K. ENTERLINE

Dodge and Plymouth

Elizabethtown, Pa.

Compliments of
THE COLLEGE Y M C A

WEAVER'S BOOK STORE

•
Bibles, Books
Church Supplies

•
South Duke Street
Lancaster, Pa.

M. M. WENGER

•
"M. W." Feeds

•
RHEEMS, PA.
Phone: E-town 175

ELIZABETHTOWN BAKERY

•
Bakers of
Quality Products

•
Miles E. Gossert, Prop. Phone: 259

RISSER BROS.

•
Famous for
Old-Fashioned Ice Cream
Modern Soda Grill

•
Phone: 176 Elizabethtown, Pa.

•
Compliments

of

BAKER'S DINER

Elizabethtown, Pa.

•
"Thanks for listenin' "

•
**THE COLLEGE
MALE QUARTETTE**

MARY B. REBER - ART SHOP

•
Gifts - New and Different

•
50 North Market Street
Elizabethtown, Pa.

Always Shop and Meet Your Friends
at the Friendly

BEN FRANKLIN STORE

5c — 10c — \$1.00 and up
SELF-SERVICE GROCERY DEPT.

•
Elizabethtown, Pa.

ICELAND, INC.

Successor to Frozen Food Lockers

•
Frozen Food Locker Service
Ice Cream
Soda Fountain
Home Freezers
Frozen Foods

•
"Everything Frozen"



"There's None Better"

On Sale at Your
Neighborhood Grocer

•
AUMENT BROS., INC.

Wholesale Distributors

227-231 North Prince Street
Lancaster, Pa.

THE DRESS SHOP

•
DAISY M. KLEIN

•
Center Square
Elizabethtown, Pa.

Party Supplies

Kodaks

GEBHART'S

ART SHOP and BOOK STORE

26 West High Street
Elizabethtown, Pa.

Gifts for All Occasions

Stationery

Greeting Cards

HERSHEY & GIBBEL

•
Special Insurance

•
Lititz, Pa.

**EPPLEY'S
Town Pharmacy**

•
Moose Building
Elizabethtown, Pa.

D. L. LANDIS

•
Insurance and Notary Public

•
23 South Market Street
Elizabethtown, Pa.

R. A. HAMILTON

•
Watchmaker and Jeweler

•
Elizabethtown, Pa.

Shaubie	Burkholder
Christie	Potts
Butch	Laushey
Sharpe	Nolt

•
"Should auld acquaintance be forgot . . ."

Stop in at . . .

THE SKY GRILL

"It's the Refreshing Thing To Do"

•
MODERN SODA SERVICE

Operated by
CENTRAL CUT-RATE DRUGS
W. K. WINTERS
45 South Market Street

THE CHRISTIAN LIGHT PRESS

Book Store

•
Distributors of
RELIGIOUS MERCHANDISE
20 S. Market St. Elizabethtown, Pa.



RUTTER BROS. DAIRY

North George St., Ext'd

YORK, PENNA.

•

Ess-Kay Butter

Ice Cream

Dari-Rich

Brookfield Butter

D. H. MARTIN

•

Clothier and Furnisher

•

CENTER SQUARE

ELIZABETHTOWN, PA.

H. S. RISSER

•

Oldsmobile - Pontiac - Cadillac
Sales - Service

•

Elizabethtown, Pa.

Compliments

of

**LANCASTER
SHOE
COMPANY**

•

Elizabethtown, Pa.

24 Hour Service — Phone: Elizabethtown 226

NEWCOMER'S SERVICE STATION

•

Richfield Gasoline

Richlube Motor Oils

Rich-Heat Fuel Oil

•

Elizabethtown, Pa.

1920 - 1946

**SHOTZBERGER'S
MEAT MARKET**

•
Meat and Provisions

•
811 N. Lime St. Lancaster, Pa.

Compliments of
HANK'S GANG

from

JAKE'S JOINT

•
Address: 3rd Floor, Fairview

WM. K. GRAUER'S SONS, INC.

38 South Queen Street
Lancaster, Pa.

•
QUALITY WALLPAPER

•
A complete line of
BENJAMIN MOORE & CO. PAINTS

JOHN M. MILLER

•
Insurance Broker

•
Lititz, Pa.

KELLER BROS.

SALES — SERVICE

MERCURY



LINCOLN

•
BUFFALO SPRINGS
LEBANON CO., PA.

11 WEST MAIN ST.
LITITZ, LANC. CO., PA.

We Appreciate Your Service

College Days . . .

They cement many lasting friendships. Soon you and your classmates will take different roads, and it may be years before some of you meet again. School days do not last forever—and when they are past, memories are kept warm by the photographs of friends and pals of the classroom and campus.

Your chums should have a "personality portrait" of you, and you will prize one of theirs in return. In a year or so, you will be glad you took this means of keeping alive the memories of your school days.

And the home folks will always cherish a portrait of "the turning point" in your life.

This studio is the headquarters for the best photographic work and the doors are open to the students of Elizabethtown College and their friends.

Why not arrange to come to the studio now and have that photograph taken?

SPECIAL STYLES AND RATES FOR STUDENTS



THE ENSMINGER STUDIOS

**Second and Walnut Streets
HARRISBURG, PENNSYLVANIA**

Phone: 5228

MUMPER'S DAIRY

PURE MILK and CREAM

Elizabethtown, Pa.

Peacetime Military Conscription

is

Unchristian—Undemocratic

•

Oppose this move by writing—
The President,
Your Senators and Congressmen

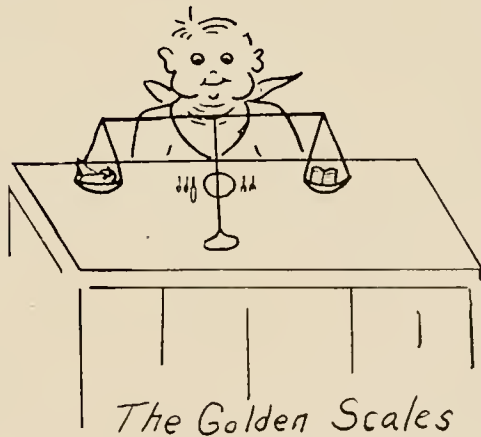
•

Compliments of Peace Team

Pensupreme

•

PENN DAIRIES, INC.



Autographs

• • •

Autographs

• • •



THE END

