



NATIONAL RECOVERY ADMINISTRATION

DIVISION OF REVIEW

EVIDENCE STUDY

NO. 52

OF

SHIP AND BOAT BLDG. AND REPAIRING INDUSTRY

Prepared by

THE INDUSTRY STATISTICS UNIT

October, 1935

PRELIMINARY DRAFT

(NOT FOR RELEASE: FOR USE IN DIVISION ONLY)

THE EVIDENCE STUDY SERIES

The EVIDENCE STUDIES were originally planned as a means of gathering evidence bearing upon various legal issues which arose under the National Industrial Recovery Act.

These studies have value quite aside from the use for which they were originally intended. Accordingly, they are now made available for confidential use within the Division of Review, and for inclusion in Code Histories.

The full list of the Evidence Studies is as follows:

- | | |
|-------------------------------------|---|
| 1. Automobile Manufacturing Ind. | 23. Mason Contractors Industry |
| 2. Boot and Shoe Mfg. Ind. | 24. Men's Clothing Industry |
| 3. Bottled Soft Drink Ind. | 25. Motion Picture Industry |
| 4. Builders' Supplies Ind. | 26. Motor Bus Mfg. Industry (Dropped) |
| 5. Chemical Mfg. Ind. | 27. Needlework Ind. of Puerto Rico |
| 6. Cigar Mfg. Industry | 28. Painting & Paperhanging & Decorating |
| 7. Construction Industry | 29. Photo Engraving Industry |
| 8. Cotton Garment Industry | 30. Plumbing Contracting Industry |
| 9. Dress Mfg. Ind. | 31. Retail Food (See No. 42) |
| 10. Electrical Contracting Ind. | 32. Retail Lumber Industry |
| 11. Electrical Mfg. Ind. | 33. Retail Solid Fuel (Dropped) |
| 12. Fab. Metal Prod. Mfg., etc. | 34. Retail Trade Industry |
| 13. Fishery Industry | 35. Rubber Mfg. Ind. |
| 14. Furniture Mfg. Ind. | 36. Rubber Tire Mfg. Ind. |
| 15. General Contractors Ind. | 37. Silk Textile Ind. |
| 16. Graphic Arts Ind. | 38. Structural Clay Products Ind. |
| 17. Gray Iron Foundry Ind. | 39. Throwing Industry |
| 18. Hosiery Ind. | 40. Trucking Industry |
| 19. Infant's & Children's Wear Ind. | 41. Waste Materials Ind. |
| 20. Iron and Steel Ind. | 42. Wholesale & Retail Food Ind. (See No. 31) |
| 21. Leather | 43. Wholesale Fresh Fruit & Veg. |
| 22. Lumber & Timber Prod. Ind. | |

In addition to the studies brought to completion, certain materials have been assembled for other industries. These MATERIALS are included in the series and are also made available for confidential use within the Division of Review and for inclusion in Code Histories, as follows:

- | | |
|------------------------------------|---|
| 44. Wool Textile Industry | 49. Household Goods & Storage, etc. (Dropped) |
| 45. Automotive Parts & Equip. Ind. | 50. Motor Vehicle Retailing Trade Ind. |
| 46. Baking Industry | 51. Retail Tire & Battery Trade Ind. |
| 47. Canning Industry | 52. Ship & Boat Bldg. & Repairing Ind. |
| 48. Coat and Suit Ind. | 53. Wholesaling or Distributing Trade |

L. C. Marshall
Director, Division of Review

* 9381-1-256

CONTENTS

General Notes	1 - 2
Notes for Data on Form R-P-28	3
Tables	4 - 29

* * * * *

TABLES

TABLE	I-A - Index of Employment (1923-25=100), 1926-1935.....	4
	B - Index of Employment (1929=100), 1926-1935.....	4
	C - Estimated Number Employed, 1926-1935.....	4
TABLE	II-A - Index of Payrolls (1923-25=100), 1926-1935.....	5
	B - Index of Payrolls (1929=100), 1926-1935.....	5
	C - Estimated Weekly Payroll, 1926-1935.....	5
TABLE	III-A - Average Hours Worked Per Week, 1932-1935.....	6
	B - Estimated Total Man-Hours Per Week, 1932-1935.....	6
TABLE	IV-A - Average Hourly Wage, 1932-1935.....	7
	B - Average Weekly Wage, 1926-1935.....	7
TABLE	V-A - Merchant Vessels Under Construction, 1926-1935.....	8
	B - Index of Merchant Vessels Under Construction, 1926- 1935.....	8
	C- Merchant Vessels Completed During Month, 1926-1935.....	8
TABLE	VI - Establishments, Wage Earners, Wages, Cost of Materials, Value of Products, Value Added, and Horsepower, by Census Years, 1899 to 1933.....	9
TABLE	VII-A - Establishments, Wage Earners, Wages, Cost of Materials, Value of Products, and Value Added by Manufacture, by States, 1929.....	10
	B - Establishments, Wage Earners, Wages, Cost of Materials, Value of Products, and Value Added by Manufacture, by States, 1931.....	11
	C - Establishments, Wage Earners, Wages, Cost of Materials, Value of Products, and Value Added by Manufacture, by States, 1933.....	12
TABLE	VIII - Ship Building and Ship Repairing Industry - Number of Plants, by States, 1933 and 1934.....	13
TABLE	IX - Number of Employees in Identical Yards Building Wooden and Steel Boats up to 196 Feet in Length, by Regions, 1929 and 1935.....	14

TABLES (cont'd)

TABLE	X	- Establishments, Wage Earners, Wages, Cost of Materials, and Value of Products, Classified by Size of City, 1933	15
TABLE	XI	- Establishments, Wage Earners, Value of Products and Value Added, Classified by Value of Products per Establishment, 1929	16
TABLE	XII-A	- Establishments and Wage Earners Classified by Number of Wage Earners per Establishment, 1929	17
	B	- Establishments, Wage Earners, Wages, Cost of Materials, and Value of Products, Classified by Number of Wage Earners per Establishment, 1931	18
	C	- Establishments, Wage Earners, Wages, Value of Products, and Value Added, Classified by Number of Wage Earners per Establishment, 1933	19
TABLE	XIII	- Establishments, Wage Earners, Wages, Cost of Materials, and Value of Products, Classified by Number of Wage Earners, and by Size of City, 1933	20
TABLE	XIV	- Number of Yards, by Wage Earners, 1929 and 1933	21
TABLE	XV	- Value of Business, Number of Employees, Total Annual Wages and Average Annual Wage for 246 Identical Yards, 1929 and 1933	22
TABLE	XVI	- Number of Yards, by Minimum Hourly Wage Rates, 1929 and 1933	23
TABLE	XVII	- Number of Yards, by Minimum Weekly Earnings of Office Employees, 1929 and 1933	24
TABLE	XVIII	- Ship Building and Ship Repairing Industry - Sources of Material Entering into the Construction of a \$15,000,000 Ship	25
TABLE	XIX	- Ship Building and Ship Repairing Industry - Members of the Industry, Classified as to Trade Association Membership, 1934	28
TABLE	XX	- Boat Building and Boat Repairing Industry - Members of the Industry, Classified as to Trade Association Membership, 1933	29

SHIP AND BOAT BUILDING AND REPAIRING INDUSTRIES

General Notes

Comparison of Definitions of the Industry

Published Government data combine the Boat Building and Ship Building Industries. Since most of the available data are from Government bureaus, it has been necessary to consider the two Codes, "Boat Building and Boat Repairing" and "Ship Building and Ship Repairing" together in this report. Only in the cases of trade association membership, total number of establishments, and the number of employees in yards building vessels up to 126 feet has it been possible to obtain data for the Codes separately.

The one Census classification "Ship and Boat Building" covers the two Industries as defined in the Codes "Boat Building and Boat Repairing," and "Ship Building and Ship Repairing." A wide discrepancy exists, however, between the number of establishments reported by the Census and the total reported by the respective Code Authorities for the two coded Industries.

The Code Authorities for the "Boat Building and Boat Repairing" and the "Ship Building and Ship Repairing" Codes reported a total of 2,935 plants under the Codes for 1933, while the Census of Manufactures reported 395 plants under its classification "Ship and Boat Building" for 1933. This discrepancy can presumably be accounted for by taking into consideration the following factors. In the first place, establishments which built boats only as a minor portion of their product had to report to the Code Authority while the Census concerned itself only with those establishments which were primarily engaged in boat building. In the second place, plants which were still considered as a part of the Industry but were inactive during the year were not canvassed by the Census. The fact that the Census does not canvass establishments with an annual product of less than \$5,000 eliminated a large number of small concerns building and repairing boats as well as a number of shore shops, which reported to the Code Authorities. A few establishments which were under one or the other of the Codes were listed by the Census under classifications other than "Ship and Boat Building."

Sources

The chief sources of the statistical material included in this report are the Bureau of the Census and the Bureau of Labor Statistics. Other data included are from the Bureau of Navigation, the Code Authorities for the Boat Building and Boat Repairing and the Ship Building and Ship Repairing Industries, the National Council of American Ship Builders, and National Recovery Administration Questionnaires.

Bureau of the Census Data.- Data from the Census of Manufactures, classification of "Ship and Boat Building," cover privately owned establishments engaged primarily in the construction or the repair of water craft of any kind, and establishments producing masts, spars, and other accessories for vessels. Subsequent to 1919 no data have been collected for ship yards operated by the Federal Government, and therefore none are included for any year.

For the Census of 1919 and prior years, data were collected from all establishments with an annual production of \$500 and over. For subsequent Census years no data were collected from establishments with annual products valued at less than \$5,000. The exclusion of data for these small establishments reduces considerably the number which must be canvassed, but does not materially impair the accuracy of the statistics except for the single item "number of establishments," as in 1919, establishments with an annual production of less than \$5,000 accounted for only .4 per cent of the wage earners and only .4 per cent of the total value of products.

To the extent that "value of products" represents new construction, it is limited to the value of work done during the year and therefore does not include the total value of completed vessels except those on which construction was begun and finished within the year. Receipts for repair work are included. The total "value of products" for the Industry includes the value of certain products other than water craft. These products represented approximately 4 per cent of the total value in 1929, 1931 and 1933.

Bureau of Labor Statistics Data.- Labor data from this source are based on a sample of the establishments canvassed by the Bureau of the Census. Descriptions of these data are presented in the more detailed notes accompanying the tables from this source.

National Recovery Administration Questionnaire.- The National Recovery Administration sent Questionnaires to 1750 ship and boat builders and received replies from 779 plants. Of these 128 were either out of business or in some other business, such as Naval Architects, and 232 replies contained insufficient data to be of value. Thus 419 questionnaires were tabulated. Data on all the items requested were not reported by all of these 419 plants. Consequently the number of plants listed in tables from this source vary from table to table and between years within a table.

Data from Other Sources.- Descriptions of data from the Bureau of Navigation, the Code Authorities, the National Council of American Ship Builders, as well as the sources discussed above are given in the notes accompanying the tables.

Industry Statistics Unit,
Statistics Section,
Division of Review, NRA
October 28, 1935

Notes for Data on Form R-P-28

SHIP AND BOAT BUILDING AND REPAIRING INDUSTRIES
(Code No. 2)

1. GENERAL COMMENT ON CURRENT LABOR DATA

Current labor data from the Bureau of Labor Statistics for employment, payrolls and average weekly wages are based on a sample covering about 85 per cent of the wage earners reported under the Census classification "Ship and Boat Building." The sample for average hours and average hourly wage covered about 40 per cent of the wage earners in 1933 and about 70 per cent in 1934. Since more than 95 per cent of the wage earners included in the sample are in the ship building industry the sample is representative of the ship building industry only.

2. EMPLOYMENT AND PAYROLLS

Bureau of Labor Statistics indexes have been adjusted to 1933 Census totals by NRA.

3. MERCHANT VESSELS UNDER CONSTRUCTION AND MERCHANT VESSELS COMPLETED DURING MONTH

The total number of vessels completed includes ocean going, lake, and river vessels built and officially numbered, including vessels of the United States Shipping Board and private American owners, but not vessels built for foreign owners.

Merchant vessels under construction include all kinds of ships under construction at the end of the month, except Federal government vessels.

Prepared by
Industry Statistics Unit
Statistics Section
Division of Review, NRA
October 28, 1935

SHIP AND BOAT BUILDING AND REPAIRING INDUSTRIES

Factory Employment

I-A Index of Employment (1923-25=100) a/

	1926	1927	1928	1929	1930	1931	1932	1933	1934	1935
JAN	94.3	111.1	85.8	90.4	116.0	93.3	75.3	54.2	64.4	68.3
FEB	97.8	115.4	82.0	90.0	115.4	89.6	75.2	51.1	66.0	72.8
MAR	95.4	115.8	78.0	97.2	113.6	86.4	74.1	48.2	69.3	74.9
APR	95.8	113.1	79.9	103.0	115.0	88.6	76.1	44.4	71.7	74.6
MAY	95.5	108.5	79.4	104.0	111.0	86.0	72.6	47.5	73.1	76.4
JUN	94.9	104.7	78.6	103.3	109.8	85.3	70.1	48.0	76.6	66.2
JUL	94.6	98.0	77.1	103.3	105.0	81.8	63.6	52.3	69.2	71.3
AUG	93.5	93.5	75.2	101.0	105.5	75.6	59.7	57.5	71.2	72.4
SEP	95.0	90.2	75.4	111.7	104.6	76.7	57.5	64.2	71.3	76.1
OCT	96.0	88.7	76.7	101.9	101.4	75.5	56.5	66.1	71.2	
NOV	102.4	87.5	79.4	106.6	94.8	78.3	55.7	63.5	69.3	
DEC	110.1	88.7	86.6	111.1	95.0	78.4	55.7	67.3	68.5	
Average	97.4	101.3	79.5	101.3	103.0	83.0	66.0	55.4	70.2	

I-B Index of Employment (1929=100) b/

JAN	93.2	109.8	84.8	89.0	114.6	92.2	74.6	54.5	65.4	69.4
FEB	96.5	114.2	80.2	89.5	114.0	88.4	74.6	51.5	67.0	73.9
MAR	97.2	114.4	77.7	96.0	112.2	85.3	73.7	48.7	70.4	61.0
APR	94.6	111.7	90.0	102.0	111.7	85.5	75.7	44.8	73.0	75.8
MAY	94.4	107.2	78.5	103.0	107.0	84.9	72.3	48.0	74.3	76.6
JUN	93.8	104.4	77.7	102.0	108.5	84.2	69.9	48.6	77.8	62.0
JUL	93.4	96.8	76.2	102.0	107.0	80.7	63.5	53.0	70.3	72.4
AUG	92.3	92.4	74.3	99.0	104.2	74.7	59.7	58.3	72.3	73.6
SEP	93.8	89.1	74.5	100.4	103.4	75.8	57.6	65.1	72.4	77.0
OCT	94.8	87.7	75.8	100.7	100.2	74.7	56.7	67.1	72.3	
NOV	101.1	86.5	78.5	105.3	93.7	77.6	55.9	64.6	70.4	
DEC	108.7	87.7	85.6	109.8	93.9	77.7	56.0	68.4	69.6	
Average	96.2	100.1	78.6	100.0	106.0	82.0	65.9	56.1	71.3	

I-C Estimated Number Employed (thousands) c/

JAN	50.4	60.5	46.7	49.2	60.1	50.8	41.1	30.0	36.0	38.2
FEB	53.2	62.9	44.2	49.3	60.8	48.7	41.1	28.4	36.9	40.7
MAR	53.6	63.0	42.8	52.9	61.8	47.0	40.6	26.8	38.8	41.9
APR	52.1	61.5	43.5	56.3	62.6	48.2	41.7	24.7	40.2	41.8
MAY	52.0	59.1	43.3	56.8	60.4	46.8	39.8	26.4	40.9	42.8
JUN	51.7	57.0	42.8	56.2	59.8	46.4	38.5	26.8	42.9	37.0
JUL	51.5	53.3	42.0	56.2	57.1	44.5	35.0	29.2	38.7	39.9
AUG	50.9	50.9	40.9	54.9	57.4	41.2	32.9	32.1	39.8	40.5
SEP	51.7	49.1	41.0	55.3	56.9	41.8	31.7	35.9	39.9	42.6
OCT	52.2	48.3	41.8	55.5	55.2	41.2	31.2	37.0	39.8	
NOV	55.7	47.7	43.3	58.0	51.6	42.8	30.8	55.6	38.8	
DEC	59.9	48.3	47.2	60.5	51.7	42.8	30.9	37.7	38.3	
Average	53.0	55.1	43.3	55.1	58.4	45.2	36.3	30.8	39.3	

a/ Bureau of Labor Statistics Index for "Shipbuilding."

b/ I-A shifted to 1929 base and adjusted to 1933 Cens total by NRA.

c/ I-B times 1929 base figure (55.89).

p - preliminary

SHIP AND BOAT BUILDING AND REPAIRING INDUSTRIES

Factory Payrolls

II-A Index of Payrolls (1923-25=100) a/

	1926	1927	1928	1929	1930	1931	1932	1933	1934	1935
JAN	5.4	117	95.	95.3	121.7	90.9	65.4	37.7	48.	56.2
FEB	96.	11.6	84.9	97.8	24.8	88.	30.9	35.7	49.0	59.7
MAR	99.2	123.1	83.6	104.6	124.4	83.4	60.6	32.5	52.4	63.8
APR	100.8	25.2	88.5	111.6	124.8	85.4	66.0	30.1	53.9	62.0
MAY	98.4	116.5	83.5	113.8	123.6	86.7	57.3	32.5	60.0	65.7
JUN	98.9	107.2	85.	115.0	116.5	78.7	54.3	32.5	60.2	55.5
JUL	97.4	105.7	82.	111.5	101.1	72.4	52.3	36.2	55.6	9.4
AUG	98.6	96.8	78.2	105.9	111.0	69.2	43.1	40.	56.4	61.5
SEP	96.7	92.9	80.6	111.1	107.	64.4	42.4	45.	57.0	65.6
OCT	105.4	97.1	81.3	111.3	100.7	68.4	33.0	47.5	56.2	
NOV	105.5	93.6	81.8	115.5	98.7	65.8	39.4	46.8	54.0	
DEC	118.6	103.6	95.2	122.3	98.6	68.4	42.3	49.4	55.3	
Average	100.9	108.3	85.0	109.7	113.5	76.8	5.5	38.	54	

II-B Index of Payrolls (1929=100) b/

	1926	1927	1928	1929	1930	1931	1932	1933	1934	1935
JAN	87.0	106.7	86.9	86.9	110.9	87.8	60.4	36.7	48.0	6.0
FEB	87.8	108.2	77.5	89.2	113.	80.0	59.3	34.8	48.9	5.5
MAR	90.5	112.3	76.3	95.4	113.4	75.7	56.4	31.8	52.3	3.6
APR	92.0	114.2	80.8	101.7	113.8	77.5	61.7	29.5	53.7	1.8
MAY	89.8	106.3	76.2	103.7	112.8	78.5	53.7	32.0	59.8	5.5
JUN	90.2	99.6	78.2	104.8	106.2	77.7	51.2	32.	60.1	5.3
JUL	88.9	96.4	74.8	101.6	100.4	57.7	47.5	35.9	55.5	59.2
AUG	90.0	88.3	71.4	96.5	101.2	63.1	41.0	37.7	56.2	1.3
SEP	88.2	84.8	73.6	101.3	97.5	58.8	40.5	45.6	56.9	65
OCT	96.2	88.6	74.2	101.5	91.8	62.6	41.3	47.3	56.0	
NOV	96.3	85.4	77.7	105.3	90.0	60.4	37.9	46.7	53.9	
DEC	108.2	94.5	86.9	111.5	89.9	63.	41.0	49.2	55.1	
Average	92.1	98.8	77.6	100.0	103.5	70.0	49.5	38.4	54.7	

II-C Estimated Weekly Payroll (thousands of dollars) c/

JAN	1,477	1,811	1,475	1,475	1,88	1,406	1,025	623	815	951
FEB	1,490	1,837	1,316	1,514	1,932	1,358	1,007	591	830	1,010
MAR	1,536	1,906	1,295	1,619	1,925	1,285	957	540	888	1,080
APR	1,562	1,939	1,372	1,726	1,932	1,316	1,047	501	12	1,049
MAY	1,524	1,805	1,294	1,760	1,915	1,333	912	543	1,015	1,112
JUN	1,531	1,691	1,378	1,778	1,803	1,217	869	545	1,20	939
JUL	1,509	1,636	1,225	1,725	1,704	1,119	840	59	942	1,025
AUG	1,528	1,499	1,212	1,638	1,718	1,071	696	64	974	1,041
SEP	1,497	1,440	1,249	1,737	1,655	998	688	774	96	1,110
OCT	1,633	1,504	1,260	1,727	1,578	1,063	701	83	951	
NOV	1,630	1,45	1,288	1,788	1,528	1,025	643	793	915	
DE	1,837	1,604	1,475	1,893	1,526	1,009	697	835	930	
Average	1,560	1,677	1,316	1,695	1,757	1,188	840	650	929	

a/ Bureau of Labor Statistics Index for "Shipbuilding."

b/ II-B shifted to 1929 base and adjusted to 1933 Census total by NRA.

c/ II-B times 1929 base figure (\$88,274,153 = \$1,697,580).

p - preliminary

SHIP AND BOAT BUILDING AND REPAIRING INDUSTRIES

Man-Hours - Factory

III-A Average Hours Worked Per Week a/

	1926	1927	1928	1929	1930	1931	1932	1933	1934	1935
JAN							37.3	29.8	30.1	31.8
FEB							35.8	29.5	30.4	30.7
MAR							34.7	30.5	31.0	32.1
APR							37.9	31.3	31.2	32.2
MAY							34.3	33.0	32.2	33.1
JUN							33.3	31.5	31.3	32.4
JUL							33.4	33.0	31.6	32.6
AUG							32.0	30.3	31.3	32.8
SEP							31.7	30.6	30.5	
OCT							32.0	30.3	30.1	
NOV							29.7	29.5	30.4	
DEC							33.4	31.2	30.5	
Average							34.2	30.9	30.0	

III-B Estimated Total Man-Hours Per Week (thousands) b/

JAN							1,533	894	1,084	1,215
FEB							1,471	838	1,122	1,249
MAR							1,409	817	1,203	1,345
APR							1,580	773	1,254	1,346
MAY							1,365	871	1,317	1,417
JUN							1,282	844	1,343	1,199
JUL							1,344	964	1,223	1,301
AUG							1,053	1,027	1,246	1,328
SEP							1,005	1,099	1,217	
OCT							998	1,121	1,198	
NOV							915	1,050	1,179	
DEC							1,032	1,177	1,168	
Average							1,249	956	1,213	

JAN										
FEB										
MAR										
APR										
MAY										
JUN										
JUL										
AUG										
SEP										
OCT										
NOV										
DEC										

a/ Bureau of Labor Statistics series for "Shipbuilding"

b/ Estimated Number Employed (I-C) multiplied by Average Hours Worked Per Week (III-A).

SHIP AND BOAT BUILDING AND REPAIRING INDUSTRIES

Wages - Factory

IV-A Average Hourly Wage (cents) a/

	1926	1927	1928	1929	1930	1931	1932	1933	1934	1935
JAN							67.2	59.4	69.6	75.0
FEB							67.9	61.2	69.9	76.2
MAR							64.1	57.9	70.2	75.2
APR							65.4	56.7	69.5	73.9
MAY							65.0	55.6	73.6	75.0
JUN							62.1	55.0	72.2	74.2
JUL							58.5	55.7	74.1	73.3
AUG							60.6	61.7	73.9	3.9
SEP							62.1	64.2	74.8	
OCT							62.6	67.1	72.1	
NOV							63.2	67.5	74.1	
DEC							60.6	65.1	75.6	
Average							63.3	60.6	72.5	

IV-B Average Weekly Wage (dollars) a/

JAN	28.42	29.23	29.96	29.10	29.31	27.83	25.86	20.64	21.79	23.81
FEB	27.96	28.37	28.31	30.00	30.09	28.10	25.20	20.85	21.59	23.60
MAR	28.50	29.32	28.83	29.98	30.56	27.67	24.23	19.38	22.10	24.50
APR	29.64	30.50	30.20	29.88	30.39	27.64	5.68	20.15	21.84	23.89
MAY	29.12	29.52	28.63	30.29	31.09	28.97	23.33	20.19	24.07	24.88
JUN	29.25	28.22	30.24	30.74	29.46	26.80	23.11	20.09	22.11	24.35
JUL	28.90	29.52	29.26	29.77	29.51	25.93	24.35	20.78	23.53	24.13
AUG	29.53	28.15	28.65	29.09	29.61	26.60	21.60	20.12	23.16	24.64
SEP	28.55	27.92	29.27	30.17	28.93	25.13	21.95	21.24	23.16	
OCT	30.74	29.70	29.42	30.31	28.18	26.87	22.66	21.43	23.07	
NOV	28.63	28.51	28.47	30.01	29.59	25.15	21.04	21.56	22.32	
DEC	30.05	31.53	30.36	30.58	29.49	26.07	22.62	21.41	23.33	
Average	29.10	29.22	29.30	30.02	29.68	26.90	23.47	20.75	22.72	

JAN										
FEB										
MAR										
APR										
MAY										
JUN										
JUL										
AUG										
SEP										
OCT										
NOV										
DEC										

a/ Bureau of Labor Statistics series for "Shipbuilding."

SHIP AND BOAT BUILDING AND REPAIRING INDUSTRIES
Merchant Vessels Under Construction and Completed

V-A Merchant Vessels Under Construction (thousands of gross tons) a/

	1926	1927	1928	1929	1930	1931	1932	1933	1934	1935
JAN	268	313	314	126	376	421	252	22	44	38
FEB	251	310	207	168	341	412	229	24	43	36
MAR	228	288	232	187	327	409	174	14	42	30
APR	229	235	252	290	366	397	173	12	48	20
MAY	223	235	259	268	488	370	186	18	46	20
JUN	199	219	264	170	487	359	180	35	38	20
JUL	254	219	256	160	465	326	161	38	35	31
AUG	275	216	235	215	489	299	147	36	33	7 ²
SEP	281	216	242	254	223	294	94	26	32	
OCT	273	241	250	400	366	288	87	24	33	
NOV	317	194	169	384	359	279	18	25	49	
DEC	314	204	94	72	344	249	18	25	50	
Average	259	241	224	250	403	342	143	25	41	

V-B Index of Merchant Vessels Under Construction (1929=100) b/

JAN	107.2	125.2	85.6	50.4	150.	168.4	100.8	8.8	17.6	15.2
FEB	100.4	124.0	82.8	61.2	136.	164.8	91.6	9.6	7.	14.
MAR	91.2	115.2	92.8	74.8	130.	163.6	69.	5.6	16.8	10.
APR	91.6	94.0	100.8	116.0	146.	158.8	69.	4.8	19.2	0.
MAY	89.2	94.0	103.6	107.2	195.	148.0	74.4	7.2	18.4	8.0
JUN	79.6	87.6	155.6	68.0	194.	143.6	72.0	14.0	5.2	8.7
JUL	101.6	87.6	112.4	40.0	86.	130.4	64.4	15.2	14.0	12.4
AUG	110.0	86.4	94.0	86.	195.6	119.6	58.8	14.4	13.2	28.
SEP	112.4	86.4	95.8	101.6	169.2	117.6	37.6	10.4	12.8	
OCT	109.2	96.4	100.0	160.	146.4	115.2	34.8	9.6	13.2	
NOV	126.8	77.6	87.6	153.6	136.	111.6	7.2	10.0	19.6	
DEC	125.6	81.6	37.6	148.	117.6	99.6	7.2	10.0	20.0	
Average	103.7	96.3	89.5	100.0	161.0	136.8	57.3	10.0	16.4	

V-C Merchant Vessels Completed During Month (gross tons) a/

JAN	8,629	6,306	1,204	7,113	25,779	29,413	2,913	15,944	4,119	3,003
FEB	7,578	19,374	2,737	3,323	4,241	25,622	3,703	9,338	2,976	4,483
MAR	33,016	41,869	12,900	11,128	2,840	17,443	41,991	41,213	5,314	14,210
APR	22,874	42,752	9,880	20,668	10,930	13,766	17,532	2,885	12,904	12,440
MAY	16,377	40,030	1,400	9,775	45,570	34,527	26,260	9,474	11,958	20,260
JUN	22,819	56,075	10,210	7,666	29,806	22,647	10,782	2,994	1,535	5,280
JUL	14,009	25,184	20,000	21,585	45,060	30,471	28,338	5,264	10,970	4,300
AUG	19,423	24,352	12,570	22,298	75,030	11,554	2,697	5,673	5,156	4,505
SEP	11,317	31,510	27,830	28,325	32,023	27,906	10,273	2,787	49,975	
OCT	12,414	9,290	1,148	8,620	51,677	4,211	22,795	5,148	2,441	
NOV	23,237	26,657	4,913	14,347	53,511	23,229	39,179	5,930	2,370	
DEC	36,376	35,867	3,880	13,692	25,711	23,055	7,698	8,363	2,430	
Average	19,006	29,946	13,651	13,309	36,461	21,991	17,847	9,568	9,849	

a/ Bureau of Navigation (taken from Survey of Current Business).

b/ V-A divided by 1929 average (250,000 gross tons).

TABLE VI

SHIP AND BOAT BUILDING AND REPAIRING INDUSTRIES
Establishments, Wage Earners, Wages, Cost of Materials, Value of Products,
Value Added, and Horsepower, by Census Years, 1899 to 1933

Year	Number of Establishments	Wage Earners (Average for Year)	Wages (Thousands of Dollars)	Cost of Materials ^{a/} (Thousands of Dollars)	Value of Products (Thousands of Dollars)	Value Added by Manufacture (Thousands of Dollars)	Horsepower (In Thousands)
1899	1,107	46,747	24,825	33,475	74,532	41,057	61
1904	1,097	50,754	29,241	37,463	82,769	45,306	78
1909	1,353	40,506	25,268	31,214	73,360	42,146	88
1914	1,147	44,489	32,931	38,597	88,682	50,085	115
1919	1,075	387,446	597,447	710,523	1,622,361	911,839	553
1921	640	106,445	155,943	169,368	400,834	231,466	b/
1923	567	62,287	90,720	84,558	213,232	128,675	318
1925	565	50,224	74,275	66,299	177,182	110,883	303
1927	559	55,014	87,081	78,626	211,127	132,501	314
1929	624	55,089	88,274	85,849	231,300	145,451	337
1931	518	45,262	62,028	72,322	186,993	114,571	b/
1933	395	30,885	33,890	31,172	92,696	61,524	b/

Source: Census of Manufactures, 1929, Vol. II, p. 1232, Release for 1931, p. 1056 and Release for 1933, p. 11. Data are for Census classification "Ship and Boat Building". They do not include establishments with annual production valued at less than \$5,000 in 1921 and subsequent Census years, for prior Census years data do not include establishments with annual production valued at less than \$500.

a/ Includes cost of materials, fuel, and purchased electric energy.

b/ Not available.

Prepared by
Industry Statistics Unit,
Statistics Section,
Division of Review, NRA.
October 14, 1935

TABLE VII-A

SHIP AND BOAT BUILDING AND REPAIRING INDUSTRIES
 Establishments, Wage Earners, Wages, Cost of Materials, Value of Products, and Value
 Added by Manufacture, by States, 1929

State	Establishments		Wage Earners		Wages		Cost of Materials ^{a/}		Value of Products		Value Added by Manufacture	
	Number	Per Cent of Total	Number	Per Cent of Total	Thousands of Dollars	Per Cent of Total	Thousands of Dollars	Per Cent of Total	Thousands of Dollars	Per Cent of Total	Thousands of Dollars	Per Cent of Total
U. S. Total	624	100.0	55,089	100.0	88,274	100.0	85,849	100.0	231,300	100.0	145,451	100.0
California	60	9.6	4,178	7.6	7,805	8.9	8,016	9.3	20,665	8.9	12,649	8.7
Connecticut	25	4.0	846	1.5	1,355	1.5	1,294	1.5	3,653	1.6	2,359	1.6
Delaware	9	1.4	1,239	2.2	1,544	1.8	3,024	3.5	6,909	3.0	3,885	2.7
Florida	30	4.8	740	1.3	933	1.1	962	1.1	2,917	1.3	1,955	1.3
Louisiana	12	1.9	1,277	2.3	2,107	2.4	1,148	1.3	4,176	1.8	3,028	2.1
Maine	24	3.9	1,134	2.1	1,362	1.6	2,434	2.8	4,421	1.9	1,987	1.4
Maryland	24	3.9	2,312	4.2	3,381	3.8	2,711	3.2	8,310	3.6	5,600	3.8
Massachusetts	40	6.4	3,635	6.6	6,500	7.4	5,584	6.5	16,450	7.1	10,865	7.5
Michigan	30	4.8	1,803	3.3	3,019	3.4	4,661	5.4	10,924	4.7	6,263	4.3
New Jersey	41	6.6	7,551	13.7	12,384	14.0	9,406	11.0	29,621	12.8	20,215	13.9
New York	98	15.7	10,811	19.6	19,533	22.1	13,808	16.1	46,480	20.1	32,672	22.5
Ohio	21	3.4	2,105	3.8	3,186	3.6	3,694	4.3	8,855	3.8	5,161	3.5
Pennsylvania	17	2.7	3,356	6.1	5,287	6.0	5,409	6.3	13,488	5.8	8,079	5.5
Rhode Island	9	1.4	577	1.0	882	1.0	2,547	3.0	3,781	1.6	1,234	.8
Texas	9	1.4	579	1.1	886	1.0	611	.7	2,308	1.0	1,697	1.2
Virginia	22	3.5	6,760	12.3	9,260	10.5	11,182	13.0	25,293	10.9	14,111	9.7
Washington	53	8.5	1,464	2.7	2,402	2.7	2,010	2.4	5,475	2.4	3,465	2.4
Wisconsin	19	3.1	1,297	2.4	1,881	2.1	3,335	3.9	6,618	2.9	3,282	2.3
Other states ^{b/}	81 ^{b/}	13.0	3,425	6.2	4,567	5.1	4,013	4.7	10,956	4.8	6,944	4.8

Source: Census of Manufactures, 1929, Volume II, p. 1233. Data are for Census classification "Ship and Boat Building." They do not include establishments with annual production valued at less than \$5,000.

^{a/} Includes cost of materials, fuel, and purchased electrical energy.

^{b/} Alabama, 8; District of Columbia, 1; Georgia, 3; Idaho, 1; Illinois, 12; Indiana, 7; Iowa, 3; Kentucky, 3; Minnesota, 11; Mississippi, 5; Missouri, 2; North Carolina, 2; Oregon, 13; South Carolina, 1; Tennessee, 2; Vermont, 1; West Virginia, 6.

Prepared by
 Industry Statistics Unit,
 Statistics Section,
 Division of Review, NRA.
 October 9, 1935

TABLE VII-B

SHIP AND BOAT BUILDING AND REPAIRING INDUSTRIES
 Establishments, Wage Earners, Wages, Cost of Materials, Value of Products, and Value
 Added by Manufacture, by States, 1931

State	Establishments		Wage Earners		Wages		Cost of Materials ^{a/}		Value of Products		Value Added by Manufacture	
	Number	Per Cent of Total	Number	Per Cent of Total	Thousands of Dollars	Per Cent of Total	Thousands of Dollars	Per Cent of Total	Thousands of Dollars	Per Cent of Total	Thousands of Dollars	Per Cent of Total
U. S. Total	518	100.0	45,262	100.0	62,028	100.0	72,322	100.0	186,993	100.0	114,671	100.0
California	47	9.1	2,938	6.5	4,188	6.8	3,612	5.0	12,085	6.5	8,473	7.4
Connecticut	20	3.9	653	1.4	761	1.2	716	1.0	2,074	1.1	1,358	1.2
Delaware	8	1.5	457	1.0	550	.9	973	1.4	1,899	1.0	926	.8
Louisiana	7	1.4	1,165	2.6	1,383	2.2	892	1.2	3,039	1.6	2,146	1.9
Maine	18	3.5	1,168	2.6	1,313	2.1	1,966	2.7	3,685	2.0	1,719	1.5
Maryland	27	5.2	1,481	3.3	2,167	3.5	2,797	3.9	6,818	3.6	4,021	3.5
Massachusetts	35	6.7	4,845	10.7	7,670	12.4	12,971	17.9	27,711	14.8	14,741	12.9
Michigan	18	3.5	926	2.0	1,290	2.1	1,809	2.5	4,655	2.5	2,346	2.1
New Jersey	37	7.1	8,499	18.8	11,001	17.8	14,750	20.4	31,311	16.8	16,562	14.4
New York	89	17.2	7,078	15.9	11,410	18.4	8,105	11.2	31,689	16.9	17,583	15.3
Ohio	15	2.9	1,083	2.4	1,541	2.5	1,144	1.6	3,324	1.8	1,180	1.0
Pennsylvania	11	2.1	3,123	6.9	3,921	6.3	6,457	8.9	13,731	7.3	7,273	6.3
Washington	4	.8	1,180	2.6	1,208	1.9	1,182	1.6	2,944	1.6	1,753	1.5
Wisconsin	15	2.9	1,631	3.6	1,734	2.8	707	1.0	1,964	1.1	1,257	1.1
Other states ^{b/}	122 ^{b/}	23.5	10,334	22.8	12,850	20.7	14,241	19.7	40,064	21.4	25,823	22.5

Source: Census of Manufactures, 1931, p. 056. Data are for Census classification "Ship and Boat Building." They do not include establishments with annual production valued at less than \$5,000.

^{a/} Includes cost of materials, fuel, and purchased electrical energy.

^{b/} Alabama, 5; Florida, 2; Georgia, 2; Idaho, 1; Illinois, 10; Indiana, 6; Iowa, 1; Kansas, 1; Kentucky, 3; Minnesota, 9; Mississippi, 4; Missouri, 1; North Carolina, 2; Oregon, 9; Rhode Island, 9; South Carolina, 1; Texas, 8; Vermont, 1; Virginia, 22; West Virginia, 4.

Prepared by
 Industry Statistics Unit,
 Statistical Section,
 Bureau of Economic Review, BBA
 Washington, D. C.

TABLE VII-C

SHIP AND BOAT BUILDING AND REPAIRING INDUSTRIES
 Establishments, Wage Earners, Wages, Cost of Materials, Value of Products, and Value
 Added by Manufacture, by States, 1933

State	Establishments		Wage Earners		Wages		Cost of Materials ^{a/}		Value of Products		Value Added by Manufacture	
	Number	Per Cent of Total	Number	Per Cent of Total	Thousands of Dollars	Per Cent of Total	Thousands of Dollars	Per Cent of Total	Thousands of Dollars	Per Cent of Total	Thousands of Dollars	Per Cent of Total
U. S. Total	395	100.0	30,885	100.0	33,890	100.0	31,172	100.0	92,696	100.0	61,524	100.0
California	39	9.9	2,240	7.3	2,635	7.8	2,268	7.3	7,717	8.3	5,448	8.9
Connecticut	15	3.8	578	1.9	788	2.3	719	2.3	2,227	2.4	1,507	2.4
Louisiana	9	2.3	953	3.1	799	2.3	556	1.8	1,841	2.0	1,235	2.1
Maryland	19	4.8	1,543	5.0	1,681	5.0	1,353	4.3	4,238	4.6	2,885	4.7
Michigan	14	3.6	351	1.1	432	1.3	592	1.9	1,600	1.7	1,008	1.6
New Jersey	35	8.9	5,437	17.6	6,146	18.1	5,204	16.7	15,424	16.7	10,220	16.6
New York	76	19.2	5,566	18.0	6,700	19.8	4,653	14.9	16,926	18.3	12,273	20.0
Ohio	13	3.3	536	1.7	599	1.8	601	1.9	1,847	2.0	1,246	2.0
Pennsylvania	14	3.5	2,772	6.9	2,449	7.2	2,239	7.2	5,060	5.4	2,821	4.6
Washington	25	6.3	779	2.5	1,067	3.1	901	2.9	2,458	2.6	1,557	2.5
Other states ^{b/}	136 ^{b/}	34.4	10,780	34.9	10,594	31.3	12,086	38.8	33,358	36.0	21,274	34.6

Source: Census of Manufactures, 1933, State Releases. Data are for Census classification "Ship and Boat Building." They do not include establishments with annual production valued at less than \$5,000.

^{a/} Includes cost of materials, fuel and purchased electrical energy.

^{b/} Florida, 17; Illinois, 9; Indiana, 4; Minnesota, 7; Oregon, 6; Rhode Island, 6; not separately shown 87.

Prepared by
 Industry Statistics Unit,
 Statistics Section,
 Division of Review, B.R.A.
 October 9, 1935

TABLE VIII

SHIP BUILDING AND SHIP REPAIRING INDUSTRY
 Number of Plants, by States,
 1933 and 1934

	Number of Plants		
	Total	Shipyards	Shore Shops
Total	595	251	344
Alabama	16	7	9
California	37	15	22
Connecticut	4	2	2
Delaware	3	3	
Florida	49	17	32
Georgia	5	4	1
Illinois	11	5	6
Indiana	2	2	
Iowa	1	1	
Louisiana	16	7	9
Maine	11	6	5
Maryland	25	18	7
Massachusetts	39	18	21
Michigan	5	4	1
Mississippi	1	1	
Missouri	1	1	
New Jersey	31	17	14
New York	150	33	117
North Carolina	6	5	1
Ohio	17	5	12
Oregon	15	4	11
Pennsylvania	17	9	8
Rhode Island	4	2	2
South Carolina	3	2	1
Tennessee	1	1	
Texas	28	11	17
Virginia	20	12	8
Washington	67	54	33
West Virginia	2	1	1
Wisconsin	8	4	4

Source: Special Tabulation by National Council of American Shipbuilders.

Prepared by
 Industry Statistics Unit,
 Statistics Section
 Division of Review, IIRA
 October 22, 1935.

TABLE IX

SHIP AND BOAT BUILDING AND REPAIRING INDUSTRIES
 Number of Employees in Identical Yards Building Wooden
 and Steel Boats up to 126 Feet in Length,
 by Regions, 1929 and 1933

Region	Yards Number	Number of Employees		Decrease 1933 from 1929 Per Cent
		1929	1933	
Total	161	4,216	1,660	60.6
North Atlantic	35	2,563	843	70.6
South Atlantic	9	73	35	52.1
Gulf Coast	7	82	59	28.0
Central & Great Lakes	36	650	467	28.2
Pacific	24	523	251	52.0

Source: National Recovery Administration Questionnaires, July 1934, tabulated by Industry Reporting Unit, Division of Research and Planning.

Prepared by
 Industry Statistics Unit,
 Statistics Section,
 Division of Review, NEA
 October 2, 1935

TABLE X

SHIP AND BOAT BUILDING AND REPAIRING INDUSTRIES
Establishments, Wage Earners, Wages, Cost of Materials, and Value of Products
Classified by Size of City, 1933

Population of City	Establishments		Wage Earners		Wages		Cost of Materials ^{a/}		Value of Products	
	Number	Per Cent of Total	Number	Per Cent Of Total	Thousands of Dollars	Per Cent of Total	Thousands of Dollars	Per Cent of Total	Thousands of Dollars	Per Cent of Total
Total	395	100.0	30,885	100.0	33,890	100.0	31,172	100.0	92,696	100.0
Less than 2,500	67	17.0	1,282	4.2	1,208	3.6	1,894	6.1	4,142	4.5
2,500 - 4,999	25	6.3	808	2.6	946	2.8	957	3.1	2,563	2.8
5,000 - 9,999	26	6.6	878	2.8	848	2.5	1,388	4.5	2,888	3.1
10,000 - 24,999	41	10.4	1,086	3.5	1,158	3.4	1,418	4.5	3,602	3.9
25,000 - 99,999	58	14.7	11,765	38.1	12,176	35.9	11,641	37.3	33,888	36.6
100,000 - 499,999	84	21.3	6,593	21.3	7,510	22.2	6,775	21.7	19,787	21.3
500,000 and over	94	23.7	8,473	27.5	10,044	29.6	7,099	22.8	25,826	27.8

Source: Bureau of the Census, Special Tabulation for NRA on Establishments, Classified by Size of City. Data are for Census classification, "Ship and Boat Building." They do not include establishments with annual production valued at less than \$5,000.

a/ Includes cost of materials, fuel, and purchased electric energy.

Prepared by
Industry Statistics Unit,
Statistics Section,
Division of Review, NRA.
October 17, 1935

TABLE XI

SHIP AND BOAT BUILDING AND REPAIRING INDUSTRIES
Establishments, Wage Earners, Value of Products, and Value
Added, Classified by Value of Products
per Establishment, 1929

Value of Products per Establishment	Establishments		Wage Earners		Value of Products		Value Added by Manufacture	
	Number of Total	Per Cent	Number of Total	Per Cent	Thousands of Dollars of Total	Per Cent	Thousands of Dollars of Total	Per Cent
Total	624	100.0	55,089	100.0	231,300	100.0	145,451	100.0
\$ 5,000-\$ 19,999	172	27.5	655	1.2	1,963	.8	1,239	.9
20,000- 49,999	128	20.5	1,094	2.0	4,078	1.8	2,598	1.8
50,000- 99,999	94	15.1	1,820	3.3	6,694	2.9	4,235	2.9
100,000- 249,999	94	15.1	3,768	6.8	15,166	6.6	9,373	6.4
250,000- 499,999	56	9.0	5,018	9.1	20,256	8.7	12,669	8.7
500,000- 999,999	31	5.0	5,380	9.8	23,275	10.1	15,431	10.6
1,000,000- 2,499,999	25	4.0	9,369	17.0	39,269	17.0	26,406	18.2
2,500,000- 4,999,999	17	2.7	11,537	20.9	53,301	23.0	31,748	21.8
5,000,000 and over	7	1.1	16,448	29.9	67,298	29.1	41,752	28.7

Source: Census of Manufactures, 1929, Vol. I, pp. 86-89. Data are for Census classification "Ship and Boat Building."

Prepared by
Industry Statistics Unit,
Statistics Section,
Division of Review, NRA.
October 8, 1935.

TABLE XII-A

SHIP AND BOAT BUILDING AND REPAIRING INDUSTRIES
 Establishments and Wage Earners
 Classified by Number of Wage Earners per
 Establishment, 1929

Number of Wage Earn- ers per Establishment	Establishments		Wage Earners	
	Number	Per Cent of Total	Number	Per Cent of Total
Total	624	100.0	55,089	100.0
1 - 5	188	30.1	631	1.1
6 - 20	176	28.2	2,038	3.7
21 - 50	113	18.1	3,745	6.8
51 - 100	51	8.2	3,594	6.5
101 - 250	47	7.5	7,192	13.1
251 - 500	22	3.5	7,216	13.1
501 - 1,000	19	3.1	13,014	23.6
1,001 - 2,500	6	1.0	17,659	32.1
2,501 and over	2	.3	a/	a/

Source: Census of Manufactures, 1929, Vol. I, pp. 68, 69. Data are for
 Census classification "Ship and Boat Building." They do not in-
 clude establishments with annual production valued at less than
 \$5,000.

a/ Included in class immediately above to avoid divulging informa-
 tion on individual establishments.

Prepared by
 Industry Statistics Unit,
 Statistics Section,
 Division of Review, MRA.
 October 8, 1935.

TABLE XII-B

SHIP AND BOAT BUILDING AND REPAIRING INDUSTRIES
Establishments, Wage Earners, Wages, Cost of Materials, and Value of Products,
Classified by Number of Wage Earners per Establishment, 1931

Number of Wage Earners per Establishment	Establishments		Wage Earners		Wages		Cost of Materials ^{a/}		Value of Products	
	Number	Per Cent of Total	Number	Per Cent of Total	Thousands of Dollars	Per Cent of Total	Thousands of Dollars	Per Cent of Total	Thousands of Dollars	Per Cent of Total
Total	518	100.0	45,262	100.0	62,028	100.0	72,322	100.0	186,993	100.0
None	1	.2					b/	b/	b/	b/
1 - 5	152	29.3	448	1.0	596	1.0	636	.9	1,731	.9
6 - 20	156	30.1	1,784	3.9	2,428	3.9	2,296	3.2	6,256	3.3
21 - 50	94	18.2	3,070	6.8	4,679	7.5	4,634	6.4	12,247	6.5
51 - 100	46	8.9	3,276	7.2	4,683	7.6	5,251	7.3	14,199	7.6
101 - 250	35	6.8	5,690	12.6	8,259	13.3	7,092	9.8	20,301	10.9
251 - 500	18	3.5	6,332	14.0	7,602	12.3	8,671	12.0	24,646	13.2
501 - 1,000	10	1.9	6,595	14.6	8,259	13.3	6,332	8.7	25,119	13.4
1,001 - 2,500	3	.5	4,844	10.7	7,575	12.2	9,115	12.6	21,611	11.6
2,501 - 5,000	2	.4	13,223	29.2	17,947	28.9	28,295	39.1	60,883	32.6
5,001 - 10,000	1	.2	b/	b/	b/	b/	b/	b/	b/	b/

Source: Bureau of the Census, Special Tabulation for NRA on Establishments Classified by Number of Wage Earners. Data are for Census classification "Ship and Boat Building." They do not include establishments with annual production valued at less than \$5,000.

^{a/} Includes cost of materials, fuel, and purchased electric energy.

^{b/} Included in class immediately above or below to avoid divulging information on one establishment.

Prepared by
 Industry Statistics Unit,
 Statistics Section,
 Division of Review, NRA
 October 23, 1935

TABLE XII-C

SHIP AND BOAT BUILDING AND REPAIRING INDUSTRIES
Establishments, Wage Earners, Wages, Value of Products, and Value Added,
Classified by Number of Wage Earners per Establishment, 1933

Number of Wage Earners per Establishments	Establishments		Wage Earners		Wages		Value of Products		Value Added by Manufacture	
	Number	Per Cent of Total	Number	Per Cent of Total	Thousands of Dollars	Per Cent of Total	Thousands of Dollars	Per Cent of Total	Thousands of Dollars	Per Cent of Total
Total	395	100.0	30,885	100.0	33,890	100.0	92,696	100.0	61,524	100.0
1 - 5	109	27.6	356	1.2	383	1.1	1,338	1.4	833	1.4
6 - 20	135	34.2	1,563	5.1	1,595	4.7	4,434	4.8	2,963	4.8
21 - 50	65	16.4	2,084	6.7	2,350	6.9	6,594	7.1	4,204	6.8
51 - 100	32	8.1	2,256	7.3	2,334	6.9	6,177	6.7	3,859	6.3
101 and over	54	13.7	24,626	79.7	27,228	80.4	74,153	80.0	49,665	80.7

Source: Bureau of the Census, Special Tabulation for NRA on Size of Establishments. Data are for Census classification "Ship and Boat Building." They do not include establishments with annual production valued at less than \$5,000.

Prepared by
Industry Statistics Unit,
Statistics Section,
Division of Review, NRA.
October 15, 1935

TABLE XII

SHIP AND BOAT BUILDING AND REPAIRING INDUSTRIES
 Establishments, Wage Earners, Wages, Cost of Materials and Value of Products, Classified by
 Number of Wage Earners, and by Size of City, 1933

Number of Wage Earners per Establishment by Population of Cities	Establishments		Wage Earners		Wages		Cost of Materials ^{a/}		Value of Products	
	Number	Per Cent of Total	Number	Per Cent of Total	Thousands of Dollars	Per Cent of Total	Thousands of Dollars	Per Cent of Total	Thousands of Dollars	Per Cent of Total
All Establishments: Total	395	100.0	30,885	100.0	33,890	100.0	31,172	100.0	92,696	100.0
Cities less than 10,000										
Total	118	29.9	2,968	9.6	3,001	8.9	4,239	13.6	9,593	10.4
0 - 5 Wage Earners	47	11.9	152	.5	163	.5	194	.6	537	.6
6 - 20 " "	48	12.2	558	1.8	534	1.6	583	1.9	1,549	1.7
21 - 100 " "	12	3.0	339	1.1	336	1.0	351	1.1	1,039	1.1
Over 100 " "	11	2.8	1,919	6.2	1,968	5.8	3,111	10.1	6,468	7.0
Cities 10,000 - 99,999										
Total	99	25.1	12,851	41.6	13,334	39.3	13,059	41.9	37,490	40.4
0 - 5 Wage Earners	27	6.8	95	.3	97	.3	136	.4	389	.4
6 - 20 " "	37	9.4	385	1.2	375	1.1	323	1.0	1,053	1.1
21 - 100 " "	8	2.0	269	.9	243	.7	270	.9	757	.8
Over 100 " "	27	6.9	12,102	39.2	12,619	37.2	12,330	39.6	35,291	38.1
Cities 100,000 - 499,999										
Total	84	21.3	6,593	21.4	7,511	22.2	6,775	21.7	19,787	21.3
0 - 5 Wage Earners	24	6.1	82	.3	89	.3	127	.4	284	.3
6 - 20 " "	21	5.3	259	.8	241	.7	214	.7	672	.7
21 - 100 " "	19	4.8	619	2.0	720	2.1	977	3.1	2,118	2.3
Over 100 " "	20	5.1	5,633	18.3	6,461	19.1	5,457	17.5	16,713	18.0
Cities 500,000 and over										
Total	94	23.7	8,473	27.4	10,044	29.6	7,099	22.8	25,826	27.9
0 - 5 Wage Earners	11	2.8	29	.1	34	.1	49	.2	128	.1
6 - 20 " "	29	7.3	361	1.2	445	1.3	352	1.1	1,159	1.3
21 - 100 " "	26	6.6	857	2.8	1,052	3.1	792	2.6	2,680	2.9
Over 100 " "	28	7.0	7,226	23.3	8,513	25.1	5,906	18.9	21,859	23.6

Source: Bureau of the Census, Special Tabulation for NRA on Establishments Classified by Number of Wage Earners and by Size of City. Data are for Census classification "Ship and Boat Building." They do not include establishments with annual production valued at less than \$5,000.

^{a/} Includes cost of materials, fuel and purchased electric energy.

Prepared by
 Industry Statistics Unit,
 Statistics Section,
 Division of Review, NRA
 October 23, 1935

TABLE XIV

SHIP AND BOAT BUILDING AND REPAIRING INDUSTRIES
 Number of Yards, by Wage Earners,
 1929 and 1933

Number of Employees	1929		1933	
	Number	Per Cent	Number	Per Cent
Total	342	100.0	372	100.0
1 - 1	25	7.3	53	14.2
2 - 2	24	7.0	44	11.8
3 - 9	97	28.3	124	33.3
10 - 19	50	14.6	50	13.4
20 - 29	19	5.6	30	8.1
30 - 39	23	6.7	15	4.0
40 - 49	16	4.7	8	2.1
50 - 59	14	4.1	7	1.9
60 - 69	8	2.3	3	.8
70 - 79	5	1.5	4	1.1
80 - 89	5	1.5	3	.8
90 - 99	2	.6	4	1.1
100 - 149	14	4.1	10	2.7
150 - 199	7	2.0	0	.0
200 - 249	7	2.0	4	1.1
250 - 299	4	1.2	3	.8
300 - 399	6	1.8	2	.5
400 - 499	1	.3	1	.3
500 - 699	8	2.3	1	.3
700 - 999	3	.9	4	1.1
1,000 - 1,499	1	.3	1	.3
1,500 - 1,999	2	.6	1	.3
2,000 - and over	1	.3	0	.0

Source: National Recovery Administration Questionnaires, July 1934, tabulated by the Bureau of Census.

Prepared by
 Industry Statistics Unit,
 Statistics Section,
 Division of Review, NRA.
 October 22, 1935.

TABLE XV
SHIP AND BOAT BUILDING AND REPAIRING INDUSTRIES
Value of Business, Number of Employees, Total Annual Wages and
Average Annual Wage for 246 Identical Yards,
1929 and 1933

	1929	1933	Decrease	
			Amount	Per Cent
Value of Business (Thousands of Dollars)	115,588	46,888	68,700	59.4
Average Number of Employees	29,444	16,743	12,701	43.1
Wage Earners	2,480	1,979	501	20.2
Office Employees				
Total Wages Paid: (Thousands of Dollars)	44,240	17,337	26,903	60.8
Wages	5,808	4,561	1,247	21.5
Salaries to Office Force				
Average Annual Wage: (Dollars)	1,499	1,035	464	31.0
Yard Employees	2,342	2,305	37	1.6
Office Employees				

129

Source: National Recovery Administration Questionnaires, July 1934, tabulated by Bureau of Census.

Prepared by
Industry Statistics Unit,
Statistics Section,
Division of Review, NRA
October 2, 1935

TABLE XVI
 SHIP AND BOAT BUILDING AND REPAIRING INDUSTRIES
 Number of Yards, by Minimum Hourly Wage Rate,
 1929 and 1933

Minimum Hourly Wage (in Cents)	1929		1933	
	Number	Per Cent	Number	Per Cent
Total	272	100.0	316	100.0
Under 25	2	.7	4	1.3
25 to 29.9	10	3.7	5	1.5
30 to 34.9	15	5.5	22	7.0
35 to 39.9	23	8.5	46	14.6
40 to 44.9	41	15.0	52	16.4
45 to 49.9	33	12.2	58	18.4
50 to 54.9	70	25.7	62	19.6
55 to 59.9	7	2.6	14	4.4
60 to 64.9	24	8.8	18	5.7
65 to 69.9	3	1.1	9	2.9
70 to 74.9	5	1.9	2	.6
75 to 79.9	12	4.4	9	2.9
80 to 84.9	12	2.2	7	2.2
85 to 89.9	7	4.8	2	.6
90 and over	8	2.9	6	1.9

Source: National Recovery Administration Questionnaires, July 1934,
 tabulated by Bureau of Census.

Prepared by
 Industry Statistics Unit,
 Statistics Section,
 Division of Review, NRA.
 October 2, 1935

TABLE XVII

SHIP AND BOAT BUILDING AND REPAIRING INDUSTRIES
 Number of Yards, by Minimum Weekly Earnings
 of Office Employees, 1929 and 1933

Minimum Weekly Earnings (in Dollars)	1929		1933	
	Number	Per Cent	Number	Per Cent
Total	200	100.0	231	100.0
Less than 5	-	-	2	.9
5.00 to 9.99	7	3.5	6	2.6
10.00 to 12.49	11	5.5	20	8.6
12.50 to 14.99	3	1.5	12	5.2
15.00 to 17.49	30	15.0	45	19.5
17.50 to 19.99	12	6.0	17	7.4
20.00 to 24.99	44	22.0	40	17.3
25.00 to 29.99	38	19.0	35	15.1
30.00 to 34.99	17	8.5	17	7.4
35.00 to 39.99	13	6.5	16	6.9
40.00 to 44.99	7	3.5	10	4.3
45.00 and over	18	9.0	11	4.8

Source: National Recovery Administration Questionnaires, July 1934,
 tabulated by Bureau of Census.

Prepared by
 Industry Statistics Unit,
 Statistics Section,
 Division of Review, NRA.
 October 2, 1935

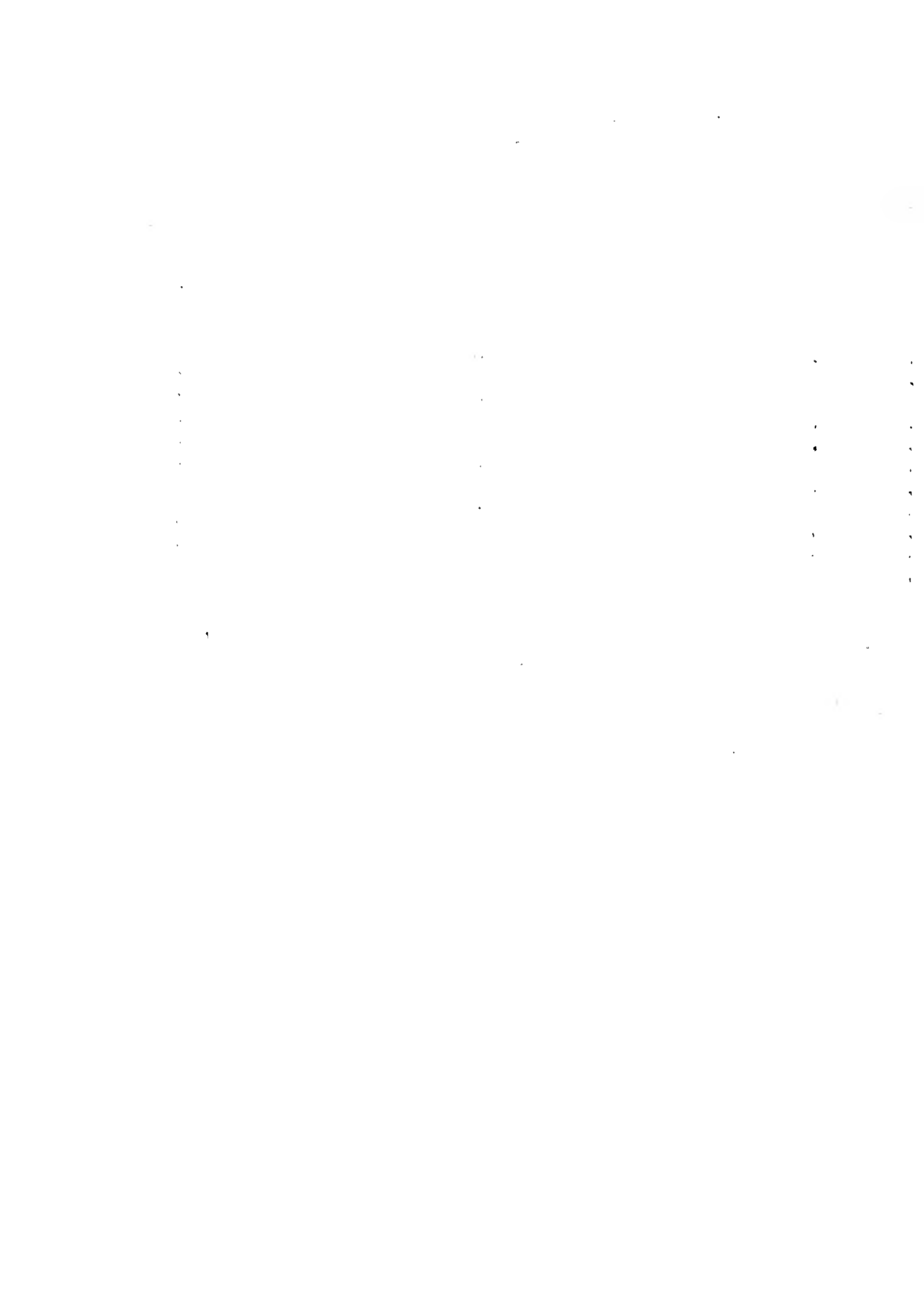


TABLE XVIII
SHIP BUILDING AND SHIP REPAIRING INDUSTRY
Sources of Material Entering into the Construction of
a \$15,000,000 Ship

State	Material	Amount (Thousands of Dollars)
Total		15,000
Alabama	Iron Ore, Limestone, Coke, Pig Iron, Pipe Fittings.	25
Arkansas	Ash Lumber.	15
Connecticut	Brass and Copper Products, Lighting Fixtures, Electric Wire, Hardware, Cutlery, Silverware, Chain, Ball Bearings, Valves, Pipe Fittings, Gauges, Clocks, Counters.	295
Florida	Cypress, Turpentine and Naval Stores.	15
Georgia	Yellow Pine, Turpentine and Naval Stores, Canvas, Cotton.	46
Idaho	White Pine, Lead.	35
Illinois	Refrigerating Machinery, Hardware, Valves, Limestone, Coke, Paints.	92
Kentucky	Fire Brick, Oak Lumber.	35
Louisiana	Yellow Pine, Cypress, Cotton, Sulphur.	25
Maine	Winches, Windlasses, Steering Gears, Capstans.	93
Maryland	Steel Plates, Brass and Copper Tubes and Sheets, Switchboard Material, Canvas, Calcium.	197
Massachusetts	Electric Motors, Turbines and Generators, Pumps, Fans and Blowers, Rubber Tile, Furniture, Bags and Draperies, Plumbing Fixtures, Insulating Paper, Manilla Rope, Valves, Office Supplies, Tools, Leather Belting, Grinding Wheels, Navigation Instruments.	680
Michigan	Iron Ore, Limestone, White Pine, Plywood, Hardware, Furniture, Soot Blowers, Small Tools, Copper, Paints.	260
Minnesota	Iron Ore, White Pine, Flax, Linseed.	92
Mississippi	Yellow Pine, Cotton.	25
Missouri	Lead and Lead Products, Zinc.	46

(continued on next page)

TABLE XVIII (Continued)
Sources of Material Entering into the Construction of
a \$15,000,000 Ship

State	Material	Amount (Thousands of Dollars)
New Jersey	Boilers and Superheaters, Oil Burners, Refrigerating Machinery, Deck Machinery, Elevators, Fans, Pumps, Plumbing Fixtures, Switchboard Instruments, Electric Cable, Storage Batteries, Galley Equipment, Fire Extinguishing Apparatus, Paints and Varnish, Zinc Oxide, Glass, Steel Forgings, Babbit, Rubber Goods.	1,175
New York	Electric Motors, Turbines and Generators, Telephones, Communication and Navigation Instruments, Life Boats, Boat Davits, Cast Iron Radiators, Furniture, Rugs and Draperies, Carpets, Linens, Magnesite Floor Covering, Galley Equipment, Glass, Cork Products, Tools, Foundry Supplies, Office Supplies, Scrap Metals.	1,100
North Carolina	Canvas, Cotton Goods, Furniture, Spruce and Maple Lumber.	126
North Dakota	Linseed.	12
Ohio	Steel Shapes, Steel and Iron Pipe, Limestone, Coke, Glassware, Quarry Tile, Sheet Rubber, Rubber Hose, Paint and Varnish, Anchors and Chain, Hardware, Heaters, Evaporators, Distillers, Tools.	330
Oklahoma	Fuel Oil and Lubricants, Lead, Zinc.	35
Oregon	Oregon Pine.	35
Pennsylvania	Steel Plates and Shapes, Sheet Steel, Iron and Steel Pipe, Steel Ingots, Steel Forgings, Steel Castings, Coal, Limestone, Coke, Electric Machinery, Refrigerating Machinery, Deck Machinery, Thrust Bearings, Glass, Magnesia Pipe Covering, Anchors and Chain, Wire Rope, Hardware, Plumbing Fixtures, Cast Iron Radiators, Galley Equipment, Paints and Varnish, Alcohol, Pipe Fittings, Tools, Steam Packing, Office Supplies, Scrap Metal, Cement.	2,130
Rhode Island	Machine and Hand Tools.	82
South Carolina	Canvas, Cotton Products, Turpentine and Naval Stores.	25
Tennessee	Iron Ore, Hardwoods.	25
Texas	Fuel Oil and Petroleum Products, Ash Lumber, Cotton.	44

TABLE XVIII (Continued)
Sources of Material Entering into the Construction of
a \$15,000,000 Ship

State	Material	Amount (Thousands of Dollars)
Virginia	Iron Ore, Foundry Sand, Office Supplies.	35
West Virginia	Coal, Coke, Steel Castings, Spruce.	163
Wisconsin	Iron Ore, White Pine, Plywood.	92
All Others ^{a/}	^{a/}	7,620 ^{a/}

Source: Unpublished data from the National Council of American Ship Builders.

^{a/} Includes materials for which amounts are not given from the following states:
 Arizona, Copper Ore, Silver; California, Sugar Pine; Colorado, Copper Ore, Lead, Silver;
 Indiana, Electric Motors, Pumps, Limestone, Alcohol, Oak Lumber; Kansas, Zinc; Montana,
 Copper Ore, Wool; Nevada, Silver; New Hampshire, Ebony Asbestos for Switchboard Panels;
 New Mexico, Copper Ore; South Dakota, Linseed; Utah, Copper Ore, Silver, Lead; Vermont,
 Plywood; and Wyoming, Wool.

Prepared by
 Industry Statistics Unit,
 Statistics Section,
 Division of Review, IIRA.
 October 23, 1935.

TABLE XIX

SHIP BUILDING AND SHIP REPAIRING INDUSTRY
Members of the Industry, Classified as to
Trade Association Membership, 1934

Total Subject to Code Provisions	595 <u>a/</u>
Non-Members of Trade Associations	<u>b/</u>
Members of the National Council of American Ship Builders	27 <u>c/</u>

Sources: As indicated in footnotes.

a/ Ship Building and Ship Repairing Code Authority.
Figure includes 344 Shore Shops.

b/ Not available.

c/ National Council of American Ship Builders, Annual Report, April, 1934. Complete membership data on other Associations are not available but it was indicated in a letter of Application submitting a revised copy, July 10, 1933 (see Code Record files, "Ship Building and Ship Repairing." Vol. A) that the New York and New Jersey Dry Dock Association included 14 firms and the Pacific Coast Dry Dock Association included 5 firms at that date.

Prepared by
Industry Statistics Unit,
Statistics Section,
Division of Review, NRA.
October 23, 1935.

TABLE XX

BOAT BUILDING AND BOAT REPAIRING INDUSTRY
Members of the Industry, Classified as to
Trade Association Membership, 1933

Total Subject to Code Provisions	2,340 <u>a/</u>
Non-Members of Trade Association	800 <u>b/</u>
Members of National Association of Boat Builders and Repairers	1,200 <u>b/</u>

Source: As indicated in footnotes.

a/ Code Authority list of members.

b/ Estimate by the Code Application Committee as reported in the Code Applications. The following are affiliated or cooperating associations:

New England Association of Boat Builders and Repairers; Maine, Massachusetts and Rhode Island.

Boat Builders and Repairers Association; Connecticut.

Boat Builders and Repairers Association; New York Yacht Yards.

Association Philadelphia District Boat Builders and Repairers.

Boat Builders and Repairers of Northern and Central California.

Northwest Boating Industry.

Detroit Boat Builders Association.

Central Florida, East Coast Boat Repairs Association.

Storage and Repair Yards of Lower East Coast Florida.

Prepared by
Industry Statistics Unit,
Statistics Section,
Division of Review, NRA.
October 23, 1935.



