

FALCON

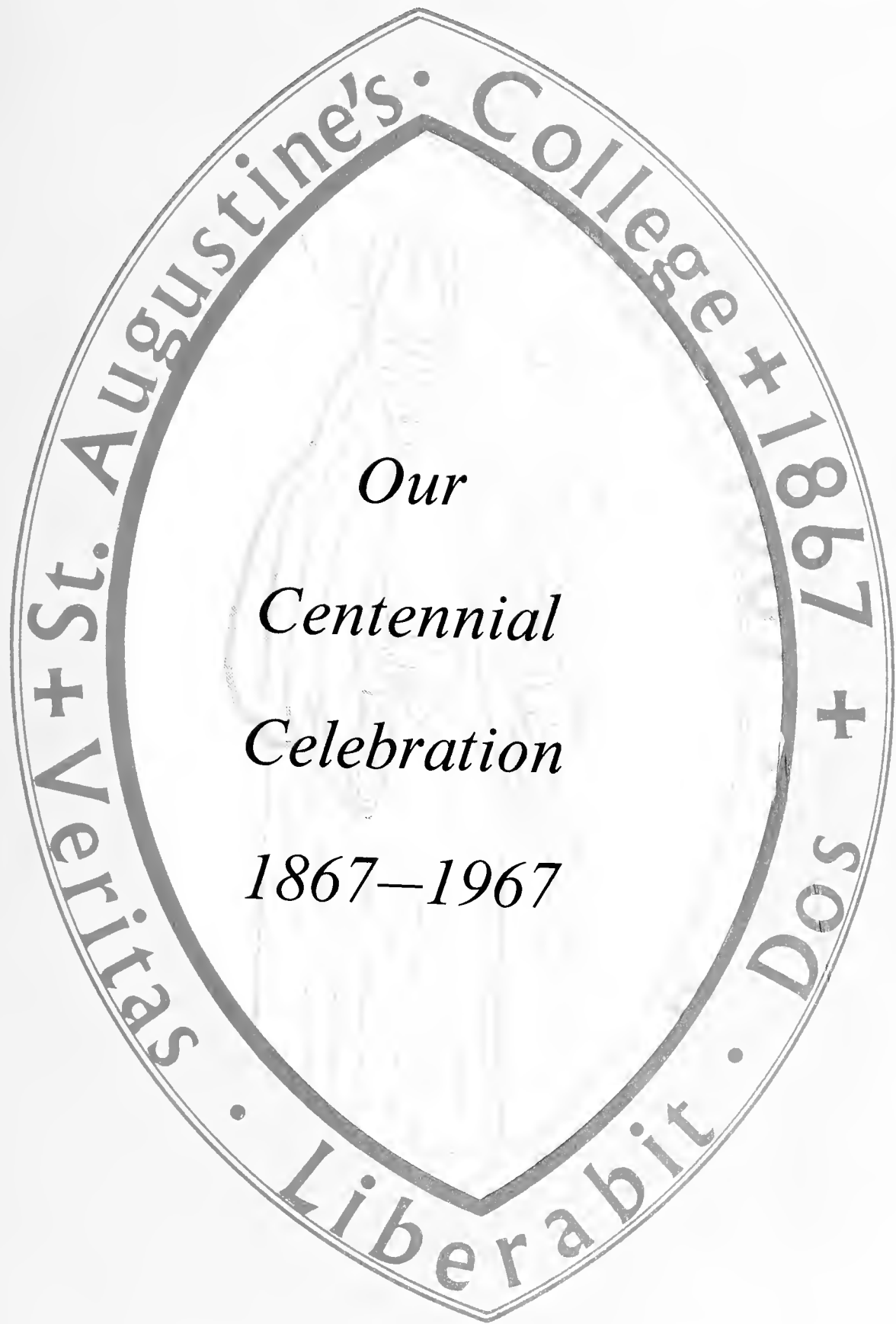


100
ANNIVERSARY

th








St. Augustine's College + 1867 + 1967

*Our
Centennial
Celebration
1867—1967*

Liberabit . Dos + Veritas





*Our
Centennial
Celebration
1867—1967*

CONTENTS

*Education
College History
Messages
Classes
Organizations
Campus Activities*

Sports

*Coronation Ball
Campus Queens
Administration
Faculty
Yearbook Staff
Greek Letter Organizations*



Dedication

*Almighty God Created Heaven
and Earth, and in His Creation,
He Endowed Many Men with the
Ability To Be Creative. This Ability
Has Been Exemplified for 100
Years, and the Class of 1967,
Recognizing the Abysmal and
Unrelenting Efforts Pertinent to
Saint Augustine's High Degree of
Educational Continuity, Dedicates
This Centennial Yearbook to an
Engrossed Numeration of
Personalities, Who Labored
Unknowingly To Engender Such a
Highly Structured Institution As
Saint Augustine's College.*

The Class of 1967

A Century of Service, Learning and Growth

History

Saint Augustine's College was founded in 1867 through the joint efforts of the Freeman's Commission of the Protestant Episcopal Church and a group of clergy and laymen of the Episcopal Diocese of North Carolina headed by Bishop Thomas Atkinson.

According to Dr. Smith, the first principal, there were enrolled on the first day only four pupils. By the end of the session of 1871-72, the enrollment had increased to 110, including 32 boarding students.

Upon the death of Dr. Smith in 1872, the Rev. J. E. C. Smedes took office as "temporary principal" and remained until 1884, when he was succeeded as principal by The Rev. Robert B. Sutton.

Upon the resignation of Dr. Sutton, Dr. Hunter became principal in 1891, and remained in that position until 1916. During the Hunter administration, the curriculum was expanded, St. Agnes Hospital was founded, the Chapel and Benson Library was constructed.

The Bishop Tuttle School was established by the Woman's Auxiliary at Saint Augustine's College and began its first session in the fall of 1925 with Miss Bertha Richards as Dean.

Each new administration has brought change and growth. After the retirement of the Rev. Edgar H. Goold in 1947, Dr. Harold L. Trigg was elected president, becoming the first Negro president. During his administration the Penick Hall of Science was constructed.

Dr. James A. Boyer, son of the first dean and himself a former dean of the College, became president in 1955. During his administration the enrollment of the College doubled, faculty salaries were substantially increased and the physical plant greatly expanded. Dr. Boyer's resignation and plans to return to the classroom were announced on May 24, 1966, by The Right Rev. Thomas A. Fraser, Bishop of the Diocese of North Carolina and Chairman of the Board of Trustees. Concomitantly, Dr. Prezell R. Robinson, Executive Dean and Professor of Sociology was appointed Acting President.

St. Augustine's College—1900





President Hunter. Students and Faculty

*P
A
S
T*



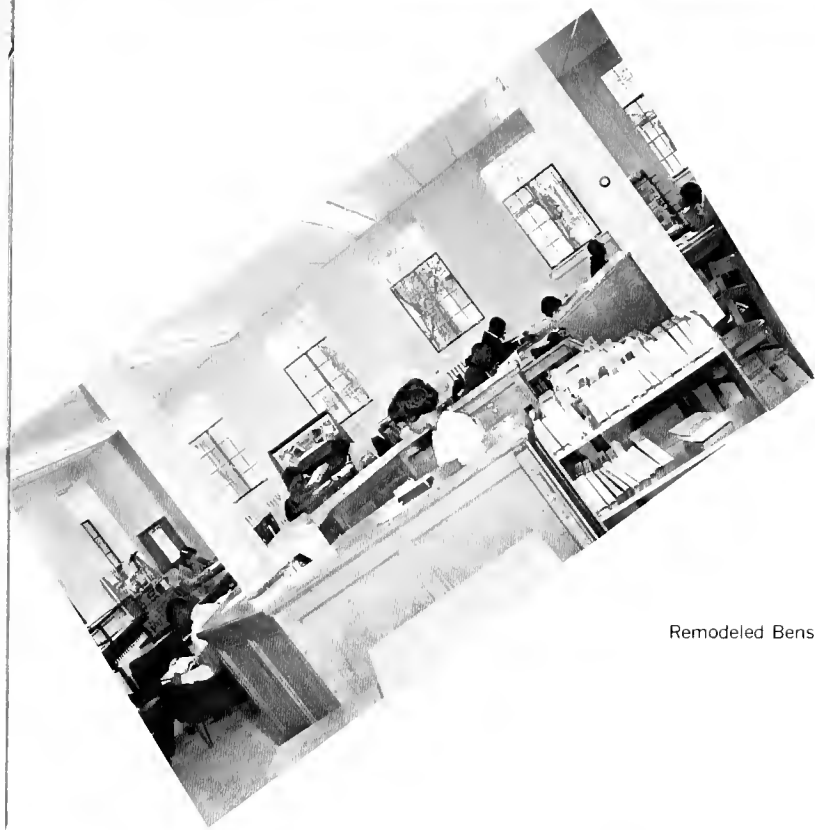
Girls Physical Education Class



First Year Greek Class—1934



St. Augustine's Football Team—1926



Remodeled Benson Library

PRESENT



New Dormitories
Baker Hall—Women
Lynch Hall—Men



Proposed Classroom Building

FUTURE

As Saint Augustine's College stands on the threshold of its second century, it rededicates itself to the following tenets: that every student is an individual and not a number that the primary thrust of the College's program will continue to be the pursuit of academic excellency in a christian-oriented environment that every effort will be made to increase the basic resources of the College in order that it may provide better services to the community, a more conducive learning environment for its students and faculty and a more substantial foundation for future growth during its second century.



Mr. W. C. Jackson from the Association of American Colleges discussing future plans and projections for Saint Augustine's College with Mr. J. Mills Holloway, Dr. J. Boyer and Dr. P. R. Robinson



“As this school was founded in a day of social change, so we who are members of The Board of Trustees, administration, faculty, and students today, live in an age of change. As the founders of this school did lay an honest and solid foundation, and rose to meet the challenges of that change, so today we must rise to meet the challenges of our day.”

*Thomas A. Freerer
Mc.*



Presidents Message



Saint Augustine's College
Raleigh, North Carolina 27602

OFFICE OF THE PRESIDENT

THE GRADUATING CLASS OF 1967

May I congratulate you upon having reached this milestone in your youthful lives. A College education today is no longer a luxury, but it is increasingly necessary in order for one to render effective service and survive in this age of science and technology.

No doubt, during the past four years, the thought has occurred to each of you at some time to throw in the towel. I am sure, however, that it must be satisfying that you did not become a victim of this kind of temptation. The fact that you have reached this point suggests that you have read many books, attended many lectures, written many themes -- much of which did not make a great deal of sense to you. I would hasten to add, nevertheless, that all of these ingredients become important in helping you to develop into a well-rounded liberally educated person.

As you go forth from the hallowed halls of Saint Augustine's College, I hope you will be ever mindful of the fact that one of the most rewarding returns you will get out of life will be that of rendering unselfish service. More and more, our young people must think, it seems to me, in terms of rendering some kind of service to their fellowman, their country and their God. This can be done in numerous ways -- serving in the Armed Forces of one's country, the Peace Corp, the Job Opportunity Corp, Vista, etc. It has been said often times, "The good that one does to others comes back into his own life".

Finally, I hope you will continue to think about your Alma Mater as you go forth. Regardless to what happens to you in life, you are still sons and daughters of Saint Augustine's College. Not only will this institution be judged by your accomplishments, but the manner in which you support it may mean the difference in its continuing to move ahead as a first-rate institution or falling behind as just another "has been college". Your Alma Mater needs you: your loyalty, enthusiasm, support and good wishes. May it never be said that this College called upon you and you were derelict in responding to its call.

Best wishes for the years ahead.

Prezell R. Robinson
President
1967

CENTENNIAL CELEBRATION



Our First Family



"Happiness is a little girl."

Dr. & Mrs. Robinson and Jess Ann



Saint Augustine's College
Raleigh, North Carolina 27602

OFFICE OF THE PRESIDENT

December 2, 1966

TO: MEMBERS OF THE CLASS OF 1967

I sincerely commend you for having advanced to this point in your quest for self-improvement. It is my fervant prayer that graduation will mark the beginning of a new chapter in your efforts to prepare for a positive and productive role in society.

Saint Augustine's College has made available to you the opportunity to become acquainted with the religious, scientific and humanistic implications of life and living. You have grown in mind and spirit while here. I therefore charge you, the members of the centennial class, to exert yourselves to the utmost in order to assure for your Alma Mater a second century of even greater service in the vanguard of higher education.

Very truly yours,
James A. Boyer
James A. Boyer, President
1955 - 1967

JAB:mdv

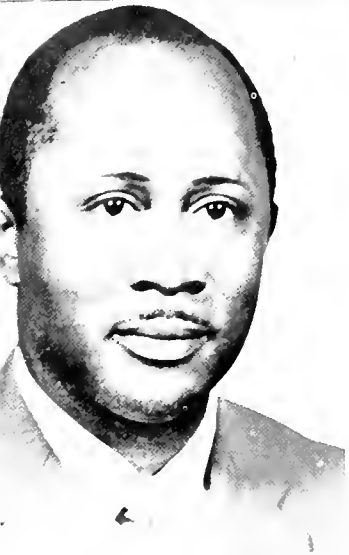


CENTENNIAL CELEBRATION





Dr. and Mrs. Boyer, and Esther



Saint Augustine's College
 Raleigh, North Carolina 27602

DEPARTMENT OF BUSINESS

To the 1967 graduates of St. Augustine's College, I extend congratulations upon the attainment of another significant milestone in your lives. During your four years at the college, the administration, faculty and staff have attempted to provide an environment that would be conducive to the maximum development of your innate intellectual abilities. The extent to which they succeeded in helping you to acquire academic excellency will be manifested, in part, by the degree of economic, social and spiritual security that you acquire, as measured by your achievements as an alumnus of St. Augustine's College.

I hope as you leave this institution, you will be ever mindful of the love of knowledge which motivated the founders of St. Augustine's College, to devote their time, energies and resources to the organization and development of this college. I am sure that you too will manifest such love by upholding the good name of the college and by making periodic donations to its development fund. As you know, St. Augustine's success is measured, to a great extent, by the achievements of its alumni. I hope that you will remember this as you go forth in quest of greater accomplishments.

Dr. Joseph Jones, Jr.
 Executive Dean

MEMBER



CENTENNIAL CELEBRATION





SENIORS



JUNIORS

SOPHOMORES



FRESHMEN

GROWTH . . .

We, the editors of this centennial anniversary yearbook, are very proud to introduce the largest freshman class in 100 years. To them we say, "welcome, and best wishes for the future."

1
9
7
0

Class Pres. Joe Heckstall

Miss Freshman
Robbie Sullivan



Orientation Week



Beverly Adams
E. Marie Adams
William E. Adams
Barbara Allen
Audrey Anderson
Hueddie Arrington



Jess B. Atkins
Jocelyn Baham
Inez Bailey
Lula Banes
Sharon Barnes
Evelyn Basemare



Christine Beatty
 Evelyn Benton
 Barbara Berry
 Barbara Birdsall
 Sarah Bledsoe



Rose Bland
 Sharon Biolock
 Judy Bond
 Joseph Bonds
 Viola Bonds



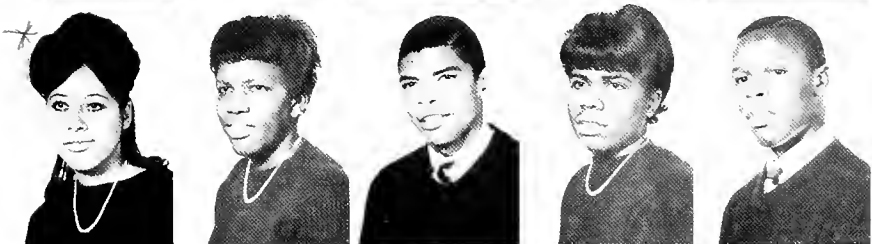
Wendolyn Boyer
 Carol Brabble
 Iva Brewton
 James A. Bridges, Jr.
 Palmera Brite



Henry Brinson
 Lewis Broughton
 Jacqueline Brown
 James Brown
 Margaret Brown



Carolyn Bryant
 Julia Bryant
 Judy Bullock
 Nancy Bunny
 Wayne Burton



Grace Burwell
 Linda Butler
 Edmund Bynum
 Christine Byrd
 Solomon Davis



Francina Caldwell
 Thurman Campbell
 Edna Canady
 Judy Canady



Stella Carr
 Gilbert Chestnut
 Claudette Cogbill
 Richard Collier
 Patricia Cottingham



Joan Covington
 William P. Craig
 Mary Crandell
 Wilhelmina Crippet
 Ronald Crudup



Loinell Cuffie
 Larry Curry
 Cornell Davis
 Donald Davis
 Shirley Debnam



Jackie Dewar
 Ernestine Edwards
 James Edwards
 Willie Jean Elder
 Jeannette Fernell



Carol Fisher
 Lee Flower
 Joyce Fowler
 Leytryce Fonville
 Carolyn Ford



Carolyn Foster
 Patricia Foster
 Bruce Franklin
 Linda Freeman
 Gilberteen Garrs



Lydia Goffigan
 Irving Good
 Cynthia Goza
 Catherine Grant

Thomasene Grant
 Marilyn Graves
 Lorraine Green
 Reginald Green
 Rose Green



Earl Haith
 Lavanda Hall
 Ella Harris
 Gay Marie Harris
 Leslie Harris



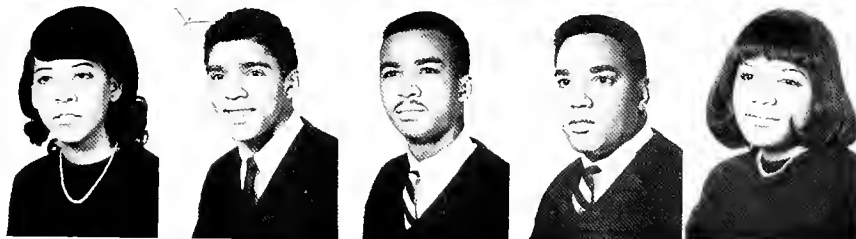
Brenda Hassell
 James Hawkins
 Stella Henry
 Deborah L. Herne
 Doris Hillard



Delma Hodge
 Carolyn Holmes
 Andrew Houston
 Jacqueline Huggins
 Josephine Jackson



Carolyn Jacobs
 Edward James
 Larry James
 Steve Jenkins
 Paula Johnson

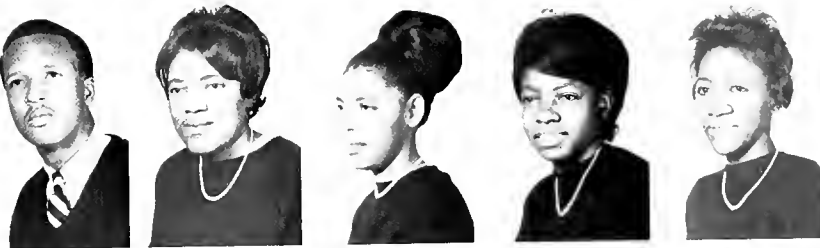


Vivian Johnson
 Betty Jones
 Dottie Jones
 Linda Jones
 Mildred Jones



Nina Jones
 Sandra Jones
 Brenda Jordan
 Brenda J. Jordan





Victor Joshua
 Jacquelyn Joyner
 Barbara Langham
 Ernestine Leech
 Gwendolyn Lee



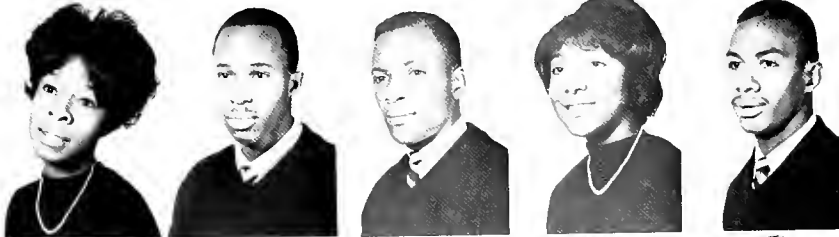
Mattie Lee
 Jarvonia Leonard
 Gwendolyn Lesesne
 Sandra Lewis
 Gary Lindsey



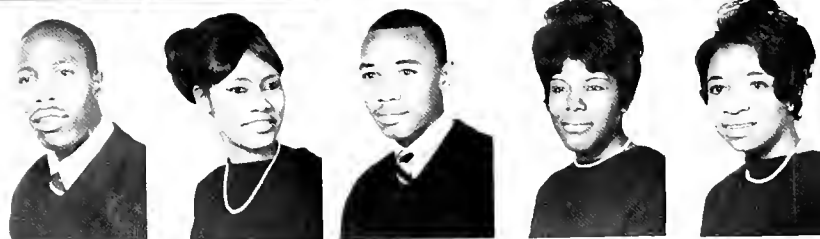
Phyllis Long
 Beatrice Love
 Sandra Love
 Carolyn Lucas
 Hermenia Lucas



Wilheminia Mack
 Mary E. Machen
 Scheron Major
 Harold Mann
 Barbara McClam



Patsy McCray
 Harry McDowell
 Quincy McGill
 Joyce McLamb
 Johnny McNeil



Waymon McNeil
 Iantha Means
 James Melvin
 Irene Milhouse
 Lorraine Mitchell



Lucy Moody
 Marilyn Moore
 Rosemary Moore
 Virginia Moore

Geraldine Morgan
 Ralph Morgan
 Barbara Morning
 Brenda Moseley
 Roosevelt Moseley



Grace Mosley
 Mary Moss
 Beverly Neely
 Patricia Neely
 Carolyn Otey



Barbara Outlaw
 Helen M. Patterson
 Loreatha Peacock
 Barbara A. Perry
 Claudia Perry



Joan Perry
 Shelia Perry
 Theatrice Perry
 Carolyn Perkins
 Douglas W. Pieper



Thurman Pittman
 Jannette Pompey
 Roxanna Powell
 Carolyn Price
 Judy Reddick



Jeanette Richardson
 James Rivers
 Regina Robinson
 Mary Rogers
 Vernon Royster



Antoinette Ryal
 Joan Saddler
 Leora Sauls
 Michael Scott





Peggy Scott
 Glentine Sellers
 Josephine Semon
 Gloria Shannon
 Daniel Simmons



Jean Simmons
 Yvonne Simmons
 Rivennette Simons
 Nora Sims
 Anne Singletary



Barbara Singletary
 Edith Singletary
 Sandra Small
 Carrie Smith
 Cynthia Smith



Lonnice Smith
 Ophelia Smith
 Patricia Smith
 Percy Smith
 Purnell Smith



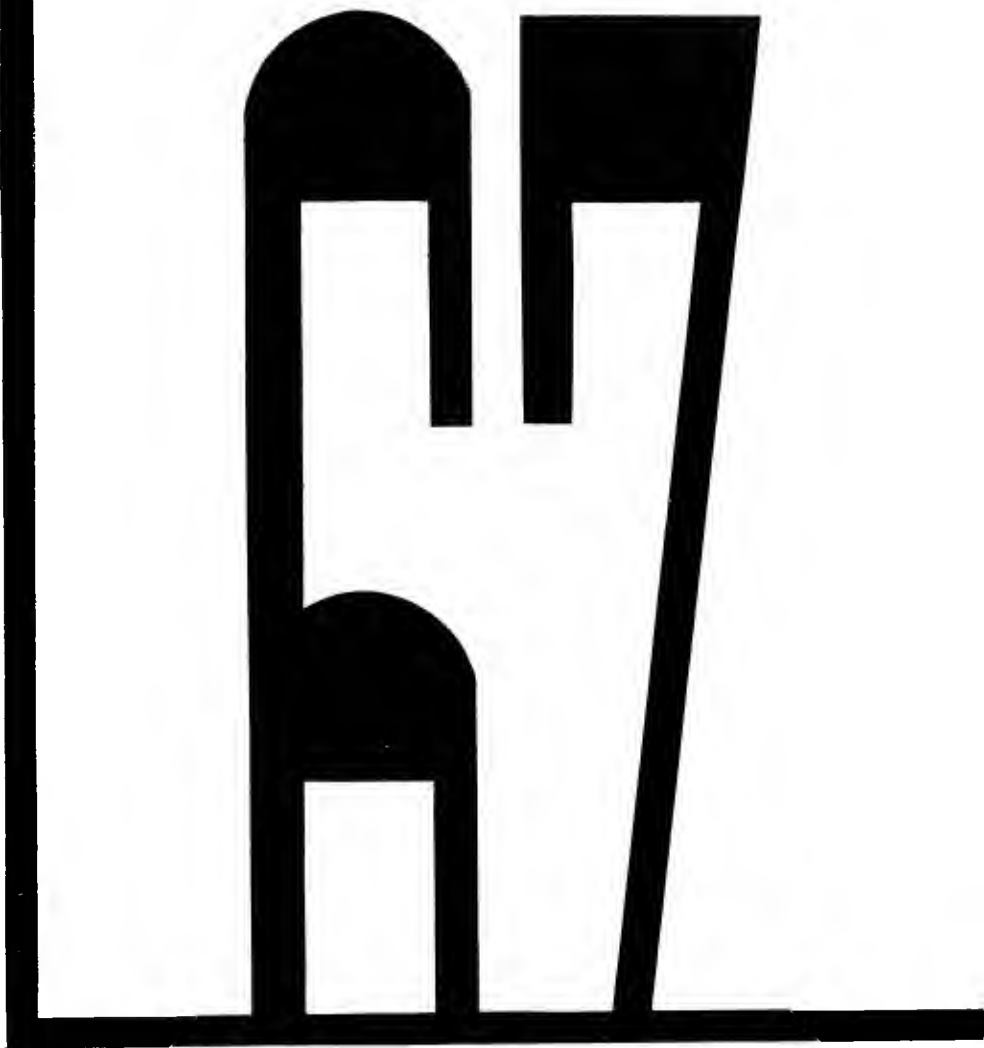
William Smith
 Felton Spaudling
 Vernestine Speller
 Alfred Spencer
 Hilliard Stallings



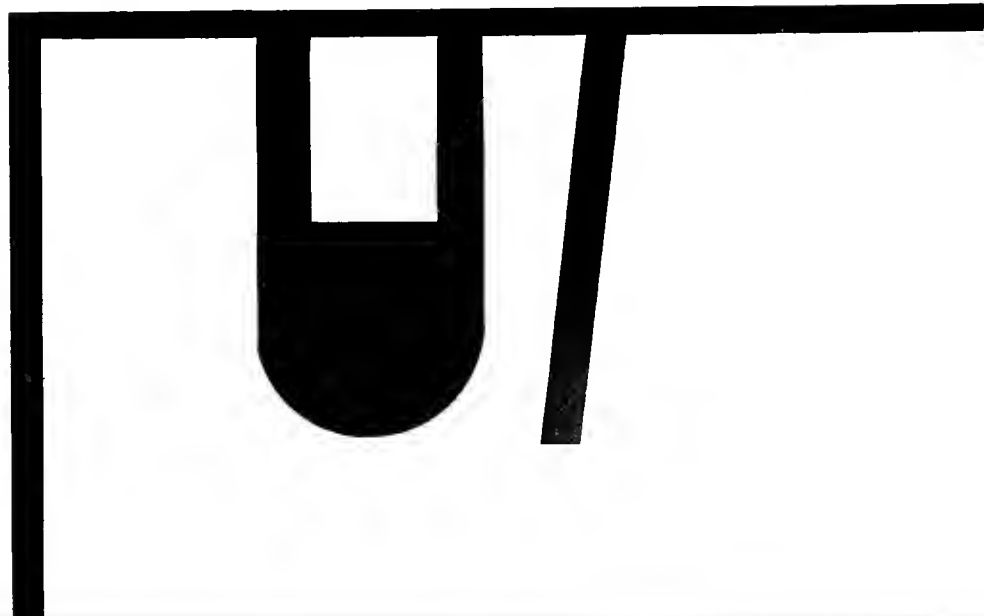
Doris Staten
 Gerald Stevenson
 Shirley Stevenson
 Patricia Stewart
 Robbie Sullivan



Ann Sutephin
 Judy Sutton
 James Tate
 Dennis Taylor
 Carrie Templeton
 Ernest Terry



SENIORS



Class Officers

CLASS HISTORY



President, Frank Godfrey



Vice President, Melvin Whitaker



Secretary, Carol Hagons



Parliamentarian, Louis Jordan



Treasurer, Reginald Elliott

Our satellite began its orbit September, 1963. Our astronauts were young ladies and gentlemen from the United States, Africa and Panama. The route had been chartered to orbit excellence, determination and self-discipline by way of station Saint Augustine's College, fondly referred to as "St. Aug."

September 9, 1963, two hundred and thirty-one astronauts boarded this satellite. We were to make four orbits; the first being the most difficult. Many astronauts were disappointed and discouraged and decided to abandon the satellite. Many astronauts had specific obligations to fulfill.

Our first duty was reporting to the campus situations. We reported the following: Cheshire Lounge—the place in which we ate; Benson Library—the place in which we studied; Delany Hall and Atkinson Hall—the places in which we lived; Hunter building—the place in which we learned English, French, Mathematics and History.

The day was November 22, 1963 . . . the world stood still. Someone shouted excitedly in the hall, "They shot the President; they shot the President!" There were hours of chaos, fear and apprehension. Lee Harvey Oswald shot President John F. Kennedy. To us, he was a great and just president and we shall always remember his famous words, "Ask not what your country can do for you, but what you can do for your country."

September, 1964, we felt that we were ready for almost anything; however, we found that many astronauts were not able to return for various reasons. Our satellite had to operate smoothly; therefore, we immediately signed duties. Portia Jamison became "Miss Sophomore." The class officers were as follows: Reginald Elliott, President; Hoyie Utle, Secretary; Ralph Wanjohi, Treasurer. Junita Sneed, Brenda Dowery and Frank Godfrey were student council members. Joan Grant became the campus soloist. We were better adjusted and welcomed the coming of different activities and organizations. This year was particularly highlighted by "Crossing the Burning Sands" into various sororities and fraternities.

Approximately 150 astronauts returned to make the third orbit. Josephine McBride became "Miss Junior." Class officers shifted to Robert Williams—President; Bessie Peterins—Secretary; Enoch Dukes—Treasurer. Ralph Wanjohi, Albert Love and Alice Holley became student council members. We were fortunate to be the first class participating in the Student Exchange Program.

Valjean Myers spent the entire junior year at Wellesley College in Wellesley, Massachusetts. Our satellite slowed down many times for honor society inductions which included membership in Alpha Kappa Mu, Beta Kappa Chi, Phi Kappa Alpha, Sigma Rho Sigma.

Many changes were made during the third orbit. Dr. Boyer, our President, challenged us when he granted us permission to make the orbits. This same year, Dr. Boyer announced his resignation as President of Saint Augustine's College.

September, 1966, our satellite made its fourth orbit. Dr. P. R. Robinson, Executive Dean, was named Acting President. Dr. Robinson believed strongly in "quality education" and passed on to us profound words of encouragement.

We had to serve as paragons this year. Junita Sneed reigned as "Miss Saint Augustine's College." Norman Mitchell, the captain of our ship, became president of the student council. Class officers were as follows: Frank Godfrey, President; Carol Hagons, Secretary; Louis Jordan, Treasurer. Alcester Bryant, Shirley Liggett and MacArthur McKinnon were student council members. Published in **Who's Who in American Colleges and Universities** were Mary Barbour, Hoyie Utle, Glendora Thomas, Phyllis Sharpe, Ralph Wanjohi, Frank Godfrey and Moses Gollatt.

We can never forget those able to lead and uphold the standards of such an institution. Men like the following stand out in our minds: Dr. James A. Boyer and Dr. Prezell R. Robinson (named President). This centennial year marked a milestone in our lives.

We shall always remember friends, classes and activities that we encountered while making four orbits in a satellite—"The Class of 1967." We shall embark this satellite May 25, 1967. We shall not bury the past too deeply for we need it.

As we, The Class of 1967, search for appropriate words,

Lives of great men all remind us
We can make our lives sublime,
And, departing we leave behind us,
Footprints on the sands of time.



MISS SENIOR CLASS



MISS VALJEAN MYERS

Senior, from Raleigh, North Carolina. Majoring in Music Education. Member of College Choir, Vocal Ensemble, and Alpha Kappa Alpha Sorority. Her hobbies are reading and dancing.

Banks, Charles
 Chemistry; B.S.
 College Choir; President of Chemistry
 Club; Math Club



Barney, Vera E.
 Elementary Education; B.A.
 Elementary Education; National Educa-
 tional Association; Art Club; N.A.A.C.P.

Best, Blossie M.
 Sociology; B.A.
 Vice Pres. S.N.E.A.; Canterbury Club;
 Member of Student Council;



Bethea, John
 Physical Education; B.S.
 Alpha Phi Alpha fraternity Intramural
 Club; PEM Club; Canterbury Club; Stu-
 dent Council; N.E.A.; Intramural foot-
 ball and basketball



Bowers, Annette
 Mathematics; B.S.
 Tutorial Program; Canterbury Club; Li-
 brary Club; Mathematics Club

Brown, Betty S.
 Business Education; B.A.
 Phi Beta Lambda; Attendant to May
 Queen; Attendant to Miss Commerce;
 "Johnson Girl"—N.C. State University;
 Dean Mangum Award; Courtesy Award

Bryant, Alcester
 Elementary Education; B.A.
 Alpha Kappa Alpha; Big Sisters Club;
 N.E.A. Student Council; N.A.A.C.P.; Dor-
 mitory Officer; Elem. Education Club



Burrell, Betty Lou
 Secretarial Science; Phi Beta Lambda



Burroughs, Valentine Jr.
 Sociology & Social Welfare B.A.; Social
 Science; N.A.A.C.P.; Art Club



Clark, Constance A.
 Business Education; B.A.
 Sigma Gamma Rho Sorority; Phi Beta
 Lambda; Greek Student Council



Mrs. Colden, Naomi P.
 English; B.A.
 Honors Program; Who's Who in Ameri-
 can College & Universities; English
 Club; S.N.E.A.

Credle, Christine
 Elementary Education; B.A.
 Assist. Sect. Elementary Club, Assist.
 Sect. SNEA; Art Club; Sunday School
 Teacher

(Mrs.) Davis, Marion W.
Elementary Education; B.A.
SNEA, Who's Who

(Mrs.) Dolby, Gloria J.
Business Education; B.A.
AKA Sorority, Phi Beta Lambda
Business Club, Pen Staff



Dowery, Brenda L.
History & Government; B.A.
Sigma Rho Sigma, Who's Who, Editor of
Newspaper, Student Council, Social
Science Club, Library Society

Dunston, Kenneth
Physical Education, B.A.
PEM Club, Basketball, Track, NAACP,
NEA



Elliott, Reginald
History & Government, B.A.
Kappa Alpha Psi Fraternity, College
Choir, Vocal Ensemble, Canterbury Club

Elliott, Ronald
Biology, B.S.
President, Canterbury Club, President,
College Choir, Vocal Ensemble, Alpha
Phi Alpha Fraternity, Biology Club Presi-
dent, Dean of Layleaders.



Evans, Carolyn Lorraine
English; B.A.
Student N.E.A.; English Club

Evans, Norma J.
Elementary Education; B.A.
Canterbury Club; Elementary Education
Club

Evans, Roy C.
Mathematics; B.S.
Intramural Basketball; Junior Varsity;
Mathematics Club; Student NEA; Library
Assistant

Ford, Alma R.
Biology; B.S.
Biology Club Seminar; Art Club; N.E.A.;
Big Sister's Club; Pre-Alumni Club



Freeman, William H.
Sociology; B.A.
Kappa Alpha Psi Fraternity Acolyte; Pole-
march of Kappa Alpha Psi Fraternity
N.A.A.C.P.; Social Science Club

(Mrs.) Fryar, Barbara M.
Biology; B.S.
Alpha Kappa Alpha (Basileus); Alpha
Kappa Mu; Beta Kappa Chi; Who's Who;
Honor Seminar; Biology Club



Galloway, Edith M.
 Business Education, B.A.
 Reporter, Phi Beta Lambda; Treasurer,
 Canterbury Club; NEA; NAACP; Big Sis-
 ters Club; Dormitory Council, Pre-Alumni
 Club; Miss Phi Beta Sigma



Galloway, Helen C.
 Business Education, B.A.
 Canterbury Club, NAACP, NEA, Year-
 book Staff, Art Club, Library Club, Phi
 Beta Lambda.

Glenn, Melvin (Jr.)
 Physical Education, B.A.
 Football, Track, Baseball, Omega Psi
 Phi Fraternity, Student Council, PEM
 Club, PEP Squad



Godfrey, Frank E.
 Business Administration, B.A.
 Omega Psi Phi Fraternity; President, Al-
 pha Kappa Mu; President, Phi Beta
 Lambda, Who's Who; President, Senior
 Class; Student Council; Inter-Greek
 Council; Honors Program; Football;
 Baseball.



Graham, Margery
 Elementary Education, B.A.
 Delta Sigma Theta Sorority, Elementary
 Ed. Club, Big Sisters Club, N.E.A., Pre-
 Alumni Club, Art Club.

(Mrs.) Grimes, Vivian H.
 Business Education, B.A.
 Alpha Kappa Alpha Sorority; Phi Beta
 Lambda, Pen Staff

Hagens, Carol
Sociology, B.A.



Holden, Peter Graham
Biology; B.S.
Sphinx Club; Biology Club; Natural
Science Club

Holmes, Agnes
Elementary Education; B.A.
Yearbook Staff; NEA; NAACP; Art Club;
Big Sister's Club; Canterbury Club



Holley, Alice
English, B.A.
Delta Sigma Theta—Pres. Sunday
School Superintendent, N.E.A., English
Club, English Honors Seminar, College
Choir, N.A.A.C.P., U.N.C.F., Student
Council, Inter-Greek Council.



Horsley, Constance H.
History & Government; B.A.
Pen Staff; Yearbook Staff; Inter-Dormi-
tory Council; College Choir; Vocal En-
semble; NAACP; Altar Guild; Canterbury
Club, Social Science Club

Jackson, Pattye L.
Secretarial Science
Secretary Phi Beta Lambda Alpha Kap-
pa Alpha



Jamison, Portia Ann
 English; B.A.
 Alpha Kappa Alpha; Big Sister's Club;
 Drama Club; N.E.A. English Club; Sun-
 day School Teacher; N.A.A.C.P. College
 Choir; Miss Phi Beta Sigma; Miss Soph-
 omore

Johnson, Bettie Jean
 Sociology; B.S.
 Social Science Club; Pre-Alumni Club;
 N.A.A.C.P.



Jones, Alice F.
 Business Education; B.A.
 Phi Beta Lambda; Business Club

Jones, Geraldine
 English; B.A.
 English Club; Drama Club, N.E.A. Big
 Sisters Club, Canterbury Club,
 N.A.A.C.P.

Jones, Jewell
 Elementary Education, B.A.
 Sigma Gamma Rho Sorority.

Jordan, John
 Physical Education, B.A.
 Captain of Basketball Team 1965-66,
 66-67, Pem Club, Baseball Team.





Jordan, Louis
 History & Government, B.A.
 Sphinx Club, Chess Club, Social Science
 Club, Student Proctor

(Mrs.) Liggett, Shirley L.
 Elementary Education, B.A.
 Who's Who; NEA; NAACP; Student
 Council



Love, Albert E.
 Sociology & Social Studies, B.A.
 Alpha Phi Alpha Fraternity; Vice Presi-
 dent, Student Council; President, Gam-
 ma Psi Chapter of APA.

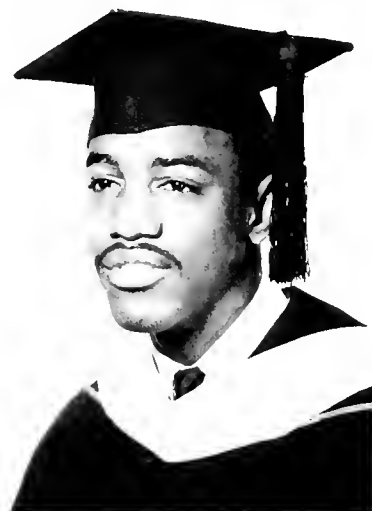
Lowry, Rosalind E.
 Business Education, B.A.
 Big Sisters; Business Club; NAACP; NEA;
 Yearbook Staff

McEachin, Effie N.
 Physical Education, B.A.
 Co-Captain, Drill Team; Kappa Alpha
 Psi Sweetheart Attendant; May Day At-
 tendant for Freshman Class; PEM Club;
 NEA; Girl's Track Team.

(Mrs.) McKinnon, Emily J.
 Biology & Chemistry, B.S.
 Delta Sigma Theta Sorority; Captain,
 Cheerleaders; Biology Club; NAACP; In-
 tramural Council.



McKinnon, McArthur
Physical Education, B.S.
Vice Polemarch of Kappa Alpha Psi, Co-Captain of the Football Intramural Council, Pres.; President of PEM Club; member of Student Council.



Mitchell, Norman
Kappa Alpha Psi, Sigma Rho Sigma Honor Society Rep. to Student Council Soph. yr., President's Cabinet—Jr., Vice-Pres. of Junior Class, Tutor Who's Who.



Morris, Mary
Elementary Education, B.A.
Sigma Gamma Rho Sorority, Art Club, N.E.A., Elem. Club, Big Sisters Club, Pre-Alumni Club.

Nesbitt, Sandra
Sociology, B.A.
Girl's Intramural Basketball Team, Soc. Science Club, Art Club, N.A.A.C.P., Canterbury Club, Yearbook Staff, Fencing Team, Big Sister's Club.



Peay, Doris D.
Sociology, B.A.
Fencing Team, Art Club, Big Sisters Club, Social Science Club, N.A.A.C.P., Canterbury Club, Yearbook Staff.

Peebles, Nelson
Mathematics, B.S.
Mathematics Club



Phillips, Mary C.
Physical Education, B.A.
Phi Beta Sigma, Pem Club, N.T.A.,
Track, Baseball, Intramural Football &
Basketball, N.A.A.C.P.

Poitier, Aretha C.
Sociology, B.A.
Girls Basketball Team, Social Science
Club, Big Sisters Club, Art Club,
N.A.A.C.P., Library Club, Canterbury
Club, Altar Guild, Yearbook Staff.

Ratliffe, George
Physical Education, B.A.
Sphinx Club, Pem Club, Intramural
Council, Basketball, Football, Track,
N.E.A.

Robinson, Mildred
Sociology, B.A.
Social Science Club.



Rushing, Rosetta
Physical Education, B.S.
Assistant Dormitory Director, College
Choir.

Scott, Shepherd
Mathematics, B.S.
Sphinx Club, Vice-President—Math Club,
President—NEA, Chaplain, State NCTA-
NEA, Mathematics Tutor.





Sim, Jacqueline
N.E.A.; Art Club; Elementary Education
Club; Big Sister's Club

Sneed, Juanita
Interdormitory Council; Biology Club;
Pan helenic Council



Speights, Ernestine
Big Sisters Club; Pre-Alumni; Mathema-
tics Club

Thomas, Annie
College Choir; Vocal Ensemble; Sym-
phonie Band; M.E.N.C. Assistant Chapel
Organist

Thompson, Gwendolyn
Social Science; Student National Teach-
ers Association



Utley, Hoyie Eugenia
 English, B.A.
 Zeta Phi Beta, Phi Kappa Alpha Honor
 Society Honors Seminar, Who's Who,
 Pen Staff, Yearbook, Secretary-Soph.,
 Church School Teacher.



Vereen, Harry C.
 Physical Education, B.A.
 Sphinx Club, White Rose Club, Baseball,
 Intramural Football, N.E.A. Club, Pem
 Club, Intramural Basketball.

Wanjohi, Ralph Maru
 Sigma Rho Sigma Honor Society, Who's
 Who.



Washington, Elizabeth A.
 Elementary Education, B.A.
 Delta Sigma Theta, Inc. Dean's List,
 Yearbook Co-Editor, College Choir, Stu-
 dent N.E.A., Elementary Education
 Club, Canterbury Club, Social Science
 Club, N.A.A.C.P., Vocal Ensm.



Washington, Mary L.
 Elementary Education, B.A.

West, Wanya Lee
 Business Administration, B.A.
 Business Club

Brenda L. Douery

James Holmes

Spesort
Dwight
(Joseph Grand)
Alister Bryant
Dwight
Dwight
Dwight

John Bethen
AFA
AFA
AFA

Senior Autographs

George A. Duke IV
Patty L. Jackson

Wendell D. Brown
Mildred
Blaze

Vera E. Barney

Constance A. Clark

Melvin
"Omega Psi Phi"
Jenn, Jr.

Phyllis Sharpe

Mary V. Morris

Whitaker, Melvin D.
 Business Administration, B.A.
 Phi Beta Sigma Fraternity; Phi Beta
 Lambda; Vice President, Senior Class;
 Chess Club; Inter-Greek Council; Canter-
 bury Club.

Williams, Acquanetta A.
 Elementary Education, B.A.
 NAACP; Pen Staff; Yearbook Staff; Art
 Club; Secretary, Junior Class.



Williams, Robert

Williamson, Patricia A.
 English, B.A.
 Delta Sigma Theta Sorority; SNEA; Pre-
 Alumni Club; English Club.



Yeargin, Mary
 Elementary Education, B.A.
 NEA; Big Sisters Club; Band; Secretary,
 Freshman Class; Assistant Secretary,
 Sophomore Class.

Yeoman, Carolyn
 Sociology, B.A.
 Social Science Club; Attendant, Miss St.
 Augustine's College.

A SAILING SHIP

A ship started on a voyage one day;
The sun's beacon light showed the way.
The Captain came out and cried, "All aboard, all aboard."

And the fare we all could afford.
"This Ship is destined for Education, U.S.A.
And we all knew that it was worth the pay.
We knew great were the preparations,
So we began early to make reservations.
Our luggage and baggage we did pack,
To our dismay many things we lacked.
"Captain, O Captain, what can this ship give?"
For four whole years here we must live."
"For failure, foolishness, or fiends," he said
"My dear voyagers, do not be afraid."

We boarded blithely the ship and looked around,
And lo! what concurrent confusion abound.
Compartments, compartments, we did see;
Such great numbers gave us want to flee.
Just then the captain said, "Be courageous and cheerful,
my dears,
For you have just abated the most dreadful fear."
The sailing was not smooth all the way;
Sometimes we had to work both night and day.
Rough, rugged ties could not hinder our years;
'Cause we had what it takes to strive, work, and persevere.
Soon the tides wanted rest;
Again we knew we had stood the test.

"Look, Voyagers, see the beacon light."
You've been strong, and have fought a faithful fight."
We see the beacon light—a torch of Liberty.
The beams carry dignity, knowledge, and security.
One more league to go, many more facts to know
When our achievements, aspirations, and talents to the world we bestow.
As we reach our destination, our voyage ends.
We stop—what was our consolation—who were our friends?
Our parents were our anchor, our teachers were our map.
Reminiscing were we about our trip
When realized we, we were the captain of this ship.
CAPTAIN, O CAPTAIN, a voyage well done!

—Hoyie E. Utley



Hail, Dear S.T.A.

Hail, Dear S.T.A.

Introduction

Maestoso

1st. Dear St. Augustine's College, we'll love and cherish Thee, we will lift our
 2nd. Dear St. Augustine's College, It's time for us to part. But will always

1st. hearts, E-ter. nall ly. St. Augustine's College, Thy - Name we claim -
 2nd. keep you in our hearts Through the years we been here you been our guide -

1st. We will always - help to lift Thy Name to Fame!
 2nd. We will always lift Thy Name both For and We!

Refrain

Dear old S.T. A. - Dear old S.T. A. we will Cher-ish Thy Name, Dear old S.T. A

Dear old S.T. A. - We will always help to lift Thy Name to Fame!

Fine

Words and Music
 — Annie Clarence Thomas



Senior Autographs

Annie Blandora Thomas 40

Betty J. Brown

Herbert S. Mills

Joan F. Creevy

Dee Dee Peay

Alma Gard
Rosetta Rushing K. 40

William H. Freeman
Frank Godfrey

Annette Bowers

Ronald Elliott AFA

Ernestine Speer
The Fox 40

Elizabeth A. Washington 40
George R. Ruffe

Christine Credle

Shelma C. Jelventon
Margery Durham 40

Nelson Peebles

Ralph M. Wanjobi

Mary V. Young
Edith Callaway

Henry L. King

Resalud Leary

Norman J. Mitchell

Jacqueline G. Gordon
St. 1920

Alice Marie Valley

Juanita Ineed
Miss St. Augustine's 40

John Bethel AFA

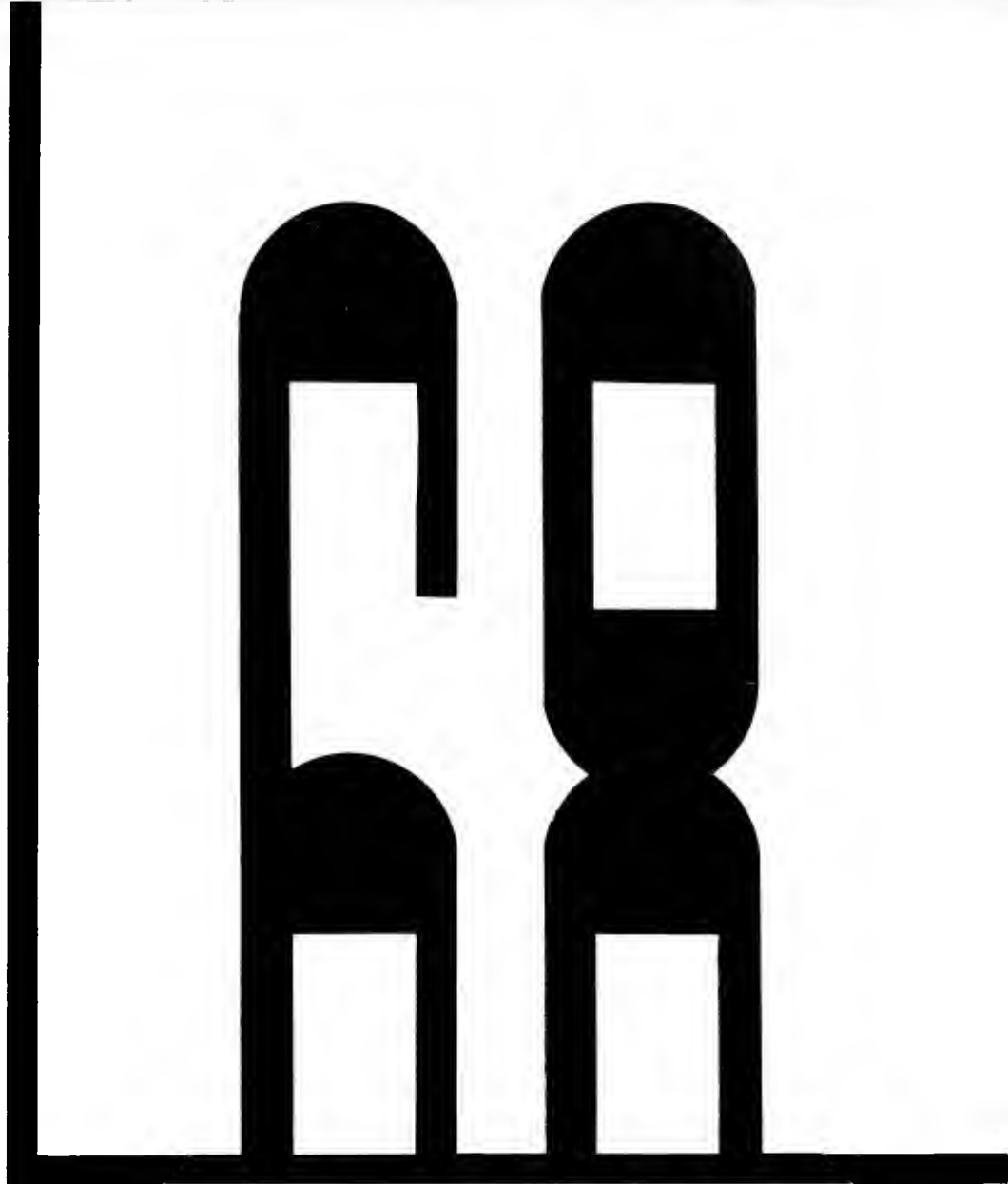
Charles Banks

M. J. Martin AFA

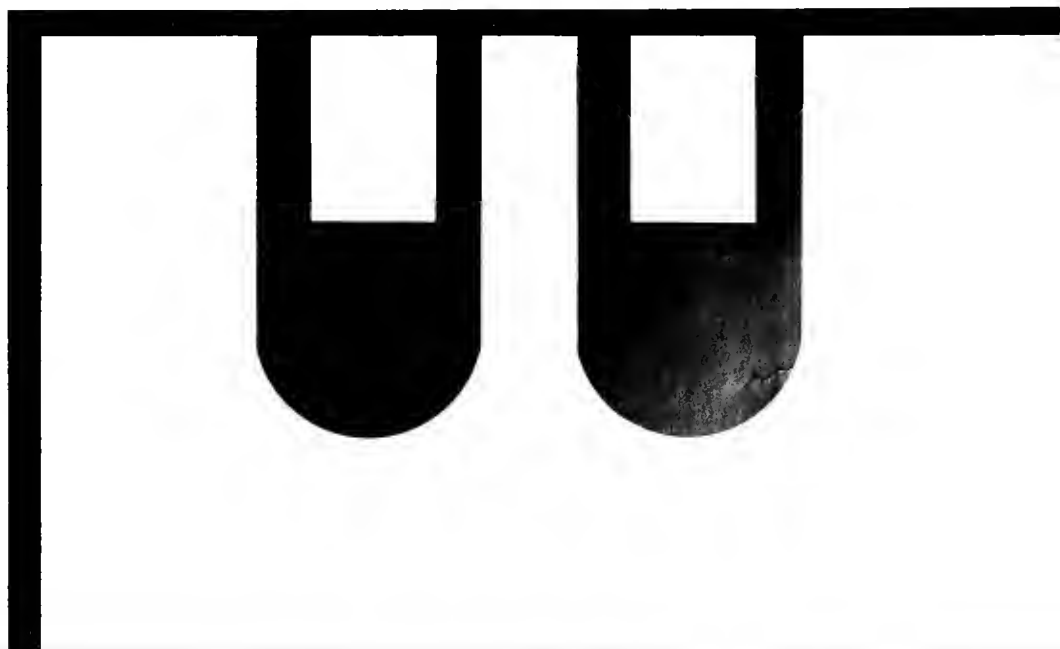
May C. Phillips

Shepherd Scott

Ray Evans



JUNIORS



Junior Class Officers

President	Curtis Kellon
Vice President	Malinda Williams
Secretary	Natalie Wooten
Asst. Secretary	Phyllis Bailey
Treasurer	Eugene Thomas
Parliamentarian	John Harvey



Miss Junior Class

Miss Janice Maultsby from Lumberton, North Carolina. Majoring in English. Member of English Club, Dramatics Club and Delta Sigma Theta Sorority. Her hobbies are sewing, dancing and dramatics.

Issac Alston

Linda Bailey



Phyllis Bailey

Chester Bennett



Janice Booker

Evelyn Bryant



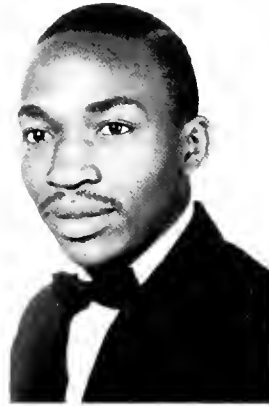
Marie Bryant

Joseph Cannon



William Carson

Alvin Copeland



Gwendolyn Cutchins

Charles E. Davis



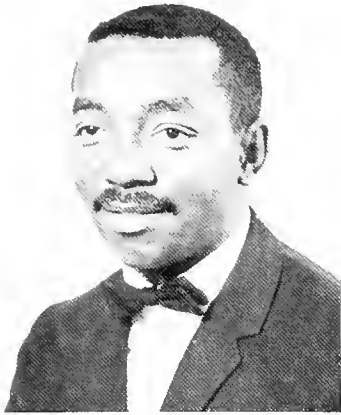
Annette Dillard

Sandra Early



Jacqueline Edwards

Eddie Eubanks



William Fain
Shirley Felton



Josephine Fergerson
Lillie Ford



Mary Ford
Doris Freeman

Brenda Gaines
Richard Hall





Patricia Harris

John Harvey



Sharon Hemphill

Lavern Haywood



Richard Highland

Shirley Horton



Norma Howey

Audrey Kelly

Theodora K. Lawson
Queen Lawson



Garnett Martin
Janice Maultsby



Geraldine McCann
Burnestine McCoy



Donald McKoy
Mary McGhee





Carolyn A. Miller

Carolyn Miller



Paula Moore

Douglessena Morrison

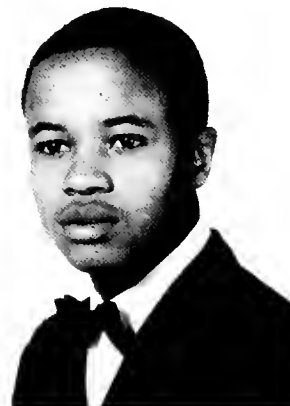


Donna Neely

Evelyn Nickson

Carol Payton

Dwight Peebles



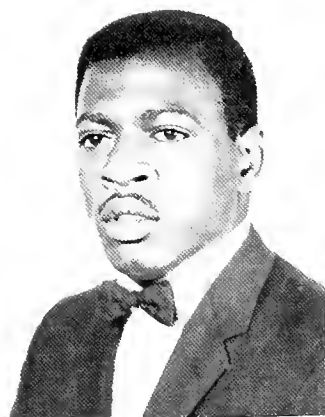
Peggy Pledger
Cynthia Pollard



Janet Powell
June Powell



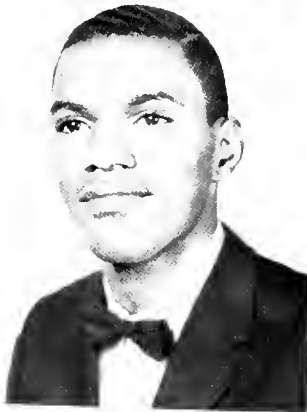
Teresa Rigby
Floretta Robinson



Philip Ross
Hilda Rouse



Linda Ruffin
Jacquelyn Scott



John Shelule
John Singletary



Hilton Smith
Elsie Spruill



Iantha Staten
Shelia Stocker

Chlorine Taylor
Quintard Taylor



Carolyn Thomas
Eugene Thomas



Juanita Walker
Dorothy Warren



Martha Westfield
Ellen Williams





Malinda Williams



Natalie Wooten



Fredrick Young

C
L
A
S
S



O
F
F
I
C
E
R
S

Pres. Leonard Muse; Vice President—Vinez Singletary; Sec. Eula Humphrey; Advisor—Mr. T. Simmons

Miss Sophomore Class

1
9
6
9



Miss Dorothy Hinton Sophomore from Raleigh, North Carolina Majoring in Social Welfare, Member of Social Science Club, dance group, and N.E.A. Her hobbies are reading, writing and listening to music.



Nathan Alford
Eadron Andrews



Helen Ash
Gloria Baucum
Dorothy Barksdale



Carolyn Bailey
Janet Baldwin
Earlene Bethel



Thomasina Blackman
Tanya Block
Regina Brooks



George Brydie
Lillian Burrus
Ruby Butler

Brenda Byrd

Mildred Campbell



Frances Carmichael

Alice M. Carpenter

Sharon Clark



Blanche Clemons

Williard Cofield

Diane Coleman



Brenda Cox

Carolyn Davis

Douglas Davis



Larry Davis

Mazie Dunn

Margaret Egerton



Peggy Farrington
 Millescira Fields
 Jewel Francis
 Shirley Frazier



Allen Gilliam
 Barbara Gill
 Sally Goodson
 Edith Haney



Florence Hanna
 Edna Hargett
 De Linda Harris
 Eunice Harrison



Frank Harrison
 Alma Hendson
 Elveretta Higgins
 Dorothy Hinton



Clejetter Holt
 Enoch Hood
 Linda House
 Eula Humprey



Billy Ray Hunter
 Sidney Ikner
 Gloria D. Johnson



Gloria Johnson
 Vivian Johnson
 Daryl Jones
 Maola Jones



Clifton Joyner
 Mary Knight
 Naomi Lassiter
 Coliquitt Lawrence



Betsy Leech
 Glorious Leatherwood
 Frank McBride
 Joyce McCloud



Gwendolyn McDonald
 Hermina McLavrin
 Phyllis Marshall
 Beverly Martin





Kathleen Mayo

Essie Merrit

William Minter

Betty Jean Mitchell



Edith Mitchell

Robert Morgan

Donnell Morris

William Newkirk



Leonard Muse

Andrea Olliviera

Anthony O'Neil

Mercedes Pearson



Vera Roberson

Harold Rodger

Jerusha Rusher

Deloris Samuel

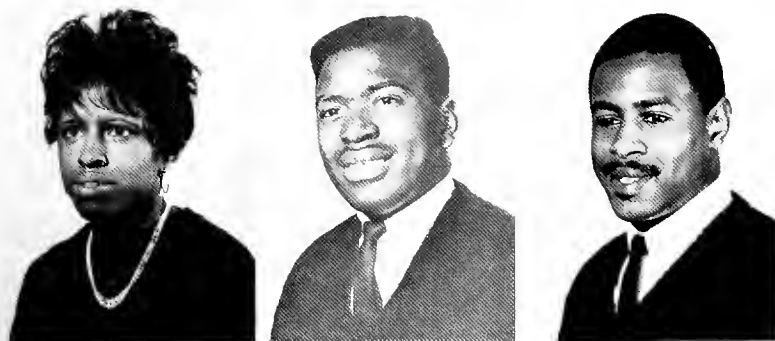


Edna M. Sanders

Johnny Sanders

LaTonya Sanders

Annie Savage



Jacqueline Selby
Daniel Simmons
Robert Simpkins



Vinez
Singletery
Bobbie Smith
Geraldine Spencer
Brenda Stewart



Elvia Stewart
Barbara Stover
James Sweatt
James Taylor



Bertha Teele
Nathaniel
Venning
Betsy Watson
Ella Wilkins



Willie Wills

Linda Wilson

Fannie Wimberly

Donna Winters

Viola Yeates

SERVICE . . .

Student Exchange Program
with Smith College; Northampton, Mass.



Standing—Bottom to top: Cynnie Greenleaf, Norman Mitchell, Susie Bernat, Arthura Winston, Lynn Ross, Valjean Myers Seated: Francie Allen, Phyllis Sharpe, Fannie Wimberly

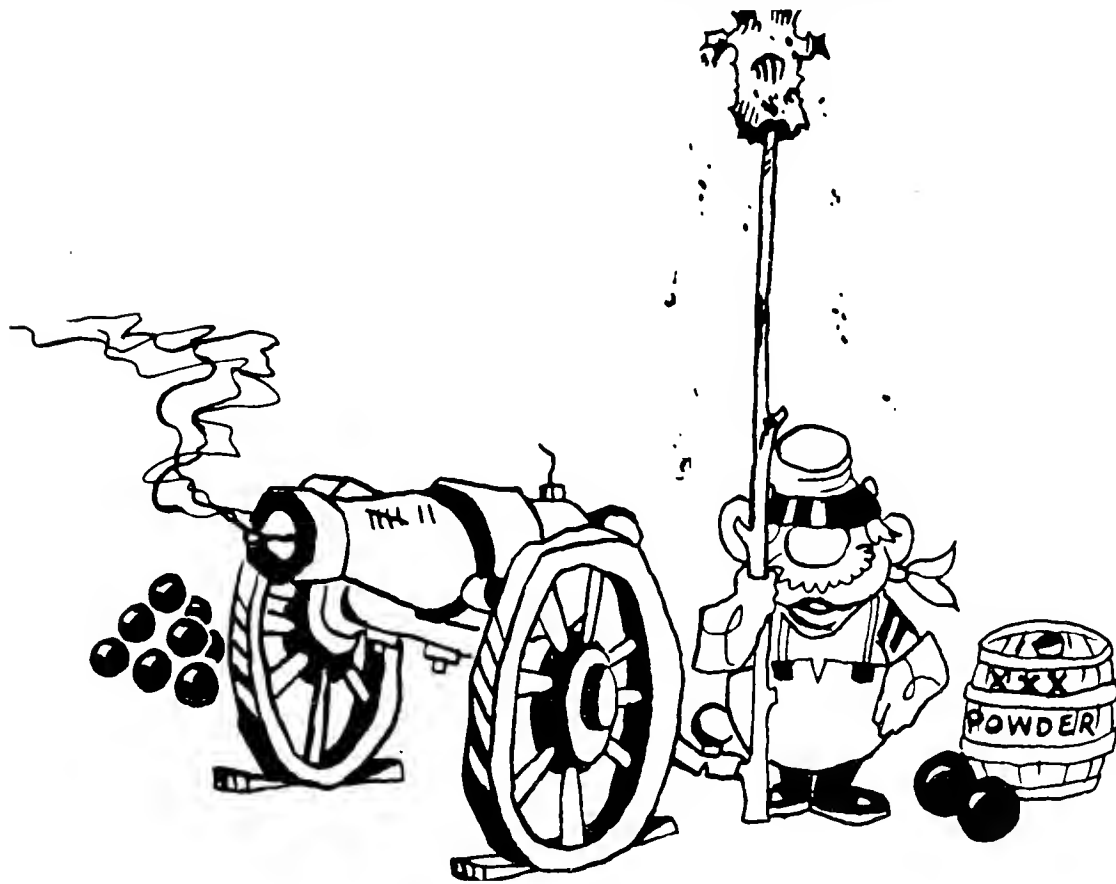
Operation Beautification Week



Dr. Robinson and Students

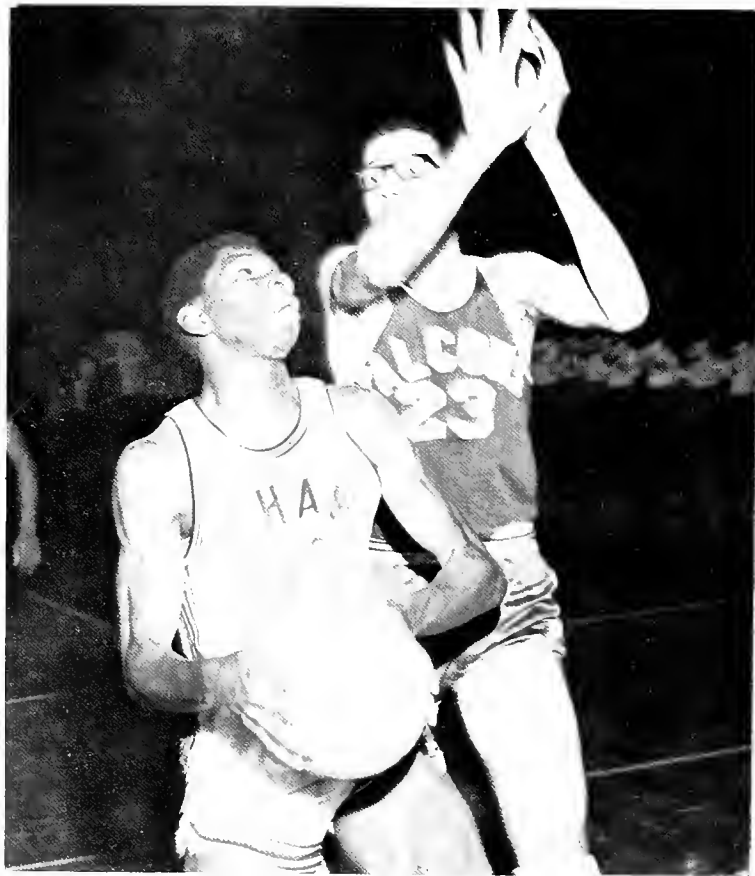


*CENTENNIAL
CELEBRATION
January 31—February 6*



STARTS WITH A BANG!

SAINT
AUGUSTINE'S
FALCONS
VS.
SHAW UNIVERSITY'S
BEARS



shaw and st. augustine's
basketball players

H
A
L
F
T
I
M
E



dance group



twirlers



trampoline

A
C
T
I
V
I
T
I
E
S



banquet address:
the honorable hobart taylor, jr.

C
E
N
T
E
N
N
I
A
L



guests

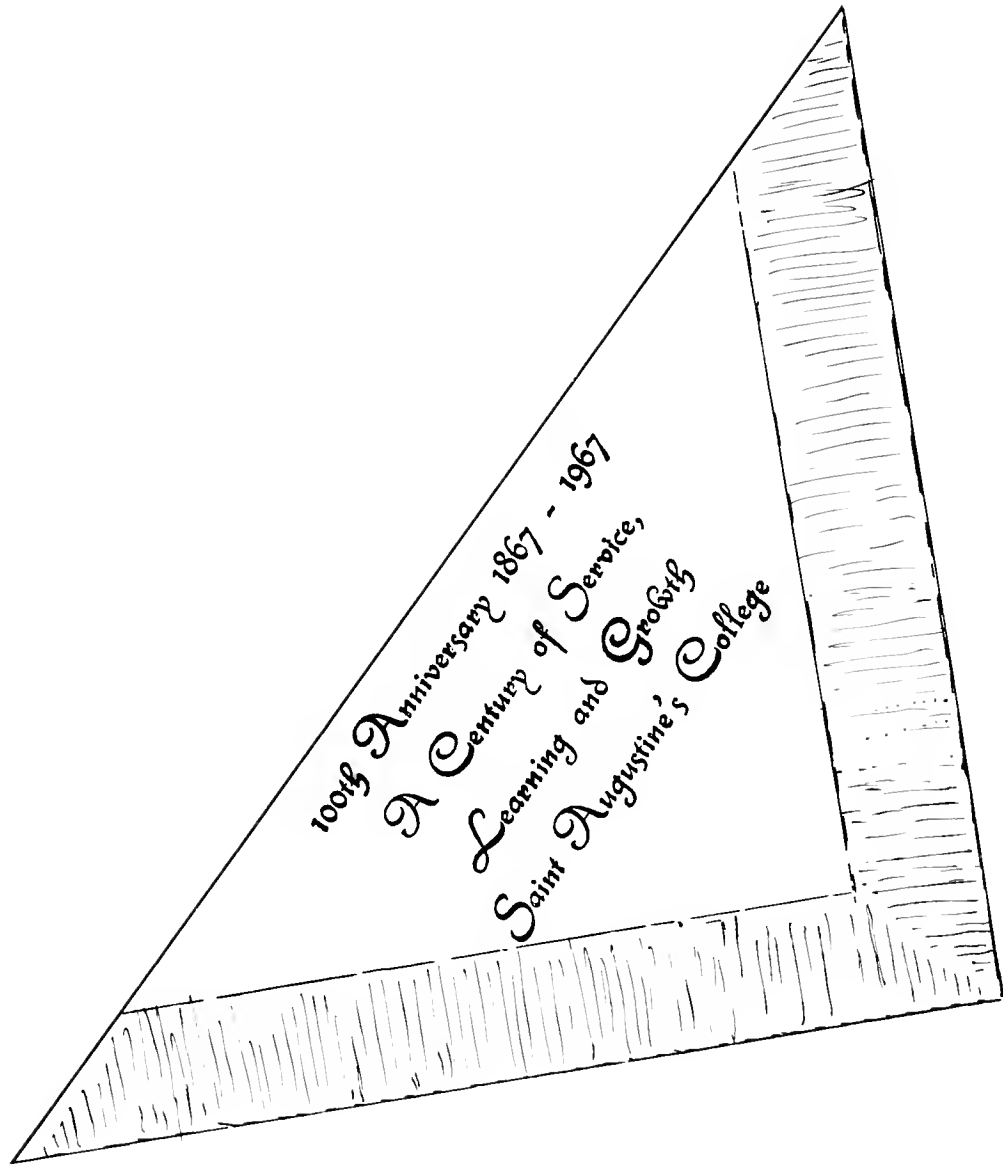
B
A
N
Q
U
E
T



portrait unveiling of
bishop henry b. delany



dance group



CENTENNIAL WORSHIP SERVICE

sermon

the right reverend

daniel corrigan, d.d.



Rev. Tollie L. Cauton; Dr. James A. Boyer;
The Right Reverend Daniel Carrigan, D.D.;
The Right Reverend Thomas A. Fraser, D.D.;
Dr. Prezell R. Robinson

100th
ANNIVERSARY CONVOCATION
1867-1967

3:00 P.M.

SUNDAY, FEBRUARY 5, 1967

Presiding

PREZELL R. ROBINSON, Ed.D.

Acting President

Processional—"Grand Choeur Dialogue" EUGENE GIGOUT
JACK L. BIGGERS, Mus.M., *Organist*

Flag Bearers—John Harvey '68
James Paul Williams, '69

Invocation FR. ARTHUR J. CALLOWAY, B.A., B.D.
Interim Chaplain

Musical Selection—"Omnipotence" FRANZ SCHUBERT
St. Augustine's College Choir
SHIRLEY M. COATS, Mus.M., *Director*

Greetings—

DR. PREZELL R. ROBINSON, *Acting President*

THE HONORABLE TRAVIS H. TOMLINSON, *Mayor of the City of Raleigh*
Trustee Representative

OSCAR PEAY, *President, National Alumni Association*

NORMAN L. MITCHELL, *President, Student Council*

DR. JAMES A. BOYER, *President on Leave*

Remarks and Introduction of Speaker THE RIGHT REV. THOMAS A. FRASER, D.D.
Bishop of North Carolina

Address C. MATHEWS DICK, JR., B.A.
Vice President, A. B. Dick Company

Musical Selection—"Excerpts" from Symphony No. 3 ("Eroica") L. V. BEETHOVEN
The Saint Augustine's College Concert Band
ESTHER L. COOKE, Mus.M., *Director*

Recognition of Platform Guests JOSEPH JONES, JR., Ph.D.
Acting Dean of the College

Announcements DR. JOSEPH JONES, JR.

Nunc Dimittis Arranged by Turle
Choir and Audience

College Hymn WILLIAM A. PERRY
Class of 1902
Choir and Audience

1
God of every nation,
Every race and creed;
Lord of every creature,
Every budding seed;
Friends of every right and
Foe of every wrong;
Father, Son, Great Spirit
Listen to our song.
We acknowledge, worship
Love and e'er adore Thee,
Father, Son, Great Spirit.

Holy Trinity

2
All good things of Thee come
Through Thine agencies
Christian lives, the Church, friends,
Services, charities,
Blessings all Thy children
Through eternity
St. Augustine's College
Thus has come from Thee.
So with thankful hearts, we
Worship and adore Thee,
Father, Son, Great Spirit.

Holy Trinity

5
Ye alumni loyal
Who have pleased and gone,
Of your Christian lives this
Day for us was born,
Grant, O God, that we may
Live as worthily,
Passing onward greater
Opportunity.
So with thankful hearts, we
Worship and adore Thee,
Father, Son, Great Spirit,

Holy Trinity

3
For Thy Missionaries,
Laboring early here,
Building firmly for our
Alma Mater dear;
For their self-denials,
Joys and sorrows blest,
We give praise as now in
Paradise they rest,
So, with thankful hearts, we
Worship and adore Thee,
Father, Son, Great Spirit.

Holy Trinity

4
For those friends and Churchmen
Living everywhere,
Giving of their means to
Build our College rare;
For all those in service
Using every power
That we may enjoy this
Blessed, happy hour;
We give thanks to Thee, we
Worship and adore Thee,
Father, Son, Great Spirit,

Holy Trinity

Benediction

Academic Recessional—"Recessional" THEODORE DUBOIS
JACK L. BIGGERS, Mus.M., *Organist*

The dedication of Baker Hall (New Girls' Dormitory) and Lynch Hall (New Boys Dormitory) will take place after the conclusion of the Convocation program. Everyone is invited to attend these dedication ceremonies, and the open house activities in the Benson Library.



dr. robinson addressing
the audience

DEDICATION
OF
NEW DORMITORIES



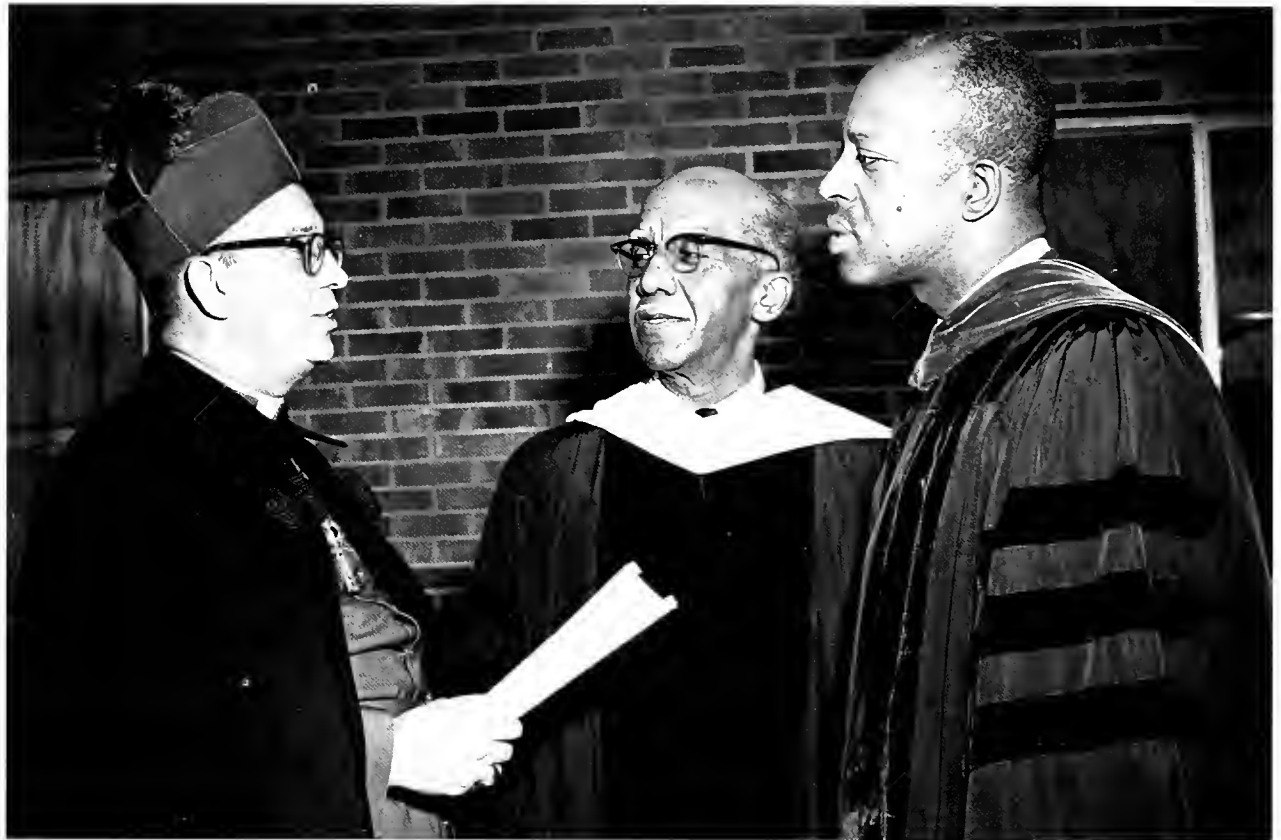
women's dormitory:
baker hall



mens dormitory lynch hall
in honor of reginald I. lynch,
former professor & asst. dean



Congratulations to
Dean Lynch
Dr. Prezell Robinson,
Dr. James Boyer,
Rev. Arthur A. Calloway,
Mr. Matthew Dick, Jr.

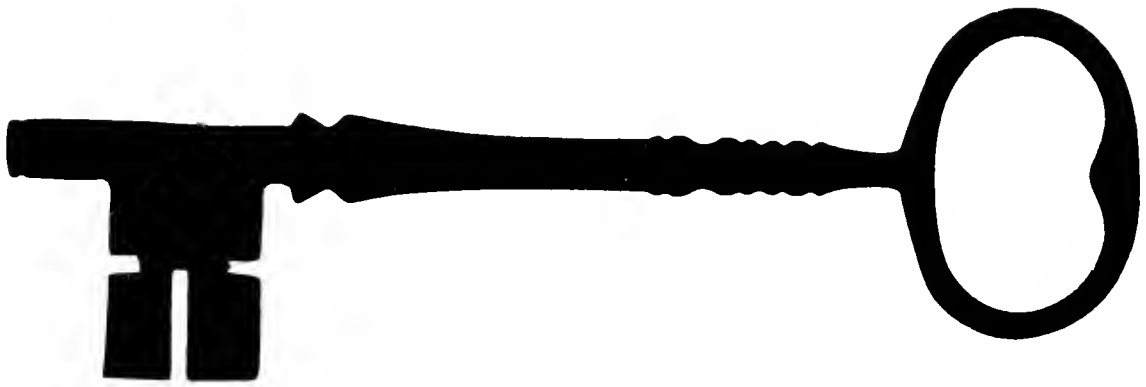


Bishop Fraser congratulates Dr. Boyer and Dr. Robinson on a job well done.



LEARNING . . .

Honor Societies, Clubs
and Organizations



The Key of Knowledge

Alpha Kappa Mu

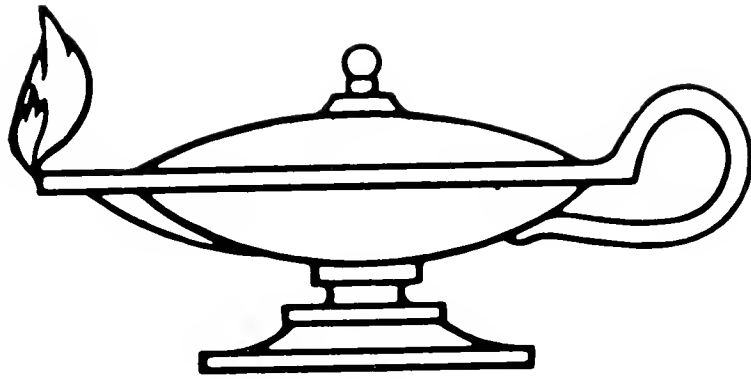


Margaret McRae; Patricia Y. Marshall; Frank Godfrey, President; Shirley Horton

Honors Program



Patricia Marshall; Frank Godfrey



Sigma Rho Sigma



Brenda Dowery, Ralph M. Wanjohi, Patricia Y. Marshall, Constance Clark, Dr. L. Oliver, Advisor



Who's Who in American Colleges and Universities



RELIGIOUS ORGANIZATIONS

ALTAR GUILD



Standing: Alice Holly, Marcia McKay, Janice Booker, Mary Ford, Christine Credie, Carol Hagans, Gwen Thompson, Nadine Holley, Andrea Ollivieria, Margery Graham

ACOLYTES



Jessie B. Atkins, Eugene C. Thomas, Larry James, Robert Monroe, Douglas W. Pieper, Jerald Stevenson

CANTERBURY CLUB



LAYREADERS



Ronald Elliott, James Williams, Mr. W. M. Fowler
Bottom: Dean J. Jones, D. Morrison, Douglas W. Pieper

USHERS



Eugene Thomas, Ronald Elliott, Donald S. Davis, Hilton
Smith

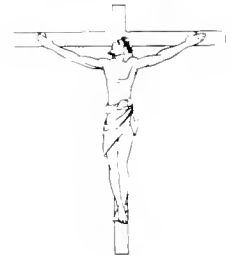
VOCAL ENSEMBLE



COLLEGE CHOIR



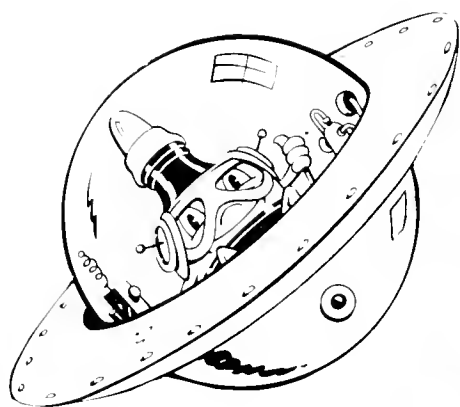
SUNDAY SCHOOL



ART CLUB



BIOLOGY CLUB



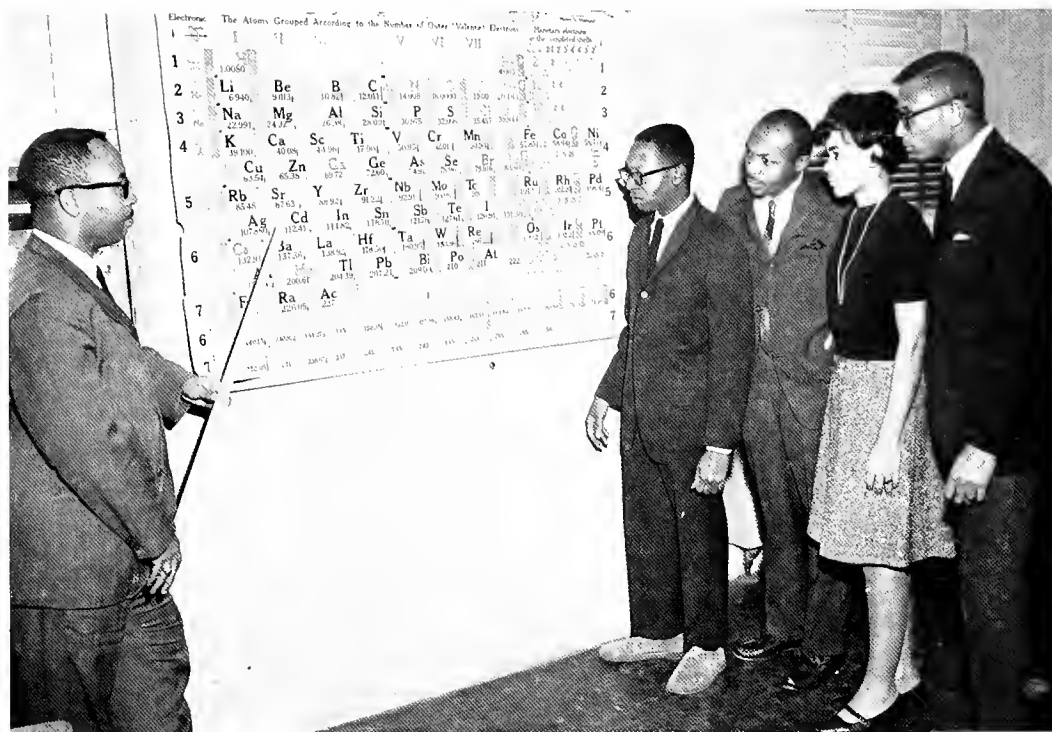
BIG SISTER CLUB



BUSINESS CLUB



CHEM—O—CRATS



Charles Banks, president; Hugh Gardner; Sandra Hawkins; Dennis Taylor



COLLEGE SYMPHONIC BAND

CLARINET ENSEMBLE



Theodora K. Lawson, Carolyn Ford, Marcia McKay, Donna Neely, Audrey Kelly, Mary Machen

DANCE CLUB



Peggy Farrington, Johnnie Winston, Grace Morley, Rose Bland, Phyllis Long, Hermina Lucas, Tanya Block.

DRAMA CLUB



Front: Marshall Bates, Janice Maultsby, Anthony O'Neil, Peggy Farrington, Solomon Davis, Donna Neeley, Christine Byrd **Back:** Claude Scott, Billy Ray Hunter

ELEM EDS



ENGLISH CLUB



Seated: Hoyie Utley, Mary Ford, Janice Maultsby, Geraldine Lancaster
Standing: Alice Holley, Geraldine Jones, Ruby Butler, Christine Byrd, Portia Jamison, Patricia Harris

DORMITORY COUNCIL



Vinez Singletary, Cynthia Pollard, Alces-
ter Bryant, Barbara Foster, Annette Dil-
lard, Linda Bailey

LIBRARY STAFF



Front: Geraldine Jones **Seated:** Mary Ford, Janice Maultsby **Back:** Christine Byrd, Douglas W. Pieper, Ruby Butler, William Riddick

MATHEMATICS CLUB



N.A.A.C.P.



President—Sy Oliver Smith

P.E.M. CLUB



Vivan Johnson, Effie M. McKeechan, William Carson, Peggy Scott



PEN STAFF

Miss Brenda Dowery, Editor

SOCIAL SCIENCE CLUB





STUDENT COUNCIL

Mr. Norman Mitchell, President
Mr. Albert Love, Vice President

OFFICE OF THE PRESIDENT OF THE STUDENT COUNCIL
November 23, 1966

Dear Senior Class: 1967

The Voyage of the "Saint Augustian" began in 1867, and its journey nears the completion of a one-hundred year Sail. While 1967 will serve as the date of termination for the Centennial Voyage of the "Saint Augustian," it will serve likewise, as the end of the sojourn of the Class of 1967 aboard Ship.

The time is near that we must leave the "Saint Augustian," having survived all turbulent tides that might have swept us Overboard. Although "the Island of Diplomas" is now in sight, we must be determined to keep the Rudder in position for safe steering.

Our Senior year is at hand, thus the Ship slows down for our departure. However, once we have left the "Saint Augustian", we must immediately Board another Craft—that of graduate school or professional life. Be reminded, therefore, that we must keep close record of the Knots of either future Ship we may board, so as to be a credit to having once been a passenger of the "Saint Augustian."

With hopes that the future will be one of prosperity and that the art of life upon the seas has been mastered.

Very truly yours,

Norman L. Mitchell

Norman Mitchell, President of the Student Council



Student National Education Association





Basketball

SPORTS



Baseball



Track

Saint Augustine's College Falcons

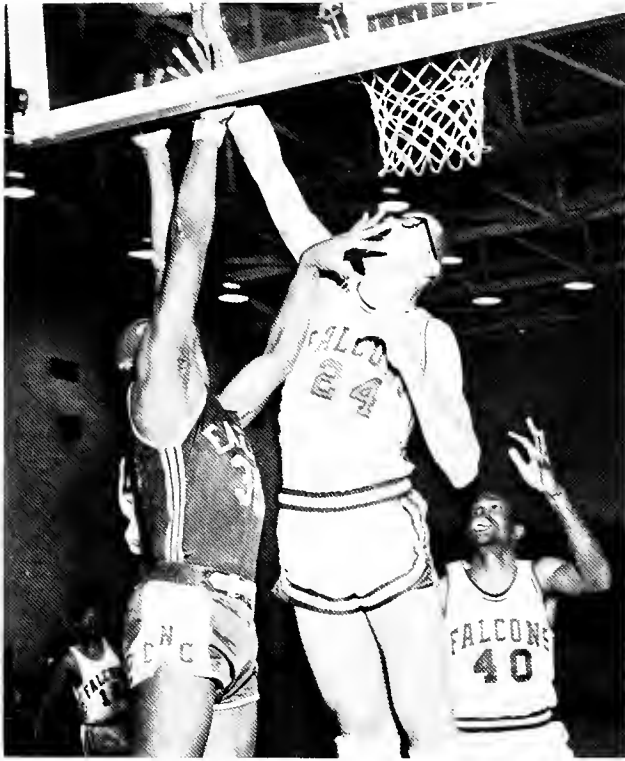


Basketball Roster — 1966-67

Name	Position	Height	Weight	Age	Class	Hometown
Dickens, Peter	C	6-5	220	19	Freshman	Tarboro, N. C.
*Gilmore, Raymond	C	6-7	210	18	Freshman	Plainfield, N.J.
Harrison, Leslie	G	5-8	210	18	Freshman	Chicago, Illinois
Hoffman, Silas L.	F	6-3	175	20	Sophomore	Gastonia, N. C.
Johnson, Jerome	G	6-0	175	17	Freshman	Raleigh, N. C.
Johnson, Wilbert	G	6-3	200	19	Freshman	Raleigh, N. C.
Jordan, John	F	6-5	195	21	Senior	Miami, Florida
**Lockette, John	F	6-4	185	20	Junior	Shelby, N. C.
**March, Curtis	C	6-7	215	20	Junior	Columbia, S. C.
*McKie, Leo	G	5-7	150	18	Freshman	Columbia, S. C.
*McReynolds, Dwight	F	6-5	195	20	Junior	Chicago, Illinois
Owens, Leon	G	6-4	185	19	Freshman	Washington, D.C.
Whitley, Eli	G	6-2	175	18	Freshman	Goldsboro, N. C.
Wiggin, William	G	6-2	175	20	Junior	Chicago, Illinois
*Mask, Nathaniel	G	6-2	190	19	Freshman	Philadelphia, Pa.

* Starters

** Co-Captains



Falcons in Action



St. Augustine's fans cheer the Falcons to victory

CHEERLEADERS



Hermína Lucas, Brenda Hassell, Barbara Langham, William Carson (Co-Captain), Patricia Harris (Captain), Johnnie Winston, Phyllis Long, Carolyn Miller, Brenda Jordan, Larry Pollard

DRILL TEAM IN ACTION



Front: Sandra Small, Vera Robinson, Edith Mitchell **Back:** Marilyn Moore, Carolyn Fisher, Carolyn Jacobs

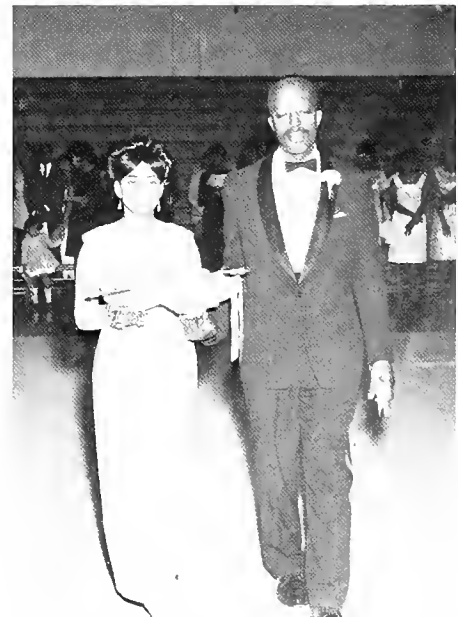
CORONATION BALL



honor guard



cloak bearer



crown and scepter bearer



MISS ST. AUGUSTINE'S
Miss Juanita Sneed



A QUEEN IS CROWNED



QUEEN AND HER COURT

Attendants to MISS ST. AUGUSTINE'S



Earlene Woods



Norma Howey

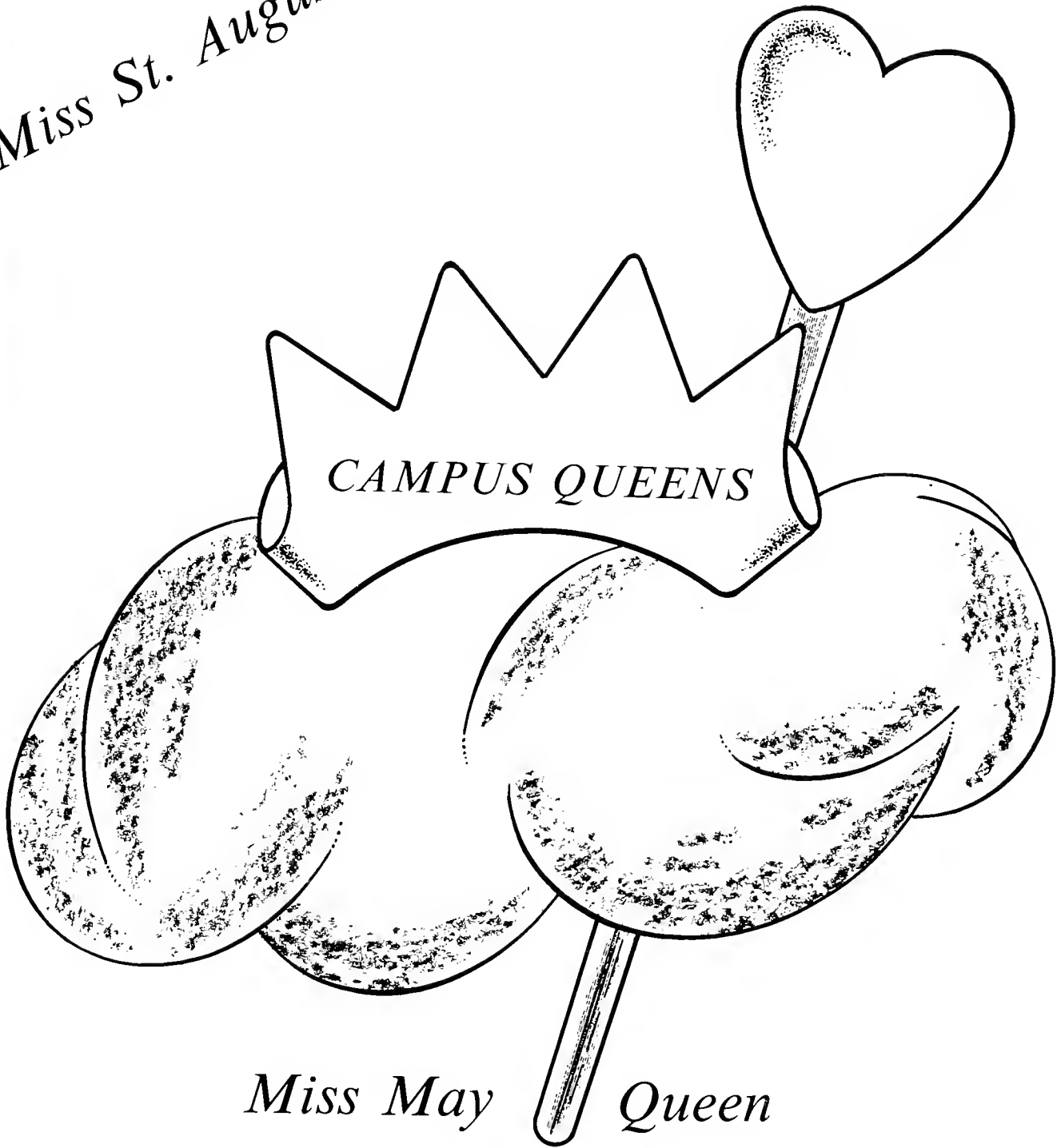


Donna Winters



Honor Attendant:
from Shaw University

Miss St. Augustine's College



Miss May Queen

Miss U.N.C.F.



Miss Saint Augustine's

Miss Juanita Sneed, our Miss St. Augustine's College, is a native of Franklin County, North Carolina. She is a member of Sigma Gamma Rho Sorority, Inc. and has served on the Interdormitory council, Student Council, Pan Hellenic Council and the Biology Club.

Much of her leisure time is spent in sewing and reading. She is a sports fan. Although she admits being active in sports seldom and enjoys being among people. "My highest aims", she says, "are to become a research biologist, marry and have a family."



"You push this end. . . ."

Miss St. Augustine's at Work.



"Easy now. . . ."



Miss May Queen

Miss Phyllis Sharpe
Senior from Statesville, North Carolina. Majoring in Social Welfare and French.
Member of Sigma Rho Sigma, Alpha Kappa Alpha Sorority, and Who's Who. Her
hobbies are sewing, cooking, collecting magazines. She plans to do graduate
work in the field of Social Welfare and French.



Miss U. N. C. F.

Miss Sheila Ann Stocker
Junior from Key West, Florida. Majoring in Biology. Member of the Biology Club,
and Alpha Kappa Alpha Sorority. Her hobbies are dancing, basketball and sewing.

Kandid ampus apers



Lionel with a green thumb?



"Duck" Margery



"Protect Me!"



"Did pre-registration really help?"



"And it says right here . . ."



"Ahh . . . Shoot two."



"Shy?"



"Are you sure we can cash it?"

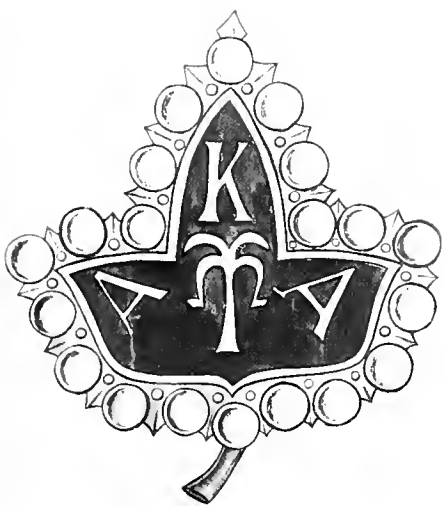
Ι Κ Λ Μ Α Β Γ Δ Ε Ζ Η Θ

*Greek
Letter
Organizations*



Inter-Greek Council

Ν Ξ Ο Π Ρ Σ Τ Υ Φ Χ Ψ Ω



ALPHA KAPPA ALPHA



Alpha Kappa Alpha Sorority, Inc. was founded on the campus of Howard University on January 16, 1908 and initiated the movement of Greek-letter sororities among Negro Women in America.

Because AKA is the oldest Greek-letter sorority founded by Negro women, the record of its origin, growth, and development is more than an interesting chronicle of a colorful bit of college-based America. It is rather a significant and inspiring reflection at the development of a minority group in a changing culture.

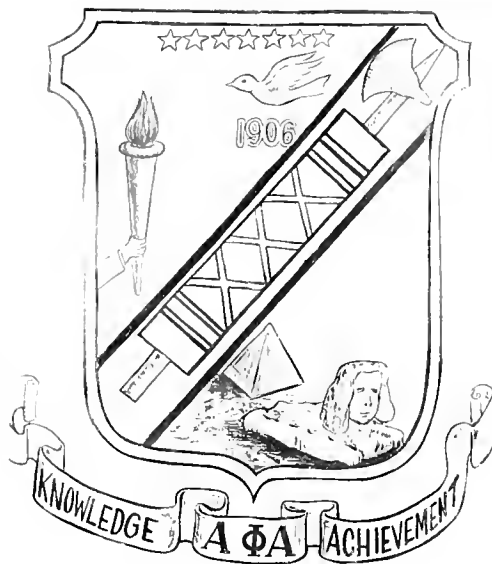


Goddess of Alpha Kappa Alpha



TOP— Portia Jamison, Constance B. Clark, Carol Payton, Natilee Wilson, Arthura Winston, Gwendolyn Cutchins, Shelia Stocker, Mrs. Jacquelyn Monk **BOTTOM**: PROBATES Pattye Jackson, Fay Harris, Alcester Bryant, Beatrice Bennett, Sandra Hawkins

ALPHA
PHI
ALPHA



Γ Ψ



Miss Alpha Phi Alpha

Miss Gwendolyn Othelin Cutchins Junior, from Franklinton, North Carolina. Majoring in Music Education. Member of College Choir, Alpha Kappa Alpha Sorority. Her hobbies are singing, instrumentation, sewing, cooking and special interest is recording.



The "Probates" of Alpha

Alpha Phi Alpha Fraternity was founded in 1906. It is the oldest Negro Greek letter organization today. Alpha is an international and interracial organization, which is favorably known throughout the world for its high principles. These principles are to promote high academic standing, high moral character, personal progress and brotherly love.



Charles Bands, Joe Cannon, Reginald Stevens, Robert Shephard, Williams Riddick, Curtis March, Albert Love, Moses Gollatt, Richard Martin, Eugene Thomas, Ronald Elliott, Quintard Taylor, John Betha



Delta Sigma Theta Sorority was founded in 1913 on the campus of Howard University as an organization whose aims would be something more serious than social activity. This sorority was established by twenty-two college women who visualized the development of a union of college women based on certain cardinal principles and pledged to uphold certain lofty ideals.

The members of Gamma Rho Chapter like all other Deltas have for their ultimate goal public service. This service is carried out under the National Project known as Public Service Projects.



Shoot 'em up



Delta Land seems so far away



#4 is mad!



*OMEGA
PSI
PHI*



KE



Miss Omega Psi Phi

Miss Andrea Elynn Olliviera Sophomore, from Detroit, Michigan. Majoring in Elementary Education. Member of the Elementary Club. Her hobbies are making ceramics and swimming.



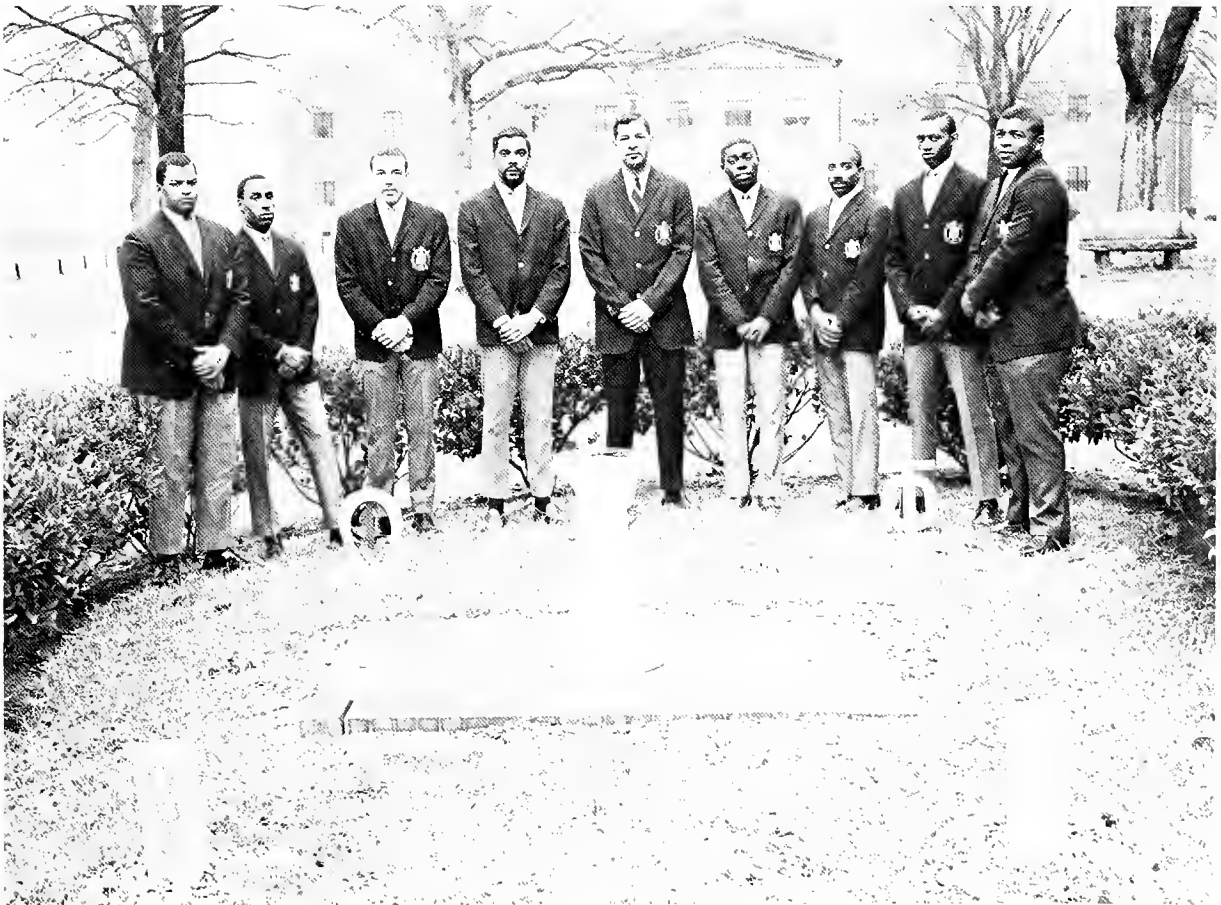
"Q" Bound

Founded in 1911 on the campus of Howard University, the Omega Psi Phi Fraternity, has endeavored through the years to build men. The bonds of brotherly love, strengthened by the motto of the fraternity, have spurred many men of Omega to high achievement.

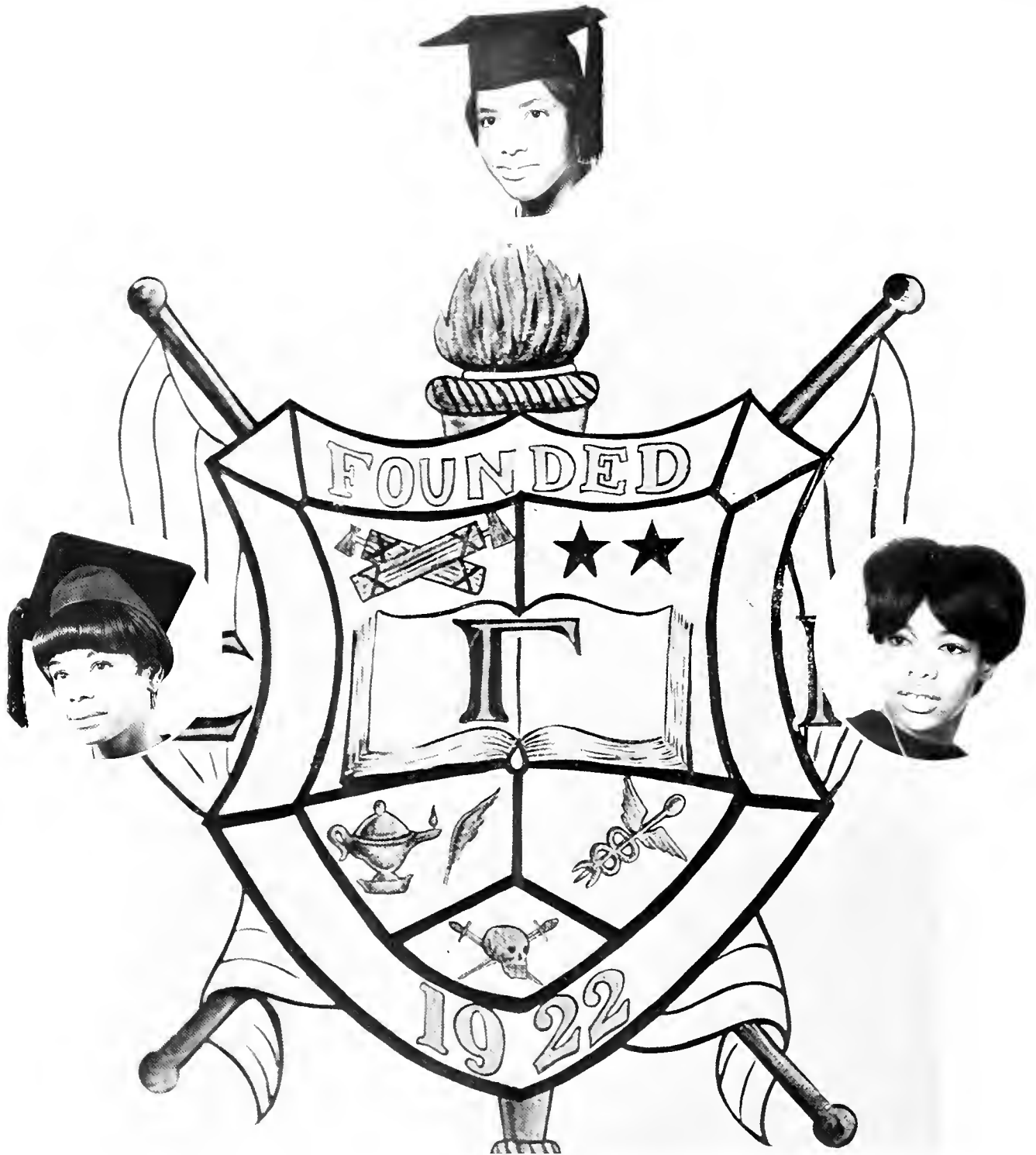
Here at Kappa Epsilon, achievement has been the watchword of the chapter. With the cardinal principles of manhood, scholarship, perseverance and uplift as a guide, the activities of the past have met success through the dedication of the sons of Omega.



We're almost there



Johnny Edmond, Robert Williams, Frank Godfrey, Herbert Johnson, Donald Brown, Anthony Bryant, Lionel Randolph, William Allen, Robert B. Williams



Sigma Gamma Rho, the youngest of Greek letter collegiate sororities and now an inter-racial organization was organized November 12, 1922 by seven young teachers in Indianapolis, Indiana. On December 30, 1929, the sorority was incorporated as a National Collegiate Sorority.

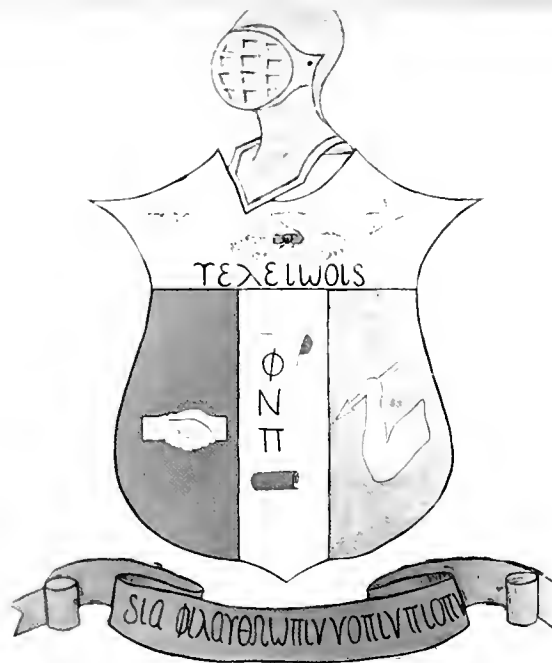
Sigma Gamma Rho holds membership in: The American

Council on Human Rights and grants a National Scholarship Fund. Very greatly stressed is Sigma Teen-Town, a project inaugurated during the war to help curb juvenile delinquency.

The sorority strives to foster and encourage education and upright living among women.



Sitting: Juanita Sneed, Jewel Jones, Constance A. Clark Kneeling: Mary Morris, Edith Mitchell



KAPPA ALPHA PSI



Miss Kappa Alpha Psi

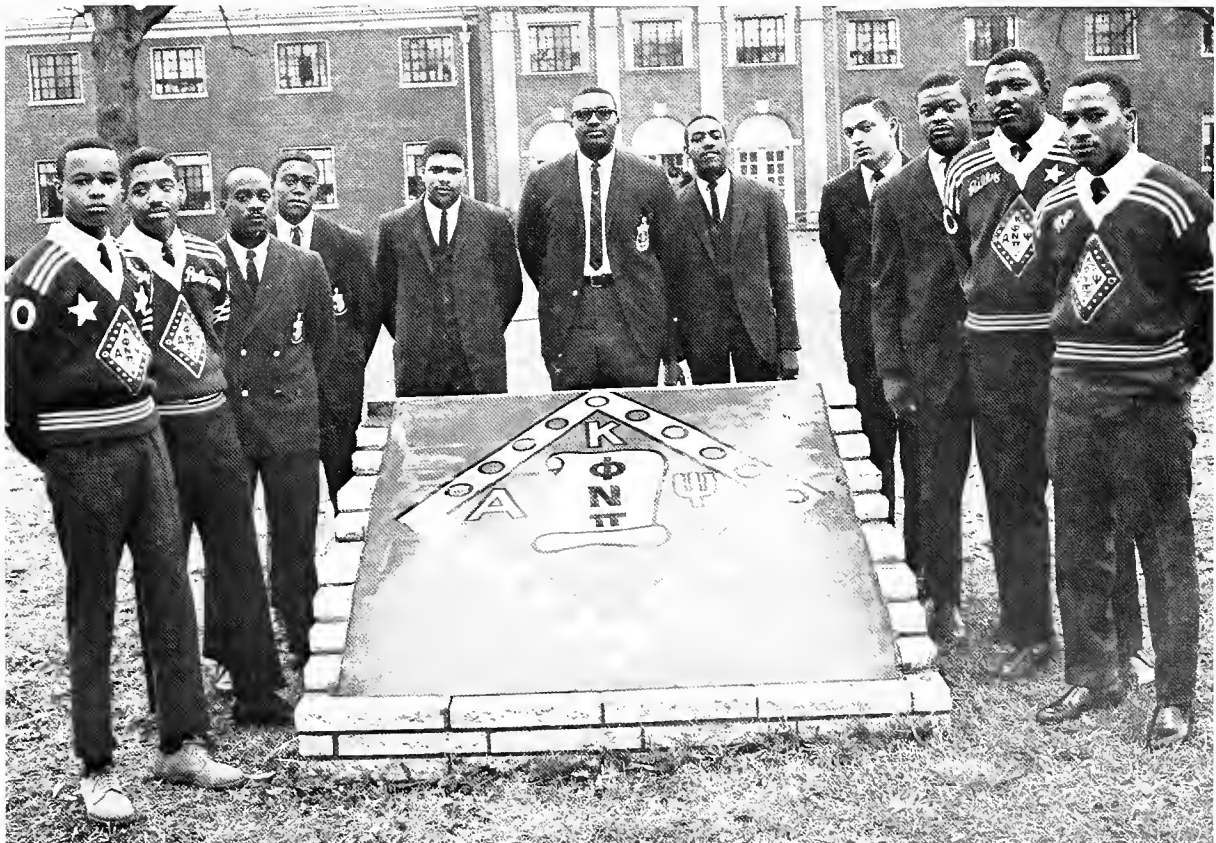
Miss Rita Colette Thomas Senior, from Washington, D. C. majoring in Secretarial Science, Member of Phi Beta Lambda and NAACP. Her hobbies are bowling, horseback riding and Dancing.



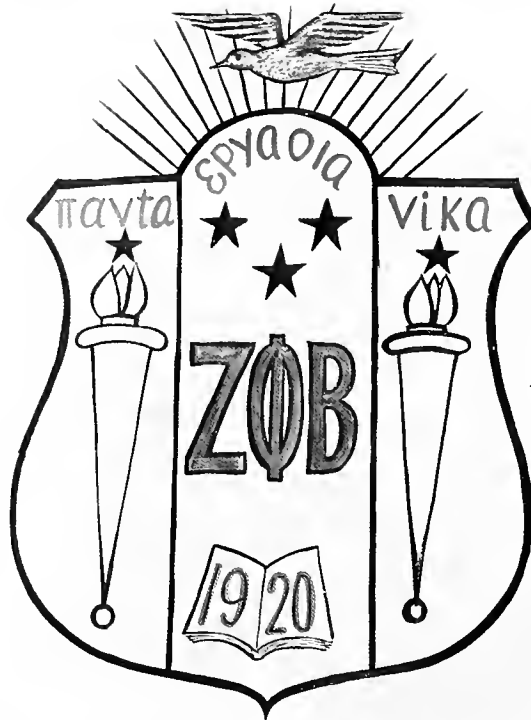
Kappa Alpha Psi was founded in 1927.

The fundamental purpose of Kappa Alpha Psi is achievement in all fields of human endeavor. As a bond we are striving hard to gain the best life has to offer.

Former Scrollers . . . Future Kappas



Dwight Peebles, Reginald Elliott, Charley Bevin, Garnett Martin, William Freeman, Herman Reid, Norman Mitchell, Frank Harris, Eddie L. Turner, Henry King, Seabron Johnson



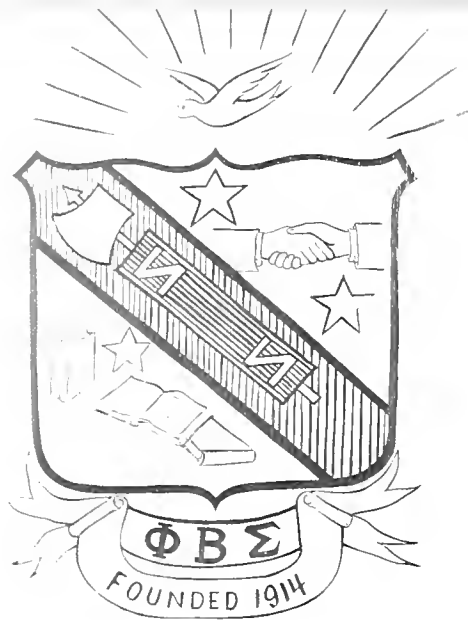
*"Finer Womanhood, Scholarship,
Sisterly Love, and Service"*

ZETA PHI BETA

Norma Howie, Carolyn Miller, Hoyie Utley, Jerelene Locas, Not Shown: Jessie Dewar



The Zeta Phi Beta Sorority was founded on the campus of Howard University, January 12, 1902. It was suggested to Arizona Cleaver by Charles Robert Samuel Taylor, a member of Phi Beta Sigma Fraternity, that she establish a sister organization. This has become a national organization of college women bonded together under a common bond of friendship and cultural effort seeking to establish the true worth of womanhood through excellence in educational achievement, human service and patriotic citizenship.



Miss Phi Beta Sigma

Miss Edith Galloway
Senior, from Beaufort, South Carolina. Majoring in Business Education. Member
of Phi Beta Lambda. Her hobbies are stamp collecting, reading, sewing and pho-
tography.



"We're almost there!"

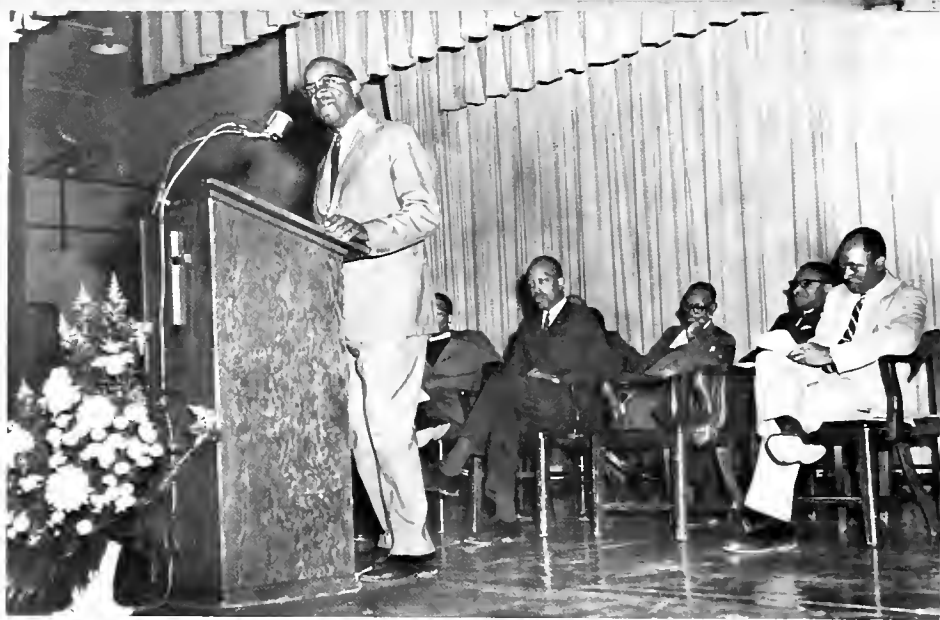
Phi Beta Sigma Fraternity, Inc. was founded January 9, 1914 on the campus of Howard University, Washington, D. C. The motto of the fraternity is "culture for service and service to Humanity." For the men of Sigma, this is more than a motto; it is a personal mode of living, in that all activities are undertaken with the idea of rendering service.

The three great ideals of Phi Beta Sigma are embodied in the philosophy—"Brotherhood, Scholarship, and Service." The realization of these ideals in their highest practical meaning has made and must continue to make Phi Beta Sigma a great and dynamic fraternity.



Vernon Perry, Mayo Phillips, Bradford Howard, Harold Rogers, Melvin Whitaker

ADDITIONAL



Special Assembly—
Dr. John Hope Franklin—Speaker



Art Show

CENTENNIAL



Sigma Rho Sigma
Teacher Recognition Day
Dr. W. W. Johnson and Mrs. E. Morgan



Sharon Beaumont
Twirler

Student Talent Show



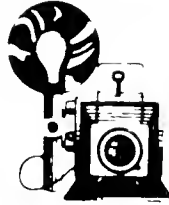
The Superbs
Brenda Byrd, Valjean Myers, Gwendolyn Cutchins, Edna Marie Sanders



Mrs. J. Williams
"And the winner is . . ."

ACTIVITIES

CAMPUS



SCENES



Administration and Staff



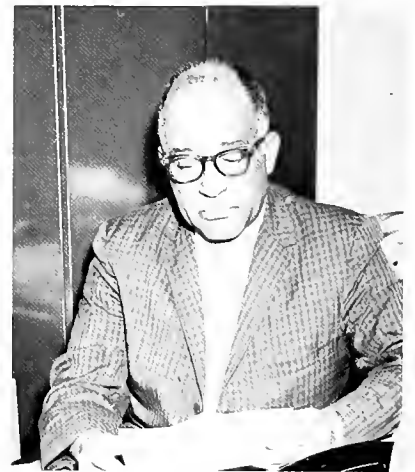
Alberta Hunt, Dean of Women, holds a B.S., Hampton Institute; M.A., Columbia University; Further study, Boston University, University of California



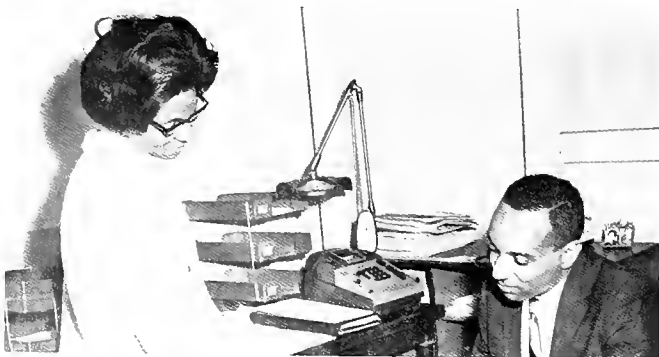
Charles C. Alston, Dean of Students, holds a A.B., Shaw University; M.A., New York University; Further study, North Carolina College, University of West Virginia



Mr. I. E. Spraggins, Registrar, B.S., Wilberforce University; M. Litt. University of Pittsburgh; Further study, University of Pittsburgh; University of Texas



Dean Christopher Gray, Dean of men.



Mr. J. Mills Holloway, Business Manager, received his B.S., North Carolina College. Further study University of Omaha.



Dr. Joseph Jones, Executive Dean, B.S., Morris Brown College; M.S., Northwestern University; Ph.D., Ohio State University

Division of Education



Dr. Marguerite M. Adams; Professor of Education, A.B., M.A., Howard University; Ed.D., Columbia University



Mrs. D. E. Ball; Elementary Education, B.S., South Carolina State; M.A., Columbia University



Mr. Jesse Clements; Head Department of Physical Education, B.A., St. Augustine's College; M.S., University of Illinois



Mr. Earl K. Curry; Physical Education, B.S., Paine College; M.S. North Carolina College



Mrs. Etta M. Eason; B.S., M.A., North Carolina College; New York University



Minnie T. Forte; B.S., M.A., Ph.D., State College, Fayetteville; North Carolina College



Mr. Willis Fowler; Business, B.S., Hampton; M.A., New York University



Dr. Frissel W. Jones; Chairman, Division of Education, Coordinator of Student Teaching, B.S., Hampton Institute; M.Ed. and D.Ed., Pennsylvania State University



Miss Nancy D. Pinckney; Physical Education, B.S., Allen University; M.S., Indiana University



Dr. Puri; Chairman of Business Department, B.A., Government College India; M.A., M.B.A., Atlanta University; Ph.D. Commerce University in India



Mr. Frederick D. Ponder; Physical Education, B.S., North Carolina College; M.S.



Thomas W. Simmons; Education, B.S., Tuskegee Institute; M.Ed.



Mable B. Wright, B.S.C., M.S.C., North Carolina College; Pennsylvania State University

Division of Humanities



Mr. Jack Biggers; Music, B.M., University of Illinois; M.M., University of Illinois



Howard Burchette; B.C., A.&T. College; M.S., A.&T. College



Father Calloway; Religious Education, B.S., St. Augustine's College; B.Th., Philadelphia Divinity School



Mrs. Shirley Coats; Music, B.A., Xavier University; M.M., Louisiana State University



Miss E. L. Cooke; Music Department, B.M., Howard University; M.M., Eastman School of Music



Max Dardeau; French, B.L., B.P., St. Martial's College; M.A., University of Haiti.



Julia A. Delany; B.A., Shaw University; M.A., Columbia University



Mrs. Friedlander; English, M.A.T., B.A., University of North Carolina; Roosevelt University



Dr. Albert W. Grauer; Head Music Department, B.M., B.S., M.A., Western Reserve University, Ph.D.



Mr. Charles E. Gregory; English, M.A., Duquesne University



Mr. Dilligham McDaniel; Chairman English Department, A.B., Fisk University; M.A., Fish University



Mrs. Lorna McDaniel; Music, B.S., Juillard School of Music; M.S.



Elizabeth A Morgan; B.A., M.A., University of North Carolina



Mrs. Lula Robinson; Religious Education, B.S., Fort Valley State; M.R.E., Fort Valley State



Mr. John Sekora; English, A.B., Bradley University; A.M., Princeton University; Work on Ph.D., Princeton University



Mrs. Juanita Williams; English, B.A., St. Augustine's College

Division of Natural Sciences and Mathematics



Mr. Milton A. Bivins; B.S. Biology



Dr. Prodyot Dutt; Mathematics



Dr. Jeffrey Gipson; B.S. & M.S., Ph.D. Chemistry



Mr. R. Hudson; B.S. & M.S. Chemistry



Mr. W. B. Inborder; Physics & Math, B.S. Engineering



Dr. W. W. Johnson; B.S. Biology



Mrs. G. Martin; M.S. Math



Dr. A. Richardson; Biology



Mrs. Weatherford; Mathematics



Dr. D. E. Young; B.S. & M.S. Ph.D. Biology

Division of Social Sciences



Mr. W. Allen; B.A. & M.A. Sociology



Mrs. S. Babbs; B.S. & M.A. History



Mr. C. Coble; B.S. & M.S. Science



Dr. N. Dawes; A.B. History Administrative Asst.

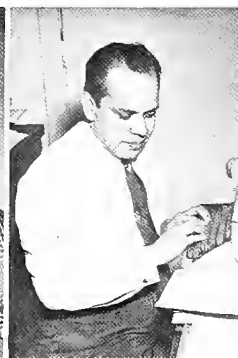


Dr. W. A. Gaines; A.B. Sociology

Dr. L. Oliver; Ph.D. Sociology

Dr. E. Schwertman; B.A., M.A. & Ph.D. History

Dr. Sinha



Library Staff



Mrs. Dorothy Chapman; Assistant Librarian, B.S., Tuskegee Institute; M.S. Carnegie Library School



Mrs. Ophelia Irving; B.A., Clark University, M.L.S., Syracuse University



Mrs. Georgia F. Mulligan; MSLS



Mrs. Puri Assistant in the Library



Mrs. Ruth B. Walker; Library Assistant, B.A. Degree



Mrs. Catherine H. Winters; M.L.S. Degree

Dormitory Directresses



Ruth D. Hicks; St. Augustine's College, A.&T. College Elementary Education, Goold Hall, Maude P. Smith; Tuskegee Normal, Hampton Institute, Goold Hall



Mrs. Pitts; Tuttle Hall



Mrs. Clara M. Wilson; Lincoln Secretarial School, Baker Hall



Mrs. Margaret L. Shelley Attended N.C.C.; Delany Building

Public Dining Relations Commons



Dr. W. W. McDowell; College Physician, B.S., M.D., Meharry Medical College



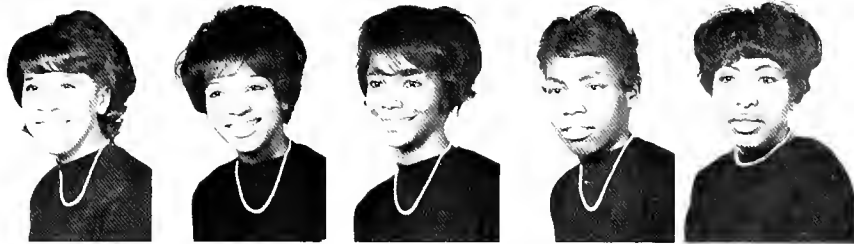
Miss Della M. Moore; College Nurse, R.N., Saint Agnes School of Nursing



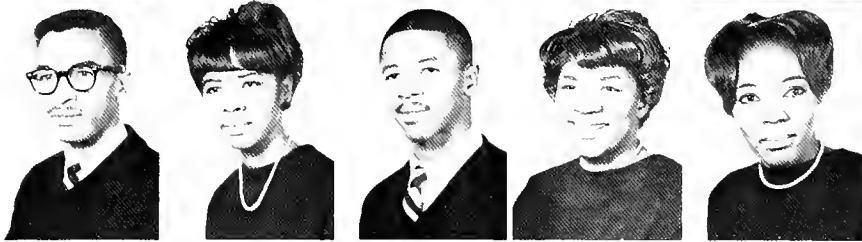
Mr. Purdie Anders; B.A., M.S., Work on Ph.D.



Mrs. Diane T. Brown; Dietitian, B.S., Tuskegee Institute



Robbie Thomas
Anna Thompson
Barbara Thorpe
Nellie Umpstead
Warranette Vaughan



Donald Weathers
Carolyn Webb
Alvin Wesson
Bessie White
Ann Whitecar



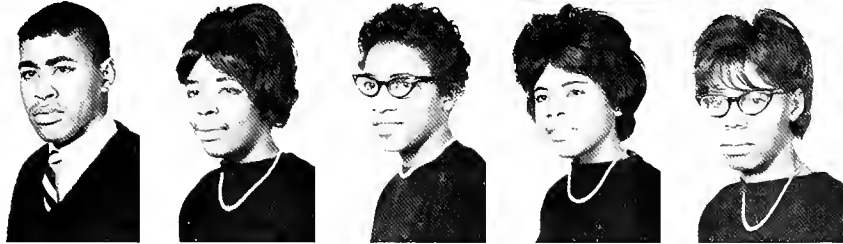
Yvonne Wilkins
Shirley Wilkins
Aimelita Williams
Clathera Williams
Inez Williams



Joann Williams
Margaret Williams
Virginia Dell Williams
Willie Marv Williams
Isiah Wilson



Johnnie Winston
Arthur Wise
Earlene Woods
Joan Wood
Gwendolyn Wright



Esco Yancy
Dorothy Yates
Ethel Young
Barbara Herritt
Bernice Hinton



Melvadine Hamn



Administrative Secretaries and Assistants



Mrs. Millie D. Veasey, B.A., St. Augustine's College; Secretary to the President



Mrs. Marie M. Gibbs; Assistant Secretary to the President; Baines Business College



Miss Nannie Alsbrook; Secretary to the Dean; B.S., St. Augustine's College



Mrs. Laura Wise; Assistant Secretary to Dean; Attended American University



Miss Ruby Austin; Secretary to Dean of Students; A.A. Morristown College



Mrs. Irene Brown; Secretary to Dean of Students; B.S., A.&T. College



Miss Ruth S. Knox; Secretary to the Registrar; B.S., North Carolina College



Miss Paulette Cannady; Assistant Secretary to the Registrar; B.A., St. Augustine's College



Miss Helen Galloway; Secretary to Administrative Aid; B.S., St. Augustine's College



Mrs. Rosa Curtis; Faculty Secretary; Payne's Business College and Secretarial School



Mrs. Margaret W. Ransdell; Secretary to the Business Manager; B.A., St. Augustine's College

Business Office



Julius H. Barbee; Chief Accountant; B.S., North Carolina College
Mrs. Nancy Wall; Billing Clerk

Mrs. Boykins; College Bookstore

Mr. Lawrence Bradley; Industrial Education and Building Construction; B.S., A.&T. College

Mrs. June Kay Campbell; Assistant Secretary to Business Manager; Attended Shaw University



Mrs. Katie L. Fitts; Cashier

Miss Joyce Hawkins; Secretary; Raleigh Business College

Mrs. Newkirk; College Bookstore

Mrs. Zelda R. Ponder; Records Clerk; B.S., North Carolina College



James Reid, Jr.; Accountant; B.S., North Carolina College

Mrs. Beatrice W. Richardson; Secretary to Maintenance Dept.; Raleigh Business College

George Sanders; Accountant; B.A., St. Augustine's College; M.B.A. North Carolina College

Mr. Bernice B. Taylor; B.S., St. Augustine's College; Maintenance Institute, A.&T. College



This has been a presentation to the various activities which have taken their perspective places from the founding of Saint Augustine's College to its Centennial Celebration.

To the advisors and staff who have worked diligently toward the publication of this book, the editors extend our sincere appreciation for your many efforts. Also, we extend special thanks to the administration, faculty and student body for the cooperation received.

Best wishes to Saint Augustine's College and the people who will make the forthcoming years as successful as these past one hundred years.

TO SAINT AUGUSTINE'S COLLEGE—Congratulations for a century of Service, Learning and Growth.

Editor-in-Chief

Margery Graham

Margery Graham

Elizabeth Washington

Elizabeth Washington



"the picture can go right here . . ."

Editors
Betty W.
Margery G.

Typists
"Mickey"
Vinez
Betty M.
Betty B.

Advisors
Mrs. E. M. Eason
Mr. W. Fowler
Mrs. A. Richardson

Our Hardworking Staff

Layout
Carol
Gwen
Lorraine

Art
Donna N.
James

Candid
Photography

Bill



"oops, Mickey goofed!"

AUTOGRAPHS



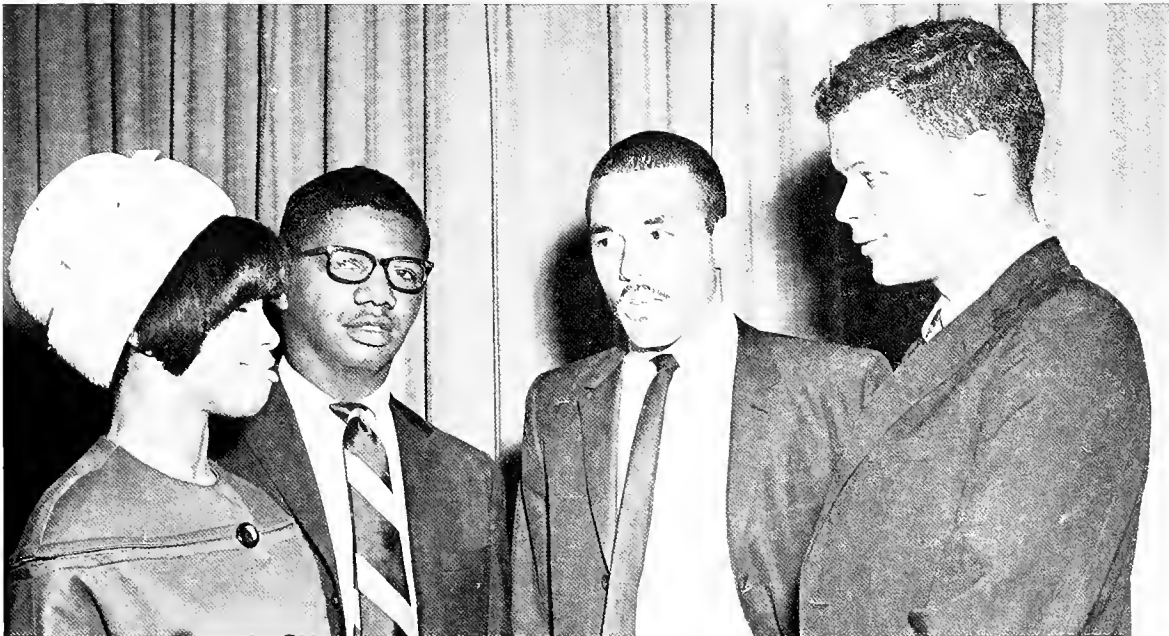


The Class of 1967

Presents . . .



Special Assembly



Mr. Julian Bond: Member of the House of Representatives; Georgia State Legislature



Class
Night



Alumni Luncheon



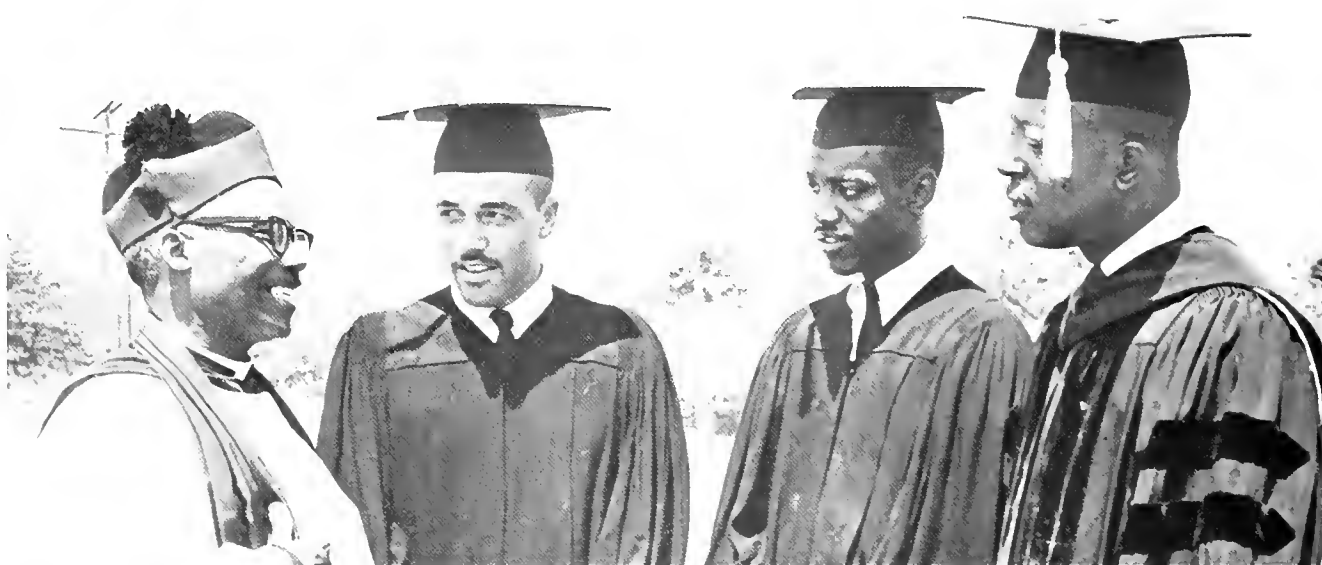


President's Reception



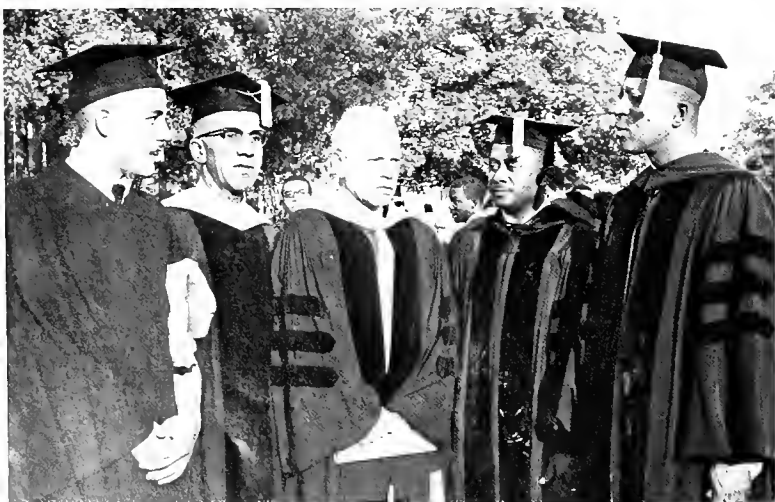


Flag Raising Baccalaureate Service



Commencement

Exercises



"St. Augustine's College will live in our hearts and minds forever."











